

**REPUBLIC OF MAURITIUS**

Ministry of Finance and Economic Development

**STATISTICS MAURITIUS**

---

**2011**  
**HOUSING AND POPULATION CENSUS**

**REPUBLIC OF MAURITIUS**

*ANALYSIS REPORT*

*POPULATION DATA EVALUATION*

February 2014

## CONTENTS

|   |    |
|---|----|
| 1. Introduction.....  | 1  |
| 2. Summary of findings.....   | 1  |
| 3. Method used for census evaluation.....   | 1  |
| 4. Coverage error .....   | 1  |
| 4.1 <i>Balancing equation by sex</i> .....  | 2  |
| 4.2 <i>Growth rate</i> .....  | 4  |
| 4.3 <i>Age and sex population structure</i> .....   | 4  |
| 4.3.1 <i>Median age</i> .....   | 4  |
| 4.3.2 <i>Sex ratio</i> .....  | 5  |
| 4.3.3 <i>Age and sex composition</i> .....  | 6  |
| 4.3.4 <i>Child-woman ratio</i> .....  | 6  |
| 4.3.5 <i>Dependency ratio</i> .....   | 7  |
| 5. Content error .....  | 7  |
| 5.1 <i>Population pyramid</i> .....   | 7  |
| 5.2 <i>Digit preference</i> .....   | 9  |
| 5.3 <i>Age ratio</i> .....  | 13 |
| 5.4 <i>Survival ratios</i> .....  | 13 |
| 6. Consistency checks with data from other sources .....  | 15 |
| 6.1 <i>Comparison of Population Census with Housing Census count</i> .....                                | 15 |
| 6.2 <i>Comparison with Ministry of Social Security, National Solidarity and Reform Institutions</i> ..... | 16 |
| 6.3 <i>Comparison with the Electoral Commission’s Office – Registered electors</i> .....                  | 16 |
| 7. Adjustment for under-enumeration of children .....   | 18 |
| 8. Notes .....  | 21 |
| 8.1 <i>Contact persons</i> .....  | 21 |
| 8.2 <i>List of Tables</i> .....   | 21 |
| 8.3 <i>List of Figures</i> .....  | 22 |
| 8.4 <i>Annexes</i> .....  | 22 |

## 1. Introduction

This report presents the results of the evaluation exercise to determine whether data from the 2011 Population Census are complete and accurate. The main objectives of the evaluation are:

- to identify the types and sources of errors or biases;
- to measure the accuracy of the data; and
- to adjust the data on the basis of the errors identified.

## 2. Summary of findings

- (i) The age and sex data from the 2011 Population Census is internally consistent and in line with past censuses as well as with fertility and mortality data from the vital registration system. It was also found to be accurate on the basis on the UN Joint Score and the Myers' index.
- (ii) There are no major coverage errors; the data is consistent with natural growth, and population growths registered at previous censuses.
- (iii) The population figures at age 18 and above are consistent with data from registered electors and with data on old-age pensioners.
- (iv) The enumeration is complete in the island of Rodrigues but the evaluation suggests under enumeration of children below age 15 years in the island of Mauritius for which an adjustment of 15,587 is needed.

## 3. Method used for census evaluation

The indirect method through demographic analysis has been used for this evaluation exercise. Data has been evaluated using:

- internal consistency checks within 2011 Census data; and
- external checks by comparing 2011 Census data with data from other sources such as previous censuses and administrative sources.

## 4. Coverage error

Coverage error is the error in the count of persons which may occur in various forms, namely:

- omitting a unit that should have been included;
- including a unit more than once; and
- including a unit that should not have been included.

The extent of the coverage error is being assessed in sections 4.1 to 4.3.

#### 4.1 Balancing equation by sex

One of the ways of determining the reliability of the estimates from a Census is to determine the intercensal error.

The intercensal error refers to the difference between the latest Census 2011 and the estimated population figures based on the previous Census 2000 which have been carried forward using births, deaths and migration data. This is computed through the population balancing equation.

It is to be noted however that the definition of ‘resident population’ used at Census 2011 is different from that used at Census 2000. Upon aligning the definition of ‘resident population’ used at Census 2000 with that at Census 2011, the balancing equation is as shown in the table below.

**Table 1 - Balancing equation by sex, 2011 Census – Republic of Mauritius  
(based on the definition of ‘resident’ used at 2011 Census)**

|   | <b>Both<br/>sexes</b> | <b>Male</b> | <b>Female</b> |
|---|-----------------------|-------------|---------------|
| Resident population, 2000 Census(based on definition of ‘resident’ as at 2011 Census) <sup>1/</sup> | 1,163,548             | 574,856     | 588,692       |
| <i>Add: Adjustment for under enumeration at 2000 Census</i>   | 8,025                 | 4,456       | 3,569         |
| <i>Add: Live births July 2000 - June 2011</i>   | 196,040               | 99,687      | 96,353        |
| <i>Less: Deaths July 2000 - June 2011</i>   | 94,875                | 53,074      | 41,801        |
| <i>Add: Net migration</i>   | -1,987                | -1,101      | -886          |
| Expected population at 2011 Census  | 1,270,751             | 624,824     | 645,927       |
| Enumerated resident population - 2011 Census  | 1,236,817             | 610,848     | 625,969       |
| Excess of enumerated over expected population   | -33,934               | -13,976     | -19,958       |
| Excess as a % of enumerated 2011 population   | -2.74                 | -2.29       | -3.19         |

<sup>1/</sup> See Annex I for method used to obtain the adjusted resident population at Census 2000

The balancing equation indicates possible undercount at Census 2011 when compared against Census 2000.

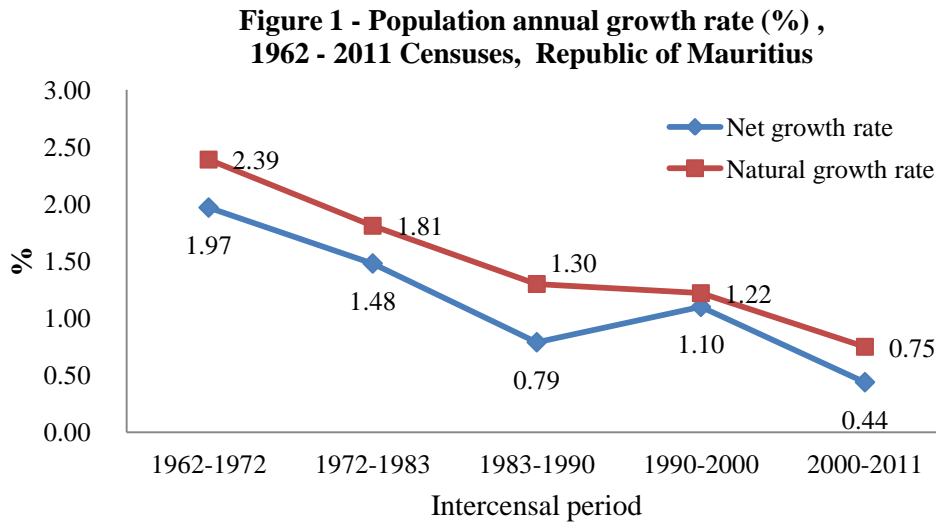
However, the intercensal error of -33,934 obtained for Census 2011 cannot be strictly attributed to an undercount at Census 2011 only since there are many areas that contribute to the intercensal error, namely:

- errors in the Census based estimates of the population of 2000;
- errors in the Census based estimates of the population of 2011; and
- errors in the estimates of any of the components of population change (births, deaths and migration) since Census 2000.

In Mauritius, vital registration is considered complete and it can be assumed that births and deaths are correctly reported. However, international migration data are not as reliable; the estimates thereon have been based on past trend of net arrivals over departures of residents.

## 4.2 Growth rate

As shown in Figure 1, the net population growth rate in 2000 - 2011 is consistent with the natural growth rate for the same period. It is also in line with net growth rates for past intercensal periods. There was a gradual decline in the population growth rate from 1962 to 1990 but an increase from 1990 to 2000 due to lesser out-migration during that period.

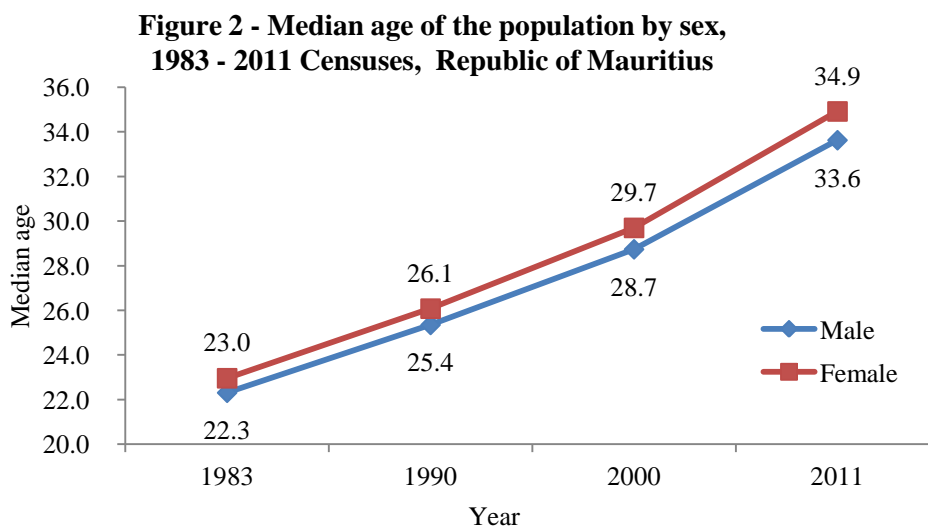


The population growth rate in 2000 - 2011 does not indicate major coverage errors when compared with natural growth rate and with previous censuses.

## 4.3 Age and sex population structure

### 4.3.1 Median age

The evolution of the median age indicates whether the population is getting younger or older.

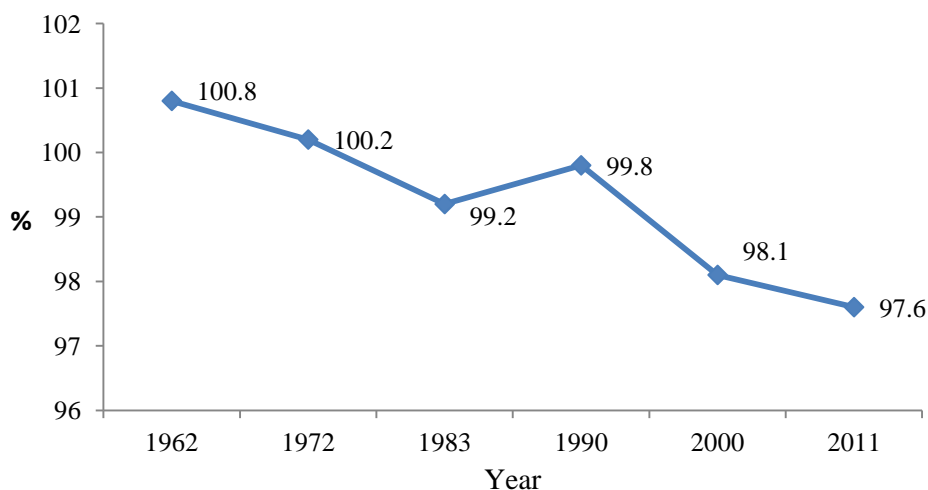


The median age observed at Census 2011 is in line with that observed at previous censuses and confirms the tendency towards population ageing (Figure 2). The median age of both males and females is increasing and the gap is widening from 0.7 years in 1983 to 1.3 years in 2011.

4.3.2 Sex ratio

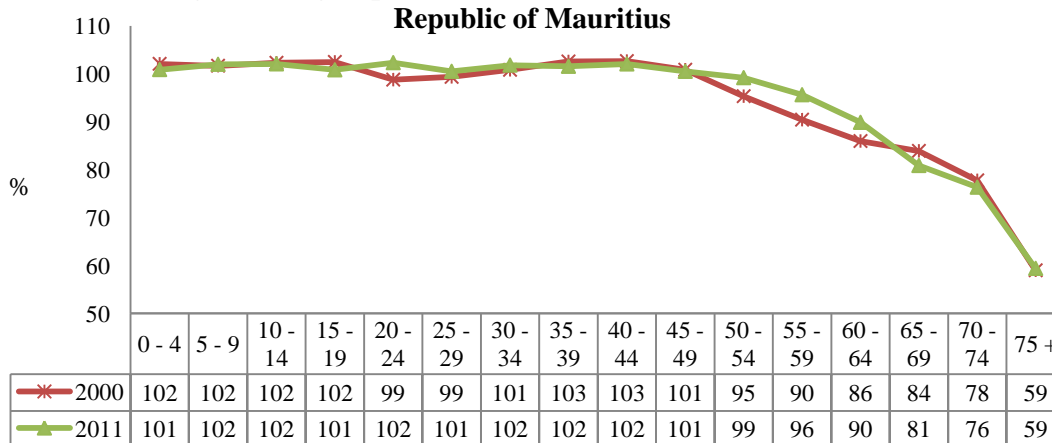
Sex ratio is influenced by the three factors affecting population change namely fertility, mortality and migration. It gives the number of males for every 100 females. If it is above 100, it shows the predominance of males over females, conversely when it is lower than 100, there are more females than males.

**Figure 3 - Evolution of sex ratio, 1962 - 2011 Censuses, Republic of Mauritius**



The sex ratio continued its declining trend in 2011 (Figure 3); the increase noted in 1990 is mainly due to higher out-migration of females than males in 1983 - 1990.

**Figure 4 - Age -specific sex ratio - 2000 and 2011 Censuses, Republic of Mauritius**



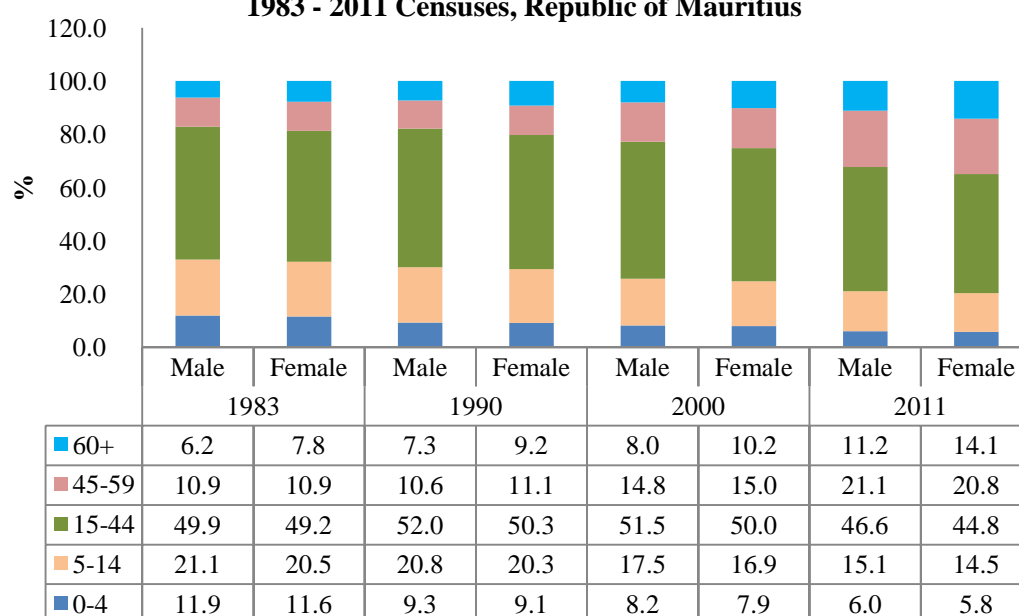
Sex ratios tend to decline with increasing age since more males are born than females but females live longer. This general tendency is observed at Census 2011 (Figure 4). At Census 2000, there are exceptions at ages 20-29 years - the sex ratio for this age-group was 99 in 2000, possibly due to the presence of foreign female workers.

### 4.3.3 Age and sex composition

Comparison of data on age and sex composition from Census 2011 with previous censuses (Figure 5) shows that, from 1983 to 2011, the proportion of the population

- aged 0-4 and 5-14 years decreased continuously among both males and females, mainly due to a general fall in fertility;
- aged 60 years and above increased significantly due to higher life expectancy.

**Figure 5 - Age composition of the population by age and sex, 1983 - 2011 Censuses, Republic of Mauritius**



As in previous censuses, females are fewer in proportion among the younger ages at Census 2011; this is due to fewer females than males at birth. Among the elderly, females are more numerous since they live longer than men.

### 4.3.4 Child-woman ratio

The child-woman ratio is defined as the number of children aged 0-4 years per 1,000 women in the age group 15-44 years. It is a crude measure of the level of fertility derived from census data.

The child-woman ratio declined from 363.3 in 1990 to 316.7 in 2000 and 260.5 in 2011. These ratios are in line with the fertility decline observed during these periods whereby the Total Fertility Rate went down from 2.32 in 1990 to 1.99 in 2000 and 1.45 in 2011.



#### *4.3.5 Dependency ratio*

The total dependency ratio is the ratio of the ‘dependent’ population (combined child population 0 -14 years and the aged population 65 years and over) to the population of intermediate age 15-64 years. It is the sum of the child and old age dependency ratio (Table 2).

**Table 2 - Dependency ratio by sex - 2000 and 2011 Censuses, Republic of Mauritius**

| Sex    | 2000  |         |       | 2011  |         |       |
|--------|-------|---------|-------|-------|---------|-------|
|        | Child | Old-age | Total | Child | Old-age | Total |
| Male   | 373   | 78      | 451   | 293   | 93      | 386   |
| Female | 364   | 107     | 471   | 288   | 132     | 420   |
| Total  | 368   | 92      | 460   | 290   | 113     | 403   |

The total dependency ratio went down from 460 in 2000 to 403 in 2011, mainly attributable to a fall in child dependency brought about by fertility decline.

Conversely, the old-age dependency ratio went up from 92 in 2000 to 113 in 2011, as a result of both fertility decline and mortality improvement.

In addition, both 2000 and 2011 census data indicate higher old age dependency among females than males again due to the fact that women live longer than men.

The age and sex composition of the population at Census 2011 is internally consistent and is line with past censuses as well as with fertility and mortality from the vital registration system.

## **5. Content error**

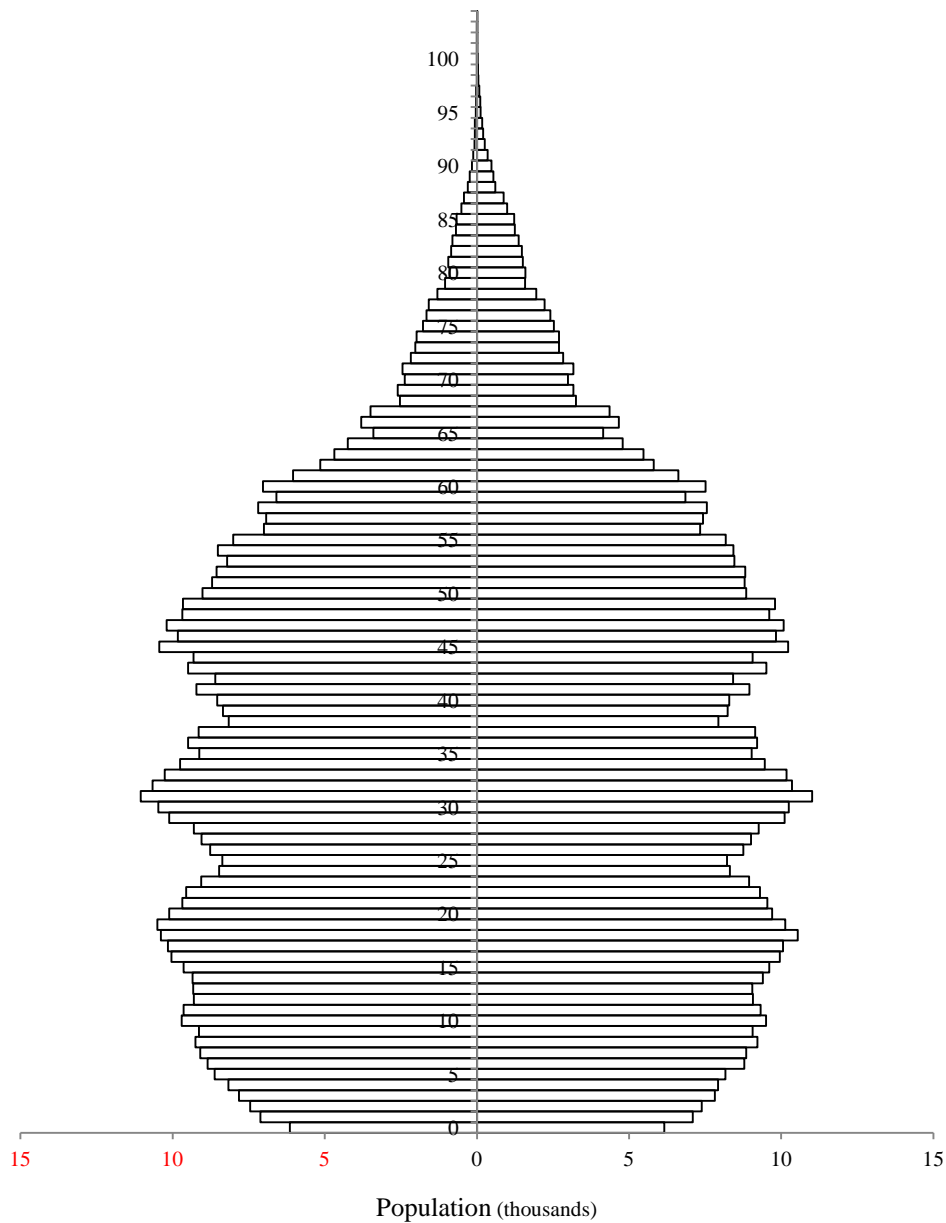
Content errors refer to instances where characteristics such as age, sex, marital status and economic activity of a person enumerated in a census are incorrectly reported.

The extent of the content errors in Census 2011 is examined in Sections 5.1 to 5.4.

### **5.1 Population pyramid**

Another way of detecting irregularities in the reported age data of a census is by looking at a population pyramid by single year of age. In a population with no drastic changes in fertility, mortality and migration and where migration is either negligible or does not occur at selective ages, change in population in given ages is expected to decrease smoothly with age. The base of the pyramid is mainly determined by the level of fertility in the population, while how fast it converges to peak is determined by previous levels of mortality and fertility. Moreover, migration by age and sex also affect the shape of the pyramid.

**Figure 6 - Population pyramid by single year of age  
2011 Census, Republic of Mauritius**



The base of the population pyramid for the 2011 Census (Figure 6) is narrower, indicating fewer births and in line with a fertility rate which is continuously decreasing over the past two decades. For ages 45 and above, there is a smooth decrease with age. For the ages below 45 years, the changes with age are irregular, mostly due to variations in number of births over the last few decades and the impact of out-migration on the labour market. The bulge at age 31 is the result of high births around the year 1981 while the bulge at age 18 is due to high births recorded around year 1992. The top of the pyramid shows the impact of mortality on both males and females above 60 years old.

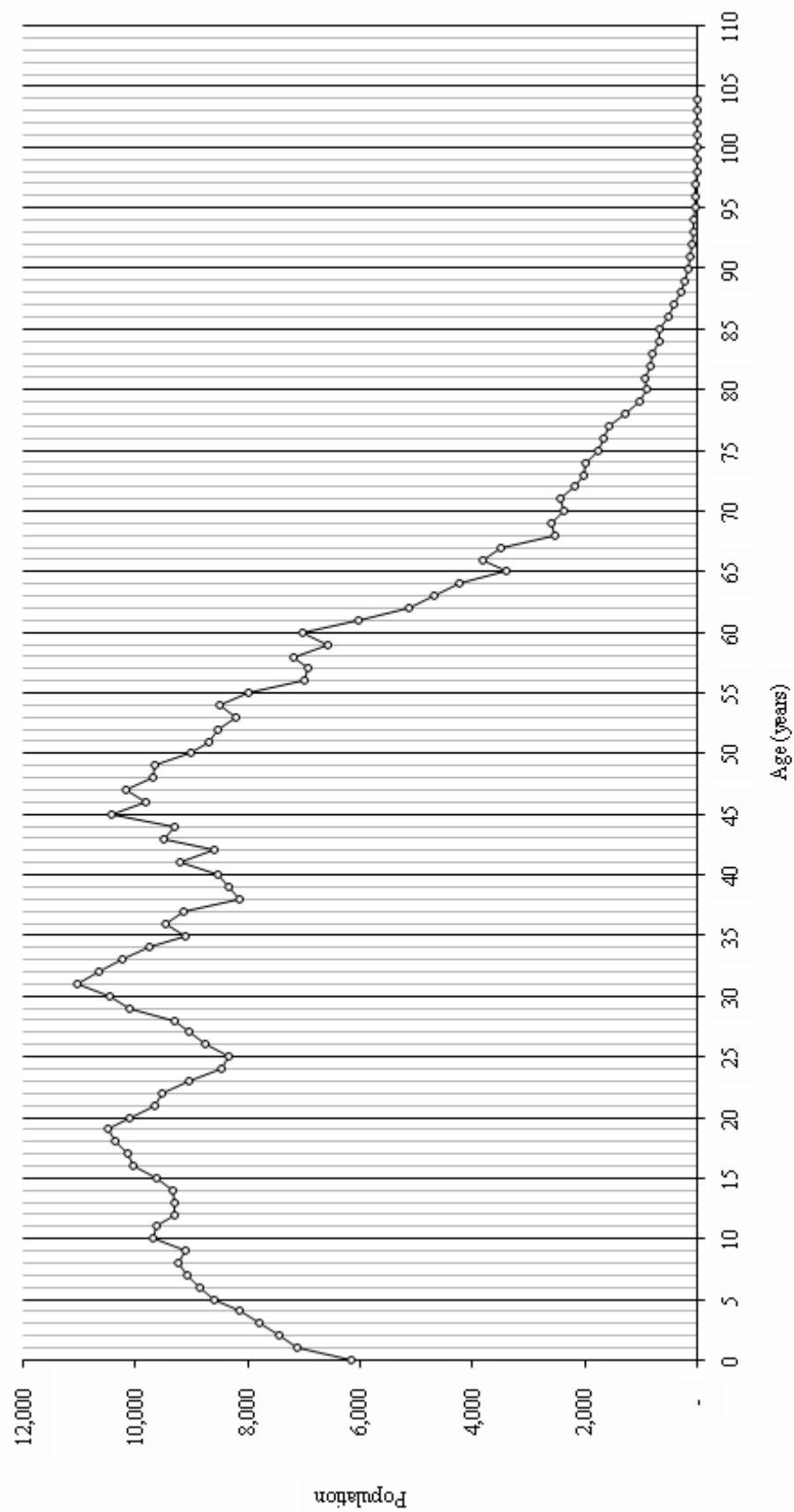
The population pyramid does not indicate severe age misreporting at the 2011 Census.

### ***5.2 Digit preference***

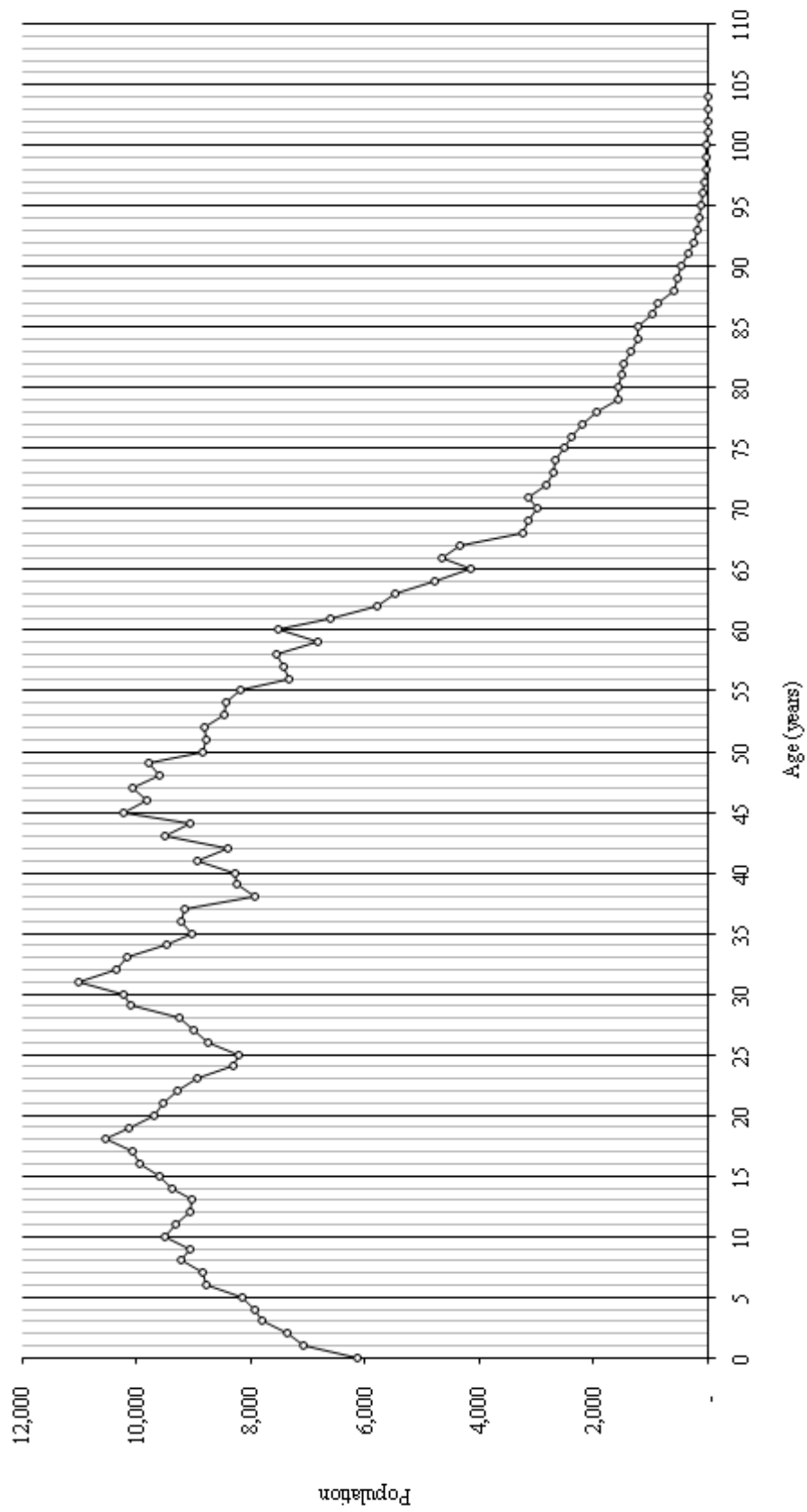
A common form of age misreporting is digit preference or age heaping, that is, a noticeable concentration of reported ages at specific digits. It is the result of deliberate mis-statement or ignorance of age on the part of the respondent.

Figures 7 and 8 depict the age distribution by sex of the Republic of Mauritius. The peaks on the curves indicate the most preferred ages in reporting while the troughs indicate the under reported ages. From figures 7 and 8, it appears that there is a slight preference for the digit 0 among both males and females.

**Figure 7 - Male population by age - 2011 Census  
Republic of Mauritius**



**Figure 8 - Female population by age - 2011 Census  
Republic of Mauritius**



To quantify the magnitude of digit preference, the Myers' Index has been used. It involves the calculation of the percentage of the population,  $P(i)$  having age ending in  $i$  where  $i = 0, 1, 2, \dots, 9$ . In the ideal situation where there is no digit preference,  $P(i)$  equals 10 for each  $i$ .

The index is thus computed as the sum of absolute deviations of  $P(i)$  from 10,

i.e.

$$Index = \frac{1}{2} \sum_{i=0}^{i=9} |P(i) - 10|$$

It lies between 0 and 90 where 0 means no digit preference and 90 means absolute digit preference at a single digit.

Table 3 indicates slight digit preference of 0, 1 and 9 at the 2011 Census. However, considering that the Myers' index was only 0.8 to 0.9 on a scale of 0 to 90, it can be construed that age was accurately reported at the 2011 Census.

In addition, the Myers' index shows a slight improvement in age reporting at Census 2011 as compared to Census 2000 possibly due to verification with the National Identity Number provided.

**Table 3 - Index for digit preference in age data - 2011 Census, Republic of Mauritius**

| Digit      | Individual percentages |        |
|------------|------------------------|--------|
|            | Male                   | Female |
| 0          | 10.3                   | 10.2   |
| 1          | 10.3                   | 10.3   |
| 2          | 9.9                    | 9.9    |
| 3          | 9.9                    | 10.0   |
| 4          | 9.7                    | 9.6    |
| 5          | 9.8                    | 9.8    |
| 6          | 9.8                    | 9.9    |
| 7          | 10.0                   | 10.1   |
| 8          | 10.0                   | 10.0   |
| 9          | 10.3                   | 10.2   |
| 2011 Index | 0.9                    | 0.8    |
| 2000 Index | 1.0                    | 1.0    |

The Myers' index shows that age was accurately reported at the 2011 Census.

### 5.3 Age ratio

The quality of age data can also be evaluated by examining age ratios. To quantify the degree of age-sex reporting errors, various indices such as the age ratio score, the sex ratio score and the UN Joint Score have been calculated for the population aged less than 70 years.

The age ratio is defined as the ratio of the population of a given age to half the sum of population in the preceding and following groups and expressed per 100. The age-ratio score is defined as the average of the sum of absolute deviations of age-ratios from the expected 100. When there are no major changes in fertility, mortality or migration, the age ratios do not deviate much from 100, hence, any substantial deviation is explained in terms of age misreporting.

The sex ratio score is defined as the average of the sum of absolute deviations of sex ratios of consecutive age-groups.

The UN age-sex accuracy index or UN Joint Scores combines indices on accuracy of the age distribution and accuracy in sex ratio to come up with a single index measuring the accuracy of the age-sex distribution of a Census. The census data is considered to be "accurate", "inaccurate" or "highly inaccurate" if the index is under 20, 20 to 40 or over 40 respectively.

**Table 4 - Age ratio, Sex Ratio and U.N Joint Scores - 2000 and 2011 Censuses, Republic of Mauritius**

| Census Year | Sex Ratio Score | Age Ratio Score |        | U.N Joint Score |
|-------------|-----------------|-----------------|--------|-----------------|
|             |                 | Male            | Female |                 |
| 2000        | 2.1             | 6.0             | 5.9    | 18.3            |
| 2011        | 2.2             | 6.4             | 6.5    | 19.6            |

When compared with 2000 Census, sex ratio score has slightly increased from 2.1 to 2.2 in 2011. Male age ratio score has increased from 6.0 to 6.4 while for female; it has increased from 5.9 to 6.5. The latter increase cannot be attributable to age misreporting per se as it can occur due to factors of population change such as fertility or international migration applicable to certain age groups.

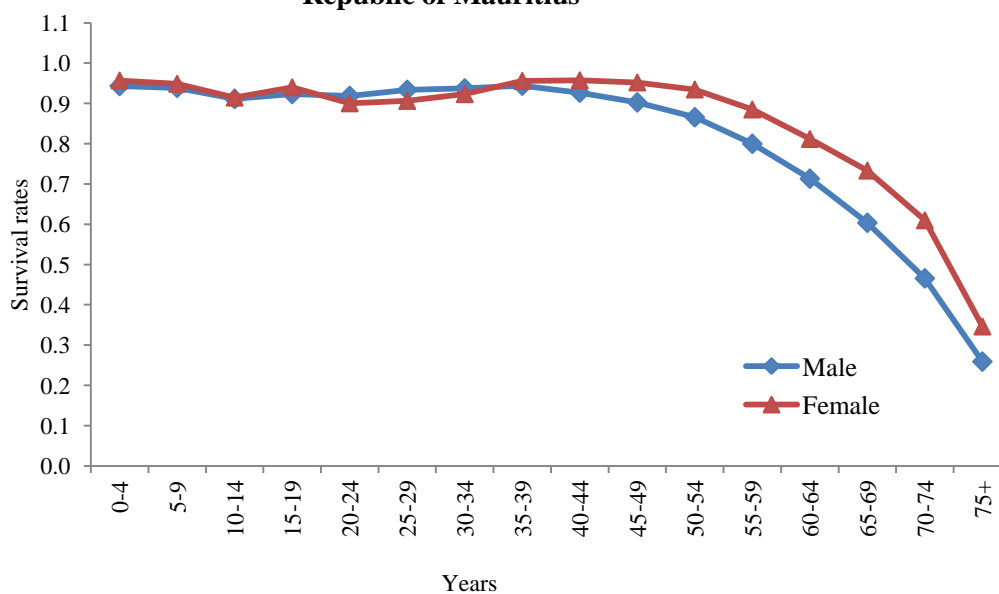
The U.N. Joint Score computed from 2011 Census data stood at 19.6 indicating that age-sex data at Census 2011 can be considered accurate and reliable.

### 5.4 Survival ratios

The quality of census data can also be assessed by the analysis of survival ratios. The cohort survival ratio is the proportion of persons in a given age group who have survived from one census to another if there is no international migration in the country. The survival ratio is usually below unity due to deaths and is expected to decrease smoothly with increasing age.

**Table 5 - Intercensal cohort and overall survival ratios 2000 - 2011 by sex, Republic of Mauritius**

| Age in 2000 | Cohort survival ratios |        | Age | Overall survival ratios |        |
|-------------|------------------------|--------|-----|-------------------------|--------|
|             | Male                   | Female |     | Male                    | Female |
| 0-4         | 0.9432                 | 0.9570 | 0+  | 0.8895                  | 0.9007 |
| 5-9         | 0.9387                 | 0.9488 | 5+  | 0.8846                  | 0.8958 |
| 10-14       | 0.9111                 | 0.9145 | 10+ | 0.8786                  | 0.8902 |
| 15-19       | 0.9233                 | 0.9399 | 15+ | 0.8748                  | 0.8876 |
| 20-24       | 0.9185                 | 0.9002 | 20+ | 0.8687                  | 0.8813 |
| 25-29       | 0.9336                 | 0.9062 | 25+ | 0.8602                  | 0.8783 |
| 30-34       | 0.9372                 | 0.9230 | 30+ | 0.8480                  | 0.8738 |
| 35-39       | 0.9441                 | 0.9560 | 35+ | 0.8299                  | 0.8645 |
| 40-44       | 0.9267                 | 0.9575 | 40+ | 0.7972                  | 0.8409 |
| 45-49       | 0.9026                 | 0.9520 | 45+ | 0.7536                  | 0.8070 |
| 50-54       | 0.8657                 | 0.9346 | 50+ | 0.6937                  | 0.7581 |
| 55-59       | 0.7997                 | 0.8849 | 55+ | 0.6133                  | 0.6902 |
| 60-64       | 0.7131                 | 0.8116 | 60+ | 0.5352                  | 0.6207 |
| 65-69       | 0.6037                 | 0.7332 | 65+ | 0.4490                  | 0.5441 |
| 70-74       | 0.4656                 | 0.6097 | 70+ | 0.3532                  | 0.4510 |
| 75+         | 0.2589                 | 0.3460 | 75+ | 0.2589                  | 0.3460 |
| All ages    | 0.8895                 | 0.9007 |     |                         |        |

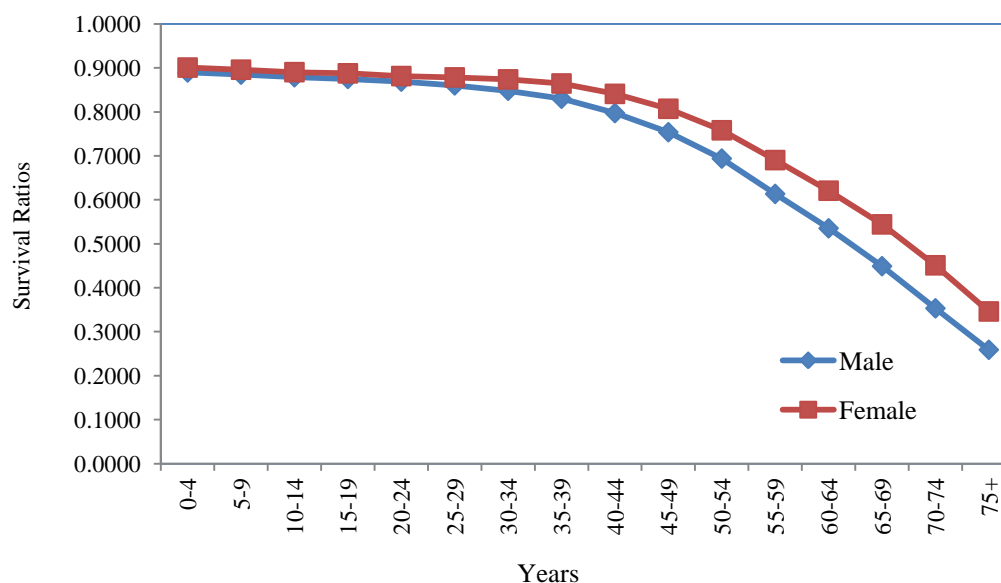
**Figure 9 - Cohort survival ratios, 2000 - 2011  
Republic of Mauritius**

At the youngest age groups below 15 years, the cohort survival ratios follow an irregular pattern; this is possibly due to under enumeration and out-migration of children.



For ages 15-39 years, there is an irregular pattern; the survival ratios do not decrease with increasing age but this could be due to out-migration. As from age 40, the survival ratios follow the expected pattern and decrease smoothly with age, with a gap between males and females due to higher life expectancy among women.

**Figure 10 - Overall Survival ratios, 2000 - 2011  
Republic of Mauritius**



However, the overall survival ratios show the expected pattern, where the ratio declines continuously with increasing age, without any fluctuations, indicating that the census data is of good quality.

A comparison of overall survival ratio by sex indicates that for ages below 19, the ratios are almost the same for males and females while for ages 20 and above, higher survival ratios can be observed among females. This is expected since mortality is lower among females.

## 6. Consistency checks with data from other sources

### 6.1 Comparison of Population Census with Housing Census count

The Housing Census was conducted from February to June 2011 while the Population Census was taken at the beginning of July 2011.

At the Housing Census, 342,358 private households and 1,215,170 persons were enumerated compared to 348,266 private households and 1,210,328 persons at the Population Census. The difference of 1.7% in the household figures may be explained by the formation of new households or the splitting of households during the period February-June 2011. As regards the population figures, the difference of -0.4% may be due to the fact that the definition of resident population used at Population Census was not applied at Housing Census. At the Housing Census, the respondents had to give a count of the number of usual residents irrespective of how long they stay or intend to stay in the household.

The population figures obtained at the 2011 Population Census can be considered to be consistent with those at the 2011 Housing Census.

### **6.2 Comparison with Ministry of Social Security, National Solidarity and Reform Institutions**

In Mauritius, an old-age pension known as the Basic Retirement Pension (BRP) is payable to every Mauritian citizen aged 60 years and above.

**Table 6 - Comparison of 2011 enumerated population with Beneficiaries of Basic Retirement Pension by age - June 2011, Republic of Mauritius**

| Age in years       | Population     |                      | Difference    | % Difference |
|--------------------|----------------|----------------------|---------------|--------------|
|                    | Census (2011)  | Beneficiaries of BRP |               |              |
| 60 - 64            | 57,342         | 57,326               | 16            | 0.03         |
| 65 - 69            | 35,439         | 35,580               | -141          | -0.40        |
| 70 - 74            | 25,375         | 25,604               | -229          | -0.89        |
| 75 - 79            | 18,044         | 18,276               | -232          | -1.27        |
| 80 - 84            | 11,369         | 11,651               | -282          | -2.42        |
| 85 - 89            | 6,368          | 6,510                | -142          | -2.18        |
| 90 - 94            | 1,982          | 2,108                | -126          | -5.98        |
| 95 - 99            | 491            | 502                  | -11           | -2.19        |
| 100+               | 96             | 100                  | -4            | -4.00        |
| <b>60 and over</b> | <b>156,506</b> | <b>157,657</b>       | <b>-1,151</b> | <b>-0.73</b> |

*Note: Basic Retirement Pension (BRP) is payable to every Mauritian citizen aged 60 years and over, provided that the person has resided in Mauritius for an aggregate period of 12 years since attaining the age of 18.*

Comparison of the Census population aged 60 years and above with the number of BRP beneficiaries by age indicates good concordance between the two sources - a difference of only 0.7% is observed.

### **6.3 Comparison with the Electoral Commission's Office – Registered electors**

In Mauritius, a house to house enquiry is usually done in January by officers of the Electoral Commission's Office to register all eligible electors (aged 18 years and above) in the country. A comparison of the 2011 population aged 18 years and over enumerated at the Census with the number of registered electors indicates a surplus of around 14,500 persons (1.6%) at the Census. In some constituencies the differences are almost negligible.

**Table 7 - Comparison of 2011 resident population aged 18 years and over with number of registered electors, Republic of Mauritius**

| Constituency                                    | Resident Population | No. of Electors | Difference    | % Difference |
|---|---------------------|-----------------|---------------|--------------|
| 1. Grand River North West and Port Louis West   | 45,293              | 41,524          | 3,769         | 9.08         |
| 2. Port Louis South and Port Louis Central      | 23,994              | 25,044          | -1,050        | -4.19        |
| 3. Port Louis Maritime and Port Louis East      | 22,004              | 22,960          | -956          | -4.16        |
| 4. Port Louis North and Montagne Longue         | 48,595              | 47,989          | 606           | 1.26         |
| 5. Pamplemousses and Triolet                    | 62,911              | 58,948          | 3,963         | 6.72         |
| 6. Grand Baie and Poudre D'Or                   | 52,193              | 49,998          | 2,195         | 4.39         |
| 7. Piton and Rivière du Rempart                 | 41,468              | 41,633          | -165          | -0.40        |
| 8. Quartier Militaire and Moka                  | 43,988              | 42,597          | 1,391         | 3.27         |
| 9. Flacq and Bon Accueil                        | 52,410              | 52,622          | -212          | -0.40        |
| 10. Montagne Blanche and Grand River South East | 48,848              | 48,756          | 92            | 0.19         |
| 11. Vieux Grand Port and Rose Belle             | 40,585              | 40,904          | -319          | -0.78        |
| 12. Mahebourg and Plaine Magnien                | 37,014              | 37,248          | -234          | -0.63        |
| 13. Rivière des Anguilles and Souillac          | 33,362              | 34,096          | -734          | -2.15        |
| 14. Savanne and Black River                     | 62,898              | 60,230          | 2,668         | 4.43         |
| 15. La Caverne and Phoenix                      | 56,299              | 55,157          | 1,142         | 2.07         |
| 16. Vacoas and Floreal                          | 44,223              | 45,464          | -1,241        | -2.73        |
| 17. Curepipe and Midlands                       | 46,655              | 46,500          | 155           | 0.33         |
| 18. Belle Rose and Quatre Bornes                | 43,945              | 43,366          | 579           | 1.34         |
| 19. Stanley and Rose Hill                       | 40,156              | 39,870          | 286           | 0.72         |
| 20. Beau Bassin and Petite Rivière              | 47,814              | 43,855          | 3,959         | 9.03         |
| 21. Rodrigues                                   | 26,352              | 27,776          | -1,424        | -5.13        |
| <b>Total</b>                                    | <b>921,007</b>      | <b>906,537</b>  | <b>14,470</b> | <b>1.60</b>  |

*Note: The annual compilation of the register of electors is laid down in the Constitution and the Representation of the People Act which stipulate that a person shall be qualified as an elector if he/she is 18 years and above and has resided in Mauritius for a period of not less than 2 years immediately before the 1 January of the year in which he is seeking registration or he is domiciled in Mauritius and is a resident therein on the 1st of January.*

The population aged 18 years and above based on 2011 Census is consistent with the number of registered electors, with a difference of only 1.6%.

## 7. Adjustment for under-enumeration of children

Based on the above demographic analysis and consistency checks, coverage of the population aged 18 years and above can be considered complete.

### Comparison with population estimates

For ages under 18, the difference is as shown in Table 8 below upon comparing the estimated population of that age-group in 2011 derived by surviving the resident population enumerated at the 2000 Census on the basis of data on live births, deaths and migration for the intercensal period July 2000 to June 2011.

In Rodrigues, the estimated population aged less than 18 years is almost the same as the enumerated population. It can therefore be concluded that enumeration is complete in Rodrigues and therefore the 2011 Census population of Rodrigues does not warrant any adjustment.

**Table 8 - Comparison of 2011 enumerated population aged less than 18 years with estimated 2011 population based on 2000 Census data**

|                              | <b>Population<br/>enumerated<br/>at Census<br/>2011</b> | <b>Estimated<br/>2011<br/>population<br/>based on<br/>Census 2000</b> | <b>Difference</b> |
|------------------------------|---|---|-------------------|
| <b>Republic of Mauritius</b> |   |   |                   |
| Total                        | 315,191   | 333,319   | -18,128           |
| Male                         | 158,785   | 168,967   | -10,182           |
| Female                       | 156,406   | 164,352   | -7,946            |
| <b>Island of Mauritius</b>   |   |   |                   |
| Total                        | 301,135   | 319,560   | -18,425           |
| Male                         | 151,740   | 161,967   | -10,227           |
| Female                       | 149,395   | 157,593   | -8,198            |
| <b>Island of Rodrigues</b>   |   |   |                   |
| Total                        | 14,056  | 13,759  | 297               |
| Male                         | 7,045   | 7,000   | 45                |
| Female                       | 7,011   | 6,759   | 252               |

For the island of Mauritius, a difference of 18,425 persons (10,227 males and 8,198 females) is noted. A breakdown by age group (Table 9) shows that the census figures are systematically lower than expected at all ages below 18 years for both males and females.

**Table 9 - Comparison of 2011 enumerated population aged less than 18 years with estimated 2011 population based on 2000 Census data, Island of Mauritius**

| <b>Age (Years)</b> | <b>Population enumerated at Census 2011</b> | <b>Estimated 2011 population based on Census 2000</b> | <b>Difference</b> |
|--------------------|---|---|-------------------|
| <b>Total</b>       |   |   |                   |
| 0 - 4              | 69,300                                      | 74,774  | -5,474            |
| 5 - 9              | 84,828                                      | 90,117  | -5,289            |
| 10 - 14            | 89,806                                      | 94,630  | -4,824            |
| 15 - 17            | 57,201                                      | 60,039  | -2,838            |
| <b>&lt;18</b>      | <b>301,135</b>                              | <b>319,560</b>  | <b>-18,425</b>    |
| <b>Male</b>        |   |   |                   |
| 0 - 4              | 34,800                                      | 37,805  | -3,005            |
| 5 - 9              | 42,832                                      | 45,790  | -2,958            |
| 10 - 14            | 45,370                                      | 48,150  | -2,780            |
| 15 - 17            | 28,738                                      | 30,222  | -1,484            |
| <b>&lt;18</b>      | <b>151,740</b>                              | <b>161,967</b>  | <b>-10,227</b>    |
| <b>Female</b>      |   |   |                   |
| 0 - 4              | 34,500                                      | 36,969  | -2,469            |
| 5 - 9              | 41,996                                      | 44,327  | -2,331            |
| 10 - 14            | 44,436                                      | 46,480  | -2,044            |
| 15 - 17            | 28,463                                      | 29,817  | -1,354            |
| <b>&lt;18</b>      | <b>149,395</b>                              | <b>157,593</b>  | <b>-8,198</b>     |

#### Comparison with school enrolment from the Ministry of Education and Human Resources

In order to determine the extent of under-reporting among the population aged under 18 years, the census figures have been compared with school enrolment statistics from the Ministry of Education (Table 10). The comparison has been done for children aged 5 to 16 years since formal education is compulsory up to age 16 in Mauritius.

This indicates a deficit of 3,966 in the age group 5-9 years and 432 in the age group 10-14 years. However, for children aged 15 to 16 years, a surplus of 3,260 is observed. This difference could be due to the fact that children attending some educational institutions such as the Mauritius Institute of Training and Development were not included in the school enrolment figures from the Ministry of Education and Human Resources.

**Table 10 - Comparison of 2011 census data on school population with school enrolment from the Ministry of Education, Island of Mauritius**

| <b>Age Group</b> | <b>Census data</b> | <b>School Statistics</b> | <b>Difference</b> | <b>% Difference</b> |
|------------------|--------------------|--------------------------|-------------------|---------------------|
| 5-9              | 84,680             | 88,646                   | -3,966            | -4.5                |
| 10-14            | 88,610             | 89,042                   | -432              | -0.5                |
| 15-16            | 34,100             | 30,840                   | 3,260             | 10.6                |
| <b>5-16</b>      | <b>207,390</b>     | <b>208,528</b>           | <b>-1,138</b>     | <b>-0.5</b>         |

Adjustment for under-reporting is therefore warranted for the age group 0-14 years in the island of Mauritius.

The actual adjustments (Table 11) are the difference between the estimated and the enumerated population; the rationale being that both vital registration and school enrolment are complete in Mauritius.

**Table 11 - Adjustment for under-enumeration of children - 2011 Census, Island of Mauritius**

| <b>Age</b>   | <b>Male</b>   | <b>Female</b> | <b>Total</b>   |
|--------------|---------------|---------------|----------------|
| 0            | -1,142        | -970          | -2,112         |
| 1            | -506          | -407          | -913           |
| 2            | -387          | -417          | -804           |
| 3            | -472          | -358          | -830           |
| 4            | -498          | -317          | -815           |
| <b>0-4</b>   | <b>-3,005</b> | <b>-2,469</b> | <b>-5,474</b>  |
| 5            | -573          | -543          | -1,116         |
| 6            | -551          | -409          | -960           |
| 7            | -588          | -409          | -997           |
| 8            | -595          | -500          | -1,095         |
| 9            | -651          | -470          | -1,121         |
| <b>5-9</b>   | <b>-2,958</b> | <b>-2,331</b> | <b>-5,289</b>  |
| 10           | -497          | -290          | -787           |
| 11           | -452          | -332          | -784           |
| 12           | -582          | -365          | -947           |
| 13           | -628          | -566          | -1,194         |
| 14           | -621          | -491          | -1,112         |
| <b>10-14</b> | <b>-2,780</b> | <b>-2,044</b> | <b>-4,824</b>  |
| <b>0-14</b>  | <b>-8,743</b> | <b>-6,844</b> | <b>-15,587</b> |

## 8. Notes

### 8.1 Contact persons

Ms N. Gujadhur, Statistician  
(Email: [ngujadhur@mail.gov.mu](mailto:ngujadhur@mail.gov.mu))

Mr. S. Mungralee, Senior Statistician  
(Email: [amungralee@mail.gov.mu](mailto:amungralee@mail.gov.mu))

Statistics Mauritius  
Tel: (230)211 2316/17  
Fax: (230)211 4150

Website: <http://statsmauritius.gov.mu>

### 8.2 List of Tables

- Table 1 - Balancing equation by sex, 2011 Census – Republic of Mauritius  
(based on the definition of ‘resident’ used at 2011 Census)
- Table 2 - Dependency ratio by sex - 2000 and 2011 Censuses, Republic of Mauritius
- Table 3 - Index for digit preference in age data - 2011 Census, Republic of Mauritius
- Table 4 - Age ratio, Sex Ratio and U.N Joint Scores - 2000 and 2011 Censuses,  
Republic of Mauritius
- Table 5 - Intercensal cohort and overall survival ratios 2000-2011 by sex, Republic of  
Mauritius
- Table 6 - Comparison of 2011 enumerated population with Beneficiaries of Basic  
Retirement Pension by age - June 2011, Republic of Mauritius
- Table 7 - Comparison of 2011 resident population aged 18 years and over with  
number of registered electors, Republic of Mauritius
- Table 8 - Comparison of 2011 enumerated population aged less than 18 years with  
estimated 2011 population based on 2000 Census data
- Table 9 - Comparison of 2011 enumerated population aged less than 18 years with  
estimated 2011 population based on 2000 Census data, Island of Mauritius
- Table 10 - Comparison of 2011 census data on school population with school  
enrolment from the Ministry of Education, Island of Mauritius
- Table 11 - Adjustment for under-enumeration of children - 2011 Census, Island of  
Mauritius

### ***8.3 List of Figures***

Figure 1 - Population annual growth rate (%), 1962 - 2011 Censuses, Republic of Mauritius

Figure 2 - Median age of the population by sex, 1983 - 2011 Censuses, Republic of Mauritius

Figure 3 - Evolution of sex ratio, 1962 - 2011 Censuses, Republic of Mauritius

Figure 4 - Age-specific sex ratio - 2000 and 2011 Censuses, Republic of Mauritius

Figure 5 - Age composition of the population by age and sex, 1983 - 2011 Censuses, Republic of Mauritius

Figure 6 - Population pyramid by single year of age - 2011 Census, Republic of Mauritius

Figure 7 - Male population by age - 2011 Census, Republic of Mauritius

Figure 8 - Female population by age - 2011 Census, Republic of Mauritius

Figure 9 - Cohort Survival ratios, 2000 - 2011, Republic of Mauritius

Figure 10 - Overall Survival ratios, 2000 - 2011, Republic of Mauritius

### ***8.4 Annexes***

Annex I - Adjustment of the Census 2000 resident population

Annex II - Population Census questionnaire



**Annex I****Adjustment of the Census 2000 resident population to be in line with the definition of resident used at Census 2011**

At Census 2000, a person is a 'resident' if he/she reports his/her place of usual residence as being in Mauritius. At Census 2011, a person is a resident if he/she

- lives in the country continuously during the past 12 months; or
- intends to live in the country continuously for at least 12 months.

At Census 2011

Number of persons reporting place of usual residence as being in Mauritius (i.e. considered as residents under 2000 Census definition) = 1,225,106

*Of whom*

Not considered as resident using 2011 Census definition = 16,100 or 1.3%  
Applying this proportion of 1.3% to the 2000 Census results, the resident population at Census 2000 would be 1,163,548 comprising 574,856 males and 588,692 females.

IN STRICT CONFIDENCE



**REPUBLIC OF MAURITIUS  
MINISTRY OF FINANCE & ECONOMIC DEVELOPMENT  
CENTRAL STATISTICS OFFICE  
POPULATION CENSUS (Night 3 - 4 July 2011)**



**Completion of the Questionnaire**

**Confidentiality**

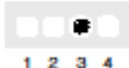
The census is being carried out under the Statistics Act 2000 which guarantees the confidentiality of personal information.

**Who should be counted in this questionnaire?**

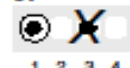
- All persons present in the household on the Census night 3 - 4 July 2011 whether they are members of the household, visitors, guests, boarders or servants.
- All persons who usually live in the household but were away on census night.
- All persons who arrive on the premises and join the household on Monday 4 July 2011 without having been enumerated elsewhere.

**How to complete the questionnaire?**

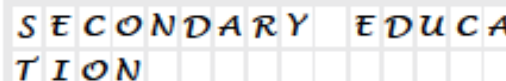
1. Use a **BLACK** ballpoint pen of 0.7 mm diameter.
2. Shade check boxes like this



3. If you make a mistake, cross out the wrongly shaded check box, shade the appropriate box and circle it.



4. Write legibly in **CAPITAL** letters and keep each letter within 1 box; only leave a box to keep a space between words



5. If you make a mistake, darken totally the wrong entries and continue the entries like this:



**Name, Address and Particulars of Household**

| G/DIST  | MVCA                 | EA                   | BLOCK NO.  | BUILDING NO.         | HU NO.               | HH NO.               | HH TP                | I. No. of Persons - Housing Census:  |                          |                      |                          |               |                                     |  |  |  |  |  |  |  |  |  |  |  |  |  |  |  |  |  |  |  |  |  |  |  |  |  |  |  |  |  |  |  |  |  |  |  |  |  |  |  |  |  |  |  |  |  |  |  |  |  |                      |                      |                      |
|---|----------------------|----------------------|--|----------------------|----------------------|----------------------|----------------------|--|--------------------------|----------------------|--------------------------|---------------|-------------------------------------|--|--|--|--|--|--|--|--|--|--|--|--|--|--|--|--|--|--|--|--|--|--|--|--|--|--|--|--|--|--|--|--|--|--|--|--|--|--|--|--|--|--|--|--|--|--|--|--|--|----------------------|----------------------|----------------------|
| <input type="text"/>  | <input type="text"/> | <input type="text"/> | <input type="text"/>   | <input type="text"/> | <input type="text"/> | <input type="text"/> | <input type="text"/> | Total  | Male                     | Female               |                          |               |                                     |  |  |  |  |  |  |  |  |  |  |  |  |  |  |  |  |  |  |  |  |  |  |  |  |  |  |  |  |  |  |  |  |  |  |  |  |  |  |  |  |  |  |  |  |  |  |  |  |  |                      |                      |                      |
| SURNAME   |                      |                      | <table border="1" style="width: 100%; border-collapse: collapse;"> <tr><td style="width: 10%; height: 20px;"></td><td style="width: 10%;"></td><td style="width: 10%;"></td><td style="width: 10%;"></td><td style="width: 10%;"></td><td style="width: 10%;"></td><td style="width: 10%;"></td><td style="width: 10%;"></td><td style="width: 10%;"></td><td style="width: 10%;"></td><td style="width: 10%;"></td></tr> <tr><td style="height: 20px;"></td><td></td><td></td><td></td><td></td><td></td><td></td><td></td><td></td><td></td><td></td></tr> <tr><td style="height: 20px;"></td><td></td><td></td><td></td><td></td><td></td><td></td><td></td><td></td><td></td><td></td></tr> <tr><td style="height: 20px;"></td><td></td><td></td><td></td><td></td><td></td><td></td><td></td><td></td><td></td><td></td></tr> <tr><td style="height: 20px;"></td><td></td><td></td><td></td><td></td><td></td><td></td><td></td><td></td><td></td><td></td></tr> </table> |                      |                      |                      |                      |  |                          |                      |                          |               |                                     |  |  |  |  |  |  |  |  |  |  |  |  |  |  |  |  |  |  |  |  |  |  |  |  |  |  |  |  |  |  |  |  |  |  |  |  |  |  |  |  |  |  |  |  |  |  |  |  |  | <input type="text"/> | <input type="text"/> | <input type="text"/> |
|   |                      |                      |  |                      |                      |                      |                      |  |                          |                      |                          |               |                                     |  |  |  |  |  |  |  |  |  |  |  |  |  |  |  |  |  |  |  |  |  |  |  |  |  |  |  |  |  |  |  |  |  |  |  |  |  |  |  |  |  |  |  |  |  |  |  |  |  |                      |                      |                      |
|   |                      |                      |  |                      |                      |                      |                      |  |                          |                      |                          |               |                                     |  |  |  |  |  |  |  |  |  |  |  |  |  |  |  |  |  |  |  |  |  |  |  |  |  |  |  |  |  |  |  |  |  |  |  |  |  |  |  |  |  |  |  |  |  |  |  |  |  |                      |                      |                      |
|   |                      |                      |  |                      |                      |                      |                      |  |                          |                      |                          |               |                                     |  |  |  |  |  |  |  |  |  |  |  |  |  |  |  |  |  |  |  |  |  |  |  |  |  |  |  |  |  |  |  |  |  |  |  |  |  |  |  |  |  |  |  |  |  |  |  |  |  |                      |                      |                      |
|   |                      |                      |  |                      |                      |                      |                      |  |                          |                      |                          |               |                                     |  |  |  |  |  |  |  |  |  |  |  |  |  |  |  |  |  |  |  |  |  |  |  |  |  |  |  |  |  |  |  |  |  |  |  |  |  |  |  |  |  |  |  |  |  |  |  |  |  |                      |                      |                      |
|   |                      |                      |  |                      |                      |                      |                      |  |                          |                      |                          |               |                                     |  |  |  |  |  |  |  |  |  |  |  |  |  |  |  |  |  |  |  |  |  |  |  |  |  |  |  |  |  |  |  |  |  |  |  |  |  |  |  |  |  |  |  |  |  |  |  |  |  |                      |                      |                      |
| OTHER NAMES   |                      |                      | <input type="text"/>   | <input type="text"/> | <input type="text"/> | <input type="text"/> | <input type="text"/> | Total  | Male                     | Female               |                          |               |                                     |  |  |  |  |  |  |  |  |  |  |  |  |  |  |  |  |  |  |  |  |  |  |  |  |  |  |  |  |  |  |  |  |  |  |  |  |  |  |  |  |  |  |  |  |  |  |  |  |  |                      |                      |                      |
| NAME OF APARTMENT/FLAT  |                      |                      | <input type="text"/>   | <input type="text"/> | <input type="text"/> | <input type="text"/> | <input type="text"/> | <input type="text"/>   | <input type="text"/>     | <input type="text"/> |                          |               |                                     |  |  |  |  |  |  |  |  |  |  |  |  |  |  |  |  |  |  |  |  |  |  |  |  |  |  |  |  |  |  |  |  |  |  |  |  |  |  |  |  |  |  |  |  |  |  |  |  |  |                      |                      |                      |
| NO. & STREET/ROAD/LANE  |                      |                      | <input type="text"/>   | <input type="text"/> | <input type="text"/> | <input type="text"/> | <input type="text"/> | III. Discrepancies: Yes <input type="checkbox"/> No <input type="checkbox"/> |                          |                      |                          |               |                                     |  |  |  |  |  |  |  |  |  |  |  |  |  |  |  |  |  |  |  |  |  |  |  |  |  |  |  |  |  |  |  |  |  |  |  |  |  |  |  |  |  |  |  |  |  |  |  |  |  |                      |                      |                      |
| LOCALITY  |                      |                      | <input type="text"/>   | <input type="text"/> | <input type="text"/> | <input type="text"/> | <input type="text"/> | If «Yes», state reason(s):   |                          |                      |                          |               |                                     |  |  |  |  |  |  |  |  |  |  |  |  |  |  |  |  |  |  |  |  |  |  |  |  |  |  |  |  |  |  |  |  |  |  |  |  |  |  |  |  |  |  |  |  |  |  |  |  |  |                      |                      |                      |
| TOWN/VILLAGE  |                      |                      | <input type="text"/>   | <input type="text"/> | <input type="text"/> | <input type="text"/> | <input type="text"/> | 1. Deceased.....   | <input type="checkbox"/> | 4. Birth.....        | <input type="checkbox"/> |               |                                     |  |  |  |  |  |  |  |  |  |  |  |  |  |  |  |  |  |  |  |  |  |  |  |  |  |  |  |  |  |  |  |  |  |  |  |  |  |  |  |  |  |  |  |  |  |  |  |  |  |                      |                      |                      |
| iv. Number of questionnaires completed for this household: <input type="text"/> |                      |                      | v. Barcode of the first questionnaire for this household: <input type="text"/>   |                      |                      |                      |                      | 2. Marriage.....   |                          |                      | <input type="checkbox"/> | 5. Other..... | <input type="checkbox"/>            |  |  |  |  |  |  |  |  |  |  |  |  |  |  |  |  |  |  |  |  |  |  |  |  |  |  |  |  |  |  |  |  |  |  |  |  |  |  |  |  |  |  |  |  |  |  |  |  |  |                      |                      |                      |
| Remarks: .....  |                      |                      | Name of Enumerator: .....  |                      |                      |                      |                      | Signature of the Enumerator: .....   |                          |                      |                          |               | Enumerator ID: <input type="text"/> |  |  |  |  |  |  |  |  |  |  |  |  |  |  |  |  |  |  |  |  |  |  |  |  |  |  |  |  |  |  |  |  |  |  |  |  |  |  |  |  |  |  |  |  |  |  |  |  |  |                      |                      |                      |

COMPLETE A LINE FOR EVERY PERSON PRESENT ON CENSUS NIGHT (3 - 4 JULY 2011) AND ALSO FOR EVERY PERSON WHO USUALLY LIVES IN THE HOUSEHOLD BUT WAS ABSENT ON CENSUS NIGHT

| P01                  | P02A   | P02B  | P03   | P04                               | P05                               | P06                                     |
|----------------------|--|---|---|-----------------------------------|-----------------------------------|---|
| Person Number        | i Surname<br>ii Other names  | National ID Card Number                                     | Relationship to head  | Sex                               | Age                               | Date of birth                           |
|                      | Write the (i) surname and (ii) other names in the following order:<br>Head of household<br>Spouse of head<br>Unmarried children of head<br>Married children of head and their families<br>Other relatives of head<br>Other persons | Write the ID number.<br>(applicable for Mauritian citizens) | State if:<br>1 Head<br>2 Spouse<br>3 Son/Daughter<br>4 Son-in-law/<br>Daughter-in-law<br>5 Grand child<br>6 Father/Mother of head<br>7 Other relative of head<br>8 Non relative of head | State if:<br>M: Male<br>F: Female | Write the age in completed years. | Write the day, month and year of birth. |
|                      | <b>BABIES MUST BE INCLUDED</b>   |   |   |                                   |                                   |   |
| <input type="text"/> | i <input type="text"/><br>ii <input type="text"/>  | <input type="text"/>  | <input type="text"/><br>1 2 3 4 5 6 7 8   | <input type="text"/><br>M F       | <input type="text"/>              | <input type="text"/><br>DD MM YYYY      |
| <input type="text"/> | i <input type="text"/><br>ii <input type="text"/>  | <input type="text"/>  | <input type="text"/><br>1 2 3 4 5 6 7 8   | <input type="text"/><br>M F       | <input type="text"/>              | <input type="text"/><br>DD MM YYYY      |
| <input type="text"/> | i <input type="text"/><br>ii <input type="text"/>  | <input type="text"/>  | <input type="text"/><br>1 2 3 4 5 6 7 8   | <input type="text"/><br>M F       | <input type="text"/>              | <input type="text"/><br>DD MM YYYY      |
| <input type="text"/> | i <input type="text"/><br>ii <input type="text"/>  | <input type="text"/>  | <input type="text"/><br>1 2 3 4 5 6 7 8   | <input type="text"/><br>M F       | <input type="text"/>              | <input type="text"/><br>DD MM YYYY      |
| <input type="text"/> | i <input type="text"/><br>ii <input type="text"/>  | <input type="text"/>  | <input type="text"/><br>1 2 3 4 5 6 7 8   | <input type="text"/><br>M F       | <input type="text"/>              | <input type="text"/><br>DD MM YYYY      |
| <input type="text"/> | i <input type="text"/><br>ii <input type="text"/>  | <input type="text"/>  | <input type="text"/><br>1 2 3 4 5 6 7 8   | <input type="text"/><br>M F       | <input type="text"/>              | <input type="text"/><br>DD MM YYYY      |
| <input type="text"/> | i <input type="text"/><br>ii <input type="text"/>  | <input type="text"/>  | <input type="text"/><br>1 2 3 4 5 6 7 8   | <input type="text"/><br>M F       | <input type="text"/>              | <input type="text"/><br>DD MM YYYY      |
| <input type="text"/> | i <input type="text"/><br>ii <input type="text"/>  | <input type="text"/>  | <input type="text"/><br>1 2 3 4 5 6 7 8   | <input type="text"/><br>M F       | <input type="text"/>              | <input type="text"/><br>DD MM YYYY      |



| P01<br>Person Number | P10A<br>Place of residence   | P10B<br>Place of residence   | P10C<br>Reason for living abroad   | P10D<br>Reason for staying in the Republic of Mauritius  | P11A<br>Usual address 5 years ago (on 03.07.2006)  | P11B<br>Usual address 5 years ago (on 03.07.2006)  |
|----------------------|--|--|--|--|--|--|
|                      | State if the person lived in the Republic of Mauritius continuously for the <u>past</u> 12 months.<br><br>Y: Yes<br>N: No<br>If «Yes» go to P11A | State if the person intends to live in the Republic of Mauritius continuously for <u>at least</u> 12 months.<br><br>Y: Yes<br>N: No<br>If «Yes» go to P11A | For Mauritian citizens who replied «No» at both P10A and P10B, state if:<br><br>1. Working abroad<br>2. Studying abroad<br>3. On medical treatment<br>4. Other | For non-Mauritian citizens who replied «No» at both P10A and P10B, state if:<br><br>1. Working<br>2. Studying<br>3. On medical treatment<br>4. Other<br><br>STOP HERE if «On medical treatment» or «Other» | State if:<br><br>1. Here<br>2. Elsewhere in the Republic of Mauritius<br>3. Outside the Republic of Mauritius<br>4. Not born | If usual address 5 years ago is elsewhere in the Republic of Mauritius, write the person's address.<br><br>If usual address 5 years ago is outside the Republic of Mauritius, write the country.<br><br>If usual address 5 years ago is «Here» or «Not born», leave blank. |
| <input type="text"/> | <input type="radio"/> Y <input type="radio"/> N  | <input type="radio"/> Y <input type="radio"/> N  | <input type="radio"/> 1 <input type="radio"/> 2 <input type="radio"/> 3 <input type="radio"/> 4  | <input type="radio"/> 1 <input type="radio"/> 2 <input type="radio"/> 3 <input type="radio"/> 4  | <input type="radio"/> 1 <input type="radio"/> 2 <input type="radio"/> 3 <input type="radio"/> 4                              | <input type="text"/>   |
| <input type="text"/> | <input type="radio"/> Y <input type="radio"/> N  | <input type="radio"/> Y <input type="radio"/> N  | <input type="radio"/> 1 <input type="radio"/> 2 <input type="radio"/> 3 <input type="radio"/> 4  | <input type="radio"/> 1 <input type="radio"/> 2 <input type="radio"/> 3 <input type="radio"/> 4  | <input type="radio"/> 1 <input type="radio"/> 2 <input type="radio"/> 3 <input type="radio"/> 4                              | <input type="text"/>   |
| <input type="text"/> | <input type="radio"/> Y <input type="radio"/> N  | <input type="radio"/> Y <input type="radio"/> N  | <input type="radio"/> 1 <input type="radio"/> 2 <input type="radio"/> 3 <input type="radio"/> 4  | <input type="radio"/> 1 <input type="radio"/> 2 <input type="radio"/> 3 <input type="radio"/> 4  | <input type="radio"/> 1 <input type="radio"/> 2 <input type="radio"/> 3 <input type="radio"/> 4                              | <input type="text"/>   |
| <input type="text"/> | <input type="radio"/> Y <input type="radio"/> N  | <input type="radio"/> Y <input type="radio"/> N  | <input type="radio"/> 1 <input type="radio"/> 2 <input type="radio"/> 3 <input type="radio"/> 4  | <input type="radio"/> 1 <input type="radio"/> 2 <input type="radio"/> 3 <input type="radio"/> 4  | <input type="radio"/> 1 <input type="radio"/> 2 <input type="radio"/> 3 <input type="radio"/> 4                              | <input type="text"/>   |
| <input type="text"/> | <input type="radio"/> Y <input type="radio"/> N  | <input type="radio"/> Y <input type="radio"/> N  | <input type="radio"/> 1 <input type="radio"/> 2 <input type="radio"/> 3 <input type="radio"/> 4  | <input type="radio"/> 1 <input type="radio"/> 2 <input type="radio"/> 3 <input type="radio"/> 4  | <input type="radio"/> 1 <input type="radio"/> 2 <input type="radio"/> 3 <input type="radio"/> 4                              | <input type="text"/>   |
| <input type="text"/> | <input type="radio"/> Y <input type="radio"/> N  | <input type="radio"/> Y <input type="radio"/> N  | <input type="radio"/> 1 <input type="radio"/> 2 <input type="radio"/> 3 <input type="radio"/> 4  | <input type="radio"/> 1 <input type="radio"/> 2 <input type="radio"/> 3 <input type="radio"/> 4  | <input type="radio"/> 1 <input type="radio"/> 2 <input type="radio"/> 3 <input type="radio"/> 4                              | <input type="text"/>   |
| <input type="text"/> | <input type="radio"/> Y <input type="radio"/> N  | <input type="radio"/> Y <input type="radio"/> N  | <input type="radio"/> 1 <input type="radio"/> 2 <input type="radio"/> 3 <input type="radio"/> 4  | <input type="radio"/> 1 <input type="radio"/> 2 <input type="radio"/> 3 <input type="radio"/> 4  | <input type="radio"/> 1 <input type="radio"/> 2 <input type="radio"/> 3 <input type="radio"/> 4                              | <input type="text"/>   |

| P01<br>Person<br>Number                           | P12 A<br>State if the person has any difficulty to perform a daily-life activity considered normal for his/her age.<br><br>Y: Yes<br>N: No<br><br>If «No» go to P13 | P12B<br>Disability  |   |   |   |   |   |   |   |   |  |
|---|---|---|---|---|---|---|---|---|---|---|--|
|   |   | If «Yes» at P12A, state the severity of all applicable difficulties as follows: 1. Some difficulty  |   |   |   |   |   |   |   |   |  |
|   |   | A<br>Seeing even if wearing glasses   | B<br>Hearing even if using a hearing aid  | C<br>Walking or climbing stairs   | D<br>Remembering, concentrating or acquiring education and learning                                 | E<br>Looking after oneself with regard to feeding, personal care and hygiene                        | F<br>Speaking and talking   | 2. A lot of difficulty<br>G<br>Manual activities such as gripping and holding                       | 3. Cannot do at all<br>H<br>Disturbances of behaviour, including antisocial behaviour, maladjustment and liability to self injury | I<br>Other difficulties, specify  |  |
| <input type="checkbox"/> <input type="checkbox"/> | Y N   | <input type="checkbox"/> <input type="checkbox"/> <input type="checkbox"/> <input type="checkbox"/> | <input type="checkbox"/> <input type="checkbox"/> <input type="checkbox"/> <input type="checkbox"/> | <input type="checkbox"/> <input type="checkbox"/> <input type="checkbox"/> <input type="checkbox"/> | <input type="checkbox"/> <input type="checkbox"/> <input type="checkbox"/> <input type="checkbox"/> | <input type="checkbox"/> <input type="checkbox"/> <input type="checkbox"/> <input type="checkbox"/> | <input type="checkbox"/> <input type="checkbox"/> <input type="checkbox"/> <input type="checkbox"/> | <input type="checkbox"/> <input type="checkbox"/> <input type="checkbox"/> <input type="checkbox"/> | <input type="checkbox"/> <input type="checkbox"/> <input type="checkbox"/> <input type="checkbox"/>                               | <input type="checkbox"/> <input type="checkbox"/> <input type="checkbox"/> <input type="checkbox"/> |  |
| <input type="checkbox"/> <input type="checkbox"/> | Y N   | <input type="checkbox"/> <input type="checkbox"/> <input type="checkbox"/> <input type="checkbox"/> | <input type="checkbox"/> <input type="checkbox"/> <input type="checkbox"/> <input type="checkbox"/> | <input type="checkbox"/> <input type="checkbox"/> <input type="checkbox"/> <input type="checkbox"/> | <input type="checkbox"/> <input type="checkbox"/> <input type="checkbox"/> <input type="checkbox"/> | <input type="checkbox"/> <input type="checkbox"/> <input type="checkbox"/> <input type="checkbox"/> | <input type="checkbox"/> <input type="checkbox"/> <input type="checkbox"/> <input type="checkbox"/> | <input type="checkbox"/> <input type="checkbox"/> <input type="checkbox"/> <input type="checkbox"/> | <input type="checkbox"/> <input type="checkbox"/> <input type="checkbox"/> <input type="checkbox"/>                               | <input type="checkbox"/> <input type="checkbox"/> <input type="checkbox"/> <input type="checkbox"/> |  |
| <input type="checkbox"/> <input type="checkbox"/> | Y N   | <input type="checkbox"/> <input type="checkbox"/> <input type="checkbox"/> <input type="checkbox"/> | <input type="checkbox"/> <input type="checkbox"/> <input type="checkbox"/> <input type="checkbox"/> | <input type="checkbox"/> <input type="checkbox"/> <input type="checkbox"/> <input type="checkbox"/> | <input type="checkbox"/> <input type="checkbox"/> <input type="checkbox"/> <input type="checkbox"/> | <input type="checkbox"/> <input type="checkbox"/> <input type="checkbox"/> <input type="checkbox"/> | <input type="checkbox"/> <input type="checkbox"/> <input type="checkbox"/> <input type="checkbox"/> | <input type="checkbox"/> <input type="checkbox"/> <input type="checkbox"/> <input type="checkbox"/> | <input type="checkbox"/> <input type="checkbox"/> <input type="checkbox"/> <input type="checkbox"/>                               | <input type="checkbox"/> <input type="checkbox"/> <input type="checkbox"/> <input type="checkbox"/> |  |
| <input type="checkbox"/> <input type="checkbox"/> | Y N   | <input type="checkbox"/> <input type="checkbox"/> <input type="checkbox"/> <input type="checkbox"/> | <input type="checkbox"/> <input type="checkbox"/> <input type="checkbox"/> <input type="checkbox"/> | <input type="checkbox"/> <input type="checkbox"/> <input type="checkbox"/> <input type="checkbox"/> | <input type="checkbox"/> <input type="checkbox"/> <input type="checkbox"/> <input type="checkbox"/> | <input type="checkbox"/> <input type="checkbox"/> <input type="checkbox"/> <input type="checkbox"/> | <input type="checkbox"/> <input type="checkbox"/> <input type="checkbox"/> <input type="checkbox"/> | <input type="checkbox"/> <input type="checkbox"/> <input type="checkbox"/> <input type="checkbox"/> | <input type="checkbox"/> <input type="checkbox"/> <input type="checkbox"/> <input type="checkbox"/>                               | <input type="checkbox"/> <input type="checkbox"/> <input type="checkbox"/> <input type="checkbox"/> |  |
| <input type="checkbox"/> <input type="checkbox"/> | Y N   | <input type="checkbox"/> <input type="checkbox"/> <input type="checkbox"/> <input type="checkbox"/> | <input type="checkbox"/> <input type="checkbox"/> <input type="checkbox"/> <input type="checkbox"/> | <input type="checkbox"/> <input type="checkbox"/> <input type="checkbox"/> <input type="checkbox"/> | <input type="checkbox"/> <input type="checkbox"/> <input type="checkbox"/> <input type="checkbox"/> | <input type="checkbox"/> <input type="checkbox"/> <input type="checkbox"/> <input type="checkbox"/> | <input type="checkbox"/> <input type="checkbox"/> <input type="checkbox"/> <input type="checkbox"/> | <input type="checkbox"/> <input type="checkbox"/> <input type="checkbox"/> <input type="checkbox"/> | <input type="checkbox"/> <input type="checkbox"/> <input type="checkbox"/> <input type="checkbox"/>                               | <input type="checkbox"/> <input type="checkbox"/> <input type="checkbox"/> <input type="checkbox"/> |  |
| <input type="checkbox"/> <input type="checkbox"/> | Y N   | <input type="checkbox"/> <input type="checkbox"/> <input type="checkbox"/> <input type="checkbox"/> | <input type="checkbox"/> <input type="checkbox"/> <input type="checkbox"/> <input type="checkbox"/> | <input type="checkbox"/> <input type="checkbox"/> <input type="checkbox"/> <input type="checkbox"/> | <input type="checkbox"/> <input type="checkbox"/> <input type="checkbox"/> <input type="checkbox"/> | <input type="checkbox"/> <input type="checkbox"/> <input type="checkbox"/> <input type="checkbox"/> | <input type="checkbox"/> <input type="checkbox"/> <input type="checkbox"/> <input type="checkbox"/> | <input type="checkbox"/> <input type="checkbox"/> <input type="checkbox"/> <input type="checkbox"/> | <input type="checkbox"/> <input type="checkbox"/> <input type="checkbox"/> <input type="checkbox"/>                               | <input type="checkbox"/> <input type="checkbox"/> <input type="checkbox"/> <input type="checkbox"/> |  |
| <input type="checkbox"/> <input type="checkbox"/> | Y N   | <input type="checkbox"/> <input type="checkbox"/> <input type="checkbox"/> <input type="checkbox"/> | <input type="checkbox"/> <input type="checkbox"/> <input type="checkbox"/> <input type="checkbox"/> | <input type="checkbox"/> <input type="checkbox"/> <input type="checkbox"/> <input type="checkbox"/> | <input type="checkbox"/> <input type="checkbox"/> <input type="checkbox"/> <input type="checkbox"/> | <input type="checkbox"/> <input type="checkbox"/> <input type="checkbox"/> <input type="checkbox"/> | <input type="checkbox"/> <input type="checkbox"/> <input type="checkbox"/> <input type="checkbox"/> | <input type="checkbox"/> <input type="checkbox"/> <input type="checkbox"/> <input type="checkbox"/> | <input type="checkbox"/> <input type="checkbox"/> <input type="checkbox"/> <input type="checkbox"/>                               | <input type="checkbox"/> <input type="checkbox"/> <input type="checkbox"/> <input type="checkbox"/> |  |
| <input type="checkbox"/> <input type="checkbox"/> | Y N   | <input type="checkbox"/> <input type="checkbox"/> <input type="checkbox"/> <input type="checkbox"/> | <input type="checkbox"/> <input type="checkbox"/> <input type="checkbox"/> <input type="checkbox"/> | <input type="checkbox"/> <input type="checkbox"/> <input type="checkbox"/> <input type="checkbox"/> | <input type="checkbox"/> <input type="checkbox"/> <input type="checkbox"/> <input type="checkbox"/> | <input type="checkbox"/> <input type="checkbox"/> <input type="checkbox"/> <input type="checkbox"/> | <input type="checkbox"/> <input type="checkbox"/> <input type="checkbox"/> <input type="checkbox"/> | <input type="checkbox"/> <input type="checkbox"/> <input type="checkbox"/> <input type="checkbox"/> | <input type="checkbox"/> <input type="checkbox"/> <input type="checkbox"/> <input type="checkbox"/>                               | <input type="checkbox"/> <input type="checkbox"/> <input type="checkbox"/> <input type="checkbox"/> |  |

**FOR PERSONS NOT SINGLE AT P13**

| P01<br>Person Number | P13<br>Marital status   | P14<br>Age at first marriage      | P15<br>Whether married more than once | P16<br>Number of children ever born   | P17<br>Religion  |
|----------------------|---|-----------------------------------|---------------------------------------|---|--|
|                      | <p>State if:</p> <p>0 Widowed (not remarried)<br/>1 Divorced (not remarried)<br/>2 Separated<br/>3 Married religiously and civilly<br/>4 Married religiously only<br/>5 Married civilly only</p> <p>6 In a union but not married religiously or civilly<br/>7 Single (never married)<br/>8 Unmarried parent<br/>9 Other - specify</p> | Write the age in completed years. | State if:<br>Y : Yes<br>N : No        | For women not «Single» at P13, write the number of children ever born (excluding still births). | Write the religion as reported by the person.<br>If the person has no religion, write «NO RELIGION». |
| <input type="text"/> | <input type="text"/>  | <input type="text"/>              | <input type="text"/>                  | <input type="text"/>  | <input type="text"/>   |
| <input type="text"/> | <input type="text"/>  | <input type="text"/>              | <input type="text"/>                  | <input type="text"/>  | <input type="text"/>   |
| <input type="text"/> | <input type="text"/>  | <input type="text"/>              | <input type="text"/>                  | <input type="text"/>  | <input type="text"/>   |
| <input type="text"/> | <input type="text"/>  | <input type="text"/>              | <input type="text"/>                  | <input type="text"/>  | <input type="text"/>   |
| <input type="text"/> | <input type="text"/>  | <input type="text"/>              | <input type="text"/>                  | <input type="text"/>  | <input type="text"/>   |
| <input type="text"/> | <input type="text"/>  | <input type="text"/>              | <input type="text"/>                  | <input type="text"/>  | <input type="text"/>   |
| <input type="text"/> | <input type="text"/>  | <input type="text"/>              | <input type="text"/>                  | <input type="text"/>  | <input type="text"/>   |
| <input type="text"/> | <input type="text"/>  | <input type="text"/>              | <input type="text"/>                  | <input type="text"/>  | <input type="text"/>   |

**FOR PERSONS AGED 2 YEARS AND OVER**

| P01<br>Person Number | P18<br>Languages of forefathers | P19<br>Language usually spoken | P20<br>Languages read and written |  |
|----------------------|---------------------------------|--------------------------------|-----------------------------------|--|
|----------------------|---------------------------------|--------------------------------|-----------------------------------|--|

Write the language(s) spoken by the person's ancestors.

Up to two answers are possible.

For census purposes, consider creole and bhojpuri as languages.

Write the language usually or most often spoken by the person at home.

For children not yet able to speak, write the language spoken by the mother.

**STOP HERE FOR CHILDREN UNDER 2 YEARS**

State the language(s) in which the person can, with understanding, both read and write a simple statement in his/her everyday life.

- 0 None
- 1 Creole
- Oriental languages:
- 2 Bhojpuri
- 3 Indian languages
- 4 Chinese languages
- 5 Other Oriental languages

- European languages:
- 6 English
- 7 French
- 8 Other European languages
- 9 Other languages - specify

| (i)                  |                      | (ii)                 |                      |  |                      |
|----------------------|----------------------|----------------------|----------------------|--|----------------------|
| <input type="text"/> | <input type="text"/> | <input type="text"/> | <input type="text"/> | <input type="radio"/> <input type="radio"/> <input type="radio"/> <input type="radio"/> <input type="radio"/> <input type="radio"/> <input type="radio"/> <input type="radio"/> <input type="radio"/> <input type="radio"/> <input type="radio"/><br>0 1 2 3 4 5 6 7 8 9 | <input type="text"/> |
| <input type="text"/> | <input type="text"/> | <input type="text"/> | <input type="text"/> | <input type="radio"/> <input type="radio"/> <input type="radio"/> <input type="radio"/> <input type="radio"/> <input type="radio"/> <input type="radio"/> <input type="radio"/> <input type="radio"/> <input type="radio"/> <input type="radio"/><br>0 1 2 3 4 5 6 7 8 9 | <input type="text"/> |
| <input type="text"/> | <input type="text"/> | <input type="text"/> | <input type="text"/> | <input type="radio"/> <input type="radio"/> <input type="radio"/> <input type="radio"/> <input type="radio"/> <input type="radio"/> <input type="radio"/> <input type="radio"/> <input type="radio"/> <input type="radio"/> <input type="radio"/><br>0 1 2 3 4 5 6 7 8 9 | <input type="text"/> |
| <input type="text"/> | <input type="text"/> | <input type="text"/> | <input type="text"/> | <input type="radio"/> <input type="radio"/> <input type="radio"/> <input type="radio"/> <input type="radio"/> <input type="radio"/> <input type="radio"/> <input type="radio"/> <input type="radio"/> <input type="radio"/> <input type="radio"/><br>0 1 2 3 4 5 6 7 8 9 | <input type="text"/> |
| <input type="text"/> | <input type="text"/> | <input type="text"/> | <input type="text"/> | <input type="radio"/> <input type="radio"/> <input type="radio"/> <input type="radio"/> <input type="radio"/> <input type="radio"/> <input type="radio"/> <input type="radio"/> <input type="radio"/> <input type="radio"/> <input type="radio"/><br>0 1 2 3 4 5 6 7 8 9 | <input type="text"/> |
| <input type="text"/> | <input type="text"/> | <input type="text"/> | <input type="text"/> | <input type="radio"/> <input type="radio"/> <input type="radio"/> <input type="radio"/> <input type="radio"/> <input type="radio"/> <input type="radio"/> <input type="radio"/> <input type="radio"/> <input type="radio"/> <input type="radio"/><br>0 1 2 3 4 5 6 7 8 9 | <input type="text"/> |
| <input type="text"/> | <input type="text"/> | <input type="text"/> | <input type="text"/> | <input type="radio"/> <input type="radio"/> <input type="radio"/> <input type="radio"/> <input type="radio"/> <input type="radio"/> <input type="radio"/> <input type="radio"/> <input type="radio"/> <input type="radio"/> <input type="radio"/><br>0 1 2 3 4 5 6 7 8 9 | <input type="text"/> |
| <input type="text"/> | <input type="text"/> | <input type="text"/> | <input type="text"/> | <input type="radio"/> <input type="radio"/> <input type="radio"/> <input type="radio"/> <input type="radio"/> <input type="radio"/> <input type="radio"/> <input type="radio"/> <input type="radio"/> <input type="radio"/> <input type="radio"/><br>0 1 2 3 4 5 6 7 8 9 | <input type="text"/> |





P01

**FOR PERSONS AGED 12 YEARS AND OVER**

P23B

**Person  
Number**

**Education other than those of the Primary and Secondary levels - Past**

**Highest qualification**

**Second highest qualification**

**Third highest qualification**

Write the duration of course in months.

Write the (i) qualification received, (ii) the major field of study. E.g. (i) MSC (ii) STATISTICS, (i) DIPLOMA (ii) HOSPITALITY MANAGEMENT, etc.

Write the duration of course in months.

Write the (i) qualification received, (ii) the major field of study. E.g. (i) BSC (ii) ECONOMICS, (i) CERTIFICATE (ii) COMMUNICATION, etc.

Write the duration of course in months.

Write the (i) qualification received, (ii) the major field of study. E.g. (i) DIPLOMA (ii) HUMANITIES, (i) CERTIFICATE (ii) TOWN AND COUNTRY PLANNING, etc.

| Person Number | Highest qualification |                     | Second highest qualification |                     | Third highest qualification |                     |
|---------------|-----------------------|---------------------|------------------------------|---------------------|-----------------------------|---------------------|
|               | Duration (months)     | Qualification/Field | Duration (months)            | Qualification/Field | Duration (months)           | Qualification/Field |
|               | (i)                   |                     | (i)                          |                     | (i)                         |                     |
|               | (ii)                  |                     | (ii)                         |                     | (ii)                        |                     |
|               | (i)                   |                     | (i)                          |                     | (i)                         |                     |
|               | (ii)                  |                     | (ii)                         |                     | (ii)                        |                     |
|               | (i)                   |                     | (i)                          |                     | (i)                         |                     |
|               | (ii)                  |                     | (ii)                         |                     | (ii)                        |                     |
|               | (i)                   |                     | (i)                          |                     | (i)                         |                     |
|               | (ii)                  |                     | (ii)                         |                     | (ii)                        |                     |
|               | (i)                   |                     | (i)                          |                     | (i)                         |                     |
|               | (ii)                  |                     | (ii)                         |                     | (ii)                        |                     |
|               | (i)                   |                     | (i)                          |                     | (i)                         |                     |
|               | (ii)                  |                     | (ii)                         |                     | (ii)                        |                     |

**FOR PERSONS AGED 12 YEARS AND OVER**

**FOR PERSONS AGED 12 YEARS AND OVER**

| P01<br>Person Number | P24<br>Number of hours worked during reference week   | P25<br>Whether temporarily away from work   | P26<br>Job Search  | P27<br>Availability for work  |  | P28<br>When last worked  |
|----------------------|---|---|--|---|--|--|
|                      | Write the total number of HOURS, the person worked for pay, profit or family gain during the WEEK from Monday 27 June to Sunday 3 July 2011.<br><br>(If worked for 1 hour or more, go to P29) | State whether there was a job, business, family enterprise or agricultural holding or farm, at which the person did not work because of illness, injury, holiday, industrial dispute, off-season inactivity, temporary disorganisation, etc.<br><br>Y: Yes<br>N: No<br><br>If «Yes» go to P29 | State if, during the past 4 weeks, the person took any active steps to look for work or set up a business of his/her own.<br><br>Y: Yes<br>N: No | State if, during the past 4 weeks, the person was available for work.<br><br>Y: Yes<br>N: No<br><br>If «NO», give reason as follows:<br>1 Household duties<br>2 Studies<br>3 Disability, illness, injury<br>4 Wholly retired<br>5 Other - specify |  | How many months ago did the person work for the last time, even for a few days? Write the number of completed months.<br><br>If person NEVER WORKED, write «998» and STOP HERE.<br><br>Else continue with P29. |
| <input type="text"/> | <input type="text"/>  | <input type="text"/> Y <input type="text"/> N   | <input type="text"/> Y <input type="text"/> N  | <input type="text"/> Y <input type="text"/> N   | <input type="text"/> 1 <input type="text"/> 2 <input type="text"/> 3 <input type="text"/> 4 <input type="text"/> 5 | <input type="text"/>   |
| <input type="text"/> | <input type="text"/>  | <input type="text"/> Y <input type="text"/> N   | <input type="text"/> Y <input type="text"/> N  | <input type="text"/> Y <input type="text"/> N   | <input type="text"/> 1 <input type="text"/> 2 <input type="text"/> 3 <input type="text"/> 4 <input type="text"/> 5 | <input type="text"/>   |
| <input type="text"/> | <input type="text"/>  | <input type="text"/> Y <input type="text"/> N   | <input type="text"/> Y <input type="text"/> N  | <input type="text"/> Y <input type="text"/> N   | <input type="text"/> 1 <input type="text"/> 2 <input type="text"/> 3 <input type="text"/> 4 <input type="text"/> 5 | <input type="text"/>   |
| <input type="text"/> | <input type="text"/>  | <input type="text"/> Y <input type="text"/> N   | <input type="text"/> Y <input type="text"/> N  | <input type="text"/> Y <input type="text"/> N   | <input type="text"/> 1 <input type="text"/> 2 <input type="text"/> 3 <input type="text"/> 4 <input type="text"/> 5 | <input type="text"/>   |
| <input type="text"/> | <input type="text"/>  | <input type="text"/> Y <input type="text"/> N   | <input type="text"/> Y <input type="text"/> N  | <input type="text"/> Y <input type="text"/> N   | <input type="text"/> 1 <input type="text"/> 2 <input type="text"/> 3 <input type="text"/> 4 <input type="text"/> 5 | <input type="text"/>   |
| <input type="text"/> | <input type="text"/>  | <input type="text"/> Y <input type="text"/> N   | <input type="text"/> Y <input type="text"/> N  | <input type="text"/> Y <input type="text"/> N   | <input type="text"/> 1 <input type="text"/> 2 <input type="text"/> 3 <input type="text"/> 4 <input type="text"/> 5 | <input type="text"/>   |
| <input type="text"/> | <input type="text"/>  | <input type="text"/> Y <input type="text"/> N   | <input type="text"/> Y <input type="text"/> N  | <input type="text"/> Y <input type="text"/> N   | <input type="text"/> 1 <input type="text"/> 2 <input type="text"/> 3 <input type="text"/> 4 <input type="text"/> 5 | <input type="text"/>   |
| <input type="text"/> | <input type="text"/>  | <input type="text"/> Y <input type="text"/> N   | <input type="text"/> Y <input type="text"/> N  | <input type="text"/> Y <input type="text"/> N   | <input type="text"/> 1 <input type="text"/> 2 <input type="text"/> 3 <input type="text"/> 4 <input type="text"/> 5 | <input type="text"/>   |

**FOR PERSONS AGED 12 YEARS AND OVER**

The following questions refer to the person's work during the reference week Monday 27 June to Sunday 3 July 2011. If the person is retired or had no job during that week, answer for his/her last job. If the person has more than one job, answer for the job at which he/she worked the most hours.

| P01   | P29   | P30   | P31A   | P31B          |
|---|---|---|--|---------------|
| Person Number   | Name of establishment   | Kind of business, industry or service   | Place of work  | Place of work |
| <p>Write the name of the establishment, firm, government institution, etc., for which the person worked.<br/>If establishment has no name, give name of employer.<br/>If self-employed, write the name of business shop, agency, etc., or write the person's own name.<br/>If working for a private household (e.g. cook, gardener, etc.), write «PRIVATE HOUSEHOLD».</p> | <p>Write FULLY the kind of business, industry or service activities carried out at the person's place of work.<br/><br/>Use precise terms such as SUGAR CANE CULTIVATION, SUGAR MANUFACTURING, CAR REPAIRS, PRIMARY EDUCATION, etc.</p> | <p>State if :<br/>1 Fixed place of work outside home<br/>2 No fixed place of work<br/>3 Worked at home<br/>4 Worked outside Mauritius</p> | <p>If P31A-1, write full address including municipal ward/village council area/locality.<br/>If P31A-2, write address where the person reported for work or the place where he/she worked the most.<br/>If P31A-3, write «HOME».<br/>If P31A-4, write the country.</p> |               |
| <input type="text"/>  |   |   | <input type="radio"/> 1 <input type="radio"/> 2 <input type="radio"/> 3 <input type="radio"/> 4  |               |
| <input type="text"/>  |   |   | <input type="radio"/> 1 <input type="radio"/> 2 <input type="radio"/> 3 <input type="radio"/> 4  |               |
| <input type="text"/>  |   |   | <input type="radio"/> 1 <input type="radio"/> 2 <input type="radio"/> 3 <input type="radio"/> 4  |               |
| <input type="text"/>  |   |   | <input type="radio"/> 1 <input type="radio"/> 2 <input type="radio"/> 3 <input type="radio"/> 4  |               |
| <input type="text"/>  |   |   | <input type="radio"/> 1 <input type="radio"/> 2 <input type="radio"/> 3 <input type="radio"/> 4  |               |
| <input type="text"/>  |   |   | <input type="radio"/> 1 <input type="radio"/> 2 <input type="radio"/> 3 <input type="radio"/> 4  |               |
| <input type="text"/>  |   |   | <input type="radio"/> 1 <input type="radio"/> 2 <input type="radio"/> 3 <input type="radio"/> 4  |               |
| <input type="text"/>  |   |   | <input type="radio"/> 1 <input type="radio"/> 2 <input type="radio"/> 3 <input type="radio"/> 4  |               |

**FOR PERSONS AGED 12 YEARS AND OVER**

The following questions refer to the person's work during the reference week Monday 27 June to Sunday 3 July 2011. If the person is retired or had no job during that week, answer for his/her last job. If the person has more than one job, answer for the job at which he/she worked the most hours.

| P01<br>Person Number | P32<br>Occupation  | P33<br>Employment Status  | P34<br>Length of Service with employer   |
|----------------------|--|---|--|
|                      | <p>Write the kind of work/business the person did most of the time.</p> <p>Use <b>precise terms</b> such as ACCOUNTS CLERK, SCHOOL CLERK, TAXI CAR DRIVER, LORRY DRIVER, STATISTICIAN, PRE-PRIMARY TEACHER, etc.</p> | <p>State if the person's employment status is:</p> <p>1 Self-employed with employees<br/>2 Self-employed without employees<br/>3 Working without pay for spouse or other relative in his/her farm or business<br/>4 Apprentice/Trainee with or without pay<br/>5 Employee paid by the month<br/>6 Employee paid by day, week, fortnight, job<br/>7 Member of producers' cooperative<br/>8 Other - specify</p> | <p>Write the number of <b>years</b> the person worked/has worked for his/her present or most recent <b>employer</b>.</p> <p>For <u>self-employed</u> persons, write the number of years the person has been in the present business.</p> <p>If worked for less than 1 year, write «0».</p> |
| <input type="text"/> | <input type="text"/>   | <input type="text"/>  | <input type="text"/>   |
| <input type="text"/> | <input type="text"/>   | <input type="text"/>  | <input type="text"/>   |
| <input type="text"/> | <input type="text"/>   | <input type="text"/>  | <input type="text"/>   |
| <input type="text"/> | <input type="text"/>   | <input type="text"/>  | <input type="text"/>   |
| <input type="text"/> | <input type="text"/>   | <input type="text"/>  | <input type="text"/>   |
| <input type="text"/> | <input type="text"/>   | <input type="text"/>  | <input type="text"/>   |
| <input type="text"/> | <input type="text"/>   | <input type="text"/>  | <input type="text"/>   |
| <input type="text"/> | <input type="text"/>   | <input type="text"/>  | <input type="text"/>   |