

CONSUMER PRICE INDEX
(Base: January – December 2012 = 100)

December 2013	November 2014	December 2014
105.3	105.9	105.5

The main contributors to the change in the index between November and December 2014 were:

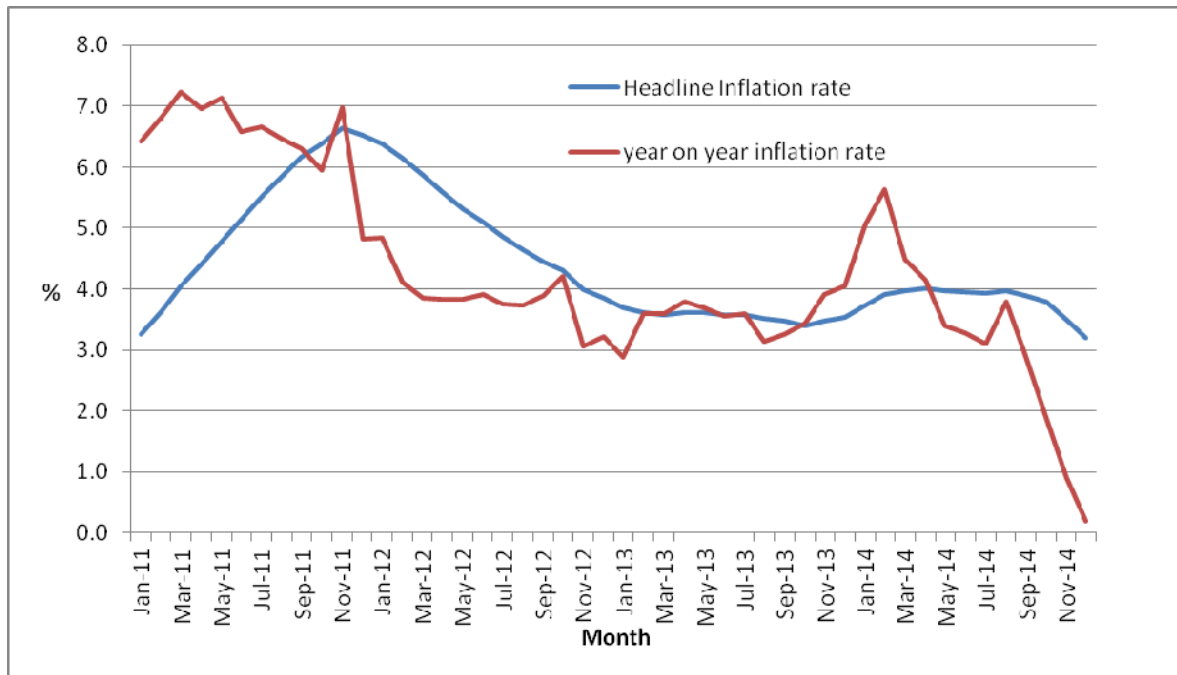
Commodity	Change in index point
Vegetables	+0.3
Milk	-0.1
Trader's rice	-0.1
Other food products	-0.1
Gasolene	-0.3
Diesel	-0.1
Goods for personal care	-0.1
Other goods and services	+0.1
Total	-0.4

Sub-indices for the twelve divisions of consumption expenditure for the month of December 2014 compared to November 2014 are shown below:

Division	November 2014	December 2014	% change in index between November and December 2014
1. Food and non alcoholic beverages	104.5	104.7	+0.2
2. Alcoholic beverages and tobacco	116.4	115.8	-0.5
3. Clothing and footwear	111.0	111.8	+0.7
4. Housing, water, electricity, gas and other fuels	101.3	101.3	-
5. Furnishings, household equipment and routine household maintenance	102.1	102.0	-0.1
6. Health	110.0	111.0	+0.9
7. Transport	105.1	102.6	-2.4
8. Communication	99.1	98.9	-0.2
9. Recreation and culture	104.9	105.4	+0.5
10. Education	103.7	103.7	-
11. Restaurants and hotels	112.7	113.1	+0.4
12. Miscellaneous goods and services	105.2	103.9	-1.2
All Divisions	<u>105.9</u>	<u>105.5</u>	-0.4
<i>All Divisions, excluding "Alcoholic beverages and tobacco"</i>	<i><u>104.7</u></i>	<i><u>104.4</u></i>	<i>-0.3</i>

The **headline** inflation rate for the twelve months ending December 2014 works out to 3.2%, compared to 3.5% for the twelve months ending December 2013.

The **year-on-year** inflation rate for December 2014, as measured by the change in the CPI for December 2014 relative to December 2013, works out to 0.2%.



Detailed CPI series available at <http://statsmauritius.govmu.org/CPI and Inflation>

Source: **Statistics Mauritius**
Port Louis
09 January 2015