



Economic and Social Indicators

Issue No 1872

Gender Statistics

Year 2024

Released online : Tuesday 22 July 2025

<https://statsmauritius.govmu.org>

Price: Rs 40.00

Statistics Mauritius
Ministry of Finance
Port Louis

Note: Readers are invited to make the distinction between official data which are published in the Economic and Social indicators and the analysis presented for the benefit of general readers. Differences of opinion may arise regarding the analytical part but these do not in any way, undermine the quality of the data. The Editors welcome constructive critical comments.

Gender Statistics - 2024

1. Introduction

This is the sixteenth issue of Economic and Social Indicators (ESI) on gender statistics. It presents a portrait of women and men in the Republic of Mauritius and includes their demographic profile, health, family status, educational attainment and labour force characteristics.

The ESI is based on latest available sex disaggregated data from administrative sources, household surveys and censuses. Some of the statistics presented therefore refer to years earlier than 2024.

2. Highlights

- (i) In 2024, the population comprised 628,970 women compared to 616,479 men. Women outnumbered men by 12,491 as they lived on average 7.1 years longer than men.
- (ii) Women continue to give birth to fewer children than in the past.
- (iii) Both men and women are getting married at an older age and the age difference between them is narrowing over time.
- (iv) More women than men were enrolled in tertiary institutions.
- (v) Only 10.9% of working women were heads of business compared to 25.1% among men.
- (vi) Unemployed women were more qualified than their male counterparts: 22.2% women possessed tertiary qualifications compared to 17.8% men.
- (vii) Women are largely under-represented in decision making at higher sphere of society: the number of female ministers was only 2 out of 24.
- (viii) The proportion of women in the most senior positions in government services (Senior Chief Executive, Permanent Secretary, Deputy Permanent Secretary, Director, Manager, Judge and Magistrate) was 34.9%.
- (ix) Among victims of domestic violence, 86.6% were women and 13.4% were men.
- (x) Some 4,714 men were victims of homicides and assaults compared to 4,922 women whereas 646 women were victims of sexual violence and sexual exploitation compared to 47 men.
- (xi) Women participated less than men in sports as high level athletes (65.3% men against 34.7% women).
- (xii) According to the Global Gender Gap Index (GGI) of the World Economic Forum, Mauritius was ranked 107 out of 146 countries worldwide. The GGI measures gender equality across four key areas, namely: (a) economic participation and opportunity, (b) educational attainment, (c) health and survival and (d) political empowerment.

3. Population

Prior to 1950 women were fewer than men in number. However, the female population has been growing at a faster rate such that in the 50's there were almost equal numbers of men and women. This balance in the population has been maintained for some 40 years. As from 1990, women have been increasingly outnumbering men over the years.

In 2024, there were 12,491 more women than men. Out of a total population of 1,245,449 there were 628,970 women against 616,479 men, i.e., 98 men for every 100 women (Table 1).

Though women were more numerous in the total population, this was not the case in all age groups. At the younger ages (under 50 years), men were more numerous, mainly due to more births of baby boys than girls. In 2024, there were 101 male births for every 100 female births.

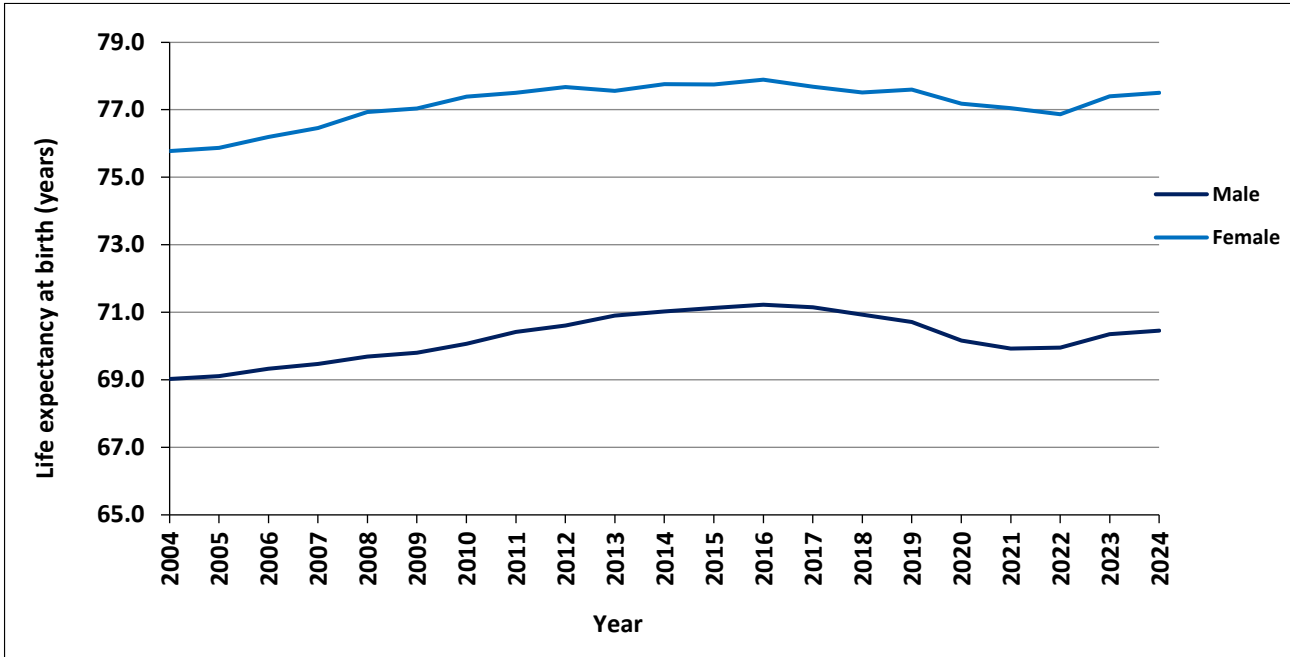
At ages 50 years and above, women outnumbered men and their proportion increased at higher ages. The male-female ratio stood at around 102 for those aged between 40 to 49 years compared to around 55 among those aged 80 years and over; there were around 2 women for every man in this age group. The main reason for this imbalance is that women live longer than men.

Table 1 – Population by age and sex, Republic of Mauritius, 1st July 2024

Age Group (years)	Male	Female	Both sexes	Sex ratio (males per 100 females)
Under 10	64,851	62,564	127,415	103.7
10 - 19	77,156	75,926	153,082	101.6
20 - 29	91,322	89,366	180,688	102.2
30 - 39	97,624	89,358	186,982	109.3
40 - 49	91,683	89,853	181,536	102.0
50 - 59	78,182	80,002	158,184	97.7
60 - 79	105,717	123,848	229,565	85.4
80+	9,944	18,053	27,997	55.1
Total	616,479	628,970	1,245,449	98.0

Women have a higher life expectancy than men. In fact, women live some 7.1 years longer than men. In 2024, life expectancy at birth for women was 77.5 years compared to 70.4 years for men. Life expectancy at birth has improved over the years for both men and women and the gap between them increased from 6.8 years in 2004 to 7.1 years in 2024 (Chart 1).

Chart 1 - Life Expectancy at birth, Republic of Mauritius, 2004 – 2024

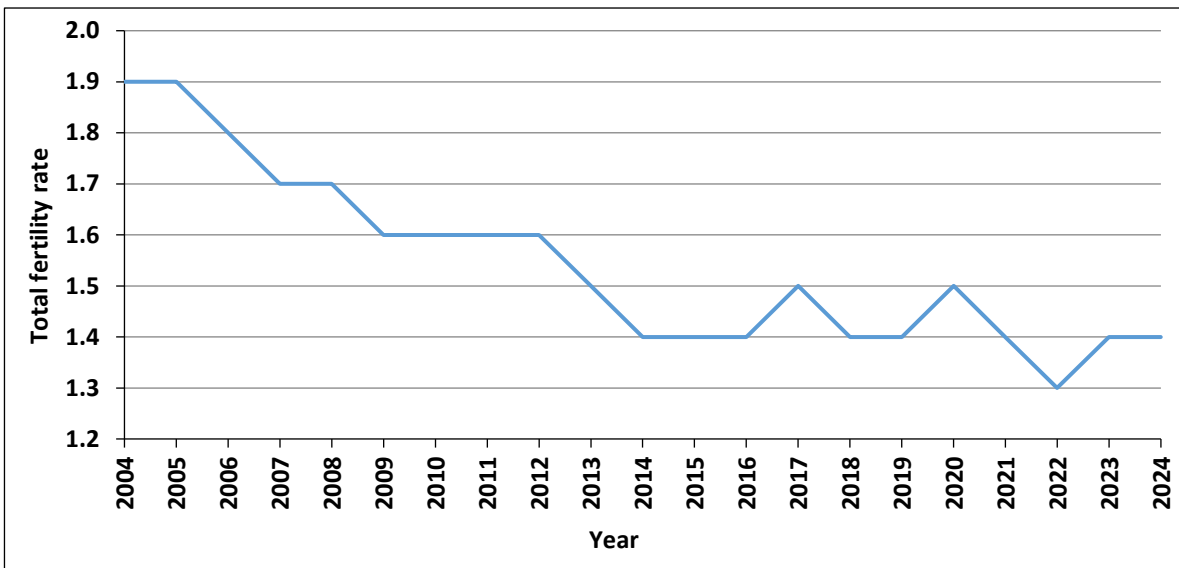


Source: Statistics Mauritius

4. Fertility and Contraceptive Use

Women continued to give birth to fewer children than in the past. The total fertility rate, which is an indication of the average number of babies born to a woman during her childbearing period, has maintained a general decreasing trend over the last 20 years. During that period, the total fertility rate dropped from 1.9 in 2004 to 1.4 in 2024. (Chart 2).

Chart 2 - Total Fertility Rate, Republic of Mauritius, 2004 – 2024

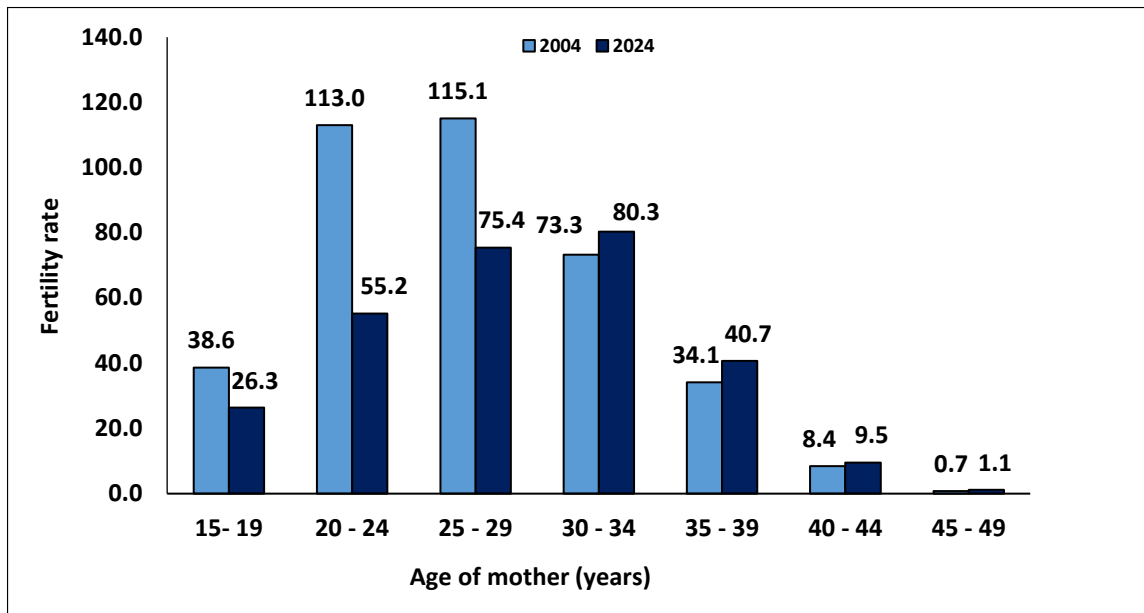


Source: Ministry of Health and Wellness

In 2004, women in the age bracket 25-29 years had the highest fertility with 115 births per 1,000 women of those age groups (Chart 3). In 2024, the peak fertility rate is observed in the age bracket

30-34 years with 80 births per 1,000 women in that age group. One of the reasons explaining this shift is that women are getting married at an older age.

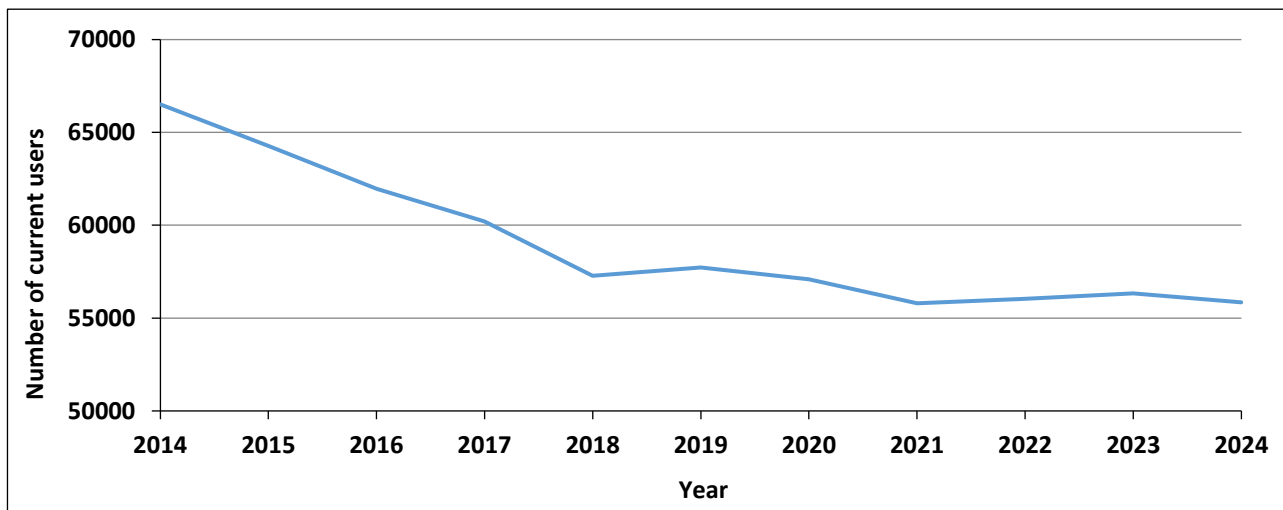
Chart 3 – Fertility Rate by age of mother, Republic of Mauritius, 2004 and 2024



Source: Ministry of Health and Wellness

In 2024, Government Family Planning Clinics, Mauritius Family Planning & Welfare Association and “Action Familiale” registered a total of some 55,841 current users of contraceptive methods in the Island of Mauritius, a decrease of 491 compared to 56,332 in 2023 (Chart 4).

Chart 4 – Number of current users of contraceptives, Island of Mauritius, 2014 - 2024



Source: Ministry of Health & Wellness

New acceptors of contraceptive methods registered in 2024 numbered 2,979, of whom 480 had sympto-thermal. A declining trend was observed in the number of new acceptors from 5,203 in 2014.

Among the new acceptors in 2024, 3-month injectable (26.9%), tubal ligation (22.0%) and condom (16.4%) were the three most preferred methods of contraception while for current users sympto-thermal (48.4%) was the preferred method (Table 2).

Table 2 – Method of family planning, Island of Mauritius, 2024

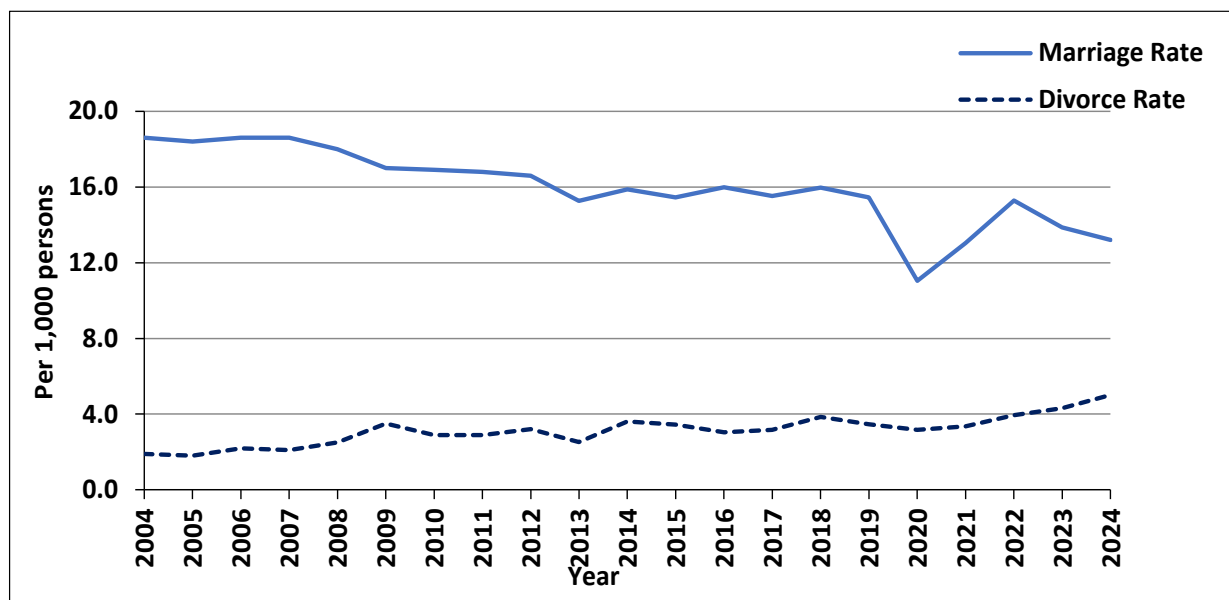
Methods	New Acceptors (%)	Current Users (%)
Pill	12.9	4.3
Tubal Ligation	22.0	26.0
Sympto-thermal	16.1	48.4
Condom	16.4	10.8
3-month injectable	26.9	5.5
Intra-Uterine Devices	1.0	2.5
1-month injectable	3.4	0.9
Implant	1.3	1.6
Total	100.0	100.0

Source: Ministry of Health and Wellness

5. Family Status

While marriage rate is declining, divorce rate is on the rise. The marriage rate, i.e., the number of persons married per 1,000 mid-year population, fell from 18.6 in 2004 to 13.2 in 2024. The number of divorced persons per 1,000 mid-year population increased from 1.9 in 2004 to 5.0 in 2024 (Chart 5).

Chart 5 – Marriage and Divorce Rate, Republic of Mauritius, 2004 – 2024

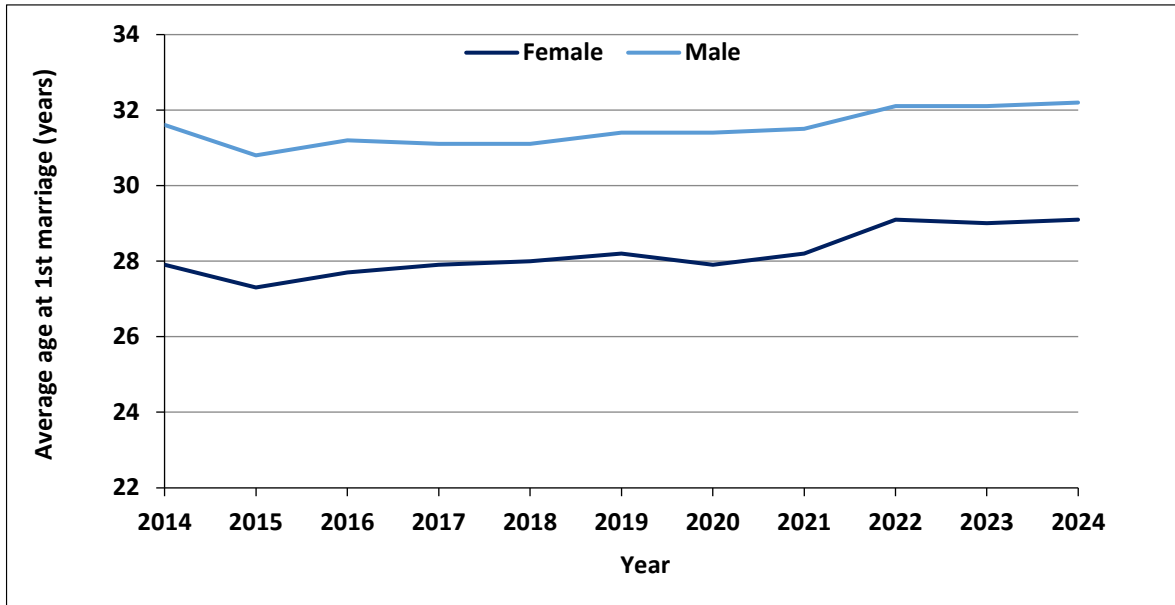


Source: Statistics Mauritius

Generally, women tend to marry men who are older than them. However, over the past 10 years the age difference between husband and wife narrowed from 3.7 years in 2014 to 3.1 years in 2024 (Chart 6).

The average age at first marriage has been gradually increasing over the years for both women and men. The average age at first marriage for women increased from 27.9 years in 2014 to reach 29.1 years in 2024, while that for men increased from 31.6 to 32.2 during the same period.

Chart 6 – Average age at first marriage, Republic of Mauritius, 2014 – 2024



Source: Statistics Mauritius

Of the 3,120 divorces granted by the Supreme Court in 2024, women were the petitioners in 32.3% of the cases (Table 3).

Table 3 – Divorce by petitioner, Republic of Mauritius, 2023 & 2024

Petitioner	2023	%	2024	%
Husband	644	23.9	745	23.9
Wife	915	33.9	1008	32.3
Joint petitioner (both husband & wife)	1,137	42.2	1,367	43.8
Total divorces	2,696	100.0	3,120	100.0

Source: The Judiciary

An analysis of the divorce statistics by duration of marriage indicate that couples had the highest tendency to divorce within the 5-10 years duration of marriage (Table 4).

Table 4 – Number of divorces by duration of union, Republic of Mauritius, 2024

Duration of union (years)	Number	%
< 1 year	26	0.8
1 and <3	285	9.1
3 and <5	335	10.7
5 and <10	832	26.7
10 and <15	589	18.9
15 and <25	692	22.2
25 or more	361	11.6
Total divorces	3,120	100

Source: The Judiciary

Some 36.1% of couples who divorced in 2024 did not have any children, while 54.3% of them had 1 to 2 children. There were 69 couples with 4 or more children (Table 5).

Table 5 – Number of dependent children ¹, Republic of Mauritius, 2024

Number of children	Number	%
0	1,127	36.1
1	925	29.6
2	771	24.7
3	228	7.3
4	53	1.7
5 or more	16	0.51
Total	3,120	100.0

¹ dependent children are the living children who are dependent on either of the divorcees at the time the divorce petition is filed

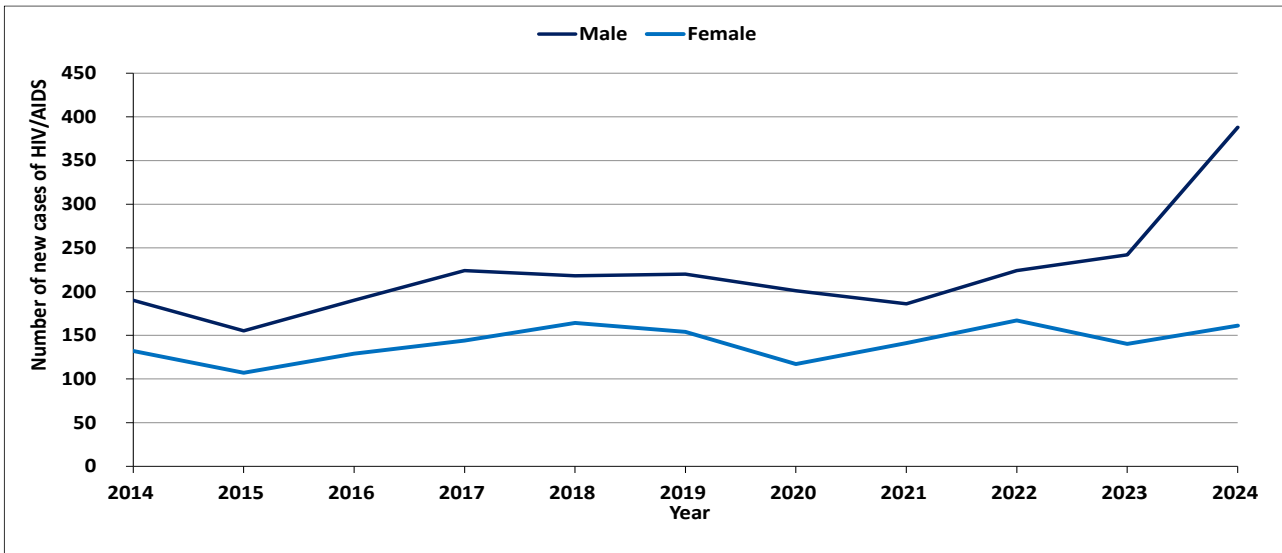
Source: The Judiciary

6. Health

Since the first cases of HIV/AIDS were registered in October 1987, the number has been increasing to reach 9,762 in December 2024, of whom 28.7% were women.

During 2024, 549 new cases of HIV/AIDS were registered among Mauritians and the proportion of women among the new cases was 29.3% compared to 41.0% in 2014.

Chart 7 – New HIV/AIDS cases, Republic of Mauritius, 2014 – 2024

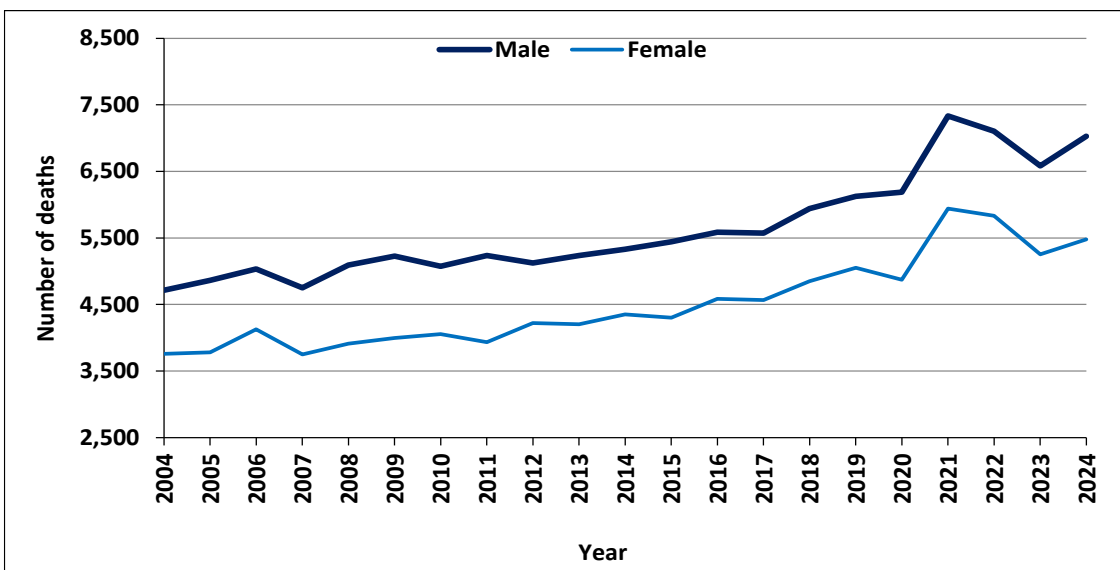


Source: Ministry of Health and Wellness

7. Mortality

Though women are more numerous than men in the population, there are fewer deaths among women than among men. In 2024, 7,028 men compared to 5,478 women died (Chart 8). The crude death rate for 2024 was 11.4 for man and 8.7 for woman.

Chart 8 – Number of deaths by sex, Republic of Mauritius, 2004 – 2024



Source: Civil Status Division

In 2023, heart disease and diabetes mellitus were the leading causes of deaths among women and men. Diabetes mellitus and heart disease were respectively responsible for 24.7% and 18.8% of deaths among women and 21.9% and 19.9% of deaths among men. Cancer and diseases of the respiratory system were responsible for 11.2% and 9.5% of deaths among men. Causes of death specific to women, such as breast and uterus cancer, were responsible for 14.6% deaths while maternal deaths accounted for another 0.1%. Compared to men, women were more likely to die of hypertensive diseases and neoplasms but less likely to die of diseases of the liver, and to commit suicide (Table 6).

Table 6 – Deaths (%) by cause and sex, Republic of Mauritius, 2023

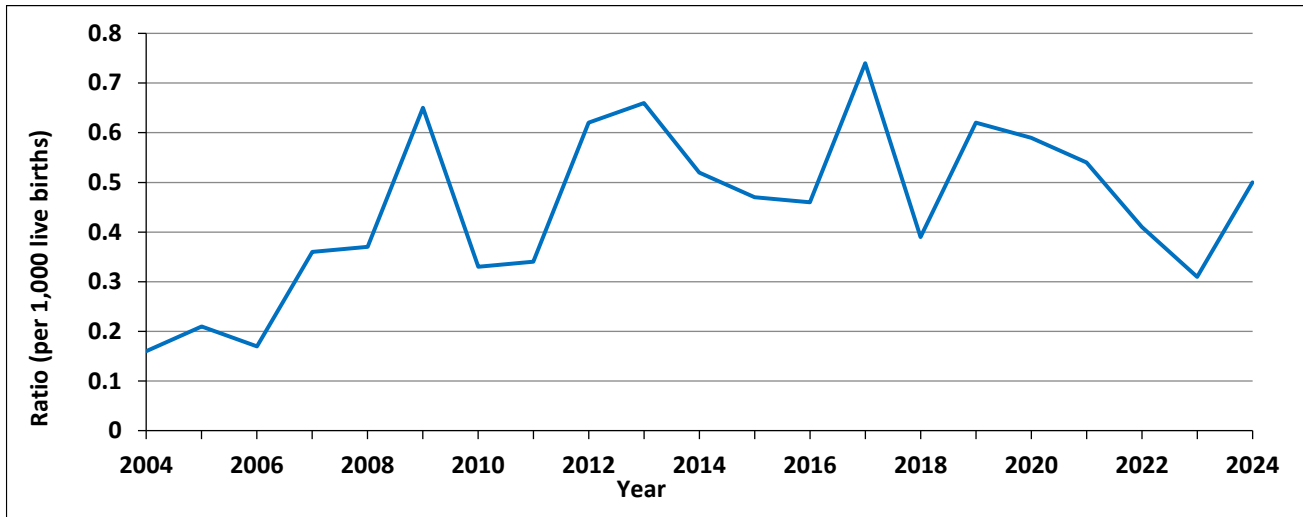
Cause of death	Male	Female
Diabetes mellitus	21.9	24.7
Heart disease	19.9	18.8
Hypertensive Disease	4.1	6.6
Neoplasm:	11.2	14.6
<i>of which: breast cancer (malignant)</i>	0.3	28.6
<i>uterus cancer (malignant)</i>	<i>Napp</i>	11.3
Diseases of the respiratory system	9.5	9.2
Cerebrovascular disease	7.5	8.6
Diseases of liver	3.1	1.2
Suicide	1.8	0.4
Maternal death	<i>Napp</i>	0.1
Other causes of death	21.0	15.8
Total	100.0	100.0

Napp: Not Applicable

Source: Ministry of Health and Wellness

Between 2004 and 2014, Mauritius witnessed both progress and setbacks in maternal mortality ratio. Despite a peak of 0.74 in 2017, the overall trajectory showed improvements, particularly after 2018. However, there was an increase to 0.50 in 2024.

Chart 9 – Maternal Mortality Ratio, Republic of Mauritius, 2004 – 2024



Source: Ministry of Health and Wellness

8. Education

Boys and girls are equally likely to go to pre-primary and primary schools. The Gender Parity Index (GPI) which measures the relative educational participation of boys and girls was 1.0 for pre-primary and primary indicating no disparity (Table 7).

Table 7 – Gross Enrolment Rate (%) by sex, Republic of Mauritius, 2024

Educational level	Male	Female	Total	Gender Parity Index
Pre-Primary (4 - 5 years)	107	106	107	1.0
Primary (6 - 11 years)	107	108	107	1.0
Secondary (12 - 19 years)	70	77	71	1.1

Source: Ministry of Education and Human Resource

At the end of primary, girls generally perform better than boys at the Primary School Achievement Certificate (PSAC) examinations. In 2024, the pass rate for girls was 82.2% against 76.8% for boys.

At secondary level, girls are more likely to be enrolled than boys. The Gender Parity Index (GPI) in secondary enrolment, which measures the relative access to secondary education of boys and girls was 1.1 in 2024 showing a disparity in favour of girls.

Girls generally perform better than boys at Higher School Certificate (HSC) examinations (Table 8).

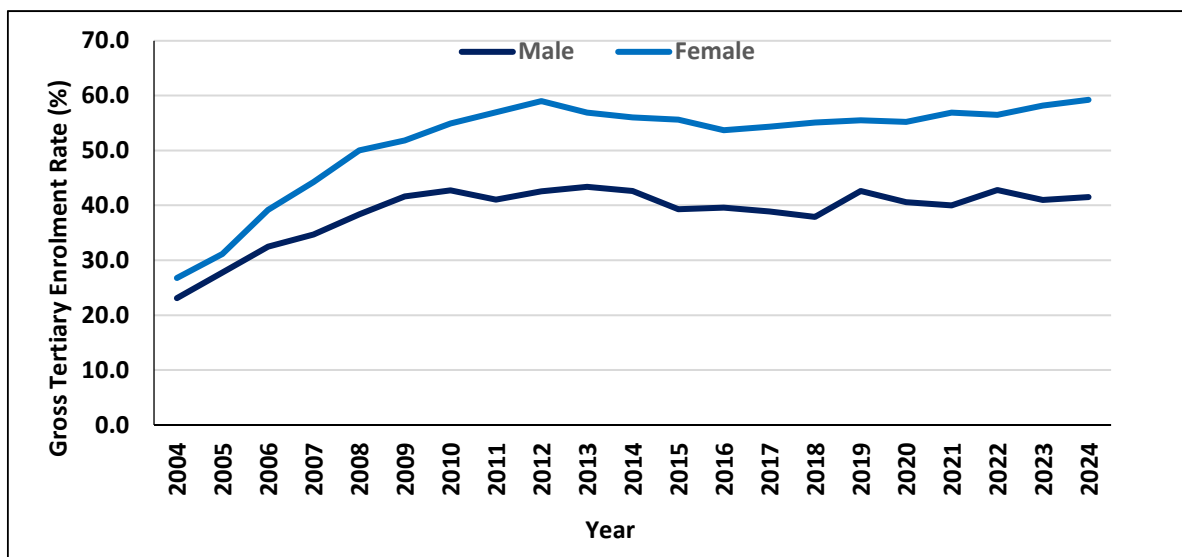
Table 8 – Pass Rate (%) at HSC, Republic of Mauritius, 2014 – 2024

Year	Male	Female
2014	70.0	79.1
2015	72.0	77.8
2016	70.9	78.2
2017	69.5	77.9
2018	70.6	78.0
2019	70.8	77.8
2020/2021	87.3	92.0
2022	89.1	94.6
2023	81.5	86.4
2024	75.3	81.5

Source: Ministry of Education and Human Resource

Consequently, more women than men are enrolled in tertiary institutions. Tertiary enrolment for both girls and boys increased over time but with a widening gap in favour of girls. Tertiary enrolment, as measured by Gross Tertiary Enrolment Rate (GTER), rose from 26.8% in 2004 to 59.2% in 2024 for women, and from 23.1% to 41.5% for men during the same period (Chart 10). In 2024, women enrolled in public, private and overseas tertiary institutions numbered 29,534 representing 57.6% of the student population which stood at 51,315.

Chart 10 – Gross Tertiary Enrolment Rate (GTER), Republic of Mauritius, 2004 – 2024



Source: Ministry of Education and Human Resource

Both men and women were mostly enrolled in Bachelor Degree (Table 9). There were fewer women than men at PhD, MPhil and DBA² levels, 388 women against 408 men in 2024.

Table 9 – No. of student enrolled¹ in tertiary institutions by level of study, 2024

Level of study	Male	Female	Total
PhD	197	167	364
MPhil/PhD	114	146	260
MPhil	13	15	28
DBA ²	84	60	144
Masters Degree	2,226	3,020	5,246
Post Graduate Diploma	129	203	332
Post Graduate Certificate	303	881	1,184
Professional	924	1,414	2,338
Bachelor Degree	10,979	16,218	27,197
Diploma	838	1,304	2,142
Certificate	39	165	204
Total	15,846	23,593	39,439

¹Enrolment in public and private institutions, including students studying through Distance Education mode but excluding overseas students

² Doctor of Business Administration

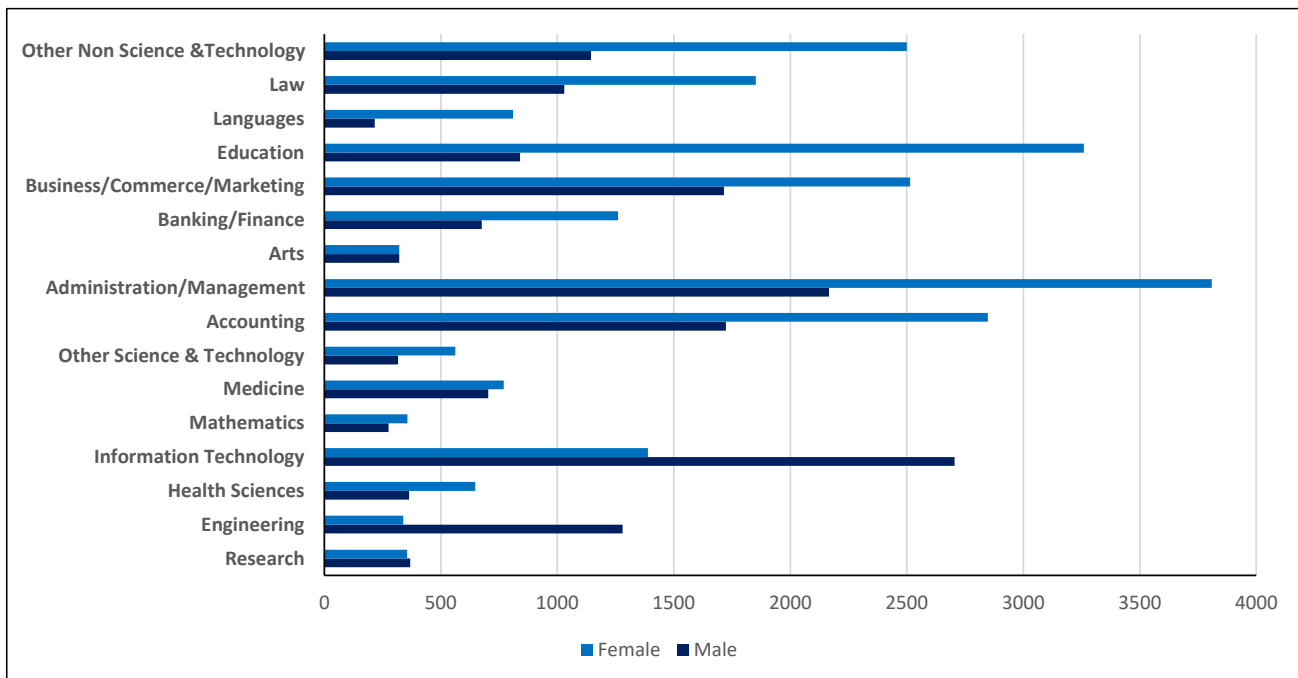
Source: Higher Education Commission

The most popular field of study for men was Information Technology (2,700) followed by Administration/Management (2,200) and Accounting (1,700).

On the other hand, the most popular field of study for women was Administration/Management (3,800) followed by Education (3,300) and Accounting (2,800).

Women were under-represented in science-related field such as Engineering (300 against 1,300 men) and Information technology (1,400 against 2,700 men) whereas men were under-represented in Education (800 against 3,300 women) and Languages (200 against 800 women) (Chart 11).

Chart 11 – Number of students enrolled ¹ in tertiary institutions by field of study, 2024



¹Enrolment in local public and private institutions, excluding overseas students

Source: Higher Education Commission

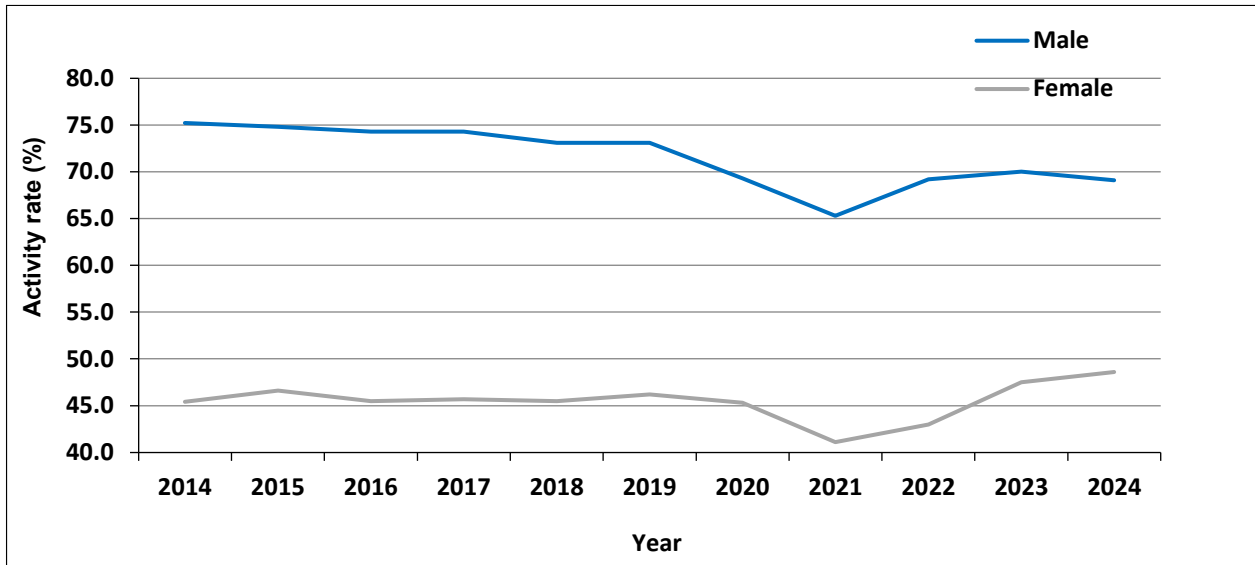
9. Economic Characteristics

In 2024, the active Mauritian population (aged 16 years and above) stood at 596,100 with 340,700 men and 255,400 women. Some 42.8% of women of working age were in the labour force compared to 57.2% of men.

The number of persons aged 16 years and over not forming part of the labour force (population outside the labour force) stood at 422,400 (152,300 males and 270,100 females).

During the period 2014 to 2024, male activity rate was consistently higher than female activity rate. However, the gap has been narrowing over time as the activity rate for men has been decreasing over the years from 75.2% in 2014 to 69.1% in 2024, and that of females ranged from 45.4% to 48.6% during the same period (Chart 12).

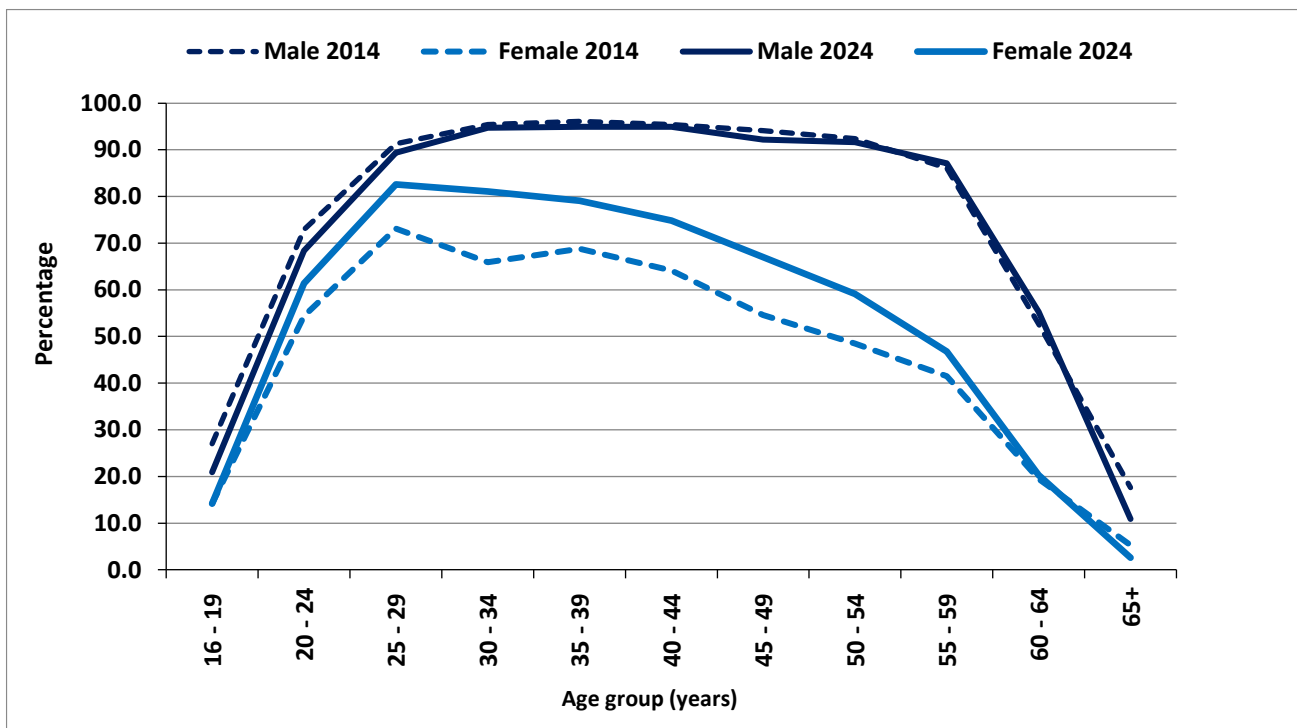
Chart 12 – Activity rate (%) by sex, 2014 – 2024



Source: Continuous Multi-Purpose Household Survey (CMPHS), Statistics Mauritius

Men and women have a similar age pattern of economic activity, i.e., less active at the younger and older age-groups (Chart 13). Over the years, the shape of the curve for female activity rate by age has been tending towards that of the male.

Chart 13 – Activity rate (%) by age-group and sex, 2014 and 2024



Source: Continuous Multi-Purpose Household Survey (CMPHS), Statistics Mauritius

Table 10 – Employed persons by industrial sector and sex, 2024

Industrial sector	Male		Female	
	Number	%	Number	%
Primary	22,300	6.9	8,100	3.5
Secondary	87,200	26.7	24,700	10.5
Tertiary	216,600	66.4	201,400	86.0
All sectors	326,100	100.0	234,200	100.0

Source: Continuous Multi-Purpose Household Survey (CMPHS), Statistics Mauritius

Both women and men had a high proportion of their working population in the tertiary sector (covering trade, accommodation service, transportation, health, education and other service industries), 66.4% for men and 86.0% for women. The secondary sector (covering manufacturing, electricity & water and construction) accounted for 26.7% of the working men and 10.5% of the working women. The primary sector (comprising agriculture and mining & quarrying) employed 6.9% and 3.5% of the working men and women respectively (Table 10).

Table 11 – Distribution (%) of employed population by employment status and sex, 2024

Employment status	Male (%)	Female (%)
Employer	6.5	1.5
Own Account Worker	18.6	9.4
Employee	74.2	86.6
Contributing Family Worker	0.7	2.5
All status	100.0	100.0

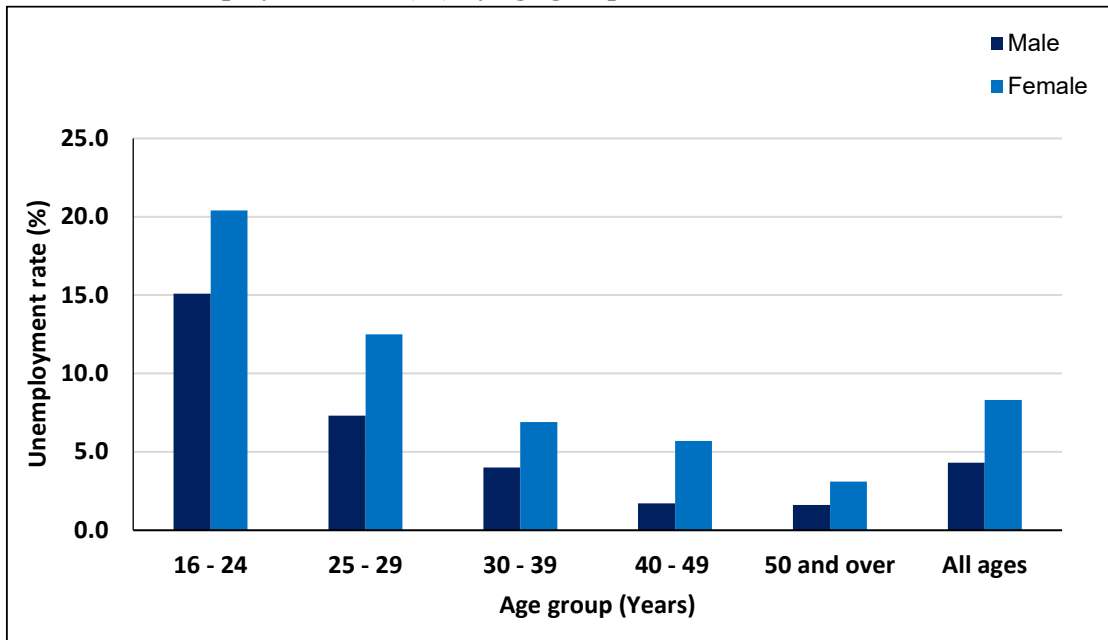
Source: Continuous Multi-Purpose Household Survey (CMPHS), Statistics Mauritius

Women were more likely than men to be employees, with 86.6% of the female workforce in that employment status as compared to 74.2% for the male workforce. Women were also less likely than men to work for themselves. Some 25.1% of working men were employers or own account workers compared to 10.9% for women (Table 11).

In spite of being fewer in the labour force (representing only 42.8%), women were over-represented among the unemployed; they made up 59.2% of the total unemployed. Unemployed women numbered 21,200 in 2024 compared to 14,600 men. Female unemployment rate stood at 8.3%, much higher than the rate of 4.3% for male. The disparity between male and female unemployment rate was highest in the lower age-groups; the difference was nearly 5.3 percentage points among the

unemployed below 25 years and around 1.5 percentage points among those aged 50 years and above (Chart 14).

Chart 14 – Unemployment rate (%) by age group and sex, 2024



Source: Continuous Multi-Purpose Household Survey (CMPHS), Statistics Mauritius

Unemployed women were generally more qualified than their male counterparts; 6,900 (33.7%) of them possessed the School Certificate (SC) or Higher School Certificate (HSC) against 3,600 males (24.6%). At tertiary level also, there were 4,700 (22.2%) unemployed women compared to 2,600 (17.8%) unemployed men (Table 12).

Table 12 – Unemployed persons by educational attainment, 2024

Educational attainment	Male		Female	
	Number	%	Number	%
Primary	1,800	12.3	2,100	9.9
Secondary	10,200	69.9	14,400	67.9
<i>Form I - V but not passed SC</i>	<i>6,600</i>	<i>45.2</i>	<i>7,500</i>	<i>35.4</i>
<i>Passed SC</i>	<i>1,900</i>	<i>13.0</i>	<i>3,900</i>	<i>19.5</i>
<i>Passed HSC</i>	<i>1,700</i>	<i>11.6</i>	<i>3,000</i>	<i>14.2</i>
Tertiary	2,600	17.8	4,700	22.2
Total	14,600	100.0	21,200	100.0

Source: Continuous Multi-Purpose Household Survey (CMPHS), Statistics Mauritius

10. Poverty

Poor households are households found below the relative poverty line estimated from the Household Budget Survey (HBS). The poverty lines for 2017 and 2023 were estimated at Rs 7,509 and Rs 12,378 respectively (Table 13).

Women are more likely than men to live in poverty. In 2023, 8.6% of the female population was living below poverty line compared to 8.1% for the males. Out of 101,200 persons in relative poverty, 52,400 were females and 48,800 were males.

The 2023 HBS showed that poverty was more likely to be among female headed households than male headed households (9.9% compared to 6.4%).

Table 13 – Number of persons in relative poverty, 2017 and 2023

	2017	2023
Relative poverty line (Rs)	7,509	12,378
Persons in relative poverty		
Total	127,200	101,200
Male	58,700	48,800
Female	68,500	52,400

Source: Household Budget Survey, Statistics Mauritius

11. Social benefits and inmates of infirmaries

As at June 2024, out of 269,887 Basic Retirement pensioners, 55.0% were women (Table 14). During that period, the number of women receiving Basic Retirement Pension outnumbered their male counterparts by 26,900 and this number is expected to be around 27,500 by 2064. Both male and female pensioners were concentrated in the age-group 60 to 69 years. It is to be noted that 71.2 % of the pensioners in the age group 90 to 99 were women. For every male centenary pensioner, there were 5 female centenary pensioners.

There were 17,133 recipients of Basic Widows Pension as at June 2024, a decrease of 3.5% compared to 17,753 in 2023.

Invalids pensioners numbered 28,969 as at June 2024, with a higher proportion of men (54.4%) compared to women (45.6%).

As at June 2024, some 377 children received Basic Orphans Pension, amongst whom 56.8% were girls.

Table 14 – Number of beneficiaries of selected benefits, 2023 and 2024

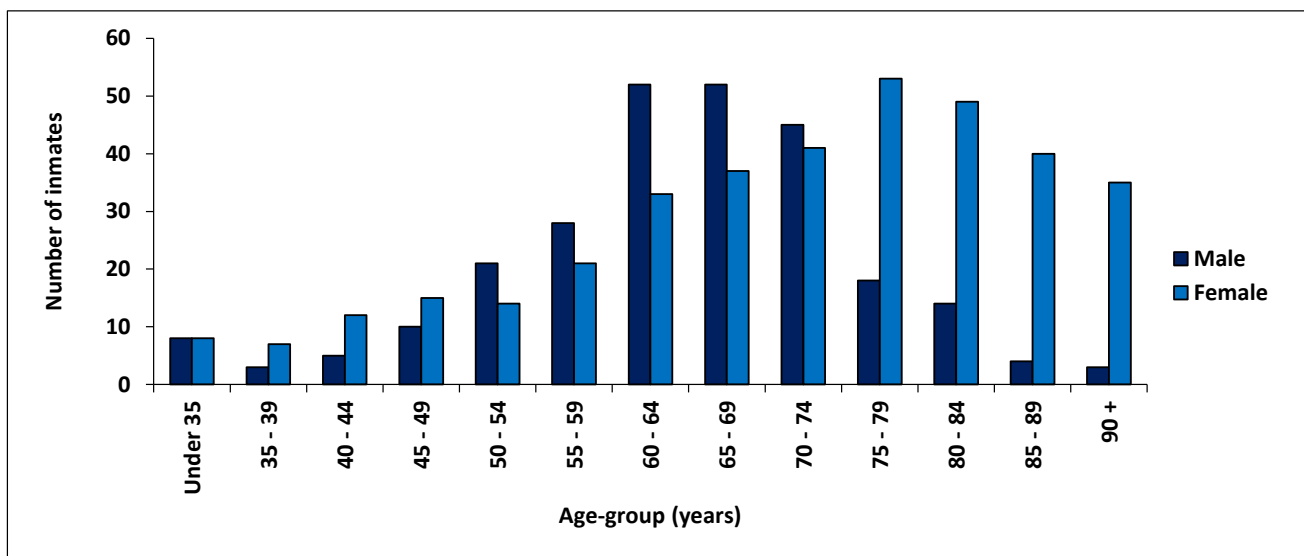
Pension type	June 2023			June 2024		
	Male	Female	Total	Male	Female	Total
Basic Retirement Pension	116,796	142,951	259,747	121,505	148,382	269,887
<i>of whom 90 years and above</i>	<i>1,182</i>	<i>3,170</i>	<i>4,352</i>	<i>1,320</i>	<i>3,327</i>	<i>4,647</i>
Basic Widow's Pension	Napp	17,753	17,753	Napp	17,133	17,133
Basic Invalid's Pension	16,586	14,142	30,728	15,771	13,198	28,969
Basic Orphan's Pension	171	227	398	163	214	377

Napp: Not applicable

Source: Ministry of Social Integration, Social Security and National Solidarity

In 2024, some 58.1% of the 628 inmates living in infirmaries and orphanages registered at the Ministry of Social Integration, Social Security and National Solidarity (Social Security Division), were women. The women residents were older than men with 59.7% aged 70 years and over compared to 31.9% for men (Chart 15).

Chart 15 – Number of Inmates in infirmaries and orphanages by age group and sex, 2024



Source: Ministry of Social Integration, Social Security and National Solidarity

Both women and men inmates were prone to mental disease (38.8% and 46.4%) while more men inmates than women suffered from partial paralysis (16.3% compared to 8.5% among women) (Table 15).

Table 15 – Distribution (%) of inmates in infirmaries and orphanages by disability/diseases, 2024

Disability/Diseases	Male	Female
Loss of sight	0.8	1.2
Partial paralysis	16.3	8.5
Total Paralysis	3.3	2.0
Mental diseases	46.4	38.8
Heart diseases	5.0	5.5
Diabetes	13.4	6.7
Other (including those suffering from multiple disabilities)	11.3	30.6
Inmates with no disabilities	3.3	6.7
TOTAL	100.0	100.0

Source: Ministry of Social Integration, Social Security and National Solidarity

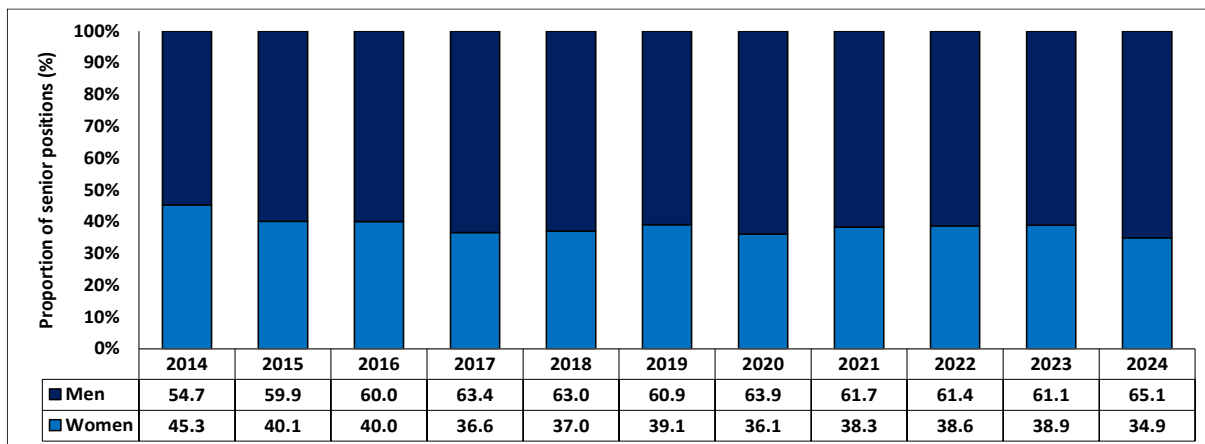
12. Women in decision making

Women continue to be underrepresented in decision-making position in Government cabinet. The share of women among cabinet ministers was 8.3% in 2024 (2 out of 24 Ministers).

Even though the proportion of women elected at Municipal Council elections has increased over the years, the number of female mayors remained low. In 2024, there were no female mayors in the five municipalities.

Less women are holding senior positions in government services. The proportion of women in the most senior positions has decreased from 38.9% in 2023 to 34.9% in 2024 (Chart 16).

Chart 16 – Senior positions¹ in Government Services, 2014– 2024



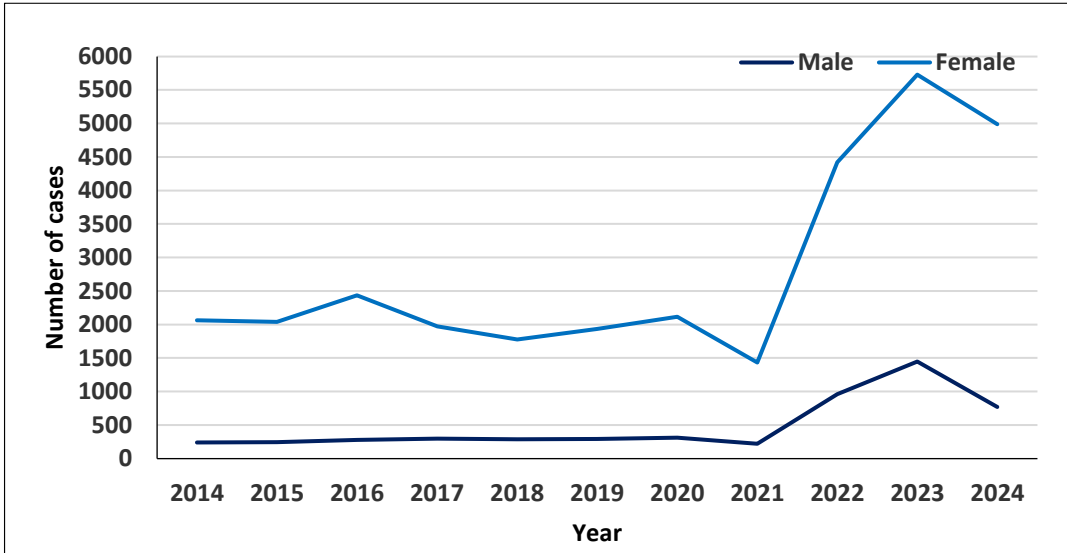
¹ Senior Chief Executive, Permanent Secretary, Deputy Permanent Secretary, Director, Manager, Judge and Magistrate

Source: Administrative data from CISD & Survey of Employment in Government Services, Ministry of Gender Equality and Family Welfare

13. Domestic violence

Women are more likely to be victims of domestic violence. The number of cases of domestic violence, reported at the Ministry of Gender Equality and Family Welfare, decreased from 7,177 in 2023 to 5,758 in 2024. The total number of domestic violence against women decreased from 5,729 to 4,988 and against men from 1,448 to 770 respectively (Chart 17).

Chart 17 – Number of reported cases of domestic violence, 2014 – 2024



Source: Ministry of Gender Equality and Family Welfare

In 2024, verbal abuse and physical violence were the main types of violence reported by both men and women followed by emotional violence (Table 16).

Table 16 – Reported cases of domestic Violence by types and sex, 2024

Types of violence	Male	Female	Total
Emotional Violence	2.1	2.9	2.8
Physical Violence	36.8	44.5	43.5
Psychological Violence	1.9	1.2	1.3
Economic Violence	0.9	0.6	0.7
Sexual Violence	0.0	1.1	0.9
Verbal Abuse	58.3	49.6	50.8
Total	100.0	100.0	100.0

Source: Ministry of Gender Equality and Family Welfare

14. Child Abuse

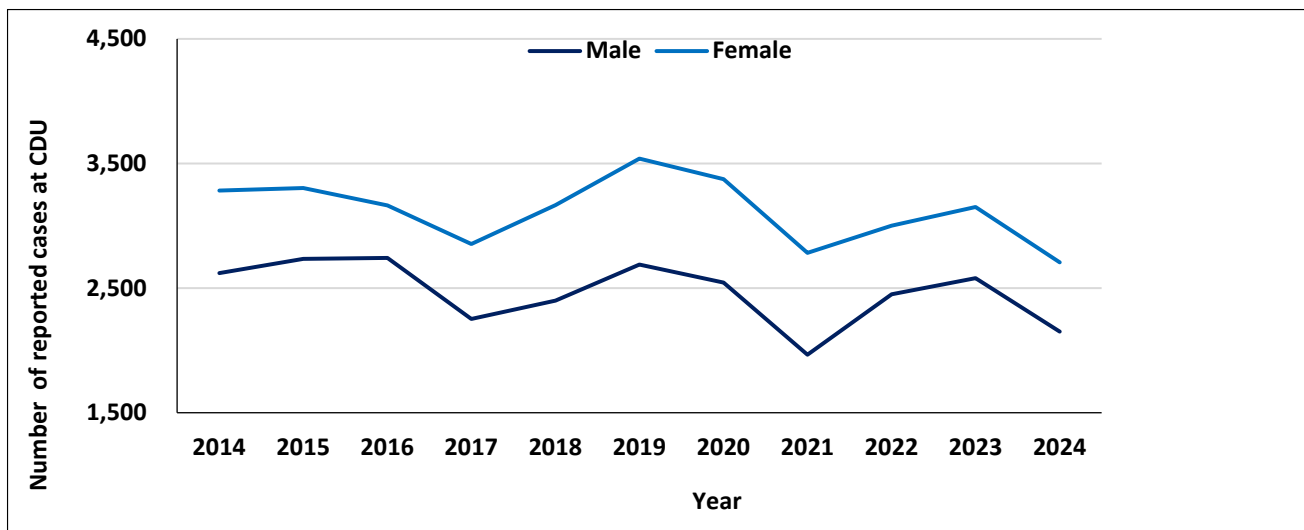
The total number of cases reported at the Child Development Unit went down to 4,854 in 2024 from 5,727 in 2023 (Table 17).

Table 17 – All cases reported at Child Development Unit by nature of problem and sex, 2024

Nature of problem	2023			2024		
	Male	Female	Total	Male	Female	Total
Child protection Concern	1,285	1,767	3,052	1,002	1,506	2,508
Welfare	966	1,019	1,985	814	866	1,680
Developmental	329	361	690	333	333	666
Total	2,580	3,147	5,727	2,149	2,705	4,854

Source: Ministry of Gender Equality and Family Welfare

Chart 18 – Number of reported cases at the Child Development Unit, 2014 – 2024



Source: Ministry of Gender Equality and Family Welfare

Out of the 2,508 reported cases of child abuse in 2024, some 60.0% of the victims were females (Table 18). The most common nature of abuse for girls were sexual abuse (21.6%) followed by neglect cases (21.2%) and physical abuse (15.2%), while the most common abuse for boys were neglect cases (27.8%) followed by physical abuse (27.1%) and emotional abuse (11.5%).

Table 18 – Reported cases of child abuse at Child Development Unit by nature of problem, 2024

Nature of Problem	Male		Female	
	Number	%	Number	%
Neglect cases	279	27.8	320	21.2
Physical abuse	272	27.1	229	15.2
Emotional	115	11.5	120	8.0
Sexual abuse	55	5.5	326	21.6
Teenage pregnancy	0	0.0	149	9.9
Child at risk	57	5.7	56	3.7
Bullying	42	4.2	46	3.1
Harassment	38	3.8	42	2.8
Other problems	144	14.4	218	14.5
Total	1,002	100.0	1,506	100.0

Source: Ministry of Gender Equality and Family Welfare

15. Offences

Men are more likely to be victims of homicides, while women are more prone to sexual violence and sexual exploitation. In 2024, some 68.6% of the intentional homicides were committed against men. Some 93.2% of victims of sexual violence and sexual exploitation were women (Table 19).

Table 19 –Victims ¹ of selected offences ² reported at the Police, Republic of Mauritius, 2024

Offences	Male	Female	Both sexes
Homicides	48	24	72
<i>of which Intentional homicides</i>	24	11	35
Assaults	4,666	4,898	9,564
Sexual violence and sexual exploitation	47	646	693
<i>of which Rape</i>	<i>Napp</i>	55	55

¹ A person may be victim of one or more than one offence and/or an offence may involve one or more victims

² Based on latest Classification of Crime for Statistical Purposes (ICCS) Version 1.0, developed by United Nations Office on Drugs and Crime (UNODC)

Source: Mauritius Police Force

Boys are much more likely to commit offences than girls. In 2024, only 12.0% of the juvenile offences were committed by girls. The female juvenile delinquency rate stood at 2.3, while that for male was 11.9 (Table 20).

Table 20 – Number of Juvenile ¹ offenders reported, Republic of Mauritius, 2024

	Male	Female	Both sexes
Crimes	125	6	131
<i>of which drug offences</i>	24	0	24
Misdemeanours	252	65	317
<i>of which drug offences</i>	23	9	32
Contraventions ²	142	0	142
Total	519	71	590
Juvenile Delinquency Rate ³	11.9	2.3	7.1

¹ A person may be victim of one or more than one offence and/or an offence may involve one or more victims

² Exclude contraventions established by camera

³ Rate per 1,000 mid-year juvenile population and exclude contraventions

Source: Mauritius Police Force

16. Sports

During the period 2022 to 2024, participation in high level sports was consistently lower among female athletes than male athletes. In 2024, participation among female athletes was 34.7% against 65.3% among male athletes (Table 21).

Table 21 – Participation of high-level athletes in sports, 2022 – 2024

	2022		2023		2024	
	Number	%	Number	%	Number	%
Male	77	55.4	87	73.7	77	65.3
Female	42	30.2	52	44.1	41	34.7
Total	119	85.6	139	117.8	118	100.0

Source: Ministry of Youth and Sports

The most common sporting disciplines in which women participated in 2024 were “athletics” (26.8%), followed by “badminton” (12.2%), “handisports” (12.2%) and “Weight Lifting” (12.2%). For men, the most common sporting disciplines were athletics (20.8%), boxing (14.2%) followed by kick boxing (13.0%) and cycling (10.4%) (Table 22).

Table 22 – Participation of high-level athletes in sports, as at December 2024

Sports discipline	Male		Female	
	No.	%	No.	%
Athletics	16	20.8	11	26.8
Badminton	6	7.8	5	12.2
Swimming	3	3.9	3	7.3
Table Tennis	1	1.3	2	4.9
Cycling	8	10.4	3	7.3
Boxing	11	14.2	0	0.0
Judo	3	3.9	4	9.8
Weight lifting	7	9.1	5	12.2
Triathlon	1	1.3	1	2.4
Fencing	1	1.3	0	0.0
Kick boxing	10	13.0	2	4.9
Handisports	7	9.1	5	12.2
Ju Jitsu	3	3.9	0	0.0
Total	77	100.0	41	100.0

Source: Ministry of Youth and Sports

17. Global Gender Gap Indices

Since 2006, through the Global Gender Gap Report series, the World Economic Forum has been quantifying the magnitude of gender-based disparities and tracking their progress over time. By providing a comprehensive framework for benchmarking global gender gaps, the report identified countries that are role models in dividing their resources equitably between women and men, regardless of the overall resource level.

The Global Gender Gap Index (GGI) seeks to measure one important aspect of gender equality; their relative gaps between women and men across a large set of countries and across four key areas, namely: (a) economic participation and opportunity, (b) educational attainment, (c) health and survival and (d) political empowerment. The equality benchmark is considered to be one with no gap between men and women.

In 2024, Mauritius was ranked 107 out of 146 countries worldwide (Table 23). Mauritius has closed both its education attainment, and health and survival gender gaps with indices nearing 1 (Table 24).

Table 23 – Global Gender Gap Index by selected countries, 2022 – 2024

Country	2022		2023		2024	
	Rank	Value	Rank	Value	Rank	Value
Iceland	1	0.908	1	0.912	1	0.935
Finland	2	0.860	3	0.863	2	0.875
Norway	3	0.845	2	0.879	3	0.875
United Kingdom	22	0.780	15	0.792	14	0.789
South Africa	20	0.782	20	0.787	18	0.785
France	15	0.791	40	0.756	22	0.781
Australia	43	0.738	26	0.778	24	0.78
Canada	25	0.772	30	0.770	36	0.761
United States	27	0.769	43	0.748	43	0.747
Singapore	49	0.734	49	0.739	48	0.744
Madagascar	48	0.735	51	0.737	66	0.72
Brazil	94	0.696	57	0.726	70	0.716
China	102	0.682	107	0.678	106	0.684
Mauritius	105	0.679	98	0.689	107	0.683
India	135	0.629	127	0.643	129	0.641
Pakistan	145	0.564	142	0.575	145	0.57
Sudan	-	-	-	-	146	0.568
Afghanistan	146	0.435	146	0.406	-	-

Source: *Global Gender Gap Report 2024, World Economic Forum*

Table 24 – Global Gender Gap Index for overall and four key areas, Republic of Mauritius, 2014 -2024

Year	Overall	Economic participation	Educational attainment	Health and survival	Political empowerment
2014	0.654	0.551	0.990	0.980	0.097
2015	0.646	0.534	0.991	0.980	0.078
2016	0.652	0.550	0.991	0.980	0.087
2017	0.664	0.595	0.992	0.980	0.090
2018	0.663	0.585	0.991	0.980	0.097
2019	0.665	0.596	0.992	0.980	0.094
2020	0.665	0.596	0.992	0.980	0.094
2021	0.679	0.600	0.992	0.980	0.144
2022	0.679	0.601	0.991	0.980	0.144
2023	0.689	0.637	0.993	0.980	0.148
2024	0.683	0.603	0.993	0.980	0.159

Source: Global Gender Gap Report 2024, World Economic Forum

Statistics Mauritius

Ministry of Finance

Port Louis

22 July 2025

Contact persons:

(1) Ms N. Ramjan (Statistician/Senior Statistician)

Email: nramjan@govmu.org

(2) Ms S. Sham-Jacmohun (Principal Statistical Officer)

Email : ssham-jacmohun@govmu.org

Statistics Mauritius

LIC Centre, Port Louis

Tel: (230) 4053300 Ext 4354, 4053314

Fax: (230) 2082041

Appendix: Glossary

Activity rate: The ratio (%) of the economically active population (employed and unemployed) to population aged 16 years and above.

Age specific fertility rate: the number of live births to women of a specified age-group per 1,000 women in that age-group.

Assault: Assault is defined as intentional or reckless application of physical force inflicted upon the body of a person.

Athletics: Athletics is a collection of sporting events that involve competitive running, jumping, throwing and walking, such as sprints (100 m, 200 m), relays (4×100 m, 4×400 m), running (800 m, 1500 m), long jump, triple jump, high jump, hammer throw, javelin throw, race walking, etc

Contraventions: Contraventions are defined as offences that are punishable by: (a) imprisonment for a term not exceeding 10 days; (b) fine not exceeding 5,000 rupees.

Contributing family worker: A contributing family worker is a person who works without pay in an enterprise operated by a family worker.

Crimes: Offences that are punishable by: (a) penal servitude (b) fine exceeding 5,000 rupees.

Crude death rate: the number of deaths in a year per 1,000 mid-year population.

Current user of contraceptive method: A new acceptor who continues with the same or different method of contraception and pays regular return visits to the family planning service point to receive services and supplies.

Divorce rate: the number of persons divorced in a year per 1,000 mid-year population.

Employee: An employee is a person who works for pay for someone else, even in a temporary capacity.

Employer: An employer is a person who operates his/her own business or trade and hires one or more employees.

Employment: Employed population consists of Mauritians aged 16 years and above who have worked for pay, profit or family gain for at least one hour during reference week of a month. It includes those who are temporarily absent from work for reason such as leave with pay, leave without pay and temporary disorganisation of work (bad weather, breakdown of equipment, lack of order, etc).

Gross Enrolment Ratio (GER): Number of pupils enrolled in a given level of education, regardless of age, expressed as a percentage of the population in the relevant age-group

- 4 - 5 years for pre-primary
- 6 – 11 years for primary
- 12 – 19 years for secondary

Gender Parity Index (GPI): Ratio of the GER for female to the GER for male. It measures the relative education participation of boys and girls. A GPI of 1 reflects equal enrolment rate for boys and girls, whereas a GPI greater than 1 shows disparity in favour of girls.

HIV/AIDS: AIDS (Acquired immune deficiency syndrome or acquired immunodeficiency syndrome) is a disease caused by a virus called HIV (Human Immunodeficiency Virus).

Household income: It comprises income from work (both paid and self-employment), transfer income (mainly government pensions, regular allowances from relatives and organisations), property income, and income from owned produced goods and it also includes imputed rent – a rental value for non-renting households.

Intentional homicide: Intentional homicide is defined as unlawful death inflicted upon a person with the intent to cause death.

Juvenile: a person aged below 18 years.

Juvenile delinquency rate: the number of juvenile offenders involved in offences (excluding contraventions) per 1,000 juvenile population.

Life expectancy at birth: the number of years a new born infant would live if prevailing patterns of mortality at the time of its birth were to stay the same throughout its life.

Marriage rate: the number of persons married in a year per 1,000 mid-year population.

Maternal mortality rate: number of deaths due to pregnancy, childbirth and the puerperium per 10,000 live births during that year.

Misdemeanours: Offences that are punishable by:(a) imprisonment for a term exceeding 10 days; (b) fine exceeding 5,000 rupees.

New acceptor of contraceptive methods: Someone who accepts a contraceptive method for the first time from a provider of a family planning programme.

Own Account Worker: An own account worker is a person who operates his/her own business or trade but does not hire employees. He/She may be working alone or with the help of contributing family workers.

Primary sector: Primary Sector comprises activities related to 'Agriculture, hunting, forestry and fishing' and 'Mining'.

Relative poverty line (RPL): It is a threshold below which a household/ person is deemed poor and is set as the 'half median monthly household income per adult equivalent'.

Secondary sector: Secondary Sector comprises activities related to 'Manufacturing, 'Electricity, gas and water supply' and 'Construction'.

Sex ratio: The sex ratio is defined as the number of males per 100 females.

Sexual violence: Sexual violence is defined as unwanted sexual act, attempt to obtain a sexual act, or contact or communication with unwanted sexual attention without valid consent or with consent as a result of intimidation, force, fraud, coercion, threat, deception, use of drugs or alcohol, or abuse of power or of a position of vulnerability.

Sexual exploitation: Sexual exploitation is defined as acts of abuse of a position of vulnerability, power or trust, or use of force or threat of force, for profiting financially, physically, socially or politically from the prostitution or sexual acts of a person.

Total fertility rate: the average number of children born to an average woman assuming that she survives to the end of her child-bearing age and is subjected to a fixed schedule of age-specific fertility rates.

Unemployment rate: Unemployment rate is the ratio (%) of unemployment to economically active population (employed and unemployed).

Unemployment: Unemployed population comprises all Mauritians aged 16 years and over who are not working but who are looking for work and are available for work during the reference week.

Statistics Mauritius
LIC Centre,
John Kennedy Street,
Port Louis, MAURITIUS
T: +230 208 1800
F: +230 211 4150
W: <https://statsmauritius.govmu.org>
E: statsmauritius@govmu.org