



# Economic and Social Indicators

**Issue No 1755**

**Construction Price Index**

**3<sup>rd</sup> Quarter 2023**

**Released online : 20 October 2023**

<https://statsmauritius.govmu.org>

Price: Rs 40.00

Statistics Mauritius  
Ministry of Finance, Economic Planning and Development  
Port Louis

Note: Readers are invited to make the distinction between official data which are published in the Economic and Social indicators and the analysis presented for the benefit of general readers. Differences of opinion may arise regarding the analytical part but these do not in any way, undermine the quality of the data. The Editors welcome constructive critical comments.

# CONSTRUCTION PRICE INDEX

## (Input Cost Index for the construction of a single storey house)

**3<sup>rd</sup> Quarter 2023**

### 1. Introduction

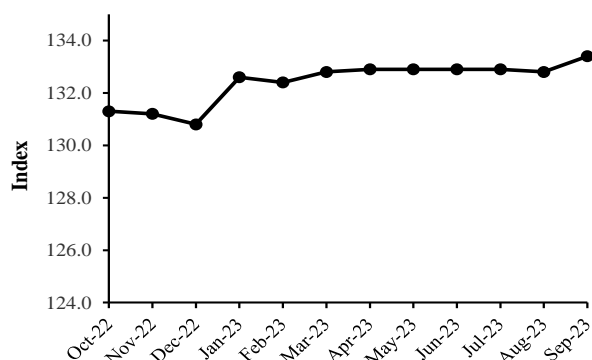
This issue of the Economic and Social Indicators presents the monthly Construction Price Index (residential) for the third quarter of 2023 with first quarter of 2018 as base period. Figures showing the evolution of the index during the past twelve months are also included.

The methodology used for compiling the index is given in the annexed technical notes. Figures have been rounded to one or two decimal places although they have been calculated to many decimal places.

### 2. Evolution of Construction Price Index (October 2022 to September 2023)

The Construction Price index which stood at 131.3 in October 2022 maintained a decreasing trend up to December 2022, reaching 130.8. In January 2023, the index increased to 132.6 followed by a decrease of 0.2% in February 2023 reaching 132.4. In March 2023, the index increased to reach 132.8. The index registered a further increase of 0.1% in April 2023, reaching 132.9 and remained at the same level up to July 2023. The index decreased by 0.1% in August 2023 reaching 132.8 in August 2023 followed by an increase of 0.5% in September 2023 to reach 133.4.

**Chart 1: Construction Price Index October 2022 to September 2023**



### 3. Changes in Construction Price Index (July to September 2023)

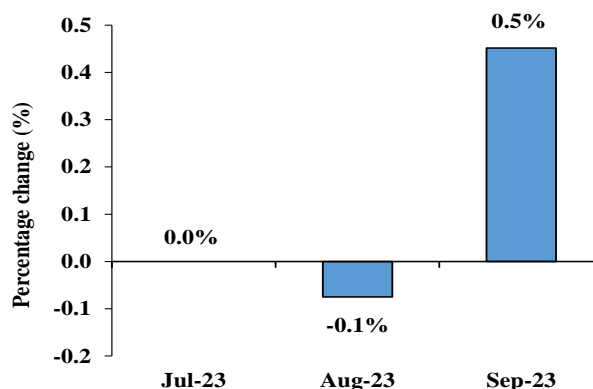
The Construction Price Index, which stood at 132.9 at the end of June 2023, remained at the same level in July 2023. The increase in the rates for hire of plant sub-index (0.6%) was offset by the decrease in the material sub-index (-0.1%). The decrease in the

materials sub-index is mainly due to lower prices of steel bars (-1.3%) and timber carpentry (-4.5%), partly offset by the increase in the prices of premixed concrete (1.4%).

In August 2023, the index went down by 0.1% to reach 132.8. The contraction of 0.1% was mainly due to decreases in the prices of steel bars (-1.1%) and laminated flooring (-1.1%), partly offset by higher rates for the hire of plant (1.0%).

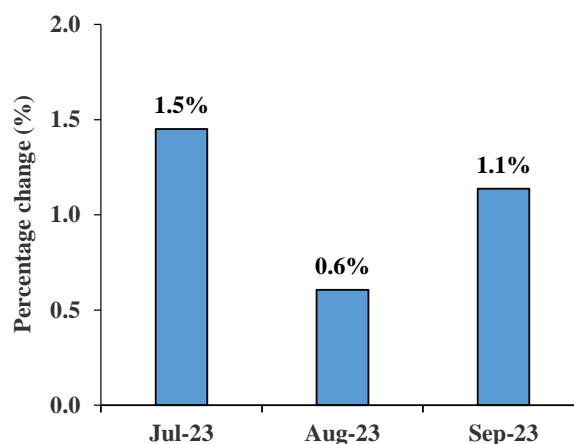
The overall index increased by 0.5% in September 2023 as a result of an increase of 0.7% in the material sub-index. The increase in the material sub-index was mainly due to higher prices of hardcore (remplissage) (5.2%), aggregate (8.6%) and block (7.3%), partly offset by decreases in the prices of steel bars (-0.8%) and laminated flooring (-1.5%).

**Chart 2: Percentage change from previous month**



Compared to the corresponding months of the previous year, the index increased by 1.5% in July, 0.6% in August and 1.1% in September. (Table 1.3).

**Chart 3: Percentage change from corresponding month of previous year**



#### 4. Changes by Input Categories

Changes by input categories are shown in Tables 1.1 to 1.5.

During the third quarter of 2023, no change was registered in the “Labour” and “Transport” sub-indices.

The “Hire of plant” sub-index increased by 0.6% in July 2023 followed by a further increase of 1.0% in August 2023. In September 2023, the sub-index remained unchanged.

The “Materials” sub-index contracted by 0.1% in July 2023 mainly due to lower prices of steel bars (-1.3%) and timber carpentry (-4.5%), partly offset by the increase in the prices of premixed concrete (1.4%). The sub-index further declined by 0.1% in August 2023 mainly due to lower prices of steel bars (-1.1%) and laminated flooring (-1.1%). In September 2023, the sub-index went up by 0.7% mainly due to higher prices of hardcore (remplissage) (5.2%), aggregate (8.6%) and block (7.3%), partly offset by decreases in the prices of steel bars (-0.8%) and laminated flooring (-1.5%).

The net monthly contributions of the input categories to the index during the period October 2022 to September 2023 are shown in Table 1.4.

Quarterly averages of the monthly indices by input category and the percentage change from quarter to quarter are shown in Table 1.5.

#### 5. Changes by Work Category

Changes by work category are shown in Tables 2.1 to 2.5.

In July 2023, the grey building sub-index stood at 132.6, same level as that in June 2023. The increase in the price of premixed concrete (1.4%) and the higher rates for hire of plant sub-index (0.6%) was offset by lower prices of steel bars (-1.3%) and timber carpentry (-4.5%).

At the level of work categories, the main changes are as follows: “Earthworks” (0.3%), “Concrete works” (1.1%), “Reinforcement” (-1.1%), “Formwork” (-1.5%), “Internal openings and joinery works” (0.4%) and “Tiling” (-0.3%).

The grey building sub-index declined by 0.2% in August 2023 to reach 132.4. This decrease is mainly due to lower prices of steel bars (-1.1%), partly offset by higher rates for the hire of plant (1.0%).

At the level of work categories, the main changes are: “Earthworks” (0.7%), “Reinforcement” (-0.9%), “Parquet” (-1.1%), and “Plumbing and Drainage” (0.3%).

In September 2023, the grey building sub-index went up by 1.0% to reach 133.7. This increase resulted mainly due to higher prices of hardcore (remplissage) (5.2%), aggregate (8.6%) and block (7.3%), partly offset by the decrease in the prices of steel bars (-0.8%).

At the level of work categories, the main changes are: “Earthworks” (2.3%), “Concrete works” (0.8%), “Reinforcement” (-0.7%), “Blockwork” (4.4%), “Screeding to floors and roofs” (1.2%) and “Parquet” (-1.4%).

Table 2.4 shows the net monthly contributions of the work categories to the index since October 2022.

Quarterly averages of the monthly indices by work category and the percentage changes from quarter to quarter are shown in Table 2.5.

#### 6. Past Trends

Table 3.1 summarises the monthly indices, the quarterly and yearly averages as well as the percentage changes in the yearly average since 2009. The base period for the calculation of the index as from 2009 up to 2018 is the second quarter of 2009. As from 2018, the base period used is the first quarter of 2018.

The series are not strictly comparable because of different base periods. However, for some particular purposes, comparison between the series may be necessary. A chain linked series with base period first quarter 2018, has been worked out and is given in Table 3.2.

*Statistics Mauritius*  
*Ministry of Finance, Economic Planning and Development*  
*Port Louis*  
*20 October 2023*

Contact persons: Mr. E. Romjon (Statistician)

Statistics Mauritius

LIC Centre, Port-Louis

Tel: +230 208 1800

Fax: +230 213 0234

Email: [cs0\\_construction@govmu.org](mailto:cs0_construction@govmu.org)

## Input Cost Index for the construction of a single storey house

(Base: 1st Quarter 2018 = 100)

**Table 1.1: Monthly sub-indices by input category, October 2022 to September 2023**

Input Categories	Weight	2022			2023								
		Oct	Nov	Dec	Jan	Feb	Mar	Apr	May	Jun	Jul	Aug	Sep
<b>LABOUR</b>	<b>24.1</b>	<b>107.0</b>	<b>107.0</b>	<b>107.0</b>	<b>111.8</b>	<b>111.8</b>	<b>111.8</b>	<b>111.8</b>	<b>111.8</b>	<b>111.8</b>	<b>111.8</b>	<b>111.8</b>	<b>111.8</b>
<b>HIRE OF PLANT</b>	<b>5.0</b>	<b>114.6</b>	<b>114.6</b>	<b>114.6</b>	<b>117.7</b>	<b>117.7</b>	<b>117.7</b>	<b>117.7</b>	<b>117.7</b>	<b>118.6</b>	<b>119.3</b>	<b>120.5</b>	<b>120.5</b>
<b>MATERIALS :</b>	<b>68.6</b>	<b>139.8</b>	<b>139.6</b>	<b>139.0</b>	<b>139.6</b>	<b>139.4</b>	<b>139.9</b>	<b>140.1</b>	<b>140.1</b>	<b>140.0</b>	<b>139.9</b>	<b>139.7</b>	<b>140.7</b>
Hardcore (remplissage)	2.0	118.1	118.1	118.1	118.1	118.4	118.4	122.3	122.3	122.3	122.3	122.3	128.7
Damp proofing	0.2	123.5	123.5	123.5	122.2	122.2	122.2	120.3	120.3	120.3	121.4	121.4	121.4
Cement	4.1	143.6	143.6	143.5	143.3	143.3	143.7	143.2	143.4	144.0	144.0	144.1	144.1
Aggregate	3.1	120.4	120.4	120.4	121.0	121.2	121.2	125.1	125.1	125.1	125.1	125.1	135.8
Block	3.2	155.0	155.0	155.0	155.0	155.0	155.0	155.1	155.1	155.1	155.1	155.1	166.4
Premixed concrete	13.9	124.9	124.9	124.9	128.2	128.2	131.3	131.3	131.4	131.4	133.3	133.3	133.3
Premixed mortar	5.0	122.4	122.4	122.4	122.4	122.4	122.7	124.2	125.0	125.0	125.0	125.0	125.0
Steel bars (armature)	6.4	178.9	175.4	168.8	167.8	165.9	164.6	163.9	163.9	163.0	160.9	159.2	158.0
Timber: (a) Carpentry	1.9	172.5	171.8	174.0	174.7	174.0	174.7	166.5	165.2	158.7	151.6	151.3	151.1
(b) Joinery	2.1	169.3	173.4	176.2	173.8	173.7	173.1	173.1	172.7	172.9	173.6	173.6	173.6
Aluminium openings	13.3	132.7	132.7	132.7	133.2	133.2	133.2	133.2	133.2	133.2	133.2	133.2	133.2
Tiles and granite	3.6	146.4	146.4	146.4	147.2	146.3	145.8	147.0	146.6	148.3	148.0	148.0	148.0
Adhesive	0.2	116.5	116.8	116.8	118.9	119.0	119.8	120.6	120.9	120.6	120.6	120.6	120.6
Paint	1.0	132.5	132.5	133.2	133.4	132.9	132.9	132.9	133.2	133.5	133.6	134.7	134.7
Laminated flooring	2.4	161.4	161.4	161.4	161.4	161.4	161.4	161.4	161.4	161.5	160.9	159.1	156.7
Plumbing	3.9	139.4	139.5	136.9	136.0	136.0	136.0	136.1	136.3	136.3	136.1	136.1	136.1
Sanitary installation	0.7	133.0	133.0	133.0	133.3	133.9	133.8	133.8	133.4	133.4	132.8	131.3	132.1
Electrical installation	1.5	138.9	138.9	139.1	139.3	139.2	139.1	139.1	138.9	138.9	139.0	139.3	139.3
<b>TRANSPORT</b>	<b>2.2</b>	<b>170.4</b>	<b>170.4</b>	<b>170.4</b>	<b>173.8</b>	<b>173.8</b>	<b>173.8</b>	<b>173.8</b>	<b>173.8</b>	<b>173.8</b>	<b>173.8</b>	<b>173.8</b>	<b>173.8</b>
<b>Total</b>	<b>100.0</b>	<b>131.3</b>	<b>131.2</b>	<b>130.8</b>	<b>132.6</b>	<b>132.4</b>	<b>132.8</b>	<b>132.9</b>	<b>132.9</b>	<b>132.9</b>	<b>132.9</b>	<b>132.8</b>	<b>133.4</b>

## Input Cost Index for the construction of a single storey house

(Base: 1st Quarter 2018 = 100)

**Table 1.2: Percentage change from previous month by input category, October 2022 to September 2023**

Input Categories	Weight	% change from previous month											
		Oct 22	Nov 22	Dec 22	Jan 23	Feb 23	Mar 23	Apr 23	May 23	Jun 23	Jul 23	Aug 23	Sep 23
<b>LABOUR</b>	<b>24.1</b>	<b>0.0</b>	<b>0.0</b>	<b>0.0</b>	<b>4.5</b>	<b>0.0</b>	<b>0.0</b>	<b>0.0</b>	<b>0.0</b>	<b>0.0</b>	<b>0.0</b>	<b>0.0</b>	<b>0.0</b>
<b>HIRE OF PLANT</b>	<b>5.0</b>	<b>0.0</b>	<b>0.0</b>	<b>0.0</b>	<b>2.7</b>	<b>0.0</b>	<b>0.0</b>	<b>0.0</b>	<b>0.0</b>	<b>0.8</b>	<b>0.6</b>	<b>1.0</b>	<b>0.0</b>
<b>MATERIALS :</b>	<b>68.6</b>	<b>-0.6</b>	<b>-0.1</b>	<b>-0.4</b>	<b>0.4</b>	<b>-0.1</b>	<b>0.4</b>	<b>0.1</b>	<b>0.0</b>	<b>-0.1</b>	<b>-0.1</b>	<b>-0.1</b>	<b>0.7</b>
Hardcore (remplissage)	2.0	4.7	0.0	0.0	0.0	0.3	0.0	3.3	0.0	0.0	0.0	0.0	5.2
Damp proofing	0.2	0.0	0.0	0.0	-1.1	0.0	0.0	-1.6	0.0	0.0	0.9	0.0	0.0
Cement	4.1	-0.1	0.0	-0.1	-0.1	0.0	0.3	-0.3	0.1	0.4	0.0	0.1	0.0
Aggregate	3.1	6.4	0.0	0.0	0.5	0.2	0.0	3.2	0.0	0.0	0.0	0.0	8.6
Block	3.2	10.1	0.0	0.0	0.0	0.0	0.0	0.1	0.0	0.0	0.0	0.0	7.3
Premixed concrete	13.9	0.0	0.0	0.0	2.6	0.0	2.4	0.0	0.1	0.0	1.4	0.0	0.0
Premixed mortar	5.0	0.0	0.0	0.0	0.0	0.0	0.2	1.2	0.6	0.0	0.0	0.0	0.0
Steel bars (armature)	6.4	-2.0	-2.0	-3.8	-0.6	-1.1	-0.8	-0.4	0.0	-0.5	-1.3	-1.1	-0.8
Timber: (a) Carpentry	1.9	-0.2	-0.4	1.3	0.4	-0.4	0.4	-4.7	-0.8	-3.9	-4.5	-0.2	-0.1
(b) Joinery	2.1	0.1	2.4	1.6	-1.4	-0.1	-0.3	0.0	-0.2	0.1	0.4	0.0	0.0
Aluminium openings	13.3	-6.0	0.0	0.0	0.4	0.0	0.0	0.0	0.0	0.0	0.0	0.0	0.0
Tiles and granite	3.6	0.4	0.0	0.0	0.5	-0.6	-0.3	0.8	-0.3	1.2	-0.2	0.0	0.0
Adhesive	0.2	0.0	0.3	0.0	1.8	0.1	0.7	0.7	0.2	-0.2	0.0	0.0	0.0
Paint	1.0	0.0	0.0	0.5	0.2	-0.4	0.0	0.0	0.2	0.2	0.1	0.8	0.0
Laminated flooring	2.4	0.0	0.0	0.0	0.0	0.0	0.0	0.0	0.0	0.1	-0.4	-1.1	-1.5
Plumbing	3.9	0.4	0.1	-1.9	-0.7	0.0	0.0	0.1	0.1	0.0	-0.1	0.0	0.0
Sanitary installation	0.7	0.4	0.0	0.0	0.2	0.5	-0.1	0.0	-0.3	0.0	-0.4	-1.1	0.6
Electrical installation	1.5	0.9	0.0	0.1	0.1	-0.1	-0.1	0.0	-0.1	0.0	0.1	0.2	0.0
<b>TRANSPORT</b>	<b>2.2</b>	<b>0.0</b>	<b>0.0</b>	<b>0.0</b>	<b>2.0</b>	<b>0.0</b>	<b>0.0</b>	<b>0.0</b>	<b>0.0</b>	<b>0.0</b>	<b>0.0</b>	<b>0.0</b>	<b>0.0</b>
<b>Total</b>	<b>100.0</b>	<b>-0.5</b>	<b>-0.1</b>	<b>-0.3</b>	<b>1.4</b>	<b>-0.2</b>	<b>0.3</b>	<b>0.1</b>	<b>0.0</b>	<b>0.0</b>	<b>0.0</b>	<b>-0.1</b>	<b>0.5</b>

## Input Cost Index for the construction of a single storey house

(Base: 1st Quarter 2018 = 100)

**Table 1.3: Percentage change from corresponding month of previous year by input category, October 2022 to September 2023**

Input Categories	Weight	% change from corresponding month of previous year											
		Oct 22	Nov 22	Dec 22	Jan 23	Feb 23	Mar 23	Apr 23	May 23	Jun 23	Jul 23	Aug 23	Sep 23
<b>LABOUR</b>	<b>24.1</b>	<b>1.8</b>	<b>1.8</b>	<b>1.8</b>	<b>4.5</b>	<b>4.5</b>	<b>4.5</b>	<b>4.5</b>	<b>4.5</b>	<b>4.5</b>	<b>4.5</b>	<b>4.5</b>	<b>4.5</b>
<b>HIRE OF PLANT</b>	<b>5.0</b>	<b>6.7</b>	<b>6.1</b>	<b>6.1</b>	<b>8.3</b>	<b>8.3</b>	<b>6.7</b>	<b>6.7</b>	<b>5.1</b>	<b>5.9</b>	<b>4.8</b>	<b>5.9</b>	<b>5.1</b>
<b>MATERIALS :</b>	<b>68.6</b>	<b>12.5</b>	<b>10.9</b>	<b>9.9</b>	<b>7.4</b>	<b>5.8</b>	<b>2.6</b>	<b>1.6</b>	<b>0.9</b>	<b>0.5</b>	<b>0.4</b>	<b>-0.8</b>	<b>0.1</b>
Hardcore (remplissage)	2.0	10.0	7.0	7.0	6.7	7.0	7.0	10.6	10.6	8.8	8.4	8.4	14.1
Damp proofing	0.2	9.3	9.3	9.3	5.7	5.7	3.4	0.8	-1.1	4.1	-0.2	-1.7	-1.7
Cement	4.1	10.6	10.4	10.3	10.5	0.2	0.5	0.0	0.1	0.6	0.3	0.2	0.2
Aggregate	3.1	11.4	8.2	8.2	8.4	8.4	8.4	11.9	11.9	11.3	10.5	10.5	20.0
Block	3.2	14.6	10.1	10.1	10.1	10.1	10.1	10.2	10.2	10.2	10.2	10.2	18.2
Premixed concrete	13.9	8.0	8.0	8.0	10.8	8.0	9.2	9.0	9.0	7.5	9.1	6.7	6.7
Premixed mortar	5.0	7.8	7.8	7.8	7.5	7.0	5.4	6.3	4.3	3.9	4.0	3.9	2.1
Steel bars (armature)	6.4	12.4	9.8	4.8	3.1	1.3	-8.6	-13.8	-14.8	-14.9	-15.2	-14.7	-13.5
Timber: (a) Carpentry	1.9	19.2	13.2	14.3	14.8	14.2	7.4	3.3	-4.3	-8.1	-12.2	-13.5	-12.6
(b) Joinery	2.1	38.5	41.8	42.0	6.2	5.8	4.7	5.7	5.0	3.9	3.7	2.9	2.7
Aluminium openings	13.3	8.1	8.1	8.1	-0.1	-0.1	-5.7	-5.7	-5.7	-5.7	-5.7	-5.7	-5.7
Tiles and granite	3.6	16.4	9.2	7.9	8.5	5.7	4.2	4.5	3.6	5.1	4.9	1.7	1.5
Adhesive	0.2	8.0	7.9	6.3	6.2	3.8	3.0	3.7	4.0	3.5	2.8	3.5	3.5
Paint	1.0	16.3	16.5	17.0	15.1	12.6	10.2	7.8	7.3	7.6	7.7	2.9	1.7
Laminated flooring	2.4	32.0	26.2	21.2	21.2	20.4	11.6	11.3	11.6	11.7	11.3	-1.4	-2.9
Plumbing	3.9	17.6	15.5	12.2	10.9	10.6	9.9	2.2	1.1	0.6	-1.2	-1.8	-2.0
Sanitary installation	0.7	12.0	9.6	8.4	9.0	5.5	4.8	4.6	3.4	3.4	2.7	0.3	-0.3
Electrical installation	1.5	10.9	9.3	6.8	6.7	6.7	4.3	3.1	1.7	2.4	2.0	1.8	1.2
<b>TRANSPORT</b>	<b>2.2</b>	<b>45.9</b>	<b>45.9</b>	<b>45.9</b>	<b>40.0</b>	<b>40.0</b>	<b>40.0</b>	<b>40.0</b>	<b>11.6</b>	<b>11.6</b>	<b>2.0</b>	<b>2.0</b>	<b>2.0</b>
<b>Total</b>	<b>100.0</b>	<b>10.7</b>	<b>9.5</b>	<b>8.8</b>	<b>7.5</b>	<b>6.3</b>	<b>4.0</b>	<b>3.2</b>	<b>2.1</b>	<b>1.8</b>	<b>1.5</b>	<b>0.6</b>	<b>1.1</b>

## Input Cost Index for the construction of a single storey house

(Base: 1st Quarter 2018 = 100)

**Table 1.4: Net monthly contributions of input categories to the index, October 2022 to September 2023**

Input Categories	Weight	2022			2023								
		Oct	Nov	Dec	Jan	Feb	Mar	Apr	May	Jun	Jul	Aug	Sep
<b>LABOUR</b>	<b>24.1</b>	<b>0.00</b>	<b>0.00</b>	<b>0.00</b>	<b>1.16</b>	<b>0.00</b>	<b>0.00</b>	<b>0.00</b>	<b>0.00</b>	<b>0.00</b>	<b>0.00</b>	<b>0.00</b>	<b>0.00</b>
<b>HIRE OF PLANT</b>	<b>5.0</b>	<b>0.00</b>	<b>0.00</b>	<b>0.00</b>	<b>0.15</b>	<b>0.00</b>	<b>0.00</b>	<b>0.00</b>	<b>0.00</b>	<b>0.04</b>	<b>0.03</b>	<b>0.06</b>	<b>0.00</b>
<b>MATERIALS :</b>	<b>68.6</b>	<b>-0.55</b>	<b>-0.14</b>	<b>-0.41</b>	<b>0.41</b>	<b>-0.14</b>	<b>0.34</b>	<b>0.14</b>	<b>0.00</b>	<b>-0.07</b>	<b>-0.07</b>	<b>-0.14</b>	<b>0.69</b>
Hardcore (remplissage)	2.0	0.11	0.00	0.00	0.00	0.01	0.00	0.08	0.00	0.00	0.00	0.00	0.13
Damp proofing	0.2	0.00	0.00	0.00	0.00	0.00	0.00	0.00	0.00	0.00	0.00	0.00	0.00
Cement	4.1	-0.01	0.00	0.00	-0.01	0.00	0.02	-0.02	0.01	0.02	0.00	0.00	0.00
Aggregate	3.1	0.22	0.00	0.00	0.02	0.01	0.00	0.12	0.00	0.00	0.00	0.00	0.33
Block	3.2	0.45	0.00	0.00	0.00	0.00	0.00	0.00	0.00	0.00	0.00	0.00	0.36
Premixed concrete	13.9	0.00	0.00	0.00	0.46	0.00	0.43	0.00	0.01	0.00	0.26	0.00	0.00
Premixed mortar	5.0	0.00	0.00	0.00	0.00	0.00	0.02	0.08	0.04	0.00	0.00	0.00	0.00
Steel bars (armature)	6.4	-0.24	-0.23	-0.42	-0.06	-0.12	-0.08	-0.05	0.00	-0.06	-0.14	-0.11	-0.08
Timber: (a) Carpentry	1.9	-0.01	-0.01	0.04	0.01	-0.01	0.01	-0.16	-0.03	-0.13	-0.14	-0.01	0.00
(b) Joinery	2.1	0.00	0.09	0.06	-0.05	0.00	-0.01	0.00	-0.01	0.00	0.01	0.00	0.00
Aluminium openings	13.3	-1.13	0.00	0.00	0.07	0.00	0.00	0.00	0.00	0.00	0.00	0.00	0.00
Tiles and granite	3.6	0.02	0.00	0.00	0.03	-0.03	-0.02	0.04	-0.01	0.06	-0.01	0.00	0.00
Adhesive	0.2	0.00	0.00	0.00	0.00	0.00	0.00	0.00	0.00	0.00	0.00	0.00	0.00
Paint	1.0	0.00	0.00	0.01	0.00	-0.01	0.00	0.00	0.00	0.00	0.00	0.01	0.00
Laminated flooring	2.4	0.00	0.00	0.00	0.00	0.00	0.00	0.00	0.00	0.00	-0.01	-0.04	-0.06
Plumbing	3.9	0.02	0.00	-0.10	-0.04	0.00	0.00	0.00	0.01	0.00	-0.01	0.00	0.00
Sanitary installation	0.7	0.00	0.00	0.00	0.00	0.00	0.00	0.00	0.00	0.00	0.00	-0.01	0.01
Electrical installation	1.5	0.02	0.00	0.00	0.00	0.00	0.00	0.00	0.00	0.00	0.00	0.00	0.00
<b>TRANSPORT</b>	<b>2.2</b>	<b>0.00</b>	<b>0.00</b>	<b>0.00</b>	<b>0.08</b>	<b>0.00</b>	<b>0.00</b>	<b>0.00</b>	<b>0.00</b>	<b>0.00</b>	<b>0.00</b>	<b>0.00</b>	<b>0.00</b>
<b>Total</b>	<b>100.0</b>	<b>-0.60</b>	<b>-0.10</b>	<b>-0.40</b>	<b>1.80</b>	<b>-0.20</b>	<b>0.40</b>	<b>0.10</b>	<b>0.00</b>	<b>0.00</b>	<b>0.00</b>	<b>-0.10</b>	<b>0.60</b>



## Input Cost Index for the construction of a single storey house

(Base: 1st Quarter 2018 = 100)

**Table 1.5: Quarterly average of monthly indices and percentage changes by input category, 4th Quarter 2022 to 3rd Quarter 2023**

Input Categories	Weight	2022	2023			% change from previous quarter			
		4th Qr	1st Qtr	2nd Qtr	3rd Qtr	4th Qr 2022	1st Qr 2023	2nd Qr 2023	3rd Qr 2023
<b>LABOUR</b>	<b>24.1</b>	<b>107.0</b>	<b>111.8</b>	<b>111.8</b>	<b>111.8</b>	<b>0.0</b>	<b>4.5</b>	<b>0.0</b>	<b>0.0</b>
<b>HIRE OF PLANT</b>	<b>5.0</b>	<b>114.6</b>	<b>117.7</b>	<b>118.0</b>	<b>120.1</b>	<b>0.5</b>	<b>2.7</b>	<b>0.3</b>	<b>1.8</b>
<b>MATERIALS :</b>	<b>68.6</b>	<b>139.5</b>	<b>139.6</b>	<b>140.1</b>	<b>140.1</b>	<b>-0.6</b>	<b>0.1</b>	<b>0.3</b>	<b>0.0</b>
Hardcore (remplissage)	2.0	118.1	118.3	122.3	124.4	4.7	0.2	3.4	1.7
Damp proofing	0.2	123.5	122.2	120.3	121.4	0.5	-1.1	-1.6	0.9
Cement	4.1	143.6	143.4	143.5	144.1	-0.1	-0.1	0.1	0.4
Aggregate	3.1	120.4	121.1	125.1	128.7	6.4	0.6	3.3	2.9
Block	3.2	155.0	155.0	155.1	158.9	10.1	0.0	0.1	2.4
Premixed concrete	13.9	124.9	129.2	131.4	133.3	0.7	3.5	1.7	1.5
Premixed mortar	5.0	122.4	122.5	124.7	125.0	1.2	0.1	1.8	0.2
Steel bars (armature)	6.4	174.4	166.1	163.6	159.4	-6.4	-4.7	-1.5	-2.6
Timber: (a) Carpentry	1.9	172.8	174.5	163.5	151.3	-0.4	1.0	-6.3	-7.4
(b) Joinery	2.1	173.0	173.5	172.9	173.6	2.7	0.3	-0.4	0.4
Aluminium openings	13.3	132.7	133.2	133.2	133.2	-6.0	0.4	0.0	0.0
Tiles and granite	3.6	146.4	146.4	147.3	148.0	1.6	0.0	0.6	0.5
Adhesive	0.2	116.7	119.2	120.7	120.6	-0.1	2.2	1.2	-0.1
Paint	1.0	132.7	133.1	133.2	134.3	2.8	0.3	0.1	0.9
Laminated flooring	2.4	161.4	161.4	161.4	158.9	3.6	0.0	0.0	-1.6
Plumbing	3.9	138.6	136.0	136.2	136.1	0.1	-1.9	0.2	-0.1
Sanitary installation	0.7	133.0	133.7	133.5	132.1	1.6	0.5	-0.1	-1.1
Electrical installation	1.5	139.0	139.2	139.0	139.2	1.5	0.2	-0.2	0.2
<b>TRANSPORT</b>	<b>2.2</b>	<b>170.4</b>	<b>173.8</b>	<b>173.8</b>	<b>173.8</b>	<b>0.0</b>	<b>2.0</b>	<b>0.0</b>	<b>0.0</b>
<b>Total</b>	<b>100.0</b>	<b>131.1</b>	<b>132.6</b>	<b>132.9</b>	<b>133.0</b>	<b>-0.4</b>	<b>1.1</b>	<b>0.2</b>	<b>0.1</b>

## Input Cost Index for the construction of a single storey house

(Base: 1st Quarter 2018 = 100)

**Table 2.1: Monthly sub-indices by work category, October 2022 to September 2023**

Work Categories	Weight	2022			2023								
		Oct	Nov	Dec	Jan	Feb	Mar	Apr	May	Jun	Jul	Aug	Sep
1. Grey building	58.3	131.3	130.8	130.2	132.2	132.0	132.6	132.7	132.8	132.6	132.6	132.4	133.7
<i>1.1. Earthworks</i>	4.5	118.7	118.7	118.7	120.0	120.1	120.1	121.8	121.8	122.2	122.6	123.4	126.2
<i>1.2. Concrete works</i>	19.3	126.4	126.4	126.4	128.9	128.9	131.2	131.5	131.6	131.7	133.1	133.1	134.2
<i>1.3. Reinforcement</i>	7.9	165.5	162.6	157.4	157.4	155.9	154.9	154.3	154.3	153.6	151.9	150.5	149.5
<i>1.4. Formwork (coffrage)</i>	6.5	130.6	130.3	131.0	134.3	134.1	134.3	131.8	131.4	129.4	127.4	127.3	127.3
<i>1.5. Blockwork</i>	6.8	136.9	136.9	136.9	138.6	138.6	138.6	138.9	138.9	139.0	139.0	139.0	145.1
<i>1.6. Plastering to ceilings and walls</i>	9.3	116.4	116.4	116.4	118.6	118.6	118.8	119.6	120.0	120.0	120.0	120.0	120.0
<i>1.7. Screeding to floors and roofs</i>	4.0	126.8	126.8	126.7	128.6	128.6	128.8	129.3	129.4	129.6	129.6	129.7	131.3
2. External openings	12.2	134.1	134.1	134.1	134.7	134.7	134.7	134.7	134.7	134.7	134.7	134.7	134.7
3. Internal openings and joinery works	2.7	140.2	143.1	143.3	142.3	142.4	142.6	142.9	142.9	143.0	143.6	143.6	143.6
4. Tiling	3.8	142.5	142.5	142.5	144.8	144.0	143.6	143.9	143.5	145.2	144.8	144.8	144.8
5. Painting	1.9	121.0	121.0	121.4	123.7	123.5	123.5	123.5	123.6	123.8	123.8	124.4	124.4
6. Parquet	2.5	158.3	158.3	158.3	158.6	158.6	158.6	158.6	158.6	158.7	158.2	156.4	154.2
7. Kitchen fit-out	2.2	133.1	133.7	136.1	138.2	138.0	137.1	138.6	138.2	138.2	138.2	138.2	138.1
8. Bathroom fit-out	1.7	122.8	122.8	122.8	123.0	123.3	123.3	123.1	122.9	122.9	122.7	122.0	122.5
9. Electrical works	2.2	128.3	128.3	128.4	130.1	130.1	130.0	130.0	129.9	129.9	130.0	130.2	130.2
10. Plumbing and Drainage	6.7	129.2	129.3	127.8	127.7	127.7	127.8	127.8	128.0	128.1	128.2	128.6	128.6
11. Site overhead costs	5.8	111.6	111.6	111.6	118.2	118.2	118.2	118.3	118.3	118.3	118.2	118.2	118.2
<b>Total</b>	<b>100.0</b>	<b>131.3</b>	<b>131.2</b>	<b>130.8</b>	<b>132.6</b>	<b>132.4</b>	<b>132.8</b>	<b>132.9</b>	<b>132.9</b>	<b>132.9</b>	<b>132.9</b>	<b>132.8</b>	<b>133.4</b>

## Input Cost Index for the construction of a single storey house

(Base: 1st Quarter 2018 = 100)

**Table 2.2: Percentage change from previous month by work category, October 2022 to September 2023**

Work Categories	Weight	% change from previous month											
		Oct 22	Nov 22	Dec 22	Jan 23	Feb 23	Mar 23	Apr 23	May 23	Jun 23	Jul 23	Aug 23	Sep 23
1. Grey building	58.3	0.8	-0.4	-0.5	1.5	-0.2	0.5	0.1	0.1	-0.2	0.0	-0.2	1.0
1.1. Earthworks	4.5	2.0	0.0	0.0	1.1	0.1	0.0	1.4	0.0	0.3	0.3	0.7	2.3
1.2. Concrete works	19.3	0.6	0.0	0.0	2.0	0.0	1.8	0.2	0.1	0.1	1.1	0.0	0.8
1.3. Reinforcement	7.9	-1.8	-1.8	-3.2	0.0	-1.0	-0.6	-0.4	0.0	-0.5	-1.1	-0.9	-0.7
1.4. Formwork (coffrage)	6.5	0.0	-0.2	0.5	2.5	-0.1	0.1	-1.9	-0.3	-1.5	-1.5	-0.1	0.0
1.5. Blockwork	6.8	5.6	0.0	0.0	1.2	0.0	0.0	0.2	0.0	0.1	0.0	0.0	4.4
1.6. Plastering to ceilings and walls	9.3	0.0	0.0	0.0	1.9	0.0	0.2	0.7	0.3	0.0	0.0	0.0	0.0
1.7. Screeding to floors and roofs	4.0	0.9	0.0	-0.1	1.5	0.0	0.2	0.4	0.1	0.2	0.0	0.1	1.2
2. External openings	12.2	-6.1	0.0	0.0	0.4	0.0	0.0	0.0	0.0	0.0	0.0	0.0	0.0
3. Internal openings and joinery works	2.7	0.1	2.1	0.1	-0.7	0.1	0.1	0.2	0.0	0.1	0.4	0.0	0.0
4. Tiling	3.8	0.3	0.0	0.0	1.6	-0.6	-0.3	0.2	-0.3	1.2	-0.3	0.0	0.0
5. Painting	1.9	0.0	0.0	0.3	1.9	-0.2	0.0	0.0	0.1	0.2	0.0	0.5	0.0
6. Parquet	2.5	0.0	0.0	0.0	0.2	0.0	0.0	0.0	0.0	0.1	-0.3	-1.1	-1.4
7. Kitchen fit-out	2.2	0.3	0.5	1.8	1.5	-0.1	-0.7	1.1	-0.3	0.0	0.0	0.0	-0.1
8. Bathroom fit-out	1.7	-3.1	0.0	0.0	0.2	0.2	0.0	-0.2	-0.2	0.0	-0.2	-0.6	0.4
9. Electrical works	2.2	0.7	0.0	0.1	1.3	0.0	-0.1	0.0	-0.1	0.0	0.1	0.2	0.0
10. Plumbing and Drainage	6.7	0.2	0.1	-1.2	-0.1	0.0	0.1	0.0	0.2	0.1	0.1	0.3	0.0
11. Site overhead costs	5.8	0.1	0.0	0.0	5.9	0.0	0.0	0.1	0.0	0.0	-0.1	0.0	0.0
<b>Total</b>	<b>100.0</b>	<b>-0.5</b>	<b>-0.1</b>	<b>-0.3</b>	<b>1.4</b>	<b>-0.2</b>	<b>0.3</b>	<b>0.1</b>	<b>0.0</b>	<b>0.0</b>	<b>0.0</b>	<b>-0.1</b>	<b>0.5</b>

## Input Cost Index for the construction of a single storey house

(Base: 1st Quarter 2018 = 100)

**Table 2.3: Percentage change from corresponding month of previous year by work category, October 2022 to September 2023**

Work Categories	Weight	% change from corresponding month of previous year											
		Oct 22	Nov 22	Dec 22	Jan 23	Feb 23	Mar 23	Apr 23	May 23	Jun 23	Jul 23	Aug 23	Sep 23
1. Grey building	58.3	9.8	8.5	7.9	8.6	6.9	5.1	4.1	2.6	2.2	1.8	1.3	2.6
<i>1.1. Earthworks</i>	4.5	10.7	8.9	8.9	9.2	9.3	8.2	9.8	7.6	7.2	5.8	6.5	8.4
<i>1.2. Concrete works</i>	19.3	9.0	8.6	8.6	10.6	7.2	8.2	8.1	7.8	6.8	7.6	5.9	6.8
<i>1.3. Reinforcement</i>	7.9	11.1	8.8	4.6	3.3	1.8	-6.9	-11.6	-12.5	-12.6	-12.9	-12.4	-11.3
<i>1.4. Formwork (coffrage)</i>	6.5	11.1	9.0	9.5	10.6	10.5	7.9	6.3	1.4	-0.2	-2.5	-3.0	-2.5
<i>1.5. Blockwork</i>	6.8	12.5	10.0	10.0	10.4	9.7	9.7	9.9	8.0	8.1	7.2	7.2	11.9
<i>1.6. Plastering to ceilings and walls</i>	9.3	6.0	6.0	6.0	6.8	6.6	5.7	6.2	4.6	4.3	4.2	4.1	3.1
<i>1.7. Screeding to floors and roofs</i>	4.0	9.5	8.9	8.8	9.5	5.0	5.1	5.4	3.9	4.0	3.2	3.2	4.5
2. External openings	12.2	9.0	9.0	9.0	1.0	1.0	-5.7	-5.7	-5.7	-5.7	-5.7	-5.7	-5.7
3. Internal openings and joinery works	2.7	20.8	23.1	21.9	4.1	3.8	3.4	4.5	4.2	3.0	3.0	2.7	2.5
4. Tiling	3.8	14.9	8.4	7.1	8.3	5.9	5.0	4.7	3.9	5.4	5.2	2.1	1.9
5. Painting	1.9	10.0	10.1	10.5	10.5	9.2	7.9	6.5	6.2	6.4	6.4	3.5	2.8
6. Parquet	2.5	30.5	25.0	20.3	20.4	19.7	11.3	11.1	11.3	11.4	11.0	-1.2	-2.6
7. Kitchen fit-out	2.2	19.9	19.4	21.5	7.5	6.7	4.6	5.6	5.3	5.3	5.0	4.4	4.1
8. Bathroom fit-out	1.7	2.4	1.6	1.1	-4.4	-5.6	-1.4	-1.6	-2.1	-2.1	-2.4	-3.6	-3.3
9. Electrical works	2.2	8.2	7.1	5.4	6.0	6.0	4.3	3.5	2.5	3.0	2.8	2.6	2.2
10. Plumbing and Drainage	6.7	13.7	12.2	10.3	9.2	9.1	8.2	3.4	2.0	1.7	0.2	0.1	-0.2
11. Site overhead costs	5.8	4.5	4.4	4.4	8.9	8.8	8.8	8.9	7.1	7.1	6.1	6.0	6.0
<b>Total</b>	<b>100.0</b>	<b>10.7</b>	<b>9.5</b>	<b>8.8</b>	<b>7.5</b>	<b>6.3</b>	<b>4.0</b>	<b>3.2</b>	<b>2.1</b>	<b>1.8</b>	<b>1.5</b>	<b>0.6</b>	<b>1.1</b>

## Input Cost Index for the construction of a single storey house

(Base: 1st Quarter 2018 = 100)

**Table 2.4: Net monthly contributions of work categories to the index, October 2022 to September 2023**

Work Categories	Weight	2022			2023								
		Oct	Nov	Dec	Jan	Feb	Mar	Apr	May	Jun	Jul	Aug	Sep
1. Grey building	58.3	0.58	-0.29	-0.35	1.17	-0.12	0.35	0.06	0.06	-0.12	0.00	-0.12	0.76
1.1. Earthworks	4.5	0.10	0.00	0.00	0.06	0.00	0.00	0.08	0.00	0.02	0.02	0.04	0.13
1.2. Concrete works	19.3	0.13	0.00	0.00	0.48	0.00	0.44	0.06	0.02	0.02	0.27	0.00	0.21
1.3. Reinforcement	7.9	-0.24	-0.23	-0.41	0.00	-0.12	-0.08	-0.05	0.00	-0.06	-0.14	-0.11	-0.08
1.4. Formwork (coffrage)	6.5	0.00	-0.02	0.05	0.21	-0.01	0.01	-0.16	-0.03	-0.13	-0.13	-0.01	0.00
1.5. Blockwork	6.8	0.49	0.00	0.00	0.12	0.00	0.00	0.02	0.00	0.01	0.00	0.00	0.41
1.6. Plastering to ceilings and walls	9.3	0.00	0.00	0.00	0.20	0.00	0.02	0.07	0.04	0.00	0.00	0.00	0.00
1.7. Screeding to floors and roofs	4.0	0.04	0.00	0.00	0.08	0.00	0.01	0.02	0.00	0.01	0.00	0.00	0.06
2. External openings	12.2	-1.06	0.00	0.00	0.07	0.00	0.00	0.00	0.00	0.00	0.00	0.00	0.00
3. Internal openings and joinery works	2.7	0.00	0.08	0.01	-0.03	0.00	0.01	0.01	0.00	0.00	0.02	0.00	0.00
4. Tiling	3.8	0.02	0.00	0.00	0.09	-0.03	-0.02	0.01	-0.02	0.07	-0.02	0.00	0.00
5. Painting	1.9	0.00	0.00	0.01	0.04	0.00	0.00	0.00	0.00	0.00	0.00	0.01	0.00
6. Parquet	2.5	0.00	0.00	0.00	0.01	0.00	0.00	0.00	0.00	0.00	-0.01	-0.05	-0.06
7. Kitchen fit-out	2.2	0.01	0.01	0.05	0.05	0.00	-0.02	0.03	-0.01	0.00	0.00	0.00	0.00
8. Bathroom fit-out	1.7	-0.06	0.00	0.00	0.00	0.00	0.00	0.00	0.00	0.00	0.00	-0.01	0.01
9. Electrical works	2.2	0.02	0.00	0.00	0.04	0.00	0.00	0.00	0.00	0.00	0.00	0.00	0.00
10. Plumbing and Drainage	6.7	0.02	0.01	-0.10	-0.01	0.00	0.01	0.00	0.01	0.01	0.01	0.03	0.00
11. Site overhead costs	5.8	0.01	0.00	0.00	0.38	0.00	0.00	0.01	0.00	0.00	-0.01	0.00	0.00
<b>Total</b>	<b>100.0</b>	<b>-0.60</b>	<b>-0.10</b>	<b>-0.40</b>	<b>1.80</b>	<b>-0.20</b>	<b>0.40</b>	<b>0.10</b>	<b>0.00</b>	<b>0.00</b>	<b>0.00</b>	<b>-0.10</b>	<b>0.60</b>

## Input Cost Index for the construction of a single storey house

(Base: 1st Quarter 2018 = 100)

**Table 2.5: Quarterly average of monthly indices and percentage changes by work category, 4th Quarter 2022 to 3rd Quarter 2023**

Work Categories	Weight	2022	2023			% change from previous quarter			
		4th Qr	1st Qr	2nd Qr	3rd Qtr	4th Qr 2022	1st Qr 2023	2nd Qr 2023	3rd Qr 2023
1. Grey building	58.3	130.8	132.3	132.7	132.9	0.3	1.1	0.3	0.2
1.1. Earthworks	4.5	118.7	120.1	121.9	124.1	2.3	1.2	1.6	1.7
1.2. Concrete works	19.3	126.4	129.7	131.6	133.5	1.1	2.6	1.5	1.4
1.3. Reinforcement	7.9	161.8	156.1	154.1	150.6	-5.7	-3.6	-1.3	-2.2
1.4. Formwork (coffrage)	6.5	130.6	134.2	130.9	127.3	-0.2	2.8	-2.5	-2.7
1.5. Blockwork	6.8	136.9	138.6	138.9	141.0	5.6	1.2	0.2	1.5
1.6. Plastering to ceilings and walls	9.3	116.4	118.7	119.9	120.0	0.7	1.9	1.0	0.1
1.7. Screeding to floors and roofs	4.0	126.8	128.7	129.4	130.2	0.9	1.5	0.6	0.6
2. External openings	12.2	134.1	134.7	134.7	134.7	-6.1	0.4	0.0	0.0
3. Internal openings and joinery works	2.7	142.2	142.4	142.9	143.6	1.7	0.2	0.4	0.5
4. Tiling	3.8	142.5	144.1	144.2	144.8	1.4	1.1	0.0	0.4
5. Painting	1.9	121.1	123.6	123.6	124.2	1.6	2.0	0.1	0.5
6. Parquet	2.5	158.3	158.6	158.6	156.3	3.4	0.2	0.0	-1.5
7. Kitchen fit-out	2.2	134.3	137.8	138.3	138.2	1.6	2.6	0.4	-0.1
8. Bathroom fit-out	1.7	122.8	123.2	123.0	122.4	-2.8	0.3	-0.2	-0.5
9. Electrical works	2.2	128.3	130.1	129.9	130.1	1.1	1.4	-0.1	0.2
10. Plumbing and Drainage	6.7	128.8	127.7	128.0	128.5	0.3	-0.8	0.2	0.4
11. Site overhead costs	5.8	111.6	118.2	118.3	118.2	0.1	5.9	0.1	-0.1
<b>Total</b>	<b>100.0</b>	<b>131.1</b>	<b>132.6</b>	<b>132.9</b>	<b>133.0</b>	<b>-0.4</b>	<b>1.1</b>	<b>0.2</b>	<b>0.1</b>

**Table 3.1: Construction Price Index - April 2009 to September 2023**

Month	(Base: 2nd Quarter 2009 = 100)										(Base: 1st Quarter 2018 = 100)					
	2009	2010	2011	2012	2013	2014	2015	2016	2017	2018	2018	2019	2020	2021	2022	2023
January		100.3	102.8	106.7	109.8	112.6	113.8	114.2	114.6	117.2	99.8	101.0	103.1	107.9	123.3	132.6
February		100.3	104.1	106.8	110.5	112.6	113.7	113.9	114.6	118.4	100.1	101.0	104.4	108.5	124.5	132.4
March		98.8	104.5	106.8	110.4	112.6	113.9	113.8	114.6	118.5	100.1	101.3	105.2	108.5	127.7	132.8
<i>1st Quarter</i>		<b>99.8</b>	<b>103.8</b>	<b>106.8</b>	<b>110.2</b>	<b>112.6</b>	<b>113.8</b>	<b>114.0</b>	<b>114.6</b>	<b>118.1</b>	<b>100.0</b>	<b>101.1</b>	<b>104.2</b>	<b>108.3</b>	<b>125.2</b>	<b>132.6</b>
April	100.2	98.8	104.5	108.6	110.9	112.6	114.0	113.8	114.7	118.6	100.2	101.7	105.2	108.8	128.8	132.9
May	100.0	100.2	104.4	108.6	110.9	112.5	114.0	113.9	114.7	118.7	100.3	101.6	105.3	109.6	130.2	132.9
June	99.8	100.4	104.4	108.6	111.0	112.5	114.1	113.9	114.7	118.8	100.4	101.6	105.6	112.4	130.5	132.9
<i>2nd Quarter</i>	<b>100.0</b>	<b>99.8</b>	<b>104.4</b>	<b>108.6</b>	<b>110.9</b>	<b>112.5</b>	<b>114.0</b>	<b>113.9</b>	<b>114.7</b>	<b>118.7</b>	<b>100.3</b>	<b>101.6</b>	<b>105.4</b>	<b>110.3</b>	<b>129.8</b>	<b>132.9</b>
July	100.6	100.9	104.3	108.7	111.0	112.4	<i>114.1</i>	114.1	114.8	119.0	100.5	102.6	106.1	114.5	131.0	132.9
August	100.2	100.8	105.0	108.7	111.0	112.3	<i>114.2</i>	114.1	114.8	119.0	100.5	102.7	106.2	115.3	132.0	132.8
September	100.2	100.8	105.2	108.8	111.1	112.3	<i>114.3</i>	114.1	114.9	118.9	100.5	102.7	106.5	117.0	131.9	133.4
<i>3rd Quarter</i>	<b>100.3</b>	<b>100.9</b>	<b>104.8</b>	<b>108.7</b>	<b>111.0</b>	<b>112.4</b>	<b>114.2</b>	<b>114.1</b>	<b>114.8</b>	<b>119.0</b>	<b>100.5</b>	<b>102.6</b>	<b>106.3</b>	<b>115.6</b>	<b>131.6</b>	<b>133.0</b>
October	100.3	101.4	105.4	108.8	111.2	112.4	114.2	114.1	114.9	118.9	100.5	102.6	106.8	118.6	131.3	
November	100.3	101.6	105.4	108.8	111.2	112.3	114.0	114.1	116.3	118.9	100.5	102.6	106.9	119.8	131.2	
December	100.3	101.7	105.5	108.9	111.5	112.3	113.8	114.1	116.3	118.9	100.5	102.5	106.9	120.2	130.8	
<i>4th Quarter</i>	<b>100.3</b>	<b>101.6</b>	<b>105.4</b>	<b>108.8</b>	<b>111.3</b>	<b>112.3</b>	<b>114.0</b>	<b>114.1</b>	<b>115.8</b>	<b>118.9</b>	<b>100.5</b>	<b>102.6</b>	<b>106.9</b>	<b>119.5</b>	<b>131.1</b>	
<b>Yearly average</b>		<b>100.5</b>	<b>104.6</b>	<b>108.2</b>	<b>110.9</b>	<b>112.5</b>	<b>114.0</b>	<b>114.0</b>	<b>115.0</b>	<b>118.7</b>	<b>100.3</b>	<b>102.0</b>	<b>105.7</b>	<b>113.4</b>	<b>129.4</b>	
<b>% change in the yearly average</b>		<b>-0.1</b>	<b>4.1</b>	<b>3.5</b>	<b>2.4</b>	<b>1.4</b>	<b>1.4</b>	<b>0.0</b>	<b>0.8</b>	<b>3.2</b>		<b>1.7</b>	<b>3.6</b>	<b>7.3</b>	<b>14.1</b>	

**Table 3.2: Construction Price Index - January 2009 to September 2023 (Base period 1st Qtr 2018 = 100)**

Month	2009	2010	2011	2012	2013	2014	2015	2016	2017	2018	2019	2020	2021	2022	2023
January	86.5	84.9	87.0	90.4	93.0	95.4	96.4	96.7	97.0	99.8	101.0	103.1	107.9	123.3	132.6
February	86.5	84.9	88.2	90.5	93.6	95.4	96.3	96.5	97.0	100.1	101.0	104.4	108.5	124.5	132.4
March	85.2	83.7	88.6	90.5	93.5	95.4	96.5	96.4	97.1	100.1	101.3	105.2	108.5	127.7	132.8
<i>1st Quarter</i>	<b>86.0</b>	<b>84.5</b>	<b>87.9</b>	<b>90.5</b>	<b>93.4</b>	<b>95.4</b>	<b>96.4</b>	<b>96.5</b>	<b>97.0</b>	<b>100.0</b>	<b>101.1</b>	<b>104.2</b>	<b>108.3</b>	<b>125.2</b>	<b>132.6</b>
April	84.9	83.7	88.5	92.0	93.9	95.4	96.6	96.4	97.1	100.2	101.7	105.2	108.8	128.8	132.9
May	84.7	84.8	88.5	92.0	93.9	95.3	96.6	96.5	97.2	100.3	101.6	105.3	109.6	130.2	132.9
June	84.5	85.0	88.5	92.0	94.0	95.3	96.7	96.5	97.2	100.4	101.6	105.6	112.4	130.5	132.9
<i>2nd Quarter</i>	<b>84.7</b>	<b>84.5</b>	<b>88.5</b>	<b>92.0</b>	<b>94.0</b>	<b>95.3</b>	<b>96.6</b>	<b>96.5</b>	<b>97.2</b>	<b>100.3</b>	<b>101.6</b>	<b>105.4</b>	<b>110.3</b>	<b>129.8</b>	<b>132.9</b>
July	85.2	85.5	88.4	92.1	94.0	95.2	96.7	96.6	97.2	100.5	102.6	106.1	114.5	131.0	132.9
August	84.9	85.4	88.9	92.1	94.1	95.2	96.8	96.6	97.2	100.5	102.7	106.2	115.3	132.0	132.8
September	84.9	85.4	89.1	92.2	94.1	95.1	96.8	96.6	97.3	100.5	102.7	106.5	117.0	131.9	133.4
<i>3rd Quarter</i>	<b>85.0</b>	<b>85.4</b>	<b>88.8</b>	<b>92.1</b>	<b>94.0</b>	<b>95.2</b>	<b>96.7</b>	<b>96.6</b>	<b>97.2</b>	<b>100.5</b>	<b>102.6</b>	<b>106.3</b>	<b>115.6</b>	<b>131.6</b>	<b>133.0</b>
October	85.0	85.9	89.3	92.1	94.2	95.2	96.7	96.7	97.3	100.5	102.6	106.8	118.6	131.3	
November	85.0	86.1	89.3	92.2	94.2	95.1	96.6	96.7	98.5	100.5	102.6	106.9	119.8	131.2	
December	85.0	86.2	89.3	92.2	94.4	95.1	96.4	96.7	98.5	100.5	102.5	106.9	120.2	130.8	
<i>4th Quarter</i>	<b>85.0</b>	<b>86.1</b>	<b>89.3</b>	<b>92.2</b>	<b>94.3</b>	<b>95.2</b>	<b>96.6</b>	<b>96.7</b>	<b>98.1</b>	<b>100.5</b>	<b>102.6</b>	<b>106.9</b>	<b>119.5</b>	<b>131.1</b>	
<b>Yearly average</b>	<b>85.2</b>	<b>85.1</b>	<b>88.6</b>	<b>91.7</b>	<b>93.9</b>	<b>95.3</b>	<b>96.6</b>	<b>96.6</b>	<b>97.4</b>	<b>100.3</b>	<b>102.0</b>	<b>105.7</b>	<b>113.4</b>	<b>129.4</b>	
<b>% change in the yearly average</b>		<b>-0.1</b>	<b>4.1</b>	<b>3.5</b>	<b>2.4</b>	<b>1.4</b>	<b>1.4</b>	<b>0.0</b>	<b>0.8</b>	<b>3.0</b>	<b>1.7</b>	<b>3.6</b>	<b>7.3</b>	<b>14.1</b>	



**Technical Note****Methodology for the compilation of the Construction Price Index****(i) Introduction**

A Construction Price Index measures the change in the level of construction prices. The construction industry is very broad and highly diversified with considerable variations from one type of construction to another. This makes it difficult to derive generalized indices that would be applicable to the industry as a whole. Hence, separate indices for the different types of construction need to be compiled. At present, Statistics Mauritius publishes an index that covers residential buildings only.

**(ii) Types of Construction Price Indices**

Different approaches to index number compilation are used depending on the purpose for which the index is required. There are two main types of construction price indices:

*The Output Price Index*

In this approach, specific projects representative of the various categories of construction works are selected as models and construction firms are surveyed and asked to provide estimates of the prevailing market prices for each of the projects. As such, the output price indices respond to the changes in prices of materials used and cost of labour, as well as changes in overhead costs and profits.

*The Input Price Index*

The index is based on prices of a representative selection of basic inputs (labour, plant, materials and transport) that go into the construction work. Hence, the input price index measures the change in the cost of resources to the contractor, and not the change in the price that the client pays.

The office opted for the input price index which, though more limiting than the output price index, is simpler and less expensive to construct and maintain.

**(iii) Selection of representative dwelling**

Since it would have been too time-consuming and costly to include all major types of residential dwellings, it was decided to restrict the index to a model dwelling, representing the most common type of dwelling in 2017. This model dwelling was determined on the basis of the 2011 Housing Census data and developments assumed to have taken place during the period 2011 to 2017. The drawings of the prototype model dwelling were provided by the Mauritius Housing Company Ltd. A description of the model is given at paragraph (viii) below.

**(iv) Weighting scheme**

The quantity survey work to determine the weighting pattern for the index was entrusted to a private Quantity Surveyor following established procedures.

Any given construction consists of an assembly of a certain number of stages or work categories. Seventeen stages or broad work categories were identified and detailed costs of inputs in terms of labour, plant, materials and transport that go into the construction of the selected model were calculated under each of the work categories. The weights have been worked out in such a way that they can be presented in terms of inputs as well as work categories. For publication purposes, weights and sub-indices are also shown for broad input categories of labour, plant, materials and transport, and also for “grey building”.

**(v) Data collection**

The data needed for the computation of the index are collected every month from a sample of around 70 outlets in 8 regions of the island. Prices are collected in respect of some 91 items, representative of all items that go into the computation of the index.

**(vi) Calculation of the Construction Price Index**

The Construction Price Index is a weighted average of price relatives of individual items, based on the modified Laspeyres formula:

$$I_t = \frac{\sum W_i (P_{it} / P_{io})}{\sum W_i} \times 100$$

where  $I_t$  = index for current period t  
 $P_{io}$  = price of item i at base period 0  
 $P_{it}$  = price of item i at current period t  
 $W_i$  = weight of item i

The base period is the 1<sup>st</sup> quarter of 2018.

At the level of individual items, the Jevons formula is used to calculate price relatives, that is, the geometric mean is used to compute the lowest level indices.

**(vii) Uses**

- a) Construction price indices give an indication of the change in the level of prices of construction works. As such, they are used as deflators for the measurement of real growth in the construction sector.
- b) They are also useful for evaluating cost fluctuations in contracts regarding construction works and for renegotiating owner-tenant agreements.

**(viii) Description of model dwelling**

The model used is a single storey (ground floor) detached house of 137 square meters (1,475 square feet) in floor area measured at plinth level to the external face of the external walls. The overall area is inclusive of 17 square metres (183 square feet) in respect of a garage.

It comprises three bedrooms, a living-dining room, a kitchen, a toilet, a bathroom, a porch and an attached garage. The building has concrete block walls, reinforced concrete flat roof, internal flush plywood doors, aluminium openings for windows and entrance door, screeded floor and roof, tiling to floors, walls of w.c. and bathroom and kitchen worktop, laminated flooring in bedrooms; the ceilings and walls are rendered and painted both internally and externally. Plumbing, sanitary installation and electrical installation are included as well as drainage which is to be connected to the sewerage system. The dwelling is also equipped with solar water heater and water tank.

Provision has been made, in the form of more substantial foundations and of stub columns on the roof, for converting the single into a two-storey house eventually. Site works are restricted to spreading and leveling surplus excavated material around the site.

The index excludes the cost of the building permit and the draughtman's fee.

It is assumed that although the house is not constructed by a contractor, the client has recourse to the services of a foreman.

**Statistics Mauritius**  
**LIC Centre,**  
**John Kennedy Street,**  
**Port Louis, MAURITIUS**  
**T: +230 208 1800**  
**F: +230 211 4150**  
**W: <https://statsmauritius.govmu.org>**  
**E: [statsmauritius@govmu.org](mailto:statsmauritius@govmu.org)**