

CONSTRUCTION PRICE INDEX (Input Cost Index for the construction of a single storey house)

3rd Quarter 2022

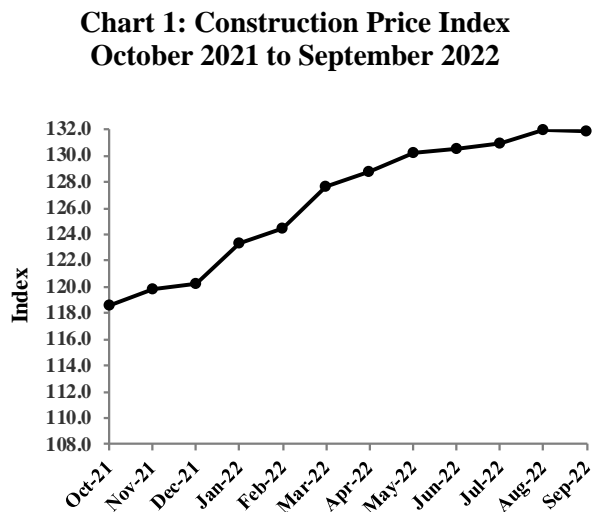
1. Introduction

This issue of the Economic and Social Indicators presents the monthly Construction Price Index (residential) for the third quarter of 2022 with first quarter of 2018 as base period. Figures showing the evolution of the index during the past twelve months are also included.

The methodology used for compiling the index is given in the annexed technical notes. Figures have been rounded to one or two decimal places although they have been calculated to many decimal places.

2. Evolution of Construction Price Index (October 2021 to September 2022)

The Construction Price index which stood at 118.6 in October 2021 maintained an increasing trend up to August 2022 reaching 132.0. The index contracted by 0.1% in September 2022 to reach 131.9.



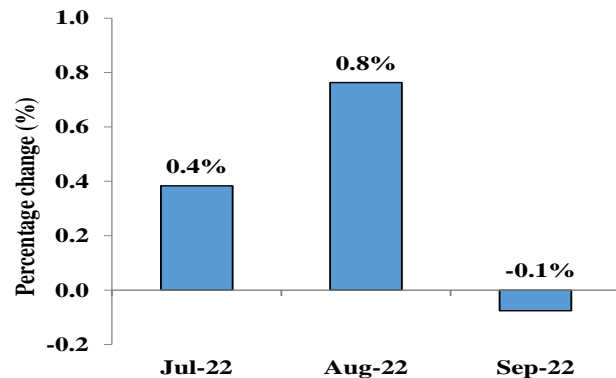
3. Changes in Construction Price Index (July to September 2022)

The Construction Price Index, which stood at 130.5 at the end of June 2022, increased by 0.4% to reach 131.0 in July 2022. The increase is mainly due to higher rates for the hire of plant (1.6%) and transport (9.4%), coupled with increases in the prices of materials (0.1%). The increase in materials is mainly due to higher prices of cement (0.2%), aggregate (0.7%), timber joinery (0.6%) and plumbing (1.6%), partly offset by a decrease in the prices of steel bars (-0.9%).

The index further increased by 0.8% in August 2022 reaching 132.0. The 0.8% increase is due to increases in the prices of materials, mainly cement (0.2%), premixed concrete (2.2%), timber carpentry (1.3%), timber joinery (0.8%), tiles and granite (3.1%), paint (5.5%), laminated flooring (11.6%) and plumbing (0.7%), partly offset by a decrease in the prices of steel bars (-1.6%).

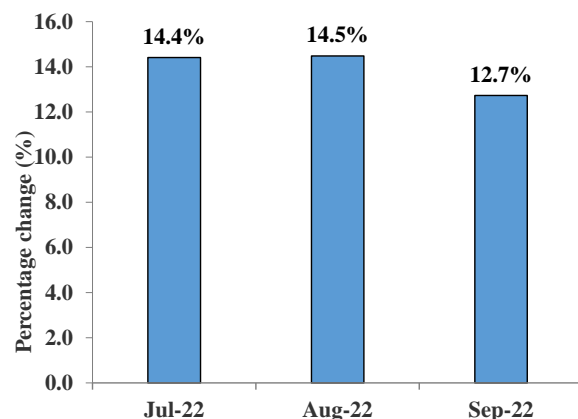
In September 2022, the index contracted by 0.1% to reach 131.9, as a result of decreases in the prices of materials (-0.1%), partly offset by higher rates for the hire of plant (0.7%). The 0.1% decrease in the materials sub-index is mainly due to lower prices of steel bars (-2.2%) and timber carpentry (-1.2%), partly offset by an increase in the prices of premixed mortar (1.7%).

Chart 2: Percentage change from previous month



Compared to the corresponding months of the previous year, the index increased by 14.4% in July 2022, 14.5% in August 2022 and 12.7% in September 2022. (Table 1.3).

Chart 3: Percentage change from corresponding month of previous year



4. Changes by Input Categories

Changes by input categories are shown in Tables 1.1 to 1.5.

The “Labour” sub-index remained unchanged during the third quarter of 2022.

The “Hire of plant” sub-index increased by 1.6% in July 2022. The sub-index remained at the same level in August 2022 and then increased by 0.7% in September 2022.

The “Materials” sub-index increased by 0.1% in July 2022 mainly due to increases in the prices of cement (0.2%), aggregate (0.7%), timber joinery (0.6%) and plumbing (1.6%), partly offset by a decrease in the prices of steel bars (-0.9%). In August 2022, the materials sub-index increased by 1.0% mainly due to increases in the prices of cement (0.2%), premixed concrete (2.2%), timber carpentry (1.3%), timber joinery (0.8%), tiles and granite (3.1%), paint (5.5%), laminated flooring (11.6%) and plumbing (0.7%), partly offset by a decrease in the prices of steel bars (-1.6%). The sub-index went down by 0.1% in September 2022, as a result of decreases in the prices of steel bars (-2.2%) and timber carpentry (-1.2%), partly offset by an increase in the prices of premixed mortar (1.7%).

The “Transport” sub-index increased by 9.4% in July 2022 and remained unchanged in August and September 2022.

The net monthly contributions of the input categories to the index during the period October 2021 to September 2022 are shown in Table 1.4.

Quarterly averages of the monthly indices by input category and the percentage change from quarter to quarter are shown in Table 1.5.

5. Changes by Work Category

Changes by work category are shown in Tables 2.1 to 2.5.

In July 2022, the grey building sub-index registered an increase of 0.4% to reach 130.3 from 129.8 in June 2022. This increase was mainly due to higher transportation cost (9.4%), coupled with an increase in the prices of cement (0.2%), aggregate (0.7%), partly offset by a decrease in the prices of steel bars (-0.9%).

At the level of work categories, the main changes are as follows: “Earthworks” (1.7%), “Concrete works” (0.3%), “Reinforcement” (-0.9%), “Formwork” (0.8%), “Blockwork” (0.9%), “Screeding to floors and roofs” (0.8%), “Plumbing and drainage” (1.6%) and “Site overhead costs” (0.8%).

The grey building sub-index further increased by 0.3% in August 2022 to reach 130.7. The 0.3% increase is due mainly to higher prices of cement (0.2%), premixed concrete (2.2%) and timber carpentry (1.3%), partly offset by a decrease in the prices of steel bars (-1.6%).

At the level of work categories, the main changes are: “Concrete works” (1.6%), “Reinforcement” (-1.4%), “Formwork” (0.5%), “Tiling” (3.0%), “Painting” (3.3%), “Parquet” (11.1%), and “Plumbing and drainage” (0.5%).

In September 2022, the grey building sub-index contracted by 0.3% to reach 130.3. This decrease resulted mainly from lower prices of steel bars (-2.2%) and timber carpentry (-1.2%), partly offset by an increase in the prices of premixed mortar (1.7%) and higher rates for the hire of plant (0.7%).

At the level of work categories, the main changes are: “Reinforcement” (-1.9%), “Formwork” (-0.5%), “Plastering to ceilings and walls” (1.0%) and “Plumbing and Drainage” (0.3%).

Table 2.4 shows the net monthly contributions of the work categories to the index since October 2021.

Quarterly averages of the monthly indices by work category and the percentage changes from quarter to quarter are shown in Table 2.5.

6. Past Trends

Table 3.1 summarises the monthly indices, the quarterly and yearly averages as well as the percentage changes in the yearly average since 2009. The base period for the calculation of the index as from 2009 up to 2018 is the second quarter of 2009. As from 2018, the base period used is the first quarter of 2018.

The series are not strictly comparable because of different base periods. However, for some particular purposes, comparison between the series may be necessary. A chain linked series with base period first quarter 2018, has been worked out and is given in Table 3.2.

Statistics Mauritius

Ministry of Finance, Economic Planning and Development

Port Louis

21 October 2022

<p>Contact persons: Mr. E. Romjon (Statistician) Ms. F. Victor (Senior Statistical Officer) Statistics Mauritius LIC Centre, Port-Louis Tel: +230 208 1800 Fax: +230 213 0234 Email: cs0_construction@govmu.org</p>
--

Input Cost Index for the construction of a single storey house

(Base: 1st Quarter 2018 = 100)

Table 1.1: Monthly sub-indices by input category, October 2021 to September 2022

Input Categories	Weight	2021			2022								
		Oct	Nov	Dec	Jan	Feb	Mar	Apr	May	Jun	Jul	Aug	Sep
LABOUR	24.1	105.1	105.1	105.1	107.0	107.0	107.0	107.0	107.0	107.0	107.0	107.0	107.0
HIRE OF PLANT	5.0	107.4	108.0	108.0	108.7	108.7	110.3	110.3	112.0	112.0	113.8	113.8	114.6
MATERIALS :	68.6	124.3	125.9	126.5	130.0	131.8	136.3	137.9	138.9	139.3	139.4	140.8	140.6
Hardcore (remplissage)	2.0	107.4	110.4	110.4	110.7	110.7	110.7	110.6	110.6	112.4	112.8	112.8	112.8
Damp proofing	0.2	113.0	113.0	113.0	115.6	115.6	118.2	119.4	121.6	115.6	121.6	123.5	123.5
Cement	4.1	129.8	130.1	130.1	129.7	143.0	143.0	143.2	143.2	143.2	143.5	143.8	143.8
Aggregate	3.1	108.1	111.3	111.3	111.6	111.8	111.8	111.8	111.8	112.4	113.2	113.2	113.2
Block	3.2	135.2	140.8	140.8	140.8	140.8	140.8	140.8	140.8	140.8	140.8	140.8	140.8
Premixed concrete	13.9	115.7	115.7	115.7	115.7	118.7	120.2	120.5	120.5	122.2	122.2	124.9	124.9
Premixed mortar	5.0	113.5	113.5	113.5	113.9	114.4	116.4	116.8	119.8	120.3	120.2	120.3	122.4
Steel bars (armature)	6.4	159.1	159.7	161.0	162.8	163.7	180.0	190.2	192.4	191.6	189.8	186.7	182.6
Timber: (a) Carpentry	1.9	144.7	151.7	152.2	152.2	152.4	162.7	161.2	172.7	172.7	172.6	174.9	172.8
(b) Joinery	2.1	122.2	122.3	124.1	163.6	164.2	165.3	163.8	164.4	166.4	167.4	168.7	169.1
Aluminium openings	13.3	122.8	122.8	122.8	133.3	133.3	141.2	141.2	141.2	141.2	141.2	141.2	141.2
Tiles and granite	3.6	125.8	134.1	135.7	135.7	138.4	139.9	140.7	141.5	141.1	141.1	145.5	145.8
Adhesive	0.2	107.9	108.2	109.9	112.0	114.6	116.3	116.3	116.3	116.5	117.3	116.5	116.5
Paint	1.0	113.9	113.7	113.8	115.9	118.0	120.6	123.3	124.1	124.1	124.1	130.9	132.5
Laminated flooring	2.4	122.3	127.9	133.2	133.2	134.0	144.6	145.0	144.6	144.6	144.6	161.4	161.4
Plumbing	3.9	118.5	120.8	122.0	122.6	123.0	123.8	133.2	134.8	135.5	137.7	138.6	138.9
Sanitary installation	0.7	118.7	121.4	122.7	122.3	126.9	127.7	127.9	129.0	129.0	129.3	130.9	132.5
Electrical installation	1.5	125.3	127.1	130.2	130.5	130.5	133.4	134.9	136.6	135.6	136.3	136.8	137.6
TRANSPORT	2.2	116.8	116.8	116.8	124.1	124.1	124.1	124.1	155.7	155.7	170.4	170.4	170.4
Total	100.0	118.6	119.8	120.2	123.3	124.5	127.7	128.8	130.2	130.5	131.0	132.0	131.9

Input Cost Index for the construction of a single storey house

(Base: 1st Quarter 2018 = 100)

Table 1.2: Percentage change from previous month by input category, October 2021 to September 2022

Input Categories	Weight	% change from previous month											
		Oct 21	Nov 21	Dec 21	Jan 22	Feb 22	Mar 22	Apr 22	May 22	Jun 22	Jul 22	Aug 22	Sep 22
LABOUR	24.1	0.0	0.0	0.0	1.8	0.0	0.0	0.0	0.0	0.0	0.0	0.0	0.0
HIRE OF PLANT	5.0	3.6	0.6	0.0	0.6	0.0	1.5	0.0	1.5	0.0	1.6	0.0	0.7
MATERIALS :	68.6	1.8	1.3	0.5	2.8	1.4	3.4	1.2	0.7	0.3	0.1	1.0	-0.1
Hardcore (remplissage)	2.0	0.0	2.8	0.0	0.3	0.0	0.0	-0.1	0.0	1.6	0.4	0.0	0.0
Damp proofing	0.2	0.0	0.0	0.0	2.3	0.0	2.2	1.0	1.8	-4.9	5.2	1.6	0.0
Cement	4.1	0.0	0.2	0.0	-0.3	10.3	0.0	0.1	0.0	0.0	0.2	0.2	0.0
Aggregate	3.1	0.0	3.0	0.0	0.3	0.2	0.0	0.0	0.0	0.5	0.7	0.0	0.0
Block	3.2	0.0	4.1	0.0	0.0	0.0	0.0	0.0	0.0	0.0	0.0	0.0	0.0
Premixed concrete	13.9	1.3	0.0	0.0	0.0	2.6	1.3	0.2	0.0	1.4	0.0	2.2	0.0
Premixed mortar	5.0	0.0	0.0	0.0	0.4	0.4	1.7	0.3	2.6	0.4	-0.1	0.1	1.7
Steel bars (armature)	6.4	-0.3	0.4	0.8	1.1	0.6	10.0	5.7	1.2	-0.4	-0.9	-1.6	-2.2
Timber: (a) Carpentry	1.9	2.3	4.8	0.3	0.0	0.1	6.8	-0.9	7.1	0.0	-0.1	1.3	-1.2
(b) Joinery	2.1	1.0	0.1	1.5	31.8	0.4	0.7	-0.9	0.4	1.2	0.6	0.8	0.2
Aluminium openings	13.3	3.2	0.0	0.0	8.6	0.0	5.9	0.0	0.0	0.0	0.0	0.0	0.0
Tiles and granite	3.6	9.8	6.6	1.2	0.0	2.0	1.1	0.6	0.6	-0.3	0.0	3.1	0.2
Adhesive	0.2	0.0	0.3	1.6	1.9	2.3	1.5	0.0	0.0	0.2	0.7	-0.7	0.0
Paint	1.0	0.4	-0.2	0.1	1.8	1.8	2.2	2.2	0.6	0.0	0.0	5.5	1.2
Laminated flooring	2.4	2.9	4.6	4.1	0.0	0.6	7.9	0.3	-0.3	0.0	0.0	11.6	0.0
Plumbing	3.9	2.4	1.9	1.0	0.5	0.3	0.7	7.6	1.2	0.5	1.6	0.7	0.2
Sanitary installation	0.7	4.7	2.3	1.1	-0.3	3.8	0.6	0.2	0.9	0.0	0.2	1.2	1.2
Electrical installation	1.5	4.0	1.4	2.4	0.2	0.0	2.2	1.1	1.3	-0.7	0.5	0.4	0.6
TRANSPORT	2.2	0.0	0.0	0.0	6.3	0.0	0.0	0.0	25.5	0.0	9.4	0.0	0.0
Total	100.0	1.4	1.0	0.3	2.6	1.0	2.6	0.9	1.1	0.2	0.4	0.8	-0.1

Input Cost Index for the construction of a single storey house

(Base: 1st Quarter 2018 = 100)

Table 1.3: Percentage change from corresponding month of previous year by input category, October 2021 to September 2022

Input Categories	Weight	% change from corresponding month of previous year											
		Oct 21	Nov 21	Dec 21	Jan 22	Feb 22	Mar 22	Apr 22	May 22	Jun 22	Jul 22	Aug 22	Sep 22
LABOUR	24.1	1.7	1.7	1.7	1.8	1.8	1.8	1.8	1.8	1.8	1.8	1.8	1.8
HIRE OF PLANT	5.0	3.6	4.1	4.1	4.8	4.8	6.4	6.4	8.0	8.0	9.7	9.7	10.5
MATERIALS :	68.6	14.9	16.4	16.9	19.2	19.9	24.0	24.9	24.4	20.4	17.6	17.6	15.2
Hardcore (remplissage)	2.0	0.0	2.8	2.8	3.1	3.1	3.1	3.0	3.0	4.7	5.0	5.0	5.0
Damp proofing	0.2	14.5	14.5	14.5	15.8	15.8	18.4	19.6	21.8	15.8	19.3	15.9	9.3
Cement	4.1	7.7	8.0	8.1	7.8	18.7	18.7	18.1	17.7	15.3	15.1	15.1	10.8
Aggregate	3.1	0.0	3.0	3.0	3.2	3.4	3.4	3.4	3.4	4.0	4.7	4.7	4.7
Block	3.2	0.0	4.1	4.1	4.1	4.1	4.1	4.1	4.1	4.1	4.1	4.1	4.1
Premixed concrete	13.9	1.9	1.9	1.9	1.9	4.6	5.9	6.2	6.2	7.7	7.0	9.4	9.4
Premixed mortar	5.0	5.8	5.8	5.8	6.2	6.6	8.5	8.8	11.0	10.7	6.5	6.2	7.8
Steel bars (armature)	6.4	55.5	55.7	55.9	45.6	36.0	49.5	51.9	44.1	37.2	28.4	22.5	14.4
Timber: (a) Carpentry	1.9	36.4	42.8	43.4	43.3	43.5	53.2	53.8	55.3	54.7	36.2	24.4	22.2
(b) Joinery	2.1	8.1	8.2	9.8	44.8	44.9	45.9	44.6	44.2	45.3	43.7	41.1	39.8
Aluminium openings	13.3	22.8	22.8	22.8	33.3	33.3	41.2	41.2	41.2	22.7	22.7	22.7	18.7
Tiles and granite	3.6	21.2	29.2	32.5	32.1	34.8	36.2	37.0	34.9	34.5	26.5	29.3	27.2
Adhesive	0.2	4.1	4.3	5.5	7.2	9.7	11.3	11.3	10.4	10.6	10.6	8.8	8.0
Paint	1.0	6.8	6.7	6.8	8.7	10.5	12.9	15.0	15.5	15.5	10.1	15.5	16.7
Laminated flooring	2.4	14.5	19.8	24.7	24.7	25.5	35.4	35.8	33.4	33.4	24.0	36.4	35.7
Plumbing	3.9	17.3	19.6	20.8	21.3	21.7	22.5	31.8	33.2	28.4	26.6	26.9	20.1
Sanitary installation	0.7	14.9	17.5	18.8	17.3	20.5	21.3	21.5	20.9	20.9	17.8	17.4	16.8
Electrical installation	1.5	21.2	21.6	24.6	23.7	21.8	24.6	26.0	27.5	25.7	18.5	17.3	14.2
TRANSPORT	2.2	5.8	5.8	5.8	12.4	12.4	12.4	12.4	41.0	41.0	45.9	45.9	45.9
Total	100.0	11.0	12.1	12.4	14.3	14.7	17.7	18.4	18.8	16.1	14.4	14.5	12.7

Input Cost Index for the construction of a single storey house

(Base: 1st Quarter 2018 = 100)

Table 1.4: Net monthly contributions of input categories to the index, October 2021 to September 2022

Input Categories	Weight	2021			2022								
		Oct	Nov	Dec	Jan	Feb	Mar	Apr	May	Jun	Jul	Aug	Sep
LABOUR	24.1	0.00	0.00	0.00	0.46	0.00	0.00	0.00	0.00	0.00	0.00	0.00	0.00
HIRE OF PLANT	5.0	0.18	0.03	0.00	0.03	0.00	0.08	0.00	0.08	0.00	0.09	0.00	0.04
MATERIALS :	68.6	1.51	1.10	0.41	2.40	1.24	3.09	1.10	0.69	0.27	0.07	0.96	-0.14
Hardcore (remplissage)	2.0	0.00	0.06	0.00	0.01	0.00	0.00	0.00	0.00	0.04	0.01	0.00	0.00
Damp proofing	0.2	0.00	0.00	0.00	0.01	0.00	0.01	0.00	0.00	-0.01	0.01	0.00	0.00
Cement	4.1	0.00	0.01	0.00	-0.02	0.54	0.00	0.01	0.00	0.00	0.01	0.01	0.00
Aggregate	3.1	0.00	0.10	0.00	0.01	0.01	0.00	0.00	0.00	0.02	0.02	0.00	0.00
Block	3.2	0.00	0.18	0.00	0.00	0.00	0.00	0.00	0.00	0.00	0.00	0.00	0.00
Premixed concrete	13.9	0.21	0.00	0.00	0.00	0.42	0.21	0.04	0.00	0.24	0.00	0.37	0.00
Premixed mortar	5.0	0.00	0.00	0.00	0.02	0.03	0.10	0.02	0.15	0.03	-0.01	0.01	0.11
Steel bars (armature)	6.4	-0.03	0.04	0.08	0.12	0.06	1.05	0.66	0.14	-0.05	-0.12	-0.20	-0.26
Timber: (a) Carpentry	1.9	0.06	0.14	0.01	0.00	0.00	0.20	-0.03	0.22	0.00	0.00	0.04	-0.04
(b) Joinery	2.1	0.03	0.00	0.04	0.84	0.01	0.02	-0.03	0.01	0.04	0.02	0.03	0.01
Aluminium openings	13.3	0.51	0.00	0.00	1.40	0.00	1.05	0.00	0.00	0.00	0.00	0.00	0.00
Tiles and granite	3.6	0.40	0.30	0.06	0.00	0.10	0.05	0.03	0.03	-0.01	0.00	0.16	0.01
Adhesive	0.2	0.00	0.00	0.00	0.00	0.00	0.00	0.00	0.00	0.00	0.00	0.00	0.00
Paint	1.0	0.00	0.00	0.00	0.02	0.02	0.03	0.03	0.01	0.00	0.00	0.07	0.02
Laminated flooring	2.4	0.08	0.13	0.13	0.00	0.02	0.25	0.01	-0.01	0.00	0.00	0.40	0.00
Plumbing	3.9	0.11	0.09	0.05	0.02	0.02	0.03	0.37	0.06	0.03	0.09	0.04	0.01
Sanitary installation	0.7	0.04	0.02	0.01	0.00	0.03	0.01	0.00	0.01	0.00	0.00	0.01	0.01
Electrical installation	1.5	0.07	0.03	0.05	0.00	0.00	0.04	0.02	0.02	-0.01	0.01	0.01	0.01
TRANSPORT	2.2	0.00	0.00	0.00	0.16	0.00	0.00	0.00	0.70	0.00	0.33	0.00	0.00
Total	100.0	1.60	1.20	0.40	3.10	1.20	3.20	1.10	1.40	0.30	0.50	1.00	-0.10

Input Cost Index for the construction of a single storey house

(Base: 1st Quarter 2018 = 100)

Table 1.5: Quarterly average of monthly indices and percentage changes by input category, 4th Quarter 2021 to 3rd Quarter 2022

Input Categories	Weight	2021	2022			% change from previous quarter			
		4th Qr	1st Qr	2nd Qr	3rd Qr	4th Qr 2021	1st Qr 2022	2nd Qr 2022	3rd Qr 2022
LABOUR	24.1	105.1	107.0	107.0	107.0	0.0	1.8	0.0	0.0
HIRE OF PLANT	5.0	107.8	109.2	111.4	114.1	4.0	1.3	2.0	2.4
MATERIALS :	68.6	125.6	132.7	138.7	140.3	4.6	5.7	4.5	1.1
Hardcore (replissage)	2.0	109.4	110.7	111.2	112.8	1.9	1.2	0.5	1.4
Damp proofing	0.2	113.0	116.5	118.9	122.9	5.4	3.1	2.1	3.4
Cement	4.1	130.0	138.6	143.2	143.7	2.8	6.6	3.3	0.3
Aggregate	3.1	110.2	111.7	112.0	113.2	2.0	1.4	0.2	1.1
Block	3.2	138.9	140.8	140.8	140.8	2.8	1.3	0.0	0.0
Premixed concrete	13.9	115.7	118.2	121.1	124.0	1.3	2.2	2.4	2.4
Premixed mortar	5.0	113.5	114.9	119.0	121.0	0.2	1.2	3.5	1.7
Steel bars (armature)	6.4	159.9	168.8	191.4	186.4	4.3	5.6	13.4	-2.6
Timber: (a) Carpentry	1.9	149.5	155.8	168.9	173.4	9.8	4.2	8.4	2.7
(b) Joinery	2.1	122.9	164.4	164.9	168.4	3.2	33.8	0.3	2.1
Aluminium openings	13.3	122.8	135.9	141.2	141.2	5.5	10.7	3.9	0.0
Tiles and granite	3.6	131.9	138.0	141.1	144.1	16.8	4.7	2.2	2.1
Adhesive	0.2	108.7	114.3	116.4	116.8	1.5	5.2	1.8	0.3
Paint	1.0	113.8	118.2	123.8	129.2	0.6	3.8	4.8	4.3
Laminated flooring	2.4	127.8	137.3	144.7	155.8	8.4	7.4	5.4	7.6
Plumbing	3.9	120.4	123.1	134.5	138.4	8.3	2.2	9.2	2.9
Sanitary installation	0.7	120.9	125.6	128.6	130.9	8.4	3.9	2.4	1.8
Electrical installation	1.5	127.5	131.5	135.7	136.9	8.7	3.1	3.2	0.9
TRANSPORT	2.2	116.8	124.1	145.2	170.4	0.0	6.2	17.0	17.4
Total	100.0	119.5	125.2	129.8	131.6	3.4	4.7	3.7	1.4

Input Cost Index for the construction of a single storey house

(Base: 1st Quarter 2018 = 100)

Table 2.1: Monthly sub-indices by work category, October 2021 to September 2022

Work Categories	Weight	2021			2022								
		Oct	Nov	Dec	Jan	Feb	Mar	Apr	May	Jun	Jul	Aug	Sep
1. Grey building	58.3	119.6	120.6	120.7	121.7	123.5	126.2	127.5	129.4	129.8	130.3	130.7	130.3
1.1. Earthworks	4.5	107.2	109.0	109.0	109.9	109.9	111.0	110.9	113.2	114.0	115.9	115.9	116.4
1.2. Concrete works	19.3	116.0	116.4	116.4	116.5	120.2	121.3	121.6	122.1	123.3	123.7	125.7	125.7
1.3. Reinforcement	7.9	148.9	149.5	150.5	152.4	153.1	166.3	174.5	176.4	175.8	174.3	171.8	168.5
1.4. Formwork (coffrage)	6.5	117.5	119.5	119.6	121.4	121.4	124.5	124.0	129.6	129.7	130.7	131.3	130.6
1.5. Blockwork	6.8	121.7	124.5	124.5	125.6	126.4	126.4	126.4	128.6	128.6	129.7	129.7	129.7
1.6. Plastering to ceilings and walls	9.3	109.8	109.8	109.8	111.0	111.3	112.4	112.6	114.7	115.0	115.2	115.3	116.4
1.7. Screeding to floors and roofs	4.0	115.8	116.4	116.4	117.4	122.5	122.6	122.7	124.5	124.6	125.6	125.7	125.7
2. External openings	12.2	123.0	123.0	123.0	133.4	133.4	142.8	142.8	142.8	142.8	142.8	142.8	142.8
3. Internal openings and joinery works	2.7	116.1	116.2	117.6	136.7	137.2	137.9	136.7	137.2	138.8	139.4	139.8	140.1
4. Tiling	3.8	124.0	131.4	133.0	133.7	136.0	136.7	137.4	138.1	137.7	137.7	141.8	142.1
5. Painting	1.9	110.0	109.9	109.9	111.9	113.1	114.5	116.0	116.4	116.4	116.4	120.2	121.0
6. Parquet	2.5	121.3	126.6	131.6	131.7	132.5	142.5	142.8	142.5	142.5	142.5	158.3	158.3
7. Kitchen fit-out	2.2	111.0	112.0	112.0	128.6	129.3	131.1	131.3	131.3	131.3	131.6	132.4	132.7
8. Bathroom fit-out	1.7	119.9	120.9	121.5	128.7	130.6	125.0	125.1	125.6	125.6	125.7	126.5	126.7
9. Electrical works	2.2	118.6	119.8	121.8	122.7	122.7	124.6	125.6	126.7	126.1	126.5	126.9	127.4
10. Plumbing and Drainage	6.7	113.6	115.2	115.9	116.9	117.1	118.1	123.6	125.5	125.9	127.9	128.5	128.9
11. Site overhead costs	5.8	106.8	106.9	106.9	108.5	108.6	108.6	108.6	110.5	110.5	111.4	111.5	111.5
Total	100.0	118.6	119.8	120.2	123.3	124.5	127.7	128.8	130.2	130.5	131.0	132.0	131.9

Input Cost Index for the construction of a single storey house

(Base: 1st Quarter 2018 = 100)

Table 2.2: Percentage change from previous month by work category, October 2021 to September 2022

Work Categories	Weight	% change from previous month											
		Oct 21	Nov 21	Dec 21	Jan 22	Feb 22	Mar 22	Apr 22	May 22	Jun 22	Jul 22	Aug 22	Sep 22
1. Grey building	58.3	0.3	0.8	0.1	0.8	1.5	2.2	1.0	1.5	0.3	0.4	0.3	-0.3
1.1. Earthworks	4.5	0.6	1.7	0.0	0.8	0.0	1.0	-0.1	2.1	0.7	1.7	0.0	0.4
1.2. Concrete works	19.3	1.0	0.3	0.0	0.1	3.2	0.9	0.2	0.4	1.0	0.3	1.6	0.0
1.3. Reinforcement	7.9	-0.3	0.4	0.7	1.3	0.5	8.6	4.9	1.1	-0.3	-0.9	-1.4	-1.9
1.4. Formwork (coffrage)	6.5	0.9	1.7	0.1	1.5	0.0	2.6	-0.4	4.5	0.1	0.8	0.5	-0.5
1.5. Blockwork	6.8	0.0	2.3	0.0	0.9	0.6	0.0	0.0	1.7	0.0	0.9	0.0	0.0
1.6. Plastering to ceilings and walls	9.3	0.0	0.0	0.0	1.1	0.3	1.0	0.2	1.9	0.3	0.2	0.1	1.0
1.7. Screeding to floors and roofs	4.0	0.0	0.5	0.0	0.9	4.3	0.1	0.1	1.5	0.1	0.8	0.1	0.0
2. External openings	12.2	3.5	0.0	0.0	8.5	0.0	7.0	0.0	0.0	0.0	0.0	0.0	0.0
3. Internal openings and joinery works	2.7	0.8	0.1	1.2	16.2	0.4	0.5	-0.9	0.4	1.2	0.4	0.3	0.2
4. Tiling	3.8	7.0	6.0	1.2	0.5	1.7	0.5	0.5	0.5	-0.3	0.0	3.0	0.2
5. Painting	1.9	0.2	-0.1	0.0	1.8	1.1	1.2	1.3	0.3	0.0	0.0	3.3	0.7
6. Parquet	2.5	2.7	4.4	3.9	0.1	0.6	7.5	0.2	-0.2	0.0	0.0	11.1	0.0
7. Kitchen fit-out	2.2	4.4	0.9	0.0	14.8	0.5	1.4	0.2	0.0	0.0	0.2	0.6	0.2
8. Bathroom fit-out	1.7	1.5	0.8	0.5	5.9	1.5	-4.3	0.1	0.4	0.0	0.1	0.6	0.2
9. Electrical works	2.2	2.8	1.0	1.7	0.7	0.0	1.5	0.8	0.9	-0.5	0.3	0.3	0.4
10. Plumbing and Drainage	6.7	1.9	1.4	0.6	0.9	0.2	0.9	4.7	1.5	0.3	1.6	0.5	0.3
11. Site overhead costs	5.8	2.1	0.1	0.0	1.5	0.1	0.0	0.0	1.7	0.0	0.8	0.1	0.0
Total	100.0	1.4	1.0	0.3	2.6	1.0	2.6	0.9	1.1	0.2	0.4	0.8	-0.1

Input Cost Index for the construction of a single storey house

(Base: 1st Quarter 2018 = 100)

Table 2.3: Percentage change from corresponding month of previous year by work category, October 2021 to September 2022

Work Categories	Weight	% change from corresponding month of previous year											
		Oct 21	Nov 21	Dec 21	Jan 22	Feb 22	Mar 22	Apr 22	May 22	Jun 22	Jul 22	Aug 22	Sep 22
1. Grey building	58.3	9.1	9.9	10.0	9.5	10.2	12.6	13.1	13.6	13.1	11.5	10.8	9.3
1.1. Earthworks	4.5	0.9	2.6	2.6	3.4	3.4	4.4	4.3	6.5	7.2	8.7	8.7	9.2
1.2. Concrete works	19.3	2.7	3.0	3.0	3.0	6.3	7.3	7.4	7.9	8.6	8.3	10.0	9.4
1.3. Reinforcement	7.9	45.1	45.6	45.7	37.9	30.3	41.5	43.7	37.6	32.1	24.7	19.7	12.9
1.4. Formwork (coffrage)	6.5	12.2	14.1	14.2	14.6	14.6	17.6	17.5	20.7	20.7	16.4	12.9	12.1
1.5. Blockwork	6.8	1.3	3.7	3.7	4.1	4.7	4.7	4.7	6.5	6.4	6.8	6.8	6.6
1.6. Plastering to ceilings and walls	9.3	4.0	4.0	4.0	4.3	4.6	5.6	5.7	7.5	7.4	5.2	5.1	6.0
1.7. Screeding to floors and roofs	4.0	4.2	4.8	4.9	5.1	9.6	9.7	9.5	10.9	10.1	10.3	10.3	8.5
2. External openings	12.2	23.0	23.0	23.0	33.4	33.4	42.8	42.8	42.8	24.0	24.0	24.0	20.2
3. Internal openings and joinery works	2.7	6.0	6.1	7.4	23.9	24.3	24.9	23.8	23.6	24.7	23.5	22.5	21.6
4. Tiling	3.8	18.7	25.7	27.3	27.1	29.3	29.9	30.6	28.7	28.3	21.5	24.5	22.6
5. Painting	1.9	4.6	4.5	4.5	5.6	6.6	7.9	9.1	9.4	9.4	6.5	9.7	10.2
6. Parquet	2.5	13.8	18.8	23.5	23.4	24.2	33.6	33.8	31.6	31.6	22.8	34.6	34.0
7. Kitchen fit-out	2.2	6.7	7.7	10.1	25.5	25.7	27.4	27.6	27.2	27.0	26.9	24.6	24.8
8. Bathroom fit-out	1.7	18.2	19.2	19.8	26.7	28.5	23.0	23.1	23.4	12.6	11.3	11.4	7.3
9. Electrical works	2.2	14.7	15.1	17.0	16.4	15.2	17.0	17.9	19.0	17.9	13.2	12.5	10.4
10. Plumbing and Drainage	6.7	10.8	12.3	13.0	13.6	13.8	14.8	20.1	21.8	19.3	19.0	19.3	15.6
11. Site overhead costs	5.8	3.9	4.0	4.0	4.4	4.5	4.5	4.5	6.4	6.3	6.6	6.6	6.6
Total	100.0	11.0	12.1	12.4	14.3	14.7	17.7	18.4	18.8	16.1	14.4	14.5	12.7

Input Cost Index for the construction of a single storey house

(Base: 1st Quarter 2018 = 100)

Table 2.4: Net monthly contributions of work categories to the index, October 2021 to September 2022

Work Categories	Weight	2021			2022								
		Oct	Nov	Dec	Jan	Feb	Mar	Apr	May	Jun	Jul	Aug	Sep
1. Grey building	58.3	0.23	0.58	0.06	0.58	1.05	1.57	0.76	1.11	0.23	0.29	0.23	-0.23
1.1. Earthworks	4.5	0.03	0.08	0.00	0.04	0.00	0.05	0.00	0.10	0.04	0.09	0.00	0.02
1.2. Concrete works	19.3	0.21	0.08	0.00	0.02	0.71	0.21	0.06	0.10	0.23	0.08	0.39	0.00
1.3. Reinforcement	7.9	-0.03	0.05	0.08	0.15	0.06	1.05	0.65	0.15	-0.05	-0.12	-0.20	-0.26
1.4. Formwork (coffrage)	6.5	0.07	0.13	0.01	0.12	0.00	0.20	-0.03	0.36	0.01	0.07	0.04	-0.05
1.5. Blockwork	6.8	0.00	0.19	0.00	0.07	0.05	0.00	0.00	0.15	0.00	0.07	0.00	0.00
1.6. Plastering to ceilings and walls	9.3	0.00	0.00	0.00	0.11	0.03	0.10	0.02	0.19	0.03	0.02	0.01	0.10
1.7. Screeding to floors and roofs	4.0	0.00	0.02	0.00	0.04	0.20	0.00	0.00	0.07	0.00	0.04	0.00	0.00
2. External openings	12.2	0.51	0.00	0.00	1.27	0.00	1.15	0.00	0.00	0.00	0.00	0.00	0.00
3. Internal openings and joinery works	2.7	0.02	0.00	0.04	0.51	0.01	0.02	-0.03	0.01	0.04	0.02	0.01	0.01
4. Tiling	3.8	0.31	0.28	0.06	0.03	0.09	0.03	0.03	0.03	-0.02	0.00	0.16	0.01
5. Painting	1.9	0.00	0.00	0.00	0.04	0.02	0.03	0.03	0.01	0.00	0.00	0.07	0.02
6. Parquet	2.5	0.08	0.13	0.13	0.00	0.02	0.25	0.01	-0.01	0.00	0.00	0.40	0.00
7. Kitchen fit-out	2.2	0.10	0.02	0.00	0.36	0.02	0.04	0.00	0.00	0.00	0.01	0.02	0.01
8. Bathroom fit-out	1.7	0.03	0.02	0.01	0.12	0.03	-0.09	0.00	0.01	0.00	0.00	0.01	0.00
9. Electrical works	2.2	0.07	0.03	0.04	0.02	0.00	0.04	0.02	0.02	-0.01	0.01	0.01	0.01
10. Plumbing and Drainage	6.7	0.14	0.11	0.05	0.07	0.01	0.07	0.37	0.13	0.03	0.13	0.04	0.03
11. Site overhead costs	5.8	0.13	0.01	0.00	0.09	0.01	0.00	0.00	0.11	0.00	0.05	0.01	0.00
Total	100.0	1.60	1.20	0.40	3.10	1.20	3.20	1.10	1.40	0.30	0.50	1.00	-0.10

Input Cost Index for the construction of a single storey house

(Base: 1st Quarter 2018 = 100)

Table 2.5: Quarterly average of monthly indices and percentage changes by work category, 4th Quarter 2021 to 3rd Quarter 2022

Work Categories	Weight	2021	2022			% change from previous quarter			
		4th Qr	1st Qr	2nd Qr	3rd Qr	4th Qr 2021	1st Qr 2022	2nd Qr 2022	3rd Qr 2022
1. Grey building	58.3	120.3	123.8	128.9	130.4	1.9	2.9	4.1	1.2
1.1. Earthworks	4.5	108.4	110.3	112.7	116.1	1.7	1.7	2.2	3.0
1.2. Concrete works	19.3	116.3	119.3	122.3	125.0	1.6	2.6	2.5	2.2
1.3. Reinforcement	7.9	149.6	157.3	175.6	171.5	3.8	5.1	11.6	-2.3
1.4. Formwork (coffrage)	6.5	118.9	122.4	127.8	130.9	3.3	3.0	4.4	2.4
1.5. Blockwork	6.8	123.6	126.1	127.9	129.7	1.7	2.1	1.4	1.4
1.6. Plastering to ceilings and walls	9.3	109.8	111.6	114.1	115.6	0.1	1.6	2.3	1.3
1.7. Screeding to floors and roofs	4.0	116.2	120.8	123.9	125.7	1.4	4.0	2.6	1.4
2. External openings	12.2	123.0	136.5	142.8	142.8	5.7	11.0	4.6	0.0
3. Internal openings and joinery works	2.7	116.6	137.3	137.6	139.8	2.3	17.7	0.2	1.6
4. Tiling	3.8	129.5	135.5	137.7	140.5	13.2	4.6	1.7	2.0
5. Painting	1.9	109.9	113.2	116.3	119.2	0.3	2.9	2.7	2.5
6. Parquet	2.5	126.5	135.6	142.6	153.0	7.9	7.2	5.2	7.3
7. Kitchen fit-out	2.2	111.7	129.7	131.3	132.2	5.9	16.1	1.3	0.7
8. Bathroom fit-out	1.7	120.8	128.1	125.4	126.3	5.1	6.1	-2.1	0.7
9. Electrical works	2.2	120.1	123.3	126.1	126.9	6.0	2.7	2.3	0.6
10. Plumbing and Drainage	6.7	114.9	117.4	125.0	128.4	5.5	2.1	6.5	2.7
11. Site overhead costs	5.8	106.9	108.6	109.9	111.5	2.2	1.6	1.2	1.5
Total	100.0	119.5	125.2	129.8	131.6	3.4	4.7	3.7	1.4

Table 3.1: Construction Price Index - April 2009 to September 2022

Month	<i>(Base: 2nd Quarter 2009 = 100)</i>										<i>(Base: 1st Quarter 2018 = 100)</i>				
	2009	2010	2011	2012	2013	2014	2015	2016	2017	2018	2018	2019	2020	2021	2022
January		100.3	102.8	106.7	109.8	112.6	113.8	114.2	114.6	117.2	99.8	101.0	103.1	107.9	123.3
February		100.3	104.1	106.8	110.5	112.6	113.7	113.9	114.6	118.4	100.1	101.0	104.4	108.5	124.5
March		98.8	104.5	106.8	110.4	112.6	113.9	113.8	114.6	118.5	100.1	101.3	105.2	108.5	127.7
<i>1st Quarter</i>		99.8	103.8	106.8	110.2	112.6	113.8	114.0	114.6	118.1	100.0	101.1	104.2	108.3	125.2
April	100.2	98.8	104.5	108.6	110.9	112.6	114.0	113.8	114.7	118.6	100.2	101.7	105.2	108.8	128.8
May	100.0	100.2	104.4	108.6	110.9	112.5	114.0	113.9	114.7	118.7	100.3	101.6	105.3	109.6	130.2
June	99.8	100.4	104.4	108.6	111.0	112.5	114.1	113.9	114.7	118.8	100.4	101.6	105.6	112.4	130.5
<i>2nd Quarter</i>	100.0	99.8	104.4	108.6	110.9	112.5	114.0	113.9	114.7	118.7	100.3	101.6	105.4	110.3	129.8
July	100.6	100.9	104.3	108.7	111.0	112.4	114.1	114.1	114.8	119.0	100.5	102.6	106.1	114.5	131.0
August	100.2	100.8	105.0	108.7	111.0	112.3	114.2	114.1	114.8	119.0	100.5	102.7	106.2	115.3	132.0
September	100.2	100.8	105.2	108.8	111.1	112.3	114.3	114.1	114.9	118.9	100.5	102.7	106.5	117.0	131.9
<i>3rd Quarter</i>	100.3	100.9	104.8	108.7	111.0	112.4	114.2	114.1	114.8	119.0	100.5	102.6	106.3	115.6	131.6
October	100.3	101.4	105.4	108.8	111.2	112.4	114.2	114.1	114.9	118.9	100.5	102.6	106.8	118.6	
November	100.3	101.6	105.4	108.8	111.2	112.3	114.0	114.1	116.3	118.9	100.5	102.6	106.9	119.8	
December	100.3	101.7	105.5	108.9	111.5	112.3	113.8	114.1	116.3	118.9	100.5	102.5	106.9	120.2	
<i>4th Quarter</i>	100.3	101.6	105.4	108.8	111.3	112.3	114.0	114.1	115.8	118.9	100.5	102.6	106.9	119.5	
Yearly average		100.5	104.6	108.2	110.9	112.5	114.0	114.0	115.0	118.7	100.3	102.0	105.7	113.4	
% change in the yearly average		-0.1	4.1	3.5	2.4	1.4	1.4	0.0	0.8	3.2		1.7	3.6	7.3	

Table 3.2: Construction Price Index - January 2009 to September 2022 (Base period 1st Qtr 2018 =100)

Month	2009	2010	2011	2012	2013	2014	2015	2016	2017	2018	2019	2020	2021	2022
January	86.5	84.9	87.0	90.4	93.0	95.4	96.4	96.7	97.0	99.8	101.0	103.1	107.9	123.3
February	86.5	84.9	88.2	90.5	93.6	95.4	96.3	96.5	97.0	100.1	101.0	104.4	108.5	124.5
March	85.2	83.7	88.6	90.5	93.5	95.4	96.5	96.4	97.1	100.1	101.3	105.2	108.5	127.7
<i>1st Quarter</i>	86.0	84.5	87.9	90.5	93.4	95.4	96.4	96.5	97.0	100.0	101.1	104.2	108.3	125.2
April	84.9	83.7	88.5	92.0	93.9	95.4	96.6	96.4	97.1	100.2	101.7	105.2	108.8	128.8
May	84.7	84.8	88.5	92.0	93.9	95.3	96.6	96.5	97.2	100.3	101.6	105.3	109.6	130.2
June	84.5	85.0	88.5	92.0	94.0	95.3	96.7	96.5	97.2	100.4	101.6	105.6	112.4	130.5
<i>2nd Quarter</i>	84.7	84.5	88.5	92.0	94.0	95.3	96.6	96.5	97.2	100.3	101.6	105.4	110.3	129.8
July	85.2	85.5	88.4	92.1	94.0	95.2	96.7	96.6	97.2	100.5	102.6	106.1	114.5	131.0
August	84.9	85.4	88.9	92.1	94.1	95.2	96.8	96.6	97.2	100.5	102.7	106.2	115.3	132.0
September	84.9	85.4	89.1	92.2	94.1	95.1	96.8	96.6	97.3	100.5	102.7	106.5	117.0	131.9
<i>3rd Quarter</i>	85.0	85.4	88.8	92.1	94.0	95.2	96.7	96.6	97.2	100.5	102.6	106.3	115.6	131.6
October	85.0	85.9	89.3	92.1	94.2	95.2	96.7	96.7	97.3	100.5	102.6	106.8	118.6	
November	85.0	86.1	89.3	92.2	94.2	95.1	96.6	96.7	98.5	100.5	102.6	106.9	119.8	
December	85.0	86.2	89.3	92.2	94.4	95.1	96.4	96.7	98.5	100.5	102.5	106.9	120.2	
<i>4th Quarter</i>	85.0	86.1	89.3	92.2	94.3	95.2	96.6	96.7	98.1	100.5	102.6	106.9	119.5	
Yearly average	85.2	85.1	88.6	91.7	93.9	95.3	96.6	96.6	97.4	100.3	102.0	105.7	113.4	
% change in the yearly average		-0.1	4.1	3.5	2.4	1.4	1.4	0.0	0.8	3.0	1.7	3.6	7.3	

Technical Note

Methodology for the compilation of the Construction Price Index

(i) Introduction

A Construction Price Index measures the change in the level of construction prices. The construction industry is very broad and highly diversified with considerable variations from one type of construction to another. This makes it difficult to derive generalized indices that would be applicable to the industry as a whole. Hence, separate indices for the different types of construction need to be compiled. At present, Statistics Mauritius publishes an index that covers residential buildings only.

(ii) Types of Construction Price Indices

Different approaches to index number compilation are used depending on the purpose for which the index is required. There are two main types of construction price indices:

The Output Price Index

In this approach, specific projects representative of the various categories of construction works are selected as models and construction firms are surveyed and asked to provide estimates of the prevailing market prices for each of the projects. As such, the output price indices respond to the changes in prices of materials used and cost of labour, as well as changes in overhead costs and profits.

The Input Price Index

The index is based on prices of a representative selection of basic inputs (labour, plant, materials and transport) that go into the construction work. Hence, the input price index measures the change in the cost of resources to the contractor, and not the change in the price that the client pays.

The office opted for the input price index which, though more limiting than the output price index, is simpler and less expensive to construct and maintain.

(iii) Selection of representative dwelling

Since it would have been too time-consuming and costly to include all major types of residential dwellings, it was decided to restrict the index to a model dwelling, representing the most common type of dwelling in 2017. This model dwelling was determined on the basis of the 2011 Housing Census data and developments assumed to have taken place during the period 2011 to 2017. The drawings of the prototype model dwelling were provided by the Mauritius Housing Company Ltd. A description of the model is given at paragraph (viii) below.

(iv) Weighting scheme

The quantity survey work to determine the weighting pattern for the index was entrusted to a private Quantity Surveyor following established procedures.

Any given construction consists of an assembly of a certain number of stages or work categories. Seventeen stages or broad work categories were identified and detailed costs of inputs in terms of labour, plant, materials and transport that go into the construction of the selected model were calculated under each of the work categories. The weights have been worked out in such a way that they can be presented in terms of inputs as well as work categories. For publication purposes, weights and sub-indices are also shown for broad input categories of labour, plant, materials and transport, and also for “grey building”.

(v) Data collection

The data needed for the computation of the index are collected every month from a sample of around 70 outlets in 8 regions of the island. Prices are collected in respect of some 91 items, representative of all items that go into the computation of the index.

(vi) Calculation of the Construction Price Index

The Construction Price Index is a weighted average of price relatives of individual items, based on the modified Laspeyres formula:

$$I_t = \frac{\sum W_i (P_{it} / P_{io})}{\sum W_i} \times 100$$

where I_t = index for current period t
 P_{io} = price of item i at base period 0
 P_{it} = price of item i at current period t
 W_i = weight of item i

The base period is the 1st quarter of 2018.

At the level of individual items, the Jevons formula is used to calculate price relatives, that is, the geometric mean is used to compute the lowest level indices.

(vii) Uses

- a) Construction price indices give an indication of the change in the level of prices of construction works. As such, they are used as deflators for the measurement of real growth in the construction sector.
- b) They are also useful for evaluating cost fluctuations in contracts regarding construction works and for renegotiating owner-tenant agreements.

(viii) Description of model dwelling

The model used is a single storey (ground floor) detached house of 137 square meters (1,475 square feet) in floor area measured at plinth level to the external face of the external walls. The overall area is inclusive of 17 square metres (183 square feet) in respect of a garage.

It comprises three bedrooms, a living-dining room, a kitchen, a toilet, a bathroom, a porch and an attached garage. The building has concrete block walls, reinforced concrete flat roof, internal flush plywood doors, aluminium openings for windows and entrance door, screeded floor and roof, tiling to floors, walls of w.c. and bathroom and kitchen worktop, laminated flooring in bedrooms; the ceilings and walls are rendered and painted both internally and externally. Plumbing, sanitary installation and electrical installation are included as well as drainage which is to be connected to the sewerage system. The dwelling is also equipped with solar water heater and water tank.

Provision has been made, in the form of more substantial foundations and of stub columns on the roof, for converting the single into a two-storey house eventually. Site works are restricted to spreading and leveling surplus excavated material around the site.

The index excludes the cost of the building permit and the draughtman's fee.

It is assumed that although the house is not constructed by a contractor, the client has recourse to the services of a foreman.