

## Labour force, Employment and Unemployment – Second quarter 2016

### Introduction

1. This issue of Economic and Social Indicators (ESI) presents a set of estimates of labour force, employment and unemployment for the second quarter of 2016, based on the results of the Continuous Multi-Purpose Household Survey (CMPHS) from April to June 2016. The estimates refer to the Mauritian population aged 16 years and above.
2. Annual estimates of labour force including foreign workers derived after integrating data from CMPHS with other sources are given at Annex 3.

### Key figures

	Q2 2015	Q1 2016	Q2 2016 <sup>1</sup>	Change	
				Q2 2016- Q2 2015	Q2 2016 - Q1 2016
Labour force	588,600	571,700	580,100	-8,500	8,400
Employment	542,600	528,200	537,000	-5,600	8,800
Unemployment	46,000	43,500	43,100	-2,900	-400
Unemployment rate (%)	7.8	7.6	7.4	-0.4	-0.2
Seasonally adjusted unemployment rate (%)	7.4	7.0	7.1	-0.3	0.1

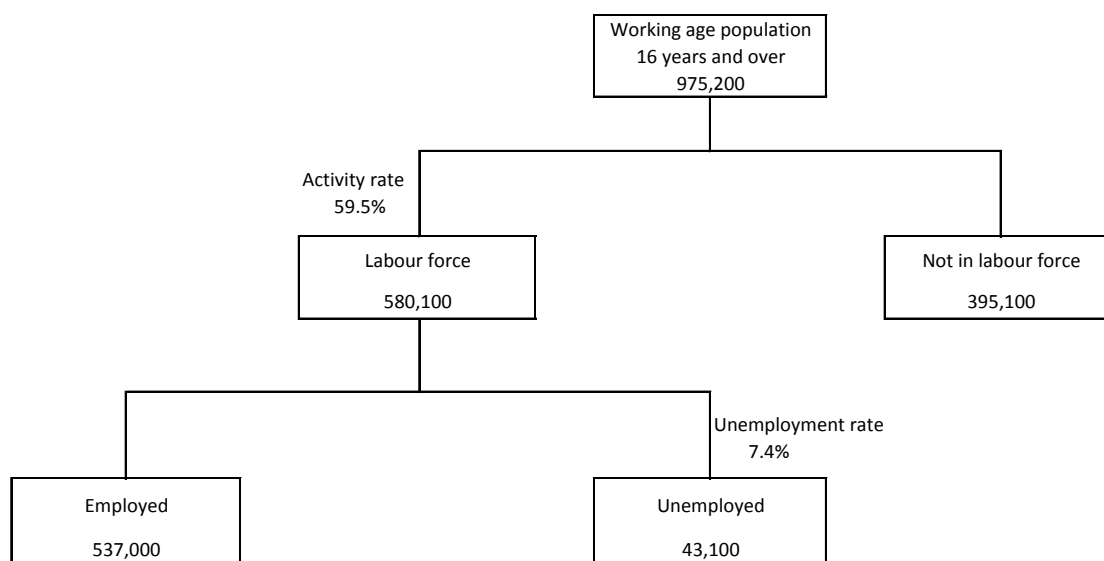
<sup>1</sup>Provisional

### Labour market overview, second quarter 2016

3. Compared with the corresponding quarter of 2015, there has been a decrease in the labour force (-8,500) with a decrease in both employment (-5,600) and unemployment (-2,900).
4. Compared with the previous quarter, labour force increased by 8,400 with an increase in employment (8,800) and a decrease in unemployment (-400).

**NOTE: The increase or decrease in employment represents the net change in employment level i.e the combined effect of employment gains and losses during the period under reference.**

Chart 1: The Labour Market, 2<sup>nd</sup> quarter 2016



### **Labour force participation**

5. The activity rate for the second quarter 2016 was 59.5%, down by 1.3 percentage points from 60.8% in the corresponding quarter one year earlier. The male activity rate decreased by 0.9 percentage point to 74.1% and the female activity rate decreased by 1.8 percentage points to 45.5%.
6. Compared with the previous quarter, the activity rate increased by 0.7 percentage point to 59.5%. The male activity rate increased by 0.9 percentage point from 73.2% to 74.1% and the female activity rate by 0.5 percentage point from 45.0% to 45.5%.

### **Employment**

7. From second quarter 2015 to second quarter 2016, employment decreased by 5,600 to 537,000; male employment decreased by 1,500 to 334,400 and female employment by 4,100 to 202,600.
8. Compared with the previous quarter, employment increased by 8,800 with increase in both male employment (4,100) and female employment (4,700).

### **Unemployment**

#### ***2<sup>nd</sup> Quarter 2015 to 2<sup>nd</sup> Quarter 2016***

9. From second quarter 2015 to second quarter 2016, the number of unemployed persons decreased by 2,900 (+200 males and -3,100 females).
10. The unemployment rate decreased by 0.4 percentage point from 7.8% in the second quarter 2015 to 7.4% in the second quarter 2016. During that same period, male

unemployment rate increased by 0.1 percentage point to 5.2% while female unemployment rate decreased by 1.0 percentage point to 10.9%.

#### ***1<sup>st</sup> Quarter 2016 to 2<sup>nd</sup> Quarter 2016***

11. When compared with the first quarter of 2016, the total number of unemployed persons decreased by 400. Male increased by 1,200 while female decreased by 1,600.
12. From first quarter 2016 to second quarter 2016, the unemployment rate decreased by 0.2 percentage point with an increase of 0.3 percentage point in male unemployment rate and a decrease of 0.8 percentage point in female unemployment rate.
13. At the second quarter 2016, youth unemployed aged 16 to 24 years numbered 19,300 (9,100 males and 10,200 females) compared to 19,700 (9,400 males and 10,300 females) at the corresponding quarter of 2015 and 18,700 (8,500 males and 10,200 females) at the previous quarter.

#### ***Characteristics of the unemployed as second quarter 2016***

14. The main characteristics of the unemployed as at second quarter 2016 were as follows:
  - (i) The 43,100 unemployed comprised 18,400 males (43%) and 24,700 females (57%).
  - (ii) Around 25,200 (58%) of the unemployed were single. Among males the majority (80%) was single compared to 43% among the females.
  - (iii) Some 5,000 or 12% had not reached the Certificate of Primary Education (CPE) level or equivalent and a further 14,600 (34%) did not have the Cambridge School Certificate (SC) or equivalent.
  - (iv) Around 32,800 (76%) had been looking for work for up to one year and the remaining 10,300 (24%) for more than one year.
  - (v) About 31,000 (72%) had working experience and 12,100 (28%) were looking for a job for the first time.
  - (vi) Around 16,800 (39%) were registered at the Employment Service.
  - (vii) There were 7,500 (17%) young persons aged 16 to 24 years, not yet married and looking for a first job. Some 1,400 (19%) of them had not passed SC.
  - (viii) Ever married (including widowed, divorced or separated) unemployed persons aged 25 to 44 years and having worked before numbered 9,300. Among them, about 4,600 (49%) had not passed SC.
  - (ix) 5,200 or 12% of the unemployed were heads of households.

### *Seasonally adjusted unemployment rate*

15. Seasonally adjusted unemployment rate for the second quarter of 2016 was 7.1%, lower than the rate of 7.4% at the corresponding quarter of 2015 but was higher than 7.0% at the first quarter of 2016.

### **Economically inactive population**

16. The number of persons aged 16 years and over, not forming part of the labour force (inactive population) was estimated at 395,100 at the second quarter 2016 compared to 379,800 in the corresponding quarter of 2015 and 400,600 in the previous quarter.
17. The inactive population was made up of 123,300 males and 271,800 females. Among inactive males, around 47% were 'retired or old persons' and 30% were students. Among females, 58% were homemakers; around 17% were 'Retired or old persons' and 14% were students of the inactive females.

### **Forecasts of Employment and Unemployment estimates - Year 2016**

18. Based on the results of the survey for the first semester of the current year and other information available, the following are the forecasts of employment and unemployment for 2016:

	<b>Year 2015</b>	<b>Year 2016<sup>1</sup></b>	<b>Change</b>
Employment	538,300	542,400	+4,100 <sup>2</sup>
Unemployment	46,300	43,700	-2,600
Unemployment rate (%)	7.9	7.5	-0.4

<sup>1</sup>Forecast      <sup>2</sup>please see explanations in the box on page 1

#### **CAUTION:**

The estimate of unemployment rate for the year 2015 (7.9%) is NOT end of year estimate (i.e as at 31<sup>st</sup> December). It represents weighted averages of estimates based on sample data collected throughout the year under review.

19. The employment level of Mauritians is expected to increase on a net basis, by 4,100 to 542,400 in 2016 from 538,300 in 2015. It is to be noted that this increase represents the net change in employment level, i.e the combined effect of employment gains and losses during the period under reference.
20. The unemployment rate for the year 2016 is revised downwards to 7.5% from 7.7% forecasted in March 2016. The rate for year 2015 was 7.9%.

### **Sampling errors**

21. The estimates in this publication are based on the results of a sample survey and are thus subject to sample variability. Standard errors and confidence intervals give an indication of this variability.
22. The standard error of the estimates and the 95% confidence interval which represent a 95% chance that the true value lies within that interval, are given in the tables that follow.

Estimated labour force, employment and unemployment by sex, 2<sup>nd</sup> quarter 2015 – 2<sup>nd</sup> quarter 2016

Both Sexes

		Estimates	Standard Error	95% confidence interval	
				Lower limit	Upper limit
Labour force					
	2015 Q2	588,600	10,200	568,600	608,600
	Q3	579,100	10,300	558,900	599,300
	Q4	592,200	13,000	566,800	617,800
	2016 Q1	571,700	12,400	547,300	596,200
	Q2 <sup>1</sup>	580,100	11,300	557,900	602,300
Employment					
	2015 Q2	542,600	9,900	523,100	562,200
	Q3	536,500	9,900	517,100	555,900
	Q4	545,600	12,500	521,000	570,300
	2016 Q1	528,200	11,200	506,200	550,300
	Q2 <sup>1</sup>	537,000	10,400	516,600	557,400
Unemployment					
	2015 Q2	46,000	2,800	40,400	51,400
	Q3	42,600	2,500	37,700	47,500
	Q4	46,600	2,800	41,000	52,200
	2016 Q1	43,500	2,800	38,000	48,900
	Q2 <sup>1</sup>	43,100	3,000	37,300	49,000
Unemployment rate, %					
	2015 Q2	7.8	0.5	6.9	8.7
	Q3	7.4	0.4	6.5	8.2
	Q4	7.9	0.5	7.0	8.8
	2016 Q1	7.6	0.4	6.8	8.4
	Q2 <sup>1</sup>	7.4	0.5	6.5	8.4
Activity rate, %					
	2015 Q2	60.8	0.7	59.4	62.1
	Q3	59.8	0.7	58.4	61.2
	Q4	61.0	0.7	59.6	62.4
	2016 Q1	58.8	0.7	57.5	60.1
	Q2 <sup>1</sup>	59.5	0.6	58.2	60.7

<sup>1</sup> Provisional

Estimated labour force, employment and unemployment by sex, 2<sup>nd</sup> quarter 2015 – 2<sup>nd</sup> quarter 2016

Male

		Estimates	Standard Error	95% confidence interval	
				Lower limit	Upper limit
<b>Labour force</b>					
	2015 Q2	354,100	6,800	340,600	367,500
	Q3	353,100	6,800	339,800	366,400
	Q4	357,600	8,100	341,700	373,600
	2016 Q1	347,500	7,900	332,000	363,100
	Q2 <sup>1</sup>	352,800	7,400	338,300	367,200
<b>Employment</b>					
	2015 Q2	335,900	6,800	322,500	349,300
	Q3	336,000	6,600	323,100	348,900
	Q4	337,900	8,100	321,900	354,000
	2016 Q1	330,300	7,500	315,600	345,100
	Q2 <sup>1</sup>	334,400	7,000	320,500	348,200
<b>Unemployment</b>					
	2015 Q2	18,200	1,500	15,200	21,100
	Q3	17,100	1,700	13,800	20,400
	Q4	19,700	1,600	16,500	22,800
	2016 Q1	17,200	1,700	13,800	20,600
	Q2 <sup>1</sup>	18,400	1,900	14,600	22,200
<b>Unemployment rate, %</b>					
	2015 Q2	5.1	0.4	4.3	6.0
	Q3	4.8	0.5	3.9	5.7
	Q4	5.5	0.5	4.6	6.4
	2016 Q1	4.9	0.5	4.0	5.9
	Q2 <sup>1</sup>	5.2	0.5	4.2	6.2
<b>Activity rate, %</b>					
	2015 Q2	75.0	0.8	73.4	76.5
	Q3	74.7	0.8	73.2	76.3
	Q4	75.5	0.8	74.0	77.0
	2016 Q1	73.2	0.8	71.7	74.8
	Q2 <sup>1</sup>	74.1	0.7	72.7	75.5

<sup>1</sup> Provisional

Estimated labour force, employment and unemployment by sex, 2<sup>nd</sup> quarter 2015 – 2<sup>nd</sup> quarter 2016

Female

		Estimates	Standard Error	95% confidence interval	
				Lower limit	Upper limit
<b>Labour force</b>					
	2015 Q2	234,500	6,000	222,700	246,300
	Q3	226,000	6,100	213,900	238,100
	Q4	234,600	7,000	220,900	248,400
	2016 Q1	224,200	6,300	211,800	236,600
	Q2 <sup>1</sup>	227,300	6,100	215,200	239,500
<b>Employment</b>					
	2015 Q2	206,700	5,700	195,600	217,900
	Q3	200,500	5,900	188,900	212,100
	Q4	207,700	6,400	195,100	220,300
	2016 Q1	197,900	5,700	186,800	209,100
	Q2 <sup>1</sup>	202,600	5,700	191,500	213,800
<b>Unemployment</b>					
	2015 Q2	27,800	2,200	23,400	32,200
	Q3	25,500	1,900	21,800	29,200
	Q4	26,900	2,300	22,500	31,400
	2016 Q1	26,300	2,100	22,000	30,500
	Q2 <sup>1</sup>	24,700	2,100	20,600	28,800
<b>Unemployment rate, %</b>					
	2015 Q2	11.9	0.9	10.1	13.6
	Q3	11.3	0.8	9.7	12.9
	Q4	11.5	0.9	9.7	13.2
	2016 Q1	11.7	0.9	10.0	13.4
	Q2 <sup>1</sup>	10.9	0.8	9.2	12.5
<b>Activity rate, %</b>					
	2015 Q2	47.3	1.0	45.3	49.3
	Q3	45.6	1.0	43.6	47.5
	Q4	47.2	1.0	45.3	49.1
	2016 Q1	45.0	0.9	43.3	46.8
	Q2 <sup>1</sup>	45.5	0.9	43.7	47.4

<sup>1</sup> Provisional



## Longer time series

- The following graphs show the series for employment, unemployment and activity rate from 2<sup>nd</sup> quarter 2012 to 2<sup>nd</sup> quarter 2016.

Chart 2: Employment by quarter, 2<sup>nd</sup> quarter 2012 – 2<sup>nd</sup> quarter 2016

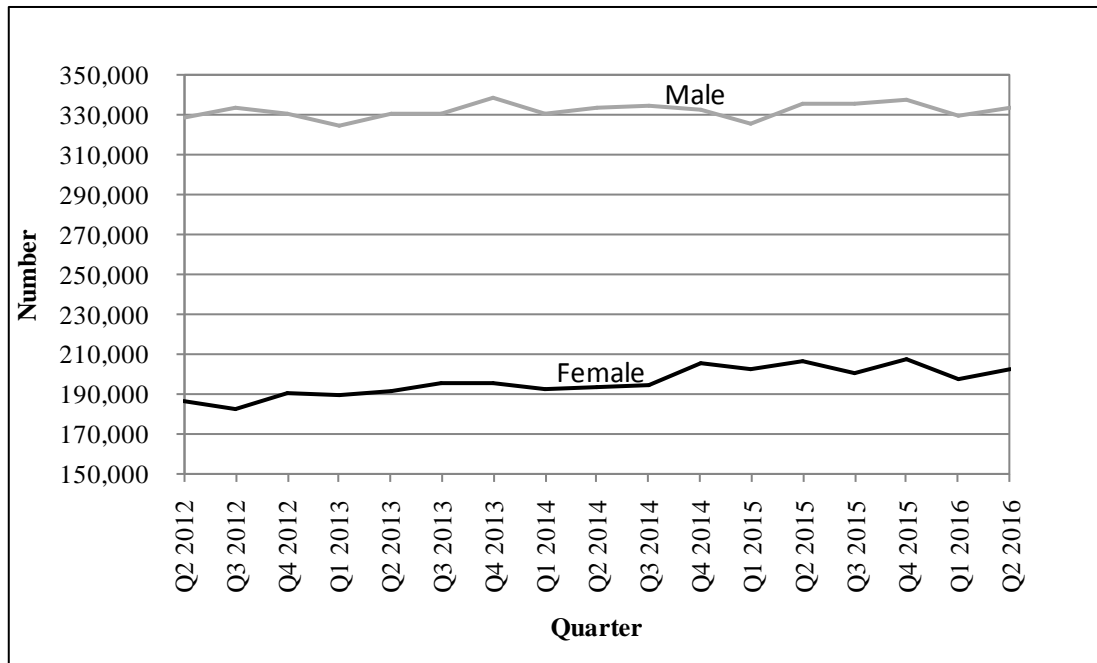
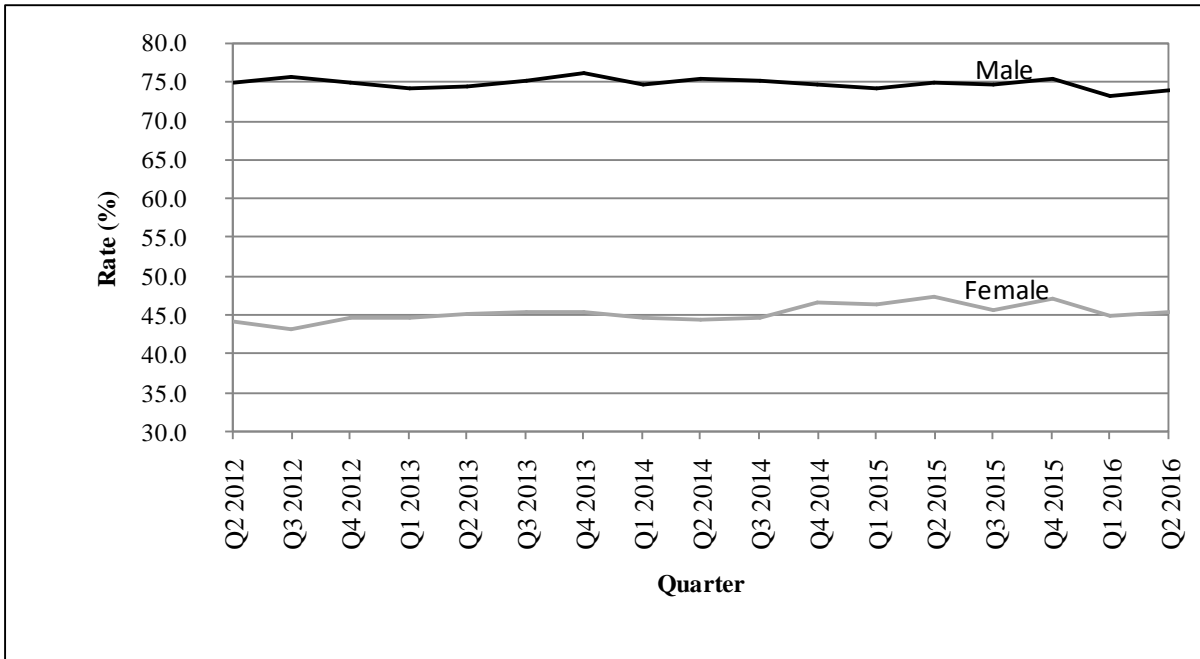


Chart 3: Unemployment rate by quarter, 2<sup>nd</sup> quarter 2012 – 2<sup>nd</sup> quarter 2016



Chart 4: Activity rate by quarter, 2<sup>nd</sup> quarter 2012 – 2<sup>nd</sup> quarter 2016



The following tables together with the web version of this publication can be downloaded from Statistics Mauritius website at <http://statsmauritius.govmu.org> From the homepage, click on ‘Statistics by subject’ followed by ‘labour’ then select the appropriate publication under the heading ‘Publications – Economic and Social Indicators’.

### **List of tables**

*Table 1: Labour market activity by status, 2nd Quarter 2015 to 2nd Quarter 2016*

*Table 2: Labour force characteristics by age and sex, 2nd Quarter 2016*

*Table 3: Employment by industrial activity, 2nd Quarter 2015 to 2nd Quarter 2016*

*Table 4: Employment by occupational group, 2nd Quarter 2015 to 2nd Quarter 2016*

*Table 5: Employment by hours worked, 2nd Quarter 2015 to 2nd Quarter 2016*

*Table 6: Unemployment by educational attainment, 2nd Quarter 2015 to 2nd Quarter 2016*

*Table 7: Unemployment by age, 2nd Quarter 2015 to 2nd Quarter 2016*

*Table 8: Unemployment by work experience, 2nd Quarter 2015 to 2nd Quarter 2016*

*Table 9: Economically inactive population by reason, 2nd Quarter 2015 to 2nd Quarter 2016*

Statistics Mauritius

Ministry of Finance and Economic Development

Port Louis

September 2016

Contact persons: (1) Ms. N. Ramjan (Statistician)

Email: [nramjan@govmu.org](mailto:nramjan@govmu.org)

(2) Ms. P. Koonjul (Senior Statistical Officer)

Email: [pkoonjul@govmu.org](mailto:pkoonjul@govmu.org)

Statistics Mauritius

LIC Centre, Port Louis

Tel: 2081800 Fax: 2114150

## **NOTES**

### **Release of Labour Force data**

Labour Force statistics are compiled and published in the “Economic and Social Indicators” in March, June, September and December according to an advance calendar posted on the website of Statistics Mauritius (<http://statsmauritius.govmu.org>). This issue provides data for the second quarter 2016 compared to the previous quarter and to the same quarter a year ago.

However, where appropriate, historical series are also provided for the main indicators.

### **The CMPHS Survey methodology**

#### **Data collection**

Face to face interviews of household members are carried out by qualified interviewers recruited by the office.

#### **Frequency of data collection**

Data collection is carried out monthly except in 2004 when it was carried out every quarter. Up to 2005, the reference period for data on labour force was the last week of the survey month. As from 2006, the reference week has been changed to the second week of the survey month so that estimates can be published within one quarter of the reference period, as required by the IMF Special Data Dissemination System (SDDS) to which the country has graduated on 28 February 2012.

#### **Scope and coverage of collection**

All private Mauritian households in the islands of Mauritius and Rodrigues are covered.

#### **Sampling method**

A Stratified two-stage sampling design is used. At the first stage, Primary Sampling Units (PSUs) are selected with probability proportional to size and at the second stage, a fixed number of households is selected from each selected PSU.

Prior to 2005, the first stage stratification factors were urban, semi urban and rural geographical locations. As from 2005, the Relative Development Index (RDI) is used as the spatial stratification factor. This index is based on 12 variables encompassing housing and living conditions, literacy and education, and employment derived from the 2011 Housing and Population Census to rank PSUs. A set of RDIs for administrative regions has been published in the series "Economic and Social Indicators" - Issue No. 977.

The second stage stratification criteria are community, household size and average monthly expenditure of the household.

## **Sample size**

From 1999 to 2003, around 6,500 households were covered each year. In 2004, the sample was increased to 8,640 so that reliable quarterly estimates of labour force, employment and unemployment could be worked out. As from 2005, the sample for the year has been further increased to 11,280. Furthermore, in order to measure quarterly changes, 50% of the households sampled in a quarter are re-interviewed in the following quarter; for example, 50% of the households sampled in the first quarter of 2005 have been re-interviewed in the second quarter of 2005.

## **Questionnaire**

The CMPHS questionnaire comprises three modules: a basic module common to all rounds of the survey covering the general characteristics of the population (b) a second module covering labour force with in-depth investigation and a core set of questions which are kept constant at all rounds of the survey and (c) a third module grouping other topics of interest but investigated in less details.

## **Estimation and reliability of results**

Estimates worked out from household survey data are inevitably subject to sampling variability since they are based on information collected from only a sample of households rather than from all households. The Standard Error (S.E) which is a measure of this variability, used to set confidence intervals for any estimate (whether a total or a rate) derived from the sample. For example, a 95% confidence interval indicates that there is 95% chance that the upper and lower limits of the interval enclose the true value (which would be obtained if all households had been surveyed). Standard errors and confidence intervals are calculated for the main labour force estimates.

## **Definitions**

### **Household**

A household is defined as either a person living on his/her own or a group of two or more persons, who may or may not be related, but who live together and make common provision for food and other essentials for living.

### **Employment**

Employed population consists of Mauritians aged 16 years and above (16+) who have worked for pay, profit or family gain for at least one hour during the reference week of a month. It includes those who are temporarily absent from work for reasons such as leave with pay, leave without pay and temporary disorganisation of work (bad weather, break down of equipment, lack of order, etc.).

It is to be noted that as from year 2007, labour force estimates are based on population aged 16 years and above, following the amendment to the Labour Act in December 2006 whereby the minimum legal working age is 16 years, and the subsequent recommendation by the ILO to be in line with the amended Labour Act.

### **Unemployment**

Unemployed population comprises all Mauritians aged 16+ who are not working but who are looking for work and are available for work during the reference period.

### **Labour force**

Labour force or active population is made up of employed and unemployed population.

### **Unemployment rate**

Unemployment rate is the ratio (%) of unemployment to labour force.

### **Inactive population**

Inactive population includes all Mauritians aged 16+ years, not forming part of the labour force for reasons such as attendance at educational institutions, engagement in household duties, retirement, old age and infirmity/disablement.

### **Activity rate**

Activity rate is the ratio (%) of labour force to population aged 16+ (active and inactive population).

### **Employer**

An employer is a person who operates his/her own business or trade and hires one or more employees.

**Own account worker**

An Own account worker is a person who operates his/her own business or trade but does not hire employees. He/She may be working alone or with the help of contributing family workers.

**Employee**

An Employee is a person who works for pay for someone else, even in a temporary capacity.

**Apprentice**

An Apprentice is a person being trained for a job or trade and does not receive pay or may just receive some pocket money; an apprentice is considered as an employee.

**Contributing family worker**

A Contributing family worker is a person who works without pay in an enterprise operated by a family member.

**Educational attainment**

*Primary*: comprises persons who have studied up to a “Standard” between Standard 1 and the Certificate of Primary Education (CPE) or equivalent.

*Secondary*: comprises persons who have studied up to a “Form” between Form 1 and the Higher School Certificate (HSC) or equivalent.

*Tertiary*: comprises persons who in addition to their secondary educational certificates (SC and HSC or equivalent) also possess either a certificate/diploma (which is above the HSC but below a first degree) or a degree.

## Annual labour force estimates based on data from different data sources, 2011 - 2016

	Labour force			Employment				Unemployment <sup>1</sup>	
	Mauritians aged 16+	Foreign workers	Total	in large establishments	outside large establishments	Total	of whom Mauritians	Number	Rate
	(000s)	(000s)	(000s)	(000s)	(000s)	(000s)	(000s)	(000s)	(%)
<b>Both sexes</b>									
2011	548.6	23.0	<b>571.6</b>	310.7	218.2	<b>528.9</b>	505.9	42.7	7.8
2012	556.3	24.0	<b>580.3</b>	311.5	224.2	<b>535.7</b>	511.7	44.6	8.0
2013	571.2	26.3	<b>597.5</b>	312.5	239.5	<b>552.0</b>	525.7	45.5	8.0
2014	575.7	28.3	<b>604.0</b>	313.5	245.7	<b>559.2</b>	530.9	44.8	7.8
2015	584.6	28.3	<b>612.9</b>	314.1	252.5	<b>566.6</b>	538.3	46.3	7.9
2016 <sup>2</sup>	586.1	27.8	<b>613.9</b>	313.3	256.9	<b>570.2</b>	542.4	43.7	7.5
<b>Change current year over previous:</b>	1.5	-0.5	1.0	-0.8	4.4	3.6	4.1	-2.6	-0.4
<b>Male</b>									
2011	343.3	13.4	<b>356.7</b>	197.8	141.6	<b>339.4</b>	326.0	17.3	5.0
2012	346.9	14.2	<b>361.1</b>	198.3	144.7	<b>343.0</b>	328.8	18.1	5.2
2013	350.4	16.5	<b>366.9</b>	199.1	149.2	<b>348.3</b>	331.8	18.6	5.3
2014	352.8	18.3	<b>371.1</b>	199.3	152.4	<b>351.7</b>	333.4	19.4	5.5
2015	353.3	18.6	<b>371.9</b>	198.5	153.9	<b>352.4</b>	333.8	19.5	5.5
2016 <sup>2</sup>	354.5	18.9	<b>373.4</b>	198.2	156.9	<b>355.1</b>	336.2	18.3	5.2
<b>Change current year over previous:</b>	1.2	0.3	1.5	-0.3	3.0	2.7	2.4	-1.2	-0.3
<b>Female</b>									
2011	205.3	9.6	<b>214.9</b>	112.9	76.6	<b>189.5</b>	179.9	25.4	12.4
2012	209.4	9.8	<b>219.2</b>	113.2	79.5	<b>192.7</b>	182.9	26.5	12.7
2013	220.8	9.8	<b>230.6</b>	113.4	90.3	<b>203.7</b>	193.9	26.9	12.2
2014	222.9	10.0	<b>232.9</b>	114.2	93.3	<b>207.5</b>	197.5	25.4	11.4
2015	231.3	9.7	<b>241.0</b>	115.6	98.6	<b>214.2</b>	204.5	26.8	11.6
2016 <sup>2</sup>	231.6	8.9	<b>240.5</b>	115.1	100.0	<b>215.1</b>	206.2	25.4	11.0
<b>Change current year over previous:</b>	0.3	-0.8	-0.5	-0.5	1.4	0.9	1.7	-1.4	-0.6

<sup>1</sup> Unemployment figures and rate refer to Mauritians<sup>2</sup> Provisional**Note:**

1. The above figures have been worked out in order to give a set of comparable labour force estimates obtained from different sources. Users are cautioned in the use of these figures given that there are differences related to the reference period, coverage and methodology. The different sources from which these estimates have been obtained are as follows:
  - i CMPHS for Mauritian labour force estimates which are subject to sampling variability as mentioned at Annex 1.
  - ii The Annual Survey of Employment and Earnings (SEE) carried out in March of each year. Employment figures refer to jobs in large establishments employing 10 or more persons and include both Mauritians and foreign workers.
  - iii Employment in 'other than large' establishments has been estimated after reconciling data from CMPHS, SEE and administrative sources.



**Table 1: Labour market activity by status, 2nd Quarter 2015 to 2nd Quarter 2016**

In thousands

	Total Mauritian population aged 16 & over	In employment					Unemployed	Total econ. active	Total econ. inactive
		Employees	Employers	Own account workers	Contrib. family workers	Total			
<b>Both sexes</b>									
2015 Q2	<b>968.4</b>	422.2	21.9	83.9	14.6	<b>542.6</b>	<b>46.0</b>	<b>588.6</b>	<b>379.8</b>
Q3	<b>968.4</b>	428.4	20.3	74.9	12.9	<b>536.5</b>	<b>42.6</b>	<b>579.1</b>	<b>389.3</b>
Q4	<b>970.8</b>	432.9	23.3	74.7	14.7	<b>545.6</b>	<b>46.6</b>	<b>592.2</b>	<b>378.6</b>
2016 Q1	<b>972.3</b>	421.0	21.5	77.3	8.4	<b>528.2</b>	<b>43.5</b>	<b>571.7</b>	<b>400.6</b>
Q2 <sup>1</sup>	<b>975.2</b>	422.9	27.4	74.3	12.4	<b>537.0</b>	<b>43.1</b>	<b>580.1</b>	<b>395.1</b>
<b>% change, latest quarter over:</b>									
previous quarter	<b>0.3</b>	<b>0.5</b>	<b>27.4</b>	<b>-3.9</b>	<b>47.6</b>	<b>1.7</b>	<b>-0.9</b>	<b>1.5</b>	<b>-1.4</b>
same quarter a year ago	<b>0.7</b>	<b>0.2</b>	<b>25.1</b>	<b>-11.4</b>	<b>-15.1</b>	<b>-1.0</b>	<b>-6.3</b>	<b>-1.4</b>	<b>4.0</b>
<b>Male</b>									
2015 Q2	<b>472.4</b>	251.9	18.7	61.4	3.9	<b>335.9</b>	<b>18.2</b>	<b>354.1</b>	<b>118.3</b>
Q3	<b>472.6</b>	262.2	16.6	54.4	2.8	<b>336.0</b>	<b>17.1</b>	<b>353.1</b>	<b>119.5</b>
Q4	<b>473.7</b>	258.7	19.1	56.5	3.6	<b>337.9</b>	<b>19.7</b>	<b>357.6</b>	<b>116.1</b>
2016 Q1	<b>474.6</b>	251.5	19.4	57.5	1.9	<b>330.3</b>	<b>17.2</b>	<b>347.5</b>	<b>127.1</b>
Q2 <sup>1</sup>	<b>476.1</b>	251.9	24.0	55.0	3.5	<b>334.4</b>	<b>18.4</b>	<b>352.8</b>	<b>123.3</b>
<b>% change, latest quarter over:</b>									
previous quarter	<b>0.3</b>	<b>0.2</b>	<b>23.7</b>	<b>-4.3</b>	<b>84.2</b>	<b>1.2</b>	<b>7.0</b>	<b>1.5</b>	<b>-3.0</b>
same quarter a year ago	<b>0.8</b>	<b>0.0</b>	<b>28.3</b>	<b>-10.4</b>	<b>-10.3</b>	<b>-0.4</b>	<b>1.1</b>	<b>-0.4</b>	<b>4.2</b>
<b>Female</b>									
2015 Q2	<b>496.0</b>	170.3	3.2	22.5	10.7	<b>206.7</b>	<b>27.8</b>	<b>234.5</b>	<b>261.5</b>
Q3	<b>495.8</b>	166.2	3.7	20.5	10.1	<b>200.5</b>	<b>25.5</b>	<b>226.0</b>	<b>269.8</b>
Q4	<b>497.1</b>	174.2	4.2	18.2	11.1	<b>207.7</b>	<b>26.9</b>	<b>234.6</b>	<b>262.5</b>
2016 Q1	<b>497.7</b>	169.5	2.1	19.8	6.5	<b>197.9</b>	<b>26.3</b>	<b>224.2</b>	<b>273.5</b>
Q2 <sup>1</sup>	<b>499.1</b>	171.0	3.4	19.3	8.9	<b>202.6</b>	<b>24.7</b>	<b>227.3</b>	<b>271.8</b>
<b>% change, latest quarter over:</b>									
previous quarter	<b>0.3</b>	<b>0.9</b>	<b>61.9</b>	<b>-2.5</b>	<b>36.9</b>	<b>2.4</b>	<b>-6.1</b>	<b>1.4</b>	<b>-0.6</b>
same quarter a year ago	<b>0.6</b>	<b>0.4</b>	<b>6.3</b>	<b>-14.2</b>	<b>-16.8</b>	<b>-2.0</b>	<b>-11.2</b>	<b>-3.1</b>	<b>3.9</b>

<sup>1</sup> Provisional

**Table 2: Labour force characteristics by age and sex, 2nd Quarter 2016<sup>1</sup>****In thousands**

	Mauritian aged 16 and over	Age group (years)				
		16-24	25 - 29	30 - 39	40 - 49	50+
<b>Both sexes</b>						
In employment	<b>537.0</b>	58.3	59.5	138.5	130.2	150.5
Unemployed	<b>43.1</b>	19.3	7.4	9.1	4.3	3.0
Labour force	<b>580.1</b>	77.6	66.9	147.6	134.5	153.5
Economically inactive	<b>395.1</b>	94.7	14.0	32.7	35.1	218.6
Total Population	<b>975.2</b>	172.3	80.9	180.3	169.6	372.1
Employment rate (%)	<b>92.6</b>	75.1	88.9	93.8	96.8	98.0
Unemployment rate (%)	<b>7.4</b>	24.9	11.1	6.2	3.2	2.0
Activity rate (%)	<b>59.5</b>	45.0	82.7	81.9	79.3	41.3
<b>Male</b>						
In employment	<b>334.4</b>	34.8	34.5	82.1	79.5	103.5
Unemployed	<b>18.4</b>	9.1	3.3	3.4	0.9	1.7
Labour force	<b>352.8</b>	43.9	37.8	85.5	80.4	105.2
Economically inactive	<b>123.3</b>	42.8	2.9	4.4	4.6	68.6
Total Population	<b>476.1</b>	86.7	40.7	89.9	85.0	173.8
Employment rate (%)	<b>94.8</b>	79.3	91.3	96.0	98.9	98.4
Unemployment rate (%)	<b>5.2</b>	20.7	8.7	4.0	1.1	1.6
Activity rate (%)	<b>74.1</b>	50.6	92.9	95.1	94.6	60.5
<b>Female</b>						
In employment	<b>202.6</b>	23.5	25.0	56.4	50.7	47.0
Unemployed	<b>24.7</b>	10.2	4.1	5.7	3.4	1.3
Labour force	<b>227.3</b>	33.7	29.1	62.1	54.1	48.3
Economically inactive	<b>271.8</b>	51.9	11.1	28.3	30.5	150.0
Total Population	<b>499.1</b>	85.6	40.2	90.4	84.6	198.3
Employment rate (%)	<b>89.1</b>	69.7	85.9	90.8	93.7	97.3
Unemployment rate (%)	<b>10.9</b>	30.3	14.1	9.2	6.3	2.7
Activity rate (%)	<b>45.5</b>	39.4	72.4	68.7	63.9	24.4

<sup>1</sup> Provisional

**Table 3: Employment by industrial activity, 2nd Quarter 2015 to 2nd Quarter 2016**

	Total employed aged 16+	Primary sector	Secondary sector	Tertiary sector	Selected NSIC <sup>1</sup> Sections			
					Manufacturing	Construction	Wholesale and retail trade	Other services
					C	F	G	H - U
	(000s)	(%)	(%)	(%)	(%)	(%)	(%)	(%)
<b>Both sexes</b>								
2015 Q2	<b>542.6</b>	7.4	24.0	68.6	13.3	9.4	14.6	54.0
Q3	<b>536.5</b>	7.7	24.1	68.2	14.1	8.5	14.8	53.4
Q4	<b>545.6</b>	8.0	25.9	66.1	15.3	9.2	15.1	51.0
2016 Q1	<b>528.2</b>	7.8	26.1	66.1	13.8	10.7	14.1	51.9
Q2 <sup>2</sup>	<b>537.0</b>	7.0	24.5	68.5	13.2	9.6	14.5	53.9
<b>Male</b>								
2015 Q2	<b>335.9</b>	8.5	29.2	62.3	12.5	14.6	13.6	48.6
Q3	<b>336.0</b>	8.7	28.8	62.5	13.4	13.2	13.6	48.9
Q4	<b>337.9</b>	9.2	30.6	60.2	14.3	14.4	13.2	47.0
2016 Q1	<b>330.3</b>	8.6	31.7	59.7	12.7	16.5	12.8	47.0
Q2 <sup>2</sup>	<b>334.4</b>	7.7	30.8	61.5	13.2	15.3	13.0	48.5
<b>Female</b>								
2015 Q2	<b>206.7</b>	5.7	15.4	78.9	14.4	0.8	16.2	62.7
Q3	<b>200.5</b>	6.0	16.2	77.8	15.3	0.6	16.8	61.0
Q4	<b>207.7</b>	6.1	18.2	75.7	17.1	0.8	18.2	57.5
2016 Q1	<b>197.9</b>	6.5	16.9	76.6	15.5	1.1	16.4	60.2
Q2 <sup>2</sup>	<b>202.6</b>	5.9	14.1	80.0	13.3	0.4	17.0	63.0

<sup>1</sup> National version of the International Standard Industrial Classification of All Economic Activities (ISIC Revision 4)

<sup>2</sup> Provisional

**Table 4: Employment by occupational group, 2nd Quarter 2015 to 2nd Quarter 2016**

	Total employed aged 16+	ISCO-08 <sup>1</sup>				
		Managers, Professionals, Technicians & associate professionals	Clerical support workers	Service and sales workers	Agricultural, Craft & related trades workers, Plant & machine operators & assemblers	Elementary occupations
		1,2,3 (%)	4 (%)	5 (%)	6,7,8 (%)	9 (%)
	(000s)					
<b>Both sexes</b>						
2015 Q2	<b>542.6</b>	26.0	8.5	21.0	29.4	15.1
Q3	<b>536.5</b>	25.2	8.8	21.8	28.7	15.5
Q4	<b>545.6</b>	22.8	9.4	21.6	28.5	17.7
2016 Q1	<b>528.2</b>	25.3	8.3	20.3	29.7	16.4
Q2 <sup>2</sup>	<b>537.0</b>	24.2	8.5	22.5	29.6	15.2
<b>Male</b>						
2015 Q2	<b>335.9</b>	23.3	5.0	19.6	40.5	11.6
Q3	<b>336.0</b>	22.5	6.0	20.4	38.5	12.6
Q4	<b>337.9</b>	20.8	6.3	19.8	38.5	14.6
2016 Q1	<b>330.3</b>	24.4	5.4	17.8	40.2	12.2
Q2 <sup>2</sup>	<b>334.4</b>	23.0	5.3	19.9	39.9	11.9
<b>Female</b>						
2015 Q2	<b>206.7</b>	30.2	14.2	23.5	11.5	20.6
Q3	<b>200.5</b>	29.5	13.6	24.1	12.3	20.5
Q4	<b>207.7</b>	26.0	14.4	24.5	12.3	22.8
2016 Q1	<b>197.9</b>	26.8	13.1	24.4	12.2	23.5
Q2 <sup>2</sup>	<b>202.6</b>	26.3	13.8	26.8	12.5	20.6

<sup>1</sup> National version of the International Standard Classification of Occupations (ISCO-08)

<sup>2</sup> Provisional

**Table 5: Employment by hours worked, 2nd Quarter 2015 to 2nd Quarter 2016**

	Total employed aged 16+ (000's)	Total hours worked (000's)	% having worked for:					Average number of hours worked
			0 hour	1 to 23 hours	24 to 40 hours	41 to 50 hours	51 and above	
<b>Both sexes</b>								
2015 Q2	<b>542.6</b>	19,900	5.9	12.3	40.9	27.0	13.9	39.0
Q3	<b>536.5</b>	19,900	6.3	12.1	38.7	27.9	15.0	39.5
Q4	<b>545.6</b>	20,100	6.5	10.7	42.9	24.7	15.2	39.4
2016 Q1	<b>528.2</b>	18,400	5.6	16.5	43.3	22.1	12.5	36.8
Q2 <sup>1</sup>	<b>537.0</b>	20,000	5.8	11.2	40.6	27.2	15.3	39.6
<b>Male</b>								
2015 Q2	<b>335.9</b>	13,000	6.5	8.6	38.7	29.4	16.8	41.3
Q3	<b>336.0</b>	13,100	6.7	9.2	35.5	30.1	18.5	41.9
Q4	<b>337.9</b>	13,100	6.4	7.5	41.8	26.3	18.0	41.5
2016 Q1	<b>330.3</b>	12,100	6.3	13.5	40.4	24.4	15.4	38.9
Q2 <sup>1</sup>	<b>334.4</b>	13,100	6.3	8.5	38.0	28.6	18.6	41.7
<b>Female</b>								
2015 Q2	<b>206.7</b>	6,900	5.0	18.2	44.5	23.2	9.1	35.3
Q3	<b>200.5</b>	6,800	5.6	17.1	43.9	24.3	9.1	35.7
Q4	<b>207.7</b>	7,000	6.6	16.0	44.6	22.2	10.6	35.9
2016 Q1	<b>197.9</b>	6,300	4.3	21.8	48.1	18.2	7.6	33.3
Q2 <sup>1</sup>	<b>202.6</b>	7,000	5.0	15.6	44.7	24.9	9.8	36.2

0 hour not included in total hours worked & in average number of hours worked

<sup>1</sup> Provisional

**Table 6: Unemployment by educational attainment, 2nd Quarter 2015 to 2nd Quarter 2016**

	Unemployed Mauritians aged 16+ (000s)	Primary			Secondary			Tertiary	
		Total (%)	Below CPE (%)	Passed CPE (%)	Total (%)	Below SC (%)	Passed SC (%)	Passed HSC (%)	(%)
<b>Both sexes</b>									
2015 Q2	<b>46.0</b>	<b>16.1</b>	10.7	5.4	<b>64.1</b>	33.7	16.7	13.7	<b>19.8</b>
Q3	<b>42.6</b>	<b>17.1</b>	13.1	4.0	<b>62.9</b>	33.8	13.4	15.7	<b>20.0</b>
Q4	<b>46.6</b>	<b>17.2</b>	12.9	4.3	<b>60.1</b>	27.9	13.5	18.7	<b>22.7</b>
2016 Q1	<b>43.5</b>	<b>13.8</b>	9.9	3.9	<b>63.4</b>	37.2	13.3	12.9	<b>22.8</b>
Q2 <sup>1</sup>	<b>43.1</b>	<b>15.3</b>	11.6	3.7	<b>62.0</b>	30.2	15.3	16.5	<b>22.7</b>
<b>Male</b>									
2015 Q2	<b>18.2</b>	<b>14.8</b>	10.4	4.4	<b>69.8</b>	40.7	15.4	13.7	<b>15.4</b>
Q3	<b>17.1</b>	<b>21.7</b>	17.0	4.7	<b>64.3</b>	40.9	8.2	15.2	<b>14.0</b>
Q4	<b>19.7</b>	<b>17.8</b>	13.7	4.1	<b>58.3</b>	28.4	12.7	17.2	<b>23.9</b>
2016 Q1	<b>17.2</b>	<b>16.3</b>	13.4	2.9	<b>58.1</b>	33.1	10.5	14.5	<b>25.6</b>
Q2 <sup>1</sup>	<b>18.4</b>	<b>14.7</b>	11.4	3.3	<b>56.0</b>	29.3	10.9	15.8	<b>29.3</b>
<b>Female</b>									
2015 Q2	<b>27.8</b>	<b>16.9</b>	10.8	6.1	<b>60.4</b>	29.1	17.6	13.7	<b>22.7</b>
Q3	<b>25.5</b>	<b>14.1</b>	10.6	3.5	<b>62.0</b>	29.0	16.9	16.1	<b>23.9</b>
Q4	<b>26.9</b>	<b>16.8</b>	12.3	4.5	<b>61.3</b>	27.5	14.1	19.7	<b>21.9</b>
2016 Q1	<b>26.3</b>	<b>12.2</b>	7.6	4.6	<b>66.9</b>	39.9	15.2	11.8	<b>20.9</b>
Q2 <sup>1</sup>	<b>24.7</b>	<b>15.8</b>	11.7	4.1	<b>66.4</b>	30.8	18.6	17.0	<b>17.8</b>

<sup>1</sup> Provisional

**Table 7: Unemployment by age, 2nd Quarter 2015 to 2nd Quarter 2016**

		In Thousands			
		All aged 16 and over	Age group (years)		
			16-24	25-49	50+
<b>Both sexes</b>					
	2015 Q2	46.0	19.7	21.8	4.5
	Q3	42.6	20.7	19.8	2.1
	Q4	46.6	22.1	21.2	3.3
	2016 Q1	43.5	18.7	22.2	2.6
	Q2 <sup>1</sup>	43.1	19.3	20.8	3.0
<b>Change, latest quarter over:</b>					
	previous quarter	-0.4	0.6	-1.4	0.4
	same quarter a year ago	-2.9	-0.4	-1.0	-1.5
<b>Male</b>					
	2015 Q2	18.2	9.4	6.3	2.5
	Q3	17.1	9.5	6.6	1.0
	Q4	19.7	10.0	7.3	2.4
	2016 Q1	17.2	8.5	7.2	1.5
	Q2 <sup>1</sup>	18.4	9.1	7.6	1.7
<b>Change, latest quarter over:</b>					
	previous quarter	1.2	0.6	0.4	0.2
	same quarter a year ago	0.2	-0.3	1.3	-0.8
<b>Female</b>					
	2015 Q2	27.8	10.3	15.5	2.0
	Q3	25.5	11.2	13.2	1.1
	Q4	26.9	12.1	13.9	0.9
	2016 Q1	26.3	10.2	15.0	1.1
	Q2 <sup>1</sup>	24.7	10.2	13.2	1.3
<b>Change, latest quarter over:</b>					
	previous quarter	-1.6	0.0	-1.8	0.2
	same quarter a year ago	-3.1	-0.1	-2.3	-0.7

<sup>1</sup> Provisional

**Table 8: Unemployment by work experience, 2nd Quarter 2015 to 2nd Quarter 2016**

	Unemployed Mauritians aged 16+	No. of first job seekers	Unemployed with work experience by industry *					
			Total	Manuf.	Construction	Trade	Accommodation & Food Service Activities	Other
			(000s)	(%)	(%)	(%)	(%)	(%)
<b>Both sexes</b>								
2015 Q2	46.0	12.4	33.6	18.2	9.8	21.7	16.1	34.2
Q3	42.6	13.7	28.9	12.1	11.4	23.5	12.8	40.2
Q4	46.6	14.6	32.0	17.8	10.0	21.9	10.6	39.7
2016 Q1	43.5	13.6	29.9	12.7	9.7	23.1	21.4	33.1
Q2 <sup>1</sup>	43.1	12.1	31.0	13.2	11.0	16.8	20.0	39.0
<b>Change, latest quarter over:</b>								
previous quarter	-0.4	-1.5	1.1					
same quarter a year ago	-2.9	-0.3	-2.6					
<b>Male</b>								
2015 Q2	18.2	5.4	12.8	15.6	24.2	14.1	10.9	35.2
Q3	17.1	4.1	13.0	9.2	23.8	20.0	10.8	36.2
Q4	19.7	6.0	13.7	13.1	23.4	14.6	10.2	38.7
2016 Q1	17.2	4.8	12.4	11.3	21.8	17.7	20.2	29.0
Q2 <sup>1</sup>	18.4	4.2	14.2	11.3	19.7	9.2	21.8	38.0
<b>Change, latest quarter over:</b>								
previous quarter	1.2	-0.6	1.8					
same quarter a year ago	0.2	-1.2	1.4					
<b>Female</b>								
2015 Q2	27.8	7.0	20.8	19.7	1.0	26.4	19.2	33.7
Q3	25.5	9.6	15.9	14.5	1.3	26.4	14.5	43.3
Q4	26.9	8.6	18.3	21.3	0.0	27.3	10.9	40.5
2016 Q1	26.3	8.8	17.5	13.7	1.1	26.9	22.3	36.0
Q2 <sup>1</sup>	24.7	7.9	16.8	14.9	3.5	23.2	18.5	39.9
<b>Change, latest quarter over:</b>								
previous quarter	-1.6	-0.9	-0.7					
same quarter a year ago	-3.1	0.9	-4.0					

\* National version of the International Standard Industrial Classification of All Economic Activities (ISIC Revision 4)

<sup>1</sup> Provisional



**Table 9: Economically inactive population by reason, 2nd Quarter 2015 to 2nd Quarter 2016**

	Total Mauritians aged 16+ (000s)	Economically inactive by reason						
		Total	Homemakers	Retired or elderly	Students	Sick or disabled	Other	
		(000s)	(%)	(%)	(%)	(%)	(%)	
<b>Both sexes</b>								
2015 Q2	968.4	379.8	38.7	26.4	21.2	9.2	4.5	
Q3	968.4	389.3	42.1	24.4	21.1	8.8	3.6	
Q4	970.8	378.6	39.9	26.5	21.2	8.9	3.5	
2016 Q1	972.3	400.6	40.8	24.8	19.3	9.7	5.4	
Q2 <sup>1</sup>	975.2	395.1	40.0	26.5	19.4	8.7	5.4	
<b>Male</b>								
2015 Q2	472.4	118.3	1.3	46.1	33.0	15.3	4.3	
Q3	472.6	119.5	0.1	46.3	34.0	14.6	5.0	
Q4	473.7	116.1	0.3	46.9	33.3	14.3	5.2	
2016 Q1	474.6	127.1	0.7	45.7	29.7	16.1	7.8	
Q2 <sup>1</sup>	476.1	123.3	0.2	47.0	30.5	14.8	7.5	
<b>Female</b>								
2015 Q2	496.0	261.5	55.5	17.6	15.8	6.5	4.6	
Q3	495.8	269.8	60.7	14.7	15.5	6.2	2.9	
Q4	497.1	262.5	57.5	17.5	15.8	6.5	2.7	
2016 Q1	497.7	273.5	59.5	15.1	14.5	6.7	4.2	
Q2 <sup>1</sup>	499.1	271.8	58.0	17.2	14.3	6.0	4.5	

<sup>1</sup> Provisional