

Labour force, Employment and Unemployment – Fourth quarter 2015

Introduction

1. This issue of Economic and Social Indicators (ESI) presents a set of estimates of labour force, employment and unemployment for the fourth quarter of 2015, based on the results of the Continuous Multi-Purpose Household Survey (CMPHS) from October to December 2015. The estimates refer to the Mauritian population aged 16 years and above.
2. Annual estimates of labour force including foreign workers derived after integrating data from CMPHS with other sources are given at Annex 3.

Key figures

	Q4 2014	Q3 2015	Q4 2015 ¹	Change	
				Q4 2015 - Q4 2014	Q4 2015 - Q3 2015
Labour force	582,900	579,100	592,200	+9,300	+13,100
Employment	538,900	536,500	545,600	+6,700	+9,100
Unemployment	44,000	42,600	46,600	+2,600	+4,000
Unemployment rate (%)	7.5	7.4	7.9	+0.4	+0.5
Seasonally adjusted unemployment rate (%)	8.3	7.6	8.6	+0.3	+1.0

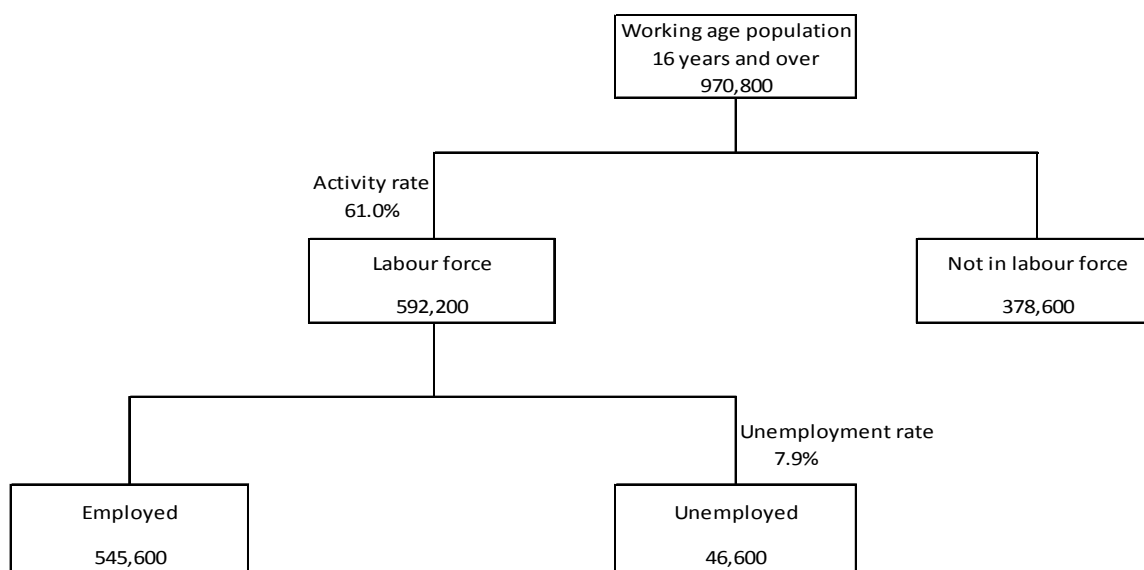
¹Provisional

Labour market overview, fourth quarter 2015

3. Compared with the corresponding quarter of 2014, there has been an increase in the labour force (+9,300) with an increase in both employment (+6,700) and unemployment (+2,600).
4. Compared with the previous quarter, labour force increased by 13,100 with an increase in both employment (+9,100) and unemployment (+4,000).

NOTE: The increase in employment, e.g 6,700 mentioned in paragraph 3 represents the net change in employment level i.e the combined effect of employment creations and losses during the period under reference.

Chart 1: The Labour Market, 4th quarter 2015



Labour force participation – increasing participation of both males and females

5. The activity rate for the fourth quarter 2015 was 61.0%, up by 0.6 percentage point from 60.4% in the corresponding quarter one year earlier. The male activity rate increased by 0.8 percentage point to 75.5% and the female rate by 0.4 percentage point to 47.2%.
6. Compared with the previous quarter, the activity rate increased by 1.2 percentage points to 61.0%. The male activity rate increased by 0.8 percentage point from 74.7% to 75.5% and the female activity rate by 1.6 percentage points from 45.6% to 47.2%.

Employment

7. From fourth quarter 2014 to fourth quarter 2015, employment increased by 6,700 to 545,600; male employment increased by 5,000 to 337,900 and female employment by 1,700 to 207,700.
8. Compared with the previous quarter, employment increased by 9,100 with an increase in both female (+7,200) and male employment (+1,900)

Unemployment

4th Quarter 2014 to 4th Quarter 2015

9. From fourth quarter 2014 to fourth quarter 2015, the number of unemployed persons increased by 2,600 (+900 males and +1,700 females).
10. The unemployment rate increased by 0.4 percentage point from 7.5% to 7.9% at the fourth quarter 2015 compared to the fourth quarter 2014. Male unemployment rate

increased by 0.2 percentage point to 5.5% and female unemployment rate increased by 0.6 percentage point to 11.5%.

3rd Quarter 2015 to 4th Quarter 2015

11. When compared with the third quarter of 2015, the total number of unemployed persons increased by 4,000. There were increases in both males (+2,600) and females (+1,400).
12. From third quarter 2015 to fourth quarter 2015, the unemployment rate increased by 0.5 percentage point with increases in both males (0.7 percentage point) and females (0.2 percentage point).
13. At the fourth quarter 2015, youth unemployed aged 16 to 24 years numbered 22,100 (10,000 males and 12,100 females) compared to 20,700 (9,500 males and 11,200 females) at the previous quarter and 17,600 (8,400 males and 9,200 females) at the corresponding quarter of 2014.
14. The main characteristics of the unemployed as at fourth quarter 2015 were as follows:
 - (i) The 46,600 unemployed comprised 19,700 males (42%) and 26,900 females (58%).
 - (ii) Around 28,300 (61%) of the unemployed were single. Among males the majority (77%) was single compared to 49% among the females.
 - (iii) Some 6,000 or 13% had not reached the Certificate of Primary Education (CPE) level or equivalent and a further 13,000 (28%) did not have the Cambridge School Certificate (SC) or equivalent.
 - (iv) Around 37,000 (79%) had been looking for work for up to one year and the remaining 9,600 (21%) for more than one year.
 - (v) About 32,000 (69%) had working experience and 14,600 (31%) were looking for a job for the first time.
 - (vi) Around 21,400 (46%) were registered at the Employment Service.
 - (vii) There were 11,100 (24%) young persons aged 16 to 24 years, not yet married and looking for a first job. Some 3,900 (35%) of them had not passed SC.
 - (viii) Ever married (including widowed, divorced or separated) unemployed persons aged 25 to 44 years and having worked before numbered 10,400. Among them, about 6,400 (62%) had not passed SC.
 - (ix) 5,200 or 11% of the unemployed were heads of households.
 - (x) 4,900 (11%) lived in households with no employed persons.

Seasonally adjusted unemployment rate

15. Seasonally adjusted unemployment rate for the fourth quarter of 2015 was 8.6%, higher than the rates of 7.6% and 8.3% for the third quarter 2015 and the corresponding quarter of 2014 respectively.

Economically inactive population

16. The number of persons aged 16 years and over, not forming part of the labour force (inactive population) was estimated at 378,600 at the fourth quarter 2015 compared to 389,300 in the previous quarter and 381,800 in the corresponding quarter of 2014.
17. The inactive population was made up of 116,100 males and 262,500 females. Among inactive males, around 47% were 'retired or old persons' and 33% were students. Among females, 58% were homemakers; 18% were 'retired or old persons' followed by 16% students.

Employment and Unemployment estimates - Year 2015¹

18. Based on the results of the survey for the four quarters of the current year, the following are the estimates of employment and unemployment for 2015:

	Year 2014	Year 2015¹	Change
Employment	530,900	538,300	+7,400
Unemployment	44,800	46,300	+1,500
Unemployment rate (%)	7.8	7.9	+0.1

¹Provisional

19. The employment level of Mauritians increased by 7,400 from 530,900 in 2014 to 538,300 in 2015. It is to be noted that this increase represents the net change in employment level, i.e the combined effect of employment creations and losses during the period under reference.
20. Unemployment rate for year 2015 stood at 7.9% compared to 7.8% for 2014.

Sampling errors

21. The estimates in this publication are based on the results of a sample survey and are thus subject to sample variability. Standard errors and confidence intervals give an indication of this variability.
22. The standard error of the estimates and the 95% confidence interval which represent a 95% chance that the true value lies within that interval, are given in the tables that follow.

Estimated labour force, employment and unemployment by sex, 4th quarter 2014 – 4th quarter 2015

Both Sexes

		Estimates	Standard Error	95% confidence interval	
				Lower limit	Upper limit
Labour force					
	2014 Q4	582,900	13,800	555,700	610,100
	2015 Q1	579,400	9,700	560,400	598,600
	Q2	588,600	10,200	568,600	608,600
	Q3	579,100	10,300	558,900	599,300
	Q4 ¹	592,200	13,000	566,800	617,800
Employment					
	2014 Q4	538,900	13,100	513,000	564,800
	2015 Q1	529,100	8,900	511,600	546,800
	Q2	542,600	9,900	523,100	562,200
	Q3	536,500	9,900	517,100	555,900
	Q4 ¹	545,600	12,500	521,000	570,300
Unemployment					
	2014 Q4	44,000	3,300	37,600	50,400
	2015 Q1	50,300	3,000	44,400	56,400
	Q2	46,000	2,800	40,400	51,400
	Q3	42,600	2,500	37,700	47,500
	Q4 ¹	46,600	2,800	41,000	52,200
Unemployment rate, %					
	2014 Q4	7.5	0.5	6.5	8.6
	2015 Q1	8.7	0.5	7.7	9.6
	Q2	7.8	0.5	6.9	8.7
	Q3	7.4	0.4	6.5	8.2
	Q4 ¹	7.9	0.5	7.0	8.8
Activity rate, %					
	2014 Q4	60.4	0.7	59.1	61.8
	2015 Q1	60.0	0.6	58.9	61.2
	Q2	60.8	0.7	59.4	62.1
	Q3	59.8	0.7	58.4	61.2
	Q4 ¹	61.0	0.7	59.6	62.4

¹ Provisional

Estimated labour force, employment and unemployment by sex, 4th quarter 2014 – 4th quarter 2015

Male

		Estimates	Standard Error	95% confidence interval	
				Lower limit	Upper limit
Labour force					
	2014 Q4	351,700	8,600	334,800	368,600
	2015 Q1	349,500	6,000	337,700	361,300
	Q2	354,100	6,800	340,600	367,500
	Q3	353,100	6,800	339,800	366,400
	Q4 ¹	357,600	8,100	341,700	373,600
Employment					
	2014 Q4	332,900	8,400	316,400	349,500
	2015 Q1	326,000	5,700	314,900	337,200
	Q2	335,900	6,800	322,500	349,300
	Q3	336,000	6,600	323,100	348,900
	Q4 ¹	337,900	8,100	321,900	354,000
Unemployment					
	2014 Q4	18,800	1,900	14,900	22,500
	2015 Q1	23,500	2,100	19,300	27,600
	Q2	18,200	1,500	15,200	21,100
	Q3	17,100	1,700	13,800	20,400
	Q4 ¹	19,700	1,600	16,500	22,800
Unemployment rate, %					
	2014 Q4	5.3	0.5	4.3	6.4
	2015 Q1	6.7	0.6	5.6	7.9
	Q2	5.1	0.4	4.3	6.0
	Q3	4.8	0.5	3.9	5.7
	Q4 ¹	5.5	0.5	4.6	6.4
Activity rate, %					
	2014 Q4	74.7	0.8	73.1	76.3
	2015 Q1	74.2	0.7	72.8	75.6
	Q2	75.0	0.8	73.4	76.5
	Q3	74.7	0.8	73.2	76.3
	Q4 ¹	75.5	0.8	74.0	77.0

¹ Provisional

Estimated labour force, employment and unemployment by sex, 4th quarter 2014 – 4th quarter 2015

Female

		Estimates	Standard Error	95% confidence interval	
				Lower limit	Upper limit
Labour force					
	2014 Q4	231,200	6,800	217,900	244,600
	2015 Q1	229,900	5,800	218,500	241,500
	Q2	234,500	6,000	222,700	246,300
	Q3	226,000	6,100	213,900	238,100
	Q4 ¹	234,600	7,000	220,900	248,400
Employment					
	2014 Q4	206,000	6,300	193,700	218,300
	2015 Q1	203,100	5,500	192,400	213,900
	Q2	206,700	5,700	195,600	217,900
	Q3	200,500	5,900	188,900	212,100
	Q4 ¹	207,700	6,400	195,100	220,300
Unemployment					
	2014 Q4	25,200	2,200	21,000	29,500
	2015 Q1	26,800	2,200	22,500	31,300
	Q2	27,800	2,200	23,400	32,200
	Q3	25,500	1,900	21,800	29,200
	Q4 ¹	26,900	2,300	22,500	31,400
Unemployment rate, %					
	2014 Q4	10.9	0.9	9.2	12.6
	2015 Q1	11.7	0.9	9.9	13.5
	Q2	11.9	0.9	10.1	13.6
	Q3	11.3	0.8	9.7	12.9
	Q4 ¹	11.5	0.9	9.7	13.2
Activity rate, %					
	2014 Q4	46.8	0.9	45.1	48.5
	2015 Q1	46.5	0.9	44.8	48.2
	Q2	47.3	1.0	45.3	49.3
	Q3	45.6	1.0	43.6	47.5
	Q4 ¹	47.2	1.0	45.3	49.1

¹ Provisional

Longer time series

- The following graphs show the series for employment, unemployment and activity rate from 4th quarter 2011 to 4th quarter 2015.

Chart 2: Employment by quarter, 4th quarter 2011 – 4th quarter 2015

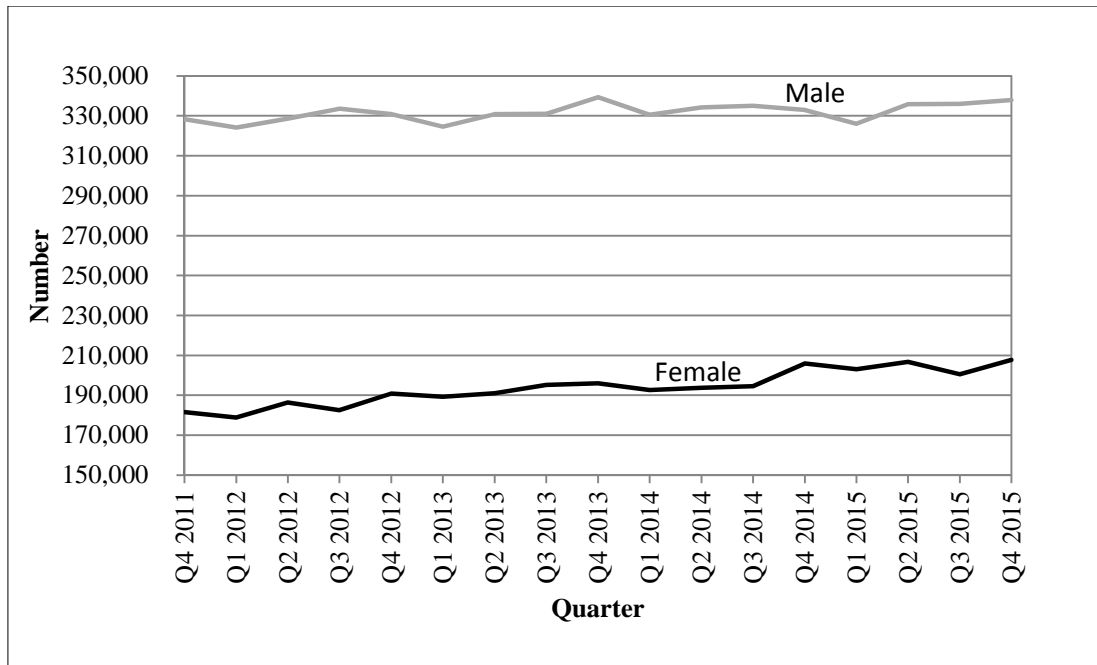


Chart 3: Unemployment rate by quarter, 4th quarter 2011 – 4th quarter 2015

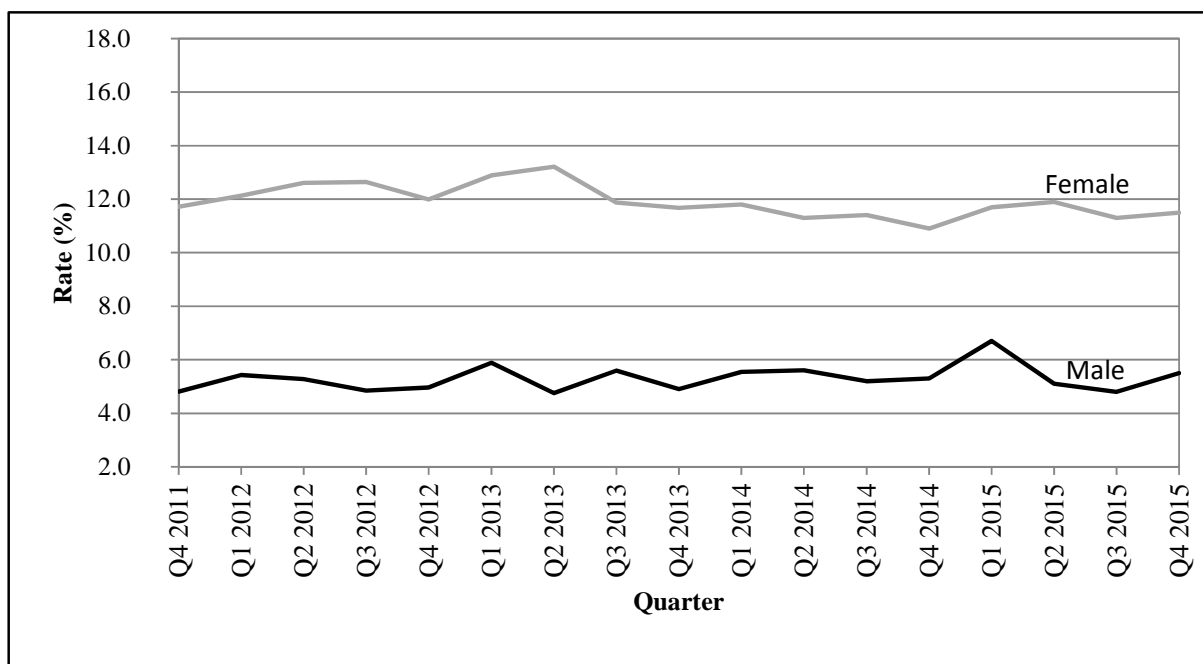
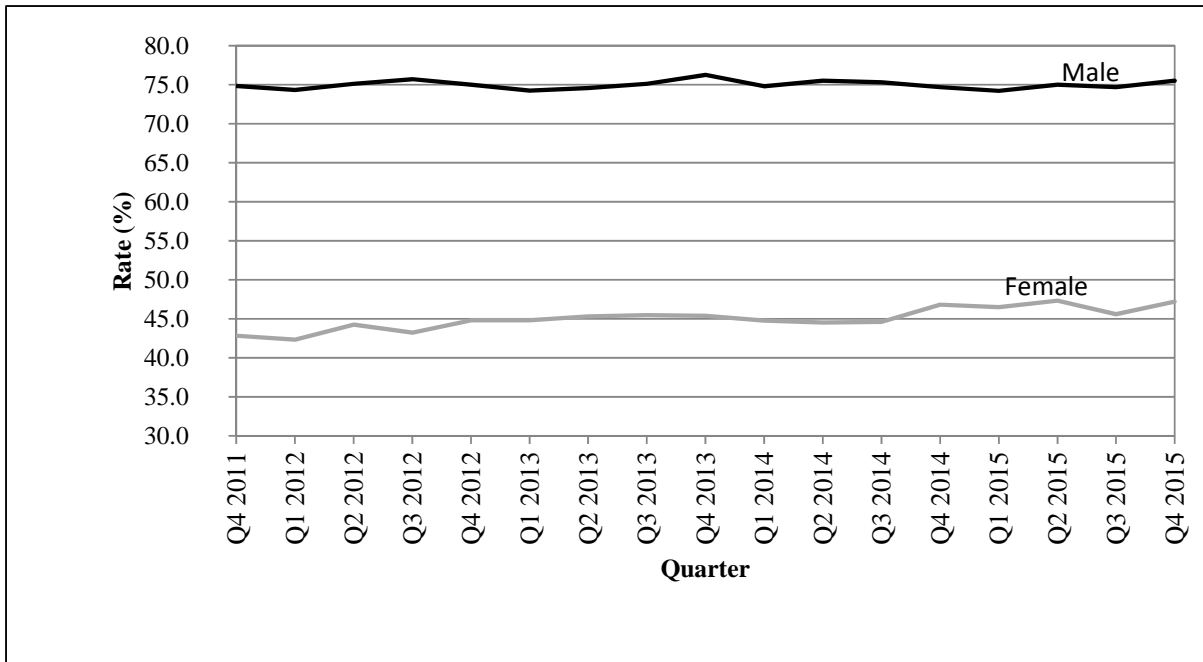


Chart 4: Activity rate by quarter, 4th quarter 2011 – 4th quarter 2015



The following tables together with the web version of this publication can be downloaded from Statistics Mauritius website at <http://statsmauritius.govmu.org> From the homepage, click on 'Statistics by subject' followed by 'labour' then select the appropriate publication under the heading 'Publications – Economic and Social Indicators'.

List of tables

Table 1: Labour market activity by status, 4th Quarter 2014 to 4th Quarter 2015

Table 2: Labour force characteristics by age and sex, 4th Quarter 2015

Table 3: Employment by industrial activity, 4th Quarter 2014 to 4th Quarter 2015

Table 4: Employment by occupational group, 4th Quarter 2014 to 4th Quarter 2015

Table 5: Employment by hours worked, 4th Quarter 2014 to 4th Quarter 2015

Table 6: Unemployment by educational attainment, 4th Quarter 2014 to 4th Quarter 2015

Table 7: Unemployment by age, 4th Quarter 2014 to 4th Quarter 2015

Table 8: Unemployment by work experience, 4th Quarter 2014 to 4th Quarter 2015

Table 9: Economically inactive population by reason, 4th Quarter 2014 to 4th Quarter 2015

Statistics Mauritius
Ministry of Finance and Economic Development
Port Louis

March 2016

Contact persons: (1) Ms. N. Ramjan (Statistician) Email: nramjan@govmu.org (2) Ms. P. Koonjul (Senior Statistical Officer) Email: pkoonjul@govmu.org Statistics Mauritius LIC Centre, Port Louis Tel: 2081800 Fax: 2114150
--

NOTES

Release of Labour Force data

Labour Force statistics are compiled and published in the “Economic and Social Indicators” in March, June, September and December according to an advance calendar posted on the website of Statistics Mauritius (<http://statsmauritius.govmu.org>). This issue provides data for the fourth quarter 2015 compared to the previous quarter and to the same quarter a year ago.

However, where appropriate, historical series are also provided for the main indicators.

The CMPHS Survey methodology

Data collection

Face to face interviews of household members are carried out by qualified interviewers recruited by the office.

Frequency of data collection

Data collection is carried out monthly except in 2004 when it was carried out every quarter. Up to 2005, the reference period for data on labour force was the last week of the survey month. As from 2006, the reference week has been changed to the second week of the survey month so that estimates can be published within one quarter of the reference period, as required by the IMF Special Data Dissemination System (SDDS) to which the country has graduated on 28 February 2012.

Scope and coverage of collection

All private Mauritian households in the islands of Mauritius and Rodrigues are covered.

Sampling method

A Stratified two-stage sampling design is used. At the first stage, Primary Sampling Units (PSUs) are selected with probability proportional to size and at the second stage, a fixed number of households is selected from each selected PSU.

Prior to 2005, the first stage stratification factors were urban, semi urban and rural geographical locations. As from 2005, the Relative Development Index (RDI) is used as the spatial stratification factor. This index is based on 12 variables encompassing housing and living conditions, literacy and education, and employment derived from the 2011 Housing and Population Census to rank PSUs. A set of RDIs for administrative regions has been published in the series "Economic and Social Indicators" - Issue No. 977.

The second stage stratification criteria are community, household size and average monthly expenditure of the household.

Sample size

From 1999 to 2003, around 6,500 households were covered each year. In 2004, the sample was increased to 8,640 so that reliable quarterly estimates of labour force, employment and unemployment could be worked out. As from 2005, the sample for the year has been further increased to 11,280. Furthermore, in order to measure quarterly changes, 50% of the households sampled in a quarter are re-interviewed in the following quarter; for example, 50% of the households sampled in the first quarter of 2005 have been re-interviewed in the second quarter of 2005.

Questionnaire

The CMPHS questionnaire comprises three modules: a basic module common to all rounds of the survey covering the general characteristics of the population (b) a second module covering labour force with in-depth investigation and a core set of questions which are kept constant at all rounds of the survey and (c) a third module grouping other topics of interest but investigated in less details.

Estimation and reliability of results

Estimates worked out from household survey data are inevitably subject to sampling variability since they are based on information collected from only a sample of households rather than from all households. The Standard Error (S.E) which is a measure of this variability, used to set confidence intervals for any estimate (whether a total or a rate) derived from the sample. For example, a 95% confidence interval indicates that there is 95% chance that the upper and lower limits of the interval enclose the true value (which would be obtained if all households had been surveyed). Standard errors and confidence intervals are calculated for the main labour force estimates.

Definitions

Household

A household is defined as either a person living on his/her own or a group of two or more persons, who may or may not be related, but who live together and make common provision for food and other essentials for living.

Employment

Employed population consists of Mauritians aged 16 years and above (16+) who have worked for pay, profit or family gain for at least one hour during the reference week of a month. It includes those who are temporarily absent from work for reasons such as leave with pay, leave without pay and temporary disorganisation of work (bad weather, break down of equipment, lack of order, etc.).

It is to be noted that as from year 2007, labour force estimates are based on population aged 16 years and above, following the amendment to the Labour Act in December 2006 whereby the minimum legal working age is 16 years, and the subsequent recommendation by the ILO to be in line with the amended Labour Act.

Unemployment

Unemployed population comprises all Mauritians aged 16+ who are not working but who are looking for work and are available for work during the reference period.

Labour force

Labour force or active population is made up of employed and unemployed population.

Unemployment rate

Unemployment rate is the ratio (%) of unemployment to labour force.

Inactive population

Inactive population includes all Mauritians aged 16+ years, not forming part of the labour force for reasons such as attendance at educational institutions, engagement in household duties, retirement, old age and infirmity/disablement.

Activity rate

Activity rate is the ratio (%) of labour force to population aged 16+ (active and inactive population).

Employer

An employer is a person who operates his/her own business or trade and hires one or more employees.

Own account worker

An Own account worker is a person who operates his/her own business or trade but does not hire employees. He/She may be working alone or with the help of contributing family workers.

Employee

An Employee is a person who works for pay for someone else, even in a temporary capacity.

Apprentice

An Apprentice is a person being trained for a job or trade and does not receive pay or may just receive some pocket money; an apprentice is considered as an employee.

Contributing family worker

A Contributing family worker is a person who works without pay in an enterprise operated by a family member.

Educational attainment

Primary: comprises persons who have studied up to a “Standard” between Standard 1 and the Certificate of Primary Education (CPE) or equivalent.

Secondary: comprises persons who have studied up to a “Form” between Form 1 and the Higher School Certificate (HSC) or equivalent.

Tertiary: comprises persons who in addition to their secondary educational certificates (SC and HSC or equivalent) also possess either a certificate/diploma (which is above the HSC but below a first degree) or a degree.

Annex 3

Annual labour force estimates based on data from different data sources, 2011 - 2015

	Labour force			Employment				Unemployment ¹	
	Mauritians aged 16+	Foreign workers	Total	in large establishments	outside large establishments	Total	of whom Mauritians	Number	Rate
	(000s)	(000s)	(000s)	(000s)	(000s)	(000s)	(000s)	(000s)	(%)
Both sexes									
2011	548.6	23.0	571.6	310.7	218.2	528.9	505.9	42.7	7.8
2012	556.3	24.0	580.3	311.5	224.2	535.7	511.7	44.6	8.0
2013	571.2	26.3	597.5	312.5	239.5	552.0	525.7	45.5	8.0
2014	575.7	28.3	604.0	313.3	245.9	559.2	530.9	44.8	7.8
2015 ²	584.6	28.3	612.9	313.5	253.1	566.6	538.3	46.3	7.9
Change current year over previous:	8.9	0.0	8.9	0.2	7.2	7.4	7.4	1.5	0.1
Male									
2011	343.3	13.4	356.7	197.8	141.6	339.4	326.0	17.3	5.0
2012	346.9	14.2	361.1	198.3	144.7	343.0	328.8	18.1	5.2
2013	350.4	16.5	366.9	199.1	149.2	348.3	331.8	18.6	5.3
2014	352.8	18.3	371.1	199.1	152.6	351.7	333.4	19.4	5.5
2015 ²	353.3	18.6	371.9	198.1	154.3	352.4	333.8	19.5	5.5
Change current year over previous:	0.5	0.3	0.8	-1.0	1.7	0.7	0.4	0.1	0.0
Female									
2011	205.3	9.6	214.9	112.9	76.6	189.5	179.9	25.4	12.4
2012	209.4	9.8	219.2	113.2	79.5	192.7	182.9	26.5	12.7
2013	220.8	9.8	230.6	113.4	90.3	203.7	193.9	26.9	12.2
2014	222.9	10.0	232.9	114.2	93.3	207.5	197.5	25.4	11.4
2015 ²	231.3	9.7	241.0	115.4	98.8	214.2	204.5	26.8	11.6
Change current year over previous:	8.4	-0.3	8.1	1.2	5.5	6.7	7.0	1.4	0.2

¹ Unemployment figures and rate refer to Mauritians

² Provisional

Note:

1. The above figures have been worked out in order to give a set of comparable labour force estimates obtained from different sources. Users are cautioned in the use of these figures given that there are differences related to the reference period, coverage and methodology. The different sources from which these estimates have been obtained are as follows:

- i CMPHS for Mauritian labour force estimates which are subject to sampling variability as mentioned at Annex 1.
- ii The Annual Survey of Employment and Earnings (SEE) carried out in March of each year. Employment figures refer to jobs in large establishments employing 10 or more persons and include both Mauritians and foreign workers.
- iii Employment in 'other than large' establishments has been estimated after reconciling data from CMPHS, SEE and administrative sources.

Table 1: Labour market activity by status, 4th Quarter 2014 to 4th Quarter 2015

In thousands

	Total Mauritian population aged 16 & over	In employment					Unemployed	Total econ. active	Total econ. inactive
		Employees	Employers	Own account workers	Contrib. family workers	Total			
Both sexes									
2014 Q4	964.7	433.4	23.2	71.9	10.4	538.9	44.0	582.9	381.8
2015 Q1	965.6	418.3	20.0	78.8	12.0	529.1	50.3	579.4	386.2
Q2	968.4	422.2	21.9	83.8	14.6	542.6	46.0	588.6	379.8
Q3	968.4	428.4	20.3	74.9	12.9	536.5	42.6	579.1	389.3
Q4 ¹	970.8	432.9	23.3	74.7	14.7	545.6	46.6	592.2	378.6
% change, latest quarter over:									
previous quarter	0.2	1.1	14.8	-0.3	14.0	1.7	9.4	2.3	-2.7
same quarter a year ago	0.6	-0.1	0.4	3.9	41.3	1.2	5.9	1.6	-0.8
Male									
2014 Q4	470.6	258.1	19.9	52.2	2.7	332.9	18.8	351.7	118.9
2015 Q1	471.1	245.6	17.0	59.6	3.8	326.0	23.5	349.5	121.6
Q2	472.4	251.9	18.7	61.4	3.9	335.9	18.2	354.1	118.3
Q3	472.6	262.2	16.6	54.4	2.8	336.0	17.1	353.1	119.5
Q4 ¹	473.7	258.7	19.1	56.5	3.6	337.9	19.7	357.6	116.1
% change, latest quarter over:									
previous quarter	0.2	-1.3	15.1	3.9	28.6	0.6	15.2	1.3	-2.8
same quarter a year ago	0.7	0.2	-4.0	8.2	33.3	1.5	4.8	1.7	-2.4
Female									
2014 Q4	494.1	175.3	3.3	19.7	7.7	206.0	25.2	231.2	262.9
2015 Q1	494.5	172.7	3.0	19.2	8.2	203.1	26.8	229.9	264.6
Q2	496.0	170.3	3.2	22.4	10.7	206.7	27.8	234.5	261.5
Q3	495.8	166.2	3.7	20.5	10.1	200.5	25.5	226.0	269.8
Q4 ¹	497.1	174.2	4.2	18.2	11.1	207.7	26.9	234.6	262.5
% change, latest quarter over:									
previous quarter	0.3	4.8	13.5	-11.2	9.9	3.6	5.5	3.8	-2.7
same quarter a year ago	0.6	-0.6	27.3	-7.6	44.2	0.8	6.7	1.5	-0.2

¹ Provisional

Table 2: Labour force characteristics by age and sex, 4th Quarter 2015¹

	In thousands					
	Mauritian aged 16 and over	Age group (years)				
		16-24	25 - 29	30 - 39	40 - 49	50+
Both sexes						
In employment	545.6	60.9	58.4	138.4	128.7	159.2
Unemployed	46.6	22.1	7.5	9.6	4.1	3.3
Labour force	592.2	83.0	65.9	148.0	132.8	162.5
Economically inactive	378.6	90.1	13.7	32.8	38.1	203.9
Total Population	970.8	173.1	79.6	180.8	170.9	366.4
Employment rate (%)	92.1	73.4	88.6	93.5	96.9	98.0
Unemployment rate (%)	7.9	26.6	11.4	6.5	3.1	2.0
Activity rate (%)	61.0	47.9	82.8	81.9	77.7	44.4
Male						
In employment	337.9	36.6	33.1	84.5	79.3	104.4
Unemployed	19.7	10.0	3.3	3.1	0.9	2.4
Labour force	357.6	46.6	36.4	87.6	80.2	106.8
Economically inactive	116.1	40.4	3.5	2.6	5.6	64.0
Total Population	473.7	87.0	39.9	90.2	85.8	170.8
Employment rate (%)	94.5	78.5	90.9	96.5	98.9	97.8
Unemployment rate (%)	5.5	21.5	9.1	3.5	1.1	2.2
Activity rate (%)	75.5	53.6	91.2	97.1	93.5	62.5
Female						
In employment	207.7	24.3	25.3	53.9	49.4	54.8
Unemployed	26.9	12.1	4.2	6.5	3.2	0.9
Labour force	234.6	36.4	29.5	60.4	52.6	55.7
Economically inactive	262.5	49.7	10.2	30.2	32.5	139.9
Total Population	497.1	86.1	39.7	90.6	85.1	195.6
Employment rate (%)	88.5	66.8	85.8	89.2	93.9	98.4
Unemployment rate (%)	11.5	33.2	14.2	10.8	6.1	1.6
Activity rate (%)	47.2	42.3	74.3	66.7	61.8	28.5

¹ Provisional

Table 3: Employment by industrial activity, 4th Quarter 2014 to 4th Quarter 2015

	Total employed aged 16+	Primary sector	Secondary sector	Tertiary sector	Selected NSIC ¹ Sections			
					Manufacturing	Construction	Wholesale and retail trade	Other services
					C	F	G	H - U
	(000s)	(%)	(%)	(%)	(%)	(%)	(%)	(%)
Both sexes								
2014 Q4	538.9	8.1	27.2	64.7	14.9	10.7	15.1	49.7
2015 Q1	529.1	8.5	26.4	65.1	15.1	9.8	13.6	51.5
Q2	542.6	7.4	24.0	68.6	13.3	9.4	14.6	54.0
Q3	536.5	7.7	24.1	68.2	14.1	8.5	14.8	53.4
Q4 ²	545.6	8.0	25.9	66.1	15.3	9.2	15.1	51.0
Male								
2014 Q4	332.9	9.1	32.6	58.3	13.8	16.6	14.0	44.3
2015 Q1	326.0	10.1	31.1	58.8	13.6	15.5	12.7	46.1
Q2	335.9	8.5	29.2	62.3	12.5	14.6	13.6	48.6
Q3	336.0	8.7	28.8	62.5	13.4	13.2	13.6	48.9
Q4 ²	337.9	9.2	30.6	60.2	14.3	14.4	13.2	47.0
Female								
2014 Q4	206.0	6.4	18.5	75.1	16.6	1.3	16.8	58.4
2015 Q1	203.1	6.1	18.7	75.2	17.4	0.8	15.1	60.1
Q2	206.7	5.7	15.4	78.9	14.4	0.8	16.2	62.7
Q3	200.5	6.0	16.2	77.8	15.3	0.6	16.8	61.0
Q4 ²	207.7	6.1	18.2	75.7	17.1	0.8	18.2	57.5

¹ National version of the International Standard Industrial Classification of All Economic Activities (ISIC Revision 4)

² Provisional

Table 4: Employment by occupational group, 4th Quarter 2014 to 4th Quarter 2015

		ISCO-08 ¹					
		Total employed aged 16+	Managers, Professionals, Technicians & associate professionals	Clerical support workers	Service and sales workers	Agricultural, Craft & related trades workers, Plant & machine operators & assemblers	Elementary occupations
		(000s)	1,2,3 (%)	4 (%)	5 (%)	6,7,8 (%)	9 (%)
Both sexes							
	2014 Q4	538.9	25.0	8.1	19.6	30.6	16.7
	2015 Q1	529.1	24.6	8.5	19.3	30.9	16.7
	Q2	542.6	26.0	8.5	21.0	29.4	15.1
	Q3	536.5	25.2	8.8	21.8	28.7	15.5
	Q4 ²	545.6	22.8	9.4	21.6	28.5	17.7
Male							
	2014 Q4	332.9	22.9	5.4	17.2	41.7	12.8
	2015 Q1	326.0	22.2	6.0	17.8	42.2	11.8
	Q2	335.9	23.3	5.0	19.6	40.5	11.6
	Q3	336.0	22.5	6.0	20.4	38.5	12.6
	Q4 ²	337.9	20.8	6.3	19.8	38.5	14.6
Female							
	2014 Q4	206.0	28.4	12.7	23.3	12.6	23.0
	2015 Q1	203.1	28.3	12.6	21.7	12.8	24.6
	Q2	206.7	30.2	14.2	23.5	11.5	20.6
	Q3	200.5	29.5	13.6	24.1	12.3	20.5
	Q4 ²	207.7	26.0	14.4	24.5	12.3	22.8

¹ National version of the International Standard Classification of Occupations (ISCO-08)

² Provisional

Table 5: Employment by hours worked, 4th Quarter 2014 to 4th Quarter 2015

	Total employed aged 16+ (000's)	Total hours worked (000's)	% having worked for:					Average number of hours worked
			0 hour	1 to 23 hours	24 to 40 hours	41 to 50 hours	51 and above	
Both sexes								
2014 Q4	538.9	19,400	6.2	13.4	40.8	25.0	14.6	38.5
2015 Q1	529.1	18,400	7.4	15.1	41.6	22.6	13.3	38.0
Q2	542.6	19,900	5.9	12.3	40.9	27.0	13.9	39.0
Q3	536.5	19,900	6.3	12.1	38.7	27.9	15.0	39.5
Q4 ¹	545.6	20,100	6.5	10.7	42.9	24.7	15.2	39.4
Male								
2014 Q4	332.9	12,700	5.8	9.7	40.1	26.9	17.5	40.6
2015 Q1	326.0	11,900	8.7	11.1	40.0	23.8	16.4	40.0
Q2	335.9	13,000	6.5	8.6	38.7	29.4	16.8	41.3
Q3	336.0	13,100	6.7	9.2	35.5	30.1	18.5	41.9
Q4 ¹	337.9	13,100	6.4	7.5	41.8	26.3	18.0	41.5
Female								
2014 Q4	206.0	6,700	6.8	19.5	41.7	22.1	9.9	35.0
2015 Q1	203.1	6,500	5.5	21.5	44.1	20.7	8.2	34.0
Q2	206.7	6,900	5.0	18.2	44.5	23.2	9.1	35.3
Q3	200.5	6,800	5.6	17.1	43.9	24.3	9.1	35.7
Q4 ¹	207.7	7,000	6.6	16.0	44.6	22.2	10.6	35.9

0 hour not included in total hours worked & in average number of hours worked

¹ Provisional

Table 6: Unemployment by educational attainment, 4th Quarter 2014 to 4th Quarter 2015

	Unemployed Mauritians aged 16+ (000s)	Primary			Secondary			Tertiary		
		Total (%)	Below CPE (%)	Passed CPE (%)	Total (%)	Below SC (%)	Passed SC (%)	Passed HSC (%)		
Both sexes										
2014 Q4	44.0	19.0	12.3	6.7	63.0	31.5	15.3	16.2	18.0	
2015 Q1	50.3	21.9	14.9	7.0	63.0	29.6	15.7	17.7	15.1	
Q2	46.0	16.1	10.7	5.4	64.1	33.7	16.7	13.7	19.8	
Q3	42.6	17.1	13.1	4.0	62.9	33.8	13.4	15.7	20.0	
Q4 ¹	46.6	17.2	12.9	4.3	60.1	27.9	13.5	18.7	22.7	
Male										
2014 Q4	18.8	25.3	16.2	9.1	60.9	35.5	11.9	13.5	13.8	
2015 Q1	23.5	23.4	16.2	7.2	62.6	36.2	14.0	12.3	14.0	
Q2	18.2	14.8	10.4	4.4	69.8	40.7	15.4	13.7	15.4	
Q3	17.1	21.7	17.0	4.7	64.3	40.9	8.2	15.2	14.0	
Q4 ¹	19.7	17.8	13.7	4.1	58.3	28.4	12.7	17.2	23.9	
Female										
2014 Q4	25.2	14.4	9.5	4.9	64.6	28.4	17.9	18.3	21.0	
2015 Q1	26.8	20.5	13.8	6.7	63.4	23.9	17.2	22.4	16.1	
Q2	27.8	16.9	10.8	6.1	60.4	29.1	17.6	13.7	22.7	
Q3	25.5	14.1	10.6	3.5	62.0	29.0	16.9	16.1	23.9	
Q4 ¹	26.9	16.8	12.3	4.5	61.3	27.5	14.1	19.7	21.9	

¹ Provisional

Table 7: Unemployment by age, 4th Quarter 2014 to 4th Quarter 2015

In Thousands

		All aged 16 and over	Age group (years)		
			16-24	25-49	50+
Both sexes					
	2014 Q4	44.0	17.6	23.3	3.1
	2015 Q1	50.3	23.3	23.6	3.4
	Q2	46.0	19.7	21.8	4.5
	Q3	42.6	20.7	19.8	2.1
	Q4 ¹	46.6	22.1	21.2	3.3
Change, latest quarter over:					
	previous quarter	4.0	1.4	1.4	1.2
	same quarter a year ago	2.6	4.5	-2.1	0.2
Male					
	2014 Q4	18.8	8.4	8.4	2.0
	2015 Q1	23.5	11.2	9.7	2.6
	Q2	18.2	9.4	6.3	2.5
	Q3	17.1	9.5	6.6	1.0
	Q4 ¹	19.7	10.0	7.3	2.4
Change, latest quarter over:					
	previous quarter	2.6	0.5	0.7	1.4
	same quarter a year ago	0.9	1.6	-1.1	0.4
Female					
	2014 Q4	25.2	9.2	14.9	1.1
	2015 Q1	26.8	12.1	13.9	0.8
	Q2	27.8	10.3	15.5	2.0
	Q3	25.5	11.2	13.2	1.1
	Q4 ¹	26.9	12.1	13.9	0.9
Change, latest quarter over:					
	previous quarter	1.4	0.9	0.7	-0.2
	same quarter a year ago	1.7	2.9	-1.0	-0.2

¹ Provisional

Table 8: Unemployment by work experience, 4th Quarter 2014 to 4th Quarter 2015

	Unemployed Mauritians aged 16+	No. of first job seekers	Unemployed with work experience by industry *						
			Total	Manuf.	Construction	Trade	Accommodation & Food Service Activities	Other	
	(000s)	(000s)	(000s)	(%)	(%)	(%)	(%)	(%)	
Both sexes									
2014 Q4	44.0	13.0	31.0	13.1	15.0	16.5	10.3	45.1	
2015 Q1	50.3	17.1	33.2	16.6	19.0	22.3	9.6	32.5	
Q2	46.0	12.4	33.6	18.2	9.8	21.7	16.1	34.2	
Q3	42.6	13.7	28.9	12.1	11.4	23.5	12.8	40.2	
Q4 ¹	46.6	14.6	32.0	17.8	10.0	21.9	10.6	39.7	
Change, latest quarter over:									
previous quarter	4.0	0.9	3.1						
same quarter a year ago	2.6	1.6	1.0						
Male									
2014 Q4	18.8	4.7	14.1	7.8	32.0	16.6	8.8	34.8	
2015 Q1	23.5	6.0	17.5	13.7	36.0	17.1	8.0	25.2	
Q2	18.2	5.4	12.8	15.6	24.2	14.1	10.9	35.2	
Q3	17.1	4.1	13.0	9.2	23.8	20.0	10.8	36.2	
Q4 ¹	19.7	6.0	13.7	13.1	23.4	14.6	10.2	38.7	
Change, latest quarter over:									
previous quarter	2.6	1.9	0.7						
same quarter a year ago	0.9	1.3	-0.4						
Female									
2014 Q4	25.2	8.3	16.9	17.6	0.8	16.5	11.5	53.6	
2015 Q1	26.8	11.1	15.7	19.7	0.0	28.0	11.5	40.8	
Q2	27.8	7.0	20.8	19.7	1.0	26.4	19.2	33.7	
Q3	25.5	9.6	15.9	14.5	1.3	26.4	14.5	43.3	
Q4 ¹	26.9	8.6	18.3	21.3	0.0	27.3	10.9	40.5	
Change, latest quarter over:									
previous quarter	1.4	-1.0	2.4						
same quarter a year ago	1.7	0.3	1.4						

* National version of the International Standard Industrial Classification of All Economic Activities (ISIC Revision 4)

¹ Provisional

Table 9: Economically inactive population by reason, 4th Quarter 2014 to 4th Quarter 2015

	Total Mauritians aged 16+ (000s)	Economically inactive by reason						
		Total (000s)	Homemakers (%)	Retired or elderly (%)	Students (%)	Sick or disabled (%)	Other (%)	
Both sexes								
2014 Q4	964.7	381.8	41.6	24.1	21.4	8.1	4.8	
2015 Q1	965.6	386.2	40.5	25.0	20.5	9.0	5.0	
Q2	968.4	379.8	38.7	26.4	21.2	9.2	4.5	
Q3	968.4	389.3	42.1	24.4	21.1	8.8	3.6	
Q4 ¹	970.8	378.6	39.9	26.5	21.2	8.9	3.5	
Male								
2014 Q4	470.6	118.9	0.7	45.7	33.2	14.6	5.8	
2015 Q1	471.1	121.6	0.2	45.1	30.3	16.4	8.0	
Q2	472.4	118.3	1.3	46.1	33.0	15.3	4.3	
Q3	472.6	119.5	0.1	46.3	34.0	14.6	5.0	
Q4 ¹	473.7	116.1	0.3	46.9	33.3	14.3	5.2	
Female								
2014 Q4	494.1	262.9	60.1	14.3	16.0	5.3	4.3	
2015 Q1	494.5	264.6	59.0	15.8	16.0	5.7	3.5	
Q2	496.0	261.5	55.5	17.6	15.8	6.5	4.6	
Q3	495.8	269.8	60.7	14.7	15.5	6.2	2.9	
Q4 ¹	497.1	262.5	57.5	17.5	15.8	6.5	2.7	

¹ Provisional