

# INTERNATIONAL TRAVEL AND TOURISM

## JANUARY TO SEPTEMBER 2013

### 1. INTRODUCTION

This issue of the Economic and Social Indicators presents data on International Travel and Tourism for the first nine months of 2013. A brief on the compilation of these statistics is given at Annex I and a glossary of terms at Annex II.

### 2. INTERNATIONAL TRAVEL

#### Passenger traffic, January-September 2012 and 2013

	January- September 2012	January- September 2013	% change
Arrivals by			
Air	883,772	912,023	3.2
Sea	30,627	23,005	-24.9
<i>of which Cruise travellers</i>	<i>21,800</i>	<i>16,290</i>	<i>-25.3</i>
<b>Total</b>	<b>914,399</b>	<b>935,028</b>	<b>2.3</b>
Departures by			
Air	913,947	943,241	3.2
Sea	33,742	25,087	-25.7
<b>Total</b>	<b>947,689</b>	<b>968,328</b>	<b>2.2</b>

#### 2.1 Arrivals in January to September 2013

Compared to January to September 2012,

- total arrivals increased by 2.3% to 935,028;
- tourist arrivals increased by 2.8% to 694,443; and
- the number of excursionists (arriving and leaving on the same day) rose by 11.7% to 16,612.

In the first nine months of 2013, 10 cruise ships arrived in the country and carried some 16,290 cruise travellers made up of 4,515 tourists, 6,700 excursionists, 15 Mauritian residents and 5,060 crew members.

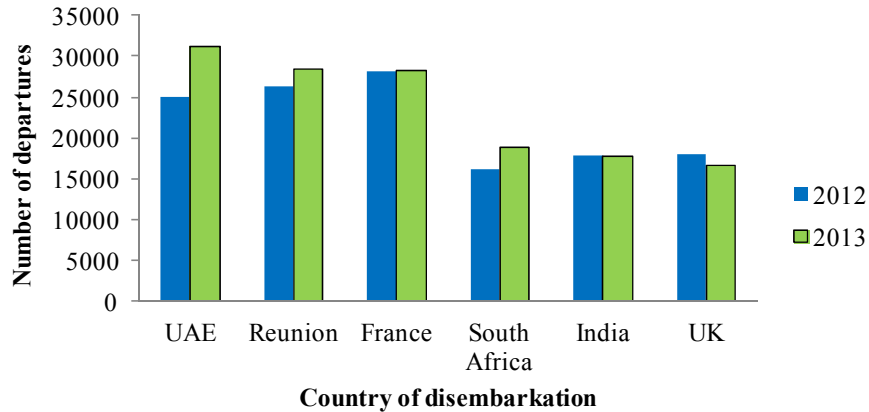
#### 2.2 Departures in January to September 2013

Compared to January to September 2012,

- total departures increased by 2.2% to 968,328 in the first nine months of 2013;
- departures of Mauritian residents increased by 6.3% to 186,576.

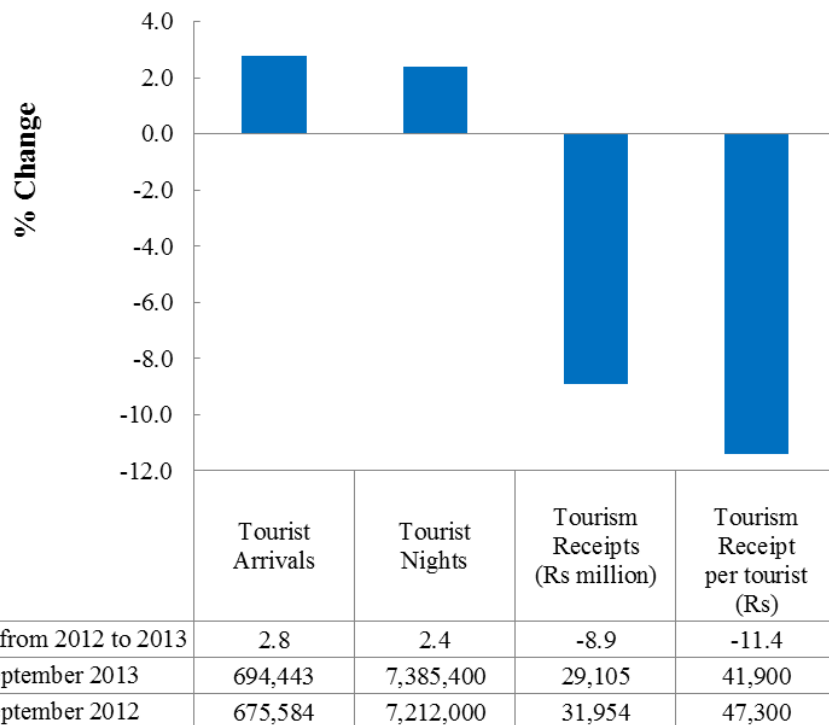
In the first nine months of 2013, the main countries of disembarkation (country of final destination or transit country) for Mauritian residents were United Arab Emirates (31,226 or 16.7%), Reunion Island (28,342 or 15.2%), France (28,248 or 15.1%), Republic of South Africa (18,753 or 10.1%), India (17,804 or 9.5%) and United Kingdom (16,546 or 8.9%).

**Figure 1 - Mauritian departures by major country of disembarkation, January-September 2012 and 2013**



### 3. TOURISM

**Figure 2 - % change in main tourism indicators, January-September 2013 compared to January-September 2012**

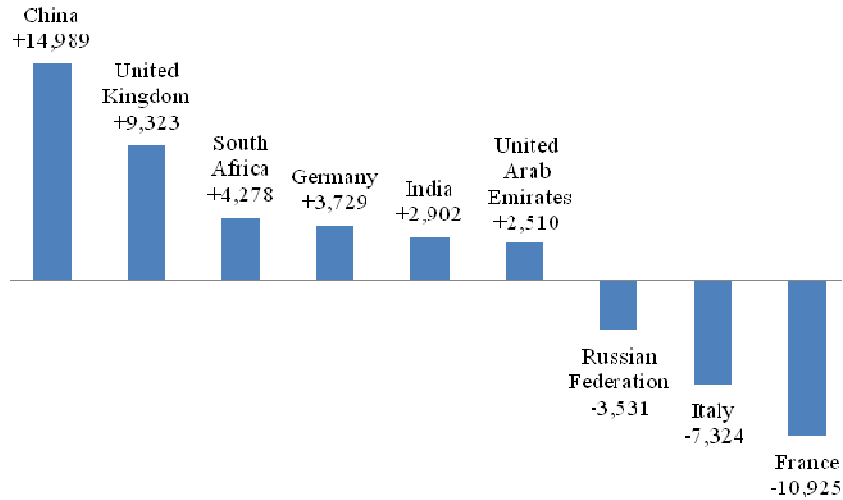


% Change from 2012 to 2013	2.8	2.4	-8.9	-11.4
January-September 2013	694,443	7,385,400	29,105	41,900
January-September 2012	675,584	7,212,000	31,954	47,300

### 3.1 Tourist Arrivals

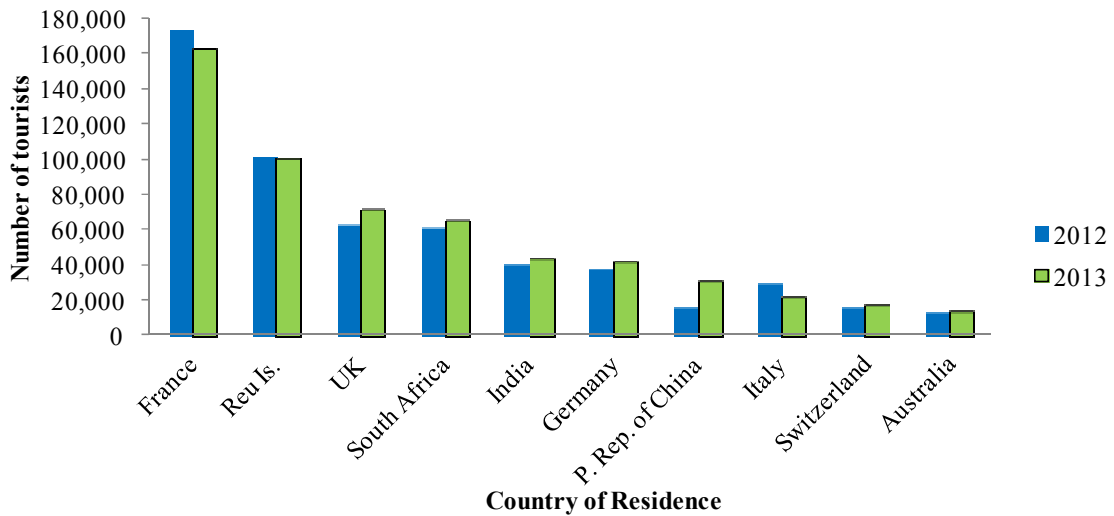
Compared to January to September 2012, the number of tourist arrivals increased by 18,859 or 2.8% to 694,443 in January to September 2013 as a result of main changes shown below.

**Figure 3 - Main changes in tourist arrivals by country January-September 2012 to January-September 2013**



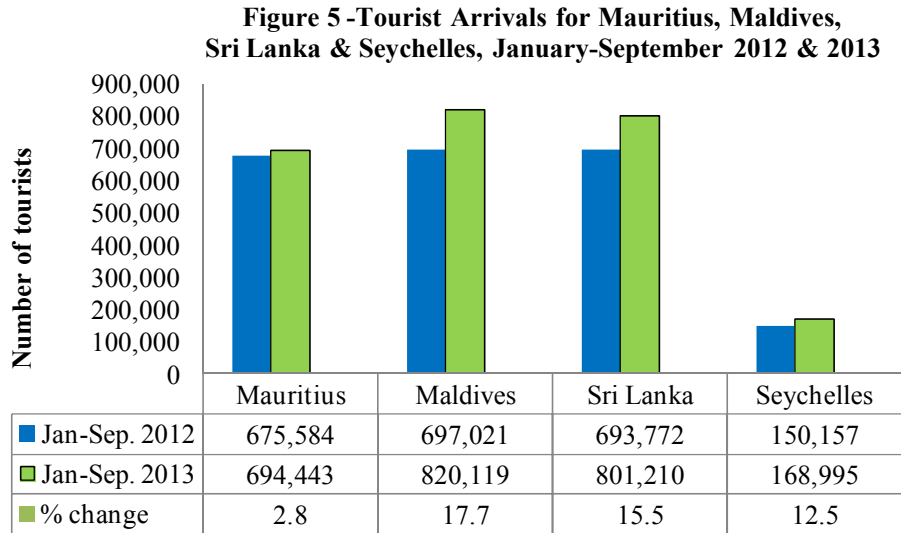
In spite of decreases registered from France and Reunion, these two countries remained the two top tourist generating countries and respectively contributed 23.5% and 14.5% of all tourist arrivals in January-September 2013.

**Figure 4 - Tourist Arrivals from main and emerging markets , January-September 2012 and 2013**



### 3.2 Tourist arrivals in Mauritius compared to selected tourist destinations

During the first nine months of 2013, Mauritius registered a much lower growth in tourist arrivals than in Maldives, Sri Lanka and Seychelles.



Source :Seychelles National Bureau of Statistics; Maldives Statistics section - Ministry of Tourism Arts & Culture; Sri lanka Tourism Development Authority

### 3.3 Tourist Nights

Compared to January to September 2012,

- the number of nights spent by tourists increased by 2.4% from 7,212,000 to 7,385,400;
- the average length of stay decreased from 10.7 to 10.6.

### 3.4 Tourism Receipts

According to the Bank of Mauritius, the gross tourism receipts decreased by 8.9% from Rs 31,954 million in January-September 2012 to Rs 29,105 million in January-September 2013. Tourism receipts per tourist therefore declined from Rs 47,298 to Rs 41,911.

### 3.5 Employment

Employment data for the tourism sector as obtained from the Survey of Employment and Earnings relate to employment in restaurants, hotels and, travel and tourism establishments with 10 or more workers. Latest available data indicate that employment in these establishments increased by 0.2% from 28,427 in March 2012 to 28,477 in March 2013.

### 3.6 Accommodation

Registered hotels in the island of Mauritius

As at end of September 2013, there were 113 registered hotels of which 106 were in operation and 7 were not operating due to renovation works. The room capacity of the 106 operating hotels was 11,866 with 24,085 bed places.

During the first nine months of 2013,

- the room occupancy rate of all registered hotels in operation averaged 59% down from 60% in the first nine months of 2012; and
- the bed occupancy rate averaged 52%, down from 53% in the first nine months of 2012.

‘Large’ hotels in the island of Mauritius

At the end of September 2013, 48 ‘large’ hotels (i.e. well-established beach hotels with more than 80 rooms) were in operation; they had a room capacity of 8,818 with 17,970 bed places. These ‘large’ hotels represent 45% of all registered hotels but make up 74% of total room capacity and 75% of total bed places.

During the first nine months of 2013,

- the room occupancy rate of ‘large’ hotels was 61%, down from 62% in the first nine months of 2012; and
- the bed occupancy rate was 54%, down from 55% in the first nine months of 2012.

### **3.7 Forecast Year 2013**

Based on latest available data on tourist arrivals and information gathered from stakeholders, the forecast of tourist arrivals for the year 2013 is revised upwards from 980,000 to 1,000,000. Compared to 2012 when the number of tourists totaled 965,441, this represents an increase of 3.6%. The forecasted number of tourists for 2014 is around 1,025,000.

According to the Bank of Mauritius, tourism receipts for the year 2013 will be around Rs. 41,500 million down by 6.5% from Rs 44,378 million in 2012. For year 2014, tourism receipts are forecasted at around Rs 44,500 million.

## **Statistics Mauritius**

### **Ministry of Finance and Economic Development**

**Port Louis**

**26 November 2013**

#### **Contact persons**

Ms. M. V. Luchmun, Statistician  
&  
Mr. E. Romjon, Senior Statistical Officer

Ministry of Tourism and Leisure  
3<sup>rd</sup> Floor, Victoria House, Port Louis  
Tel: (230) 211-9042, Fax: (230) 210-3901  
Email: sm-tourism@mail.gov.mu

<b>Table</b>	<b>Description</b>	<b>Page</b>
1	Passenger Traffic by month, 2011 - 2013	7
2	Departure of Mauritian residents by country of disembarkation, January - September 2012 and 2013	8
3	Tourist arrivals by month, 2011 - 2013	9
4	Tourist arrivals by main purpose of visit, January - September 2012 and 2013	9
5	Tourist arrivals by country of residence, January - September 2012 and 2013	10
6	Tourist arrivals, nights, average length of stay and receipts, 2010 - 2013	12
7	Hotels, rooms and bedplaces, 2010 - 2013	12
8	Monthly occupancy rates (%) for All hotels and "Large" hotels, 2011 - 2013	13
9	Employment in the tourist industry as at end of March, 2009 - 2013	14

## **ANNEX**

- I    COMPILATION OF PASSENGER TRAFFIC STATISTICS
- II   GLOSSARY OF TERMS

**Table 1:- Passenger Traffic <sup>1</sup> by month, 2011 - 2013**

Month	2011		2012		2013 <sup>2</sup>	
	Arrivals	Departures	Arrivals	Departures	Arrivals	Departures
January	133,081	156,319	132,789	154,685	124,571	149,067
February	103,237	102,527	105,802	106,969	103,021	103,726
March	109,308	117,231	106,939	111,605	117,619	117,253
<u>1st Quarter</u>	<u>345,626</u>	<u>376,077</u>	<u>345,530</u>	<u>373,259</u>	<u>345,211</u>	<u>370,046</u>
April	106,615	103,457	109,760	110,366	105,561	109,657
May	90,193	98,535	92,684	100,829	97,003	106,945
June	81,113	80,054	77,955	75,456	79,653	76,918
<u>2nd Quarter</u>	<u>277,921</u>	<u>282,046</u>	<u>280,399</u>	<u>286,651</u>	<u>282,217</u>	<u>293,520</u>
<b><i>1st Semester</i></b>	<b><i>623,547</i></b>	<b><i>658,123</i></b>	<b><i>625,929</i></b>	<b><i>659,910</i></b>	<b><i>627,428</i></b>	<b><i>663,566</i></b>
July	110,611	98,700	105,542	94,119	107,351	95,837
August	96,238	103,142	93,502	102,936	103,559	111,560
September	88,382	87,962	89,426	90,724	96,690	97,365
<u>3rd Quarter</u>	<u>295,231</u>	<u>289,804</u>	<u>288,470</u>	<u>287,779</u>	<u>307,600</u>	<u>304,762</u>
<b><i>Jan. to Sep.</i></b>	<b><i>918,778</i></b>	<b><i>947,927</i></b>	<b><i>914,399</i></b>	<b><i>947,689</i></b>	<b><i>935,028</i></b>	<b><i>968,328</i></b>
October	114,833	111,676	113,613	106,643		
November	113,864	110,704	110,477	110,296		
December	146,912	122,832	148,355	121,463		
<u>4th Quarter</u>	<u>375,609</u>	<u>345,212</u>	<u>372,445</u>	<u>338,402</u>		
<b><i>2nd Semester</i></b>	<b><i>670,840</i></b>	<b><i>635,016</i></b>	<b><i>660,915</i></b>	<b><i>626,181</i></b>		
<b>Whole Year</b>	<b>1,294,387</b>	<b>1,293,139</b>	<b>1,286,844</b>	<b>1,286,091</b>		

<sup>1</sup> Excluding inter islands traffic<sup>2</sup> Provisional

**Table 2 : - Departure of Mauritian residents by country of disembarkation <sup>1</sup>,  
January - September 2012 and 2013**

Country of disembarkation	2012	2013	% Change
<b>EUROPE</b>	<b>52,715</b>	<b>48,443</b>	<b>-8.1</b>
France	28,183	28,248	0.2
Germany	3,005	1,524	-49.3
Italy	2,478	2,044	-17.5
Switzerland	937	78	-91.7
United Kingdom	18,071	16,546	-8.4
Other European	41	3	-92.7
<b>AFRICA</b>	<b>54,667</b>	<b>61,413</b>	<b>12.3</b>
Malagasy Republic	7,189	8,016	11.5
Reunion	26,278	28,342	7.9
Seychelles	2,839	3,482	22.6
South Africa	16,091	18,753	16.5
Other African	2,270	2,820	24.2
<b>ASIA</b>	<b>60,978</b>	<b>69,921</b>	<b>14.7</b>
P. Rep. of China	2,014	2,344	16.4
Hong Kong SAR <sup>1</sup>	6,596	6,557	-0.6
India	17,776	17,804	0.2
Indonesia	-	135	-
Malaysia	3,016	6,582	118.2
Singapore	6,525	5,269	-19.2
United Arab Emirates	25,050	31,226	24.7
Other Asian	1	4	300.0
<b>OCEANIA</b>	<b>7,182</b>	<b>6,774</b>	<b>-5.7</b>
Australia	7,182	6,774	-5.7
Other Oceanian	-	-	-
<b>AMERICA</b>	<b>-</b>	<b>-</b>	<b>-</b>
<b>NOT STATED</b>	<b>24</b>	<b>25</b>	<b>4.2</b>
<b>All Countries</b>	<b>175,566</b>	<b>186,576</b>	<b>6.3</b>

<sup>1</sup> Country of disembarkation may either be the country of final destination or the transit country

<sup>2</sup> Special Administrative Region of China



**Table 3:- Tourist arrivals by month, 2011 - 2013**

<b>Month</b>	<b>2011</b>	<b>2012</b>	<b>2013 <sup>1</sup></b>
January	101,887	98,837	92,894
February	77,390	79,331	81,185
March	83,349	83,827	91,759
<i>1st Quarter</i>	<u>262,626</u>	<u>261,995</u>	<u>265,838</u>
April	79,173	79,137	76,223
May	68,214	71,396	74,596
June	54,591	54,625	55,007
<i>2nd Quarter</i>	<u>201,978</u>	<u>205,158</u>	<u>205,826</u>
<i>1st Semester</i>	<b>464,604</b>	<b>467,153</b>	<b>471,664</b>
July	78,034	76,166	77,374
August	66,865	65,896	73,454
September	64,880	66,369	71,951
<i>3rd Quarter</i>	<u>209,779</u>	<u>208,431</u>	<u>222,779</u>
<i>Jan. to Sep.</i>	<b>674,383</b>	<b>675,584</b>	<b>694,443</b>
October	90,616	89,994	
November	87,348	84,398	
December	112,295	115,465	
<i>4th Quarter</i>	<u>290,259</u>	<u>289,857</u>	
<i>2nd Semester</i>	<b>500,038</b>	<b>498,288</b>	
<b>Whole Year</b>	<b>964,642</b>	<b>965,441</b>	

<sup>1</sup> Provisional**Table 4:- Tourist arrivals by main purpose of visit, January - September 2012 and 2013**

<b>Purpose of visit</b>	<b>Jan - Sept 2012</b>	<b>Jan-Sept 2013 <sup>1</sup></b>	<b>% Change</b>
Holiday	623,965	642,377	3.0
Business	27,900	27,628	-1.0
Transit	17,868	16,591	-7.1
Conference	3,777	5,167	36.8
Sports	891	1,385	55.4
Other & Not Stated	1,183	1,295	9.5
<b>Total</b>	<b>675,584</b>	<b>694,443</b>	<b>2.8</b>

<sup>1</sup> Provisional

**Table 5 : - Tourist Arrivals by Country of Residence, January - September 2012 and 2013**

Country of residence	Jan - Sep 2012	Jan -Sep 2013 <sup>1</sup>										% Change Jan-Sep 2012 to Jan-Sep 2013
		Jan	Feb	Mar	Apr	May	Jun	Jul	Aug	Sep	Jan - Sep	
<b>EUROPE</b>	<b>383,478</b>	<b>51,529</b>	<b>52,839</b>	<b>54,354</b>	<b>47,816</b>	<b>34,773</b>	<b>22,889</b>	<b>37,260</b>	<b>34,763</b>	<b>38,317</b>	<b>374,540</b>	<b>-2.3</b>
Austria	5,605	898	1,106	885	644	398	260	336	339	494	5,360	-4.4
Belgium	7,243	1,021	762	992	1,235	618	662	1,221	697	838	8,046	11.1
France	174,157 <sup>4</sup>	25,478	26,550	26,092	22,973	15,005	8,096	15,030	13,183	10,825	163,232	-6.3
Germany	38,205	5,525	5,216	5,824	4,680	4,723	2,861	3,054	3,628	6,423	41,934	9.8
Italy	29,335	3,699	3,467	2,844	2,159	1,287	1,403	1,645	2,594	2,913	22,011	-25.0
Netherlands	3,040	270	261	243	394	309	316	564	363	491	3,211	5.6
Spain	7,579	257	318	944	613	547	632	893	1,136	1,250	6,590	-13.0
Sweden	2,178	521	539	403	197	107	147	171	103	130	2,318	6.4
Switzerland	15,796	2,198	2,728	2,576	2,573	1,269	645	1,993	816	1,958	16,756	6.1
United Kingdom	62,720	5,664	6,445	9,041	7,675	7,657	6,166	9,672	9,619	10,104	72,043	14.9
CIS <sup>2</sup>	16,532	3,233	1,570	1,613	2,674	1,413	470	618	810	826	13,227	-20.0
<i>of which:</i>												
<i>Russian Federation</i>	<i>14,052</i>	<i>2,707</i>	<i>1,177</i>	<i>1,229</i>	<i>2,290</i>	<i>1,110</i>	<i>343</i>	<i>453</i>	<i>551</i>	<i>661</i>	<i>10,521</i>	<i>-25.1</i>
Czech Republic	3,561	594	893	541	532	321	187	179	139	373	3,759	5.6
Denmark	1,682	259	596	428	151	103	69	310	74	192	2,182	29.7
Luxemburg	684	52	66	174	43	56	25	94	129	63	702	2.6
Norway	2,627	209	451	395	80	95	201	425	169	180	2,205	-16.1
Other European	12,534	1,651	1,871	1,359	1,193	865	749	1,055	964	1,257	10,964	-12.5
<b>AFRICA</b>	<b>189,656</b>	<b>30,678</b>	<b>13,171</b>	<b>25,704</b>	<b>16,842</b>	<b>24,070</b>	<b>16,553</b>	<b>24,768</b>	<b>23,388</b>	<b>20,039</b>	<b>195,213</b>	<b>2.9</b>
Comoros	744	101	73	85	114	112	91	78	101	85	840	12.9
Kenya	1,928	186	169	219	172	189	175	307	339	270	2,026	5.1
Malagasy Rep.	9,925	1,145	1,051	1,259	1,122	950	936	1,029	1,501	1,076	10,069	1.5
Reunion	101,738 <sup>4</sup>	22,431	5,353	13,958	5,430	15,120	5,975	15,554	10,886	6,322	101,029	-0.7
Seychelles	4,864	432	312	448	675	704	642	621	806	527	5,167	6.2
South Africa	61,252	5,760	5,331	8,645	7,966	5,418	7,820	6,054	7,947	10,589	65,530	7.0
Zimbabwe	1,114	42	66	99	157	156	66	121	219	94	1,020	-8.4
Other African	8,091	581	816	991	1,206	1,421	848	1,004	1,589	1,076	9,532	17.8

<sup>1</sup> Provisional

<sup>2</sup> Commonwealth of Independent States (Ex Soviet Union Countries)

<sup>3</sup> Special Administrative Region of China

<sup>4</sup> Revised

**Table 5 (cont'd.) : - Tourist Arrivals by Country of Residence, January - September 2012 and 2013**

Country of residence	Jan - Sep 2012	Jan- Sep 2013 <sup>1</sup>										% Change Jan-Sep 2011 to Jan-Sep 2012
		Jan	Feb	Mar	Apr	May	Jun	Jul	Aug	Sep	Jan - Sep	
<b>ASIA</b>	<b>76,378</b>	<b>7,914</b>	<b>12,880</b>	<b>9,203</b>	<b>8,890</b>	<b>12,573</b>	<b>12,664</b>	<b>11,806</b>	<b>12,398</b>	<b>10,222</b>	<b>98,550</b>	<b>29.0</b>
Hong Kong SAR <sup>3</sup>	927	58	156	172	69	45	88	163	209	121	1,081	16.6
India	40,474	4,289	5,362	3,751	3,958	7,499	6,978	4,793	3,700	3,046	43,376	7.2
Japan	1,243	180	145	109	71	145	130	144	156	204	1,284	3.3
Korea Republic	1,743	171	157	230	212	211	223	154	119	213	1,690	-3.0
Malaysia	1,367	66	254	224	121	281	172	169	568	180	2,035	48.9
P. Rep. of China	15,430	1,682	5,229	2,412	2,562	2,297	2,908	4,311	4,646	4,372	30,419	97.1
Singapore	1,426	124	130	163	185	185	197	253	178	195	1,610	12.9
United Arab Emirates	3,934	432	550	705	695	728	836	839	1,201	458	6,444	63.8
Other Asian	9,834	912	897	1,437	1,017	1,182	1,132	980	1,621	1,433	10,611	7.9
<b>OCEANIA</b>	<b>13,521</b>	<b>1,136</b>	<b>860</b>	<b>1,176</b>	<b>1,695</b>	<b>1,723</b>	<b>1,608</b>	<b>2,074</b>	<b>1,795</b>	<b>2,293</b>	<b>14,360</b>	<b>6.2</b>
Australia	12,884	1,084	811	1,133	1,626	1,604	1,555	1,997	1,711	2,190	13,711	6.4
Other Oceanian	637	52	49	43	69	119	53	77	84	103	649	1.9
<b>AMERICA</b>	<b>12,068</b>	<b>1,528</b>	<b>1,362</b>	<b>1,238</b>	<b>890</b>	<b>1,383</b>	<b>1,241</b>	<b>1,397</b>	<b>1,044</b>	<b>1,024</b>	<b>11,107</b>	<b>-8.0</b>
USA	4,841	368	412	537	330	546	618	540	496	368	4,215	-12.9
Canada	3,305	346	341	305	271	309	391	553	320	197	3,033	-8.2
Brazil	2,249	385	318	202	168	263	108	171	107	287	2,009	-10.7
Other American	1,673	429	291	194	121	265	124	133	121	172	1,850	10.6
<b>OTHER &amp; N.STATED</b>	<b>483</b>	<b>109</b>	<b>73</b>	<b>84</b>	<b>90</b>	<b>74</b>	<b>52</b>	<b>69</b>	<b>66</b>	<b>56</b>	<b>673</b>	<b>39.3</b>
<b>All Countries</b>	<b>675,584</b>	<b>92,894</b>	<b>81,185</b>	<b>91,759</b>	<b>76,223</b>	<b>74,596</b>	<b>55,007</b>	<b>77,374</b>	<b>73,454</b>	<b>71,951</b>	<b>694,443</b>	<b>2.8</b>

<sup>1</sup> Provisional

<sup>2</sup> Commonwealth of Independent States (Ex Soviet Union Countries)

<sup>3</sup> Special Administrative Region of China

<sup>4</sup> Revised

**Table 6:- Tourist arrivals, nights, average length of stay and receipts, 2010 - 2013**

Year		Tourist arrivals (Number)	Tourist nights <sup>1</sup> (000)	Average length of stay <sup>1</sup>	Tourism receipts <sup>2</sup> (Rs million)
<b>2010</b>	January-September	646,656	6,624	10.2	28,167
	Year	934,827	9,651	10.3	39,456
<b>2011</b>	January-September	674,383	6,860	10.2	30,149
	Year	964,642	10,000	10.4	42,717
<b>2012</b>	January-September	675,584	7,212	10.7	31,954
	Year	965,441	10,446 <sup>3</sup>	10.8 <sup>3</sup>	44,378
<b>2013<sup>3</sup></b>	January-September	694,443	7,387	10.6	29,105

<sup>1</sup> Revised<sup>2</sup> Source: Bank of Mauritius<sup>3</sup> Provisional**Table 7:- Hotels, rooms and bedplaces, 2010 - 2013**

Year		Number as at end of period		
		Hotels <sup>1</sup>	Rooms	Bedplaces
<b>2010</b>	1st Qr.	105	11,564	23,547
	2nd Qr.	104	11,362	23,168
	3rd Qr.	104	11,383	23,296
	4th Qr.	112	12,075	24,698
<b>2011</b>	1st Qr.	112	12,082	24,664
	2nd Qr.	111	11,999	24,493
	3rd Qr.	109	11,816	24,018
	4th Qr.	109	11,925	24,242
<b>2012</b>	1st Qr.	110	12,027	24,446
	2nd Qr.	107	11,822	24,089
	3rd Qr.	105	11,715	23,899
	4th Qr.	117	12,527	25,496
<b>2013<sup>2</sup></b>	1st Qr.	117	12,676	25,887
	2nd Qr.	109	11,977	24,438
	3rd Qr.	106 <sup>3</sup>	11,866	24,085

<sup>1</sup> Refers to hotels in the island of Mauritius only<sup>2</sup> Provisional<sup>3</sup> Excluding seven hotels not operational because of renovation works

**Table 8:- Monthly Occupancy Rates (%) for All Hotels and "Large" Hotels, 2011 - 2013**

Month	All Hotels						"Large" Hotels					
	2011		2012		2013 <sup>1</sup>		2011		2012		2013 <sup>1</sup>	
	Room	Bed	Room	Bed	Room	Bed	Room	Bed	Room	Bed	Room	Bed
January	75	66	74	65	67	59	76	67	76	67	69	61
February	68	60	67	59	66	57	70	61	69	60	67	59
March	64	57	65	57	63	56	66	58	66	58	66	58
<u>1st Quarter</u>	<u>69</u>	<u>61</u>	<u>69</u>	<u>61</u>	<u>65</u>	<u>57</u>	<u>71</u>	<u>62</u>	<u>70</u>	<u>62</u>	<u>68</u>	<u>59</u>
April	64	57	62	55	60	53	68	60	66	58	63	56
May	55	49	59	52	58	51	57	50	61	54	61	53
June	44	38	45	39	42	36	45	39	46	41	42	37
<u>2nd Quarter</u>	<u>55</u>	<u>48</u>	<u>55</u>	<u>49</u>	<u>54</u>	<u>47</u>	<u>57</u>	<u>50</u>	<u>58</u>	<u>51</u>	<u>55</u>	<u>49</u>
July	53	47	52	45	53	47	54	48	53	47	54	48
August	57	51	56	50	60	53	60	53	60	52	62	55
September	64	57	60	53	65	57	66	58	62	54	67	60
<u>3rd Quarter</u>	<u>58</u>	<u>51</u>	<u>56</u>	<u>49</u>	<u>59</u>	<u>52</u>	<u>60</u>	<u>53</u>	<u>58</u>	<u>51</u>	<u>61</u>	<u>54</u>
October	68	60	67	59			70	61	70	62		
November	74	66	69	61			76	67	71	63		
December	73	64	71	63			74	65	74	65		
<u>4th Quarter</u>	<u>72</u>	<u>64</u>	<u>69</u>	<u>61</u>			<u>73</u>	<u>64</u>	<u>72</u>	<u>63</u>		
<b>Whole Year</b>	<b>65</b>	<b>57</b>	<b>62</b>	<b>55</b>			<b>65</b>	<b>57</b>	<b>65</b>	<b>57</b>		

<sup>1</sup> Provisional

**Table 9:- Employment in large <sup>1</sup> establishments of the tourist industry as at end of March, 2009 - 2013**

<b>Year</b> <b>Establishments</b>	<b>2009 <sup>2</sup></b>	<b>2010 <sup>2</sup></b>	<b>2011 <sup>2</sup></b>	<b>2012 <sup>2</sup></b>	<b>2013 <sup>3</sup></b>
Restaurants	2,388	2,337	2,262	2,340	2,386
Hotels	20,904	21,295	21,863	22,201	22,339
Travel and Tourism	4,162	3,850	4,052	3,886	3,752
<b>Total</b>	<b>27,454</b>	<b>27,482</b>	<b>28,177</b>	<b>28,427</b>	<b>28,477</b>

<sup>1</sup> Large establishments are those employing 10 or more persons.

<sup>2</sup> Revised

<sup>3</sup> Provisional

Source: Survey of Employment and Earnings in large Establishments

## COMPILATION OF PASSENGER TRAFFIC STATISTICS

### **Sources of data**

The main source of data for the compilation of passenger traffic statistics is the Passport and Immigration Office, which maintains a database of all travellers entering and leaving the country. The data are collected from the passport of travellers, disembarkation cards filled in by non-residents and questions put to non-residents entering the country. At the end of every month, the electronic database of passenger traffic for that particular month is downloaded and supplied to the statistics unit of the Ministry of Tourism and Leisure within fifteen days. Additional data on cruises are obtained from the Mauritius Ports Authority.

### **Tourism receipts**

The Bank of Mauritius is responsible for the estimation of tourism receipts based on monthly statements of Inward and Outward Remittances of Commercial Banks.

### **Monthly Occupancy Rates**

All hotels are contacted by phone at the end of every month for data on room/bed nights available and rented during the month for the calculation of room and bed occupancy rates.

### **Short-term projections of tourist arrivals**

A Tourism Statistics Committee grouping various stakeholders of the tourism industry meet regularly under the chairmanship of the Director of the Statistics Mauritius to discuss performance of the tourism sector and to provide information for short-term forecast of tourist arrivals.

### **Publications**

The regular publications of the unit are:

- (i) Monthly tourist arrivals (by mid of each month)
- (ii) Quarterly Economic and Social Indicators on International Travel and Tourism  
(with a lag of seven weeks)
- (iii) Quarterly tourism statistics (Pamphlet)
- (iv) Digest of International Travel and Tourism (November )
- (v) Handbook of statistical data on tourism (December)
- (vi) Report of the Survey of Inbound and Outbound Tourism

## GLOSSARY OF TERMS

### 1. Tourist

A tourist is defined as a non-resident staying overnight but less than a year, and who has no employer-employee relationship with a resident.

### 2. Transit

A transit passenger is one who stops over in the country for flight connections to other destinations. There are two types of transit passengers:

*Type I* : Passengers who do not leave the transit area of the airport or the harbour.

*Type II* : Passengers who do leave the airport or harbour and stay in the country overnight but only for flight connection purposes.

Only Type II transit passengers, as defined above, are included in the definition of "Tourists".

### 3. Excursionist or Same-day Visitor

Excursionists are non-resident visitors, other than those who do not leave the airport, who depart on the same day they arrived.

### 4. Tourist Nights

"Tourist nights" for year Y refer to tourist nights spent by tourists arriving in year Y.

### 5. Large Hotels

Large hotels are well established beach hotels with more than 80 rooms.

### 6. Occupancy rate

The room/bed occupancy rate is the ratio of room/bed nights rented to the total number of room/bed nights available.

$$= \frac{\text{Total number of room/bed nights rented}}{\text{Total number of room/bed nights available}} \times 100$$

### 7. CIS

CIS denotes the Commonwealth of Independent States. It consists of the States of the former Soviet Union.