

# EDUCATION STATISTICS – 2013

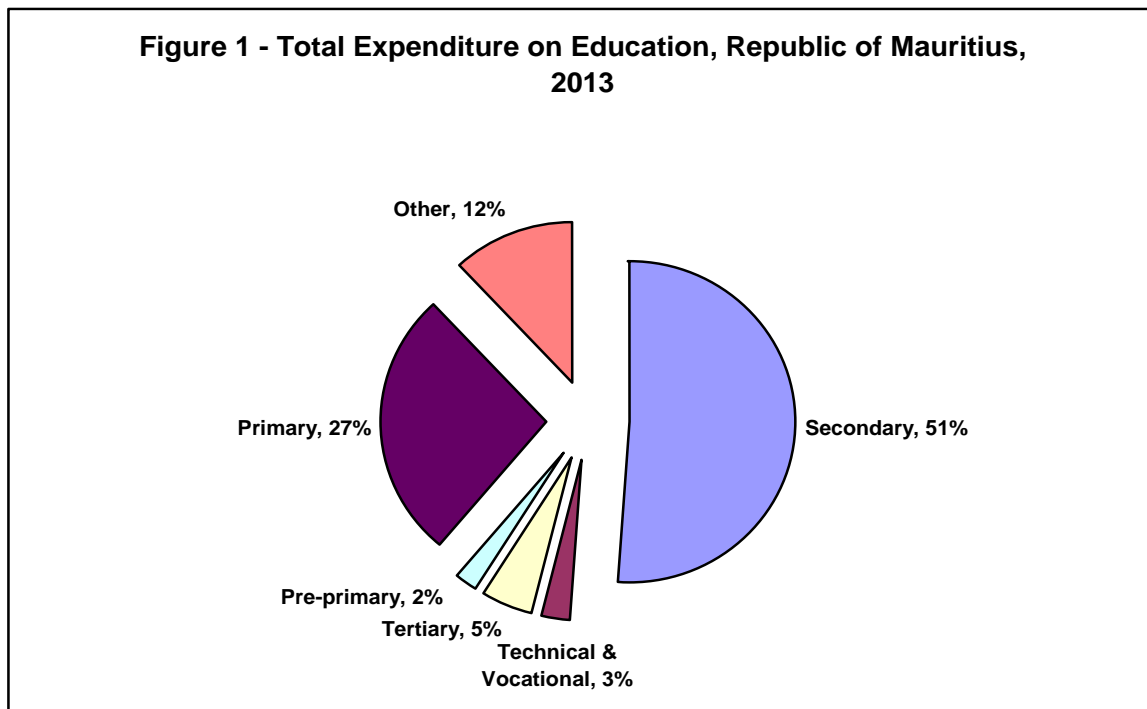
## 1. Introduction

This issue of the Economic and Social Indicators presents data on education, compiled on the basis of information collected through the annual survey conducted in schools in March 2013, together with data from other sources. The data refer to the Republic of Mauritius (excluding Agalega) and cover pre-primary, primary, secondary (general and pre-vocational), technical & vocational, tertiary as well as education in specialised institutions.

## 2. Expenditure

Total government expenditure for the year 2013 has been estimated at Rs 104,784 million, of which, Rs 13,584 million (13%) has been allocated to education and training.

Out of the total budget on education and training for 2013, 51% is allocated to secondary education, 27% to primary education, 5% to tertiary education, 3% to technical and vocational education, 2% to pre-primary education and the remaining 12% to other expenses (Table 2.2 and Figure 1).



### **3. Pre-primary education**

#### **3.1 Schools**

In March 2013, there were 978 schools providing pre-primary education: 945 in the Island of Mauritius and 33 in Rodrigues. Of these schools, 727 (74%) were privately run institutions; 186 (19%), operating on government primary school premises, were administered by the Early Childhood Care and Education Authority (Ex Pre-School Trust Fund) and the remaining 65 (7%) were administered by either Roman Catholic (RC) or Hindu Education Authorities or Municipal/Village Councils (Table 3.1).

#### **3.2 Enrolment**

Total enrolment in pre-primary schools numbered 31,419, of whom 15,902 were boys and 15,517 girls (Table 3.3). The Gross Enrolment Ratio (pre-primary enrolment as a percentage of the population aged 4 and 5 years) works out to 98% in 2013, against 101% in 2012.

#### **3.3 Personnel**

In March 2013, total employment in pre-primary schools stood at 3,447 of whom 2,425 were teachers and 1,022, non-teaching staff. The average number of pupils per teacher works out to 13, as in 2012.

### **4 Primary education**

#### **4.1 Schools**

In March 2013, there were 320 schools providing primary education: 305 in the Island of Mauritius and 15 in Rodrigues. The majority (223) of the schools were run by government, 51 by the Roman Catholic Education Authority (RCEA), 2 by the Hindu Education Authority and the other 44 were private non-aided schools.

#### **4.2 Enrolment**

The primary school population in the Republic of Mauritius stood at 108,853 in 2013 a decrease of around 4% from 2012 figure. Boys represented 51% of the 2013 primary school

population and girls 49%. Around 70% of the primary school population was enrolled in government schools and the remaining was in private aided and non-aided schools (Table 4.3).

Distribution by grade shows that the highest number of pupils were in standard VI (20,467 pupils including 1,763 repeaters). The Gross Enrolment Ratio (primary enrolment as a percentage of the population aged 6 to 11 years) works out to 98%, against 99% in 2012.

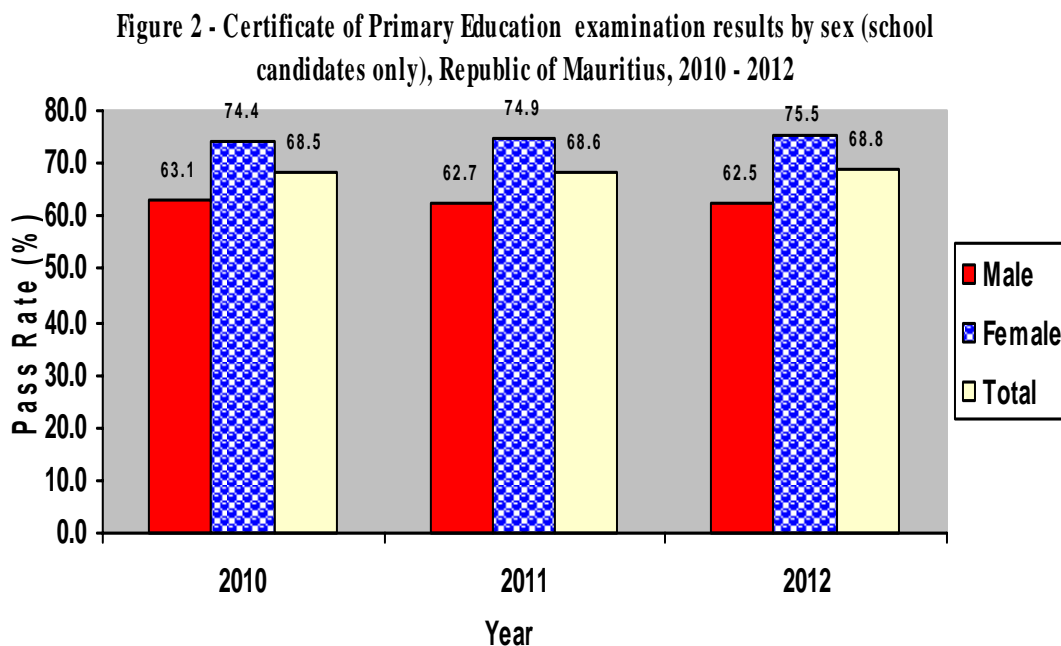
#### 4.3 Personnel

As at March 2013, 8,126 persons were employed in primary schools. Of this number, 5,512 were teaching staff: 4,146 General Purpose Teachers and 1,366 Oriental Language Teachers. The remaining 2,614 comprised 302 Head Teachers, 964 Deputy Head Teachers and 1,348 administrative and other workers (Table 4.9). The pupil/teacher (general purpose) ratio in primary schools works out to 26 compared to 28 in 2012.

#### 4.4 Certificate of Primary Education (CPE)

In 2012, the number of candidates who took part in the CPE examination was 24,975 (22,697 school candidates and 2,278 private candidates), with an overall pass rate of 65.2%.

The pass rate among school candidates, comprising 11,716 boys and 10,981 girls, was 68.8%. The girls were more successful than the boys, with respective pass rates of 75.5% and 62.5% (Table 4.12 and Figure 2).



The overall pass rate among the 2,278 private candidates (1,400 boys and 878 girls) was 29.9%, with girls again achieving better results than boys, 34.3% against 27.1% (Table 4.12).

School candidates who took part in the CPE examination for the first time did much better than those re-taking the examination, 76.4% against 39.3% (Table 4.12).

According to the analysis carried out by the Mauritius Examinations Syndicate on performance at CPE examinations, the pass rate among the 2011 cohort of school candidates works out to 83.3%. The pass rate relates to school candidates who either passed at their first sitting in 2011 or at their second sitting in 2012.

## **5. Secondary General and Pre-vocational education**

### **5.1 General and Pre-vocational Education**

As at March 2013, 114 secondary schools were offering both general and pre-vocational education while 62 schools were offering general education only and 2 pre-vocational education only.

### **5.2 Secondary education (General)**

#### **5.2.1 Schools**

Out of the 176 schools dispensing secondary general education, 170 were in the Island of Mauritius and 6 in Rodrigues. State administered schools numbered 68, while the other 108 were private aided and non-aided schools (Table 5.1).

#### **5.2.2 Enrolment**

Secondary education enrolment decreased by 1,805 from 115,677 in 2012 to reach 113,872 in 2013. Table 5.3 shows that 59,481 (52%) were girls and 54,391 (48%) were boys. About 44% of the secondary school population was in state schools and 56% in private (aided and unaided) schools. Gross Enrolment Ratio (secondary education enrolment as a percentage of the population aged 12 to 19 years) for the general stream remained at 71%, as in 2012.

### 5.3 Pre-vocational education

#### 5.3.1 Schools

As at March 2013, 116 schools were offering pre-vocational education: 111 in the Island of Mauritius and 5 in Rodrigues. Forty-three of these schools were state pre-vocational schools while the remaining 73 were private schools (Table 5.9).

#### 5.3.2 Enrolment

Enrolment in the schools offering pre-vocational education was 10,437 comprising 6,869 boys and 3,568 girls (Table 5.11). About 29% of the students in pre-vocational schools were in state schools.

### 5.4 Personnel

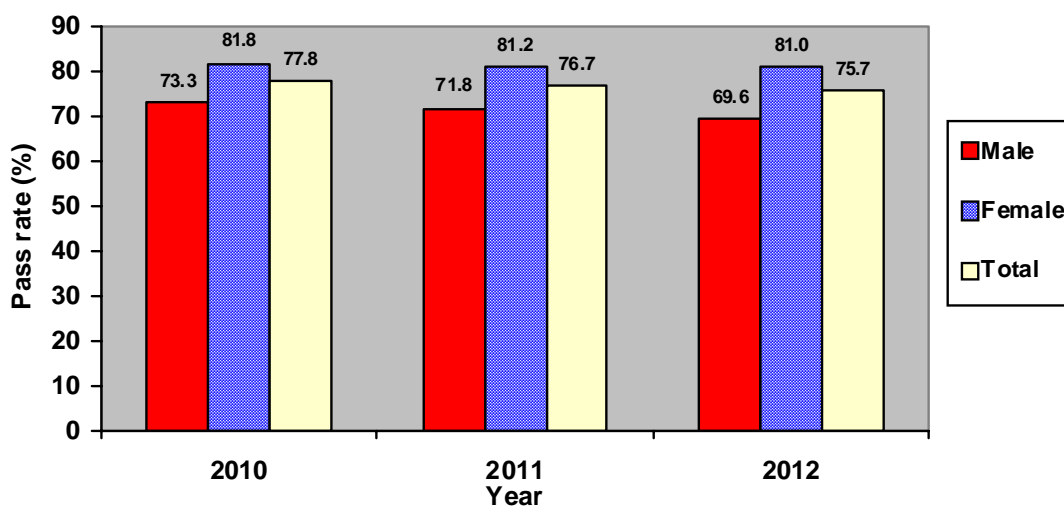
The number of teachers working in secondary schools offering general and pre-vocational education was 8,830 at March 2013.

The secondary education teaching staff in the general stream was 8,092 (3,343 males and 4,749 females). The pupil/teacher ratio works out to 14. On the other hand, the pre-vocational education teaching staff stood at 738 (268 males and 470 females), giving an average of 14 pupils per teacher.

### 5.5 Cambridge School Certificate (SC)

In 2012, out of 16,885 candidates (7,799 males and 9,086 females) who took part in the Cambridge School Certificate examination, 12,788 were successful. Comparison with the 2011 results shows that the overall pass rate decreased slightly from 76.7% to 75.7% (Table 5.19 and Figure 3).

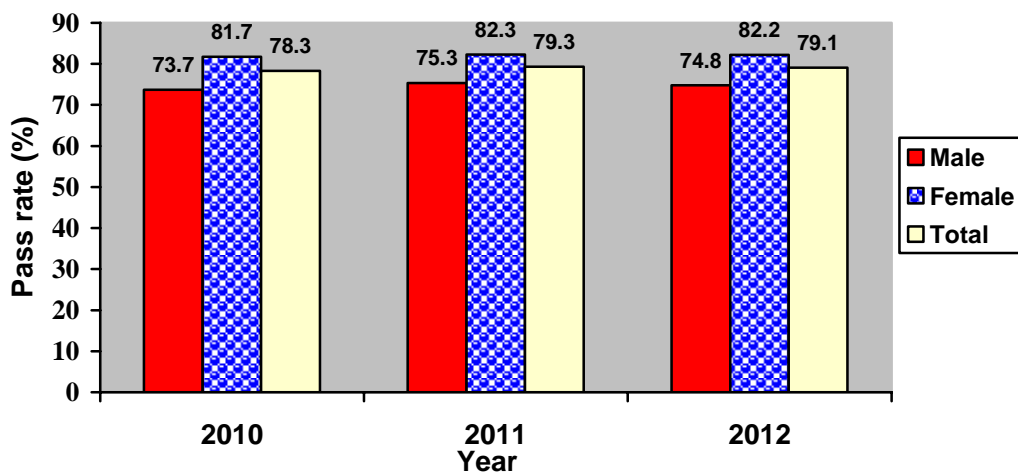
Figure 3 - Cambridge School Certificate pass rate (school candidates only), Republic of Mauritius, 2010 - 2012



## 5.6 Cambridge Higher School Certificate (HSC)

The number of students taking part in the 2012 Cambridge Higher School Certificate examination stood at 10,414 (4,326 males and 6,088 females). The overall pass rate is 79.1%, slightly lower than the 2011 figure of 79.3% (Table 5.20 and Figure 4).

**Figure 4 - Cambridge Higher School Certificate pass rate (school candidates only), Republic of Mauritius, 2010 - 2012**



## 5.7 Technical and Vocational Education

In 2012, there were 10,351 students enrolled in publicly funded technical and vocational courses, of which 78% were males. Forty five per cent of the students were enrolled in full-time courses, the same as for those in part-time courses and the rest (10%) in apprenticeship courses (Table 5.22).

## 6. Special Education Needs (SEN)

### 6.1 Schools

As at March 2013, there were 61 Special Education Needs schools in the Republic of Mauritius registered with the Ministry of Education and Human Resources. Eleven schools were run by Government, while the other 50 were run by NGOs (Table 6.1).

## 6.2 *Enrolment*

The number of students enrolled in these special schools stood at 2,008 as at March 2013, of whom 734 (37%) were girls and 1,274 (63%) were boys (Table 6.3).

Table 6.6 shows that the two most frequent types of impairment were Intellectual Impairment (27%) and Physical Disability (13%).

## 6.3 *Personnel*

As at March 2013, there were 562 persons employed in the special education needs institutions. Out of these, 378 were teaching staff, and 68 were medical and para-medical staff. The remaining 116 were administrative and ancillary workers (Table 6.7).

## 7. **ICT in Education**

In March 2013, out of the 978 pre-primary schools in the Republic of Mauritius 431, i.e., 44% had computers. All primary and secondary schools (general & pre-vocational) were equipped with computers. Schools having internet access for students stood at 6% in pre-primary, 56% in primary and 96% in secondary schools (Table 7.1).

## 8. **Tertiary Education**

As at December 2012, the total number of students (part-time and full-time) enrolled on tertiary-level programmes (including Distance Education) reached 49,625 compared to 45,969 in December 2011, representing an increase of 8.0%.

The majority of students (81%) were enrolled in tertiary education locally in both public-funded institutions (43%) and private institutions (38%). The remaining 19% of the students were enrolled in tertiary education overseas (Table 8.1b).

The Gross Enrolment Ratio (tertiary education enrolment as a percentage of the population aged 20 to 24 years), which was 45.0% in 2011, increased to 46.6 % in 2012.

**Statistics Mauritius**  
**Ministry of Finance and Economic Development**  
**Port Louis**  
**Mauritius**  
**September 2013**

### **Contact Person**

F. Koussa  
 Statistician  
 Statistics Unit  
 Ministry of Education and Human Resources  
 Pont Fer, Phoenix  
 Tel: 601 5252, 601 5200, Ext. 5430, 5478  
 Email: fkoussa@mail.gov.mu

## LIST OF TABLES

	<b>Page</b>
<b>1 EDUCATION INDICATORS</b>	
1.1 Main Indicators, Republic of Mauritius, 2009 - 2013	8
<b>2 EXPENDITURE ON EDUCATION</b>	
2.1 Total Government Expenditure, Republic of Mauritius, 2011 - 2013	9
2.2 Government Expenditure on Education by sector, 2011 - 2013	9
<b>3 PRE-PRIMARY EDUCATION</b>	
3.1 Distribution of pre-primary schools by district and type of administration, 2013	10
3.2 Distribution of pre-primary schools by zone and type of administration, 2013	10
3.3 Enrolment and personnel in pre-primary schools by district and sex, 2013	11
3.4 Enrolment and personnel in pre-primary schools by zone and sex, 2013	11
<b>4 PRIMARY EDUCATION</b>	
4.1 Distribution of primary schools by district and type of administration, 2013	12
4.2 Distribution of primary schools by zone and type of administration, 2013	12
4.3 Enrolment in primary schools by district, type of administration and sex , 2013	13
4.4 Enrolment in primary schools by zone, type of administration and sex , 2013	13
4.5 Enrolment in primary schools by district and grade, 2013	14
4.6 Enrolment in primary schools by zone and grade, 2013	14
4.7 Enrolment in primary schools by grade and sex, 2011- 2013	15
4.8 Enrolment in primary schools by type of administration, grade and sex, 2011- 2013, Republic of Mauritius	16
4.9 Personnel in primary schools by district and occupational status, 2013	17
4.10 Personnel in primary schools by zone and occupational status, 2013	17
4.11 Certificate of Primary Education (CPE) examination results by sex, 2010 - 2012	18
4.12 Performance at Certificate of Primary Education (CPE) examination by sex and sitting, 2012	19
<b>5 SECONDARY EDUCATION - GENERAL AND PRE-VOCATIONAL</b>	
5.1 Distribution of secondary schools (general) by district and type of administration, 2013	20
5.2 Distribution of secondary schools (general) by zone and type of administration, 2013	20
5.3 Enrolment in secondary schools (general) by district, type of administration and sex, 2013	21
5.4 Enrolment in secondary schools (general) by zone, type of administration and sex, 2013	21
5.5 Enrolment in secondary schools (general) by district and grade, 2013	22
5.6 Enrolment in secondary schools (general) by zone and grade, 2013	22
5.7 Enrolment in secondary schools (general) by grade and sex, 2011 - 2013	23
5.8 Enrolment in secondary schools (general) by type of administration, grade and sex, 2011 - 2013, Republic of Mauritius	24



5.9	Distribution of schools offering pre-vocational education by district and type of administration, 2013	25
5.10	Distribution of schools offering pre-vocational education by zone and type of administration, 2013	25
5.11	Enrolment in schools offering pre-vocational education by district, type of administration and sex, 2013	26
5.12	Enrolment in schools offering pre-vocational education by zone, type of administration and sex, 2013	26
5.13	Enrolment in schools offering pre-vocational education by district and year of study, 2013	27
5.14	Enrolment in schools offering pre-vocational education by zone and year of study, 2013	27
5.15	Enrolment in schools offering pre-vocational education by year of study and sex, 2011 - 2013	28
5.16	Enrolment in schools offering pre-vocational education by type of administration, year of study and sex, 2011 - 2013, Republic of Mauritius	29
5.17	Teaching staff in secondary schools (general & pre-vocational stream) by district and sex, 2013	30
5.18	Teaching staff in secondary schools (general & pre-vocational stream) by zone and sex, 2013	30
5.19	Cambridge School Certificate (SC) examination results by type of school administration and sex, 2010 - 2012	31
5.20	Cambridge Higher School Certificate (HSC) examination results by type of school administration and sex, 2010 - 2012	32
5.21	Enrolment in Mauritius Institute of Training and Development (MITD) centres offering National Trade Certificate (Foundation course) by zone and sex, 2012	33
5.22	Number enrolled in Mauritius Institute of Training and Development (MITD) Centres Republic of Mauritius, 2012	33
5.23	Number enrolled in Mauritius Institute of Training and Development (MITD) Centres by course level, year of study and sex (Full Time),2012	33
<b>6</b>	<b>SPECIAL EDUCATION NEEDS</b>	
6.1	Distribution of Special Education Needs (SEN) schools by district and type of administration, 2013	34
6.2	Distribution of Special Education Needs (SEN) schools by zone and type of administration, 2013	34
6.3	Enrolment in Special Education Needs (SEN) schools by sex and district, 2011 - 2013	35
6.4	Enrolment in Special Education Needs (SEN) schools by sex and zone, 2011 - 2013	35
6.5	Enrolment in Special Education Needs (SEN) schools by age and sex, Republic of Mauritius, 2011 - 2013	36
6.6	Number of pupils in Special Education Needs (SEN) schools by type of impairment and sex, Republic of Mauritius, 2013	37
6.7	Personnel in Special Education Needs (SEN) schools by sex, Republic of Mauritius, 2011 - 2013	37
<b>7</b>	<b>ICT</b>	
7.1	ICT in pre-primary, primary and secondary schools - Republic of Mauritius, 2013	38
<b>8</b>	<b>POST SECONDARY EDUCATION</b>	
8.1(a)	Enrolment at Tertiary Education Level, both Locally and Overseas, by Source and Field of Study , as at December 2011	39
8.1(b)	Enrolment at Tertiary Education Level, both Locally and Overseas, by Source and Field of Study , as at December 2012	40

Table 1.1 - Main Indicators, Republic of Mauritius, 2009 - 2013

	2009	2010	2011	2012	2013
<b>Pre-primary</b>					
Number of schools	1,057	1,042	1,018	1,026	978
Enrolment	35,974	35,139	33,901	33,518	31,419
Number of teachers	2,518	2,538	2,550	2,541	2,425
Gross Enrolment Ratio (%) (3-4 years) <sup>1</sup>	98	101	102	104	102
Gross Enrolment Ratio (%) (4-5 years)	96	96	97	101	98
Pupil/Teacher Ratio	14	14	13	13	13

**Primary**

Number of schools	302	305	305	312	320
Enrolment	117,922	117,432	116,068	113,634	108,853
Number of teachers	5,454	5,472	5,701	5,427	5,512
Gross Enrolment Ratio (%) (5-10 years) <sup>1</sup>	101	101	102	102	100
Gross Enrolment Ratio (%) (6-11 years)	101	101	100	99	98
Pupil/Teacher Ratio	29	28	27	28	26
Transition Rate (Primary to Secondary)	82	82	84	93	n.a
Certificate of Primary Education Pass Rate	68.1	68.5	68.6	68.8	n.a

**Secondary (General and Pre-Vocational)**

Number of schools	185	187	185	183	178
Enrolment	124,259	122,445	122,559	122,898	124,309
Number of teachers	8,186	8,323	8,507	8,643	8,830
Gross Enrolment Ratio (%) (11-17 years) <sup>1</sup>	85	86	87	88	91
Gross Enrolment Ratio (%) (12-19 years)	73	73	74	76	78
Pupil/Teacher Ratio	15	15	14	14	14
Cambridge School Certificate Pass Rate	77.6	77.8	76.7	75.7	n.a
Cambridge Higher School Certificate Pass Rate	78.8	78.3	79.3	79.1	n.a

<sup>1</sup> Based on the UNESCO definition of Gross Enrolment Ratio, i.e., total enrolment in a specific level of education, regardless of age expressed as a percentage of the eligible official school-age population.

**Tertiary<sup>2</sup>**

Number of institutions	61	65	70	77	n.a
Enrolment	41,484	44,334	45,969	49,625	n.a
Gross Enrolment Ratio (%)	43	45	45	47	n.a

<sup>2</sup> Source: Tertiary Education Commission

<b>Expenditure</b>	2008/2009	2010	2011	2012 <sup>3</sup>	2013 <sup>4</sup>
Total Government Expenditure (Rs million)	76,215.2	79,894.1	87,816.2	89,100.0	104,784.3
Total Government Expenditure on Education (Rs million)	10,625.0	10,880.9	11,017.4	11,985.8	13,583.5
Total Government Expenditure on Education as a % of GDP at market price	3.9	3.6	3.4	3.5	3.6
Total Government Expenditure on Education as a % of Total Government Expenditure	13.9	13.6	12.5	13.5	13.0

<sup>3</sup> Revised

<sup>4</sup> Budget Estimates

n.a: Not available

Table 2.1- Total Government Expenditure, Republic of Mauritius, 2011 , 2012 and 2013

	(Rs million)		
	2011 <sup>1</sup>	2012 <sup>2</sup>	2013 <sup>3</sup>
<b>Total Government Expenditure</b>	<b>87,816.2</b>	<b>89,100.0</b>	<b>104,784.3</b>
of which expenditure by:			
Ministry of Education & HR	9,241.7	10,089.0	11,780.2

Table 2.2 - Government Expenditure on Education, 2011, 2012 and 2013

	(Rs million)					
	2011 <sup>1</sup>		2012 <sup>2</sup>		2013 <sup>3</sup>	
	Amount	%	Amount	%	Amount	%
<b>Island of Mauritius</b>						
<b>Ministry of Education &amp; HR</b>	<b>9,241.7</b>	<b>83.9</b>	<b>10,089.0</b>	<b>84.2</b>	<b>11,780.2</b>	<b>86.7</b>
<i>Pre-primary</i>	152.6	1.4	185.0	1.5	201.2	1.5
<i>Primary</i>	2,838.6	25.8	2,989.4	24.9	3,522.4	25.9
<i>Secondary</i>	5,257.8	47.7	5,635.3	47.0	6,941.8	51.1
<i>Technical &amp; Vocational</i>	409.4	3.7	399.0	3.3	395.4	2.9
<i>Special Education Needs</i>	28.6	0.3	35.9	0.3	52.8	0.4
<i>Other</i> <sup>4</sup>	554.7	5.0	844.4	7.0	666.6	4.9
<b>Ministry of Tertiary Education</b>	<b>758.3</b>	<b>6.9</b>	<b>732.6</b>	<b>6.1</b>	<b>714.6</b>	<b>5.3</b>
<i>Tertiary Education</i>	758.3	6.9	732.6	6.1	714.6	5.3
<b>Island of Rodrigues</b> <sup>5</sup>	<b>212.0</b>	<b>1.9</b>	<b>230.5</b>	<b>1.9</b>	<b>223.0</b>	<b>1.6</b>
<i>Pre-Primary</i>	4.7	0.0	4.5	0.0	4.6	0.0
<i>Primary</i>	147.5	1.3	176.5	1.5	173.5	1.3
<i>Secondary</i>	40.0	0.4	32.6	0.3	28.2	0.2
<i>Technical &amp; Vocational</i>	0.3	0.0	8.7	0.1	9.7	0.1
<i>Tertiary Education</i>	8.0	0.1	8.2	0.1	7.0	0.1
<i>Other</i>	11.5	0.1	-	0.0	-	0.0
<b>Other Ministries</b>	<b>805.4</b>	<b>7.3</b>	<b>933.7</b>	<b>7.8</b>	<b>865.7</b>	<b>6.4</b>
<b>Total</b>	<b>11,017.4</b>	<b>100.0</b>	<b>11,985.8</b>	<b>100.0</b>	<b>13,583.5</b>	<b>100.0</b>

<sup>1</sup> Actual Expenditure

<sup>2</sup> Revised

<sup>3</sup> Budget Estimates

<sup>4</sup> Includes Mauritius Institute of Education (MIE), Conservatoire de Musique Francois Mitterrand, Human Resource Development Council (HRDC), National Productivity and Competitiveness Council (NPCC), Mauritius Qualifications Authority (MQA), Rajiv Gandhi Science Centre & World Hindi Secretariat

<sup>5</sup> Expenditure on Education under Ministry of Rodrigues Vote

Table 3.1 - Distribution of pre-primary schools by district and type of administration, 2013

District	Type of Administration				
	Total	ECCEA <sup>1</sup>	RC/HA <sup>2</sup>	Municipal/ V.Council	Private <sup>3</sup>
Port Louis	126	18	1	17	90
Pamplemousses	100	23	1	1	75
Riv. du Rempart	91	23	-	2	66
Flacq	119	30	3	-	86
Grand Port	96	20	-	6	70
Savanne	53	11	1	1	40
Plaines Wilhems	271	29	1	28	213
Moka	48	17	3	-	28
Black River	41	12	-	-	29
Island of Mauritius	945	183	10	55	697
Island of Rodrigues	33	3	-	-	30
Republic of Mauritius	978	186	10	55	727

Table 3.2 - Distribution of pre-primary schools by zone and type of administration, 2013

Zone	Type of Administration				
	Total	ECCEA <sup>1</sup>	RC/HA <sup>2</sup>	Municipal/ V.Council	Private <sup>3</sup>
1 - Port Louis / North	318	64	2	21	231
2 - B.Bassin-R.Hill / East	239	56	6	9	168
3 - Curepipe / South	221	39	1	8	173
4 - Q.Bornes / Vacoas-Phoenix /West	167	24	1	17	125
Island of Mauritius	945	183	10	55	697
Island of Rodrigues	33	3	-	-	30
Republic of Mauritius	978	186	10	55	727

<sup>1</sup> ECCEA: Early Childhood Care and Education Authority (Ex Pre-School Trust Fund)

<sup>2</sup> RC/HA: Roman Catholic and Hindu Aided Schools

<sup>3</sup> Private: Includes pupils from NGO

Table 3.3 - Enrolment and personnel in pre-primary schools by district and sex, 2013

District	Enrolment			Personnel		
	Male	Female	Total	Teaching	Non - Teaching	Total
Port Louis	2,249	2,124	4,373	326	168	494
Pamplemousses	1,728	1,654	3,382	236	125	361
Riviere du Rempart	1,405	1,360	2,765	194	89	283
Flacq	1,887	1,845	3,732	266	91	357
Grand Port	1,236	1,229	2,465	210	56	266
Savanne	821	818	1,639	113	32	145
Plaines Wilhems	4,247	4,236	8,483	761	345	1,106
Moka	810	784	1,594	116	57	173
Black River	752	761	1,513	133	51	184
Island of Mauritius	15,135	14,811	29,946	2,355	1,014	3,369
Island of Rodrigues	767	706	1,473	70	8	78
Republic of Mauritius	15,902	15,517	31,419	2,425	1,022	3,447

Table 3.4 - Enrolment and personnel in pre-primary schools by zone and sex, 2013

Zone	Enrolment			Personnel		
	Male	Female	Total	Teaching	Non - Teaching	Total
1 - Port Louis / North	5,457	5,186	10,643	773	394	1,167
2 - B.Bassin-R.Hill / East	3,869	3,737	7,606	594	230	824
3 - Curepipe / South	3,163	3,262	6,425	516	165	681
4 - Q.Bornes / Vacoas-Phoenix / West	2,646	2,626	5,272	472	225	697
Island of Mauritius	15,135	14,811	29,946	2,355	1,014	3,369
Island of Rodrigues	767	706	1,473	70	8	78
Republic of Mauritius	15,902	15,517	31,419	2,425	1,022	3,447

Table 4.1 - Distribution of primary schools by district and type of administration, 2013

District	Total	Type of Administration					
		Government		Private			
		No.	%	Aided		Non - Aided	
No.	%			No.	%		
Port Louis	38	25	66	8	21	5	13
Pamplemousses	33	23	70	-	-	10	30
Riviere du Rempart	27	22	81	3	11	2	7
Flacq	38	28	74	9	24	1	3
Grand Port	30	25	83	5	17	-	-
Savanne	17	14	82	3	18	-	-
Plaines Wilhems	78	44	56	13	17	21	27
Moka	26	20	77	4	15	2	8
Black River	18	12	67	3	17	3	17
Island of Mauritius	305	213	70	48	16	44	14
Island of Rodrigues	15	10	67	5	33	-	-
Republic of Mauritius	320	223	70	53	17	44	14

Table 4.2 - Distribution of primary schools by zone and type of administration, 2013

Zone	Total	Type of Administration					
		Government		Private			
		No.	%	Aided		Non - Aided	
No.	%			No.	%		
1 - Port Louis / North	100	72	72	11	11	17	17
2 - B.Bassin-R.Hill / East	80	58	73	17	21	5	6
3 - Curepipe / South	67	48	72	12	18	7	10
4 - Q.Bornes / Vacoas-Phoenix / West	58	35	60	8	14	15	26
Island of Mauritius	305	213	70	48	16	44	14
Island of Rodrigues	15	10	67	5	33	-	-
Republic of Mauritius	320	223	70	53	17	44	14

Table 4.3 - Enrolment in primary schools by district, type of administration and sex, 2013

District	All schools			Government schools			Private schools					
	Total	Male	Female	Total	Male	Female	Aided			Non-aided		
							Total	Male	Female	Total	Male	Female
Port Louis	14,685	7,382	7,303	9,208	4,626	4,582	4,894	2,462	2,432	583	294	289
Pamplemousses	10,310	5,268	5,042	8,327	4,196	4,131	-	-	-	1,983	1,072	911
Riviere du Rempart	9,186	4,745	4,441	7,559	3,912	3,647	864	438	426	763	395	368
Flacq	12,266	6,233	6,033	10,273	5,215	5,058	1,790	913	877	203	105	98
Grand Port	9,186	4,583	4,603	7,601	3,785	3,816	1,585	798	787	-	-	-
Savanne	5,600	2,877	2,723	4,770	2,452	2,318	830	425	405	-	-	-
Plaines Wilhems	30,642	15,479	15,163	16,776	8,580	8,196	8,445	4,253	4,192	5,421	2,646	2,775
Moka	7,042	3,552	3,490	5,245	2,642	2,603	883	452	431	914	458	456
Black River	4,724	2,270	2,454	3,600	1,716	1,884	694	332	362	430	222	208
Island of Mauritius	103,641	52,389	51,252	73,359	37,124	36,235	19,985	10,073	9,912	10,297	5,192	5,105
Island of Rodrigues	5,212	2,633	2,579	3,116	1,591	1,525	2,096	1,042	1,054	-	-	-
Republic of Mauritius	108,853	55,022	53,831	76,475	38,715	37,760	22,081	11,115	10,966	10,297	5,192	5,105

- 13 -

Table 4.4 - Enrolment in primary schools by zone, type of administration and sex, 2013

Zone	All schools			Government schools			Private schools					
	Total	Male	Female	Total	Male	Female	Aided			Non-aided		
							Total	Male	Female	Total	Male	Female
1 - Port Louis / North	34,903	17,771	17,132	25,816	13,110	12,706	5,758	2,900	2,858	3,329	1,761	1,568
2 - B.Bassin-R.Hill / East	25,772	13,012	12,760	18,352	9,285	9,067	6,002	2,996	3,006	1,418	731	687
3 - Curepipe / South	22,859	11,548	11,311	15,573	7,899	7,674	4,628	2,369	2,259	2,658	1,280	1,378
4 - Q.Bornes / Vacoas - Phoenix / West	20,107	10,058	10,049	13,618	6,830	6,788	3,597	1,808	1,789	2,892	1,420	1,472
Island of Mauritius	103,641	52,389	51,252	73,359	37,124	36,235	19,985	10,073	9,912	10,297	5,192	5,105
Island of Rodrigues	5,212	2,633	2,579	3,116	1,591	1,525	2,096	1,042	1,054	-	-	-
Republic of Mauritius	108,853	55,022	53,831	76,475	38,715	37,760	22,081	11,115	10,966	10,297	5,192	5,105

Table 4.5 - Enrolment in primary schools by district and grade, 2013

District	Grade/Standard							All Grades
	I	II	III	IV	V	VI	VI (repeaters)	
Port Louis	2,296	2,236	2,346	2,478	2,442	2,544	343	14,685
Pamplemousses	1,576	1,621	1,690	1,794	1,699	1,751	179	10,310
Riviere du Rempart	1,469	1,424	1,455	1,593	1,627	1,539	79	9,186
Flacq	1,805	1,866	2,074	2,129	2,086	2,148	158	12,266
Grand Port	1,356	1,372	1,637	1,516	1,578	1,611	116	9,186
Savanne	855	852	968	943	930	1,009	43	5,600
Plaines Wilhems	4,710	4,836	5,023	5,116	5,239	5,283	435	30,642
Moka	1,041	1,072	1,167	1,188	1,224	1,276	74	7,042
Black River	809	739	783	811	753	747	82	4,724
Island of Mauritius	15,917	16,018	17,143	17,568	17,578	17,908	1,509	103,641
Island of Rodrigues	869	790	825	896	782	796	254	5,212
Republic of Mauritius	16,786	16,808	17,968	18,464	18,360	18,704	1,763	108,853

Table 4.6 - Enrolment in primary schools by zone and grade, 2013

Zone	Grade/Standard							All Grades
	I	II	III	IV	V	VI	VI (repeaters)	
1 -Port Louis / North	5,428	5,394	5,634	5,989	5,890	5,966	602	34,903
2 -B.Bassin-R.Hill / East	3,888	3,938	4,265	4,407	4,375	4,496	403	25,772
3 -Curepipe / South	3,435	3,499	3,953	3,814	3,919	4,005	234	22,859
4 -Q.Bornes/Vacoas-Phoenix/West	3,166	3,187	3,291	3,358	3,394	3,441	270	20,107
Island of Mauritius	15,917	16,018	17,143	17,568	17,578	17,908	1,509	103,641
Island of Rodrigues	869	790	825	896	782	796	254	5,212
Republic of Mauritius	16,786	16,808	17,968	18,464	18,360	18,704	1,763	108,853



Table 4.7 - Enrolment in primary schools by grade and sex, 2011 - 2013

Grade	2011			2012			2013		
	Total	Male	Female	Total	Male	Female	Total	Male	Female
<b>Republic of Mauritius</b>									
<b>I</b>	18,112	9,147	8,965	16,967	8,683	8,284	16,786	8,476	8,310
<b>II</b>	18,465	9,273	9,192	18,106	9,158	8,948	16,808	8,587	8,221
<b>III</b>	18,562	9,401	9,161	18,540	9,320	9,220	17,968	9,119	8,849
<b>IV</b>	19,029	9,602	9,427	18,463	9,374	9,089	18,464	9,243	9,221
<b>V</b>	18,700	9,378	9,322	18,932	9,495	9,437	18,360	9,236	9,124
<b>VI</b>	19,094	9,685	9,409	18,459	9,247	9,212	18,704	9,318	9,386
<b>VI Repeaters</b>	4,106	2,449	1,657	4,167	2,471	1,696	1,763	1,043	720
<b>Total</b>	116,068	58,935	57,133	113,634	57,748	55,886	108,853	55,022	53,831
<b>Island of Mauritius</b>									
<b>I</b>	17,287	8,709	8,578	16,179	8,294	7,885	15,917	8,055	7,862
<b>II</b>	17,572	8,830	8,742	17,284	8,736	8,548	16,018	8,187	7,831
<b>III</b>	17,772	8,987	8,785	17,642	8,875	8,767	17,143	8,701	8,442
<b>IV</b>	18,215	9,174	9,041	17,681	8,971	8,710	17,568	8,801	8,767
<b>V</b>	17,904	8,986	8,918	18,131	9,090	9,041	17,578	8,838	8,740
<b>VI</b>	18,283	9,277	9,006	17,660	8,849	8,811	17,908	8,917	8,991
<b>VI Repeaters</b>	3,874	2,300	1,574	3,942	2,332	1,610	1,509	890	619
<b>Total</b>	110,907	56,263	54,644	108,519	55,147	53,372	103,641	52,389	51,252
<b>Island of Rodrigues</b>									
<b>I</b>	825	438	387	788	389	399	869	421	448
<b>II</b>	893	443	450	822	422	400	790	400	390
<b>III</b>	790	414	376	898	445	453	825	418	407
<b>IV</b>	814	428	386	782	403	379	896	442	454
<b>V</b>	796	392	404	801	405	396	782	398	384
<b>VI</b>	811	408	403	799	398	401	796	401	395
<b>VI Repeaters</b>	232	149	83	225	139	86	254	153	101
<b>Total</b>	5,161	2,672	2,489	5,115	2,601	2,514	5,212	2,633	2,579

Table 4.8 - Enrolment in primary schools by type of administration, grade and sex, 2011 - 2013

**Republic of Mauritius**

Grade	2011			2012			2013		
	Total	Male	Female	Total	Male	Female	Total	Male	Female
<b>All schools</b>									
<b>I</b>	18,112	9,147	8,965	16,967	8,683	8,284	16,786	8,476	8,310
<b>II</b>	18,465	9,273	9,192	18,106	9,158	8,948	16,808	8,587	8,221
<b>III</b>	18,562	9,401	9,161	18,540	9,320	9,220	17,968	9,119	8,849
<b>IV</b>	19,029	9,602	9,427	18,463	9,374	9,089	18,464	9,243	9,221
<b>V</b>	18,700	9,378	9,322	18,932	9,495	9,437	18,360	9,236	9,124
<b>VI</b>	19,094	9,685	9,409	18,459	9,247	9,212	18,704	9,318	9,386
<b>VI Repeaters</b>	4,106	2,449	1,657	4,167	2,471	1,696	1,763	1,043	720
<b>Total</b>	116,068	58,935	57,133	113,634	57,748	55,886	108,853	55,022	53,831
<b>Government schools</b>									
<b>I</b>	12,697	6,470	6,227	11,644	5,962	5,682	11,419	5,801	5,618
<b>II</b>	13,138	6,613	6,525	12,634	6,400	6,234	11,589	5,908	5,681
<b>III</b>	13,242	6,722	6,520	13,125	6,614	6,511	12,557	6,416	6,141
<b>IV</b>	13,756	6,939	6,817	13,168	6,695	6,473	13,040	6,543	6,497
<b>V</b>	13,547	6,844	6,703	13,631	6,827	6,804	13,086	6,600	6,486
<b>VI</b>	13,961	7,095	6,866	13,421	6,757	6,664	13,609	6,753	6,856
<b>VI Repeaters</b>	3,161	1,892	1,269	3,232	1,908	1,324	1,175	694	481
<b>Total</b>	83,502	42,575	40,927	80,855	41,163	39,692	76,475	38,715	37,760
<b>Private schools</b>									
<b>I</b>	5,415	2,677	2,738	5,323	2,721	2,602	5,367	2,675	2,692
<b>II</b>	5,327	2,660	2,667	5,472	2,758	2,714	5,219	2,679	2,540
<b>III</b>	5,320	2,679	2,641	5,415	2,706	2,709	5,411	2,703	2,708
<b>IV</b>	5,273	2,663	2,610	5,295	2,679	2,616	5,424	2,700	2,724
<b>V</b>	5,153	2,534	2,619	5,301	2,668	2,633	5,274	2,636	2,638
<b>VI</b>	5,133	2,590	2,543	5,038	2,490	2,548	5,095	2,565	2,530
<b>VI Repeaters</b>	945	557	388	935	563	372	588	349	239
<b>Total</b>	32,566	16,360	16,206	32,779	16,585	16,194	32,378	16,307	16,071

Table 4.9 - Personnel in primary schools by district and occupational status, 2013

District	Head Teacher	Deputy Head Teacher	Teacher General Purpose *	Teacher, Oriental language									School clerk	Caretaker	Labourer	Other	Total
				Total	Hindi	Urdu	Tamil	Telugu	Marathi	Arabic	Modern Chinese	kreol					
Port Louis	36	92	541	181	45	47	26	5	1	26	9	22	23	64	33	8	978
Pamplemousses	31	87	423	147	74	38	16	7	-	5	-	7	30	47	30	14	809
Riv. du Rempart	25	84	362	138	71	23	21	13	-	5	-	5	20	45	34	12	720
Flacq	34	96	453	197	101	48	17	8	9	4	2	8	25	61	42	7	915
Grand Port	28	79	326	138	56	23	17	13	6	11	1	11	19	47	25	12	674
Savanne	15	62	193	85	22	14	10	7	8	12	4	8	12	32	9	5	413
Plaines Wilhems	78	330	1,104	336	98	94	45	19	17	31	14	18	67	149	74	86	2,224
Moka	23	74	310	98	35	32	12	8	5	4	1	1	21	28	33	26	613
Black River	18	27	206	38	13	9	3	-	8	-	-	5	13	28	17	7	354
Island of Mauritius	288	931	3,918	1,358	515	328	167	80	54	98	31	85	230	501	297	177	7,700
Island of Rodrigues	14	33	228	8	-	-	-	-	-	-	-	8	15	53	46	29	426
Republic of Mauritius	302	964	4,146	1,366	515	328	167	80	54	98	31	93	245	554	343	206	8,126

Table 4.10 - Personnel in primary schools by zone and occupational status, 2013

Zone	Head Teacher	Deputy Head Teacher	Teacher General Purpose *	Teacher, Oriental language									School clerk	Caretaker	Labourer	Other	Total
				Total	Hindi	Urdu	Tamil	Telugu	Marathi	Arabic	Modern Chinese	kreol					
1 - Port Louis / North	94	265	1,349	475	191	113	63	25	1	39	9	34	74	158	100	34	2,549
2 - B.Bassin-R.Hill / East	71	231	1,001	365	157	101	41	16	15	10	8	17	61	115	94	41	1,979
3 - Curepipe / South	62	223	802	295	96	54	36	24	17	37	7	24	48	124	59	42	1,655
4 - Q.Bornes/ Vacoas-Phoenix / West	61	212	766	223	71	60	27	15	21	12	7	10	47	104	44	60	1,517
Island of Mauritius	288	931	3,918	1,358	515	328	167	80	54	98	31	85	230	501	297	177	7,700
Island of Rodrigues	14	33	228	8	-	-	-	-	-	-	-	8	15	53	46	29	426
Republic of Mauritius	302	964	4,146	1,366	515	328	167	80	54	98	31	93	245	554	343	206	8,126

\* including physical education instructors

Table 4.11 - Certificate of Primary Education (CPE) examination results by sex, 2010 - 2012

**School Candidates only**

		2010			2011			2012		
		Number Examined	Number Passed	% Passed	Number Examined	Number Passed	% Passed	Number Examined	Number Passed	% Passed
<b>Republic of Mauritius</b>	Total	23,156	15,871	68.5	23,176	15,890	68.6	22,697	15,613	68.8
	Male	12,048	7,604	63.1	12,055	7,561	62.7	11,716	7,319	62.5
	Female	11,108	8,267	74.4	11,121	8,329	74.9	10,981	8,294	75.5
<b>Island of Mauritius</b>	Total	22,153	15,252	68.8	22,131	15,235	68.8	21,680	15,004	69.2
	Male	11,508	7,312	63.5	11,502	7,250	63.0	11,185	7,044	63.0
	Female	10,645	7,940	74.6	10,629	7,985	75.1	10,495	7,960	75.8
<b>Island of Rodrigues</b>	Total	1,003	619	61.7	1,045	655	62.7	1,017	609	59.9
	Male	540	292	54.1	553	311	56.2	531	275	51.8
	Female	463	327	70.6	492	344	69.9	486	334	68.7

Source: Mauritius Examinations Syndicate

Table 4.12 - Performance at Certificate of Primary Education (CPE) examination by sex and sitting, 2012

			Island of Mauritius			Island of Rodrigues			Republic of Mauritius		
			Number Examined	Number Passed	% Passed	Number Examined	Number Passed	% Passed	Number Examined	Number Passed	% Passed
<b>School Candidates</b>											
First Sitting	Total	17,221	13,232	76.8	794	539	67.9	18,015	13,771	76.4	
	Male	8,587	6,143	71.5	395	240	60.8	8,982	6,383	71.1	
	Female	8,634	7,089	82.1	399	299	74.9	9,033	7,388	81.8	
Second Sitting (or more)	Total	4,459	1,772	39.7	223	70	31.4	4,682	1,842	39.3	
	Male	2,598	901	34.7	136	35	25.7	2,734	936	34.2	
	Female	1,861	871	46.8	87	35	40.2	1,948	906	46.5	
Total	Total	21,680	15,004	69.2	1,017	609	59.9	22,697	15,613	68.8	
	Male	11,185	7,044	63.0	531	275	51.8	11,716	7,319	62.5	
	Female	10,495	7,960	75.8	486	334	68.7	10,981	8,294	75.5	
<b>Private Candidates</b>											
	Total	2,209	668	30.2	69	13	18.8	2,278	681	29.9	
	Male	1,357	371	27.3	43	9	20.9	1,400	380	27.1	
	Female	852	297	34.9	26	4	15.4	878	301	34.3	
<b>School &amp; Private Candidates</b>											
	Total	23,889	15,672	65.6	1,086	622	57.3	24,975	16,294	65.2	
	Male	12,542	7,415	59.1	574	284	49.5	13,116	7,699	58.7	
	Female	11,347	8,257	72.8	512	338	66.0	11,859	8,595	72.5	

Source: Mauritius Examinations Syndicate

Table 5.1 - Distribution of secondary schools (general) by district and type of administration, 2013

District	All Schools <sup>1</sup>	Type of Administration					
		State <sup>2</sup>		Private			
				Aided <sup>3</sup>		Non - Aided	
		No.	%	No.	%	No.	%
Port Louis	27	8	30	16	59	3	11
Pamplemousses	15	8	53	6	40	1	7
Riviere du Rempart	13	6	46	5	38	2	15
Flacq	14	8	57	6	43	-	-
Grand Port	11	4	36	7	64	-	-
Savanne	6	4	67	2	33	-	-
Plaines Wilhems	67	22	33	33	52	12	18
Moka	12	5	42	4	33	3	25
Black River	5	3	60	2	40	-	-
Island of Mauritius	170	68	40	81	48	21	12
Island of Rodrigues	6	-	-	6	100	-	-
Republic of Mauritius	176	68	39	87	49	21	12

Table 5.2 - Distribution of secondary schools by zone and type of administration, 2013

Zone	All Schools <sup>1</sup>	Type of Administration					
		State <sup>2</sup>		Private			
				Aided <sup>3</sup>		Non - Aided	
		No.	%	No.	%	No.	%
1 - Port Louis / North	56	23	41	27	48	6	11
2 - B.Bassin-R.Hill / East	42	17	40	20	48	5	12
3 - Curepipe / South	40	13	33	20	50	7	18
4 - Q.Bornes / Vacoas-Phoenix / West	32	15	47	14	44	3	9
Island of Mauritius	170	68	40	81	48	21	12
Island of Rodrigues	6	-	-	6	100	-	-
Republic of Mauritius	176	68	39	87	49	21	12

<sup>1</sup> 62 of these schools offer general education only and 114 both academic and pre-vocational education

<sup>2</sup> includes Mahatma Gandhi Institute, Rabindranath Tagore Secondary School and 4 Mahatma Gandhi State Schools

<sup>3</sup> includes Mauritius Educational Development Company (MEDCO) / Rodrigues Educational Development Company (REDCO)

Table 5.3 - Enrolment in secondary schools (general) by district, type of administration and sex, 2013

District	All schools			State schools <sup>1</sup>			Private schools					
							Aided <sup>2</sup>			Non-aided		
	Total	Male	Female	Total	Male	Female	Total	Male	Female	Total	Male	Female
Port Louis	14,468	6,692	7,776	5,403	2,569	2,834	7,914	3,424	4,490	1,151	699	452
Pamplemousses	9,431	4,186	5,245	6,110	2,733	3,377	3,282	1,429	1,853	39	24	15
Riviere du Rempart	9,983	5,239	4,744	5,079	3,205	1,874	4,278	1,699	2,579	626	335	291
Flacq	12,215	5,837	6,378	5,961	2,272	3,689	6,254	3,565	2,689	-	-	-
Grand Port	6,811	3,050	3,761	2,975	1,666	1,309	3,836	1,384	2,452	-	-	-
Savanne	3,764	1,742	2,022	2,487	1,167	1,320	1,277	575	702	-	-	-
Plaines Wilhems	45,216	22,444	22,772	17,166	7,688	9,478	24,671	12,891	11,780	3,379	1,865	1,514
Moka	6,097	2,612	3,485	3,196	1,469	1,727	1,460	374	1,086	1,441	769	672
Black River	1,883	752	1,131	1,241	437	804	642	315	327	-	-	-
Island of Mauritius	109,868	52,554	57,314	49,618	23,206	26,412	53,614	25,656	27,958	6,636	3,692	2,944
Island of Rodrigues	4,004	1,837	2,167	-	-	-	4,004	1,837	2,167	-	-	-
Republic of Mauritius	113,872	54,391	59,481	49,618	23,206	26,412	57,618	27,493	30,125	6,636	3,692	2,944

- 21 -

Table 5.4 - Enrolment in secondary schools (general) by zone, type of administration and sex, 2013

Zone	All schools			State schools <sup>1</sup>			Private schools					
							Aided <sup>2</sup>			Non-aided		
	Total	Male	Female	Total	Male	Female	Total	Male	Female	Total	Male	Female
1 - Port Louis / North	34,240	16,117	18,123	16,950	8,507	8,443	15,474	6,552	8,922	1,816	1,058	758
2 - B.Bassin-R.Hill / East	29,460	14,301	15,159	13,110	5,527	7,583	14,760	7,908	6,852	1,590	866	724
3 - Curepipe / South	27,325	13,772	13,553	9,434	5,188	4,246	15,085	7,059	8,026	2,806	1,525	1,281
4 - Q.Bornes / Vacoas-Phoenix / West	18,843	8,364	10,479	10,124	3,984	6,140	8,295	4,137	4,158	424	243	181
Island of Mauritius	109,868	52,554	57,314	49,618	23,206	26,412	53,614	25,656	27,958	6,636	3,692	2,944
Island of Rodrigues	4,004	1,837	2,167	-	-	-	4,004	1,837	2,167	-	-	-
Republic of Mauritius	113,872	54,391	59,481	49,618	23,206	26,412	57,618	27,493	30,125	6,636	3,692	2,944

<sup>1</sup> includes Mahatma Gandhi Institute, Rabindranath Tagore Secondary School and Mahatma Gandhi State Schools<sup>2</sup> includes Mauritius Educational Development Company (MEDCO) / Rodrigues Educational Development Company (REDCO)

Table 5.5 - Enrolment in secondary schools (general) by district and grade, 2013

District	Grade							All Grades
	I	II	III	IV	V	VI Lower	VI Upper	
Port Louis	2,099	2,127	2,227	2,303	2,442	1,619	1,651	14,468
Pamplemousses	1,427	1,449	1,479	1,612	1,587	941	936	9,431
Riviere du Rempart	1,479	1,546	1,585	1,713	1,681	940	1,039	9,983
Flacq	1,784	1,830	1,806	2,020	2,363	1,216	1,196	12,215
Grand Port	838	934	977	1,144	1,460	693	765	6,811
Savanne	490	559	591	618	794	334	378	3,764
Plaines Wilhems	6,696	6,920	6,650	7,093	7,366	5,287	5,204	45,216
Moka	916	892	861	1,080	1,022	648	678	6,097
Black River	298	298	292	338	352	157	148	1,883
Island of Mauritius	16,027	16,555	16,468	17,921	19,067	11,835	11,995	109,868
Island of Rodrigues	660	718	710	641	673	316	286	4,004
Republic of Mauritius	16,687	17,273	17,178	18,562	19,740	12,151	12,281	113,872

Table 5.6 - Enrolment in secondary schools (general) by zone and grade, 2013

Zone	Grade							All Grades
	I	II	III	IV	V	VI Lower	VI Upper	
1 - Port Louis / North	5,080	5,176	5,353	5,685	5,768	3,522	3,656	34,240
2 - B.Bassin-R.Hill / East	4,298	4,470	4,341	4,843	5,198	3,196	3,114	29,460
3 - Curepipe / South	3,837	4,021	3,918	4,373	5,114	2,916	3,146	27,325
4 - Q.Bornes / Vacoas-Phoenix / West	2,812	2,888	2,856	3,020	2,987	2,201	2,079	18,843
Island of Mauritius	16,027	16,555	16,468	17,921	19,067	11,835	11,995	109,868
Island of Rodrigues	660	718	710	641	673	316	286	4,004
Republic of Mauritius	16,687	17,273	17,178	18,562	19,740	12,151	12,281	113,872



Table 5.7 - Enrolment in secondary schools (general) by grade and sex, 2011 - 2013

Grade	2011			2012			2013		
	Total	Male	Female	Total	Male	Female	Total	Male	Female
<b>Republic of Mauritius</b>									
<b>I</b>	16,924	8,322	8,602	17,075	8,290	8,785	16,687	8,017	8,670
<b>II</b>	16,373	7,963	8,410	17,330	8,493	8,837	17,273	8,336	8,937
<b>III</b>	17,342	8,461	8,881	16,913	8,301	8,612	17,178	8,486	8,692
<b>IV</b>	19,473	9,405	10,068	18,836	9,094	9,742	18,562	9,107	9,455
<b>V</b>	20,842	10,178	10,664	20,749	10,140	10,609	19,740	9,628	10,112
<b>VI Lower</b>	12,510	5,533	6,977	12,426	5,579	6,847	12,151	5,401	6,750
<b>VI Upper</b>	11,825	5,326	6,499	12,348	5,477	6,871	12,281	5,416	6,865
<b>Total</b>	115,289	55,188	60,101	115,677	55,374	60,303	113,872	54,391	59,481
<b>Island of Mauritius</b>									
<b>I</b>	16,379	8,048	8,331	16,374	7,958	8,416	16,027	7,709	8,318
<b>II</b>	15,862	7,706	8,156	16,647	8,154	8,493	16,555	8,000	8,555
<b>III</b>	16,727	8,154	8,573	16,281	7,990	8,291	16,468	8,125	8,343
<b>IV</b>	18,773	9,114	9,659	18,165	8,797	9,368	17,921	8,805	9,116
<b>V</b>	20,220	9,896	10,324	20,107	9,872	10,235	19,067	9,350	9,717
<b>VI Lower</b>	12,210	5,409	6,801	12,109	5,438	6,671	11,835	5,274	6,561
<b>VI Upper</b>	11,582	5,221	6,361	12,070	5,359	6,711	11,995	5,291	6,704
<b>Total</b>	111,753	53,548	58,205	111,753	53,568	58,185	109,868	52,554	57,314
<b>Island of Rodrigues</b>									
<b>I</b>	545	274	271	701	332	369	660	308	352
<b>II</b>	511	257	254	683	339	344	718	336	382
<b>III</b>	615	307	308	632	311	321	710	361	349
<b>IV</b>	700	291	409	671	297	374	641	302	339
<b>V</b>	622	282	340	642	268	374	673	278	395
<b>VI Lower</b>	300	124	176	317	141	176	316	127	189
<b>VI Upper</b>	243	105	138	278	118	160	286	125	161
<b>Total</b>	3,536	1,640	1,896	3,924	1,806	2,118	4,004	1,837	2,167

Table 5.8 - Enrolment in secondary schools (general) by type of administration, grade and sex, 2011 - 2013

**Republic of Mauritius**

Grade	2011			2012			2013		
	Total	Male	Female	Total	Male	Female	Total	Male	Female
<b>All schools</b>									
<b>I</b>	16,924	8,322	8,602	17,075	8,290	8,785	16,687	8,017	8,670
<b>II</b>	16,373	7,963	8,410	17,330	8,493	8,837	17,273	8,336	8,937
<b>III</b>	17,342	8,461	8,881	16,913	8,301	8,612	17,178	8,486	8,692
<b>IV</b>	19,473	9,405	10,068	18,836	9,094	9,742	18,562	9,107	9,455
<b>V</b>	20,842	10,178	10,664	20,749	10,140	10,609	19,740	9,628	10,112
<b>VI Lower</b>	12,510	5,533	6,977	12,426	5,579	6,847	12,151	5,401	6,750
<b>VI Upper</b>	11,825	5,326	6,499	12,348	5,477	6,871	12,281	5,416	6,865
<b>Total</b>	115,289	55,188	60,101	115,677	55,374	60,303	113,872	54,391	59,481
<b>State Schools</b>									
<b>I</b>	7,408	3,570	3,838	7,317	3,508	3,809	7,349	3,515	3,834
<b>II</b>	7,161	3,479	3,682	7,335	3,516	3,819	7,236	3,418	3,818
<b>III</b>	7,460	3,688	3,772	7,249	3,547	3,702	7,356	3,541	3,815
<b>IV</b>	7,585	3,714	3,871	7,713	3,779	3,934	7,559	3,708	3,851
<b>V</b>	7,984	3,785	4,199	8,095	3,917	4,178	7,973	3,846	4,127
<b>VI Lower</b>	5,993	2,516	3,477	5,915	2,540	3,375	6,006	2,627	3,379
<b>VI Upper</b>	6,114	2,577	3,537	6,243	2,607	3,636	6,139	2,551	3,588
<b>Total</b>	49,705	23,329	26,376	49,867	23,414	26,453	49,618	23,206	26,412
<b>Private Schools</b>									
<b>I</b>	9,516	4,752	4,764	9,758	4,782	4,976	9,338	4,502	4,836
<b>II</b>	9,212	4,484	4,728	9,995	4,977	5,018	10,037	4,918	5,119
<b>III</b>	9,882	4,773	5,109	9,664	4,754	4,910	9,822	4,945	4,877
<b>IV</b>	11,888	5,691	6,197	11,123	5,315	5,808	11,003	5,399	5,604
<b>V</b>	12,858	6,393	6,465	12,654	6,223	6,431	11,767	5,782	5,985
<b>VI Lower</b>	6,517	3,017	3,500	6,511	3,039	3,472	6,145	2,774	3,371
<b>VI Upper</b>	5,711	2,749	2,962	6,105	2,870	3,235	6,142	2,865	3,277
<b>Total</b>	65,584	31,859	33,725	65,810	31,960	33,850	64,254	31,185	33,069

Table 5.9 - Distribution of schools offering pre-vocational education by district and type of administration, 2013

District	All Schools <sup>1</sup>	Type of Administration			
		State		Private <sup>2</sup>	
		No.	%	No.	%
Port Louis	18	4	22	14	78
Pamplemousses	12	6	50	6	50
Riviere du Rempart	8	3	38	5	63
Flacq	12	6	50	6	50
Grand Port	8	1	13	7	88
Savanne	6	4	67	2	33
Plaines Wilhems	34	12	35	22	65
Moka	8	4	50	4	50
Black River	5	3	60	2	40
Island of Mauritius	111	43	39	68	61
Island of Rodrigues	5	-	-	5	100
Republic of Mauritius	116	43	37	73	63

Table 5.10 - Distribution of schools offering pre-vocational education by zone and type of administration, 2013

Zone	All Schools <sup>1</sup>	Type of Administration			
		State		Private <sup>2</sup>	
		No.	%	No.	%
1 - Port Louis / North	39	14	36	25	64
2 - B.Bassin-R.Hill / East	30	12	40	18	60
3 - Curepipe / South	24	8	33	16	67
4 - Q.Bornes / Vacoas-Phoenix / West	18	9	50	9	50
Island of Mauritius	111	43	39	68	61
Island of Rodrigues	5	-	-	5	100
Republic of Mauritius	116	43	37	73	63

<sup>1</sup> includes 114 secondary schools providing both academic and pre-vocational education and 2 schools providing only pre-vocational

<sup>2</sup> includes Mauritius Educational Development Company (MEDCO) / Rodrigues Educational Development Company (REDCO)

Table 5.11 - Enrolment in schools offering pre-vocational education by district, type of administration and sex, 2013

District	All schools			State schools			Private schools <sup>1</sup>		
	Total	Male	Female	Total	Male	Female	Total	Male	Female
Port Louis	1,755	1,181	574	324	234	90	1,431	947	484
Pamplemousses	1,013	677	336	401	289	112	612	388	224
Riviere du Rempart	899	579	320	190	106	84	709	473	236
Flacq	1,178	762	416	359	150	209	819	612	207
Grand Port	916	606	310	18	18	-	898	588	310
Savanne	724	447	277	284	123	161	440	324	116
Plaines Wilhems	2,422	1,591	831	768	505	263	1,654	1,086	568
Moka	577	412	165	298	221	77	279	191	88
Black River	515	319	196	362	197	165	153	122	31
Island of Mauritius	9,999	6,574	3,425	3,004	1,843	1,161	6,995	4,731	2,264
Island of Rodrigues	438	295	143	-	-	-	438	295	143
Republic of Mauritius	10,437	6,869	3,568	3,004	1,843	1,161	7,433	5,026	2,407

Table 5.12 - Enrolment in schools offering pre-vocational education by zone, type of administration and sex, 2013

Zone	All schools			State schools			Private schools <sup>1</sup>		
	Total	Male	Female	Total	Male	Female	Total	Male	Female
1 - Port Louis / North	3,726	2,437	1,289	974	629	345	2,752	1,808	944
2 - B.Bassin-R.Hill / East	2,446	1,595	851	779	439	340	1,667	1,156	511
3 - Curepipe / South	2,268	1,480	788	549	325	224	1,719	1,155	564
4 - Q.Bornes / Vacoas-Phoenix / West	1,559	1,062	497	702	450	252	857	612	245
Island of Mauritius	9,999	6,574	3,425	3,004	1,843	1,161	6,995	4,731	2,264
Island of Rodrigues	438	295	143	-	-	-	438	295	143
Republic of Mauritius	10,437	6,869	3,568	3,004	1,843	1,161	7,433	5,026	2,407

<sup>1</sup> includes Mauritius Educational Development Company (MEDCO) / Rodrigues Educational Development Company (REDCO)

Table 5.13 - Enrolment in schools offering pre-vocational education by district and year of study, 2013

District	Enrolment																				
	Year 1.1			Year 1.2			Total Year I			Year II			Year III			NTCF <sup>1</sup>			Total		
	Total	Male	Female	Total	Male	Female	Total	Male	Female	Total	Male	Female	Total	Male	Female	Total	Male	Female	Total	Male	Female
Port Louis	355	252	103	427	274	153	782	526	256	381	241	140	331	222	109	261	192	69	1,755	1,181	574
Pamplemousses	159	109	50	279	197	82	438	306	132	218	153	65	197	108	89	160	110	50	1,013	677	336
Riviere du Rempart	273	168	105	207	128	79	480	296	184	172	114	58	133	92	41	114	77	37	899	579	320
Flacq	245	146	99	306	205	101	551	351	200	247	171	76	222	148	74	158	92	66	1,178	762	416
Grand Port	238	159	79	230	142	88	468	301	167	177	123	54	163	102	61	108	80	28	916	606	310
Savanne	225	166	59	126	63	63	351	229	122	152	92	60	107	56	51	114	70	44	724	447	277
P.Wilhems	485	328	157	641	411	230	1,126	739	387	509	343	166	461	281	180	326	228	98	2,422	1,591	831
Moka	122	101	21	158	100	58	280	201	79	124	91	33	104	80	24	69	40	29	577	412	165
Black River	95	54	41	121	72	49	216	126	90	101	66	35	113	67	46	85	60	25	515	319	196
Island of Mauritius	2,197	1,483	714	2,495	1,592	903	4,692	3,075	1,617	2,081	1,394	687	1,831	1,156	675	1,395	949	446	9,999	6,574	3,425
Island of Rodrigues	-	-	-	127	86	41	127	86	41	121	78	43	98	72	26	92	59	33	438	295	143
Republic of Mauritius	2,197	1,483	714	2,622	1,678	944	4,819	3,161	1,658	2,202	1,472	730	1,929	1,228	701	1,487	1,008	479	10,437	6,869	3,568

Table 5.14 - Enrolment in schools offering pre-vocational education by zone and year of study, 2013

Zone	Enrolment																				
	Year 1.1			Year 1.2			Total Year I			Year II			Year III			NTCF <sup>1</sup>			Total		
	Total	Male	Female	Total	Male	Female	Total	Male	Female	Total	Male	Female	Total	Male	Female	Total	Male	Female	Total	Male	Female
1- Port Louis / North	787	529	258	931	599	332	1,718	1,128	590	785	508	277	672	422	250	551	379	172	3,726	2,437	1,289
2- B.Bassin-R.Hill / East	548	367	181	669	440	229	1,217	807	410	488	327	161	446	292	154	295	169	126	2,446	1,595	851
3- Curepipe / South	589	412	177	472	281	191	1,061	693	368	475	320	155	410	244	166	322	223	99	2,268	1,480	788
4- Q.Bornes / Vacoas-Phoenix / West	273	175	98	423	272	151	696	447	249	333	239	94	303	198	105	227	178	49	1,559	1,062	497
Island of Mauritius	2,197	1,483	714	2,495	1,592	903	4,692	3,075	1,617	2,081	1,394	687	1,831	1,156	675	1,395	949	446	9,999	6,574	3,425
Island of Rodrigues	-	-	-	127	86	41	127	86	41	121	78	43	98	72	26	92	59	33	438	295	143
Republic of Mauritius	2,197	1,483	714	2,622	1,678	944	4,819	3,161	1,658	2,202	1,472	730	1,929	1,228	701	1,487	1,008	479	10,437	6,869	3,568

<sup>1</sup> National Trade Certificate Foundation**Note**

Year 1.1 refers to students enrolled in Prevocational Year 1 and who were unsuccessful at CPE examinations at their first attempt

Year 1.2 refers to students enrolled in Prevocational Year 1 and who were unsuccessful at CPE examinations at their second attempt

Year I is total Year 1.1 and total Year 1.2

Table 5.15 - Enrolment in schools offering pre-vocational education by year of study and sex, 2011 - 2013

Year of study	2011			2012			2013		
	Total	Male	Female	Total	Male	Female	Total	Male	Female
<b>Republic of Mauritius</b>									
<i>I.1</i>	-	-	-	-	-	-	2,197	1,483	714
<i>I.2</i>	-	-	-	-	-	-	2,622	1,678	944
I	2,544	1,589	955	2,674	1,724	950	4,819	3,161	1,658
II	2,409	1,576	833	2,364	1,492	872	2,202	1,472	730
III	2,317	1,470	847	2,183	1,425	758	1,929	1,228	701
NTCF <sup>1</sup>	-	-	-	-	-	-	1,487	1,008	479
Total	7,270	4,635	2,635	7,221	4,641	2,580	10,437	6,869	3,568
<b>Island of Mauritius</b>									
<i>I.1</i>	-	-	-	-	-	-	2,197	1,483	714
<i>I.2</i>	-	-	-	-	-	-	2,495	1,592	903
I	2,434	1,515	919	2,510	1,616	894	4,692	3,075	1,617
II	2,276	1,489	787	2,241	1,404	837	2,081	1,394	687
III	2,197	1,394	803	2,035	1,329	706	1,831	1,156	675
NTCF <sup>1</sup>	-	-	-	-	-	-	1,395	949	446
Total	6,907	4,398	2,509	6,786	4,349	2,437	9,999	6,574	3,425
<b>Island of Rodrigues</b>									
<i>I.1</i>	-	-	-	-	-	-	-	-	-
<i>I.2</i>	-	-	-	-	-	-	127	86	41
I	110	74	36	164	108	56	127	86	41
II	133	87	46	123	88	35	121	78	43
III	120	76	44	148	96	52	98	72	26
NTCF <sup>1</sup>	-	-	-	-	-	-	92	59	33
Total	363	237	126	435	292	143	438	295	143

<sup>1</sup> National Trade Certificate Foundation

Table 5.16 - Enrolment in schools offering pre-vocational education by type of administration, year of study and sex, 2011 - 2013

**Republic of Mauritius**

Year of study	2011			2012			2013		
	Total	Male	Female	Total	Male	Female	Total	Male	Female
<b>All schools</b>									
<i>I.1</i>	-	-	-	-	-	-	2,197	1,483	714
<i>I.2</i>	-	-	-	-	-	-	2,622	1,678	944
I	2,544	1,589	955	2,674	1,724	950	4,819	3,161	1,658
II	2,409	1,576	833	2,364	1,492	872	2,202	1,472	730
III	2,317	1,470	847	2,183	1,425	758	1,929	1,228	701
NTCF <sup>1</sup>	-	-	-	-	-	-	1,487	1,008	479
Total	7,270	4,635	2,635	7,221	4,641	2,580	10,437	6,869	3,568
<b>State</b>									
<i>I.1</i>	-	-	-	-	-	-	688	433	255
<i>I.2</i>	-	-	-	-	-	-	661	373	288
I	757	440	317	781	427	354	1,349	806	543
II	700	445	255	715	415	300	634	394	240
III	721	446	275	677	428	249	546	337	209
NTCF <sup>1</sup>	-	-	-	-	-	-	475	306	169
Total	2,178	1,331	847	2,173	1,270	903	3,004	1,843	1,161
<b>Private</b>									
<i>I.1</i>	-	-	-	-	-	-	1,509	1,050	459
<i>I.2</i>	-	-	-	-	-	-	1,961	1,305	656
I	1,787	1,149	638	1,893	1,297	596	3,470	2,355	1,115
II	1,709	1,131	578	1,649	1,077	572	1,568	1,078	490
III	1,596	1,024	572	1,506	997	509	1,383	891	492
NTCF <sup>1</sup>	-	-	-	-	-	-	1,012	702	310
Total	5,092	3,304	1,788	5,048	3,371	1,677	7,433	5,026	2,407

<sup>1</sup> National Trade Certificate Foundation

Table 5.17 - Teaching staff in secondary schools (general &amp; pre-vocational stream) by district and sex, 2013

District	General			Pre-vocational			General & Pre-vocational		
	Total	Male	Female	Total	Male	Female	Total	Male	Female
Port Louis	1,141	466	675	122	49	73	1,263	515	748
Pamplemousses	633	265	368	69	20	49	702	285	417
Riviere du Rempart	644	279	365	54	22	32	698	301	397
Flacq	860	387	473	82	39	43	942	426	516
Grand Port	560	227	333	61	19	42	621	246	375
Savanne	368	163	205	52	17	35	420	180	240
Plaines Wilhems	3,038	1,235	1,803	184	61	123	3,222	1,296	1,926
Moka	463	153	310	55	19	36	518	172	346
Black River	149	62	87	30	15	15	179	77	102
Island of Mauritius	7,856	3,237	4,619	709	261	448	8,565	3,498	5,067
Island of Rodrigues	236	106	130	29	7	22	265	113	152
Republic of Mauritius	8,092	3,343	4,749	738	268	470	8,830	3,611	5,219

Table 5.18 - Teaching staff in secondary schools (general &amp; pre-vocational stream) by zone and sex, 2013

Zone	General			Pre-vocational			General & Pre-vocational		
	Total	Male	Female	Total	Male	Female	Total	Male	Female
1 - Port Louis / North	2,449	1,022	1,427	250	92	158	2,699	1,114	1,585
2 - B.Bassin-R.Hill / East	2,048	850	1,198	198	76	122	2,246	926	1,320
3 - Curepipe / South	1,983	842	1,141	155	50	105	2,138	892	1,246
4 - Q.Bornes / Vacoas-Phoenix / West	1,376	523	853	106	43	63	1,482	566	916
Island of Mauritius	7,856	3,237	4,619	709	261	448	8,565	3,498	5,067
Island of Rodrigues	236	106	130	29	7	22	265	113	152
Republic of Mauritius	8,092	3,343	4,749	738	268	470	8,830	3,611	5,219



Table 5.19 - Cambridge School Certificate (SC) examination results by type of school administration and sex, 2010 - 2012

**School candidates only**

Type of school administration and sex		2010			2011			2012		
		No. Examined	No. Passed	% Passed	No. Examined	No. Passed	% Passed	No. Examined	No. Passed	% Passed
<b>Republic of Mauritius</b>										
<b>All Schools</b>	Total	17,487	13,609	77.8	17,192	13,194	76.7	16,885	12,788	75.7
	Male	8,170	5,987	73.3	8,080	5,799	71.8	7,799	5,431	69.6
	Female	9,317	7,622	81.8	9,112	7,395	81.2	9,086	7,357	81.0
<b>State Schools</b>	Total	8,186	7,116	86.9	8,116	6,995	86.2	8,122	6,923	85.2
	Male	3,963	3,278	82.7	3,892	3,181	81.7	3,892	3,098	79.6
	Female	4,223	3,838	90.9	4,224	3,814	90.3	4,230	3,825	90.4
<b>Private Schools</b>	Total	9,301	6,493	69.8	9,076	6,199	68.3	8,763	5,865	66.9
	Male	4,207	2,709	64.4	4,188	2,618	62.5	3,907	2,333	59.7
	Female	5,094	3,784	74.3	4,888	3,581	73.3	4,856	3,532	72.7
<b>Island of Mauritius</b>										
<b>All Schools</b>	Total	16,885	13,171	78.0	16,613	12,738	76.7	16,296	12,356	75.8
	Male	7,904	5,791	73.3	7,818	5,594	71.6	7,552	5,251	69.5
	Female	8,981	7,380	82.2	8,795	7,144	81.2	8,744	7,105	81.3
<b>State Schools</b>	Total	8,186	7,116	86.9	8,116	6,995	86.2	8,122	6,923	85.2
	Male	3,963	3,278	82.7	3,892	3,181	81.7	3,892	3,098	79.6
	Female	4,223	3,838	90.9	4,224	3,814	90.3	4,230	3,825	90.4
<b>Private Schools</b>	Total	8,699	6,055	69.6	8,497	5,743	67.6	8,174	5,433	66.5
	Male	3,941	2,513	63.8	3,926	2,413	61.5	3,660	2,153	58.8
	Female	4,758	3,542	74.4	4,571	3,330	72.9	4,514	3,280	72.7
<b>Island of Rodrigues <sup>1</sup></b>										
<b>All Schools</b>	Total	602	438	72.8	579	456	78.8	589	432	73.3
	Male	266	196	73.7	262	205	78.2	247	180	72.9
	Female	336	242	72.0	317	251	79.2	342	252	73.7

Source: Mauritius Examinations Syndicate

<sup>1</sup> All candidates in Rodrigues are from REDCO and private schools

Table 5.20 - Cambridge Higher School Certificate (HSC) examination results by type of school administration and sex, 2010 - 2012

**School candidates only**

Type of school administration and sex		2010			2011			2012		
		No. Examined	No. Passed	% Passed	No. Examined	No. Passed	% Passed	No. Examined	No. Passed	% Passed
<b>Republic of Mauritius</b>										
<b>All Schools</b>	Total	9,813	7,687	78.3	10,081	7,995	79.3	10,414	8,242	79.1
	Male	4,146	3,055	73.7	4,283	3,224	75.3	4,326	3,235	74.8
	Female	5,667	4,632	81.7	5,798	4,771	82.3	6,088	5,007	82.2
<b>State Schools</b>	Total	5,556	4,598	82.8	5,933	4,920	82.9	6,016	4,995	83.0
	Male	2,290	1,807	78.9	2,453	1,949	79.5	2,450	1,955	79.8
	Female	3,266	2,791	85.5	3,480	2,971	85.4	3,566	3,040	85.2
<b>Private Schools</b>	Total	4,257	3,089	72.6	4,148	3,075	74.1	4,398	3,247	73.8
	Male	1,856	1,248	67.2	1,830	1,275	69.7	1,876	1,280	68.2
	Female	2,401	1,841	76.7	2,318	1,800	77.7	2,522	1,967	78.0
<b>Island of Mauritius</b>										
<b>All Schools</b>	Total	9,541	7,480	78.4	9,854	7,808	79.2	10,178	8,050	79.1
	Male	4,026	2,972	73.8	4,186	3,145	75.1	4,225	3,153	74.6
	Female	5,515	4,508	81.7	5,668	4,663	82.3	5,953	4,897	82.3
<b>State Schools</b>	Total	5,556	4,598	82.8	5,933	4,920	82.9	6,016	4,995	83.0
	Male	2,290	1,807	78.9	2,453	1,949	79.5	2,450	1,955	79.8
	Female	3,266	2,791	85.5	3,480	2,971	85.4	3,566	3,040	85.2
<b>Private Schools</b>	Total	3,985	2,882	72.3	3,921	2,888	73.7	4,162	3,055	73.4
	Male	1,736	1,165	67.1	1,733	1,196	69.0	1,775	1,198	67.5
	Female	2,249	1,717	76.3	2,188	1,692	77.3	2,387	1,857	77.8
<b>Island of Rodrigues<sup>1</sup></b>										
<b>All Schools</b>	Total	272	207	76.1	227	187	82.4	236	192	81.4
	Male	120	83	69.2	97	79	81.4	101	82	81.2
	Female	152	124	81.6	130	108	83.1	135	110	81.5

Source: Mauritius Examinations Syndicate

<sup>1</sup> All candidates in Rodrigues are from REDCO and private schools

Table 5.21 - Enrolment in Mauritius Institute of Training and Development (MITD) centres offering National Trade Certificate (Foundation course) by zone and sex, 2012

Zone	No. of centres	Enrolment		
		Total	Male	Female
1 - Port Louis / North	4	436	289	147
2 - B.Bassin-R.Hill / East	5	769	530	239
3 - Curepipe / South	5	312	228	84
4 - Q.Bornes / Vacoas-Phoenix / West	-	-	-	-
Island of Mauritius	14	1,517	1,047	470
Island of Rodrigues	1	134	86	48
Republic of Mauritius	15	1,651	1,133	518

Table 5.22 - Number enrolled in Mauritius Institute of Training and Development (MITD) Centres, Republic of Mauritius, 2012

Sex	Mode of Study			
	Full Time	Part Time	Apprenticeship	Total
Total	4,621	4,644	1,086	10,351
Male	3,405	3,820	874	8,099
Female	1,216	824	212	2,252

Table 5.23 - Number enrolled in MITD Centres by course level, year of study and sex (Full Time), Republic of Mauritius, 2012

Course Level	Year I			Year II			Year III			Total		
	T	M	F	T	M	F	T	M	F	T	M	F
National Trade Certificate Foundation	1,651	1,133	518	-	-	-	-	-	-	1,651	1,133	518
Basic Certificate/ National Certificate Level 2	334	254	80	-	-	-	-	-	-	334	254	80
National Trade Certificate Level 3/ National Certificate Level 3	1,185	925	260	-	-	-	-	-	-	1,185	925	260
National Certificate Level 4	256	174	82	-	-	-	-	-	-	256	174	82
National Certificate Level 5	63	51	12	11	1	10	-	-	-	74	52	22
National Trade Certificate Level 2	65	64	1	56	55	1	-	-	-	121	119	2
Brevet De Technicien	138	136	2	110	108	2	102	102	-	350	346	4
Diploma	234	155	79	186	116	70	-	-	-	420	271	149
Higher National Diploma	109	65	44	65	37	28	56	29	27	230	131	99
Total	4,035	2,957	1,078	428	317	111	158	131	27	4,621	3,405	1,216

Source: Mauritius Institute of Training and Development (MITD)

T: Total

M: Male

F: Female

Table 6.1 - Distribution of Special Education Needs (SEN) schools by district and type of administration, 2013

District	Type of Administration			
	Total	Government School	Government Integrated Unit <sup>1</sup>	NGO <sup>2</sup>
Port Louis	8	-	-	8
Pamplemousses	3	-	-	3
Riviere du Rempart	8	-	3	5
Flacq	8	-	2	6
Grand Port	5	-	2	3
Savanne	2	-	-	2
Plaines Wilhems	21	1	1	19
Moka	3	-	1	2
Black River	2	-	1	1
Island of Mauritius	60	1	10	49
Island of Rodrigues	1	-	-	1
Republic of Mauritius	61	1	10	50

Table 6.2 - Distribution of Special Education Needs (SEN) schools by zone and type of administration, 2013

Zone	Type of Administration			
	Total	Government School	Government Integrated Unit <sup>1</sup>	NGO <sup>2</sup>
1 - Port Louis / North	19	-	3	16
2 - B.Bassin-R.Hill / East	21	1	3	17
3 - Curepipe / South	12	-	2	10
4 - Q.Bornes/Vacoas-Phoenix/West	8	-	2	6
Island of Mauritius	60	1	10	49
Island of Rodrigues	1	-	-	1
Republic of Mauritius	61	1	10	50

<sup>1</sup> Government Integrated Unit is a class in a primary Government school catering for Special Education Needs

<sup>2</sup> NGO: Non-Government Organisation

Table 6.3 - Enrolment in Special Education Needs (SEN) schools by sex and district, 2011-2013

**All schools**

District	2011			2012			2013		
	Total	Male	Female	Total	Male	Female	Total	Male	Female
Port Louis	253	158	95	289	181	108	290	186	104
Pamplemousses	64	38	26	81	50	31	107	67	40
Riviere du Rempart	186	123	63	194	134	60	214	141	73
Flacq	268	155	113	263	143	120	330	194	136
Grand Port	34	20	14	39	19	20	72	37	35
Savanne	84	64	20	124	88	36	122	79	43
Plaines Wilhems	797	469	328	706	433	273	698	432	266
Moka	35	23	12	37	27	10	35	29	6
Black River	82	67	15	81	65	16	96	74	22
Island of Mauritius	1,803	1,117	686	1,814	1,140	674	1,964	1,239	725
Island of Rodrigues	50	41	9	48	38	10	44	35	9
Republic of Mauritius	1,853	1,158	695	1,862	1,178	684	2,008	1,274	734

Table 6.4 - Enrolment in Special Education Needs (SEN) schools by sex and zone, 2011 - 2013

**All schools**

Zone	2011			2012			2013		
	Total	Male	Female	Total	Male	Female	Total	Male	Female
1 - Port Louis / North	503	319	184	564	365	199	611	394	217
2 - B.Bassin-R.Hill / East	726	431	295	609	366	243	687	428	259
3 - Curepipe / South	306	187	119	366	220	146	386	222	164
4 - Q.Bornes/Vacoas-Phoenix/West	268	180	88	275	189	86	280	195	85
Island of Mauritius	1,803	1,117	686	1,814	1,140	674	1,964	1,239	725
Island of Rodrigues	50	41	9	48	38	10	44	35	9
Republic of Mauritius	1,853	1,158	695	1,862	1,178	684	2,008	1,274	734

Table 6.5 - Enrolment in Special Education Needs (SEN) schools by age and sex, Republic of Mauritius, 2011 - 2013

**All schools**

Age (Years)	2011			2012			2013		
	Total	Boys	Girls	Total	Boys	Girls	Total	Boys	Girls
3	10	5	5	6	2	4	13	11	2
4	15	8	7	73	56	17	16	8	8
5	35	23	12	44	27	17	38	25	13
6	61	43	18	70	48	22	94	64	30
7	103	73	30	122	88	34	113	73	40
8	113	80	33	139	101	38	135	91	44
9	147	89	58	132	97	35	153	103	50
10	181	120	61	155	103	52	138	89	49
11	163	111	52	178	118	60	152	110	42
12	156	90	66	141	84	57	207	144	63
13	151	90	61	120	71	49	145	92	53
14	135	85	50	107	60	47	141	86	55
15	135	81	54	101	66	35	134	82	52
16	113	61	52	82	50	32	115	72	43
17	71	42	29	85	44	41	86	53	33
18	62	29	33	47	26	21	67	35	32
19	44	28	16	49	21	28	56	32	24
20	28	19	9	64	41	23	47	28	19
21 and over	130	81	49	147	75	72	158	76	82
Total	1,853	1,158	695	1,862	1,178	684	2,008	1274	734

Table 6.6 - Number of pupils in Special Education Needs (SEN) schools by type of impairment and sex, Republic of Mauritius, 2013

Impairment type	Total	Boys	Girls
Autism	172	143	29
Deafness and Hearing Impairment	181	103	78
Down's Syndrome	176	104	72
Dyslexia	86	65	21
Emotional Disturbance	90	61	29
Epilepsy	124	63	61
Intellectual Impairment	541	357	184
Physical Disability	252	155	97
Severe and Multiple Disabilities	120	70	50
Visual Impairment	125	76	49
Other	141	77	64
Total	2008	1,274	734

Table 6.7 - Personnel in Special Education Needs (SEN) schools by sex, Republic of Mauritius, 2011 - 2013

Personnel	2011			2012			2013		
	Total	Male	Female	Total	Male	Female	Total	Male	Female
Teaching staff	394	40	354	278	37	241	378	45	333
Administrative and Ancilliary staff	100	35	65	94	35	59	116	43	73
Medical and Para-Medical	53	21	32	50	18	32	68	18	50
Total	547	96	451	422	90	332	562	106	456

Table 7.1 - ICT<sup>1</sup> in pre-primary, primary and secondary schools - Republic of Mauritius, 2013

Description	Pre-primary		Primary		Secondary <sup>2</sup>	
	Number	%	Number	%	Number	%
Schools having computer(s)	431	44	320	100	178	100
Number of computers	943	-	5,518	-	7,558	-
<i>of which: only for pedagogical use</i>	513	-	4,710	-	6,319	-
<i>of which: only for administrative use</i>	219	-	573	-	891	-
<i>of which: for both purposes</i>	211	-	235	-	348	-
Schools having access to the internet	142	15	292	91	176	99
Schools having internet access for students	57	6	179	56	171	96
Schools having a web site	45	5	51	16	70	39
Schools with a computer used for educational purposes	332	34	308	96	177	99
Schools with a radio used for educational purposes	742	76	295	92	146	82
Schools with a television used for educational purposes	563	58	295	92	158	89
Schools having ICT-assisted instruction <sup>3</sup>	742	76	310	97	167	94
Schools having ICT support services	211	22	278	87	137	77

<sup>1</sup> ICT include computers, laptops, internet, radio, television, video players, etc

<sup>2</sup> Include both secondary general and pre-vocational

<sup>3</sup> Refers to teaching methods that include ICT in supporting and enhancing course content delivery



Table 8.1 (a): Enrolment at Tertiary Education Level, both Locally &amp; Overseas, by Source and Field of Study, as at December 2011

Field of Study	Total	Publicly-Funded Institutions											Distance Education / Private Providers	Overseas
		UoM <sup>1</sup>	UTM	FDI <sup>2</sup>	MIE	MGI	RTI <sup>3</sup>	MCA	Poly-technics	MITD	MIH	Total PFIs		
Accounting	6,009	398	81	-	-	-	-	-	48	-	-	527	5,016	466
Administration/Management	7,397	2,212	1,983	-	-	-	-	159	311	26	-	4,691	1,992	714
Agriculture	397	365	-	-	-	-	-	-	-	-	-	365	-	32
Architecture	326	-	16	-	-	-	-	-	-	-	-	16	71	239
Arts	797	-	-	59	-	208	26	-	-	-	-	293	378	126
Banking/Finance	2,115	760	506	-	-	-	-	49	61	-	-	1,376	519	220
Business/Commerce/Marketing	2,283	111	8	-	-	-	-	10	16	-	-	145	1,287	851
Communication	639	87	173	-	-	-	-	2	-	-	-	262	202	175
Counselling	79	-	79	-	-	-	-	-	-	-	-	79	-	-
Dentistry	174	-	-	-	-	-	-	-	-	-	-	-	34	140
Economics	961	536	11	-	-	-	-	-	-	-	-	547	54	360
Education	4,171	109	-	-	3,903	-	-	13	-	-	-	4,025	49	97
Engineering	3,742	1,425	188	-	-	-	-	-	261	135	-	2,009	282	1,451
Health Sciences	916	306	263	-	-	-	-	-	-	-	101	670	138	108
Humanities	643	241	-	-	-	15	-	-	-	-	-	256	10	377
Information Technology	3,878	1,343	621	62	-	-	-	3	165	38	-	2,232	1,140	506
Languages	1,519	431	-	-	-	374	-	281	-	-	-	1,086	204	229
Law	1,796	608	-	-	-	-	-	-	-	-	-	608	609	579
Library	61	22	-	-	-	-	-	39	-	-	-	61	-	-
Master in Research (Mres)	2	2	-	-	-	-	-	-	-	-	-	2	-	-
Mathematics	708	368	124	-	-	-	-	-	-	-	-	492	23	193
Medicine	2,124	171	-	-	-	-	-	-	-	-	21	192	640	1,292
Pharmacy	169	55	-	-	-	-	-	-	-	-	-	55	15	99
Psychology	252	121	-	-	-	-	-	-	-	-	-	121	35	96
Religious studies	69	-	-	-	-	-	-	-	-	-	-	-	53	16
Research (MPhil/PhD)	256	154	41	-	-	-	-	-	-	-	-	195	36	25
Science	990	549	-	-	-	-	-	-	-	-	-	549	2	439
Social Science	1,132	463	65	-	-	-	-	19	-	-	-	547	144	441
Textile	242	171	-	31	-	-	-	-	-	-	-	202	-	40
Travel/Hotel/Tourism	1,384	215	211	-	-	-	-	64	-	308	-	798	222	364
Others	738	16	-	-	-	-	-	25	-	-	-	41	309	388
<b>Total</b>	<b>45,969</b>	<b>11,239</b>	<b>4,370</b>	<b>152</b>	<b>3,903</b>	<b>597</b>	<b>26</b>	<b>664</b>	<b>862</b>	<b>507</b>	<b>122</b>	<b>22,442</b>	<b>13,464</b>	<b>10,063</b>

<sup>1</sup> Excludes enrolment on joint MIE & MGI Programmes<sup>2</sup> FDI - The Fashion and Design Institute<sup>3</sup> RTI - The Rabindranath Tagore Institute

Table 8.1 (b): Enrolment at Tertiary Education Level, both Locally &amp; Overseas, by Source and Field of Study, as at December 2012

Field of Study	Total	Publicly-Funded Institutions											Distance Education / Private Providers <sup>4</sup>	Overseas
		UoM <sup>1</sup>	UTM	FDI <sup>2</sup>	MIE	MGI	RTI <sup>3</sup>	OUM (ex MCA)	Poly-technics	MITD	MIH	Total PFIs		
Accounting	10,114	418	35	-	-	-	-	-	39	-	-	492	9,215	407
Administration/Management	7,374	2,099	1,672	-	-	-	-	106	302	35	-	4,214	2,544	616
Agriculture	374	353	-	-	-	-	-	-	-	-	-	353	-	21
Architecture	271	-	15	-	-	-	-	-	-	-	-	15	28	228
Arts	784	-	-	66	-	216	24	-	-	-	-	306	348	130
Banking/Finance	2,172	817	415	-	-	-	-	42	51	-	-	1,325	648	199
Business/Commerce/Marketing	1,775	89	17	-	-	-	-	3	31	-	-	140	1,084	551
Communication	608	98	159	-	-	-	-	2	-	-	-	259	217	132
Counselling	34	-	34	-	-	-	-	-	-	-	-	34	-	-
Dentistry	141	-	-	-	-	-	-	-	-	-	-	-	18	123
Economics	905	517	25	-	-	-	-	-	-	-	-	542	10	353
Education	4,098	151	-	-	3,721	-	-	14	-	-	-	3,886	119	93
Engineering	4,067	1,526	165	-	-	-	-	-	261	129	-	2,081	558	1,428
Health Sciences	911	274	328	-	-	-	-	-	-	-	78	680	76	155
Humanities	867	211	-	-	-	98	-	-	-	-	-	309	57	501
Information Technology	3,520	1,395	403	80	-	-	-	3	141	51	-	2,073	1,045	402
Languages	1,422	388	-	-	-	252	-	263	-	-	-	903	300	219
Law	2,112	671	-	-	-	-	-	-	-	-	-	671	838	603
Library	61	23	-	-	-	-	-	38	-	-	-	61	-	-
Master in Research (Mres)	2	2	-	-	-	-	-	-	-	-	-	2	-	-
Mathematics	744	391	114	-	-	-	-	-	-	-	-	505	44	195
Medicine	2,147	165	-	-	-	-	-	-	-	-	8	173	670	1,304
Pharmacy	195	48	-	-	-	-	-	-	-	-	20	68	-	127
Psychology	265	101	-	-	-	-	-	-	-	-	-	101	59	105
Religious studies	26	-	-	-	-	-	-	-	-	-	-	-	10	16
Research (MPhil/PhD)	241	170	42	-	-	-	-	-	-	-	-	212	29	-
Science	945	520	-	-	-	-	-	-	-	-	-	520	10	415
Social Science	994	511	91	-	-	-	-	4	-	-	-	606	85	303
Textile	225	161	-	33	-	-	-	-	-	-	-	194	-	31
Travel/Hotel/Tourism	1,454	219	174	-	-	-	-	54	-	340	-	787	379	288
Others	777	-	38	-	-	-	-	12	-	-	-	50	212	515
<b>Total</b>	<b>49,625</b>	<b>11,318</b>	<b>3,727</b>	<b>179</b>	<b>3,721</b>	<b>566</b>	<b>24</b>	<b>541</b>	<b>825</b>	<b>555</b>	<b>106</b>	<b>21,562</b>	<b>18,603</b>	<b>9,460</b>

<sup>1</sup> Excludes enrolment on joint MIE & MGI Programmes<sup>2</sup> FDI - The Fashion and Design Institute<sup>3</sup> RTI - The Rabindranath Tagore Institute<sup>4</sup> Private includes enrolment in Private Post Secondary Educational Institutions and private students pursuing studies without going through an intermediary/ Private Post Secondary Educational Institutions locally

NB: Considering Statistics from ACCA Mauritius as from this year

Source: Tertiary Education Commission (TEC) Report - 2012