

INTERNATIONAL TRAVEL & TOURISM

Year 2012

Introduction

This issue of the Economic and Social Indicators presents data on International Travel and Tourism and hotel statistics. A brief on the compilation of these statistics is given at Annex I while Annex II contains a glossary of terms used.

2. Passenger Traffic

2.1 Total Passenger Traffic

Passenger traffic for the year 2012 totalled 2,572,935, made up of 1,286,844 arrivals and 1,286,091 departures. Compared to the year 2011, these figures represent decreases of 0.6% in arrivals and 0.5% in departures (Table 1). Total passenger arrivals included 1,247,619 (97.0%) by air and 39,225 (3.0%) by sea, while total passenger departures consisted of 1,243,243 (96.7%) by air and 42,848 (3.3%) by sea. Total passenger arrivals by sea included 27,760 "cruise travellers" (around 11,510 tourists, 6,450 excursionists, 40 Mauritian residents and 9,760 crews) aboard 23 cruise ships, which visited our port in 2012.

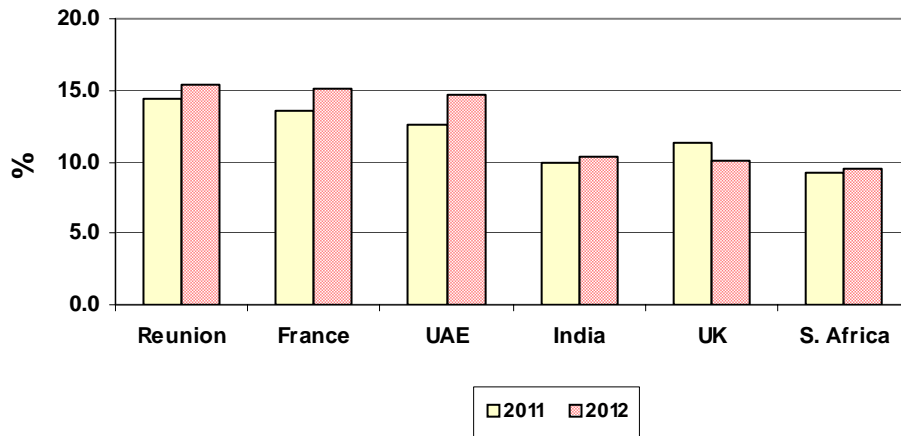
2.2 Excursionists (*Same day visitors*)

Total excursionists, i.e. visitors arriving and leaving on the same day, numbered 18,663, of which 12,434 (66.6%) arrived by air and 6,229 (33.4%) by sea. Excursionists arriving by air included 3,875 (31.2%) from Reunion Island and 2,440 (19.6%) from France. Excursionists by sea were mainly from: United Kingdom (1,564 or 25.1%), Republic of South Africa (1,100 or 17.7%) and United States of America (970 or 15.6%).

2.3 Mauritian Residents

For the year 2012, the number of Mauritian residents travelling abroad increased by 8.0% to 236,595 compared to 219,055 in 2011 and accounted for 18.4% of total departures (Table 2). The main countries of disembarkation (which may not necessarily be the country of final destination when the passengers are in transit) were: Reunion Island (36,427 or 15.4%), France (35,839 or 15.1%), United Arab Emirates (34,705 or 14.7%), India (24,354 or 10.3%), United Kingdom (23,671 or 10.0%) and Republic of South Africa (22,499 or 9.5%) (Figure1).

Figure 1 - Percentage distribution of Mauritian departures by major country of disembarkation, 2011 and 2012

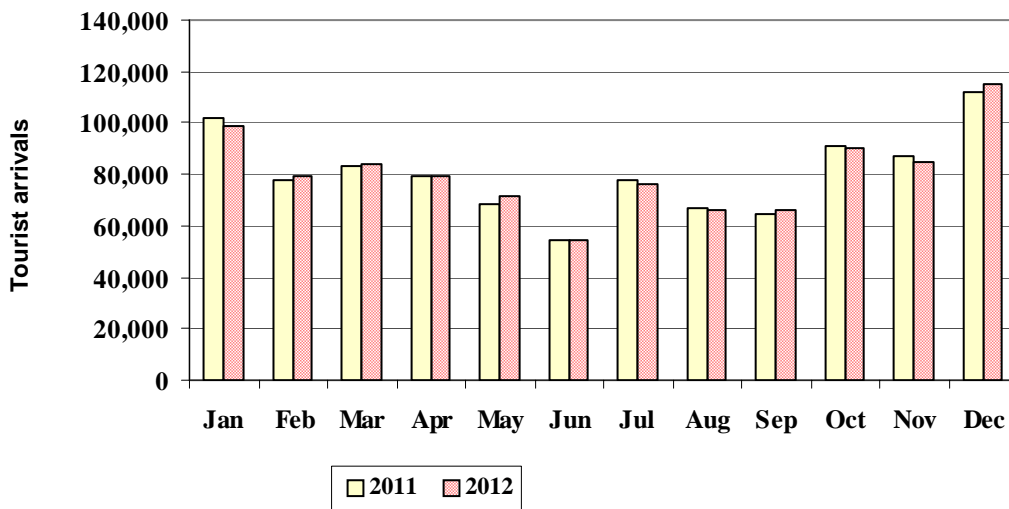


2.4 Tourist Arrivals

By month

Tourist arrivals for 2012 increased by 0.1% to reach 965,441 compared to 964,642 in 2011. Figure 2 shows monthly tourist arrivals for 2011 and 2012. In both years, tourist arrivals peaked in December and were lowest in June. Further details are given in Tables 3 to 6.

Figure 2 - Monthly Tourist Arrivals, 2011 and 2012



By purpose of visit

Around 93% of the tourists came for holidays while 4.4% were on business/conference trips and another 2.4% was in transit (Table 4).

By country of residence

Tourist arrivals from Europe, which accounted for 58.1% of total tourist arrivals, decreased by 8.0% from 609,648 in 2011 to 560,699 in 2012. Arrivals from France, the leading European market, decreased by 13.2% to 262,100. Other major tourist generating countries of Europe also registered decreases as follows: United Kingdom (-0.6%), Germany (-2.0%) and Italy (-24.1%). As regards the remaining European countries, the following changes were noted: Russian Federation (+58.9%), Switzerland (+6.7%), Sweden (-0.7%), Spain (-3.3%), Austria (-7.6%), Belgium (-8.8%) and Netherlands (-14.4%).

In 2012, tourist arrivals from Africa, with a share of around 28% of total tourist arrivals, expanded by 14.7% to 265,215. Tourist arrivals from Reunion Island, the main market of the region, increased by 23.2% to 139,169 and those from Republic of South Africa, by 3.3% to 89,058. The following changes were registered from the other African countries: Kenya (+41.3%), Malagasy Republic (+18.5%), Comoros (+11.0%), Zimbabwe (+4.9%) and Seychelles (-20.1%).

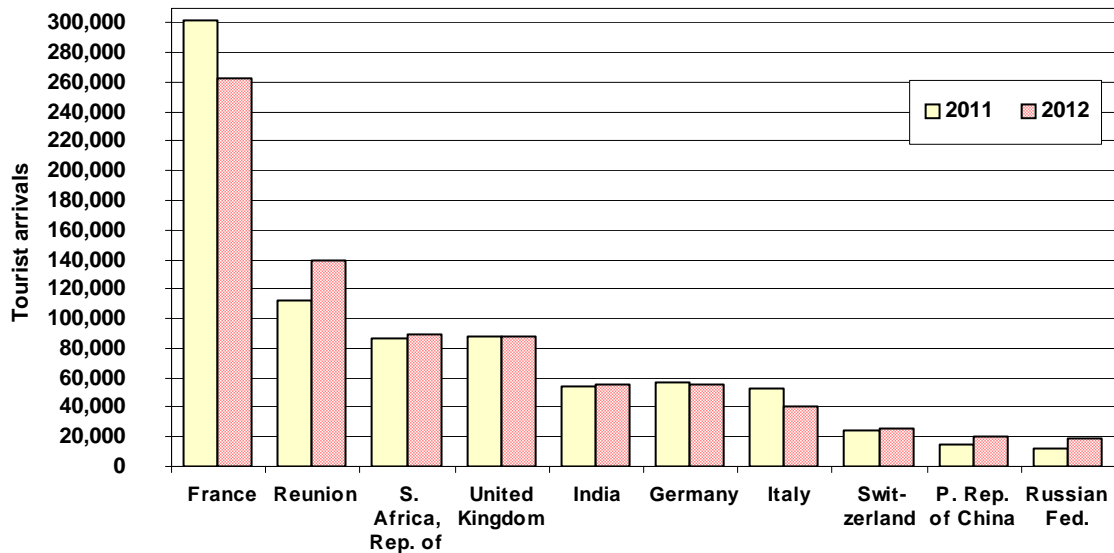
Tourist arrivals from the Asian market, which represented 10.8% of total tourist arrivals, went up by 14.6% from 91,057 in 2011 to 104,336 in 2012. Arrivals from India, the major source on this continent, increased by 2.3% to 55,197 and those from People's Republic of China, the other emerging market of this region increased by 38.0% to 20,885. The other Asian countries registered the following changes: Hong Kong (+114.0%), United Arab Emirates (+42.9%), Japan (+6.2%), Malaysia (-1.1%) and Singapore (-15.6%).

Tourist arrivals from Oceania rose by 6.6% from 16,761 in 2011 to 17,863 in 2012 being the net result of an increase in arrivals of 8.2% from Australia and a decrease of 17.5% from the other Oceanian countries.

Tourist arrivals from the continent of America went up by 15.4% due to increases of 21.8% from Canada and 51.0% from the "Other American" countries which is partly offset by a decrease of 7.2% from USA.

Tourist arrivals from top ten markets for 2011 and 2012 are given in Figure 3.

Figure 3 - Tourist Arrivals from Top Ten Markets, 2011 and 2012



3. Tourist Nights

The total number of tourist nights spent in the country in 2012 is estimated at 9,735 thousand, which represents an increase of 1.3% over that of 2011 (9,608 thousand, Table 6).

4. Hotel Statistics

At the end of December 2012, there was a total of 118 registered hotels of which 117 were in operation and one hotel was not operating due to renovation works. The total room capacity of the registered hotels in operation was 12,527 with 25,496 bedplaces (Table 7). The room occupancy rate for all hotels averaged 62% in 2012 compared to 65% in 2011 while the bed occupancy rate in 2012 was 55% against 57% for 2011 (Table 8).

“Large” hotels, i.e. well-established beach hotels with more than 80 rooms, numbered 52 (44% of all registered hotels in operation). These hotels had a combined room capacity of 9,293 with 19,041 bedplaces, representing 74% of total room capacity and 75% of total bedplaces respectively. The average room and bed occupancy rates for these hotels in 2012 was 65% and 57% respectively, same as in 2011 (Table 8).

5. Gross Tourism Receipts

Data from the Bank of Mauritius indicate that gross tourism receipts for 2012 were Rs 44,378 million which represents an increase of 3.9% compared to Rs 42,717 million in 2011 (Table 6).

6. Employment

According to the Survey of Employment and Earnings, direct employment in hotels, restaurants and travel and tourism establishments employing 10 persons or more stood at 28,027 at the end of March 2012 which is slightly lower than the figure of 28,133 for March 2011. Of this number, 21,628 or 77.2% were engaged in hotels (Table 9).

7. Forecast Year 2013

Based on data available on tourist arrivals and information gathered from the main stakeholders, tourist arrivals for the year 2013 is expected to reach 1,000,000, which represents an increase of 3.6% over the figure of 965,441 in 2012.

According to the Bank of Mauritius, tourism receipts for the year 2013 will be around Rs 47,000 million (+ 5.9%) compared to Rs 44,378 million in 2012.

Statistics Mauritius

Ministry of Finance and Economic Development

Port Louis

27 February 2012

Contact persons:

Ms. M.V. Luchmun, Statistician &
Mr. M. Lan Pin Wing
Senior Statistical Officer
Ministry of Tourism and Leisure
3rd Floor, Victoria House
Port Louis
Tel: (230) 211-9042
Fax: (230) 210-3901
Email: sm-tourism@mail.gov.mu

LIST OF TABLES

Table	Description	Page
1	Passenger Traffic by month, 2010 - 2012	7
2	Departure of Mauritian residents by country of disembarkation, 2011 and 2012	8
3	Tourist arrivals by month, 2010 - 2012	9
4	Tourist arrivals by main purpose of visit, 2011 and 2012	9
5	Tourist arrivals by country of residence, 2011 and 2012	10
6	Tourist arrivals, nights and receipts, 2009 - 2012	12
7	Hotels, rooms and bedplaces, 2009 - 2012	12
8	Monthly occupancy rates (%) for All hotels and "Large" hotels, 2010 - 2012	13
9	Employment in the tourist industry as at end of March, 2008 - 2012	14

ANNEX

- I BRIEF ON COMPILATION OF PASSENGER TRAFFIC STATISTICS
- II GLOSSARY OF TERMS

Table 1:- Passenger Traffic ¹ by month, 2010 - 2012

Month	2010		2011		2012 ²	
	Arrivals	Departures	Arrivals	Departures	Arrivals	Departures
January	119,807	145,268	133,081	156,319	132,789	154,685
February	91,943	92,398	103,237	102,527	105,802	106,969
March	123,358	128,101	109,308	117,231	106,939	111,605
<u>1st Quarter</u>	<u>335,108</u>	<u>365,767</u>	<u>345,626</u>	<u>376,077</u>	<u>345,530</u>	<u>373,259</u>
April	87,878	94,542	106,615	103,457	109,760	110,366
May	91,329	95,350	90,193	98,535	92,684	100,829
June	76,838	75,521	81,113	80,054	77,955	75,456
<u>2nd Quarter</u>	<u>256,045</u>	<u>265,413</u>	<u>277,921</u>	<u>282,046</u>	<u>280,399</u>	<u>286,651</u>
<i>1st Semester</i>	<i>591,153</i>	<i>631,180</i>	<i>623,547</i>	<i>658,123</i>	<i>625,929</i>	<i>659,910</i>
July	107,678	93,775	110,611	98,700	105,542	94,119
August	93,893	103,907	96,238	103,142	93,502	102,936
September	87,109	86,564	88,382	87,962	89,426	90,724
<u>3rd Quarter</u>	<u>288,680</u>	<u>284,246</u>	<u>295,231</u>	<u>289,804</u>	<u>288,470</u>	<u>287,779</u>
<i>Jan. to Sep.</i>	<i>879,833</i>	<i>915,426</i>	<i>918,778</i>	<i>947,927</i>	<i>914,399</i>	<i>947,689</i>
October	110,219	107,543	114,833	111,676	113,613	106,643
November	110,118	108,784	113,864	110,704	110,477	110,296
December	151,868	125,255	146,912	122,832	148,355	121,463
<u>4th Quarter</u>	<u>372,205</u>	<u>341,582</u>	<u>375,609</u>	<u>345,212</u>	<u>372,445</u>	<u>338,402</u>
<i>2nd Semester</i>	<i>660,885</i>	<i>625,828</i>	<i>670,840</i>	<i>635,016</i>	<i>660,915</i>	<i>626,181</i>
Whole Year	1,252,038	1,257,008	1,294,387	1,293,139	1,286,844	1,286,091

¹ Excluding inter islands traffic² Provisional

**Table 2 : - Departure of Mauritian residents by country of disembarkation ¹,
2011 and 2012**

Country of disembarkation	2011	2012	% Change
EUROPE	65,121	66,829	2.6
France	29,631	35,839	21.0
Germany	2,337	3,411	46.0
Italy	6,315	2,864	-54.6
Switzerland	2,001	997	-50.2
United Kingdom	24,815	23,671	-4.6
Other European	22	47	113.6
AFRICA	67,815	76,086	12.2
Malagasy Republic	8,894	10,044	12.9
Reunion	31,642	36,427	15.1
Seychelles	4,681	3,978	-15.0
S. Africa, Rep. of	20,087	22,499	12.0
Zimbabwe	-	-	-
Other African	2,511	3,138	25.0
ASIA	76,551	84,407	10.3
P. Rep. of China	1,325	2,843	114.6
Hong Kong SAR ²	11,628	8,338	-28.3
India	21,825	24,354	11.6
Indonesia	308	188	-39.0
Malaysia	3,377	3,762	11.4
Singapore	9,469	10,215	7.9
Saudi Arabia	946	-	-
United Arab Emirates	27,670	34,705	25.4
Other Asian	3	2	-33.3
OCEANIA	9,534	9,237	-3.1
Australia	9,534	9,237	-3.1
Other Oceanian	-	-	-
AMERICA	4	0	-100.0
Other American	4	-	-100.0
NOT STATED	30	36	20.0
All Countries	219,055	236,595	8.0

¹ Country of disembarkation may either be the country of final destination or the transit country

² Special Administrative Region of China

Table 3:- Tourist arrivals by month, 2010 - 2012

Month	Number		
	2010	2011	2012 ¹
January	91,857	101,887	98,837
February	72,366	77,390	79,331
March	85,748	83,349	83,827
<u>1st Quarter</u>	<u>249,971</u>	<u>262,626</u>	<u>261,995</u>
April	64,797	79,173	79,137
May	71,055	68,214	71,396
June	53,327	54,591	54,625
<u>2nd Quarter</u>	<u>189,179</u>	<u>201,978</u>	<u>205,158</u>
<i>1st Semester</i>	<i>439,150</i>	<i>464,604</i>	<i>467,153</i>
July	77,009	78,034	76,166
August	65,093	66,865	65,896
September	65,404	64,880	66,369
<u>3rd Quarter</u>	<u>207,506</u>	<u>209,779</u>	<u>208,431</u>
<i>Jan. to Sep.</i>	<i>646,656</i>	<i>674,383</i>	<i>675,584</i>
October	87,340	90,616	89,994
November	85,982	87,348	84,398
December	114,849	112,295	115,465
<u>4th Quarter</u>	<u>288,171</u>	<u>290,259</u>	<u>289,857</u>
<i>2nd Semester</i>	<i>495,677</i>	<i>500,038</i>	<i>498,288</i>
Whole Year	934,827	964,642	965,441

¹ Provisional**Table 4:- Tourist arrivals by main purpose of visit, 2011 and 2012**

Purpose of visit	2011	2012 ²	% Change
Holiday	897,786	896,977	-0.1
Business	36,093	36,962	2.4
Transit	23,024 ¹	23,081	0.2
Conference	4,637	5,605	20.9
Sports	1,083	1,253	15.7
Other & Not Stated	2,019 ¹	1,563	-22.6
Total	964,642	965,441	0.1

¹ Revised² Provisional

Table 5 : - Tourist Arrivals by Country of Residence, 2011 and 2012

Country of residence	Year 2011	2012 ¹													% Change 2012/2011
		Jan	Feb	Mar	Apr	May	Jun	Jul	Aug	Sep	Oct	Nov	Dec	Year	
EUROPE	609,648	59,038	59,195	53,436	50,050	33,382	24,542	36,570	35,228	37,208	53,690	57,934	60,426	560,699	-8.0
Austria	8,822	1,142	1,238	793	516	495	253	326	338	504	838	919	789	8,151	-7.6
Belgium	12,029	886	710	902	966	575	637	1,116	626	825	1,294	1,065	1,365	10,967	-8.8
France	302,004	30,692	32,330	26,604	24,740	14,331	8,715	15,633	14,205	12,078	22,756	30,572	29,444	262,100	-13.2
Germany	56,331	4,465	4,755	5,298	4,274	4,420	2,432	3,389	3,733	5,439	6,086	5,844	5,051	55,186	-2.0
Italy	52,747	6,242	4,498	3,566	2,919	1,840	1,853	2,140	3,009	3,268	3,411	2,638	4,625	40,009	-24.1
Netherlands	5,179	316	263	252	273	340	276	568	318	434	516	366	512	4,434	-14.4
Spain	9,801	375	709	1,270	581	566	729	949	1,207	1,193	923	488	483	9,473	-3.3
Sweden	4,325	586	477	285	265	64	137	102	102	160	515	629	973	4,295	-0.7
Switzerland	24,362	2,287	2,319	1,695	3,425	1,096	768	1,900	665	1,641	3,920	3,089	3,197	26,002	6.7
United Kingdom	88,182	5,206	5,757	7,012	7,141	6,721	6,072	7,665	8,277	8,869	8,821	8,058	8,049	87,648	-0.6
CIS ²	15,246	3,631	2,148	2,747	2,591	1,570	974	787	1,067	1,017	1,755	1,759	3,048	23,094	51.5
<i>of which:</i>															
<i>Russian Federation</i>	12,224	3,037	1,870	2,430	2,264	1,354	799	624	880	794	1,482	1,424	2,471	19,429	58.9
Other European	30,620	3,210	3,991	3,012	2,359	1,364	1,696	1,995	1,681	1,780	2,855	2,507	2,890	29,340	-4.2
AFRICA	231,174	29,436	10,155	20,364	19,203	24,955	15,236	27,017	19,948	18,171	25,612	14,260	40,858	265,215	14.7
Comoros	969	51	65	88	67	107	81	122	59	104	92	117	123	1,076	11.0
Kenya	1,914	121	127	146	396	231	233	226	233	215	180	206	391	2,705	41.3
Malagasy Rep.	11,449	908	885	1,088	1,221	876	1,002	1,327	1,585	1,033	1,068	1,071	1,499	13,563	18.5
Reunion	113,000	19,861	4,155	10,213	7,197	15,865	5,470	17,813	9,974	6,019	16,883	6,148	19,571	139,169	23.2
Seychelles	8,485	567	403	505	615	548	626	567	584	449	549	574	792	6,779	-20.1
S. Africa, Rep. of	86,232	7,205	4,053	7,653	8,212	5,944	6,777	5,927	6,413	9,068	5,817	4,992	16,997	89,058	3.3
Zimbabwe	1,495	94	57	142	241	126	84	64	159	147	112	110	232	1,568	4.9
Other African	7,630	629	410	529	1,254	1,258	963	971	941	1,136	911	1,042	1,253	11,297	48.1

Table 5 (contd.) : - Tourist Arrivals by Country of Residence, 2011 and 2012

Country of residence	Year 2011	2012 ¹												% Change 2012/2011	
		Jan	Feb	Mar	Apr	May	Jun	Jul	Aug	Sep	Oct	Nov	Dec		Year
ASIA	91,057	7,254	7,732	6,991	7,105	10,318	11,953	9,206	8,197	7,622	7,717	9,829	10,412	104,336	14.6
Hong Kong SAR ³	593	85	57	45	150	79	151	164	91	105	111	84	147	1,269	114.0
India	53,955	3,035	4,800	3,689	3,499	6,955	7,393	4,828	3,349	2,926	3,386	5,457	5,880	55,197	2.3
Japan	1,545	116	111	147	152	79	125	132	181	200	120	124	154	1,641	6.2
Malaysia	1,989	74	147	88	141	151	195	58	227	286	134	286	180	1,967	-1.1
P. Rep. of China	15,133	2,735	1,407	1,431	1,342	1,303	1,415	1,808	1,990	1,999	1,803	1,833	1,819	20,885	38.0
Singapore	2,461	123	90	119	152	145	324	101	147	225	206	178	268	2,078	-15.6
United Arab Emirates	3,780	203	164	185	589	325	556	674	900	338	451	402	616	5,403	42.9
Other Asian	11,601	883	956	1,287	1,080	1,281	1,794	1,441	1,312	1,543	1,506	1,465	1,348	15,896	37.0
OCEANIA	16,761	1,166	880	1,080	1,758	1,501	1,640	1,738	1,559	2,199	1,453	1,081	1,808	17,863	6.6
Australia	15,726	1,118	790	1,028	1,669	1,451	1,561	1,648	1,477	2,142	1,370	1,012	1,743	17,009	8.2
Other Oceanian	1,035	48	90	52	89	50	79	90	82	57	83	69	65	854	-17.5
AMERICA	14,408	1,883	1,333	1,878	957	1,201	1,223	1,574	909	1,110	1,466	1,237	1,853	16,624	15.4
USA	6,870	618	559	1,122	322	396	546	530	336	412	492	392	649	6,374	-7.2
Canada	3,887	377	335	400	304	358	370	542	335	284	296	383	752	4,736	21.8
Other American	3,651	888	439	356	331	447	307	502	238	414	678	462	452	5,514	51.0
OTHER & N.STATED	1,594	60	36	78	64	39	31	61	55	59	56	57	108	704	-55.8
All Countries	964,642	98,837	79,331	83,827	79,137	71,396	54,625	76,166	65,896	66,369	89,994	84,398	115,465	965,441	0.1

¹ Provisional

² Commonwealth of Independent States (Ex Soviet Union Countries)

³ Special Administrative Region of China

Table 6:- Tourist arrivals, nights and receipts, 2009 - 2012

Year		Tourist arrivals (Number)	Tourist nights (000)	Tourism receipts ¹ (Rs million)
	2009	871,356	8,639	35,693
	2010	934,827	9554 ³	39,456
	2011	964,642	9608 ³	42,717
	2012	965,441	9,735	44,378
2010	1st Qr.	249,971	2,970	11,021
	2nd Qr.	189,179	1,800	8,788
	1st Semester	439,150	4,770	19,809
	3rd Qr.	207,506	2,287	8,358
	4th Qr.	288,171	2,497	11,289
2011	2nd Semester	495,677	4,784	19,647
	1st Qr.	262,626	2,997	11,949
	2nd Qr.	201,978	1,844	9,355
	1st Semester	464,604	4,841	21,304
	3rd Qr.	209,779	2,268	8,845
2012 ²	4th Qr.	290,259	2,499	12,568
	2nd Semester	500,038	4,767	21,413
	1st Qr.	261,995	2,950	13,768
	2nd Qr.	205,158	2,010	9,780
	1st Semester	467,153	4,960	23,548
	3rd Qr.	208,431	2,300	8,406
	4th Qr.	289,857	2,475	12,424
	2nd Semester	498,288	4,775	20,830

¹ Source: Bank of Mauritius² Provisional³ Revised**Table 7:- Hotels, rooms and bedplaces, 2009 - 2012**

Year	Number as at end of period			
	Hotels	Rooms	Bedplaces	
2009	102	11,456	23,235	
2010	112	12,075	24,698	
2011	109	11,925	24,242	
2012	117	12,527	25,496	
2009	1st Qr.	102	11,444	23,148
	2nd Qr.	97	10,486	21,362
	3rd Qr.	100	11,102	22,530
	4th Qr.	102	11,456	23,235
2010	1st Qr.	105	11,564	23,547
	2nd Qr.	104	11,362	23,168
	3rd Qr.	104	11,383	23,296
	4th Qr.	112	12,075	24,698
2011	1st Qr.	112	12,082	24,664
	2nd Qr.	111	11,999	24,493
	3rd Qr.	109	11,816	24,018
	4th Qr.	109	11,925	24,242
2012 ¹	1st Qr.	110	12,027	24,446
	2nd Qr.	107	11,822	24,089
	3rd Qr.	105	11,715	23,899
	4th Qr.	117 ²	12,527	25,496

¹ Provisional² Excluding one hotel not operational because of renovation works

Table 8:- Monthly Occupancy Rates (%) for All Hotels and "Large" Hotels, 2010 - 2012

Month	All Hotels						"Large" Hotels					
	2010		2011		2012 ¹		2010		2011		2012 ¹	
	Room	Bed	Room	Bed	Room	Bed	Room	Bed	Room	Bed	Room	Bed
January	72	64	75	66	74	65	74	66	76	67	76	67
February	67	58	68	60	67	59	67	60	70	61	69	60
March	64	56	64	57	65	57	65	58	66	58	66	58
<i>1st Quarter</i>	<u>67</u>	<u>59</u>	<u>69</u>	<u>61</u>	<u>69</u>	<u>61</u>	<u>69</u>	<u>61</u>	<u>71</u>	<u>62</u>	<u>70</u>	<u>62</u>
April	61	54	64	57	62	55	64	56	68	60	66	58
May	61	53	55	49	59	52	63	55	57	50	61	54
June	47	41	44	38	45	39	48	43	45	39	46	41
<i>2nd Quarter</i>	<u>56</u>	<u>50</u>	<u>55</u>	<u>48</u>	<u>55</u>	<u>49</u>	<u>58</u>	<u>51</u>	<u>57</u>	<u>50</u>	<u>58</u>	<u>51</u>
<i>1st Semester</i>	64	56	65	57	62	55	64	56	64	56	64	56
July	54	47	53	47	52	45	55	48	54	48	53	47
August	60	52	57	51	56	50	62	54	60	53	60	52
September	65	57	64	57	60	53	67	58	66	58	62	54
<i>3rd Quarter</i>	<u>60</u>	<u>52</u>	<u>58</u>	<u>51</u>	<u>56</u>	<u>49</u>	<u>62</u>	<u>54</u>	<u>60</u>	<u>53</u>	<u>58</u>	<u>51</u>
<i>Jan. to Sep.</i>	63	55	63	55	60	53	63	56	63	55	62	55
October	69	61	68	60	67	59	71	62	70	61	70	62
November	74	65	74	66	69	61	76	67	76	67	71	63
December	75	66	73	64	71	63	78	68	74	65	74	65
<i>4th Quarter</i>	<u>73</u>	<u>64</u>	<u>72</u>	<u>64</u>	<u>69</u>	<u>61</u>	<u>74</u>	<u>65</u>	<u>73</u>	<u>64</u>	<u>72</u>	<u>63</u>
<i>2nd Semester</i>	66	58	64	57	63	55	67	59	65	58	65	57
Whole Year	65	57	65	57	62	55	66	58	65	57	65	57

¹ Provisional

Table 9:- Employment in the tourist industry as at end of March, 2008 - 2012

Year	2008	2009	2010	2011	2012¹
Establishments					
Restaurants	2,251	2,431	2,464	2,409	2,511
Hotels	22,314	20,478	20,847	21,672	21,628
Travel and Tourism	4,188	4,093	3,850	4,052	3,888
Total	28,753	27,002	27,161	28,133	28,027

¹ Revised

Source: Survey of Employment and Earnings in large Establishments (i.e employing 10 or more persons)

BRIEF ON COMPILATION OF PASSENGER TRAFFIC STATISTICS

Sources of data

The main source of data for the compilation of passenger traffic statistics is the Passport and Immigration Office, which maintains a database of all travellers entering and leaving the country. The data are collected from the passport of travellers, disembarkation cards filled in by non-residents and questions put to non-residents entering the country. At the end of every month, passenger traffic for that particular month is downloaded and supplied to the statistics unit of the Ministry of Tourism and Leisure within fifteen days. Additional data on cruises are supplied by the Mauritius Ports Authority.

To supplement the recurrent statistics a Survey of Outgoing Tourists (SOT) is conducted every two years since 1984 jointly by the Statistics Mauritius and the Ministry of Tourism and Leisure. This survey covers a representative sample of tourists at departure and provides qualitative and quantitative information on tourists. Results of the survey are published in the Survey of Outgoing Tourists report.

Tourism receipts

The Bank of Mauritius is responsible for the estimation of tourism receipts based on monthly statements of Inward and Outward Remittances of Commercial Banks.

Monthly Occupancy Rates

All hotels are contacted by phone at the end of every month for data on room/bed nights available and rented during the month for the calculation of room and bed occupancy rates.

Short-term projections of tourist arrivals

A Tourism Statistics Committee grouping various stakeholders of the tourism industry meet regularly under the chairmanship of the Director of the Central Statistics Office to discuss performance of the tourism sector and to provide information for short-term forecast of tourist arrivals.

Publications

The regular publications of the unit are:

- (i) Monthly tourist arrivals (by mid of each month)
- (ii) Quarterly Economic and Social Indicators on International Travel and Tourism (with a lag of seven weeks)
- (iii) Quarterly tourism statistics (Pamphlet)
- (iv) Digest of International Travel and Tourism (August)
- (v) Handbook of statistical data on tourism (August)
- (vi) Report of the Survey of Outgoing Tourists

GLOSSARY OF TERMS

1. Tourist

A tourist is defined as a non-resident staying overnight but less than a year, and who has no employer-employee relationship with a resident.

2. Transit

A transit passenger is one who stops over in the country for flight connections to other destinations. There are two types of transit passengers:

Type I : Passengers who do not leave the transit area of the airport or the harbour.

Type II : Passengers who do leave the airport or harbour and stay in the country overnight but only for flight connection purposes.

Only Type II transit passengers, as defined above, are included in the definition of "Tourists".

3. Excursionist or Same-day Visitor

Excursionists are non-resident visitors, other than those who do not leave the airport, who depart on the same day they arrived.

4. Tourist Nights

"Tourist nights" means the total number of nights spent in the country by tourists, as defined above, during the period under review.

5. Large Hotels

Large hotels are well established beach hotels with more than 80 rooms.

6. Occupancy rate

The room/bed occupancy rate is the ratio of room/bed nights rented to the total number of room/bed nights available.

$$= \frac{\text{Total number of room/bed nights rented}}{\text{Total number of room/bed nights available}} \times 100$$

7. CIS

CIS denotes the Commonwealth of Independent States. It consists of the States of the former Soviet Union.