

# CONSTRUCTION PRICE INDEX

## (Input Cost Index for the construction of a single storey house)

**1st Quarter 2012**

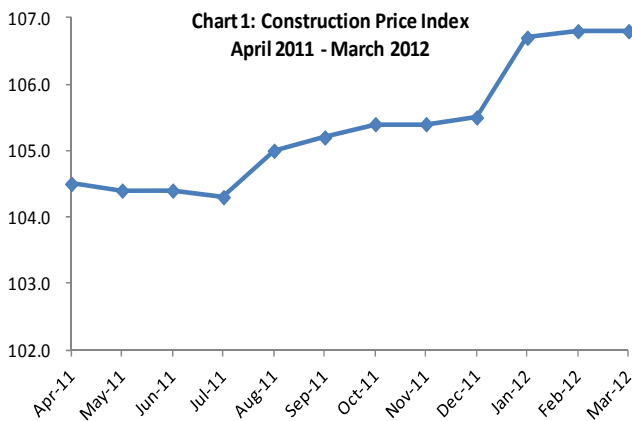
### 1. Introduction

This issue of the Economic and Social Indicators presents the monthly Construction Price Index (residential) for the first quarter of 2012 with second quarter 2009 as base period. Figures showing the evolution of the index during the past twelve months are also included.

The methodology used for compiling the index is given in the annexed technical notes. Figures have been rounded to one or two decimal places although they have been calculated to many decimal places.

### 2. Evolution of the Construction Price Index (April 2011 to March 2012)

Chart 1 shows the movement of the Construction Price Index from April 2011 to March 2012, with the second quarter of 2009 as base. The index which stood at 104.5 in April 2011 decreased to 104.4 in May, remained at the same level in June and thereafter dropped to 104.3 in July, mainly due to lower prices of steel bars. The index registered an increasing trend from 105.0 in August 2011 to 105.5 in December mainly as a result of higher prices of cement, steel bars and timber carpentry. The index rose to 106.7 in January and 106.8 in February 2012. In March 2012, it remained at the same level as February 2012.

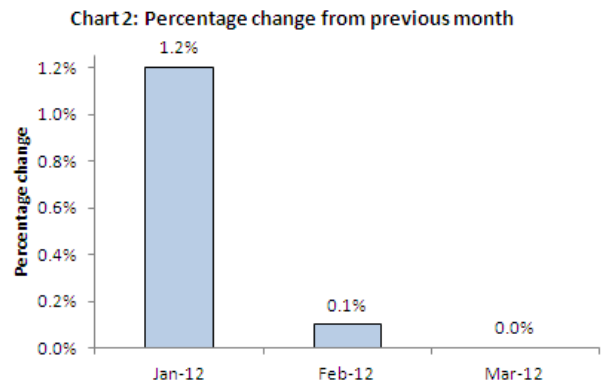


### 3. Changes in the Construction Price Index (January to March 2012)

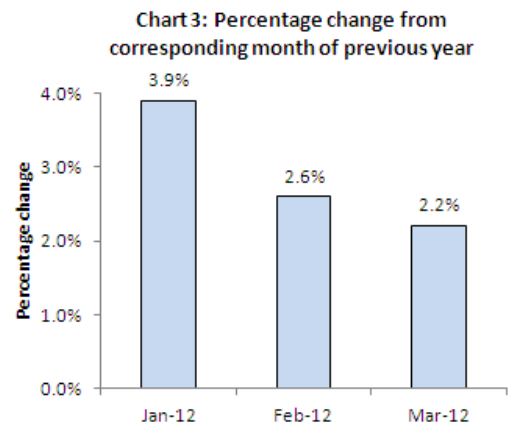
The Construction Price Index, which stood at 105.5 at the end of December 2011 increased by 1.2% in January 2012 to reach 106.7 mainly as a result of higher wages following the 2012 salary compensation and to a rise in the prices of cement.

The index increased by 0.1% in February 2012 to reach 106.8 following increases in the prices of steel bars (0.6%) and cement (0.5%) partly offset by decreases in the prices of electrical installation (-0.9%) and timber carpentry (-0.8%).

In March 2012, the index remained at the same level as in February following an increase of 0.5 in the prices of blocks mitigated by a decrease of 0.2% in the prices of steel bars.



Compared to the corresponding months of the previous year, the index shows overall increases of 3.9% for January 2012, 2.6% for February 2012 and 2.2% for March 2012 (Table 1.3).



#### 4. Changes by Input Categories

Changes by input categories are shown in Tables 1.1 to 1.5.

During the first quarter of 2012, no change was registered in the "Transport" sub-index.

The "Labour" sub index increased by 3.8% from 103.3 in December 2011 to 107.3 in January 2012 due to 2012 salary compensation. It remained unchanged during the months of February and March 2012.

The "Hire of Plant" sub-index increased by 0.6% from 101.0 in December 2011 to 101.6 in January 2012, and remained unchanged up to March 2012.

The "Materials" sub-index increased by 0.2% from 106.4 in December 2011 to 106.6 in January 2012 mainly due to increases of 1.2% in both the prices of cement and timber joinery, partly offset by a decrease of 0.4% in the prices of steel bars.

The sub-index increased by 0.1% in February to reach 106.7, mostly due to higher prices of steel bars (0.6%) and cement (0.5%) which was mitigated by lower prices of electrical installation (-0.9%) and timber carpentry (-0.8%).

In March, the sub-index increased to 106.8 mainly as a result of increases in the prices of blocks (0.5%) and ceramic tiles (1.7%) which was partly offset by a decrease in the prices of steel bars (-0.2%).

The net monthly contributions of the input categories to the index during the period April 2011 to March 2012 are shown in Table 1.4.

Quarterly averages of the monthly indices by input category and the percentage change from quarter to quarter are shown in Table 1.5.

#### 5. Changes by Work Category

Changes by work category are shown in Tables 2.1 to 2.5.

In January 2012, all work categories were affected by an increase in wages. Increases in the prices of cement also contributed in increases in the "Concrete" and "Rendering to wall/ceiling" work categories. In addition, higher rates for the hire of metal plaques also contributed to the "Formwork" (coffrage) work category.

During the month of February 2012, increase in the prices of steel bars (0.6%) affected the "Reinforcement"

work category by 0.4% and higher prices of cement (0.5%) resulted in increases in the following work categories: "Concrete", (0.2%) "Rendering to wall/ceiling" (0.1%). The "Electrical installation" work category decreased by 0.7% following a decrease of 0.9% in the "Electrical installation" input category. Another 0.8% drop in timber carpentry input category caused the "Formwork" (coffrage) work category to decrease by 0.4%.

The "Blockwork" work category went up by 0.3% in March 2012 as a result of higher prices of blocks (0.5%). The "Tiling" work category increased by 0.8% following an increase in the prices of ceramic tiles (1.7%). The 0.2% drop in the prices of steel bars resulted in a decrease of 0.1% in the "Reinforcement" work category.

Table 2.4 shows the net monthly contributions of the work categories to the index since April 2011.

Quarterly averages of the monthly indices by work category and the percentage change from quarter to quarter are shown in Table 2.5.

#### 6. Past Trends

Table 3.1 summarises the monthly indices, the quarterly and yearly averages as well as the percentage changes in the yearly average since 2001. Indices for the years 2001 have been worked out using as base the fourth quarter of 1993, while the base period for the calculation of the index from 2002 up to first quarter 2009 is the fourth quarter of 2001. As from April 2009 the base period used is the second quarter of 2009.

The series are not strictly comparable because of different base periods. However, for some particular purposes, comparison between the series may be necessary. A chain linked series with base period second quarter 2009 has been worked out and is given in table 3.2.

*Statistics Mauritius  
Ministry of Finance and Economic Development  
Port Louis  
May 2012*

**Contact persons:** Mr. L. Persand (Statistician)  
Ms. F. Victor (Senior Statistical Officer)  
**Statistics Mauritius**  
**LIC Centre**  
**Port-Louis**  
**Tel: 212 2316/17**  
**Fax: 211 4150**  
**Email: cso\_construction@mail.gov.mu**

## Input Cost Index for the construction of a single storey house

(Base: 2nd Quarter 2009 = 100)

**Table 1.1: Monthly sub-indices by input category, April 2011 to March 2012**

Input Categories	Weight	2011									2012		
		Apr	May	Jun	Jul	Aug	Sep	Oct	Nov	Dec	Jan	Feb	Mar
<b>LABOUR</b>	<b>28.2</b>	<b>103.3</b>	<b>103.3</b>	<b>103.3</b>	<b>103.3</b>	<b>103.3</b>	<b>103.3</b>	<b>103.3</b>	<b>103.3</b>	<b>103.3</b>	<b>107.3</b>	<b>107.3</b>	<b>107.3</b>
<b>HIRE OF PLANT</b>	<b>3.3</b>	<b>100.0</b>	<b>100.0</b>	<b>101.0</b>	<b>101.3</b>	<b>101.3</b>	<b>101.7</b>	<b>101.0</b>	<b>101.0</b>	<b>101.0</b>	<b>101.6</b>	<b>101.6</b>	<b>101.6</b>
<b>MATERIALS :</b>	<b>64.2</b>	<b>104.9</b>	<b>104.9</b>	<b>104.8</b>	<b>104.7</b>	<b>105.7</b>	<b>106.0</b>	<b>106.3</b>	<b>106.3</b>	<b>106.4</b>	<b>106.6</b>	<b>106.7</b>	<b>106.8</b>
Hardcore (remplissage)	1.8	116.2	116.2	116.2	116.2	116.2	116.2	116.2	116.2	116.2	116.2	116.2	116.2
Cement	12.7	91.2	91.2	91.2	91.2	94.3	94.6	94.5	94.9	95.6	96.7	97.2	97.2
Sand	4.2	119.4	119.4	119.4	119.4	119.4	119.4	119.4	119.4	119.4	119.4	119.4	119.4
Aggregate	3.4	117.3	117.3	117.3	117.3	117.3	117.3	117.3	117.3	117.3	117.3	117.3	117.3
Block	5.2	108.8	108.8	108.8	108.8	109.0	109.8	109.8	109.8	109.8	109.8	109.8	110.4
Steel bars (armature)	10.6	108.2	107.6	107.0	106.0	107.0	107.9	109.8	109.8	109.5	109.1	109.8	109.6
Galvanised corrugated cast iron sheeting	0.6	102.1	101.5	102.1	102.1	102.1	102.1	102.1	102.1	102.1	101.5	101.5	101.5
Timber: (a) Carpentry	3.9	104.6	104.6	104.6	104.5	104.7	104.5	104.7	104.7	104.7	104.9	104.0	104.1
(b) Joinery	1.6	101.5	102.1	102.9	103.0	106.7	106.7	106.9	106.9	107.4	108.7	108.6	108.5
Aluminium openings	4.1	100.0	100.0	100.0	100.0	100.0	100.0	100.0	100.0	100.0	100.0	100.0	100.0
Metal openings	2.7	106.5	107.4	107.5	107.5	107.6	107.7	107.7	107.7	107.7	107.8	107.8	107.8
Ceramic tiles	0.8	99.1	99.1	99.1	99.1	99.1	100.5	99.1	96.3	96.3	96.3	99.0	100.7
Adhesive	1.7	101.2	101.2	101.6	101.6	103.4	103.4	103.6	103.6	103.6	103.6	103.6	103.6
Paint	2.5	111.3	111.3	111.3	111.3	111.3	111.3	111.3	111.3	111.3	111.3	111.3	111.3
Plumbing	1.5	101.8	102.0	102.0	102.0	102.0	102.8	102.8	103.0	103.0	103.0	103.0	103.0
Sanitary installation	2.2	103.1	102.9	102.9	102.8	104.2	104.2	104.2	104.2	103.9	103.9	104.0	104.0
Electrical installation	4.7	109.9	109.9	110.1	110.4	110.4	110.6	110.6	110.5	110.5	110.4	109.4	109.4
<b>TRANSPORT</b>	<b>4.3</b>	<b>109.1</b>	<b>109.1</b>	<b>109.1</b>	<b>109.1</b>	<b>109.1</b>	<b>109.1</b>	<b>109.1</b>	<b>109.1</b>	<b>109.1</b>	<b>109.1</b>	<b>109.1</b>	<b>109.1</b>
<b>Total</b>	<b>100.0</b>	<b>104.5</b>	<b>104.4</b>	<b>104.4</b>	<b>104.3</b>	<b>105.0</b>	<b>105.2</b>	<b>105.4</b>	<b>105.4</b>	<b>105.5</b>	<b>106.7</b>	<b>106.8</b>	<b>106.8</b>

## Input Cost Index for the construction of a single storey house

(Base: 2nd Quarter 2009 = 100)

**Table 1.2: Percentage change from previous month by input category, April 2011 to March 2012**

Input Categories	Weight	% change from previous month											
		Apr 11	May 11	Jun 11	Jul 11	Aug 11	Sep 11	Oct 11	Nov 11	Dec 11	Jan 12	Feb 12	Mar 12
<b>LABOUR</b>	<b>28.2</b>	<b>0.0</b>	<b>0.0</b>	<b>0.0</b>	<b>0.0</b>	<b>0.0</b>	<b>0.0</b>	<b>0.0</b>	<b>0.0</b>	<b>0.0</b>	<b>3.8</b>	<b>0.0</b>	<b>0.0</b>
<b>HIRE OF PLANT</b>	<b>3.3</b>	<b>0.0</b>	<b>0.0</b>	<b>1.0</b>	<b>0.3</b>	<b>0.0</b>	<b>0.3</b>	<b>-0.7</b>	<b>0.0</b>	<b>0.0</b>	<b>0.6</b>	<b>0.0</b>	<b>0.0</b>
<b>MATERIALS :</b>	<b>64.2</b>	<b>-0.1</b>	<b>0.0</b>	<b>0.0</b>	<b>-0.1</b>	<b>1.0</b>	<b>0.3</b>	<b>0.3</b>	<b>0.0</b>	<b>0.1</b>	<b>0.2</b>	<b>0.1</b>	<b>0.0</b>
Hardcore (remplissage)	1.8	0.0	0.0	0.0	0.0	0.0	0.0	0.0	0.0	0.0	0.0	0.0	0.0
Cement	12.7	0.0	0.0	0.0	0.0	3.4	0.3	-0.1	0.4	0.7	1.2	0.5	0.0
Sand	4.2	0.0	0.0	0.0	0.0	0.0	0.0	0.0	0.0	0.0	0.0	0.0	0.0
Aggregate	3.4	0.0	0.0	0.0	0.0	0.0	0.0	0.0	0.0	0.0	0.0	0.0	0.0
Block	5.2	0.0	0.0	0.0	0.0	0.2	0.7	0.0	0.0	0.0	0.0	0.0	0.5
Steel bars (armature)	10.6	-1.6	-0.5	-0.6	-0.9	0.9	0.8	1.8	0.0	-0.2	-0.4	0.6	-0.2
Galvanised corrugated cast iron sheeting	0.6	0.0	-0.5	0.5	0.0	0.0	0.0	0.0	0.0	0.0	-0.5	0.0	0.0
Timber: (a) Carpentry	3.9	0.0	0.0	0.0	-0.1	0.2	-0.2	0.2	0.0	0.0	0.1	-0.8	0.1
(b) Joinery	1.6	0.0	0.5	0.9	0.1	3.6	0.0	0.2	0.0	0.5	1.2	-0.1	-0.1
Aluminium openings	4.1	0.0	0.0	0.0	0.0	0.0	0.0	0.0	0.0	0.0	0.0	0.0	0.0
Metal openings	2.7	0.1	0.9	0.0	0.1	0.1	0.0	0.0	0.0	0.0	0.1	0.0	0.0
Ceramic tiles	0.8	0.0	0.0	0.0	0.0	0.0	1.4	-1.4	-2.8	0.0	0.0	2.8	1.7
Adhesive	1.7	0.2	0.0	0.5	0.0	1.8	0.0	0.2	0.0	0.0	0.0	0.0	0.0
Paint	2.5	0.0	0.0	0.0	0.0	0.0	0.0	0.0	0.0	0.0	0.0	0.0	0.0
Plumbing	1.5	0.1	0.2	0.1	0.0	0.0	0.7	0.0	0.2	0.0	0.0	0.0	0.0
Sanitary installation	2.2	0.0	-0.1	0.0	-0.1	1.3	0.0	0.0	0.0	-0.3	0.0	0.1	0.0
Electrical installation	4.7	1.9	0.1	0.2	0.2	0.0	0.1	0.0	0.0	0.0	-0.2	-0.9	0.0
<b>TRANSPORT</b>	<b>4.3</b>	<b>0.0</b>	<b>0.0</b>	<b>0.0</b>	<b>0.0</b>	<b>0.0</b>	<b>0.0</b>	<b>0.0</b>	<b>0.0</b>	<b>0.0</b>	<b>0.0</b>	<b>0.0</b>	<b>0.0</b>
<b>Total</b>	<b>100.0</b>	<b>-0.1</b>	<b>0.0</b>	<b>0.0</b>	<b>-0.1</b>	<b>0.6</b>	<b>0.2</b>	<b>0.2</b>	<b>0.0</b>	<b>0.1</b>	<b>1.2</b>	<b>0.1</b>	<b>0.0</b>

## Input Cost Index for the construction of a single storey house

(Base: 2nd Quarter 2009 = 100)

**Table 1.3: Percentage change from corresponding month of previous year by input category, April 2011 to March 2012**

Input Categories	Weight	% change from corresponding month of previous year											
		Apr 11	May 11	Jun 11	Jul 11	Aug 11	Sep 11	Oct 11	Nov 11	Dec 11	Jan 12	Feb 12	Mar 12
<b>LABOUR</b>	<b>28.2</b>	<b>2.0</b>	<b>2.0</b>	<b>2.0</b>	<b>2.0</b>	<b>2.0</b>	<b>2.0</b>	<b>2.0</b>	<b>2.0</b>	<b>2.0</b>	<b>3.8</b>	<b>3.8</b>	<b>3.8</b>
<b>HIRE OF PLANT</b>	<b>3.3</b>	<b>0.0</b>	<b>0.0</b>	<b>1.0</b>	<b>1.3</b>	<b>1.3</b>	<b>1.7</b>	<b>1.0</b>	<b>1.0</b>	<b>1.0</b>	<b>1.6</b>	<b>1.6</b>	<b>1.6</b>
<b>MATERIALS :</b>	<b>64.2</b>	<b>7.5</b>	<b>5.1</b>	<b>4.7</b>	<b>3.7</b>	<b>4.9</b>	<b>5.2</b>	<b>4.5</b>	<b>4.2</b>	<b>4.2</b>	<b>4.3</b>	<b>2.3</b>	<b>1.7</b>
Hardcore (remplissage)	1.8	11.8	10.3	10.3	6.2	6.2	6.2	6.2	6.2	6.2	6.2	2.4	0.0
Cement	12.7	0.0	0.0	0.0	0.0	3.4	3.8	3.7	4.2	4.9	6.1	6.7	6.7
Sand	4.2	9.5	8.4	8.4	5.5	5.5	5.5	5.5	5.5	5.5	5.5	1.8	0.0
Aggregate	3.4	12.9	11.2	11.2	6.5	6.5	6.5	6.5	6.5	6.5	6.5	2.7	0.0
Block	5.2	8.6	7.5	7.5	5.3	5.6	6.3	6.3	6.3	6.3	6.3	3.2	1.5
Steel bars (armature)	10.6	22.3	10.4	4.5	3.6	5.8	6.7	5.6	4.5	3.8	3.7	0.4	-0.3
Galvanised corrugated cast iron sheeting	0.6	2.1	1.5	2.1	2.1	2.1	2.1	2.1	2.1	2.1	0.3	-0.5	-0.5
Timber: (a) Carpentry	3.9	4.4	4.4	4.4	4.3	4.5	4.3	3.3	3.0	2.1	3.2	-0.8	-0.5
(b) Joinery	1.6	1.5	2.1	2.9	3.0	6.7	6.7	6.6	6.8	7.3	8.0	7.9	6.9
Aluminium openings	4.1	0.0	0.0	0.0	0.0	0.0	0.0	0.0	0.0	0.0	0.0	0.0	0.0
Metal openings	2.7	1.6	2.5	2.5	2.6	2.7	2.1	2.0	2.0	2.0	2.0	1.3	1.3
Ceramic tiles	0.8	-0.9	-0.9	-0.9	-0.9	-0.9	0.5	-0.9	-3.7	-3.7	-2.8	-0.1	1.6
Adhesive	1.7	0.9	0.9	1.4	1.4	3.2	3.2	3.4	3.4	3.4	2.6	2.6	2.6
Paint	2.5	9.9	9.9	9.9	9.9	9.9	9.9	0.5	0.4	0.4	0.1	0.1	0.1
Plumbing	1.5	1.7	1.9	1.9	1.9	1.9	2.7	2.6	2.6	2.6	1.8	1.5	1.3
Sanitary installation	2.2	3.1	2.9	2.9	0.8	2.1	2.1	2.1	1.6	1.1	1.1	0.9	0.9
Electrical installation	4.7	9.9	3.5	10.3	10.5	10.6	10.7	10.7	8.8	8.8	6.4	2.1	1.5
<b>TRANSPORT</b>	<b>4.3</b>	<b>9.1</b>	<b>9.1</b>	<b>9.1</b>	<b>9.1</b>	<b>9.1</b>	<b>9.1</b>	<b>9.1</b>	<b>9.1</b>	<b>9.1</b>	<b>0.0</b>	<b>0.0</b>	<b>0.0</b>
<b>Total</b>	<b>100.0</b>	<b>5.7</b>	<b>4.2</b>	<b>4.0</b>	<b>3.4</b>	<b>4.2</b>	<b>4.3</b>	<b>3.9</b>	<b>3.7</b>	<b>3.7</b>	<b>3.9</b>	<b>2.6</b>	<b>2.2</b>

## Input Cost Index for the construction of a single storey house

(Base: 2nd Quarter 2009 = 100)

**Table 1.4: Net monthly contributions of input categories to the index, April 2011 to March 2012**

Input Categories	Weight	2011									2012		
		Apr	May	Jun	Jul	Aug	Sep	Oct	Nov	Dec	Jan	Feb	Mar
<b>LABOUR</b>	<b>28.2</b>	<b>0.00</b>	<b>0.00</b>	<b>0.00</b>	<b>0.00</b>	<b>0.00</b>	<b>0.00</b>	<b>0.00</b>	<b>0.00</b>	<b>0.00</b>	<b>1.12</b>	<b>0.00</b>	<b>0.00</b>
<b>HIRE OF PLANT</b>	<b>3.3</b>	<b>0.00</b>	<b>0.00</b>	<b>0.03</b>	<b>0.01</b>	<b>0.00</b>	<b>0.01</b>	<b>-0.02</b>	<b>0.00</b>	<b>0.00</b>	<b>0.02</b>	<b>0.00</b>	<b>0.00</b>
<b>MATERIALS :</b>	<b>64.2</b>	<b>-0.08</b>	<b>-0.02</b>	<b>-0.03</b>	<b>-0.09</b>	<b>0.65</b>	<b>0.20</b>	<b>0.20</b>	<b>0.03</b>	<b>0.06</b>	<b>0.11</b>	<b>0.07</b>	<b>0.03</b>
Hardcore (remplissage)	1.8	0.00	0.00	0.00	0.00	0.00	0.00	0.00	0.00	0.00	0.00	0.00	0.00
Cement	12.7	0.00	0.00	0.00	0.00	0.40	0.04	-0.01	0.05	0.09	0.14	0.06	0.00
Sand	4.2	0.00	0.00	0.00	0.00	0.00	0.00	0.00	0.00	0.00	0.00	0.00	0.00
Aggregate	3.4	0.00	0.00	0.00	0.00	0.00	0.00	0.00	0.00	0.00	0.00	0.00	0.00
Block	5.2	0.00	0.00	0.00	0.00	0.01	0.04	0.00	0.00	0.00	0.00	0.00	0.03
Steel bars (armature)	10.6	-0.19	-0.05	-0.07	-0.10	0.10	0.10	0.20	0.00	-0.03	-0.04	0.07	-0.02
Galvanised corrugated cast iron sheeting	0.6	0.00	0.00	0.00	0.00	0.00	0.00	0.00	0.00	0.00	0.00	0.00	0.00
Timber: (a) Carpentry	3.9	0.00	0.00	0.00	0.00	0.01	-0.01	0.01	0.00	0.00	0.00	-0.03	0.00
(b) Joinery	1.6	0.00	0.01	0.01	0.00	0.06	0.00	0.00	0.00	0.01	0.02	0.00	0.00
Aluminium openings	4.1	0.00	0.00	0.00	0.00	0.00	0.00	0.00	0.00	0.00	0.00	0.00	0.00
Metal openings	2.7	0.00	0.03	0.00	0.00	0.00	0.00	0.00	0.00	0.00	0.00	0.00	0.00
Ceramic tiles	0.8	0.00	0.00	0.00	0.00	0.00	0.01	-0.01	-0.02	0.00	0.00	0.02	0.01
Adhesive	1.7	0.00	0.00	0.01	0.00	0.03	0.00	0.00	0.00	0.00	0.00	0.00	0.00
Paint	2.5	0.00	0.00	0.00	0.00	0.00	0.00	0.00	0.00	0.00	0.00	0.00	0.00
Plumbing	1.5	0.00	0.00	0.00	0.00	0.00	0.01	0.00	0.00	0.00	0.00	0.00	0.00
Sanitary installation	2.2	0.00	0.00	0.00	0.00	0.03	0.00	0.00	0.00	-0.01	0.00	0.00	0.00
Electrical installation	4.7	0.10	0.00	0.01	0.01	0.00	0.01	0.00	0.00	0.00	-0.01	-0.04	0.00
<b>TRANSPORT</b>	<b>4.3</b>	<b>0.00</b>	<b>0.00</b>	<b>0.00</b>	<b>0.00</b>	<b>0.00</b>	<b>0.00</b>	<b>0.00</b>	<b>0.00</b>	<b>0.00</b>	<b>0.00</b>	<b>0.00</b>	<b>0.00</b>
<b>Total</b>	<b>100.0</b>	<b>-0.08</b>	<b>-0.02</b>	<b>0.00</b>	<b>-0.08</b>	<b>0.65</b>	<b>0.21</b>	<b>0.18</b>	<b>0.03</b>	<b>0.06</b>	<b>1.26</b>	<b>0.07</b>	<b>0.03</b>

## Input Cost Index for the construction of a single storey house

(Base: 2nd Quarter 2009= 100)

**Table 1.5: Quarterly average of monthly indices and percentage changes by input category, 2nd Quarter 2011 to 1st quarter 2012**

Input Categories	Weight	2011			2012	% change from previous quarter		
		2nd Qr 2011	3rd Qr 2011	4th Qr 2011	1st Qr 2012	3rd Qr 2011	4th Qr 2011	1st Qr 2012
<b>LABOUR</b>	<b>28.2</b>	<b>103.3</b>	<b>103.3</b>	<b>103.3</b>	<b>107.3</b>	<b>0.0</b>	<b>0.0</b>	<b>3.8</b>
<b>HIRE OF PLANT</b>	<b>3.3</b>	<b>100.3</b>	<b>101.4</b>	<b>101.0</b>	<b>101.6</b>	<b>1.1</b>	<b>-0.4</b>	<b>0.6</b>
<b>MATERIALS :</b>	<b>64.2</b>	<b>104.8</b>	<b>105.4</b>	<b>106.3</b>	<b>106.7</b>	<b>0.6</b>	<b>0.9</b>	<b>0.3</b>
Hardcore (remplissage)	1.8	116.2	116.2	116.2	116.2	0.0	0.0	0.0
Cement	12.7	91.2	93.4	95.0	97.1	2.4	1.8	2.1
Sand	4.2	119.4	119.4	119.4	119.4	0.0	0.0	0.0
Aggregate	3.4	117.3	117.3	117.3	117.3	0.0	0.0	0.0
Block	5.2	108.8	109.2	109.8	110.0	0.4	0.5	0.2
Steel bars (armature)	10.6	107.6	107.0	109.7	109.5	-0.6	2.6	-0.2
Galvanised corrugated cast iron sheeting	0.6	101.9	102.1	102.1	101.5	0.2	0.0	-0.5
Timber: (a) Carpentry	3.9	104.6	104.6	104.7	104.3	0.0	0.2	-0.4
(b) Joinery	1.6	102.2	105.5	107.0	108.6	3.2	1.5	1.5
Aluminium openings	4.1	100.0	100.0	100.0	100.0	0.0	0.0	0.0
Metal openings	2.7	107.1	107.6	107.7	107.8	0.5	0.1	0.1
Ceramic tiles	0.8	99.1	99.6	97.3	98.7	0.5	-2.3	1.5
Adhesive	1.7	101.3	102.8	103.6	103.6	1.5	0.8	0.0
Paint	2.5	111.3	111.3	111.3	111.3	0.0	0.0	0.0
Plumbing	1.5	101.9	102.3	102.9	103.0	0.3	0.6	0.1
Sanitary installation	2.2	103.0	103.7	104.1	104.0	0.7	0.3	-0.1
Electrical installation	4.7	110.0	110.5	110.5	109.7	0.4	0.1	-0.7
<b>TRANSPORT</b>	<b>4.3</b>	<b>109.1</b>	<b>109.1</b>	<b>109.1</b>	<b>109.1</b>	<b>0.0</b>	<b>0.0</b>	<b>0.0</b>
<b>Total</b>	<b>100.0</b>	<b>104.4</b>	<b>104.8</b>	<b>105.4</b>	<b>106.8</b>	<b>0.4</b>	<b>0.5</b>	<b>1.3</b>

## Input Cost Index for the construction of a single storey house

(Base: 2nd Quarter 2009 = 100)

**Table 2.1: Monthly sub-indices by work category, April 2011 to March 2012**

Work Categories	Weight	2011									2012		
		Apr	May	Jun	Jul	Aug	Sep	Oct	Nov	Dec	Jan	Feb	Mar
1. Setting up	1.5	105.6	105.4	105.6	105.5	105.8	105.7	105.7	105.7	105.8	106.1	106.1	106.1
2. Setting out	0.5	111.5	112.0	112.0	112.2	114.9	114.9	115.1	115.1	115.3	117.1	117.0	117.0
3. Earthworks	3.3	110.4	110.4	111.1	111.1	111.1	111.1	110.4	110.4	110.4	111.2	111.2	111.2
4. Concrete	21.3	102.4	102.4	102.4	102.4	103.7	103.8	103.8	103.9	104.2	105.6	105.8	105.8
5. Reinforcement	14.6	106.9	106.5	106.0	105.3	106.1	106.7	108.1	108.1	107.9	108.7	109.2	109.0
6. Formwork (coffrage)	8.5	102.1	102.0	102.2	102.3	102.5	102.6	102.7	102.7	102.7	104.1	103.7	103.7
7. Blockwork	8.7	106.0	106.0	106.0	106.0	106.5	107.0	107.0	107.1	107.2	107.8	107.9	108.2
8. Softwood joinery	1.5	103.3	103.9	104.4	104.4	106.9	106.9	107.0	107.0	107.2	109.9	109.7	109.7
9. Aluminium Doors and Openings	6.0	101.1	101.1	101.1	101.1	101.1	101.1	101.1	101.1	101.1	102.2	102.2	102.2
10. Metal openings	4.1	106.0	106.6	106.6	106.7	106.7	106.8	106.8	106.8	106.8	107.9	107.9	107.9
11. Rendering to wall/ceiling (crepissage)	10.4	103.3	103.3	103.3	103.3	104.1	104.1	104.1	104.2	104.3	107.0	107.1	107.1
12. Bed & screed to floor/roof	3.8	103.2	103.2	103.2	103.2	104.3	104.4	104.4	104.5	104.7	106.5	106.7	106.7
13. Tiling	1.6	100.6	100.6	100.8	100.8	101.2	101.9	101.2	99.9	99.9	101.1	102.5	103.3
14. Painting	3.2	108.4	108.4	108.4	108.4	108.4	108.4	108.4	108.4	108.4	109.5	109.5	109.5
15. Plumbing and Drainage	5.0	102.9	102.9	102.9	102.9	103.5	103.7	103.7	103.7	103.6	104.5	104.5	104.5
16. Electrical installation	6.0	108.4	108.5	108.6	108.9	108.9	109.0	109.0	109.0	109.0	109.7	108.9	108.9
<b>Total</b>	<b>100.0</b>	<b>104.5</b>	<b>104.4</b>	<b>104.4</b>	<b>104.3</b>	<b>105.0</b>	<b>105.2</b>	<b>105.4</b>	<b>105.4</b>	<b>105.5</b>	<b>106.7</b>	<b>106.8</b>	<b>106.8</b>



## Input Cost Index for the construction of a single storey house

(Base: 2nd Quarter 2009 = 100)

**Table 2.2: Percentage change from previous month by work category, April 2011 to March 2012**

Work Categories	Weight	% change from previous month											
		Apr 11	May 11	Jun 11	Jul 11	Aug 11	Sep 11	Oct 11	Nov 11	Dec 11	Jan 12	Feb 12	Mar 12
1. Setting up	1.5	0.0	-0.2	0.2	-0.1	0.3	-0.1	0.0	0.0	0.0	0.3	0.0	0.0
2. Setting out	0.5	0.0	0.5	0.0	0.1	2.4	0.0	0.1	0.0	0.2	1.6	-0.1	0.0
3. Earthworks	3.3	0.0	0.0	0.6	0.0	0.0	0.0	-0.6	0.0	0.0	0.6	0.0	0.0
4. Concrete	21.3	0.0	0.0	0.0	0.0	1.2	0.1	0.0	0.2	0.3	1.3	0.2	0.0
5. Reinforcement	14.6	-1.2	-0.3	-0.5	-0.7	0.7	0.6	1.3	0.0	-0.2	0.7	0.4	-0.1
6. Formwork (coffrage)	8.5	0.0	0.0	0.2	0.1	0.2	0.1	0.1	0.0	0.0	1.3	-0.4	0.0
7. Blockwork	8.7	0.0	0.0	0.0	0.0	0.5	0.5	0.0	0.0	0.1	0.6	0.1	0.3
8. Softwood joinery	1.5	0.0	0.5	0.4	0.0	2.4	0.0	0.1	0.0	0.2	2.6	-0.2	0.0
9. Aluminium Doors and Openings	6.0	0.0	0.0	0.0	0.0	0.0	0.0	0.0	0.0	0.0	1.1	0.0	0.0
10. Metal openings	4.1	0.0	0.6	0.0	0.0	0.1	0.0	0.0	0.0	0.0	1.0	0.0	0.0
11. Rendering to wall/ceiling (crepissage)	10.4	0.0	0.0	0.1	0.0	0.7	0.1	0.0	0.1	0.1	2.5	0.1	0.0
12. Bed & screed to floor/roof	3.8	0.0	0.0	0.0	0.0	1.1	0.1	0.0	0.1	0.2	1.7	0.1	0.0
13. Tiling	1.6	0.0	0.0	0.2	0.0	0.4	0.7	-0.7	-1.4	0.0	1.2	1.4	0.8
14. Painting	3.2	0.0	0.0	0.0	0.0	0.0	0.0	0.0	0.0	0.0	1.0	0.0	0.0
15. Plumbing and Drainage	5.0	0.0	0.0	0.0	0.0	0.6	0.2	0.0	0.0	-0.1	0.8	0.0	0.0
16. Electrical installation	6.0	1.5	0.1	0.1	0.2	0.0	0.1	0.0	0.0	0.0	0.6	-0.7	0.0
<b>Total</b>	<b>100.0</b>	<b>-0.1</b>	<b>0.0</b>	<b>0.0</b>	<b>-0.1</b>	<b>0.6</b>	<b>0.2</b>	<b>0.2</b>	<b>0.0</b>	<b>0.1</b>	<b>1.2</b>	<b>0.1</b>	<b>0.0</b>

## Input Cost Index for the construction of a single storey house

(Base: 2nd Quarter 2009 = 100)

**Table 2.3: Percentage change from corresponding month of previous year by work category, April 2011 to March 2012**

Work Categories	Weight	% change from corresponding month of previous year											
		Apr 11	May 11	Jun 11	Jul 11	Aug 11	Sep 11	Oct11	Nov 11	Dec 11	Jan 12	Feb 12	Mar 12
1. Setting up	1.5	5.4	5.1	5.3	4.8	5.1	5.0	5.0	5.0	5.0	4.2	0.6	0.5
2. Setting out	0.5	10.6	11.1	11.1	11.3	14.0	14.0	14.1	14.1	14.4	15.1	4.8	5.0
3. Earthworks	3.3	7.8	7.0	7.6	5.3	5.3	5.3	4.7	4.7	4.7	4.2	2.0	0.6
4. Concrete	21.3	4.5	4.1	4.1	3.0	4.3	4.4	4.4	4.5	4.8	4.9	4.0	3.3
5. Reinforcement	14.6	17.3	9.0	4.7	4.0	5.6	6.3	5.5	4.7	4.2	3.8	1.3	0.8
6. Formwork (coffrage)	8.5	1.5	1.5	1.7	1.8	2.0	2.0	1.6	1.5	1.1	2.4	1.6	1.6
7. Blockwork	8.7	6.6	5.9	5.9	4.5	5.0	5.5	5.5	5.6	5.7	5.3	3.3	2.1
8. Softwood joinery	1.5	3.1	3.6	4.1	4.1	6.6	6.6	5.8	5.9	5.5	6.8	6.7	6.2
9. Aluminium Doors and Openings	6.0	0.6	0.6	0.6	0.6	0.6	0.6	0.6	0.6	0.6	1.1	1.1	1.1
10. Metal openings	4.1	2.1	2.7	2.7	2.7	2.8	2.4	2.0	2.0	2.0	2.3	1.8	1.8
11. Rendering to wall/ceiling (crepissage)	10.4	2.2	2.1	2.2	1.9	2.7	2.7	2.7	2.8	2.8	4.2	3.9	3.7
12. Bed & screed to floor/roof	3.8	2.5	2.4	2.4	1.9	3.1	3.2	3.2	3.3	3.5	4.2	3.7	3.4
13. Tiling	1.6	0.2	0.2	0.3	0.4	0.7	1.4	0.8	-0.6	-0.6	0.5	1.9	2.7
14. Painting	3.2	7.0	7.0	7.0	7.0	7.0	7.0	0.5	0.5	0.5	1.0	1.0	1.0
15. Plumbing and Drainage	5.0	2.5	2.5	2.5	1.5	2.1	2.4	2.3	2.1	1.9	1.9	1.7	1.6
16. Electrical installation	6.0	8.1	3.1	8.4	8.6	8.6	8.7	8.7	7.2	7.2	5.8	2.4	1.9
<b>Total</b>	<b>100.0</b>	<b>5.7</b>	<b>4.2</b>	<b>4.0</b>	<b>3.4</b>	<b>4.2</b>	<b>4.3</b>	<b>3.9</b>	<b>3.7</b>	<b>3.7</b>	<b>3.9</b>	<b>2.6</b>	<b>2.2</b>

## Input Cost Index for the construction of a single storey house

(Base: 2nd Quarter 2009 = 100)

**Table 2.4: Net monthly contributions of work categories to the index, April 2011 to March 2012**

Work Categories	Weight	2011									2012		
		Apr	May	Jun	Jul	Aug	Sep	Oct	Nov	Dec	Jan	Feb	Mar
1. Setting up	1.5	0.00	0.00	0.00	0.00	0.00	0.00	0.00	0.00	0.00	0.01	0.00	0.00
2. Setting out	0.5	0.00	0.00	0.00	0.00	0.01	0.00	0.00	0.00	0.00	0.01	0.00	0.00
3. Earthworks	3.3	0.00	0.00	0.02	0.00	0.00	0.00	-0.02	0.00	0.00	0.02	0.00	0.00
4. Concrete	21.3	0.00	0.00	0.00	0.00	0.26	0.03	-0.01	0.03	0.06	0.30	0.04	0.00
5. Reinforcement	14.6	-0.19	-0.05	-0.07	-0.10	0.10	0.10	0.20	0.00	-0.03	0.12	0.07	-0.02
6. Formwork (coffrage)	8.5	0.00	0.00	0.02	0.01	0.01	0.01	0.01	0.00	0.00	0.11	-0.03	0.00
7. Blockwork	8.7	0.00	0.00	0.00	0.00	0.05	0.04	0.00	0.00	0.01	0.06	0.01	0.03
8. Softwood joinery	1.5	0.00	0.01	0.01	0.00	0.04	0.00	0.00	0.00	0.00	0.04	0.00	0.00
9. Aluminium Doors and Openings	6.0	0.00	0.00	0.00	0.00	0.00	0.00	0.00	0.00	0.00	0.06	0.00	0.00
10. Metal openings	4.1	0.00	0.03	0.00	0.00	0.00	0.00	0.00	0.00	0.00	0.05	0.00	0.00
11. Rendering to wall/ceiling (crepissage)	10.4	0.00	0.00	0.01	0.00	0.08	0.01	0.00	0.01	0.01	0.27	0.01	0.00
12. Bed & screed to floor/roof	3.8	0.00	0.00	0.00	0.00	0.04	0.00	0.00	0.00	0.01	0.07	0.01	0.00
13. Tiling	1.7	0.00	0.00	0.00	0.00	0.01	0.01	-0.01	-0.02	0.00	0.02	0.02	0.01
14. Painting	3.2	0.00	0.00	0.00	0.00	0.00	0.00	0.00	0.00	0.00	0.03	0.00	0.00
15. Plumbing and Drainage	5.0	0.00	0.00	0.00	0.00	0.03	0.01	0.00	0.00	-0.01	0.04	0.00	0.00
16. Electrical installation	6.0	0.10	0.00	0.01	0.01	0.00	0.01	0.00	0.00	0.00	0.04	-0.04	0.00
<b>Total</b>	<b>100.0</b>	<b>-0.08</b>	<b>-0.02</b>	<b>0.00</b>	<b>-0.08</b>	<b>0.65</b>	<b>0.21</b>	<b>0.18</b>	<b>0.03</b>	<b>0.06</b>	<b>1.26</b>	<b>0.07</b>	<b>0.03</b>

## Input Cost Index for the construction of a single storey house

(Base: 2nd Quarter 2009= 100)

**Table 2.5: Quarterly average of monthly indices and percentage changes by work category, 2nd Quarter 2011 to 1st quarter 2012**

Work Categories	Weight	2011			2012	% change from previous quarter		
		2nd Qr 2011	3rd Qr 2011	4th Qr 2011	1st Qr 2012	3rd Qr 2011	4th Qr 2011	1st Qr 2012
1. Setting up	1.5	105.5	105.7	105.7	106.1	0.2	0.0	0.4
2. Setting out	0.5	111.9	114.0	115.1	117.1	1.9	1.0	1.7
3. Earthworks	3.3	110.7	111.1	110.4	111.2	0.4	-0.6	0.6
4. Concrete	21.3	102.4	103.3	104.0	105.7	0.8	0.6	1.7
5. Reinforcement	14.6	106.5	106.0	108.0	109.0	-0.4	1.9	0.9
6. Formwork (coffrage)	8.5	102.1	102.5	102.7	103.8	0.3	0.2	1.1
7. Blockwork	8.7	106.0	106.5	107.1	108.0	0.5	0.5	0.8
8. Softwood joinery	1.5	103.9	106.1	107.0	109.8	2.1	0.9	2.6
9. Aluminium Doors and Openings	6.0	101.1	101.1	101.1	102.2	0.0	0.0	1.1
10. Metal openings	4.1	106.4	106.7	106.8	107.9	0.3	0.1	1.1
11. Rendering to wall/ceiling (crepissage)	10.4	103.3	103.8	104.2	107.0	0.5	0.4	2.7
12. Bed & screed to floor/roof	3.8	103.2	104.0	104.6	106.6	0.8	0.6	2.0
13. Tiling	1.7	100.7	101.3	100.3	102.3	0.6	-1.0	2.0
14. Painting	3.2	108.4	108.4	108.4	109.5	0.0	0.0	1.0
15. Plumbing and Drainage	5.0	102.9	103.3	103.7	104.5	0.4	0.3	0.8
16. Electrical installation	6.0	108.5	108.9	109.0	109.2	0.4	0.1	0.2
<b>Total</b>	<b>100.0</b>	<b>104.4</b>	<b>104.8</b>	<b>105.4</b>	<b>106.8</b>	<b>0.4</b>	<b>0.5</b>	<b>1.3</b>

Table 3.1: Construction Price Index - January 2001 to March 2012

	<i>(Base: 4th Quarter 1993 = 100)</i>	<i>(Base: 4th Quarter 2001 = 100)</i>								<i>(Base: 2nd Quarter 2009 = 100)</i>			
	<b>2001</b>	<b>2002</b>	<b>2003</b>	<b>2004</b>	<b>2005</b>	<b>2006</b>	<b>2007</b>	<b>2008</b>	<b>2009</b>	<b>2009</b>	<b>2010</b>	<b>2011</b>	<b>2012</b>
January	124.9	100.3	105.8	109.5	118.7	126.7	140.7	159.0	166.0		100.3	102.8	106.7
February	124.9	100.5	106.8	112.2	122.5	127.3	140.7	159.0	166.0		100.3	104.1	106.8
March	125.0	100.6	107.0	112.3	122.5	127.3	141.2	157.9	163.5		98.8	104.5	106.8
<i>1st Quarter</i>	<i>124.9</i>	<i>100.5</i>	<i>106.5</i>	<i>111.3</i>	<i>121.3</i>	<i>127.1</i>	<i>140.9</i>	<i>158.7</i>	<i>165.2</i>		<i>99.8</i>	<i>103.8</i>	<i>106.8</i>
April	124.9	100.7	107.1	112.3	122.5	127.9	144.1	157.9		100.2	98.8	104.5	
May	124.9	101.5	107.1	112.3	122.7	127.9	144.3	157.9		100.0	100.2	104.4	
June	124.9	101.5	107.1	115.5	122.7	129.9	147.4	161.2		99.8	100.4	104.4	
<i>2nd Quarter</i>	<i>124.9</i>	<i>101.3</i>	<i>107.1</i>	<i>113.4</i>	<i>122.6</i>	<i>128.6</i>	<i>145.2</i>	<i>159.0</i>		<i>100.0</i>	<i>99.8</i>	<i>104.4</i>	
July	126.9	105.4	108.1	116.4	124.6	134.4	150.5	165.2		100.6	100.9	104.3	
August	127.4	105.4	108.6	116.4	124.6	135.1	151.3	167.5		100.2	100.8	105	
September	127.4	105.4	109.4	117.0	124.6	135.1	151.6	169.2		100.2	100.8	105.2	
<i>3rd Quarter</i>	<i>127.2</i>	<i>105.4</i>	<i>108.7</i>	<i>116.6</i>	<i>124.6</i>	<i>134.9</i>	<i>151.1</i>	<i>167.3</i>		<i>100.3</i>	<i>100.9</i>	<i>104.8</i>	
October	127.6	105.2	109.4	117.3	125.3	135.1	152.9	170.0		100.3	101.4	105.4	
November	128.4	105.3	109.5	117.8	126.1	136.9	151.1	168.7		100.3	101.6	105.4	
December	128.5	105.3	109.5	118.4	126.1	137.1	151.4	167.2		100.3	101.7	105.5	
<i>4th Quarter</i>	<i>128.2</i>	<i>105.3</i>	<i>109.5</i>	<i>117.8</i>	<i>125.8</i>	<i>136.4</i>	<i>151.8</i>	<i>168.6</i>		<i>100.3</i>	<i>101.6</i>	<i>105.4</i>	
<b>Yearly average</b>	<b>126.3</b>	<b>103.1</b>	<b>107.9</b>	<b>114.8</b>	<b>123.6</b>	<b>131.8</b>	<b>147.2</b>	<b>163.4</b>			<b>100.5</b>	<b>104.6</b>	
<b>% change in the yearly average</b>	<b>3.8</b>	<b>4.6</b>	<b>4.7</b>	<b>6.3</b>	<b>7.7</b>	<b>6.6</b>	<b>11.8</b>	<b>11.0</b>		<b>0.1</b>	<b>-0.1</b>	<b>4.1</b>	

**Table 3.2: Construction Price Index - January 2001 to March 2012 (Base period: 2nd Quarter 2009 = 100)**

	<b>2001</b>	<b>2002</b>	<b>2003</b>	<b>2004</b>	<b>2005</b>	<b>2006</b>	<b>2007</b>	<b>2008</b>	<b>2009</b>	<b>2010</b>	<b>2011</b>	<b>2012</b>
January	59.9	61.7	65.0	67.3	73.0	77.9	86.5	97.8	102.1	100.3	102.8	106.7
February	59.9	61.8	65.7	69.0	75.3	78.3	86.5	97.8	102.1	100.3	104.1	106.8
March	59.9	61.9	65.8	69.1	75.3	78.3	86.8	97.1	100.6	98.8	104.5	106.8
<i>1st Quarter</i>	<i>59.9</i>	<i>61.8</i>	<i>65.5</i>	<i>68.5</i>	<i>74.6</i>	<i>78.2</i>	<i>86.6</i>	<i>97.6</i>	<i>101.6</i>	<i>99.8</i>	<i>103.8</i>	<i>106.8</i>
April	59.9	61.9	65.9	69.1	75.3	78.7	88.6	97.1	100.2	98.8	104.5	
May	59.9	62.4	65.9	69.1	75.5	78.7	88.7	97.1	100.0	100.2	104.4	
June	59.9	62.4	65.9	71.0	75.5	79.9	90.6	99.2	99.8	100.4	104.4	
<i>2nd Quarter</i>	<i>59.9</i>	<i>62.3</i>	<i>65.9</i>	<i>69.7</i>	<i>75.4</i>	<i>79.1</i>	<i>89.3</i>	<i>97.8</i>	<i>100.0</i>	<i>99.8</i>	<i>104.4</i>	
July	60.9	64.8	66.5	71.6	76.6	82.7	92.5	101.6	100.6	100.9	104.3	
August	61.1	64.8	66.8	71.6	76.6	83.1	93.0	103.0	100.2	100.8	105.0	
September	61.1	64.8	67.3	72.0	76.6	83.1	93.2	104.1	100.2	100.8	105.2	
<i>3rd Quarter</i>	<i>61.0</i>	<i>64.8</i>	<i>66.9</i>	<i>71.7</i>	<i>76.6</i>	<i>82.9</i>	<i>92.9</i>	<i>102.9</i>	<i>100.3</i>	<i>100.9</i>	<i>104.8</i>	
October	61.2	64.7	67.3	72.2	77.1	83.1	94.0	104.6	100.3	101.4	105.4	
November	61.6	64.8	67.3	72.4	77.6	84.2	92.9	103.7	100.3	101.6	105.4	
December	61.6	64.8	67.3	72.8	77.6	84.3	93.1	102.8	100.3	101.7	105.5	
<i>4th Quarter</i>	<i>61.5</i>	<i>64.7</i>	<i>67.3</i>	<i>72.5</i>	<i>77.4</i>	<i>83.9</i>	<i>93.3</i>	<i>103.7</i>	<i>100.3</i>	<i>101.6</i>	<i>105.4</i>	
<b>Yearly average</b>	<b>60.6</b>	<b>63.4</b>	<b>66.4</b>	<b>70.6</b>	<b>76.0</b>	<b>81.0</b>	<b>90.6</b>	<b>100.5</b>	<b>100.6</b>	<b>100.5</b>	<b>104.6</b>	
<b>% change in the yearly average</b>	<b>3.8</b>	<b>4.6</b>	<b>4.7</b>	<b>6.3</b>	<b>7.7</b>	<b>6.6</b>	<b>11.8</b>	<b>11.0</b>	<b>0.1</b>	<b>-0.1</b>	<b>4.1</b>	

## Technical Note

### Methodology for the compilation of the Construction Price Index

#### (i) Introduction

A Construction Price Index measures the change in the level of construction prices. The construction industry is very broad and highly diversified with considerable variations from one type of construction to another. This makes it difficult to derive generalized indices that would be applicable to the industry as a whole. Hence, separate indices for the different types of construction need to be compiled. At present, Statistics Mauritius publishes an index that covers residential buildings only.

#### (ii) Types of Construction Price Indices

Different approaches to index number compilation are used depending on the purpose for which the index is required. There are two main types of construction price indices:

##### The Output Price Index

In this approach, specific projects representative of the various categories of construction works are selected as models and construction firms are surveyed and asked to provide estimates of the prevailing market prices for each of the projects. As such, the output price indices respond to the changes in prices of materials used and cost of labour, as well as changes in overhead costs and profits.

##### The Input Price Index

The index is based on prices of a representative selection of basic inputs (labour, plant, materials and transport) that go into the construction work. Hence, the input price index measures the change in the cost of resources to the contractor, and not the change in the price that the client pays.

The office opted for the input price index which, though more limiting than the output price index, is simpler and less expensive to construct and maintain.

#### (iii) Selection of representative dwelling

Since it would have been too time-consuming and costly to include all major types of residential dwellings, it was decided to restrict the index to a model dwelling, representing the most common type of dwelling in 2007. This model dwelling was determined on the basis of the 2000 Housing Census data and developments assumed to have taken place during the period 2000 to 2007. The drawings of the prototype model dwelling were provided by the Mauritius Housing Company Ltd. A description of the model is given at paragraph (viii) below.

**(iv) Weighting scheme**

The quantity survey work to determine the weighting pattern for the index was entrusted to a private Quantity Surveyor following established procedures.

Any given construction consists of an assembly of a certain number of stages or work categories. Sixteen stages or broad work categories were identified and detailed costs of inputs in terms of labour, plant, materials and transport that go into the construction of the selected model were calculated under each of the 16 work categories. The weights have been worked out in such a way that they can be presented in terms of inputs as well as work categories. For publication purposes, weights and sub-indices are shown not only for the 16 work categories, but also for the 4 broad input categories of labour, plant, materials and transport, the “materials” category being further sub-divided into 17 sub-categories.

Changes in the weight structure from 2001 to 2009 are given at the end of this technical note. It is noted that there has been some reclassification within work categories while new ones have been identified. Also within work categories there has been some changes in the product mix as well as the introduction of some new products.

**(v) Data collection**

The data needed for the computation of the index are collected every month from a sample of 50 outlets in 8 regions of the island. Prices are collected in respect of some 109 items, representative of all items that go into the computation of the index.

**(vi) Calculation of the Construction Price Index**

The Construction Price Index is a weighted average of price relatives of individual items, based on the modified Laspeyres formula:

$$I_t = \frac{\sum W_i (P_{it} / P_{io})}{\sum W_i} \times 100$$

where  $I_t$  = index for current period t  
 $P_{io}$  = price of item i at base period 0  
 $P_{it}$  = price of item i at current period t  
 $W_i$  = weight of item i

The base period is the 2<sup>nd</sup> quarter of 2009.



**(vii) Uses**

- a) Construction price indices give an indication of the change in the level of prices of construction works. As such, they are used as deflators for the measurement of real growth in the construction sector.
- b) They are also useful for evaluating cost fluctuations in contracts regarding construction works and for renegotiating owner-tenant agreements.

**(viii) Description of model dwelling**

The model used is a single storey (ground floor) detached house of 138 square metres (1,485 square feet) in floor area measured at plinth level to the external face of the external walls. The overall area is inclusive of 18.55 square metres (200 square feet) in respect of a garage.

It comprises three bedrooms, a living-dining room, a kitchen, two toilets, a utility room, a bathroom, a verandah and an attached garage. The building has concrete block walls, reinforced concrete flat roof, internal flush plywood doors, aluminium openings for windows and entrance door, screeded floor and roof, tiling to floor and walls of w.c. and bathroom and kitchen worktop; the ceilings and walls are rendered and painted both internally and externally. Plumbing, sanitary installation and electrical installation are included as well as drainage which is to be connected to the sewerage system.

Provision has been made, in the form of more substantial foundations and of stub columns on the roof, for converting the single into a two-storey house eventually. Site works are restricted to spreading and leveling surplus excavated material around the site.

The index excludes the cost of the building permit and the draughtman's fee.

It is assumed that although the house is not constructed by a contractor, the client has recourse to the services of a foreman.