

EDUCATION STATISTICS - 2011

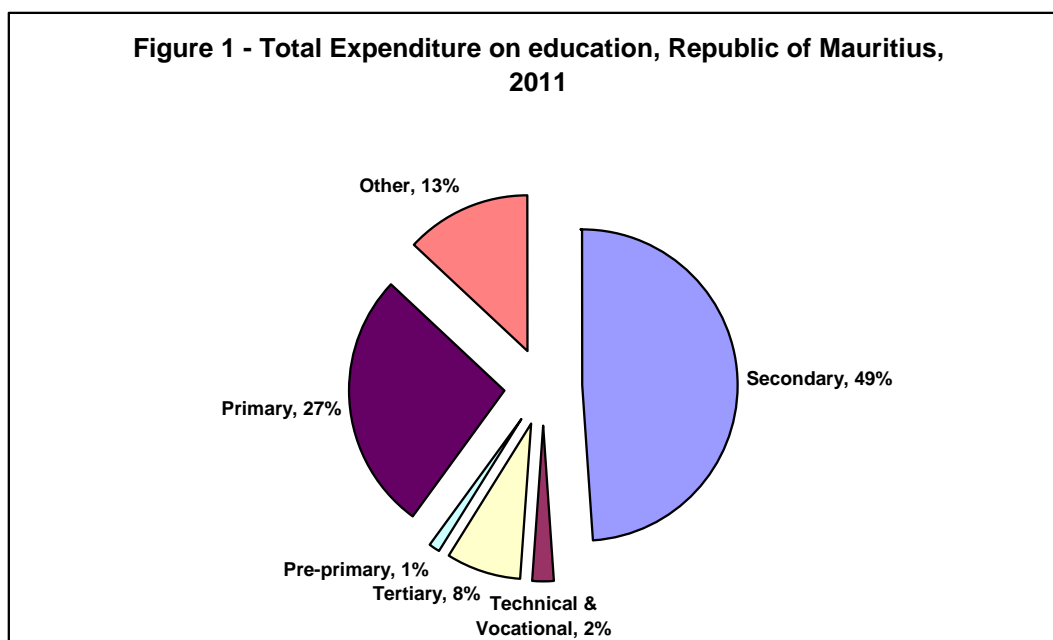
1. Introduction

This issue of the Economic and Social Indicators presents data on education, compiled on the basis of information collected through the annual survey conducted in schools in March 2011, together with data from other sources. The data refer to the Republic of Mauritius (excluding Agalega) and cover pre-primary, primary, secondary (academic and pre-vocational) and tertiary education. As from this year, new tables on Special Education Needs (SEN) and ICT have been included. The main indicators on education for the period 2007 – 2011 are presented in Table 1.1.

2. Expenditure

Total government expenditure for the period 2011 has been estimated at Rs 93,442 million, out of which, Rs 11,709 million (13%) has been allocated to education.

Out of the total budget on education and training for 2011, 49% is allocated to secondary education, 27% to primary education, 8% to tertiary education, 2% to technical and vocational education, 1% to pre-primary education and the remaining 13% to other expenses (Table 2.2 and Figure 1).



3. Pre-primary education

3.1 Schools

In March 2011, there were 1,018 schools providing pre-primary education: 985 in the Island of Mauritius and 33 in Rodrigues. Of these schools, 763 (75%) were privately run institutions; 184 (18%), operating on government primary school premises, were administered by the Early Childhood Care and Education Authority (Ex Pre-School Trust Fund) and the remaining 71 (7%) were administered by either Roman Catholic (RC) or Hindu Education Authorities or Municipal/Village Councils (Table 3.1).

3.2 Enrolment

Total enrolment in pre-primary schools numbered 33,901, of whom 17,282 were boys and 16,619 girls (Table 3.3). The Gross Enrolment Ratio (pre-primary enrolment as a percentage of the population aged 4 and 5 years) works out to 97% in 2011.

3.3 Personnel

In March 2011, total employment in pre-primary schools stood at 3,517 of whom 2,550 were teachers and 967, non-teaching staff. The average number of pupils per teacher works out to 13.

4 Primary education

4.1 Schools

In March 2011, there were 305 schools providing primary education: 291 in the Island of Mauritius and 14 in Rodrigues. The majority (222) of the schools were run by government, 51 by the Roman Catholic Education Authority (RCEA), 2 by the Hindu Education Authority and the other 30 were private non-aided schools.

4.2 Enrolment

The primary school population in the Republic of Mauritius stood at 116,068 in 2011 a decrease of around 1% from 2010 figure. Boys represented 51% of the 2011 primary school population and girls 49%. Around 72% of the primary school population was enrolled in government schools and the remaining was in private aided and non-aided schools (Table 4.3).

Distribution by grade shows that the highest number of pupils was in standard VI (23,200 pupils including 4,106 repeaters). The Gross Enrolment Ratio (primary enrolment as a percentage of the population aged 6 to 11 years) works out to 100%, against 101% in 2010.

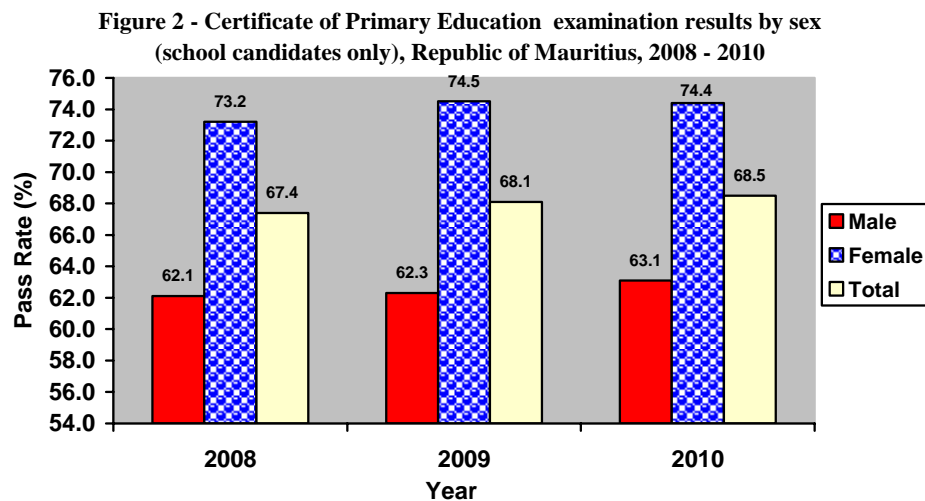
4.3 Personnel

At March 2011, 8,266 persons were employed in primary schools. Of this number, 5,627 were teaching staff: 4,277 General Purpose Teachers and 1,350 Oriental Language Teachers. The remaining 2,639 comprised 287 Head Teachers, 957 Deputy Head Teachers and 1,395 administrative and other workers (Table 4.9). The pupil/teacher (general purpose) ratio in primary schools works out to 27.

4.4 Certificate of Primary Education (CPE)

In 2010, the number of candidates who took part in the CPE examination was 25,624 (23,156 school candidates and 2,468 private candidates), with an overall pass rate of 65%.

The pass rate among school candidates, comprising 12,048 boys and 11,108 girls, was 69%. The girls were more successful than the boys, with respective pass rates of 74% and 63% (Table 4.12 and Figure 2).



The overall pass rate among the 2,468 private candidates (1,475 boys and 993 girls) was 27%, with girls again achieving better results than boys, 30% against 25% (Table 4.12).

School candidates who took part in the CPE examination for the first time did much better than those re-taking the examination, 76% against 37% (Table 4.12).

5. Secondary and pre-vocational education

5.1 General

At March 2011, there were 121 secondary schools offering both academic and pre-vocational education, 59 schools were offering academic education only and 5 pre-vocational education only.

5.2 Secondary education (Academic only)

5.2.1 Schools

Out of the 180 schools dispensing secondary academic education, 175 were in the Island of Mauritius and 5 in Rodrigues. State administered schools numbered 69, while the other 111 were private aided and non-aided schools (Table 5.1).

5.2.2 Enrolment

Secondary education enrolment increased by 286 from 115,003 in 2010 to reach 115,289 in 2011. Table 5.3 shows that 60,101 (52%) were girls and 55,188 (48%) were boys. About 43% of the secondary school population were in state schools and 57% in private (aided and unaided) schools. Gross Enrolment Ratio (secondary education enrolment as a percentage of the population aged 12 to 19 years) for the academic stream works out to 70% in 2011.

5.3 Pre-vocational education

5.3.1 Schools

At March 2011, 126 schools were offering pre-vocational education: 121 in the Island of Mauritius and 5 in Rodrigues. Fifty of these schools were state pre-vocational schools while the remaining 76 were private schools.

5.3.2 Enrolment

Enrolment in the schools offering pre-vocational education was 7,270 comprising 4,635 boys and 2,635 girls (Table 5.11). About 30% of the students in pre-vocational schools were in state schools.

5.4 Personnel

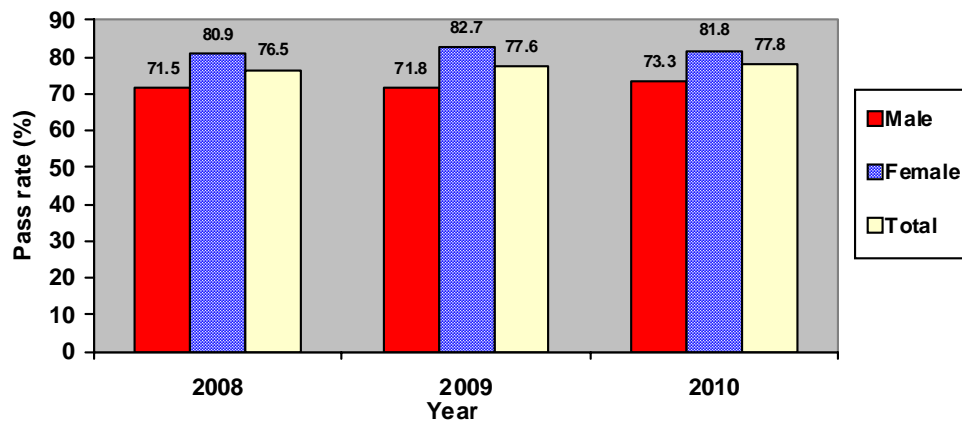
The number of teachers working in schools offering secondary and pre-vocational education was 8,507 at March 2011.

The secondary education teaching staff in the academic stream was 7,873 (3,258 males and 4,615 females). The pupil/teacher ratio works out to 15. On the other hand, the pre-vocational education teaching staff stood at 634 (227 males and 407 females), giving an average of 12 pupils per teacher.

5.5 Cambridge School Certificate (SC)

In 2010, out of 17,487 candidates (8,170 males and 9,317 females) who took part in the Cambridge School Certificate examination, 13,609 were successful. Comparison with the 2009 results shows that the overall pass rate improved slightly from 77.6% to 77.8% (Table 5.19 and Figure 3).

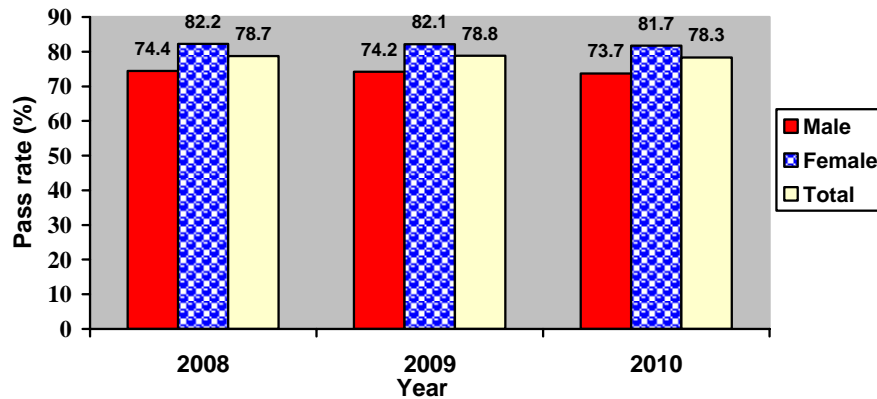
Figure 3 - Cambridge School Certificate pass rate (school candidates only), Republic of Mauritius, 2008 - 2010



5.6 Cambridge Higher School Certificate (HSC)

The number of students taking part in the 2010 Cambridge Higher School Certificate examination stood at 9,813 (4,146 males and 5,667 females). The overall pass rate was 78.3%, slightly lower than the 2009 figure of 78.8% (Table 5.20 and Figure 4).

Figure 4 - Cambridge Higher School Certificate pass rate (school candidates only), Republic of Mauritius, 2008 - 2010



6. Special Education Needs (SEN)

6.1 Schools

At March 2011, there were 49 Special Education Needs schools in the Island of Mauritius registered with the Ministry of Education and Human Resources. Six schools were run by Government, while the other 43 were run by NGOs (Table 6.1).

6.2 Enrolment

The number of students enrolled in these special schools stood at 1,803 as at March 2011. Table 6.5 shows that 686 (38%) were girls and 1,117 (62%) were boys.

6.3 Personnel

At March 2011, there were 439 persons employed in these special education needs institutions and day-care centres. Out of these, 287 were teaching staff, and 53 were medical and para-medical staff. The remaining 99 were administrative and ancillary workers (Table 6.7).

7. ICT in Education

In March 2011, out of the 1,018 pre-primary schools in the Republic of Mauritius 441 (43%) had computers. All primary and secondary schools (academic & pre-vocational) were equipped with computers. Schools having internet access for students stood at 4% in pre-primary, 58% in primary and 96% in secondary schools (Table 7.1).

8. Tertiary Education

As at December 2010, the total number of students (part-time and full-time) enrolled on tertiary-level programmes (including Distance Education) reached 44,334 compared to 41,484 in December 2009, representing an increase of 6.4%.

The majority of students (75%) were enrolled in tertiary education locally in both public-funded institutions (49%) and private institutions (26%). The remaining 25% of the students were enrolled in tertiary education overseas (Table 8.1b).

The Gross Enrolment Ratio (tertiary education enrolment as a percentage of the population aged 20 to 24 years), which was 43.4% in 2009, reached 45.1 % in 2010.

**Statistics Mauritius
Ministry of Finance and Economic Development
Port Louis
Mauritius
September 2011**

Contact Person

D. Pothegadoo
Statistician
Statistics Unit
Ministry of Education and Human Resources
Pont Fer, Phoenix
Tel: 601 5252, 601 5200, Ext. 5430, 5478
Fax: 686 8774
Email : dpothegadoo@mail.gov.mu

LIST OF TABLES

	Page
1 EDUCATION INDICATORS	
1.1 Main Education Indicators and data, Republic of Mauritius, 2007 - 2011	8
2 EXPENDITURE ON EDUCATION	
2.1 Total Government Expenditure, Republic of Mauritius, July-December 2009, 2010 and 2011	9
2.2 Government Expenditure on Education by sector, July-December 2009, 2010 and 2011	9
3 PRE-PRIMARY EDUCATION	
3.1 Distribution of pre-primary schools by district and type of administration, 2011	10
3.2 Distribution of pre-primary schools by zone and type of administration, 2011	10
3.3 Enrolment and personnel in pre-primary schools by district and sex, 2011	11
3.4 Enrolment and personnel in pre-primary schools by zone and sex, 2011	11
4 PRIMARY EDUCATION	
4.1 Distribution of primary schools by district and type of administration, 2011	12
4.2 Distribution of primary schools by zone and type of administration, 2011	12
4.3 Enrolment in primary schools by district, type of administration and sex , 2011	13
4.4 Enrolment in primary schools by zone, type of administration and sex , 2011	13
4.5 Enrolment in primary schools by district and grade, 2011	14
4.6 Enrolment in primary schools by zone and grade, 2011	14
4.7 Enrolment in primary schools by grade and sex, 2009 - 2011	15
4.8 Enrolment in primary schools by type of administration, grade and sex, 2009 - 2011, Republic of Mauritius	16
4.9 Personnel in primary schools by district and occupational status, 2011	17
4.10 Personnel in primary schools by zone and occupational status, 2011	17
4.11 Certificate of Primary Education (CPE) examination results by sex, 2008 - 2010	18
4.12 Performance at Certificate of Primary Education (CPE) examination by sex and sitting, 2010	19
5 SECONDARY EDUCATION - ACADEMIC STREAM AND PRE-VOCATIONAL	
5.1 Distribution of secondary schools by district and type of administration, 2011	20
5.2 Distribution of secondary schools by zone and type of administration, 2011	20
5.3 Enrolment in secondary schools (academic stream) by district, type of administration and sex, 2011	21
5.4 Enrolment in secondary schools (academic stream) by zone, type of administration and sex, 2011	21
5.5 Enrolment in secondary schools (academic stream) by district and grade, 2011	22
5.6 Enrolment in secondary schools (academic stream) by zone and grade, 2011	22

5.7	Enrolment in secondary schools (academic stream) by grade and sex, 2009 - 2011	23
5.8	Enrolment in secondary schools (academic stream) by type of administration, grade and sex, 2009 - 2011, Republic of Mauritius	24
5.9	Distribution of schools offering pre-vocational education by district and type of administration, 2011	25
5.10	Distribution of schools offering pre-vocational education by zone and type of administration, 2011	25
5.11	Enrolment in schools offering pre-vocational education by district, type of administration and sex, 2011	26
5.12	Enrolment in schools offering pre-vocational education by zone, type of administration and sex, 2011	26
5.13	Enrolment in schools offering pre-vocational education by district and year of study, 2011	27
5.14	Enrolment in schools offering pre-vocational education by zone and year of study, 2011	27
5.15	Enrolment in schools offering pre-vocational education by year of study and sex, 2009 - 2011	28
5.16	Enrolment in schools offering pre-vocational education by type of administration, year of study and sex, 2009 - 2011, Republic of Mauritius	29
5.17	Teaching staff in secondary schools (academic & pre-vocational streams) by district and sex, 2011	30
5.18	Teaching staff in secondary schools (academic & pre-vocational streams) by zone and sex, 2011	30
5.19	Cambridge School Certificate (SC) examination results by type of school administration and sex, 2008 - 2010	31
5.20	Cambridge Higher School Certificate (HSC) examination results by type of school administration and sex, 2008 - 2010	32
6	SPECIAL EDUCATION NEEDS	
6.1	Distribution of Special Education Needs (SEN) schools by district and type of administration, 2011	33
6.2	Distribution of Special Education Needs (SEN) schools by zone and type of administration, 2011	33
6.3	Enrolment in Special Education Needs (SEN) schools by sex and district, 2010 and 2011	34
6.4	Enrolment in Special Education Needs (SEN) schools by sex and zone, 2010 and 2011	34
6.5	Enrolment in Special Education Needs (SEN) schools by age and sex, Island of Mauritius, 2010 and 2011	35
6.6	Number of pupils in Special Education Needs (SEN) schools by type of impairment and sex, Island of Mauritius, 2011	36
6.7	Personnel in Special Education Needs (SEN) schools by sex, Island of Mauritius, 2010 and 2011	36
7	ICT	
7.1	ICT in pre-primary, primary and secondary schools - Republic of Mauritius, 2011	37
8	POST SECONDARY EDUCATION	
8.1(a)	Total number of students enrolled in Tertiary Education, both locally and overseas, by field of study as at December 2009	38
8.1(b)	Total number of students enrolled in Tertiary Education, both locally and overseas, by field of study as at December 2010	39

Table 1.1 - Main Education Indicators and data, Republic of Mauritius, 2007 - 2011

	2007	2008	2009	2010	2011
Pre-primary					
Number of schools	1,076	1,070	1,057	1,042	1,018
Enrolment	36,467	36,242	35,974	35,139	33,901
Number of teachers	2,513	2,541	2,518	2,538	2,550
Gross Enrolment Ratio (%)	94	94	96	96	97
Pupil/Teacher Ratio	15	14	14	14	13

Primary

Number of schools	289	299	302	305	305
Enrolment	119,310	119,022	117,922	117,432	116,068
Number of teachers	5,548	5,495	5,454	5,472	5,627
Gross Enrolment Ratio (%)	101	101	101	101	100
Pupil/Teacher Ratio	28	29	29	28	27
Transition Rate (Primary to Secondary)	81	82	82	82	n.a
Certificate of Primary Education Pass Rate	66.2	67.4	68.1	68.5	n.a

Secondary (Academic and Pre-Vocational)

Number of schools	193	187	185	187	185
Enrolment	126,279	124,998	124,259	122,445	122,559
Number of teachers	8,124	8,053	8,186	8,323	8,507
Gross Enrolment Ratio (%)	74	74	73	73	74
Pupil/Teacher Ratio	16	16	15	15	14
Cambridge School Certificate Pass Rate	76.7	76.5	77.6	77.8	n.a
Cambridge Higher School Certificate Pass Rate	77.8	78.7	78.8	78.5	n.a

Tertiary¹

Number of institutions	53	60	61	65	n.a
Enrolment	35,023	38,623	41,484	44,334	n.a
Gross Enrolment Ratio (%)	37	41	43	45	n.a

¹ Source: Tertiary Education Commission

Expenditure	2006/2007	2007/2008	2008/2009	2010 ²	2011
Total Government Expenditure (Rs million)	56,315.0	61,544.0	76,215.2	79,894.1	93,441.9
Total Government Expenditure on Education (Rs million)	7,606.7	8,326.8	10,625.0	10,936.8	11,709.4
Total Government Expenditure on Education as a % of GDP at market price	3.5	3.3	3.9	3.7	3.6
Total Government Expenditure on Education as a % of Total Government Expenditure	13.5	13.5	13.9	13.7	12.5

² Revised

n.a: Not available

Table 2.1- Total Government Expenditure, Republic of Mauritius, July - December 2009, 2010 and 2011

	(Rs million)		
	July - Dec 2009 ¹	2010 ¹	2011 ²
Total Government Expenditure	40,321.0	79,894.1	93,441.9
of which expenditure by:			
Ministry of Education & HR	5,123.3	9,119.0	9,804.4

Table 2.2 - Government Expenditure on Education by sector, July - December 2009, 2010 and 2011

	(Rs million)					
	July - Dec 2009 ¹		2010 ¹		2011 ²	
	Amount	%	Amount	%	Amount	%
Island of Mauritius						
Ministry of Education & HR	5,123.3	89.8	9,119.0	83.4	9,804.4	83.7
<i>Pre-primary</i>	74.1	1.3	146.4	1.3	149.6	1.3
<i>Primary</i>	1,512.1	26.5	2,807.8	25.7	3,025.7	25.8
<i>Secondary</i>	2,684.2	47.1	5,110.9	46.7	5,667.1	48.4
<i>Technical & Vocational</i>	232.1	4.1	450.4	4.1	262.6	2.2
<i>Tertiary Education</i>	325.7	5.7	-	-	-	-
<i>Special Education Needs</i>	14.5	0.3	26.3	0.2	33.0	0.3
<i>Other</i> ³	280.6	4.9	577.2	5.3	666.4	5.7
Ministry of Tertiary Education	-	-	743.5	6.8	870.0	7.4
<i>Tertiary Education</i>	-	-	743.5	6.8	870.0	7.4
Island of Rodrigues ⁴	94.2	1.7	209.6	1.9	198.3	1.7
<i>Pre-Primary</i>	2.3	0.0	4.6	0.0	4.6	0.0
<i>Primary</i>	65.5	1.1	141.0	1.3	124.0	1.1
<i>Secondary</i>	11.2	0.2	30.7	0.3	38.1	0.3
<i>Technical & Vocational</i>	0.2	0.0	0.7	0.0	0.4	0.0
<i>Tertiary Education</i>	4.0	0.1	9.3	0.1	8.0	0.1
<i>Other</i>	11.0	0.2	23.3	0.2	23.2	0.2
Other Ministries	485.2	8.5	864.7	7.9	836.7	7.1
Total	5,702.7	100.0	10,936.8	100.0	11,709.4	100.0

¹ Revised Estimates

² Budget Estimates

³ Includes Mauritius Institute of Education (MIE), Conservatoire de Musique Francois Mitterrand, Human Resource Development Council (HRDC), National Productivity and Competitiveness Council (NPCC), Mauritius College of the Air (MCA), Mauritius Qualifications Authority (MQA), Rajiv Gandhi Science Centre & World Hindi Secretariat

⁴ Expenditure on Education under Ministry of Rodrigues Vote

Table 3.1 - Distribution of pre-primary schools by district and type of administration, 2011

District	Type of Administration				
	Total	ECCEA ¹	RC/HA ²	Municipal/ V.Council	Private ³
Port Louis	133	18	1	17	97
Pamplemousses	108	23	1	1	83
Riv. du Rempart	95	23	-	2	70
Flacq	118	29	3	-	86
Grand Port	101	20	1	10	70
Savanne	55	10	1	2	42
Plaines Wilhems	285	31	1	28	225
Moka	50	15	3	-	32
Black River	40	12	-	-	28
Island of Mauritius	985	181	11	60	733
Island of Rodrigues	33	3	-	-	30
Republic of Mauritius	1,018	184	11	60	763

Table 3.2 - Distribution of pre-primary schools by zone and type of administration, 2011

Zone	Type of Administration				
	Total	ECCEA ¹	RC/HA ²	Municipal/ V.Council	Private ³
1 - Port Louis / North	337	65	2	20	250
2 - B.Bassin-R.Hill / East	250	52	6	9	183
3 - Curepipe / South	222	38	2	14	168
4 - Q.Bornes / Vacoas-Phoenix /West	176	26	1	17	132
Island of Mauritius	985	181	11	60	733
Island of Rodrigues	33	3	-	-	30
Republic of Mauritius	1,018	184	11	60	763

¹ ECCEA: Early Childhood Care and Education Authority (Ex Pre-School Trust Fund)

² RC/HA: Roman Catholic and Hindu Aided Schools

³ Private: Includes pupils from NGO

Table 3.3 - Enrolment and personnel in pre-primary schools by district and sex, 2011

District	Enrolment			Personnel		
	Male	Female	Total	Teaching	Non - Teaching	Total
Port Louis	2,353	2,310	4,663	333	166	499
Pamplemousses	1,876	1,793	3,669	259	112	371
Riviere du Rempart	1,524	1,424	2,948	211	82	293
Flacq	1,942	1,864	3,806	284	88	372
Grand Port	1,371	1,327	2,698	208	54	262
Savanne	915	876	1,791	117	32	149
Plaines Wilhems	4,851	4,565	9,416	810	336	1,146
Moka	882	813	1,695	115	48	163
Black River	788	858	1,646	141	40	181
Island of Mauritius	16,502	15,830	32,332	2,478	958	3,436
Island of Rodrigues	780	789	1,569	72	9	81
Republic of Mauritius	17,282	16,619	33,901	2,550	967	3,517

Table 3.4 - Enrolment and personnel in pre-primary schools by zone and sex, 2011

Zone	Enrolment			Personnel		
	Male	Female	Total	Teaching	Non - Teaching	Total
1 - Port Louis / North	5,777	5,544	11,321	806	361	1,167
2 - B.Bassin-R.Hill / East	4,202	4,015	8,217	648	226	874
3 - Curepipe / South	3,367	3,217	6,584	501	150	651
4 - Q.Bornes / Vacoas-Phoenix / West	3,156	3,054	6,210	523	221	744
Island of Mauritius	16,502	15,830	32,332	2,478	958	3,436
Island of Rodrigues	780	789	1,569	72	9	81
Republic of Mauritius	17,282	16,619	33,901	2,550	967	3,517

Table 4.1 - Distribution of primary schools¹ by district and type of administration, 2011

District	Total	Type of Administration					
		Government		Private			
		No.	%	Aided		Non - Aided	
No.	%			No.	%		
Port Louis	35	25	71	8	23	2	6
Pamplemousses	29	23	79	-	-	6	21
Riviere du Rempart	27	22	82	3	11	2	7
Flacq	38	28	73	9	24	1	3
Grand Port	30	25	83	5	17	-	-
Savanne	17	14	82	3	18	-	-
Plaines Wilhems	73	44	60	13	18	16	22
Moka	26	20	77	4	15	2	8
Black River	16	12	75	3	19	1	6
Island of Mauritius	291	213	73	48	17	30	10
Island of Rodrigues	14	9	64	5	36	-	-
Republic of Mauritius	305	222	73	53	17	30	10

Table 4.2 - Distribution of primary schools¹ by zone and type of administration, 2011

Zone	Total	Type of Administration					
		Government		Private			
		No.	%	Aided		Non - Aided	
No.	%			No.	%		
1 - Port Louis / North	93	72	77	11	12	10	11
2 - B.Bassin-R.Hill / East	79	58	73	17	22	4	5
3 - Curepipe / South	66	48	73	12	18	6	9
4 - Q.Bornes / Vacoas-Phoenix / West	53	35	66	8	15	10	19
Island of Mauritius	291	213	73	48	17	30	10
Island of Rodrigues	14	9	64	5	36	-	-
Republic of Mauritius	305	222	73	53	17	30	10

¹ Excluding schools with partial stream

Table 4.3 - Enrolment in primary schools ¹ by district, type of administration and sex, 2011

District	All schools			Government schools			Private schools					
	Total	Male	Female	Total	Male	Female	Aided			Non-aided		
							Total	Male	Female	Total	Male	Female
Port Louis	16,007	8,007	8,000	10,261	5,178	5,083	5,173	2,573	2,600	573	256	317
Pamplemousses	10,647	5,472	5,175	9,011	4,586	4,425	-	-	-	1,636	886	750
Riviere du Rempart	10,031	5,231	4,800	8,306	4,356	3,950	954	483	471	771	392	379
Flacq	13,525	6,860	6,665	11,355	5,740	5,615	1,957	997	960	213	123	90
Grand Port	10,185	5,115	5,070	8,381	4,207	4,174	1,804	908	896	-	-	-
Savanne	6,092	3,183	2,909	5,273	2,769	2,504	819	414	405	-	-	-
Plaines Wilhems	32,154	16,195	15,959	18,461	9,351	9,110	8,985	4,538	4,447	4,708	2,306	2,402
Moka	7,524	3,806	3,718	5,643	2,878	2,765	1,008	488	520	873	440	433
Black River	4,742	2,394	2,348	3,768	1,913	1,855	706	346	360	268	135	133
Island of Mauritius	110,907	56,263	54,644	80,459	40,978	39,481	21,406	10,747	10,659	9,042	4,538	4,504
Island of Rodrigues	5,161	2,672	2,489	3,043	1,597	1,446	2,118	1,075	1,043	-	-	-
Republic of Mauritius	116,068	58,935	57,133	83,502	42,575	40,927	23,524	11,822	11,702	9,042	4,538	4,504

- 13 -

Table 4.4 - Enrolment in primary schools ¹ by zone, type of administration and sex, 2011

Zone	All schools			Government schools			Private schools					
	Total	Male	Female	Total	Male	Female	Aided			Non-aided		
							Total	Male	Female	Total	Male	Female
1 - Port Louis / North	37,485	19,124	18,361	28,378	14,534	13,844	6,127	3,056	3,071	2,980	1,534	1,446
2 - B.Bassin-R.Hill / East	27,949	14,147	13,802	20,142	10,211	9,931	6,492	3,242	3,250	1,315	694	621
3 - Curepipe / South	24,542	12,409	12,133	17,184	8,729	8,455	5,027	2,538	2,489	2,331	1,142	1,189
4 - Q.Bornes / Vacoas-Phoenix / West	20,931	10,583	10,348	14,755	7,504	7,251	3,760	1,911	1,849	2,416	1,168	1,248
Island of Mauritius	110,907	56,263	54,644	80,459	40,978	39,481	21,406	10,747	10,659	9,042	4,538	4,504
Island of Rodrigues	5,161	2,672	2,489	3,043	1,597	1,446	2,118	1,075	1,043	-	-	-
Republic of Mauritius	116,068	58,935	57,133	83,502	42,575	40,927	23,524	11,822	11,702	9,042	4,538	4,504

¹ including enrolment in schools with a partial stream

Table 4.5 - Enrolment in primary schools¹ by district and grade, 2011

District	Grade/Standard							All Grades
	I	II	III	IV	V	VI	VI (repeaters)	
Port Louis	2,398	2,533	2,533	2,607	2,530	2,677	729	16,007
Pamplemousses	1,672	1,731	1,675	1,753	1,686	1,697	433	10,647
Riviere du Rempart	1,474	1,623	1,653	1,650	1,699	1,581	351	10,031
Flacq	2,077	2,136	2,104	2,162	2,260	2,322	464	13,525
Grand Port	1,672	1,546	1,611	1,634	1,624	1,758	340	10,185
Savanne	969	956	939	1,028	969	985	246	6,092
Plaines Wilhems	5,043	5,077	5,256	5,353	5,274	5,327	824	32,154
Moka	1,135	1,184	1,242	1,272	1,206	1,266	219	7,524
Black River	847	786	759	756	656	670	268	4,742
Island of Mauritius	17,287	17,572	17,772	18,215	17,904	18,283	3,874	110,907
Island of Rodrigues	825	893	790	814	796	811	232	5,161
Republic of Mauritius	18,112	18,465	18,562	19,029	18,700	19,094	4,106	116,068

Table 4.6 - Enrolment in primary schools¹ by zone and grade, 2011

Zone	Grade/Standard							All Grades
	I	II	III	IV	V	VI	VI (repeaters)	
1 -Port Louis / North	5,670	6,013	5,986	6,144	6,043	6,076	1,553	37,485
2 -B.Bassin-R.Hill / East	4,281	4,429	4,460	4,515	4,588	4,767	909	27,949
3 -Curepipe / South	3,957	3,797	3,900	4,057	3,943	4,091	797	24,542
4 -Q.Bornes/Vacoas-Phoenix/West	3,379	3,333	3,426	3,499	3,330	3,349	615	20,931
Island of Mauritius	17,287	17,572	17,772	18,215	17,904	18,283	3,874	110,907
Island of Rodrigues	825	893	790	814	796	811	232	5,161
Republic of Mauritius	18,112	18,465	18,562	19,029	18,700	19,094	4,106	116,068

¹ including enrolment in schools with a partial stream

Table 4.7 - Enrolment in primary schools¹ by grade and sex, 2009 - 2011

Grade	2009			2010			2011		
	Total	Male	Female	Total	Male	Female	Total	Male	Female
Republic of Mauritius									
I	18,613	9,452	9,161	18,430	9,228	9,202	18,112	9,147	8,965
II	19,121	9,604	9,517	18,482	9,388	9,094	18,465	9,273	9,192
III	18,955	9,513	9,442	19,087	9,605	9,482	18,562	9,401	9,161
IV	19,329	9,759	9,570	18,812	9,462	9,350	19,029	9,602	9,427
V	19,310	9,805	9,505	19,257	9,763	9,494	18,700	9,378	9,322
VI	18,282	9,250	9,032	19,273	9,776	9,497	19,094	9,685	9,409
VI Repeaters	4,312	2,565	1,747	4,091	2,450	1,641	4,106	2,449	1,657
Total	117,922	59,948	57,974	117,432	59,672	57,760	116,068	58,935	57,133
Island of Mauritius									
I	17,800	9,028	8,772	17,533	8,789	8,744	17,287	8,709	8,578
II	18,275	9,187	9,088	17,684	8,981	8,703	17,572	8,830	8,742
III	18,149	9,110	9,039	18,261	9,193	9,068	17,772	8,987	8,785
IV	18,506	9,338	9,168	18,021	9,069	8,952	18,215	9,174	9,041
V	18,510	9,396	9,114	18,449	9,347	9,102	17,904	8,986	8,918
VI	17,588	8,903	8,685	18,487	9,380	9,107	18,283	9,277	9,006
VI Repeaters	4,056	2,407	1,649	3,874	2,309	1,565	3,874	2,300	1,574
Total	112,884	57,369	55,515	112,309	57,068	55,241	110,907	56,263	54,644
Island of Rodrigues									
I	813	424	389	897	439	458	825	438	387
II	846	417	429	798	407	391	893	443	450
III	806	403	403	826	412	414	790	414	376
IV	823	421	402	791	393	398	814	428	386
V	800	409	391	808	416	392	796	392	404
VI	694	347	347	786	396	390	811	408	403
VI Repeaters	256	158	98	217	141	76	232	149	83
Total	5,038	2,579	2,459	5,123	2,604	2,519	5,161	2,672	2,489

¹ Includes pupils attending schools with a partial stream

Table 4.8 - Enrolment in primary schools¹ by type of administration, grade and sex, 2009 - 2011

Republic of Mauritius

Grade	2009			2010			2011		
	Total	Male	Female	Total	Male	Female	Total	Male	Female
All schools									
I	18,613	9,452	9,161	18,430	9,228	9,202	18,112	9,147	8,965
II	19,121	9,604	9,517	18,482	9,388	9,094	18,465	9,273	9,192
III	18,955	9,513	9,442	19,087	9,605	9,482	18,562	9,401	9,161
IV	19,329	9,759	9,570	18,812	9,462	9,350	19,029	9,602	9,427
V	19,310	9,805	9,505	19,257	9,763	9,494	18,700	9,378	9,322
VI	18,282	9,250	9,032	19,273	9,776	9,497	19,094	9,685	9,409
VI Repeaters	4,312	2,565	1,747	4,091	2,450	1,641	4,106	2,449	1,657
Total	117,922	59,948	57,974	117,432	59,672	57,760	116,068	58,935	57,133
Government schools									
I	13,331	6,783	6,548	13,202	6,630	6,572	12,697	6,470	6,227
II	13,870	6,968	6,902	13,297	6,747	6,550	13,138	6,613	6,525
III	13,693	6,937	6,756	13,841	6,940	6,901	13,242	6,722	6,520
IV	14,048	7,090	6,958	13,609	6,895	6,714	13,756	6,939	6,817
V	14,146	7,218	6,928	13,976	7,093	6,883	13,547	6,844	6,703
VI	13,408	6,796	6,612	14,136	7,178	6,958	13,961	7,095	6,866
VI Repeaters	3,301	1,949	1,352	3,073	1,831	1,242	3,161	1,892	1,269
Total	85,797	43,741	42,056	85,134	43,314	41,820	83,502	42,575	40,927
Private schools									
I	5,282	2,669	2,613	5,228	2,598	2,630	5,415	2,677	2,738
II	5,251	2,636	2,615	5,185	2,641	2,544	5,327	2,660	2,667
III	5,262	2,576	2,686	5,246	2,665	2,581	5,320	2,679	2,641
IV	5,281	2,669	2,612	5,203	2,567	2,636	5,273	2,663	2,610
V	5,164	2,587	2,577	5,281	2,670	2,611	5,153	2,534	2,619
VI	4,874	2,454	2,420	5,137	2,598	2,539	5,133	2,590	2,543
VI Repeaters	1,011	616	395	1,018	619	399	945	557	388
Total	32,125	16,207	15,918	32,298	16,358	15,940	32,566	16,360	16,206

¹ including enrolment in schools with a partial stream

Table 4.9 - Personnel in primary schools by district and occupational status, 2011

District	Head Teacher	Deputy Head Teacher	Teacher General Purpose *	Teacher, Oriental language								School clerk	Caretaker	Labourer	Other	TOTAL
				Total	Hindi	Urdu	Tamil	Telugu	Marathi	Arabic	Modern Chinese					
Port Louis	34	104	544	159	49	54	24	3	1	27	1	26	68	41	5	981
Pamplemousses	27	88	385	161	89	36	21	12	-	3	-	21	56	26	10	774
Riv. du Rempart	25	95	385	146	89	21	20	11	1	4	-	21	43	43	11	769
Flacq	35	89	453	195	103	46	21	12	6	5	2	26	76	46	8	928
Grand Port	29	106	396	145	62	23	24	14	8	13	1	25	54	47	13	815
Savanne	15	63	202	77	24	10	13	9	11	10	-	10	32	17	4	420
Plaines Wilhems	69	273	1,173	330	109	84	46	22	21	32	16	61	149	82	66	2,203
Moka	24	80	334	103	39	32	12	9	6	4	1	25	32	32	25	655
Black River	16	31	192	34	18	5	5	-	6	-	-	9	27	23	4	336
Island of Mauritius	274	929	4,064	1,350	582	311	186	92	60	98	21	224	537	357	146	7,881
Island of Rodrigues	13	28	213	-	-	-	-	-	-	-	-	14	46	43	28	385
Republic of Mauritius	287	957	4,277	1,350	582	311	186	92	60	98	21	238	583	400	174	8,266

Table 4.10 - Personnel in primary schools by zone and occupational status, 2011

Zone	Head Teacher	Deputy Head Teacher	Teacher General Purpose *	Teacher, Oriental language								School clerk	Caretaker	Labourer	Other	TOTAL
				Total	Hindi	Urdu	Tamil	Telugu	Marathi	Arabic	Modern Chinese					
1 - Port Louis / North	88	290	1,348	476	228	117	66	26	2	36	1	70	170	112	26	2,580
2 - B.Bassin-R.Hill / East	74	210	1,045	365	170	94	44	22	15	10	10	63	136	96	41	2,030
3 - Curepipe / South	61	241	915	290	102	49	47	28	22	37	5	52	132	95	35	1,821
4 - Q.Bornes/ Vacoas-Phoenix/ West	51	188	756	219	82	51	29	16	21	15	5	39	99	54	44	1,450
Island of Mauritius	274	929	4,064	1,350	582	311	186	92	60	98	21	224	537	357	146	7,881
Island of Rodrigues	13	28	213	-	-	-	-	-	-	-	-	14	46	43	28	385
Republic of Mauritius	287	957	4,277	1,350	582	311	186	92	60	98	21	238	583	400	174	8,266

* including physical education instructors

Table 4.11 - Certificate of Primary Education (CPE) examination results by sex, 2008 - 2010

School Candidates only

		2008			2009			2010		
		No. Examined	No. Passed	% Passed	No. Examined	No. Passed	% Passed	No. Examined	No. Passed	% Passed
Republic of Mauritius	Total	23,664	15,957	67.4	22,620	15,411	68.1	23,156	15,871	68.5
	Male	12,299	7,633	62.1	11,764	7,328	62.3	12,048	7,604	63.1
	Female	11,365	8,324	73.2	10,856	8,083	74.5	11,108	8,267	74.4
Island of Mauritius	Total	22,662	15,404	68.0	21,675	14,871	68.6	22,153	15,252	68.8
	Male	11,769	7,368	62.6	11,262	7,079	62.9	11,508	7,312	63.5
	Female	10,893	8,036	73.8	10,413	7,792	74.8	10,645	7,940	74.6
Island of Rodrigues	Total	1,002	553	55.2	945	540	57.1	1,003	619	61.7
	Male	530	265	50.0	502	249	49.6	540	292	54.1
	Female	472	288	61.0	443	291	65.7	463	327	70.6

Source: Mauritius Examinations Syndicate

Table 4.12 - Performance at Certificate of Primary Education (CPE) examination by sex and sitting, 2010

		Island of Mauritius			Island of Rodrigues			Republic of Mauritius		
		No. Examined	No. Passed	% Passed	No. Examined	No. Passed	% Passed	No. Examined	No. Passed	% Passed
School Candidates										
First Sitting	Total	17,945	13,689	76.3	787	539	68.5	18,732	14,228	76.0
	Male	9,045	6,514	72.0	400	248	62.0	9,445	6,762	71.6
	Female	8,900	7,175	80.6	387	291	75.2	9,287	7,466	80.4
Second Sitting (or more)	Total	4,208	1,563	37.1	216	80	37.0	4,424	1,643	37.1
	Male	2,463	798	32.4	140	44	31.4	2,603	842	32.3
	Female	1,745	765	43.8	76	36	47.4	1,821	801	44.0
Total	Total	22,153	15,252	68.8	1,003	619	61.7	23,156	15,871	68.5
	Male	11,508	7,312	63.5	540	292	54.1	12,048	7,604	63.1
	Female	10,645	7,940	74.6	463	327	70.6	11,108	8,267	74.4
Private Candidates										
	Total	2,393	650	27.2	75	18	24.0	2,468	668	27.1
	Male	1,435	366	25.5	40	8	20.0	1,475	374	25.4
	Female	958	284	29.6	35	10	28.6	993	294	29.6
School & Private Candidates										
	Total	24,546	15,902	64.8	1,078	637	59.1	25,624	16,539	64.5
	Male	12,943	7,678	59.3	580	300	51.7	13,523	7,978	59.0
	Female	11,603	8,224	70.9	498	337	67.7	12,101	8,561	70.7

Source: Mauritius Examinations Syndicate

Table 5.1 - Distribution of secondary schools by district and type of administration, 2011

District	All Schools ¹	Type of Administration					
		State ²		Private			
				Aided ³		Non - Aided	
		No.	%	No.	%	No.	%
Port Louis	28	8	29	16	57	4	14
Pamplemousses	16	8	50	7	44	1	6
Riviere du Rempart	13	6	46	5	39	2	15
Flacq	14	8	57	6	43	-	-
Grand Port	11	4	36	7	64	-	-
Savanne	6	4	67	2	33	-	-
Plaines Wilhems	70	23	33	36	51	11	16
Moka	12	5	42	4	33	3	25
Black River	5	3	60	2	40	-	-
Island of Mauritius	175	69	39	85	49	21	12
Island of Rodrigues	5	-	-	5	100	-	-
Republic of Mauritius	180	69	38	90	50	21	12

Table 5.2 - Distribution of secondary schools by zone and type of administration, 2011

Zone	All Schools ¹	Type of Administration					
		State ²		Private			
				Aided ³		Non - Aided	
		No.	%	No.	%	No.	%
1 - Port Louis / North	58	23	40	28	48	7	12
2 - B.Bassin-R.Hill / East	44	18	41	21	48	5	11
3 - Curepipe / South	41	13	32	21	51	7	17
4 - Q.Bornes / Vacoas-Phoenix / West	32	15	47	15	47	2	6
Island of Mauritius	175	69	39	85	49	21	12
Island of Rodrigues	5	-	-	5	100	-	-
Republic of Mauritius	180	69	38	90	50	21	12

¹ 59 of these schools offer academic education only and 121 both academic and pre-vocational education

² includes Mahatma Gandhi Institute, Rabindranath Tagore Secondary School and 4 Mahatma Gandhi State Schools

³ includes Mauritius Educational Development Company (MEDCO) / Rodrigues Educational Development Company (REDCO)

Table 5.3 - Enrolment in secondary schools (academic stream) by district, type of administration and sex, 2011

District	All schools			State schools ¹			Private schools					
							Aided ²			Non-aided		
	Total	Male	Female	Total	Male	Female	Total	Male	Female	Total	Male	Female
Port Louis	15,045	7,104	7,941	5,380	2,606	2,774	8,412	3,704	4,708	1,253	794	459
Pamplemousses	9,173	4,046	5,127	5,806	2,591	3,215	3,337	1,437	1,900	30	18	12
Riviere du Rempart	10,012	5,129	4,883	5,068	3,145	1,923	4,336	1,666	2,670	608	318	290
Flacq	12,660	5,950	6,710	6,127	2,336	3,791	6,533	3,614	2,919	-	-	-
Grand Port	6,719	2,975	3,744	3,021	1,602	1,419	3,698	1,373	2,325	-	-	-
Savanne	3,842	1,794	2,048	2,540	1,204	1,336	1,302	590	712	-	-	-
Plaines Wilhems	46,511	23,308	23,203	17,431	8,056	9,375	25,947	13,503	12,444	3,133	1,749	1,384
Moka	5,922	2,581	3,341	3,040	1,404	1,636	1,469	422	1,047	1,413	755	658
Black River	1,869	661	1,208	1,292	385	907	577	276	301	-	-	-
Island of Mauritius	111,753	53,548	58,205	49,705	23,329	26,376	55,611	26,585	29,026	6,437	3,634	2,803
Island of Rodrigues	3,536	1,640	1,896	-	-	-	3,536	1,640	1,896	-	-	-
Republic of Mauritius	115,289	55,188	60,101	49,705	23,329	26,376	59,147	28,225	30,922	6,437	3,634	2,803

- 21 -

Table 5.4 - Enrolment in secondary schools (academic stream) by zone, type of administration and sex, 2011

Zone	All schools			State schools ¹			Private schools					
							Aided ²			Non-aided		
	Total	Male	Female	Total	Male	Female	Total	Male	Female	Total	Male	Female
1 - Port Louis / North	34,608	16,279	18,329	16,632	8,342	8,290	16,085	6,807	9,278	1,891	1,130	761
2 - B.Bassin-R.Hill / East	30,024	14,538	15,486	13,171	5,645	7,526	15,295	8,049	7,246	1,558	844	714
3 - Curepipe / South	27,700	13,915	13,785	9,449	5,057	4,392	15,592	7,385	8,207	2,659	1,473	1,186
4 - Q.Bornes / Vacoas-Phoenix / West	19,421	8,816	10,605	10,453	4,285	6,168	8,639	4,344	4,295	329	187	142
Island of Mauritius	111,753	53,548	58,205	49,705	23,329	26,376	55,611	26,585	29,026	6,437	3,634	2,803
Island of Rodrigues	3,536	1,640	1,896	-	-	-	3,536	1,640	1,896	-	-	-
Republic of Mauritius	115,289	55,188	60,101	49,705	23,329	26,376	59,147	28,225	30,922	6,437	3,634	2,803

¹ includes Mahatma Gandhi Institute, Rabindranath Tagore Secondary School and Mahatma Gandhi State Schools² includes Mauritius Educational Development Company (MEDCO) / Rodrigues Educational Development Company (REDCO)

Table 5.5 - Enrolment in secondary schools (academic stream) by district and grade, 2011

District	Grade							All Grades
	I	II	III	IV	V	VI Lower	VI Upper	
Port Louis	2,210	2,108	2,226	2,541	2,655	1,728	1,577	15,045
Pamplemousses	1,424	1,360	1,465	1,665	1,642	836	781	9,173
Riviere du Rempart	1,541	1,477	1,497	1,652	1,693	1,099	1,053	10,012
Flacq	1,734	1,701	1,936	2,132	2,617	1,325	1,215	12,660
Grand Port	890	890	999	1,125	1,451	755	609	6,719
Savanne	529	540	613	681	780	369	330	3,842
Plaines Wilhems	6,924	6,500	6,789	7,636	7,965	5,394	5,303	46,511
Moka	827	918	877	999	1,082	608	611	5,922
Black River	300	368	325	342	335	96	103	1,869
Island of Mauritius	16,379	15,862	16,727	18,773	20,220	12,210	11,582	111,753
Island of Rodrigues	545	511	615	700	622	300	243	3,536
Republic of Mauritius	16,924	16,373	17,342	19,473	20,842	12,510	11,825	115,289

Table 5.6 - Enrolment in secondary schools (academic stream) by zone and grade, 2011

Zone	Grade							All Grades
	I	II	III	IV	V	VI Lower	VI Upper	
1 - Port Louis / North	5,238	4,998	5,240	5,911	6,049	3,721	3,451	34,608
2 - B.Bassin-R.Hill / East	4,290	4,256	4,491	4,962	5,548	3,278	3,199	30,024
3 - Curepipe / South	3,947	3,809	3,974	4,584	5,264	3,195	2,927	27,700
4 - Q.Bornes / Vacoas-Phoenix / West	2,904	2,799	3,022	3,316	3,359	2,016	2,005	19,421
Island of Mauritius	16,379	15,862	16,727	18,773	20,220	12,210	11,582	111,753
Island of Rodrigues	545	511	615	700	622	300	243	3,536
Republic of Mauritius	16,924	16,373	17,342	19,473	20,842	12,510	11,825	115,289

Table 5.7 - Enrolment in secondary schools (academic stream) by grade and sex, 2009 - 2011

Grade	2009			2010			2011		
	Total	Male	Female	Total	Male	Female	Total	Male	Female
Republic of Mauritius									
I	16,809	8,197	8,612	16,240	7,894	8,346	16,924	8,322	8,602
II	17,246	8,210	9,036	17,030	8,222	8,808	16,373	7,963	8,410
III	18,632	8,980	9,652	17,568	8,382	9,186	17,342	8,461	8,881
IV	20,355	9,968	10,387	20,522	9,955	10,567	19,473	9,405	10,068
V	21,080	10,151	10,929	21,162	10,397	10,765	20,842	10,178	10,664
VI Lower	11,135	4,904	6,231	11,263	4,994	6,269	12,510	5,533	6,977
VI Upper	10,969	4,979	5,990	11,218	5,011	6,207	11,825	5,326	6,499
Total	116,226	55,389	60,837	115,003	54,855	60,148	115,289	55,188	60,101
Island of Mauritius									
I	16,272	7,923	8,349	15,728	7,641	8,087	16,379	8,048	8,331
II	16,677	7,954	8,723	16,479	7,939	8,540	15,862	7,706	8,156
III	17,924	8,651	9,273	16,901	8,087	8,814	16,727	8,154	8,573
IV	19,677	9,636	10,041	19,875	9,660	10,215	18,773	9,114	9,659
V	20,424	9,871	10,553	20,486	10,092	10,394	20,220	9,896	10,324
VI Lower	10,905	4,803	6,102	11,008	4,890	6,118	12,210	5,409	6,801
VI Upper	10,693	4,858	5,835	10,941	4,889	6,052	11,582	5,221	6,361
Total	112,572	53,696	58,876	111,418	53,198	58,220	111,753	53,548	58,205
Island of Rodrigues									
I	537	274	263	512	253	259	545	274	271
II	569	256	313	551	283	268	511	257	254
III	708	329	379	667	295	372	615	307	308
IV	678	332	346	647	295	352	700	291	409
V	656	280	376	676	305	371	622	282	340
VI Lower	230	101	129	255	104	151	300	124	176
VI Upper	276	121	155	277	122	155	243	105	138
Total	3,654	1,693	1,961	3,585	1,657	1,928	3,536	1,640	1,896

Table 5.8 - Enrolment in secondary schools (academic stream) by type of administration, grade and sex, 2009 - 2011

Republic of Mauritius

Grade	2009			2010			2011		
	Total	Male	Female	Total	Male	Female	Total	Male	Female
All schools									
I	16,809	8,197	8,612	16,240	7,894	8,346	16,924	8,322	8,602
II	17,246	8,210	9,036	17,030	8,222	8,808	16,373	7,963	8,410
III	18,632	8,980	9,652	17,568	8,382	9,186	17,342	8,461	8,881
IV	20,355	9,968	10,387	20,522	9,955	10,567	19,473	9,405	10,068
V	21,080	10,151	10,929	21,162	10,397	10,765	20,842	10,178	10,664
VI Lower	11,135	4,904	6,231	11,263	4,994	6,269	12,510	5,533	6,977
VI Upper	10,969	4,979	5,990	11,218	5,011	6,207	11,825	5,326	6,499
Total	116,226	55,389	60,837	115,003	54,855	60,148	115,289	55,188	60,101
State Schools									
I	7,535	3,775	3,760	7,171	3,529	3,642	7,408	3,570	3,838
II	7,190	3,547	3,643	7,379	3,648	3,731	7,161	3,479	3,682
III	7,442	3,532	3,910	7,245	3,560	3,685	7,460	3,688	3,772
IV	7,610	3,773	3,837	7,802	3,737	4,065	7,585	3,714	3,871
V	8,370	4,055	4,315	8,220	3,969	4,251	7,984	3,785	4,199
VI Lower	5,438	2,169	3,269	5,626	2,367	3,259	5,993	2,516	3,477
VI Upper	4,976	2,127	2,849	5,615	2,299	3,316	6,114	2,577	3,537
Total	48,561	22,978	25,583	49,058	23,109	25,949	49,705	23,329	26,376
Private Schools									
I	9,274	4,422	4,852	9,069	4,365	4,704	9,516	4,752	4,764
II	10,056	4,663	5,393	9,651	4,574	5,077	9,212	4,484	4,728
III	11,190	5,448	5,742	10,323	4,822	5,501	9,882	4,773	5,109
IV	12,745	6,195	6,550	12,720	6,218	6,502	11,888	5,691	6,197
V	12,710	6,096	6,614	12,942	6,428	6,514	12,858	6,393	6,465
VI Lower	5,697	2,735	2,962	5,637	2,627	3,010	6,517	3,017	3,500
VI Upper	5,993	2,852	3,141	5,603	2,712	2,891	5,711	2,749	2,962
Total	67,665	32,411	35,254	65,945	31,746	34,199	65,584	31,859	33,725

Table 5.9 - Distribution of schools offering pre-vocational education by district and type of administration, 2011

District	All Schools ¹	Type of Administration			
		State		Private ²	
		No.	%	No.	%
Port Louis	18	5	28	13	72
Pamplemousses	13	6	46	7	54
Riviere du Rempart	12	7	58	5	42
Flacq	12	6	50	6	50
Grand Port	9	2	22	7	78
Savanne	6	4	67	2	33
Plaines Wilhems	38	13	34	25	66
Moka	8	4	50	4	50
Black River	5	3	60	2	40
Island of Mauritius	121	50	41	71	59
Island of Rodrigues	5	-	-	5	100
Republic of Mauritius	126	50	40	76	60

Table 5.10 - Distribution of schools offering pre-vocational education by zone and type of administration, 2011

Zone	All Schools ¹	Type of Administration			
		State		Private ²	
		No.	%	No.	%
1 - Port Louis / North	44	19	43	25	57
2 - B.Bassin-R.Hill / East	32	13	41	19	59
3 - Curepipe / South	26	9	35	17	65
4 - Q.Bornes / Vacoas-Phoenix / West	19	9	47	10	53
Island of Mauritius	121	50	41	71	59
Island of Rodrigues	5	-	-	5	100
Republic of Mauritius	126	50	40	76	60

¹ includes 121 secondary schools providing both academic and pre-vocational education and 5 schools providing only pre-vocational

² includes Mauritius Educational Development Company (MEDCO) / Rodrigues Educational Development Company (REDCO)

Table 5.11 - Enrolment in schools offering pre-vocational education by district, type of administration and sex, 2011

District	All schools			State schools			Private schools ¹		
	Total	Male	Female	Total	Male	Female	Total	Male	Female
Port Louis	1,081	673	408	240	162	78	841	511	330
Pamplemousses	768	481	287	294	216	78	474	265	209
Riviere du Rempart	620	424	196	211	157	54	409	267	142
Flacq	822	538	284	294	108	186	528	430	98
Grand Port	601	397	204	23	23	-	578	374	204
Savanne	467	292	175	192	98	94	275	194	81
Plaines Wilhems	1,832	1,193	639	506	355	151	1,326	838	488
Moka	370	209	161	210	103	107	160	106	54
Black River	346	191	155	208	109	99	138	82	56
Island of Mauritius	6,907	4,398	2,509	2,178	1,331	847	4,729	3,067	1,662
Island of Rodrigues	363	237	126	-	-	-	363	237	126
Republic of Mauritius	7,270	4,635	2,635	2,178	1,331	847	5,092	3,304	1,788

Table 5.12 - Enrolment in schools offering pre-vocational education by zone, type of administration and sex, 2011

Zone	All schools			State schools			Private schools ¹		
	Total	Male	Female	Total	Male	Female	Total	Male	Female
1 - Port Louis / North	2,526	1,578	948	802	535	267	1,724	1,043	681
2 - B.Bassin-R.Hill / East	1,841	1,220	621	656	389	267	1,185	831	354
3 - Curepipe / South	1,503	953	550	299	187	112	1,204	766	438
4 - Q.Bornes / Vacoas-Phoenix / West	1,037	647	390	421	220	201	616	427	189
Island of Mauritius	6,907	4,398	2,509	2,178	1,331	847	4,729	3,067	1,662
Island of Rodrigues	363	237	126	-	-	-	363	237	126
Republic of Mauritius	7,270	4,635	2,635	2,178	1,331	847	5,092	3,304	1,788

¹ includes Mauritius Educational Development Company (MEDCO) / Rodrigues Educational Development Company (REDCO)

Table 5.13 - Enrolment in schools offering pre-vocational education by district and year of study, 2011

District	Enrolment											
	Year I			Year II			Year III			Total		
	Total	Male	Female	Total	Male	Female	Total	Male	Female	Total	Male	Female
Port Louis	376	233	143	387	266	121	318	174	144	1,081	673	408
Pamplemousses	313	179	134	257	171	86	198	131	67	768	481	287
Riviere du Rempart	203	135	68	193	133	60	224	156	68	620	424	196
Flacq	289	195	94	256	155	101	277	188	89	822	538	284
Grand Port	205	124	81	218	150	68	178	123	55	601	397	204
Savanne	138	84	54	160	101	59	169	107	62	467	292	175
P.Wilhems	663	422	241	589	389	200	580	382	198	1,832	1,193	639
Moka	127	78	49	99	59	40	144	72	72	370	209	161
Black River	120	65	55	117	65	52	109	61	48	346	191	155
Island of Mauritius	2,434	1,515	919	2,276	1,489	787	2,197	1,394	803	6,907	4,398	2,509
Island of Rodrigues	110	74	36	133	87	46	120	76	44	363	237	126
Republic of Mauritius	2,544	1,589	955	2,409	1,576	833	2,317	1,470	847	7,270	4,635	2,635

Table 5.14 - Enrolment in schools offering pre-vocational education by zone and year of study, 2011

Zone	Enrolment											
	Year I			Year II			Year III			Total		
	Total	Male	Female	Total	Male	Female	Total	Male	Female	Total	Male	Female
1- Port Louis / North	910	547	363	859	570	289	757	461	296	2,526	1,578	948
2- B.Bassin-R.Hill / East	621	416	205	574	373	201	646	431	215	1,841	1,220	621
3- Curepipe / South	518	319	199	522	340	182	463	294	169	1,503	953	550
4- Q.Bornes / Vacoas-Phoenix / West	385	233	152	321	206	115	331	208	123	1,037	647	390
Island of Mauritius	2,434	1,515	919	2,276	1,489	787	2,197	1,394	803	6,907	4,398	2,509
Island of Rodrigues	110	74	36	133	87	46	120	76	44	363	237	126
Republic of Mauritius	2,544	1,589	955	2,409	1,576	833	2,317	1,470	847	7,270	4,635	2,635

Table 5.15 - Enrolment in schools offering pre-vocational education by year of study and sex,
2009 - 2011

Year of study	2009			2010			2011		
	Total	Male	Female	Total	Male	Female	Total	Male	Female
Republic of Mauritius									
I	2,981	1,889	1,092	2,691	1,736	955	2,544	1,589	955
II	2,612	1,655	957	2,589	1,654	935	2,409	1,576	833
III	2,440	1,570	870	2,162	1,374	788	2,317	1,470	847
Total	8,033	5,114	2,919	7,442	4,764	2,678	7,270	4,635	2,635
Island of Mauritius									
I	2,844	1,804	1,040	2,549	1,647	902	2,434	1,515	919
II	2,441	1,554	887	2,463	1,576	887	2,276	1,489	787
III	2,289	1,476	813	2,016	1,288	728	2,197	1,394	803
Total	7,574	4,834	2,740	7,028	4,511	2,517	6,907	4,398	2,509
Island of Rodrigues									
I	137	85	52	142	89	53	110	74	36
II	171	101	70	126	78	48	133	87	46
III	151	94	57	146	86	60	120	76	44
Total	459	280	179	414	253	161	363	237	126

Table 5.16 - Enrolment in schools offering pre-vocational education by type of administration, year of study and sex, 2009 - 2011

Republic of Mauritius

Year of study	2009			2010			2011		
	Total	Male	Female	Total	Male	Female	Total	Male	Female
All schools									
I	2,981	1,889	1,092	2,691	1,736	955	2,544	1,589	955
II	2,612	1,655	957	2,589	1,654	935	2,409	1,576	833
III	2,440	1,570	870	2,162	1,374	788	2,317	1,470	847
Total	8,033	5,114	2,919	7,442	4,764	2,678	7,270	4,635	2,635
State									
I	891	562	329	778	507	271	757	440	317
II	739	501	238	765	477	288	700	445	255
III	781	542	239	583	391	192	721	446	275
Total	2,411	1,605	806	2,126	1,375	751	2,178	1,331	847
Private									
I	2,090	1,327	763	1,913	1,229	684	1,787	1,149	638
II	1,873	1,154	719	1,824	1,177	647	1,709	1,131	578
III	1,659	1,028	631	1,579	983	596	1,596	1,024	572
Total	5,622	3,509	2,113	5,316	3,389	1,927	5,092	3,304	1,788

Table 5.17 - Teaching staff in secondary schools (academic & pre-vocational streams) by district and sex, 2011

District	Academic			Pre-vocational			Academic & Pre-vocational		
	Total	Male	Female	Total	Male	Female	Total	Male	Female
Port Louis	1,091	450	641	83	34	49	1,174	484	690
Pamplemousses	624	260	364	73	21	52	697	281	416
Riviere du Rempart	631	282	349	62	23	39	693	305	388
Flacq	835	380	455	54	23	31	889	403	486
Grand Port	539	209	330	48	14	34	587	223	364
Savanne	313	138	175	37	13	24	350	151	199
Plaines Wilhems	2,978	1,221	1,757	165	53	112	3,143	1,274	1,869
Moka	495	161	334	49	18	31	544	179	365
Black River	152	61	91	25	12	13	177	73	104
Island of Mauritius	7,658	3,162	4,496	596	211	385	8,254	3,373	4,881
Island of Rodrigues	215	96	119	38	16	22	253	112	141
Republic of Mauritius	7,873	3,258	4,615	634	227	407	8,507	3,485	5,022

Table 5.18 - Teaching staff in secondary schools (academic & pre-vocational streams) by zone and sex, 2011

Zone	Academic			Pre-vocational			Academic & Pre-vocational		
	Total	Male	Female	Total	Male	Female	Total	Male	Female
1 - Port Louis / North	2,389	1,002	1,387	221	78	143	2,610	1,080	1,530
2 - B.Bassin-R.Hill / East	2,039	856	1,183	165	67	98	2,204	923	1,281
3 - Curepipe / South	1,865	772	1,093	122	36	86	1,987	808	1,179
4 - Q.Bornes / Vacoas-Phoenix / West	1,365	532	833	88	30	58	1,453	562	891
Island of Mauritius	7,658	3,162	4,496	596	211	385	8,254	3,373	4,881
Island of Rodrigues	215	96	119	38	16	22	253	112	141
Republic of Mauritius	7,873	3,258	4,615	634	227	407	8,507	3,485	5,022

Table 5.19 - Cambridge School Certificate (SC) examination results by type of school administration and sex, 2008 - 2010

School candidates only

Type of school administration and sex		2008			2009			2010		
		No. Examined	No. Passed	% Passed	No. Examined	No. Passed	% Passed	No. Examined	No. Passed	% Passed
Republic of Mauritius										
All Schools	Total	17,794	13,617	76.5	17,496	13,585	77.6	17,487	13,609	77.8
	Male	8,262	5,908	71.5	8,136	5,844	71.8	8,170	5,987	73.3
	Female	9,532	7,709	80.9	9,360	7,741	82.7	9,317	7,622	81.8
State Schools	Total	8,280	6,871	83.0	8,356	7,078	84.7	8,186	7,116	86.9
	Male	3,919	3,042	77.6	4,043	3,187	78.8	3,963	3,278	82.7
	Female	4,361	3,829	87.8	4,313	3,891	90.2	4,223	3,838	90.9
Private Schools	Total	9,514	6,746	70.9	9,140	6,507	71.2	9,301	6,493	69.8
	Male	4,343	2,866	66.0	4,093	2,657	64.9	4,207	2,709	64.4
	Female	5,171	3,880	75.0	5,047	3,850	76.3	5,094	3,784	74.3
Island of Mauritius										
All Schools	Total	17,227	13,211	76.7	16,950	13,182	77.8	16,885	13,171	78.0
	Male	8,024	5,738	71.5	7,910	5,685	71.9	7,904	5,791	73.3
	Female	9,203	7,473	81.2	9,040	7,497	82.9	8,981	7,380	82.2
State Schools	Total	8,280	6,871	83.0	8,356	7,078	84.7	8,186	7,116	86.9
	Male	3,919	3,042	77.6	4,043	3,187	78.8	3,963	3,278	82.7
	Female	4,361	3,829	87.8	4,313	3,891	90.2	4,223	3,838	90.9
Private Schools	Total	8,947	6,340	70.9	8,594	6,104	71.0	8,699	6,055	69.6
	Male	4,105	2,696	65.7	3,867	2,498	64.6	3,941	2,513	63.8
	Female	4,842	3,644	75.3	4,727	3,606	76.3	4,758	3,542	74.4
Island of Rodrigues¹										
All Schools	Total	567	406	71.6	546	403	73.8	602	438	72.8
	Male	238	170	71.4	226	159	70.4	266	196	73.7
	Female	329	236	71.7	320	244	76.3	336	242	72.0

Source: Mauritius Examinations Syndicate

¹ All candidates in Rodrigues are from REDCO and private schools.

Table 5.20 - Cambridge Higher School Certificate (HSC) examination results by type of school administration and sex, 2008 - 2010

School candidates only

Type of school administration and sex		2008			2009			2010		
		No. Examined	No. Passed	% Passed	No. Examined	No. Passed	% Passed	No. Examined	No. Passed	% Passed
Republic of Mauritius										
All Schools	Total	8,907	7,011	78.7	9,490	7,475	78.8	9,813	7,687	78.3
	Male	3,999	2,976	74.4	4,034	2,995	74.2	4,146	3,055	73.7
	Female	4,908	4,035	82.2	5,456	4,480	82.1	5,667	4,632	81.7
State Schools	Total	4,111	3,384	82.3	4,734	4,007	84.6	5,556	4,598	82.8
	Male	1,911	1,481	77.5	1,991	1,602	80.5	2,290	1,807	78.9
	Female	2,200	1,903	86.5	2,743	2,405	87.7	3,266	2,791	85.5
Private Schools	Total	4,796	3,627	75.6	4,756	3,468	72.9	4,257	3,089	72.6
	Male	2,088	1,495	71.6	2,043	1,393	68.2	1,856	1,248	67.2
	Female	2,708	2,132	78.7	2,713	2,075	76.5	2,401	1,841	76.7
Island of Mauritius										
All Schools	Total	8,658	6,827	78.9	9,222	7,280	78.9	9,541	7,480	78.4
	Male	3,884	2,896	74.6	3,916	2,915	74.4	4,026	2,972	73.8
	Female	4,774	3,931	82.3	5,306	4,365	82.3	5,515	4,508	81.7
State Schools	Total	4,111	3,384	82.3	4,734	4,007	84.6	5,556	4,598	82.8
	Male	1,911	1,481	77.5	1,991	1,602	80.5	2,290	1,807	78.9
	Female	2,200	1,903	86.5	2,743	2,405	87.7	3,266	2,791	85.5
Private Schools	Total	4,547	3,443	75.7	4,488	3,273	72.9	3,985	2,882	72.3
	Male	1,973	1,415	71.7	1,925	1,313	68.2	1,736	1,165	67.1
	Female	2,574	2,028	78.8	2,563	1,960	76.5	2,249	1,717	76.3
Island of Rodrigues¹										
All Schools	Total	249	184	73.9	268	195	72.8	272	207	76.1
	Male	115	80	69.6	118	80	67.8	120	83	69.2
	Female	134	104	77.6	150	115	76.7	152	124	81.6

Source: Mauritius Examinations Syndicate

¹ All candidates in Rodrigues are from REDCO and private schools.

Table 6.1 - Distribution of Special Education Needs (SEN) schools by district and type of administration, 2011

District	Type of Administration			
	Total	Government School	Government Integrated Unit ¹	NGO ²
Port Louis	7	-	-	7
Pamplemousses	2	-	-	2
Riviere du Rempart	6	-	2	4
Flacq	5	-	-	5
Grand Port	2	-	-	2
Savanne	1	-	-	1
Plaines Wilhems	21	1	1	19
Moka	3	-	1	2
Black River	2	-	1	1
Island of Mauritius	49	1	5	43

Table 6.2 - Distribution of Special Education Needs (SEN) schools by zone and type of administration, 2011

Zone	Type of Administration			
	Total	Government School	Government Integrated Unit ¹	NGO ²
1 - Port Louis / North	15	-	2	13
2 - B.Bassin-R.Hill / East	17	1	2	14
3 - Curepipe / South	8	-	-	8
4 - Q.Bornes/Vacoas-Phoenix/West	9	-	1	8
Island of Mauritius	49	1	5	43

¹ Government Integrated Unit is a class in a primary Government school catering for Special Education Needs

² NGO: Non-Government Organisation

Table 6.3 - Enrolment in Special Education Needs (SEN) schools by sex and district, 2010 and 2011

All schools

District	2010			2011		
	Total	Male	Female	Total	Male	Female
Port Louis	252	159	93	253	158	95
Pamplemousses	62	38	24	64	38	26
Riviere du Rempart	184	107	77	186	123	63
Flacq	248	139	109	268	155	113
Grand Port	70	38	32	34	20	14
Savanne	84	64	20	84	64	20
Plaines Wilhems	595	358	237	797	469	328
Moka	37	22	15	35	23	12
Black River	86	71	15	82	67	15
Island of Mauritius	1,618	996	622	1,803	1,117	686

Table 6.4 - Enrolment in Special Education Needs (SEN) schools by sex and zone, 2010 and 2011

All schools

Zone	2010			2011		
	Total	Male	Female	Total	Male	Female
1 - Port Louis / North	498	304	194	503	319	184
2 - B.Bassin-R.Hill / East	554	316	238	726	431	295
3 - Curepipe / South	290	183	107	306	187	119
4 - Q.Bornes / Vacoas-Phoenix / West	276	193	83	268	180	88
Island of Mauritius	1,618	996	622	1,803	1,117	686

Table 6.5 - Enrolment in Special Education Needs (SEN) schools by age and sex, Island of Mauritius, 2010 and 2011

All schools

Age (Years)	2010			2011		
	Total	Boys	Girls	Total	Boys	Girls
3	17	8	9	9	4	5
4	12	8	4	12	7	5
5	41	28	13	31	19	12
6	54	34	20	58	40	18
7	86	51	35	100	70	30
8	91	56	35	108	75	33
9	115	75	40	141	84	57
10	138	93	45	176	115	61
11	125	86	39	155	105	50
12	113	69	44	151	87	64
13	149	88	61	147	86	61
14	141	83	58	133	84	49
15	119	73	46	134	81	53
16	87	54	33	113	61	52
17	86	50	36	71	42	29
18	44	21	23	62	29	33
19	35	18	17	44	28	16
20	17	10	7	28	19	9
21 and over	148	91	57	130	81	49
Total	1,618	996	622	1,803	1,117	686

Table 6.6 -Number of pupils in Special Education Needs (SEN) schools by type of impairment and sex
Island of Mauritius, 2011

Impairment Type		Impairment								
		Mild			Moderate			Profound		
		Total	Boys	Girls	Total	Boys	Girls	Total	Boys	Girls
1	Visual	16	12	4	23	9	14	42	20	22
2	Hearing	4	3	1	20	14	6	122	73	49
3	Speech	28	20	8	38	26	12	34	22	12
4	Physical	24	11	13	53	42	11	51	32	19
5	Mental/Behavioural	79	48	31	245	147	98	194	119	75
6	Multiple Disabilities	107	66	41	132	83	49	223	137	86
7	Learning disabilities	115	75	40	119	80	39	92	54	38
8	Other	2	1	1	9	4	5	31	19	12

Table 6.7 - Personnel in Special Education Needs (SEN) schools by gender, Island of Mauritius, 2010 and 2011

Personnel	2010			2011		
	Total	Male	Female	Total	Male	Female
Teaching staff	255	34	221	287	40	247
Administrative and Ancilliary staff	72	27	45	99	35	64
Medical and Para-Medical	44	14	30	53	21	32
Total	371	75	296	439	96	343

Table 7.1 - ICT¹ in pre-primary, primary and secondary schools - Republic of Mauritius, 2011

	Pre-primary		Primary		Secondary ²	
	Number	%	Number	%	Number	%
Schools having computer(s)	441	43	305	100	185	100
Number of computers	917	-	5,384	-	6,892	-
<i>of which: only for pedagogical use</i>	<i>510</i>	<i>-</i>	<i>4,529</i>	<i>-</i>	<i>5,908</i>	<i>-</i>
<i>of which: only for administrative use</i>	<i>186</i>	<i>-</i>	<i>482</i>	<i>-</i>	<i>802</i>	<i>-</i>
<i>of which: for both purposes</i>	<i>221</i>	<i>-</i>	<i>373</i>	<i>-</i>	<i>182</i>	<i>-</i>
Schools having access to the internet	123	12	289	95	184	99
Schools having internet access for students	40	4	177	58	177	96
Schools having a web site	29	3	40	13	57	31
Schools with a computer used for educational purposes	214	21	196	64	149	81
Schools with a radio used for educational purposes	649	64	150	49	87	47
Schools with a television used for educational purposes	496	49	172	56	105	57
Schools having ICT-assisted instruction ³	649	64	231	76	155	84
Schools having ICT support services	101	10	207	68	129	70

¹ ICT include computers, laptops, internet, radio, television, video players, etc

² Include both academic and pre-vocational

³ Refers to teaching methods that include ICT in supporting and enhancing course content delivery

Table 8.1(a) - Total number of students enrolled in Tertiary Education, both locally and overseas, by field of study as at December 2009

Field of study	Total	Publicly Funded Institutions (PFIs)											Distance Education/ Private Providers	Overseas
		UOM ¹	UTM	FDI ²	MIE	MGI	RTI ³	MCA	Polytechnics	MITD	MIH	Total(PFIs)		
Accountancy	5,249	303	16		-	-		-	26	-	-	345	4,405	499
Administration / Management	5,301	1,821	1,182		-	-		125	308	-	-	3,436	1,234	631
Agriculture	378	353	-		-	-		-	-	-	-	353	-	25
Architecture	196	-	-		-	-		-	-	-	-	-	14	182
Arts	677	-	-		-	197	12	-	-	50	-	259	300	118
Banking / Finance	1,141	545	254		-	-		24	57	-	-	880	91	170
Business / Commerce / Marketing	3,743	294	11		-	-		30	18	-	-	353	1,482	1,908
Communication	561	86	74		-	-		-	-	23	-	183	137	241
Counselling	93	-	93		-	-		-	-	-	-	93	-	-
Dentistry	252	-	-		-	-		-	-	-	-	-	168	84
Economics	843	497	13		-	-		-	-	-	-	510	72	261
Education	5,205	76	207		4,738	-		3	-	-	-	5,024	43	138
Fisheries Studies	18	-	15		-	-		-	-	-	-	15	-	3
Engineering	3,000	1,250	87		-	-		-	240	28	-	1,605	158	1,237
Health Sciences	662	308	144		-	-		-	-	-	24	476	72	114
Humanities	470	257	-		-	-		-	-	-	-	257	14	199
Information Technology	3,559	1,004	495	15	-	-		10	186	113	-	1,823	913	823
Languages	1,442	419	-		-	429		190	-	-	-	1,038	204	200
Law	1,328	471	-		-	-		-	-	-	-	471	360	497
Library	45	35	-		-	-		10	-	-	-	45	-	-
Mathematics	503	266	62		-	-		-	-	-	-	328	44	131
Medicine	1,710	142	-		-	-		-	-	-	22	164	592	954
Mres	12	12	-		-	-		-	-	-	-	12	-	-
Pharmacy	174	30	-		-	-		-	-	-	-	30	17	127
Police Studies	8	6	-		-	-		-	-	-	-	6	-	2
Psychology	181	107	-		-	-		-	-	-	-	107	-	74
Religious Studies	95	-	-		-	-		-	-	-	-	-	78	17
Research (MPhil / PhD)	212	159	34		-	-		-	-	-	-	193	-	19
Science	944	519	-		-	-		-	-	-	-	519	3	422
Social Science	1,438	337	-		-	-		-	-	-	-	337	75	1,026
Textile	262	156	-	11	-	-		-	-	22	-	189	10	63
Travel / Hotel / Tourism	1,241	210	227		-	-		60	-	230	-	727	63	451
Others	541	-	104		-	-		-	-	-	-	104	114	323
Total	41,484	9,663	3,018	26	4,738	626	12	452	835	466	46	19,882	10,663	10,939

¹ Excludes enrolment on joint MIE & MGI Programmes

² FDI - The Fashion and Design Institute

³ RTI - The Rabindranath Tagore Institute

Table 8.1(b) - Total number of students enrolled in Tertiary Education, both locally and overseas, by field of study as at December 2010

Field of study	Total	Publicly Funded Institutions (PFIs)										Distance Education/ Private Providers	Overseas	
		UOM ¹	UTM	FDI ²	MIE	MGI	RTI ³	MCA	Polytechnics	MITD	MIH			Total(PFIs)
Accountancy	5,465	362	43	-	-	-	-	-	34	-	-	439	4,526	500
Administration / Management	6,248	2,021	1,733	-	-	-	-	100	304	-	-	4,158	1,515	575
Agriculture	385	348	-	-	-	-	-	-	-	-	-	348	-	37
Architecture	276	-	16	-	-	-	-	-	-	-	-	-	24	236
Arts	742	-	-	50	-	183	8	-	-	-	-	241	379	122
Banking / Finance	1,496	708	338	-	-	-	-	21	54	-	-	1,121	189	186
Business / Commerce / Marketing	3,029	109	12	-	-	-	-	14	30	-	-	165	1,406	1,458
Communication	548	80	94	-	-	-	-	5	-	-	-	179	121	248
Counselling	26	-	26	-	-	-	-	-	-	-	-	26	-	-
Dentistry	219	-	-	-	-	-	-	-	-	-	-	-	120	99
Economics	901	492	12	-	-	-	-	-	-	-	-	504	63	334
Education	5,296	88	-	-	5,032	-	-	16	-	-	-	5,136	49	111
Fisheries Studies	0	-	-	-	-	-	-	-	-	-	-	0	-	-
Engineering	3,565	1,353	154	-	-	-	-	-	182	100	-	1,789	277	1,499
Health Sciences	755	284	216	-	-	-	-	-	-	-	-	500	115	140
Humanities	527	258	-	-	-	-	-	-	-	-	-	258	13	256
Information Technology	3,694	1,137	623	64	-	-	-	3	214	80	-	2,121	933	640
Languages	1,471	422	-	-	-	354	-	257	-	-	-	1,033	251	187
Law	1,551	596	-	-	-	-	-	-	-	-	-	596	417	538
Library	74	33	-	-	-	-	-	41	-	-	-	74	-	-
Mathematics	649	325	103	-	-	-	-	-	-	-	-	428	40	181
Medecine	1,919	101	-	-	-	-	-	-	-	-	22	123	623	1,173
Mres	1	1	-	-	-	-	-	-	-	-	-	1	-	-
Pharmacy	168	45	-	-	-	-	-	-	-	-	-	45	16	107
Police Studies	0	-	-	-	-	-	-	-	-	-	-	0	-	-
Psychology	204	111	-	-	-	-	-	-	-	-	-	111	19	74
Religious Studies	88	-	-	-	-	-	-	-	-	-	-	0	67	21
Research (MPhil / PhD)	254	161	35	-	-	-	-	-	-	-	-	196	34	24
Science	950	532	-	-	-	-	-	-	-	-	-	532	3	415
Social Science	1,244	379	49	-	-	-	-	21	-	-	-	449	51	744
Textile	336	182	-	37	-	-	-	68	-	-	-	287	-	49
Travel / Hotel / Tourism	1,406	208	242	-	-	-	-	-	-	285	-	735	133	538
Others	847	20	135	-	-	-	-	-	-	-	-	155	277	415
Total	44,334	10,356	3,831	151	5,032	537	8	546	818	465	22	21,766	11,661	10,907

¹ Excludes enrolment on joint MIE & MGI Programmes

² FDI - The Fashion and Design Institute

³ RTI - The Rabindranath Tagore Institute