

GENDER STATISTICS, 2010

1. INTRODUCTION

This is the second issue of Economic and Social Indicator (ESI) on gender statistics. It presents a portrait of women and men in the Republic of Mauritius and includes their demographic profile, health, family status, educational attainment, labour force characteristics and their role in decision making.

The ESI is based on latest available sex disaggregated data from administrative sources and household surveys. Some of the statistics presented therefore refer to years earlier than 2010.

2. HIGHLIGHTS

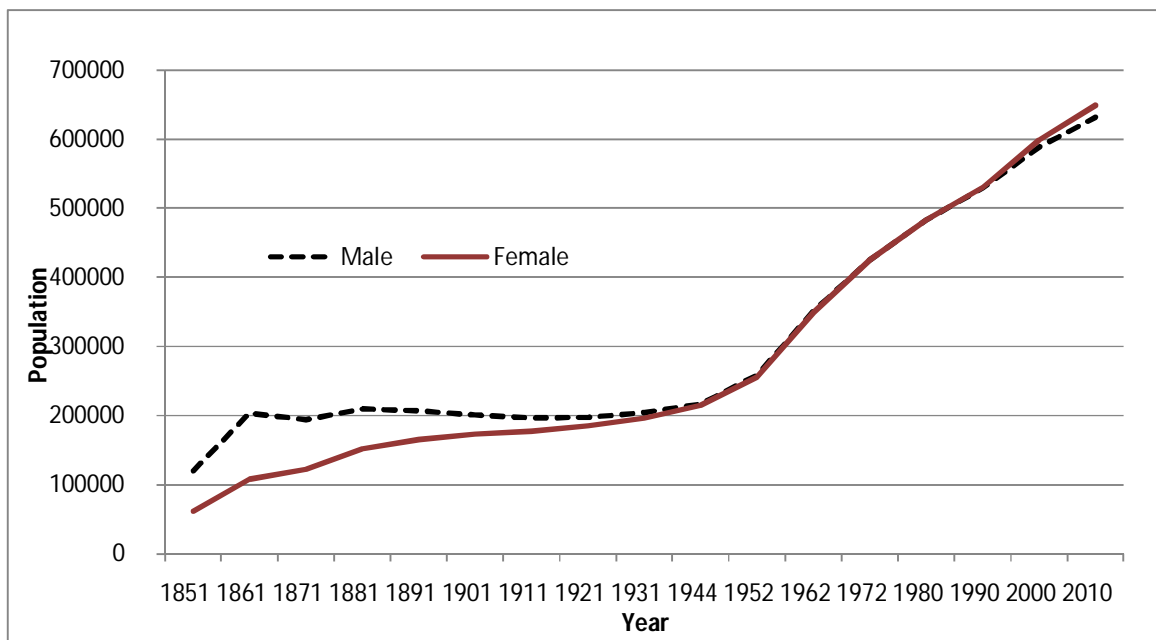
- (i) There were 17,500 more women than men in 2010, as women live on average seven years longer than men.
- (ii) Diabetes, heart disease and cancer together accounted for 58% of all deaths among women against 50% of men's deaths.
- (iii) Both men and women are getting married at an older age and the age difference between them is narrowing over time.
- (iv) Women are more likely than men to be widowed, living alone, divorced/separated and unemployed.
- (v) The proportion of students progressing from primary cycle to secondary cycle (academic) in 2010 was 65% for boys and 76% for girls.
- (vi) The performance gaps between boys and girls at primary and secondary levels have widened over time.
- (vii) Women are more likely to use internet for communication and educational purposes while men are more likely to make use of internet for entertainment and on-line transactions.
- (viii) Women are nowadays more inclined towards entrepreneurship than they were ten years ago, though they are predominantly employees.
- (ix) Unemployed women are on average three years older than unemployed men, but less likely to have work experience. They are also generally more qualified but tend to stay longer in unemployment.
- (x) Women's participation in decision making is increasing but remains low. In 2010, there were only 13 women parliamentarians out a total of 69.
- (xi) More women are occupying high positions in government services. The number of women in the most senior positions more than doubled during the period 2000 to 2010.
- (xii) Women are more likely to be victims of personal theft than men, but less likely to report the incident to the police.
- (xiii) Domestic violence against men is on the increase, though women are more likely to be victims.

- (xiv) In 2008, Mauritius ranked 46th out of 138 countries according to the Gender Inequality Index of the UN. The index reflects inequality in achievements between women and men in reproductive health, empowerment and the labour market.

3. POPULATION

Prior to the 1950's women were fewer than men in number. However, the female population has been growing at a faster rate such that in the 50's there were almost equal numbers of men and women. This balance in the population has been maintained for some 40 years. As from 1990, women have been increasingly outnumbering men over the years (Chart 1).

Chart 1 - Population by sex, Republic of Mauritius, 1851 - 2010



In 2010, there were 17,540 more women than men. It is projected that female population will exceed male population by around 28,000 in 2050. The sex ratio in the population, declined from 100.2 in 1972 to 97.3 in 2010 and it is expected to decrease further to reach 95.8 in 2050.

Though women are now more numerous in the total population, this is not the case at all age groups (Table 1). At the younger ages (under 30 years), men were more numerous mainly due to the occurrence of more male births than female births. In fact, there were 103 male births for every 100 female births in 2010.

At ages 30 years and above, women outnumber men and their proportion increases at higher ages. At 80 years and over, there were around 2 women for every man. The main reason for this imbalance is that women live longer than men.

Table 1 – Population by age and sex, Republic of Mauritius, 1972, 2010 & 2050

Age group (years)	1st July 1972			1st July 2010			1st July 2050		
	Male	Female	Sex ratio (males per 100 females)	Male	Female	Sex ratio (males per 100 females)	Male	Female	Sex ratio (males per 100 females)
Under 10	115 690	113 260	102.1	90 626	87 854	103.2	63 900	61 600	103.7
10 - 19	109 290	108 501	100.7	104 746	102 085	102.6	69 100	66 700	103.6
20 - 29	68 096	68 418	99.5	99 958	97 994	102.0	77 400	74 600	103.8
30 - 39	43 304	43 419	99.7	99 783	101 880	97.9	80 900	78 600	102.9
40 - 49	39 399	36 998	106.5	97 470	98 171	99.3	86 800	89 200	97.3
50 - 59	27 780	26 321	105.5	77 443	79 951	96.9	94 600	97 500	97.0
60 - 79	21 205	25 307	83.8	55 396	69 261	80.0	140 300	161 200	87.0
80 +	1 086	2 894	37.5	6 270	12 036	52.1	26 300	40 700	64.6
All ages	425 850	425 118	100.2	631 692	649 232	97.3	639 300	670 100	95.4

4. FERTILITY

Women now give birth to fewer children than in the past. The total fertility rate, which is an indication of the average number of babies born to a woman during her childbearing period, has been generally declining, from 2.4 in 1992 to 1.5 in 2010.

In the 1990's, women in the age bracket 20-24 years had the highest fertility with 147 births per 1,000 women of that age group (Table 2). The peak fertility moved to the age bracket 25-29 years in 2010, with only 91 births per 1,000 women of that age group. This shift is mostly explained by women postponing marriage to an older age.

Table 2 – Fertility rates by age, Republic of Mauritius, 1990, 2000 & 2010

Age group (years)	1990	2000	2010
15- 19	45.2	38.9	30.6
20 - 24	147.2	121.5	78.7
25 - 29	138.1	120.4	91.1
30 - 34	80.4	75.1	59.6
35 - 39	39.1	34.2	26.4
40 - 44	11.4	8.1	6.5
45 - 49	1.8	0.6	0.3
15 - 49	77.4	60.1	42.2

5. MARRIAGES, DIVORCES AND MARITAL STATUS

Over the years, both men and women are getting married at an older age. From 1990 to 2010, women, on average, postponed marriage by 3 years and men by 2 years.

Generally women marry men who are older than them. Over the past 20 years, the age difference between husband and wife narrowed down from 4.7 years to 3.7 years (Table 3).

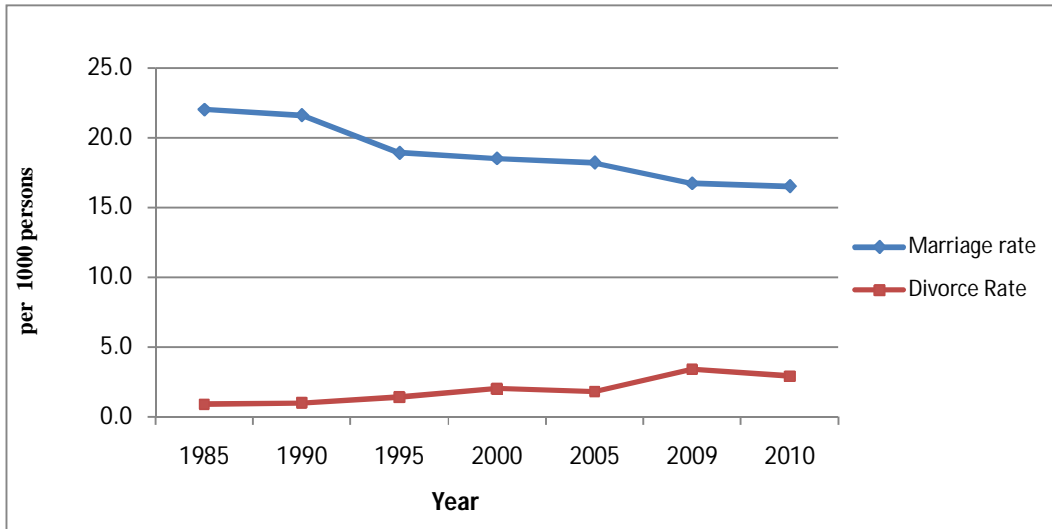
Table 3 – Average age (years) of first marriage, Republic of Mauritius, 1990 – 2010

Year	Wife	Husband	Age difference
1990	24.3	29.0	4.7
1995	24.2	29.0	4.8
2000	24.9	29.2	4.3
2005	25.8	29.6	3.8
2010	27.4	31.1	3.7

Divorce rate is on the rise while marriage rate is declining. The number of divorced persons per 1,000 population increased from one in 1985 to three in 2010. The number of divorces granted by the Supreme Court rose from 460 in 1985 to around 1,800 in 2010.

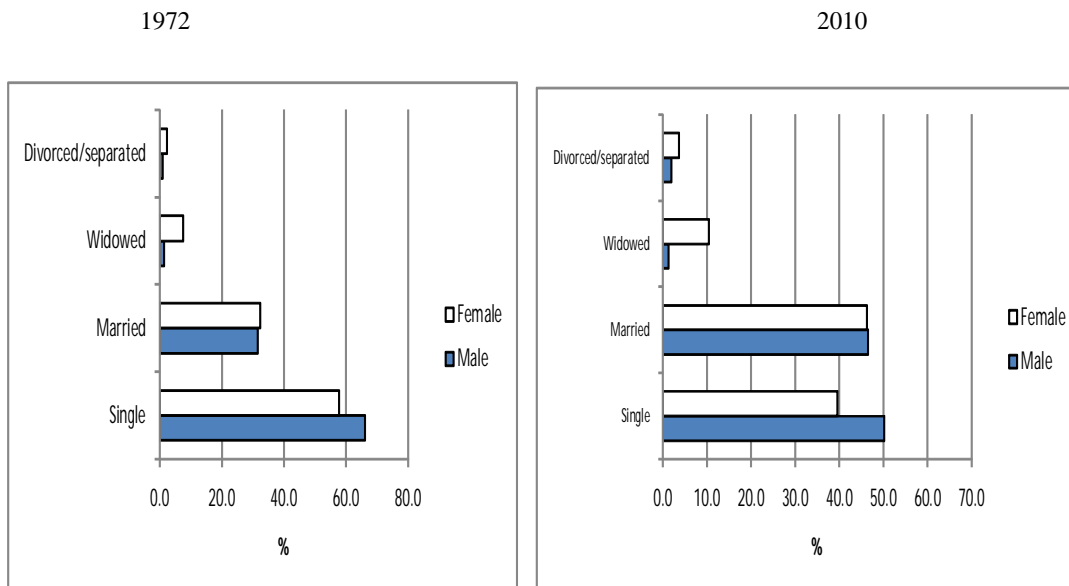
Marriage rate, defined as the number of married persons per 1,000 population, fell from 22 in 1985 to 17 in 2010. However, the number of civil marriages registered remained in the range 10,000 to 11,000 during that period.

Chart 2 – Marriage rate and Divorce rate, Republic of Mauritius, 1985 – 2010



Over the years, the proportion of singles in the population has been declining while that of married persons has increased. This is explained by the decreasing proportion of children in the population. The proportion of widowed, divorced and separated remained higher among women than among men indicating that women are still less likely to re-marry than men.

Chart 3 – Population by marital status (%), Republic of Mauritius, 1972 & 2010

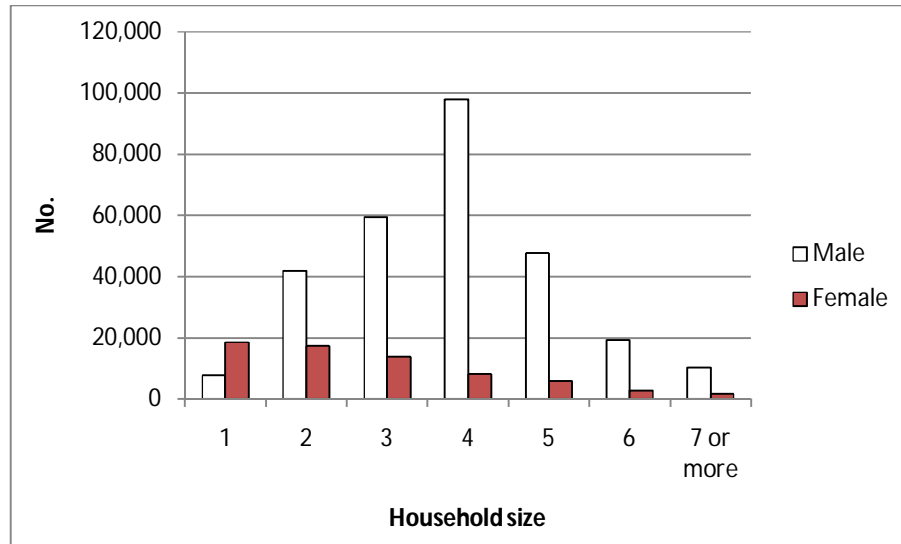


6. HOUSEHOLD AND LIVING ARRANGEMENTS

Women are much less likely than men to be heads of households. In 2010, there were 4 male heads of household for every female head.

As the size of the household increases, women are less likely to head the household. However, women are much more likely to head one-member households, some 70% of these households were headed by women in 2010.

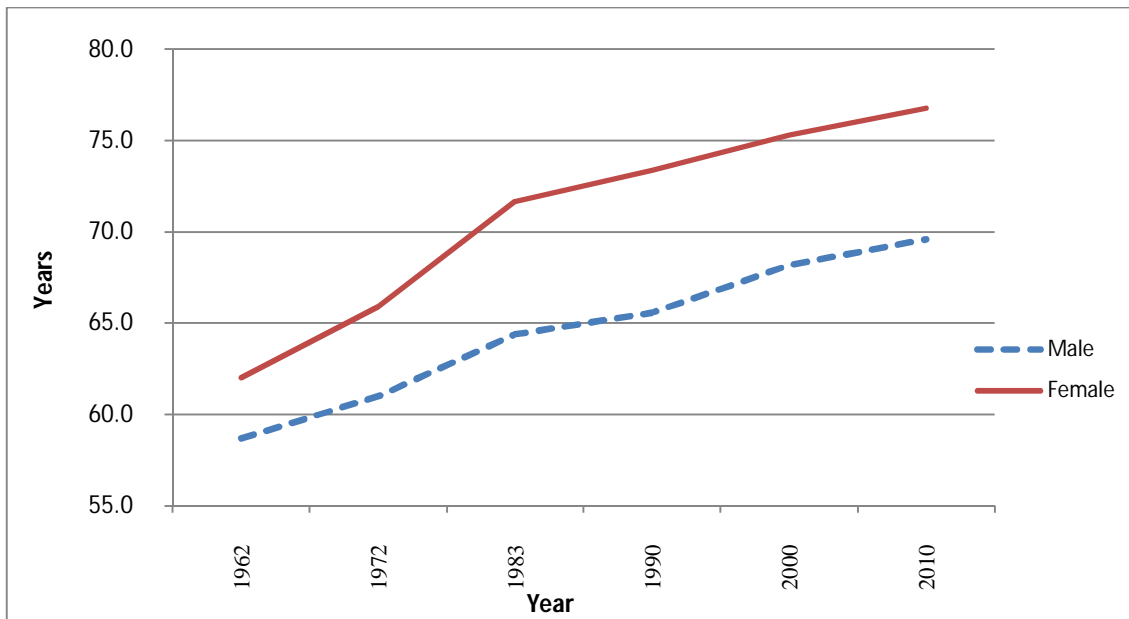
Chart 4 – Heads of household by sex and household size, 2010



7. HEALTH

Women live 7 years longer than men. In 2010, the life expectancy at birth for women was 77 years compared to 70 years for men.

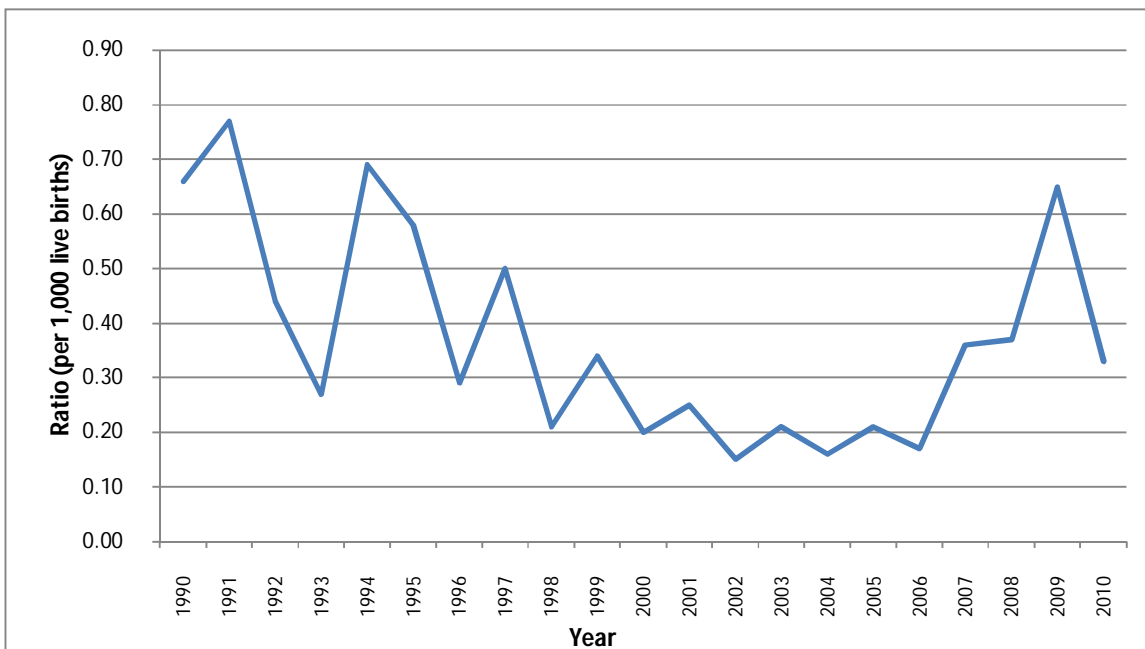
Chart 5 – Life expectancy at birth, Republic of Mauritius, 1962 – 2010



Life expectancy has improved over the years for both men and women. However, the improvement has been more pronounced for women, thus increasing the gap in life expectancy from 3 years in the 1960's to more than 7 years in 2010 (Chart 5).

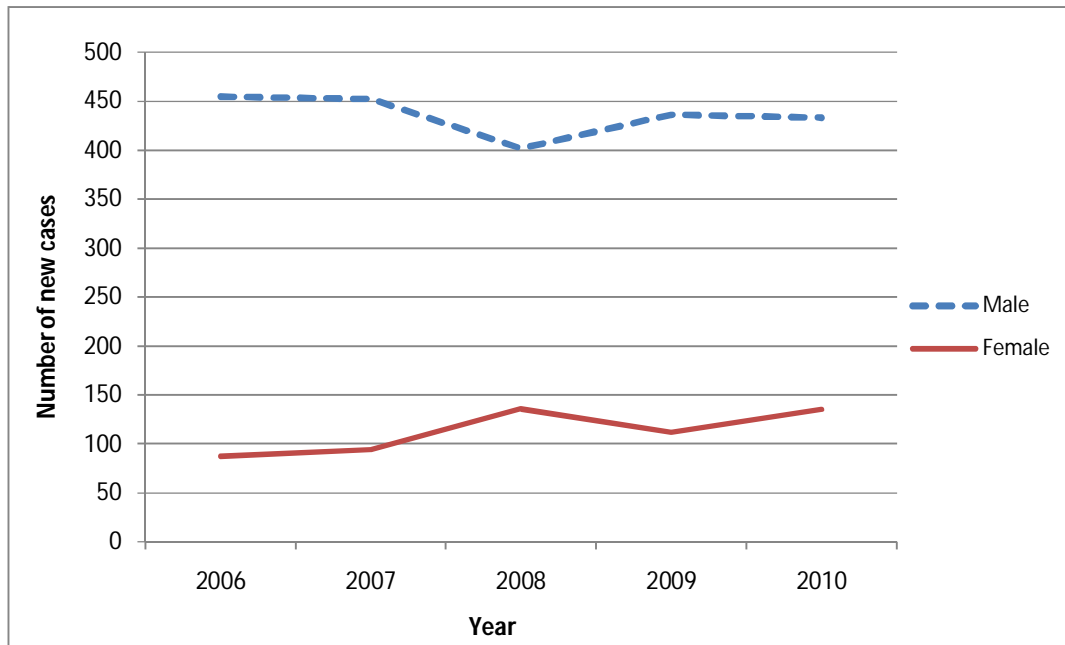
The risk of a woman dying as a result of pregnancy or childbirth during her lifetime has generally been declining over the years with a slight increasing trend in the recent years.

Chart 6 – Maternal Mortality Ratio, Republic of Mauritius, 1990 - 2010



During the year 2010, 568 new cases of HIV/AIDS were registered among the Mauritian population. The number of new cases is more significant among men than among women. However, the proportion of women with HIV/AIDS increased from 16% in 2006 to reach 24% in 2010.

Chart 7 –New HIV/AIDS cases among Mauritians, Republic of Mauritius, 2006 - 2010



8. MORTALITY

Though women are more numerous than men, there are fewer deaths among women than among men, with female deaths representing around 44% of all deaths. Female death rate has been constantly lower than male death rate (Table 4).

Death rate has generally been declining over the years for both male and female, but a reversal of the trend is noted in recent years.

Table 4 - Number of deaths by sex, Republic of Mauritius, 1980 – 2010

Year	Male		Female	
	No.	Rate	No.	Rate
1980	3921	8.1	2998	6.2
1990	4092	7.7	2939	5.5
2000	4489	7.6	3493	5.8
2010	5076	8.0	4055	6.2

The main causes of death for both men and women in 2010 were diabetes, heart disease and cancer (neoplasm). These causes together accounted for 58% of all deaths among women against 50% of men's deaths.

Compared to men, women are more likely to die of diabetes but less likely to die of cirrhosis of liver and to commit suicide.

Causes of death specific to women, such as breast and uterus cancer, were responsible for 4% of deaths among women while maternal deaths was responsible for another 0.1%.

Table 5 – Deaths (%) by cause and sex, Republic of Mauritius, 2010

Cause of death	Male	Female
Diabetes mellitus	20.7	27.1
Heart disease	18.2	18.2
Neoplasm:	10.6	12.7
<i>of which: breast cancer (malignant)</i>	<i>n/a</i>	2.8
<i>uterus cancer (malignant)</i>	<i>n/a</i>	1.5
Cerebrovascular disease	7.6	9.2
Cirrhosis of liver	2.1	0.6
Suicide	1.6	0.6
Maternal death	<i>n/a</i>	0.1
Other	39.3	31.4
Total	100.0	100.0

9. EDUCATION

Boys and girls are equally likely to go to primary schools. The Gross Enrolment Ratio was around 100% for both boys and girls, indicating no disparity.

However, at the end of primary schooling, girls generally perform better than boys at the Certificate of Primary Education (CPE) examinations. In 2010, the pass rate for girls was nearly 74% against 63% for boys.

Consequently at secondary level, girls are more likely to be enrolled than boys. The transition rate, i.e. the proportion of students progressing from primary cycle to secondary cycle (academic) in 2010 was around 65% for boys and 76% for girls.

Secondary enrolment (academic stream) for both girls and boys increased over time but with a widening gap in favour of girls. The Gender Parity Index (GPI) in secondary enrolment, which measures the relative access to secondary education of males and females increased from 1.0 in 1990 to 1.1 in 2010 showing larger disparity in favour of girls.

Table 6 – Gross Enrolment Ratio for secondary level, 1990 -2010

Year	Male (%)	Female (%)
1990	48	49
1995	49	54
2000	58	63
2005	64	71
2010	65	72

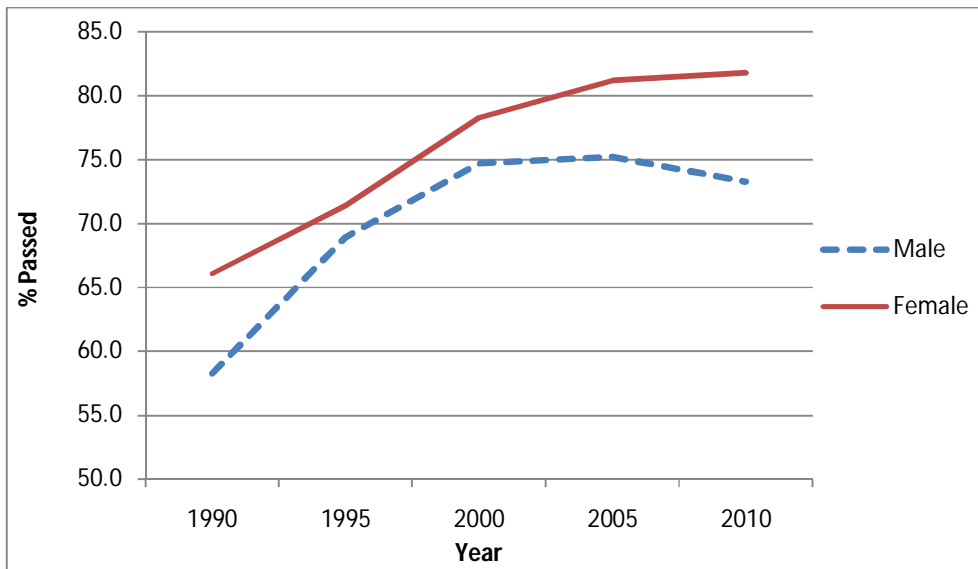
Girls do better than boys at both primary and secondary schools and the performance gap has increased over time. At the primary level, the gap nearly doubled over the period 1990 to 2010.

Table 7 – Certificate of Primary Education Pass Rate (%), 1990 -2010

Year	Male	Female	Gap
1990	55.0	61.8	6.7
1995	61.8	69.1	7.2
2000	61.2	71.8	10.7
2005	59.0	71.2	12.2
2010	63.1	74.4	11.3

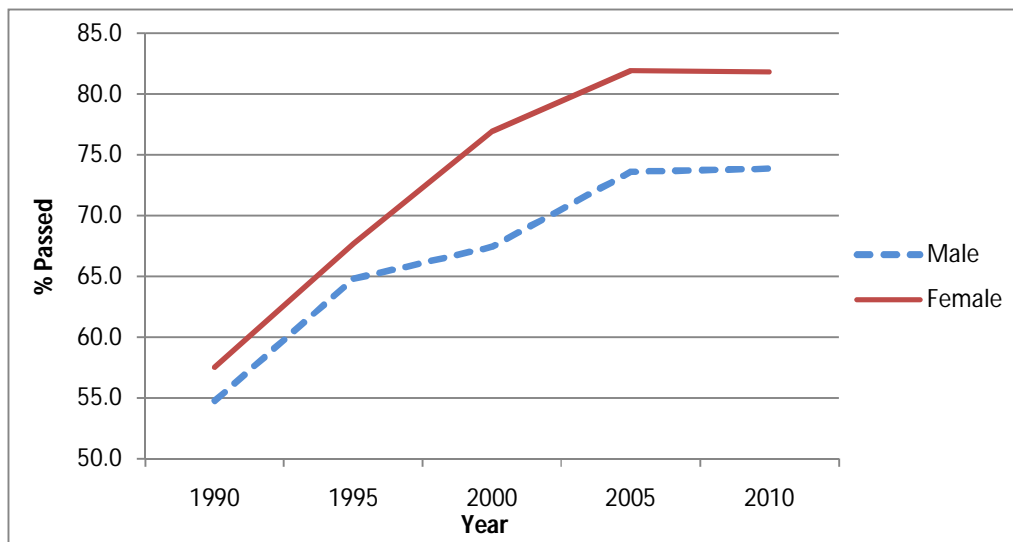
For the School Certificate, the difference in the pass rates narrowed in the years 1995 to 2000 to widen thereafter.

Chart 8 – School Certificate Pass rate (%), 1990 - 2010



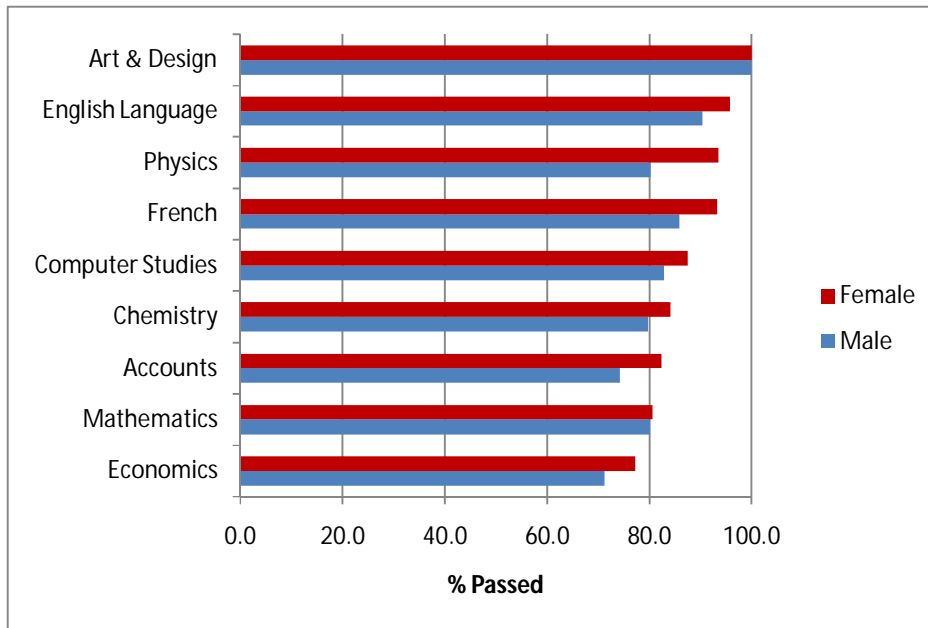
The performance gap for the Higher School Certificate has also been increasing over the years.

Chart 9 – Higher School Certificate Pass rate (%), 1990 - 2010



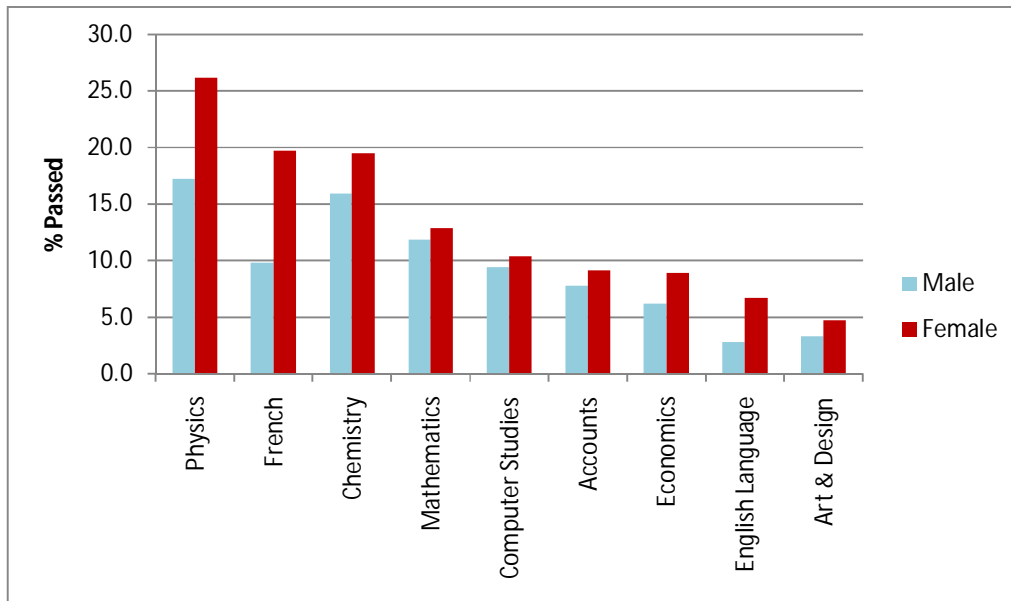
Girls outperform boys in virtually all subjects at secondary level. In 2010, they did better than boys in the majority of subjects at School Certificate except for Mathematics and Art & Design, where the performance of boys and girls, as measured by the pass rate, was nearly the same. The gap was more pronounced in Physics, Accounts and French.

Chart 10 - Pass rate (%) by selected subject, School Certificate , 2010



Furthermore, girls were more likely than boys to pass with distinctions. There is a marked difference in French and Physics.

Chart 11 – Percentage passed with distinctions by selected subjects, School Certificate, 2010

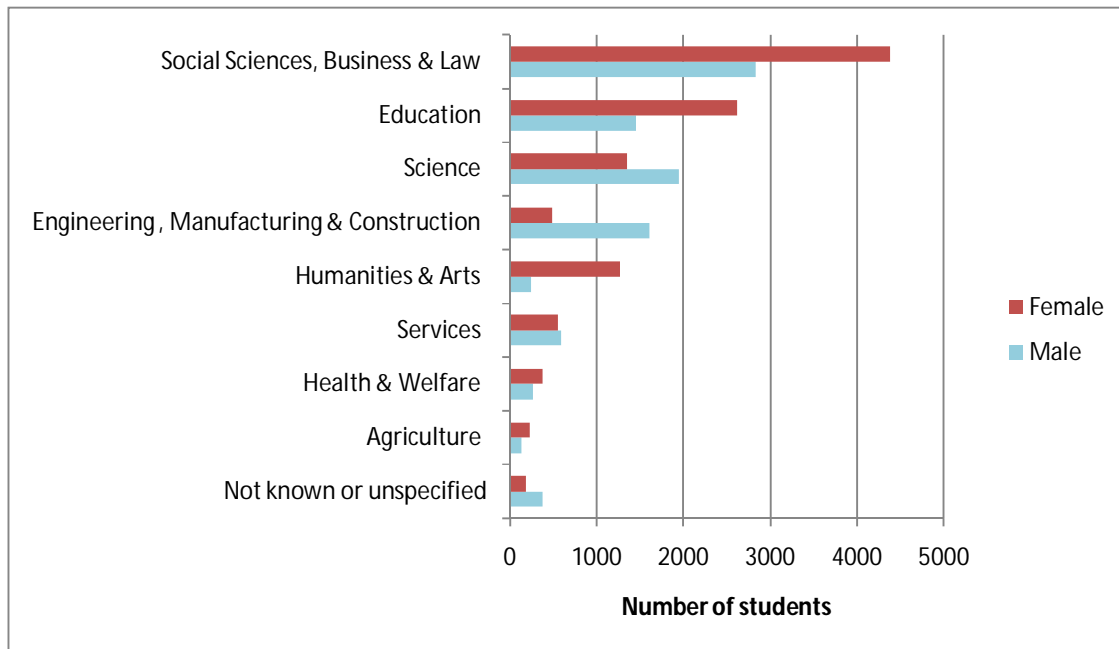


More women than men are enrolled in tertiary public-funded institutions. In 2010, women numbered 11,400 and represented 55% of the student population.

Social Sciences, Business & Law was the most popular field of study for both men (30%) and women (38%), followed by Science (21%) for men and Education for women (23%).

Women were largely under represented in Engineering, Manufacturing & Construction and to some extent in Science. They represented 23% and 41% respectively in the two fields of education. However, they comprised 84% of the students in Humanities & Arts.

Chart 12 - Enrolment in tertiary public institutions by field of education, 2010



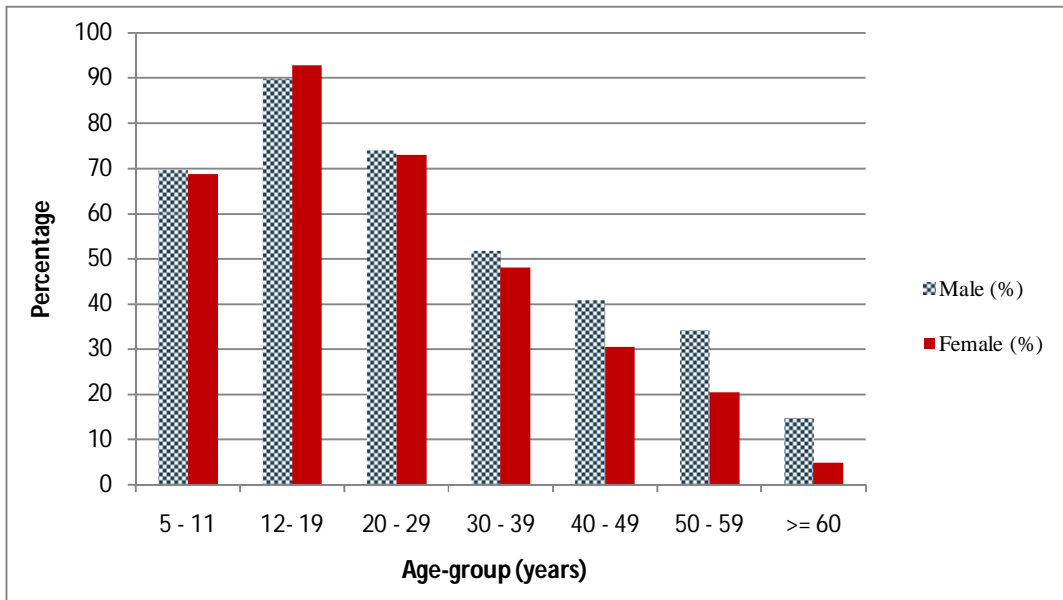
In 2010, there were more women (56%) than men entering undergraduate courses. Among the student enrolled at Ph.D level, the proportion of women stood at 45%.

10. ICT

Generally men are more likely to be able to use a computer than women. In 2010, 55% of the male population were able to use a computer compared to 48% for the female population.

Usage of computers peaked in the age group 12 to 19 years to decrease with age. Only in this particular age group, women were more likely than men to use a computer.

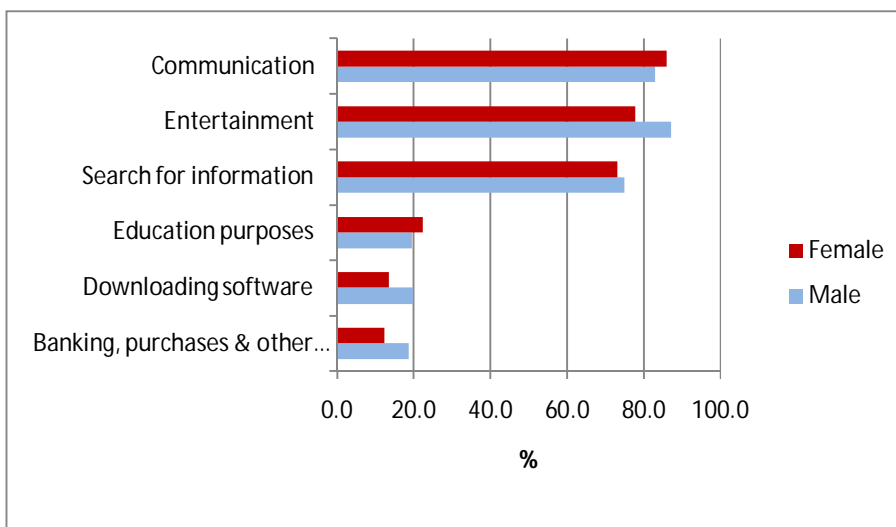
Chart 13 – Usage of computers by age group and sex, 2010



Women use the computer as often as men. However, women are less likely than men to use the computer at their workplace, but more likely to use the computer at educational institutions.

Internet is mostly used by both men and women for communication through email, chatting & telephoning, entertainment and searching for information. Women are, however, more likely to use internet for communication and educational purposes while the use of internet for entertainment, downloading software and on-line transactions is more common among men.

Chart 14 – Usage of internet by sex, 2010

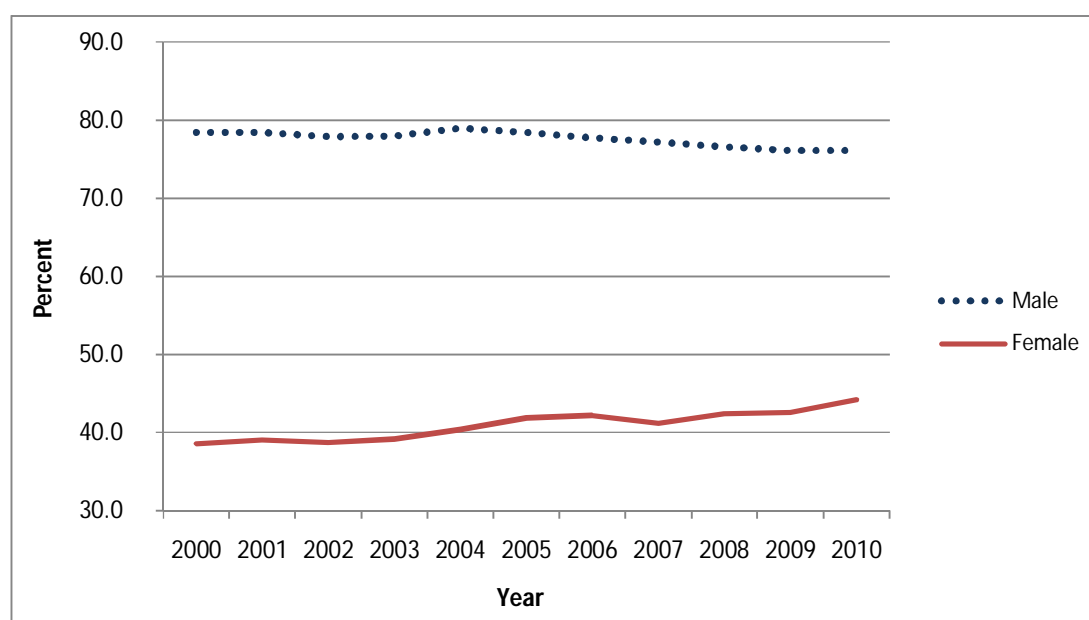


11. LABOUR FORCE, EMPLOYMENT AND UNEMPLOYMENT FOR MAURITIAN POPULATION

Though women represent a higher proportion than men in the working age population (16 years and above), they are under represented among the economic active population, i.e., those who are in employment or those looking for work. In 2010, the economic activity rate for women was 43% compared to 76% for men. The active population stood at 581,300 with 362,400 men and 218,900 women.

Men have always been more economically active than women; however, the gap has narrowed over time. The activity rate for men shows a slight decline over the years while there has been a rising trend for women.

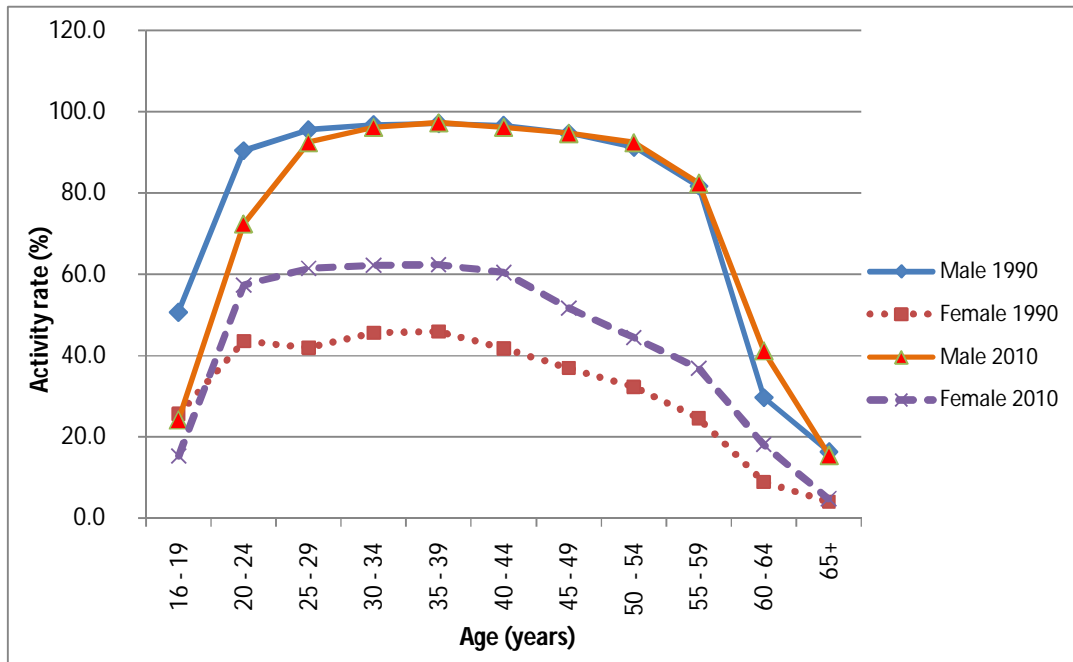
Chart 15 – Activity rate (%) by sex, 2000 - 2010



Men and women have a similar pattern of economic activity during their life, i.e., less active at the younger and older age groups. The activity rates for both are highest in the age group 30 to 45 years.

Over the years, men and women have become less active at the younger ages as they tend to go for higher studies. Women in their 20's and early 30's, in the past years, moved out of the labour market temporarily at the time of marriage, childbirth and child care. This is depicted by the 'M' shape of the curve for year 1990. However, they are now more likely to remain economically active, as represented by the flatter shape of the curve for year 2010.

Chart 16 – Age specific activity rate (%) by sex, 1990 & 2010



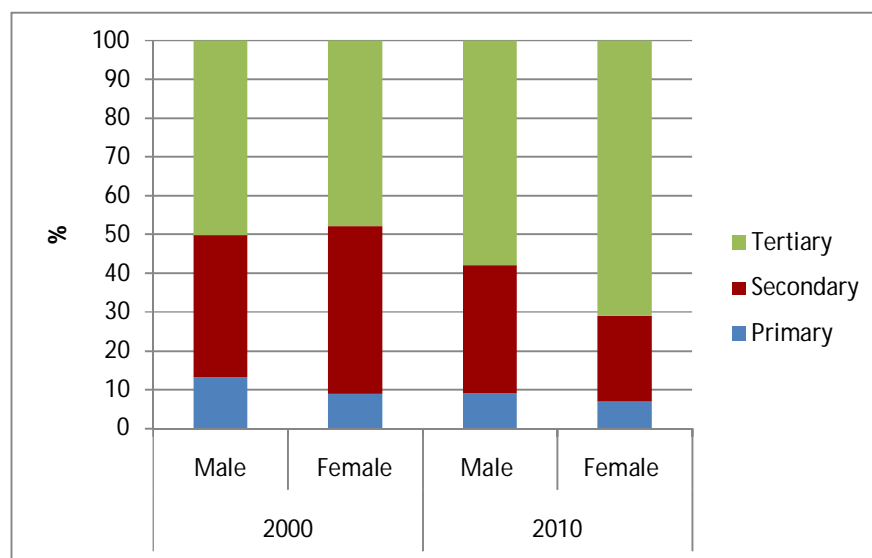
In 2010, working women were 190,400 in number and accounted for 36% of the total workforce, i.e. 1 out of every 3 workers was woman. A working woman was on average one year younger than her male counterpart.

The majority of the workforce were found in the tertiary sector (covering trade, hotels & restaurants, transport and all other service industries) for both and women.

Out of every 10 female workers, 7 were employed in the tertiary sector, 2 in the secondary sector (covering manufacturing, electricity & water and construction) and 1 in the primary sector (covering agriculture and mining & quarrying). The corresponding figures for male workers were 6, 3 and 1.

Ten years ago, men and women were almost equally distributed in the three sectors of employment.

Chart 17 – Distribution of employed person by sector and sex, 2000 & 2010



Women are much less likely than men to be self employed. Only 12% of the employed women worked on their own or head their business compared to 21% for men. However, women are nowadays more inclined towards entrepreneurship than they were ten years back.

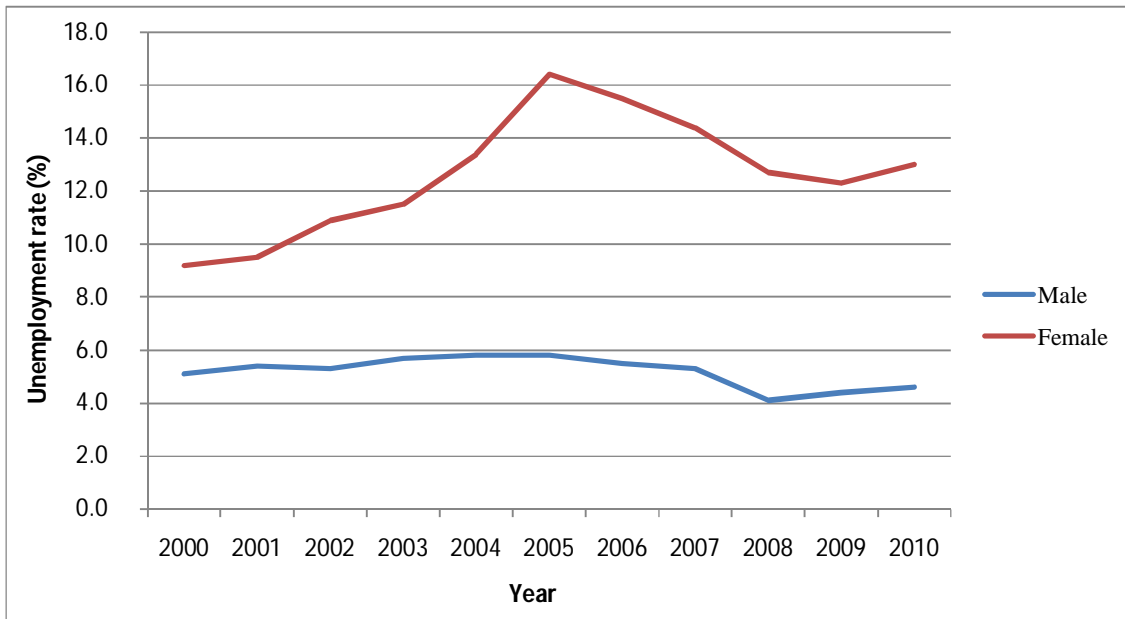
Table 8 – Distribution (%) of employed persons by employment status and sex, 2000 & 2010

Employment status	2000		2010	
	Male	Female	Male	Female
Employer	4.9	1.8	5.3	1.8
Own account worker	15.3	5.4	15.9	9.6
Employee	79.3	91.1	77.9	83.5
Contributing family worker	0.5	1.7	0.9	5.1
Total	100.0	100.0	100.0	100.0

Though the working age population comprised an almost equal number of men and women, the latter are over represented among the unemployed. In 2010, unemployed women numbered 28,500 against 16,700 men. Female unemployment rate at 13%, nearly trebled the rate for men.

Over the years, while male unemployment rate hovered in the range of 4% to 6 %, that for women increased to reach a peak of 16% in 2005; it then decreased till 2009 when the trend is reversed. The disparity between male and female unemployment is higher in 2010 than in 2000.

Chart 18 – Unemployment rate (%) by sex, 2000 - 2010



In 2010, unemployed men were mostly single (78%) while unemployed women were mostly ever-married (67%).

Unemployed women are on average three years older than unemployed men, but less likely to have work experience. Some 65% of the unemployed women had worked in the past against nearly 70% for men.

Unemployed women are generally more qualified but tend to stay longer in unemployment. Some 40% of them possessed the School Certificate or above against 35% among men. On average, women remained unemployed for 12 months compared to 8 months for men.

In search for a job, men are more likely to check at factories and worksites while the most common method for women was to apply to prospective employers.

Unemployed men relied mainly on their parents for financial support whereas jobless women were supported mostly by their spouse or partner.

12. POLICY AND DECISION MAKING

Women's participation in decision making is increasing but remains low. Though the number of female candidates at the National Legislative Assembly increased nearly four fold over the past 20 years, they represented only 11% of the candidates at the 2010 National Legislative Assembly Election.

Table 9 - Candidates at the National Legislative Assembly Elections, 1991, 2000 & 2010

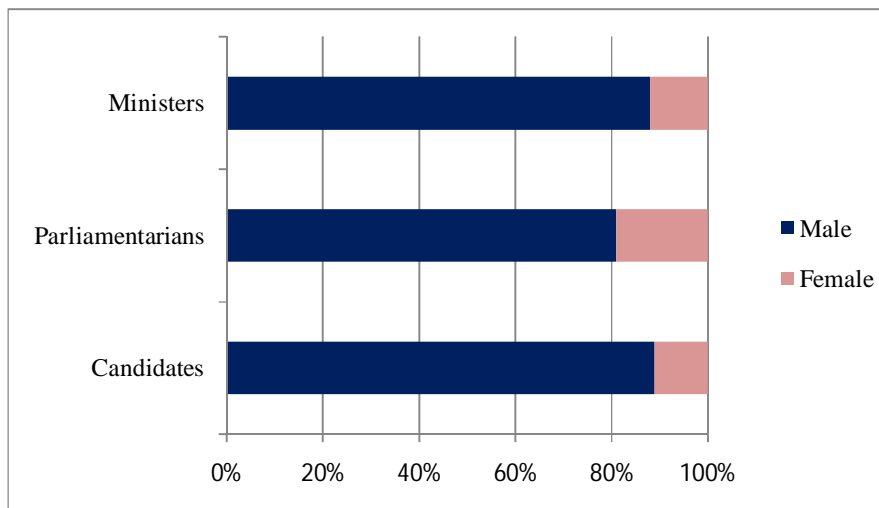
	1991		2000		2010	
	Number	%	Number	%	Number	%
Male	316	95	494	92	471	89
Female	15	5	41	8	58	11
Total	331	100	535	100	529	100

Similarly, the number of female parliamentarians increased, but comprised less than 20% of the total number in 2010. During the same year, there were only 3 women ministers out of a total of 25 (12%).

Table 10 - Parliamentarians, National Legislative Assembly Elections, 1991, 2000 & 2010

	1991		2000		2010	
	Male	Female	Male	Female	Male	Female
Members of Parliament	64	2	66	4	56	13
<i>of whom Ministers</i>	<i>18</i>	<i>1</i>	<i>23</i>	<i>1</i>	<i>22</i>	<i>3</i>

Chart 19 - Candidates, Parliamentarians and Ministers, 2010



In 2005, women comprised 13% of the elected members at the Municipal Council Election. They are even more under-represented at the Village Council Election, with a share of only 6%, though the number increased six fold from 1992 to 2005.

Table 11 – Elected Members at the Municipal Council Elections, 1991, 2001 & 2005

	1991		2001		2005	
	Male	Female	Male	Female	Male	Female
Urban Councillors	119	7	109	17	110	16

Table 12 – Elected Members at the Village Council Elections, 1992, 1997 & 2005

	1992		1997		2005	
	Male	Female	Male	Female	Male	Female
Rural Councillors	1,378	14	1,435	41	1,390	86

More women are occupying high positions in government services. Women in the most senior positions more than doubled in number during the period 2000 to 2010; the proportion of women in the most senior positions thus increased from 23% to 39% over the last ten years.

Table 13 – Senior position ¹ in Government Services, 2000, 2005 & 2010

	2000		2005		2010	
	Number	%	Number	%	Number	%
Male	266	77	213	65	284	61
Female	80	23	114	35	184	39
Total	346	100	327	100	468	100

¹ Senior Chief Executive, Permanent Secretary, Principal Assistant Secretary, Director, Manager, Judge and Magistrate

13. DOMESTIC VIOLENCE

Domestic violence against men is on the increase, though women are more likely to be victims. Cases of domestic violence are reported at the Ministry of Gender Equality, Child Development and Family Welfare. During the period 2000 to 2010, the number of reported cases of domestic violence against men increased by 7 times while that for women rose by 1.5 times.

Out of every 8 cases of domestic violence reported in 2010, 7 were against women.

Table 14 – Cases of domestic violence reported, 2000 - 2010

Year	Male	Female
2000	37	1,235
2004	143	1,579
2008	287	1,959
2010	263	1,952

Some 35% of women victims of domestic violence reported physical assault by spouse or partner, and 34% verbal assault by spouse or partner (illtreatment, harassment, abuse, humiliation). Reported cases by men relate mostly to verbal assault by spouse or partner (30%) and physical assault by spouse or partner (18%). Another 18% of men victims reported being assaulted by other members of their households; the corresponding percentage for women was less than 5%.

14. VICTIMS OF PERSONAL THEFT

Women are more likely to be victims of personal theft than men, but are less likely to report the incident to the police. The 2010 Continuous Multi Purpose Household Survey reveals that 60% of victims of personal theft or attempted theft were women. The latter were mainly victims of bag/purse snatching (34%), mobile phone theft (29%) and chain snatching (22%). Nearly 60% of the men victims of personal theft or attempted theft lost their mobile phone while another 23% had their bag/purse snatched.

Some 55% of the thefts against men were reported to the police against 40% for those against women.

15. OFFENCES AND IMPRISONMENT

Men are more likely to be victims of homicides and assaults while women are more prone to sexual offences. In 2009, 61% of the intentional homicides and 56% of the assaults were committed against men. However, women were found to be victims to 90% of the sexual offences.

Table 15 – Victims of selected offences reported at the Police, Island of Mauritius, 2009

Offences	Male	Female	Both sexes
Homicides	62	31	93
<i>of which Intentional Homicides</i>	30	19	49
Assaults	8 026	6 225	14 251
Sexual offences	43	344	387
<i>of which Rape</i>	1	52	53

Men commit more offences than women and are more likely to be convicted for offences than women. In 2009, out of every 30 convicts admitted to prison, 29 were males. The admission rate per 100,000 mid-year population was 723 for men and 24 for women.

Theft was the most common offence for which both men (47%) and women (31%) were admitted in prisons in 2009. Fraud & dishonesty ranked second for male convicts while drug offences listed second for female convicts.

Table 16 - Number of convicts admitted, 2009

Offences	Male	Female	Total
Homicide and related offences	23	2	25
Assault and related offences	204	5	209
Sexual offences	48	1	49
Fraud and dishonesty	880	6	886
Theft	1675	38	1,713
Drug offences	662	25	687
Other offences	99	46	145
Total	3,591	123	3,714

The majority (85%) of the male adult offenders admitted to prisons in 2009 was reoffenders with at least one previous imprisonment while nearly half of the adult female offenders had previous imprisonment.

16. UN GENDER INDICES

The Gender Inequality Index (GII) , introduced by the United Nations in 2010, is a composite measure reflecting inequality in achievements between women and men in three dimensions, namely reproductive health, empowerment and the labour market. It varies between zero (when women and men fare equally) and one (when men or women fare poorly compared to the other in all dimensions).

According to the latest figure published in the 2010 UN Human Development Report, Mauritius is ranked 46th out of 138 countries with a GII value of 0.47 in 2008. Netherlands ranked first with a value of 0.17 and Yemen last with a value of 0.85.

Table 17 - GII by selected countries, 2008

Country	Index	Rank
Netherlands	0.17	1
Singapore	0.26	10
Australia	0.30	18
United Kingdom	0.36	32
Mauritius	0.47	46
South Africa	0.64	82
Kenya	0.74	117
India	0.75	122
Yemen	0.85	138

Central Statistics Office
Ministry of Finance and Economic Development
Port Louis
July 2011

Contact person: Mr. D. Pothegadoo

Statistician

Central Statistics Office

LIC Centre, Port Louis

Tel: 2122316, 2122317

Fax: 2114150

email: dpothegadoo@mail.gov.mu

DEFINITION OF TERMS

1. **Activity rate** : The ratio (%) of the economically active population (employed and unemployed) to population aged 16 years and above.
2. **Age specific fertility rate** : The number of live births to women of a specified age-group per 1,000 women in that age-group.
3. **Assault** : Physical attack against the body of another person.
4. **Contributing family worker** : A contributing family worker is a person who works without pay in an enterprise operated by a family member.
5. **Convict** : A person sentenced to imprisonment
6. **Death rate** : The number of deaths in a year per 1,000 mid-year population.
7. **Divorce rate** : The number of persons divorced in a year per 1,000 mid-year population.
8. **Employment** : Employed population consists of Mauritians aged 16 years and above who have worked for pay, profit or family gain for at least one hour during the reference week of a month. It includes those who are temporarily absent from work for reasons such as leave with pay, leave without pay and temporary disorganisation of work (bad weather, break down of equipment, lack of order, etc.).
9. **Employee** : An employee is a person who works for pay for someone else, even in a temporary capacity.
10. **Employer** : An employer is a person who operates his/her own business or trade and hires one or more employees.
11. **Fraud** : The acquisition of another person's property by deception.
12. **Gross Enrolment Ratio (primary)** : The number of pupils in standard I to VI as a percentage of the total population aged 6-11 years.
13. **Gross Enrolment Ratio (secondary)** : The number of pupils in form I to VI as a percentage of the total population aged 12-19 years.
14. **Household** : A household is defined as either a person living on his/her own or a group of two or more persons, who may or may not be related, but who live together and make common provision for food and other essentials for living.
15. **Intentional homicide** : Death deliberately inflicted on a person by another person, including infanticide and abortion.

- 16. Life expectancy at birth :** Life expectancy at birth is the average number of years that a new born child would be expected to live if subjected to the mortality conditions by a particular set of age specific death rates.
- 17. Marriage rate :** The number of persons married in a year per 1,000 mid-year population.
- 18. Own account worker :** An own account worker is a person who operates his/her own business or trade but does not hire employees. He/She may be working alone or with the help of contributing family workers.
- 19. Unemployment :** Unemployed population comprises all Mauritians aged 16 years and over who are not working but who are looking for work and are available for work during the reference period.
- 20. Unemployment rate :** Unemployment rate is the ratio (%) of unemployment to economically active population (employed and unemployed).
- 21. Sex Ratio :** The sex ratio is defined as the number of males per 100 females.
- 22. Sexual offence :** Sexual intercourse or assault without valid consent.
- 23. Total fertility rate :** Total fertility rate is the average number of children born to an average woman assuming that she survives to the end of her child-bearing age and is subjected to a fixed schedule of age-specific fertility rates.
- 24. Theft :** The removal of property without the owner's consent.