

## Quarterly Export and Import Price Indices

1st Quarter 2011  
(Base year: 2007=100)

### 1. Introduction

The Export Price Index (EPI) provides an overall measure of pure price changes (in Mauritian rupees) of goods exported to other countries. The Import Price Index (IPI), on the other hand, measures pure price changes (in Mauritian rupees) of goods purchased from other countries.

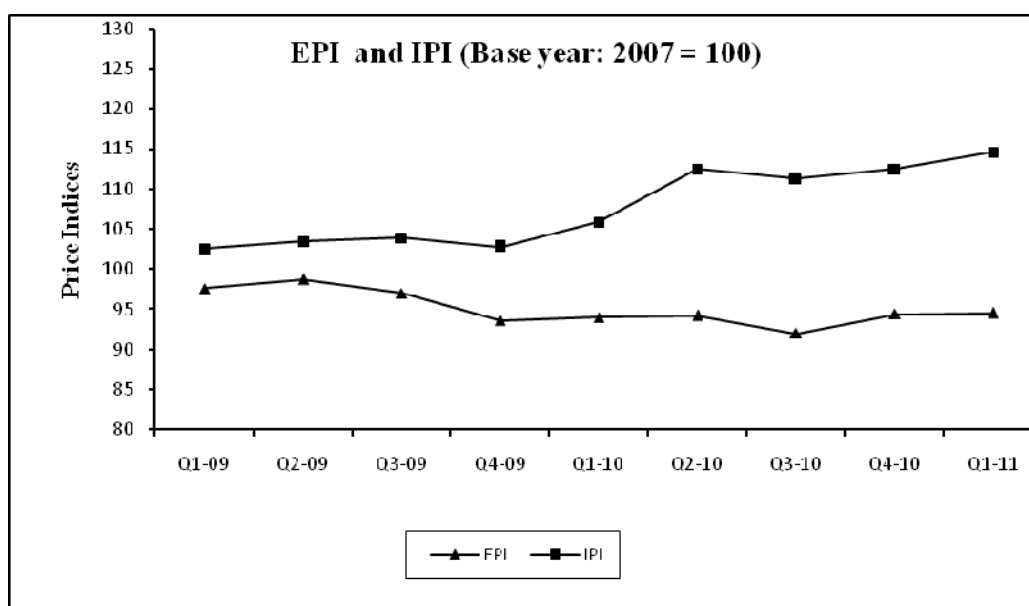
This issue of Economic and Social Indicators presents a series of quarterly export and import price indices for the period 2009 to first quarter 2011 with 2007 as base year. The weights have been derived from exports and imports data for the base year, while the average import and export prices of representative items in 2007 have been used in the base year.

The methodology used and the weight structure are given in the technical notes at Annex.

### 2. Terms of trade (base year: 2007 = 100)

The terms of trade index are the ratio of export price index to import price index. A rise in this ratio indicates that the terms of trade have moved in favour of Mauritius. During the first quarter of 2011, exports and imports prices increased by 0.1% and 1.8% respectively when compared to the previous quarter. Consequently, the terms of trade were down by 2 points to reach 82.

Chart 1: Export and Import price indices, 1<sup>st</sup> Quarter 2009 – 1<sup>st</sup> Quarter 2011



### **3. Export Price Index (EPI) – (Tables 4-9)**

#### **3.1 Structure of the EPI**

The EPI covers six sections of the SITC, namely “Food and live animals”, “Crude materials, inedible, except fuels”, “Animals and vegetables oils & fats” “Chemicals and related products”, “Manufactured goods classified chiefly by material” and “Miscellaneous manufactured articles”. Exports of goods falling under these sections covered 88.0% of total exports in base year 2007. In addition to the overall index, separate sub-indices are given for the different sections, groups of commodities and items product categories.

#### **3.2 Changes in Export Price Index (1<sup>st</sup> quarter 2011)**

##### 3.2.1 Overall Index

During the first quarter of 2011, the EPI increased by 0.1% to reach 94.5 from 94.4 in the previous quarter. This was mainly due to increases in the prices of “Manufactured goods classified chiefly by material” (+5.5%) and “Miscellaneous manufactured articles” (+0.5%) partly offset by a decrease in the prices of “Food and live animals” (-2.0%).

Compared to price levels in the corresponding quarter of 2010, the index was higher by 0.5%, explained by price increases in “Miscellaneous manufactured articles” (+2.1%) partly offset by a decrease in prices of “Food and live animals” (-1.2%).

##### 3.2.2 Sub-indices by section

###### *Section 0: Food and live animals*

During the first quarter of 2011, the sub-index for “Food and live animals” accounting for 34.5% of the total weight went down to 87.7 from 89.5 in the previous quarter representing a fall of 2.0%. That was mainly due to a decrease of 5.0% in the export price of “Fish and fish preparations”.

When compared to the corresponding quarter of 2010, the index decreased by 1.2%, due to a fall of 5.1% in the prices of “Sugars, sugar preparations and honey” partly offset by a rise of 2.8% in the prices of “Fish and fish preparations”.

###### *Section 2: Crude materials, inedible, except fuels*

The index for “Crude materials, inedible, except fuels” decreased by 13.2% from 120.9 in the fourth quarter of 2010 to 105.0 in the first quarter of 2011, as a result of a 13.2% fall in the export price of fresh cut flowers.

When compared to the corresponding quarter of 2010, the index was 13.9% lower.

*Section 4: Animal and vegetable oils, fats and waxes*

The index for “Animal and vegetable oils, fats and waxes” remained almost at the same level of the fourth quarter of 2010.

Compared to the corresponding period of 2010, the index went up by 4.6%.

*Section 5: Chemicals and related products*

The export price index for “Chemicals and related products”, which stood at 89.3 in the fourth quarter of 2010, decreased by 1.0% to reach 88.4 in the first quarter of 2011.

Compared to the corresponding quarter of 2010, the index fell by 1.0%.

*Section 6: Manufactured goods classified chiefly by material*

Export prices of goods in this section, which consist mainly of textile fabrics, increased by 5.5% from 125.0 in the fourth quarter of 2010 to 131.8 in the first quarter of 2011. This rise is explained by higher prices of 8.9 % in “Textile yarn and fabrics”, the most important component of this section.

Compared to the corresponding quarter of 2010, the index fell by 1.2%, mainly as a result of a 6.9% fall in the export prices of “Textile yarn and fabrics”.

*Section 8: Miscellaneous manufactured articles*

“Miscellaneous manufactured articles” which consists mostly of articles of apparel and clothing accessories, is the most important section covered by the export price index as it carries about 55.2% of the total weight.

There was no change in the index for this section when compared to the fourth quarter of 2010.

Compared to the corresponding quarter of 2010, the index was up by 1.6% as a result of higher prices of “Articles of apparel and clothing accessories” (+1.1%).

**4. Import Price Index (IPI) (Tables 10 -16)**

**4.1 Structure of the IPI**

The IPI covers nine out of the 10 Standard International Trade Classification (SITC, Rev.3) sections.

The only section not covered is “Commodities and transactions not classified elsewhere”, because of the heterogeneity of the products and the inherent difficulties in pricing the items of a constant quality.

Thus, the index, either directly or indirectly, covers about 91.0% of merchandise imported during 2007. Sixty per cent of the items are directly represented. For those items which are not directly represented, the prices are considered to move similarly to those represented directly.

## **4.2 Changes in Import Price Index (1st quarter 2011)**

### 4.2.1 Overall Index

The Import Price Index (IPI) increased by 1.8% from 112.5 in the last quarter of 2010 to 114.6 in the first quarter of 2011. This was mainly the effect of increases in the prices of “Mineral fuels, lubricants and related materials” (+7.9%) and “Food and live animals” (+0.7%).

Compared to the corresponding period of 2010, the index went up by 8.1%, mainly as a result of increases in the prices of “Mineral fuels, lubricants and related materials” (+19.9%) and “Food and live animals” (+8.8%).

### 4.2.2 Sub-indices by section

#### *Section 0: Food and live animals*

The index for “Food and live animals”, representing about 18.0% of total weight, increased by 0.7%, from 118.1 in the fourth quarter of 2010 to 118.9 in the first quarter of 2011. Within the section, price increases were registered in “Fish and fish preparations” (+12.6%), while decreases were noted in “Cereals and cereal preparations” (-3.7%) and “Dairy products and birds’ eggs” (-1.4%).

Compared to the fourth quarter of 2010, the index went up by 8.8%, mainly due to increases in the prices of “Fish and fish preparations” (+23.1%) and “Meat and meat preparations” (+15.0%).

#### *Section 1: Beverages and tobacco*

The index for “Beverages and tobacco” was down by 1.2%, from 137.5 in the fourth quarter of 2010 to 135.9 in the first quarter of 2011, as a result of price decreases of 1.0% and 1.3% in “Tobacco and tobacco manufactures” and “Beverages” respectively.

Compared to the corresponding period of 2010, the index fell by 3.1% due to price falls of 3.7% and 2.3% in the prices of “Beverages” and “Tobacco & tobacco manufactures” respectively.

#### *Section 2: Crude materials, inedible, except fuels*

The index for “Crude materials, inedible, except fuels” was down by 3.0% from 148.4 in the fourth quarter of 2010 to 144.0 in the first quarter of 2011, mainly

as a result of decreases of 0.5% in prices of “Textile fibres and their wastes” and 2.3% in prices of “Cork and Wood”.

Compared to the corresponding period of last year, the index increased by 2.0%, mainly attributable to an increase of 10.4% in the prices of “Textile fibres and their wastes”.

### *Section 3: Mineral fuels, lubricants and related materials*

The index for “Mineral fuels, lubricants and related materials” with 20% of the total weight, increased by 7.9% from 116.0 in the fourth quarter of 2010 to reach 125.2 in the first quarter of 2011, mainly explained by an increase of 9.1% in the prices of “Petroleum, petroleum products and materials”.

Compared to the corresponding period of 2010, the index rose by 19.9%, mainly due to a price increase of 21.6% in “Petroleum, petroleum products and materials”.

### *Section 4: Animal and vegetable oils, fats and waxes*

During the first quarter of 2011, the index for “Animal and vegetable oils, fats and waxes” went up by 32.0% reaching 152.8 from 115.8 in the fourth quarter of 2010.

When compared to the corresponding quarter of 2010, the index showed an increase of 40.1% reaching 152.8 from 109.1.

### *Section 5: Chemical materials and related products, not elsewhere specified (n.e.s)*

The index for “Chemical materials and related products, n.e.s” fell by 2.7% in the first quarter of 2011 from 108.2 in the fourth quarter of 2010 to reach 105.3. During the first quarter of 2011, decreases in import prices were registered in “Plastics in primary forms” (-5.2%) and “Medicinal and pharmaceutical products” (-1.0%).

The index decreased by 1.2% when compared to the corresponding period of last year.

### *Section 6: Manufactured goods classified chiefly by material*

In the first quarter of 2011, the index for “Manufactured goods classified chiefly by material” stood at 106.0, which represents an increase of 1.0% over the previous quarter which was 104.9. This is mainly attributable to a rise in prices of “Non-metallic mineral manufactures n.e.s” (+6.3%) and “Textile yarn, fabrics, made-up articles n.e.s” (+1.6%).

When compared to the corresponding quarter of 2010, the index went up by 4.7%, mainly due to price increases in “Textile yarn, fabrics, made-up articles n.e.s” (+11.4%) and “Iron and steel” (+6.8%).

*Section 7: Machinery and transport equipment*

The index of “Machinery and transport equipment” with 18.0% of total weight reached 107.8 in the first quarter of 2011, showing a slight increase of 0.2% compared to the previous quarter which stood at 107.5. This was mainly due to an increase of 2.2% in the prices of “Telecommunications and sound recording and apparatus”.

Compared to the corresponding quarter of 2010, the index was up by 7.1%, mainly attributable to price increases of 31.2% in “Telecommunications and sound recording and apparatus”.

*Section 8: Miscellaneous manufactured articles*

The index of “Miscellaneous manufactured articles” fell by 2.2% in the first quarter of 2011 from 110.1 in the fourth quarter to reach 107.7. This is mainly attributable to decreases in “Miscellaneous manufactured articles, n.e.s” (-2.6%) and “Photographic apparatus, equipment and supplies and optical goods, n.e.s., watches & clocks” (-2.0%).

Compared to the corresponding quarter of 2010, the index rose by 0.6%, mainly due to higher prices of 23.3% in “Professional, scientific instruments”.

**5. Past trends**

As indicated earlier, EPI and IPI in this publication are not strictly comparable with previously published series worked out using 2003 as base year. Chain linked export and import price indices using 2007 as the base year have been worked out using appropriate conversion factors and are presented in Tables 9 and 16 respectively.

**Central Statistics Office**

Ministry of Finance and Economic Development

**PORT LOUIS**

June 2011

**Contact Person**

**S. Haulcooree - Statistician**

<b>Central Statistics Office</b>	<b>Telephone: 2122316</b>
<b>L.I.C Centre</b>	<b>Fax: 211 4150</b>
<b>J. Kennedy Street</b>	
<b>Port Louis</b>	

**Table 1- Price indices of exports and imports and terms of trade, 1st quarter 2009 - 1st quarter 2011**

Period		Price indices		Terms of trade
		Export	Import	
Reference year : 2007 = 1 0 0				
2009	1st Qr	98	103	95
	2nd Qr	99	104	95
	3rd Qr	98	104	94
	4th Qr	94	103	92
	<b>Year</b>	<b>97</b>	<b>103</b>	<b>94</b>
2010	1st Qr	94	106	89
	2nd Qr	94	112	84
	3rd Qr	92	111	83
	4th Qr	94	112	84
	<b>Year</b>	<b>94</b>	<b>110</b>	<b>85</b>
2011 <sup>1</sup>	1st Qr	94	115	82

<sup>1</sup> Provisional**Table 2-Percentage change in the price and volume of exports<sup>1</sup>, 1st quarter 2010 - 1st quarter 2011**

SITC-section	Description	Weight	F.O.B Value (Rs Mn)		% change		
			Jan-Mar 2010	Jan-Mar 2011 <sup>2</sup>	Value	Price	Volume <sup>3</sup>
	<b>Overall</b>	<b>10,000</b>	<b>11,937</b>	<b>14,756</b>	<b>+ 24</b>	<b>+ 1</b>	<b>+ 23</b>
0	Food and live animals	<b>3,445</b>	3,604	4,973	+ 38	- 1	+ 40
	<i>of which:</i>						
	<i>Sugar</i>	<b>1,904</b>	824	2,201	+ 167	-5	+ 182
2	Crude materials, inedible except fuels	<b>37</b>	232	296	+ 28	- 14	+ 48
4	Animals and vegetables oils & fats	<b>9</b>	17	18	+ 6	+ 5	+ 1
5	Chemicals & related products, n.e.s	<b>233</b>	429	458	+ 7	- 1	+ 8
6	Manufactured goods classified chiefly by material	<b>759</b>	1,201	1,653	+ 38	- 1	+ 39
8	Miscellaneous manufactured articles	<b>5,517</b>	6,454	7,358	+ 14	+ 2	+ 11

<sup>1</sup> Excluding sections 1,3,7 and 9 not covered by the EPI<sup>2</sup> Provisional <sup>3</sup> Volume change has been derived as the ratio of value to price change**Table 3 -Percentage change in the price and volume of total imports<sup>1</sup>, 1st quarter 2010 -1st quarter 2011**

SITC-section	Description	Weight	C.I.F Value (Rs Mn)		% change		
			Jan-Mar 2010	Jan-Mar 2011 <sup>2</sup>	Value	Price	Volume <sup>3</sup>
	<b>Overall</b>	<b>10,000</b>	<b>28,577</b>	<b>34,592</b>	<b>+ 21</b>	<b>+ 8</b>	<b>+ 12</b>
0	Food and live animals	<b>1,808</b>	5,803	5,923	+ 2	+ 9	- 6
1	Beverages & tobacco	<b>138</b>	568	575	+ 1	- 3	+ 5
2	Crude materials, inedible except fuels	<b>288</b>	857	1,177	+ 37	+ 2	+ 35
3	Mineral fuels, lubricants & related materials	<b>2,004</b>	5,738	9,386	+ 64	+ 20	+ 36
4	Animals and vegetables oils & fats	<b>104</b>	298	534	+ 79	+ 40	+ 28
5	Chemicals & related products, n.e.s	<b>851</b>	2,310	2,714	+ 17	-1	+ 19
6	Manufactured goods classified chiefly by material	<b>2,141</b>	4,937	6,155	+ 25	+ 5	+ 19
7	Machinery & transport equipment (excluding aircraft)	<b>1,800</b>	5,758	5,693	- 1	+ 7	- 8
8	Miscellaneous manufactured articles	<b>866</b>	2,308	2,435	+ 6	+ 1	+ 5

<sup>1</sup> Excluding section 9 not covered by the IPI<sup>2</sup> Provisional <sup>3</sup> Volume change has been derived as the ratio of value to price change

**Table 4 - Quarterly Export Price Index by SITC <sup>1</sup> section, 1st quarter 2009 - 1st quarter 2011**

Reference year 2007=100

SITC <sup>1</sup> Section	Description	Weight	2009					2010					2011
			1st Qr	2nd Qr	3rd Qr	4th Qr	Average	1st Qr	2nd Qr	3rd Qr	4th Qr	Average	1st Qr <sup>2</sup>
	<b>Overall</b>	<b>10,000</b>	<b>97.6</b>	<b>98.7</b>	<b>97.0</b>	<b>93.6</b>	<b>96.7</b>	<b>94.0</b>	<b>94.2</b>	<b>92.0</b>	<b>94.4</b>	<b>93.7</b>	<b>94.5</b>
0	Food and live animals	3,445	96.1	92.5	90.6	87.2	<b>91.6</b>	88.8	89.0	88.3	89.5	<b>88.9</b>	87.7
2	Crude materials, inedible, except fuels	37	139.6	116.4	139.9	146.7	<b>135.7</b>	121.9	122.9	134.8	120.9	<b>125.1</b>	105.0
4	Animals and vegetables oils & fats	9	103.2	117.4	114.7	71.6	<b>101.7</b>	75.6	79.1	79.1	79.1	<b>78.2</b>	79.1
5	Chemicals and related products, n.e.s	233	96.8	100.5	94.3	93.3	<b>96.2</b>	89.2	86.9	86.4	89.3	<b>88.0</b>	88.4
6	Manufactured goods classified chiefly by material	759	127.5	134.7	127.1	123.0	<b>128.1</b>	133.5	127.8	130.6	125.0	<b>129.2</b>	131.8
8	Miscellaneous manufactured articles	5,517	94.2	97.4	96.6	93.3	<b>95.4</b>	91.9	93.0	88.9	93.3	<b>91.8</b>	93.8

<sup>1</sup> The Standard International Trade Classification Revision 3 (SITC Rev 3)

<sup>2</sup> Provisional



**Table 5 - Quarterly Export Price Index by SITC <sup>1</sup>, 1st quarter 2009 - 1st quarter 2011**

Reference year 2007=100

SITC <sup>1</sup> Section	Description	Weight	2009					2010					2011
			1st Qr	2nd Qr	3rd Qr	4th Qr	Average	1st Qr	2nd Qr	3rd Qr	4th Qr	Average	1st Qr <sup>2</sup>
	<b>Overall</b>	<b>10,000</b>	<b>97.6</b>	<b>98.7</b>	<b>97.0</b>	<b>93.6</b>	<b>96.7</b>	<b>94.0</b>	<b>94.2</b>	<b>92.0</b>	<b>94.4</b>	<b>93.7</b>	<b>94.5</b>
<b>0</b>	<b>Food and live animals</b>	<b>3,445</b>	<b>96.1</b>	<b>92.5</b>	<b>90.6</b>	<b>87.2</b>	<b>91.6</b>	<b>88.8</b>	<b>89.0</b>	<b>88.3</b>	<b>89.5</b>	<b>88.9</b>	<b>87.7</b>
	Live animals	163	110.6	113.9	112.7	106.6	<i>110.9</i>	90.0	92.5	91.0	89.9	<i>90.8</i>	89.0
	Fish, crustaceans, molluscs, and aquatic invertebrates and preparations thereof	1,262	104.4	94.5	90.8	82.6	<i>93.1</i>	89.6	89.9	94.3	96.9	<i>92.7</i>	92.1
	Cereals and cereal preparations	55	131.4	126.5	125.7	119.5	<i>125.8</i>	107.9	107.1	107.9	115.0	<i>109.5</i>	117.6
	Sugars, sugar preparations and honey	1,904	87.7	87.7	86.9	86.9	<i>87.3</i>	86.9	86.9	82.4	82.4	<i>84.6</i>	82.4
	Feeding stuff for animals	61	114.9	114.9	113.8	111.1	<i>113.7</i>	111.8	114.7	120.6	130.4	<i>119.4</i>	130.4
<b>2</b>	<b>Crude materials, inedible, except fuels</b>	<b>37</b>	<b>139.6</b>	<b>116.4</b>	<b>139.9</b>	<b>146.7</b>	<b>135.7</b>	<b>121.9</b>	<b>122.9</b>	<b>134.8</b>	<b>120.9</b>	<b>125.1</b>	<b>105.0</b>
	Crude animal and vegetable materials (Fresh cut flowers)	37	139.6	116.4	139.9	146.7	<i>135.7</i>	121.9	122.9	134.8	120.9	<i>125.1</i>	105.0
<b>4</b>	<b>Animal and vegetable oils, fats and waxes</b>	<b>9</b>	<b>103.2</b>	<b>117.4</b>	<b>114.7</b>	<b>71.6</b>	<b>101.7</b>	<b>75.6</b>	<b>79.1</b>	<b>79.1</b>	<b>79.1</b>	<b>78.2</b>	<b>79.1</b>
	Fixed vegetable fats and oils, crude, refined or fractionated	9	103.2	117.4	114.7	71.6	<i>101.7</i>	75.6	79.1	79.1	79.1	<i>78.2</i>	79.1
<b>5</b>	<b>Chemicals and related products, n.e.s</b>	<b>233</b>	<b>96.8</b>	<b>100.5</b>	<b>94.3</b>	<b>93.3</b>	<b>96.2</b>	<b>89.2</b>	<b>86.9</b>	<b>86.4</b>	<b>89.3</b>	<b>88.0</b>	<b>88.4</b>
	Organic chemicals	69	100.4	104.2	80.4	82.5	<i>91.8</i>	81.2	80.6	83.4	87.0	<i>83.1</i>	86.1
	Medicinal and pharmaceutical products	164	95.4	99.0	100.1	97.8	<i>98.1</i>	92.6	89.6	87.7	90.2	<i>90.0</i>	89.3
<b>6</b>	<b>Manufactured goods classified chiefly by material</b>	<b>759</b>	<b>127.5</b>	<b>134.7</b>	<b>127.1</b>	<b>123.0</b>	<b>128.1</b>	<b>133.5</b>	<b>127.8</b>	<b>130.6</b>	<b>125.0</b>	<b>129.2</b>	<b>131.8</b>
	Textile yarn, fabrics, made-up articles, n.e.s., & related products	438	137.6	146.2	130.7	126.5	<i>135.3</i>	148.4	139.5	140.8	126.8	<i>138.9</i>	138.1
	Non-metallic mineral manufactures, n.e.s	178	116.3	120.1	120.5	118.5	<i>118.9</i>	115.8	116.2	126.9	134.8	<i>123.4</i>	137.1
	Manufactures of metal, n.e.s.	143	110.6	117.5	124.1	117.9	<i>117.5</i>	109.8	106.3	104.0	107.0	<i>106.8</i>	105.9

<sup>1</sup> The Standard International Trade Classification Revision 3 (SITC Rev 3)

<sup>2</sup> Provisional

**Table 5 (cont'd) - Quarterly Export Price Index by SITC<sup>1</sup>, 1st quarter 2009 - 1st quarter 2011**

Reference year 2007=100

SITC <sup>1</sup> Section	Description	Weight	2009					2010					2011
			1st Qr	2nd Qr	3rd Qr	4th Qr	Average	1st Qr	2nd Qr	3rd Qr	4th Qr	Average	1st Qr <sup>2</sup>
<b>8</b>	<b>Miscellaneous manufactured articles</b>	<b>5,517</b>	<b>94.2</b>	<b>97.4</b>	<b>96.6</b>	<b>93.3</b>	<b>95.4</b>	<b>91.9</b>	<b>93.0</b>	<b>88.9</b>	<b>93.3</b>	<b>91.8</b>	<b>93.8</b>
	Articles of apparel and clothing access	5,389	93.4	96.5	95.7	92.4	<b>94.5</b>	91.1	92.2	87.7	92.2	<b>90.8</b>	92.6
	<i>Men's or boys' coats, jackets, suits, blazers, trousers, shorts, shirts etc, not knitted or crocheted</i>	1,488	98.6	99.8	98.3	93.4	<b>97.5</b>	92.2	94.0	92.7	96.5	<b>93.9</b>	97.6
	<i>Women's or girls' coats, jackets, suits, blazers, trousers, shorts, shirts etc, not knitted or crocheted</i>	256	112.3	110.7	113.1	130.1	<b>116.5</b>	131.6	138.6	136.3	137.2	<b>135.9</b>	136.2
	<i>Men's or boys' coats, jackets, suits, blazers, trousers, shorts, shirts etc, knitted or crocheted</i>	546	79.9	83.2	84.3	82.1	<b>82.4</b>	80.1	77.4	76.6	77.6	<b>77.9</b>	77.7
	<i>Women's or girls' coats, jackets, suits, blazers, trousers, shorts, shirts etc, knitted or crocheted</i>	49	90.1	93.5	94.6	92.4	<b>92.6</b>	87.5	84.6	82.8	85.2	<b>85.0</b>	84.3
	<i>Articles of apparel, of textile fabrics, whether or not knitted or crocheted</i>	3,050	91.8	95.9	95.1	90.6	<b>93.3</b>	89.1	90.2	83.3	89.0	<b>87.9</b>	89.2
	Photographic apparatus, equipment and supplies and optical goods, n.e.s.; watches & clocks	99	137.1	141.3	141.4	138.5	<b>139.6</b>	135.1	135.8	152.9	157.3	<b>145.3</b>	161.9
	<i>Optical goods, n.e.s</i>	29	102.1	104.3	103.4	99.8	<b>102.4</b>	97.0	97.9	95.9	95.0	<b>96.5</b>	94.5
	<i>Watches and clocks</i>	70	151.6	156.6	157.1	154.6	<b>155.0</b>	150.9	151.5	176.6	183.2	<b>165.5</b>	189.8
	Miscellaneous manufactured articles, n.e.s	29	99.4	99.8	100.8	94.7	<b>98.7</b>	91.9	91.9	94.3	93.4	<b>92.9</b>	92.5

<sup>1</sup> The Standard International Trade Classification Revision 3 (SITC Rev 3)

<sup>2</sup> Provisional

**Table 6 - Export Price Index: Percentage change by SITC<sup>1</sup> section, 1st quarter 2010 - 1st quarter 2011**

Section	Description	Weight	Percentage change from								
			1st Qr 10	2nd Qr 10	3rd Qr 10	4th Qr 10	1st Qr 09	2nd Qr 09	3rd Qr 09	4th Qr 09	1st Qr 10
			to 2nd Qr 10	to 3rd Qr 10	to 4th Qr 10	to 1st Qr 11	to 1st Qr 10	to 2nd Qr 10	to 3rd Qr 10	to 4th Qr 10	to 1st Qr 11
	<b>Overall</b>	<b>10,000</b>	<b>0.2</b>	<b>-2.4</b>	<b>2.6</b>	<b>0.1</b>	<b>-3.7</b>	<b>-4.5</b>	<b>-5.1</b>	<b>0.9</b>	<b>0.5</b>
0	Food and live animals	3,445	0.3	-0.9	1.4	-2.0	-7.6	-3.8	-2.6	2.6	-1.2
2	Crude materials, inedible, except fuels	37	0.8	9.7	-10.3	-13.2	-12.7	5.5	-3.7	-17.6	-13.9
4	Animals and vegetables oils & fats	9	4.6	0.0	0.0	0.0	-26.7	-32.6	-31.1	10.4	4.6
5	Chemicals and related products, n.e.s	233	-2.6	-0.6	3.3	-1.0	-7.9	-13.5	-8.4	-4.3	-1.0
6	Manufactured goods classified chiefly by material	759	-4.3	2.2	-4.3	5.5	4.7	-5.1	2.8	1.6	-1.2
8	Miscellaneous manufactured articles	5,517	1.2	-4.4	4.9	0.5	-2.5	-4.5	-7.9	0.1	2.1

<sup>1</sup> The Standard International Trade Classification Revision 3 (SITC Rev 3)

**Table 7 - Export Price Index: Percentage change by SITC<sup>1</sup>, 1st quarter 2010 - 1st quarter Qr 2011**

Section	Description	Weight	Percentage change from								
			1st Qr 10	2nd Qr 10	3rd Qr 10	4th Qr 10	1st Qr 09	2nd Qr 09	3rd Qr 09	4th Qr 09	1st Qr 10
			to 2nd Qr 10	to 3rd Qr 10	to 4th Qr 10	to 1st Qr 11	to 1st Qr 10	to 2nd Qr 10	to 3rd Qr 10	to 4th Qr 10	to 1st Qr 11
	<b>Overall</b>	<b>10,000</b>	<b>0.2</b>	<b>-2.4</b>	<b>2.6</b>	<b>0.1</b>	<b>-3.7</b>	<b>-4.5</b>	<b>-5.1</b>	<b>0.9</b>	<b>0.5</b>
<b>0</b>	<b>Food and live animals</b>	<b>3,445</b>	<b>0.3</b>	<b>-0.9</b>	<b>1.4</b>	<b>-2.0</b>	<b>-7.6</b>	<b>-3.8</b>	<b>-2.6</b>	<b>2.6</b>	<b>-1.2</b>
	Live animals	163	2.8	-1.6	-1.2	-1.0	-18.7	-18.8	-19.2	-15.7	-1.1
	Fish, crustaceans, molluscs, and aquatic invertebrates and preparations thereof	1,262	0.3	5.0	2.8	-5.0	-14.1	-4.9	3.8	17.4	2.8
	Cereals and cereal preparations	55	-0.7	0.7	6.6	2.2	-17.9	-15.3	-14.1	-3.7	9.0
	Sugars, sugar preparations and honey	1,904	0.0	-5.1	0.0	0.0	-1.0	-1.0	-5.1	-5.1	-5.1
	Feeding stuff for animals	61	2.6	5.2	8.1	0.0	-2.7	-0.2	6.0	17.3	16.6
<b>2</b>	<b>Crude materials, inedible, except fuels</b>	<b>37</b>	<b>0.8</b>	<b>9.7</b>	<b>-10.3</b>	<b>-13.2</b>	<b>-12.7</b>	<b>5.5</b>	<b>-3.7</b>	<b>-17.6</b>	<b>-13.9</b>
	Crude animal and vegetable materials (Fresh cut flowers)	37	0.8	9.7	-10.3	-13.2	-12.7	5.5	-3.7	-17.6	-13.9
<b>4</b>	<b>Animals and vegetables oils &amp; fats</b>	<b>9</b>	<b>4.6</b>	<b>0.0</b>	<b>0.0</b>	<b>0.0</b>	<b>-26.7</b>	<b>-32.6</b>	<b>-31.1</b>	<b>10.4</b>	<b>4.6</b>
	Fixed vegetable fats and oils, crude, refined or fractionated	9	4.6	0.0	0.0	0.0	-26.7	-32.6	-31.1	10.4	4.6
<b>5</b>	<b>Chemicals and related products, n.e.s</b>	<b>233</b>	<b>-2.6</b>	<b>-0.6</b>	<b>3.3</b>	<b>-1.0</b>	<b>-7.9</b>	<b>-13.5</b>	<b>-8.4</b>	<b>-4.3</b>	<b>-1.0</b>
	Organic chemicals	69	-0.7	3.4	4.4	-1.0	-19.1	-22.6	3.7	5.6	6.1
	Medicinal and pharmaceutical products	164	-3.3	-2.1	2.9	-1.0	-2.9	-9.5	-12.4	-7.7	-3.6
<b>6</b>	<b>Manufactured goods classified chiefly by material</b>	<b>759</b>	<b>-4.3</b>	<b>2.2</b>	<b>-4.3</b>	<b>5.5</b>	<b>4.7</b>	<b>-5.1</b>	<b>2.8</b>	<b>1.6</b>	<b>-1.2</b>
	Textile yarn, fabrics, made-up articles, n.e.s., & related products	438	-6.0	1.0	-9.9	8.9	7.8	-4.6	7.7	0.3	-6.9
	Non-metallic mineral manufactures, n.e.s	178	0.4	9.2	6.3	1.7	-0.4	-3.3	5.3	13.7	18.4
	Manufactures of metal, n.e.s.	143	-3.3	-2.1	2.9	-1.0	-0.7	-9.6	-16.2	-9.2	-3.6

<sup>1</sup> The Standard International Trade Classification Revision 3 (SITC Rev 3)

**Table 7 (cont'd) - Export Price Index: Percentage change by SITC<sup>1</sup> 1st quarter 2010 - 1st quarter 2011**

Section	Description	Percentage change from									
		Weight	1st Qr 10 to 2nd Qr 10	2nd Qr 10 to 3rd Qr 10	3rd Qr 10 to 4th Qr 10	4th Qr 10 to 1st Qr 11	1st Qr 09 to 1st Qr 10	2nd Qr 09 to 2nd Qr 10	3rd Qr 09 to 3rd Qr 10	4th Qr 09 to 4th Qr 10	1st Qr 10 to 1st Qr 11
<b>8</b>	<b>Miscellaneous manufactured articles</b>	<b>5,517</b>	<b>1.2</b>	<b>-4.4</b>	<b>4.9</b>	<b>0.0</b>	<b>-2.5</b>	<b>-4.5</b>	<b>-7.9</b>	<b>0.1</b>	<b>1.6</b>
	Articles of apparel and clothing accessories	5,389	1.3	-4.9	5.0	-0.1	-2.5	-4.5	-8.3	-0.3	1.1
	<i>Men's or boys' coats, jackets, suits, blazers, trousers, shorts, shirts etc, not knitted or crocheted</i>	1,488	2.0	-1.4	4.1	-0.6	-6.5	-5.7	-5.7	3.3	4.1
	<i>Women's or girls' coats, jackets, suits, blazers, trousers, shorts, shirts etc, not knitted or crocheted</i>	256	5.3	-1.6	0.7	-0.7	17.2	25.2	20.6	5.5	3.5
	<i>Men's or boys' coats, jackets, suits, blazers, trousers, shorts, shirts etc, knitted or crocheted</i>	546	-3.3	-1.0	1.3	0.1	0.2	-7.0	-9.1	-5.5	-3.0
	<i>Women's or girls' coats, jackets, suits, blazers, trousers, shorts, shirts etc, knitted or crocheted</i>	49	-3.3	-2.1	2.9	-1.0	-2.9	-9.5	-12.4	-7.7	-3.6
	<i>Articles of apparel, of textile fabrics, whether or not knitted or crocheted</i>	3,050	1.2	-7.7	6.8	0.3	-2.9	-5.9	-12.4	-1.8	0.1
	Photographic apparatus, equipment and supplies and optical goods, n.e.s.; watches & clocks	99	0.5	12.6	2.9	2.9	-1.4	-3.9	8.2	13.6	19.8
	<i>Optical goods, n.e.s</i>	29	1.0	-2.1	-1.0	-0.5	-5.0	-6.1	-7.3	-4.8	-2.6
	<i>Watches and clocks</i>	70	0.4	16.6	3.7	3.6	-0.5	-3.3	12.4	18.5	25.8
	Miscellaneous manufactured articles, n.e.s	29	0.0	2.6	-0.9	-1.1	-7.6	-7.9	-6.4	-1.3	0.6

<sup>1</sup> The Standard International Trade Classification Revision 3 (SITC Rev 3)

**Table 8 - Quarterly Export Price Index, 1st Qr 1994 - 1st Qr 2011 (multiple base)**

	Reference year 1993=100				Reference year 1997=100						Reference year 2003=100				Reference year 2007=100			
	1994	1995	1996	1997	1998	1999	2000	2001	2002	2003	2004	2005	2006	2007	2008	2009	2010	2011 <sup>1</sup>
Qr 1	103.2	109.5	117.0	125.3	102.1	111.0	108.2	108.1	117.6	124.9	102.0	112.0	116.4	129.1	96.5	97.6	94.0	94.5
Qr 2	101.6	109.8	121.3	126.2	106.1	110.0	105.3	107.4	120.2	126.5	106.3	111.7	119.3	126.4	96.0	98.7	94.2	
Qr 3	105.2	113.2	126.8	123.8	111.3	109.7	101.6	112.6	126.5	131.2	109.5	114.6	122.0	126.4	96.9	97.0	92.0	
Qr 4	107.3	114.7	127.2	132.0	113.8	109.7	102.4	114.8	126.8	132.2	111.3	115.2	125.0	126.3	99.2	93.6	94.4	
<b>Year</b>	<b>104.3</b>	<b>111.8</b>	<b>123.1</b>	<b>126.8</b>	<b>108.3</b>	<b>110.1</b>	<b>104.4</b>	<b>110.7</b>	<b>122.8</b>	<b>128.7</b>	<b>107.3</b>	<b>113.4</b>	<b>120.7</b>	<b>127.1</b>	<b>97.2</b>	<b>96.7</b>	<b>93.7</b>	

<sup>1</sup> Provisional

**Table 9 - Quarterly Export Price Index, 1st Qr 1994 - 1st Qr 2011 (single base)**

	Reference year 2007=100																	
	1994	1995	1996	1997	1998	1999	2000	2001	2002	2003	2004	2005	2006	2007	2008	2009	2010	2011 <sup>1</sup>
Qr 1	49.8	52.8	56.4	60.4	62.4	67.9	66.2	66.1	71.9	76.4	80.3	88.2	91.6	101.6	96.5	97.6	94.0	94.5
Qr 2	49.0	53.0	58.5	60.9	64.9	67.3	64.4	65.7	73.5	77.4	83.7	87.9	93.9	99.4	96.0	98.7	94.2	
Qr 3	50.7	54.6	61.2	59.7	68.1	67.1	62.1	68.9	77.4	80.2	86.2	90.2	96.0	98.9	96.9	97.0	92.0	
Qr 4	51.7	55.3	61.3	63.7	69.6	67.1	62.6	70.2	77.5	80.8	87.6	90.7	98.4	100.0	99.2	93.6	94.4	
<b>Year</b>	<b>50.3</b>	<b>53.9</b>	<b>59.4</b>	<b>61.2</b>	<b>66.2</b>	<b>67.3</b>	<b>63.8</b>	<b>67.7</b>	<b>75.1</b>	<b>78.7</b>	<b>84.4</b>	<b>89.2</b>	<b>95.0</b>	<b>100.0</b>	<b>97.2</b>	<b>96.7</b>	<b>93.7</b>	

<sup>1</sup> Provisional

**Table 10 - Quarterly Import Price Index by SITC<sup>1</sup> section, 1st quarter 2009 - 1st quarter 2011**

Reference year 2007=100

Section	Description	Weight	2009					2010					2011
			1st Qr	2nd Qr	3rd Qr	4th Qr	Average	1st Qr	2nd Qr	3rd Qr	4th Qr	Average	1st Qr <sup>2</sup>
	<b>Overall Index</b>	<b>10,000</b>	<b>102.6</b>	<b>103.5</b>	<b>103.9</b>	<b>102.8</b>	<b>103.2</b>	<b>105.9</b>	<b>112.5</b>	<b>111.3</b>	<b>112.5</b>	<b>110.6</b>	<b>114.6</b>
0	Food and live animals	1,808	110.0	109.4	111.5	108.9	<b>109.9</b>	109.2	121.0	113.7	118.1	<b>115.5</b>	118.9
1	Beverages and tobacco	138	116.4	137.9	140.5	144.2	<b>134.7</b>	140.3	140.1	135.7	137.5	<b>138.4</b>	135.9
2	Crude materials, inedible, except fuels	288	153.6	135.6	138.4	135.5	<b>140.8</b>	141.1	149.7	143.6	148.4	<b>145.7</b>	144.0
3	Mineral fuels, lubricants and related materials	2,004	78.5	82.1	97.3	98.0	<b>89.0</b>	104.4	116.3	111.8	116.0	<b>112.1</b>	125.2
4	Animal and vegetable oils, fats and waxes	104	109.7	96.4	101.7	99.8	<b>101.9</b>	109.1	108.0	108.4	115.8	<b>110.3</b>	152.8
5	Chemical materials & related products, n.e.s	851	112.5	113.7	108.6	102.6	<b>109.3</b>	106.6	108.8	106.4	108.2	<b>107.5</b>	105.3
6	Manufactured goods classified chiefly by material	2,141	102.7	106.0	94.8	96.3	<b>99.9</b>	101.2	108.6	106.2	104.9	<b>105.2</b>	106.0
7	Machinery and transport equipment	1,800	105.4	104.3	103.3	100.4	<b>103.4</b>	100.6	99.2	110.4	107.5	<b>104.4</b>	107.8
8	Miscellaneous manufactured articles	866	107.0	107.9	106.1	105.3	<b>106.6</b>	107.1	110.9	110.2	110.1	<b>109.6</b>	107.7

<sup>1</sup> The Standard International Trade Classification Revision 3 (SITC Rev. 3)

<sup>2</sup> Provisional



**Table 11 - Quarterly Import Price Index by SITC<sup>1</sup> section & division, 1st quarter 2009 - 1st quarter 2011**

Reference year 2007=100

Section/ Division	Description	Weight	2009					2010					2011
			1st Qr	2nd Qr	3rd Qr	4th Qr	Average	1st Qr	2nd Qr	3rd Qr	4th Qr	Average	1st Qr <sup>2</sup>
	<b>Overall Index</b>	<b>10,000</b>	<b>102.6</b>	<b>103.5</b>	<b>103.9</b>	<b>102.8</b>	<b>103.2</b>	<b>105.9</b>	<b>112.5</b>	<b>111.3</b>	<b>112.5</b>	<b>110.6</b>	<b>114.6</b>
<b>Section 0</b>	<b>Food and live animals</b>	<b>1,808</b>	<b>110.0</b>	<b>109.4</b>	<b>111.5</b>	<b>108.9</b>	<b>109.9</b>	<b>109.2</b>	<b>121.0</b>	<b>113.7</b>	<b>118.1</b>	<b>115.5</b>	<b>118.9</b>
Div 00	Live animals	29	135.0	108.4	101.6	98.5	<b>110.9</b>	98.5	123.1	119.6	122.0	<b>115.8</b>	122.4
Div 01	Meat and meat preparations	122	111.3	113.0	120.4	122.4	<b>116.8</b>	145.1	184.6	165.7	168.6	<b>166.0</b>	166.9
Div 02	Dairy products and birds' eggs	220	132.9	122.5	121.1	120.7	<b>124.3</b>	124.4	117.9	121.2	121.9	<b>121.3</b>	120.1
Div 03	Fish, crustaceans, etc. and preparations thereof	638	84.8	84.5	88.9	79.9	<b>84.5</b>	76.3	100.2	84.4	83.4	<b>86.1</b>	93.9
Div 04	Cereals and cereal preparations	360	143.2	141.2	138.7	134.1	<b>139.3</b>	135.6	132.5	134.5	138.2	<b>135.2</b>	133.2
	<i>of which wheat</i>	<i>144</i>	<i>127.9</i>	<i>127.9</i>	<i>124.1</i>	<i>124.1</i>	<b>126.0</b>	<i>117.9</i>	<i>117.9</i>	<i>117.9</i>	<i>113.2</i>	<b>116.7</b>	<i>110.9</i>
Div 05	Vegetables and fruit	177	87.0	91.0	96.4	105.6	<b>95.0</b>	101.8	98.8	96.6	117.5	<b>103.7</b>	103.2
Div 06	Sugars, sugar preparations and honey	59	158.7	161.9	168.9	168.9	<b>164.6</b>	200.6	215.0	185.6	210.3	<b>202.9</b>	208.2
Div 07	Coffee, tea, cocoa, spices and manufactures thereof	47	106.7	111.6	111.6	113.4	<b>110.8</b>	110.4	127.0	130.4	131.9	<b>124.9</b>	137.6
Div 08	Feeding stuff for animals	40	90.5	100.8	104.8	131.2	<b>106.8</b>	95.5	90.9	82.0	99.2	<b>91.9</b>	105.2
Div 09	Miscellaneous edible products and preparations	116	112.6	122.6	118.9	121.4	<b>118.9</b>	113.9	131.8	133.6	139.2	<b>129.6</b>	133.6
<b>Section 1</b>	<b>Beverages and Tobacco</b>	<b>138</b>	<b>116.4</b>	<b>137.9</b>	<b>140.5</b>	<b>144.2</b>	<b>134.7</b>	<b>140.3</b>	<b>140.1</b>	<b>135.7</b>	<b>137.5</b>	<b>138.4</b>	<b>135.9</b>
Div 11	Beverages	81	117.2	137.2	140.1	143.2	<b>134.4</b>	136.7	136.2	135.2	133.3	<b>135.3</b>	131.6
Div 12	Tobacco and tobacco manufactures	57	115.4	138.7	141.1	145.5	<b>135.2</b>	145.5	145.5	136.5	143.6	<b>142.8</b>	142.1
<b>Section 2</b>	<b>Crude materials, inedible, except fuels</b>	<b>288</b>	<b>153.6</b>	<b>135.6</b>	<b>138.4</b>	<b>135.5</b>	<b>140.8</b>	<b>141.1</b>	<b>149.7</b>	<b>143.6</b>	<b>148.4</b>	<b>145.7</b>	<b>144.0</b>
Div 24	Cork and wood	98	238.7	204.8	195.3	188.8	<b>206.9</b>	193.8	210.4	193.0	190.1	<b>196.8</b>	185.6
Div 26	Textile fibres and their wastes (not manufactured into yarn or fabric)	168	100.9	92.7	91.4	92.3	<b>94.3</b>	100.9	104.7	109.5	111.9	<b>106.8</b>	111.4
Div 27	Crude fertilisers and crude minerals (excluding coal, petroleum and precious stones)	22	176.5	154.2	244.7	227.8	<b>200.8</b>	213.2	223.4	183.3	240.8	<b>215.2</b>	207.3

<sup>1</sup> The Standard International Trade Classification Revision 3 (SITC Rev. 3)

<sup>2</sup> Provisional

**Table 11 (cont'd) - Quarterly Import Price Index by SITC<sup>1</sup> section & division, 1st quarter 2009 - 1st quarter 2011**

Reference year 2007=100

Section/ Division	Description	Weight	2009					2010					2011
			1st Qr	2nd Qr	3rd Qr	4th Qr	Average	1st Qr	2nd Qr	3rd Qr	4th Qr	Average	1st Qr <sup>2</sup>
<b>Section 3</b>	<b>Mineral fuels, lubricants and related materials</b>	<b>2,004</b>	<b>78.5</b>	<b>82.1</b>	<b>97.3</b>	<b>98.0</b>	<b>89.0</b>	<b>104.4</b>	<b>116.3</b>	<b>111.8</b>	<b>116.0</b>	<b>112.1</b>	<b>125.2</b>
Div 32	Coal, coke and briquettes	145	140.3	121.7	117.4	111.9	<i>122.8</i>	125.9	149.0	137.7	142.5	<i>138.8</i>	147.3
Div 33	Petroleum, petroleum products and related materials	1,725	72.6	79.2	96.2	96.4	<i>86.1</i>	101.9	113.5	110.8	113.6	<i>110.0</i>	123.9
Div 34	Gas, natural and manufactured	134	88.3	75.4	89.8	103.5	<i>89.2</i>	113.5	115.9	97.4	118.3	<i>111.3</i>	117.1
<b>Section 4</b>	<b>Animal and vegetable oils, fats and waxes</b>	<b>104</b>	<b>109.7</b>	<b>96.4</b>	<b>101.7</b>	<b>99.8</b>	<b>101.9</b>	<b>109.1</b>	<b>108.0</b>	<b>108.4</b>	<b>115.8</b>	<b>110.3</b>	<b>152.8</b>
Div 42	Fixed vegetable fats and oils, crude, refined or fractionated	104	109.7	96.4	101.7	99.8	<i>101.9</i>	109.1	108.0	108.4	115.8	<i>110.3</i>	152.8
<b>Section 5</b>	<b>Chemical materials &amp; related products, n.e.s</b>	<b>851</b>	<b>112.5</b>	<b>113.7</b>	<b>108.6</b>	<b>102.6</b>	<b>109.3</b>	<b>106.6</b>	<b>108.8</b>	<b>106.4</b>	<b>108.2</b>	<b>107.5</b>	<b>105.3</b>
Div 51	Organic chemicals	61	119.7	113.9	108.6	103.3	<i>111.4</i>	116.4	123.2	116.2	115.9	<i>117.9</i>	107.8
Div 54	Medicinal and pharmaceutical products	225	95.5	98.6	98.3	94.8	<i>96.8</i>	98.2	99.2	98.4	96.6	<i>98.1</i>	95.6
Div 55	Essential oils and resinoids & perfume materials;toilet, etc.	147	115.0	123.3	130.8	128.4	<i>124.4</i>	125.6	126.6	123.0	124.0	<i>124.8</i>	121.7
Div 56	Fertilizers (other than those of group 272)	49	230.5	230.5	150.2	115.5	<i>181.7</i>	115.5	115.5	96.7	96.2	<i>106.0</i>	95.6
Div 57	Plastics in primary forms	157	95.3	93.0	92.7	89.4	<i>92.6</i>	101.3	106.7	107.7	118.0	<i>108.4</i>	111.9
Div 58	Plastics in non-primary forms	81	97.5	102.2	100.4	96.2	<i>99.1</i>	95.7	94.9	100.6	101.9	<i>98.3</i>	100.7
Div 59	Chemical materials & products, n.e.s	131	121.2	117.0	109.8	101.3	<i>112.3</i>	104.9	106.8	102.7	103.5	<i>104.5</i>	100.9

<sup>1</sup> The Standard International Trade Classification Revision 3 (SITC Rev. 3)

<sup>2</sup> Provisional

**Table 11 (cont'd) - Quarterly Import Price Index by SITC<sup>1</sup> section & division, 1st quarter 2009 - 1st quarter 2011**

Reference year 2007=100

Section/ Division	Description	Weight	2009					2010					2011
			1st Qr	2nd Qr	3rd Qr	4th Qr	Average	1st Qr	2nd Qr	3rd Qr	4th Qr	Average	1st Qr <sup>2</sup>
<b>Section 6</b>	<b>Manufactured goods classified chiefly by material</b>	<b>2,141</b>	<b>102.7</b>	<b>106.0</b>	<b>94.8</b>	<b>96.3</b>	<b>99.9</b>	<b>101.2</b>	<b>108.6</b>	<b>106.2</b>	<b>104.9</b>	<b>105.2</b>	<b>106.0</b>
Div 61	Leather, leather manufactures, n.e.s., & dressed furs	27	110.2	111.3	112.9	110.4	<b>111.2</b>	104.5	99.2	97.8	101.1	<b>100.7</b>	101.4
Div 62	Rubber manufactures, n.e.s.	70	112.2	119.1	116.1	115.9	<b>115.8</b>	119.5	125.7	124.1	122.3	<b>122.9</b>	122.2
Div 63	Cork and wood manufactures (excluding furniture)	50	115.7	115.7	112.2	112.2	<b>114.0</b>	117.9	123.7	123.7	123.7	<b>122.3</b>	123.7
Div 64	Paper, paperboard and articles of paper pulp	151	95.7	94.2	92.4	88.5	<b>92.7</b>	88.1	95.0	94.1	94.7	<b>93.0</b>	93.5
Div 65	Textile yarn, fabrics, made-up articles, n.e.s	813	98.3	100.1	89.5	95.7	<b>95.9</b>	98.9	107.2	107.1	108.4	<b>105.4</b>	110.1
	<i>of which</i>												
	<i>Textile yarn</i>	406	94.7	94.5	77.6	93.2	<b>90.0</b>	98.7	109.5	113.6	116.9	<b>109.7</b>	122.6
	<i>Cotton fabrics, woven (not including narrow or special fabrics)</i>	233	99.7	106.5	100.6	97.5	<b>101.1</b>	98.9	109.4	104.0	103.0	<b>103.8</b>	98.7
	<i>Fabrics, woven, of man-made textile materials</i>	100	101.3	100.4	97.7	93.1	<b>98.1</b>	92.6	93.6	93.6	91.7	<b>92.9</b>	90.9
	<i>Knitted/crocheted fabric including tubular knit, fabrics. n e s</i>	74	109.7	110.0	108.9	107.0	<b>108.9</b>	108.1	106.1	99.6	101.6	<b>103.8</b>	104.0
Div 66	Non-metallic mineral manufactures, n.e.s.	416	115.1	117.8	92.5	97.6	<b>105.8</b>	108.1	111.2	103.5	96.7	<b>104.9</b>	102.8
	<i>of which</i>												
	<i>Lime, cement &amp; fab. const. materials (except glass &amp; clay mats.)</i>	175	100.4	97.8	87.1	82.4	<b>91.9</b>	76.9	79.7	76.5	74.1	<b>76.8</b>	72.0
	<i>Clay construction materials &amp; refractory construction materials</i>	66	107.0	107.4	104.4	103.4	<b>105.5</b>	106.4	108.9	105.2	102.8	<b>105.8</b>	101.5
	<i>Pearls, precious and semi-precious stones, unworked or worked</i>	175	132.8	141.8	93.5	110.8	<b>119.7</b>	140.0	143.7	129.8	117.0	<b>132.6</b>	134.0
Div 67	Iron and steel	285	103.2	94.7	80.7	76.7	<b>88.8</b>	81.2	92.7	92.7	89.0	<b>88.9</b>	86.7
Div 68	Non-ferrous metals	95	72.8	92.3	95.4	99.2	<b>89.9</b>	99.2	108.6	102.3	109.3	<b>104.9</b>	111.2
Div 69	Manufactures of metals, n.e.s.	247	105.4	126.0	123.4	112.9	<b>116.9</b>	121.6	129.9	125.6	122.7	<b>125.0</b>	118.4

<sup>1</sup> The Standard International Trade Classification Revision 3 (SITC Rev. 3)

<sup>2</sup> Provisional

**Table 11 (cont'd) - Quarterly Import Price Index by SITC<sup>1</sup> section & division, 1st quarter 2009 - 1st quarter 2011**

Reference year 2007=100

Section/ Division	Description	Weight	2009					2010					2011
			1st Qr	2nd Qr	3rd Qr	4th Qr	Average	1st Qr	2nd Qr	3rd Qr	4th Qr	Average	1st Qr <sup>2</sup>
<b>Section 7</b>	<b>Machinery and transport equipment</b>	<b>1,800</b>	<b>105.4</b>	<b>104.3</b>	<b>103.3</b>	<b>100.4</b>	<b>103.4</b>	<b>100.6</b>	<b>99.2</b>	<b>110.4</b>	<b>107.5</b>	<b>104.4</b>	<b>107.8</b>
Div 71	Power generating machinery and equipment	65	110.6	101.9	116.1	116.1	<b>111.2</b>	116.1	116.1	116.1	116.1	<b>116.1</b>	116.1
Div 72	Machinery specialized for particular industries	266	103.3	103.6	105.1	101.8	<b>103.5</b>	101.4	100.3	100.7	101.5	<b>101.0</b>	101.6
Div 74	General industrial machinery & equipment, n.e.s.	271	107.2	107.9	104.2	95.4	<b>103.7</b>	95.8	97.3	96.9	98.3	<b>97.1</b>	97.2
Div 75	Office machines and automatic data processing machines	96	101.2	99.9	95.0	93.7	<b>97.5</b>	93.5	92.4	92.4	95.1	<b>93.3</b>	93.9
Div 76	Telecommunications and sound recording and	456	88.0	88.2	88.1	87.7	<b>88.0</b>	87.5	79.0	123.5	112.4	<b>100.6</b>	114.9
Div 77	Electrical machinery, apparatus and appliances, n.e.s., & parts thereof reproducing apparatus	238	110.9	114.2	111.6	106.9	<b>110.9</b>	106.2	103.9	103.9	99.6	<b>103.4</b>	97.1
Div 78	Road vehicles (including air-cushion vehicles)	408	122.1	116.0	113.7	112.3	<b>116.0</b>	113.9	118.5	118.1	118.3	<b>117.2</b>	119.0
	<i>of which Motor cars &amp; other motor vehicles principally designed for the transport of persons, including station wagons &amp; racing cars</i>	272	<b>114.2</b>	<b>112.5</b>	<b>109.1</b>	<b>108.4</b>	<b>111.0</b>	<b>110.6</b>	<b>117.1</b>	<b>116.7</b>	<b>117.1</b>	<b>115.4</b>	<b>117.9</b>
<b>Section 8</b>	<b>Miscellaneous manufactured articles</b>	<b>866</b>	<b>107.0</b>	<b>107.9</b>	<b>106.1</b>	<b>105.3</b>	<b>106.6</b>	<b>107.1</b>	<b>110.9</b>	<b>110.2</b>	<b>110.1</b>	<b>109.6</b>	<b>107.7</b>
Div 81	Prefabricated buildings; sanitary plumbing, heating & lighting fixtures and fittings, n.e.s.	62	94.4	97.2	95.9	93.4	<b>95.2</b>	91.0	94.2	103.2	99.8	<b>97.1</b>	95.0
Div 82	Furniture & parts thereof; bedding, mattresses, mattress support, cushions & similar stuffed furnishings	98	146.4	146.4	145.0	144.4	<b>145.5</b>	152.6	157.2	157.2	163.4	<b>157.6</b>	162.9
Div 87	Professional, scientific and controlling inst. and app	103	94.4	97.2	98.2	97.1	<b>96.7</b>	97.1	95.0	119.8	122.2	<b>108.5</b>	119.7
Div 88	Photographic apparatus, equipment and supplies and optical goods, n.e.s.; watches & clocks	107	121.8	127.6	119.9	115.9	<b>121.3</b>	119.2	130.6	119.1	114.4	<b>120.8</b>	112.1
Div 89	Miscellaneous manufactured articles, n.e.s.	496	100.2	99.7	98.4	98.4	<b>99.2</b>	99.6	103.0	97.8	97.5	<b>99.5</b>	95.0
	<i>of which Articles, n.e.s. of plastics</i>	168	<b>94.3</b>	<b>85.1</b>	<b>82.0</b>	<b>79.1</b>	<b>85.1</b>	<b>80.1</b>	<b>87.1</b>	<b>83.5</b>	<b>82.9</b>	<b>83.4</b>	<b>80.6</b>
	<i>Jewellery, goldsmiths' &amp; silversmiths' wares of precious/semi-precious, n.e.s.</i>	101	<b>101.7</b>	<b>114.5</b>	<b>116.7</b>	<b>130.4</b>	<b>115.8</b>	<b>130.4</b>	<b>130.4</b>	<b>130.4</b>	<b>128.7</b>	<b>130.0</b>	<b>127.8</b>

20

<sup>1</sup> The Standard International Trade Classification Revision 3 (SITC Rev. 3)

<sup>2</sup> Provisional

**Table 12 - Import Price Index : Percentage change by SITC<sup>1</sup> section, 1st quarter 2010 - 1st quarter 2011**

Reference year 2007=100

Section	Description	Weight	Percentage change from								
			1st Qr 10 to 2nd Qr 10	2nd Qr 10 to 3rd Qr 10	3rd Qr 10 to 4th Qr 10	4th Qr 10 to 1st Qr 11	1st Qr 09 to 1st Qr 10	2nd Qr 09 to 2nd Qr 10	3rd Qr 09 to 3rd Qr 10	4th Qr 09 to 4th Qr 10	1st Qr 10 to 1st Qr 11
	<b>Overall Index</b>	<b>10,000</b>	<b>6.2</b>	<b>-1.1</b>	<b>1.1</b>	<b>1.8</b>	<b>3.3</b>	<b>8.7</b>	<b>7.1</b>	<b>9.5</b>	<b>8.2</b>
0	Food and live animals	<b>1,808</b>	10.7	-6.0	3.8	0.7	-0.7	10.6	2.0	8.4	8.8
1	Beverages and tobacco	<b>138</b>	-0.2	-3.1	1.3	-1.2	20.5	1.6	-3.4	-4.6	-3.1
2	Crude materials, inedible, except fuels	<b>288</b>	6.1	-4.1	3.3	-3.0	-8.1	10.5	3.7	9.5	2.0
3	Mineral fuels, lubricants and related materials	<b>2,004</b>	11.4	-3.8	3.7	7.9	33.0	41.7	14.9	18.4	19.9
4	Animal and vegetable oils, fats and waxes	<b>104</b>	-1.0	0.4	6.8	32.0	-0.6	12.1	6.6	16.0	40.1
5	Chemical materials & related products, n.e.s	<b>851</b>	2.0	-2.2	1.7	-2.7	-5.2	-4.3	-2.0	5.5	-1.2
6	Manufactured goods classified chiefly by material	<b>2,141</b>	7.4	-2.2	-1.2	1.0	-1.5	2.5	12.0	9.0	4.7
7	Machinery and transport equipment	<b>1,800</b>	-1.4	11.3	-2.6	0.2	-4.6	-4.9	6.8	7.1	7.1
8	Miscellaneous manufactured articles	<b>866</b>	3.6	-0.7	0.0	-2.2	0.1	2.8	3.8	4.6	0.6

<sup>1</sup> The Standard International Trade Classification Revision 3 (SITC Rev. 3)

**Table 13 - Import Price Index: Percentage change by SITC<sup>1</sup> section & division, 1st quarter 2010 - 1st quarter 2011**

Reference year 2007=100

Section/ Division	Description	Weight	Percentage change from								
			1st Qr 10 to 2nd Qr 10	2nd Qr 10 to 3rd Qr 10	3rd Qr 10 to 4th Qr 10	4th Qr 10 to 1st Qr 11	1st Qr 09 to 1st Qr 10	2nd Qr 09 to 2nd Qr 10	3rd Qr 09 to 3rd Qr 10	4th Qr 09 to 4th Qr 10	1st Qr 10 to 1st Qr 11
	<b>Overall Index</b>	<b>10,000</b>	<b>6.2</b>	<b>-1.1</b>	<b>1.1</b>	<b>1.8</b>	<b>3.3</b>	<b>8.7</b>	<b>7.1</b>	<b>9.5</b>	<b>8.1</b>
<b>Section 0</b>	<b>Food and live animals</b>	<b>1,808</b>	<b>10.7</b>	<b>-6.0</b>	<b>3.8</b>	<b>0.7</b>	<b>-0.7</b>	<b>10.6</b>	<b>2.0</b>	<b>8.4</b>	<b>8.8</b>
Div 00	Live animals	29	25.0	-2.8	2.0	0.3	-27.0	13.6	17.8	23.9	24.2
Div 01	Meat and meat preparations	122	27.2	-10.2	1.8	-1.1	30.4	63.4	37.6	37.7	15.0
Div 02	Dairy products and birds' eggs	220	-5.2	2.8	0.6	-1.4	-6.4	-3.7	0.1	0.9	-3.5
Div 03	Fish, crustaceans, etc, and preparations thereof	638	31.3	-15.7	-1.2	12.6	-10.1	18.6	-5.0	4.4	23.1
Div 04	Cereals and cereal preparations	360	-2.3	1.5	2.8	-3.7	-5.4	-6.2	-3.0	3.1	-1.8
	<i>of which wheat</i>	<i>144</i>	<i>0.0</i>	<i>0.0</i>	<i>-4.0</i>	<i>-2.0</i>	<i>-7.8</i>	<i>-7.8</i>	<i>-5.0</i>	<i>-8.8</i>	<i>-5.9</i>
Div 05	Vegetables and fruit	177	-2.9	-2.2	21.6	-12.1	17.0	8.6	0.3	11.2	1.4
Div 06	Sugars, sugar preparations and honey	59	7.2	-13.7	13.3	-1.0	26.4	32.8	9.9	24.5	3.8
Div 07	Coffee, tea, cocoa, spices and manufactures thereof	47	15.0	2.6	1.2	4.3	3.5	13.8	16.8	16.3	24.6
Div 08	Feeding stuff for animals	40	-4.8	-9.8	20.9	6.0	5.5	-9.7	-21.7	-24.4	10.1
Div 09	Miscellaneous edible products and preparations	116	15.7	1.3	4.3	-4.0	1.1	7.5	12.3	14.7	17.3
<b>Section 1</b>	<b>Beverages and Tobacco</b>	<b>138</b>	<b>-0.2</b>	<b>-3.1</b>	<b>1.3</b>	<b>-1.2</b>	<b>20.5</b>	<b>1.6</b>	<b>-3.4</b>	<b>-4.6</b>	<b>-3.1</b>
Div 11	Beverages	81	-0.3	-0.7	-1.4	-1.3	16.7	-0.7	-3.5	-6.9	-3.7
Div 12	Tobacco and tobacco manufactures	57	0.0	-6.2	5.2	-1.0	26.2	4.9	-3.3	-1.3	-2.3
<b>Section 2</b>	<b>Crude materials, inedible, except fuels</b>	<b>288</b>	<b>6.1</b>	<b>-4.1</b>	<b>3.3</b>	<b>-3.0</b>	<b>-8.1</b>	<b>10.5</b>	<b>3.7</b>	<b>9.5</b>	<b>2.0</b>
Div 24	Cork and wood	98	8.6	-8.2	-1.5	-2.3	-18.8	2.7	-1.1	0.7	-4.2
Div 26	Textile fibres and their wastes (not manufactured into yarn or fabric)	168	3.8	4.6	2.2	-0.5	0.0	12.9	19.9	21.2	10.4
Div 27	Crude fertilisers and crude minerals (excluding coal, petroleum and precious stones)	22	4.8	-17.9	31.3	-13.9	20.8	44.8	-25.1	5.7	-2.7

<sup>1</sup> The Standard International Trade Classification Revision 3 (SITC Rev. 3)

**Table 13 cont'd - Import Price Index: Percentage change by SITC<sup>1</sup> section & division, 1st quarter 2010 - 1st quarter 2011**

Reference year 2007=100

Section/ Division	Description	Weight	Percentage change from								
			1st Qr 10 to 2nd Qr 10	2nd Qr 10 to 3rd Qr 10	3rd Qr 10 to 4th Qr 10	4th Qr 10 to 1st Qr 11	1st Qr 09 to 1st Qr 10	2nd Qr 09 to 2nd Qr 10	3rd Qr 09 to 3rd Qr 10	4th Qr 09 to 4th Qr 10	1st Qr 10 to 1st Qr 11
<b>Section 3</b>	<b>Mineral fuels, lubricants and related materials</b>	<b>2,004</b>	<b>11.4</b>	<b>-3.8</b>	<b>3.7</b>	<b>7.9</b>	<b>33.0</b>	<b>41.7</b>	<b>14.9</b>	<b>18.4</b>	<b>19.9</b>
Div 32	Coal, coke and briquettes	145	18.3	-7.6	3.5	3.4	-10.3	22.4	17.2	27.4	17.0
Div 33	Petroleum, petroleum products and related materials	1,725	11.4	-2.4	2.5	9.1	40.4	43.3	15.2	17.9	21.6
Div 34	Gas, natural and manufactured	134	2.1	-16.0	21.5	-1.0	28.5	53.7	8.4	14.3	3.1
<b>Section 4</b>	<b>Animal and vegetable oils, fats and waxes</b>	<b>104</b>	<b>-1.0</b>	<b>0.4</b>	<b>6.8</b>	<b>32.0</b>	<b>-0.6</b>	<b>12.1</b>	<b>6.6</b>	<b>16.0</b>	<b>40.1</b>
Div 42	Fixed vegetable fats and oils, crude, refined or fractionated	104	-1.0	0.4	6.8	32.0	-0.6	12.1	6.6	16.0	40.1
<b>Section 5</b>	<b>Chemical materials &amp; related products, n.e.s</b>	<b>851</b>	<b>2.0</b>	<b>-2.2</b>	<b>1.7</b>	<b>-2.7</b>	<b>-5.2</b>	<b>-4.3</b>	<b>-2.0</b>	<b>5.5</b>	<b>-1.2</b>
Div 51	Organic chemicals	61	5.8	-5.6	-0.3	-7.0	-2.8	8.1	7.1	12.2	-7.4
Div 54	Medicinal and pharmaceutical products	225	1.0	-0.9	-1.8	-1.0	2.9	0.6	0.1	1.9	-2.7
Div 55	Essential oils and resinoids & perfume materials;toilet, etc.	147	0.8	-2.8	0.8	-1.9	9.2	2.7	-5.9	-3.4	-3.1
Div 56	Fertilizers (other than those of group 272)	49	0.0	-16.2	-0.6	-0.6	-49.9	-49.9	-35.6	-16.7	-17.2
Div 57	Plastics in primary forms	157	5.4	0.9	9.6	-5.2	6.2	14.8	16.2	32.0	10.5
Div 58	Plastics in non-primary forms	81	-0.7	6.0	1.3	-1.2	-1.9	-7.1	0.2	5.9	5.2
Div 59	Chemical materials & products, n.e.s	131	1.8	-3.9	0.9	-2.5	-13.5	-8.7	-6.5	2.2	-3.8

<sup>1</sup> The Standard International Trade Classification Revision 3 (SITC Rev. 3)

**Table 13 cont'd - Import Price Index: Percentage change by SITC<sup>1</sup> section & division, 1st quarter 2010 - 1st quarter 2011**

Reference year 2007=100

Section/ Division	Description	Weight	Percentage change from								
			1st Qr 10 to 2nd Qr 10	2nd Qr 10 to 3rd Qr 10	3rd Qr 10 to 4th Qr 10	4th Qr 10 to 1st Qr 11	1st Qr 09 to 1st Qr 10	2nd Qr 09 to 2nd Qr 10	3rd Qr 09 to 3rd Qr 10	4th Qr 09 to 4th Qr 10	1st Qr 10 to 1st Qr 11
<b>Section 6</b>	<b>Manufactured goods classified chiefly by material</b>	<b>2,141</b>	<b>7.4</b>	<b>-2.2</b>	<b>-1.2</b>	<b>1.0</b>	<b>-1.5</b>	<b>2.5</b>	<b>12.0</b>	<b>9.0</b>	<b>4.7</b>
Div 61	Leather, leather manufactures, n.e.s., & dressed furskins	27	-5.0	-1.4	3.4	0.2	-5.2	-10.8	-13.3	-8.4	-3.0
Div 62	Rubber manufactures, n.e.s.	70	5.2	-1.3	-1.4	-0.1	6.6	5.5	6.9	5.5	2.2
Div 63	Cork and wood manufactures (excluding furniture)	50	5.0	0.0	0.0	0.0	1.9	6.9	10.2	10.2	5.0
Div 64	Paper, paperboard and articles of paper pulp	151	7.7	-1.0	0.7	-1.3	-7.9	0.9	1.8	7.1	6.1
Div 65	Textile yarn, fabrics, made-up articles, n.e.s	813	8.4	-0.1	1.2	1.6	0.6	7.1	19.7	13.4	11.4
	<i>of which</i>										
	<i>Textile yarn</i>	406	10.9	3.8	2.9	4.8	4.2	15.8	46.5	25.5	24.2
	<i>Cotton fabrics, woven (not including narrow or special fabrics)</i>	233	10.7	-5.0	-0.9	-4.2	-0.8	2.7	3.3	5.6	-0.2
	<i>Fabrics, woven, of man-made textile materials</i>	100	1.1	0.0	-2.1	-0.9	-8.6	-6.7	-4.2	-1.6	-1.9
	<i>Knitted/crocheted fabric including tubular knit, fabrics n.e.s</i>	74	-1.9	-6.1	2.0	2.3	-1.4	-3.5	-8.5	-5.0	-3.8
Div 66	Non-metallic mineral manufactures, n.e.s.	416	2.8	-7.0	-6.5	6.3	-6.0	-5.6	11.8	-1.0	-5.0
	<i>of which</i>										
	<i>Lime, cement &amp; fab. const. materials (except glass &amp; clay mats.)</i>	175	3.6	-4.0	-3.1	-2.8	-23.4	-18.5	-12.1	-10.1	-6.4
	<i>Clay construction materials &amp; refractory construction materials</i>	66	2.3	-3.3	-2.3	-1.3	-0.5	1.4	0.8	-0.5	-4.6
	<i>Pearls, precious and semi-precious stones, unworked or worked</i>	175	2.6	-9.6	-9.8	14.5	5.4	1.3	38.8	5.7	-4.3
Div 67	Iron and steel	285	14.2	-0.1	-4.0	-2.5	-21.3	-2.0	14.9	16.0	6.8
Div 68	Non-ferrous metals	95	9.4	-5.8	6.9	1.7	36.4	17.6	7.2	10.2	12.1
Div 69	Manufactures of metals, n.e.s.	247	6.8	-3.3	-2.3	-3.5	15.4	3.1	1.8	8.7	-2.7

<sup>1</sup> The Standard International Trade Classification Revision 3 (SITC Rev. 3)



Table 13 cont'd - Import Price Index: Percentage change by SITC<sup>1</sup> section & division, 1st quarter 2010 - 1st quarter 2011

Reference year 2007=100

Section/ Division	Description	Weight	Percentage change from								
			1st Qr 10 to 2nd Qr 10	2nd Qr 10 to 3rd Qr 10	3rd Qr 10 to 4th Qr 10	4th Qr 10 to 1st Qr 11	1st Qr 09 to 1st Qr 10	2nd Qr 09 to 2nd Qr 10	3rd Qr 09 to 3rd Qr 10	4th Qr 09 to 4th Qr 10	1st Qr 10 to 1st Qr 11
<b>Section 7</b>	<b>Machinery and transport equipment</b>	<b>1,800</b>	<b>-1.4</b>	<b>11.3</b>	<b>-2.6</b>	<b>0.2</b>	<b>-4.6</b>	<b>-4.9</b>	<b>6.8</b>	<b>7.1</b>	<b>7.1</b>
Div 71	Power generating machinery and equipment	65	0.0	0.0	0.0	0.0	5.0	13.9	0.0	0.0	0.0
Div 72	Machinery specialized for particular industries	266	-1.1	0.4	0.8	0.1	-1.8	-3.2	-4.1	-0.3	0.2
Div 74	General industrial machinery & equipment, n.e.s.	271	1.7	-0.4	1.5	-1.1	-10.6	-9.8	-7.0	3.0	1.5
Div 75	Office machines and automatic data processing machines	96	-1.2	0.0	2.9	-1.3	-7.6	-7.6	-2.7	1.4	0.4
Div 76	Telecommunications and sound recording and	456	-9.8	56.3	-9.0	2.2	-0.5	-10.4	40.2	28.2	31.2
Div 77	Electrical machinery, apparatus and appliances, n.e.s., & parts thereof reproducing apparatus	238	-2.1	0.0	-4.2	-2.5	-4.2	-9.0	-6.9	-6.8	-8.5
Div 78	Road vehicles (including air-cushion vehicles)	408	4.0	-0.3	0.1	0.7	-6.7	2.1	3.9	5.3	4.5
	<i>of which Motor cars &amp; other motor vehicles for the transport of persons</i>	272	5.9	-0.3	0.4	0.6	-3.1	4.1	7.0	8.1	6.6
<b>Section 8</b>	<b>Miscellaneous manufactured articles</b>	<b>866</b>	<b>3.6</b>	<b>-0.7</b>	<b>0.0</b>	<b>-2.2</b>	<b>0.1</b>	<b>2.8</b>	<b>3.8</b>	<b>4.6</b>	<b>0.6</b>
Div 81	Prefabricated buildings; sanitary plumbing, heating & lighting fixtures and fittings, n.e.s.	62	3.5	9.6	-3.3	-4.8	-3.5	-3.1	7.6	6.8	4.3
Div 82	Furniture & parts thereof; bedding, mattresses, mattress support, cushions & similar stuffed furnishings	98	3.0	0.0	3.9	-0.3	4.2	7.4	8.4	13.1	6.8
Div 87	Professional, scientific and controlling inst. and app.	103	-2.2	26.1	2.0	-2.0	2.9	-2.3	22.0	25.8	23.3
Div 88	Photographic apparatus, equipment and supplies and optical goods, n.e.s.; watches & clocks	107	9.6	-8.8	-4.0	-2.0	-2.2	2.4	-0.6	-1.3	-5.9
Div 89	Miscellaneous manufactured articles, n.e.s.	496	3.4	-5.0	-0.4	-2.6	-0.6	3.3	-0.6	-0.9	-4.6
	<i>of which Articles, n.e.s. of plastics</i>	168	8.7	-4.1	-0.7	-2.8	-15.1	2.3	1.9	4.8	0.7
	<i>Jewellery, goldsmiths' &amp; silversmiths' wares of precious/semi-precious, n.e.s</i>	101	0.0	0.0	-1.3	-0.7	28.2	13.9	11.8	-1.3	-2.0

<sup>1</sup> The Standard International Trade Classification Revision 3 (SITC Rev. 3)

**Table 14 - Quarterly Import Price Index, 1st Qr 2004 - 1st Qr 2011 (multiple base)**

	Reference year 2003=100				Reference year 2007=100			
	2004	2005	2006	2007	2008	2009	2010	2011 <sup>1</sup>
Qr 1	100.9	123.6	137.8	156.2	100.3	102.6	105.9	114.6
Qr 2	110.5	124.8	141.1	151.8	108.4	103.5	112.5	
Qr 3	115.6	134.1	148.3	150.2	118.7	103.9	111.3	
Qr 4	117.4	132.7	153.3	156.2	110.9	102.8	112.5	
<b>Year</b>	<b>111.1</b>	<b>128.8</b>	<b>145.1</b>	<b>153.6</b>	<b>109.6</b>	<b>103.2</b>	<b>110.6</b>	

<sup>1</sup> Provisional

**Table 15 - Quarterly Import Price Index, 1st Qr 2004 - 1st Qr 2011(single base)**

	Reference year 2007=100							
	2004	2005	2006	2007	2008	2009	2010	2011 <sup>1</sup>
Qr 1	65.7	80.5	89.7	101.7	100.3	102.6	105.9	114.6
Qr 2	71.9	81.3	91.9	98.8	108.4	103.5	112.5	
Qr 3	75.3	87.3	96.5	97.8	118.7	103.9	111.3	
Qr 4	76.4	86.4	99.8	101.7	110.9	102.8	112.5	
<b>Year</b>	<b>72.3</b>	<b>83.9</b>	<b>94.5</b>	<b>100.0</b>	<b>109.6</b>	<b>103.2</b>	<b>110.6</b>	

<sup>1</sup> Provisional

**ANNEX****Technical Note****Export Price Index (EPI)****Methodology for the Construction of the EPI****Definition**

The Export Price index (EPI) provides an overall measure of pure price changes in Mauritian Rupees of goods exported to other countries. This index is constructed from the export prices of a "constant" well-defined representative basket of products selected from trade data in the base year, that is, in 2007.

The first series of EPI was calculated with year 1993 as base and reference period. It was subsequently rebased in 1997, 2003 and 2007.

**Scope and Classification**

The index is based on the Nomenclature of the Standard International Trade Classification of the United Nations (SITC Rev 4). Separate sub-indices are produced for each SITC section and for more detailed groups where possible.

The EPI covers domestic exports and re-exports, the most important commodities being sugar, textile fabrics, articles of apparel and clothing accessories.

However, some commodities were excluded in the computation of the weights, because of their heterogeneity and the inherent difficulties in pricing the items to a constant quality. These were precious stones, jewellery, recorded media and free publications, and all products classified within the Sections 1, 3, 7 and 9 of the SITC; together, they accounted for around 12% of total exports.

The index thus covers about 88% of the value of merchandise exported during 2007. Items directly represented (price movements followed), constitute 75% of the total value of exports. For the other 13% not directly represented, their prices are considered to move similarly to those represented directly.

**Selection of Items to be priced and Outlets**

A representative sample of 25 exporting companies (outlets) was selected from trade declarations submitted to the Customs Department in 2007 for the pricing of the commodity items. The sample consists of major exporting companies trading on a regular basis. The selected companies are visited each quarter to collect the required prices.

A total of 65 items, representing 30 commodities were selected for pricing on the basis of regularity of trade and share in total exports, the most important ones being sugar, textile fabrics, and articles of apparel and clothing accessories. Specifications of items to be

priced (physical and qualitative) were established in collaboration with the selected exporting companies to ensure that same items are priced every quarter. Specifications include: pricing basis, contract basis, country of destination, unit of measurement, mode of transport, terms of payment, currency and any other conditions like quality and quantity of the product, that have a bearing on the price.

### **Weighting Scheme**

The weights have been derived from the 2007 total exports. Weights assigned to each section, division, group and commodity are based on their export values in 2007. Items selected for pricing purposes represent all commodities that fall within that weight group.

### **Changes in the weights from 2003 to 2007**

The changes in weights at section level are shown in the table below.

Section	Description	2003	2007
	All sections	10,000	10,000
Section 0	Food and live animals	2,942	3,445
Section 2	Crude materials, inedible, except fuels	31	37
Section 4	Animal and vegetable oils, fats and waxes	-	9
Section 5	Chemical materials & related products, n.e.s	21	233
Section 6	Manufactured goods classified chiefly by material	293	759
Section 8	Miscellaneous manufactured articles	6,713	5,517

It is noted that the weights of “Food and live animals”, and “Manufactured goods classified chiefly by material” have increased in the new weight structure due to their growing importance while the increase in the weights of “Chemicals and related products” was a result of the introduction of medicinal and pharmaceutical products in the index basket.

### **Base and Reference Period**

Both the base period (period to which weights refer) and the reference period (index=100) for the EPI are the calendar year 2007. Export data for year 2007 have been used to derive the weights while the yearly average prices were used as reference year prices. The quarterly average prices have also been used to calculate the quarterly indices for the reference year.

### **Price Collection**

Selected companies are visited once every quarter, but prices are collected for each month of the quarter and quarterly averages worked out for the computation of the price

indices. Some 65 price quotations are collected each month. These prices are reported on a free on board (F.O.B.) basis and are mostly contract prices.

### **Sugar**

Due to its specificity, sugar has been treated differently. Sugar produced during a crop year, which normally extends from July to June of the following year, is usually exported during the same crop year. The export prices are mostly negotiated prices. These prices can be quite volatile between quarters, depending on the destination of the shipments. Therefore, in order to eliminate these price distortions between quarters, the same average yearly price for the crop year is used for the four quarters of that crop year. It is to be noted that the base year price of sugar is the average price for crop years 2006/07 and 2007/08.

### **Uses of the EPI**

The EPI is mainly used as price deflators for exports. It shows changes in the prices of Mauritian products sold abroad and can be used for calculating changes in the volume of exports.

It also serves as a basis to assess the competitiveness of Mauritian products in relation to price trends of common products of other countries with which Mauritius competes for markets.

### **Calculation of the EPI**

The lowest level (SITC 7 digit) indices are calculated as a geometric average of the price relatives of the basic observations. A modified Laspeyres formula, based on the weighted average of price relatives, is used to calculate higher level indices. The mathematical

$$I_{ot} = \frac{\sum w_i \times \frac{P_{it}}{P_{io}} \times 100}{\sum w_i}$$

form of the formula is shown below:

Where  $I_{ot}$  is the index for period t compared to base period 0

$w_i$  is the weight of the  $i^{\text{th}}$  element

$P_{io}$  is the base price of the  $i^{\text{th}}$  element

$P_{it}$  is the price of the  $i^{\text{th}}$  element in period t

$\frac{P_{it}}{P_{io}}$  is the price relative of the  $i^{\text{th}}$  element  
in period t relative to base period 0

$\Sigma$  means summation over all selected elements

## **Import Price Index (IPI)**

### **Methodology for the Construction of the IPI**

#### **Definition**

The Import Price Index (IPI) provides an overall measure of pure price changes (in Mauritian Rupees) of goods imported into the country.

The IPI is based on actual price measurements of a fixed basket of imported goods. It requires elaborate specifications of products and takes into account the main price determining factors such as country of origin and quality.

The first IPI was calculated with the year 2003 as reference and 2002 as base year. The new index is calculated with 2007 as base and reference year.

#### **Scope and Classification**

The commodities are classified according to the United Nations Standard International Trade Classification (SITC Rev 4). Sub-indices are produced for each SITC section and for more detailed groups where possible.

For the computation of weights, some commodities accounting for around 9% of total imports in 2007 were excluded because of their heterogeneity and the inherent difficulties in pricing the items to a constant quality. These were: precious stones, jewellery, cellular telephones, recorded media and free publications, aircraft, helicopters and marine vessels, certain machine parts, textile wastes and Section 9 of the SITC described as “Commodities and transactions not classified elsewhere”.

Thus, the index covers about 91% of the value of merchandise imported during 2007. Items directly represented (price movements followed), constitute around 60% of the total value of imports. For the other 31% not directly represented, their prices are considered to move similarly to those represented directly.

#### **Selection of Items to be priced and Outlets**

The commodities forming the basket were selected according to the following criteria:

- (i) As far as possible, an item is included if it is imported regularly and frequently
- (ii) The items selected had to be, to a large extent, representative of the bulk of the trader’s import
- (iii) There must be a sustained demand of the commodity variety
- (iv) Items had to be specific and detailed enough for pricing.

Similarly, an importer for a particular product is selected provided that he imports that product on a regular basis.

Detailed characteristics (physical and qualitative) of items to be priced were established in collaboration with the importers so that the price quotations from period to period refer to the same items. The following are some commodity specifications: pricing basis, country of importation, unit of measurement, mode of transport, terms of payment, currency and any other conditions like quality and quantity of the product that have a bearing on the price

At the end of the process, some 139 commodity items and 220 outlets were selected for subsequent pricing.

### **Weighting scheme**

The weights were derived from total imports in 2007. Weights assigned to each section and group are based on their import values in that year. Products or group of products selected for pricing purposes represent all products that fall within that weight group.

### **Changes in the weights from 2003 to 2007**

The changes in weights at section level are shown in the table below.

Section	Description	2003	2007
	All sections	10,000	10,000
Section 0	Food and live animals	1,621	1,808
Section 1	Beverages and Tobacco	-	138
Section 2	Crude materials, inedible, except fuels	221	288
Section 3	Mineral fuels, lubricants and related materials	1,789	2,004
Section 4	Animal and vegetable oils, fats and waxes	113	104
Section 5	Chemical materials & related products, n.e.s	467	851
Section 6	Manufactured goods classified chiefly by material	3,776	2,141
Section 7	Machinery and transport equipment	1,134	1,800
Section 8	Miscellaneous manufactured articles	879	866

The main changes were:

- (i) "Manufactured goods classified chiefly by material" declined by 1,635 from 3,776 in 2003 to 2,141 due to lower imports of textile yarn, paper and paperboard and cotton fabrics
- (ii) "Machinery and transport equipment" increased by 666 from 1,134 in 2003 to 1,800 as a result of higher imports.



## **Base and Reference Period**

Both the base period (period to which weights refer) and the reference period (index=100) for the IPI are the calendar year 2007. Import data for year 2007 have been used to derive the weights while the yearly average prices were used as reference year prices. The quarterly average prices have also been used to calculate the quarterly indices for the reference year.

## **Price collection**

There are two common practices for the collection of prices of items falling in the basket. Prices for the specified goods are collected each month from importers and average quarterly prices are then derived for compiling the index, or, in case where most imports occur at intervals longer than a month, prices are collected only once every quarter and refer to the last consignment. A preliminary survey of the importers has shown that, in the case of Mauritius, the second practice is more suitable.

Prices are reported on a cost, insurance and freight (c.i.f) basis and are expressed in Mauritian Rupees. Exchange rates from the Customs and Excise Department are used in case prices are reported in foreign currencies.

Though the frequency of imports has been taken into consideration in selecting items and importers, it may happen that some items in the basket have not been imported during a certain period. In such cases, the prices are estimated using the variations in the exchange rate of the currency of imports. The underlying assumption is that the only factor affecting the price is the value of the Mauritian Rupee relative to the transaction currency. However, for items that would no longer be imported, they would have to be substituted by similar items.

## **Petroleum products and rice**

It is to be noted that for petroleum products, the index is calculated differently given that these products, namely gasoline, gas oil, aviation fuel, fuel oil, LPG are now imported more than once during a quarter. All prices available for the quarter are collected and an average price for the quarter is computed.

The above pricing system is also applicable for rice , imported by the STC.

## **Uses of the Import Price Index**

The Import Price Index is an important economic indicator which is used, inter alia, to:

- (i) measure changes in prices of imports
- (ii) analyse the effect of import price changes on the various sectors of the economy
- (iii) calculate changes in the volume of imports
- (iv) calculate the terms of trade (that is the ratio of export prices to import prices)
- (v) analyse the effect of exchange rates on import prices.

### Calculation of the IPI

The lowest level indices are determined as a geometric average of the price relatives of the basic observations. A modified Laspeyres formula, based on the weighted average of price relatives, is used to calculate higher level indices.

The mathematical form of the formula is shown below:

$$I_{ot} = \frac{\sum w_i \times \frac{P_{it}}{P_{io}} \times 100}{\sum w_i}$$

Where  $I_{ot}$  is the index for period t compared to base period 0

$w_i$  is the weight of the  $i^{\text{th}}$  element

$P_{io}$  is the base price of the  $i^{\text{th}}$  element

$P_{it}$  is the price of the  $i^{\text{th}}$  element in period t

$\frac{P_{it}}{P_{io}}$  is the price relative of the  $i^{\text{th}}$  element  
in period t relative to base period 0

$\Sigma$  means summation over all selected elements