

Producer Price Index – Agriculture (PPI-A)

First quarter 2010

(Base period year 2007 = 100)

1. Introduction

The Producer Price Index-Agriculture (PPI-A) gives a measure of the average change in the selling prices which producers receive for their agricultural products.

This issue of the Economic and Social Indicators presents monthly PPI-A indices for the months of January, February and March 2010 as well as figures for preceding months updated in the light of additional information that have now become available.

Table 7 presents the monthly indices as well as the quarterly and yearly average for the agricultural sector. Comparative monthly indices for the agricultural sector are given in Table 8. Monthly weights by commodity group and product are given in Table 9.

The methodology for the construction of the PPI-A is annexed.

2. Producer Price Index - Agriculture: First Quarter 2010

2.1 Structure of the PPI-A (Base period: 2007=100)

The PPI-A covers two sub-groups, namely: "Crop products" and "Animals and animal products". "Crop products" is further subdivided into "Sugar cane" and "Other crop products". Sugar cane heavily influences both the "overall" index and that of sub-group "Crop products", of which it constitutes 57.1% and 75.5% respectively.

2.2 Changes in the monthly index

Fig 1: Overall monthly indices, April 2009 – March 2010

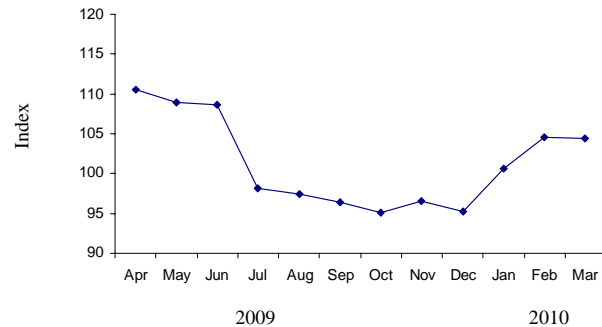


Figure 1 shows the monthly evolution of PPI-A for the period April 2009 to March 2010.

The PPI-A for the month of March worked out to 104.4% as a consequence of increases of 5.6% and 3.9% in January and February respectively and a decrease of 0.1% in March. (Table 1)

The index for the sub-group "Crop products", which carries 75.6% of the total weight, went up by 7.6% in January, 5.9% in February and declined by 0.2% in March.

The index for "Sugar cane" for the period July 2009 to March 2010 decreased by 15.7% to reach 80.5 based on the provisional price of sugar for the 2009 crop. It is to be noted that the index may be revised at the end of June 2010 when the final price is available.

The index for "Other crop products" went up by 27.7% in January mainly due to higher prices of: (i) 47.4% in the prices of fresh vegetables (creepers, other fresh vegetables and tomato) and (ii) 15.8% in the prices of fruits. In February, the index rose by 18.2% largely as a result of increases of: (i) 31.6% in the prices of fresh vegetables (tomato, creepers and carrot)

and (ii) 8.3% in the prices of fruits. In March, the index registered a drop of 0.7% mainly due to declines of: (i) 2.3% in the prices of fresh vegetables (creepers, beans and other fresh vegetables) and (ii) 9.1% in the prices of fruits.

The index for the sub-group "Animals and animal products" went up by 1.5% in January, mainly due to increases in the prices of eggs (+7.3%) and poultry (+0.2%). In February, the index went down by 0.2% as a result of lower prices of poultry (-1.2%), partly offset by an increase in the prices of eggs (+3.3%). The decrease of 0.1% in the index in March was explained by a decline of 0.4% in the prices of eggs.

More details of changes on a month-to-month basis are given in Table 2 and changes over the corresponding month of the previous year in Table 3.

2.3 Changes in the quarterly index

Fig 2: Overall quarterly indices, 4th quarter 2008 – 1st quarter 2010

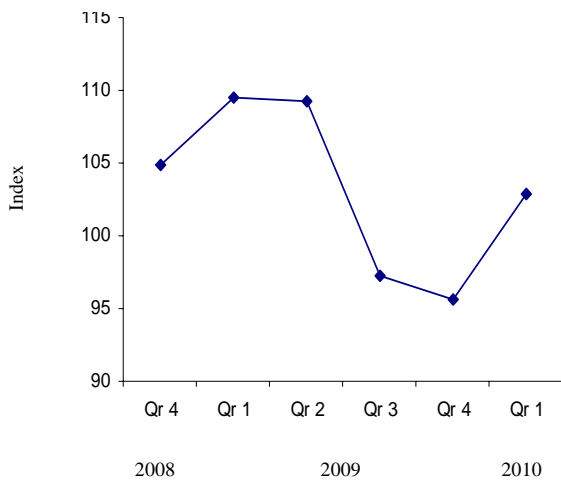


Figure 2 shows the movement the index from 4th quarter 2008 to 1st quarter 2010

Table 4 gives the evolution of the PPI-A on a quarterly basis. The overall index for the first quarter of 2010 shows increases of 7.6% compared to the previous quarter and a decline

of 6.0% over the corresponding quarter of 2009. Percentage changes on a quarterly basis and the net contributions of commodity groups and products are given in Table 5.

2.4 Changes in the yearly index

Average prices producers received from the sale of agricultural products in the year 2009 were 3.2% lower compared to the previous year. The annual indices for the years 2007, 2008 and 2009, annual changes and the net contributions of commodity groups and products to the change are presented in Table 6.

Central Statistics Office
Ministry of Finance and Economic
Development
Port Louis

May 2010

CONTACT PERSON

Mrs. F. Koussa
Statistician (Agriculture Unit)
Central Statistics Office
5th Floor, LIC Centre
Port Louis
Tel : (230) 213-3073
Fax : (230) 211-4150 / (230) 210-8092
Email: cso_agriculture@mail.gov.mu
Website: <http://statsmauritius.gov.mu>

Monthly Producer Price Index -Agriculture (PPI-A)

(Base period:Year 2007=100)

Table 1 : Monthly indices by commodity group and product, January 2008 - March 2010

Commodity Group	Weight	2010		
		January	February	March
Crop Products	755.9	90.2	95.5	95.3
Sugar cane ¹	570.5	80.5	80.5	80.5
Other crop products	185.4	119.9	141.7	140.7
Root Crops ²	24.7	121.1	91.3	111.2
Potato	22.4	130.7
Other root crops	2.3	95.0	91.3	111.2
Fruits ²	21.6	122.4	132.5	120.4
Banana	7.1	71.5	69.1	66.6
Pineapple	8.4	160.4	173.9	168.4
Other fruits	6.1	130.2	160.6	114.0
Fresh vegetables ²	119.3	120.9	159.1	155.5
Beans	3.4	194.6	181.5	170.7
Brinjal	2.7	179.1	88.3	102.1
Cabbage	4.2	139.2	170.9	183.9
Cauliflower	2.6	105.2	105.2	105.2
Carrot	7.2	102.2	145.3	250.2
Onion	8.1
Tomato	30.1	94.0	220.7	227.3
Creepers	37.0	118.6	131.4	111.5
Other fresh vegetables	24.0	149.7	126.4	125.0
Flowers, ornamental plants	8.5	106.7	108.1	108.1
Anthurium	5.1	98.4	100.8	100.8 ¹
Rose	3.0	118.2	118.2	118.2
Other flowers	0.4	125.0	125.0	125.0
Tea ¹	8.1	106.2	106.2	106.2
Tobacco ¹	3.2	124.7	124.7	124.7
Animals & Animal Products	244.1	132.7	132.5	132.4
Cattle	2.0	110.5	110.5	110.5
Pigs	3.2	131.6	131.6	131.6
Goat	0.7	145.5	145.5	145.5
Deer	4.9	124.3	124.3	124.3
Poultry	174.2	132.3	130.7	130.7
Eggs	55.0	131.5	135.8	135.3
Milk	4.1	184.5	184.5	184.5
Overall Index	1,000.0	100.6	104.5	104.4

¹ Provisional

... Not applicable

² The indices are computed based on the method of variable baskets with fixed monthly weights in the base year as explained at paragraph 11 of Annex. The composition of these baskets is shown in Table 9.

Monthly Producer Price Index -Agriculture (PPI-A)
(Base period:Year 2007 =100)

Table 1 (cont'd) : Monthly indices by commodity group and product, January 2008 - March 2010

Commodity Group	Weight	2009											
		January	February	March	April	May	June	July	August	September	October	November	December
Crop Products	755.9	98.8	106.1	108.3	103.6	100.8	100.5	87.0	86.2	85.1	84.1	85.7	83.8
Sugar cane	570.5	95.5	95.5	95.5	95.5	95.5	95.5	80.5¹	80.5¹	80.5¹	80.5¹	80.5¹	80.5¹
Other crop products	185.4	108.8	138.6	147.6	128.5	117.2	115.9	107.0	103.7	99.4	95.0	101.6	93.9
<i>Root Crops²</i>	24.7	119.1	91.2	92.9	98.8	85.7	112.8	128.1	129.4	129.1	128.3	129.0	128.0
Potato	22.4	124.5	124.5	130.7	130.7	130.7	130.7	130.7	130.7
Other root crops	2.3	104.2	91.2	92.9	98.8	85.7	107.9	101.9	104.7	93.5	98.4	97.0	87.3
<i>Fruits²</i>	21.6	113.1	123.1	121.2	95.5	94.3	107.8	95.0	103.7	103.1	114.4	109.7	105.7
Banana	7.1	82.6	82.6	80.1	72.7	75.2	75.2	75.2	75.2	75.2	78.9	78.9	78.9
Pineapple	8.4	160.5	157.8	158.0	114.9	111.8	140.1	114.6	134.3	130.0	161.2	159.2	117.5
Other fruits	6.1	106.9	121.9	108.2	112.3	112.8	109.6	111.9	112.7	111.5	108.2	102.0	108.8
<i>Fresh vegetables²</i>	119.3	105.5	155.9	169.6	143.6	128.8	118.6	104.1	97.1	90.6	81.7	93.1	82.0
Beans	3.4	141.6	193.0	213.4	157.7	128.7	123.9	118.0	100.1	69.1	82.7	110.4	87.5
Brinjal	2.7	76.5	81.9	55.3	145.3	131.9	249.2	228.8	190.1	122.3	97.2	93.6	41.6
Cabbage	4.2	120.7	229.1	198.2	157.1	166.0	143.5	132.5	78.3	42.9	42.0	71.4	94.4
Cauliflower	2.6	105.7	105.7	105.7	105.7	105.7	105.7	105.8	101.7	111.5	129.1	105.2	105.2
Carrot	7.2	187.9	340.0	308.0	306.1	181.6	133.2	61.8	55.8	42.1	38.2	67.4	74.8
Onion	8.1	116.5	116.5	116.5	116.5	116.5	116.5	116.5	116.5	116.5
Tomato	30.1	108.4	172.4	263.4	196.2	192.8	93.8	85.9	75.7	63.5	33.3	82.5	63.3
Creepers	37.0	90.5	121.6	120.2	110.2	88.9	113.8	105.2	106.8	111.9	91.2	90.0	82.9
Other fresh vegetables	24.0	103.1	131.2	113.5	125.4	110.8	135.1	120.6	110.2	108.9	94.1	87.9	95.0
<i>Flowers, ornamental plants</i>	8.5	107.2	106.9	109.8	108.4	112.4	112.5	111.6	111.2	111.3	113.8	107.8	108.0
Anthurium	5.1	99.2	98.8	103.5	101.2	107.8	108.0	106.7	105.9	106.1	110.2 ³	100.2 ³	100.6 ³
Rose	3.0	118.2	118.2	118.2	118.2	118.2	118.2	118.2	118.2	118.2	118.2	118.2	118.2
Other flowers	0.4	125.0	125.0	125.0	125.0	125.0	125.0	125.0	125.0	125.0	125.0	125.0	125.0
<i>Tea</i>	8.1	106.2	106.2	106.2	106.2	106.2	106.2	106.2¹	106.2¹	106.2¹	106.2¹	106.2¹	106.2¹
<i>Tobacco</i>	3.2	131.9	131.9	131.9	124.7³	124.7³	124.7³	124.7³	124.7³	124.7³	124.7³	124.7³	124.7³
Animals & Animal Products	244.1	127.6	127.6	127.6	132.1	133.8	134.2	132.3	132.4	131.4	129.2	130.3	130.8
Cattle	2.0	106.5	106.5	106.5	106.5	106.5	106.5	110.5	110.5	110.5	110.5	110.5	110.5
Pigs	3.2	151.6	151.6	151.6	136.6	136.6	136.6	118.1	118.1	118.1	131.6	131.6	155.3
Goat	0.7	129.8	129.8	135.2	135.2	135.2	137.7	138.6	138.6	138.6	138.6	138.6	138.6
Deer	4.9	120.4	120.4	120.4	120.4	120.4	120.4	120.4	120.4	120.4	124.3	124.3	124.3
Poultry	174.2	133.6	133.6	133.6	135.0	134.3	134.3	132.0	132.0	132.0	132.0 ¹	132.0 ¹	132.0 ¹
Eggs	55.0	104.5	104.6	104.6	120.7	130.5	132.0	132.0	132.2	127.8 ³	117.1 ³	121.9 ³	122.6 ³
Milk	4.1	184.5	184.5	184.5	184.5	184.5	184.5	184.5	184.5	184.5	184.5	184.5	184.5
Overall Index	1,000.0	105.8	111.3	113.0	110.6	108.9	108.7	98.1	97.5	96.4	95.1	96.6	95.3

¹ Provisional

³ Revised

² The indices are computed based on the method of variable baskets with fixed monthly weights in the base year as explained at paragraph 11 of Annex. The composition of these baskets is shown in Table 9.

... Not applicable

Monthly Producer Price Index -Agriculture (PPI-A)

(Base period:Year 2007 =100)

Table 1 (cont'd) : Monthly indices by commodity group and product, January 2008 - March 2010

Commodity Group	Weight	2008											
		January	February	March	April	May	June	July	August	September	October	November	December
Crop Products	755.9	100.1	103.1	104.7	110.3	105.7	107.0	100.0	96.2	96.4	98.9	98.2	95.9
Sugar cane	570.5	102.0	102.0	102.0	102.0	102.0	102.0	95.5	95.5	95.5	95.5	95.5	95.5
Other crop products	185.4	94.3	106.7	112.9	136.0	117.1	122.5	113.7	98.2	99.0	109.5	106.5	97.1
<i>Root Crops</i> ¹	24.7	99.2	83.4	94.0	106.8	89.6	112.5	123.4	123.9	124.4	123.6	123.5	123.2
Potato	22.4	103.4	103.0	125.0	125.0	125.0	125.0	125.0	125.0
Other root crops	2.3	87.8	83.4	94.0	106.8	89.6	116.3	107.5	103.9	110.3	107.0	88.9	94.4
<i>Fruits</i> ¹	21.6	95.7	109.2	104.4	95.7	94.5	97.0	98.3	97.3	101.4	105.4	100.3	94.9
Banana	7.1	83.8	79.9	76.9	76.9	77.9	77.9	85.8	85.8	85.8	84.8	84.8	84.8
Pineapple	8.4	129.7	144.2	129.2	112.2	110.4	115.2	111.7	109.7	118.1	119.6	157.5	87.8
Other fruits	6.1	86.4	84.9	87.7	98.2	103.2	101.8	100.1	100.1	100.8	123.0	80.0	98.7
<i>Fresh vegetables</i> ¹	119.3	91.4	111.3	119.8	154.0	128.2	131.2	115.1	91.3	91.5	106.8	103.3	89.6
Beans	3.4	113.1	155.3	178.4	221.1	145.8	117.1	94.0	88.4	102.0	134.6	74.9	74.8
Brinjal	2.7	83.7	58.5	91.4	303.6	193.6	279.3	199.7	249.1	256.5	291.5	128.2	82.2
Cabbage	4.2	147.0	162.1	209.8	225.4	232.5	149.7	82.6	44.2	60.7	59.1	85.5	95.2
Cauliflower	2.6	177.6	177.6	177.6	177.6	130.0	169.9	100.0	81.3	96.9	101.6	105.7	105.7
Carrot	7.2	100.1	147.6	133.0	241.3	139.3	113.4	152.2	61.6	68.7	74.5	135.7	137.1
Onion	8.1	116.5	116.5	116.5	116.5	116.5	116.5	116.5	116.5	116.5
Tomato	30.1	67.9	123.0	180.1	180.7	145.3	131.7	96.1	43.8	32.9	51.9	51.9	51.9
Creepers	37.0	94.4	99.1	89.9	133.8	114.9	114.9	120.7	116.0	117.7	116.2	101.0	72.1
Other fresh vegetables	24.0	108.9	100.0	92.7	119.9	101.0	140.2	120.9	111.2	111.4	141.8	108.0	100.1
<i>Flowers, ornamental plants</i>	8.5	105.1	107.5	106.1	103.3	107.2	107.5	106.1	105.3	107.8	112.5	111.3	111.3
Anthurium	5.1	96.1	100.2	97.8	93.1	99.6	100.2	97.8	96.5	100.6	102.7	100.8	100.8
Rose	3.0	118.2	118.2	118.2	118.2	118.2	118.2	118.2	118.2	118.2	127.3	127.3	127.3
Other flowers	0.4	120.0	120.0	120.0	120.0	120.0	120.0	120.0	120.0	120.0	125.0	125.0	125.0
<i>Tea</i>	8.1	105.7	105.7	105.7	105.7	105.7	105.7	106.2	106.2	106.2	106.2	106.2	106.2
<i>Tobacco</i>	3.2	98.1	98.1	98.1	131.9	131.9	131.9	131.9	131.9	131.9	131.9	131.9	131.9
Animals & Animal Products	244.1	106.1	109.9	110.8	115.4	117.4	120.8	128.3	131.1	130.6	127.2	127.1	127.3
Cattle	2.0	100.0	100.0	100.0	100.0	100.0	100.0	100.0	100.0	100.0	106.5	106.5	106.5
Pigs	3.2	100.3	100.3	100.3	100.3	100.3	100.3	139.7	139.7	139.7	147.8	147.8	147.8
Goat	0.7	123.5	123.5	123.5	123.5	129.8	129.8	129.8	129.8	129.8	129.8	129.8	129.8
Deer	4.9	104.1	104.1	104.1	115.7	115.7	115.7	115.7	115.7	115.7	120.4	120.4	120.4
Poultry	174.2	108.9	114.4	114.6	116.6	116.6	118.1	126.8	129.2	131.0	131.0	131.0	131.0
Eggs	55.0	94.3	94.3	97.2	110.3	119.3	129.6	132.8	137.6	129.9	110.8	110.3	111.2
Milk	4.1	149.4	149.4	149.4	149.4	149.4	149.4	149.4	149.4	149.4	184.5	184.5	184.5
Overall Index	1,000.0	101.6	104.8	106.2	111.6	108.6	110.4	106.9	104.7	104.7	105.8	105.3	103.6

¹ The indices are computed based on the method of variable baskets with fixed monthly weights in the base year as explained at paragraph 11 of Annex. The composition of these baskets is shown in Table 9.

... Not applicable

Monthly Producer Price Index -Agriculture (PPI-A)

(Base period: Year 2007=100)

Table 2 : Percentage changes from previous month by commodity group and product , April 2009 -March 2010

	Weight	Percentage changes from											
		Mar 09 to	Apr 09 to	May 09 to	Jun 09 to	Jul 09 to	Aug 09 to	Sep 09 to	Oct 09 to	Nov 09 to	Dec 09 to	Jan 10 to	Feb 10 to
		Apr 09	May 09	Jun 09	Jul 09	Aug 09	Sep 09	Oct-09	Nov-09	Dec-09	Jan-10	Feb-10	Mar-10
Crop Products	755.9	-4.3	-2.7	-0.3	-13.4	-0.9	-1.3	-1.2	1.9	-2.2	7.6	5.9	-0.2
Sugar cane	570.5	0.0	0.0	0.0	-15.7	0.0	0.0	0.0	0.0	0.0	0.0	0.0	0.0
Other crop products	185.4	-12.9	-8.8	-1.1	-7.7	-3.1	-4.1	-4.4	6.9	-7.6	27.7	18.2	-0.7
Root Crops	24.7	6.4	-13.3	31.6	13.6	1.0	-0.2	-0.6	0.5	-0.8	-5.4	-24.6	21.8
Potato	22.4	5.0	0.0	0.0	0.0	0.0	0.0	0.0
Other root crops	2.3	6.4	-13.3	25.9	-5.6	2.7	-10.7	5.2	-1.4	-10.0	8.8	-3.9	21.8
Fruits	21.6	-21.2	-1.3	14.3	-11.9	9.2	-0.6	11.0	-4.1	-3.6	15.8	8.3	-9.1
Banana	7.1	-9.2	3.4	0.0	0.0	0.0	0.0	4.9	0.0	0.0	-9.4	-3.4	-3.6
Pineapple	8.4	-27.3	-2.7	25.3	-18.2	17.2	-3.2	24.0	-1.2	-26.2	36.5	8.4	-3.2
Other fruits	6.1	3.8	0.4	-2.8	2.1	0.7	-1.1	-3.0	-5.7	6.7	19.7	23.3	-29.0
Fresh vegetables	119.3	-15.3	-10.3	-7.9	-12.2	-6.7	-6.7	-9.8	14.0	-11.9	47.4	31.6	-2.3
Beans	3.4	-26.1	-18.4	-3.7	-4.8	-15.2	-31.0	19.7	33.5	-20.7	122.4	-6.7	-6.0
Brinjal	2.7	162.7	-9.2	88.9	-8.2	-16.9	-35.7	-20.5	-3.7	-55.6	330.5	-50.7	15.6
Cabbage	4.2	-20.7	5.7	-13.6	-7.7	-40.9	-45.2	-2.1	70.0	32.2	47.5	22.8	7.6
Cauliflower	2.6	0.0	0.0	0.0	0.1	-3.9	9.6	15.8	-18.5	0.0	0.0	0.0	0.0
Carrot	7.2	-0.6	-40.7	-26.7	-53.6	-9.7	-24.6	-9.3	76.4	11.0	36.6	42.2	72.2
Onion	8.1	...	0.0	0.0	0.0	0.0	0.0	0.0	0.0	0.0
Tomato	30.1	-25.5	-1.7	-51.3	-8.4	-11.9	-16.1	-47.6	147.7	-23.3	48.5	134.8	3.0
Creepers	37.0	-8.3	-19.3	28.0	-7.6	1.5	4.8	-18.5	-1.3	-7.9	43.1	10.8	-15.1
Other fresh vegetables	24.0	10.5	-11.6	21.9	-10.7	-8.6	-1.2	-13.6	-6.6	8.1	57.6	-15.6	-1.1
Flowers, ornamental plants	8.5	-1.3	3.7	0.1	-0.8	-0.4	0.1	2.2	-5.3	0.2	-1.2	1.3	0.0
Anthurium	5.1	-2.2	6.5	0.2	-1.2	-0.7	0.2	3.9	-9.1	0.4	-2.2	2.4	0.0
Rose	3.0	0.0	0.0	0.0	0.0	0.0	0.0	0.0	0.0	0.0	0.0	0.0	0.0
Other flowers	0.4	0.0	0.0	0.0	0.0	0.0	0.0	0.0	0.0	0.0	0.0	0.0	0.0
Tea	8.1	0.0	0.0	0.0	0.0	0.0	0.0	0.0	0.0	0.0	0.0	0.0	0.0
Tobacco	3.2	-5.5	0.0	0.0	0.0	0.0	0.0	0.0	0.0	0.0	0.0	0.0	0.0
Animals & Animal Products	244.1	3.5	1.3	0.3	-1.4	0.1	-0.8	-1.7	0.9	0.4	1.5	-0.2	-0.1
Cattle	2.0	0.0	0.0	0.0	3.8	0.0	0.0	0.0	0.0	0.0	0.0	0.0	0.0
Pigs	3.2	-9.9	0.0	0.0	-13.5	0.0	0.0	11.4	0.0	18.0	-15.3	0.0	0.0
Goat	0.7	0.0	0.0	1.8	0.7	0.0	0.0	0.0	0.0	0.0	5.0	0.0	0.0
Deer	4.9	0.0	0.0	0.0	0.0	0.0	0.0	3.2	0.0	0.0	0.0	0.0	0.0
Poultry	174.2	1.0	-0.5	0.0	-1.7	0.0	0.0	0.0	0.0	0.0	0.2	-1.2	0.0
Eggs	55.0	15.4	8.1	1.1	0.0	0.2	-3.3	-8.4	4.1	0.6	7.3	3.3	-0.4
Milk	4.1	0.0	0.0	0.0	0.0	0.0	0.0	0.0	0.0	0.0	0.0	0.0	0.0
Overall Change	1,000.0	-2.1	-1.5	-0.2	-9.8	-0.6	-1.1	-1.3	1.6	-1.3	5.6	3.9	-0.1

... Not applicable

Monthly Producer Price Index -Agriculture (PPI-A)

(Base period: Year 2007=100)

Table 3 : Percentage changes from corresponding month of previous year by commodity group and product , April 2009 - March 2010

Commodity Group	Weight	Percentage changes from											
		Apr 08 to	May 08 to	Jun 08 to	Jul 08 to	Aug 08 to	Sep 08 to	Oct 08 to	Nov 08 to	Dec 08 to	Jan 09 to	Feb 09 to	Mar 09 to
		Apr 09	May 09	Jun 09	Jul 09	Aug 09	Sep 09	Oct 09	Nov 09	Dec 09	Jan 10	Feb 10	Mar 10
Crop Products	755.9	-6.1	-4.6	-6.1	-13.0	-10.4	-11.7	-15.0	-12.7	-12.6	-8.7	-10.0	-12.0
Sugar cane	570.5	-6.4	-6.4	-6.4	-15.7	-15.7	-15.7	-15.7	-15.7	-15.7	-15.7	-15.7	-15.7
Other crop products	185.4	-5.5	0.1	-5.4	-5.9	5.6	0.4	-13.2	-4.6	-3.3	10.2	2.2	-4.7
Root Crops	24.7	-7.5	-4.4	0.3	3.8	4.4	3.8	3.8	4.5	3.9	1.7	0.1	19.7
Potato	22.4	20.9	4.6	4.6	4.6	4.6	4.6	4.6	5.0
Other root crops	2.3	-7.5	-4.4	-7.2	-5.2	0.8	-15.2	-8.0	9.1	-7.5	-8.8	0.1	19.7
Fruits	21.6	-0.2	-0.2	11.1	-3.4	6.6	1.7	8.5	9.4	11.4	8.2	7.6	-0.7
Banana	7.1	-5.5	-3.5	-3.5	-12.4	-12.4	-12.4	-7.0	-7.0	-7.0	-13.4	-16.3	-16.9
Pineapple	8.4	2.4	1.3	21.6	2.6	22.4	10.1	34.8	1.1	33.8	-0.1	10.2	6.6
Other fruits	6.1	14.4	9.3	7.7	11.8	12.6	10.6	-12.0	27.5	10.2	21.8	31.7	5.4
Fresh vegetables	119.3	-6.8	0.5	-9.6	-9.6	6.4	-1.0	-23.5	-9.9	-8.5	14.6	2.1	-8.3
Beans	3.4	-28.7	-11.7	5.8	25.5	13.2	-32.3	-38.6	47.4	17.0	37.4	-6.0	-20.0
Brinjal	2.7	-52.1	-31.9	-10.8	14.6	-23.7	-52.3	-66.7	-27.0	-49.4	134.1	7.8	84.6
Cabbage	4.2	-30.3	-28.6	-4.1	60.4	77.1	-29.3	-28.9	-16.5	-0.8	15.3	-25.4	-7.2
Cauliflower	2.6	-40.5	-18.7	-37.8	5.8	25.1	15.1	27.1	-0.5	-0.5	-0.5	-0.5	-0.5
Carrot	7.2	26.9	30.4	17.5	-59.4	-9.4	-38.7	-48.7	-50.3	-45.4	-45.6	-57.3	-18.8
Onion	8.1	0.0	0.0	0.0	0.0	0.0	0.0	0.0	0.0	0.0
Tomato	30.1	8.6	32.7	-28.8	-10.6	72.8	93.0	-35.8	59.0	22.0	-13.3	28.0	-13.7
Creepers	37.0	-17.6	-22.6	-1.0	-12.8	-7.9	-4.9	-21.5	-10.9	15.0	31.0	8.1	-7.2
Other fresh vegetables	24.0	4.6	9.7	-3.6	-0.2	-0.9	-2.2	-33.6	-18.6	-5.1	45.2	-3.7	10.1
Flowers, ornamental plants	8.5	4.9	4.9	4.7	5.2	5.6	3.2	1.2	-3.1	-3.0	-0.5	1.1	-1.5
Anthurium	5.1	8.7	8.2	7.8	9.1	9.7	5.5	7.3	-0.6	-0.2	-0.8	2.0	-2.6
Rose	3.0	0.0	0.0	0.0	0.0	0.0	0.0	-7.1	-7.1	-7.1	0.0	0.0	0.0
Other flowers	0.4	4.2	4.2	4.2	4.2	4.2	4.2	0.0	0.0	0.0	0.0	0.0	0.0
Tea	8.1	0.5	0.5	0.5	0.0	0.0	0.0	0.0	0.0	0.0	0.0	0.0	0.0
Tobacco	3.2	-5.5	-5.5	-5.5	-5.5	-5.5	-5.5	-5.5	-5.5	-5.5	-5.5	-5.5	-5.5
Animals & Animal Products	244.1	14.5	14.0	11.1	3.1	1.0	0.6	1.6	2.5	2.7	4.0	3.8	3.8
Cattle	2.0	6.5	6.5	6.5	10.5	10.5	10.5	3.8	3.8	3.8	3.8	3.8	3.8
Pigs	3.2	36.2	36.2	36.2	-15.5	-15.5	-15.5	-11.0	-11.0	5.1	-13.2	-13.2	-13.2
Goat	0.7	9.5	4.2	6.1	6.8	6.8		6.8	6.8	6.8	12.1	12.1	7.6
Deer	4.9	4.1	4.1	4.1	4.1	4.1	4.1	3.2	3.2	3.2	3.2	3.2	3.2
Poultry	174.2	15.8	15.2	13.7	4.1	2.2	0.8	0.8	0.8	0.8	-1.0	-2.2	-2.2
Eggs	55.0	9.4	9.4	1.9	-0.6	-3.9	-1.6	5.7	10.5	10.3	25.8	29.8	29.3
Milk	4.1	23.5	23.5	23.5	23.5	23.5	23.5	0.0	0.0	0.0	0.0	0.0	0.0
Overall Change	1,000.0	-0.9	0.3	-1.5	-8.2	-6.9	-7.9	-10.1	-8.2	-8.0	-4.9	-6.1	-7.6

... Not applicable

Quarterly Producer Price Index -Agriculture (PPI-A)
(Base period: Year 2007=100)

Table 4: Quarterly indices ¹ by commodity group and product, 2nd Quarter 2008 - 1st Quarter 2010

Commodity Group	Weight	2008			2009				2010
		2 nd Qr	3 rd Qr	4 th Qr	1 st Qr	2 nd Qr	3 rd Qr	4 th Qr	1 st Qr
Crop Products	755.9	107.5	97.6	97.7	103.6	101.4	86.1	84.5	93.4
Sugar cane	570.5	102.0	95.5	95.5	95.5	95.5	80.5²	80.5²	80.5²
Other crop products	185.4	124.2	103.9	104.5	128.7	119.4	103.5	96.8	132.9
<i>Root Crops</i> ³	24.7	106.7	124.0	123.5	108.5	103.3	129.0	128.5	114.0
Potato	22.4	103.0	125.0	125.0	124.5	124.5	130.7	130.7	130.7
Other root crops	2.3	107.1	107.1	98.9	95.7	99.8	100.2	95.3	100.8
<i>Fruits</i> ³	21.6	95.7	99.1	98.4	118.1	99.1	100.7	108.5	125.1
Banana	7.1	77.6	85.8	84.8	81.8	74.3	75.2	78.9	69.1
Pineapple	8.4	112.5	113.3	119.9	158.6	121.7	126.4	144.0	168.2
Other fruits	6.1	101.6	100.5	95.6	109.9	110.8	111.9	107.0	136.1
<i>Fresh vegetables</i> ³	119.3	135.6	99.7	100.5	137.7	127.8	97.4	85.8	142.1
Beans	3.4	149.3	95.3	97.6	172.1	132.7	94.3	92.9	185.8
Brinjal	2.7	259.5	237.6	164.7	74.2	181.3	176.6	77.3	129.7
Cabbage	4.2	184.0	64.4	77.6	173.9	151.9	87.6	66.7	159.2
Cauliflower	2.6	162.7	93.1	103.6	105.7	105.7	105.9	111.9	105.2
Carrot	7.2	144.4	101.4	112.2	277.5	179.3	54.2	52.9	161.1
Onion	8.1	117.0	117.0	117.0	...	116.5	116.5	116.5	...
Tomato	30.1	145.8	58.0	78.3	160.4	145.7	75.1	61.3	164.9
Creepers	37.0	120.3	118.2	95.4	108.7	104.4	107.9	87.9	121.2
Other fresh vegetables	24.0	122.3	114.3	117.2	114.9	124.8	113.0	92.5	136.1
<i>Flowers, ornamental plants</i>	8.5	106.0	106.4	111.7	108.0	111.1	111.4	109.9	107.6
Anthurium	5.1	97.6	98.3	101.4	100.5	105.7	106.2	103.7 ⁴	100.0 ²
Rose	3.0	118.2	100.0	127.3	118.2	118.2	118.2	118.2	118.2
Other flowers	0.4	120.0	120.0	125.0	125.0	125.0	125.0	125.0	125.0
<i>Tea</i>	8.1	105.7	106.2	106.2	106.2	106.2	106.2²	106.2²	106.2²
<i>Tobacco</i>	3.2	131.9	131.9	131.9	131.9	124.7⁴	124.7⁴	124.7⁴	124.7²
Animals & Animal Products	244.1	117.9	130.0	127.2	127.6	133.4	132.0	130.1	132.5
Cattle	2.0	100.0	100.0	106.5	106.5	106.5	110.5	110.5	110.5
Pigs	3.2	100.3	139.7	147.8	151.6	136.6	118.1	139.5	131.6
Goat	0.7	127.7	129.8	129.8	131.6	136.0	138.6	138.6	145.5
Deer	4.9	115.7	115.7	120.4	120.4	120.4	120.4	124.3	124.3
Poultry	174.2	117.1	129.0	131.0	133.6	134.5	132.0	132.0	131.2
Eggs	55.0	119.7	133.4	110.8	104.6	127.7	130.7 ⁴	120.5 ⁴	134.2
Milk	4.1	149.4	149.4	184.5	184.5	184.5	184.5	184.5	184.5
Overall Index	1,000.0	110.0	105.5	104.9	109.5	109.2	97.3	95.6	102.9

¹ Using data for base period as weights, and not a simple average of the monthly indices

² Provisional

³ The indices are computed based on the method of variable baskets with fixed monthly weights in the base year as explained

⁴ Revised

at paragraph 11 of Annex. The composition of these baskets is shown in Table 9.

... Not applicable

Quarterly Producer Price Index -Agriculture (PPI-A)
(Base period:Year 2007=100)

Table 5: Quarterly changes (%) and net contributions of commodity group and product to the change, 1st Quarter 2009 - 1st Quarter 2010

Commodity Group	Weight	Percentage changes from previous quarter				Percentage changes from corresponding quarter of previous year				Net contributions from			
		1 st Qr 09	2 nd Qr 09	3 rd Qr 09	4 th Qr 09	2 nd Qr 08	3 rd Qr 08	4 th Qr 08	1 st Qr 09	1 st Qr 09	2 nd Qr 09	3 rd Qr 09	4 th Qr 09
		to 2 nd Qr 09	to 3 rd Qr 09	to 4 th Qr 09	to 1 st Qr 10	to 2 nd Qr 09	to 3 rd Qr 09	to 4 th Qr 09	to 1 st Qr 10	to 2 nd Qr 09	to 3 rd Qr 09	to 4 th Qr 09	to 1 st Qr 10
Crop Products	755.9	-2.1	-15.1	-1.9	10.5	-5.6	-11.7	-13.5	-9.8	-1.33	-11.95	-1.87	7.31
Sugar cane	570.5	0.0	-15.7	0.0	0.0	-6.4	-15.7	-15.7	-15.7	0.00	-8.56	0.00	0.00
Other crop products	185.4	-7.2	-13.3	-6.5	37.3	-3.9	-0.4	-7.4	3.3	-1.33	-3.39	-1.87	7.31
<i>Root Crops</i>	24.7	-4.8	24.9	-0.4	-11.3	-3.2	4.0	4.0	5.1	0.01	0.14	-0.01	0.01
Potato	22.4	0.0	5.0	0.0	0.0	20.9	4.6	4.6	5.0	0.00	0.14	0.00	0.00
Other root crops	2.3	4.3	0.4	-4.9	5.8	-6.8	-6.4	-3.6	5.3	0.01	0.00	-0.01	0.01
Fruits	21.6	-16.1	1.6	7.7	15.3	3.6	1.6	10.3	5.9	-0.35	0.06	0.15	0.31
Banana	7.1	-9.2	1.2	4.9	-12.4	-4.3	-12.4	-7.0	-15.5	-0.05	0.01	0.03	-0.07
Pineapple	8.4	-23.3	3.9	13.9	16.8	8.2	11.6	20.1	6.1	-0.31	0.04	0.15	0.20
Other fruits	6.1	0.8	1.0	-4.4	27.2	9.1	11.3	11.9	23.8	0.01	0.01	-0.03	0.18
Fresh vegetables	119.3	-7.2	-23.8	-11.9	65.6	-5.8	-2.3	-14.6	3.2	-1.00	-3.59	-2.00	7.01
Beans	3.4	-22.9	-28.9	-1.5	100.0	-11.1	-1.0	-4.8	8.0	-0.13	-0.13	0.00	0.32
Brinjal	2.7	144.3	-2.6	-56.2	67.8	-30.1	-25.7	-53.1	74.8	0.29	-0.01	-0.27	0.14
Cabbage	4.2	-12.7	-42.3	-23.9	138.7	-17.4	36.0	-14.0	-8.5	-0.09	-0.27	-0.09	0.39
Cauliflower	2.6	0.0	0.2	5.7	-6.0	-35.0	13.7	8.0	-0.5	0.00	0.00	0.02	-0.02
Carrot	7.2	-35.4	-69.8	-2.4	204.5	24.2	-46.5	-52.9	-41.9	-0.71	-0.90	-0.01	0.78
Onion	8.1	...	0.0	0.0	...	-0.4	-0.4	-0.4	0.00	0.00	...
Tomato	30.1	-9.2	-48.5	-18.4	169.0	-0.1	29.5	-21.7	2.8	-0.44	-2.13	-0.42	3.12
Creepers	37.0	-4.0	3.4	-18.5	37.9	-13.2	-8.7	-7.9	11.5	-0.16	0.13	-0.74	1.23
Other fresh vegetables	24.0	8.6	-9.5	-18.1	47.1	2.0	-1.1	-21.1	18.5	0.24	-0.28	-0.49	1.05
Flowers, ornamental plants	8.5	2.9	0.3	-1.3	-2.1	4.8	4.7	-1.6	-0.4	0.03	0.00	-0.01	-0.02
Anthurium	5.1	5.2	0.5	-2.4	-3.6	8.3	8.0	2.3	-0.5	0.03	0.00	-0.01	-0.02
Rose	3.0	0.0	0.0	0.0	0.0	0.0	18.2	-7.1	0.0	0.00	0.00	0.00	0.00
Other flowers	0.4	0.0	0.0	0.0	0.0	4.2	4.2	0.0	0.0	0.00	0.00	0.00	0.00
Tea	8.1	0.0	0.0	0.0	0.0	0.5	0.0	0.0	0.0	0.00	0.00	0.00	0.00
Tobacco	3.2	-5.5	0.0	0.0	0.0	-5.5	-5.5	-5.5	-5.5	-0.02	0.00	0.00	0.00
Animals & Animal Products	244.1	4.5	-1.0	-1.4	1.8	13.1	1.5	2.3	3.8	1.38	-0.32	-0.47	0.58
Cattle	2.0	0.0	3.8	0.0	0.0	6.5	10.5	3.8	3.8	0.00	0.01	0.00	0.00
Pigs	3.2	-9.9	-13.5	18.1	-5.7	36.2	-15.5	-5.6	-13.2	-0.05	-0.06	0.07	-0.03
Goat	0.7	3.3	1.9	0.0	5.0	6.5	6.8	6.8	10.6	0.00	0.00	0.00	0.00
Deer	4.9	0.0	0.0	3.2	0.0	4.1	4.1	3.2	3.2	0.00	0.00	0.02	0.00
Poultry	174.2	0.7	-1.9	0.0	-0.6	14.9	2.3	0.8	-1.8	0.16	-0.44	0.00	-0.14
Eggs	55.0	22.1	2.3	-7.8	11.4	6.7	-2.0	8.8	28.3	1.27	0.17	-0.56	0.75
Milk	4.1	0.0	0.0	0.0	0.0	23.5	23.5	0.0	0.0	0.00	0.00	0.00	0.00
Overall	1,000.0	-0.3	-10.9	-1.7	7.6	-0.7	-7.7	-8.9	-6.0	0.05	-12.27	-2.34	7.89

... Not applicable

Annual Producer Price Index -Agriculture (PPI-A)

(Base period:Year 2007=100)

Table 6 : Annual indices, annual changes (%) and net contributions of commodity group and product to the change, 2007 - 2009

Commodity Group	Weight	Annual index ¹			Percentage changes from		Net contributions from	
		2007	2008	2009	2007 to 2008	2008 to 2009	2007 to 2008	2008 to 2009
Crop Products	755.9	100.0	101.3	93.6	1.3	-7.6	0.98	-5.82
Sugar cane	570.5	100.0	98.8	88.0	-1.2	-10.9	-0.68	-6.16
Other crop products	185.4	100.0	109.0	110.7	9.0	1.6	1.66	0.34
<i>Root Crops</i> ²	24.7	100.0	122.4	128.5	22.4	5.0	0.55	0.12
Potato	22.4	100.0	124.6	130.6	24.6	4.8	0.55	0.13
Other root crops	2.3	100.0	101.2	97.6	1.2	-3.6	0.00	-0.01
<i>Fruits</i> ²	21.6	100.0	100.4	108.0	0.4	7.5	0.00	0.21
Banana	7.1	100.0	82.1	77.6	-17.9	-5.5	-0.13	-0.03
Pineapple	8.4	100.0	120.8	138.3	20.8	14.5	0.17	0.15
Other fruits	6.1	100.0	93.6	108.1	-6.4	15.5	-0.04	0.09
<i>Fresh vegetables</i> ²	119.3	100.0	107.8	107.4	7.8	-0.4	0.93	-0.02
Beans	3.4	100.0	114.4	114.3	14.4	-0.1	0.05	0.00
Brinjal	2.7	100.0	175.7	118.7	75.7	-32.4	0.20	-0.15
Cabbage	4.2	100.0	113.4	111.6	13.4	-1.6	0.06	-0.01
Cauliflower	2.6	100.0	107.6	107.4	7.6	-0.2	0.02	0.00
Carrot	7.2	100.0	117.4	128.0	17.4	9.0	0.13	0.08
Onion	8.1	100.0	117.0	116.5	17.0	-0.4	0.14	0.00
Tomato	30.1	100.0	91.5	102.6	-8.5	12.1	-0.26	0.33
Creepers	37.0	100.0	106.7	101.6	6.7	-4.8	0.25	-0.19
Other fresh vegetables	24.0	100.0	114.1	110.6	14.1	-3.1	0.34	-0.08
<i>Flowers, ornamental plants</i>	8.5	100.0	107.6	110.1	7.6	2.3	0.06	0.02
Anthurium	5.1	100.0	98.9	104.0	-1.1	5.2	-0.01	0.03
Rose	3.0	100.0	120.5	118.2	20.5	-1.9	0.06	-0.01
Other flowers	0.4	100.0	121.3	125.0	21.3	3.1	0.01	0.00
<i>Tea</i>	8.1	100.0	106.0	106.2	6.0	0.2	0.05	0.00
<i>Tobacco</i>	3.2	100.0	123.4	126.5 ³	23.4	2.5	0.07	0.01
Animals & Animal Products	244.1	100.0	121.0	130.8	21.0	8.1	5.11	2.41
Cattle	2.0	100.0	102.0	109.0	2.0	6.9	0.00	0.01
Pigs	3.2	100.0	122.0	139.5	22.0	14.3	0.07	0.06
Goat	0.7	100.0	128.0	136.0	28.0	6.3	0.02	0.01
Deer	4.9	100.0	114.0	121.0	14.0	6.1	0.07	0.03
Poultry	174.2	100.0	122.4	133.0	22.4	8.7	3.90	1.85
Eggs	55.0	100.0	114.8	120.9	14.8	5.3	0.81	0.34
Milk	4.1	100.0	158.2	184.5	58.2	16.6	0.24	0.11
Overall	1,000.0	100.0	106.1	102.7	6.1	-3.2	6.09	-3.40

¹ Using data for base period as weights, and not a simple average of the monthly indices

³ Revised

² The indices are computed based on the method of variable baskets with fixed monthly weights in the base year as explained at paragraph 11 of Annex. The composition of these baskets is shown in Table 9.

Table 7: Monthly indices for the Agricultural Sector, January 2007 - March 2010
(Base period: Year 2007=100)

Month	2007	2008	2009	2010
January	97.0	101.6	105.8	100.6 ²
February	101.6	104.8	111.3	104.5 ²
March	111.7	106.2	113.0	104.4 ²
1st quarter	103.2	103.9	109.5	102.9²
April	108.0	111.6	110.6	
May	101.5	108.6	108.9	
June	96.2	110.4	108.7	
2nd quarter	103.7	110.0	109.2	
July	98.0	106.9	98.1 ¹	
August	99.8	104.7	97.5 ¹	
September	100.9	104.7	96.4 ¹	
3rd quarter	99.5	105.5	97.3¹	
October	100.7	105.8	95.1 ¹	
November	100.2	105.3	96.6 ¹	
December	99.1	103.6	95.3 ¹	
4th quarter	100.0	104.9	95.6¹	
Yearly average²	100.0	106.1	102.7	
Annual change (%)	7.1	6.1	-3.2	

¹ Revised

² Provisional

³ Using data for base period as weights, and not a simple average of the monthly indices

Table 8: Monthly indices for the Agricultural Sector, January 1993 - March 2010¹

(Base period: Year 2007=100)

Month	1993	1994	1995	1996	1997	1998	1999	2000	2001	2002	2003	2004	2005	2006	2007	2008	2009	2010
January	45.1	47.9	56.7	60.0	67.2	64.5	71.6	64.1	62.5	73.9	72.8	83.1	82.9	90.9	97.0	101.6	105.8	100.6
February	45.7	51.3	56.9	62.1	66.3	65.8	72.1	70.6	64.1	79.3	77.0	83.5	88.1	90.9	101.6	104.8	111.3	104.5
March	47.5	55.5	59.8	64.0	65.7	72.5	72.6	70.6	62.7	80.3	81.0	86.4	95.1	98.1	111.7	106.2	113.0	104.4
April	44.6	52.9	60.3	64.1	65.9	72.1	74.5	66.7	64.6	73.0	81.4	87.2	101.8	100.1	108.0	111.6	110.6	
May	43.6	52.3	58.0	64.9	67.5	66.7	73.4	66.6	66.3	68.9	83.1	84.6	95.0	93.2	101.5	108.6	108.9	
June	43.8	50.3	56.9	63.3	67.5	65.4	72.0	65.3	67.6	68.9	80.9	82.3	86.8	91.2	96.2	110.4	108.7	
July	48.3	57.2	60.3	65.4	64.9	70.3	68.3	63.3	70.9	74.0	80.7	84.2	87.8	93.8	98.0	106.9	98.1	
August	48.8	57.3	60.9	64.2	64.6	70.7	68.3	64.1	69.7	74.7	79.2	83.6	87.5	95.8	99.8	104.7	97.5	
September	49.2	56.8	60.6	65.0	63.9	70.5	67.0	63.3	68.4	75.3	77.6	82.1	89.1	93.6	100.9	104.7	96.4	
October	48.4	56.8	60.0	65.3	63.3	70.6	67.0	62.1	69.1	75.7	77.3	82.7	91.8	92.5	100.7	105.8	95.1	
November	48.4	57.8	59.4	64.7	62.9	70.0	67.3	61.3	68.1	72.9	79.0	82.0	89.0	92.8	100.2	105.3	96.6	
December	47.8	57.4	59.7	65.4	63.3	70.5	66.9	61.1	70.1	74.0	78.7	80.9	89.3	93.2	99.1	103.6	95.3	
Yearly Average ²	46.6	54.1	58.7	63.8	64.9	68.7	69.5	64.5	67.3	73.6	78.7	83.0	89.6	93.3	100.0	106.1	102.7	
Annual change (%)		16.1	8.4	8.6	1.8	5.8	1.2	-7.2	4.3	9.4	6.9	5.5	8.0	4.1	7.1	6.1	-3.2	

¹ The indices for January 1993 to June 2009 previously based on 2002=100 have been converted to the new base 2007=100

² Using data for base period as weights, and not a simple average of the monthly indices

Monthly Producer Price Index -Agriculture (PPI-A)

(Base period:Year 2007 =100)

Table 9 : Weight distribution for the base period and its months by commodity group and product

Commodity Group	Weight												
	Year	Jan	Feb	Mar	Apr	May	June	July	Aug	Sept	Oct	Nov	Dec
Crop Products	755.9	755.9	755.9	755.9	755.9	755.9	755.9	755.9	755.9	755.9	755.9	755.9	755.9
Sugar cane	570.5	570.5	570.5	570.5	570.5	570.5	570.5	570.5	570.5	570.5	570.5	570.5	570.5
Other crop products	185.4	185.4	185.4	185.4	185.4	185.4	185.4	185.4	185.4	185.4	185.4	185.4	185.4
<i>Root Crops</i>	24.7	24.7	24.7	24.7	24.7	24.7	24.7	24.7	24.7	24.7	24.7	24.7	24.7
Potato	22.4	18.1	0.0	0.0	0.0	0.0	7.2	22.6	23.4	23.6	22.8	23.7	23.3
Other root crops	2.3	6.6	24.7	24.7	24.7	24.7	17.5	2.1	1.3	1.1	1.9	1.0	1.4
<i>Fruits</i>	21.6	21.6	21.6	21.6	21.6	21.6	21.6	21.6	21.6	21.6	21.6	21.6	21.6
Banana	7.1	5.4	8.0	10.0	9.9	10.4	10.0	10.6	10.7	9.7	9.3	5.9	3.3
Pineapple	8.4	5.0	9.5	11.3	11.3	10.5	10.0	9.7	9.5	9.2	7.6	5.3	3.4
Other fruits	6.1	11.2	4.1	0.3	0.4	0.7	1.7	1.3	1.3	2.7	4.7	10.5	14.9
<i>Fresh vegetables</i>	119.3	119.3	119.3	119.3	119.3	119.3	119.3	119.3	119.3	119.3	119.3	119.3	119.3
Beans	3.4	3.1	2.5	2.3	3.3	4.4	3.6	3.5	3.3	4.2	3.6	3.0	3.4
Brinjal	2.7	3.5	3.7	3.1	2.9	2.3	2.0	2.0	2.5	2.6	2.5	2.6	3.0
Cabbage	4.2	3.4	3.2	2.8	3.3	5.2	7.4	5.5	4.5	4.9	3.9	2.8	3.4
Cauliflower	2.6	0.3	0.1	0.0 ¹	0.0 ¹	1.4	4.3	7.6	6.1	4.6	2.0	0.8	5.0
Carrot	7.2	6.2	7.6	9.7	5.7	6.2	8.6	10.6	7.9	8.1	6.1	5.3	0.6
Onion	8.1	0.0	0.0	0.0	0.1	0.8	1.7	2.6	2.0	3.2	28.2	27.5	8.5
Tomato	30.1	36.7	36.1	28.1	23.5	27.9	30.5	28.1	28.8	29.1	24.9	29.6	35.6
Creepers	37.0	41.4	42.7	48.0	52.6	45.5	36.8	33.7	33.7	32.5	29.5	31.1	38.6
Other fresh vegetables	24.0	24.9	23.3	25.4	27.8	25.7	24.3	25.8	30.4	30.2	18.6	16.5	21.2
<i>Flowers, ornamental plants</i>	8.5	8.5	8.5	8.5	8.5	8.5	8.5	8.5	8.5	8.5	8.5	8.5	8.5
Anthurium	5.1	5.1	5.1	5.1	5.1	5.1	5.1	5.1	5.1	5.1	5.1	5.1	5.1
Rose	3.0	3.0	3.0	3.0	3.0	3.0	3.0	3.0	3.0	3.0	3.0	3.0	3.0
Other flowers	0.4	0.4	0.4	0.4	0.4	0.4	0.4	0.4	0.4	0.4	0.4	0.4	0.4
<i>Tea</i>	8.1	8.1	8.1	8.1	8.1	8.1	8.1	8.1	8.1	8.1	8.1	8.1	8.1
<i>Tobacco</i>	3.2	3.2	3.2	3.2	3.2	3.2	3.2	3.2	3.2	3.2	3.2	3.2	3.2
Animals & Animal Products	244.1	244.1	244.1	244.1	244.1	244.1	244.1	244.1	244.1	244.1	244.1	244.1	244.1
Cattle	2.0	2.0	2.0	2.0	2.0	2.0	2.0	2.0	2.0	2.0	2.0	2.0	2.0
Pigs	3.2	3.2	3.2	3.2	3.2	3.2	3.2	3.2	3.2	3.2	3.2	3.2	3.2
Goat	0.7	0.7	0.7	0.7	0.7	0.7	0.7	0.7	0.7	0.7	0.7	0.7	0.7
Deer	4.9	4.9	4.9	4.9	4.9	4.9	4.9	4.9	4.9	4.9	4.9	4.9	4.9
Poultry	174.2	174.2	174.2	174.2	174.2	174.2	174.2	174.2	174.2	174.2	174.2	174.2	174.2
Eggs	55.0	55.0	55.0	55.0	55.0	55.0	55.0	55.0	55.0	55.0	55.0	55.0	55.0
Milk	4.1	4.1	4.1	4.1	4.1	4.1	4.1	4.1	4.1	4.1	4.1	4.1	4.1
Total	1,000.0	1,000.0	1,000.0	1,000.0	1,000.0	1,000.0	1,000.0	1,000.0	1,000.0	1,000.0	1,000.0	1,000.0	1,000.0

¹ Due to rounding

Producer Price Index – Agriculture (PPI-A) Methodology for the Construction of the PPI-A

1. Introduction

The analysis of price data implies comparison of current and past prices. Comparison over time is required to study the price movement in order to understand the history and to indicate future outlook. While price relatives of single commodities can be studied in isolation, general conclusion can only be derived from averages, covering a given set or class of commodities. The indicators of average price changes are the price indices.

2. Purpose of the agricultural price indices

The purpose of the price indices is to provide information on trends in producer prices of agricultural products and purchase prices of the means of agricultural production.

The selling prices of agricultural products and the purchase of the means of production have a decisive influence on farmer's income. It would, therefore, seem useful to have indicators showing how agricultural revenue and expenditure are influenced by their price component.

The agricultural price indicators are of two types:-

- (i) Price received by farmers represent the producer prices of agricultural products (output prices)
- (ii) Prices paid by farmers are the purchase prices of agricultural requisites (input prices)

The two classes of prices mentioned above, are considered important in the context of economic analysis and agricultural policy decisions. Index numbers based on them show the average changes of these prices.

In the first instance, only the output price index for different groups of commodities has been compiled. Later on, an input price index will be constructed.

3. Uses of agricultural prices indices

The construction of agricultural price index numbers may serve various purposes as shown below:-

- (i) Economic analysis, in particular the estimation of general price trends and their relationship with other pertinent variable, e.g the study of domestic price changes

in relation to prices observed in external markets or the movement of agricultural production.

- (ii) Monitoring the implementation of agricultural price policy decision such as the introduction or modification of support prices
- (iii) Forecasting price movements in connection with market studies or business cycle research.
- (iv) Compilation of national accounts at constant prices. In order to estimate the growth of the real product of the agricultural sector, deflator indices are needed. They are appropriately weighted indices of agricultural commodities or input items

4. Definition of prices

A price is a pure price when the same amount of money refers to what the buyer pays and what the seller receives. Since the price series form the basis for calculation, the index of the output prices must be representative of what the farmer actually receives.

The prices must be recorded at a point in the marketing of the product which is as close as possible to the farmer. This means that the selling prices should be recorded at the farm gate or (if this is not possible) at the next stage of the commodity flow.

5. Price received by agricultural producers

As mentioned earlier, the prices for the index should be farm-gate prices, but this is not possible in many cases. Hence, in lieu of the farm-gate price, the wholesale price of the produce is recorded at the two auction markets located in Vacoas and Port Louis.

As regards sugarcane, there is no actual market price for the product. The final price for a crop is only available after the crop year to which it refers. The solution has been found in such a way that every quarter an updated provisional price of sugar (obtained from Mauritius Sugar Syndicate) is used which, however, is corrected afterwards as soon as the final price is available. The same procedure is applied to tea and tobacco.

6. Weighting Scheme and Choice of the base period

As price data are associated with commercial transaction, it is logical to relate prices to sales rather than total production. However, since value of production for the market (sales) is not available here, the value of the total production is considered as a proxy in calculation of weights. Furthermore, since meteorological conditions and market forces may generate high fluctuations, the weight base is taken as the average of the total production for three years.

It may be noted that 'FAO' and 'Eurostat' recommend that if the quantity weight base is the average of 3 years, then the reference base for prices should be the middle year. The weights are

derived by multiplying the average of production during the years 2006, 2007 and 2008 by the average of unit prices in 2007, the reference period. The weight is assigned to each commodity group on the basis of total production (as a proxy for sales) pertaining to the particular group. At commodity level, the weights are apportioned within the commodity group on the basis of production of each product.

Quarterly and annual indices have been computed using a weighting system based on the production value for the base period.

7. Type of Index

The PPI will be calculated according to a modified Laspeyres formula:

$$I_t = \frac{\sum W_i (P_{ti}/P_{oi})}{\sum W_i} \times 100$$

Where:

- I_t** is the index for the current period t
- P_{ti}** is the price of commodity i in the current period t
- P_{oi}** is the price of the commodity i in the reference period o (2007)
- W_i** is the weight associated with commodity i

8. Commodity Coverage

The bulk of the products in agriculture, with the exception of forestry, fishing and agricultural services, is taken into account in the producer price index. Thus, about 83% of the total value of agricultural production is covered.

9. Observation Units

There are essentially three types of observation units for collecting producer prices: (i) producers (ii) purchasers and (iii) markets. However, in the context of Mauritius, different type of observation units are used for different commodities as shown below:

- (i) For main Commercial crops (sugarcane, tea leaf and tobacco leaf etc) the respective marketing agency is the source of the price data.
- (ii) For vegetables, price data are obtained mainly at the two auction markets which are situated at Vacoas and Port Louis respectively
- (iii) For fruits, prices are recorded from different sources such as planters and first middlemen
- (iv) For animals and animal products, price data are available at sources varying from marketing agencies to producers.

10. Frequency of Price Collection

The frequency of price collection varies from weekly for some commodities to only once a year in others. Broadly speaking, the frequency of price collection is as follows:-

- (i) For vegetables, price data are collected once a week at the two auction markets
- (ii) For commodities for which prices are fairly stable, data suppliers are visited on a quarterly basis, but prices are collected for each month of the quarter. For example Crop products – potato, onion. etc
- (iii) For the main Commercial crops like Sugarcane, tea leaf and tobacco leaf, the reported prices are normally fixed for the crop year by the respective marketing agency.
- (iv) For the remaining type of items not mentioned above, the price data are collected on a monthly basis.

11. Seasonality

Prices and quantities of many agricultural commodities show seasonal variations. As vegetables and fruits are extremely seasonal products, it is therefore decided to use the method of variable baskets with fixed monthly weights in the base year.

There are 12 monthly baskets of representative products. The composition of these baskets varies each month. Certain products whose marketing period covers the whole year appear in all 12 monthly baskets, while others, which are more seasonal, appear only in some of them. However, the composition of the basket for a given month is fixed overtime.

12. Missing Prices

There is also in the field of agricultural price observation the case of missing prices for a product which must be taken into account because there is an index weight for respective month. In such a case, it is recommended that a fictitious price be used; which is the last observed price.

13. Periodicity

The index is calculated on a monthly, quarterly as well as on an annual basis. While quarterly and annual price indices can normally be calculated as the simple (unweighted) average of the monthly indices, it is recommended that the monthly sales figures for the base year be used as weights to calculate the quarterly and annual indices. If sales figures are not available, total production can be used as a proxy when most of the production is available for sales. Such is the case in Mauritius and the values of total production have been used as weights.