

# EDUCATION STATISTICS - 2009

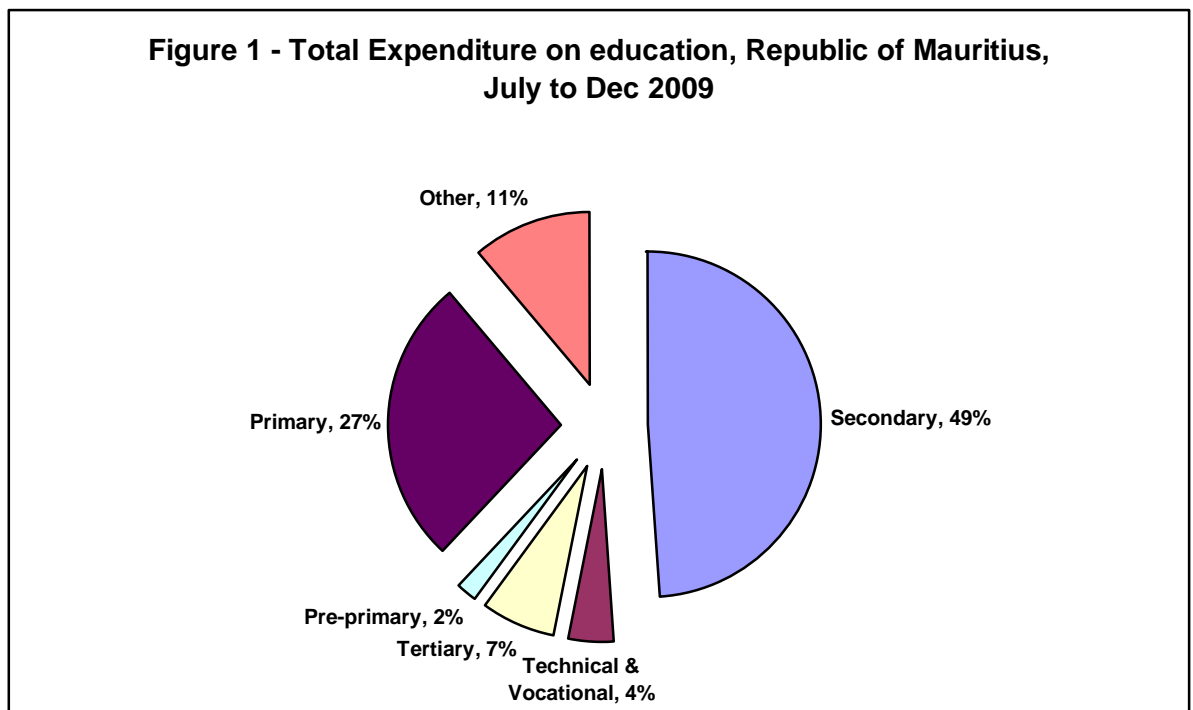
## 1. Introduction

This issue of the Economic and Social Indicators presents data on education, compiled on the basis of information collected through the annual survey conducted in schools in March 2009, together with data from other sources. The data refer to the Republic of Mauritius (excluding Agalega) and cover pre-primary, primary, secondary (academic and pre-vocational) and tertiary education. The main indicators on education for the period 2005 – 2009 are presented in Table 1.1.

## 2. Expenditure

Total government expenditure estimates for the period July to Dec 2009 is Rs 39,530 million, out of which, Rs 4,208 million (11%) has been allocated to education.

Out of the total budget on education and training for the period July to Dec 2009, 49% is allocated to secondary education, 27% to primary education, 7% to tertiary education, 4% to technical and vocational education, 2% to pre-primary education and the remaining 11% to other expenses (Table 2.2 and Figure 1).



### **3. Pre-primary education**

#### **3.1 Schools**

In March 2009, there were 1,057 schools providing pre-primary education: 1,024 in the Island of Mauritius and 33 in Rodrigues. Of these schools, 803 (76%) were privately run institutions; 182 (17%), operating on government primary school premises, were administered by the Early Childhood Care and Education Authority (Ex Pre-School Trust Fund) and the remaining 72 (7%) were administered by either Roman Catholic (RC) or Hindu Education authorities or Municipal/Village Councils (Table 3.1).

#### **3.2 Enrolment**

Total enrolment in pre-primary schools numbered 35,974, of whom 18,097 were boys and 17,877 girls (Table 3.3). The Gross Enrolment Ratio (pre-primary enrolment as a percentage of the population aged 4 and 5 years) works out to 96% in 2009.

#### **3.3 Personnel**

In March 2009, total employment in pre-primary schools stood at 3,451, of whom 2,518 were teachers and 933, non-teaching staff. The average number of pupils per teacher works out to 14.

### **4 Primary education**

#### **4.1 Schools**

In March 2009, there were 302 schools providing primary education, 289 in the Island of Mauritius and 13 in Rodrigues. The majority (220) of the schools was run by government, 51 by the Roman Catholic Education Authority (RCEA), 2 by the Hindu Education Authority and the other 29 were private non-aided schools.

#### **4.2 Enrolment**

The primary school population in the Republic of Mauritius stood at 117,922 in 2009 a decrease of 1100 from 2008 figure. Boys represented 51% of the 2009 primary school population and girls 49%. Around 73% of the primary school population was enrolled in government schools and the remaining was in private aided and non-aided schools (Table 4.3).

Distribution by grade shows that the highest number of pupils was in standard VI (22,594 pupils including 4,312 repeaters). The Gross Enrolment Ratio (primary enrolment as a percentage of the population aged 6 to 11 years) works out to 101%, same as in 2008.

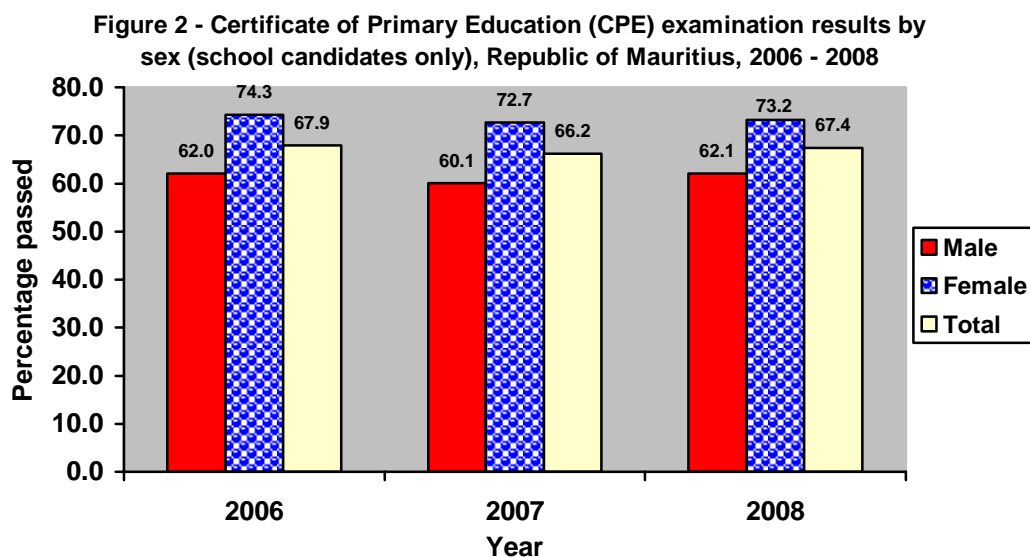
### 4.3 Personnel

At March 2009, 8,090 persons were employed in primary schools. Of this number, 5,454 were teaching staff: 4,080 General Purpose Teachers and 1,374 Oriental Language Teachers. The remaining 2,636 comprised 303 Head Teachers, 918 Deputy Head Teachers and 1,415 administrative and other workers (Tables 4.9). The pupil/teacher (general purpose) ratio in primary schools works out to 29.

### 4.4 Certificate of Primary Education (CPE)

In 2008, the number of candidates who took part in the CPE examination was 26,211 (23,664 school candidates and 2,547 private candidates), with an overall pass rate of 64%.

The pass rate among school candidates, comprising 12,299 boys and 11,365 girls, was 67%. The girls were more successful than the boys, with respective pass rates of 73% and 62% (Table 4.11 and Figure 2).



The overall pass rate among the 2,547 private candidates (1,488 boys and 1,059 girls) was 32%, with girls again achieving better results than boys, 38% against 28% (Table 4.12).

School candidates who took part in the CPE examination for the first time did much better than those taking the examination a second time, 75% against 40% (Table 4.12).

## **5. Secondary and pre-vocational education**

### **5.1 General**

At March 2009, 54 schools were offering secondary academic education only, 6 pre-vocational education only and 125 both secondary academic and pre-vocational education.

### **5.2 Secondary education (Academic only)**

#### **5.2.1 Schools**

Out of the 179 schools dispensing secondary education, 174 were in the Island of Mauritius and 5 in Rodrigues. State administered schools numbered 69, while the other 105 were private aided and non-aided schools (Table 5.1).

#### **5.2.2 Enrolment**

Secondary education enrolment decreased slightly by some 300 from 116,503 in 2008 to reach 116,226 in 2009. Table 5.3 shows that 60,837 (52%) were girls and 55,389 (48%) were boys. About 42% of the secondary school population were in state schools and 58% in private (aided and unaided) schools. Gross Enrolment Ratio (secondary education enrolment as a percentage of the population aged 12 to 19 years) for the academic stream works out to 69% in 2009, same as in 2008.

### **5.3 Pre-vocational education**

#### **5.3.1 Schools**

At March 2009, 131 schools were offering pre-vocational education: 126 in the Island of Mauritius and 5 in Rodrigues. Fifty-six of these schools were state secondary schools and state pre-vocational schools while the remaining 75 were private schools.

#### **5.3.2 Enrolment**

Enrolment in the schools offering pre-vocational education was 8,033 comprising 5,114 boys and 2,919 girls (Table 5.11). About 30% of the students in pre-vocational schools were in state schools.

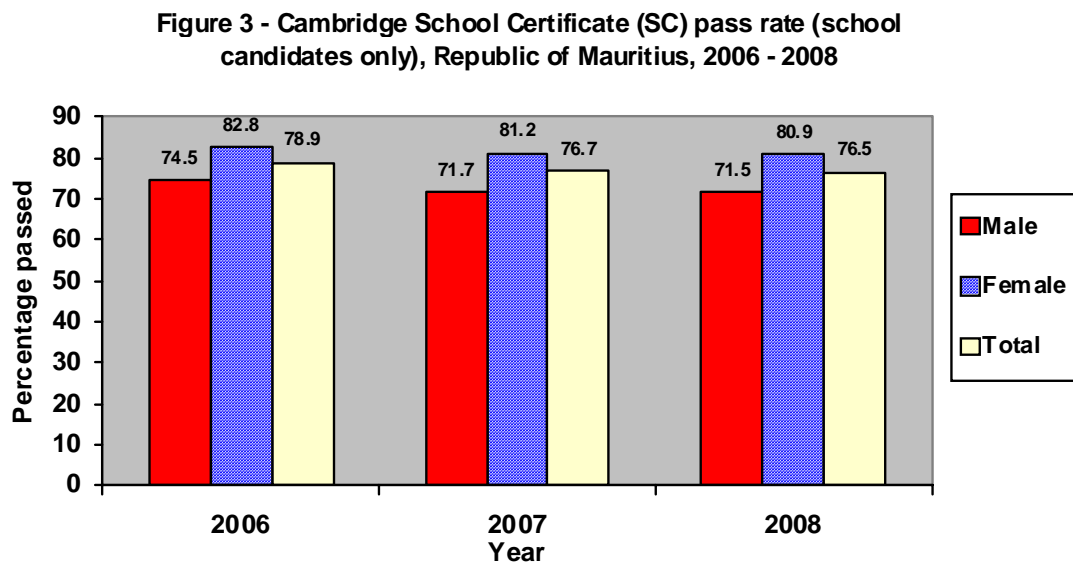
## 5.4 Personnel

The number of teachers working in schools offering secondary and pre-vocational education was 8,186 at March 2009.

The secondary education teaching staff in the academic stream was 7,564 (3,256 males and 4,308 females). The pupil/teacher ratio works out to 15. On the other hand, the pre-vocational education teaching staff stood at 622 (220 males and 402 females), giving an average of 13 pupils per teacher.

## 5.5 Cambridge School Certificate (SC)

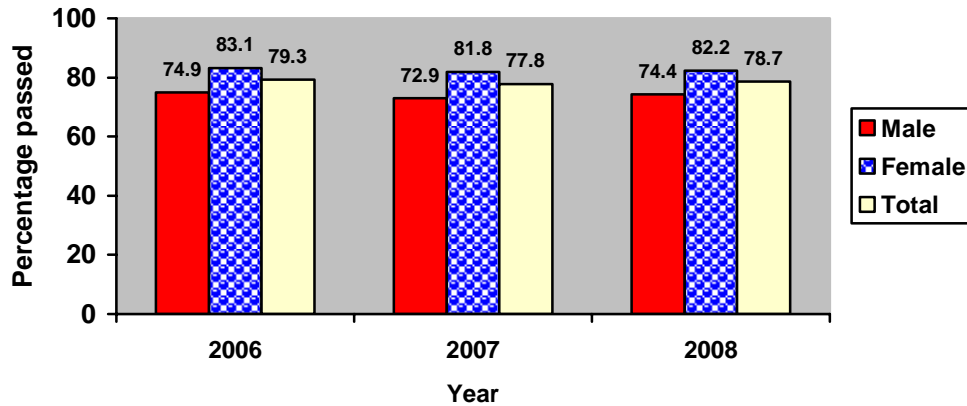
In 2008, out of 17,794 candidates (8,262 males and 9,532 females) who took part in the Cambridge School Certificate examination, 13,617 were successful. Comparison with the 2007 results shows that the overall pass rate has declined from 76.7% to 76.5% (Table 5.19 and Figure 3).



## 5.6 Cambridge Higher School Certificate (HSC)

The number of students taking part in the 2008 Cambridge Higher School Certificate examination stood at 8,907 (3,999 males and 4,908 females). The overall pass rate was 78.7% compared to 77.8% in 2007 (Table 5.20 and Figure 4).

**Figure 4 - Cambridge Higher School Certificate (HSC) pass rate (school candidates only), Republic of Mauritius, 2006 - 2008**



## 6. Tertiary Education

As at December 2008, the total number of students (part-time and full-time) enrolled on tertiary-level programmes (including Distance Education) reached 38,623 compared to 35,023 in December 2007, representing an increase of 9.3%.

The majority of students (71%) were enrolled in tertiary education locally in both public-funded institutions (45%) and private institutions (26%). Another 29% of the students were enrolled in tertiary education overseas (Table 6.1b).

The Gross Enrolment Rate (tertiary education enrolment as a percentage of the population aged 20 to 24 years), which was 37.3% in 2007, reached 41.4 % in 2008.

**Central Statistics Office  
Ministry of Finance and Economic Empowerment  
Port Louis  
Mauritius  
September 2009**

### **Contact Person**

D. Pothegadoo  
Statistician  
Statistics Unit  
Ministry of Education, Culture and Human Resources  
Pont Fer, Phoenix  
Tel: 601 5252, 601 5200, Ext. 5430, 5478  
Fax: 686 8774  
Email : dpothegadoo@mail.gov.mu

## LIST OF TABLES

	<b>Page</b>
<b>EDUCATION INDICATORS</b>	
1.1 Main Education indicators and data, Republic of Mauritius, 2005 - 2009	7
<b>EXPENDITURE ON EDUCATION</b>	
2.1 Total Government Expenditure, Republic of Mauritius, 2008/2009 and 2009/2010	8
2.2 Government Expenditure on Education by sector, 2008/2009 and 2009/2010	8
<b>PRE-PRIMARY EDUCATION</b>	
3.1 Distribution of pre-primary schools by district and type of administration, 2009	9
3.2 Distribution of pre-primary schools by zone and type of administration, 2009	9
3.3 Enrolment and personnel in pre-primary schools by district and sex, 2009	10
3.4 Enrolment and personnel in pre-primary schools by zone and sex, 2009	10
<b>PRIMARY EDUCATION</b>	
4.1 Distribution of primary schools by district and type of administration, 2009	11
4.2 Distribution of primary schools by zone and type of administration, 2009	11
4.3 Enrolment in primary schools by district, type of administration and sex , 2009	12
4.4 Enrolment in primary schools by zone, type of administration and sex , 2009	12
4.5 Enrolment in primary schools by district and grade, 2009	13
4.6 Enrolment in primary schools by zone and grade, 2009	13
4.7 Enrolment in primary schools by grade and sex, 2007 - 2009	14
4.8 Enrolment in primary schools by type of administration, grade and sex, 2007 - 2009, Republic of Mauritius	15
4.9 Personnel in primary schools by district and occupational status, 2009	16
4.10 Personnel in primary schools by zone and occupational status, 2009	16
4.11 Certificate of Primary Education (CPE) examination results by sex, 2006 - 2008	17
4.12 Performance at Certificate of Primary Education (CPE) examination by sex and sitting, 2008	18
<b>SECONDARY EDUCATION - ACADEMIC STREAM AND PRE-VOCATIONAL</b>	
5.1 Distribution of secondary schools by district and type of administration, 2009	19
5.2 Distribution of secondary schools by zone and type of administration, 2009	19

5.3	Enrolment in secondary schools (academic stream) by district, type of administration and sex, 2009	20
5.4	Enrolment in secondary schools (academic stream) by zone, type of administration and sex, 2009	20
5.5	Enrolment in secondary schools (academic stream) by district and grade, 2009	21
5.6	Enrolment in secondary schools (academic stream) by zone and grade, 2009	21
5.7	Enrolment in secondary schools (academic stream) by grade and sex, 2007 - 2009	22
5.8	Enrolment in secondary schools (academic stream) by type of administration, grade and sex, 2007 - 2009, Republic of Mauritius	23
5.9	Distribution of schools offering pre-vocational education by district and type of administration, 2009	24
5.10	Distribution of schools offering pre-vocational education by zone and type of administration, 2009	24
5.11	Enrolment in schools offering pre-vocational education by district, type of administration and sex, 2009	25
5.12	Enrolment in schools offering pre-vocational education by zone, type of administration and sex, 2009	25
5.13	Enrolment in schools offering pre-vocational education by district and year of study, 2009	26
5.14	Enrolment in schools offering pre-vocational education by zone and year of study, 2009	26
5.15	Enrolment in schools offering pre-vocational education by year of study and sex, 2007 - 2009	27
5.16	Enrolment in schools offering pre-vocational education by type of administration, year study and sex, 2007 - 2009, Republic of Mauritius	28
5.17	Teaching staff in secondary (academic & pre-vocational streams) by district and sex, 2009	29
5.18	Teaching staff in secondary schools (academic & pre-vocational streams) by zone and sex, 2009	29
5.19	Cambridge School Certificate (SC) examination results by type of school administration and sex, 2006 - 2008	30
5.20	Cambridge Higher School Certificate (HSC) examination results by type of school administration and sex, 2006 - 2008	31

#### **POST SECONDARY EDUCATION**

6.1(a)	Total number of students enrolled in Tertiary Education, both locally and overseas, by field of study as at December 2007	32
6.1(b)	Total number of students enrolled in Tertiary Education, both locally and overseas, by field of study as at December 2008	33



Table 1.1 - Main Education Indicators and data, Republic of Mauritius, 2005 - 2009

	2005	2006	2007	2008	2009
<b>Pre-primary</b>					
Number of schools	1,072	1,087	1,076	1,070	1,057
Enrolment	37,356	37,129	36,467	36,242	35,974
Number of teachers	2,501	2,527	2,513	2,541	2,518
Gross Enrolment Ratio (%)	94	95	94	94	96
Pupil/Teacher Ratio	15	15	15	14	14

**Primary**

Number of schools	291	290	289	299	302
Enrolment	123,562	121,387	119,310	119,022	117,922
Number of teachers	5,531	5,598	5,548	5,495	5,454
Gross Enrolment Ratio (%)	102	102	101	101	101
Pupil/Teacher Ratio	30	29	28	29	29
Transition Rate (Primary to Secondary)	81	84	81	82	n.a
Certificate of Primary Education Pass Rates	64.9	67.9	66.2	67.4	n.a

**Secondary (Academic and Pre-Vocational)**

Number of schools	196	196	193	187	185
Enrolment	120,132	125,081	126,279	124,998	124,259
Number of teachers	7,433	7,761	8,124	8,053	8,186
Gross Enrolment Ratio (%)	73	75	74	74	73
Pupil/Teacher Ratio	16	16	16	16	15
Cambridge School Certificate Pass Rates	78.4	78.9	76.7	76.5	n.a
Cambridge Higher School Certificate Pass Rates	78.2	79.3	77.8	78.7	n.a

**Tertiary<sup>1</sup>**

Enrolment	28,864	33,230	35,023	38,623	n.a
Gross Enrolment Ratio (%)	28	34	37	41	n.a

<sup>1</sup> Source: Tertiary Education Commission

**Expenditure**

Total Government Expenditure (Rs million)	48,394.0	53,609.9	56,315.0	61,544.0	74,800.0
Total Government Expenditure on Education (Rs million)	6,819.8	6,970.3	7,099.3	7,817.3	8,510.1
Total Government Expenditure on Education as a % of GDP at market price	3.8	3.6	3.2	3.2	3.2
Total Government Expenditure on Education as a % of Total Government Expenditure	14.1	13.0	12.6	12.7	11.4

n.a: Not available

Table 2.1 - Total Government Expenditure, Republic of Mauritius, 2008/2009 and July to Dec 2009

(Rs million)		
	2008/2009 <sup>1</sup>	July to 31 Dec 2009 <sup>1</sup>
<b>Total Government Expenditure</b>	<b>74,800.0</b>	<b>39,530.0</b>
of which expenditure by:		
Ministry of Education & Human Resources	8,020.3	4,208.2

Table 2.2 - Government Expenditure on Education by sector, 2008/2009 and July to Dec 2009

(Rs million)				
	2008/2009 <sup>1</sup>		July to 31 Dec 2009 <sup>1</sup>	
	Amount	%	Amount	%
<b>Island of Mauritius</b>				
<b>Ministry of Education &amp; HR</b>	<b>8,020.3</b>	<b>94.1</b>	<b>4,208.1</b>	<b>94.1</b>
<i>Pre-primary</i>	125.1	1.5	66.1	1.5
<i>Primary</i>	2,182.2	25.6	1,153.9	25.8
<i>Secondary</i>	4,114.8	48.3	2,163.1	48.4
<i>Technical &amp; Vocational</i>	370.8	4.4	184.6	4.1
<i>Tertiary Education</i>	642.7	7.5	323.4	7.2
<i>Special Education Programmes</i> <sup>2</sup>	285.8	3.4	146.2	3.3
<i>Other</i> <sup>3</sup>	298.9	3.5	170.8	3.8
<b>Island of Rodrigues</b> <sup>4</sup>	<b>169.3</b>	<b>2.0</b>	<b>93.9</b>	<b>2.1</b>
<i>Pre-Primary</i>	3.6	0.0	2.3	0.1
<i>Primary</i>	102.9	1.2	65.4	1.5
<i>Secondary</i>	37.1	0.4	11.2	0.3
<i>Technical &amp; Vocational</i>	0.5	0.0	0.2	0.0
<i>Tertiary Education</i>	5.0	0.1	4.0	0.1
<i>Other</i>	20.7	0.2	11.0	0.2
<b>Other Ministries</b> <sup>5</sup>	<b>332.9</b>	<b>3.9</b>	<b>167.6</b>	<b>3.7</b>
<b>Total</b>	<b>8,522.5</b>	<b>100.0</b>	<b>4,469.6</b>	<b>100.0</b>

<sup>1</sup> Budget Estimates

<sup>2</sup> Includes MIE, Conservatoire, HRDC, NPCC & MCA

<sup>3</sup> Includes MQA, Rajiv Gandhi Science Centre & World Hindi Secretariat

<sup>4</sup> Expenditure on Education under Ministry of Rodrigues Vote

<sup>5</sup> Includes Sea Training, MIH & Training under the National Empowerment Foundation

Table 3.1 - Distribution of pre-primary schools by district and type of administration, 2009

District	Type of Administration				
	Total	ECCEA <sup>1</sup>	RC/HA <sup>2</sup>	Municipal/ V.Council	Private
Port Louis	138	18	1	16	103
Pamplemousses	108	23	1	1	83
Riv. du Rempart	100	23	-	2	75
Flacq	124	29	3	1	91
Grand Port	102	19	1	11	71
Savanne	60	10	1	2	47
Plaines Wilhems	303	31	2	27	243
Moka	50	15	3	-	32
Black River	39	11	-	-	28
Island of Mauritius	1,024	179	12	60	773
Island of Rodrigues	33	3	-	-	30
Republic of Mauritius	1,057	182	12	60	803

Table 3.2 - Distribution of pre-primary schools by zone and type of administration, 2009

Zone	Type of Administration				
	Total	ECCEA <sup>1</sup>	RC/HA <sup>2</sup>	Municipal/ V.Council	Private
1 - Port Louis / North	347	65	2	19	261
2 - B.Bassin-R.Hill / East	255	51	6	10	188
3 - Curepipe / South	235	36	2	15	182
4 - Q.Bornes / Vacoas-Phoenix /West	187	27	2	16	142
5 - Rodrigues	33	3	-	-	30
All Zones	1,057	182	12	60	803

<sup>1</sup> Early Childhood Care and Education Authority (Ex Pre-School Trust Fund)

<sup>2</sup> Roman Catholic and Hindu Aided Schools

Table 3.3 - Enrolment and personnel in pre-primary schools by district and sex, 2009

District	Enrolment			Personnel		
	Male	Female	Total	Teaching	Non - Teaching	Total
Port Louis	2,580	2,526	5,106	336	155	491
Pamplemousses	1,886	1,856	3,742	244	108	352
Riviere du Rempart	1,626	1,499	3,125	218	82	300
Flacq	2,181	2,082	4,263	279	92	371
Grand Port	1,519	1,507	3,026	211	61	272
Savanne	1,023	1,018	2,041	128	33	161
Plaines Wilhems	4,840	4,876	9,716	786	306	1,092
Moka	836	842	1,678	110	46	156
Black River	762	829	1,591	131	42	173
Island of Mauritius	17,253	17,035	34,288	2,443	925	3,368
Island of Rodrigues	844	842	1,686	75	8	83
Republic of Mauritius	18,097	17,877	35,974	2,518	933	3,451

Table 3.4 - Enrolment and personnel in pre-primary schools by zone and sex, 2009

Zone	Enrolment			Personnel		
	Male	Female	Total	Teaching	Non - Teaching	Total
1 - Port Louis / North	6,114	5,893	12,007	801	346	1,147
2 - B.Bassin-R.Hill / East	4,317	4,273	8,590	613	230	843
3 - Curepipe / South	3,635	3,628	7,263	510	147	657
4 - Q.Bornes / Vacoas-Phoenix / West	3,187	3,241	6,428	519	202	721
5 - Rodrigues	844	842	1,686	75	8	83
All Zones	18,097	17,877	35,974	2,518	933	3,451

Table 4.1 - Distribution of primary schools<sup>1</sup> by district and type of administration, 2009

District	Total	Type of Administration					
		Government		Private			
				Aided		Non - Aided	
		No.	%	No.	%	No.	%
Port Louis	35	25	71	8	23	2	6
Pamplemousses	28	23	82	-	-	5	18
Riviere du Rempart	27	22	82	3	11	2	7
Flacq	37	27	73	9	24	1	3
Grand Port	30	25	83	5	17	-	-
Savanne	17	14	82	3	18	-	-
Plaines Wilhems	73	44	60	13	18	16	22
Moka	26	20	77	4	15	2	8
Black River	16	12	75	3	19	1	6
Island of Mauritius	289	212	73	48	17	29	10
Island of Rodrigues	13	8	62	5	38	-	-
Republic of Mauritius	302	220	73	53	17	29	10

Table 4.2 - Distribution of primary schools<sup>1</sup> by zone and type of administration, 2009

Zone	Total	Type of Administration					
		Government		Private			
				Aided		Non - Aided	
		No.	%	No.	%	No.	%
1 - Port Louis / North	92	72	78	11	12	9	10
2 - B.Bassin-R.Hill / East	78	57	73	17	22	4	5
3 - Curepipe / South	66	48	73	12	18	6	9
4 - Q.Bornes / Vacoas-Phoenix / West	53	35	66	8	15	10	19
5 - Rodrigues	13	8	62	5	38	-	-
All Zones	302	220	73	53	17	29	10

<sup>1</sup> Excluding schools with partial stream

Table 4.3 - Enrolment in primary schools<sup>1</sup> by district, type of administration and sex, 2009

District	All schools			Government schools			Private schools					
	Total	Male	Female	Total	Male	Female	Aided			Non-aided		
							Total	Male	Female	Total	Male	Female
Port Louis	16,519	8,331	8,188	10,548	5,332	5,216	5,328	2,691	2,637	643	308	335
Pamplemousses	10,491	5,390	5,101	9,364	4,761	4,603	-	-	-	1,127	629	498
Riviere du Rempart	10,341	5,366	4,975	8,647	4,507	4,140	992	503	489	702	356	346
Flacq	13,798	7,015	6,783	11,746	5,965	5,781	1,931	986	945	121	64	57
Grand Port	10,418	5,261	5,157	8,605	4,361	4,244	1,813	900	913	-	-	-
Savanne	6,139	3,208	2,931	5,393	2,826	2,567	746	382	364	-	-	-
Plaines Wilhems	33,032	16,673	16,359	19,379	9,798	9,581	9,401	4,741	4,660	4,252	2,134	2,118
Moka	7,766	3,914	3,852	5,775	2,955	2,820	1,052	479	573	939	480	459
Black River	4,380	2,211	2,169	3,485	1,773	1,712	669	326	343	226	112	114
Island of Mauritius	112,884	57,369	55,515	82,942	42,278	40,664	21,932	11,008	10,924	8,010	4,083	3,927
Island of Rodrigues	5,038	2,579	2,459	2,855	1,463	1,392	2,183	1,116	1,067	-	-	-
Republic of Mauritius	117,922	59,948	57,974	85,797	43,741	42,056	24,115	12,124	11,991	8,010	4,083	3,927

Table 4.4 - Enrolment in primary schools<sup>1</sup> by zone, type of administration and sex, 2009

Zone	All schools			Government schools			Private schools					
	Total	Male	Female	Total	Male	Female	Aided			Non-aided		
							Total	Male	Female	Total	Male	Female
1 - Port Louis / North	38,172	19,490	18,682	29,380	15,003	14,377	6,320	3,194	3,126	2,472	1,293	1,179
2 - B.Bassin-R.Hill / East	28,792	14,622	14,170	20,742	10,573	10,169	6,746	3,359	3,387	1,304	690	614
3 - Curepipe / South	24,889	12,649	12,240	17,672	9,035	8,637	5,043	2,531	2,512	2,174	1,083	1,091
4 - Q.Bornes / Vacoas-Phoenix / West	21,031	10,608	10,423	15,148	7,667	7,481	3,823	1,924	1,899	2,060	1,017	1,043
5 - Rodrigues	5,038	2,579	2,459	2,855	1,463	1,392	2,183	1,116	1,067	-	-	-
All Zones	117,922	59,948	57,974	85,797	43,741	42,056	24,115	12,124	11,991	8,010	4,083	3,927

<sup>1</sup> including enrolment in schools with a partial stream

Table 4.5 - Enrolment in primary schools<sup>1</sup> by district and grade, 2009

District	Grade/Standard							All Grades
	I	II	III	IV	V	VI	VI (repeaters)	
Port Louis	2,539	2,695	2,585	2,757	2,648	2,526	769	16,519
Pamplemousses	1,598	1,678	1,682	1,664	1,692	1,750	427	10,491
Riviere du Rempart	1,655	1,636	1,726	1,684	1,787	1,528	325	10,341
Flacq	2,112	2,196	2,263	2,333	2,292	2,128	474	13,798
Grand Port	1,611	1,646	1,649	1,744	1,800	1,622	346	10,418
Savanne	949	1,035	990	986	994	931	254	6,139
Plaines Wilhems	5,243	5,345	5,360	5,355	5,415	5,344	970	33,032
Moka	1,281	1,283	1,223	1,307	1,251	1,181	240	7,766
Black River	812	761	671	676	631	578	251	4,380
Island of Mauritius	17,800	18,275	18,149	18,506	18,510	17,588	4,056	112,884
Island of Rodrigues	813	846	806	823	800	694	256	5,038
Republic of Mauritius	18,613	19,121	18,955	19,329	19,310	18,282	4,312	117,922

Table 4.6 - Enrolment in primary schools<sup>1</sup> by zone and grade, 2009

Zone	Grade/Standard							All Grades
	I	II	III	IV	V	VI	VI (repeaters)	
1 -Port Louis / North	5,926	6,140	6,122	6,230	6,241	5,942	1,571	38,172
2 -B.Bassin-R.Hill / East	4,500	4,585	4,624	4,817	4,773	4,500	993	28,792
3 -Curepipe / South	3,861	4,079	4,007	4,106	4,125	3,888	823	24,889
4 -Q.Bornes/Vacoas-Phoenix/West	3,513	3,471	3,396	3,353	3,371	3,258	669	21,031
5 -Rodrigues	813	846	806	823	800	694	256	5,038
All Zones	18,613	19,121	18,955	19,329	19,310	18,282	4,312	117,922

<sup>1</sup> including enrolment in schools with a partial stream

Table 4.7 - Enrolment in primary schools<sup>1</sup> by grade and sex, 2007 - 2009

Grade	2007			2008			2009		
	Total	Male	Female	Total	Male	Female	Total	Male	Female
<b>Republic of Mauritius</b>									
<b>I</b>	18,831	9,465	9,366	19,048	9,587	9,461	18,613	9,452	9,161
<b>II</b>	19,468	9,850	9,618	18,915	9,533	9,382	19,121	9,604	9,517
<b>III</b>	19,548	9,921	9,627	19,425	9,926	9,499	18,955	9,513	9,442
<b>IV</b>	18,522	9,402	9,120	19,488	9,849	9,639	19,329	9,759	9,570
<b>V</b>	19,044	9,627	9,417	18,487	9,416	9,071	19,310	9,805	9,505
<b>VI</b>	19,456	9,715	9,741	18,901	9,570	9,331	18,282	9,250	9,032
<b>VI Repeaters</b>	4,441	2,661	1,780	4,758	2,812	1,946	4,312	2,565	1,747
<b>Total</b>	119,310	60,641	58,669	119,022	60,693	58,329	117,922	59,948	57,974
<b>Island of Mauritius</b>									
<b>I</b>	18,003	9,036	8,967	18,201	9,174	9,027	17,800	9,028	8,772
<b>II</b>	18,636	9,427	9,209	18,100	9,121	8,979	18,275	9,187	9,088
<b>III</b>	18,725	9,500	9,225	18,601	9,507	9,094	18,149	9,110	9,039
<b>IV</b>	17,819	9,034	8,785	18,681	9,434	9,247	18,506	9,338	9,168
<b>V</b>	18,309	9,261	9,048	17,788	9,054	8,734	18,510	9,396	9,114
<b>VI</b>	18,735	9,375	9,360	18,178	9,200	8,978	17,588	8,903	8,685
<b>VI Repeaters</b>	4,177	2,504	1,673	4,458	2,638	1,820	4,056	2,407	1,649
<b>Total</b>	114,404	58,137	56,267	114,007	58,128	55,879	112,884	57,369	55,515
<b>Island of Rodrigues</b>									
<b>I</b>	828	429	399	847	413	434	813	424	389
<b>II</b>	832	423	409	815	412	403	846	417	429
<b>III</b>	823	421	402	824	419	405	806	403	403
<b>IV</b>	703	368	335	807	415	392	823	421	402
<b>V</b>	735	366	369	699	362	337	800	409	391
<b>VI</b>	721	340	381	723	370	353	694	347	347
<b>VI Repeaters</b>	264	157	107	300	174	126	256	158	98
<b>Total</b>	4,906	2,504	2,402	5,015	2,565	2,450	5,038	2,579	2,459

<sup>1</sup> Includes pupils attending schools with a partial stream



Table 4.8 - Enrolment in primary schools<sup>1</sup> by type of administration, grade and sex, 2007 - 2009

**Republic of Mauritius**

Grade	2007			2008			2009		
	Total	Male	Female	Total	Male	Female	Total	Male	Female
<b>All schools</b>									
<b>I</b>	18,831	9,465	9,366	19,048	9,587	9,461	18,613	9,452	9,161
<b>II</b>	19,468	9,850	9,618	18,915	9,533	9,382	19,121	9,604	9,517
<b>III</b>	19,548	9,921	9,627	19,425	9,926	9,499	18,955	9,513	9,442
<b>IV</b>	18,522	9,402	9,120	19,488	9,849	9,639	19,329	9,759	9,570
<b>V</b>	19,044	9,627	9,417	18,487	9,416	9,071	19,310	9,805	9,505
<b>VI</b>	19,456	9,715	9,741	18,901	9,570	9,331	18,282	9,250	9,032
<b>VI Repeaters</b>	4,441	2,661	1,780	4,758	2,812	1,946	4,312	2,565	1,747
<b>Total</b>	119,310	60,641	58,669	119,022	60,693	58,329	117,922	59,948	57,974
<b>Government schools</b>									
<b>I</b>	13,758	6,984	6,774	13,963	7,021	6,942	13,331	6,783	6,548
<b>II</b>	14,199	7,205	6,994	13,698	6,951	6,747	13,870	6,968	6,902
<b>III</b>	14,351	7,292	7,059	14,120	7,251	6,869	13,693	6,937	6,756
<b>IV</b>	13,562	6,913	6,649	14,248	7,219	7,029	14,048	7,090	6,958
<b>V</b>	14,100	7,190	6,910	13,555	6,934	6,621	14,146	7,218	6,928
<b>VI</b>	14,650	7,332	7,318	14,023	7,151	6,872	13,408	6,796	6,612
<b>VI Repeaters</b>	3,532	2,105	1,427	3,830	2,252	1,578	3,301	1,949	1,352
<b>Total</b>	88,152	45,021	43,131	87,437	44,779	42,658	85,797	43,741	42,056
<b>Private schools</b>									
<b>I</b>	5,073	2,481	2,592	5,085	2,566	2,519	5,282	2,669	2,613
<b>II</b>	5,269	2,645	2,624	5,217	2,582	2,635	5,251	2,636	2,615
<b>III</b>	5,197	2,629	2,568	5,305	2,675	2,630	5,262	2,576	2,686
<b>IV</b>	4,960	2,489	2,471	5,240	2,630	2,610	5,281	2,669	2,612
<b>V</b>	4,944	2,437	2,507	4,932	2,482	2,450	5,164	2,587	2,577
<b>VI</b>	4,806	2,383	2,423	4,878	2,419	2,459	4,874	2,454	2,420
<b>VI Repeaters</b>	909	556	353	928	560	368	1,011	616	395
<b>Total</b>	31,158	15,620	15,538	31,585	15,914	15,671	32,125	16,207	15,918

<sup>1</sup> including enrolment in schools with a partial stream

Table 4.9 - Personnel in primary schools by district and occupational status, 2009

District	Head Teacher	Deputy Head Teacher	Teacher General Purpose *	Teacher, Oriental language								School clerk	Caretaker	Labourer	Other	TOTAL
				Total	Hindi	Urdu	Tamil	Telugu	Marathi	Arabic	Modern					
Port Louis	35	116	505	175	45	51	28	4	1	39	7	27	75	43	5	981
Pamplemousses	30	85	355	151	83	33	20	11	-	4	-	19	65	30	6	741
Riv. du Rempart	27	88	362	154	94	22	20	15	-	3	-	20	45	46	10	752
Flacq	36	93	467	207	108	41	23	21	8	5	1	25	74	57	6	965
Grand Port	30	83	333	138	56	21	24	16	8	12	1	23	55	45	8	715
Savanne	17	57	193	87	28	14	13	13	9	10	-	10	38	18	7	427
Plaines Wilhems	74	289	1,137	322	109	83	49	21	20	27	13	57	153	89	47	2,168
Moka	26	68	338	108	39	30	18	7	7	5	2	21	33	36	19	649
Black River	16	19	178	32	15	4	6	-	7	-	-	10	24	20	3	302
Island of Mauritius	291	898	3,868	1,374	577	299	201	108	60	105	24	212	562	384	111	7,700
Island of Rodrigues	12	20	212	-	-	-	-	-	-	-	-	13	51	53	29	390
Republic of Mauritius	303	918	4,080	1,374	577	299	201	108	60	105	24	225	613	437	140	8,090

Table 4.10 - Personnel in primary schools by zone and occupational status, 2009

Zone	Head Teacher	Deputy Head Teacher	Teacher General Purpose *	Teacher, Oriental language								School clerk	Caretaker	Labourer	Other	TOTAL
				Total	Hindi	Urdu	Tamil	Telugu	Marathi	Arabic	Modern Chinese					
1 - Port Louis / North	94	293	1,256	493	225	111	70	30	1	49	7	68	189	121	21	2,535
2 - B.Bassin-R.Hill / East	78	215	1,047	364	160	90	50	30	17	10	7	56	129	114	29	2,032
3 - Curepipe / South	66	204	835	301	111	51	49	33	21	32	4	49	143	95	35	1,728
4 - Q.Bornes/ Vacoas-Phoenix/ West	53	186	730	216	81	47	32	15	21	14	6	39	101	54	26	1,405
5 - Rodrigues	12	20	212	-	-	-	-	-	-	-	-	13	51	53	29	390
All Zones	303	918	4,080	1,374	577	299	201	108	60	105	24	225	613	437	140	8,090

\* including physical education instructors

Table 4.11 - Certificate of Primary Education (CPE) examination results by sex, 2006 - 2008

**School Candidates only**

		2006			2007			2008		
		No. Examined	No. Passed	% Passed	No. Examined	No. Passed	% Passed	No. Examined	No. Passed	% Passed
<b>Republic of Mauritius</b>	Total	25,007	16,987	67.9	24,050	15,915	66.2	23,664	15,957	67.4
	Male	12,942	8,028	62.0	12,368	7,428	60.1	12,299	7,633	62.1
	Female	12,065	8,959	74.3	11,682	8,487	72.7	11,365	8,324	73.2
<b>Island of Mauritius</b>	Total	23,986	16,424	68.5	23,078	15,431	66.9	22,662	15,404	68.0
	Male	12,426	7,787	62.7	11,877	7,222	60.8	11,769	7,368	62.6
	Female	11,560	8,637	74.7	11,201	8,209	73.3	10,893	8,036	73.8
<b>Island of Rodrigues</b>	Total	1,021	563	55.1	972	484	49.8	1,002	553	55.2
	Male	516	241	46.7	491	206	42.0	530	265	50.0
	Female	505	322	63.8	481	278	57.8	472	288	61.0

Source: Mauritius Examinations Syndicate

Table 4.12 - Performance at Certificate of Primary Education (CPE) examination by sex and sitting, 2008

		Island of Mauritius			Island of Rodrigues			Republic of Mauritius		
		No. Examined	No. Passed	% Passed	No. Examined	No. Passed	% Passed	No. Examined	No. Passed	% Passed
<b>School Candidates</b>										
First Sitting	Total	17,687	13,414	75.8	722	461	63.9	18,409	13,875	75.4
	Male	8,905	6,355	71.4	367	214	58.3	9,272	6,569	70.8
	Female	8,782	7,059	80.4	355	247	69.6	9,137	7,306	80.0
Second Sitting	Total	4,975	1,990	40.0	280	92	32.9	5,255	2,082	39.6
	Male	2,864	1,013	35.4	163	51	31.3	3,027	1,064	35.2
	Female	2,111	977	46.3	117	41	35.0	2,228	1,018	45.7
Total	Total	22,662	15,404	68.0	1,002	553	55.2	23,664	15,957	67.4
	Male	11,769	7,368	62.6	530	265	50.0	12,299	7,633	62.1
	Female	10,893	8,036	73.8	472	288	61.0	11,365	8,324	73.2
<b>Private Candidates</b>										
	Total	2,478	796	32.1	69	21	30.4	2,547	817	32.1
	Male	1,453	405	27.9	35	14	40.0	1,488	419	28.2
	Female	1,025	391	38.1	34	7	20.6	1,059	398	37.6
<b>School &amp; Private Candidates</b>										
	Total	25,140	16,200	64.4	1,071	574	53.6	26,211	16,774	64.0
	Male	13,222	7,773	58.8	565	279	49.4	13,787	8,052	58.4
	Female	11,918	8,427	70.7	506	295	58.3	12,424	8,722	70.2

Source: Mauritius Examinations Syndicate

Table 5.1 - Distribution of secondary schools by district and type of administration, 2009

District	All Schools <sup>1</sup>	Type of Administration					
		State <sup>2</sup>		Private			
		No.	%	Aided <sup>3</sup>		Non - Aided	
No.	%			No.	%		
Port Louis	28	8	29	16	57	4	14
Pamplemousses	15	8	53	7	47	-	-
Riviere du Rempart	13	6	46	5	38	2	15
Flacq	15	8	53	7	47	-	-
Grand Port	11	4	36	7	64	-	-
Savanne	7	4	57	3	43	-	-
Plaines Wilhems	68	23	34	36	53	9	13
Moka	12	5	42	4	33	3	25
Black River	5	3	60	2	40	-	-
Island of Mauritius	174	69	40	87	50	18	10
Island of Rodrigues	5	-	-	5	100	-	-
Republic of Mauritius	179	69	39	92	51	18	10

Table 5.2 - Distribution of secondary schools by zone and type of administration, 2009

Zone	All Schools <sup>1</sup>	Type of Administration					
		State <sup>2</sup>		Private			
		No.	%	Aided <sup>3</sup>		Non - Aided	
No.	%			No.	%		
1 - Port Louis / North	57	23	40	28	49	6	11
2 - B.Bassin-R.Hill / East	44	18	41	22	50	4	9
3 - Curepipe / South	41	13	32	22	54	6	15
4 - Q.Bornes / Vacoas-Phoenix / West	32	15	47	15	47	2	6
5 - Rodrigues	5	-	-	5	100	-	-
All Zones	179	69	39	92	51	18	10

<sup>1</sup> 54 of these schools offer academic education only and 125 both academic and pre-vocational education

<sup>2</sup> includes Mahatma Gandhi Institute, Rabindranath Tagore Secondary School and 4 Mahatma Gandhi State Schools

<sup>3</sup> includes Mauritius Educational Development Company (MEDCO) / Rodrigues Educational Development Company (REDCO)

Table 5.3 - Enrolment in secondary schools (academic stream) by district, type of administration and sex, 2009

District	All schools			State schools <sup>1</sup>			Private schools					
	Total	Male	Female	Total	Male	Female	Aided <sup>2</sup>			Non-aided		
							Total	Male	Female	Total	Male	Female
Port Louis	15,663	7,333	8,330	5,316	2,511	2,805	8,806	3,900	4,906	1,541	922	619
Pamplemousses	9,457	4,429	5,028	5,644	2,708	2,936	3,813	1,721	2,092	-	-	-
Riviere du Rempart	9,958	4,957	5,001	4,855	2,861	1,994	4,538	1,825	2,713	565	271	294
Flacq	12,864	6,012	6,852	6,191	2,445	3,746	6,673	3,567	3,106	-	-	-
Grand Port	6,674	2,822	3,852	2,903	1,499	1,404	3,771	1,323	2,448	-	-	-
Savanne	4,298	2,119	2,179	2,616	1,353	1,263	1,682	766	916	-	-	-
Plaines Wilhems	45,524	22,668	22,856	16,230	7,647	8,583	26,723	13,682	13,041	2,571	1,339	1,232
Moka	6,031	2,598	3,433	3,190	1,427	1,763	1,470	444	1,026	1,371	727	644
Black River	2,103	758	1,345	1,616	527	1,089	487	231	256	-	-	-
Island of Mauritius	112,572	53,696	58,876	48,561	22,978	25,583	57,963	27,459	30,504	6,048	3,259	2,789
Island of Rodrigues	3,654	1,693	1,961	-	-	-	3,654	1,693	1,961	-	-	-
Republic of Mauritius	116,226	55,389	60,837	48,561	22,978	25,583	61,617	29,152	32,465	6,048	3,259	2,789

Table 5.4 - Enrolment in secondary schools (academic stream) by zone, type of administration and sex, 2009

Zone	All schools			State schools <sup>1</sup>			Private schools					
	Total	Male	Female	Total	Male	Female	Aided <sup>2</sup>			Non-aided		
							Total	Male	Female	Total	Male	Female
1 - Port Louis / North	35,538	16,719	18,819	16,275	8,080	8,195	17,157	7,446	9,711	2,106	1,193	913
2 - B.Bassin-R.Hill / East	29,776	14,383	15,393	12,726	5,543	7,183	15,593	8,056	7,537	1,457	784	673
3 - Curepipe / South	27,695	13,563	14,132	9,103	4,801	4,302	16,365	7,626	8,739	2,227	1,136	1,091
4 - Q.Bornes / Vacoas-Phoenix / West	19,563	9,031	10,532	10,457	4,554	5,903	8,848	4,331	4,517	258	146	112
5 - Rodrigues	3,654	1,693	1,961	-	-	-	3,654	1,693	1,961	-	-	-
All Zones	116,226	55,389	60,837	48,561	22,978	25,583	61,617	29,152	32,465	6,048	3,259	2,789

<sup>1</sup> includes Mahatma Gandhi Institute, Rabindranath Tagore Secondary School and Mahatma Gandhi State Schools<sup>2</sup> includes Mauritius Educational Development Company (MEDCO) / Rodrigues Educational Development Company (REDCO)

Table 5.5 - Enrolment in secondary schools (academic stream) by district and grade, 2009

District	Grade							All Grades
	I	II	III	IV	V	VI Lower	VI Upper	
Port Louis	2,164	2,392	2,525	2,689	2,771	1,506	1,616	15,663
Pamplemousses	1,426	1,465	1,565	1,606	1,797	797	801	9,457
Riviere du Rempart	1,497	1,428	1,602	1,869	1,841	881	840	9,958
Flacq	1,867	1,838	2,043	2,503	2,467	1,060	1,086	12,864
Grand Port	920	833	1,020	1,225	1,451	572	653	6,674
Savanne	607	629	651	906	939	277	289	4,298
Plaines Wilhems	6,622	6,872	7,225	7,558	7,541	5,083	4,623	45,524
Moka	824	837	942	966	1,151	633	678	6,031
Black River	345	383	351	355	466	96	107	2,103
Island of Mauritius	16,272	16,677	17,924	19,677	20,424	10,905	10,693	112,572
Island of Rodrigues	537	569	708	678	656	230	276	3,654
Republic of Mauritius	16,809	17,246	18,632	20,355	21,080	11,135	10,969	116,226

Table 5.6 - Enrolment in secondary schools (academic stream) by zone and grade, 2009

Zone	Grade							All Grades
	I	II	III	IV	V	VI Lower	VI Upper	
1 - Port Louis / North	5,138	5,340	5,749	6,249	6,521	3,228	3,313	35,538
2 - B.Bassin-R.Hill / East	4,316	4,370	4,731	5,071	5,281	3,076	2,931	29,776
3 - Curepipe / South	3,880	3,842	4,187	5,008	5,104	2,822	2,852	27,695
4 - Q.Bornes / Vacoas-Phoenix / West	2,938	3,125	3,257	3,349	3,518	1,779	1,597	19,563
5 - Rodrigues	537	569	708	678	656	230	276	3,654
All Zones	16,809	17,246	18,632	20,355	21,080	11,135	10,969	116,226

Table 5.7 - Enrolment in secondary schools (academic stream) by grade and sex, 2007 - 2009

Grade	2007			2008			2009		
	Total	Male	Female	Total	Male	Female	Total	Male	Female
<b>Republic of Mauritius</b>									
<b>I</b>	18,328	8,806	9,522	17,028	8,169	8,859	16,809	8,197	8,612
<b>II</b>	18,759	9,074	9,685	18,269	8,740	9,529	17,246	8,210	9,036
<b>III</b>	18,372	8,959	9,413	18,792	9,092	9,700	18,632	8,980	9,652
<b>IV</b>	20,192	9,655	10,537	19,932	9,794	10,138	20,355	9,968	10,387
<b>V</b>	20,996	10,209	10,787	21,267	10,386	10,881	21,080	10,151	10,929
<b>VI Lower</b>	10,166	4,709	5,457	10,833	4,847	5,986	11,135	4,904	6,231
<b>VI Upper</b>	9,893	4,685	5,208	10,382	4,845	5,537	10,969	4,979	5,990
<b>Total</b>	116,706	56,097	60,609	116,503	55,873	60,630	116,226	55,389	60,837
<b>Island of Mauritius</b>									
<b>I</b>	17,683	8,522	9,161	16,503	7,930	8,573	16,272	7,923	8,349
<b>II</b>	18,061	8,728	9,333	17,616	8,460	9,156	16,677	7,954	8,723
<b>III</b>	17,737	8,652	9,085	18,107	8,740	9,367	17,924	8,651	9,273
<b>IV</b>	19,532	9,369	10,163	19,343	9,528	9,815	19,677	9,636	10,041
<b>V</b>	20,344	9,913	10,431	20,682	10,127	10,555	20,424	9,871	10,553
<b>VI Lower</b>	9,960	4,615	5,345	10,612	4,751	5,861	10,905	4,803	6,102
<b>VI Upper</b>	9,664	4,585	5,079	10,132	4,729	5,403	10,693	4,858	5,835
<b>Total</b>	112,981	54,384	58,597	112,995	54,265	58,730	112,572	53,696	58,876
<b>Island of Rodrigues</b>									
<b>I</b>	645	284	361	525	239	286	537	274	263
<b>II</b>	698	346	352	653	280	373	569	256	313
<b>III</b>	635	307	328	685	352	333	708	329	379
<b>IV</b>	660	286	374	589	266	323	678	332	346
<b>V</b>	652	296	356	585	259	326	656	280	376
<b>VI Lower</b>	206	94	112	221	96	125	230	101	129
<b>VI Upper</b>	229	100	129	250	116	134	276	121	155
<b>Total</b>	3,725	1,713	2,012	3,508	1,608	1,900	3,654	1,693	1,961



Table 5.8 - Enrolment in secondary schools (academic stream) by type of administration, grade and sex, 2007 - 2009

**Republic of Mauritius**

Grade	2007			2008			2009		
	Total	Male	Female	Total	Male	Female	Total	Male	Female
<b>All schools</b>									
<b>I</b>	18,328	8,806	9,522	17,028	8,169	8,859	16,809	8,197	8,612
<b>II</b>	18,759	9,074	9,685	18,269	8,740	9,529	17,246	8,210	9,036
<b>III</b>	18,372	8,959	9,413	18,792	9,092	9,700	18,632	8,980	9,652
<b>IV</b>	20,192	9,655	10,537	19,932	9,794	10,138	20,355	9,968	10,387
<b>V</b>	20,996	10,209	10,787	21,267	10,386	10,881	21,080	10,151	10,929
<b>VI Lower</b>	10,166	4,709	5,457	10,833	4,847	5,986	11,135	4,904	6,231
<b>VI Upper</b>	9,893	4,685	5,208	10,382	4,845	5,537	10,969	4,979	5,990
<b>Total</b>	116,706	56,097	60,609	116,503	55,873	60,630	116,226	55,389	60,837
<b>State Schools</b>									
<b>I</b>	7,487	3,581	3,906	7,221	3,587	3,634	7,535	3,775	3,760
<b>II</b>	7,345	3,602	3,743	7,391	3,502	3,889	7,190	3,547	3,643
<b>III</b>	7,197	3,556	3,641	7,390	3,642	3,748	7,442	3,532	3,910
<b>IV</b>	7,518	3,590	3,928	7,600	3,844	3,756	7,610	3,773	3,837
<b>V</b>	7,000	3,380	3,620	8,444	4,065	4,379	8,370	4,055	4,315
<b>VI Lower</b>	3,721	1,702	2,019	4,649	1,959	2,690	5,438	2,169	3,269
<b>VI Upper</b>	4,168	2,030	2,138	4,345	2,008	2,337	4,976	2,127	2,849
<b>Total</b>	44,436	21,441	22,995	47,040	22,607	24,433	48,561	22,978	25,583
<b>Private Schools</b>									
<b>I</b>	10,841	5,225	5,616	9,807	4,582	5,225	9,274	4,422	4,852
<b>II</b>	11,414	5,472	5,942	10,878	5,238	5,640	10,056	4,663	5,393
<b>III</b>	11,175	5,403	5,772	11,402	5,450	5,952	11,190	5,448	5,742
<b>IV</b>	12,674	6,065	6,609	12,332	5,950	6,382	12,745	6,195	6,550
<b>V</b>	13,996	6,829	7,167	12,823	6,321	6,502	12,710	6,096	6,614
<b>VI Lower</b>	6,445	3,007	3,438	6,184	2,888	3,296	5,697	2,735	2,962
<b>VI Upper</b>	5,725	2,655	3,070	6,037	2,837	3,200	5,993	2,852	3,141
<b>Total</b>	72,270	34,656	37,614	69,463	33,266	36,197	67,665	32,411	35,254

Table 5.9 - Distribution of schools offering pre-vocational education by district and type of administration, 2009

District	All Schools <sup>1</sup>	Type of Administration			
		State		Private <sup>2</sup>	
		No.	%	No.	%
Port Louis	19	7	37	12	63
Pamplemousses	14	7	50	7	50
Riviere du Rempart	13	8	62	5	38
Flacq	12	7	58	5	42
Grand Port	9	2	22	7	78
Savanne	7	4	57	3	43
Plaines Wilhems	39	14	36	25	64
Moka	8	4	50	4	50
Black River	5	3	60	2	40
Island of Mauritius	126	56	44	70	56
Island of Rodrigues	5	-	-	5	100
Republic of Mauritius	131	56	43	75	57

Table 5.10 - Distribution of schools offering pre-vocational education by zone and type of administration, 2009

Zone	All Schools <sup>1</sup>	Type of Administration			
		State		Private <sup>2</sup>	
		No.	%	No.	%
1 - Port Louis / North	47	23	49	24	51
2 - B.Bassin-R.Hill / East	34	16	47	18	53
3 - Curepipe / South	25	7	28	18	72
4 - Q.Bornes / Vacoas-Phoenix / West	20	10	50	10	50
5 - Rodrigues	5	-	-	5	100
All Zones	131	56	43	75	57

<sup>1</sup> includes 125 secondary schools providing both academic and pre-vocational education and 6 schools providing only pre-vocational

<sup>2</sup> includes Mauritius Educational Development Company (MEDCO) / Rodrigues Educational Development Company (REDCO)

Table 5.11 - Enrolment in schools offering pre-vocational education by district, type of administration and sex, 2009

District	All schools			State schools			Private schools <sup>1</sup>		
	Total	Male	Female	Total	Male	Female	Total	Male	Female
Port Louis	1,070	596	474	277	147	130	793	449	344
Pamplemousses	788	498	290	313	246	67	475	252	223
Riviere du Rempart	827	578	249	370	286	84	457	292	165
Flacq	902	618	284	276	117	159	626	501	125
Grand Port	671	442	229	89	75	14	582	367	215
Savanne	490	333	157	87	45	42	403	288	115
Plaines Wilhems	2,030	1,347	683	555	475	80	1,475	872	603
Moka	450	236	214	256	116	140	194	120	74
Black River	346	186	160	188	98	90	158	88	70
Island of Mauritius	7,574	4,834	2,740	2,411	1,605	806	5,163	3,229	1,934
Island of Rodrigues	459	280	179	-	-	-	459	280	179
Republic of Mauritius	8,033	5,114	2,919	2,411	1,605	806	5,622	3,509	2,113

Table 5.12 - Enrolment in schools offering pre-vocational education by zone, type of administration and sex, 2009

Zone	All schools			State schools			Private schools <sup>1</sup>		
	Total	Male	Female	Total	Male	Female	Total	Male	Female
1 - Port Louis / North	2,724	1,672	1,052	999	679	320	1,725	993	732
2 - B.Bassin-R.Hill / East	2,164	1,439	725	794	506	288	1,370	933	437
3 - Curepipe / South	1,596	1,032	564	234	178	56	1,362	854	508
4 - Q.Bornes / Vacoas-Phoenix	1,090	691	399	384	242	142	706	449	257
5 - Rodrigues	459	280	179	-	-	-	459	280	179
All Zones	8,033	5,114	2,919	2,411	1,605	806	5,622	3,509	2,113

<sup>1</sup> includes Mauritius Educational Development Company (MEDCO) / Rodrigues Educational Development Company (REDCO)

Table 5.13 - Enrolment in schools offering pre-vocational education by district and year of study, 2009

District	Enrolment											
	Year I			Year II			Year III			Total		
	Total	Male	Female	Total	Male	Female	Total	Male	Female	Total	Male	Female
Port Louis	412	227	185	317	161	156	341	208	133	1,070	596	474
Pamplemousses	270	160	110	269	175	94	249	163	86	788	498	290
Riviere du Rempart	325	221	104	294	219	75	208	138	70	827	578	249
Flacq	348	236	112	299	222	77	255	160	95	902	618	284
Grand Port	235	149	86	211	139	72	225	154	71	671	442	229
Savanne	206	130	76	144	101	43	140	102	38	490	333	157
P.Wilhems	762	530	232	669	410	259	599	407	192	2,030	1,347	683
Moka	166	85	81	126	65	61	158	86	72	450	236	214
Black River	120	66	54	112	62	50	114	58	56	346	186	160
Island of Mauritius	2,844	1,804	1,040	2,441	1,554	887	2,289	1,476	813	7,574	4,834	2,740
Island of Rodrigues	137	85	52	171	101	70	151	94	57	459	280	179
Republic of Mauritius	2,981	1,889	1,092	2,612	1,655	957	2,440	1,570	870	8,033	5,114	2,919

Table 5.14 - Enrolment in schools offering pre-vocational education by zone and year of study, 2009

Zone	Enrolment											
	Year I			Year II			Year III			Total		
	Total	Male	Female	Total	Male	Female	Total	Male	Female	Total	Male	Female
1- Port Louis / North	1,027	608	419	886	555	331	811	509	302	2,724	1,672	1,052
2- B.Bassin-R.Hill / East	801	542	259	709	479	230	654	418	236	2,164	1,439	725
3- Curepipe / South	600	385	215	507	320	187	489	327	162	1,596	1,032	564
4- Q.Bornes / Vacoas-Phoenix / West	416	269	147	339	200	139	335	222	113	1,090	691	399
5- Rodrigues	137	85	52	171	101	70	151	94	57	459	280	179
All Zones	2,981	1,889	1,092	2,612	1,655	957	2,440	1,570	870	8,033	5,114	2,919

Table 5.15 - Enrolment in schools offering pre-vocational education by year of study and sex,  
2007 - 2009

Year of study	2007			2008			2009		
	Total	Male	Female	Total	Male	Female	Total	Male	Female
<b>Republic of Mauritius</b>									
I	3,146	1,978	1,168	2,971	1,869	1,102	2,981	1,889	1,092
II	3,192	1,972	1,220	2,858	1,787	1,071	2,612	1,655	957
III	3,235	2,007	1,228	2,666	1,680	986	2,440	1,570	870
Total	9,573	5,957	3,616	8,495	5,336	3,159	8,033	5,114	2,919
<b>Island of Mauritius</b>									
I	2,961	1,866	1,095	2,794	1,766	1,028	2,844	1,804	1,040
II	3,023	1,884	1,139	2,696	1,685	1,011	2,441	1,554	887
III	3,087	1,905	1,182	2,521	1,602	919	2,289	1,476	813
Total	9,071	5,655	3,416	8,011	5,053	2,958	7,574	4,834	2,740
<b>Island of Rodrigues</b>									
I	185	112	73	177	103	74	137	85	52
II	169	88	81	162	102	60	171	101	70
III	148	102	46	145	78	67	151	94	57
Total	502	302	200	484	283	201	459	280	179

Table 5.16 - Enrolment in schools offering pre-vocational education by type of administration, year of study and sex, 2007 - 2009

**Republic of Mauritius**

Year of study	2007			2008			2009		
	Total	Male	Female	Total	Male	Female	Total	Male	Female
<b>All schools</b>									
I	3,146	1,978	1,168	2,971	1,869	1,102	2,981	1,889	1,092
II	3,192	1,972	1,220	2,858	1,787	1,071	2,612	1,655	957
III	3,235	2,007	1,228	2,666	1,680	986	2,440	1,570	870
Total	9,573	5,957	3,616	8,495	5,336	3,159	8,033	5,114	2,919
<b>State</b>									
I	1,000	700	300	893	599	294	891	562	329
II	1,198	807	391	959	637	322	739	501	238
III	1,295	758	537	1,010	699	311	781	542	239
Total	3,493	2,265	1,228	2,862	1,935	927	2,411	1,605	806
<b>Private</b>									
I	2,146	1,278	868	2,078	1,270	808	2,090	1,327	763
II	1,994	1,165	829	1,899	1,150	749	1,873	1,154	719
III	1,940	1,249	691	1,656	981	675	1,659	1,028	631
Total	6,080	3,692	2,388	5,633	3,401	2,232	5,622	3,509	2,113

Table 5.17 - Teaching staff in secondary schools (academic &amp; pre-vocational streams) by district and sex, 2009

District	Academic			Pre-vocational			Academic & Pre-vocational		
	Total	Male	Female	Total	Male	Female	Total	Male	Female
Port Louis	1,060	449	611	71	25	46	1,131	474	657
Pamplemousses	601	262	339	67	19	48	668	281	387
Riviere du Rempart	627	297	330	65	28	37	692	325	367
Flacq	824	411	413	60	26	34	884	437	447
Grand Port	468	189	279	42	15	27	510	204	306
Savanne	311	144	167	40	15	25	351	159	192
Plaines Wilhems	2,815	1,157	1,658	171	53	118	2,986	1,210	1,776
Moka	478	168	310	47	17	30	525	185	340
Black River	171	81	90	23	9	14	194	90	104
Island of Mauritius	7,355	3,158	4,197	586	207	379	7,941	3,365	4,576
Island of Rodrigues	209	98	111	36	13	23	245	111	134
Republic of Mauritius	7,564	3,256	4,308	622	220	402	8,186	3,476	4,710

- 29 -

Table 5.18 - Teaching staff in secondary schools (academic &amp; pre-vocational streams) by zone and sex, 2009

Zone	Academic			Pre-vocational			Academic & Pre-vocational		
	Total	Male	Female	Total	Male	Female	Total	Male	Female
1 - Port Louis / North	2,334	1,022	1,312	206	72	134	2,540	1,094	1,446
2 - B.Bassin-R.Hill / East	1,980	867	1,113	177	64	113	2,157	931	1,226
3 - Curepipe / South	1,759	752	1,007	115	39	76	1,874	791	1,083
4 - Q.Bornes / Vacoas-Phoenix / West	1,282	517	765	88	32	56	1,370	549	821
5 - Rodrigues	209	98	111	36	13	23	245	111	134
All Zones	7,564	3,256	4,308	622	220	402	8,186	3,476	4,710

Table 5.19 - Cambridge School Certificate (SC) examination results by type of school administration and sex, 2006 - 2008

**School candidates only**

Type of school administration and sex		2006			2007			2008		
		No. Examined	No. Passed	% Passed	No. Examined	No. Passed	% Passed	No. Examined	No. Passed	% Passed
<b>Republic of Mauritius</b>										
<b>All Schools</b>	Total	16,448	12,971	78.9	17,343	13,298	76.7	17,794	13,617	76.5
	Male	7,790	5,803	74.5	8,213	5,889	71.7	8,262	5,908	71.5
	Female	8,658	7,168	82.8	9,130	7,409	81.2	9,532	7,709	80.9
<b>State Schools</b>	Total	5,111	4,550	89.0	6,804	5,680	83.5	8,280	6,871	83.0
	Male	2,596	2,172	83.7	3,336	2,597	77.8	3,919	3,042	77.6
	Female	2,515	2,378	94.6	3,468	3,083	88.9	4,361	3,829	87.8
<b>Private Schools</b>	Total	11,337	8,421	74.3	10,539	7,618	72.3	9,514	6,746	70.9
	Male	5,194	3,631	69.9	4,877	3,292	67.5	4,343	2,866	66.0
	Female	6,143	4,790	78.0	5,662	4,326	76.4	5,171	3,880	75.0
<b>Island of Mauritius</b>										
<b>All Schools</b>	Total	15,871	12,565	79.2	16,761	12,866	76.8	17,227	13,211	76.7
	Male	7,531	5,613	74.5	7,948	5,704	71.8	8,024	5,738	71.5
	Female	8,340	6,952	83.4	8,813	7,162	81.3	9,203	7,473	81.2
<b>State Schools</b>	Total	5,111	4,550	89.0	6,804	5,680	83.5	8,280	6,871	83.0
	Male	2,596	2,172	83.7	3,336	2,597	77.8	3,919	3,042	77.6
	Female	2,515	2,378	94.6	3,468	3,083	88.9	4,361	3,829	87.8
<b>Private Schools</b>	Total	10,760	8,015	74.5	9,957	7,186	72.2	8,947	6,340	70.9
	Male	4,935	3,441	69.7	4,612	3,107	67.4	4,105	2,696	65.7
	Female	5,825	4,574	78.5	5,345	4,079	76.3	4,842	3,644	75.3
<b>Island of Rodrigues <sup>1</sup></b>										
<b>All Schools</b>	Total	577	406	70.4	582	432	74.2	567	406	71.6
	Male	259	190	73.4	265	185	69.8	238	170	71.4
	Female	318	216	67.9	317	247	77.9	329	236	71.7

Source: Mauritius Examinations Syndicate

<sup>1</sup> All candidates in Rodrigues are from REDCO and private schools.



Table 5.20 - Cambridge Higher School Certificate (HSC) examination results by type of school administration and sex, 2006 - 2008

**School candidates only**

Type of school administration and sex		2006			2007			2008		
		No. Examined	No. Passed	% Passed	No. Examined	No. Passed	% Passed	No. Examined	No. Passed	% Passed
<b>Republic of Mauritius</b>										
<b>All Schools</b>	Total	8,040	6,376	79.3	8,517	6,622	77.8	8,907	7,011	78.7
	Male	3,698	2,769	74.9	3,896	2,842	72.9	3,999	2,976	74.4
	Female	4,342	3,607	83.1	4,621	3,780	81.8	4,908	4,035	82.2
<b>State Schools</b>	Total	3,765	3,156	83.8	3,911	3,209	82.1	4,111	3,384	82.3
	Male	1,873	1,461	78.0	1,866	1,410	75.6	1,911	1,481	77.5
	Female	1,892	1,695	89.6	2,045	1,799	88.0	2,200	1,903	86.5
<b>Private Schools</b>	Total	4,275	3,220	75.3	4,606	3,413	74.1	4,796	3,627	75.6
	Male	1,825	1,308	71.7	2,030	1,432	70.5	2,088	1,495	71.6
	Female	2,450	1,912	78.0	2,576	1,981	76.9	2,708	2,132	78.7
<b>Island of Mauritius</b>										
<b>All Schools</b>	Total	7,849	6,234	79.4	8,290	6,456	77.9	8,658	6,827	78.9
	Male	3,618	2,709	74.9	3,796	2,764	72.8	3,884	2,896	74.6
	Female	4,231	3,525	83.3	4,494	3,692	82.2	4,774	3,931	82.3
<b>State Schools</b>	Total	3,765	3,156	83.8	3,911	3,209	82.1	4,111	3,384	82.3
	Male	1,873	1,461	78.0	1,866	1,410	75.6	1,911	1,481	77.5
	Female	1,892	1,695	89.6	2,045	1,799	88.0	2,200	1,903	86.5
<b>Private Schools</b>	Total	4,084	3,078	75.4	4,379	3,247	74.1	4,547	3,443	75.7
	Male	1,745	1,248	71.5	1,930	1,354	70.2	1,973	1,415	71.7
	Female	2,339	1,830	78.2	2,449	1,893	77.3	2,574	2,028	78.8
<b>Island of Rodrigues<sup>1</sup></b>										
<b>All Schools</b>	Total	191	142	74.3	227	166	73.1	249	184	73.9
	Male	80	60	75.0	100	78	78.0	115	80	69.6
	Female	111	82	73.9	127	88	69.3	134	104	77.6

Source: Mauritius Examinations Syndic<sup>1</sup> All candidates in Rodrigues are from REDCO and private schools

Table 6.1(a) - Total number of students enrolled in Tertiary Education, both locally and overseas, by field of study as at December 2007

Field of study	Total	Publicly - Funded Institutions (PFIs)								Total (PFIs)	Distance Education/ Private Providers	Overseas
		UOM <sup>1</sup>	UTM	MIE	MGI	MCA	Polytechnics	IVTB	MIH			
Accounting	4,353	230	18	-	-	-	-	-	-	248	3,568	537
Administration / Management	4,684	1,333	762	-	-	271	357	-	-	2,723	1,125	836
Agriculture	351	334	-	-	-	-	-	-	-	334	-	17
Architecture	103	-	-	-	-	-	-	-	-	-	-	103
Arts	535	-	-	-	136	-	-	-	-	136	275	124
Banking / Finance	814	418	217	-	-	-	-	-	-	635	62	117
Business / Commerce / Marketing	2,265	150	-	-	-	53	14	-	-	217	1,032	1,016
Communication	427	89	45	-	-	1	-	-	-	135	137	155
Dentistry	301	-	-	-	-	-	-	-	-	-	257	44
Economics	732	430	-	-	-	-	-	-	-	430	99	203
Education	4,187	10	83	3,959	-	3	-	-	-	4,055	20	112
Engineering	2,120	948	-	-	-	-	292	55	-	1,295	23	802
Health Sciences	535	313	83	-	-	-	-	-	-	396	1	138
Humanities	566	233	-	-	124	-	-	-	-	357	9	200
Information Technology	3,700	943	346	-	-	11	229	113	-	1,642	1,172	886
Languages	1,389	322	-	-	315	139	-	-	-	776	194	419
Law	1,067	243	-	-	-	-	-	-	-	243	354	470
Mathematics	436	195	17	-	-	-	-	-	-	212	64	160
Medicine	1,834	59	-	-	-	-	-	-	97	156	622	1,056
Pharmacy	165	13	-	-	-	-	-	-	-	13	6	146
Police Studies	91	91	-	-	-	-	-	-	-	91	-	-
Psychology	24	-	-	-	-	-	-	-	-	-	-	24
Religious Studies	115	-	-	-	-	-	-	-	-	-	112	3
Research (MPhil / PhD)	204	204	-	-	-	-	-	-	-	204	-	-
Research (Master)	12	12	-	-	-	-	-	-	-	12	-	-
Science	1,264	444	-	-	-	-	-	-	-	444	14	806
Social Science	691	355	16	-	-	-	-	-	-	371	113	207
Textile	363	112	-	-	-	-	-	74	-	186	77	100
Travel / Hotel / Tourism	1,268	159	237	-	-	-	-	136	-	532	143	593
Others	427	22	15	-	-	-	-	-	-	37	133	257
<b>Total</b>	<b>35,023</b>	<b>7,662</b>	<b>1,839</b>	<b>3,959</b>	<b>575</b>	<b>478</b>	<b>892</b>	<b>378</b>	<b>97</b>	<b>15,880</b>	<b>9,612</b>	<b>9,531</b>

<sup>1</sup> Excludes enrolment on joint MIE & MGI Programmes

Source: Participation in Tertiary Education 2007, Tertiary Education Commission (TEC) Report

Table 6.1(b) - Total number of students enrolled in Tertiary Education, both locally and overseas, by field of study as at December 2008

Field of study	Total	Publicly Funded Institutions (PFIs)								Total	Education/ Private Providers	Overseas
		UOM <sup>1</sup>	UTM	MIE	MGI	MCA	Polytechnics	IVTB	MIH			
Accountancy	5,139	257	24	-	-	-	-	-	-	281	4,324	534
Administration / Management	5,168	1,521	1,034	-	-	133	349	-	-	3,037	1,160	971
Agriculture	338	319	-	-	-	-	-	-	-	319	-	19
Architecture	134	-	-	-	-	-	-	-	-	-	7	127
Arts	553	-	-	-	160	-	-	-	-	160	254	139
Banking / Finance	981	465	265	-	-	-	-	-	-	730	110	141
Business / Commerce / Marketing	3,096	148	-	-	-	42	-	-	-	190	1,150	1,756
Communication	451	86	69	-	-	-	-	-	-	155	112	184
Counselling	62	-	62	-	-	-	-	-	-	62	-	-
Dentistry	331	-	-	-	-	-	-	-	-	-	267	64
Economics	763	467	13	-	-	-	-	-	-	480	47	236
Education	4,530	22	135	4,196	-	2	-	-	-	4,355	36	139
Fisheries Studies	17	-	15	-	-	-	-	-	-	15	-	2
Engineering	2,780	1,220	31	-	-	-	268	22	-	1,541	229	1,010
Health Sciences	673	378	108	-	-	-	-	-	51	537	-	136
Humanities	542	258	-	-	79	-	-	-	-	337	9	196
Information Technology	3,448	949	419	-	-	11	166	121	-	1,666	756	1,026
Languages	1,292	361	-	-	300	131	-	-	-	792	120	380
Law	1,195	331	-	-	-	-	-	-	-	331	385	479
Mathematics	441	201	43	-	-	-	-	-	0	244	32	165
Medecine	1,889	74	-	-	-	-	-	-	16	90	702	1,097
Mres	12	12	-	-	-	-	-	-	-	12	-	-
Pharmacy	174	34	-	-	-	-	-	-	-	34	11	129
Police Studies	6	6	-	-	-	-	-	-	-	6	-	-
Psychology	35	-	-	-	-	-	-	-	-	0	-	35
Religious Studies	67	-	-	-	-	-	-	-	-	0	47	20
Research (MPhil / PhD)	207	179	28	-	-	-	-	-	-	207	-	-
Science	1,119	464	-	-	-	-	-	-	-	464	28	627
Social Science	918	397	-	-	-	-	-	-	-	397	36	485
Textile	271	125	-	-	-	-	-	85	-	210	6	55
Travel / Hotel / Tourism	1,443	195	247	-	-	60	-	194	-	696	100	647
Others	548	-	24	-	-	-	-	-	-	24	75	449
<b>Total</b>	<b>38,623</b>	<b>8,469</b>	<b>2,517</b>	<b>4,196</b>	<b>539</b>	<b>379</b>	<b>783</b>	<b>422</b>	<b>67</b>	<b>17,372</b>	<b>10,003</b>	<b>11,248</b>

<sup>1</sup> Excludes enrolment on joint MIE & MGI Programmes