

Producer Price Index – Agriculture (PPI-A)

Fourth quarter 2007

(Base period year 2002 = 100)

1. Introduction

The Producer Price Index-Agriculture (PPI-A) gives a measure of the average change in the selling prices which producers receive for their agricultural products.

This issue of the Economic and Social Indicators presents monthly PPI-A indices for the months of October, November and December 2007 as well as figures for preceding months updated in the light of additional information that have now become available.

A technical note on the construction of the PPI-A is annexed.

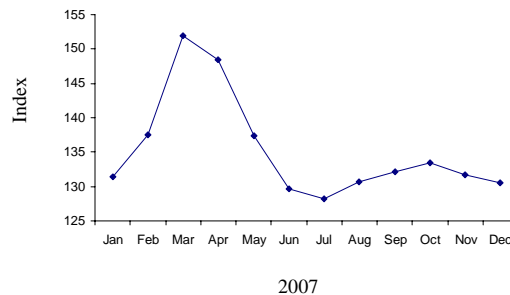
2. Producer Price Index - Agriculture: Fourth Quarter 2007

2.1 Structure of the PPI-A (Base period: 2002=100)

The PPI-A covers two sub-groups, namely "Crop products" and "Animals and animal products". "Crop products" is further subdivided into "Sugar cane" and "Other crop products". Sugar cane heavily influences both the "overall" index and that of sub-group "Crop products", of which it constitutes 61.6% and 74.6% respectively.

2.2 Changes in the monthly index

Overall monthly indices, January 2007 – December 2007



The PPI-A for the month of December worked out to 131.9 following an increase of 1.0% in October, and consecutive drops of 1.3% in November and 1.0% in December respectively. (Table 2).

The index for the sub-group "Crop products", which carries 82.6% of the total weight, rose by 1.1% in October, declined by 1.4% in November and 1.3% in December.

The index of sugar cane for the period July to September 2007 has been revised from 133.1 to 135.4 based on December 2007 estimate of sugar prices for the 2007/2008 crop. It is to be noted that the index may be revised at the end of June 2008 when the final price is available.

The index for "Other crop products" went up by 4.4% in October mostly due to increases in the prices of fruits (+24.6%). The index decreased by 5.7% in November. This was mostly attributable to decreases of 37.0% and 5.3% in the prices of fruits and flowers, ornamental plants respectively. In December, the

index further went down by 5.4% consequent to a drop of 8.3% in the prices of fresh vegetables. The decrease in the prices of fresh vegetables was due to lower prices of tomato and sweet pepper.

The index for the sub-group "Animals and animal products" edged 0.3% higher in October, due to increases in the prices of goat (+ 31.8%), deer (+ 4.6%) and eggs (+ 0.3%). In November, the index fell by 0.8% due to a combined effect of a decrease of 3.4% in the prices of eggs and a slight increase of 0.8% in the prices of goat. The 0.3% increase in the index in December was mostly explained by an increase of 1.4% in the prices of eggs partially offset by a drop of 2.7% in the prices of goat.

More details of changes on a month-to-month basis are given in Table 2 and changes over the corresponding month of the previous year in Table 3.

2.3 Changes in the quarterly index

Overall quarterly indices, 3rd quarter 2006 – 4th quarter 2007

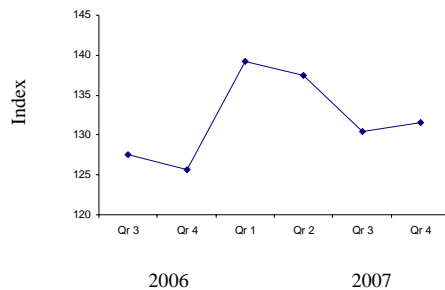


Table 4 gives the evolution of the PPI-A on a quarterly basis. The overall index for the fourth quarter of 2007 increased by 0.9% compared to the previous quarter and 5.9 over the corresponding

quarter of 2006. Percentage changes on a quarterly basis and the net contributions of commodity groups and products are given in Table 5.

2.4 Changes in the yearly index

Average prices producers received from the sale of agricultural products in the year 2007 were 6.4% higher compared to the previous year. The annual indices for the years 2005, 2006 and 2007, annual changes and the net contributions of commodity groups and products to the change are presented in Table 6.

Central Statistics Office
Ministry of Finance and Economic
Development
Port Louis

March 2008

CONTACT PERSON

Mr. S. Haulcooree
Statistician (Agriculture Unit)
Central Statistics Office
5th Floor, LIC Centre
Port Louis
Tel. 213-3073
Fax 211-4150 / 213-6535
Email: cso_agriculture@mail.gov.mu
Website: <http://statsmauritius.gov.mu>

Monthly Producer Price Index -Agriculture (PPI-A)

(Base period:Year 2002=100)

Table 1 : Monthly indices by commodity group and product, January 2005 - December 2007

Commodity Group	Weight	2007											
		Jan	Feb	Mar	Apr	May	June	July	Aug	Sept	Oct	Nov	Dec
Crop products	825.8	128.8	136.0	153.5	148.5	135.1	125.1	125.2	129.6	131.3	132.7	130.9	129.2
Sugar cane	615.9	133.1	133.1	133.1	133.1	133.1	133.1	135.4¹	135.4¹	135.4¹	135.4²	135.4²	135.4²
Other crop products	209.9	116.1	144.7	213.4	193.6	140.9	101.7	95.2	112.5	119.3	124.6	117.5	111.2
Root crops	20.2	117.4	100.5	133.6	196.3	141.3	130.3	131.5	131.6	131.0	140.1	141.7	142.3
Fruits	28.8	98.6	120.1	73.7	87.1	81.6	88.7	98.1	105.4	109.6	136.6	86.0	86.1
Fresh vegetables	138.0	116.7	157.1	266.8	224.9	153.9	94.2	82.2	107.3	116.7	117.3	117.5	107.7
Flowers, ornamental plants	11.5	138.8	151.0	147.0	145.7	145.1	147.7	148.3	144.4	144.6 ¹	151.8	143.7	143.8 ²
Tea	7.3	111.9 ¹	111.9 ¹	111.9 ¹	111.9 ¹	111.9 ¹	111.9 ¹	111.9 ²	111.9 ²	111.9 ²	111.9 ²	111.9 ²	111.9 ²
Tobacco	4.1	157.1	157.1	157.1	157.1 ²	157.1 ²	157.1 ²	157.1 ²	157.1 ²	157.1 ²	157.1 ²	157.1 ²	157.1 ²
Animals & animal products	174.2	144.4	144.4	144.5	148.3	148.6	151.0	150.7	144.3	144.6	145.1	144.0	144.5
Cattle	2.2	148.6	148.6	148.6	148.6	148.6	148.6	148.6	148.6	148.6	148.6	148.6	148.6
Pigs	4.6	115.7	119.1	119.1	106.5	106.1	106.1	112.6	112.6	112.6	112.6	112.6	112.6
Goat	1.3	93.8	93.8	93.8	93.8	93.8	93.8	93.8	99.2	99.2	130.7	131.7	128.1
Deer	5.8	109.0	109.0	109.0	116.4	116.4	113.8	113.8	113.8	113.8	119.0	119.0	119.0
Poultry	111.3	149.8	149.8	149.8	150.3	150.8	152.7	156.6	157.5 ¹	158.8 ¹	158.8 ²	158.8 ²	158.8 ²
Eggs	45.2	142.9	142.6	143.2	154.7	154.7	159.6	148.0 ¹	120.9 ¹	119.0 ¹	119.4	115.3	116.9
Milk	3.8	105.6	105.6	105.6	133.3	133.3	133.3	133.3	133.3	133.3	133.3	133.3	133.3
Overall Index	1,000.0	131.5	137.5	151.9	148.5	137.5	129.6	129.6	132.2	133.6	134.9	133.2	131.9

¹ Revised

² Provisional

Monthly Producer Price Index -Agriculture (PPI-A)

(Base period:Year 2002 =100)

Table 1 (cont'd) : Monthly indices by commodity group and product, January 2005 - December 2007

Commodity Group	Weight	2006											
		Jan	Feb	Mar	Apr	May	June	July	Aug	Sept	Oct	Nov	Dec
Crop products	825.8	122.5	123.2	134.3	139.8	128.6	123.2	126.7	129.4	126.2	127.3	123.0	123.5
Sugar cane	615.9	131.1	131.1	131.1	131.1	131.1	131.1	133.1	133.1	133.1	133.1	133.1	133.1
Other crop products	209.9	97.2	100.0	143.8	165.3	121.1	100.2	107.9	118.6	106.0	110.2	93.3	95.5
Root crops	20.2	112.9	97.8	100.8	89.4	94.5	124.9	131.1	131.0	130.7	129.2	130.7	130.9
Fruits	28.8	87.2	105.4	84.2	72.4	74.5	78.7	86.2	90.8	98.5	108.6	78.8	59.1
Fresh vegetables	138.0	92.4	94.8	165.7	201.5	133.1	96.0	104.6	120.0	99.2	103.1	84.1	91.4
Flowers, ornamental plants	11.5	133.7	137.5	133.7	136.3	137.3	136.3	141.9	140.8	140.8	147.4	140.6	141.8
Tea	7.3	107.3	107.3	107.3	107.3	107.3	107.3	111.9 ¹	111.9 ¹	111.9 ¹	111.9 ¹	111.9 ¹	111.9 ¹
Tobacco	4.1	131.7	131.7	131.7	157.1	157.1	157.1	157.1	157.1	157.1	157.1	157.1	157.1
Animals & animal products	174.2	120.3	119.9	126.2	127.1	119.0	123.5	126.8	128.8	128.4	127.9	133.6	135.4
Cattle	2.2	136.8	136.8	136.8	136.8	136.8	136.8	136.8	136.8	136.8	136.8	136.8	136.8
Pigs	4.6	86.7	88.5	88.9	96.7	96.7	96.7	102.6	104.6	106.3	112.4	113.7	113.7
Goat	1.3	105.0	105.0	105.0	105.0	105.0	105.0	105.0	105.0	105.0	105.0	105.0	105.0
Deer	5.8	106.7	106.7	106.7	106.7	106.7	107.1	108.6	108.6	108.6	108.3	109.0	109.0
Poultry	111.3	122.7	121.4	131.9	133.8	121.3	126.9	128.2	128.2	128.2	128.0	137.0	139.4
Eggs	45.2	120.4	121.9	120.5	118.3	118.0	121.3	130.0	137.4	135.9	133.8	133.5	134.4
Milk	3.8	105.6	105.6	105.6	105.6	105.6	105.6	105.6	105.6	105.6	105.6	105.6	105.6
Overall Index	1,000.0	122.1	122.6	132.9	137.6	126.9	123.3	126.7	129.3	126.6	127.4	124.8	125.6

¹ Revised

Monthly Producer Price Index -Agriculture (PPI-A)

(Base period:Year 2002 =100)

Table 1 (cont'd) : Monthly indices by commodity group and product, January 2005 - December 2007

Commodity Group	Weight	2005											
		Jan	Feb	Mar	Apr	May	June	July	Aug	Sept	Oct	Nov	Dec
Crop products	825.8	112.7	121.3	132.8	143.7	132.4	118.7	120.6	120.5	123.1	127.8	123.4	123.8
Sugar cane	615.9	120.2	120.2	120.2	120.2	120.2	120.2	131.1	131.1	131.1	131.1	131.1	131.1
Other crop products	209.9	90.8	124.5	169.9	212.8	168.3	114.3	89.7	89.5	99.7	118.0	100.8	102.4
Root crops	20.2	103.5	96.2	92.9	96.4	123.2	118.6	128.1	128.1	127.2	126.8	126.6	127.5
Fruits	28.8	101.7	102.6	85.0	83.8	78.5	77.1	78.3	90.2	99.4	125.2	92.4	72.7
Fresh vegetables	138.0	82.1	133.7	207.4	272.0	201.6	120.6	81.1	78.8	91.6	114.1	94.3	100.6
Flowers, ornamental plants	11.5	126.7	132.3	127.2	130.7	128.9	127.0	128.2	122.2	133.3	132.6	138.6	139.9
Tea	7.3	99.7	99.7	99.7	99.7	99.7	99.7	107.3	107.3	107.3	107.3	107.3	107.3
Tobacco	4.1	128.8	128.8	128.8	131.7	131.7	131.7	131.7	131.7	131.7	131.7	131.7	131.7
Animals & animal products	174.2	111.9	112.0	112.6	112.7	113.4	114.0	113.0	111.6	111.5	110.6	109.0	110.3
Cattle	2.2	105.5	105.5	108.2	109.5	109.5	111.4	115.0	115.0	115.0	121.4	136.4	136.4
Pigs	4.6	54.1	54.1	57.0	57.0	57.0	57.0	62.6	62.6	62.6	72.2	75.7	78.0
Goat	1.3	105.0	105.0	105.0	105.0	105.0	105.0	105.0	105.0	105.0	105.0	105.0	105.0
Deer	5.8	104.3	104.3	104.3	104.3	105.0	108.3	108.3	108.3	108.3	106.7	106.7	106.7
Poultry	111.3	112.0	112.0	112.0	112.4	112.4	112.4	109.4	107.4	107.4	107.4	107.4	107.4
Eggs	45.2	119.6	120.1	121.9	121.2	123.6	125.7	128.2	127.9	127.4	122.9	115.7	120.6
Milk	3.8	105.6	105.6	105.6	105.6	105.6	105.6	105.6	105.6	105.6	105.6	105.6	105.6
Overall Index	1,000.0	112.6	119.7	129.3	138.3	129.1	117.9	119.3	118.9	121.1	124.8	120.9	121.4

Monthly Producer Price Index -Agriculture (PPI-A)

(Base period:Year 2002=100)

Table 2 : Percentage changes from previous month by commodity group and product , January 2007 - December 2007

	Weight	Percentage changes from											
		Dec 06 to	Jan 07 to	Feb 07 to	Mar 07 to	Apr 07 to	May 07 to	Jun 07 to	Jul 07 to	Aug 07 to	Sept 07 to	Oct 07 to	Nov 07 to
		Jan 07	Feb 07	Mar 07	Apr 07	May 07	Jun 07	Jul 07	Aug 07	Sept 07	Oct 07	Nov 07	Dec 07
Crop products	825.8	4.3	5.6	12.9	-3.3	-9.0	-7.4	0.1	3.5	1.3	1.1	-1.4	-1.3
Sugar cane	615.9	0.0	0.0	0.0	0.0	0.0	0.0	1.7	0.0	0.0	0.0	0.0	0.0
Other crop products	209.9	21.6	24.6	47.5	-9.3	-27.2	-27.8	-6.4	18.2	6.0	4.4	-5.7	-5.4
Root crops	20.2	-10.3	-14.4	32.9	46.9	-28.0	-7.8	0.9	0.1	-0.5	6.9	1.1	0.4
Fruits	28.8	66.8	21.8	-38.6	18.2	-6.3	8.7	10.6	7.4	4.0	24.6	-37.0	0.1
Fresh vegetables	138.0	27.7	34.6	69.8	-15.7	-31.6	-38.8	-12.7	30.5	8.8	0.5	0.2	-8.3
Flowers, ornamental plants	11.5	-2.1	8.8	-2.6	-0.9	-0.4	1.8	0.4	-2.6	0.1	5.0	-5.3	0.1
Tea	7.3	0.0	0.0	0.0	0.0	0.0	0.0	0.0	0.0	0.0	0.0	0.0	0.0
Tobacco	4.1	0.0	0.0	0.0	0.0	0.0	0.0	0.0	0.0	0.0	0.0	0.0	0.0
Animals & animal products	174.2	6.6	0.0	0.1	2.6	0.2	1.6	-0.2	-4.2	0.2	0.3	-0.8	0.3
Cattle	2.2	8.6	0.0	0.0	0.0	0.0	0.0	0.0	0.0	0.0	0.0	0.0	0.0
Pigs	4.6	1.8	2.9	0.0	-10.6	-0.4	0.0	6.1	0.0	0.0	0.0	0.0	0.0
Goat	1.3	-10.7	0.0	0.0	0.0	0.0	0.0	0.0	5.8	0.0	31.8	0.8	-2.7
Deer	5.8	0.0	0.0	0.0	6.8	0.0	-2.2	0.0	0.0	0.0	4.6	0.0	0.0
Poultry	111.3	7.5	0.0	0.0	0.3	0.3	1.3	2.6	0.6	0.8	0.0	0.0	0.0
Eggs	45.2	6.3	-0.2	0.4	8.0	0.0	3.2	-7.3	-18.3	-1.6	0.3	-3.4	1.4
Milk	3.8	0.0	0.0	0.0	26.2	0.0	0.0	0.0	0.0	0.0	0.0	0.0	0.0
Overall Change	1,000.0	4.7	4.6	10.5	-2.2	-7.4	-5.7	0.0	2.0	1.1	1.0	-1.3	-1.0

Monthly Producer Price Index -Agriculture (PPI-A)

(Base period:Year 2002=100)

Table 3 : Percentage changes from corresponding month of previous year by commodity group and product , January 2007 - December 2007

Commodity Group	Weight	Percentage changes from											
		Jan 06 to	Feb 06 to	Mar 06 to	Apr 06 to	May 06 to	Jun 06 to	Jul 06 to	Aug 06 to	Sept 06 to	Oct 06 to	Nov 06 to	Dec 06 to
		Jan 07	Feb 07	Mar 07	Apr 07	May 07	Jun 07	Jul 07	Aug 07	Sept 07	Oct 07	Nov 07	Dec 07
Crop products	825.8	5.1	10.4	14.3	6.2	5.1	1.5	-1.2	0.2	4.0	4.2	6.4	4.6
Sugar cane	615.9	1.5	1.5	1.5	1.5	1.5	1.5	1.7	1.7	1.7	1.7	1.7	1.7
Other crop products	209.9	19.4	44.7	48.4	17.1	16.4	1.5	-11.8	-5.1	12.5	13.1	25.9	16.4
Root crops	20.2	4.0	2.8	32.5	119.6	49.5	4.3	0.3	0.5	0.2	8.4	8.4	8.7
Fruits	28.8	13.1	13.9	-12.5	20.3	9.5	12.7	13.8	16.1	11.3	25.8	9.1	45.7
Fresh vegetables	138.0	26.3	65.7	61.0	11.6	15.6	-1.9	-21.4	-10.6	17.6	13.8	39.7	17.8
Flowers, ornamental plants	11.5	3.8	9.8	9.9	6.9	5.7	8.4	4.5	2.6	2.7	3.0	2.2	1.4
Tea	7.3	4.3	4.3	4.3	4.3	4.3	4.3	0.0	0.0	0.0	0.0	0.0	0.0
Tobacco	4.1	19.3	19.3	19.3	0.0	0.0	0.0	0.0	0.0	0.0	0.0	0.0	0.0
Animals & animal products	174.2	20.0	20.4	14.5	16.7	24.9	22.3	18.8	12.0	12.6	13.4	7.8	6.7
Cattle	2.2	8.6	8.6	8.6	8.6	8.6	8.6	8.6	8.6	8.6	8.6	8.6	8.6
Pigs	4.6	33.4	34.6	34.0	10.1	9.7	9.7	9.7	7.6	5.9	0.2	-1.0	-1.0
Goat	1.3	-10.7	-10.7	-10.7	-10.7	-10.7	-10.7	-10.7	-5.5	-5.5	24.5	25.4	22.0
Deer	5.8	2.2	2.2	2.2	9.1	9.1	6.3	4.8	4.8	4.8	9.9	9.2	9.2
Poultry	111.3	22.1	23.4	13.6	12.3	24.3	20.3	22.2	22.9	23.9	24.1	15.9	13.9
Eggs	45.2	18.7	17.0	18.8	30.8	31.1	31.6	13.8	-12.0	-12.4	-10.8	-13.6	-13.0
Milk	3.8	0.0	0.0	0.0	26.2	26.2	26.2	26.2	26.2	26.2	26.2	26.2	26.2
Overall Change	1,000.0	7.7	12.2	14.3	7.9	8.4	5.1	2.3	2.2	5.5	5.9	6.7	5.0

Quarterly Producer Price Index -Agriculture (PPI-A)

(Base period:Year 2002=100)

Table 4: Quarterly indices ¹ by commodity group and product, 1st Quarter 2006 - 4th Quarter 2007

Commodity Group	Weight	2006				2007			
		1st Qr	2nd Qr	3rd Qr	4th Qr	1st Qr	2nd Qr	3rd Qr	4th Qr
Crop products	825.8	126.2	130.3	127.4	124.3	138.1	135.0	128.8	130.7
Sugar cane	615.9	131.1	131.1	133.1	133.1	133.1	133.1	135.4 ²	135.4 ³
Other crop products	209.9	111.8	127.8	110.8	98.4	152.8	140.6	109.3	116.8
Root crops	20.2	108.3	117.9	131.0	130.3	116.7	137.9	131.4	141.5
Fruits	28.8	91.4	75.3	92.3	72.1	100.1	85.9	104.8	94.0
Fresh vegetables	138.0	114.3	139.7	107.8	93.0	171.7	152.9	102.4	114.5
Flowers, ornamental plants	11.5	135.0	136.6	141.2	143.3	145.6	146.2	145.8 ²	146.4 ³
Tea	7.3	107.3	107.3	111.9 ²	111.9 ²	111.9 ²	111.9 ²	111.9 ³	111.9 ³
Tobacco	4.1	131.7	157.1	157.1	157.1	157.1	157.1 ³	157.1 ³	157.1 ³
Animals & animal products	174.2	122.1	123.2	128.0	132.3	144.4	149.3	146.5	144.5
Cattle	2.2	136.8	136.8	136.8	136.8	148.6	148.6	148.6	148.6
Pigs	4.6	88.0	96.7	104.5	113.3	118.0	106.2	112.6	112.6
Goat	1.3	105.0	105.0	105.0	105.0	93.8	93.8	97.4	130.2
Deer	5.8	106.7	106.8	108.6	108.8	109.0	115.5	113.8	119.0
Poultry	111.3	125.3	127.3	128.2	134.8	149.8	151.3	157.6 ²	158.8 ³
Eggs	45.2	120.9	119.2	134.4	133.9	142.9	156.3	129.3 ²	117.2
Milk	3.8	105.6	105.6	105.6	105.6	105.6	133.3	133.3	133.3
Overall Index	1,000.0	125.5	129.1	127.5	125.7	139.2	137.5	131.9	133.1

¹ using data for base period as weights, and not a simple average of the monthly indices

² Revised

³ Provisional

Quarterly Producer Price Index -Agriculture (PPI-A)

(Base period:Year 2002=100)

Table 5: Quarterly changes (%) and net contributions of commodity groups and products to the change, 4th Quarter 2006 - 4th Quarter 2007

Commodity Group	Weight	Percentage changes from previous quarter				Percentage changes from corresponding quarter of previous year				Net contributions from				
		4th Qr 06 to	1st Qr 07 to	2nd Qr 07 to	3rd Qr 07 to	1st Qr 06 to	2nd Qr 06 to	3rd Qr 06 to	4th Qr 06 to	4th Qr 06 to	1st Qr 07 to	2nd Qr 07 to	3rd Qr 07 to	4th Qr 07 to
		1st Qr 07	2nd Qr 07	3rd Qr 07	4th Qr 07	1st Qr 07	2nd Qr 07	3rd Qr 07	4th Qr 07	1st Qr 07	2nd Qr 07	3rd Qr 07	4th Qr 07	
Crop products	825.8	11.1	-2.2	-4.6	1.5	9.4	3.6	1.1	5.1	11.43	-2.56	-5.14	1.57	
Sugar cane	615.9	0.0	0.0	1.7	0.0	1.5	1.5	1.7	1.7	0.00	0.00	1.42	0.00	
Other crop products	209.9	55.3	-8.0	-22.3	6.9	36.7	10.0	-1.4	18.7	11.43	-2.56	-6.56	1.57	
Root crops	20.2	-10.4	18.2	-4.7	7.7	7.8	17.0	0.3	8.6	-0.27	0.43	-0.13	0.20	
Fruits	28.8	38.8	-14.2	22.0	-10.3	9.5	14.1	13.5	30.4	0.81	-0.41	0.54	-0.31	
Fresh vegetables	138.0	84.6	-10.9	-33.0	11.8	50.2	9.4	-5.0	23.1	10.86	-2.59	-6.97	1.67	
Flowers, ornamental plants	11.5	1.6	0.4	-0.3	0.4	7.9	7.0	3.3	2.2	0.03	0.01	0.00	0.01	
Tea	7.3	0.0	0.0	0.0	0.0	4.3	4.3	0.0	0.0	0.00	0.00	0.00	0.00	
Tobacco	4.1	0.0	0.0	0.0	0.0	19.3	0.0	0.0	0.0	0.00	0.00	0.00	0.00	
Animals & animal products	174.2	9.1	3.4	-1.9	-1.4	18.3	21.2	14.5	9.2	2.12	0.88	-0.50	0.35	
Cattle	2.2	8.6	0.0	0.0	0.0	8.6	8.6	8.6	8.6	0.03	0.00	0.00	0.00	
Pigs	4.6	4.1	-10.0	6.0	0.0	34.1	9.8	7.8	-0.6	0.02	-0.05	0.03	0.00	
Goat	1.3	-10.7	0.0	3.8	33.7	-10.7	-10.7	-7.2	24.0	-0.01	0.00	0.00	0.04	
Deer	5.8	0.2	6.0	-1.5	4.6	2.2	8.1	4.8	9.4	0.00	0.04	-0.01	0.03	
Poultry	111.3	11.1	1.0	4.2	0.8	19.6	18.9	22.9	17.8	1.67	0.17	0.70	0.13	
Eggs	45.2	6.7	9.4	-17.3	-9.4	18.2	31.1	-3.8	-12.5	0.41	0.61	-1.22	-0.55	
Milk	3.8	0.0	26.2	0.0	0.0	0.0	26.2	26.2	26.2	0.00	0.11	0.00	0.00	
Total	1,000.0	10.7	-1.2	-4.1	0.9	10.9	6.5	3.5	5.9	13.55	-1.68	-5.64	1.22	

Annual Producer Price Index -Agriculture (PPI-A)

(Base period:Year 2002=100)

Table 6 : Annual indices, annual changes (%) and net contributions of commodity groups and products to the change, 2005 - 2007

Commodity Group	Weight	Annual index ¹			Percentage changes from		Net contributions from	
		2005	2006	2007	2005 to 2006	2006 to 2007	2005 to 2006	2006 to 2007
Crop products	825.8	123.9	126.8	132.4	2.3	4.4	2.35	4.63
Sugar cane	615.9	125.7	132.1	134.3 ²	5.1	1.7	3.94	1.35
Other crop products	209.9	118.7	111.1	126.7	-6.4	14.0	-1.59	3.28
Root crops	20.2	125.9	129.2	135.5	2.6	4.9	0.07	0.13
Fruits	28.8	89.8	81.1	96.3	-9.7	18.7	-0.25	0.44
Fresh vegetables	138.0	123.1	111.3	130.0	-9.6	16.8	-1.63	2.58
Flowers, ornamental plants	11.5	130.6	139.0	146.02	6.4	5.0	0.10	0.08
Tea	7.3	103.5	109.63	111.92	5.9	2.1	0.04	0.02
Tobacco	4.1	131.0	150.8	157.12	15.1	4.2	0.08	0.03
Animals & animal products	174.2	111.9	126.4	146.2	13.0	15.7	2.52	3.46
Cattle	2.2	117.5	136.8	148.6	16.4	8.6	0.04	0.03
Pigs	4.6	62.9	101.2	112.2	60.9	10.9	0.18	0.05
Goat	1.3	105.0	105.0	105.5	0.0	0.5	0.00	0.00
Deer	5.8	106.3	107.7	114.3	1.3	6.1	0.01	0.04
Poultry	111.3	110.0	128.9	154.42	17.2	19.8	2.10	2.84
Eggs	45.2	122.9	127.1	136.4	3.4	7.3	0.19	0.42
Milk	3.8	105.6	105.6	126.4	0.0	19.7	0.00	0.08
Total	1,000.0	121.8	126.7	134.8	4.0	6.4	4.87	8.09

¹ using data for base period as weights, and not a simple average of the monthly indices

² Provisional

³ Revised

Technical Note
Producer Price Index - Agriculture (PPI-A)

Methodology for the construction of the PPI-A

Weighting scheme

The weights are derived by multiplying the average of production during 2001, 2002 and 2003 by the average of unit prices in 2002, the reference period. The weight is assigned to each commodity group on the basis of total production (as a proxy for sales) pertaining to the particular group. At commodity level, the weights are apportioned within the commodity group on the basis of production of each product.

Quarterly and annual indices have been computed using a weighting system based on the production value for the base period.

Coverage

The bulk of the products in agriculture, with the exception of forestry, fishing and agricultural services, is taken into account in the producer price index. Thus, about 83% of the total value of agricultural production is covered.

Price collection

In principle, prices collected should refer to farm-gate prices, but it is extremely difficult to obtain such prices for vegetables, not only because of the enormous resources to be mobilised but also crop plantations tend to be very dynamic among planters. Hence, in lieu of the farm-gate price, the wholesale price of the produce is recorded at the two main auction markets (Vacoas and Port-Louis) once a week.

In the case of commodities for which prices are fairly stable, data suppliers are visited on a quarterly basis, but prices are collected for each month of the quarter.

Prices of the main commercial crops like sugar cane, tea leaf and tobacco leaf, which are normally fixed for the crop year, are supplied by the respective marketing agencies.

Index calculation

The PPI-A is calculated according to a modified Laspeyres formula:

$$I_t = \frac{\sum W_i(P_{ti}/P_{oi})}{\sum W_i} \times 100$$

where :

I_t is the index for the current period t

P_{ti} is the price of commodity i in the current period t

P_{oi} is the price of the commodity i in the reference period o (2002)

W_i is the weight associated with commodity i