

EDUCATION STATISTICS - 2007

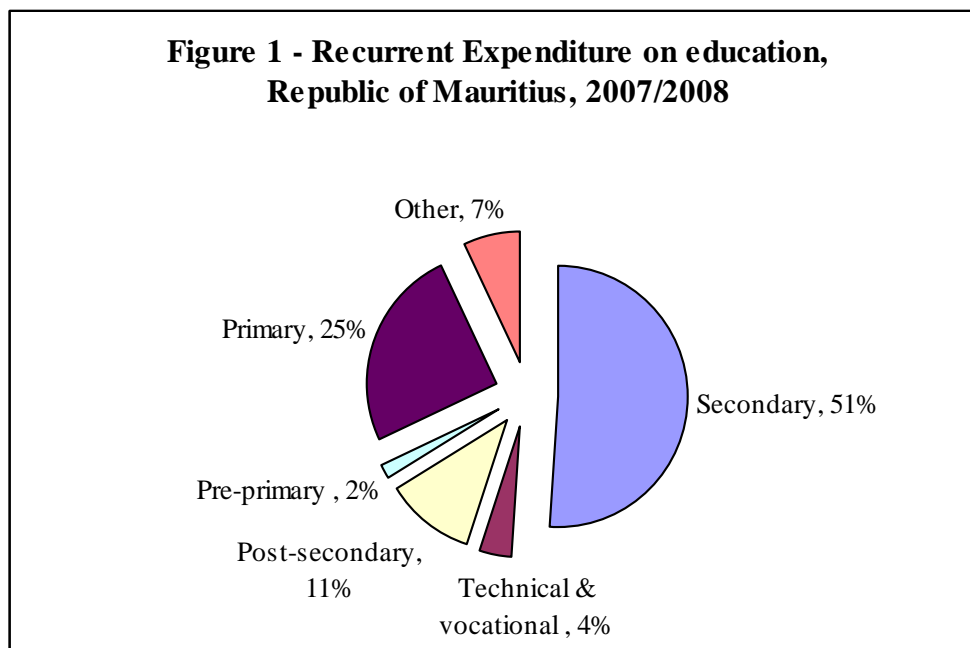
1. Introduction

This issue of the Economic and Social Indicators presents data on education, compiled on the basis of information collected through the annual survey conducted in schools in March 2007, together with data from other sources. The data refer to the Republic of Mauritius (excluding Agalega) and cover pre-primary, primary, secondary (academic and pre-vocational) and tertiary education.

2. Expenditure

Total government expenditure estimates for the financial year 2007/2008 is Rs 61,544 million, out of which, Rs 7,812 million (13%) has been allocated to education. Government capital expenditure on education, estimated at Rs 872 million, represents 9% of total government capital expenditure (Rs 10,050 million), and recurrent expenditure on education estimated at Rs 6,940 million, that is 13% of the government total recurrent expenditure (Rs 51,494 million).

Out of the recurrent budget on education and training for the year 2007/2008, 51% is allocated to secondary education, 25% to primary education, 11% to post secondary education, 4% to technical and vocational education, 2% to pre-primary education and the remaining 7% to other expenses (Table 1.3 and Figure 1).



3. Pre-primary education

3.1 Schools

In March 2007, there were 1,076 schools providing pre-primary education: 1,044 in the Island of Mauritius and 32 in Rodrigues. Of these schools, 826 (77%) were privately run institutions; 179 (17%), operating on government primary school premises, were administered by the Pre-School Trust Fund (PSTF) and the remaining 71 (6%) were administered by either Roman Catholic (RC) authorities or Municipal/Village Councils (Table 2.1).

3.2 Enrolment

Total enrolment in pre-primary schools numbered 36,421, of whom 18,339 were boys and 18,082 girls (Table 2.3). The Gross Enrolment Ratio (pre-primary enrolment as a percentage of the population aged 4 and 5 years) works out to 94% in 2007 against 95% in 2006.

3.3 Personnel

In March 2007, total employment in pre-primary schools stood at 3,386, of whom 2,500 were teachers and 886, non-teaching staff. The average number of pupils per teacher works out to 15.

4 Primary education

4.1 Schools

In March 2007, there were 289 schools providing primary education, 276 in the Island of Mauritius and 13 in Rodrigues. The majority (219) of the schools was run by government, 51 by the Roman Catholic Education Authority (RCEA), 2 by the Hindu Education Authority and the other 17 were private non-aided schools.

4.2 Enrolment

The primary school population in the Republic of Mauritius decreased by about 2% from 121,387 in 2006 to 119,310 in 2007. Boys represented 51% of the 2007 primary school population and girls 49%. Around 74% of the primary school population was enrolled in government schools and the remaining was in private aided and non-aided schools (Table 3.3).

Distribution by grade shows that the highest number of pupils was in standard VI (23,897 pupils including 4,441 repeaters). The Gross Enrolment Ratio (primary enrolment as a percentage of the population aged 6 to 11 years) works out to 101%, against 102 in 2006.

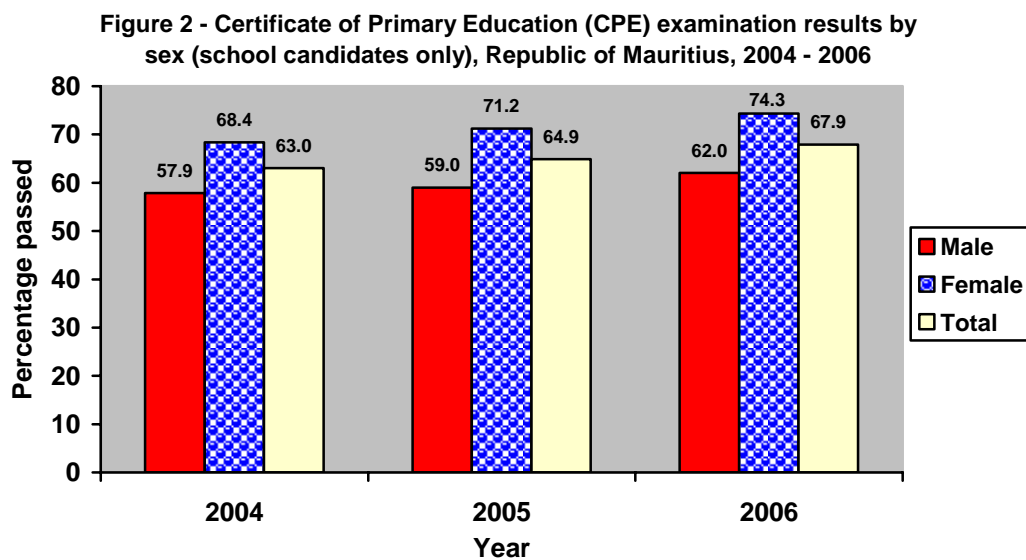
4.3 Personnel

At March 2007, 8,026 persons were employed in primary schools. Of this number, 5,548 were teaching staff: 4,201 General Purpose Teachers and 1,347 Oriental Language Teachers. The remaining 2,478 comprised 287 Head Teachers, 829 Deputy Head Teachers and 1,362 administrative and other workers (Tables 3.9). The pupil/teacher (general purpose) ratio in primary schools works out to 28.

4.4 Certificate of Primary Education (CPE)

In 2006, the number of candidates who took part in the CPE examination was 27,771 (25,007 school candidates and 2,764 private candidates), with an overall pass rate of 65%.

The pass rate among school candidates, comprising 12,942 boys and 12,065 girls, was 68%. The girls were more successful than the boys, with respective pass rates of 74% and 62% (Table 3.11 and Figure 2).



The overall pass rate among the 2,764 private candidates (1,562 boys and 1,202 girls) was 41%, with girls again achieving better results than boys, 46% against 37% (Table 3.12).

School candidates who took part in the CPE examination for the first time did much better than those taking the examination a second time, 76% against 40% (Table 3.12).

5. Secondary and pre-vocational education

5.1 General

At March 2007, 40 schools were offering secondary academic education only, 7 pre-vocational education only and 146 both secondary academic and pre-vocational education.

5.2 Secondary education (Academic only)

5.2.1 Schools

Out of the 186 schools dispensing secondary education, 181 were in the Island of Mauritius and 5 in Rodrigues. State administered schools numbered 70, while the other 116 were private aided and non-aided schools (Table 4.1).

5.2.2 Enrolment

Table 4.3 shows that secondary education enrolment increased by about 2% from 114,657 in 2006 to 116,706 in 2007. Among the students, 60,609 (52%) were girls and 56,097 (48%) were boys. About 38% of the secondary school population were in state schools and 62% in private (aided and unaided) schools. Gross Enrolment Ratio (secondary education enrolment as a percentage of the population aged 12 to 19 years) for the academic stream works out to 69% in 2007, same as in 2006.

5.3 Pre-vocational education

5.3.1 Schools

At March 2007, 153 schools were offering pre-vocational education: 148 in the Island of Mauritius and 5 in Rodrigues. Sixty-six of these schools were state secondary schools and state pre-vocational schools while the remaining 87 were private schools.

5.3.2 Enrolment

Enrolment in the schools offering pre-vocational education was 9,573 comprising 5,957 boys and 3,616 girls (Table 4.11). About 36% of the students in pre-vocational schools were in state schools.

5.4 Personnel

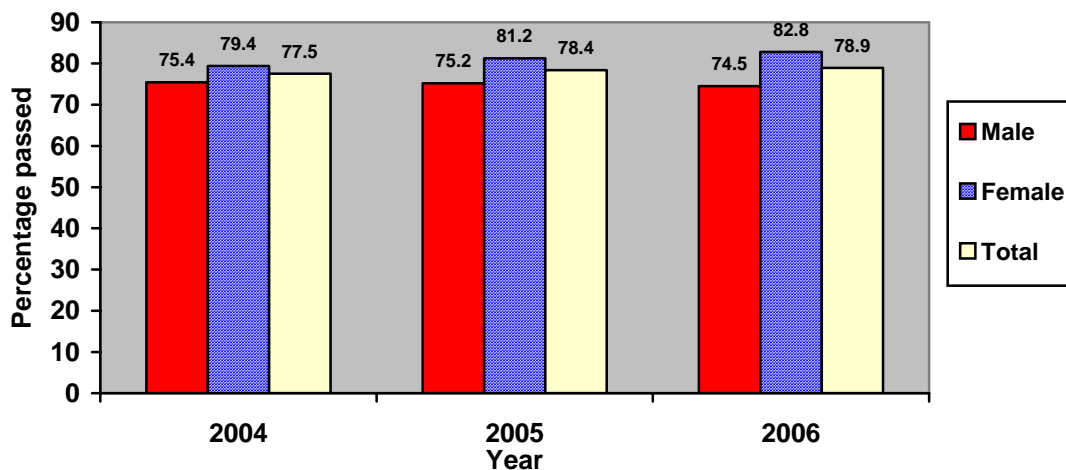
The number of teachers working in schools offering secondary and pre-vocational education was 8,124 at March 2007.

The secondary education teaching staff in the academic stream was 7,423 (3,278 males and 4,145 females). The pupil/teacher ratio works out to 16. On the other hand, the pre-vocational education teaching staff stood at 701 (260 males and 441 females), giving an average of 14 pupils per teacher.

5.5 Cambridge School Certificate (SC)

In 2006, out of 16,448 candidates (7,790 males and 8,658 females) who took part in the Cambridge School Certificate examination, 12,971 were successful. Comparison with the 2005 results shows that the overall pass rate has slightly gone up from 78.4% to 78.9% (Table 4.17 and Figure 3).

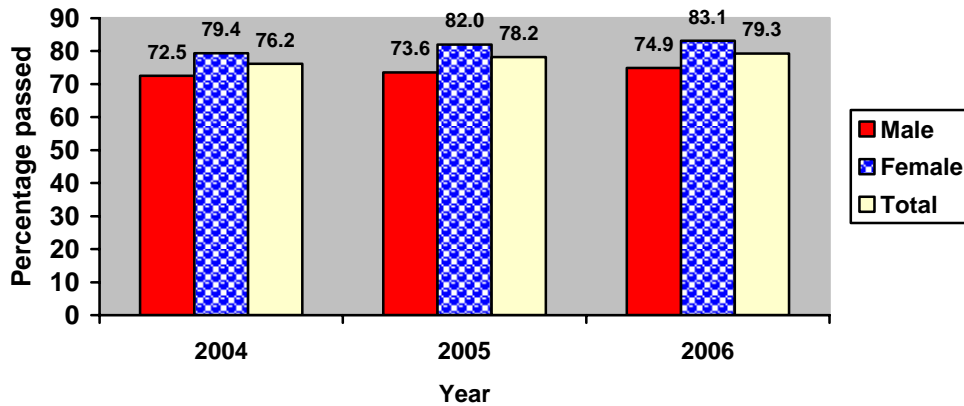
Figure 3 - Cambridge School Certificate (SC) pass rate (school candidates only), Republic of Mauritius, 2004 - 2006



5.6 Cambridge Higher School Certificate (HSC)

The number of students taking part in the 2006 Cambridge Higher School Certificate examination stood at 8,040 (3,698 males and 4,342 females). The overall pass rate was 79.3% compared to 78.2% in 2005 (Table 4.18 and Figure 4).

Figure 4 - Cambridge Higher School Certificate (HSC) pass rate (school candidates only), Republic of Mauritius, 2004 - 2006



6. Tertiary Education

As at December 2006, the total number of students (part-time and full-time) enrolled on tertiary-level programmes (including Distance Education) reached 33,230 compared to 28,864 in December 2005, representing an increase of 15.1%.

The majority of students (75%) were enrolled in tertiary education locally in both public-funded institutions (47%) and private institutions (28%). Another 25% of the students were enrolled in tertiary education overseas (Table 5.1b).

The Gross Enrolment Rate (tertiary education enrolment as a percentage of the population aged 20 to 24 years), which was 28.4% in 2005, reached 34.1% in 2006.

**Central Statistics Office
Ministry of Finance and Economic Development
Port Louis
Mauritius
September 2007**

Contact Person

D. Pothegadoo
Statistician
Statistics Unit
Ministry of Education and Human Resources
Pont Fer, Phoenix
Tel: 601 5252, 601 5200, Ext. 5330, 5252
Fax: 686 8774
Email : dpothegadoo@mail.gov.mu

Table 1.1 - Total Government Expenditure (Capital and Recurrent), 2005/2006, 2006/2007 and 2007/2008
Republic of Mauritius

	(Rs million)		
	2005/2006 ¹	2006/2007 ²	2007/2008 ²
Total Government Expenditure	48,194.7	55,828.0	61,544.0
Capital	7,631.1	8,200.0	10,050.0
Recurrent	40,563.6	47,628.0	51,494.0

Table 1.2 - Government Expenditure on Education (Capital and Recurrent), 2005/2006, 2006/2007, 2007/2008
(Rs million)

	2005/2006 ¹	2006/2007 ²	2007/2008 ²
Island of Mauritius			
Ministry of Education & HR	6,895.6	6,945.4	7,390.0
Capital	892.6	844.0	828.0
Recurrent	6,003.0	6,101.4	6,562.0
Island of Rodrigues⁴			
Ministry of Rodrigues & Outer Islands	144.5	113.4	123.9
Capital	60.0	29.3	36.0
Recurrent	84.5	84.1	87.9
Other Ministries⁵	30.8	93.0	298.0
Capital	20.2	10.0	8.0
Recurrent	10.6	83.0	290.0
Total	7,070.9	7,151.8	7,811.9

Table 1.3 - Government Recurrent Expenditure on Education by sector, 2005/2006, 2006/2007 and 2007/2008
(Rs million)

	2005/2006 ¹		2006/2007 ²		2007/2008 ²	
	Amount	%	Amount	%	Amount	%
Island of Mauritius						
Ministry of Education & HR	6,003.0	98.4	6,101.4	97.3	6,562.0	94.6
<i>Pre-primary</i>	100.8	1.7	82.0	1.3	108.1	1.6
<i>Primary</i>	1,601.3	26.3	1,645.2	26.2	1,653.7	23.8
<i>Secondary</i>	2,644.4	43.4	2,641.6	42.1	3,552.8	51.2
<i>Technical & Vocational</i>	298.5	4.9	293.0	4.7	290.7	4.2
<i>Post Secondary</i>	684.7	11.2	700.0	11.2	785.4	11.3
<i>Other³</i>	673.3	11.0	739.6	11.8	171.3	2.5
Island of Rodrigues⁴	84.5	1.4	84.1	1.3	87.9	1.3
<i>Pre-Primary</i>	1.8	-	1.8	-	1.8	-
<i>Primary</i>	82.7	1.4	82.3	1.3	86.1	1.2
Other Ministries⁵	10.6	0.2	83.0	1.3	290.0	4.2
Total	6,098.1	100.0	6,268.5	100.0	6,939.9	100.0

¹ Actual

² Provisional : budget estimates

³ Includes administrative staff, Conservatoire, MQA, HR, HRDC & NPCC

⁴ Expenditure on Education under Ministry of Rodrigues Vote

⁵ Includes Sea Training, MIH & Training under the Empowerment Programme

Table 2.1 - Distribution of pre-primary schools³ by district and type of administration, 2007

District	Type of Administration				
	Total	PSTF ¹	RC ²	Municipal/ V.Council	Private
Port Louis	138	18	1	15	104
Pamplemousses	109	21	1	1	86
Riv. du Rempart	101	23	-	2	76
Flacq	132	29	3	1	99
Grand Port	95	19	1	13	62
Savanne	63	10	1	2	50
Plaines Wilhems	317	30	2	26	259
Moka	52	15	2	-	35
Black River	37	11	-	-	26
Island of Mauritius	1,044	176	11	60	797
Island of Rodrigues	32	3	-	-	29
Republic of Mauritius	1,076	179	11	60	826

Table 2.2 - Distribution of pre-primary schools³ by zone and type of administration, 2007

Zone	Type of Administration				
	Total	PSTF ¹	RC ²	Municipal/ V.Council	Private
1 - Port Louis / North	358	63	2	18	275
2 - B.Bassin-R.Hill / East	258	51	5	10	192
3 - Curepipe / South	233	36	2	17	178
4 - Q.Bornes / Vacoas-Phoenix /West	195	26	2	15	152
5 - Rodrigues	32	3	-	-	29
All Zones	1,076	179	11	60	826

¹ Pre-School Trust Fund

² Roman Catholic

³ Figures are provisional

Table 2.3 - Enrolment and personnel in pre-primary schools¹ by district and sex, 2007

District	Enrolment			Personnel		
	Male	Female	Total	Teaching	Non - Teaching	Total
Port Louis	2,662	2,547	5,209	334	144	478
Pamplemousses	1,780	1,830	3,610	245	97	342
Riviere du Rempart	1,663	1,558	3,221	214	60	274
Flacq	2,191	2,169	4,360	270	84	354
Grand Port	1,471	1,530	3,001	203	58	261
Savanne	1,058	1,013	2,071	121	34	155
Plaines Wilhems	5,250	5,117	10,367	808	326	1,134
Moka	922	873	1,795	125	48	173
Black River	696	754	1,450	105	29	134
Island of Mauritius	17,693	17,391	35,084	2,425	880	3,305
Island of Rodrigues	646	691	1,337	75	6	81
Republic of Mauritius	18,339	18,082	36,421	2,500	886	3,386

Table 2.4 - Enrolment and personnel in pre-primary schools¹ by zone and sex, 2007

Zone	Enrolment			Personnel		
	Male	Female	Total	Teaching	Non - Teaching	Total
1 - Port Louis / North	6,260	6,086	12,346	818	311	1,129
2 - B.Bassin-R.Hill / East	4,477	4,356	8,833	608	208	816
3 - Curepipe / South	3,761	3,715	7,476	494	147	641
4 - Q.Bornes / Vacoas-Phoenix / West	3,195	3,234	6,429	505	214	719
5 - Rodrigues	646	691	1,337	75	6	81
All Zones	18,339	18,082	36,421	2,500	886	3,386

¹ Figures are provisional

Table 3.1 - Distribution of primary schools¹ by district and type of administration, 2007

District	Total	Type of Administration					
		Government		Private			
				Aided		Non - Aided	
		No.	%	No.	%	No.	%
Port Louis	34	25	74	8	23	1	3
Pamplemousses	24	23	96	-	-	1	4
Riviere du Rempart	27	22	82	3	11	2	7
Flacq	36	27	75	9	25	-	-
Grand Port	30	25	83	5	17	-	-
Savanne	17	14	82	3	18	-	-
Plaines Wilhems	68	44	65	13	19	11	16
Moka	26	20	77	4	15	2	8
Black River	14	11	79	3	21	-	-
Island of Mauritius	276	211	77	48	17	17	6
Island of Rodrigues	13	8	62	5	38	-	-
Republic of Mauritius	289	219	76	53	18	17	6

Table 3.2 - Distribution of primary schools¹ by zone and type of administration, 2007

Zone	Total	Type of Administration					
		Government		Private			
				Aided		Non - Aided	
		No.	%	No.	%	No.	%
1 - Port Louis / North	87	72	83	11	13	4	4
2 - B.Bassin-R.Hill / East	77	57	74	17	22	3	4
3 - Curepipe / South	65	48	74	12	18	5	8
4 - Q.Bornes / Vacoas-Phoenix / West	47	34	72	8	17	5	11
5 - Rodrigues	13	8	62	5	38	-	-
All Zones	289	219	76	53	18	17	6

¹ Excluding schools with partial stream

Table 3.3 - Enrolment in primary schools¹ by district, type of administration and sex, 2007

District	All schools			Government schools			Private schools					
	Total	Male	Female	Total	Male	Female	Aided			Non-aided		
							Total	Male	Female	Total	Male	Female
Port Louis	16,716	8,443	8,273	10,735	5,432	5,303	5,472	2,760	2,712	509	251	258
Pamplemousses	10,366	5,293	5,073	9,698	4,911	4,787	-	-	-	668	382	286
Riviere du Rempart	10,610	5,455	5,155	8,983	4,647	4,336	1,005	500	505	622	308	314
Flacq	14,040	7,180	6,860	12,045	6,173	5,872	1,995	1,007	988	-	-	-
Grand Port	10,781	5,470	5,311	8,843	4,495	4,348	1,938	975	963	-	-	-
Savanne	6,215	3,193	3,022	5,540	2,858	2,682	675	335	340	-	-	-
Plaines Wilhems	33,824	17,056	16,768	20,273	10,301	9,972	9,715	4,894	4,821	3,836	1,861	1,975
Moka	7,702	3,926	3,776	5,833	3,004	2,829	1,039	481	558	830	441	389
Black River	4,150	2,121	2,029	3,378	1,740	1,638	619	305	314	153	76	77
Island of Mauritius	114,404	58,137	56,267	85,328	43,561	41,767	22,458	11,257	11,201	6,618	3,319	3,299
Island of Rodrigues	4,906	2,504	2,402	2,824	1,460	1,364	2,082	1,044	1,038	-	-	-
Republic of Mauritius	119,310	60,641	58,669	88,152	45,021	43,131	24,540	12,301	12,239	6,618	3,319	3,299

Table 3.4 - Enrolment in primary schools¹ by zone, type of administration and sex, 2007

Zone	All schools			Government schools			Private schools					
	Total	Male	Female	Total	Male	Female	Aided			Non-aided		
							Total	Male	Female	Total	Male	Female
1 - Port Louis / North	38,574	19,629	18,945	30,298	15,428	14,870	6,477	3,260	3,217	1,799	941	858
2 - B.Bassin-R.Hill / East	29,322	14,968	14,354	21,247	10,913	10,334	7,084	3,521	3,563	991	534	457
3 - Curepipe / South	25,454	12,924	12,530	18,130	9,270	8,860	5,151	2,587	2,564	2,173	1,067	1,106
4 - Q.Bornes / Vacoas-Phoenix / West	21,054	10,616	10,438	15,653	7,950	7,703	3,746	1,889	1,857	1,655	777	878
5 - Rodrigues	4,906	2,504	2,402	2,824	1,460	1,364	2,082	1,044	1,038	-	-	-
All Zones	119,310	60,641	58,669	88,152	45,021	43,131	24,540	12,301	12,239	6,618	3,319	3,299

¹ including enrolment in schools with a partial stream

Table 3.5 - Enrolment in primary schools¹ by district and grade, 2007

District	Grade/Standard							All Grades
	I	II	III	IV	V	VI	VI (repeaters)	
Port Louis	2,566	2,782	2,701	2,562	2,657	2,678	770	16,716
Pamplemousses	1,630	1,675	1,678	1,671	1,588	1,668	456	10,366
Riviere du Rempart	1,608	1,676	1,787	1,660	1,751	1,768	360	10,610
Flacq	2,280	2,345	2,295	2,148	2,194	2,225	553	14,040
Grand Port	1,654	1,747	1,813	1,606	1,803	1,776	382	10,781
Savanne	991	1,003	991	935	1,002	1,027	266	6,215
Plaines Wilhems	5,404	5,412	5,508	5,451	5,443	5,735	871	33,824
Moka	1,185	1,315	1,293	1,178	1,271	1,221	239	7,702
Black River	685	681	659	608	600	637	280	4,150
Island of Mauritius	18,003	18,636	18,725	17,819	18,309	18,735	4,177	114,404
Island of Rodrigues	828	832	823	703	735	721	264	4,906
Republic of Mauritius	18,831	19,468	19,548	18,522	19,044	19,456	4,441	119,310

Table 3.6 - Enrolment in primary schools¹ by zone and grade, 2007

Zone	Grade/Standard							All Grades
	I	II	III	IV	V	VI	VI (repeaters)	
1 -Port Louis / North	5,933	6,259	6,293	6,038	6,145	6,262	1,644	38,574
2 -B.Bassin-R.Hill / East	4,656	4,846	4,860	4,533	4,677	4,701	1,049	29,322
3 -Curepipe / South	4,030	4,151	4,183	3,932	4,136	4,176	846	25,454
4 -Q.Bornes/Vacoas-Phoenix/West	3,384	3,380	3,389	3,316	3,351	3,596	638	21,054
5 -Rodrigues	828	832	823	703	735	721	264	4,906
All Zones	18,831	19,468	19,548	18,522	19,044	19,456	4,441	119,310

¹ including enrolment in schools with a partial stream

Table 3.7 - Enrolment in primary schools¹ by grade and sex, 2005 - 2007

Grade	2005			2006			2007		
	Total	Male	Female	Total	Male	Female	Total	Male	Female
Republic of Mauritius									
I	19,525	9,928	9,597	19,437	9,861	9,576	18,831	9,465	9,366
II	18,578	9,420	9,158	19,623	9,937	9,686	19,468	9,850	9,618
III	19,179	9,733	9,446	18,600	9,426	9,174	19,548	9,921	9,627
IV	19,716	9,863	9,853	19,105	9,648	9,457	18,522	9,402	9,120
V	19,798	9,897	9,901	19,683	9,833	9,850	19,044	9,627	9,417
VI	20,801	10,480	10,321	19,568	9,766	9,802	19,456	9,715	9,741
VI Repeaters	5,965	3,408	2,557	5,371	3,216	2,155	4,441	2,661	1,780
Total	123,562	62,729	60,833	121,387	61,687	59,700	119,310	60,641	58,669
Island of Mauritius									
I	18,700	9,509	9,191	18,594	9,430	9,164	18,003	9,036	8,967
II	17,862	9,054	8,808	18,796	9,507	9,289	18,636	9,427	9,209
III	18,445	9,364	9,081	17,888	9,063	8,825	18,725	9,500	9,225
IV	18,986	9,523	9,463	18,368	9,276	9,092	17,819	9,034	8,785
V	19,047	9,534	9,513	18,959	9,494	9,465	18,309	9,261	9,048
VI	20,005	10,087	9,918	18,814	9,406	9,408	18,735	9,375	9,360
VI Repeaters	5,692	3,264	2,428	5,094	3,053	2,041	4,177	2,504	1,673
Total	118,737	60,335	58,402	116,513	59,229	57,284	114,404	58,137	56,267
Island of Rodrigues									
I	825	419	406	843	431	412	828	429	399
II	716	366	350	827	430	397	832	423	409
III	734	369	365	712	363	349	823	421	402
IV	730	340	390	737	372	365	703	368	335
V	751	363	388	724	339	385	735	366	369
VI	796	393	403	754	360	394	721	340	381
VI Repeaters	273	144	129	277	163	114	264	157	107
Total	4,825	2,394	2,431	4,874	2,458	2,416	4,906	2,504	2,402

¹ Includes pupils attending schools with a partial stream

Table 3.8 - Enrolment in primary schools¹ by type of administration, grade and sex, 2005 - 2007

Republic of Mauritius

Grade	2005			2006			2007		
	Total	Male	Female	Total	Male	Female	Total	Male	Female
All schools									
I	19,525	9,928	9,597	19,437	9,861	9,576	18,831	9,465	9,366
II	18,578	9,420	9,158	19,623	9,937	9,686	19,468	9,850	9,618
III	19,179	9,733	9,446	18,600	9,426	9,174	19,548	9,921	9,627
IV	19,716	9,863	9,853	19,105	9,648	9,457	18,522	9,402	9,120
V	19,798	9,897	9,901	19,683	9,833	9,850	19,044	9,627	9,417
VI	20,801	10,480	10,321	19,568	9,766	9,802	19,456	9,715	9,741
VI Repeaters	5,965	3,408	2,557	5,371	3,216	2,155	4,441	2,661	1,780
Total	123,562	62,729	60,833	121,387	61,687	59,700	119,310	60,641	58,669
Government schools									
I	14,502	7,408	7,094	14,299	7,286	7,013	13,758	6,984	6,774
II	13,660	6,968	6,692	14,423	7,327	7,096	14,199	7,205	6,994
III	14,262	7,282	6,980	13,624	6,943	6,681	14,351	7,292	7,059
IV	14,819	7,430	7,389	14,174	7,213	6,961	13,562	6,913	6,649
V	14,761	7,442	7,319	14,727	7,362	7,365	14,100	7,190	6,910
VI	15,809	8,010	7,799	14,671	7,382	7,289	14,650	7,332	7,318
VI Repeaters	4,777	2,686	2,091	4,363	2,583	1,780	3,532	2,105	1,427
Total	92,590	47,226	45,364	90,281	46,096	44,185	88,152	45,021	43,131
Private schools									
I	5,023	2,520	2,503	5,138	2,575	2,563	5,073	2,481	2,592
II	4,918	2,452	2,466	5,200	2,610	2,590	5,269	2,645	2,624
III	4,917	2,451	2,466	4,976	2,483	2,493	5,197	2,629	2,568
IV	4,897	2,433	2,464	4,931	2,435	2,496	4,960	2,489	2,471
V	5,037	2,455	2,582	4,956	2,471	2,485	4,944	2,437	2,507
VI	4,992	2,470	2,522	4,897	2,384	2,513	4,806	2,383	2,423
VI Repeaters	1,188	722	466	1,008	633	375	909	556	353
Total	30,972	15,503	15,469	31,106	15,591	15,515	31,158	15,620	15,538

¹ including enrolment in schools with a partial stream

Table 3.9 - Personnel in primary schools by district and occupational status, 2007

District	Head Teacher	Deputy Head Teacher	Teacher General Purpose *	Teacher, Oriental language								School clerk	Caretaker	Labourer	Other	TOTAL
				Total	Hindi	Urdu	Tamil	Telugu	Marathi	Arabic	Modern Chinese					
Port Louis	34	116	525	166	46	48	21	5	1	38	7	27	71	41	6	986
Pamplemousses	26	68	346	149	89	33	18	7	-	2	-	21	50	42	9	711
Riv. du Rempart	27	67	384	156	90	24	23	16	1	2	-	23	49	50	9	765
Flacq	32	75	482	199	106	44	21	18	7	3	-	23	62	59	3	935
Grand Port	30	71	383	131	53	23	22	13	9	10	1	20	54	44	6	739
Savanne	17	41	220	86	25	12	14	13	11	11	-	12	40	23	4	443
Plaines Wilhems	69	268	1,153	323	105	77	54	23	24	29	11	52	129	72	50	2,116
Moka	25	68	340	109	40	30	16	9	8	4	2	22	34	35	21	654
Black River	16	28	171	28	14	-	6	-	8	-	-	10	23	22	2	300
Island of Mauritius	276	802	4,004	1,347	568	291	195	104	69	99	21	210	512	388	110	7,649
Island of Rodrigues	11	27	197	-	-	-	-	-	-	-	-	13	51	50	28	377
Republic of Mauritius	287	829	4,201	1,347	568	291	195	104	69	99	21	223	563	438	138	8,026

Table 3.10 - Personnel in primary schools by zone and occupational status, 2007

Zone	Head Teacher	Deputy Head Teacher	Teacher General Purpose *	Teacher, Oriental language								School clerk	Caretaker	Labourer	Other	TOTAL
				Total	Hindi	Urdu	Tamil	Telugu	Marathi	Arabic	Modern Chinese					
1 - Port Louis / North	89	253	1,289	481	228	109	63	28	2	44	7	73	177	134	24	2,520
2 - B.Bassin-R.Hill / East	72	198	1,061	367	161	92	53	27	19	9	6	57	115	111	32	2,013
3 - Curepipe / South	65	181	915	287	100	50	48	31	23	33	2	46	144	83	28	1,749
4 - Q.Bornes/ Vacoas-Phoenix/ West	50	170	739	212	79	40	31	18	25	13	6	34	76	60	26	1,367
5 - Rodrigues	11	27	197	-	-	-	-	-	-	-	-	13	51	50	28	377
All Zones	287	829	4,201	1,347	568	291	195	104	69	99	21	223	563	438	138	8,026

* including physical education instructors

Table 3.11 - Certificate of Primary Education (CPE) examination results by sex, 2004-2006

School Candidates only

		2004			2005			2006		
		No. Examined	No. Passed	% Passed	No. Examined	No. Passed	% Passed	No. Examined	No. Passed	% Passed
Republic of Mauritius	Total	27,332	17,217	63.0	27,117	17,596	64.9	25,007	16,987	67.9
	Male	14,084	8,152	57.9	13,981	8,244	59.0	12,942	8,028	62.0
	Female	13,248	9,065	68.4	13,136	9,352	71.2	12,065	8,959	74.3
Island of Mauritius	Total	26,318	16,681	63.4	26,038	16,993	65.3	23,986	16,424	68.5
	Male	13,548	7,895	58.3	13,438	7,970	59.3	12,426	7,787	62.7
	Female	12,770	8,786	68.8	12,600	9,023	71.6	11,560	8,637	74.7
Island of Rodrigues	Total	1,014	536	52.9	1,079	603	55.9	1,021	563	55.1
	Male	536	257	47.9	543	274	50.5	516	241	46.7
	Female	478	279	58.4	536	329	61.4	505	322	63.8

Source: Mauritius Examinations Syndicate

Table 3.12 - Performance at Certificate of Primary Education (CPE) examination by sex and sitting, 2006

		Island of Mauritius			Island of Rodrigues			Republic of Mauritius			
		No. Examined	No. Passed	% Passed	No. Examined	No. Passed	% Passed	No. Examined	No. Passed	% Passed	
School Candidates	First Sitting	Total	18,472	14,160	76.7	749	489	65.3	19,221	14,649	76.2
		Male	9,230	6,630	71.8	360	203	56.4	9,590	6,833	71.3
		Female	9,242	7,530	81.5	389	286	73.5	9,631	7,816	81.2
	Second Sitting	Total	5,514	2,264	41.1	272	74	27.2	5,786	2,338	40.4
		Male	3,196	1,157	36.2	156	38	24.4	3,352	1,195	35.7
		Female	2,318	1,107	47.8	116	36	31.0	2,434	1,143	47.0
	Total	Total	23,986	16,424	68.5	1,021	563	55.1	25,007	16,987	67.9
		Male	12,426	7,787	62.7	516	241	46.7	12,942	8,028	62.0
		Female	11,560	8,637	74.7	505	322	63.8	12,065	8,959	74.3
Private Candidates	Total	2,702	1,115	41.3	62	15	24.2	2,764	1,130	40.9	
	Male	1,530	575	37.6	32	8	25.0	1,562	583	37.3	
	Female	1,172	540	46.1	30	7	23.3	1,202	547	45.5	
School & Private Candidates	Total	26,688	17,539	65.7	1,083	578	53.4	27,771	18,117	65.2	
	Male	13,956	8,362	59.9	548	249	45.4	14,504	8,611	59.4	
	Female	12,732	9,177	72.1	535	329	61.5	13,267	9,506	71.7	

Source: Mauritius Examinations Syndicate

Table 4.1 - Distribution of secondary schools by district and type of administration, 2007

District	All Schools ¹	Type of Administration					
		State ²		Private			
				Aided ³		Non - Aided	
		No.	%	No.	%	No.	%
Port Louis	29	8	28	16	55	5	17
Pamplemousses	16	8	50	8	50	-	-
Riviere du Rempart	13	6	46	5	39	2	15
Flacq	15	8	53	7	47	-	-
Grand Port	13	5	38	8	62	-	-
Savanne	9	4	44	5	56	-	-
Plaines Wilhems	69	23	33	36	52	10	15
Moka	12	5	42	4	33	3	25
Black River	5	3	60	2	40	-	-
Island of Mauritius	181	70	39	91	50	20	11
Island of Rodrigues	5	-	-	5	100	-	-
Republic of Mauritius	186	70	38	96	51	20	11

Table 4.2 - Distribution of secondary schools by zone and type of administration, 2007

Zone	All Schools ¹	Type of Administration					
		State ²		Private			
				Aided ³		Non - Aided	
		No.	%	No.	%	No.	%
1 - Port Louis / North	59	23	39	29	49	7	12
2 - B.Bassin-R.Hill / East	44	18	41	22	50	4	9
3 - Curepipe / South	45	14	31	25	56	6	13
4 - Q.Bornes / Vacoas-Phoenix / West	33	15	45	15	46	3	9
5 - Rodrigues	5	-	-	5	100	-	-
All Zones	186	70	38	96	51	20	11

¹ 40 of these schools offer academic education only and 146 both academic and pre-vocational education

² includes Mahatma Gandhi Institute, Rabindranath Tagore Secondary School and Mahatma Gandhi State Schools

³ includes Mauritius Educational Development Company (MEDCO) / Rodrigues Educational Development Company (REDCO)

Table 4.3 - Enrolment in secondary schools (academic stream) by district, type of administration and sex, 2007

District	All schools			State schools ¹			Private schools					
	Total	Male	Female	Total	Male	Female	Aided ²			Non-aided		
							Total	Male	Female	Total	Male	Female
Port Louis	15,593	7,279	8,314	5,018	2,398	2,620	9,262	4,088	5,174	1,313	793	520
Pamplemousses	9,512	4,691	4,821	5,367	2,749	2,618	4,145	1,942	2,203	-	-	-
Riviere du Rempart	9,749	4,788	4,961	4,472	2,570	1,902	4,800	1,981	2,819	477	237	240
Flacq	13,149	6,194	6,955	5,801	2,280	3,521	7,348	3,914	3,434	-	-	-
Grand Port	6,712	2,734	3,978	2,817	1,342	1,475	3,895	1,392	2,503	-	-	-
Savanne	4,946	2,572	2,374	2,501	1,452	1,049	2,445	1,120	1,325	-	-	-
Plaines Wilhems	45,141	22,773	22,368	13,598	6,721	6,877	28,969	14,730	14,239	2,574	1,322	1,252
Moka	5,970	2,527	3,443	2,988	1,264	1,724	1,570	465	1,105	1,412	798	614
Black River	2,209	826	1,383	1,874	665	1,209	335	161	174	-	-	-
Island of Mauritius	112,981	54,384	58,597	44,436	21,441	22,995	62,769	29,793	32,976	5,776	3,150	2,626
Island of Rodrigues	3,725	1,713	2,012	-	-	-	3,725	1,713	2,012	-	-	-
Republic of Mauritius	116,706	56,097	60,609	44,436	21,441	22,995	66,494	31,506	34,988	5,776	3,150	2,626

Table 4.4 - Enrolment in secondary schools (academic stream) by zone, type of administration and sex, 2007

Zone	All schools			State schools ¹			Private schools					
	Total	Male	Female	Total	Male	Female	Aided ²			Non-aided		
							Total	Male	Female	Total	Male	Female
1 - Port Louis / North	35,452	16,758	18,694	15,455	7,717	7,738	18,207	8,011	10,196	1,790	1,030	760
2 - B.Bassin-R.Hill / East	29,940	14,592	15,348	11,503	5,159	6,344	16,922	8,568	8,354	1,515	865	650
3 - Curepipe / South	28,184	13,755	14,429	8,299	4,357	3,942	17,674	8,290	9,384	2,211	1,108	1,103
4 - Q.Bornes / Vacoas-Phoenix / West	19,405	9,279	10,126	9,179	4,208	4,971	9,966	4,924	5,042	260	147	113
5 - Rodrigues	3,725	1,713	2,012	-	-	-	3,725	1,713	2,012	-	-	-
All Zones	116,706	56,097	60,609	44,436	21,441	22,995	66,494	31,506	34,988	5,776	3,150	2,626

¹ includes Mahatma Gandhi Institute, Rabindranath Tagore Secondary School and Mahatma Gandhi State Schools² includes Mauritius Educational Development Company (MEDCO) / Rodrigues Educational Development Company (REDCO)

Table 4.5 - Enrolment in secondary schools (academic stream) by district and grade, 2007

District	Grade							All Grades
	I	II	III	IV	V	VI Lower	VI Upper	
Port Louis	2,451	2,523	2,396	2,585	2,787	1,480	1,371	15,593
Pamplemousses	1,599	1,441	1,549	1,620	1,890	839	574	9,512
Riviere du Rempart	1,671	1,719	1,558	1,805	1,521	713	762	9,749
Flacq	1,935	2,247	2,069	2,324	2,508	962	1,104	13,149
Grand Port	1,041	1,117	1,050	1,065	1,288	613	538	6,712
Savanne	637	806	796	950	1,219	250	288	4,946
Plaines Wilhems	7,090	7,015	6,971	7,607	7,581	4,428	4,449	45,141
Moka	934	827	978	1,046	1,121	570	494	5,970
Black River	325	366	370	530	429	105	84	2,209
Island of Mauritius	17,683	18,061	17,737	19,532	20,344	9,960	9,664	112,981
Island of Rodrigues	645	698	635	660	652	206	229	3,725
Republic of Mauritius	18,328	18,759	18,372	20,192	20,996	10,166	9,893	116,706

Table 4.6 - Enrolment in secondary schools (academic stream) by zone and grade, 2007

Zone	Grade							All Grades
	I	II	III	IV	V	VI Lower	VI Upper	
1 - Port Louis / North	5,802	5,771	5,595	6,095	6,326	3,111	2,752	35,452
2 - B.Bassin-R.Hill / East	4,621	4,552	4,623	5,063	5,455	2,738	2,888	29,940
3 - Curepipe / South	4,051	4,346	4,265	4,773	5,346	2,819	2,584	28,184
4 - Q.Bornes / Vacoas-Phoenix / West	3,209	3,392	3,254	3,601	3,217	1,292	1,440	19,405
5 - Rodrigues	645	698	635	660	652	206	229	3,725
All Zones	18,328	18,759	18,372	20,192	20,996	10,166	9,893	116,706

Table 4.7 - Enrolment in secondary schools (academic stream) by grade and sex, 2005 - 2007

Grade	2005			2006			2007		
	Total	Male	Female	Total	Male	Female	Total	Male	Female
Republic of Mauritius									
I	17,986	8,686	9,300	18,517	8,948	9,569	18,328	8,806	9,522
II	18,554	8,873	9,681	18,186	8,719	9,467	18,759	9,074	9,685
III	18,993	9,206	9,787	18,802	8,960	9,842	18,372	8,959	9,413
IV	18,851	9,089	9,762	20,224	9,915	10,309	20,192	9,655	10,537
V	18,725	9,068	9,657	19,927	9,650	10,277	20,996	10,209	10,787
VI Lower	8,795	4,072	4,723	9,540	4,398	5,142	10,166	4,709	5,457
VI Upper	8,383	3,994	4,389	9,461	4,546	4,915	9,893	4,685	5,208
Total	110,287	52,988	57,299	114,657	55,136	59,521	116,706	56,097	60,609
Island of Mauritius									
I	17,415	8,387	9,028	17,851	8,632	9,219	17,683	8,522	9,161
II	17,921	8,596	9,325	17,579	8,411	9,168	18,061	8,728	9,333
III	18,309	8,889	9,420	18,134	8,667	9,467	17,737	8,652	9,085
IV	18,239	8,807	9,432	19,576	9,614	9,962	19,532	9,369	10,163
V	18,091	8,773	9,318	19,270	9,352	9,918	20,344	9,913	10,431
VI Lower	8,623	3,998	4,625	9,347	4,309	5,038	9,960	4,615	5,345
VI Upper	8,207	3,913	4,294	9,270	4,466	4,804	9,664	4,585	5,079
Total	106,805	51,363	55,442	111,027	53,451	57,576	112,981	54,384	58,597
Island of Rodrigues									
I	571	299	272	666	316	350	645	284	361
II	633	277	356	607	308	299	698	346	352
III	684	317	367	668	293	375	635	307	328
IV	612	282	330	648	301	347	660	286	374
V	634	295	339	657	298	359	652	296	356
VI Lower	172	74	98	193	89	104	206	94	112
VI Upper	176	81	95	191	80	111	229	100	129
Total	3,482	1,625	1,857	3,630	1,685	1,945	3,725	1,713	2,012

Table 4.8 - Enrolment in secondary schools (academic stream) by type of administration, grade and sex, 2005 - 2007 - Republic of Mauritius

Grade	2005			2006			2007		
	Total	Male	Female	Total	Male	Female	Total	Male	Female
All schools									
I	17,986	8,686	9,300	18,517	8,948	9,569	18,328	8,806	9,522
II	18,554	8,873	9,681	18,186	8,719	9,467	18,759	9,074	9,685
III	18,993	9,206	9,787	18,802	8,960	9,842	18,372	8,959	9,413
IV	18,851	9,089	9,762	20,224	9,915	10,309	20,192	9,655	10,537
V	18,725	9,068	9,657	19,927	9,650	10,277	20,996	10,209	10,787
VI Lower	8,795	4,072	4,723	9,540	4,398	5,142	10,166	4,709	5,457
VI Upper	8,383	3,994	4,389	9,461	4,546	4,915	9,893	4,685	5,208
Total	110,287	52,988	57,299	114,657	55,136	59,521	116,706	56,097	60,609
State Schools									
I	7,159	3,550	3,609	7,410	3,675	3,735	7,487	3,581	3,906
II	7,382	3,587	3,795	7,102	3,471	3,631	7,345	3,602	3,743
III	6,546	3,187	3,359	7,394	3,551	3,843	7,197	3,556	3,641
IV	4,402	2,147	2,255	6,441	3,098	3,343	7,518	3,590	3,928
V	4,514	2,243	2,271	5,053	2,547	2,506	7,000	3,380	3,620
VI Lower	3,460	1,687	1,773	3,629	1,666	1,963	3,721	1,702	2,019
VI Upper	3,742	1,874	1,868	4,088	2,097	1,991	4,168	2,030	2,138
Total	37,205	18,275	18,930	41,117	20,105	21,012	44,436	21,441	22,995
Private Schools									
I	10,827	5,136	5,691	11,107	5,273	5,834	10,841	5,225	5,616
II	11,172	5,286	5,886	11,084	5,248	5,836	11,414	5,472	5,942
III	12,447	6,019	6,428	11,408	5,409	5,999	11,175	5,403	5,772
IV	14,449	6,942	7,507	13,783	6,817	6,966	12,674	6,065	6,609
V	14,211	6,825	7,386	14,874	7,103	7,771	13,996	6,829	7,167
VI Lower	5,335	2,385	2,950	5,911	2,732	3,179	6,445	3,007	3,438
VI Upper	4,641	2,120	2,521	5,373	2,449	2,924	5,725	2,655	3,070
Total	73,082	34,713	38,369	73,540	35,031	38,509	72,270	34,656	37,614

Table 4.9 - Distribution of schools offering pre-vocational education by district and type of administration, 2007

District	All Schools ¹	Type of Administration			
		State		Private ²	
		No.	%	No.	%
Port Louis	23	8	35	15	65
Pamplemousses	15	7	47	8	53
Riviere du Rempart	13	8	62	5	38
Flacq	15	8	53	7	47
Grand Port	12	4	33	8	67
Savanne	8	3	38	5	62
Plaines Wilhems	48	20	42	28	58
Moka	9	5	56	4	44
Black River	5	3	60	2	40
Island of Mauritius	148	66	45	82	55
Island of Rodrigues	5	-	-	5	100
Republic of Mauritius	153	66	43	87	57

Table 4.10 - Distribution of schools offering pre-vocational education by zone and type of administration, 2007

Zone	All Schools ¹	Type of Administration			
		State		Private ²	
		No.	%	No.	%
1 - Port Louis / North	52	24	46	28	54
2 - B.Bassin-R.Hill / East	38	18	47	20	53
3 - Curepipe / South	33	11	33	22	67
4 - Q.Bornes / Vacoas-Phoenix / West	25	13	52	12	48
5 - Rodrigues	5	-	-	5	100
All Zones	153	66	43	87	57

¹ includes 146 secondary schools providing both academic and pre-vocational education and 7 schools providing only pre-vocational

² includes Mauritius Educational Development Company (MEDCO) / Rodrigues Educational Development Company (REDCO)

Table 4.11 - Enrolment in schools offering pre-vocational education by district, type of administration and sex, 2007

District	All schools			State schools			Private schools ¹		
	Total	Male	Female	Total	Male	Female	Total	Male	Female
Port Louis	1,299	765	534	462	282	180	837	483	354
Pamplemousses	948	584	364	410	277	133	538	307	231
Riviere du Rempart	931	649	282	519	405	114	412	244	168
Flacq	1,041	661	380	325	166	159	716	495	221
Grand Port	794	518	276	211	145	66	583	373	210
Savanne	592	411	181	114	74	40	478	337	141
Plaines Wilhems	2,577	1,614	963	947	685	262	1,630	929	701
Moka	518	258	260	309	131	178	209	127	82
Black River	371	195	176	196	100	96	175	95	80
Island of Mauritius	9,071	5,655	3,416	3,493	2,265	1,228	5,578	3,390	2,188
Island of Rodrigues	502	302	200	-	-	-	502	302	200
Republic of Mauritius	9,573	5,957	3,616	3,493	2,265	1,228	6,080	3,692	2,388

Table 4.12 - Enrolment in schools offering pre-vocational education by zone, type of administration and sex, 2007

Zone	All schools			State schools			Private schools ¹		
	Total	Male	Female	Total	Male	Female	Total	Male	Female
1 - Port Louis / North	3,236	1,998	1,238	1,449	964	485	1,787	1,034	753
2 - B.Bassin-R.Hill / East	2,410	1,492	918	896	574	322	1,514	918	596
3 - Curepipe / South	1,942	1,216	726	462	331	131	1,480	885	595
4 - Q.Bornes / Vacoas-Phoenix	1,483	949	534	686	396	290	797	553	244
5 - Rodrigues	502	302	200	-	-	-	502	302	200
All Zones	9,573	5,957	3,616	3,493	2,265	1,228	6,080	3,692	2,388

¹ includes Mauritius Educational Development Company (MEDCO) / Rodrigues Educational Development Company (REDCO)

Table 4.13 - Enrolment in schools offering pre-vocational education by district and year of study, 2007

District	Enrolment											
	Year I			Year II			Year III			Total		
	Total	Male	Female	Total	Male	Female	Total	Male	Female	Total	Male	Female
Port Louis	439	252	187	408	224	184	452	289	163	1,299	765	534
Pamplemousses	342	222	120	310	196	114	296	166	130	948	584	364
Riviere du Rempart	291	189	102	317	234	83	323	226	97	931	649	282
Flacq	360	219	141	352	236	116	329	206	123	1,041	661	380
Grand Port	292	193	99	277	182	95	225	143	82	794	518	276
Savanne	183	129	54	200	135	65	209	147	62	592	411	181
P.Wilhems	762	513	249	898	556	342	917	545	372	2,577	1,614	963
Moka	148	76	72	143	61	82	227	121	106	518	258	260
Black River	144	73	71	118	60	58	109	62	47	371	195	176
Island of Mauritius	2,961	1,866	1,095	3,023	1,884	1,139	3,087	1,905	1,182	9,071	5,655	3,416
Island of Rodrigues	185	112	73	169	88	81	148	102	46	502	302	200
Republic of Mauritius	3,146	1,978	1,168	3,192	1,972	1,220	3,235	2,007	1,228	9,573	5,957	3,616

Table 4.14 - Enrolment in schools offering pre-vocational education by zone and year of study, 2007

Zone	Enrolment											
	Year I			Year II			Year III			Total		
	Total	Male	Female	Total	Male	Female	Total	Male	Female	Total	Male	Female
1- Port Louis / North	1,096	663	433	1,054	654	400	1,086	681	405	3,236	1,998	1,238
2- B.Bassin-R.Hill / East	796	510	286	785	503	282	829	479	350	2,410	1,492	918
3- Curepipe / South	613	394	219	652	406	246	677	416	261	1,942	1,216	726
4- Q.Bornes / Vacoas-Phoenix / West	456	299	157	532	321	211	495	329	166	1,483	949	534
5- Rodrigues	185	112	73	169	88	81	148	102	46	502	302	200
All Zones	3,146	1,978	1,168	3,192	1,972	1,220	3,235	2,007	1,228	9,573	5,957	3,616

Table 4.15 - Teaching staff in secondary schools (academic & pre-vocational streams) by district and sex, 2007

District	Academic			Pre-vocational			Academic & Pre-vocational		
	Total	Male	Female	Total	Male	Female	Total	Male	Female
Port Louis	966	425	541	85	32	53	1,051	457	594
Pamplemousses	579	266	313	68	19	49	647	285	362
Riviere du Rempart	578	274	304	61	26	35	639	300	339
Flacq	823	409	414	61	29	32	884	438	446
Grand Port	484	197	287	55	20	35	539	217	322
Savanne	341	175	166	51	21	30	392	196	196
Plaines Wilhems	2,793	1,187	1,606	212	72	140	3,005	1,259	1,746
Moka	495	176	319	49	19	30	544	195	349
Black River	154	67	87	21	10	11	175	77	98
Island of Mauritius	7,213	3,176	4,037	663	248	415	7,876	3,424	4,452
Island of Rodrigues	210	102	108	38	12	26	248	114	134
Republic of Mauritius	7,423	3,278	4,145	701	260	441	8,124	3,538	4,586

Table 4.16 - Teaching staff in secondary schools (academic & pre-vocational streams) by zone and sex, 2007

Zone	Academic			Pre-vocational			Academic & Pre-vocational		
	Total	Male	Female	Total	Male	Female	Total	Male	Female
1 - Port Louis / North	2,183	986	1,197	221	77	144	2,404	1,063	1,341
2 - B.Bassin-R.Hill / East	1,939	861	1,078	180	71	109	2,119	932	1,187
3 - Curepipe / South	1,763	800	963	151	58	93	1,914	858	1,056
4 - Q.Bornes / Vacoas-Phoenix / West	1,267	519	748	105	41	64	1,372	560	812
5 - Rodrigues	271	112	159	44	13	31	315	125	190
All Zones	7,423	3,278	4,145	701	260	441	8,124	3,538	4,586

Table 4.17 - Cambridge School Certificate (SC) examination results by type of school administration and sex, 2004 - 2006

School candidates only

Type of school administration and sex		2004			2005			2006		
		No. Examined	No. Passed	% Passed	No. Examined	No. Passed	% Passed	No. Examined	No. Passed	% Passed
Republic of Mauritius										
All Schools	Total	14,809	11,483	77.5	15,501	12,149	78.4	16,448	12,971	78.9
	Male	6,876	5,184	75.4	7,316	5,503	75.2	7,790	5,803	74.5
	Female	7,933	6,299	79.4	8,185	6,646	81.2	8,658	7,168	82.8
State Schools	Total	4,865	4,259	87.5	4,737	4,258	89.9	5,111	4,550	89.0
	Male	2,504	2,092	83.5	2,381	2,065	86.7	2,596	2,172	83.7
	Female	2,361	2,167	91.8	2,356	2,193	93.1	2,515	2,378	94.6
Private Schools	Total	9,944	7,224	72.6	10,764	7,891	73.3	11,337	8,421	74.3
	Male	4,372	3,092	70.7	4,935	3,438	69.7	5,194	3,631	69.9
	Female	5,572	4,132	74.2	5,829	4,453	76.4	6,143	4,790	78.0
Island of Mauritius										
All Schools	Total	14,297	11,169	78.1	14,951	11,814	79.0	15,871	12,565	79.2
	Male	6,641	5,038	75.9	7,069	5,358	75.8	7,531	5,613	74.5
	Female	7,656	6,131	80.1	7,882	6,456	81.9	8,340	6,952	83.4
State Schools	Total	4,865	4,259	87.5	4,737	4,258	89.9	5,111	4,550	89.0
	Male	2,504	2,092	83.5	2,381	2,065	86.7	2,596	2,172	83.7
	Female	2,361	2,167	91.8	2,356	2,193	93.1	2,515	2,378	94.6
Private Schools	Total	9,432	6,910	73.3	10,214	7,556	74.0	10,760	8,015	74.5
	Male	4,137	2,946	71.2	4,688	3,293	70.2	4,935	3,441	69.7
	Female	5,295	3,964	74.9	5,526	4,263	77.1	5,825	4,574	78.5
Island of Rodrigues ¹										
All Schools	Total	512	314	61.3	550	335	60.9	577	406	70.4
	Male	235	146	62.1	247	145	58.7	259	190	73.4
	Female	277	168	60.6	303	190	62.7	318	216	67.9

Source: Mauritius Examinations Syndicate

¹ All candidates in Rodrigues are from REDCO and private schools.

Table 4.18 - Cambridge Higher School Certificate (HSC) examination results by type of school administration and sex, 2004 - 2006

School candidates only

Type of school administration and sex		2004				2005				2006			
		No. Examined	No. Passed	%	Passed	No. Examined	No. Passed	%	Passed	No. Examined	No. Passed	%	Passed
Republic of Mauritius													
All Schools	Total	6,883	5,245	76.2	7,274	5,686	78.2	8,040	6,376	79.3			
	Male	3,209	2,328	72.5	3,301	2,430	73.6	3,698	2,769	74.9			
	Female	3,674	2,917	79.4	3,973	3,256	82.0	4,342	3,607	83.1			
State Schools	Total	3,454	2,723	78.8	3,534	2,926	82.8	3,765	3,156	83.8			
	Male	1,748	1,286	73.6	1,734	1,353	78.0	1,873	1,461	78.0			
	Female	1,706	1,437	84.2	1,800	1,573	87.4	1,892	1,695	89.6			
Private Schools	Total	3,429	2,522	73.5	3,740	2,760	73.8	4,275	3,220	75.3			
	Male	1,461	1,042	71.3	1,567	1,077	68.7	1,825	1,308	71.7			
	Female	1,968	1,480	75.2	2,173	1,683	77.5	2,450	1,912	78.0			
Island of Mauritius													
All Schools	Total	6,683	5,136	76.8	7,106	5,555	78.2	7,849	6,234	79.4			
	Male	3,107	2,268	73.0	3,225	2,375	73.6	3,618	2,709	74.9			
	Female	3,576	2,868	80.2	3,881	3,180	81.9	4,231	3,525	83.3			
State Schools	Total	3,454	2,723	78.8	3,534	2,926	82.8	3,765	3,156	83.8			
	Male	1,748	1,286	73.6	1,734	1,353	78.0	1,873	1,461	78.0			
	Female	1,706	1,437	84.2	1,800	1,573	87.4	1,892	1,695	89.6			
Private Schools	Total	3,229	2,413	74.7	3,572	2,629	73.6	4,084	3,078	75.4			
	Male	1,359	982	72.3	1,491	1,022	68.5	1,745	1,248	71.5			
	Female	1,870	1,431	76.5	2,081	1,607	77.2	2,339	1,830	78.2			
Island of Rodrigues ¹													
All Schools	Total	200	109	54.5	168	131	78.0	191	142	74.3			
	Male	102	60	58.8	76	55	72.4	80	60	75.0			
	Female	98	49	50.0	92	76	82.6	111	82	73.9			

Source: Mauritius Examinations Syndicate

¹ All candidates in Rodrigues are from REDCO and private schools

Table 5.1a - Total number of students enrolled in Tertiary Education, both locally and overseas, by field of study as at December 2005

Field of study	Total	Publicly - Funded Institutions (PFIs)								Total (PFIs)	Distance Education/ Private Providers	Overseas
		UOM ¹	UTM	MIE	MGI	MCA	Polytechnics	IVTB	MIH			
Accountancy	3,154	215	-	-	-	-	-	-	-	215	2,764	175
Administration / Management	3,786	1,008	726	-	-	136	349	-	-	2,219	1,086	481
Agriculture	253	253	-	-	-	-	-	-	-	253	-	-
Architecture	125	-	-	-	-	-	-	-	-	-	-	125
Arts	607	-	-	-	198	-	-	-	-	198	249	160
Banking / Finance	504	354	110	-	-	-	-	-	-	464	-	40
Business / Commerce / Marketing	1,744	154	-	-	-	57	60	-	-	271	806	667
Communication	340	94	23	-	-	10	-	-	-	127	135	78
Dentistry	197	-	-	-	-	-	-	-	-	-	158	39
Design / Fashion	176	-	-	-	-	-	-	40	-	40	58	78
Economics	635	334	-	-	-	-	-	-	-	334	131	170
Education	3,108	-	-	3,001	-	7	-	-	-	3,008	87	13
Engineering	1,430	721	-	-	-	-	215	41	-	977	2	451
Health & Safety	262	173	-	-	-	-	-	-	-	173	12	77
Humanities	389	169	-	-	65	-	-	-	-	234	30	125
Information Technology	4,134	1,103	399	-	-	15	337	166	-	2,020	1,261	853
Languages	1,412	279	-	-	283	79	-	-	-	641	183	588
Law	793	207	-	-	-	-	-	-	-	207	279	307
Library	69	69	-	-	-	-	-	-	-	69	-	-
Mathematics	377	153	23	-	-	-	-	-	-	176	88	113
Medecine	1,432	53	-	-	-	-	-	-	31	84	547	801
Pharmacy	144	-	-	-	-	-	-	-	-	-	2	142
Police Studies	212	212	-	-	-	-	-	-	-	212	-	-
Religious Studies	29	-	-	-	-	-	-	-	-	-	15	14
Research (MPhil / PhD)	185	185	-	-	-	-	-	-	-	185	-	-
Science	1,098	408	-	-	-	-	-	-	-	408	12	678
Social Science	374	172	-	-	-	-	-	-	-	172	114	88
Social Studies / Social Work	149	116	-	-	-	-	-	-	-	116	-	33
Textile	125	100	-	-	-	-	-	25	-	125	-	-
Transport	61	-	-	-	-	50	-	-	-	50	11	-
Travel / Hotel / Tourism	930	118	186	-	-	2	-	113	-	419	50	461
Others	216	-	-	-	-	-	-	-	-	-	-	216
Not Available	414	-	-	-	-	-	-	-	-	-	30	384
Total	28,864	6,650	1,467	3,001	546	356	961	385	31	13,397	8,110	7,357

¹ Excludes enrolment on joint MIE & MGI Programmes

Source: Participation in Tertiary Education 2005, Tertiary Education Commission (TEC) Report

Table 5.1b - Total number of students enrolled in Tertiary Education, both locally and overseas, by field of study as at December 2006

Field of study	Total	Publicly Funded Institutions (PFIs)								Total (PFIs)	Distance Education/ Private Providers	Overseas
		UOM ¹	UTM	MIE	MGI	MCA	Polytechnics	IVTB	MIH			
Accountancy	3,655	229	11	-	-	-	-	-	-	240	3,172	243
Administration / Management	4,576	1,199	812	-	-	235	370	-	-	2,616	1,370	590
Agriculture	293	293	-	-	-	-	-	-	-	293	-	-
Architecture	148	-	-	-	-	-	-	-	-	-	-	148
Arts	619	-	-	-	181	-	-	-	-	181	264	174
Banking / Finance	663	375	168	-	-	-	-	-	-	543	50	70
Business / Commerce / Marketing	1,901	166	-	-	-	60	15	-	-	241	765	895
Communication	498	83	37	-	-	9	-	-	-	129	223	146
Dentistry	252	-	-	-	-	-	-	-	-	-	206	46
Economics	688	400	-	-	-	-	-	-	-	400	119	169
Education	4,126	10	29	3,981	-	19	-	-	-	4,039	35	52
Engineering	1,776	836	-	-	-	-	236	49	-	1,121	2	653
Health & Safety	370	241	-	-	-	-	-	-	-	241	2	127
Humanities	796	219	-	-	186	-	-	-	-	405	164	227
Information Technology	3,971	1,100	336	-	-	11	290	91	-	1,828	1,255	888
Languages	1,335	317	-	-	283	78	-	-	-	678	148	509
Law	1,016	240	-	-	-	-	-	-	-	240	370	406
Mathematics	387	164	7	-	-	-	-	-	-	171	71	145
Medecine	1,773	61	-	-	-	-	-	-	104	165	735	873
Pharmacy	183	20	-	-	-	-	-	-	-	20	-	163
Police Studies	153	153	-	-	-	-	-	-	-	153	-	-
Research (MPhil / PhD)	196	196	-	-	-	-	-	-	-	196	-	-
Science	1,368	419	-	-	-	-	-	-	-	419	7	942
Social Science	462	358	-	-	-	-	-	-	-	358	104	-
Textile	426	131	-	-	-	-	-	113	-	244	64	118
Travel / Hotel / Tourism	1,308	137	220	-	-	3	-	160	-	520	119	669
Others	291	23	-	-	-	-	-	-	-	23	48	220
Total	33,230	7,370	1,620	3,981	650	415	911	413	104	15,464	9,293	8,473

¹ Excludes enrolment on joint MIE & MGI Programmes

Source: Participation in Tertiary Education 2006, Tertiary Education Commission (TEC) Report