

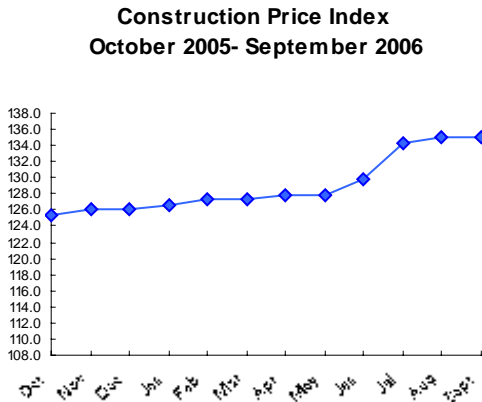
CONSTRUCTION PRICE INDEX

(Input Cost Index for the construction of a single storey house)
3rd Quarter 2006

1. Introduction

This issue of the Economic and Social Indicators presents the monthly Construction Price Index (residential) for the third quarter of 2006 with fourth quarter 2001 as base period. Figures showing the evolution of the index during the past twelve months are also included. The methodology used for compiling the index is given in Annex. Figures have been rounded to one or two decimal places although they have been calculated to many decimal places.

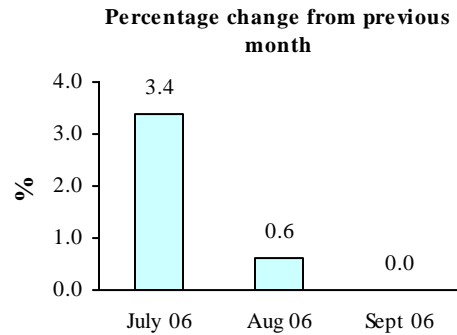
2. Changes in the Construction Price Index.



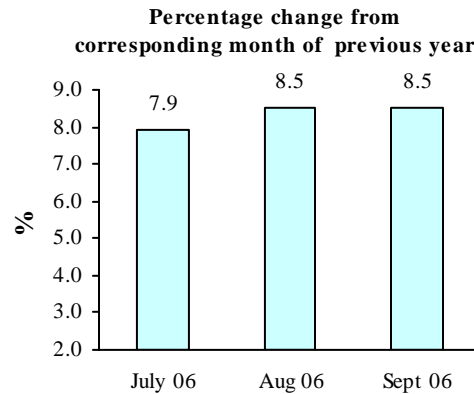
The Construction Price Index, which stood at 129.9 at the end of June 2006, increased to 134.4 in July and to 135.1 in August, a level which was maintained in September (Table 1.1).

The 3.4% increase in July was mainly due to higher wages following the 2006/2007 salary compensation, higher prices of cement, steel bars and metal openings, higher rental fees of plant and increases in transport costs of materials.

The 0.6% increase in August was mostly due to increases in the prices of sand, aggregate, block and plumbing.



Compared to the corresponding months of the previous year, the index shows increases of 7.9% for July and 8.5% for both August and September (Table 1.3).



3. Changes by Input Categories

Changes by input categories are shown in Tables 1.1 to 1.5.

During the third quarter of 2006, changes were registered in all sub-indices.

The “Labour” sub-index increased by 1.5% from 113.0 in June to 114.8 in July as a result of wage increases ranging from 1.2% to 1.8%. It remained unchanged in August and September.

The “Hire of Plant” sub-index which stood at 106.8 in June increased by 14.7% in July to reach 122.5. This was due to higher rental fees of mixer (6.9%), broomwade breaker (8.6%) and metal plaques (16.2%). No change was registered in August and September.

The “Materials” sub-index increased by 2.8% from 143.6 in June to 147.6 in July. This was mainly due to higher prices of cement (12.1%), steel bars (2.1%) and metallic openings (6.4%).

The sub-index increased further by 0.9% in August to 148.9, mostly explained by higher prices of sand (2.9%), aggregate (4.9%), block (2.4%) and water tank (9.3%). No change was registered for the month of September.

An increase of 20.0% in the transportation costs of construction materials caused the “Transport” sub-index to move up from 105.3 in June to 126.4 in July, a level which did not change in August and September.

The net monthly contributions of the input categories to the index during the period October 2005 to September 2006 are shown in Table 1.4.

Quarterly averages of the monthly indices by input category and the percentage change from quarter to quarter are shown in Table 1.5.

4. Changes by Work Category

Changes by work category are shown in Tables 2.1 to 2.5.

All work categories were affected by higher wages following the 2006/2007 salary compensation in July. However, more pronounced increases were observed in work categories which were affected by higher

prices of cement, besides higher wages. These were “concrete” (6.7%), “Bed & Screed to floor/roof” (7.1%) and “Rendering to wall/ceiling” (3.8%).

In August, higher prices of sand, aggregate and block resulted in price increases of blockwork (1.4%) and concrete (1.1%) while that of water tank resulted in an increase in the price of plumbing/sanitary installation (2.8%). There was no further increase in September.

Table 2.4 shows the net monthly contributions of the work categories to the index since October 2005.

Quarterly averages of the monthly indices by work category and the percentage change from quarter to quarter are shown in Table 2.5.

5. Past Trends

Table 3 summarises the monthly indices, the quarterly and yearly averages as well as the percentage changes in the yearly average since 1998. Indices for the years 1998 to 2001 have been worked out using as base the fourth quarter of 1993, while the base period for the calculation of the index from 2002 onwards is the fourth quarter of 2001.

The two series are not strictly comparable. A crude method of converting an index from the new base to the old base is to multiply the new index by 1.282. Conversely, an index on the old base can be converted to the new base by dividing the old index by 1.282.

*Central Statistics Office
Ministry of Finance and Economic
Development
Port Louis
November 2006*

| | |
|-----------------|---|
| Contact person: | Mr. D. Jagai Statistician Central Statistics Office LIC Centre Port-Louis Tel: 212 2316/17 Fax: 211 4150 Email: cso_construction@mail.gov.mu |
|-----------------|---|

Input Cost Index for the construction of a single storey house

(Base: 4th Quarter 2001 = 100)

Table 1.1: Monthly sub-indices by input category, October 2005 to September 2006

| Input Categories | Weigh | 2005 | | | 2006 | | | | | | | | |
|--|--------------|--------------|--------------|--------------|--------------|--------------|--------------|--------------|--------------|--------------|--------------|--------------|--------------|
| | | Oct | Nov | Dec | Jan | Feb | Mar | Apr | May | Jun | July | Aug | Sep |
| LABOUR | 34.5 | 113.0 | 113.0 | 113.0 | 113.0 | 113.0 | 113.0 | 113.0 | 113.0 | 113.0 | 114.8 | 114.8 | 114.8 |
| HIRE OF PLANT | 3.0 | 105.5 | 105.5 | 105.5 | 105.5 | 105.5 | 105.5 | 105.5 | 105.5 | 105.5 | 106.8 | 122.5 | 122.5 |
| MATERIALS : | 57.2 | 135.6 | 136.9 | 136.9 | 138.0 | 139.1 | 139.1 | 140.1 | 140.1 | 143.6 | 147.6 | 148.9 | 148.9 |
| Hardcore (remplissage) | 1.0 | 110.5 | 110.5 | 110.5 | 110.5 | 110.5 | 110.5 | 110.5 | 110.5 | 110.5 | 110.5 | 110.5 | 110.5 |
| Cement | 10.0 | 158.7 | 158.7 | 158.7 | 158.7 | 158.7 | 158.7 | 158.7 | 158.7 | 158.7 | 178.0 | 178.0 | 178.0 |
| Sand | 6.1 | 114.2 | 120.0 | 120.0 | 123.1 | 123.1 | 123.1 | 125.9 | 125.9 | 125.9 | 125.9 | 129.6 | 129.6 |
| Aggregate | 2.9 | 124.0 | 130.4 | 130.4 | 136.2 | 136.2 | 136.2 | 141.4 | 141.4 | 141.4 | 141.4 | 148.3 | 148.3 |
| Block | 4.4 | 126.7 | 130.5 | 130.5 | 133.2 | 133.2 | 133.2 | 138.2 | 138.2 | 138.2 | 138.2 | 141.5 | 141.5 |
| Steel bars (armature) | 5.8 | 169.8 | 169.8 | 169.8 | 169.6 | 169.8 | 169.8 | 169.8 | 169.8 | 170.8 | 174.3 | 174.3 | 174.3 |
| Galvanised corrugated cast iron sheeting | 1.2 | 152.2 | 152.2 | 152.2 | 152.2 | 152.2 | 152.2 | 152.2 | 152.2 | 152.2 | 152.5 | 152.5 | 152.5 |
| Timber: (a) Carpentry | 3.9 | 122.2 | 122.2 | 122.2 | 122.2 | 121.8 | 121.8 | 121.8 | 121.8 | 121.8 | 122.7 | 122.7 | 122.7 |
| (b) Joinery | 4.2 | 129.7 | 129.7 | 129.7 | 129.7 | 143.3 | 143.3 | 143.3 | 143.3 | 150.1 | 150.1 | 150.1 | 150.1 |
| Metal openings | 6.1 | 132.1 | 132.3 | 132.3 | 132.3 | 132.7 | 132.7 | 132.7 | 132.7 | 147.3 | 148.4 | 148.4 | 148.4 |
| Ceramic tiles | 1.3 | 101.5 | 101.5 | 101.5 | 101.5 | 101.5 | 101.5 | 101.5 | 101.5 | 101.5 | 101.5 | 101.5 | 101.5 |
| Glass and putty | 0.7 | 109.4 | 109.4 | 109.4 | 109.4 | 109.4 | 109.4 | 109.4 | 109.4 | 109.4 | 112.3 | 112.3 | 112.3 |
| Paint | 2.0 | 138.7 | 138.7 | 138.7 | 138.7 | 140.8 | 140.8 | 140.8 | 140.8 | 140.8 | 140.9 | 140.9 | 140.9 |
| Plumbing | 1.5 | 136.9 | 137.1 | 137.1 | 137.1 | 137.6 | 137.6 | 138.8 | 138.8 | 138.8 | 139.0 | 150.4 | 150.4 |
| Sanitary installation | 2.3 | 120.7 | 120.7 | 120.7 | 120.7 | 120.7 | 120.7 | 120.8 | 120.8 | 120.8 | 120.9 | 120.9 | 120.9 |
| Electrical installation | 2.6 | 123.6 | 123.9 | 123.9 | 130.4 | 130.4 | 130.4 | 130.4 | 130.4 | 158.7 | 159.1 | 159.1 | 159.1 |
| Other | 1.2 | 134.8 | 134.8 | 134.9 | 134.9 | 136.2 | 136.2 | 136.2 | 136.2 | 139.3 | 141.4 | 141.4 | 141.4 |
| TRANSPORT | 5.3 | 105.3 | 105.3 | 105.3 | 105.3 | 105.3 | 105.3 | 105.3 | 105.3 | 105.3 | 126.4 | 126.4 | 126.4 |
| Total | 100.0 | 125.3 | 126.1 | 126.1 | 126.7 | 127.3 | 127.3 | 127.9 | 127.9 | 129.9 | 134.4 | 135.1 | 135.1 |

Input Cost Index for the construction of a single storey house

(Base: 4th Quarter 2001 = 100)

Table 1.2: Percentage change from previous month by input category, October 2005 to September 2006

| Input Categories | Weight | % change from previous month | | | | | | | | | | | |
|--|-------------|------------------------------|------------|------------|------------|------------|------------|------------|------------|------------|-------------|------------|------------|
| | | Oct 05 | Nov 05 | Dec 05 | Jan 06 | Feb 06 | Mar 06 | Apr 06 | May 06 | Jun 06 | Jul 06 | Aug 06 | Sep 06 |
| LABOUR | 34.5 | 0.0 | 0.0 | 0.0 | 0.0 | 0.0 | 0.0 | 0.0 | 0.0 | 0.0 | 1.5 | 0.0 | 0.0 |
| HIRE OF PLANT | 3.0 | 1.6 | 0.0 | 0.0 | 0.0 | 0.0 | 0.0 | 0.0 | 0.0 | 1.3 | 14.7 | 0.0 | 0.0 |
| MATERIALS : | 57.2 | 0.8 | 0.9 | 0.0 | 0.8 | 0.8 | 0.0 | 0.7 | 0.0 | 2.5 | 2.8 | 0.9 | 0.0 |
| Hardcore (remplissage) | 1.0 | 0.0 | 0.0 | 0.0 | 0.0 | 0.0 | 0.0 | 0.0 | 0.0 | 0.0 | 0.0 | 0.0 | 0.0 |
| Cement | 10.0 | 0.0 | 0.0 | 0.0 | 0.0 | 0.0 | 0.0 | 0.0 | 0.0 | 0.0 | 12.1 | 0.0 | 0.0 |
| Sand | 6.1 | 0.0 | 5.1 | 0.0 | 2.6 | 0.0 | 0.0 | 2.3 | 0.0 | 0.0 | 0.0 | 2.9 | 0.0 |
| Aggregate | 2.9 | 0.0 | 5.1 | 0.0 | 4.4 | 0.0 | 0.0 | 3.8 | 0.0 | 0.0 | 0.0 | 4.9 | 0.0 |
| Block | 4.4 | 0.0 | 3.1 | 0.0 | 2.0 | 0.0 | 0.0 | 3.8 | 0.0 | 0.0 | 0.0 | 2.4 | 0.0 |
| Steel bars (armature) | 5.8 | 0.0 | 0.0 | 0.0 | -0.1 | 0.1 | 0.0 | 0.0 | 0.0 | 0.6 | 2.1 | 0.0 | 0.0 |
| Galvanised corrugated cast iron sheeting | 1.2 | 0.0 | 0.0 | 0.0 | 0.0 | 0.0 | 0.0 | 0.0 | 0.0 | 0.0 | 0.2 | 0.0 | 0.0 |
| Timber: (a) Carpentry | 3.9 | 1.1 | 0.0 | 0.0 | 0.0 | -0.3 | 0.0 | 0.0 | 0.0 | 0.0 | 0.7 | 0.0 | 0.0 |
| (b) Joinery | 4.2 | 8.3 | 0.0 | 0.0 | 0.0 | 10.5 | 0.0 | 0.0 | 0.0 | 4.8 | 0.0 | 0.0 | 0.0 |
| Metal openings | 6.1 | 0.4 | 0.2 | 0.0 | 0.0 | 0.3 | 0.0 | 0.0 | 0.0 | 11.0 | 0.7 | 0.0 | 0.0 |
| Ceramic tiles | 1.3 | 0.0 | 0.0 | 0.0 | 0.0 | 0.0 | 0.0 | 0.0 | 0.0 | 0.0 | 0.0 | 0.0 | 0.0 |
| Glass and putty | 0.7 | 0.0 | 0.0 | 0.0 | 0.0 | 0.0 | 0.0 | 0.0 | 0.0 | 0.0 | 2.6 | 0.0 | 0.0 |
| Paint | 2.0 | 1.2 | 0.0 | 0.0 | 0.0 | 1.5 | 0.0 | 0.0 | 0.0 | 0.0 | 0.1 | 0.0 | 0.0 |
| Plumbing | 1.5 | 2.8 | 0.2 | 0.0 | 0.0 | 0.4 | 0.0 | 0.9 | 0.0 | 0.0 | 0.2 | 8.2 | 0.0 |
| Sanitary installation | 2.3 | 1.6 | 0.0 | 0.0 | 0.0 | 0.0 | 0.0 | 0.1 | 0.0 | 0.0 | 0.0 | 0.0 | 0.0 |
| Electrical installation | 2.6 | 0.2 | 0.2 | 0.0 | 5.3 | 0.0 | 0.0 | 0.0 | 0.0 | 21.7 | 0.2 | 0.0 | 0.0 |
| Other | 1.2 | 0.2 | 0.0 | 0.1 | 0.0 | 0.9 | 0.0 | 0.0 | 0.0 | 2.3 | 1.5 | 0.0 | 0.0 |
| TRANSPORT | 5.3 | 0.0 | 0.0 | 0.0 | 0.0 | 0.0 | 0.0 | 0.0 | 0.0 | 0.0 | 20.0 | 0.0 | 0.0 |
| OVERALL CHANGE | | 0.6 | 0.6 | 0.0 | 0.5 | 0.5 | 0.0 | 0.4 | 0.0 | 1.6 | 3.4 | 0.6 | 0.0 |

Input Cost Index for the construction of a single storey house

(Base: 4th Quarter 2001 = 100)

Table 1.3: Percentage change from corresponding month of previous year by input category, October 2005 to September 2006

| Input Categories | Weight | % change from corresponding month of previous year | | | | | | | | | | | |
|--|-------------|--|------------|------------|------------|------------|------------|------------|------------|------------|-------------|-------------|-------------|
| | | Oct 05 | Nov 05 | Dec 05 | Jan 06 | Feb 06 | Mar 06 | Apr 06 | May 06 | Jun 06 | Jul 06 | Aug 06 | Sep 06 |
| LABOUR | 34.5 | 3.6 | 3.6 | 3.6 | 3.6 | 3.6 | 3.6 | 3.6 | 3.6 | 3.6 | 1.5 | 1.5 | 1.5 |
| HIRE OF PLANT | 3.0 | 1.6 | 1.6 | 1.6 | 1.6 | 1.6 | 1.6 | 1.6 | 1.6 | 3.0 | 18.1 | 18.1 | 18.1 |
| MATERIALS : | 57.2 | 9.3 | 9.6 | 8.7 | 9.1 | 4.5 | 4.5 | 5.2 | 5.0 | 7.6 | 9.8 | 10.7 | 10.7 |
| Hardcore (remplissage) | 1.0 | 0.0 | 0.0 | 0.0 | 0.0 | 0.0 | 0.0 | 0.0 | 0.0 | 0.0 | 0.0 | 0.0 | 0.0 |
| Cement | 10.0 | 16.4 | 16.4 | 16.4 | 16.4 | 0.0 | 0.0 | 0.0 | 0.0 | 0.0 | 12.1 | 12.1 | 12.1 |
| Sand | 6.1 | 2.8 | 8.0 | 8.0 | 7.8 | 7.8 | 7.8 | 10.2 | 10.2 | 10.2 | 10.2 | 13.5 | 13.5 |
| Aggregate | 2.9 | 4.7 | 10.1 | 10.1 | 9.8 | 9.8 | 9.8 | 14.0 | 14.0 | 14.0 | 14.0 | 19.6 | 19.6 |
| Block | 4.4 | 5.8 | 9.0 | 9.0 | 11.3 | 5.2 | 5.2 | 9.1 | 9.1 | 9.1 | 9.1 | 11.7 | 11.7 |
| Steel bars (armature) | 5.8 | -0.4 | -0.4 | -0.4 | -0.5 | -0.6 | -0.6 | -0.6 | -0.6 | 0.0 | 2.7 | 2.7 | 2.7 |
| Galvanised corrugated cast iron sheeting | 1.2 | 14.2 | 14.2 | 14.2 | 14.2 | 6.5 | 6.5 | 6.5 | 5.8 | 5.8 | 0.2 | 0.2 | 0.2 |
| Timber: (a) Carpentry | 3.9 | 5.7 | 5.7 | 5.7 | 5.7 | 0.8 | 0.8 | 0.8 | 0.8 | 0.8 | 1.5 | 1.5 | 1.5 |
| (b) Joinery | 4.2 | 21.4 | 21.4 | 17.0 | 17.0 | 26.3 | 26.3 | 26.3 | 26.0 | 32.0 | 25.3 | 25.3 | 25.3 |
| Metal openings | 6.1 | 7.5 | 6.0 | 5.2 | 5.2 | 2.8 | 2.8 | 2.8 | 1.1 | 12.1 | 12.8 | 12.8 | 12.8 |
| Ceramic tiles | 1.3 | 0.0 | 0.0 | 0.0 | 0.0 | 0.0 | 0.0 | 0.0 | 0.0 | 0.0 | 0.0 | 0.0 | 0.0 |
| Glass and putty | 0.7 | 4.3 | 4.3 | 2.4 | 2.4 | 0.5 | 0.5 | 0.5 | 0.5 | 0.5 | 2.6 | 2.6 | 2.6 |
| Paint | 2.0 | 19.2 | 15.0 | 15.0 | 15.0 | 9.6 | 9.6 | 9.6 | 9.6 | 9.6 | 2.8 | 2.8 | 2.8 |
| Plumbing | 1.5 | 19.9 | 6.3 | 6.3 | 6.3 | 3.8 | 3.8 | 4.7 | 4.5 | 4.5 | 4.4 | 12.9 | 12.9 |
| Sanitary installation | 2.3 | 8.8 | 8.8 | 3.3 | 3.3 | 1.9 | 1.9 | 2.0 | 1.8 | 1.8 | 1.8 | 1.8 | 1.8 |
| Electrical installation | 2.6 | 13.1 | 13.4 | 9.4 | 15.2 | 6.9 | 6.9 | 6.9 | 6.9 | 30.1 | 29.0 | 29.0 | 29.0 |
| Other | 1.2 | 23.5 | 23.5 | 11.9 | 11.9 | 4.3 | 4.3 | 4.3 | 4.2 | 6.6 | 5.1 | 5.1 | 5.1 |
| TRANSPORT | 5.3 | 0.0 | 0.0 | 0.0 | 0.0 | 0.0 | 0.0 | 0.0 | 0.0 | 0.0 | 20.0 | 20.0 | 20.0 |
| OVERALL CHANGE | | 6.8 | 7.0 | 6.5 | 6.7 | 3.9 | 3.9 | 4.4 | 4.2 | 5.9 | 7.9 | 8.5 | 8.5 |

Input Cost Index for the construction of a single storey house

(Base: 4th Quarter 2001 = 100)

Table 1.4: Net monthly contributions of input categories to the index, October 2005 to September 2006

| Input Categories | Weight | 2005 | | | 2006 | | | | | | | | |
|--|--------------|-------------|-------------|-------------|-------------|-------------|-------------|-------------|-------------|-------------|-------------|-------------|-------------|
| | | Oct | Nov | Dec | Jan | Feb | Mar | Apr | May | Jun | Jul | Aug | Sep |
| LABOUR | 34.5 | 0.00 | 0.00 | 0.00 | 0.00 | 0.00 | 0.00 | 0.00 | 0.00 | 0.00 | 0.60 | 0.00 | 0.00 |
| HIRE OF PLANT | 3.0 | 0.05 | 0.00 | 0.00 | 0.00 | 0.00 | 0.00 | 0.00 | 0.00 | 0.04 | 0.48 | 0.00 | 0.00 |
| MATERIALS : | 57.2 | 0.65 | 0.73 | 0.00 | 0.63 | 0.66 | 0.00 | 0.56 | 0.00 | 1.99 | 2.28 | 0.74 | 0.00 |
| Hardcore (remplissage) | 1.0 | 0.00 | 0.00 | 0.00 | 0.00 | 0.00 | 0.00 | 0.00 | 0.00 | 0.00 | 0.00 | 0.00 | 0.00 |
| Cement | 10.0 | 0.00 | 0.00 | 0.00 | 0.00 | 0.00 | 0.00 | 0.00 | 0.00 | 0.00 | 1.92 | 0.00 | 0.00 |
| Sand | 6.1 | 0.00 | 0.35 | 0.00 | 0.19 | 0.00 | 0.00 | 0.17 | 0.00 | 0.00 | 0.00 | 0.22 | 0.00 |
| Aggregate | 2.9 | 0.00 | 0.18 | 0.00 | 0.17 | 0.00 | 0.00 | 0.15 | 0.00 | 0.00 | 0.00 | 0.20 | 0.00 |
| Block | 4.4 | 0.00 | 0.17 | 0.00 | 0.12 | 0.00 | 0.00 | 0.22 | 0.00 | 0.00 | 0.00 | 0.15 | 0.00 |
| Steel bars (armature) | 5.8 | 0.00 | 0.00 | 0.00 | -0.01 | 0.01 | 0.00 | 0.00 | 0.00 | 0.06 | 0.21 | 0.00 | 0.00 |
| Galvanised corrugated cast iron sheeting | 1.2 | 0.00 | 0.00 | 0.00 | 0.00 | 0.00 | 0.00 | 0.00 | 0.00 | 0.00 | 0.00 | 0.00 | 0.00 |
| Timber: (a) Carpentry | 3.9 | 0.05 | 0.00 | 0.00 | 0.00 | -0.01 | 0.00 | 0.00 | 0.00 | 0.00 | 0.03 | 0.00 | 0.00 |
| (b) Joinery | 4.2 | 0.42 | 0.00 | 0.00 | 0.00 | 0.58 | 0.00 | 0.00 | 0.00 | 0.29 | 0.00 | 0.00 | 0.00 |
| Metal openings | 6.1 | 0.04 | 0.01 | 0.00 | 0.00 | 0.03 | 0.00 | 0.00 | 0.00 | 0.88 | 0.07 | 0.00 | 0.00 |
| Ceramic tiles | 1.3 | 0.00 | 0.00 | 0.00 | 0.00 | 0.00 | 0.00 | 0.00 | 0.00 | 0.00 | 0.00 | 0.00 | 0.00 |
| Glass and putty | 0.7 | 0.00 | 0.00 | 0.00 | 0.00 | 0.00 | 0.00 | 0.00 | 0.00 | 0.00 | 0.02 | 0.00 | 0.00 |
| Paint | 2.0 | 0.03 | 0.00 | 0.00 | 0.00 | 0.04 | 0.00 | 0.00 | 0.00 | 0.00 | 0.00 | 0.00 | 0.00 |
| Plumbing | 1.5 | 0.06 | 0.00 | 0.00 | 0.00 | 0.01 | 0.00 | 0.02 | 0.00 | 0.00 | 0.00 | 0.17 | 0.00 |
| Sanitary installation | 2.3 | 0.04 | 0.00 | 0.00 | 0.00 | 0.00 | 0.00 | 0.00 | 0.00 | 0.00 | 0.00 | 0.00 | 0.00 |
| Electrical installation | 2.6 | 0.01 | 0.01 | 0.00 | 0.17 | 0.00 | 0.00 | 0.00 | 0.00 | 0.72 | 0.01 | 0.00 | 0.00 |
| Other | 1.2 | 0.00 | 0.00 | 0.00 | 0.00 | 0.01 | 0.00 | 0.00 | 0.00 | 0.04 | 0.02 | 0.00 | 0.00 |
| TRANSPORT | 5.3 | 0.00 | 0.00 | 0.00 | 0.00 | 0.00 | 0.00 | 0.00 | 0.00 | 0.00 | 1.11 | 0.00 | 0.00 |
| TOTAL | 100.0 | 0.70 | 0.73 | 0.00 | 0.63 | 0.66 | 0.00 | 0.56 | 0.00 | 2.03 | 4.46 | 0.74 | 0.00 |

Input Cost Index for the construction of a single storey house

(Base: 4th Quarter 2001 = 100)

Table 1.5: Quarterly average of monthly indices and percentage changes by input category, October 2005 - September 2006

| Input Categories | Weight | 2005 | 2006 | | | % change from previous quarter | | | |
|--|-------------|--------------|--------------|--------------|--------------|--------------------------------|----------------|----------------|----------------|
| | | 4th Qr | 1st Qr | 2nd Qr | 3rd Qr | 4th Qr 2005 | 1st Qr 2006 | 2nd Qr 2006 | 3rd Qr 2006 |
| LABOUR | 34.5 | 113.0 | 113.0 | 113.0 | 114.8 | 0.0 | 0.0 | 0.0 | 1.5 |
| HIRE OF PLANT | 3.0 | 105.5 | 105.5 | 105.9 | 122.5 | 1.6 | 0.0 | 0.4 | 15.7 |
| MATERIALS : | 57.2 | 136.5 | 138.8 | 141.3 | 148.5 | 1.5 | 1.7 | 1.8 | 5.1 |
| Hardcore (remplissage) | 1.0 | 110.5 | 110.5 | 110.5 | 110.5 | 0.0 | 0.0 | 0.0 | 0.0 |
| Cement | 10.0 | 158.7 | 158.7 | 158.7 | 178.0 | 0.0 | 0.0 | 0.0 | 12.1 |
| Sand | 6.1 | 118.1 | 123.1 | 125.9 | 128.3 | 3.4 | 4.3 | 2.3 | 2.0 |
| Aggregate | 2.9 | 128.3 | 136.2 | 141.4 | 146.0 | 3.4 | 6.2 | 3.8 | 3.3 |
| Block | 4.4 | 129.2 | 133.2 | 138.2 | 140.4 | 2.0 | 3.1 | 3.8 | 1.6 |
| Steel bars (armature) | 5.8 | 169.8 | 169.7 | 170.1 | 174.3 | 0.0 | 0.0 | 0.2 | 2.5 |
| Galvanised corrugated cast iron sheeting | 1.2 | 152.2 | 152.2 | 152.2 | 152.5 | 0.0 | 0.0 | 0.0 | 0.2 |
| Timber: (a) Carpentry | 3.9 | 122.2 | 121.9 | 121.8 | 122.7 | 1.1 | -0.2 | -0.1 | 0.7 |
| (b) Joinery | 4.2 | 129.7 | 138.8 | 145.6 | 150.1 | 8.3 | 7.0 | 4.9 | 3.1 |
| Metal openings | 6.1 | 132.3 | 132.6 | 137.6 | 148.4 | 0.6 | 0.3 | 3.8 | 7.8 |
| Ceramic tiles | 1.3 | 101.5 | 101.5 | 101.5 | 101.5 | 0.0 | 0.0 | 0.0 | 0.0 |
| Glass and putty | 0.7 | 109.4 | 109.4 | 109.4 | 112.3 | 0.0 | 0.0 | 0.0 | 2.6 |
| Paint | 2.0 | 138.7 | 140.1 | 140.8 | 140.9 | 1.2 | 1.0 | 0.5 | 0.1 |
| Plumbing | 1.5 | 137.0 | 137.4 | 138.8 | 146.6 | 2.9 | 0.3 | 1.0 | 5.6 |
| Sanitary installation | 2.3 | 120.7 | 120.7 | 120.8 | 120.9 | 1.6 | 0.0 | 0.1 | 0.0 |
| Electrical installation | 2.6 | 123.8 | 130.4 | 139.9 | 159.1 | 0.3 | 5.4 | 7.2 | 13.7 |
| Other | 1.2 | 134.8 | 135.8 | 137.2 | 141.4 | 0.3 | 0.7 | 1.1 | 3.0 |
| TRANSPORT | 5.3 | 105.3 | 105.3 | 105.3 | 126.4 | 0.0 | 0.0 | 0.0 | 20.0 |
| OVERALL INDEX AND CHANGE | | 125.8 | 127.1 | 128.6 | 134.9 | 1.0 | 1.0 | 1.2 | 4.9 |

Input Cost Index for the construction of a single storey house
(Base: 4th Quarter 2001 = 100)

Table 2.1: Monthly sub-indices by work category, October 2005 to September 2006

| Work Categories | Weight | 2005 | | | 2006 | | | | | | | | |
|--|--------------|--------------|--------------|--------------|--------------|--------------|--------------|--------------|--------------|--------------|--------------|--------------|--------------|
| | | Oct | Nov | Dec | Jan | Feb | Mar | Apr | May | Jun | July | Aug | Sep |
| 1. Setting up | 2.3 | 136.0 | 136.5 | 136.5 | 136.8 | 136.7 | 136.7 | 137.0 | 137.0 | 137.0 | 140.2 | 140.6 | 140.6 |
| 2. Setting out | 0.5 | 106.2 | 106.2 | 106.2 | 106.2 | 105.9 | 105.9 | 105.9 | 105.9 | 105.9 | 107.7 | 107.7 | 107.7 |
| 3. Temporary works | 0.5 | 114.4 | 114.4 | 114.4 | 114.4 | 114.1 | 114.1 | 114.1 | 114.1 | 114.1 | 115.8 | 115.8 | 115.8 |
| 4. Site preparation, excavation & disposal, hardcore filling | 5.8 | 113.7 | 113.9 | 113.9 | 114.2 | 114.2 | 114.2 | 114.4 | 114.4 | 114.9 | 118.6 | 118.8 | 118.8 |
| 5. Concrete | 20.2 | 127.4 | 129.1 | 129.1 | 130.4 | 130.4 | 130.4 | 131.5 | 131.5 | 131.5 | 140.3 | 141.8 | 141.8 |
| 6. Reinforcement | 9.2 | 148.5 | 148.5 | 148.5 | 148.4 | 148.5 | 148.5 | 148.5 | 148.5 | 149.1 | 152.6 | 152.6 | 152.6 |
| 7. Formwork (coffrage) | 7.8 | 116.9 | 116.9 | 116.9 | 116.9 | 116.8 | 116.8 | 116.8 | 116.8 | 116.8 | 121.9 | 121.9 | 121.9 |
| 8. Blockwork | 8.5 | 121.8 | 124.0 | 124.0 | 125.5 | 125.5 | 125.5 | 128.1 | 128.1 | 128.1 | 132.3 | 134.1 | 134.1 |
| 9. Softwood joinery | 4.5 | 128.5 | 128.5 | 128.5 | 128.5 | 141.3 | 141.3 | 141.3 | 141.3 | 147.6 | 147.9 | 147.9 | 147.9 |
| 10. Ironmongery | 0.5 | 110.9 | 110.9 | 111.2 | 111.2 | 111.7 | 111.7 | 111.7 | 111.7 | 113.8 | 114.7 | 114.7 | 114.7 |
| 11. Metal openings | 6.5 | 130.8 | 131.0 | 131.0 | 131.0 | 131.4 | 131.4 | 131.4 | 131.4 | 145.0 | 146.3 | 146.3 | 146.3 |
| 12. Rendering to wall/ceiling (crépissage) | 9.9 | 118.9 | 119.5 | 119.5 | 119.8 | 119.8 | 119.8 | 120.1 | 120.1 | 120.1 | 124.7 | 125.1 | 125.1 |
| 13. Bed & screed to floor/roof | 4.2 | 130.2 | 131.8 | 131.8 | 132.6 | 132.6 | 132.6 | 133.3 | 133.3 | 133.3 | 142.8 | 143.8 | 143.8 |
| 14. Tiling | 2.1 | 106.3 | 106.3 | 106.3 | 106.3 | 106.3 | 106.3 | 106.3 | 106.3 | 106.3 | 107.1 | 107.1 | 107.1 |
| 15. Glazing | 1.0 | 109.2 | 109.2 | 109.2 | 109.2 | 109.2 | 109.2 | 109.2 | 109.2 | 109.2 | 113.8 | 113.8 | 113.8 |
| 16. Painting | 5.2 | 122.4 | 122.4 | 122.4 | 122.4 | 123.4 | 123.4 | 123.4 | 123.4 | 123.4 | 124.6 | 124.6 | 124.6 |
| 17. Plumbing/sanitary installation | 5.0 | 122.5 | 122.5 | 122.5 | 122.5 | 122.7 | 122.7 | 123.1 | 123.1 | 123.1 | 124.0 | 127.4 | 127.4 |
| 18. Electrical installation | 4.2 | 119.2 | 119.3 | 119.3 | 123.3 | 123.3 | 123.3 | 123.3 | 123.3 | 140.5 | 141.6 | 141.6 | 141.6 |
| 19. Drainage | 2.1 | 129.4 | 130.3 | 130.3 | 131.0 | 131.0 | 131.0 | 131.9 | 131.9 | 133.1 | 139.8 | 140.6 | 140.6 |
| Total | 100.0 | 125.3 | 126.1 | 126.1 | 126.7 | 127.3 | 127.3 | 127.9 | 127.9 | 129.9 | 134.4 | 135.1 | 135.1 |

Input Cost Index for the construction of a single storey house

(Base: 4th Quarter 2001 = 100)

Table 2.2: Percentage change from previous month by work category, October 2005 to September 2006

| Work Categories | Weight | % change from previous month | | | | | | | | | | | |
|--|--------|------------------------------|------------|------------|------------|------------|------------|------------|------------|------------|------------|------------|------------|
| | | Oct 05 | Nov 05 | Dec 05 | Jan 06 | Feb 06 | Mar 06 | Apr 06 | May 06 | Jun 06 | Jul 06 | Aug 06 | Sep 06 |
| 1. Setting up | 2.3 | 0.0 | 0.3 | 0.0 | 0.2 | -0.1 | 0.0 | 0.2 | 0.0 | 0.0 | 2.3 | 0.3 | 0.0 |
| 2. Setting out | 0.5 | 0.0 | 0.0 | 0.0 | 0.0 | -0.4 | 0.0 | 0.0 | 0.0 | 0.0 | 1.7 | 0.0 | 0.0 |
| 3. Temporary works | 0.5 | 0.5 | 0.0 | 0.0 | 0.0 | -0.3 | 0.0 | 0.0 | 0.0 | 0.0 | 1.5 | 0.0 | 0.0 |
| 4. Site preparation, excavation & disposal, hardcore filling | 5.8 | 0.3 | 0.2 | 0.0 | 0.2 | 0.0 | 0.0 | 0.2 | 0.0 | 0.5 | 3.2 | 0.2 | 0.0 |
| 5. Concrete | 20.2 | 0.1 | 1.4 | 0.0 | 1.0 | 0.0 | 0.0 | 0.9 | 0.0 | 0.0 | 6.7 | 1.1 | 0.0 |
| 6. Reinforcement | 9.2 | 0.0 | 0.0 | 0.0 | -0.1 | 0.1 | 0.0 | 0.0 | 0.0 | 0.4 | 2.3 | 0.0 | 0.0 |
| 7. Formwork (coffrage) | 7.8 | 0.5 | 0.0 | 0.0 | 0.0 | -0.1 | 0.0 | 0.0 | 0.0 | 0.0 | 4.4 | 0.0 | 0.0 |
| 8. Blockwork | 8.5 | 0.0 | 1.8 | 0.0 | 1.2 | 0.0 | 0.0 | 2.1 | 0.0 | 0.0 | 3.3 | 1.4 | 0.0 |
| 9. Softwood joinery | 4.5 | 7.8 | 0.0 | 0.0 | 0.0 | 9.9 | 0.0 | 0.0 | 0.0 | 4.5 | 0.2 | 0.0 | 0.0 |
| 10. Ironmongery | 0.5 | 0.0 | 0.0 | 0.2 | 0.0 | 0.4 | 0.0 | 0.0 | 0.0 | 1.9 | 0.8 | 0.0 | 0.0 |
| 11. Metal openings | 6.5 | 0.4 | 0.2 | 0.0 | 0.0 | 0.3 | 0.0 | 0.0 | 0.0 | 10.4 | 0.9 | 0.0 | 0.0 |
| 12. Rendering to wall/ceiling (crépissage) | 9.9 | 0.0 | 0.5 | 0.0 | 0.3 | 0.0 | 0.0 | 0.2 | 0.0 | 0.0 | 3.8 | 0.3 | 0.0 |
| 13. Bed & screed to floor/roof | 4.2 | 0.0 | 1.2 | 0.0 | 0.6 | 0.0 | 0.0 | 0.6 | 0.0 | 0.0 | 7.1 | 0.7 | 0.0 |
| 14. Tiling | 2.1 | 0.0 | 0.0 | 0.0 | 0.0 | 0.0 | 0.0 | 0.0 | 0.0 | 0.0 | 0.7 | 0.0 | 0.0 |
| 15. Glazing | 1.0 | 0.0 | 0.0 | 0.0 | 0.0 | 0.0 | 0.0 | 0.0 | 0.0 | 0.0 | 4.3 | 0.0 | 0.0 |
| 16. Painting | 5.2 | 0.5 | 0.0 | 0.0 | 0.0 | 0.9 | 0.0 | 0.0 | 0.0 | 0.0 | 1.0 | 0.0 | 0.0 |
| 17. Plumbing/sanitary installation | 5.0 | 1.7 | 0.1 | 0.0 | 0.0 | 0.1 | 0.0 | 0.3 | 0.0 | 0.0 | 0.8 | 2.8 | 0.0 |
| 18. Electrical installation | 4.2 | 0.1 | 0.1 | 0.0 | 3.4 | 0.0 | 0.0 | 0.0 | 0.0 | 13.9 | 0.7 | 0.0 | 0.0 |
| 19. Drainage | 2.1 | 0.2 | 0.8 | 0.0 | 0.5 | 0.0 | 0.0 | 0.7 | 0.0 | 0.9 | 5.0 | 0.6 | 0.0 |
| OVERALL CHANGE | | 0.6 | 0.6 | 0.0 | 0.5 | 0.5 | 0.0 | 0.4 | 0.0 | 1.6 | 3.4 | 0.6 | 0.0 |

Input Cost Index for the construction of a single storey house

(Base: 4th Quarter 2001 = 100)

Table 2.3: Percentage change from corresponding month of previous year by work category, October 2005 to September 2006

| Work Categories | Weight | % change from corresponding month of previous year | | | | | | | | | | | |
|--|--------|--|------------|------------|------------|------------|------------|------------|------------|------------|------------|------------|------------|
| | | Oct 05 | Nov 05 | Dec 05 | Jan 06 | Feb 06 | Mar 06 | Apr 06 | May 06 | Jun 06 | Jul 06 | Aug 06 | Sep 06 |
| 1. Setting up | 2.3 | 10.8 | 11.1 | 10.6 | 10.6 | 4.6 | 4.6 | 4.8 | 4.4 | 4.4 | 3.1 | 3.4 | 3.4 |
| 2. Setting out | 0.5 | 1.8 | 1.8 | 1.8 | 1.8 | 1.4 | 1.4 | 1.4 | 1.4 | 1.4 | 1.3 | 1.3 | 1.3 |
| 3. Temporary works | 0.5 | 3.7 | 3.7 | 3.1 | 3.1 | 1.2 | 1.2 | 1.2 | 1.2 | 1.2 | 1.7 | 1.7 | 1.7 |
| 4. Site preparation, excavation & disposal, hardcore filling | 5.8 | 3.1 | 3.3 | 3.3 | 3.3 | 3.3 | 3.3 | 3.5 | 3.5 | 4.0 | 4.6 | 4.8 | 4.8 |
| 5. Concrete | 20.2 | 7.7 | 9.1 | 9.1 | 9.1 | 3.4 | 3.4 | 4.3 | 4.3 | 4.3 | 10.3 | 11.5 | 11.5 |
| 6. Reinforcement | 9.2 | 0.6 | 0.6 | 0.6 | 0.6 | 0.5 | 0.5 | 0.5 | 0.5 | 0.9 | 2.8 | 2.8 | 2.8 |
| 7. Formwork (coffrage) | 7.8 | 5.4 | 5.4 | 4.7 | 4.7 | 1.7 | 1.7 | 1.7 | 1.7 | 1.7 | 4.9 | 4.9 | 4.9 |
| 8. Blockwork | 8.5 | 5.3 | 7.1 | 7.1 | 8.3 | 3.8 | 3.8 | 6.0 | 6.0 | 6.0 | 8.6 | 10.1 | 10.1 |
| 9. Softwood joinery | 4.5 | 20.2 | 20.2 | 16.1 | 16.1 | 24.8 | 24.8 | 24.8 | 24.6 | 30.2 | 24.0 | 24.0 | 24.0 |
| 10. Ironmongery | 0.5 | 2.1 | 2.1 | 2.3 | 2.3 | 2.2 | 2.2 | 2.2 | 2.2 | 4.1 | 3.4 | 3.4 | 3.4 |
| 11. Metal openings | 6.5 | 7.3 | 5.8 | 5.1 | 5.1 | 2.8 | 2.8 | 2.8 | 1.2 | 11.7 | 12.3 | 12.3 | 12.3 |
| 12. Rendering to wall/ceiling (crépissage) | 9.9 | 5.5 | 6.0 | 6.0 | 6.0 | 3.0 | 3.0 | 3.3 | 3.3 | 3.3 | 4.9 | 5.2 | 5.2 |
| 13. Bed & screed to floor/roof | 4.2 | 8.8 | 10.1 | 10.1 | 10.0 | 2.6 | 2.6 | 3.2 | 3.2 | 3.2 | 9.7 | 10.4 | 10.4 |
| 14. Tiling | 2.1 | 1.9 | 1.9 | 1.9 | 1.9 | 1.4 | 1.4 | 1.4 | 1.3 | 1.3 | 0.7 | 0.7 | 0.7 |
| 15. Glazing | 1.0 | 3.7 | 3.7 | 2.2 | 2.2 | 0.8 | 0.8 | 0.8 | 0.8 | 0.8 | 4.3 | 4.3 | 4.3 |
| 16. Painting | 5.2 | 9.9 | 8.3 | 8.3 | 8.3 | 6.1 | 6.1 | 6.1 | 6.1 | 6.2 | 2.4 | 2.4 | 2.4 |
| 17. Plumbing/sanitary installation | 5.0 | 10.3 | 6.1 | 4.4 | 4.4 | 3.0 | 3.0 | 3.4 | 3.2 | 3.2 | 3.0 | 5.8 | 5.8 |
| 18. Electrical installation | 4.2 | 9.3 | 9.5 | 7.1 | 10.7 | 5.6 | 5.6 | 5.6 | 5.6 | 20.3 | 18.9 | 18.9 | 18.9 |
| 19. Drainage | 2.1 | 11.2 | 12.1 | 7.8 | 7.9 | 3.5 | 3.5 | 4.2 | 4.2 | 5.2 | 8.3 | 8.9 | 8.9 |
| OVERALL CHANGE | | 6.8 | 7.0 | 6.5 | 6.7 | 3.9 | 3.9 | 4.4 | 4.2 | 5.9 | 7.9 | 8.5 | 8.5 |

Input Cost Index for the construction of a single storey house

(Base: 4th Quarter 2001 = 100)

Table 2.4: Net monthly contributions of work categories to the index, October 2005 to September 2006

| Work Categories | Weight | 2005 | | | 2006 | | | | | | | | |
|--|--------------|-------------|-------------|-------------|-------------|-------------|-------------|-------------|-------------|-------------|-------------|-------------|-------------|
| | | Oct | Nov | Dec | Jan | Feb | Mar | Apr | May | Jun | Jul | Aug | Sep |
| 1. Setting up | 2.3 | 0.00 | 0.01 | 0.00 | 0.01 | 0.00 | 0.00 | 0.01 | 0.00 | 0.00 | 0.07 | 0.01 | 0.00 |
| 2. Setting out | 0.5 | 0.00 | 0.00 | 0.00 | 0.00 | 0.00 | 0.00 | 0.00 | 0.00 | 0.00 | 0.01 | 0.00 | 0.00 |
| 3. Temporary works | 0.5 | 0.00 | 0.00 | 0.00 | 0.00 | 0.00 | 0.00 | 0.00 | 0.00 | 0.00 | 0.01 | 0.00 | 0.00 |
| 4. Site preparation, excavation & disposal, hardcore filling | 5.8 | 0.02 | 0.01 | 0.00 | 0.01 | 0.00 | 0.00 | 0.01 | 0.00 | 0.03 | 0.21 | 0.01 | 0.00 |
| 5. Concrete | 20.2 | 0.03 | 0.35 | 0.00 | 0.25 | 0.00 | 0.00 | 0.23 | 0.00 | 0.01 | 1.78 | 0.30 | 0.00 |
| 6. Reinforcement | 9.2 | 0.00 | 0.00 | 0.00 | -0.01 | 0.01 | 0.00 | 0.00 | 0.00 | 0.06 | 0.32 | 0.00 | 0.00 |
| 7. Formwork (coffrage) | 7.8 | 0.05 | 0.00 | 0.00 | 0.00 | -0.01 | 0.00 | 0.00 | 0.00 | 0.00 | 0.40 | 0.00 | 0.00 |
| 8. Blockwork | 8.5 | 0.00 | 0.18 | 0.00 | 0.12 | 0.00 | 0.00 | 0.22 | 0.00 | 0.00 | 0.36 | 0.15 | 0.00 |
| 9. Softwood joinery | 4.5 | 0.42 | 0.00 | 0.00 | 0.00 | 0.58 | 0.00 | 0.00 | 0.00 | 0.29 | 0.01 | 0.00 | 0.00 |
| 10. Ironmongery | 0.5 | 0.00 | 0.00 | 0.00 | 0.00 | 0.00 | 0.00 | 0.00 | 0.00 | 0.01 | 0.00 | 0.00 | 0.00 |
| 11. Metal openings | 6.5 | 0.04 | 0.01 | 0.00 | 0.00 | 0.03 | 0.00 | 0.00 | 0.00 | 0.88 | 0.08 | 0.00 | 0.00 |
| 12. Rendering to wall/ceiling (crépissage) | 9.9 | 0.00 | 0.06 | 0.00 | 0.03 | 0.00 | 0.00 | 0.03 | 0.00 | 0.00 | 0.45 | 0.04 | 0.00 |
| 13. Bed & screed to floor/roof | 4.2 | 0.00 | 0.07 | 0.00 | 0.03 | 0.00 | 0.00 | 0.03 | 0.00 | 0.00 | 0.40 | 0.04 | 0.00 |
| 14. Tiling | 2.1 | 0.00 | 0.00 | 0.00 | 0.00 | 0.00 | 0.00 | 0.00 | 0.00 | 0.00 | 0.02 | 0.00 | 0.00 |
| 15. Glazing | 1.0 | 0.00 | 0.00 | 0.00 | 0.00 | 0.00 | 0.00 | 0.00 | 0.00 | 0.00 | 0.05 | 0.00 | 0.00 |
| 16. Painting | 5.2 | 0.03 | 0.00 | 0.00 | 0.00 | 0.05 | 0.00 | 0.00 | 0.00 | 0.00 | 0.06 | 0.00 | 0.00 |
| 17. Plumbing/sanitary installation | 5.0 | 0.10 | 0.00 | 0.00 | 0.00 | 0.01 | 0.00 | 0.02 | 0.00 | 0.00 | 0.05 | 0.17 | 0.00 |
| 18. Electrical installation | 4.2 | 0.01 | 0.01 | 0.00 | 0.17 | 0.00 | 0.00 | 0.00 | 0.00 | 0.72 | 0.04 | 0.00 | 0.00 |
| 19. Drainage | 2.1 | 0.01 | 0.02 | 0.00 | 0.01 | 0.00 | 0.00 | 0.02 | 0.00 | 0.03 | 0.14 | 0.02 | 0.00 |
| TOTAL | 100.0 | 0.70 | 0.73 | 0.00 | 0.63 | 0.66 | 0.00 | 0.56 | 0.00 | 2.03 | 4.46 | 0.74 | 0.00 |

Input Cost Index for the construction of a single storey house

(Base: 4th Quarter 2001 = 100)

Table 2.5: Quarterly average of monthly indices and percentage changes by work category, October 2005 - September 2006

| Work Categories | Weight | 2005 | 2006 | | | % change from previous quarter | | | |
|---|--------|--------------|--------------|--------------|--------------|--------------------------------|----------------|----------------|----------------|
| | | 4th Qr | 1st Qr | 2nd Qr | 3rd Qr | 4th Qr 2005 | 1st Qr 2006 | 2nd Qr 2006 | 3rd Qr 2006 |
| 1. Setting up | 2.3 | 136.3 | 136.8 | 137.0 | 140.5 | 0.2 | 0.3 | 0.2 | 2.5 |
| 2. Setting out | 0.5 | 106.2 | 106.0 | 105.9 | 107.7 | 0.0 | -0.2 | -0.1 | 1.7 |
| 3. Temporary works | 0.5 | 114.4 | 114.2 | 114.1 | 115.8 | 0.5 | -0.2 | -0.1 | 1.5 |
| 4. Site preparation, excavation & disposal, hardcore filling | 5.8 | 113.9 | 114.2 | 114.5 | 118.7 | 0.5 | 0.3 | 0.3 | 3.7 |
| 5. Concrete | 20.2 | 128.6 | 130.4 | 131.5 | 141.3 | 1.0 | 1.4 | 0.9 | 7.5 |
| 6. Reinforcement | 9.2 | 148.5 | 148.5 | 148.7 | 152.6 | 0.0 | 0.0 | 0.2 | 2.6 |
| 7. Formwork (coffrage) | 7.8 | 116.9 | 116.8 | 116.8 | 121.9 | 0.5 | -0.1 | 0.0 | 4.4 |
| 8. Blockwork | 8.5 | 123.3 | 125.5 | 128.1 | 133.5 | 1.2 | 1.8 | 2.1 | 4.2 |
| 9. Softwood joinery | 4.5 | 128.5 | 137.0 | 143.4 | 147.9 | 7.8 | 6.6 | 4.6 | 3.1 |
| 10. Ironmongery | 0.5 | 111.0 | 111.5 | 112.4 | 114.7 | 0.1 | 0.5 | 0.8 | 2.1 |
| 11. Metal openings | 6.5 | 130.9 | 131.3 | 135.9 | 146.3 | 0.5 | 0.2 | 3.6 | 7.6 |
| 12. Rendering to wall/ceiling (crépissage) | 9.9 | 119.3 | 119.8 | 120.1 | 124.9 | 0.3 | 0.4 | 0.2 | 4.0 |
| 13. Bed & screed to floor/roof | 4.2 | 131.2 | 132.6 | 133.3 | 143.4 | 0.8 | 1.0 | 0.6 | 7.6 |
| 14. Tiling | 2.1 | 106.3 | 106.3 | 106.3 | 107.1 | 0.0 | 0.0 | 0.0 | 0.7 |
| 15. Glazing | 1.0 | 109.2 | 109.2 | 109.2 | 113.8 | 0.0 | 0.0 | 0.0 | 4.3 |
| 16. Painting | 5.2 | 122.4 | 123.0 | 123.4 | 124.6 | 0.5 | 0.6 | 0.3 | 1.0 |
| 17. Plumbing/sanitary installation | 5.0 | 122.5 | 122.6 | 123.1 | 126.3 | 1.7 | 0.1 | 0.4 | 2.6 |
| 18. Electrical installation | 4.2 | 119.3 | 123.3 | 129.1 | 141.6 | 0.2 | 3.4 | 4.6 | 9.7 |
| 19. Drainage | 2.1 | 130.0 | 131.0 | 132.3 | 140.3 | 0.7 | 0.8 | 1.0 | 6.1 |
| OVERALL INDEX AND CHANGE | | 125.8 | 127.1 | 128.6 | 134.9 | 1.0 | 1.0 | 1.2 | 4.9 |

Table 3: Construction Price Index - January 1998 to September 2006

| | <i>(Base: 4th Quarter 1993 = 100)</i> | | | | <i>(Base: 4th Quarter 2001 = 100)</i> | | | | |
|---------------------------------------|---------------------------------------|--------------|--------------|--------------|---------------------------------------|--------------|--------------|--------------|--------------|
| | 1998 | 1999 | 2000 | 2001 | 2002 | 2003 | 2004 | 2005 | 2006 |
| January | 115.2 | 118.6 | 120.4 | 124.9 | 100.3 | 105.8 | 109.5 | 118.7 | 126.7 |
| February | 115.3 | 119.1 | 120.4 | 124.9 | 100.5 | 106.8 | 112.2 | 122.5 | 127.3 |
| March | 115.3 | 119.1 | 120.5 | 125.0 | 100.6 | 107.0 | 112.3 | 122.5 | 127.3 |
| <i>1st Quarter</i> | <i>115.3</i> | <i>118.9</i> | <i>120.5</i> | <i>124.9</i> | <i>100.5</i> | <i>106.5</i> | <i>111.3</i> | <i>121.3</i> | <i>127.1</i> |
| April | 115.3 | 119.2 | 120.4 | 124.9 | 100.7 | 107.1 | 112.3 | 122.5 | 127.9 |
| May | 115.5 | 119.2 | 120.4 | 124.9 | 101.5 | 107.1 | 112.3 | 122.7 | 127.9 |
| June | 115.6 | 119.3 | 120.5 | 124.9 | 101.5 | 107.1 | 115.5 | 122.7 | 129.9 |
| <i>2nd Quarter</i> | <i>115.5</i> | <i>119.3</i> | <i>120.5</i> | <i>124.9</i> | <i>101.3</i> | <i>107.1</i> | <i>113.4</i> | <i>122.6</i> | <i>128.6</i> |
| July | 116.9 | 120.9 | 121.5 | 126.9 | 105.4 | 108.1 | 116.4 | 124.6 | 134.4 |
| August | 117.5 | 121.0 | 121.6 | 127.4 | 105.4 | 108.6 | 116.4 | 124.6 | 135.1 |
| September | 118.1 | 121.0 | 121.4 | 127.4 | 105.4 | 109.4 | 117.0 | 124.6 | 135.1 |
| <i>3rd Quarter</i> | <i>117.5</i> | <i>120.9</i> | <i>121.5</i> | <i>127.2</i> | <i>105.4</i> | <i>108.7</i> | <i>116.6</i> | <i>124.6</i> | <i>134.9</i> |
| October | 118.4 | 121.2 | 124.3 | 127.6 | 105.2 | 109.4 | 117.3 | 125.3 | |
| November | 118.4 | 120.5 | 124.4 | 128.4 | 105.3 | 109.5 | 117.8 | 126.1 | |
| December | 118.6 | 120.6 | 124.4 | 128.5 | 105.3 | 109.5 | 118.4 | 126.1 | |
| <i>4th Quarter</i> | <i>118.4</i> | <i>120.8</i> | <i>124.3</i> | <i>128.2</i> | <i>105.3</i> | <i>109.5</i> | <i>117.8</i> | <i>125.8</i> | |
| Yearly average | 116.7 | 120.0 | 121.7 | 126.3 | 103.1 | 107.9 | 114.8 | 123.6 | |
| % change in the yearly average | 2.9 | 2.8 | 1.4 | 3.8 | 4.7 | 4.7 | 6.3 | 7.7 | |

Technical Note

Methodology for the compilation of the Construction Price Index

(i) Introduction

A Construction Price Index measures the change in the level of construction prices. The construction industry is very broad and highly diversified with considerable variations from one type of construction to another. This makes it difficult to derive generalized indices that would be applicable to the industry as a whole. The Central Statistics Office has decided to start with an index for residential buildings only.

(ii) Types of Construction Price Indices

Different approaches to index number compilation are used depending on the purpose for which the index is required. There are two main types of construction price indices:

The Output Price Index

In this approach, specific projects representative of the various categories of construction works are selected as models and construction firms are surveyed and asked to provide estimates of the prevailing market prices for each of the projects. As such, the output price indices respond to the changes in prices of materials used and cost of labour, as well as changes in overhead costs and profits.

The Input Price Index

The index is based on prices of a representative selection of basic inputs (labour, plant, materials and transport) that go into the construction work. Hence, the input price index measures the change in the cost of resources to the contractor, and not the change in the price that the client pays.

The office opted for the input price index which, though more limiting than the output price index, is simpler and less expensive to construct and maintain.

(iii) Selection of representative dwelling

Since it would have been too time-consuming and costly to include all major types of residential dwellings, it was decided to restrict the index to the most common type identified at the 2000 Housing Census. The drawings of the prototype model dwelling were provided by the Mauritius Housing Company Ltd. A description of the model is given at paragraph (viii) below.

(iv) Weighting scheme

The quantity survey work to determine the weighting pattern for the index was entrusted to a private firm of Quantity Surveyors following established procedures.

Any given construction consists of an assembly of a certain number of stages or work categories. Nineteen stages or broad work categories were identified and detailed costs of inputs in terms of labour, plant, materials and transport that go into the construction of the selected model were calculated under each of the 19 work categories. The weights have been worked out in such a way that they can be presented in terms of inputs as well as work categories. For publication purposes, weights and sub-indices are shown not only for the 19 work categories, but also for the 4 broad input categories of labour, plant, materials and transport, the “materials” category being further sub-divided into 17 sub-categories.

(v) Data collection

The data needed for the computation of the index are collected every month from a sample of 53 outlets in 8 regions of the island. Prices are collected in respect of some 84 items, representative of all items that go into the computation of the index.

(vi) Calculation of the Construction Price Index

The Construction Price Index is a weighted average of price relatives of individual items, based on the modified Laspeyres formula:

$$I_t = \frac{\sum W_i (P_{it} / P_{io})}{\sum W_i} \times 100$$

where I_t = index for current period t

P_{io} = price of item i at base period 0

P_{it} = price of item i at current period t

W_i = weight of item i

The base period is the 4th quarter of 2001.

(vii) Uses

- a) Construction price indices give an indication of the change in the level of prices of construction works. As such, they are used as deflators for the measurement of real growth in the construction sector.

- b) They are also useful for evaluating cost fluctuations in contracts regarding construction works and for renegotiating owner-tenant agreements.

(viii) Description of model dwelling

The model used is a single storey (ground floor) detached house of 128.30 square metres (1,381 square feet) in floor area measured at plinth level to the external face of the external walls. The overall area is inclusive of 18.55 square metres (200 square feet) in respect of a garage.

It comprises two bedrooms, a living-dining room, a kitchen, a toilet, a bathroom, a verandah and an attached garage. The building has concrete block walls, reinforced concrete flat roof, internal flush plywood doors, glazed metal openings, screeded floor and roof, tiling to floor and walls of w.c. and bathroom and kitchen worktop; the ceilings and walls are rendered and painted both internally and externally. Plumbing, sanitary installation and electrical installation are included as well as drainage which is to be connected to the sewerage system.

Provision has been made, in the form of more substantial foundations and of stub columns on the roof, for converting the single into a two-storey house eventually. Site works are restricted to spreading and leveling surplus excavated material around the site.

The index excludes the cost of the building permit and the draughtman's fee; these two items represent 0.47 % and 1.30% of the total cost respectively.

It is assumed that although the house is not constructed by a contractor, the client has recourse to the services of a foreman.