

INTERNATIONAL TRAVEL & TOURISM
Year 2005

TABLE OF CONTENTS:

Introduction

Definitions and notes

Table 1 :- Passenger Traffic by month, 2003 - 2005

Table 2 :- Departure of Mauritian residents by country of disembarkation, 2004 - 2005

Table 3 :- Tourist arrivals by month, 2003 - 2005

Table 4 :- Tourist arrivals by main purpose of visit, 2004 - 2005

Table 5 :- Tourist Arrivals by Country of Residence, 2004 - 2005

Table 6 :- Selected Tourism Statistics, 2002 - 2005

Table 7 :- Hotels, rooms and bedplaces, 2002 - 2005

Table 8 :- Monthly Occupancy Rates (%) for All Hotels and "Large" Hotels, 2003 - 2005

Table 9 :- Employment in the tourist industry as at end of March, 2001 - 2005

Annex

INTERNATIONAL TRAVEL & TOURISM

Year 2005

1. Passenger Traffic

1.1 Total Passenger Traffic

Passenger traffic for the year 2005 totalled 1,966,045, made up of 989,913 arrivals and 976,132 departures. Compared to the preceding year, these figures represent increases of 5.3% in arrivals and 6.3% in departures. Movements by sea accounted for 2.8% of arrivals and 2.9% of departures. Further details on monthly trends are given in Table 1.

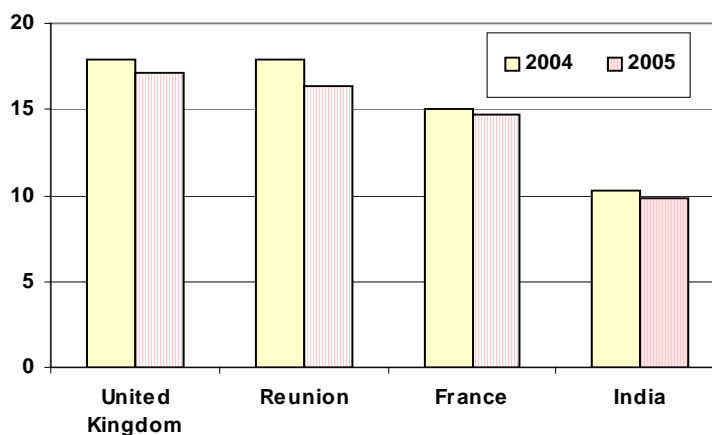
1.2 Excursionists

Total arrivals by air included 10,779 “excursionists”, i.e. visitors arriving and leaving on the same day. Of these excursionists, 3,043 (28.2%) came from Reunion Island while 2,927 (27.2%) came from France. Total arrivals by sea included 11,553 “cruise excursionists” (6,294 passengers and 5,259 crews) aboard 24 cruise ships which visited our port in 2005.

1.3 Mauritian Residents

During the period under review, the number of Mauritian residents travelling abroad went up by 1.6% from 179,961 in 2004 to 182,923 in 2005 and accounted for 18.7 % of total departures. The major destinations were United Kingdom, Reunion Island, France and India, accounting for 17%, 16%, 15% and 10% of total departures respectively. Chart 1 shows the percentage distribution by major destinations for 2004 and 2005.

Chart 1 - Percentage distribution of Mauritian departures by major destinations, 2004 and 2005

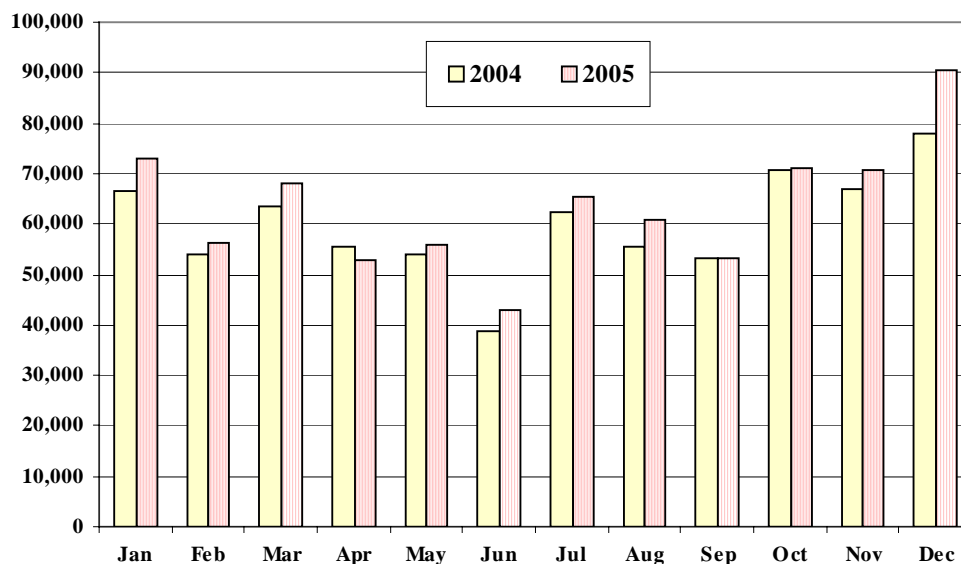


The following trends were recorded in the number of Mauritians visiting the major destinations: Hong Kong (+36.9%), Malagasy Republic (+33.1%), United Arab Emirates (+11.3%), Singapore (+6.8%), Australia (+3.6%), Republic of South Africa (+2.0%), France (-0.7%), India (-2.3%), United Kingdom (-2.9%) and Reunion Island (-7.1%). Table 2 shows a more detailed distribution of countries visited.

1.4 Tourist Arrivals

Tourist arrivals for the year 2005 attained 761,063 which were 5.9% higher than the figures 718,861 in 2004. Chart 2 shows monthly tourist arrivals for 2004 and 2005. Further details are given in Tables 3 to 6.

Chart 2 - Monthly Tourist Arrivals, 2004 and 2005



Around 91% of the tourists came mainly for holidays while 4.0% were on business/conference trips and another 3.7% were in transit (Table 4).

Arrivals from Europe, which accounted for 66.1% of total tourist arrivals, expanded by 5.4% to 502,715 in the year 2005 against 477,041 in 2004. Arrivals from France, our leading market, representing 29.0% of total tourist arrivals and 43.8% of the European market, rose by 4.8% to reach 220,421. Among the other major markets, growth was recorded in arrivals from Germany (+7.1%), Italy (+5.3%) and the United Kingdom (+3.0%).

Trends among the other European countries were as follows: CIS (+28.7%), Spain (+14.2%), Belgium (+5.3%), Netherlands (+5.0%), Austria (+1.3%), Switzerland (-2.1%) and Sweden (-8.4%).

In 2005, arrivals from Africa, with a share of 24.3% of total tourist arrivals, registered a growth of 5.4% to attain 185,208. With regards to performance of the major markets of the region, arrivals from the Republic of South Africa increased by 11.1% and those from Reunion Island by 2.6%. Changes in arrivals from other African countries were as follows: Seychelles (+35.2%), Comoros (+22.9%), Zimbabwe (+3.2%), Kenya (-9.8%) and Malagasy Republic (-10.4%).

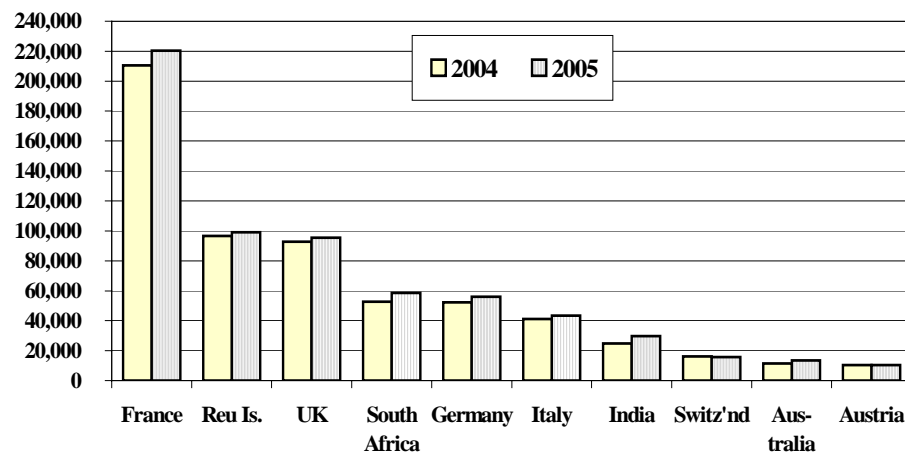
Tourist arrivals from the Asian market, which constituted 6.5% of the total, were up by 8.6% during the reference period. Arrivals from India, our major source on this continent, expanded by 20.4% to reach 29,755. The performance of other Asian countries was as follows: People's Republic of China (+4.4%), Japan (-5.0%), Malaysia (-21.1%), United Arab Emirates (-21.6%), Singapore (-23.2%) and Hong Kong (-39.2%).

Arrivals from Oceania went up by 19.5% to 14,424 due to increases of 18.6% and 35.0% in arrivals from Australia and the other Oceanian countries respectively.

Arrivals from the continent of America rose by 5.2% to reach 8,850. This was mainly attributed to increases of 13.6% from USA and 4.4% from “Other American” countries, partly offset by a fall of 9.5% in arrivals from Canada.

Tourist arrivals from top ten markets for the year 2004 and 2005 are given in Chart 3.

Chart 3 - Tourist Arrivals from Top Ten Markets, 2004 and 2005



2. Tourist Nights

Total tourist nights spent in the country in 2005 is estimated at Rs 7.5 million, up by 5.9% over the preceding year (Table 6).

3. Hotel Statistics

At the end of December 2005, there was a total of 99 registered hotels in operation. Owing to renovation, one hotel was not operational. The total room capacity for these registered hotels in operation was 10,497 with 21,072 bed places (Table 7). The room occupancy rate for all hotels for the year 2005 averaged 63% while the bed occupancy rate was 57% (Table 8).

“Large” hotels, i.e. well-established beach hotels with more than 80 rooms, numbered 42 (42% of all registered hotels). These "Large" hotels had a room capacity of 7,981 with 16,027 bedplaces, representing 76% of both total room capacity and total bedplaces. The average room occupancy rate for these hotels for 2005 was of the order of 66%, while bed occupancy rate averaged 59% (Table 8).

4. Gross Tourism Receipts

Data from the Bank of Mauritius indicate that gross tourism receipts for the year 2005 amounted to Rs 25,704 million, which were 9.6% higher than the figure of Rs 23,448 million in 2004.

5. Employment

According to the Survey of Employment and Earnings, direct employment in travel and tourism establishments employing 10 persons or more, stood at 25,377 at the end of March 2005, that is 12.2% higher than last year. Of this number, 76% or 19,226 were engaged in hotels (Table 9).

6. Forecast Year 2006

Based on recent trends, including figures for January 2006, and taking into consideration measures for the review of our air access policy and more promotional campaigns, tourist arrivals for year 2006 would be around 825,000, i.e 8.4% higher than last year. According to the Bank of Mauritius, tourism receipts for the year 2006 will be around Rs 29,424 million (+14.5%).

Central Statistics Office

Ministry of Finance and Economic Development

Port - Louis

February 2006

Contact person:

Mrs. R.Moraby
Statistician
Ministry of Tourism,Leisure and
External Communications
Ken Lee Tower
Port Louis
Tel: 210-9832
Fax: 210-3901
Email: rmoraby@mail.gov.mu

DEFINITION AND NOTES

1. Tourist

A tourist is defined as a non-resident staying for more than 24 hours but less than a year, who is not involved in any gainful occupation in the country during his/her stay.

2. Transit

A transit passenger is one who stops over in the country for flight connections to other destinations. There are two types of transit passengers:

Type I : Passengers who do not leave the transit area of the airport or the harbour.

Type II : Passengers who do leave the airport or harbour and stay in the country for more than 24 hours but only for flight connection purposes.

Only Type II transit passengers, as defined above, are included in the definition of "Tourists".

3. Excursionist or Same-day Visitor

Excursionists are non-resident visitors, other than those who do not leave the airport, who stay in the country for less than 24 hours. They also include passengers as well as crews of *cruise ships*.

4. Tourist Nights

"Tourist nights" means the total number of nights spent in the country by tourists, as defined above, during the period under review.

5. Large Hotels

Large hotels are well established beach hotels with more than 80 rooms.

6. Occupancy rate

The room/bed occupancy rate is the ratio of room/bed nights rented to the total number of room/bed nights available.

$$= \frac{\text{Total number of room/bed nights rented}}{\text{Total number of room/bed nights available}} \times 100$$

7. CIS

CIS denotes the Commonwealth of Independent States, which consists of the states of the former Soviet Union.

Table 1 :- Passenger Traffic ¹ by month, 2003 - 2005

Month	2003		2004		2005	
	Arrivals	Departures	Arrivals	Departures	Arrivals	Departures
January	82,764	101,301	86,669	106,951	93,809	110,249
February	66,756	62,720	69,256	63,267	71,350	69,084
March	84,501	87,275	82,050	78,071	85,353	85,395
<u>1st Quarter</u>	<u>234,021</u>	<u>251,296</u>	<u>237,975</u>	<u>248,289</u>	<u>250,512</u>	<u>264,728</u>
April	70,795	65,828	72,901	66,782	71,302	73,753
May	68,044	71,992	69,183	71,206	73,111	75,814
June	57,261	55,374	54,924	56,167	61,487	55,736
<u>2nd Quarter</u>	<u>196,100</u>	<u>193,194</u>	<u>197,008</u>	<u>194,155</u>	<u>205,900</u>	<u>205,303</u>
<i>1st Semester</i>	<i>430,121</i>	<i>444,490</i>	<i>434,983</i>	<i>442,444</i>	<i>456,412</i>	<i>470,031</i>
July	77,754	62,785	84,223	68,707	88,752	73,586
August	76,492	88,513	77,716	88,594	83,314	94,535
September	66,150	65,894	69,018	70,521	70,784	74,767
<u>3rd Quarter</u>	<u>220,396</u>	<u>217,192</u>	<u>230,957</u>	<u>227,822</u>	<u>242,850</u>	<u>242,888</u>
<i>Jan. to Sep.</i>	<i>650,517</i>	<i>661,682</i>	<i>665,940</i>	<i>670,266</i>	<i>699,262</i>	<i>712,919</i>
October	80,491	75,517	87,848	81,795	87,365	84,467
November	77,614	70,212	83,404	83,236	88,491	85,783
December	96,368	76,779	102,523	83,163	114,795	92,963
<u>4th Quarter</u>	<u>254,473</u>	<u>222,508</u>	<u>273,775</u>	<u>248,194</u>	<u>290,651</u>	<u>263,213</u>
<i>2nd Semester</i>	<i>474,869</i>	<i>439,700</i>	<i>504,732</i>	<i>476,016</i>	<i>533,501</i>	<i>506,101</i>
Whole Year	904,990	884,190	939,715	918,460	989,913	976,132

¹ Excluding inter islands traffic

**Table 2 :- Departure of Mauritian residents by country of disembarkation,
2004 - 2005**

Country of disembarkation	2004	2005	% Change
EUROPE	67,998	66,005	-2.9
Belgium	205	26	-87.3
France	27,021	26,840	-0.7
Germany	3,166	2,121	-33.0
Italy	3,127	3,643	16.5
Switzerland	1,959	1,581	-19.3
United Kingdom	32,276	31,342	-2.9
Other European	244	452	85.2
AFRICA	56,307	57,400	1.9
Kenya	1,562	44	-97.2
Malagasy Republic	5,794	7,710	33.1
Reunion	32,274	29,994	-7.1
Seychelles	2,977	5,880	97.5
S. Africa, Rep. of	13,128	13,384	2.0
Zimbabwe	494	356	-27.9
Other African	78	32	-59.0
ASIA	48,363	52,203	7.9
Hong Kong SAR ¹	7,117	9,746	36.9
India	18,405	17,979	-2.3
Malaysia	2,334	871	-62.7
Singapore	8,821	9,417	6.8
Saudi Arabia	1,942	3,257	67.7
United Arab Emirates	9,724	10,818	11.3
Other Asian	20	115	475.0
OCEANIA	6,760	7,002	3.6
Australia	6,760	7,000	3.6
Other Oceanian	0	2	-
AMERICA	86	73	-15.1
U.S.A	13	14	7.7
Canada	73	58	-20.5
Other American	0	1	-
NOT STATED	447	240	-46.3
All Countries	179,961	182,923	1.6

¹ Special Administrative Region of China

Table 3 :- Tourist arrivals by month, 2003 - 2005

Month	Number		
	2003	2004	2005 ¹
January	64,762	66,543	73,053
February	53,647	54,104	56,367
March	63,129	63,631	67,931
<i>1st Quarter</i>	<u>181,538</u>	<u>184,278</u>	<u>197,351</u>
April	57,217	55,599	52,971
May	54,710	53,974	55,995
June	41,841	38,826	42,994
<i>2nd Quarter</i>	<u>153,768</u>	<u>148,399</u>	<u>151,960</u>
<i>1st Semester</i>	335,306	332,677	349,311
July	58,403	62,173	65,462
August	56,844	55,342	60,746
September	50,293	53,102	53,233
<i>3rd Quarter</i>	<u>165,540</u>	<u>170,617</u>	<u>179,441</u>
<i>Jan. to Sep.</i>	500,846	503,294	528,752
October	64,917	70,793	70,999
November	61,984	66,960	70,793
December	74,271	77,814	90,519
<i>4th Quarter</i>	<u>201,172</u>	<u>215,567</u>	<u>232,311</u>
<i>2nd Semester</i>	366,712	386,184	411,752
Whole Year	702,018	718,861	761,063

¹ Provisional**Table 4 :- Tourist arrivals by main purpose of visit, 2004 - 2005**

Purpose of visit	2004	2005 ¹	% Change
Holiday	653,818	692,084	5.9
Business	24,970	24,621	-1.4
Transit	25,055	27,790	10.9
Conference	5,446	5,543	1.8
Sports	1,327	1,372	3.4
Other & Not Stated	8,245	9,653	17.1
Total	718,861	761,063	5.9

¹ Provisional

Table 5 :- Tourist Arrivals by Country of Residence, 2004 - 2005

Country of residence	Year 2004	2005 ¹													% Change 2005/2004
		Jan	Feb	Mar	Apr	May	Jun	Jul	Aug	Sep	Oct	Nov	Dec	Year	
EUROPE	477,041	46,047	42,889	45,215	36,135	35,039	25,947	39,213	37,783	35,148	49,177	54,249	55,873	502,715	5.4
Austria	10,304	1,161	1,111	932	646	877	381	686	566	714	990	1,253	1,123	10,440	1.3
Belgium	8,524	674	534	834	453	729	660	895	520	678	1,109	889	998	8,973	5.3
France	210,411	22,470	20,050	20,463	17,333	14,478	9,600	17,600	15,027	10,991	20,789	26,307	25,313	220,421	4.8
Germany	52,277	4,857	4,267	5,447	4,112	4,577	2,871	3,642	4,260	4,716	5,586	6,255	5,393	55,983	7.1
Italy	41,277	4,844	3,840	3,892	2,925	2,834	2,023	2,148	4,112	3,123	3,131	3,833	6,753	43,458	5.3
Netherlands	4,867	279	335	375	331	506	255	518	409	484	611	507	501	5,111	5.0
Spain	8,475	476	753	721	475	647	859	744	1,180	1,245	886	877	819	9,682	14.2
Sweden	4,609	547	648	470	163	124	148	147	84	138	621	577	557	4,224	-8.4
Switzerland	16,110	1,417	1,329	1,230	1,342	711	479	1,170	497	1,165	2,215	2,141	2,077	15,773	-2.1
United Kingdom	92,652	5,212	6,000	7,841	6,686	7,745	6,837	9,322	9,001	9,454	10,232	8,509	8,568	95,407	3.0
CIS ²	4,383	1,022	396	427	422	409	181	216	291	379	431	529	938	5,641	28.7
Other European	23,152	3,088	3,626	2,583	1,247	1,402	1,653	2,125	1,836	2,061	2,576	2,572	2,833	27,602	19.2
AFRICA	175,649	21,563	8,089	17,845	12,078	14,145	9,519	19,373	16,932	12,094	15,785	10,369	27,416	185,208	5.4
Comoros	949	98	56	74	107	110	87	103	122	124	105	60	120	1,166	22.9
Kenya	1,506	77	97	103	100	95	79	122	165	115	95	121	189	1,358	-9.8
Malagasy Rep.	8,256	615	699	562	611	522	496	592	814	468	658	628	732	7,397	-10.4
Reunion	96,510	15,872	3,072	9,817	4,499	8,717	3,088	12,885	9,587	3,535	9,531	4,620	13,813	99,036	2.6
Seychelles	7,456	527	517	598	934	822	856	857	954	791	866	950	1,412	10,084	35.2
S. Africa, Rep. of	52,609	3,841	3,095	5,982	4,931	3,320	4,493	4,237	4,334	6,595	3,890	3,507	10,221	58,446	11.1
Zimbabwe	2,345	138	139	222	307	147	116	168	305	159	177	143	398	2,419	3.2
Other African	6,018	395	414	487	589	412	304	409	651	307	463	340	531	5,302	-11.9

¹ Provisional

² Commonwealth of Independent States (Ex Soviet Union Countries)

Table 5 (contd.) :- Tourist Arrivals by Country of Residence, 2004 - 2005

Country of residence	Year 2004	2005 ¹													% Change 2005/2004
		Jan	Feb	Mar	Apr	May	Jun	Jul	Aug	Sep	Oct	Nov	Dec	Year	
ASIA	45,325	3,276	4,092	3,250	3,024	5,142	5,548	4,584	4,074	3,846	3,797	4,005	4,564	49,202	8.6
Hong Kong SAR ³	836	39	90	58	31	23	42	51	46	28	26	32	42	508	-39.2
India	24,716	1,756	2,282	1,882	1,904	3,815	3,614	2,452	2,066	2,264	2,353	2,386	2,981	29,755	20.4
Japan	1,724	140	243	139	97	78	77	132	161	155	108	104	204	1,638	-5.0
Malaysia	2,006	80	124	133	67	123	176	119	158	87	160	216	139	1,582	-21.1
P. Rep. of China	5,291	439	696	412	322	329	535	566	439	429	482	492	385	5,526	4.4
Singapore	2,329	73	106	129	102	205	265	144	121	151	156	173	164	1,789	-23.2
United Arab Emirates	1,715	110	53	96	81	160	202	208	189	72	32	68	73	1,344	-21.6
Other Asian	6,708	639	498	401	420	409	637	912	894	660	480	534	576	7,060	5.2
OCEANIA	12,068	1,052	651	909	1,005	951	1,247	1,431	1,278	1,602	1,379	1,404	1,515	14,424	19.5
Australia	11,373	860	622	878	951	888	1,170	1,339	1,221	1,500	1,291	1,309	1,457	13,486	18.6
Other Oceanian	695	192	29	31	54	63	77	92	57	102	88	95	58	938	35.0
AMERICA	8,409	1,083	622	685	634	654	689	799	609	478	816	703	1,078	8,850	5.2
USA	4,305	510	306	429	400	363	388	424	371	246	446	373	634	4,890	13.6
Canada	2,341	165	171	154	115	171	192	243	161	102	192	151	302	2,119	-9.5
Other American	1,763	408	145	102	119	120	109	132	77	130	178	179	142	1,841	4.4
OTHER & N.STATED	369	32	24	27	95	64	44	62	70	65	45	63	73	664	79.9
All Countries	718,861	73,053	56,367	67,931	52,971	55,995	42,994	65,462	60,746	53,233	70,999	70,793	90,519	761,063	5.9

¹ Provisional

³ Special Administrative Region of China

Table 6 :- Selected Tourism Statistics, 2002 - 2005

Year		Tourist arrivals (Number)	Tourist nights (000)	Tourism receipts ¹ (Rs million)
	2002	681,648	6,769	18,328
	2003	702,018	6,952	19,415
	2004	718,861	7,119	23,448
	2005	761,063	7,537	25,704
2003	1st Qr.	181,538	1,785	4,705
	2nd Qr.	153,768	1,527	4,251
	1st Semester	335,306	3,312	8,956
	3rd Qr.	165,540	1,640	4,286
	4th Qr.	201,172	2,000	6,173
	2nd Semester	366,712	3,640	10,459
2004	1st Qr.	184,278	1,815	6,487
	2nd Qr.	148,399	1,474	5,448
	1st Semester	332,677	3,289	11,935
	3rd Qr.	170,617	1,690	4,912
	4th Qr.	215,567	2,140	6,601
	2nd Semester	386,184	3,830	11,513
2005 ²	1st Qr.	197,351	1,945	7,076
	2nd Qr.	151,960	1,510	5,508
	1st Semester	349,311	3,455	12,584
	3rd Qr.	179,441	1,780	5,428
	4th Qr.	232,311	2,302	7,692
	2nd Semester	411,752	4,082	13,120

¹ Source: Bank of Mauritius² Provisional**Table 7 :- Hotels, rooms and bedplaces, 2002 - 2005**

Year	Number as at end of period			
	Hotels	Rooms	Bedplaces	
2002	95	9,623	19,597	
2003	97	9,647	19,727	
2004	103	10,640	21,355	
2005	99	10,497	21,072	
2003	1st Qr.	96	9,638	19,671
	2nd Qr.	94	9,574	19,515
	3rd Qr.	96	9,425	19,249
	4th Qr.	97	9,647	19,727
2004	1st Qr.	94	9,563	19,527
	2nd Qr.	97	9,944	20,295
	3rd Qr.	98	10,008	20,115
	4th Qr.	103	10,640	21,355
2005 ¹	1st Qr.	100	10,571	21,239
	2nd Qr.	97	10,224	20,545
	3rd Qr.	98	10,447	20,973
	4th Qr.	99 ²	10,497	21,072

¹ Provisional² Excluding one hotel not operational because of renovation works.

Table 8 :- Monthly Occupancy Rates (%) for All Hotels and "Large" Hotels, 2003 - 2005

Month	All Hotels						"Large" Hotels					
	2003		2004		2005		2003		2004		2005	
	Room	Bed	Room	Bed	Room	Bed	Room	Bed	Room	Bed	Room	Bed
January	68	59	69	61	73	66	69	61	72	64	77	69
February	66	58	64	57	65	59	69	61	68	60	70	63
March	63	56	66	58	64	57	66	58	70	62	68	61
<i>1st Quarter</i>	<u>66</u>	<u>58</u>	<u>67</u>	<u>59</u>	<u>68</u>	<u>61</u>	<u>68</u>	<u>60</u>	<u>70</u>	<u>62</u>	<u>72</u>	<u>64</u>
April	63	55	63	56	56	50	67	59	67	59	59	53
May	62	55	59	52	55	49	64	56	62	55	58	52
June	49	43	47	41	45	40	50	44	48	43	45	41
<i>2nd Quarter</i>	<u>58</u>	<u>51</u>	<u>56</u>	<u>50</u>	<u>53</u>	<u>48</u>	<u>60</u>	<u>53</u>	<u>59</u>	<u>52</u>	<u>55</u>	<u>49</u>
<i>1st Semester</i>	62	54	61	54	60	53	64	57	64	57	62	56
July	53	47	52	47	54	49	54	48	55	49	56	50
August	61	54	58	52	64	57	64	56	62	56	67	60
September	63	55	64	57	63	57	67	59	69	62	67	60
<i>3rd Quarter</i>	<u>59</u>	<u>52</u>	<u>58</u>	<u>52</u>	<u>61</u>	<u>54</u>	<u>62</u>	<u>54</u>	<u>62</u>	<u>55</u>	<u>63</u>	<u>57</u>
<i>Jan. to Sep.</i>	61	54	60	53	60	54	63	56	64	56	62	56
October	68	60	70	63	68	61	72	64	75	67	73	65
November	70	61	74	66	78	70	74	65	78	70	83	74
December	68	60	68	61	74	66	70	62	72	64	78	70
<i>4th Quarter</i>	<u>69</u>	<u>61</u>	<u>70</u>	<u>63</u>	<u>73</u>	<u>66</u>	<u>72</u>	<u>64</u>	<u>75</u>	<u>67</u>	<u>78</u>	<u>70</u>
<i>2nd Semester</i>	64	56	64	58	67	60	67	59	68	62	71	63
Whole Year	63	55	63	56	63	57	66	58	66	59	66	59

¹ Provisional

Table 9 :- Employment in the tourist industry as at end of March, 2001 - 2005

Year	2001	2002	2003	2004	2005¹
Establishments					
Restaurants	1,269	1,252	1,719	1,623	1,809
Hotels	14,601	15,503	16,096	16,853	19,226
Travel and Tourism	3,652	3,974	4,045	4,137	4,342
Total	19,522	20,729	21,860	22,613	25,377

¹ Provisional

Source: Survey of Employment and Earnings in large Establishments (i.e employing 10 or more persons)

TECHNICAL NOTE

Sources of data

The main source of data for the compilation of passenger traffic statistics is the Passport and Immigration Office which maintains a database of all passengers entering and leaving the country. The data are extracted from the Embarkation/ Disembarkation cards filled in by all incoming and outgoing passengers. At the end of every month, passenger traffic for that particular month is downloaded and supplied to the statistics unit of the Ministry of Tourism, Leisure and External Communications within fifteen days. Additional data on cruises are supplied by the Mauritius Ports Authority.

To supplement the recurrent statistics a Survey of Outgoing Tourists (SOT) is conducted every two years since 1984 jointly by the Central Statistics Office and the Ministry of Tourism, Leisure and External Communications. This survey covers a representative sample of tourists at departure and provides qualitative and quantitative information on tourists. Results of the survey are published in a report.

Tourism receipts

The Bank of Mauritius is responsible for the estimation of tourism receipts based on monthly statements of Inward and Outward Remittances of Commercial Banks.

Monthly Occupancy Rates

All hotels are contacted by phone at the end of every month for data on room/bed nights available and rented during the month for the calculation of room and bed occupancy rates.

Short-term projections of tourist arrivals

A Tourism Statistics Committee grouping various stakeholders of the tourism industry meet regularly under the chairmanship of the Director of the Central Statistics Office to discuss performance of the tourism sector and to provide information for short-term forecast of tourist arrivals.

Publications

The regular publications of the unit are:

- Monthly tourist arrivals (by mid of each month)
- Quarterly Economic and Social Indicators on International Travel and Tourism (with a lag of seven weeks)
- Quarterly tourism statistics (Pamphlet)
- Digest of International Travel and Tourism (August)
- Handbook of statistical data on tourism (August)
- Report of the Survey of Outgoing Tourists