

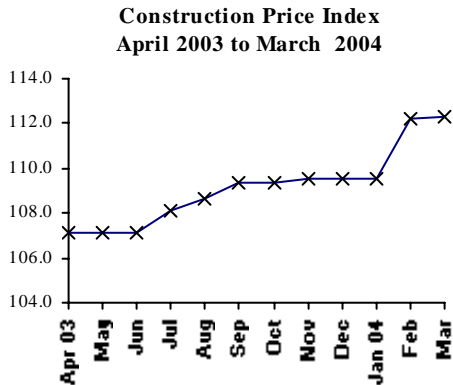
# CONSTRUCTION PRICE INDEX

( Input Cost Index for the construction of a single storey house )  
1<sup>st</sup> Quarter 2004

## 1. Introduction

This issue of the Economic and Social Indicators presents the monthly Construction Price Index (residential) for the first quarter of 2004 with fourth quarter 2001 as base period. Figures showing the evolution of the index during the past twelve months are also included. A description of the model dwelling used for constructing the index is given at Annex. Figures have been rounded to one decimal place although they have been calculated to many decimal places.

## 2. Changes in the Construction Price Index.

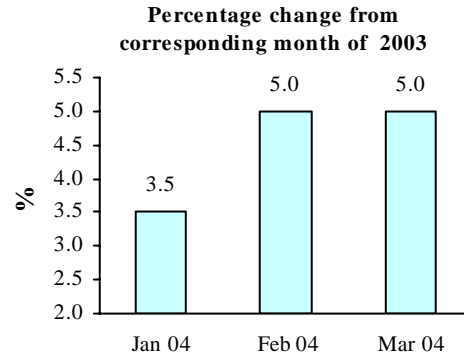


The Construction Price Index which stood at 109.5 at the end of December 2003, did not register any change in January. It however increased to 112.2 in February and to 112.3 in March 2004.

Higher prices of cement, paints and metallic openings contributed most to the 2.5% (or 2.7 points) increase in February.

The marginal increase of 0.1% (or 0.1 point) in March was attributable to

increases in the prices of concrete blocks and electric wires.



Compared to the corresponding months of 2003, the index shows increases of 3.5% for January and 5.0% for both the months of February and March 2004.

## 3. Changes by Input Categories

Changes by input categories are shown in Tables 1.1 to 1.5. During the first quarter of 2004, no change was registered in the sub-indices for “Labour”, “Hire of Plant” and “Transport” categories.

As regards the sub-index for “Materials” category, the level attained in December (112.1) was maintained in January. It then increased to reach 116.9 in February as a result of higher prices of cement (20%), metallic openings (5%) and paints (6%). In March, it attained the level of 117.0 due to increases in the prices of concrete blocks (1%) and electrical wires (2%).

The net monthly contributions of the input categories to the index during the period April 2003 to March 2004 are shown in Table 1.4.

Quarterly averages of the monthly indices by input categories and the percentage change from quarter to quarter are shown in Table 1.5. Only the sub-index for “Materials” registered an increase (2.9%) during the first quarter of 2004.

#### 4. Changes by Work Categories

Changes by work categories are shown in Tables 2.1 to 2.5.

There was no change in the sub-indices in the month of January.

Higher cost of cement in February affected mainly the following work categories: “Bed and screed to floor and roof” (7.9%), “Concrete” (5.9%) and “Rendering to wall/ceiling” (3.1%). In the same month, “Painting” sub-index rose by 2.6% as a result of higher prices of paint and “Metal openings” sub-index moved up by 1.7% following price increases of metallic openings.

In March, increases in the price of blocks pushed up the “Blockwork” sub-index by 0.7% whereas higher cost of electrical wires resulted in an increase of 0.4% in the “Electrical Installation” sub-index.

Table 2.4 shows the net monthly contributions of the work categories to the index since April 2003.

Quarterly averages of the monthly indices by work categories and the percentage change from quarter to quarter are shown in Table 2.5.

#### 5. Past Trends

Table 3 summarises the monthly indices, the quarterly and yearly averages as well as the percentage changes in the yearly average since 1998. Indices for the years 1998 to 2001 have been worked out using as base the fourth quarter of 1993, while the base period for the calculation of the index from 2002 onwards is the fourth quarter of 2001.

The two series are not strictly comparable. A crude method of converting an index from the new base to the old base is to multiply the new index by 1.282. Conversely, an index on the old base can be converted to the new base by dividing the old index by 1.282.

*Central Statistics Office  
Ministry of Finance and Economic Development,  
Port Louis  
May 2004*

Contact person:	Mr. A. Ramasamy Senior Statistical Officer Central Statistics Office LIC Centre Port-Louis Tel: 212 2316/17 Fax: 211 4150 Email: <a href="mailto:cso-const@mail.gov.mu">cso-const@mail.gov.mu</a>
-----------------	--

## Input Cost Index for the construction of a single storey house

(Base: 4th Quarter 2001 = 100)

**Table 1.1: Monthly sub-indices by input categories, April 2003 to March 2004**

Input Categories	Weight	2003										2004		
		Apr	May	Jun	Jul	Aug	Sep	Oct	Nov	Dec	Jan	Feb	Mar	
<b>LABOUR</b>	<b>34.5</b>	<b>103.4</b>	<b>103.4</b>	<b>103.4</b>	<b>106.5</b>	<b>106.5</b>	<b>106.5</b>	<b>106.5</b>	<b>106.5</b>	<b>106.5</b>	<b>106.5</b>	<b>106.5</b>	<b>106.5</b>	
<b>HIRE OF PLANT</b>	<b>3.0</b>	<b>101.6</b>	<b>101.6</b>	<b>101.6</b>	<b>101.6</b>	<b>101.6</b>	<b>101.6</b>	<b>101.6</b>	<b>101.6</b>	<b>101.6</b>	<b>101.6</b>	<b>101.6</b>	<b>101.6</b>	
<b>MATERIALS :</b>	<b>57.2</b>	<b>109.7</b>	<b>109.7</b>	<b>109.7</b>	<b>109.8</b>	<b>110.6</b>	<b>111.9</b>	<b>111.9</b>	<b>112.1</b>	<b>112.1</b>	<b>112.1</b>	<b>116.9</b>	<b>117.0</b>	
Hardcore (remplissage)	1.0	110.5	110.5	110.5	110.5	110.5	110.5	110.5	110.5	110.5	110.5	110.5	110.5	
Cement	10.0	113.8	113.8	113.8	113.8	113.8	113.8	113.8	113.8	113.8	113.8	136.3	136.3	
Sand	6.1	105.6	105.6	105.6	105.6	105.6	111.1	111.1	111.1	111.1	111.1	111.1	111.1	
Aggregate	2.9	109.8	109.8	109.8	109.8	109.8	118.4	118.4	118.4	118.4	118.4	118.4	118.4	
Block	4.4	113.2	113.2	113.2	113.2	113.2	117.0	117.0	117.0	117.0	117.0	117.0	118.7	
Steel bars (armature)	5.8	114.0	114.0	114.0	114.1	120.9	120.9	120.9	121.5	121.5	121.5	121.5	121.5	
Galvanised corrugated cast iron sheeting	1.2	101.9	101.9	101.9	101.9	101.9	101.9	101.9	101.9	101.9	101.9	103.8	103.8	
Timber: (a) Carpentry	3.9	116.4	116.4	116.4	116.0	116.0	116.0	116.0	116.0	116.0	116.0	117.8	117.8	
(b) Joinery	4.2	105.7	105.7	105.7	105.7	105.6	105.6	105.6	105.6	105.6	105.6	105.9	105.9	
Metal openings	6.1	110.5	110.5	110.5	110.5	111.7	111.7	111.7	112.3	112.3	112.3	114.3	114.3	
Ceramic tiles	1.3	101.5	101.5	101.5	101.5	101.5	101.5	101.5	101.5	101.5	101.5	101.5	101.5	
Glass and putty	0.7	104.1	104.1	104.1	104.1	104.4	104.4	104.4	104.4	104.4	104.4	104.4	104.4	
Paint	2.0	104.2	104.2	104.2	105.9	105.9	105.9	105.9	106.1	106.1	106.1	112.7	112.7	
Plumbing	1.5	108.8	108.8	108.8	108.6	108.6	108.6	108.6	108.7	108.7	108.7	109.6	109.6	
Sanitary installation	2.3	101.4	101.4	101.4	101.4	102.9	102.9	102.9	103.3	103.3	103.3	107.6	107.6	
Electrical installation	2.6	106.3	106.3	106.3	106.2	105.9	105.9	105.9	105.9	105.9	105.9	105.9	106.6	
Other	1.2	105.3	105.3	105.3	105.1	105.4	105.4	105.4	105.4	105.4	105.4	107.7	107.7	
<b>TRANSPORT</b>	<b>5.3</b>	<b>105.3</b>	<b>105.3</b>	<b>105.3</b>	<b>105.3</b>	<b>105.3</b>	<b>105.3</b>	<b>105.3</b>	<b>105.3</b>	<b>105.3</b>	<b>105.3</b>	<b>105.3</b>	<b>105.3</b>	
<b>Total</b>	<b>100.0</b>	<b>107.1</b>	<b>107.1</b>	<b>107.1</b>	<b>108.1</b>	<b>108.6</b>	<b>109.4</b>	<b>109.4</b>	<b>109.5</b>	<b>109.5</b>	<b>109.5</b>	<b>112.2</b>	<b>112.3</b>	

**Table 1.2: Percentage change from previous month by input categories, April 2003 to March 2004**

Input Categories	Weight	2003									2004		
		Mar to Apr	Apr to May	May to Jun	Jun to Jul	Jul to Aug	Aug to Sep	Sep to Oct	Oct to Nov	Nov to Dec	Dec 03 to Jan 04	Jan to Feb	Feb to Mar
<b>LABOUR</b>	<b>34.5</b>	<b>0.0</b>	<b>0.0</b>	<b>0.0</b>	<b>2.9</b>	<b>0.0</b>	<b>0.0</b>	<b>0.0</b>	<b>0.0</b>	<b>0.0</b>	<b>0.0</b>	<b>0.0</b>	<b>0.0</b>
<b>HIRE OF PLANT</b>	<b>3.0</b>	<b>0.0</b>	<b>0.0</b>	<b>0.0</b>	<b>0.0</b>	<b>0.0</b>	<b>0.0</b>	<b>0.0</b>	<b>0.0</b>	<b>0.0</b>	<b>0.0</b>	<b>0.0</b>	<b>0.0</b>
<b>MATERIALS :</b>	<b>57.2</b>	<b>0.2</b>	<b>0.0</b>	<b>0.0</b>	<b>0.0</b>	<b>0.8</b>	<b>1.2</b>	<b>0.0</b>	<b>0.1</b>	<b>0.0</b>	<b>0.0</b>	<b>4.3</b>	<b>0.1</b>
Hardcore (remplissage)	1.0	0.0	0.0	0.0	0.0	0.0	0.0	0.0	0.0	0.0	0.0	0.0	0.0
Cement	10.0	0.0	0.0	0.0	0.0	0.0	0.0	0.0	0.0	0.0	0.0	19.8	0.0
Sand	6.1	0.0	0.0	0.0	0.0	0.0	5.2	0.0	0.0	0.0	0.0	0.0	0.0
Aggregate	2.9	0.0	0.0	0.0	0.0	0.0	7.9	0.0	0.0	0.0	0.0	0.0	0.0
Block	4.4	0.0	0.0	0.0	0.0	0.0	3.4	0.0	0.0	0.0	0.0	0.0	1.4
Steel bars (armature)	5.8	0.0	0.0	0.0	0.0	5.9	0.0	0.0	0.5	0.0	0.0	0.0	0.0
Galvanised corrugated cast iron sheeting	1.2	0.5	0.0	0.0	0.0	0.0	0.0	0.0	0.0	0.0	0.0	1.8	0.0
Timber: (a) Carpentry	3.9	0.0	0.0	0.0	-0.3	0.0	0.0	0.0	0.0	0.0	0.0	1.5	0.0
(b) Joinery	4.2	-0.1	0.0	0.0	0.0	-0.1	0.0	0.0	0.0	0.0	0.0	0.3	0.0
Metal openings	6.1	0.4	0.0	0.0	0.0	1.1	0.0	0.0	0.5	0.0	0.0	1.8	0.0
Ceramic tiles	1.3	0.0	0.0	0.0	0.0	0.0	0.0	0.0	0.0	0.0	0.0	0.0	0.0
Glass and putty	0.7	0.0	0.0	0.0	0.0	0.2	0.0	0.0	0.0	0.0	0.0	0.0	0.0
Paint	2.0	0.5	0.0	0.0	1.6	0.0	0.0	0.0	0.2	0.0	0.0	6.2	0.0
Plumbing	1.5	0.0	0.0	0.0	-0.2	0.0	0.0	0.0	0.1	0.0	0.0	0.8	0.0
Sanitary installation	2.3	1.3	0.0	0.0	0.0	1.4	0.0	0.0	0.4	0.0	0.0	4.1	0.0
Electrical installation	2.6	1.5	0.0	0.0	-0.1	-0.3	0.0	0.0	0.0	0.0	0.0	0.0	0.7
Other	1.2	0.1	0.0	0.0	-0.2	0.3	0.0	0.0	0.0	0.0	0.0	2.2	0.0
<b>TRANSPORT</b>	<b>5.3</b>	<b>0.0</b>	<b>0.0</b>	<b>0.0</b>	<b>0.0</b>	<b>0.0</b>	<b>0.0</b>	<b>0.0</b>	<b>0.0</b>	<b>0.0</b>	<b>0.0</b>	<b>0.0</b>	<b>0.0</b>
<b>OVERALL CHANGE</b>		<b>0.1</b>	<b>0.0</b>	<b>0.0</b>	<b>1.0</b>	<b>0.5</b>	<b>0.7</b>	<b>0.0</b>	<b>0.1</b>	<b>0.0</b>	<b>0.0</b>	<b>2.5</b>	<b>0.1</b>

## Input Cost Index for the construction of a single storey house

(Base: 4th Quarter 2001 = 100)

**Table 1.3: Percentage change from corresponding month of previous year by input categories, April 2003 to March 2004**

Input Categories	Weight	Apr 02 to	May 02 to	Jun 02 to	Jul 02 to	Aug 02 to	Sep 02 to	Oct 02 to	Nov 02 to	Dec 02 to	Jan 03 to	Feb 03 to	Mar 03 to
		Apr 03	May 03	Jun 03	Jul 03	Aug 03	Sep 03	Oct 03	Nov 03	Dec 03	Jan 04	Feb 04	Mar 04
<b>LABOUR</b>	<b>34.5</b>	<b>3.4</b>	<b>3.4</b>	<b>3.4</b>	<b>2.9</b>	<b>2.9</b>	<b>2.9</b>	<b>2.9</b>	<b>2.9</b>	<b>2.9</b>	<b>2.9</b>	<b>2.9</b>	<b>2.9</b>
<b>HIRE OF PLANT</b>	<b>3.0</b>	<b>1.6</b>	<b>1.6</b>	<b>1.6</b>	<b>0.6</b>	<b>0.6</b>	<b>0.6</b>	<b>0.6</b>	<b>0.6</b>	<b>0.6</b>	<b>0.0</b>	<b>0.0</b>	<b>0.0</b>
<b>MATERIALS :</b>	<b>57.2</b>	<b>8.4</b>	<b>6.9</b>	<b>6.9</b>	<b>2.8</b>	<b>3.5</b>	<b>4.7</b>	<b>5.1</b>	<b>5.1</b>	<b>5.1</b>	<b>4.3</b>	<b>6.9</b>	<b>6.9</b>
Hardcore (remplissage)	1.0	10.5	10.5	10.5	0.0	0.0	0.0	0.0	0.0	0.0	0.0	0.0	0.0
Cement	10.0	11.8	11.8	11.8	8.9	8.9	8.9	8.9	8.9	8.9	8.9	19.8	19.8
Sand	6.1	5.6	5.6	5.6	0.0	0.0	5.2	5.2	5.2	5.2	5.2	5.2	5.2
Aggregate	2.9	9.8	9.8	9.8	0.0	0.0	7.9	7.9	7.9	7.9	7.9	7.9	7.9
Block	4.4	11.3	11.3	11.3	3.0	3.0	6.5	6.5	6.5	6.5	6.5	3.4	4.8
Steel bars (armature)	5.8	9.6	9.6	9.6	6.4	12.0	12.0	12.0	12.4	12.4	6.5	6.6	6.6
Galvanised corrugated cast iron sheeting	1.2	2.4	2.9	2.9	0.9	0.9	0.9	0.9	0.9	0.9	0.9	2.8	2.3
Timber: (a) Carpentry	3.9	15.3	-4.4	-4.4	-4.7	-4.7	-4.7	-0.3	-0.3	-0.3	-0.3	1.2	1.2
(b) Joinery	4.2	5.3	4.0	4.0	0.5	0.4	0.4	0.3	0.3	0.3	0.3	0.6	0.0
Metal openings	6.1	8.2	8.2	8.2	1.4	2.5	2.5	2.5	2.0	2.0	2.0	3.9	3.9
Ceramic tiles	1.3	0.0	0.0	0.0	0.0	0.0	0.0	0.0	0.0	0.0	0.0	0.0	0.0
Glass and putty	0.7	4.1	4.1	4.1	1.0	1.3	1.3	1.3	1.3	1.3	1.3	0.2	0.2
Paint	2.0	4.1	4.1	4.1	2.9	2.9	2.9	2.9	3.1	3.1	3.1	9.5	8.7
Plumbing	1.5	8.7	8.6	8.6	5.8	5.8	5.8	5.8	5.5	5.5	0.0	0.7	0.7
Sanitary installation	2.3	2.2	2.2	2.2	1.9	3.3	3.3	3.3	3.6	3.6	3.2	7.4	7.4
Electrical installation	2.6	6.3	6.4	6.4	3.8	3.5	3.5	3.5	3.6	3.6	3.6	3.6	1.7
Other	1.2	5.4	5.4	5.4	2.0	2.3	2.3	2.3	1.6	1.6	1.3	3.5	2.4
<b>TRANSPORT</b>	<b>5.3</b>	<b>5.3</b>	<b>5.3</b>	<b>5.3</b>	<b>0.0</b>	<b>0.0</b>	<b>0.0</b>	<b>0.0</b>	<b>0.0</b>	<b>0.0</b>	<b>0.0</b>	<b>0.0</b>	<b>0.0</b>
<b>OVERALL CHANGE</b>		<b>6.4</b>	<b>5.5</b>	<b>5.5</b>	<b>2.6</b>	<b>3.0</b>	<b>3.8</b>	<b>4.0</b>	<b>4.0</b>	<b>4.0</b>	<b>3.5</b>	<b>5.0</b>	<b>5.0</b>

**Table 1.4: Net monthly contributions of input categories to the index, April 2003 to March 2004**

Input Categories	Weight	2003									2004		
		Mar to Apr	Apr to May	May to Jun	Jun to Jul	Jul to Aug	Aug to Sep	Sep to Oct	Oct to Nov	Nov to Dec	Dec 03 to Jan 04	Jan to Feb	Feb to Mar
<b>LABOUR</b>	<b>34.5</b>	<b>0.00</b>	<b>0.00</b>	<b>0.00</b>	<b>1.05</b>	<b>0.00</b>	<b>0.00</b>	<b>0.00</b>	<b>0.00</b>	<b>0.00</b>	<b>0.00</b>	<b>0.00</b>	<b>0.00</b>
<b>HIRE OF PLANT</b>	<b>3.0</b>	<b>0.00</b>	<b>0.00</b>	<b>0.00</b>	<b>0.00</b>	<b>0.00</b>	<b>0.00</b>	<b>0.00</b>	<b>0.00</b>	<b>0.00</b>	<b>0.00</b>	<b>0.00</b>	<b>0.00</b>
<b>MATERIALS :</b>	<b>57.2</b>	<b>0.11</b>	<b>0.00</b>	<b>0.00</b>	<b>0.02</b>	<b>0.48</b>	<b>0.75</b>	<b>0.00</b>	<b>0.09</b>	<b>0.00</b>	<b>0.00</b>	<b>2.75</b>	<b>0.09</b>
Hardcore (remplissage)	1.0	0.00	0.00	0.00	0.00	0.00	0.00	0.00	0.00	0.00	0.00	0.00	0.00
Cement	10.0	0.00	0.00	0.00	0.00	0.00	0.00	0.00	0.00	0.00	0.00	2.25	0.00
Sand	6.1	0.00	0.00	0.00	0.00	0.00	0.33	0.00	0.00	0.00	0.00	0.00	0.00
Aggregate	2.9	0.00	0.00	0.00	0.00	0.00	0.25	0.00	0.00	0.00	0.00	0.00	0.00
Block	4.4	0.00	0.00	0.00	0.00	0.00	0.17	0.00	0.00	0.00	0.00	0.00	0.07
Steel bars (armature)	5.8	0.00	0.00	0.00	0.00	0.39	0.00	0.00	0.04	0.00	0.00	0.00	0.00
Galvanised corrugated cast iron sheeting	1.2	0.01	0.00	0.00	0.00	0.00	0.00	0.00	0.00	0.00	0.00	0.02	0.00
Timber: (a) Carpentry	3.9	0.00	0.00	0.00	-0.01	0.00	0.00	0.00	0.00	0.00	0.00	0.07	0.00
(b) Joinery	4.2	0.00	0.00	0.00	0.00	0.00	0.00	0.00	0.00	0.00	0.00	0.01	0.00
Metal openings	6.1	0.03	0.00	0.00	0.00	0.07	0.00	0.00	0.03	0.00	0.00	0.13	0.00
Ceramic tiles	1.3	0.00	0.00	0.00	0.00	0.00	0.00	0.00	0.00	0.00	0.00	0.00	0.00
Glass and putty	0.7	0.00	0.00	0.00	0.00	0.00	0.00	0.00	0.00	0.00	0.00	0.00	0.00
Paint	2.0	0.01	0.00	0.00	0.03	0.00	0.00	0.00	0.01	0.00	0.00	0.13	0.00
Plumbing	1.5	0.00	0.00	0.00	0.00	0.00	0.00	0.00	0.00	0.00	0.00	0.01	0.00
Sanitary installation	2.3	0.03	0.00	0.00	0.00	0.03	0.00	0.00	0.01	0.00	0.00	0.10	0.00
Electrical installation	2.6	0.04	0.00	0.00	0.00	-0.01	0.00	0.00	0.00	0.00	0.00	0.00	0.02
Other	1.2	0.00	0.00	0.00	0.00	0.00	0.00	0.00	0.00	0.00	0.00	0.03	0.00
<b>TRANSPORT</b>	<b>5.3</b>	<b>0.00</b>	<b>0.00</b>	<b>0.00</b>	<b>0.00</b>	<b>0.00</b>	<b>0.00</b>	<b>0.00</b>	<b>0.00</b>	<b>0.00</b>	<b>0.00</b>	<b>0.00</b>	<b>0.00</b>
<b>TOTAL</b>	<b>100.0</b>	<b>0.11</b>	<b>0.00</b>	<b>0.00</b>	<b>1.07</b>	<b>0.48</b>	<b>0.75</b>	<b>0.00</b>	<b>0.09</b>	<b>0.00</b>	<b>0.00</b>	<b>2.75</b>	<b>0.09</b>

## Input Cost Index for the construction of a single storey house

(Base: 4th Quarter 2001 = 100)

**Table 1.5: Quarterly average of monthly indices and percentage changes by input categories, April 2003 - March 2004**

Input Categories	Weight	2003			2004	% change from previous quarter			
		2nd Qr	3rd Qr	4th Qr	1st Qr	2nd Qr 2003	3rd Qr 2003	4th Qr 2003	1st Qr 2004
<b>LABOUR</b>	<b>34.5</b>	<b>103.4</b>	<b>106.5</b>	<b>106.5</b>	<b>106.5</b>	<b>0.0</b>	<b>2.9</b>	<b>0.0</b>	<b>0.0</b>
<b>HIRE OF PLANT</b>	<b>3.0</b>	<b>101.6</b>	<b>101.6</b>	<b>101.6</b>	<b>101.6</b>	<b>0.0</b>	<b>0.0</b>	<b>0.0</b>	<b>0.0</b>
<b>MATERIALS :</b>	<b>57.2</b>	<b>109.7</b>	<b>110.8</b>	<b>112.0</b>	<b>115.3</b>	<b>0.9</b>	<b>0.9</b>	<b>1.1</b>	<b>2.9</b>
Hardcore (remplissage)	1.0	110.5	110.5	110.5	110.5	0.0	0.0	0.0	0.0
Cement	10.0	113.8	113.8	113.8	128.8	2.8	0.0	0.0	13.2
Sand	6.1	105.6	107.4	111.1	111.1	0.0	1.7	3.4	0.0
Aggregate	2.9	109.8	112.7	118.4	118.4	0.0	2.6	5.1	0.0
Block	4.4	113.2	114.5	117.0	117.6	1.0	1.1	2.2	0.5
Steel bars (armature)	5.8	114.0	118.6	121.3	121.5	0.0	4.0	2.3	0.2
Galvanised corrugated cast iron sheeting	1.2	101.9	101.9	101.9	103.2	0.8	0.0	0.0	1.2
Timber: (a) Carpentry	3.9	116.4	116.0	116.0	117.2	0.0	-0.3	0.0	1.0
(b) Joinery	4.2	105.7	105.6	105.6	105.8	0.2	-0.1	0.0	0.2
Metal openings	6.1	110.5	111.3	112.1	113.6	0.4	0.7	0.7	1.4
Ceramic tiles	1.3	101.5	101.5	101.5	101.5	0.0	0.0	0.0	0.0
Glass and putty	0.7	104.1	104.3	104.4	104.4	0.3	0.2	0.1	0.0
Paint	2.0	104.2	105.9	106.1	110.5	1.0	1.6	0.2	4.2
Plumbing	1.5	108.8	108.6	108.7	109.3	0.0	-0.2	0.1	0.6
Sanitary installation	2.3	101.4	102.4	103.2	106.2	1.3	1.0	0.7	2.9
Electrical installation	2.6	106.3	106.0	105.9	106.1	3.2	-0.3	-0.1	0.2
Other	1.2	105.3	105.3	105.4	107.0	0.8	0.0	0.1	1.5
<b>TRANSPORT</b>	<b>5.3</b>	<b>105.3</b>	<b>105.3</b>	<b>105.3</b>	<b>105.3</b>	<b>0.0</b>	<b>0.0</b>	<b>0.0</b>	<b>0.0</b>
<b>OVERALL INDEX AND CHANGE</b>		<b>107.1</b>	<b>108.7</b>	<b>109.5</b>	<b>111.3</b>	<b>0.5</b>	<b>1.5</b>	<b>0.7</b>	<b>1.7</b>

## Input Cost Index for the construction of a single storey house

(Base: 4th Quarter 2001 = 100)

**Table 2.1: Monthly sub-indices by work categories, April 2003 to March 2004**

Work Categories	Weight	2003										2004		
		Apr	May	Jun	Jul	Aug	Sep	Oct	Nov	Dec	Jan	Feb	Mar	
1. Setting up	2.3	103.6	103.6	103.6	103.9	103.9	104.5	104.5	104.5	104.5	104.5	106.9	106.9	
2. Setting out	0.5	101.6	101.6	101.6	103.1	103.1	103.1	103.1	103.1	103.1	103.1	103.1	103.1	
3. Temporary works	0.5	107.7	107.7	107.7	108.5	108.5	108.5	108.5	108.5	108.5	108.5	109.3	109.3	
4. Site preparation, excavation & disposal, hardcore filling	5.8	105.4	105.4	105.4	107.7	107.7	108.0	108.0	108.0	108.0	108.0	108.0	108.0	
5. Concrete	20.2	107.8	107.8	107.8	108.7	108.7	110.8	110.8	110.8	110.8	110.8	117.3	117.3	
6. Reinforcement	9.2	110.2	110.2	110.2	111.3	115.5	115.5	115.5	115.9	115.9	115.9	115.9	115.9	
7. Formwork (coffrage)	7.8	109.0	109.0	109.0	110.0	110.0	110.0	110.0	110.0	110.0	110.0	110.9	110.9	
8. Blockwork	8.5	109.3	109.3	109.3	110.0	110.0	112.2	112.2	112.2	112.2	112.2	113.8	114.6	
9. Softwood joinery	4.5	105.6	105.6	105.6	105.7	105.6	105.6	105.6	105.6	105.6	105.6	105.9	105.9	
10. Ironmongery	0.5	105.8	105.8	105.8	106.9	107.2	107.2	107.2	107.2	107.2	107.2	107.7	107.7	
11. Metal openings	6.5	110.1	110.1	110.1	110.2	111.3	111.3	111.3	111.9	111.9	111.9	113.8	113.8	
12. Rendering to wall/ceiling (crépissage)	9.9	105.1	105.1	105.1	107.2	107.2	107.6	107.6	107.6	107.6	107.6	110.9	110.9	
13. Bed & screed to floor/roof	4.2	108.3	108.3	108.3	109.0	109.0	110.3	110.3	110.3	110.3	110.3	119.0	119.0	
14. Tiling	2.1	102.2	102.2	102.2	103.1	103.2	103.2	103.2	103.2	103.2	103.2	103.4	103.4	
15. Glazing	1.0	104.1	104.1	104.1	104.5	104.6	104.6	104.6	104.6	104.6	104.6	104.6	104.6	
16. Painting	5.2	103.7	103.7	103.7	105.8	105.8	105.8	105.8	105.9	105.9	105.9	108.6	108.6	
17. Plumbing/sanitary installation	5.0	104.3	104.3	104.3	105.1	105.7	105.7	105.7	106.0	106.0	106.0	107.7	107.7	
18. Electrical installation	4.2	105.1	105.1	105.1	106.2	106.0	106.0	106.0	106.0	106.0	106.0	106.0	106.4	
19. Drainage	2.1	106.9	106.9	106.9	107.8	107.9	109.0	109.0	109.0	109.0	109.0	113.1	113.3	
<b>Total</b>	<b>100.0</b>	<b>107.1</b>	<b>107.1</b>	<b>107.1</b>	<b>108.1</b>	<b>108.6</b>	<b>109.4</b>	<b>109.4</b>	<b>109.5</b>	<b>109.5</b>	<b>109.5</b>	<b>112.2</b>	<b>112.3</b>	



## Input Cost Index for the construction of a single storey house

(Base: 4th Quarter 2001 = 100)

**Table 2.2: Percentage change from previous month by work categories, April 2003 to March 2004**

Work Categories	Weight	2003									2004		
		Mar to Apr	Apr to May	May to Jun	Jun to Jul	Jul to Aug	Aug to Sep	Sep to Oct	Oct to Nov	Nov to Dec	Dec 03 to Jan 04	Jan to Feb	Feb to Mar
1. Setting up	2.3	0.2	0.0	0.0	0.3	0.0	0.5	0.0	0.0	0.0	0.0	2.3	0.0
2. Setting out	0.5	0.0	0.0	0.0	1.4	0.0	0.0	0.0	0.0	0.0	0.0	0.0	0.0
3. Temporary works	0.5	0.0	0.0	0.0	0.7	0.0	0.0	0.0	0.0	0.0	0.0	0.7	0.0
4. Site preparation, excavation & disposal, hardcore filling	5.8	0.0	0.0	0.0	2.1	0.0	0.3	0.0	0.0	0.0	0.0	0.0	0.0
5. Concrete	20.2	0.0	0.0	0.0	0.8	0.0	1.9	0.0	0.0	0.0	0.0	5.9	0.0
6. Reinforcement	9.2	0.0	0.0	0.0	1.0	3.8	0.0	0.0	0.3	0.0	0.0	0.0	0.0
7. Formwork (coffrage)	7.8	0.0	0.0	0.0	0.9	0.0	0.0	0.0	0.0	0.0	0.0	0.8	0.0
8. Blockwork	8.5	0.0	0.0	0.0	0.7	0.0	2.0	0.0	0.0	0.0	0.0	1.4	0.7
9. Softwood joinery	4.5	-0.1	0.0	0.0	0.2	-0.1	0.0	0.0	0.0	0.0	0.0	0.2	0.0
10. Ironmongery	0.5	0.0	0.0	0.0	1.0	0.2	0.0	0.0	0.0	0.0	0.0	0.5	0.0
11. Metal openings	6.5	0.4	0.0	0.0	0.1	1.0	0.0	0.0	0.5	0.0	0.0	1.7	0.0
12. Rendering to wall/ceiling (crépissage)	9.9	0.0	0.0	0.0	2.0	0.0	0.4	0.0	0.0	0.0	0.0	3.1	0.0
13. Bed & screed to floor/roof	4.2	0.0	0.0	0.0	0.7	0.0	1.1	0.0	0.0	0.0	0.0	7.9	0.0
14. Tiling	2.1	0.0	0.0	0.0	0.9	0.1	0.0	0.0	0.0	0.0	0.0	0.2	0.0
15. Glazing	1.0	0.0	0.0	0.0	0.3	0.2	0.0	0.0	0.0	0.0	0.0	0.0	0.0
16. Painting	5.2	0.2	0.0	0.0	2.0	0.0	0.0	0.0	0.1	0.0	0.0	2.6	0.0
17. Plumbing/sanitary installation	5.0	0.6	0.0	0.0	0.8	0.6	0.0	0.0	0.2	0.0	0.0	1.7	0.0
18. Electrical installation	4.2	0.9	0.0	0.0	1.0	-0.2	0.0	0.0	0.0	0.0	0.0	0.0	0.4
19. Drainage	2.1	0.0	0.0	0.0	0.8	0.1	1.0	0.0	0.0	0.0	0.0	3.8	0.1
<b>OVERALL CHANGE</b>		<b>0.1</b>	<b>0.0</b>	<b>0.0</b>	<b>1.0</b>	<b>0.5</b>	<b>0.7</b>	<b>0.0</b>	<b>0.1</b>	<b>0.0</b>	<b>0.0</b>	<b>2.5</b>	<b>0.1</b>

## Input Cost Index for the construction of a single storey house

(Base: 4th Quarter 2001 = 100)

**Table 2.3: Percentage change from corresponding month of previous year by work categories, April 2003 to March 2004**

Work Categories	Weight	Apr 02 to Apr 03	May 02 to May03	Jun 02 to Jun03	Jul 02 to Jul 03	Aug 02 to Aug 03	Sep 02 to Sep 03	Oct 02 to Oct 03	Nov 02 to Nov 03	Dec 02 to Dec 03	Jan 03 to Jan 04	Feb 03 to Feb 04	Mar 03 to Mar 04
1. Setting up	2.3	3.8	4.0	4.0	1.3	1.3	1.9	1.9	1.9	1.9	1.9	3.6	3.4
2. Setting out	0.5	1.6	1.6	1.6	1.4	1.4	1.4	1.4	1.4	1.4	1.4	1.4	1.4
3. Temporary works	0.5	7.4	-0.8	-0.8	-1.2	-1.2	-1.2	0.7	0.7	0.7	0.7	1.5	1.5
4. Site preparation, excavation & disposal, hardcore filling	5.8	5.4	5.4	5.4	2.4	2.4	2.7	2.7	2.7	2.7	2.4	2.4	2.4
5. Concrete	20.2	7.2	7.2	7.2	3.4	3.4	5.4	5.4	5.4	5.4	5.4	8.8	8.8
6. Reinforcement	9.2	7.4	7.4	7.4	5.1	8.6	8.6	8.6	8.9	8.9	5.2	5.2	5.2
7. Formwork (coffrage)	7.8	8.6	-0.8	-0.8	-1.3	-1.3	-1.3	0.9	0.9	0.9	0.9	1.7	1.7
8. Blockwork	8.5	8.2	8.2	8.2	2.8	2.8	4.9	4.9	4.9	4.9	4.9	4.1	4.8
9. Softwood joinery	4.5	5.2	3.9	3.9	0.6	0.5	0.5	0.4	0.4	0.4	0.4	0.7	0.2
10. Ironmongery	0.5	6.5	6.5	6.5	5.4	5.6	5.6	5.6	3.9	3.9	3.9	4.4	1.7
11. Metal openings	6.5	7.9	7.9	7.9	1.5	2.5	2.5	2.5	2.1	2.1	2.1	3.8	3.8
12. Rendering to wall/ceiling (crépissage)	9.9	4.8	4.8	4.8	3.3	3.3	3.7	3.7	3.7	3.7	3.7	5.5	5.5
13. Bed & screed to floor/roof	4.2	7.5	7.5	7.5	4.2	4.2	5.3	5.3	5.3	5.3	5.3	9.9	9.9
14. Tiling	2.1	1.2	1.2	1.2	1.0	1.0	1.0	1.0	1.0	1.0	1.0	1.3	1.3
15. Glazing	1.0	4.1	4.1	4.1	1.1	1.3	1.3	1.3	1.3	1.3	1.3	0.5	0.5
16. Painting	5.2	3.6	3.6	3.6	2.5	2.6	2.6	2.6	2.7	2.7	2.7	5.3	5.0
17. Plumbing/sanitary installation	5.0	4.6	4.5	4.5	3.4	4.1	4.1	4.1	4.1	4.1	2.2	3.9	3.9
18. Electrical installation	4.2	5.1	5.1	5.1	3.4	3.2	3.2	3.2	3.3	3.3	3.3	3.3	2.1
19. Drainage	2.1	6.2	5.1	5.1	2.2	2.4	3.4	3.7	3.7	3.7	3.3	5.9	6.0
<b>OVERALL CHANGE</b>		<b>6.4</b>	<b>5.5</b>	<b>5.5</b>	<b>2.6</b>	<b>3.0</b>	<b>3.8</b>	<b>4.0</b>	<b>4.0</b>	<b>4.0</b>	<b>3.5</b>	<b>5.0</b>	<b>5.0</b>

## Input Cost Index for the construction of a single storey house

(Base: 4th Quarter 2001 = 100)

**Table 2.4: Net monthly contributions of work categories to the index, April 2003 to March 2004**

Work Categories	Weight	2003									2004			
		Mar to Apr	Apr to May	May to Jun	Jun to Jul	Jul to Aug	Aug to Sep	Sep to Oct	Oct to Nov	Nov to Dec	Dec 03 to Jan 04	Jan to Feb	Feb to Mar	
1. Setting up	2.3	0.01	0.00	0.00	0.01	0.00	0.01	0.00	0.00	0.00	0.00	0.00	0.06	0.00
2. Setting out	0.5	0.00	0.00	0.00	0.01	0.00	0.00	0.00	0.00	0.00	0.00	0.00	0.00	0.00
3. Temporary works	0.5	0.00	0.00	0.00	0.00	0.00	0.00	0.00	0.00	0.00	0.00	0.00	0.00	0.00
4. Site preparation, excavation & disposal, hardcore filling	5.8	0.00	0.00	0.00	0.13	0.00	0.02	0.00	0.00	0.00	0.00	0.00	0.00	0.00
5. Concrete	20.2	0.00	0.00	0.00	0.18	0.00	0.42	0.00	0.00	0.00	0.00	1.33	0.00	0.00
6. Reinforcement	9.2	0.00	0.00	0.00	0.10	0.39	0.00	0.00	0.04	0.00	0.00	0.00	0.00	0.00
7. Formwork (coffrage)	7.8	0.00	0.00	0.00	0.08	0.00	0.00	0.00	0.00	0.00	0.00	0.07	0.00	0.00
8. Blockwork	8.5	0.00	0.00	0.00	0.06	0.00	0.19	0.00	0.00	0.00	0.00	0.13	0.07	0.00
9. Softwood joinery	4.5	0.00	0.00	0.00	0.01	0.00	0.00	0.00	0.00	0.00	0.00	0.01	0.00	0.00
10. Ironmongery	0.5	0.00	0.00	0.00	0.01	0.00	0.00	0.00	0.00	0.00	0.00	0.00	0.00	0.00
11. Metal openings	6.5	0.03	0.00	0.00	0.01	0.07	0.00	0.00	0.03	0.00	0.00	0.12	0.00	0.00
12. Rendering to wall/ceiling (crépissage)	9.9	0.00	0.00	0.00	0.20	0.00	0.05	0.00	0.00	0.00	0.00	0.33	0.00	0.00
13. Bed & screed to floor/roof	4.2	0.00	0.00	0.00	0.03	0.00	0.05	0.00	0.00	0.00	0.00	0.37	0.00	0.00
14. Tiling	2.1	0.00	0.00	0.00	0.02	0.00	0.00	0.00	0.00	0.00	0.00	0.01	0.00	0.00
15. Glazing	1.0	0.00	0.00	0.00	0.00	0.00	0.00	0.00	0.00	0.00	0.00	0.00	0.00	0.00
16. Painting	5.2	0.01	0.00	0.00	0.11	0.00	0.00	0.00	0.01	0.00	0.00	0.14	0.00	0.00
17. Plumbing/sanitary installation	5.0	0.03	0.00	0.00	0.04	0.03	0.00	0.00	0.01	0.00	0.00	0.09	0.00	0.00
18. Electrical installation	4.2	0.04	0.00	0.00	0.05	-0.01	0.00	0.00	0.00	0.00	0.00	0.00	0.00	0.02
19. Drainage	2.1	0.00	0.00	0.00	0.02	0.00	0.02	0.00	0.00	0.00	0.00	0.09	0.00	0.00
<b>TOTAL</b>	<b>100.0</b>	<b>0.11</b>	<b>0.00</b>	<b>0.00</b>	<b>1.07</b>	<b>0.48</b>	<b>0.75</b>	<b>0.00</b>	<b>0.09</b>	<b>0.00</b>	<b>0.00</b>	<b>2.75</b>	<b>0.09</b>	<b>0.00</b>

## Input Cost Index for the construction of a single storey house

(Base: 4th Quarter 2001 = 100)

**Table 2.5: Quarterly average of monthly indices and percentage changes by work categories, April 2003 - March 2004**

Work Categories	Weight	2003			2004	% change from previous quarter			
		2nd Qr	3rd Qr	4th Qr	1st Qr	2nd Qr 2003	3rd Qr 2003	4th Qr 2003	1st Qr 2004
1. Setting up	2.3	103.6	104.1	104.5	106.1	0.6	0.5	0.3	1.5
2. Setting out	0.5	101.6	103.1	103.1	103.1	0.0	1.4	0.0	0.0
3. Temporary works	0.5	107.7	108.5	108.5	109.0	0.0	0.7	0.0	0.5
4. Site preparation, excavation & disposal, hardcore filling	5.8	105.4	107.8	108.0	108.0	0.0	2.2	0.2	0.0
5. Concrete	20.2	107.8	109.4	110.8	115.1	0.8	1.5	1.3	4.0
6. Reinforcement	9.2	110.2	114.1	115.8	115.9	0.0	3.6	1.5	0.1
7. Formwork (coffrage)	7.8	109.0	110.0	110.0	110.6	0.0	0.9	0.0	0.5
8. Blockwork	8.5	109.3	110.8	112.2	113.5	0.7	1.4	1.3	1.2
9. Softwood joinery	4.5	105.6	105.7	105.6	105.8	0.2	0.1	0.0	0.2
10. Ironmongery	0.5	105.8	107.1	107.2	107.5	1.7	1.2	0.1	0.3
11. Metal openings	6.5	110.1	111.0	111.7	113.2	0.4	0.8	0.7	1.3
12. Rendering to wall/ceiling (crépissage)	9.9	105.1	107.3	107.6	109.8	0.4	2.1	0.3	2.0
13. Bed & screed to floor/roof	4.2	108.3	109.4	110.3	116.1	1.1	1.1	0.7	5.3
14. Tiling	2.1	102.2	103.2	103.2	103.4	0.0	1.0	0.0	0.2
15. Glazing	1.0	104.1	104.6	104.6	104.6	0.3	0.5	0.1	0.0
16. Painting	5.2	103.7	105.8	105.9	107.7	0.4	2.0	0.1	1.8
17. Plumbing/sanitary installation	5.0	104.3	105.5	105.9	107.1	0.6	1.2	0.4	1.2
18. Electrical installation	4.2	105.1	106.0	106.0	106.1	1.9	0.9	-0.1	0.1
19. Drainage	2.1	106.9	108.2	109.0	111.8	0.4	1.2	0.7	2.6
<b>OVERALL INDEX AND CHANGE</b>		<b>107.1</b>	<b>108.7</b>	<b>109.5</b>	<b>111.3</b>	<b>0.5</b>	<b>1.5</b>	<b>0.7</b>	<b>1.7</b>

**Table 3: Construction Price Index - January 1998 to March 2004**

	<i>(Base: 4th Quarter 1993 = 100)</i>				<i>(Base: 4th Quarter 2001 = 100)</i>		
	<b>1998</b>	<b>1999</b>	<b>2000</b>	<b>2001</b>	<b>2002</b>	<b>2003</b>	<b>2004</b>
<b>January</b>	115.2	118.6	120.4	124.9	100.3	105.8	109.5
<b>February</b>	115.3	119.1	120.4	124.9	100.5	106.8	112.2
<b>March</b>	115.3	119.1	120.5	125.0	100.6	107.0	112.3
<i>1st Quarter</i>	<i>115.3</i>	<i>118.9</i>	<i>120.5</i>	<i>124.9</i>	<i>100.5</i>	<i>106.5</i>	<i>111.3</i>
<b>April</b>	115.3	119.2	120.4	124.9	100.7	107.1	
<b>May</b>	115.5	119.2	120.4	124.9	101.5	107.1	
<b>June</b>	115.6	119.3	120.5	124.9	101.5	107.1	
<i>2nd Quarter</i>	<i>115.5</i>	<i>119.3</i>	<i>120.5</i>	<i>124.9</i>	<i>101.3</i>	<i>107.1</i>	
<b>July</b>	116.9	120.9	121.5	126.9	105.4	108.1	
<b>August</b>	117.5	121.0	121.6	127.4	105.4	108.6	
<b>September</b>	118.1	121.0	121.4	127.4	105.4	109.4	
<i>3rd Quarter</i>	<i>117.5</i>	<i>120.9</i>	<i>121.5</i>	<i>127.2</i>	<i>105.4</i>	<i>108.7</i>	
<b>October</b>	118.4	121.2	124.3	127.6	105.2	109.4	
<b>November</b>	118.4	120.5	124.4	128.4	105.3	109.5	
<b>December</b>	118.6	120.6	124.4	128.5	105.3	109.5	
<i>4th Quarter</i>	<i>118.4</i>	<i>120.8</i>	<i>124.3</i>	<i>128.2</i>	<i>105.3</i>	<i>109.5</i>	
<b>Yearly average</b>	<b>116.7</b>	<b>120.0</b>	<b>121.7</b>	<b>126.3</b>	<b>103.1</b>	<b>107.9</b>	
<b>% change in the yearly average</b>	<b>2.9</b>	<b>2.8</b>	<b>1.4</b>	<b>3.8</b>		<b>4.7</b>	

**ANNEX****Description of the model used for establishing the  
Construction Price Index**

The model used is a single storey (ground floor) detached house of 128.30 square metres (1,381 square feet) in floor area measured at plinth level to the external face of the external walls. The overall area is inclusive of 18.55 square metres (200 square feet) in respect of a garage.

It comprises two bedrooms, a living-dining room, a kitchen, a toilet, a bathroom, a verandah and an attached garage. The building has concrete block walls, reinforced concrete flat roof, internal flush plywood doors, glazed metal openings, screeded floor and roof, tiling to floor and walls of w.c. and bathroom and kitchen worktop; the ceilings and walls are rendered and painted both internally and externally. Plumbing, sanitary installation and electrical installation are included as well as drainage which is to be connected to the sewerage system.

Provision has been made, in the form of more substantial foundations and of stub columns on the roof, for converting the single into a two-storey house eventually. Site works are restricted to spreading and levelling surplus excavated material around the site.

The Index excludes the cost of the building permit and the draughtman's fee; these two items represent 0.47 % and 1.30% of the total cost respectively.

It is assumed that although the house is not constructed by a contractor, the client has recourse to the services of a foreman.