



Republic of Mauritius

ECONOMIC AND SOCIAL INDICATORS

ISSUE NO. 433

20 NOVEMBER, 2003

⇒ INTERNATIONAL TRAVEL AND TOURISM

January - September 2003

⇒ CONSTRUCTION PRICE INDEX

3rd Quarter 2003

<http://statsmauritius.gov.mu>

Price: Rs 30.-

Central Statistics Office
Ministry of Economic Development, Financial Services and Corporate Affairs
Port-Louis
Republic of Mauritius

Note: Readers are invited to make the distinction between official data which are published in the Economic Indicators and the analysis presented for the benefit of general readers. Differences of opinion may arise regarding the analytical part but these do not in any way, undermine the quality of the data. The Editors welcome constructive critical comments.

INTERNATIONAL TRAVEL & TOURISM

January to September 2003

1. Passenger Traffic

1.1 Total Passenger Traffic

Passenger traffic for the period January to September 2003 totalled 1,312,199, made up of 650,517 arrivals and 661,682 departures. Compared to the same period of 2002, these figures represent increases of 2.3% in arrivals and 1.6% in departures. Movements by sea accounted for 3% of both arrivals and departures. Table 1 shows monthly details of passenger traffic.

1.2 Excursionists

Total arrivals by air included 7,636 "excursionists", i.e. visitors arriving and leaving on the same day. Of these excursionists, 2,300 (30.1%) came from Reunion Island while 1,425 (18.7%) came from France. Total arrivals by sea included 9,072 "cruise excursionists" (5,153 passengers and 3,919 crews) aboard 12 cruise ships which visited our port during the first nine months of 2003.

1.3 Mauritian Residents

During the period under review, the number of Mauritian residents travelling abroad regressed by 1.3% from 121,705 in 2002 to 120,180 in 2003 and accounted for 18.2% of total departures. The following trends were recorded in the number of Mauritians visiting the major destinations: Malagasy Republic (+69.5%), United Kingdom (+13.2%), Australia (+4.9%), India (+1.2%), Republic of South Africa (-1.6%), France (-2.0%), Reunion Island (-5.7%) and Singapore (-49.2%). Table 2 shows a more detailed distribution of countries visited.

1.4 Tourist Arrivals

Tourist arrivals for the first nine months of 2003 rose by 3.8% from 482,585 in 2002 to 500,846 in 2003. Further details are given in Tables 3 to 6.

Around 90% of the tourists came mainly for holidays while 4.6% were on business/conference trips, and another 3.4% were in transit (Table 4).

Arrivals from Europe, which accounted for 65.3% of total tourist arrivals, grew by 3.9% to 327,041 during the first nine months of 2003 compared to 314,863 in the same period of 2002. Arrivals from France, our leading market, representing 27.1% of total tourist arrivals and 41.5% of the European market, slipped by 2.0% to reach 135,707. Among the other major markets, growth was registered in arrivals from United Kingdom (+16.5%), Italy (+2.8%) and Germany (+1.0%). Trends among the other European countries were as follows: Spain (+24.8%), Switzerland (+9.9%), Sweden (+9.2%), Austria (-1.7%), Netherlands (-2.7%) and Belgium (-3.7%).

For the period January to September 2003, arrivals from Africa, with a share of 25.5% of total tourist arrivals, registered a growth of 1.1% to attain 127,952. Arrivals from Reunion Island, the major generating country of the region, were down by 1.2%, while those from the Republic of South Africa were up by 5.1%. Changes in arrivals from other African countries were as follows: Comoros (+72.8%), Malagasy Republic (+27.5%), Kenya (-1.4%), Seychelles (-18.8%) and Zimbabwe (-37.3%).

Tourist arrivals from the Asian market expanded by 10.0% during the reference period and constituted 6.5% of total tourist arrivals. Arrivals from India, our major source on this continent, rose by 26.2% to reach 19,577. Among the other Asian countries, the following trends were noted: United Arab Emirates (+161.0%), People's Republic of China (-23.3%), Japan (-24.8%), Malaysia (-27.9%), Singapore (-44.5%) and Hong Kong (-50.3%).

Arrivals from Oceania increased by 16.1% due mainly to a rise of 17.0% in arrivals from Australia.

Arrivals from the continent of America grew by 11.6% being the result of growths from USA (+14.0%), Canada (+0.2%) and other American countries (+18.3%).

2. Tourist Nights

The number of nights spent by tourists during the period January to September 2003 is estimated at 5.0 million, up by 3.5% over the same period of 2002 (Table 6).

3. Hotel Statistics

At the end of September 2003, there was a total of 96 registered hotels in operation. Owing to renovation, four hotels were not operational. The total room capacity for these registered hotels in operation was 9,425 with 19,249 bed places (Table 7). The room occupancy rate for all hotels for the first nine months of 2003 averaged 61% while the bed occupancy rate was 54% (Table 8).

"Large" hotels, i.e. well-established beach hotels with more than 80 rooms, numbered 36 (38% of all registered hotels). These "Large" hotels had a room capacity of 6,856 with 13,994 bedplaces, representing 72.7% of both total room capacity and total bedplaces. The average room occupancy rate for these hotels for the first nine months of 2003 was of the order of 63%, while bed occupancy rate averaged 56% (Table 8).

4. Gross Tourism Receipts

Data from the Bank of Mauritius indicate that gross tourism receipts for the period January to September of 2003 were of the order of Rs 13,253 million, edged 0.6% lower when compared to Rs 13,329 million for the corresponding period of 2002.

5. Employment

According to the Survey of Employment and Earnings, direct employment in travel and tourism establishments employing 10 persons or more, stood at 22,261 at the end of March 2003, that is 5.4% higher than last year. Of this number, 74.1% or 16,497 were engaged in hotels (Table 9).

6. Forecast Year 2003

Based on the information obtained from the major stakeholders of the tourist industry, the initial forecast of tourist arrivals (700,000) for the year 2003 has been revised upwards to 705,000, i.e 3.4% more than the figure of 681,648 registered in the preceding year. According to the Bank of Mauritius, the initial estimate of tourism receipts (Rs 18,100 million) is maintained.

Central Statistics Office

Ministry of Economic Development, Financial Services and Corporate Affairs

Port - Louis

November 2003

Contact person:

Mr. C.Ramnath
Statistician
Ministry of Tourism & Leisure
Ken Lee Tower
Port Louis
Tel: 210-9832
Fax: 210-9851
Email: mot@intnet.mu

Explanatory Notes

1. Tourist

A tourist is defined as a non-resident staying for more than 24 hours but less than a year, who is not involved in any gainful occupation in the country during his/her stay.

2. Transit

A transit passenger is one who stops over in the country for flight connections to other destinations. There are two types of transit passengers:

Type I : Passengers who do not leave the transit area of the airport or the harbour.

Type II : Passengers who do leave the airport or harbour and stay in the country for more than 24 hours but only for flight connection purposes.

Only Type II transit passengers, as defined above, are included in the definition of "Tourists".

3. Excursionist or Same-day Visitor

Excursionists are non-resident visitors, other than those who do not leave the airport, who stay in the country for less than 24 hours. They also include passengers as well as crews of *cruise ships*.

4. Tourist Nights

"Tourist nights" means the total number of nights spent in the country by tourists, as defined above, during the period under review.

5. Large Hotels

Large hotels are well established beach hotels with more than 80 rooms.

6. CIS

CIS denotes the Commonwealth of Independent States, which consists of the states of the former Soviet Union.

Table 1:- Passenger Traffic by month, 2001 - 2003

Month	2001		2002		2003	
	Arrivals	Departures	Arrivals	Departures	Arrivals	Departures
January	83,006	96,568	82,203	98,297	82,764	101,301
February	62,662	63,034	63,657	63,562	66,756	62,720
March	73,365	74,278	89,745	86,466	84,501	87,275
<i>1st Quarter</i>	<u>219,033</u>	<u>233,880</u>	<u>235,605</u>	<u>248,325</u>	<u>234,021</u>	<u>251,296</u>
April	70,185	68,642	63,961	69,431	70,795	65,828
May	65,600	69,705	67,030	69,414	68,044	71,992
June	54,696	51,854	54,781	51,274	57,261	55,374
<i>2nd Quarter</i>	<u>190,481</u>	<u>190,201</u>	<u>185,772</u>	<u>190,119</u>	<u>196,100</u>	<u>193,194</u>
<i>1st Semester</i>	409,514	424,081	421,377	438,444	430,121	444,490
July	77,552	63,875	75,786	62,403	77,754	62,785
August	72,980	83,574	73,431	84,849	76,492	88,513
September	63,876	66,230	65,381	65,607	66,150	65,894
<i>3rd Quarter</i>	<u>214,408</u>	<u>213,679</u>	<u>214,598</u>	<u>212,859</u>	<u>220,396</u>	<u>217,192</u>
<i>Jan. to Sep.</i>	623,922	637,760	635,975	651,303	650,517	661,682
October	73,660	70,007	81,830	77,979		
November	72,147	70,362	78,362	75,840		
December	88,453	72,167	94,939	77,399		
<i>4th Quarter</i>	<u>234,260</u>	<u>212,536</u>	<u>255,131</u>	<u>231,218</u>		
<i>2nd Semester</i>	448,668	426,215	469,729	444,077		
Whole Year	858,182	850,296	891,106	882,521		

**Table 2 : - Departure of Mauritian residents by country of disembarkation,
January - September of 2002 and 2003**

Country of disembarkation	Jan - Sep 2002	Jan - Sep 2003	% Change
EUROPE	44,882	47,850	6.6
Belgium	412	941	128.4
France	20,980	20,551	-2.0
Germany	1,761	2,635	49.6
Italy	2,618	2,583	-1.3
Switzerland	2,029	1,841	-9.3
United Kingdom	16,781	18,992	13.2
Other European	301	307	2.0
AFRICA	43,816	42,870	-2.2
Kenya	833	941	13.0
Malagasy Republic	2,064	3,499	69.5
Reunion	26,715	25,203	-5.7
Seychelles	2,732	2,369	-13.3
S. Africa, Rep. of	10,579	10,412	-1.6
Zimbabwe	780	421	-46.0
Other African	113	25	-77.9
ASIA	28,750	25,060	-12.8
Hong Kong SAR ¹	5,597	2,357	-57.9
India	9,963	10,087	1.2
Malaysia	1,353	828	-38.8
Singapore	8,228	4,178	-49.2
Saudi Arabia	1,473	783	-46.8
Other Asian ²	2,136	6,827	219.6
OCEANIA	3,515	3,689	5.0
Australia	3,515	3,688	4.9
Other Oceanian	0	1	-
AMERICA	85	56	-34.1
U.S.A	16	14	-12.5
Canada	69	41	-40.6
Other American	-	1	-
NOT STATED	657	655	-0.3
All Countries	121,705	120,180	-1.3

¹ Special Administrative Region of China

² Including United Arab Emirates

Table 3:- Tourist arrivals by month, 2001 - 2003

Month	Number		
	2001	2002	2003 ¹
January	65,122	63,551	64,762
February	49,464	50,554	53,647
March	55,944	67,554	63,129
<i>1st Quarter</i>	<u>170,530</u>	<u>181,659</u>	<u>181,538</u>
April	54,794	48,187	57,217
May	51,969	53,813	54,710
June	38,496	39,048	41,841
<i>2nd Quarter</i>	<u>145,259</u>	<u>141,048</u>	<u>153,768</u>
<i>1st Semester</i>	<u>315,789</u>	<u>322,707</u>	<u>335,306</u>
July	57,274	56,709	58,403
August	52,923	53,395	56,844
September	48,953	49,774	50,293
<i>3rd Quarter</i>	<u>159,150</u>	<u>159,878</u>	<u>165,540</u>
<i>Jan. to Sep.</i>	<u>474,939</u>	<u>482,585</u>	<u>500,846</u>
October	59,325	65,291	
November	57,326	61,326	
December	68,728	72,446	
<i>4th Quarter</i>	<u>185,379</u>	<u>199,063</u>	
<i>2nd Semester</i>	<u>344,529</u>	<u>358,941</u>	
Whole Year	660,318	681,648	

¹ ProvisionalTable 4 :- Tourist arrivals by main purpose of visit,
January - September of 2002 and 2003

Purpose of visit	Jan - Sep 2002	Jan - Sep 2003	% Change
Holiday	437,621	452,083	3.3
Business	17,371	18,549	6.8
Transit	17,620	16,938	-3.9
Conference	3,320	4,390	32.2
Sports	707	2,043	189.0
Other & Not Stated	5,946	6,843	15.1
Total	482,585	500,846	3.8

Table 5 : - Tourist Arrivals by Country of Residence, January - September of 2002 and 2003

Country of residence	Jan - Sep 2002	2003 ¹												% Change 2003/2002
	Jan	Feb	Mar	Apr	May	Jun	Jul	Aug	Sep	Jan - Sep				
EUROPE	314,863	38,932	40,739	43,086	40,500	33,724	27,064	34,988	34,123	33,885	327,041		3.9	
Austria	6,295	875	995	742	690	1,029	340	592	374	548	6,185		-1.7	
Belgium	7,416	604	622	891	1,008	738	874	930	655	822	7,144		-3.7	
France	138,527	19,136	17,962	19,642	16,327	14,092	9,971	14,626	13,928	10,023	135,707		-2.0	
Germany	38,322	4,475	4,769	5,790	5,385	4,147	3,322	2,860	3,926	4,019	38,693		1.0	
Italy	27,932	4,158	4,242	3,731	3,999	1,569	1,830	2,254	3,844	3,081	28,708		2.8	
Netherlands	3,433	243	398	381	356	304	314	703	193	450	3,342		-2.7	
Spain	5,730	350	507	746	921	778	926	881	1,062	980	7,151		24.8	
Sweden	2,754	578	747	466	346	169	219	206	132	143	3,006		9.2	
Switzerland	10,636	1,366	1,427	1,498	1,951	1,150	800	1,267	687	1,538	11,684		9.9	
United Kingdom	58,103	4,521	6,190	6,990	7,724	8,070	6,954	8,952	7,873	10,427	67,701		16.5	
CIS	2,288	677	327	269	369	525	164	150	131	178	2,790		21.9	
Other European	13,427	1,949	2,553	1,940	1,424	1,153	1,350	1,567	1,318	1,676	14,930		11.2	
AFRICA	126,529	21,522	7,772	15,511	12,330	14,655	9,302	18,212	17,598	11,050	127,952		1.1	
Comoros	629	72	68	92	107	137	95	105	265	146	1,087		72.8	
Kenya	1,111	92	81	137	210	101	113	122	150	90	1,096		-1.4	
Malagasy Rep.	6,357	952	869	835	971	831	632	859	1,408	751	8,108		27.5	
Reunion	71,257	15,955	2,731	8,579	4,982	8,974	3,534	11,958	10,152	3,548	70,413		-1.2	
Seychelles	9,756	890	897	1,122	1,111	989	740	587	1,023	561	7,920		-18.8	
S/ Africa Rep. of	31,211	2,753	2,646	4,054	3,997	2,981	3,497	3,991	3,569	5,325	32,813		5.1	
Zimbabwe	2,540	105	108	169	259	144	71	121	447	169	1,593		-37.3	
Other African	3,668	703	372	523	693	498	620	469	584	460	4,922		34.2	

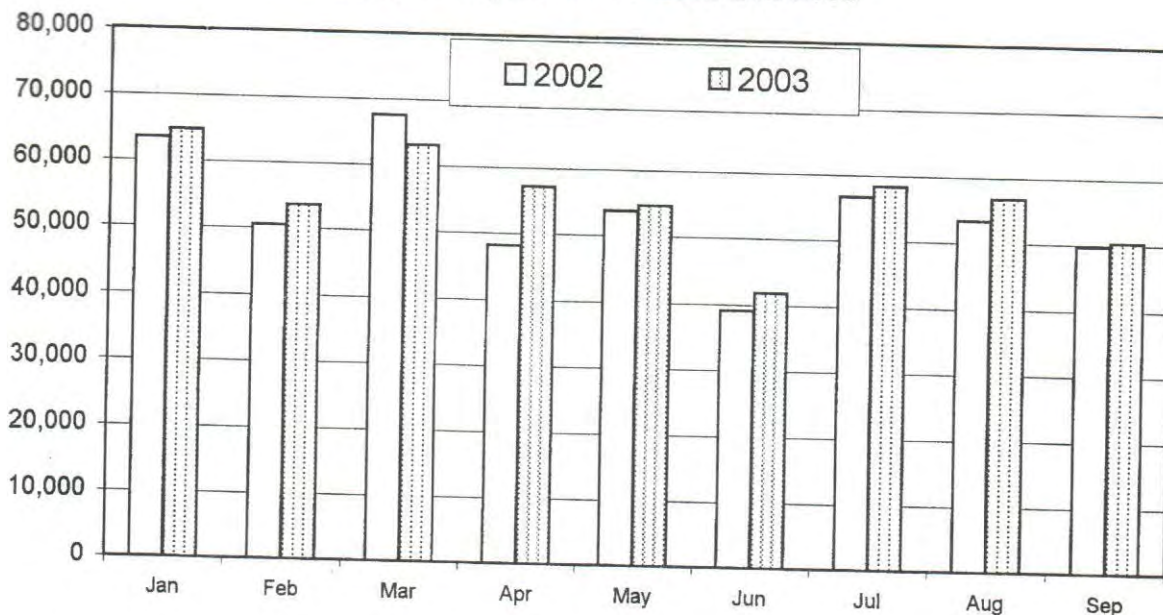
¹ Provisional

Table 5 (contd.) : - Tourist Arrivals by Country of Residence, January - September of 2002 and 2003

Country of residence	Jan - Sep 2002	2003 ¹												% Change 2003/2002
		Jan	Feb	Mar	Apr	May	Jun	Jul	Aug	Sep	Jan - Sep			
		ASIA	29,587	2,675	4,004	3,273	2,980	5,045	3,996	3,457	3,650	3,478	32,558	
Hong Kong SAR ²	940	99	67	70	30	22	18	33	59	69	467	-50.3		
India	15,516	1,019	1,744	1,612	2,082	4,361	3,066	2,196	1,751	1,746	19,577	26.2		
Japan	1,329	138	221	173	78	49	50	30	138	123	1,000	-24.8		
Malaysia	1,390	166	228	114	47	29	33	48	192	145	1,002	-27.9		
P. Rep. of China	3,018	422	453	379	142	57	47	71	232	511	2,314	-23.3		
Singapore	2,175	175	290	269	50	32	40	50	141	161	1,208	-44.5		
United Arab Emirates	780	80	201	132	193	212	325	399	369	125	2,036	161.0		
Other Asian	4,439	576	800	524	358	283	417	630	768	598	4,954	11.6		
OCEANIA	6,249	767	537	612	853	755	821	780	817	1,310	7,252	16.1		
Australia	5,735	653	497	559	809	728	783	685	769	1,226	6,709	17.0		
Other Oceanian	514	114	40	53	44	27	38	95	48	84	543	5.6		
AMERICA	5,218	849	574	625	535	498	629	933	638	542	5,823	11.6		
USA	2,901	504	304	363	298	237	279	595	386	341	3,307	14.0		
Canada	1,241	120	120	165	115	113	173	230	125	82	1,243	0.2		
Other American	1,076	225	150	97	122	148	177	108	127	119	1,273	18.3		
OTHER & N.STATED	139	17	21	22	19	33	29	33	18	28	220	58.3		
All Countries	482,585	64,762	53,647	63,129	57,217	54,710	41,841	58,403	56,844	50,293	500,846	3.8		

¹ Provisional² Special Administrative Region of China

**Chart 1 - Monthly Distribution of Tourist Arrivals,
January - September of 2002 and 2003**



**Chart 2 - Tourist Arrivals from Top Ten Markets,
January - September of 2002 and 2003**

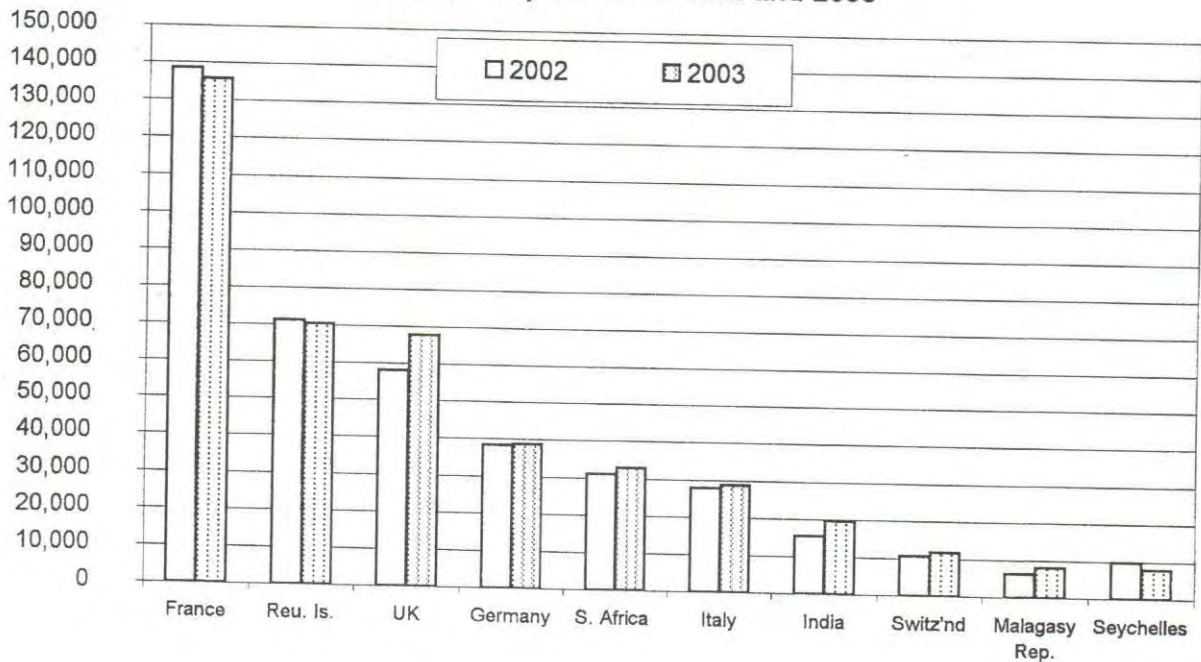


Table 6 :- Selected Tourism Statistics, 2000 - 2003

Year		Tourist arrivals (Number)	Tourist nights (000)	Tourism receipts ¹ (Rs million)	
2001	2000	656,453	6,413	14,234	
	2001	660,318	6,528	18,166	
	2002	681,648	6,769	18,328	
	1st Qr.	170,530	1,682	4,584	
	2nd Qr.	145,259	1,442	3,825	
	1st Semester	315,789	3,124	8,409	
	3rd Qr.	159,150	1,572	4,460	
	4th Qr.	185,379	1,832	5,297	
	2nd Semester	344,529	3,404	9,757	
	2002	2002	181,659	1,795	5,005
2nd Qr.		141,048	1,404	4,283	
1st Semester		322,707	3,199	9,288	
3rd Qr.		159,878	1,584	4,041	
4th Qr.		199,063	1,986	4,999	
2nd Semester		358,941	3,570	9,040	
2003 ²		1st Qr.	181,538	1,785	4,705
		2nd Qr.	153,768	1,527	4,251
		1st Semester	335,306	3,312	8,956
		3rd Qr.	165,540	1,640	4,297

¹ Source: Bank of Mauritius² Provisional

Table 7:- Hotels, rooms and bedplaces, 2000 - 2003

Year	Number as at end of period			
	Hotels	Rooms	Bedplaces	
2000	95	8,657	17,776	
2001	95	9,024	18,350	
2001	2002	95	9,623	19,597
	1st Qr.	95	8,667	17,796
	2nd Qr.	95	8,715	17,972
	3rd Qr.	95	8,640	17,718
	4th Qr.	95	9,024	18,350
2002	1st Qr.	94	8,770	17,846
	2nd Qr.	89	8,136	16,588
	3rd Qr.	92	8,317	16,875
	4th Qr.	95	9,623	19,597
2003 ¹	1st Qr.	96	9,638	19,671
	2nd Qr.	94	9,574	19,515
	3rd Qr.	96 ²	9,425	19,249

¹ Provisional² Excluding four hotels not operational because of renovation works.

Table 8 :- Monthly Occupancy Rates (%) for All Hotels and "Large" Hotels, 2001 - 2003

Month	All Hotels						"Large" Hotels					
	2001		2002		2003 ¹		2001		2002		2003 ¹	
	Room	Bed	Room	Bed	Room	Bed	Room	Bed	Room	Bed	Room	Bed
January	74	65	71	63	68	59	78	69	76	68	69	61
February	67	59	69	62	66	58	70	63	74	66	69	61
March	68	60	75	66	63	56	72	64	81	72	66	58
<u>1st Quarter</u>	71	62	72	64	66	58	75	66	77	69	68	60
April	66	57	62	56	63	55	70	62	68	61	67	59
May	64	56	67	59	62	55	68	61	73	65	64	56
June	50	43	50	45	49	43	51	46	53	47	50	44
<u>2nd Quarter</u>	60	53	60	54	58	51	64	57	65	58	60	53
<u>1st Semester</u>	66	58	66	59	62	54	70	62	71	64	64	57
July	55	48	59	52	53	47	57	51	62	56	54	48
August	62	55	63	56	61	54	65	58	69	62	64	56
September	68	60	69	62	63	55	74	66	76	68	67	59
<u>3rd Quarter</u>	63	55	64	56	59	52	66	59	69	62	62	54
<u>Jan. to Sep.</u>	64	56	65	58	61	54	68	60	71	63	63	56
October	70	62	76	68	76	68	76	67	82	73	82	73
November	73	64	76	67	78	71	78	70	81	71	81	71
December	69	61	70	62	72	64	72	64	72	64	72	64
<u>4th Quarter</u>	70	62	74	65	75	69	75	67	78	69	78	69
<u>2nd Semester</u>	66	58	67	60	67	60	70	63	70	62	70	62
Whole Year	66	58	67	59	67	59	70	62	70	62	70	62

¹ Provisional

Table 9 :- Employment in the tourist industry as at end of March, 1999 - 2003

Year Establishments	1999 ¹	2000 ¹	2001	2002	2003 ²
Restaurants	1,168	1,256	1,269	1,252	1,719
Hotels	11,835	13,239	15,023	15,890	16,497
Travel and Tourism	3,232	3,316	3,652	3,974	4,045
Total	16,235	17,811	19,944	21,116	22,261

¹ Revised in the light of new classification based on International Standard Industrial Classification Rev. 3

² Provisional

Source: Survey of Employment and Earnings in large Establishments (i.e. employing 10 or more persons)

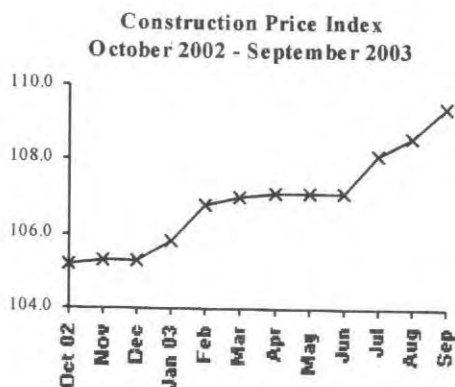
CONSTRUCTION PRICE INDEX

(Input Cost Index for the construction of a single storey house)
3rd Quarter 2003

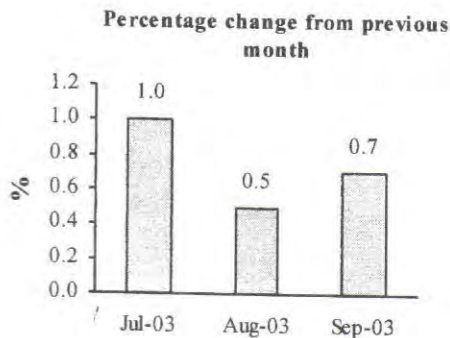
1. Introduction

This issue of the Economic and Social Indicators presents the monthly Construction Price Index (residential) for the third quarter of 2003 with fourth quarter 2001 as base period. Figures showing the evolution of the index during the past twelve months are also included. A description of the model dwelling used for constructing the index is given in Annex. Figures have been rounded to one decimal place although they have been calculated to many decimal places.

2. Changes in the Construction Price Index.



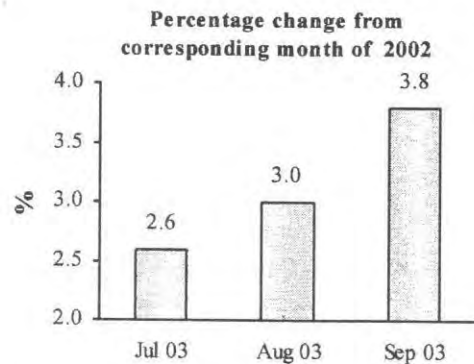
The Construction Price Index, which stood at 107.1 at the end of June 2003, increased to 108.1 in July, 108.6 in August and 109.4 in September 2003.



The 1.0% increase in July was mainly the result of higher wages following the 2003/2004 salary compensation.

Higher prices of iron bars contributed most to the 0.5% increase in August.

The 0.7% rise in September was attributable to increases in the prices of sand, aggregate and block.



Compared to the corresponding months of 2002, the index shows increases of 2.6% for July, 3.0% for August and 3.8% for September 2003.

3. Changes by Input Categories

Changes by input categories are shown in Tables 1.1 to 1.5.

In July 2003, the "Labour" sub-index stood at 106.5, representing an increase of 2.9% from the figure of 103.4 registered in June 2003 as a result of wage increases ranging between 2.5% and 3.4%. This level remained unchanged in August and September.

Higher prices of paint (4-5%) in July moved the "Materials" category sub-index slightly up from 109.7 to 109.8. The sub-index

attained a level of 110.6 in August following increases in the prices of iron bars (6-7%). It increased further to 111.9 in September as a result of higher costs of sand (4%), aggregate (7-8%), and block (3%).

The net monthly contributions of the input categories to the index during the period October 2002 to September 2003 are shown in Table 1.4.

Quarterly averages of the monthly indices by input categories and the percentage change from quarter to quarter are shown in Table 1.5. During the third quarter of 2003, no change was registered in the sub-indices for "Hire of Plant" and "Transport" categories.

4. Changes by Work Categories

Changes by work categories are shown in Tables 2.1 to 2.5.

In July 2003, all work categories were affected by higher wages. The effect was more pronounced in those categories where labour has important weights, e.g. "Site preparation, excavation and disposal, hardcore filling" (2.1%) and "Rendering to wall and ceiling" (2.0%). A 2.0% rise was registered in "Painting", being the combined effect of higher wages and costs of paint.

The higher costs of iron bars in August resulted in an increase of 3.8% in the work category "Reinforcement".

In September, several work categories were affected by increases in the prices of sand, aggregate and block, the most important being "Blockwork" (2.0%), "Concrete" (1.9%), "Bed and screed to floor and roof" (1.1%) and "Drainage" (1.0%).

Table 2.4 shows the net monthly contributions of the work categories to the index since October 2002.

Quarterly averages of the monthly indices by work categories and the percentage

change from quarter to quarter are shown in Table 2.5.

5. Past Trends

Table 3 summarises the monthly indices, the quarterly and yearly averages as well as the percentage changes in the yearly average since 1998. Indices for the years 1998 to 2001 have been worked out using as base the fourth quarter of 1993, while the base period for the calculation of the index from 2002 onwards is the fourth quarter of 2001.

The two series are not strictly comparable. A crude method of converting an index from the new base to the old base is to multiply the new index by 1.282. Conversely, an index on the old base can be converted to the new base by dividing the old index by 1.282.

*Central Statistics Office
Ministry of Economic Development, Financial
Services and Corporate Affairs
Port Louis
November 2003*

<p>Contact person: Mr. D. Bundhoo Statistician - Housing Unit Central Statistics Office LIC Centre Port Louis Tel: 212 2316 / 17 Fax: 211 4150 Email: cso@mail.gov.mu</p>
--

Input Cost Index for the construction of a single storey house

(Base: 4th Quarter 2001 = 100)

Table 1.1: Monthly sub-indices by input categories, October 2002 to September 2003

Input Categories	Weight	2002												2003				
		Oct	Nov	Dec	Jan	Feb	Mar	Apr	May	Jun	Jul	Aug	Sep					
LABOUR	34.5	103.4	103.4	103.4	103.4	103.4	103.4	103.4	103.4	103.4	103.4	103.4	103.4	103.4	106.5	106.5	106.5	
HIRE OF PLANT	3.0	101.0	101.0	101.0	101.6	101.6	101.6	101.6	101.6	101.6	101.6	101.6	101.6	101.6	101.6	101.6	101.6	
MATERIALS:	57.2	106.5	106.7	106.7	107.4	109.3	109.5	109.7	109.7	109.7	109.7	109.7	109.7	109.7	109.8	110.6	111.9	
Hardcore (rempissage)	1.0	110.5	110.5	110.5	110.5	110.5	110.5	110.5	110.5	110.5	110.5	110.5	110.5	110.5	110.5	110.5	110.5	
Cement	10.0	104.5	104.5	104.5	104.5	113.8	113.8	113.8	113.8	113.8	113.8	113.8	113.8	113.8	113.8	113.8	113.8	
Sand	6.1	105.6	105.6	105.6	105.6	105.6	105.6	105.6	105.6	105.6	105.6	105.6	105.6	105.6	105.6	105.6	111.1	
Aggregate	2.9	109.8	109.8	109.8	109.8	109.8	109.8	109.8	109.8	109.8	109.8	109.8	109.8	109.8	109.8	109.8	118.4	
Block	4.4	109.9	109.9	109.9	109.9	113.2	113.2	113.2	113.2	113.2	113.2	113.2	113.2	113.2	113.2	113.2	117.0	
Steel bars (armature)	5.8	107.9	108.0	108.0	114.0	114.0	114.0	114.0	114.0	114.0	114.0	114.0	114.0	114.1	114.1	120.9	120.9	
Galvanised corrugated cast iron sheeting	1.2	101.0	101.0	101.0	101.0	101.0	101.4	101.4	101.4	101.4	101.4	101.4	101.4	101.4	101.4	101.4	101.4	
Timber: (a) Carpentry	3.9	116.4	116.4	116.4	116.4	116.4	116.4	116.4	116.4	116.4	116.4	116.4	116.4	116.4	116.4	116.4	116.4	
(b) Joinery	4.2	105.3	105.3	105.3	105.3	105.3	105.8	105.8	105.8	105.8	105.8	105.8	105.8	105.8	105.8	105.8	105.8	
Metal openings	6.1	109.0	110.0	110.0	110.0	110.0	110.0	110.0	110.0	110.0	110.0	110.5	110.5	110.5	110.5	111.7	111.7	
Ceramic tiles	1.3	101.5	101.5	101.5	101.5	101.5	101.5	101.5	101.5	101.5	101.5	101.5	101.5	101.5	101.5	101.5	101.5	
Glass and putty	0.7	103.1	103.1	103.1	103.1	104.1	104.1	104.1	104.1	104.1	104.1	104.1	104.1	104.1	104.1	104.4	104.4	
Paint	2.0	102.9	102.9	102.9	102.9	102.9	103.7	103.7	103.7	103.7	103.7	104.2	104.2	104.2	104.2	105.9	105.9	
Plumbing	1.5	102.7	103.1	103.1	103.1	103.1	103.1	103.1	103.1	103.1	103.1	103.1	103.1	103.1	103.1	103.1	103.1	
Sanitary installation	2.3	99.6	99.7	99.7	99.7	99.7	100.1	100.1	100.1	100.1	100.1	101.4	101.4	101.4	101.4	102.9	102.9	
Electrical installation	2.6	102.3	102.2	102.2	102.2	102.2	104.8	104.8	104.8	104.8	104.8	106.3	106.3	106.3	106.3	106.3	106.3	
Other	1.2	103.1	103.7	103.7	103.7	104.1	105.2	105.2	105.2	105.2	105.2	105.3	105.3	105.3	105.3	105.4	105.4	
TRANSPORT	5.3	105.3	105.3	105.3	105.3	105.3	105.3	105.3	105.3	105.3	105.3	105.3	105.3	105.3	105.3	105.3	105.3	
Total	100.0	105.2	105.3	105.3	105.8	106.8	107.0	107.1	107.1	107.1	107.1	107.1	107.1	107.1	108.1	108.6	109.4	

Input Cost Index for the construction of a single storey house

(Base: 4th Quarter 2001 = 100)

Table 1.2: Percentage change from previous month by input categories, October 2002 to September 2003

Input Categories	Weight	2002												2003										
		Sep to Oct	Oct to Nov	Nov to Dec	Dec 02 to Jan 03	Jan to Feb	Feb to Mar	Mar to Apr	Apr to May	May to Jun	Jun to Jul	Jul to Aug	Aug to Sep											
		0.0	0.0	0.0	0.0	0.0	0.0	0.0	0.0	0.0	0.0	0.0	0.0											
LABOUR	34.5	0.0	0.0	0.0	0.0	0.0	0.0	0.0	0.0	0.0	0.0	0.0	0.0	0.0	0.0	0.0	0.0	0.0	0.0	0.0	0.0	0.0	0.0	
HIRE OF PLANT	3.0	0.0	0.0	0.0	0.6	0.0	0.0	0.0	0.0	0.0	0.0	0.0	0.0	0.0	0.0	0.0	0.0	0.0	0.0	0.0	0.0	0.0	0.0	0.0
MATERIALS :	57.2	-0.3	0.1	0.0	0.7	1.8	0.2	0.2	0.0	0.0	0.0	0.2	0.0	0.0	0.0	0.0	0.0	0.0	0.0	0.0	0.0	0.0	0.0	0.0
Hardcore (remplassage)	1.0	0.0	0.0	0.0	0.0	0.0	0.0	0.0	0.0	0.0	0.0	0.0	0.0	0.0	0.0	0.0	0.0	0.0	0.0	0.0	0.0	0.0	0.0	0.0
Cement	10.0	0.0	0.0	0.0	0.0	8.9	0.0	0.0	0.0	0.0	0.0	0.0	0.0	0.0	0.0	0.0	0.0	0.0	0.0	0.0	0.0	0.0	0.0	0.0
Sand	6.1	0.0	0.0	0.0	0.0	0.0	0.0	0.0	0.0	0.0	0.0	0.0	0.0	0.0	0.0	0.0	0.0	0.0	0.0	0.0	0.0	0.0	0.0	0.0
Aggregate	2.9	0.0	0.0	0.0	0.0	0.0	0.0	0.0	0.0	0.0	0.0	0.0	0.0	0.0	0.0	0.0	0.0	0.0	0.0	0.0	0.0	0.0	0.0	0.0
Block	4.4	0.0	0.0	0.0	0.0	3.0	0.0	0.0	0.0	0.0	0.0	0.0	0.0	0.0	0.0	0.0	0.0	0.0	0.0	0.0	0.0	0.0	0.0	0.0
Steel bars (armature)	5.8	0.0	0.1	0.0	5.5	0.0	0.0	0.0	0.0	0.0	0.0	0.0	0.0	0.0	0.0	0.0	0.0	0.0	0.0	0.0	0.0	0.0	0.0	0.0
Galvanised corrugated cast iron sheeting	1.2	0.0	0.0	0.0	0.0	0.0	0.0	0.0	0.0	0.0	0.0	0.5	0.0	0.0	0.0	0.0	0.0	0.0	0.0	0.0	0.0	0.0	0.0	0.0
Timber: (a) Carpentry	3.9	-4.4	0.0	0.0	0.0	0.0	0.0	0.0	0.0	0.0	0.0	0.0	0.0	0.0	0.0	0.0	0.0	0.0	0.0	0.0	0.0	0.0	0.0	0.0
(b) Joinery	4.2	0.1	0.0	0.0	0.0	0.0	0.0	0.0	0.0	0.0	0.5	-0.1	0.0	0.0	0.0	0.0	0.0	0.0	0.0	0.0	0.0	0.0	0.0	0.0
Metal openings	6.1	0.0	1.0	0.0	0.0	0.0	0.0	0.0	0.0	0.0	0.0	0.4	0.0	0.0	0.0	0.0	0.0	0.0	0.0	0.0	0.0	0.0	0.0	0.0
Ceramic tiles	1.3	0.0	0.0	0.0	0.0	0.0	0.0	0.0	0.0	0.0	0.0	0.0	0.0	0.0	0.0	0.0	0.0	0.0	0.0	0.0	0.0	0.0	0.0	0.0
Glass and putty	0.7	0.0	0.0	0.0	0.0	1.0	0.0	0.0	0.0	1.0	0.0	0.0	0.0	0.0	0.0	0.0	0.0	0.0	0.0	0.0	0.0	0.0	0.0	0.0
Paint	2.0	0.0	0.0	0.0	0.0	0.0	0.0	0.0	0.0	0.0	0.8	0.5	0.0	0.0	0.0	0.0	0.0	0.0	0.0	0.0	0.0	0.0	0.0	0.0
Plumbing	1.5	0.0	0.4	0.0	5.4	0.1	0.0	0.0	0.0	0.0	0.0	0.0	0.0	0.0	0.0	0.0	0.0	0.0	0.0	0.0	0.0	0.0	0.0	0.0
Sanitary installation	2.3	0.0	0.1	0.0	0.4	0.0	0.0	0.0	0.0	0.0	0.0	1.3	0.0	0.0	0.0	0.0	0.0	0.0	0.0	0.0	0.0	0.0	0.0	0.0
Electrical installation	2.6	0.0	-0.1	0.0	0.0	0.0	2.6	0.0	0.0	0.0	0.0	1.5	0.0	0.0	0.0	0.0	0.0	0.0	0.0	0.0	0.0	0.0	0.0	0.0
Other	1.2	0.0	0.6	0.0	0.4	0.0	1.1	0.0	0.0	0.0	0.0	0.1	0.0	0.0	0.0	0.0	0.0	0.0	0.0	0.0	0.0	0.0	0.0	0.0
TRANSPORT	5.3	0.0	0.0	0.0	0.0	0.0	0.0	0.0	0.0	0.0	0.0	0.0	0.0	0.0	0.0	0.0	0.0	0.0	0.0	0.0	0.0	0.0	0.0	0.0
OVERALL CHANGE		-0.2	0.1	0.0	0.4	1.0	0.1	0.1	0.0	0.0	0.0	0.1	0.0	0.0	0.0	0.0	0.0	0.0	0.0	0.0	0.0	0.0	0.0	0.0

Input Cost Index for the construction of a single storey house

(Base: 4th Quarter 2001 = 100)

Table 1.3: Percentage change from corresponding month of previous year by input categories, January 2003 to September 2003

Input Categories	Weight	Jan 02 to Jan 03	Feb 02 to Feb 03	Mar 02 to Mar 03	Apr 02 to Apr 03	May 02 to May 03	Jun 02 to Jun 03	Jul 02 to Jul 03	Aug 02 to Aug 03	Sep 02 to Sep 03
LABOUR	34.5	3.4	3.4	3.4	3.4	3.4	3.4	2.9	2.9	2.9
HIRE OF PLANT	3.0	1.6	1.6	1.6	1.6	1.6	1.6	0.6	0.6	0.6
MATERIALS :	57.2	6.9	8.3	8.5	8.4	6.9	6.9	2.8	3.5	4.7
Hardcore (rempissage)	1.0	10.5	10.5	10.5	10.5	10.5	10.5	0.0	0.0	0.0
Cement	10.0	2.6	11.8	11.8	11.8	11.8	11.8	8.9	8.9	8.9
Sand	6.1	5.6	5.6	5.6	5.6	5.6	5.6	0.0	0.0	5.2
Aggregate	2.9	9.8	9.8	9.8	9.8	9.8	9.8	0.0	0.0	7.9
Block	4.4	8.0	11.3	11.3	11.3	11.3	11.3	3.0	3.0	6.5
Steel bars (armature)	5.8	14.0	9.7	9.7	9.6	9.6	9.6	6.4	12.0	12.0
Galvanised corrugated cast iron sheeting	1.2	1.0	1.4	1.9	2.4	2.9	2.9	0.9	0.9	0.9
Timber: (a) Carpentry	3.9	16.4	16.4	15.3	15.3	-4.4	-4.4	-4.7	-4.7	-4.7
(b) Joinery	4.2	5.3	4.9	5.4	5.3	4.0	4.0	0.5	0.4	0.4
Metal openings	6.1	10.0	9.8	9.8	8.2	8.2	8.2	1.4	2.5	2.5
Ceramic tiles	1.3	1.5	1.5	0.4	0.0	0.0	0.0	0.0	0.0	0.0
Glass and putty	0.7	3.1	4.1	4.0	4.1	4.1	4.1	1.0	1.3	1.3
Paint	2.0	2.9	2.3	3.1	4.1	4.1	4.1	2.9	2.9	2.9
Plumbing	1.5	8.7	8.8	8.7	8.7	8.6	8.6	5.8	5.8	5.8
Sanitary installation	2.3	0.0	0.0	0.4	2.2	2.2	2.2	1.9	3.3	3.3
Electrical installation	2.6	2.1	2.1	4.8	6.3	6.4	6.4	3.8	3.5	3.5
Other	1.2	4.1	4.2	5.3	5.4	5.4	5.4	2.0	2.3	2.3
TRANSPORT	5.3	5.3	5.3	5.3	5.3	5.3	5.3	0.0	0.0	0.0
OVERALL CHANGE		5.5	6.3	6.4	6.4	5.5	5.5	2.6	3.0	3.8

Input Cost Index for the construction of a single storey house

(Base: 4th Quarter 2001 = 100)

Table 1.4: Net monthly contributions of input categories to the index, October 2002 to September 2003

Input Categories	Weight	2002						2003																		
		Oct	Nov	Dec	Jan	Feb	Mar	Apr	May	Jun	Jul	Aug	Sep													
		to Sep	to Oct	to Nov	to Dec	to Jan 03	to Feb	to Mar	to Apr	to May	to Jun	to Jul	to Aug	to Sep												
LABOUR	34.5	0.00	0.00	0.00	0.00	0.00	0.00	0.00	0.00	0.00	0.00	0.00	0.00	0.00	0.00	0.00	0.00	0.00	0.00	0.00	0.00	0.00	0.00			
HIRE OF PLANT	3.0	0.00	0.00	0.00	0.00	0.00	0.00	0.00	0.00	0.00	0.00	0.00	0.00	0.00	0.00	0.00	0.00	0.00	0.00	0.00	0.00	0.00	0.00	0.00	0.00	
MATERIALS:	57.2	-0.20	0.08	0.00	0.00	0.44	1.08	0.13	0.11	0.00	0.00	0.00	0.00	0.00	0.00	0.00	0.00	0.00	0.00	0.00	0.00	0.00	0.00	0.00	0.00	
Hardcore (remplassage)	1.0	0.00	0.00	0.00	0.00	0.00	0.00	0.00	0.00	0.00	0.00	0.00	0.00	0.00	0.00	0.00	0.00	0.00	0.00	0.00	0.00	0.00	0.00	0.00	0.00	0.00
Cement	10.0	0.00	0.00	0.00	0.00	0.00	0.93	0.00	0.00	0.00	0.00	0.00	0.00	0.00	0.00	0.00	0.00	0.00	0.00	0.00	0.00	0.00	0.00	0.00	0.00	0.00
Sand	6.1	0.00	0.00	0.00	0.00	0.00	0.00	0.00	0.00	0.00	0.00	0.00	0.00	0.00	0.00	0.00	0.00	0.00	0.00	0.00	0.00	0.00	0.00	0.00	0.00	0.00
Aggregate	2.9	0.00	0.00	0.00	0.00	0.00	0.00	0.00	0.00	0.00	0.00	0.00	0.00	0.00	0.00	0.00	0.00	0.00	0.00	0.00	0.00	0.00	0.00	0.00	0.00	0.00
Block	4.4	0.00	0.00	0.00	0.00	0.00	0.15	0.00	0.00	0.00	0.00	0.00	0.00	0.00	0.00	0.00	0.00	0.00	0.00	0.00	0.00	0.00	0.00	0.00	0.00	0.00
Steel bars (armature)	5.8	0.00	0.01	0.00	0.00	0.35	0.00	0.00	0.00	0.00	0.00	0.00	0.00	0.00	0.00	0.00	0.00	0.00	0.00	0.00	0.00	0.00	0.00	0.00	0.00	0.00
Galvanised corrugated cast iron sheeting	1.2	0.00	0.00	0.00	0.00	0.00	0.00	0.01	0.01	0.00	0.00	0.00	0.00	0.00	0.00	0.00	0.00	0.00	0.00	0.00	0.00	0.00	0.00	0.00	0.00	0.00
Timber: (a) Carpentry	3.9	-0.21	0.00	0.00	0.00	0.00	0.00	0.00	0.00	0.00	0.00	0.00	0.00	0.00	0.00	0.00	0.00	0.00	0.00	0.00	0.00	0.00	0.00	0.00	0.00	0.00
(b) Joinery	4.2	0.00	0.00	0.00	0.00	0.00	0.00	0.02	0.00	0.00	0.00	0.00	0.00	0.00	0.00	0.00	0.00	0.00	0.00	0.00	0.00	0.00	0.00	0.00	0.00	0.00
Metal openings	6.1	0.00	0.06	0.00	0.00	0.00	0.00	0.00	0.03	0.00	0.00	0.00	0.00	0.00	0.00	0.00	0.00	0.00	0.00	0.00	0.00	0.00	0.00	0.00	0.00	0.00
Ceramic tiles	1.3	0.00	0.00	0.00	0.00	0.00	0.00	0.00	0.00	0.00	0.00	0.00	0.00	0.00	0.00	0.00	0.00	0.00	0.00	0.00	0.00	0.00	0.00	0.00	0.00	0.00
Glass and putty	0.7	0.00	0.00	0.00	0.00	0.00	0.00	0.00	0.00	0.00	0.00	0.00	0.00	0.00	0.00	0.00	0.00	0.00	0.00	0.00	0.00	0.00	0.00	0.00	0.00	0.00
Paint	2.0	0.00	0.00	0.00	0.00	0.00	0.00	0.02	0.01	0.00	0.00	0.00	0.00	0.00	0.00	0.00	0.00	0.00	0.00	0.00	0.00	0.00	0.00	0.00	0.00	0.00
Plumbing	1.5	0.00	0.01	0.00	0.00	0.08	0.00	0.00	0.00	0.00	0.00	0.00	0.00	0.00	0.00	0.00	0.00	0.00	0.00	0.00	0.00	0.00	0.00	0.00	0.00	0.00
Sanitary installation	2.3	0.00	0.00	0.00	0.00	0.01	0.00	0.00	0.03	0.00	0.00	0.00	0.00	0.00	0.00	0.00	0.00	0.00	0.00	0.00	0.00	0.00	0.00	0.00	0.00	0.00
Electrical installation	2.6	0.00	0.00	0.00	0.00	0.00	0.00	0.07	0.04	0.00	0.00	0.00	0.00	0.00	0.00	0.00	0.00	0.00	0.00	0.00	0.00	0.00	0.00	0.00	0.00	0.00
Other	1.2	0.00	0.00	0.00	0.00	0.00	0.00	0.01	0.00	0.00	0.00	0.00	0.00	0.00	0.00	0.00	0.00	0.00	0.00	0.00	0.00	0.00	0.00	0.00	0.00	0.00
TRANSPORT	5.3	0.00	0.00	0.00	0.00	0.00	0.00	0.00	0.00	0.00	0.00	0.00	0.00	0.00	0.00	0.00	0.00	0.00	0.00	0.00	0.00	0.00	0.00	0.00	0.00	0.00
TOTAL	100.0	-0.20	0.08	0.00	0.00	0.46	1.08	0.13	0.11	0.00	0.00	0.00	0.00	0.00	0.00	0.00	0.00	0.00	0.00	0.00	0.00	0.00	0.00	0.00	0.00	0.00

Input Cost Index for the construction of a single storey house

(Base: 4th Quarter 2001 = 100)

Table 1.5: Quarterly average of monthly indices and percentage changes by input categories, October 2002 - September 2003

Input Categories	Weight	2002		2003			% change from previous quarter		
		4th Qr	1st Qr	2nd Qr	3rd Qr	4th Qr 2002	1st Qr 2003	2nd Qr 2003	3rd Qr 2003
LABOUR	34.5	103.4	103.4	103.4	106.5	0.0	0.0	0.0	2.9
HIRE OF PLANT	3.0	101.0	101.6	101.6	101.6	0.0	0.6	0.0	0.0
MATERIALS:	57.2	106.6	108.8	109.7	110.8	-0.2	2.0	0.9	0.9
Hardcore (remplassage)	1.0	110.5	110.5	110.5	110.5	0.0	0.0	0.0	0.0
Cement	10.0	104.5	110.7	113.8	113.8	0.0	5.9	2.8	0.0
Sand	6.1	105.6	105.6	105.6	107.4	0.0	0.0	0.0	1.7
Aggregate	2.9	109.8	109.8	109.8	112.7	0.0	0.0	0.0	2.6
Block	4.4	109.9	112.1	113.2	114.5	0.0	2.0	1.0	1.1
Steel bars (armature)	5.8	108.0	114.0	114.0	118.6	0.3	5.6	0.0	4.0
Galvanised corrugated cast iron sheeting	1.2	101.0	101.1	101.9	101.9	0.0	0.2	0.8	0.0
Timber: (a) Carpentry	3.9	116.4	116.4	116.4	116.0	-4.4	0.0	0.0	-0.3
(b) Joinery	4.2	105.3	105.5	105.7	105.6	0.1	0.2	0.2	-0.1
Metal openings	6.1	109.7	110.0	110.5	111.3	0.6	0.3	0.4	0.7
Ceramic tiles	1.3	101.5	101.5	101.5	101.5	0.0	0.0	0.0	0.0
Glass and putty	0.7	103.1	103.8	104.1	104.3	0.0	0.7	0.3	0.2
Paint	2.0	102.9	103.2	104.2	105.9	0.0	0.3	1.0	1.6
Plumbing	1.5	103.0	108.8	108.8	108.6	0.3	5.6	0.0	-0.2
Sanitary installation	2.3	99.7	100.1	101.4	102.4	0.1	0.5	1.3	1.0
Electrical installation	2.6	102.2	103.0	106.3	106.0	-0.1	0.8	3.2	-0.3
Other	1.2	103.5	104.5	105.3	105.3	0.4	0.9	0.8	0.0
TRANSPORT	5.3	105.3	105.3	105.3	105.3	0.0	0.0	0.0	0.0
OVERALL INDEX AND CHANGE		105.3	106.5	107.1	108.7	-0.1	1.2	0.5	1.5

Input Cost Index for the construction of a single storey house

(Base: 4th Quarter 2001 = 100)

Table 2.1: Monthly sub-indices by work categories, October 2002 to September 2003

Work Categories	Weight	2002												2003									
		Oct	Nov	Dec	Jan	Feb	Mar	Apr	May	Jun	Jul	Aug	Sep	Jan	Feb	Mar	Apr	May	Jun	Jul	Aug	Sep	
		1. Setting up	2.3	102.6	102.6	102.6	102.6	103.1	103.4	103.6	103.6	103.6	103.6	103.9	103.9	103.9	103.9	103.9	103.9	103.6	103.6	103.6	103.9
2. Setting out	0.5	101.6	101.6	101.6	101.6	101.6	101.6	101.6	101.6	101.6	101.6	103.1	103.1	103.1	103.1	103.1	103.1	101.6	101.6	101.6	103.1	103.1	103.1
3. Temporary works	0.5	107.7	107.7	107.7	107.7	107.7	107.7	107.7	107.7	107.7	107.7	107.7	107.7	107.7	107.7	107.7	107.7	107.7	107.7	107.7	108.5	108.5	108.5
4. Site preparation, excavation & disposal, hardcore filling	5.8	105.1	105.1	105.1	105.1	105.4	105.4	105.4	105.4	105.4	105.4	105.4	105.4	105.4	105.4	105.4	105.4	105.4	105.4	105.4	107.7	107.7	108.0
5. Concrete	20.2	105.1	105.1	105.1	105.1	107.8	107.8	107.8	107.8	107.8	107.8	107.8	107.8	107.8	107.8	107.8	107.8	107.8	107.8	107.8	108.7	108.7	110.8
6. Reinforcement	9.2	106.4	106.4	106.4	106.4	110.2	110.2	110.2	110.2	110.2	110.2	110.2	110.2	110.2	110.2	110.2	110.2	110.2	110.2	110.2	111.3	111.3	115.5
7. Formwork (coffrage)	7.8	109.0	109.0	109.0	109.0	109.0	109.0	109.0	109.0	109.0	109.0	109.0	109.0	109.0	109.0	109.0	109.0	109.0	109.0	109.0	110.0	110.0	110.0
8. Blockwork	8.5	107.0	107.0	107.0	107.0	109.3	109.3	109.3	109.3	109.3	109.3	109.3	109.3	109.3	109.3	109.3	109.3	109.3	109.3	109.3	110.0	110.0	112.2
9. Softwood joinery	4.5	105.2	105.2	105.2	105.2	105.2	105.2	105.2	105.2	105.2	105.2	105.2	105.2	105.2	105.2	105.2	105.2	105.2	105.2	105.2	105.7	105.7	105.6
10. Ironmongery	0.5	101.5	103.1	103.1	103.1	103.1	103.1	103.1	103.1	103.1	103.1	103.1	103.1	103.1	103.1	103.1	103.1	103.1	103.1	103.1	106.9	106.9	107.2
11. Metal openings	6.5	108.6	109.6	109.6	109.6	109.6	109.6	109.6	109.6	109.6	109.6	109.6	109.6	109.6	109.6	109.6	109.6	109.6	109.6	109.6	110.2	110.2	111.3
12. Rendering to wall/ceiling (crépiçage)	9.9	103.7	103.7	103.7	103.7	105.1	105.1	105.1	105.1	105.1	105.1	105.1	105.1	105.1	105.1	105.1	105.1	105.1	105.1	105.1	107.2	107.2	107.6
13. Bed & screed to floor/roof	4.2	104.7	104.7	104.7	104.7	108.3	108.3	108.3	108.3	108.3	108.3	108.3	108.3	108.3	108.3	108.3	108.3	108.3	108.3	108.3	109.0	109.0	110.3
14. Tiling	2.1	102.1	102.1	102.1	102.1	102.1	102.1	102.1	102.1	102.1	102.1	102.1	102.1	102.1	102.1	102.1	102.1	102.1	102.1	102.1	103.1	103.1	103.2
15. Glazing	1.0	103.3	103.3	103.3	103.3	104.1	104.1	104.1	104.1	104.1	104.1	104.1	104.1	104.1	104.1	104.1	104.1	104.1	104.1	104.1	104.5	104.5	104.6
16. Painting	5.2	103.2	103.2	103.2	103.2	103.2	103.2	103.2	103.2	103.2	103.2	103.2	103.2	103.2	103.2	103.2	103.2	103.2	103.2	103.2	105.8	105.8	105.8
17. Plumbing/sanitary installation	5.0	101.6	101.8	101.8	101.8	103.7	103.7	103.7	103.7	103.7	103.7	103.7	103.7	103.7	103.7	103.7	103.7	103.7	103.7	103.7	105.1	105.1	105.7
18. Electrical installation	4.2	102.7	102.6	102.6	102.6	102.6	102.6	102.6	102.6	102.6	102.6	102.6	102.6	102.6	102.6	102.6	102.6	102.6	102.6	102.6	106.2	106.2	106.0
19. Drainage	2.1	105.1	105.1	105.1	105.1	106.9	106.9	106.9	106.9	106.9	106.9	106.9	106.9	106.9	106.9	106.9	106.9	106.9	106.9	106.9	107.8	107.8	109.0
Total	100.0	105.2	105.3	105.3	105.3	106.8	107.0	107.1	107.1	107.1	107.1	108.1	108.6	109.4	109.4	109.4	109.4	109.4	109.4	109.4	108.6	108.6	109.4

Input Cost Index for the construction of a single storey house

(Base: 4th Quarter 2001 = 100)

Table 2.2: Percentage change from previous month by work categories, October 2002 to September 2003

Work Categories	Weight	2002												2003											
		Sep to Oct		Oct to Nov		Nov to Dec		Dec 02 to Jan 03		Jan to Feb		Feb to Mar		Mar to Apr		Apr to May		May to Jun		Jun to Jul		Jul to Aug		Aug to Sep	
1. Setting up	2.3	0.0	0.0	0.0	0.0	0.0	0.0	0.0	0.5	0.2	0.2	0.2	0.2	0.0	0.0	0.0	0.0	0.0	0.0	0.3	0.3	0.0	0.0	0.0	0.5
2. Setting out	0.5	0.0	0.0	0.0	0.0	0.0	0.0	0.0	0.0	0.0	0.0	0.0	0.0	0.0	0.0	0.0	0.0	0.0	0.0	1.4	1.4	0.0	0.0	0.0	0.0
3. Temporary works	0.5	-1.9	0.0	0.0	0.0	0.0	0.0	0.0	0.0	0.0	0.0	0.0	0.0	0.0	0.0	0.0	0.0	0.0	0.0	0.7	0.7	0.0	0.0	0.0	0.0
4. Site preparation, excavation & disposal, hardcore filling	5.8	0.0	0.0	0.0	0.0	0.0	0.0	0.3	0.0	0.0	0.0	0.0	0.0	0.0	0.0	0.0	0.0	0.0	0.0	2.1	2.1	0.0	0.0	0.0	0.3
5. Concrete	20.2	0.0	0.0	0.0	0.0	0.0	0.0	0.0	2.6	0.0	0.0	0.0	0.0	0.0	0.0	0.0	0.0	0.0	0.0	0.8	0.8	0.0	0.0	0.0	1.9
6. Reinforcement	9.2	0.0	0.1	0.0	0.0	0.0	0.0	3.5	0.0	0.0	0.0	0.0	0.0	0.0	0.0	0.0	0.0	0.0	0.0	1.0	1.0	3.8	3.8	0.0	0.0
7. Formwork (coffrage)	7.8	-2.2	0.0	0.0	0.0	0.0	0.0	0.0	0.0	0.0	0.0	0.0	0.0	0.0	0.0	0.0	0.0	0.0	0.0	0.9	0.9	0.0	0.0	0.0	0.0
8. Blockwork	8.5	0.0	0.0	0.0	0.0	0.0	0.0	0.0	2.1	0.0	0.0	0.0	0.0	0.0	0.0	0.0	0.0	0.0	0.0	0.7	0.7	0.0	0.0	0.0	2.0
9. Softwood joinery	4.5	0.1	0.0	0.0	0.0	0.0	0.0	0.0	0.0	0.5	-0.1	0.0	0.0	0.0	0.0	0.0	0.0	0.0	0.0	0.2	0.2	-0.1	-0.1	0.0	0.0
10. Ironmongery	0.5	0.0	1.6	0.0	0.0	0.0	0.0	0.0	0.0	2.6	0.0	0.0	0.0	0.0	0.0	0.0	0.0	0.0	0.0	1.0	1.0	0.2	0.2	0.0	0.0
11. Metal openings	6.5	0.0	0.9	0.0	0.0	0.0	0.0	0.0	0.0	0.0	0.4	0.0	0.0	0.0	0.0	0.0	0.0	0.0	0.0	0.1	0.1	1.0	1.0	0.0	0.0
12. Rendering to wall/ceiling (crépissage)	9.9	0.0	0.0	0.0	0.0	0.0	0.0	0.0	1.3	0.0	0.0	0.0	0.0	0.0	0.0	0.0	0.0	0.0	0.0	2.0	2.0	0.0	0.0	0.0	0.4
13. Bed & screed to floor/roof	4.2	0.0	0.0	0.0	0.0	0.0	0.0	0.0	3.5	0.0	0.0	0.0	0.0	0.0	0.0	0.0	0.0	0.0	0.0	0.7	0.7	0.0	0.0	0.0	1.1
14. Tiling	2.1	0.0	0.0	0.0	0.0	0.0	0.0	0.0	0.0	0.0	0.0	0.0	0.0	0.0	0.0	0.0	0.0	0.0	0.0	0.9	0.9	0.1	0.1	0.0	0.0
15. Glazing	1.0	0.0	0.0	0.0	0.0	0.0	0.0	0.0	0.8	0.0	0.0	0.0	0.0	0.0	0.0	0.0	0.0	0.0	0.0	0.3	0.3	0.2	0.2	0.0	0.0
16. Painting	5.2	0.0	0.0	0.0	0.0	0.0	0.0	0.0	0.0	0.3	0.2	0.0	0.0	0.0	0.0	0.0	0.0	0.0	0.0	2.0	2.0	0.0	0.0	0.0	0.0
17. Plumbing/sanitary installation	5.0	0.0	0.2	0.0	0.0	0.0	0.0	1.9	0.0	0.0	0.6	0.0	0.0	0.0	0.0	0.0	0.0	0.0	0.0	0.8	0.8	0.6	0.6	0.0	0.0
18. Electrical installation	4.2	0.0	-0.1	0.0	0.0	0.0	0.0	0.0	0.0	1.6	0.9	0.0	0.0	0.0	0.0	0.0	0.0	0.0	0.0	1.0	1.0	-0.2	-0.2	0.0	0.0
19. Drainage	2.1	-0.3	0.0	0.0	0.0	0.0	0.0	0.3	1.3	0.0	0.0	0.0	0.0	0.0	0.0	0.0	0.0	0.0	0.0	0.8	0.8	0.1	0.1	1.0	1.0
OVERALL CHANGE		-0.2	0.1	0.0	0.0	0.0	0.0	0.4	1.0	0.1	0.1	0.1	0.0	0.0	0.0	0.0	0.0	0.0	0.0	1.0	1.0	0.5	0.5	0.7	0.7

Input Cost Index for the construction of a single storey house

(Base: 4th Quarter 2001 = 100)

Table 2.3: Percentage change from corresponding month of previous year by work categories, January 2003 to September 2003

Work Categories	Weight	Jan 02 to Jan 03	Feb 02 to Feb 03	Mar 02 to Mar 03	Apr 02 to Apr 03	May 02 to May 03	Jun 02 to Jun 03	Jul 02 to Jul 03	Aug 02 to Aug 03	Sep 02 to Sep 03
1. Setting up	2.3	2.5	3.3	3.5	3.8	4.0	4.0	1.3	1.3	1.9
2. Setting out	0.5	1.6	1.6	1.6	1.6	1.6	1.6	1.4	1.4	1.4
3. Temporary works	0.5	7.7	7.7	7.4	7.4	-0.8	-0.8	-1.2	-1.2	-1.2
4. Site preparation, excavation & disposal, hardcore filling	5.8	5.4	5.4	5.4	5.4	5.4	5.4	2.4	2.4	2.7
5. Concrete	20.2	4.5	7.2	7.2	7.2	7.2	7.2	3.4	3.4	5.4
6. Reinforcement	9.2	10.2	7.5	7.5	7.4	7.4	7.4	5.1	8.6	8.6
7. Formwork (coffrage)	7.8	9.0	9.0	8.6	8.6	-0.8	-0.8	-1.3	-1.3	-1.3
8. Blockwork	8.5	5.9	8.2	8.2	8.2	8.2	8.2	2.8	2.8	4.9
9. Softwood joinery	4.5	5.2	4.8	5.3	5.2	3.9	3.9	0.6	0.5	0.5
10. Ironmongery	0.5	3.1	3.4	6.1	6.5	6.5	6.5	5.4	5.6	5.6
11. Metal openings	6.5	9.6	9.4	9.4	7.9	7.9	7.9	1.5	2.5	2.5
12. Rendering to wall/ceiling (crépiage)	9.9	3.5	4.8	4.8	4.8	4.8	4.8	3.3	3.3	3.7
13. Bed & screed to floor/roof	4.2	3.9	7.5	7.5	7.5	7.5	7.5	4.2	4.2	5.3
14. Tiling	2.1	2.1	2.1	1.4	1.2	1.2	1.2	1.0	1.0	1.0
15. Glazing	1.0	3.3	4.1	4.0	4.1	4.1	4.1	1.1	1.3	1.3
16. Painting	5.2	3.2	2.9	3.2	3.6	3.6	3.6	2.5	2.6	2.6
17. Plumbing/sanitary installation	5.0	3.6	3.6	3.8	4.6	4.5	4.5	3.4	4.1	4.1
18. Electrical installation	4.2	2.6	2.6	4.2	5.1	5.1	5.1	3.4	3.2	3.2
19. Drainage	2.1	5.1	6.4	6.4	6.2	5.1	5.1	2.2	2.4	3.4
OVERALL CHANGE		5.5	6.3	6.4	6.4	5.5	5.5	2.6	3.0	3.8

Input Cost Index for the construction of a single storey house

(Base: 4th Quarter 2001 = 100)

Table 2.4: Net monthly contributions of work categories to the index, October 2002 to September 2003

Work Categories	Weight	2002												2003				
		2002	2002	2002	2002	2002	2002	2002	2002	2002	2002	2002	2002	2003	2003	2003	2003	
		Sep to Oct	Oct to Nov	Nov to Dec	Dec 02 to Jan 03	Jan to Feb	Feb to Mar	Mar to Apr	Apr to May	May to Jun	Jun to Jul	Jul to Aug	Aug to Sep	2003	2003	2003	2003	
1. Setting up	2.3	0.00	0.00	0.00	0.00	0.01	0.01	0.01	0.00	0.00	0.00	0.00	0.00	0.00	0.01	0.00	0.00	0.01
2. Setting out	0.5	0.00	0.00	0.00	0.00	0.00	0.00	0.00	0.00	0.00	0.00	0.00	0.00	0.00	0.01	0.00	0.00	0.00
3. Temporary works	0.5	-0.01	0.00	0.00	0.00	0.00	0.00	0.00	0.00	0.00	0.00	0.00	0.00	0.00	0.00	0.00	0.00	0.00
4. Site preparation, excavation & disposal, hardcore filling	5.8	0.00	0.00	0.00	0.02	0.00	0.00	0.00	0.00	0.00	0.00	0.00	0.00	0.00	0.13	0.00	0.00	0.02
5. Concrete	20.2	0.00	0.00	0.00	0.00	0.56	0.00	0.00	0.00	0.00	0.00	0.00	0.00	0.00	0.18	0.00	0.00	0.42
6. Reinforcement	9.2	0.00	0.01	0.00	0.34	0.00	0.00	0.00	0.00	0.00	0.00	0.00	0.00	0.10	0.39	0.00	0.00	0.00
7. Formwork (coffrage)	7.8	-0.19	0.00	0.00	0.00	0.00	0.00	0.00	0.00	0.00	0.00	0.00	0.00	0.08	0.00	0.00	0.00	0.00
8. Blockwork	8.5	0.00	0.00	0.00	0.00	0.19	0.00	0.00	0.00	0.00	0.00	0.00	0.00	0.06	0.00	0.00	0.19	0.00
9. Softwood joinery	4.5	0.00	0.00	0.00	0.00	0.00	0.00	0.00	0.00	0.00	0.02	0.00	0.00	0.01	0.00	0.00	0.00	0.00
10. Ironmongery	0.5	0.00	0.00	0.00	0.00	0.00	0.00	0.00	0.00	0.00	0.01	0.00	0.00	0.01	0.00	0.00	0.00	0.00
11. Metal openings	6.5	0.00	0.06	0.00	0.00	0.00	0.00	0.00	0.00	0.00	0.00	0.03	0.00	0.01	0.07	0.00	0.00	0.00
12. Rendering to wall/ceiling (crépissage)	9.9	0.00	0.00	0.00	0.00	0.13	0.00	0.00	0.00	0.00	0.00	0.00	0.00	0.20	0.00	0.00	0.05	0.05
13. Bed & screed to floor/roof	4.2	0.00	0.00	0.00	0.00	0.15	0.00	0.00	0.00	0.00	0.00	0.00	0.00	0.03	0.00	0.00	0.05	0.05
14. Tiling	2.1	0.00	0.00	0.00	0.00	0.00	0.00	0.00	0.00	0.00	0.00	0.00	0.00	0.02	0.00	0.00	0.00	0.00
15. Glazing	1.0	0.00	0.00	0.00	0.00	0.01	0.00	0.00	0.00	0.00	0.00	0.00	0.00	0.00	0.00	0.00	0.00	0.00
16. Painting	5.2	0.00	0.00	0.00	0.00	0.00	0.02	0.00	0.00	0.00	0.00	0.01	0.00	0.11	0.00	0.00	0.00	0.00
17. Plumbing/sanitary installation	5.0	0.00	0.01	0.00	0.09	0.00	0.00	0.00	0.00	0.00	0.00	0.03	0.00	0.04	0.03	0.00	0.00	0.00
18. Electrical installation	4.2	0.00	0.00	0.00	0.00	0.00	0.07	0.00	0.00	0.00	0.07	0.04	0.00	0.05	-0.01	0.00	0.00	0.00
19. Drainage	2.1	-0.01	0.00	0.00	0.01	0.03	0.00	0.00	0.00	0.00	0.00	0.00	0.00	0.02	0.00	0.00	0.02	0.02
TOTAL	100.0	-0.20	0.08	0.00	0.46	1.08	0.13	0.11	0.00	0.00	1.07	0.48	0.75	0.00	1.07	0.48	0.75	0.75

Input Cost Index for the construction of a single storey house

(Base: 4th Quarter 2001 = 100)

Table 2.5: Quarterly average of monthly indices and percentage changes by work categories, October 2002 - September 2003

Work Categories	Weight	2002				2003			% change from previous quarter		
		4th Qr	1st Qr	2nd Qr	3rd Qr	4th Qr 2002	1st Qr 2003	2nd Qr 2003	3rd Qr 2003		
1. Setting up	2.3	102.6	103.0	103.6	104.1	0.0	0.4	0.6	0.5		
2. Setting out	0.5	101.6	101.6	101.6	103.1	0.0	0.0	0.0	1.4		
3. Temporary works	0.5	107.7	107.7	107.7	108.5	-1.9	0.0	0.0	0.7		
4. Site preparation, excavation & disposal, hardcore filling	5.8	105.1	105.4	105.4	107.8	0.0	0.3	0.0	2.2		
5. Concrete	20.2	105.1	106.9	107.8	109.4	0.0	1.7	0.8	1.5		
6. Reinforcement	9.2	106.4	110.2	110.2	114.1	0.2	3.5	0.0	3.6		
7. Formwork (coffrage)	7.8	109.0	109.0	109.0	110.0	-2.2	0.0	0.0	0.9		
8. Blockwork	8.5	107.0	108.5	109.3	110.8	0.0	1.4	0.7	1.4		
9. Softwood joinery	4.5	105.2	105.3	105.6	105.7	0.1	0.2	0.2	0.1		
10. Ironmongery	0.5	102.6	104.0	105.8	107.1	1.1	1.4	1.7	1.2		
11. Metal openings	6.5	109.3	109.6	110.1	111.0	0.6	0.3	0.4	0.8		
12. Rendering to wall/ceiling (crépissage)	9.9	103.7	104.7	105.1	107.3	0.0	0.9	0.4	2.1		
13. Bed & screed to floor/roof	4.2	104.7	107.1	108.3	109.4	0.0	2.3	1.1	1.1		
14. Tiling	2.1	102.1	102.1	102.2	103.2	0.0	0.0	0.0	1.0		
15. Glazing	1.0	103.3	103.8	104.1	104.6	0.0	0.5	0.3	0.5		
16. Painting	5.2	103.2	103.3	103.7	105.8	0.0	0.1	0.4	2.0		
17. Plumbing/sanitary installation	5.0	101.7	103.7	104.3	105.5	0.1	1.9	0.6	1.2		
18. Electrical installation	4.2	102.6	103.1	105.1	106.0	-0.1	0.5	1.9	0.9		
19. Drainage	2.1	105.1	106.4	106.9	108.2	-0.3	1.2	0.4	1.2		
OVERALL INDEX AND CHANGE		105.3	106.5	107.1	108.7	-0.1	1.2	0.5	1.5		

Table 3: Construction Price Index - January 1998 to September 2003

	<i>(Base: 4th Quarter 1993 = 100)</i>				<i>(Base: 4th Quarter 2001 = 100)</i>	
	1998	1999	2000	2001	2002	2003
January	115.2	118.6	120.4	124.9	100.3	105.8
February	115.3	119.1	120.4	124.9	100.5	106.8
March	115.3	119.1	120.5	125.0	100.6	107.0
<i>1st Quarter</i>	<i>115.3</i>	<i>118.9</i>	<i>120.5</i>	<i>124.9</i>	<i>100.5</i>	<i>106.5</i>
April	115.3	119.2	120.4	124.9	100.7	107.1
May	115.5	119.2	120.4	124.9	101.5	107.1
June	115.6	119.3	120.5	124.9	101.5	107.1
<i>2nd Quarter</i>	<i>115.5</i>	<i>119.3</i>	<i>120.5</i>	<i>124.9</i>	<i>101.3</i>	<i>107.1</i>
July	116.9	120.9	121.5	126.9	105.4	108.1
August	117.5	121.0	121.6	127.4	105.4	108.6
September	118.1	121.0	121.4	127.4	105.4	109.4
<i>3rd Quarter</i>	<i>117.5</i>	<i>120.9</i>	<i>121.5</i>	<i>127.2</i>	<i>105.4</i>	<i>108.7</i>
October	118.4	121.2	124.3	127.6	105.2	
November	118.4	120.5	124.4	128.4	105.3	
December	118.6	120.6	124.4	128.5	105.3	
<i>4th Quarter</i>	<i>118.4</i>	<i>120.8</i>	<i>124.3</i>	<i>128.2</i>	<i>105.3</i>	
Yearly average	116.7	120.0	121.7	126.3	103.1	
% change in the yearly average	2.9	2.8	1.4	3.8		

ANNEX

**Description of the model used for establishing the
Construction Price Index**

The model used is a single storey (ground floor) detached house of 128.30 square metres (1,381 square feet) in floor area measured at plinth level to the external face of the external walls. The overall area is inclusive of 18.55 square metres (200 square feet) in respect of a garage.

It comprises two bedrooms, a living-dining room, a kitchen, a toilet, a bathroom, a verandah and an attached garage. The building has concrete block walls, reinforced concrete flat roof, internal flush plywood doors, glazed metal openings, screeded floor and roof, tiling to floor and walls of w.c. and bathroom and kitchen worktop; the ceilings and walls are rendered and painted both internally and externally. Plumbing, sanitary installation and electrical installation are included as well as drainage which is to be connected to the sewerage system.

Provision has been made, in the form of more substantial foundations and of stub columns on the roof, for converting the single into a two-storey house eventually. Site works are restricted to spreading and levelling surplus excavated material around the site.

The Index excludes the cost of the building permit and the draughtman's fee; these two items represent 0.47 % and 1.30% of the total cost respectively.

It is assumed that although the house is not constructed by a contractor, the client has recourse to the services of a foreman.