

CONSTRUCTION PRICE INDEX

(Cost Price Index for the construction of a single storey house - Input Price Index)
4th Quarter 2001

1. Introduction

This issue of the Economic and Social Indicators presents the monthly Construction Price Index (residential) for the 4th quarter of 2001. An overview of the evolution of the index during the previous 9 months is also included. A description of the model dwelling used for constructing the index is given in the Annex. Figures are presented at one decimal place although they have been calculated to many decimal places.

2. Changes in the Construction Price Index

The Construction Price Index which stood at 127.4 at the end of September 2001, increased by 1.1 points during the 4th quarter of 2001 to attain 127.6 in October, 128.4 in November and 128.5 in December.

The 0.2% increase in October is mainly the result of higher prices of paint, varnish, fibre glass water tank and manhole cover for drainage.

Higher costs of cement caused the index to rise by 0.6% in November.

In December, increases in the prices of blocks moved the index up marginally by 0.1%.

Compared to the corresponding months of 2000, the index shows increases of 2.7% for October, 3.2% for November and 3.3% for December.

The yearly average index works out to 126.3 for 2001, compared to 121.7 for year 2000 and 120.0 for 1999. This indicates an increase of 3.8% for 2001 as compared to 1.4% for year 2000 (Table 3).

3. Changes by Input Categories

Changes by input categories are shown in Tables 1.1 to 1.5 and Chart 1. No change was registered in the "Labour", "Hire of Plant" and "Transport" categories during the fourth quarter of 2001.

The sub-index for the "Materials" category moved up from 126.1 in September to 126.5 in October due to increases in the costs of paint (4% - 5%), varnish (5%), fibre glass water tank (2%) and manhole cover (8%). The sub-index reached a level of 127.7 in November following an increase of 5% in the prices of cement. It increased further to 128.0 in December as a result of higher costs of blocks (3%).

The net monthly contributions of the input categories to the index during 2001 are shown in Table 1.4.

Quarterly averages of the monthly indices by input categories and the percentage change from quarter to quarter are shown in Table 1.5.

4. Changes by Work Categories

Changes by work categories are shown in Tables 2.1 to 2.5.

In October, higher prices of paint and varnish caused an increase of 2.8% in the work category "Painting". In the same month, the work categories "Plumbing/Sanitary installation" and "Drainage" moved up by 0.4% each, following increases in the costs of fibre glass water tank and manhole cover respectively.

In November, the work categories which registered the most important increases were "Bed and screed to floor and roof" (2.4%), "Concrete" (1.6%) and "Rendering to wall and ceiling" (0.9%). These changes were the result of higher prices of cement.

The increase in the costs of blocks in December pushed up the sub-index for "Blockwork" by 1.4% and that for "Drainage" by 0.2%.

Table 2.4 shows the net monthly contributions of the work categories to the index for 2001.

Quarterly averages of the monthly indices by work categories and the percentage change from quarter to quarter are shown in Table 2.5.

5. Past Trends

Table 3 summarizes the monthly indices, the quarterly and yearly averages as well as the changes in the yearly average since 1995.

Central Statistics Office
Ministry of Economic Development, Financial Services and Corporate Affairs
Port Louis
February 2002

Contact person:	Mr. D. Bundhoo Statistician (Housing Unit) Phone: 212 2316 / 17
-----------------	---

Cost Price Index for the construction of a single storey house (Input Price Index)

(Base: 4th Quarter 1993 = 100)

Table 1.1: Monthly sub-indices by input categories, January 2001 - December 2001

Input Categories	Weight	2001											
		Jan	Feb	Mar	Apr	May	Jun	Jul	Aug	Sep	Oct	Nov	Dec
LABOUR	32.8	125.7	125.7	125.7	125.7	125.7	125.7	129.0	129.0	129.0	129.0	129.0	129.0
HIRE OF PLANT	4.0	111.2	111.2	111.2	111.5	111.5	111.5	113.5	113.5	113.5	113.5	113.5	113.5
MATERIALS :	58.7	123.8	123.8	123.9	123.8	123.8	123.8	125.2	126.1	126.1	126.5	127.7	128.0
Hardcore (remplissage)	1.0	102.9	102.9	102.9	102.9	102.9	102.9	102.9	102.9	102.9	102.9	102.9	102.9
Cement	12.0	103.3	103.3	103.3	103.3	103.3	103.3	105.0	105.0	105.0	105.0	111.0	111.0
Sand	5.3	133.5	133.5	133.5	133.5	133.5	133.5	136.0	140.2	140.2	140.2	140.2	140.2
Aggregates	2.4	164.4	164.4	164.4	164.4	164.4	164.4	167.4	173.0	173.0	173.0	173.0	173.0
Block	3.9	138.7	138.7	138.7	138.7	138.7	138.7	141.3	145.7	145.7	145.7	145.7	149.6
Steel bars (armature)	5.1	134.0	134.0	134.0	134.0	134.0	133.7	137.5	137.5	137.5	137.6	137.6	137.6
Galvanised corrugated cast iron sheeting	1.5	122.4	122.4	122.4	122.4	122.4	122.4	121.5	121.5	121.5	121.5	121.5	121.5
Timber: (a) Carpentry	6.1	111.8	111.8	112.6	112.6	112.6	112.6	113.4	113.4	113.4	113.4	113.4	113.4
(b) Joinery	2.4	116.6	116.6	118.3	118.1	118.1	118.1	117.7	117.7	117.7	117.7	117.7	117.7
Steel sections & ironmongery for metal openings	4.9	130.0	130.0	130.0	129.7	129.7	129.7	131.1	131.1	131.1	131.1	131.1	131.1
Ceramic tiles	1.4	140.4	140.4	140.4	140.4	140.4	140.4	140.4	140.4	140.4	140.4	140.4	140.4
Glass,putty and oil	0.8	119.6	119.6	119.6	119.6	119.6	119.6	119.6	119.6	119.6	119.6	119.6	119.6
Paint	1.9	142.7	142.7	142.7	142.7	142.7	142.7	143.3	143.3	143.3	151.6	151.6	151.6
Plumbing	2.1	130.0	130.0	130.0	130.1	130.0	130.0	130.3	130.3	130.3	131.8	131.9	131.9
Sanitary installation	2.0	127.0	127.0	127.0	126.9	126.9	126.6	127.4	127.4	127.4	127.3	127.3	127.3
Electrical installation	3.2	123.1	123.1	123.1	122.0	122.0	122.0	121.6	121.6	121.6	122.0	122.0	122.0
Other	2.7	122.7	122.7	122.6	122.6	122.5	122.5	122.2	122.2	122.2	122.9	122.9	122.9
TRANSPORT	4.5	145.3	145.3	145.3	145.3	145.3	145.3	145.3	145.3	145.3	145.3	145.3	145.3
OVERALL INDEX		124.9	124.9	125.0	124.9	124.9	124.9	126.9	127.4	127.4	127.6	128.4	128.5

Cost Price Index for the construction of a single storey house (Input Price Index)
(Base : 4th Quarter 1993 = 100)

Table 1.2: Percentage change from previous month by input categories, January 2001 - December 2001

Input Categories	Weight	2001											
		Dec-00 to Jan-01	Jan to Feb	Feb to Mar	Mar to Apr	Apr to May	May to Jun	Jun to Jul	Jul to Aug	Aug to Sep	Sep to Oct	Oct to Nov	Nov to Dec
LABOUR	32.8	0.0	0.0	0.0	0.0	0.0	0.0	2.7	0.0	0.0	0.0	0.0	0.0
HIRE OF PLANT	4.0	0.0	0.0	0.0	0.3	0.0	0.0	1.8	0.0	0.0	0.0	0.0	0.0
MATERIALS :	58.7	0.7	0.0	0.1	-0.1	0.0	0.0	1.1	0.7	0.0	0.3	1.0	0.2
Hardcore (remplissage)	1.0	0.0	0.0	0.0	0.0	0.0	0.0	0.0	0.0	0.0	0.0	0.0	0.0
Cement	12.0	0.0	0.0	0.0	0.0	0.0	0.0	1.7	0.0	0.0	0.0	5.7	0.0
Sand	5.3	0.0	0.0	0.0	0.0	0.0	0.0	1.8	3.1	0.0	0.0	0.0	0.0
Aggregates	2.4	0.0	0.0	0.0	0.0	0.0	0.0	1.8	3.3	0.0	0.0	0.0	0.0
Block	3.9	0.0	0.0	0.0	0.0	0.0	0.0	1.8	3.1	0.0	0.0	0.0	2.7
Steel bars (armature)	5.1	7.9	0.0	0.0	0.0	0.0	-0.3	2.9	0.0	0.0	0.1	0.0	0.0
Galvanised corrugated cast iron sheeting	1.5	0.0	0.0	0.0	0.0	0.0	0.0	-0.7	0.0	0.0	0.0	0.0	0.0
Timber: (a) Carpentry	6.1	0.0	0.0	0.7	0.0	0.0	0.0	0.8	0.0	0.0	0.0	0.0	0.0
(b) Joinery	2.4	0.0	0.0	1.4	-0.1	0.0	0.0	-0.3	0.0	0.0	0.0	0.0	0.0
Steel sections & ironmongery for metal openings	4.9	0.1	0.0	0.0	-0.2	0.0	0.0	1.1	0.0	0.0	0.0	0.0	0.0
Ceramic tiles	1.4	0.0	0.0	0.0	0.0	0.0	0.0	0.0	0.0	0.0	0.0	0.0	0.0
Glass,putty and oil	0.8	0.0	0.0	0.0	0.0	0.0	0.0	0.0	0.0	0.0	0.0	0.0	0.0
Paint	1.9	0.0	0.0	0.0	0.0	0.0	0.0	0.4	0.0	0.0	5.8	0.0	0.0
Plumbing	2.1	0.0	0.0	0.0	0.1	-0.1	0.0	0.2	0.0	0.0	1.2	0.1	0.0
Sanitary installation	2.0	0.1	0.0	0.0	-0.1	0.0	-0.2	0.6	0.0	0.0	-0.1	0.0	0.0
Electrical installation	3.2	-0.1	0.0	0.0	-0.9	0.0	0.0	-0.4	0.0	0.0	0.4	0.0	0.0
Other	2.7	0.0	0.0	-0.1	0.0	-0.1	0.0	-0.2	0.0	0.0	0.6	0.0	0.0
TRANSPORT	4.5	0.0	0.0	0.0	0.0	0.0	0.0	0.0	0.0	0.0	0.0	0.0	0.0
OVERALL CHANGE		0.4	0.0	0.1	0.0	0.0	0.0	1.6	0.4	0.0	0.2	0.6	0.1

Cost Price Index for the construction of a single storey house (Input Price Index)
(Base : 4th Quarter 1993 = 100)

Table 1.3: Percentage change from corresponding month of previous year by input categories, January 2001 to December 2001

Input Categories	Weight	Jan-00 to Jan-01	Feb-00 to Feb-01	Mar-00 to Mar-01	Apr-00 to Apr-01	May-00 to May-01	Jun-00 to Jun-01	Jul-00 to Jul-01	Aug-00 to Aug-01	Sep-00 to Sep-01	Oct-00 to Oct-01	Nov-00 to Nov-01	Dec-00 to Dec-01
LABOUR	32.8	2.6	2.6	2.6	2.6	2.6	2.6	2.7	2.7	2.7	2.7	2.7	2.7
HIRE OF PLANT	4.0	6.2	6.2	6.2	6.5	6.5	6.5	8.4	8.4	8.4	2.1	2.1	2.1
MATERIALS :	58.7	2.9	2.9	3.0	3.0	3.0	2.8	4.0	4.7	4.9	3.0	3.9	4.1
Hardcore (remplissage)	1.0	0.0	0.0	0.0	0.0	0.0	0.0	0.0	0.0	0.0	0.0	0.0	0.0
Cement	12.0	0.0	0.0	0.0	0.0	0.0	0.0	1.7	1.7	1.7	1.7	7.5	7.5
Sand	5.3	13.7	13.7	13.7	13.7	13.7	13.7	15.7	19.3	19.3	5.0	5.0	5.0
Aggregate	2.4	15.8	15.8	15.8	15.8	15.8	15.8	17.9	21.8	21.8	5.2	5.2	5.2
Block	3.9	3.3	3.3	3.3	3.3	3.3	3.3	5.2	8.5	8.5	5.0	5.0	7.8
Steel bars (armature)	5.1	6.8	6.8	6.3	6.7	6.7	6.4	9.4	9.4	10.8	10.8	10.8	10.8
Galvanised corrugated cast iron sheeting	1.5	-3.7	-3.7	-2.2	-2.7	-2.7	-2.7	-3.3	-3.3	-0.7	-0.7	-0.7	-0.7
Timber: (a) Carpentry	6.1	0.9	0.9	1.5	1.5	1.5	1.1	1.9	1.9	2.7	2.7	1.4	1.4
(b) Joinery	2.4	1.2	1.2	2.6	2.5	2.5	1.6	1.5	1.5	1.5	1.5	0.9	0.9
Steel sections & ironmongery for metal openings	4.9	-0.5	-0.5	-0.4	-0.5	-0.5	-0.6	0.9	0.9	0.9	1.0	1.0	1.0
Ceramic tiles	1.4	5.5	5.5	4.4	4.4	4.4	4.4	4.4	0.9	0.9	0.0	0.0	0.0
Glass,putty and oil	0.8	4.9	4.9	4.9	4.9	4.9	1.0	1.0	1.0	1.0	0.0	0.0	0.0
Paint	1.9	-0.2	-0.2	-0.2	-0.2	-0.2	0.0	0.4	0.4	0.4	6.2	6.2	6.2
Plumbing	2.1	-0.2	-0.2	-0.2	-0.1	-0.2	-0.2	0.2	0.2	0.2	1.3	1.5	1.5
Sanitary installation	2.0	0.6	0.6	0.0	0.5	0.5	0.2	0.9	0.6	0.6	0.3	0.3	0.3
Electrical installation	3.2	-2.0	-2.0	-2.0	-2.9	-2.9	-2.9	-3.3	-3.3	-3.2	-0.9	-0.9	-0.9
Other	2.7	0.2	0.2	0.2	0.2	0.1	-0.1	-0.2	-0.2	-0.2	0.4	0.2	0.2
TRANSPORT	4.5	19.5	19.5	19.5	19.5	19.5	19.5	19.5	19.5	19.5	0.0	0.0	0.0
OVERALL CHANGE		3.7	3.7	3.7	3.7	3.7	3.6	4.4	4.8	4.9	2.7	3.2	3.3

Cost Price Index for the construction of a single storey house (Input Price Index)
(Base : 4th Quarter 1993 = 100)

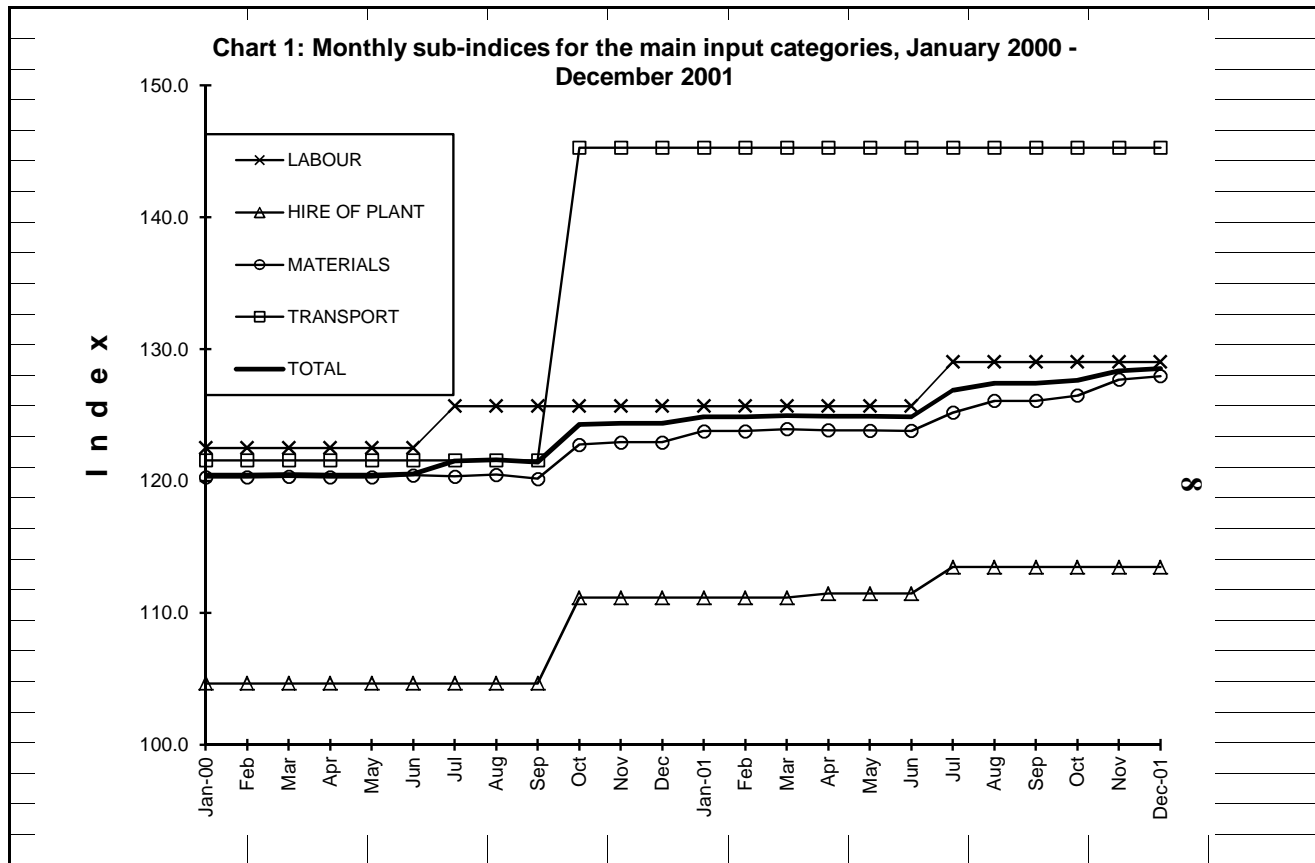
Table 1.4: Net monthly contributions of input categories to the index, January 2001 - December 2001

Input Categories	Weight	2001											
		Dec-00 to Jan-01	Jan to Feb	Feb to Mar	Mar to Apr	Apr to May	May to Jun	Jun to Jul	Jul to Aug	Aug to Sep	Sep to Oct	Oct to Nov	Nov to Dec
LABOUR	32.8	0.00	0.00	0.00	0.00	0.00	0.00	+1.10	0.00	0.00	0.00	0.00	0.00
HIRE OF PLANT	4.0	0.00	0.00	0.00	+0.01	0.00	0.00	+0.08	0.00	0.00	0.00	0.00	0.00
MATERIALS :	58.7	+0.50	0.00	+0.09	-0.06	0.00	-0.02	+0.82	+0.53	0.00	+0.23	+0.71	+0.15
Hardcore (remplissage)	1.0	0.00	0.00	0.00	0.00	0.00	0.00	0.00	0.00	0.00	0.00	0.00	0.00
Cement	12.0	0.00	0.00	0.00	0.00	0.00	0.00	+0.21	0.00	0.00	0.00	+0.71	0.00
Sand	5.3	0.00	0.00	0.00	0.00	0.00	0.00	+0.13	+0.22	0.00	0.00	0.00	0.00
Aggregates	2.4	0.00	0.00	0.00	0.00	0.00	0.00	+0.07	+0.14	0.00	0.00	0.00	0.00
Block	3.9	0.00	0.00	0.00	0.00	0.00	0.00	+0.10	+0.17	0.00	0.00	0.00	+0.15
Steel bars (armature)	5.1	+0.50	0.00	0.00	0.00	0.00	-0.02	+0.20	0.00	0.00	0.00	0.00	0.00
Galvanised corrugated cast iron sheeting	1.5	0.00	0.00	0.00	0.00	0.00	0.00	-0.01	0.00	0.00	0.00	0.00	0.00
Timber: (a) Carpentry	6.1	0.00	0.00	+0.05	0.00	0.00	0.00	+0.05	0.00	0.00	0.00	0.00	0.00
(b) Joinery	2.4	0.00	0.00	+0.04	0.00	0.00	0.00	-0.01	0.00	0.00	0.00	0.00	0.00
Steel sections & ironmongery for metal openings	4.9	0.00	0.00	0.00	-0.02	0.00	0.00	+0.07	0.00	0.00	0.00	0.00	0.00
Ceramic tiles	1.4	0.00	0.00	0.00	0.00	0.00	0.00	0.00	0.00	0.00	0.00	0.00	0.00
Glass,putty and oil	0.8	0.00	0.00	0.00	0.00	0.00	0.00	0.00	0.00	0.00	0.00	0.00	0.00
Paint	1.9	0.00	0.00	0.00	0.00	0.00	0.00	+0.01	0.00	0.00	+0.16	0.00	0.00
Plumbing	2.1	0.00	0.00	0.00	0.00	0.00	0.00	+0.01	0.00	0.00	+0.03	0.00	0.00
Sanitary installation	2.0	0.00	0.00	0.00	0.00	0.00	-0.01	+0.02	0.00	0.00	0.00	0.00	0.00
Electrical installation	3.2	0.00	0.00	0.00	-0.04	0.00	0.00	-0.02	0.00	0.00	+0.02	0.00	0.00
Other	2.7	0.00	0.00	0.00	0.00	0.00	0.00	-0.01	0.00	0.00	+0.02	0.00	0.00
TRANSPORT	4.5	0.00	0.00	0.00	0.00	0.00	0.00	0.00	0.00	0.00	0.00	0.00	0.00
TOTAL	100.0	+0.50	0.00	+0.09	-0.05	0.00	-0.03	+2.00	+0.53	0.00	+0.23	+0.71	+0.15

Cost Price Index for the construction of a single storey house (Input Price Index)
(Base : 4th Quarter 1993 = 100)

Table 1.5 : Quarterly average of monthly indices and percentage changes by input categories, January 2001 - December 2001

Input Categories	Weight	Quarterly average				% change from previous quarter			
		2001				1st Qr 2001	2nd Qr 2001	3rd Qr 2001	4th Qr 2001
		1st Qr	2nd Qr	3rd Qr	4th Qr				
LABOUR	32.8	125.7	125.7	129.0	129.0	0.0	0.0	2.7	0.0
HIRE OF PLANT	4.0	111.2	111.5	113.5	113.5	0.0	0.3	1.8	0.0
MATERIALS :	58.7	123.8	123.8	125.8	127.4	0.8	0.0	1.6	1.3
Hardcore (remplissage)	1.0	102.9	102.9	102.9	102.9	0.0	0.0	0.0	0.0
Cement	12.0	103.3	103.3	105.0	109.0	0.0	0.0	1.7	3.8
Sand	5.3	133.5	133.5	138.8	140.2	0.0	0.0	3.9	1.0
Aggregate	2.4	164.4	164.4	171.1	173.0	0.0	0.0	4.1	1.1
Block	3.9	138.7	138.7	144.2	147.0	0.0	0.0	4.0	1.9
Steel bars (armature)	5.1	134.0	133.9	137.5	137.6	7.9	-0.1	2.7	0.1
Galvanised corrugated cast iron sheeting	1.5	122.4	122.4	121.5	121.5	0.0	0.0	-0.7	0.0
Timber: (a) Carpentry	6.1	112.1	112.6	113.4	113.4	0.7	0.4	0.8	0.0
(b) Joinery	2.4	117.2	118.1	117.7	117.7	0.6	0.8	-0.3	0.0
Steel sections & ironmongery for metal openings	4.9	130.0	129.7	131.1	131.1	0.1	-0.2	1.1	0.0
Ceramic tiles	1.4	140.4	140.4	140.4	140.4	0.0	0.0	0.0	0.0
Glass,putty and oil	0.8	119.6	119.6	119.6	119.6	0.0	0.0	0.0	0.0
Paint	1.9	142.7	142.7	143.3	151.6	0.0	0.0	0.4	5.8
Plumbing	2.1	130.0	130.0	130.3	131.9	0.0	0.0	0.2	1.2
Sanitary installation	2.0	127.0	126.8	127.4	127.3	0.1	-0.1	0.5	-0.1
Electrical installation	3.2	123.1	122.0	121.6	122.0	-0.1	-0.9	-0.4	0.4
Other	2.7	122.6	122.5	122.2	122.9	0.1	-0.1	-0.3	0.6
TRANSPORT	4.5	145.3	145.3	145.3	145.3	0.0	0.0	0.0	0.0
Overall index and change		124.9	124.9	127.2	128.2	0.5	0.0	1.9	0.7



Cost Price Index for the construction of a single storey house (Input Price Index)
(Base : 4th Quarter 1993 = 100)

Table 2.1: Monthly sub-indices by work categories, January 2001 - December 2001

Work Categories	Weight	2001											
		Jan	Feb	Mar	Apr	May	Jun	Jul	Aug	Sep	Oct	Nov	Dec
1. Setting up	2.9	121.5	121.5	121.5	121.5	121.5	121.5	121.8	122.1	122.1	122.1	122.5	122.5
2. Setting out	0.5	123.5	123.5	124.1	124.1	124.1	124.1	126.5	126.5	126.5	126.5	126.5	126.5
3. Temporary works	1.1	127.9	127.9	129.0	129.0	129.0	129.0	130.3	130.3	130.3	130.3	130.3	130.3
4. Site preparation,excavation & disposal,hardcore filling	5.5	122.5	122.5	122.5	122.7	122.7	122.7	125.5	125.6	125.6	125.6	125.6	125.6
5. Concrete	20.1	124.4	124.4	124.4	124.4	124.4	124.4	126.9	128.1	128.1	128.1	130.1	130.1
6. Reinforcement	8.3	131.9	131.9	131.9	131.9	131.9	131.7	135.2	135.2	135.2	135.2	135.2	135.2
7. Formwork (coffrage)	9.8	115.4	115.4	115.7	115.7	115.7	115.7	117.1	117.1	117.1	117.1	117.1	117.1
8. Blockwork	7.6	131.8	131.8	131.8	131.8	131.8	131.8	134.2	136.6	136.6	136.6	137.1	139.0
9. Softwood joinery	2.8	118.5	118.5	119.9	119.8	119.8	119.8	119.8	119.8	119.8	119.8	119.8	119.8
10. Ironmongery	0.9	121.0	121.0	121.0	121.0	121.0	121.0	121.5	121.5	121.5	121.5	121.5	121.5
11. Steel windows & doors	5.3	129.9	129.9	130.0	129.7	129.7	129.7	131.2	131.2	131.2	131.2	131.2	131.2
12. Rendering to wall/ceiling (crepissage)	9.8	121.2	121.2	121.2	121.2	121.2	121.2	124.0	124.3	124.3	124.3	125.4	125.4
13. Bed & screed to floor/roof	4.1	117.4	117.4	117.4	117.4	117.4	117.4	119.6	120.5	120.5	120.5	123.4	123.4
14. Tiling	2.4	135.8	135.8	135.7	135.7	135.6	135.6	136.6	136.6	136.6	136.6	136.6	136.6
15. Glazing	1.0	122.6	122.6	122.6	122.6	122.6	122.6	122.9	122.9	122.9	122.9	122.9	122.9
16. Painting	4.3	133.8	133.8	133.8	133.8	133.8	133.8	135.8	135.8	135.8	139.5	139.5	139.5
17. Plumbing/sanitary inst.	5.9	127.3	127.3	127.3	127.3	127.2	127.1	128.4	128.4	128.4	128.9	128.9	128.9
18. Electrical installation	5.1	124.4	124.4	124.4	123.7	123.7	123.7	124.4	124.4	124.4	124.7	124.7	124.7
19. Drainage	2.6	124.4	124.4	124.4	124.4	124.4	124.4	125.7	126.6	126.6	127.1	127.8	128.1
OVERALL INDEX		124.9	124.9	125.0	124.9	124.9	124.9	126.9	127.4	127.4	127.6	128.4	128.5

Cost Price Index for the construction of a single storey house (Input Price Index)
(Base : 4th Quarter 1993 = 100)

Table 2.2 : Percentage change from previous month by work categories, January 2001 - December 2001

Work Categories	Weight	2001											
		Dec-00 to Jan-01	Jan to Feb	Feb to Mar	Mar to Apr	Apr to May	May to Jun	Jun to Jul	Jul to Aug	Aug to Sep	Sep to Oct	Oct to Nov	Nov to Dec
1. Setting up	2.9	0.0	0.0	0.0	0.0	0.0	0.0	0.2	0.3	0.0	0.0	0.3	0.0
2. Setting out	0.5	0.0	0.0	0.5	0.0	0.0	0.0	1.9	0.0	0.0	0.0	0.0	0.0
3. Temporary works	1.1	0.0	0.0	0.9	0.0	0.0	0.0	1.0	0.0	0.0	0.0	0.0	0.0
4. Site preparation,excavation & disposal,hardcore filling	5.5	0.0	0.0	0.0	0.2	0.0	0.0	2.3	0.1	0.0	0.0	0.0	0.0
5. Concrete	20.1	0.0	0.0	0.0	0.0	0.0	0.0	2.0	0.9	0.0	0.0	1.6	0.0
6. Reinforcement	8.3	4.8	0.0	0.0	0.0	0.0	-0.2	2.7	0.0	0.0	0.0	0.0	0.0
7. Formwork (coffrage)	9.8	0.0	0.0	0.3	0.0	0.0	0.0	1.2	0.0	0.0	0.0	0.0	0.0
8. Blockwork	7.6	0.0	0.0	0.0	0.0	0.0	0.0	1.8	1.8	0.0	0.0	0.4	1.4
9. Softwood joinery	2.8	0.0	0.0	1.2	-0.1	0.0	0.0	0.0	0.0	0.0	0.0	0.0	0.0
10. Ironmongery	0.9	0.0	0.0	0.0	0.0	0.0	0.0	0.4	0.0	0.0	0.0	0.0	0.0
11. Steel windows & doors	5.3	0.0	0.0	0.0	-0.2	0.0	0.0	1.1	0.0	0.0	0.0	0.0	0.0
12. Rendering to wall/ceiling (crepissage)	9.8	0.0	0.0	0.0	0.0	0.0	0.0	2.2	0.3	0.0	0.0	0.9	0.0
13. Bed & screed to floor/roof	4.1	0.0	0.0	0.0	0.0	0.0	0.0	1.8	0.8	0.0	0.0	2.4	0.0
14. Tiling	2.4	0.0	0.0	-0.1	0.0	-0.1	0.0	0.7	0.0	0.0	0.0	0.0	0.0
15. Glazing	1.0	0.0	0.0	0.0	0.0	0.0	0.0	0.3	0.0	0.0	0.0	0.0	0.0
16. Painting	4.3	0.0	0.0	0.0	0.0	0.0	0.0	1.5	0.0	0.0	2.8	0.0	0.0
17. Plumbing/sanitary inst.	5.9	0.0	0.0	0.0	0.0	0.0	-0.1	1.0	0.0	0.0	0.4	0.0	0.0
18. Electrical installation	5.1	0.0	0.0	0.0	-0.6	0.0	0.0	0.6	0.0	0.0	0.2	0.0	0.0
19. Drainage	2.6	0.0	0.0	0.0	0.0	0.0	0.0	1.1	0.7	0.0	0.4	0.5	0.2
OVERALL CHANGE		0.4	0.0	0.1	0.0	0.0	0.0	1.6	0.4	0.0	0.2	0.6	0.1

Cost Price Index for the construction of a single storey house (Input Price Index)
(Base : 4th Quarter 1993 = 100)

Table 2.3: Percentage change from corresponding month of previous year by work categories, January 2001 to December 2001

Work Categories	Weight	Jan-00 to Jan-01	Feb-00 to Feb-01	Mar-00 to Mar-01	Apr-00 to Apr-01	May-00 to May-01	Jun-00 to Jun-01	Jul-00 to Jul-01	Aug-00 to Aug-01	Sep-00 to Sep-01	Oct-00 to Oct-01	Nov-00 to Nov-01	Dec-00 to Dec-01
1. Setting up	2.9	0.1	0.1	0.9	0.7	0.7	0.7	0.7	0.9	2.5	0.7	0.9	0.9
2. Setting out	0.5	2.1	2.1	2.6	2.6	2.6	2.6	3.2	3.2	3.4	3.4	2.4	2.4
3. Temporary works	1.1	2.8	2.8	3.7	3.7	3.7	3.7	4.6	4.6	4.7	4.7	1.9	1.9
4. Site preparation,excavation & disposal,hardcore filling	5.5	4.5	4.5	4.5	4.7	4.7	4.7	5.0	5.1	5.1	2.6	2.6	2.6
5. Concrete	20.1	7.0	7.0	7.0	7.0	7.0	7.0	8.3	9.4	9.4	3.0	4.6	4.6
6. Reinforcement	8.3	6.0	6.0	5.8	6.0	6.0	5.8	7.7	7.7	8.5	7.5	7.5	7.5
7. Formwork (coffrage)	9.8	1.8	1.8	2.1	2.0	2.0	1.8	2.2	2.2	2.6	1.8	1.5	1.5
8. Blockwork	7.6	4.5	4.5	4.5	4.5	4.5	4.5	5.8	7.6	7.6	3.6	4.0	5.5
9. Softwood joinery	2.8	2.1	2.1	3.3	3.2	3.2	2.4	2.3	2.3	2.3	1.5	1.1	1.1
10. Ironmongery	0.9	1.4	1.4	1.4	1.4	1.4	0.9	1.1	1.1	1.1	1.1	0.4	0.4
11. Steel windows & doors	5.3	0.1	0.1	0.1	0.0	0.0	-0.1	1.3	1.3	1.4	1.0	1.0	1.0
12. Rendering to wall/ceiling (crepissage)	9.8	3.3	3.3	3.3	3.3	3.3	3.3	3.8	4.1	4.1	2.5	3.4	3.4
13. Bed & screed to floor/roof	4.1	5.0	5.0	5.0	5.0	5.0	5.0	6.3	7.1	7.1	2.6	5.1	5.1
14. Tiling	2.4	4.0	4.0	3.3	3.3	3.2	3.2	3.2	1.1	1.1	0.6	0.6	0.6
15. Glazing	1.0	6.3	6.3	6.3	6.3	6.3	3.2	3.2	3.2	3.2	0.3	0.3	0.3
16. Painting	4.3	1.6	1.6	1.6	1.6	1.6	1.6	1.9	1.9	1.9	4.3	4.3	4.3
17. Plumbing/sanitary inst.	5.9	1.1	1.1	0.9	1.1	1.1	1.0	1.4	1.3	1.3	1.3	1.4	1.4
18. Electrical installation	5.1	-0.2	-0.2	-0.2	-0.7	-0.7	-0.7	-0.9	-0.9	-0.9	0.2	0.2	0.2
19. Drainage	2.6	4.1	4.1	4.1	4.1	4.1	4.1	4.6	5.4	5.4	2.2	2.7	3.0
OVERALL CHANGE		3.7	3.7	3.7	3.7	3.7	3.6	4.4	4.8	4.9	2.7	3.2	3.3

Cost Price Index for the construction of a single storey house (Input Price Index)
(Base : 4th Quarter 1993 = 100)

Table 2.4 :Net monthly contributions of work categories to the index, January 2001 - December 2001

Work Categories	Weight	2001											
		Dec-00 to Jan-01	Jan to Feb	Feb to Mar	Mar to Apr	Apr to May	May to Jun	Jun to Jul	Jul to Aug	Aug to Sep	Sep to Oct	Oct to Nov	Nov to Dec
1. Setting up	2.9	0.00	0.00	0.00	0.00	0.00	0.00	+0.01	+0.01	0.00	0.00	+0.01	0.00
2. Setting out	0.5	0.00	0.00	+0.01	0.00	0.00	0.00	+0.01	0.00	0.00	0.00	0.00	0.00
3. Temporary works	1.1	0.00	0.00	+0.01	0.00	0.00	0.00	+0.01	0.00	0.00	0.00	0.00	0.00
4. Site preparation,excavation & disposal,hardcore filling	5.5	0.00	0.00	0.00	+0.01	0.00	0.00	+0.16	+0.01	0.00	0.00	0.00	0.00
5. Concrete	20.1	0.00	0.00	0.00	0.00	0.00	0.00	+0.50	+0.24	0.00	0.00	+0.42	0.00
6. Reinforcement	8.3	+0.50	0.00	0.00	0.00	0.00	-0.02	+0.29	0.00	0.00	0.00	0.00	0.00
7. Formwork (coffrage)	9.8	0.00	0.00	+0.03	0.00	0.00	0.00	+0.14	0.00	0.00	0.00	0.00	0.00
8. Blockwork	7.6	0.00	0.00	0.00	0.00	0.00	0.00	+0.18	+0.18	0.00	0.00	+0.04	+0.14
9. Softwood joinery	2.8	0.00	0.00	+0.04	0.00	0.00	0.00	0.00	0.00	0.00	0.00	0.00	0.00
10. Ironmongery	0.9	0.00	0.00	0.00	0.00	0.00	0.00	0.00	0.00	0.00	0.00	0.00	0.00
11. Steel windows & doors	5.3	0.00	0.00	0.00	-0.02	0.00	0.00	+0.08	0.00	0.00	0.00	0.00	0.00
12. Rendering to wall/ceiling (crepissage)	9.8	0.00	0.00	0.00	0.00	0.00	0.00	+0.27	+0.03	0.00	0.00	+0.11	0.00
13. Bed & screed to floor/roof	4.1	0.00	0.00	0.00	0.00	0.00	0.00	+0.09	+0.04	0.00	0.00	+0.12	0.00
14. Tiling	2.4	0.00	0.00	0.00	0.00	0.00	0.00	+0.02	0.00	0.00	0.00	0.00	0.00
15. Glazing	1.0	0.00	0.00	0.00	0.00	0.00	0.00	0.00	0.00	0.00	0.00	0.00	0.00
16. Painting	4.3	0.00	0.00	0.00	0.00	0.00	0.00	+0.08	0.00	0.00	+0.16	0.00	0.00
17. Plumbing/sanitary inst.	5.9	0.00	0.00	0.00	0.00	0.00	-0.01	+0.07	0.00	0.00	+0.03	0.00	0.00
18. Electrical installation	5.1	0.00	0.00	0.00	-0.04	0.00	0.00	+0.04	0.00	0.00	+0.02	0.00	0.00
19. Drainage	2.6	0.00	0.00	0.00	0.00	0.00	0.00	+0.03	+0.02	0.00	+0.02	+0.01	+0.01
TOTAL	100.0	+0.50	0.00	+0.09	-0.05	0.00	-0.03	+2.00	+0.53	0.00	+0.23	+0.71	+0.15

Cost Price Index for the construction of a single storey house (Input Price Index)
(Base : 4th Quarter 1993 = 100)

Table 2.5 : Quarterly average of monthly indices and percentage changes by work categories, January 2001 - December 2001

Work Categories	Weight	Quarterly average				% change from previous quarter			
		2001				1st Qr 2001	2nd Qr 2001	3rd Qr 2001	4th Qr 2001
		1st Qr	2nd Qr	3rd Qr	4th Qr				
1. Setting up	2.9	121.5	121.5	122.0	122.4	0.1	0.0	0.4	0.3
2. Setting out	0.5	123.7	124.1	126.5	126.5	0.5	0.3	1.9	0.0
3. Temporary works	1.1	128.2	129.0	130.3	130.3	1.2	0.6	1.0	0.0
4. Site preparation,excavation & disposal,hardcore filling	5.5	122.5	122.7	125.6	125.6	0.0	0.2	2.4	0.0
5. Concrete	20.1	124.4	124.4	127.7	129.5	0.0	0.0	2.6	1.4
6. Reinforcement	8.3	131.9	131.8	135.2	135.2	4.8	-0.1	2.5	0.0
7. Formwork (coffrage)	9.8	115.5	115.7	117.1	117.1	0.2	0.1	1.2	0.0
8. Blockwork	7.6	131.8	131.8	135.8	137.6	0.0	0.0	3.0	1.3
9. Softwood joinery	2.8	119.0	119.8	119.8	119.8	0.5	0.7	0.0	0.0
10. Ironmongery	0.9	121.0	121.0	121.5	121.5	0.2	0.0	0.4	0.0
11. Steel windows & doors	5.3	129.9	129.7	131.2	131.2	0.1	-0.2	1.1	0.0
12. Rendering to wall/ceiling (crepissage)	9.8	121.2	121.2	124.2	125.0	0.0	0.0	2.4	0.7
13. Bed & screed to floor/roof	4.1	117.4	117.4	120.2	122.4	0.0	0.0	2.4	1.9
14. Tiling	2.4	135.8	135.6	136.6	136.6	0.0	-0.1	0.7	0.0
15. Glazing	1.0	122.6	122.6	122.9	122.9	0.0	0.0	0.3	0.0
16. Painting	4.3	133.8	133.8	135.8	139.5	0.0	0.0	1.5	2.8
17. Plumbing/sanitary inst.	5.9	127.3	127.2	128.4	128.9	0.0	0.0	0.9	0.4
18. Electrical installation	5.1	124.4	123.7	124.4	124.7	0.0	-0.6	0.6	0.2
19. Drainage	2.6	124.4	124.4	126.3	127.6	0.0	0.0	1.5	1.1
Overall index and change		124.9	124.9	127.2	128.2	0.5	0.0	1.9	0.7

Table 3: Construction Price Index - January 1995 to December 2001

(Base: 4th Quarter 1993 = 100)

	1995	1996	1997	1998	1999	2000	2001
January	104.4	106.8	111.8	115.2	118.6	120.4	124.9
February	104.4	107.0	111.9	115.3	119.1	120.4	124.9
March	104.5	107.1	112.0	115.3	119.1	120.5	125.0
<i>1st Quarter</i>	<i>104.4</i>	<i>107.0</i>	<i>111.9</i>	<i>115.3</i>	<i>118.9</i>	<i>120.5</i>	<i>124.9</i>
April	104.8	107.2	112.1	115.3	119.2	120.4	124.9
May	105.1	107.3	112.2	115.5	119.2	120.4	124.9
June	105.1	110.2	112.0	115.6	119.3	120.5	124.9
<i>2nd Quarter</i>	<i>105.0</i>	<i>108.2</i>	<i>112.1</i>	<i>115.5</i>	<i>119.3</i>	<i>120.5</i>	<i>124.9</i>
July	106.1	110.8	114.0	116.9	120.9	121.5	126.9
August	106.2	111.4	114.5	117.5	121.0	121.6	127.4
September	106.4	111.4	114.9	118.1	121.0	121.4	127.4
<i>3rd Quarter</i>	<i>106.2</i>	<i>111.2</i>	<i>114.5</i>	<i>117.5</i>	<i>120.9</i>	<i>121.5</i>	<i>127.2</i>
October	106.6	111.4	115.0	118.4	121.2	124.3	127.6
November	106.7	111.6	115.0	118.4	120.5	124.4	128.4
December	106.8	111.7	115.2	118.6	120.6	124.4	128.5
<i>4th Quarter</i>	<i>106.7</i>	<i>111.6</i>	<i>115.1</i>	<i>118.4</i>	<i>120.8</i>	<i>124.3</i>	<i>128.2</i>
Yearly average	105.6	109.5	113.4	116.7	120.0	121.7	126.3
Change in the yearly average		3.7	3.6	2.9	2.8	1.4	3.8

Description of the model used for establishing the Construction Price Index

The model used is a single storey (ground floor) detached house of 108.75 square metres (1,171 square feet) in floor area measured at plinth level to the external face of the external walls.

It comprises two bedrooms, a living-dining room, a kitchen, w.c. and bathroom. The building has concrete block walls, reinforced concrete flat roof, internal flush plywood doors, glazed metal openings, screeded floor and roof, tiling to floor and walls of w.c. and bathroom and kitchen worktop; the ceilings and walls are rendered and painted both internally and externally. Plumbing, sanitary installation and electrical installation are included as well as drainage which is to be connected to the sewerage system. Site works are restricted to spreading and levelling surplus excavated material around the site.

The Index excludes the cost of the building permit and the draughtman's fee; these two items represent 0.2 % and 1.0% of the total cost respectively.

It is assumed that although the house is not constructed by a contractor, the client has recourse to the services of a foreman.