

Mr. Bernard



MAURITIUS

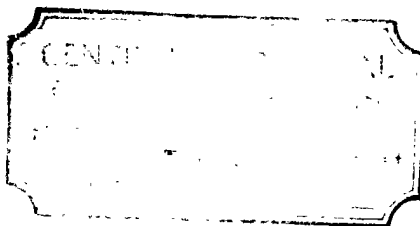
Economic Indicators

An Occasional Paper

Issue No. 208

28 April 1995

Agricultural Production
Year 1994



MINISTRY OF ECONOMIC PLANNING & DEVELOPMENT
PORT LOUIS
MAURITIUS

AGRICULTURAL PRODUCTION — YEAR 1994

1. Introduction

This report presents data on agricultural production for the year 1994.

2. Sugar Cane

As in the previous years, total acreage under sugar cane continued its downward trend in 1994, when a further decrease of 1,199 hectares was registered. Thus, total area harvested was 72,831 hectares vis-à-vis 74,030 hectares in 1993.

The vegetative period was marked by cyclone Hollanda which struck Mauritius in February 1994. Despite the favourable climatic conditions which prevailed in the remaining part of the vegetative period and during the period of maturation, sugar cane failed to recuperate completely from the adverse effects of the cyclone. In consequence, sugar cane yield per hectare fell to 66.1 tonnes as compared to 73.0 tonnes in 1993, resulting in a sugar cane production of 4,813,454 tonnes against 5,402,401 tonnes in 1993.

The extraction rate which was 10.46% in 1993 dropped slightly to 10.39% in 1994, the lowest recorded rate since 1990. Sugar production reached 500,209 tonnes in 1994, 11.5% below the previous year's level of 565,026 tonnes.

3. Tea

The quantity of green tea leaf produced in 1994 was 27,204 tonnes, i.e. 12% below the 30,900 tonnes produced in 1993. This reduction was due to two factors: firstly, a decline of 3.9% in area under cultivation (from 3,151 hectares to 3,028 hectares in 1994); and secondly, a reduced yield of green leaf per hectare which went down by 8.2% (from 9.8 tonnes in 1993 to 9.0 tonnes in 1994). The decrease in yield per hectare is attributable mainly to the adverse effect of cyclone Hollanda and unfavourable climatic conditions in the last quarter of 1994.

As a result, the production of black tea dropped by 14.2% from 5,931 tonnes in 1993 to 5,089 in 1994. The average export price of black tea fell from Rs 23.36 per Kg in 1993 to Rs 20.57 per Kg in 1994.

4. Tobacco

The total acreage under tobacco fell to 697 hectares in 1994 from 746 hectares in the previous year. However, the production of tobacco leaves inched up to 1,025 tonnes, slightly higher than the previous year's level of 1,015 tonnes. The higher production is largely accounted for by sustained improvements in cultural practices.

It is worthwhile to note that most of the Virginia flue-cured variety, which accounts for almost 90% of total production, had already been harvested when Mauritius was hit by cyclone Hollanda.

5. Foodcrops

In 1994, the production of foodcrops, which was adversely affected by cyclone Hollanda in February 1994, amounted to 78,088 (down 1.4%) tonnes against 79,174 tonnes in 1993. However, the acreage harvested in 1994 amounted to 6,217 hectares (up 4%) as compared to 5,984 hectares in 1993.

In view of an expansion in area harvested, substantial increases were recorded in the production of the following foodcrops: ginger (+84.9%), onion (+51.0%), Cauliflower (+49.1%), garlic (+44.1%), potato (+22.3%) and creepers (+22.0%).

Conversely, significant reduction, mainly attributable to cyclone Hollanda, were registered in the production of: maize (-45.2%), banana (-39.3%), chillies (-33.2%), tomato (-30.8%), cabbage (-29.7%) and brinjal (-13.1%).

Immediately after cyclone Hollanda, many planters cultivated creepers which have a short cycle. As a result, the production of creepers jumped by 22.0% to attain 18,500 tonnes in 1994 as compared to 15,168 tonnes a year earlier.

There was a sharp increase of 35.9% in the production of groundnut which rose to 1,180 tonnes in 1994 from 868 tonnes in the preceding year. This rise is largely due to the fact that the acreage devoted to groundnut expanded as growers switched from other field crops, particularly maize.

6. Livestock and Poultry

Beef production from live cattle increased from 2,523 tonnes in 1993 to 2,609 tonnes in 1994. This is the net result of a 5.8% increase in imports (from 2,096 to 2,218 tonnes) and a 8.4% decrease (from 427 to 391 tonnes) in local production, including Rodrigues. Thus, the share of imports which accounted for 83% of total production in 1993 rose to 85% in 1994.

Production of goat meat and mutton from live animals grew by 6.5% to 148 tonnes in 1994 from 139 tonnes in 1993. The share of mutton in this sub-group contracted from 11% (15.3 tonnes) to 7.7% (11.5 tonnes) during the same period. The production of goat meat increased by 11.4% from 123 tonnes in 1993 to 137 tonnes in 1994. However, this rise is due to an increase of 82.2% (from 45 to 82 tonnes) registered in goat meat from imported animals. Local production, in fact, showed a drop of 30.4% from 79 tonnes in 1993 to 55 tonnes in 1994.

Pork production remained more or less stagnant, increasing by only 4 tonnes to reach 1,058 tonnes in 1994.

Poultry production expanded by 6.5% to 18,100 tonnes in 1994 from 17,000 tonnes a year earlier.

Production of milk continued its downward trend to reach 8 million litres in 1994 compared to 9 million litres in 1993.

7. Fisheries

In 1994, total fish production was 17,234 tonnes, 12.1% less than the 1993 figure of 19,602 tonnes. The overall drop resulted mainly from a sharp decrease of 22.5% registered in tuna fishing following a decline in the number of fishing vessels in operation.

Production of fresh fish (coastal) in 1994 remained close to the preceding year's level, at 2,550 tonnes. Production of frozen fish from banks, excluding tuna, inched down by 1.0% to reach 6,629 tonnes from 6,696 tonnes in 1993.

Central Statistical Office,
Ministry of Economic Planning and Development,
Port Louis.

April 1995

Table 1 - Agricultural Crops: Area Harvested and Production

CROPS	1993 ^{1/}		1994 ^{3/}	
	Area Harvested (Hectares)	Production (Tonnes)	Area Harvested (Hectares)	Production (Tonnes)
1. Sugar cane	74,030	5,402,401	72,831	4,813,454
2. Tea (Green Leaves)	3,151 ^{2/}	30,900	3,028 ^{2/}	27,204
3. Tobacco	746	1,015	697	1,025
4. Foodcrops	5,984	79,174	6,217	78,088

1/ Revised

2/ Area under cultivation

3/ Provisional

Table 2 - Production of Agro-Industrial Products

Agro-industrial Products	Unit	1993 ^{3/}	1994 ^{4/}
1. Sugar	Tonnes	565,026	500,209
2. Tea (manufactured)	"	5,931	5,089
3. Beef <u>1/</u>	"	2,523	2,609
.. Local including Rodrigues	"	(427)	(391)
Imported	"	(2,096)	(2,218)
4. Goat meat and mutton <u>1/</u>	"	139	148
5. Pork <u>1/</u>	"	1,054	1,058
6. Poultry	"	17,000	18,100
7. Milk	000 Litres	9,000	8,000
8. Fish <u>2/</u>	Tonnes	19,602	17,234
Coastal	"	(2,533)	(2,550)
Other	"	(17,069)	(14,684)

1/ Comprises abattoir slaughters only

2/ Fresh weight equivalent

3/ Revised

4/ Provisional

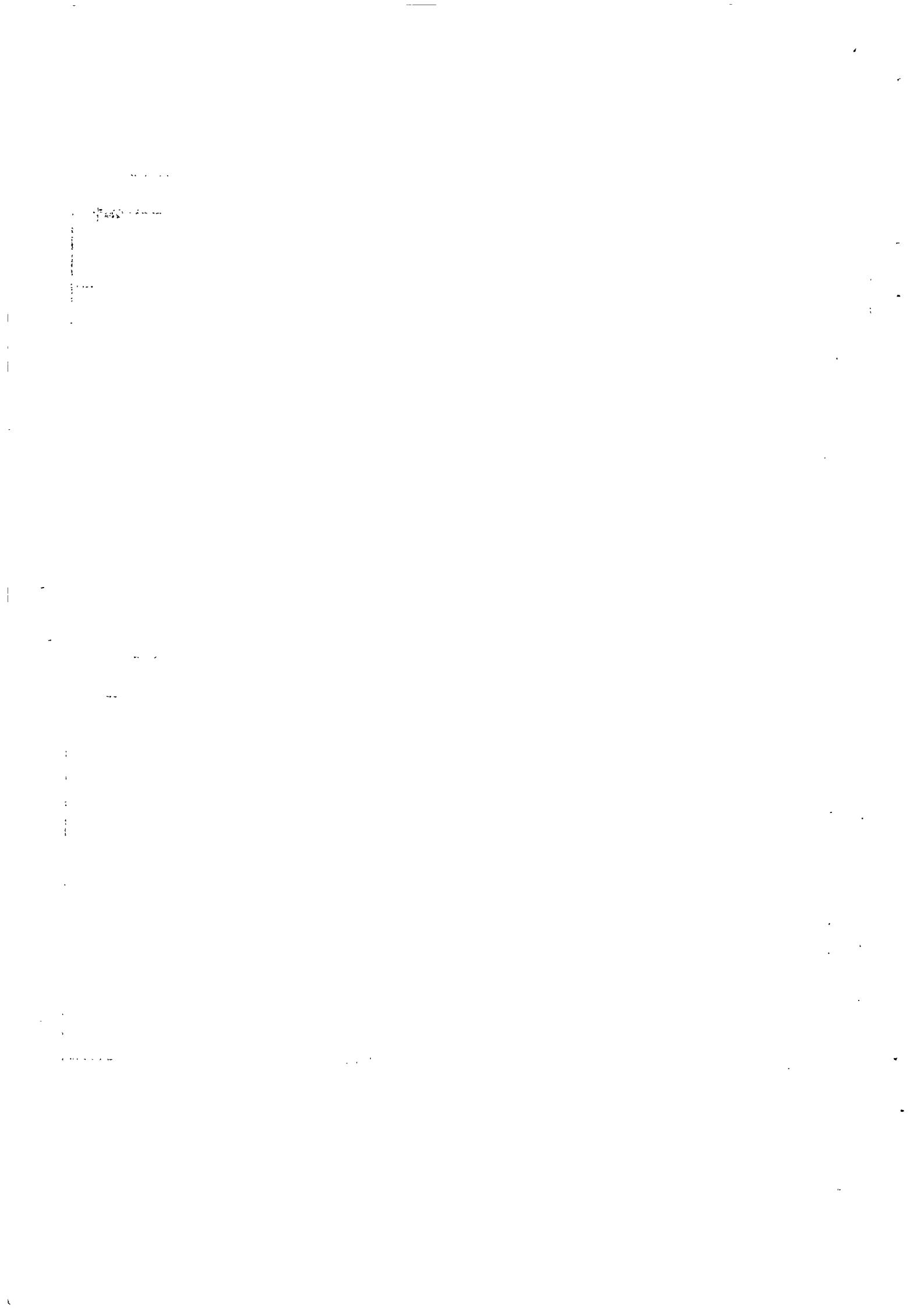


Table 3 (a) - Sugar Industry - Field Statistics

Ownership	1 9 9 3 ^{1/}			1 9 9 4 ^{2/}		
	Area harvested (hectares)	Cane produced (tonnes)	Yield (tonnes/hectare)	Area harvested (hectares)	Cane produced (tonnes)	Yield (tonnes/hectare)
1. Estates	39,762	3,269,581	82.23	38,349	2,865,993	74.73
2. Metayers	1,558	75,327	48.35	1,453	53,713	36.97
3. Planters	32,710	2,057,493	62.90	33,029	1,893,748	57.34
T O T A L	74,030	5,402,401	72.97	72,831	4,813,454	66.09

^{1/} Revised

^{2/} Provisional

Table 3(b) - Sugar Industry - Factory Statistics

Details	Unit	1993 ^{1/}	1994 ^{2/}
1. Tonnage of canes crushed	tonnes	5,402,197	4,812,879
2. Extraction rate (commercial sugar recovered % cane)		10.46	10.39
3. Average polarisation	degrees	98.78	98.78
4. Average yield of sugar	tonnes/hectare	7.63	6.87
5. Average tonnes of cane for 1 tonne of sugar	tonnes	9.56	9.62
6. Production of sugar	"	565,026	500,209
(White)	"	(63,078)	(39,691)
(Raw)	"	(438,816)	(398,191)
(Special)	"	(63,132)	(62,327)
7. Molasses	"	164,801	138,421

^{1/} Revised

^{2/} Provisional

Table 4 - Tea - Production of Green Leaves by Type of Producer

(tonnes)

Type of Producer	1993	1994 ^{1/}
1. Estates	1,672	1,618
2. Metayers	1,898	1,393
3. Free Planters	2,380	2,877
4. Planters in Co-operatives Societies	24,747	21,159
5. Other (including T.D.A.)	203	157
T O T A L	30,900	27,204

^{1/} Provisional

Table 5 - Tobacco - Area Harvested and Production of leaf

Variety	1993 ^{1/}		1994 ^{2/}	
	Area Harvested (Hectares)	Production (tonnes)	Area Harvested (Hectares)	Production (tonnes)
1. Virginia (flue cured)	689	906	649	940
2. Amarello (air cured)	57	109	48	85
T O T A L	746	1,015	697	1,025

^{1/} Revised

^{2/} Provisional



Table 6 - Foodcrops: area harvested and production^{1/}

Foodcrops	1993 ^{2/}		1994 ^{3/}	
	Area harvested (hectares)	Production (tonnes)	Area harvested (hectares)	Production (tonnes)
Potato	686	13,780	958	16,850
Maize	428	1,816	235	995
Groundnut	274	868	282	1,180
Onion	222	3,637	325	5,493
Ginger	19	284	35	525
Garlic	22	177	33	255
Chillies	193	898	150	600
Tomato	1,085	13,001	825	9,000
Beans and Peas	295	1,211	293	1,270
Cabbage	236	5,514	208	3,875
Cauliflower	68	1,382	110	2,060
Brinjal	156	1,813	116	1,575
Creepers	1,223	15,168	1,573	18,500
Other vegetables	444	5,697	469	5,910
Banana	463	9,880	430	6,000
Pineapple	170	4,048	175	4,050
Total foodcrops	5,984	79,174	6,217	78,088

^{1/} Calendar year

^{2/} Revised

^{3/} Provisional