

REPUBLIC OF MAURITIUS

Ministry of Finance and Economic Empowerment

CENTRAL STATISTICS OFFICE

**DIGEST
OF
ROAD TRANSPORT
AND
ROAD ACCIDENT STATISTICS
2008**

Vol. 24 August 2009

(Price Rs 75.00)

DIGEST

OF

ROAD TRANSPORT

AND

ROAD ACCIDENT STATISTICS

2008

Digest of Road Transport and Road Accident Statistics - 2008

FOREWORD

This is the twenty fourth issue of the Digest of Road Transport and Road Accident Statistics published by the Central Statistics Office.

It presents statistics on road transport and road traffic accidents relating to the Island of Mauritius. Data on vehicles have been compiled from the register of the National Transport Authority (NTA) and those on road traffic accidents from returns provided by police stations and insurance companies. It is to be noted that, as from August 2004, most non-injury road traffic accidents are not reported to the police, but only to insurance companies which provide aggregated data on such accidents. Thus detailed information on non-injury accidents are not available.

The figures published are the latest available. Some of them are provisional and are therefore subject to revision in later issues. Figures in this issue of the digest supersede those appearing in previous ones.

It is hoped that the data presented in this report will be of valuable help to planners, policy-makers and the public in general.

This digest has been prepared with the collaboration of the National Transport Authority, the Traffic Management and Road Safety Unit of the Ministry of Public Infrastructure, Land Transport and Shipping, the Police Department and insurance companies. Their assistance is gratefully acknowledged.

(H . Bundhoo)
Director of Statistics

Central Statistics Office
Ministry of Finance and Economic Empowerment
PORT LOUIS .

August 2009

Contact person:

Mr. A. Poreema

Senior statistical officer

National Transport Authority

Tel: 202-2831

Fax: 212-9399

Traffic Management and Road Safety Unit

Tel: 210-8716

Fax: 211-0075

CONTENTS

Page

Definition and Explanatory Notes	5
Abbreviations and Symbols	8
Road Transport and Road Traffic Accident Statistics - An overview, 2008	9
Main Road Transport and Road Accident Indicators, 2007 - 2008	11

PART 1 - VEHICLE STATISTICS

Table 1.1 - Road network as at end of year, 2004 - 2008	15
1.2 - Vehicles registered, 1999 - 2008	17
1.3 - New vehicles registered, 2004 - 2008	18
1.4 - Imported second-hand and re-registered vehicles, 2004 - 2008	19
1.5 - Vehicles off the road, 2004 - 2008	20
1.6 - Age composition of cars and dual purpose vehicles, 2007 - 2008	21
1.7 - Age composition of operational bus fleet, 2007 - 2008	22
1.8 - Bus operational statistics, 2004 - 2008	23
1.9 - Evolution of bus fares (adults), 1999 - 2008	24
1.10 - Receipts from the activities of the National Transport Authority, 2004 - 2008	25
1.11 - Driving licences issued during the year by type of licence, 1999 - 2008	26
1.12 - Imports of vehicles and spare parts by country of origin, 2007 - 2008	27

PART 2 - ROAD TRAFFIC ACCIDENT STATISTICS

Table 2.1 - Road traffic accidents and casualties, 1999 - 2008	39
2.2 - Road traffic accidents, motor-vehicles involved and casualties, 2004 - 2008	41
2.3 - Number of casualty accidents by degree of casualty and casualty rate, 2004 - 2008	41
2.4 - Casualty accidents, pedestrian and rider (auto/motorcycle) casualties by police district, 2007 - 2008	42
2.5 - Pedestrian and total casualties by police district and semester, 2008	43
2.6 - Distribution of casualty accidents by day of the week and time, 2008	44
2.7 - Number of accidents by severity of accident, 2004 - 2008	46
2.8 - Number of casualty accidents involved in "hit and run cases", by semester, 2007 - 2008	46
2.9 - Number of accidents by severity of accident and police district, 2007 - 2008	47

CONTENTS (cont'd)		Page
Table 2.10 - Number of accidents by severity of accident and weather conditions, 2007 - 2008		48
2.11 - Number of accidents by severity of accident and light conditions, 2007 - 2008		49
2.12 - Number of casualty accidents by type of road, severity of accident and collision type, 2008		50
2.13 - Number of accidents by severity of accident and type of road, 2007 - 2008		51
2.14 - Number of casualty accidents by degree of casualties and junction type, 2008		52
2.15 - Number of vehicles involved in casualty accidents by type, 2007 - 2008		53
2.16 - Number of motor-vehicles involved in casualty accidents by type of vehicle and nature of damage, 2008		54
2.17 - Number of drivers and riders involved in casualty accidents by age-group and sex, 2008		55
2.18 - Number of drivers/riders involved in casualty accidents by driving experience and sex, 2008		56
2.19 - Number of casualties by class of road users, 2007 - 2008		57
2.20 - Number of casualties by degree of casualty and class of road users, 2007 - 2008		58
2.21 - Number of casualties by class of road users, age-group and sex, 2008		59
2.22 - Number of pedestrian casualties by age-group, 2007 - 2008		60
2.23 - Number of fatalities by class of road users, age-group and sex, 2008		61
2.24 - Fatalities by category of road users, 2007 - 2008		62
2.25 - Number of fatalities by police district and class of road users, 2007 - 2008		63
 PART 3 - PETROLEUM PRODUCTS		
Table 3.1 - Evolution of price and sales of gasoline and gas oil, 2003 - 2008		67
3.2 - Imports of motor-spirit and gas oil by country of origin, 2007 - 2008		68
3.3 - Imports of lubricating oils and greases by country of origin, 2007 - 2008		69

ILLUSTRATIONS	Page
Figure 1.1 - Stock of registered vehicles, 1999 - 2008	16
1.2 - Age composition of cars and dual purpose vehicles as at 31st December, 2007 - 2008	21
1.3 - Age composition of operational bus fleet, as at 31st December, 2007 - 2008	22
2.1 - Number of vehicles registered and road accidents, 1999 - 2008	40
2.2 - Number of casualty accidents by day of week, 2008	45
2.3 - Number of casualty accidents by time of day, 2008	45
2.4 - Vehicles involved in casualty accidents by type of vehicle, 2008	53
2.5 - Casualties by class of road users, 2008	57
2.6 - Fatalities by category of road users, 2007 - 2008	62

Appendix Police form (P.f 178)

Vehicle Statistics¹

Definitions

Definitions as stipulated in Section 4 of Road Traffic Act of 1962 for types of vehicles

1. Motor cars

Motor cars are mechanically propelled vehicles, other than vehicles classified as motor cycles, which are constructed themselves to carry a load or passengers and whose unladen weight –

- (i) in case of vehicles which are –
 - (A) constructed solely for the carriage of passengers and their effects;
 - (B) adapted to carry not more than 7 passengers exclusive of the driver; and
 - (C) fitted with tyres of the prescribed type, does not exceed 3 tons;
- (ii) in any other case does not exceed 3 tons.

2. Heavy motor cars

Heavy motor cars are mechanically propelled vehicles, other than vehicles classified as motor cars, which are constructed themselves to carry a load or passengers and whose unladen weight exceeds 2½ tons.

3. Dual purpose vehicles

Dual purpose vehicles are vehicles constructed or adapted for the carriage both of passengers and of goods or burden of any description whose unladen weight does not exceed two tons and which either:-

- (a) are so constructed or adapted that the driving power of the engine is, or by the appropriate use of the controls of the vehicle can be, transmitted to all the wheels of the vehicle; or
- (b) satisfied the following conditions as to construction -
 - (i) the vehicle is permanently fitted with a rigid roof, with or without a sliding panel,
 - (ii) the area of the vehicle to the rear of the driver's seat is -
 - (A) permanently fitted with at least one row of transverse seats (fixed or folding) for 2 or more passengers and those seats are properly sprung or cushioned and provided with upholstered back-rests, attached either to the seats or to a side or the floor of the vehicle; and

¹ excludes pedal cycles

- (B) lit on each side and at the rear by a window or windows of glass or other transparent material having an area or aggregate area of not less than 2 square feet on each side and not less than 120 square inches on the rear.
- (iii) the distance between the rearmost part of the steering wheel and the backrests of the row of transverse seats satisfying the requirements specified in subparagraph (ii) (A) (or, where there is more than one row of seats, the distance between the rearmost part of the steering wheel and the backrests of the rearmost row) is, when the seats are ready for use, not less than one-third of distance between the rearmost part of the steering wheel and the rearmost part of the floor of the vehicle.

4. Motor cycles

Motor cycles are mechanically propelled vehicles, other than auto-cycles, with not more than 4 wheels and whose unladen weight does not exceed 400 kilograms.

5. Auto cycles

Auto cycles are bicycles which have pedals and a motor attached which can be propelled by means of those pedals and by mechanical or electrical power from that motor and the swept volume of the cylinders of that motor does not exceed 50 cubic centimeters.

6. Motor tractors

Motor tractors are mechanically propelled vehicles which are not constructed themselves to carry any load and whose unladen weight does not exceed 7¼ tons.

7. Trailer

- (a) means a vehicle which has no independent motive power of its own and which is drawn, or designed to be drawn, by a motor vehicle,
- (b) does not include a sidecar attached to a motor cycle, nor a farm implement that is not constructed or adapted for the conveyance of goods or burden of any description.

8. Weight Unladen

Means the weight of a vehicle which:-

- (a) includes the body and all parts (the heavier being taken where alternative bodies or parts are used) which are necessary to, or ordinarily used with, the vehicle when working on a road;
- (b) excludes the weight of water, fuel or accumulators used for the purpose of the supply of power for the propulsion of vehicle or of loose tools and loose equipment.

Road Traffic Accidents

Definitions and Explanatory Notes

In this report, data on accidents refer to all road accidents reported to police stations and to insurance companies.

Road Traffic Accident

A road traffic accident is an accident between two or more vehicles, a vehicle and a cyclist, a vehicle and a pedestrian, a vehicle and a fixed object, such as a bridge, building, tree, post, etc, or a single vehicle that overturned on or near a public road.

Severity of accident

Road traffic accidents are classified into the following categories according to the severity of the accident.

Fatal accident - an accident resulting in the death of one or more persons. Prior to 2002, a fatal accident was defined as an accident where deaths occurred within 7 days. As from 2002, a fatal accident is defined as an accident where deaths occurred within 30 days.

Serious injury accident - An accident in which one or more persons are seriously injured.

Slight injury accident - An accident in which one or more persons are slightly injured. The above three categories are jointly referred to as *casualty accident*

Non injury accident - An accident in which no one is killed or injured but which results in damage to the vehicle/s and/or other property only.

Casualty

Any person killed or injured in a road accident is referred to as a casualty.

Fatality - Any person killed during an accident or within 30 days (7 days prior to 2002) as a result of an accident is referred to as a fatality.

Serious Injury - An injury for which a person is detained in hospital as an "in-patient" or any of the following injuries (whether or not he is detained in hospital): fractures, concussions, internal injuries, severe cuts and lacerations, crushings and severe general shock requiring medical treatment.

Slight Injury - An injury of minor character such as a sprain, bruise and cut not judged to be severe.

Abbreviations and Symbols

Abbreviations

No.	:	Number
000	:	Thousand
%	:	Percentage
km	:	Kilometre
sq	:	Square
M/ton	:	Metric ton : 1,000 kilos
Mn	:	Million
Rs	:	Rupees
c.i.f	:	Cost, insurance and freight
n.e.s	:	Not elsewhere specified
000 Litres:		Thousand Litres

Symbols

-	Nil or negligible
...	Not available

Road Transport and Road Traffic Accident Statistics – An overview (Island of Mauritius)

Year 2008

1. Vehicles registered in 2008

At the end of December 2008 there were 351,406 vehicles registered at the National Transport Authority (NTA). This represents a net increase of 17,261 vehicles (5.2%) as compared to end of year 2007 when the number of registered vehicles was 334,145.

During the year 2008, the fleet was strengthened with the registration of 21,849 vehicles, of which 14,515 (66%) were new, 6,531 (30%) were imported second-hand and 803 (4%) were re-registered vehicles; i.e., those which had been previously de-registered (put off the road). However during the same period 4,588 vehicles were put off the road, resulting in a net addition of 17,261 vehicles to the existing fleet (Table 1.3 to 1.5).

2. Composition of the fleet

A breakdown of the fleet by type of vehicle is given in Table 1.2. At the end of December 2008, the fleet consisted of 44% (155,528) cars and dual purpose vehicles and 42% (147,988) auto/motor cycles. The remaining 14% comprised vans (25,334), lorries and trucks (12,726), buses (2,762) and other vehicles (7,068).

3. Vehicles used for the transport of passengers

3.1 *Cars and dual purpose vehicles*

At the end of 2008, the number of cars and dual purpose vehicles was 155,528, a rise of 7.7% over the 2007 figure which stood at 144,405. This increase was the result of the registration of 12,766 such vehicles (6,452 new, 5,876 imported second-hand and 438 re-registered), partly offset by 1,643 that were put off the road.

Table 1.6 shows the age distribution of cars and dual purpose vehicles. At the end of December 2008, 41% were less than 5 years, 24% between 5 and 9 years and the remaining 35%, 10 years and above.

3.2 *Buses*

At the end of December 2008, there were 2,762 registered buses, out of which 1,898 or 69% were 'public' buses operating with a road service licence. During 2008, 81 new buses were registered while 72 buses were put off the road resulting in an increase of 9 buses.

Table 1.7 which gives the age distribution of the fleet of public buses shows that 35% of the buses were under 5 years, 24% between 5 and 9 years and 41%, between 10 and 18 years.

4. Road traffic accidents

The number of road accidents registered during the year 2008 was 20,873 against 20,519 in the preceding year, showing an increase of 1.7%. Among these accidents the majority, 18,650 (89.3%) were non-injury, 162 fatal, 380 caused serious injuries and 1,681 slight injuries.

Compared to 2007, accidents causing casualties went up by 1.7% and non-injury accidents by 1.8%. Fatal accidents rose by 21.8% and slight injury accidents by 1.6 % while serious injury accidents decreased by 5.7%.

The accident rate expressed as the number of accidents per 100,000 mid-year population increased from 1,678 in 2007 to 1,696 in 2008 while the number of accidents per 1,000 mid-year registered motor vehicles decreased from 63 to 61 (Table 2.1).

5. Vehicles involved in road accidents

During the year 2008, the total number of vehicles (both motor and non-motor) involved in road accidents was 43,096 against 41,355 in the previous year. The number of vehicles involved in accidents resulting in casualties in 2008 was 3,568 against 3,389 in 2007. Table 2.15 shows that 35.5% of these were private cars, 31.6% motor cycles and 13.3% vans.

6. Casualties

The number of casualties (fatalities and persons injured as a result of road accidents) rose by 12.4 % from 3,055 in 2007 to 3,435 in 2008. Among the casualties, 168 were fatal, 512 were seriously injured and the remaining 2,755 were slightly injured.

Compared to 2007, the number of persons who died as a result of road accidents went up by 20.0%. The fatality rate expressed as the number of persons who died as a result of road accidents per 100,000 mid-year population increased from 11.4% in 2007 to 13.6 in 2008.

Table 2.19 reveals that, among the casualties in 2008, 33.6% were passengers 29.4% riders of auto/motor cycles, 18.4% pedestrians, 12.7% drivers and 6.0% pedal cyclists.

7. Hit and run cases of accidents causing casualties

In 2008, there were 163 " hit and run" cases causing casualties compared to 128 in 2007. Out of these 163 cases, 54% (88) involved vehicles only while the other 46% (75) involved both vehicles and pedestrians (Table 2.8).

**Main Road Transport and Road Accident Indicators,
2007 - 2008 (Island of Mauritius)**

	2007	2008	
Population (mid - year)	1,223,089	1,230,995	
Area of Mauritius (sq km)	1,865	1,865	
Length of roads (km)	2,028	2,028	
Per Capita G.D.P at market prices (Rs) ¹ - Republic of Mauritius	186,985	208,823	
	2007	2008	% change
Vehicles on register	334,145	351,406	+ 5.2
Motor cycle and auto cycle	142,606	147,988	+ 3.8
Car and dual purpose vehicle	144,405	155,528	+ 7.7
Other	47,134	47,890	+ 1.6
Road Accidents	20,519	20,873	+ 1.7
Number of non-injury accidents	18,329	18,650	+ 1.8
Number of casualty accidents	2,190	2,223	+ 1.5
<i>Fatal accident</i>	133	162	+ 21.8
<i>Serious injury accident</i>	403	380	- 5.7
<i>Slight injury accident</i>	1,654	1,681	+ 1.6
Total casualties	3,055	3,435	+ 12.4
<i>Fatal</i>	140	168	+ 20.0
<i>Seriously injured</i>	500	512	+ 2.4
<i>Slightly injured</i>	2,415	2,755	+ 14.1
Motor vehicles involved in road accidents	41,355	43,096	+ 4.2
Fatality rate			
Rate per 1,000 registered motor vehicles	0.43	0.49	+ 0.06
Rate per 100,000 population	11.45	13.65	+ 2.20
Rate per 100 casualty accident	6.39	7.56	+ 1.17
Rate per 100 casualties	4.58	4.90	+ 0.32

¹ Revised

PART I

VEHICLES

STATISTICS

Table 1.1 - Road network as at end of year, 2004- 2008

Year	Length of roads (km)					% of roads paved	Density ¹ of total network in km per sq. km	Number of vehicles per km of road
	Motorways	Main roads	Secondary roads	Other roads	Total			
2004	75	955	592	398	2,020	98	1.08	144
2005	75	955	592	398	2,020	98	1.08	151
2006	75	955	593	398	2,021	98	1.08	158
2007	75	962	593	398	2,028	98	1.09	165
2008	75	962	593	398	2,028	98	1.09	173

¹ density of total network in km per sq. km is the ratio of the total number of km of roads to the area of Mauritius (1,865 sq. km)

Fig. 1.1 - Stock of registered vehicles, 1999- 2008

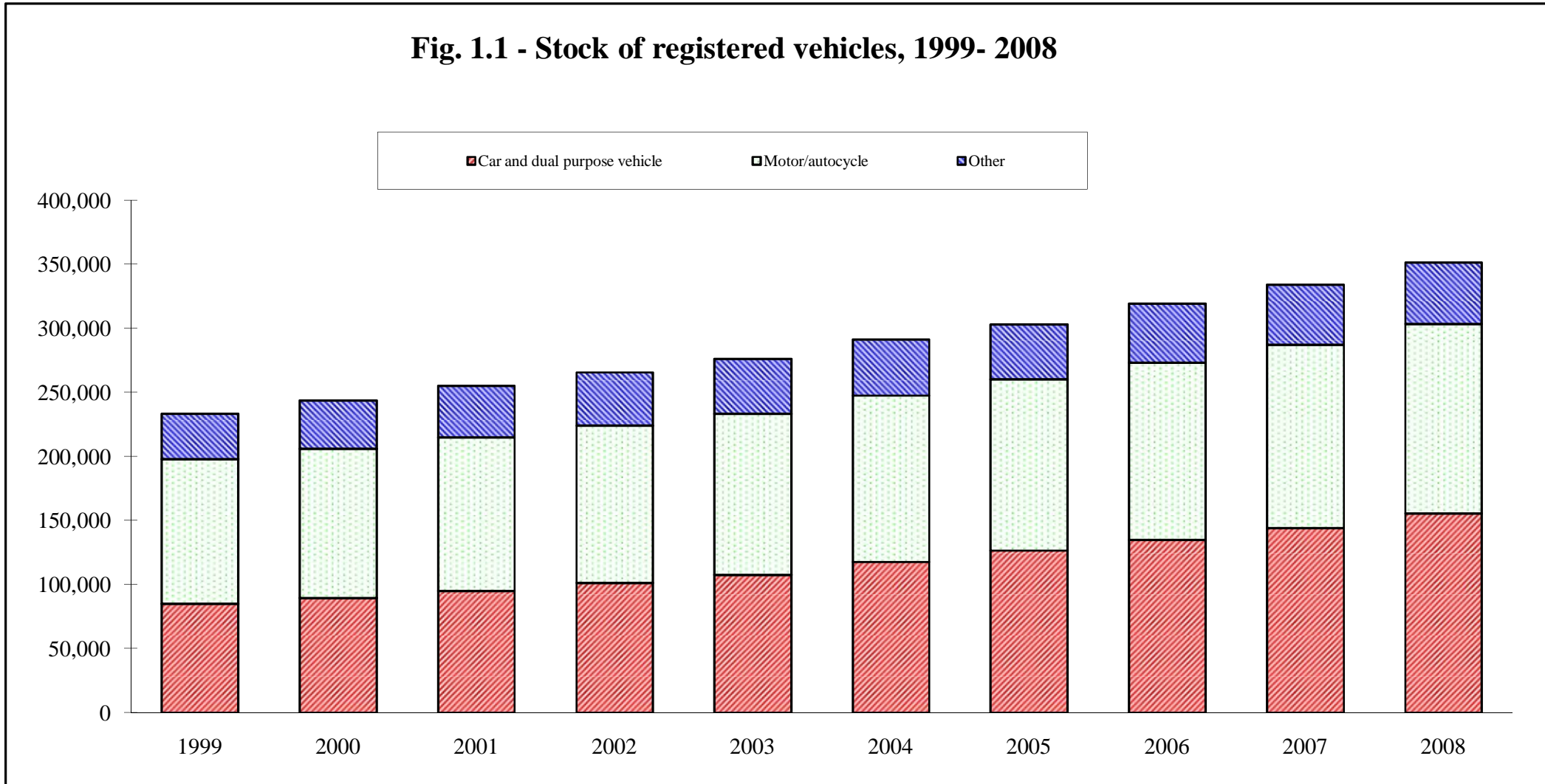


Table 1.2 - Vehicles¹ registered , 1999 - 2008

Type of vehicle	Number									
	1999	2000	2001	2002	2003	2004	2005	2006	2007	2008
Car	52,892	54,911	58,082	63,307	68,524	77,342	84,818	91,911	99,770	109,507
<i>(of which taxi car)</i>	<i>(4,905)</i>	<i>(5,039)</i>	<i>(5,318)</i>	<i>(5,801)</i>	<i>(5,979)</i>	<i>(6,482)</i>	<i>(6,798)</i>	<i>(6,860)</i>	<i>(6,885)</i>	<i>(6,941)</i>
Dual purpose vehicle	32,262	34,912	36,984	38,129	39,383	40,667	42,026	43,221	44,635	46,021
Heavy motor car	934	916	923	944	958	1,020	1,045	1,118	1,223	1,290
Motor cycle	24,125	24,523	25,104	25,723	26,744	28,646	30,927	33,936	36,969	40,804
Auto cycle	88,821	91,955	94,849	97,078	98,858	100,854	102,503	104,238	105,637	107,184
Lorry and truck	10,138	10,485	10,888	11,236	11,501	11,774	12,047	12,272	12,536	12,726
Van	16,814	18,807	20,694	21,750	22,496	23,326	23,989	24,522	24,934	25,334
Bus	2,344	2,394	2,408	2,450	2,460	2,457	2,560	2,612	2,753	2,762
Tractor and dumper	2,630	2,645	2,683	2,683	2,877	2,935	2,982	3,001	3,025	3,045
Prime mover	315	322	335	349	369	388	412	436	452	505
Trailer	1,719	1,726	1,776	1,770	1,772	1,771	1,765	1,756	1,795	1,809
Road roller	102	100	100	101	100	99	96	96	96	96
Other	319	322	323	321	329	326	326	321	320	323
TOTAL	233,415	244,018	255,149	265,841	276,371	291,605	305,496	319,440	334,145	351,406

¹ excluding pedal cycles, but including government vehicles.

Table 1.3 - New vehicles ¹ registered, 2004 - 2008

Type of vehicle	Number				
	2004	2005	2006	2007	2008
Car	3,404	3,359	3,378	3,831	4,798
Dual purpose vehicle	1,313	1,389	1,411	1,622	1,654
Heavy motor car	93	58	112	134	113
Motor cycle	2,191	2,574	3,374	3,272	4,235
Auto cycle	3,328	2,973	3,049	2,716	2,890
Lorry and truck	179	254	251	257	225
Van	332	322	297	245	349
Bus	65	184	133	219	81
Tractor and dumper	82	66	55	60	60
Prime mover	15	14	17	10	34
Trailer	32	45	45	60	69
Road roller	-	-	-	-	-
Other ²	1	5	1	2	7
Total	11,035	11,243	12,123	12,428	14,515

¹ includes government vehicles

² includes, inter alia, tanker lorries, excavators and industrial tractors

Table 1.4 - Imported Second-hand and re-registered vehicles, 2004 - 2008

Type of vehicle	2004			2005			2006			2007			2008		
	Imported second - hand vehicles	Re-registered vehicles ¹	Total	Imported second - hand vehicles	Re-registered vehicles ¹	Total	Imported second - hand vehicles	Re-registered vehicles ¹	Total	Imported second - hand vehicles	Re-registered vehicles ¹	Total	Imported second - hand vehicles	Re-registered vehicles ¹	Total
Car	5,918	618	6,536	4,528	717	5,245	4,403	437	4,840	4,527	604	5,131	5,698	349	6,047
Dual purpose vehicle	212	222	434	246	216	462	167	125	292	135	179	314	178	89	267
Heavy motor car	7	10	17	7	14	21	10	8	18	11	14	25	6	5	11
Motor cycle	32	311	343	40	291	331	51	231	282	66	343	409	55	198	253
Auto cycle	9	26	35	8	28	36	6	18	24	9	15	24	6	3	9
Lorry and truck	166	157	323	114	130	244	112	88	200	106	129	235	130	64	194
Van	719	127	846	532	169	701	486	121	607	412	148	560	380	76	456
Bus	-	1	1	-	-	-	-	-	-	-	-	-	-	-	-
Tractor and dumper	18	12	30	22	14	36	11	9	20	7	14	21	7	11	18
Prime mover	18	1	19	26	-	26	23	-	23	20	2	22	33	1	34
Trailer	31	18	49	34	6	40	25	13	38	59	15	74	36	6	42
Road roller	-	-	-	-	-	-	-	-	-	-	-	-	-	-	-
Other ²	2	-	2	-	-	-	-	-	-	2	1	3	2	1	3
Total	7,132	1,503	8,635	5,557	1,585	7,142	5,294	1,050	6,344	5,354	1,464	6,818	6,531	803	7,334

¹ refers to re-registration of vehicles previously put off the road excludes government vehicles which are not liable to re-registration

² includes, inter alia, tanker lorries, excavators and industrial tractors

Table 1.5 - Vehicles off the road ¹, 2004 - 2008

Type of vehicle	Number				
	2004	2005	2006	2007	2008
Car	1,122	1,128	1,125	1,103	1,108
Dual purpose vehicle	463	492	508	522	535
Heavy motor car	48	54	57	54	57
Motor cycle	632	624	647	648	653
Auto cycle	1,367	1,360	1,338	1,341	1,352
Lorry and truck	229	225	226	228	229
Van	348	360	371	393	405
Bus	69	81	81	78	72
Tractor and dumper	54	55	56	57	58
Prime mover	15	16	16	16	15
Trailer	82	91	92	95	97
Road roller	1	3	-	-	-
Other ²	6	5	6	6	7
Total	4,436	4,494	4,523	4,541	4,588

¹ a vehicle may be withdrawn from the register of vehicles (off the road) either temporarily or permanently.

Any such vehicle (except a government vehicle) must register with the N.T.A before it is put on the road again. Includes government vehicles which have been sold by auction.

² includes, inter alia, tanker lorries, excavators and industrial tractors.

Table 1.6 - Age composition of cars and dual purpose vehicles, 2007 - 2008

(As at 31 December)

Age group (Years)	2007		2008	
	Number	%	Number	%
< 5	55,960	38.8	63,842	41.0
5 < 10	36,955	25.6	37,321	24.0
10 < 15	15,190	10.5	16,294	10.5
≥ 15	36,300	25.1	38,071	24.5
TOTAL	144,405	100.0	155,528	100.0

**Fig. 1.2 - Age composition of cars and dual purpose vehicles
(as at 31 December)**

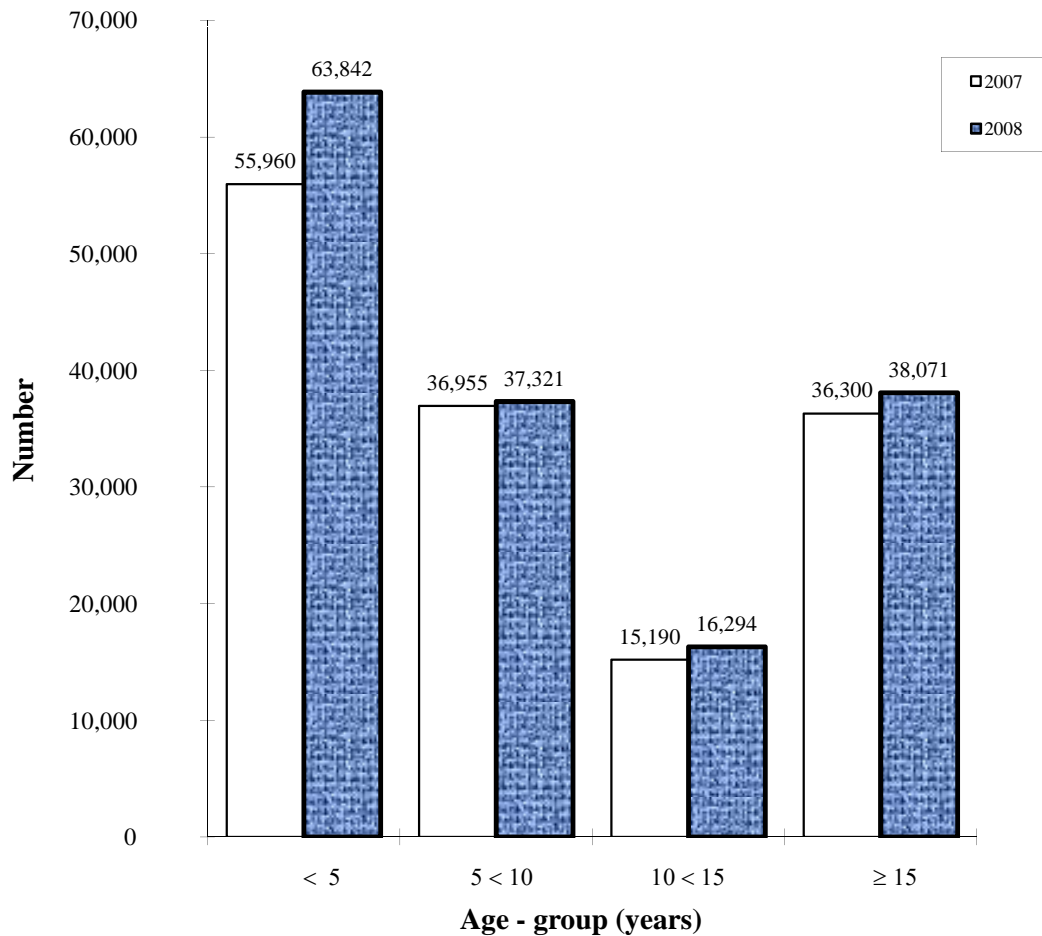


Table 1.7 - Age composition of operational bus fleet ¹, 2007 - 2008

(as at 31 December)

Age group (Years)	2007		2008	
	Number	%	Number	%
< 5	694	36.6	670	35.3
5 < 10	437	23.0	456	24.0
10 < 15	596	31.5	501	26.4
15 < 18	168	8.9	271	14.3
TOTAL	1,895	100.0	1,898	100.0

¹ Refers only to buses with a Road Service License, i.e., buses which operate on proclaimed routes and charge individual fares

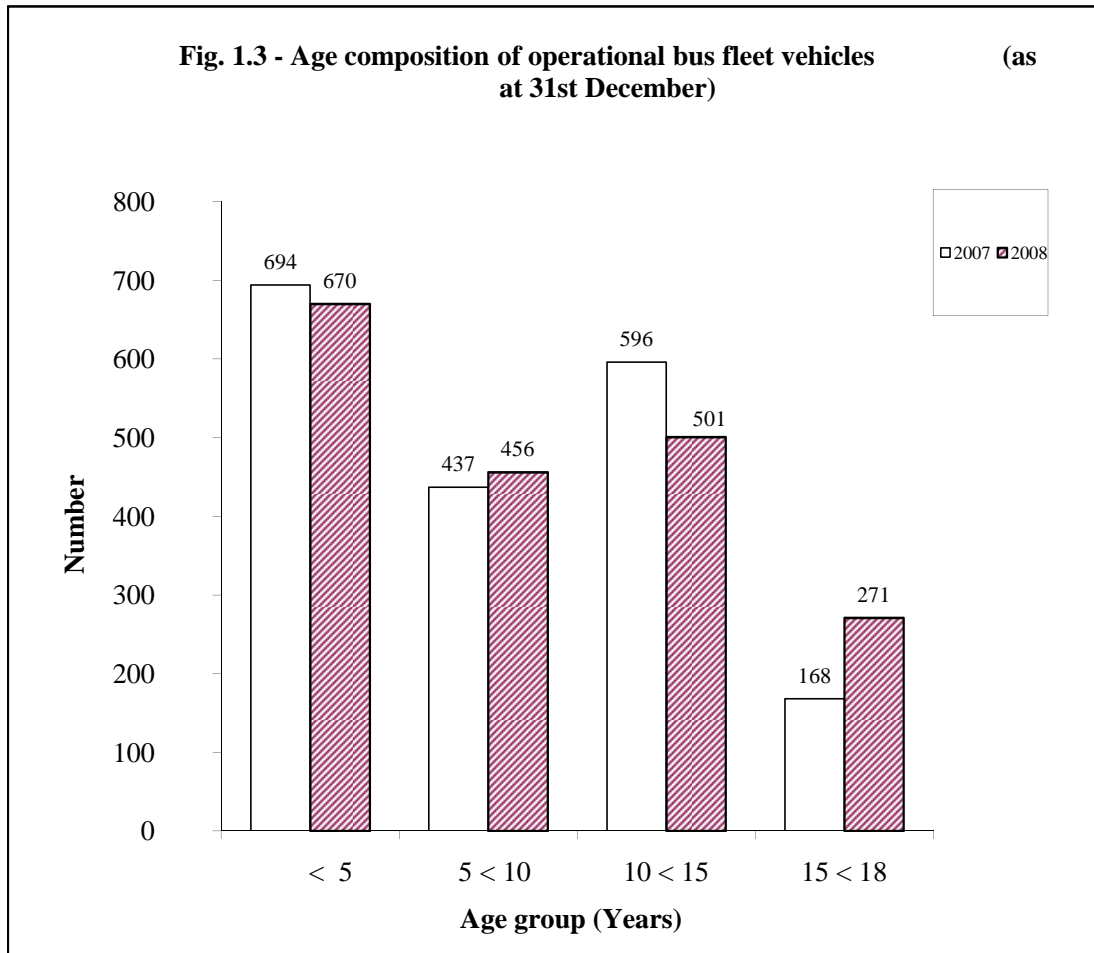


Table 1.8 - Bus operational statistics ¹, 2004 - 2008

	Unit	2004	2005	2006	2007	2008 ²
Operational bus fleet (as at 30th June)	Number	1,854	1,881	1,887	1,878	1,898
Total vehicle - journeys	Thousand	4,477	4,486	4,647	4,618	4,789
Average vehicle - journeys per day	"	8.0	8.0	8.2	8.2	8.4
Total vehicle - kilometres	"	87,665	89,552	94,034	95,117	99,203
Average vehicle - kilometres per day	"	158	159	166	169	174
Total gross receipts	Rs Mn	1,928	1,994	2,031	2,048	2,152
Average gross receipts per day	Rs '000	5,932	6,135	6,249	6,301	6,621

¹ refer only to buses with a Road Service Licence, i.e., buses which operate on proclaimed routes and charge individual fares . Including data on special trips .

² Provisional

Table 1.9 - Evolution of bus fares (adults), 1999 - 2008

Period Stage	Rupees				
	Nov. 99	Jul. 01	Aug. 02	Oct. 04	May. 08
1	4.00	4.00	5.00	6.00	8.00
2	7.00	8.00	9.00	10.00	14.00
3	9.00	11.00	12.00	14.00	18.00
4	9.00	11.00	12.00	14.00	18.00
5	11.00	13.00	14.00	16.00	20.00
6	11.00	13.00	14.00	16.00	20.00
7	12.00	14.00	16.00	18.00	23.00
8	12.00	14.00	16.00	18.00	23.00
9	13.00	15.00	17.00	19.00	24.00
10	13.00	15.00	17.00	19.00	24.00
11	13.00	15.00	17.00	19.00	24.00
12	13.00	15.00	17.00	19.00	24.00
13	14.00	16.00	19.00	21.00	26.00
14	14.00	16.00	19.00	21.00	26.00
15	14.00	16.00	19.00	21.00	26.00
16	14.00	16.00	19.00	21.00	26.00
17	14.00	16.00	19.00	21.00	26.00
18	14.00	16.00	19.00	21.00	26.00
19	14.00	16.00	19.00	21.00	26.00
20	14.00	16.00	19.00	21.00	26.00
21	15.00	17.00	20.00	22.00	27.00
22	15.00	17.00	20.00	22.00	27.00
23	15.00	17.00	20.00	22.00	27.00
24	15.00	17.00	20.00	22.00	27.00
25	15.00	17.00	20.00	22.00	27.00
26	15.00	17.00	20.00	22.00	27.00
27	15.00	17.00	20.00	22.00	27.00
28	15.00	17.00	20.00	22.00	27.00
29	15.00	17.00	20.00	22.00	27.00
30	15.00	17.00	20.00	22.00	27.00
30 +	16.00	18.00	21.00	23.00	28.00

Table 1.10 - Receipts from the activities of the National Transport Authority, 2004 - 2008

Rs. '000

Activity	As at end of December				
	2004	2005	2006	2007	2008 ¹
Issue of motor vehicle licences (Road tax)	603,013	640,085	664,486	791,622	938,768
Examination of vehicles	13,629	14,211	14,535	33,951	33,849
Issue of public service vehicle and carrier's licences	28,935	32,051	32,344	33,443	34,281
Registration of vehicles	33,403	41,519	39,921	45,298	57,860
Issue of special route permits	693	954	496	442	405
Issue of motor vehicles dealers and petrol service station licences	1,794	1,833	2,691	2,491	1,424
Total	681,467	730,653	754,473	907,247	1,066,587

¹ provisional

Table 1.11 - Driving licences issued during the year by type of licence, 1999 - 2008

Type of Licence Year	Learner's licence			Competent licence			International Licence		
	First issue			First issue					
	Male	Female	Both Sexes	Male	Female	Both Sexes	Male	Female	Both Sexes
1999	12,622	6,310	18,932	13,299	2,183	15,482	3,237	515	3,752
2000	10,686	7,293	17,979	13,883	2,094	15,977	3,102	636	3,738
2001	9,420	4,566	13,986	11,739	2,329	14,068	3,363	720	4,083
2002	12,381	12,647	25,028	12,061	2,410	14,471	3,585	762	4,347
2003	14,495	11,005	25,500	11,150	2,380	13,530	3,819	842	4,661
2004	7,019	6,065	13,084	11,212	2,595	13,807	4,126	903	5,029
2005	8,742	6,372	15,114	10,878	2,557	13,435	4,200	825	5,025
2006	9,809	7,317	17,126	11,212	2,465	13,677	4,200	1,014	5,214
2007	10,440	8,429	18,869	6,984	2,958	9,942	4,943	652	5,595
2008¹	10,434	8,817	19,251	7,575	3,297	10,872	4,526	1,542	6,068

¹ provisional

Table 1.12 - Imports of vehicles and spare parts by country of origin, 2007 - 2008

Item	Country of origin	Unit	C.I.F. Value Rs ' 000			
			2007 ¹		2008 ²	
			Quantity	Value	Quantity	Value
1 - Passenger motor cars - of engine capacity not exceeding 1,250 c.c.	France	No.	18	6,320	8	2,563
	Germany	"	14	4,515	2	445
	India	"	23	29,998	199	38,834
	Japan	"	1,119	252,045	789	172,159
	Korea Rep.	"	56	11,659	111	26,127
	Korea Dem.	"	42	6,502	8	1,447
	Malaysia	"	35	5,338	34	2,700
	Spain	"	13	4,183	12	3,307
	Other Countries	"	25	3,043	8	801
				1,345	323,603	1,171
- of engine capacity exceeding 1,250 c.c. but not exceeding 1,500 c.c.	France	No.	91	34,560	27	9,754
	Germany	"	23	10,105	52	24,120
	India	"	83	16,476	105	22,538
	Japan	"	2,656	562,069	4,278	932,532
	Korea Rep.	"	62	9,778	210	24,426
	Malaysia	"	42	6,139	115	16,885
	Spain	"	40	15,367	44	15,273
	United Kingdom	"	13	5,506	3	612
	Thailand	"	193	56,563	136	27,209
	Other Countries	"	66	10,903	100	27,082
			3,269	727,466	5,070	1,100,431

¹ revised

² provisional

Table 1.12 (cont'd) - Imports of vehicles and spare parts by country of origin, 2007 - 2008

C.I.F. Value Rs '000

Item	Country of origin	Unit	2007 ¹		2008 ²	
			Quantity	Value	Quantity	Value
- of engine capacity exceeding 1,500 c.c. but not exceeding 2,250 c.c.	France	No.	229	112,374	163	80,754
	Germany	"	298	223,395	300	225,198
	Italy	"	14	10,297	18	13,310
	Japan	"	2,432	659,055	3,090	831,063
	Korea Dem.	"	36	9,762	51	17,250
	Korea Rep.	"	171	55,386	426	121,823
	Malaysia	"	29	5,732	50	6,748
	South Africa Rep.	"	46	34,496	58	37,252
	Spain	"	31	14,424	26	9,474
	United Kingdom	"	141	88,461	262	158,708
	Mexico	"	15	6,361	2	1,277
	Sweden	"	2	1,286	7	5,064
	Thailand	"	4	934	27	8,845
	Other Countries	"	13	8,693	51	27,284
			3,461	1,230,656	4,531	1,544,050
- of engine capacity exceeding 2,250 c.c.	Germany	No.	129	178,803	117	156,050
	Japan	"	218	97,519	317	150,948
	South Africa Rep.	"	29	31,759	17	12,317
	United Kingdom	"	19	30,350	33	43,807
	Other Countries	"	69	63,588	42	27,785
			464	402,019	526	390,907

¹ revised

² provisional

Table 1.12 (cont'd) - Imports of vehicles and spare parts by country of origin, 2007 - 2008

Item	Country of origin	Unit	C.I.F. Value Rs ' 000			
			2007 ¹		2008 ²	
			Quantity	Value	Quantity	Value
- other, unspecified	Germany	No.	21	47,765	51	127,067
	Japan	"	89	61,981	40	27,347
	South Africa Rep.	"	14	17,090	7	5,169
	United Kingdom	"	3	10,483	7	11,195
	Other Countries	"	8	10,319	8	28,800
			135	147,638	113	199,578
2 - Trucks and lorries, trucks of pick-up type, vans designed solely for the types which are not derived solely from ordinary passenger motor-car	China	No.	16	5,605	26	9,823
	France	"	55	18,697	77	28,366
	Germany	"	1	639	-	-
	India	"	6	3,894	6	7,021
	Italy	"	2	4,697	3	6,656
	Japan	"	536	187,492	762	457,333
	Korea Dem.	"	20	5,122	23	6,530
	Korea Rep.	"	38	76,403	13	7,873
	Netherlands	"	-	-	1	3,003
	South Africa Rep.	"	24	8,255	88	26,400
	Spain	"	-	-	8	2,762
	Thailand	"	92	36,691	14	4,949
	United Kingdom	"	10	15,409	8	9,740
	United States	"	34	10,123	36	9,584
			834	373,027	1,065	580,040

¹ revised

² provisional

Table 1.12 (cont'd) - Imports of vehicles and spare parts by country of origin, 2007 - 2008

C.I.F. Value Rs ' 000						
Item	Country of origin	Unit	2007 ¹		2008 ²	
			Quantity	Value	Quantity	Value
3 - Public service type passenger motor vehicle	China	No.	4	6,576	5	8,064
	Germany	"	2	1,754	4	3,307
	India	"	103	183,108	-	-
	Japan	"	471	249,291	522	269,489
	Korea Dem.	"	-	-	6	2,730
	Korea Rep.	"	9	4,933	2	1,103
			589	445,662	539	284,693
4 - Road tractors for semi-trailers	France	No.	1	1,794	3	7,715
	Japan	"	5	7,548	9	12,809
	Korea Rep.	"	5	9,889	1	1,733
	Netherlands	"	1	1,492	4	6,293
	South Africa Rep.	"	-	-	2	5,531
	United Kingdom	"	14	22,592	24	29,588
			26	43,315	43	63,669
5 - Dumpers	China	No.	24	2,005	25	3,202
	Spain	"	-	-	2	1,109
	United Kingdom	"	-	-	10	5,829
			24	2,005	37	10,140

¹ revised

² provisional

Table 1.12 (cont'd) - Imports of vehicles and spare parts by country of origin, 2007 - 2008

C.I.F. Value Rs ' 000						
Item	Country of origin	Unit	2007 ¹		2008 ²	
			Quantity	Value	Quantity	Value
6 - Other motor vehicles for the transport of goods or materials - of an engine capacity exceeding 1,600 c.c. but not exceeding 2,250 c.c. - of an engine capacity exceeding 2,250 c.c.	Japan	No.	19	3,560	1	221
			19	3,560	1	221
	Japan	No.	3	658	-	-
			3	658	-	-

¹ revised

² provisional

Table 1.12 (cont'd) - Imports of vehicles and spare parts by country of origin, 2007 - 2008

Item	Country of origin	Unit	C.I.F. Value Rs ' 000			
			2007 ¹		2008 ²	
			Quantity	Value	Quantity	Value
7 - Special purpose motor vehicles and vans	Brazil	No.	9	11,007	6	4,753
	China	"	-	-	25	18,986
	France	"	27	53,394	19	34,524
	India	"	163	26,129	67	11,714
	Japan	"	304	90,715	182	95,447
	Korea Rep.	"	8	2,131	1	1,745
	Malaysia	"	-	-	91	14,124
	United Kingdom	"	9	11,283	18	25,503
	United States	"	5	9,954	77	12,730
	Other countries	"	8	20,218	20	45,921
			533	224,831	506	265,447

¹ revised

² provisional

Table 1.12 (cont'd) - Imports of vehicles and spare parts by country of origin, 2007 - 2008

C.I.F. Value Rs '000						
Item	Country of origin	Unit	2007 ¹		2008 ²	
			Quantity	Value	Quantity	Value
8 - Motor cycles, scooters and auto cycles	Brazil	No.	66	4,641	102	7,381
	China	"	4,617	81,584	6,479	116,342
	United States	"	2	999	11	5,135
	France	"	3	220	6	463
	Switzerland	"	-	-	14	183
	India	"	285	3,059	145	3,228
	Italy	"	5	641	20	2,386
	Japan	"	107	13,289	213	29,487
	Korea Rep.	"	-	-	15	479
	Spain	"	9	728	15	1,593
	Taiwan	"	126	3,824	238	8,441
	Thailand	"	31	1,856	13	1,144
	South Africa Rep.	"	5	177	26	699
	Turkey	"	236	4,777	108	2,086
	Other countries	"	14	740	6	857
			5,506	116,535	7,411	179,904
9 - Cycles not motorised	China	No.	30,918	33,840	38,330	49,259
	France	"	84	1,377	86	777
	South Africa Rep.	"	282	1,493	265	542
	Taiwan	"	1,628	7,744	915	4,322
	United States	"	29	953	19	680
	Other countries	"	47	643	259	769
			32,988	46,050	39,874	56,349

¹ revised

² provisional

Table 1.12 (cont'd) - Imports of vehicles and spare parts by country of origin, 2007- 2008

C.I.F. Value Rs ' 000

Item	Country of origin	Unit	2007 ¹		2008 ²	
			Quantity	Value	Quantity	Value
10 - Chassis fitted with engines for tractors, and for motor vehicles	China	No.	2	643	131	44,626
	France	"	6	14,433	9	21,868
	India	"	76	48,444	62	43,877
	Japan	"	463	253,716	356	161,064
	Korea Rep.	"	49	14,371	51	16,271
	South Africa Rep.	"	285	153,672	677	338,703
	Thailand	"	760	270,665	542	220,177
	Other countries	"	30	23,337	16	10,319
				1,671	779,281	1,844
11 - Parts and accessories for tractors and for motor vehicles	China	M/ton	210	14,466	345	28,827
	France	"	107	45,644	103	38,757
	Germany	"	46	39,856	51	44,383
	India	"	76	14,908	142	17,425
	Italy	"	21	10,246	18	11,185
	Japan	"	551	101,716	585	124,842
	Korea Dem.	"	3	843	1	278
	Korea Rep.	"	43	7,187	28	7,464
	Malaysia	"	112	10,891	124	12,104
	Singapore	"	11	2,018	14	2,394
	South Africa Rep.	"	116	18,928	236	27,897
	Spain	"	8	5,140	11	5,650
	Taiwan	"	42	7,757	43	8,487
	Thailand	"	153	30,857	144	33,190
	United Kingdom	"	150	28,218	181	13,789
Other countries	"	31	32,566	40	22,677	
			1,680	371,241	2,066	399,349

¹ revised

² provisional

Table 1.12 (cont'd) - Imports of vehicles and spare parts by country of origin, 2007 - 2008

C.I.F. Value Rs ' 000

Item	Country of origin	Unit	2007 ¹		2008 ²	
			Quantity	Value	Quantity	Value
12 - Parts n.e.s and accessories for motor cycles, scooters and autocycles	China	M/ton	147	11,725	167	18,023
	France	"	14	3,941	3	3,077
	India	"	25	2,380	35	3,620
	Italy	"	3	1,525	2	1,786
	Japan	"	7	4,537	10	6,102
	Taiwan	"	32	5,534	28	5,606
	Thailand	"	5	885	5	694
	Turkey	"	11	3,096	7	2,341
	Other countries	"	2	2,016	4	4,035
			246	35,639	261	45,284

¹ revised

² provisional

PART II

ROAD ACCIDENTS

Table 2.1 - Road traffic accidents ¹ and casualties, 1999 - 2008

	1999	2000	2001	2002	2003	2004	2005	2006	2007	2008
1. Road traffic accidents :										
Number	17,877	18,278	18,517	18,022	19,178	19,495	22,554	20,242	20,519	20,873
Rate per 100,000 population	1,569	1,588	1,591	1,535	1,616	1,629	1,869	1,665	1,678	1,696
Rate per 1,000 registered motor vehicles	79	77	75	69	72	69	76	65	63	61
2. Motor vehicle involved :										
Number	32,547	33,537	33,988	33,119	35,239	35,506	43,741	40,023	41,178	42,910
Rate per 1,000 registered motor vehicles	144	142	137	127	133	126	148	129	127	125
3. Casualties :										
Total number of casualties of which	3,405	3,291	3,264	2,904	2,698	2,951	2,760	2,522	3,055	3,435
<i>Fatal</i> ²	170	163	126	158	131	144	136	134	140	168
<i>Seriously injured</i>	237	266	288	216	291	245	358	348	500	512
<i>Slightly injured</i>	2,998	2,862	2,850	2,530	2,276	2,562	2,266	2,040	2,415	2,755
4. Fatality :										
Rate per 100,000 population	14.9	14.2	10.8	13.5	11.0	12.0	11.3	11.0	11.4	13.6
Rate per 1,000 registered motor vehicles	0.8	0.7	0.5	0.6	0.5	0.5	0.4	0.4	0.4	0.5
Fatality index ³	5.0	5.0	3.9	5.4	4.8	4.9	4.9	5.3	4.6	4.9

¹ Exclude accidents involving bicycles only or bicycle and pedestrian.

² From 1993 to 2001 figures are based on definition of fatal accidents where death occurred within 7 days.

As from 2002, figures are based on definition of fatal accidents where deaths occurred within 30 days as a result of road accidents.

³ Fatality index is the number of fatalities per 100 casualties.

Figure 2.1 - Number of vehicles registered and road accidents, 1999 -2008

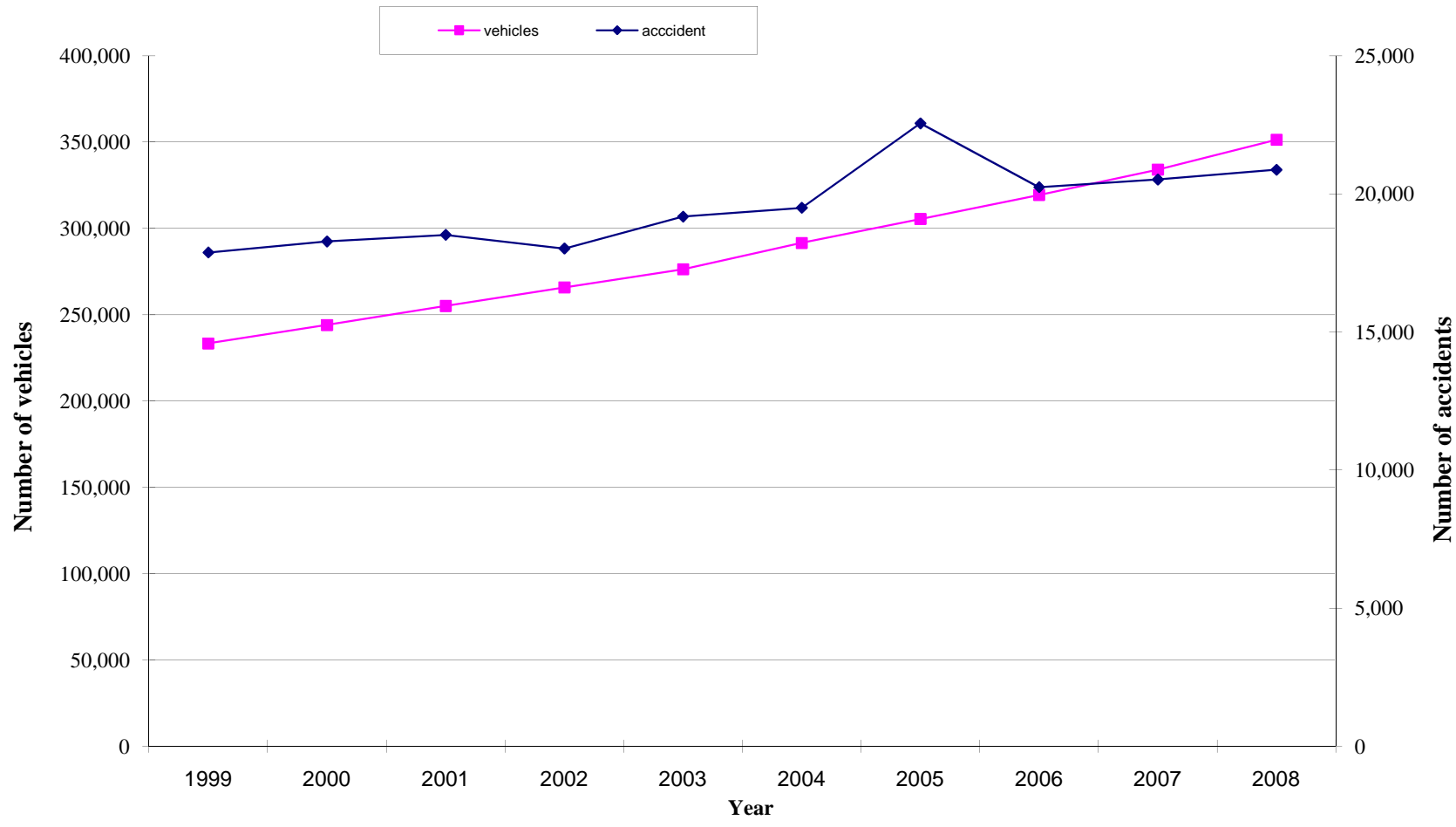


Table 2.2 - Road traffic accidents, motor-vehicles involved and casualties, 2004 - 2008

Year	Accidents	Casualty accidents	Non-injury accidents	Casualties	Motor Vehicles involved	Number	
						Population (mid-year)	Motor vehicles registered (mid-year)
2004	19,495	2,160	17,335	2,951	35,506	1,196,696	281,930
2005	22,554	2,144	20,410	2,760	43,741	1,206,346	296,219
2006	20,242	1,947	18,295	2,522	40,023	1,215,619	310,482
2007	20,519	2,190	18,329	3,055	41,355	1,223,089	324,715
2008	20,873	2,223	18,650	3,435	43,096	1,230,995	342,344

Table 2.3 - Number of casualty accidents by degree of casualty and casualty rate, 2004- 2008

Year	Degree of casualty				Casualty rate		
	Fatal	Seriously injured	Slightly injured	Total casualties	Per casualty accident	Per 100,000 population	Per 1,000 Motor-vehicles
2004	144	245	2,562	2,951	1.4	247	10
2005	136	358	2,266	2,760	1.3	229	9
2006	134	348	2,040	2,522	1.3	207	8
2007	140	500	2,415	3,055	1.4	250	9
2008	168	512	2,755	3,435	1.5	279	10

Table 2.4 - Casualty accidents, pedestrian and rider (auto/motor) casualties by police district, 2007 - 2008

Police District	Casualty accidents		Casualties							
			Pedestrian		Rider (auto/moto cycle)		Other		Total	
	2007	2008	2007	2008	2007	2008	2007	2008	2007	2008
Port Louis (South)	177	186	50	54	103	105	72	86	225	245
Port Louis (North)	331	320	97	81	206	190	137	168	440	439
Pamplemousses/Rivière du Rempart	311	355	67	89	165	189	215	244	447	522
Moka/Flacq	407	432	102	102	188	201	296	372	586	675
Grand Port/Savanne	288	311	83	82	106	100	251	494	440	676
Upper Plaines Wilhems	254	205	80	72	86	61	185	158	351	291
Plaines Wilhems/Black River	422	414	129	150	165	164	272	273	566	587
Whole Island	2,190	2,223	608	630	1,019	1,010	1,428	1,795	3,055	3,435

Table 2.5 - Pedestrian and total casualties by police district and semester, 2008

Police district	Pedestrian casualties			Total casualties		
	Jan - Jun	Jul - Dec	Total	Jan - Jun	Jul - Dec	Total
Port Louis (South)	16	38	54	103	142	245
Port Louis (North)	41	40	81	220	219	439
Pamplemousses/Rivière du Rempart	48	41	89	216	306	522
Moka/Flacq	59	43	102	281	394	675
Grand Port/Savanne	44	38	82	296	380	676
Upper Plaines Wilhems	46	26	72	164	127	291
Plaines Wilhems/Black River	79	71	150	309	278	587
Whole Island	333	297	630	1,589	1,846	3,435

Table 2.6 - Distribution of casualty accidents by day of week and time, 2008

Day Time (Hour)	Monday	Tuesday	Wednesday	Thursday	Friday	Saturday	Sunday	Total
0 - 1	11	3	4	3	3	0	2	26
1 - 2	7	1	3	4	-	1	5	24
2 - 3	4	1	2	2	2	1	5	17
3 - 4	5	3	-	-	5	0	4	19
4 - 5	1	2	1	1	2	1	3	11
5 - 6	13	6	6	4	2	4	7	42
6 - 7	17	15	12	8	10	13	10	85
7 - 8	2	31	17	30	19	27	15	141
8 - 9	16	25	15	23	14	18	29	140
9 - 10	12	4	5	19	12	13	18	83
10 - 11	19	18	17	19	9	15	19	116
11 - 12	28	13	10	13	12	13	20	109
12 - 13	12	16	13	17	11	17	22	108
13 - 14	16	21	11	7	24	13	20	112
14 - 15	30	17	14	18	20	22	17	138
15 - 16	16	17	25	16	22	23	14	133
16 - 17	17	23	23	15	20	14	20	132
17 - 18	17	26	29	23	27	31	16	169
18 - 19	27	22	18	22	22	25	23	159
19 - 20	21	23	18	13	12	18	18	123
20 - 21	19	10	15	16	11	9	23	103
21 - 22	20	7	12	14	12	19	23	107
22 - 23	11	3	8	13	9	12	16	72
23 - 24	11	3	4	3	7	9	17	54
Total	352	310	282	305	290	318	366	2,223

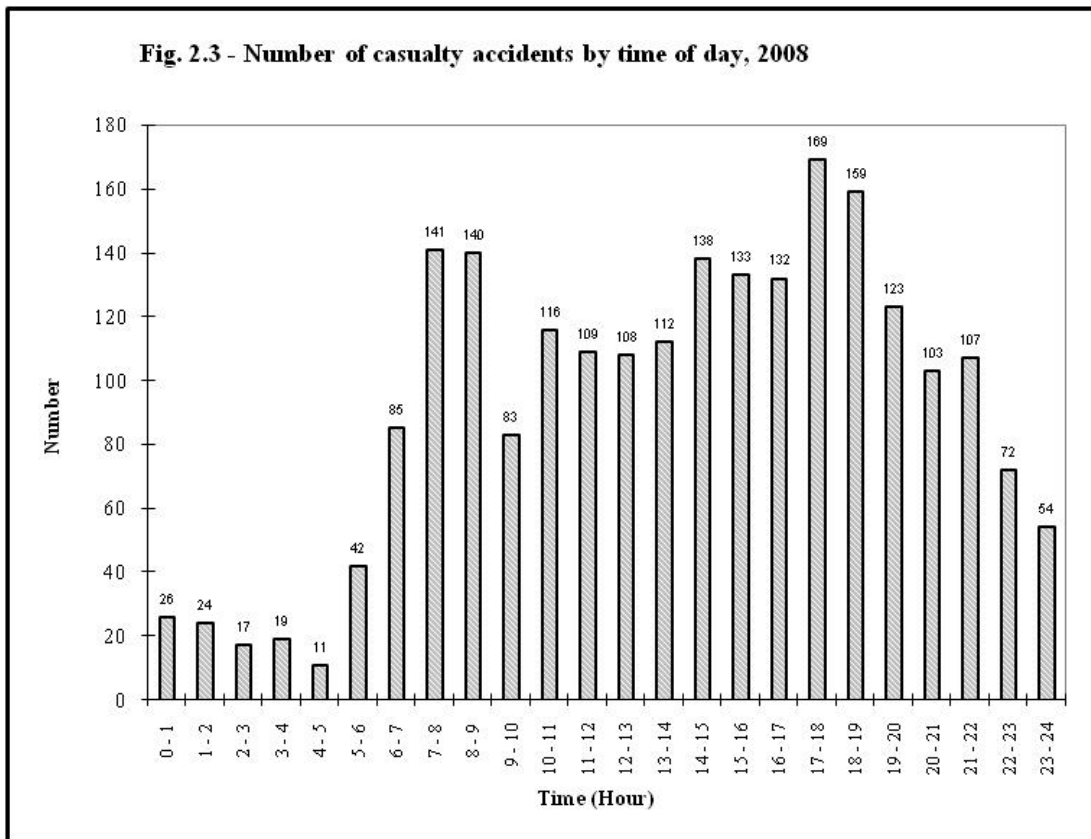
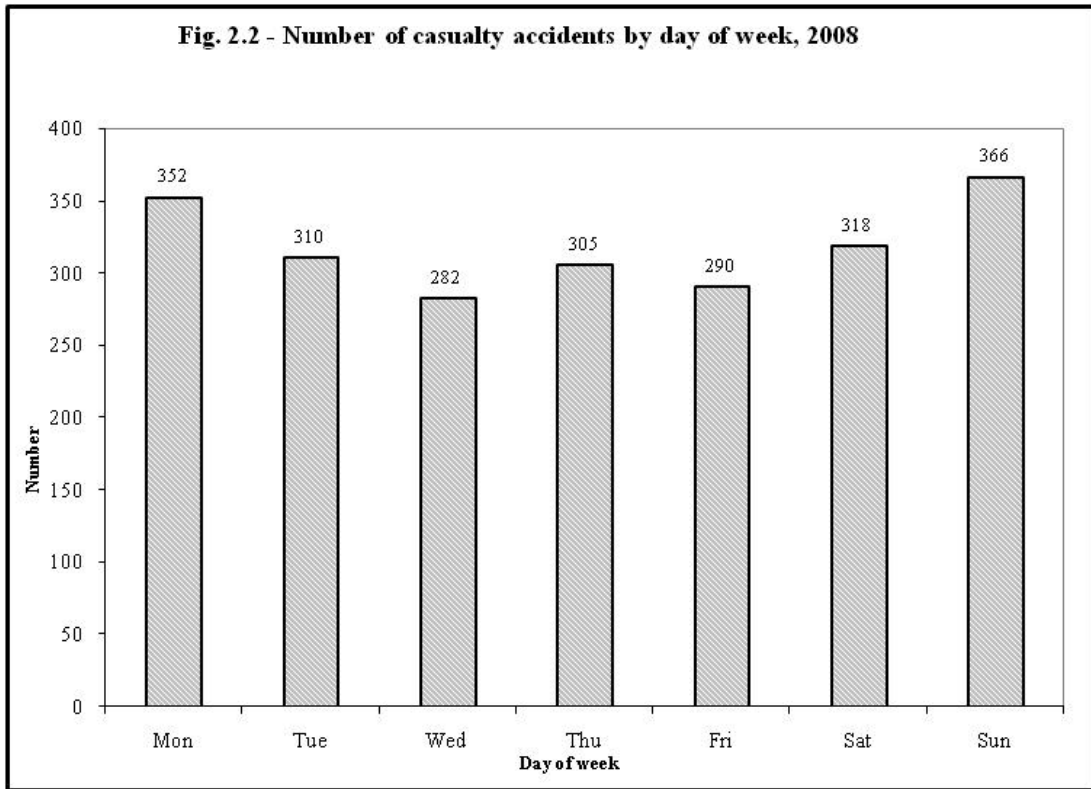


Table 2.7 - Number of accidents by severity of accident, 2004 - 2008

Year	Severity of accident				
	Fatal ¹	Serious	Slight	No injury	Total
2004	131	184	1,845	17,335	19,495
2005	116	295	1,733	20,410	22,554
2006	122	296	1,529	18,295	20,242
2007	133	403	1,654	18,329	20,519
2008	162	380	1,681	18,650	20,873

¹ prior to 2002, a fatal accident was defined as an accident where deaths occurred within 7 days. As from 2002, a fatal accident is defined as an accident where deaths occurred within 30 days.

Table 2.8 - Number of casualty accidents involved in "hit and run" cases by semester, 2007- 2008

Year Accident	2007				2008			
	Jan. - Jun.	Jul. - Dec.	Total	%	Jan. - Jun.	Jul. - Dec.	Total	%
Vehicles v/s pedestrian	23	28	51	39.8	46	29	75	46.0
Vehicles v/s vehicles	40	37	77	60.2	43	45	88	54.0
Total	63	65	128	100.0	89	74	163	100.0

Table 2.9 - Number of accidents by severity of accident and police district, 2007 - 2008

Police district	2007					2008				
	Severity of accident					Severity of accident				
	Fatal	Serious	Slight	No injury ¹	Total	Fatal	Serious	Slight	No injury ¹	Total
Port Louis (South)	14	27	136	...	177	21	36	129	...	186
Port Louis (North)	21	56	254	...	331	26	61	233	...	320
Pamplemousses /Riviere-Du-Rempart	28	76	207	...	311	31	67	257	...	355
Moka/Flacq	21	56	330	...	407	24	52	356	...	432
Grand-Port/Savanne	15	36	237	...	288	19	52	240	...	311
Upper Plaine -Wilhems	10	76	168	...	254	11	44	150	...	205
Plaine - Wilhems/Black- River	24	76	322	...	422	30	68	316	...	414
Not specified	-	-	-	18,329	18,329	-	-	-	18,650	18,650
Total	133	403	1,654	18,329	20,519	162	380	1,681	18,650	20,873

¹ as from August 2004, most non-injury road traffic accidents are not reported to the police, but only to insurance companies. Consequently, disaggregated data on non-injury accidents by police districts are not available.

Table 2.10 - Number of accidents by severity of accident and weather conditions, 2007 - 2008

Weather conditions	2007					2008				
	Severity of accident					Severity of accident				
	Fatal	Serious	Slight	No injury ¹	Total	Fatal	Serious	Slight	No injury ¹	Total
Fine	123	373	1,522	...	2,018	154	334	1,551	...	2,039
Rainy	10	28	130	...	168	7	44	129	...	180
Foggy/misty	-	2	2	...	4	1	2	1	...	4
Other	-	-	-	...	-	-	-	-	...	-
Not specified	-	-	-	18,329	18,329	-	-	-	18,650	18,650
Total	133	403	1,654	18,329	20,519	162	380	1,681	18,650	20,873

¹ as from August 2004, most non-injury road traffic accidents are not reported to the police, but only to insurance companies. Consequently, disaggregated data on non-injury accidents by t availableweather conditions

Table 2.11 - Number of accidents by severity of accident and light conditions, 2007 - 2008

Light conditions	2007					2008				
	Severity of accident					Severity of accident				
	Fatal	Serious	Slight	No injury ¹	Total	Fatal	Serious	Slight	No injury ¹	Total
Day light	73	264	1,134	...	1,471	89	253	1,215	...	1,557
Dark - no street lighting	17	34	84	...	135	27	17	76	...	120
Dark - street lighting on	37	95	414	...	546	44	101	365	...	510
Dark -street lighting off	6	9	22	...	37	2	9	25	...	36
Not specified	-	1	-	18,329	18,330	-	-	-	18,650	18,650
Total	133	403	1,654	18,329	20,519	162	380	1,681	18,650	20,873

¹ as from August 2004, most non-injury road traffic accidents are not reported to the police, but only to insurance companies. Consequently, disaggregated data on non-injury accidents by light conditions are not available.

Table 2.12 - Number of casualty accidents by type of road, severity of accident and collision type, 2008

Collision type	Type of road									Total
	One Way Street	Two Way Street	Dual Carriage way	One Way Street	Two Way Street	Dual Carriage way	One Way Street	Two Way Street	Dual Carriage way	
	Fatal			Serious			Slight			
Head On	-	29	1	-	88	5	2	294	2	421
Rear End	-	3	2	2	31	6	15	185	43	287
Right Angle	2	8	3	6	36	8	25	204	17	309
Side Swipe	-	9	1	2	18	8	12	79	19	148
Ran Off Road	-	5	-	-	12	3	-	47	7	74
Hit Object in Road	-	2	-	-	-	-	-	9	-	11
Hit Object off Road	-	16	4	-	17	6	5	82	21	151
Hit Parked Vehicle	-	3	-	1	8	-	5	39	2	58
Hit Pedestrian	6	49	13	13	80	5	40	368	10	584
Hit Animal	-	-	-	1	6	-	1	40	2	50
Other	-	4	2	1	13	4	7	90	9	130
Total	8	128	26	26	309	45	112	1,437	132	2,223

Table 2.13 - Number of accidents by severity of accident and type of road, 2007 - 2008

Type of road	2007						2008					
	Length of roads (kms)	Severity of accident					Length of roads (kms)	Severity of accident				
		Fatal	Serious	Slight	No injury ¹	Total		Fatal	Serious	Slight	No injury ¹	Total
Motor-way	75	5	15	61	...	81	75	6	14	62	...	82
Main road	962	63	191	784	...	1,038	962	77	180	797	...	1,054
Secondary road	593	39	118	484	...	641	593	47	111	492	...	650
Other road	398	26	79	325	...	430	398	32	75	330	...	437
Not specified	-	-	-	-	18,329	18,329	-	-	-	-	18,650	18,650
Total	2,028	133	403	1,654	18,329	20,519	2,028	162	380	1,681	18,650	20,873

¹ as from August 2004, most non-injury road traffic accidents are not reported to the police, but only to insurance companies. Consequently, disaggregated data on non-injury accidents by types of road are not available.

Table 2.14 - Number of casualty accidents by degree of casualties and junction type, 2008

Junction type	2008			
	Degree of casualties			
	Fatal	Serious	Slight	Total
Not a Junction	133	240	1,110	1,483
Crossroads	12	45	210	267
T - Junction	12	71	269	352
Staggered - Junction	-	5	5	10
Y - Junction	1	1	15	17
Roundabout	4	18	70	92
Slip Road	-	-	1	1
Private Entrance	-	-	1	1
Total	162	380	1,681	2,223

Table 2.15 - Number of vehicles¹ involved in casualty accidents by type, 2007 - 2008

Type of vehicle	2007		2008	
	Number of vehicles	%	Number of vehicles	%
Private car	1,153	34.0	1,268	35.5
Taxi car	100	3.0	91	2.6
Bus	271	8.0	279	7.8
Lorry	121	3.6	105	2.9
Van	418	12.3	476	13.3
Motor/Auto cycle	1,140	33.6	1,128	31.6
Pedal cycle	177	5.2	216	6.1
Other motor vehicle	9	0.3	5	0.1
Other non-motor vehicle	0	0.0	0	0.0
All vehicles	3,389	100.0	3,568	100.0

¹ only three main vehicles have been considered in accidents involving more than three vehicles.

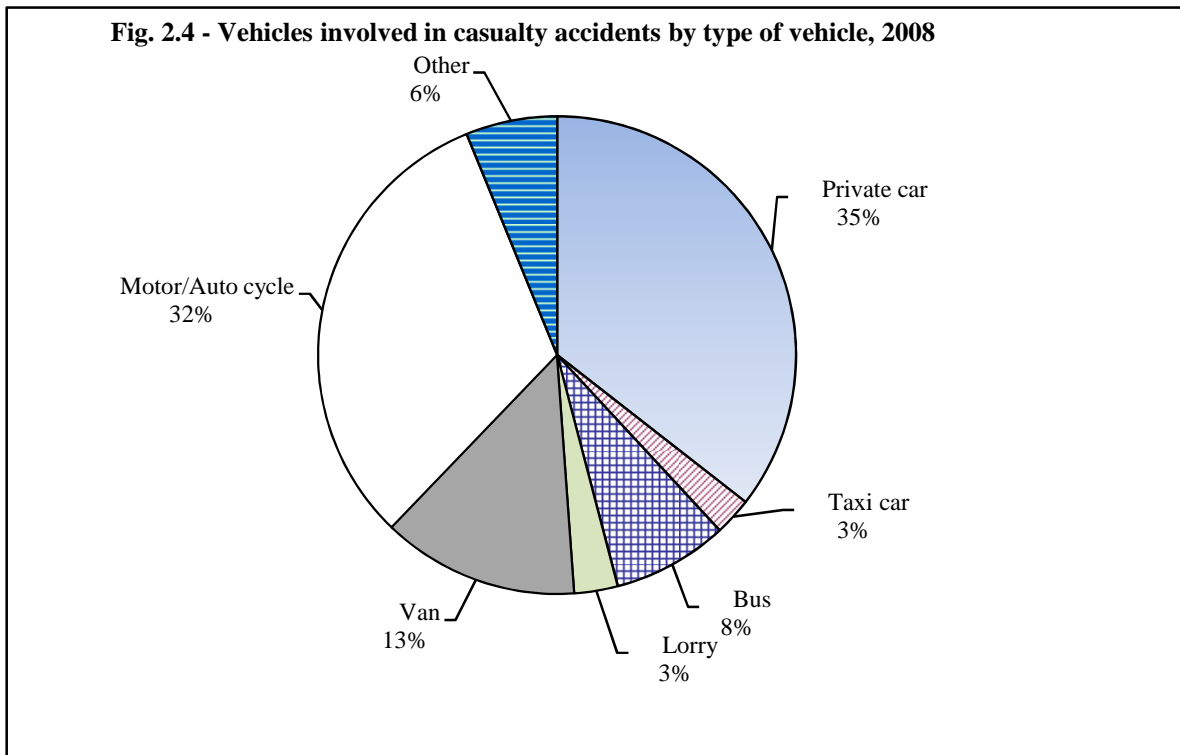


Table 2.16 - Number of motor-vehicles ¹ involved in casualty accidents by type of vehicle and nature of damage, 2008

Type of vehicle	2008			
	Seriously damaged	Slightly damaged	No damage	Total
Private car	233	741	131	1,105
Taxi car	10	65	11	86
Bus	39	160	83	282
Lorry	10	49	49	108
Van	71	324	66	461
Motor/Auto cycle	312	755	59	1,126
Other motor-vehicle	-	5	4	9
All vehicles	675	2,099	403	3,177

¹ only three main vehicles have been considered in accidents involving more than three vehicles.

Note: as from August 2004, most non-injury road traffic accidents are not reported to the police, but only to insurance companies. Consequently, disaggregated data on non-injury accidents by type of vehicle and nature of damage are not available .

Table 2.17 - Number of drivers and riders¹ involved in casualty accidents by age-group and sex, 2008

Age - group (years)	Drivers			Riders			Total		
	Male	Female	Total	Male	Female	Total	Male	Female	Total
15 - 18	4	-	4	31	1	32	35	1	36
19 - 24	53	3	56	141	-	141	194	3	197
25 - 34	152	7	159	352	5	357	504	12	516
35 - 44	103	8	111	231	2	233	334	10	344
45 - 54	69	3	72	154	-	154	223	3	226
55 - 60	21	1	22	65	-	65	86	1	87
Over 60	13	-	13	28	-	28	41	0	41
All ages	415	22	437	1,002	8	1,010	1,417	30	1,447

¹ excluding drivers and riders involved in hit and run and mutual agreement cases.

Note: as from August 2004, most non-injury road traffic accidents are not reported to the police, but only to insurance companies. Consequently, disaggregated data on non-injury accidents by age group and sex are not available.

Table 2.18 - Number of drivers/riders¹ involved in casualty accidents by driving experience and sex, 2008

Driving experience	2008		
	Number of drivers/riders		
	Male	Female	Total
No licence	27	-	27
Learner driver's licence	689	6	695
Full licence	2,342	118	2,460
All categories	3,058	124	3,182

- 56 -

¹ excluding drivers and riders involved in hit and run and mutual agreement cases

Note: as from August 2004, most non-injury road traffic accidents are not reported to the police, but only to insurance companies. Consequently, disaggregated data on non-injury accidents by age group and sex are not available.

Table 2.19 - Number of casualties by class of road users, 2007- 2008

Class of road users	2007		2008	
	Number	%	Number	%
Pedestrian	608	19.9	630	18.3
Passenger	834	27.3	1,153	33.6
Driver	430	14.1	437	12.7
Rider (auto/motor cycle)	1,010	33.1	1,010	29.4
Pedal cyclist	173	5.7	205	6.0
All road users	3,055	100.0	3,435	100.0

Fig. 2.5 - Casualties by class of road users, 2008

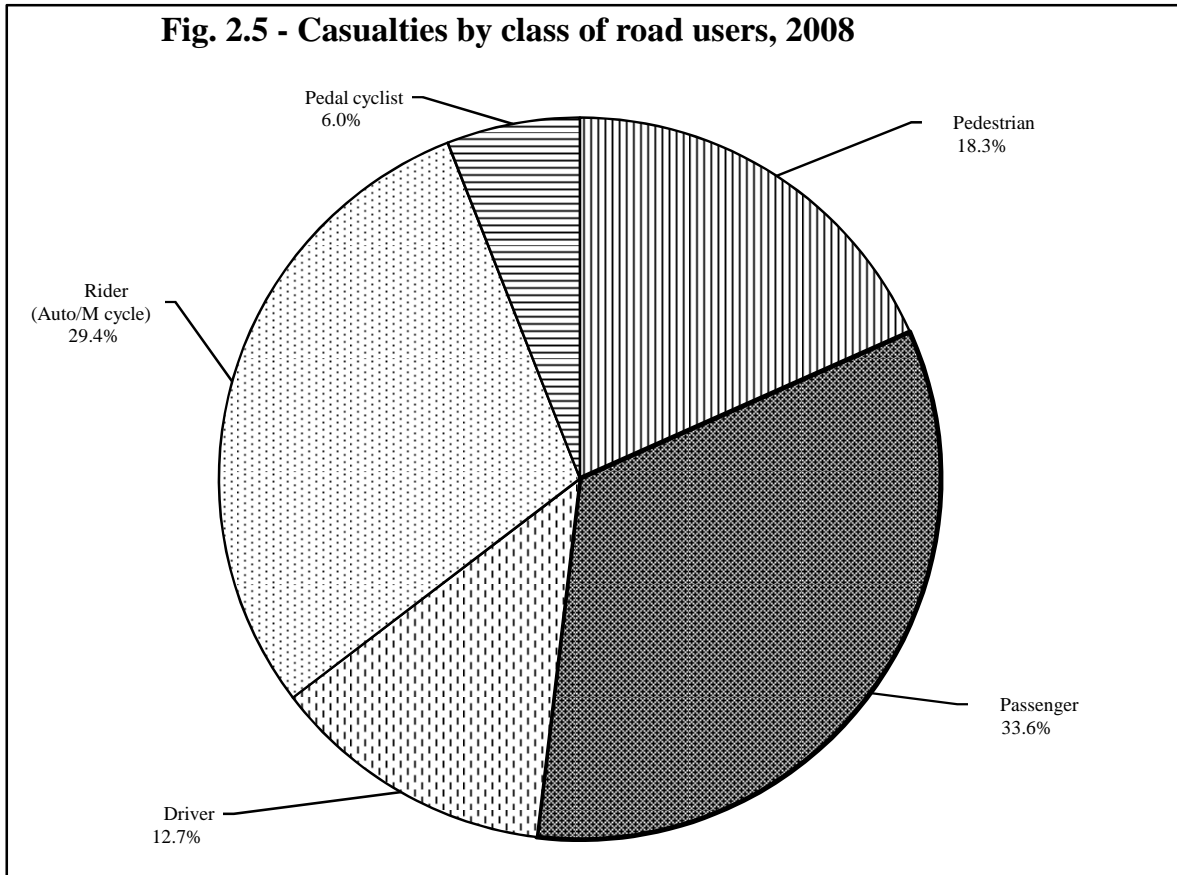


Table 2.20 - Number of casualties by degree of casualty and class of road users, 2007 - 2008

Class of Road users	2007					2008				
	Degree of casualty					Degree of casualty				
	Fatal	Seriously injured	Slightly injured	Total	%	Fatal	Seriously injured	Slightly injured	Total	%
Pedestrian	41	126	441	608	19.9	70	107	453	630	18.3
Passenger	23	125	686	834	27.3	30	120	1,003	1,153	33.6
Driver	16	57	357	430	14.1	15	73	349	437	12.7
Rider (auto / m - cycle)	47	165	798	1,010	33.1	37	180	793	1,010	29.4
Pedal cyclist	13	27	133	173	5.7	16	32	157	205	6.0
All road users	140	500	2,415	3,055	100.0	168	512	2,755	3,435	100.0

Table 2.21 - Number of casualties by class of road users, age-group and sex, 2008

Age-group (years)	Road Users											
	Pedestrian			Passenger			Driver/Rider/Cyclist			Total Casualties		
	Male	Female	Total	Male	Female	Total	Male	Female	Total	Male	Female	Total
Under 7	20	8	28	15	13	28	-	-	-	35	21	56
7 - 12	45	19	64	29	16	45	8	-	8	82	35	117
13 - 20	42	36	78	102	64	166	113	3	116	257	103	360
21 - 40	117	89	206	319	308	627	963	25	988	1,399	422	1,821
41 - 50	51	40	91	83	86	169	287	4	291	421	130	551
51 - 60	42	24	66	29	50	79	190	-	190	261	74	335
Over 60	44	53	97	20	19	39	58	1	59	122	73	195
All ages	361	269	630	597	556	1,153	1,619	33	1,652	2,577	858	3,435

Table 2.22 - Number of pedestrian casualties by age-group, 2007 - 2008

Age-group (years)	2007			2008		
	Population (mid year)	Pedestrian casualties		Population (mid year)	Pedestrian casualties	
		Number	Per 100,000 population		Number	Per 100,000 population
Under 7	125,548	39	31	121,987	28	23
7 - 12	115,146	66	57	113,935	64	56
13 - 20	160,945	72	45	163,591	78	48
21 - 40	387,936	209	54	386,723	206	53
41 - 50	187,788	87	46	188,783	91	48
51 - 60	132,573	45	34	138,865	66	48
Over 60	113,153	90	80	117,111	97	83
All ages	1,223,089	608	50	1,230,995	630	51

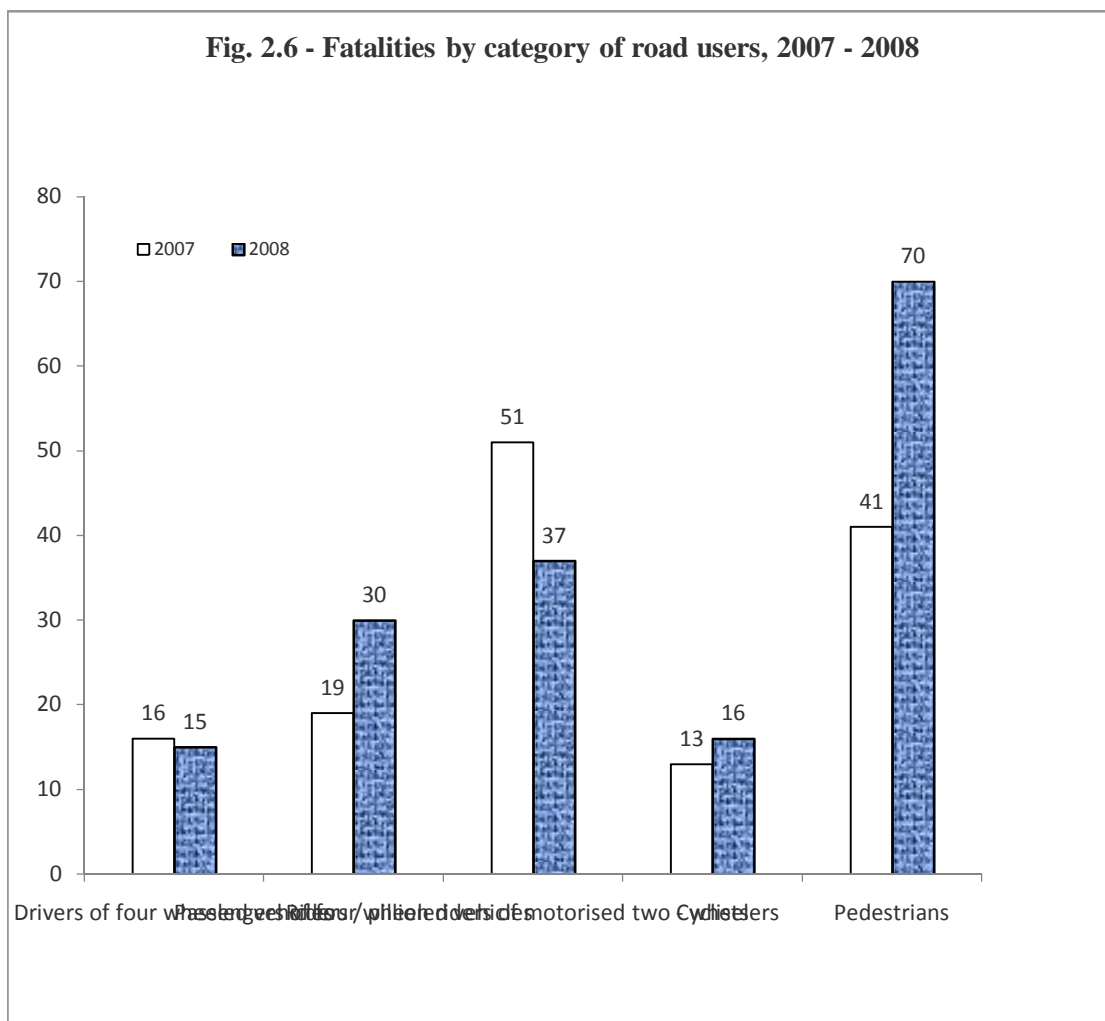
Table 2.23 - Number of fatalities by class of road users, age-group and sex, 2008

Age-group (years)	Road Users											
	Pedestrian			Passenger			Driver/Rider/Cyclist			Total Casualties		
	Male	Female	Total	Male	Female	Total	Male	Female	Total	Male	Female	Total
Under 7	-	-	-	-	-	-	-	-	-	-	-	-
7 - 12	2	-	2	-	-	-	2	-	-	4	-	4
13 - 20	2	1	3	4	-	4	10	-	10	16	1	17
21 - 40	12	1	13	9	4	13	31	-	31	52	5	57
41 - 50	12	4	16	3	2	5	9	-	9	24	6	30
51 - 60	9	4	13	3	1	4	12	-	12	24	5	29
Over 60	14	9	23	2	2	4	4	-	4	20	11	31
All ages	51	19	70	21	9	30	68	-	66	140	28	168

Table 2.24 - Fatalities by category of road users, 2007 - 2008

Category of road users	Fatalities			
	2007		2008	
	Number	%	Number	%
Drivers of four wheeled vehicles	16	11.4	15	8.9
Passengers of four wheeled vehicles	19	13.6	30	17.9
Riders / pillion riders of motorised two - wheelers	51	36.4	37	22.0
Cyclists	13	9.3	16	9.5
Pedestrians	41	29.3	70	41.7
All road users	140	100.0	168	100.0

Fig. 2.6 - Fatalities by category of road users, 2007 - 2008



Tab 2.25 - Number of fatalities by Police district and class of road users, 2007 - 2008

Police district	2007						2008					
	Class of road users						Class of road users					
	Pedestrian	Passengers	Drivers	Riders	Pedal Cyclist	All Road Users	Pedestrian	Passengers	Drivers	Riders	Pedal Cyclist	All Road Users
Port Louis (South)	6	2	1	5	-	14	13	4	1	5	-	23
Port Louis (North)	7	1	2	8	4	22	11	5	1	7	2	26
Pamplemousses/Riviere Du Rempart	6	7	4	12	2	31	15	5	2	8	2	32
Moka/Flacq	5	1	2	10	3	21	8	4	1	8	3	24
Grand-Port/Savanne	4	6	4	4	3	21	6	3	6	2	2	19
Upper Plaine -Wilhems	2	1	1	2	-	6	4	1	1	2	2	10
Plaine -Wilhems/Black-River	11	5	2	6	1	25	13	8	3	5	5	34
Total	41	23	16	47	13	140	70	30	15	37	16	168

PART III

PETROLEUM

PRODUCTS

Table 3.1 - Evolution of price and sales of gasoline and gas oil, 2003 - 2008

Year		Gasolene		Gas oil	
		Price (Rs/Litre)	Sales (000 Litre)	Price (Rs/Litre)	Sales (000 Litre)
2003		20.40	123,779	11.90	224,718
2004 up to 01-April-2004		20.40	122,999	11.90	230,086
02-04-04 Coming into operation of Automatic Pricing Mechanism (APM)	2-Apr-2004	21.35		13.05	
	2-Jul-2004	24.55		15.00	
	2-Oct-2004	26.10		17.25	
2005	5-Jan-2005	25.25	126,140	18.50	227,377
	2-Apr-2005	25.25		17.25	
	3-Oct-2005	29.00		19.80	
2006	4-Jan-2006	34.80	121,413	23.75	242,973
	3-Apr-2006	31.30		28.50	
	3-Jul-2006	37.55		32.75	
	4-Oct-2006	40.60		30.20	
2007	4-Jan-2007	32.50	136,979	26.50	219,239
	3-Apr-2007	32.50		28.35	
	3-Jul-2007	39.00		29.70	
	2-Oct-2007	41.50		31.55	
2008	4-Jan-2008	41.50	138,051	35.60	217,647
	2-Apr-2008	41.50		35.60	
	2-Jul-2008	49.50		42.70	
	2-Oct-2008	46.80		51.20	
	1-Nov-2008	39.80		41.00	
	2-Dec-2008	36.85		37.95	

Table 3.2 - Imports of motor spirit and gas oil by country of origin, 2007 - 2008

Item	Country of origin	2007 ¹		2008 ²	
		Quantity ('000 Litres)	Value (C.I.F, Rs '000)	Quantity ('000 Litres)	Value (C.I.F, Rs '000)
Motor spirit (Gasolene)	India	125,919	2,180,054	141,913	2,690,298
Gas oil	India	369,513	6,442,993	397,859	8,908,957

¹ Revised

² Provisional

Table 3.3 - Imports of lubricating oils and greases by country of origin, 2007 - 2008

(C.I.F. Value Rs ' 000)

Item	Country of origin	Unit	2007 ¹		2008 ²	
			Quantity	Value	Quantity	Value
Lubricating oil containing not less than 70% by weight of petroleum products	Belgium	M/ton	17	1,224	8	750
	Egypt	"	176	10,514	120	8,476
	France	"	144	13,038	198	16,116
	India	"	157	6,588	180	9,309
	Indonesia	"	39	1,741	40	1,914
	Iran	"	15	444	14	428
	Kenya	"	91	5,026	17	745
	Malaysia	"	255	8,858	30	1,583
	Madagascar	"	112	6,455	187	7,178
	Singapore	"	2,192	106,746	1,914	99,429
	South Africa Rep.	"	3,443	167,982	2,275	127,129
	Thailand	"	30	1,637	677	37,040
	United Arab Emirates	"	269	9,852	448	20,422
	United Kingdom	"	64	5,640	32	3,426
	United States	"	81	15,695	68	13,067
Other countries	"	137	10,713	184	14,921	
			7,222	372,153	6,392	361,933
Lubricating greases containing not less than 70% by weight of petroleum products	China	M/ton	2	123	4	116
	France	"	-	-	5	709
	India	"	26	1,228	8	403
	Singapore	"	8	506	3	287
	South Africa Rep.	"	71	5,659	92	7,242
	Thailand	"	-	-	11	779
	United Arab Emirates	"	3	118	89	3,784
	United States	"	3	314	4	315
	Other countries	"	4	860	8	900
			117	8,808	224	14,535

¹ revised

² provisional

