

**Vol. 12**



**MAURITIUS**

**Ministry of Economic Planning and Development**

**CENTRAL STATISTICAL OFFICE**

---

**INTERNATIONAL TRAVEL  
AND  
TOURISM STATISTICS**

**1985**

**[Price : Rs 75.00]**

INTERNATIONAL TRAVEL AND TOURISM STATISTICS  
=====

Vol. 12

December 1985

"International Travel and Tourism Statistics" a publication of the Central Statistical Office, is designed to present data on international travel and tourism in more detail than those that are currently published in the Annual Digest of Statistics.

As from January 1979, owing to the increase in the volume of passenger traffic, it has been decided to process the data on a 10% sample. Cases where the number of passengers are too small have been omitted in order to avoid large sampling errors. It is to be noted, however, that figures for official emigrants published in this report have been compiled from the Passport Office register.

With the help of the computer of the Ministry of Finance it has been possible to process in more detail the information recorded on the international embarkation and disembarkation cards which passengers fill in on leaving and entering the country.

The co-operation of the Immigration and Passport Office of the Police Department, the Mauritius Government Tourist Office and the Data Processing Division of the Ministry of Finance is gratefully acknowledged.

The following symbols are used throughout:

- Nil

... Not available

(D. Zmanay)  
Director of Statistics

Central Statistical Office  
Rose Hill  
Mauritius

June 1986

# C O N T E N T S

## I - POPULATION AND VITAL STATISTICS

	<u>Page</u>
Table 1 - Estimated population of Mauritius as at 31st December, 1985 based on the 1983 Population Census data	1
2 - Population increase in intercensal periods - Island of Mauritius, 1846 - 1983	1
3 - Estimated population of Mauritius by geographical district and sex, 1983 - 1985	2
4 - Population and vital statistics - Island of Mauritius, 1921 - 1985	3
5 - Population growth and vital statistics - Island of Mauritius, 1973 - 1985	4
6 - Population increase in intercensal periods - Island of Rodrigues, 1851 - 1983	5
7 - Population growth and vital statistics - Island of Rodrigues, 1973 - 1985	6

## II - PASSENGER TRAFFIC

Table 8 - Passenger traffic by sex, 1934 - 1985	7 & 8
9 - Passenger traffic between Island of Mauritius and Rodrigues, 1967 - 1985	8
10 - Passenger traffic by mode of transport, 1963 - 1985	10
11 - Passenger traffic by month, 1982 - 1985	11
12 - Arrivals by country of original embarkation, 1980 - 1985	12
13 - Departures by country of final destination, 1980 - 1985	13
14(a) - Passenger traffic by type of passenger and month, 1984	14
14(b) - Passenger traffic by type of passenger and month, 1985	15
15 - Arrivals by age and sex, 1984 - 1985	16
16 - Departures by age and sex, 1984 - 1985	17
17 - Excess of arrivals over departures by age and sex, 1984 - 1985	18

## Contents (cont'd)

### II - PASSENGER TRAFFIC (cont'd)

		<u>Page</u>
Table 18	- Arrivals of residents by district of residence and sex, 1984 - 1985	19
19	- Departures of residents by district of residence and sex, 1984 - 1985	20
20	- Excess of arrivals over departures of residents by district of residence and sex, 1984 - 1985	21
21	- Arrivals of residents of Island of Mauritius by age and sex, 1984 - 1985	22
22	- Departures of residents of Island of Mauritius by age and sex, 1984 - 1985	23
23	- Excess of arrivals over departures of residents (excluding emigrants) of Island of Mauritius by age and sex, 1984 - 1985	24
24	- Excess of arrivals over departures of residents (including emigrants) of Island of Mauritius by age and sex, 1984 - 1985	25
25	- Arrivals and departures of Mauritian residents by country of embarkation and disembarkation, 1983 - 1985	26

### III - EMIGRATION

Table 26	- Official long-term emigrants by sex, 1959 - 1985	27
27	- External migration, 1959 - 1985	28
28	- Official long-term emigrants by country of intended residence, 1970 - 1985	29 & 30
29	- Age distribution of official long-term emigrants, 1970 - 1985	31 - 33
30	- Official long-term emigrants by Major Occupational Group, 1979 - 1985	34
31(a)	- Official long-term emigrants by Major Occupational Group, age and sex, 1984	35
31(b)	- Official long-term emigrants by Major Occupational Group, age and sex, 1985	36
32	- Official long-term emigrants by occupation, 1983 - 1985	37
33	- Official long-term emigrants by district of last residence and sex, 1984 - 1985	38

## Contents (cont'd)

### IV - TOURISM

	<u>Page</u>
Definition and notes	39 & 40
Table 34 - Tourist arrivals by mode of transport and tourist nights spent during period, 1966 - 1985	41
35 - Tourist arrivals by month of arrival, 1974 - 1985	42
36 - Percentage distribution of tourist arrivals by month of arrival, 1974 - 1985	44
37 - Tourist arrivals by country of residence, 1974 - 1985	45
38 - Percentage distribution of tourist arrivals by country of residence, 1974 - 1985	46
39 - Tourist nights by country of residence of tourist, 1974 - 1985	48
40 - Tourist arrivals and tourist nights by country of residence, 1985	51
41 - Visitor arrivals by age and sex, 1984 - 1985	52
42 - Visitor arrivals and visitor nights by country of residence, 1984 - 1985	53
43 - Visitor arrivals by duration of stay, 1984 - 1985	54
44(a) - Visitor arrivals by country of residence and duration of stay, 1984	55
44(b) - Visitor arrivals by country of residence and duration of stay, 1985	56
45(a) - Visitor arrivals and visitor nights by country of nationality, 1984	57
45(b) - Visitor arrivals and visitor nights by country of nationality, 1985	58
46 - Gross earnings from tourism, 1976 - 1985	59
47 - Hotels, rooms and bed places, 1976 - 1985	59
48 - Monthly occupancy rates in hotels, 1984 - 1985	61
49 - Arrivals of Mauritians settled abroad (excluding students and nights spent by them by country of residence, 1984 - 1985	62

Contents (cont'd)

<u>IV - TOURISM</u>		<u>Page</u>
Table 50	- Arrivals of Mauritians settled abroad (excluding students) by duration of stay, 1984 - 1985	63
51	- Total nights spent by Mauritians settled abroad (excluding students) by country of residence, 1984 - 1985	65

FIGURES

		<u>Page</u>
Figure 1	- Passenger traffic by sex, 1969 - 1985	9
2	- Tourist arrivals by month of arrival, 1982 - 1985	43
3	- Percentage distribution of tourist arrivals by country of residence, 1984 - 1985	47
4	- Total arrivals and tourist arrivals, 1972 - 1985	49
5	- Tourist nights and visitor nights, 1973 - 1985	50
6	- Gross earnings from tourism, 1975 - 1985	60

Appendix : International embarkation/disembarkation specimen card

XXXXXXXXXXXXXXXXXXXXXXXX

I. POPULATION AND VITAL STATISTICS

Table 1 - Estimated population of Mauritius as at 31st December, 1985 based on the 1983 Population Census data

Island	Both sexes	Male	Female	Area	Density
				Sq. Km	Sq. Km
Island of Mauritius	998,471	501,517	496,954	1,864.8	535
Island of Rodrigues	35,284	17,892	17,392	104.0	339
Other islands	500	350	150	71.2	7
<b>Mauritius</b>	<b>1,034,255</b>	<b>519,759</b>	<b>514,496</b>	<b>2,040.0</b>	<b>507</b>

Table 2 - Population increase in intercensal periods - Island of Mauritius, 1846 - 1983

Census date	Population enumerated at Census			Inter-censal increase	Average annual rate of increase %
	Both sexes	Male	Female		
1st Aug. 1846	158,462	104,598	53,864		
20th Nov. 1851	180,823	119,341	61,482	22,361	2.55
8th Apr. 1861	310,050	202,961	107,089	129,227	5.87
11th Apr. 1871	316,042	193,575	122,467	5,992	0.19
4th Apr. 1881	359,874	208,655	151,219	43,832	1.31
6th Mar. 1891	370,588	206,038	164,550	10,714	0.29
1st Apr. 1901	371,023	199,552	171,471	435	0.01
31st Mar. 1911	368,791	194,095	174,696	- 2,232	- 0.06
21st May. 1921	376,485	194,108	182,377	7,694	0.21
26th Apr. 1931	393,238	200,609	192,629	<b>16,753</b>	0.44
11th Jun. 1944	419,185	210,326	208,859	25,947	0.49
29th Jun. 1952	501,415	252,032	249,383	82,230	2.26
30th Jun. 1962 <u>1/</u>	681,619	342,306	339,313	180,204	3.12
30th Jun. 1972 <u>1/</u>	826,199	413,580	412,619	144,580	1.94
2nd Jul. 1983 <u>1/</u>	966,863	481,368	485,495	140,664	1.44

1/ de facto population

Table 3. - Estimated population<sup>1/</sup> of Mauritius by geographical district and sex, 1983 - 1985

Geographical district	31st December 1983			31st December 1984			31st December 1985		
	Both sexes	Male	Female	Both sexes	Male	Female	Both sexes	Male	Female
Port Louis	135,629	67,321	68,308	136,812	68,019	68,793	138,272	68,951	69,321
Pamplemousses	91,782	46,070	45,712	92,706	46,557	46,149	93,647	47,239	46,408
Rivière du Rempart	82,188	41,215	40,973	83,035	41,752	41,283	83,856	42,246	41,610
Flacq	109,290	54,801	54,487	110,341	55,432	54,909	111,551	56,228	55,323
Grand Port	94,490	47,380	47,110	95,294	47,844	47,450	96,146	48,438	47,708
Savanne	59,611	29,918	29,693	60,051	30,173	29,878	60,610	30,553	30,057
P. Wilhems: Urban	273,392	135,818	137,574	275,301	137,199	138,102	277,866	139,134	138,732
Other	34,623	17,411	17,212	34,859	17,530	17,329	35,159	17,666	17,493
Moka	62,024	30,934	31,090	62,488	31,279	31,209	63,028	31,679	31,349
Black River	37,470	18,826	18,644	37,895	19,079	18,816	38,336	19,383	18,953
Island of Mauritius	980,499	489,696	490,803	988,782	494,864	493,918	998,471	501,517	496,954
Island of Rodrigues	33,472	16,723	16,749	34,652	17,460	17,192	35,284	17,892	17,392
Other islands	500	350	150	500	350	150	500	350	150
Mauritius	1,014,471	506,769	507,702	1,023,934	512,674	511,260	1,034,255	519,759	514,496

<sup>1/</sup> based on the 1983 population census data. No account has been taken of internal migration



Table 4 - Population and vital statistics - Island of Mauritius, 1921 - 1985

Period	Population <sup>1/</sup> at mid-period	Live births	Deaths	Natural increase	Infant deaths <sup>2/</sup>	Still births	Civil marriages
1921-25 Average	379,636	14,834	11,758	3,076	2,104	1,581	2,062
1926-30 "	403,248	14,208	11,614	2,594	2,002	1,256	1,455
1931-35 "	398,647	12,490	11,889	601	1,752	1,216	1,489
1936-40 "	412,003	13,621	11,157	2,464	2,119	1,240	2,093
1941-45 "	417,838	15,027	11,927	3,100	2,318	1,240	3,333
1946-50 "	438,797	19,595	9,113	10,482	2,343	1,348	3,503
1951-55 "	522,577	23,176	7,701	15,475	1,884	1,472	3,307
1956	574,938	24,910	6,739	18,171	1,644	1,789	3,080
1957	593,070	25,273	7,603	17,670	1,897	1,800	2,903
1958	609,518	24,600	7,112	17,488	1,659	1,703	3,169
1959	627,249	23,923	6,753	17,170	1,495	1,759	3,297
1960	644,743	25,307	7,248	18,059	1,760	1,783	3,113
1961	662,368	26,092	6,505	19,587	1,618	1,963	3,484
1962	681,619	26,267	6,325	19,942	1,579	1,841	3,893
1963	695,641	27,978	6,709	21,269	1,660	1,519	3,472
1964	716,298	27,528	6,184	21,344	1,361	1,611	3,965
1965	735,245	26,279	6,337	19,942	1,685	1,557	3,976
1966	753,276	26,817	6,701	20,116	1,721	1,384	4,157
1967	767,782	23,499	6,543	16,956	1,656	1,074	3,949
1968	781,615	24,413	7,126	17,287	1,688	1,110	3,974
1969	792,893	21,719	6,428	15,291	1,528	951	3,882
1970	805,489	21,623	6,309	15,314	1,232	857	4,499
1971	816,561	20,834	6,248	14,586	1,077	842	4,346
1972	826,199	20,496	6,506	13,990	1,308	718	5,082
1973	846,089	18,974	6,525	12,449	1,201	678	5,533
1974	857,063	22,938	6,221	16,717	1,045	854	6,771
1975	867,824	21,492	6,967	14,525	1,046	896	6,888
1976	879,193	22,250	6,815	15,435	900	784	8,262
1977	893,069	22,730	6,966	15,764	1,023	712	8,421
1978	907,779	24,250	6,400	17,850	823	653	10,532
1979	922,807	25,056	6,625	18,431	824	650	9,080
1980	937,886	24,983	6,685	18,298	808	623	8,629
1981	950,785	23,670	6,404	17,266	795	553	8,169
1982	960,994	21,247	6,380	14,867	624	438	10,597
1983	968,609	19,948	6,322	13,626	511	379	10,067
1984	977,129	19,222	6,417	12,805	444	388	10,638
1985	985,210	18,520	6,691	11,829	441	368	11,088

<sup>1/</sup> figures for 1963-71 have been revised in the light of the 1972 Population Census data, figures for 1973-85 have been revised in the light of the 1983 Census data adjusted for underenumeration of young children

<sup>2/</sup> deaths of children under 1 year of age

Table 5 - Population growth and vital statistics - Island of Mauritius, 1973-1985

Period (year)	Population at the beginning of period		Natural movement			External migration		Total increase		% increase during year due to		Population at the end of period
	Live births	Deaths	Natural increase	Arrivals	Departures	(A - D) <sup>1/2</sup>	Total increase	Natural increase	(A - D) <sup>2/2</sup>	Total		
1973	18,974	6,525	12,449	101,184	104,697	- 3,513	8,936	1,47	- 0.42	1.05	854,730	
1974	22,938	6,221	16,717	109,044	113,362	- 4,318	12,399	1.96	- 0.51	1.45	867,129	
1975	21,492	6,967	14,525	117,548	120,703	- 3,155	11,370	1.68	- 0.36	1.32	878,499	
1976	22,250	6,815	15,435	139,303	141,148	- 1,845	13,590	1.76	- 0.21	1.55	892,089	
1977	22,730	6,966	15,764	153,208	155,623	- 2,415	13,319	1.77	- 0.27	1.50	905,408	
1978	24,250	6,400	17,850	161,688	163,733	- 2,045	15,805	1.97	- 0.23	1.74	921,213	
1979	25,056	6,625	18,431	182,771	186,864	- 4,093	14,338	2.00	- 0.44	1.56	935,551	
1980	24,983	6,685	18,298	163,230	167,269	- 4,039	14,259	1.96	- 0.43	1.53	949,810	
1981	23,670	6,404	17,266	168,973	174,376	- 5,403	11,863	1.82	- 0.57	1.25	961,673	
1982	21,247	6,385	14,862	166,669	171,991	- 5,322	9,540	1.55	- 0.55	1.00	971,213	
1983	19,948	6,322	13,626	177,665	182,005	- 4,340	9,286	1.40	- 0.45	0.95	980,499	
1984	19,222	6,417	12,805	198,461	202,983	- 4,522	8,283	1.31	- 0.46	0.85	988,782	
1985	18,520	6,691	11,829	212,860	215,000	- 2,140	9,689	1.20	- 0.22	0.98	998,471	

<sup>1/</sup> revised in the light of the 1983 population census data adjusted for underenumeration of young children

<sup>2/</sup> excess of arrivals over departures

Table 6 - Population increase in intercensal periods - Island of Rodrigues,  
1851 - 1983

Census date	Population enumerated at census			Intercensal increase	Average annual rate of increase (%)
	Male	Female	Both sexes		
20th Nov. 1851	327	168	495		
8th Apr. 1861	464	229	693	198	3.42
11th Apr. 1871	693	415	1,108	415	4.80
4th Apr. 1881	812	619	1,431	323	2.59
6th Mar. 1891	1,154	914	2,068	637	3.75
1st Apr. 1901	1,685	1,477	3,162	1,094	4.34
31st Mar. 1911	2,523	2,306	4,829	1,667	4.33
21st May 1921	3,300	3,284	6,584	1,755	3.15
26th Apr. 1931	4,033	4,169	8,202	1,618	2.22
11th Jun. 1944	5,740	6,145	11,885	3,683	2.89
30th Jun. 1952	5,947	7,386	13,333	1,448	1.45
30th Jun. 1962 <sup>1/</sup>	9,062	9,273	18,335	5,002	3.24
30th Jun. 1972 <sup>1/</sup>	12,270	12,499	24,769	6,434	3.05
2nd Jul. 1983 <sup>1/</sup>	16,552	16,530	33,082	8,313	2.67

<sup>1/</sup> de facto population

Table 7 - Population<sup>1/</sup> growth and vital statistics - Island of Rodrigues, 1973 - 1985

Period (year)	Population at the beginning of period		Natural movement		External migration		Total increase	% increase during year due to	Population at the end of period				
	Population at the beginning of period	Population at the end of period	Live births	Deaths	Natural increase	Total increase				Natural increase	Total increase		
1973	22,974	23,735	1,041	254	787	2,427	2,453	- 26	761	3.43	- 0.11	3.32	23,735
1974	23,735	24,001	1,064	203	861	2,053	2,648	- 595	266	3.63	- 2.51	1.12	24,001
1975	24,001	24,481	1,065	234	831	2,968	3,319	- 351	480	3.46	- 1.46	2.00	24,481
1976	24,481	24,927	1,024	153	871	3,796	4,221	- 425	446	3.56	- 1.74	1.82	24,927
1977	24,927	25,492	1,129	188	941	4,477	4,853	- 376	565	3.73	- 1.51	2.27	25,492
1978	25,492	26,253	1,028	196	832	5,571	5,642	- 71	761	3.26	- 0.28	2.98	26,253
1979	26,253	27,501	1,107	246	861	5,785	5,398	+ 387	1,248	3.28	+ 1.47	4.75	27,501
1980	27,501	28,898	1,311	234	1,077	6,042	5,722	+ 320	1,397	3.92	+ 1.16	5.08	28,898
1981	28,898	30,855	1,297	249	1,048	7,099	6,190	+ 909	1,957	3.63	+ 3.15	6.78	30,855
1982	30,855	32,521	1,212	199	1,013	6,333	5,680	+ 653	1,666	3.28	+ 2.12	5.40	32,521
1983	32,521	33,472	1,125	210	915	6,556	6,520	+ 36	951	2.81	+ 0.11	2.92	33,472
1984	33,472	34,652	1,110	229	881	7,471	7,172	+ 299	1,180	2.63	+ 0.89	3.52	34,652
1985	34,652		856	215	641	7,277	7,286	- 9	632	1.85	- 0.03	1.82	35,284

<sup>1/</sup> based on the 1983 census data

<sup>2/</sup> excess of arrivals over departures

- 7 -  
 II - PASSENGER TRAFFIC

Table 8 - Passenger traffic<sup>1</sup> by sex, 1934 - 1985

Period	Arrivals			Departures			Net overseas migration
	Both sexes	Male	Female	Both sexes	Male	Female	
1934	3,969	2,777	1,192	4,380	3,056	1,324	- 411
1935	3,988	2,876	1,112	4,255	2,899	1,356	- 267
1936	3,807	2,681	1,126	3,563	2,451	1,112	+ 244
1937	3,472	2,366	1,106	3,849	2,736	1,113	- 377
1938	4,554	3,062	1,492	4,281	2,896	1,385	+ 273
1939	3,171	1,984	1,187	3,212	2,127	1,085	- 41
1940	1,518	1,028	490	1,851	1,379	472	- 333
1941	1,209	950	259	4,165	3,859	306	- 2,956
1942	1,083	893	190	1,560	1,398	162	- 477
1943	1,054	859	195	737	642	95	+ 317
1944	1,034	798	236	1,053	796	257	- 19
1945	2,061	1,624	437	2,247	1,624	623	- 186
1946	3,298	2,279	1,019	3,377	2,160	1,217	- 79
1947	4,698	3,128	1,570	4,514	3,100	1,414	+ 184
1948	4,294	2,792	1,502	4,015	2,684	1,331	+ 279
1949	4,093	2,700	1,393	4,141	2,794	1,347	- 48
1950	5,253	3,469	1,784	4,900	3,352	1,548	+ 353
1951	5,243	3,515	1,728	5,016	3,536	1,480	+ 227
1952	6,046	3,999	2,047	5,637	3,854	1,783	+ 409
1953	7,252	4,820	2,432	7,054	4,732	2,322	+ 198
1954	7,251	4,728	2,523	7,312	4,824	2,488	- 61
1955	7,216	4,558	2,658	7,354	4,722	2,632	- 138
1956	7,747	4,873	2,874	8,225	5,219	3,006	- 478
1957	8,095	5,156	2,939	8,267	5,309	2,958	- 172
1958	8,703	5,424	3,279	8,924	5,596	3,328	- 221
1959	9,637	5,995	3,642	9,544	6,058	3,486	+ 93
1960	10,412	6,563	3,849	10,784	6,938	3,846	- 372
1961	11,854	7,246	4,608	13,033	8,165	4,868	- 1,179
1962	15,189	9,283	5,906	16,075	9,887	6,188	- 886
1963	17,974	10,866	7,108	18,215	11,024	7,191	- 241
1964	21,221	12,787	8,434	22,331	13,349	8,982	- 1,110
1965	22,024	13,571	8,453	24,150	14,759	9,391	- 2,126
1966	26,456	16,358	10,098	29,301	17,930	11,371	- 2,845
1967	29,321	18,177	11,144	32,925	20,135	12,790	- 3,604
1968	31,403	19,820	11,583	35,988	22,181	13,807	- 4,585
1969	35,919	21,552	14,367	38,929	23,127	15,802	- 3,010
1970	48,819	29,587	19,232	51,969	31,033	20,936	- 3,150

Table 8 (cont'd)

Period	Arrivals			Departures			Net overseas migration
	Both sexes	Male	Female	Both sexes	Male	Female	
1971	60,826	36,005	24,821	63,997	37,399	26,598	- 3,171
1972	77,174	45,587	31,587	81,493	47,837	33,656	- 4,319
1973	101,184	59,215	41,969	104,697	61,364	43,333	- 3,513
1974	109,044	63,077	45,967	113,362	65,649	47,713	- 4,318
1975	117,548	68,654	48,094	120,703	70,368	50,335	- 3,155
1976	139,303	80,674	58,629	141,148	81,718	59,430	- 1,845
1977	153,208	87,417	65,791	155,653	89,243	66,410	- 2,445
1978	161,688	93,087	68,601	163,733	94,850	68,883	- 2,045
1979	182,771	105,051	77,720	186,864	110,284	76,580	- 4,093
1980	163,230	96,460	66,770	167,269	100,579	66,690	- 4,039
1981	168,973	95,293	73,680	174,376	98,066	76,310	- 5,403
1982	166,669	93,299	73,370	171,991	95,061	76,930	- 5,322
1983	177,665	101,125	76,540	182,005	102,785	79,220	- 4,340
1984	198,461	113,201	85,260	202,983	114,203	88,780	- 4,522
1985 <sup>2/</sup>	212,860	120,940	91,920	215,000	119,780	95,220	- 2,140

1/ including seamen but excluding transit passengers who do not leave the airport

2/ as from 1985, seamen are not included

Table 9 - Passenger traffic between Islands of Mauritius and Rodrigues, 1967 - 1985

Period	Arrivals in Rodrigues			Departures from Rodrigues			Net overseas migration
	Both sexes	Male	Female	Both sexes	Male	Female	
1967	1,485	940	545	1,268	822	446	+ 217
1968	1,541	940	601	1,485	946	539	+ 56
1969	1,569	1,034	535	1,493	994	499	+ 76
1970	1,740	1,103	637	1,762	1,123	639	- 22
1971	1,578	1,017	561	1,744	1,118	626	- 166
1972	2,168	1,409	759	2,311	1,469	842	- 143
1973	2,427	1,521	906	2,453	1,511	942	- 26
1974	2,053	1,197	856	2,643	1,560	1,083	- 595
1975	2,968	1,870	1,098	3,319	2,030	1,289	- 351
1976	3,796	2,528	1,268	4,221	2,854	1,367	- 425
1977	4,477	2,935	1,542	4,853	3,214	1,639	- 376
1978	5,571	3,588	1,983	5,642	3,641	2,001	- 71
1979	5,785	3,794	1,991	5,398	3,672	1,726	+ 387
1980	6,042	3,964	2,078	5,722	3,908	1,814	+ 320
1981	7,099	4,871	2,228	6,190	4,256	1,934	+ 909
1982	6,333	4,144	2,189	5,680	3,773	1,907	+ 653
1983	6,556	4,182	2,374	6,520	4,182	2,338	+ 36
1984	7,471	4,762	2,709	7,172	4,452	2,720	+ 299
1985	7,277	4,725	2,552	7,286	4,603	2,683	- 9

Figure 1 - Passenger traffic by sex, 1969 - 1985

Number  
(thousand)

200

----- Departures

----- Arrivals

180

Both sexes

160

140

120

100

Males

80

Females

60

40

20

0 1969 70 71 72 73 74 75 76 77 78 79 80 81 82 83 84 1985

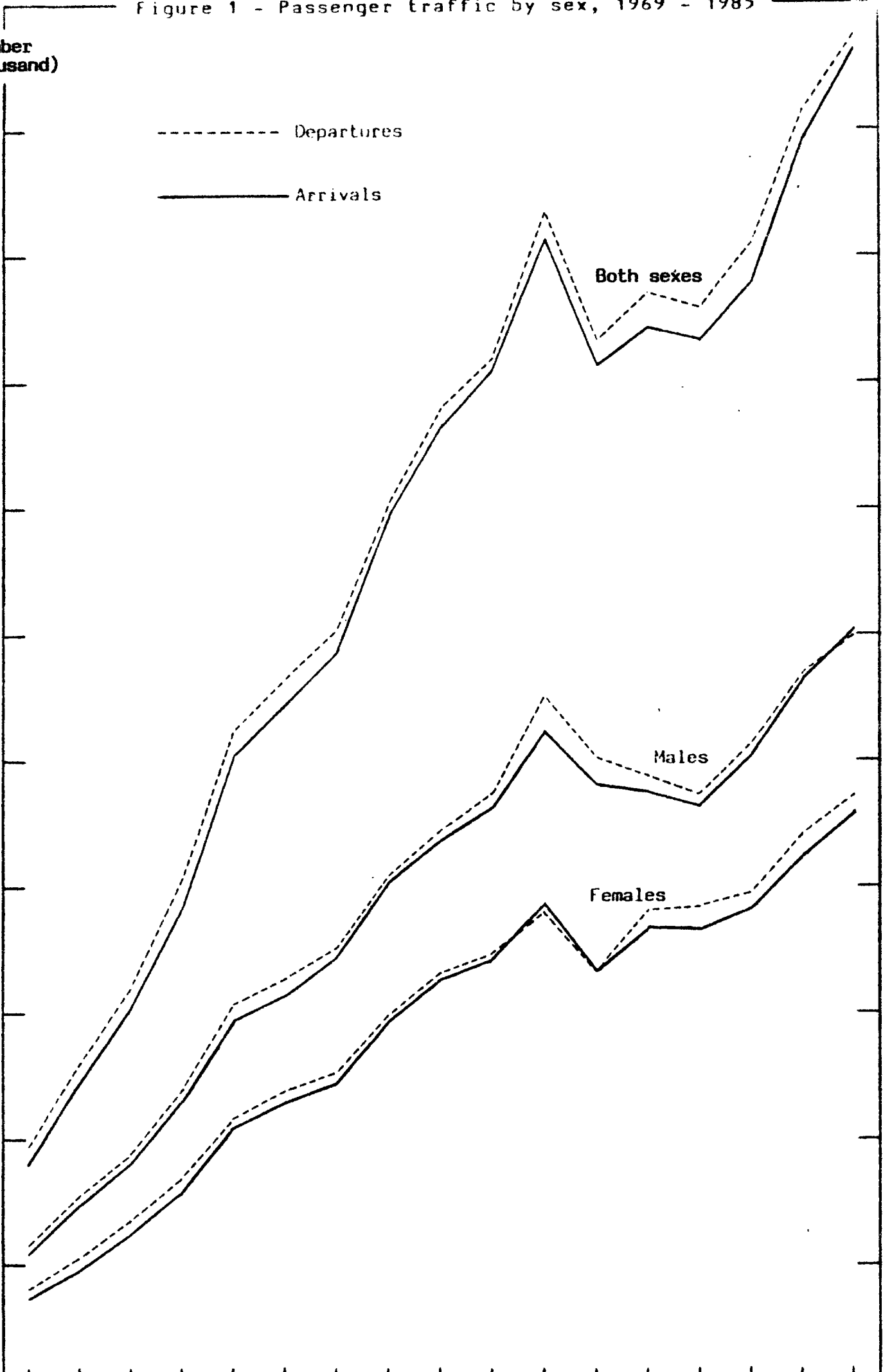


Table 10 - Passenger traffic<sup>1/</sup> by mode of transport, 1963 - 1985

Period	Arrivals			Departures			Net overseas migration
	Total	By sea	By air	Total	By sea	By air	
1963	18,047	4,660	13,387	18,299	4,432	13,867	- 252
1964	21,221	5,187	16,034	22,331	5,478	16,853	- 1,110
1965	22,024	4,886	17,138	24,150	5,463	18,687	- 2,126
1966	26,456	5,544	20,912	29,301	6,330	22,971	- 2,845
1967	29,321	4,901	24,420	32,925	6,515	26,410	- 3,604
1968	31,403	4,264	27,139	35,988	5,967	30,021	- 4,585
1969	35,919	3,483	32,436	38,929	4,632	34,297	- 3,010
1970	48,819	3,984	44,835	51,969	4,376	47,593	- 3,150
1971	60,826	3,857	56,969	63,997	4,295	59,702	- 3,171
1972	77,174	3,741	73,433	81,493	4,072	77,421	- 4,319
1973	101,184	4,238	96,946	104,697	4,027	100,670	- 3,513
1974	109,044	3,848	105,196	113,362	3,772	109,590	- 4,318
1975	117,548	4,485	113,063	120,703	4,255	116,448	- 3,155
1976	139,303	4,367	134,936	141,148	4,441	136,707	- 1,845
1977	153,208	4,929	148,279	155,653	4,624	151,029	- 2,445
1978	161,688	4,411	157,277	163,733	4,698	159,035	- 2,045
1979	182,771	3,581	179,190	186,864	4,054	182,810	- 4,093
1980	163,230	3,980	159,250	167,269	4,469	162,800	- 4,039
1981	168,973	4,533	164,440	174,376	5,316	169,060	- 5,403
1982	166,669	3,839	162,830	171,991	4,421	167,570	- 5,322
1983	177,665	4,915	172,750	182,005	4,755	177,250	- 4,340
1984	198,461	5,541	192,920	202,983	5,553	197,430	- 4,522
1985 <sup>2/</sup>	212,860	4,450	208,410	215,000	5,020	209,980	- 2,140
1985 : 1st Qr.	49,630	1,070	48,560	55,780	1,710	54,070	- 6,150
2nd Qr.	44,520	1,040	43,480	47,800	1,020	46,780	- 3,280
3rd Qr.	57,090	1,120	55,970	58,430	1,190	57,240	- 1,340
4th Qr.	61,620	1,220	60,400	52,990	1,100	51,890	+ 8,630

<sup>1/</sup> including seamen but excluding transit passengers who do not leave the airport

<sup>2/</sup> as from 1985, seamen are not included



Table 11 - Passenger traffic<sup>1/</sup> by month, 1982 - 1985

Month	Arrivals				Departures				Excess of arrivals over departures			
	1982	1983	1984	1985 <sup>2/</sup>	1982	1983	1984	1985 <sup>2/</sup>	1982	1983	1984	1985 <sup>2/</sup>
January	16,246	17,242	18,609	19,430	19,990	21,078	22,653	23,740	3,744	3,836	4,044	4,310
February	11,376	12,429	14,203	14,420	13,488	15,099	17,138	16,410	2,112	2,670	2,935	1,990
March	11,933	13,157	15,093	15,780	12,059	12,928	15,477	15,630	126	229	384	150
April	13,401	12,621	15,675	15,770	14,512	14,858	16,285	17,250	1,111	2,237	610	1,480
May	13,361	13,262	15,111	15,780	13,939	13,904	15,993	17,690	578	642	882	1,910
June	8,772	10,150	11,802	12,970	9,193	10,403	12,713	12,860	421	253	911	110
July	13,790	14,887	16,144	16,130	12,261	13,289	14,678	14,770	1,529	1,598	1,466	1,360
August	17,996	18,374	20,051	23,690	17,117	18,179	19,248	20,850	879	195	803	2,840
September	14,567	14,654	16,000	17,270	18,192	17,749	19,646	22,810	3,625	3,095	3,646	5,540
October	13,694	14,715	15,879	17,180	13,229	13,977	14,900	15,670	465	738	979	1,510
November	13,129	14,664	17,398	19,020	14,261	15,167	17,293	18,830	1,132	503	105	190
December	18,404	21,510	22,496	25,420	13,750	15,374	16,959	18,490	4,654	6,136	5,537	6,930
Whole year	166,669	177,665	198,461	212,860	171,991	182,005	202,983	215,000	5,322	4,340	4,522	2,140

<sup>1/</sup> including seamen but excluding transit passengers who do not leave the airport

<sup>2/</sup> as from 1985, seamen are not included

Table 12 - Arrivals<sup>1/</sup> by country of original embarkation, 1980 - 1985

Country of original embarkation	1980	1981	1982	1983	1984	1985
Australia	5,220	4,330	4,420	3,560	3,290	3,790
Belgium	320	290	420	280	400	550
France	16,870	20,290	17,810	17,520	20,830	22,950
Germany, Fed. Rep. of	7,660	6,480	7,120	7,130	7,310	7,720
Hong Kong	1,020	940	1,190	1,120	1,520	1,100
India	8,550	8,330	6,810	7,050	7,730	7,180
Italy	3,260	5,050	5,730	5,860	5,920	5,710
Kenya	2,700	2,210	2,220	2,370	2,170	2,680
Malagasy Republic	5,880	5,690	6,160	7,100	6,890	6,820
Malawi	240	1,210	890	720	560	990
Réunion	51,710	52,450	57,700	60,320	67,440	72,390
Rodrigues	5,722	6,190	5,680	6,520	7,471	7,286
Seychelles	2,810	3,020	2,640	2,120	1,950	2,870
South Africa, Rep. of	24,890	27,950	26,230	30,450	34,950	33,410
Switzerland	1,130	730	1,070	1,960	5,250	7,370
Tanzania	1,050	1,100	350	430	480	850
United Kingdom	15,850	13,070	12,070	12,960	12,880	14,150
Zambia	2,840	3,100	2,050	1,650	1,550	440
Zimbabwe	340	730	880	1,910	2,250	2,120
Other countries	4,548	5,120	4,650	6,050	6,979	12,484
All countries	162,610	168,380	166,090	177,080	197,820	212,860

<sup>1/</sup> excluding transit passengers who did not leave the airport, discharged seamen numbering 620, 593, 579, 585, 641 and 723 respectively.

Table 13 - Departures<sup>1/</sup> by country of final destination, 1980 - 1985

Country of final destination	1980	1981	1982	1983	1984	1985
Australia	5,190	5,120	5,090	3,790	3,410	4,090
Belgium	400	500	650	480	540	520
France	17,670	23,540	21,770	20,250	23,490	24,660
Germany, Fed. Rep. of	7,660	7,280	7,230	7,520	7,740	8,930
Hong Kong	1,230	1,380	1,500	1,370	1,690	1,810
India	8,090	7,360	6,070	6,590	6,470	7,010
Italy	4,190	5,850	6,310	6,340	6,170	6,100
Kenya	2,780	2,470	2,580	2,650	2,380	2,790
Malagasy Republic	4,980	4,860	5,700	6,580	6,920	6,270
Malawi	330	820	800	660	690	680
Réunion	52,400	51,620	55,730	58,300	64,380	70,780
Rodrigues	6,042	7,099	6,333	6,556	7,172	7,277
Seychelles	3,420	3,250	2,290	2,150	2,440	2,900
South Africa, Rep. of	24,920	28,130	26,140	29,680	35,570	33,150
Switzerland	1,290	1,190	1,490	2,270	6,040	7,610
Tanzania	930	910	360	430	650	740
United Kingdom	16,300	12,420	12,250	13,240	13,530	14,270
Zambia	2,240	2,590	1,630	1,380	1,300	580
Zimbabwe	430	710	990	2,230	2,140	2,490
Other countries	6,048	6,611	6,457	8,884	9,548	12,343
All countries	166,540	173,710	171,370	181,350	202,270	215,000

<sup>1/</sup> excluding transit passengers who did not leave the airport, engaged seamen numbering 729, 666, 621, 655, 713 and 837 respectively.

Table 14(a). - Passenger traffic by type of passenger and month, 1961

Type of passenger	Jan.	Feb.	Mar.	Apr.	May	Jun.	Jul.	Aug.	Sept.	Oct.	Nov.	Dec.	Whole year
<b>ARRIVALS</b>													
Visitors <sup>2/</sup>	14,540	11,220	11,500	11,320	11,310	7,760	10,690	13,970	11,330	11,700	12,660	15,210	143,210
On holiday	14,010	10,670	10,260	10,480	10,520	6,940	9,900	13,420	10,680	10,960	11,440	14,730	134,010
On business	130	280	860	540	500	630	470	340	300	560	900	210	5,720
In transit	400	270	340	290	280	180	290	210	340	180	230	220	3,230
Other and N.S	-	-	40	10	10	10	30	-	10	-	90	50	250
Mauritians settled abroad	610	540	540	790	490	850	2,070	1,510	700	660	850	2,600	12,210
Mauritian residents	3,270	2,380	2,880	3,350	3,110	3,030	3,160	4,360	3,760	3,420	3,680	4,560	40,960
Other	160	30	90	170	120	110	150	190	180	60	120	60	1,440
Total	18,580	14,170	15,010	15,630	15,030	11,750	16,070	20,030	15,970	15,840	17,310	22,430	197,820
<b>DEPARTURES</b>													
Visitors	17,170	12,430	11,090	11,960	11,460	8,250	9,240	12,880	12,900	10,760	12,520	11,470	142,130
Mauritians settled abroad	2,050	1,330	740	680	860	490	780	1,550	2,010	730	610	680	12,510
Mauritian residents	2,990	3,140	3,370	3,310	3,340	3,640	4,420	4,570	4,220	3,020	3,610	4,540	44,170
Emigrants	243	137	45	178	136	128	111	74	334	146	266	163	1,961
Other	167	73	125	102	114	152	99	156	126	134	194	57	1,499
Total	22,620	17,110	15,370	16,230	15,910	12,660	14,650	19,230	19,590	14,790	17,200	16,910	202,270

<sup>1/</sup> excluding seamen and transit passengers who do not leave the airport

<sup>2/</sup> including non-residents (a total of 3,540) who left the airport but stayed in the country for less than a day

Table 14(b) - Passenger traffic by type of passenger and month, 1985

Type of passenger	Jan.	Feb.	Mar.	Apr.	May	Jun.	Jul.	Aug.	Sept.	Oct.	Nov.	Dec.	Whole year
<b>ARRIVALS</b>													
Visitors <sup>2/</sup>	14,800	11,040	12,000	11,710	11,790	8,710	10,260	17,850	12,080	12,060	14,200	17,190	153,690
On holiday	14,230	9,960	10,750	10,780	10,640	7,370	9,240	15,220	10,480	10,880	12,720	16,530	138,800
On business	280	470	1,020	750	960	1,120	750	800	950	790	1,010	320	9,220
In transit	260	570	220	180	160	220	260	450	620	370	440	310	4,060
Other and N.S.	30	40	10	-	30	-	10	1,380	30	20	30	30	1,610
Mauritians settled abroad	700	670	950	610	510	930	1,900	1,400	780	770	300	2,600	12,660
Mauritian residents	3,640	2,490	2,640	3,320	3,120	3,300	3,910	4,300	4,160	4,100	3,700	5,530	44,550
Other	290	220	190	130	60	30	60	140	250	250	240	100	1,960
Total	19,430	14,420	15,780	15,770	15,780	12,970	16,130	23,690	17,270	17,180	19,020	25,420	212,860
<b>DEPARTURES</b>													
Visitors	17,890	12,340	11,110	12,510	12,940	8,120	9,450	13,980	16,080	10,970	13,550	12,730	151,970
Mauritians settled abroad	2,280	1,370	680	880	870	670	750	1,820	2,100	740	1,050	750	13,960
Mauritian residents	3,320	2,530	3,270	3,570	3,690	3,950	4,400	4,860	4,350	3,760	3,950	4,810	46,460
Emigrants	95	162	77	237	185	88	77	89	169	113	166	133	1,591
Other	155	8	193	53	5	32	93	101	111	87	114	67	1,019
Total	23,740	16,410	15,630	17,250	17,690	12,860	14,770	20,850	22,810	15,670	18,830	18,490	215,000

<sup>1/</sup> as from 1985, seamen are not included.

<sup>2/</sup> including non-residents (a total of 4,830) who left the airport but stayed in the country for less than a day

Table 15 - Arrivals<sup>1/</sup> by age and sex, 1984 - 1985<sup>2/</sup>

Age (years)	1 9 8 4			1 9 8 5			January -- June 1985			July -- December 1985		
	Both sexes	Male	Female	Both sexes	Male	Female	Both sexes	Male	Female	Both sexes	Male	Female
Under 1	1,050	550	500	1,390	760	630	520	240	280	870	520	350
1 - 4	6,310	3,460	2,850	6,410	3,640	2,770	2,840	1,710	1,130	3,570	1,930	1,640
5 - 9	7,660	4,270	3,390	8,000	4,410	3,590	3,460	1,950	1,510	4,540	2,460	2,080
10 - 14	7,620	4,020	3,600	7,970	4,320	3,650	3,020	1,620	1,400	4,950	2,700	2,250
15 - 19	8,130	4,010	4,120	8,720	4,110	4,610	3,360	1,540	1,820	5,360	2,570	2,790
20 - 24	18,010	8,390	9,620	19,420	9,430	9,990	8,390	4,000	4,390	11,030	5,430	5,600
25 - 29	26,380	14,650	11,730	26,940	14,840	12,100	11,720	6,560	5,160	15,220	8,280	6,940
30 - 34	25,420	14,780	10,640	27,940	16,040	11,900	12,580	7,200	5,380	15,360	8,840	6,520
35 - 39	22,620	13,800	9,020	25,520	15,450	10,070	11,480	7,190	4,290	14,040	8,260	5,780
40 - 44	17,970	11,020	6,950	20,670	12,870	7,800	9,560	6,020	3,540	11,110	6,350	4,260
45 - 49	14,010	8,660	5,350	15,230	9,100	6,130	7,330	4,410	2,920	7,900	4,690	3,210
50 - 54	11,890	7,230	4,660	12,280	7,180	5,100	5,510	3,310	2,200	6,770	3,870	2,900
55 - 59	8,880	5,130	3,750	9,590	5,360	4,230	4,330	2,380	1,950	5,260	2,980	2,280
60 - 64	6,690	3,800	2,890	7,510	4,310	3,200	3,250	1,890	1,360	4,260	2,420	1,840
65 - 69	3,340	1,680	1,660	3,500	1,910	1,590	1,620	950	670	1,880	960	920
70 & over	3,440	1,850	1,590	3,420	1,860	1,560	1,580	870	710	1,840	990	850
Not stated	8,841	5,901	2,940	8,350	5,350	3,000	3,600	2,410	1,190	4,750	2,940	1,810
All ages	198,461	113,201	85,260	212,860	120,940	91,920	94,150	54,250	39,900	118,710	66,690	52,020

<sup>1/</sup> including discharged seamen but excluding transit passengers who do not leave the airport

<sup>2/</sup> as from 1985, seamen are not included

Table 16 - Departures<sup>1/</sup> by age and sex, 1984 - 1985<sup>2/</sup>

Age (years)	1 9 8 4			1 9 8 5			January - June 1985			July - December 1985		
	Both sexes	Male	Female	Both sexes	Male	Female	Both sexes	Male	Female	Both sexes	Male	Female
Under 1	1,060	620	440	1,190	600	590	600	330	270	590	270	320
1 - 4	6,490	3,340	3,150	6,320	3,700	3,120	3,520	1,830	1,690	3,300	1,870	1,430
5 - 9	8,470	4,610	3,860	8,620	4,490	4,130	3,810	1,910	1,900	4,810	2,580	2,230
10 - 14	7,310	3,820	3,490	8,470	4,280	4,190	3,650	1,940	1,710	4,820	2,340	2,480
15 - 19	8,760	4,200	4,560	9,000	4,190	4,810	3,830	1,670	2,160	5,170	2,520	2,650
20 - 24	19,730	9,410	10,320	19,840	9,260	10,580	9,080	4,210	4,870	10,760	5,050	5,710
25 - 29	26,400	14,120	12,280	28,840	15,640	13,200	13,740	7,680	6,060	15,100	7,960	7,140
30 - 34	26,230	15,260	10,970	28,210	16,180	12,030	13,950	7,920	6,030	14,260	8,260	6,000
35 - 39	23,690	14,470	9,220	25,180	15,290	9,890	12,510	7,520	4,990	12,670	7,770	4,900
40 - 44	17,650	10,950	6,700	19,900	12,220	7,680	9,950	6,130	3,820	9,950	6,090	3,860
45 - 49	14,460	8,690	5,770	15,250	8,720	6,530	7,470	4,300	3,170	7,780	4,420	3,360
50 - 54	11,370	6,680	4,690	11,580	6,790	4,790	5,900	3,420	2,480	5,680	3,370	2,310
55 - 59	8,950	4,950	4,000	9,180	5,040	4,140	4,470	2,470	2,000	4,710	2,570	2,140
60 - 64	6,040	3,200	2,840	7,250	4,190	3,060	3,660	2,120	1,540	3,590	2,070	1,520
65 - 69	3,250	1,740	1,510	4,030	2,130	1,900	1,950	1,060	890	2,080	1,070	1,010
70 & over	3,930	1,910	2,020	3,480	1,830	1,650	1,750	980	770	1,730	850	880
Not stated	9,193	6,233	2,960	8,160	5,230	2,930	3,740	2,470	1,270	4,420	2,760	1,660
All ages	202,983	114,203	88,780	215,000	119,780	95,220	103,580	57,960	45,620	111,420	61,820	49,600

<sup>1/</sup> including engaged seamen but excluding transit passengers who do not leave the airport.

<sup>2/</sup> as from 1985, seamen are not included.

Table 17 - Excess of arrivals<sup>1/</sup> over departures<sup>1/</sup> by age and sex, 1984 - 1985<sup>2/</sup>

Age (years)	1984			1985			January - June 1985			July - December 1985		
	Both sexes	Male	Female	Both sexes	Male	Female	Both sexes	Male	Female	Both sexes	Male	Female
Under 1	- 10	- 70	+ 60	+ 200	+ 160	+ 40	- 80	- 90	+ 10	+ 280	+ 250	+ 30
1 - 4	- 180	+ 120	- 300	- 410	- 60	- 350	- 680	- 120	- 560	+ 270	+ 60	+ 210
5 - 9	- 810	- 340	- 470	- 620	- 80	- 540	- 350	+ 40	- 390	- 270	- 120	- 150
10 - 14	+ 310	+ 200	+ 110	- 500	+ 40	- 540	- 630	- 320	- 310	+ 130	+ 360	- 230
15 - 19	- 630	- 190	- 440	- 280	- 80	- 200	- 470	- 130	- 340	+ 190	+ 50	+ 140
20 - 24	- 1,720	- 1,020	- 700	- 420	+ 170	- 590	- 690	- 210	- 480	+ 270	+ 380	- 110
25 - 29	- 20	+ 530	- 550	- 1,900	- 300	- 1,100	- 2,020	- 1,120	- 900	+ 120	+ 320	- 200
30 - 34	- 810	- 480	- 330	- 270	- 140	- 130	- 1,370	- 720	- 650	+ 1,100	+ 580	+ 520
35 - 39	- 870	- 670	- 200	+ 340	+ 160	+ 180	- 1,030	- 330	- 700	+ 1,370	+ 490	+ 330
40 - 44	+ 320	+ 70	+ 250	+ 770	+ 650	+ 120	- 390	- 110	- 280	+ 1,160	+ 760	+ 400
45 - 49	- 450	- 30	- 420	- 20	+ 380	- 400	- 140	+ 110	- 250	+ 120	+ 270	- 150
50 - 54	+ 520	+ 550	- 30	+ 700	+ 390	+ 310	- 390	- 110	- 280	+ 1,090	+ 500	+ 590
55 - 59	- 70	+ 180	- 250	+ 410	+ 320	+ 90	- 140	- 90	- 50	+ 550	+ 410	+ 140
60 - 64	+ 650	+ 600	+ 50	+ 260	+ 120	+ 140	- 410	- 230	- 130	+ 670	+ 350	+ 320
65 - 69	+ 90	- 60	+ 150	- 530	- 220	- 310	- 330	- 110	- 220	- 200	- 110	- 90
70 & over	- 490	- 60	- 430	- 60	+ 30	- 90	- 170	- 110	- 60	+ 110	+ 140	- 30
Not stated	- 352	- 332	- 20	+ 190	+ 120	+ 70	- 140	- 60	- 80	+ 330	+ 180	+ 150
All ages	- 4,522	- 1,002	- 3,520	- 2,140	+ 1,160	- 3,300	- 9,430	- 3,710	- 5,720	+ 7,290	+ 4,870	+ 2,420

<sup>1/</sup> including seamen but excluding transit passengers who do not leave the airport

<sup>2/</sup> as from 1985 seamen are not included



Table 18 - Arrivals of residents by district of residence and sex, 1984 - 1985

Geographical district	1984			1985			January - June 1985			July - December 1985		
	Both sexes	Male	Female	Both sexes	Male	Female	Both sexes	Male	Female	Both sexes	Male	Female
Port Louis	6,720	4,150	2,570	7,800	4,950	2,850	3,250	2,160	1,090	4,550	2,790	1,760
Pamplemousses	990	750	240	1,400	940	460	460	310	150	940	630	310
Rivière du Rempart	1,960	1,300	660	1,470	900	570	680	390	290	790	510	280
Maq	1,040	750	290	1,440	910	530	680	450	230	760	460	300
Grandport	1,260	870	390	1,360	860	500	490	280	210	870	580	290
Savanne	600	440	160	920	650	270	470	310	160	450	340	110
Plaines Wilhems: Urban	17,090	10,550	6,540	19,020	11,340	7,680	7,940	4,640	3,300	11,080	6,700	4,380
Other	540	340	200	350	250	100	200	140	60	150	110	40
Moka	770	510	260	690	460	230	310	210	100	380	250	130
Black River	570	310	260	830	400	430	310	140	170	520	260	260
Not stated	9,420	5,840	3,580	9,270	5,950	3,320	4,020	2,660	1,360	5,250	3,290	1,960
Whole island	40,960	25,810	15,150	44,550	27,610	16,940	18,810	11,690	7,120	25,740	15,920	9,820

Table 19 - Departures<sup>1/</sup> of residents by district of residence and sex, 1984 - 1985

Geographical district	1984			1985			January - June 1985			July - December 1985		
	Both sexes	Male	Female	Both sexes	Male	Female	Both sexes	Male	Female	Both sexes	Male	Females
Port Louis	7,250	4,290	2,960	7,600	4,580	3,020	3,280	2,020	1,260	4,320	2,560	1,760
Pamplemousses	1,030	620	410	1,780	980	800	710	370	340	1,070	610	460
Rivière du Rempart	1,600	910	690	1,520	950	570	730	440	290	790	510	280
Flacq	990	670	320	1,420	960	460	820	540	280	600	420	180
Grandport	1,350	810	540	1,520	880	640	620	380	240	900	500	400
Savanne	860	430	430	750	450	300	320	180	140	430	270	160
Plaines Wilhems: Urban	18,880	11,130	7,750	20,660	11,960	8,700	8,720	5,040	3,680	11,940	6,920	5,020
Other	180	70	110	320	210	110	230	170	110	40	40	-
Moka	890	520	370	840	600	240	420	300	120	420	300	120
Black River	580	360	220	700	400	300	250	160	90	450	240	210
Not stated	10,560	6,600	3,960	9,350	5,940	3,410	4,180	2,770	1,410	5,170	3,170	2,000
Whole island	44,170	26,410	17,760	46,460	27,910	18,550	20,330	12,370	7,960	26,130	15,540	10,590

<sup>1/</sup> excluding official long-term emigrants

Table 20 - Excess of arrivals over departures<sup>1/</sup> of residents by district of residence and sex, 1984 - 1985

Geographical district	1984			1985			January - June 1985			July - December 1985		
	Both sexes	Male	Female	Both sexes	Male	Female	Both sexes	Male	Female	Both sexes	Male	Female
	Port Louis	- 530	- 140	- 390	+ 200	+ 370	- 170	- 30	+ 140	- 170	+ 230	+ 230
Pamplemousses	- 40	+ 130	- 170	- 380	- 40	- 340	- 250	- 60	- 190	- 130	+ 20	- 150
Rivière du Rempart	+ 360	+ 390	- 30	- 50	- 50	-	- 50	- 50	-	-	-	-
Flacq	+ 50	+ 80	- 30	+ 20	- 50	+ 70	- 140	- 90	- 50	+ 160	+ 40	+ 120
Grandport	- 90	+ 60	- 150	- 160	- 20	- 140	- 130	- 100	- 30	- 30	+ 80	- 110
Savanne	- 260	+ 10	- 270	+ 170	+ 200	- 30	+ 150	+ 130	+ 20	+ 20	+ 70	- 50
Plaines Wilhems: Urban	- 1,790	- 580	- 1,210	- 1,640	- 620	- 1,020	- 760	- 400	- 380	- 860	- 220	- 640
Other	+ 360	+ 270	+ 90	+ 30	+ 40	- 10	- 80	- 30	- 50	+ 110	+ 70	+ 40
Moka	- 120	- 10	- 110	- 150	- 140	- 10	- 110	- 90	- 20	- 40	- 50	+ 10
Black River	- 10	- 50	+ 40	+ 130	-	+ 130	+ 60	- 20	+ 80	+ 70	+ 20	+ 50
Not stated	- 1,140	- 760	- 380	- 80	+ 10	- 90	- 160	- 110	- 50	+ 80	+ 120	- 40
Whole island	- 3,210	- 600	- 2,610	- 1,910	- 300	- 1,610	- 1,520	- 680	- 840	- 390	+ 380	- 770

<sup>1/</sup> excluding official long-term emigrants

Table 21 - Arrivals of residents of Island of Mauritius by age and sex, 1984 - 1985

Age (years)	1 9 8 4			1 9 8 5			January - June 1985			July - December 1985		
	Both sexes	Male	Female	Both sexes	Male	Female	Both sexes	Male	Female	Both sexes	Male	Female
Under 1	120	50	70	250	160	90	130	60	70	120	100	20
1 - 4	900	440	460	780	440	340	360	190	170	420	250	170
5 - 9	930	540	390	1,210	640	570	560	300	260	650	340	310
10 - 14	880	500	380	1,010	450	560	410	190	220	600	260	340
15 - 19	1,530	930	600	1,450	760	690	590	310	280	860	450	410
20 - 24	4,010	2,520	1,490	4,700	2,900	1,800	1,990	1,190	800	2,710	1,710	1,000
25 - 29	5,120	3,440	1,680	5,290	3,500	1,790	2,250	1,510	740	3,040	1,990	1,050
30 - 34	4,850	3,090	1,760	5,560	3,760	1,800	2,260	1,510	750	3,300	2,250	1,050
35 - 39	3,430	2,470	960	4,160	2,800	1,360	1,760	1,190	570	2,400	1,610	790
40 - 44	2,440	1,580	860	2,900	2,080	820	1,300	830	470	1,600	1,250	350
45 - 49	2,220	1,460	760	2,140	1,260	880	880	570	310	1,260	690	570
50 - 54	2,020	1,240	780	2,250	1,310	940	860	520	340	1,390	790	600
55 - 59	1,950	1,100	850	2,030	1,050	980	880	450	430	1,150	600	550
60 - 64	1,340	770	570	1,540	790	750	490	230	260	1,050	560	490
65 - 69	940	450	490	730	360	370	310	170	140	420	190	230
70 and over	710	440	270	830	380	450	380	170	210	450	210	240
Not stated	7,570	4,790	2,780	7,720	4,970	2,750	3,400	2,300	1,100	4,320	2,670	1,650
All ages	40,960	25,810	15,150	44,550	27,610	16,940	18,810	11,690	7,120	25,740	15,920	9,820

Table 22 - Departures of residents<sup>1/</sup> of Island of Mauritius by age and sex, 1984 - 1985

Age (years)	1984			1985			January - June 1985			July - December 1985		
	Both sexes	Male	Female	Both sexes	Male	Female	Both sexes	Male	Female	Both sexes	Male	Female
Under 1	140	60	80	170	90	80	60	50	10	110	40	70
1 - 4	870	390	480	1,050	640	410	470	300	170	580	310	240
5 - 9	1,510	720	790	1,210	700	510	340	180	160	870	520	350
10 - 14	830	470	410	1,270	570	700	330	150	180	940	420	520
15 - 19	2,010	990	1,020	2,250	1,170	1,080	840	420	420	1,410	750	660
20 - 24	5,160	3,020	2,140	5,580	3,170	2,410	2,410	1,250	1,160	3,170	1,920	1,250
25 - 29	5,190	3,360	1,830	5,510	3,430	2,080	2,710	1,720	990	2,800	1,710	1,090
30 - 34	4,720	2,940	1,780	5,290	3,350	1,940	2,310	1,520	790	2,980	1,830	1,150
35 - 39	3,620	2,370	1,250	4,270	2,920	1,350	1,840	1,330	510	2,430	1,590	840
40 - 44	2,640	1,670	970	3,020	1,890	1,130	1,280	800	480	1,740	1,090	650
45 - 49	2,460	1,470	990	2,040	1,180	860	950	540	410	1,090	640	450
50 - 54	2,220	1,240	980	1,730	1,050	680	680	430	250	1,050	620	430
55 - 59	2,000	1,070	930	2,100	990	1,110	1,030	510	520	1,070	480	590
60 - 64	1,390	740	650	1,740	1,090	650	870	510	360	870	580	290
65 - 69	700	390	310	910	450	490	410	200	210	530	250	280
70 & over	920	440	480	860	410	450	400	200	200	460	210	250
Not stated	7,740	5,070	2,670	7,430	4,810	2,620	3,400	2,260	1,140	4,030	2,550	1,480
All ages	44,170	26,410	17,760	46,460	27,910	18,550	20,330	12,370	7,960	26,130	15,510	10,590

<sup>1/</sup> excluding official long-term emigrants

Table 23 - Excess of arrivals over departures of residents (excluding emigrants) of Island of Mauritius by age and sex, 1984 - 1985

Age (years)	1 9 8 4			1 9 8 5			January - June 1985			July - December 1985		
	Both sexes	Male	Female	Both sexes	Male	Female	Both sexes	Male	Female	Both sexes	Male	Female
Under 1	-	- 10	- 10	+ 80	+ 70	+ 10	+ 70	+ 10	+ 60	+ 10	+ 60	- 50
1 - 4	+	+ 50	- 20	- 270	- 200	- 70	- 110	- 110	-	- 160	- 90	- 70
5 - 9	-	- 180	- 400	-	- 60	+ 60	+ 220	+ 120	+ 100	- 220	- 180	- 40
10 - 14	-	+ 30	- 30	- 260	- 120	- 140	+ 80	+ 40	+ 40	- 340	- 160	- 180
15 - 19	-	- 60	- 420	- 800	- 410	- 390	- 250	- 110	- 140	- 550	- 300	- 250
20 - 24	-	- 500	- 650	- 880	- 270	- 610	- 420	- 60	- 360	- 460	- 210	- 250
25 - 29	-	+ 80	- 150	- 220	+ 70	- 290	- 460	- 210	- 250	+ 240	+ 280	- 40
30 - 34	+	+ 150	- 20	- 270	+ 410	- 140	- 50	- 10	- 40	+ 320	+ 420	- 100
35 - 39	-	+ 100	- 290	- 110	- 120	+ 10	- 80	- 140	+ 60	- 30	+ 20	- 50
40 - 44	-	- 90	- 110	- 120	+ 190	- 310	+ 20	+ 30	- 10	- 140	+ 160	- 300
45 - 49	-	- 10	- 230	- 100	+ 80	+ 20	- 70	+ 30	- 100	+ 170	+ 50	+ 120
50 - 54	-	-	- 200	- 520	+ 260	+ 260	+ 180	+ 90	+ 90	+ 340	+ 170	+ 170
55 - 59	-	+ 30	- 80	- 70	+ 60	- 130	- 150	- 60	- 90	+ 80	+ 120	- 40
60 - 64	-	+ 30	- 80	- 200	- 300	+ 100	- 380	- 280	- 100	+ 180	- 20	+ 200
65 - 69	+	+ 60	+ 180	- 210	- 90	- 120	- 100	- 30	- 70	- 110	- 60	- 50
70 & over	-	-	- 210	- 30	- 30	-	- 20	- 30	+ 10	- 10	-	- 10
Not stated	-	- 280	+ 110	- 290	+ 160	+ 130	-	+ 40	- 40	+ 290	+ 120	+ 170
All ages	- 3,210	- 600	- 2,610	- 1,910	- 300	- 1,610	- 1,520	- 680	- 840	- 390	+ 380	- 770

Table 24 - Excess of arrivals over departures of residents (including emigrants) of Island of Mauritius by age and sex, 1984 - 1985.

Age (years)	1984			1985			January - June 1985			July - December 1985		
	Both sexes	Male	Female	Both sexes	Male	Female	Both sexes	Male	Female	Both sexes	Male	Female
Under 1	-	30	21	+ 48	54	6	+ 49	-	49	-	+ 54	55
1 - 4	-	+ 27	51	- 316	223	93	- 137	- 124	13	- 179	- 99	80
5 - 9	-	- 204	426	- 61	92	31	+ 193	+ 108	85	- 254	- 200	54
10 - 14	-	-	52	- 305	139	166	+ 66	+ 36	30	- 371	- 175	196
15 - 19	-	- 111	505	- 922	429	493	- 311	- 121	190	- 611	- 308	303
20 - 24	-	- 712	827	- 1,247	386	861	- 614	- 121	493	- 633	- 265	368
25 - 29	-	- 231	306	- 581	112	469	- 666	- 331	335	+ 85	+ 219	134
30 - 34	-	- 113	114	9	267	258	- 192	- 106	86	+ 201	+ 373	172
35 - 39	-	- 43	335	- 235	206	29	- 144	- 191	47	- 91	- 15	76
40 - 44	-	- 173	136	- 182	146	328	- 13	- 4	14	- 164	+ 150	314
45 - 49	-	- 62	236	+ 58	52	6	- 92	+ 14	106	+ 150	+ 38	112
50 - 54	-	- 13	209	+ 505	248	257	+ 175	+ 86	89	+ 330	+ 162	168
55 - 59	-	+ 21	84	- 81	54	135	- 154	- 62	92	+ 73	+ 116	43
60 - 64	-	+ 25	83	- 215	305	90	- 389	- 283	106	+ 174	- 22	196
65 - 69	+ 236	+ 58	178	- 221	95	126	- 106	- 33	73	- 115	- 62	53
70 & over	- 215	- 1	214	- 34	31	3	- 21	- 31	10	- 13	-	13
Not stated	- 186	- 294	108	+ 285	155	130	- 3	+ 37	40	+ 288	+ 118	170
All ages	- 5,171	- 1,856	3,315	- 3,495	1,042	2,453	- 2,364	- 1,126	1,238	- 1,131	+ 84	1,215

Table 25 - Arrivals and departures of Mauritian residents by country of embarkation and disembarkation, 1983 - 1985

Country of embarkation/ final destination	Arrivals		Departures		Excess of arrivals over departures		
	1983	1984	1983	1984	1983	1984	
	1985	1985	1985	1985	1985	1985	
Australia	520	570	1,120	1,110	- 600	- 540	- 380
Belgium	60	40	150	130	- 90	- 90	- 90
Canada	110	110	230	170	- 170	- 60	- 90
France	2,750	2,780	3,620	4,270	- 870	- 1,490	- 670
Germany, Fed. Rep. of	420	660	900	1,000	- 480	- 340	- 860
Hong Kong	560	520	550	720	+ 10	- 200	- 300
India	2,940	2,770	2,520	2,400	+ 420	+ 370	+ 370
Italy	380	280	670	600	- 260	- 320	- 160
Kenya	690	570	760	720	- 70	- 130	- 10
Rodrigues	6,556	7,471	6,520	7,172	+ 36	+ 299	+ 9
Reunion	13,510	14,950	13,450	14,240	+ 60	+ 710	+ 620
South Africa	2,030	2,170	2,100	2,370	- 70	- 200	+ 50
Switzerland	70	290	220	520	- 150	- 230	- 280
United Kingdom	4,600	4,870	4,750	4,740	- 150	+ 130	+ 170
Other countries	3,334	2,939	3,710	4,008	- 376	- 1,069	- 289
All countries	38,530	40,960	41,290	44,170	- 2,760	- 3,210	- 1,910



III - EMIGRATION  
=====

Table 26 - Official long-term emigrants<sup>1/</sup> by sex, 1959 - 1985

Year	Both sexes	Male	Female
1959	170	128	42
1960	158	132	26
1961	837	629	208
1962	1,083	711	372
1963	594	326	268
1964	915	491	424
1965	1,408	659	749
1966	1,611	774	837
1967	2,225	1,038	1,187
1968	3,067	1,487	1,580
1969	2,379	1,119	1,260
1970	2,282	1,063	1,219
1971	2,351	1,078	1,273
1972	2,271	956	1,315
1973	2,037	844	1,193
1974	1,494	606	888
1975	874	328	546
1976	579	195	384
1977	290	120	170
1978	320	111	209
1979	191	43	148
1980	308	84	224
1981	485	283	202
1982	913	682	231
1983	1,735	1,437	298
1984	1,961	1,256	705
1985	1,585	742	843

<sup>1/</sup> persons who have obtained a permit to emigrate to another country

Table 27 - External migration, 1959 - 1985

Year	Arrivals	Departures		Excess of arrivals over departures (excluding emigrants)
		Total	Official long-term emigrants <sup>1/</sup>	
1959	9,637	9,544	170	+ 263
1960	10,412	10,784	156	- 214
1961	11,054	13,033	837	- 342
1962	15,139	16,075	1,083	+ 197
1963	18,047	18,299	594	+ 342
1964	21,221	22,331	915	- 195
1965	22,024	24,150	1,408	- 718
1966	26,456	29,301	1,611	- 1,234
1967	29,321	32,925	2,225	- 1,379
1968	31,403	35,988	3,067	- 1,518
1969	35,919	38,929	2,379	- 631
1970	43,819	51,969	2,282	- 868
1971	60,826	63,997	2,351	- 820
1972	77,174	81,493	2,271	- 2,048
1973	101,134	104,697	2,037	- 1,476
1974	109,044	113,362	1,494	- 2,824
1975	117,543	120,703	874	- 2,281
1976	139,303	141,148	579	- 1,266
1977	153,208	155,653	290	- 2,155
1978	161,633	163,733	320	- 1,725
1979	182,771	186,864	191	- 3,902
1980	163,230	167,269	308	- 3,731
1981	168,973	174,376	485	- 4,918
1982	166,669	171,991	913	- 4,409
1983	177,665	182,005	1,735	- 2,605
1984	198,461	202,983	1,961	- 2,561
1985	212,860	215,000	1,585	- 555

<sup>1/</sup> persons who have obtained a permit to emigrate to another country.

Note: The number of immigrants coming to settle in Mauritius is negligible. A net negative balance over successive years in the last column indicates that a number of persons not registered as official emigrants are permanently leaving the country.



Table 28 (cont'd)

Country of intended residence	1970	1971	1972	1973	1974	1975	1976	1977	1978	1979	1980	1981	1982	1983	1984	1985
<u>ASIA</u>	4	3	18	2	2	3	-	-	1	-	-	213	735	1,181	1,249	827
Bahrain	-	-	-	-	-	-	-	-	-	-	-	-	1	5	9	65
India	1	-	1	2	-	2	-	-	1	-	-	-	1	-	-	4
Iraq	-	-	-	-	-	-	-	-	-	-	-	-	46	-	1	2
Israel	-	-	-	-	-	-	-	-	-	-	-	-	-	1	46	8
Lebanon	-	-	-	-	-	-	-	-	-	-	-	-	33	36	151	94
Oman	-	-	-	-	-	-	-	-	-	-	-	-	1	2	84	-
Qatar	-	-	-	-	-	-	-	-	-	-	-	50	81	43	34	29
Saudi Arabia	-	-	15	-	-	-	-	-	-	-	-	163	554	1,070	815	437
United Arab Emirates	-	-	-	-	-	-	-	-	-	-	-	-	15	2	42	150
Yemen	-	-	-	-	-	-	-	-	-	-	-	-	-	13	56	4
Other Asian	3	3	2	-	2	1	-	-	-	-	-	-	3	9	11	34
<u>EUROPE</u>	939	1,058	1,145	1,353	1,042	682	477	223	252	148	176	148	122	101	273	303
Belgium	22	44	32	38	54	30	17	1	2	7	5	5	2	2	7	6
France	435	566	554	684	546	237	137	88	105	77	93	69	56	62	147	181
Germany, Fed. Rep. of	5	8	31	43	7	4	1	6	12	1	1	9	2	4	10	16
Italy	4	19	48	29	19	17	17	6	5	16	13	18	9	5	6	3
Norway	1	3	2	5	1	1	2	-	4	-	-	-	-	-	-	1
Switzerland	6	1	3	5	4	4	1	4	7	3	8	11	4	2	22	39
United Kingdom	463	415	460	543	402	385	302	113	113	41	49	36	47	25	66	54
Other European	3	2	15	6	9	4	-	5	4	3	7	-	2	1	15	3
<u>OCEANIA</u>	1,095	1,019	883	547	314	85	51	25	30	31	54	41	18	24	154	194
Australia	1,082	1,004	877	545	301	84	50	25	30	31	54	41	18	24	153	194
New Zealand	-	-	1	1	-	-	-	-	-	-	-	-	-	-	1	-
Other Oceanian	13	15	5	1	13	1	1	-	-	-	-	-	-	-	-	-

1/ persons who have obtained a permit to emigrate to another country

2/ British Indian Ocean Territory

Table 29 - Age distribution of official long-term emigrants, 1970 - 1985

Male

Age (years)	1970	1971	1972	1973	1974	1975	1976	1977	1978	1979	1980	1981	1982	1983	1984	1985
0 - 4	93	83	94	65	68	36	22	24	10	4	6	7	5	22	43	39
5 - 9	106	94	118	101	77	43	28	26	23	4	16	5	6	13	24	32
10 - 14	93	96	115	105	77	59	36	23	18	8	5	11	4	5	30	19
15 - 19	113	106	108	100	57	46	29	12	21	7	7	21	13	14	51	19
20 - 24	153	171	149	112	101	66	28	10	6	7	14	105	150	197	212	116
25 - 29	141	128	85	107	82	35	21	10	10	1	14	67	207	525	311	182
30 - 34	120	108	68	59	39	17	7	3	8	3	11	27	122	301	263	143
35 - 39	68	89	59	45	38	3	5	5	2	2	2	10	76	156	143	86
40 - 44	63	69	51	53	23	6	5	4	2	1	-	19	53	101	83	44
45 - 49	32	48	46	33	13	5	4	1	4	2	3	1	25	62	52	28
50 - 54	33	23	29	19	3	3	6	-	3	1	-	1	10	27	13	12
55 - 59	15	18	11	18	8	-	2	-	1	-	2	2	3	8	9	6
60 - 64	13	19	12	15	9	3	1	1	2	2	2	4	2	3	5	5
65 - 69	9	16	7	3	1	4	1	1	1	-	-	1	1	1	2	5
70 & over	11	9	4	6	4	1	-	-	-	1	-	2	1	-	1	1
Unknown	-	1	-	3	1	1	-	-	-	-	2	-	4	2	14	5
All ages	1,063	1,078	956	844	606	328	195	120	111	43	84	283	682	1,437	1,256	742

Table 29 (cont'd)

Female

Age (years)	1970	1971	1972	1973	1974	1975	1976	1977	1978	1979	1980	1981	1982	1983	1984	1985
0 - 4	99	90	89	48	50	46	24	11	9	7	6	7	11	13	42	39
5 - 9	98	89	110	111	79	44	29	14	13	6	6	14	11	12	26	29
10 - 14	94	89	140	104	70	42	36	19	22	16	10	6	6	6	22	26
15 - 19	131	184	157	181	153	105	74	42	53	32	46	42	38	25	85	103
20 - 24	237	241	267	263	212	142	102	41	46	47	72	57	69	91	177	251
25 - 29	132	145	148	130	102	54	51	21	30	18	36	33	44	55	156	179
30 - 34	81	106	100	84	72	33	22	6	13	9	19	13	30	56	94	118
35 - 39	64	84	75	72	47	18	9	4	8	4	10	11	11	18	45	39
40 - 44	61	58	65	63	24	12	6	5	3	2	3	2	4	9	28	18
45 - 49	50	60	47	51	27	8	8	1	6	3	4	3	4	4	6	14
50 - 54	25	31	32	21	26	10	5	3	-	2	3	5	2	4	9	3
55 - 59	37	44	33	17	10	11	-	-	2	-	3	3	-	4	4	5
60 - 64	25	21	22	17	7	6	4	1	3	2	4	2	1	2	3	10
65 - 69	17	10	16	10	4	6	7	1	1	-	-	2	-	-	2	6
70 & over	18	18	14	16	4	7	5	1	-	-	1	2	-	1	4	3
Unknown	-	3	-	5	1	2	-	-	-	-	1	-	-	-	2	-
All ages	1,219	1,273	1,315	1,193	888	546	384	170	209	148	224	202	231	298	705	843

**Table 29 (cont'd)**

Both sexes

Age (years)	1970	1971	1972	1973	1974	1975	1976	1977	1978	1979	1980	1981	1982	1983	1984	1985
0 - 4	192	173	183	113	118	82	46	35	19	11	12	14	16	35	85	78
5 - 9	204	183	228	212	156	87	57	40	36	10	22	19	17	25	50	61
10 - 14	187	185	255	209	147	101	74	42	40	24	15	17	10	11	52	45
15 - 19	294	290	265	281	210	151	103	54	74	39	53	63	51	39	136	122
20 - 24	390	412	416	375	313	208	130	51	52	54	86	162	219	288	389	367
25 - 29	273	273	233	237	184	89	72	31	40	19	50	100	251	580	467	361
30 - 34	201	214	168	143	111	50	29	9	21	12	30	40	152	357	357	261
35 - 39	132	173	134	117	85	21	14	9	10	6	12	21	87	174	188	125
40 - 44	124	127	116	116	47	18	11	9	5	3	3	21	57	110	111	62
45 - 49	82	108	93	84	40	13	12	2	10	5	7	4	29	66	58	42
50 - 54	58	54	61	40	34	13	11	3	3	3	3	6	12	31	22	15
55 - 59	52	62	44	35	18	11	2	-	3	-	5	5	3	10	13	11
60 - 64	38	40	34	32	16	9	5	2	5	4	6	6	3	5	8	15
65 - 69	26	26	23	13	5	10	8	2	2	-	-	3	1	1	4	11
70 & over	29	27	18	22	8	8	5	1	-	1	1	4	1	1	5	4
Unknown	-	4	-	8	2	3	-	-	-	-	3	-	4	2	16	5
All ages	2,282	2,351	2,271	2,037	1,494	874	579	290	320	191	308	485	913	1,735	1,961	1,585

1/ persons who have obtained a permit to emigrate to another country

Table 30 - Official long-term emigrants<sup>1/</sup> by Major Occupational Group, 1970 - 1985

Major Occupational Group	1970	1980	1981	1982	1983	1984	1985
Total emigrants	44	112	294	722	1,538	1,506	1,111
0/1. Professional, Technical and Related Workers	3	6	25	141	328	426	112
2. Administrative and Managerial Workers	1	-	1	2	6	5	5
3. Clerical and Related Workers	4	14	31	32	36	65	106
4. Sales Workers	2	4	2	11	5	15	8
5. Service Workers	11	40	56	173	153	371	427
6. Agricultural, Animal Husbandry and Forestry Workers, Fishermen and Hunters	-	-	52	98	402	255	146
7/8/9. Production and Related Workers, Transport Equipment Operators and Labourers	22	38	125	371	600	331	267
X. Workers not classifiable by Occupation	1	10	1	4	8	38	40
Emigrants not reporting any occupation (including housewives and children)	147	196	192	181	197	455	474

1/ persons who have obtained a permit to emigrate to another country

2/ International Standard Classification of Occupation, Revised Edition, 1968



Table 3(a) - Official long-term emigrants 1/ by Major Occupational Group, age and sex, 1954

Major Occupational Group <sup>2/</sup>	Age (completed years)																
	All ages		/ 20		20 - 24		25 - 34		35 - 44		45 - 54		55+		Not stated		
	Both sexes	Male	Female	Male	Female	Male	Female	Male	Female	Male	Female	Male	Female	Male	Female		
Total number of emigrants	1,961	1,256	705	148	175	212	177	574	250	226	73	65	15	17	13	14	2
Emigrants reporting an occupation	1,506	1,094	412	28	35	197	115	560	197	221	54	64	2	11	1	10	1
0/1 Professional, Technical & Related Workers	426	296	130	1	1	18	7	177	89	72	28	18	4	5	1	5	-
2 Administrative and Managerial Workers	5	5	-	-	-	-	-	1	-	1	-	2	-	1	-	-	-
3 Clerical & Related Workers	65	35	30	1	4	10	13	17	13	4	-	1	-	-	-	2	-
4 Sales Workers	15	9	5	-	1	3	2	3	1	-	-	1	2	2	-	-	-
5 Service Workers	371	159	212	9	27	60	83	78	78	11	22	1	2	-	-	-	-
6 Agriculture, Animal Husbandry & Forestry Workers, Fishermen and Hunters	255	255	-	11	-	50	-	126	-	52	-	15	-	-	-	1	-
7/8/9 Production & Related Workers, Transport Equipment Operators and Labourers	331	308	23	5	1	49	8	147	11	75	2	24	1	6	-	2	-
X Workers not classifiable by Occupation	38	27	11	1	1	7	2	11	5	6	2	2	-	-	-	-	1
Emigrants not reporting any occupation (including housewives and children)	455	162	293	120	140	15	62	14	53	5	19	1	6	3	12	4	1

1/ persons who have obtained a permit to emigrate to another country

2/ International Standard Classification of Occupations, Revised Edition, 1950

Table 31 (b)-0. Social long-term emigrants<sup>1/</sup> by Major Occupational Group, age and sex, 1965

Major Occupational Group <sup>2/</sup>	Age (completed years)																
	All ages		20		20 - 24		25 - 34		35 - 44		45 - 54		55+		Not stated		
	Both sexes	Male	Female	Male	Female	Male	Female	Male	Female	Male	Female	Male	Female	Male	Female		
Total number of emigrants	1,585	742	843	109	197	116	251	325	297	130	57	40	17	17	24	5	-
Emigrants reporting an occupation	1,111	615	496	6	63	107	162	321	216	123	39	38	8	11	1	4	-
0/1 Professional, Technical & Related Workers	112	90	22	-	-	14	3	44	12	22	2	6	4	4	1	-	-
2 Administrative and Managerial Workers	5	4	1	-	-	1	-	1	1	1	-	-	-	1	-	-	-
3 Clerical & Related Workers	106	58	48	1	6	19	12	32	24	4	5	2	1	-	-	-	-
4 Sales Workers	8	3	5	-	1	-	2	-	2	2	-	1	-	-	-	-	-
5 Service Workers	427	49	378	1	48	18	141	16	162	9	25	4	2	-	-	1	-
6 Agriculture, Animal Husbandry & Forestry Workers, Fishermen and Hunters	146	146	-	1	-	22	-	84	-	30	-	5	-	2	-	2	-
7/8/9 Production & Related Workers, Transport Equipment Operators and Labourers	267	244	23	3	3	28	7	135	9	55	3	18	1	4	-	1	-
X Workers not classifiable by Occupation	40	21	19	-	5	5	4	9	6	5	4	2	-	-	-	-	-
Emigrants not reporting any occupation (including housewives and children)	474	127	347	103	134	9	32	4	81	2	18	2	2	6	23	1	-

1/ persons who have obtained a permit to emigrate to another country

2/ International Standard Classification of Occupations - 1968 Edition, 1968

Table 32 - Official long-term emigrants<sup>1/</sup> by occupation, 1983 - 1985

Occupation	1983	1984	1985
Accountants	-	12	8
Air hostesses	1	12	8
Cabinet makers	14	10	8
Carpenters	110	40	13
Cleaners	11	9	6
Clerks	14	24	47
Computer operators	-	-	16
Cooks	19	36	12
Doctors	2	42	1
Drivers	35	14	58
Electricians and electrical fitters	38	53	30
Engineers	10	3	8
Foremen	39	6	17
Labourers	400	253	144
Machine operators	5	2	6
Maids (domestic servants)	83	196	379
Managers	6	4	2
Masons	121	97	39
Mechanics	16	21	20
Nurses	3	235	22
Painters	24	10	17
Plumbers	15	5	9
Salesmen	6	6	6
Seamstresses and tailors	11	17	15
Steel fixers	42	7	1
Stenographers and typists	6	19	28
Storekeepers	5	7	6
Teachers	283	29	16
Technicians	25	39	33
Waiters	35	100	20
Welders	9	12	5
Other	185	178	111
Occupation not stated or nor applicable <sup>2/</sup>	162	413	474
<b>Total number of emigrants</b>	<b>1,735</b>	<b>1,961</b>	<b>1,585</b>

<sup>1/</sup> persons who have obtained a permit to emigrate to another country

<sup>2/</sup> emigrants not reporting any occupation (including housewives and children)

Table 33 - Official long-term emigrants<sup>1/</sup> by district of last residence and sex, 1984 - 1985

Geographical district	1984			1985			July - December 1985				
	1984		1985	1985		Both sexes	June 1985		Both sexes		
	Both sexes	Male		Female	Both sexes		Male	Female			
Port Louis	355	222	133	298	137	161	172	84	126	53	73
Pamplemousses	69	44	25	89	45	44	57	31	32	14	18
Rivière du Rempart	211	158	53	69	30	39	45	23	24	7	17
Flacq	143	113	30	81	51	30	47	32	34	19	15
Grand Port	88	58	30	90	26	64	45	17	45	9	36
Savanne	58	28	30	57	16	41	29	9	28	7	21
Plaines Wilhems: Urban	792	487	305	750	373	377	357	205	393	168	225
Other	31	18	13	26	13	13	11	9	15	4	11
Moka	68	37	31	60	24	36	34	15	26	9	17
Black River	52	32	20	28	12	16	12	6	16	6	10
Not stated	94	59	35	37	15	22	35	15	2	-	2
Whole island	1,961	1,256	705	1,585	742	843	844	446	741	296	445

<sup>1/</sup> persons who have obtained a permit to emigrate to another country

IV - TOURISM

Definition and notes

1. Definition of tourist

- (a) prior to 1964, a tourist has been defined as a non-resident staying in Mauritius for more than 24 hours but less than 6 months ,
- (b) as from 1964, a tourist is defined as a non-resident staying in the island for more than 24 hours but less than a year.

The figures for the two periods are nevertheless comparable because of the small number of tourists staying for more than 6 months.

2. Visitors include the following:

- (a) tourists as defined above; and
- (b) non-residents who stay in the country for less than a day, other than those who do not leave the airport.

3. Method of compilation

Certain data on tourism (such as type of visitor, tourist arrivals by month of arrival, tourist arrivals by country of residence and mode of transport) are compiled from disembarkation (arrival) cards which all passengers have to fill in when they arrive in this country. However, information on duration of stay of visitors can be compiled only from the embarkation (departure) cards which they fill in when they leave the country.

As from January 1979 figures are based on a 10% sample. Data on "visitor arrivals" are compiled both from embarkation and disembarkation cards. Since the compilation has been done on a sample basis the figures of "visitor arrivals" obtained when working with records of arrivals do not tally with those obtained when working with records of departures. The figures in the latter case have been prorated to the totals obtained when working with records of arrivals.

4. Tourist nights

Tables 34, 39 and 40 show the number of nights spent by tourists who were present in the country during the period under review. Thus the number of tourist nights for 1985 include:

- (a) the nights spent during 1985 by tourists who arrived prior to 1st January 1985; and

(b) the nights spent during 1985 by tourists who arrived during the same year

However, nights spent after 31st December 1985 by tourists who arrived in 1985 are excluded.

5. Visitor nights

The concept of visitor nights is different from that of tourist nights. Here, an attempt is made to find how many nights have been spent by the total number of visitors who arrived during the period (year) under review. For instance, the total number of visitor nights for 1985 should refer to the total number of nights spent by all visitors who arrived during the year 1985. To get this figure it is necessary to wait until all visitors who came in 1985 have left the country. However, since in principle, a visitor can stay up to one year, it is not possible to wait for so long before compiling the data. Thus, the figures for the year 1985 actually refer to the total number of nights spent as at the end of February 1986. Hence, a visitor who arrived in November 1985 and who left in March 1986 will unfortunately not be recorded in the given figures. However, because of the very small number of visitors who stay for more than two months, the errors should probably not be very significant.

6. Mauritians settled abroad are excluded from figures of tourists and visitors. Data referring to them are shown separately in tables 49 - 51. Table 49 shows the total nights spent by Mauritians settled abroad who arrived during the period under review and who have left by a given date after the end of the period. Thus the figure for 1985 include nights spent in January - February 1986 by Mauritians settled abroad who arrived in 1985. Table 51 shows the nights spent during the period under review only. Thus the figures for 1985 include nights spent in 1985 by Mauritians settled abroad, who arrived in 1984 but exclude nights spent in January - February 1986 by those who arrived in 1985.

Table 34 - Tourist 1/ arrivals by mode of transport and tourist nights spent during period, 1966 - 1985

Period	Tourists arriving during period		Tourist nights spent during period <u>2/</u>	% Change over previous year	
	Sea	Air		Tourist arrivals	Tourist nights
1966	1,328	11,712	162,269	+ 29.6	+ 12.0
1967	937	13,877	171,967	+ 13.6	+ 6.0
1968	647	14,906	149,507	+ 5.0	- 13.1
1969	455	20,132	220,572	+ 32.4	+ 47.5
1970	365	27,285	287,591	+ 34.3	+ 30.4
1971	168	36,230	399,739	+ 31.6	+ 39.0
1972	143	48,654	454,274	+ 34.1	+ 13.6
1973	1,293 <sup>3/</sup>	66,701	733,065	+ 39.3	+ 61.4
1974	472	72,443	772,183	+ 7.2	+ 5.3
1975	554	74,043	746,898	+ 2.3	- 3.3
1976	778	91,783	892,222	+ 24.1	+ 19.5
1977	1,035	101,475	994,766	+ 10.7	+ 11.5
1978	696	107,626	1,051,610	+ 5.7	+ 5.7
1979	510	127,850	1,119,610	+ 18.5	+ 35.0
1980	470	114,610	1,301,730	- 10.3	- 8.3
1981	590	121,030	1,361,190	+ 5.7	+ 4.6
1982	680	117,680	1,392,510	- 2.7	+ 2.3
1983	960	122,860	1,405,870	+ 4.6	+ 1.0
1984	1,230	138,440	1,541,590	+ 12.8	+ 9.7
1985	920	147,940	1,735,960	+ 6.6	+ 12.6

1/ see notes on page 39

2/ include nights spent during reference period by tourists arriving prior to the period

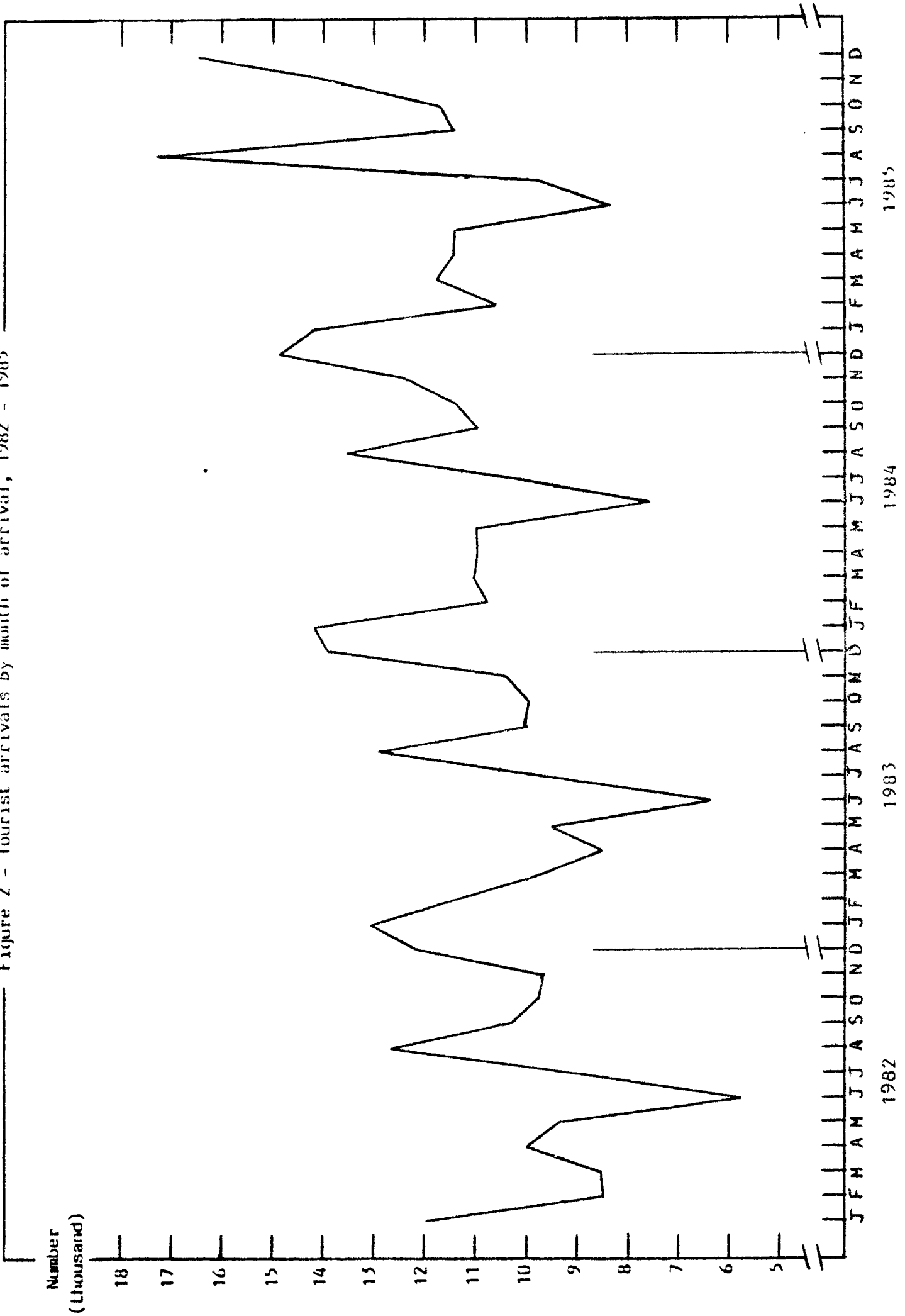
3/ includes about 700 persons who came for a religious conference

Table 35 - Tourist arrivals by month of arrival, 1974 - 1985

Month of arrival	1974	1975	1976	1977	1978	1979	1980	1981	1982	1983	1984	1985
January	8,495	8,401	10,055	11,507	10,808	12,640	10,990	11,180	11,980	13,130	14,180	14,250
February	5,954	4,017	7,035	8,433	8,452	9,930	8,650	9,300	8,450	9,190	10,850	10,620
March	5,272	4,383	6,149	6,974	7,715	9,410	9,610	9,230	8,590	9,780	11,130	11,780
April	5,299	4,477	6,753	8,245	7,836	10,860	8,290	10,440	10,050	8,570	11,080	11,480
May	5,203	5,235	7,385	7,974	7,337	10,300	8,870	8,980	9,600	9,550	11,080	11,470
June	4,661	3,740	4,849	5,432	5,244	7,190	5,970	6,240	5,810	6,370	7,590	8,380
July	5,379	5,739	7,551	8,832	8,599	10,270	8,310	8,770	9,170	9,790	10,430	9,840
August	9,026	10,844	11,851	11,927	13,477	14,710	12,790	12,950	12,730	12,970	13,650	17,410
September	5,183	5,706	6,004	6,463	7,616	9,860	8,910	10,720	10,280	10,070	10,980	11,510
October	5,202	5,586	7,757	7,982	9,130	9,760	9,660	9,820	9,800	10,020	11,360	11,720
November	5,650	6,634	7,157	7,859	9,719	10,310	9,770	10,630	9,720	10,450	12,420	13,870
December	7,591	9,835	10,015	10,882	12,389	13,120	13,260	13,360	12,180	13,930	14,920	16,530
Whole year	72,915	74,597	92,561	102,510	108,322	128,360	115,080	121,620	118,360	123,820	139,670	148,860



Figure 2 - Tourist arrivals by month of arrival, 1982 - 1985



1982

1983

1984

1985



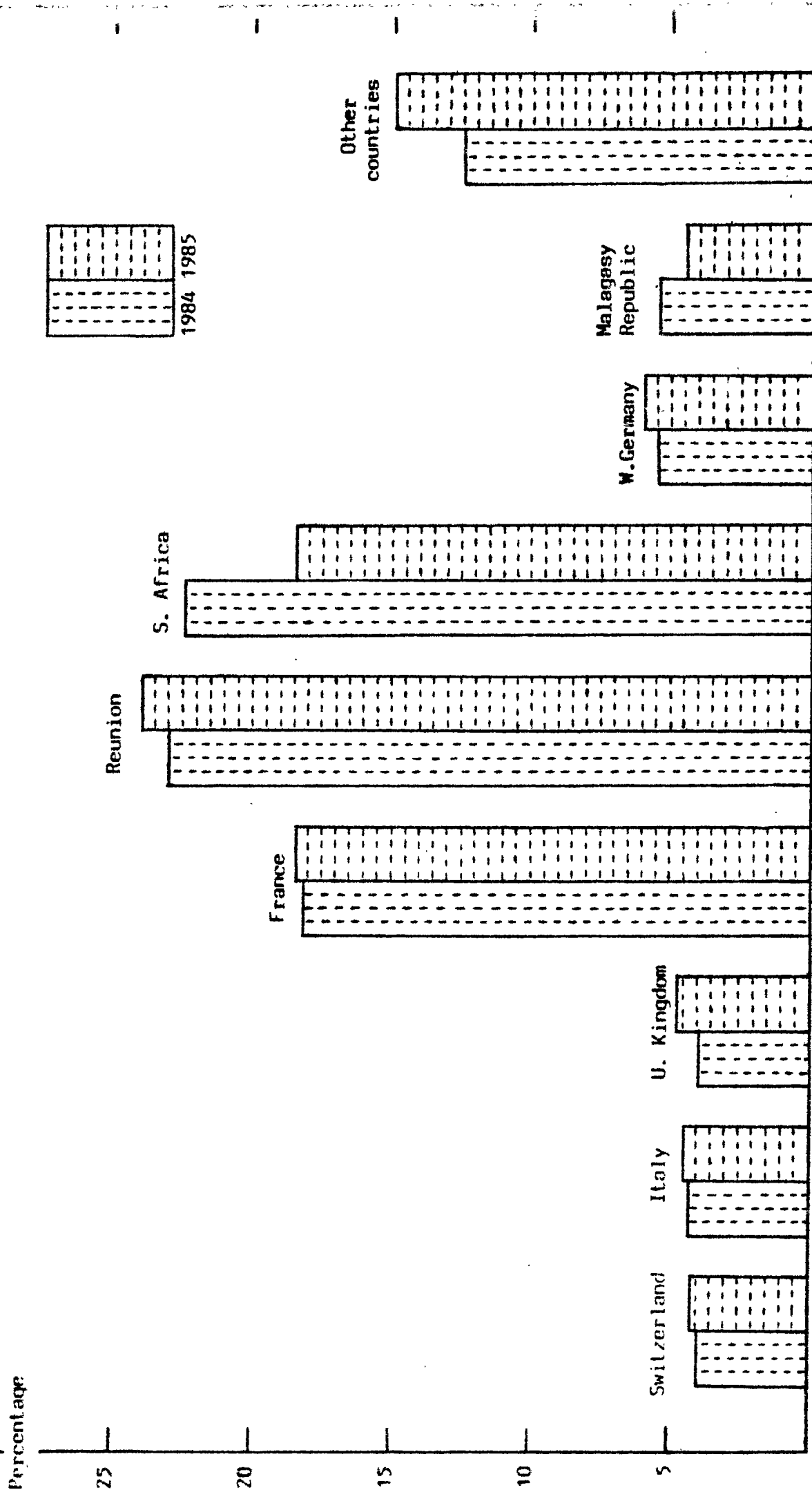
Table 37 - Tourist arrivals by country of residence, 1974 ... 1985

Country of residence	1974	1975	1976	1977	1978	1979	1980	1981	1982	1983	1984	1985
Australia	3,351	3,417	3,579	2,812	2,730	4,780	3,460	3,680	2,680	1,680	1,580	2,460
Belgium	502	554	597	825	939	1,060	730	770	610	590	840	840
France	7,874	8,929	13,385	17,628	21,240	25,720	19,620	21,820	22,450	22,050	25,460	27,470
Germany, Fed. Rep. of	1,951	1,533	1,532	2,535	2,811	5,550	9,050	7,470	7,040	6,960	7,890	8,920
India	1,308	1,944	2,676	2,704	2,913	2,950	2,950	2,350	1,840	1,710	2,540	2,980
Italy	1,937	1,712	2,115	3,302	3,498	3,760	4,300	5,940	5,690	5,520	6,170	6,830
Kenya	898	707	1,057	909	826	1,000	910	940	680	690	700	780
Malagasy Republic	2,679	1,976	3,035	5,273	4,891	6,220	6,480	6,890	7,090	8,110	7,780	6,710
Reunion	23,232	24,853	30,032	29,926	29,717	29,740	26,570	27,620	30,220	30,180	32,300	35,630
Seychelles	431	405	428	505	545	520	450	600	560	560	340	770
South Africa, Rep. of	14,193	14,740	17,823	18,205	18,956	23,420	21,180	24,940	22,630	27,150	31,560	27,410
Switzerland	840	876	1,014	1,189	1,449	1,950	1,570	1,500	1,560	2,570	5,440	6,480
Tanzania	282	125	254	439	459	520	620	630	390	330	230	550
United Kingdom	3,452	3,598	4,852	6,024	7,133	8,180	7,690	6,340	5,780	5,860	5,760	7,110
U.S.A.	1,000	893	738	921	862	1,090	970	1,100	960	1,020	1,130	1,460
Zambia	3,332	2,406	1,884	2,865	2,549	2,390	1,180	1,290	1,050	720	680	400
Zimbabwe	591	1,232	920	440	688	1,290	630	1,180	910	1,730	1,800	1,900
Other countries	5,062	4,697	6,160	6,008	6,116	8,220	6,720	6,560	6,220	6,390	7,470	10,160
All countries	72,915	74,597	92,561	102,510	108,322	128,360	115,080	121,620	118,360	123,820	139,670	148,860

1/ see notes on page 39



Figure 3 - Percentage distribution of tourist arrivals by country of residence, 1984 - 1985



The first part of the document discusses the importance of maintaining accurate records of all transactions. It emphasizes that every entry should be supported by a valid receipt or invoice. This ensures transparency and allows for easy verification of the data.

In the second section, the author details the various methods used to collect and analyze the data. This includes both manual and automated processes. The manual process involves reviewing each entry individually, while the automated process uses software to identify patterns and anomalies.

The third section describes the results of the analysis. It shows that there are several areas where the data is inconsistent or incomplete. These areas need to be addressed to ensure the overall accuracy of the records.

Finally, the document concludes with a series of recommendations. These include implementing stricter controls over data entry, improving the quality of the source documents, and conducting regular audits to catch any errors early on.

Table 39 - Tourist<sup>1</sup>/nights by country of residence of tourist, 1974 - 1985

Country of residence	1974	1975	1976	1977	1978	1979	1980	1981	1982	1983	1984	1985
Australia	26,014	26,080	26,487	23,198	25,047	38,570	40,270	48,070	28,270	31,560	21,050	27,520
Belgium	8,198	8,202	9,129	12,041	12,589	18,320	12,670	15,730	7,730	7,980	10,410	11,990
France	100,673	99,847	151,971	189,961	219,947	263,200	233,190	259,250	288,520	278,650	309,170	348,960
Germany, Fed. Rep. of	27,796	23,068	21,128	32,015	40,450	94,060	125,710	121,430	117,670	112,150	116,580	146,620
India	15,287	17,285	22,501	22,769	26,377	33,370	47,960	36,170	26,800	37,630	33,230	51,170
Italy	20,876	15,703	21,217	30,424	29,898	44,530	40,880	61,110	64,060	65,000	73,090	76,420
Kenya	6,371	5,532	7,492	7,474	6,746	10,310	9,290	6,960	8,830	8,730	7,100	7,910
Malagasy Republic	26,965	17,735	29,081	42,440	33,597	48,460	43,030	42,060	54,350	53,620	57,710	52,100
Reunion	227,129	220,288	244,391	243,402	237,919	243,870	243,720	230,660	294,210	243,840	264,530	337,440
Seychelles	4,239	4,000	4,867	6,254	6,513	4,810	8,710	4,350	4,590	8,350	8,620	11,240
South Africa, Rep. of	138,178	145,596	172,865	169,522	179,566	282,740	206,670	230,850	210,560	246,870	287,350	258,470
Switzerland	10,770	10,522	13,653	17,164	17,625	21,190	25,390	20,250	31,990	36,750	74,210	95,320
Tanzania	2,563	1,512	2,892	3,582	4,035	4,750	4,460	3,680	4,100	4,550	3,310	2,970
United Kingdom	56,923	61,943	71,336	86,855	107,921	144,280	142,070	137,540	120,230	127,780	122,570	123,880
U.S.A.	9,511	9,481	7,261	8,676	7,478	17,910	10,590	13,930	17,890	11,620	15,400	21,560
Zambia	34,948	22,394	17,006	23,779	23,457	22,800	13,380	11,180	15,200	16,890	9,020	8,030
Zimbabwe	7,174	14,133	10,513	5,527	10,913	15,110	9,450	11,320	11,480	19,910	21,070	28,490
Other countries	48,568	43,577	58,432	69,683	61,532	111,330	84,290	106,650	86,030	93,990	107,170	125,870
All countries	772,183	746,898	892,222	994,766	1,051,610	1,419,610	1,301,730	1,361,190	1,392,510	1,405,870	1,541,590	1,735,960

<sup>1</sup>/ see notes on page 32

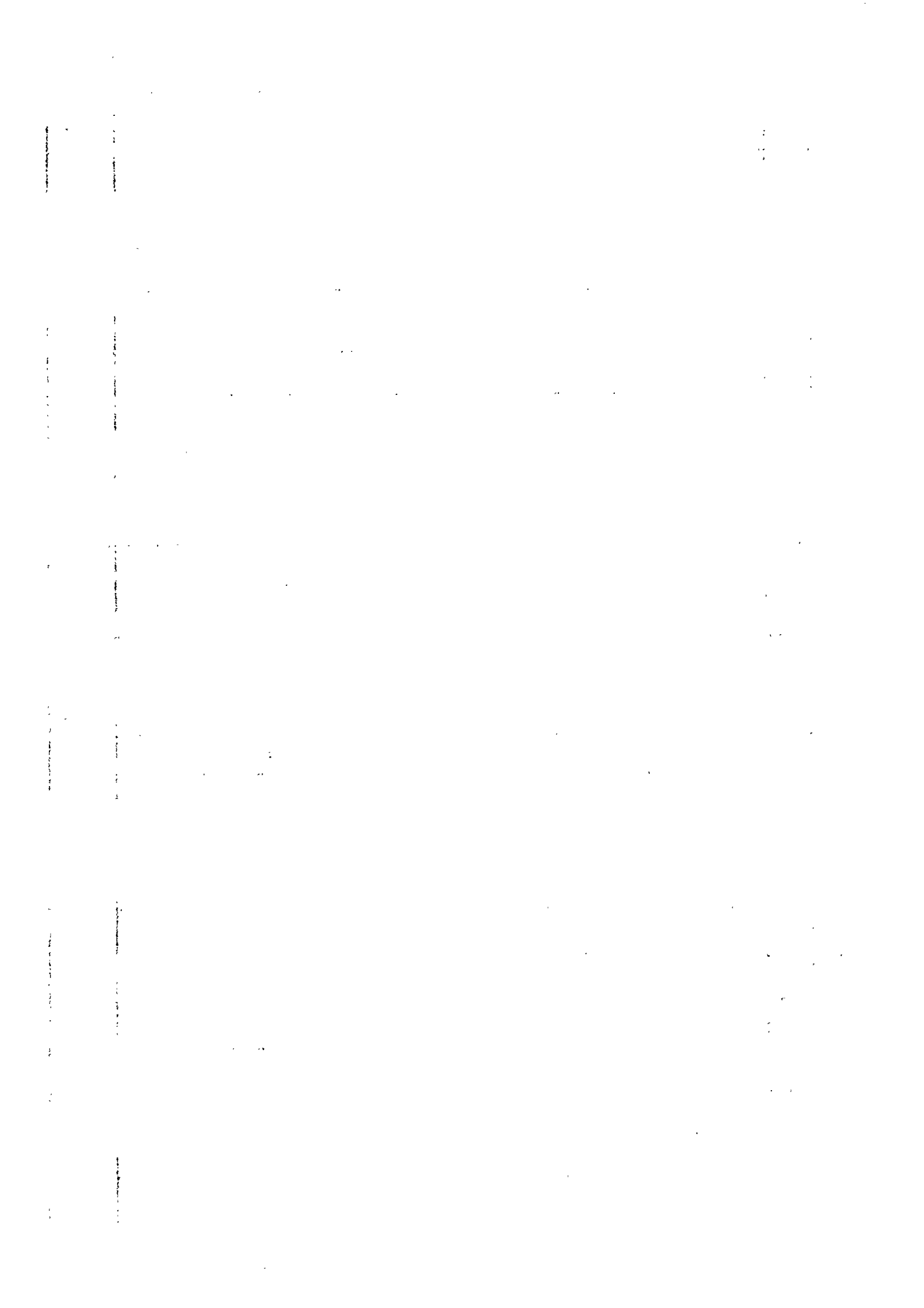




Figure 4 - Total arrivals and tourist arrivals, 1972 - 1985

Number  
(thousand)

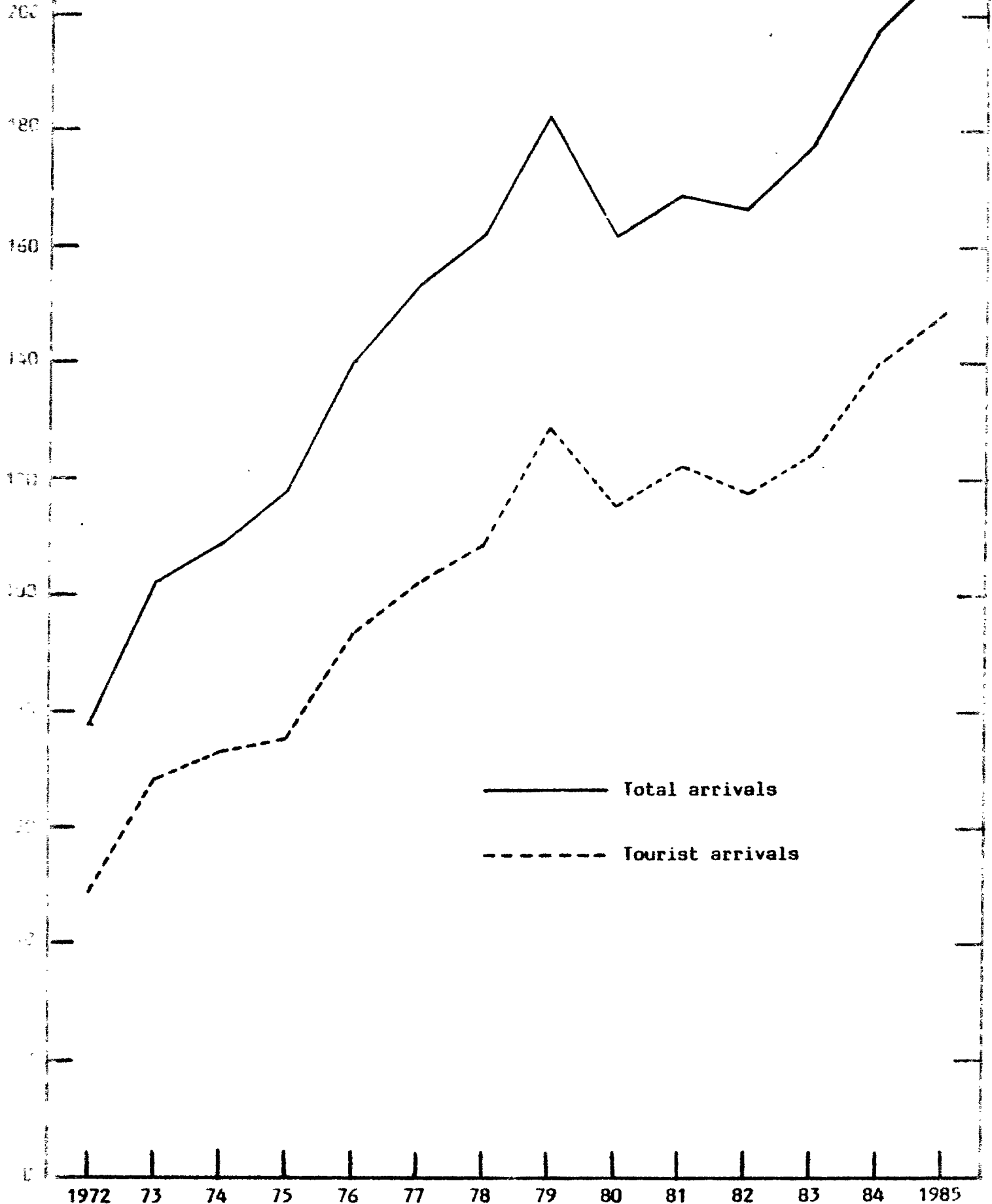


Figure 5 - Tourist nights and visitor nights, 1973 - 1985

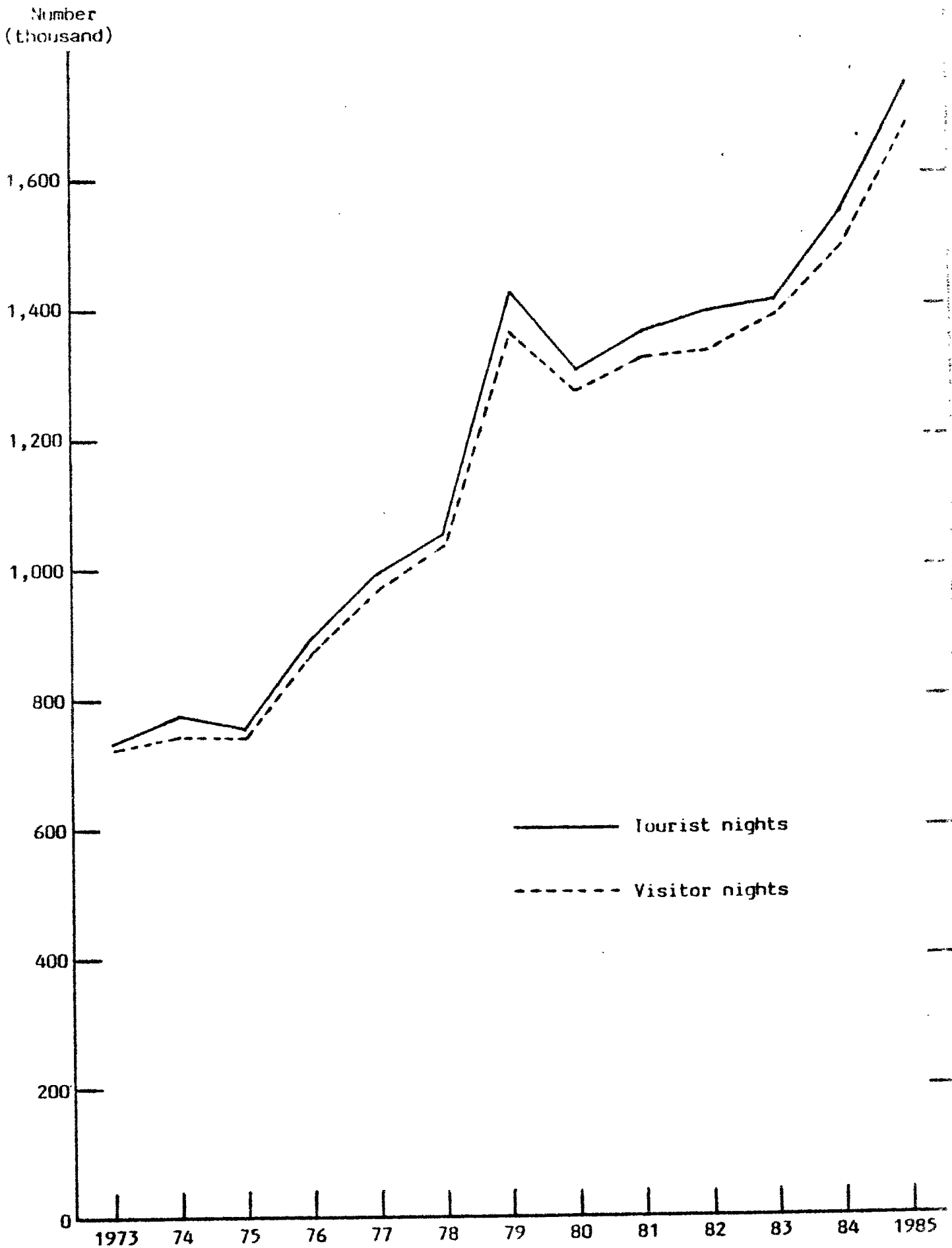


Table 40 - Tourist arrivals and tourist nights <sup>1/</sup> by country of residence, 1985

Country of residence	Tourist arrivals	Tourist nights spent during period
Australia	2,460	27,520
Belgium	840	11,990
France	27,470	348,960
Germany, Fed. Rep. of	8,920	146,620
India	2,980	51,170
Italy	6,830	76,420
Kenya	780	7,910
Malagasy Republic	6,710	52,100
Reunion	35,630	337,440
Seychelles	770	11,240
South Africa, Rep. of	27,410	258,470
Switzerland	6,480	95,320
Tanzania	550	2,970
United Kingdom	7,110	123,880
U.S.A.	1,460	21,560
Zambia	400	8,030
Zimbabwe	1,900	28,490
Other countries	10,160	125,870
All Countries	148,860	1,735,960

<sup>1/</sup> see notes on page 39

Table 41 - Visitor <sup>1/</sup> arrivals by age and sex, 1984 - 1985

Age (completed years)	1 9 8 4 <sup>2/</sup>			1 9 8 5 <sup>3/</sup>		
	Both sexes	Male	Female	Both sexes	Male	Female
Under 1	710	370	340	880	520	360
1 - 4	4,440	2,180	2,260	4,520	2,260	2,260
5 - 9	6,120	3,450	2,670	6,360	3,310	3,050
10 - 14	6,150	3,250	2,900	6,600	3,470	3,130
15 - 19	6,300	2,890	3,410	6,280	2,850	3,430
20 - 24	13,320	5,870	7,450	13,050	5,540	7,510
25 - 29	19,190	10,050	9,140	21,470	11,330	10,140
30 - 34	18,960	10,820	8,140	20,640	11,690	8,950
35 - 39	18,320	10,870	7,450	19,020	11,160	7,860
40 - 44	13,750	8,430	5,320	15,500	9,510	5,990
45 - 49	11,020	6,560	4,460	12,390	7,100	5,290
50 - 54	8,260	4,930	3,330	9,270	5,320	3,950
55 - 59	6,480	3,550	2,930	6,640	3,830	2,810
60 - 64	4,530	2,370	2,160	5,150	2,870	2,280
65 - 69	2,330	1,230	1,100	2,770	1,450	1,320
70 and over	2,650	1,270	1,380	2,480	1,370	1,110
Not stated	680	440	240	670	400	270
All ages	143,210	78,530	64,680	153,690	83,980	69,710

<sup>1/</sup> see notes on page 39  
<sup>2/</sup> visitors arriving in 1984 and leaving before 1.3.85  
<sup>3/</sup> visitors arriving in 1985 and leaving before 1.3.86

Table 42 - Visitor arrivals and visitor nights <sup>1/</sup> by country of residence, 1984 - 1985

Country of residence	1984 <sup>2/</sup>			1985 <sup>3/</sup>		
	Visitor arrivals	Visitor nights	Average length of stay	Visitor arrivals	Visitor nights	Average length of stay
Australia	1,430	21,370	14.9	2,360	27,540	11.7
Belgium	670	10,170	15.2	680	11,100	16.3
France	25,520	307,960	12.1	27,500	334,910	12.2
Germany, Fed. Rep. of	7,750	117,850	15.2	8,670	140,600	16.2
India	2,120	20,810	9.8	3,640	41,780	11.5
Italy	6,120	69,910	11.4	7,030	75,130	10.7
Kenya	760	7,270	9.6	910	7,610	8.4
Malagasy Republic	7,730	54,980	7.1	6,680	48,830	7.3
Réunion	35,050	259,910	7.4	38,430	330,630	8.6
Seychelles	460	8,660	18.8	670	9,990	14.9
South Africa, Rep. of	32,260	286,290	8.9	28,300	260,730	9.2
Switzerland	5,770	71,580	12.4	7,020	97,690	13.9
Tanzania	440	3,750	8.5	400	2,700	6.8
United Kingdom	5,830	116,270	19.9	6,830	119,550	17.5
U.S.A.	1,240	13,140	10.6	1,480	14,940	10.1
Zambia	760	8,770	11.5	580	8,020	13.8
Zimbabwe	1,640	21,790	13.3	2,140	27,810	13.0
Other countries	7,660	89,910	11.7	10,370	116,520	11.2
All countries	143,210	1,490,390	10.4	153,690	1,676,080	10.9

<sup>1/</sup> see notes on page 39

<sup>2/</sup> figures refer to visitors arriving in 1984 and leaving before 1.3.85 and to the nights spent by them.

<sup>3/</sup> figures refer to visitors arriving in 1985 and leaving before 1.3.86 and to the nights spent by them

Table 43 - Visitor <sup>1/</sup> arrivals by duration of stay, 1984 - 1985

Duration of stay	1984 <sup>1/</sup>		1985 <sup>2/</sup>	
	Number	Percentage	Number	Percentage
Less than 1 day	3,540	2.5	4,830	3.1
1 day	3,730	2.6	3,890	2.5
2 days	5,470	3.8	5,770	3.7
3 days	9,430	6.6	9,940	6.5
4 "	9,950	7.0	9,960	6.5
5 "	8,520	6.0	8,620	5.6
6 "	11,560	8.1	11,770	7.7
7 "	26,380	18.4	27,600	18.0
8 "	6,610	4.6	7,180	4.7
9 "	7,140	5.0	6,240	4.1
10 "	3,870	2.7	5,590	3.6
11 "	7,960	5.6	8,220	5.3
12 "	3,350	2.3	4,970	3.2
13 "	2,500	1.7	2,850	1.9
14 "	11,660	8.1	10,420	6.8
15 "	1,410	1.0	2,270	1.5
16 "	1,600	1.1	1,440	0.9
17 "	800	0.6	990	0.6
18 "	2,560	1.8	3,550	2.3
19 "	1,060	0.7	1,560	1.0
20 - 24 "	4,890	3.4	5,930	3.9
25 - 29 "	3,440	2.4	3,640	2.4
1 month - under 2 months	4,250	3.0	4,700	3.1
2 months - under 3 months	930	0.6	970	0.6
3 months and over	600	0.4	790	0.5
<b>Total</b>	<b>143,210</b>	<b>100.0</b>	<b>153,690</b>	<b>100.0</b>

<sup>1/</sup> see notes on page 39

<sup>2/</sup> visitors arriving in 1984 and leaving before 1.3.85

<sup>3/</sup> visitors arriving in 1985 and leaving before 1.3.86

Table 44(a) - Visitor arrivals by country of residence and duration of stay, 1984

Country of residence	Duration of stay in days											Total visitors	
	0	1 & 2	3 & 4	5 & 6	7 & 8	9 & 10	11 & 12	13 & 14	15 - 19	20 - 24	25 - 29		30+
Australia	10	120	280	250	240	50	50	60	10	80	10	270	1,430
Belgium	20	30	60	50	120	10	20	120	50	30	60	100	670
France	400	1,420	3,530	3,870	4,410	1,890	1,440	3,410	1,470	1,100	1,000	1,580	25,520
Germany, Fed. Rep. of	90	200	300	200	1,090	140	790	1,690	1,460	1,070	440	280	7,750
India	70	300	390	370	480	60	90	70	70	50	50	120	2,120
Kenya	20	110	180	160	90	50	50	30	30	-	-	40	760
Malagasy Rep.	170	530	1,160	3,020	1,940	350	110	180	70	50	40	110	7,730
Reunion	1,650	3,310	9,010	6,120	7,180	2,340	1,210	1,340	960	630	480	820	35,050
South Africa, Rep. of	320	1,670	2,500	2,960	11,380	4,600	3,970	2,460	1,310	380	440	270	32,260
Switzerland	110	110	200	240	1,340	220	1,310	840	850	220	160	170	5,770
United Kingdom	60	310	340	410	860	190	300	930	390	490	370	1,180	5,830
U.S.A.	30	170	210	230	150	90	50	100	40	80	30	60	1,240
Zambia	70	30	-	40	240	30	10	270	10	20	10	30	760
Zimbabwe	10	10	60	40	270	10	30	960	20	190	30	10	1,640
Other countries	510	880	1,160	2,120	3,200	980	1,880	1,700	690	500	320	740	14,680
All countries	3,540	9,200	19,380	20,000	32,990	11,010	11,310	14,160	7,430	4,890	3,440	5,780	143,210





Table 5(a) - Visitor arrivals and visitor nights<sup>1/</sup> by country of nationality, 1984

Country of nationality	Visitor arrivals <sup>2/</sup>	Visitor nights <sup>3/</sup>	Average length of stay
Australia	1,430	21,280	14.9
Belgium	870	12,560	14.4
France	61,620	575,700	9.3
Germany, Fed. Rep. of	8,290	122,210	14.7
India	2,470	22,440	9.1
Italy	6,480	72,020	11.1
Kenya	170	2,510	14.8
Malagasy Republic	6,860	47,640	6.9
South Africa, Rep. of	28,330	250,450	8.8
Switzerland	5,610	69,610	12.4
Tanzania	130	1,040	8.0
United Kingdom	9,700	156,400	16.1
U.S.A.	1,630	16,200	9.9
Zambia	240	2,970	12.4
Zimbabwe	1,140	14,970	13.1
Other countries	8,240	102,390	12.4
All countries	143,210	1,490,390	10.4

1/ see notes on page 39

2/ figures refer to visitors arriving in 1984 and leaving before 1.3.85

3/ figures refer to nights spent by visitors arriving in 1984 and leaving before 1.3.85

Table 45(b) - Visitor arrivals and visitor nights <sup>1/</sup> by country of nationality, 1985

Country of nationality	Visitor arrivals <sup>2/</sup>	Visitor nights <sup>3/</sup>	Average length of stay
Australia	2,200	27,450	12.5
Belgium	320	11,970	14.6
France	67,140	672,280	10.0
Germany, Fed. Rep. of	9,400	147,570	15.7
India	3,970	44,830	11.3
Italy	7,320	78,030	10.7
Kenya	250	3,120	12.5
Malagasy Republic	5,520	41,780	7.6
South Africa, Rep. of	24,560	227,490	9.3
Switzerland	6,750	93,980	13.9
Tanzania	160	1,210	7.6
United Kingdom	10,560	156,060	14.4
U.S.A.	1,910	18,760	9.8
Zambia	160	3,260	20.4
Zimbabwe	1,240	14,840	12.0
Other countries	11,430	133,450	11.7
All countries	153,690	1,676,030	10.9

1/ see notes on page 39

2/ figures refer to visitors arriving in 1985 and leaving before 1.3.86

3/ figures refer to nights spent by visitors arriving in 1985 and leaving before 1.3.86

Table 46 - Gross earnings from tourism, 1976 - 1985

	1976	1977	1978	1979	1980	1981	1982	1983	1984	1985
Earnings (Rs Mn)	184	210	230	260	361	421	450	503	630	840 <sup>1/</sup>

<sup>1/</sup> provisional

Source: Bank of Mauritius

Table 47 - Hotels, rooms and bed places, 1976 - 1985

Year	No. of hotels <sup>1/</sup>	No. of rooms	No. of bed places
1976	37	1,881	3,688
1977	37	1,881	3,688
1978	38	1,931	3,888
1979	38	1,931	3,888
1980	43	2,000	4,000
1981	51	2,201	4,484
1982	51	2,204	4,530
1983	55	2,300	4,900
1984	54	2,488	5,102
1985	55	2,630	5,387

<sup>1/</sup> as from 1984 figures exclude hotels which have been converted to boarding houses but include newly constructed hotels



Figure 6 - Gross Earnings from Tourism, 1975 - 1985

Earnings  
(Rs million)

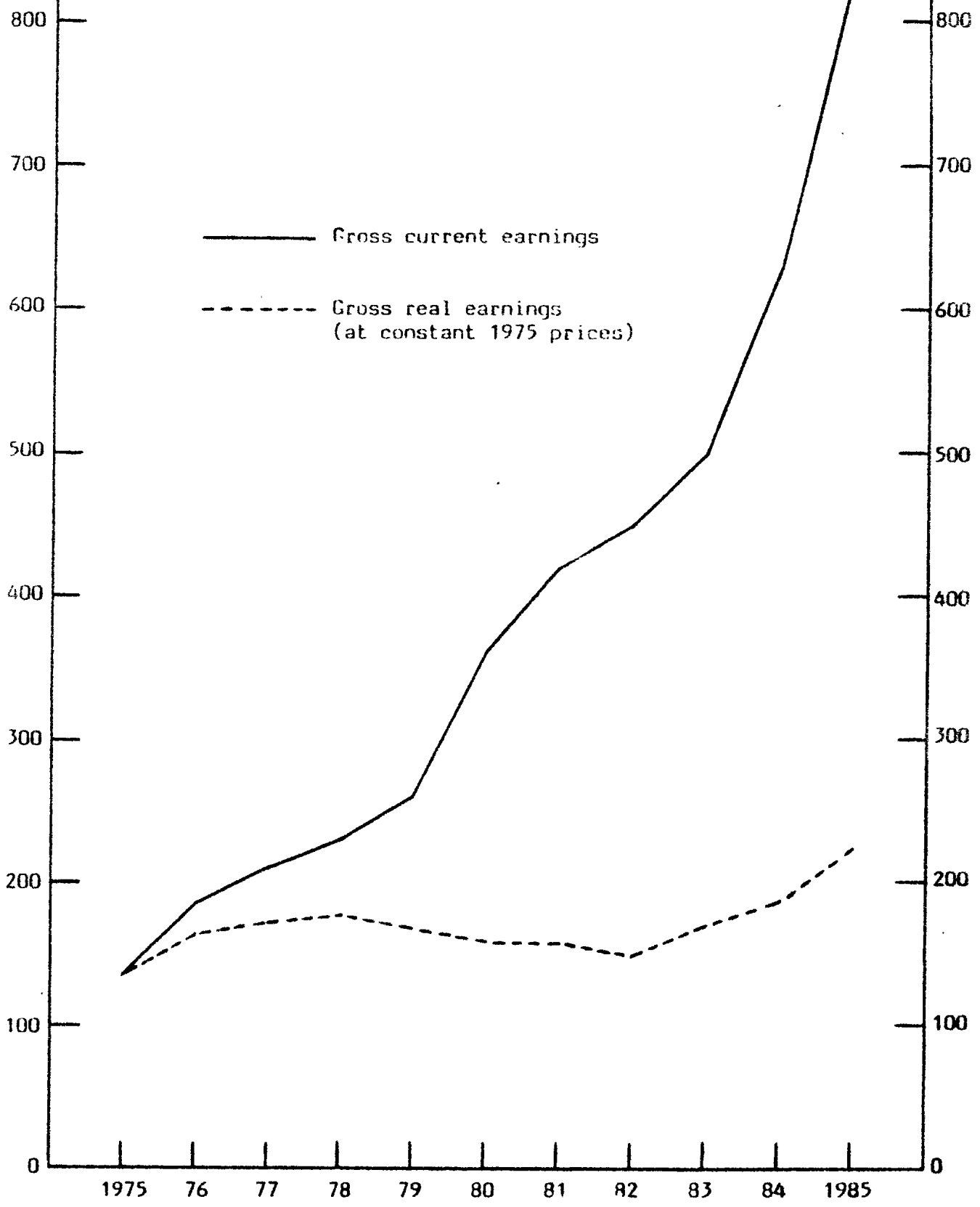


Table 48 - Monthly occupancy rates in hotels, 1984 - 1985

Month	1984			1985		
	Total <sup>1/</sup> room	Tourist <sup>2/</sup> room	Total <sup>3/</sup> bed	Total <sup>1/</sup> room	Tourist <sup>2/</sup> room	Total <sup>3/</sup> bed
January	79.3	78.9	69.9	79.4	79.2	68.7
February	80.9	80.0	68.5	80.6	79.5	68.5
March	78.0	77.7	64.4	75.6	75.4	61.9
April	74.0	73.8	64.6	69.3	69.3	59.2
May	69.2	68.8	57.3	61.1	60.0	50.1
June	51.9	51.4	41.8	46.0	45.4	36.3
July	56.1	55.4	47.4	51.8	51.1	42.7
August	65.7	64.9	56.6	64.7	64.0	55.9
September	65.9	65.5	55.9	61.9	61.1	51.3
October	73.9	73.5	62.1	69.5	68.9	58.3
November	81.5	81.1	67.9	83.2	82.5	68.9
December	72.3	70.7	62.8	73.4	73.2	65.9
Mean	70.7	70.1	60.0	68.0	67.4	57.2

<sup>1/</sup>  $\frac{\text{Total number of room nights rented}}{\text{Total number of room nights available}} \times 100$

<sup>2/</sup>  $\frac{\text{Number of room nights rented to tourists}}{\text{Total number of room nights available}} \times 100$

<sup>3/</sup>  $\frac{\text{Total number of bed nights rented}}{\text{Total number of bed nights available}} \times 100$

Table 49 - Arrivals of Mauritians settled abroad (excluding students) and nights spent by them by country of residence, 1984 - 1985

Country of residence	1984 <sup>1/</sup>			1985 <sup>2/</sup>		
	Arrivals	Nights	Average length of stay	Arrivals	Nights	Average length of stay
Australia	820	32,370	39.5	930	32,620	35.1
Belgium	150	5,490	36.6	180	6,300	35.0
Canada	300	11,930	39.8	370	14,570	39.4
France	3,040	118,830	39.1	2,810	95,700	34.1
Germany, Fed. Rep. of	140	5,260	37.6	150	5,610	37.4
Italy	120	4,370	36.4	130	4,460	34.3
Malagasy Republic	50	1,190	23.8	20	350	17.5
Malawi	80	2,320	29.0	130	3,750	28.8
Reunion	2,180	49,230	22.6	2,360	50,140	21.2
Switzerland	190	6,910	36.4	280	7,770	27.8
South Africa, Rep. of	660	20,450	31.0	710	19,250	27.1
United Kingdom	3,580	144,270	40.3	3,690	145,970	39.6
Zambia	50	1,810	36.2	40	1,160	29.0
Other countries	850	24,580	28.9	860	28,490	33.1
All countries	12,210	429,010	35.1	12,660	416,140	32.9

1/ figures refer to Mauritians settled abroad arriving in 1984 and leaving before 1.3.85 and to the total nights spent by them in 1984 and 1985

2/ figures refer to Mauritians settled abroad arriving in 1985 and leaving before 1.3.86 and to the total nights spent by them in 1985 and 1986

See notes on page 39

Table 50 - Arrivals of Mauritiens settled abroad (excluding students)  
by duration of stay, 1984 - 1985

Duration of stay	1984 <sup>1/</sup>	1985 <sup>2/</sup>
Less than 1 day	50	160
1 day	90	40
2 days	110	210
3 days	210	210
4 days	100	180
5 days	180	130
6 days	140	140
7 days	220	360
8 days	140	150
9 days	150	230
10 days	110	140
11 days	100	170
12 days	190	220
13 days	180	150
14 days	230	310
15 days	150	130
16 days	110	190
17 days	110	130
18 days	250	200
19 days	220	250
20 - 24 days	1,000	940
25 - 29 days	1,600	1,370
1 month - under 2 months	5,040	5,410
2 months - under 3 months	1,070	800
3 months and over	460	440
<b>Total</b>	<b>12,210</b>	<b>12,660</b>

<sup>1/</sup> figures refer to Mauritiens settled abroad arriving in 1984 and leaving before 1.3.85

<sup>2/</sup> figures refer to Mauritiens settled abroad arriving in 1985 and leaving before 1.3.86

See notes on page 39



Table 51 - Total nights spent by Mauritians settled abroad (excluding students)  
by country of residence, 1984 - 1985

Country of residence	1984 <sup>1/</sup>	1985 <sup>2/</sup>
Australia	33,030	36,830
Belgium	6,740	6,150
Canada	11,760	18,610
France	140,770	114,200
Germany, Fed. Rep. of	5,620	6,230
Italy	4,340	4,830
Malagasy Republic	1,190	350
Malawi	6,540	3,840
Reunion	54,090	60,600
Switzerland	8,270	9,320
South Africa, Rep. of	20,580	22,140
United Kingdom	151,880	172,670
Zambia	2,210	1,820
Other countries	27,850	35,320
All countries	474,870	492,910

1/ figures refer to nights spent during 1984 by Mauritians settled abroad arriving in 1984 or before and leaving before 1.3.85

2/ figures refer to nights spent during 1985 by Mauritians settled abroad arriving in 1985 or before and leaving before 1.3.86

See notes on page 39

# INTERNATIONAL EMBARKATION AND DISEMBARKATION CARD

## *Carte Internationale d'Embarquement et de Débarquement*

1. Mr/M. }  
Mrs/Mme. } .....  
Miss/Mlle. } (Surname / Nom)

.....  
(Given Names / Prénoms)

2. Date and place of Birth  
*Date et lieu de naissance* .....

3. Nationality  
*Nationalité* .....

4. Occupation  
*Profession* .....

5. Permanent address  
*Domicile* .....

---

### For Passengers Leaving/Pour les Passagers au Départ

6. Port of final destination  
*Lieu de destination finale* .....

---

### For Arriving Passengers/Pour les Passagers à l'Arrivée

7. Port of original embarkation  
*Lieu d'embarquement d'origine* .....

8. Purpose of journey to Mauritius  
*Motif du voyage à l'île Maurice* .....

9. Intended length of stay in Mauritius  
*Durée probable du séjour à l'île Maurice* .....

10. Intended address during stay in Mauritius  
*Adresse prévue pendant le séjour à Maurice* .....

11. Passport No., Place and Date of Issue  
*Numéro du passeport, lieu et date d'émission* .....