

DIGEST OF
INTERNATIONAL TRAVEL
AND
TOURISM STATISTICS
2013

INTERNATIONAL TRAVEL AND TOURISM STATISTICS

Vol. 40

2013

"International Travel and Tourism Statistics" is a regular publication of the Statistics Mauritius, designed to present in a single report, detailed statistics concerning international travel and tourism relating to Mauritius.

The statistical tables presented in this report have been compiled from data collected from the passport of travellers, disembarkation cards filled in by non-residents, questions put to non-residents entering the country, hotels and administrative records.

Statistical data on International Travel and Tourism are constantly updated as more reliable information become available, necessitating minor changes over previous issues of this publication. The figures published in this issue therefore supersede those of all previous issues.

It is hoped that the data herewith assembled will prove useful to the public in general and to policy makers, planners and research workers in particular.

The publication of this report has been made possible with the collaboration of the Passport and Immigration Office and the Ministry of Tourism and Leisure. Their co-operation is herewith gratefully acknowledged.

L.F Cheung Kai Suet

Director of Statistics

Statistics Mauritius
Ministry of Finance and Economic Development
PORT LOUIS
MAURITIUS
October 2014

CONTENTS

Table	Page
I - POPULATION AND VITAL STATISTICS	
1 - Estimated resident population of Republic of Mauritius as at 31st December, 2012 & 2013	5
2 - Population growth in intercensal periods - Island of Mauritius, 1851 - 2011	5
3 - Population growth in intercensal periods - Island of Rodrigues, 1851 - 2011	6
4 - Estimated resident population by geographical district and sex - Republic of Mauritius, 2012 & 2013 (End of year estimates)	7
5 - Population and vital statistics - Republic of Mauritius, 1978 - 2013	8
6 - Growth of the resident population and vital statistics - Island of Mauritius, 2003 - 2013	9
7 - Growth of the resident population and vital statistics - Island of Rodrigues, 2003 - 2013	10
II - PASSENGER TRAFFIC	
8 - Passenger traffic by sex, 1993 - 2013	11
9 - Passenger traffic between Islands of Mauritius and Rodrigues, 1993 - 2013	12
10 - Passenger traffic by mode of transport, 1993 - 2013	16
11 - Passenger traffic by month, 2010 - 2013	17
12 - Arrivals by country of original embarkation, 2008 - 2013	18
13 - Departures by country of final destination, 2008 - 2013	19
14 - Monthly passenger traffic by type of passenger, 2013	20
15 - Passenger traffic by type of passenger, 2004 - 2013	21
16 - Total arrivals by age and sex, 2012 & 2013	22
17 - Total departures by age and sex, 2012 & 2013	23
18 - Excess of arrivals over departures by age and sex, 2012 & 2013	24
19 - Arrivals of Mauritian residents by age and sex, 2012 & 2013	25
20 - Departures of Mauritian residents by age and sex, 2012 & 2013	26
21 - Excess of arrivals over departures of Mauritian residents by age and sex, 2012 & 2013	27
22 - Arrivals and departures of Mauritian residents by country of embarkation and disembarkation, 2011 - 2013	28

CONTENTS

Table		Page
	III - TOURISM	
	Definition and notes	29
23	- Tourist arrivals by mode of transport and tourist nights spent during period, 1997 - 2013	31
24	- Tourist arrivals by month of arrival, 2004 - 2013	32
25	- Percentage distribution of tourist arrivals by month of arrival, 2004 - 2013	34
26	- Tourist arrivals by country of residence and sex, 2012 and 2013	35
27	- Tourist arrivals by country of residence, 2004 - 2013	36
28	- Percentage distribution of tourist arrivals by country of residence, 2004 - 2013	37
29	- Tourist nights by country of residence, 2004 - 2013	39
30	- Visitor arrivals by country of residence and type of passenger, 2011 - 2013	42
31	- Visitor arrivals by age and sex, 2012 & 2013	43
32	- Visitor arrivals by duration of stay, 2012 & 2013	44
33	- Visitor arrivals by country of residence and duration of stay, 2013	45
34	- Tourist arrivals and average length of stay of tourists by country of residence, 2012 and 2013	46
35	- Gross earnings from tourism, 2004 - 2013	47
36	- Expenditure of tourists by country of residence, 2010 - 2013	47
37	- Expenditure of tourists by type of expenditure, 2010 - 2013	47
38	- Hotels, rooms and bedplaces, 2004 - 2013	48
39	- Monthly occupancy rates in large hotels, 2009 - 2013	49
40	- Monthly occupancy rates in all hotels, 2009 - 2013	50

CONTENTS

Page

ILLUSTRATIONS

Fig. 1	- Passenger Traffic: Total arrivals by sex, 1997 - 2013	13
2	- Passenger Traffic: Total departures by sex, 1997 - 2013	14
3	- Passenger Traffic: Total arrivals and total departures, 2004 - 2013	15
4	- Tourist arrivals by month, 2009 - 2013	33
5	- Percentage distribution of tourist arrivals by country of residence, 2013	38
6	- Total arrivals and tourist arrivals, 2004 - 2013	40
7	- Tourist nights, 2004 - 2013	41

The following symbol is used throughout :-

" - " for Nil

Appendix : Disembarkation Card

Contact persons:

Mr. E.Romjon, Ag. Statistician
Ministry of Tourism and Leisure
3rd Floor, Victoria House
Port Louis
Tel: (230) 211-9042
Fax: (230) 210-3901
Email: sm-tourism@mail.gov.mu

I - POPULATION AND VITAL STATISTICS

**Table 1 - Estimated resident population of Republic of Mauritius
as at 31st December, 2012 & 2013 ¹**

Year	Island	Both sexes	Male	Female	Area (sq km)	Density (persons/km ²)
2012	Mauritius	1,216,133	601,876	614,257	1,864.8	652
	Rodrigues	41,083	20,239	20,844	104.0	395
	Other	274	174	100	71.2	4
	Republic of Mauritius	1,257,490	622,289	635,201	2,040.0	616
2013	Mauritius	1,218,060	602,831	615,229	1,864.8	653
	Rodrigues	41,504	20,467	21,037	104.0	399
	Other	274	174	100	71.2	4
	Republic of Mauritius	1,259,838	623,472	636,366	2,040.0	618

¹ based on the 2011 population census data adjusted for underenumeration of young children.

Table 2 - Population growth in intercensal periods - Island of Mauritius, 1851 - 2011

Census Date	Population enumerated at census			Intercensal increase	Average annual rate of increase(%)
	Both sexes	Male	Female		
20 Nov. 1851	180,823	119,341	61,482	22,361	2.55
8 Apr. 1861	310,050	202,961	107,089	129,227	5.91
11 Apr. 1871	316,042	193,575	122,467	5,992	0.19
4 Apr. 1881	359,874	208,655	151,219	43,832	1.31
6 Mar. 1891	370,588	206,038	164,550	10,714	0.29
1 Apr. 1901	371,023	199,552	171,471	435	0.01
31 Mar. 1911	368,791	194,095	174,696	-2,232	-0.06
21 May. 1921	376,485	194,108	182,377	7,694	0.21
26 Apr. 1931	393,238	200,609	192,629	16,753	0.44
11 Jun. 1944	419,185	210,326	208,859	25,947	0.49
30 Jun. 1952	501,415	252,032	249,383	82,230	2.26
30 Jun. 1962 ¹	681,619	342,306	339,313	180,204	3.12
30 Jun. 1972 ¹	826,199	413,580	412,619	144,580	1.94
2 Jul. 1983 ¹	966,863	481,368	485,495	140,664	1.44
1 Jul. 1990 ²	1,022,456	510,676	511,780	55,593	0.80
2 Jul. 2000 ²	1,143,069	566,056	577,013	120,613	1.12
3 Jul. 2011 ²	1,196,383	590,944	605,439	53,314	0.42

¹ " De facto " population

² " De jure " population

**Table 3 - Population growth in intercensal periods - Island of Rodrigues,
1851 - 2011**

Census Date	Population enumerated at census			Inter-censal increase	Average annual rate of increase (%)
	Both sexes	Male	Female		
20 Nov. 1851	525	327	198	-	-
8 Apr. 1861	693	464	229	168	3.65
11 Apr. 1871	1,108	693	415	415	4.80
4 Apr. 1881	1,431	812	619	323	2.59
6 Mar. 1891	2,068	1,154	914	637	3.75
1 Apr. 1901	3,162	1,685	1,477	1,094	4.34
31 Mar. 1911	4,829	2,523	2,306	1,667	4.33
21 May. 1921	6,584	3,300	3,284	1,755	3.15
26 Apr. 1931	8,202	4,033	4,169	1,618	2.22
11 Jun. 1944	11,885	5,740	6,145	3,683	2.89
30 Jun. 1952	13,333	5,947	7,386	1,448	1.45
30 Jun. 1962 ¹	18,335	9,062	9,273	5,002	3.24
30 Jun. 1972 ¹	24,769	12,270	12,499	6,434	3.05
2 Jul. 1983 ¹	33,082	16,552	16,530	8,313	2.67
1 Jul. 1990 ²	34,204	17,084	17,120	1,122	0.48
2 Jul. 2000 ²	35,779	17,700	18,079	1,575	0.45
3 Jul. 2011 ²	40,434	19,904	20,530	4,655	1.12

¹ "De facto" population

² "De jure" population

Table 4 - Estimated resident population by geographical district and sex - Republic of Mauritius, 2012 & 2013
(End of year estimates) ¹

Geographical district	Area (km ²)	31st December 2012			31st December 2013		
		Both sexes	Male	Female	Both sexes	Male	Female
Port Louis	42.7	120,851	60,028	60,823	120,507	59,874	60,633
Pamplemousses	178.7	138,212	68,627	69,585	138,849	68,929	69,920
Riviere du Rempart	147.6	107,624	53,356	54,268	107,777	53,434	54,343
Flacq	297.9	137,729	68,513	69,216	138,121	68,699	69,422
Grand Port	260.3	112,649	56,081	56,568	112,789	56,151	56,638
Savanne	244.8	68,742	34,033	34,709	68,725	34,051	34,674
Plaines Wilhems	203.3	369,252	180,746	188,506	369,076	180,660	188,416
Moka	230.5	82,768	41,169	41,599	82,980	41,257	41,723
Black River	259.0	78,306	39,323	38,983	79,236	39,776	39,460
Island of Mauritius	1,864.8	1,216,133	601,876	614,257	1,218,060	602,831	615,229
Island of Rodrigues	104.0	41,083	20,239	20,844	41,504	20,467	21,037
Other ²	71.2	274	174	100	274	174	100
Republic of Mauritius	2,040.0	1,257,490	622,289	635,201	1,259,838	623,472	636,366

¹ based on the 2011 population census data adjusted for underenumeration of young children.

Internal migration within districts is assumed to be the same as the net annual internal migration during 2006 - 2011 (obtained from the 2011 census).

² includes Agalega and St Brandon.

Table 5 - Population and vital statistics - Republic of Mauritius², 1978 - 2013

Year	Population at mid-year ¹	Live births	Deaths	Infant deaths	Still births	Civil marriages	Divorces ³
1978	933,499	25,278	6,596	876	680	10,741	255
1979	949,888	26,163	6,871	891	668	9,327	265
1980	966,039	26,294	6,919	864	662	8,894	351
1981	980,462	24,967	6,653	884	590	8,406	305
1982	992,521	22,459	6,584	682	458	10,768	312
1983	1,001,691	21,073	6,532	570	403	10,255	361
1984	1,012,221	20,332	6,646	505	404	10,865	471
1985	1,020,528	19,376	6,906	487	383	11,245	460
1986	1,028,360	19,170	6,805	524	365	10,556	616
1987	1,036,082	20,033	6,753	504	363	11,392	842
1988	1,043,239	20,941	6,879	471	374	11,453	740
1989	1,051,260	21,822	7,149	498	415	11,197	711
1990	1,058,775	22,602	7,031	462	365	11,425	549
1991	1,070,266	22,197	7,027	413	400	11,295	707
1992	1,084,441	22,902	7,023	426	291	11,408	781
1993	1,097,374	22,329	7,433	438	337	11,576	762
1994	1,112,846	21,795	7,402	394	274	11,414	733
1995	1,122,457	20,549	7,465	404	299	10,624	801
1996	1,133,996	20,763	7,670	459	266	10,700	792
1997	1,148,284	20,012	7,986	406	257	10,887	891
1998	1,160,421	19,434	7,839	376	227	10,898	1,012
1999	1,175,267	20,311	7,944	396	226	11,295	1,150
2000	1,186,873	20,205	7,982	322	266	10,963	1,191
2001	1,196,287	19,696	7,983	282	244	10,635	1,512
2002	1,204,621	19,983	8,310	297	203	10,484	1,291
2003	1,213,370	19,343	8,520	250	220	10,812	1,190
2004	1,221,003	19,230	8,475	277	191	11,385	1,162
2005	1,228,254	18,820	8,646	248	185	11,294	1,133
2006	1,233,996	17,604	9,162	249	147	11,471	1,379
2007	1,239,630	17,034	8,498	261	172	11,547	1,302
2008	1,244,121	16,372	9,004	236	165	11,197	1,569
2009	1,247,429	15,344	9,224	205	138	10,619	2,154
2010	1,250,400	15,005	9,131	187	103	10,555	1,837
2011	1,252,404	14,701	9,170	189	139	10,499	1,788
2012	1,255,882	14,494	9,343	199	140	10,382	2,003
2013	1,258,653	13,688	9,440	165	117	9,575	1,590

¹ Figures for 2001 - 2010 have been revised in the light of the 2011 census data

² Excluding Agalega & Saint Brandon

³ Source : Judicial Department

Note : The increase in the number of civil marriages as from 1982 is due largely to improved registration of religious marriages with the coming into force of a new Civil Status Act as from January, 1982.

Table 6 - Growth of the resident population and vital statistics - Island of Mauritius, 2003 - 2013

Year	Population at beginning of year	Natural movement			Net migration	Total increase	% change during the year due to:			Population at end of year
		Live births	Deaths	Natural increase			Natural increase	Migration	Total	
2003	1,180,189	18,518	8,310	10,208	+939	11,147	0.86	+0.08	0.94	1,191,336
2004	1,191,336	18,285	8,259	10,026	-362	9,664	0.84	-0.03	0.81	1,201,000
2005	1,201,000	17,924	8,422	9,502	+800	10,302	0.79	+0.07	0.86	1,211,302
2006	1,211,302	16,723	8,917	7,806	+100	7,906	0.64	+0.01	0.65	1,219,208
2007	1,219,208	16,190	8,323	7,867	0	7,867	0.65	0.00	0.65	1,227,075
2008	1,227,075	15,590	8,798	6,792	+175	6,967	0.55	+0.01	0.56	1,234,042
2009	1,234,042	14,623	8,987	5,636	+110	5,746	0.46	+0.01	0.47	1,239,788
2010	1,239,788	14,291	8,891	5,400	+100	5,500	0.44	+0.01	0.45	1,245,288
2011 ¹	1,211,181	14,002	8,951	5,051	-3,030	2,021	0.42	-0.25	0.41	1,213,202
2012 ¹	1,213,202	13,766	9,103	4,663	-1,732	2,931	0.38	-0.14	0.37	1,216,133
2013	1,216,133	12,986	9,231	3,755	-1,828	1,927	0.31	-0.15	0.16	1,218,060

¹ Revised

Table 7 - Growth of the resident population and vital statistics - Island of Rodrigues, 2003 - 2013

Year	Population at beginning of year	Natural movement			Net migration	Total increase	% change during the year due to:			Population at end of year
		Live births	Deaths	Natural increase			Natural increase	Migration	Total	
2003	36,303	825	210	615	-415	200	1.69	-1.14	0.55	36,503
2004	36,503	945	216	729	-460	269	2.00	-1.26	0.74	36,772
2005	36,772	896	224	672	-450	222	1.83	-1.22	0.61	36,994
2006	36,994	881	245	636	-400	236	1.72	-1.08	0.64	37,230
2007	37,230	844	175	669	-400	269	1.80	-1.07	0.73	37,499
2008	37,499	782	206	576	-375	201	1.54	-1.00	0.54	37,700
2009	37,700	721	237	484	-410	74	1.28	-1.09	0.19	37,774
2010	37,774	714	240	474	-410	64	1.25	-1.08	0.17	37,838
2011 ¹	40,221	699	219	480	-38	442	1.19	-0.09	1.10	40,663
2012 ¹	40,663	728	240	488	-68	420	1.20	-0.17	1.03	41,083
2013	41,083	702	209	493	-72	421	1.20	-0.18	1.02	41,504

¹ Revised

II - PASSENGER TRAFFIC

Table 8 - Passenger traffic ¹ by sex, 1993 - 2013

Period	Arrivals			Departures			Arrivals minus Departures
	Both Sexes	Male	Female	Both Sexes	Male	Female	
1993	523,740	280,910	242,830	520,400	281,100	239,300	+ 3,340
1994	558,136	295,259	262,877	557,575	295,500	262,075	+ 561
1995	579,993	304,705	275,288	578,481	304,245	274,236	+ 1,512
1996	672,070	350,561	321,509	663,501	345,892	317,609	+ 8,569
1997	743,291	378,593	364,698	737,523	379,841	357,682	+ 5,768
1998	778,574	367,914	410,660	775,998	382,567	393,431	+ 2,576
1999	823,085	434,667	388,418	809,233	428,234	380,999	+ 13,852
2000	915,203	480,879	434,324	895,569	469,902	425,667	+ 19,634
2001	910,489	477,984	432,505	903,073	473,096	429,977	+ 7,416
2002	951,090	498,177	452,913	942,876	494,212	448,664	+ 8,214
2003	968,906	510,212	458,694	947,774	497,011	450,763	+ 21,132
2004	1,000,545	523,961	476,584	979,322	511,734	467,588	+ 21,223
2005	1,043,900	544,520	499,380	1,029,666	538,113	491,553	+ 14,234
2006	1,072,879	562,766	510,113	1,060,074	555,279	504,795	+ 12,805
2007	1,238,826	648,554	590,272	1,237,747	645,657	592,090	+ 1,079
2008	1,280,640	669,919	610,721	1,261,182	658,947	602,235	+ 19,458
2009	1,210,005	623,925	586,080	1,206,550	623,551	582,999	+ 3,455
2010	1,312,700	677,067	635,633	1,317,581	679,362	638,219	- 4,881
2011	1,358,951	703,094	655,857	1,358,562	702,039	656,523	+ 389
2012	1,354,589	702,943	651,646	1,353,618	702,000	651,618	+ 971
2013	1,391,295	721,445	669,850	1,390,467	719,252	671,215	+ 828

¹ Includes traffic between Island of Mauritius and Rodrigues. As from 1994, figures of the passenger traffic also include cruise travellers, i.e passengers and crews of cruise ships.

Table 9 - Passenger traffic ¹ between Islands of Mauritius and Rodrigues, 1993 - 2013

Period	Arrivals in Rodrigues			Departures from Rodrigues			Arrivals minus Departures
	Both Sexes	Male	Female	Both Sexes	Male	Female	
1993	22,819	13,973	8,846	23,476	14,094	9,382	- 657
1994	23,292	14,174	9,118	23,636	14,177	9,459	- 344
1995	24,150	14,532	9,618	24,820	14,603	10,217	- 670
1996	29,129	16,947	12,182	29,370	16,861	12,509	- 241
1997	37,765	22,120	15,645	38,014	22,096	15,918	- 249
1998	40,648	24,181	16,467	40,553	23,072	17,481	+ 95
1999	45,117	28,384	16,733	45,154	26,961	18,193	- 37
2000	49,530	28,280	21,250	49,981	29,436	20,545	- 451
2001	52,777	30,320	22,457	52,307	30,760	21,547	+ 470
2002	60,355	34,647	25,708	59,984	34,004	25,980	+ 371
2003	63,649	37,203	26,446	63,937	37,673	26,264	- 288
2004	60,862	34,467	26,395	60,830	34,314	26,516	+ 32
2005	53,534	29,805	23,729	53,987	29,447	24,540	- 453
2006	55,368	31,395	23,973	56,015	31,822	24,193	- 647
2007	61,617	33,991	27,626	61,595	33,735	27,860	+ 22
2008	54,433	29,713	24,720	54,212	29,260	24,952	+ 221
2009	52,981	28,337	24,644	53,426	28,341	25,085	- 445
2010	60,573	31,624	28,949	60,662	32,101	28,561	- 89
2011	65,423	34,417	31,006	64,564	33,938	30,626	+ 859
2012	67,527	35,666	31,861	67,745	36,372	31,373	- 218
2013	69,762	36,235	33,527	69,848	37,348	32,500	- 86

¹ Includes residents and non-residents

Fig 1 - Passenger traffic: Total arrivals by sex, 1997 - 2013

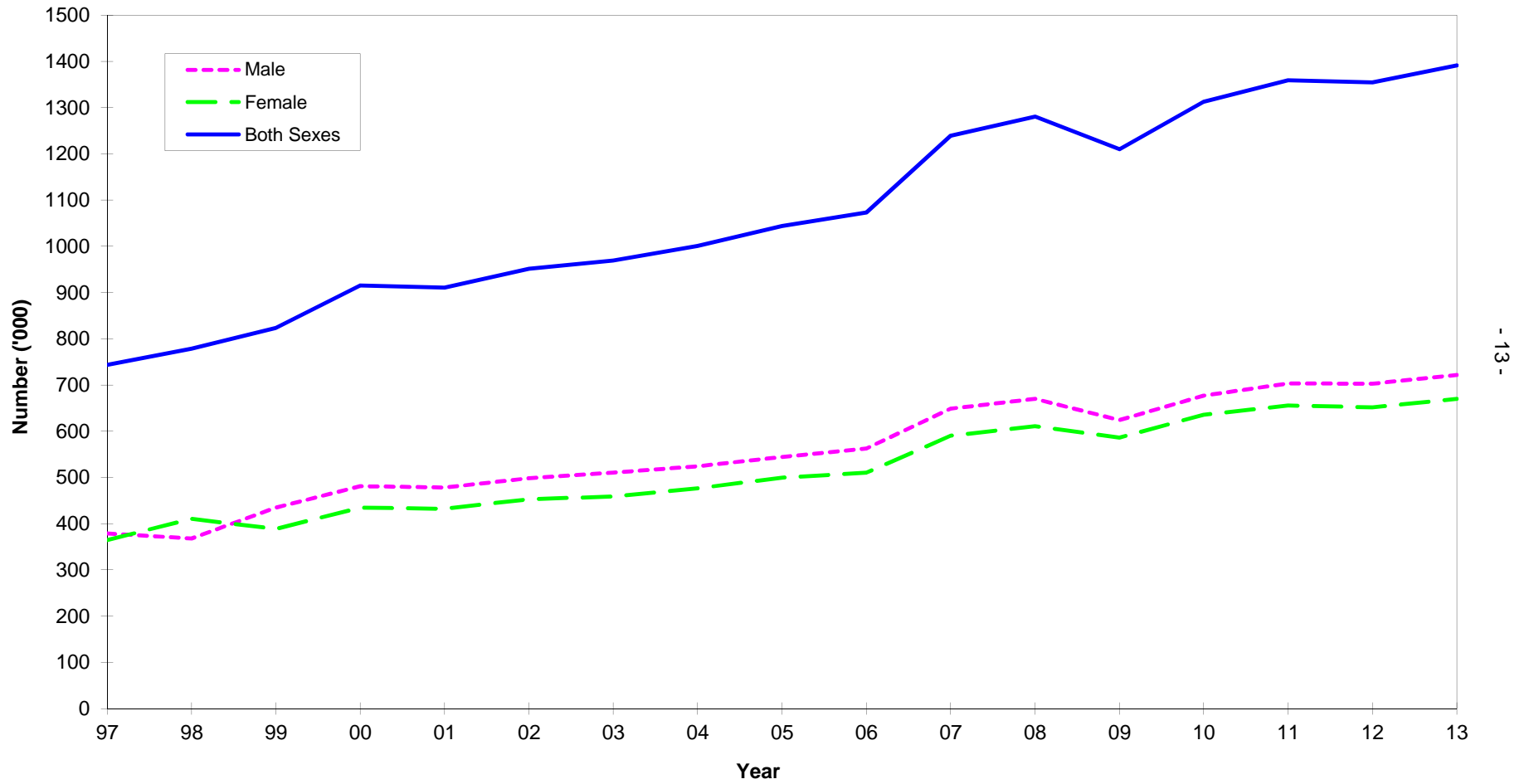


Fig 2 - Passenger traffic: Total departures by sex, 1997 - 2013

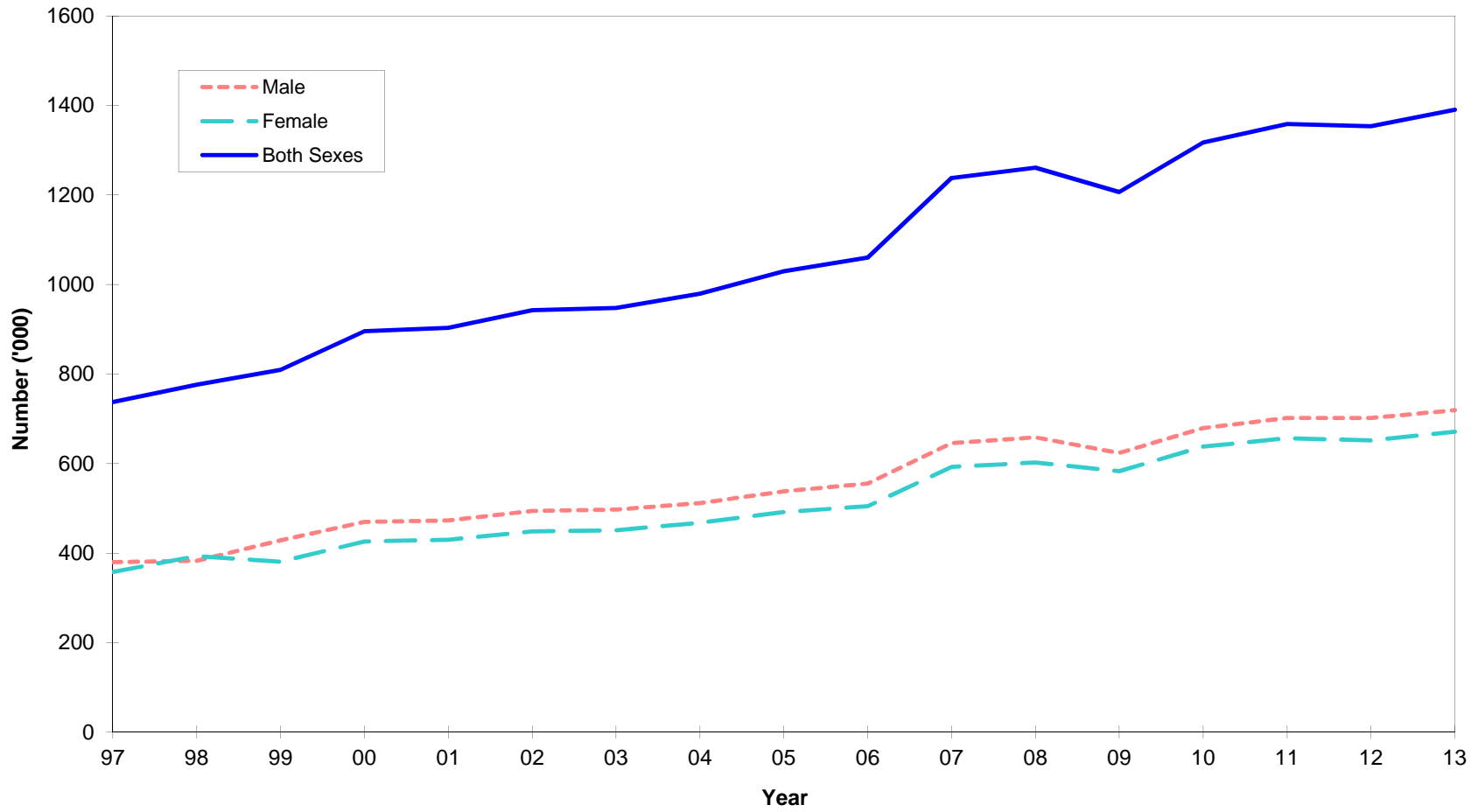


Fig. 3 - Passenger traffic : Total arrivals and total departures, 2004 - 2013

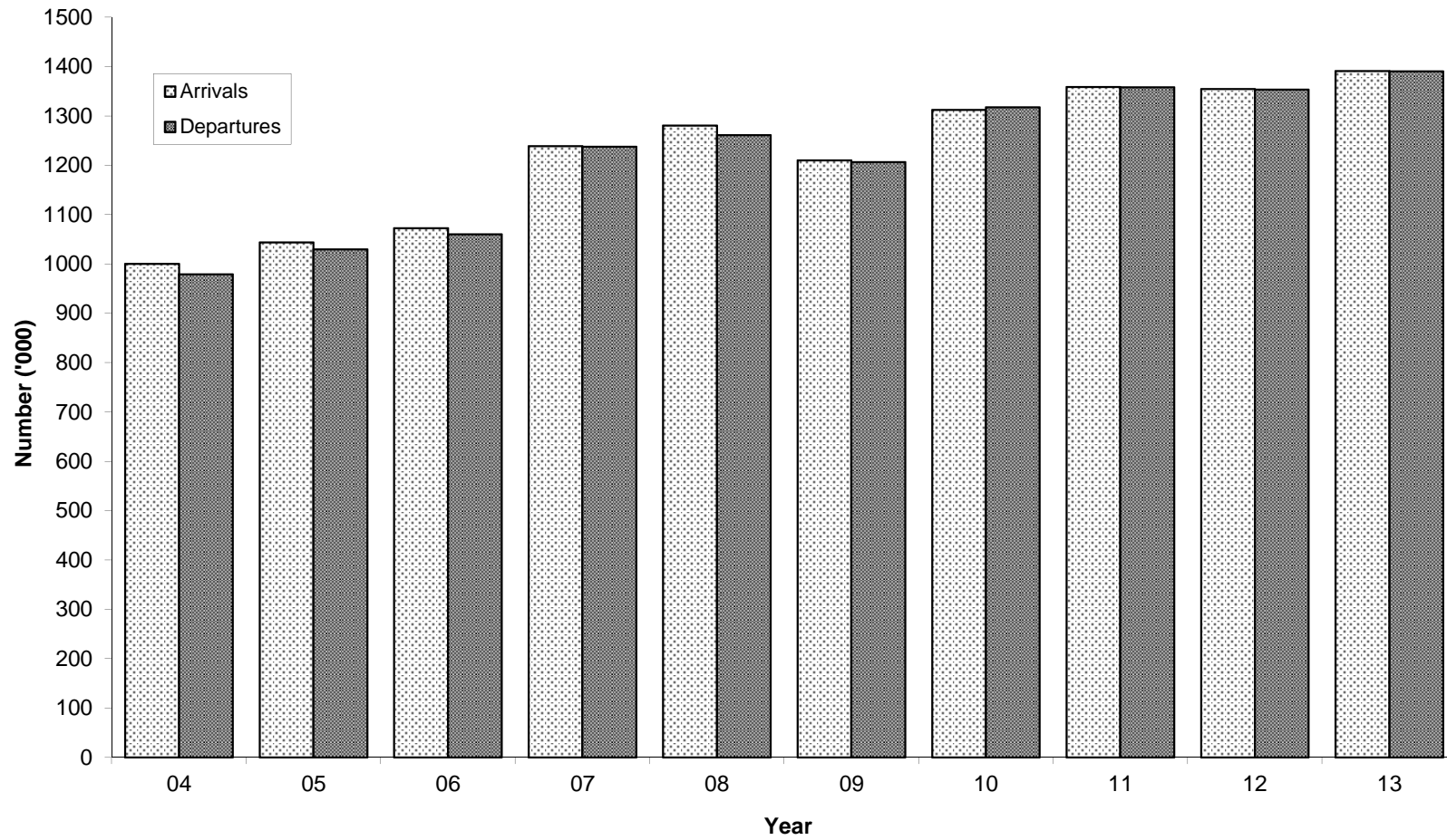


Table 10 - Passenger traffic ¹ by mode of transport, 1993 - 2013

Period	Arrivals			Departures			Arrivals minus Departures
	Total	By sea	By air	Total	By sea	By air	
1993	523,740	13,530	510,210	520,400	11,890	508,510	+ 3,340
1994	558,136	19,461	538,675	557,575	17,663	539,912	+ 561
1995	579,993	18,854	561,139	578,481	17,895	560,586	+ 1,512
1996	672,070	27,308	644,762	663,501	24,794	638,707	+ 8,569
1997	743,291	29,756	713,535	737,523	27,390	710,133	+ 5,768
1998	778,574	43,706	734,868	775,998	40,809	735,189	+ 2,576
1999	823,085	40,499	782,586	809,233	39,230	770,003	+ 13,852
2000	915,203	34,262	880,941	895,569	33,368	862,201	+ 19,634
2001	910,489	27,847	882,642	903,073	26,313	876,760	+ 7,416
2002	951,090	43,890	907,200	942,876	42,630	900,246	+ 8,214
2003	968,906	31,296	937,610	947,774	28,936	918,838	+ 21,132
2004	1,000,545	32,238	968,307	979,322	28,609	950,713	+ 21,223
2005	1,043,900	35,422	1,008,478	1,029,666	35,478	994,188	+ 14,234
2006	1,072,879	31,713	1,041,166	1,060,074	28,725	1,031,349	+ 12,805
2007	1,238,826	33,373	1,205,453	1,237,747	31,001	1,206,746	+ 1,079
2008	1,280,640	48,311	1,232,329	1,261,182	47,494	1,213,688	+ 19,458
2009	1,210,005	54,396	1,155,609	1,206,550	49,005	1,157,545	+ 3,455
2010	1,312,700	57,576	1,255,124	1,317,581	63,549	1,254,032	- 4,881
2011	1,358,951	54,841	1,304,110	1,358,562	52,356	1,306,206	+ 389
2012	1,354,589	45,947	1,308,642	1,353,618	48,258	1,305,360	+ 971
2013	1,391,295	39,558	1,351,737	1,390,467	40,643	1,349,824	+ 828
2013:1st Qr.	362,302	16,734	345,568	385,210	17,665	367,545	- 22,908
2nd Qr.	297,078	7,111	289,967	308,185	7,603	300,582	- 11,107
3rd Qr.	324,332	4,061	320,271	320,404	4,033	316,371	+ 3,928
4th Qr.	407,583	11,652	395,931	376,668	11,342	365,326	+ 30,915

¹ Includes traffic between Island of Mauritius and Rodrigues. As from 1994, figures of the passenger traffic also include cruise travellers, i.e passengers and crews of cruise ships.

Table 11 - Passenger traffic ¹ by month, 2010 - 2013

Month	Arrivals				Departures				Excess of arrivals over departures			
	2010	2011	2012	2013	2010	2011	2012	2013	2010	2011	2012	2013
January	126,978	140,898	141,537	133,204	151,282	163,294	161,618	155,872	- 24,304	- 22,396	- 20,081	- 22,668
February	95,708	107,189	109,705	107,135	95,702	105,877	110,455	107,928	+ 6	+ 1,312	- 750	- 793
March	127,560	113,364	111,257	121,963	132,127	120,954	115,750	121,410	- 4,567	- 7,590	- 4,493	+ 553
April	93,717	112,027	115,656	111,692	100,482	109,440	116,514	115,749	- 6,765	+ 2,587	- 858	- 4,057
May	95,343	95,129	97,676	102,030	98,907	102,756	105,415	111,679	- 3,564	- 7,627	- 7,739	- 9,649
June	79,689	84,688	81,335	83,356	78,323	83,662	78,968	80,757	+ 1,366	+ 1,026	+ 2,367	+ 2,599
July	113,118	116,429	111,572	113,264	99,736	105,168	100,158	101,216	+ 13,382	+ 11,261	+ 11,414	+ 12,048
August	99,618	102,159	100,129	110,440	109,313	108,437	108,930	118,002	- 9,695	- 6,278	- 8,801	- 7,562
September	90,522	92,166	93,423	100,628	90,167	92,002	94,603	101,186	+ 355	+ 164	- 1,180	- 558
October	115,290	120,083	118,782	123,663	112,631	117,131	112,103	117,898	+ 2,659	+ 2,952	+ 6,679	+ 5,765
November	115,763	120,253	117,217	122,351	114,383	117,011	116,961	120,743	+ 1,380	+ 3,242	+ 256	+ 1,608
December	159,394	154,566	156,300	161,569	134,528	132,830	132,143	138,027	+ 24,866	+ 21,736	+ 24,157	+ 23,542
Whole Year	1,312,700	1,358,951	1,354,589	1,391,295	1,317,581	1,358,562	1,353,618	1,390,467	- 4,881	+ 389	+ 971	+ 828

¹ Includes traffic between Island of Mauritius and Rodrigues. Figures of the passenger traffic also include cruise travellers, i.e passengers and crews of cruise ships.

Table 12 - Arrivals ¹ by country of original embarkation, 2008 - 2013

Country of original embarkation	2008	2009	2010	2011	2012	2013
Australia	29,169	16,859	21,438	20,265	22,404	28,827
France	253,159	261,716	273,903	279,027	274,976	257,080
Germany	62,858	43,157	42,668	45,194	41,822	40,815
Hong Kong SAR ²	27,189	22,310	28,161	30,262	25,307	22,028
India	62,147	53,487	70,138	75,268	80,325	83,193
Italy	61,685	46,403	50,884	46,198	24,333	15,742
Kenya	5,777	4,926	6,396	8,582	9,856	9,609
Malagasy Rep.	29,211	21,480	26,363	28,870	31,913	31,467
Malaysia	NA	NA	NA	NA	NA	15,564
People's Rep. of China	NA	NA	NA	NA	NA	29,946
Reunion Island	218,865	240,369	268,943	272,452	257,612	256,149
Rodrigues	54,212	53,426	60,662	64,564	67,745	69,848
Russian Federation	NA	NA	NA	NA	NA	604
Seychelles	25,541	22,702	24,557	17,794	13,448	18,594
Singapore	18,022	16,501	21,749	23,630	22,403	15,381
S. Africa, Rep. of	144,122	130,776	138,838	147,295	144,510	154,724
Switzerland	13,882	10,404	14,806	17,765	15,791	7,747
United Arab Emirates	NA	NA	NA	NA	NA	230,039
United Kingdom	132,551	108,441	103,588	107,206	96,711	87,197
Other & not stated	142,250	157,048	159,606	174,579	225,433	16,741
All Countries	1,280,640	1,210,005	1,312,700	1,358,951	1,354,589	1,391,295

¹ Figures on passenger arrivals include cruise travellers, i.e passengers and crews of cruise ships which numbered 26388, 34117, 38061, 35172, 27763 and 23180 for 2008, 2009, 2010, 2011, 2012 and 2013 respectively, in accordance with the recommendations of the World Tourism Organisation.

² Special Administrative Region of China

Note: Figures as from 2009 refers to country of embarkation.

NA - Not available

Table 13 - Departures ¹ by country of final destination, 2008 - 2013

Country of final destination	2008	2009	2010	2011	2012	2013
Australia	33,765	18,164	18,300	25,541	22,785	23,118
France	263,683	274,659	284,197	291,778	285,448	265,791
Germany	62,156	43,023	44,132	43,704	44,984	40,450
Hong Kong SAR ²	20,247	21,795	27,367	26,287	20,821	21,072
India	59,651	53,120	68,052	74,296	78,464	77,629
Italy	62,791	47,626	51,220	47,729	25,316	16,217
Kenya	4,978	3,430	4,431	6,960	8,350	9,773
Malagasy Rep.	30,342	22,805	26,338	30,286	32,940	33,590
Malaysia	NA	NA	NA	NA	NA	15,932
People's Rep. of China	NA	NA	NA	NA	NA	27,864
Reunion Island	218,786	224,128	258,359	262,721	248,892	257,235
Rodrigues	54,433	52,981	60,573	65,423	67,527	69,762
Seychelles	25,160	30,978	31,958	27,423	18,587	16,190
Singapore	17,760	15,542	17,868	17,428	18,229	14,898
S. Africa, Rep. of	126,982	117,004	132,040	136,619	141,989	154,143
Switzerland	13,841	9,234	13,013	17,131	11,885	7,690
United Arab Emirates	NA	NA	NA	NA	NA	234,153
United Kingdom	132,143	111,143	105,368	105,433	96,831	89,544
Other & not stated	134,464	160,918	174,365	179,803	230,570	15,416
All Countries	1,261,182	1,206,550	1,317,581	1,358,562	1,353,618	1,390,467

¹ Figures on passenger departures include cruise travellers, i.e passengers and crews of cruise ships which numbered 26782, 31154, 40834, 34735, 27953 and 23386 for 2008, 2009, 2010, 2011, 2012 and 2013 respectively, in accordance with the recommendations of the World Tourism Organisation.

² Special Administrative Region of China

Note: Figures as from 2009 refers to country of disembarkation which may not necessarily be the country of final destination.

NA Not available

Table 14 - Monthly passenger traffic ¹ by type of passenger, 2013

Type of passenger	Jan	Feb	Mar	Apr	May	Jun	Jul	Aug	Sep	Oct	Nov	Dec	Whole Year
Arrivals													
Visitors ²	96,567	82,834	93,831	79,540	75,581	55,979	78,843	74,944	72,936	93,739	90,090	120,401	1,015,285
- On holiday	87,446	76,071	85,996	70,908	67,742	49,531	71,588	67,518	65,577	85,761	82,212	112,897	923,247
- On business & Conference	2,565	3,188	3,484	3,488	4,962	3,857	3,915	3,162	4,174	4,193	4,195	2,299	43,482
- In transit	6,433	3,423	4,112	4,800	2,667	2,315	3,066	3,556	2,831	3,496	3,127	5,037	44,863
- Other and not stated	123	152	239	344	210	276	274	708	354	289	556	168	3,693
Mauritian residents	31,702	19,428	24,236	27,747	23,430	24,017	31,485	32,630	24,106	26,199	28,253	35,395	328,628
Other ³	4,935	4,873	3,896	4,405	3,019	3,360	2,936	2,866	3,586	3,725	4,008	5,773	47,382
Total arrivals	133,204	107,135	121,963	111,692	102,030	83,356	113,264	110,440	100,628	123,663	122,351	161,569	1,391,295
Departures													
Visitors	121,318	80,998	91,984	82,521	85,102	53,231	68,734	83,202	69,812	89,356	87,595	95,709	1,009,562
Mauritian residents	28,103	20,921	23,672	27,489	22,598	23,639	28,174	30,456	26,995	24,373	28,629	34,851	319,900
Other	6,451	6,009	5,754	5,739	3,979	3,887	4,308	4,344	4,379	4,169	4,519	7,467	61,005
Total departures	155,872	107,928	121,410	115,749	111,679	80,757	101,216	118,002	101,186	117,898	120,743	138,027	1,390,467

¹ Including traffic between Island of Mauritius and Rodrigues

² Including non-residents who left the airport but stayed in the country for less than a day.

³ Including contract workers

Table 15 - Passenger traffic ¹ by type of passenger, 2004 - 2013

Type of passenger	2004	2005	2006	2007	2008	2009	2010	2011	2012	2013
Arrivals										
Visitors ²	738,516	781,572	806,652	932,782	970,482	889,999	956,327	982,566	984,104	1,015,285
- On holiday	653,818	692,084	712,620	818,714	821,325	819,739	865,562	897,786	896,977	923,247
- On business & Conference	30,416	30,164	32,511	34,633	37,521	29,025	36,081	40,730	42,567	43,482
- In transit	44,710	48,299	47,966	61,186	82,683	24,871	42,243	40,948	41,744	44,863
- Other & not stated	9,572	11,025	13,555	18,249	28,953	16,364	12,441	3,102	2,816	3,693
Mauritian residents	239,969	239,389	242,330	277,369	283,792	253,374	278,987	292,018	315,795	328,628
Other ³	22,060	22,939	23,897	28,675	26,366	66,632	77,386	84,367	54,690	47,382
Total arrivals	1,000,545	1,043,900	1,072,879	1,238,826	1,280,640	1,210,005	1,312,700	1,358,951	1,354,589	1,391,295
Departures										
Visitors	718,789	773,951	801,702	942,374	960,279	908,253	972,791	997,507	971,157	1,009,562
Mauritian residents	240,823	236,457	241,138	274,786	280,300	248,945	272,145	284,478	304,122	319,900
Other	19,710	19,258	17,234	20,587	20,603	49,352	72,645	76,577	78,339	61,005
Total departures	979,322	1,029,666	1,060,074	1,237,747	1,261,182	1,206,550	1,317,581	1,358,562	1,353,618	1,390,467

¹ Including traffic between Island of Mauritius and Rodrigues. Figures of the passenger traffic also include cruise travellers, i.e, passengers and crews of cruise ships.

² Including non-residents who left the airport but stayed in the country for less than a day.

³ Including contract workers.

Table 16 - Total arrivals ¹ by age and sex, 2012 & 2013

Age (years)	2012			2013			January - June 2013			July - December 2013		
	Both Sexes	Male	Female	Both Sexes	Male	Female	Both Sexes	Male	Female	Both Sexes	Male	Female
Under 1	6,590	3,332	3,258	6,675	3,454	3,221	3,257	1,681	1,576	3,418	1,773	1,645
1 - 4	37,743	19,077	18,666	37,076	18,624	18,452	18,281	9,143	9,138	18,795	9,481	9,314
5 - 9	48,459	24,196	24,263	48,826	24,526	24,300	22,676	11,334	11,342	26,150	13,192	12,958
10 - 14	48,488	24,288	24,200	48,620	24,478	24,142	21,280	10,632	10,648	27,340	13,846	13,494
15 - 19	40,728	19,277	21,451	41,616	19,810	21,806	17,541	8,277	9,264	24,075	11,533	12,542
20 - 24	69,109	28,751	40,358	70,550	29,982	40,568	32,401	13,491	18,910	38,149	16,491	21,658
25 - 29	139,670	65,411	74,259	146,405	68,278	78,127	66,902	31,278	35,624	79,503	37,000	42,503
30 - 34	141,068	73,225	67,843	144,558	75,470	69,088	67,390	35,118	32,272	77,168	40,352	36,816
35 - 39	128,362	69,376	58,986	129,783	69,544	60,239	62,824	33,738	29,086	66,959	35,806	31,153
40 - 44	127,740	71,339	56,401	128,243	70,993	57,250	62,707	35,007	27,700	65,536	35,986	29,550
45 - 49	123,937	67,736	56,201	127,589	69,962	57,627	61,431	33,996	27,435	66,158	35,966	30,192
50 - 54	108,809	58,082	50,727	114,382	61,233	53,149	53,981	29,034	24,947	60,401	32,199	28,202
55 - 59	90,794	48,277	42,517	93,934	49,752	44,182	45,194	24,049	21,145	48,740	25,703	23,037
60 - 64	74,145	39,551	34,594	77,003	40,894	36,109	37,491	19,942	17,549	39,512	20,952	18,560
65 - 69	46,102	24,740	21,362	51,513	27,648	23,865	25,500	13,775	11,725	26,013	13,873	12,140
70 & over	43,095	22,928	20,167	47,585	25,551	22,034	23,508	12,774	10,734	24,077	12,777	11,300
Not stated	79,750	43,357	36,393	76,937	41,246	35,691	39,921	21,195	18,726	37,016	20,051	16,965
All ages	1,354,589	702,943	651,646	1,391,295	721,445	669,850	662,285	344,464	317,821	729,010	376,981	352,029

¹ Include arrivals from Rodrigues and cruise travellers, i.e passengers and crews of cruise ships which numbered 27763 and 23180 for 2012 and 2013 respectively, in accordance with the recommendations of the World Tourism Organisation.

Table 17 - Total departures ¹ by age and sex, 2012 & 2013

Age (years)	2012			2013			January - June 2013			July - December 2013		
	Both Sexes	Male	Female	Both Sexes	Male	Female	Both Sexes	Male	Female	Both Sexes	Male	Female
Under 1	6,285	3,169	3,116	6,384	3,287	3,097	3,438	1,746	1,692	2,946	1,541	1,405
1 - 4	37,706	19,045	18,661	37,200	18,738	18,462	20,249	10,149	10,100	16,951	8,589	8,362
5 - 9	48,192	24,063	24,129	49,136	24,687	24,449	25,316	12,689	12,627	23,820	11,998	11,822
10 - 14	48,417	24,255	24,162	48,953	24,709	24,244	23,736	11,878	11,858	25,217	12,831	12,386
15 - 19	41,551	19,653	21,898	42,299	20,126	22,173	19,153	9,051	10,102	23,146	11,075	12,071
20 - 24	67,293	27,692	39,601	69,000	28,704	40,296	33,114	13,466	19,648	35,886	15,238	20,648
25 - 29	138,126	64,657	73,469	144,766	67,249	77,517	68,065	31,579	36,486	76,701	35,670	41,031
30 - 34	141,852	73,578	68,274	145,166	75,548	69,618	70,329	36,300	34,029	74,837	39,248	35,589
35 - 39	128,220	69,391	58,829	129,797	69,555	60,242	65,887	35,240	30,647	63,910	34,315	29,595
40 - 44	128,378	71,639	56,739	129,435	71,657	57,778	66,779	37,008	29,771	62,656	34,649	28,007
45 - 49	123,297	67,681	55,616	126,761	69,753	57,008	64,786	35,770	29,016	61,975	33,983	27,992
50 - 54	109,883	58,496	51,387	115,192	61,610	53,582	57,653	30,909	26,744	57,539	30,701	26,838
55 - 59	90,184	48,021	42,163	93,112	49,349	43,763	47,394	25,184	22,210	45,718	24,165	21,553
60 - 64	74,964	39,958	35,006	77,415	41,078	36,337	39,843	21,071	18,772	37,572	20,007	17,565
65 - 69	46,138	24,744	21,394	51,404	27,548	23,856	27,276	14,641	12,635	24,128	12,907	11,221
70 & over	43,507	23,245	20,262	47,630	25,539	22,091	25,523	13,753	11,770	22,107	11,786	10,321
Not stated	79,625	42,713	36,912	76,817	40,115	36,702	34,854	18,844	16,010	41,963	21,271	20,692
All ages	1,353,618	702,000	651,618	1,390,467	719,252	671,215	693,395	359,278	334,117	697,072	359,974	337,098

¹ Include departures to Rodrigues and cruise travellers, i.e passengers and crews of cruise ships which numbered 27953 and 23386 for 2012 and 2013 respectively, in accordance with the recommendations of the World Tourism Organisation.

Table 18 - Excess of arrivals over departures ¹ by age and sex, 2012 & 2013

Age (years)	2012			2013			January - June 2013			July - December 2013		
	Both Sexes	Male	Female	Both Sexes	Male	Female	Both Sexes	Male	Female	Both Sexes	Male	Female
Under 1	305	163	142	291	167	124	-181	-65	-116	472	232	240
1 - 4	37	32	5	-124	-114	-10	-1,968	-1,006	-962	1,844	892	952
5 - 9	267	133	134	-310	-161	-149	-2,640	-1,355	-1,285	2,330	1,194	1,136
10 - 14	71	33	38	-333	-231	-102	-2,456	-1,246	-1,210	2,123	1,015	1,108
15 - 19	-823	-376	-447	-683	-316	-367	-1,612	-774	-838	929	458	471
20 - 24	1,816	1,059	757	1,550	1,278	272	-713	25	-738	2,263	1,253	1,010
25 - 29	1,544	754	790	1,639	1,029	610	-1,163	-301	-862	2,802	1,330	1,472
30 - 34	-784	-353	-431	-608	-78	-530	-2,939	-1,182	-1,757	2,331	1,104	1,227
35 - 39	142	-15	157	-14	-11	-3	-3,063	-1,502	-1,561	3,049	1,491	1,558
40 - 44	-638	-300	-338	-1,192	-664	-528	-4,072	-2,001	-2,071	2,880	1,337	1,543
45 - 49	640	55	585	828	209	619	-3,355	-1,774	-1,581	4,183	1,983	2,200
50 - 54	-1,074	-414	-660	-810	-377	-433	-3,672	-1,875	-1,797	2,862	1,498	1,364
55 - 59	610	256	354	822	403	419	-2,200	-1,135	-1,065	3,022	1,538	1,484
60 - 64	-819	-407	-412	-412	-184	-228	-2,352	-1,129	-1,223	1,940	945	995
65 - 69	-36	-4	-32	109	100	9	-1,776	-866	-910	1,885	966	919
70 & over	-412	-317	-95	-45	12	-57	-2,015	-979	-1,036	1,970	991	979
Not stated	125	644	-519	120	1,131	-1,011	5,067	2,351	2,716	-4,947	-1,220	-3,727
All ages	971	943	28	828	2,193	-1,365	-31,110	-14,814	-16,296	31,938	17,007	14,931

¹ Including traffic between Island of Mauritius and Rodrigues

Table 19 - Arrivals ¹ of Mauritian residents by age and sex, 2012 & 2013

Age (years)	2012			2013			January - June 2013			July - December 2013		
	Both Sexes	Male	Female	Both Sexes	Male	Female	Both Sexes	Male	Female	Both Sexes	Male	Female
Under 1	728	374	354	737	420	317	334	196	138	403	224	179
1 - 4	4,328	2,238	2,090	4,340	2,207	2,133	1,997	1,027	970	2,343	1,180	1,163
5 - 9	5,681	2,885	2,796	5,939	2,973	2,966	2,463	1,237	1,226	3,476	1,736	1,740
10 - 14	6,439	3,256	3,183	6,570	3,314	3,256	2,608	1,321	1,287	3,962	1,993	1,969
15 - 19	7,929	3,848	4,081	7,950	3,820	4,130	3,580	1,711	1,869	4,370	2,109	2,261
20 - 24	16,568	8,048	8,520	16,838	8,417	8,421	7,449	3,662	3,787	9,389	4,755	4,634
25 - 29	22,029	11,275	10,754	21,645	10,963	10,682	10,006	5,076	4,930	11,639	5,887	5,752
30 - 34	27,297	14,398	12,899	27,608	14,714	12,894	12,944	6,940	6,004	14,664	7,774	6,890
35 - 39	28,102	15,456	12,646	29,930	16,084	13,846	13,998	7,744	6,254	15,932	8,340	7,592
40 - 44	28,391	17,306	11,085	28,069	17,042	11,027	13,260	8,306	4,954	14,809	8,736	6,073
45 - 49	27,383	16,274	11,109	28,431	17,035	11,396	13,096	7,987	5,109	15,335	9,048	6,287
50 - 54	22,327	12,324	10,003	24,089	13,606	10,483	10,873	6,262	4,611	13,216	7,344	5,872
55 - 59	20,033	10,833	9,200	20,712	11,219	9,493	9,635	5,337	4,298	11,077	5,882	5,195
60 - 64	15,909	8,633	7,276	17,186	9,438	7,748	7,841	4,339	3,502	9,345	5,099	4,246
65 - 69	8,757	4,739	4,018	9,882	5,460	4,422	4,518	2,542	1,976	5,364	2,918	2,446
70 & over	8,345	4,315	4,030	8,854	4,706	4,148	4,006	2,164	1,842	4,848	2,542	2,306
Not stated	65,549	35,047	30,502	69,848	37,348	32,500	31,952	17,266	14,686	37,896	20,082	17,814
All ages	315,795	171,249	144,546	328,628	178,766	149,862	150,560	83,117	67,443	178,068	95,649	82,419

¹ Including arrivals from Rodrigues

Table 20 - Departures¹ of Mauritian residents by age and sex, 2012 & 2013

Age (years)	2012			2013			January - June 2013			July - December 2013		
	Both Sexes	Male	Female	Both Sexes	Male	Female	Both Sexes	Male	Female	Both Sexes	Male	Female
Under 1	701	358	343	658	372	286	310	174	136	348	198	150
1 - 4	3,759	1,919	1,840	4,054	2,091	1,963	1,887	972	915	2,167	1,119	1,048
5 - 9	5,130	2,614	2,516	5,773	2,915	2,858	2,128	1,097	1,031	3,645	1,818	1,827
10 - 14	5,986	3,019	2,967	6,474	3,280	3,194	2,087	1,060	1,027	4,387	2,220	2,167
15 - 19	8,423	4,097	4,326	8,449	4,049	4,400	3,092	1,462	1,630	5,357	2,587	2,770
20 - 24	16,306	7,970	8,336	16,429	8,148	8,281	7,315	3,540	3,775	9,114	4,608	4,506
25 - 29	20,882	10,628	10,254	20,740	10,451	10,289	10,153	5,136	5,017	10,587	5,315	5,272
30 - 34	25,924	13,613	12,311	26,675	14,115	12,560	13,163	7,018	6,145	13,512	7,097	6,415
35 - 39	26,786	14,721	12,065	29,061	15,473	13,588	13,909	7,652	6,257	15,152	7,821	7,331
40 - 44	26,972	16,453	10,519	27,515	16,776	10,739	13,210	8,333	4,877	14,305	8,443	5,862
45 - 49	26,257	15,687	10,570	27,614	16,584	11,030	12,997	7,965	5,032	14,617	8,619	5,998
50 - 54	21,177	11,679	9,498	23,307	13,264	10,043	10,844	6,256	4,588	12,463	7,008	5,455
55 - 59	18,755	10,219	8,536	19,853	10,839	9,014	9,507	5,265	4,242	10,346	5,574	4,772
60 - 64	14,660	8,003	6,657	16,250	8,992	7,258	7,653	4,192	3,461	8,597	4,800	3,797
65 - 69	7,921	4,238	3,683	9,160	5,037	4,123	4,408	2,440	1,968	4,752	2,597	2,155
70 & over	7,626	3,954	3,672	8,126	4,308	3,818	3,930	2,081	1,849	4,196	2,227	1,969
Not stated	66,857	35,272	31,585	69,762	36,235	33,527	29,829	16,080	13,749	39,933	20,155	19,778
All ages	304,122	164,444	139,678	319,900	172,929	146,971	146,422	80,723	65,699	173,478	92,206	81,272

¹ Including departures to Rodrigues

Table 21 - Excess of arrivals over departures ¹ of Mauritian residents by age & sex, 2012 & 2013

Age (years)	2012			2013			January - June 2013			July - December 2013		
	Both Sexes	Male	Female	Both Sexes	Male	Female	Both Sexes	Male	Female	Both Sexes	Male	Female
Under 1	27	16	11	79	48	31	24	22	2	55	26	29
1 - 4	569	319	250	286	116	170	110	55	55	176	61	115
5 - 9	551	271	280	166	58	108	335	140	195	-169	-82	-87
10 - 14	453	237	216	96	34	62	521	261	260	-425	-227	-198
15 - 19	-494	-249	-245	-499	-229	-270	488	249	239	-987	-478	-509
20 - 24	262	78	184	409	269	140	134	122	12	275	147	128
25 - 29	1,147	647	500	905	512	393	-147	-60	-87	1,052	572	480
30 - 34	1,373	785	588	933	599	334	-219	-78	-141	1,152	677	475
35 - 39	1,316	735	581	869	611	258	89	92	-3	780	519	261
40 - 44	1,419	853	566	554	266	288	50	-27	77	504	293	211
45 - 49	1,126	587	539	817	451	366	99	22	77	718	429	289
50 - 54	1,150	645	505	782	342	440	29	6	23	753	336	417
55 - 59	1,278	614	664	859	380	479	128	72	56	731	308	423
60 - 64	1,249	630	619	936	446	490	188	147	41	748	299	449
65 - 69	836	501	335	722	423	299	110	102	8	612	321	291
70 & over	719	361	358	728	398	330	76	83	-7	652	315	337
Not stated	-1,308	-225	-1,083	86	1,113	-1,027	2,123	1,186	937	-2,037	-73	-1,964
All ages	11,673	6,805	4,868	8,728	5,837	2,891	4,138	2,394	1,744	4,590	3,443	1,147

¹ Including traffic between Island of Mauritius and Rodrigues.

Table 22 - Arrivals and departures of Mauritian residents¹ by country of embarkation and disembarkation, 2011 - 2013

Country of embarkation/ disembarkation	Arrivals			Departures			Excess of arrivals over departures		
	2011	2012	2013	2011	2012	2013	2011	2012	2013
Australia	9,287	9,282	9,467	9,534	9,251	9,045	-247	31	422
France	30,581	38,872	37,273	29,631	35,939	35,518	950	2,933	1,755
Germany	2,907	2,775	2,264	2,337	3,428	1,904	570	-653	360
Hong Kong SAR ²	11,913	9,548	8,716	11,628	8,359	8,353	285	1,189	363
India	22,060	25,792	26,306	21,825	24,393	25,028	235	1,399	1,278
Italy	6,325	2,959	2,502	6,315	2,876	2,507	10	83	-5
Kenya	2,305	3,016	3,389	2,507	3,074	3,457	-202	-58	-68
Rodrigues	64,564	67,745	69,848	65,423	67,527	69,762	-859	218	86
Reunion	33,929	38,638	39,730	31,642	36,615	39,359	2,287	2,023	371
Singapore	11,808	11,672	7,872	9,469	10,227	7,916	2,339	1,445	-44
S. Africa, Rep of	20,207	23,571	26,134	20,087	22,604	25,693	120	967	441
Switzerland	2,247	2,179	228	2,001	1,003	124	246	1,176	104
United Kingdom	28,031	25,998	22,990	24,815	23,725	21,580	3,216	2,273	1,410
Other countries	45,854	53,748	71,909	47,264	55,101	69,654	-1,410	-1,353	2,255
All Countries	292,018	315,795	328,628	284,478	304,122	319,900	7,540	11,673	8,728

¹ Including traffic between Island of Mauritius and Rodrigues

² Special Administrative Region of China

III - TOURISM

Definition and notes

1. Definition of tourist

- (a) Prior to 1964, a tourist has been defined as a non-resident staying in Mauritius for more than 24 hours but less than 6 months.
- (b) From 1964 to 2008, a tourist is defined as a non-resident staying in Mauritius for more than 24 hours but less than a year and is not involved in any gainful occupation.
- (c) As from 2009, a tourist is defined as a non-resident staying overnight but less than a year, and who has no employer-employee relationship with a resident.

The figures for the three periods are nevertheless comparable because of the small number of tourists staying for more than 6 months.

2. Visitors include the following:

- (a) Tourists as defined above and
- (b) Excursionists or same day visitors, i.e non-residents, other than those who do not leave the airport/ships, who depart on the same day they arrived.

3. Method of compilation

Sources of data

The main source of data for the compilation of passenger traffic statistics is the Passport and Immigration Office, which maintains a database of all passengers entering and leaving the country. The data are collected from the passport of travellers, disembarkation cards filled in by non-residents and questions put to non-residents entering the country. At the end of every month, passenger traffic for that particular month is downloaded and supplied to the Statistics Unit of the Ministry of Tourism and Leisure within fifteen days. Additional data on cruises are supplied by the Mauritius Ports Authority.

Prior to 1994, figures have been compiled from a 10% sample of embarkation and disembarkation cards filled in by passengers. However, as from January 1994, they are based on movements of all passengers. Thus disaggregated data for 1994 onwards may not be strictly comparable to previous series.

Tourism earnings

The Bank of Mauritius is responsible for the estimation of tourism earnings based on monthly statements of Inward and Outward Remittances of Commercial Banks.

Monthly Occupancy Rates

All hotels are contacted by mail and/or phone at the end of every month on room / bed nights available and rented during the month for the calculation of room and bed occupancy.

4. Tourist nights

Prior to 2010, tables on tourist nights show the number of nights spent by tourists who were present in the country during the period under review. Thus the number of tourist nights for 2009 include:

- (a) nights spent during 2009 by tourists who arrived prior to 1st January 2009; and
- (b) nights during 2009 by tourists who arrived during the same year.

However, nights spent after 31st December 2009 by tourists who arrived in 2009 are excluded.

As from 2010, tourist night for year Y refer to tourist nights spent by tourists arriving in year Y.

5. Large hotels

Large hotels are well established beach hotels of over 80 rooms.

Table 23 -Tourist arrivals by mode of transport and tourist nights spent during period, 1997 - 2013

Period	Tourist arrivals			Tourist nights spent during period	% change over previous year	
	Sea	Air	Total		Tourist arrivals	Tourist nights
1997	7,476	528,649	536,125	5,451,314	+ 10.1	+ 10.0
1998	17,109	541,086	558,195	5,567,889	+ 4.1	+ 2.1
1999	13,852	564,233	578,085	5,729,464	+ 3.6	+ 2.9
2000	10,677	645,776	656,453	6,412,876	+ 13.6	+ 11.9
2001	10,532	649,786	660,318	6,527,800	+ 0.6	+ 1.8
2002	14,180	667,468	681,648	6,768,870	+ 3.2	+ 3.7
2003	12,155	689,863	702,018	6,952,313	+ 3.0	+ 2.7
2004	11,390	707,471	718,861	7,118,603	+ 2.4	+ 2.4
2005	13,321	747,742	761,063	7,498,251	+ 5.9	+ 5.3
2006	13,249	775,027	788,276	7,760,679	+ 3.6	+ 3.5
2007	12,163	894,808	906,971	8,986,934	+ 15.1	+ 15.8
2008	15,961	914,495	930,456	9,218,625	+ 2.6	+ 2.6
2009	23,265	848,091	871,356	8,639,304	- 6.4	- 6.3
2010 ³	23,648	911,179	934,827	9,651,244
2011	25,047	939,595	964,642	10,000,136	+ 3.2	+ 3.6
2012	16,930	948,511	965,441	10,461,126 ¹	+ 0.1	+ 4.6
2013 ²	13,284	979,822	993,106	10,834,907	+ 2.9	+ 3.6

¹ Revised

² Provisional

³ As from 2010, a new methodology for computation of tourist nights is being used. Refer to definition on page 30.

Table 24 - Tourist arrivals by month of arrival, 2004 - 2013

Month of arrival	2004	2005	2006	2007	2008	2009	2010	2011	2012	2013
January	66,543	73,053	86,218	91,628	94,579	88,591	91,857	101,887	98,837	92,894
February	54,104	56,367	64,894	72,338	77,763	67,892	72,366	77,390	79,331	81,185
March	63,631	67,931	58,136	79,965	89,152	76,425	85,748	83,349	83,827	91,759
April	55,599	52,971	57,361	70,297	72,837	68,969	64,797	79,173	79,137	76,223
May	53,974	55,995	50,773	65,301	67,705	64,761	71,055	68,214	71,396	74,596
June	38,826	42,994	42,755	52,584	53,722	46,866	53,327	54,591	54,625	55,007
July	62,173	65,462	65,540	77,225	81,169	71,872	77,009	78,034	76,166	77,374
August	55,342	60,746	64,307	69,941	71,605	63,365	65,093	66,865	65,896	73,454
September	53,102	53,233	56,138	65,542	65,632	60,144	65,404	64,880	66,369	71,951
October	70,793	70,999	75,451	81,244	83,524	80,197	87,340	90,616	89,994	92,520
November	66,960	70,793	70,394	77,236	75,380	78,544	85,982	87,348	84,398	89,057
December	77,814	90,519	96,309	103,670	97,388	103,730	114,849	112,295	115,465	117,086
Year	718,861	761,063	788,276	906,971	930,456	871,356	934,827	964,642	965,441	993,106

Fig 4 - Tourist arrivals by month, 2009-2013

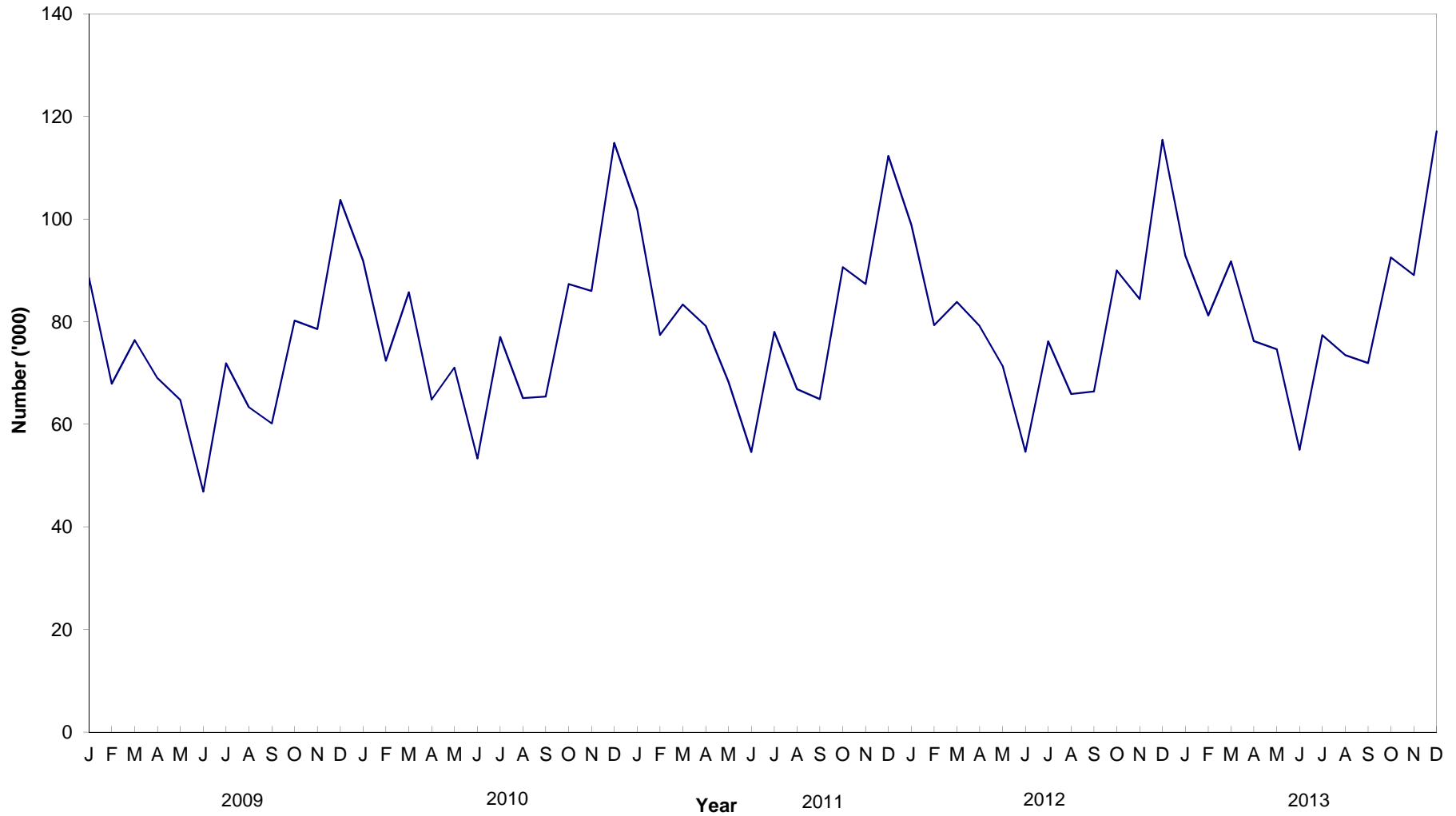


Table 25 - Percentage distribution of tourist arrivals by month of arrival, 2004 - 2013

Month of arrival	2004	2005	2006	2007	2008	2009	2010	2011	2012	2013
January	9.3	9.6	10.9	10.1	10.2	10.2	9.8	10.6	10.2	9.4
February	7.5	7.4	8.2	8.0	8.4	7.8	7.7	8.0	8.2	8.2
March	8.9	8.9	7.4	8.8	9.6	8.8	9.2	8.6	8.7	9.2
April	7.7	7.0	7.3	7.8	7.8	7.9	6.9	8.2	8.2	7.7
May	7.5	7.4	6.4	7.2	7.3	7.4	7.6	7.1	7.4	7.5
June	5.4	5.6	5.4	5.8	5.8	5.4	5.7	5.7	5.7	5.5
July	8.6	8.6	8.3	8.5	8.7	8.2	8.2	8.1	7.9	7.8
August	7.7	8.0	8.2	7.7	7.7	7.3	7.0	6.9	6.8	7.4
September	7.4	7.0	7.1	7.2	7.1	6.9	7.0	6.7	6.9	7.2
October	9.8	9.3	9.6	9.0	9.0	9.2	9.3	9.4	9.3	9.3
November	9.3	9.3	8.9	8.5	8.1	9.0	9.2	9.1	8.7	9.0
December	10.8	11.9	12.2	11.4	10.5	11.9	12.4	11.6	12.0	11.8
Whole Year	100.0	100.0	100.0	100.0	100.0	100.0	100.0	100.0	100.0	100.0

Table 26 - Tourist arrivals by country of residence and sex, 2012 and 2013

Country of residence	2012			2013		
	Male	Female	Both Sexes	Male	Female	Both Sexes
Australia	8,293	8,716	17,009	9,163	9,230	18,393
Belgium	5,581	5,386	10,967	5,782	5,784	11,566
France	127,012	129,917	256,929	120,830	123,922	244,752
Germany	27,282	27,904	55,186	29,773	30,757	60,530
Hong Kong SAR ¹	654	615	1,269	767	682	1,449
India	31,515	23,682	55,197	32,479	24,776	57,255
Italy	19,951	20,058	40,009	15,531	15,674	31,205
Japan	896	745	1,641	998	770	1,768
Kenya	1,583	1,122	2,705	1,712	1,153	2,865
Malagasy Rep.	6,849	6,714	13,563	7,186	6,757	13,943
P. Rep. of China	11,336	9,549	20,885	20,558	21,355	41,913
Reunion Island	70,321	74,019	144,340	70,097	73,017	143,114
Russian Federation	8,958	10,471	19,429	7,093	7,812	14,905
Seychelles	3,039	3,740	6,779	3,286	3,901	7,187
Singapore	1,216	862	2,078	1,343	769	2,112
S. Africa, Rep. of	44,687	44,371	89,058	47,219	46,989	94,208
Switzerland	12,552	13,450	26,002	13,403	14,353	27,756
United Arab Emirates	2,786	2,617	5,403	4,099	4,062	8,161
United Kingdom	44,027	43,621	87,648	48,949	49,068	98,017
U.S.A.	3,796	2,578	6,374	3,308	2,469	5,777
Zimbabwe	862	706	1,568	840	686	1,526
Other countries	55,805	45,597	101,402	56,859	47,845	104,704
All Countries	489,001	476,440	965,441	501,275	491,831	993,106

¹ Special Administrative Region of China

Table 27 - Tourist arrivals by country of residence, 2004 - 2013

Country of residence	2004	2005	2006	2007	2008	2009	2010	2011	2012	2013
Australia	11,373	13,486	16,660	19,635	18,852	10,363	11,493	15,726	17,009	18,393
Belgium	8,524	8,973	9,216	10,945	11,796	10,254	10,214	12,029	10,967	11,566
France	210,411	220,421	182,295	240,028	260,054	275,599	302,185	282,469	256,929	244,752
Germany	52,277	55,983	57,251	65,165	61,484	51,279	52,886	56,331	55,186	60,530
Hong Kong SAR ¹	836	508	519	649	641	382	415	593	1,269	1,449
India	24,716	29,755	37,498	42,974	43,911	39,252	49,779	53,955	55,197	57,255
Italy	41,277	43,458	69,407	69,510	66,432	56,736	56,540	52,747	40,009	31,205
Japan	1,724	1,638	1,695	1,730	1,751	1,351	1,485	1,545	1,641	1,768
Kenya	1,506	1,358	1,694	1,790	1,997	1,386	1,548	1,914	2,705	2,865
Malagasy Rep.	8,256	7,397	7,239	8,842	10,905	8,333	9,833	11,449	13,563	13,943
People's Rep. of China	5,291	5,526	4,875	7,739	8,425	6,925	7,609	15,133	20,885	41,913
Reunion Island	96,510	99,036	89,127	95,823	96,174	104,946	114,914	132,535	144,340	143,114
Russian Federation	3,209	4,000	5,081	5,968	6,763	5,628	6,615	12,224	19,429	14,905
Seychelles	7,456	10,084	12,023	14,275	10,604	7,532	10,160	8,485	6,779	7,187
Singapore	2,329	1,789	1,862	2,020	1,758	1,657	1,909	2,461	2,078	2,112
S. Africa, Rep. of	52,609	58,446	70,796	81,733	84,448	74,176	81,458	86,232	89,058	94,208
Switzerland	16,110	15,773	16,161	17,546	16,037	15,349	18,577	24,362	26,002	27,756
United Arab Emirates	1,715	1,344	1,896	1,971	4,109	3,141	3,470	3,780	5,403	8,161
United Kingdom	92,652	95,407	102,333	107,297	107,919	101,996	97,548	88,182	87,648	98,017
USA	4,305	4,890	5,220	5,451	7,089	6,951	7,316	6,870	6,374	5,777
Zimbabwe	2,345	2,419	1,587	1,669	1,809	1,326	1,204	1,495	1,568	1,526
Other Countries	73,430	79,372	93,841	104,211	107,498	86,794	87,669	94,125	101,402	104,704
All Countries	718,861	761,063	788,276	906,971	930,456	871,356	934,827	964,642	965,441	993,106

¹ Special Administrative Region of China

Table 28 - Percentage distribution of tourist arrivals by country of residence, 2004 - 2013

Country of residence	2004	2005	2006	2007	2008	2009	2010	2011	2012	2013
Australia	1.6	1.8	2.1	2.2	2.0	1.2	1.2	1.6	1.8	1.9
Belgium	1.2	1.2	1.2	1.2	1.3	1.2	1.1	1.2	1.1	1.2
France	29.3	29.0	23.1	26.5	27.9	31.6	32.3	29.3	26.6	24.6
Germany	7.3	7.4	7.3	7.2	6.6	5.9	5.7	5.8	5.7	6.1
Hong Kong SAR ¹	0.1	0.1	0.1	0.1	0.1	0.0	0.0	0.1	0.1	0.1
India	3.4	3.9	4.8	4.7	4.7	4.5	5.3	5.6	5.7	5.8
Italy	5.7	5.7	8.8	7.7	7.1	6.5	6.0	5.5	4.1	3.1
Japan	0.2	0.2	0.2	0.2	0.2	0.2	0.2	0.2	0.2	0.2
Kenya	0.2	0.2	0.2	0.2	0.2	0.2	0.2	0.2	0.3	0.3
Malagasy Rep.	1.1	1.0	0.9	1.0	1.2	1.0	1.1	1.2	1.4	1.4
People's Rep. of China	0.7	0.7	0.6	0.9	0.9	0.8	0.8	1.6	2.2	4.2
Reunion Island	13.4	13.0	11.3	10.6	10.3	12.0	12.3	13.7	15.0	14.4
Russian Federation	0.4	0.5	0.6	0.7	0.7	0.6	0.7	1.3	2.0	1.5
Seychelles	1.0	1.3	1.5	1.6	1.1	0.9	1.1	0.9	0.7	0.7
Singapore	0.3	0.2	0.2	0.2	0.2	0.2	0.2	0.3	0.2	0.2
S. Africa, Rep. of	7.3	7.7	9.0	9.0	9.1	8.5	8.7	8.9	9.2	9.5
Switzerland	2.2	2.1	2.1	1.9	1.7	1.8	2.0	2.5	2.7	2.8
United Arab Emirates	0.2	0.2	0.2	0.2	0.4	0.4	0.4	0.4	0.6	0.8
United Kingdom	12.9	12.5	13.0	11.8	11.6	11.7	10.4	9.1	9.1	9.9
USA	0.6	0.6	0.7	0.6	0.8	0.8	0.8	0.7	0.7	0.6
Zimbabwe	0.3	0.3	0.2	0.2	0.2	0.2	0.1	0.2	0.2	0.2
Other Countries	10.6	10.4	11.9	11.3	11.7	9.8	9.4	9.7	10.4	10.5
All Countries	100.0	100.0	100.0	100.0	100.0	100.0	100.0	100.0	100.0	100.0

¹ Special Administrative Region of China

Fig. 5 - Percentage distribution of tourist arrivals by country of residence, 2013

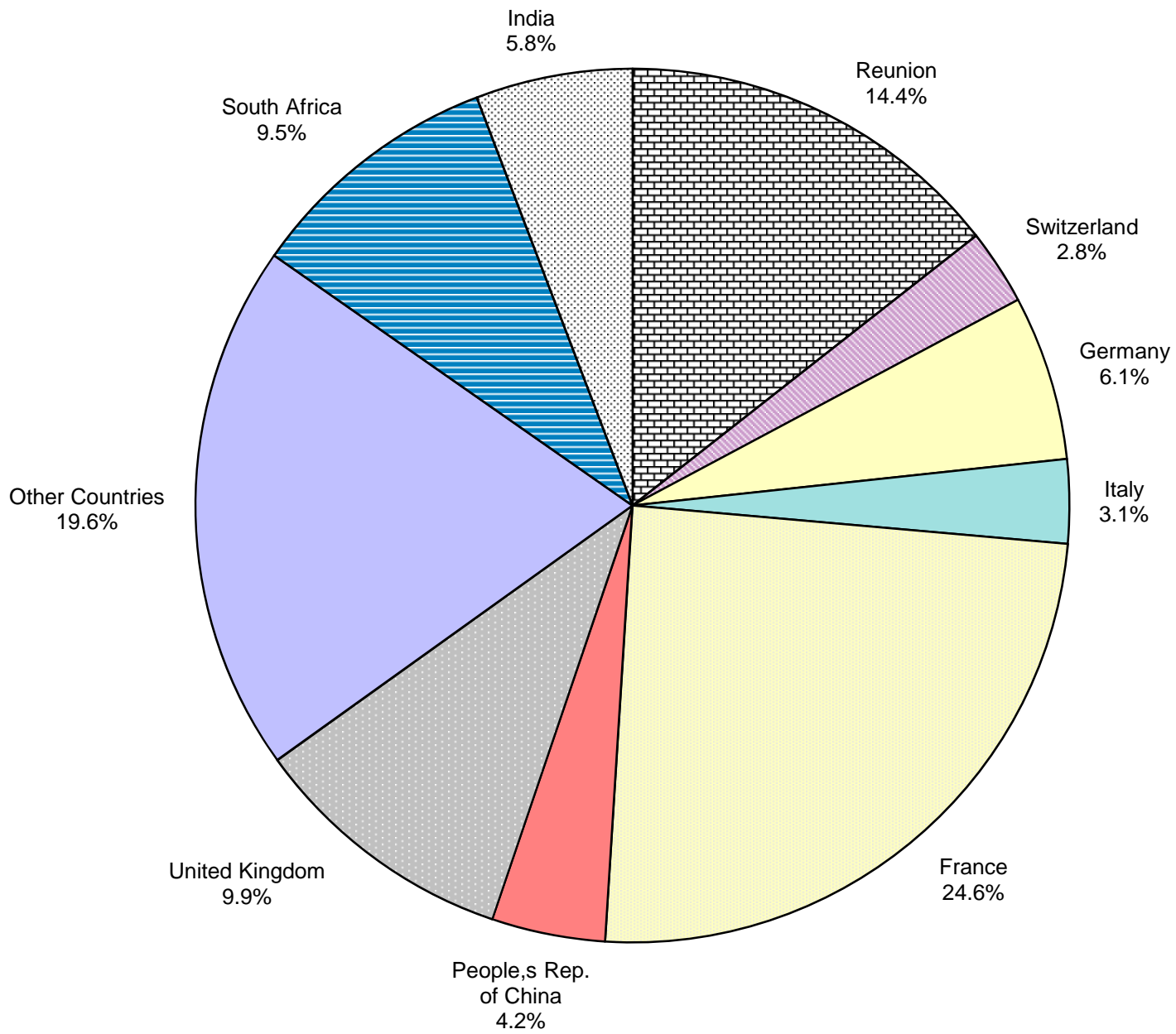


Table 29 - Tourist nights by country of residence, 2004 - 2013

Country of residence	2004	2005	2006	2007	2008	2009	2010	2011	2012 ²	2013 ³
Australia	111,546	115,851	126,859	143,482	161,488	138,665	151,744	200,337	225,318	227,459
Belgium	105,445	117,210	120,987	132,145	148,978	138,764	138,874	150,952	154,761	159,050
France	2,101,125	2,208,575	1,931,005	2,542,172	2,711,413	2,498,920	3,296,234	3,190,400	2,985,267	3,081,030
Germany	608,031	655,283	655,738	735,938	760,468	579,531	657,888	686,431	677,082	729,164
Hong Kong SAR ¹	7,984	4,694	3,739	4,788	4,492	4,211	4,934	6,533	10,921	10,543
India	265,174	295,698	336,048	408,128	399,570	376,783	414,939	488,810	552,374	582,864
Italy	362,758	397,160	619,089	600,236	605,457	512,033	526,028	501,289	391,495	323,399
Japan	9,881	10,538	9,889	10,701	10,643	11,481	10,030	10,760	10,396	10,529
Kenya	11,069	12,258	13,875	12,642	14,338	11,767	12,684	17,600	20,768	21,901
Malagasy Rep.	83,961	73,964	84,400	98,034	107,295	96,282	108,972	125,848	143,169	205,807
People's Rep. of China	50,202	64,707	67,643	88,967	105,990	69,196	93,492	162,914	241,543	378,981
Reunion Island	832,879	828,889	730,678	917,369	790,612	969,927	769,924	943,649	1,159,028	1,001,960
Russian Federation	NA	NA	NA	NA	NA	NA	79,316	133,424	232,387	183,859
Seychelles	75,277	93,951	108,603	133,595	95,254	67,976	94,302	80,522	63,574	67,712
Singapore	16,094	12,106	14,166	12,200	11,953	11,330	12,825	14,805	17,285	20,795
S. Africa, Rep. of	425,680	467,603	565,627	676,795	699,329	602,983	697,026	720,138	753,993	780,188
Switzerland	189,115	185,482	200,141	207,130	192,797	197,742	243,851	299,347	328,073	347,834
United Arab Emirates	NA	NA	NA	NA	NA	NA	37,433	39,421	39,393	45,929
United Kingdom	1,053,881	1,070,185	1,152,123	1,141,982	1,189,830	1,281,968	1,210,557	1,101,156	1,211,382	1,363,354
U.S.A.	39,039	41,298	44,827	49,666	65,761	54,075	63,341	67,665	59,995	61,441
Zimbabwe	28,831	31,233	20,493	23,207	24,678	12,859	11,500	15,255	18,324	16,581
Other countries	790,833	876,273	1,022,392	1,136,724	1,224,269	1,072,007	1,015,350	1,042,880	1,164,598	1,214,527
All Countries	7,118,603	7,498,251	7,760,679	8,986,934	9,218,625	8,639,304	9,651,244	10,000,136	10,461,126	10,834,907

¹ Special Administrative Region of China

² Revised

³ Provisional

As from 2010, a new methodology for computation of tourist nights is being used.

NA - Not available

Table 29 - Tourist nights by country of residence, 2004 - 2013

Country of residence	2004	2005	2006	2007	2008	2009	2010	2011	2012 ²	2013 ³
Australia	111,546	115,851	126,859	143,482	161,488	138,665	151,744	200,337	225,318	227,459
Belgium	105,445	117,210	120,987	132,145	148,978	138,764	138,874	150,952	154,761	159,050
France	2,101,125	2,208,575	1,931,005	2,542,172	2,711,413	2,498,920	3,296,234	3,190,400	2,985,267	3,081,030
Germany	608,031	655,283	655,738	735,938	760,468	579,531	657,888	686,431	677,082	729,164
Hong Kong SAR ¹	7,984	4,694	3,739	4,788	4,492	4,211	4,934	6,533	10,921	10,543
India	265,174	295,698	336,048	408,128	399,570	376,783	414,939	488,810	552,374	582,864
Italy	362,758	397,160	619,089	600,236	605,457	512,033	526,028	501,289	391,495	323,399
Japan	9,881	10,538	9,889	10,701	10,643	11,481	10,030	10,760	10,396	10,529
Kenya	11,069	12,258	13,875	12,642	14,338	11,767	12,684	17,600	20,768	21,901
Malagasy Rep.	83,961	73,964	84,400	98,034	107,295	96,282	108,972	125,848	143,169	205,807
People's Rep. of China	50,202	64,707	67,643	88,967	105,990	69,196	93,492	162,914	241,543	378,981
Reunion Island	832,879	828,889	730,678	917,369	790,612	969,927	769,924	943,649	1,159,028	1,001,960
Russian Federation	NA	NA	NA	NA	NA	NA	79,316	133,424	232,387	183,859
Seychelles	75,277	93,951	108,603	133,595	95,254	67,976	94,302	80,522	63,574	67,712
Singapore	16,094	12,106	14,166	12,200	11,953	11,330	12,825	14,805	17,285	20,795
S. Africa, Rep. of	425,680	467,603	565,627	676,795	699,329	602,983	697,026	720,138	753,993	780,188
Switzerland	189,115	185,482	200,141	207,130	192,797	197,742	243,851	299,347	328,073	347,834
United Arab Emirates	NA	NA	NA	NA	NA	NA	37,433	39,421	39,393	45,929
United Kingdom	1,053,881	1,070,185	1,152,123	1,141,982	1,189,830	1,281,968	1,210,557	1,101,156	1,211,382	1,363,354
U.S.A.	39,039	41,298	44,827	49,666	65,761	54,075	63,341	67,665	59,995	61,441
Zimbabwe	28,831	31,233	20,493	23,207	24,678	12,859	11,500	15,255	18,324	16,581
Other countries	740,631	811,566	954,749	1,047,757	1,118,279	1,002,811	1,015,350	1,042,880	1,164,598	1,214,527
All Countries	7,118,603	7,498,251	7,760,679	8,986,934	9,218,625	8,639,304	9,651,244	10,000,136	10,461,126	10,834,907

¹ Special Administrative Region of China

² Revised

³ Provisional

NA - Not available

Fig 6 - Total arrivals and tourist arrivals, 2004 - 2013

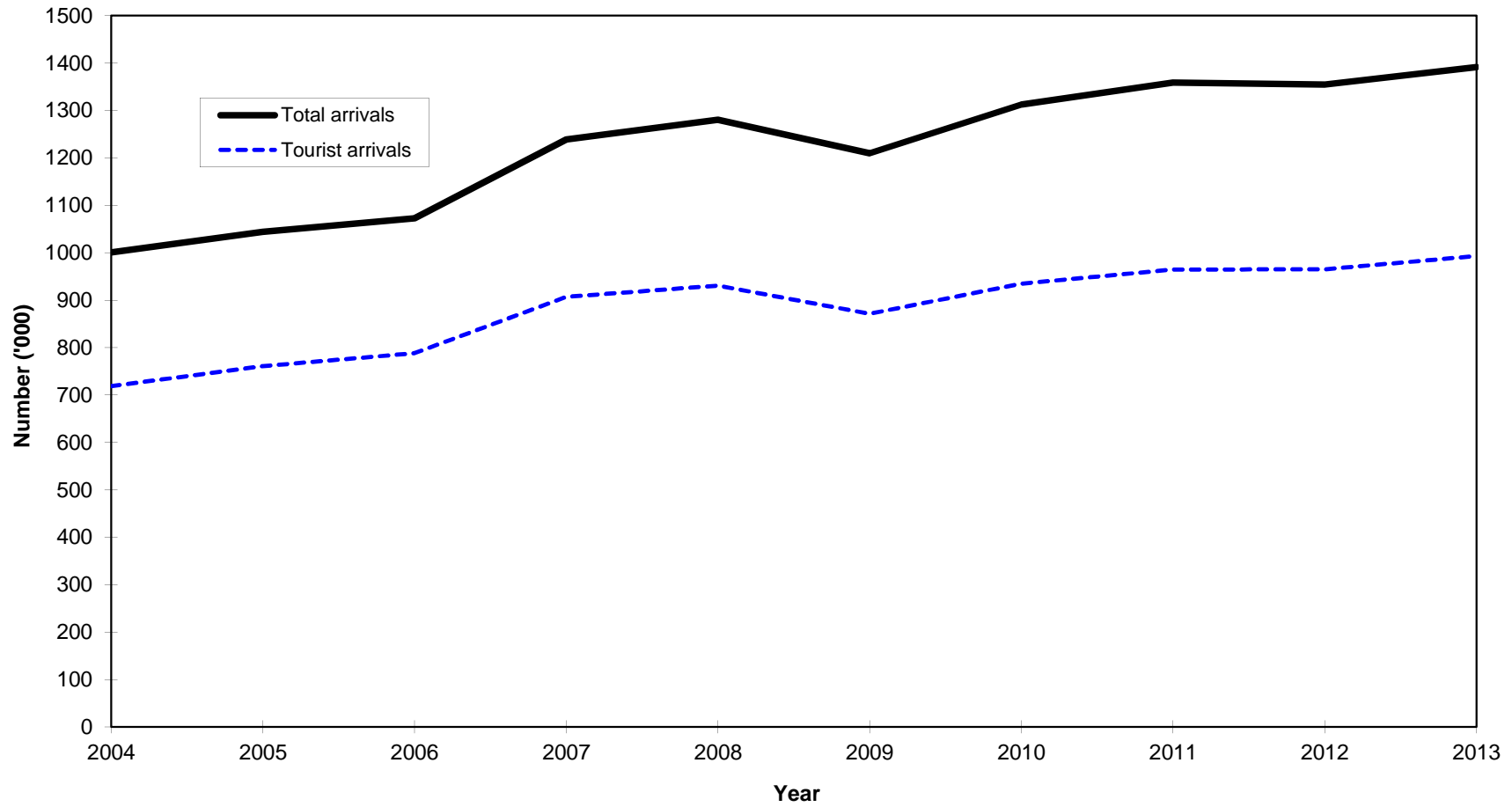


Fig 7 - Tourist nights, 2004 - 2013

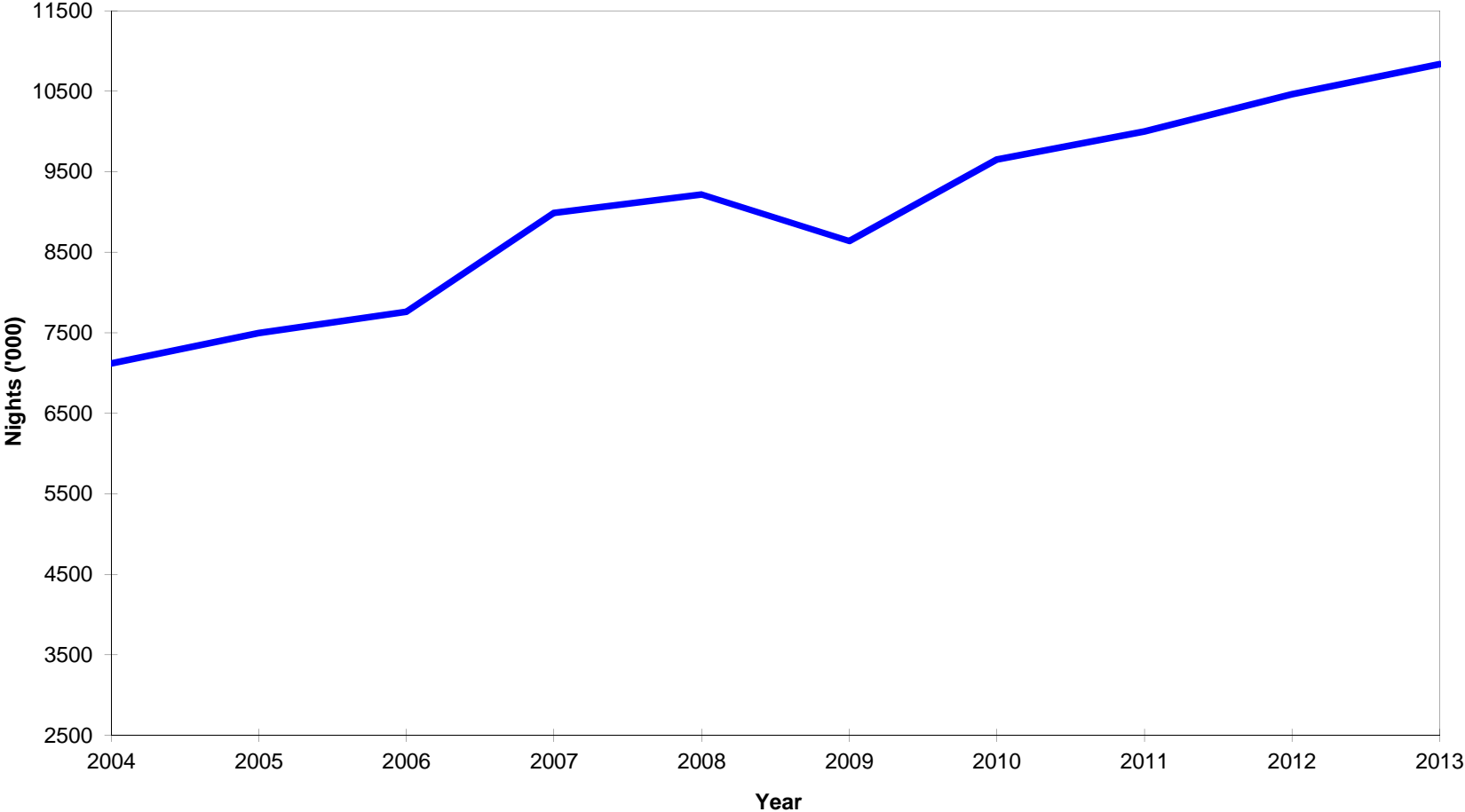


Table 30 - Visitor¹ arrivals by country of residence and type of passenger, 2011 - 2013

Country of residence	Visitors on holidays			Visitors on business			Visitors in transit			Other visitors			Total visitors		
	2011	2012	2013	2011	2012	2013	2011	2012	2013	2011	2012	2013	2011	2012	2013
Australia	13,907	15,410	16,081	612	510	517	4,029	2,447	4,063	31	9	15	18,579	18,376	20,676
Belgium	11,592	10,563	11,143	357	350	380	154	114	110	32	17	15	12,135	11,044	11,648
France	276,625	249,107	238,115	4,156	4,960	5,104	5,777	5,286	3,899	921	300	199	287,479	259,653	247,317
Germany	55,381	54,381	59,052	658	594	663	886	1,069	1,872	20	15	19	56,945	56,059	61,606
Hong Kong SAR ²	589	1,022	1,235	1	113	158	4	166	82	0	3	7	594	1,304	1,482
India	47,787	49,071	51,189	4,697	4,874	4,960	1,522	1,289	1,201	320	330	287	54,326	55,564	57,637
Italy	51,788	39,361	30,544	597	471	507	577	457	623	31	18	8	52,993	40,307	31,682
Japan	1,223	1,380	1,399	183	196	243	593	621	2,036	1	6	1	2,000	2,203	3,679
Kenya	887	1,349	1,362	869	1,059	1,097	166	274	348	30	36	72	1,952	2,718	2,879
Malagasy Rep.	7,506	8,663	8,389	1,080	1,585	1,468	2,917	3,552	4,256	281	321	429	11,784	14,121	14,542
Reunion Island	123,403	137,759	137,293	4,469	2,625	2,191	6,810	7,078	6,920	0	496	691	134,682	147,958	147,095
Seychelles	7,224	5,279	5,329	511	537	595	666	698	930	304	353	509	8,705	6,867	7,363
Singapore	1,794	1,576	1,385	320	412	656	361	121	88	4	0	3	2,479	2,109	2,132
S. Africa Rep. of	78,404	81,115	85,614	6,924	7,198	7,619	911	1,880	2,602	278	184	290	86,517	90,377	96,125
Switzerland	23,981	25,538	27,187	261	349	463	426	586	482	17	6	9	24,685	26,479	28,141
United Kingdom	83,554	84,009	94,602	3,030	2,657	2,641	3,098	3,309	2,631	125	56	86	89,807	90,031	99,960
U.S.A.	5,162	4,744	4,447	1,213	999	1,020	1,925	1,608	1,546	9	18	9	8,309	7,369	7,022
Zimbabwe	1,069	1,119	1,081	407	422	386	18	12	17	5	22	49	1,499	1,575	1,533
Other & N. Stated	105,012	125,531	147,800	10,751	12,656	12,814	10,703	11,177	11,157	630	626	995	127,096	149,990	172,766
All Countries	896,888	896,977	923,247	41,096	42,567	43,482	41,543	41,744	44,863	3,039	2,816	3,693	982,566	984,104	1,015,285

¹ Visitors include tourists, cruise ship passengers and non-residents who stay in the country for less than a day, other than those who do not leave the airport

² Special Administrative Region of China

Table 31 - Visitor arrivals by age and sex, 2012 & 2013

Age (years)	2012			2013		
	Both Sexes	Male	Female	Both Sexes	Male	Female
Under 1	5,764	2,917	2,847	5,899	3,011	2,888
1 - 4	33,017	16,667	16,350	32,543	16,320	16,223
5 - 9	42,355	21,168	21,187	42,711	21,478	21,233
10 - 14	41,719	20,912	20,807	41,896	21,088	20,808
15 - 19	32,329	15,250	17,079	32,975	15,625	17,350
20 - 24	47,689	18,322	29,367	48,334	18,632	29,702
25 - 29	109,398	50,053	59,345	115,178	52,343	62,835
30 - 34	107,117	55,065	52,052	109,835	56,466	53,369
35 - 39	94,824	50,599	44,225	94,731	50,183	44,548
40 - 44	94,655	50,982	43,673	95,929	51,056	44,873
45 - 49	93,051	49,137	43,914	95,866	50,594	45,272
50 - 54	84,218	44,168	40,050	88,216	46,067	42,149
55 - 59	69,195	36,306	32,889	72,052	37,629	34,423
60 - 64	57,309	30,334	26,975	59,181	30,979	28,202
65 - 69	36,984	19,803	17,181	41,392	22,029	19,363
70 & over	34,480	18,482	15,998	38,547	20,717	17,830
All ages	984,104	500,165	483,939	1,015,285	514,217	501,068

Table 32 - Visitor arrivals by duration of stay, 2012 & 2013

Duration of stay	2012 ¹		2013 ²	
	Number	Percentage	Number	Percentage
Less than 1 night	18,663	1.9	22,179	2.2
1 night	29,656	3.0	32,283	3.2
2 nights	34,798	3.5	31,474	3.1
3 nights	39,244	4.0	41,462	4.1
4 nights	54,137	5.5	58,426	5.8
5 nights	56,868	5.8	82,175	8.1
6 nights	90,242	9.2	87,477	8.6
7 nights	233,447	23.7	220,781	21.7
8 nights	42,645	4.3	43,126	4.2
9 nights	54,018	5.5	55,836	5.5
10 nights	60,177	6.1	65,306	6.4
11 nights	29,074	3.0	26,939	2.7
12 nights	31,191	3.2	37,837	3.7
13 nights	36,464	3.7	33,559	3.3
14 nights	64,379	6.5	64,535	6.4
15 nights	10,413	1.1	10,327	1.0
16 nights	9,331	0.9	9,887	1.0
17 nights	5,955	0.6	6,046	0.6
18 nights	5,154	0.5	5,355	0.5
19 nights	5,884	0.6	6,176	0.6
20 - 24 nights	24,890	2.5	24,738	2.4
25 - 29 nights	12,906	1.3	13,225	1.3
1 month - under 2 months	21,824	2.2	22,433	2.2
2 months - under 3 months	5,819	0.6	6,341	0.6
3 months and over	6,925	0.7	7,362	0.7
All Countries	984,104	100.0	1,015,285	100.0

¹ Revised

² Provisional

Table 33 - Visitor arrivals by country of residence and duration of stay, 2013

Country of residence	Duration of stay (Nights)												
	<1	1 - 2	3 - 4	5 - 6	7 - 8	9 - 10	11 - 12	13 - 14	15 - 19	20 - 24	25 - 29	30+	Total
Australia	2,283	3,324	1,848	3,165	1,739	1,981	758	1,259	1,042	1,062	777	1,438	20,676
Belgium	82	225	530	1,213	3,117	2,035	937	1,415	578	485	297	734	11,648
France	2,565	8,304	17,031	21,468	81,617	37,567	19,060	23,379	10,998	7,717	4,707	12,904	247,317
Germany	1,076	2,111	2,263	3,085	7,643	9,838	9,117	17,639	4,843	2,501	584	906	61,606
Hong Kong SAR ¹	33	210	198	606	166	74	62	34	45	16	6	32	1,482
India	382	3,120	12,180	32,539	2,461	1,200	480	813	767	655	473	2,567	57,637
Italy	477	736	850	3,694	15,623	3,133	1,370	3,310	864	461	294	870	31,682
Japan	1,911	344	523	593	132	52	18	40	14	14	11	27	3,679
Kenya	14	653	652	474	617	161	57	75	63	25	21	67	2,879
Malagasy Rep.	599	4,715	1,775	1,485	1,645	1,161	609	703	354	226	240	1,030	14,542
Reunion Island	3,981	14,348	29,689	27,694	49,025	8,643	3,567	3,119	3,093	1,452	770	1,714	147,095
Seychelles	176	1,316	766	720	1,663	795	581	532	240	234	90	250	7,363
Singapore	20	333	486	481	143	186	90	113	102	52	41	85	2,132
S. Africa Rep. of	1,917	6,453	8,804	12,390	44,263	10,714	3,099	3,766	2,009	1,129	406	1,175	96,125
Switzerland	385	780	704	1,693	6,157	4,209	3,238	6,657	1,699	1,319	535	765	28,141
United Kingdom	1,943	2,057	3,095	5,536	19,069	20,630	10,676	21,472	4,762	3,923	1,930	4,867	99,960
U.S.A.	1,245	684	1,179	1,324	888	429	282	234	238	136	114	269	7,022
Zimbabwe	7	103	259	334	356	152	67	86	56	29	26	58	1,533
Other & not stated	3,083	13,941	17,056	51,158	27,583	18,182	10,708	13,448	6,024	3,302	1,903	6,378	172,766
All Countries	22,179	63,757	99,888	169,652	263,907	121,142	64,776	98,094	37,791	24,738	13,225	36,136	1,015,285

¹ Special Administrative Region of China

**Table 34 - Tourist arrivals and average length of stay of tourists
by country of residence, 2012 and 2013**

Country of Residence	2012		2013	
	Tourist arrivals	Average length of stay (nights)	Tourist arrivals	Average length of stay (nights)
Australia	17,009	13.2	18,393	12.4
Belgium	10,967	14.1	11,566	13.8
France	256,929	11.6	244,752	12.6
Germany	55,186	12.3	60,530	12.0
Hong Kong SAR ¹	1,269	8.6	1,449	7.3
India	55,197	10.0	57,255	10.2
Italy	40,009	9.8	31,205	10.4
Japan	1,641	6.3	1,768	6.0
Kenya	2,705	7.7	2,865	7.6
Malagasy Rep.	13,563	10.6	13,943	14.8
People's Rep. of China	20,885	11.6	41,913	9.0
Reunion	144,340	8.0	143,114	7.0
Russian Federation	19,429	12.0	14,905	12.3
Seychelles	6,779	9.4	7,187	9.4
Singapore	2,078	8.3	2,112	9.8
S. Africa, Rep. of	89,058	8.5	94,208	8.3
Switzerland	26,002	12.6	27,756	12.5
United Arab Emirates	5,403	7.3	8,161	5.6
United Kingdom	87,648	13.8	98,017	13.9
U.S.A.	6,374	9.4	5,777	10.6
Zimbabwe	1,568	11.7	1,526	10.9
Other & not stated	101,402	11.5	104,704	11.6
All Countries	965,441	10.8	993,106	10.9

¹ Special Administrative Region of China

Table 35 - Gross earnings from tourism, 2004 - 2013

Earnings (Rs Mn)	2004	2005	2006	2007	2008	2009	2010	2011	2012	2013
		23,448	25,704	31,942	40,687	41,213	35,693	39,456	42,717	44,378

Source : Bank of Mauritius

Table 36 - Expenditure of tourists by country of residence, 2010 - 2013

Country of residence	Expenditure (Rs Mn)			
	2010	2011	2012	2013
France	13,981.5	11,362.9	10,316.0	10,991.1
Germany	2,876.4	2,816.3	2,922.9	3,211.3
Italy	2,503.3	2,330.9	1,597.8	1,382.9
Russia	N.A	732.4	1,090.9	966.7
Switzerland	1,108.5	1,270.7	1,436.8	1,709.4
United Kingdom	5,212.0	4,390.6	4,432.1	4,822.9
Reunion	3,206.3	3,053.6	3,194.2	3,472.4
South Africa, Rep. of	3,368.3	3,340.4	3,326.7	3,493.1
China	276.4	603.7	1,053.1	2,034.4
India	1,659.5	1,691.2	1,727.2	1,784.1
Other countries	6,802.8	6,954.5	7,553.8	8,009.1
All Countries	40,995.2	38,547.1	38,651.4	41,877.3

N.A - Not Available

Source: Survey of Inbound Tourism conducted by Statistics Mauritius

Table 37 - Expenditure of tourists by type of expenditure, 2010 - 2013

Type of expenditure	Expenditure (Rs Mn)			
	2010	2011	2012	2013
Accommodation	21,409	23,197	22,603	24,673
Meals & Beverages	5,585	4,830	5,475	4,194
Transport	5,309	3,019	2,882	3,313
Entertainment	3,212	3,031	3,178	4,558
Shopping	4,977	4,029	4,134	4,413
Other	503	441	379	726
Total	40,995	38,547	38,651	41,877

Source: Survey of Inbound Tourism conducted by Statistics Mauritius

Table 38 - Hotels, rooms and bedplaces, 2004 - 2013

Year	No. of hotels	No. of rooms	No. of bedplaces
2004	103	10,640	21,355
2005	99	10,497	21,072
2006	98	10,666	21,403
2007	97	10,857	21,788
2008	102	11,488	23,095
2009	102	11,456	23,235
2010	112	12,075	24,698
2011	109	11,925	24,242
2012	117	12,527	25,496
2013	107 ¹	12,376	25,105

¹ Excluding seven hotels not operational because of renovation works

Table 39 - Monthly occupancy rates in large ¹ hotels, 2009 - 2013

Month	2009		2010		2011		2012		2013	
	Room	Bed	Room	Bed	Room	Bed	Room	Bed	Room	Bed
January	69	62	74	66	76	67	76	67	69	61
February	60	54	67	60	70	61	69	60	67	59
March	59	53	65	58	66	58	66	58	66	58
April	61	54	64	56	68	60	66	58	63	56
May	59	52	63	55	57	50	61	54	61	53
June	44	39	48	43	45	39	46	41	42	37
July	52	46	55	48	54	48	53	47	54	48
August	61	54	62	54	60	53	60	52	62	55
September	64	56	67	58	66	58	62	54	67	60
October	67	59	71	62	70	61	70	62	72	64
November	71	63	76	67	76	67	71	63	75	67
December	73	64	78	68	74	65	74	65	74	66
Whole Year	62	55	66	58	65	57	65	57	65	57

¹ Large Hotels are well established beach hotels of over 80 rooms

Room Occupancy Rate = $\frac{\text{Total number of room nights rented} \times 100}{\text{Total number of room nights available}}$

Bed Occupancy Rate = $\frac{\text{Total number of bed nights rented} \times 100}{\text{Total number of bed nights available}}$

Table 40 - Monthly occupancy rates in all hotels, 2009 - 2013

Month	2009		2010		2011		2012		2013	
	Room	Bed	Room	Bed	Room	Bed	Room	Bed	Room	Bed
January	69	62	72	64	75	66	74	65	67	59
February	60	53	67	58	68	60	67	59	66	57
March	59	52	64	56	64	57	65	57	63	56
April	59	53	61	54	64	57	62	55	60	53
May	58	52	61	53	55	49	59	52	58	51
June	45	39	47	41	44	38	45	39	42	36
July	51	45	54	47	53	47	52	45	53	47
August	59	52	60	52	57	51	56	50	60	53
September	62	55	65	57	64	57	60	53	65	57
October	65	58	69	61	68	60	67	59	71	63
November	69	61	74	65	74	66	69	61	74	65
December	70	62	75	66	73	64	71	63	73	65
Whole Year	61	54	65	57	65	57	62	55	63	55

Room Occupancy Rate = $\frac{\text{Total number of room nights rented} \times 100}{\text{Total number of room nights available}}$

Bed Occupancy Rate = $\frac{\text{Total number of bed nights rented} \times 100}{\text{Total number of bed nights available}}$

