

# **INTERNATIONAL TRAVEL AND TOURISM STATISTICS**

**Vol. 33**

**2006**

" International Travel and Tourism Statistics" is a regular publication of the Central Statistics Office, designed to present in a single report, detailed statistics concerning international travel and tourism relating to Mauritius.

The statistical tables presented in this report have been compiled from the embarkation/disembarkation cards filled in by passengers as they leave or enter the country in the course of their travel.

Statistical data on International Travel and Tourism are constantly updated as more reliable information become available, necessitating minor changes over previous issues of this publication. The figures published in this issue therefore supersede those of all previous issues.

It is hoped that the data herewith assembled will prove useful to the public in general and to policy makers, planners and research workers in particular.

The publication of this report has been made possible with the collaboration of the Passport and Immigration Office and the Ministry of Tourism, Leisure and External Communications. Their co-operation is herewith gratefully acknowledged.

H. Bundhoo

Director of Statistics

Central Statistics Office  
Ministry of Finance and Economic Development  
PORT LOUIS  
MAURITIUS  
September 2007

## CONTENTS

Table	Page
<b>I - POPULATION AND VITAL STATISTICS</b>	
1 - Estimated resident population of Rep. of Mauritius as at 31st December, 2005 & 2006	5
2 - Population growth in intercensal periods - Island of Mauritius, 1851 - 2000	5
3 - Population growth in intercensal periods - Island of Rodrigues, 1851 - 2000	6
4 - Estimated resident population by geographical district and sex - Republic of Mauritius, 2005 & 2006 (End of year estimates)	7
5 - Population and vital statistics - Republic of Mauritius, 1971 - 2006	8
6 - Growth of the resident population and vital statistics - Island of Mauritius, 1997 - 2006	9
7 - Growth of the resident population and vital statistics - Island of Rodrigues, 1997 - 2006	10
<b>II - PASSENGER TRAFFIC</b>	
8 - Passenger traffic by sex, 1986 - 2006	11
9 - Passenger traffic between Islands of Mauritius and Rodrigues, 1986 - 2006	12
10 - Passenger traffic by mode of transport, 1986 - 2006	16
11 - Passenger traffic by month, 2003 - 2006	17
12 - Arrivals by country of original embarkation, 2001 - 2006	18
13 - Departures by country of final destination, 2001 - 2006	19
14 - Monthly passenger traffic by type of passenger, 2006	20
15 - Passenger traffic by type of passenger, 1997 - 2006	21
16 - Total arrivals by age and sex, 2005 & 2006	22
17 - Total departures by age and sex, 2005 & 2006	23
18 - Excess of arrivals over departures by age and sex, 2005 & 2006	24
19 - Arrivals of Mauritian residents by age and sex, 2005 & 2006	25
20 - Departures of Mauritian residents by age and sex, 2005 & 2006	26
21 - Excess of arrivals over departures of Mauritian residents by age and sex, 2005 & 2006	27
22 - Arrivals and departures of Mauritian residents by country of embarkation and disembarkation, 2004 - 2006	28

## **CONTENTS**

<b>Table</b>		<b>Page</b>
	<b>III - TOURISM</b>	
	<b>Definition and notes</b>	29
23 -	Tourist arrivals by mode of transport and tourist nights spent during period, 1990 - 2006	31
24 -	Tourist arrivals by month of arrival, 1997 - 2006	32
25 -	Percentage distribution of tourist arrivals by month of arrival, 1997 - 2006	34
26 -	Tourist arrivals by country of residence and sex, 2006	35
27 -	Tourist arrivals by country of residence, 1997 - 2006	36
28 -	Percentage distribution of tourist arrivals by country of residence, 1997 - 2006	37
29 -	Tourist nights by country of residence, 1997 - 2006	39
30 -	Visitor arrivals by country of residence and type of passenger, 2004 - 2006	42
31 -	Visitor arrivals by age and sex, 2005 & 2006	43
32 -	Visitor arrivals by duration of stay, 2005 & 2006	44
33 -	Visitor arrivals by country of residence and duration of stay, 2006	45
34 -	Visitor arrivals and average length of stay by country of residence, 2006	46
35 -	Gross earnings from tourism, 1997 - 2006	47
36 -	Expenditure of tourists by country of residence, 1996 - 2004	47
37 -	Expenditure of tourists by type of expenditure, 1996 - 2004	48
38 -	Hotels, rooms and bedplaces, 1997 - 2006	49
39 -	Monthly occupancy rates in large hotels, 2002 - 2006	50
40 -	Monthly occupancy rates in all hotels, 2002 - 2006	51

## **CONTENTS**

**Page**

### **ILLUSTRATIONS**

Fig. 1	- Passenger Traffic: Total arrivals by sex, 1990 - 2006	13
2	- Passenger Traffic: Total departures by sex, 1990 - 2006	14
3	- Passenger Traffic: Total arrivals and total departures, 1997 - 2006	15
4	- Tourist arrivals by month, 2002 - 2006	33
5	- Percentage distribution of tourist arrivals by country of residence, 2006	38
6	- Total arrivals and tourist arrivals, 1997 - 2006	40
7	- Tourist nights, 1997 - 2006	41

**The following symbol is used throughout :-**

**" - " for Nil**

**Appendix : International embarkation / disembarkation card**

\*\*\*\*\*

#### **Contact persons:**

Mrs R. Moraby, Statistician or  
Mr M. Lan Pin Wing, Senior Statistical Officer  
Ministry of Tourism, Leisure &  
External Communications  
3rd Floor, Victoria House  
Port Louis  
Tel: 211-9042  
Fax: 210-3901  
Email: cso@mail.gov.mu

## I - POPULATION AND VITAL STATISTICS

**Table 1 - Estimated resident population of Republic of Mauritius  
as at 31st December, 2005 & 2006 <sup>1</sup>**

Year	Island	Both sexes	Male	Female	Area ( sq km)	Density (persons/km <sup>2</sup> )
<b>2005</b>	Mauritius	1,211,302	598,908	612,394	1,864.8	650
	Rodrigues	36,994	18,308	18,686	104.0	356
	Other	289	193	96	71.2	4
	<b>Republic of Mauritius</b>	<b>1,248,585</b>	<b>617,409</b>	<b>631,176</b>	<b>2,040.0</b>	<b>612</b>
<b>2006</b>	Mauritius	1,219,208	602,688	616,520	1,864.8	654
	Rodrigues	37,230	18,423	18,807	104.0	358
	Other	289	193	96	71.2	4
	<b>Republic of Mauritius</b>	<b>1,256,727</b>	<b>621,304</b>	<b>635,423</b>	<b>2,040.0</b>	<b>616</b>

<sup>1</sup> based on the 2000 population census data adjusted for underenumeration of young children.

**Table 2 - Population growth in intercensal periods - Island of Mauritius, 1851 - 2000**

Census Date	Population enumerated at census			Intercensal increase	Average annual rate of increase(%)
	Both sexes	Male	Female		
20 Nov. 1851	180,823	119,341	61,482	22,361	2.55
8 Apr. 1861	310,050	202,961	107,089	129,227	5.91
11 Apr. 1871	316,042	193,575	122,467	5,992	0.19
4 Apr. 1881	359,874	208,655	151,219	43,832	1.31
6 Mar. 1891	370,588	206,038	164,550	10,714	0.29
1 Apr. 1901	371,023	199,552	171,471	435	0.01
31 Mar. 1911	368,791	194,095	174,696	-2,232	-0.06
21 May. 1921	376,485	194,108	182,377	7,694	0.21
26 Apr. 1931	393,238	200,609	192,629	16,753	0.44
11 Jun. 1944	419,185	210,326	208,859	25,947	0.49
29 Jun. 1952	501,415	252,032	249,383	82,230	2.26
30 Jun. 1962 <sup>1</sup>	681,619	342,306	339,313	180,204	3.12
30 Jun. 1972 <sup>1</sup>	826,199	413,580	412,619	144,580	1.94
2 Jul. 1983 <sup>1</sup>	966,863	481,368	485,495	140,664	1.44
1 Jul. 1990 <sup>2</sup>	1,022,456	510,676	511,780	55,593	0.80
1 Jul. 2000 <sup>2</sup>	1,143,069	566,056	577,013	120,613	1.12

<sup>1</sup> " De facto " population

<sup>2</sup> " De jure " population

**Table 3 - Population growth in intercensal periods - Island of Rodrigues, 1851 - 2000**

Census Date	Population enumerated at census			Inter-censal increase	Average annual rate of increase (%)
	Both sexes	Male	Female		
20 Nov. 1851	495	327	168	-	-
8 Apr. 1861	693	464	229	198	3.65
11 Apr. 1871	1,108	693	415	415	4.80
4 Apr. 1881	1,431	812	619	323	2.59
6 Mar. 1891	2,068	1,154	914	637	3.75
1 Apr. 1901	3,162	1,685	1,477	1,094	4.34
31 Mar. 1911	4,829	2,523	2,306	1,667	4.33
21 May. 1921	6,584	3,300	3,284	1,755	3.15
26 Apr. 1931	8,202	4,033	4,169	1,618	2.22
11 Jun. 1944	11,885	5,740	6,145	3,683	2.89
29 Jun. 1952	13,333	5,947	7,386	1,448	1.45
30 Jun. 1962	18,335	9,062	9,273	5,002	3.24
30 Jun. 1972 <sup>1</sup>	24,769	12,270	12,499	6,434	3.05
2 Jul. 1983 <sup>1</sup>	33,082	16,552	16,530	8,313	2.67
1 Jul. 1990 <sup>2</sup>	34,204	17,084	17,120	1,122	0.48
1 Jul. 2000 <sup>2</sup>	35,779	17,700	18,079	1,575	0.45

<sup>1</sup> "De facto" population

<sup>2</sup> "De jure" population

**Table 4 - Estimated resident population by geographical district and sex - Republic of Mauritius, 2005 & 2006**  
**(End of year estimates) <sup>1</sup>**

Geographical district	Area (km <sup>2</sup> )	31st December 2005			31st December 2006		
		Both sexes	Male	Female	Both sexes	Male	Female
Port Louis	42.7	130,420	64,623	65,797	130,189	64,512	65,677
Pamplemousses	178.7	131,990	65,276	66,714	133,315	65,902	67,413
Riviere du Rempart	147.6	105,593	52,352	53,241	106,360	52,715	53,645
Flacq	297.9	135,648	67,819	67,829	136,649	68,310	68,339
Grand Port	260.3	112,833	55,984	56,849	113,451	56,284	57,167
Savanne	244.8	69,391	34,432	34,959	69,729	34,582	35,147
Plaines Wilhems	203.3	376,418	184,283	192,135	378,499	185,215	193,284
Moka	230.5	79,435	39,237	40,198	79,953	39,521	40,432
Black River	259.0	69,574	34,902	34,672	71,063	35,647	35,416
Island of Mauritius	1,864.8	1,211,302	598,908	612,394	1,219,208	602,688	616,520
Island of Rodrigues	104.0	36,994	18,308	18,686	37,230	18,423	18,807
Other <sup>2</sup>	71.2	289	193	96	289	193	96
<b>Republic of Mauritius</b>	<b>2,040.0</b>	<b>1,248,585</b>	<b>617,409</b>	<b>631,176</b>	<b>1,256,727</b>	<b>621,304</b>	<b>635,423</b>

<sup>1</sup> based on the 2000 population census data adjusted for underenumeration of young children. Internal migration within districts is assumed to be the same as the net annual internal migration during 1995 - 2000 (obtained from the 2000 census)

<sup>2</sup> includes Agalega and St Brandon.

**Table 5 - Population and vital statistics - Republic of Mauritius, 1971 - 2006**

Year	Population at mid-year <sup>1</sup>	Live births	Deaths	Infant deaths	Still births	Civil marriages <sup>2</sup>	Divorces <sup>3</sup>
1971	840,602	21,926	6,436	1,146	882	4,478	179
1972	850,968	21,495	6,753	1,399	749	5,214	136
1973	869,334	20,015	6,779	1,277	701	5,679	147
1974	880,650	24,002	6,424	1,113	879	6,905	117
1975	892,045	22,557	7,201	1,130	932	7,069	110
1976	903,610	23,274	6,968	936	808	8,451	98
1977	918,005	23,859	7,154	1,087	742	8,632	197
1978	933,499	25,278	6,596	876	680	10,741	255
1979	949,888	26,163	6,871	891	668	9,327	265
1980	966,039	26,294	6,919	864	662	8,894	351
1981	980,462	24,967	6,653	884	590	8,406	305
1982	992,521	22,459	6,584	682	458	10,768	312
1983	1,001,691	21,073	6,532	570	403	10,255	361
1984	1,012,221	20,332	6,646	505	404	10,865	471
1985	1,020,528	19,376	6,906	487	383	11,245	460
1986	1,028,360	19,170	6,805	524	365	10,556	616
1987	1,036,082	20,033	6,753	504	363	11,392	842
1988	1,043,239	20,941	6,879	471	374	11,453	740
1989	1,051,260	21,822	7,149	498	415	11,197	711
1990	1,058,775	22,602	7,031	462	365	11,425	549
1991	1,070,266	22,197	7,027	413	400	11,295	707
1992	1,084,441	22,902	7,023	426	291	11,408	781
1993	1,097,374	22,329	7,433	438	337	11,576	762
1994	1,112,846	21,795	7,402	394	274	11,414	733
1995	1,122,457	20,549	7,465	404	299	10,624	801
1996	1,133,996	20,763	7,670	459	266	10,700	792
1997	1,148,284	20,012	7,986	406	257	10,887	891
1998	1,160,421	19,434	7,839	376	227	10,898	1,012
1999	1,175,267	20,311	7,944	396	226	11,295	1,150
2000	1,186,873	20,205	7,982	322	266	10,963	1,191
2001	1,199,881	19,696	7,983	282	244	10,635	1,512
2002	1,210,196	19,983	8,310	297	203	10,484	1,294
2003	1,222,811	19,343	8,520	250	220	10,812	1,190
2004	1,233,386	19,230	8,475	278	190	11,385	1,162
2005	1,243,253	18,820	8,646	248	185	11,294	1,133
2006	1,252,698	17,604	9,162	249	147	11,471	1,379

<sup>1</sup> Figures for 1971 have been revised in the light of the final 1972 population census data. Figures for 1973 - 1982, 1984 - 1989 and 1991 - 1999 have been respectively revised in the light of the 1983, 1990 and 2000 population census data adjusted for underenumeration of young children.

<sup>2</sup> The increase in the number of civil marriages as from 1982 is due largely to improved registration of religious marriages with the coming into force of a new Civil Status Act as from January, 1982.

<sup>3</sup> Source: Judicial Department



**Table 6 - Growth of the resident population and vital statistics - Island of Mauritius, 1997 - 2006**

Year	Population at beginning of year	Natural movement			Net migration	Total increase	% change during the year due to:			Population at end of year
		Live births	Deaths	Natural increase			Natural increase	Migration	Total	
1997	1,106,888	19,331	7,798	11,533	1,663	13,196	1.04	+0.15	1.19	1,120,084
1998	1,120,084	18,744	7,651	11,093	314	11,407	0.99	+0.03	1.02	1,131,491
1999	1,131,491	19,543	7,791	11,752	1,478	13,230	1.04	+0.13	1.17	1,144,721
2000	1,144,721	19,398	7,806	11,592	977	12,569	1.01	+0.09	1.10	1,157,290
2001	1,157,290	18,884	7,761	11,123	890	12,013	0.96	+0.08	1.04	1,169,303
2002	1,169,303	19,169	8,081	11,088	-202	10,886	0.95	-0.02	0.93	1,180,189
2003	1,180,189	18,518	8,310	10,208	939	11,147	0.86	+0.08	0.94	1,191,336
2004	1,191,336	18,285	8,259	10,026	-362	9,664	0.84	-0.03	0.81	1,201,000
2005	1,201,000	17,924	8,422	9,502	800	10,302	0.79	+0.07	0.86	1,211,302
2006	1,211,302	16,723	8,917	7,806	100	7,906	0.64	+0.01	0.65	1,219,208

**Table 7 - Growth of the resident population and vital statistics - Island of Rodrigues, 1997 - 2006**

Year	Population at beginning of year	Natural movement			Net migration	Total increase	% change during the year due to:			Population at end of year
		Live births	Deaths	Natural increase			Natural increase	Migration	Total	
1997	35,072	681	188	493	-305	188	1.41	-0.87	0.54	35,260
1998	35,260	690	188	502	-351	151	1.42	-1.00	0.42	35,411
1999	35,411	768	153	615	-386	229	1.74	-1.09	0.65	35,640
2000	35,640	807	176	631	-386	245	1.77	-1.08	0.69	35,885
2001	35,885	812	222	590	-390	200	1.64	-1.09	0.55	36,085
2002	36,085	814	229	585	-367	218	1.62	-1.02	0.60	36,303
2003	36,303	825	210	615	-415	200	1.69	-1.14	0.55	36,503
2004	36,503	945	216	729	-460	269	2.00	-1.26	0.74	36,772
2005	36,772	896	224	672	-450	222	1.83	-1.22	0.61	36,994
2006	36,994	881	245	636	-50	586	1.72	-0.14	1.58	37,580

## II - PASSENGER TRAFFIC

**Table 8 - Passenger traffic <sup>1</sup> by sex, 1986 - 2006**

Period	Arrivals			Departures			Arrivals minus Departures
	Both Sexes	Male	Female	Both Sexes	Male	Female	
1986	235,640	129,600	106,040	236,850	132,740	104,110	-1,210
1987	293,160	161,030	132,130	294,970	160,670	134,300	-1,810
1988	343,940	186,800	157,140	341,330	187,580	153,750	+ 2,610
1989	379,080	208,860	170,220	385,050	213,230	171,820	- 5,970
1990	418,200	232,050	186,150	422,230	233,280	188,950	-4,030
1991	426,680	239,630	187,050	425,620	236,190	189,430	+ 1,060
1992	475,920	262,660	213,260	472,010	258,320	213,690	+ 3,910
1993	523,740	280,910	242,830	520,400	281,100	239,300	+ 3,340
1994	558,136	295,259	262,877	557,575	295,500	262,075	+ 561
1995	579,993	304,705	275,288	578,481	304,245	274,236	+ 1,512
1996	672,070	350,561	321,509	663,501	345,892	317,609	+ 8,569
1997	743,291	378,593	364,698	737,523	379,841	357,682	+ 5,768
1998	778,574	367,914	410,660	775,998	382,567	393,431	+ 2,576
1999	823,085	434,667	388,418	809,233	428,234	380,999	+ 13,852
2000	915,203	480,879	434,324	895,569	469,902	425,667	+ 19,634
2001	910,489	477,984	432,505	903,073	473,096	429,977	+ 7,416
2002	951,090	498,177	452,913	942,876	494,212	448,664	+ 8,214
2003	968,906	510,212	458,694	947,774	497,011	450,763	+ 21,132
2004	1,000,545	523,961	476,584	979,322	511,734	467,588	+ 21,223
2005	1,043,900	544,520	499,380	1,029,666	538,113	491,553	+ 14,234
2006	1,072,879	562,766	510,113	1,060,074	555,279	504,795	+ 12,805

<sup>1</sup> Includes traffic between Island of Mauritius and Rodrigues. As from 1994, figures of the passenger traffic also include cruise excursionists, i.e passengers and crews of cruise ships which numbered 12806, 10910, 11096, 5511, 19613, 9965, 9927, 11553 and 11651 for 1998, 1999, 2000, 2001, 2002, 2003, 2004, 2005 and 2006 respectively, in accordance with the recommendations of the World Tourism Organisation.

**Table 9 - Passenger traffic <sup>1</sup> between Islands of Mauritius and Rodrigues, 1986 - 2006**

Period	Arrivals in Rodrigues			Departures from Rodrigues			Arrivals minus Departures
	Both Sexes	Male	Female	Both Sexes	Male	Female	
1986	7,975	5,103	2,872	7,906	4,976	2,930	+69
1987	8,255	5,135	3,120	8,337	5,135	3,202	-82
1988	9,146	5,903	3,243	10,128	6,330	3,798	-982
1989	11,501	7,234	4,267	11,092	6,831	4,261	+409
1990	13,110	8,023	5,087	13,492	7,949	5,543	-382
1991	15,125	9,594	5,531	16,178	10,117	6,061	-1,053
1992	19,064	11,629	7,435	19,865	11,887	7,978	- 801
1993	22,819	13,973	8,846	23,476	14,094	9,382	-657
1994	23,292	14,174	9,118	23,636	14,177	9,459	-344
1995	24,150	14,532	9,618	24,820	14,603	10,217	-670
1996	29,129	16,947	12,182	29,370	16,861	12,509	-241
1997	37,765	22,120	15,645	38,014	22,096	15,918	-249
1998	40,648	24,181	16,467	40,553	23,072	17,481	+95
1999	45,117	28,384	16,733	45,154	26,961	18,193	-37
2000	49,530	28,280	21,250	49,981	29,436	20,545	-451
2001	52,777	30,320	22,457	52,307	30,760	21,547	+470
2002	60,355	34,647	25,708	59,984	34,004	25,980	+371
2003	63,649	37,203	26,446	63,937	37,673	26,264	-288
2004	60,862	34,467	26,395	60,830	34,314	26,516	+32
2005 <sup>2</sup>	53,534	29,805	23,729	53,987	29,447	24,540	-453
2006	55,368	31,395	23,973	56,015	31,822	24,193	-647

<sup>1</sup> Includes residents and non - residents

<sup>2</sup> Revised

Fig 1 - Passenger traffic: Total arrivals by sex, 1990- 2006

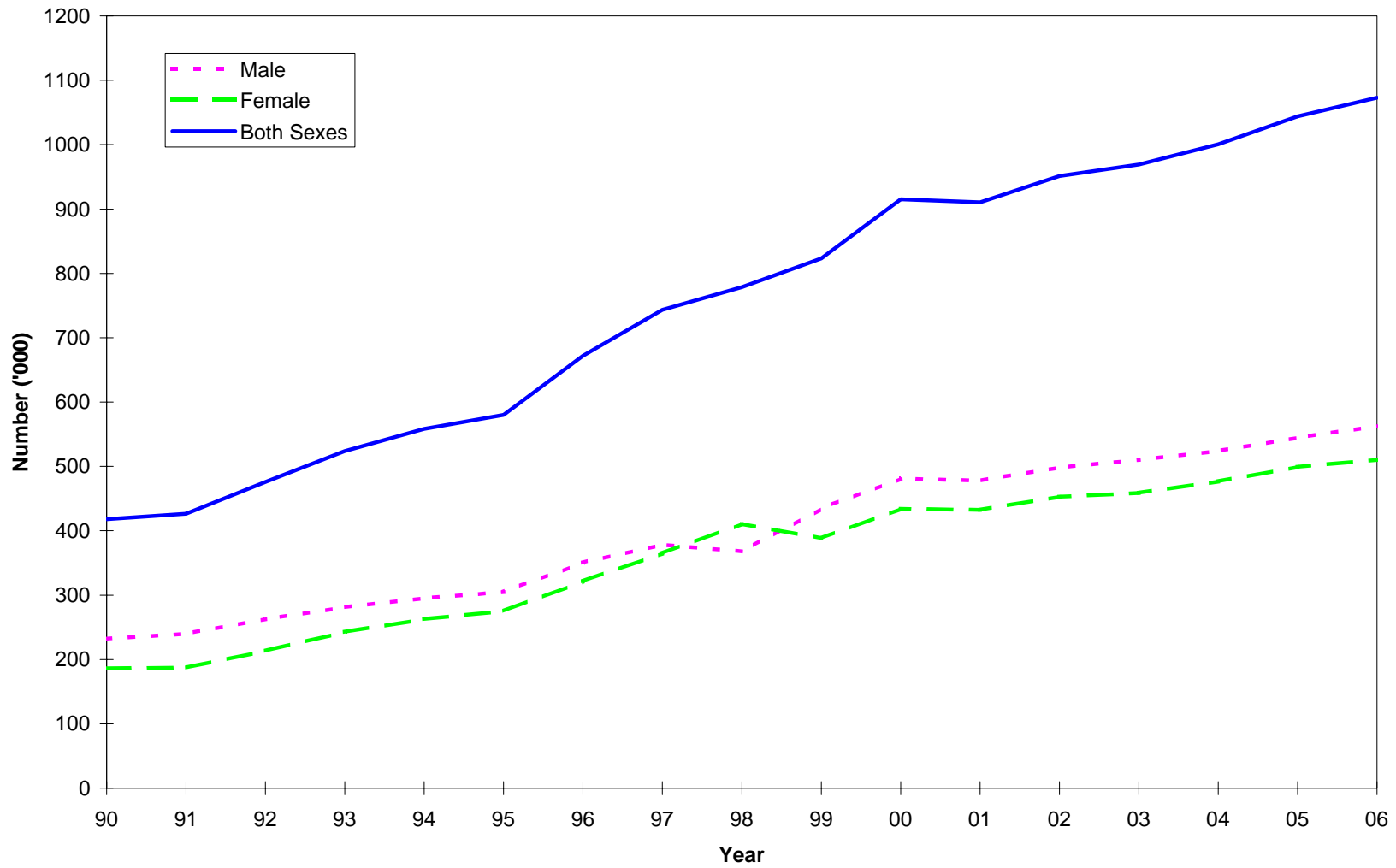
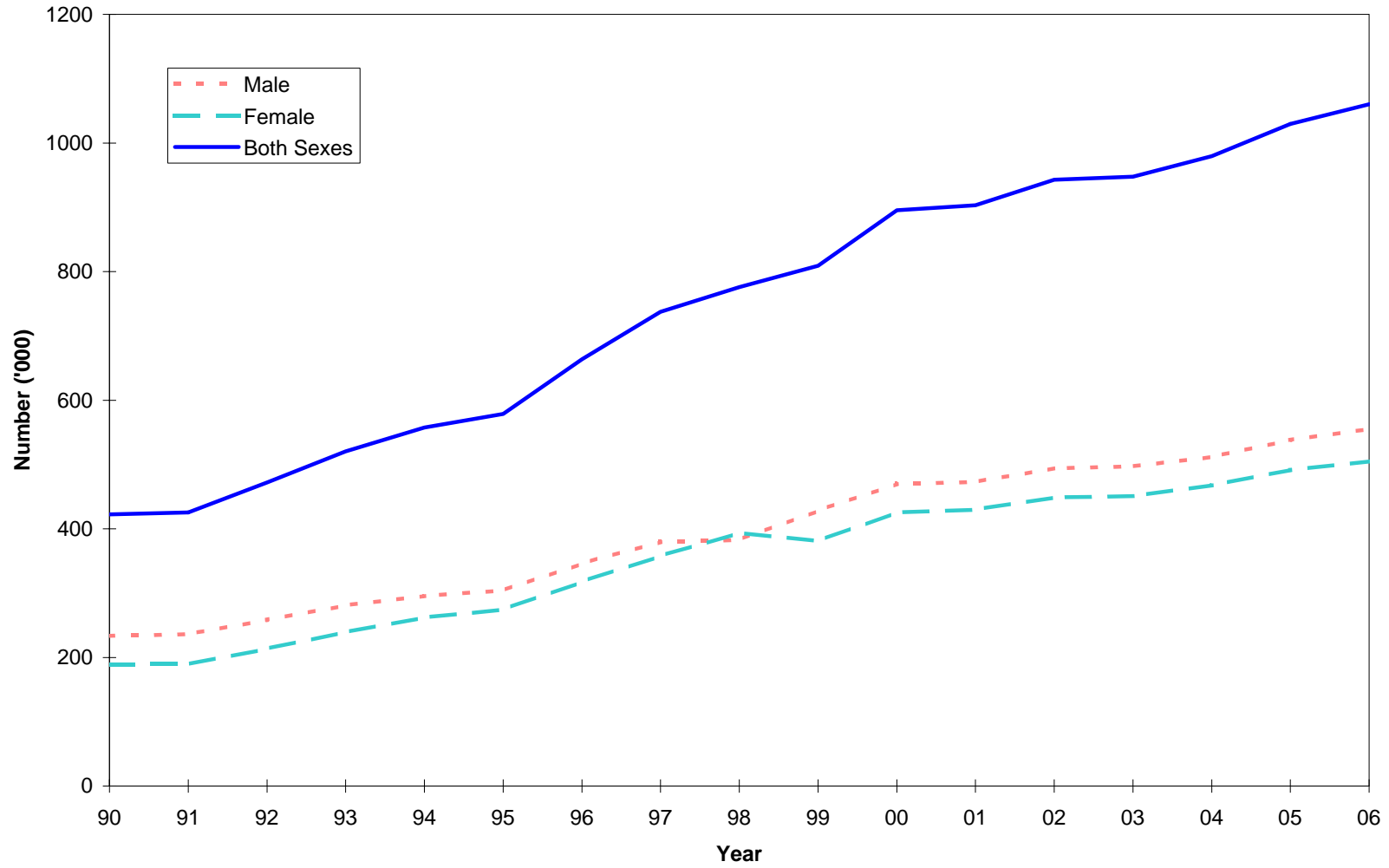
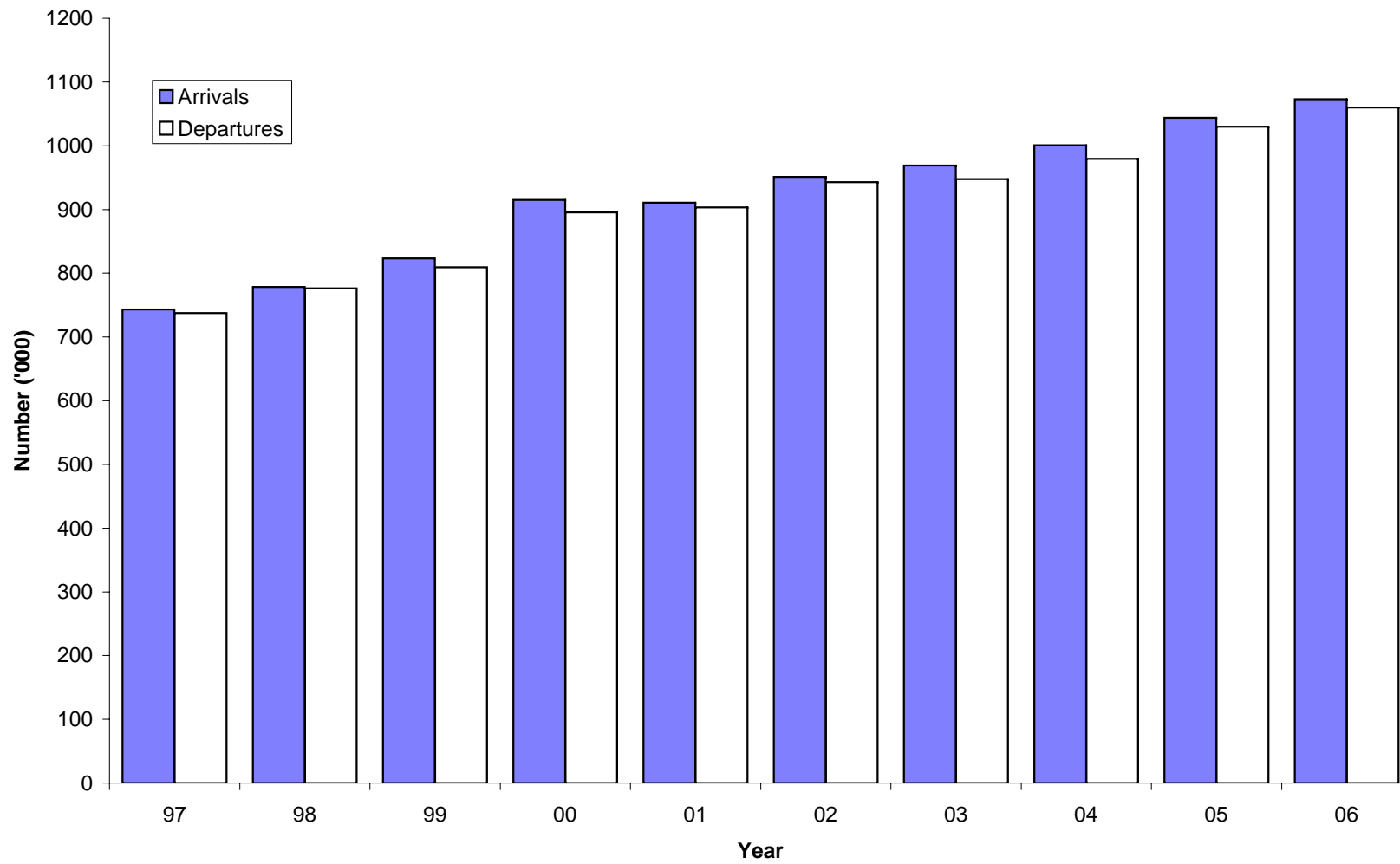


Fig 2 - Passenger traffic: Total departures by sex, 1990 - 2006



**Fig. 3 - Passenger traffic : Total arrivals and total departures, 1997 - 2006**



**Table 10 - Passenger traffic <sup>1</sup> by mode of transport, 1986 - 2006**

Period	Arrivals			Departures			Arrivals minus Departures
	Total	By sea	By air	Total	By sea	By air	
1986	235,640	4,510	231,130	236,850	4,300	232,550	-1,210
1987	293,160	4,870	288,290	294,970	5,230	289,740	-1,810
1988	343,940	5,260	338,680	341,330	4,340	336,990	+2,610
1989	379,080	3,190	375,890	385,050	3,620	381,430	-5,970
1990	418,200	3,820	414,380	422,230	3,820	418,410	-4,030
1991	426,680	7,290	419,390	425,620	5,820	419,800	+1,060
1992	475,920	9,260	466,660	472,010	6,780	465,230	+3,910
1993	523,740	13,530	510,210	520,400	11,890	508,510	+3,340
1994	558,136	19,461	538,675	557,575	17,663	539,912	+561
1995	579,993	18,854	561,139	578,481	17,895	560,586	+1,512
1996	672,070	27,308	644,762	663,501	24,794	638,707	+8,569
1997	743,291	29,756	713,535	737,523	27,390	710,133	+5,768
1998	778,574	43,706	734,868	775,998	40,809	735,189	+2,576
1999	823,085	40,499	782,586	809,233	39,230	770,003	+13,852
2000	915,203	34,262	880,941	895,569	33,368	862,201	+19,634
2001	910,489	27,847	882,642	903,073	26,313	876,760	+7,416
2002	951,090	43,890	907,200	942,876	42,630	900,246	+8,214
2003	968,906	31,296	937,610	947,774	28,936	918,838	+21,132
2004	1,000,545	32,238	968,307	979,322	28,609	950,713	+21,223
2005	1,043,900	35,422	1,008,478	1,029,666	35,478	994,188	+14,234
2006	1,072,879	31,713	1,041,166	1,060,074	28,725	1,031,349	+12,805
2006:1st Qr.	277,920	13,608	264,312	300,207	12,636	287,571	-22,287
2nd Qr.	212,208	3,215	208,993	209,034	2,929	206,105	+3,174
3rd Qr.	264,342	6,515	257,827	260,422	5,947	254,475	+3,920
4th Qr.	318,409	8,375	310,034	290,411	7,213	283,198	+27,998

<sup>1</sup> Includes traffic between Island of Mauritius and Rodrigues. As from 1994, figures of the passenger traffic also include cruise excursionists, i.e passengers and crews of cruise ships which numbered 12806, 10910, 11096, 5511, 19613, 9965, 9927, 11553 and 11651 for 1998, 1999, 2000, 2001, 2002, 2003, 2004, 2005 and 2006 respectively, in accordance with the recommendations of the World Tourism Organisation.



**Table 11 - Passenger traffic <sup>1</sup> by month, 2003 - 2006**

Month	Arrivals				Departures				Excess of arrivals over departures			
	2003	2004	2005	2006	2003	2004	2005	2006	2003	2004	2005	2006
January	89,661	94,499	100,280	115,801	107,010	113,360	115,517	129,705	-17,349	-18,861	-15,237	-13,904
February	70,202	72,707	74,305	83,952	66,220	66,795	72,084	84,174	+ 3,982	+ 5,912	+2,221	-222
March	88,272	86,558	88,986	78,167	90,764	82,305	88,710	86,328	-2,492	+ 4,253	+ 276	-8,161
April	75,690	78,417	75,622	78,461	70,755	72,693	78,281	76,574	+4,935	+ 5,724	-2,659	+1,887
May	72,888	73,603	77,272	70,188	76,818	75,660	79,660	72,775	-3,930	-2,057	-2,388	-2,587
June	61,103	58,550	64,325	63,559	58,998	59,424	58,353	59,685	+ 2,105	-874	+5,972	+ 3,874
July	83,122	88,905	92,748	95,775	68,222	74,021	77,677	81,639	+ 14,900	+ 14,884	+15,071	+14,136
August	83,351	84,122	89,531	92,048	94,913	94,450	100,304	100,271	-11,562	-10,328	-10,773	-8,223
September	70,942	72,626	74,165	76,519	70,797	74,289	78,182	78,512	+ 145	-1,663	- 4,017	- 1,993
October	85,732	92,771	91,633	96,033	81,054	86,832	88,915	90,243	+ 4,678	+ 5,939	+2,718	+5,790
November	84,359	89,123	94,678	95,261	76,295	88,677	91,531	94,380	+ 8,064	+ 446	+3,147	+881
December	103,584	108,664	120,355	127,115	85,928	90,816	100,452	105,788	+ 17,656	+ 17,848	+19,903	+21,327
<b>Whole Year</b>	<b>968,906</b>	<b>1,000,545</b>	<b>1,043,900</b>	<b>1,072,879</b>	<b>947,774</b>	<b>979,322</b>	<b>1,029,666</b>	<b>1,060,074</b>	<b>+21,132</b>	<b>+21,223</b>	<b>+14,234</b>	<b>+12,805</b>

<sup>1</sup> Includes traffic between Island of Mauritius and Rodrigues. Figures of the passenger traffic also include cruise excursionists, i.e passengers and crews of cruise ships which numbered 9965, 9927, 11553 and 11651 for 2003, 2004, 2005 and 2006 respectively, in accordance with the recommendations of the World Tourism Organisation.

**Table 12 - Arrivals <sup>1</sup> by country of original embarkation, 2001 - 2006**

<b>Country of original embarkation</b>	<b>2001</b>	<b>2002</b>	<b>2003</b>	<b>2004</b>	<b>2005</b>	<b>2006</b>
Australia	12,164	11,586	13,350	16,417	18,282	21,563
Belgium	8,547	8,719	8,485	2,778	619	484
France	176,775	185,142	183,710	197,937	208,271	201,444
Germany	46,930	47,958	49,466	47,601	51,958	56,982
Hong Kong SAR <sup>2</sup>	15,246	19,081	10,902	17,453	20,764	20,782
India	38,682	38,388	45,750	49,268	51,500	58,910
Italy	33,910	33,239	34,673	35,486	37,301	60,741
Japan	185	297	191	140	53	65
Kenya	5,402	5,318	6,109	6,172	1,925	9,734
Malagasy Rep.	17,421	14,898	20,848	20,242	26,515	22,141
Reunion Island	219,681	218,488	215,700	215,820	216,414	176,157
Rodrigues	52,307	59,984	63,916	60,830	53,987	56,015
Seychelles	18,766	22,151	17,585	14,751	21,718	23,766
Singapore	24,577	19,804	14,019	15,374	17,855	13,571
S. Africa, Rep. of	82,262	84,713	88,816	93,598	101,294	117,175
Switzerland	20,479	16,753	17,556	13,402	12,722	14,249
United Kingdom	94,591	96,463	103,630	112,795	115,400	116,724
Zambia	49	37	190	156	26	16
Zimbabwe	5,251	4,042	2,469	2,439	2,676	688
Other & not stated	37,264	64,029	71,541	77,886	84,620	101,672
<b>All Countries</b>	<b>910,489</b>	<b>951,090</b>	<b>968,906</b>	<b>1,000,545</b>	<b>1,043,900</b>	<b>1,072,879</b>

<sup>1</sup> As from 1994, figures of the passenger traffic include cruise excursionists, i.e passengers and crews of cruise ships which numbered 5511, 19613, 9965, 9927, 11553 and 11651 for 2001, 2002, 2003, 2004, 2005 and 2006 respectively, in accordance with the recommendations of the World Tourism Organisation.

<sup>2</sup> Special Administrative Region of China

**Table 13 - Departures <sup>1</sup> by country of final destination, 2001 - 2006**

Country of final destination	2001	2002	2003	2004	2005	2006
Australia	12,336	11,063	12,698	16,108	18,931	22,579
Belgium	4,211	5,163	7,546	1,521	102	65
France	196,939	202,902	197,413	208,070	221,372	215,093
Germany	46,918	52,460	50,370	50,083	53,368	56,377
Hong Kong SAR <sup>2</sup>	14,403	16,025	9,010	16,042	19,052	17,898
India	37,222	36,499	42,508	46,669	50,784	55,942
Italy	31,665	29,479	31,958	32,351	35,022	57,922
Japan	65	22	111	28	41	10
Kenya	1,985	4,103	5,167	5,122	1,103	6,258
Malagasy Rep.	18,478	15,302	20,700	21,558	26,611	21,722
Reunion Island	208,389	210,864	204,666	206,012	205,625	176,007
Rodrigues	52,777	60,355	63,584	60,862	53,534	55,368
Seychelles	17,494	21,411	16,325	13,339	21,128	23,844
Singapore	21,541	23,382	15,392	16,715	17,513	18,405
S. Africa, Rep. of	77,848	80,942	81,848	84,821	91,817	107,201
Switzerland	21,402	18,741	17,337	12,738	11,443	13,148
United Kingdom	104,135	98,989	103,328	114,328	117,045	119,260
Zambia	-	1	111	20	8	13
Zimbabwe	4,777	4,189	2,267	2,462	2,352	735
Other & not stated	30,488	50,984	65,435	70,473	82,815	92,227
<b>All Countries</b>	<b>903,073</b>	<b>942,876</b>	<b>947,774</b>	<b>979,322</b>	<b>1,029,666</b>	<b>1,060,074</b>

<sup>1</sup> As from 1994, figures of the passenger traffic include cruise excursionists, i.e passengers and crews of cruise ships which number 5571, 20288, 9748, 8682, 12772 and 11323 for 2001, 2002, 2003, 2004, 2005 and 2006 respectively, in accordance with the recommendations of the World Tourism Organisation.

<sup>2</sup> Special Administrative Region of China

**Table 14 - Monthly passenger traffic <sup>1</sup> by type of passenger, 2006**

Type of passenger	Jan	Feb	Mar	Apr	May	Jun	Jul	Aug	Sep	Oct	Nov	Dec	Whole Year
<b>Arrivals</b>													
Visitors <sup>2</sup>	89,458	68,389	60,258	58,191	51,419	43,426	66,786	65,519	56,874	77,195	71,672	97,465	806,652
- On holiday	79,538	59,705	50,935	51,481	43,888	36,751	58,564	57,012	50,601	69,012	64,294	90,839	712,620
- On business & Conference	2,028	2,715	3,508	2,903	3,750	3,067	2,466	2,294	2,365	2,629	3,022	1,764	32,511
- In transit	7,258	5,258	4,822	2,535	2,408	2,557	4,233	4,342	2,898	4,573	3,349	3,733	47,966
- Other and not stated	634	711	993	1,272	1,373	1,051	1,523	1,871	1,010	981	1,007	1,129	13,555
Mauritian residents	24,138	13,892	16,117	18,392	16,942	18,230	27,129	24,245	17,712	16,681	21,260	27,592	242,330
Other <sup>3</sup>	2,205	1,671	1,792	1,878	1,827	1,903	1,860	2,284	1,933	2,157	2,329	2,058	23,897
<b>Total arrivals</b>	<b>115,801</b>	<b>83,952</b>	<b>78,167</b>	<b>78,461</b>	<b>70,188</b>	<b>63,559</b>	<b>95,775</b>	<b>92,048</b>	<b>76,519</b>	<b>96,033</b>	<b>95,261</b>	<b>127,115</b>	<b>1,072,879</b>
<b>Departures</b>													
Visitors	106,665	67,580	69,244	56,131	55,646	41,509	56,058	73,872	55,790	72,371	71,112	75,724	801,702
Mauritian residents	21,728	15,434	15,768	18,949	15,994	16,513	23,811	25,018	21,520	16,704	22,006	27,693	241,138
Other	1,312	1,160	1,316	1,494	1,135	1,663	1,770	1,381	1,202	1,168	1,262	2,371	17,234
<b>Total departures</b>	<b>129,705</b>	<b>84,174</b>	<b>86,328</b>	<b>76,574</b>	<b>72,775</b>	<b>59,685</b>	<b>81,639</b>	<b>100,271</b>	<b>78,512</b>	<b>90,243</b>	<b>94,380</b>	<b>105,788</b>	<b>1,060,074</b>

<sup>1</sup> Including traffic between Island of Mauritius and Rodrigues

<sup>2</sup> Including non-residents who left the airport but stayed in the country for less than a day.

<sup>3</sup> Including contract workers

**Table 15 - Passenger traffic <sup>1</sup> by type of passenger, 1997 - 2006**

Type of passenger	1997	1998	1999	2000	2001	2002	2003	2004	2005	2006
<b>Arrivals</b>										
Visitors <sup>2</sup>	557,996	578,930	599,717	678,472	674,619	709,305	721,348	738,516	781,572	806,652
- On holiday	494,563	512,746	530,792	602,606	606,545	620,124	636,325	653,818	692,084	712,620
- On business & Conference	23,424	24,621	26,942	27,004	26,523	28,558	31,155	30,416	30,164	32,511
- In transit	34,384	35,479	34,703	38,984	33,263	51,747	42,736	44,710	48,299	47,966
- Other & not stated	5,625	6,084	7,280	9,878	8,288	8,876	11,132	9,572	11,025	13,555
Mauritian residents	170,977	183,218	206,806	216,680	215,803	220,949	227,288	239,969	239,389	242,330
Other <sup>3</sup>	14,318	16,426	16,562	20,051	20,067	20,836	20,270	22,060	22,939	23,897
<b>Total arrivals</b>	<b>743,291</b>	<b>778,574</b>	<b>823,085</b>	<b>915,203</b>	<b>910,489</b>	<b>951,090</b>	<b>968,906</b>	<b>1,000,545</b>	<b>1,043,900</b>	<b>1,072,879</b>
<b>Departures</b>										
Visitors	557,012	580,863	596,953	667,212	672,388	704,548	705,849	718,789	773,951	801,702
Mauritian residents	169,375	183,355	199,245	212,879	213,778	221,889	224,771	240,823	236,457	241,138
Other	11,136	11,780	13,035	15,478	16,907	16,439	17,154	19,710	19,258	17,234
<b>Total departures</b>	<b>737,523</b>	<b>775,998</b>	<b>809,233</b>	<b>895,569</b>	<b>903,073</b>	<b>942,876</b>	<b>947,774</b>	<b>979,322</b>	<b>1,029,666</b>	<b>1,060,074</b>

<sup>1</sup> Including traffic between Island of Mauritius and Rodrigues. As from 1994, figures of the passenger traffic also include cruise excursionists, i.e passengers and crews of cruise ships which numbered 13261, 12806, 10910, 11096, 5511, 19613, 9965, 9927, 11553 and 11651 for 1997, 1998, 1999, 2000, 2001, 2002, 2003, 2004, 2005 and 2006 respectively, in accordance with the recommendations of the World Tourism Organisation.

<sup>2</sup> Including non-residents who left the airport but stayed in the country for less than a day.

<sup>3</sup> Including contract workers.

**Table 16 - Total arrivals <sup>1</sup> by age and sex, 2005 & 2006**

Age (years)	2005			2006			January - June 2006			July - December 2006		
	Both Sexes	Male	Female	Both Sexes	Male	Female	Both Sexes	Male	Female	Both Sexes	Male	Female
Under 1	5,255	2,684	2,571	5,072	2,580	2,492	2,227	1,125	1,102	2,845	1,455	1,390
1 - 4	29,836	15,177	14,659	29,131	14,650	14,481	13,497	6,810	6,687	15,634	7,840	7,794
5 - 9	40,756	20,572	20,184	40,301	20,407	19,894	17,485	8,753	8,732	22,816	11,654	11,162
10 - 14	40,896	20,612	20,284	40,504	20,261	20,243	16,678	8,266	8,412	23,826	11,995	11,831
15 - 19	34,482	16,275	18,207	35,549	16,733	18,816	14,146	6,469	7,677	21,403	10,264	11,139
20 - 24	53,234	22,496	30,738	55,465	23,758	31,707	23,815	9,941	13,874	31,650	13,817	17,833
25 - 29	107,335	50,351	56,984	112,138	52,512	59,626	47,953	22,431	25,522	64,185	30,081	34,104
30 - 34	116,640	61,062	55,578	120,388	62,820	57,568	54,449	28,065	26,384	65,939	34,755	31,184
35 - 39	108,884	59,905	48,979	113,083	62,142	50,941	53,354	29,242	24,112	59,729	32,900	26,829
40 - 44	102,824	56,859	45,965	108,556	60,499	48,057	50,322	28,338	21,984	58,234	32,161	26,073
45 - 49	90,638	49,548	41,090	95,145	52,008	43,137	43,805	23,990	19,815	51,340	28,018	23,322
50 - 54	82,199	44,330	37,869	83,209	45,421	37,788	38,836	21,230	17,606	44,373	24,191	20,182
55 - 59	67,860	36,916	30,944	69,613	38,006	31,607	33,060	18,064	14,996	36,553	19,942	16,611
60 - 64	45,460	24,498	20,962	46,698	25,372	21,326	22,354	12,240	10,114	24,344	13,132	11,212
65 - 69	27,827	14,901	12,926	28,002	15,422	12,580	13,681	7,610	6,071	14,321	7,812	6,509
70 & over	26,639	13,856	12,783	26,201	14,057	12,144	12,265	6,738	5,527	13,936	7,319	6,617
Not stated	63,135	34,478	28,657	63,824	36,118	27,706	32,201	18,247	13,954	31,623	17,871	13,752
<b>All ages</b>	<b>1,043,900</b>	<b>544,520</b>	<b>499,380</b>	<b>1,072,879</b>	<b>562,766</b>	<b>510,113</b>	<b>490,128</b>	<b>257,559</b>	<b>232,569</b>	<b>582,751</b>	<b>305,207</b>	<b>277,544</b>

<sup>1</sup> Include arrivals from Rodrigues and cruise excursionists, i.e passengers and crews of cruise ships which numbered 11553 and 11651 for 2005 and 2006 respectively, in accordance with the recommendations of the World Tourism Organisation.

**Table 17 - Total departures <sup>1</sup> by age and sex, 2005 & 2006**

Age (years)	2005			2006			January - June 2006			July - December 2006		
	Both Sexes	Male	Female	Both Sexes	Male	Female	Both Sexes	Male	Female	Both Sexes	Male	Female
Under 1	4,873	2,498	2,375	4,687	2,421	2,266	2,366	1,201	1,165	2,321	1,220	1,101
1 - 4	29,465	14,947	14,518	29,222	14,732	14,490	15,222	7,675	7,547	14,000	7,057	6,943
5 - 9	40,193	20,237	19,956	40,176	20,246	19,930	20,013	10,000	10,013	20,163	10,246	9,917
10 - 14	40,554	20,505	20,049	40,475	20,206	20,269	18,825	9,365	9,460	21,650	10,841	10,809
15 - 19	35,098	16,628	18,470	36,705	17,361	19,344	15,770	7,255	8,515	20,935	10,106	10,829
20 - 24	53,019	22,808	30,211	54,106	23,108	30,998	24,166	10,162	14,004	29,940	12,946	16,994
25 - 29	104,763	49,514	55,249	109,300	51,037	58,263	47,873	22,353	25,520	61,427	28,684	32,743
30 - 34	114,374	59,796	54,578	117,913	61,738	56,175	55,175	28,447	26,728	62,738	33,291	29,447
35 - 39	105,480	58,108	47,372	109,943	60,205	49,738	54,641	29,638	25,003	55,302	30,567	24,735
40 - 44	101,116	55,870	45,246	107,264	59,699	47,565	53,203	29,734	23,469	54,061	29,965	24,096
45 - 49	88,575	48,323	40,252	93,342	51,088	42,254	45,469	24,933	20,536	47,873	26,155	21,718
50 - 54	81,692	43,890	37,802	83,533	45,187	38,346	40,872	22,058	18,814	42,661	23,129	19,532
55 - 59	67,045	36,345	30,700	68,934	37,506	31,428	34,341	18,709	15,632	34,593	18,797	15,796
60 - 64	45,532	24,589	20,943	47,254	25,682	21,572	23,666	12,813	10,853	23,588	12,869	10,719
65 - 69	27,719	14,884	12,835	27,766	15,282	12,484	14,468	7,941	6,527	13,298	7,341	5,957
70 & over	26,329	13,696	12,633	26,498	14,212	12,286	13,609	7,418	6,191	12,889	6,794	6,095
Not stated	63,839	35,475	28,364	62,956	35,569	27,387	29,562	16,890	12,672	33,394	18,679	14,715
<b>All ages</b>	<b>1,029,666</b>	<b>538,113</b>	<b>491,553</b>	<b>1,060,074</b>	<b>555,279</b>	<b>504,795</b>	<b>509,241</b>	<b>266,592</b>	<b>242,649</b>	<b>550,833</b>	<b>288,687</b>	<b>262,146</b>

<sup>1</sup> Include departures to Rodrigues and cruise excursionists, i.e passengers and crews of cruise ships which numbered 12772 and 11323 for 2005 and 2006 respectively, in accordance with the recommendations of the World Tourism Organisation.

**Table 18 - Excess of arrivals over departures <sup>1</sup> by age and sex, 2005 & 2006**

Age (years)	2005			2006			January - June 2006			July - December 2006		
	Both Sexes	Male	Female	Both Sexes	Male	Female	Both Sexes	Male	Female	Both Sexes	Male	Female
Under 1	382	186	196	385	159	226	-139	-76	-63	524	235	289
1 - 4	371	230	141	-91	-82	-9	-1,725	-865	-860	1,634	783	851
5 - 9	563	335	228	125	161	-36	-2,528	-1,247	-1,281	2,653	1,408	1,245
10 - 14	342	107	235	29	55	-26	-2,147	-1,099	-1,048	2,176	1,154	1,022
15 - 19	-616	-353	-263	-1,156	-628	-528	-1,624	-786	-838	468	158	310
20 - 24	215	-312	527	1,359	650	709	-351	-221	-130	1,710	871	839
25 - 29	2,572	837	1,735	2,838	1,475	1,363	80	78	2	2,758	1,397	1,361
30 - 34	2,266	1,266	1,000	2,475	1,082	1,393	-726	-382	-344	3,201	1,464	1,737
35 - 39	3,404	1,797	1,607	3,140	1,937	1,203	-1,287	-396	-891	4,427	2,333	2,094
40 - 44	1,708	989	719	1,292	800	492	-2,881	-1,396	-1,485	4,173	2,196	1,977
45 - 49	2,063	1,225	838	1,803	920	883	-1,664	-943	-721	3,467	1,863	1,604
50 - 54	507	440	67	-324	234	-558	-2,036	-828	-1,208	1,712	1,062	650
55 - 59	815	571	244	679	500	179	-1,281	-645	-636	1,960	1,145	815
60 - 64	-72	-91	19	-556	-310	-246	-1,312	-573	-739	756	263	493
65 - 69	108	17	91	236	140	96	-787	-331	-456	1,023	471	552
70 & over	310	160	150	-297	-155	-142	-1,344	-680	-664	1,047	525	522
Not stated	-704	-997	293	868	549	319	2,639	1,357	1,282	-1,771	-808	-963
<b>All ages</b>	<b>14,234</b>	<b>6,407</b>	<b>7,827</b>	<b>12,805</b>	<b>7,487</b>	<b>5,318</b>	<b>-19,113</b>	<b>-9,033</b>	<b>-10,080</b>	<b>31,918</b>	<b>16,520</b>	<b>15,398</b>

<sup>1</sup> Including traffic between Island of Mauritius and Rodrigues



**Table 19 - Arrivals<sup>1</sup> of Mauritian residents by age and sex, 2005 & 2006**

Age (years)	2005			2006			January - June 2006			July - December 2006		
	Both Sexes	Male	Female	Both Sexes	Male	Female	Both Sexes	Male	Female	Both Sexes	Male	Female
Under 1	599	296	303	516	275	241	218	116	102	298	159	139
1 - 4	3,430	1,761	1,669	3,130	1,578	1,552	1,324	686	638	1,806	892	914
5 - 9	5,218	2,673	2,545	4,914	2,476	2,438	1,874	926	948	3,040	1,550	1,490
10 - 14	5,908	3,068	2,840	5,393	2,642	2,751	1,995	981	1,014	3,398	1,661	1,737
15 - 19	6,415	3,095	3,320	6,350	2,968	3,382	2,587	1,181	1,406	3,763	1,787	1,976
20 - 24	13,348	6,688	6,660	12,869	6,512	6,357	5,542	2,723	2,819	7,327	3,789	3,538
25 - 29	17,797	9,234	8,563	18,459	9,591	8,868	8,238	4,291	3,947	10,221	5,300	4,921
30 - 34	16,712	9,308	7,404	17,676	9,657	8,019	8,209	4,528	3,681	9,467	5,129	4,338
35 - 39	19,886	11,760	8,126	19,477	11,474	8,003	8,947	5,433	3,514	10,530	6,041	4,489
40 - 44	21,762	12,716	9,046	22,063	12,944	9,119	9,754	5,962	3,792	12,309	6,982	5,327
45 - 49	19,905	11,025	8,880	20,066	11,191	8,875	8,746	4,966	3,780	11,320	6,225	5,095
50 - 54	18,852	9,974	8,878	18,627	9,908	8,719	8,267	4,503	3,764	10,360	5,405	4,955
55 - 59	14,141	7,558	6,583	15,236	8,183	7,053	6,739	3,715	3,024	8,497	4,468	4,029
60 - 64	9,277	4,793	4,484	9,542	4,979	4,563	4,207	2,254	1,953	5,335	2,725	2,610
65 - 69	5,853	2,901	2,952	5,740	2,933	2,807	2,548	1,345	1,203	3,192	1,588	1,604
70 & over	6,297	3,095	3,202	6,256	3,157	3,099	2,563	1,338	1,225	3,693	1,819	1,874
Not stated	53,989	29,448	24,541	56,016	31,822	24,194	25,953	14,810	11,143	30,063	17,012	13,051
<b>All ages</b>	<b>239,389</b>	<b>129,393</b>	<b>109,996</b>	<b>242,330</b>	<b>132,290</b>	<b>110,040</b>	<b>107,711</b>	<b>59,758</b>	<b>47,953</b>	<b>134,619</b>	<b>72,532</b>	<b>62,087</b>

<sup>1</sup> Including arrivals from Rodrigues

**Table 20 - Departures <sup>1</sup> of Mauritian residents by age and sex, 2005 & 2006**

Age (years)	2005			2006			January - June 2006			July - December 2006		
	Both Sexes	Male	Female	Both Sexes	Male	Female	Both Sexes	Male	Female	Both Sexes	Male	Female
Under 1	619	298	321	629	340	289	295	154	141	334	186	148
1 - 4	3,571	1,820	1,751	3,456	1,751	1,705	1,420	718	702	2,036	1,033	1,003
5 - 9	5,361	2,712	2,649	5,206	2,615	2,591	1,700	867	833	3,506	1,748	1,758
10 - 14	6,000	3,120	2,880	5,637	2,752	2,885	1,555	779	776	4,082	1,973	2,109
15 - 19	7,604	3,708	3,896	7,827	3,770	4,057	2,510	1,156	1,354	5,317	2,614	2,703
20 - 24	14,214	7,284	6,930	13,730	7,093	6,637	5,972	3,028	2,944	7,758	4,065	3,693
25 - 29	16,870	8,937	7,933	17,948	9,483	8,465	8,375	4,495	3,880	9,573	4,988	4,585
30 - 34	15,561	8,746	6,815	16,425	9,247	7,178	7,791	4,453	3,338	8,634	4,794	3,840
35 - 39	18,600	10,956	7,644	18,020	10,618	7,402	8,338	5,139	3,199	9,682	5,479	4,203
40 - 44	21,191	12,342	8,849	21,467	12,620	8,847	9,671	5,979	3,692	11,796	6,641	5,155
45 - 49	19,612	10,820	8,792	20,030	11,106	8,924	8,820	5,000	3,820	11,210	6,106	5,104
50 - 54	18,655	9,870	8,785	18,732	9,930	8,802	8,246	4,435	3,811	10,486	5,495	4,991
55 - 59	13,971	7,443	6,528	15,177	8,153	7,024	6,672	3,657	3,015	8,505	4,496	4,009
60 - 64	9,185	4,773	4,412	9,630	5,045	4,585	4,248	2,193	2,055	5,382	2,852	2,530
65 - 69	5,792	2,881	2,911	5,627	2,879	2,748	2,568	1,297	1,271	3,059	1,582	1,477
70 & over	6,114	3,003	3,111	6,228	3,143	3,085	2,767	1,420	1,347	3,461	1,723	1,738
Not stated	53,537	29,807	23,730	55,369	31,396	23,973	23,438	13,522	9,916	31,931	17,874	14,057
<b>All ages</b>	<b>236,457</b>	<b>128,520</b>	<b>107,937</b>	<b>241,138</b>	<b>131,941</b>	<b>109,197</b>	<b>104,386</b>	<b>58,292</b>	<b>46,094</b>	<b>136,752</b>	<b>73,649</b>	<b>63,103</b>

<sup>1</sup> Including departures to Rodrigues

**Table 21 - Excess of arrivals over departures <sup>1</sup> of Mauritian residents by age & sex, 2005 & 2006**

Age (years)	2005			2006			January - June 2006			July - December 2006		
	Both Sexes	Male	Female	Both Sexes	Male	Female	Both Sexes	Male	Female	Both Sexes	Male	Female
Under 1	-20	-2	-18	-113	-65	-48	-77	-38	-39	-36	-27	-9
1 - 4	-141	-59	-82	-326	-173	-153	-96	-32	-64	-230	-141	-89
5 - 9	-143	-39	-104	-292	-139	-153	174	59	115	-466	-198	-268
10 - 14	-92	-52	-40	-244	-110	-134	440	202	238	-684	-312	-372
15 - 19	-1,189	-613	-576	-1,477	-802	-675	77	25	52	-1,554	-827	-727
20 - 24	-866	-596	-270	-861	-581	-280	-430	-305	-125	-431	-276	-155
25 - 29	927	297	630	511	108	403	-137	-204	67	648	312	336
30 - 34	1,151	562	589	1,251	410	841	418	75	343	833	335	498
35 - 39	1,286	804	482	1,457	856	601	609	294	315	848	562	286
40 - 44	571	374	197	596	324	272	83	-17	100	513	341	172
45 - 49	293	205	88	36	85	-49	-74	-34	-40	110	119	-9
50 - 54	197	104	93	-105	-22	-83	21	68	-47	-126	-90	-36
55 - 59	170	115	55	59	30	29	67	58	9	-8	-28	20
60 - 64	92	20	72	-88	-66	-22	-41	61	-102	-47	-127	80
65 - 69	61	20	41	113	54	59	-20	48	-68	133	6	127
70 & over	183	92	91	28	14	14	-204	-82	-122	232	96	136
Not stated	452	-359	811	647	426	221	2,515	1,288	1,227	-1,868	-862	-1,006
<b>All ages</b>	<b>2,932</b>	<b>873</b>	<b>2,059</b>	<b>1,192</b>	<b>349</b>	<b>843</b>	<b>3,325</b>	<b>1,466</b>	<b>1,859</b>	<b>-2,133</b>	<b>-1,117</b>	<b>-1,016</b>

<sup>1</sup> Including traffic between Island of Mauritius and Rodrigues.

**Table 22 - Arrivals and departures of Mauritian residents<sup>1</sup> by country of embarkation and disembarkation, 2004 - 2006**

Country of embarkation/ disembarkation	Arrivals			Departures			Excess of arrivals over departures		
	2004	2005	2006	2004	2005	2006	2004	2005	2006
Australia	6,338	6,889	7,368	6,760	7,000	7,904	-422	-111	-536
Belgium	316	61	40	205	26	20	111	35	20
Canada	254	126	108	73	58	24	181	68	84
France	26,920	27,264	29,059	27,021	26,840	30,299	-101	424	-1,240
Germany	2,748	2,388	2,435	3,166	2,121	2,151	-418	267	284
Hong Kong SAR <sup>2</sup>	7,584	9,155	9,856	7,117	9,746	10,379	467	-591	-523
India	18,962	18,086	19,597	18,405	17,979	19,321	557	107	276
Italy	3,418	3,771	4,278	3,127	3,643	3,464	291	128	814
Kenya	1,239	252	1,222	1,562	44	1,188	-323	208	34
Rodrigues	60,830	53,987	56,015	60,862	53,534	55,368	-32	453	647
Reunion	33,022	31,447	27,480	32,274	29,994	26,661	748	1,453	819
Singapore	7,880	9,692	6,768	8,821	9,417	9,584	-941	275	-2,816
S. Africa, Rep of	14,199	14,457	13,979	13,128	13,384	13,167	1,071	1,073	812
Switzerland	2,056	2,031	2,316	1,959	1,581	2,255	97	450	61
United Kingdom	29,137	31,711	30,580	32,276	31,342	30,715	-3,139	369	-135
Other countries	25,066	28,072	31,229	24,067	29,748	28,638	999	-1,676	2,591
<b>All Countries</b>	<b>239,969</b>	<b>239,389</b>	<b>242,330</b>	<b>240,823</b>	<b>236,457</b>	<b>241,138</b>	<b>-854</b>	<b>2,932</b>	<b>1,192</b>

<sup>1</sup> Including traffic between Island of Mauritius and Rodrigues

<sup>2</sup> Special Administrative Region of China

### III - TOURISM

#### Definition and notes

1. Definition of tourist

(a) prior to 1964, a tourist has been defined as a non-resident staying in Mauritius for more than 24 hours but less than 6 months.

(b) as from 1964, a tourist is defined as a non-resident staying in the island for more than 24 hours but less than a year and is not involved in any gainful occupation .

The figures for the two periods are nevertheless comparable because of the small number of tourists staying for more than 6 months.

2. Visitors include the following:

(a) tourists as defined above; and

(b) cruise ship passengers and non-residents who stayed in the country for less than a day, other than those who do not leave the airport.

3. Method of compilation

Sources of data

The main source of data for the compilation of passenger traffic statistics is the Passport and Immigration Office which maintains a database of all passengers entering and leaving the country. The data are extracted from the Embarkation / Disembarkation cards filled in by all incoming and outgoing passengers. At the end of every month, passenger traffic for that particular month is downloaded and supplied to the statistics unit of the Ministry of Tourism, Leisure and External Communications within fifteen days. Additional data on cruises are supplied by the Mauritius Ports Authority.

Prior to 1994, figures have been compiled from a 10% sample of embarkation and disembarkation cards filled in by passengers. However, as from January 1994, they are based on movements of all passengers. Thus disaggregated data for 1994 onwards may not be strictly comparable to previous series.

#### Tourism receipts

The Bank of Mauritius is responsible for the estimation of tourism receipts based on monthly statements of Inward and Outward Remittances of Commercial Banks.

#### Monthly Occupancy Rates

All hotels are contacted by mail and/or phone at the end of every month on room / bed nights available and rented during the month for the calculation of room and bed occupancy.

#### 4. Tourist nights

Tables on tourist nights show the number of nights spent by tourists who were present in the country during the period under review. Thus the number of tourist nights for 2006 include:

(a) the nights spent during 2006 by tourists who arrived prior to 1st January 2006; and

(b) the nights spent during 2006 by tourists who arrived during the same year.

However, nights spent after 31st December 2006 by tourists who arrived in 2006 are excluded.

#### 5. Large hotels

Large hotels are well established beach hotels of over 80 rooms.

**Table 23 -Tourist arrivals by mode of transport and tourist nights spent during period, 1990 - 2006**

Period	Tourist arrivals			Tourist nights spent during period	% change over previous year	
	Sea	Air	Total		Tourist arrivals	Tourist nights
1990	1,200	290,350	291,550	3,564,930	+ 10.9	+ 11.5
1991	2,500	298,170	300,670	3,696,990	+ 3.1	+ 3.7
1992	2,630	332,770	335,400	4,110,430	+ 11.6	+ 11.2
1993	5,710	368,920	374,630	4,610,400	+ 11.7	+ 12.2
1994	6,383	394,143	400,526	4,359,303	+ 6.9	- 5.4
1995	6,105	416,358	422,463	4,434,891	+ 5.5	+ 1.7
1996	6,484	480,383	486,867	4,957,683	+ 15.2	+ 11.8
1997	7,476	528,649	536,125	5,451,314	+ 10.1	+ 10.0
1998	17,109	541,086	558,195	5,567,889	+ 4.1	+ 2.1
1999	13,852	564,233	578,085	5,729,464	+ 3.6	+ 2.9
2000	10,677	645,776	656,453	6,412,876	+ 13.6	+ 11.9
2001	10,532	649,786	660,318	6,527,800	+ 0.6	+ 1.8
2002	14,180	667,468	681,648	6,768,870	+ 3.2	+ 3.7
2003	12,155	689,863	702,018	6,952,313	+ 3.0	+ 2.7
2004	11,390	707,471	718,861	7,118,603	+ 2.4	+ 2.4
2005	13,321	747,742	761,063	7,498,251	+ 5.9	+ 5.3
2006	13,249	775,027	788,276	7,760,679 <sup>1</sup>	+ 3.6	+ 3.5

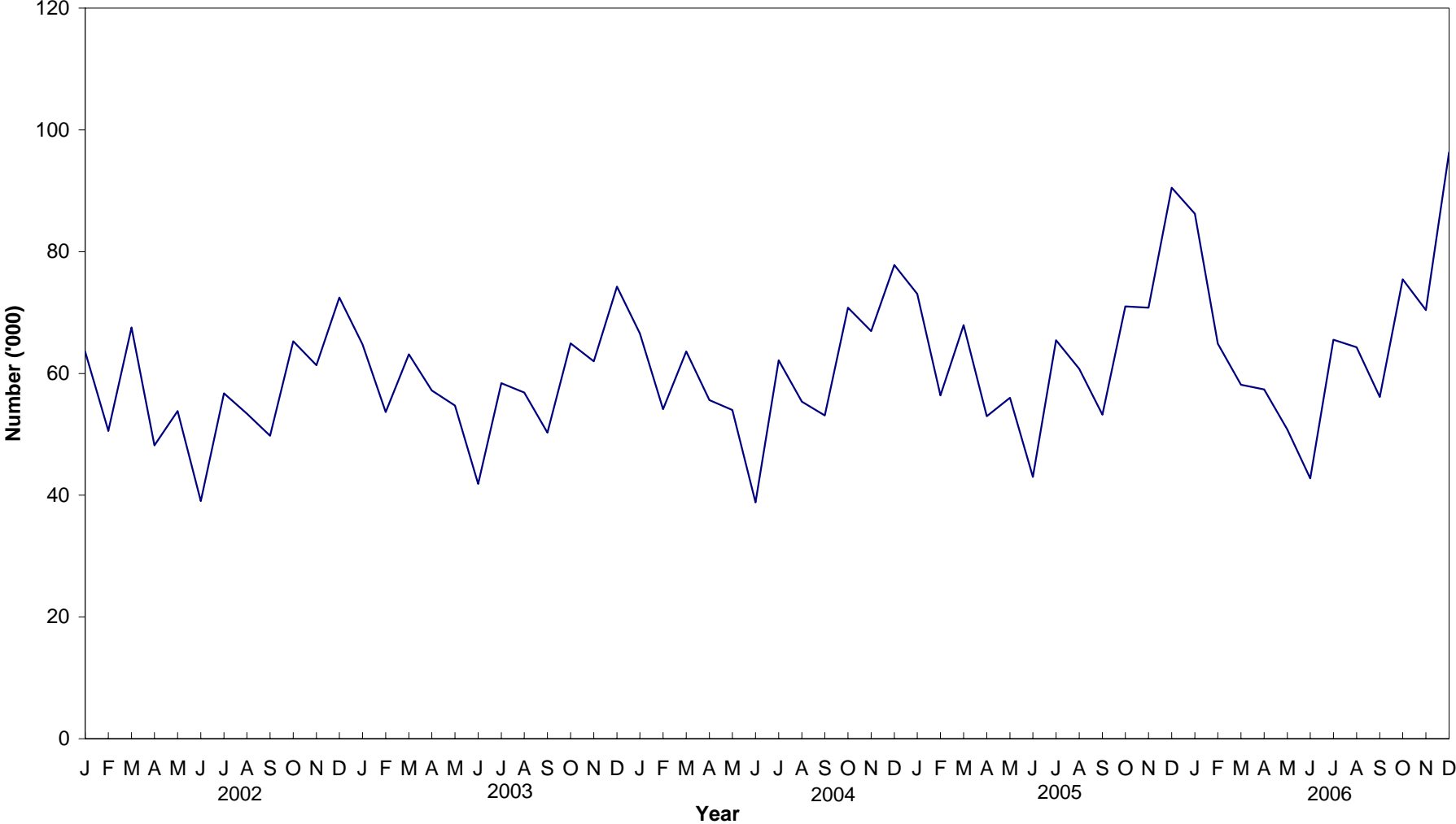
<sup>1</sup> Provisional

**Table 24 - Tourist arrivals by month of arrival, 1997 - 2006**

<b>Month of arrival</b>	<b>1997</b>	<b>1998</b>	<b>1999</b>	<b>2000</b>	<b>2001</b>	<b>2002</b>	<b>2003</b>	<b>2004</b>	<b>2005</b>	<b>2006</b>
January	50,507	54,839	59,680	62,355	65,122	63,551	64,762	66,543	73,053	86,218
February	37,254	41,928	41,859	50,466	49,464	50,554	53,647	54,104	56,367	64,894
March	46,923	48,440	50,707	54,872	55,944	67,554	63,129	63,631	67,931	58,136
April	38,683	45,433	41,536	56,353	54,794	48,187	57,217	55,599	52,971	57,361
May	39,794	43,790	42,254	49,960	51,969	53,813	54,710	53,974	55,995	50,773
June	32,165	30,387	35,910	39,885	38,496	39,048	41,841	38,826	42,994	42,755
July	39,716	40,700	42,862	51,577	57,274	56,709	58,403	62,173	65,462	65,540
August	55,033	54,651	57,321	59,731	52,923	53,395	56,844	55,342	60,746	64,307
September	39,694	39,228	41,383	47,634	48,953	49,774	50,293	53,102	53,233	56,138
October	45,302	49,090	55,128	61,526	59,325	65,291	64,917	70,793	70,999	75,451
November	55,424	52,563	56,584	57,334	57,326	61,326	61,984	66,960	70,793	70,394
December	55,630	57,146	52,861	64,760	68,728	72,446	74,271	77,814	90,519	96,309
<b>Whole Year</b>	<b>536,125</b>	<b>558,195</b>	<b>578,085</b>	<b>656,453</b>	<b>660,318</b>	<b>681,648</b>	<b>702,018</b>	<b>718,861</b>	<b>761,063</b>	<b>788,276</b>



Fig 4 - Tourist arrivals by month, 2002- 2006



**Table 25 - Percentage distribution of tourist arrivals by month of arrival, 1997 - 2006**

<b>Month of arrival</b>	<b>1997</b>	<b>1998</b>	<b>1999</b>	<b>2000</b>	<b>2001</b>	<b>2002</b>	<b>2003</b>	<b>2004</b>	<b>2005</b>	<b>2006</b>
January	9.4	9.8	10.3	9.5	9.9	9.3	9.2	9.3	9.6	10.9
February	6.9	7.5	7.2	7.7	7.5	7.4	7.6	7.5	7.4	8.2
March	8.8	8.7	8.8	8.4	8.5	9.9	9.0	8.9	8.9	7.4
April	7.2	8.1	7.2	8.6	8.3	7.1	8.2	7.7	7.0	7.3
May	7.4	7.8	7.3	7.6	7.9	7.9	7.8	7.5	7.4	6.4
June	6.0	5.4	6.2	6.1	5.8	5.7	6.0	5.4	5.6	5.4
July	7.4	7.3	7.4	7.9	8.7	8.3	8.3	8.6	8.6	8.3
August	10.3	9.8	9.9	9.1	8.0	7.8	8.1	7.7	8.0	8.2
September	7.4	7.0	7.2	7.3	7.4	7.3	7.2	7.4	7.0	7.1
October	8.4	8.8	9.5	9.4	9.0	9.6	9.2	9.8	9.3	9.6
November	10.3	9.4	9.8	8.7	8.7	9.0	8.8	9.3	9.3	8.9
December	10.4	10.2	9.1	9.9	10.4	10.6	10.6	10.8	11.9	12.2
<b>Whole Year</b>	<b>100.0</b>	<b>100.0</b>	<b>100.0</b>	<b>100.0</b>	<b>100.0</b>	<b>100.0</b>	<b>100.0</b>	<b>100.0</b>	<b>100.0</b>	<b>100.0</b>

**Table 26 - Tourist arrivals by country of residence and sex, 2006**

<b>Country of residence</b>	<b>Male</b>	<b>Female</b>	<b>Both Sexes</b>
Australia	8,354	8,306	16,660
Belgium	4,792	4,424	9,216
France	92,316	89,979	182,295
Germany	29,083	28,168	57,251
Hong Kong SAR <sup>1</sup>	324	195	519
India	23,340	14,158	37,498
Italy	33,236	36,171	69,407
Japan	1,041	654	1,695
Kenya	1,011	683	1,694
Malagasy Rep.	3,623	3,616	7,239
Reunion Island	44,259	44,868	89,127
Seychelles	5,037	6,986	12,023
Singapore	1,056	806	1,862
S. Africa, Rep. of	36,289	34,507	70,796
Switzerland	7,965	8,196	16,161
United Kingdom	52,210	50,123	102,333
U.S.A.	2,960	2,260	5,220
Zimbabwe	839	748	1,587
Other countries	56,952	48,741	105,693
<b>All Countries</b>	<b>404,687</b>	<b>383,589</b>	<b>788,276</b>

<sup>1</sup> *Special Administrative Region of China*

**Table 27 - Tourist arrivals by country of residence, 1997 - 2006**

<b>Country of residence</b>	<b>1997</b>	<b>1998</b>	<b>1999</b>	<b>2000</b>	<b>2001</b>	<b>2002</b>	<b>2003</b>	<b>2004</b>	<b>2005</b>	<b>2006</b>
Australia	9,460	8,913	8,076	8,771	8,790	8,387	9,103	11,373	13,486	16,660
Belgium	8,162	8,365	9,586	10,998	10,398	10,579	10,170	8,524	8,973	9,216
France	145,173	162,775	175,431	198,423	197,595	202,869	200,229	210,411	220,421	182,295
Germany	43,993	43,826	45,206	52,869	50,866	53,762	53,970	52,277	55,983	57,251
Hong Kong SAR <sup>1</sup>	1,629	969	859	1,227	1,488	1,201	676	836	508	519
India	13,220	12,629	13,583	17,241	18,890	20,898	25,367	24,716	29,755	37,498
Italy	35,255	36,614	36,675	39,000	37,343	38,263	39,774	41,277	43,458	69,407
Japan	3,140	2,505	2,324	2,389	1,589	1,958	1,572	1,724	1,638	1,695
Kenya	1,230	1,684	1,655	1,801	1,734	1,507	1,510	1,506	1,358	1,694
Malagasy Rep.	10,143	9,213	7,880	7,057	6,674	9,417	11,044	8,256	7,397	7,239
Reunion Island	82,628	83,966	83,749	86,945	91,140	96,375	95,679	96,510	99,036	89,127
Seychelles	8,995	8,529	7,893	9,229	10,687	13,468	9,869	7,456	10,084	12,023
Singapore	3,404	3,515	3,661	4,104	3,431	3,114	2,102	2,329	1,789	1,862
S. Africa, Rep. of	51,249	49,676	46,583	48,683	47,882	42,685	45,756	52,609	58,446	70,796
Switzerland	16,105	16,178	16,281	20,473	18,427	17,371	17,929	16,110	15,773	16,161
United Kingdom	46,022	52,299	58,683	74,488	77,888	80,667	91,210	92,652	95,407	102,333
USA	2,879	3,158	3,345	3,704	3,923	4,116	4,505	4,305	4,890	5,220
Zimbabwe	4,248	3,796	2,606	3,435	3,860	3,185	2,343	2,345	2,419	1,587
Other countries	49,190	49,585	54,009	65,616	67,713	71,826	79,210	83,645	90,242	105,693
<b>All Countries</b>	<b>536,125</b>	<b>558,195</b>	<b>578,085</b>	<b>656,453</b>	<b>660,318</b>	<b>681,648</b>	<b>702,018</b>	<b>718,861</b>	<b>761,063</b>	<b>788,276</b>

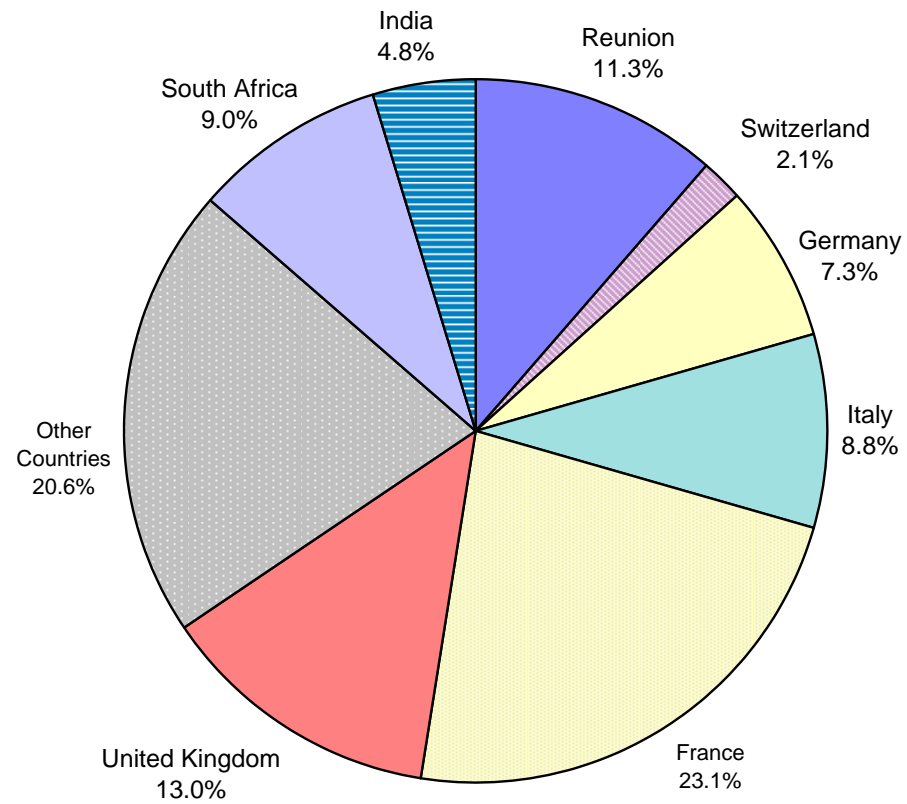
<sup>1</sup> Special Administrative Region of China

**Table 28 - Percentage distribution of tourist arrivals by country of residence, 1997 - 2006**

Country of residence	1997	1998	1999	2000	2001	2002	2003	2004	2005	2006
Australia	1.8	1.6	1.4	1.3	1.3	1.2	1.3	1.6	1.8	2.1
Belgium	1.5	1.5	1.7	1.7	1.6	1.6	1.4	1.2	1.2	1.2
France	27.1	29.2	30.3	30.2	29.9	29.8	28.5	29.3	29.0	23.1
Germany	8.2	7.9	7.8	8.1	7.7	7.9	7.7	7.3	7.4	7.3
Hong Kong SAR <sup>1</sup>	0.3	0.2	0.1	0.2	0.2	0.2	0.1	0.1	0.1	0.1
India	2.5	2.3	2.3	2.6	2.9	3.1	3.6	3.4	3.9	4.8
Italy	6.6	6.6	6.3	5.9	5.7	5.6	5.7	5.7	5.7	8.8
Japan	0.6	0.4	0.4	0.4	0.2	0.3	0.2	0.2	0.2	0.2
Kenya	0.2	0.3	0.3	0.3	0.3	0.2	0.2	0.2	0.2	0.2
Malagasy Rep.	1.9	1.7	1.4	1.1	1.0	1.4	1.6	1.1	1.0	0.9
Reunion Island	15.4	15.0	14.5	13.2	13.8	14.1	13.6	13.4	13.0	11.3
Seychelles	1.7	1.5	1.4	1.4	1.6	2.0	1.4	1.0	1.3	1.5
Singapore	0.6	0.6	0.6	0.6	0.5	0.5	0.3	0.3	0.2	0.2
S. Africa, Rep. of	9.6	8.9	8.1	7.4	7.3	6.3	6.5	7.3	7.7	9.0
Switzerland	3.0	2.9	2.8	3.1	2.8	2.5	2.6	2.2	2.1	2.1
United Kingdom	8.6	9.4	10.2	11.3	11.8	11.8	13.0	12.9	12.5	13.0
USA	0.5	0.6	0.6	0.6	0.6	0.6	0.6	0.6	0.6	0.7
Zimbabwe	0.8	0.7	0.5	0.5	0.6	0.5	0.3	0.3	0.3	0.2
Other countries	9.2	8.9	9.3	10.0	10.3	10.5	11.3	11.6	11.9	13.3
<b>All Countries</b>	<b>100.0</b>	<b>100.0</b>	<b>100.0</b>	<b>100.0</b>	<b>100.0</b>	<b>100.0</b>	<b>100.0</b>	<b>100.0</b>	<b>100.0</b>	<b>100.0</b>

<sup>1</sup> Special Administrative Region of China

**Fig. 5 - Percentage distribution of tourist arrivals by country of residence, 2006**



**Table 29 - Tourist nights by country of residence, 1997- 2006**

Country of residence	1997	1998	1999	2000	2001	2002	2003	2004	2005	2006
Australia	123,056	104,284	91,655	96,932	104,232	98,869	100,332	111,546	115,851	126,859
Belgium	113,011	105,146	126,221	132,571	125,752	124,586	121,687	105,445	117,210	120,987
France	1,509,687	1,632,311	1,719,893	1,934,683	1,966,911	2,020,850	1,996,305	2,101,125	2,208,575	1,931,005
Germany	557,374	548,693	553,112	635,600	612,881	651,913	636,435	608,031	655,283	655,738
Hong Kong SAR <sup>1</sup>	13,524	9,559	9,367	9,601	11,955	10,941	6,767	7,984	4,694	3,739
India	155,700	146,872	157,110	188,008	207,965	253,340	287,741	265,174	295,698	336,048
Italy	337,486	346,779	336,271	349,267	326,100	329,809	346,865	362,758	397,160	619,089
Japan	19,834	15,625	12,593	14,054	10,161	11,170	9,302	9,881	10,538	9,889
Kenya	9,065	11,318	12,904	12,585	10,780	8,784	11,347	11,069	12,258	13,875
Malagasy Rep.	78,525	80,310	74,643	65,526	66,177	81,758	128,437	83,961	73,964	84,400
Reunion Island	593,693	588,452	576,423	596,449	632,970	675,483	738,968	832,879	828,889	730,678
Seychelles	72,835	71,407	67,271	82,577	96,303	113,942	92,493	75,277	93,951	108,603
Singapore	18,154	19,627	21,925	21,998	23,420	20,403	14,871	16,094	12,106	14,166
S. Africa, Rep. of	420,633	416,635	412,869	422,300	400,656	376,588	379,561	425,680	467,603	565,627
Switzerland	209,931	209,329	206,392	248,345	229,227	210,510	220,382	189,115	185,482	200,141
United Kingdom	625,419	675,375	720,291	884,799	942,095	977,717	1,043,113	1,053,881	1,070,185	1,152,123
U.S.A.	26,205	28,558	31,953	32,719	37,067	38,478	38,795	39,039	41,298	44,827
Zimbabwe	37,582	35,377	28,106	37,555	47,134	39,504	26,469	28,831	31,233	20,493
Other countries	529,600	522,232	570,465	647,307	676,014	724,225	752,443	790,833	876,273	1,022,392
<b>All Countries</b>	<b>5,451,314</b>	<b>5,567,889</b>	<b>5,729,464</b>	<b>6,412,876</b>	<b>6,527,800</b>	<b>6,768,870</b>	<b>6,952,313</b>	<b>7,118,603</b>	<b>7,498,251</b>	<b>7,760,679</b>

<sup>1</sup> Special Administrative Region of China

Fig 6 - Total arrivals and tourist arrivals, 1997 - 2006

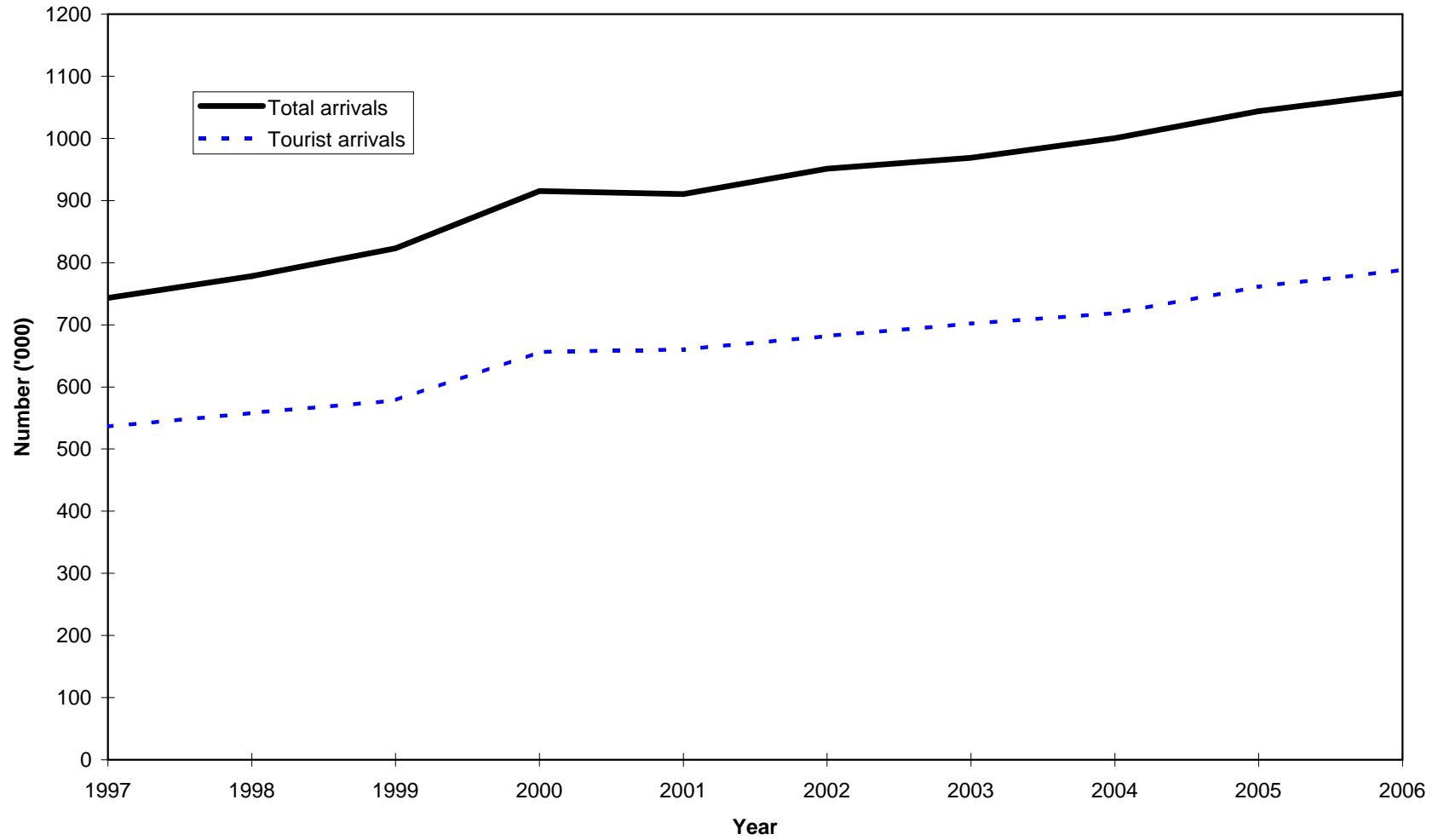
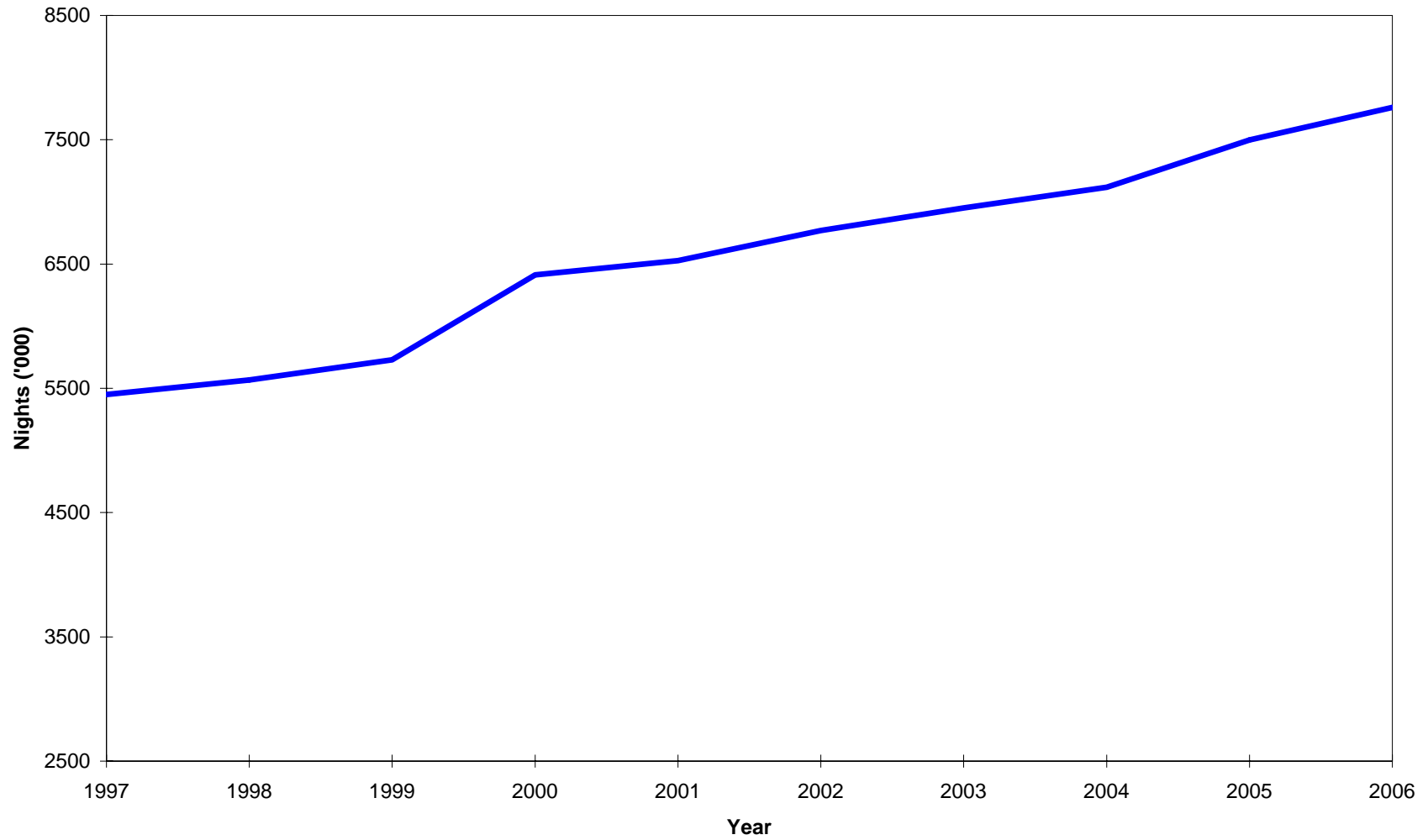




Fig 7 - Tourist nights, 1997 - 2006



**Table 30 - Visitor <sup>1</sup> arrivals by country of residence and type of passenger, 2004 - 2006**

Country of residence	Visitors on holidays			Visitors on business			Visitors in transit			Other visitors			Total visitors		
	2004	2005	2006	2004	2005	2006	2004	2005	2006	2004	2005	2006	2004	2005	2006
Australia	9,634	11,314	13,315	599	539	855	1,350	1,845	2,810	116	115	143	11,699	13,813	17,123
Belgium	7,991	8,458	8,650	318	278	298	125	201	108	168	150	216	8,602	9,087	9,272
France	200,206	207,984	169,818	5,135	4,900	4,477	5,015	7,577	7,259	2,339	2,918	3,351	212,695	223,379	184,905
Germany	50,921	54,337	55,029	506	532	599	786	1,209	1,078	538	640	956	52,751	56,718	57,662
Hong Kong SAR <sup>2</sup>	424	306	328	142	66	87	272	147	105	13	3	2	851	522	522
India	17,714	23,234	30,073	4,106	4,103	5,186	1,922	1,721	1,589	1,328	1,088	1,086	25,070	30,146	37,934
Italy	40,390	42,504	67,884	467	442	546	276	331	413	285	312	730	41,418	43,589	69,573
Japan	1,188	1,204	1,161	161	211	249	519	268	307	20	10	11	1,888	1,693	1,728
Kenya	780	665	915	548	475	505	197	160	136	23	63	144	1,548	1,363	1,700
Malagasy Rep.	4,104	3,693	3,653	820	1,081	1,057	4,534	3,279	2,820	206	253	396	9,664	8,306	7,926
Reunion Island	89,065	90,053	79,794	1,860	1,811	1,801	8,147	9,782	10,053	514	605	680	99,586	102,251	92,328
Seychelles	6,276	8,813	10,406	350	331	384	622	779	892	375	404	610	7,623	10,327	12,292
Singapore	1,946	1,313	1,465	247	301	296	136	172	80	34	20	36	2,363	1,806	1,877
S. Africa Rep. of	45,301	51,321	62,737	5,430	5,117	5,587	1,547	1,492	1,902	688	902	1,037	52,966	58,832	71,263
Switzerland	15,736	15,349	15,588	223	204	224	272	333	347	37	61	132	16,268	15,947	16,291
United Kingdom	88,659	91,056	97,461	2,388	2,322	2,826	793	1,053	1,384	1,092	1,316	1,054	92,932	95,747	102,725
U.S.A.	3,383	3,769	4,099	669	796	756	324	495	404	59	71	138	4,435	5,131	5,397
Zimbabwe	1,915	2,112	1,259	351	248	231	50	31	50	65	41	63	2,381	2,432	1,603
Other & N. Stated	68,185	74,599	88,985	6,096	6,407	6,547	17,823	17,424	16,229	1,672	2,053	2,770	93,776	100,483	114,531
<b>All Countries</b>	<b>653,818</b>	<b>692,084</b>	<b>712,620</b>	<b>30,416</b>	<b>30,164</b>	<b>32,511</b>	<b>44,710</b>	<b>48,299</b>	<b>47,966</b>	<b>9,572</b>	<b>11,025</b>	<b>13,555</b>	<b>738,516</b>	<b>781,572</b>	<b>806,652</b>

<sup>1</sup> Visitors include tourists, cruise ship passengers and non-residents who stay in the country for less than a day, other than those who do not leave the airport

<sup>2</sup> Special Administrative Region of China

**Table 31 - Visitor arrivals by age and sex, 2005 & 2006**

Age (years)	2005			2006		
	Both Sexes	Male	Female	Both Sexes	Male	Female
Under 1	4,487	2,309	2,178	4,433	2,255	2,178
1 - 4	25,813	13,106	12,707	25,501	12,806	12,695
5 - 9	34,887	17,557	17,330	34,855	17,653	17,202
10 - 14	34,413	17,260	17,153	34,587	17,371	17,216
15 - 19	27,459	12,878	14,581	28,596	13,475	15,121
20 - 24	37,447	14,710	22,737	39,604	15,570	24,034
25 - 29	85,893	39,189	46,704	89,803	40,535	49,268
30 - 34	96,206	49,689	46,517	99,028	50,925	48,103
35 - 39	85,958	46,249	39,709	90,403	48,590	41,813
40 - 44	78,708	42,512	36,196	84,009	45,804	38,205
45 - 49	69,079	37,373	31,706	73,360	39,607	33,753
50 - 54	61,903	33,380	28,523	63,077	34,437	28,640
55 - 59	52,668	28,675	23,993	53,325	29,097	24,228
60 - 64	35,672	19,353	16,319	36,596	20,006	16,590
65 - 69	21,739	11,835	9,904	21,967	12,302	9,665
70 & over	20,096	10,604	9,492	19,700	10,728	8,972
Not stated	9,144	5,029	4,115	7,808	4,296	3,512
<b>All ages</b>	<b>781,572</b>	<b>401,708</b>	<b>379,864</b>	<b>806,652</b>	<b>415,457</b>	<b>391,195</b>

**Table 32 - Visitor arrivals by duration of stay, 2005 & 2006**

Duration of stay	2005		2006	
	Number	Percentage	Number	Percentage
Less than 1 day	20,509	2.6	18,376	2.3
1 day	25,402	3.3	25,630	3.2
2 days	16,330	2.1	17,964	2.2
3 days	25,766	3.3	27,767	3.4
4 days	37,861	4.8	38,112	4.7
5 days	42,334	5.4	39,150	4.9
6 days	66,186	8.5	66,099	8.2
7 days	138,269	17.7	162,912	20.2
8 days	38,805	5.0	39,172	4.9
9 days	40,890	5.2	42,786	5.3
10 days	44,120	5.6	45,062	5.6
11 days	23,702	3.0	23,307	2.9
12 days	23,868	3.1	24,120	3.0
13 days	35,795	4.6	35,106	4.4
14 days	63,871	8.2	71,727	8.9
15 days	8,527	1.1	8,217	1.0
16 days	6,568	0.8	6,017	0.7
17 days	4,252	0.5	3,852	0.5
18 days	3,670	0.5	3,332	0.4
19 days	4,101	0.5	3,903	0.5
20 - 24 days	17,917	2.3	17,056	2.1
25 - 29 days	9,049	1.2	8,239	1.0
1 month - under 2 months	13,903	1.8	13,018	1.6
2 months - under 3 months	65,374	8.4	62,895	7.8
3 months and over	4,503	0.6	2,833	0.4
<b>All Countries</b>	<b>781,572</b>	<b>100.0</b>	<b>806,652</b>	<b>100.0</b>

**Table 33 - Visitor arrivals by country of residence and duration of stay, 2006**

Country of residence	Duration of stay (Nights)												Total
	<1	1 - 2	3 - 4	5 - 6	7 - 8	9 - 10	11 - 12	13 - 14	15 - 19	20 - 24	25 - 29	30+	
Australia	463	3,911	2,443	3,490	1,021	1,116	234	1,440	277	365	211	2,152	17,123
Belgium	56	137	297	699	2,276	1,532	780	1,197	411	413	219	1,255	9,272
France	2,610	7,639	12,991	21,672	49,388	25,595	12,351	16,609	7,711	4,271	2,769	21,299	184,905
Germany	411	1,482	1,250	2,868	8,746	4,719	3,881	23,266	2,137	3,301	589	5,012	57,662
Hong Kong SAR <sup>1</sup>	3	129	100	112	18	46	12	18	8	10	4	62	522
India	436	2,599	9,462	11,697	6,560	997	487	884	329	268	215	4,000	37,934
Italy	166	467	789	10,371	32,941	4,100	2,491	12,722	916	763	319	3,528	69,573
Japan	33	294	352	533	185	52	26	33	17	14	10	179	1,728
Kenya	6	235	422	188	462	83	37	68	25	11	6	157	1,700
Malagasy Rep.	687	2,070	1,063	680	608	356	172	282	210	140	190	1,468	7,926
Reunion Island	3,201	11,129	13,678	17,377	22,164	6,796	2,975	2,213	2,587	1,034	617	8,557	92,328
Seychelles	269	1,203	2,362	1,267	2,586	1,027	1,134	566	343	186	109	1,240	12,292
Singapore	15	176	329	791	116	91	31	41	32	14	9	232	1,877
S. Africa Rep. of	467	3,068	6,745	9,307	28,613	8,786	2,574	2,838	1,432	705	363	6,365	71,263
Switzerland	130	312	306	2,074	2,145	1,321	1,278	5,227	570	871	334	1,723	16,291
United Kingdom	392	2,746	3,234	6,481	17,869	17,956	12,006	24,307	4,853	2,594	1,284	9,003	102,725
U.S.A.	177	596	970	894	861	377	209	277	132	93	62	749	5,397
Zimbabwe	16	75	145	186	348	151	78	197	108	61	23	215	1,603
Other & not stated	8,838	5,326	8,941	14,562	25,177	12,747	6,671	14,648	3,223	1,942	906	11,550	114,531
<b>All Countries</b>	<b>18,376</b>	<b>43,594</b>	<b>65,879</b>	<b>105,249</b>	<b>202,084</b>	<b>87,848</b>	<b>47,427</b>	<b>106,833</b>	<b>25,321</b>	<b>17,056</b>	<b>8,239</b>	<b>78,746</b>	<b>806,652</b>

<sup>1</sup> Special Administrative Region of China

**Table 34 - Visitor arrivals and average length of stay by country of residence, 2006**

Country of Residence	Visitor arrivals	Average length of stay (nights)
Australia	17,123	7.8
Belgium	9,272	13.4
France	184,905	10.9
Germany	57,662	12.3
Hong Kong SAR <sup>1</sup>	522	7.3
India	37,934	8.7
Italy	69,573	9.2
Japan	1,728	6.1
Kenya	1,700	7.3
Malagasy Rep.	7,926	10.4
Reunion	92,328	7.5
Seychelles	12,292	8.7
Singapore	1,877	7.7
S. Africa, Rep. of	71,263	8.4
Switzerland	16,291	12.8
United Kingdom	102,725	11.7
U.S.A.	5,397	9.3
Zimbabwe	1,603	12.4
Other & not stated	114,531	10.2
<b>All Countries</b>	<b>806,652</b>	<b>10.1</b>

<sup>1</sup> *Special Administrative Region of China*

**Table 35 - Gross earnings from tourism, 1997 - 2006**

Earnings (Rs Mn)	1997	1998	1999	2000	2001	2002	2003	2004	2005	2006
	10,068	11,890	13,668	14,234	18,166	18,328	19,415	23,448	25,704	31,942

Source : Bank of Mauritius

**Table 36 - Expenditure of tourists by country of residence, 1996 - 2004**

Country of residence	Expenditure (Rs Mn)				
	1996	1998	2000	2002	2004
France	2,391.8	3,173.1	3,785.7	5,188.2	6,928.4
Germany	1,301.0	1,195.9	1,447.3	1,852.9	2,084.0
Italy	541.9	827.9	918.3	1,215.0	1,389.9
Switzerland	475.7	473.3	615.7	662.6	692.2
United Kingdom	973.1	1,680.2	2,708.2	3,269.9	4,216.5
Malagasy Rep.	158.6	108.4	90.3	141.5	136.6
Reunion	731.2	855.4	871.4	1,242.5	1,575.8
South Africa, Rep. of	706.4	808.8	780.6	778.2	1,363.2
Singapore	52.0	62.5	94.5	68.6	50.4
Other countries	1,692.2	2,578.4	2,875.3	3,355.3	4,679.5
<b>All Countries</b>	<b>9,023.9</b>	<b>11,763.9</b>	<b>14,187.3</b>	<b>17,774.7</b>	<b>23,116.5</b>

- 47 -

Source: Survey of Outgoing Tourists conducted by the Ministry of Tourism, Leisure & External Communications every two years.

**Table 37 - Expenditure of tourists by type of expenditure, 1996 - 2004**

Type of expenditure	Expenditure (Rs Mn)				
	1996	1998	2000	2002	2004
Accommodation	4,647	6,415	7,479	9,155	12,231
Meals & Beverages	1,381	1,818	2,470	3,327	4,203
Transport	668	804	941	1,232	1,339
Entertainment	514	685	839	986	1,353
Shopping	1,381	1,691	2,002	2,450	3,010
Other	433	351	457	624	981
<b>Total</b>	<b>9,024</b>	<b>11,764</b>	<b>14,187</b>	<b>17,775</b>	<b>23,117</b>

Source: Survey of Outgoing Tourists conducted by the Ministry of Tourism, Leisure & External Communications every two years.



**Table 38 - Hotels, rooms and bedplaces, 1997 - 2006**

Year	No. of hotels	No. of rooms	No. of bedplaces
1997	87	6,809	14,126
1998	90	7,267	14,995
1999	92	8,255	16,947
2000	95	8,657	17,776
2001	95	9,024	18,350
2002	95	9,623	19,597
2003	97	9,647	19,727
2004	103	10,640	21,355
2005	99	10,497	21,072
2006	98 <sup>1</sup>	10,666	21,403

<sup>1</sup> Excluding four hotels not operational because of renovation works

**Table 39 - Monthly occupancy rates in large <sup>1</sup> hotels, 2002 - 2006**

Month	2002		2003		2004		2005		2006	
	Room	Bed	Room	Bed	Room	Bed	Room	Bed	Room	Bed
January	76	68	69	61	72	64	77	69	86	77
February	74	66	69	61	68	60	70	63	81	72
March	81	72	66	58	70	62	68	61	63	56
April	68	61	67	59	67	59	59	53	61	55
May	73	65	64	56	62	55	58	52	54	48
June	53	47	50	44	48	43	45	41	47	42
July	62	56	54	48	55	49	56	50	58	52
August	69	62	64	56	62	56	67	60	73	66
September	76	68	67	59	69	62	67	60	71	63
October	82	73	72	64	75	67	73	65	76	68
November	81	71	74	65	78	70	83	74	81	73
December	72	64	70	62	72	64	78	70	81	73
<b>Whole Year</b>	<b>70</b>	<b>62</b>	<b>66</b>	<b>58</b>	<b>66</b>	<b>59</b>	<b>66</b>	<b>59</b>	<b>69</b>	<b>62</b>

<sup>1</sup> Large Hotels are well established beach hotels of over 80 rooms

Room Occupancy Rate =  $\frac{\text{Total number of room nights rented} \times 100}{\text{Total number of room nights available}}$

Bed Occupancy Rate =  $\frac{\text{Total number of bed nights rented} \times 100}{\text{Total number of bed nights available}}$

**Table 40 - Monthly occupancy rates in all hotels, 2002 - 2006**

Month	2002		2003		2004		2005		2006	
	Room	Bed	Room	Bed	Room	Bed	Room	Bed	Room	Bed
January	71	63	68	59	69	61	73	66	81	72
February	69	62	66	58	64	57	65	59	76	68
March	75	66	63	56	66	58	64	57	60	54
April	62	56	63	55	63	56	56	50	58	52
May	67	59	62	55	59	52	55	49	51	46
June	50	45	49	43	47	41	45	40	45	41
July	59	52	53	47	52	47	54	49	56	50
August	63	56	61	54	58	52	64	57	69	62
September	69	62	63	55	64	57	63	57	67	60
October	76	68	68	60	70	63	68	61	73	65
November	76	67	70	61	74	66	78	70	78	70
December	70	62	68	60	68	61	74	66	79	71
<b>Whole Year</b>	<b>67</b>	<b>59</b>	<b>63</b>	<b>55</b>	<b>63</b>	<b>56</b>	<b>63</b>	<b>57</b>	<b>66</b>	<b>59</b>

Room Occupancy Rate =  $\frac{\text{Total number of room nights rented} \times 100}{\text{Total number of room nights available}}$

Bed Occupancy Rate =  $\frac{\text{Total number of bed nights rented} \times 100}{\text{Total number of bed nights available}}$

## APPENDIX

### INTERNATIONAL EMBARKATION AND DISEMBARKATION CARD

*Carte Internationale d'Embarquement et de  
Débarquement*

- Mr/M )  
Mrs/Mme ).....  
Miss/Melle ) (Surname / *Nom*)  
.....  
(Given Names / *Prénoms*)
2. Date and place of Birth .....  
*Date et lieu de naissance*  
.....
3. Nationality.....  
*Nationalité*
4. Occupation.....  
*Profession*
5. Permanent address.....  
*Domicile*.....
6. Passport No., Place and Date of issue  
*Numéro du passeport, lieu et date d'émission*.....  
.....
7. Port of original embarkation  
*Lieu d'embarquement d'origine* .....
8. Purpose of journey to Mauritius.....  
*Motif principal du voyage à l'Ile Maurice*
9. Intended length of stay in Mauritius.....  
*Durée probable du séjour à l'Ile Maurice*
10. Intended address during stay in Mauritius.....  
*Adresse prévue pendant le séjour à Maurice*  
.....
- Signature .....