



Republic of Mauritius

Ministry of Finance and Economic Development

Central Statistics Office

**Digest of International Travel
and Tourism Statistics
2004**

INTERNATIONAL TRAVEL AND TOURISM STATISTICS

Vol. 31

2004

" International Travel and Tourism Statistics" is a regular publication of the Central Statistics Office, designed to present in a single report, detailed statistics concerning international travel and tourism relating to Mauritius.

The statistical tables presented in this report have been compiled from the embarkation/disembarkation cards filled in by passengers as they leave or enter the country in the course of their travel.

Statistical data on International Travel and Tourism are constantly updated as more reliable information become available, necessitating minor changes over previous issues of this publication. The figures published in this issue therefore supersede those of all previous issues.

It is hoped that the data herewith assembled will prove useful to the public in general and to policy makers, planners and research workers in particular.

The publication of this report has been made possible with the collaboration of the Passport and Immigration Office and the Ministry of Tourism, Leisure and External Communications. Their co-operation is herewith gratefully acknowledged.

H. Bundhoo

Director of Statistics

Central Statistics Office
Ministry of Finance and Economic Development
PORT LOUIS
MAURITIUS
September 2005

CONTENTS

Table	Page
I - POPULATION AND VITAL STATISTICS	
1 - Estimated resident population of Rep. of Mauritius as at 31st December, 2003 & 2004	5
2 - Population growth in intercensal periods - Island of Mauritius, 1851 - 2000	5
3 - Population growth in intercensal periods - Island of Rodrigues, 1851 - 2000	6
4 - Estimated resident population by geographical district and sex - Republic of Mauritius, 2003 & 2004	7
5 - Population and vital statistics - Republic of Mauritius, 1969 - 2004	8
6 - Growth of the resident population and vital statistics - Island of Mauritius, 1995 - 2004	9
7 - Growth of the resident population and vital statistics - Island of Rodrigues, 1995 - 2004	10
II - PASSENGER TRAFFIC	
8 - Passenger traffic by sex, 1984 - 2004	11
9 - Passenger traffic between Islands of Mauritius and Rodrigues, 1984 - 2004	12
10 - Passenger traffic by mode of transport, 1984 - 2004	16
11 - Passenger traffic by month, 2001 - 2004	17
12 - Arrivals by country of original embarkation, 1999 - 2004	18
13 - Departures by country of final destination, 1999 - 2004	19
14 - Monthly passenger traffic by type of passenger, 2004	20
15 - Passenger traffic by type of passenger, 1995 - 2004	21
16 - Total arrivals by age and sex, 2003 & 2004	22
17 - Total departures by age and sex, 2003 & 2004	23
18 - Excess of arrivals over departures by age and sex, 2003 & 2004	24
19 - Arrivals of Mauritian residents by age and sex, 2003 & 2004	25
20 - Departures of Mauritian residents by age and sex, 2003 & 2004	26
21 - Excess of arrivals over departures of Mauritian residents by age and sex, 2003 & 2004	27
22 - Arrivals and departures of Mauritian residents by country of embarkation and disembarkation, 2002 - 2004	28

CONTENTS

Table		Page
	III - TOURISM	
	Definition and notes	29
23 -	Tourist arrivals by mode of transport and tourist nights spent during period, 1988 - 2004	31
24 -	Tourist arrivals by month of arrival, 1995 - 2004	32
25 -	Percentage distribution of tourist arrivals by month of arrival, 1995 - 2004	34
26 -	Tourist arrivals by country of residence and sex, 2004	35
27 -	Tourist arrivals by country of residence, 1995 - 2004	36
28 -	Percentage distribution of tourist arrivals by country of residence, 1995 - 2004	37
29 -	Tourist nights by country of residence, 1995 - 2004	39
30 -	Visitor arrivals by country of residence and type of passenger, 2002 - 2004	42
31 -	Visitor arrivals by age and sex, 2003 & 2004	43
32 -	Visitor arrivals by duration of stay, 2003 & 2004	44
33 -	Visitor arrivals by country of residence and duration of stay, 2004	45
34 -	Visitor arrivals and average length of stay by country of residence, 2004	46
35 -	Gross earnings from tourism, 1995 - 2004	47
36 -	Expenditure of tourists by country of residence, 1994 - 2002	47
37 -	Expenditure of tourists by type of expenditure, 1994 - 2002	48
38 -	Hotels, rooms and bedplaces, 1995 - 2004	49
39 -	Monthly occupancy rates in large hotels, 2000 - 2004	50
40 -	Monthly occupancy rates in all hotels, 2000 - 2004	51

CONTENTS

	Page
<u>ILLUSTRATIONS</u>	
Fig. 1 - Passenger Traffic: Total arrivals by sex, 1988 - 2004	13
2 - Passenger Traffic: Total departures by sex, 1988 - 2004	14
3 - Passenger Traffic: Total arrivals and total departures, 1995 - 2004	15
4 - Tourist arrivals by month, 2000 - 2004	33
5 - Percentage distribution of tourist arrivals by country of residence, 2004	38
6 - Total arrivals and tourist arrivals, 1995 - 2004	40
7 - Tourist nights, 1995 - 2004	41

The following symbol is used throughout :-

" - " for Nil

Appendix : International embarkation / disembarkation card

Contact person:

Mrs R.Moraby
Statistician
Ministry of Tourism, Leisure &
External Communications
Ken Lee Tower
Port Louis
Tel: 210-9832
Fax: 210-3901
Email: cso@mail.gov.mu

I - POPULATION AND VITAL STATISTICS

**Table 1 - Estimated resident population of Republic of Mauritius
as at 31st December, 2003 & 2004 ¹**

Year	Island	Both sexes	Male	Female	Area (sq km)	Density (persons/km ²)
2003	Mauritius	1,191,336	589,400	601,936	1,864.8	639
	Rodrigues	36,503	18,089	18,414	104.0	351
	Other	289	193	96	71.2	4
	Republic of Mauritius	1,228,128	607,682	620,446	2,040.0	602
2004	Mauritius	1,201,000	594,063	606,937	1,864.8	644
	Rodrigues	36,772	18,217	18,555	104.0	354
	Other	289	193	96	71.2	4
	Republic of Mauritius	1,238,061	612,473	625,588	2,040.0	607

¹ based on the 2000 population census data adjusted for underenumeration of young children.

Table 2 - Population growth in intercensal periods - Island of Mauritius, 1851 - 2000

Census Date	Population enumerated at census			Intercensal increase	Average annual rate of increase(%)
	Both sexes	Male	Female		
20 Nov. 1851	180,823	119,341	61,482	22,361	2.55
8 Apr. 1861	310,050	202,961	107,089	129,227	5.91
11 Apr. 1871	316,042	193,575	122,467	5,992	0.19
4 Apr. 1881	359,874	208,655	151,219	43,832	1.31
6 Mar. 1891	370,588	206,038	164,550	10,714	0.29
1 Apr. 1901	371,023	199,552	171,471	435	0.01
31 Mar. 1911	368,791	194,095	174,696	-2,232	-0.06
21 May. 1921	376,485	194,108	182,377	7,694	0.21
26 Apr. 1931	393,238	200,609	192,629	16,753	0.44
11 Jun. 1944	419,185	210,326	208,859	25,947	0.49
29 Jun. 1952	501,415	252,032	249,383	82,230	2.26
30 Jun. 1962 ¹	681,619	342,306	339,313	180,204	3.12
30 Jun. 1972 ¹	826,199	413,580	412,619	144,580	1.94
2 Jul. 1983 ¹	966,863	481,368	485,495	140,664	1.44
1 Jul. 1990 ²	1,022,456	510,676	511,780	55,593	0.80
1 Jul. 2000 ²	1,143,069	566,056	577,013	120,613	1.12

¹ " De facto " population

² " De jure " population

Table 3 - Population growth in intercensal periods - Island of Rodrigues, 1851 - 2000

Census Date	Population enumerated at census			Inter-censal increase	Average annual rate of increase (%)
	Both sexes	Male	Female		
20 Nov. 1851	495	327	168	-	-
8 Apr. 1861	693	464	229	198	3.65
11 Apr. 1871	1,108	693	415	415	4.80
4 Apr. 1881	1,431	812	619	323	2.59
6 Mar. 1891	2,068	1,154	914	637	3.75
1 Apr. 1901	3,162	1,685	1,477	1,094	4.34
31 Mar. 1911	4,829	2,523	2,306	1,667	4.33
21 May. 1921	6,584	3,300	3,284	1,755	3.15
26 Apr. 1931	8,202	4,033	4,169	1,618	2.22
11 Jun. 1944	11,885	5,740	6,145	3,683	2.89
29 Jun. 1952	13,333	5,947	7,386	1,448	1.45
30 Jun. 1962	18,335	9,062	9,273	5,002	3.24
30 Jun. 1972 ¹	24,769	12,270	12,499	6,434	3.05
2 Jul. 1983 ¹	33,082	16,552	16,530	8,313	2.67
1 Jul. 1990 ²	34,204	17,084	17,120	1,122	0.48
1 Jul. 2000 ²	35,779	17,700	18,079	1,575	0.45

¹ " De facto " population

² " De jure " population

Table 4 - Estimated resident population by geographical district and sex - Republic of Mauritius, 2003 & 2004
(End of year estimates) ¹

Geographical district	Area (km ²)	31st December 2003			31st December 2004		
		Both sexes	Male	Female	Both sexes	Male	Female
Port Louis	42.7	130,300	64,566	65,734	130,402	64,646	65,756
Pamplemousses	178.7	128,832	63,784	65,048	130,340	64,538	65,802
Riviere du Rempart	147.6	103,580	51,392	52,188	104,691	51,921	52,770
Flacq	297.9	133,065	66,584	66,481	134,360	67,202	67,158
Grand Port	260.3	110,983	55,065	55,918	111,792	55,457	56,335
Savanne	244.8	68,481	33,920	34,561	68,899	34,143	34,756
Plaines Wilhems	203.3	371,415	182,053	189,362	373,774	183,123	190,651
Moka	230.5	78,260	38,644	39,616	78,798	38,917	39,881
Black River	259.0	66,420	33,392	33,028	67,944	34,116	33,828
Island of Mauritius	1,864.8	1,191,336	589,400	601,936	1,201,000	594,063	606,937
Island of Rodrigues	104.0	36,503	18,089	18,414	36,772	18,217	18,555
Other ²	71.2	289	193	96	289	193	96
Republic of Mauritius	2,040.0	1,228,128	607,682	620,446	1,238,061	612,473	625,588

¹ based on the 2000 population census data adjusted for underenumeration of young children. Internal migration within districts is assumed to be the same as the net annual internal migration during 1995 - 2000 (obtained from the 2000 census)

² includes Agalega and St Brandon.

Table 5 - Population and vital statistics - Republic of Mauritius, 1969 - 2004

Year	Population at mid-year ¹	Live births	Deaths	Infant deaths	Still births	Civil marriages ²	Divorces ³
1969	815,327	22,621	6,733	1,628	988	4,055	133
1970	828,922	22,766	6,520	1,312	892	4,651	126
1971	840,602	21,926	6,436	1,146	882	4,478	179
1972	850,968	21,495	6,753	1,399	749	5,214	136
1973	869,334	20,015	6,779	1,277	701	5,679	147
1974	880,650	24,002	6,424	1,113	879	6,905	117
1975	892,045	22,557	7,201	1,130	932	7,069	110
1976	903,610	23,274	6,968	936	808	8,451	98
1977	918,005	23,859	7,154	1,087	742	8,632	197
1978	933,499	25,278	6,596	876	680	10,741	255
1979	949,888	26,163	6,871	891	668	9,327	265
1980	966,039	26,294	6,919	864	662	8,894	351
1981	980,462	24,967	6,653	884	590	8,406	305
1982	992,521	22,459	6,584	682	458	10,768	312
1983	1,001,691	21,073	6,532	570	403	10,255	361
1984	1,012,221	20,332	6,646	505	404	10,865	471
1985	1,020,528	19,376	6,906	487	383	11,245	460
1986	1,028,360	19,170	6,805	524	365	10,556	616
1987	1,036,082	20,033	6,753	504	363	11,392	842
1988	1,043,239	20,941	6,879	471	374	11,453	740
1989	1,051,260	21,822	7,149	498	415	11,197	711
1990	1,058,775	22,602	7,031	462	365	11,425	549
1991	1,070,266	22,197	7,027	413	400	11,295	707
1992	1,084,441	22,902	7,023	426	291	11,408	781
1993	1,097,374	22,329	7,433	438	337	11,576	762
1994	1,112,846	21,795	7,402	394	274	11,414	733
1995	1,122,457	20,549	7,465	404	299	10,624	801
1996	1,133,996	20,763	7,670	459	266	10,700	792
1997	1,148,284	20,012	7,986	406	257	10,887	891
1998	1,160,421	19,434	7,839	376	227	10,898	1,012
1999	1,175,267	20,311	7,944	396	226	11,295	1,150
2000	1,186,873	20,205	7,982	322	266	10,963	1,191
2001	1,199,881	19,696	7,983	282	244	10,635	1,512
2002	1,210,196	19,983	8,310	297	203	10,484	1,294
2003	1,222,811	19,343	8,520	250	220	10,812	1,190
2004	1,233,386	19,230	8,475	278	190	11,385	1,162

¹ Figures for 1969 - 1971 have been revised in the light of the final 1972 population census data. Figures for 1973 - 1982, 1984 - 1989 and 1991 - 1999 have been respectively revised in the light of the 1983, 1990 and 2000 population census data adjusted for underenumeration of young children.

² The increase in the number of civil marriages as from 1982 is due largely to improved registration of religious marriages with the coming into force of a new Civil Status Act as from January, 1982.

³ Source: Judicial Department

Table 6 - Growth of the resident population and vital statistics - Island of Mauritius, 1995 - 2004

Year	Population at beginning of year	Natural movement			Net migration	Total increase	% change during the year due to:			Population at end of year
		Live births	Deaths	Natural increase			Natural increase	Migration	Total	
1995	1,082,583	19,824	7,298	12,526	-1,069	11,457	1.16	-0.10	1.06	1,094,040
1996	1,094,040	20,049	7,508	12,541	307	12,848	1.15	0.03	1.18	1,106,888
1997	1,106,888	19,331	7,798	11,533	1,663	13,196	1.04	+0.15	1.19	1,120,084
1998	1,120,084	18,744	7,651	11,093	314	11,407	0.99	+0.03	1.02	1,131,491
1999	1,131,491	19,543	7,791	11,752	1,478	13,230	1.04	+0.13	1.17	1,144,721
2000	1,144,721	19,398	7,806	11,592	977	12,569	1.01	+0.09	1.10	1,157,290
2001	1,157,290	18,884	7,761	11,123	890	12,013	0.96	+0.08	1.04	1,169,303
2002	1,169,303	19,169	8,081	11,088	-202	10,886	0.95	-0.02	0.93	1,180,189
2003	1,180,189	18,518	8,310	10,208	939	11,147	0.86	+0.08	0.94	1,191,336
2004	1,191,336	18,285	8,259	10,026	-362	9,664	0.84	-0.03	0.81	1,201,000

Table 7 - Growth of the resident population and vital statistics - Island of Rodrigues, 1995 - 2004

Year	Population at beginning of year	Natural movement			Net migration	Total increase	% change during the year due to:			Population at end of year
		Live births	Deaths	Natural increase			Natural increase	Migration	Total	
1995	34,707	725	167	558	-397	161	1.61	-1.14	0.47	34,868
1996	34,868	714	162	552	-348	204	1.58	-1.00	0.58	35,072
1997	35,072	681	188	493	-305	188	1.41	-0.87	0.54	35,260
1998	35,260	690	188	502	-351	151	1.42	-1.00	0.42	35,411
1999	35,411	768	153	615	-386	229	1.74	-1.09	0.65	35,640
2000	35,640	807	176	631	-386	245	1.77	-1.08	0.69	35,885
2001	35,885	812	222	590	-390	200	1.64	-1.09	0.55	36,085
2002	36,085	814	229	585	-367	218	1.62	-1.02	0.60	36,303
2003	36,303	825	210	615	-415	200	1.69	-1.14	0.55	36,503
2004	36,503	945	216	729	-460	269	2.00	-1.26	0.74	36,772

II - PASSENGER TRAFFIC

Table 8 - Passenger traffic ¹ by sex, 1984 - 2004

Period	Arrivals			Departures			Arrivals minus Departures
	Both Sexes	Male	Female	Both Sexes	Male	Female	
1984	198,461	113,201	85,260	202,983	114,203	88,780	-4,522
1985	212,860	120,940	91,920	215,000	119,780	95,220	-2,140
1986	235,640	129,600	106,040	236,850	132,740	104,110	-1,210
1987	293,160	161,030	132,130	294,970	160,670	134,300	-1,810
1988	343,940	186,800	157,140	341,330	187,580	153,750	2,610
1989	379,080	208,860	170,220	385,050	213,230	171,820	-5,970
1990	418,200	232,050	186,150	422,230	233,280	188,950	-4,030
1991	426,680	239,630	187,050	425,620	236,190	189,430	1,060
1992	475,920	262,660	213,260	472,010	258,320	213,690	3,910
1993	523,740	280,910	242,830	520,400	281,100	239,300	3,340
1994	558,136	295,259	262,877	557,575	295,500	262,075	561
1995	579,993	304,705	275,288	578,481	304,245	274,236	1,512
1996	672,070	350,561	321,509	663,501	345,892	317,609	8,569
1997	743,291	378,593	364,698	737,523	379,841	357,682	5,768
1998	778,574	367,914	410,660	775,998	382,567	393,431	2,576
1999	823,085	434,667	388,418	809,233	428,234	380,999	13,852
2000	915,203	480,879	434,324	895,569	469,902	425,667	19,634
2001	910,489	477,984	432,505	903,073	473,096	429,977	7,416
2002	951,090	498,177	452,913	942,876	494,212	448,664	8,214
2003	968,906	510,212	458,694	947,774	497,011	450,763	21,132
2004	1,000,545	523,961	476,584	979,322	511,734	467,588	21,223

¹ Includes traffic between Island of Mauritius and Rodrigues. As from 1994, figures of the passenger traffic also include cruise excursionists, i.e passengers and crews of cruise ships which numbered 12460, 13261, 12806, 10910, 11096, 5511, 19613, 9965 and 9927 for 1996, 1997, 1998, 1999, 2000, 2001, 2002, 2003 and 2004 respectively, in accordance with the recommendations of the World Tourism Organisation.

**Table 9 - Passenger traffic ¹ between Islands of Mauritius and Rodrigues,
1984 - 2004**

Period	Arrivals in Rodrigues			Departures from Rodrigues			Arrivals minus Departures
	Both Sexes	Male	Female	Both Sexes	Male	Female	
1984	7,471	4,762	2,709	7,172	4,452	2,720	+299
1985	7,277	4,725	2,552	7,286	4,603	2,683	- 9
1986	7,975	5,103	2,872	7,906	4,976	2,930	+69
1987	8,255	5,135	3,120	8,337	5,135	3,202	- 82
1988	9,146	5,903	3,243	10,128	6,330	3,798	-982
1989	11,501	7,234	4,267	11,092	6,831	4,261	+409
1990	13,110	8,023	5,087	13,492	7,949	5,543	- 382
1991	15,125	9,594	5,531	16,178	10,117	6,061	-1,053
1992	19,064	11,629	7,435	19,865	11,887	7,978	-801
1993	22,819	13,973	8,846	23,476	14,094	9,382	-657
1994	23,292	14,174	9,118	23,636	14,177	9,459	-344
1995	24,150	14,532	9,618	24,820	14,603	10,217	-670
1996	29,129	16,947	12,182	29,370	16,861	12,509	-241
1997	37,765	22,120	15,645	38,014	22,096	15,918	-249
1998	40,648	24,181	16,467	40,553	23,072	17,481	+95
1999	45,117	28,384	16,733	45,154	26,961	18,193	- 37
2000	49,530	28,280	21,250	49,981	29,436	20,545	-451
2001	52,777	30,320	22,457	52,307	30,760	21,547	+470
2002	60,355	34,647	25,708	59,984	34,004	25,980	+371
2003 ²	63,649	37,203	26,446	63,937	37,673	26,264	- 288
2004	60,862	34,467	26,395	60,830	34,314	26,516	+32

¹ Includes residents and non - residents

² Revised

Fig 1 - Passenger traffic: Total arrivals by sex, 1988- 2004

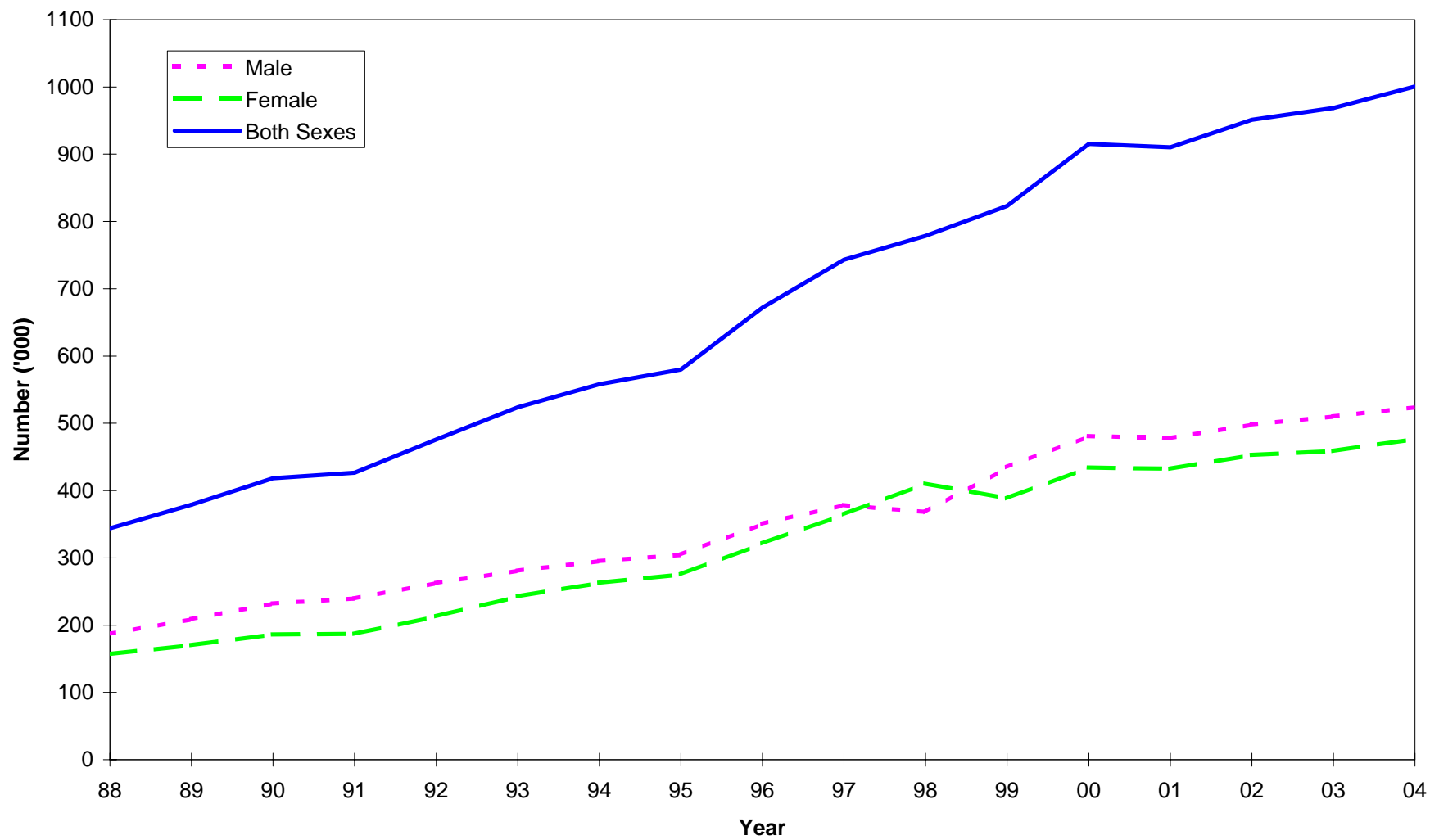


Fig 2 - Passenger traffic: Total departures by sex, 1988 - 2004

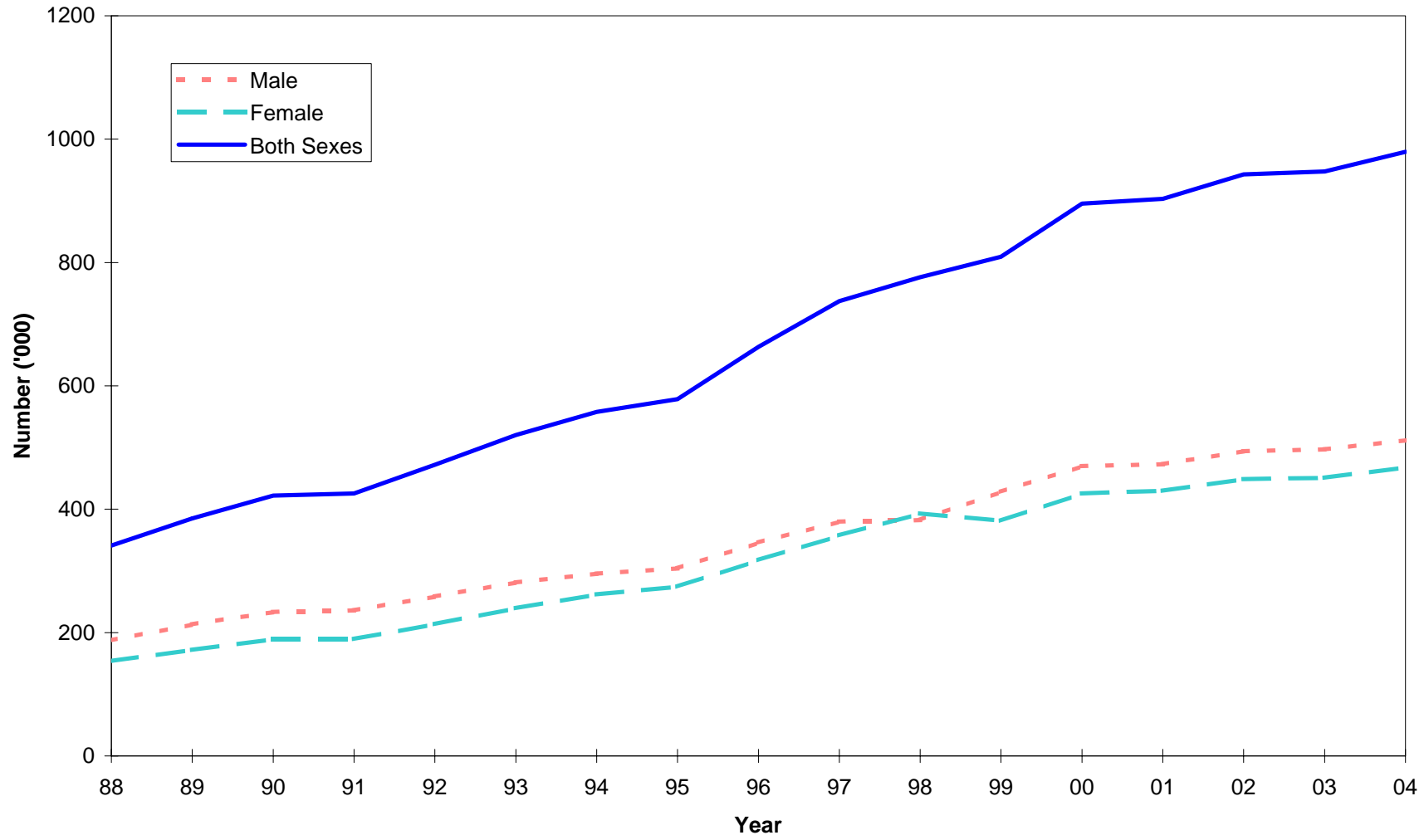


Fig. 3 - Passenger traffic : Total arrivals and total departures, 1995 - 2004

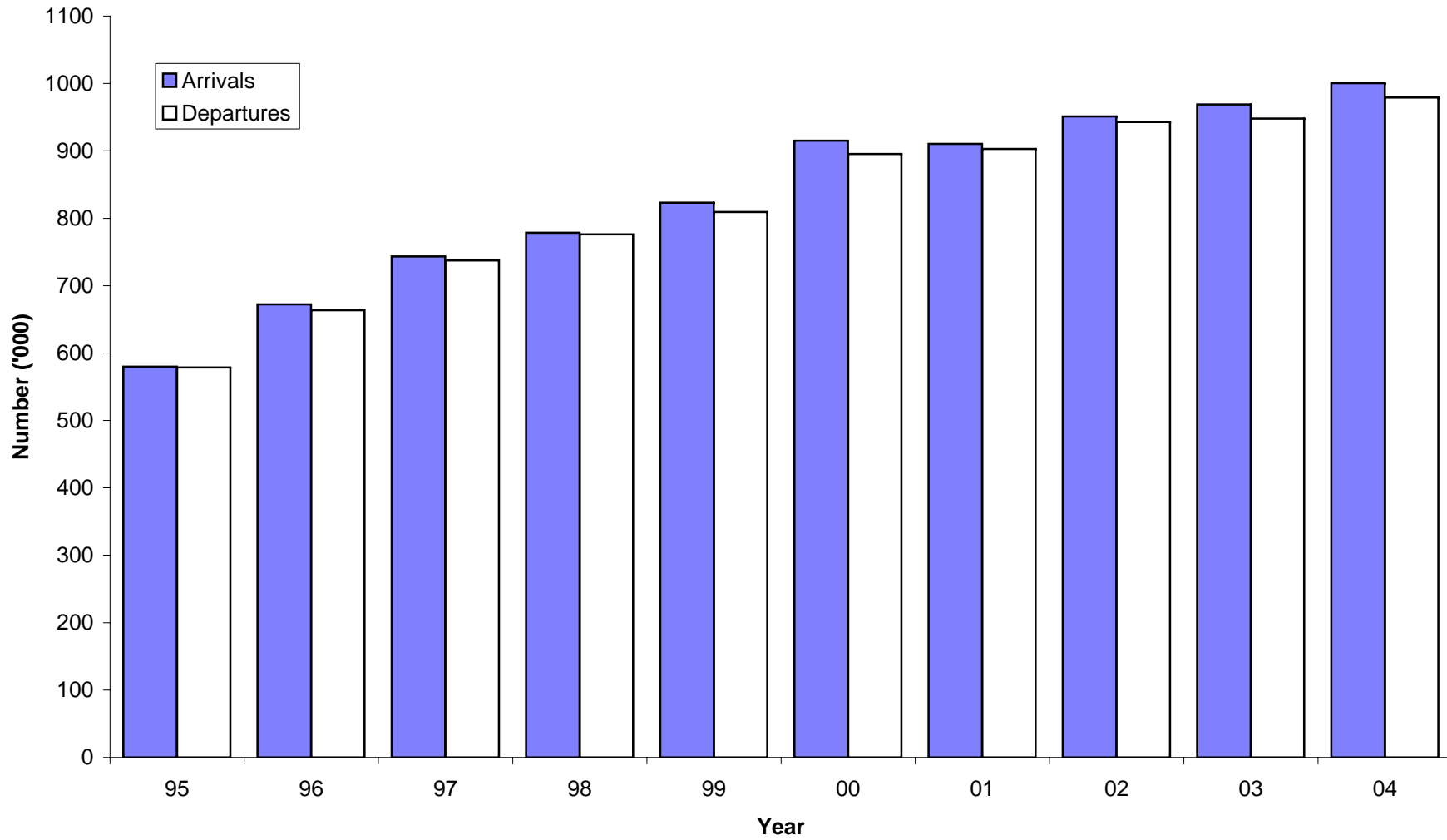


Table 10 - Passenger traffic ¹ by mode of transport, 1984 - 2004

Period	Arrivals			Departures			Arrivals minus Departures
	Total	By sea	By air	Total	By sea	By air	
1984	198,461	5,541	192,920	202,983	5,553	197,430	-4,522
1985	212,860	4,450	208,410	215,000	5,020	209,980	-2,140
1986	235,640	4,510	231,130	236,850	4,300	232,550	-1,210
1987	293,160	4,870	288,290	294,970	5,230	289,740	-1,810
1988	343,940	5,260	338,680	341,330	4,340	336,990	+2,610
1989	379,080	3,190	375,890	385,050	3,620	381,430	-5,970
1990	418,200	3,820	414,380	422,230	3,820	418,410	-4,030
1991	426,680	7,290	419,390	425,620	5,820	419,800	+1,060
1992	475,920	9,260	466,660	472,010	6,780	465,230	+3,910
1993	523,740	13,530	510,210	520,400	11,890	508,510	+3,340
1994	558,136	19,461	538,675	557,575	17,663	539,912	+561
1995	579,993	18,854	561,139	578,481	17,895	560,586	+1,512
1996	672,070	27,308	644,762	663,501	24,794	638,707	+8,569
1997	743,291	29,756	713,535	737,523	27,390	710,133	+5,768
1998	778,574	43,706	734,868	775,998	40,809	735,189	+2,576
1999	823,085	40,499	782,586	809,233	39,230	770,003	+13,852
2000	915,203	34,262	880,941	895,569	33,368	862,201	+19,634
2001	910,489	27,847	882,642	903,073	26,313	876,760	+7,416
2002	951,090	43,890	907,200	942,876	42,630	900,246	+8,214
2003	968,906	31,296	937,610	947,774	28,936	918,838	+21,132
2004	1,000,545	32,238	968,307	979,322	28,609	950,713	+21,223
2004:1st Qr.	253,764	10,937	242,827	262,460	10,818	251,642	-8,696
2nd Qr.	210,570	3,329	207,241	207,777	2,979	204,798	+2,793
3rd Qr.	245,653	5,895	239,758	242,760	5,496	237,264	+2,893
4th Qr.	290,558	12,077	278,481	266,325	9,316	257,009	+24,233

¹ Includes traffic between Island of Mauritius and Rodrigues. As from 1994, figures of the passenger traffic also include cruise excursionists, i.e passengers and crews of cruise ships which numbered 12460, 13261, 12806, 10910, 11096, 5511, 19613, 9965 and 9927 for 1996, 1997, 1998, 1999, 2000, 2001, 2002, 2003 and 2004 respectively, in accordance with the recommendations of the World Tourism Organisation.

Table 11 - Passenger traffic ¹ by month, 2001 - 2004

Month	Arrivals				Departures				Excess of arrivals over departures			
	2001	2002	2003	2004	2001	2002	2003	2004	2001	2002	2003	2004
January	88,439	87,565	89,661	94,499	101,313	102,805	107,010	113,360	-12,874	-15,240	-17,349	-18,861
February	65,803	66,955	70,202	72,707	65,803	66,570	66,220	66,795	-	+ 385	+ 3,982	+5,912
March	77,230	93,577	88,272	86,558	78,365	90,404	90,764	82,305	-1,135	+ 3,173	-2,492	+ 4,253
April	74,420	68,846	75,690	78,417	72,953	74,424	70,755	72,693	+ 1,467	-5,578	+ 4,935	+5,724
May	70,014	72,054	72,888	73,603	74,003	74,316	76,818	75,660	-3,989	-2,262	-3,930	-2,057
June	57,970	58,557	61,103	58,550	55,188	54,771	58,998	59,424	+ 2,782	+ 3,786	+ 2,105	- 874
July	81,692	80,392	83,122	88,905	67,941	67,111	68,222	74,021	+ 13,751	+ 13,281	+ 14,900	+14,884
August	78,614	80,216	83,351	84,122	89,139	91,723	94,913	94,450	-10,525	-11,507	-11,562	-10,328
September	67,520	69,633	70,942	72,626	70,012	70,008	70,797	74,289	-2,492	-375	+ 145	- 1,663
October	77,685	87,080	85,732	92,771	74,239	83,068	81,054	86,832	+ 3,446	+ 4,012	+ 4,678	+5,939
November	77,644	84,799	84,359	89,123	75,425	82,260	76,295	88,677	+ 2,219	+ 2,539	+ 8,064	+446
December	93,458	101,416	103,584	108,664	78,692	85,416	85,928	90,816	+ 14,766	+ 16,000	+ 17,656	+17,848
Whole Year	910,489	951,090	968,906	1,000,545	903,073	942,876	947,774	979,322	+7,416	+8,214	+21,132	+21,223

¹ Includes traffic between Island of Mauritius and Rodrigues. Figures of the passenger traffic also include cruise excursionists, i.e passengers and crews of cruise ships which numbered 5511, 19613, 9965 and 9927 for 2001, 2002, 2003 and 2004 respectively, in accordance with the recommendations of the World Tourism Organisation.

Table 12 - Arrivals ¹ by country of original embarkation, 1999 - 2004

Country of original embarkation	1999	2000	2001	2002	2003	2004
Australia	10,929	12,617	12,164	11,586	13,350	16,417
Belgium	8,011	6,479	8,547	8,719	8,485	2,778
France	149,974	175,482	176,775	185,142	183,710	197,937
Germany	39,577	47,117	46,930	47,958	49,466	47,601
Hong Kong SAR ²	7,099	11,429	15,246	19,081	10,902	17,453
India	32,345	35,484	38,682	38,388	45,750	49,268
Italy	34,243	34,570	33,910	33,239	34,673	35,486
Japan	425	440	185	297	191	140
Kenya	6,234	5,456	5,402	5,318	6,109	6,172
Malagasy Rep.	16,703	17,606	17,421	14,898	20,848	20,242
Reunion Island	210,900	215,409	219,681	218,488	215,700	215,820
Rodrigues	45,154	49,981	52,307	59,984	63,916	60,830
Seychelles	16,692	18,821	18,766	22,151	17,585	14,751
Singapore	26,135	27,429	24,577	19,804	14,019	15,374
S. Africa, Rep. of	74,343	79,404	82,262	84,713	88,816	93,598
Switzerland	18,262	26,023	20,479	16,753	17,556	13,402
United Kingdom	73,649	92,572	94,591	96,463	103,630	112,795
Zambia	62	123	49	37	190	156
Zimbabwe	8,137	6,263	5,251	4,042	2,469	2,439
Other & not stated	44,211	52,498	37,264	64,029	71,541	77,886
All Countries	823,085	915,203	910,489	951,090	968,906	1,000,545

¹ As from 1994, figures of the passenger traffic include cruise excursionists, i.e passengers and crews of cruise ships which numbered 10910, 11096, 5511, 19613, 9965 and 9927 for 1999, 2000, 2001, 2002, 2003 and 2004 respectively, in accordance with the recommendations of the World Tourism Organisation.

² Special Administrative Region of China

Table 13 - Departures ¹ by country of final destination, 1999 - 2004

Country of final destination	1999	2000	2001	2002	2003	2004
Australia	9,900	11,770	12,336	11,063	12,698	16,108
Belgium	5,765	7,399	4,211	5,163	7,546	1,521
France	160,944	184,158	196,939	202,902	197,413	208,070
Germany	37,802	47,306	46,918	52,460	50,370	50,083
Hong Kong SAR ²	6,323	10,088	14,403	16,025	9,010	16,042
India	29,291	34,702	37,222	36,499	42,508	46,669
Italy	31,195	32,835	31,665	29,479	31,958	32,351
Japan	234	149	65	22	111	28
Kenya	6,449	3,904	1,985	4,103	5,167	5,122
Malagasy Rep.	16,328	18,966	18,478	15,302	20,700	21,558
Reunion Island	209,228	209,273	208,389	210,864	204,666	206,012
Rodrigues	45,117	49,530	52,777	60,355	63,584	60,862
Seychelles	17,066	17,418	17,494	21,411	16,325	13,339
Singapore	26,617	27,664	21,541	23,382	15,392	16,715
S. Africa, Rep. of	71,421	76,886	77,848	80,942	81,848	84,821
Switzerland	17,289	23,668	21,402	18,741	17,337	12,738
United Kingdom	77,252	93,451	104,135	98,989	103,328	114,328
Zambia	12	37	-	1	111	20
Zimbabwe	5,882	5,158	4,777	4,189	2,267	2,462
Other & not stated	35,118	41,207	30,488	50,984	65,435	70,473
All Countries	809,233	895,569	903,073	942,876	947,774	979,322

¹ As from 1994, figures of the passenger traffic include cruise excursionists, i.e passengers and crews of cruise ships which number 10910, 11096, 5571, 20288, 9748 and 8682 for 1999, 2000, 2001, 2002, 2003 and 2004 respectively, in accordance with the recommendations of the World Tourism Organisation.

² Special Administrative Region of China

Table 14 - Monthly passenger traffic ¹ by type of passenger, 2004

Type of passenger	Jan	Feb	Mar	Apr	May	Jun	Jul	Aug	Sep	Oct	Nov	Dec	Whole Year
Arrivals													
Visitors ²	69,861	55,199	67,919	56,302	54,789	39,635	63,079	56,324	53,808	72,779	68,170	80,651	738,516
- On holiday	60,760	49,302	57,810	51,204	48,399	33,985	56,511	49,249	47,577	64,532	61,331	73,158	653,818
- On business	1,876	2,186	2,844	2,013	3,217	2,731	2,299	2,844	2,879	2,766	3,128	1,633	30,416
- In transit	6,066	2,933	6,588	2,250	2,402	2,242	3,351	3,365	2,619	4,803	2,923	5,168	44,710
- Other and not stated	1,159	778	677	835	771	677	918	866	733	678	788	692	9,572
Mauritian residents	22,356	15,478	16,893	20,477	16,892	17,259	24,093	25,222	17,270	18,244	19,260	26,525	239,969
Other ³	2,282	2,030	1,746	1,638	1,922	1,656	1,733	2,576	1,548	1,748	1,693	1,488	22,060
Total arrivals	94,499	72,707	86,558	78,417	73,603	58,550	88,905	84,122	72,626	92,771	89,123	108,664	1,000,545
Departures													
Visitors	88,611	50,798	64,282	50,699	57,175	40,727	49,797	66,959	50,461	68,305	67,515	63,460	718,789
Mauritian residents	23,243	14,792	16,694	20,494	16,843	15,953	22,110	25,982	22,493	17,207	19,810	25,202	240,823
Other	1,506	1,205	1,329	1,500	1,642	2,744	2,114	1,509	1,335	1,320	1,352	2,154	19,710
Total departures	113,360	66,795	82,305	72,693	75,660	59,424	74,021	94,450	74,289	86,832	88,677	90,816	979,322

¹ Including traffic between Island of Mauritius and Rodrigues

² Including non-residents who left the airport but stayed in the country for less than a day.

³ Including contract workers

Table 15 - Passenger traffic ¹ by type of passenger, 1995 - 2004

Type of passenger	1995	1996	1997	1998	1999	2000	2001	2002	2003	2004
Arrivals										
Visitors ²	437,175	509,303	557,996	578,930	599,717	678,472	674,619	709,305	721,348	738,516
- On holiday	395,414	450,936	494,563	512,746	530,792	602,606	606,545	620,124	636,325	653,818
- On business	17,827	20,692	23,424	24,621	26,942	27,004	26,523	28,558	31,155	30,416
- In transit	20,530	33,129	34,384	35,479	34,703	38,984	33,263	51,747	42,736	44,710
- Other & not stated	3,404	4,546	5,625	6,084	7,280	9,878	8,288	8,876	11,132	9,572
Mauritian residents	130,490	149,777	170,977	183,218	206,806	216,680	215,803	220,949	227,288	239,969
Other ³	12,328	12,990	14,318	16,426	16,562	20,051	20,067	20,836	20,270	22,060
Total arrivals	579,993	672,070	743,291	778,574	823,085	915,203	910,489	951,090	968,906	1,000,545
Departures										
Visitors	437,166	503,817	557,012	580,863	596,953	667,212	672,388	704,548	705,849	718,789
Mauritian residents	131,296	149,544	169,375	183,355	199,245	212,879	213,778	221,889	224,771	240,823
Other	10,019	10,140	11,136	11,780	13,035	15,478	16,907	16,439	17,154	19,710
Total departures	578,481	663,501	737,523	775,998	809,233	895,569	903,073	942,876	947,774	979,322

¹ Including traffic between Island of Mauritius and Rodrigues. As from 1994, figures of the passenger traffic also include cruise excursionists, i.e. passengers and crews of cruise ships which numbered 5725, 12460, 13261, 12806, 10910, 11096, 5511, 19613, 9965 and 9927 for 1995, 1996, 1997, 1998, 1999, 2000, 2001, 2002, 2003 and 2004 respectively, in accordance with the recommendations of the World Tourism Organisation.

² Including non-residents who left the airport but stayed in the country for less than a day.

³ Including contract workers.

Table 16 - Total arrivals ¹ by age and sex, 2003 & 2004

Age (years)	2003			2004			January - June 2004			July - December 2004		
	Both Sexes	Male	Female	Both Sexes	Male	Female	Both Sexes	Male	Female	Both Sexes	Male	Female
Under 1	4,537	2,322	2,215	4,984	2,602	2,382	2,322	1,202	1,120	2,662	1,400	1,262
1 - 4	26,497	13,367	13,130	28,525	14,461	14,064	13,712	6,964	6,748	14,813	7,497	7,316
5 - 9	36,388	18,382	18,006	38,143	19,389	18,754	16,996	8,725	8,271	21,147	10,664	10,483
10 - 14	37,114	18,747	18,367	38,773	19,333	19,440	16,388	8,056	8,332	22,385	11,277	11,108
15 - 19	29,862	13,967	15,895	31,101	14,616	16,485	13,002	6,034	6,968	18,099	8,582	9,517
20 - 24	50,775	21,805	28,970	50,012	21,317	28,695	22,308	9,621	12,687	27,704	11,696	16,008
25 - 29	102,239	48,175	54,064	100,465	47,137	53,328	44,466	20,905	23,561	55,999	26,232	29,767
30 - 34	110,194	58,192	52,002	110,814	58,358	52,456	52,106	27,418	24,688	58,708	30,940	27,768
35 - 39	103,952	57,331	46,621	106,042	58,457	47,585	51,261	28,332	22,929	54,781	30,125	24,656
40 - 44	92,319	51,318	41,001	96,413	53,421	42,992	45,593	25,505	20,088	50,820	27,916	22,904
45 - 49	83,433	45,655	37,778	86,776	47,311	39,465	40,337	22,184	18,153	46,439	25,127	21,312
50 - 54	76,345	41,489	34,856	79,263	42,736	36,527	37,436	20,286	17,150	41,827	22,450	19,377
55 - 59	58,855	32,505	26,350	64,463	35,215	29,248	30,659	16,892	13,767	33,804	18,323	15,481
60 - 64	38,623	20,978	17,645	43,400	23,341	20,059	20,353	11,060	9,293	23,047	12,281	10,766
65 - 69	23,269	12,315	10,954	26,473	14,024	12,449	12,134	6,584	5,550	14,339	7,440	6,899
70 & over	21,967	11,265	10,702	25,396	13,160	12,236	10,977	5,920	5,057	14,419	7,240	7,179
Not stated	72,537	42,399	30,138	69,502	39,083	30,419	34,284	19,409	14,875	35,218	19,674	15,544
All ages	968,906	510,212	458,694	1,000,545	523,961	476,584	464,334	245,097	219,237	536,211	278,864	257,347

¹ Include arrivals from Rodrigues and cruise excursionists, i.e passengers and crews of cruise ships which numbered 9965 and 9927 for 2003 and 2004 respectively, in accordance with the recommendations of the World Tourism Organisation.

Table 17 - Total departures ¹ by age and sex, 2003 & 2004

Age (years)	2003			2004			January - June 2004			July - December 2004		
	Both Sexes	Male	Female	Both Sexes	Male	Female	Both Sexes	Male	Female	Both Sexes	Male	Female
Under 1	4,071	2,097	1,974	4,596	2,404	2,192	2,345	1,222	1,123	2,251	1,182	1,069
1 - 4	25,823	13,020	12,803	27,914	14,170	13,744	14,693	7,479	7,214	13,221	6,691	6,530
5 - 9	36,158	18,287	17,871	37,595	19,150	18,445	18,444	9,426	9,018	19,151	9,724	9,427
10 - 14	37,267	18,779	18,488	38,436	19,198	19,238	17,622	8,673	8,949	20,814	10,525	10,289
15 - 19	30,755	14,463	16,292	31,782	14,949	16,833	13,740	6,364	7,376	18,042	8,585	9,457
20 - 24	50,496	21,425	29,071	50,232	21,335	28,897	22,938	9,795	13,143	27,294	11,540	15,754
25 - 29	97,750	45,828	51,922	98,196	46,070	52,126	43,846	20,495	23,351	54,350	25,575	28,775
30 - 34	106,355	55,674	50,681	108,788	56,863	51,925	52,105	26,872	25,233	56,683	29,991	26,692
35 - 39	100,110	54,918	45,192	102,315	56,303	46,012	51,319	27,996	23,323	50,996	28,307	22,689
40 - 44	90,240	49,940	40,300	94,478	52,237	42,241	46,772	26,038	20,734	47,706	26,199	21,507
45 - 49	81,268	44,404	36,864	83,781	45,634	38,147	40,401	22,145	18,256	43,380	23,489	19,891
50 - 54	75,131	40,665	34,466	77,832	41,788	36,044	37,978	20,475	17,503	39,854	21,313	18,541
55 - 59	57,276	31,561	25,715	62,132	33,836	28,296	30,478	16,661	13,817	31,654	17,175	14,479
60 - 64	38,215	20,793	17,422	42,687	22,968	19,719	20,901	11,282	9,619	21,786	11,686	10,100
65 - 69	22,790	12,078	10,712	25,783	13,612	12,171	12,436	6,628	5,808	13,347	6,984	6,363
70 & over	21,826	11,151	10,675	24,548	12,700	11,848	11,567	6,217	5,350	12,981	6,483	6,498
Not stated	72,243	41,928	30,315	68,227	38,517	29,710	32,652	18,822	13,830	35,575	19,695	15,880
All ages	947,774	497,011	450,763	979,322	511,734	467,588	470,237	246,590	223,647	509,085	265,144	243,941

¹ Include departures to Rodrigues and cruise excursionists, i.e passengers and crews of cruise ships which numbered 9748 and 8682 for 2003 and 2004 respectively, in accordance with the recommendations of the World Tourism Organisation.

Table 18 - Excess of arrivals over departures ¹ by age and sex, 2003 & 2004

Age (years)	2003			2004			January - June 2004			July - December 2004		
	Both Sexes	Male	Female	Both Sexes	Male	Female	Both Sexes	Male	Female	Both Sexes	Male	Female
Under 1	466	225	241	388	198	190	-23	-20	-3	411	218	193
1 - 4	674	347	327	611	291	320	-981	-515	-466	1,592	806	786
5 - 9	230	95	135	548	239	309	-1,448	-701	-747	1,996	940	1,056
10 - 14	-153	-32	-121	337	135	202	-1,234	-617	-617	1,571	752	819
15 - 19	-893	-496	-397	-681	-333	-348	-738	-330	-408	57	-3	60
20 - 24	279	380	-101	-220	-18	-202	-630	-174	-456	410	156	254
25 - 29	4,489	2,347	2,142	2,269	1,067	1,202	620	410	210	1,649	657	992
30 - 34	3,839	2,518	1,321	2,026	1,495	531	1	546	-545	2,025	949	1,076
35 - 39	3,842	2,413	1,429	3,727	2,154	1,573	-58	336	-394	3,785	1,818	1,967
40 - 44	2,079	1,378	701	1,935	1,184	751	-1,179	-533	-646	3,114	1,717	1,397
45 - 49	2,165	1,251	914	2,995	1,677	1,318	-64	39	-103	3,059	1,638	1,421
50 - 54	1,214	824	390	1,431	948	483	-542	-189	-353	1,973	1,137	836
55 - 59	1,579	944	635	2,331	1,379	952	181	231	-50	2,150	1,148	1,002
60 - 64	408	185	223	713	373	340	-548	-222	-326	1,261	595	666
65 - 69	479	237	242	690	412	278	-302	-44	-258	992	456	536
70 & over	141	114	27	848	460	388	-590	-297	-293	1,438	757	681
Not stated	294	471	-177	1,275	566	709	1,632	587	1,045	-357	-21	-336
All ages	21,132	13,201	7,931	21,223	12,227	8,996	-5,903	-1,493	-4,410	27,126	13,720	13,406

¹ Including traffic between Island of Mauritius and Rodrigues

Table 19 - Arrivals¹ of Mauritian residents by age and sex, 2003 & 2004

Age (years)	2003			2004			January - June 2004			July - December 2004		
	Both Sexes	Male	Female	Both Sexes	Male	Female	Both Sexes	Male	Female	Both Sexes	Male	Female
Under 1	561	288	273	599	294	305	291	143	148	308	151	157
1 - 4	3,439	1,699	1,740	3,587	1,804	1,783	1,630	834	796	1,957	970	987
5 - 9	4,767	2,419	2,348	4,987	2,575	2,412	2,067	1,092	975	2,920	1,483	1,437
10 - 14	5,052	2,660	2,392	5,636	2,864	2,772	2,342	1,180	1,162	3,294	1,684	1,610
15 - 19	5,304	2,545	2,759	5,875	2,852	3,023	2,614	1,249	1,365	3,261	1,603	1,658
20 - 24	12,978	6,464	6,514	13,244	6,597	6,647	5,942	2,903	3,039	7,302	3,694	3,608
25 - 29	15,610	8,107	7,503	16,922	8,700	8,222	7,617	3,963	3,654	9,305	4,737	4,568
30 - 34	16,220	9,434	6,786	16,691	9,508	7,183	7,718	4,527	3,191	8,973	4,981	3,992
35 - 39	19,296	11,587	7,709	19,950	11,837	8,113	9,186	5,669	3,517	10,764	6,168	4,596
40 - 44	18,925	11,129	7,796	20,592	12,115	8,477	9,151	5,581	3,570	11,441	6,534	4,907
45 - 49	17,394	9,609	7,785	19,597	10,798	8,799	8,481	4,807	3,674	11,116	5,991	5,125
50 - 54	16,109	8,705	7,404	18,242	9,838	8,404	8,110	4,490	3,620	10,132	5,348	4,784
55 - 59	10,851	5,764	5,087	13,009	7,008	6,001	5,899	3,263	2,636	7,110	3,745	3,365
60 - 64	7,113	3,629	3,484	8,519	4,383	4,136	3,865	2,042	1,823	4,654	2,341	2,313
65 - 69	4,711	2,321	2,390	5,639	2,817	2,822	2,559	1,308	1,251	3,080	1,509	1,571
70 & over	5,041	2,429	2,612	6,049	2,994	3,055	2,531	1,307	1,224	3,518	1,687	1,831
Not stated	63,917	37,659	26,258	60,831	34,315	26,516	29,352	16,696	12,656	31,479	17,619	13,860
All ages	227,288	126,448	100,840	239,969	131,299	108,670	109,355	61,054	48,301	130,614	70,245	60,369

¹ Including arrivals from Rodrigues

Table 20 - Departures ¹ of Mauritian residents by age and sex, 2003 & 2004

Age (years)	2003			2004			January - June 2004			July - December 2004		
	Both Sexes	Male	Female	Both Sexes	Male	Female	Both Sexes	Male	Female	Both Sexes	Male	Female
Under 1	616	311	305	684	361	323	307	162	145	377	199	178
1 - 4	3,552	1,779	1,773	3,773	1,907	1,866	1,619	824	795	2,154	1,083	1,071
5 - 9	4,874	2,453	2,421	5,325	2,762	2,563	1,833	961	872	3,492	1,801	1,691
10 - 14	5,301	2,763	2,538	6,027	3,079	2,948	1,895	962	933	4,132	2,117	2,015
15 - 19	6,539	3,212	3,327	7,327	3,615	3,712	2,526	1,234	1,292	4,801	2,381	2,420
20 - 24	13,812	7,114	6,698	14,323	7,316	7,007	6,405	3,250	3,155	7,918	4,066	3,852
25 - 29	14,170	7,672	6,498	16,395	8,563	7,832	7,793	4,128	3,665	8,602	4,435	4,167
30 - 34	14,553	8,460	6,093	16,085	9,124	6,961	7,730	4,539	3,191	8,355	4,585	3,770
35 - 39	18,134	10,829	7,305	19,074	11,228	7,846	9,001	5,524	3,477	10,073	5,704	4,369
40 - 44	18,666	11,008	7,658	20,432	11,907	8,525	9,193	5,602	3,591	11,239	6,305	4,934
45 - 49	17,431	9,594	7,837	19,405	10,667	8,738	8,463	4,796	3,667	10,942	5,871	5,071
50 - 54	16,032	8,699	7,333	18,145	9,740	8,405	8,178	4,492	3,686	9,967	5,248	4,719
55 - 59	10,892	5,834	5,058	12,834	6,830	6,004	5,868	3,147	2,721	6,966	3,683	3,283
60 - 64	7,021	3,603	3,418	8,492	4,393	4,099	3,989	2,060	1,929	4,503	2,333	2,170
65 - 69	4,663	2,293	2,370	5,638	2,813	2,825	2,656	1,322	1,334	2,982	1,491	1,491
70 & over	4,927	2,368	2,559	6,001	2,961	3,040	2,769	1,412	1,357	3,232	1,549	1,683
Not stated	63,588	37,168	26,420	60,863	34,468	26,395	27,794	16,151	11,643	33,069	18,317	14,752
All ages	224,771	125,160	99,611	240,823	131,734	109,089	108,019	60,566	47,453	132,804	71,168	61,636

¹ Including departures to Rodrigues

Table 21 - Excess of arrivals over departures ¹ of Mauritian residents by age & sex, 2003 & 2004

Age (years)	2003			2004			January - June 2004			July - December 2004		
	Both Sexes	Male	Female	Both Sexes	Male	Female	Both Sexes	Male	Female	Both Sexes	Male	Female
Under 1	-55	-23	-32	-85	-67	-18	-16	-19	3	-69	-48	-21
1 - 4	-113	-80	-33	-186	-103	-83	11	10	1	-197	-113	-84
5 - 9	-107	-34	-73	-338	-187	-151	234	131	103	-572	-318	-254
10 - 14	-249	-103	-146	-391	-215	-176	447	218	229	-838	-433	-405
15 - 19	-1,235	-667	-568	-1,452	-763	-689	88	15	73	-1,540	-778	-762
20 - 24	-834	-650	-184	-1,079	-719	-360	-463	-347	-116	-616	-372	-244
25 - 29	1,440	435	1,005	527	137	390	-176	-165	-11	703	302	401
30 - 34	1,667	974	693	606	384	222	-12	-12	0	618	396	222
35 - 39	1,162	758	404	876	609	267	185	145	40	691	464	227
40 - 44	259	121	138	160	208	-48	-42	-21	-21	202	229	-27
45 - 49	-37	15	-52	192	131	61	18	11	7	174	120	54
50 - 54	77	6	71	97	98	-1	-68	-2	-66	165	100	65
55 - 59	-41	-70	29	175	178	-3	31	116	-85	144	62	82
60 - 64	92	26	66	27	-10	37	-124	-18	-106	151	8	143
65 - 69	48	28	20	1	4	-3	-97	-14	-83	98	18	80
70 & over	114	61	53	48	33	15	-238	-105	-133	286	138	148
Not stated	329	491	-162	-32	-153	121	1,558	545	1,013	-1,590	-698	-892
All ages	2,517	1,288	1,229	-854	-435	-419	1,336	488	848	-2,190	-923	-1,267

¹ Including traffic between Island of Mauritius and Rodrigues.

Table 22 - Arrivals and departures of Mauritian residents¹ by country of embarkation and disembarkation, 2002 - 2004

Country of embarkation/ disembarkation	Arrivals			Departures			Excess of arrivals over departures		
	2002	2003	2004	2002	2003	2004	2002	2003	2004
Australia	4,498	5,188	6,338	4,705	5,250	6,760	-207	-62	-422
Belgium	1,030	1,198	316	561	1,103	205	469	95	111
Canada	330	266	254	73	47	73	257	219	181
France	24,987	25,673	26,920	25,168	25,396	27,021	-181	277	-101
Germany	1,981	3,000	2,748	2,134	3,263	3,166	-153	-263	-418
Hong Kong SAR ²	7,461	4,063	7,584	7,304	3,898	7,117	157	165	467
India	14,020	15,401	18,962	13,768	14,792	18,405	252	609	557
Italy	3,225	3,431	3,418	3,076	3,088	3,127	149	343	291
Kenya	1,231	1,217	1,239	1,149	1,228	1,562	82	-11	-323
Rodrigues	59,984	63,937 ³	60,830	60,355	63,649 ³	60,862	-371	288	-32
Reunion	36,959	34,710	33,022	37,245	33,980	32,274	-286	730	748
Singapore	10,034	7,048	7,880	11,720	7,062	8,821	-1,686	-14	-941
S. Africa, Rep of	14,312	15,029	14,199	14,460	14,010	13,128	-148	1,019	1,071
Switzerland	1,948	2,353	2,056	2,294	2,133	1,959	-346	220	97
United Kingdom	20,110	23,454	29,137	21,523	25,035	32,276	-1,413	-1,581	-3,139
Other countries	18,839	21,341	25,066	16,354	20,902	24,067	2,485	439	999
All Countries	220,949	227,309	239,969	221,889	224,836	240,823	-940	2,473	-854

¹ Including traffic between Island of Mauritius and Rodrigues

² Special Administrative Region of China

³ Revised

III - TOURISM

Definition and notes

1. Definition of tourist

(a) prior to 1964, a tourist has been defined as a non-resident staying in Mauritius for more than 24 hours but less than 6 months.

(b) as from 1964, a tourist is defined as a non-resident staying in the island for more than 24 hours but less than a year and is not involved in any gainful occupation .

The figures for the two periods are nevertheless comparable because of the small number of tourists staying for more than 6 months.

2. Visitors include the following:

(a) tourists as defined above; and

(b) cruise ship passengers and non-residents who stayed in the country for less than a day, other than those who do not leave the airport.

3. Method of compilation

Certain data on tourism (such as type of visitor, tourist arrivals by month of arrival, tourist arrivals by country of residence and mode of transport) are compiled from disembarkation cards which all passengers have to fill in when they arrive in this country. However, information on duration of stay of visitors can be compiled only from the embarkation cards which they fill in when leaving the country.

Prior to 1994, figures have been compiled from a 10% sample of embarkation and disembarkation cards filled in by passengers. However, as from January 1994, they are based on movements of all passengers. Thus disaggregated data for 1994 onwards may not be strictly comparable to previous series.

4. Tourist nights

Tables on tourist nights show the number of nights spent by tourists who were present in the country during the period under review. Thus the number of tourist nights for 2004 include:

- (a) the nights spent during 2004 by tourists who arrived prior to 1st January 2004; and
- (b) the nights spent during 2004 by tourists who arrived during the same year.

However, nights spent after 31st December 2004 by tourists who arrived in 2004 are excluded.

5. Large hotels

Large hotels are well established beach hotels of over 80 rooms.

Table 23 -Tourist arrivals by mode of transport and tourist nights spent during period, 1988 - 2004

Period	Tourist arrivals			Tourist nights spent during period	% change over previous year	
	Sea	Air	Total		Tourist arrivals	Tourist nights
1988	1,770	237,530	239,300	3,002,620	+ 15.3	+ 26.6
1989	840	261,950	262,790	3,196,780	+ 9.8	+ 6.5
1990	1,200	290,350	291,550	3,564,930	+ 10.9	+ 11.5
1991	2,500	298,170	300,670	3,696,990	+ 3.1	+ 3.7
1992	2,630	332,770	335,400	4,110,430	+ 11.6	+ 11.2
1993	5,710	368,920	374,630	4,610,400	+ 11.7	+ 12.2
1994	6,383	394,143	400,526	4,359,303	+ 6.9	- 5.4
1995	6,105	416,358	422,463	4,434,891	+ 5.5	+ 1.7
1996	6,484	480,383	486,867	4,957,683	+ 15.2	+ 11.8
1997	7,476	528,649	536,125	5,451,314	+ 10.1	+ 10.0
1998	17,109	541,086	558,195	5,567,889	+ 4.1	+ 2.1
1999	13,852	564,233	578,085	5,729,464	+ 3.6	+ 2.9
2000	10,677	645,776	656,453	6,412,876	+ 13.6	+ 11.9
2001	10,532	649,786	660,318	6,527,800	+ 0.6	+ 1.8
2002	14,180	667,468	681,648	6,768,870	+ 3.2	+ 3.7
2003	12,155	689,863	702,018	6,952,313	+ 3.0	+ 2.7
2004	11,390	707,471	718,861	7,118,603	+ 2.4	+ 2.4

Table 24 - Tourist arrivals by month of arrival, 1995 - 2004

Month of arrival	1995	1996	1997	1998	1999	2000	2001	2002	2003	2004
January	42,528	42,743	50,507	54,839	59,680	62,355	65,122	63,551	64,762	66,543
February	26,587	30,870	37,254	41,928	41,859	50,466	49,464	50,554	53,647	54,104
March	33,038	41,736	46,923	48,440	50,707	54,872	55,944	67,554	63,129	63,631
April	34,428	38,759	38,683	45,433	41,536	56,353	54,794	48,187	57,217	55,599
May	30,607	36,303	39,794	43,790	42,254	49,960	51,969	53,813	54,710	53,974
June	23,177	27,984	32,165	30,387	35,910	39,885	38,496	39,048	41,841	38,826
July	33,833	35,656	39,716	40,700	42,862	51,577	57,274	56,709	58,403	62,173
August	42,985	50,347	55,033	54,651	57,321	59,731	52,923	53,395	56,844	55,342
September	28,928	36,681	39,694	39,228	41,383	47,634	48,953	49,774	50,293	53,102
October	40,620	45,930	45,302	49,090	55,128	61,526	59,325	65,291	64,917	70,793
November	39,437	46,130	55,424	52,563	56,584	57,334	57,326	61,326	61,984	66,960
December	46,295	53,728	55,630	57,146	52,861	64,760	68,728	72,446	74,271	77,814
Whole Year	422,463	486,867	536,125	558,195	578,085	656,453	660,318	681,648	702,018	718,861

Fig 4 - Tourist arrivals by month, 2000 - 2004

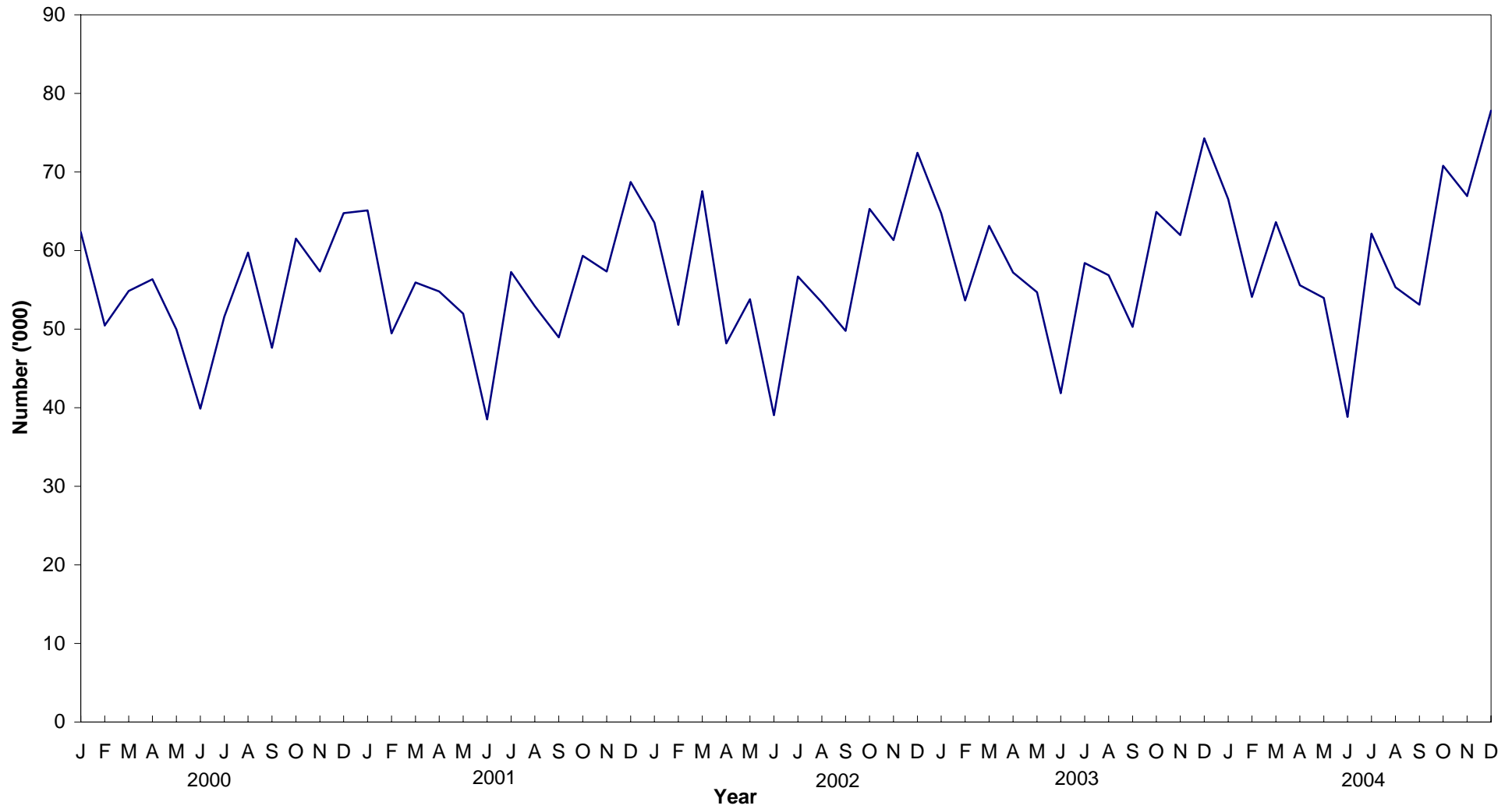


Table 25 - Percentage distribution of tourist arrivals by month of arrival, 1995 - 2004

Month of arrival	1995	1996	1997	1998	1999	2000	2001	2002	2003	2004
January	10.1	8.8	9.4	9.8	10.3	9.5	9.9	9.3	9.2	9.3
February	6.3	6.3	6.9	7.5	7.2	7.7	7.5	7.4	7.6	7.5
March	7.8	8.6	8.8	8.7	8.8	8.4	8.5	9.9	9.0	8.9
April	8.1	8.0	7.2	8.1	7.2	8.6	8.3	7.1	8.2	7.7
May	7.2	7.5	7.4	7.8	7.3	7.6	7.9	7.9	7.8	7.5
June	5.5	5.7	6.0	5.4	6.2	6.1	5.8	5.7	6.0	5.4
July	8.0	7.3	7.4	7.3	7.4	7.9	8.7	8.3	8.3	8.6
August	10.2	10.3	10.3	9.8	9.9	9.1	8.0	7.8	8.1	7.7
September	6.8	7.6	7.4	7.0	7.2	7.3	7.4	7.3	7.2	7.4
October	9.6	9.4	8.4	8.8	9.5	9.4	9.0	9.6	9.2	9.8
November	9.3	9.5	10.3	9.4	9.8	8.7	8.7	9.0	8.8	9.3
December	11.0	11.0	10.4	10.2	9.1	9.9	10.4	10.6	10.6	10.8
Whole Year	100.0	100.0	100.0	100.0	100.0	100.0	100.0	100.0	100.0	100.0

Table 26 - Tourist arrivals by country of residence and sex, 2004

Country of residence	Male	Female	Both Sexes
Australia	5,647	5,726	11,373
Belgium	4,432	4,092	8,524
France	104,510	105,901	210,411
Germany	26,361	25,916	52,277
Hong Kong SAR ¹	501	335	836
India	16,246	8,470	24,716
Italy	20,098	21,179	41,277
Japan	1,037	687	1,724
Kenya	915	591	1,506
Malagasy Rep.	4,255	4,001	8,256
Reunion Island	47,088	49,422	96,510
Seychelles	3,287	4,169	7,456
Singapore	1,357	972	2,329
S. Africa, Rep. of	27,203	25,406	52,609
Switzerland	7,937	8,173	16,110
United Kingdom	46,809	45,843	92,652
U.S.A.	2,411	1,894	4,305
Zimbabwe	1,165	1,180	2,345
Other countries	46,184	37,461	83,645
All Countries	367,443	351,418	718,861

¹ *Special Administrative Region of China*

Table 27 - Tourist arrivals by country of residence, 1995 - 2004

Country of residence	1995	1996	1997	1998	1999	2000	2001	2002	2003	2004
Australia	5,558	7,762	9,460	8,913	8,076	8,771	8,790	8,387	9,103	11,373
Belgium	5,802	8,060	8,162	8,365	9,586	10,998	10,398	10,579	10,170	8,524
France	116,701	130,292	145,173	162,775	175,431	198,423	197,595	202,869	200,229	210,411
Germany	41,637	45,221	43,993	43,826	45,206	52,869	50,866	53,762	53,970	52,277
Hong Kong SAR ¹	1,645	2,066	1,629	969	859	1,227	1,488	1,201	676	836
India	11,225	13,075	13,220	12,629	13,583	17,241	18,890	20,898	25,367	24,716
Italy	17,384	21,848	35,255	36,614	36,675	39,000	37,343	38,263	39,774	41,277
Japan	3,176	3,192	3,140	2,505	2,324	2,389	1,589	1,958	1,572	1,724
Kenya	1,158	1,170	1,230	1,684	1,655	1,801	1,734	1,507	1,510	1,506
Malagasy Rep.	6,885	11,401	10,143	9,213	7,880	7,057	6,674	9,417	11,044	8,256
Reunion Island	78,431	82,272	82,628	83,966	83,749	86,945	91,140	96,375	95,679	96,510
Seychelles	7,116	9,325	8,995	8,529	7,893	9,229	10,687	13,468	9,869	7,456
Singapore	2,601	3,153	3,404	3,515	3,661	4,104	3,431	3,114	2,102	2,329
S. Africa, Rep. of	42,653	50,361	51,249	49,676	46,583	48,683	47,882	42,685	45,756	52,609
Switzerland	13,815	15,692	16,105	16,178	16,281	20,473	18,427	17,371	17,929	16,110
United Kingdom	31,324	35,271	46,022	52,299	58,683	74,488	77,888	80,667	91,210	92,652
USA	2,093	2,362	2,879	3,158	3,345	3,704	3,923	4,116	4,505	4,305
Zimbabwe	2,965	3,402	4,248	3,796	2,606	3,435	3,860	3,185	2,343	2,345
Other countries	30,294	40,942	49,190	49,585	54,009	65,616	67,713	71,826	79,210	83,645
All Countries	422,463	486,867	536,125	558,195	578,085	656,453	660,318	681,648	702,018	718,861

¹ Special Administrative Region of China

Table 28 - Percentage distribution of tourist arrivals by country of residence, 1995 - 2004

Country of residence	1995	1996	1997	1998	1999	2000	2001	2002	2003	2004
Australia	1.3	1.6	1.8	1.6	1.4	1.3	1.3	1.2	1.3	1.6
Belgium	1.4	1.7	1.5	1.5	1.7	1.7	1.6	1.6	1.4	1.2
France	27.6	26.8	27.1	29.2	30.3	30.2	29.9	29.8	28.5	29.3
Germany	9.9	9.3	8.2	7.9	7.8	8.1	7.7	7.9	7.7	7.3
Hong Kong SAR ¹	0.4	0.4	0.3	0.2	0.1	0.2	0.2	0.2	0.1	0.1
India	2.7	2.7	2.5	2.3	2.3	2.6	2.9	3.1	3.6	3.4
Italy	4.1	4.5	6.6	6.6	6.3	5.9	5.7	5.6	5.7	5.7
Japan	0.8	0.7	0.6	0.4	0.4	0.4	0.2	0.3	0.2	0.2
Kenya	0.3	0.2	0.2	0.3	0.3	0.3	0.3	0.2	0.2	0.2
Malagasy Rep.	1.6	2.3	1.9	1.7	1.4	1.1	1.0	1.4	1.6	1.1
Reunion Island	18.6	16.9	15.4	15.0	14.5	13.2	13.8	14.1	13.6	13.4
Seychelles	1.7	1.9	1.7	1.5	1.4	1.4	1.6	2.0	1.4	1.0
Singapore	0.6	0.6	0.6	0.6	0.6	0.6	0.5	0.5	0.3	0.3
S. Africa, Rep. of	10.1	10.3	9.6	8.9	8.1	7.4	7.3	6.3	6.5	7.3
Switzerland	3.3	3.2	3.0	2.9	2.8	3.1	2.8	2.5	2.6	2.2
United Kingdom	7.4	7.2	8.6	9.4	10.2	11.3	11.8	11.8	13.0	12.9
USA	0.5	0.5	0.5	0.6	0.6	0.6	0.6	0.6	0.6	0.6
Zimbabwe	0.7	0.7	0.8	0.7	0.5	0.5	0.6	0.5	0.3	0.3
Other countries	7.2	8.4	9.2	8.9	9.3	10.0	10.3	10.5	11.3	11.6
All Countries	100.0	100.0	100.0	100.0	100.0	100.0	100.0	100.0	100.0	100.0

¹ Special Administrative Region of China

Fig. 5 - Percentage distribution of tourist arrivals by country of residence, 2004

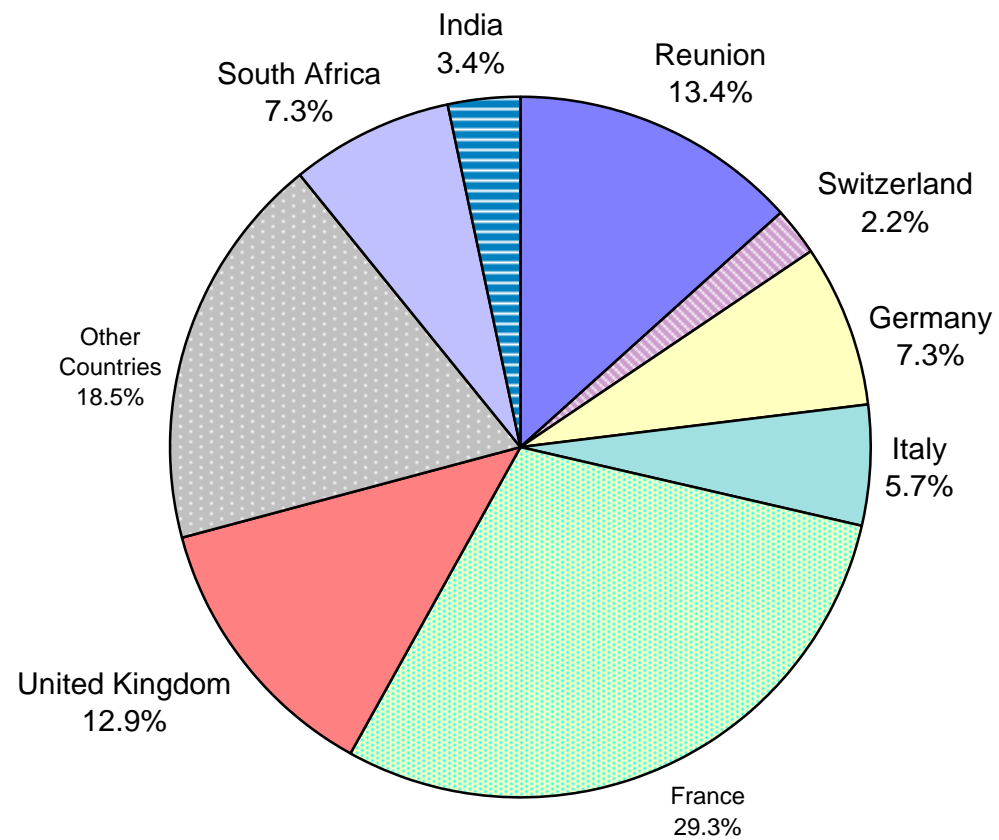


Table 29 - Tourist nights by country of residence, 1995 - 2004

Country of residence	1995	1996	1997	1998	1999	2000	2001	2002	2003	2004
Australia	85,473	115,711	123,056	104,284	91,655	96,932	104,232	98,869	100,332	111,546
Belgium	85,274	102,517	113,011	105,146	126,221	132,571	125,752	124,586	121,687	105,445
France	1,232,159	1,345,112	1,509,687	1,632,311	1,719,893	1,934,683	1,966,911	2,020,850	1,996,305	2,101,125
Germany	521,984	563,798	557,374	548,693	553,112	635,600	612,881	651,913	636,435	608,031
Hong Kong SAR ¹	14,387	17,503	13,524	9,559	9,367	9,601	11,955	10,941	6,767	7,984
India	143,884	149,164	155,700	146,872	157,110	188,008	207,965	253,340	287,741	265,174
Italy	180,214	210,962	337,486	346,779	336,271	349,267	326,100	329,809	346,865	362,758
Japan	19,007	20,676	19,834	15,625	12,593	14,054	10,161	11,170	9,302	9,881
Kenya	9,242	8,418	9,065	11,318	12,904	12,585	10,780	8,784	11,347	11,069
Malagasy Rep.	54,783	76,714	78,525	80,310	74,643	65,526	66,177	81,758	128,437	83,961
Reunion Island	573,206	585,351	593,693	588,452	576,423	596,449	632,970	675,483	738,968	832,879
Seychelles	65,577	82,035	72,835	71,407	67,271	82,577	96,303	113,942	92,493	75,277
Singapore	18,323	17,468	18,154	19,627	21,925	21,998	23,420	20,403	14,871	16,094
S. Africa, Rep. of	378,812	434,348	420,633	416,635	412,869	422,300	400,656	376,588	379,561	425,680
Switzerland	179,118	205,089	209,931	209,329	206,392	248,345	229,227	210,510	220,382	189,115
United Kingdom	470,448	510,672	625,419	675,375	720,291	884,799	942,095	977,717	1,043,113	1,053,881
U.S.A.	21,170	24,363	26,205	28,558	31,953	32,719	37,067	38,478	38,795	39,039
Zimbabwe	29,306	31,258	37,582	35,377	28,106	37,555	47,134	39,504	26,469	28,831
Other countries	352,524	456,524	529,600	522,232	570,465	647,307	676,014	724,225	752,443	790,833
All Countries	4,434,891	4,957,683	5,451,314	5,567,889	5,729,464	6,412,876	6,527,800	6,768,870	6,952,313	7,118,603

¹ Special Administrative Region of China

Fig 6 - Total arrivals and tourist arrivals, 1995 - 2004

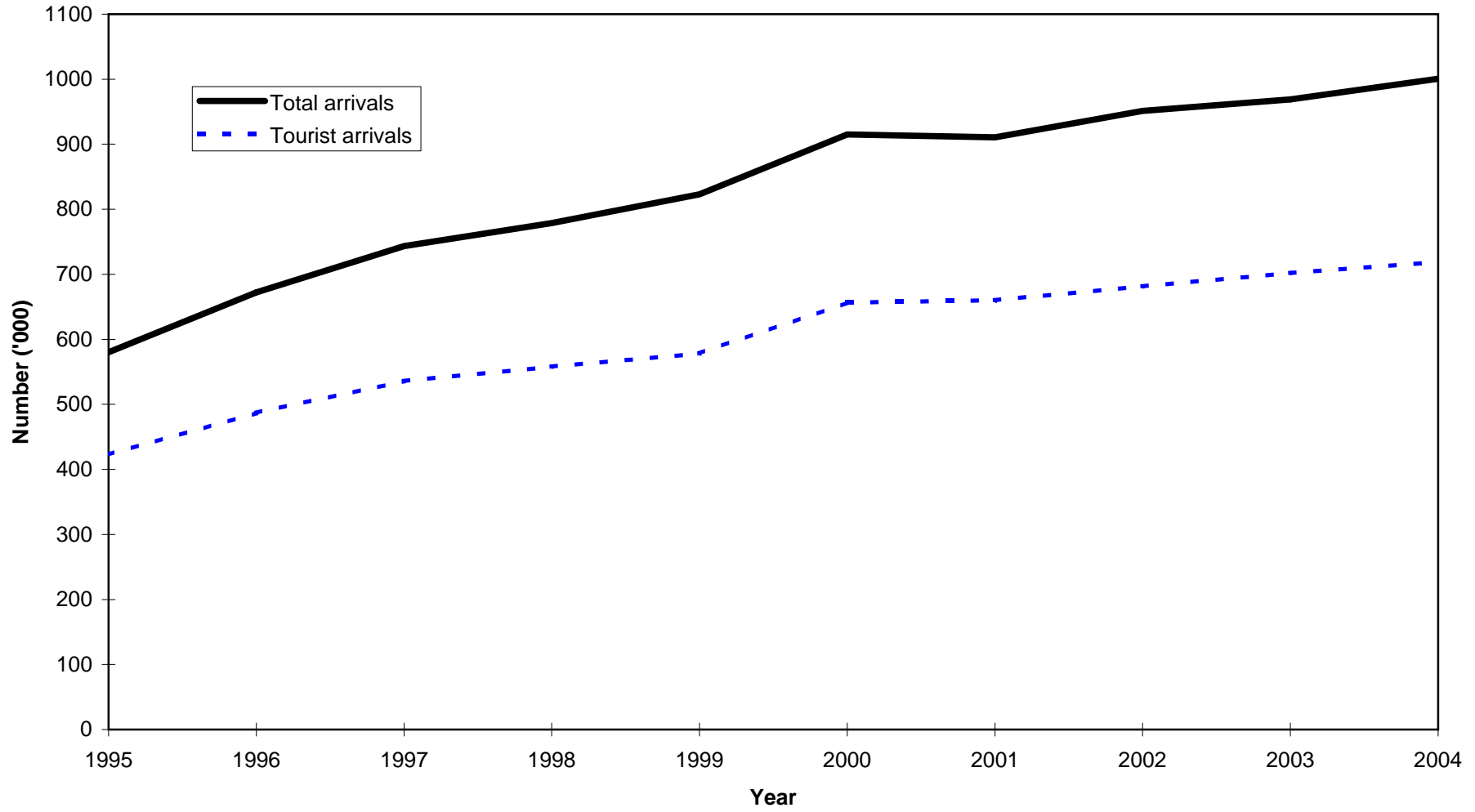


Fig 7 - Tourist nights, 1995 - 2004

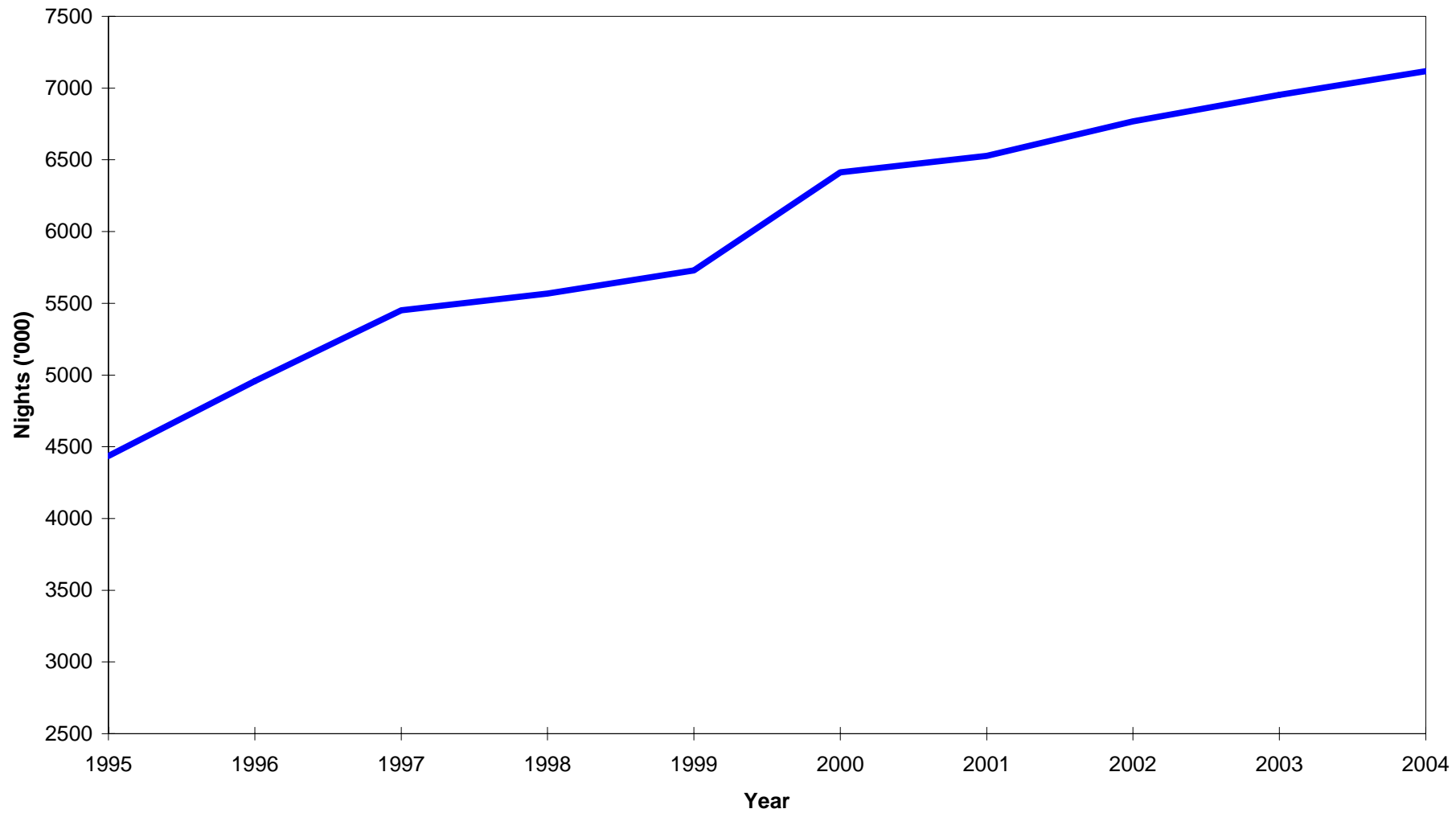


Table 30 - Visitor ¹ arrivals by country of residence and type of passenger, 2002 - 2004

Country of residence	Visitors on holidays			Visitors on business			Visitors in transit			Other visitors			Total visitors		
	2002	2003	2004	2002	2003	2004	2002	2003	2004	2002	2003	2004	2002	2003	2004
Australia	6,771	7,882	9,634	742	475	599	782	868	1,350	212	131	116	8,507	9,356	11,699
Belgium	10,171	9,726	7,991	262	269	318	101	130	125	86	125	168	10,620	10,250	8,602
France	193,352	190,000	200,206	4,538	5,212	5,135	4,425	4,358	5,015	2,356	2,662	2,339	204,671	202,232	212,695
Germany	52,432	52,489	50,921	445	597	506	967	971	786	619	634	538	54,463	54,691	52,751
Hong Kong SAR ²	686	309	424	255	147	142	335	240	272	26	22	13	1,302	718	851
India	15,110	19,363	17,714	3,903	3,909	4,106	1,157	1,644	1,922	937	848	1,328	21,107	25,764	25,070
Italy	37,432	38,779	40,390	435	490	467	184	253	276	304	385	285	38,355	39,907	41,418
Japan	1,596	1,112	1,188	154	139	161	306	376	519	45	60	20	2,101	1,687	1,888
Kenya	802	839	780	441	492	548	261	136	197	19	88	23	1,523	1,555	1,548
Malagasy Rep.	5,475	6,396	4,104	780	1,112	820	3,955	4,595	4,534	275	580	206	10,485	12,683	9,664
Reunion Island	87,868	87,762	89,065	1,945	2,126	1,860	8,768	7,918	8,147	587	832	514	99,168	98,638	99,586
Seychelles	12,217	8,324	6,276	399	402	350	691	767	622	363	587	375	13,670	10,080	7,623
Singapore	2,419	1,598	1,946	375	282	247	147	123	136	231	133	34	3,172	2,136	2,363
S. Africa Rep. of	36,071	38,645	45,301	5,099	5,625	5,430	1,168	1,161	1,547	775	576	688	43,113	46,007	52,966
Switzerland	17,034	17,555	15,736	219	229	223	206	277	272	34	36	37	17,493	18,097	16,268
United Kingdom	76,219	86,520	88,659	2,619	2,555	2,388	593	652	793	1,459	1,705	1,092	80,890	91,432	92,932
U.S.A.	3,251	3,254	3,383	627	950	669	306	309	324	58	140	59	4,242	4,653	4,435
Zimbabwe	2,843	1,953	1,915	214	282	351	75	74	50	83	57	65	3,215	2,366	2,381
Other & N. Stated	58,375	63,819	68,185	5,106	5,862	6,096	24,597	15,086	17,823	3,130	4,329	1,672	91,208	89,096	93,776
All Countries	620,124	636,325	653,818	28,558	31,155	30,416	49,024	39,938	44,710	11,599	13,930	9,572	709,305	721,348	738,516

¹ Visitors include tourists, cruise ship passengers and non-residents who stay in the country for less than a day, other than those who do not leave the airport

² Special Administrative Region of China

Table 31 - Visitor arrivals by age and sex, 2003 & 2004

Age (years)	2003			2004		
	Both Sexes	Male	Female	Both Sexes	Male	Female
Under 1	3,825	1,957	1,868	4,242	2,236	2,006
1 - 4	22,562	11,423	11,139	24,361	12,360	12,001
5 - 9	31,010	15,646	15,364	32,474	16,438	16,036
10 - 14	31,545	15,854	15,691	32,484	16,151	16,333
15 - 19	24,007	11,127	12,880	24,672	11,487	13,185
20 - 24	35,745	14,143	21,602	34,624	13,464	21,160
25 - 29	83,334	38,103	45,231	80,273	36,500	43,773
30 - 34	90,504	46,856	43,648	90,363	46,697	43,666
35 - 39	81,958	44,005	37,953	82,955	44,575	38,380
40 - 44	71,429	38,893	32,536	73,581	39,817	33,764
45 - 49	64,542	35,040	29,502	65,594	35,408	30,186
50 - 54	59,022	31,996	27,026	59,644	31,987	27,657
55 - 59	47,097	26,108	20,989	50,411	27,476	22,935
60 - 64	31,136	17,077	14,059	34,454	18,659	15,795
65 - 69	18,329	9,852	8,477	20,620	11,068	9,552
70 & over	16,683	8,666	8,017	19,094	9,988	9,106
Not stated	8,620	4,740	3,880	8,670	4,767	3,903
All ages	721,348	371,486	349,862	738,516	379,078	359,438

Table 32 - Visitor arrivals by duration of stay, 2003 & 2004

Duration of stay	2003		2004	
	Number	Percentage	Number	Percentage
Less than 1 day	19,330	2.7	19,655	2.7
1 day	19,320	2.7	21,725	2.9
2 days	14,209	2.0	14,668	2.0
3 days	25,647	3.6	27,308	3.7
4 days	34,422	4.8	35,490	4.8
5 days	41,585	5.8	41,072	5.6
6 days	60,133	8.3	61,636	8.3
7 days	110,652	15.3	123,345	16.7
8 days	36,240	5.0	36,830	5.0
9 days	35,139	4.9	37,739	5.1
10 days	34,549	4.8	39,825	5.4
11 days	21,043	2.9	21,444	2.9
12 days	30,350	4.2	24,951	3.4
13 days	34,868	4.8	36,062	4.9
14 days	54,928	7.6	56,376	7.6
15 days	7,791	1.1	7,942	1.1
16 days	6,217	0.9	6,403	0.9
17 days	3,743	0.5	4,186	0.6
18 days	3,528	0.5	3,583	0.5
19 days	5,021	0.7	4,230	0.6
20 - 24 days	16,521	2.3	16,653	2.3
25 - 29 days	8,846	1.2	8,932	1.2
1 month - under 2 months	12,922	1.8	13,253	1.8
2 months - under 3 months	81,667	11.3	70,927	9.6
3 months and over	2,677	0.4	4,281	0.6
All Countries	721,348	100.0	738,516	100.0

Table 33 - Visitor arrivals by country of residence and duration of stay, 2004

Country of residence	Duration of stay (Nights)												
	<1	1 - 2	3 - 4	5 - 6	7 - 8	9 - 10	11 - 12	13 - 14	15 - 19	20 - 24	25 - 29	30+	Total
Australia	326	1,679	1,123	2,697	785	483	559	1,606	256	372	297	1,516	11,699
Belgium	78	162	312	960	1,721	1,169	599	1,193	475	331	234	1,368	8,602
France	2,284	6,356	21,021	30,995	49,831	27,374	14,079	16,563	8,694	4,767	3,240	27,491	212,695
Germany	474	747	1,017	3,235	7,196	4,642	3,354	20,941	2,606	3,123	621	4,795	52,751
Hong Kong SAR ¹	15	269	65	157	62	48	31	31	24	19	6	124	851
India	354	2,085	4,585	5,702	4,299	965	535	756	496	274	230	4,789	25,070
Italy	141	255	890	8,650	14,987	2,371	1,277	7,150	708	571	361	4,057	41,418
Japan	164	356	298	429	166	95	18	35	27	15	4	281	1,888
Kenya	42	264	306	300	233	62	43	64	12	24	9	189	1,548
Malagasy Rep.	1,408	2,741	1,082	543	552	331	199	211	206	139	123	2,129	9,664
Reunion Island	3,076	9,288	14,220	20,013	26,165	6,957	3,014	2,559	2,607	1,059	693	9,935	99,586
Seychelles	167	515	1,069	509	2,104	542	455	673	298	203	87	1,001	7,623
Singapore	34	171	556	915	135	114	22	31	27	28	7	323	2,363
S. Africa Rep. of	357	2,588	6,533	7,374	17,845	6,392	1,937	2,082	1,219	680	358	5,601	52,966
Switzerland	158	222	342	1,837	2,331	1,537	1,669	4,176	777	768	386	2,065	16,268
United Kingdom	280	2,010	2,490	5,931	13,833	14,249	11,609	23,848	5,087	2,541	1,277	9,777	92,932
U.S.A.	130	506	683	789	694	326	157	199	143	78	62	668	4,435
Zimbabwe	36	95	139	150	837	107	46	481	27	75	52	336	2,381
Other & not stated	10,131	6,084	6,067	11,522	16,399	9,800	6,792	9,839	2,655	1,586	885	12,016	93,776
All Countries	19,655	36,393	62,798	102,708	160,175	77,564	46,395	92,438	26,344	16,653	8,932	88,461	738,516

¹ Special Administrative Region of China

Table 34 - Visitor arrivals and average length of stay by country of residence, 2004

Country of Residence	Visitor arrivals	Average length of stay (nights)
Australia	11,699	10.6
Belgium	8,602	13.4
France	212,695	10.7
Germany	52,751	12.6
Hong Kong SAR ¹	851	9.9
India	25,070	11.4
Italy	41,418	9.4
Japan	1,888	6.3
Kenya	1,548	7.8
Malagasy Rep.	9,664	11.4
Reunion	99,586	9.1
Seychelles	7,623	10.9
Singapore	2,363	7.3
S. Africa, Rep. of	52,966	8.8
Switzerland	16,268	12.7
United Kingdom	92,932	12.2
U.S.A.	4,435	9.8
Zimbabwe	2,381	13.0
Other & not stated	93,776	10.4
All Countries	738,516	10.6

¹ *Special Administrative Region of China*

Table 35 - Gross earnings from tourism, 1995 - 2004

Earnings (Rs Mn)	1995	1996	1997	1998	1999	2000	2001	2002	2003	2004
	7,472	9,048	10,068	11,890	13,668	14,234	18,166	18,328	19,415	23,448

Source : Bank of Mauritius

Table 36 - Expenditure of tourists by country of residence, 1994 - 2002

Country of residence	Expenditure (Rs Mn)				
	1994	1996	1998	2000	2002
France	1,729.3	2,391.8	3,173.1	3,785.7	5,188.2
Germany	933.0	1,301.0	1,195.9	1,447.3	1,852.9
Italy	357.7	541.9	827.9	918.3	1,215.0
Switzerland	279.7	475.7	473.3	615.7	662.6
United Kingdom	814.7	973.1	1,680.2	2,708.2	3,269.9
Malagasy Rep.	79.6	158.6	108.4	90.3	141.5
Reunion	552.9	731.2	855.4	871.4	1,242.5
South Africa, Rep. of	546.5	706.4	808.8	780.6	778.2
Singapore	35.9	52.0	62.5	94.5	68.6
Other countries	1,143.1	1,692.2	2,578.4	2,875.3	3,355.3
All Countries	6,472.4	9,023.9	11,763.9	14,187.3	17,774.7

Source: Survey of Outgoing Tourists conducted by the Ministry of Tourism and Leisure every two years.

Table 37 - Expenditure of tourists by type of expenditure, 1994 - 2002

Type of expenditure	Expenditure (Rs Mn)				
	1994	1996	1998	2000	2002
Accommodation	3,405	4,647	6,415	7,479	9,155
Meals & Beverages	997	1,381	1,818	2,470	3,327
Transport	583	668	804	941	1,232
Entertainment	214	514	685	839	986
Shopping	945	1,381	1,691	2,002	2,450
Other	330	433	351	457	624
Total	6,472	9,024	11,764	14,187	17,775

Source: Survey of Outgoing Tourists conducted by the Ministry of Tourism and Leisure every two years.

Table 38 - Hotels, rooms and bedplaces, 1995 - 2004

Year	No. of hotels	No. of rooms	No. of bedplaces
1995	95	5,977	12,359
1996	90	6,668	13,833
1997	87	6,809	14,126
1998	90	7,267	14,995
1999	92	8,255	16,947
2000	95	8,657	17,776
2001	95	9,024	18,350
2002	95	9,623	19,597
2003	97	9,647	19,727
2004	103 ¹	10,640	21,355

¹ *Excluding two hotels not operational because of renovation works*

Table 39 - Monthly occupancy rates in large ¹ hotels, 2000 - 2004

Month	2000		2001		2002		2003		2004	
	Room	Bed	Room	Bed	Room	Bed	Room	Bed	Room	Bed
January	75	67	78	69	76	68	69	61	72	64
February	77	68	70	63	74	66	69	61	68	60
March	72	64	72	64	81	72	66	58	70	62
April	77	68	70	62	68	61	67	59	67	59
May	71	63	68	61	73	65	64	56	62	55
June	62	55	51	46	53	47	50	44	48	43
July	64	57	57	51	62	56	54	48	55	49
August	73	65	65	58	69	62	64	56	62	56
September	76	67	74	66	76	68	67	59	69	62
October	79	70	76	67	82	73	72	64	75	67
November	83	74	78	70	81	71	74	65	78	70
December	71	63	72	64	72	64	70	62	72	64
Whole Year	73	65	70	62	70	62	66	58	66	59

¹ Large Hotels are well established beach hotels of over 80 rooms

Room Occupancy Rate = $\frac{\text{Total number of room nights rented} \times 100}{\text{Total number of room nights available}}$

Bed Occupancy Rate = $\frac{\text{Total number of bed nights rented} \times 100}{\text{Total number of bed nights available}}$

Table 40 - Monthly occupancy rates in all hotels, 2000 - 2004

Month	2000		2001		2002		2003		2004	
	Room	Bed	Room	Bed	Room	Bed	Room	Bed	Room	Bed
January	73	64	74	65	71	63	68	59	69	61
February	73	64	67	59	69	62	66	58	64	57
March	71	62	68	60	75	66	63	56	66	58
April	73	64	66	57	62	56	63	55	63	56
May	67	58	64	56	67	59	62	55	59	52
June	58	51	50	43	50	45	49	43	47	41
July	61	53	55	48	59	52	53	47	52	47
August	71	62	62	55	63	56	61	54	58	52
September	73	64	68	60	69	62	63	55	64	57
October	77	67	70	62	76	68	68	60	70	63
November	80	70	73	64	76	67	70	61	74	66
December	69	60	69	61	70	62	68	60	68	61
Whole Year	70	62	66	58	67	59	63	55	63	56

Room Occupancy Rate = $\frac{\text{Total number of room nights rented} \times 100}{\text{Total number of room nights available}}$

Bed Occupancy Rate = $\frac{\text{Total number of bed nights rented} \times 100}{\text{Total number of bed nights available}}$

APPENDIX

INTERNATIONAL EMBARKATION AND DISEMBARKATION CARD

*Carte Internationale d'Embarquement et de
Débarquement*

- Mr/M)
Mrs/Mme).....
Miss/Melle) (Surname / *Nom*)
.....
(Given Names / *Prénoms*)
2. Date and place of Birth
Date et lieu de naissance
.....
3. Nationality.....
Nationalité
4. Occupation.....
Profession
5. Permanent address.....
Domicile.....
6. Passport No., Place and Date of issue
Numéro du passeport, lieu et date d'émission.....
.....
7. Port of original embarkation
Lieu d'embarquement d'origine
8. Purpose of journey to Mauritius.....
Motif principal du voyage à l'Ile Maurice
9. Intended length of stay in Mauritius.....
Durée probable du séjour à l'Ile Maurice
10. Intended address during stay in Mauritius.....
Adresse prévue pendant le séjour à Maurice
.....
- Signature