

Vol. 3

No. 1

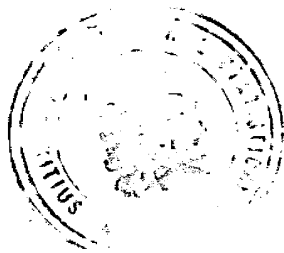


MAURITIUS

Ministry of Economic Planning and Development  
CENTRAL STATISTICAL OFFICE

---

# INTERNATIONAL TRAVEL AND TOURISM

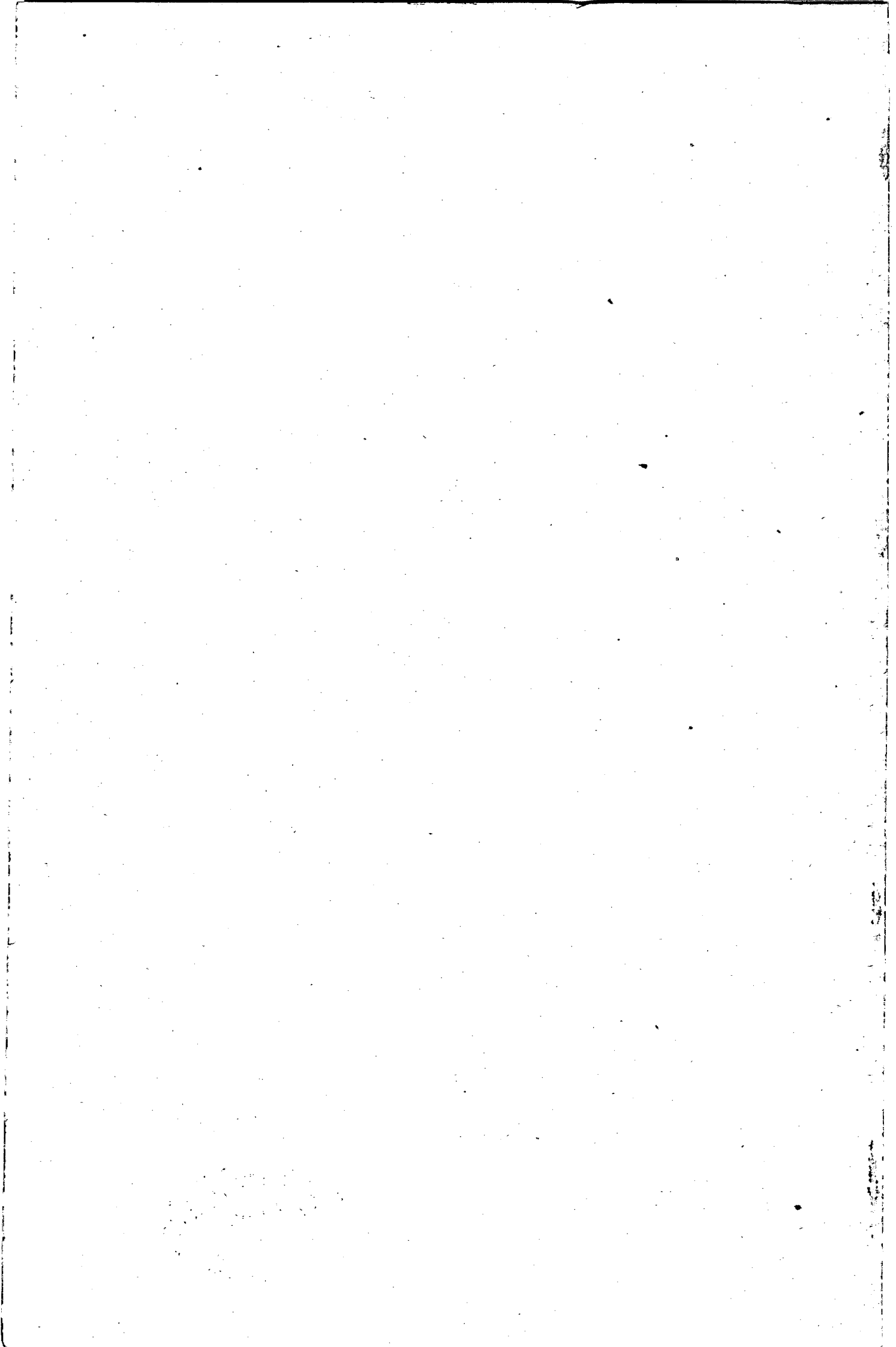


---

June 1976

[ Price : Rs 15.00 ]

EST



INTERNATIONAL TRAVEL AND TOURISM

Vol. 3 No. 1

June 1976

"International Travel and Tourism", a publication of the Central Statistical Office, is designed to present data on international travel and tourism in more detail than those that are currently published in the Bi-annual Digest of Statistics.

With the help of the computer of the Ministry of Finance it has been possible to process in more detail the information recorded on the international embarkation and disembarkation cards which passengers fill in on leaving and entering the country.

It is hoped that the results, especially those on tourism, which have been assembled in this report will be useful to all those who take an interest in the evolution of the tourist industry in this country.

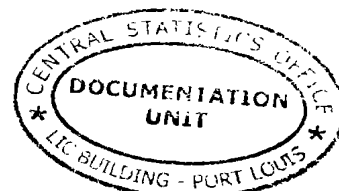
The co-operation of the Immigration and Passport Office of the Police Department and the Data Processing Division of the Ministry of Finance is gratefully acknowledged.

The following symbols are used throughout:

- Nil
- ... Not available

J. Ah Kong  
Director of Statistics

Central Statistical Office  
Rose Hill  
Mauritius  
January 1977



## CONTENTS

Page

### I - POPULATION AND VITAL STATISTICS

Table 1 - Estimated population of Mauritius as at 30.6.76 based on the final 1972 Population Census data	1
2 - Population increase in intercensal periods - Island of Mauritius, 1846 - 1972	1
3 (a) - Population enumerated at each census by population group and sex - Island of Mauritius, 1846 - 1952	2
3 (b) - Population enumerated at each census by community and sex - Island of Mauritius, 1962-72	2
4 - Population of Mauritius by geographical district and sex, 1974-76 (mid-year estimates)	3
5 - Population and vital statistics - Island of Mauritius, 1921-75	4

### II - PASSENGER TRAFFIC

Table 6 - Passenger traffic by sex, 1933 - June 1976	5 & 6
7 - Passenger traffic between Island of Mauritius and Rodrigues, 1962 - June 1976	6
8 - Passenger traffic by mode of transport, 1962 - June 1976	7
9 - Passenger traffic by month, 1973 - June 1976	8
10 - Arrivals by country of original embarkation, 1971 - June 1976	9
11 - Departures by country of final destination, 1971 - June 1976	10
12 - Passenger traffic by type of passenger and month, January - June 1976	11
13 - Arrivals by age and sex, July 1974 - June 1976	12
14 - Departures by age and sex, July 1974 - June 1976	13
15 - Excess of arrivals over departures by age and sex, July 1974 - June 1976	14
16 - Arrivals and departures of residents of Island of Mauritius by district of residence and sex, January - June 1976	15
17 - Arrivals of residents of Island of Mauritius by age and sex, January 1974 - June 1976	16
18 - Departures of residents of Island of Mauritius by age and sex, January 1974 - June 1976	17
19 - Excess of arrivals over departures of residents (excluding emigrants) of Island of Mauritius by age and sex, January 1974 - June 1976	18
20 - Excess of arrivals over departures of residents (including emigrants) of Island of Mauritius by age and sex, January 1974 - June 1976	19

### III - EMIGRATION

Table 21 - Official long-term emigrants by sex, 1956 - June 1976	20
22 - External migration, 1956 - 1975	21
23 - Official long-term emigrants by country of intended residence, 1963 - June 1976	22 & 23
24 - Age distribution of official long-term emigrants, 1962 - June 1976	24 - 26

CONTENTS (cont'd)

	<u>Page</u>
<u>III - EMIGRATION (cont'd)</u>	
Table 25 - Official long-term emigrants by Major Occupational Group, 1972 - June 1976	27
26 - Official long-term emigrants by Major Occupational Group, age and sex, January - June 1976	28
27 - Official long-term emigrants by occupation, 1974 - June 1976	29
28 - Official long-term emigrants by district of last residence and sex, January 1975 - June 1976	30
<u>IV - TOURISM</u>	
Definition and notes	31
Table 29 - Tourist arrivals by mode of transport and total nights spent during period, 1963 - June 1976	32
30 - Tourist arrivals by month of arrival, 1964 - June 1976	33
31 - Percentage distribution of tourist arrivals by month of arrival, 1964-75	34
32 - Tourist arrivals by country of residence, 1964 - June 1976	35-37
33 - Percentage distribution of tourist arrivals by country of residence, 1964 - June 1976	38
34 - Tourist nights by country of residence of tourist, 1964 - June 1976	39-41
35 - Tourists arriving in January - June 1976 by country of residence and month of arrival	42
36 - Tourist arrivals and tourist nights by country of residence and mode of transport, January - June 1976	43
37 - Visitor arrivals by age and sex, 1975 - June 1976	44
38 - Visitor arrivals and visitor nights by country of residence, 1975 - June 1976	45
39 - Visitor arrivals by duration of stay, 1975 - June 1976	46
40 - Visitor arrivals by country of residence and duration of stay, January - June 1976	47
41 - Visitor arrivals and visitor nights by country of nationality, January - June 1976	48
42 - Visitor arrivals by country of residence and nationality, January - June 1976	49
43 - Visitor nights by country of residence and nationality, January - June 1976	50
44 - Arrivals of Mauritians settled abroad (excluding students) and nights spent by them by country of residence, 1975 - June 1976	51
45 - Arrivals of Mauritians settled abroad (excluding students) by duration of stay, 1975 - June 1976	52
46 - Total nights spent by Mauritians settled abroad (excluding students) by country of residence, 1975 - June 1976	53

I. POPULATION AND VITAL STATISTICS

Table 1 - Estimated population of Mauritius as at 30th June 1976 based on the final 1972 Population Census data

Island	Both sexes	Male	Female
Island of Mauritius	367,885	433,055	434,830
Island of Rodrigues	26,539	13,023	13,516
Other Islands	350	250	100
<b>Mauritius</b>	<b>894,774</b>	<b>446,328</b>	<b>448,446</b>

Table 2 - Population increase in intercensal periods - Island of Mauritius, 1846-1972

Census date	Population enumerated at census			Intercensal increase	Average annual rate of increase %
	Both sexes	Male	Female		
1st Aug. 1846	158,462	104,503	53,864		
20th Nov. 1851	180,823	119,341	61,482	22,361	2.55
8th Apr. 1861	310,050	202,961	107,089	129,227	5.87
11th Apr. 1871	316,042	193,575	122,467	5,992	0.19
4th Apr. 1881	359,874	208,655	151,219	43,832	1.31
6th Mar. 1891	370,583	206,038	164,550	10,714	0.29
1st Apr. 1901	371,023	199,552	171,471	435	0.01
31st Mar. 1911	368,791	194,095	174,696	- 2,232	- 0.06
21st May 1921	376,485	194,108	182,377	7,694	0.21
26th Apr. 1931	393,238	200,609	192,629	16,753	0.44
11th Jun. 1944	419,185	210,326	208,859	25,947	0.49
29th Jun. 1952	501,415	252,032	249,383	82,230	2.26
30th Jun. 1962 <sup>1/</sup>	681,619	342,306	339,313	180,204	3.12
30th Jun. 1972 <sup>1/</sup>	826,199	413,580	412,619	144,580	1.94

<sup>1/</sup> de facto population - including the European members of the Armed Forces but excluding the passengers and crews of ships lying in the harbour.

Table 3(a) - Population enumerated at each census by population group and sex - Island of Mauritius, 1846-1952

Year of census	GENERAL POPULATION			INDO-MAURITIAN POPULATION			CHINESE POPULATION			At the 1962 Census each household was asked, for the first time to state the population group to which each member of his household claimed to belong.
	Both sexes	Male	Female	Both sexes	Male	Female	Both sexes	Male	Female	
1846	102,217	55,663	46,554	56,245	48,935	7,310	-	-	-	Prior to 1962, it is probable that, from one census to another, different criteria have been used in classifying the population by population groups. Figures are therefore not strictly comparable from one census to another, before 1962.
1851	102,327	55,059	47,768	77,996	64,232	13,714	-	-	-	
1861	115,864	59,796	56,068	192,634	141,615	51,019	1,552	1,550	2	
1871	97,497	49,487	48,010	216,258	141,804	74,454	2,287	2,284	3	
1881	107,323	53,754	53,569	248,993	151,352	97,641	3,553	3,549	9	
1891	111,517	55,397	56,120	255,920	147,499	108,421	3,151	3,142	9	
1901	108,422	52,995	55,427	259,086	143,100	115,986	3,515	3,457	58	
1911	107,432	51,808	55,624	257,697	138,974	118,723	3,662	3,313	349	
1921	104,216	49,725	54,491	265,524	139,150	126,374	6,745	5,233	1,512	
1931	115,666	54,733	60,933	268,649	139,533	129,116	8,923	6,343	2,580	
1944	143,056	67,136	75,920	265,247	136,382	128,865	10,332	6,808	4,074	
1952	143,233	70,370	77,868	335,327	171,241	164,086	17,850	10,421	7,429	

Table 3(b) - Population enumerated at each census by community and sex - Island of Mauritius, 1962-72

Year of census	TOTAL POPULATION			HINDU			MUSLIM			SINO-MAURITIAN			GENERAL POPULATION		
	Both sexes	Male	Female	Both sexes	Male	Female	Both sexes	Male	Female	Both sexes	Male	Female	Both sexes	Male	Female
1962 <sup>1/</sup>	681,619	342,306	339,313	344,587	174,698	169,889	110,322	55,971	54,351	23,053	12,654	10,404	203,652	93,983	104,669
1972 <sup>1/</sup>	826,199	413,580	412,619	428,167	215,654	212,513	137,081	68,789	68,292	24,034	12,849	11,235	236,867	116,288	120,579

<sup>1/</sup> de facto population - including the European members of the Armed Forces but excluding the passengers and crews of ships lying in the harbour.

Table 4 - Population of Mauritius by geographical district and sex, 1974-76 (mid-year estimates)

Geographical district	Estimated population <sup>1/</sup> as at 30.6.74			Estimated population <sup>1/</sup> as at 30.6.75			Estimated population <sup>1/</sup> as at 30.6.76		
	Both sexes	Male	Female	Both sexes	Male	Female	Both sexes	Male	Female
Port Louis	136,593	67,522	69,071	137,955	68,111	69,844	139,399	68,835	70,564
Pamplemousses	70,972	35,929	35,043	72,026	36,419	35,607	73,138	36,907	36,231
Rivière du Rempart	69,266	35,073	34,193	70,512	35,627	34,885	71,736	36,251	35,485
Flacq	92,191	46,498	45,693	94,017	47,361	46,656	95,675	48,111	47,564
Grand Port	82,738	41,599	41,139	83,875	42,112	41,763	85,048	42,651	42,397
Savanne	54,137	27,231	26,906	54,780	27,534	27,246	55,480	27,878	27,602
P. Wilhems : Urban	234,091	115,744	118,347	236,014	116,573	119,441	238,574	117,851	120,723
Other	29,059	14,587	14,472	29,507	14,791	14,716	29,875	14,962	14,913
Moka	49,814	24,986	24,828	50,444	25,243	25,201	51,137	25,577	25,560
Black River	26,894	13,581	13,313	27,386	13,813	13,573	27,823	14,032	13,791
Island of Mauritius	845,755	422,750	423,005	856,516	427,584	428,932	867,885	433,055	434,830
Island of Rodrigues	25,709	12,725	12,984	26,343	13,030	13,313	26,539	13,023	13,516
Other Islands	350	250	100	350	250	100	350	250	100
Mauritius	871,814	435,725	436,089	883,209	440,864	442,345	894,774	446,328	448,446

<sup>1/</sup> Based on the final 1972 Population Census data. No account has been taken of internal migration.



Table 5 - Population and vital statistics - Island of Mauritius, 1921-75

Period	Population <sup>1/</sup> at mid-period	Live births	Deaths	Natural increase	Infant deaths <sup>2/</sup>	Still births	Civil marriages
1921-25 Average	379,636	14,834	11,758	3,076	2,104	1,581	2,062
1926-30 "	403,248	14,208	11,614	2,594	2,002	1,256	1,455
1931-35 "	398,647	12,490	11,889	601	1,752	1,216	1,489
1936-40 "	412,003	13,621	11,157	2,464	2,119	1,240	2,093
1941-45 "	417,838	15,027	11,927	3,100	2,318	1,240	3,333
1946-50 "	438,797	19,595	9,113	10,482	2,343	1,348	3,503
1951-55 "	522,577	23,176	7,701	15,475	1,884	1,472	3,307
1956	574,938	24,910	6,739	18,171	1,644	1,789	3,080
1957	593,070	25,273	7,603	17,670	1,897	1,800	2,903
1958	609,518	24,600	7,112	17,488	1,659	1,703	3,169
1959	627,249	23,923	6,753	17,170	1,495	1,759	3,297
1960	644,743	25,307	7,248	18,059	1,760	1,783	3,113
1961	662,368	26,092	6,505	19,587	1,618	1,963	3,484
1962	681,619	26,267	6,325	19,942	1,579	1,841	3,893
1963	695,641	27,978	6,709	21,269	1,560	1,519	3,472
1964	716,298	27,528	6,184	21,344	1,561	1,611	3,965
1965	735,245	26,279	6,337	19,942	1,685	1,557	3,976
1966	753,276	26,817	6,701	20,116	1,721	1,384	4,157
1967	767,782	23,499	6,543	16,956	1,656	1,074	3,949
1968	781,615	24,413	7,126	17,287	1,688	1,110	3,974
1969	792,893	21,719	6,428	15,291	1,528	951	3,882
1970	805,489	21,623	6,309	15,314	1,232	857	4,499
1971	816,561	20,834	6,248	14,586	1,077	842	4,346
1972	826,199	20,496	6,506	13,990	1,308	718	5,082
1973	834,781	18,974	6,525	12,499	1,201	678	5,533
1974	845,755	22,938	6,221	16,717	1,045	854	6,771
1975	856,516	21,492	6,967	14,525	1,046	896	6,888

<sup>1/</sup> Figures for 1963-71 have been revised in the light of the final 1972 Population Census data.

<sup>2/</sup> Deaths of children under 1 year of age.

II - PASSENGER TRAFFIC

Table 6 - Passenger traffic<sup>1/</sup> by sex, 1933 - June 1976

Period	Arrivals			Departures			Net overseas migration
	Both sexes	Male	Female	Both sexes	Male	Female	
1933	3,444	2,410	1,034	4,011	2,862	1,149	- 567
1934	3,969	2,777	1,192	4,380	3,056	1,324	- 411
1935	3,988	2,876	1,112	4,255	2,899	1,356	- 267
1936	3,807	2,681	1,126	3,563	2,451	1,112	+ 244
1937	3,472	2,366	1,106	3,849	2,736	1,113	- 377
1938	4,554	3,062	1,492	4,281	2,896	1,385	+ 273
1939	3,171	1,984	1,187	3,212	2,127	1,085	- 41
1940	1,518	1,028	490	1,851	1,379	472	- 333
1941	1,209	950	259	4,165	3,359	306	- 2,956
1942	1,083	893	190	1,560	1,398	162	- 477
1943	1,054	859	195	737	642	95	+ 317
1944	1,034	798	236	1,053	796	257	- 19
1945	2,061	1,624	437	2,247	1,624	623	- 186
1946	3,298	2,279	1,019	3,377	2,160	1,217	- 79
1947	4,698	3,128	1,570	4,514	3,100	1,414	+ 184
1948	4,294	2,792	1,502	4,015	2,684	1,331	+ 279
1949	4,093	2,700	1,393	4,141	2,794	1,347	- 48
1950	5,253	3,469	1,784	4,900	3,352	1,548	+ 353
1951	5,243	3,515	1,728	5,016	3,536	1,480	+ 227
1952	6,046	3,999	2,047	5,637	3,854	1,783	+ 409
1953	7,252	4,820	2,432	7,054	4,732	2,322	+ 198
1954	7,251	4,728	2,523	7,312	4,824	2,488	- 61
1955	7,216	4,558	2,658	7,354	4,722	2,632	- 138
1956	7,747	4,873	2,874	8,225	5,219	3,006	- 478
1957	8,095	5,156	2,939	8,267	5,309	2,958	- 172
1958	8,703	5,424	3,279	8,924	5,596	3,328	- 221
1959	9,637	5,995	3,642	9,544	6,058	3,486	+ 93
1960	10,412	6,563	3,849	10,784	6,938	3,846	- 372

Table 6 (Continued)

Period	Arrivals			Departures			Net overseas migration
	Both sexes	Male	Female	Both sexes	Male	Female	
1961	11,854	7,246	4,608	13,033	8,165	4,868	- 1,179
1962	15,189	9,283	5,906	16,075	9,887	6,188	- 886
1963	18,047	10,939	7,108	18,299	11,108	7,191	- 252
1964	21,221	12,787	8,434	22,331	13,349	8,982	- 1,110
1965	22,024	13,571	8,453	24,150	14,759	9,391	- 2,126
1966	26,456	16,358	10,098	29,301	17,930	11,371	- 2,845
1967	29,321	18,177	11,144	32,925	20,135	12,790	- 3,604
1968	31,403	19,820	11,583	35,988	22,181	13,807	- 4,585
1969	35,919	21,552	14,367	38,929	23,127	15,802	- 3,010
1970	48,819	29,587	19,232	51,969	31,033	20,936	- 3,150
1971	60,826	36,005	24,821	63,997	37,399	26,598	- 3,171
1972	77,174	45,587	31,587	81,493	47,837	33,656	- 4,319
1973	101,184	59,215	41,969	104,697	61,364	43,333	- 3,513
1974	109,044	63,077	45,967	113,362	65,649	47,713	- 4,318
1975	117,548	68,654	48,894	120,703	70,368	50,335	- 3,155
Jan-June 1976	61,815	36,875	24,940	68,457	39,803	28,654	- 6,642

1/ Including seamen but excluding transit passengers who do not leave the airport.

Table 7 - Passenger traffic between Island of Mauritius and Rodrigues, 1962 - June 76

Period	Departures to Rodrigues			Arrivals from Rodrigues			Net overseas migration
	Both sexes	Male	Female	Both sexes	Male	Female	
1962	1,033	661	372	1,126	725	401	- 93
1963	899	620	279	1,439	905	534	- 540
1964	1,300	850	450	1,450	915	535	- 150
1965	1,339	854	485	1,525	961	564	- 186
1966	1,326	860	466	1,418	904	514	- 92
1967	1,485	940	545	1,268	822	446	+ 217
1968	1,541	940	601	1,485	946	539	+ 56
1969	1,569	1,034	535	1,493	994	499	+ 76
1970	1,740	1,103	637	1,762	1,123	639	+ 22
1971	1,578	1,017	561	1,744	1,118	626	- 166
1972	2,168	1,409	759	2,311	1,469	842	- 143
1973	2,427	1,521	906	2,453	1,511	942	- 26
1974	2,053	1,197	856	2,648	1,560	1,088	- 595
1975	2,968	1,870	1,098	3,319	2,030	1,289	- 351
Jan-June 1976	1,620	1,100	520	2,083	1,429	654	- 463

Table 8 - Passenger traffic<sup>1/</sup> by mode of transport, 1962 - June 1976

Period	Arrivals			Departures			Net overseas migration
	Total	By sea	By air	Total	By sea	By air	
1962	15,189	4,258	10,931	16,075	4,374	11,701	- 886
1963	18,047	4,660	13,387	18,299	4,432	13,867	- 252
1964	21,221	5,137	16,034	22,331	5,478	16,853	- 1,110
1965	22,024	4,886	17,138	24,150	5,463	18,687	- 2,126
1966	26,456	5,544	20,912	29,301	6,330	22,971	- 2,845
1967	29,321	4,901	24,420	32,925	6,515	26,410	- 3,604
1968	31,403	4,264	27,139	35,938	5,967	30,021	- 4,585
1969	35,919	3,483	32,436	38,929	4,632	34,297	- 3,010
1970	48,819	3,984	44,835	51,969	4,376	47,593	- 3,150
1971	60,826	3,857	56,969	63,997	4,295	59,702	- 3,171
1972	77,174	3,741	73,433	81,493	4,072	77,421	- 4,319
1973	101,184	4,238	96,946	104,697	4,027	100,670	- 3,513
1974	109,044	3,848	105,196	113,362	3,772	109,590	- 4,318
1975	117,548	4,485	113,063	120,703	4,255	116,448	- 3,155
1975 : 1st Qr.	25,256	1,011	24,245	30,264	879	29,385	- 5,008
2nd Qr.	22,260	903	21,357	24,077	788	23,289	- 1,817
3rd Qr.	35,023	1,267	33,756	36,401	1,203	35,198	- 1,378
4th Qr.	35,009	1,304	33,705	29,961	1,385	28,576	+ 5,048
1976 : 1st Qr.	33,068	1,038	32,030	38,616	1,119	37,497	- 5,548
2nd Qr.	28,747	1,161	27,586	29,841	1,044	28,797	- 1,094

<sup>1/</sup> Including seamen but excluding transit passengers who do not leave the airport.

Table 9 - Passenger traffic <sup>1/</sup> by month, 1973-June 1976

Month	Arrivals				Departures				Excess of arrivals over departures			
	1973	1974	1975	1976	1973	1974	1975	1976	1973	1974	1975	1976
January	9,307	12,015	11,918	14,436	10,915	13,947	14,327	17,267	- 1,608	- 1,932	- 2,409	- 2,831
February	6,709	7,884	6,223	9,560	8,723	10,617	9,203	12,222	- 2,014	- 2,733	- 2,980	- 2,662
March	5,946	7,379	7,115	9,072	6,724	7,469	6,734	9,127	- 778	- 90	+ 381	- 55
April	7,502	7,974	7,222	9,758	7,854	8,817	7,873	10,223	- 352	- 843	- 651	- 465
May	7,282	7,387	7,968	10,933	7,764	7,190	9,139	11,338	- 482	+ 197	- 1,171	- 405
June	7,216	7,288	7,070	8,056	7,437	8,075	7,065	8,280	- 221	- 787	+ 5	- 224
July	7,896	9,142	9,756		8,334	8,808	9,911		- 438	+ 334	- 155	
August	13,816	13,128	15,963		12,239	11,630	14,024		+ 1,577	+ 1,498	+ 1,939	
September	8,171	8,058	9,304		10,807	11,521	12,466		- 2,636	- 3,463	- 3,162	
October	7,159	7,384	8,905		7,140	7,537	8,624		+ 19	- 153	+ 281	
November	6,362	8,140	10,009		7,144	8,509	10,527		- 782	- 369	- 518	
December	13,818	13,265	16,095		9,616	9,242	10,810		+ 4,202	+ 4,023	+ 5,285	
Whole year	101,184	109,044	117,548		104,697	113,362	120,703		- 3,513	- 4,318	- 3,155	

<sup>1/</sup> Including seamen but excluding transit passengers who do not leave the airport.

Table 10 - Arrivals<sup>1/</sup> by country of original embarkation, 1971 - June 1976

Country of original embarkation	1971	1972	1973	1974	1975	Jan-June 1976
Kenya	1,554	1,690	2,278	2,319	2,126	1,572
Malagasy Republic	3,459	4,113	4,870	3,888	2,704	1,945
Malawi	379	463	495	571	907	501
Réunion	25,691	29,314	36,031	36,959	43,058	23,637
Rhodesia	197	401	342	399	1,150	476
Seychelles	126	1,348	2,295	2,429	2,209	1,121
South Africa, Rep. of	6,930	10,198	12,537	16,607	17,450	9,444
Tanzania	539	534	576	433	332	235
Zambia	1,519	2,171	2,824	3,891	3,263	1,129
Rodrigues	1,744	2,292	2,453	2,648	3,319	2,083
Agalega & St. Brandon	473	276	335	526	672	116
Other African	466	672	1,245	854	798	847
China (Mainland)	}	160	63	24	14	11
China (Taiwan)		34	186	197	52	21
Hong Kong	249	594	652	574	839	548
India	2,270	2,798	5,185	4,790	5,608	4,044
Japan	79	98	126	111	111	36
Singapore	60	25	42	119	36	14
Other Asian	253	343	257	574	439	331
Australia	3,503	3,869	4,660	5,568	5,395	2,748
New Caledonia	...	178	118	86	92	47
New Zealand	260	238	333	360	316	219
Other Oceanian	230	69	49	61	50	15
Belgium	563	1,494	3,808	2,294	1,703	288
France	1,580	2,604	4,357	7,008	8,277	4,106
Germany, Fed. Rep. of	677	1,188	1,596	1,548	1,246	524
Italy	288	572	1,470	1,362	1,276	440
Switzerland	118	167	372	510	396	211
United Kingdom	6,039	7,869	9,882	10,374	12,192	4,562
Other European	358	363	723	765	400	158
Canada	81	105	174	210	157	60
U. S. A.	307	311	290	296	124	67
Other American	18	19	26	29	55	8
U. S. S. R.	227	71	70	100	74	10
High Seas	-	-	-	40	-	-
Unknown	-	-	-	12	21	3
All countries	60,237	76,641	100,720	108,536	116,861	61,577

<sup>1/</sup> Excluding transit passengers who did not leave the airport; discharged seamen numbering 589, 533, 464, 508, 687 and 238 respectively for the period under review

Table 11 - Departures<sup>1/</sup> by country of final destination, 1971 - June 1976

Country of final destination	1971	1972	1973	1974	1975	Jan-June 1976
Kenya	2,155	1,940	2,349	2,815	2,733	1,653
Malagasy Republic	2,867	2,984	3,649	3,211	2,228	1,736
Malawi	471	482	499	628	793	511
Réunion	26,173	30,259	37,156	37,767	42,569	24,864
Rhodesia	214	462	368	535	1,088	596
Seychelles	165	1,710	1,780	2,051	2,061	1,285
South Africa, Rep. of	6,410	8,535	12,346	17,220	18,158	11,345
Tanzania	588	548	570	655	528	257
Zambia	1,640	2,290	2,605	3,663	2,952	1,142
Rodrigues	1,578	2,168	2,427	2,053	2,968	1,620
Agalega & St. Brandon	429	266	325	394	357	101
Other African	701	975	1,685	1,117	1,078	521
China (Mainland)		88	76	13	13	32
China (Taiwan)	... }	23	170	270	93	15
Hong Kong	380	708	673	595	858	559
India	2,446	3,694	5,040	4,108	5,506	3,131
Japan	106	133	123	157	124	76
Singapore	47	27	53	91	99	58
Other Asian	364	430	384	696	524	87
Australia	3,463	3,908	4,325	4,575	4,537	2,461
New Caledonia	...	135	120	131	59	40
New Zealand	170	263	423	363	303	114
Other Oceanian	140	35	72	67	30	9
Belgium	616	1,485	3,066	2,235	2,242	346
France	2,728	4,616	6,627	9,009	9,814	5,586
Germany, Fed. Rep. of	764	1,082	1,650	1,487	1,231	552
Italy	224	829	1,656	1,783	1,406	875
Switzerland	129	225	385	589	536	311
United Kingdom	7,174	9,496	11,989	12,410	13,728	7,733
Other European	414	446	884	877	490	218
Canada	116	157	221	355	326	146
U. S. A.	304	360	356	362	226	90
Other American	14	22	31	80	32	8
U. S. S. R.	237	57	79	93	66	17
High Seas	-	-	-	137	-	-
Unknown	-	-	-	24	16	6
All countries	63,227	80,838	104,162	112,616	119,772	68,101

<sup>1/</sup> Excluding transit passengers who did not leave the airport; engaged seamen numbering 770, 655, 535, 746, 931 and 356 respectively for the period under review.

Table 12 - Passenger<sup>1/</sup> traffic by type of passenger and month, January - June 1976

Type of passenger	January	February	March	April	May	June	Total (Jan-June)
<b>ARRIVALS</b>							
Visitors <sup>2/</sup>	10,410	7,588	6,464	7,029	7,877	5,233	44,601
On holiday	9,417	6,294	5,344	6,122	6,686	3,346	37,209
On business	283	413	463	385	509	1,301	3,354
In transit	659	803	633	495	652	509	3,751
Other and not stated	51	78	24	27	30	77	287
Mauritians settled abroad	700	491	488	557	519	608	3,363
Mauritian residents	3,043	1,250	1,847	1,832	2,332	2,036	12,340
Other	242	217	234	253	175	152	1,273
<b>Total</b>	<b>14,395</b>	<b>9,546</b>	<b>9,033</b>	<b>9,671</b>	<b>10,903</b>	<b>8,029</b>	<b>61,577</b>
<b>DEPARTURES</b>							
Visitors <sup>2/</sup>	12,541	8,812	6,235	6,931	8,449	4,937	47,905
Mauritians settled abroad	2,342	1,126	458	444	523	421	5,314
Emigrants	60	90	72	61	53	30	366
Mauritian residents	1,938	1,861	2,053	2,388	2,079	2,545	12,864
Other	312	304	232	279	215	310	1,652
<b>Total</b>	<b>17,193</b>	<b>12,193</b>	<b>9,050</b>	<b>10,103</b>	<b>11,319</b>	<b>8,243</b>	<b>68,101</b>

<sup>1/</sup> Excluding seamen and transit passengers who do not leave the airport.

<sup>2/</sup> Including non-residents (a total of 2,375 for the half-year) who left the airport but stayed in the country for less than a day.



Table 13 - Arrivals<sup>1/</sup> by age and sex, July 1974 - June 1976

Age (completed years)	July - December 1974			January - June 1975			July - December 1975			January - June 1976		
	Both sexes	Male	Female	Both sexes	Male	Female	Both sexes	Male	Female	Both sexes	Male	Female
Under 1	463	239	224	302	159	143	414	226	188	343	206	137
1 - 4	2,183	1,125	1,058	1,747	927	820	2,556	1,353	1,203	2,085	1,115	970
5 - 9	2,735	1,453	1,282	2,062	1,091	971	2,988	1,568	1,420	2,466	1,339	1,127
10 - 14	2,653	1,358	1,295	1,849	945	904	3,043	1,533	1,510	2,370	1,245	1,125
15 - 19	2,963	1,385	1,578	2,290	1,133	1,157	3,627	1,657	1,970	2,896	1,361	1,535
20 - 24	6,430	3,121	3,309	5,118	2,671	2,447	7,579	3,628	3,951	6,619	3,343	3,276
25 - 29	8,161	4,633	3,528	6,610	3,934	2,676	10,061	5,637	4,424	9,649	5,023	3,626
30 - 34	7,102	4,257	2,845	5,540	3,521	2,019	8,314	5,037	3,277	7,697	4,747	2,950
35 - 39	5,739	3,587	2,152	4,669	3,062	1,607	6,849	4,222	2,627	6,318	4,134	2,184
40 - 44	4,669	2,940	1,729	3,789	2,528	1,261	5,400	3,450	1,950	5,151	3,426	1,725
45 - 49	4,197	2,552	1,645	3,358	2,187	1,171	4,997	3,023	1,874	4,405	2,883	1,522
50 - 54	3,595	2,113	1,482	2,785	1,760	1,025	4,171	2,478	1,693	3,779	2,375	1,404
55 - 59	2,485	1,418	1,067	2,060	1,268	792	2,836	1,656	1,180	2,496	1,510	986
60 - 64	1,765	1,013	752	1,506	899	607	2,181	1,272	909	1,940	1,133	807
65 - 69	1,010	559	451	885	509	376	1,271	695	576	1,157	670	487
70 and over	727	386	341	629	367	262	888	485	403	818	460	358
Not stated	2,240	1,525	715	2,317	1,725	592	2,957	2,048	909	2,626	1,905	721
All ages	59,117	33,664	25,453	47,516	28,686	18,830	70,032	39,968	30,064	61,815	36,875	24,940

<sup>1/</sup> Including discharged seamen but excluding transit passengers who do not leave the airport.

**Table 14 - Departures<sup>1/</sup> by age and sex, July 1974-June 1976**

Age (completed years)	July-December 1974			January-June 1975			July-December 1975			January-June 1976		
	Both sexes	Male	Female	Both sexes	Male	Female	Both sexes	Male	Female	Both sexes	Male	Female
Under 1	382	203	179	363	187	176	341	191	150	421	241	180
1 - 4	1,956	1,024	932	2,184	1,175	1,009	2,280	1,239	1,041	2,552	1,353	1,199
5 - 9	2,555	1,375	1,180	2,512	1,343	1,169	2,766	1,437	1,329	2,987	1,601	1,386
10 - 14	2,498	1,291	1,207	2,337	1,235	1,102	2,932	1,527	1,405	2,839	1,515	1,324
15 - 19	3,269	1,556	1,713	3,067	1,474	1,593	3,902	1,806	2,096	3,542	1,673	1,869
20 - 24	6,987	3,612	3,375	6,308	3,229	3,079	7,748	3,945	3,803	7,659	3,758	3,901
25 - 29	7,801	4,521	3,280	7,552	4,380	3,172	9,223	5,237	3,986	9,723	5,478	4,245
30 - 34	6,768	4,105	2,663	6,281	3,919	2,362	7,639	4,655	2,984	8,436	5,093	3,343
35 - 39	5,293	3,315	1,978	5,270	3,413	1,857	6,307	3,880	2,427	6,734	4,261	2,473
40 - 44	4,376	2,842	1,534	4,194	2,752	1,442	4,967	3,214	1,753	5,608	3,645	1,965
45 - 49	3,886	2,383	1,503	3,780	2,402	1,378	4,678	2,877	1,801	4,626	2,958	1,668
50 - 54	3,423	2,007	1,416	3,126	1,937	1,189	3,893	2,298	1,595	4,104	2,502	1,602
55 - 59	2,419	1,346	1,073	2,147	1,317	830	2,736	1,626	1,110	2,719	1,641	1,078
60 - 64	1,695	967	728	1,613	954	659	2,120	1,246	874	2,035	1,158	877
65 - 69	982	553	429	961	542	419	1,226	664	562	1,242	698	544
70 and over	722	380	342	673	368	305	874	469	405	879	499	380
Not stated	2,235	1,548	687	1,973	1,494	479	2,730	1,936	794	2,351	1,731	620
All ages	57,247	33,028	24,219	54,341	32,121	22,220	66,362	38,247	28,115	68,457	39,803	28,654

<sup>1/</sup> Including engaged seamen but excluding transit passengers who do not leave the airport.

Table 15 - Excess of arrivals<sup>1/</sup> over departures<sup>1/</sup> by age and sex, July 1974-June 1976

Age (completed years)	July-December 1974			January-June 1975			July-December 1975			January-June 1976		
	Both sexes	Male	Female	Both sexes	Male	Female	Both sexes	Male	Female	Both sexes	Male	Female
Under 1	+ 81	+ 36	+ 45	- 61	- 28	- 33	+ 73	+ 35	+ 38	- 78	- 35	- 43
1 - 4	+ 227	+ 101	+ 126	- 437	- 248	- 189	+ 276	+ 114	+ 162	- 467	- 238	- 229
5 - 9	+ 180	+ 78	+ 102	- 450	- 252	- 198	+ 222	+ 131	+ 91	- 521	- 262	- 259
10 - 14	+ 155	+ 67	+ 88	- 488	- 290	- 198	+ 111	+ 6	+ 105	- 469	- 270	- 199
15 - 19	- 306	- 171	- 135	- 777	- 341	- 436	- 275	- 149	- 126	- 646	- 312	- 334
20 - 24	- 557	- 491	- 66	- 1,190	- 558	- 632	- 169	- 317	+ 148	- 1,040	- 415	- 625
25 - 29	+ 360	+ 112	+ 248	- 942	- 446	- 496	+ 838	+ 400	+ 438	- 1,074	- 455	- 619
30 - 34	+ 334	+ 152	+ 182	- 741	- 398	- 343	+ 675	+ 382	+ 293	- 739	- 346	- 393
35 - 39	+ 446	+ 272	+ 174	- 601	- 351	- 250	+ 542	+ 342	+ 200	- 416	- 127	- 289
40 - 44	+ 293	+ 98	+ 195	- 405	- 224	- 181	+ 433	+ 236	+ 197	- 457	- 217	- 240
45 - 49	+ 311	+ 169	+ 142	- 422	- 215	- 207	+ 219	+ 146	+ 73	- 221	- 75	- 146
50 - 54	+ 172	+ 106	+ 66	- 341	- 177	- 164	+ 278	+ 180	+ 98	- 325	- 127	- 198
55 - 59	+ 66	+ 72	- 6	- 87	- 49	- 38	+ 100	+ 30	+ 70	- 223	- 131	- 92
60 - 64	+ 70	+ 46	+ 24	- 107	- 55	- 52	+ 61	+ 26	+ 35	- 95	- 25	- 70
65 - 69	+ 28	+ 6	+ 22	- 76	- 33	- 43	+ 45	+ 31	+ 14	- 85	- 28	- 57
70 and over	+ 5	+ 6	- 1	- 44	- 1	- 43	+ 14	+ 16	- 2	- 61	- 39	- 22
Not stated	+ 5	- 23	+ 28	+ 344	+ 231	+ 113	+ 227	+ 112	+ 115	+ 275	+ 174	+ 101
All ages	+ 1,870	+ 636	+ 1,234	- 6,825	- 3,435	- 3,390	+ 3,670	+ 1,721	+ 1,949	- 6,642	- 2,928	- 3,714

<sup>1/</sup> Including seamen but excluding transit passengers who do not leave the airport.

Table 16 - Arrivals and departures<sup>1/</sup> of residents of Island of Mauritius by district of residence and sex, Jan-June 1976

Geographical district	Arrivals			Departures			Excess of arrivals over departures		
	Both sexes	Male	Female	Both sexes	Male	Female	Both sexes	Male	Female
Port Louis	2,591	1,727	864	2,766	1,759	1,007	- 175	- 32	- 143
Pamplemousses	427	288	139	434	293	141	- 7	- 5	- 2
Rivière du Rempart	322	205	117	334	222	112	- 12	- 17	+ 5
Flacq	301	203	98	340	240	100	- 39	- 37	- 2
Grand Port	343	214	129	346	203	143	- 3	+ 11	- 14
Savanne	219	142	77	195	126	69	+ 24	+ 16	+ 8
Plaines Wilhems : Urban	5,165	3,257	1,908	5,660	3,429	2,231	- 495	- 172	- 323
Other	89	55	34	124	63	61	- 35	- 8	- 27
Moka	270	182	88	239	147	92	+ 31	+ 35	- 4
Black River	108	66	42	107	63	44	+ 1	+ 3	- 2
Not stated	2,505	1,730	775	2,319	1,559	760	+ 136	+ 171	+ 15
Whole Island	12,340	8,069	4,271	12,864	8,104	4,760	- 524	- 35	- 489

<sup>1/</sup> Excluding official long-term emigrants.

Table 17 - Arrivals of residents of Island of Mauritius by age and sex, January 1974 - June 1976

Age (completed years)	January-June 1974			July-December 1974			January-June 1975			July-December 1975			January-June 1976		
	Both sexes	Male	Female	Both sexes	Male	Female	Both sexes	Male	Female	Both sexes	Male	Female	Both sexes	Male	Female
Under 1	49	25	24	59	29	30	37	24	13	36	24	54	27	27	
1 - 4	187	103	84	209	102	107	214	101	113	160	141	208	117	91	
5 - 9	210	101	109	303	154	149	248	125	123	183	164	262	143	119	
10 - 14	212	108	104	362	182	180	226	99	127	219	219	309	163	146	
15 - 19	494	242	252	609	321	288	512	280	232	383	386	637	301	336	
20 - 24	1,202	755	447	1,610	1,003	607	1,365	879	486	2,027	774	1,500	1,000	500	
25 - 29	1,033	717	316	1,320	870	450	1,219	867	352	1,801	594	1,338	967	371	
30 - 34	895	610	285	1,076	703	373	1,025	708	317	1,411	471	1,040	712	328	
35 - 39	789	536	253	1,080	684	396	885	615	270	1,227	445	932	636	296	
40 - 44	703	506	197	866	568	298	818	558	260	1,025	328	874	611	263	
45 - 49	644	424	220	841	513	328	789	509	280	1,055	394	848	543	305	
50 - 54	542	359	183	647	401	246	577	376	201	438	353	691	440	251	
55 - 59	458	277	181	569	358	211	527	332	195	397	267	517	320	197	
60 - 64	315	190	125	398	224	174	364	212	152	302	222	403	234	169	
65 - 69	204	121	83	205	98	107	225	131	94	183	149	251	149	102	
70 and over	166	90	76	192	106	86	180	111	69	138	112	240	141	99	
Not stated	1,358	892	466	1,910	1,251	659	1,595	1,073	522	2,479	821	2,236	1,565	671	
All ages	9,461	6,056	3,405	12,256	7,567	4,689	10,806	7,000	3,806	15,506	9,642	12,340	8,069	4,271	

Table 18 - Departures of residents<sup>1/</sup> of Island of Mauritius by age and sex, January 1974 - June 1976

Age (completed years)	January - June 1974			July - December 1974			January - June 1975			July - December 1975			January - June 1976		
	Both sexes	Male	Female	Both sexes	Male	Female	Both sexes	Male	Female	Both sexes	Male	Female	Both sexes	Male	Female
Under 1	47	23	24	58	30	28	60	31	29	73	38	35	66	35	31
1 - 4	214	108	106	269	132	137	295	150	145	344	199	145	226	107	119
5 - 9	243	119	124	436	236	200	317	164	153	474	227	247	256	140	116
10 - 14	221	107	114	529	270	259	276	132	144	626	325	301	257	138	119
15 - 19	724	371	353	1,198	640	558	826	417	409	1,375	689	686	769	391	378
20 - 24	1,723	1,096	627	2,642	1,689	953	1,965	1,214	751	2,778	1,791	987	1,829	1,125	704
25 - 29	1,266	840	426	1,697	1,131	566	1,496	978	518	1,884	1,253	631	1,496	1,012	484
30 - 34	997	661	336	1,233	787	446	1,193	795	398	1,469	956	513	1,141	758	383
35 - 39	896	600	296	1,081	678	403	1,019	688	331	1,214	731	483	1,008	659	349
40 - 44	810	574	236	868	579	289	890	603	287	1,003	661	342	927	638	289
45 - 49	733	480	253	808	482	326	888	553	335	1,045	623	422	853	543	310
50 - 54	597	390	207	631	377	254	657	409	248	780	424	356	746	435	311
55 - 59	493	307	186	585	346	239	552	347	205	690	418	272	549	319	230
60 - 64	309	192	117	393	217	176	391	218	173	559	321	238	405	227	178
65 - 69	182	97	85	243	119	124	238	133	105	378	206	172	264	151	113
70 and over	144	84	60	205	109	96	185	104	81	290	148	142	223	130	93
Not stated	878	618	260	1,759	1,106	653	1,270	860	410	2,170	1,441	729	1,849	1,296	553
All ages	10,477	6,667	3,810	14,635	8,928	5,707	12,518	7,796	4,722	17,152	10,451	6,701	12,864	8,104	4,760

<sup>1/</sup> Excluding official long-term emigrants.

Table 19 - Excess of arrivals over departures of residents (excluding emigrants) of Island of Mauritius by age and sex, January 1974 - June 1976

Age (completed years)	January - June 1974		July - December 1974		January - June 1975		July - December 1975		January - June 1976			
	Both sexes	Male	Female	Both sexes	Male	Female	Both sexes	Male	Female	Both sexes	Male	Female
Under 1	+ 2	+ 2	-	+ 1	- 1	+ 2	- 23	- 13	- 2	- 11	- 8	- 4
1 - 4	- 27	- 5	- 22	- 60	- 30	- 30	- 81	- 43	- 39	- 4	+ 10	- 28
5 - 9	- 33	- 18	- 15	- 133	- 82	- 51	- 69	- 127	- 44	- 83	+ 6	+ 3
10 - 14	- 9	+ 1	- 10	- 167	- 88	- 79	- 50	- 188	- 106	- 82	+ 25	+ 27
15 - 19	- 230	- 129	- 101	- 589	- 319	- 270	- 314	- 606	- 306	- 300	- 90	- 42
20 - 24	- 521	- 341	- 180	- 1,032	- 686	- 346	- 600	- 751	- 538	- 213	- 125	- 204
25 - 29	- 233	- 123	- 110	- 377	- 261	- 116	- 277	- 83	- 46	- 37	- 158	- 113
30 - 34	- 102	- 51	- 51	- 157	- 84	- 73	- 168	- 58	- 16	- 42	- 101	- 46
35 - 39	- 107	- 64	- 43	- 1	+ 6	- 7	- 134	+ 13	+ 51	- 38	- 76	- 53
40 - 44	- 107	- 68	- 39	- 2	- 11	+ 9	- 72	+ 22	+ 36	- 14	- 53	- 26
45 - 49	- 89	- 56	- 33	+ 33	+ 31	+ 2	- 99	+ 10	+ 38	- 28	- 5	- 5
50 - 54	- 55	- 31	- 24	+ 16	+ 24	- 8	- 80	+ 11	+ 14	- 3	+ 5	- 60
55 - 59	- 35	- 30	- 5	- 16	+ 12	- 28	- 25	- 26	- 21	- 5	+ 1	- 33
60 - 64	+ 6	- 2	+ 8	+ 5	+ 7	- 2	- 27	- 35	- 19	- 16	+ 7	- 9
65 - 69	+ 22	+ 24	- 2	- 38	- 21	- 17	- 13	- 41	- 18	- 23	- 2	- 11
70 and over	+ 22	+ 6	+ 16	- 13	- 3	- 10	- 5	- 40	- 10	- 30	+ 17	+ 6
Not stated	+ 480	+ 274	+ 206	+ 151	+ 145	+ 6	+ 325	+ 309	+ 217	+ 92	+ 269	+ 118
All ages	- 1,016	- 611	- 405	- 2,379	- 1,361	- 1,018	- 1,712	- 1,646	- 809	- 837	- 524	- 489





III - EMIGRATION

Table 21 - Official long-term emigrants<sup>1/</sup> by sex, 1956 - June 1976

Year	Both sexes	Male	Female
1956	147	93	54
1957	109	68	41
1958	163	130	33
1959	170	128	42
1960	158	132	26
1961	837	629	208
1962	1,083	711	372
1963	594	326	268
1964	915	491	424
1965	1,408	659	749
1966	1,611	774	837
1967	2,225	1,038	1,187
1968	3,067	1,487	1,580
1969	2,379	1,119	1,260
1970	2,282	1,063	1,219
1971	2,351	1,078	1,273
1972	2,271	956	1,315
1973	2,037	844	1,193
1974	1,494	606	888
1975	874	328	546
Jan - June 1976	366	123	243

<sup>1/</sup> Persons who have obtained a permit to emigrate to another country.

Table 22 - External migration, 1956-75

Year	Arrivals	Departures			Excess of arrivals over departures (excluding emigrants)
		Total	Official long-term emigrants <sup>1/</sup>	Departures excluding emigrants	
1956	7,747	8,225	147	8,078	- 331
1957	8,095	8,267	109	8,158	- 63
1958	8,703	8,924	163	8,761	- 58
1959	9,637	9,544	170	9,374	+ 263
1960	10,412	10,784	158	10,626	- 214
1961	11,854	13,033	837	12,196	- 342
1962	15,189	16,075	1,083	14,992	+ 197
1963	18,047	18,299	594	17,705	+ 342
1964	21,221	22,331	915	21,416	- 195
1965	22,024	24,150	1,408	22,742	- 718
1966	26,456	29,301	1,611	27,690	- 1,234
1967	29,321	32,925	2,225	30,700	- 1,379
1968	31,403	35,988	3,067	32,921	- 1,518
1969	35,919	38,929	2,379	36,550	- 631
1970	48,819	51,969	2,282	49,687	- 868
1971	60,826	63,997	2,351	61,646	- 820
1972	77,174	81,493	2,271	79,222	- 2,048
1973	101,184	104,697	2,037	102,660	- 1,476
1974	109,044	113,362	1,494	111,868	- 2,824
1975	117,548	120,703	874	119,829	- 2,281

<sup>1/</sup> Persons who have obtained a permit to emigrate to another country.

Note: The number of immigrants coming to settle in Mauritius is negligible. A net negative balance over successive years in the last column indicates that a number of persons not registered as official emigrants are permanently leaving the country.

Table 23- Official long-term emigrants/ by country of intended residence, 1963 - June 1976

Country of intended residence	1963	1964	1965	1966	1967	1968	1969	1970	1971	1972	1973	1974	1975	Jan-June, 1976
All countries	594	915	1,408	1,611	2,225	3,067	2,379	2,282	2,351	2,271	2,037	1,494	874	366
<u>AFRICA</u>	<u>131</u>	<u>74</u>	<u>201</u>	<u>164</u>	<u>246</u>	<u>276</u>	<u>84</u>	<u>158</u>	<u>220</u>	<u>185</u>	<u>106</u>	<u>99</u>	<u>17</u>	<u>16</u>
Congo Brazzaville	-	-	-	1	1	-	1	20	54	-	3	9	-	-
Kenya	4	2	7	1	1	20	3	11	9	5	12	7	-	2
Malagasy Rep.	55	10	-	-	3	2	2	4	6	4	7	-	-	1
Malawi	-	-	3	13	8	23	1	12	15	30	23	29	2	9
Mozambique	-	-	3	-	4	-	14	42	20	20	11	8	7	-
Reunion	4	1	2	2	6	9	2	1	6	-	8	1	2	-
Rhodesia	13	19	111	54	16	4	1	2	3	-	-	-	-	-
South Africa, Rep.	50	31	72	81	176	171	50	22	37	5	9	8	3	-
Zambia	-	-	-	7	30	38	10	30	56	113	23	21	2	4
Other African	5	11	3	5	1	9	-	14	14	8	10	16	1	-
<u>AMERICA</u>	<u>-</u>	<u>10</u>	<u>10</u>	<u>12</u>	<u>34</u>	<u>24</u>	<u>29</u>	<u>86</u>	<u>51</u>	<u>40</u>	<u>29</u>	<u>37</u>	<u>87</u>	<u>27</u>
Canada	-	9	1	10	32	18	25	82	47	37	26	37	87	27
U S.A.	-	1	9	2	2	6	4	4	4	2	2	-	-	-
Other American	-	-	-	-	-	-	-	-	-	1	1	-	-	-

Table 23 (Cont'd)

Country of intended residence	1963	1964	1965	1966	1967	1968	1969	1970	1971	1972	1973	1974	1975	Jan - June 1976
<u>ASIA</u>														
India	2	5	1	-	1	1	3	4	2	18	2	2	3	-
Other Asian	2	3	1	-	1	-	-	1	-	1	2	-	2	-
	<u>416</u>	<u>738</u>	<u>955</u>	<u>804</u>	<u>613</u>	<u>728</u>	<u>615</u>	<u>939</u>	<u>1,058</u>	<u>1,145</u>	<u>1,353</u>	<u>1,042</u>	<u>682</u>	<u>297</u>
<u>EUROPE</u>														
Belgium	-	3	5	94	35	22	7	22	44	32	38	54	30	3
France	6	12	8	41	53	58	93	435	566	554	684	546	237	65
Germany, Fed. Rep.	-	1	1	-	-	-	2	5	8	31	43	7	4	-
Italy	2	1	-	-	1	-	1	4	19	48	29	19	17	12
Norway	-	-	-	-	-	-	-	1	3	2	5	1	1	2
Switzerland	-	-	-	-	3	1	-	6	1	3	5	4	4	-
United Kingdom	407	718	939	667	519	646	510	463	415	460	543	402	385	215
Other European	1	3	2	2	2	1	2	3	2	15	6	9	4	-
	<u>45</u>	<u>88</u>	<u>241</u>	<u>631</u>	<u>1,331</u>	<u>2,038</u>	<u>1,648</u>	<u>1,095</u>	<u>1,019</u>	<u>883</u>	<u>547</u>	<u>314</u>	<u>85</u>	<u>26</u>
<u>OCEANIA</u>														
Australia	45	73	240	619	1,330	2,037	1,645	1,082	1,004	877	545	301	84	26
New Zealand	-	15	1	8	-	1	1	-	-	1	1	-	-	-
Other Oceanian	-	-	-	4	1	-	2	13	15	5	1	13	1	-

1/ Persons who have obtained a permit to emigrate to another country.

Table 24 - Age distribution of official long-term emigrants<sup>1/</sup>, 1962 - June 1976

Male

Age group (completed years)	1962	1963	1964	1965	1966	1967	1968	1969	1970	1971	1972	1973	1974	1975	Jan- June 1976
0 - 4	45	26	35	89	86	127	226	136	93	83	94	65	68	36	11
5 - 9	27	32	41	96	94	133	197	153	106	94	118	101	77	43	21
10 - 14	37	17	41	79	86	135	149	146	93	96	115	105	77	59	19
15 - 19	84	26	38	62	70	122	147	140	113	106	108	100	57	46	16
20 - 24	179	68	62	63	123	132	155	114	153	171	149	112	101	66	19
25 - 29	160	56	72	69	87	94	141	86	141	128	85	107	82	35	13
30 - 34	64	19	54	58	76	63	146	75	120	108	63	59	39	17	5
35 - 39	39	23	44	45	49	60	93	52	68	89	59	45	38	3	4
40 - 44	32	12	37	33	43	63	82	62	63	69	51	53	23	6	4
45 - 49	22	14	28	28	12	35	48	44	32	48	46	33	13	5	3
50 - 54	9	8	14	21	23	25	34	39	33	23	29	19	8	3	6
55 - 59	8	3	17	11	7	17	27	40	15	18	11	18	8	-	1
60 - 64	-	1	4	4	9	20	24	13	13	19	12	15	9	3	-
65 - 69	3	2	1	1	5	9	10	10	9	16	7	3	1	4	1
70 & over	2	-	3	-	4	3	8	9	11	9	4	6	4	1	-
Unknown	-	19	-	-	-	-	-	-	-	1	-	3	1	1	-
All ages	711	326	491	659	774	1,038	1,487	1,119	1,063	1,078	956	844	606	328	123

Table 24 (Continued)

Female

Age group (completed years)	1962	1963	1964	1965	1966	1967	1968	1969	1970	1971	1972	1973	1974	1975	Jan- June 1976
0 - 4	23	28	57	104	90	138	215	121	99	90	89	48	50	46	16
5 - 9	24	36	33	90	94	147	202	143	98	89	110	111	79	44	11
10 - 14	29	26	37	87	81	123	168	151	94	89	140	104	70	42	20
15 - 19	56	28	42	91	110	154	172	174	181	184	157	181	153	105	44
20 - 24	60	38	55	95	142	171	184	150	237	241	267	263	212	142	74
25 - 29	53	34	50	79	89	106	149	101	132	145	143	130	102	54	38
30 - 34	29	19	40	49	64	74	133	87	81	106	100	84	72	33	14
35 - 39	25	18	25	41	50	74	85	78	64	84	75	72	47	18	6
40 - 44	15	7	20	30	29	58	74	58	61	58	65	63	24	12	5
45 - 49	17	7	20	25	23	44	54	49	50	60	47	51	27	8	4
50 - 54	13	10	16	23	19	32	46	53	25	31	32	21	26	10	3
55 - 59	8	3	12	10	18	30	32	37	37	44	33	17	10	11	-
60 - 64	9	2	7	14	11	11	27	21	25	21	22	17	7	6	2
65 - 69	3	2	4	5	9	11	19	12	17	10	16	10	4	6	3
70 & over	6	1	5	6	7	14	20	25	18	18	14	16	4	7	3
Unknown	2	9	1	-	1	-	-	-	-	3	-	5	1	2	-
All ages	372	268	424	749	837	1,187	1,580	1,260	1,219	1,273	1,315	1,193	888	546	243

Table 24 (continued)

Both sexes

Age group (completed years)	1962	1963	1964	1965	1966	1967	1968	1969	1970	1971	1972	1973	1974	1975	Jan-June 1976
0 - 4	68	54	92	193	176	265	441	257	192	173	183	113	113	82	27
5 - 9	51	68	74	186	188	280	399	296	204	183	228	212	156	87	32
10 - 14	66	43	78	166	167	258	317	297	187	185	255	209	147	101	39
15 - 19	140	54	80	153	180	276	319	314	294	290	265	281	210	151	60
20 - 24	239	106	117	158	265	303	339	264	390	412	416	375	313	208	93
25 - 29	213	90	122	148	176	200	290	187	273	273	233	237	184	89	51
30 - 34	93	38	94	107	140	137	279	162	201	214	168	143	111	50	19
35 - 39	61	41	69	86	99	134	178	130	132	173	134	117	85	21	10
40 - 44	47	19	57	63	72	121	156	120	124	127	116	116	47	18	9
45 - 49	39	21	48	53	35	79	102	93	82	108	93	84	40	13	7
50 - 54	22	18	30	44	42	57	80	92	58	54	61	40	34	13	9
55 - 59	16	6	29	21	25	47	59	77	52	62	44	35	18	11	1
60 - 64	9	3	11	18	20	31	51	34	38	40	34	32	16	9	2
65 - 69	6	4	5	6	14	20	29	22	26	26	23	13	5	10	4
70 and over	8	1	8	6	11	17	28	34	29	27	18	22	8	8	3
Unknown	2	28	1	-	1	-	-	-	-	4	-	8	2	3	-
All ages	1,083	594	915	1,408	1,611	2,225	3,067	2,379	2,282	2,351	2,271	2,037	1,494	874	366

1/ Persons who have obtained a permit to emigrate to another country.

Table 25 - Official long-term emigrants <sup>1/</sup> by Major Occupational Group, 1972 - June 1976

Major Occupational Group <sup>2/</sup>	1972	1973	1974	1975	Jan - June 1976
Total number of emigrants	2,271	2,037	1,494	874	366
<u>Emigrants reporting an occupation</u>	778	724	518	253	98
0/1. Professional, Technical and Related workers	70	70	97	62	14
2. Administrative and Managerial Workers	2	3	14	8	5
3. Clerical and Related Workers	159	142	52	42	20
4. Sales Workers	23	9	11	7	1
5. Service Workers	228	216	151	83	20
6. Agricultural, Animal Husbandry and Forestry Workers, Fishermen and Hunters	3	6	2	1	1
7,8/9. Production and Related Workers, Transport Equipment Operators and Labourers	290	264	182	48	34
X. Workers not classifiable by Occupation	3	14	9	2	3
<u>Emigrants not reporting any occupation (including housewives and children)</u>	1,493	1,313	976	621	268

<sup>1/</sup> Persons who have obtained a permit to emigrate to another country.

<sup>2/</sup> International Standard Classification of Occupations, Revised Edition, 1968.



Table 26 - Official long-term emigrants<sup>1/</sup> by Major Occupational Group, age and sex, January-June 1976

Major Occupational Group <sup>2/</sup>	Age (completed years)															
	All ages		/ 19		20 - 24		25 - 34		35 - 44		45 - 54		55 +		Not stated	
	Both sexes	Male	Female	Male	Female	Male	Female	Male	Female	Male	Female	Male	Female	Male	Female	
Total number of emigrants	366	123	243	67	91	74	18	52	8	11	9	7	2	8	-	-
Emigrants reporting an occupation	98	48	50	2	2	23	14	22	8	3	7	-	1	-	-	-
0/1 Professional, Technical and Related Workers	14	6	8	-	-	2	2	6	-	-	-	-	-	-	-	-
2 Administrative and Managerial Workers	5	-	5	-	5	-	-	-	-	-	-	-	-	-	-	-
3 Clerical and Related Workers	20	6	14	-	9	5	1	5	-	-	-	-	-	-	-	-
4 Sales Workers	1	-	1	-	-	-	-	1	-	-	-	-	-	-	-	-
5 Service Workers	20	7	13	-	1	4	4	5	-	3	-	-	-	-	-	-
6 Agricultural, Animal Husbandry and Forestry Workers, Fishermen and Hunters	1	1	-	-	-	-	-	-	1	-	-	-	-	-	-	-
7/8/9 Production and Related Workers, Transport Equipment Operators and Labourers	34	27	7	2	-	3	7	4	6	-	7	-	1	-	-	-
X Workers not classifiable by Occupation	3	1	2	-	1	-	-	1	1	-	-	-	-	-	-	-
Emigrants not reporting any occupation (including housewives and children)	268	75	193	55	89	51	4	30	-	8	2	7	1	8	-	-

<sup>1/</sup> Persons who have obtained a permit to emigrate to another country.

<sup>2/</sup> International Standard Classification of Occupations, Revised Edition, 1968

Table 27 - Official long-term emigrants<sup>1/</sup> by occupation, 1974-June 1976

Occupation	1974	1975	Jan-June 1976
Accountants	3	2	1
Cabinet makers	10	3	3
Carpenters	5	1	2
Clerks	40	20	11
Cooks	8	9	2
Doctors	1	1	-
Drivers	8	3	3
Electricians (see also fitters)	16	4	3
Fitters (see also electricians)	14	5	6
Maids (domestic servants)	113	42	14
Managers	1	-	-
Masons	12	1	-
Mechanics	25	3	1
Nurses	60	42	5
Policemen	5	3	-
Salesmen	7	4	1
Seamstresses and tailors	48	17	7
Stenographers and typists	7	17	5
Storekeepers	1	1	-
Teachers	24	7	5
Waiters	17	24	3
Welders	7	2	3
Other	86	42	23
Occupation not stated or not applicable <sup>2/</sup>	976	621	268
<b>Total number of emigrants</b>	<b>1,494</b>	<b>874</b>	<b>366</b>

<sup>1/</sup> Persons who have obtained a permit to emigrate to another country.

<sup>2/</sup> Emigrants not reporting any occupation (including housewives and children)

Table 28 - Official long-term emigrants<sup>1/</sup> by district of last residence and sex, January 1975 - June 1976

Geographical district	January - June 1975			July-December 1975			January-June 1976		
	Both sexes	Male	Female	Both sexes	Male	Female	Both sexes	Male	Female
Port Louis	105	47	58	104	36	68	97	29	68
Pamplemousses	14	8	6	7	3	4	16	4	12
Rivière du Rempart	10	3	7	11	5	6	7	1	6
Flacq	9	2	7	8	1	7	7	3	4
Grand Port	28	9	19	17	6	11	19	6	13
Savanne	2	1	1	10	3	7	5	1	4
Plaines Wilhems : Urban	224	79	145	191	83	108	164	63	101
Other	2	-	2	2	-	2	9	3	6
Moka	5	1	4	12	2	10	6	-	6
Black River	-	-	-	4	-	4	2	1	1
Not stated	69	25	44	40	14	26	34	12	22
Whole Island	468	175	293	406	153	253	366	123	243

<sup>1/</sup> Persons who have obtained a permit to emigrate to another country.

## IV -- TOURISM

### Definition and notes

#### 1. Definition of tourist:

- (a) Prior to 1964, a tourist has been defined as a non-resident staying in Mauritius for more than 24 hours but less than 6 months;
- (b) As from 1964, a tourist is defined as a non-resident staying in the island for more than 24 hours but less than a year.

The figures for the two periods are nevertheless comparable because of the small number of tourists staying for more than 6 months.

#### 2. Visitors include the following:

- (i) tourists as defined above; and
- (ii) non-residents who stay in the country for less than a day, other than those who do not leave the airport.

#### 3. Method of compilation:

Certain data on tourism (such as type of visitor, tourist arrivals by month of arrival, tourist arrivals by country of residence and mode of transport) are compiled from disembarkation cards which visitors fill in when they arrive in this country. However, information on duration of stay of visitors can be compiled only from the embarkation cards which they fill in when they leave the country. Since it is not possible to wait for the departure of all the visitors who come during the period under review, we restrict our analysis of duration of stay only to those visitors who arrive during the reference period but who have left by a given date after the end of the period.

However, the error due to this limitation is not considerable since visitors arriving in 1975 and leaving before 1.3.76 represent 99.2% of total visitor arrivals for 1975 and visitors arriving in January - June 1976 and leaving before 1.9.76 represent 99.7% of total visitor arrivals for January - June 1976.

#### 4. Tourist nights:

Tables 29, 34 and 36 show the number of nights spent by tourists who were on visit in the country during the period under review. The figures therefore include nights spent during the reference period by tourists who arrived before the beginning of the period. On the other hand, nights spent after the end of the reference period by tourists who arrived during the period are excluded.

#### 5. Visitor nights:

In tables 38 - 41 and table 43 an analysis is made of nights spent by visitors who arrive during the period under review and who have left by a given date after the end of the period. Figures for January - June 1976 thus show the total number of nights spent by visitors who arrived in January - June 1976 and left before 1.9.76.

6. Mauritians settled abroad are excluded from figures of tourists and visitors. Data referring to them are shown separately in tables 44 - 46. Table 44 shows the total nights spent by Mauritians settled abroad who arrive during the period under review and who have left by a given date after the end of the period. Thus the figures for January - June 1976 include nights spent in July and August 1976 by Mauritians settled abroad who arrived in January - June 1976. Table 46 shows the nights spent during the period under review only. Thus the figures for January - June 1976 include nights spent in January - June 1976 by Mauritians settled abroad who arrived in 1975, but exclude nights spent in July and August 1976 by those who arrived in January - June 1976.

Table 29 - Tourist<sup>1/</sup> arrivals by mode of transport and total nights spent during period, 1963 - June 1976

Period	Tourists arriving during period			Total nights spent during period <sup>2/</sup>
	Sea	Air	Total	
1963	1,003	6,719	7,727	99,400
1964	1,010	9,023	10,033	144,600
1965	746	9,312	10,058	144,900
1966	1,328	11,712	13,040	162,300
1967	937	13,877	14,814	172,000
1968	647	14,906	15,553	149,500
1969	455	20,132	20,587	220,600
1970	365	27,235	27,650	287,600
1971	168	36,230	36,398	399,700
1972	143	48,654	48,797	454,300
1973	1,293 <sup>3/</sup>	66,701	67,994	733,100
1974	472	72,443	72,915	772,200
1975	554	74,043	74,597	746,900
Jan - June 1976	307	41,919	42,226	415,200

<sup>1/</sup> See notes on page 31.

<sup>2/</sup> Include nights spent during reference period by tourists arriving prior to the period.

<sup>3/</sup> Includes about 700 persons who came for a religious conference.

**Table 30 - Tourist arrivals by month of arrival, 1964 - June 1976**

Month of arrival	1964	1965	1966	1967	1968	1969	1970	1971	1972	1973	1974	1975	Jan-June 1976
January	1,005	944	1,046	1,165	2,023	1,892	2,718	3,669	4,701	6,874	8,495	8,401	10,055
February	510	713	976	1,002	1,018	1,556	2,013	2,494	3,335	4,863	5,954	4,017	7,035
March	745	540	853	1,050	707	1,370	1,876	2,191	3,046	4,152	5,272	4,383	6,149
April	545	888	891	941	936	1,449	1,493	2,419	2,875	5,091	5,299	4,477	6,753
May	671	658	888	819	938	1,208	2,281	2,905	3,261	5,060	5,203	5,235	7,385
June	716	673	740	811	832	985	1,722	1,890	2,639	4,501	4,661	3,740	4,849
July	1,758	1,537	2,293	2,322	2,068	2,334	1,981	2,918	3,986	4,726	5,379	5,739	
August	1,083	960	1,449	1,533	1,609	2,761	3,909	5,297	7,038	9,595	9,026	10,844	
September	657	536	844	1,105	1,200	1,816	2,232	2,845	3,911	5,105	5,183	5,706	
October	655	750	875	1,280	1,282	1,222	1,889	2,522	3,334	4,893	5,202	5,586	
November	716	734	801	1,079	1,059	1,564	2,049	2,615	3,873	4,398	5,650	6,634	
December	972	1,125	1,384	1,707	1,881	2,430	3,487	4,633	6,798	8,736	7,591	9,835	
Whole year	10,033	10,058	13,040	14,814	15,553	20,587	27,650	36,398	48,797	67,994	72,915	74,597	



Table 32 - Tourist<sup>1/</sup> arrivals by country of residence, 1964 - June 1976

Country of residence	1964	1965	1966	1967	1968	1969	1970	1971	1972	1973	1974	1975	Jan-June 1976
All countries	10,033	10,058	13,040	14,814	15,553	20,587	27,650	36,398	48,797	67,994	72,915	74,597	42,226
<b>AFRICA</b>	8,056	7,780	10,259	10,626	10,404	15,058	19,784	25,289	33,206	41,969	46,971	47,689	28,140
Comoro Islands	15	10	20	14	3	16	44	25	23	126	176	181	102
Ethiopia	2	13	6	15	30	34	28	33	49	119	75	60	145
Kenya	286	302	299	552	579	574	681	634	684	824	898	707	580
Malagasy Rep.	1,560	1,392	1,648	1,598	1,512	2,050	1,985	2,287	2,747	3,563	2,679	1,976	1,297
Malawi	2	24	51	100	15	27	67	66	135	166	243	267	190
Mozambique	15	14	9	5	13	14	22	21	46	94	110	41	41
Réunion	5,203	4,737	6,738	6,242	6,094	8,905	11,405	15,161	19,230	22,542	23,232	24,853	15,128
Rhodesia	321 <sup>2/</sup>	346	275	296	62	22	88	191	435	380	591	1,232	679
Seychelles	19	6	15	32	25	21	45	63	256	563	431	405	196
South Africa, Rep. of	508	656	770	1,209	1,555	2,680	3,637	4,939	7,088	9,985	14,193	14,740	7,962
Tanzania	52	85	103	111	262	194	186	216	200	308	282	125	168
Uganda	21	24	14	48	54	60	131	130	139	68	46	42	83
Zambia	...	112	252	318	127	332	1,314	1,224	1,825	2,375	3,332	2,406	772
Other African	52	59	59	86	73	129	151	299	349	856	683	654	797
<b>AMERICA</b>	190	181	220	437	559	612	765	978	1,201	1,406	1,435	1,369	507
Brazil	22	6	7	7	2	7	5	9	35	24	89	32	9

1/ See notes on page 31

2/ Includes Zambia and Southern Rhodesia

3/ See Rhodesia



Table 32 (continued)

Country of residence	1964	1965	1966	1967	1968	1969	1970	1971	1972	1973	1974	1975	Jan-June 1976
Canada	7	20	21	33	69	57	90	145	209	329	247	302	124
U.S.A.	159	145	184	377	464	506	646	778	917	989	1,000	893	345
Other American	2	10	8	20	24	42	24	46	40	64	99	142	29
<b>ASIA</b>	228	205	284	487	721	579	863	1,071	1,642	3,412	2,619	2,963	1,698
China	10	2	52	3	30	2	5	26	91	78	50	53	34
Formosa (Taiwan)	41	2	2	1	9	11	43	60	29	310	408	90	7
Hong Kong	38	31	56	62	55	70	51	115	226	230	154	215	86
India	67	79	70	257	421	272	479	554	879	2,235	1,308	1,944	1,258
Israel	5	7	4	14	11	6	17	15	20	17	28	33	26
Japan	29	24	48	53	72	86	83	105	148	240	261	245	111
Malaysia	8	14	18	17	18	8	32	24	26	21	33	36	3
Pakistan	9	11	11	18	31	15	20	25	44	60	64	62	25
Singapore	5	9	7	21	30	37	44	42	29	49	79	62	30
Other Asian	16	26	16	41	44	72	89	105	150	172	234	223	118
<b>U.S.S.R.</b>	-	-	31	4	8	34	11	8	24	56	79	72	28
<b>EUROPE</b>	1,262	1,505	1,804	2,314	2,637	2,809	4,319	6,820	9,917	17,323	17,665	18,253	9,499
Belgium	17	12	35	20	23	24	47	104	318	482	502	554	212
Denmark	12	4	3	10	10	14	17	45	52	106	88	81	38

Table 32 (continued)

Country of residence	1964	1965	1966	1967	1968	1969	1970	1971	1972	1973	1974	1975	Jan-June 1976
France	585	668	816	888	922	767	1,437	2,540	3,771	7,281	7,874	8,929	5,077
Germany, Fed. Rep.	61	82	98	88	106	124	481	824	1,406	1,996	1,951	1,533	619
Greece	4	6	11	5	34	13	28	24	31	48	76	92	30
Irish Rep.	2	-	8	8	18	13	33	44	42	68	83	116	55
Italy	38	63	74	69	98	146	190	428	775	2,136	1,937	1,712	762
Netherlands	29	25	42	36	50	41	71	118	98	195	189	183	90
Norway	-	1	12	11	4	19	15	30	30	73	63	42	21
Spain	14	13	5	2	6	6	10	60	29	121	156	123	46
Sweden	16	6	15	11	11	17	21	48	73	155	106	106	82
Switzerland	31	35	56	78	74	77	110	159	303	537	840	876	362
U.K.	435	576	618	1,056	1,261	1,524	1,740	2,252	2,848	3,822	3,452	3,598	1,973
Other European	18	14	11	32	20	24	119	144	141	303	348	308	132
<u>OCEANIA</u>	<u>277</u>	<u>366</u>	<u>426</u>	<u>946</u>	<u>1,224</u>	<u>1,495</u>	<u>1,988</u>	<u>2,232</u>	<u>2,807</u>	<u>3,828</u>	<u>4,138</u>	<u>4,235</u>	<u>2,345</u>
Australia	224	287	331	771	999	1,162	1,571	1,700	2,171	3,060	3,351	3,417	1,878
New Caledonia	4	15	18	37	14	63	44	93	124	112	89	77	62
New Zealand	33	59	69	101	190	224	254	374	437	568	620	678	368
Other Oceanian	16	5	8	37	21	46	39	65	75	88	78	63	37
<u>NOT STATED</u>	<u>20</u>	<u>21</u>	<u>16</u>	<u>-</u>	<u>-</u>	<u>-</u>	<u>-</u>	<u>-</u>	<u>-</u>	<u>-</u>	<u>8</u>	<u>16</u>	<u>9</u>



Table 34 - Tourist<sup>1/</sup> nights by country of residence of tourist, 1964 - June 1976

Country of residence	1964	1965	1966	1967	1968	1969	1970	1971	1972	1973	1974	1975	Jan-June 1976
All countries	144,584	144,875	162,269	171,967	149,507	220,572	287,591	399,739	454,271	707,467	772,183	746,898	415,170
AFRICA	112,189	108,311	128,451	129,406	105,719	165,259	211,132	279,314	313,953	414,697	462,285	441,709	256,536
Comoro Islands	106	202	243	69	10	61	232	114	96	905	2,041	1,160	689
Ethiopia	5	42	26	62	91	251	181	359	406	1,328	580	383	1,245
Kenya	2,313	2,967	2,624	3,764	3,447	4,355	5,180	5,197	4,498	6,291	6,371	5,532	3,520
Malagasy Rep.	19,708	18,073	19,065	19,188	17,592	24,236	19,553	27,618	25,376	38,904	26,965	17,735	13,552
Malawi	8	417	702	1,233	104	235	505	860	1,074	1,655	2,910	2,407	1,795
Mozambique	599	401	35	71	143	349	348	137	463	914	1,249	424	213
Réunion	70,588	63,152	85,040	79,017	65,512	105,018	130,052	172,147	198,383	231,566	227,129	220,288	130,909
Rhodesia	4,826 <sup>2/</sup>	5,401	3,688	4,152	945	141	840	2,004	4,952	5,048	7,174	14,133	7,350
Seychelles	669	220	705	424	607	858	1,700	1,505	2,213	5,508	4,239	4,000	2,423
South Africa, Rep. of	11,475	13,177	10,593	14,525	14,130	23,792	33,630	50,066	52,383	86,752	138,178	145,596	79,451
Tanzania	614	1,478	837	901	1,121	1,054	1,860	2,543	1,673	2,806	2,563	1,512	1,764
Uganda	162	145	163	273	491	305	1,610	1,192	763	776	357	302	571
Zambia	3 <sup>3/</sup>	1,923	4,115	4,727	976	3,130	14,052	13,076	18,972	22,335	34,948	22,394	7,045
Other African	1,116	713	615	1,000	550	1,424	1,389	2,496	2,701	9,909	7,581	5,843	6,009
AMERICA	2,076	2,362	1,371	3,721	4,186	5,109	4,970	7,807	7,811	13,565	13,555	13,938	5,160
Brazil	903	55	34	31	7	14	18	66	67	124	435	176	29

Table 34 (cont'd)

Country of residence	1964	1965	1966	1967	1968	1969	1970	1971	1972	1973	1974	1975	Jan-June 1976
Canada	78	629	152	222	392	391	569	1,558	1,773	3,412	2,966	3,444	1,278
U.S.A.	1,067	1,651	1,108	3,169	3,268	4,085	4,243	5,823	5,821	9,416	9,511	9,481	3,433
Other American	28	27	77	299	519	619	140	360	150	613	643	837	420
<u>ASIA</u>	<u>5,102</u>	<u>4,856</u>	<u>4,458</u>	<u>6,810</u>	<u>8,643</u>	<u>8,813</u>	<u>11,823</u>	<u>15,329</u>	<u>14,134</u>	<u>28,422</u>	<u>25,992</u>	<u>28,548</u>	<u>15,964</u>
China (Mainland)	295	49	544	86	398	149	285	158	929	2,866	575	453	295
Formosa (Taiwan)	163	2	39	26	122	274	140	114	155	927	1,836	866	274
Hong Kong	1,100	536	998	888	943	318	1,348	2,606	2,867	3,324	2,140	3,314	1,373
India	1,608	2,526	1,412	3,693	4,183	5,482	7,492	8,793	8,032	14,843	15,287	17,285	10,922
Israel	17	41	103	114	50	26	110	103	157	201	139	287	224
Japan	879	422	741	683	937	1,058	766	1,045	759	1,867	1,542	1,758	843
Malaysia	176	352	212	108	97	55	220	157	150	147	192	374	147
Pakistan	466	124	143	188	591	396	358	791	283	1,493	1,903	963	864
Singapore	150	94	76	273	283	374	228	437	181	477	419	599	205
Other Asian	248	710	190	751	1,039	681	876	1,125	621	2,277	1,959	2,649	817
<u>U.S.S.R.</u>	<u>-</u>	<u>-</u>	<u>316</u>	<u>66</u>	<u>50</u>	<u>900</u>	<u>211</u>	<u>223</u>	<u>206</u>	<u>1,156</u>	<u>461</u>	<u>945</u>	<u>297</u>
<u>EUROPE</u>	<u>20,668</u>	<u>24,113</u>	<u>24,183</u>	<u>26,168</u>	<u>25,667</u>	<u>31,506</u>	<u>49,606</u>	<u>82,343</u>	<u>104,943</u>	<u>227,565</u>	<u>239,196</u>	<u>231,316</u>	<u>121,117</u>
Belgium	369	325	460	399	181	225	696	1,523	2,564	6,569	8,198	8,202	2,831
Denmark	234	6	58	39	60	308	112	724	581	2,118	1,402	1,667	748

Table 34 - (cont'd)

Country of residence	1964	1965	1966	1967	1968	1969	1970	1971	1972	1973	1974	1975	Jan-June 1976
France	8,805	9,346	9,769	8,219	7,312	6,531	15,385	26,878	39,043	90,934	100,673	99,847	55,893
Germany, Fed. Rep.	935	1,280	1,104	734	613	1,200	4,874	10,582	14,306	24,910	27,796	23,068	9,570
Greece	43	50	126	25	467	135	326	143	152	629	748	694	323
Irish Rep.	104	-	460	228	202	37	310	1,137	348	1,372	1,238	1,689	611
Italy	668	491	515	367	700	1,049	1,216	3,716	5,567	19,524	20,876	15,703	10,340
Netherlands	291	227	377	326	434	656	573	877	530	2,417	3,602	2,461	1,324
Norway	-	1	110	129	8	221	46	338	271	663	462	441	166
Spain	98	37	51	14	36	21	50	665	215	1,378	1,456	919	359
Sweden	277	45	25	45	112	418	441	1,054	542	1,729	1,501	1,115	827
Switzerland	149	353	384	731	400	694	1,018	1,716	2,693	5,256	10,770	10,522	5,728
U.K.	7,632	11,898	10,630	14,711	14,821	19,609	23,577	31,181	36,125	66,090	56,923	61,943	30,837
Other European	1,063	54	114	201	321	402	982	1,809	2,006	3,976	2,551	3,045	1,560
<u>OCEANIA</u>	<u>3,375</u>	<u>4,778</u>	<u>3,398</u>	<u>5,796</u>	<u>5,242</u>	<u>8,985</u>	<u>9,849</u>	<u>14,723</u>	<u>13,224</u>	<u>22,062</u>	<u>30,504</u>	<u>30,256</u>	<u>16,088</u>
Australia	2,960	4,479	2,871	4,709	4,385	7,877	7,520	11,431	9,767	18,747	26,014	26,080	13,510
New Caledonia	61	114	88	175	70	139	118	404	747	315	584	275	188
New Zealand	171	173	375	619	691	879	2,041	2,566	2,194	2,538	3,305	3,582	2,102
Other Oceanian	183	12	64	293	96	90	170	322	516	462	601	319	288
<u>NOT STATED</u>	<u>1,174</u>	<u>455</u>	<u>92</u>	-	-	-	-	-	-	-	<u>190</u>	<u>186</u>	<u>8</u>

1/ See notes on page 31

2/ Includes Northern Rhodesia (Zambia)

3/ See Rhodesia

Table 35 - Tourists<sup>1/</sup> arriving in January - June 1976 by country of residence and month of arrival

Country of residence	Jan.	Feb.	March	April	May	June	Jan - June
Kenya	106	87	98	103	84	102	580
Malagasy Republic	108	154	364	257	210	204	1,297
Malawi	29	17	24	67	25	28	190
Réunion	5,063	2,630	1,108	1,947	3,000	1,380	15,128
Rhodesia	166	135	96	133	114	35	679
Seychelles	21	24	32	59	27	33	196
South Africa, Rep. of	1,682	1,201	1,281	1,607	1,546	645	7,962
Tanzania	12	11	19	69	16	41	168
Zambia	151	69	111	204	159	78	772
Other African	69	64	89	88	79	779	1,168
U. S. S. R.	2	2	2	6	7	9	28
China (Mainland)	4	3	4	4	6	13	34
China (Taiwan)	1	-	5	-	1	-	7
Hong Kong	22	14	6	21	10	13	86
India	167	215	422	126	199	129	1,258
Japan	41	10	-	10	33	17	111
Pakistan	3	1	5	4	-	12	25
Singapore	1	3	7	4	9	6	30
Other Asian	27	16	34	20	22	28	147
Australia	521	311	257	310	295	184	1,878
New Caledonia	12	21	3	11	9	6	62
New Zealand	46	70	76	64	62	50	368
Other Oceanian	3	5	7	14	3	5	37
Belgium	29	52	27	33	44	27	212
France	915	968	1,299	732	650	513	5,077
Germany, Fed. Rep. of	106	93	93	146	88	93	619
Italy	281	165	107	92	77	40	762
Switzerland	50	111	62	59	47	33	362
United Kingdom	268	367	339	385	387	227	1,973
Other European	68	133	78	79	83	53	494
Canada	15	14	22	19	42	12	124
U. S. A.	55	58	62	71	47	52	345
Other American	7	10	9	9	1	2	38
Unknown	4	1	1	-	3	-	9
All countries	10,055	7,035	6,149	6,753	7,385	4,849	42,226

<sup>1/</sup> See notes on page 31

Table 36 - Tourist arrivals and tourist nights<sup>1/</sup> by country of residence and mode of transport, Jan-June 1976

Country of residence	Tourist arrivals			Tourist nights spent during Jan-June 1976
	Sea	Air	Total	
Kenya	7	573	580	3,520
Malagasy Republic	4	1,293	1,297	13,552
Malawi	-	190	190	1,795
Réunion	78	15,050	15,128	130,909
Rhodesia	2	677	679	7,350
Seychelles	9	187	196	2,423
South Africa, Rep. of	59	7,903	7,962	79,451
Tanzania	9	159	168	1,764
Zambia	-	772	772	7,045
Other African	3	1,165	1,168	8,727
U.S.S.R.	-	28	28	297
China (Mainland)	1	33	34	295
China (Taiwan)	5	2	7	274
Hong Kong	1	85	86	1,373
India	9	1,249	1,258	10,922
Japan	1	110	111	843
Pakistan	1	24	25	864
Singapore	5	25	30	205
Other Asian	6	141	147	1,188
Australia	8	1,870	1,878	13,510
New Caledonia	-	62	62	188
New Zealand	2	366	368	2,102
Other Oceanian	-	37	37	288
Belgium	5	207	212	2,831
France	44	5,033	5,077	55,893
Germany, Fed. Rep. of	1	618	619	9,570
Italy	-	762	762	10,340
Switzerland	2	360	362	5,728
United Kingdom	22	1,951	1,973	30,837
Other European	15	479	494	5,918
Canada	-	124	124	1,278
U.S.A.	8	337	345	3,433
Other American	-	38	38	449
Unknown	-	9	9	8
All countries	307	41,919	42,226	415,170

<sup>1/</sup> See notes on page 31



Table 37 - Visitors<sup>1/</sup> arrivals by age and sex, 1975 - June 1976

Age (completed years)	1975 <sup>2/</sup>			January - June 1976 <sup>3/</sup>		
	Male	Female	Both sexes	Male	Female	Both sexes
Under 1	215	179	394	131	89	220
1 - 4	1,512	1,257	2,769	797	705	1,502
5 - 9	1,955	1,711	3,666	1,048	860	1,908
10 - 14	1,953	1,719	3,672	1,005	884	1,889
15 - 19	1,931	2,234	4,165	996	1,109	2,105
20 - 24	3,552	4,280	7,832	2,166	2,465	4,631
25 - 29	6,367	5,002	11,369	3,565	2,850	6,415
30 - 34	5,977	3,800	9,777	3,648	2,337	5,985
35 - 39	5,254	3,042	8,296	3,191	1,728	4,919
40 - 44	4,227	2,205	6,432	2,652	1,352	4,004
45 - 49	3,640	2,092	5,732	2,146	1,124	3,270
50 - 54	3,062	1,913	4,975	1,787	1,051	2,838
55 - 59	1,993	1,318	3,311	1,157	689	1,846
60 - 64	1,531	1,018	2,549	814	599	1,413
65 - 69	785	653	1,438	464	348	812
70 and over	557	411	968	304	240	544
Not stated	207	124	331	92	58	150
All ages	44,718	32,958	77,676	25,963	18,488	44,451

<sup>1/</sup> See notes on page 31.

<sup>2/</sup> Visitors arriving in 1975 and leaving before 1.3.76.

<sup>3/</sup> Visitors arriving in January - June 1976 and leaving before 1.9.76.

Table 38 - Visitor arrivals and visitor nights<sup>1/</sup> by country of residence, 1975 - June 1976

Country of residence	1975 <sup>2/</sup>			January - June 1976 <sup>3/</sup>		
	Visitor arrivals	Visitor nights	Average length of stay	Visitor arrivals	Visitor nights	Average length of stay
Kenya	937	5,379	5.7	635	3,844	6.0
Malagasy Republic	2,067	16,629	8.0	1,494	13,049	8.7
Malawi	271	2,463	9.1	190	1,640	8.6
Réunion	25,627	217,978	8.5	15,756	119,649	7.6
Rhodesia	1,251	14,492	11.6	702	6,837	9.7
Seychelles	407	4,169	10.2	240	2,218	9.2
South Africa, Rep. of	15,205	145,969	9.6	8,194	72,561	8.8
Tanzania	220	1,578	7.2	190	1,838	9.7
Zambia	2,494	22,379	9.0	814	6,501	8.0
Other African	1,095	7,946	7.2	1,173	11,980	10.2
U. S. S. R.	74	910	12.3	17	236	13.9
China (Mainland)	57	467	8.2	28	315	11.2
China (Taiwan)	109	485	4.4	21	336	16.0
Hong Kong	220	3,102	14.1	94	1,482	15.8
India	1,812	15,984	8.8	1,299	11,057	8.5
Japan	252	1,509	6.0	208	807	3.9
Singapore	75	799	8.0	28	218	7.8
Other Asian	431	4,174	9.7	170	2,270	13.4
Australia	3,715	24,515	6.6	2,140	13,069	6.1
New Caledonia	163	305	1.9	68	154	2.3
New Zealand	797	3,568	4.5	395	2,220	5.6
Other Oceanian	100	348	3.5	43	273	6.3
Belgium	533	8,112	15.2	216	2,383	11.0
France	9,333	98,854	10.6	5,337	52,026	9.7
Germany, Fed. Rep. of	1,543	22,715	14.7	657	9,457	14.4
Italy	1,747	16,911	9.7	779	7,772	10.0
Switzerland	869	10,668	12.3	375	4,454	11.9
United Kingdom	3,695	60,611	16.4	2,052	25,728	12.5
Other European	1,109	11,677	10.5	558	5,762	10.3
Canada	314	3,065	9.8	133	1,222	9.2
U. S. A.	964	9,369	9.7	394	3,265	8.3
Other American	153	915	6.0	47	473	10.1
Unknown	37	213	5.8	4	8	2.0
All countries	77,676	738,058	9.5	44,451	385,104	8.7

1/ See notes on page 31.

2/ Figures refer to visitors arriving in 1975 and leaving before 1.3.76 and to the nights spent by them.

3/ Figures refer to visitors arriving in January - June 1976 and leaving before 1.9.76 and to the nights spent by them.

Table 39 - Visitor<sup>1/</sup> arrivals by duration of stay, 1975 - June 1976

Duration of stay	1975 <sup>2/</sup>		January - June 1976 <sup>3/</sup>	
	Number	Percentage	Number	Percentage
Less than 1 day	3,680	4.7	2,375	5.3
1 day	5,264	6.8	2,720	6.1
2 days	6,213	8.0	3,583	8.1
3 "	6,348	8.2	4,008	9.0
4 "	5,532	7.1	3,580	8.1
5 "	4,616	5.9	2,727	6.1
6 "	3,478	4.5	2,082	4.7
7 "	9,072	11.7	5,933	13.3
8 "	4,043	5.2	2,574	5.8
9 "	3,506	4.5	2,200	4.9
10 "	2,358	3.0	1,357	3.1
11 "	1,902	2.4	1,125	2.5
12 "	1,832	2.3	1,143	2.6
13 "	1,445	1.9	987	2.2
14 "	5,875	7.6	2,660	6.0
15 "	1,690	2.2	792	1.8
16 "	1,043	1.3	486	1.1
17 "	591	0.8	298	0.7
18 "	674	0.9	216	0.5
19 "	517	0.7	236	0.5
20 - 24 "	2,674	3.4	1,121	2.5
25 - 29 "	2,197	2.8	931	2.1
1 month - under 2 months	2,390	3.1	935	2.1
2 months - under 3 months	455	0.6	240	0.5
3 months and over	215	0.3	119	0.3
Not stated	66	0.1	23	0.1
Total	77,676	100.0	44,451	100.0

<sup>1/</sup> See notes on page 31.

<sup>2/</sup> Visitors arriving in 1975 and leaving before 1.3.76.

<sup>3/</sup> Visitors arriving in January - June 1976 and leaving before 1.9.76.

Table 40 - Visitor<sup>1/</sup> arrivals by country of residence and duration of stay, January - June 1976

Country of residence	Duration of stay in days													Not stated	Total visitors		
	0	1	2	3	4	5	6	7 & 8	9 & 10	11 & 12	13 & 14	15-19	20-24			25-29	30 +
Australia	260	189	467	364	174	119	75	230	59	27	14	32	18	24	87	1	2,140
Belgium	6	9	5	13	14	9	7	44	14	19	50	5	7	3	11	-	216
France	223	226	393	331	578	298	211	1,053	308	333	616	300	151	110	204	2	5,337
Germany, F. Rep.	24	33	39	16	26	49	15	69	23	35	76	44	81	95	32	-	657
India	42	104	69	200	222	128	23	205	36	95	17	53	28	24	52	1	1,299
Italy	5	32	14	12	44	17	78	321	22	28	123	43	16	6	17	1	779
Kenya	88	42	79	57	59	79	19	93	33	24	19	18	13	4	8	-	635
Malagasy Rep.	115	98	110	98	197	116	86	258	91	71	91	66	14	19	64	-	1,494
New Zealand	41	64	96	58	37	25	12	27	8	2	5	3	3	-	14	-	395
Réunion	828	874	1,300	1,898	1,573	1,136	880	2,786	1,525	722	612	707	279	280	355	1	15,756
Seychelles	38	9	43	12	5	11	5	45	10	9	21	3	3	13	13	-	240
S. Africa, Rep. of	277	441	355	406	231	370	418	2,297	1,075	545	980	400	192	127	80	-	8,194
Switzerland	9	13	16	14	25	19	11	90	8	13	68	25	34	17	13	-	375
United Kingdom	102	148	146	146	119	148	72	277	97	57	261	86	81	131	180	1	2,052
United States	28	31	59	47	39	28	17	41	17	19	20	12	11	6	19	-	394
Zambia	50	74	97	83	38	20	6	178	20	20	144	21	45	9	9	-	814
Other countries	239	333	295	253	199	155	147	493	211	249	530	210	145	63	136	16	3,674
All countries	2,375	2,720	3,583	4,008	3,580	2,727	2,082	8,507	3,557	2,268	3,647	2,028	1,121	931	1,294	23	44,451

<sup>1/</sup> Visitors arriving in January - June 1976 and leaving before 1.9.76.

See notes on page 31.

Table 41 - Visitor arrivals and visitor nights<sup>1/</sup> by country of nationality, January-June 1976

Country of nationality	Visitor arrivals <sup>2/</sup>	Visitor nights <sup>3/</sup>	Average length of stay
Kenya	199	1,359	6.8
Malagasy Republic	660	6,326	9.6
Malawi	28	139	5.0
Rhodesia	432	3,575	8.3
South Africa, Rep. of	7,081	61,797	8.7
Tanzania	108	1,267	11.7
Zambia	148	991	6.7
Other African	874	10,036	11.5
U. S. S. R.	38	356	9.4
China (Mainland)	217	2,228	10.3
China (Taiwan)	16	294	18.4
Hong Kong	3	57	19.0
India	1,663	13,049	7.8
Japan	212	920	4.3
Singapore	26	208	8.0
Other Asian	221	3,060	13.8
Australia	1,840	11,458	6.2
New Caledonia	2	3	1.5
New Zealand	409	2,492	6.1
Other Oceanian	15	66	4.4
Belgium	244	2,725	11.2
France	21,823	176,388	8.1
Germany, Fed. Rep. of	982	12,747	13.0
Italy	878	8,513	9.7
Switzerland	410	4,779	11.6
United Kingdom	4,209	44,732	10.6
Other European	947	9,419	9.9
Canada	180	1,537	8.5
U. S. A.	521	3,822	7.3
Other American	61	724	11.9
Unknown	4	37	9.2
All countries	44,451	385,104	8.7

1/ See notes on page 31.

2/ Figures refer to visitors arriving in January - June 1976 and leaving before 1.9.76.

3/ Figures refer to nights spent by visitors arriving in January - June 1976 and leaving before 1.9.76.

Table 42 - Visitor arrivals by country of residence and nationality, January - June 1976

Country of residence \ Country of nationality	Australia	Belgium	Canada	France	Germany, Fed. Rep.	India	Italy	Kenya	Malagasy Rep.	New Zealand	South Africa Rep. of	Southern Rhodesia	United Kingdom	U.S.A.	Zambia	Other countries	All countries
Australia	1,658	-	13	9	23	1	3	-	-	17	37	2	317	23	1	36	2,140
Belgium	-	165	-	19	8	-	2	-	-	-	1	-	7	6	-	8	216
Canada	-	-	101	4	-	1	-	-	1	-	1	-	17	5	-	3	133
France	2	16	-	5,197	10	-	8	-	-	2	4	-	26	10	-	62	5,337
Germany, Fed. Rep.	-	2	1	5	625	-	-	-	-	-	1	-	2	12	-	9	657
India	-	-	-	11	-	1,258	-	-	-	-	2	1	19	2	-	6	1,299
Italy	1	-	1	6	5	-	735	-	-	-	-	-	7	4	-	20	779
Kenya	26	3	7	10	20	10	23	190	-	9	-	-	247	31	-	59	635
Malagasy Rep.	-	12	4	606	25	75	21	-	622	-	-	-	10	9	-	110	1,494
New Zealand	4	-	-	-	-	-	-	1	-	335	1	1	48	-	-	5	395
Reunion	-	3	1	15,513	5	41	4	1	23	-	2	-	10	23	-	130	15,756
South Africa, Rep. of	34	13	15	46	187	71	62	-	-	20	6,871	11	635	38	-	191	8,194
Southern Rhodesia	1	3	1	1	4	8	-	-	-	-	95	406	166	2	1	14	702
United Kingdom	21	2	8	17	6	9	-	2	-	6	17	-	1,903	11	-	50	2,052
U.S.A.	9	-	2	9	9	2	1	-	1	-	1	-	17	316	-	27	394
Zambia	18	4	2	18	18	132	7	-	-	15	16	5	328	8	144	99	814
Other countries	66	21	24	330	37	55	12	5	13	5	32	6	450	21	2	2,375	3,454
All countries	1,840	244	180	21,801	982	1,663	878	199	660	409	7,081	432	4,209	521	148	3,204	44,451

1/ Visitors arriving in January - June 1976 and leaving before 1.9.76.

Table 43 - Visitor nights<sup>1/</sup> by country of residence and nationality, January - June 1976

Country of residence	Australia	Belgium	Canada	France	Germany Fed. Rep.	India	Italy	Kenya	Malagasy Rep.	New Zealand	South Africa Rep. of	Southern Rhodesia	United Kingdom	U.S.A.	Zambia	Other countries	All countries
Australia	10,764	-	75	63	80	1	17	-	-	141	185	8	1,358	60	2	315	13,069
Belgium	-	1,952	-	151	42	-	12	-	-	-	5	-	85	46	-	90	2,383
Canada	-	-	876	46	-	70	-	-	7	-	2	-	164	31	-	26	1,222
France	7	154	-	50,297	71	-	83	-	-	81	69	-	418	82	-	764	52,026
Germany, Fed. Rep.	-	36	7	16	9,232	-	-	-	-	-	8	-	23	20	-	115	9,457
India	-	-	-	40	-	10,626	-	-	-	-	2	-	333	23	-	33	11,057
Italy	1	-	4	35	46	-	7,341	-	-	-	-	-	77	22	-	246	7,772
Kenya	63	17	47	41	98	51	107	1,296	-	21	-	-	1,473	133	-	497	3,844
Malagasy Rep.	-	72	5	4,971	177	763	139	-	5,950	-	-	-	118	164	-	690	13,049
New Zealand	18	-	-	-	-	-	-	-	-	1,898	7	1	284	-	-	12	2,220
Réunion	-	28	3	17,670	74	462	7	2	194	-	24	-	34	122	-	1,029	119,649
South Africa, Rep. of	165	138	118	373	2,227	241	656	-	-	279	59,634	83	6,599	291	-	1,757	72,561
Southern Rhodesia	7	63	3	9	33	17	-	-	-	-	1,090	3,313	2,183	10	15	94	6,837
United Kingdom	136	36	124	279	55	134	-	12	-	29	256	-	23,710	107	-	850	25,728
U.S.A.	29	-	4	102	115	7	11	-	4	-	7	-	221	2,516	-	249	3,265
Zambia	59	29	20	115	260	410	67	-	-	36	131	58	3,226	74	952	1,064	6,501
Other countries	209	200	251	1,924	237	267	73	49	171	7	377	112	4,426	121	22	26,018	34,464
All countries	11,458	2,725	1,537	76,132	12,747	13,049	8,513	1,359	6,326	2,492	61,797	3,575	44,732	3,822	991	33,849	385,104

<sup>1/</sup> Figures refer to nights spent by visitors arriving in January - June 1976 and leaving before 1.9.76.

Table 44 - Arrivals of Mauritians settled abroad (excluding students) and nights spent by them by country of residence, 1975 - June 1976

Country of residence	1975 <sup>1/</sup>			January - June 1976 <sup>2/</sup>		
	Arrivals	Nights	Average length of stay	Arrivals	Nights	Average length of stay
Congo Brazaville	10	419	41.9	3	69	23.0
Ethiopia	9	156	17.3	5	88	17.6
Kenya	20	589	29.4	17	481	28.3
Malagasy Republic	137	2,863	20.9	65	1,409	21.7
Malawi	127	4,954	39.0	24	919	38.3
Mozambique	38	1,788	47.0	27	1,462	54.1
Réunion	1,498	25,535	17.0	696	11,104	16.0
Rhodesia	86	2,003	23.3	29	605	20.9
Seychelles	37	672	18.2	9	113	12.6
South Africa, Rep. of	719	17,574	24.4	304	7,255	23.9
Tanzania	14	351	25.1	3	131	43.7
Zambia	140	5,150	36.8	51	1,361	26.7
Other African	57	2,138	37.5	8	337	42.1
Hong Kong	17	367	21.6	8	100	12.5
India	2	14	7.0	6	335	55.8
Pakistan	8	257	32.1	2	78	39.0
Singapore	9	132	14.7	4	59	14.8
Other Asian	9	259	28.8	3	49	16.3
Australia	807	26,567	32.9	145	4,277	29.5
Other Oceanian	27	824	30.5	8	340	42.5
Belgium	124	4,825	38.9	27	1,018	37.7
Denmark	4	102	25.5	3	52	17.3
France	1,217	40,091	32.9	245	8,780	35.8
Germany, Fed. Rep.	66	2,109	32.0	18	536	29.8
Italy	25	891	35.6	2	99	49.5
Netherlands	9	319	35.4	1	31	31.0
Switzerland	69	2,567	37.2	29	927	32.0
United Kingdom	3,570	132,619	37.1	1,085	39,919	36.8
Other European	34	990	29.1	14	452	32.3
Canada	179	6,081	34.0	82	2,904	35.4
U. S. A.	36	958	26.6	17	803	47.2
Other American	6	256	42.7	-	-	-
Unknown	1	28	28.0	-	-	-
All countries	9,111	284,448	31.2	2,940	86,093	29.3

1/ Figures refer to Mauritians settled abroad arriving in 1975 and leaving before 1.3.76, and to the total nights spent by them in 1975 and 1976.

2/ Figures refer to Mauritians settled abroad arriving in January - June 1976 and leaving before 1.9.76, and to the total nights spent by them in 1976.

See notes on page 31.



Table 45 - Arrivals of Mauritians settled abroad (excluding students) by duration of stay, 1975 - June 1976

Duration of stay	1975 <sup>1/</sup>	Jan-June 1976 <sup>2/</sup>
Less than 1 day	76	20
1 day	76	32
2 days	118	68
3 days	137	81
4 days	152	80
5 days	128	70
6 days	77	33
7 days	153	111
8 days	76	37
9 days	115	39
10 days	73	39
11 days	116	44
12 days	92	26
13 days	74	38
14 days	176	103
15 days	95	45
16 days	91	34
17 days	51	25
18 days	70	25
19 days	62	39
20 - 24 days	495	185
25 - 29 days	2,386	609
1 month - under 2 months	3,659	926
2 months - under 3 months	427	134
3 months and over	128	87
Not stated	8	5
<b>Total</b>	<b>9,111</b>	<b>2,940</b>

<sup>1/</sup> Figures refer to Mauritians settled abroad arriving in 1975 and leaving before 1.3.76.

<sup>2/</sup> Figures refer to Mauritians settled abroad arriving in January - June 1976 and leaving before 1.9.76.

See notes on page 31.

Table 46 - Total nights spent by Mauritians settled abroad (excluding students) by country of residence, 1975 - June 1976

Country of residence	1975 <sup>1/</sup>	Jan-June 1976 <sup>2/</sup>
Congo Brazzaville	404	126
Ethiopia	156	61
Kenya	553	348
Malagasy Republic	2,970	1,438
Malawi	4,107	2,141
Mozambique	1,231	2,719
Réunion	27,342	14,470
Rhodesia	1,952	786
Seychelles	774	138
South Africa, Rep. of	17,647	9,087
Tanzania	311	125
Zambia	4,691	3,205
Other African	2,456	379
Hong Kong	367	100
India	14	335
Pakistan	153	126
Singapore	132	59
Other Asian	262	65
Australia	29,021	15,922
Other Oceanian	763	448
Belgium	4,419	1,881
Denmark	74	39
France	39,363	15,366
Germany, Fed. Rep.	2,511	880
Ireland	160	97
Italy	795	298
Netherlands	340	31
Switzerland	2,497	945
United Kingdom	131,458	62,860
Other European	625	657
Canada	5,838	3,483
U.S.A.	976	736
Other American	110	174
Unknown	28	-
All countries	284,500	139,525

<sup>1/</sup> Figures refer to nights spent during 1975 by Mauritians settled abroad arriving in 1975 or before and leaving before 1.3.76.

<sup>2/</sup> Figures refer to nights spent during Jan-June 1976 by Mauritians settled abroad arriving in Jan-June 1976 or before and leaving before 1.9.76.

See notes on page 31.

