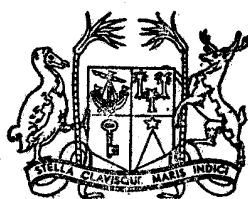


Vol. 8

No. 2



MAURITIUS

Ministry of Economic Planning and Development

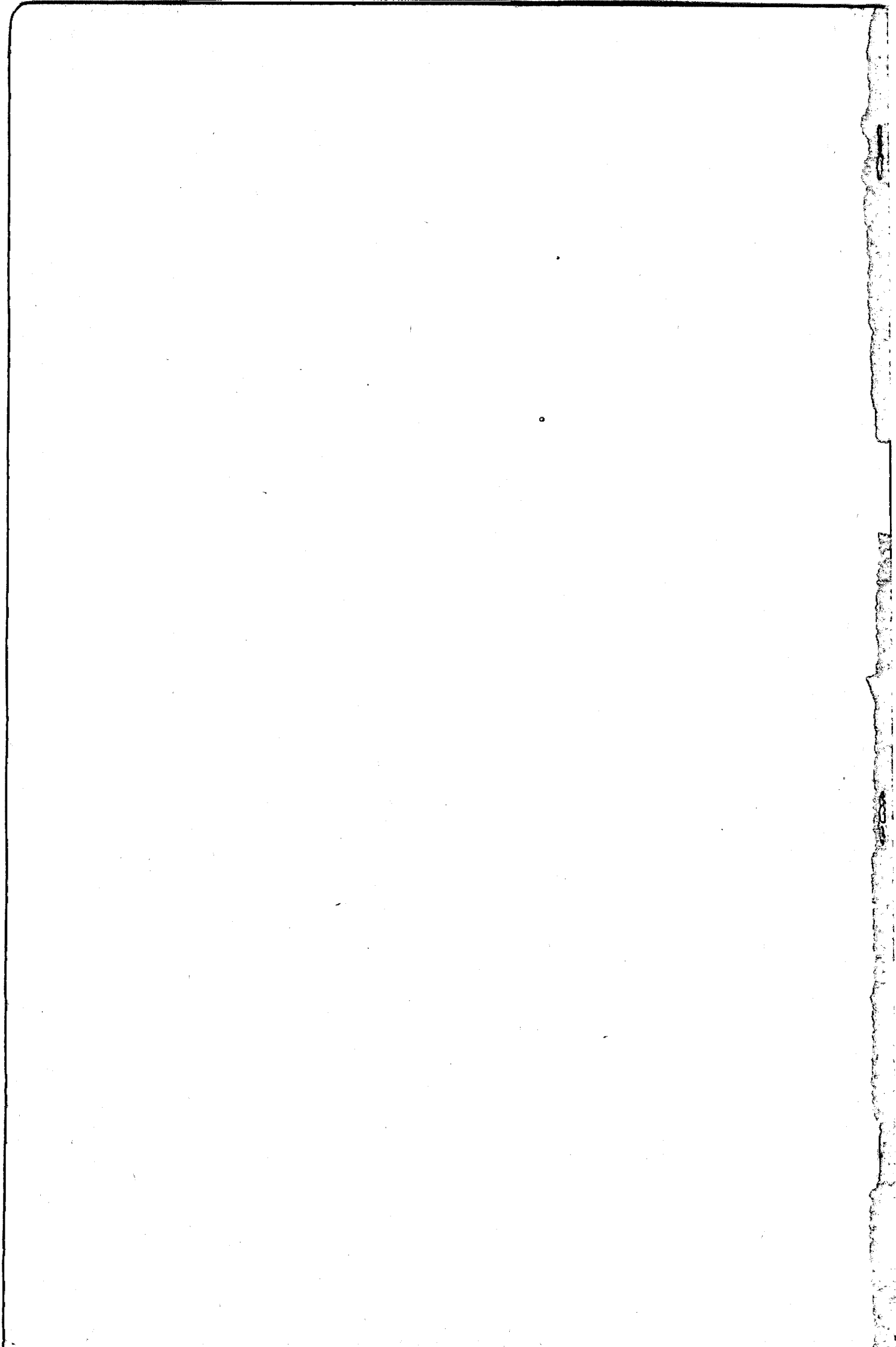
CENTRAL STATISTICAL OFFICE

**INTERNATIONAL TRAVEL
AND
TOURISM**

December 1981

[Price : Rs. 15.00]

EST



INTERNATIONAL TRAVEL AND TOURISM

Vol. 8 No. 2

December 1981

"International Travel and Tourism", a publication of the Central Statistical Office, is designed to present data on international travel and tourism in more detail than those that are currently published in the Bi-annual Digest of Statistics.

As from January 1979, owing to the increase in the volume of passenger traffic, it has been decided to process the data on a 10% sample. Cases where the number of passengers are too small have been omitted in order to avoid large sampling errors. It is to be noted, however, that figures for official emigrants published in this report have been compiled from the Passport Office register.

With the help of the computer of the Ministry of Finance it has been possible to process in more detail the information recorded on the international embarkation and disembarkation cards which passengers fill in on leaving and entering the country.

It is hoped that the results, especially those on tourism, which have been assembled in this report will be useful to all those who take an interest in the evolution of the tourist industry in this country.

The co-operation of the Immigration and Passport Office of the Police Department and the Data Processing Division of the Ministry of Finance is gratefully acknowledged.

The following symbols are used throughout:

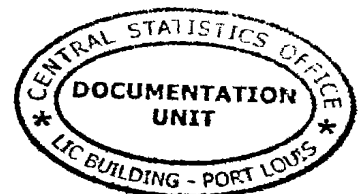
- Nil

... Not available

(D. Zmanay)
Director of Statistics

Central Statistical Office
Rose Hill
Mauritius

May 1982



C O N T E N T S

I - POPULATION AND VITAL STATISTICS

	<u>Page</u>
Table 1 - Estimated population of Mauritius as at 31st December 1981 based on the final 1972 Population Census data	1
2 - Population increase in intercensal periods - Island of Mauritius, 1846 - 1972	1
3(a) Population enumerated at each census by population group and sex - Island of Mauritius, 1846 - 1952	2
3(b) Population enumerated at each census by community and sex - Island of Mauritius, 1962 - 1972	2
4 - Estimated population of Mauritius by geographical district and sex, 1979 - 1981 (end of year estimates)	3
5 - Population and vital statistics - Island of Mauritius, 1921 - 1981	4

II - PASSENGER TRAFFIC

Table 6 - Passenger traffic by sex, 1933 - 1981	6 & 7
7 - Passenger traffic between Island of Mauritius and Rodrigues 1965 - 1981	7
8 - Passenger traffic by mode of transport, 1962 - 1981	9
9 - Passenger traffic by month, 1978 - 1981	10
10 - Arrivals by country of original embarkation, 1976 - 1981	11
11 - Departures by country of final destination, 1976 - 1981	12
12 - Passenger traffic by type of passenger and month, 1981	13
13 - Arrivals by age and sex, January 1980 - December 1981	14
14 - Departures by age and sex, January 1980 - December 1981	15
15 - Excess of arrivals over departures by age and sex, January 1980 - December 1981	16
16 - Arrivals and departures of residents of Island of Mauritius by district of residence and sex, 1981	17
17 - Arrivals of residents of Island of Mauritius by age and sex, January 1980 - December 1981	18
18 - Departures of residents of Island of Mauritius by age and sex, January 1980 - December 1981	19
19 - Excess of arrivals over departures of residents (excluding emigrants) of Island of Mauritius by age and sex, January 1980 - December 1981	20

II - PASSENGER TRAFFIC (Cont'd)

	<u>Page</u>
Table 20 - Excess of arrivals over departures of residents (including emigrants) of Island of Mauritius by age and sex, January 1980 - December 1981	21
21 - Departures of Mauritian residents travelling by air by country of final destination, 1979 - 1981	22

III - EMIGRATION

Table 22 - Official long-term emigrants by sex, 1956 - 1981	23
23 - External migration, 1956 - 1981	24
24 - Official long-term emigrants by country of intended residence, 1967 - 1981	25 & 26
25 - Age distribution of official long-term emigrants, 1967 - 1981	27 - 29
26 - Official long-term emigrants by Major Occupational Group, 1975 - 1981	30
27 - Official long-term emigrants by Major Occupational Group, age and sex, 1981	31
28 - Official long-term emigrants by occupation, 1979 - 1981	32
29 - Official long-term emigrants by district of last residence and sex, January 1980 - December 1981	33

IV - TOURISM

Definition and notes	34
Table 30 - Tourist arrivals by mode of transport and tourist nights spent during period, 1964 - 1981	35
31 - Tourist arrivals by month of arrival, 1971 - 1981	36
32 - Percentage distribution of tourist arrivals by month of arrival, 1971 - 1981	38
33 - Tourist arrivals by country of residence, 1971 - 1981	39
34 - Percentage distribution of tourist arrivals by country of residence, 1971 - 1981	40
35 - Tourist nights by country of residence of tourist, 1971 - 1981	42
36 - Tourist arrivals and tourist nights by country of residence, 1981	44

I. POPULATION AND VITAL STATISTICS

Table 1 - Estimated population of Mauritius as at 31st December, 1931 based on the final 1972 Population Census data

Island	Both sexes	Male	Female	Area		Density	
				sq. mile	sq. km	Persons/sq. mile	Persons/sq. km
Island of Mauritius	950,365	465,272	485,093	720	1,865	1,320	510
Island of Rodrigues	32,977	16,036	16,891	40	104	824	317
Other islands	350	250	100	27.5	71.2	13	5
Mauritius	983,692	481,608	502,084	787.5	2,040.2	1,249	482

Table 2 - Population increase in intercensal periods - Island of Mauritius, 1846-1972

Census date	Population enumerated at Census			Intercensal increase	Average annual rate of increase %
	Both sexes	Male	Female		
1st Aug. 1846	158,462	104,598	53,864		
20th Nov. 1851	180,823	119,341	61,482	22,361	2.55
5th Apr. 1861	310,050	202,961	107,089	129,227	5.87
11th Apr. 1871	316,042	193,575	122,467	5,992	0.19
4th Apr. 1881	359,874	208,655	151,219	43,832	1.31
6th Mar. 1891	370,588	206,038	164,550	10,714	0.29
1st Apr. 1901	371,023	199,552	171,471	435	0.01
31st Mar. 1911	363,791	194,095	174,696	2,232	- 0.06
21st May 1921	376,485	194,108	182,377	7,694	0.21
25th Apr. 1931	393,238	200,609	192,629	16,753	0.44
11th Jun. 1944	419,185	210,326	208,859	25,947	0.49
29th Jun. 1952	501,415	252,032	249,383	82,230	2.26
30th Jun. 1962 ^{1/}	681,619	342,306	339,313	180,204	3.12
50th Jun. 1972 ^{1/}	826,199	413,580	412,619	144,580	1.94

^{1/} de facto population - including the European members of the armed forces but excluding the passengers and crews of ships lying in the harbour.

Year of census	General population			Indo-Mauritian population			Chinese population		
	Both sexes	Male	Female	Both sexes	Male	Female	Both sexes	Male	Female
1846	102,217	55,663	46,554	56,245	48,955	7,310	-	-	-
1851	102,327	55,059	47,268	77,996	64,282	13,714	-	-	-
1861	115,864	59,796	56,068	192,634	141,615	51,019	1,552	1,550	2
1871	97,497	49,487	48,010	216,258	141,804	74,454	2,287	2,284	3
1881	107,325	53,754	53,569	248,993	151,352	97,641	3,558	3,549	9
1891	111,517	55,397	56,120	255,920	147,499	108,421	3,151	3,142	9
1901	108,422	52,995	55,427	259,086	143,100	115,986	3,515	3,457	58
1911	107,432	51,808	55,624	257,697	138,974	118,723	3,662	3,313	349
1921	104,216	49,725	54,491	265,524	139,150	126,374	6,745	5,233	1,512
1931	115,666	54,733	60,933	268,649	139,533	129,116	8,923	6,343	2,580
1944	143,056	67,136	75,920	265,247	136,382	128,865	10,882	6,808	4,074
1952	148,238	70,370	77,868	335,327	171,241	164,086	17,850	10,421	7,429

At the 1962 census each householder was asked for the first time to state the population group to which each member of his household claimed to belong.

Prior to 1962, it is probable that, from one census to another different criteria have been used in classifying the population by population groups. Figures are therefore not strictly comparable from one census to another, before 1962.

Table 3(b) - Population enumerated at each census by community and sex - Island of Mauritius, 1962-1972

Year of census	Total population			Hindu			Muslim			Sino-Mauritian			General population		
	Both sexes	Male	Female	Both sexes	Male	Female	Both sexes	Male	Female	Both sexes	Male	Female	Both sexes	Male	Female
1962	681,619	342,306	339,313	344,587	174,698	169,889	110,322	54,971	54,351	23,058	12,654	10,404	203,652	98,983	104,669
1972	826,199	413,580	412,619	428,167	215,654	212,513	137,081	68,789	68,292	24,084	12,849	11,235	236,867	116,288	120,579

✓ de facto population - includes the 1962-1972 census but excludes the 1962-1972 census of persons living in the territory.

Table 4 - Estimated population of Mauritius by geographical district and sex, 1979 - 1981 (end of year estimates)

Geographical district	31st December 1979			31st December 1980			31st December 1981		
	Both sexes	Male	Female	Both sexes	Male	Female	Both sexes	Male	Female
Port Louis	146,101	70,939	75,162	147,386	71,117	76,269	148,389	71,542	76,847
Pamplemousses	78,232	39,008	39,224	79,824	39,674	40,150	81,151	40,322	40,829
Riviere du Rempart	76,944	38,380	38,564	78,430	39,010	39,420	79,749	39,685	40,064
Flacq	103,176	51,272	51,904	105,150	52,113	53,037	106,976	52,988	53,988
Grand Port	90,631	44,907	45,724	92,014	45,430	46,584	93,176	45,956	47,222
Savanne	59,145	29,367	29,778	60,048	29,680	30,368	60,936	30,127	30,809
P. Vilhems : Urban	251,450	121,850	129,600	254,693	122,553	132,140	257,231	123,670	133,561
Other	33,685	17,226	16,459	34,405	17,518	16,887	34,975	17,798	17,177
Moka	54,444	26,927	27,517	55,471	27,350	28,121	56,239	27,709	28,530
Black River	30,435	15,080	15,355	31,081	15,265	15,816	31,541	15,475	16,066
Island of Mauritius	924,243	454,956	469,287	936,502	459,710	476,792	950,365	465,272	485,093
Island of Rodrigues	29,623	14,341	15,282	31,020	14,942	16,078	32,977	16,086	16,891
Other islands	350	250	100	350	250	100	350	250	100
Mauritius	954,216	469,547	484,669	969,872	474,902	494,970	983,692	481,608	502,084

based on the final 1972 Population Census data. No account has been taken of internal migration.

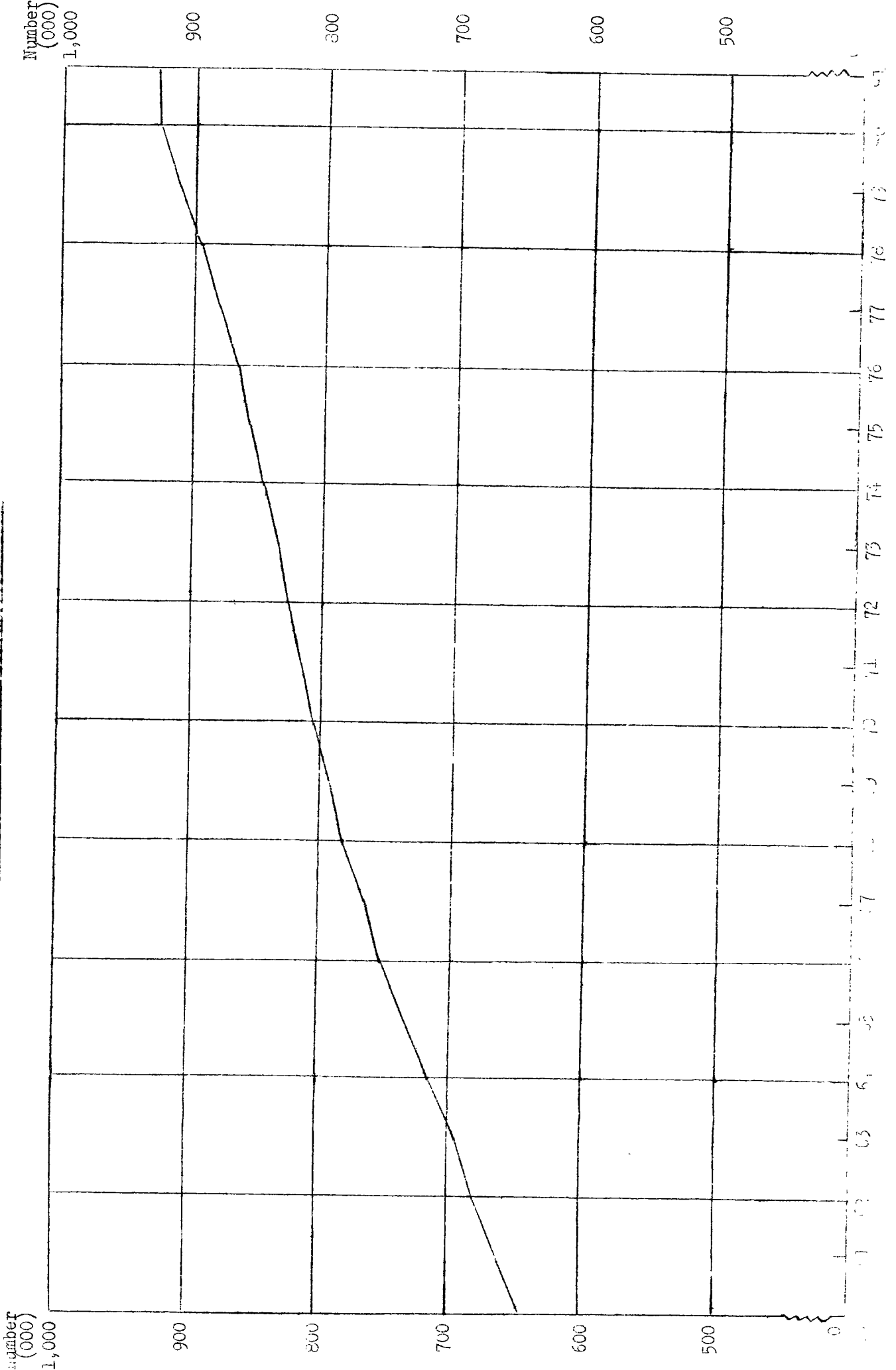
Table 5 - Population and vital statistics - Island of Mauritius, 1921 - 1981

Period	Population ^{1/} at mid-period	Live births	Deaths	Natural increase	Infant deaths ^{2/}	Still births	Civil marriages
1921-25 Average	379,636	14,834	11,758	3,076	2,104	1,581	2,062
1926-30 "	403,248	14,208	11,614	2,594	2,002	1,256	1,495
1931-35 "	398,647	12,490	11,889	601	1,752	1,216	1,489
1936-40 "	412,003	13,621	11,157	2,464	2,119	1,240	2,093
1941-45 "	417,838	15,027	11,927	3,100	2,318	1,240	3,333
1946-50 "	438,797	19,595	9,113	10,482	2,343	1,348	3,503
1951-55 "	522,577	23,176	7,701	15,475	1,884	1,472	3,307
1956	574,938	24,910	6,739	18,171	1,644	1,789	3,080
1957	593,070	25,273	7,603	17,670	1,897	1,800	2,903
1958	609,518	24,600	7,112	17,488	1,659	1,703	3,159
1959	627,249	23,923	6,753	17,170	1,495	1,759	3,297
1960	644,743	25,307	7,248	18,059	1,760	1,783	3,113
1961	662,368	26,092	6,505	19,587	1,618	1,963	3,484
1962	681,619	26,267	6,325	19,942	1,579	1,841	3,893
1963	695,641	27,978	6,709	21,269	1,660	1,519	3,472
1964	716,298	27,528	6,184	21,344	1,361	1,611	3,966
1965	735,245	26,279	6,337	19,942	1,685	1,557	3,976
1966	753,276	26,817	6,701	20,116	1,721	1,384	4,157
1967	767,782	23,499	6,543	16,956	1,656	1,074	3,949
1968	781,615	24,413	7,126	17,287	1,688	1,110	3,974
1969	792,893	21,719	6,428	15,291	1,528	951	3,822
1970	805,489	21,623	6,309	15,314	1,232	857	4,499
1971	816,561	20,834	6,248	14,586	1,077	842	4,346
1972	826,199	20,496	6,506	13,990	1,308	718	5,082
1973	834,781	18,974	6,525	12,499	1,201	678	5,533
1974	845,755	22,938	6,221	16,717	1,045	854	6,771
1975	856,516	21,492	6,967	14,525	1,046	896	6,888
1976	867,885	22,250	6,815	15,435	900	784	8,262
1977	881,761	22,730	6,966	15,764	1,023	712	8,461
1978	896,471	24,250	6,400	17,850	823	653	10,532
1979	911,499	25,056	6,625	18,431	824	650	9,030
1980	926,578	24,983	6,685	18,298	808	623	8,629
1981	939,477	23,670	6,404	17,266	795	553	8,160

^{1/} Figures for 1963-71 have been revised in the light of the final 1972 Population Census data

^{2/} deaths of children under 1 year of age

Graph 1 - mid-year Population Estimates - Island of Mauritius, 1960 - 1981



II - PASSENGER TRAFFIC

Table 6 - Passenger traffic^{1/} by sex, 1933 - 1981

Period	Arrivals			Departures			Net overseas migration
	Both sexes	Male	Female	Both sexes	Male	Female	
1933	3,444	2,410	1,034	4,011	2,862	1,149	- 567
1934	3,969	2,777	1,192	4,380	3,056	1,324	- 411
1935	3,988	2,876	1,112	4,255	2,899	1,356	- 267
1936	3,807	2,681	1,126	3,563	2,451	1,112	+ 244
1937	3,472	2,366	1,106	3,849	2,736	1,113	- 377
1938	4,554	3,062	1,492	4,281	2,896	1,385	+ 273
1939	3,171	1,984	1,187	3,212	2,127	1,085	- 41
1940	1,518	1,028	490	1,851	1,379	472	- 333
1941	1,209	950	259	4,165	3,859	306	- 2,956
1942	1,083	893	190	1,560	1,398	162	- 477
1943	1,054	859	195	737	642	95	+ 317
1944	1,034	798	236	1,053	796	257	- 19
1945	2,061	1,624	437	2,247	1,624	623	- 186
1946	3,298	2,279	1,019	3,377	2,160	1,217	- 79
1947	4,698	3,128	1,570	4,514	3,100	1,414	+ 184
1948	4,294	2,792	1,502	4,015	2,684	1,331	+ 279
1949	4,093	2,700	1,393	4,141	2,794	1,347	- 48
1950	5,253	3,469	1,784	4,900	3,352	1,548	+ 353
1951	5,243	3,515	1,728	5,016	3,536	1,480	+ 227
1952	6,046	3,999	2,047	5,637	3,854	1,783	+ 409
1953	7,252	4,820	2,432	7,054	4,732	2,322	+ 198
1954	7,251	4,728	2,523	7,312	4,824	2,488	- 61
1955	7,216	4,558	2,658	7,354	4,722	2,632	- 138
1956	7,747	4,873	2,874	8,225	5,219	3,006	- 478
1957	8,095	5,156	2,939	8,267	5,309	2,958	- 172
1958	8,703	5,424	3,279	8,924	5,596	3,328	- 221
1959	9,637	5,995	3,642	9,544	6,058	3,486	+ 93
1960	10,412	6,563	3,849	10,784	6,938	3,846	- 372
1961	11,854	7,246	4,608	13,033	8,165	4,868	- 1,179
1962	15,189	9,283	5,906	16,075	9,887	6,188	- 886

Table 6 (continued)

Period	Arrivals			Departures			Net overseas migration
	Both sexes	Male	Female	Both sexes	Male	Female	
1963	17,974	10,866	7,108	18,215	11,024	7,191	- 241
1964	21,221	12,787	8,434	22,331	13,349	8,982	- 1,110
1965	22,024	13,571	8,453	24,150	14,759	9,391	- 2,126
1966	26,456	16,358	10,098	29,301	17,930	11,371	- 2,845
1967	29,321	18,177	11,144	32,925	20,135	12,790	- 3,604
1968	31,403	19,820	11,583	35,938	22,181	13,807	- 4,535
1969	35,919	21,552	14,367	38,929	23,127	15,802	- 3,010
1970	48,819	29,587	19,232	51,969	31,033	20,936	- 3,150
1971	60,826	36,005	24,821	63,997	37,399	26,598	- 3,171
1972	77,174	45,587	31,537	81,493	47,857	33,656	- 4,319
1973	101,184	59,215	41,969	104,697	61,364	43,333	- 3,513
1974	109,044	63,077	45,967	113,362	65,649	47,713	- 4,313
1975	117,548	68,654	48,894	120,703	70,368	50,335	- 3,455
1976	139,303	80,674	58,629	141,148	81,718	59,430	- 1,845
1977	153,203	87,417	65,791	155,653	89,243	66,410	- 2,445
1978	161,688	95,087	68,601	163,733	94,850	68,883	- 2,015
1979	182,771	105,051	77,720	186,864	110,284	76,580	- 4,093
1980	163,230	96,460	66,470	167,269	100,579	66,690	- 4,039
1981	168,973	95,293	73,680	174,376	98,066	76,310	- 5,403

1/ including seamen but excluding transit passengers who do not leave the airport

Table 7 - Passenger traffic between Island of Mauritius and Rodrigues, 1965 - 1981

Period	Departures to Rodrigues			Arrivals from Rodrigues			Net overseas migration
	Both sexes	Male	Female	Both sexes	Male	Female	
1965	1,339	854	485	1,525	961	564	- 186
1966	1,326	860	466	1,418	904	514	- 92
1967	1,485	940	545	1,268	822	446	+ 217
1968	1,541	940	601	1,435	946	539	+ 56
1969	1,569	1,034	535	1,493	994	499	+ 76
1970	1,740	1,103	637	1,762	1,123	639	- 22
1971	1,578	1,017	561	1,744	1,118	626	- 166
1972	2,168	1,409	759	2,311	1,469	842	- 143
1973	2,427	1,521	906	2,453	1,511	942	- 26
1974	2,053	1,197	856	2,548	1,560	1,088	- 595
1975	2,968	1,870	1,098	3,319	2,030	1,289	- 351
1976	3,796	2,528	1,268	4,221	2,854	1,367	- 425
1977	4,477	2,935	1,542	4,853	3,214	1,639	- 376
1978	5,571	3,588	1,983	5,642	3,641	2,001	- 71
1979	5,785	3,794	1,991	5,393	3,672	1,726	+ 387
1980	6,042	3,964	2,078	5,722	3,908	1,814	+ 320
1981	7,099	4,871	2,228	6,190	4,256	1,934	+ 909

Graph 2 - Passenger Traffic, 1965 - 1981

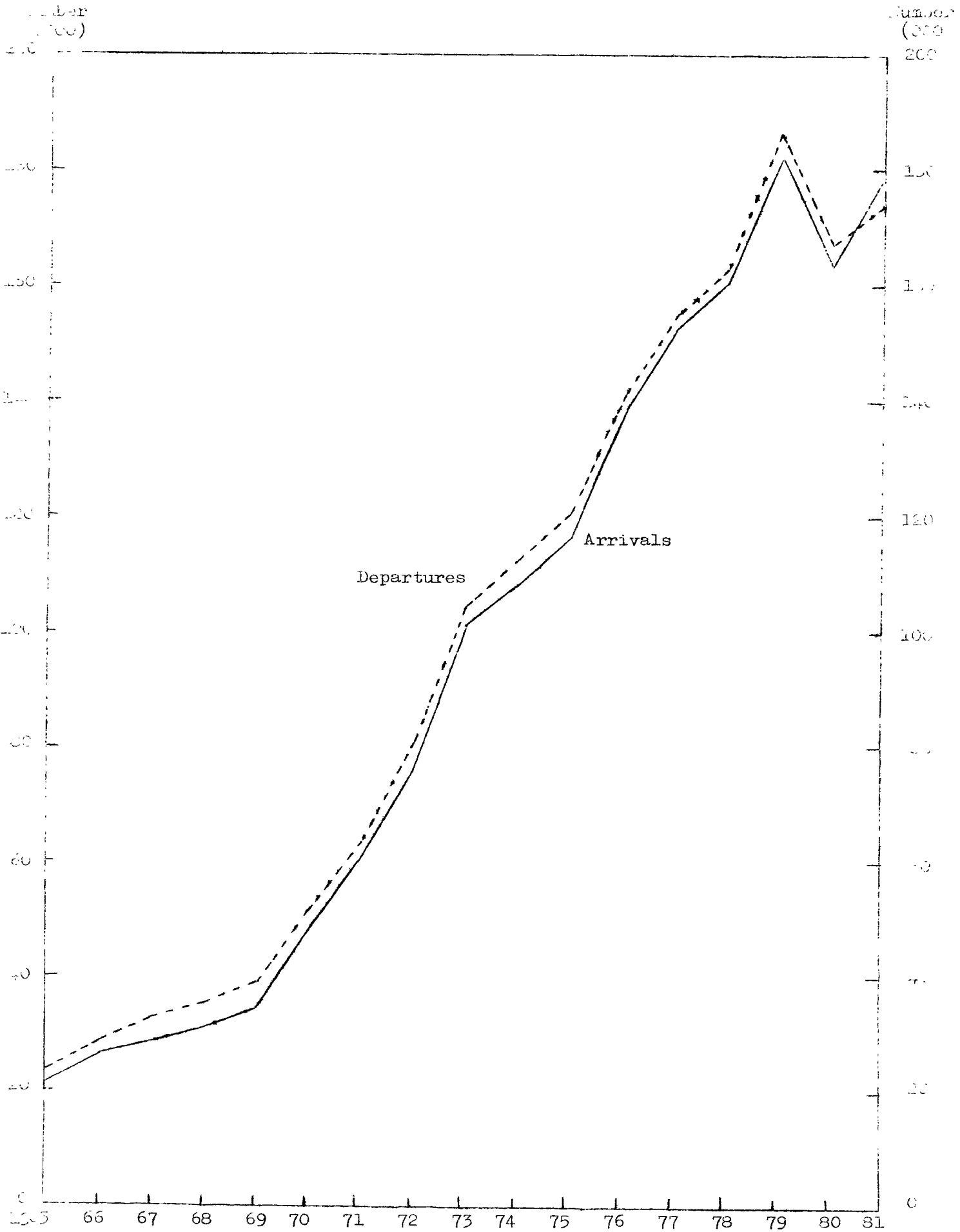


Table 8 - Passenger traffic^{1/} by mode of transport, 1962 - 1981

Period	Arrivals			Departures			Net overseas migration
	Total	By sea	By air	Total	By sea	By air	
1962	15,189	4,258	10,931	16,075	4,374	11,701	- 886
1963	18,047	4,660	13,387	18,299	4,432	13,867	- 252
1964	21,221	5,187	16,034	22,331	5,478	16,853	- 1,110
1965	22,024	4,886	17,138	24,150	5,463	18,687	- 2,126
1966	26,456	5,544	20,912	29,301	6,330	22,971	- 2,845
1967	29,321	4,901	24,420	32,925	6,515	26,410	- 3,604
1968	31,403	4,264	27,139	35,988	5,967	30,021	- 4,585
1969	35,919	3,483	32,436	38,929	4,632	34,297	- 3,010
1970	48,819	3,984	44,835	51,969	4,376	47,593	- 3,150
1971	60,826	3,857	56,969	63,997	4,295	59,702	- 3,171
1972	77,174	3,741	73,433	81,493	4,072	77,421	- 4,319
1973	101,184	4,238	96,946	104,697	4,027	100,670	- 3,513
1974	109,044	3,848	105,196	113,362	3,772	109,590	- 4,318
1975	117,548	4,485	113,063	120,703	4,255	116,448	- 3,155
1976	139,303	4,367	134,936	141,148	4,441	136,707	- 1,845
1977	153,208	4,929	148,279	155,653	4,624	151,029	- 2,445
1978	161,688	4,411	157,277	163,733	4,698	159,035	- 2,045
1979	182,771	3,581	179,190	186,864	4,054	182,810	- 4,093
1980	163,230	3,980	159,250	167,269	4,469	162,800	- 4,039
1981	168,973	4,533	164,440	174,376	5,316	169,060	- 5,405
1981 : 1st Qr.	39,895	925	38,970	45,762	932	44,830	- 5,867
2nd Qr.	35,897	1,017	34,880	37,456	1,086	36,370	- 1,559
3rd Qr.	47,220	1,500	45,720	47,998	1,668	46,330	- 778
4th Qr.	45,961	1,091	44,870	43,160	1,630	41,530	+ 2,801

^{1/} including seamen but excluding transit passengers who do not leave the airport

Table 9 - Passenger traffic ^{1/} by month, 1978 - 1981

Month	Arrivals				Departures				Excess of arrivals over departures			
	1978	1979	1980	1981	1978	1979	1980	1981	1978	1979	1980	1981
January	15,890	18,078	14,983	15,452	19,041	21,055	18,070	19,262	- 3,151	- 2,955	- 3,087	- 3,810
February	11,777	13,008	11,629	12,099	13,203	15,406	13,741	13,581	- 1,431	- 2,398	- 2,112	- 1,482
March	10,816	12,861	12,679	12,344	11,098	13,758	12,714	12,919	- 282	- 897	- 35	- 575
April	11,620	15,014	11,891	13,656	11,738	15,927	13,185	13,736	- 118	- 913	- 1,294	- 80
May	11,268	14,359	12,512	12,596	12,064	14,587	13,052	13,355	- 796	- 228	- 540	- 759
June	9,003	10,838	9,308	9,645	9,474	10,903	9,303	10,365	- 471	- 65	+ 5	- 720
July	13,824	15,577	13,059	13,271	13,586	15,262	11,744	11,847	+ 238	+ 315	+ 1,315	+ 1,424
August	19,256	21,128	17,840	19,131	17,394	19,965	17,039	17,123	+ 1,862	+ 1,163	+ 801	+ 2,008
September	12,369	15,112	13,470	14,818	16,005	17,673	16,741	19,028	- 3,636	- 2,561	- 3,271	- 4,210
October	13,181	13,769	13,293	13,173	12,307	13,410	13,194	12,576	+ 874	+ 359	+ 99	+ 597
November	13,555	13,951	13,704	14,182	14,033	14,315	14,046	15,520	- 478	- 364	- 342	- 1,338
December	19,129	19,076	18,862	18,606	13,785	14,625	14,440	15,064	+ 5,344	+ 4,451	+ 4,422	+ 3,542
Whole year	161,688	182,771	163,230	168,973	163,733	186,864	167,269	174,376	- 2,045	- 4,093	- 4,039	- 5,403

^{1/} including seamen but excluding transit passengers who do not leave the airport

Table 10 - Arrivals^{1/} by country of original embarkation, 1976 - 1981

Country of original embarkation	1976	1977	1978	1979	1980	1981
Australia	5,469	4,354	4,195	6,080	5,220	4,580
France	11,044	14,798	20,053	22,300	16,870	20,290
Germany, Fed. Rep. of	1,319	1,726	2,279	4,780	7,660	6,180
Hong Kong	983	1,016	1,072	1,020	1,020	940
India	7,055	7,955	8,048	9,520	8,550	8,330
Italy	1,346	2,380	3,016	3,200	3,260	5,050
Kenya	3,096	3,309	2,801	2,870	2,700	2,210
Madagascar Republic	4,371	6,516	5,460	6,370	5,880	5,690
Malawi	1,304	1,178	1,222	1,060	240	1,210
Reunion	50,538	53,024	53,197	57,150	51,710	52,450
Zimbabwe	633	304	415	710	340	730
Rodrigues	4,221	4,853	5,642	5,398	5,722	6,190
Seychelles	2,591	3,250	3,153	3,570	2,810	3,020
South Africa, Rep. of	20,684	21,514	22,603	27,440	24,890	27,950
Switzerland	534	587	726	1,150	1,130	780
Tanzania	479	529	815	1,050	1,050	1,100
United Kingdom	15,376	17,102	18,497	19,290	15,850	13,070
Zambia	2,800	4,020	3,840	4,010	2,840	3,100
Other Countries	4,953	4,165	4,207	5,232	4,868	5,410
All countries	138,796	152,580	161,241	182,200	162,610	168,380

^{1/} excluding transit passengers who did not leave the airport; discharged seamen numbering 507, 628, 447, 571, 620 and 593 respectively for the period under review.

Table 11 - Departures^{1/} by country of final destination, 1976 - 1981

Country of final destination	1976	1977	1978	1979	1980	1981
Australia	4,750	4,627	4,144	5,930	5,190	5,120
France	12,865	15,736	21,256	22,010	17,670	23,540
Germany, Fed. Rep. of	1,183	1,934	2,268	5,070	7,660	7,280
Hong Kong	1,012	1,048	1,192	1,450	1,230	1,380
India	6,564	8,340	8,753	8,880	8,090	7,360
Italy	1,580	3,072	3,218	4,160	4,190	5,850
Kenya	3,591	2,541	2,348	3,140	2,780	2,470
Malagasy Republic	3,694	4,990	4,433	4,870	4,980	4,860
Malawi	897	943	972	830	330	820
Reunion	49,799	53,648	53,418	58,910	52,400	51,620
Zimbabwe	734	375	447	790	430	710
Rodrigues	3,796	4,477	5,571	5,785	6,042	7,099
Seychelles	3,223	4,023	3,544	4,780	3,420	3,250
South Africa, Rep. of	21,471	21,344	22,209	28,250	24,920	28,130
Switzerland	597	892	882	1,040	1,290	1,190
Tanzania	608	637	780	930	930	910
United Kingdom	16,641	17,757	18,855	20,030	16,300	12,420
Zambia	2,330	3,444	3,314	3,280	2,240	2,590
Other Countries	5,074	4,932	5,149	5,815	6,448	7,111
All countries	140,409	154,760	162,753	185,950	166,540	173,710

^{1/} excluding transit passengers who did not leave the airport; engaged seamen numbering 739, 893, 980, 914, 729 and 666 respectively for the period under review.

Table 12 - Passenger Traffic by Type of Passenger and Month, 1961

Type of passenger	Jan.	Feb.	Mar.	Apr.	May	Jun.	Jul.	Aug.	Sept.	Oct.	Nov.	Dec.	Whole year
ARRIVALS													
Visitors ^{2/}	11,700	9,820	9,580	10,690	9,270	6,470	8,940	13,490	11,140	10,150	10,840	13,670	125,760
On holiday	10,250	8,510	8,560	9,930	8,390	5,940	8,690	12,960	10,150	9,560	10,010	12,920	115,870
On business	580	370	590	420	440	220	120	240	390	300	500	340	4,510
In transit	870	930	430	330	400	310	130	290	590	290	310	400	5,280
Other and not stated	-	10	-	10	40	-	-	-	10	-	20	10	100
Mauritians settled abroad	450	490	520	550	500	530	1,240	1,690	590	440	620	1,540	9,160
Mauritian residents	3,120	1,590	2,070	2,260	2,630	2,500	2,900	3,650	2,730	2,430	2,610	3,260	31,750
Other	140	170	120	130	140	100	140	200	270	120	80	100	1,710
Total	15,410	12,070	12,290	13,630	12,540	9,600	13,220	19,030	14,730	13,140	14,150	18,570	168,380
DEPARTURES													
Visitors	14,730	10,040	9,690	10,080	9,780	7,110	7,600	12,020	12,840	9,040	11,170	10,420	124,520
Mauritians settled abroad	1,710	1,020	450	630	660	380	510	1,210	1,700	670	590	440	9,970
Emigrants	25	82	81	19	52	22	22	47	12	16	47	60	485
Mauritian residents	2,600	2,300	2,520	2,780	2,660	2,640	3,380	3,600	4,250	2,710	3,450	3,970	36,860
Other	135	108	109	201	138	188	288	113	128	94	223	150	1,875
Total	19,200	13,550	12,850	13,710	13,290	10,340	11,800	16,990	18,930	12,530	15,480	15,040	173,710

^{1/} excluding seamen and transit passengers who do not leave the airport

^{2/} including non-residents (a total of 4,140) who left the airport but stayed in the country for less than a day

Table 13 - Arrivals by age and sex, January 1980 - December 1981

Age (completed years)	January - June 1980			July - December 1980			January - June 1981			July - December 1981		
	Both sexes	Male	Female	Both sexes	Male	Female	Both sexes	Male	Female	Both sexes	Male	Female
Under	410	250	160	540	220	320	470	250	220	810	430	380
1 -	2,020	1,160	860	2,900	1,600	1,300	2,070	950	1,120	3,080	1,550	1,530
5 -	2,340	1,250	1,090	3,640	1,990	1,650	2,430	1,240	1,190	4,020	2,000	2,020
10 -	1,870	1,010	860	3,550	1,670	1,880	2,420	1,330	1,090	3,540	1,690	1,850
15 -	2,810	1,440	1,370	4,320	1,810	2,510	2,990	1,390	1,600	4,240	2,050	2,190
20 -	7,070	5,650	3,420	8,930	4,270	4,660	7,130	3,180	3,950	8,570	3,760	4,810
25 -	10,250	6,360	3,890	12,170	6,720	5,450	10,350	5,530	4,820	12,480	6,620	5,860
30 -	9,990	6,020	3,970	11,970	6,740	5,230	10,620	6,390	4,230	12,460	6,790	5,670
35 -	8,320	5,600	2,720	9,450	6,030	3,420	8,890	5,420	3,470	10,270	6,200	4,070
40 -	6,520	4,240	2,280	7,830	5,060	2,770	6,870	4,360	2,510	8,140	5,110	3,030
45 -	5,100	3,310	1,790	5,960	3,680	2,280	5,590	3,430	2,160	6,270	3,930	2,340
50 -	4,780	3,020	1,760	5,040	3,030	2,010	4,500	2,710	1,790	5,200	3,200	2,000
55 -	3,640	2,440	1,200	4,150	2,600	1,550	3,440	2,110	1,330	4,440	2,710	1,730
60 -	2,170	1,290	880	2,570	1,490	1,080	1,950	1,190	760	2,510	1,260	1,250
65 -	1,520	910	610	1,780	1,010	770	1,650	1,020	630	1,710	970	740
70 and over	1,170	650	520	1,510	820	690	1,080	610	470	1,440	750	690
Not stated	3,022	2,222	800	3,918	2,898	1,020	3,342	2,332	1,010	4,001	2,831	1,170
All ages	73,002	44,822	28,180	90,228	51,638	38,590	75,792	43,442	32,350	93,181	51,851	41,330

including discharged seamen but excluding transit passengers who do not leave the airport.

Table 14 - Departures^{1/} by age and sex, January 1980 - December 1981

Age (completed years)	January - June 1980			July - December 1980			January - June 1981			July - December 1981		
	Both sexes	Male	Female	Both sexes	Male	Female	Both sexes	Male	Female	Both sexes	Male	Female
Under 1	600	340	260	630	340	290	370	150	220	530	250	280
1 - 4	2,360	1,170	1,190	2,880	1,550	1,330	2,430	1,290	1,140	2,710	1,340	1,370
5 - 9	2,860	1,610	1,250	3,580	2,040	1,540	3,300	1,700	1,600	3,780	1,880	1,900
10 - 14	2,620	1,530	1,090	3,420	1,890	1,530	2,530	1,220	1,310	3,750	1,770	1,980
15 - 19	3,430	1,670	1,760	4,460	2,000	2,460	3,790	1,730	2,060	4,420	2,030	2,390
20 - 24	7,700	3,970	3,730	8,320	4,190	4,130	7,460	3,150	4,310	9,450	4,610	4,840
25 - 29	11,400	6,760	4,640	11,590	6,410	5,180	11,830	6,280	5,550	12,400	6,730	5,670
30 - 34	10,340	6,480	3,860	11,720	7,130	4,590	11,760	6,810	4,950	11,310	6,160	5,150
35 - 39	9,020	5,970	3,050	8,850	5,890	2,960	9,520	5,910	3,610	10,200	5,900	4,300
40 - 44	7,380	4,820	2,560	7,430	4,940	2,490	7,410	5,130	2,280	7,710	4,810	2,900
45 - 49	5,560	3,620	1,940	5,950	3,650	2,300	5,820	3,700	2,120	5,990	3,760	2,230
50 - 54	4,920	3,240	1,680	4,550	2,920	1,630	4,910	2,990	1,920	4,860	2,700	2,160
55 - 59	5,790	2,390	1,400	3,660	2,200	1,460	3,710	2,230	1,480	3,890	2,330	1,560
60 - 64	2,060	1,400	660	2,450	1,340	1,110	2,170	1,240	930	2,480	1,250	1,230
65 - 69	1,480	1,000	480	1,750	890	860	1,400	820	580	1,640	940	700
70 & over	1,260	860	400	1,600	920	680	1,210	650	560	1,390	730	660
Not stated	3,285	2,405	880	4,364	3,044	1,320	3,598	2,578	1,020	4,648	3,288	1,360
All ages	80,065	49,235	30,830	87,204	51,344	35,860	83,218	47,578	35,640	91,158	50,478	40,680

^{1/} including engaged stevedores but excluding transient passengers who do not leave the airport

Table 15 - Excess of arrivals^{1/} over departures^{1/} by age and sex, January 1980 - December 1981

Age (completed years)	January - June 1980			July - December 1980			January - June 1981			July - December 1981		
	Both sexes	Male	Female	Both sexes	Male	Female	Both sexes	Male	Female	Both sexes	Male	Female
Under 1	- 190	- 90	- 100	- 90	- 120	+ 30	+ 100	+ 100	-	+ 280	+ 180	+ 100
1 - 4	- 340	- 10	- 330	+ 20	+ 50	- 30	- 360	-	- 20	+ 370	+ 210	+ 160
5 - 9	- 520	- 360	- 160	+ 60	- 50	+ 110	- 870	-	- 410	+ 240	+ 120	+ 120
10 - 14	- 750	- 520	- 230	+ 130	- 220	+ 350	- 110	+ 110	- 220	- 210	- 80	- 130
15 - 19	- 620	- 230	- 390	- 140	- 190	+ 50	- 800	- 340	- 460	- 180	+ 20	- 200
20 - 24	- 630	- 320	- 310	+ 610	+ 80	+ 530	- 330	+ 30	- 360	- 880	- 850	- 30
25 - 29	- 1,150	- 400	- 750	+ 580	+ 310	+ 270	- 1,480	- 750	- 730	+ 80	- 110	+ 190
30 - 34	- 350	- 460	+ 110	+ 250	- 390	+ 640	- 1,140	- 420	- 720	+ 1,150	+ 630	+ 520
35 - 39	- 700	- 370	- 330	+ 600	+ 140	+ 460	- 630	- 490	- 140	+ 70	+ 300	- 230
40 - 44	- 860	- 580	- 280	+ 400	+ 120	+ 280	- 540	- 770	+ 230	+ 430	+ 300	+ 130
45 - 49	- 460	- 310	- 150	+ 10	+ 30	- 20	- 230	- 270	+ 40	+ 280	+ 170	+ 110
50 - 54	- 140	- 220	+ 80	+ 490	+ 110	+ 380	- 410	- 280	- 130	+ 340	+ 500	- 160
55 - 59	- 150	+ 50	- 200	+ 490	+ 400	+ 90	- 270	- 120	- 150	+ 550	+ 380	+ 170
60 - 64	+ 110	- 110	+ 220	+ 120	+ 150	- 30	- 220	- 50	- 170	+ 30	+ 10	+ 20
65 - 69	+ 40	- 90	+ 130	+ 30	+ 120	- 90	+ 250	+ 200	+ 50	+ 70	+ 30	+ 40
70 & over	- 90	- 210	+ 120	- 90	- 100	+ 10	- 130	- 40	- 90	+ 50	+ 20	+ 30
Not stated	- 263	- 183	- 80	- 446	- 146	- 300	- 256	- 246	- 10	- 647	- 457	- 190
All ages	- 7,063	- 4,413	- 2,650	+ 3,024	+ 294	+ 2,730	- 7,426	- 4,136	- 3,290	+ 2,023	+ 1,373	+ 650

^{1/} including seaman but excluding transit passengers who do not leave the airport

Table 16 - Arrivals and departures ^{1/} of residents of Island of Mauritius by district of residence and sex, 1981

Geographical district	Arrivals			Departures			Excess of arrivals over departures		
	Both sexes	Male	Female	Both sexes	Male	Female	Both sexes	Male	Female
	Port Louis	3,230	1,990	1,240	3,760	2,380	1,380	- 530	- 390
Pamplemousses	830	540	290	890	600	290	- 60	- 60	-
Rivière du Rempart	190	130	60	370	280	90	- 180	- 150	- 30
Flacq	420	280	140	450	240	210	- 30	+ 40	- 70
Grand Port	500	280	220	570	340	230	- 70	- 60	- 10
Savanne	250	170	80	360	250	110	- 110	- 80	- 30
Plaines Wilhems : Urban	7,310	4,300	3,010	8,840	5,210	3,630	- 1,530	- 910	- 620
Other	90	60	30	200	140	60	- 110	- 80	- 30
Moka	360	270	90	370	210	160	- 10	+ 60	- 70
Black River	150	80	70	170	120	50	- 20	- 40	+ 20
Not stated	4,250	2,840	1,410	5,380	3,580	1,800	- 1,130	- 740	- 390
Whole island	17,580	10,940	6,640	21,360	13,350	8,010	- 3,780	- 2,410	- 1,370

^{1/} excluding official long-term emigrants

Table 17 - Arrivals of residents of Isard of Mauritius by age and sex, January 1980 - December 1981

Age (completed years)	January - June 1980			July - December 1980			January - June 1981			July - December 1981		
	Both sexes	Male	Female	Both sexes	Male	Female	Both sexes	Male	Female	Both sexes	Male	Female
Under	70	60	10	40	40	-	80	40	40	100	60	40
1 -	250	150	100	390	180	210	310	130	180	430	210	220
5 -	330	180	150	420	220	200	290	110	180	580	240	340
10 -	280	140	140	400	220	180	290	200	90	280	110	170
15 -	650	360	290	740	380	360	430	240	190	540	280	260
20 -	1,810	1,160	650	2,390	1,510	880	1,390	800	590	1,870	1,090	780
25 -	1,930	1,430	500	2,620	1,680	940	1,700	1,240	460	2,160	1,460	700
30 -	1,340	860	480	1,820	1,230	540	1,390	1,030	360	1,760	1,130	650
35 -	1,050	800	250	1,310	900	410	1,010	680	330	1,310	910	400
40 -	1,010	630	380	1,330	950	380	1,010	640	370	1,180	710	470
45 -	930	650	280	1,020	680	340	860	560	300	960	630	330
50 -	750	530	220	960	610	350	730	410	320	720	360	360
55 -	570	360	210	990	570	420	670	420	250	760	460	300
60 -	480	240	240	640	380	260	530	340	190	550	340	210
65 -	230	110	120	470	250	220	330	200	130	460	300	160
70 and over	250	150	100	270	140	130	220	120	100	360	210	150
Not stated	2,580	1,850	730	3,430	2,460	970	2,930	1,990	940	3,560	2,440	1,120
All ages	14,510	9,660	4,850	19,240	12,450	6,790	14,170	9,150	5,020	17,580	10,940	6,640

Table 13 - Departures of residents^{1/} of Island of Mauritius by age and sex, January 1980 - December 1981

Age (completed years)	January - June 1980			July - December 1980			January - June 1981			July - December 1981		
	Both sexes	Male	Female	Both sexes	Male	Female	Both sexes	Male	Female	Both sexes	Male	Female
Under 1	90	60	30	150	80	70	80	40	40	120	80	40
1 - 4	300	180	120	600	350	250	360	240	120	590	250	340
5 - 9	240	130	110	420	160	260	300	120	180	600	310	290
10 - 14	310	190	120	610	310	300	170	60	110	650	340	310
15 - 19	850	520	330	1,120	600	520	620	300	320	1,090	570	520
20 - 24	1,860	1,110	750	2,530	1,680	850	1,610	810	800	2,990	1,780	1,210
25 - 29	2,170	1,360	810	2,790	1,920	870	2,150	1,310	840	2,800	1,810	990
30 - 34	1,490	1,120	370	2,040	1,370	670	1,670	1,060	610	1,820	1,280	540
35 - 39	1,080	800	280	1,490	940	550	1,090	740	350	1,540	900	640
40 - 44	1,120	740	380	1,250	870	380	980	730	250	1,250	820	430
45 - 49	1,020	660	360	950	590	360	980	680	300	990	610	380
50 - 54	760	520	240	820	500	320	730	380	350	790	490	300
55 - 59	600	400	200	800	410	390	600	290	310	680	450	230
60 - 64	460	320	140	600	380	220	460	250	210	530	350	180
65 - 69	550	220	130	300	120	180	240	100	140	400	210	190
70 & over	260	190	70	400	210	190	290	140	150	420	270	150
Not stated	2,630	1,850	780	3,830	2,560	1,270	3,170	2,260	910	4,100	2,830	1,270
All ages	15,590	10,370	5,220	20,700	13,050	7,650	15,500	9,510	5,990	21,360	13,350	8,010

^{1/} excluding official long-term emigrants

Table 19 - Excess of arrivals over departures of residents (excluding emigrants) of Island of Mauritius by age and sex, January 1980 - December 1981

Age (completed years)	January - June 1980			July - December 1980			January - June 1981			July - December 1981		
	Both sexes	Male	Female	Both sexes	Male	Female	Both sexes	Male	Female	Both sexes	Male	Female
Under 1	- 20	-	- 20	- 110	- 40	- 70	-	-	-	- 20	-	-
1 - 4	- 50	- 30	- 20	- 210	- 170	- 40	- 50	- 110	+ 60	- 160	- 40	- 120
5 - 9	+ 90	+ 50	+ 40	-	+ 60	- 60	- 10	- 10	-	- 20	- 70	+ 50
10 - 14	- 30	- 50	+ 20	- 210	- 90	- 120	+ 120	+ 140	- 20	- 370	- 230	- 140
15 - 19	- 200	- 160	- 40	- 380	- 220	- 160	- 190	- 60	- 130	- 550	- 290	- 260
20 - 24	- 50	+ 50	- 100	- 140	- 170	+ 30	- 220	- 10	- 210	- 1,120	- 690	- 430
25 - 29	- 240	+ 70	- 310	- 170	- 240	+ 70	- 450	- 70	- 380	- 640	- 350	- 290
30 - 34	- 150	- 260	+ 110	- 220	- 90	- 130	- 280	- 30	- 250	- 60	- 150	+ 90
35 - 39	- 30	-	- 30	- 180	- 40	- 140	- 80	- 60	- 20	- 230	+ 10	- 240
40 - 44	- 110	- 110	-	+ 80	+ 80	-	+ 30	- 90	+ 120	- 70	- 110	+ 40
45 - 49	- 90	- 10	- 80	+ 70	+ 90	- 20	- 120	- 120	-	- 30	+ 20	- 50
50 - 54	- 10	+ 10	- 20	+ 140	+ 110	+ 30	-	+ 30	- 30	- 70	- 130	+ 60
55 - 59	- 30	- 40	+ 10	+ 190	+ 160	+ 30	+ 70	+ 130	- 60	+ 80	+ 10	+ 70
60 - 64	+ 20	- 80	+ 100	+ 40	-	+ 40	+ 70	+ 90	- 20	+ 20	- 10	+ 30
65 - 69	- 120	- 110	- 10	+ 170	+ 130	+ 40	+ 90	+ 100	- 10	+ 60	+ 90	- 30
70 & over	- 10	- 40	+ 30	- 130	- 70	- 60	- 70	- 20	- 50	- 60	- 60	-
Not stated	- 50	-	- 50	- 400	- 100	- 300	- 240	- 270	+ 30	- 540	- 390	- 150
ALL ages	- 1,000	- 710	- 370	- 1,460	- 600	- 860	- 1,350	- 360	- 970	- 3,780	- 2,410	- 1,370

Table 20 - Excess of arrivals over departures of residents (including emigrants) of Island of Mauritius by age and sex, January 1980 - December 1981

Age (completed years)	January - June 1980			July - December 1980			January - June 1981			July - December 1981		
	Both sexes	Male	Female	Both sexes	Male	Female	Both sexes	Male	Female	Both sexes	Male	Female
Under	-	1	20	-	40	-	-	-	-	-	20	-
1	-	32	22	-	173	-	57	111	57	-	167	-
5	+	41	39	-	53	-	19	13	6	-	30	+
10	-	53	14	-	92	-	111	131	22	-	378	-
15	-	163	58	-	224	-	231	70	161	-	572	-
20	-	38	132	-	172	-	320	70	250	-	1,182	-
25	-	61	324	-	245	+	506	105	401	-	684	-
30	-	267	103	-	94	-	302	43	259	-	78	+
35	-	34	33	-	41	-	93	65	28	-	238	+
40	-	110	1	+	80	-	23	96	119	-	84	+
45	-	11	81	+	86	-	123	110	3	-	31	+
50	-	10	22	+	110	+	3	29	-	-	73	+
55	-	40	8	+	158	+	68	129	61	+	77	+
60	+	80	97	+	2	+	67	88	21	+	17	+
65	-	110	10	+	130	+	88	99	11	+	59	-
70 & over	-	40	29	-	70	-	74	22	52	-	60	-
Not stated	-	2	51	-	100	-	240	270	30	-	540	-
All ages	-	1,224	464	-	1,624	-	1,611	510	1,101	-	3,934	-
					634						-2,543	-
												1,441

Table 21 - Departures of Mauritian residents travelling by air by country of final destination, 1979 - 1981

Country of final destination	1979	1980	1981
Australia	1,010	850	750
France	3,230	3,360	4,050
Germany, Fed. Rep. of	560	670	1,080
Hong Kong	730	490	530
India	2,990	2,520	2,490
Italy	380	460	830
Kenya	660	540	660
Rodrigues	3,654	3,654	3,623
Reunion	13,190	10,320	8,910
South Africa, Rep. of	1,900	2,100	2,350
U.K.	7,130	5,570	4,060
Other countries	2,686	2,836	3,587
All countries	38,120	33,370	32,920

III - EMIGRATION

Table 22 - Official long-term emigrants^{1/} by sex, 1956 - 1981

Year	Both sexes	Male	Female
1956	147	93	54
1957	109	68	41
1958	163	130	33
1959	170	128	42
1960	158	132	26
1961	837	629	208
1962	1,083	711	372
1963	594	326	268
1964	915	491	424
1965	1,408	659	749
1966	1,611	774	837
1967	2,225	1,038	1,187
1968	3,067	1,487	1,580
1969	2,379	1,119	1,260
1970	2,282	1,063	1,219
1971	2,351	1,078	1,273
1972	2,271	956	1,315
1973	2,037	844	1,193
1974	1,494	606	888
1975	874	328	546
1976	579	195	384
1977	290	120	170
1978	320	111	209
1979	191	43	148
1980	308	84	224
1981	485	283	202

^{1/} persons who have obtained a permit to emigrate to another country

Table 23 - External migration, 1956 - 1981

Year	Arrivals	Departures			Excess of arrivals over departures (excluding emigrants)
		Total	Official long-term emigrants	Departures excluding emigrants	
1956	7,747	8,225	147	8,078	- 331
1957	8,095	8,267	109	8,158	- 63
1958	8,703	8,924	163	8,761	- 58
1959	9,637	9,544	170	9,374	+ 263
1960	10,412	10,784	158	10,626	- 214
1961	11,854	13,033	837	12,196	- 342
1962	15,189	16,075	1,083	14,992	+ 197
1963	18,047	18,299	594	17,705	+ 342
1964	21,221	22,331	915	21,416	- 195
1965	22,024	24,150	1,408	22,742	- 718
1966	26,456	29,301	1,611	27,690	- 1,234
1967	29,321	32,925	2,225	30,700	- 1,379
1968	31,403	35,988	3,067	32,921	- 1,518
1969	35,919	38,923	2,379	36,550	- 631
1970	48,819	51,969	2,282	49,687	- 868
1971	60,826	63,997	2,351	61,646	- 820
1972	77,174	81,493	2,271	79,222	- 2,048
1973	101,184	104,697	2,037	102,660	- 1,475
1974	109,044	113,362	1,494	111,868	- 2,824
1975	117,548	120,703	874	119,829	- 2,281
1976	139,303	141,148	579	140,569	- 1,266
1977	153,208	155,653	290	155,363	- 2,155
1978	161,688	163,733	320	163,413	- 1,725
1979	182,771	186,864	191	186,673	- 3,902
1980	163,230	167,269	308	166,961	- 3,731
1981	168,973	174,376	485	173,891	- 4,918

Persons who have obtained a permit to emigrate to another country

The number of immigrants coming to settle in Mauritius is negligible.
A net negative balance over successive years in the last column indicates that a number of persons not registered as official emigrants are permanently leaving the country

Country of intended residence	1967	1968	1969	1970	1971	1972	1973	1974	1975	1976	1977	1978	1979	1980	1981
<u>ASIA</u>	1	1	3	4	3	18	2	2	3	-	-	1	-	-	213
India	1	-	3	1	-	1	2	-	2	-	-	1	-	-	-
Saudi Arabia	-	-	-	-	-	15	-	-	-	-	-	-	-	-	163
Qatar	-	-	-	-	-	-	-	-	-	-	-	-	-	-	50
Other Asian	-	1	-	3	3	2	-	2	1	-	-	-	-	-	-
<u>EUROPE</u>	613	728	615	939	1,058	1,145	1,353	1,042	682	477	223	252	148	176	148
Belgium	35	22	7	22	44	32	38	54	30	17	1	2	7	5	5
France	55	58	93	435	566	554	684	546	237	137	38	105	77	93	69
Germany, Fed. Rep. of	-	-	2	5	8	31	43	7	4	1	6	12	1	1	9
Italy	1	-	1	4	19	48	29	19	17	17	6	5	16	13	18
Norway	-	-	-	1	3	2	5	1	1	2	-	4	-	-	-
Switzerland	3	-	-	6	1	3	5	4	4	1	4	7	3	8	11
United Kingdom	519	646	510	463	415	460	543	402	385	302	113	113	41	49	36
Other European	2	1	2	3	2	15	6	9	4	-	5	4	3	7	-
<u>OCEANIA</u>	1,331	2,038	1,648	1,095	1,019	883	547	314	85	51	25	30	31	54	41
Australia	1,330	2,037	1,645	1,082	1,004	877	545	301	84	50	25	30	31	54	41
New Zealand	-	1	1	-	-	1	1	-	-	-	-	-	-	-	-
Other Oceanian	1	-	2	13	15	5	1	13	1	1	-	-	-	-	-

1. Persons who have obtained a permit to emigrate to a letter country

Table 25 - Age distribution of official long-term emigrants, 1967 - 1981

Male

Age (completed years)	1967	1968	1969	1970	1971	1972	1973	1974	1975	1976	1977	1978	1979	1980	1981
0 - 4	127	226	136	93	83	94	65	68	56	22	24	10	4	6	7
5 - 9	133	197	153	106	94	118	101	77	43	28	26	23	4	16	5
10 - 14	135	149	146	93	96	115	105	77	59	36	23	18	8	5	11
15 - 19	122	147	140	113	106	108	100	57	46	29	12	21	7	7	21
20 - 24	132	155	114	153	171	149	112	101	66	28	10	6	7	14	105
25 - 29	94	141	86	141	128	85	107	82	35	21	10	10	1	14	67
30 - 34	63	146	75	120	108	68	59	39	17	7	3	8	3	11	27
35 - 39	60	93	52	68	89	59	45	38	3	5	5	2	2	2	10
40 - 44	63	82	62	63	69	51	53	23	6	5	4	2	1	-	19
45 - 49	35	48	44	32	48	46	33	13	5	4	1	4	2	3	1
50 - 54	25	34	39	33	23	29	19	8	3	6	-	3	1	-	1
55 - 59	17	27	40	15	18	11	18	8	-	2	-	1	-	2	2
60 - 64	20	24	13	13	19	12	15	9	3	1	1	2	2	2	4
65 - 69	9	10	10	9	16	7	3	1	4	1	1	1	-	-	1
70 and over	3	8	9	11	9	4	6	4	1	-	-	-	1	-	2
Unknown	-	-	-	-	1	-	3	1	1	-	-	-	-	2	-
All ages	1,038	1,487	1,119	1,063	1,078	956	844	606	328	195	120	111	43	84	283

Table 25 (cont'd)

Female

Age (completed years)	1967	1968	1969	1970	1971	1972	1973	1974	1975	1976	1977	1978	1979	1980	1981
0 - 4	138	215	121	99	90	89	48	50	46	24	11	9	7	6	7
5 - 9	147	202	143	98	89	110	111	79	44	29	14	13	6	6	14
10 - 14	123	168	151	94	89	140	104	70	42	38	19	22	16	10	6
15 - 19	154	172	174	181	184	157	181	153	105	74	42	53	32	46	42
20 - 24	171	184	150	237	241	267	263	212	142	102	41	46	47	72	57
25 - 29	106	149	101	132	145	148	150	102	54	51	21	30	18	36	33
30 - 34	74	133	87	81	106	100	84	72	33	22	6	13	9	19	13
35 - 39	74	85	78	64	84	75	72	47	18	9	4	6	4	10	11
40 - 44	53	74	58	61	58	65	63	24	12	6	5	3	2	3	2
45 - 49	44	54	49	50	60	47	51	27	8	8	1	6	3	4	3
50 - 54	52	46	53	25	31	32	21	26	10	5	3	-	2	3	5
55 - 59	30	32	37	37	44	33	17	10	11	-	-	2	-	3	3
60 - 64	11	27	21	25	21	22	17	7	6	4	1	3	2	4	2
65 - 69	11	19	12	17	10	16	10	4	6	7	1	1	-	-	2
70 and over	14	20	25	18	18	14	16	4	7	5	1	-	-	1	2
Unknown	-	-	-	-	3	-	5	1	2	-	-	-	-	1	-
All ages	1,187	1,580	1,260	1,219	1,273	1,315	1,193	888	546	384	170	209	148	224	202

Table 25 (cont'd)

Both sexes

Age (completed years)	1967	1968	1969	1970	1971	1972	1973	1974	1975	1976	1977	1978	1979	1980	1981
0 - 4	265	441	257	192	173	183	113	118	82	46	35	19	11	12	14
5 - 9	280	399	296	204	183	228	212	156	87	57	40	36	10	22	19
10 - 14	258	317	297	187	185	255	209	147	101	74	42	40	24	15	17
15 - 19	276	319	314	294	290	265	281	210	151	103	54	74	39	53	63
20 - 24	303	339	264	390	412	416	375	313	208	130	51	52	54	86	162
25 - 29	200	290	187	273	273	233	237	184	99	72	31	40	19	50	100
30 - 34	137	279	162	201	214	168	143	111	50	29	9	21	12	30	40
35 - 39	134	178	130	132	173	134	117	85	21	14	9	10	6	12	21
40 - 44	121	156	120	124	127	116	116	47	18	11	9	5	3	3	21
45 - 49	79	102	93	82	108	93	84	40	13	12	2	10	5	7	4
50 - 54	57	80	92	58	54	61	40	34	13	11	3	3	3	3	6
55 - 59	47	59	77	52	62	44	35	18	11	2	-	3	-	5	5
60 - 64	31	51	34	38	40	34	32	16	9	5	2	5	4	6	6
65 - 69	20	29	22	26	26	23	13	5	10	8	2	2	-	-	3
70 & over	17	28	34	29	27	18	22	8	8	5	1	-	1	1	4
Unknown	-	-	-	-	4	-	8	2	3	-	-	-	-	3	-
All ages	2,225	3,067	2,379	2,282	2,351	2,271	2,037	1,494	874	579	290	320	191	308	485

1/ persons who have obtained a permit to emigrate to another country

Table 26 - Official long-term emigrants^{1/} by Major Occupational group, 1975 - 1981

Major Occupational Group ^{2/}	1975	1976	1977	1978	1979	1980	1981
Total number of emigrants	874	579	290	320	191	308	485
<u>Emigrants reporting an occupation</u>	<u>253</u>	<u>136</u>	<u>41</u>	<u>45</u>	<u>44</u>	<u>112</u>	<u>292</u>
0/1. Professional, Technical and Related Workers	62	20	10	8	5	6	25
2. Administrative and Managerial workers	8	6	2	-	1	-	1
3. Clerical and Related Workers	42	30	7	6	4	14	31
4. Sales Workers	7	5	7	1	2	4	2
5. Service Workers	83	28	3	8	11	40	56
6. Agricultural, Animal Husbandry and Forestry Workers, Fishermen and Hunters	1	1	-	-	-	-	52
7/8/9. Production and Related Workers, Transport Equipment Operators and Labourers	48	42	11	19	22	38	125
X. Workers not classifiable by Occupation	2	4	1	3	1	10	1
<u>Emigrants not reporting any occupation (including housewives and children)</u>	<u>621</u>	<u>443</u>	<u>249</u>	<u>275</u>	<u>147</u>	<u>196</u>	<u>192</u>

1/ persons who have obtained a permit to emigrate to another country

2/ International Standard Classification of Occupations, Revised Edition, 1968

Table 27 - Official long-term emigrants, ^{1/} by Major Occupational Group, age and sex, 1981

Major Occupational Group ^{2/}	Age (completed years)																
	All ages		< 20		20 - 24		25 - 34		35 - 44		45 - 54		55 +		Not stated		
	Both sexes	Male	Female	Male	Female	Male	Female	Male	Female	Male	Female	Male	Female	Male	Female	Male	Female
Total number of emigrants	485	283	202	44	70	105	56	94	46	29	13	2	8	9	9	-	-
Emigrants reporting an occupation	293	220	73	13	9	81	29	92	28	27	5	2	2	5	2	-	-
0/1 Professional, Technical and Related Workers	25	18	7	-	-	4	2	9	3	3	2	-	-	2	-	-	-
2 Administrative and Managerial Workers	1	1	-	-	-	-	-	1	-	-	-	-	-	-	-	-	-
3 Clerical and Related Workers	31	14	17	1	1	7	6	5	8	1	1	-	1	-	-	-	-
4 Sales Workers	2	1	1	-	-	1	1	-	-	-	-	-	-	-	-	-	-
5 Service Workers	56	23	33	4	6	11	15	6	11	2	1	-	-	-	-	-	-
6 Agriculture, Animal Husbandry and Forestry Workers, Fishermen and Hunters	52	52	-	2	-	22	-	24	-	3	-	-	-	1	-	-	-
7/8/9 Production and Related Workers, Transport Equipment Operators and Labourers	125	110	15	6	2	35	5	47	6	18	1	2	1	2	-	-	-
X Workers not classifiable by Occupation	1	1	-	-	-	1	-	-	-	-	-	-	-	-	-	-	-
Emigrants not reporting any occupation (including housewives and children)	192	63	129	31	61	24	27	2	18	2	8	-	6	4	9	-	-

^{1/} Persons who have changed their country of origin to another country.
^{2/} The distribution of emigrants by occupational group is based on the classification of occupations in the Standard Classification of Occupations, 1980.

Table 28 - Official long-term emigrants^{1/} by occupation, 1979 - 1981

Occupation	1979	1980	1981
Accountants	-	1	3
Air hostesses	1	-	23
Cabinet makers	2	2	1
Carpenters	-	1	2
Clerks	2	5	13
Cooks	-	2	6
Doctors	-	-	2
Drivers	-	-	2
Electricians (see also fitters)	-	3	30
Fitters (see also electricians)	1	3	18
Labourers	-	-	52
Maids (domestic servants)	8	37	9
Managers	-	-	1
Masons	1	1	5
Mechanics	-	2	3
Nurses	-	1	3
Plumbers	-	1	7
Policemen	-	1	1
Salesmen	2	3	2
Seamstresses and tailors	15	18	21
Sheet metal workers	-	-	9
Steel fixers	-	-	6
Stenographers and typists	2	5	8
Storekeepers	-	1	1
Teachers	1	2	5
Waiters	2	-	11
Welders	1	4	12
Other	6	19	36
Occupation not stated or not applicable ^{2/}	147	196	193
Total number of emigrants	191	308	485

^{1/} persons who have obtained a permit to emigrate to another country

^{2/} emigrants not reporting any occupation (including housewives and children)

Table 29 - Official long-term emigrants^{1/} by district of last residence and sex, January 1980 - December 1981

Geographical district	January - June 1980			July - December 1980			January - June 1981			July - December 1981		
	Both sexes	Male	Female	Both sexes	Male	Female	Both sexes	Male	Female	Both sexes	Male	Female
Port Louis	39	13	26	40	3	37	54	22	32	55	41	14
Pamplemousses	6	2	4	8	3	5	19	15	4	10	9	1
Rivière du Rempart	4	1	3	4	-	4	5	2	3	18	11	7
Flacq	6	2	4	2	-	2	17	10	7	11	7	4
Grand Port	4	1	3	12	4	8	14	6	8	8	7	1
Savanne	7	3	4	11	3	8	10	3	7	6	4	2
Plaines Wilhems : Urban	68	24	44	81	21	60	139	77	62	85	49	36
Other	4	-	4	3	-	3	2	1	1	4	3	1
Moka	2	2	-	1	-	1	13	8	5	3	1	2
Black River	4	2	2	2	-	2	8	6	2	4	1	3
Not stated	-	-	-	-	-	-	-	-	-	-	-	-
Whole island	144	50	94	164	34	130	281	150	131	204	133	71

^{1/} persons who have obtained a permit to emigrate to another country

IV - TOURISM

Definition and notes

1. Definition of tourist :

- (a) prior to 1964, a tourist has been defined as a non-resident staying in Mauritius for more than 24 hours but less than 6 months;
- (b) As from 1964, a tourist is defined as a non-resident staying in the island for more than 24 hours but less than a year.

The figures for the two periods are nevertheless comparable because of the small number of tourists staying for more than 6 months.

2. Visitors include the following :

- (i) tourists as defined above; and
- (ii) non-residents who stay in the country for less than a day, other than those who do not leave the airport.

3. Method of compilation :

Certain data on tourism (such as type of visitor, tourist arrivals by month of arrival, tourist arrivals by country of residence and mode of transport) are compiled from disembarkation cards which visitors fill in when they arrive in this country. However, information on duration of stay of visitors can be compiled only from the embarkation cards which they fill in when they leave the country.

As from January 1979, figures are based on a 10% sample. Data on "visitor arrivals" are compiled both from embarkation and disembarkation cards. Since the compilation has been done on a sample basis the figures of "visitor arrivals" obtained when working with records of arrivals do not tally with those obtained when working with records of departures. The figures in the latter case have been prorated to the totals obtained when working with records of arrivals.

4. Tourist nights :

Table 30, 35 and 36 show the number of nights spent by tourists who were on visit in the country during the period under review. The figures therefore include nights spent during the reference period by tourists who arrived before the beginning of the period. On the other hand, nights spent after the end of the reference period by tourists who arrived during the period are excluded.

5. Visitor nights :

In tables 38 - 41 an analysis is made of nights spent by visitors who arrived during the period under review and who have left by a given date after the end of the period. Figures for 1981 thus show the total number of nights spent by visitors who arrived in 1981 and left before 1.4.1982.

6. Mauritians settled abroad are excluded from figures of tourists and visitors. Data referring to them are shown separately in tables 42 - 44. Table 42 shows the total nights spent by Mauritians settled abroad who arrived during the period under review and who have left by a given date after the end of the period. Thus the figures for 1981 include nights spent in January - March 1982 by Mauritians settled abroad who arrived in 1981. Table 44 shows the nights spent during the period under review only. Thus the figures for 1981 include nights spent in 1981 by Mauritians settled abroad who arrived in 1980, but exclude nights spent in January - March 1982 by those who arrived in 1981.

Table 30. Tourist^{1/} arrivals by mode of transport and tourist nights spent during period, 1964 - 1981

Period	Tourists arriving during period		Tourist nights spent during period ^{2/}	% Change over previous year	
	Sea	Air		Tourist arrivals	Tourist nights
1964	1,010	9,023	144,600	+ 29.8	+ 45.5
1965	746	9,312	144,900	+ 0.2	+ 0.2
1966	1,328	11,712	162,300	+ 29.6	+ 12.0
1967	937	13,877	172,000	+ 13.6	+ 6.0
1968	647	14,906	149,500	+ 5.0	- 13.1
1969	455	20,132	220,600	+ 32.4	+ 47.6
1970	365	27,285	287,600	+ 34.3	+ 30.4
1971	168	36,230	399,700	+ 31.6	+ 39.0
1972	143	48,654	454,300	+ 34.1	+ 13.7
1973	1,293 ^{3/}	66,701	733,100	+ 39.3	+ 61.4
1974	472	72,443	772,200	+ 7.2	+ 5.3
1975	554	74,043	746,900	+ 2.3	- 3.3
1976	778	91,783	892,200	+ 24.1	+ 19.4
1977	1,035	101,475	994,800	+ 10.7	+ 11.5
1978	696	107,626	1,051,600	+ 5.7	+ 5.7
1979	510	127,850	1,419,600	+ 18.5	+ 35.0
1980	470	114,610	1,301,700	- 10.4	- 8.3
1981	590	121,030	1,361,200	+ 5.7	+ 4.6

^{1/} see notes on page 34

^{2/} include nights spent during reference period by tourists arriving prior to the period

^{3/} includes about 700 per cent increase in days spent in hotels during reference

Table 31 -- Tourist arrivals by month of arrival, 1971 - 1981

Month of arrival	1971	1972	1973	1974	1975	1976	1977	1978	1979	1980	1981
January	3,669	4,701	6,874	8,495	8,401	10,055	11,507	10,808	12,640	10,990	11,180
February	2,494	3,335	4,863	5,954	4,017	7,035	8,433	8,452	9,930	8,650	9,300
March	2,191	3,046	4,152	5,272	4,383	6,149	6,974	7,715	9,410	9,610	9,230
April	2,419	2,875	5,091	5,299	4,477	6,753	8,245	7,836	10,860	8,290	10,440
May	2,905	3,261	5,060	5,203	5,235	7,395	7,974	7,337	10,300	8,870	8,980
June	1,890	2,639	4,501	4,661	3,740	4,849	5,432	5,244	7,190	5,970	6,240
July	2,918	3,986	4,726	5,379	5,739	7,551	8,832	8,599	10,270	8,310	8,770
August	5,297	7,038	9,595	9,026	10,844	11,851	11,927	13,477	14,710	12,790	12,950
September	2,845	3,911	5,105	5,183	5,706	6,004	6,463	7,616	9,860	8,910	10,720
October	2,522	3,334	4,893	5,202	5,586	7,757	7,932	9,130	9,760	9,660	9,820
November	2,615	3,875	4,398	5,650	6,654	7,157	7,859	9,719	10,310	9,770	10,630
December	4,633	6,798	8,736	7,591	9,835	10,015	10,882	12,389	13,120	13,260	13,360
Whole year	36,398	48,797	67,994	72,915	74,597	92,561	102,510	108,322	128,360	115,080	121,620

Table 33 - Tourist arrivals by country of residence, 1971 - 1981

Country of residence	1971	1972	1973	1974	1975	1976	1977	1978	1979	1980	1981
Australia	1,700	2,171	3,060	3,351	3,417	3,559	2,812	2,730	4,780	3,460	3,680
France	2,540	3,771	7,281	7,874	8,929	13,885	17,628	21,240	25,720	19,620	21,820
Germany, Fed. Rep. of	824	1,406	1,996	1,951	1,533	1,532	2,535	2,811	5,550	9,050	7,470
India	554	879	2,235	1,308	1,944	2,676	2,704	2,913	2,950	2,950	2,350
Italy	428	775	2,136	1,937	1,712	2,115	3,302	3,498	3,760	4,300	5,940
Kenya	634	684	824	898	707	1,057	909	826	1,000	910	940
Malagasy Republic	2,287	2,747	3,563	2,679	1,976	3,035	5,273	4,891	6,220	6,480	6,890
Reunion	15,161	19,230	22,542	23,232	24,853	30,032	29,926	29,717	29,740	26,570	27,620
Zimbabwe	191	435	380	591	1,232	920	440	688	1,290	630	1,180
Seychelles	63	256	563	431	405	428	505	545	520	450	600
South Africa, Rep. of	4,939	7,088	9,985	14,193	14,740	17,823	18,205	18,956	23,420	21,180	24,940
Switzerland	159	303	537	840	876	1,014	1,189	1,449	1,950	1,570	1,500
Tanzania	216	200	308	282	125	254	439	459	520	620	630
United Kingdom	2,252	2,848	3,822	3,452	3,598	4,852	6,024	7,133	8,180	7,690	6,340
Zambia	1,224	1,825	2,375	3,332	2,406	1,884	2,865	2,549	2,390	1,180	1,290
Other countries	3,226	4,179	6,387	6,564	6,144	7,495	7,754	7,917	10,370	8,420	8,430
All countries	36,398	48,797	67,994	72,915	74,597	92,561	102,510	108,322	128,360	115,080	121,620

1/ see notes on page 34

Graph 4 - Percentage distribution of tourist arrivals by country of residence, 1981

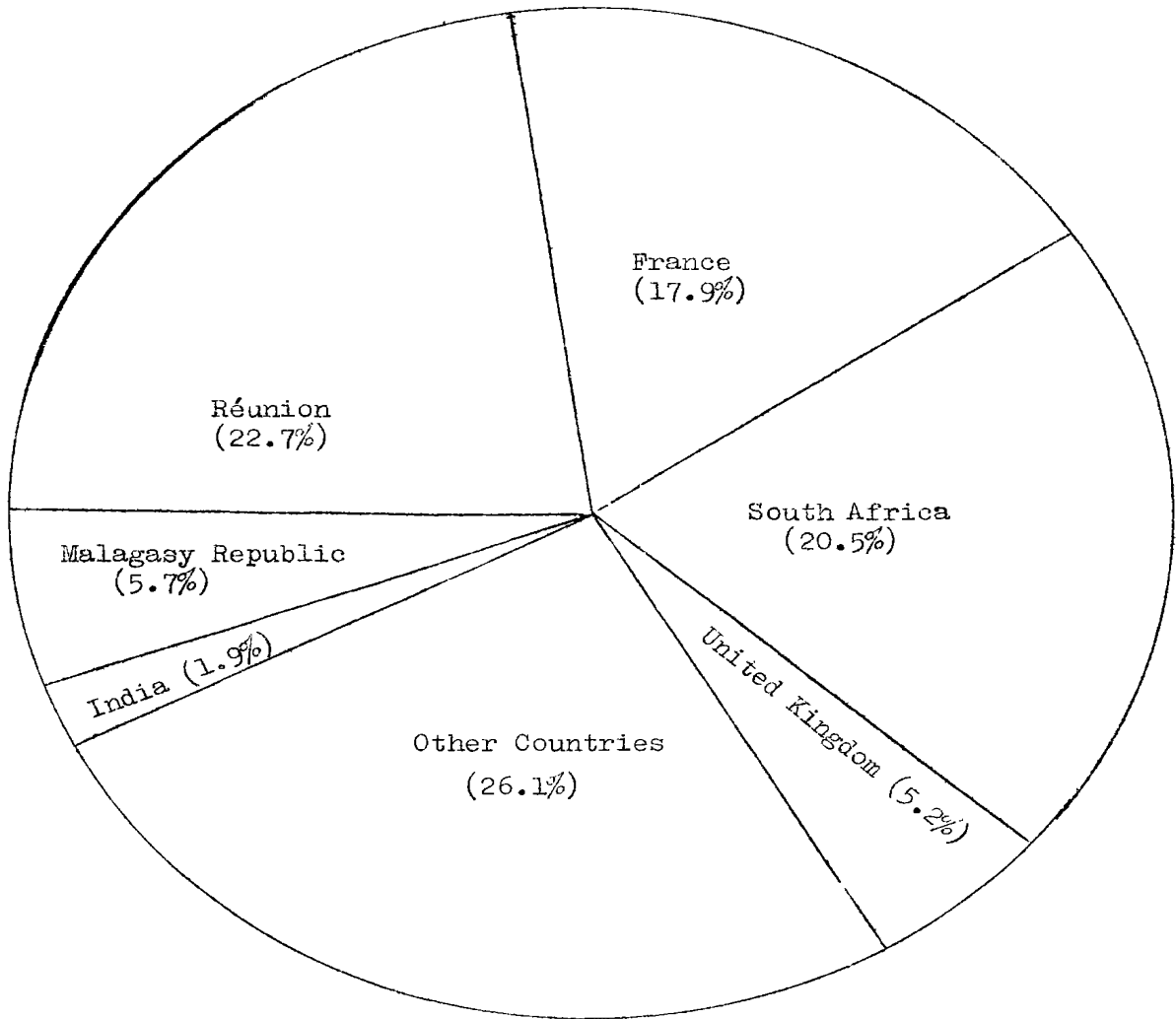


Table 35 - Tourist/ nights by country of residence of tourist, 1971 - 1981

Country of residence	1971	1972	1973	1974	1975	1976	1977	1978	1979	1980	1981
Australia	11,431	9,767	21,032	26,014	26,080	26,487	23,198	25,047	58,570	40,270	48,070
France	26,878	39,043	94,408	100,673	99,847	151,971	189,961	219,547	263,200	233,190	259,250
Germany, Fed. Rep. of	10,582	14,306	25,016	27,796	23,068	21,128	32,015	40,450	94,060	125,710	121,430
India	8,793	8,032	16,509	15,287	17,285	22,501	22,769	26,377	33,370	47,960	36,170
Italy	3,716	5,567	19,563	20,876	15,703	21,217	30,424	29,898	44,530	40,880	61,110
Kenya	5,197	4,498	6,471	6,371	5,532	7,492	7,474	6,746	10,310	9,290	6,960
Malagasy Rep.	27,618	25,376	39,927	26,965	17,735	20,001	42,440	33,597	48,400	43,030	42,060
Reunion	172,147	198,333	236,462	227,129	220,238	244,391	243,402	237,919	243,870	243,720	230,660
Zimbabwe	2,004	4,952	5,103	7,174	14,133	10,513	5,527	10,913	15,110	9,450	11,320
Seychelles	1,505	2,213	6,005	4,239	4,000	4,867	6,254	6,513	4,810	8,710	4,350
South Africa, Rep. of	50,066	52,335	87,975	138,178	145,595	172,665	169,522	179,566	232,740	206,670	210,650
Switzerland	1,716	2,633	5,295	10,770	10,522	13,653	17,164	17,625	21,130	25,390	20,250
Tanzania	2,543	1,673	2,761	2,563	1,512	2,892	3,512	4,035	4,750	4,460	3,680
United Kingdom	31,181	36,125	71,275	56,923	61,943	71,336	86,855	107,921	144,280	142,070	137,540
Zambia	13,076	18,972	22,567	34,948	22,394	17,006	23,773	23,457	22,800	13,380	11,180
Other countries	31,286	30,288	72,646	66,277	61,260	74,822	90,400	81,599	147,560	107,550	136,310
All countries	399,739	454,271	733,065	772,183	746,898	892,222	994,766	1,051,610	1,419,610	1,301,730	1,361,190

1/ see notes on page 34

Graph 5 - Total arrivals, tourist arrivals and tourist nights spent during period 1971 - 1981

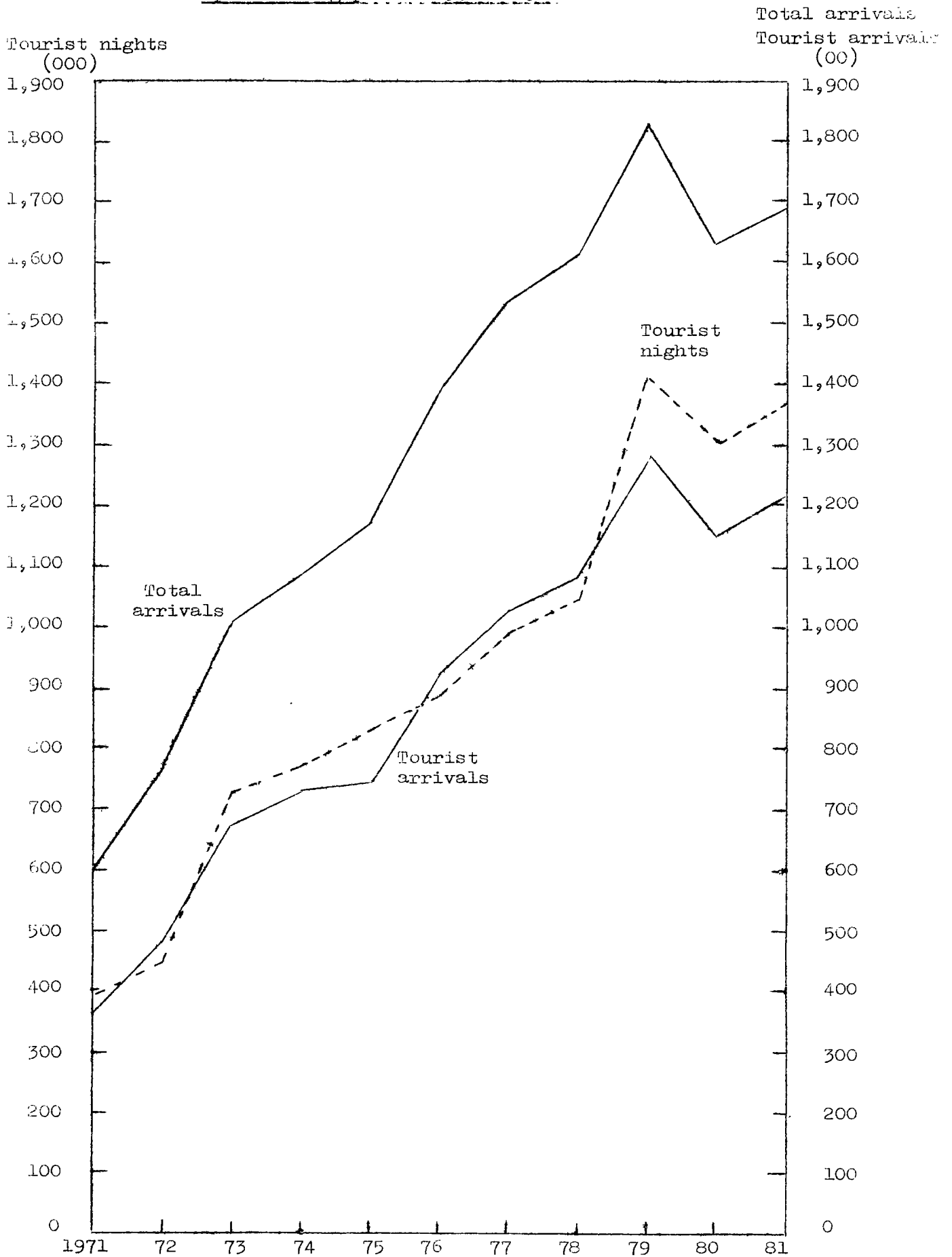


Table 36 - Tourist arrivals and tourist nights^{1/} by country of residence, 1981

Country of residence	Tourist arrivals	Tourist nights spent during period
Australia	3,680	48,070
France	21,820	259,250
Germany, Fed. Rep. of	7,470	121,430
India	2,350	36,170
Italy	5,940	61,110
Kenya	940	6,960
Malagasy Republic	6,890	42,060
Reunion	27,620	230,660
Zimbabwe	1,180	11,320
Seychelles	600	4,350
South Africa, Rep. of	24,940	230,850
Switzerland	1,500	20,250
Tanzania	630	3,680
United Kingdom	6,340	137,540
Zambia	1,290	11,180
Other countries	8,430	136,310
All countries	121,620	1,361,190

^{1/} see notes on page 34

Table 27 - Visitors^{1/} arrivals by age and sex, 1980 - 1981

Age (completed years)	1980 ^{2/}			1981 ^{3/}		
	Both sexes	Male	Female	Both sexes	Male	Female
	Under 1.	810	520	290	490	200
1 - 4.	3,740	1,920	1,820	3,440	1,770	1,670
5 - 9.	5,230	2,960	2,270	5,410	2,770	2,640
10 - 14	4,730	2,740	1,990	5,100	2,370	2,730
15 - 19	5,610	2,390	3,220	6,090	2,750	3,340
20 - 24	10,680	4,990	5,690	11,670	4,920	6,750
25 - 29	16,000	8,710	7,290	17,600	9,160	8,440
30 - 34	16,800	10,210	6,590	17,740	9,680	8,060
35 - 39	14,170	9,300	4,870	15,440	9,230	6,210
40 - 44	11,190	7,260	3,930	12,200	7,890	4,310
45 - 49	8,910	5,550	3,360	9,240	5,800	3,440
50 - 54	7,150	4,670	2,480	7,820	4,660	3,160
55 - 59	5,630	3,500	2,130	5,710	3,400	2,310
60 - 64	3,310	1,910	1,400	3,400	1,760	1,640
65 - 69	2,600	1,570	1,030	2,210	1,290	920
70 and over	1,950	1,290	660	1,760	900	860
Not stated	570	380	190	440	190	250
All ages	119,080	69,870	49,210	125,760	68,740	57,020

^{1/} see notes on page 34

^{2/} visitors arriving in 1980 and leaving before 1.4.81

^{3/} visitors arriving in 1981 and leaving before 1.4.82

Table 38 - Visitor arrivals and visitor nights^{1/} by country of residence,
1980 - 1981

Country of residence	1980 ^{2/}			1981 ^{3/}		
	Visitor arrivals	Visitor nights	Average length of stay	Visitor arrivals	Visitor nights	Average length of stay
Australia	3,770	41,880	11.1	3,820	38,470	10.1
France	19,720	226,350	11.5	21,920	258,710	11.8
Germany, Fed. Rep. of	8,480	129,500	15.3	8,000	119,780	15.0
India	3,110	39,410	12.7	2,140	32,090	15.0
Italy	4,300	39,720	9.2	6,260	59,460	9.5
Kenya	940	9,360	10.0	800	7,630	9.5
Malagasy Republic	6,070	42,930	7.1	6,730	42,840	6.4
Reunion	29,750	250,190	8.4	30,020	223,030	7.4
Zimbabwe	680	9,280	13.6	990	11,760	11.9
Seychelles	550	8,810	16.0	510	4,790	9.4
South Africa, Rep. of	21,630	200,380	9.3	25,580	226,510	8.9
Switzerland	1,620	22,140	13.7	1,480	19,730	13.3
Tanzania	520	4,430	8.5	470	3,680	7.8
United Kingdom	7,520	135,780	18.1	6,590	135,980	20.6
Zambia	1,410	13,450	9.5	1,060	10,310	9.7
Other countries	9,010	97,430	10.8	9,390	125,440	13.4
All countries	119,080	1,271,040	10.7	125,760	1,320,210	10.5

^{1/} see notes on page 34

^{2/} figures refer to visitors arriving in 1980 and leaving before 1.4.81 and to the nights spent by them.

^{3/} figures refer to visitors arriving in 1981 and leaving before 1.4.82 and to the nights spent by them.

Table 39 - Visitor^{1/} arrivals by duration of stay, 1980 - 1981

Duration of stay	1980 ^{2/}		1981 ^{3/}	
	Number	Percentage	Number	Percentage
Less than 1 day	4,000	3.3	4,140	3.3
1 day	6,200	5.2	6,540	5.2
2 days	7,080	5.9	6,620	5.2
3 "	9,550	8.0	10,020	8.0
4 "	9,600	8.1	8,800	7.1
5 "	7,500	6.3	6,920	5.5
6 "	6,780	5.7	7,410	5.9
7 "	20,320	17.1	23,120	18.4
8 "	5,530	4.6	6,690	5.3
9 "	2,960	2.5	4,000	3.2
10 "	3,660	3.1	4,750	3.8
11 "	3,390	2.8	3,750	3.0
12 "	2,290	1.9	2,140	1.7
13 "	1,910	1.6	2,000	1.6
14 "	8,720	7.3	9,980	7.9
15 "	1,770	1.5	1,720	1.4
16 "	1,280	1.1	880	0.7
17 "	810	0.7	840	0.7
18 "	850	0.7	1,160	0.9
19 "	700	0.6	560	0.4
20 - 24 "	5,670	4.8	5,180	4.1
25 - 29 "	2,930	2.5	2,930	2.3
1 month - under 2 months	3,730	3.1	3,870	3.1
2 months- under 3 months	910	0.8	790	0.6
3 months and over	940	0.8	870	0.7
Not stated	-	-	-	-
Total	119,080	100.0	125,760	100.0

^{1/} see notes on page 34

^{2/} visitors arriving in 1980 and leaving before 1.4.81

^{3/} visitors arriving in 1981 and leaving before 1.4.82

Table 40 - Visitor arrivals by country of residence and duration of stay, 1981

Country of residence	Duration of stay in days													Total visitors
	0	1 & 2	3 & 4	5 & 6	7 & 8	9 & 10	11 & 12	13 & 14	15 - 19	20 - 24	25 - 29	30+		
Australia	140	870	1,080	380	290	120	80	100	160	170	80	350	3,820	
France	530	1,470	2,930	2,770	5,130	1,440	1,160	2,450	1,070	1,020	710	1,240	21,920	
India	130	550	310	270	260	70	80	40	80	50	40	260	2,140	
Kenya	-	210	180	120	130	60	10	-	40	10	10	30	800	
Malagasy Rep.	130	820	1,800	1,590	1,540	340	80	120	70	70	70	100	6,730	
Reunion	1,150	3,990	7,870	5,040	4,950	2,030	930	1,010	890	510	340	810	30,020	
S. Africa, Rep. of	560	2,770	2,090	1,610	8,950	3,340	2,260	1,830	1,060	400	350	360	25,580	
United Kingdom	150	330	430	380	1,150	330	260	970	310	610	400	1,270	6,590	
Zambia	-	110	50	90	380	20	10	270	60	30	40	-	1,060	
Other countries	750	2,040	2,160	2,080	7,030	1,000	1,020	5,190	1,420	2,510	890	1,110	27,100	
All countries	4,140	13,160	18,900	14,330	29,810	8,750	5,890	11,980	5,160	5,180	2,930	5,530	125,760	

1/ see notes on page 34

Table 41 - Visitor arrivals and visitor nights^{1/} by country of nationality, 1981

Country of nationality	Visitor arrivals ^{2/}	Visitor nights ^{3/}	Average length of stay
Australia	3,280	33,080	10.1
France	52,680	484,080	9.2
Germany, Fed. Rep. of	8,290	120,920	14.6
India	2,660	37,180	14.0
Italy	6,390	60,330	9.4
Kenya	220	1,380	6.3
Madagascar Republic	5,770	36,430	6.3
Zimbabwe	700	8,610	12.3
South Africa, Rep. of	23,100	203,710	8.8
Switzerland	1,640	21,370	13.0
Tanzania	250	1,940	7.8
United Kingdom	10,030	168,160	16.8
Zambia	290	2,880	9.9
Other countries	10,460	140,140	13.4
All countries	125,760	1,320,210	10.5

^{1/} see notes on page 34

^{2/} figures refer to visitors arriving in 1981 and leaving before 1.4.82

^{3/} figures refer to nights spent by visitors arriving in 1981 and leaving before 1.4.82

Table 42 - Arrivals of Mauritians settled abroad (excluding students) and nights spent by them by country of residence, 1980 - 1981

Country of residence	1980 ^{1/}			1981 ^{2/}		
	Arrivals	Nights	Average length of stay	Arrivals	Nights	Average length of stay
Australia	650	16,190	24.9	590	21,760	36.9
Belgium	90	3,060	34.0	120	2,940	24.5
Canada	160	5,600	35.0	180	4,470	24.8
France	1,720	52,720	30.6	2,250	78,000	34.7
Germany, Fed. Rep. of	170	4,100	24.1	90	2,340	26.0
India	-	-	-	30	780	26.0
Malagasy Republic	40	2,720	68.0	160	4,840	30.2
Malawi	130	3,150	24.2	90	1,950	21.7
Reunion	1,410	22,220	15.8	1,370	28,920	21.1
Zimbabwe	50	810	16.2	90	3,400	37.8
Switzerland	70	1,870	26.7	110	3,220	29.3
South Africa, Rep. of	410	10,640	26.0	400	12,250	30.6
United Kingdom	2,800	101,070	36.1	3,070	122,630	39.9
Zambia	60	2,340	39.0	80	3,820	47.3
Other countries	580	14,660	25.3	530	4,490	8.5
All countries	8,340	241,150	28.9	9,160	295,810	32.3

^{1/} figures refer to Mauritians settled abroad arriving in 1980 and leaving before 1.4.81 and to the total nights spent by them in 1980 and 1981

^{2/} figures refer to Mauritians settled abroad arriving in 1981 and leaving before 1.4.82 and to the total nights spent by them in 1981 and 1982

See notes on page 34

Table 43 - Arrivals of Mauritians settled abroad (excluding students) by duration of stay, 1980 - 1981

Duration of stay	1980 ^{1/}	1981 ^{2/}
Less than 1 day	180	100
1 day	80	180
2 days	190	160
3 days	220	170
4 days	320	140
5 days	160	170
6 days	110	130
7 days	360	170
8 days	200	120
9 days	140	100
10 days	140	90
11 days	130	160
12 days	110	150
13 days	110	60
14 days	250	260
15 days	90	120
16 days	150	90
17 days	150	100
18 days	120	120
19 days	40	90
20 - 24 days	620	530
25 - 29 days	1,160	1,420
1 month - under 2 months	2,610	3,630
2 months - under 3 months	470	640
3 months and over	250	260
Not stated	-	-
Total	8,340	9,160

^{1/} figures refer to Mauritians settled abroad arriving in 1980 and leaving before 1.4.81

^{2/} figures refer to Mauritians settled abroad arriving in 1981 and leaving before 3.4.82

See notes on page 34

Table 44 - Total nights spent by Mauritians settled abroad
(excluding students) by country of residence,
1980 - 1981

Country of residence	1980 ^{1/}	1981 ^{2/}
Australia	20,640	26,860
Belgium	3,760	2,530
Canada	6,840	4,700
France	57,960	77,730
Germany, Fed. Rep. of	5,210	2,570
India	350	780
Malagasy Republic	3,290	5,970
Malawi	3,030	3,400
Reunion	26,110	29,030
Zimbabwe	1,220	2,850
Switzerland	2,960	3,200
South Africa, Rep. of	10,720	16,870
United Kingdom	120,340	139,300
Zambia	2,850	6,210
Other countries	14,860	22,970
All countries	280,140	344,970

^{1/} figures refer to nights spent during 1980 by Mauritians settled abroad arriving in 1980 or before and leaving before 1.4.81.

^{2/} figures refer to nights spent during 1981 by Mauritians settled abroad arriving in 1981 or before and leaving before 1.4.82.

See notes on page 34

International embarkation/diseembarkation specimen card

MAURITIUS

ILE MAURICE

INTERNATIONAL EMBARKATION AND DISEMBARKATION CARD

Carte Internationale d'Embarquement et de Débarquement

- 1. Mr/M.)
 - Mrs/Mme.) Surname/Nom
 - Miss/Mlle) Given names/Prénoms
- 2. Date and Place of birth
Date et lieu de naissance
- 3. Nationality
Nationalité
- 4. Occupation
Profession
- 5. Permanent address
Domicile

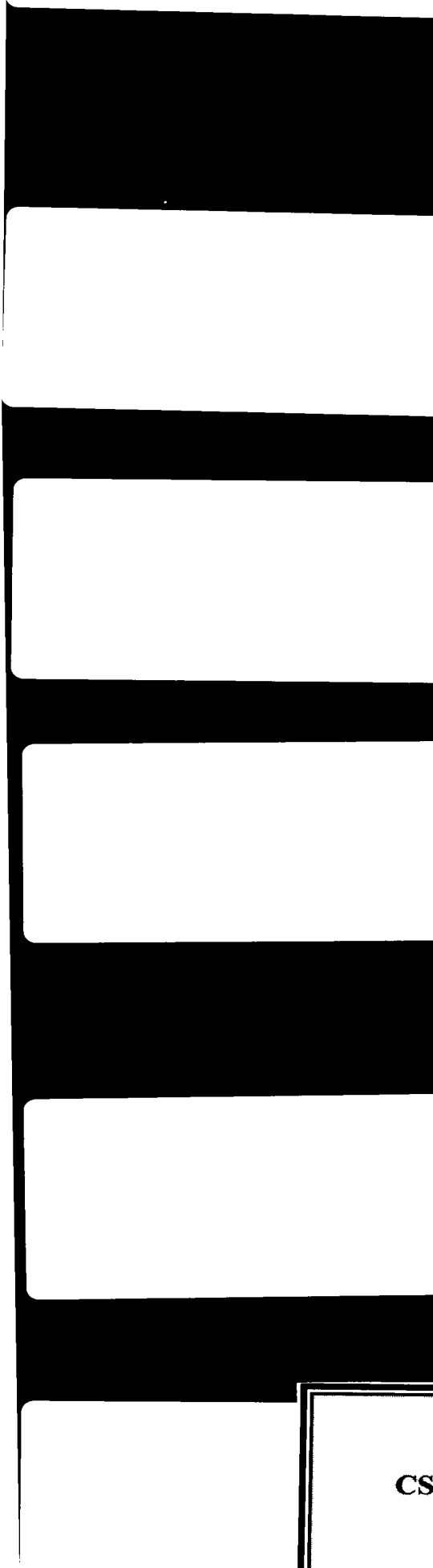
FOR PASSENGERS LEAVING / POUR LES PASSAGERS AU DEPART

- 6. Port of final destination
Lieu de destination finale

FOR ARRIVING PASSENGERS / POUR LES PASSAGERS A L'ARRIVEE

- 7. Port of original embarkation
Lieu d'embarquement d'origine
- 8. Purpose of journey to Mauritius
Motif du voyage à l'Ile Maurice
- 9. Intended length of stay in Mauritius
Durée probable du séjour à l'Ile Maurice
- 10. Intended address during stay in Mauritius
Adresse prévue pendant le séjour à Maurice
- 11. Passport No. Place and Date of issue
Numéro du passeport, lieu et date d'émission





CS