

Vol. 7

No. 2



MAURITIUS

Ministry of Economic Planning and Development

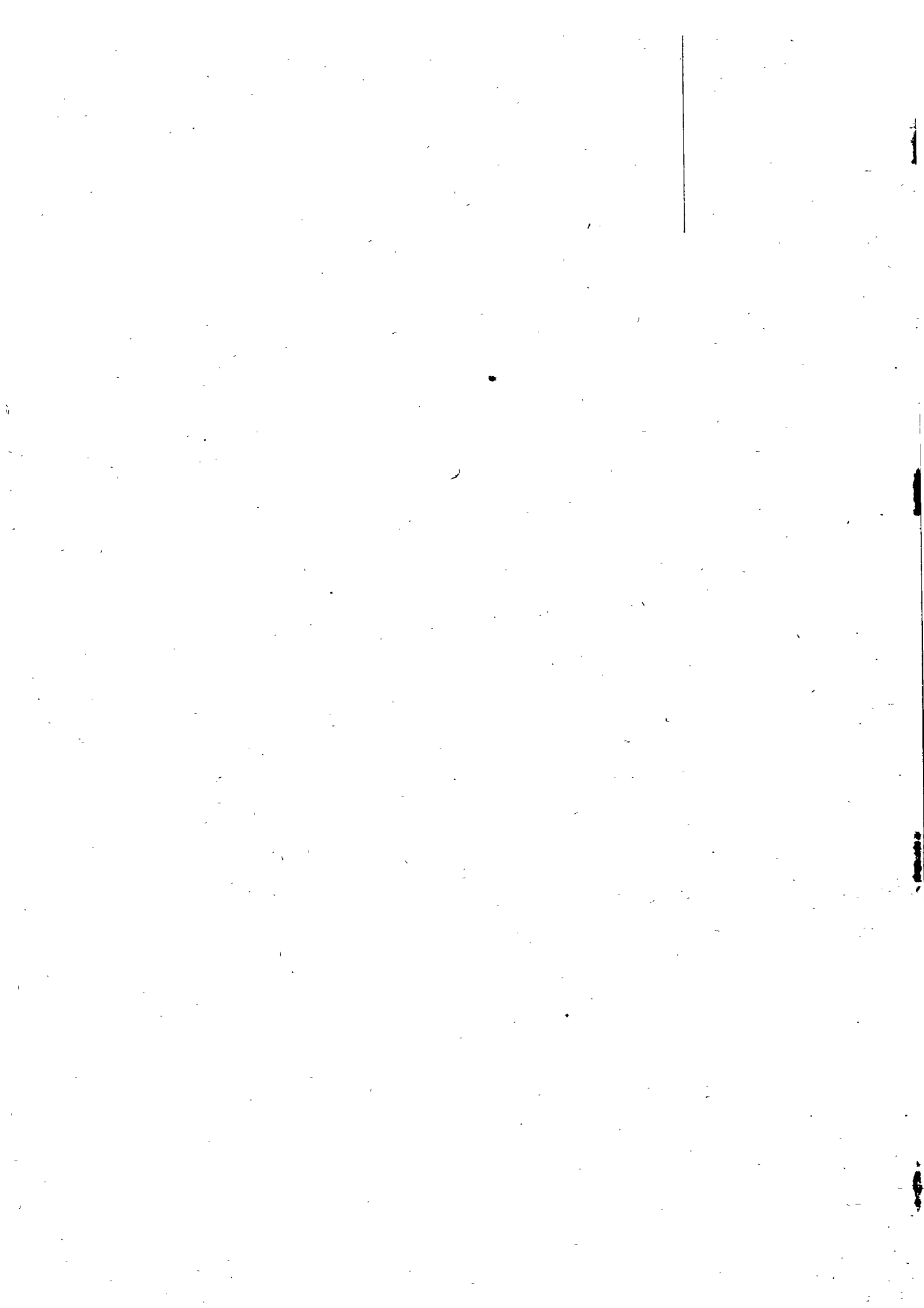
CENTRAL STATISTICAL OFFICE

**INTERNATIONAL TRAVEL
AND
TOURISM**

December 1980

[Price : Rs 15.00]

ST



INTERNATIONAL TRAVEL AND TOURISM

Vol. 7 No. 2

December 1980

"International Travel and Tourism", a publication of the Central Statistical Office, is designed to present data on international travel and tourism in more detail than those that are currently published in the Bi-annual Digest of Statistics.

As from January 1979, owing to the increase in the volume of passenger traffic, it has been decided to process the data on a 10% sample. Cases where the number of passengers are too small have been omitted in order to avoid large sampling errors. It is to be noted, however, that figures for official emigrants published in this report have been compiled from the Passport Office register.

With the help of the computer of the Ministry of Finance it has been possible to process in more detail the information recorded on the international embarkation and disembarkation cards which passengers fill in on leaving and entering the country.

It is hoped that the results, especially those on tourism, which have been assembled in this report will be useful to all those who take an interest in the evolution of the tourist industry in this country.

The co-operation of the Immigration and Passport Office of the Police Department and the Data Processing Division of the Ministry of Finance is gratefully acknowledged.

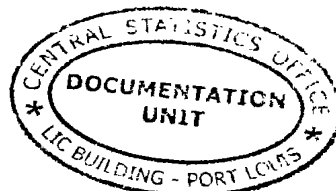
The following symbols are used throughout:

- Nil
- ... Not available

(J. Ah Kong)
Director of Statistics

Central Statistical Office
Rose Hill
Mauritius

May 1981



C O N T E N T S

I - POPULATION AND VITAL STATISTICS

	<u>Page</u>
Table 1 - Estimated population of Mauritius as at 31st December 1980 based on the final 1972 Population Census data	1
2 - Population increase in intercensal periods - Island of Mauritius, 1846 - 1972	1
3(a) Population enumerated at each census by population group and sex - Island of Mauritius, 1846 - 1952	2
3(b) Population enumerated at each census by community and sex - Island of Mauritius, 1962 - 1972	2
4 - Estimated population of Mauritius by geographical district and sex, 1973 - 1980 (end of year estimates)	3
5 - Population and vital statistics - Island of Mauritius, 1921 - 1930	4

II - PASSENGER TRAFFIC

Table 6 - Passenger traffic by sex, 1933 - 1980	6 & 7
7 - Passenger traffic between Island of Mauritius and Rodrigues, 1953 - 1980	7
8 - Passenger traffic by mode of transport, 1962 - 1980	9
9 - Passenger traffic by month, 1977 - 1980	10
10 - Arrivals by country of original embarkation, 1975 - 1980	11
11 - Departures by country of final destination, 1975 - 1980	12
12 - Departures by type of passenger and month, 1980	13
13 - Arrivals by age and sex, January 1979 - December 1980	14
14 - Departures by age and sex, January 1979 - December 1980	15
15 - Excess of arrivals over departures by age and sex, January 1979 - December 1980	16
16 - Arrivals and departures of residents of Island of Mauritius by districts of residence and sex, 1980	17
17 - Arrivals of residents of Island of Mauritius by age and sex, January 1979 - December 1980	18
18 - Departures of residents of Island of Mauritius by age and sex, January 1979 - December 1980	19
19 - Excess of arrivals over departures of residents (excluding emigrants) of Island of Mauritius by age and sex, January 1979 - December 1980	20

II - PASSENGER TRAFFIC (Cont'd)

	<u>Page</u>
Table 20 - Excess of arrivals over departures of residents (including emigrants) of Island of Mauritius by age and sex, January 1979 - December 1980	21
21 - Departures of Mauritian residents travelling by air by country of final destination, 1978 - 1980	22

III - EMIGRATION

Table 22 - Official long-term emigrants by sex, 1956 - 1980	23
23 - External migration, 1956 - 1980	24
24 - Official long-term emigrants by country of intended residence, 1967 - 1980	25 & 25
25 - Age distribution of official long-term emigrants, 1967 - 1980	27 - 29
26 - Official long-term emigrants by Major Occupational Group, 1975 - 1980	30
27 - Official long-term emigrants by Major Occupational Group, age and sex, 1980	31
28 - Official long-term emigrants by occupation, 1978 - 1980	32
29 - Official long-term emigrants by district of last residence and sex, January 1979 - December 1980	33

IV - TOURISM

Definition and notes	34
Table 30 - Tourist arrivals by mode of transport and total nights spent during period, 1964 - 1980	35
31 - Tourist arrivals by month of arrival, 1970 - 1980	36
32 - Percentage distribution of tourist arrivals by month of arrival, 1970 - 1980	38
33 - Tourist arrivals by country of residence, 1970 - 1980	39
34 - Percentage distribution of tourist arrivals by country of residence, 1970 - 1980	40
35 - Tourist nights by country of residence of tourist, 1970 - 1980	42
36 - Tourist arrivals and tourist nights by country of residence, 1980	44

IV - TOURISM (Cont'd)

	<u>Page</u>
Table 37 - Visitor arrivals by age and sex, 1979 - 1980	45
38 - Visitor arrivals and visitor nights by country of residence, 1979 - 1980	46
39 - Visitor arrivals by duration of stay, 1979 - 1980	47
40 - Visitor arrivals by country of residence and duration of stay, 1980	48
41 - Visitor arrivals and visitor nights by country of nationality, 1980	49
42 - Arrivals of Mauritians settled abroad (excluding students) and nights spent by them by country of residence, 1979 - 1980	50
43 - Arrivals of Mauritians settled abroad (excluding students) by duration of stay, 1979 - 1980	51
44 - Total nights spent by Mauritians settled abroad (excluding students) by country of residence, 1979 - 1980	52

Graphs

Graph 1 - Mid-year population estimates - Island of Mauritius, 1959 - 1980	5
2 - Passenger traffic, 1964 - 1980	8
3 - Tourist arrivals by month of arrival, January 1973 - December 1980	37
4 - Percentage distribution of tourist arrivals by country of residence, 1980	41
5 - Total arrivals, tourist arrivals and tourist nights spent during period, 1970 - 1980	53

Appendix : International embarkation/disembarkation specimen card

I. POPULATION AND VITAL STATISTICS

Table 1 - Estimated population of Mauritius as at 31st December, 1980 based on the final 1972 Population Census data

Island	Area		Both sexes	Male	Female
	Sq. mile	Sq. Km.			
Island of Mauritius	720	1,865	938,502	459,710	478,792
Island of Rodrigues	40	104	31,020	14,942	16,078
Other islands	27	71	350	250	100
Mauritius	787	2,040	969,872	474,902	494,970

Table 2 - Population increase in intercensal periods - Island of Mauritius, 1846-1972

Census date	Population enumerated at Census			Intercensal increase	Average annual rate of increase %
	Both sexes	Male	Female		
1st Aug. 1846	158,462	104,598	53,864		
20th Nov. 1851	180,823	119,341	61,482	22,361	2.55
8th Apr. 1861	310,050	202,961	107,089	129,227	5.87
11th Apr. 1871	316,042	193,575	122,467	5,992	0.19
4th Apr. 1881	359,874	208,655	151,219	43,832	1.31
6th Mar. 1891	370,538	206,038	164,550	10,714	0.29
1st Apr. 1901	371,023	199,552	171,471	435	0.01
31st Mar. 1911	368,791	194,095	174,696	-2,232	-0.06
21st May 1921	376,485	194,108	182,377	7,694	0.21
26th Apr. 1931	393,238	200,609	192,629	16,753	0.44
11th Jun. 1944	419,185	210,326	208,859	25,947	0.49
29th Jun. 1952	501,415	252,032	249,383	82,230	2.26
30th Jun. 1962 ^{1/}	681,619	342,306	339,313	180,204	3.12
30th Jun. 1972 ^{1/}	826,199	413,580	412,619	144,580	1.94

^{1/} de facto population - including the European members of the armed forces but excluding the passengers and crews of ships lying in the harbour.

Table 3(a) - Population enumerated at each census by community, group and sex - Island of Mauritius, 1846-1952

Year of census	General population			Indo-Mauritian population			Chinese population		
	Both sexes	Male	Female	Both sexes	Male	Female	Both sexes	Male	Female
1846	102,217	55,653	46,554	56,245	48,955	7,310	-	-	-
1851	102,827	55,059	47,768	77,996	64,282	13,714	-	-	-
1861	115,064	59,796	56,068	192,634	141,615	51,019	1,552	1,550	2
1871	97,497	49,487	48,010	216,258	141,804	74,454	2,287	2,284	3
1881	107,325	53,754	53,569	248,993	151,552	97,641	3,558	3,549	9
1891	111,517	55,397	56,120	255,920	147,499	108,421	3,151	3,142	9
1901	108,422	52,995	55,427	259,086	145,100	115,986	3,515	3,457	58
1911	107,432	51,808	55,624	257,697	138,974	118,723	3,662	3,313	349
1921	104,215	49,725	54,491	265,524	139,150	126,374	6,745	5,233	1,512
1931	115,666	54,733	60,933	268,649	139,555	129,116	8,923	6,343	2,580
1944	143,656	67,136	75,920	265,247	136,382	128,865	10,882	6,808	4,074
1952	148,258	70,370	77,868	335,327	171,241	164,086	17,850	10,421	7,429

At the 1962 Census each household was asked for the first time to state the population group to which each member of his household claimed to belong.

Prior to 1962, it is probable that, from one census to another different criteria have been used in classifying the population by population groups. Figures are therefore not strictly comparable from one census to another, before 1962.

Table 3(b) - Population enumerated at each census by community and sex - Island of Mauritius, 1962-72

Year of census	Total population				Hindu			Muslim			Sino-Mauritian			General population		
	Both sexes	Male	Female	Both sexes	Male	Female	Both sexes	Male	Female	Both sexes	Male	Female	Both sexes	Male	Female	
1962	681,619	342,306	339,313	344,587	174,698	169,889	110,322	55,971	54,351	23,058	12,654	10,404	203,652	98,983	104,669	
1972	826,199	413,580	412,619	428,167	215,654	212,513	137,081	68,789	68,292	24,084	12,649	11,235	236,867	116,288	120,579	

de facto population - including the European members of the armed forces but excluding the passengers and crews of ships lying in the harbor.

Table 4 - Estimated population^{1/} of Mauritius by geographical district and sex, 1978-80 (end of year estimates)

Geographical district	31st December 1978			31st December 1979			31st December 1980		
	Both sexes	Male	Female	Both sexes	Male	Female	Both sexes	Male	Female
Port Louis	144,815	71,099	73,716	146,101	70,939	75,162	147,386	71,117	76,269
Pamplemousses	76,879	38,567	38,312	78,232	39,008	39,224	79,824	39,674	40,150
Rivière du Rempart	75,572	37,941	37,631	76,544	38,380	38,564	78,450	39,010	39,420
Flacq	101,163	50,508	50,655	103,176	51,272	51,904	105,150	52,115	53,037
Grand Port	89,223	44,550	44,673	90,631	44,907	45,724	92,014	45,430	46,584
Savanne	58,216	29,097	29,119	59,145	29,367	29,778	60,048	29,680	30,368
P. Williams : Urban	247,814	121,225	126,589	251,450	121,850	129,600	254,693	124,555	132,140
Other	32,990	16,914	16,076	33,685	17,226	16,459	34,405	17,518	16,887
Moka	53,558	26,603	26,955	54,444	26,927	27,517	55,471	27,350	28,121
Black River	29,675	14,848	14,827	30,435	15,080	15,355	31,081	15,265	15,816
Island of Mauritius	909,905	451,352	458,553	924,243	454,956	469,287	938,502	459,710	478,792
Island of Rodrigues	28,375	13,785	14,590	29,623	14,341	15,282	31,020	14,942	16,078
Other islands	350	250	100	350	250	100	350	250	100
Mauritius	938,630	465,387	473,243	954,216	469,547	484,669	969,872	474,902	494,970

^{1/} based on the final 1972 Population Census data. No account has been taken of internal migration

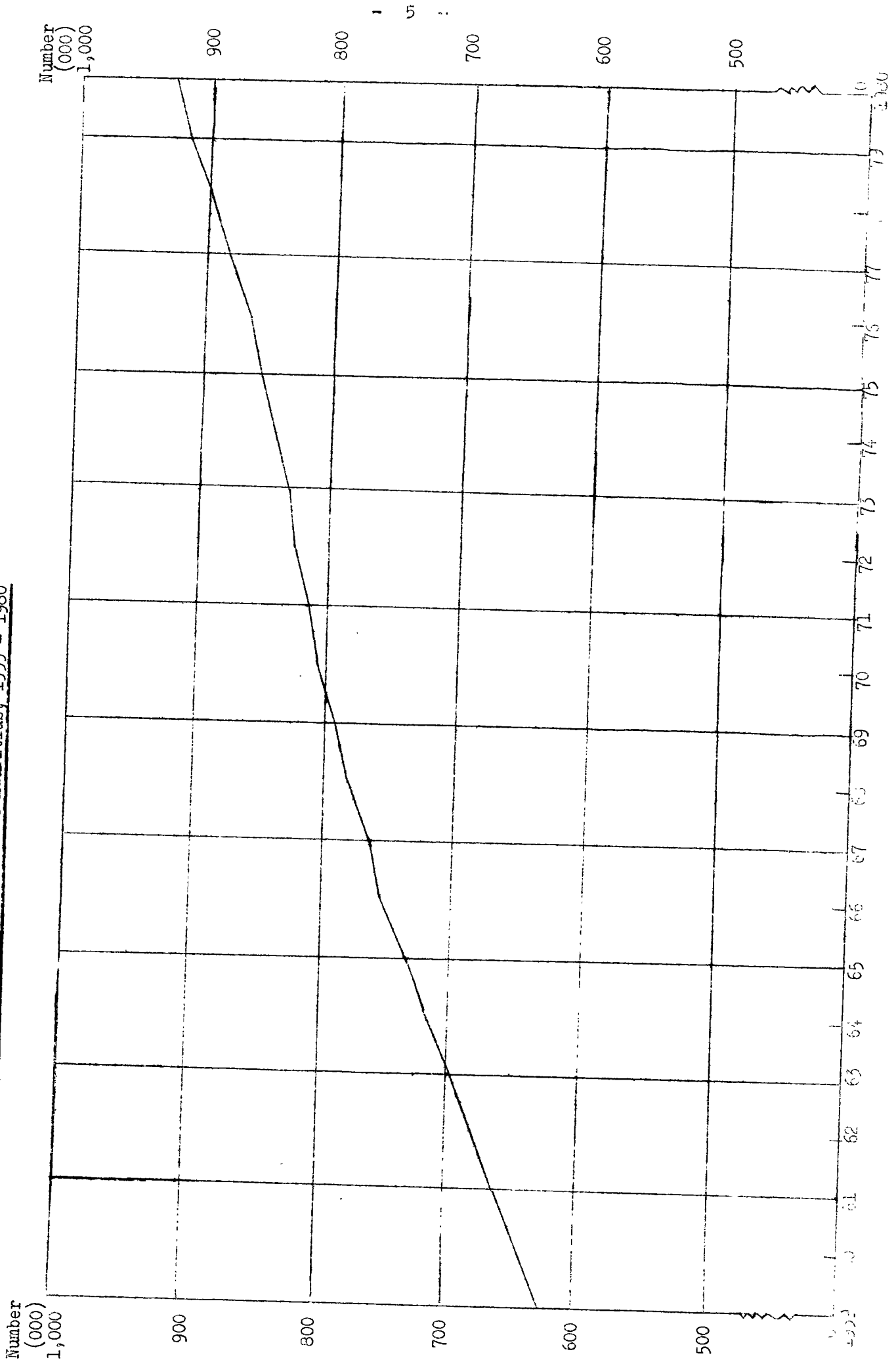
Table 5 - Population and vital statistics - Island of Mauritius, 1921 - 1980

Period	Population ^{1/} at mid-period	Live births	Deaths	Natural increase	Infant deaths ^{2/}	Still births	Civil marriages
1921-25 Average	379,636	14,834	11,758	3,076	2,104	1,581	2,032
1926-30 "	403,248	14,208	11,614	2,594	2,002	1,256	1,455
1931-35 "	398,647	12,490	11,889	601	1,752	1,216	1,409
1936-40 "	412,003	13,621	11,157	2,464	2,119	1,240	2,055
1941-45 "	417,838	15,027	11,927	3,100	2,318	1,240	3,353
1946-50 "	438,797	19,595	9,113	10,482	2,343	1,348	3,503
1951-55 "	522,577	23,176	7,701	15,475	1,884	1,472	3,307
1956	574,938	24,910	6,739	18,171	1,644	1,789	3,000
1957	593,070	25,273	7,603	17,670	1,897	1,800	2,880
1958	609,518	24,600	7,112	17,488	1,659	1,703	3,100
1959	627,249	23,923	6,753	17,170	1,495	1,759	3,277
1960	644,743	25,307	7,248	18,059	1,760	1,783	3,110
1961	662,368	26,092	6,505	19,587	1,618	1,963	3,404
1962	681,619	26,267	6,325	19,942	1,579	1,841	3,053
1963	695,641	27,978	6,709	21,269	1,660	1,519	3,472
1964	716,298	27,528	6,184	21,344	1,361	1,611	3,035
1965	735,245	26,270	6,337	19,942	1,685	1,557	3,076
1966	753,276	26,817	6,701	20,116	1,721	1,384	4,157
1967	767,782	23,499	6,543	16,956	1,656	1,074	3,549
1968	781,615	24,413	7,126	17,287	1,688	1,110	3,974
1969	792,893	21,719	6,428	15,291	1,528	951	3,332
1970	805,489	21,623	6,309	15,314	1,232	857	4,499
1971	816,561	20,834	6,248	14,586	1,077	842	4,340
1972	826,199	20,496	6,506	13,990	1,308	718	5,082
1973	834,781	18,974	6,525	12,499	1,201	678	5,530
1974	845,755	22,933	6,221	16,717	1,045	854	5,711
1975	856,516	21,492	6,967	14,525	1,046	896	5,200
1976	867,885	22,250	6,815	15,435	900	784	6,200
1977	881,761	22,730	6,966	15,764	1,023	712	6,420
1978	896,471	24,250	6,400	17,850	823	653	10,532
1979	911,499	25,056	6,625	18,431	824	650	9,080
1980	926,578	24,933	6,685	18,298	808	623	6,420

^{1/} Figures for 1963-71 have been revised in the light of the final 1972 Population Census data

^{2/} deaths of children under 1 year of age

Graph 1 - Mid-year Population Estimates - Island of Mauritius, 1959 - 1980



II -- PASSENGER TRAFFIC

Table 6 - Passenger traffic^{1/} by sex, 1933 - 1980

Period	Arrivals			Departures			Net overseas migration
	Both sexes	Male	Female	Both sexes	Male	Female	
1933	3,444	2,410	1,034	4,011	2,862	1,149	- 567
1934	3,969	2,777	1,192	4,380	3,056	1,324	- 411
1935	3,988	2,876	1,112	4,255	2,899	1,356	- 267
1936	3,807	2,681	1,126	3,563	2,451	1,112	+ 244
1937	3,472	2,366	1,106	3,849	2,736	1,113	- 377
1938	4,554	3,062	1,492	4,281	2,896	1,385	+ 273
1939	3,171	1,984	1,187	3,212	2,127	1,085	- 41
1940	1,518	1,023	490	1,851	1,379	472	- 333
1941	1,209	950	259	4,165	3,859	306	- 2,956
1942	1,083	893	190	1,560	1,398	162	- 477
1943	1,054	859	195	737	642	95	+ 317
1944	1,034	798	236	1,053	796	257	- 19
1945	2,061	1,624	437	2,247	1,624	623	- 186
1946	3,298	2,279	1,019	3,377	2,160	1,217	- 79
1947	4,698	3,128	1,570	4,514	3,100	1,414	+ 184
1948	4,294	2,792	1,502	4,015	2,684	1,331	+ 279
1949	4,093	2,700	1,393	4,141	2,794	1,347	- 48
1950	5,253	3,469	1,784	4,900	3,352	1,548	+ 353
1951	5,243	3,515	1,728	5,016	3,536	1,480	+ 227
1952	6,046	3,999	2,047	5,637	3,854	1,783	+ 409
1953	7,252	4,820	2,432	7,054	4,732	2,322	+ 198
1954	7,251	4,728	2,523	7,312	4,824	2,488	- 61
1955	7,216	4,558	2,658	7,354	4,722	2,632	- 138
1956	7,747	4,873	2,874	8,225	5,219	3,006	- 478
1957	8,095	5,156	2,939	8,267	5,309	2,958	- 172
1958	8,703	5,424	3,279	8,924	5,596	3,328	- 221
1959	9,637	5,995	3,642	9,544	6,058	3,486	+ 93
1960	10,412	6,563	3,849	10,784	6,938	3,846	- 372
1961	11,854	7,246	4,608	13,033	8,165	4,868	- 1,179
1962	15,189	9,283	5,906	16,075	9,887	6,188	- 886

Table 6 (continued)

Period	Arrivals			Departures			Net overseas migration
	Both sexes	Male	Female	Both sexes	Male	Female	
1963	17,974	10,866	7,108	18,215	11,024	7,191	- 241
1964	21,221	12,787	8,434	22,331	13,349	8,982	- 1,110
1965	22,024	13,571	8,453	24,150	14,759	9,391	- 2,126
1966	26,456	16,358	10,098	29,301	17,930	11,371	- 2,845
1967	29,321	18,177	11,144	32,925	20,135	12,790	- 3,604
1968	31,403	19,820	11,583	35,988	22,181	13,807	- 4,585
1969	35,919	21,552	14,367	38,929	23,127	15,802	- 3,010
1970	48,819	29,587	19,232	51,969	31,033	20,936	- 3,150
1971	60,826	36,005	24,821	63,997	37,399	26,598	- 3,171
1972	77,174	45,587	31,587	81,493	47,837	33,656	- 4,319
1973	101,184	59,215	41,969	104,697	61,364	43,333	- 3,513
1974	109,044	63,077	45,967	113,362	65,649	47,713	- 4,310
1975	117,548	68,654	48,894	120,703	70,368	50,335	- 3,155
1976	139,303	80,674	58,629	141,148	81,718	59,430	- 1,845
1977	153,208	87,417	65,791	155,653	89,243	66,410	- 2,445
1978	161,688	93,087	68,601	163,733	94,850	68,883	- 2,045
1979	182,771	105,051	77,720	186,864	110,284	76,580	- 4,093
1980	163,230	96,450	66,770	167,269	100,579	66,690	- 4,039

/ including seamen but excluding transit passengers who do not leave the airport

Table 7 - Passenger traffic between Island of Mauritius and Rodrigues, 1963 - 1980

Period	Departures to Rodrigues			Arrivals from Rodrigues			Net overseas migration
	Both sexes	Male	Female	Both sexes	Male	Female	
1963	899	620	279	1,439	905	534	- 540
1964	1,300	850	450	1,450	915	535	- 150
1965	1,339	854	485	1,525	961	564	- 186
1966	1,326	860	466	1,418	904	514	- 92
1967	1,485	940	545	1,268	822	446	+ 217
1968	1,541	940	601	1,485	946	539	+ 55
1969	1,569	1,034	535	1,493	994	499	+ 76
1970	1,740	1,103	637	1,762	1,123	639	- 22
1971	1,578	1,017	561	1,744	1,118	626	- 166
1972	2,168	1,409	759	2,311	1,469	842	- 143
1973	2,427	1,521	906	2,453	1,511	942	- 26
1974	2,053	1,197	856	2,648	1,560	1,088	+ 595
1975	2,968	1,870	1,098	3,319	2,030	1,289	- 351
1976	3,796	2,528	1,268	4,221	2,854	1,367	- 425
1977	4,477	2,955	1,542	4,853	3,214	1,639	- 376
1978	5,571	3,588	1,983	5,642	3,641	2,001	- 71
1979	5,785	3,794	1,991	5,398	3,672	1,726	+ 387
1980	6,042	3,964	2,078	5,722	3,908	1,814	+ 320

Graph 2 - Passenger traffic, 1964 - 1980

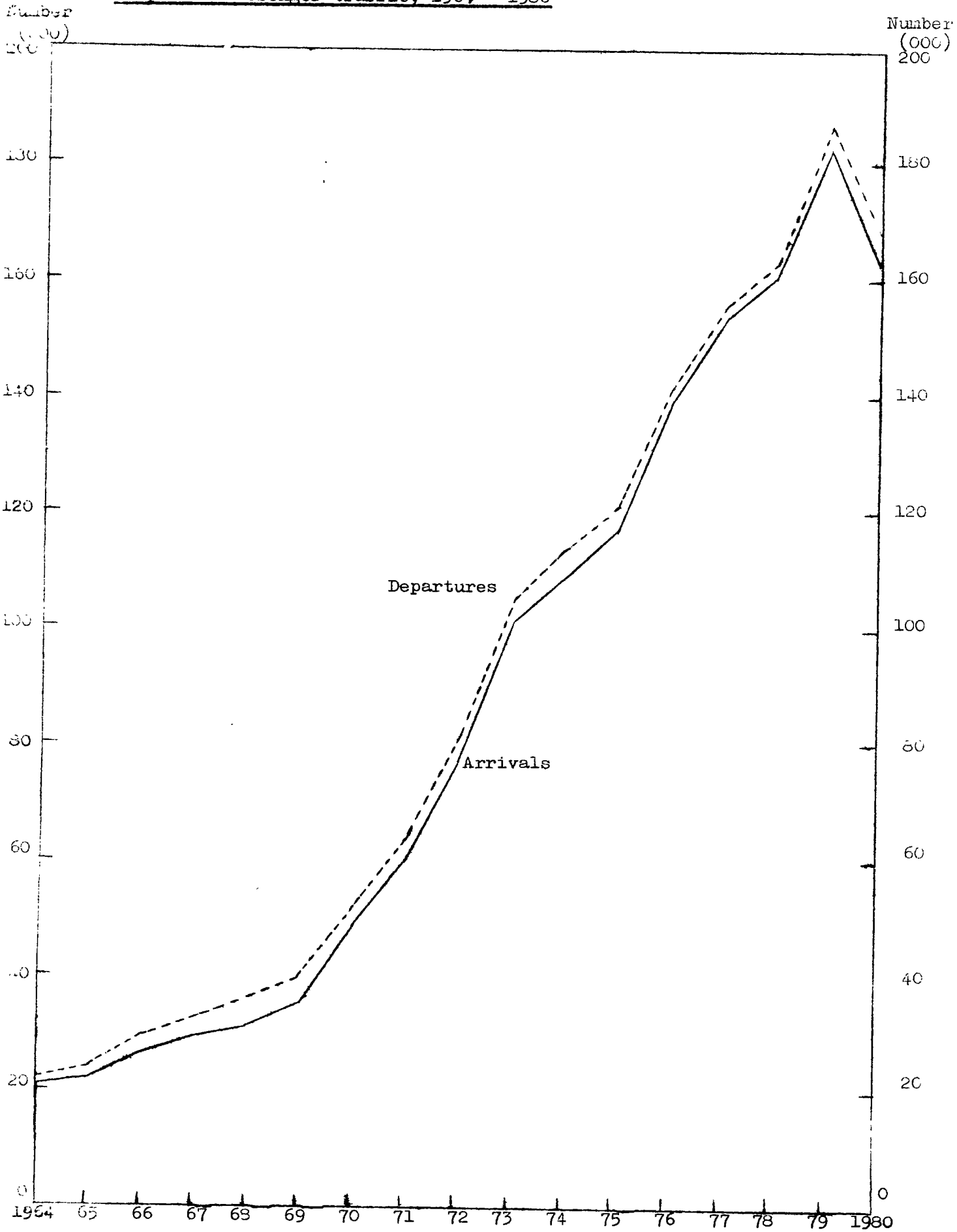


Table 8 - Passenger traffic^{1/} by mode of transport, 1962 - 1980

Period	Arrivals			Departures			Net overseas migration
	Total	By sea	By air	Total	By sea	By air	
1962	15,189	4,258	10,931	16,075	4,374	11,701	- 885
1963	18,047	4,660	13,387	18,299	4,432	13,867	- 252
1964	21,221	5,187	16,034	22,331	5,478	16,853	- 1,110
1965	22,024	4,886	17,138	24,150	5,463	18,687	- 2,126
1966	26,456	5,544	20,912	29,301	6,330	22,971	- 2,845
1967	29,321	4,901	24,420	32,925	6,515	26,410	- 3,604
1968	31,403	4,264	27,139	35,988	5,967	30,021	- 4,585
1969	35,919	3,483	32,436	38,929	4,632	34,297	- 3,010
1970	48,819	3,934	44,885	51,969	4,376	47,593	- 3,154
1971	60,826	3,857	56,969	63,997	4,295	59,702	- 3,111
1972	77,174	3,741	73,433	81,493	4,072	77,421	- 4,311
1973	101,184	4,238	96,946	104,697	4,027	100,670	- 3,513
1974	109,044	3,848	105,196	113,362	3,772	109,590	- 4,318
1975	117,548	4,485	113,063	120,703	4,255	116,448	- 3,155
1976	139,303	4,367	134,936	141,148	4,441	136,707	- 1,845
1977	153,208	4,299	148,909	155,653	4,624	151,029	- 2,445
1978	161,688	4,411	157,277	163,733	4,698	159,035	- 2,045
1979	182,771	3,581	179,190	186,864	4,054	182,810	- 4,093
1980	163,230	3,980	159,250	167,269	4,469	162,800	- 4,039
1980 : 1st Qr.	39,291	751	38,540	44,525	1,035	43,490	- 5,234
2nd Qr.	33,711	861	32,850	35,540	930	34,610	- 1,829
3rd Qr.	44,369	1,229	43,140	45,524	1,294	44,230	- 1,295
4th Qr.	45,859	1,159	44,720	41,680	1,210	40,470	+ 4,179

^{1/} including seamen but excluding transit passengers who do not leave the airport.

Table 1 - Excess of arrivals over departures by month, 1977 - 1980

Month	Arrivals				Departures				Excess of arrivals over departures			
	1977	1978	1979	1980	1977	1978	1979	1980	1977	1978	1979	1980
January	16,034	15,890	18,078	14,983	12,365	15,041	21,033	18,070	- 3,345	- 3,151	- 2,955	- 3,087
February	11,445	11,777	13,008	11,629	15,120	15,208	15,406	13,741	- 1,675	- 1,431	- 2,398	- 2,112
March	9,547	10,816	12,861	12,679	10,564	11,098	13,758	12,714	- 617	- 282	- 897	- 35
April	12,615	11,620	15,014	11,891	11,051	11,758	15,927	13,185	+ 162	- 118	- 913	- 1,294
May	11,728	11,268	14,359	12,512	12,027	12,064	14,587	13,052	- 1,099	- 796	- 228	- 540
June	9,344	9,003	10,838	9,308	9,151	9,474	10,903	9,303	+ 153	- 471	- 65	+ 5
July	13,647	13,024	15,577	13,059	13,064	15,586	15,262	11,744	+ 585	+ 238	+ 315	+ 1,315
August	11,004	19,256	21,128	17,840	16,475	17,394	19,965	17,039	+ 1,529	+ 1,862	+ 1,163	+ 801
September	10,844	12,369	15,112	13,470	15,514	16,005	17,673	16,741	- 3,670	- 3,636	- 2,561	- 3,271
October	11,017	13,181	13,769	13,293	10,595	12,307	13,410	13,194	+ 1,022	+ 874	+ 359	+ 99
November	11,195	13,555	13,951	13,704	11,791	14,033	14,315	14,046	- 658	- 478	- 364	- 342
December	17,552	19,129	19,076	18,862	12,118	13,785	14,625	14,440	+ 4,714	+ 5,344	+ 4,451	+ 4,422
Whole year	155,208	161,688	182,771	163,230	155,655	163,733	186,864	167,269	- 2,445	- 2,045	- 4,093	- 4,039

L including seamen but excluding transit passengers who do not leave the airport

Table 10 - Arrivals^{1/} by country of original embarkation, 1975 - 1980.

Country of original embarkation	1975	1976	1977	1978	1979	1980
Australia	5,295	5,469	4,354	4,195	6,080	5,220
France	3,277	11,044	14,798	20,053	22,300	16,870
Germany, Fed. Rep.	1,246	1,519	1,726	2,279	4,780	7,660
Hong Kong	839	983	1,016	1,072	1,020	1,020
India	5,608	7,055	7,955	8,048	9,520	8,550
Italy	1,276	1,346	2,380	3,016	3,200	3,260
Kenya	2,126	3,096	3,309	2,801	2,870	2,700
Madagascar Republic	2,704	4,371	6,516	5,460	6,370	5,880
Malawi	907	1,304	1,178	1,222	1,060	240
Reunion	43,058	50,538	53,024	53,197	57,150	51,710
Rhodesia	1,150	633	304	415	710	340
Rodrigues	3,519	4,221	4,853	5,642	5,398	5,722
Seychelles	2,209	2,591	3,250	3,153	3,570	2,810
South Africa, Rep. of	17,450	20,684	21,514	22,603	27,440	24,890
Switzerland	396	534	587	726	1,150	1,130
Tanzania	332	479	529	815	1,050	1,050
United Kingdom	12,192	15,376	17,102	18,497	19,290	15,850
Zambia	3,263	2,800	4,020	3,840	4,010	2,340
Other Countries	5,114	4,953	4,165	4,207	5,232	4,868
All Countries	116,861	138,796	152,580	161,241	162,200	162,510

^{1/} excluding transit passengers who did not leave the airport; discharged seamen numbering 687, 507, 628, 447, 571 and 620 respectively for the period under review.

Table 11 - Departures^{1/} by country of final destination, 1975 - 1980

Country of final destination	1975	1976	1977	1978	1979	1980
Australia	4,557	4,750	4,627	4,144	5,030	5,190
France	9,014	12,865	15,736	21,256	22,010	17,670
Germany, Fed. Rep.	1,251	1,183	1,934	2,268	5,070	7,560
Hong Kong	558	1,012	1,048	1,192	1,450	1,250
India	5,506	6,564	8,340	8,753	8,880	8,090
Italy	1,406	1,580	3,072	3,218	4,160	4,190
Kenya	2,755	3,591	2,541	2,348	3,140	2,780
Malagasy Republic	2,228	3,694	4,990	4,433	4,870	4,580
Malawi	755	897	943	972	830	350
Reunion	42,568	49,799	53,648	53,418	58,010	52,400
Togo	1,038	734	375	447	790	430
Rodrigues	2,358	3,796	4,477	5,571	5,785	5,042
Seychelles	2,061	3,223	4,023	3,544	4,780	5,420
South Africa, Rep. of	18,158	21,471	21,344	22,209	28,250	24,320
Switzerland	55	597	892	882	1,040	1,290
Tanzania	528	608	637	780	930	950
United Kingdom	13,728	16,641	17,757	18,855	20,030	16,500
Zambia	2,152	2,330	3,444	3,314	3,280	2,240
Other Countries	5,078	5,074	4,932	5,149	5,815	6,448
All Countries	119,772	140,409	154,760	162,753	185,950	166,540

^{1/} excluding transit passengers who did not leave the airport; engaged seamen numbering 931, 739, 893, 930, 914 and 729 respectively for the period under review.

Table 12 - Passenger Traffic by type of passenger and month, 1960

Type of passenger	January	Feb.	March	April	May	June	July	August	Sept.	Oct.	Nov.	Dec.	Whole Year
<u>ARRIVALS</u>													
Visitors ^{2/}	11,430	9,320	9,900	8,550	9,220	6,330	8,560	13,070	9,310	9,890	10,040	13,460	119,080
On holiday	10,160	7,750	8,630	7,560	7,980	5,700	7,760	12,010	7,890	8,940	8,980	12,470	105,890
On business	480	580	600	460	640	310	410	430	430	530	580	210	5,720
In transit	750	960	570	550	570	320	380	530	620	370	480	630	6,710
Other and not stated	40	30	40	-	30	-	10	100	310	50	-	150	760
Mauritians settled abroad	510	430	520	500	380	450	1,110	1,090	460	560	490	1,840	8,340
Mauritian residents	2,870	1,750	2,120	2,530	2,760	2,420	3,150	3,510	3,560	2,720	3,060	3,440	33,750
Other	140	100	120	100	110	50	100	100	270	110	90	70	1,440
Total	14,950	11,600	12,660	11,820	12,470	9,250	12,920	17,770	15,460	13,280	13,680	18,810	162,610
<u>DEPARTURES</u>													
Visitors	13,420	10,000	9,200	9,610	9,740	6,130	7,170	12,050	11,090	9,470	10,470	9,880	118,230
Mauritians settled abroad	1,730	1,210	500	550	400	330	500	1,240	1,500	600	680	560	9,600
Emigrants	17	25	31	28	25	18	20	35	16	23	18	52	308
Mauritian residents	2,470	2,290	2,850	2,620	2,740	2,620	3,760	3,530	4,150	2,910	2,710	3,660	36,290
Other	353	185	79	502	105	172	170	105	134	127	152	228	2,112
Total	17,990	13,710	12,660	15,110	13,010	9,270	11,620	16,960	16,670	13,130	14,030	14,380	166,540

^{1/} excluding seamen and transit passengers who do not leave the airport

^{2/} including non-residents (a total of 4,000) who leave the airport but stayed in the country for less than a day

Table 13 - Arrivals by Age Group, January 1979 - December 1980

Age (completed years)	January - June 1979			July - December 1979			January - June 1980			July - December 1980		
	Both sexes	Male	Female	Both sexes	Male	Female	Both sexes	Male	Female	Both sexes	Male	Female
Under 1	430	280	210	440	280	160	410	250	160	540	220	320
1 - 4	2,540	1,530	1,010	3,030	1,650	1,380	2,020	1,160	860	2,900	1,600	1,300
5 - 9	2,660	1,640	1,220	4,130	2,170	1,960	2,340	1,250	1,090	3,640	1,990	1,650
10 - 14	2,660	1,340	1,320	3,740	1,860	1,880	1,870	1,010	860	3,550	1,670	1,880
15 - 19	3,270	1,470	1,800	4,640	2,260	2,380	2,810	1,440	1,370	4,320	1,810	2,510
20 - 24	3,070	4,090	3,980	9,770	4,700	5,070	7,070	3,650	3,420	8,930	4,270	4,660
25 - 29	11,650	6,210	4,820	13,640	7,350	6,250	10,250	6,360	5,890	12,170	6,720	5,450
30 - 34	10,770	6,110	4,660	12,930	7,650	5,300	9,990	6,020	5,170	11,970	6,740	5,230
35 - 39	7,270	5,860	3,410	11,020	5,650	4,370	8,320	5,600	2,720	9,450	6,030	3,420
40 - 44	7,530	4,960	2,630	8,210	5,650	3,160	6,520	4,240	2,260	7,830	5,060	2,770
45 - 49	6,690	4,090	2,600	6,470	5,750	2,680	5,100	3,310	1,790	5,960	3,680	2,280
50 - 54	5,260	3,110	2,150	5,850	3,610	2,240	4,780	3,020	1,760	5,040	3,030	2,010
55 - 59	4,180	2,690	1,490	4,770	2,350	1,920	3,640	2,440	1,200	4,150	2,600	1,550
60 - 64	2,740	1,610	1,130	2,660	1,530	1,130	2,170	1,290	880	2,570	1,490	1,080
65 - 69	1,570	1,050	920	1,540	860	680	1,520	910	610	1,780	1,010	770
70 & over	1,540	750	790	1,620	960	660	1,170	650	420	1,510	820	690
Not stated	3,225	2,198	1,050	3,755	2,723	1,030	3,422	2,222	800	3,918	2,898	1,020
All ages	34,150	48,988	35,170	98,613	56,005	42,550	73,002	44,822	28,160	90,228	51,638	38,590

✓ including discharged seamen but excluding transit passengers who do not leave the airport

Table 14 - Departures ^{1/} by age and sex, January 1979 - December 1980.

Age (completed years)	January - June 1979			July - December 1979			January - June 1980			July - December 1980		
	Both sexes	Male	Female	Both sexes	Male	Female	Both sexes	Male	Female	Both sexes	Male	Female
	Under 1	680	400	280	620	340	280	600	340	260	630	340
1 - 4	2,960	1,740	1,220	2,590	1,210	1,380	2,360	1,170	1,190	2,880	1,550	1,330
5 - 9	3,380	2,060	1,320	3,670	1,890	1,780	2,860	1,610	1,250	3,580	2,040	1,540
10 - 14	3,090	1,780	1,310	3,790	2,100	1,690	2,620	1,530	1,090	3,420	1,890	1,530
15 - 19	3,840	1,820	2,020	4,500	2,400	2,100	3,430	1,670	1,760	4,460	2,000	2,460
20 - 24	9,120	4,700	4,420	10,300	5,490	4,810	7,700	3,970	3,730	8,320	4,190	4,130
25 - 29	11,740	7,040	4,700	13,150	7,290	5,860	11,400	6,760	4,640	11,590	6,410	5,180
30 - 34	11,820	7,310	4,510	11,910	6,840	5,070	10,340	6,480	3,860	11,720	7,130	4,590
35 - 39	10,670	7,160	3,510	10,440	6,150	4,290	9,020	5,970	3,050	8,850	5,890	2,960
40 - 44	7,470	4,850	2,620	7,960	4,960	3,000	7,380	4,820	2,560	7,430	4,940	2,490
45 - 49	6,850	4,320	2,530	6,480	4,110	2,370	5,560	3,620	1,940	5,950	3,650	2,300
50 - 54	5,560	3,350	2,210	5,660	3,360	2,300	4,920	3,240	1,680	4,550	2,920	1,630
55 - 59	4,210	2,350	1,860	4,110	2,490	1,620	3,790	2,390	1,400	3,660	2,200	1,460
60 - 64	2,710	1,680	1,030	2,550	1,520	1,030	2,060	1,400	660	2,450	1,340	1,110
65 - 69	2,330	1,460	870	1,890	1,020	870	1,480	1,000	480	1,750	850	860
70 & over	1,650	930	720	1,490	780	710	1,260	860	400	1,600	920	680
Not stated	3,534	2,594	940	4,140	2,790	1,350	3,285	2,405	880	4,364	3,044	1,320
All ages	91,614	55,544	36,070	95,250	54,740	40,510	80,065	49,235	30,830	87,204	51,344	35,860

^{1/} including engaged seamen but excluding transit passengers who do not leave the airport

Table 15 - Excess of arrivals over departures^{1/} by age and sex, January 1979 - December 1980

Age (completed years)	January - June 1979			July - December 1979			January - June 1980			July - December 1980		
	Both sexes	Male	Female	Both sexes	Male	Female	Both sexes	Male	Female	Both sexes	Male	Female
Under 1	- 190	- 120	- 70	- 180	- 60	- 120	- 190	- 90	- 100	- 90	- 120	+ 30
1 - 4	- 420	- 210	- 210	+ 440	+ 440	-	- 340	- 10	- 330	+ 20	+ 50	- 30
5 - 9	- 520	- 420	- 100	+ 460	+ 280	+ 180	- 520	- 360	- 160	+ 60	- 50	+ 110
10 - 14	- 430	- 440	+ 10	- 50	- 240	+ 190	- 750	- 520	- 230	+ 130	- 220	+ 350
15 - 19	- 570	- 350	- 220	+ 140	- 140	+ 280	- 620	- 230	- 390	- 140	- 190	+ 50
20 - 24	- 1,050	- 610	- 440	- 530	- 790	+ 260	- 630	- 320	- 310	+ 610	+ 80	+ 530
25 - 29	- 710	- 830	+ 120	+ 490	+ 100	+ 390	- 1,150	- 400	- 750	+ 580	+ 310	+ 270
30 - 34	- 1,050	- 1,200	+ 150	+ 1,020	+ 790	+ 230	- 350	- 460	+ 110	+ 250	- 390	+ 640
35 - 39	- 1,400	- 1,300	- 100	+ 580	+ 500	+ 80	- 700	- 370	- 330	+ 600	+ 140	+ 460
40 - 44	+ 120	+ 110	+ 10	+ 250	+ 90	+ 160	- 860	- 580	- 280	+ 400	+ 120	+ 280
45 - 49	- 160	- 230	+ 70	- 10	- 320	+ 310	- 460	- 310	- 150	+ 10	+ 30	- 20
50 - 54	- 300	- 240	- 60	+ 190	+ 250	- 60	- 140	- 220	+ 80	+ 490	+ 110	+ 380
55 - 59	- 30	+ 340	- 370	+ 660	+ 360	+ 300	- 150	+ 50	- 200	+ 490	+ 400	+ 90
60 - 64	+ 30	- 70	+ 100	+ 110	+ 10	+ 100	+ 110	- 110	+ 220	+ 120	+ 150	- 30
65 - 69	- 360	- 410	+ 50	+ 50	- 60	+ 110	+ 40	- 90	+ 130	+ 30	+ 120	- 90
70 & over	- 110	- 180	+ 70	+ 130	+ 180	- 50	- 90	- 210	+ 120	- 90	- 100	+ 10
Not stated	- 306	- 396	+ 90	- 387	- 67	- 320	- 263	- 183	- 80	- 446	- 146	- 300
All ages	- 7,456	- 6,556	- 900	+ 3,363	+ 1,323	+ 2,040	- 7,063	- 4,413	- 2,650	+ 3,024	+ 294	+ 2,730

^{1/} including seamen but excluding transit passengers who do not leave the airport

Table 16 - Arrivals and departures^{1/} of residents of Island of Mauritius by district of residence and sex, 1980

Geographical district	Arrivals			Departures			Excess of arrivals over departures			
	Both sexes	Male	Female	Both sexes	Male	Female	Both sexes	Male	Female	
Port Louis	6,640	4,380	2,260	6,530	4,290	2,240	+	110	+ 90	+ 20
Pamplemousses	1,260	860	400	1,220	850	370	+	40	+ 10	+ 30
Rivière du Rempart	890	630	260	840	540	300	+	50	+ 90	- 40
Flacq	640	440	200	860	580	280	-	220	- 140	- 80
Grand Port	790	490	300	1,040	640	400	-	250	- 150	- 100
Savanne	420	260	160	420	250	170	-	-	+ 10	- 10
Plaines Wilhems : Urban	13,590	8,410	5,180	15,350	9,430	5,920	-	1,760	-1,020	- 740
Other	180	140	40	220	140	80	-	40	-	- 40
Moka	840	580	260	720	530	190	+	120	+ 50	+ 70
Black River	560	350	210	450	320	130	+	110	+ 30	+ 80
Not stated	7,940	5,570	2,370	8,640	5,850	2,790	-	700	- 280	- 420
Whole island	33,750	22,110	11,640	36,290	23,420	12,870	-	2,540	-1,310	- 1,230

^{1/} excluding official long-term emigrants

Table 17 - Arrivals of residents of Island of Mauritius by age and sex, January 1979 - December 1980

Age (completed years)	January - June 1979			July - December 1979			January - June 1980			July - December 1980		
	Both sexes	Male	Female	Both sexes	Male	Female	Both sexes	Male	Female	Both sexes	Male	Female
Under 1	120	80	40	90	60	30	70	60	10	40	-	
1 - 4	380	180	200	500	290	210	250	150	100	390	180	210
5 - 9	430	290	140	600	330	270	330	180	150	420	220	200
10 - 14	480	270	210	560	330	230	280	140	140	400	220	180
15 - 19	790	400	390	910	490	420	650	360	290	740	380	360
20 - 24	2,110	1,420	690	2,650	1,560	1,090	1,810	1,160	650	2,390	1,510	880
25 - 29	2,150	1,390	760	2,910	1,970	940	1,930	1,430	500	2,620	1,680	940
30 - 34	1,510	940	570	1,880	1,260	620	1,340	860	480	1,820	1,280	540
35 - 39	1,380	930	450	1,580	1,050	530	1,050	800	250	1,310	900	410
40 - 44	1,300	880	420	1,460	1,010	450	1,010	630	380	1,330	950	380
45 - 49	1,100	650	450	1,160	670	490	930	650	280	1,020	680	340
50 - 54	950	610	340	1,350	760	590	750	530	220	960	610	350
55 - 59	660	480	180	920	560	360	570	360	210	990	570	420
60 - 64	550	310	240	760	520	240	480	240	240	640	380	260
65 - 69	270	140	130	390	200	190	230	110	120	470	250	220
70 & over	280	140	140	410	270	140	250	150	100	270	140	130
Not stated	2,540	1,670	870	3,230	2,270	960	2,580	1,850	730	3,430	2,460	970
All ages	17,000	10,780	6,220	21,460	13,600	7,860	14,510	9,660	4,850	19,240	12,450	6,790

Table 16 - Departures of Residents of Island of Mauritius by age and sex, January 1979 - December 1980

Age (completed years)	January - June 1979			July - December 1979			January - June 1980			July - December 1980		
	Both sexes	Male	Female	Both sexes	Male	Female	Both sexes	Male	Female	Both sexes	Male	Female
Under 1	140	80	60	160	60	100	90	60	30	150	80	70
1 - 4	420	210	210	460	250	210	300	180	120	600	350	250
5 - 9	400	230	170	600	320	280	240	130	110	420	160	260
10 - 14	290	190	100	1,030	620	410	310	190	120	610	310	300
15 - 19	820	330	440	1,400	770	530	850	520	330	1,120	600	520
20 - 24	2,340	1,490	850	3,620	2,370	1,250	1,860	1,110	750	2,530	1,580	850
25 - 29	2,010	1,380	630	3,030	1,980	1,050	2,170	1,360	810	2,750	1,920	870
30 - 34	1,870	1,330	540	2,050	1,240	810	1,490	1,120	370	2,040	1,370	670
35 - 39	1,590	1,150	430	1,580	850	730	1,080	800	280	1,490	940	550
40 - 44	1,070	710	360	1,320	940	380	1,120	740	380	1,250	370	380
45 - 49	1,020	680	340	1,120	720	400	1,020	660	360	950	590	360
50 - 54	1,070	580	490	1,150	560	590	760	520	240	820	500	320
55 - 59	600	330	270	780	400	380	600	400	200	800	410	390
60 - 64	490	340	150	750	430	320	460	320	140	600	380	220
65 - 69	270	150	120	370	180	190	350	220	130	300	120	180
70 & over	280	140	140	360	200	160	260	190	70	400	210	190
Not stated	2,820	1,930	890	3,380	2,150	1,230	2,630	1,850	780	3,830	2,560	1,270
All ages	17,500	11,310	6,190	25,160	14,040	9,120	15,590	10,370	5,220	20,700	15,050	7,650

1/ excluding official long-term emigrants

Table 1. - Excess arrivals over departures of residents (excluding emigrants) of Island of Newfoundland by age and sex, January 1979 - December 1980

Age (completed years)	January - June 1979			July - December 1979			January - June 1980			July - December 1980		
	Both sexes	Male	Female	Both sexes	Male	Female	Both sexes	Male	Female	Both sexes	Male	Female
Under 1	- 20	-	- 20	-	-	70	-	-	20	-	-	70
1 - 4	- 40	- 30	- 10	+ 40	+ 40	-	-	-	20	-	-	40
5 - 9	+ 30	+ 60	- 30	+ 10	+ 10	-	+ 90	+ 50	40	-	+ 60	- 60
10 - 14	+ 150	+ 80	+ 110	- 290	- 80	370	- 30	- 50	20	-	- 90	- 120
15 - 19	- 30	+ 20	- 50	- 280	- 210	490	- 200	- 150	40	-	- 220	- 160
20 - 24	- 230	- 70	- 160	- 910	- 160	870	- 50	+ 30	100	-	- 170	+ 30
25 - 29	+ 140	+ 10	+ 130	- 10	- 110	120	- 240	+ 70	510	-	- 240	+ 70
30 - 34	- 360	- 390	+ 30	+ 20	- 190	170	- 150	- 260	110	-	- 90	- 130
35 - 39	- 210	- 230	+ 20	+ 200	- 200	-	- 30	-	30	-	- 40	- 140
40 - 44	+ 230	+ 170	+ 60	+ 70	+ 70	140	- 110	- 110	-	+ 80	-	-
45 - 49	+ 80	- 30	+ 110	- 50	+ 90	40	- 90	- 10	80	+ 70	+ 90	- 20
50 - 54	- 120	+ 30	- 150	+ 200	-	200	- 10	+ 10	20	+ 140	+ 110	+ 30
55 - 59	+ 60	+ 150	- 90	+ 160	- 20	140	- 30	- 40	10	+ 190	+ 160	+ 30
60 - 64	+ 60	- 30	+ 90	+ 50	- 80	10	+ 20	- 80	100	+ 40	-	+ 40
65 - 69	-	- 10	+ 10	+ 20	-	20	- 120	- 110	10	+ 170	+ 130	+ 40
70 & over	-	-	-	+ 70	- 20	50	- 10	- 40	30	- 130	- 70	- 60
Not stated	- 280	- 260	- 20	+ 120	- 270	150	- 50	-	50	- 400	- 100	- 300
All ages	- 500	- 530	+ 30	- 440	- 1,260	1,700	- 1,080	- 710	370	- 1,460	- 600	- 860

Table 20 - Excess of arrivals over departures of residents (including emigrants) of Island of Jamaica, by age and sex, January 1979 - December 1980

Age (completed years)	January - June 1979			July - December 1979			January - June 1980			July - December 1980		
	Both sexes	Male	Female	Both sexes	Male	Female	Both sexes	Male	Female	Both sexes	Male	Female
Under 1	- 23	-	- 23	- 72	- 2	- 70	- 21	- 1	- 20	- 111	- 41	- 70
1 - 4	- 46	- 32	- 14	- 46	+ 40	-	- 54	- 32	- 22	- 221	- 175	- 46
5 - 9	+ 25	+ 59	- 34	- 5	+ 7	- 12	+ 80	+ 41	+ 53	- 22	+ 44	- 66
10 - 14	+ 180	+ 74	+ 106	- 384	- 292	- 92	- 39	- 53	+ 14	- 225	- 95	- 130
15 - 19	- 55	+ 16	- 71	- 504	- 283	- 221	- 221	- 163	- 58	- 433	- 227	- 206
20 - 24	- 265	- 75	- 190	- 989	- 812	- 177	- 94	+ 38	- 132	- 226	- 184	- 42
25 - 29	+ 151	+ 10	+ 121	- 130	- 11	- 119	- 263	+ 61	- 324	- 220	- 254	+ 34
30 - 34	- 370	- 392	+ 22	- 172	+ 19	- 191	- 164	- 267	+ 103	- 250	- 101	- 149
35 - 39	- 212	- 230	+ 18	- 4	+ 158	- 202	- 34	- 1	- 33	- 192	- 42	- 150
40 - 44	+ 229	+ 169	+ 60	+ 130	+ 70	+ 68	- 111	- 110	- 1	+ 77	+ 80	- 3
45 - 49	+ 76	- 32	+ 108	+ 39	- 50	+ 89	- 92	- 11	- 81	+ 63	+ 87	- 24
50 - 54	- 121	+ 30	- 151	+ 198	+ 159	- 1	- 12	+ 10	- 22	+ 137	+ 110	+ 27
55 - 59	+ 60	+ 150	- 90	+ 140	+ 160	- 20	- 32	- 40	+ 8	+ 185	+ 158	+ 27
60 - 64	+ 56	- 32	+ 88	+ 10	+ 50	- 80	+ 17	- 80	+ 97	+ 34	- 2	+ 36
65 - 69	-	- 10	+ 10	+ 20	+ 20	-	- 120	- 110	- 10	+ 170	+ 130	+ 40
70 & over	- 1	- 1	-	+ 50	+ 70	- 20	- 11	- 40	+ 29	- 131	- 70	- 61
Not stated	- 280	- 260	- 20	- 150	+ 120	- 270	- 53	- 2	- 51	- 403	- 102	- 301
All ages	- 616	- 556	- 60	- 1,775	- 457	- 1,318	- 1,224	- 760	- 464	- 1,768	- 684	- 1,084

Table 21 - Departures of Mauritian residents travelling by air by
country of final destination, 1978 - 1980

Country of final destination	1978	1979	1980
Australia	879	1,010	850
France	2,480	3,230	3,360
Germany, Fed. Rep. of	380	560	670
Hong Kong	525	730	490
India	3,167	2,990	2,520
Italy	240	380	460
Kenya	531	660	540
Rodrigues	3,075	3,654	3,654
Réunion	11,478	13,190	10,320
South Africa, Rep. of	1,550	1,000	2,100
U.K.	7,560	7,130	5,570
Other countries	2,625	2,685	2,836
All countries	34,490	38,120	33,370

III - EMIGRATION

Table 22 - Official long-term emigrants^{1/} by sex, 1956 - 1980

Year	Both sexes	Male	Female
1956	147	93	54
1957	109	68	41
1958	163	130	33
1959	170	128	42
1960	158	132	26
1961	837	629	208
1962	1,083	711	372
1963	594	326	268
1964	915	491	424
1965	1,408	659	749
1966	1,611	774	837
1967	2,225	1,038	1,187
1968	3,067	1,487	1,580
1969	2,379	1,119	1,260
1970	2,282	1,063	1,219
1971	2,351	1,078	1,273
1972	2,271	956	1,315
1973	2,037	844	1,193
1974	1,494	606	888
1975	874	328	546
1976	579	195	384
1977	290	120	170
1978	320	111	209
1979	191	43	148
1980	308	84	224

^{1/} persons who have obtained a permit to emigrate to another country

Table 23 - External migration, 1956 - 1980

Year	Arrivals	Departures			Excess of arrivals over departures (excluding emigrants)
		Total	Official long-term emigrants ^{1/}	Departures excluding emigrants	
1956	7,747	8,225	147	8,078	- 331
1957	8,095	8,267	109	8,158	- 63
1958	8,703	8,924	163	8,761	- 58
1959	9,637	9,544	170	9,374	+ 263
1960	10,412	10,784	158	10,626	- 214
1961	11,854	13,033	837	12,196	- 342
1962	15,189	16,075	1,083	14,992	+ 197
1963	18,047	18,299	594	17,705	+ 342
1964	21,221	22,331	915	21,416	- 195
1965	22,024	24,150	1,408	22,742	- 718
1966	26,456	29,301	1,611	27,690	- 1,234
1967	29,321	32,925	2,225	30,700	- 1,379
1968	31,403	35,988	3,067	32,921	- 1,518
1969	35,919	38,929	2,379	36,550	- 631
1970	48,819	51,969	2,282	49,687	- 868
1971	60,826	63,997	2,351	61,646	- 820
1972	77,174	81,493	2,271	79,222	- 2,048
1973	101,184	104,697	2,037	102,660	- 1,476
1974	109,044	113,362	1,494	111,868	- 2,824
1975	117,548	120,703	874	119,829	- 2,281
1976	139,303	141,148	579	140,569	- 1,266
1977	153,208	155,653	290	155,363	- 2,155
1978	161,688	163,733	320	163,413	- 1,725
1979	182,771	186,864	191	186,673	- 3,902
1980	163,230	167,269	308	166,961	- 3,731

^{1/} persons who have obtained a permit to emigrate to another country

Note : The number of immigrants coming to settle in Mauritius is negligible. A net negative balance over successive years in the last column indicates that a number of persons not registered as official emigrants are permanently leaving the country

Table 24 - Official long-term emigrants^{1/} by country of intended residence, 1967 - 1980

Country of intended residence	1967	1968	1969	1970	1971	1972	1973	1974	1975	1976	1977	1978	1979	1980
All countries	2,225	3,067	2,379	2,282	2,351	2,271	2,037	1,494	874	579	290	320	191	308
<u>AFRICA</u>	<u>246</u>	<u>276</u>	<u>84</u>	<u>158</u>	<u>220</u>	<u>185</u>	<u>106</u>	<u>99</u>	<u>17</u>	<u>18</u>	<u>11</u>	<u>32</u>	<u>2</u>	<u>34</u>
Congo Brazzaville	1	-	1	20	54	-	3	9	-	-	-	-	-	-
Kenya	1	20	3	11	9	5	12	7	-	2	-	2	-	-
Libya	-	-	-	-	-	-	-	-	-	-	-	-	-	33
Malagasy Rep.	3	2	2	4	6	4	7	-	-	1	-	-	-	-
Malawi	8	23	1	12	15	30	23	29	2	9	5	2	-	-
Mozambique	4	-	14	42	20	20	11	8	7	-	-	-	-	-
Réunion	6	9	2	1	6	-	8	1	2	1	6	21	-	-
Rhodesia	16	4	1	2	3	-	-	-	-	-	-	-	-	-
South Africa Rep.	176	171	50	22	37	5	9	8	3	-	-	1	-	-
Zambia	30	38	10	30	56	113	23	21	2	5	-	-	-	-
Other African	1	9	-	14	14	8	10	16	1	-	-	6	2	1
<u>AMERICA</u>	<u>34</u>	<u>24</u>	<u>29</u>	<u>86</u>	<u>51</u>	<u>40</u>	<u>29</u>	<u>37</u>	<u>87</u>	<u>33</u>	<u>31</u>	<u>5</u>	<u>10</u>	<u>44</u>
Canada	32	18	25	82	47	37	26	37	87	33	31	1	10	40
U.S.A.	2	6	4	4	4	2	2	-	-	-	-	4	-	4
Other American	-	-	-	-	-	1	1	-	-	-	-	-	-	-

Table 23 (continued)

Country of intended residence	1967	1968	1969	1970	1971	1972	1973	1974	1975	1976	1977	1978	1979	1980
<u>ASIA</u>	<u>1</u>	<u>1</u>	<u>3</u>	<u>4</u>	<u>3</u>	<u>18</u>	<u>2</u>	<u>2</u>	<u>3</u>	<u>-</u>	<u>-</u>	<u>1</u>	<u>-</u>	<u>-</u>
India	1	-	3	1	-	1	2	-	2	-	-	1	-	-
Other Asian	-	1	-	3	3	17	-	2	1	-	-	-	-	-
<u>EUROPE</u>	<u>613</u>	<u>728</u>	<u>615</u>	<u>939</u>	<u>1,058</u>	<u>1,145</u>	<u>1,353</u>	<u>1,042</u>	<u>682</u>	<u>477</u>	<u>223</u>	<u>252</u>	<u>148</u>	<u>176</u>
Belgium	35	22	7	22	44	32	38	54	30	17	1	2	7	5
France	53	58	93	435	566	554	684	546	237	137	88	105	77	93
Germany, Fed. Rep.	-	-	2	5	8	31	43	7	4	1	6	12	1	1
Italy	1	-	1	4	19	48	29	19	17	17	6	5	16	13
Norway	-	-	-	1	3	2	5	1	1	2	-	4	-	-
Switzerland	3	1	-	6	1	3	5	4	4	1	4	7	3	8
United Kingdom	519	646	510	463	415	460	543	402	385	302	113	113	41	49
Other European	2	1	2	3	2	15	6	9	4	-	5	4	3	7
<u>OCEANIA</u>	<u>1,331</u>	<u>2,038</u>	<u>1,648</u>	<u>1,095</u>	<u>1,019</u>	<u>883</u>	<u>547</u>	<u>314</u>	<u>85</u>	<u>51</u>	<u>25</u>	<u>30</u>	<u>31</u>	<u>54</u>
Australia	1,330	2,037	1,645	1,082	1,004	877	545	301	84	50	25	30	31	54
New Zealand	-	1	1	-	-	1	1	-	-	-	-	-	-	-
Other Oceanian	1	-	2	13	15	5	1	13	1	1	-	-	-	-

1/ persons who have obtained a permit to emigrate to another country

Table 25 - Age distribution of official long-term employees, 1967 - 1980
Male

Age (completed years)	1967	1968	1969	1970	1971	1972	1973	1974	1975	1976	1977	1978	1979	1980
0 - 4	127	226	136	93	65	94	65	68	36	22	24	10	4	6
5 - 9	133	197	153	106	54	118	101	77	43	28	26	23	4	16
10 - 14	135	149	146	93	55	115	105	77	59	36	25	18	8	5
15 - 19	122	147	140	113	106	108	100	57	46	29	12	21	7	7
20 - 24	132	155	114	53	171	149	112	101	66	28	16	6	7	14
25 - 29	94	141	86	41	122	95	107	82	35	21	10	10	1	14
30 - 34	63	146	75	120	100	68	59	39	17	7	3	3	3	11
35 - 39	60	93	52	68	89	59	45	38	3	5	5	2	2	2
40 - 44	63	82	62	63	60	51	55	23	6	5	4	2	1	-
45 - 49	35	48	44	32	48	46	33	13	5	4	1	4	2	3
50 - 54	25	34	39	33	23	29	19	8	3	6	-	3	1	-
55 - 59	17	27	40	15	10	11	18	8	-	2	-	1	-	2
60 - 64	20	24	13	13	19	12	15	9	3	1	1	2	2	2
65 - 69	9	10	10	9	16	7	3	1	4	1	1	1	-	-
70 & over	3	8	9	11	3	4	6	4	1	-	-	-	1	-
Unknown	-	-	-	-	1	-	3	1	1	-	-	-	-	2
All ages	1,038	1,487	1,119	1,063	1,078	956	844	606	328	195	120	111	43	84

Table 25 - (cont'd.)

Female

Age (completed years)	1967	1968	1969	1970	1971	1972	1973	1974	1975	1976	1977	1978	1979	1980
0 - 4	138	215	121	99	90	88	48	50	46	24	11	5	7	6
5 - 9	147	202	143	98	89	110	111	79	44	29	14	13	6	6
10 - 14	123	168	151	94	80	140	104	70	42	38	19	22	16	10
15 - 19	154	172	174	181	184	157	181	153	105	74	42	53	32	46
20 - 24	171	184	150	237	241	257	263	212	142	102	41	46	47	72
25 - 29	103	170	101	132	145	146	150	102	54	51	21	30	18	36
30 - 34	74	133	87	81	106	100	84	72	33	22	6	13	9	19
35 - 39	74	85	78	64	84	75	72	47	18	9	4	2	4	10
40 - 44	58	74	58	61	58	65	63	24	12	6	5	5	2	3
45 - 49	44	54	49	50	60	47	51	27	8	8	1	5	3	4
50 - 54	32	46	53	25	51	32	21	26	10	5	3	-	2	3
55 - 59	30	32	37	37	44	33	17	10	11	-	-	2	-	3
60 - 64	11	27	21	25	21	22	17	7	6	4	1	3	2	4
65 - 69	11	19	12	17	10	15	10	4	6	7	1	1	-	-
70 & over	14	20	25	18	16	14	16	4	7	5	1	-	-	1
Unknown	-	-	-	-	3	-	5	1	2	-	-	-	-	1
All ages	1,167	1,560	1,260	1,219	1,275	1,315	1,193	888	546	384	170	209	148	224

Table 25 (cont'd.)
Both sexes

Age (completed years)	1967	1968	1969	1970	1971	1972	1973	1974	1975	1976	1977	1978	1979	1980
0 - 4	265	441	257	192	173	165	113	118	82	46	35	10	11	12
5 - 9	280	399	296	204	185	220	212	156	87	57	40	35	10	22
10 - 14	258	317	297	187	185	255	205	147	101	74	42	40	24	15
15 - 19	276	319	314	294	290	265	281	210	151	103	54	74	39	53
20 - 24	303	339	264	390	412	416	375	313	208	130	51	52	54	86
25 - 29	200	290	187	275	275	255	237	184	89	72	31	40	19	50
30 - 34	157	279	162	201	214	143	145	111	50	29	9	21	12	30
35 - 39	154	178	130	132	173	154	117	85	21	14	9	10	6	12
40 - 44	121	156	120	124	127	136	116	47	18	11	9	5	3	3
45 - 49	75	102	93	82	100	95	84	40	13	12	2	10	5	7
50 - 54	57	80	92	58	54	61	40	34	13	11	3	3	3	3
55 - 59	47	59	77	52	62	44	35	18	11	2	-	3	-	5
60 - 64	31	51	34	38	40	54	32	16	9	5	2	5	4	6
65 - 69	20	29	22	26	26	25	13	5	10	8	2	2	-	-
70 & over	17	28	34	29	27	18	22	8	8	5	1	-	1	1
Unknown	-	-	-	-	4	-	8	2	3	-	-	-	-	3
All ages	2,225	3,067	2,379	2,282	2,551	2,271	2,057	1,494	874	579	250	320	191	308

1/ persons who have obtained a permit to emigrate to another country

Table 26 - Official long-term emigrants^{1/} by Major Occupational group, 1975 - 1980

Major Occupational Group ^{2/}	1975	1976	1977	1978	1979	1980
Total number of emigrants	874	579	290	320	191	308
<u>Emigrants reporting an occupation</u>	<u>253</u>	<u>136</u>	<u>41</u>	<u>45</u>	<u>44</u>	<u>112</u>
0/1. Professional, Technical and Related Workers	62	20	10	8	3	6
2. Administrative and Managerial Workers	8	6	2	-	1	-
3. Clerical and Related Workers	42	30	7	6	4	14
4. Sales Workers	7	5	7	1	2	4
5. Service Workers	83	28	3	8	11	40
6. Agricultural, Animal Husbandry and Forestry Workers, Fishermen and Hunters	1	1	-	-	-	-
7/8/9. Production and Related Workers, Transport Equipment Operators and Labourers	48	42	11	19	22	38
X. Workers not classifiable by Occupation	2	4	1	3	1	10
<u>Emigrants not reporting any occupation (including housewives and children)</u>	<u>621</u>	<u>443</u>	<u>249</u>	<u>275</u>	<u>147</u>	<u>196</u>

^{1/} persons who have obtained a permit to emigrate to another country

^{2/} International Standard Classification of Occupations, Revised Edition, 1968

Table 27 - Distribution of emigrants by major occupational group, age and sex, 1967

Major Occupational Group	Age (completed years)																
	All ages		19-20		20-24		25-34		35-44		45-54		55+		Not stated		
	Both sexes	Male	Female	Male	Female	Male	Female	Male	Female	Male	Female	Male	Female	Male	Female	Male	Female
Total number of emigrants	308	84	224	34	68	13	73	26	54	2	13	3	6	4	9	2	1
Emigrants reporting an occupation	112	40	72	1	12	8	29	25	23	2	8	3	-	1	-	-	-
0/1 Professional, Technical and Related Workers	6	3	3	-	-	-	3	3	-	-	-	-	-	-	-	-	-
2 Administrative and Managerial Workers	-	-	-	-	-	-	-	-	-	-	-	-	-	-	-	-	-
3 Clerical and Related Workers	14	6	8	1	2	2	3	2	2	-	1	1	-	-	-	-	-
4 Sales Workers	4	2	2	-	-	-	-	1	1	-	-	-	-	1	-	-	-
5 Service Workers	40	3	37	-	8	1	13	1	13	-	4	1	-	-	-	-	-
6 Agriculture, Animal Husbandry and Forestry Workers, Fishermen and Hunters	-	-	-	-	-	-	-	-	-	-	-	-	-	-	-	-	-
7/8/9 Production and Related Workers Transport Equipment Operators and Labourers	38	20	18	-	2	3	6	15	7	1	3	1	-	-	-	-	-
X Workers not classifiable by Occupation	10	6	4	-	-	2	4	3	-	1	-	-	-	-	-	1	-
Emigrants not reporting any occupation (including housewives and children)	196	44	152	33	56	5	44	1	31	-	5	-	6	3	9	2	1

1/ persons who have obtained a permit to emigrate to another country

2/ International Standard Classification of Occupations, Revised Edition, 1968

Table 28 - Official long-term emigrants^{1/} by occupation, 1978 - 1980

Occupation	1978	1979	1980
Accountants	-	-	1
Cabinet makers	-	2	2
Carpenters	1	-	1
Clerks	2	2	5
Cooks	2	-	2
Doctors	-	-	-
Drivers	1	-	-
Electricians (see also fitters)	-	-	3
Fitters (see also electricians)	-	1	3
Maids (domestic servants)	5	8	37
Managers	-	-	-
Masons	1	1	1
Mechanics	-	-	2
Nurses	4	-	1
Policemen	1	-	1
Salesmen	-	2	3
Seamstresses and tailors	11	15	18
Stenographers and typists	3	2	5
Storekeepers	-	-	1
Teachers	3	1	2
Waiters	-	2	-
Welders	1	1	4
Other	10	7	20
Occupation not stated or not applicable ^{2/}	275	147	196
Total number of emigrants	320	191	308

^{1/} persons who have obtained a permit to emigrate to another country

^{2/} emigrants not reporting any occupation (including housewives and children)

Table 29 - Official long-term emigrants^{1/} by district of last residence and sex, January 1979 - December 1980

Geographical district	January - June 1979			July - December 1979			January - June 1980			July - December 1980		
	Both sexes	Male	Female	Both sexes	Male	Female	Both sexes	Male	Female	Both sexes	Male	Female
Port Louis	22	3	19	25	6	19	39	13	26	40	3	37
Pamplemousses	8	-	8	4	2	2	6	2	4	8	3	5
Rivière du Rempart	11	5	6	-	-	-	4	1	3	4	-	4
Flacq	7	1	6	1	-	1	6	2	4	2	-	2
Grand Port	10	1	9	8	-	8	4	1	3	12	4	8
Savanne	3	-	3	1	-	1	7	3	4	11	3	8
Plaines Wilhems : Urban	51	16	35	35	9	26	68	24	44	81	21	60
Other	3	-	3	-	-	-	4	-	4	3	-	3
Moka	1	-	1	-	-	-	2	2	-	1	-	1
Black River	-	-	-	1	-	1	4	2	2	2	-	2
Not stated	-	-	-	-	-	-	-	-	-	-	-	-
Whole island	116	26	90	75	17	58	144	50	94	164	34	130

^{1/} persons who have obtained a permit to emigrate to another country

IV - TOURISM

Definition and notes

1. Definition of tourist:

- (a) prior to 1964, a tourist has been defined as a non-resident staying in Mauritius for more than 24 hours but less than 6 months;
- (b) As from 1964, a tourist is defined as a non-resident staying in the island for more than 24 hours but less than a year.

The figures for the two periods are nevertheless comparable because of the small number of tourists staying for more than 6 months.

2. Visitors include the following

- (i) tourists as defined above; and
- (ii) non-residents who stay in the country for less than a day, other than those who do not leave the airport.

3. Method of compilation:

Certain data on tourism (such as type of visitor, tourist arrivals by month of arrival, tourist arrivals by country of residence and mode of transport) are compiled from disembarkation cards which visitors fill in when they arrive in this country. However, information on duration of stay of visitors can be compiled only from the embarkation cards which they fill in when they leave the country.

As from January 1979, figures are based on a 10% sample. Data on "visitor arrivals" are compiled both from embarkation and disembarkation cards. Since the compilation has been done on a sample basis the figures of "visitor arrivals" obtained when working with records of arrivals do not tally with those obtained when working with records of departures. The figures in the latter case have been pro-rated to the totals obtained when working with records of arrivals.

4. Tourist nights:

Table 30, 35 and 36 show the number of nights spent by tourists who were on visit in the country during the period under review. The figures therefore include nights spent during the reference period by tourists who arrived before the beginning of the period. On the other hand, nights spent after the end of the reference period by tourists who arrived during the period are excluded.

5. Visitor nights:

In tables 38 - 41 an analysis is made of nights spent by visitors who arrived during the period under review and who have left by a given date after the end of the period. Figures for 1980 thus show the total number of nights spent by visitors who arrived in 1980 and left before 1.4.1981.

6. Mauritians settled abroad are excluded from figures of tourists and visitors. Data referring to them are shown separately in tables 42 - 44. Table 42 shows the total nights spent by Mauritians settled abroad who arrived during the period under review and who have left by a given date after the end of the period. Thus the figures for 1980 include nights spent in January - March 1981 by Mauritians settled abroad who arrived in 1980. Table 44 shows the nights spent during the period under review only. Thus the figures for 1980 include nights spent in 1980 by Mauritians settled abroad who arrived in 1979, but exclude nights spent in January - March 1981 by those who arrived in 1980.

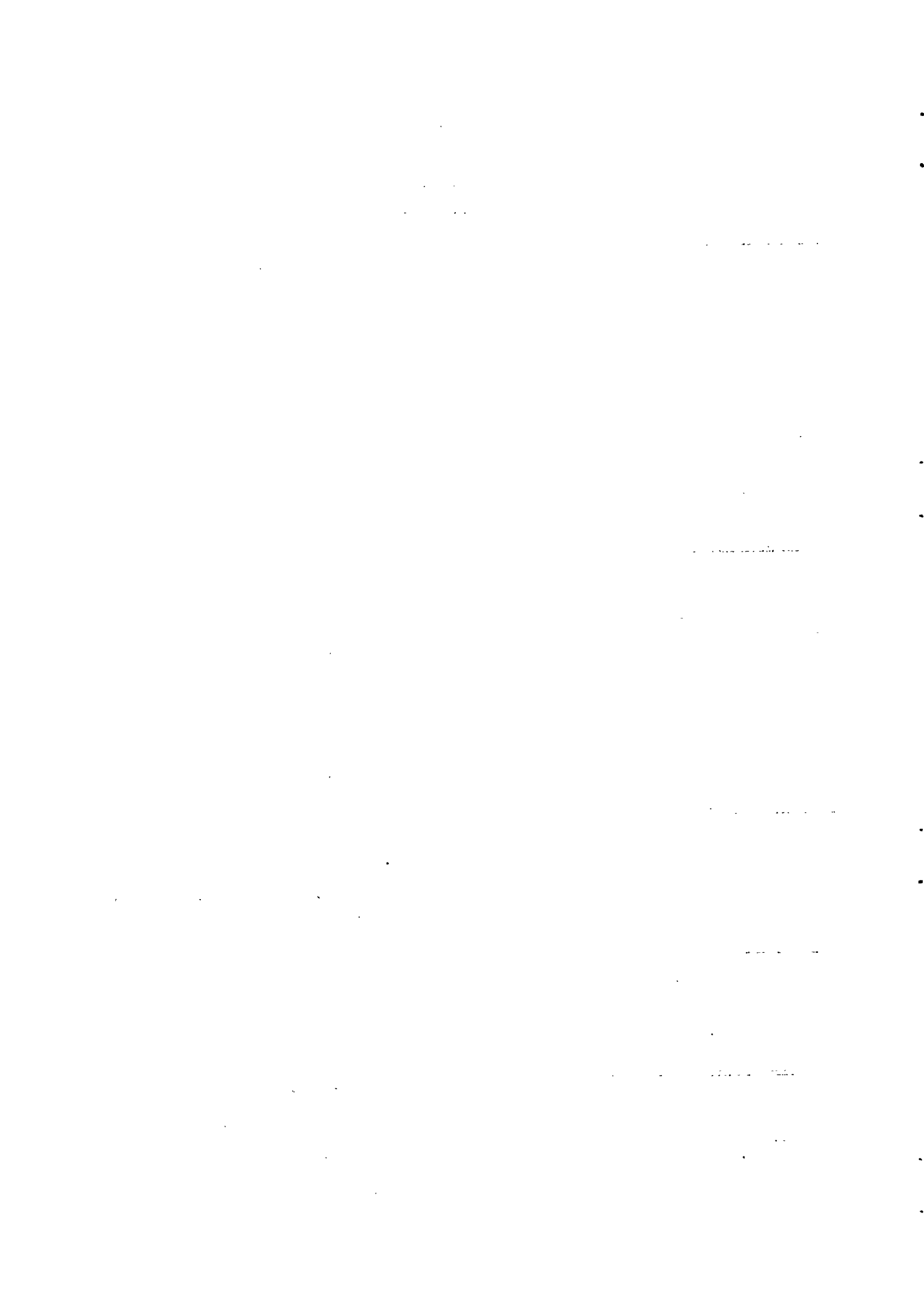


Table 2.1. Trends in mode of transport of tourists during period, 1964-1980

Period	Tourists arriving during period		Tourist nights spent during period ^{2/}	% Change over previous year	
	Sea	Air		Tourist arrivals	Tourist nights
1964	1,010	9,023	144,600	+ 29.8	+ 45.5
1965	746	9,312	144,900	+ 0.2	+ 0.2
1966	1,328	11,712	162,300	+ 29.6	+ 12.0
1967	937	13,877	172,000	+ 13.6	+ 6.0
1968	647	14,906	149,500	+ 5.0	- 13.1
1969	455	20,132	220,600	+ 32.4	+ 47.6
1970	365	27,285	287,600	+ 34.5	+ 30.4
1971	168	36,230	399,700	+ 31.6	+ 39.0
1972	143	48,654	454,300	+ 34.1	+ 13.7
1973	1,293 ^{3/}	66,701	733,100	+ 39.5	+ 61.4
1974	472	72,443	772,200	+ 7.2	+ 5.3
1975	554	74,043	746,900	+ 2.3	- 3.3
1976	778	91,783	892,200	+ 24.1	+ 19.4
1977	1,035	101,475	994,800	+ 10.7	+ 11.5
1978	696	107,626	1,051,600	+ 5.7	+ 5.7
1979	510	127,850	1,419,600	+ 16.5	+ 35.0
1980	470	114,610	1,301,730	- 10.4	- 8.3

^{1/} see notes on page 34

^{2/} include nights spent during reference period by tourists arriving prior to the period

^{3/} includes about 700 persons who came for a religious conference

Table 31. Positive arrivals by month of arrival, 1970 - 1980

Month of arrival	1970	1971	1972	1973	1974	1975	1976	1977	1978	1979	1980
January	2,718	3,669	4,701	6,874	8,495	8,401	10,055	11,507	10,808	12,640	10,990
February	2,013	2,494	3,335	4,863	5,954	4,017	7,035	8,433	8,452	9,930	8,650
March	1,876	2,191	3,046	4,152	5,272	4,383	6,149	6,974	7,715	9,410	9,610
April	1,493	2,419	2,875	5,091	5,299	4,477	6,753	8,245	7,836	10,860	8,290
May	2,281	2,905	3,261	5,060	5,203	5,235	7,385	7,974	7,337	10,300	8,870
June	1,722	1,890	2,639	4,501	4,661	3,740	4,849	5,432	5,244	7,190	5,970
July	1,981	2,918	3,986	4,726	5,379	5,739	7,551	8,832	8,599	10,270	8,310
August	3,909	5,297	7,038	9,595	9,026	10,844	11,851	11,927	13,477	14,710	12,790
September	2,232	2,845	3,911	5,105	5,183	5,706	6,004	6,463	7,616	9,860	8,910
October	1,889	2,522	3,334	4,893	5,202	5,586	7,757	7,982	9,130	9,760	9,660
November	2,049	2,615	3,873	4,398	5,650	6,634	7,157	7,859	9,719	10,310	9,770
December	3,487	4,633	6,798	8,736	7,591	9,835	10,015	10,882	12,389	13,120	13,260
Whole year	27,650	36,398	48,797	67,994	72,915	74,597	92,561	102,510	108,322	128,360	115,080

Graph 3 - Tourist arrivals by month of arrival, January 1973 - December 1980

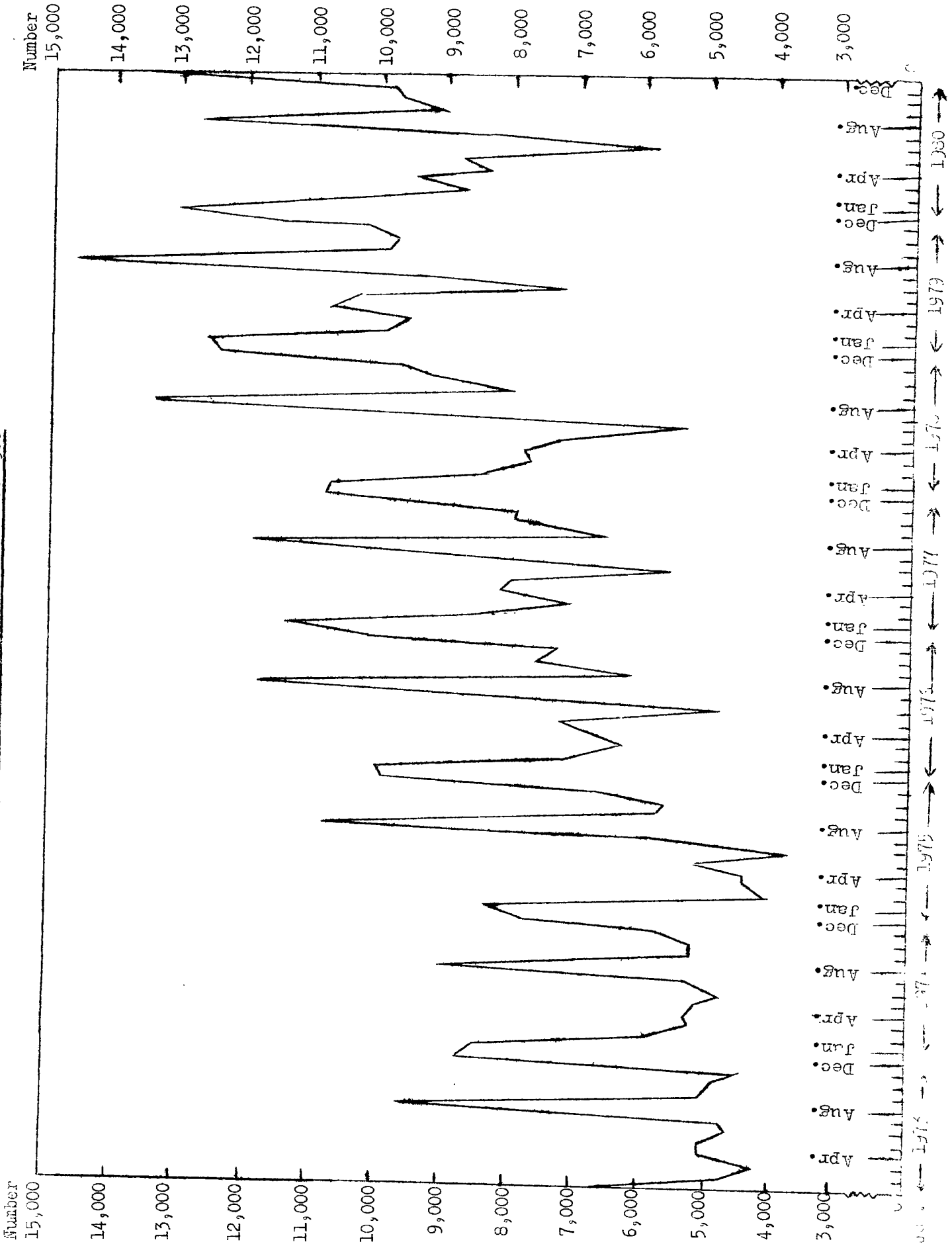


Table 33 - Tourist arrivals by country of residence, 1970 - 1980

Country of residence	1970	1971	1972	1973	1974	1975	1976	1977	1978	1979	1980
Australia	1,571	1,700	2,171	3,060	3,351	3,417	3,559	2,812	4,730	4,780	3,460
France	1,437	2,540	3,771	7,281	7,874	8,929	13,885	17,628	20,000	25,720	19,620
Germany, Fed. Rep.	481	824	1,406	1,996	1,951	1,533	1,532	2,535	2,811	5,550	9,050
India	479	554	879	2,235	1,308	1,944	2,676	2,704	2,313	2,950	2,950
Italy	190	428	775	2,136	1,937	1,712	2,115	3,302	3,498	3,760	4,300
Kenya	681	634	684	824	898	707	1,057	909	826	1,000	910
Malagasy Republic	1,985	2,287	2,747	3,563	2,679	1,975	3,035	5,273	4,891	6,220	6,480
Reunion	11,405	15,161	19,230	22,542	23,232	24,853	30,032	29,955	29,717	29,740	26,570
Rhodesia	88	191	435	380	591	1,232	920	440	688	1,290	630
Seychelles	45	63	256	563	431	405	428	505	545	520	450
South Africa, Rep. of	3,637	4,939	7,088	9,985	14,193	14,740	17,823	18,205	18,956	23,420	21,180
Switzerland	110	159	303	537	840	876	1,014	1,189	1,449	1,950	1,570
Tanzania	186	216	200	308	282	125	254	439	459	520	620
United Kingdom	1,710	2,252	2,848	3,822	3,423	5,930	4,500	6,024	7,133	8,180	7,690
Zambia	1,314	1,224	1,825	2,375	3,332	2,406	1,884	2,865	2,549	2,390	1,180
Other countries	2,301	3,226	4,179	6,387	6,564	6,144	7,495	7,754	7,917	10,370	8,420
All countries	27,650	36,398	48,797	67,994	72,915	74,597	92,561	102,510	108,322	128,360	115,080

1/ see notes on page 34

Table 34 - Percentage distribution of tourist arrivals by country of residence, 1970 - 1980

Country of residence	1970	1971	1972	1973	1974	1975	1976	1977	1978	1979	1980
Australia	5.7	4.7	4.5	4.5	4.6	4.6	3.8	2.7	2.5	3.7	3.0
France	5.2	7.0	7.7	10.7	10.8	12.0	15.0	17.2	19.6	20.0	17.1
Germany, Fed. Rep	1.7	2.3	2.9	2.9	2.7	2.1	1.7	2.5	2.6	4.3	7.9
India	1.7	1.5	1.8	3.3	1.8	2.6	2.9	2.6	2.7	2.3	2.6
Italy	0.7	1.2	1.6	3.2	2.6	2.3	2.3	3.2	3.2	2.9	3.7
Kenya	2.5	1.7	1.4	1.2	1.2	0.9	1.1	0.9	0.8	0.8	0.8
Malagasy Republic	7.2	6.3	5.6	5.2	3.7	2.6	3.3	5.1	4.5	4.9	5.6
Réunion	41.2	41.6	39.4	33.2	31.9	33.3	32.4	29.2	27.4	23.2	23.1
Rhodesia	0.3	0.5	0.9	0.6	0.8	1.7	1.0	0.4	0.6	1.0	0.5
Seychelles	0.2	0.2	0.5	0.8	0.6	0.5	0.5	0.5	0.5	0.4	0.4
South Africa, Rep. of	13.1	13.5	14.5	14.7	19.5	19.8	19.3	17.8	17.5	18.2	18.4
Switzerland	0.4	0.4	0.6	0.8	1.2	1.2	1.1	1.2	1.3	1.5	1.4
Tanzania	0.7	0.6	0.4	0.5	0.4	0.2	0.3	0.4	0.4	0.4	0.5
United Kingdom	6.3	6.2	5.9	5.6	4.7	4.8	5.2	5.9	6.6	6.4	6.7
Zambia	4.8	3.4	3.7	3.5	4.6	3.2	2.0	2.8	2.4	1.9	1.0
Other countries	8.3	8.9	8.6	9.3	8.9	8.2	8.1	7.6	7.4	8.1	7.3
All countries	100.0	100.0	100.0	100.0	100.0	100.0	100.0	100.0	100.0	100.0	100.0

Graph 4 - Percentage distribution of tourist arrivals by country of residence, 1980

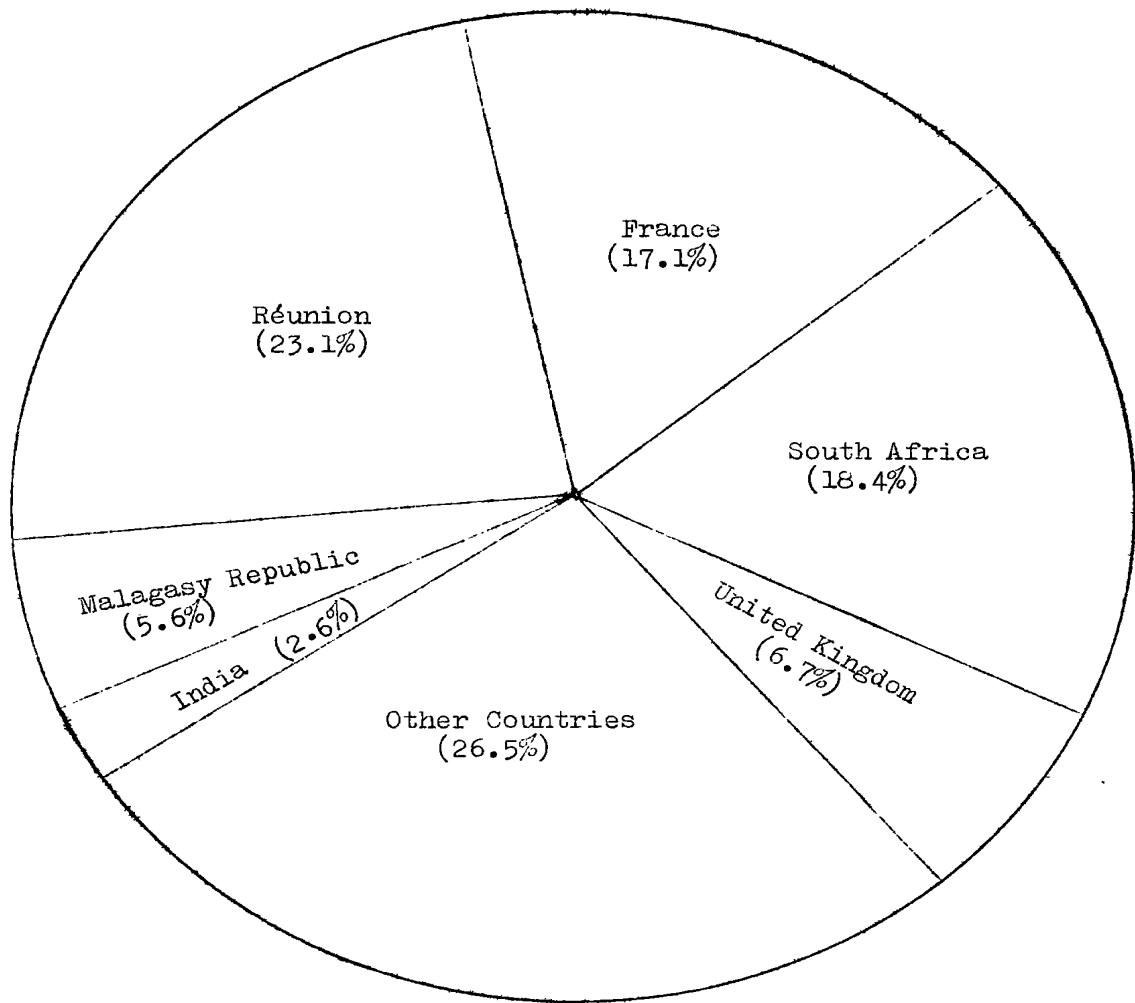


Table 35 - Tourist^{1/} nights by country of residence of tourist, 1970 - 1980

Country of residence	1970	1971	1972	1973	1974	1975	1976	1977	1978	1979	1980
Australia	7,520	11,431	9,767	21,082	26,014	26,080	26,487	23,198	25,047	38,570	40,270
France	15,385	26,878	39,043	94,408	100,673	99,847	151,971	189,961	219,947	263,200	233,190
Germany, Fed. Rep.	4,874	10,582	14,306	25,016	27,135	23,068	21,128	32,015	40,450	94,060	125,710
India	7,492	8,793	8,032	16,509	15,287	17,285	22,501	22,769	26,377	33,370	47,960
Italy	1,216	3,716	5,567	19,563	20,876	15,703	21,217	30,424	29,898	44,530	40,880
Kenya	5,180	5,197	4,498	6,471	6,371	5,532	7,492	7,474	6,746	10,310	9,290
Malagasy Rep.	19,553	27,618	25,376	39,927	26,965	17,735	29,081	42,440	33,597	48,460	43,030
Reunion	130,052	172,147	198,383	236,462	227,129	220,288	244,391	243,402	237,919	243,870	243,720
Rhodesia	840	2,004	4,952	5,103	7,174	14,133	10,513	5,527	10,913	15,110	9,450
Seychelles	1,700	1,505	2,213	6,005	4,239	4,000	4,867	6,254	6,513	4,810	8,710
South Africa, Rep. of	33,630	50,066	52,383	87,975	138,178	145,596	172,865	169,522	179,566	282,740	206,670
Switzerland	1,018	1,716	2,693	5,295	10,770	10,522	13,653	17,164	17,625	21,190	25,390
Tanzania	1,860	2,543	1,673	2,761	2,563	1,512	2,892	3,582	4,035	4,750	4,460
United Kingdom	23,577	31,181	36,125	71,275	56,923	61,943	71,336	86,855	107,921	144,252	142,070
Zambia	14,052	13,076	18,972	22,567	34,948	22,394	17,006	23,779	23,457	22,800	13,380
Other countries	19,642	31,286	30,288	72,646	66,277	61,260	74,822	90,400	81,599	147,560	107,550
All countries	287,591	399,739	454,271	733,065	772,183	746,898	892,222	994,766	1,051,610	1,419,610	1,301,730

^{1/} see notes on page 34

Graph 5 - Total arrivals, tourist arrivals and tourist nights spent during period, 1970 - 1980

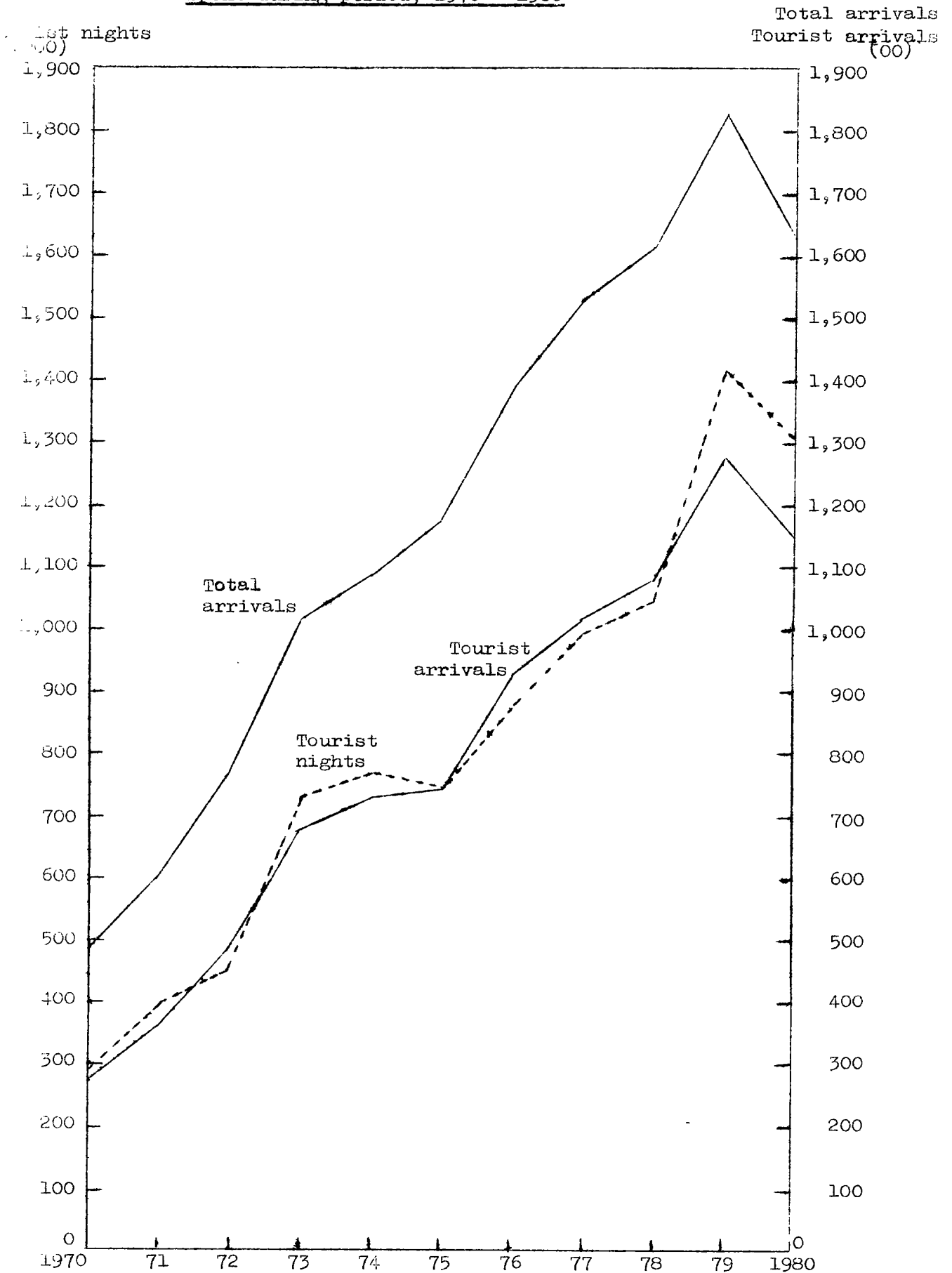


Table 36 - Tourist arrivals and tourist nights^{1/} by country of residence, 1980

Country of residence	Tourist arrivals	Tourist nights spent during period
Australia	3,460	40,270
France	19,620	233,190
Germany, Fed. Rep.	9,050	125,710
India	2,950	47,960
Italy	4,300	40,880
Kenya	910	9,290
Malagasy Republic	6,480	43,030
Reunion	26,570	243,720
Rhodesia	630	9,450
Seychelles	450	8,710
South Africa, Rep. of	21,180	206,670
Switzerland	1,570	25,390
Tanzania	630	4,460
United Kingdom	7,690	142,070
Zambia	1,180	13,380
Other countries	8,410	107,550
All Countries	115,080	1,301,730

^{1/} see notes on page 34

Table 37 - Visitor arrivals by age and sex, 1979 - 1980

Age (Completed years)	1979 ^{1/}			1980 ^{2/}		
	Both sexes	Male	Female	Both sexes	Male	Female
Under 1	720	440	280	810	520	290
1 - 4	3,670	1,960	1,710	3,740	1,920	1,820
5 - 9	5,400	3,050	2,350	5,230	2,960	2,270
10 - 14	5,030	2,770	2,260	4,730	2,740	1,990
15 - 19	5,660	2,890	2,770	5,610	2,390	3,220
20 - 24	12,160	5,760	6,400	10,680	4,990	5,690
25 - 29	17,600	9,780	7,820	16,000	8,710	7,290
30 - 34	17,960	10,450	7,510	16,800	10,210	6,590
35 - 39	16,270	10,340	5,930	14,170	9,300	4,870
40 - 44	11,950	7,540	4,410	11,190	7,260	3,930
45 - 49	10,440	6,550	3,890	8,910	5,550	3,360
50 - 54	8,430	5,190	3,240	7,150	4,670	2,480
55 - 59	6,770	4,040	2,730	5,630	3,500	2,130
60 - 64	3,810	2,250	1,560	3,310	1,910	1,400
65 - 69	3,220	1,940	1,280	2,600	1,570	1,030
70 & over	2,340	1,280	1,060	1,950	1,290	660
Not stated	620	430	190	570	380	190
All ages	132,050	76,660	55,390	119,080	69,870	49,210

^{1/} see notes on page 34

^{2/} visitors arriving in 1979 and leaving before 1.4.80

^{3/} visitors arriving in 1980 and leaving before 1.4.81

Table 38 - Visitor arrivals and visitor nights^{1/} by country of residence,
1979 - 1980

Country of residence	1979 ^{2/}			1980 ^{3/}		
	Visitor arrivals	Visitor nights	Average length of stay	Visitor arrivals	Visitor nights	Average length of stay
Australia	4,460	38,720	8.7	3,770	41,880	11.1
France	24,740	255,500	10.3	19,720	226,350	11.5
Germany, Fed. Rep.	5,650	89,150	15.8	8,480	129,500	15.3
India	2,940	32,530	11.1	3,110	39,410	12.7
Italy	3,810	38,560	10.1	4,300	39,720	9.2
Kenya	1,000	7,030	7.0	940	9,360	10.0
Madagascar Republic	6,530	46,330	7.1	6,070	42,930	7.1
Reunion	31,680	232,530	7.3	29,750	250,190	8.4
Rhodesia	1,220	15,130	12.4	680	9,280	13.6
Seychelles	510	4,070	8.0	550	8,810	16.0
South Africa, Rep. of	24,470	279,040	11.4	21,630	200,380	9.3
Switzerland	1,820	22,660	12.5	1,620	22,140	13.7
Tanzania	520	4,310	8.3	520	4,430	8.5
United Kingdom	8,520	134,740	15.8	7,520	135,780	18.1
Zambia	2,470	21,600	8.7	1,410	13,450	9.5
Other Countries	11,710	140,880	12.0	9,010	97,430	10.3
All Countries	132,050	1,362,780	10.3	119,080	1,271,040	10.7

^{1/} see notes on page 34

^{2/} figures refer to visitors arriving in 1979 and leaving before 1.4.80 and to the nights spent by them.

^{3/} figures refer to visitors arriving in 1980 and leaving before 1.4.81 and to the nights spent by them.

Table 39 - Visitor^{1/} arrivals by duration of stay, 1979 - 1980

Duration of stay	1979 ^{2/}		1980 ^{3/}	
	Number	Percentage	Number	Percentage
Less than 1 day	3,690	2.8	4,000	3.3
1 day	6,350	4.8	6,200	5.2
2 days	8,140	6.2	7,080	5.9
3 days	11,340	8.6	9,550	8.0
4 "	10,910	8.3	9,600	8.1
5 "	8,160	6.2	7,500	6.3
6 "	7,590	5.7	6,780	5.7
7 "	24,140	18.3	20,320	17.1
8 "	6,830	5.2	5,530	4.6
9 "	3,510	2.6	2,960	2.5
10 "	4,290	3.2	3,660	3.1
11 "	4,000	3.0	3,390	2.8
12 "	2,370	1.8	2,290	1.9
13 "	2,140	1.6	1,910	1.6
14 "	9,890	7.5	8,720	7.3
15 "	1,940	1.5	1,770	1.5
16 "	1,010	0.8	1,280	1.1
17 "	780	0.6	810	0.7
18 "	730	0.5	850	0.7
19 "	740	0.6	700	0.6
20 - 24 "	5,180	3.9	5,670	4.8
25 - 29 "	3,010	2.3	2,930	2.5
1 month - under 2 months	3,660	2.8	3,730	3.1
2 months- under 3 months	670	0.5	910	0.8
3 months and over	980	0.7	940	0.8
Not stated	-	-	-	-
Total	132,050	100.0	119,080	100.0

^{1/} see notes on page 34

^{2/} visitors arriving in 1979 and leaving before 1.4.80

^{3/} visitors arriving in 1980 and leaving before 1.4.81

Table 40 - Visitor^{1/} arrivals by country of residence and duration of stay, 1980

Country of residence	Duration of stay in days											Total visitors	
	0	1 & 2	3 & 4	5 & 6	7 & 8	9 & 10	11 & 12	13 & 14	15-19	20-24	25-29		30+
Australia	100	1,010	1,050	420	280	140	60	130	100	90	30	360	3,770
France	420	1,500	3,020	2,980	3,900	1,220	1,190	2,020	1,090	680	610	1,090	19,720
India	130	790	770	550	280	90	70	10	110	40	50	220	3,110
Kenya	20	140	200	130	130	70	20	60	70	30	20	50	940
Malagasy Rep.	110	680	1,150	1,640	1,720	210	100	100	90	80	90	100	6,070
Reunion	1,960	3,850	7,450	4,350	4,770	1,560	1,440	1,060	1,190	530	530	1,060	29,750
S. Africa, Rep.	400	2,150	2,090	1,120	8,570	2,110	1,780	1,630	660	450	310	360	21,630
United Kingdom	160	390	580	430	1,400	230	200	1,110	420	940	510	1,150	7,520
Zambia	40	400	70	80	360	10	-	270	50	70	10	50	1,410
Other countries	660	2,370	2,770	2,580	4,440	980	820	4,240	1,630	2,760	770	1,140	25,160
All countries	4,000	13,280	19,150	14,280	25,850	6,620	5,680	10,630	5,410	5,670	2,930	5,580	119,080

^{1/} see notes on page 34

Table 41 - Visitor arrivals and visitor nights^{1/} by country of nationality, 1980

Country of nationality	Visitor arrivals ^{2/}	Visitor nights ^{3/}	Average length of stay
Australia	3,360	36,010	10.7
France	50,190	483,720	9.6
Germany, Fed. Rep.	8,880	133,720	15.1
India	3,910	44,670	11.4
Italy	4,630	42,680	9.2
Kenya	320	3,490	10.9
Malagasy Republic	5,260	36,090	6.9
Rhodesia	480	6,660	13.9
South Africa, Rep. of	19,680	182,200	9.2
Switzerland	1,720	23,650	13.8
Tanzania	270	3,390	12.6
United Kingdom	10,210	163,110	16.0
Zambia	410	3,550	8.7
Other countries	9,760	108,100	11.1
All countries	119,080	1,271,040	10.7

^{1/} see notes on page 34

^{2/} figures refer to visitors arriving in 1980 and leaving before 1.4.81

^{3/} figures refer to nights spent by visitors arriving in 1980 and leaving before 1.4.81

Table 42 - Arrivals of Mauritians settled abroad (excluding students) and nights spent by them by country of residence, 1979 - 1980

Country of residence	1979 ^{1/}			1980 ^{2/}		
	Arrivals	Nights	Average length of stay	Arrivals	Nights	Average length of stay
Australia	690	18,500	26.8	650	16,190	24.9
Belgium	100	3,480	34.8	90	3,060	34.0
Canada	180	5,130	28.5	160	5,600	35.0
France	1,960	59,890	30.6	1,720	52,720	30.6
Germany, Fed. Rep. of	100	3,030	30.3	170	4,100	24.1
India	50	1,840	36.8	-	-	-
Malagasy Republic	60	2,680	44.7	40	2,720	68.0
Malawi	40	600	15.0	130	3,150	24.2
Reunion	1,470	23,750	16.2	1,410	22,220	15.8
Rhodesia	80	1,740	21.8	50	810	16.2
Switzerland	100	2,920	29.2	70	1,870	26.7
South Africa, Rep. of	440	8,700	19.8	410	10,640	26.0
United Kingdom	3,620	140,050	38.7	2,800	101,070	36.1
Zambia	90	1,750	19.4	60	2,340	39.0
Other Countries	600	13,070	21.8	580	14,660	25.3
All Countries	9,580	287,130	30.0	8,340	241,150	28.9

^{1/} figures refer to Mauritians settled abroad arriving in 1979 and leaving before 1.4.80 and to the total nights spent by them in 1979 and 1980

^{2/} figures refer to Mauritians settled abroad arriving in 1980 and leaving before 1.4.81 and to the total nights spent by them in 1980 and 1981

See notes on page 34

Table 43 - Arrivals of Mauritians settled abroad (excluding students)
by duration of stay, 1979 - 1980

Duration of stay	1979 ^{1/}	1980 ^{2/}
Less than 1 day	110	180
1 day	90	80
2 days	100	190
3 days	220	220
4 days	240	320
5 days	170	160
6 days	170	110
7 days	400	360
8 days	140	200
9 days	140	140
10 days	110	140
11 days	260	130
12 days	140	110
13 days	70	110
14 days	220	230
15 days	110	90
16 days	140	150
17 days	110	150
18 days	200	120
19 days	130	40
20 - 24 days	920	620
25 - 29 days	1,240	1,160
1 month - under 2 months	3,450	2,610
2 months - under 3 months	460	470
3 months and over	240	250
Not stated	-	-
Total	9,580	8,340

^{1/} figures refer to Mauritians settled abroad arriving in 1979 and leaving before 1.4.80.

^{2/} figures refer to Mauritians settled abroad arriving in 1980 and leaving before 1.4.81.

See notes on page 34

Table 44 - Total nights spent by Mauritians settled abroad
(excluding students) by country of residence,
1979 - 1980

Country of residence	1979 ^{1/}	1980 ^{2/}
Australia	28,450	20,640
Belgium	3,830	3,760
Canada	5,440	6,840
France	68,670	57,960
Germany, Fed. Rep. of	2,930	5,210
India	1,540	350
Malagasy Republic	2,770	3,290
Malawi	750	3,030
Reunion	34,330	26,110
Rhodesia	1,520	1,220
Switzerland	2,540	2,960
South Africa, Rep. of	11,380	10,720
United Kingdom	157,320	120,340
Zambia	1,720	2,850
Other countries	14,480	14,860
All countries	337,670	280,140

^{1/} figures refer to nights spent during 1979 by Mauritians settled abroad arriving in 1979 or before and leaving before 1.4.80

^{2/} figures refer to nights spent during 1980 by Mauritians settled abroad arriving in 1980 or before and leaving before 1.4.81

See notes on page 34

MAURITIUS

ILE MAURICE

INTERNATIONAL EMBARKATION AND DISEMBARKATION CARD

Carte International d'Embarquement et de Debarquement

1. Mr/M.)
Mrs/Mme.)
) Surname/Nom
Miss/Mlle)

.....
Given names/Prenoms

2. Date and Place of birth
Date et lieu de naissance

3. Nationality
Nationalité

4. Occupation
Profession

5. Permanent address
Domicile

FOR PASSENGERS LEAVING / POUR LES PASSAGERS AU DEPART

6. Port of final destination
Lieu de destination finale

FOR ARRIVING PASSENGERS / POUR LES PASSENGERS A L'ARRIVEE

7. Port of original embarkation
Lieu d'embarquement d'origine

8. Purpose of journey to Mauritius
Motif du voyage à l'Ile Maurice

9. Intended length of stay in Mauritius
Durée probable du séjour à l'Ile Maurice

10. Intended address during stay in Mauritius
Address prévue pendant le séjour à Maurice

11. Passport No. Place and Date of issue
Numéro du passport, lieu et date d'émission

CSO

5