

**Vol 5**

**No 4**



**COLONY OF MAURITIUS**

**CENTRAL STATISTICAL OFFICE**

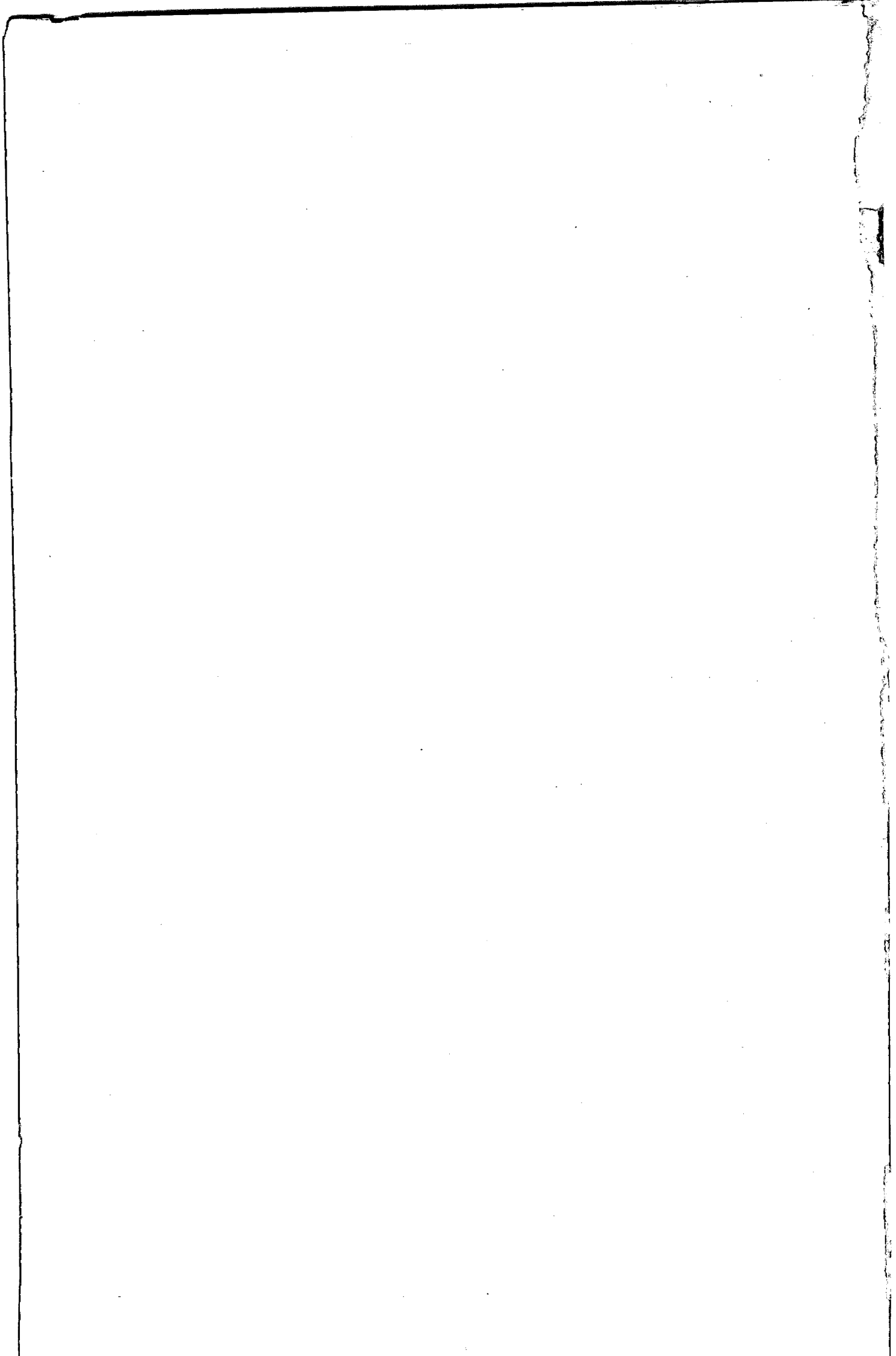
---

**QUARTERLY  
DIGEST OF STATISTICS**

---

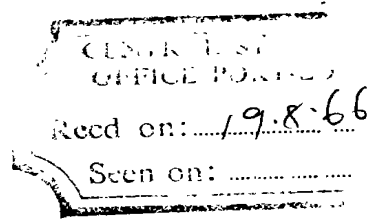
**December 1965**

**[ Price : Rs 2.50 ]**



QUARTERLY DIGEST OF STATISTICS

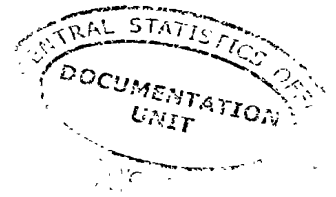
NOTES



The following symbols are used throughout : -

- Nil or negligible

... Not available



2. Some of the figures in this Digest are liable to revision in the later issues.

3. Where necessary figures have been rounded off to the nearest final digit, and in some tables there may be discrepancies between the sum of the constituent items and the total as shown.

Central Statistical Office,  
Mauritius.

CONTENTS

Page

I. POPULATION AND VITAL STATISTICS

Table 1 - Population and vital statistics	1
2 - Live-births and still-births	1
3 - Total deaths and infant deaths	2
4 - External migration	2

II. PUBLIC HEALTH

Table 5 - Statistics of hospitals	3
6 - Notifiable, contagious or communicable diseases	4

III. PUBLIC FINANCE

Table 7 - Central Government Revenue & Expenditure : Recurrent	5
8 - Central Government Revenue & Expenditure : Capital	6
9 - Central Government Indebtedness	6
10 - Sterling Assets	7
11 - Banking Statistics : Assets of Commercial Banks	8
12 - " " : Liabilities of Commercial Banks	9
13 - " " : Assets of the Development Bank of Mauritius & The Mauritius Housing Corporation	10
14 - " " : Liabilities of the Development Bank of Mauritius & The Mauritius Housing Corporation	11
15 - Post Office Savings Bank	12
16 - Currency in Circulation	12
17 - Gross National Product	13
18 - Gross Fixed Domestic Capital Formation	14
19 - Balance of Payments	15

IV. CONSUMER PRICE INDICES

Table 20 - Consumer Price Indices	16
-----------------------------------	----

V: EXTERNAL TRADE

Table 21 - Balance of visible trade	17
22 - Quantum and price indices of exports and imports and terms of trade	17
23 - Quantum and price indices of imports by section	18
24 - Exports : quantities and values	19
25 - Exports : principal countries of destination - values	20
26 - Imports : values	21
27 - " : selected commodities - values	22
28 - " : " " - quantities	23
29 - " : main sources of supply - values	24

CONTENTS (Cont'd)

	Page
VI. <u>TRANSPORT AND COMMUNICATION</u>	
Table 30 - Road Transport	25
31 - Sea Borne Shipping	26
32 - Civil Aviation	26
VII. <u>LAND UTILISATION</u>	
Table 33 - Total area classified by utilisation	27
VIII. <u>LOCAL PRODUCTION</u>	
Table 34 - Production of specific commodities	28
IX. <u>EDUCATION</u>	
Table 35 - Roll of pupils and students in schools and colleges	29

.....

APPENDIX

Table	(i) - Population and vital statistics
	(ii) - Live births and still births
	(iii) - Infant deaths
	(iv) - Estimated population of Mauritius by population group, sex and geographical district
	(v) - Passenger traffic by country of origin or destination and by method of transport
	(vi) - Imports of fertilizers
	(vii) - Wireless and Television Licences

&&&&&&&&&

I. POPULATION AND VITAL STATISTICS

Table 1 - Population and vital statistics

Period	Marriages	Births	Deaths	Natural Increase	Net Oversea migration	Total increase	Estimated population at the end of the period
1960	3,113	25,307	7,248	18,059	- 372	17,687	654,890
1961	3,484	26,092	6,505	19,587	- 1,179	18,408	673,298
1962	3,893	26,267	6,325	19,942	- 886	19,056	692,354
1963	3,472	27,978	6,709	21,269	- 252	21,017	713,371
1964	3,965	27,528	6,184	21,344	- 1,110	20,234	733,605
1965	3,976	26,279	6,337	19,942	- 2,126	17,816	751,421
1964 : 1st Qr.	809	6,206	1,627	4,579	- 839	3,740	717,111
2nd Qr.	1,015	6,834	1,482	5,352	- 374	4,978	722,089
3rd Qr.	983	7,297	1,687	5,610	- 318	5,292	727,381
4th Qr.	1,158	7,191	1,388	5,803	+ 421	6,224	733,605
1965 : 1st Qr.	900	6,237	1,612	4,625	- 1,265	3,360	736,965
2nd Qr.	990	6,290	1,491	4,718	- 647	4,071	741,036
3rd Qr.	1,025	6,955	1,597	5,358	- 689	4,669	745,705
4th Qr.	1,061	6,878	1,637	5,241	+ 475	5,716	751,421

Revision of population estimates prior to 1962 based on data obtained from the 1962 Population Census.

Table 2 - Live births and still births

Period	Live births			Still births
	Total	Males	Females	
1960	25,307	12,973	12,334	1,783
1961	26,092	13,244	12,848	1,963
1962	26,267	13,395	12,872	1,841
1963	27,978	14,263	13,715	1,519
1964	27,528	13,960	13,568	1,611
1965	26,279	13,287	12,992	1,557
1964 : 1st Qr.	6,206	3,077	3,129	306
2nd Qr.	6,834	3,489	3,345	395
3rd Qr.	7,297	3,737	3,570	469
4th Qr.	7,191	3,667	3,524	441
1965 : 1st Qr.	6,237	3,108	3,129	403
2nd Qr.	6,209	3,199	3,010	389
3rd Qr.	6,955	3,453	3,502	408
4th Qr.	6,878	3,527	3,351	357



Table 3 - Total Deaths and Infant Deaths

Period	Total Deaths			Infant Deaths		
	Total	Males	Females	Total	Males	Females
1960	7,248	3,706	3,542	1,760	980	780
1961	6,505	3,359	3,146	1,618	915	703
1962	6,325	3,255	3,070	1,579	896	683
1963	6,709	3,457	3,252	1,660	929	731
1964	6,184	3,249	2,935	1,561	900	661
1965	6,337	3,388	2,949	1,685	943	742
1964 : 1st Qr.	1,627	830	797	484	301	183
2nd Qr.	1,482	750	732	375	209	166
3rd Qr.	1,687	906	781	374	204	170
4th Qr.	1,388	763	625	328	186	142
1965 : 1st Qr.	1,612	879	733	489	275	214
2nd Qr.	1,491	783	708	444	247	197
3rd Qr.	1,597	851	746	356	205	151
4th Qr.	1,637	875	762	396	216	180

Table 4 - External Migration<sup>+</sup>

Period	Arrivals			Departures			Net migration
	Total	By sea	By air	Total	By sea	By air	
1960	10,412	4,063	6,349	10,784	4,464	6,320	- 372
1961	11,854	4,402	7,452	13,033	5,442	7,591	- 1,179
1962	15,189	4,258	10,931	16,075	4,374	11,701	- 886
1963	18,047	4,660	13,387	18,299	4,432	13,867	- 252
1964	21,221	5,187	16,034	22,331	5,478	16,853	- 1,110
1965	22,024	5,886	17,138	24,150	5,463	18,687	- 2,126
1964 : 1st Qr.	4,456	1,157	3,299	5,295	1,444	3,851	- 839
2nd Qr.	4,529	949	3,580	4,903	1,195	3,708	- 374
3rd Qr.	6,743	1,421	5,322	7,061	1,503	5,558	- 318
4th Qr.	5,493	1,660	3,833	5,072	1,336	3,736	+ 421
1965 : 1st Qr.	4,435	1,775	3,660	5,700	1,281	4,419	- 1,265
2nd Qr.	4,960	1,092	3,868	5,607	1,437	4,170	- 647
3rd Qr.	6,466	1,357	5,109	7,155	1,361	5,794	- 689
4th Qr.	6,163	1,662	4,501	5,688	1,384	4,304	+ 475

<sup>+</sup>Includes : - (a) The very small figure of engaged or discharged seamen; (b) Emigrants and immigrants to and from the dependencies; and (c) Movement of military personnel as from the 1962 Population Census.



II. PUBLIC HEALTH

Table 5 - Statistics of Hospitals

Period	No. of beds	Patients in hospital on 1st day of period	Total admissions	Deaths	Discharges	Patients remaining on last day of period
1960	2,357	1,627	34,355	1,560	32,766	1,656
1961	2,448	1,656	36,892	1,601	35,196	1,751
1962	2,453	1,751	38,130	1,628	36,480	1,773
1963	2,453	1,773	45,717	1,959	43,686	1,845
1964	2,481	1,845	49,080	1,887	47,233	1,805
1965	2,514	1,805	51,445	1,955	49,356	1,939
1964 : 1st Qr.	2,481	1,845	12,085	494	11,288	2,148
2nd Qr.	2,481	2,148	12,688	467	12,149	2,220
3rd Qr.	2,481	2,220	12,161	492	11,657	2,232
4th Qr.	2,481	2,232	12,146	434	12,139	1,805
1965 : 1st Qr.	2,514	1,805	13,010	485	12,050	2,280
2nd Qr.	2,514	2,280	12,678	448	12,259	2,251
3rd Qr.	2,514	2,251	12,658	489	12,120	2,300
4th Qr.	2,514	2,300	13,099	533	12,927	1,939

Table 6 - Notifiable, contagious or communicable diseases

Disease Period	Typhoid	Diphtheria	Actue poliomyelitis	Puerperal fever	Erysipelas	Cerebro- spinal meningitis	Tuberculosis	Leprosy	Murine typhus
1960	114	164	1	3	2	1	313	2	-
1961	71	215	-	1	-	-	353	1	-
1962	81	151	1	-	-	-	300	-	3
1963	89	145	3	2	2	-	429	4	3
1964	64	206	-	6	-	-	472	-	1
1965	77	78	-	-	-	-	366	-	-
1964 : 1st Qr.	12	27	-	1	-	-	93	-	1
2nd Qr.	19	113	-	-	-	-	145	-	-
3rd Qr.	16	42	-	1	-	-	124	-	-
4th Qr.	17	24	-	4	-	-	110	-	-
1965 : 1st Qr.	32	35	-	-	-	-	106	-	-
2nd Qr.	18	16	-	-	-	-	77	-	-
3rd Qr.	11	9	-	-	-	-	92	-	-
4th Qr.	16	18	-	-	-	-	91	-	-



III. PUBLIC FINANCE

Table 7 - Central Government Revenue and Expenditure : Recurrent

Rs Million

Period	Revenue				Expenditure	
	Total	Direct taxes	Indirect taxes	Other	Total including debt charges	Debt
1960	141.0	43.2	79.6	18.2	145.9	7.9
1961	144.9	40.3	82.8	21.8	150.1	8.9
1962	154.8	38.3	97.2	19.3	164.9	9.3
1963	168.8	41.0	102.9	24.9	164.6	10.6
1964	214.5	63.9	123.2	27.4	192.6	12.7
1965	205.1	67.4	107.8	29.9	210.2	13.5
1964 : 1st Qr.	51.9	6.6	41.0	4.3	47.0	3.2
2nd Qr.	52.7	13.9	27.7	11.1	51.1	2.7
3rd Qr.	43.1	11.1	26.4	5.6	39.0	3.8
4th Qr.	66.8	32.3	28.1	6.4	55.5	3.0
1965 : 1st Qr.	56.5	19.4	32.1	5.0	46.2	3.6
2nd Qr.	65.4	27.8	25.1	12.5	64.9	3.2
3rd Qr.	37.3	7.5	23.7	6.1	45.3	4.1
4th Qr.	45.9	12.7	26.9	6.3	53.8	2.6

Table 8 - Central Government Revenue and Expenditure : Capital

Period	Revenue					Total expenditure
	Total	Contributory	Grants	Loans	Other	
1960	32.6	14.0	2.0	15.4	1.2	45.8
1961	43.1	12.0	18.3	12.0	0.8	47.4
1962	43.8	12.0	13.3	18.3	0.2	62.9
1963	72.3	6.0	9.1	56.4	0.8	53.2
1964	60.7	16.0	6.5	36.8	1.4	55.5
1965	38.0	16.0	5.0	14.6	2.4	52.2
1964 : 1st Qr.	20.9	6.0	3.2	10.9	0.8	11.5
2nd Qr.	20.1	-	1.8	18.1	0.2	20.0
3rd Qr.	5.3	-	0.5	4.6	0.2	10.0
4th Qr.	14.4	10.0	1.0	3.2	0.2	14.0
1965 : 1st Qr.	11.4	-	2.3	7.4	1.7	14.9
2nd Qr.	13.6	10.0	1.1	2.2	0.3	18.0
3rd Qr.	2.8	-	0.7	1.9	0.2	7.0
4th Qr.	10.2	6.0	0.9	3.1	0.2	12.3

Table 9 - Central Government Indebtedness

Period	Amount outstanding at beginning of period	Borrowing			Repayments
		Total	Internal	External	
1960-61	127.3	16.9	9.3	7.6	0.5
1961-62	143.7	13.5	8.0	5.5	0.5
1962-63	156.7	39.2	24.6	14.6	7.5
1963-64	188.4	54.1	7.6	46.5	1.1
1964-65	241.4	19.8	7.3	12.5	1.2
1964 : Jan.-March	212.3	11.3	2.8	8.5	0.2
April-June	223.4	18.3	2.2	16.1	0.3
July-Sept.	241.4	5.1	2.7	2.4	0.5
Oct.-Dec.	246.0	4.1	1.3	2.8	0.1
1965 : Jan.-March	250.0	8.6	2.8	5.8	0.3
April-June	258.3	2.0	0.5	1.5	0.3
July-Sept.	260.0	4.2	3.0	1.2	0.5
Oct.-Dec.	263.7	2.7	0.8	1.9	0.1



Table 10 - Sterling Assets

(end of period)

Rs Million

Period	INVESTMENTS (Nominal value)				LIQUID ASSETS (Cash and money at call)					Net balances of banks due from banks abroad		
	Government	Semi- governmental institutions	Currency backing	Post Office Savings Bank	Total	Government institutions	Semi- governmental institutions	Currency backing	Post Office Savings Bank		Total Government & semi- governmental institutions	
1960	42.9	79.4	66.0	26.3	214.6	18.3	-	2.3	15.5	4.1	35.6	16.2
1961	26.4	64.8	60.5	25.8	177.5	24.1	-	42.8	26.8	2.2	10.3	35.1
1962	29.4	20.5	59.6	23.3	132.8	3.0	-	6.5	28.7	2.1	27.3	21.0
1963	32.6	8.8	45.7	23.1	110.2	12.0	-	1.2	46.5	4.3	61.6	108.0
1964	38.0	8.8	44.9	22.4	114.1	8.6	7.7	7.0	46.0	6.5	68.8	96.1
1965	40.0	6.9	57.7	20.3	124.9	0.8	7.0	7.0	37.3	8.9	54.0	44.0
1964 : 1st Qr.	32.8	8.8	45.7	23.0	110.3	11.0	1.1	1.1	41.1	5.4	58.6	129.4
2nd Qr.	34.9	8.8	45.6	22.7	112.0	22.2	8.7	8.7	36.8	5.0	72.7	40.3
3rd Qr.	35.8	8.8	44.9	22.5	112.0	31.1	7.6	7.6	38.8	5.1	82.6	46.3
4th Qr.	38.0	8.8	44.9	22.4	114.1	8.6	7.7	7.7	46.0	6.5	68.8	96.1
1965 : 1st Qr.	38.9	8.8	58.2	22.4	128.3	6.4	7.9	7.9	26.8	6.5	47.6	24.4
2nd Qr.	37.7	8.7	57.7	24.5	128.6	5.8	7.0	7.0	25.9	4.7	43.4	- 39.0
3rd Qr.	38.5	8.5	57.8	20.4	125.2	9.1	5.5	5.5	27.6	3.8	51.0	- 31.4
4th Qr.	40.0	6.9	57.7	20.3	124.9	0.8	7.0	7.0	37.3	8.9	54.0	44.0

Table 11 - Banking Statistics - Assets of Commercial banks

Period	Total	Cash	Balances due by			Loans and Advances			Investments		Other Assets	
			Other banks in the Colony	Banks abroad	Primary products	Other industries	Other advances	Local	Abroad	Bills discounted	Other	
												in the Colony
1960 : 31st Dec.	194.2	7.5	2.3	26.4	45.0	45.0	13.6	5.5	2.0	13.8	33.1	
1961 : "	241.2	6.0	3.0	57.1	53.3	45.7	21.8	5.0	2.0	11.8	35.5	
1962 : "	229.2	6.4	0.9	46.4	57.4	44.0	20.9	5.0	2.0	10.7	35.5	
1963 : "	281.9	8.9	3.3	113.2	28.5	41.8	19.9	6.4	2.0	10.5	47.4	
1964 : "	311.1	7.3	2.0	97.4	44.9	51.6	32.4	10.6	2.4	15.3	47.2	
1965 : "	280.0	5.8	1.7	57.8	52.0	60.4	32.7	5.8	4.3	12.3	47.2	
1964 : 31st March	313.3	10.2	1.5	130.1	32.8	50.7	19.6	6.5	2.0	11.3	48.6	
30th June	271.8	8.6	1.7	50.7	52.0	49.1	30.4	6.5	5.0	14.5	53.3	
30th Sept.	271.9	7.8	2.1	57.3	47.2	58.6	23.8	8.5	2.0	14.8	49.8	
31st Dec.	311.1	7.3	2.0	97.4	44.9	51.6	32.4	10.6	2.4	15.3	47.2	
1965 : 31st March	275.8	8.9	2.3	32.2	64.2	60.6	29.0	6.0	6.7	14.7	51.2	
30th June	293.2	9.2	2.0	6.2	99.2	63.4	36.4	6.0	6.7	15.2	48.9	
30th Sept.	269.1	8.4	1.3	6.1	75.3	68.6	37.6	5.8	4.3	15.1	46.6	
31st Dec.	280.0	5.8	1.7	57.8	52.0	60.4	32.7	5.8	4.3	12.3	47.2	

Rs Million



Table 12 - Banking Statistics - Liabilities of Commercial banks

Rs Million

Period	Total	Notes in circulation	Deposits			Balances due to			Other Liabilities
			Demand	Time	Savings	Other banks in the Colony	Banks abroad	Other	
1960 : 31st Dec.	194.2	-	113.3	3.0	11.6	2.7	10.7	53.4	
1961 : "	241.2	-	143.5	3.6	12.5	3.7	22.0	55.9	
1962 : "	229.2	-	124.5	7.3	15.2	1.3	25.5	55.4	
1963 : "	281.9	-	174.7	10.7	20.7	4.3	5.2	66.3	
1964 : "	311.1	-	161.2	52.3	26.2	2.7	1.4	67.3	
1965 : "	280.0	-	128.4	38.2	28.1	1.8	13.9	69.6	
1965 : 31st March	313.3	-	206.1	14.4	24.0	1.9	0.7	66.2	
30th June	271.8	-	134.7	27.7	24.6	2.3	10.4	72.1	
30th Sept.	271.9	-	135.3	28.6	25.5	2.4	11.1	69.0	
31st Dec.	311.1	-	161.2	52.3	26.2	2.7	1.4	67.3	
1965 : 31st March	275.8	-	120.2	47.3	26.7	2.7	7.8	71.1	
30th June	293.2	-	94.3	55.5	26.8	2.6	45.2	68.8	
30th Sept.	269.1	-	95.7	39.5	27.0	1.6	37.5	67.8	
31st Dec.	280.0	-	128.4	38.2	28.1	1.8	13.9	69.6	

Table 13 - Banking Statistics - Assets of the Development Bank of Mauritius and the Mauritius Housing Corporation

Period	Total	Cash	Balances due by			Loans and Advances			Investments		Other Assets
			Other banks in the Colony	Banks abroad	Primary products	Other industries	Other advances	Local	Abroad		
1960 : 31st Dec.	40.0	0.1	0.9	-	25.5	0.8	9.7	0.8	0.7	1.5	
1961 : "	42.4	-	0.9	-	25.2	0.8	11.8	0.9	0.7	2.1	
1962 : "	46.3	-	1.6	-	24.4	0.8	14.0	1.0	0.9	3.6	
1963 : "	45.8	-	1.3	-	23.4	1.0	14.7	1.1	0.9	3.4	
1964 : "	48.3	-	2.4	-	22.1	1.7	15.6	1.4	0.9	4.2	
1965 : "	55.3	-	2.1	-	24.2	3.6	18.8	1.8	1.1	3.7	
1964 : 31st March	46.5	-	1.4	-	23.2	1.0	14.9	1.1	0.9	4.0	
30th June	45.8	-	1.1	-	22.7	1.0	15.1	1.1	0.9	3.9	
30th Sept.	45.3	-	1.2	-	22.5	1.2	15.4	1.0	0.9	3.1	
31st Dec.	48.3	-	2.4	-	22.1	1.7	15.6	1.4	0.9	4.2	
1965 : 31st March	49.2	0.7	1.4	-	23.7	2.0	15.8	1.8	1.1	2.7	
30th June	52.9	0.1	3.1	-	23.7	2.4	16.6	2.3	1.1	3.6	
30th Sept.	52.2	-	0.9	-	23.9	2.9	17.3	2.9	1.1	3.2	
31st Dec.	55.3	-	2.1	-	24.2	3.6	18.8	1.8	1.1	3.7	

Rs Million

Table 14 - Banking Statistics : Liabilities of the Development Bank of Mauritius and the Mauritius Housing Corporation

Period	Total	Notes in circulation	Deposits			Balances due to		Other Liabilities
			Demand	Time	Savings	Other banks in the Colony	Banks abroad	
1960 : 31st Dec.	40.0	-	-	4.9	2.1	-	-	33.0
1961 : "	42.4	-	0.7	7.0	2.1	-	-	32.6
1962 : "	46.3	-	0.7	9.6	2.0	-	-	34.0
1963 : "	45.8	-	0.5	9.0	2.2	-	-	34.1
1964 : "	48.3	-	0.3	8.6	2.1	-	-	37.3
1965 : "	55.3	-	1.2	3.6	2.1	-	-	48.4
1964 : 31st March	46.5	-	0.4	8.8	2.2	-	-	35.1
30th June	45.8	-	0.4	8.8	2.2	-	-	34.4
30th Sept.	45.3	-	0.4	8.7	2.1	-	-	34.1
31st Dec.	48.3	-	0.3	8.6	2.1	-	-	37.3
1965 : 31st March	49.2	-	0.4	7.9	2.1	-	-	38.8
30th June	52.9	-	0.9	3.8	2.1	-	-	46.1
30th Sept.	52.5	-	0.7	3.7	2.1	-	-	45.7
31st Dec.	55.3	-	1.2	3.6	2.1	-	-	48.4

Table 15 - Post Office Savings Bank

Period	Deposits	Withdrawals	Accumulated Balance	Number of Accounts
	during period		at the end of period	
	Rs Mn	Rs Mn	Rs Mn	
1960	15.3	16.9	31.3	...
1961	11.9	13.4	30.4	...
1962	13.9	15.3	29.8	...
1963	15.4	13.4	32.6	...
1964	16.9	15.6	34.8	...
1965	15.0	15.9	34.8	...
1964 : 1st Qr.	4.7	3.4	33.9	...
2nd Qr.	3.3	3.6	34.4	84,642
3rd Qr.	4.6	4.5	34.5	...
4th Qr.	4.3	4.1	34.8	...
1965 : 1st Qr.	4.0	4.0	34.8	...
2nd Qr.	2.8	3.4	35.2	86,929
3rd Qr.	4.0	4.4	34.8	...
4th Qr.	4.2	4.1	34.8	...

Table 16 - Currency in circulation  
(end of period)

Rs Million

Period	Notes	Coins	Total	Cash held by banks	Net circulation
1960	73.1	4.5	77.6	7.5	70.1
1961	77.7	4.5	82.2	6.0	76.2
1962	77.3	4.9	82.2	6.4	75.8
1963	95.8	5.3	101.1	8.9	92.2
1964	92.2	5.6	97.8	7.3	90.5
1965	93.4	5.6	99.0	5.8	93.2
1964 : 1st Qr.	88.6	5.1	93.7	10.2	83.5
2nd Qr.	84.2	5.0	89.2	8.6	80.6
3rd Qr.	85.2	5.4	90.6	7.8	82.8
4th Qr.	92.2	5.6	97.8	7.3	90.5
1965 : 1st Qr.	85.7	5.3	91.0	8.9	82.1
2nd Qr.	84.3	5.2	89.5	9.2	80.3
3rd Qr.	85.3	5.5	90.8	8.4	82.4
4th Qr.	93.4	5.6	99.0	5.8	93.2

Table 17 - Industrial Origin of Gross National Product  
(At current factor cost)

	Rs Million				
	1960	1961	1962	1963	1964 <sup>+</sup>
1. Agriculture, forestry, hunting and fishing	112	193	189	313	188
2. Mining and quarrying	1	1	1	1	1
3. Manufacturing	70	121	122	185	117
4. Construction	35	49	50	48	49
5. Electricity, gas, water and sanitary services	12	14	17	21	21
6. Transportation, storage and communication	84	92	95	107	96
7. Wholesale and retail trade	67	74	74	81	87
8. Banking, insurance and real estate	13	13	14	15	15
9. Ownership of dwellings	42	52	55	57	59
10. Public Administration and Defence	27	29	31	33	35
11. Services	69	72	77	81	85
<b>GROSS DOMESTIC PRODUCT AT FACTOR COST</b>	<b>532</b>	<b>710</b>	<b>725</b>	<b>943</b>	<b>753</b>
Net factor income from abroad	10	- 5	- 5	- 11	- 2
Net receipts from foreign reinsurers (Sugar Industry Cyclone and Drought Insurance Fund)	32	- 3	-	- 4	+ 16
<b>GROSS NATIONAL PRODUCT AT FACTOR COST</b>	<b>605</b>	<b>702</b>	<b>720</b>	<b>928</b>	<b>767</b>

<sup>+</sup>provisional

Table 18 - Composition of Gross Fixed Domestic Capital Formation  
(at current prices)

	Rs Million				
	1960	1961	1962	1963	1964 <sup>@</sup>
A. By type of capital good					
a. Land <sup>x</sup>	3	3	2	2	3
b. Dwellings	30	42	42	45	42
c. Non-residential buildings	13	18	14	13	19
d. Other construction and work	23	29	37	38	31
e. Transport equipment	19	18	16	16	24
(i) Passenger cars	6	5	5	5	8
(ii) Other equipment	13	13	11	11	16
f. Machinery and other equipment	46	39	30	43	52
GROSS FIXED DOMESTIC CAPITAL FORMATION <sup>+</sup>	134	149	141	157	171
B. By industrial use					
a. Agriculture, forestry and fishing	17	13	15	9	17
b. Mining and quarrying	-	-	-	-	-
c. Manufacture	28	24	20	21	33
d. Construction	3	2	2	3	3
e. Electricity, gas and water	13	13	12	30	16
f. Transportation, storage and communications	25	28	23	20	27
g. Wholesale and retail trade	4	5	3	3	6
h. Banking, insurance and real estate	-	-	1	1	1
i. Ownership of dwellings	30	43	44	49	42
j. Public Administration	8	13	14	14	18
k. Service industries	3	5	5	5	5
l. Legal fees, stamp duties, etc.	3	3	2	2	3
GROSS FIXED DOMESTIC CAPITAL FORMATION <sup>+</sup>	134	149	141	157	171

<sup>+</sup> Excluding the expenditure incurred on reconstruction of and abnormal repairs to buildings damaged by cyclones and valued as follows :

1960	:	Rs 60 M
1961	:	Rs 6 M
1962	:	Rs 5 M
1963	:	Rs 2 M

<sup>x</sup> Including legal fees, stamp duties, agents' commissions etc., connected with the transfer of ownership of land and buildings.

<sup>@</sup>provisional.

Table 19 - Balance of Payments

	Rs Million									
	1960		1961		1962		1963		1964 +	
	Receipts	Payments	Receipts	Payments	Receipts	Payments	Receipts	Payments	Receipts	Payments
Goods and services	248.5	368.5	343.0	378.2	341.6	380.1	463.4	389.2	416.8	456.4
Donations	5.8	5.7	21.2	8.8	16.7	9.8	11.7	8.5	10.8	10.1
Capital Transactions	105.8	21.4	97.8	55.5	90.4	51.5	62.7	141.5	50.0	38.5
Net credit or debit balance	35.5	-	-	19.6	-	7.3	1.4	-	27.4	-
TOTAL	395.6	395.6	462.1	462.1	448.7	448.7	539.2	539.2	505.0	505.0

+ provisional

IV. CONSUMER PRICE INDICES

Table 20 - Consumer Price Indices

(Base : January-June 1962 = 100)

The table below gives for the period January 1963 to December 1965, three consumer price indices, viz:

- (a) in index for households in urban areas;
- (b) an index for households in rural areas;
- (c) a total index for Mauritius as a whole.

Period	Urban	Rural	Total
<u>1963</u> : January	98.6	99.0	98.8
February	99.3	99.6	99.4
March	98.0	98.2	98.1
April	97.3	97.4	97.4
May	97.5	97.5	97.5
June	97.4	97.4	97.4
July	98.1	98.1	98.1
August	98.3	98.2	98.2
September	98.9	98.8	98.8
October	100.2	100.2	100.2
November	99.3	99.2	99.2
December	98.6	98.6	98.6
<u>1964</u> : January	100.2	100.2	100.2
February	104.3	104.2	104.3
March	102.9	102.9	102.9
April	101.7	101.8	101.7
May	99.5	99.0	99.2
June	98.4	97.9	98.1
July	98.9	98.5	98.7
August	100.0	99.4	99.7
September	100.3	99.6	99.9
October	100.0	99.3	99.6
November	99.8	99.2	99.5
December	100.5	100.0	100.3
<u>1965</u> : January	101.5	101.0	101.2
February	101.4	101.0	101.2
March	101.4	100.8	101.0
April	102.4	102.2	102.3
May	103.3	102.9	103.0
June	104.0	104.0	104.0
July	102.9	102.9	102.9
August	102.6	102.4	102.5
September	101.7	101.3	101.5
October	102.2	101.5	101.8
November	102.2	101.5	101.8
December	102.5	102.3	102.4



V. EXTERNAL TRADE

Table 21 - Balance of visible trade

Period	Imports (C.I.F.Value)	Exports <sup>+</sup> (F.O.B.Value)	Rs Million	
			Balance of visible trade Surplus	Deficit
1960	331.9	185.0	-	146.9
1961	324.0	294.2	-	29.8
1962	322.7	305.9	-	16.8
1963	333.1	427.8	94.7	-
1964	388.9	366.9	-	22.0
1965 <sup>x</sup>	367.3	312.8	-	54.5
1964 : 1st Qr.	76.4	76.4	-	-
2nd Qr.	96.9	17.6	-	79.3
3rd Qr.	108.8	125.7	16.9	-
4th Qr.	106.8	147.2	40.4	-
1965 : 1st Qr.	88.2	12.5	-	75.7
2nd Qr.	97.6	12.1	-	85.5
3rd Qr.	79.7	137.0	57.3	-
4th Qr. <sup>x</sup>	101.8	151.2	49.4	-

Table 22 - Quantum and price indices of exports and imports & terms of trade  
(1956 = 100)

Period	Quantum indices		Price indices		Terms of trade <sup>*</sup>
	Export	Import	Export	Import	
1960	57	154	109	96	114
1961	98	150	101	96	105
1962	100	152	102	95	107
1963	111	153	130	97	134
1964	111	175	111	99	112

<sup>+</sup>Including value of sugar quota certificates, but excluding sales value of bunker fuel and ships' stores.

For the years 1963 and 1964, the value of sugar quota certificates has been included in the 4th quarter.

<sup>x</sup>provisional

<sup>\*</sup>Ratio of export price index to import price index.

A rise in the index indicates that the terms of trade have moved in favour of Mauritius.

Table 23 - Quantum and Prices of Imports by Sections

(1956 = 100)

Period	All Sections	Food	Beverage and tobacco	Crude materials, inedible, except fuels	Mineral fuels, lubricants, etc	Animal and vegetable oils and fats	Chemicals	Manufactured goods classified chiefly by material	Machinery and transport equipment	Miscellaneous manufactured articles	Quantum Indices					Price Indices				
											1960	1961	1962	1963	1964	1960	1961	1962	1963	1964
1960	154	143	142	90	104	133	145	158	198	235	96	105	98	86	90	87	98	106	78	
1961	150	151	148	102	99	127	149	141	179	197	96	105	96	90	83	88	96	108	102	
1962	152	157	143	78	127	135	156	138	148	218	95	105	97	88	86	87	91	110	108	
1963	153	161	136	66	114	167	166	139	174	179	97	107	96	81	88	88	90	115	119	
1964	175	175	126	75	154	151	184	171	211	205	99	109	99	83	78	92	92	119	116	

Table 24 - Exports : Quantities and values

Period	Total value*	Re-exports value	DOMESTIC EXPORTS											
			Total		Sugar		Molasses		Tea		Other			
			Quantity	Value	Quantity	Value	Quantity	Value	Quantity	Value	Quantity	Value		
1960	185.0	5.5	...	179.5	299.4	174.0	3.4	45.2	0.2	1.3	...	0.8		
1961	294.2	10.5	...	283.7	505.7	272.2	5.0	64.6	0.8	4.9	...	1.6		
1962	305.9	8.8	...	297.1	515.1	282.0	9.1	110.3	0.7	3.9	...	2.1		
1963	427.8	6.8	...	420.9	574.3	400.2	13.5	109.8	1.0	5.5	...	1.8		
1964	366.9	7.0	...	359.7	575.7	344.2	8.8	99.1	0.8	4.4	...	2.5		
1965 <sup>†</sup>	312.8	9.9	...	302.9	569.4	289.7	5.0	92.1	1.1	5.9	...	2.3		
1964 : 1st Qr.	76.4	1.6	...	74.8	91.2	69.5	3.5	28.6	0.2	1.4	...	0.4		
2nd Qr.	17.6	1.4	...	16.2	17.1	12.7	1.5	12.3	0.3	1.4	...	0.		
3rd Qr.	125.7	1.3	...	124.3	227.0	121.7	2.2	25.0	0.1	0.3	...	0.2		
4th Qr. <sup>x</sup>	147.2	2.7	...	144.6	240.4	140.3	1.7	33.2	0.2	1.3	...	1.3		
1965 : 1st Qr.	12.5	1.7	...	10.8	11.1	6.9	1.1	19.6	0.5	2.6	...	0.2		
2nd Qr.	12.1	3.1	...	8.9	16.6	6.3	1.0	19.1	0.2	1.2	...	0.4		
3rd Qr.	137.0	2.8	...	134.2	273.1	131.6	1.0	17.0	0.1	0.4	...	1.2		
4th Qr. <sup>†</sup>	151.3	2.3	...	149.0	268.7	144.9	1.9	36.4	0.3	1.6	...	0.6		

\*Including value of sugar quota certificates, but excluding sales value of bunker fuel and ships' stores.

<sup>†</sup>provisional

<sup>x</sup>the value of sugar quota certificates has been included in this quarter.

Table 25 - Total Exports\* : Principal countries of destination - values

Period	Rs Million F.O.B.									
	United Kingdom	Canada	Republic of South Africa	Federation of Malaysia	New Zealand	Holland	Italy	Japan	Reunion	United States of America
1960	159.5	10.0	0.5	0.7	-	1.0	-	1.5	1.4	-
1961	235.9	36.4	0.5	-	0.2	0.1	-	2.3	1.5	3.5
1962	251.0	22.3	2.1	0.1	0.6	2.0	0.5	3.0	1.2	9.2
1963	290.7	66.7	1.2	0.1	0.4	0.1	8.4	0.6	1.8	47.8
1964	272.7	57.1	2.3	4.0	0.3	1.6	11.8	0.2	1.0	5.4
1965 <sup>+</sup>	238.6	27.4	11.8	4.6	0.5	0.6	0.3	-	1.6	14.1
1964 : 1st Qr.	62.2	-	0.7	-	0.1	-	11.0	0.1	0.2	1.5
2nd Qr.	14.3	-	0.4	-	0.1	1.5	0.4	0.1	0.3	-
3rd Qr.	81.9	36.4	0.1	4.0	-	-	-	-	0.2	2.2
4th Qr.	114.3	20.7	1.1	-	0.1	0.1	0.4	-	0.3	1.6
1965 : 1st Qr.	9.5	-	0.2	-	0.3	-	-	-	0.4	0.8
2nd Qr.	4.6	-	4.2	-	0.1	0.1	-	-	0.5	2.0
3rd Qr.	103.4	18.1	5.9	-	0.1	0.5	0.3	-	0.2	1.3
4th Qr. <sup>†</sup>	121.1	9.3	1.5	4.6	-	-	-	-	0.4	9.9

\* excluding value of sugar quota certificates.

<sup>†</sup>provisional.

Table 26 - Imports : Values

Period	Rs Million c.i.f.										
	Total	Food	Beverages and tobacco	Crude materials inedible, except fuels	Mineral fuels, lubricants, etc.	Animal and vegetable oils and fats	Chemicals	Manufactured goods classified chiefly by material	Machinery and transport equipment	Miscellaneous manufactured articles	Miscellaneous transactions and commodities n.e.s.
1960	331.9	85.2	8.1	7.4	13.2	10.3	34.4	86.9	58.5	27.3	0.6
1961	324.0	88.9	8.4	8.2	11.7	10.3	36.0	76.0	53.7	29.9	0.9
1962	322.7	93.0	8.1	6.3	15.5	10.7	37.2	70.9	45.4	34.9	0.7
1963	333.1	94.7	7.9	5.6	14.2	12.1	39.7	70.8	55.7	31.7	0.8
1964	388.9	105.9	7.4	6.5	17.0	11.3	46.4	88.5	70.3	35.5	0.1
1965 <sup>+</sup>	367.3	108.0	6.8	6.7	17.7	14.9	47.1	78.6	56.3	31.0	0.3
1964 : 1st Qr.	76.4	19.6	1.3	1.1	3.9	2.7	8.4	18.8	13.7	6.8	0.1
2nd Qr.	96.9	27.2	1.6	1.7	4.5	2.8	9.3	22.5	18.6	8.7	-
3rd Qr.	108.8	28.4	2.0	2.0	4.5	3.8	16.3	24.5	18.2	8.9	-
4th Qr.	106.8	30.7	2.5	1.7	4.1	2.0	12.5	22.7	19.6	11.0	-
1965 : 1st Qr.	88.2	25.5	1.5	1.6	5.0	4.8	8.5	21.0	13.4	6.8	0.1
2nd Qr.	97.6	25.3	1.9	1.6	3.2	2.7	11.5	22.7	19.8	8.7	0.1
3rd Qr.	79.7	23.8	1.3	2.1	4.2	4.1	11.6	15.4	11.2	6.1	-
4th Qr. <sup>+</sup>	101.8	33.4	2.1	1.4	5.3	3.3	15.5	19.5	11.9	9.5	0.1

<sup>+</sup> provisional.

1. The first part of the document discusses the importance of maintaining accurate records of all transactions and activities. It emphasizes that proper record-keeping is essential for transparency and accountability, particularly in financial matters. This section also highlights the need for regular audits and reviews to ensure that all data is up-to-date and correct.

2. The second part of the document focuses on the role of technology in modern business operations. It explores how digital tools and software can streamline processes, reduce errors, and improve overall efficiency. The text mentions various applications, such as cloud storage, project management software, and data analytics, which are becoming increasingly integral to organizational success.

3. The third part of the document addresses the challenges of remote work and virtual collaboration. It discusses the importance of clear communication, setting boundaries, and using digital tools to facilitate teamwork. The text also touches upon the need for strong cybersecurity measures to protect sensitive information in a distributed work environment.

4. The fourth part of the document discusses the importance of employee training and development. It argues that investing in the growth of your workforce is crucial for long-term success. This section covers topics such as onboarding new hires, providing ongoing education, and creating a culture of continuous learning. It also mentions the benefits of mentorship programs and cross-functional training.

5. The fifth part of the document focuses on the importance of customer service and client relationships. It emphasizes that excellent customer service is a key differentiator for many businesses. The text discusses strategies for understanding customer needs, responding to feedback, and building loyalty. It also mentions the importance of maintaining accurate records of customer interactions and preferences.

6. The sixth part of the document discusses the importance of financial management and budgeting. It highlights the need for a clear understanding of your organization's financial health and the ability to create and stick to a budget. This section covers topics such as cash flow management, expense tracking, and the use of financial software to simplify accounting tasks.

7. The seventh part of the document addresses the importance of legal and regulatory compliance. It emphasizes that staying up-to-date on relevant laws and regulations is essential to avoid penalties and legal issues. The text discusses the importance of consulting with legal counsel and implementing robust compliance programs across all areas of the organization.

8. The eighth part of the document discusses the importance of risk management and crisis preparedness. It highlights the need to identify potential risks, assess their impact, and develop contingency plans. This section covers topics such as disaster recovery, business continuity planning, and the importance of having a clear communication protocol in place during a crisis.

9. The ninth part of the document focuses on the importance of innovation and staying competitive in a rapidly changing market. It discusses the need for a culture of innovation, where employees are encouraged to think creatively and propose new ideas. The text also mentions the importance of staying abreast of industry trends and investing in research and development to create new products and services.

10. The tenth and final part of the document discusses the importance of work-life balance and employee well-being. It emphasizes that a healthy and happy workforce is more productive and engaged. This section covers topics such as flexible work arrangements, mental health support, and the importance of taking regular breaks and vacations. It also mentions the role of management in fostering a positive and supportive work environment.

Table 27 - Imports of merchandise : selected commodities - values

Period	Rs Million c.i.f.													
	Rice	Wheat flour	Alcoholic beverages	Petroleum products	Vegetable edible oils	Fertilizers, manufactured	Cotton fabrics	Other textile fabrics	Cement	Iron and steel goods	Manufactures of metals n.e.s.	Machinery, other than electric	Electric machinery, apparatus and appliances	Road motor vehicles and parts
1960	33.0	10.0	6.0	12.9	9.7	13.2	12.1	5.9	9.9	23.0	12.8	21.6	19.6	15.5
1961	36.8	9.4	6.8	10.9	9.8	12.7	12.2	6.5	9.1	13.8	11.8	20.2	17.5	13.8
1962	37.3	11.6	6.4	15.0	10.0	14.9	12.7	5.6	8.8	11.1	9.6	18.2	12.0	13.8
1963	38.3	12.1	5.9	13.8	11.5	16.4	12.1	6.5	7.4	9.0	12.0	17.8	22.0	13.8
1964	39.2	13.5	5.6	16.6	10.8	19.4	13.5	8.7	9.1	15.6	13.4	30.0	18.5	19.3
1965 <sup>+</sup>	39.3	14.4	5.1	17.4	14.4	18.4	10.8	7.3	8.9	11.6	11.3	23.2	17.2	14.7
1964 : 1st Qr.	5.2	2.8	0.9	3.9	2.6	2.3	2.9	1.9	2.2	3.2	2.7	4.9	3.2	4.9
2nd Qr.	10.1	2.3	1.2	4.3	2.6	3.0	3.7	2.1	2.5	3.6	3.5	7.6	4.5	5.6
3rd Qr.	12.2	4.1	1.4	4.4	3.7	8.3	3.6	2.3	2.7	4.2	4.0	7.0	5.5	5.3
4th Qr.	11.7	4.3	2.1	4.0	1.9	5.8	3.3	2.4	1.7	4.6	3.2	10.5	5.3	3.4
1965 : 1st Qr.	10.6	3.2	0.9	4.9	4.7	1.5	2.7	2.0	2.9	3.8	2.8	5.5	3.9	3.7
2nd Qr.	9.6	3.5	1.3	3.1	2.6	3.7	2.7	1.6	2.2	3.9	3.5	9.9	5.4	4.0
3rd Qr.	8.1	2.2	1.1	4.1	4.0	5.6	2.5	1.6	1.9	1.7	2.1	3.5	4.2	3.3
4th Qr. <sup>+</sup>	10.9	5.6	1.7	5.2	3.1	7.7	2.9	2.1	1.9	2.2	2.9	4.2	3.7	3.7

<sup>+</sup> provisional.

Table 28 - Imports of merchandise : selected commodities - quantities

Period	Rice	Wheat flour	Vegetable edible oils	Fertilizers, manufactured	Cotton fabrics	Other textile fabrics	Cement	Iron and Steel goods
	Thousand M/Tons	Thousand M/Tons	Thousand M/Tons	Thousand M/Tons	Million Sq. Metres	Million Sq. Metres	Thousand M/Tons	Thousand M/Tons
1960	60.6	23.9	7.1	51.3	9.1	2.4	94.6	26.7
1961	67.2	22.7	6.5	50.3	9.0	2.8	91.8	16.8
1962	68.2	26.6	6.8	62.7	10.0	2.5	95.2	14.2
1963	69.7	28.2	8.2	66.7	9.6	2.0	80.4	12.9
1964	68.1	28.6	7.5	69.3	10.2	3.0	103.1	21.3
1965 <sup>†</sup>	67.2	33.5	8.6	58.1	8.5	2.6	95.4	15.8
1964 : 1st Qr.	8.9	6.1	1.8	9.5	2.2	0.7	25.4	4.7
2nd Qr.	18.4	5.0	1.8	10.7	2.9	0.7	27.7	5.0
3rd Qr.	20.8	8.5	2.7	23.0	2.6	0.8	30.1	5.6
4th Qr.	19.9	9.0	1.2	21.1	2.5	0.9	19.9	6.0
1965 : 1st Qr.	18.3	7.3	2.7	6.1	2.2	0.8	28.7	5.1
2nd Qr.	16.6	8.2	1.5	10.8	2.1	0.5	24.2	5.5
3rd Qr.	13.8	5.1	2.5	15.9	1.9	0.5	21.2	2.3
4th Qr.	18.5	12.9	1.9	25.2	2.4	0.7	21.3	2.9

<sup>†</sup>provisional



Table 29 - Imports : Main sources of supply - values

Rs Million c.i.f.

Period	United Kingdom	Australia	Burma	Hong-Kong	India	Republic of South Africa	Western Germany	Iran	Japan	Siam	France	United States of America
1960	115.9	23.0	26.8	9.4	13.5	21.7	13.0	9.7	13.4	8.8	13.0	9.5
1961	104.8	22.4	28.9	9.7	13.8	27.1	15.0	8.2	9.7	10.0	12.9	7.6
1962	90.2	22.1	34.5	11.7	14.0	34.7	13.1	12.4	10.1	4.7	15.4	7.8
1963	94.2	19.3	34.7	11.7	13.0	30.8	13.0	10.3	9.7	4.3	17.2	9.0
1964	115.2	30.6	26.5	12.3	16.3	32.3	13.7	11.3	15.6	13.9	17.2	11.4
1965 <sup>+</sup>	98.4	24.2	23.3	9.6	11.2	34.6	15.2	11.1	13.9	17.1	20.9	12.7
1964 : 1st Qr.	24.6	5.8	3.1	2.4	3.7	7.5	2.8	3.0	2.6	2.3	3.4	2.6
2nd Qr.	26.1	6.5	9.0	3.9	4.7	9.3	3.2	3.3	3.3	1.5	3.4	2.5
3rd Qr.	32.8	8.0	4.2	2.8	3.9	8.2	4.8	3.5	4.5	8.3	4.6	3.3
4th Qr.	31.8	10.3	10.2	3.2	4.0	7.3	2.9	1.6	5.3	1.8	5.8	3.1
1965 : 1st Qr.	24.8	4.0	5.5	2.3	3.0	9.2	2.9	3.6	3.8	5.5	4.7	3.0
2nd Qr.	28.0	6.0	2.2	2.6	3.0	9.8	3.6	2.1	3.1	7.6	6.9	3.6
3rd Qr.	18.4	6.0	5.3	2.0	1.9	7.2	4.0	1.9	2.5	3.1	3.8	3.1
4th Qr. <sup>+</sup>	27.3	8.2	10.2	2.7	3.3	8.4	4.8	3.5	4.6	0.8	5.5	2.9

<sup>+</sup>provisional

VI. TRANSPORT AND COMMUNICATION

Table 30 - Road Transport

End of period	Grand Total	Private Vehicles			Commercial Vehicles				Government owned vehicles		
		Total	Cars	Motor cycles	Other	Total	Taxi-cars	Buses		Lorries	Other
1960	14,083	9,181	7,649	1,092	440	4,401	1,274	447	1,901	779	501
1961	15,669	10,026	8,273	1,236	517	5,079	1,270	466	2,390	953	564
1962	16,673	10,847	8,860	1,400	587	5,224	1,194	498	2,470	1,062	602
1963	18,092	12,020	9,640	1,621	759	5,446	1,284	519	2,561	1,082	626
1964	20,093	13,536	10,709	1,914	913	5,899	1,389	590	2,672	1,248	658
1965 <sup>†</sup>	22,762	16,420	12,303	1,977	2,140	5,547	1,387	615	2,669	876	795
1964 : 1st Qr.	18,577	12,213	9,934	1,706	573	5,734	1,297	518	2,590	1,329	630
2nd Qr.	19,158	13,037	10,208	1,762	1,067	5,482	1,338	564	2,645	935	639
3rd Qr.	19,740	13,298	10,624	1,835	839	5,790	1,266	537	2,686	1,301	652
4th Qr.	20,093	13,536	10,709	1,914	913	5,899	1,389	590	2,672	1,248	658
1965 : 1st Qr.	20,607	13,965	11,014	1,989	962	5,950	1,402	595	2,679	1,274	692
2nd Qr.	21,168	14,332	11,234	2,063	1,035	6,100	1,421	604	2,718	1,357	736
3rd Qr. <sup>†</sup>	22,250	16,004	12,084	1,904	2,016	5,465	1,358	605	2,661	841	781
4th Qr. <sup>†</sup>	22,762	16,420	12,303	1,977	2,140	5,547	1,387	615	2,669	876	795

<sup>†</sup>Note : As a result of the implementation of amendments to the Road Traffic Ordinance, 1962, a new classification of vehicles - especially of dual purpose ones - has been adopted by the Road Traffic Licensing Authority as from July 1965. Figures in the new series starting from 3rd quarter of 1965 will consequently not be comparable to those published up to June 1965.

Table 31 - Sea Borne Shipping

Period	Vessels entering		Vessels leaving		Goods	
	Number	Net registered tonnage	Number	Net registered tonnage	Unloaded	Loaded <sup>+</sup>
		Thousand M/Tons		Thousand M/Tons		Thousand M/Tons
1960	371	1,251	369	1,253	479	366
1961	418	1,510	419	1,508	478	604
1962	467	1,494	464	1,489	517	647
1963	493	1,593	487	1,601	466	701
1964	731	1,900	730	1,906	578	712
1965	710	1,728	714	1,734	640	550
1964 : 1st Qr.	147	505	153	522	119	127
2nd Qr.	149	395	148	386	140	39
3rd Qr.	209	528	207	512	162	260
4th Qr.	226	471	222	486	157	287
1965 : 1st Qr.	159	385	166	383	134	44
2nd Qr.	147	337	145	344	110	47
3rd Qr.	204	504	202	513	120	213
4th Qr.	200	502	201	495	337	187

<sup>+</sup>including bunkers

Table 32 - Civil Aviation

Period	Number of movements		Passengers		Freight	
	Loadings	Take offs	Set down	Picked up	Unloaded	Loaded
					M/Tons	M/Tons
1960	251	250	6,312	6,311	89.5	21.1
1961	287	288	7,645	7,775	201.6	70.8
1962	377	376	10,351	11,179	130.9	43.4
1963	390	390	12,912	13,405	120.4	51.5
1964	431	431	15,810	16,593	152.7	53.1
1965	511	510	16,967	18,541	...	...
1964 : 1st Qr.	92	92	3,276	3,794	32.8	9.2
2nd Qr.	108	108	3,492	3,581	48.0	16.2
3rd Qr.	124	123	5,261	5,503	35.4	13.3
4th Qr.	107	108	3,781	3,715	36.5	14.4
1965 : 1st Qr.	104	104	3,614	4,371	30.2	21.3
2nd Qr.	120	119	3,834	4,138	63.1	16.7
3rd Qr.	144	144	5,078	5,771	31.7	17.3
4th Qr.	143	143	4,441	4,261	...	...

Note : In this table : (1) are included only movements of commercial aircraft;  
(2) each touch down and take off is counted as a separate movement;  
(3) passengers in transit are excluded;  
(4) freight carried by planes other than commercial are included.

VII. LAND UTILISATION

Table 33 - Total area classified by utilisation

	<u>Acres</u>				
	1961	1962	1963	1964	1965
<u>Agriculture :</u>	226,300	229,000	228,700	231,000	233,400
Sugar	209,800	213,800	213,000	215,800	215,800
Aloe fibre (effective area)	2,200	1,100	1,000	900	900
Tea	4,400	4,500	5,300	5,800	6,600
Tobacco	900	700	800	500	1,000
Foodcrops	2,000	2,100	2,100	1,900	2,500
Vegetables	7,000	6,800	6,500	6,100	6,600
<u>Forests, scrub areas, grasslands and grazing grounds</u>	182,300	179,200	179,100	176,600	174,200
Private forest lands	15,000	15,000	15,000	15,000	15,000
Crown Forests	65,500	65,500	64,000	63,670	63,300
Pas Geometriques <sup>x</sup>	5,290	5,290	5,290	5,290	5,290
Natural reserves <sup>+</sup>	15,500	15,500	15,500	15,500	15,500
Meadows, grasslands,scrubs, forests and grazing grounds	81,010	77,910	79,310	77,140	75,110
<u>Built on areas</u>	14,200	14,600	15,000	15,200	15,200
<u>Inland water bodies</u>	23,000	23,000	23,000	23,000	23,000
Reservoirs, crater, lakes, ponds	3,000	3,000	3,000	3,000	3,000
Natural water courses	20,000	20,000	20,000	20,000	20,000
<u>Roads - tracks<sup>@</sup></u>	10,000	10,000	10,000	10,000	10,000
<u>Permanent waste lands</u>	5,000	5,000	5,000	5,000	5,000
<b>TOTAL ISLAND AREA</b>	<b>460,800</b>	<b>460,800</b>	<b>460,800</b>	<b>460,800</b>	<b>460,800</b>

<sup>x</sup>Leased crownlands in the coastal belt

<sup>+</sup>Privately owned mountain and river reserves protected by law

<sup>@</sup>Estimated - including roads in agricultural lands.

VIII. LOCAL PRODUCTION

Table 34 - Production of specific commodities

Period	Sugar cane Thousand M/Tons	Sugar Thousand M/Tons	Molasses Thousand M/Tons	Alcohol (Total) at 100°GL Hectolitre	Tea M/Tons	Tobacco leaf M/Tons	Cigarettes M/Tons	Rum <sup>x</sup> Hectolitre	Country liquor Hectolitre	Beer Hectolitre	Sacks Thousand units	Electricity generated Mn Kwh
1960	2,393.5	235.8	73.0	19,536	786.0	459.8	618.3	16,096	49,517	-	1,270.0	54.6
1961	4,943.0	553.3	139.2	14,148	1,274.2	447.9	584.4	14,159	55,644	-	1,422.7	63.2
1962	4,624.5	532.8	125.6	15,460	1,269.8	424.4	576.7	14,440	57,812	-	1,500.2	77.2
1963	5,746.7	685.6	150.1	17,360	1,477.2	457.7	576.8	15,386	50,246	19,518	1,534.5	87.4
1964	4,380.5	519.0	115.3	15,380	1,392.7	462.3	603.9	15,709	45,859	36,521	1,457.6	93.3
1965 <sup>+</sup>	5,984.5	664.7	149.4	...	1,736.8	485.3	588.6	14,637	42,948	27,699	1,599.9	102.8
1964 : 1st Qr.	-	-	-	...	524.8	101.5	131.0	3,157	9,363	10,087	244.3	21.6
2nd Qr.	-	-	-	...	260.2	115.1	147.5	3,738	12,361	7,048	401.1	23.3
3rd Qr.	...	...	...	...	67.4	124.6	163.3	4,196	12,409	6,062	392.2	23.6
4th Qr.	...	...	...	...	540.3	121.1	162.1	4,618	11,726	13,324	419.9	24.8
1965 : 1st Qr.	-	-	-	...	739.1	105.9	133.9	3,030	9,956	4,697	297.2	24.4
2nd Qr.	-	-	-	...	288.2	114.4	139.3	3,472	9,393	6,430	427.8	25.8
3rd Qr.	...	...	...	...	131.3	137.3	162.3	3,872	11,419	5,600	454.4	25.6
4th Qr.	...	...	...	...	578.2	127.7	153.1	4,263	12,180	10,972	420.5	27.0

x Issued for local consumption at 40° - 50° Gay Lussac

+ provisional

IX - EDUCATION

Table 35 - Roll of pupils and students in schools and colleges

Period	PRIMARY SCHOOLS			SECONDARY SCHOOLS			
	Total	Government	Aided	Total	Government	Aided	Private
October 1960	104,713	60,938	43,775	22,840	1,456	2,557	18,827
" 1961	113,604	66,497	47,107	24,851	1,629	2,602	20,620
" 1962	119,630	72,241	47,389	26,861	1,750	4,688	20,423
" 1963	124,049	75,672	48,377	28,134	1,945	4,900	21,289
" 1964	126,409	86,240	40,169	31,797	2,067	5,029	24,701

Table (i) Population and vital statistics

Year	Estimated mid-year population (30th June)	Numbers				Rates per 1000 of the mid-year population				
		Marriages	Births	Deaths	Natural Increase	Marriage rate	Crude birth rate	Crude death rate	Rate of natural increase	
1944-48 Average	424,219	3,228	17,788	11,672	6,116	15.2	41.9	27.5	14.4	
1949-53 "	483,859	3,552	22,913	7,358	15,555	14.7	47.4	15.2	32.2	
1954-58 "	574,938	3,008	23,936	7,401	16,535	10.5	41.6	12.9	28.7	
1959	627,249	3,297	23,923	6,753	17,170	10.5	38.1	10.8	27.3	
1960	644,743	3,113	25,307	7,248	18,059	9.7	39.3	11.2	28.1	
1961	662,368	3,484	26,092	6,505	19,767	10.5	39.4	9.8	29.6	
1962	681,619	3,893	26,267	6,325	19,942	11.4	38.5	9.3	29.2	
1963	701,422	3,472	27,978	6,709	21,269	9.9	39.9	9.6	30.3	
1964	722,089	3,965	27,528	6,184	21,344	11.0	38.1	8.6	29.5	
1965	741,036	3,976	26,279	6,337	19,942	10.7	35.5	8.6	26.9	

Note : Revision of population estimates from 1953 based on data obtained from the 1962 Population Census.

Table (ii) Live births and still births

Year	Numbers			Rates	
	Live births	Still births	Infant deaths	Still birth rate <sup>+</sup>	Infantile mortality rate <sup>++</sup>
1944-48 average	17,788	1,154	2,745	60.9	154.3
1949-53 average	22,913	1,464	1,945	60.1	84.9
1954-58 average	23,936	1,622	1,704	63.5	71.2
1959	23,923	1,759	1,495	68.5	62.5
1960	25,307	1,783	1,760	65.8	69.5
1961	26,092	1,963	1,618	70.0	62.0
1962	26,267	1,841	1,579	65.5	60.1
1963	27,978	1,519	1,660	51.5	59.3
1964	27,528	1,611	1,561	55.3	56.7
1965	26,279	1,557	1,685	55.9	64.1

<sup>+</sup>Still births per 1000 total births (live births and still births)

<sup>++</sup>Deaths of children under 1 year of age per 1000 live births

Table (iii) - Infant deaths (deaths under 1 year of age) by age and sex

Age	1963			1964			1965		
	Both Sexes	Male	Female	Both Sexes	Male	Female	Both Sexes	Male	Female
Total infant deaths	1,660	929	731	1,561	880	681	1,685	943	742
Under 1 day	192	110	82	130	68	62	169	105	64
1-6 days	399	242	157	429	264	165	428	263	165
7-27 days	254	137	117	243	137	106	231	121	110
28 days-under 2 months	106	51	55	102	54	48	122	69	53
2-3 months	167	88	79	177	91	86	185	86	99
4-5 months	144	77	67	136	70	66	163	86	77
6-7 months	144	72	72	145	84	61	147	74	73
8-9 months	154	95	59	114	62	52	135	77	58
10-11 months	100	57	43	85	50	35	105	62	43



Table (iv) - Estimated Population of Mauritius by Population Group, Sex and Geographical District as at 31.12.65

Geographical District	Total Population			General Population			Indo-Mauritian Population						Chinese Population		
	Male	Female	Both Sexes	Male	Female	Both Sexes	Hindu			Muslim			Male	Female	Both Sexes
							Male	Female	Both Sexes	Male	Female	Both Sexes			
Whole Island	377,245	374,176	751,421	107,368	112,725	220,093	194,304	189,238	383,542	62,125	60,885	123,010	13,448	11,328	24,776
Port Louis	65,370	66,013	131,383	23,129	24,793	47,922	16,740	16,510	33,250	18,825	18,591	37,416	6,676	6,119	12,795
Pamplemousses	30,887	30,180	61,067	4,812	4,995	9,807	21,037	20,397	41,434	4,670	4,490	9,160	368	298	666
R. du Rempart	30,158	29,244	59,402	4,636	4,795	9,431	21,372	20,449	41,821	3,836	3,786	7,622	314	214	528
Flacq	41,257	40,169	81,426	7,530	7,373	14,903	27,553	26,926	54,479	5,623	5,489	11,112	551	381	932
Grand Port	38,746	37,785	76,531	9,401	9,395	18,796	23,316	22,566	45,882	5,273	5,261	10,534	756	563	1,319
Savanne	26,122	25,382	51,504	5,481	5,301	10,782	15,453	15,197	30,650	4,710	4,541	9,251	478	343	821
Black River	10,356	10,120	20,476	4,090	4,091	8,181	5,840	5,675	11,515	205	211	416	221	143	364
Plaines Wilhems	113,710	114,959	228,669	45,162	48,879	94,041	49,206	47,994	97,200	15,580	15,083	30,663	3,762	3,003	6,765
Moka	20,639	20,324	40,963	3,127	3,103	6,230	13,787	13,524	27,311	3,403	3,433	6,836	322	264	586

Table (v) - Passenger traffic<sup>+</sup> by country of origin or destination and by method of transport, 1965

Country of origin or destination	Arrivals			Departures		
	Sea	Air	Total	Sea	Air	Total
East Africa <sup>*</sup>	156	1,187	1,343	85	1,249	1,334
Madagascar	651	1,511	2,162	596	1,256	1,852
Portuguese East Africa	8	7	15	18	-	18
Reunion	715	9,258	9,973	838	9,350	10,188
Rhodesia	5	684	689	-	906	906
Seychelles	26	-	26	37	-	37
South Africa	453	1,253	1,706	530	1,429	1,959
U.S.A.	2	15	17	2	35	37
Ceylon	10	1	11	-	-	-
China	-	-	-	2	-	2
Hong-kong	72	2	74	140	21	161
India	26	58	84	52	111	163
Singapore	42	-	42	69	2	71
Australia	14	662	676	35	697	732
France	497	343	840	225	421	646
O.E.E.C.	4	220	224	19	254	273
U.K.	127	1,880	2,007	721	2,802	3,523
Other countries	44	57	101	58	154	212
Rodrigues	1,525	-	1,525	1,339	-	1,339
Other dependencies	255	-	255	377	-	377
<b>TOTAL</b>	<b>4,632</b>	<b>17,138</b>	<b>21,770</b>	<b>5,143</b>	<b>18,687</b>	<b>23,830</b>

<sup>+</sup>Excluding 320 engaged seamen and 254 discharged seamen and all air passengers in transit.

<sup>\*</sup>The place of origin or destination of the majority of these passengers was probably India or the United Kingdom

1. The first part of the document discusses the importance of maintaining accurate records of all transactions. It emphasizes that every entry should be supported by a valid receipt or invoice to ensure transparency and accountability.

2. The second section outlines the procedures for handling discrepancies between the recorded amounts and the actual cash received. It states that any such variance must be investigated immediately and reported to the appropriate authority.

3. The third part of the document details the process of reconciling the accounts at the end of each month. It requires that the total of all receipts and payments be compared against the bank statements to identify any errors or omissions.

4. The fourth section describes the requirements for the storage and security of financial records. It mandates that all documents be kept in a secure, fireproof location and that access be restricted to authorized personnel only.

5. The final part of the document provides a summary of the key points and reiterates the commitment to high standards of financial integrity and compliance with all applicable laws and regulations.

Table (vi)-Imports of Fertilizers in 1965

Kind of Fertilizer	Country of origin	Quantity (M/Tons)	C.I.F. Value (Rs 000)
<u>NITROGENEOUS FERTILIZERS</u>			
Sulphate of ammonia	United Kingdom	16,210	4,058
	Germany (Fed.Rep.)	2,124	532
	Holland	200	49
Other nitrogenous fertilizers	United Kingdom	1,196	398
	Germany (Fed.Rep.)	940	306
	Chile	51	18
		20,721	5,361
<u>NITROGENEOUS &amp; POTASSIC FERTILIZERS</u>			
Nitrate of potash	Germany (Fed.Rep.)	2,475	955
<u>POTASSIC FERTILIZERS</u>			
Sulphate of potash	France	65	21
	Germany (Fed.Rep.)	25	8
Muriate of potash	France	2,043	565
	Germany (Fed.Rep.)	1,673	461
	Germany (Eastern)	424	120
	Holland	30	8
	Israel	1,304	361
		5,564	1,544
<u>PHOSPHATIC FERTILIZERS</u>			
Superphosphate	Belgium	50	20
	Germany (Fed.Rep)	71	26
	Holland	425	175
	Rep. of S.Africa	4,149	1,305
Phosphatic Guano	Dependencies	1,221	145
	Mada_gascar	5,575	502
	Seychelles	6,069	639
Other phosphates	Belgium	5	3
	France	31	9
	Rep. of S.Africa	1,050	210
		18,646	3,084
<u>MIXED &amp; COMPOUND FERTILIZERS</u>			
	United Kingdom	3,200	1,238
	France	190	74
	Germany (Fed.Rep.)	3,329	1,350
	Holland	149	68
	Italy	11,294	4,209
	Rep. of S.Africa	5,429	1,917
		23,591	8,856
	TOTAL	70,997	19,800

Table (vii) - Wireless and Television Licences

Month	1960	1961	1962	1963	1964	1965	New television licences issued
	New wireless licences issued						
January	496	591	634	712	720	607	81
February	305	366	352	439	800	413	651
March	191	421	337	461	630	487	562
April	276	362	360	471	482	317	278
May	378	351	455	395	639	347	342
June	474	306	349	398	696	398	292
July	690	377	750	513	701	344	217
August	464	310	382	532	509	330	240
September	431	396	445	570	489	406	230
October	448	477	759	810	562	533	224
November	453	596	479	720	446	456	186
December	520	428	641	656	435	358	231
Number of sets registered as at 31st December 1965							
				Radio sets - 62,531		Television sets - 3,589	

