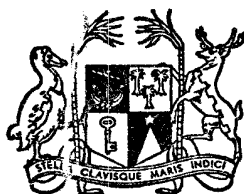


Vol. 9

No. 1



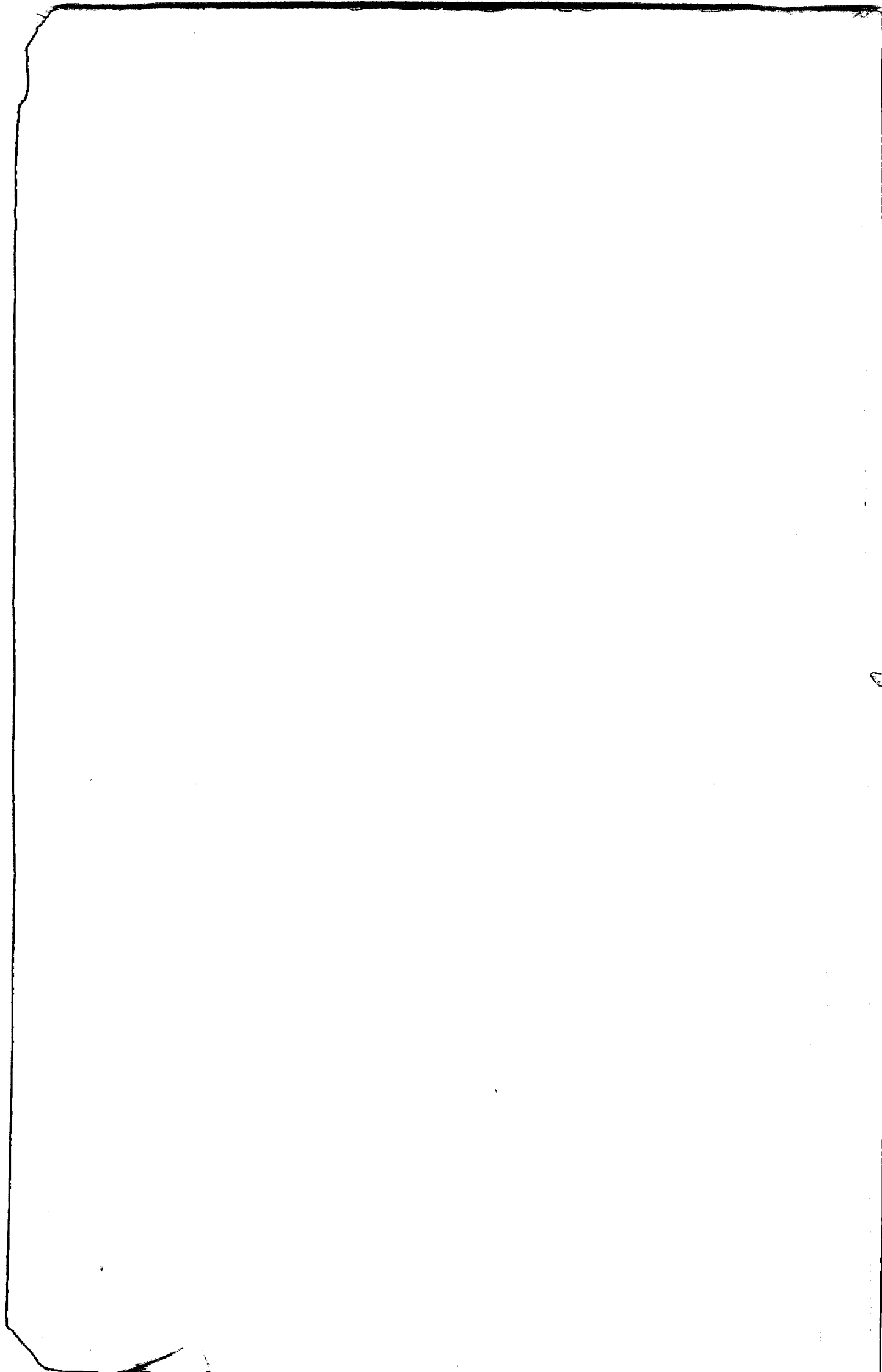
MAURITIUS

CENTRAL STATISTICAL OFFICE
Ministry of Economic Planning and Development

BI-ANNUAL
DIGEST OF STATISTICS

June 1974

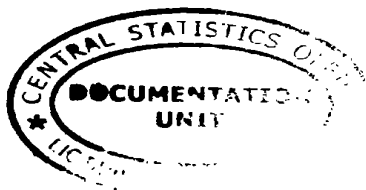
[Price : Rs 15.00]



BI-ANNUAL DIGEST OF STATISTICS

Vol. 9 No. 1

June 1974



The Bi-annual Digest of Statistics is a publication of the Central Statistical Office.

It is designed to present in a concise and readily accessible form the more important statistical series available on the demographic, economic and social characteristics of Mauritius.

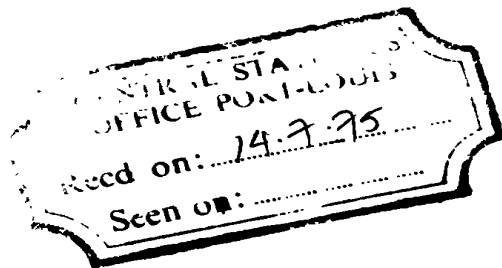
Some of the figures in this digest are provisional and liable to revision in later issues.

Where necessary, figures have been rounded off to the nearest final digit, and in some tables there may be discrepancies between the sum of the constituent items and the total as shown.

The following symbols are used throughout: -

- Nil or negligible
- ... Not available

The assistance given by the Bank of Mauritius, all government departments and other bodies in providing data for publication in this issue is gratefully acknowledged.



J. AHKONG
Asst. Director of Statistics

Central Statistical Office,
Rose Hill,
Mauritius,

6th November, 1974.

CONTENTS

	Page
<u>I - POPULATION AND VITAL STATISTICS</u>	
Table 1 - Estimated population of the Island of Mauritius as at 30th June 1974, based on the 1972 Population Census data	1
2 - Population increase in intercensal periods, Island of Mauritius (1846 - 1972)	1
3(a) - Population of the Island of Mauritius enumerated at each census by population group and sex (1846 - 1952)	2
3(b) - Population of the Island of Mauritius enumerated at each census by community and sex (1962 - 72)	2
4 - Population of the Island of Mauritius by geographical district and sex, 1972-74	3
5 - Population growth and vital statistics, Island of Mauritius (1963 - 73)	4
6 - Rate of increase of population of the Island of Mauritius compared with other countries	5
7 - Expectation of life at selected ages, Island of Mauritius	5
8 - Population and vital statistics, Island of Mauritius (1921 - 73)	6
9 - Population and vital statistics rates, Island of Mauritius (1921 - 73)	7
10 - Age distribution of the population as enumerated at the censuses of 1962 and 1972, Island of Mauritius	8
11 - Vital statistics by month of registration and sex, Island of Mauritius (Jan 73 - June 74)	9
12 - Vital statistics by geographical district, Island of Mauritius (1973 - 74)	10
13 - Still births and infant deaths by sex, Island of Mauritius (1962 - 74)	11
14 - Infant deaths by age and sex, Island of Mauritius	11
15 - Deaths by age and sex, Island of Mauritius (1972 - 74)	12
16 - Deaths by cause, Island of Mauritius, 1973	13
17 - Enumerated and estimated population, urban and extra-urban, Island of Mauritius (1972-74)	14
18 - Intercensal population increase in urban and extra-urban areas, Island of Mauritius (1962 - 1972)	15
19 - Population and vital statistics, Island of Rodrigues (1963 - 73)	16
20 - Passenger traffic, Island of Mauritius (1962 - 74)	17
21 - Passenger traffic by country of embarkation or disembarkation and by mode of transport, Jan-June 1974	18
22 - Tourist arrivals by mode of transport and total nights spent during period, Island of Mauritius (1963 - 74)	19
23 - Tourist arrivals and tourist nights by country of residence and by mode of transport, Island of Mauritius, Jan-June 1974	20
24 - Official long-term emigrants by sex, Island of Mauritius (1956 - 73)	21

CONTENTS (cont'd)

Page

II - PUBLIC HEALTH

Table 25 - Health services, Mauritius	22
26 - Statistics of hospitals, Mauritius	23
27 - Notifiable, contagious or communicable diseases, Mauritius	24

III - PUBLIC FINANCE AND BANKING

Table 28 - Central government revenue and expenditure	25
29 - Functional classification of central government capital revenue	25
30 - Functional classification of central government capital expenditure	26
31 - Functional classification of central government recurrent revenue	27
32 - Functional classification of central government recurrent expenditure	28
33 - Central government indebtedness	29
34 - Sinking funds held against the public debt	29
35 - Central government loan raisings	30
36 - Outstanding loans and advances made from public funds as at 30th June	31
37 - Income tax - individuals	32
38 - " " - companies	33
39 - Sterling assets of central government, Bank of Mauritius and commercial banks	34
40 - Assets of the Bank of Mauritius	35
41 - Liabilities of the Bank of Mauritius	36
42 - Assets of commercial banks	37
43 - Liabilities of commercial banks	38
44 - Analysis of bills discounted, loans and advances made by commercial banks	39
45 - Assets and liabilities of the Development Bank of Mauritius	40
46 - Post Office Savings Bank	41
47 - Assets and liabilities of the Mauritius Co-operative Central Bank Ltd.	41
48 - Money supply	42
49 - Assets and liabilities of the Mauritius Housing Corporation	42
50 - Bank and interest rates	43
51 - Foreign exchange rates	44

IV - NATIONAL ACCOUNTS

Table 52 - Gross national product, by industrial origin	45
52 - " " " , per capita	45
53 - Distribution of the national income before providing for depreciation	46
54 - Expenditure on gross national product	47
55 - Composition of gross domestic fixed capital formation	48
56 - Balance of payments	49 - 51

CONTENTS (cont'd)

	<u>Page</u>
V - <u>CONSUMER PRICE INDICES</u>	
Table 57 - Consumer price indices	52
VI - <u>EXTERNAL TRADE</u>	
Table 58 - Balance of visible trade	53
59 - Price indices of exports and imports and the terms of trade	53
60 - Price indices of imports, by section	54
61 - Exports: quantities and values	55 & 56
62 - Total exports: main countries of destination - values	57
63 - Imports: values by S.I.T.C. sections	58
64 - " : selected commodities - values	59
65 - " : selected commodities - quantities	60
66 - " : main countries of origin - values	61 - 63
67 - Imports of fertilizers	64
VII - <u>EMPLOYMENT AND WAGES</u>	
Table 68 - Employment in large establishments by major industrial groups	65
69 - Employment by sex and age group	66
70 - Employment in specified sectors: sugar industry	67
71 - " " " " : government services	67
72 - " " " " : manufacturing industries	68
73 - Employment and salaries or wages by industries, March 1974	69 - 72
74 - Job vacancies in large establishments as at 28.3.1974	73 - 75
75 - Daily wage rates in certain industries (October inquiry)	76
76 - Daily wage rates of manual workers employed by the central government	77
77 - Employment and wages of certain categories of employees on sugar millers' estates (September inquiry)	78
78 - Employment and earnings on sugar millers' estates	79
VIII - <u>SOCIAL ASSISTANCE</u>	
Table 79 - Social benefits	80
IX - <u>EDUCATION</u>	
Table 80 - Primary education : number of schools, pupils and teachers	81
81 - Secondary education : number of schools, pupils and teachers	82
82 - Enrolment by grade and sex in primary schools : Mauritius	83
83 - Enrolment by grade and sex in primary schools : Rodrigues	84

I. POPULATION AND VITAL STATISTICS

Table 1 - Estimated population of the Island of Mauritius as at 30th June 1974, based on the 1972 Population Census data

	Male	Female	Both sexes
Population enumerated at 30th June 1972	413,648	412,551	826,199
Births July 1972-June 1974	+21,101	+20,203	+41,304
Deaths - do -	- 7,076	- 5,964	-13,040
Arrivals - do -	+115,317	+81,664	+196,981
Departures - do -	-120,172	-85,517	-205,689
Estimated population, 30th June 1974	422,818	422,937	845,755

Table 2 - Population increase in intercensal periods - Island of Mauritius, 1846-1972

Census year	Population enumerated at census			Intercensal increase	Average annual rate of increase %
	Both sexes	Male	Female		
1846	158,462	104,598	53,864		
1851	180,823	119,341	61,482	22,361	2.55
1861	310,050	202,961	107,089	129,227	5.87
1871	316,042	193,575	122,467	5,992	0.19
1881	359,874	208,655	151,219	43,832	1.31
1891	370,588	206,038	164,550	10,714	0.29
1901	371,023	199,552	171,471	435	0.01
1911	368,791	194,095	174,696	- 2,232	- 0.06
1921	376,485	194,108	182,377	7,694	0.21
1931	393,238	200,609	192,629	16,753	0.44
1944	419,185	210,326	208,859	25,947	0.49
1952	501,415	252,032	249,383	82,230	2.26
1962 ⁺	681,619	342,306	339,313	180,204	3.12
1972 ⁺	826,199	413,648	412,551	144,580	1.94

⁺ de facto population - including the European members of the Armed Forces but excluding the passengers and crews of ships lying in the harbour.

Table 3 (a) - Population enumerated at each census by population group and sex - Island of Mauritius, 1846-1952

Year of Census	GENERAL POPULATION			INDO-MAURITIAN POPULATION			CHINESE POPULATION		
	Both Sexes	Male	Female	Both Sexes	Male	Female	Both Sexes	Male	Female
1846	102,217	55,663	46,554	56,245	48,935	7,310	-	-	-
1851	102,827	55,059	47,768	77,996	64,282	13,714	-	-	-
1861	115,864	59,796	56,068	192,634	141,615	51,019	1,552	1,550	2
1871	97,497	49,487	48,010	216,258	141,804	74,454	2,287	2,284	3
1881	107,323	53,754	53,569	248,993	151,352	97,641	3,558	3,549	9
1891	111,517	55,397	56,120	255,920	147,499	108,421	3,151	3,142	9
1901	108,422	52,995	55,427	259,086	143,100	115,986	3,515	3,457	58
1911	107,432	51,808	55,624	257,697	138,974	118,723	3,662	3,313	349
1921	104,216	49,725	54,491	265,524	139,150	126,374	6,745	5,233	1,512
1931	115,666	54,733	60,933	268,649	139,533	129,116	8,923	6,343	2,580
1944	143,056	67,136	75,920	265,247	136,382	128,865	10,882	6,808	4,074
1952	148,238	70,370	77,868	335,327	171,241	164,086	17,850	10,421	7,429

At the 1962 census each household was asked, for the first time, to state the population group to which each member of his household claimed to belong.

Prior to 1962, it is probable that, from one census to another, different criteria have been used in classifying the population by population groups. Figures are therefore not strictly comparable from one census to another, before 1962.

Table 3 (b) - Population enumerated at each census by community and sex - Island of Mauritius, 1962 - 72

Year of Census	TOTAL POPULATION			HINDU			MUSLIM			SINO-MAURITIAN			GENERAL POPULATION		
	Both Sexes	Male	Female	Both Sexes	Male	Female	Both Sexes	Male	Female	Both Sexes	Male	Female	Both Sexes	Male	Female
1962+	681,619	342,306	339,313	344,587	174,698	169,889	110,322	55,971	54,351	23,058	12,654	10,404	203,652	98,983	104,669
1972+	826,199	413,648	412,551	428,167	215,698	212,469	137,081	68,802	68,279	24,084	12,849	11,235	236,867	116,299	120,568

+ de facto population - including the European members of the Armed Forces but excluding the passengers and crews of ships lying in the harbour.

Table 4 - Population of the Island of Mauritius by geographical district and sex, 1972-74

Geographical district	Enumerated population as at 30.6.72			Estimated population ^{1/} as at 30.6.73			Estimated population ^{1/} as at 30.6.74		
	Both sexes	Male	Female	Both sexes	Male	Female	Both sexes	Male	Female
Port Louis	133,996	66,445	67,551	135,296	67,019	68,277	136,802	67,662	69,140
Pamplemousses	68,948	34,948	34,000	69,807	35,369	34,438	71,011	35,960	35,051
Rivière du Rempart	66,995	33,996	32,999	67,946	34,458	33,488	69,299	35,105	34,194
Flacq	89,050	45,065	43,985	90,493	45,760	44,733	92,226	46,529	45,697
Grand Port	80,719	40,647	40,072	81,574	41,032	40,542	82,744	41,606	41,138
Savanne	53,011	26,744	26,267	53,445	26,948	26,497	54,170	27,259	26,911
Plaines Wilhems	258,699	128,137	130,562	260,662	129,049	131,613	262,820	130,141	132,679
Moka	48,610	24,441	24,169	49,081	24,651	24,430	49,865	25,021	24,844
Black River	26,171	13,225	12,946	26,477	13,353	13,124	26,818	13,535	13,283
WHOLE ISLAND	826,199	413,648	412,551	834,781	417,639	417,142	845,755	422,818	422,937

^{1/} Based on the 1972 Population Census. No account has been taken of internal migration.

Table 5 - Population^{1/} growth and vital statistics - Island of Mauritius, 1963-73

Year	Population as at 31st December	Numbers					Rates per 1,000 of mid-year population			Increase during year (%)			Mid-year population
		Live births	Deaths	Natural increase	(A-D) ^{2/}	Total increase	Crude birth rate	Crude death rate	Rate of natural increase	due to		Total	
										Natural increase	(A-D) ^{2/}		
1963	707,580	27,978	6,709	21,269	- 252	21,017	40.2	9.6	30.6	3.10	-0.04	3.06	695,631
1964	727,814	27,528	6,184	21,344	-1,110	20,234	38.4	8.6	29.8	3.02	-0.16	2.86	716,298
1965	745,630	26,279	6,337	19,942	-2,126	17,816	35.7	8.6	27.1	2.74	-0.29	2.45	735,245
1966	762,901	26,817	6,701	20,116	-2,845	17,271	35.6	8.9	26.7	2.70	-0.38	2.32	753,276
1967	776,253	23,499	6,543	16,956	-3,604	13,352	30.6	8.5	22.1	2.22	-0.47	1.75	767,782
1968	788,955	24,413	7,126	17,287	-4,585	12,702	31.2	9.1	22.1	2.23	-0.59	1.64	781,615
1969	801,236	21,719	6,428	15,291	-3,010	12,281	27.4	8.1	19.3	1.94	-0.38	1.56	792,893
1970	813,400	21,623	6,309	15,314	-3,150	12,164	26.8	7.8	19.0	1.91	-0.39	1.52	805,489
1971	824,815	20,834	6,248	14,586	-3,171	11,415	25.5	7.7	17.8	1.79	-0.39	1.40	816,561
1972	834,486	20,496	6,506	13,990	-4,319	9,671	24.8	7.9	16.9	1.70	-0.53	1.17	826,199
1973	843,422	18,974	6,525	12,449	-3,513	8,936	22.7	7.8	14.9	1.49	-0.42	1.07	834,781

^{1/}Revised in the light of the 1972 Population Census data.

^{2/}Excess of arrivals over departures.

Table 6 - Rate of increase of the population of the Island of Mauritius compared with other countries

Continent & country	Average annual rate of increase 1963-72 (%)	Continent & country	Average annual rate of increase 1963-72 (%)
<u>AFRICA:</u>		<u>ASIA:</u>	
Island of Mauritius	1.9	Ceylon	2.3
<u>AMERICA:</u>		China (Mainland)	1.8
Canada	1.6	India	2.2
Guyana	2.3	Japan	1.1
Trinidad and Tobago	1.4	Pakistan	2.4
<u>OCEANIA:</u>		<u>EUROPE:</u>	
Australia	1.9	Albania	2.9
New Zealand	1.5	France	0.9
		United Kingdom	0.4

Source: United Nations Demographic Yearbook 1972

Table 7 - Expectation of life in years at selected ages - Island of Mauritius

Exact age (years)	Males			Females		
	1942-46 ^{1/}	1951-53 ^{1/}	1961-63	1942-46 ^{1/}	1951-53 ^{1/}	1961-63
0	32.8	49.8	58.7	33.8	52.3	61.9
10	35.8	49.2	55.1	37.3	52.2	58.1
20	28.1	40.1	45.7	30.2	43.7	48.9
30	22.3	31.6	36.6	26.1	36.2	40.3
40	16.7	23.6	27.7	21.2	28.7	31.9
50	11.9	16.7	19.6	15.7	21.2	23.5
60	8.1	11.2	13.2	10.6	14.6	15.8
70	5.6	6.7	8.5	7.1	9.1	9.7
80	4.0	4.3	4.8	4.6	5.3	5.4

^{1/}Excluding Sino-Mauritian community.

Source: Mauritius Life Table

Table 8 - Population and vital statistics - Island of Mauritius, 1921-73

Period	Population ^{1/} at mid-period	Live births	Deaths	Natural increased	Infant deaths ^{2/}	Still births	Civil marriages
1921-25 Average	379,636	14,834	11,758	3,076	2,104	1,581	2,062
1926-30 "	403,248	14,208	11,614	2,594	2,002	1,256	1,455
1931-35 "	398,647	12,490	11,889	601	1,752	1,216	1,489
1936-40 "	412,003*	13,621	11,157	2,464	2,119	1,240	2,093
1941-45 "	417,838	15,027	11,927	3,100	2,318	1,240	3,333
1946-50 "	438,797	19,595	9,113	10,482	2,343	1,348	3,503
1951-55 "	522,577	23,176	7,701	15,475	1,884	1,472	3,307
1956	574,938	24,910	6,739	18,171	1,644	1,789	3,080
1957	593,070	25,273	7,603	17,670	1,897	1,800	2,903
1958	609,518	24,600	7,112	17,488	1,659	1,703	3,169
1959	627,249	23,923	6,753	17,170	1,495	1,759	3,297
1960	644,743	25,307	7,248	18,059	1,760	1,783	3,113
1961	662,368	26,092	6,505	19,587	1,618	1,963	3,484
1962	681,619	26,267	6,325	19,942	1,579	1,841	3,893
1963	695,631	27,978	6,709	21,269	1,660	1,519	3,472
1964	716,298	27,528	6,184	21,344	1,561	1,611	3,965
1965	735,245	26,279	6,337	19,942	1,685	1,557	3,976
1966	753,276	26,817	6,701	20,116	1,721	1,384	4,157
1967	767,782	23,499	6,543	16,956	1,656	1,074	3,949
1968	781,615	24,413	7,126	17,287	1,688	1,110	3,974
1969	792,893	21,719	6,428	15,291	1,528	951	3,882
1970	805,489	21,623	6,309	15,314	1,232	857	4,499
1971	816,561	20,834	6,248	14,586	1,077	842	4,346
1972	826,199	20,496	6,506	13,990	1,308	718	5,082
1973	834,781	18,974	6,525	12,449	1,201	678	5,533

^{1/} Figures for 1963-71 have been revised in the light of the 1972 Population Census data.

^{2/} Deaths of children under 1 year of age.

Table 9 - Population and vital statistics rates ^{1/} - Island of Mauritius, 1921-73

Period	Population at mid-period	Crude birth rate	Crude death rate	Rate of natural increase	Infantile mortality rate ^{2/}	Still birth rate ^{3/}	Marriage rate ^{4/}
1921-25 Average	379,636	39.1	31.0	8.1	141.8	96.3	10.9
1926-30 "	403,248	35.2	28.8	6.4	140.9	81.2	7.2
1931-35 "	398,647	31.3	29.8	1.5	140.3	88.7	7.5
1936-40 "	412,003	33.1	27.1	6.0	155.6	83.4	10.2
1941-45 "	417,838	36.0	28.5	7.5	154.3 ^{5/}	76.2	16.0
1946-50 "	438,797	44.7	20.8	23.9	119.6 ^{6/}	64.4	16.0
1951-55 "	522,577	44.3	14.7	29.6	81.3	59.7	12.7
1956	574,938	43.3	11.7	31.6	66.0	67.0	10.7
1957	593,070	42.6	12.8	29.8	75.1	66.5	9.8
1958	609,518	40.4	11.7	28.7	67.4	64.7	10.4
1959	627,249	38.1	10.8	27.3	62.5	68.5	10.5
1960	644,743	39.3	11.2	28.1	69.5	65.8	9.7
1961	662,368	39.4	9.8	29.6	62.0	70.0	10.5
1962	681,619	38.5	9.3	29.2	60.1	65.5	11.4
1963	695,631	40.2	9.6	30.6	59.3	51.5	10.0
1964	716,298	38.4	8.6	29.8	56.7	55.3	11.1
1965	735,245	35.7	8.6	27.1	64.1	55.9	10.8
1966	753,276	35.6	8.9	26.7	64.2	49.1	11.0
1967	767,782	30.6	8.5	22.1	70.5	43.7	10.3
1968	781,615	31.2	9.1	22.1	69.1	43.5	10.2
1969	792,893	27.4	8.1	19.3	70.4	41.9	9.8
1970	805,489	26.8	7.8	19.0	57.0	38.1	11.2
1971	816,561	25.5	7.7	17.8	51.7	38.8	10.6
1972	826,199	24.8	7.9	16.9	63.8	33.8	12.3
1973	834,781	22.7	7.8	14.9	63.3	34.5	13.3

^{1/} Figures for 1963-71 have been revised in the light of the 1972 Population Census data.

^{2/} Deaths of children under 1 year of age per 1,000 live births.

^{3/} Still births per 1,000 total births (live births and still births).

^{4/} Number of persons civilly married per 1,000 of mid-period population.

^{5/} The rate reached 188.0 in 1945 when there were poliomyelitis and dysentery epidemics.

^{6/} The rate reached 186.2 in 1948 when there was an epidemic of whooping cough.

Table 10 - Age distribution of the population as enumerated at the censuses of 1962 and 1972, Island of Mauritius

Age group (years)	P O P U L A T I O N						% D I S T R I B U T I O N	
	1962			1972			1962	1972
	Male	Female	Both sexes	Male	Female	Both sexes		
Under 1	11,786	11,673	23,459	9,763	9,768	19,531	3.4	2.4
1 - 4	44,869	43,746	88,615	41,498	40,431	81,929	13.0	9.9
5 - 9	52,715	51,914	104,629	59,972	58,618	118,590	15.4	14.3
10 - 14	46,166	45,807	91,973	56,150	55,085	111,235	13.5	13.5
15 - 19	31,107	31,043	62,150	50,226	50,430	100,656	9.1	12.2
20 - 24	23,574	23,723	47,297	40,150	39,677	79,827	6.9	9.7
25 - 29	22,014	22,174	44,188	26,204	26,970	53,174	6.5	6.4
30 - 34	19,877	19,334	39,211	21,168	21,495	42,663	5.8	5.2
35 - 39	21,756	20,111	41,867	20,751	20,470	41,221	6.1	5.0
40 - 44	16,592	14,987	31,579	18,310	17,681	35,991	4.6	4.4
45 - 49	15,073	13,398	28,471	20,139	18,441	38,580	4.2	4.7
50 - 54	12,011	10,593	22,604	14,535	13,209	27,744	3.3	3.3
55 - 59	9,325	9,224	18,549	12,617	12,464	25,081	2.7	3.0
60 - 64	7,038	7,715	14,753	9,213	9,574	18,787	2.2	2.3
65 - 69	4,111	5,571	9,682	6,067	6,962	13,029	1.4	1.6
70 - 74	2,465	3,992	6,457	3,673	5,042	8,715	1.0	1.0
75 - 79	1,070	2,251	3,301	1,684	3,041	4,725	0.5	0.6
80 - 84	427	1,186	1,613	766	1,725	2,491	0.2	0.3
85 & over	183	723	906	285	1,094	1,379	0.1	0.1
Age unknown	147	168	315	409	442	851	0.1	0.1
All ages	342,306	339,313	681,619	413,580	412,619	826,199	100.0	100.0

Table 11 - ~~Vital~~ statistics by month of registration and sex - Island of Mauritius, Jan. 73 - June 74

Month of registration	Live births			Deaths			Infant deaths			Still births			Civil marriages
	Male	Female	Both sexes	Male	Female	Both sexes	Male	Female	Both sexes	Male	Female	Both sexes	
1973 : January	954	845	1,799	349	272	621	91	80	171	31	24	55	429
February	688	681	1,369	277	206	483	59	40	99	22	10	32	417
March	704	674	1,378	318	268	586	93	52	145	30	26	56	377
April	715	664	1,379	283	236	519	65	46	111	30	21	51	419
May	810	772	1,582	274	222	496	53	41	94	33	25	58	416
June	724	720	1,444	264	232	496	53	29	82	34	33	67	489
July	748	765	1,513	346	292	638	63	45	108	33	33	66	440
August	760	755	1,515	345	249	594	51	33	84	39	24	63	508
September	743	803	1,546	289	228	517	44	30	74	38	24	62	467
October	910	903	1,813	272	253	525	36	34	70	34	31	65	472
November	976	906	1,882	275	246	521	38	38	76	30	15	45	442
December	896	858	1,754	284	245	529	53	34	87	31	27	58	657
Whole year	9,628	9,346	18,974	3,576	2,949	6,525	699	502	1,201	385	293	678	5,533
1974 : January	1,085	1,036	2,121	280	208	488	52	45	97	29	27	56	512
February	865	845	1,710	219	162	381	46	26	72	28	32	60	437
March	946	900	1,846	297	236	533	36	31	67	46	43	89	431
April	1,003	966	1,969	312	306	618	57	45	102	32	24	56	582
May	934	955	1,889	273	231	504	45	39	84	20	44	64	527
June	1,054	979	2,033	277	246	523	56	50	106	33	37	70	550
Jan-June	5,887	5,681	11,568	1,658	1,389	3,047	292	236	528	188	207	395	3,039

Table 12 - Vital statistics by geographical district - Island of Mauritius, 1973-74

Geographical district	Estimated population as at 30.6.73	1973					Estimated population as at 30.6.74	January-June 1974			
		Live births	Deaths	Infant deaths ^{1/}	Still births	Civil marriages		Live births	Deaths	Infant deaths ^{1/}	Still births
Port-Louis	135,296	3,127	1,155	186	78	967	136,802	527	82	51	494
Pamplennousses	69,807	1,628	520	107	51	405	71,011	247	53	37	230
Rivière du Rempart	67,946	1,726	508	97	63	466	69,299	242	47	32	275
Flacq	90,493	2,464	731	174	110	576	92,226	365	65	59	306
Grand Port	81,574	1,904	746	148	73	406	82,744	340	69	52	257
Savanne	53,445	1,105	399	75	64	284	54,170	181	27	28	205
Plaines Wilhems	260,662	5,274	1,839	281	163	1,976	262,820	875	129	98	1,028
Moka	49,081	1,058	383	66	47	321	49,865	147	29	22	153
Black River	26,477	688	244	67	29	132	26,818	123	27	16	91
Whole island	834,781	18,974	6,525	1,201	678	5,533	845,755	5,047	528	395	3,039

^{1/} Deaths of children under 1 year of age

Table 13 - Still births and infant deaths by sex - Island of Mauritius, 1962-74

Period	Still births			Infant deaths		
	Both sexes	Male	Female	Both sexes	Male	Female
1962	1,841	1,001	840	1,579	896	683
1963	1,519 ^{1/}	827	691	1,660	929	731
1964	1,611 ^{1/}	896	714	1,561	900	661
1965	1,557	864	693	1,685	943	742
1966	1,384 ^{1/}	716	667	1,721	943	778
1967	1,074 ^{1/}	609	464	1,656	947	709
1968	1,110 ^{2/}	597	511	1,688	935	753
1969	951 ^{1/}	518	432	1,528	847	681
1970	857	450	407	1,232	706	526
1971	342	445	397	1,077	584	493
1972	718	350	358	1,308	716	592
1973	673	385	293	1,201	699	502
1973 : 1st Qr.	143	83	60	415	243	172
2nd Qr.	176	97	79	287	171	116
3rd Qr.	191	110	81	266	158	108
4th Qr.	168	95	73	233	127	106
1974 : 1st Qr.	205	103	102	236	134	102
2nd Qr.	190	85	105	292	158	134

^{1/} Including one of unknown sex

^{2/} Including two of unknown sex

Table 14 - Infant deaths (deaths under 1 year of age) by age and sex - Island of Mauritius

Age	1972			1973			Jan-June 1974		
	Both sexes	Male	Female	Both sexes	Male	Female	Both sexes	Male	Female
Under 1 day	165	83	77	161	106	55	66	40	26
1 - 6 days	345	215	130	272	166	106	120	70	50
7 - 27 days	150	81	69	133	73	60	77	46	31
28 days - Under 2 months	85	47	33	86	54	32	33	21	12
2 - 3 months	160	84	76	122	68	54	65	26	39
4 - 5 "	124	63	61	123	68	55	58	32	26
6 - 7 "	117	59	58	114	68	46	42	27	15
8 - 9 "	92	54	38	107	56	51	46	24	22
10 - 11 "	70	25	45	83	40	43	21	6	15
Under 1 year	1,303	716	592	1,201	699	502	528	292	236

Table 15 - Deaths by age and sex - Island of Mauritius, 1972-74.

Age group (years)	1972			1973			January - June 1974		
	Both sexes	Male	Female	Both sexes	Male	Female	Both sexes	Male	Female
	0 - 4	1,834	967	867	1,790	978	812	773	419
5 - 9	125	54	71	117	58	59	50	23	27
10 - 14	90	61	29	84	52	32	32	16	16
15 - 19	127	57	70	125	69	56	51	28	23
20 - 24	140	58	82	132	54	78	79	40	39
25 - 29	106	42	64	91	37	54	53	25	28
30 - 34	117	51	66	104	50	54	51	18	33
35 - 39	129	68	61	131	71	60	63	35	28
40 - 44	159	90	69	175	110	65	91	53	38
45 - 49	262	162	100	271	180	91	127	83	44
50 - 54	301	178	123	335	226	109	168	111	57
55 - 59	412	255	157	420	285	135	170	108	62
60 - 64	532	330	202	527	346	181	267	172	95
65 - 69	555	359	196	539	343	196	279	185	94
70 - 74	546	308	238	587	317	270	284	155	129
75 - 79	441	195	246	471	231	240	233	106	127
80 - 84	362	155	207	345	114	231	149	51	98
85 and over	268	57	211	281	55	226	126	29	97
Unknown	-	-	-	-	-	-	1	1	-
All ages	6,506	3,447	3,059	6,525	3,576	2,949	3,047	1,658	1,389

Table 16 - Deaths by cause - Island of Mauritius, 1973

Group	CAUSE OF DEATH	DEATHS						% of total deaths	Death rate per 100,000 of population
		Under 1 year	1 to under 5 years		All ages				
		Both sexes	Both sexes	Male	Female	Both sexes			
I	Infective and parasitic diseases	413	311	512	483	995	15.3	119.2	
II	Neoplasms	-	6	200	176	376	5.8	45.0	
III	Endocrine, nutritional and metabolic diseases	11	21	70	112	182	2.8	21.8	
IV	Diseases of the blood and blood forming organs	3	19	73	97	170	2.6	20.4	
V	Mental disorders	-	-	6	1	7	0.1	0.8	
VI	Diseases of the nervous system and sense organs	5	10	48	33	81	1.2	9.7	
VII	Diseases of the circulatory system	10	5	867	640	1,507	23.1	180.5	
VIII	Diseases of the respiratory system	165	99	495	376	871	13.3	104.3	
IX	Diseases of the digestive system	10	2	152	65	217	3.3	26.0	
X	Diseases of the genito-urinary system	1	9	41	35	76	1.2	9.1	
XI	Complications of pregnancy, childbirth and the puerperium	-	-	-	29	29	0.4	3.5	
XII	Diseases of the skin and subcutaneous tissue	2	-	5	1	6	0.1	0.7	
XIII	Diseases of musculoskeletal system and connective tissue	-	-	6	13	19	0.3	2.3	
XIV	Congenital anomalies	23	4	24	8	32	0.5	3.8	
XV	Certain causes of perinatal morbidity and mortality	368	-	227	141	368	5.6	44.1	
XVI	Symptoms and ill-defined conditions	184	75	564	616	1,180	18.1	141.4	
XVII	Accidents, poisonings and violence	6	28	286	123	409	6.3	49.0	
	All causes	1,201	589	3,576	2,949	6,525	100.0	781.6	

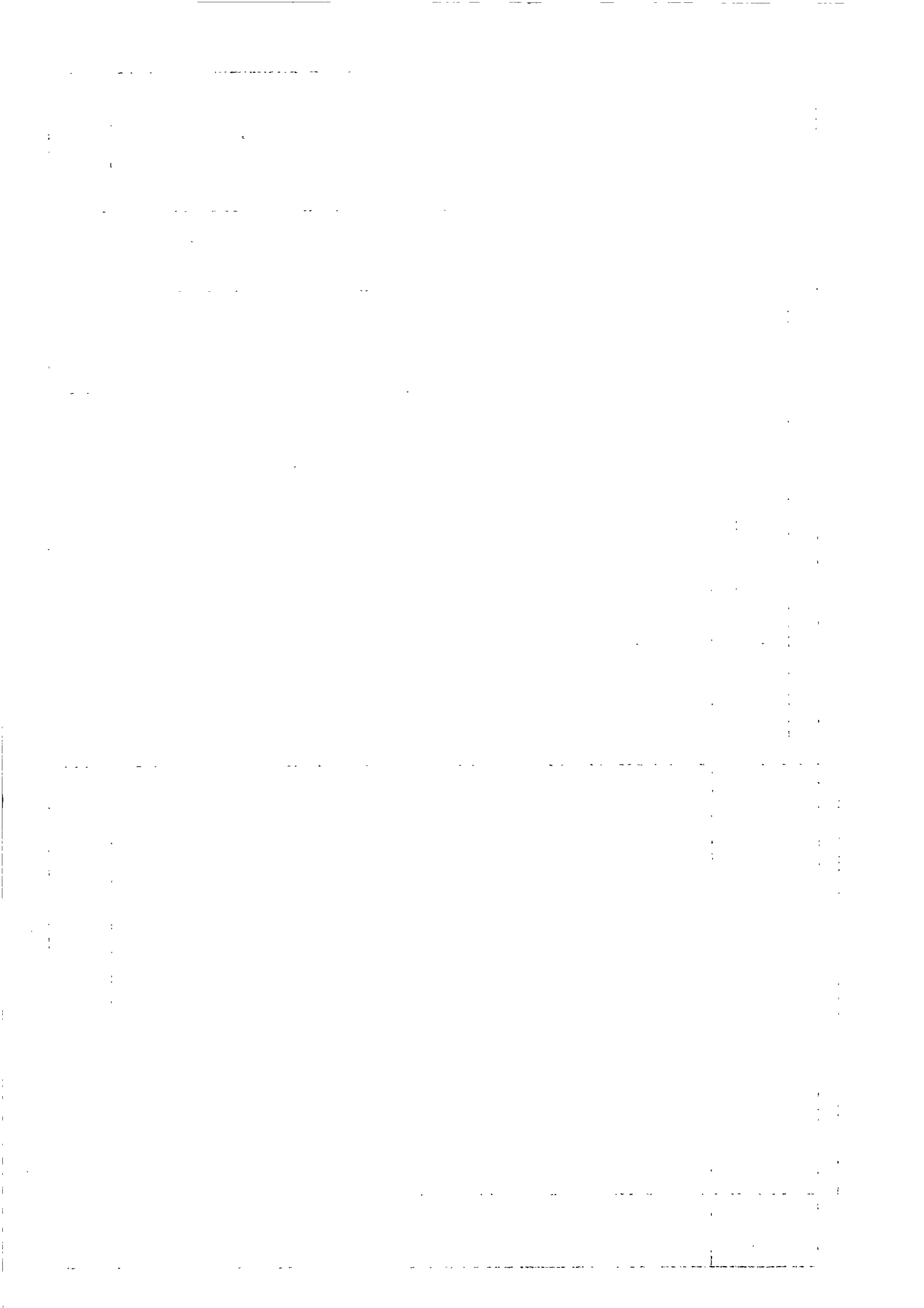


Table 17 - Enumerated and estimated^{1/} population, urban and extra-urban - Island of Mauritius, 1972-74

Township ^{2/}	Enumerated population as at 30.6.72			Estimated population as at 30.6.73			Estimated population as at 31.12.73			Estimated population as at 30.6.74		
	Both sexes	Male	Female	Both sexes	Male	Female	Both sexes	Male	Female	Both sexes	Male	Female
Port-Louis	133,996	66,445	67,551	135,296	67,019	68,277	136,622	67,645	68,977	136,802	67,662	69,140
Beau Bassin - Rose Hill	80,043	39,571	40,472	80,411	39,723	40,688	81,182	40,104	41,078	80,829	39,945	40,884
Quatre Bornes	50,825	24,946	25,879	51,219	25,152	26,067	51,689	25,372	26,317	51,638	25,359	26,279
Vacoas - Phoenix	47,884	23,842	24,042	48,377	24,062	24,315	48,786	24,268	24,518	48,809	24,279	24,530
Curepipe	52,154	25,812	26,342	52,480	25,971	26,509	52,976	26,217	26,759	52,709	26,092	26,617
Urban population	364,902	180,616	184,286	367,783	181,927	185,856	371,255	183,606	187,649	370,787	183,337	187,450
Extra-urban population	461,297	233,032	228,265	466,998	235,712	231,286	472,167	238,191	233,976	474,968	239,481	235,487
Total population	826,199	413,648	412,551	834,781	417,639	417,142	843,422	421,797	421,625	845,755	422,818	422,937
Percentage urban	44.2			44.1			44.0			43.8		

^{1/} Based on the 1972 Population Census. No account has been taken of internal migration in computing the post-censal estimates.

^{2/} According to proclaimed boundaries, altered in 1963 (Proclamations Nos. 12 and 13) and subsequently enlarged in 1965 (Proclamation No. 23) and in 1967 (Proclamation No. 2). Urban population refers to the total population in townships.

Table 18 - Intercensal population increase in urban and extra-urban areas according to present boundaries -
Island of Mauritius - 1962-72

Township ^{1/}	Population enumerated at 30.6.62			Population enumerated at 30.6.72			Intercensal increase	
	Both sexes	Male	Female	Both sexes	Male	Female	Number	Annual Average %
	Port-Louis	119,950	59,751	60,199	133,996	66,445	67,551	14,046
Beau Bassin - Rose Hill	62,296	30,580	31,716	80,043	39,571	40,472	17,747	2.85
Quatre Bornes	38,567	18,952	19,615	50,825	24,946	25,879	12,258	3.18
Vacoas - Phoenix	41,743	20,913	20,830	47,884	23,842	24,042	6,141	1.47
Curepipe	44,244	21,816	22,428	52,154	25,812	26,342	7,910	1.79
Urban population	306,800 ^{4.5%}	152,012	154,788	364,902 ^{44.2}	180,616	184,286	58,102	1.89
Extra-urban population	374,819	190,294	184,525	461,297	233,032	228,265	86,478	2.31
Total population	681,619	342,306	339,313	826,199	413,648	412,551	144,580	2.12

^{1/} According to proclaimed boundaries, altered in 1963 (Proclamations Nos. 12 and 13) and subsequently enlarged in 1965 (Proclamation No. 23) and in 1967 (Proclamation No. 2). Urban population refers to the total population in townships.

Table 19 - Population^{1/} and vital statistics - Island of Rodrigues, 1963-73

Period	Estimated mid-year population (30th June)	Numbers			Rates ^{2/}				Estimated population as at 31st December	
		Marriages	Live births	Deaths	Natural increase	Marriage rate	Crude birth rate	Crude death rate		Rate of natural increase
1963	18,529	171	881	203	678	18.5	47.5	11.0	36.5	18,587
1964	18,974	161	1,082	237	845	17.0	57.0	12.5	44.5	19,282
1965	19,438	127	916	300	616	13.1	47.1	15.4	31.7	19,709
1966	20,084	132	1,014	243	771	13.1	50.5	12.1	38.4	20,388
1967	20,762	156	972	207	765	15.0	46.8	10.0	36.8	21,370
1968	21,832	145	996	256	740	13.3	45.6	11.7	33.9	22,166
1969	22,434	173	902	305	597	15.4	40.2	13.6	26.6	22,839
1970	23,433	152	1,143	211	932	13.0	48.8	9.0	39.8	23,749
1971	24,041	132	1,092	188	904	11.0	45.4	7.8	37.6	24,487
1972	24,769	132	999	247	752	10.7	40.3	10.0	30.3	25,096
1973	25,367	146	1,041	254	787	11.5	41.0	10.0	31.0	25,857

^{1/} Revised in the light of the 1972 Population Census data.

^{2/} Per 1000 of the mid-year population.

Table 20 - Passenger traffic^{1/} - Island of Mauritius, 1962-74

Period	Arrivals			Departures			Net overseas migration
	Total	By sea	By air	Total	By sea	By air	
1962	15,189	4,258	10,931	16,075	4,374	11,701	- 886
1963	18,047	4,660	13,387	18,229	4,432	13,867	- 252
1964	21,221	5,187	16,034	22,331	5,478	16,853	- 1,110
1965	22,024	4,896	17,138	24,150	5,463	18,687	- 2,126
1966	26,456	5,544	20,912	29,301	6,330	22,971	- 2,845
1967	29,321	4,901	24,420	32,925	6,515	26,410	- 3,604
1968	31,403	4,264	27,139	35,988	5,967	30,021	- 4,585
1969	35,919	3,483	32,436	37,419	4,332	34,297	- 3,010
1970	48,819	3,984	44,835	51,969	4,376	47,593	- 3,150
1971	60,826	3,857	56,969	63,997	4,295	59,702	- 3,171
1972	77,174	3,741	73,433	81,493	4,012	77,421	- 4,319
1973	101,184	4,238	96,946	104,697	4,027	100,670	- 3,513
1973 : 1st Qr.	21,962	823	21,139	25,362	678	25,684	- 4,400
2nd Qr.	22,000	969	21,031	23,055	818	22,237	- 1,055
3rd Qr.	29,883	1,665	28,218	31,320	1,494	29,886	- 1,497
4th Qr.	27,339	781	26,558	23,900	1,037	22,863	+ 3,439
1974 : 1st Qr.	27,278	728	26,550	32,033	698	31,335	- 4,755
2nd Qr.	22,649	1,000	21,589	24,082	888	23,194	- 1,433

^{1/} Includes : (a) the very small number of engaged or discharged seamen;
 (b) emigrants to and immigrants from the dependencies; and
 (c) movement of military personnel as from the 1962 population census.

Table 21 - Passenger traffic^{1/} by country of embarkation or disembarkation and by mode of transport, January - June 1974

Country of embarkation or disembarkation	Arrivals			Departures		
	Sea	Air	Total	Sea	Air	Total
Kenya	5	1,081	1,086	-	1,347	1,347
Malagasy Republic	2	1,810	1,812	20	1,607	1,627
Malawi	-	250	250	-	316	316
Reunion	87	17,142	17,229	91	19,004	19,095
Rhodesia	-	205	205	-	294	294
Seychelles	7	1,083	1,090	11	946	957
South Africa, Rep. of	14	7,833	7,847	75	9,374	9,449
Tanzania	22	198	220	28	350	378
Zambia	-	1,729	1,729	-	1,781	1,781
Rodrigues	873	168	1,041	415	66	481
Other Islands	253	-	253	238	-	238
Other African	6	390	396	4	492	496
U.S.S.R.	-	24	24	1	22	23
China (Taiwan)	5	33	38	1	57	58
Hong Kong	-	367	367	1	313	314
India	6	3,266	3,272	23	2,142	2,165
Japan	2	55	57	9	97	106
Singapore	45	38	83	22	36	58
Other Asian	18	439	457	24	148	172
Australia	22	2,654	2,676	80	2,195	2,275
New Caledonia	-	39	39	-	72	72
New Zealand	12	184	196	-	166	166
Other Oceanian	4	19	23	-	29	29
Belgium	-	926	926	-	821	821
France	4	2,922	2,926	3	3,952	3,955
Germany, Fed. Rep. of	2	745	747	6	776	782
Italy	-	547	547	-	1,091	1,091
Switzerland	-	189	189	-	332	332
United Kingdom	20	3,259	3,279	14	6,030	6,044
Other European	17	270	287	18	351	369
Canada	-	101	101	-	121	121
U.S.A.	3	148	151	10	154	164
Other American	-	21	21	-	43	43
High seas	40	-	40	137	-	137
Unknown	-	4	4	-	4	4
All countries	1,469	48,139	49,608	1,231	54,529	55,760

^{1/}Excluding those transit passengers who did not leave the airport, 319 discharged seamen and 355 engaged seamen.

Table 22 - Tourist^{1/} arrivals by mode of transport and total nights spent during period - Island of Mauritius, 1963-74

Period	Tourists arriving during period			Total nights spent during period
	Sea	Air	Total	
1963	1,008	6,719	7,727	99,400
1964	1,010	9,023	10,033	144,584
1965	746	9,312	10,058	144,875
1966	1,328	11,712	13,040	162,269
1967	937	13,877	14,814	171,967
1968	647	14,906	15,553	149,507
1969	455	20,132	20,587	220,572
1970	365	27,285	27,650	287,591
1971	168	36,230	36,398	399,739
1972	143	48,654	48,797	454,271
1973	1,293 ^{2/}	66,701	67,994	733,065
Jan.-June 1974	228	34,656	34,884	373,465 ^{3/}

^{1/} Prior to 1964 a tourist has been defined as a non-resident staying in Mauritius for more than 24 hours but less than 6 months. As from 1964 a tourist is defined as a non-resident staying in the island for more than 24 hours but less than a year.

Figures for the two periods are nevertheless comparable because of the small number of visitors who stay longer than 6 months.

^{2/} Includes about 700 persons who came for a religious conference.

^{3/} Provisional.

Table 23 - Tourist arrivals and tourist nights by country of residence and by mode of transport- Island of Mauritius, January-June 1974

Country of residence	Tourist arrivals			Tourist nights spent during ^{1/} Jan.-June 1974
	Sea	Air	Total	
Kenya	3	461	464	3,165
Malagasy Republic	1	1,278	1,279	13,362
Malawi	-	119	119	1,461
Reunion	51	11,408	11,459	127,654
Rhodesia	-	272	272	3,143
Seychelles	1	226	227	2,543
South Africa, Rep. of	3	6,959	6,962	63,600
Tanzania	18	145	163	1,443
Zambia	1	1,575	1,576	15,067
Other African	6	470	476	5,256
U.S.S.R.	-	18	18	114
China (Mainland)	3	8	11	264
China (Taiwan)	2	152	154	278
Hong Kong	-	74	74	900
India	7	683	690	7,756
Japan	3	124	127	703
Pakistan	7	31	38	320
Singapore	22	22	44	216
Other Asian	10	113	123	968
Australia	4	1,666	1,670	11,377
New Caledonia	-	39	39	282
New Zealand	2	288	290	1,599
Other Oceanian	4	27	31	223
Belgium	1	220	221	4,031
France	5	3,282	3,287	40,272
Germany, Fed. Rep. of	6	938	944	14,292
Italy	1	863	864	10,182
Switzerland	2	316	318	4,569
United Kingdom	17	1,663	1,680	27,083
Other European	33	460	493	5,825
Canada	3	118	121	1,603
U.S.A.	12	487	499	3,328
Other American	-	146	146	528
Unknown	-	5	5	58
All countries	228	34,656	34,884	373,465

^{1/} Provisional. Include nights spent during Jan.-June 1974 by tourists arriving before this period.

Table 24 - Official long-term emigrants^{1/} by sex -
Island of Mauritius, 1956-73

Year	Both sexes	Male	Female
1956	147	93	54
1957	109	68	41
1958	163	130	33
1959	170	128	42
1960	158	132	26
1961	837	629	208
1962	1,083	711	372
1963	594	326	268
1964	915	491	424
1965	1,408	659	749
1966	1,611	774	837
1967	2,225	1,038	1,187
1968	3,067	1,487	1,580
1969	2,379	1,119	1,260
1970	2,282	1,063	1,219
1971	2,351	1,078	1,273
1972	2,271	956	1,315
1973	2,037	844	1,193

^{1/} Persons who have obtained a permit to emigrate to another country.

II. PUBLIC HEALTH

Table 25 - Health Services, Mauritius

	1969	1970	1971	1972	1973
<u>Hospitals</u>					
General hospitals	8	8	8	6	6
Special hospitals (mental diseases, leprosy and tuberculosis) ^{1/}	3	3	3	4	4
Private hospitals on sugar estates	24	22	23	23	21
<u>Dispensaries</u>					
Public dispensaries and out-patients' departments of hospitals	56	57	57	58	58
Private dispensaries on sugar estates	24	21	23	23	21
Mobile dispensaries	5	5	5	5	5
<u>Clinics</u>					
Private	5	7	7	7	7
Public mobile ante-natal	1	1	1	1	1
Public mobile dental	4	2	2	2	1
<u>Maternal and Child Health Centres</u>					
	41	43	43	43	45
<u>Doctors</u>					
Government Service:					
Specialists ^{2/}	36	41	42	46	55
Total government doctors	98	140 ^{3/}	144 ^{3/}	140 ^{3/}	173 ^{3/}
Private Service :					
Registered medical practitioners	67	71	79	85	72
<u>Dentists</u>					
Government Service	7	6	6	6	9
Private	15	19	19	22	22
<u>Trained Nurses (Government Service)</u>					
	725	832	827	945	993
<u>Midwives (Government Service)</u>					
	157	150	148	154	167
<u>Pharmacists</u>					
Attached to hospitals	4	4	5	5	3
Private	46	45	48	49	48

^{1/} including one eye clinic as from 1972

^{2/} included in figures for total government doctors

^{3/} including temporary medical officers

Table 26 - Statistics of hospitals - Mauritius

Period	No. of beds	Patients in hospitals on first day of period	Total admissions	Deaths	Discharges	Patients remaining on last day of period
1967	2,578	1,723	54,982	2,255	52,734	1,716
1968	2,543	1,716	60,055	2,361	57,447	1,963
1969	2,561	1,963	59,421	1,997	57,452	1,935
1970	2,633	1,935	60,941	2,064	58,926	1,886
1971	2,712	1,886	62,736	2,148	60,721	1,753
1972	2,734	1,753	65,518	2,039	63,477	1,755
1973	2,751	1,755	60,379	2,075	58,412	1,647
1973 : 1st Qr.	2,751	1,755	15,212	573	13,989	2,405
2nd Qr.	2,751	2,405	13,916	480	13,594	2,247
3rd Qr.	2,751	2,247	15,229	533	14,650	2,293
4th Qr.	2,751	2,293	16,022	489	16,179	1,647
1974 : 1st Qr.	2,782	1,647	16,359	401	15,299	2,306
2nd Qr.	2,782	2,306	16,297	481	15,779	2,343

Table 27 - Notifiable, contagious or communicable diseases - Mauritius

Disease Period	Enteric fever	Diphtheria	Acute poliomyelitis	Puerperal fever	Erysipelas	Tuberculosis	Leprosy	Cerebro-spinal meningitis
1967	91	37	6	1	-	553	5	-
1968	32	44	-	2	2	499	1	-
1969	9	8	-	-	-	393	-	-
1970	45	8	-	3	-	436	1	-
1971	25	17	-	-	-	307	-	-
1972	30	24	-	-	-	367	1	1
1973	21	2	-	-	-	285	2	-
1973 :1st Qr.	8	-	-	-	-	79	-	-
2nd Qr.	5	1	-	-	-	80	1	-
3rd Qr.	5	-	-	-	-	55	1	-
4th Qr.	3	1	-	-	-	71	-	-
1974 :1st Qr.	4	4	-	-	-	72	1	-
2nd Qr.	5	4	-	-	-	78	-	-

111. PUBLIC FINANCE AND BANKING

Table 28 - Central government revenue and expenditure

Rs million

Financial year	Revenue <u>1/</u>			Expenditure <u>1/</u>			Surplus (+) Deficit (-)
	Recurrent	Capital	Total	Recurrent	Capital	Total	
1971-72	294.1	130.3	424.4	283.2	100.8	384.0	+ 40.4
1972-73	376.7	156.4	533.1	326.4	127.4	453.8	+ 79.3
1973-74	515.4	130.1	645.5	534.8	244.9	779.7	- 134.2
1974-75 ^{2/}	605.9	252.0	857.9	603.6	285.8	889.4	- 31.5

1/including tax reserve certificate

2/estimates

Table 29 - Functional classification of central government capital revenue

Rs million

	1971-72	1972-73	1973-74	1974-75 ^{1/}
Grants:				
British government	0.8	8.7	0.2	-
Other foreign sources	-	5.0	2.6	17.0
Internal borrowing	103.7	108.9	83.7	55.0
External borrowing	9.4	17.8	38.5	125.9
Interest on investments	0.2	-	1.7	3.4
Special Drawing Rights from I.M.F.	0.7	-	-	-
Transfer from recurrent revenue	15.0	15.0	-	-
Other capital revenue	0.5	1.0	3.4	50.7
Total	130.3	156.4	130.1	252.0

1/estimates

Table 30 - Functional classification of central government capital expenditure

Rs million

	1971-72	1972-73	1973-74	1974-75 ^{2/}
Agriculture and forests	10.1	9.9	34.0	20.2
Irrigation ^{1/}	2.1	0.4	-	-
Roads and bridges	4.0	4.1	2.8	3.2
Marine services and civil aviation	7.0	7.0	25.2	37.8
Domestic water supplies ^{1/}	6.1	4.7	-	-
Health	1.6	1.7	3.2	6.2
Housing	0.1	0.3	0.3	1.5
Sewerage	9.2	8.7	7.5	7.7
Education	1.5	2.3	4.8	20.0
Telecommunications	1.4	4.6	5.9	9.4
Rural Development	-	0.2	1.8	15.0
Development Works	20.4	30.8	36.0	34.0
Rodrigues	4.9	5.0	5.3	8.4
Additional subscription to I.M.F. and I.B.R.D.	-	-	21.7	-
Contribution to share capital of Development Bank	-	-	4.8	4.2
Contribution to share capital of State Commercial Bank	-	4.5	-	-
Subscription to the African Development Bank	-	-	0.5	1.7
Loans: Development Bank of Mauritius	6.0	0.7	10.7	21.0
Central Electricity Board	1.6	7.1	1.8	10.2
Mauritius Housing Corporation	-	2.0	1.1	2.0
Central Housing Authority	-	0.3	0.8	2.0
Municipalities	-	-	12.8	14.0
Tea Development Authority	4.8	8.2	11.6	14.0
Central Water Authority	-	1.9	9.2	10.0
Rose-Belle Sugar Estate Board	-	-	3.7	-
Sugar Planters' Mechanical Pool	-	-	0.3	4.6
Other loans	1.5	4.2	4.0	0.3
Redemption of loans	13.0	-	-	-
Other Capital Expenditure	5.5	18.8	35.1	38.4
Total	100.8	127.4	244.9	285.8

^{1/}projects now under the control of the Central Water Authority

^{2/}estimates

Table 31 - Functional classification of central government recurrent revenue

Rs million

	1971-72	1972-73	1973-74	1974-75 ^{1/}
<u>Taxes on Income and Capital</u>	<u>61.0</u>	<u>81.8</u>	<u>128.2</u>	<u>145.0</u>
Income Tax:				
Individuals	31.8	40.9	63.3	70.0
Companies	24.7	36.7	59.2	70.0
Contribution to Widows' Fund	1.9	2.0	2.7	2.7
Succession duties	2.6	2.2	3.0	2.3
<u>Taxes on Financial Transactions</u>	<u>13.2</u>	<u>16.8</u>	<u>25.1</u>	<u>26.6</u>
<u>Taxes on Gambling</u>	<u>3.6</u>	<u>4.7</u>	<u>6.5</u>	<u>6.2</u>
<u>Taxes on Consumption and Production</u>	<u>158.3</u>	<u>213.0</u>	<u>283.9</u>	<u>360.0</u>
Import duties	86.6	107.1	141.6	165.0
Export duties	19.6	29.9	48.1	89.5
Excise duties	37.0	59.5	74.9	84.1
Business and professional licenses	6.7	6.7	8.4	7.4
Taxes on transportation	8.4	9.8	10.9	10.0
Taxes on tourism	-	-	-	4.0
<u>Provision of Goods and Services</u>	<u>34.4</u>	<u>38.8</u>	<u>41.2</u>	<u>42.0</u>
Rental of government property	2.6	2.7	3.1	2.6
Telephone service	5.0	7.1	7.6	7.8
Marine services	7.0	7.5	8.4	8.1
Posts and telegraphs	5.0	5.6	6.3	6.8
Water and irrigation	3.0	1.6	-	-
Agriculture and forests	2.2	2.0	2.7	2.7
Other goods and services	9.6	12.3	13.1	14.0
<u>Interests, Profits and Dividends</u>	<u>17.1</u>	<u>16.8</u>	<u>20.0</u>	<u>20.7</u>
<u>Grants from British Government</u>	<u>1.6</u>	<u>0.2</u>	<u>1.3</u>	<u>0.2</u>
<u>Other Recurrent Revenue</u>	<u>4.9</u>	<u>4.6</u>	<u>9.2</u>	<u>5.2</u>
Total	294.1	376.7	515.4	605.9

^{1/}estimates

Table 32 - Functional Classification of central government recurrent expenditure

Rs million

	1971-72	1972-73	1973-74	1974-75 ^{1/}
<u>General Services</u>	<u>41.5</u>	<u>53.5</u>	<u>70.3</u>	<u>81.9</u>
General administration	3.1	4.1	7.3	7.6
Legislature	0.8	0.9	1.6	1.6
Maintenance of law and order:				
Justice and Attorney General	2.4	2.6	3.9	4.6
Police and defence	17.2	19.5	26.8	32.4
Prisons	2.2	2.5	3.5	4.4
Revenue collection & financial control	6.5	8.2	11.5	14.3
Other general services	9.3	15.7	15.7	17.0
<u>Community Services</u>	<u>18.4</u>	<u>18.9</u>	<u>21.6</u>	<u>30.6</u>
Maintenance of roads & public buildings	7.6	7.7	8.0	10.5
Domestic water supplies	4.5	4.3	4.1	8.0
Sanitation and sewerage	3.7	4.0	5.4	6.8
Other community services	2.6	2.9	4.1	5.3
<u>Social Services</u>	<u>104.0</u>	<u>112.9</u>	<u>266.6</u>	<u>287.5</u>
Education	41.0	45.4	66.5	82.0
Health (excluding sanitation)	27.4	30.7	44.4	53.0
Social security:				
Family allowances	6.3	6.3	7.8	7.8
Outdoor relief	8.9	8.7	11.0	11.5
Old age pensions	13.6	14.4	19.6	20.8
Subsidy on rice and flour	-	-	107.0	100.0
Housing	2.1	2.5	3.2	4.2
Other social services	4.7	4.9	7.1	8.2
<u>Economic Services</u>	<u>25.1</u>	<u>26.1</u>	<u>36.0</u>	<u>45.7</u>
Agriculture and forests	8.6	8.7	12.8	17.2
Civil aviation and marine services	4.1	4.4	6.3	7.9
Posts, telegraphs & telecommunications	7.4	7.3	10.2	12.0
Other economic services	5.0	5.7	6.7	8.6
<u>Unallocable Expenditure</u>	<u>79.2</u>	<u>100.0</u>	<u>140.3</u>	<u>157.9</u>
Transfer to local authorities	7.0	6.9	17.5	21.5
Recurrent financial obligations:				
Public debt:				
Interest	20.8	28.1	35.7	39.5
Redemptions	4.7	5.1	6.6	8.2
Sinking Fund	10.0	19.5	15.3	17.3
Public pensions & gratuities	18.1	19.5	25.0	27.2
Passages	1.4	1.5	1.7	1.5
Rodrigues	5.1	5.8	7.6	11.7
Relief works	2.4	2.7	3.1	2.9
Other unallocable expenditure	9.7	10.9	27.8	28.1
<u>Transfer to Capital Budget</u>	<u>15.0</u>	<u>15.0</u>	-	-
Total	283.2	326.4	534.8	603.6

^{1/} estimates

Table 33 - Central government indebtedness

Period	Rs million								
	Amount outstanding at beginning of period			Borrowing during period		Payment during period			
	Total	Internal		Internal	External	Internal	External		
		Tap loan	Other					U.K.	Other ^{1/}
1.7.70 - 30.6.71	327.8	106.6	50.9	138.0	32.3	61.4	11.5	2.4	17.1
1.7.71 - 30.6.72	381.3	125.8	90.7	134.2	30.6	104.9	9.3	18.1	6.2
1.7.72 - 30.6.73	471.0	125.6	177.6	137.7	30.1	110.0	17.6	5.1	7.2
1.7.73 - 30.6.74	586.3	120.6	287.5	143.9	34.3	85.0	34.7	10.0	9.7
1973: 1st Qr.	561.2	124.9	262.6	141.3	32.4	-	6.3	4.3	2.5
2nd Qr.	560.7	120.5	262.6	143.4	34.2	25.0	4.0	0.1	3.3
3rd Qr.	586.3	120.6	287.5	143.9	34.3	-	7.3	0.5	2.1
4th Qr.	591.0	120.1	287.5	147.9	35.5	45.0	1.4	-	2.1
1974: 1st Qr.	635.3	120.1	332.5	147.8	34.9	-	15.1	9.5	2.9
2nd Qr.	638.0	115.6	327.5	159.5	35.4	40.0	10.9	-	2.6

^{1/} International Bank for Reconstruction and Development, International Development Association and Government of China

Table 34 - Sinking funds held against the public debt

Amount as at 30th June	Rs million				
	1969	1970	1971	1972	1973
	76.0	80.6	106.2	119.5	142.1

Note: Investments have been valued at mean market prices

Table 35 - Central government loan raisings

	Year of issue	Rate of interest % p.a.	Amount outstanding at 30.6.74 (Rs million)
<u>Local loans</u>			
Development welfare loan 1971-81	1950	3	3.1
Development (general purposes) Loan 1964-74	1953	4 $\frac{1}{4}$	14.4
Development (" ") Loan 1973-83	1962	5 $\frac{3}{4}$	15.0
Development (" ") Loan 1971-76	1966	6	5.0
Development Loan Stock 1985	1970	7 $\frac{1}{4}$	5.0
" " " 1975	1970	6 $\frac{1}{2}$	15.0
" " " 1977	1971	6 $\frac{1}{2}$	10.0
" " " 1991	1971	7 $\frac{1}{2}$	10.0
" " " 1976	1971	6 $\frac{1}{2}$	10.0
" " " 1979	1971	6 $\frac{3}{4}$	15.0
" " " 1986	1971	7 $\frac{1}{2}$	15.0
" " " 1978	1972	6 $\frac{1}{2}$	10.0
" " " 1984	1972	7	15.0
" " " 1979	1972	6 $\frac{1}{2}$	15.0
" " " 1988	1972	7 $\frac{1}{2}$	15.0
" " " 1977	1972	6 $\frac{1}{2}$	15.0
" " " 1980	1972	6 $\frac{3}{4}$	15.0
" " " 1990	1972	7 $\frac{1}{2}$	10.0
" " " 1978	1972	6 $\frac{1}{2}$	10.0
" " " 1982	1972	6 $\frac{3}{4}$	15.0
" " " 1992	1972	7 $\frac{1}{2}$	20.0
" " " 1980	1973	6 $\frac{1}{2}$	10.0
" " " 1989	1973	7 $\frac{1}{2}$	15.0
" " " 1980	1973	6 $\frac{1}{2}$	15.0
" " " 1985	1973	7	15.0
" " " 1989	1973	7 $\frac{1}{2}$	15.0
" " " 1992	1974	7 $\frac{1}{2}$	20.0
" " " 1985	1974	7	20.0
Tap Loan	<u>1/</u>	5	115.6
<u>U.K. Loans</u>			
Development (general purposes) Loan 1972-77	1955-56	4 $\frac{3}{4}$	23.0
Development (general purposes) Loan 1973-75	1964	6 $\frac{1}{2}$	18.4

1/ Tap loans are issued every year since 1959. The date of redemption is at the option of the purchaser.

Table 36 - Outstanding loans and advances made from public funds as at 30th June

Debtor	Rs million				
	1970	1971	1972	1973	1974
Central Electricity Board	87.2	86.6	86.2	91.3	90.5
Central Housing Authority	35.4	33.7	33.9	33.6	48.9
Development Bank of Mauritius	23.9	16.2	23.3	26.9	38.3
Mauritius Housing Corporation	16.9	16.4	15.9	17.3	17.7
Mauritius Broadcasting Corporation	1.1	1.3	1.1	0.9	0.6
Municipalities	22.1	22.3	21.4	20.7	29.4
Sewerage schemes	11.1	12.8	14.1	15.4	16.7
Government Sack Factory	5.5	5.9	5.8	5.8	5.8
Colonial Steamships	1.8	1.6	1.5	1.3	1.1
Tea Estates	3.6	3.5	3.3	3.2	3.1
Mauritius Hotels Ltd.	1.3	1.2	1.2	1.1	1.1
Mauritius Agricultural Marketing Board	5.7	7.4	7.8	7.8	7.8
Landlords of private school buildings	0.7	0.7	0.6	0.7	0.8
Planters' Hurricane Loan	0.7	0.6	0.4	0.3	0.2
Tea Development Authority	-	-	4.8	12.6	24.6
Central Water Authority	-	-	-	1.9	14.7
Mauritius Sugar Industry Research Institute	-	-	1.0	1.4	1.2
Rose-Belle S.E.	-	-	-	-	1.0
Compagnie des Villages de Vacances de l'Ile de France Ltée (COVIFRA)	-	-	-	-	4.1
Other	2.9	2.6	2.5	2.2	2.0
TOTAL	219.9	212.8	224.8	244.4	309.6

Table 37 - Income tax^{1/} - individuals

Range of gross income (Rupees)	Year of assessment 1970-71 ^{2/}				Year of assessment 1971-72			
	Number of taxpayers	Gross income (Mn Rs)	Chargeable income (Mn Rs)	Tax assessed (Mn Rs)	Number of taxpayers	Gross income (Mn Rs)	Chargeable income (Mn Rs)	Tax assessed (Mn Rs)
5,000 or less	1,984	8.09	1.38	0.28	1,967	8.02	1.47	0.30
5,001 - 10,000	4,002	29.72	9.56	1.95	4,073	30.25	9.98	2.01
10,001 - 15,000	2,833	34.40	13.46	2.68	3,002	36.52	14.42	2.84
15,001 - 25,000	2,047	39.15	22.77	4.63	2,148	41.21	24.02	4.77
25,001 - 50,000	1,254	41.60	29.87	7.64	1,421	47.77	34.78	8.88
50,001 - 100,000	247	16.36	13.06	5.31	304	20.30	16.58	6.81
100,001 - 250,000	39	5.00	3.95	2.32	54	7.54	6.03	3.64
Over 250,000	12	3.82	3.53	2.53	12	3.66	3.41	2.45
TOTAL	12,418	178.14	97.58	27.34	12,981	195.27	110.69	31.70

Notes ^{1/} The figures are provisional and subject to amendment, as the income tax ordinance empowers the Commissioner of Income Tax to revise cases under objection, to issue additional claims for the six years preceding the present year of assessment, and to claim back duty at any time in cases of false or incorrect returns of income for any previous year.

^{2/} Revised

Table 38- Income tax ^{1/} - companies

Range of gross income (Rupees)	Year of assessment 1970-71 ^{2/}						Year of assessment 1971-72			
	Number of companies	Gross income (Mn Rs)	Chargeable income (Mn Rs)	Tax assessed (Mn Rs)	Number of companies	Gross income (Mn Rs)	Chargeable income (Mn Rs)	Tax assessed (Mn Rs)		
5,000 or less	112	0.23	0.20	0.10	89	0.19	0.15	0.07		
5,001 - 10,000	35	0.27	0.21	0.09	24	0.18	0.11	0.05		
10,001 - 15,000	22	0.28	0.18	0.08	23	0.29	0.16	0.08		
15,001 - 25,000	27	0.52	0.26	0.13	34	0.66	0.34	0.16		
25,001 - 50,000	56	1.99	1.01	0.48	45	1.64	0.98	0.43		
50,001 - 100,000	47	3.22	1.41	0.66	55	3.94	1.91	0.86		
100,001 - 250,000	46	7.28	2.96	1.34	58	10.01	4.10	1.84		
250,001 - 500,000	26	8.78	2.91	1.31	28	10.10	3.15	1.42		
500,001 - 750,000	9	5.00	1.96	0.88	8	4.82	2.29	1.04		
750,001 - 1,000,000	7	5.87	2.40	1.07	5	4.13	2.25	1.01		
Over 1,000,000	27	77.57	40.80	18.32	26	107.57	36.03	16.15		
TOTAL	414	111.01	54.30	24.46	395	143.53	51.47	23.11		

Notes: ^{1/} The figures are provisional and subject to amendment, as the income tax ordinance empowers the Commissioner of Income Tax to revise cases under objection, to issue additional claims for the six years preceding the present year of assessment, and to claim back duty at any time in cases of false or incorrect returns of income for any previous year.

^{2/} Revised

Table 39 - Sterling assets of central government Bank of Mauritius and commercial banks
(at end of period)

Period	INVESTMENTS (nominal value)				LIQUID ASSETS (cash, money at call and short-term deposits)					Total
	Central government	Semi-governmental institutions	Bank of Mauritius	Total	Central government ^{1/}	Semi-governmental institutions	Bank of Mauritius	Net balance of banks due from banks abroad		
1969	17.9	4.3	165.5	187.7	- 2.2	23.3	18.1	+ 39.3	78.5	
1970	6.5	3.5	100.9	110.9	+ 7.6	0.4	145.7 ^{2/}	+ 20.7	174.4	
1971	11.5	2.5	153.9	172.9	+ 9.2	0.4	92.0 ^{2/}	- 1.0	100.6	
1972	17.1	0.9	212.7	230.7	+ 4.0	1.9	165.5 ^{2/}	+ 2.1	173.5	
1973	17.3	0.2	152.0	169.5	+ 7.3	1.6	204.3 ^{2/}	+ 2.4	216.1	
1973 : 1st Qr.	17.1	0.2	156.2	173.5	+ 4.3	1.5	247.4 ^{2/}	- 0.1	253.1	
2nd Qr.	17.4	0.2	171.4	189.0	+ 3.3	1.5	163.1 ^{2/}	- 2.4	165.5	
3rd Qr.	17.4	0.2	171.9	189.5	+ 2.8	1.5	163.5 ^{2/}	- 1.3	166.5	
4th Qr.	17.3	0.2	152.0	169.5	+ 7.8	1.6	204.3 ^{2/}	+ 2.4	216.1	
1974 : 1st Qr.	15.7	0.2	177.4	193.3	+ 10.4	1.6	161.9 ^{2/}	+ 3.0	181.9	
2nd Qr.	16.5	0.2	123.6	140.3	+ 7.1	1.5	26.1 ^{2/}	+ 4.3	39.0	

^{1/} Net of short-term borrowings.

^{2/} Includes IMF Special Drawing Rights.

Rs million

Table 40 - Assets of the Bank of Mauritius
(at end of period)

Rs million

Period	Grand total	External						Local			
		Total	Balances with banks	Bills	Securities	IMF Special Drawing Rights	Total	Government securities	Discounts and advances	Other assets	
1969	219.0	180.0	13.1	44.3	117.6	-	39.0	14.9	19.7	4.4	
1970	253.4	246.5	131.0	16.1	84.8	14.6	5.9	0.5	2.6	3.8	
1971	308.1	250.9	64.3	75.9	82.0	27.7	57.2	16.9	32.9	7.4	
1972	468.1	378.2	124.9	106.6	105.1	40.6	89.8	48.8	32.8	8.2	
1973	454.1	356.4	163.8	52.3	99.7	40.6	97.7	20.8	67.6	9.5	
1973 : 1st Qr.	442.6	403.6	206.8	49.8	106.4	40.6	39.0	13.3	17.6	8.1	
2nd Qr.	405.1	334.5	122.5	64.1	107.3	40.6	70.6	9.3	48.5	12.8	
3rd Qr.	407.2	335.4	122.9	70.3	101.6	40.6	71.8	6.1	55.4	10.3	
4th Qr.	454.1	356.4	163.8	52.3	99.7	40.6	97.7	20.8	67.6	9.3	
1974 : 1st Qr.	422.3	339.3	121.3	79.5	97.9	40.6	83.0	34.5	34.5	14.0	
2nd Qr.	414.4	149.7	13.2	35.3	88.4	12.8	264.7	92.4	159.3	13.0	

Source: The Bank of Mauritius

Table 41 - Liabilities of the Bank of Mauritius
(at end of period)

Rs million

Period	Total	Capital and reserve	Notes in circulation	Coins in circulation	DEPOSITS					Other liabilities
					Total	Demand			Other ^{1/}	
						Government	Bankers			
							Other			
1969	219.0	7.2	100.5	6.2	76.6	3.0	3.5	3.1	67.0	28.5
1970	253.4	9.5	108.1	6.6	121.2	3.3	6.1	3.0	108.8	8.0
1971	308.1	14.5	129.0	7.1	118.1	1.7	8.6	6.0	101.8	39.4
1972	468.1	16.6	160.7	8.4	235.8	130.8	30.1	33.0	41.9	46.6
1973	454.1	19.7	215.5	11.0	150.8	73.2	30.9	8.7	38.0	57.1
1973 : 1st Qr.	442.6	16.6	147.5	8.8	215.4	161.8	12.9	7.3	33.4	54.3
2nd Qr.	405.1	19.7	149.6	9.3	165.4	103.8	15.4	12.0	34.2	61.1
3rd Qr.	407.2	19.7	167.2	9.9	158.6	72.5	35.2	16.0	34.9	51.8
4th Qr.	454.1	19.7	215.5	11.0	150.8	73.2	30.9	8.7	38.0	57.1
1974 : 1st Qr.	422.3	19.7	204.1	10.5	122.3	34.5	38.6	7.9	41.3	65.7
2nd Qr.	414.4	24.7	207.8	10.8	83.7	1.9	32.4	7.1	42.3	87.4

^{1/}Mainly due to semi-government bodies.

Source : The Bank of Mauritius.

Table 42 - Assets of commercial banks
(at end of period)

Period	Total	Balances due by		Loans and advances			Investments		Other assets		
		Cash	Other local banks		Primary products	Other industries	Other advances	Local	Abroad	Bills discounted and bills receivable	Other
			Banks abroad	Banks							
1969	344.6	9.5	0.5	45.2	78.1	78.4	29.2	24.2	2.0	11.6	65.9
1970	393.7	9.9	0.6	31.3	60.3	74.6	34.1	53.2	2.0	29.1	98.6
1971	487.2	9.8	0.8	13.2	78.5	105.9	41.5	80.5	2.0	55.7	100.3
1972	682.1	12.8	3.1	10.0	61.7	149.3	64.2	137.4	2.0	78.4	163.2
1973	1024.2	25.8	4.3	13.9	55.4	249.3	82.7	154.7	2.0	148.4	286.7
1973 : 1st Qr.	701.0	13.2	5.4	10.1	56.0	167.8	61.6	156.8	2.0	60.8	157.3
2nd Qr.	795.0	10.8	4.8	12.8	80.0	201.2	71.2	144.2	2.0	68.4	199.6
3rd Qr.	909.5	15.3	5.8	8.1	64.3	232.3	75.0	153.7	2.0	87.6	265.4
4th Qr.	1024.2	25.8	4.3	13.9	56.4	249.3	82.7	154.7	2.0	148.4	286.7
1974 : 1st Qr.	1084.5	17.5	6.1	12.3	59.1	279.1	85.2	142.4	2.0	77.4	403.4
2nd Qr.	1063.2	17.8	4.2	10.8	68.8	145.1	206.9	113.6	-	84.0	412.0

Rs million

Table 43 - Liabilities of commercial banks
(at end of period)

Period	Total	Notes in circulation	Deposits				Balances due to			Other liabilities
			Government	Non-government			Other local banks	Banks abroad	Other liabilities	
				Demand	Time	Savings				
1969	344.6	-	3.8	116.7	70.2	49.1	-	6.0	98.8	
1970	393.7	-	2.4	121.0	96.1	62.9	1.4	10.6	99.3	
1971	487.2	-	3.7	129.8	105.0	85.0	6.5	14.3	142.9	
1972	682.1	-	2.4	201.9	140.6	118.7	11.6	7.9	199.0	
1973	1024.2	-	6.1	265.0	210.0	165.9	11.4	11.5	354.3	
1973 : 1st Qr.	701.0	-	2.1	185.6	165.9	131.7	2.0	10.1	203.6	
2nd Qr.	795.0	-	4.3	193.3	168.7	136.8	5.2	15.3	271.4	
3rd Qr.	909.5	-	3.2	231.2	179.6	147.8	3.7	9.4	334.6	
4th Qr.	1024.2	-	6.1	265.0	210.0	165.9	11.4	11.5	354.3	
1974 : 1st Qr.	1084.5	-	7.5	268.5	187.1	184.2	11.2	4.3	421.7	
2nd Qr.	1063.2	-	5.4	219.7	187.0	188.0	7.6	6.5	449.0	

Table 44 - Analysis of bills discounted, loans and advances made by commercial banks

Rs million

	1973				1974	
	March	June	September	December	March	June
Sugar industry	85.2	97.3	92.9	123.4	64.2	51.7
Other agricultural interests	10.2	10.3	11.6	11.7	10.7	22.0
Other industries and manufacturers	78.8	98.0	134.4	140.7	168.3	147.2
Traders	94.0	108.1	105.7	115.1	120.0	137.3
Personal and professional	39.1	50.4	50.8	53.9	56.5	56.9
Stockbrokers	-	0.1	0.2	0.3	2.0	1.4
Government	-	-	-	-	-	-
Other public bodies	14.2	15.5	15.3	20.3	19.1	5.3
Financial institutions	1.4	1.9	3.1	2.7	2.3	2.0
Other customers	10.9	10.1	10.8	12.8	11.4	12.3
Foreign bills	2.7	5.8	5.3	6.7	7.6	9.1
Total	336.5	397.5	430.1	487.6	462.1	445.2

Source : Bank of Mauritius

Table 45 -Assets and liabilities of the Development Bank of Mauritius
(at end of period)

Rs million

	1969	1970	1971	1972	1973
<u>Assets</u>					
Cash	-	0.5	-	0.1	1.3
Balances due by other banks in Mauritius	1.0	1.4	0.9	0.4	3.4
Loans and advances:					
Primary industries	21.6	20.8	19.4	18.1	17.2
Other industries	15.9	17.1	17.9	22.9	25.6
Other loans and advances	0.4	0.4	0.4	0.4	-
Investments:					
Local (at cost)	6.2	6.9	13.7	13.0	11.0
Overseas	2.0	2.1	-	-	-
Other assets	6.2	9.2	11.9	15.4	20.6
Total	53.3	58.4	64.2	70.3	79.1
<u>Liabilities</u>					
Notes in circulation	-	-	-	-	-
Deposits:					
Demand	1.4	2.0	1.1	1.3	3.8
Time	1.8	1.8	2.6	4.0	5.3
Savings	1.8	1.8	2.1	2.2	2.4
Share capital	-	-	10.0	10.0	10.0
Debentures	17.0	17.0	17.0	17.0	17.0
The Government of Mauritius	22.4	25.9	20.3	23.3	29.2
Bills	0.3	0.3	0.3	0.3	0.2
Other liabilities	8.6	9.6	10.8	12.2	11.2
Total	53.3	58.4	64.2	70.3	79.1

Table 46 - Post Office Savings Bank

Period	Deposits during period (Rs million)	Withdrawals during period (Rs million)	Accumulated balance at end of period (Rs million)	Number of accounts at 30th June
1969	11.5	11.8	26.7	90,552
1970	11.4	11.5	27.7	92,200
1971	13.3	11.5	30.4	93,929
1972	17.1	13.4	35.3	97,944
1973	20.0	16.0	40.8	103,216
1973 : 1st Qr.	4.7	3.9	36.2	...
2nd Qr.	3.5	3.7	37.5 ^{1/}	103,216
3rd Qr.	5.4	4.4	38.3	...
4th Qr.	6.4	4.0	40.8	...
1974 : 1st Qr.	5.9	4.4	42.3	...
2nd Qr.	4.4	4.5	43.6 ^{1/}	109,077

^{1/} Includes interest capitalised to Depositors Accounts

Table 47- Assets and liabilities of the Mauritius Co-operative Central Bank Ltd
(at end of February)

	Rs million				
	1970	1971	1972	1973	1974
Assets					
Cash at bank and in hand	0.2	2.1	1.6	1.9	2.3
Loans and advances:					
Primary industries	4.0	4.3	6.6	9.5	10.2
Housing	1.4	1.5	1.7	1.9	2.2
Other loans and advances	1.8	2.2	2.1	2.1	7.8
Investments:					
Local	5.6	7.4	7.4	12.1	9.8
Abroad	-	-	-	-	-
Other assets	0.2	0.7	0.8	0.8	2.7
Total	13.2	18.2	20.2	28.3	35.0
Liabilities					
"Owned Funds"	3.7	4.1	4.5	5.2	5.8
Deposits:					
Demand	2.0	2.6	1.7	3.8	5.9
Time	5.0	8.5	10.5	15.1	17.3
Savings	2.2	2.6	2.8	3.6	4.6
Balances due to other banks in Mauritius	-	-	-	-	-
Other liabilities	0.3	0.4	0.7	0.6	1.4
Total	13.2	18.2	20.2	28.3	35.0

Table 48 - Money Supply
(at end of period)

Period	Currency with the public ^{1/}	Demand Deposits			Total money supply
		Bank of Mauritius ^{2/}	Commercial banks	Total	
1969	97.1	1.5	118.8	120.3	217.4
1970	104.7	1.1	123.8	124.9	229.6
1971	126.3	0.9	134.4	135.3	261.6
1972	156.3	18.1	201.9	220.0	376.3
1973 : 1st Qr.	143.1	2.3	185.6	187.9	331.0
2nd Qr.	148.2	1.4	193.3	194.7	342.9
3rd Qr.	161.9	1.1	224.6	225.7	387.6
4th Qr.	200.6	0.9	265.0	265.9	466.5
1974 : 1st Qr.	197.1	0.2	268.5	268.7	465.8
2nd Qr.	200.8	0.1	219.7	219.8	420.6

^{1/}Net of cash held by commercial banks

^{2/}Miscellaneous private deposits

Source : Bank of Mauritius

Table 49 - Assets and liabilities of the Mauritius Housing Corporation
(at end of period)

	Rs million				
	1969	1970	1971	1972	1973
<u>Assets</u>					
Cash in hand and on deposit	-	-	-	-	-
Housing loans	32.1	34.0	37.0	42.2	46.1
Investments (at cost)	-	0.5	0.4	0.5	0.5
Other assets	3.1	3.4	3.4	4.7	6.4
Total	35.2	37.9	40.8	47.4	53.0
<u>Liabilities</u>					
Loans: <u>Local</u>					
Government of Mauritius	14.2	14.1	13.9	14.7	15.5
Development Bank of Mauritius	0.4	0.4	0.4	0.4	0.5
Other local loans	5.6	8.6	11.6	13.8	17.4
<u>External</u>					
British Government	3.0	2.6	2.3	2.0	1.6
Commonwealth Development Corporation	6.4	6.2	6.1	7.3	9.8
Other liabilities	5.6	6.0	6.5	9.2	8.2
Total	35.2	37.9	40.8	47.4	53.0

Table 50 - Bank and interest rates

	Percent per annum					
	31.12.71	30.6.72	31.12.72	30.6.73	31.12.73	30.6.74
<u>Deposit rates</u>						
Post Office Savings Bank	4	4	4	4	4	4
Trading banks : savings accounts	4	4	4	4	4	4
Fixed deposits (3 months)	4½	4½	4½	4½	4½	4½
" (6 months)	4¾	4¾	4¾	4¾	4¾	4¾
" (12 months)	5¼	5½	5½	5½	5½ ¹⁺	5½ ¹⁺
" (over 12 months)	5½-6½	6	6	6	6*	6*
<u>Lending rates</u>						
Bank of Mauritius - discount rate	6	6	6	6	6	6
Trading banks - bills of exchange and advances	7½-9	7-9	7-8½	7-8½	7-8½	7-8½
Public notaries - mortgage loans	9-11	9-11	9-11	9-11	9-11	9-11
Mauritius Housing Corporation - housing loans	8	8-8½	8-8½	8-8½	8-8½	8-8½

+ Between 12 and 17 months * Between 18 and 24 months

Note : Rates of interest on Treasury Loans are shown in table 35

Source : Bank of Mauritius

Table 51 - Foreign exchange rates

Country	Currency	Rupees							
		on 30.12.72		on 30.6.73		on 31.12.73		on 30.6.74	
		Selling rate	Buying rate	Selling rate	Buying rate	Selling rate	Buying rate	Selling rate	Buying rate
United Kingdom	Pound Sterling	13.40	13.25	13.40	13.25	13.40	13.25	13.40	13.25
Australia	Dollar	7.33	7.12	7.43	7.21	8.68	8.42	8.45	8.17
Belgium	Franc	0.131	0.129	0.145	0.141	0.142	0.138	0.146	0.140
Canada	Dollar	5.79	5.67	5.24	5.14	5.84	5.72	5.85	5.71
France	Franc	1.14	1.10	1.27	1.23	1.21	1.17	1.17	1.13
Germany, Fed. Rep. of	Mark	1.80	1.76	2.155	2.105	2.17	2.11	2.23	2.17
Hong Kong	Dollar	1.01	0.98	1.045	1.015	1.16	1.12	1.14	1.09
India	Rupee	0.73	0.70	0.73	0.70	0.73	0.70	0.73	0.70
Japan	Yen	0.0202	0.0196	0.0209	0.0203	0.0198	0.0200
Kenya	Shilling	0.81	0.785	0.755	0.73	0.845	0.820	0.799	0.774
Malagasy, Rep. of	Franc	0.0228	0.022	0.0248	0.0239	0.025	0.0242	0.0234	0.0226
New Zealand	Dollar	6.86	6.69	6.95	6.77	8.34	8.12	8.25	8.03
Pakistan	Rupee	0.54	0.51	0.56	0.53	0.61	0.58	0.61	0.57
Reunion	Franc	0.0228	0.022	0.0254	0.0246	0.0242	0.0234	0.0234	0.0226
South Africa, Rep. of	Rand	7.35	7.14	7.81	7.58	8.69	8.45	8.59	8.31
Switzerland	Franc	1.53	1.49	1.80	1.75	1.80	1.75	1.89	1.84
U.S.A.	Dollar	5.75	5.63	5.22	5.12	5.82	5.70	5.67	5.53

Source : Bank of Mauritius

IV. NATIONAL ACCOUNTS

Table 52 - Gross national product by industrial origin
(at current factor cost)

	Rs million				
	1969	1970	1971	1972	1973 ⁺
1. Agriculture, forestry, hunting and fishing	224	209	247	332	461
2. Mining and quarrying	1	1	1	2	2
3. Manufacturing	142	141	162	211	249
4. Construction	46	48	60	73	114
5. Electricity, gas, water and sanitary services	30	29	34	39	43
6. Transportation, storage and communication	105	108	114	129	161
7. Wholesale and retail trade	91	91	94	127	172
8. Banking, insurance and real estate	18	20	18	22	31
9. Ownership of dwellings	68	70	71	74	77
10. Public administration and defence	46	51	53	61	76
11. Services	116	126	141	166	203
GROSS DOMESTIC PRODUCT AT FACTOR COST	887	894	995	1,236	1,589
Net factor income from the rest of the world	+ 1	+ 7	+ 7	+ 2	+ 16
GROSS NATIONAL PRODUCT AT FACTOR COST	888	901	1,002	1,238	1,605
Per capita gross national product at factor cost (Based on mid-year population)	(Rs) 1,112	(Rs) 1,111	(Rs) 1,218	(Rs) 1,498	(Rs) 1,923

+ Revised

Table 53 - Distribution of the national income before providing for depreciation

	Rs million				
	1969	1970	1971	1972	1973
1. Compensation of employees	498	516	555	656	833
2. Income from unincorporated enterprises	128	128	140	180	235
3. Income from property	129	128	137	161	228
4. Saving of corporations	102	99	135	184	244
5. Direct tax on corporations	23	21	26	48	65
6. General government income from property and entrepreneurship	30	33	34	37	37
7. <u>Less</u> interest on public debt	- 18	- 20	- 21	- 24	- 32
8. <u>Less</u> interest on consumers' debt	- 4	- 4	- 4	- 4	- 5
NATIONAL INCOME AND DEPRECIATION = Gross national product at factor cost	888	901	1,002	1,238	1,605

Table 54 - Expenditure on gross national product
(at current prices)

	Rs million				
	1969	1970	1971	1972	1973
1. Private consumption expenditure on goods and services	681	734	783	929	1,122
2. General government consumption expenditure on goods and services	156	166	182	219	235
3. Gross domestic fixed capital formation of private enterprises	100	94	132	163	378
4. Gross domestic fixed capital formation of government and public enterprises	44	51	52	66	102
5. Increase in stocks
CONSUMPTION AND GROSS CAPITAL FORMATION	981	1,045	1,149	1,377	1,837
6. Net exports of goods and services	+ 55	+ 3	+ 12	+ 55	+ 15
7. Net factor income from the rest of the world	+ 1	+ 7	+ 7	+ 2	+ 16
8. <u>Less</u> indirect taxes (net of subsidies)	-149	- 154	- 166	- 196	- 263
GROSS NATIONAL PRODUCT AT FACTOR COST	888	901	1,002	1,238	1,605

Table 55 - Composition of gross domestic fixed capital formation
(at current prices)

	Rs million				
	1969	1970	1971	1972	1973
A. By type of capital goods					
a. Land <u>1/</u>	3	4	3	4	10
b. Dwellings	35	33	38	54	103
c. Non-residential buildings	13	23	30	34	76
d. Other construction and works	34	36	42	39	81
e. Transport equipment					
(i) Passenger cars	4	5	7	11	19
(ii) Other equipment	22	15	16	15	66
f. Machinery and other equipment	33	29	48	72	125
GROSS DOMESTIC FIXED CAPITAL FORMATION	144	145	184	229	480
B. By industrial use					
a. Agriculture, forestry and fishing	19	23	28	20	38
b. Mining and quarrying	-	-	-	-	-
c. Manufacturing	12	16	28	37	79
d. Construction	4	5	6	8	14
e. Electricity, gas, water and sanitary services	15	12	16	32	33
f. Transportation, storage and communication	37	32	35	42	126
g. Wholesale and retail trade	6	5	7	7	21
h. Banking, insurance and real estate	1	3	6	1	2
i. Ownership of dwellings	35	33	38	54	103
j. Public administration	1	-	1	1	3
k. Service industries	11	12	16	23	51
l. Legal fees, stamp duties, etc.	3	4	3	4	10
GROSS DOMESTIC FIXED CAPITAL FORMATION	144	145	184	229	480

1/Including legal fees, stamp duties, agents' commission, etc. connected with the transfer of ownership of land and buildings.

Table 56 - Balance of Payments

Rs million

Item	1969		1970		1971		1972		1973	
	Credit	Debit	Credit	Debit	Credit	Debit	Credit	Debit	Credit	Debit
<u>A. GOODS AND SERVICES</u>	<u>491</u>	<u>462</u>	<u>548</u>	<u>527</u>	<u>542</u>	<u>597</u>	<u>775</u>	<u>739</u>	<u>1,018</u>	<u>1,055</u>
1. Merchandise	367	328	388	360	362	410	577	524	755	778
2. Non-monetary gold	-	-	-	-	-	1	-	2	-	3
3. Freight and insurance on merchandise	7	46	14	54	26	61	11	88	3	115
4. Other transportation	48	35	56	59	56	63	72	47	88	47
5. Travel	18	18	27	20	39	23	52	29	83	34
6. Investment income	14	14	17	12	19	14	16	17	27	18
On direct investment	2	4	3	3	3	7	1	10	1	11
Other	12	10	14	9	16	7	15	7	26	7
7. Other government	14	5	17	7	18	7	21	8	24	11
8. Other private	23	16	29	15	22	18	26	24	38	49
<u>B. UNREQUITED TRANSFERS</u>	<u>25</u>	<u>10</u>	<u>31</u>	<u>10</u>	<u>36</u>	<u>11</u>	<u>62</u>	<u>15</u>	<u>52</u>	<u>13</u>
9. Private	8	6	13	6	15	6	30	10	36	10
10. Government	17	4	18	4	21	5	32	5	16	3
<u>NET TOTAL OF GOODS, SERVICES, AND TRANSFERS</u>	<u>44</u>	<u>-</u>	<u>42</u>	<u>-</u>	<u>-</u>	<u>30</u>	<u>83</u>	<u>-</u>	<u>2</u>	<u>-</u>

Source : Bank of Mauritius

Table 56 - Balance of Payments (cont'd)

Rs million

Item	1969		1970		1971		1972		1973	
	Credit	Debit	Credit	Debit	Credit	Debit	Credit	Debit	Credit	Debit
<u>C. CAPITAL (EXCLUDING RESERVES AND RELATED ITEMS)</u>										
<u>NON-MONETARY SECTORS</u>										
11, Direct Investment and other private										
12 long-term	16	-	29	-	27	-	24	-	-	14
Direct investment liabilities	39	-	8	-	4	-	24	-	-	13
Other	10	-	5	-	5	-	24	-	14	-
13. Other private short-term	6	-	9	-	8	-	3	-	2	-
14. Local government	4	-	-	4	-	3	-	-	12	-
15. Central government	5	-	-	1	4	-	-	4	-	40
Loans received	-	-	-	-	-	-	-	-	-	-
Other liabilities	24	-	4	-	-	5	4	-	13	-
Assets	5	8	11	11	12	24	12	5	19	8
<u>MONETARY SECTORS</u>										
16. Private institutions	-	-	-	-	-	-	-	-	-	-
Liabilities	27	-	4	-	7	-	-	3	-	4
Assets	23	23	21	-	23	-	-	-	-	1
17. Central institutions	-	11	6	-	6	-	-	2	7	-
Liabilities	-	7	15	-	17	-	2	-	-	8
Assets	-	5	-	-	-	-	-	-	-	-
<u>D. ALLOCATION OF SDRs</u>										
	-	-	15	-	13	-	13	-	-	-

Table 56 - Balance of Payments (cont'd)

Rs million

Item	1969		1970		1971		1972		1973	
	Credit	Debit	Credit	Debit	Credit	Debit	Credit	Debit	Credit	Debit
<u>E. RESERVES AND RELATED ITEMS</u>										
19. Liabilities										
Use of Fund credit	20	-	-	20	-	-	-	-	-	-
Other	-	-	-	-	-	-	-	-	-	-
20. Assets										
Monetary gold	-	81	-	74	-	9	-	124	-	21
SDRs	-	-	-	15	-	13	-	13	-	-
Reserve Position in the Fund	2	-	-	10	-	4	-	-	-	-
Foreign Exchange	-	95	-	49	9	-	-	114	32	-
Other claims	12	-	-	-	-	1	3	-	-	1
<u>NET ERRORS AND OMISSIONS</u>	1	-	8	-	-	1	4	-	-	9

Source: Bank of Mauritius

V. CONSUMER PRICE INDICES

Table 57- Consumer Price indices

(Base: January-June 1962 = 100)

The table below gives three consumer price indices, viz:

- (a) an index for households in urban areas;
- (b) an index for households in rural areas;
- (c) a total index for Mauritius as a whole.

Period	Urban	Rural	Whole Island
1963 (Average)	98.5	98.5	98.5
1964 (")	100.5	100.2	100.3
1965 (")	102.3	102.0	102.1
1966 (")	105.0	104.5	104.7
1967 (")	106.6	106.6	106.6
1968 (")	113.0	114.9	114.1
1969 (")	115.6	117.6	116.7
1970 (")	117.6	119.2	118.5
1971 (")	118.3	119.4	118.9
1972 (")	125.8	124.9	125.3
1973 (")	144.0	140.8	142.2
1973 : January	131.8	129.6	130.5
February	133.7	131.0	132.2
March	136.7	133.8	135.1
April	138.2	135.3	136.5
May	137.5	134.0	135.5
June	139.4	135.5	137.2
July	142.3	138.3	140.0
August	146.4	143.2	144.6
September	151.0	147.5	149.0
October	150.7	146.5	148.3
November	156.1	152.3	154.0
December	164.8	162.2	163.4
1974 : January	169.3	164.7	166.7
February	172.3	166.8	169.2
March	175.7	169.3	172.1
April	184.3	179.5	181.6
May	186.9	183.7	185.1
June	190.1	187.4	188.6

VI. EXTERNAL TRADE

Table 58 - Balance of visible trade

Rupees million

Period	Imports (c.i.f.value)	Exports ^{1/} (f.o.b.value)	Bunkers and Ships' stores (f.o.b.value)	Balance of visible trade	
				Surplus	Deficit
1969	376.0	365.2	17.9	7.1	-
1970	419.9	384.5	14.2	-	21.2
1971	461.6	361.7	17.3	-	82.6
1972	635.8	573.8	21.1	-	40.9
1973	915.8	748.3	28.5	-	139.0
1973 : 1st Qr.	171.9	154.5	6.6	-	10.8
2nd Qr.	222.6	66.6	5.4	-	150.6
3rd Qr.	214.6	247.9	6.2	39.5	-
4th Qr.	306.6	279.3	10.3	-	17.0
1974 : 1st Qr.	344.3	245.0	8.1	-	91.2
2nd Qr.	483.7	101.6	14.2	-	367.9

^{1/}Including value of sugar quota certificates and the bonus received in lieu of the Commonwealth Preference on sugar exports (except for 1972), but excluding sales value of bunker fuel and ships' stores.

Table 59 - Price (unit value) indices of exports and imports and terms of trade

Period	Price indices		Terms of trade ^{1/}
	Export	Import	
1965 = 100			
1966	104	102	102
1967	108	104	104
1968	106	122	87
1969	108	118	92
1970	115	117	98
1971	125	129	97
1972	148	136	109
1972 = 100			
1973	117	130	90

^{1/}Ratio of export to import price index.

A rise in the index indicates that the terms of trade have moved in favour of Mauritius.

Table 60 - Price (unit value) indices of imports, by section

Period	All Sections	Food	Beverages and tobacco	Crude materials, inedible, except fuels	Mineral fuels, lubricants, etc.	Animal and vegetable oils and fats	Chemicals	Manufactured goods classified chiefly by material	Machinery and transport equipment	Miscellaneous manufactured articles
1965 = 100										
1966	102	104	101	90	103	95	99	99	106	100
1967	104	107	104	98	104	90	100	102	108	111
1968	122	130	118	114	122	84	106	116	136	128
1969	118	129	120	120	117	74	98	116	130	125
1970	117	117	125	121	123	89	99	119	129	129
1971	129	118	140	130	152	108	105	129	161	154
1972	136	125	152	136	152	101	119	132	164	170
1972 = 100										
1973	130	148	114	134	121	117	120	124	123	138

Table 61 - Exports^{1/}: quantities and values

Quantity: Thousand metric tons
Value : Rs million (f.o.b.)

Period	Total Value ^{1/}	Re-exports Value	DOMESTIC EXPORTS									
			Total Value	Sugar		Molasses		Tea		Fish and fish preparations	Ginger	
				Quantity	Value	Quantity	Value	Quantity	Value			Quantity
1969	365.2	7.0	596.2	326.0	125.2	10.0	2.6	14.6	0.4	0.5		
1970	384.6	8.2	575.0	341.2	100.4	10.6	2.6	14.1	0.7	0.4		
1971	361.7	6.0	489.3	313.4	133.4	9.2	3.1	17.0	0.5	0.7		
1972	573.8	7.7	670.0	507.6	142.4	14.2	3.9	20.8	0.9	0.6		
1973	748.3	11.6	699.2	608.1	185.2	40.3	3.7	18.9	8.0	0.9		
1973 : 1st Qr.	154.5	3.3	151.7	128.8	17.9	3.8	1.3	6.4	1.5	0.2		
2nd Qr.	66.6	2.9	45.3	40.2	28.5	4.1	1.1	5.3	2.0	0.1		
3rd Qr.	247.9	2.6	253.6	212.9	51.9	12.6	0.6	3.2	1.6	0.3		
4th Qr.	279.3	2.8	248.5	226.2	86.8	19.9	0.7	4.1	2.9	0.3		
1974 : 1st Qr.	245.0	2.7	154.7	200.8	20.3	4.9	1.2	7.0	3.8	0.4		
2nd Qr.	101.6	4.1	24.7	49.0	22.2	6.5	0.9	5.7	0.7	0.2		

^{1/} Including value of sugar quota certificates and the bonus received in lieu of the Commonwealth Preference on sugar exports but excluding sales value of bunker fuels and ships' stores.

Table: 61 - Exports^{1/} : quantities and values (cont'd)

Quantity: Thousand metric tons
Value: Rs million (f.o.b.)

Period	DOMESTIC EXPORTS						Other domestic exports
	Feeding stuff for animals	Processed diamonds and synthetic stones	Electronic components for machines	Clothing	Other manufactured goods	Value	
	Value	Value	Value	Value	Value	Value	
1969	-	-	-	0.1	4.8	1.8	
1970	0.3	1.0	-	0.2	5.7	3.1	
1971	0.2	2.3	-	1.7	7.1	3.6	
1972	-	5.3	-	6.1	7.4	3.2	
1973	0.9	19.7	5.3	20.6	7.4	6.7	
1973 : 1st Qr.	0.1	2.3	-	3.3	1.7	3.1	
2nd Qr.	0.2	3.7	0.2	4.5	2.0	1.4	
3rd Qr.	0.2	4.5	1.2	5.7	2.1	1.0	
4th Qr.	0.3	9.2	3.8	7.1	1.7	1.1	
1974 : 1st Qr.	0.9	4.1	7.8	9.5	1.8	1.3	
2nd Qr.	0.7	5.5	11.3	13.4	2.4	1.6	

^{1/} Including value of sugar quota certificates and the bonus received in lieu of the Commonwealth Preference on sugar exports but excluding sales value of bunker fuels and ships' stores.

Table 62 - Total exports^{1/}: Main countries of destination - values

Rs million (f.o.b.)

Country of destination	1970	1971	1972	1973	Jan - June 1974
<u>Total exports</u>	<u>384.6</u>	<u>361.7</u>	<u>573.8</u>	<u>748.3</u>	<u>346.6</u>
United Kingdom	260.4	198.8	339.5	338.6	121.6
Canada	77.6	101.1	107.7	185.9	88.8
United States	21.1	22.3	36.2	65.0	36.5
South Africa, Rep. of	12.1	15.8	18.9	17.4	14.3
Vietnam Republic	-	-	-	15.9	-
Iran	-	-	10.4	15.7	-
Iraq	0.3	-	-	15.7	34.6
Indonesia	-	-	-	15.5	7.0
Malaysia	-	-	8.1	15.1	-
France	1.1	1.3	3.5	14.8	14.0
U.S.S.R.	-	-	17.7	10.4	-
Reunion	3.9	5.1	7.7	9.2	5.5
South Yemen	-	-	-	5.8	-
Belgium	-	-	2.1	4.5	1.3
Germany, Fed. Rep. of	0.2	0.3	1.5	2.6	7.5
Netherlands	-	1.4	3.9	2.6	2.0
Hong Kong	0.4	0.4	0.7	2.4	3.8
Malagasy, Rep. of	2.6	2.5	2.2	1.9	0.7
United Republic of Tanzania	-	-	-	1.7	-
Japan	-	-	-	1.2	2.7
Switzerland	1.0	1.2	1.3	1.1	0.9
Other countries	3.9	11.5	12.4	5.3	5.4

^{1/} including the value of sugar quota certificates and the bonus received in lieu of the Commonwealth Preference on sugar exports.

Table 63 - Imports: values by S.I.T.C. sections

Period	All Sections	Rs million (c.i.f.)									
		Food	Beverages and tobacco	Crude materials, inedible, except fuels	Mineral fuels, lubricants, etc.	Animal and vegetable oils and fats	Chemicals	Manufactured goods classified chiefly by material	Machinery and transport equipment	Miscellaneous manufactured articles	Miscellaneous transactions and commodities n.e.s.
1969	376.0	132.6	5.3	5.6	31.7	12.5	43.0	72.4	44.7	27.9	0.2
1970 ^{1/}	419.9	124.3	5.2	10.3	29.7	21.0	47.6	95.3	55.7	30.5	0.2
1971	461.6	121.6	6.1	11.3	29.7	28.9	49.7	104.4	77.5	32.1	0.3
1972	635.8	159.0	7.9	11.1	50.7	25.1	70.4	153.4	111.2	46.8	0.1
1973	915.8	217.8	9.3	14.2	63.6	23.1	81.4	222.4	225.1	58.5	0.4
1973 : 1st Qr.	171.9	41.5	1.5	3.1	16.1	5.4	14.9	45.5	32.5	11.2	0.3
2nd Qr.	222.6	74.4	3.1	3.0	10.4	5.3	15.6	49.5	47.1	14.1	-
3rd Qr.	214.6	30.7	2.4	3.0	10.9	10.2	29.2	59.2	54.1	14.9	0.1
4th Qr.	306.6	71.2	2.2	5.2	26.2	2.2	21.7	68.3	91.4	18.3	-
1974 : 1st Qr.	344.3	86.7	2.9	8.9	31.2	12.5	22.6	39.6	72.4	16.6	0.8
2nd Qr.	483.7	152.5	3.3	8.3	54.0	28.9	25.3	105.3	85.4	19.6	1.1

^{1/} As from 1970 S.I.T.C. (revised) used.

Table 64 - Imports : selected commodities - values

Period	Rs million (c.i.f.)													
	Rice	Wheat flour	Alcoholic beverages	Petroleum products	Vegetable edible oils	Fertilizers, manufactured	Cotton fabrics	Other textile fabrics	Cement	Iron and steel	Manufactures of metals, n.e.s.	Machinery other than electric	Electric machinery, apparatus and appliances	Road motor vehicles and parts
1969	54.9	23.0	4.0	31.1	9.7	17.1	8.4	10.7	8.4	9.3	8.2	18.6	15.0	10.4
1970	38.2	22.8	3.8	29.3	15.3	18.2	7.1	14.3	7.1	21.3	11.2	22.6	15.9	15.0
1971	31.3	23.5	4.7	28.9	21.4	16.8	9.1	15.1	9.1	17.8	13.3	41.6	18.2	16.7
1972	42.6	29.0	6.0	49.9	16.7	28.5	10.1	29.1	10.1	22.7	17.6	44.9	41.4	23.6
1973	70.9	33.8	6.8	62.6	15.7	30.9	18.2	36.7	18.2	36.0	27.4	92.0	52.1	40.8
1973 : 1st Qr.	8.8	6.1	1.2	15.9	3.2	3.6	3.9	7.2	3.9	6.5	6.6	11.4	10.1	9.9
2nd Qr.	35.5	9.4	2.1	10.0	3.9	2.8	3.9	8.4	3.9	7.0	6.4	22.0	13.9	10.9
3rd Qr.	1.7	6.2	1.7	10.7	8.6	14.7	5.2	10.1	5.2	9.7	6.6	29.1	12.9	11.5
4th Qr.	24.9	12.1	1.8	26.0	-	9.8	5.2	11.0	5.2	12.8	7.8	29.5	15.2	8.5
1974 : 1st Qr.	37.5	13.9	2.2	30.8	9.9	6.3	6.8	14.2	6.8	12.5	11.8	27.4	19.5	13.0
2nd Qr.	68.2	31.9	2.6	53.7	20.8	4.4	5.7	16.3	5.7	26.1	12.9	37.6	31.4	15.6

Table 65 - Imports: selected commodities - quantities

Period	Rice Thousand m/tons	Wheat flour Thousand m/tons	Vegetable edible oils Thousand m/tons	Fertilizers, manufactured Thousand m/tons	Cotton fabrics Million sq. metres	Other textile fabrics Million sq. metres	Cement Thousand m/tons	Iron and steel Thousand m/tons
1969	64.8	44.9	7.9	57.2	6.0	3.7	76.1	10.4
1970	58.8	45.2	10.5	57.0	6.8	4.8	65.0	18.2
1971	54.1	43.4	12.0	62.0	7.5	4.7	82.2	16.3
1972	72.3	49.3	10.6	88.0	8.2	8.6	93.3	22.0
1973	58.1	44.0	8.6	72.1	7.5	9.5	131.4	27.5
1973 : 1st Qr.	16.0	9.8	2.1	11.9	2.0	2.1	27.6	5.3
2nd Qr.	28.3	13.1	2.3	6.5	1.4	2.1	31.7	5.0
3rd Qr.	1.0	7.3	4.2	31.9	1.6	2.7	37.1	7.5
4th Qr.	12.8	13.8	-	21.8	2.5	2.6	35.0	9.7
1974 : 1st Qr.	18.3	10.6	3.1	14.5	1.2	2.8	39.3	6.3
2nd Qr.	24.1	16.9	4.7	7.4	1.5	3.2	31.4	11.7

Table 66 - Imports: main countries of origin - values

Period	Rs million (c.i.f.)									
	Total	United Kingdom	South Africa	France	Japan	Iran	Pakistan	Australia	Germany Federal Republic	India
1969	376.0	74.4	31.3	24.8	14.6	19.9	3.5	27.1	17.1	10.2
1970	419.9	88.0	37.8	29.4	21.8	14.9	3.7	30.6	20.5	12.8
1971	461.6	101.5	35.4	32.6	30.5	22.4	3.8	30.2	22.3	12.9
1972	635.8	131.0	50.4	43.3	49.3	42.1	5.4	44.9	36.6	16.8
1973	915.8	193.4	78.5 ^{1/2}	63.1	59.8	50.6	49.7	49.1	46.1	30.6
1973 : 1st Qr.	171.9	37.0	16.1 ^{1/2}	10.8	12.7	10.9	1.5	14.0	7.9	5.5
2nd Qr.	222.6	46.3	18.8	16.8	13.1	8.7	18.9	8.6	10.5	7.0
3rd Qr.	214.6	48.9	18.3	17.3	17.4	9.2	2.6	11.5	15.2	7.8
4th Qr.	306.6	61.2	25.3	18.2	16.6	21.8	26.7	15.0	12.5	10.3
1974 : 1st Qr.	344.3	63.6	27.4	26.9	22.0	19.9	0.7	15.2	18.7	3.5
2nd Qr.	483.7	61.6	43.2	33.4	23.3	50.1	0.5	26.1	29.5	13.0

^{1/2} Revised

Table 66 Imports: main countries of origin - values (cont'd)

Period	China Mainland	United States	Hong Kong	Burma	Belgium	Kenya	Netherlands	Singapore	Austria	Italy
1969	6.8	6.0	8.8	7.7	2.6	11.1	3.9	4.5	1.2	6.7
1970	8.4	23.9	10.2	25.1	5.3	14.6	5.4	6.3	2.0	4.4
1971	8.4	31.8	9.9	17.3	4.3	12.4	7.2	8.6	3.9	6.3
1972	14.0	21.6	17.6	34.4	6.9 ^{1/}	12.6	14.8	12.4	6.9	8.6
1973	29.8	25.4	23.4	18.5	30.8 ^{1/}	17.7	17.0	15.2	14.7	13.6
1973 : 1st Qr.	3.6	5.6	3.8	8.9	4.8	3.2	2.1	3.2	0.4	1.4
2nd Qr.	12.5	7.3	5.4	9.0	6.0	4.9	1.7	4.1	2.9	1.7
3rd Qr.	4.7	4.9	6.5	-	5.4	5.1	8.0	4.1	5.5	3.0
4th Qr.	9.0	7.6	7.7	0.6	14.5 ^{1/}	4.5	5.2	3.8	5.9	7.5
1974 : 1st Qr.	28.9	9.3	17.4	16.3	9.6	5.7	4.1	5.6	4.7	3.6
2nd Qr.	42.3	26.5	10.3	0.6	9.8	3.3	8.9	9.2	10.8	4.5

^{1/} Revised

Table 66 - Imports: main countries of origin - values (cont'd)

Rs million (c.i.f.)

Period	China T'ian	New Zealand	Malaysia	Switzerland	Denmark	Kuwait	Ethiopia	Madagascar	South Yemen	Other
1969	1.0	2.7	2.5	3.9	1.2	1.6	1.9	8.9	1.4	68.7
1970	1.8	5.6	2.7	3.1	1.5	1.0	1.5	8.4	3.2	28.0
1971	2.4	5.9	4.2	3.8	1.4	0.7	1.6	8.0	-	31.9
1972	5.0	6.8	4.4	4.8	2.4	0.8	2.2	6.9	-	32.9
1973	9.7	9.1	6.3	5.9	6.9 ^{1/}	5.4	5.0	4.3	1.4	34.8 ^{1/}
1973 : 1st Qr.	1.6	2.3	1.1	1.4	0.7	3.0	0.7	0.9	1.4	5.4 ^{1/}
2nd Qr.	1.9	2.9	1.1	1.5	1.2	-	1.6	2.3	-	5.9
3rd Qr.	3.8	0.1	1.6	1.3	3.6	-	-	0.8	-	8.0
4th Qr.	2.4	3.8	2.5	1.7	1.5 ^{1/}	2.4	2.7	0.3	-	15.4 ^{1/}
1974 : 1st Qr.	5.2	2.2	4.4	1.8	1.0	1.6	2.3	1.5	8.8	12.4
2nd Qr.	3.7	1.1	2.3	2.7	10.8	-	2.6	1.9	-	46.7 ^{2/}

^{1/} Revised

^{2/} Including Thailand (Rs mn 35.3)

Table 67 - Imports of fertilizers ✓

Kind of fertilizers	1972		1973		1st HALF-YEAR 1974	
	Quantity (m/tons)	Value C.i.f. (Rs 000)	Quantity (m/tons)	Value c.i.f. (Rs 000)	Quantity (m/tons)	Value c.i.f. (Rs 000)
TOTAL IMPORTS	97,642	29,659	81,175	32,218	25,889	11,919
<u>NITROGENOUS FERTILIZERS</u>	36,721	8,687	28,461	10,071	12,659	5,592
Sulphate of ammonia	35,882	8,414	27,676	9,783	12,499	5,504
Ammonia sulphate nitrate	750	242	775	277	150	73
Other nitrogenous fertilizers	89	31	10	11	10	15
<u>POTASSIC FERTILIZERS</u>	9,366	3,045	7,888	3,176	6,848	3,481
Muriate of potash	9,136	2,948	7,702	3,077	6,798	3,440
Sulphate of potash	230	97	180	94	50	41
Other	-	-	6	5	-	-
<u>PHOSPHATIC FERTILIZERS</u>	14,645	2,919	14,830	3,799	4,729	1,733
Single superphosphate	2,255	562	1,700	519	425	196
Triple superphosphate	2,760	1,219	4,025	1,968	300	349
Phosphatic guano	9,630	1,138	9,094	1,310	4,004	1,188
Other	-	-	11	2	-	-
<u>MIXED AND COMPOUND FERTILIZERS</u>	36,910	15,008	29,996	15,172	1,653	1,113

✓/excluding imports from dependencies

VII. EMPLOYMENT AND WAGES

The figures of employment in tables 68-74 apply to large establishments only - these being defined as :

- (i) Sugar cane plantations where 25 arpents or more were harvested;
- (ii) Tea plantations of 5 arpents or more;
- (iii) All 'flue-cured' tobacco establishments, irrespective of acreage;
- (iv) Non-agricultural establishments employing at least 10 persons on the day of the survey;
- (v) All central and local government departments.

Table 68 - Employment in large establishments by major industrial groups

INDUSTRIAL GROUP	Total No. of persons employed on last Thursday of		
	March 1973 ^{1/}	September 1973 ^{1/}	March 1974
Agriculture, hunting, forestry and fishing	<u>58,919</u>	<u>62,063</u>	<u>56,847</u>
Sugar	49,961	54,107	48,223
Tea	4,542	3,626	4,483
Tea Development Authority	2,577	2,614	2,597
Other	1,839	1,716	1,544
Mining and quarrying	<u>163</u>	<u>144</u>	<u>153</u>
Manufacturing	<u>13,489</u>	<u>15,722</u>	<u>18,480</u>
Electricity, gas and water	<u>2,598</u>	<u>2,739</u>	<u>2,880</u>
Construction	<u>3,436</u>	<u>4,552</u>	<u>4,580</u>
Wholesale, retail trade, restaurants and hotels	<u>5,787</u>	<u>6,154</u>	<u>6,507</u>
Transport, storage and communications	<u>6,809</u>	<u>7,911</u>	<u>8,163</u>
Financing, insurance, real estate & business services	<u>2,155</u>	<u>2,295</u>	<u>2,412</u>
Community, social and personal services	<u>50,281</u>	<u>50,220</u>	<u>51,477</u>
Government (a) Central ^{2/}	41,641	41,233	42,467
(b) Local ^{3/}	3,278	3,410	3,163
Other	5,362	5,577	5,847
Activities not elsewhere specified	<u>6,473</u>	<u>5,857</u>	<u>6,221</u>
Development Works Corporation ^{2/}	6,473	5,857	6,221
Grand total	150,110	157,657	157,720

^{1/} Revised figures

^{2/} In previous reports figures for relief/development workers were shown separately. They are now included under Government and Development Works Corporation.

^{3/} Municipalities and district councils

Table 69 - Employment^{1/} by sex and age group

Age group	March 1973 ^{2/}			September 1973 ^{2/}			March 1974		
	Males	Females	Both sexes	Males	Females	Both sexes	Males	Females	Both sexes
18 years of age and over (i.e. adults)	116,418	28,819	145,237	120,881	30,826	151,707	120,871	31,544	152,415
Under 18 years of age (i.e. young persons)	3,937	936	4,873	4,460	1,490	5,950	3,545	1,760	5,305
TOTAL	120,355	29,755	150,110	125,341	32,316	157,657	124,416	33,304	157,720

^{1/} In large establishments - See introduction on page 65
Including relief/development workers

^{2/} Revised

Table 70 - Employment^{1/} in specified sectors: sugar industry

Source of employment	Size class (arpents)	Total no. of persons employed on the last Thursday of:		
		March 1973	September 1973	March 1974
Sugar cane planters (including metayers)	25 -	1,689	1,748	1,496
	50 -	553	678	541
	75 -	557	496	427
	100 -	5,001	5,392	4,696
Total planters		7,800	8,314	7,160
Millers' estates and annexes (including factories)		42,161	45,793	41,063
Total		49,961	54,107	48,223

^{1/} in large establishments - see introduction on page 65

Note: Employment figures for millers' estates include workers in field, factory, garage and workshop.

Table 71 - Employment^{1/} in specified sectors: government services

Source of employment	Total no. of persons employed on the last Thursday of:		
	March 1973	September 1973	March 1974
Central government ^{2/}	41,641	41,233	42,467
Local government ^{3/}	3,278	3,410	3,163
Total	44,919	44,643	45,630

^{1/} in large establishments - see introduction on page 65

^{2/} including relief/development workers

^{3/} includes employees of district councils

Table 72 - Employment^{1/} in specified sectors: manufacturing industries

Industrial group	Total no. of persons employed on last Thursday of:		
	March 1973	September 1973	March 1974
Food ^{2/}	1,528	1,571	1,688
Beverages and tobacco	1,559	1,557	1,712
Textile (including aloe fibre)	626	646	614
Wearing apparel	3,432	4,472	5,907
Wood and furniture	667	835	812
Printing and publishing	849	962	1,011
Rubber and leather products	214	409	430
Chemical products	473	487	505
Non-metallic mineral products	755	846	866
Metal products	778	827	871
Repairs of machinery (except electrical)	515	517	453
Repairs of electrical machinery	475	837	1,723
Transport equipment	897	938	984
Miscellaneous manufacturing industries	721	818	904
Total	13,489	15,722	18,480

^{1/} in large establishments - see introduction on page 65

^{2/} excluding employees in sugar and tea factories, who have been included with plantation workers in agriculture.

Table 73 - Employment^{1/} by method of payment and salaries or wages paid, March 1974

Industrial group	Number of employees on monthly rates of pay	Salaries for the month of March (Rs)	Number of employees on daily rates of pay	Wages for the last Thursday of March (Rs)
<u>Agriculture, hunting, forestry and fishing</u>				
Sugar ^{2/}	<u>32,416</u>	<u>10,899,735</u>	<u>24,431</u>	<u>212,399</u>
Tobacco	31,909	10,620,916	16,314	157,752
Tea ^{2/}	16	6,077	824	5,110
Tea Development Authority	136	90,115	4,347	27,629
Fishing	103	73,403	2,494	17,999
Other	37	16,614	237	2,385
	215	92,610	215	1,524
<u>Mining and quarrying</u>	<u>16</u>	<u>7,822</u>	<u>137</u>	<u>676</u>
Salt	16	7,822	137	676
<u>Manufacturing</u>	<u>4,215</u>	<u>2,060,875</u>	<u>14,265</u>	<u>102,111</u>
Food:				
Bread	55	14,672	405	4,690
Biscuits and confectionery	34	11,004	230	958
Other	463	196,647	501	2,879
Beverages and tobacco:				
Distilleries	85	32,865	32	205
Wine and beer	194	110,555	283	1,439
Soft drinks	365	127,652	195	1,443
Compounding of spirits & cigarette manufacture	172	189,011	386	3,370

^{1/} in large establishments - See introduction on page 65

^{2/} including factories

Table 73 - Employment^{1/} by method of payment and salaries or wages paid, March 1974 (Cont'd)

Industrial group	Number of employees on monthly rates of pay	Salaries for the month of March (Rs)	Number of employees on daily rates of pay	Wages for the last Thursday of March (Rs)
<u>Manufacturing (cont'd)</u>				
Textiles:				
Aloe fibre and sack factories	45	21,602	569	4,193
Wearing apparel:				
Footwear	96	54,148	368	2,886
Tailoring and shirtmaking	698	303,801	4,745	19,129
Wood and furniture	98	47,489	714	6,828
Printing and publishing	649	277,587	362	3,693
Rubber and leather products	111	39,880	319	1,486
Miscellaneous chemical products	217	98,749	288	1,613
Non-metallic mineral products:				
Stone and concrete	81	43,304	533	5,562
Other	37	21,697	215	1,795
Metal products	107	50,260	764	7,033
Repairs of machinery (except electrical)	35	19,090	418	5,469
Repairs of electrical machinery	195	139,090	1,528	6,500

^{1/} in large establishments - See introduction on page 65

Table 73 - Employment^{1/} by method of payment and salaries or wages paid, March 1974 (cont'd)

Industrial group	Number of employees on monthly rates of pay	Salaries for the month of March (Rs)	Number of employees on daily rates of pay	Wages for the last Thursday of March (Rs)
<u>Manufacturing (cont'd)</u>				
Transport equipment:				
Building of transport equipment	186	119,666	798	17,926
Miscellaneous manufacturing industries	292	142,106	612	3,014
<u>Electricity, gas and water</u>	<u>1,622</u>	<u>1,110,632</u>	<u>1,258</u>	<u>9,737</u>
<u>Construction</u>	<u>220</u>	<u>210,378</u>	<u>4,360</u>	<u>49,832</u>
<u>Wholesale and retail trade and restaurants and hotels</u>	<u>5,437</u>	<u>3,670,942</u>	<u>1,070</u>	<u>8,217</u>
Wholesale and retail trade	3,622	3,113,593	547	4,243
Restaurants	374	95,378	171	1,529
Hotels	1,441	461,971	352	2,445

^{1/} in large establishments - See introduction on page 65

Table 73 - Employment^{1/} by method of payment and salaries or wages paid, March 1974 (cont'd)

Industrial group	Number of employees on monthly rates of pay	Salaries for the month of March (Rs)	Number of employees on daily rates of pay	Wages for the last Thursday of March (Rs)
<u>Transport, storage and communication</u>				
Road transport:				
Buses	2,400	914,632	1,743	14,252
Other	315	132,145	209	2,242
Docks and stevedoring	486	320,953	2,386	45,513
Other	608	515,775	16	200
<u>Financing, insurance, real estate and business services</u>				
Banks and other financial institutions	2,261	2,106,056	151	1,715
Insurance	1,248	1,244,308	10	82
Business services	396	352,141	109	1,296
Community, social & personal services	617	509,607	32	337
<u>Government services:</u>	35,401	18,154,145	16,076	118,207
(a) Central ^{2/}	27,806	14,339,591	14,661	106,494
(b) Local	2,752	1,148,942	411	3,355
Private education services	2,805	1,450,924	127	1,044
Private health services	241	75,103	35	229
Repairs of motor vehicles	261	157,476	533	4,444
Other services	1,536	982,109	309	2,641
<u>Activities not elsewhere specified</u>	287	154,751	5,934	38,121
Development Works Corporation ^{2/}	287	154,751	5,934	38,121
GRAND TOTAL	85,684	40,258,841	72,036	603,222

^{1/} in large establishments - see introduction on page 65

^{2/} including rolls of/annual

Table 74 - Job vacancies^{1/} by industry in large establishments^{2/} as at 28th March 1974

Industry	Job title	Males	Females	Total
Sugar	Labourer	83	104	187
	Irrigator	5	-	5
	Fitter	<u>1</u>	<u>-</u>	<u>1</u>
		<u>89</u>	<u>104</u>	<u>193</u>
Tobacco	Labourer	<u>10</u>	<u>19</u>	<u>29</u>
Tea	Leaves plucker	<u>283</u>	<u>207</u>	<u>490</u>
Manufacture of bakery products	(Petrisseur) Mixer	1	-	1
	Manoeuver	<u>3</u>	<u>-</u>	<u>3</u>
		<u>4</u>	<u>-</u>	<u>4</u>
Cigarette manufacture	Turner	<u>1</u>	<u>-</u>	<u>1</u>
Wearing apparel, tailoring & shirtmaking	Knitting operator	-	160	160
	Looping operator	-	50	50
	Machine operator	-	4	4
	Sewing machinist	-	230	230
	Mending operator	-	20	20
	Pressworker	-	5	5
	Packer	-	10	10
	Salesman	1	-	1
	Clerk, export	1	-	1
	Secretary/typist	-	1	1
	Sewing machine technician	1	-	1
	Unskilled worker	<u>130</u>	<u>55</u>	<u>185</u>
	<u>133</u>	<u>535</u>	<u>668</u>	
Wood and furniture	Cabinet maker	8	-	8
	Mechanic	<u>1</u>	<u>-</u>	<u>1</u>
		<u>9</u>	<u>-</u>	<u>9</u>
Printing and publishing	Pressman	2	-	2
	Binder	<u>2</u>	<u>-</u>	<u>2</u>
		<u>4</u>	<u>-</u>	<u>4</u>
Leather products	Tanning machine operator	<u>6</u>	<u>-</u>	<u>6</u>
Stone products	Stone breaker	102	-	102
	Blockmaker	7	-	7
	Labourer	25	-	25
	Driver, lorry	5	-	5
	Mechanic	4	-	4
	Cleaner	7	-	7
	Helper	<u>3</u>	<u>-</u>	<u>3</u>
	<u>153</u>	<u>-</u>	<u>153</u>	

1/ Excluding central and local government

2/ See introduction on page 65

Table 74 - Job vacancies^{1/} by industry in large establishments^{2/} as at 28th March 1974 (cont'd)

Industry	Job title	Males	Females	Total
Metal products	Welder	3	-	3
	Tinsmith	10	-	10
	Blacksmith	1	-	1
	Turner	10	-	10
	Upholsterer	4	-	4
	Fixer	4	-	4
	Equipment designer	2	-	2
	Metal worker	10	-	10
	Apprentice furniture	10	-	10
	Principal relations officer	1	-	1
	Secretary	1	-	1
	Cost accountant	<u>1</u>	<u>-</u>	<u>1</u>
		<u>57</u>	<u>-</u>	<u>57</u>
Machinery repairs	Fitter	4	-	4
	Turner	2	-	2
	Planer	1	-	1
	Blacksmith	1	-	1
	Electrician	<u>1</u>	<u>-</u>	<u>1</u>
	<u>9</u>	<u>-</u>	<u>9</u>	
Manufacture and repairs of electrical appliances	Fitter, electrical	1	-	1
	Fitter, mechanical	1	-	1
	Production supervisor	2	-	2
	Electronic engineer	1	-	1
	Junior technician	4	-	4
	Production operator	-	145	145
	Junior clerk	-	5	5
	Cleaner	<u>2</u>	<u>-</u>	<u>2</u>
	<u>11</u>	<u>150</u>	<u>161</u>	
Electricity	Fitter	10	-	10
	Turner	1	-	1
	Mason	2	-	2
	Carpenter	<u>1</u>	<u>-</u>	<u>1</u>
	<u>14</u>	<u>-</u>	<u>14</u>	
Construction	Building plasterer	10	-	10
	Mason	9	-	9
	Carpenter	24	-	24
	Building foreman	3	-	3
	Steel fixing foreman	1	-	1
	Steel fixer	6	-	6
	Plumber	2	-	2
	Accountant	<u>1</u>	<u>-</u>	<u>1</u>
	<u>56</u>	<u>-</u>	<u>56</u>	

^{1/} Excluding central and local government

^{2/} See introduction on page 65

Table 74 • Job vacancies^{1/} by industry in large establishments^{2/} as at 28th March 1974
(Cont'd)

Industry	Job title	Males	Females	Total
Wholesale & retail trade	Salesman	1	-	1
	Clerk	1	1	2
	Assistant storekeeper	1	-	1
	Mechanic	2	-	2
	Driver	<u>1</u>	<u>-</u>	<u>1</u>
		<u>6</u>	<u>1</u>	<u>7</u>
Restaurant	Cook	4	-	4
	Waiter	6	-	6
	Assistant waiter	2	-	2
	Assistant headwaiter	<u>1</u>	<u>-</u>	<u>1</u>
		<u>13</u>	<u>-</u>	<u>13</u>
Hotel	Headwaiter	1	-	1
	Waiter	2	-	2
	Cook	1	-	1
	Manager	<u>1</u>	<u>-</u>	<u>1</u>
		<u>5</u>	<u>-</u>	<u>5</u>
Road (bus) transport	Accountant	<u>1</u>	<u>-</u>	<u>1</u>
Insurance	Clerical assistant	<u>-</u>	<u>1</u>	<u>1</u>
Architectural services	Chief draughtsman	1	-	1
	Architect	<u>1</u>	<u>-</u>	<u>1</u>
		<u>2</u>	<u>-</u>	<u>2</u>
Education	Director	1	-	1
	Office manager	1	-	1
	Broadcasting officer	1	-	1
	Liaison officer	1	-	1
	Graphics artist	1	-	1
	Scientist	1	-	1
	Teacher	1	4	5
	Caretaker	<u>1</u>	<u>-</u>	<u>1</u>
		<u>8</u>	<u>4</u>	<u>12</u>
Private club	Croupier	4	4	8
	Cashier	<u>1</u>	<u>-</u>	<u>1</u>
		<u>5</u>	<u>4</u>	<u>9</u>
Motor vehicle repairs	Sheet metal worker	2	-	2
	Electrician	1	-	1
	Welder	2	-	2
	Diesel mechanic	4	-	4
	Apprentice mechanic	<u>6</u>	<u>-</u>	<u>6</u>
		<u>15</u>	<u>-</u>	<u>15</u>
	TOTAL	894	1,025	1,919

^{1/} Excluding central and local government

^{2/} See introduction on page 65

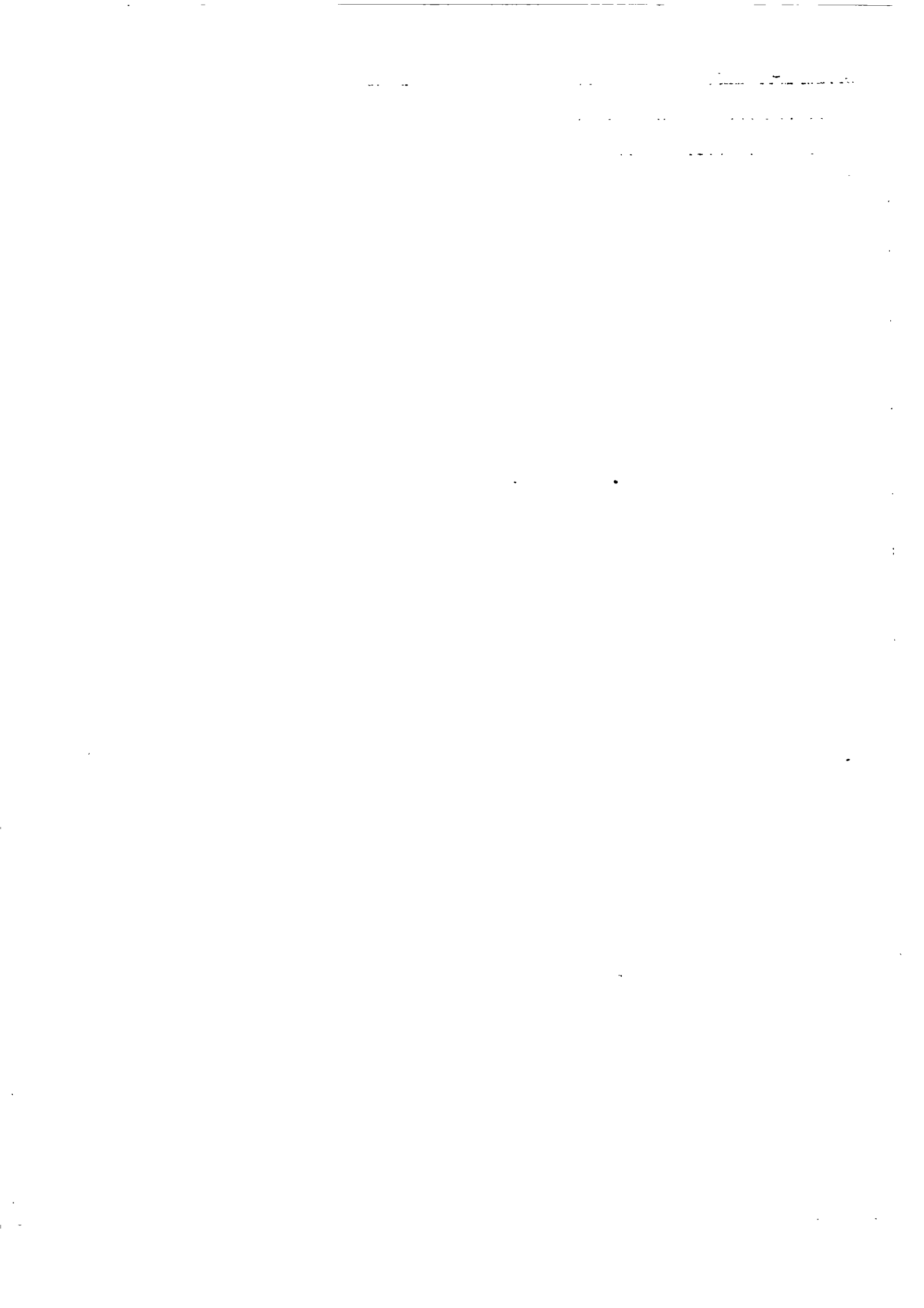


Table 75 Daily wage rates in certain industries (October inquiry^{1/})

Industry	Occupation	Rupees			
		Lowest		Highest	
		1972	1973	1972	1973
1. Manufacture of bread ^{2/}	Brigadiers	7.56 ^{3/}	7.56	7.56 ^{3/}	7.56
2. Publishing & printing	Pressman	8.25	9.24	12.15	12.47
" " "	Compositors by hand	6.65	6.78	12.75	12.83
3. Manufacture of machinery	Fitters	6.00	7.20	15.20	19.20
- do -	Pattern makers	7.25	8.72	11.20	15.30
4. Repair of motor vehicles	Mechanics	5.00	6.00	13.00	14.40
5. Construction	Carpenters	6.60	8.31	10.00	10.71
"	Masons	6.60	8.31	8.57 ^{3/}	10.71
6. Electricity	Linesmen	9.90	15.54	14.35	26.32
"	Labourers	7.30	9.54	8.05	13.23
7. Transport (bus companies ^{4/})	Drivers	9.60	13.41	9.60	13.41
- do -	Conductors	8.25	11.52	8.25	11.52
8. Municipal services	Labourers, unskilled	5.90	7.69	6.50	10.19

^{1/}Data are collected in October of each year from a sample of large establishments.

The normal hours of work are 9 per day for (6) and 8 for all others.

The normal hours of work are 48 per week for (1) and 45 for all others.

^{2/}Non-mechanical bakeries

^{3/}Revised

^{4/}The basic rates of pay have been revised as follows:

For the first four hours on any normal working day (a) Drivers: Rs 6.33 in 1972; Rs 7.60 in 1973 (b) Conductors: Rs 5.46 in 1972; Rs 6.55 in 1973

For every subsequent hour not exceeding four (a) Drivers: Rs 1.38 in 1972; Rs 1.66 in 1973 (b) Conductors: Rs 1.18 in 1972; Rs 1.42 in 1973

A normal working week shall be of 45 hours and shall be completed in 6 days.

Table 76 - Daily wage rates of manual workers employed by the central government
as at 31st December

Occupation	<u>Rupees</u>			
	Lowest		Highest	
	1972	1973	1972	1973
Pressman	9.50	12.50	10.40	21.15
Compositor	9.50	12.50	10.40	21.15
Fitters (grade I)	9.50	12.50	10.40	21.15
Pattern Makers (grade I)	9.50	11.50	10.40	19.20
Mechanics (grade I)	9.50	12.50	10.40	21.15
Carpenters (grade I)	9.50	12.50	10.40	21.15
Masons (grade I)	9.50	10.80	10.40	17.30
Drivers (grade I)	9.50	10.80	10.40	17.70
Labourers (specialised)	6.30	7.70	6.70	10.20
Labourers (unskilled)	5.60	7.10	6.05	9.60

Table 77- Employment and wages of certain categories of employees on sugar millers' estates (September inquiry)

Category	Grade	1972			1973		
		Number employed	Monthly wages		Number employed	Monthly wages	
			Lowest	Highest		Lowest	Highest
Boiler makers & sheet metal workers	I	27	Rs 344.95	Rs 494.00	31	Rs 520.00	Rs 600.00
" " " "	II	28	277.20	302.65	30	450.00	466.70
Pan boilers	Chief	22	437.35	510.00	23	690.00	760.00
" " " "	I	57	344.95	415.35	58	520.00	594.00
" " " "	II	58	277.20	332.65	50	450.00	503.10
Boiler Attendants	Chief	33	221.75	374.15	39	315.00	520.00
" " " "	Asst.	23	197.10	221.80	17	275.00	295.10
Fitters	I	106	394.25	524.40	109	520.00	650.25
" " " "	II	86	332.65	368.50	98	450.00	480.20
" " " "	III	78	258.70	307.85	83	360.00	400.00
Drivers of lorries, buses, vans, cars and wheel tractors used for haulage works only	I	650	252.55	313.35	638	355.00	432.00
" " " "	II	120	221.75	240.25	168	315.00	345.00
" " " "	III	17	197.10	215.80	23	285.00	310.20
All other drivers	I	74	240.25	362.20	32	340.00	340.10
" " " "	II	65	215.60	277.20	58	310.00	310.20
" " " "	III	19	184.80	202.85	19	275.00	275.10
Factory operators	I	145	221.75	269.50	143	305.00	360.00
" " " "	II	323	197.10	250.90	321	275.00	295.10
" " " "	III	371	172.50	201.00	352	245.00	270.10

1/ Data are collected in September of each year from all sugar millers.

Table 78 - Employment and earnings on sugar millers' estates

Month	WORKERS ON MONTHLY RATES OF PAY						WORKERS ON DAILY RATES OF PAY					
	Man-days actually worked (000)			Earnings (Rs mn)			Man-days actually worked (000)			Earnings (Rs Mn)		
	1972	1973	1974	1972	1973	1974	1972	1973	1974	1972	1973	1974
January	114	132	365	1.6	1.8	6.7	481	594	258	3.2	4.3	3.3
February	156	149	559	1.6	1.8	7.5	703	700	247	4.5	5.1	2.5
March	163	140	565	1.6	1.8	7.8	785	653	214	5.3	5.0	2.3
April	159	139	626	1.6	1.8	8.1	726	651	232	4.3	5.3	2.4
May	186	179	722	1.6	1.9	9.9	858	886	278	5.1	6.6	3.2
June	157	160	624	1.6	1.9	8.3	695	807	270	4.2	5.7	2.8
July	167	176		1.9	2.2		846	967		6.2	8.2	
August	188	181		2.1	2.3		996	1,020		8.5	9.4	
September	155	153		2.2	2.2		815	778		8.5	7.2	
October	170	180		2.3	3.4		855	965		7.5	11.0	
November	167	153		2.2	4.2		877	789		7.7	9.9	
December	151	167		5.9	7.4		777	840		10.9	15.7	
Total	1,933	1,909		26.2	32.7		9,414	9,650		75.9	93.9	

Note: (i) The table excludes the "Etat Major" staff.

(ii) Earnings and the number of "man-days actually worked" refer to 4 or 5 weekly periods ending on the the pay-day of each month; the figures are therefore not strictly comparable from month to month.

(iii) Earnings also include overtime, holiday and leave pay, housing allowance and end-of-year bonus.

VIII. SOCIAL ASSISTANCE

Table 79 - Social benefits

	1969	1970	1971	1972	1973
<u>Outdoor relief</u>					
Total number of cases relieved	41,549	41,516	40,444	33,757	26,791
Total relief payments (Rs mn.)	7.8	8.4	8.1	8.3	9.4
<u>Indoor relief</u>					
Number of persons in infirmaries at end of year	756	749	728	749	702
Number of persons in orphanages at end of year	185	199	229	175	219
Total capitation grants paid (Rs mn.)	0.4	0.4	0.4	0.4	0.5
<u>Old age pension</u>					
Number of beneficiaries at end of year	42,670	43,761	46,625	47,482	49,038
Total amount paid (Rs mn.)	11.4	11.8	12.4	14.5	16.0
<u>Family allowance</u>					
Number of beneficiaries at end of year	42,116	43,755	43,083	40,077	37,913
Total amount paid (Rs mn.)	5.7	5.5	5.7	6.5	6.6

IX - EDUCATION

Table 80 - Primary education: number of schools, pupils and teachers

Mauritius

Period	Total number of schools ^{2/}	E N R O L M E N T				Number of teachers	Pupil/teacher ratio
		Government	Aided	Non-aided ^{1/}	Total		
October 1969	224	101,944	35,499	5,637	143,080	4,300	33
" 1970	226	105,309	36,784	4,766	146,859	4,622	32
" 1971	228	107,200	37,269	4,213	148,682	4,708	32
" 1972	228	109,481	37,198	4,935	151,614	4,928	31
" 1973	228	109,132	36,677	4,847	150,656	5,142	29
<u>Rodrigues</u>							
October 1969	7	958	2,452	...	3,410	105	32
" 1970	7	1,005	2,538	...	3,543	109	35
" 1971	7	1,069	2,580	...	3,649	107	34
" 1972	7	1,117	2,893	...	4,010	124	32
" 1973	7	1,084	3,090	...	4,174	128	33

^{1/} Including pupils of the primary sections of (1) preprimary schools; (2) aided and non-aided secondary schools.

^{2/} This total includes only the number of government and aided primary schools.

The number of preprimary schools having primary sections are not included.

Table 81 - Secondary education: number of schools, pupils and teachers

Mauritius

Period	Total number of schools	E N R O L L M E N T				Number of teachers	Pupil/teacher ratio
		Government	Aided	Non-aided	Total		
October 1969	139	2,616	7,003	32,605	42,224	1,715	25
" 1970	137	2,679	6,979	34,049	43,707	1,736	25
" 1971	137	2,839	7,213	36,845	46,897	1,763 ^{1/}	27
" 1972	128	2,937	7,494	41,599	52,030	1,733	30
" 1973	124	2,965	7,819	44,835	55,619	1,859	30
<u>Rodrigues</u>							
October 1969	2	-	-	220	220	11	20
" 1970	2	-	-	262	262	11	24
" 1971	2	-	-	301	301	13	23
" 1972	2	-	-	300	300	13	23
" 1973	2	-	-	274 ^{2/}	274 ^{2/}	11	25

^{1/} As from the year 1971 the number of teachers in the secondary schools has been expressed in terms of full time equivalent, taking 30 periods per week as full time teaching.
 For the years previous to 1971, the number of teachers expressed is the exact number of persons doing teaching work.

^{2/} Provisional figures.

Table 82 - Enrolment by grade and sex in primary schools : Mauritius

GRADE	1969			1970			1971			1972			1973		
	Male	Female	Both sexes	Male	Female	Both sexes	Male	Female	Both sexes	Male	Female	Both sexes	Male	Female	Both sexes
Std. I	12,828	12,428	25,256	12,463	12,182	24,645	11,853	11,408	23,261	12,118	11,802	23,920	10,822	10,359	21,181
Std. II	11,809	11,404	23,213	12,650	12,309	24,959	12,408	12,176	24,584	11,842	11,471	23,313	11,731	11,460	23,191
Std. III	11,868	11,181	23,049	11,529	11,088	22,617	12,620	12,256	24,876	12,322	12,082	24,404	11,757	11,441	23,198
Std. IV	10,466	9,662	20,128	11,620	10,967	22,587	11,442	10,940	22,382	12,480	12,120	24,600	12,162	11,885	24,047
Std. V	9,860	9,370	19,230	10,156	9,373	19,529	11,433	10,734	22,167	11,159	10,682	21,841	12,235	11,792	24,027
Std. VI	17,195	15,009	32,204	17,173	15,349	32,522	16,478	14,934	31,412	17,480	16,056	33,536	18,105	16,907	35,012
TOTAL	74,026	69,054	143,080	75,591	71,268	146,859	76,234	72,448	148,682	77,401	74,213	151,614	76,812	73,844	150,656

Table 83 - Enrollment by grade and sex in primary schools : Rodrigues

GRADE	1969			1970			1971			1972			1973		
	Male	Female	Both sexes	Male	Female	Both sexes	Male	Female	Both sexes	Male	Female	Both sexes	Male	Female	Both sexes
Std. I	310	315	625	395	345	740	350	370	720	425	407	832	398	413	811
Std. II	305	334	639	318	322	640	406	347	753	348	364	712	431	411	842
Std. III	329	313	642	288	317	605	305	312	617	406	346	752	340	361	701
Std. IV	237	235	472	293	288	581	262	288	550	280	295	575	363	320	683
Std. V	206	223	429	198	205	403	250	251	501	237	270	507	242	271	513
Std. VI	315	288	603	277	297	574	246	262	508	315	317	632	307	317	624
TOTAL	1,702	1,708	3,410	1,769	1,774	3,543	1,819	1,830	3,649	2,011	1,999	4,010	2,081	2,093	4,174

Table 84 - Enrolment by grade and sex in secondary schools: Mauritius

GRADE	1969			1970			1971			1972			1973		
	Male	Female	Both sexes	Male	Female	Both sexes	Male	Female	Both sexes	Male	Female	Both sexes	Male	Female	Both sexes
Form I	5,522	4,104	9,626	5,407	4,102	9,509	6,445	5,219	11,664	6,912	5,531	12,443	7,053	5,874	12,927
Form II	4,622	3,289	7,911	5,042	3,536	8,578	4,897	3,817	8,714	6,037	4,585	10,622	6,209	4,991	11,200
Form III	4,180	2,827	7,007	4,159	3,032	7,191	4,603	3,742	7,950	4,721	3,438	8,209	5,611	4,210	9,821
Form IV	4,257	2,810	7,067	4,413	2,955	7,368	4,619	3,225	7,844	5,446	3,802	9,248	5,376	4,057	9,445
Form V	5,836	2,894	8,730	5,810	3,193	9,003	5,307	3,193	8,500	5,639	3,336	8,975	5,939	3,741	9,680
Form VI	1,313	570	1,883	1,453	605	2,058	1,579	646	2,225	1,796	737	2,533	1,741	807	2,548
TOTAL	25,730	16,494	42,224	26,284	17,423	43,707	27,455	19,442	46,897	30,551	21,479	52,030	31,929	23,690	55,619

Table 85 - Enrolment by grade and sex in secondary schools : Rodrigues

GRADE	1969			1970			1971			1972			1973		
	Male	Female	Both sexes	Male	Female	Both sexes	Male	Female	Both sexes	Male	Female	Both sexes	Male	Female	Both sexes
Form I	27	28	55	41	28	69	50	38	88	40	32	72	35	25	60
Form II	25	23	48	27	28	55	36	30	66	44	36	80	27	31	58
Form III	27	14	41	22	20	42	20	25	45	23	28	51	34	31	65
Form IV	19	31	50	39	30	69	30	31	61	29	23	52	23	23	46
Form V	13	13	26	14	13	27	23	18	41	22	23	45	26	19	45
Form VI	-	-	-	-	-	-	-	-	-	-	-	-	-	-	-
TOTAL	111	109	220	143	119	262	159	142	301	158	142	300	145	129	274

Table 86 - University of Mauritius: students enrolled

	School of Administration		School of Agriculture		School of Industrial Technology		Total	
	1972-73	1973-74 ^{1/}	1972-73	1973-74 ^{1/}	1972-73	1973-74 ^{1/}	1972-73	1973-74 ^{1/}
Degree courses	-	-	25	27	4	-	29	27
Diploma courses	149	128	62	69	113	144	329	341
Certificate and other courses	756 ^{2/}	397 ^{3/}	32	30	131	146	919	573

^{1/} subject to new admissions in January-February 1974

^{2/} including 493 students for non-award courses

^{3/} including 88 students for non-award courses

Table 87 - University of Mauritius: output

	School of Administration		School of Agriculture		School of Industrial Technology		Total	
	1972-73	1973-74 ^{1/}	1972-73	1973-74 ^{1/}	1972-73	1973-74 ^{1/}	1972-73	1973-74 ^{1/}
Degree courses	-	-	-	9	-	3	-	12
Diploma courses	26	53	23	19	23	25	72	97
Certificate and other courses	70	50	16	22	38	41	124	113

^{1/} subject to new admissions in January-February 1974

X - TRANSPORT AND COMMUNICATION

Table 88 - Motor vehicles registered

Period	Grand total	Private vehicles				Commercial vehicles							Government owned vehicles
		Total	Cars	Motor cycles	Auto cycles	Total	Taxi-cars	Lorries	Vans	Buses	Other		
												End of period	
1969	24,736	16,161	11,193	2,744	2,224	7,478	1,331	2,461	1,654	693	1,339	1,097	
1970	25,389	16,603	11,220	2,914	2,469	7,588	1,326	2,439	1,732	722	1,369	1,198	
1971	26,766	17,463	11,657	3,115	2,691	7,951	1,357	2,473	1,915	770	1,436	1,352	
1972	28,538	18,605	12,079	3,265	3,261	8,399	1,397	2,452	2,197	831	1,522	1,534	
1973	32,945	21,875	13,446	3,880	4,549	9,375	1,392	2,706	2,678	951	1,648	1,095	
1973: 1st Qr.	29,483	19,277	12,345	3,382	3,550	8,557	1,393	2,492	2,284	848	1,540	1,649	
2nd Qr.	30,651	20,161	12,737	3,549	3,875	8,824	1,394	2,552	2,412	884	1,582	1,666	
3rd Qr.	31,716	20,896	13,070	3,683	4,143	9,135	1,389	2,649	2,545	917	1,635	1,685	
4th Qr.	32,945	21,875	13,446	3,880	4,549	9,375	1,392	2,706	2,678	951	1,648	1,695	
1974: 1st Qr.	33,918	22,575	13,747	4,072	4,756	9,681	1,414	2,761	2,841	972	1,693	1,662	
2nd Qr.	35,134	23,478	14,097	4,216	5,165	9,978	1,451	2,795	3,033	995	1,704	1,678	

Note: The above table has been completely revised in the light of amendments to the Road Traffic Ordinance, 1962.

Figures in the new series are consequently not comparable with those published previously.

Table 89 - New Registration of Motor Vehicles ^{1/}, 1973/74

End of period

Period	Grand total	Cars	Lorries	Buses	Motor cycles and auto cycles	D.P.V. ^{2/} and Vans	Other	Period	Grand total	Cars	Lorries	Buses	Motor cycles and auto cycles	D.P.V. ^{2/} and Vans	Other
1973 : January	198	64	8	-	108	15	3	1974 : January	326	87	5	3	179	49	3
February	367	128	4	7	190	36	2	February	246	100	4	8	100	25	9
March	320	110	9	5	144	39	13	March	327	123	11	11	113	63	6
April	348	154	3	8	137	41	5	April	355	119	3	3	166	63	1
May	349	101	7	14	174	41	12	May	439	140	8	9	203	71	8
June	347	93	22	16	168	32	16	June	382	111	18	12	170	67	4
July	302	74	13	8	141	41	25								
August	333	117	13	14	139	43	7								
September	288	101	11	14	119	33	10								
October	355	96	13	9	202	30	5								
November	340	118	7	10	154	47	4								
December	416	111	3	14	240	44	4								

^{1/} Including Government Vehicles

^{2/} Dual Purpose Vehicles

Table 90 - Bus operational statistics

	Unit	1969	1970	1971	1972	1973
Total number of buses (at 30th June)	Number	651	679	770	796	884
Total vehicle - journeys	Thousand	2,340	2,559	2,513	2,900	3,290
Average vehicle - journeys per day	"	6	7	7	8	9
Total vehicle-miles	"	24,426	26,665	26,395	34,200	33,584
Average vehicle-miles per day	"	67	73	72	93	92
Total number of passengers carried during year	"	74,475	81,238	82,026	114,070	122,233
Average number of passengers carried per day	"	204	223	225	312	335
Total gross receipts	000 Rs	19,820	21,542	22,454	26,540	36,613
Average gross receipts per day	"	54	59	62	72	100

Table 91 - Road traffic accidents and casualties

	1969	1970	1971	1972	1973
<u>Road traffic accidents</u>					
Number	<u>2,035</u>	<u>2,142</u>	<u>2,075</u>	<u>2,547</u>	<u>2,866</u>
Number per 100,000 of population	255	264	252	306	340
<u>Motor vehicle accidents</u>					
Number	<u>1,899</u>	<u>2,009</u>	<u>1,960</u>	<u>2,457</u>	<u>2,689</u>
Number per 100,000 of population	238	248	238	295	319
Number per 1,000 registered motor vehicles	78	80	75	90	88
<u>Total casualties</u>	<u>1,934</u>	<u>2,174</u>	<u>2,100</u>	<u>2,259</u>	<u>2,327</u>
<u>Nature of casualty</u>					
Killed	78	117	90	115	139
Seriously injured	176	254	248	218	256
Slightly injured	1,680	1,803	1,762	1,926	1,932
<u>Casualties by class of road users</u>					
Pedestrians	805	882	921	912	898
Pedal cyclists	280	374	290	316	315
Passengers	555	569	547	596	663
Drivers or riders of motor vehicles	294	349	342	435	451

Table 92 - Sea-borne shipping

Period	Vessels entering		Vessels leaving		Goods	
	Number	Net registered tonnage Thousand m/tons	Number	Net registered tonnage Thousand m/tons	Unloaded Thousand m/tons	Loaded ^{1/} Thousand m/tons
1969	1,315	2,487	1,311	2,436	615	759
1970	1,110	2,478	1,121	2,472	535	726
1971	981	2,165	948	2,188	670	636
1972	918	2,015	931	2,206	718	798
1973	1,008	2,466	998	2,417	731	900
1973 : 1st Qr.	228	560	219	545	157	189
2nd Qr.	234	534	244	560	174	58
3rd Qr.	257	668	253	620	166	322
4th Qr.	289	704	282	692	234	331
1974 : 1st Qr.	217	564	229	581	169	185
2nd Qr.	187	461	195	447	216	37

^{1/} Excluding bunkers

Table 93 - Civil Aviation

Period	Number of movements		Freight	
	Landings	Take offs	Unloaded (m/tons)	Loaded (m/tons)
1969	598	598	277.8	235.8
1970	888	888	402.0	336.4
1971	1,167	1,167	511.2	670.9
1972	1,324	1,324	582.0	1,519.0
1973	1,592	1,592	952.3	1,298.4
1973 : 1st Qr.	389	385	192.5	270.7
2nd Qr.	381	382	183.8	316.5
3rd Qr.	412	415	184.2	352.5
4th Qr.	410	410	391.8	358.7
1974 : 1st Qr.	416	416	281.0	281.0
2nd Qr.	381	381	281.8	373.9

Note: In this table (1) are included only movements of commercial aircraft;
 (2) each touch down or each take off is counted as a separate movement;
 (3) freight carried by planes other than commercial is included.

Table 94- Telephone service

	Unit	End of period				
		1970	1971	1972	1973	Jan-June 1974
Main exchange (including rural automatic exchange)	Number	24	25	26	26	26
Capacity (in terms of line)	"	13,420	14,870	15,220	16,670	16,720
Exchange line connections	"	11,958	12,761	13,478	14,569	14,938
Individual installations	"	18,038	19,113	20,427	22,593	23,476
Call units registered (during period)	Thousand	19,583	21,673	24,636	26,520	14,390
Outstanding applications for telephone service	Number	566	898	1,799	2,736	4,573

Table 95 - Broadcasting services

	Unit	End of period				
		1970	1971	1972	1973	Jan-June 1974
<u>SOUND</u>						
Stations	Number	1	1	1	1	1
Transmitters	"	3	3	3	3	3
Aerial output : short wave	Kw.	10	10	10	10	10
medium wave	"	10	10	10	10	10
Weekly transmission time	Hour	116	116	116	116	116
New licenses issued ^{1/} (during period)	Number	2,102 ^{3/}	2,009 ^{3/}	1,903 ^{2/}	2,078	567
Radio sets licensed ^{2/}	"	83,716	83,778	84,633	84,218	84,288
<u>TELEVISION</u>						
Stations	Number	1	1	1	1	1
Transmitters	"	5	5	5	5	5
Aerial output (ERP)	Kw.	15	15	15	15	15
Weekly transmission time	Hour	57 ^{3/4}	57 ^{3/4}	59 ^{1/4}	58 ^{1/3}	59 ^{2/3}
New licenses issued ^{1/} (during period)	Number	2,910	3,049	4,289	5,654	2,766
Television sets licensed	"	18,858	21,685	25,474	30,596	33,074
Omnibus licenses issued (during period)	"	236	179	133	186	75

^{1/} including omnibus licenses

^{2/} excluding scrapped sets

^{3/} revised

XI. LAND UTILIZATION

Table 96 - Total area^{1/} classified by utilization

	<u>Acres</u>
	1972
<u>Agriculture</u>	262,500
Sugar cane	242,100
Tea	15,400
Tobacco, vegetable and other crops	5,000
<u>Forests, scrub areas, grasslands and grazing lands</u>	159,300
Forest plantations	16,740
Forest, natural	5,900
Savannah, grasslands, meadows, etc.	18,400
Scrub and other forest lands	118,260
<u>Reservoirs and ponds</u>	2,900
<u>Swamps and rocks</u>	3,500
<u>Roads (main thoroughfares)</u>	3,300
<u>Built-up areas</u>	29,300
Total island	460,800

^{1/}Based on the findings of the UNDP-FAO Land and Water Resources Survey team working on aerial photographs of the island taken at the end of 1965 and supplemented to some extent by land surveys.

Table 97 - Effective area under cultivation

	<u>Acres</u>				
	1969	1970	1971	1972	1973
Sugar cane	213,400	213,800	213,500	214,000	216,000
Tea	8,800	9,400	10,000	12,000	12,600
Tobacco	600	600	1,000	1,100	1,100

XII. LOCAL PRODUCTION

Table 98 - Agriculture: production of main crops, fish and meat

Commodity	Unit	1970	1971	1972	1973	Jan- June 1974
<u>INDUSTRIAL CROPS</u>						
Sugar cane	Thousand M/ton	5,120	5,256	6,315	6,243	-
Tea (green leaf processed)	M/ton	16,029	19,837	23,543	20,365	12,080
Tobacco leaf <u>1/</u>	"	526	562	614	677	366
<u>VEGETABLES, PULSES & FRUITS</u>						
Beans and peas	"	455	513	497	440	350
Creepers <u>2/</u>	"	7,033	6,517	7,390	6,862	2,607
Eddoes	"	341	465	472	530	290
Egg plants (bringelles)	"	2,320	2,714	1,490	1,012	391
Ginger	"	760	984	1,000	1,161	360
Groundnuts	"	693	1,062	1,471	1,984	1,396
Maize	"	529	504	470	442	893
Manioc	"	249	252	248	433	184
Potatoes (Irish)	"	6,815	8,928	7,516	10,069	919
Rice	"	906	1,084	1,149	883	540
Sweet potatoes	"	211	254	213	179	66
Tomatoes	"	5,284	6,058	5,440	4,778	3,397
Mixed vegetables <u>3/</u>	"	6,804	7,845	6,491	6,799	3,364
Bananas	"	7,953	12,005	9,990	10,214	4,477
Pineapples	"	545	815	415	673	348
<u>FISH, MEAT AND BY-PRODUCTS</u>						
Fish: Coastal fishing (controlled catch)	"	1,042	936	938	916	471
High seas	"	1,208	1,064	1,183	666	...
Meat <u>4/</u> : Beef	"	2,257	2,193	1,892	1,069	...
Goat	"	214	160	144	137	...
Mutton	"	92	56	65	35	...
Pork	"	561	629	760	762	...
Cattle hides and skins	Number	16,888	16,894	14,585	8,968	...

1/Refers to crop year which normally extends from the beginning of April to the end of March.

2/Include margoze, calabash, chouchou, cucumber, patolle, pipengaille, pumpkin, squash, voehm.

3/Include beet, cabbage, carrot, cauliflower, chillies (long and small), garlic, leek, lettuce, onion, petsai, sweet pepper, ladies' finger (lalo)

4/From local and imported livestock.

Table 99- Industry : production of specific commodities

Commodity	Unit	1970	1971	1972	1973	Jan-June 1974
Sugar	M/ton	576,214	621,087	686,366	718,464	9,626
Molasses	"	142,427	140,158	176,489	184,842	...
Tea (manufactured)	"	3,258	4,089	4,678	4,079	2,396
Aloe fibre	"	1,534	1,976	1,556	1,461	...
Alcohol @ 100 G. L.	H/litre	12,006	13,478	16,920	17,883	3,692
Colonial spirits(run)	"	12,923	14,916	17,996	19,024	3,928
Denatured spirits:						
Power alcohol	"	2,863	2,923	3,431	2,933	540
Alcohol for heat- ing and lighting	"	2,329	2,445	2,471	2,767	1,537
Perfumed spirits	"	465	503	604	829	286
Vinegar	"	168	450	883	491	198
Beer and stout	"	44,036	53,793	66,831	72,483	40,751
Country liquor	"	33,963	43,215	50,449	52,873	26,733
Soft aerated beverages	"	98,800	110,900	137,300	214,000	...
Cigarettes	M/ton	590	634	674	755	416
Matches	Gross boxes	108,347	109,466	117,505	155,140	71,459
Lime	M/ton	6,000	6,000	6,000	6,500	...
Sacks ^{1/}	Thousand	2,403	2,599	1,761	1,251	...
Salt	M/ton	4,500	5,400
Electricity generated	Mn kwh	136	148	164	187	102

^{1/} manufactured by the Government Sack Factory.

Table 100 - Sugar industry: cane cultivation

Crop year	AREA UNDER CULTIVATION (Thousand arpents)			AREA HARVESTED (Thousand arpents)			CANES HARVESTED (Thousand m/tons)			AVERAGE YIELD (M/tons per arpent)		
	Millers	Planters	Total	Millers	Planters	Total	Millers	Planters	Total	Millers	Planters	Total
1969	110	95	205	99	89	188	3,564	2,260	5,824	36.1	25.2	30.9
1970	113	92	205	101	89	190	3,181	1,939	5,120	31.5	21.7	26.9
1971	114	91	205	102	87	189	3,433	1,822	5,255	33.7	20.8	27.8
1972	115	90	205	103	87	190	3,903	2,412	6,315	38.0	27.6	33.2
1973	116	91	207	104	88	192	3,854	2,389	6,243	37.2	27.0	32.5

Table 101 - Sugar manufacture

Crop year	Number of factories operating	Commercial sugar recovered (% cane)	PRODUCTS OF MANUFACTURE (Thousand m/tons)			RESIDUES OF MANUFACTURE (Thousand m/tons)			Average sugar price ex-syndicate (Rs per m/ton.)
			White sugar	Raw sugar	Total sugar	Molasses	Scums		
1969	22	11.48	23	646	669	166	194	445.27	
1970	21	11.26	22	554	576	142	166	471.69	
1971	21	11.82	34	587	621	140	169	522.64	
1972	21	10.89	55	631	686	176	196	641.43	
1973	21	11.48	56	662	718	185	200	738.00 ^{1/}	

Table 102 - Construction Statistics : Issues of permits for new buildings*

Type of Building	1970		1971		1972		1973	
	No. of permits issued	Floor area (Thousand sq. ft)	No. of permits issued	Floor area (Thousand sq. ft)	No. of permits issued	Floor area (Thousand sq. ft)	No. of permits issued	Floor area (Thousand sq. ft)
<u>Residential</u>	<u>1,525</u>	<u>1,308</u>	<u>1,685</u>	<u>1,710</u>	<u>2,006</u>	<u>2,201</u>	<u>2,623</u>	<u>2,673</u>
<u>Non-residential</u>	<u>209</u>	<u>459</u>	<u>183</u>	<u>580</u>	<u>197</u>	<u>519</u>	<u>332</u>	<u>905</u>
Agriculture, forestry, hunting & fishing	5	2	1	1	-	-	18	45
Manufacturing	40	143	36	259	29	225	64	391
Construction	5	11	-	-	1	3	3	22
Electricity, gas, water and sanitary services	-	-	2	16	1	1	6	6
Transportation, storage & Communication	8	12	11	37	17	26	4	6
Wholesale and retail trade	93	126	79	100	56	113	147	204
Banking, insurance and real estate	1	5	1	2	3	5	3	15
Services	57	160	53	165	90	146	87	216
All buildings	1,734	1,767	1,868	2,290	2,203	2,720	2,955	3,578

* Include only buildings for which permits have been issued by the Ministry of Works & Municipalities

Table 103 - Electricity ^{1/}: production, consumption, sales, etc.

	Unit	1970	1971	1972	1973
Generating stations	Number	<u>8</u>	<u>9</u>	<u>9</u>	<u>9</u>
Hydro	"	6	7	7	7
Thermal	"	2	2	2	2
Plant - effective capacity	Kw	<u>43,090</u>	<u>52,090</u>	<u>50,590</u>	<u>56,390</u>
Hydro	"	15,090	25,090	25,090	24,890
Thermal	"	28,000	27,000	25,500	31,500
Energy generated	Million Kwh	<u>113.7</u>	<u>123.6</u>	<u>140.9</u>	<u>163.1</u>
Hydro	"	50.9	50.3	68.1	74.0
Thermal	"	62.8	73.3	72.8	89.1
Energy purchased from sugar and other factories	"	22.3	24.7	23.4	23.7
Energy sold	"	109.1	120.5	135.2	153.2
Number of consumers on 31st December:	Number	<u>93,910</u>	<u>97,385</u>	<u>103,021</u>	<u>109,969</u>
Domestic	"	82,762	85,948	91,092	97,497
Commercial	"	9,520	9,736	10,044	10,356
Industrial	"	1,458	1,516	1,688	1,899
Special	"	170	185	197	217
Average selling price	Cents per Kwh	21.6	21.1	21.0	20.7
Total revenue	Rs mn	24.8	26.8	<u>29.7</u>	33.5
Total current expenditure	" "	22.7	25.2	26.9	33.8
Persons employed	Number	1,260	1,283	1,323	1,394

^{1/} Statistical data relating to the Central Electricity Board

XIII. CLIMATE

Table 104 Monthly temperatures, 1973/74

Degrees Centigrade

Period	VACOAS Centre - 1,394 ft. A.M.S.L. $\frac{1}{2}$				PLAISANCE Coastal Region, South - 188 ft. A.M.S.L. $\frac{1}{2}$			
	Maximum		Minimum		Maximum		Minimum	
	Mean	Departure from normal	Mean	Departure from normal	Mean	Departure from normal	Mean	Departure from normal
1973 : July	22.1	+0.5	15.5	+0.3	24.1	+0.3	18.3	+0.8
August	21.1	0.0	15.1	+0.5	23.5	+0.1	17.9	+0.7
September	22.7	+0.4	15.2	0.0	24.5	+0.2	17.3	-0.2
October	24.4	+0.8	16.4	+0.4	26.1	+0.5	18.6	+0.2
November	26.7	+1.2	17.7	+0.1	28.6	+1.3	19.7	-0.2
December	27.2	+0.5	18.9	-0.5	29.6	+1.0	21.0	-0.5
1974 : January	26.4	-0.7	19.2	-0.9	29.3	+0.3	22.0	-0.5
February	26.4	-1.4	19.7	-1.0	28.3	-1.2	22.0	-0.7
March	26.4	-0.9	19.7	-0.8	28.3	-0.7	21.8	-0.7
April	25.7	-0.6	18.3	-1.0	27.7	-0.2	20.7	-0.4
May	24.3	+0.2	16.4	-0.8	26.3	+0.2	18.3	-1.1
June	22.6	-0.1	14.6	-1.1	24.6	-0.3	16.7	-1.2

$\frac{1}{2}$ above mean sea level

Table 105- Monthly rainfall for the sugar cane districts, 1973/74

Period	Millimetres											
	WEST		NORTH		EAST		SOUTH		CENTRE		ALL DISTRICTS	
	Amount	Difference from normal	Amount	Difference from normal	Amount	Difference from normal	Amount	Difference from normal	Amount	Difference from normal	Amount	Difference from normal
1973: July	15	- 12	81	+ 10	120	- 50	148	+ 2	110	- 25	114	- 12
August	12	- 5	75	+ 15	152	+ 23	151	+ 36	185	+ 75	135	+ 35
September	61	+ 41	50	- 2	65	- 47	59	- 35	71	- 26	59	- 27
October	6	- 22	30	- 9	35	- 52	32	- 44	25	- 47	30	- 37
November	0	- 61	13	- 62	17	- 104	13	-106	14	- 94	14	- 90
December	89	- 47	81	- 40	104	- 115	86	-112	104	- 81	92	- 85
1974: January	97	- 92	188	+ 12	247	- 65	208	- 92	235	- 98	213	- 62
February	162	- 35	162	- 52	223	- 117	216	- 85	261	- 79	212	- 80
March	83	- 182	160	- 99	333	- 96	294	- 82	272	- 93	257	- 94
April	32	- 84	68	- 107	69	- 242	66	-234	99	- 140	73	- 179
May	32	- 23	61	- 60	127	- 79	135	- 51	129	- 18	111	- 50
June	91	+ 53	90	+ 2	116	- 78	102	- 52	129	- 10	107	- 31

