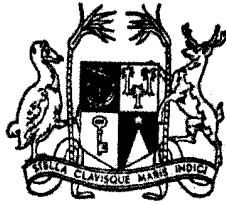


J. AH KONG.

Vol. 6

No. 1



MAURITIUS

CENTRAL STATISTICAL OFFICE

Ministry of Economic Planning and Development

**BI-ANNUAL
DIGEST OF STATISTICS**

June 1971

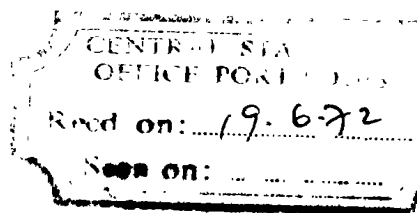
[Price : Rs 5.00]

BI-ANNUAL DIGEST OF STATISTICS



Vol. 6 No. 1

June 1971



The Bi-annual Digest of Statistics is a publication of the Central Statistical Office.

It is designed to present in a concise and readily accessible form the more important statistical series available on the demographic, economic and social characteristics of Mauritius.

Some of the figures in this digest are provisional and liable to revision in later issues.

Where necessary, figures have been rounded off to the nearest final digit, and in some tables there may be discrepancies between the sum of the constituent items and the total as shown.

The following symbols are used throughout : -

- Nil or negligible

... Not available

The assistance given by the Bank of Mauritius, all government departments and other bodies in providing data for publication in this issue is gratefully acknowledged.

J. AH KONG

Asst. Director of Statistics

Central Statistical Office,
Rose Hill,
Mauritius,
February 1972.

CONTENTS

	Page
I - <u>POPULATION AND VITAL STATISTICS</u>	
Table 1 - Estimated population of Mauritius as at 30th June 1971, based initially on the census enumeration of June 1962	1
2 - Population of Mauritius as enumerated at each census (1846-1962)	1
3 - Post-censal population estimates, 1962-71	2
4 - Comparison with other countries	2
5 - Estimated population of Mauritius by population group, sex and geographical district as at 30th June 1971	3
6 - Estimated age distribution of the population of Mauritius by sex as at 30th June 1971	4
7 - Estimated population of towns as at 30th June 1971	5
8 - External migration	5
9 - Passenger traffic, by country of embarkation or disembarkation and by mode of transport, January-June 1971	6
10 - Tourist arrivals and tourist nights by country of residence and by mode of transport, January-June 1971	7
11 - Population and vital statistics, Mauritius	8
12 - Live births and still births, Mauritius	9
13 - Infant deaths (deaths under 1 year of age) by sex and age, Mauritius	9
14 - Deaths by age and sex, Mauritius	10
15 - Population and vital statistics, Mauritius - quarterly	11
16 - Still births and infant deaths, Mauritius	12
17 - Expectation of life in years at selected ages	12
18 - Population and vital statistics - Rodrigues	13
II - <u>PUBLIC HEALTH</u>	
Table 19 - Health services, Mauritius	14
20 - Statistics of hospitals, Mauritius	15
21 - Notifiable, contagious or communicable diseases, Mauritius	16
22 - Cause of death, 1970 - Mauritius	17
III - <u>PUBLIC FINANCE AND BANKING</u>	
Table 23 - Central government revenue and expenditure	18
24 - Functional classification of central government recurrent revenue	18
25 - Functional classification of central government recurrent expenditure	19
26 - Functional classification of central government capital revenue	20
27 - Functional classification of central government capital expenditure	20
28 - Central government indebtedness	21
29 - Sinking funds held against the public debt	21
30 - Central government loan raisings	22

CONTENTS (Cont'd)

	Page
III - <u>PUBLIC FINANCE AND BANKING</u> (Cont'd)	
Table 31 - Outstanding loans and advances made from public funds	22
32 - Income tax - individuals	23
33 - " " - companies	24
34 - Sterling assets of Central Government, Bank of Mauritius and commercial banks	25
35 - Assets and liabilities of the Bank of Mauritius	26
36 - Banking statistics - assets of commercial banks	27
37 - " " - liabilities of commercial banks	28
38 - Analysis of bills discounted, loans and advances made by commercial banks	29
39 - Assets and liabilities of the Development Bank of Mauritius	30
40 - Post Office Savings Bank	30
41 - Assets and liabilities of the Mauritius Co-operative Central Bank Ltd.	31
42 - Money supply	31
43 - Assets and liabilities of the Mauritius Housing Corporation	32
44 - Bank and interest rates	32
45 - Foreign exchange rates	33
IV - <u>NATIONAL ACCOUNTS</u>	
Table 46 - Gross national product, by industrial origin	34
46 - " " " , per capita	34
47 - Distribution of the national income before providing for depreciation	35
48 - Expenditure on gross national product	36
49 - Composition of gross domestic fixed capital formation	37
50 - Balance of payments	38
V - <u>CONSUMER PRICE INDICES</u>	
Table 51 - Consumer price indices	39
VI - <u>EXTERNAL TRADE</u>	
Table 52 - Balance of visible trade	40
53 - Quantum and price indices of exports and imports and the terms of trade	40
54 - Quantum and price indices of imports, by section	41
55 - Exports : quantities and values	42
56 - Total exports : principal countries of destination - values	43
57 - Imports : values by S.I.T.C. sections	44
58 - " : selected commodities - values	45
59 - " : selected commodities - quantities	46
60 - " : main sources of supply - values	47
61 - Imports of fertilizers	48

CONTENTS (Cont'd)

	Page
VII - <u>EMPLOYMENT AND WAGES</u>	
Table 62 - Employment by major industrial groups	49
63 - Employment by sex and age group	50
64 - Employment in specified sectors : sugar industry	51
65 - " " " " : government services	51
66 - " " " " : manufacturing industries	52
67 - Indicators of unemployment	53
68 - Daily wage rates in certain industries	54
69 - Daily wage rates of manual workers employed by the central government	54
70 - Employment and wages of certain categories of employees on sugar millers' estates	55
71 - Employment and earnings on sugar millers' estates	56
VIII - <u>SOCIAL ASSISTANCE</u>	
Table 72 - Social benefits	57
IX - <u>EDUCATION</u>	
Table 73 - Education statistics - primary level	58
74 - " " - secondary level	59
75 - Enrolment by grade and sex in primary schools, Mauritius	60
76 - " " " " " " " " , Rodrigues	61
77 - " " " " " " secondary schools, Mauritius	62
78 - " " " " " " " " , Rodrigues	63
X - <u>TRANSPORT AND COMMUNICATION</u>	
Table 79 - Motor vehicles registered	64
80 - Bus operational statistics	65
81 - Road traffic accidents and casualties	65
82 - Sea borne shipping	66
83 - Civil aviation	66
84 - Telephone service	67
85 - Broadcasting services	67
XI - <u>LAND UTILIZATION</u>	
Table 86 - Total area classified by utilization	68
87 - Effective area under cultivation	68
XII - <u>LOCAL PRODUCTION</u>	
Table 88 - Agriculture : production of main crops, fish and meat	69
89 - Industry : production of specific commodities	70
90 - Sugar industry : cane cultivation	71
91 - " " : sugar manufacture	71
92 - Electricity : production, consumption, sales, etc.	72
XIII - <u>CLIMATE</u>	
Table 93 - Monthly temperatures, 1970-71	73
94 - Monthly rainfall for the sugar cane districts, 1970-71	74

I. POPULATION AND VITAL STATISTICS

Table 1 - Estimated population of Mauritius as at 30th June 1971 based initially on the census enumeration of June 1962

Population	30th June 1962 (census)			30th June 1971		
	Both sexes	Male	Female	Both sexes	Male	Female
Total	681,619	342,306	339,313	822,352	412,935	409,417
General	203,652	98,983	104,669	227,548	112,380	115,168
Hindu	344,587	174,693	169,889	433,172	218,521	214,651
Muslim	110,322	55,971	54,351	136,551	68,613	67,938
Chinese	23,058	12,654	10,404	25,081	13,421	11,660

Table 2 - Population of Mauritius as enumerated at each census (1846-1962)

Census year	Population enumerated at census			Intercensal increase	Average annual rate of increase %
	Both sexes	Male	Female		
1846	158,462	104,598	53,864		
1851	130,823	119,341	61,482	22,361	2.55
1861	310,050	202,961	107,089	129,227	5.87
1871	316,042	193,575	122,467	5,992	0.19
1881	359,874	208,655	151,219	43,832	1.31
1891	370,588	206,038	164,550	10,714	0.29
1901	371,023	199,552	171,471	435	0.01
1911	368,791	194,095	174,696	- 2,232	- 0.06
1921	376,485	194,108	182,377	7,694	0.21
1931	393,238	200,609	192,629	16,753	0.44
1944	419,185	210,326	208,859	25,947	0.49
1952	501,415	252,032	249,383	82,230	2.26
1962 ⁺	681,619	342,306	339,313	180,204	3.12

⁺ de facto population - including the European members of the Armed Forces but excluding the passengers and crews of ships lying in the harbour.

Table 3 - Post censal population estimates, Mauritius 1962-71

Period	Total population (31st December)			Increase during period		Mid-year population (30th June)
	Both sexes	Male	Female	Numerical	Percent	
1962	692,354	347,743	344,611			681,619
1963	713,371	358,385	354,986	21,017	3.04	701,422
1964	733,605	368,534	365,071	20,234	2.84	722,089
1965	751,421	377,245	374,176	17,816	2.43	741,036
1966	768,692	385,677	383,015	17,271	2.30	759,067
1967	782,044	392,283	389,761	13,352	1.74	773,573
1968	794,746	398,572	396,174	12,702	1.62	787,406
1969	807,027	404,814	402,213	12,281	1.55	798,684
1970	819,191	411,019	408,172	12,164	1.51	811,280
1971	-	-	-	-	-	822,352

Table 4 - Comparison with other countries

Continent & country	Average annual rate of increase 1963-69 (%)	Continent & country	Average annual rate of increase 1963-69 (%)
<u>AFRICA:</u>		<u>ASIA :</u>	
Mauritius	2.2	Ceylon	2.4
<u>AMERICA:</u>		India	2.5
Canada	1.8	Japan	1.1
Guyana	3.1	Pakistan	2.1
Trinidad and Tobago	2.0	Taiwan	2.9
Chile	2.4	<u>EUROPE:</u>	
<u>OCEANIA:</u>		Albania	2.8
Australia	2.0	France	0.9
New Zealand	1.6	United Kingdom	0.6

Table 5 - Estimated population of Mauritius by population group, sex and geographical district as at 30th June 1971

Geographical District	Total population		General population		Indo-Mauritian population				Chinese population						
	Both sexes	Male	Female	Both sexes	Hindu		Muslim		Both sexes	Male	Female				
					Male	Female	Both sexes	Male				Female			
Port Louis	141,124	70,380	70,744	49,515	24,262	25,253	37,347	10,794	10,553	41,363	20,721	20,662	12,579	6,505	6,276
Pamplemousses	56,862	33,538	33,324	9,969	4,366	5,102	46,204	23,279	22,925	10,031	5,011	4,937	659	349	310
Riv. du Rempart	67,255	34,075	33,132	9,922	4,360	5,032	48,210	24,529	23,711	8,510	4,284	4,226	513	300	213
Flacq	91,963	46,527	45,436	15,698	7,025	7,703	62,955	31,696	31,239	12,460	6,293	6,107	936	543	387
Grand Port	66,646	32,830	41,810	19,597	9,885	9,712	51,983	26,321	25,662	11,745	5,876	5,869	1,315	743	567
Savanne	56,707	28,705	28,002	11,258	5,755	5,505	34,245	17,214	17,091	10,403	5,270	5,133	801	466	335
Plaines Villages	245,491	122,515	122,976	96,659	46,890	49,209	108,467	54,706	53,761	53,983	17,116	16,867	6,982	3,813	3,139
Plots	45,647	22,913	22,734	6,662	3,361	3,301	30,716	15,415	15,301	7,641	3,789	3,852	628	348	280
Black River	22,663	11,354	11,209	8,799	4,416	4,353	13,055	6,567	6,468	455	220	235	374	221	153
ISLAND TOTAL	322,552	161,935	160,617	227,543	112,380	115,168	135,172	218,521	214,651	136,551	68,613	67,538	25,081	13,421	11,660
%	100.0			27.7			52.7			16.0			3.0		

*Based initially on the 1962 Population Census. No account has been taken of internal migration.

Table 6 - Estimated age distribution⁺ of the population of Mauritius as at 30th June 1971

Age group (years)	Male	Female	Both sexes	
			Number	% of total
0 - 4	53,000	51,400	104,400	12.7
5 - 9	60,850	59,800	120,650	14.7
10 - 14	54,250	53,000	107,250	13.0
15 - 19	49,000	48,300	97,300	11.8
20 - 24	41,800	41,150	82,950	10.1
25 - 29	26,650	26,500	53,150	6.5
30 - 34	21,700	21,950	43,650	5.3
35 - 39	19,300	19,250	38,550	4.7
40 - 44	19,350	18,650	38,000	4.6
45 - 49	19,350	18,050	37,400	4.5
50 - 54	14,400	13,350	27,750	3.4
55 - 59	12,400	11,400	23,800	2.9
60 - 64	8,400	8,500	16,900	2.0
65 - 69	6,050	6,950	13,000	1.6
70 - 74	3,750	5,300	9,050	1.1
75 - 79	1,800	3,650	5,450	0.7
80 - 84	700	1,700	2,400	0.3
85 and over	200	500	700	0.1
All Ages	412,950	409,400	822,350	100.0
<u>Totals</u>				
Under 15	163,100	164,200	332,300	40.4
Under 21	227,375	222,610	449,985	54.7
21 and over	185,575	186,790	372,365	45.3
60 and over	20,900	26,600	47,500	5.8

⁺Based initially on the smoothed age distribution at the census of June 1962 corrected for under-enumeration of young children and pro-rated to official population estimates.

Table 7 - Estimated population⁺ of towns as at 30th June, 1971

Town	Population
Port Louis	141,125
Beau-Bassin-Rose Hill	71,945
Quatre Bornes	45,980
Vacoas-Phoenix	49,555
Curepipe	52,440

⁺based initially on 1962 Population Census. No account has been taken of internal migration.

Table 8 - External migration[#]

Period	Arrivals			Departures			Net migration
	Total	By sea	By air	Total	By sea	By air	
1962	15,189	4,258	10,931	16,075	4,374	11,701	- 886
1963	18,047	4,660	13,387	18,299	4,432	13,867	- 252
1964	21,221	5,187	16,034	22,331	5,478	16,853	- 1,110
1965	22,024	4,886	17,138	24,150	5,463	18,687	- 2,126
1966	26,456	5,544	20,912	29,301	6,330	22,971	- 2,845
1967	29,321	4,901	24,420	32,925	6,515	26,410	- 3,604
1968	31,403	4,264	27,139	35,988	5,967	30,021	- 4,585
1969	35,919	3,483	32,436	38,929	4,632	34,297	- 3,010
1970	48,819	3,984	44,835	51,969	4,376	47,593	- 3,150
1970 : 1st Qr.	10,655	840	9,815	12,729	1,012	11,717	- 2,074
2nd Qr.	9,584	620	8,964	11,041	1,010	10,031	- 1,457
3rd Qr.	14,852	1,150	13,702	15,832	973	14,859	- 980
4th Qr.	13,728	1,374	12,354	12,367	1,381	10,986	+ 1,361
1971 : 1st Qr.	13,287	966	12,321	15,941	1,177	14,764	- 2,654
2nd Qr.	12,902	1,084	11,818	14,065	868	13,197	- 1,163

[#]Includes : (a) The very small figure of engaged or discharged seamen;
 (b) Emigrants to and immigrants from the dependencies; and
 (c) Movement of military personnel as from the 1962 Population Census.

Tourist Arrivals 1971

Jan - Jun 1971 (final) 15,600

Jul - Dec 1971 (approx.) 21,800

37,400

35,000

Table 9 - Passenger traffic⁺ by country of embarkation or disembarkation and by mode of transport, January-June 1971

Country of embarkation or disembarkation	Arrivals			Departures		
	Sea	Air	Total	Sea	Air	Total
Kenya	4	690	694	3	1,059	1,062
Malagasy Republic	31	1,409	1,440	25	1,268	1,293
Malawi	-	163	163	-	266	266
Reunion	193	11,302	11,495	187	12,615	12,802
Rhodesia	-	64	64	-	103	103
Seychelles	58	6	64	77	11	88
South Africa	35	2,766	2,801	18	3,254	3,272
Tanzania	-	205	205	-	296	296
Zambia	-	659	659	-	863	863
Rodrigues	834	-	834	704	-	704
Other dependencies of Mauritius	205	-	205	210	-	210
Other countries in Africa	4	149	153	2	327	329
U.S.S.R.	80	49	129	2	86	88
Hong Kong	12	81	93	-	96	96
India	12	1,203	1,215	1	1,048	1,049
Japan	17	14	31	7	26	33
Singapore	5	9	14	-	10	10
Other countries in Asia	3	157	160	3	164	167
Australia	35	1,654	1,689	285	1,184	1,469
New Zealand	-	132	132	2	37	39
Other countries in Oceania	-	98	98	-	76	76
Belgium	-	79	79	-	60	60
France	9	718	727	10	1,019	1,029
Germany	3	286	289	5	361	366
Italy	-	92	92	2	114	116
Switzerland	-	40	40	-	73	73
United Kingdom	18	1,870	1,888	13	3,129	3,142
Other countries in Europe	14	100	114	9	193	202
Canada	1	35	36	2	65	67
U.S.A.	65	106	171	28	150	178
Other countries in America	-	3	3	-	8	8
Total	1,638	24,139	25,777	1,595	27,961	29,556

⁺ Excluding transit passengers, 412 discharged seamen and 450 engaged seamen.

Table 10 - Tourist arrivals and tourist nights by country of residence and by mode of transport, January-June 1971

Country of residence	A R R I V A L S			Tourist nights
	Sea	Air	Total	
Kenya	2	295	297	2,676
Malagasy Republic	4	881	885	9,057
Malawi	-	29	29	480
Reunion	11	6,602	6,613	88,190
Rhodesia	-	80	80	866
Seychelles	8	34	42	636
South Africa	6	2,141	2,147	21,374
Tanzania	-	83	83	858
Zambia	-	485	485	5,453
Other countries in Africa	3	213	216	1,561
U.S.S.R.	-	4	4	190
China	-	5	5	11
Hong Kong	9	26	35	651
India	6	272	278	4,958
Japan	4	37	41	550
Singapore	1	12	13	121
Other countries in Asia	2	87	89	872
Australia	5	722	727	6,006
New Zealand	-	152	152	887
Other countries in Oceania	-	74	74	368
France	2	939	941	7,464
Germany	4	382	386	4,875
Italy	2	148	150	1,797
Switzerland	-	71	71	747
United Kingdom	2	994	996	13,084
Other countries in Europe	4	291	295	3,343
Canada	-	81	81	588
U.S.A.	1	326	327	2,085
Other countries in America	-	26	26	236
TOTAL	76	15,492	15,568	179,984

Table 11 - Population and vital statistics - Mauritius

Year	Estimated mid-year population (30th June)	Numbers				Rates per 1000 of the mid-year population			
		Marriages ⁺	Births	Deaths	Natural increase	Marriage rate ⁺	Crude birth rate	Crude death rate	Rate of natural increase
1944-48 Average	424,219	3,228	17,788	11,672	6,116	15.2	41.9	27.5	14.4
1949-53 "	483,859	3,552	22,913	7,358	15,555	14.7	47.4	15.2	32.2
1954-58 "	574,938	3,008	23,936	7,401	16,535	10.5	41.6	12.9	28.7
1959-63 "	662,368	3,452	25,913	6,708	19,205	10.4	39.1	10.1	29.0
1964-68 "	759,067	4,004	25,707	6,578	19,129	10.5	33.9	8.7	25.2
1959	627,249	3,297	23,923	6,753	17,170	10.5	38.1	10.8	27.3
1960	644,743	3,113	25,307	7,248	18,059	9.7	39.3	11.2	28.1
1961	662,368	3,484	26,092	6,505	19,587	10.5	39.4	9.8	29.6
1962	681,619	3,893	26,267	6,325	19,942	11.4	38.5	9.3	29.2
1963	701,422	3,472	27,978	6,709	21,269	9.9	39.9	9.6	30.3
1964	722,089	3,965	27,528	6,184	21,344	11.0	38.1	8.6	29.5
1965	741,036	3,976	26,279	6,337	19,942	10.7	35.5	8.6	26.9
1966	759,067	4,157	26,817	6,701	20,116	11.0	35.3	8.8	26.5
1967	773,573	3,949	23,499	6,543	16,956	10.2	30.4	8.5	21.9
1968	787,406	3,974	24,413	7,126	17,287	10.1	31.0	9.0	22.0
1969	798,684	3,882	21,719	6,428	15,291	9.7	27.2	8.0	19.2
1970	811,280	4,499	21,623	6,309	15,314	11.1	26.7	7.8	18.9

⁺ Civil marriages only.

Note : Revision of population estimates from 1953 based on data obtained from the 1962 Population Census.

Table 12 - Live births and still births, Mauritius

Year	Numbers			Rates	
	Live births	Still births	Infant deaths	Still birth rate ⁺	Infantile mortality rate ⁺⁺
1944-48 Average	17,788	1,154	2,745	60.9	154.3
1949-53 "	22,913	1,464	1,945	60.1	84.9
1954-58 "	23,936	1,622	1,704	63.5	71.2
1959-63 "	25,913	1,773	1,622	64.0	62.6
1964-68 "	25,707	1,347	1,662	49.8	64.7
1959	23,923	1,759	1,495	68.5	62.5
1960	25,307	1,783	1,760	65.8	69.5
1961	26,092	1,963	1,618	70.0	62.0
1962	26,267	1,841	1,579	65.5	60.1
1963	27,978	1,519	1,660	51.5	59.3
1964	27,528	1,611	1,561	55.3	56.7
1965	26,279	1,557	1,685	55.9	64.1
1966	26,817	1,384	1,721	49.1	64.2
1967	23,499	1,074	1,656	43.7	70.5
1968	24,413	1,110	1,688	43.5	69.1
1969	21,719	951	1,528	41.9	70.4
1970	21,623	857	1,232	38.1	57.0

⁺ still births per 1000 total births (live births and still births)

⁺⁺ deaths of children under 1 year of age per 1000 live births

Table 13 - Infant deaths (deaths under 1 year of age) by age and sex, Mauritius

Age	1969			1970			Jan.-June 1971		
	Both sexes	Male	Female	Both sexes	Male	Female	Both sexes	Male	Female
Total infant deaths	1,528	347	681	1,232	706	526	524	282	242
Under 1 day	202	122	80	175	106	69	79	46	33
1 - 6 days	298	181	117	284	176	108	123	70	53
7 -27 "	178	96	82	183	103	80	73	36	37
28 days-under 2 months	98	59	39	59	29	30	35	15	20
2 - 3 months	183	91	92	112	61	51	61	27	34
4 - 5 "	165	84	81	126	72	54	53	34	19
6 - 7 "	164	96	68	128	69	59	44	24	20
8 - 9 "	131	67	64	93	60	33	38	19	19
10 - 11 "	109	51	58	72	30	42	18	11	7

Table 14 - Deaths by age and sex, Mauritius

Age group	1969			1970			January-June 1971		
	Both sexes	Male	Female	Both sexes	Male	Female	Both sexes	Male	Female
	Total deaths	6,428	3,361	3,067	6,309	3,444	2,865	3,012	1,624
0	2,262	1,212	1,050	1,734	946	788	741	384	357
5	160	79	81	113	57	56	60	28	32
10	88	38	50	77	41	36	48	26	22
15	106	56	50	80	46	34	47	22	25
20	119	49	70	110	57	53	50	19	31
25	98	41	57	95	39	56	59	31	28
30	117	54	63	108	43	65	52	18	34
35	133	70	63	131	60	71	70	38	32
40	177	99	78	208	121	87	85	49	36
45	232	134	98	271	169	102	134	94	40
50	288	175	113	289	185	104	161	109	52
55	371	226	145	414	280	134	221	140	81
60	441	268	173	500	321	179	259	179	80
65	477	281	196	571	341	230	256	156	100
70	489	263	226	604	344	260	298	154	144
75	378	167	211	446	213	233	222	102	120
80	267	91	176	326	125	201	137	48	89
85 and over	225	58	167	231	55	176	112	27	85
Unknown	-	-	-	1	1	-	-	-	-

Table 15 - Population and vital statistics, Mauritius - quarterly

Period	Marriages [#]	Live births			Deaths			Natural increase	Net overseas migration	Total increase	Estimated population at the end of the period
		Both sexes		Female	Both sexes		Male				
		Male	Female	Male	Female						
1965	3,976	26,279	13,287	12,992	6,337	3,388	2,949	19,942	- 2,126	17,816	751,421
1966	4,157	26,817	13,554	13,263	6,701	3,550	3,151	20,116	- 2,845	17,271	768,692
1967	3,949	23,499	12,061	11,438	6,543	3,497	3,046	16,956	- 3,604	13,352	782,044
1968	3,974	24,413	12,394	12,019	7,126	3,744	3,382	17,287	- 4,585	12,702	794,746
1969	3,332	21,719	11,182	10,537	6,428	3,361	3,067	15,291	- 3,010	12,281	807,027
1970	4,499	21,623	11,091	10,532	6,309	3,444	2,965	15,314	- 3,150	12,164	819,191
1970 : 1st Qr.	1,280	5,800	2,972	2,834	1,804	990	814	4,002	- 2,074	1,928	808,955
2nd Qr.	1,070	5,206	2,650	2,556	1,724	763	661	3,782	- 1,457	2,325	811,280
3rd Qr.	1,079	5,533	2,866	2,667	1,610	882	728	3,923	- 980	2,943	814,223
4th Qr.	1,061	5,078	2,603	2,475	1,471	809	662	3,607	+ 1,361	4,968	819,101
1971 : 1st Qr.	902	4,320	2,505	2,415	1,405	743	662	3,515	- 2,654	861	820,052
2nd Qr.	1,108	5,070	2,595	2,475	1,607	881	726	3,463	- 1,163	2,300	822,352

[#] civil marriages only.

Table 16 - Still births and infant deaths, Mauritius

Period	Still births	Infant deaths		
		Both sexes	Male	Female
1965	1,557	1,685	943	742
1966	1,384	1,721	943	778
1967	1,074	1,656	947	709
1968	1,110	1,688	935	753
1969	951	1,523	847	681
1970	857	1,232	706	526
1970 : 1st Qr.	220	417	239	178
2nd Qr.	208	296	169	127
3rd Qr.	226	273	165	108
4th Qr.	203	246	133	113
1971 : 1st Qr.	200	249	143	106
2nd Qr.	216	275	139	136

Table 17 - Expectation of life in years at selected ages

Exact age (years)	Males			Females		
	1942-46 ⁺	1951-53 ⁺	1961-63	1942-46 ⁺	1951-53 ⁺	1961-63
0	32.8	49.8	58.7	33.8	52.3	61.9
10	35.8	49.2	55.1	37.3	52.2	58.1
20	28.1	40.1	45.7	30.2	43.7	48.9
30	22.3	31.6	36.6	26.1	36.2	40.3
40	16.7	23.6	27.7	21.2	23.7	31.9
50	11.9	16.7	19.6	15.7	21.2	23.5
60	8.1	11.2	13.2	10.6	14.6	15.8
70	5.6	6.7	8.5	7.1	9.1	9.7
80	4.0	4.3	4.8	4.6	5.3	5.4

⁺Excluding Chinese.

Source : Mauritius Life Tables.

Table 10 - Population and vital statistics - Rodrigues

Period	Estimated mid-year population (30th June)		N u m b e r s			R a t e s +				Estimated population as at 31st December	
	1962	1963	Marriages	Births	Deaths	Natural increase	Marriage rate	Crude birth rate	Crude death rate		Rate of natural increase
1962	18,335	18,754	145	695	160	735	15.0	48.3	3.7	40.1	18,674
1963	18,754	19,199	171	881	203	679	13.2	47.0	10.3	36.2	18,912
1964	19,199	19,663	161	1,032	237	845	16.8	56.4	12.4	44.0	19,507
1965	19,663	20,309	127	916	300	616	12.9	46.6	15.3	31.3	19,934
1966	20,309	20,557	132	1,014	243	771	13.0	49.2	12.0	37.9	20,613
1967	20,557	22,057	156	972	207	765	14.9	46.3	9.9	36.4	21,595
1968	22,057	22,659	145	996	256	740	13.1	45.2	11.6	33.6	22,391
1969	22,659	23,650	173	902	305	597	15.3	39.8	13.5	26.3	23,064
1970	23,650		152	1,143	211	932	12.3	48.3	8.9	39.4	23,372

+ per 1000 of the mid-year population

II. PUBLIC HEALTH

Table 19 - Health Services, Mauritius

	1968	1969	1970
<u>Hospitals</u>			
General hospitals	8	8	8
Special hospitals (mental diseases, leprosy and tuberculosis)	3	3	3
Private hospitals on sugar estates	24	24	22
<u>Dispensaries</u>			
Public dispensaries and out- patients' departments of hospitals	56	56	57
Private dispensaries on sugar estates	24	24	22
Mobile dispensaries	5	5	5
<u>Clinics</u>			
Private	5	5	7
Public mobile ante-natal	1	1	1
Public mobile dental	4	4	2
<u>Maternity and Child Health Centres</u>	39	41	43
<u>Doctors</u>			
Government Service :			
Specialists*	34	36	41
General practice	97	98	140 [Ⓢ]
Private Service :			
Registered medical practitioners	70	67	71
<u>Dentists</u>			
Government Service	8	7	6
Private	21	15	19
<u>Trained Nurses</u>	720	725	832
<u>Midwives</u>	160	157	150
<u>Pharmacists</u>			
Attached to hospitals	3	4	4
Private	48	46	45

* included in figures for general practice

Ⓢ including 25 temporary Medical Officers

Table 20 - Statistics of hospitals - Mauritius

Period	No. of beds	Patients in hospitals on first day of period	Total admissions	Deaths	Discharges	Patients remaining on last day of period
1962	2,453	1,751	38,130	1,628	36,480	1,773
1963	2,453	1,773	45,717	1,959	43,686	1,845
1964	2,481	1,845	49,080	1,887	47,233	1,805
1965	2,514	1,805	51,445	1,955	49,356	1,939
1966	2,514	1,939	51,258	1,983	49,575	1,639
1967	2,578	1,723	54,982	2,255	52,734	1,716
1968	2,543	1,716	60,055	2,361	57,447	1,963
1969	2,561	1,963	59,421	1,997	57,452	1,935
1970	2,633	1,935	60,941	2,064	58,926	1,886
1970 : 1st Qr.	2,633	1,935	15,825	614	14,816	2,330
2nd Qr.	2,633	2,330	15,287	456	14,782	2,379
3rd Qr.	2,633	2,379	15,586	531	15,132	2,302
4th Qr.	2,633	2,302	14,342	468	14,290	1,886
1971 : 1st Qr.	2,712	1,886	15,120	475	14,164	2,367
2nd Qr.	2,712	2,367	16,099	569	15,642	2,255

Note : Pointe aux Canoniers' Tuberculosis Hospital included as from 1967.

Table 21 - Notifiable, contagious or communicable diseases - Mauritius

Period	Enteric fever	Diphtheria	Acute poliomyelitis	Puerperal fever	Erysipelas	Tuberculosis	Leprosy	Murine typhus
1962	81	151	1	-	-	300	1	3
1963	89	145	3	2	2	429	4	3
1964	64	206	-	6	-	472	-	1
1965	77	78	-	-	-	366	-	-
1966	54	75	5	1	-	585	2	-
1967	91	37	6	1	-	553	5	-
1968	32	44	-	2	2	499	1	-
1969	9	8	-	-	-	393	-	-
1970	45	8	-	3	-	436	1	-
1970 : 1st Qr.	9	-	-	3	-	85	1	-
2nd Qr.	15	1	-	-	-	122	-	-
3rd Qr.	14	2	-	-	-	121	-	-
4th Qr.	9	5	-	-	-	108	-	-
1971 : 1st Qr.	9	2	-	-	-	89	-	-
2nd Qr.	5	9	-	-	-	59	-	-

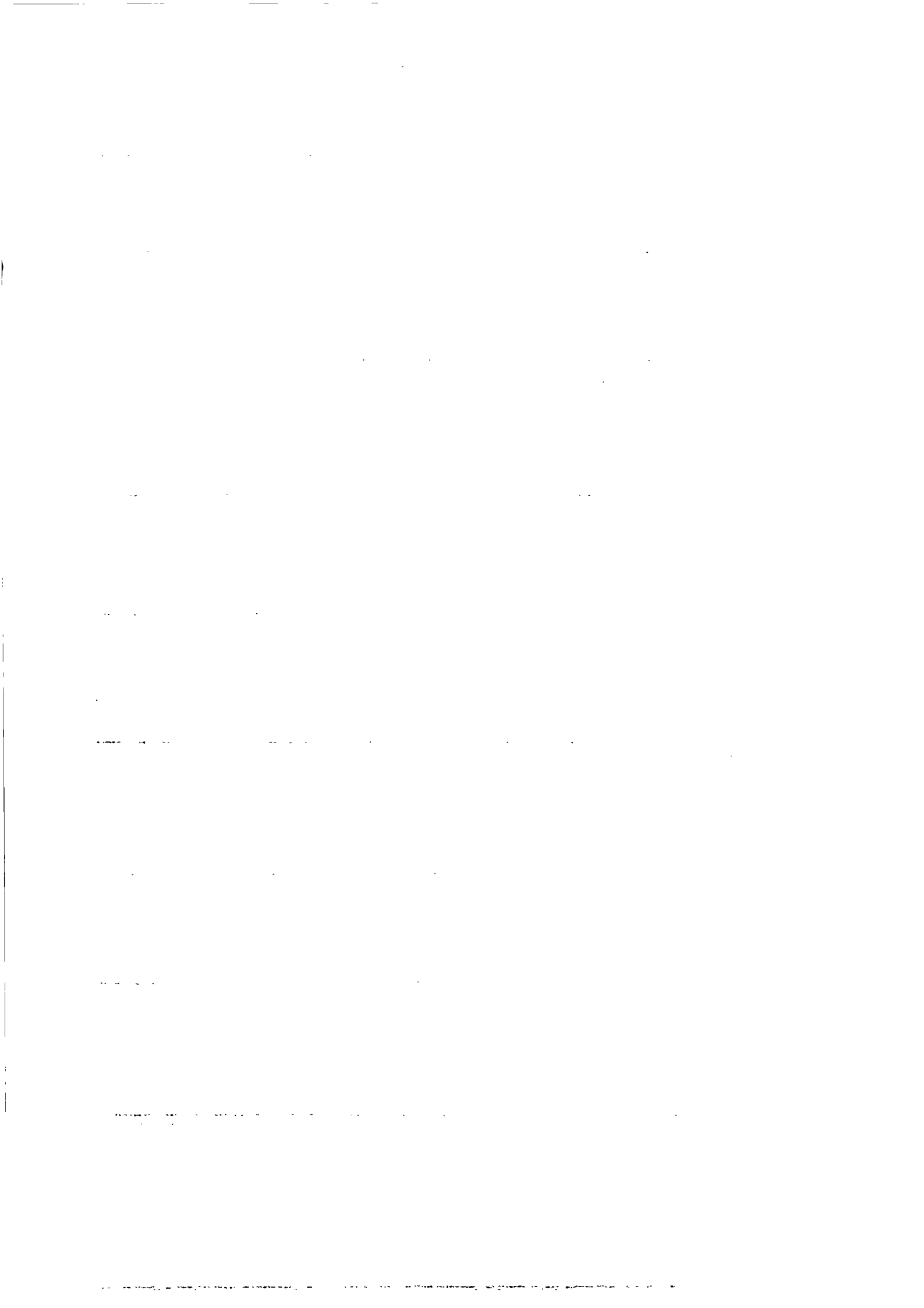


Table 22 - Cause of death, 1970 - Mauritius

Section +	CAUSE OF DEATH	D E A T H S						Death rate per 100,000 of population	
		Under 1 year		1 to under 5 years		ALL AGES			% of total deaths
		Both sexes	Male	Both sexes	Female	Both sexes	of population		
I	Infective and parasitic diseases	391	463	213	393	856	13.6	105.5	
II	Neoplasms	1	185	2	166	351	5.6	43.2	
III	Endocrine, nutritional and metabolic diseases	22	68	26	90	158	2.5	19.5	
IV	Diseases of the blood and blood forming organs	9	63	6	100	163	2.6	20.1	
V	Mental disorders	-	2	-	1	3	0.0	0.4	
VI	Diseases of the nervous system and sense organs	13	56	8	33	89	1.4	11.0	
VII	Diseases of the circulatory system	5	955	5	651	1,506	23.9	185.6	
VIII	Diseases of the respiratory system	202	549	134	456	1,005	15.9	123.8	
IX	Diseases of the digestive system	9	112	7	61	173	2.8	21.3	
X	Diseases of the genito-urinary system	-	42	-	20	62	1.0	7.6	
XI	Complications of pregnancy, childbirth, and the puerperium	-	-	-	37	37	0.6	4.6	
XII	Diseases of the skin and subcutaneous tissue	2	6	1	2	8	0.1	1.0	
XIII	Diseases of musculoskeletal system and connective tissue	-	9	-	6	15	0.2	1.8	
XIV	Congenital anomalies	18	13	2	12	55	0.4	3.1	
XV	Certain causes of perinatal morbidity and mortality	399	235	1	163	398	6.3	49.1	
XVI	Symptoms and ill-defined conditions	160	593	66	575	1,168	18.5	144.0	
XVII	Accidents, poisoning, and violence	2	193	27	99	292	4.6	36.0	
	All causes	1,232	3,414	498	2,865	6,309	100.0	777.6	

+ International Classification, 1965

III. PUBLIC FINANCE AND BANKING

Table 23 - Central government revenue and expenditure

Rs million

Financial year	Revenue [⊙]			Expenditure [⊙]			Surplus (+) Deficit (-)
	Recurrent	Capital	Total	Recurrent	Capital	Total	
1967-68	232.4	60.4	292.8	232.3	65.1	297.4	- 4.6
1968-69	242.6	20.6	263.2	241.6	3.4	235.0	- 21.8
1969-70	228.0	66.0	294.0	227.3	57.2	284.5	+ 9.5
1970-71	259.7	95.2	354.9	250.5	84.4	334.9	+ 20.0
1971-72 ⁺	262.7	134.9	397.6	260.8	155.2	416.0	- 18.4

[⊙]including tax reserve certificates

⁺ estimates

Table 24 - Functional classification of central government recurrent revenue

Rs million

	1968-69	1969-70	1970-71	1971-72 ⁺
<u>Taxes on Income and Capital</u>	<u>49.4</u>	<u>43.1</u>	<u>51.7</u>	<u>53.0</u>
Income Tax :				
Individuals	26.7	24.8	28.9	28.8
Companies	17.6	14.3	23.2	21.2
Development contribution	1.0	0.8	-	-
Contribution to Widows' Fund	2.2	1.6	1.8	1.6
Succession duties	1.9	1.6	1.4	1.4
<u>Taxes on Financial Transactions</u>	<u>8.9</u>	<u>8.7</u>	<u>3.1</u>	<u>8.0</u>
<u>Taxes on Gambling</u>	<u>3.2</u>	<u>3.3</u>	<u>3.3</u>	<u>3.5</u>
<u>Taxes on Consumption and Production</u>	<u>123.3</u>	<u>125.7</u>	<u>139.3</u>	<u>143.4</u>
Import duties	64.1	63.8	73.8	76.5
Export duties	14.6	16.8	18.7	20.5
Excise duties	30.4	30.8	32.6	32.0
Business and professional licences	6.7	6.1	6.3	6.5
Taxes on transportation	7.5	7.7	7.9	7.9
<u>Provision of Goods and Services</u>	<u>28.0</u>	<u>29.4</u>	<u>32.3</u>	<u>33.8</u>
Rental of government property	2.1	2.2	2.3	2.2
Telephone service	4.0	4.2	4.6	4.8
Marine services	6.7	6.9	6.4	7.0
Posts and telegraphs	4.7	4.6	4.6	5.3
Water and irrigation	3.0	2.8	3.0	3.0
Agriculture and forests	2.0	2.0	1.9	1.8
Other goods and services	5.5	6.7	9.5	9.7
<u>Interests, Profits and Dividends</u>	<u>8.6</u>	<u>12.3</u>	<u>16.0</u>	<u>15.4</u>
<u>Grants from British Government</u>	<u>1.4</u>	<u>0.6</u>	<u>0.7</u>	<u>0.6</u>
<u>Other Recurrent Revenue</u>	<u>19.8</u>	<u>5.1</u>	<u>4.7</u>	<u>5.0</u>
Total	242.6	223.0	259.7	262.7

⁺ estimates

Table 25 - Functional classification of central government recurrent expenditure

Rs million

	1968-69	1969-70	1970-71	1971-72*
<u>General Services</u>	<u>23.2</u>	<u>30.5</u>	<u>30.0</u>	<u>30.7</u>
General administration	1.5	1.6	1.5	2.7
Legislature	0.0	0.8	0.8	0.8
Maintenance of law and order :				
Justice and Attorney General	1.8	1.9	2.0	2.3
Police and defence	12.0	15.5	14.9	10.2
Prisons	1.8	1.8	2.0	2.2
Revenue collection and financial control	5.2	5.2	5.9	7.2
Other general services	6.1	5.7	8.6	8.3
<u>Community Services</u>	<u>16.7</u>	<u>16.9</u>	<u>17.6</u>	<u>16.8</u>
Maintenance of roads and public buildings	7.7	7.8	0.0	6.6
Domestic water supplies	3.9	3.9	4.0	3.6
Sanitation and sewerage	3.0	3.1	3.3	3.9
Other community services	2.1	2.1	2.3	2.7
<u>Social Services</u>	<u>91.2</u>	<u>85.1</u>	<u>93.4</u>	<u>100.9</u>
Education	29.8	32.0	35.9	39.9
Health (excluding sanitation)	18.8	21.5	24.1	28.1
Social security :				
Family allowances	6.2	5.5	5.6	5.6
Outdoor relief	8.5	6.6	8.9	8.0
Old age pensions	11.3	11.6	12.0	11.9
Housing	1.5	1.5	2.4	2.0
Other social services	15.3	4.4	4.5	4.8
<u>Economic Services</u>	<u>18.9</u>	<u>19.9</u>	<u>21.8</u>	<u>24.5</u>
Agriculture and forests	6.5	7.0	7.9	9.1
Civil aviation and marine services	2.8	3.3	3.4	4.1
Posts, telegraphs & telecommunications	5.0	5.6	6.3	6.8
Other economic services	3.8	4.0	4.2	4.5
<u>Unallocable Expenditure</u>	<u>85.6</u>	<u>74.9</u>	<u>81.7</u>	<u>78.9</u>
Transfer to local authorities	5.8	6.2	6.9	6.7
Recurrent financial obligations :				
Public debt :				
Interest	17.7	16.0	17.4	19.5
Redemptions	18.3	6.2	7.4	4.6
Sinking Fund	6.6	6.6	10.3	10.1
Public pensions & gratuities	17.0	17.2	16.2	17.5
Passages	0.8	1.5	1.5	1.5
Rodrigues	4.0	4.1	4.5	5.2
Relief works	8.8	3.4	2.6	2.6
Other unallocable expenditure	6.6	7.8	14.8	11.2
Total	241.6	227.3	250.5	260.8

Table 26 - Functional classification of central government capital revenue

	Rs million			
	1968-69	1969-70	1970-71	1971-72
Grants :				
British government	10.7	14.7	9.6	2.8
Other foreign sources	1.0	-	-	3.7
Internal borrowing	3.4	26.0	59.3	70.0
External borrowing	2.4	3.3	11.7	57.6
Interest on investments	1.3	0.1	0.4	0.1
Special Drawing Rights from I.M.F.	-	11.9	13.1	0.2
Other capital revenue	1.2	1.0	0.6	0.5
Total	20.6	66.0	95.2	134.9

+ estimates

Table 27 - Functional classification of central government capital expenditure

	Rs million			
	1968-69	1969-70	1970-71	1971-72
Agriculture and forests	8.7	12.5	13.0	9.9
Irrigation	0.8	0.9	0.4	2.4
Roads and bridges	1.0	1.4	2.5	5.2
Marine services and civil aviation	4.7	3.8	5.2	15.0
Domestic water supplies	2.7	2.6	2.9	15.2
Health	4.5	0.8	1.8	6.0
Housing	1.8	0.7	0.2	1.0
Sewerage	5.9	5.3	5.3	12.0
Education	1.4	2.2	3.1	5.3
Development works, general	-	-	3.4	16.3
Rodrigues	3.9	2.5	3.2	7.3
Additional subscription to I.M.F. & I.B.R.D.	-	-	11.1	-
Subscription to share capital of Development Bank	-	-	3.0	-
Loans :				
Development Bank of Mauritius	-	2.0	1.0	9.0
Central Electricity Board	-	-	1.6	3.0
Mauritius Housing Corporation	-	-	-	2.0
Central Housing Authority	2.4	1.0	0.2	6.8
Municipalities	-	0.8	0.6	-
Tea Development Authority	-	-	-	9.9
Sinking Fund Support Loan	-	-	3.8	-
Other loans	3.7	0.6	1.8	0.2
Redemption of loans	-	13.0	-	11.0
Other capital expenditure	1.9	2.1	4.7	17.7
Total	43.4	57.2	84.4	155.2

+ estimates

Table 28 - Central Government indebtedness

Rs million

Period	Amount outstanding at beginning of period				Borrowing during period		Repayments during period		
	Total	Internal		External		Internal	External	Internal	External
		Tap loan	Other	U.K.	I.B.R.D.*				
1.7.67 - 30.6.68	301.2	88.2	39.7	141.8	31.5	22.1	26.0	4.6	3.6
1.7.68 - 30.6.69	341.1	92.3	53.1	160.2	35.5	5.3	16.3	4.0	38.2
1.7.69 - 30.6.70	320.5	94.6	51.9	146.1	33.9	27.9	9.7	16.9	13.2
1.7.70 - 30.6.71	327.8	106.6	50.9	138.0	32.3	61.4	11.5	2.4	17.1
1970 : 1st Qr.	323.1	96.0	51.9	142.1	33.1	12.0	3.4	1.7	3.0
2nd Qr.	333.8	106.3	51.9	142.5	33.1	13.3	4.1	14.0	9.3
3rd Qr.	327.3	106.6	50.9	138.0	32.3	3.7	2.2	1.6	2.1
4th Qr.	330.0	108.6	50.9	138.2	32.3	29.7	1.0	0.1	1.4
1971 : 1st Qr.	359.3	118.3	76.8	133.7	31.5	20.0	4.4	0.6	1.4
2nd Qr.	361.7	117.7	90.8	141.7	31.5	8.0	3.9	0.1	12.2

*International Bank for Reconstruction and Development

Table 29 - Sinking funds held against the public debt

Rs million

	1965	1966	1967	1968	1969	1970	1971
Amount as at 30th June	62.6	73.7	81.0	88.9	79.0	50.6	106.2

Note : Investments have been valued at near market prices

Table 30 - Central government loan raisings

	Year of issue	Rate of interest (% p.a.)	Amount outstanding @ 30.6.71 (Rs million)
<u>Local loans</u>			
Development Welfare Loan 1971-81	1950	3	3.1
Development (general purposes) Loan 1964-74	1953	4 $\frac{1}{4}$	14.4
Development (" ") Loan 1973-83	1962	5 $\frac{3}{4}$	15.0
Development (" ") Loan 1971-76	1966	6	5.0
Treasury Debenture Stock 1972	1970	6	13.0
Development Loan Stock 1985	1970	7 $\frac{1}{4}$	5.0
" " " 1975	1970	6 $\frac{1}{2}$	15.0
" " " 1977	1971	6 $\frac{1}{2}$	10.0
" " " 1991	1971	7 $\frac{1}{2}$	10.0
Tap Loan	(a)	5	125.7
<u>U.K. Loans</u>			
Development (general purposes) Loan 1972-77	1955-56	4 $\frac{3}{4}$	25.8
" " " Loan 1973-75	1964	6 $\frac{1}{2}$	20.7

(a) Tap loans are issued every year since 1959. The date of redemption is at the option of the purchaser.

Table 31 - Outstanding loans and advances made from public funds

Debtor	Rs million	
	@ 30.6.70	@ 30.6.71
Central Electricity Board	87.2	86.6
Central Housing Authority	35.4	33.7
Development Bank of Mauritius	23.9	16.2
Mauritius Housing Corporation	16.9	16.4
Mauritius Broadcasting Corporation	1.1	1.3
Municipalities	22.1	22.3
Sewerage schemes	11.1	12.8
Sack Factory	5.5	5.9
Colonial steamships	1.8	1.6
Tea estates	3.6	3.5
Mauritius Hotels	1.3	1.2
Agricultural Marketing Board	5.7	7.4
Landlords of private school buildings	1.5	1.4
Planters' Hurricane Loan	0.7	0.6
Other	2.1	1.9
TOTAL	219.9	212.8

(a)
Table 32 - Income tax - individuals

(b) Range of gross income	Year of assessment 1968-69				Year of assessment 1969-70			
	Taxpayers (No.)	Gross income (Mn Rs)	Chargeable income (Mn Rs)	Tax assessed (Mn Rs)	Taxpayers (No.)	Gross income (Mn Rs)	Chargeable income (Mn Rs)	Tax assessed (Mn Rs)
1 - 5,000	3,683	13.03	2.38	0.30	2,765	10.81	1.97	0.30
5,001 - 10,000	5,340	39.51	10.65	1.68	4,333	35.76	9.57	1.48
10,001 - 15,000	2,790	33.77	13.10	2.17	2,559	31.01	11.86	1.90
15,001 - 25,000	2,014	38.59	20.33	3.98	1,946	37.36	19.40	3.73
25,001 - 50,000	1,270	42.26	26.68	7.92	1,207	40.17	25.13	7.23
50,001 - 100,000	278	18.38	13.34	6.62	254	16.64	11.41	5.47
100,001 - 250,000	49	6.60	4.94	3.13	38	5.12	3.95	2.57
Over 250,000	6	2.23	1.93	1.47	5	1.63	1.35	1.00
Total	15,450	194.37	93.44	27.36	13,607	178.50	84.64	23.63

Note : (a) The figures are provisional and subject to amendment, as the income tax ordinance empowers the Commissioner of Income Tax to revise cases under objection, to issue additional claims for the six years preceding the present year of assessment, and to claim back duty at any time in cases of false or incorrect returns of income for any previous years.

(b) The income group refers to gross income now, whereas in previous issues of the digest it referred to chargeable income.

Table 33 - Income tax - companies
(a)

Range of gross income (Rs)	Year of assessment 1968-69					Year of assessment 1969-70						
	Companies (No.)	Gross income (Mn Rs)	Chargeable income (Mn Rs)	Tax assessed (Mn Rs)	Companies (No.)	Gross income (Mn Rs)	Chargeable income (Mn Rs)	Tax assessed (Mn Rs)	Companies (No.)	Gross income (Mn Rs)	Chargeable income (Mn Rs)	Tax assessed (Mn Rs)
1 - 5,000	158	0.30	0.27	0.11	116	0.22	0.16	0.07				
5,001 - 10,000	38	0.30	0.22	0.09	34	0.25	0.17	0.06				
10,001 - 15,000	36	0.44	0.31	0.12	22	0.28	0.23	0.09				
15,001 - 25,000	41	0.85	0.53	0.21	34	0.69	0.39	0.15				
25,001 - 50,000	56	2.02	1.18	0.46	50	1.80	0.99	0.38				
50,001 - 100,000	45	3.19	1.60	0.59	45	3.25	1.27	0.47				
100,001 - 250,000	38	6.37	3.49	1.35	38	6.33	2.54	0.93				
250,001 - 500,000	28	9.89	3.17	1.17	20	6.30	2.41	0.89				
500,001 - 750,000	8	5.14	2.25	0.86	8	4.75	2.98	1.16				
750,001 - 1,000,000	4	3.56	2.27	0.97	8	6.82	3.00	1.14				
Over 1,000,000	24	61.29	30.80	11.40	17	44.82	21.31	8.00				
TOTAL	476	95.35	46.09	17.24	392	75.51	35.47	13.34				

Note : (a) The figures are provisional and subject to amendment, as the income tax ordinance empowers the Commissioner of Income Tax to revise cases under objection, to issue additional claims for the six years preceding the present year of assessment, and to claim back duty at any time in cases of false or incorrect returns of income for any previous years.

(b) The income group refers to gross income now, whereas in previous issues of the digest it referred to chargeable income.

Table 34 - Sterling assets of Central Government, Bank of Mauritius and commercial banks
(end of period)

Rs million

Period	INVESTMENTS (nominal value)				LIQUID ASSETS (cash, money at call and short-term deposits)						
	Central Government	Post Office Savings Bank	Semi-Governmental institutions	Bank of Mauritius	Total	Central Government (a)	Post Office Savings Bank	Semi-Governmental institutions	Bank of Mauritius	Net balance of banks due from banks abroad	Total
1967	32.8	18.8	6.9	68.8	127.3	-	4.7	6.4	4.5	36.0	30.0
1968	31.0	18.1	4.3	68.4	121.8	-	5.0	7.4	20.6	19.5	42.6
1969	17.9	(b)	4.3	165.5	187.7	-	(b)	23.3	18.1 ⁺	39.3	78.5
1970	6.5	(b)	3.5	100.9	110.9	+	(b)	0.4	145.7 ⁺	20.7	174.4
1970 : 1st Qr.	6.0	(b)	4.0	105.3	195.3	-	(b)	1.7	32.6 ⁺	22.4	55.7
2nd Qr.	5.9	(b)	4.0	162.6	172.5	-	(b)	0.8	34.8 ⁺	14.0	49.4
3rd Qr.	5.9	(b)	3.6	102.4	111.9	+	(b)	0.6	97.3 ⁺	27.8	130.1
4th Qr.	6.5	(b)	3.5	100.9	110.9	+	(b)	0.4	145.7 ⁺	20.7	174.4
1971 : 1st Qr.	6.5	(b)	3.5	84.9	94.9	+	(b)	0.5	157.4 ⁺	14.2	184.7
2nd Qr.	7.4	(b)	3.5	67.4	78.3	+	(b)	0.5	127.7 ⁺	- 3.3	138.2

(a) Net of short-term borrowings.

(b) During the third quarter of 1969, these assets were surrendered to the Bank of Mauritius in return for payments in Mauritian Rupees, and since then have been merged with those of the Bank of Mauritius.

⁺ Includes IMF Special Drawing Rights.

Table 35 - Assets and liabilities of the Bank of Mauritius
(at end of period)

ASSETS	Period	Total	External					Local				
			Total	Balances with banks	Bills	Securities	IMF Special Drawing Rights	Total	Government securities	Discounts & advances	Other assets	
												Government securities
1970 :	1st Qr.	230.6	210.3	17.8	38.1	139.6	14.8	20.3	7.4	2.8	10.1	
	2nd Qr.	221.6	190.5	20.1	16.1	139.6	14.7	31.1	8.8	10.8	11.5	
	3rd Qr.	210.6	195.3	82.6	16.3	81.8	14.6	15.3	1.4	5.3	7.6	
	4th Qr.	253.4	246.5	131.0	16.1	84.6	14.6	6.9	6.5	2.6	3.8	
1971 :	1st Qr.	264.7	242.3	129.7	21.8	63.1	27.7	22.4	13.4	4.8	4.2	
	2nd Qr.	236.9	195.1	100.0	8.1	59.3	27.7	41.8	8.8	21.3	11.7	
LIABILITIES	Period	Total	Capital and reserve	Notes in circulation	Coins in circulation	Total deposits	Demand deposits			Other deposits	Other liabilities	
							Government	Bankers'	Other			
												Government
1970 :	1st Qr.	230.6	7.2	91.5	6.0	92.6	2.9	5.6	2.0	82.1	33.3	
	2nd Qr.	221.6	9.5	88.6	5.8	72.9	1.9	4.5	2.0	64.5	44.8	
	3rd Qr.	210.6	9.5	95.6	6.2	80.0	2.6	5.2	2.3	75.9	13.3	
	4th Qr.	253.4	9.5	108.1	6.6	121.2	3.3	6.1	3.0	108.8	8.0	
1971 :	1st Qr.	264.7	9.5	99.4	6.3	125.5	3.1	6.0	6.4	110.0	24.0	
	2nd Qr.	236.9	14.5	98.6	6.3	92.1	3.0	8.0	3.3	77.8	25.4	

* Mainly due to semi-government bodies.
 Note : The Central Bank commenced its activities in August 1967.
 Source: The Bank of Mauritius.

Table 36 - Banking statistics : assets of commercial banks
(end of period)

Period	Total	Cash	Balances due by			Loans and advances			Investments			Other assets	
			Other local banks	Banks abroad	Primary products	Other industries	Other advances	Local	Abroad	Bills discounted and bills receivable	Other		
1966	284.3	5.5	4.6	56.7	50.8	59.5	36.4	6.9	2.0	14.1	48.2		
1967	313.3	7.0	2.2	52.3	73.9	73.4	21.9	6.7	2.0	15.2	58.7		
1968	308.7	7.9	1.5	38.7	63.1	87.3	30.1	11.7	2.0	10.2	56.2		
1969	300.6	9.5	0.5	45.2	78.1	78.4	29.2	24.2	2.0	11.6	65.9		
1970	393.7	9.9	0.6	31.3	60.3	74.6	34.1	53.2	2.0	29.1	98.6		
1970 : 1st Qr.	325.7	7.5	0.7	30.6	71.1	72.2	30.9	19.7	2.0	20.0	71.0		
2nd Qr.	535.7	8.0	0.7	24.7	50.1	80.5	31.7	21.6	2.0	46.3	70.1		
3rd Qr.	362.7	8.5	0.3	41.3	41.3	76.4	31.1	30.2	2.0	40.0	91.5		
4th Qr.	393.7	9.9	0.6	31.3	60.3	74.6	34.1	53.2	2.0	29.1	98.6		
1971 : 1st Qr.	390.9	9.0	0.4	24.8	47.5	81.8	32.1	56.1	2.0	34.8	102.4		
2nd Qr.	411.7	7.2	0.6	15.6	69.1	91.8	36.4	51.0	2.0	43.1	94.9		

Rs million

Table 37 - Banking statistics : liabilities of commercial banks
(end of period)

		Rs million									
Period	Total	Notes in circulation	Deposits			Balances due to			Other liabilities		
			Demand	Time	Savings	Other local banks	Banks abroad				
1966	284.3	-	148.8	25.7	30.5	3.6	3.5	72.2			
1967	313.3	-	139.7	30.5	41.6	5.4	16.3	79.8			
1968	308.7	-	104.4	54.0	44.6	1.9	19.2	84.6			

Period	Total	Notes in circulation	Deposits						Balances due to			Other liabilities
			Government		Non-government		Other local banks	Banks abroad				
			Demand	Time	Time	Savings						
1969	344.6	-	3.8	116.7	70.2	49.1	-	6.0	98.8			
1970	393.7	-	2.4	121.0	96.1	62.9	1.4	10.6	99.3			
1970 : 1st Qr.	325.7	-	3.5	99.1	67.3	52.7	0.3	8.1	94.7			
2nd Qr.	335.7	-	6.4	102.1	54.4	54.1	2.2	10.8	95.7			
3rd Qr.	362.6	-	4.5	103.0	73.5	53.2	-	13.6	104.8			
4th Qr.	393.7	-	2.4	121.0	96.1	62.9	1.4	10.6	99.3			
1971 : 1st Qr.	390.9	-	3.1	110.6	83.2	68.4	2.8	10.6	107.2			
2nd Qr.	411.7	-	3.1	111.0	86.0	70.9	4.5	13.9	117.3			

Note : No breakdown of deposits into government and non-government was available before March 1969.

Table 38 - Analysis of bills discounted, loans and advances made by commercial banks

Rs million

	1970				1971		
	March	June	September	December	March	June	June
Sugar industry	79.6	81.5	66.9	73.3	65.3	94.3	94.3
Other agricultural interests	2.8	2.2	3.0	3.2	3.3	4.0	4.0
Other industries and manufacturers	17.5	20.3	27.2	27.5	30.3	34.6	34.6
Traders	55.4	61.1	50.3	49.2	55.7	61.5	61.5
Personal and professional	17.7	17.8	17.7	20.7	19.4	21.0	21.0
Stockbrokers	0.1	0.1	-	-	-	-	-
Government	-	-	-	-	-	-	-
Other public bodies	9.9	10.6	9.8	9.3	9.1	10.0	10.0
Financial institutions	0.9	0.7	1.0	0.8	0.9	0.8	0.8
Other customers	5.4	8.3	9.2	9.9	3.4	8.7	8.7
Foreign bills	1.0	2.7	1.1	0.9	1.7	1.0	1.0
Total	190.3	205.3	186.2	194.8	194.1	235.9	235.9

Source : Bank of Mauritius

Table 39 - Assets and liabilities of the Development Bank of Mauritius

		Rs million			
		31.12.69	30.6.70	31.12.70	30.6.71
<u>Assets</u>					
Cash		-	-	0.5	-
Balances due by other banks in Mauritius		1.0	0.9	1.4	1.1
Loans and advances :					
Primary industries		21.6	21.5	20.8	20.9
Other industries		15.9	16.1	17.1	17.6
Other loans and advances		0.4	0.4	0.4	0.4
Investments :					
Local (at cost)		6.2	7.0	6.9	12.1
Overseas		2.0	2.0	2.1	-
Other assets		6.2	8.0	9.2	10.3
	Total	53.3	55.9	58.4	62.4
<u>Liabilities</u>					
Notes in circulation		-	-	-	-
Deposits :					
Demand		1.4	1.5	2.0	1.7
Time		1.8	1.8	1.8	3.0
Savings		1.8	1.7	1.8	2.1
Share capital		-	-	-	10.0
Debentures		17.0	17.0	17.0	17.0
The Government of Mauritius		22.4	24.9	25.9	17.3
Bills		0.3	0.3	0.3	0.3
Other liabilities		8.6	8.7	9.6	11.0
	Total	53.3	55.9	58.4	62.4

Table 40 - Post Office Savings Bank

Period	Deposits during period	Withdrawals during period	Accumulated balance at end of period	Number of accounts at 30th June
	(Rs mn.)	(Rs mn.)	(Rs mn.)	
1967	14.3	18.9	29.3	88,503
1968	11.2	13.5	27.0	89,653
1969	11.5	11.8	26.7	90,552
1970	11.4	11.5	27.7	92,200
1970 : 1st Qr.	2.8	2.7	26.8	...
2nd Qr.	2.1	2.7	27.2	92,000
3rd Qr.	3.3	3.2	27.4	...
4th Qr.	3.2	2.9	27.7	...
1971 : 1st Qr.	3.0	2.7	28.0	...
2nd Qr.	2.6	2.6	29.0	93,929

Table 41 - Assets and liabilities of the Mauritius Co-operative Central Bank Ltd.
Rs million

	28.2.69	28.2.70	28.2.71
Assets			
Cash at bank and in hand	1.1	0.2	2.1
Loans and advances :			
Primary industries	4.1	4.0	4.3
Housing	1.2	1.4	1.5
Other loans and advances	0.9	1.8	2.2
Investments :			
Local	3.6	5.6	7.4
Abroad	-	-	-
Other assets	0.3	0.2	0.7
Total	11.2	13.2	18.2
Liabilities			
"Owned Funds"	3.4	3.7	4.1
Deposits :			
Demand	1.5	2.0	2.6
Time	4.0	5.0	8.5
Savings	2.0	2.2	2.6
Balances due to other banks in Mauritius	-	-	-
Other liabilities	0.3	0.3	0.4
Total	11.2	13.2	18.2

Table 42 - Money supply

Rs million

Period	Notes and coins in circulation <u>1/</u>	Demand deposits with commercial banks	Other deposits <u>2/</u>	Total money supply
1970 : 1st Qr.	89.9	100.5	1.9	192.3
2nd Qr.	86.3	104.1	1.5	191.9
3rd Qr.	93.2	110.4	2.3	205.9
4th Qr.	104.7	123.8	2.9	231.4
1971 : 1st Qr.	96.6	112.4	6.3	215.3
2nd Qr.	97.7	112.8	2.6	213.1

1/ Net of cash held by the commercial banks.

2/ Miscellaneous current accounts with Bank of Mauritius.

Source : Bank of Mauritius.

Table 43 - Assets and liabilities of the Mauritius Housing Corporation

		Rs million		
		30.6.70	31.12.70	30.6.71
<u>Assets</u>				
	Cash in hand and on deposit	-	-	-
	Housing loans	32.6	34.0	35.2
	Investments (at cost)	0.7	0.5	1.2
	Other assets	4.0	3.4	3.4
	Total	37.3	37.9	39.8
<u>Liabilities</u>				
	Loans :			
	Local			
	Government of Mauritius	14.2	14.1	14.1
	Development Bank of Mauritius	0.4	0.4	0.4
	Other local loans	6.3	8.6	10.1
	External			
	British Government	2.7	2.6	2.3
	Commonwealth Development Corporation	6.4	6.2	6.3
	Other liabilities	7.3	6.0	6.6
	Total	37.3	37.9	39.8

Table 44 - Bank and interest rates

		per cent per annum		
		30.6.70	31.12.70	30.6.71
<u>Deposit rates</u>				
	Post Office Savings Bank	4	4	4
	Trading banks :			
	Savings accounts	4	4	4
	Fixed deposits (3 months)	5	4 $\frac{1}{2}$	4 $\frac{1}{2}$
	" (6 months)	5 $\frac{1}{4}$	4 $\frac{3}{4}$	4 $\frac{3}{4}$
	" (12 months)	5 $\frac{3}{4}$	5 $\frac{1}{4}$	5 $\frac{1}{4}$
	" (over 12 months)	6 $\frac{3}{4}$ -7 $\frac{3}{8}$	5 $\frac{1}{2}$ -6 $\frac{1}{2}$	5 $\frac{1}{2}$ -6 $\frac{1}{2}$
<u>Lending rates</u>				
	Bank of Mauritius - discount rate	7	6	6
	Trading banks - bills of exchange and advances	7 $\frac{3}{4}$ -9	7 $\frac{1}{2}$ -9	7 $\frac{1}{2}$ -9
	Public notaries - mortgage loans	9-11	9-11	9-11
	Mauritius Housing Corporation - housing loans	8	8	8

Note : Rates of interest on Treasury loans are shown in table 30.

Source : Bank of Mauritius.

Table 45 - Foreign exchange rates

Country	Currency	on 30.6.70		on 31.12.70		on 30.6.71	
		Selling rate	Buying rate	Selling rate	Buying rate	Selling Rate	Buying rate
United Kingdom	Pound sterling	13.40	13.25	13.40	13.25	13.40	13.25
Australia	Dollar	6.27	6.15	6.27	6.15	6.27	6.15
Belgium	Franc	0.113	0.11	0.113	0.11	0.115	0.11
Canada	Dollar	5.35	5.28	5.54	5.46	5.45	5.38
France	Franc	1.02	1.00	1.02	1.00	1.01	0.99
Germany, Fed. Rep. of	Mark	1.54	1.51	1.54	1.52	1.58	1.55
Hong Kong	Dollar	0.92	0.90	0.93	0.90	0.93	0.90
India	Rupee	0.7465	0.7315	0.7465	0.7315	0.7451	0.7324
Kenya	Shilling	0.783	0.76	0.783	0.76	0.733	0.76
Malagasy, Rep. of	Franc	0.02	0.0198	0.0208	0.0198	0.0202	0.0198
New Zealand	Dollar	6.27	6.15	6.27	6.15	6.27	6.15
Pakistan	Rupee	1.175	1.155	1.175	1.155	1.1742	1.1576
Reunion	Franc	0.02	0.0198	0.0208	0.0198	0.0202	0.0198
South Africa, Rep. of	Rand	7.84	7.70	7.84	7.70	7.84	7.70
Switzerland	Franc	1.31	1.28	1.30	1.28	1.36	1.33
U.S.A.	Dollar	5.60	5.52	5.61	5.53	5.55	5.47

Source : Bank of Mauritius

IV. NATIONAL ACCOUNTS

Table 46 - Industrial origin of the gross national product
(at current factor cost)

	Rs million					
	1966	1967	1968	1969*	1970*	
1. Agriculture, forestry, hunting and fishing	190	203	193	224	209	253
2. Mining and quarrying	1	1	1	1	1	1
3. Manufacturing	121	130	124	142	141	165
4. Construction	52	59	49	46	48	56
5. Electricity, gas, water and sanitary services	26	30	30	30	29	32
6. Transportation, storage and communication	99	100	102	105	108	113
7. Wholesale and retail trade	84	89	92	91	91	93
8. Banking, insurance and real estate	16	17	16	18	20	21
9. Ownership of dwellings	63	65	66	68	70	71
10. Public administration and defence	41	43	44	46	51	53
11. Services	99	104	110	116	126	132
GROSS DOMESTIC PRODUCT AT FACTOR COST	792	841	827	887	894	943
Net factor income from the rest of the world	- 1	- 5	- 3	+ 1	+ 7	17
GROSS NATIONAL PRODUCT AT FACTOR COST	791	836	824	888	901	960
Per capita gross national product at factor cost (Based on mid-year population)	(Rs) 1,042	(Rs) 1,081	(Rs) 1,046	(Rs) 1,112	(Rs) 1,111	(Rs) 1,110

* provisional

Table 47 - Distribution of the national income before providing for depreciation

	Rs million				
	1966	1967	1968	1969	1970
1. Compensation of employees	470	488	484	498	516
2. Income from unincorporated enterprises	110	111	119	128	128
3. Income from property	107	112	114	129	128
4. Saving of corporations	76	98	83	102	99
5. Direct tax on corporations	17	18	19	23	21
6. General government income from property and entrepreneurship	26	28	27	30	33
7. <u>Less</u> interest on public debt	- 11	- 15	- 18	- 18	- 20
8. <u>Less</u> interest on consumers' debt	- 4	- 4	- 4	- 4	- 4
NATIONAL INCOME AND DEPRECIATION =					
Gross national product at factor cost	791	836	824	888	901

* provisional

Table 48 - Expenditure on gross national product
(at current prices)

	1966	1967	1968	1969 [#]	1970 [#]
1. Private consumption expenditure on goods and services	654	638	711	681	734
2. General government consumption expenditure on goods and services	152	163	154	156	166
3. Gross domestic fixed capital formation of private enterprises	86	87	94	100	94
4. Gross domestic fixed capital formation of government and public enterprises	47	58	47	44	51
5. Increase in stocks
CONSULTATION AND GROSS CAPITAL FORMATION	939	996	1,006	981	1,045
6. Net exports of goods and services	- 27	- 27	- 40	+ 55	+ 3
7. Net factor income from the rest of the world	- 1	- 5	- 3	+ 1	+ 7
8. Less indirect taxes (not of subsidies)	- 120	- 123	- 139	- 149	- 154
GROSS NATIONAL PRODUCT AT FACTOR COST	791	836	824	888	901

[#] provisional

Table 49 - Composition of gross domestic fixed capital formation
(at current prices)

	Rs million				
	1966	1967	1968	1969 ⁺	1970 ⁺
A. By type of capital goods					
a. Land ^x	2	2	4	3	4
b. Dwellings	29	37	32	35	33
c. Non-residential buildings	21	29	21	13	23
d. Other construction and works	28	27	24	34	36
e. Transport equipment					
(i) Passenger cars	4	4	5	4	5
(ii) Other equipment	22	11	15	22	15
f. Machinery and other equipment	27	35	40	33	29
GROSS DOMESTIC FIXED CAPITAL FORMATION	133	145	141	144	145
B. By industrial use [*]					
a. Agriculture, forestry and fishing	16	19	17	19	23
b. Mining and quarrying	-	-	-	-	-
c. Manufacture	11	13	14	12	16
d. Construction	3	3	4	4	5
e. Electricity, gas and water	12	14	13	15	12
f. Transportation, storage and communications	37	21	30	37	32
g. Wholesale and retail trade	4	6	6	6	5
h. Banking, insurance and real estate	2	-	-	1	3
i. Ownership of dwellings	29	38	32	35	33
j. Public administration	4	1	-	1	-
k. Service industries	13	28	21	11	12
l. Legal fees, stamp duties, etc.	2	2	4	3	4
GROSS DOMESTIC FIXED CAPITAL FORMATION	133	145	141	144	145

⁺ provisional

^x including legal fees, stamp duties, agents' commission, etc., connected with the transfer of ownership of land and buildings.

^{*} The figures for 1965 onwards are not strictly comparable with those of previous years as a better distribution of imports of machinery into user industries is now possible.

Table 50 - Balance of payments

Rs million

Item	1968		1969		1970	
	Credit	Debit	Credit	Debit	Credit	Debit
<u>A. GOODS AND SERVICES</u>						
1. Merchandise	359	359	367	328	338	360
2. Non-monetary gold	-	1	-	1	-	...
3. Freight and insurance on merchandise	8	51	5	46	14	54
4. Other transportation	39	25	48	35	56	59
5. Travel	13	21	18	18	27	20
6. Investment income	12	15	14	14	17	12
7. Government, not included elsewhere	14	5	14	5	17	7
8. Other services	19	17	23	16	29	15
Net goods and services	-	30	26	-	21	-
<u>B. TRANSFER PAYMENTS</u>						
9. Private	6	11	8	6	13	6
10. Central government	33	4	17	4	18	4
Net transfer payments	24	-	15	-	21	-
<u>C. CAPITAL AND MONETARY GOLD</u>						
<u>Non-monetary sectors</u>						
11-14. Private	-	3	15	-	9	5
15. Central Government	18	-	23	-	4	-
<u>ALLOCATION OF SDR</u>	-	-	-	-	15	-
<u>Monetary sectors</u>						
16. Commercial banks : liabilities	3	-	-	11	6	-
17. Commercial banks : assets	11	-	-	7	14	-
18. Central institutions : liabilities	-	19	17	-	-	22
19. Central institutions : assets	-	16	-	82	-	71
OTHER CAPITAL, ERRORS AND OMISSIONS	12	-	4	-	8	-

*Special Drawing Rights

Source : Bank of Mauritius

V. CONSUMER PRICE INDICES

Table 51 - Consumer price indices

(Base : January-June 1962 = 100)

The table below gives three consumer price indices, viz. :

- (a) an index for households in urban areas;
- (b) an index for households in rural areas;
- (c) a total index for Mauritius as a whole.

Period	Urban	Rural	Whole Island
1963 (Average)	98.5	98.5	98.5
1964 (")	100.5	100.2	100.3
1965 (")	102.3	102.0	102.1
1966 (")	104.0	104.5	104.7
1967 (")	106.6	106.6	106.6
1968 (")	113.0	114.9	114.1
1969 (")	115.6	117.6	116.7
1970 (")	117.6	119.2	118.5
1970 : January	117.5	120.3	119.1
February	118.2	121.1	119.9
March	119.7	122.7	121.4
April	119.6	121.5	120.8
May	119.2	120.9	120.2
June	117.3	118.6	118.0
July	116.1	117.3	116.8
August	115.7	116.8	116.3
September	113.2	119.1	118.7
October	117.3	118.1	117.8
November	116.5	117.4	117.0
December	116.0	116.9	116.5
1971 : January	116.8	117.8	117.4
February	113.9	120.6	119.9
March	118.5	120.0	119.3
April	117.3	113.8	118.1
May	117.3	113.7	118.1
June	117.6	119.0	118.4

VI. EXTERNAL TRADE

Table 52 - Balance of visible trade

Period	Imports (c.i.f.value)	Exports** (f.o.b.value)	Bunkers and ships' stores (f.o.b. value)	Balance of visible trade	
				Surplus	Deficit
1965	367.3	313.4	4.2	-	49.7
1966	333.2	337.6	4.3	8.7	-
1967	371.1	306.8	9.4	-	54.9
1968	421.1	354.0	17.1	-	50.0
1969	376.0	365.2	17.9	7.1	-
1970	419.9	384.5	14.2	-	21.2
1970 : 1st Qr.	87.6	83.0	3.6	-	1.0
2nd Qr.	106.8	21.6	3.3	-	81.9
3rd Qr.	104.3	136.6	3.5	35.8	-
4th Qr.	121.2	143.3	3.8	25.9	-
1971 : 1st Qr.	103.8	60.9	3.1	-	39.8
2nd Qr.	119.4	28.5	4.3	-	86.6

** Including value of sugar quota certificates and the bonus received in lieu of the Commonwealth Preference on sugar exports, but excluding sales value of bunker fuel and ships' stores.

Table 53 - Quantum and price indices of exports and imports and terms of trade

Period	Quantum indices		Price indices		Terms of trade ^x
	Export	Import	Export	Import	
1965 = 100					
1966	103	90	105	100	105
1967	91	99	108	102	106
1968	106	98	106	117	91

x

Ratio of export price to import price index.

A rise in the index indicates that the terms of trade have moved in favour of Mauritius.

Table 55- Exports: quantities and values

Quantity : Thousand metric tons
Value : Rs million (f.o.b.)

Period	DOMESTIC EXPORTS											
	Re-exports		Total		Sugar		Molasses		Tec.		Other	
	Quantity	Value	Quantity	Value	Quantity	Value	Quantity	Value	Quantity	Value	Quantity	Value
1965	...	315.4	...	503.5	562.4	290.3	92.1	5.0	1.1	5.9	...	2.2
1966	...	337.6	...	328.6	579.9	306.4	127.5	11.5	1.3	6.5	...	4.1
1967	...	306.8	...	300.7	515.8	281.3	96.9	8.5	1.6	8.1	...	2.7
1968	...	354.0	...	346.3	596.0	520.7	169.2	11.9	1.7	9.6	...	4.0
1969	...	365.2	...	358.2	596.1	326.0	125.3	10.1	2.7	14.6	...	7.6
1970	...	384.5	...	376.3	575.0	311.2	100.4	10.6	2.6	14.1	...	10.4
1970 : 1st Qr.	...	83.0	...	81.7	120.7	69.0	51.6	6.2	1.0	5.5	...	1.0
2nd Qr.	...	21.6	...	19.0	12.7	8.0	20.6	2.4	0.9	4.6	...	4.0
3rd Qr.	...	136.6	...	134.5	227.6	130.8	0.1	-	0.2	0.9	...	2.8
4th Qr.	...	143.3	...	141.0	214.0	133.4	28.1	2.0	0.5	2.9	...	2.7
1971 : 1st Qr.	...	60.9	...	59.4	76.3	47.6	52.2	2.8	1.0	5.6	...	3.4
2nd Qr.	...	28.5	...	26.8	23.1	14.8	24.1	2.2	1.0	5.2	...	4.6

* Including value of sugar quota certificates and the bonus received in lieu of the Commonwealth Preference on sugar exports net excluding sales value of bunker fuel and ships' stores.

Table 56 - Total exports : principal countries of destination - values

Period	Rs million (f.o.b)									
	United Kingdom	Canada	Republic of South Africa	New Zealand	Holland	Italy	Republic of Madagascar	Reunion	United States of America	
1965	245.5	28.0	11.8	0.5	0.6	0.3	0.9	1.6	14.1	
1966	275.7	30.9	1.3	0.2	0.3	-	1.1	2.9	16.4	
1967	269.2	9.5	3.4	0.1	2.8	0.4	1.7	1.3	15.8	
1968	272.2	44.1	6.9	0.3	0.3	0.9	1.9	2.5	21.6	
1969	260.5	63.2	9.6	0.3	0.5	-	2.4	3.3	18.5	
1970	260.4	77.6	12.1	0.3	-	0.2	2.6	3.9	21.1	
1970 : 1st Qr.	56.8	16.9	3.5	0.2	-	-	0.2	0.3	4.3	
2nd Qr.	10.3	-	4.0	-	-	0.1	0.8	1.1	2.4	
3rd Qr.	100.1	31.7	0.9	-	-	-	0.6	1.5	7	
4th Qr.	93.1	29.0	5.7	0.1	-	-	1.0	1.0	14.4	
1971 : 1st Qr.	42.7	7.5	5.1	-	0.4	-	0.3	1.1	2.3	
2nd Qr.	9.1	7.5	1.5	0.2	0.5	-	1.1	1.5	1.9	

* Including value of sugar quota certificates and the bonus received in lieu of the Commonwealth Preference on sugar exports.

Rs million (c.i.f.)

Table 57 - Imports: values by S.I.T.C. sections

Period	Total	Food	Beverages and tobacco	Crude materials, inedible, except fuels	Mineral fuels, lubricants, etc.	Animal and vegetable oils and fats	Chemicals	Manufactured goods classified chiefly by material	Machinery and transport equipment	Miscellaneous manufactured articles	Miscellaneous transactions and commodities, n.s.
1965	367.3	108.0	6.8	6.7	17.7	14.9	47.1	78.6	56.3	31.0	0.5
1966	333.2	109.6	4.9	5.4	15.4	17.7	45.6	70.2	36.9	27.4	0.2
1967	371.1	118.5	4.8	7.1	25.4	18.3	42.6	78.5	43.7	32.1	0.1
1968	421.1	135.5	5.7	7.8	35.9	18.5	49.0	77.6	56.5	31.6	0.1
1969	376.0	132.6	5.3	5.6	31.7	12.5	43.0	72.1	44.7	27.9	0.2
1970 [#]	419.9	124.3	5.2	10.3	29.7	21.0	47.6	94.3	55.7	30.5	0.2
1970 : 1st Qr.	87.6	27.2	1.2	2.6	3.7	5.9	9.5	18.9	12.5	6.1	-
2nd Qr.	106.3	33.1	1.8	1.8	8.5	6.9	9.3	24.8	12.9	7.7	-
3rd Qr.	104.3	28.3	0.9	2.7	9.4	3.7	13.4	23.5	14.9	7.5	-
4th Qr.	121.2	35.7	1.4	3.2	6.1	4.5	15.3	28.2	15.4	9.2	0.2
1971 : 1st Qr.	103.8	29.9	1.0	2.7	9.3	5.4	10.4	22.2	15.6	7.0	0.2
2nd Qr.	119.4	28.7	1.7	3.1	6.7	10.0	12.2	25.3	24.2	7.6	-

[#]For 1970 S.I.T.C. (revised) used.

Table 53 - Imports of merchandise : selected commodities - values

Period	Rs million (c.i.f.)													
	Rice	Wheat flour	Alcoholic beverages	Petroleum products	Vegetable oils	Fertilizers, manufactured	Cotton fabrics	Other textile fabrics	Cement	Iron and steel goods	Manufactures of metals, n.e.s.	Machinery other than electric	Electric machinery, apparatus and appliances	Road motor vehicles and parts
1965	39.3	17.4	5.1	17.4	17.4	18.4	10.8	7.3	8.9	11.6	11.3	23.2	17.2	14.7
1966	37.5	15.1	5.8	14.8	16.5	17.4	9.7	8.3	7.5	10.7	8.5	12.9	12.8	10.3
1967	44.2	15.3	4.0	25.0	16.2	19.0	11.4	8.4	8.1	12.7	10.8	16.6	16.3	9.9
1968	55.7	17.6	4.2	35.3	17.5	19.3	9.2	9.9	7.3	11.6	9.7	19.7	18.1	14.3
1969	54.9	23.0	4.0	31.1	9.7	17.1	8.4	10.7	8.4	9.3	8.2	18.6	15.0	10.4
1970	54.2	22.8	3.8	29.3	15.3	18.2	9.5	17.3	7.1	21.3	11.2	22.6	15.9	15.0
1970 : 1st Qr.	7.3	5.0	0.8	3.6	5.1	2.8	2.0	2.7	1.1	4.4	1.9	1.7	3.5	2.9
2nd Qr.	13.0	5.3	1.2	8.3	4.9	1.8	2.2	3.0	2.1	7.2	2.8	5.9	3.3	3.5
3rd Qr.	6.3	6.8	0.7	9.3	2.4	7.2	2.0	3.7	2.1	5.4	2.9	6.2	4.0	4.3
4th Qr.	12.5	5.6	1.1	3.0	2.8	6.5	3.4	4.8	1.8	4.3	3.5	5.8	5.1	4.2
1971 : 1st Qr.	9.7	5.3	0.7	9.1	3.4	3.3	2.8	3.1	1.8	3.5	2.6	8.2	4.2	2.9
2nd Qr.	5.7	6.3	1.2	6.6	7.6	2.9	2.3	3.8	1.7	4.7	3.4	13.3	4.9	5.8

Table 5. - Imports of merchandise : selected commodities - quantities

Period	Rice Thousand m/tons	Wheat flour Thousand m/tons	Vegetable edible oils Thousand m/tons	Fertilizers, manufactured Thousand m/tons	Cotton fabrics Million Sq. metres	Other textile fabrics Million sq. metres	Cement Thousand m/tons	Iron and steel goods Thousand m/tons
1965	67.2	35.5	8.6	58.1	8.5	2.6	95.4	15.8
1966	61.2	30.6	10.2	51.6	7.7	3.5	79.7	11.3
1967	66.8	35.0	10.6	59.0	9.0	3.1	87.9	16.2
1968	61.5	36.2	10.2	57.3	6.5	3.6	67.1	14.2
1969	64.8	44.9	7.9	57.2	6.0	3.7	76.1	10.4
1970	58.8	45.2	10.5	57.0	6.8	4.8	65.0	18.2
1970 : 1st Qr.	9.0	10.0	3.5	10.5	1.4	1.0	9.8	3.9
2nd Qr.	19.4	10.4	3.3	6.0	1.6	1.1	19.0	5.1
3rd Qr.	10.0	13.6	1.6	21.0	1.4	1.3	19.4	5.0
4th Qr.	20.4	11.1	2.0	19.5	2.5	1.5	16.9	4.1
1971 : 1st Qr.	15.9	10.6	2.0	11.9	1.9	1.0	16.2	3.4
2nd Qr.	9.9	12.7	4.1	10.5	1.5	1.1	14.9	4.2

Table 60 - Imports : main sources of supply - values

Period	Rs million (c.i.f.)											
	United Kingdom	Australia	Burma	Hong Kong	India	Republic of South Africa	Western Germany	Iran	Japan	Thailand	France	United States of America
1965	98.4	24.2	23.3	9.6	11.2	37.6	15.2	11.1	13.9	17.1	20.9	12.7
1966	79.1	23.9	23.1	8.8	9.9	27.5	19.7	11.4	14.2	11.3	20.2	7.5
1967	77.8	28.0	27.0	10.4	9.4	30.6	25.9	17.8	16.8	16.1	20.3	7.3
1968	99.6	25.7	22.3	8.7	11.5	31.4	27.9	12.6	14.3	10.7	23.8	8.8
1969	74.4	27.1	7.7	8.8	10.2	31.3	17.1	19.9	14.6	13.8	24.8	6.0
1970	83.0	30.4	23.1	10.2	12.8	37.8	20.5	14.9	21.8	12.8	29.5	23.9
1970 : 1st Qr.	21.5	7.3	6.9	1.9	3.3	8.1	2.7	0.6	4.2	0.2	5.9	5.5
2nd Qr.	21.6	7.0	5.1	2.7	3.0	11.0	4.7	3.6	4.1	5.9	6.4	8.0
3rd Qr.	20.2	7.9	5.6	2.3	2.8	9.5	6.9	7.2	5.8	0.4	8.7	5.2
4th Qr.	21.7	8.2	5.6	3.2	3.7	9.1	6.2	3.6	7.7	6.3	8.4	5.2
1971 : 1st Qr.	20.8	5.9	9.1	2.0	2.6	6.7	4.8	6.9	7.0	0.7	7.1	7.4
2nd Qr.	27.9	7.1	0.3	2.3	2.3	11.6	7.8	3.7	6.3	5.4	9.7	11.7

*
Table 61 - Imports of fertilizers

Kind of fertilizer	1969		1970		1st half-year 1971	
	Quantity m/tons	Value - c.i.f. (Rs 000)	Quantity m/tons	Value - c.i.f. (Rs 000)	Quantity m/tons	Value - c.i.f. (Rs 000)
TOTAL IMPORTS	67,407	18,247	65,756	19,157	24,509	6,427
NITROGENOUS FERTILIZERS	18,869	4,298	17,731	3,938	10,920	2,302
Sulphate of ammonia	17,689	3,982	16,500	3,592	10,600	2,211
Ammonium sulphate nitrate	850	237	1,195	330	320	91
Sodium nitrate	325	76	-	-	4	-
Other nitrogenous fertilizers	5	3	36	16	-	-
POTASSIC FERTILIZERS	6,050	1,683	5,360	1,486	1,428	1,246
Muriate of potash	5,876	1,614	5,225	1,426	4,398	1,234
Sulphate of potash	174	69	135	60	30	12
PHOSPHATIC FERTILIZERS	12,707	2,044	12,294	2,212	4,763	1,221
Single superphosphate	137	103	1,435	320	900	203
Triple superphosphate	1,660	716	2,156	917	1,775	777
Phosphatic guano	10,233	1,117	8,703	975	2,088	211
Other phosphatic fertilizers	377	78	-	-	-	-
MIXED AND COMPOUND FERTILIZERS	29,781	10,222	50,371	11,521	4,398	1,658

* excluding imports from dependencies.

VII - EMPLOYMENT AND WAGES

The figures of employment in tables 62-66 apply to large establishments only - these being defined as :

- (i) Sugar cane plantations known to harvest 25 arpents or more;
- (ii) Tea plantations of 5 arpents or more;
- (iii) All "flue cured" tobacco establishments, irrespective of acreage;
- (iv) Non-agricultural establishments employing at least 10 persons on the day of the survey;
- (v) All central and local government departments.

Table 62 - Employment (in large establishments) by major industrial groups

Industrial group	Total no. of persons employed on last Thursday of		
	March 1970 ^{1/}	September 1970 ^{1/}	March 1971
Agriculture and fishing	53,310	60,561	55,447
Sugar	48,127	55,530	48,468
Tea	4,425	3,643	5,311
Other	1,258	1,388	1,668
Mining and quarrying	154	160	154
Manufacturing	8,152	8,336	9,183
Construction	1,779	2,004	2,058
Electricity	1,288	1,294	1,283
Commerce	4,106	4,203	4,327
Transport, storage and communication	5,430	5,242	4,930
Services :	34,642	33,971	35,775
Government: (a) Central	27,139	26,149	27,557
(b) Local ^{2/}	3,129	3,187	3,139
Other	4,374	4,635	5,079
Total (excluding relief/development workers)	109,361	115,771	113,157
Relief/development workers	12,598	13,748	17,552
GRAND TOTAL (including relief/development workers)	121,959	129,519	130,709

^{1/} Figures for March 1970 and September 1970 have been revised

^{2/} Municipalities and district councils

Table 63 - Employment by sex and age group

Age group	March 1970		September 1970		March 1971	
	Males	Females	Total	Males	Females	Total
18 years of age and over (i.e. adults)	82,333	22,524	104,857	86,649	24,282	110,931
Under 18 years of age (i.e. young persons)	3,920	582	4,504	4,147	693	4,840
Total (excluding relief/ development workers)	86,255	23,106	109,361	90,796	24,975	115,771
Relief/development workers	12,518	30	12,548	13,335	413	13,748
				17,071	481	17,552
				83,566	24,591	108,157
				3,501	761	4,262
				85,065	23,830	108,895

⁰ in large establishments - see introduction on page 49.

Table 64 - Employment^① in specified sectors : sugar industry

Source of employment	Acreage group (arpents)	Total no. of persons employed on the last Thursday of :		
		March 1970	September 1970	March 1971
Sugar cane planters (including metayers)	25 -	1,710	2,030	1,818
	50 -	357	1,043	361
	75 -	466	513	620
	100 -	5,452	5,650	5,046
Total planters		3,485	9,221	3,345
Millers' estates and annexes (including factories)		39,642	46,309	40,123
Total		48,127	55,530	48,468

Note : Employment figures for millers' estates include workers in field, factory, garage and workshop.

^① in large establishments - see introduction on page 49.

Table 65 - Employment^② in specified sectors : government services

Source of employment	Total no. of persons employed on the last Thursday of :		
	March 1970	September 1970	March 1971
Central government	27,139	26,149	27,557
Local government ⁺	3,129	3,187	3,139
Relief/development works	12,598	13,748	17,552
Total	42,866	43,084	48,248

⁺ includes employees of district councils.

^② in large establishments - see introduction on page 49.

Table 66 - Employment[©] in specified sectors : manufacturing industries

Industrial group	Total no. of persons employed on last Thursday of :		
	March 1970	September 1970	March 1971
Food ⁺	752	767	815
Beverages and tobacco	1,343	1,272	1,335
Textiles (including aloe fibre)	811	737	699
Wearing apparel	695	730	1,055
Wood and furniture	290	299	335
Printing and publishing	687	702	785
Rubber and leather products	146	158	172
Chemical products	355	347	368
Non-metallic mineral products	570	619	600
Metal products	362	358	436
Repairs of machinery (except electrical)	602	366	554
Repairs of electrical machinery	141	149	153
Transport equipment	1,127	1,317	1,281
Miscellaneous manufacturing industries	271	315	595
Total	8,152	8,336	9,183

⁺ excluding employes in sugar and tea factories, who have been included with plantation workers in agriculture.

[©] in large establishments - see introduction on page 49.

Table 67 .. Indicators of unemployment

Month	Registered unemployed					Relief/development workers [‡]				
	1967	1968	1969	1970	1971	1967	1968	1969	1970	1971
January	18,567	9,956	13,082	17,113	27,810	19,977	18,179	15,727	14,505	17,743
February	18,144	9,838	14,606	17,328	27,770	19,911	18,156	15,650	14,611	17,716
March	16,614	9,954	14,846	18,519	30,354	20,262	18,294	15,389	14,427	17,672
April	15,950	9,974	15,293	20,656	30,030	20,237	18,082	15,338	14,526	17,520
May	15,943	8,710	15,297	21,584	29,696	20,242	17,961	15,415	14,955	17,451
June	15,414	7,833	15,351	21,838	31,277	20,276	17,463	15,210	15,807	17,510
July	14,459	7,951	14,452	22,189		23,291	15,569	14,793	15,396	
August	11,609	7,472	13,041	19,986		31,696	14,818	13,847	16,118	
September	8,666	8,127	13,274	19,754		31,218	14,777	13,674	16,094	
October	14,601	8,447	13,154	22,418		19,050	14,212	13,534	17,296	
November	10,006	10,023	14,238	25,197		19,069	14,732	13,706	17,515	
December	9,356	10,698	14,794	25,328		18,469	15,658	14,450	17,768	

[†] These figures exclude persons already in employment but seeking a change in job.

[‡] Including gangmen, supervisors, pay clerks, etc.

Table 68 - Daily wage rates in certain industries (October inquiry*)

Industry	Occupation	Rupees					
		Lowest			Highest		
		1968	1969	1970	1968	1969	1970
a. Manufacture of bread	Brigadiers	6.75	6.75	6.75	6.75	6.75	6.75
b. Manufacture of furniture	Cabinet makers	7.00	7.65	7.65	8.00	7.65	7.65
c. Publishing & printing	Pressmen	6.50	6.50	6.65	10.55	10.55	12.20
d. - do -	Compositors by hand	5.50	5.50	6.05	10.35	11.90	11.35
e. Manufacture of machinery	Fitters	5.45	5.85	5.85	10.95	11.20	12.00
f. - do -	Pattern makers	6.65	5.85	5.85	7.75	8.40	8.40
g. Repair of motor vehicles	Mechanics	4.00	5.00	5.00	11.50	11.15	12.00
h. Construction	Carpenters	6.50	6.60	6.60	10.00	10.00	10.00
i. - do -	Welders	7.00	5.50	6.60	8.00	10.00	12.00
j. Electricity	Linesmen	8.65	8.85	8.85	12.20	12.80	12.80
k. - do -	Labourers	6.70	6.85	6.50	7.20	7.20	7.20
l. Transport (bus companies)	Drivers	9.60	9.60	(1)	9.60	9.60	(1)
m. - do -	Conductors	8.25	8.25	(2)	8.25	8.25	(2)
n. Municipal services	Labourers unskilled	5.00	5.00	5.50	6.00	6.00	6.10

The normal hours of work are 9 per day for (j) and (k) and 8 for all others
 The normal hours of work are 56 per week for (a), 48 for (l) and (m) and 45 for all others

The basic rates of pay have been revised as follows:-

	(1) Drivers	(2) Conductors
	Rs	Rs
For the first four hours on any normal working day	5.50	4.75
For every subsequent hour not exceeding four	1.20	1.03

A normal working week shall be of forty five hours and shall be completed in six days.

* Data are collected in October of each year from a certain number of large establishments.

Table 69 - Daily wage rates of manual workers employed by the Central Government

	Minimum	Maximum
	Rs	Rs
Foremen	11.00	14.00
Artisans:		
Class II	9.90	10.70
Class III	8.50	9.30
IV	7.20	8.00
V	6.60	7.00
VI	6.00	6.40
VII	5.60	6.00

Note: These rates are in force since July, 1963.

Table 70 - Employment and wages of certain categories of employees on sugar millers' estates (September inquiry*)

Category	Grade	1 9 6 9			1 9 7 0		
		Number employed	Monthly wages		Number employed	Monthly wages	
			Lowest	Highest		Lowest	Highest
			Rs	Rs		Rs	Rs
Boiler makers	I	24	266.20	309.50	29	290.00	320.00
" "	II	21	197.95	245.70	27	225.00	250.00
Pan Boilers	Chief	23	354.90	472.90	23	355.00	472.90
" "	I	56	279.25	325.00	57	280.00	320.00
" "	II	55	204.65	266.24	49	225.00	240.00
Boiler attendants	Chief	31	184.00	309.50	34	180.00	266.20
" "	Asst.	36	157.00	200.00	26	160.00	180.00
Fitters	I	101	309.50	500.00	111	320.00	500.00
" "	II	74	266.20	285.00	83	270.00	290.00
" "	III	83	204.75	240.24	92	210.00	266.20
Mill drivers	I	336	157.50	300.00	The classification of workers in these categories has been revised as per G.N. No. 33 of 1970. The new classification is given hereunder		
" "	II	214	136.50	156.00			
Derrick drivers	I	79	193.00	277.20			
" "	II	42	173.60	184.30			
Tractor drivers	I	107	197.95	318.55			
" "	II	32	177.45	179.35			
" "	III	25	150.15	165.88			
Loco drivers		84	165.80	224.90			
Car and lorry drivers	I	506	205.15	250.00			
" "	II	27	179.35	199.40			
Drivers of lorries, buses, vans, cars and wheel tractors used for haulage works only	I				652	205.00	292.90
	II				101	180.00	197.90
	III				12	160.00	179.30
All other drivers	I				52	197.15	318.50
" " "	II				73	175.00	197.90
" " "	III				38	150.00	175.00
Factory Operators	I				110	180.00	220.00
" "	II				324	160.00	200.00
" "	III				283	140.00	173.60

*

Data are collected in September of each year from all sugar millers.

Table 71 - Employment and earnings on sugar millers' estates

Month	Workers on monthly rates of pay				Workers on daily rates of pay			
	Man-days actually worked (000)		Earnings (Rs Mn)		Man-days actually worked (000)		Earnings (Rs Mn)	
	1969	1970	1969	1970	1969	1970	1969	1970
January	137	109	1.4	1.3	612	461	3.4	2.9
February	148	140	1.6	1.3	677	657	3.8	3.8
March	155	145	1.4	1.3	690	673	3.9	3.9
April	185	188	1.4	1.4	882	893	4.4	4.5
May	157	156	1.3	1.4	710	721	3.7	3.8
June	160	150	1.3	1.4	717	729	3.7	3.8
July	189	190	1.6	1.6	965	953	5.6	5.6
August	164	168	1.7	1.8	857	892	5.9	6.1
September	167	193	1.7	1.8	878	1,074	5.9	7.5
October	190	165	1.8	1.7	1,077	917	7.1	5.9
November	154	162	1.6	1.6	855	808	5.4	4.8
December	161	178	4.7	4.7	889	900	5.9	6.1
Total	1,987	1,955	21.5	21.3	9,807	9,678	58.7	58.7

Note : (i) The table excludes the "Etat Major" staff.

(ii) Earnings and the number of "man-days actually worked" refer to 4 or 5 weekly periods /therefore ending on the pay-day of each month, the figures are/not strictly comparable from month to month.

(iii) Earnings also include overtime, holiday and leave pay, housing allowance and end-of-year bonus.

VIII. SOCIAL ASSISTANCE

Table 72 - Social benefits

	1966	1967	1968	1969	1970
<u>Outdoor relief</u>					
Total number of cases relieved	44,079	44,409	43,380	41,549	41,516
Total relief payments (Rs mn.)	9.3	9.7	8.8	7.8	8.4
<u>Indoor relief</u>					
Number of persons in infirmaries at end of year	714	726	719	756	749
Number of persons in orphanages at end of year	189	190	186	185	199
Total capitation grants paid (Rs mn.)	0.4	0.4	0.4	0.4	0.4
<u>Old age pension</u>					
Number of beneficiaries at end of year	39,198	40,393	41,760	42,670	43,761
Total amount paid (Rs mn.)	10.4	10.8	11.1	11.4	11.8
<u>Family allowance</u>					
Number of beneficiaries at end of year	53,476	52,930	40,564	42,116	43,755
Total amount paid (Rs mn.)	9.9	9.8	7.8	5.7	5.5
<u>Assistance to voluntary organisations</u>					
Total cash grants paid (Rs mn.)	0.2	0.2	-	-	-

Table 74 - Education Statistics - Secondary Level

Mauritius

Period	Total Number of Schools	E N R O L L M E N T			TOTAL	Number of Teachers	Pupil/Teacher Ratio
		Government	Aided	Non-Aided			
October 1966	142	2,431	5,875	26,629	34,935	1,534	23
" 1967	141	2,505	6,219	29,560	38,283	1,637	23
" 1968	135	2,538	6,372	30,581	39,491	1,696	23
" 1969	139	2,616	7,003	32,605	42,224	1,715	25
" 1970	137	2,679	6,979	34,049	43,707	1,736	25

Rodrigues

October 1966	2	-	-	192	192	8	24
" 1967	2	-	-	225	225	9	23
" 1968	2	-	-	212	212	10	21
" 1969	2	-	-	220	220	11	20
" 1970	2	-	-	262	262	11	24

Table 75 - Enrollment by grade and sex in Primary Schools

M A U R I T I U S

GRADE	1966		1967		1968		1969		1970			
	Male	Female	Both Sexes	Male	Female	Both Sexes	Male	Female	Both Sexes	Both Sexes		
Std. I	11,400	10,773	22,253	12,128	11,592	23,720	12,071	11,556	23,627	12,463	12,182	24,645
Std. II	10,713	10,339	21,052	10,377	10,153	21,035	12,110	11,497	23,607	11,303	11,404	23,213
Std. III	11,230	10,580	21,310	10,445	10,035	20,460	10,672	9,982	20,554	11,863	11,191	23,049
Std. IV	10,734	9,715	20,449	11,003	10,306	21,309	10,173	9,743	19,916	10,466	9,662	20,128
Std. V	10,774	9,615	20,389	10,453	9,390	19,843	10,632	9,839	20,471	9,860	9,370	19,230
Std. VI	14,950	12,759	27,709	16,476	14,097	30,573	16,744	14,493	31,237	17,195	15,009	32,204
TOTAL	69,381	63,781	133,662	71,332	65,578	136,960	72,402	67,610	139,412	74,026	69,054	143,080



Table 73 - Enrolment by grade and sex in Secondary Schools

RODRIGUES

GRADE	1 9 6 6		1 9 6 7		1 9 6 8		1 9 6 9		1 9 7 0						
	Male	Female	Both Sexes	Male	Female	Both Sexes	Male	Female	Both Sexes	Male	Female	Both Sexes			
Form I	41	27	68	37	20	57	25	28	53	27	28	55	41	20	61
Form II	25	21	46	26	27	53	30	14	44	25	23	48	27	23	50
Form III	21	17	38	20	24	50	15	24	39	27	14	41	22	20	42
Form IV	12	11	23	21	19	40	28	27	55	19	31	50	39	30	69
Form V	5	9	17	5	10	15	3	13	21	13	13	26	14	13	27
Form VI	-	-	-	-	-	-	-	-	-	-	-	-	-	-	-
TOTAL	107	85	192	115	100	215	106	106	212	111	109	220	143	110	262

X. TRANSPORT AND COMMUNICATION

Table 79 - Motor vehicles registered

Period	Grand total	Private vehicles				Commercial vehicles							Government owned vehicles
		Total	Cars	Motor cycles	Auto cycles	Total	Taxi-cars	Lorries	Vans	Buses	Other		
1967	22,783	14,739	10,716	2,436	1,587	7,101	1,371	2,406	1,508	634	1,182	943	
1968	23,811	15,375	10,876	2,600	1,899	7,371	1,405	2,423	1,580	657	1,300	1,065	
1969	24,736	16,161	11,193	2,744	2,224	7,478	1,331	2,461	1,654	693	1,339	1,097	
1970	25,389	16,603	11,220	2,914	2,469	7,588	1,326	2,439	1,732	722	1,369	1,198	
1970 : 1st Qr.	24,849	16,225	11,125	2,791	2,309	7,517	1,330	2,472	1,673	697	1,345	1,107	
2nd Qr.	24,967	16,337	11,148	2,836	2,353	7,490	1,321	2,433	1,677	707	1,352	1,140	
3rd Qr.	25,259	16,552	11,250	2,900	2,402	7,540	1,286	2,453	1,707	715	1,379	1,167	
4th Qr.	25,389	16,605	11,220	2,914	2,459	7,588	1,326	2,439	1,732	722	1,369	1,198	
1971 : 1st Qr.	25,567	16,710	11,236	2,951	2,523	7,623	1,321	2,435	1,762	729	1,376	1,234	
2nd Qr.	25,976	16,939	11,361	3,010	2,568	7,755	1,345	2,457	1,820	743	1,390	1,282	

Note : The above table has been completely revised in the light of amendments to the Road Traffic Ordinance 1962. Figures in the new series are consequently not comparable with those published previously.

Table 80 - Bus operational statistics

	Unit	1966	1967	1968	1969	1970
Total number of buses (at 30th June)	Number	591	621	622	651	679
Total vehicle-journeys	Thousand	2,166	2,160	2,243	2,340	2,559
Average vehicle-journeys per day	"	6	6	6	6	7
Total vehicle-miles	"	22,614	23,025	23,425	24,426	26,665
Average vehicle-miles per day	"	62	63	64	67	73
Total number of passengers carried during year	"	64,829	68,607	71,661	74,475	81,238
Average number of passengers carried per day	"	178	188	196	204	223
Total gross receipts	000 Rs	17,553	18,856	18,851	19,820	21,542
Average gross receipts per day	"	48	52	52	54	59

Table 81 - Road traffic accidents and casualties

	1966	1967	1968	1969	1970
<u>Road traffic accidents</u>					
Number	<u>2,475</u>	<u>2,575</u>	<u>2,128</u>	<u>2,035</u>	<u>2,142</u>
Number per 100,000 of population	326	333	270	255	264
<u>Motor vehicle accidents</u>					
Number	<u>2,240</u>	<u>2,425</u>	<u>2,025</u>	<u>1,899</u>	<u>2,009</u>
Number per 100,000 of population	295	313	257	238	248
Number per 1,000 registered motor vehicles	109	110	87	78	80
<u>Total casualties</u>	<u>2,125</u>	<u>2,357</u>	<u>1,928</u>	<u>1,934</u>	<u>2,174</u>
<u>Nature of casualty</u>					
Killed	72	87	80	78	117
Seriously injured	217	222	218	176	254
Slightly injured	1,836	2,048	1,630	1,680	1,803
<u>Casualties by class of road users</u>					
Pedestrians	976	974	810	805	882
Pedal cyclists	345	396	310	280	374
Passengers	524	646	454	555	569
Drivers or riders of motor vehicles	280	341	354	294	349

Table 82 - Seaborne shipping

Period	Vessels entering		Vessels leaving		Goods	
	Number	Net registered tonnage	Number	Net registered tonnage	Unloaded	Loaded ⁺
		Thousand m/tons		Thousand m/tons	Thousand m/tons	Thousand m/tons
1967	1,026	2,499	1,023	2,460	594	627
1968	1,269	2,770	1,269	2,744	583	779
1969	1,315	2,487	1,311	2,436	615	759
1970	1,110	2,478	1,121	2,472	535	726
1970 : 1st Qr.	286	560	281	564	122	180
2nd Qr.	307	635	312	632	126	49
3rd Qr.	268	659	276	652	179	252
4th Qr.	249	620	252	624	108	245
1971 : 1st Qr.	216	496	221	509	151	134
2nd Qr.	205	542	198	504	175	35

⁺excluding bunkers

Table 83 - Civil aviation

Period	Number of movements		Freight	
	Landings	Take offs	Unloaded	Loaded
			(m/tons)	(m/tons)
1967	601	604	229.7	118.5
1968	554	554	245.9	192.1
1969	598	598	277.6	235.8
1970	388	388	402.0	336.4
1970 : 1st Qr.	138	138	62.0	47.0
2nd Qr.	225	225	131.5	71.6
3rd Qr.	257	257	102.0	97.5
4th Qr.	218	218	99.9	120.3
1971 : 1st Qr.	260	260	84.6	138.0
2nd Qr.	297	297	124.3	134.9

Note : In this table : (1) are included only movements of commercial aircraft;
 (2) each touch down or each take off is counted as a separate movement;
 (3) freight carried by planes other than commercial is included.

Table 84 - Telephone service

	Unit	End of period				
		1967	1968	1969	1970	Jan.-June 1971
Main exchange (including rural automatic exchange)	Number	22	22	23	24	24
Capacity (in terms of line)	"	11,970	11,957	13,370	13,470	13,470
Exchange line connections	"	10,178	10,417	10,961	11,958	12,278
Individual installations	"	15,328	15,996	16,793	18,038	18,419
Call units registered (during period)	Thousand	15,947	17,252	17,858	19,583	10,264
Outstanding applications for telephone service	Number	752	830	992	566	932

Table 85 - Broadcasting services

	Unit	End of period				
		1967	1968	1969	1970	Jan.-June 1971
<u>SOUND</u>						
Stations	Number	1	1	1	1	1
Transmitters	"	3	3	3	3	3
Aerial output: short wave	kw.	10	10	10	10	10
medium wave	"	10	10	10	10	10
Weekly transmission time	Hour	112	112	116	116	116
New licences issued (during period)	Number	4,243	8,939 [*]	3,541 ⁺	1,866 ⁺⁺	834 [@]
Radio sets licensed	"	69,905	76,829	81,224	83,716	83,131
<u>TELEVISION</u>						
Stations	Number	1	1	1	1	1
Transmitters	"	5	5	5	5	5
Aerial output (ERP)	Kw.	15	15	15	15	15
Weekly transmission time	Hour	24	31½	45	57¾	57¾
New licences issued (during period)	Number	3,430	4,409 [*]	4,119 ⁺	2,910 ⁺⁺	1,750 [@]
Television sets licensed	"	9,179	12,847	16,342	18,858	20,560

*including 714 omnibus licences

+including 953 omnibus licences

++including 236 omnibus licences

@including 110 omnibus licences

XI. LAND UTILIZATION

Table 86 - Total area⁺ classified by utilization

	<u>Acres</u>
	1 9 7 0
<u>Agriculture</u>	258,900
Sugar cane	242,100
Tea	11,800
Tobacco, vegetable and other crops	5,000
<u>Forests, scrub areas, grasslands and grazing lands</u>	162,900
Forest plantations	23,900
Forest, natural	5,900
Savannah, grasslands, meadows, etc.	18,400
Scrub and other forest lands	114,700
<u>Reservoirs and ponds</u>	2,900
<u>Swamps and rocks</u>	3,500
<u>Roads (main thoroughfares)</u>	3,300
Built-up areas	29,300
Total island area	460,800

⁺ Based on the findings of the UNDP-FAO Land and Water Resources Survey team working on aerial photographs of the island taken at the end of 1965 and supplemented to some extent by land surveys.

Table 87 - Effective area under cultivation

	<u>Acres</u>			
	1967	1968	1969	1970
Sugar cane	214,000	211,700	213,400	213,800
Tea	7,900	8,400	8,400	9,400
Tobacco	800	1,000	600	600

XII. LOCAL PRODUCTION

Table 88 - Agriculture : production of main crops, fish and meat

Commodity	Unit	1968	1969	1970	Jan.-June 1971
<u>INDUSTRIAL CROPS</u>					
Sugar cane	000 m/tons	5,152	5,824	5,120	-
Tea (green leaf processed)	M/ton	11,062	15,353	16,029	11,615
Tobacco leaf <u>a/</u>	"	742	442	526	266
<u>VEGETABLES, PULSES & FRUITS</u>					
Beans and peas	"	652	613	455	174
Creepers <u>b/</u>	"	3,006	7,071	7,033	2,665
Eddoes	"	458	468	341	236
Egg plants (bringelles)	"	1,874	2,628	2,320	1,185
Ginger	"	882	1,152	760	144
Groundnuts	"	632	792	693	742
Maize	"	376	462	529	215
Manioc	"	241	239	249	111
Potatoes (Irish)	"	9,578	5,761	6,815	759
Rice	"	118	813	906	1,007
Sweet potatoes	"	268	219	211	42
Tomatoes	"	8,780	8,566	5,284	2,419
Mixed vegetables <u>c/</u>	"	7,227	7,715	6,804	2,177
Bananas	"	10,763	11,468	7,953	5,000
Pineapples	"	666	670	545	301
<u>FISH, MEAT & BY-PRODUCTS</u>					
Fish : Coastal fishing (controlled catch)	"	940	1,350	1,042	544
High seas	"	1,259	1,282	1,208	...
Meat <u>d/</u> : Beef	"	2,348	2,148	2,257	...
Goat	"	202	205	214	...
Mutton	"	40	44	92	...
Pork	"	536	543	561	...
Cattle hides & skins	Number	16,498	15,861	16,888	...

a/ Refers to crop year which normally extends from the beginning of April to the end of March.

b/ Include margoze, calabash, chouchou, cucumber, patolle, pipengaille, pumpkin, squash, voehm.

c/ Include beet, cabbage, carrot, caulifower, chillies (long and small), garlic, leek, lettuce, onion, petsai, sweet pepper, ladies' finger (lalo).

d/ From local and imported livestock.

Table 89 - Industry : production of specific commodities

Commodity	Unit	1968	1969	1970	January- June 1971
Sugar	M/ton	596,549	668,553	576,214	-
Molasses	"	132,707	166,332	142,427	-
Tea (manufactured)	"	2,288	3,197	3,240	2,422
Aloe fibre	"	1,319	1,294	1,534	962
Alcohol @ 100 G.L.	Hectolitre	12,863	12,420	12,006	...
Colonial spirits (rum)	"	14,254	13,358	12,915	2,099
Denatured spirits :					
Power alcohol	"	2,680	3,045	2,780	1,310
Alcohol for heating and lighting	"	2,534	1,905	2,306	1,125
Perfumed spirits	"	355	404	431	220
Vinegar	"	2,913	568	167	222
Beer and stout	"	39,259	36,799	44,036	22,288
Country liquor	"	32,949	33,362	33,963	16,612
Soft aerated beverages	"	82,800	92,000	98,800	...
Cigarettes	M/Ton	562	584	596	300
Matches	Gross boxes	114,585	103,064	108,347	48,321
Lime	M/ton	6,000	6,000	6,000	...
Sacks [⌘]	Thousand	1,552	2,338	2,403	1,071
Salt	M/ton	4,200	4,200	4,500	...
Electricity generated	Mn kwh	126	130	136	72.7

[⌘] Manufactured by the Government Sack Factory

Table 90 - Sugar industry: cane cultivation

Crop Year	AREA UNDER CULTIVATION (Thousand arpents)			AREA HARVESTED (Thousand arpents)			CANES HARVESTED (Thousand m/tons)			AVERAGE YIELD (M/tons per arpent)		
	Millers	Planters	Total	Millers	Planters	Total	Millers	Planters	Total	Millers	Planters	Total
1963	109	95	204	100	94	194	3,515	2,232	5,747	35.1	23.7	29.6
1964	110	97	207	100	95	195	2,615	1,765	4,380	26.2	18.5	22.4
1965	111	95	206	101	94	195	3,619	2,365	5,984	35.7	25.3	30.7
1966	111	97	208	102	94	196	3,004	1,839	4,843	29.5	19.5	24.7
1967	111	94	205	101	91	192	3,569	2,245	5,814	35.3	24.7	30.3
1968	110	93	203	100	89	189	3,113	2,039	5,152	31.2	22.8	27.2
1969	110	95	205	99	89	188	3,564	2,260	5,824	36.1	25.2	30.9
1970	113	92	205	101	89	190	3,181	1,939	5,120	31.5	21.7	26.9

Table 91 - sugar manufacture

Crop Year	Number of factories operating	Commercial sugar recovered (% cane)	PRODUCTS OF MANUFACTURE (Thousand m/tons)			RESIDUES OF MANUFACTURE (Thousand m/tons)		Average sugar price ex-syndicate (Rs per m/ton)
			White sugar	Raw sugar	Total sugar	Molasses	Scums	
1963	23	11.93	20	666	686	150	177	590.89
1964	23	11.85	20	499	619	115	148	433.13
1965	23	11.10	25	639	664	149	179	409.32
1966	23	11.60	23	539	562	133	160	421.50
1967	23	10.98	24	614	638	154	180	424.40
1968	23	11.58	23	574	597	133	171	428.39
1969	22	11.48	23	646	669	166	194	445.27
1970	21	11.26	22	554	576	142	166	471.69

Note: 1 arpent = 1.043 acres

Table 92 - Electricity^{*}: production, consumption, sales, etc.

	Unit	1967	1968	1969	1970
Generating stations	Number	<u>8</u>	<u>8</u>	<u>8</u>	<u>8</u>
Hydro	"	6	6	6	6
Thermal	"	2	2	2	2
Plant - effective capacity	"	<u>43,090</u>	<u>43,090</u>	<u>43,090</u>	<u>43,090</u>
Hydro	"	15,090	15,090	15,090	15,090
Thermal	"	28,000	28,000	28,000	28,000
Energy generated	Million kwh	<u>103.6</u>	<u>107.8</u>	<u>104.4</u>	<u>113.7</u>
Hydro	"	57.6	46.5	26.5	50.9
Thermal	"	46.0	61.3	77.9	62.8
Energy purchased from sugar and other factories	"	17.0	18.6	24.9	22.3
Energy sold	"	94.3	98.3	102.5	109.1
Number of consumers on 31st December:	Number	<u>93,169</u>	<u>91,234</u>	<u>92,485</u>	<u>93,910</u>
Domestic	"	82,550	80,456	81,476	82,762
Commercial	"	9,113	9,212	9,423	9,520
Industrial	"	1,378	1,424	1,430	1,458
Special	"	128	142	156	170
Average selling price	Cents per kwh	19.3	22.1	21.9	21.6
Total revenue	Rs mn.	19.4	23.0	23.7	24.8
Total current expenditure	" "	18.5	21.6	23.4	22.7
Persons employed	Number	1,285	1,242	1,257	1,260

* Statistical data relating to the Central Electricity Board.

XIII. CLIMATE

Table 93 - Monthly temperatures, 1970 & 71

Period	VACOAS Centre - 1,394 ft. A.M.S.L. +				PLAISANCE Coastal Region, South - 188 ft. A.M.S.L. +			
	Maximum		Minimum		Maximum		Minimum	
	Mean	Departure from normal	Mean	Departure from normal	Mean	Departure from normal	Mean	Departure from normal
1970 : July	21.7	0.0	16.0	+ 0.9	23.9	0.0	18.3	+ 0.8
August	21.3	+ 0.2	15.5	+ 0.9	23.5	+ 0.1	17.5	+ 0.4
September	22.4	+ 0.1	15.7	+ 0.5	24.7	+ 0.4	18.7	+ 1.2
October	24.1	+ 0.5	15.8	- 0.2	26.4	+ 0.9	18.1	- 0.4
November	25.5	0.0	17.4	- 0.2	27.4	+ 0.1	20.3	+ 0.4
December	27.1	+ 0.4	18.7	- 0.5	28.9	+ 0.3	21.3	- 0.2
1971 : January	27.6	+ 0.5	20.5	+ 0.4	30.3	+ 1.3	22.7	+ 0.2
February	26.6	- 1.2	20.5	- 0.2	28.8	- 0.7	22.7	0.0
March	27.3	0.0	19.5	- 1.0	28.7	- 0.3	21.6	- 0.9
April	26.1	- 0.2	19.5	+ 0.2	28.0	+ 0.1	22.1	+ 1.0
May	24.3	+ 0.2	16.9	- 0.3	26.7	+ 0.6	19.7	+ 0.3
June	22.3	- 0.4	14.9	- 0.8	24.6	- 0.3	18.1	+ 0.2

+ above mean sea level

Table 94 - Monthly rainfall for the sugar cane districts, 1970 & 1971

Millimetres

Period	WEST		NORTH		EAST		SOUTH		CENTRE		ALL DISTRICTS	
	Amount	Difference from normal	Amount	Difference from normal	Amount	Difference from normal	Amount	Difference from normal	Amount	Difference from normal	Amount	Difference from normal
1970:												
July	11	- 16	69	- 2	134	- 36	141	- 5	117	- 17	113	- 13
August	21	+ 5	84	+ 24	147	+ 18	152	+ 37	123	+ 12	124	+ 24
September	7	- 13	31	- 21	50	- 62	30	- 64	50	- 47	38	- 48
October	2	- 26	9	- 30	54	- 33	51	- 24	40	- 32	37	- 29
November	7	- 55	29	- 46	62	- 59	61	- 59	43	- 65	47	- 57
December	64	- 72	29	- 92	63	- 156	90	- 107	82	- 104	67	- 111
1971:												
January	123	- 66	163	- 13	226	- 86	139	- 160	245	- 88	184	- 91
February	209	+ 13	166	- 49	286	- 54	278	- 23	505	+ 165	300	+ 7
March	30	- 236	86	- 173	149	- 281	154	- 223	105	- 261	122	- 230
April	201	+ 85	316	+ 141	279	- 33	249	- 51	262	+ 22	273	+ 20
May	144	+ 89	199	+ 79	270	+ 64	150	- 36	194	+ 47	195	+ 34
June	6	- 32	60	- 29	107	- 87	128	- 26	57	- 82	88	- 51

