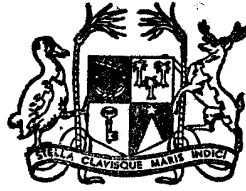


AH KONG

12

No. 1



MAURITIUS

Ministry of Economic Planning and Development

CENTRAL STATISTICAL OFFICE

---

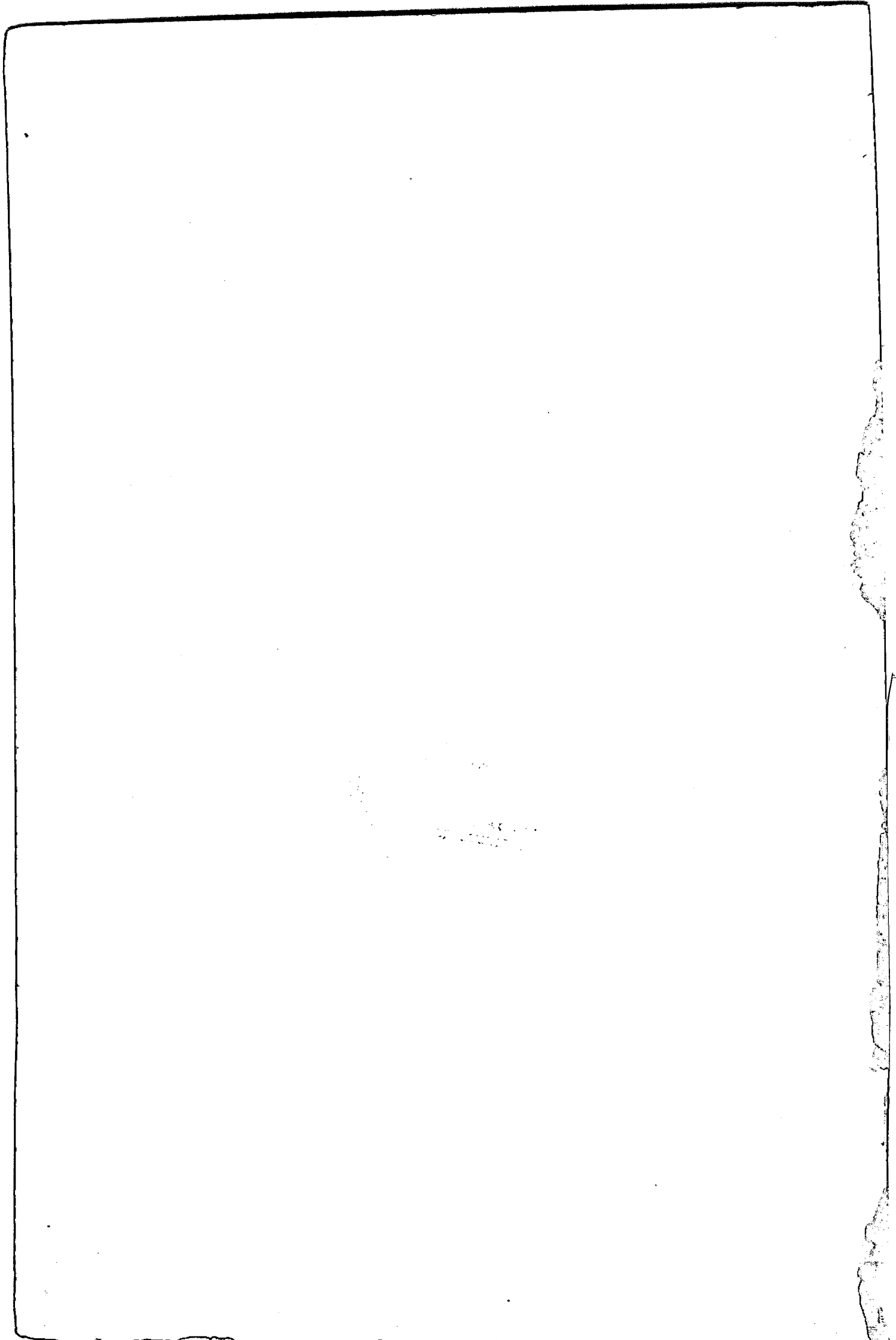
**BI-ANNUAL  
DIGEST OF STATISTICS**

---

**June 1977**

[ Price : Rs 25.00 ]

ES



BI-ANNUAL DIGEST OF STATISTICS

Vol. 12 No. 1

June 1977



The Bi-annual Digest of Statistics is a publication of the Central Statistical Office.

It is designed to present in a concise and readily accessible form the more important statistical series available on the demographic, economic and social characteristics of Mauritius.

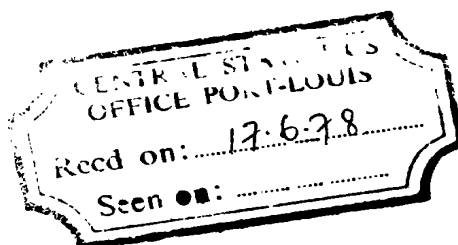
Some of the figures in this digest are provisional and liable to revision in later issues.

Where necessary, figures have been rounded off to the nearest final digit, and in some tables there may be discrepancies between the sum of the constituent items and the total as shown.

The following symbols are used throughout :

- Nil or negligible
- ... Not available

The assistance given by the Bank of Mauritius, all government departments and other bodies in providing data for publication in this issue is gratefully acknowledged.



J. AH KONG  
Director of Statistics

Central Statistical Office  
Rose Hill  
Mauritius

JANUARY 1978

CONTENTS

	<u>Page</u>
<u>I - POPULATION AND VITAL STATISTICS</u>	
Table 1 - Estimated population of Mauritius as at 30th June 1977 based on the final 1972 Population Census data	1
2 - Population increase in intercensal periods - Island of Mauritius, 1846 - 1972	1
3 - Population of Mauritius by geographical district and sex, 1975-77 (mid-year estimates)	2
4 (a) - Population enumerated at each census by population group and sex - Island of Mauritius, 1846 - 1952	3
4 (b) - Population enumerated at each census by community and sex - Island of Mauritius, 1962-72	3
5 - Population growth and vital statistics - Island of Mauritius, 1963-76	4
6 - Rate of increase of the population of Mauritius compared with other countries	5
7 - Expectation of life in years at selected ages - Island of Mauritius	5
8 - Population and vital statistics - Island of Mauritius, 1921-76	6
9 - Population and vital statistics rates - Island of Mauritius, 1921-76	7
10 - Fertility rates - Island of Mauritius, 1962, 1972-76	8
11 - Age-specific fertility rates by age of mother and live birth order - Island of Mauritius, 1962 and 1972 censuses	9
12 - Age-specific fertility rates by age of mother and live birth order - Island of Mauritius, 1975-76	10
13 - Age distribution of the population as enumerated at the censuses of 1962 and 1972, Island of Mauritius	11
14 - Estimated age distribution of population - Island of Mauritius, 1976-77	12
15 - Vital statistics by month of registration and sex - Island of Mauritius, January 1976 - June 1977	13
16 - Vital statistics by geographical district - Island of Mauritius, 1975-76	14
17 - Still births and infant deaths by sex - Island of Mauritius, 1962 - June 1977	15
18 - Infant deaths (deaths under 1 year of age) by age and sex - Island of Mauritius, 1975 - June 1977	15
19 - Deaths by age and sex - Island of Mauritius, 1975 - June 1977	16
20 - Deaths by cause - Island of Mauritius, 1976	17
21 - Intercensal population increase in urban and extra-urban areas according to present boundaries - Island of Mauritius, 1962-72	18
22 - Estimated population, urban and extra-urban - Island of Mauritius, 1974-77	19
23 - Population and vital statistics - Island of Rodrigues, 1963-76	20
24 - Vital statistics by month of registration and sex - Island of Rodrigues, January 1976 - June 1977	21
25 - Deaths by age and sex - Island of Rodrigues, 1975 - June 1977	22

CONTENTS (cont'd)

	<u>Page</u>
<u>I - POPULATION AND VITAL STATISTICS (cont'd)</u>	
Table 26 - Deaths by cause - Island of Rodrigues, 1976	23
27 - Passenger traffic - Island of Mauritius, 1962 - June 1977	24
28 - Passenger traffic by country of original embarkation or final destination and by mode of transport, January - June 1977	25
29 - Tourist arrivals by mode of transport and total nights spent during period - Island of Mauritius, 1963 - June 1977	26
30 - Tourist arrivals by country of residence and by mode of transport - Island of Mauritius, January - June 1977	27
31 - Official long-term emigrants by sex - Island of Mauritius, 1956 - June 1977	28
<u>II - PUBLIC HEALTH</u>	
Table 32 - Health services - Island of Mauritius	29
33 - Statistics of hospitals - Island of Mauritius	30
34 - Notifiable, contagious or communicable diseases - Island of Mauritius	31
<u>III - PUBLIC FINANCE AND BANKING</u>	
Table 35 - Central government revenue and expenditure	32
36 - Functional classification of central government capital revenue	32
37 - Functional classification of central government capital expenditure	33
38 - Functional classification of central government recurrent revenue	34
39 - Functional classification of central government recurrent expenditure	35
40 - Public debt outstanding	36
41 - Sinking funds held against the public debt	36
42 - Central government local loan repayments by year of maturity (at end of June 1977)	37
43 - Outstanding loans and advances made from public funds (as at end of June)	38
44 - Income tax - individuals	39
45 - Income tax - companies	40
46 - Foreign exchange reserves	41
47 - Assets of the Bank of Mauritius	42
48 - Liabilities of the Bank of Mauritius	43
49 - Assets of commercial banks	44
50 - Liabilities of commercial banks	45
51 - Analysis of bills discounted, loans and advances made by commercial banks	46
52 - Assets and liabilities of the Development Bank of Mauritius	47
53 - Post Office Savings Bank	48
54 - Assets and liabilities of the Mauritius Co-operative Central Bank Ltd.	48
55 - Money Supply	49

CONTENTS (cont'd)

	<u>Page</u>
<u>III - PUBLIC FINANCE AND BANKING (cont'd)</u>	
Table 56 - Assets and Liabilities of the Mauritius Housing Corporation	49
57 - Bank and interest rates	50
58 - Foreign exchange rates	51
<u>IV - NATIONAL ACCOUNTS</u>	
Table 59 - Gross national product, by industrial origin	52
60 - Distribution of the gross national income	53
61 - Expenditure on gross national product	54
62 - Composition of gross domestic fixed capital formation	55
63 - Gross national product at constant prices	56
64 - Gross domestic fixed capital formation at constant prices	56
65 - Balance of payments	57
<u>V - CONSUMER PRICE INDICES</u>	
Table 66 - Consumer price indices	60
<u>VI - EXTERNAL TRADE</u>	
Table 67 - Balance of visible trade	61
68 - Price indices of exports and imports and terms of trade	61
69 - Price indices of imports, by section.	62
70 - Exports : quantities and values	63
71 - Total exports : main countries of destination - values	65
72 - Imports : values by S.I.T.C. sections	66
73 - Imports : selected commodities - values	67
74 - Imports : selected commodities - quantities	68
75 - Imports : main countries of origin - values	69
76 - Imports of fertilizers	72
<u>VII - EMPLOYMENT AND WAGES</u>	
Table 77 - Employment in large establishments by major industrial groups	73
78 - Employment in specified sectors - sugar industry	74
79 - Employment in specified sectors - manufacturing industries	75
80 - Employment by major industrial group and major occupational group	76
81 - Daily wage rates of manual workers employed by the central government as at 31st December	77
82 - Daily wage rates in certain industries (October inquiry)	78
83 - Employment and wages of certain categories of employees on sugar millers' estates (September inquiry)	79
84 - Employment and earnings on sugar millers' estates	80
<u>VIII - SOCIAL ASSISTANCE</u>	
Table 85 - Social benefits	81

CONTENTS (cont'd)

	<u>Page</u>
<u>IX - EDUCATION</u>	
Table 86 - Primary education - number of schools, pupils and teachers	82
87 - Secondary education - number of schools, pupils and teachers	83
88 - Enrolment by grade and sex in primary schools - Island of Mauritius	84
89 - Enrolment by grade and sex in primary schools - Island of Rodrigues	85
90 - Enrolment by grade and sex in secondary schools - Island of Mauritius	86
91 - Enrolment by grade and sex in secondary schools - Island of Rodrigues	87
92 - University of Mauritius - students enrolled	88
93 - University of Mauritius - output	89
<u>X - TRANSPORT AND COMMUNICATION</u>	
Table 94 - Motor vehicles registered	90
95 - New registration of motor vehicles, 1975-77	91
96 - Bus operational statistics	92
97 - Road traffic accidents and casualties	92
98 - Sea-borne shipping	93
99 - Civil aviation	93
100 - Telephone service	94
101 - Broadcasting services	94
<u>XI - LAND UTILIZATION</u>	
Table 102 - Total area classified by utilization	95
103 - Effective area under cultivation	95
<u>XII - LOCAL PRODUCTION</u>	
Table 104 - Agriculture - production of main crops, fish and meat	96
105 - Sugar Industry - cane cultivation	97
106 - Sugar Industry - sugar manufacture	97
107 - Industry - production of specific commodities	98
108 - Gross output and value added of large manufacturing industries, 1975-76	99
109 - Electricity - production, consumption, sales, etc.	100
<u>XIII - CONSTRUCTION STATISTICS</u>	
Table 110 - Number of permits issued for new buildings	101
111 - Number of permits issued for new buildings classified by urban/rural areas	102
<u>XIV - CLIMATE</u>	
Table 112 - Monthly temperatures, 1976-77	103
113 - Monthly rainfall for the sugar cane districts, 1976-77	104

I - POPULATION AND VITAL STATISTICS

Table 1 - Estimated population of Mauritius as at 30th June 1977 based on the final 1972 Population Census data

Island	Both sexes	Male	Female
Island of Mauritius	881,761 ✓✓	438,944	442,817
Island of Rodrigues	27,058	13,202	13,856
Other Islands	350	250	100
<b>Mauritius</b>	<b>909,169</b>	<b>452,396</b>	<b>456,773</b>

Table 2 - Population increase in intercensal periods - Island of Mauritius 1846-1972

Census date	Population enumerated at census			Intercensal increase	Average annual rate of increase %
	Both sexes	Male	Female		
1st Aug. 1846	158,462	104,598	53,864		
20th Nov. 1851	180,823	119,341	61,482	22,361	2.55
8th Apr. 1861	310,050	202,961	107,089	129,227	5.87
11th Apr. 1871	316,042	193,575	122,467	5,992	0.19
4th Apr. 1881	359,874	208,655	151,219	43,832	1.31
6th Mar. 1891	370,588	206,038	164,550	10,714	0.29
1st Apr. 1901	371,023	199,552	171,471	435	0.01
31st Mar. 1911	368,791	194,095	174,696	- 2,232	- 0.06
21st May 1921	376,485	194,108	182,377	7,694	0.21
26th Apr. 1931	393,238	200,609	192,629	16,753	0.44
11th Jun, 1944	419,185	210,326	208,859	25,947	0.49
29th Jun. 1952	501,415	252,032	249,383	82,230	2.26
30th Jun. 1962 <sup>+</sup>	681,619	342,306	339,313	180,204	3.12
30th Jun. 1972 <sup>+</sup>	826,199	413,580	412,619	144,580	1.94

+ de facto population - including the European members of the armed forces but excluding the passengers and crews of ships lying in the harbour



Table 3 - Population of Mauritius by geographical district and sex, 1975-77 (mid-year estimates)

Geographical district	Estimated population <sup>1/</sup> as at 30.6.75			Estimated population <sup>1/</sup> as at 30.6.76			Estimated population <sup>1/</sup> as at 30.6.77		
	Both sexes	Male	Female	Both sexes	Male	Female	Both sexes	Male	Female
Port Louis	137,955	68,111	69,844	139,599	68,835	70,564	141,022	69,413	71,609
Pamplemousses	72,026	36,419	35,607	73,138	36,907	36,231	74,435	37,517	36,918
Rivière du Rempart	70,512	35,627	34,885	71,736	36,251	35,485	73,123	36,872	36,251
Flacq	94,017	47,361	46,656	95,675	48,111	47,564	97,633	48,978	48,655
Grand Port	83,875	42,112	41,763	85,048	42,651	42,397	86,477	43,315	43,162
Savanne	54,780	27,534	27,246	55,480	27,878	27,602	56,429	28,322	28,107
Plaines Wilhems	265,521	131,364	134,157	268,449	132,813	135,636	272,176	134,311	137,865
Moka	50,444	25,243	25,201	51,137	25,577	25,560	52,018	25,909	26,109
Black River	27,386	13,813	13,573	27,823	14,032	13,791	28,448	14,307	14,141
Island of Mauritius	856,516	427,584	428,932	867,885	433,055	434,830	881,761	438,944	442,817
Island of Rodrigues	26,343	13,030	13,313	26,539	13,023	13,516	27,058	13,202	13,856
Other Islands	350	250	100	350	250	100	350	250	100
Mauritius	883,209	440,864	442,345	894,774	446,328	448,446	909,169	452,396	456,773

<sup>1/</sup> based on the final 1972 Population Census data. No account has been taken of internal migration.

Table 4(a) - Population enumerated at each census by population group and sex - Island of Mauritius, 1846-1952

Year of census	General Population			Indo-Mauritian Population			Chinese Population		
	Both sexes	Male	Female	Both sexes	Male	Female	Both sexes	Male	Female
1846	102,217	55,663	46,554	56,245	48,935	7,310	-	-	-
1851	102,827	55,059	47,768	77,996	64,282	13,714	-	-	-
1861	115,864	59,796	56,068	192,634	141,615	51,019	1,552	1,550	2
1871	97,497	49,487	48,010	216,258	141,804	74,454	2,287	2,284	3
1881	107,323	53,754	53,569	248,993	151,352	97,641	3,558	3,549	9
1891	111,517	55,397	56,120	255,920	147,499	108,421	3,151	3,142	9
1901	108,422	52,995	55,427	259,086	143,100	115,986	3,515	3,457	58
1911	107,432	51,808	55,624	257,697	138,974	118,723	3,662	3,313	349
1921	104,216	49,725	54,491	265,524	139,150	126,374	6,745	5,233	1,512
1931	115,666	54,733	60,933	268,649	139,533	129,116	8,923	6,343	2,580
1944	143,056	67,136	75,920	265,247	136,382	128,865	10,882	6,808	4,074
1952	148,238	70,370	77,868	335,327	171,241	164,086	17,850	10,421	7,429

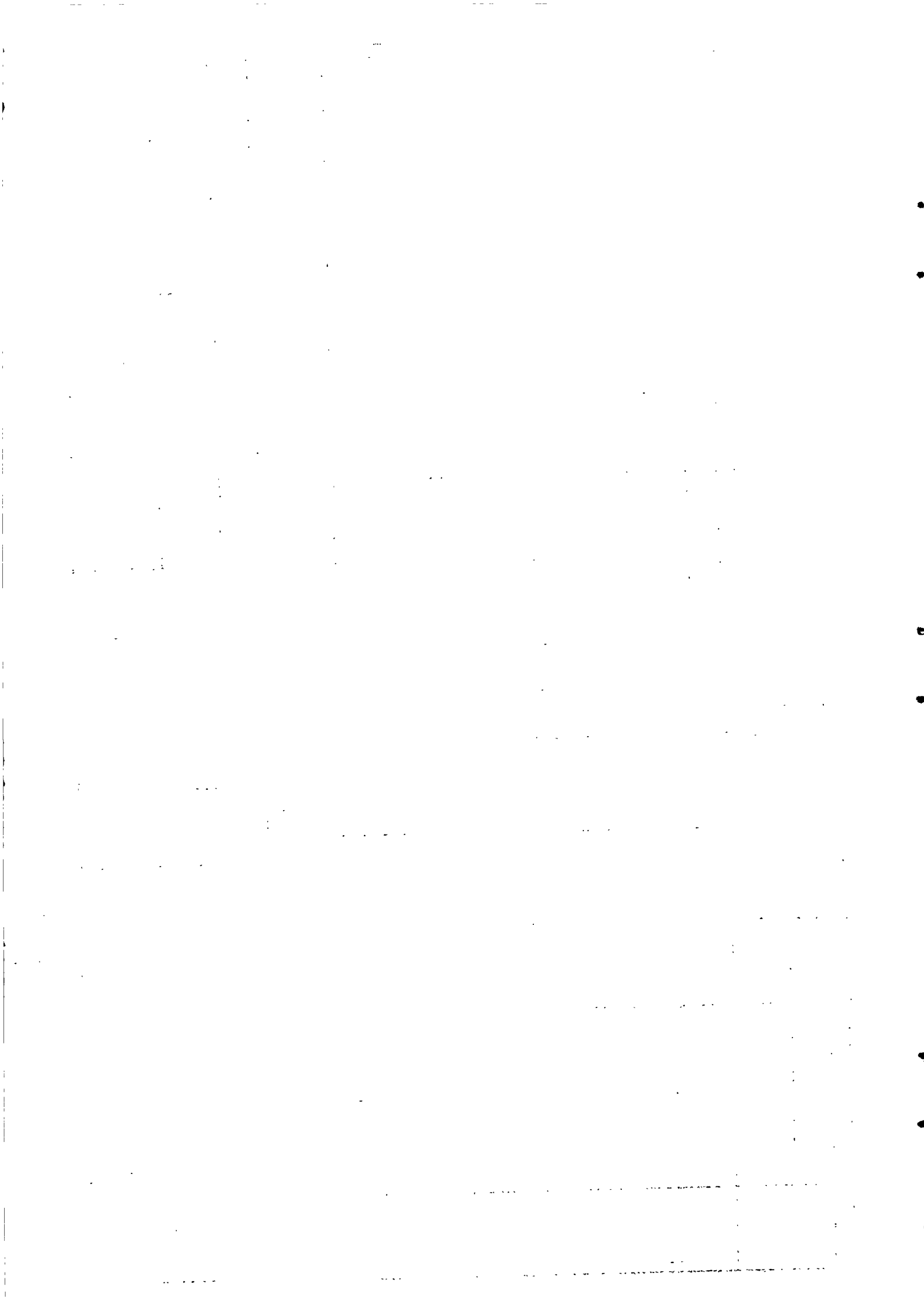
At the 1962 census each householder was asked, for the first time, to state the population group to which each member of his household claimed to belong.

Prior to 1962, it is probable that, from one census to another, different criteria have been used in classifying the population by population groups. Figures are therefore not strictly comparable from one census to another, before 1962.

Table 4(b) - Population enumerated at each census by community and sex - Island of Mauritius, 1962-72

Year of census	Total Population			Hindu			Muslim			Sino-Mauritian			General Population		
	Both sexes	Male	Female	Both sexes	Male	Female	Both sexes	Male	Female	Both sexes	Male	Female	Both sexes	Male	Female
1962 <sup>+</sup>	681,619	342,306	339,313	344,587	174,698	169,889	110,322	55,971	54,351	23,058	12,654	10,404	203,652	98,983	104,669
1972 <sup>+</sup>	826,199	413,580	412,619	428,167	215,654	212,513	137,081	68,789	68,292	24,084	12,849	11,235	236,867	116,288	120,579

<sup>+</sup> de facto population - including the European members of the Armed Forces but excluding the passengers and crews of ships lying in the harbour.



**Table 6 - Rate of increase of the population of Mauritius compared with other countries**

Continent & country	Average annual rate of increase 1963-72 (%)	Continent & country	Average annual rate of increase 1963-72 (%)
<u>AFRICA</u>		<u>ASIA</u>	
Mauritius	2.0	Ceylon	2.3
Island of Mauritius	1.9	China (Mainland)	1.8
Island of Rodrigues	3.3	India	2.2
<u>AMERICA</u>		Japan	1.1
Canada	1.6	Pakistan	2.4
Guyana	2.3	<u>EUROPE</u>	
Trinidad & Tobago	1.4	Albania	2.9
<u>OCEANIA</u>		France	0.9
Australia	1.9	United Kingdom	0.4
New Zealand	1.5		

Source : United Nations Demographic Yearbook 1972

**Table 7 - Expectation of life in years at selected ages - Island of Mauritius**

Exact age (years)	Males				Females			
	1942-46 <sup>1/</sup>	1951-53 <sup>1/</sup>	1961-63 <sup>1/</sup>	1971-73	1942-46 <sup>1/</sup>	1951-53 <sup>1/</sup>	1961-63 <sup>1/</sup>	1971-73
0	32.8	49.8	58.7	60.7	33.8	52.3	61.9	65.3
10	35.8	49.2	55.1	56.5	37.3	52.2	58.1	61.1
20	38.1	40.1	45.7	47.0	30.2	43.7	48.9	51.6
30	22.3	31.6	36.6	37.7	26.1	36.2	40.3	42.6
40	16.7	23.6	27.7	28.6	21.2	28.7	31.9	33.6
50	11.9	16.7	19.6	20.3	15.7	21.2	23.5	24.9
60	8.1	11.2	13.2	13.3	10.6	14.6	15.8	17.0
70	5.6	6.7	8.5	8.3	7.1	9.1	9.7	10.3
80	4.0	4.3	4.8	4.8	4.6	5.3	5.4	5.7

<sup>1/</sup> excluding Sino-Mauritian community

Source : Mauritius Life Table

Table 8 - Population and vital statistics - Island of Mauritius, 1921-76

Period	Population <sup>1/</sup> at mid-period	Live births	Deaths	Natural increase	Infant deaths <sup>2/</sup>	Still births	Civil marriages
1921-25 Average	379,636	14,834	11,758	3,076	2,104	1,581	2,062
1926-30 "	403,248	14,208	11,614	2,594	2,002	1,256	1,455
1931-35 "	398,647	12,490	11,889	601	1,752	1,216	1,489
1936-40 "	412,003	13,621	11,157	2,464	2,119	1,240	2,093
1941-45 "	417,838	15,027	11,927	3,100	2,318	1,240	3,333
1946-50 "	438,797	19,595	9,113	10,482	2,343	1,348	3,503
1951-55 "	522,577	23,176	7,701	15,475	1,884	1,472	3,307
1956	574,938	24,910	6,739	18,171	1,644	1,789	3,080
1957	593,070	25,273	7,603	17,670	1,897	1,800	2,903
1958	609,518	24,600	7,112	17,488	1,659	1,703	3,169
1959	627,249	23,923	6,753	17,170	1,495	1,759	3,297
1960	644,743	25,307	7,248	18,059	1,760	1,783	3,113
1961	662,368	26,092	6,505	19,587	1,618	1,963	3,484
1962	681,619	26,267	6,325	19,942	1,579	1,841	3,893
1963	695,641	27,978	6,709	21,269	1,660	1,519	3,472
1964	716,298	27,528	6,184	21,344	1,561	1,611	3,965
1965	735,245	26,279	6,337	19,942	1,685	1,557	3,976
1966	753,276	26,817	6,701	20,116	1,721	1,384	4,157
1967	767,782	23,499	6,543	16,956	1,656	1,074	3,949
1968	781,615	24,413	7,126	17,287	1,688	1,110	3,974
1969	792,893	21,719	6,428	15,291	1,528	951	3,882
1970	805,489	21,623	6,309	15,314	1,232	857	4,499
1971	816,561	20,834	6,248	14,586	1,077	842	4,346
1972	826,199	20,496	6,506	13,990	1,308	718	5,082
1973	834,781	18,974	6,525	12,449	1,201	678	5,533
1974	845,755	22,938	6,221	16,717	1,045	854	6,771
1975	856,516	21,492	6,967	14,525	1,046	896	6,888
1976	867,885	22,250	6,815	15,435	900	784	8,262

<sup>1/</sup> figures for 1963-71 have been revised in the light of the final 1972 Population Census data.

<sup>2/</sup> deaths of children under 1 year of age

Table 9 - Population and vital statistics rates<sup>1/</sup> - Island of Mauritius, 1921-76

Period	Population at mid-period	Crude birth rate	Crude death rate	Rate of natural increase	Infantile mortality rate <sup>2/</sup>	Still birth rate <sup>3/</sup>	Marriage rate <sup>4/</sup>
1921-25 Average	379,636	39.1	31.0	8.1	141.8	96.3	10.9
1926-30 "	403,248	35.2	28.8	6.4	140.9	81.2	7.2
1931-35 "	398,647	31.3	29.8	1.5	140.3	88.7	7.5
1936-40 "	412,003	33.1	27.1	6.0	155.6	83.4	10.2
1941-45 "	417,838	36.0	28.5	7.5	154.3 <sup>5/</sup>	76.2	16.0
1946-50 "	438,797	44.7	20.8	23.9	119.6 <sup>6/</sup>	64.4	16.0
1951-55 "	522,577	44.3	14.7	29.6	81.3	59.7	12.7
1956	574,938	43.3	11.7	31.6	66.0	67.0	10.7
1957	593,070	42.6	12.8	29.8	75.1	66.5	9.8
1958	609,518	40.4	11.7	28.7	67.4	64.7	10.4
1959	627,249	38.1	10.8	27.3	62.5	68.5	10.5
1960	644,743	39.3	11.2	28.1	69.5	65.8	9.7
1961	662,368	39.4	9.8	29.6	62.0	70.0	10.5
1962	681,619	38.5	9.3	29.2	60.1	65.5	11.4
1963	695,641	40.2	9.6	30.6	59.3	51.5	10.0
1964	716,298	38.4	8.6	29.8	56.7	55.3	11.1
1965	735,245	35.7	8.6	27.1	64.1	55.9	10.8
1966	753,276	35.6	8.9	26.7	64.2	49.1	11.0
1967	767,782	30.6	8.5	22.1	70.5	43.7	10.3
1968	781,615	31.2	9.1	22.1	69.1	43.5	10.2
1969	792,893	27.4	8.1	19.3	70.4	41.9	9.8
1970	805,489	26.8	7.8	19.0	57.0	38.1	11.2
1971	816,561	25.5	7.7	17.8	51.7	38.8	10.6
1972	826,199	24.8	7.9	16.9	63.8	33.8	12.3
1973	834,781	22.7	7.8	14.9	63.3	34.5	13.3
1974	845,755	27.1	7.4	19.7	45.6	35.9	16.0
1975	856,516	25.1	8.1	17.0	48.7	40.0	16.1
1976	867,885	25.6	7.8	17.8	40.4	34.0	19.0

<sup>1/</sup> figures for 1963-71 have been revised in the light of the final 1972 Population Census data.

<sup>2/</sup> deaths of children under 1 year of age per 1,000 live births.

<sup>3/</sup> still births per 1,000 total births (live births and still births).

<sup>4/</sup> number of persons civilly married per 1,000 of mid-period population.

<sup>5/</sup> the rate reached 188.0 in 1945 when there were poliomyelitis and dysentery epidemics.

<sup>6/</sup> the rate reached 186.2 in 1948 when there was an epidemic of whooping cough.

Table 10 - Fertility rates - Island of Mauritius, 1962, 1972-76

	1962	1972	1973	1974	1975	1976
Crude birth rate <sup>1/</sup>	38.5	24.8	22.7	27.1	25.1	25.6
General fertility rate <sup>2/</sup>	181.4	104.5	95.6	108.9	101.9	103.3
Gross reproduction rate <sup>3/</sup>	2.90	1.67	1.50	1.71	1.57	1.54
Net reproduction rate <sup>4/</sup>	2.51	1.49	1.34	1.53	1.40	1.38
<u>Age Specific birth rates<sup>5/</sup></u>						
Age of women (years)						
15 - 19	107.3	50.3	47.2	55.9	56.6	60.5
20 - 24	298.3	188.4	174.5	185.8	173.6	174.8
25 - 29	301.4	190.8	166.0	192.0	176.6	179.2
30 - 34	233.3	130.1	119.3	137.9	125.6	116.2
35 - 39	163.1	88.4	73.4	84.4	72.0	65.6
40 - 44	60.1	31.7	25.4	32.3	30.5	27.4
45 - 49	9.0	3.8	3.4	4.9	3.0	2.3

1/ live births per 1,000 of mid-year population

2/ live births per 1,000 of women aged 15 - 49 years

3/ the average number of daughters born to an average woman assuming that she survives to the end of her childbearing age and is subjected to a fixed schedule of age-specific fertility rates.

4/ the extent to which the average woman will replace herself, assuming a fixed schedule of age-specific mortality and fertility rates to prevail through her reproductive span of life.

5/ live births per 1,000 women in each age group

Table 11 - Age-specific fertility rates<sup>1/</sup> by age of mother and live birth order - Island of Mauritius, 1962 and 1972 censuses

Year	Age of mother	Live birth order						Total
		First	Second	Third	Fourth	Fifth	Sixth & over	
1962	15 - 19	66.1	31.6	8.2	1.4	-	-	107.3
	20 - 24	64.0	76.6	76.8	50.8	21.2	8.9	298.3
	25 - 29	23.6	38.3	51.9	58.3	56.2	73.1	301.4
	30 - 34	9.0	13.9	24.4	29.7	36.5	119.8	233.3
	35 - 39	4.3	6.8	10.3	11.8	18.9	111.0	163.1
	40 - 44	1.2	1.7	1.8	3.4	5.3	46.7	60.1
	45 - 49	-	0.3	0.4	-	1.0	7.3	9.0
	15 - 49	30.2	28.2	27.2	23.5	20.2	49.6	178.9
1972	15 - 19	35.7	11.6	2.6	0.4	-	-	50.3
	20 - 24	67.1	55.6	39.7	17.2	6.8	2.0	188.4
	25 - 29	29.1	36.4	36.1	33.4	27.3	28.5	190.8
	30 - 34	8.7	12.5	15.2	17.3	17.9	58.5	130.1
	35 - 39	3.4	4.4	6.7	7.5	8.9	57.5	88.4
	40 - 44	1.0	1.2	1.4	1.5	2.7	23.9	31.7
	45 - 49	0.3	0.1	0.3	0.3	0.2	2.6	3.8
	15 - 49	28.3	21.3	16.2	11.1	8.3	19.3	104.5

<sup>1/</sup> live births per 1,000 females in each age-group.



Table 12 - Age specific fertility  $\frac{1}{1}$  rates by age of mother and live birth order - Island of Mauritius, 1975-76

Year	Age of mother	Live birth order						Total
		First	Second	Third	Fourth	Fifth	Sixth & over	
1975	15 - 19	43.4	11.0	2.0	0.2	-	-	56.6
	20 - 24	74.6	54.0	28.6	12.2	3.1	1.1	173.6
	25 - 29	33.3	44.0	36.6	29.0	18.3	15.3	176.5
	30 - 34	9.9	16.4	17.1	18.5	19.3	44.4	125.6
	35 - 39	3.0	4.7	6.5	6.6	8.6	42.6	72.0
	40 - 44	0.9	1.5	1.3	2.4	2.9	21.5	30.5
	45 - 49	0.2	0.4	0.1	0.2	0.1	2.0	3.0
	15 - 49	33.3	23.4	14.8	10.0	6.7	13.8	102.0
1976	15 - 19	45.9	12.2	2.2	0.2	-	-	60.5
	20 - 24	75.3	58.1	29.2	9.4	2.1	0.7	174.8
	25 - 29	39.3	44.2	39.7	27.7	17.0	11.3	179.2
	30 - 34	11.0	16.0	18.1	17.5	17.3	36.3	116.2
	35 - 39	3.5	4.7	5.4	7.1	7.4	37.5	65.6
	40 - 44	1.1	1.6	1.5	1.9	2.4	18.9	27.4
	45 - 49	0.2	0.1	0.2	0.2	0.4	1.2	2.3
	15 - 49	35.3	24.9	16.0	9.4	6.2	11.5	103.3

$\frac{1}{1}$  live births per 1,000 females in each age-group

Table 13 - Age distribution of the population as enumerated at the censuses of 1962 and 1972, Island of Mauritius

Age group (years)	Population						% Distribution	
	1962			1972			1962	1972
	Male	Female	Both sexes	Male	Female	Both sexes		
Under 1	11,736	11,673	23,459	9,763	9,760	19,531	3.4	2.4
1 - 4	44,869	43,746	88,615	41,498	40,431	81,929	13.0	9.9
5 - 9	52,715	51,914	104,629	59,972	58,613	118,590	15.4	14.3
10 - 14	46,166	45,807	91,973	56,150	55,085	111,235	13.5	13.5
15 - 19	31,107	31,043	62,150	50,226	50,430	100,656	9.1	12.2
20 - 24	23,574	23,723	47,297	40,150	39,677	79,327	6.9	9.7
25 - 29	22,014	22,174	44,188	26,204	26,970	53,174	6.5	6.4
30 - 34	19,377	19,334	39,211	21,166	21,495	42,663	5.8	5.2
35 - 39	21,756	20,111	41,367	20,751	20,470	41,221	6.1	5.0
40 - 44	16,592	14,987	31,579	18,310	17,631	35,991	4.6	4.4
45 - 49	15,073	13,398	28,471	20,139	18,441	38,580	4.2	4.7
50 - 54	12,011	10,593	22,604	14,535	13,209	27,744	3.3	3.3
55 - 59	9,325	9,224	18,549	12,617	12,464	25,081	2.7	3.0
60 - 64	7,033	7,715	14,753	9,213	9,574	18,787	2.2	2.3
65 - 69	4,111	5,571	9,682	6,067	6,962	13,029	1.4	1.6
70 - 74	2,465	3,992	6,457	3,673	5,042	8,715	1.0	1.0
75 - 79	1,070	2,231	3,301	1,634	3,041	4,725	0.5	0.6
80 - 84	427	1,136	1,613	766	1,725	2,491	0.2	0.3
85 & over	183	723	906	295	1,094	1,379	0.1	0.1
Age unknown	147	168	315	409	442	851	0.1	0.1
All ages	342,306	339,313	681,619	413,530	412,619	826,199	100.0	100.0

Table 14 - Estimated age distribution of population - Island of Mauritius, 1976-77

Age group (years)	30th June 1976				30th June 1977			
	Male	Female	Both sexes		Male	Female	Both sexes	
			Number	%			Number	%
Under 1	10,231	10,266	20,497	2.5	11,025	10,608	21,633	2.4
1 - 4	39,241	38,560	77,801	9.0	39,921	39,273	79,194	9.0
5 - 9	51,891	50,669	102,560	11.8	49,980	49,179	99,159	11.2
10 - 14	60,143	59,292	119,435	13.8	58,945	58,121	117,066	13.3
15 - 19	53,675	52,852	106,527	12.3	54,901	54,067	108,968	12.4
20 - 24	44,611	45,360	89,971	10.4	46,549	47,554	94,103	10.7
25 - 29	35,650	35,609	71,259	8.2	37,695	37,815	75,510	8.6
30 - 34	23,580	24,526	48,106	5.5	25,224	26,116	51,340	5.8
35 - 39	20,950	20,907	41,857	4.8	20,442	20,886	41,328	4.7
40 - 44	18,740	18,735	37,475	4.3	20,013	19,911	39,924	4.5
45 - 49	18,477	17,782	36,259	4.2	17,245	17,207	34,452	3.9
50 - 54	18,362	17,056	35,418	4.1	18,856	17,658	36,514	4.1
55 - 59	12,881	12,328	25,209	2.9	13,021	12,441	25,462	2.9
60 - 64	10,489	11,044	21,533	2.5	10,628	11,384	22,012	2.5
65 - 69	6,808	7,885	14,693	1.7	7,173	8,398	15,571	1.8
70 - 74	4,127	5,508	9,635	1.1	4,143	5,691	9,834	1.1
75 - 79	2,224	3,801	6,025	0.7	2,231	3,828	6,059	0.7
80 - 84	780	2,071	2,851	0.3	773	2,038	2,811	0.3
85 & over	195	579	774	0.1	179	642	821	0.1
All ages	433,055	434,830	867,885	100.0	438,944	442,817	881,761	100.0
<b>Totals</b>								
Under 15	161,506	158,787	320,293	36.9	159,871	157,181	317,052	36.0
Under 18	194,189	190,777	384,966	44.4	193,852	190,426	384,278	43.6
Under 21	225,058	221,412	446,470	51.4	225,250	221,652	446,902	50.7
18 & over	238,866	244,053	482,919	55.6	245,092	252,391	497,483	56.4
21 & over	207,997	213,418	421,415	48.6	213,694	221,165	434,859	49.3
60 & over	24,623	30,888	55,511	6.4	25,127	31,981	57,108	6.5

Table 15 - Vital Statistics by month of registration and sex - Island of Mauritius, January 1976 - June 1977

Month of registration	Live births		Deaths		Infant deaths		Still births		Civil marriages			
	Male	Female	Both sexes	Male	Female	Both sexes	Male	Female		Both sexes		
1976: January	927	928	1,855	313	250	563	42	32	74	39	68	597
February	804	825	1,629	293	210	493	44	31	75	20	51	614
March	335	861	1,696	310	218	523	39	31	70	44	79	537
April	942	903	1,845	299	222	521	42	28	70	23	56	630
May	927	910	1,837	330	249	579	42	50	92	35	66	677
June	888	895	1,773	376	239	615	53	38	96	42	70	721
July	937	866	1,803	371	253	624	43	30	73	31	62	739
August	1,018	911	1,929	369	267	636	39	33	72	40	70	853
September	963	953	1,916	345	227	572	42	33	75	35	65	736
October	1,054	1,006	2,060	326	219	545	43	22	65	30	64	730
November	1,016	1,036	2,052	336	230	574	37	24	61	26	60	715
December	945	910	1,855	317	243	565	39	30	77	32	73	705
Whole year	11,256	10,994	22,250	3,975	2,840	6,815	510	390	900	394	734	8,262
1977: January	1,018	964	1,982	378	229	607	52	45	97	34	64	651
February	843	837	1,685	321	236	557	42	41	83	13	40	598
March	950	892	1,832	356	236	592	71	40	111	20	50	585
April	907	843	1,750	317	244	561	44	40	84	31	50	665
May	931	933	1,864	320	244	564	56	41	97	34	61	680
June	903	845	1,753	359	261	620	32	38	70	41	71	745
Jan. - June	5,562	5,304	10,866	2,051	1,450	3,501	297	245	542	186	336	3,924

Table 16 - Vital statistics by geographical district - Island of Mauritius, 1975-76

Geographical district	Estimated population as at 30.6.75	1975					Estimated population as at 30.6.76	1976				
		Live births	Deaths	Infant deaths	Still births	Civil marriages		Live births	Deaths	Infant deaths	Still births	Civil marriages
Port Louis	137,955	3,305	1,213	172	101	1,090	139,399	3,341	1,250	139	88	1,120
Pamplemousses	72,026	1,916	619	113	69	525	73,138	2,027	554	85	62	819
Rivière du Rempart	70,512	1,949	511	94	90	570	71,736	2,085	540	80	80	646
Flacq	94,017	2,813	833	148	144	686	95,675	2,914	801	146	111	904
Grand Port	83,875	2,188	743	124	128	589	85,048	2,278	706	101	116	728
Savanne	54,780	1,296	459	65	74	387	55,480	1,371	414	52	74	518
Plaines Wilhems	265,521	5,955	1,975	215	201	2,475	268,449	6,072	1,940	197	176	2,779
Moka	50,444	1,221	372	68	53	379	51,137	1,294	376	47	51	447
Black River	27,386	849	242	47	36	187	27,823	868	234	53	26	301
Whole Island	856,516	21,492	6,967	1,046	896	6,888	867,885	22,250	6,815	900	784	8,262

1/ deaths of children under 1 year of age

Table 17 - Still births and infant deaths by sex - Island of Mauritius, 1962 - June 1977

Period	Still births			Infant deaths		
	Both sexes	Male	Female	Both sexes	Male	Female
1962	1,841	1,001	840	1,579	896	683
1963	1,519 <sup>1/</sup>	827	691	1,660	929	731
1964	1,611 <sup>1/</sup>	896	714	1,561	900	661
1965	1,557	864	693	1,685	943	742
1966	1,384 <sup>1/</sup>	716	667	1,721	943	778
1967	1,074 <sup>1/</sup>	609	464	1,656	947	709
1968	1,110 <sup>2/</sup>	597	511	1,688	935	753
1969	951 <sup>1/</sup>	518	432	1,528	847	681
1970	857	450	407	1,232	706	526
1971	842	445	397	1,077	584	493
1972	718	360	358	1,308	716	592
1973	678	385	293	1,201	699	502
1974	854	461	393	1,045	579	466
1975	896	490	406	1,046	600	446
1976	784	394	390	900	510	390
1976 : 1st Qr.	198	95	103	219	125	94
2nd Qr.	192	105	87	258	142	116
3rd Qr.	197	106	91	220	124	96
4th Qr.	197	88	109	203	119	84
1977 : 1st Qr.	154	80	74	291	165	126
2nd Qr.	182	106	76	251	132	119

<sup>1/</sup> including one of unknown sex

<sup>2/</sup> including two of unknown sex

Table 18 - Infant deaths (deaths under 1 year of age) by age and sex - Island of Mauritius, 1975 - June 1977

Age	1 9 7 5			1 9 7 6			January - June 1977		
	Both sexes	Male	Female	Both sexes	Male	Female	Both sexes	Male	Female
Under 1 day	165	94	71	167	97	70	106	68	38
1 - 6 days	274	179	95	248	146	102	121	72	49
7 - 27 days	111	56	55	94	53	41	57	28	29
28 days - Under 2 months	57	31	26	61	31	30	24	11	13
2 - 3 months	107	62	45	83	40	43	64	36	28
4 - 5 months	103	52	51	76	40	36	62	31	31
6 - 7 months	87	45	42	61	38	23	43	22	21
8 - 9 months	79	45	34	53	25	28	45	20	25
10 - 11 months	63	36	27	57	40	17	20	9	11
Under 1 year	1,046	600	446	900	510	390	542	297	245

**Table 19 - Deaths by age and sex - Island of Mauritius, 1975-June 1977**

Age group (years)	1975			1976			January - June 1977		
	Both sexes	Male	Female	Both sexes	Male	Female	Both sexes	Male	Female
	0 - 4	1,354	770	584	1,158	626	532	676	360
5 - 9	87	49	38	51	27	24	33	12	21
10 - 14	68	34	34	72	39	33	39	19	20
15 - 19	99	60	39	96	45	51	67	34	33
20 - 24	130	74	56	128	57	71	67	33	34
25 - 29	119	65	54	147	85	62	64	34	30
30 - 34	143	74	69	109	67	42	74	43	31
35 - 39	166	99	67	146	84	62	85	58	27
40 - 44	216	150	66	194	144	50	117	85	52
45 - 49	341	265	76	283	196	87	164	132	32
50 - 54	452	324	128	470	341	129	230	162	68
55 - 59	505	354	151	536	375	161	277	192	85
60 - 64	668	455	213	703	463	240	335	227	108
65 - 69	659	409	250	694	462	232	349	224	125
70 - 74	681	372	309	636	372	264	309	180	129
75 - 79	539	247	292	648	321	327	262	139	123
80 - 84	402	146	256	410	163	247	195	68	127
85 & over	337	99	238	329	104	225	157	49	108
Unknown	1	1	-	5	4	1	1	-	1
All ages	6,967	4,047	2,920	6,815	3,975	2,840	3,501	2,051	1,450

Table 20 - Deaths by cause - Island of Mauritius, 1976

Group	Cause of death	Deaths						% of total deaths	Death rate per 100,000 of population
		Under 1 year		1 to under 5 years		All ages			
		Both sexes		Both sexes		Male	Female		
		Both sexes	Both sexes	Both sexes	Male	Female			
I	Infective and parasitic diseases	209	88	486	275	211	7.1	56.0	
II	Neoplasms	-	7	379	214	165	5.6	43.7	
III	Endocrine, nutritional and metabolic diseases	10	6	360	163	197	5.3	41.5	
IV	Diseases of the blood and blood forming organs	2	6	145	60	85	2.1	16.7	
V	Mental disorders	-	-	33	28	5	0.5	3.8	
VI	Diseases of the nervous system and sense organs	14	20	167	104	63	2.5	19.2	
VII	Diseases of the circulatory system	9	1	2,026	1,227	799	29.7	233.4	
VIII	Diseases of the respiratory system	125	68	834	500	334	12.2	96.1	
IX	Diseases of the digestive system	14	3	276	205	71	4.0	31.8	
X	Diseases of the genito-urinary system	-	1	96	64	32	1.4	11.1	
XI	Complications of pregnancy, childbirth and the puerperium	-	-	25	-	25	0.4	2.9	
XII	Diseases of the skin and subcutaneous tissue	-	-	5	1	4	0.1	0.6	
XIII	Diseases of musculoskeletal system and connective tissue	-	-	12	3	9	0.2	1.4	
XIV	Congenital anomalies	21	1	27	17	10	0.4	3.1	
XV	Certain causes of perinatal morbidity and mortality	393	-	393	215	178	5.8	45.3	
XVI	Symptoms and ill-defined conditions	98	36	1,127	586	541	16.5	129.8	
XVII	Accidents, poisonings and violence	5	21	424	313	111	6.2	48.8	
	All causes	900	258	6,815	3,975	2,840	100.0	785.2	



Table 21 - Intercensal population increase in urban and extra-urban areas according to present boundaries - Island of Mauritius, 1962-72

Township <sup>1/</sup>	Population enumerated at 30.6.62			Population enumerated at 30.6.72 <sup>2/</sup>			Intercensal increase	
	Both sexes	Male	Female	Both sexes	Male	Female	Number	Annual average %
	Port Louis	119,950	59,751	60,199	133,996	66,431	67,565	14,046
Beau Bassin - Rose Hill	62,296	30,580	31,716	80,318	39,701	40,617	18,022	2.89
Quatre Bornes	38,567	18,952	19,615	50,770	24,920	25,850	12,203	3.16
Veveys-Phoenix	41,743	20,913	20,830	47,638	23,740	23,898	5,895	1.41
Curepipe	44,244	21,816	22,428	51,956	25,673	26,283	7,712	1.74
Urban population	306,800	152,012	154,788	364,678	180,465	184,213	57,878	1.89
Extra-urban population	374,819	190,294	184,525	461,521	233,115	228,406	86,702	2.31
Total population	681,619	342,306	339,313	826,199	413,580	412,619	144,580	2.12

<sup>1/</sup> according to proclaimed boundaries, altered in 1963 (Proclamation Nos. 12 and 13) and subsequently enlarged in 1965 - (Proclamation No. 23) and in 1967 (Proclamation No. 2). Urban population refers to the total population in townships.

<sup>2/</sup> final Population Census data

Table 22 - Estimated<sup>1/</sup> population, urban and extra-urban - Island of Mauritius, 1974-77

Township <sup>2/</sup>	Estimated population as at 30.6.74			Estimated population as at 30.6.75			Estimated population as at 30.6.76			Estimated population as at 30.6.77		
	Both sexes	Male	Female	Both sexes	Male	Female	Both sexes	Male	Female	Both sexes	Male	Female
Port Louis	135,533	67,522	69,071	137,955	68,111	69,844	139,399	68,835	70,564	141,022	69,413	71,609
Beau Bassin-Rose Hill	81,232	40,154	41,078	81,753	40,379	41,374	82,460	40,741	41,719	83,270	41,000	42,270
Quatre Bornes	51,650	25,375	26,275	52,144	25,582	26,562	52,735	25,892	26,843	53,465	26,208	27,257
Vacoas-Phoenix	48,611	24,207	24,404	49,157	24,456	24,701	49,934	24,826	25,108	50,987	25,280	25,707
Gurepipe	52,598	26,008	26,590	52,960	26,156	26,804	53,445	26,392	27,053	54,156	26,664	27,492
Urban population	370,684	183,266	187,418	373,969	184,681	189,288	377,973	186,686	191,257	382,900	188,565	194,335
Extra-urban population	475,071	259,484	235,587	482,547	242,900	239,647	489,212	246,369	243,543	498,861	250,379	248,482
Total population	845,755	422,750	423,005	856,516	427,581	428,932	867,885	433,055	434,800	881,761	438,944	442,817
Percentage urban	43.8			43.7			43.6			43.4		

<sup>1/</sup> based on the final 1972 Population Census data. No account has been taken of internal migration in computing the post-censal estimates.

<sup>2/</sup> according to proclaimed boundaries, altered in 1963 (Proclamations Nos. 12 and 13) and subsequently enlarged in 1965 (Proclamation No. 23) and in 1967 (Proclamation No. 2). Urban population refers to the total population in townships.

Table 23 - Population<sup>1/</sup> and vital statistics - Island of Rodrigues, 1963-76

Year	Estimated mid-year population (30th June)	Live births	Deaths	Natural increase	Infant deaths	Still births	Civil marriages	Crude birth rate <sup>2/</sup>	Crude death rate <sup>2/</sup>	Rate of natural increase	Infantile mortality rate <sup>2/</sup>	Still birth rate <sup>4/</sup>	Civil marriage rate	Estimated population as at 31st December
1963	18,529	881	203	678	79	21	171	47.5	11.0	36.5	89.6	23.3	18.5	18,587
1964	18,974	1,082	237	845	86	32	161	57.0	12.5	44.5	79.5	28.7	17.0	19,282
1965	19,438	916	300	616	116	32	127	47.1	15.4	31.7	126.6	33.8	13.1	19,709
1966	20,084	1,014	243	771	89	26	132	50.5	12.1	38.4	87.8	25.0	13.1	20,388
1967	20,762	972	207	765	70	33	156	46.8	10.0	36.8	72.0	32.8	15.0	21,370
1968	21,832	996	256	740	102	30	145	45.6	11.7	33.9	102.4	29.2	13.3	22,166
1969	22,434	902	305	597	110	37	173	40.2	13.6	26.6	122.0	39.4	15.4	22,839
1970	23,433	1,143	211	932	80	35	152	48.8	9.0	39.8	70.0	29.7	13.0	23,749
1971	24,041	1,092	188	904	69	40	132	45.4	7.8	37.6	63.2	35.3	11.0	24,487
1972	24,769	999	247	752	91	31	132	40.3	10.0	30.3	91.1	30.1	10.7	25,096
1973	25,367	1,041	254	787	76	23	146	41.0	10.0	31.0	73.0	21.6	11.5	25,857
1974	25,709	1,064	203	861	68	25	134	41.4	7.9	33.5	63.9	23.0	10.4	26,123
1975	26,343	1,065	234	831	84	36	181	40.4	8.9	31.5	78.9	32.7	13.7	26,603
1976	26,539	1,024	153	871	36	24	189	38.6	5.8	32.8	35.2	22.9	14.2	27,049

<sup>1/</sup> revised in the light of the 1972 Population Census data

<sup>2/</sup> per 1,000 of the mid-year population

<sup>3/</sup> deaths of children under 1 year of age per 1,000 live births

<sup>4/</sup> still births per 1,000 total births (live births and still births)

Table 24 -- Vital statistics by month of registration and sex - Island of Rodrigues, January 1976 - June 1977.

Month of registration	Live births			Deaths			Infant deaths			Still births			Civil marriages
	Male	Female	Both sexes	Male	Female	Both sexes	Male	Female	Both sexes	Male	Female	Both sexes	
1976: January	49	50	99	8	4	12	3	-	3	2	-	2	9
February	32	36	68	4	7	11	-	2	2	-	2	2	10
March	45	36	81	4	9	13	3	2	5	-	1	1	8
April	31	32	63	10	11	21	3	5	8	1	-	1	18
May	55	34	89	5	7	12	-	-	-	3	2	5	13
June	42	39	81	7	6	13	1	-	1	-	-	-	16
July	39	42	81	5	9	14	-	3	3	2	1	3	15
August	59	56	115	10	7	17	4	2	6	1	2	3	14
September	50	52	102	3	7	10	-	1	1	1	1	2	15
October	40	39	79	2	3	5	-	2	2	1	1	2	23
November	39	44	83	8	5	13	4	1	5	-	1	1	24
December	33	50	83	7	5	12	-	-	-	1	1	2	24
Whole year	514	510	1,024	73	80	153	13	18	36	12	12	24	189
1977: January	55	49	104	5	3	8	1	-	1	2	-	2	7
February	41	46	87	4	2	6	1	2	3	2	1	3	10
March	37	38	75	5	7	12	1	1	2	1	1	2	17
April	42	47	89	11	8	19	2	1	3	2	2	4	19
May	57	50	107	7	7	14	2	3	5	1	-	1	16
June	50	42	92	12	8	20	4	2	6	3	5	8	20
January - June	282	272	554	44	35	79	11	9	20	11	9	20	89

Table 25 - Deaths by age and sex - Island of Rodrigues, 1975 - June 1977

Age group (years)	1975			1976			January - June 1977		
	Both sexes	Male	Female	Both sexes	Male	Female	Both sexes	Male	Female
	Under 1	84	49	35	36	16	18	20	11
1 - 4	39	21	18	10	4	6	10	8	2
5 - 9	3	2	1	5	-	5	1	1	-
10 - 14	3	2	1	1	-	1	2	2	-
15 - 19	6	3	3	2	-	2	1	1	-
20 - 24	1	-	1	4	3	1	2	-	2
25 - 29	2	-	2	3	2	1	3	3	-
30 - 34	3	1	2	4	1	3	1	-	1
35 - 39	1	-	1	4	2	2	1	-	1
40 - 44	2	2	-	1	-	1	3	1	2
45 - 49	6	3	3	4	2	2	4	2	2
50 - 54	10	5	5	6	3	3	3	2	1
55 - 59	10	7	3	10	5	5	3	2	1
60 - 64	6	2	4	7	3	4	7	3	4
65 - 69	20	10	10	15	11	4	4	2	2
70 - 74	14	7	7	15	9	6	7	2	5
75 - 79	9	5	4	7	5	2	2	1	1
80 - 84	11	6	5	9	2	7	2	1	1
85 & over	4	2	2	10	3	7	3	2	1
Unknown	-	-	-	-	-	-	-	-	-
All ages	234	127	107	153	73	80	79	44	35

Table 26 - Deaths by cause - Island of Rodrigues, 1976

Group	Cause of death	Deaths						% of total deaths	Death rate per 100,000 of population
		Under 1 year		1 to under 5 years		All ages			
		Both sexes		Both sexes		Both sexes			
		Male	Female	Male	Female	Male	Female		
I	Infective and parasitic diseases	8	6	19	10	9	12.4	71.6	
II	Neoplasms	-	-	2	1	1	1.3	7.5	
III	Endocrine, nutritional and metabolic diseases	-	-	2	-	2	1.3	7.5	
IV	Diseases of the blood and blood forming organs	-	-	1	1	-	0.7	3.8	
V	Mental disorders	-	-	-	-	-	-	-	
VI	Diseases of the nervous system and sense organs	-	1	3	1	2	1.9	11.3	
VII	Diseases of the circulatory system	-	-	27	14	13	17.6	101.7	
VIII	Diseases of the respiratory system	3	1	9	5	4	5.9	33.9	
IX	Diseases of the digestive system	-	-	1	1	-	0.7	3.8	
X	Diseases of the genito-urinary system	-	-	1	-	1	0.7	3.8	
XI	Complications of pregnancy, childbirth and the puerperium	-	-	1	-	1	0.7	3.8	
XII	Diseases of the skin and subcutaneous tissue	-	-	-	-	-	-	-	
XIII	Diseases of musculoskeletal system and connective tissue	-	-	-	-	-	-	-	
XIV	Congenital anomalies	2	-	2	1	1	1.3	7.5	
XV	Certain causes of perinatal morbidity and mortality	18	-	18	11	7	11.8	67.8	
XVI	Symptoms and ill-defined conditions	5	2	66	28	38	43.1	248.7	
XVII	Accidents, poisonings and violence	-	-	1	-	1	0.6	3.8	
	All causes	36	10	153	73	80	100.0	576.5	

Table 27 - Passenger traffic<sup>1/</sup> - Island of Mauritius, 1962 - June 1977

Period	Arrivals			Departures			Net overseas migration
	Total	By sea	By air	Total	By sea	By air	
1962	15,189	4,258	10,931	15,189	4,271	10,918	- 252
1963	18,047	4,660	13,387	18,299	4,432	13,867	- 252
1964	21,221	5,187	16,034	22,331	5,478	16,853	- 1,110
1965	22,024	4,886	17,138	24,150	5,463	18,687	- 2,126
1966	26,456	5,544	20,912	29,301	6,330	22,971	- 2,845
1967	29,321	4,901	24,420	32,925	6,515	26,410	- 3,604
1968	31,403	4,264	27,139	35,988	5,967	30,021	- 4,585
1969	35,919	3,483	32,436	38,929	4,632	34,297	- 3,010
1970	48,819	3,984	44,835	51,969	4,376	47,593	- 3,150
1971	60,826	3,857	56,969	63,997	4,295	59,702	- 3,177
1972	77,174	3,741	73,433	81,493	4,072	77,421	- 4,319
1973	101,184	4,238	96,946	104,697	4,027	100,670	- 3,513
1974	109,044	3,848	105,196	113,362	3,772	109,590	- 4,318
1975	117,548	4,485	113,063	120,703	4,255	116,448	- 3,155
1976	139,303	4,367	134,936	141,148	4,441	136,707	- 1,845
1976 : 1st Qr.	33,068	1,038	32,030	38,616	1,119	37,497	- 5,548
2nd Qr.	28,747	1,161	27,586	29,841	1,044	28,797	- 1,094
3rd Qr.	39,429	975	38,454	39,811	920	38,891	- 382
4th Qr.	38,059	1,193	36,866	32,880	1,358	31,522	+ 5,179
1977 : 1st Qr.	37,426	928	36,498	43,067	1,101	41,966	- 5,641
2nd Qr.	33,085	1,573	31,512	33,829	1,112	32,717	- 744

<sup>1/</sup> includes (a) the very small number of engaged or discharged seamen;

(b) emigrants to and immigrants from the dependencies; and

(c) movement of military personnel as from the 1962 population census

Table 28 - Passenger traffic<sup>1/</sup> by country of original embarkation or final destination and by mode of transport, January - June 1977

Country of embarkation or disembarkation	Arrivals			Departures		
	Sea	Air	Total	Sea	Air	Total
Kenya	9	1,800	1,809	3	1,343	1,346
Malagasy Republic	14	2,683	2,697	3	1,987	1,990
Malawi	-	581	581	-	514	514
Reunion	218	24,549	24,767	150	26,039	26,189
Rhodesia	-	149	149	-	223	223
Seychelles	26	1,569	1,595	26	1,905	1,931
South Africa, Rep. of	36	10,328	10,364	47	11,527	11,574
Tanzania	1	209	210	-	250	250
Zambia	-	1,907	1,907	-	1,794	1,794
Rodrigues	1,380	983	2,363	1,042	855	1,897
St. Brandon	102	-	102	172	-	172
Other African	9	685	694	93	734	827
U.S.S.R.	8	28	36	-	28	28
China (Taiwan)	62	3	65	7	153	160
Hong Kong	2	558	560	-	566	566
India	14	4,499	4,513	9	3,830	3,839
Japan	37	61	98	23	48	71
Saudi Arabia	-	6	6	-	3	3
Singapore	21	21	42	-2	25	27
Other Asian	32	149	181	30	168	198
Australia	16	2,377	2,393	5	2,355	2,360
New Caledonia	-	41	41	-	33	33
New Zealand	2	89	91	-	79	79
Other Oceanian	-	11	11	-	18	18
Belgium	1	81	82	1	184	185
France	56	6,060	6,116	25	7,303	7,328
Germany, Fed. Rep. of	15	703	718	6	946	952
Italy	-	1,089	1,089	-	2,032	2,032
Switzerland	2	194	196	-	403	403
United Kingdom	31	6,176	6,207	24	8,732	8,756
Other European	44	212	256	38	332	370
Canada	-	77	77	-	140	140
U.S.A.	20	83	103	20	119	139
Other American	3	49	52	-	15	15
All countries	2,161	68,010	70,171	1,726	74,683	76,409

<sup>1/</sup> excluding those transit passengers who did not leave the airport, 340 discharged seamen and 487 engaged seamen



Table 29 - Tourist<sup>1/</sup> arrivals by mode of transport and total nights spent during period - Island of Mauritius, 1963 - June 1977

Period	Tourist arriving during period			Total nights spent during period
	Sea	Air	Total	
1963	1,008	6,719	7,727	99,400
1964	1,010	9,023	10,033	144,584
1965	746	9,312	10,058	144,875
1966	1,328	11,712	13,040	162,269
1967	937	13,877	14,814	171,967
1968	647	14,906	15,553	149,507
1969	455	20,132	20,587	220,572
1970	365	27,285	27,650	287,591
1971	168	36,230	36,398	399,739
1972	143	48,654	48,797	454,271
1973	1,293 <sup>2/</sup>	66,701	67,994	733,065
1974	472	72,443	72,915	772,183
1975	554	74,043	74,597	746,898
1976	778	91,783	92,561	892,222
Jan - June 1977	564	48,001	48,565	459,066

<sup>1/</sup> prior to 1964 a tourist has been defined as a non-resident staying in Mauritius for more than 24 hours but less than 6 months. As from 1964 a tourist is defined as a non-resident staying in the island for more than 24 hours but less than a year.

Figures for the two periods are nevertheless comparable because of the small number of visitors who stay longer than 6 months.

<sup>2/</sup> includes about 700 persons who came for a religious conference

Table 30 - Tourist arrivals by country of residence and by mode of transport -  
Island of Mauritius, January - June 1977

Country of residence	Tourist arrivals			Tourist nights spent during Jan-June 1977 <sup>1/</sup>
	Sea	Air	Total	
Kenya	9	422	431	3,011
Malagasy Republic	13	1,990	2,003	16,049
Malawi	-	255	255	2,344
Réunion	129	14,448	14,577	122,690
Rhodesia	-	247	247	3,038
Seychelles	16	228	244	2,759
South Africa, Rep. of	11	9,088	9,099	84,358
Tanzania	-	173	173	1,241
Zambia	-	1,382	1,382	11,363
Other African	13	991	1,004	9,045
U.S.S.R.	8	24	32	394
China (Mainland)	17	61	78	453
China (Taiwan)	50	33	83	1,553
Hong Kong	3	92	95	945
India	14	1,364	1,378	11,369
Japan	35	129	164	2,043
Pakistan	1	50	51	717
Singapore	-	19	19	164
Other Asian	18	149	167	1,655
Australia	10	1,471	1,481	10,541
New Caledonia	-	46	46	111
New Zealand	3	202	205	1,253
Other Oceanian	2	49	51	92
Belgium	2	378	380	5,127
France	66	7,404	7,470	73,885
Germany, Fed. Rep. of	22	1,111	1,133	13,229
Italy	-	1,747	1,747	18,294
Switzerland	2	505	507	6,911
United Kingdom	35	2,744	2,779	40,514
Other European	56	568	624	7,553
Canada	1	143	144	1,864
U.S.A.	26	428	454	3,979
Other American	2	60	62	522
All countries	564	48,001	48,565	459,066

<sup>1/</sup> include nights spent during January - June 1977 by tourists arriving before this period

Table 31 - Official long-term emigrants<sup>1/</sup> by sex - Island of Mauritius, 1956 - June 1977

Year	Both sexes	Male	Female
1956	147	93	54
1957	109	68	41
1958	163	130	33
1959	170	128	42
1960	158	132	26
1961	837	629	208
1962	1,083	711	372
1963	594	326	268
1964	915	491	424
1965	1,408	659	749
1966	1,611	774	837
1967	2,225	1,038	1,187
1968	3,067	1,487	1,580
1969	2,379	1,119	1,260
1970	2,282	1,063	1,219
1971	2,351	1,078	1,273
1972	2,271	956	1,315
1973	2,037	844	1,193
1974	1,494	606	888
1975	874	328	546
1976	579	195	384
January - June 1977	160	59	101

<sup>1/</sup> persons who have obtained a permit to emigrate to another country.

II - PUBLIC HEALTH

Table 32 - Health Services - Island of Mauritius

	1972	1973	1974	1975	1976 <sup>4/</sup>
<u>Hospitals</u>					
General hospitals	6	6	6	6	6
Special hospitals (mental diseases, E.N.T., leprosy and tuberculosis) <sup>1/</sup>	4	4	3	3	4
Prisons hospitals	2	2	2	2	2
Private hospitals on sugar estates	23	21	20	19	17
<u>Dispensaries</u>					
Out-patients' departments of hospitals	10	10	10	10	11
Public dispensaries	45	44	44	44	45
Prisons dispensaries	2	2	2	2	2
Private dispensaries on sugar estates	23	21	18	18	21
Mobile dispensaries	5	5	5	5	5
<u>Clinics</u>					
Private	7	7	6	6	6
Public mobile ante-natal	1	1	1	1	1
Public mobile dental	2	1	1	1	1
<u>Maternal and Child Health Clinics</u> <sup>4/</sup>	46	50	58	68	71
<u>Family Planning</u>					
Clinics	62	72	76	82	83
Supply Centres	29	30	49	43	43
<u>Doctors</u>					
Government Service:					
Specialists <sup>2/</sup>	46	55	59	79	93
Total government doctors <sup>3/</sup>	140	173	226	258	266
Private Service:					
Registered medical practitioners	85	90	96	102	94
<u>Dentists</u>					
Government Service	6	9	12	17	17
Private	22	22	22	25	22
<u>Trained Nurses (government service)</u> <sup>4/</sup>	1,018	1,073	1,137	1,049	1,204
<u>Midwives (government service)</u> <sup>4/</sup>	176	174	171	163	162
<u>Pharmacists</u>					
Government Service	5	3	3	7	6
Private	49	48	48	47	46

<sup>1/</sup> including one eye clinic as from 1972. The Leprosarium and the E.N.T. Centre are administratively attached to the Sir Seewoosagur Ramgoolam National Hospital and Victoria Hospital respectively.

<sup>2/</sup> included in figures for total government doctors.

<sup>3/</sup> including temporary Medical Officers

<sup>4/</sup> revised

Table 33 - Statistics of hospitals <sup>1/</sup> - Island of Mauritius

Period	No. of beds (as at end of period)	Patients in hospitals on first day of period	Total admissions	Deaths	Discharges (excluding deaths)	Patients remaining on last day of period
1972	2,734	1,753	65,518	2,039	63,477	1,755
1973	2,751	1,755	60,379	2,075	58,412	1,647
1974	2,782	1,647	59,057	1,634	57,263	1,807
1975	2,780	1,807	62,453	1,995	60,595	1,670
1976	2,802	1,670	65,733	1,790	63,953	1,660
1976 : 1st Qr.	2,843	1,670	15,656	441	14,421	2,464
2nd Qr.	2,843	2,464	16,741	441	16,507	2,257
3rd Qr.	2,802	2,257	16,848	483	16,257	2,365
4th Qr.	2,802	2,365	16,488	425	16,768	1,660
1977 : 1st Qr.	2,802	1,660	17,853	543	16,494	2,476
2nd Qr.	2,802	2,476	17,095	453	16,841	2,277

<sup>1/</sup> excluding prisons hospital as from 1975

Table 34 - Notifiable, contagious or communicable diseases - Island of Mauritius

Period	Disease.	Enteric fever	Diphtheria	Acute polyomyelitis	Puerperal fever	Malaria	Tuberculosis	Leprosy	Cerebro-spinal meningitis
1972		30	24	-	-	14	367	1	1
1973		21	2	-	-	13	285	2	-
1974		20	10	-	-	18	267	1	-
1975		70	1	-	-	55	222	1	-
1976		23	-	-	-	50	198	1	-
1976 : 1st Qr.		9	-	-	-	5	45	1	-
2nd Qr.		2	-	-	-	30	51	-	-
3rd Qr.		4	-	-	-	14	53	-	-
4th Qr.		8	-	-	-	1	49	-	-
1977 : 1st Qr.		8	1	-	-	31	49	-	-
2nd Qr.		4	-	-	-	38	63	-	-

III. PUBLIC FINANCE AND BANKING

Table 35 - Central government revenue and expenditure

Rs million

Financial year	Revenue			Expenditure			Surplus (+) Deficit (-)
	Recurrent	Capital	Total	Recurrent	Capital	Total	
1974-75	744.9	412.0	1,156.9	734.3	259.0	993.3	+ 163.6
1975-76	1,075.7	344.3	1,420.0	1,071.0	423.4	1,494.4	- 74.4
1976-77	1,210.7	285.7	1,496.4	1,261.0	485.4	1,746.4	- 250.0
1977-78 <sup>1/</sup>	1,145.4	461.3	1,606.7	1,242.3	683.8	1,926.1	- 319.4

<sup>1/</sup> estimates

Table 36 - Functional classification of central government capital revenue

Rs million

	1974-75	1975-76	1976-77	1977-78 <sup>1/</sup>
Grants	6.7	1.5	4.9	4.1
Internal borrowing	306.4	207.9	148.2	200.0
External borrowing	53.2	36.6	79.3	241.8
Interest on investments	7.0	7.7	4.2	8.0
Transfer from recurrent revenue	-	80.0	-	-
Other capital revenue	38.7	10.6	49.1	7.4
Total	412.0	344.3	285.7	461.3

<sup>1/</sup> estimates

Table 37 - Functional classification of central government capital expenditure

	Rs million			
	1974-75	1975-76	1976-77	1977-78 <sup>1/</sup>
Agriculture and forests	32.5	35.6	39.4	43.3
Roads and bridges	1.4	2.6	5.6	12.0
Marine services and civil aviation	15.5	37.3	54.7	35.9
Health	4.0	3.3	2.9	12.1
Housing	5.7	8.1	11.2	17.2
Sewerage	7.1	6.9	9.1	21.4
Education	10.2	18.2	18.3	46.4
Telecommunications	6.8	18.0	22.0	28.2
Rural development	10.8	14.8	20.8	25.0
Development Works	47.7	39.2	63.2	85.0
Rodrigues	12.2	23.1	27.0	30.6
Additional subscription to I.M.F. and I.B.R.D.	0.1	0.1	1.2	0.1
Contribution to share capital of Development Bank	4.2	4.5	4.0	-
Subscription to the African Development Bank	2.1	3.6	7.7	8.5
I.M.F. Repurchase obligations	-	42.3	-	-
Loans: Development Bank of Mauritius	19.8	33.2	34.0	17.0
Central Electricity Board	12.5	21.5	20.2	40.7
Mauritius Housing Corporation	5.7	13.0	10.8	35.0
Central Housing Authority	0.3	5.0	12.0	24.1
Municipalities	1.1	-	-	-
Tea Development Authority	18.4	20.0	20.3	23.0
Central Water Authority	8.7	-	12.6	56.1
Agricultural Marketing Board	-	5.8	6.1	1.1
Sugar Planters' Mechanical Pool Corporation	3.5	1.1	2.4	1.0
Other loans	0.2	0.5	1.0	4.6
Redemption of loans	0.1	-	-	-
Reserve	-	-	-	40.0
Other capital expenditure	28.4	65.7	78.9	75.5
<b>Total</b>	<b>259.0</b>	<b>423.4</b>	<b>485.4</b>	<b>683.8</b>

<sup>1/</sup> estimates



Table 38 - Functional classification of central government recurrent revenue

Rs million

	1974-75	1975-76	1976-77	1977-78 <sup>1/</sup>
<u>Taxes on Income and Capital</u>	<u>197.2</u>	<u>397.9</u>	<u>392.3</u>	<u>275.5</u>
Income Tax :				
Individuals	93.6	137.7	154.9	127.0
Companies	97.6	251.4	221.5	135.0
Contribution to Widows' Fund	3.0	3.5	7.1	5.5
Succession duties	3.0	5.3	8.8	8.0
<u>Taxes on Financial Transactions</u>	<u>28.6</u>	<u>32.9</u>	<u>45.0</u>	<u>42.7</u>
<u>Taxes on Gambling</u>	<u>8.9</u>	<u>11.9</u>	<u>18.2</u>	<u>17.4</u>
<u>Taxes on Consumption and Production</u>	<u>429.4</u>	<u>508.8</u>	<u>626.1</u>	<u>671.6</u>
Import duties	187.8	260.5	349.1	355.0
Export duties	129.8	126.1	124.9	136.2
Excise duties	89.0	94.3	120.0	144.9
Business and professional licences	8.4	9.5	9.7	8.7
Taxes on transportation	12.3	14.4	16.9	21.8
Taxes on tourism	2.1	4.0	5.5	5.0
<u>Provision of Goods and Services</u>	<u>48.3</u>	<u>58.9</u>	<u>70.2</u>	<u>70.9</u>
Rental of government property	3.4	3.7	3.8	4.1
Telephone service	8.8	10.3	12.0	10.6
Marine services	10.4	11.6	13.5	-
Posts and telegraphs	7.6	9.0	12.1	16.1
Agriculture and forests	2.3	5.3	5.8	8.4
Other goods and services	15.8	19.0	23.0	31.7
<u>Interests, Profits and Dividends</u>	<u>22.6</u>	<u>38.1</u>	<u>46.4</u>	<u>50.9</u>
<u>Grants from British Government</u>	<u>0.8</u>	<u>1.5</u>	<u>-</u>	<u>0.1</u>
<u>Other Recurrent Revenue</u>	<u>9.1</u>	<u>25.7</u>	<u>12.5</u>	<u>16.3</u>
Total	744.9	1,075.7	1,210.7	1,145.4

<sup>1/</sup> estimates

Table 39 - Functional classification of central government recurrent expenditure

Rs million

	1974-75	1975-76	1976-77	1977-78 <sup>1/</sup>
<u>General Services</u>	<u>91.8</u>	<u>129.0</u>	<u>177.9</u>	<u>156.2</u>
General administration	8.1	1.9	26.1	13.9
Legislature	2.5	3.0	4.6	2.8
Maintenance of law and order:				
Justice and Attorney General	4.9	6.5	7.6	8.1
Police and defence	35.0	56.1	63.8	58.0
Prisons	4.8	5.9	7.5	7.7
Revenue collection and financial control	16.7	18.9	35.5	33.5
Other general services	19.8	23.7	32.8	32.2
<u>Community Services</u>	<u>36.7</u>	<u>50.5</u>	<u>70.6</u>	<u>85.5</u>
Maintenance of roads and public buildings	12.6	17.8	22.4	23.3
Water supplies	11.0	14.3	23.9	34.0
Sanitation and sewerage	7.1	9.6	12.1	15.2
Other community services	6.0	8.8	12.2	13.0
<u>Social Services</u>	<u>367.6</u>	<u>428.7</u>	<u>540.0</u>	<u>561.9</u>
Education	86.4	125.8	195.0	223.0
Health (excluding sanitation)	60.9	88.4	105.5	97.8
Social security:				
Family allowances	9.6	14.5	19.6	17.5
Outdoor Relief	13.3	19.3	20.6	22.0
Old age pension	25.4	36.2	45.5	-
Contribution to: National Pension Fund	-	-	22.0	77.0
Subsidy on essential foodstuffs	157.2	121.0	100.8	100.0
Housing	5.3	10.4	12.0	7.5
Other social services	9.5	13.1	19.0	17.1
<u>Economic Services</u>	<u>51.1</u>	<u>89.9</u>	<u>99.3</u>	<u>108.2</u>
Agriculture and forests	20.0	29.7	34.3	41.2
Contribution to National Fertiliser Scheme	-	18.4	16.6	15.0
Civil aviation and marine services	8.5	12.3	11.1	8.4
Posts, telegraphs and telecommunications	13.1	17.3	22.7	27.4
Other economic services	9.5	12.2	14.6	16.2
<u>Unallocable Expenditure</u>	<u>187.1</u>	<u>292.9</u>	<u>373.2</u>	<u>330.4</u>
Transfer to local authorities	24.4	46.0	55.5	56.1
Recurrent financial obligations:				
Public debt: Interest	50.6	57.1	79.4	82.2
Redemptions	9.2	9.3	9.9	12.3
Sinking Fund	16.8	32.5	27.6	31.6
Public pensions and gratuities	36.6	42.4	68.2	68.3
Passages	1.9	1.6	1.9	2.4
Rodrigues	12.4	20.7	28.4	28.7
Development Works	4.6	25.9	34.2	-
Other unallocable expenditure	30.6	57.4	68.1	48.8
<u>Transfer to Capital Budget</u>	<u>-</u>	<u>80.0</u>	<u>-</u>	<u>-</u>
<b>Total</b>	<b>734.3</b>	<b>1,071.0</b>	<b>1,261.0</b>	<b>1,242.2</b>

Table 40 - Public debt outstanding

Rs million

End of period	Total	INTERNAL DEPT				EXTERNAL DEBT <sup>1/</sup>				
		Development loan stocks	Tap loan	Other	Total internal debt	United Kingdom	I. D. A. 2/	I. B. R. D. 3/	Other	Total external debt
1972 June	471.0	140.0	125.7	37.5	303.2	137.7	1.1	29.0	-	167.8
December	561.2	225.0	125.0	37.5	387.5	141.4	4.3	28.0	-	173.7
1973 June	586.3	250.0	120.6	37.5	408.1	143.9	7.3	27.0	-	178.2
December	635.3	295.0	120.1	37.5	452.6	147.8	8.9	26.0	-	182.7
1974 June	690.1	330.0	115.6	37.5	483.1	160.6	16.6	25.0	4.8	207.0
December	839.3	490.0	112.0	23.1	625.1	161.8	23.6	24.0	4.8	214.2
1975 June	1,020.8	640.0	110.6	23.1	773.7	170.8	33.5	23.1	19.7	247.1
December	996.7	625.0	107.6	23.1	755.7	159.6	39.9	21.8	19.7	241.0
1976 June	1,226.6	835.0	105.6	23.1	963.7	142.9	62.8	25.1	32.1	262.9
December <sup>4/</sup>	1,208.0	820.0	102.4	23.1	945.5	141.4	65.3	23.4	32.4	262.5
1977 June	1,406.7	965.0	100.6	18.1	1,083.7	143.6	81.7	40.7	57.0	325.0

1/ external debt has been valued at the current rates of exchange for the dates concerned.

2/ International Development Association

3/ International Bank for Reconstruction and Development

4/ revised figures

Table 41 - Sinking Funds held against the public debt

		Rs million					
		1972	1973	1974	1975	1976	1977
Amount as at 30th June		119.5	142.1	151.7	158.4	150.1	156.4

Note: Investments have been valued at mean market prices.

Table 42 - Central government local loan repayments by year of maturity  
(at end of June 1977)

Rs million

Year of Maturity	No. of loans to be repaid	Amount to be repaid
Development Loan Stocks 1977	1	15.0
" " " 1978	2	20.0
" " " 1979	3	50.0
" " " 1980	3	40.0
" " " 1981	1	20.0
" " " 1982	2	55.0
" " " 1983	1	10.0
" " " 1984	4	85.0
" " " 1985	5	70.0
" " " 1986	1	15.0
" " " 1987	2	55.0
" " " 1988	2	30.0
" " " 1989	5	100.0
" " " 1990	2	45.0
" " " 1991	2	45.0
" " " 1992	3	55.0
" " " 1993	1	20.0
" " " 1994	2	70.0
" " " 1995	1	20.0
" " " 1996	2	60.0
" " " 1997	2	85.0
Tap Loan Stocks	<u>1/</u>	100.6
Other	2	18.1
<b>Total</b>	<b>49</b>	<b>1,083.7</b>

1/ Tap loans have been issued every year since 1959. The date of redemption is at the option of the purchaser.

Table 43 - Outstanding loans and advances made from public funds (at end of June)

Rs million

Debtor	1973	1974	1975	1976	1977
<u>Statutory Bodies</u>	<u>200.9</u>	<u>251.6</u>	<u>308.5</u>	<u>400.3</u>	<u>504.0</u>
Agricultural Marketing Board	7.8	7.8	7.8	13.6	15.5
Central Electricity Board	91.3	90.5	89.9	101.9	117.4
Central Housing Authority	33.6	48.9	47.1	50.0	59.9
Central Water Authority	1.9	14.7	34.7	41.2	52.2
Development Bank of Mauritius	27.6	38.3	57.9	89.9	122.3
Mauritius Broadcasting Corporation	0.9	0.6	0.5	0.4	0.3
Mauritius Housing Corporation	17.3	17.7	22.7	34.9	45.0
Mauritius Sugar Industry Research Institute	1.4	1.2	1.1	0.9	0.8
Sugar Planters' Mechanical Pool Corporation	-	0.3	3.8	4.3	6.1
Tea Development Authority	13.0	24.6	42.7	62.6	82.9
Other statutory bodies	6.1	7.0	0.3	0.6	1.6
<u>Local authorities</u>	<u>20.7</u>	<u>29.4</u>	<u>28.7</u>	<u>27.9</u>	<u>27.1</u>
<u>Miscellaneous</u>	<u>23.9</u>	<u>28.6</u>	<u>29.0</u>	<u>30.4</u>	<u>30.0</u>
Sewerage scheme	15.4	16.7	18.2	19.5	20.2
Colonial Steamships Co. Ltd.	1.3	1.1	1.0	0.8	0.6
Tea Estates	3.2	3.1	2.8	2.7	1.1
Mauritius Hotels Ltd.	1.1	1.1	1.0	0.9	0.9
Compagnie des Villages de Vacances de l'Ile de France Ltée (COVIFRA)	-	4.1	4.1	4.1	4.1
Other	2.9	2.5	1.9	2.4	3.1
Total	245.5	309.6	366.2	458.6	561.1

Table 44 - Income tax/ - Individuals

Range of gross income (Rupees)	Year of assessment 1972-73				Year of assessment 1973-74			
	Number of taxpayers <sup>2/</sup>	Gross income (Mn Rs)	Chargeable income (Mn Rs)	Tax assessed (Mn Rs)	Number of taxpayers <sup>2/</sup>	Gross income (Mn Rs)	Chargeable income (Mn Rs)	Tax assessed (Mn Rs)
5,000 or less	2,216	9.09	1.67	0.34	2,142	8.76	1.70	0.39
5,001 - 10,000	4,549	33.64	11.26	2.29	4,617	34.41	11.81	2.46
10,001 - 15,000	3,238	39.64	16.21	3.19	3,282	40.32	16.75	3.65
15,001 - 25,000	2,334	44.51	26.30	5.26	2,560	48.82	29.30	6.16
25,001 - 50,000	1,541	51.83	37.62	9.59	1,757	59.89	43.82	12.83
50,001 - 100,000	350	22.88	19.16	7.39	494	32.39	27.35	11.72
100,001 - 250,000	77	10.48	9.15	5.48	109	15.41	13.45	8.87
Over 250,000	11	3.90	3.13	2.25	17	6.59	5.90	4.79
Total	14,316	215.97	124.50	36.29	14,978	246.59	150.08	50.87

1/ the figures are provisional and subject to amendment as the Income Tax Act 1974 empowers the Commissioner of Income Tax to revise cases under objection, to issue additional claims for the six years preceding the present year of assessment, and to claim back duty at any time in cases of false or incorrect returns of income for any previous year.

2/ married couples are counted as one

Table 45 - Income tax<sup>1/</sup> - Companies

Range of gross income (Rupees)	Year of assessment 1972-73					Year of assessment 1973-74						
	Number of companies	Gross income (Mn Rs)	Chargeable income (Mn Rs)	Tax assessed (Mn Rs)	Number of companies	Gross income (Mn Rs)	Chargeable income (Mn Rs)	Tax assessed (Mn Rs)	Number of companies	Gross income (Mn Rs)	Chargeable income (Mn Rs)	Tax assessed (Mn Rs)
5,000 or Less	117	0.25	0.21	0.10	73	0.16	0.13	0.08				
5,001 - 10,000	34	0.27	0.20	0.10	30	0.23	0.14	0.08				
10,001 - 15,000	21	0.27	0.15	0.03	21	0.27	0.15	0.08				
15,001 - 25,000	54	1.08	0.68	0.34	33	0.65	0.36	0.20				
25,001 - 50,000	60	2.26	1.49	0.74	44	1.74	1.10	0.63				
50,001 - 100,000	61	4.29	1.97	0.96	55	4.12	2.07	1.16				
100,001 - 250,000	69	10.26	4.72	2.18	57	9.20	3.82	2.09				
250,001 - 500,000	38	13.40	4.75	2.18	41	14.82	5.60	2.96				
500,001 - 750,000	10	5.98	2.34	1.05	14	8.11	3.55	1.89				
750,001 - 1,000,000	7	6.01	2.54	1.15	10	8.82	2.84	1.56				
Over 1,000,000	37	124.66	65.12	32.14	45	161.83	84.15	48.37				
Total	508	168.73	84.17	41.02	423	209.95	103.91	59.10				

<sup>1/</sup> the figures are provisional and subject to amendment as the Income Tax Act 1974 empowers the Commissioner of Income Tax to revise cases under objection, to issue additional claims for the six years preceding the present year of assessment, and to claim back duty at any time in cases of false or incorrect returns of income for any previous year.

Table 46 - Foreign exchange reserves

End of period	I.M.F. position (net)	Bank of Mauritius	Government	Statutory bodies <sup>2/</sup>	Commercial banks (net) <sup>2/</sup>	Total
1972	13.5	378.2	19.0 <sup>1/</sup>	2.5	6.3	419.5
1973	13.5	356.4	23.7 <sup>1/</sup>	1.6	7.1	402.3
1974	-	739.8	26.0	1.1	26.2	793.1
1975	42.4	1,045.6	18.7	- 5.9	42.5	1,143.3
1976	42.4	551.9	11.9	- 2.4	25.8	629.6
1976 : 1st Qr.	42.4	1,135.6	14.0	- 8.3	25.7	1,209.4
2nd Qr.	42.4	694.7	9.7	- 1.1	30.4	776.1
3rd Qr.	42.4	511.3	9.7	- 3.5	22.7	582.6
4th Qr.	42.4	551.9	11.9	- 2.4	25.8	629.6
1977 : 1st Qr.	42.4	412.6	10.5	- 6.5	27.3	486.3
2nd Qr.	-	337.0	9.6	2.2	20.7	369.5

Rs million

<sup>1/</sup> securities at nominal values. Securities are otherwise expressed at market values.

<sup>2/</sup> statutory bodies include the Sugar Insurance Fund Board and the Central Electricity Board

<sup>3/</sup> include foreign notes and coins



Table 47 - Assets of the Bank of Mauritius  
(at end of period)

Rs million

Period	Grand Total	External					Local			
		Total	Balances with banks	Bills	Securities	IMF Special Drawing Rights	Total	Government securities	Discounts and advances	Other assets
1972	468.1	378.2	124.9	106.6	106.1	40.6	89.8	48.8	32.8	8.2
1973	454.1	356.4	163.8	52.3	99.7	40.6	97.7	20.8	67.6	9.3
1974	769.5	739.8	554.3	152.4	17.6	15.5	29.7	7.5	12.2	10.0
1975	1,063.8	1,045.6	327.6	470.5	233.2	14.3	18.2	0.7	5.0	12.5
1976	947.7	552.0	356.2	63.9	111.1	20.8	395.7	206.8	173.2	15.7
1976 : 1st Qr.	1,151.4	1,135.5	482.5	398.1	234.1	20.8	15.9	0.1	3.5	12.3
2nd Qr.	876.9	694.7	392.4	140.9	142.1	19.3	182.2	122.4	30.7	29.1
3rd Qr.	759.9	511.3	306.1	72.5	113.3	19.4	248.6	148.6	82.6	17.4
4th Qr.	947.7	552.0	356.2	63.9	111.1	20.8	395.7	206.8	173.2	15.7
1977 : 1st Qr.	910.7	412.6	221.4	66.1	104.3	20.8	498.1	257.7	227.4	13.0
2nd Qr.	960.4	337.0	77.0	136.2	104.4	19.4	623.4	308.7	290.7	24.0

Table 48 - Liabilities of the Bank of Mauritius

(at end of period)

Period	Grand Total	Capital and reserve	Notes in circulation	Coins in circulation	DEPOSITS					Other liabilities
					Total	Demand			Other <sup>1/</sup>	
						Government	Bankers			
							Bankers	Other		
1972	468.1	16.6	160.7	8.4	235.8	130.8	30.1	33.0	41.9	46.6
1973	454.1	19.7	215.5	11.0	150.8	73.2	30.9	8.7	38.0	57.1
1974	769.5	24.7	344.4	12.6	258.4	86.3	112.8	7.8	51.5	129.5
1975	1,063.8	28.0	479.9	13.8	344.7	118.6	134.4	31.1	60.6	197.4
1976	947.7	33.0	626.2	16.5	159.3	0.3	127.1	11.1	20.8	112.6
1976 : 1st Qr.	1,151.4	28.0	421.4	14.0	450.7	208.6	161.8	10.1	70.2	237.3
2nd Qr.	876.9	33.0	412.0	14.6	247.6	23.6	132.0	19.6	72.4	169.7
3rd Qr.	759.9	33.0	449.0	15.8	158.9	4.8	128.0	9.2	16.9	103.2
4th Qr.	947.7	33.0	626.2	16.5	159.3	0.3	127.1	11.1	20.8	112.6
1977 : 1st Qr.	910.7	33.0	582.4	16.4	135.2	0.3	115.4	9.4	10.1	143.7
2nd Qr.	960.4	33.0	562.9	19.9	166.5	15.3	134.3	14.2	2.7	178.1

<sup>1/</sup> mainly due to semi-government bodies

Table 49 - Assets of commercial banks  
(at end of period)

End of period	Total assets	Reserves		Foreign Assets <sup>1/</sup>		Claims on Government		Claims on Private Sector				Other assets <sup>2/</sup>
		Cash in hand	Balances at bank of Mauritius	Balance with banks abroad	Other	Treasury bills	Government securities	Local bills discounted	Bills receivable	Loans and advances to public bodies	Other loans and advances	
1972	589.5	12.8	30.1	10.0	7.1	8.7	118.9	56.1	19.4	15.6	259.6	51.2
1973	827.9	25.8	30.9	13.9	11.4	3.0	142.4	92.5	49.2	20.3	368.1	70.4
1974	1,377.7	42.8	112.8	24.5	11.3	144.2	335.2	57.7	65.1	7.8	455.7	120.6
1975	1,628.6	55.6	134.5	41.9	12.4	126.2	392.5	66.0	58.4	10.4	599.5	131.2
1976	1,750.8	54.9	127.1	13.8	21.1	-	247.0	52.1	86.8	25.7	967.0	155.3
1976 : 1st Qr.	1,803.3	44.5	161.9	22.2	10.8	166.8	477.0	69.5	63.7	11.5	667.8	107.6
2nd Qr.	1,646.5	37.8	132.0	18.8	17.5	2.5	399.7	54.9	66.7	19.2	742.7	154.7
3rd Qr.	1,675.3	38.3	128.0	15.3	15.2	22.7	316.4	70.5	67.3	16.2	843.0	142.4
4th Qr.	1,750.8	54.9	127.1	13.8	21.1	-	247.0	52.1	86.8	25.7	967.0	155.3
1977 : 1st Qr.	1,830.4	68.8	115.4	20.0	16.5	2.0	203.9	45.7	81.9	15.5	1,107.9	152.9
2nd Qr.	1,918.0	67.4	134.3	25.9	15.3	11.3	206.4	121.3	78.3	11.7	1,064.2	181.9

<sup>1/</sup> including foreign notes and coins

<sup>2/</sup> including interbank and non-interbank investments

Rs million

Table 50 - Liabilities of commercial banks  
(at end of period)

End of period	Total liabilities	Capital and reserves	Private Sector Deposits				Government deposits	Credit from Bank of Mauritius	Balance due to		Bills payable	Other liabilities
			Demand	Time	Savings	Total			Banks in Mauritius	Banks abroad		
1972	589.5	31.9	201.9	140.6	118.7	461.2	2.4	1.8	11.6	7.9	1.7	71.0
1973	827.9	40.0	265.0	210.0	165.9	640.9	6.1	54.4	11.4	11.5	1.7	61.9
1974	1,377.7	45.1	468.8	512.1	245.4	1,224.3	9.7	-	8.8	9.7	3.7	76.4
1975	1,628.6	53.1	530.2	512.6	380.2	1,423.0	10.1	-	12.1	11.8	6.5	112.0
1976	1,750.8	71.4	506.5	450.9	513.6	1,471.0	4.5	10.2	45.8	9.1	10.0	128.8
1976 : 1st Qr.	1,803.3	57.1	480.3	681.1	429.8	1,591.2	10.9	-	10.8	7.3	5.9	120.1
2nd Qr.	1,646.5	65.2	450.2	493.6	441.3	1,385.1	13.5	7.5	40.0	5.9	8.7	120.6
3rd Qr.	1,675.3	67.4	546.7	408.1	459.0	1,413.8	9.6	8.5	22.2	7.8	9.3	136.7
4th Qr.	1,750.8	71.4	506.5	450.9	513.6	1,471.0	4.5	10.2	45.8	9.1	10.0	128.8
1977 : 1st Qr.	1,830.4	79.0	498.1	453.7	564.2	1,516.0	3.5	26.7	39.1	9.2	9.2	147.7
2nd Qr.	1,918.0	91.0	555.9	460.4	560.0	1,576.3	3.8	20.0	33.4	20.5	12.7	160.3

Table 51 - Analysis of bills discounted, loans and advances made by commercial banks

	1976				1977	
	March	June	September	December	March	June
Sugar industry	64.7	99.1	158.1	170.5	286.4	352.9
Other agricultural interests	25.5	30.5	38.7	32.7	38.2	43.6
Other industries and manufacturers	383.7	382.7	412.9	454.6	481.3	509.1
Traders	167.2	179.4	187.4	221.1	216.7	218.0
Personal and professional	71.4	82.9	88.9	94.3	95.1	97.2
Stockbrokers	1.0	1.2	0.8	1.0	1.6	1.2
Government	"	-	0.9	1.4	0.1	13.1
Public bodies	11.5	19.2	16.2	25.7	15.5	11.7
Financial institutions	9.1	7.9	8.9	23.3	12.5	11.8
Other customers	14.7	13.9	16.9	20.2	21.7	28.6
Foreign bills	5.9	13.7	11.7	15.1	11.7	10.5
Total	754.7	830.5	941.4	1,059.9	1,180.8	1,207.7

Source: Bank of Mauritius

Rs million

**Table 52 - Assets and liabilities of the Development Bank of Mauritius**  
(at end of period)

Rs million

	1972	1973	1974	1975	1976
<b>Assets</b>					
Cash	0.1	1.3	3.8	0.1	0.2
Balances due by other banks in Mauritius	0.4	3.4	18.4	12.2	4.1
Loans and advances:					
Primary industries	18.1	17.2	16.1	11.1	12.5
Other industries	22.9	25.6	38.6	83.9	123.6
Other loans and advances	0.4	-	1.5	0.9	0.7
Investments					
Local (at cost)	13.0	11.0	18.6	61.7	76.3
Other assets	15.4	20.6	27.7	11.2	19.4
<b>Total</b>	<b>70.3</b>	<b>79.1</b>	<b>124.7</b>	<b>181.1</b>	<b>236.8</b>
<b>Liabilities</b>					
Notes in circulation	-	-	-	-	-
Deposits:					
Demand	1.3	3.8	5.9	1.9	2.7
Time	4.0	5.3	15.7	8.4	3.1
Savings	2.2	2.4	2.6	3.1	3.8
Share Capital	10.0	10.0	17.8	23.5	27.5
Debentures	17.0	17.0	17.0	17.0	11.0
The Government of Mauritius	23.3	29.2	49.1	83.6	107.0
Bills	0.3	0.2	-	-	-
Other liabilities	12.2	11.2	16.6	43.6	81.7
<b>Total</b>	<b>70.3</b>	<b>79.1</b>	<b>124.7</b>	<b>181.1</b>	<b>236.8</b>

Table 53 - Post Office Savings Bank

Period	Deposits during period (Rs million)	Withdrawals during period (Rs million)	Accumulated balance at end of period (Rs million)	Number of accounts at 30th June
1972	17.1	13.4	35.3	97,944
1973	20.0	16.0	40.8	103,216
1974	25.0	18.6	48.6	109,077
1975	33.4	21.6	62.1	113,400
1976	44.0	29.7	78.9	121,917
1976 : 1st Qr.	13.9	6.7	69.3	...
2nd Qr.	7.5	6.8	72.4 <sup>1/</sup>	121,917
3rd Qr.	10.1	8.6	74.0	...
4th Qr.	12.5	7.6	78.9	...
1977 : 1st Qr.	14.4	8.3	85.0	129,293
2nd Qr.	10.7	10.7	88.0 <sup>1/</sup>	132,116

<sup>1/</sup> Includes interest capitalised to depositors' accounts

Table 54 - Assets and liabilities of the Mauritius Co-operative Central Bank Ltd.  
(at the end of February)

Rs million

	1973	1974	1975	1976	1977
<b>Assets</b>					
Cash at bank and in hand	1.9	2.3	9.1	7.8	8.0
Loans and advances:					
Primary industries	9.5	10.2	13.3	19.1	26.2
Housing	1.9	2.2	2.5	3.1	4.3
Other loans and advances	2.1	7.8	5.6	6.2	8.7
Investments:					
Local	12.1	9.8	20.7	31.2	25.9
Abroad	-	-	-	-	-
Other Assets	0.8	2.7	2.6	0.6	0.8
<b>Total</b>	<b>28.3</b>	<b>35.0</b>	<b>53.8</b>	<b>68.0</b>	<b>73.9</b>
<b>Liabilities</b>					
"Owned Funds"	5.2	5.8	7.0	8.5	9.9
Deposits:					
Demand	3.8	5.9	14.4	13.5	10.0
Time	15.1	17.3	21.1	30.3	15.0
Savings	3.6	4.6	9.9	15.0	37.4
Balances due to other banks in Mauritius	-	-	-	-	-
Other liabilities	0.6	1.4	1.4	0.7	1.6
<b>Total</b>	<b>28.3</b>	<b>35.0</b>	<b>53.8</b>	<b>68.0</b>	<b>73.9</b>

Table 55 - Money Supply

(at end of period)

Rs million

Period	Currency with the public <u>1/</u>	Demand Deposits			Total money supply
		Bank of Mauritius <u>2/</u>	Commercial banks	Total	
1972	156.3	18.1	201.9	220.0	376.3
1973	200.6	0.9	265.0	265.9	466.5
1974	314.2	0.7	468.8	469.5	783.7
1975	438.1	25.0	530.2	555.2	993.3
1976	587.9	4.3	506.5	510.8	1,098.7
1977	693.6	0.3	525.3	525.6	1,219.2
1976 : 1st Qr.	390.9	3.9	480.3	484.2	875.1
2nd Qr.	388.8	13.5	450.2	463.7	852.5
3rd Qr.	426.5	3.1	546.7	549.8	976.3
4th Qr.	587.9	4.3	506.5	510.8	1,098.7
1977 : 1st Qr.	530.0	1.8	498.1	499.9	1,029.9
2nd Qr.	515.4	3.6	555.9	559.5	1,074.9
3rd " "	552.8	0.5	537.8	538.3	1,091.1
4th " "	693.6	0.3	525.3	525.6	1,219.2

1/ net of cash held by commercial banks

2/ miscellaneous private deposits

Source : Bank of Mauritius

Table 56 - Assets and Liabilities of the Mauritius Housing Corporation

(at end of period)

Rs million

	1972	1973	1974	1975	1976
<u>Assets</u>					
Cash in hand and on deposit	-	-	-	0.8	0.7
Housing loans	42.2	46.1	59.0	67.7	88.0
Investments (at cost)	0.5	0.5	0.7	0.7	0.8
Other assets	4.7	6.4	5.8	9.4	11.3
Total	47.4	53.0	65.5	78.6	100.8
<u>Liabilities</u>					
Loans : <u>Local</u>					
Government of Mauritius	14.7	15.5	19.7	30.4	37.5
Development Bank of Mauritius	0.4	0.5	0.5	0.5	-
Other local loans	13.8	17.4	19.8	21.3	24.6
<u>External</u>					
British Government	2.0	1.6	1.2	0.8	0.3
Commonwealth Development Corporation	7.3	9.8	12.3	12.0	11.7
Other liabilities	9.2	8.2	12.0	13.6	26.7
Total	47.4	53.0	65.5	78.6	100.8



Table 57 - Bank and interest rates

(Per cent per annum)

	31.12.74	30.6.75	31.12.75	30.6.76	31.12.76	30.6.77 <sup>1/</sup>
<u>Deposit rates</u>						
Post Office Savings Bank	4	4	4	4	4	4½
Commercial banks savings accounts	4	4	4	4	4	4½
Fixed Deposits :						
3 months	4½	4½	4½	4½	4½	4¾
6 months	4¾	4¾	4¾	4¾	4¾	5
12 months	5¾	5¾	5¾	5¾	5¾	6
18 months	6¼ <sup>1/</sup>	6¼	6¼	6¼	6¼	7
24 months	7¼ <sup>1/</sup>	7	7	7½	7½	7½
36 months	7¼ <sup>1/</sup>	7½	7½	7¾	7¾	8¼
Over 36 months	7¼ <sup>2/</sup>	7¾	7¾	7¾	7¾	8½
<u>Lending rates</u>						
Bank of Mauritius - discount rate	6	6	6	6	6	7
Commercial banks - bills of exchange and advances	7 - 8½	7 - 9	7 - 9	7 - 9	7 - 9	8 - 10
Public notaries - mortgage loans	9 - 11	9 - 11	9 - 11	9 - 11	9 - 11	9 - 11
Mauritius Housing Corporation - housing loans	8 - 8½	8 - 8½	8 - 8½	8 - 8½	8 - 8½	8 - 8½

<sup>1/</sup> effective as from 20.8.74

<sup>2/</sup> effective as from 6.9.74

Source : Bank of Mauritius

<sup>3/</sup> effective as from 1.3.77

Table 58 - Foreign exchange rates

Country	Currency	on 31.12.75		on 30.6.76		on 31.12.76		on 30.6.77	
		Selling rate	Buying rate	Selling rate	Buying rate	Selling rate	Buying rate	Selling rate	Buying rate
United Kingdom	Pound sterling	13.40	13.25	12.03	11.88	11.353	11.223	11.467	11.327
Australia	Dollar	8.41	8.13	8.44	8.16	7.33	7.09	7.49	7.24
Belgium	Franc	0.169	0.165	0.172	0.167	0.187	0.1825	0.1865	0.1805
Canada	Dollar	6.57	6.44	7.00	6.87	6.62	6.49	6.35	6.21
France	Franc	1.52	1.47	1.435	1.385	1.35	1.30	1.365	1.315
Germany, Fed. Rep. of	Mark	2.55	2.49	2.64	2.58	2.86	2.79	2.87	2.80
Hong Kong	Dollar	1.33	1.28	1.38	1.33	1.445	1.3195	1.44	1.38
India	Rupee	0.75	0.72	0.76	0.73	0.759	0.729	0.763	0.733
Japan	Yen	0.022	0.021	0.029	0.020	0.030	0.021	0.0251	0.0242
Kenya	Shilling	0.811	0.788	0.811	0.787	0.8135	0.7835	0.8115	0.7815
Malagasy, Rep. of	Franc	0.030	0.029	0.0287	0.0277	0.027	0.026	0.027	0.026
New Zealand	Dollar	6.98	6.72	6.76	6.50	6.42	6.20	6.51	6.28
Pakistan	Rupee	0.696	0.667	0.715	0.684	0.6985	0.668	0.6930	0.6630
Réunion	Franc	1.52	1.47	1.435	1.385	1.35	1.30	1.365	1.315
South Africa, Rep. of	Rand	7.70	7.48	7.86	7.64	7.75	7.49	7.75	7.49
Switzerland	Franc	2.57	2.52	2.76	2.71	2.76	2.70	2.72	2.65
U.S.A.	Dollar	6.66	6.53	6.80	6.67	6.73	6.60	6.71	6.57

Source : Bank of Mauritius

Note : on 5th January 1976 the Mauritian Rupee was linked to the S.D.R. at the rate of 1 S.D.R. = Rs 7.713759

IV. NATIONAL ACCOUNTS

Table 59 - Gross national product by industrial origin  
(at current factor cost)

Rs million

	1972	1973	1974	1975	1976 <sup>1/</sup>
1. Agriculture, forestry, hunting and fishing	353	494	1,323	1,034	1,060
2. Mining and quarrying	2	2	2	4	5
3. Manufacturing	233	277	505	564	648
4. Construction	73	114	155	217	260
5. Electricity, gas, water and sanitary services	39	43	49	69	75
6. Transportation, storage and communication	129	161	195	281	315
7. Wholesale and retail trade	127	172	221	279	321
8. Banking, insurance and real estate	22	31	4	66	75
9. Ownership of dwellings	74	77	83	94	100
10. Public administration and defence	61	76	105	140	225
11. Services	166	203	259	342	440
<b>GROSS DOMESTIC PRODUCT AT FACTOR COST</b>	<b>1,279</b>	<b>1,650</b>	<b>2,941</b>	<b>3,090</b>	<b>3,524</b>
Net factor income from the rest of the world	+ 2	+ 16	+ 10	+ 17	+ 16
<b>GROSS NATIONAL PRODUCT AT FACTOR COST</b>	<b>1,281</b>	<b>1,666</b>	<b>2,951</b>	<b>3,107</b>	<b>3,540</b>
	(Rs)	(Rs)	(Rs)	(Rs)	(Rs)
Per capita gross national product (at factor cost) (Based on mid-year population)	1,550	1,996	3,489	3,627	4,079

<sup>1/</sup> provisional

Table 60 - Distribution of the gross national income

	Rs million				
	1972	1973	1974	1975	1976 <sup>1/</sup>
1. Compensation of employees	656	833	1,241	1,568	2,050
2. Income from unincorporated enterprises	180	235	387	538	450
3. Income from property	161	228	322	295	298
4. Savings of corporations	184	244	600	320	500
5. Direct tax on corporations	91	126	400	404	265
6. General government income from property and entrepreneurship	37	37	47	50	50
7. <u>Less</u> interest on public debt	- 24	- 32	- 38	- 59	- 63
8. <u>Less</u> interest on consumers' debt	- 4	- 5	- 8	- 9	- 10
<b>NATIONAL INCOME AND DEPRECIATION =</b>					
Gross national product at factor cost	1,281	1,666	2,951	3,107	3,540

<sup>1/</sup> provisional

Table 61 - Expenditure on gross national product (at current prices)

Rs million

	1972	1973	1974	1975	1976 <sup>1/</sup>
1. Private consumption expenditure on goods and services	929	1,122	1,684	1,878	2,086
2. General government consumption expenditure on goods and services	219	235	360	443	595
3. Gross domestic fixed capital formation of private enterprises	163	378	561	852	994
4. Gross domestic fixed capital formation of government and public enterprises	66	102	189	286	406
5. Increase in stocks	...	...	...	...	...
<b>CONSUMPTION AND GROSS CAPITAL FORMATION</b>	<b>1,377</b>	<b>1,837</b>	<b>2,794</b>	<b>3,459</b>	<b>4,081</b>
6. Net exports of goods and services	+ 55	+ 15	+ 422	- 43	- 191
7. Net factor income from the rest of the world	+ 2	+ 16	+ 10	+ 17	+ 15
8. Less indirect taxes (net of subsidies)	- 153	- 202	- 275	- 326	- 365
<b>GROSS NATIONAL PRODUCT AT FACTOR COST</b>	<b>1,281</b>	<b>1,666</b>	<b>2,951</b>	<b>3,107</b>	<b>3,540</b>

<sup>1/</sup> provisional

Table 62 - Composition of gross domestic fixed capital formation (at current prices)

Rs million

	1972	1973	1974	1975	1976 <sup>1/</sup>
<b>A. By type of capital goods</b>					
a. Land <sup>2/</sup>	4	10	14	12	15
b. Dwellings	54	103	169	264	335
c. Non-residential buildings	34	76	156	201	265
d. Other construction and works	39	81	121	168	155
e. Transport equipment					
(i) Passenger cars	11	19	22	33	73
(ii) Other equipment	15	66	39	71	81
f. Machinery and other equipment	72	125	229	389	476
<b>GROSS DOMESTIC FIXED CAPITAL FORMATION</b>	<b>229</b>	<b>480</b>	<b>750</b>	<b>1,138</b>	<b>1,400</b>
<b>B. By industrial use</b>					
a. Agriculture, forestry and fishing	20	38	84	120	169
b. Mining and quarrying	-	-	-	-	-
c. Manufacturing	37	79	186	292	324
d. Construction	8	14	21	22	48
e. Electricity, gas, water and sanitary services	32	33	39	71	50
f. Transportation, storage and communication	42	126	134	184	197
g. Wholesale and retail trade	7	21	21	37	52
h. Banking, insurance and real estate	1	2	4	1	6
i. Ownership of dwellings	54	103	165	264	335
j. Public administration	1	3	14	44	54
k. Service industries	23	51	68	91	150
l. Legal fees, stamp duties, etc.	4	10	14	12	15
<b>GROSS DOMESTIC FIXED CAPITAL FORMATION</b>	<b>229</b>	<b>480</b>	<b>750</b>	<b>1,138</b>	<b>1,400</b>

<sup>1/</sup> provisional

<sup>2/</sup> including legal fees, stamp duties, agents' commission, etc. connected with the transfer of ownership of land and buildings

Table 63 - Gross national product at constant 1970 prices

Year	Gross national product at current prices (Rs million)	Index 1970 = 100	Percentage annual increase
1970	919	100.0	
1971	1,023	104.9	4.9
1972	1,281	115.3	9.9
1973	1,666	129.7	12.5
1974	2,951	144.0	11.0
1975	3,107	144.0	- 0.1
1976 <sup>1/</sup>	3,540	167.1	16.2

<sup>1/</sup> provisional

Table 64 - Gross domestic fixed capital formation at constant 1970 prices

Year	Gross domestic fixed capital formation at current prices (Rs million)	Index 1970 = 100	Percentage annual increase
1970	145	100.0	
1971	184	118.6	18.6
1972	229	133.8	12.8
1973	480	209.0	56.2
1974	750	247.6	18.5
1975	1,138	306.9	23.9
1976 <sup>1/</sup>	1,400	337.9	10.1

<sup>1/</sup> provisional

Table 65 - Balance of Payments

Rs million

Item	1972		1973		1974		1975		1976	
	Credit	Debit	Credit	Debit	Credit	Debit	Credit	Debit	Credit	Debit
<b>A. GOODS AND SERVICES</b>										
1. Merchandise	775	739	1,018	1,055	2,150	1,922	2,329	2,272	2,539	2,830
2. Non-monetary gold	577	524	755	778	1,798	1,521	1,848	1,672	1,768	2,047
3. Freight and insurance on merchandise	-	2	-	3	-	5	-	7	-	8
4. Other transportation	11	88	3	115	-	191	14	286	3	325
5. Travel	72	47	88	47	146	74	159	85	107	101
6. Investment income	52	29	83	34	112	51	135	78	184	97
on direct investment	16	17	27	18	26	20	60	45	98	59
other	1	10	1	11	1	11	2	35	3	49
7. Other government	15	7	26	7	25	9	58	10	95	10
8. Other private	21	8	24	11	28	13	36	25	26	32
<b>B. UNREQUITTED TRANSFERS</b>										
9. Private	26	24	38	49	40	47	77	74	255	102
10. Government	62	15	52	13	103	20	93	23	66	26
<b>NET TOTAL OF GOODS, SERVICES, AND TRANSFERS</b>	83	1	2	-	311	-	127	-	-	251



Table 65 - Balance of Payments (cont'd)

Item	1972		1973		1974		1975		1976	
	Credit	Debit	Credit	Debit	Credit	Debit	Credit	Debit	Credit	Debit
<u>C. CAPITAL (EXCLUDING RESERVES &amp; RELATED ITEMS)</u>										
<u>NON-MONETARY SECTORS</u>										
11, 12. Direct investment and other private long-term	24	-	14	14	22	-	29	-	66	-
Direct investment liabilities	3	-	2	24	24	-	33	-	28	-
Other	21	-	12	-	-	2	-	4	38	-
13. Other private short-term	-	4	-	40	-	38	180	-	-	387
14. Local government	-	-	-	-	-	-	-	-	-	-
15. Central government	4	-	13	-	28	-	46	-	46	-
Loans	12	5	19	8	40	6	56	-	46	-
Other liabilities	-	-	6	-	-	1	-	25	-	-
Assets	-	3	-	4	-	5	15	-	-	-
<u>MONETARY SECTORS</u>										
16. Private institutions	-	-	-	1	-	5	-	-	21	-
Liabilities	-	-	7	-	5	-	9	-	2	-
Assets	2	2	-	8	-	10	-	25	19	-
17. Central institutions	-	-	-	-	-	-	-	-	-	-
D. 18. <u>ALLOCATION OF SPECIAL DRAWING RIGHTS</u>	13	-	-	-	-	-	-	-	-	-

Source : Bank of Mauritius

Table 65 - Balance of Payments (cont'd)

Item	1972		1973		1974		1975		1976	
	Credit	Debit	Credit	Debit	Credit	Debit	Credit	Debit	Credit	Debit
<u>E. RESERVES AND RELATED ITEMS</u>	=	124	21	=	=	365	=	350	518	=
19. Liabilities	-	-	-	-	36	-	-	-	-	-
Use of Fund credit	-	-	-	-	36	-	-	-	-	-
Other	-	-	-	-	-	-	-	-	-	-
20. Assets	-	124	21	-	-	401	-	350	-	508
Monetary gold	-	-	-	-	-	-	-	-	-	-
Special Drawing Rights	-	13	-	-	25	-	1	-	-	-
Reserve position in the Fund	-	-	-	-	-	21	-	42	-	-
Foreign Exchange	-	114	22	-	-	408	-	308	514	-
Other claims	3	-	-	1	3	-	-	1	-	-
<u>NET ERRORS AND OMISSIONS</u>	4	=	=	2	47	=	=	16	=	3

Source : Bank of Mauritius

V. CONSUMER PRICE INDICES

Table 66 - Consumer Price Indices

(Base : January-June 1962 = 100)

The table below gives three consumer price indices, viz:

- (a) an index for households in urban areas;
- (b) an index for households in rural areas;
- (c) a total index for the island of Mauritius as a whole.

Period	Urban	Rural	Whole Island
1963 (Average)	98.5	98.5	98.5
1964 ( " )	100.5	100.2	100.3
1965 ( " )	102.3	102.0	102.1
1966 ( " )	105.0	104.5	104.7
1967 ( " )	106.6	106.6	106.6
1968 ( " )	113.0	114.9	114.1
1969 ( " )	115.6	117.6	116.7
1970 ( " )	117.6	119.2	118.5
1971 ( " )	118.3	119.4	118.9
1972 ( " )	125.8	124.9	125.3
1973 ( " )	144.0	140.8	142.2
1974 ( " )	185.8	181.9	183.6
1975 ( " )	214.7	207.6	210.6
1976 (Average for Jan-June)	241.6	231.9	236.1

A new index with base period January to June 1976 has been introduced since July 1976. This index is based on the consumption pattern, as revealed by the 1975 Family Budget Survey of households earning incomes up to Rs 2000/- per month.

(Base: January-June 1976=100)

Period	Index
1976 : July	102.6
August	102.1
September	102.5
October	101.4
November	102.5
December	103.4
1977 : January	105.3
February	106.3
March	107.1
April	107.8
May	109.4
June	111.2

VI - EXTERNAL TRADE

Table 67 - Balance of visible trade

Period	Imports (c.i.f. value)	Exports <sup>1/</sup> (f.o.b. value)	Bunkers and ships' stores (f.o.b. value)	Rs million	
				Balance of visible trade	
				Surplus	Deficit
1972	635.8	573.8	21.1	-	40.9
1973	915.8	748.3	28.5	-	139.0
1974	1,759.8	1,786.4	65.3	91.8	-
1975	1,995.3	1,838.9	73.2	-	83.2
1976 <sup>2/</sup>	2,398.7	1,769.8	64.9	-	564.0
1976 : 1st Qr.	554.4	433.5	17.6	-	103.3
2nd Qr.	625.4	135.3	14.1	-	476.0
3rd Qr.	577.4	620.4	16.1	59.1	-
4th Qr. <sup>2/</sup>	641.5	580.7	17.0	-	43.8
1977 : 1st Qr.	603.1	319.3	20.6	-	263.2
2nd Qr.	793.5	427.1	20.9	-	345.5

<sup>1/</sup> including value of sugar quota certificates and the bonus received in lieu of the Commonwealth Preference on sugar exports (except for 1972), but excluding sales value of bunker fuel and ships' stores.

<sup>2/</sup> revised figures

Table 68 - Price (unit value) indices of exports and imports and terms of trade

Period	Price indices		Terms of trade <sup>1/</sup>
	Export	Import	
1965 = 100			
1966	104	102	102
1967	108	104	104
1968	106	122	87
1969	108	118	92
1970	115	117	98
1971	125	129	97
1972	148	136	109
1972 = 100			
1973	117	130	90
1974	291	212	137
1975	383	240	160
1975 = 100			
1976	82	111	74

<sup>1/</sup> ratio of export to import price index.

Note: a rise in the index indicates that the terms of trade have moved in favour of Mauritius.

Table 69 - Price (unit value) indices of imports by section

Period	All Sections	Food	Beverages and tobacco	Crude materials, inedible, except fuels	Mineral fuels, lubricants, etc.	Animal and Vegetable oils and fats	Chemicals	Manufactured Goods classified chiefly by material	Machinery and transport equipment	Miscellaneous manufactured articles
1965 = 100										
1970	117	117	125	121	123	89	99	119	129	129
1971	129	118	140	130	152	108	105	129	161	154
1972	136	125	152	136	152	101	119	132	164	170
1972 = 100										
1973	130	148	114	134	121	117	120	124	123	138
1974	212	269	128	197	306	253	210	177	142	161
1975	240	254	166	236	367	261	283	223	178	184
1975 = 100										
1976	112	98	115	115	119	100	114	113	122	119
1976: 1st Qr	111	102	104	112	115	94	105	110	121	119
2nd Qr	111	97	127	114	114	106	115	113	122	113
3rd Qr	109	94	117	115	121	109	115	109	115	127
4th Qr	115	102	122	121	124	94	127	114	130	124
1976 = 100										
1977: 1st Qr	108	109	95	121	107	99	94	109	111	112
2nd Qr	108	105	102	116	106	90	99	111	114	109

Table 70 - Exports<sup>1/</sup> : quantities and values

Quantity : Thousand metric tons  
Value : Rs million (f.o.b.)

Period	Total value <sup>1/</sup>	Re-exports value	Total value	DOMESTIC EXPORTS						Ginger Value	
				Sugar		Molasses		Tea			Fish and fish preparations Value
				Quantity	Value	Quantity	Value	Quantity	Value		
1972	573.8	7.7	566.1	670.0	507.6	142.4	14.2	3.9	20.8	0.9	0.6
1973	748.3	11.6	736.8	699.2	608.1	185.2	40.3	3.7	18.9	8.0	0.9
1974	1,787.4	15.4	1,772.0	666.3	1,538.0	169.0	46.2	3.1	19.7	14.6	1.7
1975	1,838.9	20.9	1,818.0	497.5	1,548.8	121.2	23.6	2.1	16.0	14.3	1.0
1976 <sup>2/</sup>	1,769.8	33.8	1,736.0	550.9	1,321.5	129.1	31.7	3.4	29.2	18.8	1.1
1976 : 1st Qr.	433.5	5.4	428.1	102.8	349.5	9.1	2.6	1.5	11.6	5.4	0.3
2nd Qr.	135.3	10.7	124.7	10.2	34.0	10.4	2.4	0.8	7.4	2.9	0.1
3rd Qr.	620.4	7.7	612.8	242.5	493.1	53.6	12.7	0.6	5.3	3.9	0.3
4th Qr. <sup>2/</sup>	580.6	9.9	570.7	195.4	444.9	56.0	14.0	0.5	4.9	6.6	0.4
1977 : 1st Qr.	319.3	8.2	311.1	93.3	206.5	25.6	7.0	1.2	13.0	5.9	0.2
2nd Qr.	427.1	7.3	419.8	128.9	287.4	11.4	3.2	0.9	11.0	6.1	0.3

<sup>1/</sup> including value of sugar quota certificates and the boms received in lieu of the Commonwealth Preference on sugar exports but excluding sales value of bunker fuels and ships' stores

<sup>2/</sup> revised

Table 70 - Exports<sup>1/</sup> : quantities and values (cont'd.)

Quantity : Thousand metric tons  
Value : Rs million (f.o.b.)

Period	D O M E S T I C E X P O R T S					
	Feeding stuff for animals	Processed diamonds and synthetic stones	Electronic components for machines	Clothing	Other manufactured goods	Other domestic exports
	Value	Value	Value	Value	Value	Value
1972	-	5.3	-	6.1	7.4	3.2
1973	0.9	19.7	5.3	20.6	7.4	6.7
1974	2.0	22.6	48.6	60.8	11.1	6.7
1975	2.4	9.3	62.1	118.2	13.2	9.1
1976 <sup>2/</sup>	1.6	8.5	61.7	204.8	36.9	20.2
1976 : 1st Qr.	0.6	1.1	15.3	33.3	5.2	3.2
2nd Qr.	0.1	0.8	14.6	51.2	7.0	4.2
3rd Qr.	0.4	2.1	15.8	57.8	13.8	7.6
4th Qr. <sup>2/</sup>	0.5	4.5	16.0	62.5	10.9	5.4
1977 : 1st Qr.	1.0	2.7	16.5	46.8	10.0	1.5
2nd Qr.	0.6	6.1	16.3	68.0	16.6	4.2

<sup>1/</sup> including value of sugar quota certificates and the bonus received in lieu of the Commonwealth Preference on sugar exports but excluding sales value of bunker fuels and ships' stores.

<sup>2/</sup> revised

Table 71 - Total exports<sup>1/</sup> : main countries of destination - values

Rs Million (f.o.b.)

Country of destination	1973	1974	1975	1976 <sup>6/</sup>	Jan-Jun 1977
<u>Total exports</u>	<u>748.3</u>	<u>1,786.4</u>	<u>1,838.9</u>	<u>1,769.8</u>	<u>746.4</u>
United Kingdom	338.6	630.6	1,432.3	1,226.7	483.6
Canada	185.9	640.2	70.5	67.0	0.2
United States	65.0	140.8	101.1	103.5	54.8
South Africa, Rep. of	17.4	24.2	23.7	39.8	25.6
Vietnam Republic	15.9	-	-	-	-
Iran	15.7	122.2	-	0.2	0.2
Iraq	15.7	34.6	-	-	-
Indonesia	15.5	7.0	-	-	-
Malaysia	15.1	1.2	3.9	3.3	0.3
France	14.8	43.7	103.4	162.6	81.9
U.S.S.R.	10.4	-	0.9	2.4	-
Réunion	9.2	12.5	17.6	21.6	9.4
South Yemen	5.8	-	-	-	-
Belgium	4.5	2.9	12.3	22.1	23.1
Germany, Fed. Rep. of	2.6	18.2	30.6	48.5	25.7
Netherlands	2.6	12.4	4.4	12.8	12.5
Hong Kong	2.4	12.5	9.6	10.6	6.0
Malagasy, Rep. of	1.9	1.8	1.9	6.1	2.3
United Republic of Tanzania	1.7	0.1	-	-	-
Japan	1.2	7.7	4.4	0.6	0.1
Switzerland	1.1	2.2	1.5	1.7	0.7
Other countries	5.3	71.6 <sup>2/</sup>	20.8 <sup>3/</sup>	40.3 <sup>4/</sup>	20.0 <sup>5/</sup>

1/ including the value of sugar quota certificates and the bonus received in lieu of the Commonwealth Preference on sugar exports.

2/ including Somalia (Rs mn 28.1), Sudan (Rs mn 31.4), Australia (Rs mn 2.2) and Seychelles (Rs mn 2.6)

3/ including Seychelles (Rs mn 8.2), Australia (Rs mn 2.1)

4/ including Jordan (Rs mn 14.0)

5/ including Comoro Islands (Rs mn 4.7), Australia (Rs mn 3.2), Seychelles (Rs mn 2.7), Italy (Rs mn 2.6)

6/ revised



Table 72 - Imports : values by S.I.T.C. 1/ (revised) sections

Period	All sections	Food	Beverages and tobacco	Crude materials, inedible, except fuels	Mineral fuels, lubricants, etc.	Animal and vegetable oils and fats	Chemicals	Manufactured goods classified chiefly by material	Machinery and transport equipment	Miscellaneous manufactured articles	Miscellaneous and commodities, n.e.s.
1972	635.8	159.0	7.9	11.1	50.7	25.1	70.4	153.4	111.2	46.8	0.1
1973	915.8	217.8	9.3	14.2	63.6	23.1	81.4	222.4	225.1	58.5	0.4
1974	1,759.8	500.0	13.4	39.3	161.5	70.7	154.7	417.0	313.8	84.6	4.9
1975	1,995.3	459.8	16.5	48.6	194.6	51.8	180.3	468.1	441.4	126.7	7.6
1976 <sup>2/</sup>	2,398.7	486.5	18.9	63.9	209.0	71.2	167.8	632.1	580.2	160.3	8.7
1976 : 1st Qr.	554.4	126.1	4.7	11.6	60.0	22.2	36.0	134.5	124.7	32.7	2.0
2nd Qr.	625.4	126.8	5.2	16.0	33.1	24.3	43.7	151.6	179.7	43.2	1.8
3rd Qr.	577.4	113.8	3.8	16.4	40.9	4.8	47.7	165.2	140.8	41.7	2.2
4th Qr. <sup>2/</sup>	641.5	119.8	5.2	20.0	75.0	19.9	40.4	180.7	135.1	42.8	2.7
1977 : 1st Qr.	603.1	138.9	5.2	18.7	54.9	17.0	40.0	151.4	134.5	38.8	3.8
2nd Qr.	793.5	146.0	10.4	31.3	60.2	8.0	51.5	220.3	211.9	50.9	2.9

1/ Standard International Trade Classification

2/ revised

Table 73 - Imports : selected commodities - values

Period	Rs million (c.i.f.)													
	Rice	Wheat Flour	Alcoholic beverages	Petroleum products	Vegetable edible oils	Refrigerators manufactured	Cotton fabrics	Other textile fabrics	Cement	Iron and steel	Manufactures of metals, n.e.s.	Machinery other than electric	Electric machinery and appliances	Road motor vehicles and parts
1972	42.6	29.0	6.0	49.9	16.7	28.5	12.2	29.1	10.1	22.7	17.6	44.9	41.4	23.6
1973	70.9	33.8	6.8	62.6	15.7	30.9	17.0	36.7	18.2	36.0	27.4	92.0	52.1	40.8
1974	227.0	85.7	9.4	159.5	52.8	55.8	22.4	64.9	28.7	95.3	44.8	128.8	111.9	55.4
1975	133.0	98.9	9.2	192.7	35.2	63.6	31.7	79.7	56.2	72.1	52.1	213.1	138.6	82.0
1976 <sup>1/</sup>	130.5	70.9	12.0	206.3	47.3	21.8	45.7	114.6	71.2	86.8	78.0	258.2	182.1	132.7
1976 : 1st Qr.	39.4	18.7	2.7	59.1	18.9	6.7	11.1	26.8	14.4	16.1	16.7	54.5	42.2	26.3
2nd Qr.	38.4	23.6	3.3	32.4	11.4	7.6	10.3	31.0	15.8	17.8	17.8	90.1	47.4	40.6
3rd Qr.	34.9	16.6	2.4	40.0	0.5	3.1	11.9	28.7	24.1	20.8	21.7	56.3	44.7	37.4
4th Qr. <sup>1/</sup>	17.8	11.9	3.6	74.8	16.5	4.4	12.4	28.1	16.9	32.1	21.8	57.2	47.8	28.4
1977 : 1st Qr.	36.3	27.5	2.2	55.5	8.9	8.4	24.2	21.9	14.6	19.5	18.8	55.1	45.8	32.5
2nd Qr.	10.8	22.5	5.1	58.8	1.4	4.1	11.3	31.9	20.0	25.5	34.1	69.1	74.2	53.3

Table 74 - Imports : selected commodities - quantities

Period	Rice Thousand m/tons	Wheat flour Thousand m/tons	Vegetable edible oils Thousand m/tons	Fertilizers Thousand m/tons	Cotton fabrics Million sq. metres	Other textile fabrics Million sq. metres	Cement Thousand m/tons	Iron and steel Thousand m/tons
1972	72.3	49.3	10.6	88.0	8.2	8.6	93.3	22.0
1973	58.1	44.0	8.6	72.1	7.5	9.5	131.4	27.5
1974	87.5	50.4	12.4	67.7	6.5	12.7	151.0	40.5
1975	67.0	57.2	7.9	56.1	8.9	15.6	193.7	29.0
1976	79.2	40.1	11.7	36.5	10.2	18.9	220.9	39.8
1976 : 1st Qr.	20.9	10.7	4.8	11.3	2.7	4.2	46.8	6.7
2nd Qr.	24.9	13.7	2.7	9.4	2.1	5.3	50.2	8.1
3rd Qr.	22.7	9.7	0.1	5.9	2.7	4.8	73.3	8.8
4th Qr.	10.6	6.0	4.2	9.8	2.7	4.6	50.6	16.2
1977 : 1st Qr.	23.0	16.5	2.2	13.4	2.4	3.6	43.0	7.2
2nd Qr.	10.8	14.1	0.3	16.9	2.1	5.4	59.7	8.1

Table 75 - Imports : main countries of origin - values

Period	Rs million (c.i.f.)									
	Total	United Kingdom	Republic of South-Africa	France	Japan	Iran	Pakistan	Australia	Germany Federal Republic	India
1972	635.8	131.0	50.4	43.3	49.3	42.1	5.4	44.9	36.6	16.8
1973	915.8	193.4	78.5	63.2	59.8	50.6	49.7	49.1	46.1	30.5
1974	1,759.8	253.4	161.1	133.7	100.2	152.0	6.3	83.1	110.6	35.3
1975	1,995.3	336.3	192.9	171.4	156.9	177.3	8.0	120.6	132.0	57.7
1976	2,398.7	390.2	237.9	244.1	194.5	160.9	12.8	116.3	145.5	91.3
1976 : 1st Qr.	554.4	97.4	44.2	55.4	36.6	46.4	5.2	27.9	41.8	22.9
2nd Qr.	625.4	98.2	65.8	84.0	48.6	16.6	0.5	36.4	47.0	16.2
3rd Qr.	577.4	104.5	67.8	55.5	53.1	28.3	2.8	16.7	27.6	22.0
4th Qr.	641.5	90.2	60.2	49.1	56.2	69.6	4.3	35.3	29.0	30.2
1977 : 1st Qr.	603.1	102.8	49.3	62.3	42.8	36.8	2.9	40.7	36.2	22.7
2nd Qr.	793.5	175.5	94.2	91.0	62.4	22.2	5.3	37.9	39.2	22.7

1/ revised

Table 75 - Imports : main countries of origin - values (cont'd)

Period	Rs million (o.s.f.)										
	China Mainland	United States	Hong Kong	Burma	Belgium	Kenya	Netherlands	Singapore	Austria	Italy	
1972	14.0	21.6	17.6	34.4	6.9	12.6	14.8	12.4	6.9	8.6	
1973	29.8	25.4	23.3	18.5	30.8	17.8	17.0	15.1	14.8	13.7	
1974	149.4	87.2	49.6	40.4	39.8	20.0	28.0	31.7	18.8	20.5	
1975	57.7	99.5	55.7	58.0	39.5	35.7	30.0	26.1	3.8	27.8	
1976 <sup>1/</sup>	68.2	72.3	83.5	46.7	29.0	56.1	42.9	35.6	4.2	41.6	
1976 : 1st Qr.	29.9	15.0	15.3	17.6	6.9	9.5	8.0	7.1	0.5	11.2	
2nd Qr.	10.9	26.7	21.8	-	9.3	11.0	11.7	8.5	1.7	9.2	
3rd Qr.	12.7	17.2	23.1	14.9	5.2	15.5	6.5	9.0	1.2	11.6	
4th Qr. <sup>1/</sup>	14.7	13.4	23.4	14.2	17.5	20.1	16.7	11.0	0.8	9.6	
1977 : 1st Qr.	12.8	18.3	18.4	15.0	11.0	17.2	8.1	8.3	0.2	10.4	
2nd Qr.	14.3	15.0	23.9	14.7	7.0	23.3	13.2	9.8	1.5	10.7	

<sup>1/</sup> revised

Table 75 - Imports : main countries of origin - values (cont'd)

Period	Rs million (c.i.f.)									
	China Taiwan	New Zealand	Malaysia	Switzerland	Denmark	Kuwait	Ethiopia	Madagascar	Thailand	Other
1972	5.0	6.8	4.4	4.8	2.4	0.2	2.2	6.9	2.9	30.0
1973	9.7	9.1	6.4	5.8	6.9	5.4	5.1	4.3	1.2	34.8
1974	19.4	22.5	11.3	11.1	14.7	1.6	4.9	8.2	74.8	70.2
1975	20.4	22.5	13.1	10.8	4.4	-	4.7	16.0	49.4	67.1
1976 <sup>1/</sup>	29.0	31.1	25.3	20.9	6.6	7.6	12.8	7.4	65.2	119.2
1976 : 1st Qr.	5.3	5.0	3.4	4.7	1.3	7.6	3.0	0.6	2.7	22.0
2nd Qr.	7.8	5.6	9.8	4.2	2.7	-	3.3	3.2	39.3	25.4
3rd Qr.	8.7	6.7	6.1	4.2	1.2	-	-	0.9	20.8	33.6
4th Qr. <sup>1/</sup>	7.2	13.9	6.0	7.8	1.5	-	6.6	2.8	2.3	37.9
1977 : 1st Qr.	5.9	7.8	6.4	3.7	1.2	-	-	0.7	20.1	41.1
2nd Qr.	5.6	10.0	13.0	9.2	1.9	-	-	0.2	2.1	67.7

<sup>1/</sup> revised

Table 76 - Imports of fertilizers <sup>1/</sup>

Kind of fertilizers	1975		1976 <sup>2/</sup>		January - June 1977	
	Quantity (M/tons)	Value C.I.F. (Rs 000)	Quantity (M/tons)	Value C.I.F. (Rs 000)	Quantity (M/tons)	Value C.I.F. (Rs 000)
TOTAL IMPORTS	62,082	65,736	42,028	23,903	21,876	13,118
<u>NITROGENOUS FERTILIZERS</u>	23,831	28,583	10,301	5,078	5,025	2,260
Sulphate of ammonia	22,499	26,038	10,301	5,078	5,000	2,227
Ammonia sulphate nitrate	600	991	-	-	-	-
Other nitrogenous fertilizers	732	1,554	-	-	25	33
<u>POTASSIC FERTILIZERS</u>	17,220	12,878	20,866	10,874	9,793	4,767
Muriate of potash	16,995	12,567	20,561	10,483	9,493	4,470
Sulphate of potash	225	311	305	391	300	297
<u>PHOSPHATIC FERTILIZERS</u>	7,753	4,426	7,860	4,943	3,903	2,753
Single superphosphate	250	259	702	638	1,004	644
Triple superphosphate	1,450	1,938	1,600	2,292	1,305	1,401
Phosphatic guano	6,023	2,172	5,558	2,013	1,578	685
Other	30	57	-	-	16	23
<u>MIXED AND COMPOUND FERTILIZERS</u>	13,278	19,849	3,001	3,008	3,155	3,338

<sup>1/</sup> excluding imports from dependencies

<sup>2/</sup> revised

VII - EMPLOYMENT AND WAGES

The figures of employment in tables 77 - 80 apply to large establishments only - these being defined as:

- (i) Sugar cane plantations where 25 arpents or more were harvested;
- (ii) Tea plantations of 5 arpents or more;
- (iii) All 'flue-cured' tobacco establishments, irrespective of acreage;
- (iv) Non-agricultural establishments employing at least 10 persons;
- (v) All central and local government departments.

Table 77 - Employment in large establishments by major industrial groups

Industrial group	Total number of persons employed during March - June 1977
Agriculture, hunting, forestry and fishing	<u>61,132</u>
Sugar	54,334
Tea	2,082
Tea Development Authority	2,817
Other	1,899
Mining and quarrying	<u>143</u>
Manufacturing	<u>30,792</u>
Electricity, gas and water	<u>4,070</u>
Construction	<u>7,129</u>
Wholesale, retail trade, restaurants and hotels	<u>7,510</u>
Transport, storage and communication	<u>10,115</u>
Financing, insurance, real estate and business services	<u>3,486</u>
Community, social and personal services	<u>54,503</u>
Government (a) Central <sup>1/</sup> *	42,841
(b) Local <sup>2/</sup>	4,557
Other	7,105
Activities not elsewhere specified	<u>14,438</u>
Development Works Corporation <sup>1/</sup>	14,438
Grand Total	193,318

1/ including relief/development workers      2/ municipalities and district councils

\* excludes figures for Central Housing Authority, now included under Construction.



Table 78 - Employment<sup>1/</sup> in specified sectors - Sugar industry

Source of employment	Size class (arpents)	Total number of persons employed during March-June 1977
Sugar cane planters (including metayers)	25 -	1,170
	50 -	720
	75 -	416
	100 -	5,089
Total planters		7,395
Millers' estates and annexes (including factories)		46,939
Total		54,334

<sup>1/</sup> in large establishments - see introduction on page 73

Note : Employment figures for millers' estates include workers in field, factory, garage and workshop.

Table 79 - Employment<sup>1/</sup> in specified sectors - manufacturing industries

Industrial Group	Total number of persons employed during March-June 1977
Food <sup>2/</sup>	2,107
Beverages and tobacco	2,181
Textile (including aloe fibre)	2,591
Wearing apparel	13,020
Wood and furniture	932
Printing and publishing	851
Rubber and leather products	793
Miscellaneous chemical products	973
Non-metallic mineral products	1,282
Metal products	758
Repairs of machinery (except electrical)	825
Manufacture of electrical machinery (including repairs)	2,278
Transport equipment	663
Miscellaneous manufacturing industries	1,538
Total	30,792

<sup>1/</sup> in large establishments - see introduction on page 73

<sup>2/</sup> excluding employees in sugar and tea factories, who have been included with plantation workers in agriculture.

Table 80 - Employment by major industrial group and major occupational group - March-June 1977

Major industrial group 1/	Major occupational group 2/						Total	
	Professional, technical and related workers	Administrative and managerial workers	Clerical & related workers	Sales workers	Service workers	Agricultural, animal husbandry & forestry workers and fishermen		Production and related workers, transport equipment operators and labourers
	0/1	2	3	4	5	6	7/8/9	
1. Agriculture, hunting, forestry & fishing	143	190	514	4	776	49,245	10,260	61,132
2. Mining & quarrying	-	5	-	-	-	-	138	143
3. Manufacturing	551	529	1,446	296	524	348	27,098	30,792
4. Electricity, gas & water	118	9	559	2	303	-	3,079	4,070
5. Construction	88	38	345	3	119	4	6,532	7,129
6. Wholesale, retail trade, restaurants and hotels	254	422	1,515	1,236	2,269	162	1,652	7,510
7. Transport, storage and communication	106	83	3,142	3	736	6	6,039	10,115
8. Financing, insurance, real estate and business services	428	189	1,715	118	549	227	260	3,486
9. Community, social and personal services 3/	15,145	378	6,357	329	9,192	4,940	18,162	54,503
0. Activities not elsewhere classified	16	5	253	-	251	4	13,909	14,438
Total	16,849	1,848	15,846	1,991	14,719	54,936	87,129	193,318

1/ Major industrial group of the International Standard Industrial Classification of All Economic Activities, Revised Edition 1971.

2/ Major occupational group of the International Standard Classification of Occupations, Revised Edition 1968.

3/ includes development workers, but excludes figures for Central Housing Authority, now included under Construction.

Table 81 - Daily wage rates<sup>1/</sup> of manual workers employed by the central government as at 31st December

Rupees

Occupation	Lowest		Highest	
	1975 <sup>2/</sup>	1976 <sup>3/</sup>	1975	1976
Pressman	17.31	21.15	28.56	34.42
Compositor	17.31	21.15	28.56	34.42
Fitter (grade I)	17.31	21.15	28.56	34.42
Mechanic (grade I)	17.31	21.15	28.56	34.42
Carpenter (grade I)	17.31	21.15	28.56	34.42
Pattern Maker (grade I)	15.87	20.19	26.44	32.50
Mason (grade I)	14.90	18.27	23.65	29.42
Driver (grade I)	14.90	18.27	24.23	29.81
Labourer (specialised)	10.96	14.04	14.33	17.69
Labourer (unskilled)	10.38	13.46	13.08	17.12

1/ daily wage rate = monthly wage divided by 26

2/ including cost of living allowance

3/ including extra remuneration

Table 82 - Daily wage rates in certain industries (October inquiry<sup>1/</sup>)

Rupees

Industry	Occupation	Lowest		Highest	
		1975 <sup>2/</sup>	1976 <sup>3/</sup>	1975 <sup>2/</sup>	1976 <sup>3/</sup>
1. Manufacture of bread <sup>4/</sup>	Brigadier	12.51 <sup>5/</sup>	16.10 <sup>5/</sup>	18.10	25.78
2. Printing and publishing	Pressman	13.54	13.65	21.10	27.21
	Compositor (hand)	13.21	15.58	21.10	29.34
3. Manufacture of machinery	Fitter	14.02	18.27	32.20	41.13
	Pattern maker	13.62	19.62	32.20	37.62
4. Repair of motor vehicles	Mechanic	9.15	10.62	27.32	55.00
5. Construction	Carpenter	16.83	19.30	23.36	40.00
	Mason	16.83	19.30	23.36	40.00
6. Electricity	Linesman	20.67	24.81	34.23	41.15
	Labourer	12.31	15.19	17.12	20.19
7. Road passenger transport (buses)	Driver	20.48 <sup>5/</sup>	23.46	21.73 <sup>5/</sup>	25.38
	Conductor	17.60	20.19	18.37	21.73
8. Municipal services	Labourer, unskilled	12.31	15.19	16.83	20.19

<sup>1/</sup> data are collected in October of each year from a sample of large establishments  
The normal hours of work are 48 per week for (1) and 45 for all others

<sup>2/</sup> including cost of living allowance

<sup>3/</sup> including extra remuneration

<sup>4/</sup> mechanised bakeries - day shift

<sup>5/</sup> statutory minimum

Table 83 - Employment and wages<sup>1/</sup> of certain categories of employees on sugar millers' estates (September 1976)

Category	Grade	Number employed	Monthly Wages (Rs)	
			Lowest	Highest
Motor mechanic (automobile)	Chief	13	1,322.22	1,435.46
" " "	Superior	64	998.70	1,145.03
" " "	I	87	885.58	941.58
" " "	II	67	699.72	758.16
Pan boiler	Chief	22	1,322.22	1,431.77
" "	Superior	47	998.70	1,150.00
" "	I	55	885.58	951.86
" "	II	37	699.72	774.02
Fitter	Chief	23	1,066.24	1,217.10
"	Superior	92	998.70	1,054.70
"	I	98	885.58	930.00
"	II	103	699.72	767.78
Sheet metal worker and boiler maker	Chief	8	1,066.24	1,171.30
" " " " " "	Superior	34	998.70	1,091.22
" " " " " "	I	31	885.58	916.50
" " " " " "	II	20	699.72	719.50
Turner	Chief	8	1,066.24	1,315.74
"	Superior	46	998.70	1,045.20
"	I	32	885.58	937.30
"	II	15	699.72	699.72
Welder	Chief	10	1,066.24	1,099.54
"	Superior	39	998.70	1,054.70
"	I	53	885.58	910.75
"	II	47	699.72	796.12
Carpenter	Chief	19	886.31	1,145.03
"	I	100	675.48	812.24
"	II	73	615.50	633.00
Driver (heavy mechanical unit)	Superior	55	811.32	834.50
" " " "	I	64	683.59	745.00
" " " "	II	44	615.50	653.16
Driver/lorries, vans, buses, cars, rollers, wheel tractors for haulage work and light loader	Superior	1	811.32	811.32
"	I	644	683.59	703.00
"	II	378	615.50	699.00
Factory operator	I	159	596.85	964.00
" "	II	303	545.55	616.46
" "	III	492	486.19	568.10

<sup>1/</sup> including cost of living allowance, as per GN 82/1976

Table 84 - Employment and earnings on sugar millers' estates

Period	WORKERS ON MONTHLY RATES OF PAY						WORKERS ON DAILY RATES OF PAY					
	Man-days actually worked (000)			Earnings (Rs million)			Man-days actually worked (000)			Earnings (Rs million)		
	1975	1976	1977	1975	1976	1977	1975	1976	1977	1975	1976	1977
January	447	495	527	10.0	14.6	26.4	174	151	135	2.8	3.0	4.4
February	545	717	652	10.1	14.0	19.0	226	194	150	3.2	2.9	3.2
March	602	699	783	10.4	14.7	21.9	226	222	179	2.9	3.8	3.7
April	681	674	743	11.1	17.0	20.5	262	191	177	3.3	3.4	3.6
May	654	717	767	9.6	14.5	20.8	251	210	173	2.8	3.3	3.4
June	669	854	870*	9.6	17.4	23.6*	278	308	211*	3.0	4.8	4.0*
July	776	821		15.5	20.4		338	299		4.6	5.5	
August	641	799		12.7	21.1		314	291		4.3	5.6	
September	693	859		13.4	23.8		351	298		4.8	5.5	
October	742	753		20.2	19.9		351	261		6.6	4.7	
November	616	724		14.4	22.7		282	245		4.5	5.6	
December	762	837		60.7	70.4		331	269		11.5	11.9	
Total	7,828	8,949		197.7	270.5		3,384	2,939		54.3	60.0	

\* Provisional

Note : (i) the table excludes the "Etat Major" staff

(ii) earnings and the number of "man-days actually worked" refer to 4 or 5 weekly periods ending on the pay-day of each month; the figures are therefore not strictly comparable from month to month

(iii) earnings also include cost of living allowance, extra remuneration, overtime, holiday and leave pay, housing allowance and end-of-year bonus

VIII SOCIAL ASSISTANCE

Table 85 - Social Benefits

	1973-74	1974-75	1975-76	1976-77 <sup>1/</sup>
1. <u>Outdoor relief</u>				
(i) Total number of recipients as at 30th June	25,116	24,934	26,779	20,290
(ii) Total relief payments (Rs mn)	10.8	13.0	19.1	20.2
2. <u>Indoor relief</u>				
(i) Number of persons in infirmaries as at 30th June	669	651	609	608
(ii) Number of persons in orphanages as at 30th June	223	218	220	207
(iii) Total capitation grants paid (Rs mn)	0.64	0.81	1.16	1.56
3. <u>Non-Contribution Retirement Benefits</u>				
(i) Number of beneficiaries as at 30th June	49,592	52,415	53,895	58,348
(ii) Total amount paid (Rs mn)	19.4	25.4	36.0	55.0
4. <u>Family Allowance</u>				
(i) Number of beneficiaries as at 30th June	34,545	32,953	32,717	35,755
(ii) Total amount paid (Rs mn)	7.8	9.6	14.4	19.6
5. <u>Widows' Basic Pension and Child's Allowance</u>				
(i) Number of beneficiaries as at 30th June	-	-	-	14,557 <sup>2/</sup>
(ii) Total amount paid (Rs mn)	-	-	-	11.2

<sup>1/</sup> provisional

<sup>2/</sup> effective as from December 1976; this includes also widows previously drawing outdoor relief



IX. EDUCATION

Table 86 - Primary education - number of schools, pupils and teachers

Island of Mauritius

Period	Total number of schools <sup>2/</sup>	No. of Pupils			Total	Number of teachers	Pupil/teacher ratio
		Government	Aided	Non-aided <sup>1/</sup>			
October 1972	229	109,481	37,198	4,935	151,614	4,928	31
" 1973	228	109,132	36,677	4,847	150,656	5,142	29
" 1974	233	108,880	34,528	4,734	148,142	5,421	27
" 1975	234	106,949	33,202	5,324	145,475	5,677	26
" 1976 <sup>3/</sup>	235	103,638	31,452	4,349	139,439	5,848	24

Island of Rodrigues

October 1972	7	1,117	2,893	...	4,010	124	32
" 1973	7	1,084	3,090	...	4,174	128	33
" 1974	7	1,035	3,240	...	4,275	147	29
" 1975	7	1,012	3,351	...	4,363	151	29
" 1976	7	968	3,595	...	4,563	160	29

<sup>1/</sup> including pupils of the primary sections of (1) pre-primary schools (2) aided and non-aided secondary schools

<sup>2/</sup> this total includes only the number of government and aided primary schools. The number of pre-primary schools having primary sections are not included

<sup>3/</sup> revised

Table 87 - Secondary education - number of schools, pupils and teachers?

Island of Mauritius

Period	Total number of schools	No. of pupils				Number of teachers <sup>1/</sup>	Pupil/teacher ratio	
		Government	Aided		Non-aided			Total
			Status A	Status B & Non Recognised Schools				
October 1971	128	2,937	7,494	-	41,599	1,733	30	
" 1973	124	2,965	7,819	-	44,835	1,859	30	
" 1974	124	3,157	8,079	-	48,880	1,910	31	
" 1975	125	3,296	10,240	45,511	4,095 <sup>2/</sup>	2,065	31	
" 1976 <sup>4/</sup>	126 <sup>3/</sup>	3,459	11,983 <sup>3/</sup>	48,090	3,388 <sup>2/</sup>	2,123	32	
<u>Island of Rodrigues</u>								
October 1972	2	-	-	-	300	13	23	
" 1973	2	-	-	-	274	11	25	
" 1974	1	-	-	-	325	11	30	
" 1975	1	-	-	-	330	10	33	
" 1976	1	-	-	344	-	12	29	

<sup>1/</sup> the number of teachers in the secondary schools is expressed in terms of full time equivalent, taking 30 periods per week as full time teaching

<sup>2/</sup> as from April 1975, a number of non-aided schools have become aided schools following the implementation of the Rampul's Report

<sup>3/</sup> including Mahatma Gandhi Institute with 225 pupils

<sup>4/</sup> revised

Table 88 - Enrolment by grade and sex in primary schools - Island of Mauritius

Grade	1972			1973			1974			1975			1976 <sup>1/</sup>		
	Male	Female	Both sexes	Male	Female	Both sexes	Male	Female	Both sexes	Male	Female	Both sexes	Male	Female	Both sexes
Std. I	12,118	11,802	23,920	10,822	10,359	21,181	11,120	10,686	21,806	10,619	10,125	20,744	10,110	9,791	19,901
Std. II	11,842	11,471	23,313	11,731	11,460	23,191	10,640	10,307	20,947	10,877	10,449	21,326	10,195	9,656	19,851
Std. III	12,322	12,082	24,404	11,757	11,441	23,198	11,682	11,416	23,098	10,567	10,246	20,813	10,818	10,421	21,239
Std. IV	12,480	12,120	24,600	12,162	11,885	24,047	11,667	11,410	22,877	11,549	11,285	22,834	10,477	10,114	20,591
Std. V	11,159	10,682	21,841	12,235	11,792	24,027	11,953	11,642	23,595	11,493	10,964	22,457	11,163	10,948	22,111
Std. VI	17,480	16,056	33,536	18,105	16,907	35,012	18,484	17,335	35,819	19,115	18,186	37,301	18,314	17,432	35,746
Total	77,401	74,213	151,614	76,812	73,844	150,656	75,546	72,596	148,142	74,220	71,255	145,475	71,077	68,362	139,439

<sup>1/</sup> revised

**Table 89 - Enrolment by grade and sex in primary schools - Island of Rodrigues**

Grade	1972			1973			1974			1975			1976		
	Male	Female	Both sexes	Male	Female	Both sexes	Male	Female	Both sexes	Male	Female	Both sexes	Male	Female	Both sexes
Std. I	425	407	832	398	413	811	398	376	774	375	364	739	452	464	916
Std. II	348	364	712	431	411	842	396	403	799	389	369	758	371	371	742
Std. III	406	346	752	340	361	701	413	405	818	387	398	785	387	368	755
Std. IV	280	295	575	363	320	683	303	335	638	389	360	749	355	367	722
Std. V	237	270	507	242	271	513	309	279	588	260	307	567	334	333	667
Std. VI	315	317	632	307	317	624	311	347	658	403	362	765	373	388	761
Total	2,011	1,999	4,010	2,081	2,093	4,174	2,130	2,145	4,275	2,203	2,160	4,363	2,272	2,291	4,563

Table 90 - Enrolment by grade and sex in secondary schools - Island of Mauritius

Grade	1972			1973			1974			1975			1976		
	Male	Female	Both sexes	Male	Female	Both sexes	Male	Female	Both sexes	Male	Female	Both sexes	Male	Female	Both sexes
Form I	6,912	5,531	12,443	7,053	5,374	12,927	7,712	6,450	14,162	7,778	6,696	14,474	8,740	7,369	16,109
Form II	6,037	4,535	10,622	6,209	4,991	11,200	6,362	5,426	11,788	6,799	5,902	12,701	6,894	6,151	13,045
Form III	4,721	3,488	8,209	5,611	4,210	9,821	5,719	4,727	10,446	5,708	4,899	10,607	6,161	5,477	11,638
Form IV	5,446	3,802	9,248	5,376	4,067	9,443	6,086	4,579	10,665	6,186	5,008	11,194	6,140	5,076	11,216
Form V	5,639	3,336	8,975	5,939	3,741	9,680	6,074	4,220	10,294	6,706	4,597	11,303	6,790	5,176	11,966
Form VI	1,796	737	2,533	1,741	807	2,548	1,862	899	2,761	1,935	928	2,863	1,891	1,055	2,946
Total	30,551	21,479	52,030	31,929	23,690	55,619	33,815	26,301	60,116	35,112	28,030	63,142	36,616	30,304	66,920

Table 91 - Enrolment by grade and sex in secondary schools - Island of Rodrigues

Grade	1972			1973			1974			1975			1976		
	Male	Female	Both sexes	Male	Female	Both sexes	Male	Female	Both sexes	Male	Female	Both sexes	Male	Female	Both sexes
Form I	40	32	72	35	25	60	42	33	80	42	28	70	63	42	105
Form II	44	36	80	27	31	58	35	30	65	63	42	105	31	30	69
Form III	23	28	51	34	31	65	<b>34</b>	26	60	31	29	60	45	40	85
Form IV	29	23	52	23	23	46	20	27	55	28	22	50	23	17	40
Form V	22	23	45	26	19	45	33	32	65	28	17	45	13	12	25
Form VI	-	-	-	-	-	-	-	-	-	-	-	-	13	7	20
Total	158	142	300	145	129	274	172	153	325	192	138	330	188	156	344

Table 92 - University of Mauritius - Students enrolled

	School of Administration		School of Agriculture		School of Industrial Technology		Total	
	1975-76	1976-77	1975-76	1976-77	1975-76	1976-77	1975-76	1976-77
	Higher Degree courses	-	-	-	5	-	1	-
Degree courses	23	23	20	25	10	25	53	73
Diploma courses	157	181	108	85	184	224	449	490
Certificate courses	113	79	28	25	125	71	266	175
Professional courses	118	117	-	-	62	58	180	175
Non Award courses	-	6	-	-	-	-	-	6
Total	411	406	156	140	381	379	948	925

Table 93 - University of Mauritius - output

	School of Administration		School of Agriculture		School of Industrial Technology		Total	
	1975-76	1976-77	1975-76	1976-77	1975-76	1976-77	1975-76	1976-77
Degree courses	-	23	7	11	-	7	7	41
Diploma courses	74	100	32	33	29	59	135	192
Certificate courses	59	36	15	8	71	21	145	65
Total	133	159	54	52	100	87	287	298

Note: The output for professional courses are not available, the awards being from outside bodies



X - TRANSPORT AND COMMUNICATION

Table 94 - Motor vehicles registered

Period	Grand total	Private vehicles				Commercial vehicles							Government owned vehicles
		Total	Cars	Motor cycles	Auto cycles	Total	Taxi-cabs	Lorries	Vans	Buses	Other		
1972	28,538	18,605	12,079	3,265	3,261	8,399	1,397	2,452	2,197	831	1,522	1,524	
1973	32,945	21,875	13,446	3,880	4,549	9,375	1,392	2,706	2,678	951	1,648	1,595	
1974	37,415	25,079	14,572	4,619	5,868	10,610	1,570	2,885	3,319	1,060	1,776	1,726	
1975	43,017	29,083	16,198	5,512	7,373	12,020	1,635	3,201	4,113	1,149	1,922	1,914	
1976	50,741	34,270	18,368	6,455	9,447	14,348	2,288	3,540	5,264	1,186	2,070	2,123	
1976 : 1st Qr.	44,791	30,508	16,772	5,797	7,939	12,354	1,640	3,246	4,369	1,144	1,955	1,929	
2nd Qr.	46,855	31,814	17,454	6,042	8,318	12,788	1,639	3,340	4,649	1,155	2,005	2,253	
3rd Qr.	48,589	33,033	18,033	6,165	8,835	13,253	1,665	3,431	4,963	1,167	2,027	2,303	
4th Qr.	50,741	34,270	18,368	6,455	9,447	14,348	2,288	3,540	5,264	1,186	2,070	2,123	
1977 : 1st Qr.	52,934	35,711	18,794	6,872	10,045	15,155	2,647	3,612	5,600	1,202	2,094	2,068	
2nd Qr.	55,601	37,136	19,355	7,237	10,544	16,394	3,370	3,686	5,992	1,220	2,126	2,071	

Table 95 -- New registration of motor vehicles<sup>1/</sup>, 1975-77

Period	Grand total	Cars	Lorries	Buses	Motor cycles and auto cycles	D.P.V. <sup>2/</sup> and vans	Other
1975 January	404	121	9	6	218	48	2
February	309	111	21	4	128	42	3
March	465	144	16	9	211	65	20
April	527	165	33	10	223	76	20
May	467	116	42	8	236	51	14
June	413	120	36	9	180	63	5
July	494	146	38	10	139	97	64
August	501	169	33	8	190	76	25
September	408	121	23	7	172	73	12
October	466	135	25	8	199	81	18
November	488	182	29	7	175	85	10
December	733	208	21	14	347	107	36
1976 January	656	215	23	4	265	94	55
February	644	230	25	9	265	105	10
March	546	125	10	7	327	63	14
April	843	250	16	4	476	82	15
May	636	275	42	4	176	118	21
June	586	217	50	5	190	105	19
July	830	290	64	5	298	139	34
August	631	244	52	8	211	98	18
September	722	272	42	5	272	126	5
October	659	294	39	6	193	108	19
November	789	299	46	6	305	118	15
December	919	372	24	9	412	88	14
1977 January	736	256	27	11	374	85	3
February	804	290	27	4	345	124	14
March	754	274	30	9	298	134	9
April	805	352	15	7	309	118	4
May	975	421	25	5	360	151	13
June	932	518	36	16	223	122	17

<sup>1/</sup> including government vehicles

<sup>2/</sup> dual purpose vehicles

Table 96- Bus operational statistics

	Unit	1972	1973	1974	1975	1976
Total number of buses registered (at 30th June)	Number	796	884	995	1,103	1,186*
Total vehicle - journeys	Thousand	2,900	3,290	3,663	3,640	4,049
Average vehicle - journeys per day	"	8	9	10	10	11
Total vehicle - miles	"	34,200	33,584	38,035	38,782	36,129
Average vehicle - miles per day	"	93	92	104	106	99
Total number of tickets sold during year	"	114,070	122,233	141,296	152,503	167,762
Average number of tickets sold per day	"	312	335	387	418	460
Total gross receipts	000 Rs	26,540	36,613	48,023	62,102	81,429
Average gross receipts per day	"	72	100	132	170	223

\*end of the year

Table 97 - Road traffic accidents and casualties

	1972	1973	1974	1975	1976
<u>Road traffic accidents</u>					
Number	<u>2,547</u>	<u>2,866</u>	<u>3,017</u>	<u>3,584</u>	<u>4,560</u>
Number per 100,000 of population	308	343	357	418	525
<u>Motor vehicle accidents</u>					
Number	<u>2,457</u>	<u>2,689</u>	<u>2,842</u>	<u>3,133</u>	<u>4,678</u>
Number per 100,000 of population	297	322	336	366	539
Number per 1,000 registered motor vehicles	90	88	81	78	100
<u>Total casualties</u>	<u>2,259</u>	<u>2,327</u>	<u>2,660</u>	<u>2,767</u>	<u>2,333</u>
<u>Nature of casualty</u>					
Killed	115	139	134	161	141
Seriously injured	218	256	264	273	118
Slightly injured	1,926	1,932	2,262	2,333	2,074
<u>Casualties by class of road users</u>					
Pedestrians	912	898	1,039	1,157	973
Pedal cyclists	316	315	290	286	210
Passengers	596	663	800	811	630
Drivers or riders of motor vehicles	435	451	531	513	520

Table 98 - Sea-borne shipping

Period	Vessels entering		Vessels leaving		Goods	
	Number	Net registered tonnage (Thousand m/tons)	Number	Net registered tonnage (Thousand m/tons)	Unloaded (Thousand m/tons)	Loaded <sup>1/</sup> (Thousand m/tons)
1972	918	2,015	931	2,206	718	798
1973	1,008	2,466	998	2,417	731	900
1974 <sup>2/</sup>	606	2,560	611	2,530	802	861
1975 <sup>2/</sup>	580	2,417	590	2,432	798	635
1976 <sup>2/*</sup>	482	2,025	477	2,048	812	682
1976 <sup>2/</sup> : 1st Qr.*	105	389	102	374	196	26
2nd Qr.*	120	596	125	620	206	116
3rd Qr.	122	484	121	502	168	277
4th Qr.	135	556	129	552	242	263
1977 <sup>2/</sup> : 1st Qr.	114	389	113	413	173	122
2nd Qr.	117	449	118	483	203	137

<sup>1/</sup> excluding bunkers

<sup>2/</sup> excluding fishing vessels berthed in Port Louis

\* revised figures

Table 99 - Civil aviation

Period	Number of movements		Freight	
	Landings	Take offs	Unloaded (m/tons)	Loaded (m/tons)
1972	1,324	1,324	582.0	1,519.0
1973	1,592	1,592	952.3	1,298.4
1974	1,617	1,617	1,167.1	1,359.7
1975	2,341	2,341	2,000.8	2,005.0
1976	2,371	2,371	1,542.3	3,633.4
1976 : 1st Qr.	589	589	389.4	1,133.3
2nd Qr.	572	572	258.2	712.5
3rd Qr.	606	606	287.4	812.9
4th Qr.	604	604	607.3	974.7
1977 : 1st Qr.	535	535	385.5*	744.8
2nd Qr.	555	555	699.1	1,074.0

Note : In this table (1) are included only movements of commercial aircraft;

(2) each touch down or each take off is counted as a separate movement;

(3) freight carried by planes other than commercial is included.

\* provisional

Table 100 - Telephone service

(End of period)

	Unit	1973	1974	1975	1976	Jan-June 1977
Main exchange (including rural automatic exchange)	Number	26	26	26	26	26
Capacity (in terms of line)	"	16,670	16,820	16,870	20,550	20,550
Exchange line connections	"	14,569	15,351	15,870	16,324	16,814
Individual installations	"	22,593	24,252	24,900	26,505	27,609
Call units registered (during period)	Thousand	26,520	29,221	26,550	30,913	15,988

Table 101 - Broadcasting services

(End of period)

	Unit	1973	1974	1975	1976	Jan-June 1977
<u>SOUND</u>						
Stations	Number	1	1	1	1	1
Transmitters	"	3	3	3	3	3
Aerial output : short wave	Kw.	10	10	10	10	10
medium wave	Kw.	10	10	10	10	10
Weekly transmission time	Hour	116	116	116	116	116
New licences issued <sup>1/</sup> (during period)	Number	2,078	1,893	1,116	2,873	6,207
Radio sets licensed <sup>2/</sup>	"	84,218	85,192	85,037	87,380	88,861
<u>TELEVISION</u>						
Stations	Number	1	1	1	1	1
Transmitters	"	5	5	5	5	5
Aerial output (ERP)	Kw.	15	15	15	15	15
Weekly transmission time	Hour	58 $\frac{1}{3}$	59 $\frac{2}{3}$	60	63	63
New licences issued <sup>1/</sup> (during period)	Number	5,654	8,281	8,480	8,943	11,565
Television sets licensed	"	30,596	38,233	45,826	51,764	60,522
Omnibus licences issued (during period)	"	186	181	155	127	100

<sup>1/</sup> including omnibus licences

<sup>2/</sup> excluding scrapped sets

X1 LAND UTILIZATION

Table 102 - Total area<sup>1/</sup> classified by utilization

	<u>Acres</u>
	1972
<u>Agriculture</u>	<u>262,500</u>
Sugar cane	242,100
Tea	15,400
Tobacco, vegetable, and other crops	5,000
<u>Forests, scrub areas, grasslands and grazing lands</u>	<u>159,300</u>
Forest plantations	16,740
Forest, natural	5,900
Savannah, grasslands, meadows, etc.	18,400
Scrub and other forest lands	118,260
<u>Reservoirs and ponds</u>	<u>2,900</u>
<u>Swamps and rocks</u>	<u>3,500</u>
<u>Roads (main thoroughfares)</u>	<u>3,300</u>
<u>Built-up areas</u>	<u>29,300</u>
Total island	460,800

<sup>1/</sup> based on the findings of the UNDP-FAO Land and Water Resources Survey team working on aerial photographs of the island taken at the end of 1965 and supplemented to some extent by land surveys

Table 103 - Effective area under cultivation

	<u>Acres</u>				
	1972	1973	1974	1975	1976
Sugar cane	214,000	216,000	214,300	213,500	215,400
Tea	12,000	12,600	13,500	13,700	14,000 <sup>1/</sup>
Tobacco	1,100	1,100	1,300	1,450	1,700

<sup>1/</sup> provisional

XII LOCAL PRODUCTION

Table 104 - Agriculture - production of main crops, fish and meat

Commodity	Unit	1973	1974	1975	1976	Jan-June 1977
<u>Industrial crops</u>						
Sugar cane	Thousand m/ton	6,243	5,964	4,316	6,402	-
Tea (green leaf processed)	m/ton	20,365	19,646	15,777	22,444	13,899
Tobacco leaf <u>1/</u>	"	677	771	686	666	257
<u>Vegetables, pulses &amp; fruits</u>						
Beans and peas	"	440	760	966	912	392
Creepers <u>2/</u>	"	6,862	4,513	5,835	5,671	2,595
Eddoes	"	530	354	97	137	27
Egg plants (bringelles)	"	1,012	947	742	486	301
Ginger	"	1,161	1,788	750	826	106
Groundnuts	"	1,984	1,545	1,270	1,150	574
Maize	"	442	1,684	1,195	1,584	817
Manioc	"	433	271	211	260	131
Potatoes (Irish)	"	10,069	9,254	9,518	11,944	91
Rice	"	883	668	496	465	197
Sweet potatoes	"	179	83	117	83	9
Tomatoes	"	4,778	6,715	6,021	5,439	2,625
Mixed vegetables <u>3/</u>	"	6,799	8,966	8,067	6,641	1,275
Bananas	"	10,214	8,727	3,702	8,098	3,994
Pineapples	"	673	1,056	483	625	281
<u>Fish, meat and by-products</u>						
Fish <u>4/</u> : Coastal fishing	"	2,600	2,500	2,500	2,500	...
High seas	"	666	1,136	1,082	2,178	...
Meat <u>5/</u> : Beef	"	1,069	972	968	1,056	...
Goat	"	137	145	135	133	...
Mutton	"	35	43	70	33	...
Pork	"	762	579	745	754	...
Cattle hides and skins	Number	8,968	7,743	8,129	8,826	...

1/ refers to crop year which normally extends from the beginning of April to the end of March

2/ include margoze, calabash, chouchou, cucumber, patolle, pipengaille, pumpkin, squash, voehm

3/ include beet, cabbage, carrot, cauliflower, chillies (long and small), garlic, leek, lettuce, onion, petsai, sweet pepper, ladies' finger (lalo)

4/ revised figures

5/ from local and imported livestock

Table 105 - Sugar Industry - cane cultivation

Crop year	AREA UNDER CULTIVATION (Thousand arpents)			AREA HARVESTED (Thousand arpents)			CANES HARVESTED (Thousand m/tons)			AVERAGE YIELD (M/tons per arpent)		
	Millers	Planters	Total	Millers	Planters	Total	Millers	Planters	Total	Millers	Planters	Total
1972	115	90	205	103	87	190	3,903	2,412	6,315	38.0	27.6	33.2
1973	116	91	207	103	88	192	3,854	2,389	6,243	37.2	27.0	32.5
1974	116	89	205	104	85	189	3,864	2,100	5,964	37.1	24.6	31.5
1975	116	88	205	104	85	190	2,783	1,533	4,316	26.7	18.0	22.8
1976	117	89	206	106	86	192	3,977	2,425	6,402	37.6	28.2	33.4

Table 106- Sugar manufacture

Crop year	Number of factories operating	Commercial sugar recovered (% cane)	PRODUCTS OF MANUFACTURE (Thousand m/tons)			RESIDUES OF MANUFACTURE (Thousand m/tons)			Average sugar price ex-syndicate/ (Rs per m/ton)
			White sugar		Total sugar	Molasses		Scums	
			Raw sugar	Total sugar	Raw sugar	Molasses	Scums		
1972	21	10.89	55	631	686	176	196	640.91	
1973	21	11.48	56	662	718	185	200	854.90	
1974	21	11.80	49	648	697	173	201	2,189.03	
1975	21	10.99	25	443	468	129	153	2,555.63	
1976	21	10.91	53	637	690	199	208	1,708.00 <sup>2/</sup>	

<sup>1/</sup> price of sugar is the average ex-syndicate price for raw sugar at 98.5° polarisation after deducting the sugar insurance premium and special levy and adding the planter's share of surplus

<sup>2/</sup> provisional



Table 107 - Industry - production of specific commodities

Commodity	Unit	1973	1974	1975	1976	Jan-Jun. 1977 <sup>1/</sup>
Sugar	M/ton	718,464	696,786	468,256	689,932	24,961
Molasses	"	184,842	172,797	129,432	199,421	...
Tea (manufactured)	"	4,079	3,971	3,139	4,334	2,750
Aloe fibre	"	1,461	1,159	711	655	288
Alcoholic @ 100 G.L.	H/Litre	17,883	23,464	26,731	31,100	...
Local spirits (rum)	"	19,024	24,962	28,437	33,441	13,065
Denatured spirits:						
Power alcohol	"	2,933	1,311	982	1,282	820
Alcohol for heating and lighting	"	2,767	3,744	3,998	4,538	1,531
Perfumed spirits	"	829	633	1,048	903	460
Vinegar	"	491	629	584	997	282
Beer and stout	"	72,483	91,478	116,019	109,799	80,048
Country liquor	"	52,873	52,594	30,984	24,380	11,370
Soft aerated beverages	"	214,000	239,000	325,000	464,721	275,000
Cigarettes	M/ton	755	838	889	888	510
Matches	Gross boxes	155,140	143,109	176,996	124,376	90,716
Lime	M/ton	7,000	6,000	7,200	7,500	...
Sacks <sup>2/</sup>	Thousand	1,251	1,241	722	1,093	...
Salt	M/ton	5,500	5,500	5,500	6,000	...
Electricity generated	Mn Kwh	187	209	224	270	76

<sup>1/</sup> provisional

<sup>2/</sup> manufactured by the Mauritius Jute and Textiles Industries Ltd (ex Government Sack Factory)

Table 108 - Gross output and value added of large manufacturing industries<sup>+</sup> - 1975/1976

Industrial activity	No. of establishments		Gross output		Net output	
	1975	1976 <sup>1/</sup>	1975	1976 <sup>1/</sup>	1975	1976 <sup>1/</sup>
Food manufacturing industries including sugar	118	121	1,701	1,702	305	328
Alcoholic beverages and tobacco manufactures	12	12	166	206	27	38
Non-alcoholic beverages	5	5	31	44	13	19
Manufacture of textiles, made-up textiles and other wearing apparel	49	70	158	263	58	95
Manufacture of footwear, leather and leather products	17	19	17	21	7	9
Manufacture of wood, furniture and fixtures	23	25	23	29	10	13
Manufacture of paper products, printing, publishing and allied industries	35	36	31	39	16	19
Manufacture of chemicals and chemical products	37	40	126	118	35	37
Manufacture of metal products, transport equipment and machinery except electrical machinery	42	42	79	92	32	37
Manufacture of non-metallic mineral products	27	28	47	59	17	20
Manufacture of electrical machinery, apparatus and appliances	10	12	42	49	20	23
Other manufacturing industries	15	24	23	27	7	8
Total	390	434	2,444	2,649	547	646

<sup>1/</sup> provisional

<sup>+</sup> The data relate to the production of establishments employing 10 or more persons in industries that are classified under Major Division 3 of the International Standard Industrial Classification of all Economic Activities, except in the case of the manufacture of bread and pastry where all establishments have been included.

Table 109 - Electricity<sup>1/</sup>: production, consumption, sales, etc.

	Unit	1973	1974	1975	1976
Generating stations	Number	<u>9</u>	<u>9</u>	<u>9</u>	<u>9</u>
Hydro	"	7	7	7	7
Thermal	"	2	2	2	2
Plant - effective capacity	Kw	<u>56,390</u>	<u>62,190</u>	<u>76,650</u>	<u>87,140</u>
Hydro	"	24,890	24,890	25,740	25,440
Thermal	"	31,500	37,300	50,910	61,700
Energy generated	Million kwh	<u>163.1</u>	<u>184.5</u>	<u>207.4</u>	<u>244.9</u>
Hydro	"	74.0	40.2	56.2	54.8
Thermal	"	89.1	144.3	151.2	190.1
Energy purchased from sugar & other factories	"	23.7	24.0	16.8	25.3
Energy sold	"	153.2	173.1	184.5	225.4
Number of consumers on 31st December :	Number	<u>109,969</u>	<u>116,748</u>	<u>122,483</u>	<u>132,945</u>
Domestic	"	97,497	103,905	109,358	119,157
Commercial	"	10,356	10,592	10,692	11,114
Industrial	"	1,899	2,074	2,326	2,561
Special	"	217	177	107	113
Average selling price	Cents per kwh	20.7	28.8	31.18	37.09
Total revenue	Rsmn	33.5	51.6	59.3	85.4
Total current expenditure	" "	33.8	52.0	66.8	85.3
Persons employed	Number	1,394	1,475	1,507	1,530

<sup>1/</sup> statistical data relating to the Central Electricity Board

XIII CONSTRUCTION STATISTICS

Table 110 - Number of permits issued for new buildings<sup>1/</sup>

Type of building	1973		1974		1975		1976 <sup>2/</sup>	
	No. of permits issued	Floor area (Thousand sq. ft)	No. of permits issued	Floor area (Thousand sq. ft)	No. of permits issued	Floor area (Thousand sq. ft)	No. of permits issued	Floor area (Thousand sq. ft)
<u>Residential</u>	<u>2,623</u>	<u>2,673</u>	<u>2,918</u>	<u>3,021</u>	<u>3,775</u>	<u>3,749</u>	<u>4,252</u>	<u>4,241</u>
<u>Non-Residential</u>	<u>332</u>	<u>905</u>	<u>288</u>	<u>2,187</u>	<u>269</u>	<u>912</u>	<u>324</u>	<u>551</u>
Agriculture, forestry, hunting and fishing	18	45	32	56	6	8	5	8
Manufacturing	64	391	48	1,228	52	487	32	90
Construction	3	22	-	-	-	-	-	-
Electricity and water	6	6	4	17	3	16	4	7
Transportation, storage and communication	4	6	9	32	11	20	18	32
Wholesale and retail trade <sup>1/</sup>	147	204	145	648	136	235	212	278
Banking, insurance and real estate	3	15	1	1	-	-	2	8
Service	87	216	49	205	61	146	51	128
All buildings	2,955	3,578	3,206	5,208	4,044	4,661	4,583	4,792

<sup>1/</sup> includes only new buildings for which permits have been issued by the Ministry of Works and Municipalities. Permits issued for extensions and alterations to existing buildings have not been included.

Table III - Number of permits issued for new buildings classified by urban/rural areas

Locality	1973		1974		1975		1976	
	No. of permits issued	Floor area (Thousand sq. ft)	No. of permits issued	Floor area (Thousand sq. ft)	No. of permits issued	Floor area (Thousand sq. ft)	No. of permits issued	Floor area (Thousand sq. ft)
<b>URBAN AREAS</b>								
Port Louis	1,329	2,045	1,487	3,463	1,738	2,655	1,826	2,382
Beau Bassin - Rose Hill	259	592	384	921	454	894	468	631
Curepipe	264	383	293	1,217	349	557	415	615
Quatre Bornes	293	448	276	639	346	503	339	431
Vacoas - Phoenix	256	347	270	359	264	330	315	405
	257	275	264	327	325	371	289	300
<b>RURAL AREAS</b>								
Pamplemousses	1,626	1,533	1,719	1,745	2,306	2,006	2,757	2,410
Rivière du Rempart	250	229	277	251	502	414	543	459
Flacq	230	221	285	281	421	373	550	463
Moka	268	217	328	274	393	300	375	311
Grand Port	166	163	174	355	267	277	255	235
Savanne	187	163	206	153	221	192	359	310
Plaines Wilhems - Black River	210	161	181	151	193	163	260	220
	315	379	268	300	309	287	415	412
<b>Whole Island</b>	<b>2,955</b>	<b>3,578</b>	<b>3,206</b>	<b>8</b>	<b>4,661</b>	<b>4,583</b>	<b>4,792</b>	

2/ permits for urban areas are issued by Municipalities and those for rural areas by the Ministry of Works. Permits issued for extensions alterations to existing buildings have not been included

XIV - CLIMATE

- Monthly temperatures, 1976/77

Degrees Centigrade

Period	VACOAS Centre - 1,394 ft. A.M.S.L. <sup>1/</sup>				PLAISANCE Coastal Region, South - 138 ft. A.M.S.L. <sup>1/</sup>			
	Maximum		Minimum		Maximum		Minimum	
	Mean	Departure from normal	Mean	Departure from normal	Mean	Departure from normal	Mean	Departure from normal
1976 July	22.3	+ 0.7	15.3	+ 0.2	24.4	+ 0.5	17.3	+ 0.3
August	22.6	+ 1.5	16.0	+ 1.4	24.3	+ 0.9	18.4	+ 1.3
September	22.7	+ 0.4	15.3	+ 0.1	24.6	+ 0.3	17.3	- 0.2
October	24.1	+ 0.6	16.9	+ 0.9	26.4	+ 0.9	19.2	+ 0.7
November	25.8	+ 0.3	18.1	+ 0.5	27.5	+ 0.2	20.4	+ 0.5
December	28.0	+ 1.3	19.3	+ 0.1	29.4	+ 0.5	21.1	- 0.4
1977 January	27.8	+ 0.7	21.3	+ 1.2	29.6	+ 0.6	23.5	+ 1.0
February	27.5	- 0.3	20.7	0.0	29.4	- 0.1	22.8	+ 0.1
March	28.4	+ 1.1	21.0	+ 0.5	29.8	+ 0.8	22.9	+ 0.4
April	26.9	+ 0.6	20.3	+ 1.0	28.7	+ 0.8	22.2	+ 1.1
May	25.3	+ 1.2	19.1	+ 1.9	27.3	+ 1.2	21.0	+ 1.6
June	23.3	+ 0.6	16.1	+ 0.4	25.6	+ 0.7	19.2	+ 1.3

<sup>1/</sup> above mean sea level

Table 113 - Monthly rainfall for the sugar cane districts, 1976/77

Millimetres

P e r i o d	West		North		East		South		Centre		All Districts	
	Amount	Difference from normal	Amount	Difference from normal	Amount	Difference from normal	Amount	Difference from normal	Amount	Difference from normal	Amount	Difference from normal
1976 July	24	- 4	30	- 41	75	- 25	111	- 35	77	- 58	74	- 52
August	13	+ 1	151	+ 90	201	+ 73	183	+ 68	139	+ 29	164	+ 64
September	15	- 5	65	+ 12	94	- 16	109	+ 14	56	- 41	80	- 6
October	5	- 23	35	- 3	99	- 12	100	+ 24	104	+ 32	81	+ 15
November	21	- 41	82	+ 7	88	- 33	46	- 73	54	- 54	64	- 40
December	219	+ 83	82	- 39	110	- 109	298	+ 101	266	+ 81	199	+ 21
1977 January	176	- 12	224	+ 48	419	+ 107	431	+ 131	416	+ 83	366	+ 91
February	218	+ 22	222	+ 8	271	- 70	224	- 77	328	- 13	255	- 37
March	94	- 171	57	- 202	106	- 324	170	- 206	158	- 200	125	- 226
April	153	+ 36	193	+ 18	351	+ 40	509	+ 209	277	+ 38	338	+ 86
May	30	- 25	170	+ 58	309	+ 103	390	+ 204	145	- 2	257	+ 96
	13	- 25	94	+ 6	102	- 92	75	- 78	61	- 78	80	- 58