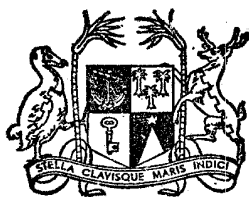


Vol. 8

No. 2



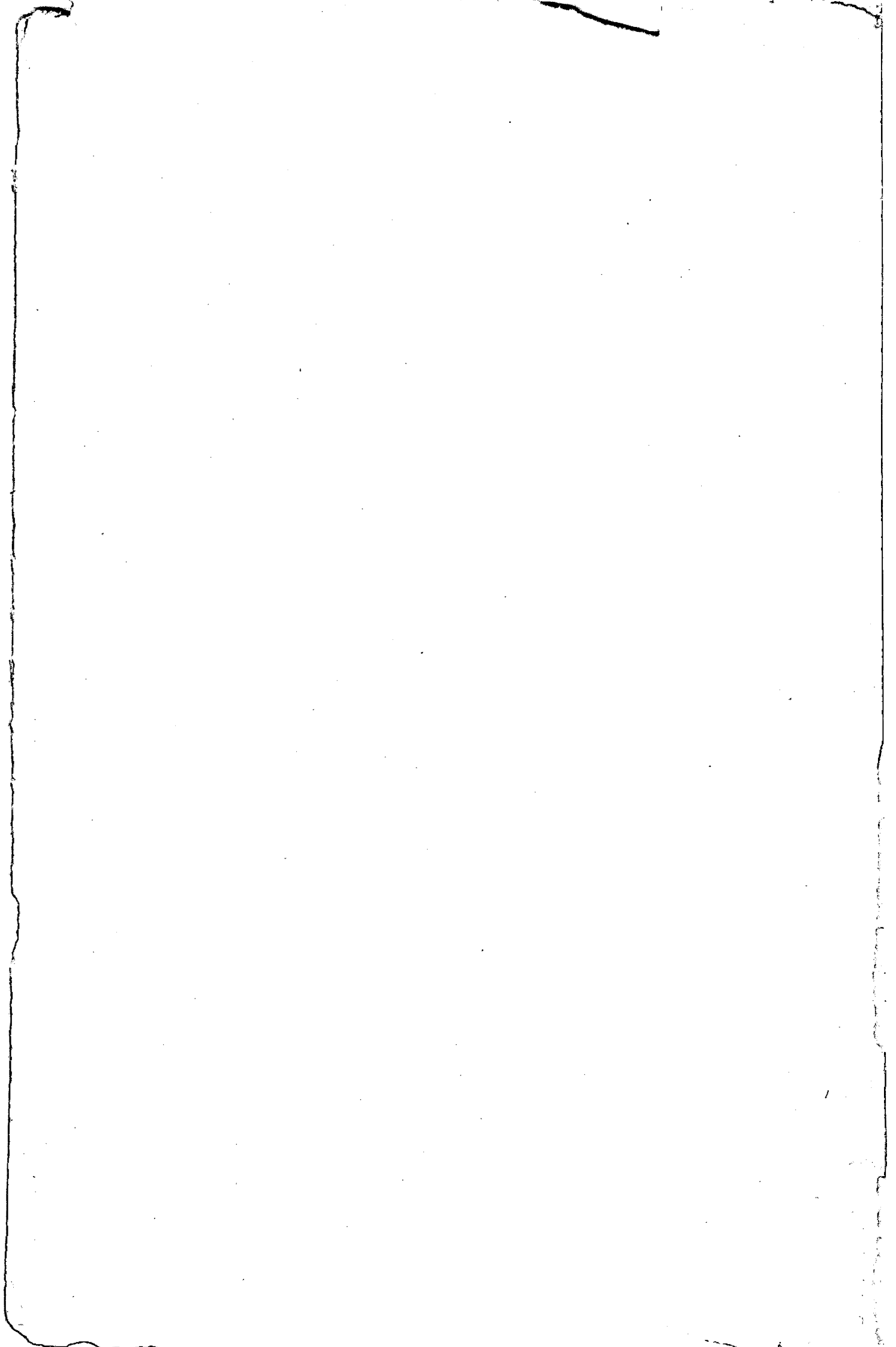
MAURITIUS

CENTRAL STATISTICAL OFFICE
Ministry of Economic Planning and Development

BI-ANNUAL
DIGEST OF STATISTICS

December 1973

[Price : Rs 10.00]

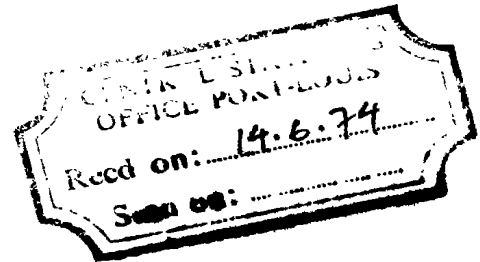




BI-ANNUAL DIGEST OF STATISTICS

Vol. 8 No. 2

December 1973



The Bi-annual Digest of Statistics is a publication of the Central Statistical Office.

It is designed to present in a concise and readily accessible form the more important statistical series available on the demographic, economic and social characteristics of Mauritius.

Some of the figures in this digest are provisional and liable to revision in later issues.

Where necessary, figures have been rounded off to the nearest final digit, and in some tables there may be discrepancies between the sum of the constituent items and the total as shown.

The following symbols are used throughout : -

- Nil or negligible

... Not available

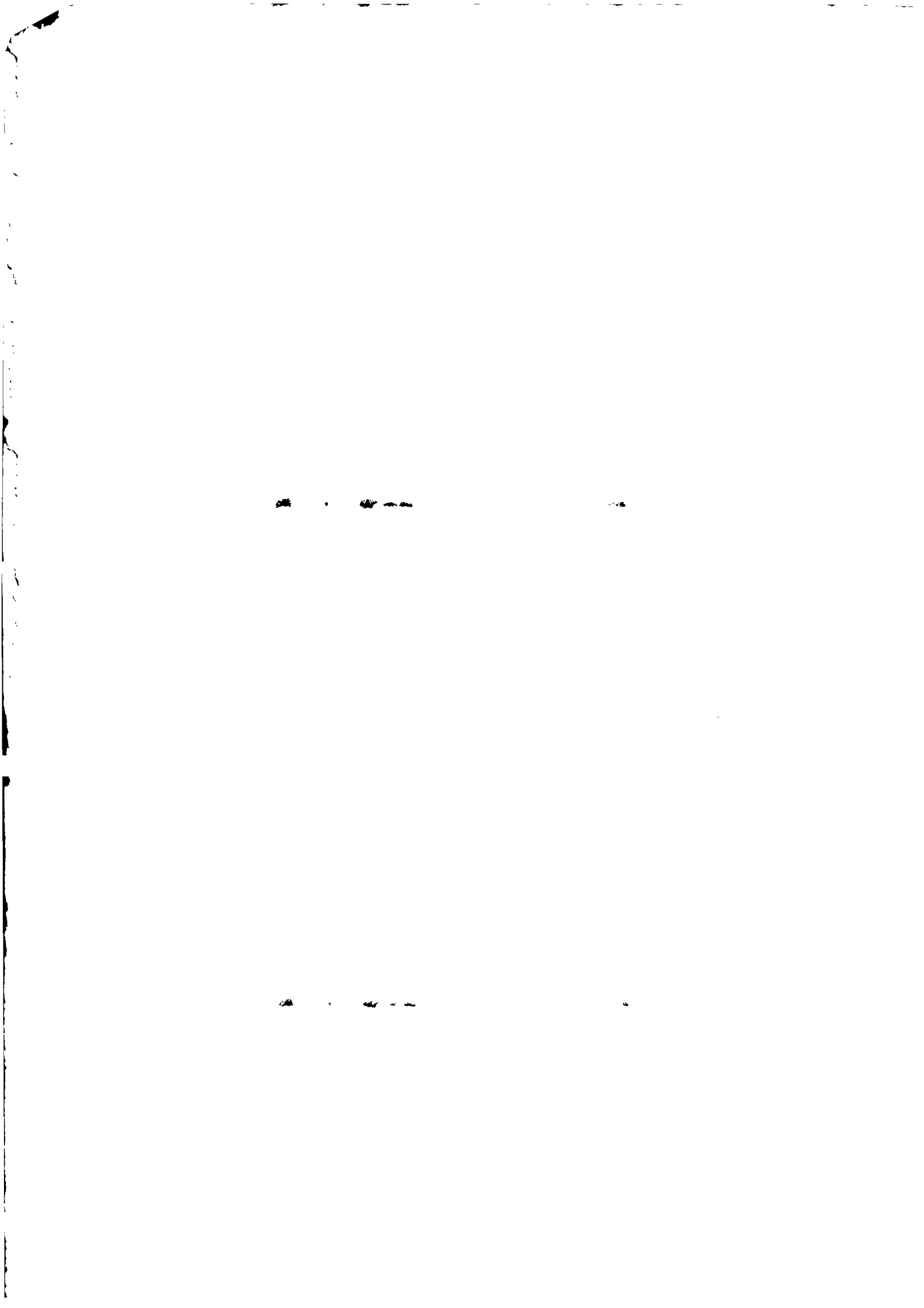
The assistance given by the Bank of Mauritius, all government departments and other bodies in providing data for publication in this issue is gratefully acknowledged.

J. AHKONG
Asst. Director of Statistics

Central Statistical Office,
Rose Hill,
Mauritius,
June 1973.

CONTENTS

	Page
 <u>I - POPULATION AND VITAL STATISTICS</u>	
Table 1 - Estimated population of Mauritius as at 31st December 1973, based on the census enumeration of June 1972	1
2 - Population of Mauritius as enumerated at each census (1846-1972)	1
3 - Population estimates, Mauritius 1963-73	2
4 - Comparison with other countries	2
5 - Population of Mauritius by geographical district and sex, 1972 and 1973	3
6 - Population of towns, 1972 and 1973	4
7 - External migration	4
8 - Passenger traffic, by country of embarkation or disembarkation and by mode of transport, 1973	5
9 - Tourist arrivals and tourist nights by country of residence and by mode of transport, 1973	6
10 - Population and vital statistics, Mauritius	7
11 - Live births and still births, Mauritius	8
12 - Infant deaths (deaths under 1 year of age) by age and sex, Mauritius	8
13 - Deaths by age and sex, Mauritius	9
14 - Population and vital statistics, Mauritius - quarterly	10
15 - Still births and infant deaths, Mauritius	11
16 - Expectation of life in years at selected ages	11
17 - Population and vital statistics - Rodrigues	12
18 - Cause of death, 1973 - Mauritius	13 & 14
 <u>II - PUBLIC HEALTH</u>	
Table 19 - Health services, Mauritius	15
20 - Statistics of hospitals, Mauritius	16
21 - Notifiable, contagious or communicable diseases, Mauritius	17
 <u>III - PUBLIC FINANCE AND BANKING</u>	
Table 22 - Central government revenue and expenditure	18
23 - Functional classification of central government recurrent revenue	18
24 - Functional classification of central government recurrent expenditure	19
25 - Functional classification of central government capital revenue	20
26 - Functional classification of central government capital expenditure	20
27 - Central government indebtedness	21
28 - Sinking funds held against the public debt	21
29 - Central government loan raisings	22
30 - Outstanding loans and advances made from public funds as at 30th June	23



CONTENTS (cont'd)

	<u>Page</u>
<u>III - PUBLIC FINANCE AND BANKING</u> (cont'd)	
Table 31 - Income tax - individuals	24
32 - " " - companies	25
33 - Sterling assets of central government, Bank of Mauritius and commercial banks	26
34 - Assets of the Bank of Mauritius	27
35 - Liabilities of the Bank of Mauritius	28
36 - Assets of commercial banks	29
37 - Liabilities of commercial banks	30
38 - Analysis of bills discounted, loans and advances made by commercial banks	31
39 - Assets and liabilities of the Development Bank of Mauritius	32
40 - Post Office Savings Bank	33
41 - Assets and liabilities of the Mauritius Co-operative Central Bank Ltd.	33
42 - Money supply	34
43 - Assets and liabilities of the Mauritius Housing Corporation	34
44 - Bank and interest rates	35
45 - Foreign exchange rates	36
<u>IV - NATIONAL ACCOUNTS</u>	
Table 46 - Gross national product, by industrial origin	37
46 - " " " , per capita	37
47 - Distribution of the national income before providing for depreciation	38
48 - Expenditure on gross national product	39
49 - Composition of gross domestic fixed capital formation	40
50 - Balance of payments	41 & 42
<u>V - CONSUMER PRICE INDICES</u>	
Table 51 - Consumer price indices	43
<u>VI - EXTERNAL TRADE</u>	
Table 52 - Balance of visible trade	44
53 - Price indices of exports and imports and the terms of trade	44
54 - Price indices of imports, by section	45
55 - Exports: quantities and values	46 & 47
56 - Total exports: main countries of destination - values	48
57 - Imports: values by S.I.T.C. sections	49
58 - " : selected commodities - values	50
59 - " : selected commodities - quantities	51
60 - " : main countries of origin - values	52 - 54
61 - Imports of fertilizers	55

CONTENTS (cont'd)

	<u>Page</u>
<u>VII - EMPLOYMENT AND WAGES</u>	
Table 62 - Employment in large establishments by major industrial groups	56
63 - Employment by sex and age group	57
64 - Employment in specified sectors: sugar industry	58
65 - " " " " : government services	58
66 - " " " " : manufacturing industries	59
67 - Employment and salaries or wages by industries, September 1973	60 - 63
68 - Indicators of unemployment	64
69 - Daily wage rates in certain industries (October inquiry)	65
70 - Daily wage rates of manual workers employed by the central government	66
71 - Employment and wages of certain categories of employees on sugar millers' estates (September inquiry)	67
72 - Employment and earnings on sugar millers' estates	68
73 - Job vacancies in large establishments as at 27.9.1973	69 - 71
<u>VIII - SOCIAL ASSISTANCE</u>	
Table 74 - Social benefits	72
<u>IX - EDUCATION</u>	
Table 75 - Primary education : number of schools, pupils and teachers	73
76 - Secondary education: number of schools, pupils and teachers	74
77 - Enrolment by grade and sex in primary schools : Mauritius	75
78 - Enrolment by grade and sex in primary schools : Rodrigues	76
79 - Enrolment by grade and sex in secondary schools: Mauritius	77
80 - Enrolment by grade and sex in secondary schools : Rodrigues	78
81 - University of Mauritius: students enrolled	79
82 - " " " : output	80
<u>X - TRANSPORT AND COMMUNICATION</u>	
Table 83 - Motor vehicles registered	81
84 - New registration of motor vehicles	82
85 - Bus operational statistics	83
86 - Road traffic accidents and casualties	83
87 - Sea-borne shipping	84
88 - Civil aviation	84
89 - Telephone service	85
90 - Broadcasting services	85

I. POPULATION AND VITAL STATISTICS

Table 1 - Estimated population of Mauritius as at 31st December 1973 based on the 1972 Population Census data

	Male	Female	Both sexes
Population enumerated at 30th June 1972	413,648	412,551	826,199
Births July 1972-December 1973	+ 15,214	+ 14,522	+ 29,736
Deaths - do -	- 5,418	- 4,575	- 9,993
Arrivals - do -	+ 85,904	+ 61,150	+ 147,054
Departures - do -	- 87,551	- 62,023	- 149,574
Estimated population, 31st December 1973	421,797	421,625	843,422

Table 2 - Population of Mauritius as enumerated at each census (1846-1972)

Census year	Population enumerated at census			Intercensal increase	Average annual rate of increase %
	Both sexes	Male	Female		
1846	158,462	104,598	53,864		
1851	180,823	119,341	61,482	22,361	2.55
1861	310,050	202,961	107,089	129,227	5.87
1871	316,042	193,575	122,467	5,992	0.19
1881	359,874	208,655	151,219	43,832	1.31
1891	370,588	206,038	164,550	10,714	0.29
1901	371,023	199,552	171,471	435	0.01
1911	368,791	194,095	174,696	- 2,232	- 0.06
1921	376,485	194,108	182,377	7,694	0.21
1931	393,258	200,609	192,629	16,753	0.44
1944	419,185	210,326	208,859	25,947	0.49
1952	501,415	252,032	249,383	82,230	2.26
1962 ⁺	681,619	342,306	339,313	180,204	3.12
1972 ⁺	826,199	413,648	412,551	144,580	1.94

⁺ de facto population - including the European members of the Armed Forces but excluding the passengers and crews of ships lying in the harbour.

Table 3 - Population estimates^{1/}, Mauritius, 1963-1973

Period	Total population (31st December)			Increase during period		Mid-year population (30th June)
	Both sexes	Male	Female	Numerical	Percent	
1963	707,580	354,645	352,937			695,631
1964	727,814	364,792	363,022	20,234	2.86	716,298
1965	745,630	373,503	372,127	17,816	2.45	735,245
1966	762,901	381,935	380,966	17,271	2.32	753,276
1967	776,253	388,541	387,712	13,352	1.75	767,782
1968	788,955	394,830	394,125	12,702	1.64	781,615
1969	801,236	401,072	400,164	12,281	1.56	792,893
1970	813,400	407,277	406,123	12,164	1.52	805,489
1971	824,815	413,133	411,682	11,415	1.40	816,561
1972	834,486	417,894	416,592	9,671	1.17	826,199
1973	843,422	421,797	421,625	8,936	1.07	834,781

^{1/} Revised in the light of the 1972 Population Census data.

Table 4 - Comparison with other countries

Continent & country	Average annual rate of increase 1963-71 (%)	Continent & country	Average annual rate of increase 1963-1971 (%)
<u>AFRICA:</u> Mauritius	2.0	<u>ASIA:</u> Ceylon	2.2
<u>AMERICA:</u> Canada	1.8	China (Mainland)	1.8
Guyana	2.3	India	2.2
Trinidad and Tobago	1.4	Japan	1.1
Chile	1.4	Pakistan	2.1
<u>OCEANIA:</u> Australia	1.9	<u>EUROPE:</u> Albania	3.0
New Zealand	1.5	France	0.9
		United Kingdom	0.4

Source: United Nations Demographic Yearbook 1971

Table 5 - Population of Mauritius by geographical district and sex

Geographical District	Enumerated population as at 30.6.72			Estimated population ^{1/} as at 30.6.73			Estimated population ^{1/} as at 31.12.73		
	Both sexes	Male	Female	Both sexes	Male	Female	Both sexes	Male	Female
Port Louis	133,996	66,445	67,551	135,296	67,019	68,277	136,622	67,645	68,977
Pamplemousses	68,948	34,948	34,000	69,807	35,369	34,438	70,559	35,738	34,821
Riviere du Rempart	66,995	33,996	32,999	67,946	34,458	33,488	68,786	34,860	33,926
Placq	89,050	45,065	43,985	90,493	45,760	44,733	91,620	46,277	45,343
Grand Port	80,719	40,647	40,072	81,574	41,032	40,542	82,398	41,455	40,945
Savanne	53,011	26,744	26,267	53,445	26,948	26,497	53,962	27,170	26,792
Plaines Wilhems	258,699	128,137	130,562	260,662	129,049	131,613	263,092	130,241	132,851
Moka	48,610	24,441	24,169	49,081	24,651	24,430	49,577	24,888	24,689
Black River	26,171	13,225	12,945	26,477	13,353	13,124	26,806	13,525	13,281
WHOLE ISLAND	826,199	413,648	412,551	834,781	417,639	417,142	843,422	421,797	421,625

^{1/} Based on the 1972 Population Census. No account has been taken of internal migration.

Table 6 - Population of towns, 1972 and 1973

Town	Enumerated population as at 30.6.72	Estimated population ^{1/} as at 30.6.73	Estimated population ^{1/} as at 31.12.73
Port Louis	133,996	135,296	136,622
Beau-Bassin/Rose-Hill	80,044	80,439	81,155
Quatre Bornes	50,825	51,193	51,674
Vacoas/Phoenix	47,884	48,372	48,866
Curepipe	52,154	52,484	52,939

^{1/} Based on the 1972 Population Census. No account has been taken of internal migration.

Table 7 - External migration^{1/}

Period	Arrivals			Departures			Net migration
	Total	By sea	By air	Total	By sea	By air	
1962	15,189	4,258	10,931	16,075	4,374	11,701	- 886
1963	18,047	4,660	13,387	18,299	4,432	13,867	- 252
1964	21,221	5,187	16,034	22,331	5,478	16,853	- 1,110
1965	22,024	4,886	17,138	24,150	5,463	18,687	- 2,126
1966	26,456	5,544	20,912	29,301	6,330	22,971	- 2,845
1967	29,321	4,901	24,420	32,925	6,515	26,410	- 3,604
1968	31,403	4,264	27,139	35,988	5,967	30,021	- 4,585
1969	35,919	3,483	32,436	38,929	4,632	34,297	- 3,010
1970	48,819	3,984	44,835	51,969	4,376	47,593	- 3,150
1971	60,826	3,857	56,969	63,997	4,295	59,702	- 3,171
1972	77,174	3,741	73,433	81,493	4,072	77,421	- 4,319
1973	101,184	4,238	96,946	104,697	4,027	100,670	- 3,513
1972 : 1st Qr.	16,607	907	15,700	19,890	1,192	18,698	- 3,283
2nd Qr.	14,697	812	13,885	16,726	914	15,812	- 2,029
3rd Qr.	23,267	936	22,331	24,993	943	24,050	- 1,726
4th Qr.	22,603	1,086	21,517	19,884	1,023	18,861	+ 2,719
1973 : 1st Qr.	21,962	823	21,139	26,362	678	25,684	- 4,400
2nd Qr.	22,000	969	21,031	23,055	818	22,237	- 1,055
3rd Qr.	29,883	1,665	28,218	31,380	1,494	29,886	- 1,497
4th Qr.	27,339	781	26,558	23,900	1,037	22,863	+ 3,439

^{1/} Includes:

- (a) the very small number of engaged or discharged seamen;
- (b) emigrants to and immigrants from the dependencies; and
- (c) movement of military personnel as from the 1962 Population Census.

Table 8 - Passenger traffic^{1/} by country of embarkation or disembarkation and by mode of transport, 1973

Country of embarkation or disembarkation	Arrivals			Departures		
	Sea	Air	Total	Sea	Air	Total
Kenya	-	2,278	2,278	2	2,347	2,349
Malagasy Republic	95	4,775	4,870	58	3,591	3,649
Malawi	-	495	495	-	499	499
Reunion	393	35,638	36,031	283	36,875	37,156
Rhodesia	-	342	342	1	367	368
Seychelles	57	2,238	2,295	35	1,745	1,780
South Africa, Rep. of	64	12,473	12,537	100	12,246	12,346
Tanzania	2	574	576	-	570	570
United Arab Republic	1	233	234	-	385	385
Zambia	-	2,824	2,824	-	2,605	2,605
Rodrigues	1,810	643	2,453	1,818	609	2,427
Other dependencies of Mauritius	335	-	335	325	-	325
Other countries in Africa	67	944	1,011	7	1,293	1,300
U.S.S.R.	3	67	70	1	78	79
China (Mainland)	7	56	63	25	51	76
China (Taiwan)	31	155	186	4	166	170
Hong-Kong	10	642	652	2	671	673
India	692	4,493	5,185	694	4,346	5,040
Japan	13	113	126	17	106	123
Singapore	10	32	42	3	50	53
Other countries in Asia	36	221	257	12	372	384
Australia	44	4,616	4,660	4	4,321	4,325
New Caledonia	3	115	118	-	120	120
New Zealand	10	323	333	7	416	423
Other countries in Oceania	6	43	49	-	72	72
Belgium	-	3,808	3,808	3	3,063	3,066
France	10	4,347	4,357	3	6,624	6,627
Germany, Fed. Rep. of	8	1,588	1,596	12	1,638	1,650
Italy	4	1,466	1,470	-	1,656	1,656
Switzerland	-	372	372	-	385	385
United Kingdom	7	9,875	9,882	16	11,973	11,989
Other countries in Europe	30	693	723	45	839	884
Canada	4	170	174	1	220	221
U.S.A.	17	273	290	14	342	356
Other countries in America	5	21	26	-	31	31
All Countries	3,774	96,946	100,720	3,492	100,670	104,162

^{1/} Excluding transit passengers, 464 discharged seamen and 535 engaged seamen.

Table 9 - Tourist arrivals and tourist nights by country of residence and by mode of transport, 1973

Country of Residence	Tourist Arrivals			Tourist nights
	Sea	Air	Total	
Kenya	3	821	824	6,291
Malagasy Republic	22	3,541	3,563	38,904
Malawi	-	166	166	1,655
Reunion	219	22,323	22,542	231,566
Rhodesia	3	377	380	5,048
Seychelles	11	552	563	5,508
South Africa, Rep. Of	33	9,952	9,985	86,752
Tanzania	2	306	308	2,806
Zambia	3	2,372	2,375	22,335
Other countries in Africa	4	1,259	1,263	13,832
U.S.S.R.	3	53	56	1,156
China (Mainland)	8	70	78	2,866
China (Taiwan)	35	275	310	927
Hong-Kong	13	217	230	3,324
India	682	1,553	2,235	14,843
Japan	10	230	240	1,867
Singapore	1	48	49	477
Other countries in Asia	49	221	270	4,118
Australia	20	3,040	3,060	18,747
New Caledonia	-	112	112	315
New Zealand	13	555	568	2,538
Other countries in Oceania	2	86	88	462
Belgium	4	478	482	6,569
France	28	7,253	7,281	90,934
Germany, Fed. Rep. Of	28	1,968	1,996	24,910
Italy	4	2,132	2,136	19,524
Switzerland	-	537	537	5,256
United Kingdom	17	3,805	3,822	66,090
Other countries in Europe	34	1,035	1,069	14,282
Canada	9	320	329	3,412
U.S.A.	31	958	989	9,416
Other countries in America	2	86	88	737
All Countries	1,293	66,701	67,994	707,467

Table 10 - Population and vital statistics - Mauritius

Year	Estimated mid-year population ^{1/} (30th June)	Numbers				Rates per 1000 of the mid-year population			
		Marriages ^{2/}	Live births	Deaths	Natural increase	Marriage rate ^{2/}	Crude birth rate	Crude death rate	Rate of natural increase
1963	695,531	3,472	27,978	6,709	21,269	10.0	40.2	9.6	30.6
1964	716,298	3,965	27,525	6,184	21,341	11.1	38.4	8.6	29.0
1965	735,245	3,976	26,279	6,337	19,942	10.8	35.7	8.6	27.1
1966	753,276	4,157	26,817	6,701	20,116	11.0	35.6	8.9	26.7
1967	767,782	3,949	23,499	6,543	16,956	10.3	30.6	8.5	22.1
1968	781,615	3,974	24,413	7,126	17,287	10.2	31.2	9.1	22.1
1969	792,393	3,882	21,719	6,428	15,291	9.8	27.4	8.1	19.3
1970	805,489	4,499	21,623	6,309	15,314	11.2	26.0	7.8	19.0
1971	816,561	4,346	20,834	6,248	14,586	10.6	25.5	7.7	17.8
1972	826,199	5,082	20,496	6,506	13,990	12.3	24.8	7.9	16.9
1973	834,781	5,533	18,974	6,525	12,449	13.3	22.7	7.8	14.9

^{1/} Revised in the light of the 1972 Population Census data.

^{2/} Civil marriages only.

Table 11 - Live births and still births, Mauritius

Year	Numbers			Rates	
	Live births	Still births	Infant deaths	Still birth rate <u>1/</u>	Infantile mortality rate <u>2/</u>
1944-48 Average	17,788	1,154	2,745	60.9	154.3
1949-53 "	22,913	1,464	1,945	60.1	84.9
1954-58 "	23,936	1,622	1,704	63.5	71.2
1959-63 "	25,913	1,773	1,622	64.0	62.6
1964-68 "	25,707	1,347	1,662	49.8	64.7
1959	23,923	1,759	1,495	68.5	62.5
1960	25,307	1,783	1,760	65.8	69.5
1961	26,092	1,963	1,618	70.0	62.0
1962	26,267	1,841	1,579	65.5	60.1
1963	27,978	1,519	1,660	51.5	59.3
1964	27,528	1,611	1,561	55.3	56.7
1965	26,279	1,557	1,685	55.9	64.1
1966	26,817	1,384	1,721	49.1	64.2
1967	23,499	1,074	1,656	43.7	70.5
1968	24,413	1,110	1,688	43.5	69.1
1969	21,719	951	1,528	41.9	70.4
1970	21,623	857	1,232	38.1	57.0
1971	20,834	842	1,077	38.8	51.7
1972	20,496	718	1,308	33.8	63.8
1973	18,974	678	1,201	34.5	63.3

1/ Still births per 1000 total births (live births and still births)

2/ Deaths of children under 1 year of age per 1000 live births

Table 12 - Infant deaths (deaths under 1 year of age) by age and sex, Mauritius

Age	1971			1972			1973		
	Both sexes	Male	Female	Both sexes	Male	Female	Both sexes	Male	Female
Under 1 day	147	89	58	165	88	77	161	106	55
1 - 6 days	244	140	104	345	215	130	272	166	106
7 - 27 "	170	82	88	150	81	69	133	73	60
28 days-under 2 months	69	31	38	85	47	38	86	54	32
2 - 3 months	128	63	65	160	84	76	122	68	54
4 - 5 "	105	63	42	124	63	61	123	68	55
6 - 7 "	86	47	39	117	59	58	114	63	46
8 - 9 "	81	46	35	92	54	38	107	56	51
10 - 11 "	47	23	24	70	25	45	83	40	43
Under 1 year	1,077	584	493	1,308	716	592	1,201	699	502

Table 13 - Deaths by age and sex, Mauritius

Age group (years)	1971			1972			1973		
	Both sexes	Male	Female	Both sexes	Male	Female	Both sexes	Male	Female
	0 - 4	1,461	764	697	1,834	967	867	1,790	978
5 - 9	106	52	54	125	54	71	117	58	59
10 - 14	89	47	42	90	61	29	84	52	32
15 - 19	105	56	49	127	57	70	125	69	56
20 - 24	103	40	63	140	58	82	132	54	78
25 - 29	106	56	50	106	42	64	91	37	54
30 - 34	105	43	62	117	51	66	104	50	54
35 - 39	126	72	54	129	68	61	131	71	60
40 - 44	170	100	70	159	90	69	175	110	65
45 - 49	268	174	94	262	162	100	271	180	91
50 - 54	338	228	110	301	178	123	335	226	109
55 - 59	465	313	152	412	255	157	420	285	135
60 - 64	577	389	188	532	330	202	527	346	181
65 - 69	560	323	237	555	359	196	539	343	196
70 - 74	628	322	306	546	308	238	587	317	270
75 - 79	493	215	278	441	195	246	471	231	240
80 - 84	299	96	203	362	155	207	345	114	231
85 and over	249	63	186	268	57	211	281	55	226
All ages	6,248	3,353	2,895	6,506	3,447	3,059	6,525	3,576	2,949

Period	Marriages ^{1/}	Live births			Deaths			Natural increase	Net overseas migration	Total increase	Estimated population at the end of the period	
		Both sexes		Male	Both sexes		Male					Female
		Both sexes	Male	Female	Both sexes	Male	Female					
1963	3,472	27,978	14,263	13,715	6,709	3,457	21,269	- 252	21,017	707,580		
1964	3,965	27,528	13,960	13,568	6,184	3,249	21,344	- 1,110	20,234	727,814		
1965	3,976	26,279	13,287	12,992	6,337	3,388	19,942	- 2,126	17,816	745,630		
1966	4,157	26,817	13,554	13,263	6,701	3,550	20,116	- 2,845	17,271	762,901		
1967	3,949	23,499	12,061	11,438	6,543	3,497	16,956	- 3,604	13,352	776,253		
1968	3,974	24,413	12,594	12,019	7,126	3,744	17,287	- 4,565	12,702	788,955		
1969	3,882	21,719	11,182	10,537	6,423	3,361	15,291	- 3,010	12,281	801,236		
1970	4,499	21,623	11,091	10,532	6,309	3,444	15,311	- 3,150	12,164	813,400		
1971	4,346	20,834	10,603	10,231	6,248	3,353	14,586	- 3,171	11,415	824,815		
1972	5,082	20,496	10,458	10,038	6,506	3,447	13,990	- 4,319	9,671	834,486		
1973	5,533	18,974	9,628	9,346	6,525	3,576	12,449	- 3,513	8,936	843,422		
1972 : 1st Qr.	1,191	4,998	2,523	2,475	1,517	797	3,481	- 3,283	198	825,013		
2nd Qr.	1,368	4,736	2,349	2,387	1,521	808	3,215	- 2,029	1,186	826,199		
3rd Qr.	1,263	5,258	2,763	2,495	1,651	876	3,607	- 1,726	1,881	828,080		
4th Qr.	1,260	5,504	2,823	2,681	1,817	966	3,687	+ 2,719	6,406	834,486		
1973 : 1st Qr.	1,223	4,546	2,346	2,200	1,690	944	2,856	- 4,400	- 1,544	832,942		
2nd Qr.	1,324	4,405	2,249	2,156	1,511	821	2,894	- 1,055	1,839	834,781		
3rd Qr.	1,415	4,574	2,251	2,323	1,749	980	2,825	- 1,497	1,328	836,109		
4th Qr.	1,571	5,449	2,782	2,667	1,575	831	3,874	+ 3,439	7,313	843,422		

^{1/} Civil marriages only.

^{2/} Revised in the light of the 1972 Population Census data.

Table 15 - Still births and infant deaths, Mauritius

Period	Still births	Infant deaths		
		Both sexes	Male	Female
1962	1,841	1,579	896	683
1963	1,519	1,660	929	731
1964	1,611	1,561	900	661
1965	1,557	1,685	945	742
1966	1,384	1,721	943	778
1967	1,074	1,656	947	709
1968	1,110	1,688	935	753
1969	951	1,528	847	681
1970	857	1,232	706	526
1971	842	1,077	584	493
1972	718	1,308	716	592
1973	678	1,201	699	502
1972 : 1st Qr.	188	367	210	157
2nd Qr.	173	289	170	119
3rd Qr.	182	327	156	171
4th Qr.	175	325	180	145
1973 : 1st Qr.	143	415	243	172
2nd Qr.	176	287	171	116
3rd Qr.	191	266	158	108
4th Qr.	168	233	127	106

Table 16 - Expectation of life in years at selected ages

Exact age (years)	Males			Females		
	1942-46 <u>1/</u>	1951-53 <u>1/</u>	1961-63	1942-46 <u>1/</u>	1951-53 <u>1/</u>	1961-63
0	32.8	49.8	58.7	33.8	52.3	61.9
10	35.8	49.2	55.1	37.3	52.2	58.1
20	28.1	40.1	45.7	30.2	43.7	48.9
30	22.3	31.6	36.6	26.1	36.2	40.3
40	16.7	23.6	27.7	21.2	28.7	31.9
50	11.9	16.7	19.6	15.7	21.2	23.5
60	8.1	11.2	13.2	10.6	14.6	15.8
70	5.6	6.7	8.5	7.1	9.1	9.7
80	4.0	4.3	4.8	4.6	5.3	5.4

1/ Excluding Chinese.

Source: Mauritius Life Table.

Table 17 - Population^{1/} and vital statistics - Rodrigues

Period	Estimated mid-year population (30th June)	Numbers			Rates ^{2/}				Estimated population as at 31st December	
		Marriages	Live births	Deaths	Natural increase	Marriage rate	Crude birth rate	Crude death rate		Rate of natural increase
1963	18,529	171	881	203	678	18.5	47.5	11.0	36.5	18,587
1964	18,974	161	1,082	237	845	17.0	57.0	12.5	44.5	19,232
1965	19,438	127	916	300	616	13.1	47.1	15.4	31.7	19,709
1966	20,084	132	1,014	243	771	13.1	50.5	12.1	38.4	20,388
1967	20,762	156	972	207	765	15.0	46.8	10.0	36.8	21,370
1968	21,832	145	996	256	740	13.5	45.6	11.7	33.9	22,166
1969	22,434	173	902	305	597	15.4	40.2	13.6	26.6	22,839
1970	23,433	152	1,143	211	932	13.0	48.8	9.0	39.8	23,749
1971	24,041	132	1,092	186	904	11.0	45.4	7.8	37.6	24,487
1972	24,769	132	999	247	752	10.7	40.3	10.0	30.3	25,096
1973	25,367	146	1,041	254	787	11.5	41.0	10.0	31.0	25,857

^{1/} Revised in the light of the 1972 Population Census data.

^{2/} Per 1000 of the mid-year population.

Table 18 - Cause of death, 1977 - Mauritius

Group	CAUSE OF DEATH	D E A T H S						% of total deaths	Death rate per 100,000 of population
		Under 1 year	1 to under 5 years	All Ages					
		Both sexes	Both sexes	Male	Female	Both sexes			
		Both sexes	Both sexes	Male	Female	Both sexes			
I	Infective and parasitic diseases	413	311	512	483	995	15.3	119.2	
II	Neoplasms	-	6	200	176	376	5.8	45.0	
III	Endocrine, nutritional and metabolic diseases	11	21	70	112	182	2.8	21.8	
IV	Diseases of the blood and blood forming organs	3	19	73	97	170	2.6	20.4	
V	Mental disorders	-	-	6	1	7	0.1	0.8	
VI	Diseases of the nervous system and sense organs	5	10	48	33	81	1.2	9.7	
VII	Diseases of the circulatory system	10	5	867	640	1,507	23.1	180.5	
VIII	Diseases of the respiratory system	165	99	495	376	871	13.3	104.3	
IX	Diseases of the digestive system	10	2	152	65	217	3.3	26.0	

I/ International Classification, 1965.

1. The first part of the document discusses the importance of maintaining accurate records of all transactions and activities. It emphasizes the need for transparency and accountability in financial reporting.

2. The second part of the document outlines the various methods and techniques used to collect and analyze data. It includes a detailed description of the experimental procedures and the statistical tools employed.

3. The third part of the document presents the results of the study, showing the trends and patterns observed in the data. It includes several tables and graphs to illustrate the findings.

4. The fourth part of the document discusses the implications of the results and the potential applications of the findings. It also addresses the limitations of the study and suggests areas for future research.

5. The final part of the document provides a conclusion and summarizes the key points of the study. It also includes a list of references and a list of figures and tables.

Table 18 - Cause of death, 1973 - Mauritius (cont'd)

Group	CAUSE OF DEATH	D E A T H S						% of total deaths	Death rate per 100,000 of population
		Under 1 year	1 to under 5 years		All Ages				
		Both sexes	Both sexes		Male	Female	Both sexes		
				Male	Female				
X	Diseases of the genito-urinary system	1	9	41	35	76	1.2	9.1	
XI	Complications of pregnancy, childbirth & the puerperium	-	-	-	29	29	0.4	3.5	
XII	Diseases of the skin and subcutaneous tissue	2	-	5	1	6	0.1	0.7	
XIII	Diseases of musculoskeletal system and connective tissue	-	-	6	13	19	0.3	2.3	
XIV	Congenital anomalies	23	4	24	8	32	0.5	3.8	
XV	Certain causes of perinatal morbidity and mortality	368	-	227	141	368	5.6	44.1	
XVI	Symptoms and ill-defined conditions	184	75	564	616	1,180	18.1	141.4	
XVII	Accidents, poisonings, and violence	6	28	286	123	409	6.3	49.0	
	All Causes	1,201	589	3,576	2,949	6,525	100.0	781.6	

1/ International Classification, 1965.

II. PUBLIC HEALTH

Table 19 - Health Services, Mauritius

	1969	1970	1971	1972	1973
<u>Hospitals</u>					
General hospitals	8	8	8	6	6
Special hospitals (mental diseases, leprosy and tuberculosis) ^{1/}	3	3	3	4	4
Private hospitals on sugar estates	24	22	23	23	...
<u>Dispensaries</u>					
Public dispensaries and out- patients' departments of hospitals	56	57	57	58	58
Private dispensaries on sugar estates	24	21	23	23	...
Mobile dispensaries	5	5	5	5	5
<u>Clinics</u>					
Private	5	7	7	7	7
Public mobile ante-natal	1	1	1	1	1
Public mobile dental	4	2	2	2	1
<u>Maternal and Child Health Centres</u>	41	43	43	43	45
<u>Doctors</u>					
Government Service:					
Specialists ^{2/}	36	41	42	46	...
Total government doctors	98	140 ^{3/}	144 ^{3/}	140 ^{3/}	...
Private Service:					
Registered medical practitioners	67	71	79	85	...
<u>Dentists</u>					
Government Service	7	6	6	6	...
Private	15	19	19	22	...
<u>Trained Nurses (Government Service)</u>	725	832	827	945	993
<u>Midwives (Government Service)</u>	157	150	148	154	167
<u>Pharmacists</u>					
Attached to hospitals	4	4	5	5	...
Private	46	45	48	49	...

^{1/} including one eye clinic as from 1972

^{2/} included in figures for total government doctors

^{3/} including temporary medical officers

Table 20 - Statistics of hospitals - Mauritius

Period	No. of beds	Patients in hospitals on first day of period	Total admissions	Deaths	Discharges	Patients remaining on last day of period
1967	2,578	1,723	54,982	2,255	52,734	1,716
1968	2,543	1,716	60,055	2,361	57,447	1,963
1969	2,561	1,963	59,421	1,997	57,452	1,935
1970	2,633	1,935	60,941	2,064	58,926	1,886
1971	2,712	1,886	62,736	2,148	60,721	1,753
1972	2,734	1,753	65,518	2,039 [*]	63,477 [*]	1,755
1973	2,751	1,755	60,379	2,075	58,412	1,647
1972 : 1st Qr.	2,734	1,753	15,675	437 [*]	14,595 [*]	2,346
2nd Qr.	2,734	2,346	16,315	476 [*]	15,774 [*]	2,413
3rd Qr.	2,734	2,413	16,697	534 [*]	16,122 [*]	2,454
4th Qr.	2,734	2,454	16,831	544 [*]	16,986 [*]	1,755
1973 : 1st Qr.	2,751	1,755	15,212	573 [*]	13,989 [*]	2,405
2nd Qr.	2,751	2,405	13,916	480 [*]	13,594 [*]	2,247
3rd Qr.	2,751	2,247	15,229	533	14,650	2,293
4th Qr.	2,751	2,293	16,022	489	16,179	1,647

* Revised figures

Table 21 - Notifiable, contagious or communicable diseases - Mauritius

Disease / Period	Enteric fever	Diphtheria	Acute poliomyelitis	Puerperal fever	Erysipelas	Tuberculosis	Leprosy	Cerebro-spinal meningitis
1967	91	37	6	1	-	553	5	-
1968	32	44	-	2	2	499	1	-
1969	9	8	-	-	-	393	-	-
1970	45	8	-	3	-	436	1	-
1971	25	17	-	-	-	307	-	-
1972	30	24	-	-	-	367	1	1
1973	21	2	-	-	-	285	2	-
1972 : 1st Qr.	8	3	-	-	-	93	-	-
2nd Qr.	7	1	-	-	-	98	1	1
3rd Qr.	7	13	-	-	-	92	-	-
4th Qr.	8	7	-	-	-	84	-	-
1973 : 1st Qr.	8	-	-	-	-	79	-	-
2nd Qr.	5	1	-	-	-	80	1	-
3rd Qr.	5	-	-	-	-	55	1	-
4th Qr.	3	1	-	-	-	71	-	-

III. PUBLIC FINANCE AND BANKING

Table 22- Central government revenue and expenditure

Rs million

Financial year	Revenue 1/			Expenditure 1/			Surplus(+) Deficit(-)
	Recurrent	Capital	Total	Recurrent	Capital	Total	
1970-71	259.7	99.2	358.9	254.5	84.4	338.9	+ 20.0
1971-72	294.1	130.3	424.4	283.2	100.8	384.0	+ 40.4
1972-73	376.7	156.4	533.1	326.4	127.4	453.8	+ 79.3
1973-74 ^{2/}	409.9	151.6	561.5	466.6	278.9	745.5	- 184.0

1/ including tax reserve certificate

2/ revised estimates

Table 23- Functional classification of central government recurrent revenue

Rs million

	1970-71	1971-72	1972-73	1973-74 ^{1/}
<u>Taxes on Income and Capital</u>	<u>55.3</u>	<u>61.0</u>	<u>81.8</u>	<u>94.9</u>
Income Tax :				
Individuals	28.9	31.8	40.9	41.0
Companies	23.2	24.7	36.7	50.0
Contribution to Widows' Fund	1.8	1.9	2.0	1.9
Succession duties	1.4	2.6	2.2	2.0
<u>Taxes on Financial Transactions</u>	<u>8.1</u>	<u>13.2</u>	<u>16.8</u>	<u>12.6</u>
<u>Taxes on Gambling</u>	<u>3.3</u>	<u>3.6</u>	<u>4.7</u>	<u>5.3</u>
<u>Taxes on Consumption and Production</u>	<u>139.3</u>	<u>158.3</u>	<u>213.0</u>	<u>236.7</u>
Import duties	73.8	86.6	107.1	115.0
Export duties	18.7	19.6	29.9	46.5
Excise duties	32.6	37.0	59.5	57.4
Business and professional licenses	6.3	6.7	6.7	9.6
Taxes on transportation	7.9	8.4	9.8	8.2
<u>Provision of Goods and Services</u>	<u>32.3</u>	<u>34.4</u>	<u>38.8</u>	<u>35.3</u>
Rental of government property	2.3	2.6	2.7	2.3
Telephone service	4.6	5.0	7.1	7.1
Marine services	6.4	7.0	7.5	7.3
Posts and telegraphs	4.6	5.0	5.6	5.8
Water and irrigation	3.0	3.0	1.6	-
Agriculture and forests	1.9	2.2	2.0	1.7
Other goods and services	9.5	9.6	12.3	11.1
<u>Interests, Profits and Dividends</u>	<u>16.0</u>	<u>17.1</u>	<u>16.8</u>	<u>19.5</u>
<u>Grants from British Government</u>	<u>0.7</u>	<u>1.6</u>	<u>0.2</u>	<u>0.6</u>
<u>Other Recurrent Revenue</u>	<u>4.7</u>	<u>4.9</u>	<u>4.6</u>	<u>5.0</u>
Total	259.7	294.1	376.7	409.9

1/ estimates

Table 24 - Functional classification of central government recurrent expenditure

Rs million

	1970-71	1971-72	1972-73	1973-74 ^{1/}
<u>General Services</u>	<u>36.0</u>	<u>41.5</u>	<u>53.5</u>	<u>61.5</u>
General administration	1.8	3.1	4.1	4.6
Legislature	0.8	0.8	0.9	1.6
Maintenance of law and order:				
Justice and Attorney General	2.0	2.4	2.6	3.2
Police and defence	14.9	17.2	19.5	21.9
Prisons	2.0	2.2	2.5	2.8
Revenue collection & financial control	5.9	6.5	8.2	11.1
Other general services	8.6	9.3	15.7	16.3
<u>Community Services</u>	<u>17.6</u>	<u>18.4</u>	<u>18.9</u>	<u>18.5</u>
Maintenance of roads & public buildings	8.0	7.6	7.7	6.5
Domestic water supplies	4.0	4.5	4.3	3.5
Sanitation and sewerage	3.3	3.7	4.0	5.0
Other community services	2.3	2.6	2.9	3.5
<u>Social Services</u>	<u>93.4</u>	<u>104.0</u>	<u>112.9</u>	<u>189.3</u>
Education	35.9	41.0	45.4	53.8
Health (excluding sanitation)	24.1	27.4	30.7	38.3
Social security:				
Family allowances	5.6	6.3	6.3	7.8
Outdoor relief	8.9	8.9	8.7	11.1
Old age pensions	12.0	13.6	14.4	18.2
Housing	2.4	2.1	2.5	2.8
Other social services	4.5	4.7	4.9	57.3
<u>Economic Services</u>	<u>21.8</u>	<u>25.1</u>	<u>26.1</u>	<u>30.3</u>
Agriculture and forests	7.9	8.6	8.7	10.1
Civil aviation & marine services	3.4	4.1	4.4	5.5
Posts, telegraphs & telecommunications	6.3	7.4	7.3	8.3
Other economic services	4.2	5.0	5.7	6.4
<u>Unallocable Expenditure</u>	<u>81.7</u>	<u>79.2</u>	<u>100.0</u>	<u>163.0</u>
Transfer to local authorities	6.9	7.0	6.9	7.3
Recurrent financial obligations:				
Public debt:				
Interest	17.4	20.8	28.1	34.7
Redemptions	7.4	4.7	5.1	7.0
Sinking Fund	10.3	10.0	19.5	15.0
Public pensions & gratuities	16.2	18.1	19.5	25.9
Passages	1.5	1.4	1.5	1.5
Rodrigues	4.6	5.1	5.8	7.0
Relief works	2.6	2.1	2.7	2.9
Other unallocable expenditure	14.8	9.7	10.9	61.7 ^{2/}
<u>Transfer to Capital Budget</u>	<u>4.0</u>	<u>15.0</u>	<u>15.0</u>	<u>4.0</u>
Total	254.5	283.2	326.4	466.6

^{1/} Revised estimates

^{2/} Including Rs Mn 47.5 (implementation of Sedgwick Report)

Table 25 - Functional classification of central government capital revenue

	Rs million			
	1970-71	1971-72	1972-73	1973-74 ^{1/}
Grants:				
British government	9.6	0.8	8.7	0.1
Other foreign sources	-	-	5.0	11.0
Internal borrowing	59.8	103.7	103.9	85.0
External borrowing	11.7	9.4	17.8	49.4
Interest on investments	0.4	0.2	-	0.1
Special Drawing Rights from I.M.F.	13.1	0.7	-	-
Transfer from recurrent revenue	4.0	15.0	15.0	4.0
Other capital revenue	0.6	0.5	1.0	2.0
Total	99.2	130.3	156.4	151.6

^{1/} estimates

Table 26 - Functional classification of central government capital expenditure

	Rs million			
	1970-71	1971-72	1972-73	1973-74 ^{1/}
Agriculture and forests	13.6	10.1	9.9	34.7
Irrigation ^{2/}	0.4	2.1	0.4	-
Roads and bridges	2.5	4.0	4.1	3.7
Marine services and civil aviation	5.2	7.0	7.0	31.7
Domestic water supplies ^{2/}	2.9	6.1	4.7	-
Health	1.8	1.6	1.7	6.1
Housing	0.2	0.1	0.3	0.7
Sewerage	5.5	9.2	8.7	8.7
Education	3.1	1.5	2.3	7.5
Development works	8.4	20.4	30.8	31.6
Rodrigues	3.2	4.9	5.0	7.6
Additional subscription to I.M.F. and I.B.R.D.	11.1	-	-	17.0
Subscription to share capital of Development Bank	3.0	-	-	4.8
Contribution to share capital of State Commercial Bank	-	-	4.5	4.5
Loans: Development Bank of Mauritius	1.0	6.0	0.7	15.0
Central Electricity Board	1.6	1.6	7.1	11.5
Mauritius Housing Corporation	-	-	2.0	2.0
Central Housing Authority	0.2	-	0.3	4.0
Municipalities	0.6	-	-	15.8
Tea Development Authority	-	4.8	8.2	11.0
Sinking Fund Support Loan	8.8	-	-	-
Central Water Authority	-	-	1.9	10.0
Rose-Belle Sugar Estate Board	-	-	-	5.8
Other loans	1.8	1.5	4.2	3.7
Redemption of loans	-	13.0	-	-
Other Capital Expenditure	4.7	6.9	23.6	43.5
Total	84.4	100.8	127.4	278.9

^{1/} revised estimates

^{2/} projects now under the control of Central Water Authority

Table 27 - Central government indebtedness

Period	Amount outstanding at beginning of period						Borrowing during period		Payment during period	
	Total	Internal		External		Internal	External	Internal	External	
		Tap loan	Other	U.K.	Other ^{1/}					
1.7.70 - 30.6.71	327.8	106.6	50.9	138.0	32.3	61.4	11.5	2.4	17.1	
1.7.71 - 30.6.72	381.3	125.8	90.7	134.2	30.6	104.9	9.3	18.1	6.2	
1.7.72 - 30.6.73	471.0	125.6	177.6	137.7	30.1	110.0	16.7	5.1	7.2	
1972: 1st Qr.	421.0	122.9	130.7	137.4	30.0	34.9	3.0	2.1	2.2	
2nd Qr.	454.4	125.6	160.7	138.1	30.0	30.0	2.0	13.1	2.3	
3rd Qr.	471.0	125.6	177.6	137.7	30.1	40.0	2.6	0.7	0.1	
4th Qr.	512.8	124.9	217.6	139.0	31.3	45.0	4.7	7	1.3	
1973: 1st Qr.	561.2	124.9	262.6	141.3	32.4	7	6.3	4.3	2.5	
2nd Qr.	560.7	120.5	262.6	143.4	34.2	25.0	4.0	0.1	3.3	
3rd Qr.	586.3	120.6	287.5	143.9	34.3	7	7.3	0.5	2.1	
4th Qr.	591.0	120.1	287.5	147.9	35.5	45.0	1.4	-	2.1	

^{1/} International Bank for Reconstruction and Development, and International Development Association

Table 28 - Sinking funds held against the public debt

Amount as at 30th June	Rs million			
	1969	1970	1971	1972
				1973
	76.0	80.6	106.2	119.5
				142.1

Note: Investments have been valued at mean market prices

Table 29 - Central government loan raisings

	Year of issue	Rate of interest % p.a.	Amount outstanding at 31.12.73 (Rs million)
<u>Local loans</u>			
Development Welfare loan 1971-81	1950	3	3.1
Development (general purposes) Loan 1964-74	1953	4 $\frac{1}{2}$	14.4
Development (" ") Loan 1973-83	1962	5 $\frac{3}{4}$	15.0
Development (" ") Loan 1971-76	1966	6	5.0
Development Loan Stock 1985	1970	7 $\frac{1}{4}$	5.0
" " " 1975	1970	6 $\frac{1}{2}$	15.0
" " " 1977	1971	6 $\frac{1}{2}$	10.0
" " " 1991	1971	7 $\frac{1}{2}$	10.0
" " " 1976	1971	6 $\frac{1}{2}$	10.0
" " " 1979	1971	6 $\frac{3}{4}$	15.0
" " " 1986	1971	7 $\frac{1}{2}$	15.0
" " " 1974	1972	6	5.0
" " " 1978	1972	6 $\frac{1}{2}$	10.0
" " " 1984	1972	7	15.0
" " " 1979	1972	6 $\frac{1}{2}$	15.0
" " " 1988	1972	7 $\frac{1}{2}$	15.0
" " " 1977	1972	6 $\frac{1}{2}$	15.0
" " " 1980	1972	6 $\frac{3}{4}$	15.0
" " " 1980	1972	7 $\frac{1}{2}$	10.0
" " " 1978	1972	6 $\frac{1}{2}$	10.0
" " " 1982	1972	6 $\frac{3}{4}$	15.0
" " " 1992	1972	7 $\frac{1}{2}$	20.0
" " " 1980	1973	6 $\frac{1}{2}$	10.0
" " " 1989	1973	7 $\frac{1}{2}$	15.0
" " " 1980	1973	6 $\frac{1}{2}$	15.0
" " " 1985	1973	7	15.0
" " " 1989	1973	7 $\frac{1}{2}$	15.0
Tap Loan	<u>1/</u>	5	120.1
<u>U.K. Loans</u>			
Development (general purposes) Loan 1972-77	1955-56	4 $\frac{5}{8}$	23.0
Development (general purposes) Loan 1973-75	1964	6 $\frac{1}{2}$	18.4

1/ Tap loans are issued every year since 1959. The date of redemption is at the option of the purchaser.

Table 30- Outstanding loans and advances made from public funds as at 30th June

Rs million

Debtor	1969	1970	1971	1972	1973
Central Electricity Board	89.2	87.2	86.6	86.2	91.3
Central Housing Authority	33.5	35.4	33.7	33.9	33.6
Development Bank of Mauritius	21.5	23.9	16.2	23.3	26.9
Mauritius Housing Corporation	14.4	16.9	16.4	15.9	17.3
Mauritius Broadcasting Corporation	1.2	1.1	1.3	1.1	0.9
Municipalities	21.8	22.1	22.3	21.4	20.7
Sewerage schemes	9.4	11.1	12.8	14.1	15.4
Government Sack Factory	5.0	5.5	5.9	5.8	5.8
Colonial Steamships	1.9	1.8	1.6	1.5	1.3
Tea Estates	3.6	3.6	3.5	3.3	3.2
Mauritius Hotels Ltd.	1.3	1.3	1.2	1.2	1.1
Mauritius Agricultural Marketing Board	3.5	5.7	7.4	7.8	7.8
Landlords of private school buildings	0.8	0.7	0.7	0.6	1.2
Planters' Hurricane Loan	0.8	0.7	0.6	0.4	0.3
Tea Development Authority	-	-	-	4.8	12.6
Central Water Authority	-	-	-	-	1.9
Other	3.1	2.9	2.6	3.5	3.1
TOTAL	211.0	219.9	212.8	224.8	244.4

Table 31 - Income tax^{1/} - individuals

Range of gross income (Rupees)	Year of assessment 1969-70 ^{2/}						Year of assessment 1970-71					
	Number of taxpayers	Gross income (Mn Rs)	Chargeable income (Mn Rs)	Tax assessed (Mn Rs)	Number of taxpayers	Gross income (Mn Rs)	Chargeable income (Mn Rs)	Gross income (Mn Rs)	Chargeable income (Mn Rs)	Tax assessed (Mn Rs)		
5,000 or less	3,201	11.59	2.12	0.33	1,822	7.41	1.27	0.25				
5,001 - 10,000	5,312	39.57	10.51	1.65	3,680	27.27	8.87	1.79				
10,001 - 15,000	2,813	34.14	13.05	2.13	2,647	32.17	12.66	2.50				
15,001 - 25,000	2,087	40.12	20.90	4.09	1,940	37.03	21.46	4.33				
25,001 - 50,000	1,276	42.49	26.74	7.89	1,188	39.42	28.28	7.18				
50,001 - 100,000	272	17.83	12.28	5.94	232	15.38	12.21	4.95				
100,001 - 250,000	38	5.12	3.95	2.57	37	4.79	3.64	2.11				
Over 250,000	5	1.63	1.35	1.00	12	3.81	3.51	2.52				
TOTAL	15,004	192.49	90.90	25.60	11,558	167.28	91.90	5.63				

Notes ^{1/} The figures are provisional and subject to amendment, as the income tax ordinance empowers the Commissioner of Income Tax to revise cases under objection, to issue additional claims for the six years preceding the present year of assessment, and to claim back duty at any time in cases of false or incorrect returns of income for any previous year.

^{2/} Revised

Table 3₁ - Income tax - companies

Range of gross income (Rupees)	Year of assessment 1969-70 ^{2/}						Year of assessment 1970-71			
	Number of companies	Gross income (Mn Rs)	Chargeable income (Mn Rs)	Tax assessed (Mn Rs)	Number of companies	Gross income (Mn Rs)	Chargeable income (Mn Rs)	Tax assessed (Mn Rs)		
5,000 or less	127	0.27	0.46	0.17	78	0.16	0.14	0.07		
5,001 - 10,000	49	0.36	0.27	0.11	32	0.24	0.18	0.08		
10,001 - 15,000	21	0.26	0.18	0.07	19	0.24	0.15	0.07		
15,001 - 25,000	38	0.78	0.42	0.17	22	0.43	0.21	0.09		
25,001 - 50,000	57	2.04	1.08	0.43	47	1.65	0.86	0.39		
50,001 - 100,000	46	3.33	1.51	0.58	41	2.81	1.22	0.56		
100,001 - 250,000	41	6.70	2.75	1.04	41	6.33	2.99	1.35		
250,001 - 500,000	23	7.38	2.91	1.24	24	8.16	2.71	1.22		
500,001 - 750,000	7	4.30	2.53	0.98	8	4.49	1.70	0.77		
750,001 - 1,000,000	9	7.72	3.10	1.21	6	5.08	2.38	1.07		
Over 1,000,000	16	43.47	19.62	7.41	26	68.74	36.30	16.29		
TOTAL	434	76.61	34.83	13.41	344	98.33	48.84	21.96		

Notes: ^{1/}The figures are provisional and subject to amendment, as the income tax ordinance empowers the Commissioner of Income Tax to revise cases under objection, to issue additional claims for the six years preceding the present year of assessment, and to claim back duty at any time of false or incorrect returns of income for any previous year.

^{2/}Revised.

I have the honor to acknowledge the receipt of your letter of the 11th inst. in relation to the above mentioned matter. I am sorry to hear that you have been unable to obtain the information you desired. I will endeavor to assist you in this regard.

I have consulted with the appropriate authorities and have determined that the information you seek is not currently available. However, I will continue to monitor the situation and will notify you as soon as the information becomes available.

I am sure that you will understand the need for accuracy and thoroughness in the collection and dissemination of information. We will continue to work towards providing you with the most complete and up-to-date information possible.

Please do not hesitate to contact me if you have any further questions or concerns. I will be glad to assist you in any way I can.

Very respectfully,
 [Signature]

Table 33- Sterling assets of central government, Bank of Mauritius and commercial banks
(at end of period)

Rs million

Period	INVESTMENTS (nominal value)				LIQUID ASSETS (cash, money at call and short-term deposits)				Total
	Central government	Semi-governmental institutions	Bank of Mauritius	Total	Central government <u>1/</u>	Semi-governmental institutions	Bank of Mauritius	Net balance of banks due from banks abroad	
1969	17.9	4.3	165.5	187.7	- 2.2	23.3	18.1	+ 39.3	78.5
1970	6.5	3.5	100.9	110.9	+ 7.6	0.4	145.7 <u>2/</u>	+ 20.7	174.4
1971	11.5	2.5	158.9	172.9	+ 9.2	0.4	92.0 <u>2/</u>	- 1.0	100.6
1972	17.1	0.9	212.7	230.7	+ 4.0	1.9	165.5 <u>2/</u>	+ 2.1	173.5
1973	17.3	0.2	152.0	169.5	+ 7.8	1.6	204.3 <u>2/</u>	+ 2.4	216.1
1972: 1st Qr.	12.6	2.3	147.7	162.6	+ 6.9	0.6	157.7 <u>2/</u>	- 7.5	157.7
2nd Qr.	13.9	2.3	134.9	151.1	+ 0.9	0.5	105.5 <u>2/</u>	- 4.0	102.9
3rd Qr.	15.2	2.3	168.3	185.8	+ 6.6	0.5	89.5 <u>2/</u>	- 1.2	95.4
4th Qr.	17.1	0.9	212.7	230.7	+ 4.0	1.9	165.5 <u>2/</u>	+ 2.1	173.5
1973: 1st Qr.	17.1	0.2	156.2	173.5	+ 4.3	1.5	247.4 <u>2/</u>	- 0.1	253.1
2nd Qr.	17.4	0.2	171.4	189.0	+ 3.3	1.5	163.1 <u>2/</u>	- 2.4	165.5
3rd Qr.	17.4	0.2	171.9	189.5	+ 2.8	1.5	163.5 <u>2/</u>	- 1.3	166.5
4th Qr.	17.3	0.2	152.0	169.5	+ 7.8	1.6	204.3 <u>2/</u>	+ 2.4	216.1

1/ Net of short-term borrowings.

2/ Includes IMF Special Drawing Rights.

Table 34 - Assets of the Bank of Mauritius
(at end of period)

Rs million

Period	Grand total	External					Local			
		Total	Balances with banks	Bills	Securities	IMF Special Drawing Rights	Total	Government securities	Discounts and advances	Other assets
1969	219.0	180.0	18.1	44.3	117.6	-	39.0	14.9	19.7	4.4
1970	253.4	246.5	131.0	16.1	84.8	14.6	6.9	0.5	2.6	3.8
1971	308.1	250.9	64.3	76.9	82.0	27.7	57.2	16.9	32.9	7.4
1972	468.1	378.2	124.9	106.6	106.1	40.6	89.8	48.8	32.8	8.2
1973	454.1	356.4	163.8	52.3	99.7	40.6	97.7	20.8	67.6	9.5
1972 : 1st Qr.	319.2	305.4	117.1	66.2	81.5	40.6	13.7	-	6.1	7.6
2nd Qr.	294.1	240.4	64.9	11.6	123.3	40.6	53.6	12.9	30.0	10.7
3rd Qr.	314.8	257.9	48.9	60.6	107.7	40.6	56.9	34.3	14.6	8.0
4th Qr.	468.1	378.2	124.9	106.6	106.1	40.6	89.8	48.8	32.8	8.2
1973 : 1st Qr.	442.6	403.6	206.8	49.8	106.4	40.6	39.0	13.3	17.6	8.1
2nd Qr.	405.1	334.5	122.5	64.1	107.3	40.6	70.6	9.3	48.5	12.8
3rd Qr.	407.2	335.4	122.9	70.3	101.6	40.6	71.8	6.1	55.4	10.3
4th Qr.	454.1	356.4	163.8	52.3	99.7	40.6	97.7	20.8	67.6	9.3

Source: The Bank of Mauritius

Table 35 - Liabilities of the Bank of Mauritius

Period	(at end of period)										Rs million
	Total	Capital and reserve	Notes in circulation	Coins in circulation	DEPOSITS				Other liabilities		
					Total	Demand				Other ^{1/}	
						Government	Bankers	Other			
1969	219.0	7.2	100.5	6.2	76.6	3.0	3.5	3.1	67.0	28.5	
1970	253.4	9.5	108.1	6.6	121.2	3.3	6.1	3.0	108.8	8.0	
1971	308.1	14.5	129.0	7.1	118.1	1.7	8.6	6.0	101.8	39.4	
1972	468.1	16.6	160.7	8.4	235.8	130.8	30.1	33.0	41.9	46.6	
1973	454.1	19.7	215.5	11.0	150.8	3.2	30.9	8.7	38.0	57.1	
1972 : 1st Qr.	319.2	14.5	131.2	7.3	111.4	46.0	16.9	3.5	45.0	54.7	
2nd Qr.	294.1	16.6	123.7	7.7	98.3	45.7	10.9	3.4	42.3	47.7	
3rd Qr.	314.8	16.6	134.5	7.9	112.6	54.6	10.2	5.1	42.6	43.1	
4th Qr.	468.1	16.6	160.7	8.4	235.3	130.8	30.1	33.0	41.9	46.6	
1973 : 1st Qr.	442.6	16.6	147.5	8.3	215.4	161.8	12.9	7.3	33.4	54.3	
2nd Qr.	405.1	19.7	149.6	9.3	165.4	103.8	15.4	12.0	34.2	61.1	
3rd Qr.	407.2	19.7	167.2	9.9	158.5	72.5	35.2	16.0	34.9	51.8	
4th Qr.	454.1	19.7	215.5	11.0	150.8	73.2	30.9	8.7	38.0	57.1	

^{1/}Mainly due to semi-government bodies.

Source : The Bank of Mauritius.

Table 36 - Assets of commercial banks
(at end of period)

Period	Total	Cash	Balances due by			Loans and advances			Investments		Other assets	
			Other local banks	Banks abroad	Primary products	Other industries	Other advances	Local	Abroad	Bills discounted and bills receivable	Other	
1969	344.6	9.5	0.5	45.2	78.1	78.4	29.2	24.2	2.0	11.6	65.9	
1970	393.7	9.9	0.6	31.3	60.3	74.6	34.1	53.2	2.0	29.1	98.6	
1971	487.2	9.8	0.8	13.2	78.5	103.9	41.5	80.5	2.0	56.7	100.3	
1972	682.1	12.8	3.1	10.0	61.7	149.3	64.2	137.4	2.0	78.4	163.2	
1973	1024.2	25.8	4.3	13.9	56.4	249.3	82.7	154.7	2.0	148.4	286.7	
1972 : 1st Qr.	524.8	10.5	1.5	4.6	70.8	104.8	42.4	107.5	2.0	69.9	110.8	
2nd Qr.	556.2	8.7	1.2	4.4	79.0	123.4	56.4	97.5	2.0	61.7	121.9	
3rd Qr.	588.5	10.3	2.6	11.0	82.5	130.8	49.0	99.6	2.0	73.4	127.3	
4th Qr.	682.1	12.8	3.1	10.0	61.7	149.3	64.2	137.4	2.0	78.4	163.2	
1973 : 1st Qr.	701.0	13.2	5.4	10.1	66.0	167.8	61.6	156.8	2.0	60.8	157.3	
2nd Qr.	795.0	10.8	4.8	12.8	80.0	201.2	71.2	144.2	2.0	68.4	199.6	
3rd Qr.	909.5	15.3	5.8	8.1	64.3	232.3	75.0	153.7	2.0	87.6	265.4	
4th Qr.	1024.2	25.8	4.3	13.9	56.4	249.3	82.7	154.7	2.0	148.4	286.7	

Rs million

Table 27 - Liabilities of commercial banks
(at end of period)

Period	Total	Notes in circulation	Deposits						Balances due to		Other liabilities
			Government	Non-government			Other local banks	Banks abroad	Other	Other	
				Demand	Time	Savings					
1969	344.6	-	3.8	116.7	70.2	49.1	-	6.0	98.8		
1970	393.7	-	2.4	121.0	96.1	62.9	1.4	10.6	99.3		
1971	487.2	-	3.7	129.8	105.0	85.0	6.5	14.3	142.9		
1972	632.1	-	2.4	201.9	140.6	118.7	11.6	7.9	199.0		
1973	1024.2	-	6.1	265.0	210.0	165.9	11.4	11.5	354.3		
1972 : 1st Qr.	524.8	-	5.5	151.1	119.3	97.7	1.1	12.1	138.0		
2nd Qr.	556.2	-	5.7	137.2	121.5	102.7	4.9	8.4	175.8		
3rd Qr.	588.5	-	3.0	158.2	133.4	111.0	4.2	12.2	169.5		
4th Qr.	632.1	-	2.4	201.9	140.6	118.7	11.6	7.9	199.0		
1973 : 1st Qr.	701.0	-	2.1	185.6	165.9	131.7	2.0	10.1	203.6		
2nd Qr.	795.0	-	4.3	193.3	168.7	136.8	5.2	15.3	271.4		
3rd Qr.	909.5	-	3.2	231.2	179.6	147.8	3.7	9.4	334.6		
4th Qr.	1024.2	-	6.1	265.0	210.0	165.9	11.4	11.5	354.3		

Rs million

Table 38 - Analysis of bills discounted, loans and advances made by commercial banks

	Rs million											
	1972				1975							
	March	June	September	December	March	June	September	December	March	June	September	December
Sugar industry	104.1	112.2	117.7	101.9	85.2	97.3	92.9	123.4				
Other agricultural interests	11.0	7.4	9.2	9.5	10.2	10.3	11.6	11.7				
Other industries and manufacturers	53.3	54.7	63.3	72.4	78.8	98.0	134.4	140.7				
Traders	54.9	72.9	71.6	80.8	94.0	108.1	105.7	115.1				
Personal and professional	22.6	25.6	28.4	30.5	39.1	50.4	50.8	53.9				
Stockbrokers	-	-	-	-	-	0.1	0.2	0.3				
Government	-	-	-	-	-	-	-	-				
Other public bodies	13.7	16.9	13.6	15.6	14.2	15.5	15.3	20.3				
Financial institutions	1.0	1.9	1.4	1.3	1.4	1.9	3.1	2.7				
Other customers	8.8	13.2	10.4	19.3	10.9	10.1	10.8	12.8				
Foreign bills	1.3	2.1	1.8	2.9	2.7	5.8	5.3	6.7				
Total	270.7	306.9	317.5	334.2	336.5	397.5	430.1	487.6				

Source: Bank of Mauritius

Table 39 - Assets and liabilities of the Development Bank of Mauritius
(at end of period)

	Rs million				
	1969	1970	1971	1972	1973
<u>Assets</u>					
Cash	-	0.5	-	0.1	1.3
Balances due by other banks in Mauritius	1.0	1.4	0.9	0.4	3.4
Loans and advances:					
Primary industries	21.6	20.8	19.4	18.1	17.2
Other industries	15.9	17.1	17.9	22.9	25.6
Other loans and advances	0.4	0.4	0.4	0.4	-
Investments:					
Local (at cost)	6.2	6.9	13.7	13.0	11.0
Overseas	2.0	2.1	-	-	-
Other assets	6.2	9.2	11.9	15.4	20.6
Total	53.3	58.4	64.2	70.3	79.1
<u>Liabilities</u>					
Notes in circulation	-	-	-	-	-
Deposits:					
Demand	1.4	2.0	1.1	1.3	3.8
Time	1.8	1.8	2.6	4.0	5.3
Savings	1.8	1.8	2.1	2.2	2.4
Share capital	-	-	10.0	10.0	10.0
Debentures	17.0	17.0	17.0	17.0	17.0
The Government of Mauritius	22.4	25.9	20.3	23.3	29.2
Bills	0.3	0.3	0.3	0.3	0.2
Other liabilities	8.6	9.6	10.8	12.2	11.2
Total	53.3	58.4	64.2	70.3	79.1

Table 40 - Post Office Savings Bank

Period	Deposits during period (Rs million)	Withdrawals during period (Rs million)	Accumulated balance at end of period (Rs million)	Number of accounts at 30th June
1969	11.5	11.8	26.7	90,552
1970	11.4	11.5	27.7	92,200
1971	13.3	11.5	30.4	93,929
1972	17.1	13.4	35.3	97,944
1973	20.0	16.0	40.8	103,216
1972 : 1st Qr.	4.5	2.9	32.0	...
2nd Qr.	3.4	3.1	33.5	97,944
3rd Qr.	4.6	3.9	34.1	...
4th Qr.	4.6	3.5	35.3	...
1973 : 1st Qr.	4.7	3.9	36.2	...
2nd Qr.	3.5	3.7	37.3 ^{1/}	103,216
3rd Qr.	5.4	4.4	38.3	...
4th Qr.	6.4	4.0	40.8	...

^{1/} includes interest capitalised to Depositors' Accounts

Table 41 - Assets and liabilities of the Mauritius Co-operative Central Bank Ltd (at end of February)

	Rs million				
	1969	1970	1971	1972	1973
Assets					
Cash at bank and in hand	1.1	0.2	2.1	1.6	1.9
Loans and advances:					
Primary industries	4.1	4.0	4.3	6.6	9.5
Housing	1.2	1.4	1.5	1.7	1.9
Other loans and advances	0.9	1.8	2.2	2.1	2.1
Investments:					
Local	3.6	3.6	7.4	7.4	12.1
Abroad	-	-	-	-	-
Other assets	0.3	0.2	0.7	0.8	0.8
Total	11.2	13.2	18.2	20.2	28.3
Liabilities					
"Owned Funds"	3.4	3.7	4.1	4.5	5.2
Deposits:					
Demand	1.5	2.0	2.6	1.7	3.8
Time	4.0	5.0	8.5	10.5	15.1
Savings	2.0	2.2	2.6	2.8	3.6
Balances due to other banks in Mauritius	-	-	-	-	-
Other liabilities	0.4	0.3	0.4	0.7	0.6
Total	11.2	13.2	18.2	20.2	28.3

Table 42 - Money supply
(at end of period)

Rs million

Period	Currency with the public ^{1/}	Demand Deposits			Total money supply
		Bank of Mauritius ^{2/}	Commercial banks	Total	
1969	97.1	1.5	118.8	120.3	217.4
1970	104.7	1.1	123.8	124.9	229.6
1971	126.3	0.9	134.4	135.3	261.6
1972 : 1st Qr.	128.0	0.2	151.1	151.3	279.3
2nd Qr.	122.7	0.7	137.2	137.9	260.6
3rd Qr.	132.2	0.6	158.2	158.8	291.0
4th Qr.	156.3	18.1	201.9	220.0	376.3
1973 : 1st Qr.	143.1	2.3	185.6	187.9	331.0
2nd Qr.	148.2	1.4	193.3	194.7	342.9
3rd Qr.	161.9	1.1	224.6	225.7	387.6
4th Qr.	200.6	0.9	265.0	265.9	466.5

1/ Net of cash held by commercial banks

2/ Miscellaneous private deposits

Source : Bank of Mauritius

Table 43 - Assets and liabilities of the Mauritius Housing Corporation

(at end of period)

Rs million

	1969	1970	1971	1972	1973
<u>Assets</u>					
Cash in hand and on deposit	-	-	-	-	-
Housing loans	32.1	34.0	37.0	42.2	46.1
Investments (at cost)	-	0.5	0.4	0.5	0.5
Other assets	3.1	3.4	3.4	4.7	6.4
Total	35.2	37.9	40.8	47.4	53.0
<u>Liabilities</u>					
<u>Loans: Local</u>					
Government of Mauritius	14.2	14.1	13.9	14.7	15.5
Development Bank of Mauritius	0.4	0.4	0.4	0.4	0.5
Other local loans	5.6	8.6	11.6	13.8	17.4
<u>External</u>					
British Government	3.0	2.6	2.3	2.0	1.6
Commonwealth Development Corporation	6.4	6.2	6.1	7.3	9.8
Other liabilities	5.6	6.0	6.5	9.2	8.2
Total	35.2	37.9	40.8	47.4	53.0

Table 44 - Bank and interest rates

	Percent per annum					
	30.6.71	31.12.71	30.6.72	31.12.72	30.6.73	31.12.73
<u>Deposit rates</u>						
Post Office Savings Bank	4	4	4	4	4	4
Trading banks : savings accounts	4	4	4	4	4	4
Fixed deposits (3 months)	4½	4½	4½	4½	4½	4½
" (6 months)	4¾	4¾	4¾	4¾	4¾	4¾
" (12 months)	5¼	5¼	5¼	5¼	5¼	5¼
" (over 12 months)	5½-6½	5½-6½	6	6	6	6
<u>Lending rates</u>						
Bank of Mauritius - discount rate	6	6	6	6	6	6
Trading banks - bills of exchange and advances	7½-9	7½-9	7-9	7-8½	7-8½	7-8½
Public notaries - mortgage loans	9-11	9-11	9-11	9-11	9-11	9-11
Mauritius Housing Corporation - housing loans	8	8	8-8½	8-8½	8-8½	8-8½

Note : Rates of interest on Treasury Loans are shown in table 29.

Source : Bank of Mauritius

Table 45 - Foreign exchange rates

Country	Currency	Rupees									
		on 31.12.71		on 30.6.72		on 30.12.72		on 30.6.73		on 31.12.73	
		Selling rate	Buying rate	Selling rate	Buying rate	Selling rate	Buying rate	Selling rate	Buying rate	Selling rate	Buying rate
United Kingdom	Pound Sterling	13,40	13,25	13,40	13,25	13,40	13,25	13,40	13,25	13,40	13,25
Australia	Dollar	6,27	6,15	6,53	6,32	7,33	7,12	7,43	7,21	8,68	8,42
Belgium	Franc	0,116	0,113	0,125	0,122	0,131	0,129	0,145	0,141	0,142	0,138
Canada	Dollar	5,27	5,18	5,57	5,45	5,79	5,67	5,24	5,14	5,84	5,72
France	Franc	1,01	0,98	1,10	1,07	1,14	1,10	1,27	1,23	1,21	1,17
Germany, Fed. Rep. of	Mark	1,61	1,58	1,74	1,70	1,80	1,76	2,155	2,105	2,17	2,11
Hong Kong	Dollar	0,93	0,90	0,94	0,91	1,01	0,98	1,045	1,015	1,16	1,12
India	Rupee	0,72	0,70	0,72	0,69	0,73	0,70	0,73	0,70	0,73	0,70
Kenya	Shilling	0,75	0,725	0,72	0,695	0,81	0,785	0,755	0,73	0,845	0,820
Malagasy, Rep. of	Franc	0,0196	0,0190	0,022	0,0214	0,0228	0,022	0,0248	0,0239	0,025	0,0242
New Zealand	Dollar	6,27	6,15	6,53	6,37	6,86	6,69	6,95	6,77	8,34	8,12
Pakistan	Rupee	1,135	1,105	0,48	0,46	0,54	0,51	0,56	0,53	0,61	0,58
Reunion	Franc	0,0202	0,0196	0,022	0,0214	0,0228	0,022	0,0254	0,0246	0,0242	0,0234
South Africa, Rep. of	Rand	6,90	6,75	6,90	6,75	7,35	7,14	7,81	7,58	8,69	8,45
Switzerland	Franc	1,36	1,33	1,44	1,43	1,53	1,49	1,80	1,75	1,80	1,75
U.S.A.	Dollar	5,26	5,17	5,48	5,36	5,75	5,63	5,22	5,12	5,82	5,70

Source: Bank of Mauritius

IV. NATIONAL ACCOUNTS

Table 46 -- Gross national product by industrial origin
(at current factor cost)

	<u>Rs million</u>				
	1969	1970	1971	1972	1973 ⁺
1. Agriculture, forestry, hunting and fishing	224	209	247	332	407
2. Mining and quarrying	1	1	1	2	2
3. Manufacturing	142	141	162	211	248
4. Construction	46	48	60	73	114
5. Electricity, gas, water and sanitary services	30	29	34	39	43
6. Transportation, storage and communication	105	108	114	129	161
7. Wholesale and retail trade	91	91	94	127	172
8. Banking, insurance and real estate	18	20	18	22	31
9. Ownership of dwellings	68	70	71	74	77
10. Public administration and defence	46	51	53	61	76
11. Services	116	126	141	166	203
GROSS DOMESTIC PRODUCT AT FACTOR COST	887	894	995	1,236	1,534
Net factor income from the rest of the world	+ 1	+ 7	+ 7	+ 2	+ 16
GROSS NATIONAL PRODUCT AT FACTOR COST	888	901	1,002	1,238	1,550
Per capita gross national product at factor cost (Based on mid-year population)	(Rs) 1,112	(Rs) 1,111	(Rs) 1,218	(Rs) 1,498	(Rs) 1,857

+ Provisional

Table 47 - Distribution of the national income before providing for depreciation

	RS million					
	1969	1970	1971	1972	1973 ⁺	
1. Compensation of employees	498	516	555	656	810	
2. Income from unincorporated enterprises	128	128	140	180	241	
3. Income from property	129	128	137	161	209	
4. Saving of corporations	102	99	135	184	225	
5. Direct tax on corporations	23	21	26	48	65	
6. General government income from property and entrepreneurship	30	33	34	37	37	
7. <u>Less</u> interest on public debt	- 18	- 20	- 21	- 24	- 32	
8. <u>Less</u> interest on consumers' debt	- 4	- 4	- 4	- 4	- 5	
NATIONAL INCOME AND DEPRECIATION =						
Gross national product at factor cost	888	901	1,002	1,238	1,550	

+ Provisional

Table 43 - Expenditure on gross national product
(at current prices)

	<u>Rs million</u>				
	1969	1970	1971	1972	1973
1. Private consumption expenditure on goods and services	681	734	783	929	1,122
2. General government consumption expenditure on goods and services	156	166	182	219	235
3. Gross domestic fixed capital formation of private enterprises	100	94	132	163	378
4. Gross domestic fixed capital formation of government and public enterprises	44	51	52	66	102
5. Increase in stocks
CONSUMPTION AND GROSS CAPITAL FORMATION	981	1,045	1,149	1,377	1,837
6. Net exports of goods and services	+ 55	+ 3	+ 12	+ 55	- 40
7. Net factor income from the rest of the world	+ 1	+ 7	+ 7	+ 2	+ 16
8. <u>Less</u> indirect taxes (net of subsidies)	-149	- 154	- 166	- 196	- 263
GROSS NATIONAL PRODUCT AT FACTOR COST	888	901	1,002	1,238	1,550

Table 49 - Composition of gross domestic fixed capital formation
(at current prices)

	Rs million				
	1969	1970	1971	1972	1973 ⁺
A. By type of capital goods					
a. Land <u>1/</u>	3	4	3	4	10
b. Dwellings	35	33	38	54	103
c. Non-residential buildings	13	23	30	34	76
d. Other construction and works	34	36	42	39	81
e. Transport equipment					
(i) Passenger cars	4	5	7	11	19
(ii) Other equipment	22	15	16	15	66
f. Machinery and other equipment	33	29	48	72	125
GROSS DOMESTIC FIXED CAPITAL FORMATION	144	145	184	229	480
B. By industrial use					
a. Agriculture, forestry and fishing	19	23	28	20	38
b. Mining and quarrying	-	-	-	-	-
c. Manufacturing	12	16	28	37	79
d. Construction	4	5	6	8	14
e. Electricity, gas, water and sanitary services	15	12	16	32	33
f. Transportation, storage and communication	37	32	35	42	126
g. Wholesale and retail trade	6	5	7	7	21
h. Banking, insurance and real estate	1	3	6	1	2
i. Ownership of dwellings	35	33	38	54	103
j. Public administration	1	-	1	1	3
k. Service industries	11	12	16	23	51
l. Legal fees, stamp duties, etc.	3	4	3	4	10
GROSS DOMESTIC FIXED CAPITAL FORMATION	144	145	184	229	480

1/ Including legal fees, stamp duties, agents' commission, etc. connected with the transfer of ownership of land and buildings.

+ provisional

Table 50 - Balance of payments

Rs million

Item	1968		1969		1970		1971		1972	
	Credit	Debit	Credit	Debit	Credit	Debit	Credit	Debit	Credit	Debit
A. GOODS AND SERVICES										
1. Merchandise	359	359	367	328	388	360	362	410	577	524
2. Non-monetary gold	-	1	-	‡	-	-	-	1	-	2
3. Freight and insurance on merchandise	9	51	7	46	14	54	26	61	11	88
4. Other transportation	39	25	48	35	56	59	56	63	72	47
5. Travel	14	21	18	18	27	20	39	23	52	29
6. Investment income	11	16	14	14	17	12	19	14	16	17
7. Government, not included elsewhere	15	5	14	5	17	7	18	7	21	8
8. Other services	19	17	23	16	29	15	22	18	26	24
Net goods and services	-	29	29	-	21	-	-	‡ 55	36	-
B. TRANSFER PAYMENTS										
9. Private	6	11	8	6	13	6	15	6	30	10
10. Central government	33	4	17	4	18	4	21	5	32	5
Net transfer payments	24	-	15	-	21	-	25	-	47	-

‡ Revised

Table 50 - Balance of payments (cont'd)

Rs million

Item	1968		1969		1970		1971		1972	
	Credit	Debit	Credit	Debit	Credit	Debit	Credit	Debit	Credit	Debit
<u>C. CAPITAL AND MONETARY GOLD</u>										
<u>Non-monetary sectors</u>										
11-14. Private	-	3	15	-	4	-	9	-	20	-
15. Central government	18	-	24	-	4	-	-	5	4	-
<u>ALLOCATION OF SDR^{1/}</u>										
<u>Monetary sectors</u>										
16. Commercial banks: liabilities	3	-	-	11	6	-	6	-	-	* 2
17. Commercial banks: assets	14	-	-	7	15	-	17	-	* 2	-
18. Central institutions: liabilities	-	* 20	15	-	-	20	-	-	-	-
19. Central institutions: assets	-	* 17	-	81	-	74	-	9	-	124
OTHER CAPITAL, ERRORS AND OMISSIONS	10	-	1	-	8	-	-	1	4	-

^{1/}Special Drawing Rights

* Revised

Source : Bank of Mauritius

V. CONSUMER PRICE INDICES

Table 51- Consumer price indices
(Base: January-June 1962 = 100)

The table below gives three consumer price indices, viz:

- (a) an index for households in urban areas;
- (b) an index for households in rural areas;
- (c) a total index for Mauritius as a whole.

Period	Urban	Rural	Whole Island
1963 (Average)	98.5	98.5	98.5
1964 (")	100.5	100.2	100.3
1965 (")	102.3	102.0	102.1
1966 (")	105.0	104.5	104.7
1967 (")	106.6	106.6	106.6
1968 (")	113.0	114.9	114.1
1969 (")	115.6	117.6	116.7
1970 (")	117.6	119.2	118.5
1971 (")	118.3	119.4	118.9
1972 (")	125.8	124.9	125.3
1973 (")	144.0	140.8	142.2
1972 : January	122.8	122.7	122.8
February	124.3	123.9	124.1
March	124.4	124.1	124.2
April	125.2	124.8	125.0
May	124.4	124.0	124.2
June	124.6	124.0	124.3
July	125.8	125.0	125.3
August	126.6	125.2	125.8
September	127.5	125.9	126.6
October	128.1	126.6	127.3
November	127.9	126.1	126.9
December	128.6	126.6	127.5
1973 : January	131.8	129.6	130.5
February	133.7	131.0	132.2
March	136.7	133.8	135.1
April	138.2	135.3	136.5
May	137.5	134.0	135.5
June	139.4	135.5	137.2
July	142.3	138.3	140.0
August	146.4	143.2	144.6
September	151.0	147.5	149.0
October	150.7	146.5	148.3
November	156.1	152.3	154.0
December	164.8	162.2	163.4

VI. EXTERNAL TRADE

Table 52 - Balance of visible trade

Rupees million

Period	Imports (c.i.f.value)	Exports ^{1/} (f.o.b.value)	Bunkers and Ships' stores (f.o.b.value)	Balance of visible trade	
				Surplus	Deficit
1969	376.0	365.2	17.9	7.1	-
1970	419.9	384.5	14.2	-	21.2
1971	461.6	361.7	17.3	-	82.6
1972	635.8	573.8	21.1	-	40.9
1973	915.8	748.3	28.5	-	139.0
1972 : 1st Qr.	154.4	131.5	5.5	-	17.4
2nd Qr.	163.0	40.5	4.8	-	117.7
3rd Qr.	133.3	196.9	5.2	68.8	-
4th Qr.	185.1	204.9	5.6	25.4	-
^{2/} 1973 : 1st Qr.	171.9	154.5	6.6	-	10.8
2nd Qr.	222.6	66.6	5.4	-	150.6
3rd Qr.	214.6	247.9	6.2	39.5	-
4th Qr.	306.6	279.3	10.3	-	17.0

^{1/}Including value of sugar quota certificates and the bonus received in lieu of the Commonwealth Preference on sugar exports (except for 1972), but excluding sales value of bunker fuel and ships' stores.

^{2/}Quarterly figures revised.

Table 53 - Price (unit value) indices of exports and imports and terms of trade

Period	Price indices		Terms of trade ^{1/}
	Export	Import	
1965 = 100			
1966	104	102	102
1967	108	104	104
1968	106	122	87
1969	108	118	92
1970	115	117	98
1971	125	129	97
1972	148	136	109
1972 = 100			
1973	117	130	90

^{1/}Ratio of export to import price index.

A rise in the index indicates that the terms of trade have moved in favour of Mauritius.

1/ Table 55- Exports : quantities and values

Quantity: Thousand metric tons
Value : Rs million (f.o.b.)

Period	Total Value ^{1/}	Re-exports Value	DOMESTIC EXPORTS									
			Total Value	Sugar		Molasses		Tea		Fish and fish preparations		Ginger Value
				Quantity	Value	Quantity	Value	Quantity	Value	Quantity	Value	
1969	365.2	7.0	358.2	596.2	326.0	125.2	10.0	2.6	14.6	0.4	0.5	
1970	384.6	8.2	376.3	575.0	341.2	100.4	10.6	2.6	14.1	0.7	0.4	
1971	361.7	6.0	355.7	489.3	313.4	133.4	9.2	3.1	17.0	0.5	0.7	
1972	573.8	7.7	566.1	670.0	507.6	142.4	14.2	3.9	20.8	0.9	0.6	
1973	748.3	11.6	736.8	699.2	608.1	185.2	40.3	3.7	18.9	8.0	0.9	
1972 : 1st Qr.	131.5	1.5	130.0	170.0	116.9	16.8	1.5	1.2	6.7	0.1	0.1	
2nd Qr.	40.5	2.2	38.3	36.7	25.8	16.7	1.7	1.0	5.2	0.2	0.1	
3rd Qr.	196.9	1.7	195.2	228.9	184.0	13.8	1.2	0.7	3.7	0.2	0.2	
4th Qr.	204.9	2.3	202.6	234.4	180.9	95.1	9.8	1.0	5.1	0.4	0.2	
1973 : 1st Qr.	154.5	3.3	151.2	151.7	128.8	17.9	3.8	1.3	6.4	1.5	0.2	
2nd Qr.	66.6	2.9	63.7	45.3	40.2	28.5	4.1	1.1	5.3	2.0	0.1	
3rd Qr.	247.9	2.6	245.3	253.6	212.9	51.9	12.6	0.6	3.2	1.6	0.3	
4th Qr.	279.3	2.8	276.6	248.5	226.2	86.8	19.9	0.7	4.1	2.9	0.3	

1/ Including value of sugar quota certificates and the bonus received in lieu of the Commonwealth Preference on sugar exports but excluding sales value of bunker fuels and ships' stores.

2/ Quarterly figures revised.

Table : 55 Exports^{1/}: quantities and values (cont'd)

Period	DOMESTIC EXPORTS							Other domestic exports
	Feeding stuff for animals	Processed diamonds and synthetic stones	Electronic components for machines	Clothing	Other manufactured goods	Quantity: Thousand metric tons	Value	
	Value	Value	Value	Value	Value	Value	Value	
1969	-	-	-	0.1	4.8	1.8		
1970	0.3	1.0	-	0.2	5.7	3.1		
1971	0.2	2.3	-	1.7	7.1	3.6		
1972	-	5.3	-	6.1	7.4	3.2		
1973	0.9	19.7	5.3	20.6	7.4	6.7		
1972 : 1st Qr.	-	1.2	-	0.6	2.0	0.9		
2nd Qr.	-	1.1	-	1.3	2.1	0.8		
3rd Qr.	-	1.5	-	1.9	1.7	0.8		
4th Qr.	-	1.5	-	2.3	1.7	0.7		
1973 ^{2/} : 1st Qr.	0.1	2.3	-	3.3	1.7	3.1		
2nd Qr.	0.2	3.7	0.2	4.5	2.0	1.4		
3rd Qr.	0.2	4.5	1.2	5.7	2.1	1.0		
4th Qr.	0.3	9.2	3.8	7.1	1.7	1.1		

^{1/} Including value of sugar quota certificates and the bonus received in lieu of the Commonwealth Preference on sugar exports but excluding sales value of bunker fuels and ships' stores.

^{2/} Quarterly figures revised.

Table 56 - Total exports^{1/}: Main countries of destination - values

Rs million (f.o.b.)					
Country of destination	1969	1970	1971	1972	1973
<u>Total exports</u>	<u>365.2</u>	<u>384.6</u>	<u>361.7</u>	<u>573.8</u>	<u>748.3</u>
United Kingdom	260.5	260.4	198.8	339.5	338.6
Canada	63.2	77.6	101.1	107.7	185.9
United States	18.4	21.1	22.3	36.2	65.0
South Africa, Rep. of	9.5	12.1	15.8	18.9	17.4
Vietnam Republic	-	-	-	-	15.9
Iran	-	-	-	10.4	15.7
Iraq	0.6	0.3	-	-	15.7
Indonesia	-	-	-	-	15.5
Malaysia	2.6	-	-	8.1	15.1
France	1.2	1.1	1.3	3.5	14.8
U.S.S.R.	-	-	-	17.7	10.4
Reunion	3.3	3.9	5.1	7.7	9.2
South Yemen	-	-	-	-	5.8
Belgium	-	-	-	2.1	4.5
Germany, Fed. Rep. of	-	0.2	0.3	1.5	2.6
Netherlands	0.5	-	1.4	3.9	2.6
Hong Kong	0.1	0.4	0.4	0.7	2.4
Malagasy, Rep. of	2.4	2.6	2.5	2.2	1.9
United Republic of Tanzania	-	-	-	-	1.7
Japan	0.1	-	-	-	1.2
Switzerland	-	1.0	1.2	1.3	1.1
Other countries	2.8	3.9	11.5	12.4	5.3

^{1/} including the value of sugar quota certificates and the bonus received in lieu of the Commonwealth Preference on sugar exports

Table 57 - Imports: values by S.I.T.C. sections

Period	Rs million (c.i.f.)										
	All Sections	Food	Beverages and tobacco	Crude materials inedible, except fuels	Mineral fuels, lubricants, etc.	Animal and vegetable oils and fats	Chemicals	Manufactured goods classified chiefly by material	Machinery and transport equipment	Miscellaneous manufactured articles	Miscellaneous transactions and commodities
1969	376.0	132.6	5.3	5.0	31.7	12.5	41.0	72.4	44.7	27.9	0.2
1970 ^{1/}	459.9	124.3	5.2	10.3	29.7	21.0	47.6	95.3	55.7	30.5	0.2
1971	461.6	121.6	6.1	11.3	29.7	28.9	49.7	104.4	77.5	32.1	0.5
1972	461.6	159.0	7.9	11.1	50.7	35.1	70.4	155.4	111.2	46.3	0.1
1973	915.8	217.8	2.3	14.2	63.6	23.1	81.4	222.4	25.1	53.5	0.4
1972 : 1st Qr.	154.4	47.4	1.6	2.6	8.8	8.6	15.3	34.9	25.5	9.7	-
2nd Qr.	163.0	41.3	2.1	2.7	19.0	6.8	14.7	37.4	27.8	11.0	0.1
3rd Qr.	133.3	29.4	1.3	1.7	9.2	5.0	19.1	36.4	19.4	10.6	-
4th Qr.	135.1	40.9	2.9	2.9	13.8	4.6	21.2	44.7	38.6	15.5	-
1973 : 1st Qr.	171.9	41.5	1.5	3.1	16.1	5.4	14.9	45.5	32.5	11.2	0.3
2nd Qr.	222.6	74.4	3.1	3.0	10.4	5.3	15.6	49.5	47.1	14.1	-
3rd Qr.	214.6	30.7	2.4	3.0	10.9	10.2	29.2	59.2	54.1	14.9	0.1
4th Qr.	306.6	71.2	2.2	5.2	26.2	2.2	21.7	68.3	91.4	18.3	-

^{1/} As from 1970 S.I.T.C. (revised) used.

^{2/} Quarterly figures revised.

Table 58 - Imports: selected commodities - values

Rs million (c.i.f.)

Period	Rice	Wheat flour	Alcoholic beverages	Petroleum products	Vegetable edible oils	Fertilizers, manufactured	Cotton fabrics	Other textile fabrics	Cement	Iron and steel goods	Manufactures of metals, n.e.s.	Machinery other than electric	Electric machinery, apparatus and appliances	Road motor vehicles and parts
1969	54.9	23.0	4.0	31.1	9.7	17.1	8.4	10.7	8.4	9.3	8.2	18.6	15.0	10.4
1970	38.2	22.8	3.8	29.3	15.3	18.2	9.5	14.3	7.1	21.3	11.2	22.6	15.9	15.0
1971	31.3	23.5	4.7	28.9	21.4	16.8	11.2	15.1	9.1	17.8	13.3	41.6	18.2	16.7
1972	42.6	29.0	6.0	49.9	16.7	28.5	12.2	29.1	10.1	22.7	17.6	44.9	41.4	23.6
1973	70.9	33.8	6.8	62.6	15.7	30.9	17.0	36.7	18.2	36.0	27.4	92.0	52.1	40.8
1972 : 1st Qr.	14.3	9.4	1.1	8.7	6.8	4.9	2.8	6.1	2.0	5.4	4.6	12.0	8.2	4.9
2nd Qr.	12.5	7.8	1.6	18.7	3.2	2.4	3.2	6.7	2.9	6.0	3.8	11.8	9.8	5.9
3rd Qr.	5.7	6.2	1.0	9.1	3.1	11.2	2.9	7.5	2.5	5.2	4.1	8.1	6.9	4.1
4th Qr.	10.0	5.5	2.3	13.4	3.6	10.0	3.4	8.9	2.6	6.0	5.1	13.0	16.4	8.6
1973 : 1st Qr.	8.8	6.1	1.2	15.9	3.2	3.6	3.2	7.2	3.2	6.5	7.0	11.4	10.1	9.9
2nd Qr.	35.5	9.4	2.1	10.0	3.9	2.8	3.1	8.4	3.9	7.0	6.4	22.0	13.9	10.9
3rd Qr.	1.7	6.2	1.7	10.7	8.6	14.7	4.0	10.1	5.2	9.7	6.6	29.1	12.9	11.5
4th Qr.	24.9	12.1	1.8	26.0	-	9.8	6.7	11.0	5.2	12.8	7.8	29.5	15.2	8.5

Table 59- Imports: selected commodities - quantities

Period	Rice Thousand m/tons	Wheat flour Thousand m/tons	Vegetable edible oils Thousand m/tons	Fertilizers, manufactured Thousand m/tons	Cotton fabrics Million sq. metres	Other textile fabrics Million sq. metres	Cement Thousand m/tons	Iron and steel goods Thousand m/tons
1969	64.8	44.9	7.9	57.2	6.0	3.7	76.1	10.4
1970	58.8	45.2	10.5	57.0	6.8	4.8	65.0	18.2
1971	54.1	43.4	12.0	62.0	7.5	4.7	82.2	16.3
1972	72.3	49.3	10.6	88.0	8.2	8.6	93.3	22.0
1973	58.1	44.0	8.6	72.1	7.5	9.5	131.4	27.5
1972: 1st Qr.	26.7	15.6	4.3	19.4	1.8	1.8	17.8	5.2
2nd Qr.	20.7	13.1	2.1	7.9	2.2	2.0	27.6	5.8
3rd Qr.	8.9	11.2	2.1	30.5	2.0	2.3	23.9	5.8
4th Qr.	15.9	9.3	2.1	30.2	2.2	2.5	24.0	5.3
1973: 1st Qr.	16.0	9.8	2.1	11.9	2.0	2.1	27.6	5.3
2nd Qr.	28.3	13.1	2.3	6.5	1.4	2.1	31.7	5.0
3rd Qr.	1.0	7.3	4.2	31.9	1.6	2.7	37.1	7.5
4th Qr.	12.8	13.8	-	21.8	2.5	2.6	35.0	9.7

Table 60 - Imports : main countries of origin - values

Rs million (c.i.f.)

Period	Total	United Kingdom	South Africa	France	Japan	Iran	Pakistan	Australia	Germany Federal Republic	India
1969	376.0	74.4	31.3	24.8	14.6	19.9	3.5	27.1	17.1	10.2
1970	419.9	88.0	37.8	29.4	21.8	14.9	3.7	30.6	20.5	12.8
1971	461.6	101.5	35.4	32.6	30.5	22.4	3.8	30.2	22.3	12.9
1972	635.8	131.0	50.4	43.3	49.3	42.1	5.4	44.9	36.6	16.8
1973	915.8	193.4	64.0	63.1	59.8	50.6	49.7	49.1	46.1	30.6
1972 : 1st Qr.	154.4	33.2	14.2	13.3	10.0	7.2	0.9	12.0	10.9	4.5
2nd Qr.	165.0	34.2	12.1	12.2	10.7	17.5	1.6	10.8	7.3	5.2
3rd Qr.	133.3	17.7	10.1	8.3	13.3	8.0	1.4	7.7	9.2	5.2
4th Qr.	185.1	45.9	14.0	9.5	15.3	9.4	1.4	14.3	9.2	3.9
1973 : 1st Qr.	171.9	37.0	1.6	10.8	12.7	10.9	1.5	14.0	7.9	5.5
2nd Qr.	222.6	46.3	18.8	16.8	13.1	8.7	18.9	8.6	10.5	7.0
3rd Qr.	214.6	48.9	18.3	17.3	17.4	9.2	2.6	11.5	15.2	7.8
4th Qr.	306.6	61.2	25.3	18.2	16.6	21.8	26.7	15.0	12.5	10.3



Table 60 - Imports : main countries of origin - values (cont'd)

Period	Rs million (c.i.f.)									
	China Mainland	United States	Hong Kong	Burma	Belgium	Kenya	Netherlands	Singapore	Austria	Italy
1969	6.8	6.0	8.8	7.7	2.6	11.1	3.9	4.5	1.2	6.7
1970	8.4	23.9	10.2	23.1	5.3	14.6	5.4	6.3	2.0	4.4
1971	8.4	31.8	9.9	17.3	4.3	12.4	7.2	8.6	3.9	6.3
1972	14.0	21.6	17.6	34.4	6.9	12.6	14.8	12.4	6.9	8.6
1973	29.8	25.4	23.4	18.5	17.7	17.7	17.0	15.2	14.7	13.6
1972 : 1st Qr.	2.6	4.1	2.7	12.9	1.5	2.5	2.9	2.5	0.7	2.1
2nd Qr.	2.9	6.1	3.6	10.4	1.5	3.7	2.6	3.3	0.6	3.2
3rd Qr.	3.7	6.7	4.8	3.8	1.6	3.3	4.0	3.1	3.5	1.6
4th Qr.	4.8	4.8	6.6	7.3	2.3	3.1	5.3	3.5	2.2	1.8
1973 : 1st Qr.	3.6	5.6	3.8	8.9	4.8	3.2	2.1	3.2	0.4	1.4
2nd Qr.	12.5	7.3	5.4	9.0	6.0	4.9	1.7	4.1	2.9	1.7
3rd Qr.	4.7	4.9	6.5	-	5.4	5.1	8.0	4.1	5.5	3.0
4th Qr.	9.0	7.6	7.7	0.6	1.5	4.5	5.2	3.8	5.9	7.5

Table 60 - Imports : main countries of origin - values

Period	Rs million (c.i.f.)									
	China Taiwan	New Zealand	Malaysia	Switzerland	Denmark	Kuwait	Ethiopia	Madagascar	South Yemen	Other
1969	1,0	2,7	2,5	3,9	1,2	1,6	1,9	8,9	1,4	68,7
1970	1,8	5,6	2,7	3,1	1,5	1,0	1,5	8,4	3,2	28,0
1971	2,4	5,9	4,2	3,8	1,4	0,7	1,6	8,0	-	31,9
1972	5,0	6,8	4,4	4,8	2,4	0,8	2,2	6,9	-	32,9
1973	9,7	9,1	6,3	5,9	5,6	5,4	5,0	4,3	1,4	63,6
1972 : 1st Qr.	0,7	2,0	1,1	1,0	0,5	-	0,6	1,9	-	5,9
2nd Qr.	0,8	2,3	1,0	1,2	0,4	-	0,4	2,2	-	7,2
3rd Qr.	1,5	1,6	1,0	1,4	0,4	-	-	1,8	-	8,6
4th Qr.	1,9	0,9	1,2	1,2	1,1	0,8	1,2	1,1	-	11,1
1973 : 1st Qr.	1,6	2,3	1,1	1,4	0,7	3,0	0,7	0,9	1,4	19,9
2nd Qr.	1,9	2,9	1,1	1,5	1,2	-	1,6	2,3	-	5,9
3rd Qr.	3,8	0,1	1,6	1,3	3,6	-	-	0,8	-	8,0
4th Qr.	2,4	3,8	2,5	1,7	0,1	2,4	2,7	0,3	-	29,8

Table 61 - Imports of fertilizers

Kind of fertilizers	1971		1972		1973	
	Quantity (m/tons)	Value c.i.f. (Rs 000)	Quantity (m/tons)	Value c.i.f. (Rs 000)	Quantity (m/tons)	Value c.i.f. (Rs 000)
TOTAL IMPORTS	68,087	17,504	97,642	29,659	81,175	32,218
NITROGENOUS FERTILIZERS	32,260	6,490	36,721	8,687	28,461	10,071
Sulphate of ammonia	31,636	6,306	35,882	8,414	27,676	9,783
Ammonia sulphate nitrate	620	181	750	242	775	277
Other nitrogenous fertilizers	4	3	89	31	10	11
POTASSIC FERTILIZERS	10,580	3,054	9,366	3,045	7,888	3,176
Muriate of potash	10,375	2,971	9,136	2,948	7,702	3,077
Sulphate of potash	205	83	230	97	180	94
Other	-	-	-	-	6	5
PHOSPHATIC FERTILIZERS	10,728	2,443	14,645	2,919	14,830	3,799
Single superphosphate	1,540	351	2,255	562	1,700	519
Triple superphosphate	3,127	1,401	2,760	1,219	4,025	1,968
Phosphatic guano	6,061	691	9,630	1,138	9,094	1,310
Other	-	-	-	-	11	2
MIXED AND COMPOUND FERTILIZERS	14,519	5,517	36,910	15,008	29,996	15,172

1/excluding imports from dependencies

VII. EMPLOYMENT AND WAGES

The figures of employment in tables 62-67 apply to large establishments only - these being defined as :

- (i) Sugar cane plantations where 25 arpents or more were harvested;
- (ii) Tea plantations of 5 arpents or more;
- (iii) All 'flue-cured' tobacco establishments, irrespective of acreage;
- (iv) Non-agricultural establishments employing at least 10 persons on the day of the survey;
- (v) All central and local government departments.

Table 62 - Employment in large establishments by major industrial groups

Industrial group	Total no. of persons employed on last Thursday of:		
	September 1972	March 1973	September 1973
Agriculture, hunting, forestry and fishing	61,924	58,919	62,063
Sugar	54,010	49,961	54,107
Tea	4,037	4,542	3,626
Tea Development Authority	2,073	2,577	2,614
Other	1,804	1,839	1,716
Mining and quarrying	146	163	144
Manufacturing	11,576	13,387 ^{1/}	15,616
Electricity, gas and water	1,338	2,598	2,739
Construction	3,003	3,436	4,552
Wholesale & retail trade & restaurants & hotels	5,353	5,787	6,154
Transport, storage and communication	6,886	6,809	7,814
Financing, insurance, real estate & business services	1,955	2,155 ^{1/}	2,295
Community, social and personal services:	37,576	38,177	38,878
Governments: (a) Central	29,006	29,412	29,868
(b) Local ^{2/}	3,371	3,278	3,410
Other	5,199	5,487	5,600
Total (excluding relief/development workers)	129,757	131,431	140,255
Relief/development workers	17,764	17,852	16,386
(a) Government	11,561	11,629	10,765
(b) Development Works Corporation	6,203	6,223	5,621
GRAND TOTAL: (including relief/development workers)	147,521	149,283	156,641

^{1/} Revised figures.

^{2/} Municipalities and district councils.

Table 63 - Employment^{1/} by sex and age group

Age group	September 1972		March 1973		September 1973				
	Male	Female	Both sexes	Male	Female	Both sexes	Male	Female	Both sexes
18 years of age and over (i.e. adults)	97,370	27,288	124,658	98,507	28,052	126,559	104,274	30,032	134,306
Under 18 years of age (i.e. young persons)	4,042	1,057	5,099	3,936	936	4,872	4,459	1,490	5,949
Total (excluding relief/ development workers)	101,412	28,345	129,757	102,443	28,988	131,431	108,733	31,522	140,255
Relief/development workers	17,311	453	17,764	17,400	452	17,852	15,924	462	16,386
GRAND TOTAL	118,723	28,798	147,521	119,843	29,440	149,283	124,657	31,984	156,641

^{1/} in large establishments - see introduction on page 56

Table 64 - Employment ^{1/} in specified sectors: sugar industry

Source of employment	Size class (arpents)	Total no. of persons employed on the last Thursday of:		
		September 1972	March 1973	September 1973
Sugar cane planters (including metayers)	25 -	2,312	1,689	1,748
	50 -	905	553	678
	75 -	514	557	496
	100 -	5,183	5,001	5,392
Total planters		8,914	7,800	8,314
Millers' estates and annexes (including factories)		45,096	42,161	45,793
Total		54,010	49,961	54,107

^{1/} in large establishments - see introduction on page 56

Note: Employment figures for millers' estates include workers in field, factory, garage and workshop.

Table 65 - Employment ^{2/} in specified sectors: government services

Source of employment	Total no. of persons employed on the last Thursday of:		
	September 1972	March 1973	September 1973
Central government ^{3/}	29,006	29,412	29,868
Local government	3,371	3,278	3,410
Relief/development workers ^{4/}	11,561	11,629	10,765
Total	43,938	44,319	44,043

^{2/} in large establishments - see introduction on page 56

^{3/} includes employees of district councils.

^{4/} excludes relief/development workers employed by the Development Works Corporation.

Table 66 - Employment^{1/} in specified sectors: manufacturing industries

Industrial group	Total no. of persons employed on last Thursday of:		
	September 1972	March 1973	September 1973
Food ^{2/}	1,254	1,528	1,571
Beverages and tobacco	1,499	1,559	1,557
Textile (including aloe fibre)	698	626	646
Wearing apparel	2,634	3,432	4,472
Wood and furniture	571	667	835
Printing and publishing	784	849	962
Rubber and leather products	205	202	395
Chemical products	482	473	487
Non-metallic mineral products	638	755	846
Metal products	588	711	764
Repairs of machinery (except electrical)	599	515	517
Repairs of electrical machinery	161	475	837
Transport equipment ^{3/}	752	397	938
Miscellaneous manufacturing industries	711	698	789
Total	11,576	13,387	15,616

^{1/} in large establishments - see introduction on page 56

^{2/} excluding employees in sugar and tea factories, who have been included with plantation workers in agriculture.

^{3/} excludes repairs of motor vehicles, which is now included in group "Community, social and personal services".

Table 67 - Employment^{1/} and salaries or wages by industries, September 1973

Industrial group	Number of employees on monthly rates of pay	Salaries for the month of September (Rs)	Number of employees on daily rates of pay	Wages for the last Thursday of September (Rs)
<u>Agriculture, hunting, forestry & fishing</u>				
Sugar <u>2/</u>	<u>8,862</u>	<u>4,094,378</u>	<u>53,201</u>	<u>438,849</u>
Tobacco	8,359	3,872,916	45,748	402,412
Tea <u>2/</u>	15	4,474	1,007	4,935
Tea Development Authority	115	75,701	3,511	16,949
Fishing	103	49,477	2,511	12,021
Other	38	12,054	234	1,275
	232	79,756	190	1,257
<u>Mining and quarrying</u>	<u>14</u>	<u>6,000</u>	<u>130</u>	<u>564</u>
Salt	14	6,000	130	564
<u>Manufacturing</u>	<u>3,681</u>	<u>1,650,232</u>	<u>11,935</u>	<u>71,972</u>
Food:				
Bread	53	12,504	400	3,328
Biscuits and confectionery	31	9,044	236	912
Other	431	180,377	420	2,249
Beverages and tobacco:				
Distilleries	58	17,540	61	457
Wine and beer	187	87,207	298	1,514
Soft drinks	292	104,785	169	969
Compounding of spirits and cigarette manufacture	161	152,504	331	3,119

^{1/} in large establishments - see introduction on page 56

^{2/} including factories

1/ Table 67 - Employment and salaries or wages by industries, September 1973 (cont'd)

Industrial group	Number of employees on monthly rates of pay	Salaries for the month of September (Rs)	Number of employees on daily rates of pay	Wages for the last Thursday of September (Rs)
<u>Manufacturing (cont'd)</u>				
Textiles:				
Alce fibre and sack factories	35	18,837	611	3,558
Wearing apparel:				
Footwear	93	41,363	372	2,677
Tailoring and shirtmaking	570	205,213	3,437	11,446
Wood and furniture	100	46,421	735	6,971
Printing and publishing	495	172,211	467	3,997
Rubber and leather products	114	32,395	281	1,013
Miscellaneous chemical products	198	85,360	289	1,530
Non-metallic mineral products:				
Stone and concrete	67	34,001	508	4,685
Other	44	20,678	227	1,713
Metal products	93	41,105	671	4,757
Repairs of machinery (except electrical)	85	63,045	432	3,484
Repairs of electrical machinery	142	80,802	695	3,669

Table 67 - Employment^{1/} and salaries or wages by industries, September 1973 (cont'd)

Industrial group	Number of employees on monthly rates of pay	Salaries for the month of September (Rs)	Number of employees on daily rates of pay	Wages for the last Thursday of September (Rs)
<u>Manufacturing (cont'd)</u>				
Transport equipment:				
Building of transport equipment	189	127,529	749	7,610
Miscellaneous manufacturing industries	243	117,313	546	2,314
<u>Electricity, gas and water</u>	<u>1,533</u>	<u>923,092</u>	<u>1,206</u>	<u>6,590</u>
<u>Construction</u>	<u>228</u>	<u>178,845</u>	<u>4,324</u>	<u>42,309</u>
<u>Wholesale and retail trade and restaurants and hotels</u>	<u>5,072</u>	<u>2,589,968</u>	<u>1,082</u>	<u>6,652</u>
Wholesale and retail trade	5,436	2,159,473	503	3,366
Restaurants	361	85,367	184	1,128
Hotels	1,275	345,128	395	2,158

^{1/} in large establishments - see introduction on page 56

Table 67 - Employment^{1/} and salaries or wages by industries, September 1973 (Cont'd)

Industrial group	Number of employees on monthly rates of pay	Salaries for the month of September (Rs)	Number of employees on daily rates of pay	Wages for the last Thursday of September (Rs)
<u>Transport, storage and communication</u>				
Road transport:				
Buses	2,261	723,615	1,338	10,639
Other	339	126,500	291	2,586
Docks and stevedoring	507	266,255	2,602	49,436
Other	462	327,198	14	150
<u>Financing, insurance, real estate and business services</u>	2,242	1,757,555	53	350
Banks and other financial institutions	1,198	998,143	11	71
Insurance	456	352,081	22	149
Business services	588	407,331	20	130
<u>Community, social and personal services</u>	31,620	16,682,019	7,258	56,983
Government services: 2/				
(a) Central	25,081	13,847,084	4,787	38,408
(b) Local	1,867	808,292	1,543	10,549
Private education services	2,690	1,131,780	130	887
Private health services	216	48,920	41	227
Repairs of motor vehicles	224	91,442	511	4,824
Other services	1,542	754,501	246	2,088
GRAND TOTAL	56,821	29,325,657	83,434	687,080

^{1/}in large establishments - see introduction on page 56

^{2/}excluding 16,386 development workers

Table 68 - Indicators of unemployment

Month	Registered unemployed ^{1/}						Relief/development workers ^{2/}					
	1969	1970	1971	1972	1973	1969	1970	1971	1972	1973		
January	13,082	17,113	27,810	33,776	31,463	15,727	14,505	17,743	14,222	11,585		
February	14,606	17,328	27,770	34,718	31,636	15,650	14,611	17,716	12,890	11,686		
March	14,846	18,519	30,354	34,589	31,543	15,389	14,427	17,672	12,749	11,608		
April	15,293	20,656	30,030	39,133	29,894	15,338	14,526	17,520	12,636	11,579		
May	15,297	21,584	29,696	39,328	29,793	15,415	14,955	17,451	12,612	11,538		
June	15,351	21,838	31,277	39,273	28,716	15,210	15,807	17,510	12,592	11,360		
July	14,432	22,189	34,502	38,074	27,114	14,793	15,396	17,355	12,389	10,865		
August	13,041	19,986	32,034	34,408	25,408	13,847	16,118	16,998	12,420	10,792		
September	13,274	19,754	31,882	33,101	24,985	13,674	16,094	16,879	12,259	10,701		
October	13,154	22,418	31,083	30,207	23,057	13,534	17,296	16,747	12,067	10,676		
November	14,238	25,197	30,858	28,582	22,302	13,706	17,515	16,596	12,031	10,657		
December	14,794	25,328	30,632	28,367	20,691	14,450	17,768	14,207	12,285	10,872		

^{1/} These figures exclude persons already in employment but seeking a change in job.

^{2/} Including gangmen, supervisors, pay clerks, etc.

Table 69 - Daily wage rates in certain industries (October inquiry ^{1/})

Industry	Occupation	Rupees			
		Lowest		Highest	
		1972	1973	1972	1973
1. Manufacture of bread ^{2/}	Brigadiers	7.56 ^{3/}	7.56	7.56 ^{3/}	7.56
2. Publishing & printing	Pressman	8.25	9.24	12.15	12.47
" " "	Compositors by hand	6.65	6.78	12.75	12.83
3. Manufacture of machinery	Fitters	6.00	7.20	15.20	19.20
" " "	Pattern makers	7.25	8.72	11.20	15.30
4. Repair of motor vehicles	Mechanics	5.00	6.00	13.00	14.40
5. Construction	Carpenters	6.60	8.31	10.00	10.71
"	Masons	6.60	8.31	8.57 ^{3/}	10.71
6. Electricity	Linesmen	9.90	15.54	14.35	26.32
"	Labourers	7.30	9.54	8.05	13.23
7. Transport (bus companies ^{4/})	Drivers	9.60	13.41	9.60	13.41
" "	Conductors	8.25	11.52	8.25	11.52
8. Municipal services	Labourers, unskilled	5.90	7.69	6.50	10.19

^{1/} Data are collected in October of each year from a sample of large establishment.

The normal hours of work are 9 per day for (6) and 8 for all others.

The normal hours of work are 48 per week for (1) and 45 for all others.

^{2/} Non-mechanical Bakeries

^{3/} Revised

^{4/} The basic rates of pay have been revised as follows:

For the first four hours on any normal working day (a) Drivers: Rs 6.33 in 1972; Rs 7.60 in 1973 (b) Conductors: Rs 5.46 in 1972; Rs 6.55 in 1973

For every subsequent hour not exceeding four (a) Drivers: Rs 1.38 in 1972; Rs 1.66 in 1973 (b) Conductors: Rs 1.18 in 1972; Rs 1.42 in 1973

A normal working week shall be of 45 hours and shall be completed in 6 days.

Table 70 - Daily wage rates of manual workers employed by the central government as at 31st December

Rupees

Occupation	Lowest		Highest	
	1972	1973	1972	1973
Pressman	9.50	12.50	10.40	21.15
Compositor	9.50	12.50	10.40	21.15
Fitters (grade I)	9.50	12.50	10.40	21.15
Pattern Makers (grade I)	9.50	11.50	10.40	19.20
Mechanics (grade I)	9.50	12.50	10.40	21.15
Carpenters (grade I)	9.50	12.50	10.40	21.15
Masons (grade I)	9.50	10.80	10.40	17.30
Drivers (grade I)	9.50	10.80	10.40	17.70
Labourers (specialised)	6.30	7.70	6.70	10.20
Labourers (unskilled)	5.60	7.10	6.05	9.60

Table 71 - Employment and wages of certain categories of employees on sugar millers' estates (September inquiry) ^{1/}

Category	Grade	1972		1973			
		Number employed	Monthly wages		Number employed	Monthly wages	
			Lowest	Highest		Lowest	Highest
Boiler makers & sheet metal workers	I	27	Rs 344.95	Rs 494.00	31	Rs 520.00	Rs 600.00
" " "	II	28	277.20	302.65	30	450.00	466.70
Pan boilers	Chief	22	437.35	510.00	23	690.00	760.00
" "	I	57	344.95	415.35	58	520.00	594.00
" "	II	58	277.20	332.65	50	450.00	503.10
Boiler Attendants	Chief	33	221.75	374.15	39	315.00	520.00
" "	Asst.	23	197.10	221.80	17	275.00	295.10
Fitters	I	106	394.25	524.40	109	520.00	650.25
" "	II	86	332.65	368.50	98	450.00	480.20
" "	III	73	258.70	307.85	83	360.00	400.00
Drivers of lorries, buses, vans, cars and wheel tractors used for haulage works only	I	650	252.55	313.35	638	355.00	432.00
	II	120	221.75	240.25	168	315.00	345.00
	III	17	197.10	215.80	23	285.00	310.20
All other drivers	I	74	240.25	362.20	32	340.00	340.10
" "	II	65	215.60	277.20	58	310.00	310.20
" "	III	19	184.80	202.85	19	275.00	275.10
Factory operators	I	145	221.75	269.50	143	305.00	360.00
" "	II	323	197.10	250.90	321	275.00	295.10
" "	III	371	172.50	201.00	352	245.00	270.10

^{1/} Data are collected in September of each year from all sugar millers.

Table 72 - Employment and earnings on sugar millers' estates

Month	WORKERS ON MONTHLY RATES OF PAY						WORKERS ON DAILY RATES OF PAY					
	Man-days actually worked (000)			Earnings (Rs mn)			Man-days actually worked (000)			Earnings (Rs mn)		
	1971	1972	1973	1971	1972	1973	1971	1972	1973	1971	1972	1973
January	112	114	132	1.4	1.6	1.8	493	481	594	2.9	3.2	4.8
February	142	156	149	1.4	1.6	1.8	654	703	700	3.9	4.5	5.1
March	183	163	140	1.4	1.6	1.8	879	785	653	4.8	5.3	5.0
April	164	159	139	1.4	1.6	1.8	739	726	651	3.9	4.3	5.3
May	156	186	179	1.4	1.6	1.9	708	858	886	3.8	5.1	6.6
June	189	157	160	1.4	1.6	1.9	871	695	807	4.5	4.2	5.7
July	165	167	176	1.5	1.9	2.2	790	846	967	4.9	6.2	8.2
August	169	188	181	1.7	2.1	2.3	875	996	1,020	6.3	8.5	9.4
September	190	155	153	1.8	2.2	2.2	1,051	815	778	7.3	8.5	7.2
October	163	170	180	1.7	2.3	3.4	850	855	965	5.6	7.5	11.0
November	152	167	153	1.9	2.2	4.2	739	877	789	5.8	7.7	9.9
December	180	151	167	5.1	5.9	7.4	976	777	640	10.0	10.9	15.7
Total	1,965	1,933	1,909	22.1	26.2	32.7	9,625	9,414	9,650	63.7	75.9	93.9

Note: (i) The table excludes the "Etat Major" staff.

(ii) Earnings and the number of "man-days actually worked" refer to 4 or 5 weekly periods ending on the pay-day of each month; the figures are therefore not strictly comparable from month to month.

(iii) Earnings also include overtime, holiday and leave pay, housing allowance and end-of-year bonus.

Table 73 - Job vacancies ^{1/} in large establishments ^{2/} as at 27.9.1973

Industry	Title of job	No. of vacancies
<u>Manufacture of bakery products</u>		<u>16</u>
	Coupeur	3
	Mixer	3
	Helper	7
	Cook	3
<u>Cigarette manufacture</u>		<u>3</u>
	Electrician (Assistant)	1
	Fitter	1
	Carpenter	1
<u>Wearing apparel</u>		<u>518</u>
	Machinist - sewing machine	60
	Operator : machine	4
	Apprentice : sewer (female)	250
	packer	30
	ironing	20
	cutter and trimmer	150
	Unskilled worker	4
<u>Footwear</u>		<u>5</u>
	Shoemaker	5
<u>Furniture</u>		<u>12</u>
	Cabinet maker	6
	Machinist	4
	Turner	2
<u>Stone products</u>		<u>36</u>
	Driver : lorry	4
	tractor loader	1
	Helper : lorry	10
	Carpenter	2
	Labourer	5
	Mason	2
	Mechanics : apprentice	3
	assistant	5
	stone crusher	2
	motor vehicle	1
	stone cutter	1
<u>Metal products</u>		<u>20</u>
	Tongman	20

^{1/} Excluding agriculture, central and local government.

^{2/} Establishments employing 10 persons or more.

Table 73 - Job vacancies^{1/} in large establishments^{2/} as at 27.9.73 (cont'd)

Industry	Title of job	No. of vacancies
<u>Manufacture and repairs of electrical machinery</u>		<u>256</u>
	Operator - production	200
	Capacitor - assembler	50
	Fitter - electrical	1
	Fitter - mechanical	2
	Production supervisor	1
	Cleaner	2
<u>Miscellaneous manufacturing industries</u>		<u>106</u>
	Supervisor : packing plant	1
	Unskilled worker	105
<u>Construction</u>		<u>120</u>
	Bricklayer	3
	Carpenter	52
	Mason	50
	Painter	10
	Plasterer	5
<u>Wholesale and retail trade</u>		<u>5</u>
	Salesman	2
	Clerk : account	2
	shipping	1
<u>Restaurant</u>		<u>8</u>
	Waiter	2
	Dishwasher	6
<u>Hotel</u>		<u>7</u>
	Barman	1
	Cook : senior	1
	assistant	2
	Porter - hall	1
	Receptionist/telephonist	1
	Telephonist	1
<u>Bus</u>		<u>2</u>
	Mechanics grade II	2
<u>Lorry transport</u>		<u>6</u>
	Helper	6

^{1/}Excluding agriculture, central and local government.

^{2/}Establishments employing 10 persons or more.

Table 73 - Job vacancies^{1/} in large establishments^{2/} as at 27.9.73 (cont'd)

Industry	Title of job	No. of vacancies
<u>Banking</u>	Assistant inspector of bank	4
	Porter	1
<u>Private club</u>	Croupier	3
	Cleaner	18
<u>Private education services</u>	Principal	16
	Teacher : senior	2
	art	32
	woodwork	1
	general	1
	Usher	23
	Liaison officer	1
	Clerical officer	1
	Carpenter	1
	Mason	1
<u>Repairs of motor vehicles</u>	Mechanics - diesel	7
	Tolier	2
	Electrician	2
	Welder assistant	1
All industries		1,181

^{1/}Excluding agriculture, central and local government.

^{2/}Establishments employing 10 persons or more.

VII. SOCIAL ASSISTANCE

Table 74- Social benefits

	1969	1970	1971	1972	1973
<u>Outdoor relief</u>					
Total number of cases relieved	41,549	41,516	40,444	33,757	26,791
Total relief payments (Rs mn.)	7.8	8.4	8.1	8.3	9.4
<u>Indoor relief</u>					
Number of persons in infirmaries at end of year	756	749	728	749	702
Number of persons in orphanages at end of year	185	199	229	175	219
Total capitation grants paid (Rs mn.)	0.4	0.4	0.4	0.4	0.5
<u>Old age pension</u>					
Number of beneficiaries at end of year	42,670	43,761	46,625	47,482	49,038
Total amount paid (Rs mn.)	11.4	11.8	12.4	14.5	16.0
<u>Family allowance</u>					
Number of beneficiaries at end of year	42,116	43,755	43,083	40,077	37,913
Total amount paid (Rs mn.)	5.7	5.5	5.7	6.5	6.6

IX - EDUCATION

Table 75 - Primary education: number of schools, pupils and teachers

Mauritius

Period	Total number of schools ^{2/}	E N R O L M E N T			Number of teachers	Pupil/teacher ratio
		Government	Aided	Non-aided ^{1/}		
October 1969	224	101,944	35,499	5,637	4,300	33
" 1970	226	105,309	36,784	4,766	4,622	32
" 1971	228	107,200	37,269	4,213	4,708	32
" 1972	228	109,481	37,198	4,937	4,928	31
" 1973	228	109,132	36,677	4,847	5,142	29
<u>Rodrigues</u>						
October 1969	7	958	2,452	...	105	32
" 1970	7	1,005	2,538	...	109	35
" 1971	7	1,069	2,580	...	107	34
" 1972	7	1,117	2,893	...	124	32
" 1973	7	1,084	3,090	...	122	34

^{1/} Including pupils of the primary sections of (1)preprimary schools; (2) aided and non-aided secondary schools.

^{2/} This total includes only the number of government and aided primary schools.

The number of preprimary schools having primary sections are not included.

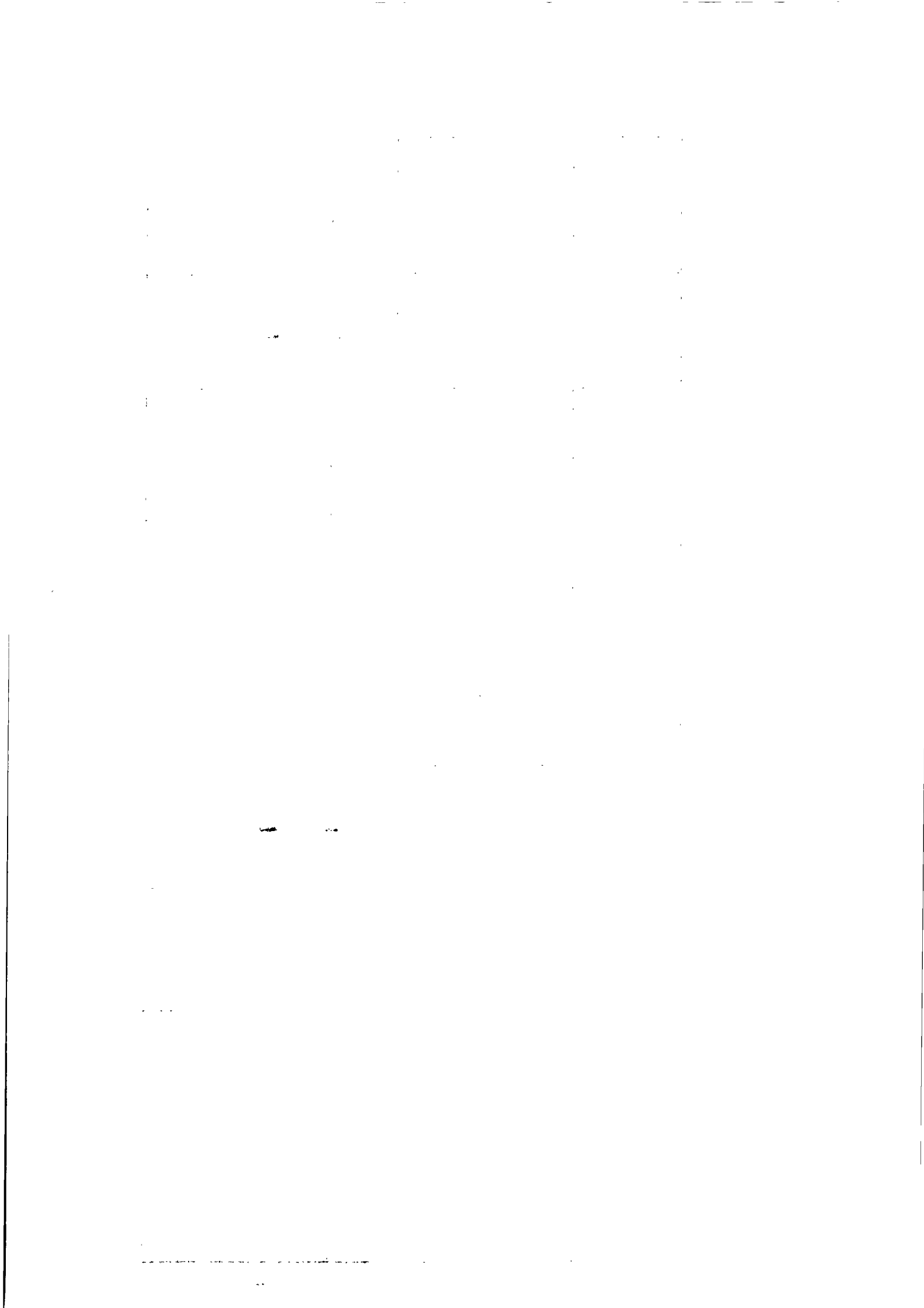


Table 76 - Secondary education: number of schools, pupils and teachers

Mauritius

Period	Total number of schools	E N R O L M E N T				Total	Number of teachers	Pupil/teacher ratio
		Government	Aided	Non-aided	Total			
October 1969	139	2,616	7,003	32,605	42,224	1,715	25	
" 1970	137	2,679	6,979	34,049	43,707	1,736	25	
" 1971	137	2,839	7,213	36,845	46,897	1,765 ^{1/}	27	
" 1972	128	2,937	7,494	41,599	52,030	1,733	30	
" 1973	124	2,965	7,819	44,835	55,619	1,859	30	

Rodrigues

October 1969	2	-	-	220	220	11	20
" 1970	2	-	-	262	262	11	24
" 1971	2	-	-	301	301	13	23
" 1972	2	-	-	300 ^{2/}	300 ^{2/}	13	23
" 1973	2	-	-	274 ^{2/}	274 ^{2/}	11	25

^{1/} As from the year 1971 the number of teachers in the secondary schools has been expressed in terms of full time equivalent, taking 30 periods per week as full time teaching.
 For the years previous to 1971, the number of teachers expressed is the exact number of persons doing teaching work.

^{2/} Provisional figures.

Table 77 - Enrolment by grade and sex in primary schools : Mauritius

GRADE	1969			1970			1971			1972			1973		
	Male	Female	Both sexes	Male	Female	Both sexes	Male	Female	Both sexes	Male	Female	Both sexes	Male	Female	Both sexes
Std. I	12,328	12,428	25,256	12,463	12,182	24,645	11,853	11,408	23,261	12,118	11,802	23,920	10,822	10,359	21,181
Std. II	11,809	11,404	23,213	12,650	12,309	24,959	12,408	12,176	24,584	11,842	11,471	23,313	11,731	11,460	23,191
Std. III	11,868	11,181	23,049	11,529	11,088	22,617	12,620	12,256	24,876	12,322	12,082	24,404	11,757	11,441	23,198
Std. IV	10,466	9,662	20,128	11,620	10,967	22,587	11,442	10,940	22,382	12,480	12,120	24,600	12,162	11,885	24,047
Std. V	9,860	9,370	19,230	10,156	9,373	19,529	11,433	10,734	22,167	11,159	10,682	21,841	12,235	11,792	24,027
Std. VI	17,195	15,009	32,204	17,173	15,349	32,522	16,478	14,934	31,412	17,480	16,056	33,536	18,105	16,907	35,012
TOTAL	74,026	69,054	143,080	75,591	71,268	146,859	76,234	72,448	148,682	77,401	74,213	151,614	76,812	73,844	150,656

Table 78 - Enrollment by grade and sex in primary schools : Rodrigues

GRADE	1969			1970			1971			1972			1973		
	Male	Female	Both sexes	Male	Female	Both sexes	Male	Female	Both sexes	Male	Female	Both sexes	Male	Female	Both sexes
Std. I	310	315	625	305	345	740	350	370	720	425	407	832	398	413	811
Std. II	305	334	639	318	322	640	406	347	753	348	364	712	431	411	842
Std. III	329	313	642	288	317	605	305	312	617	406	346	752	340	361	701
Std. IV	257	235	472	293	288	581	262	288	550	280	295	575	365	320	685
Std. V	206	223	429	198	205	403	250	251	501	237	270	507	242	271	513
Std. VI	315	288	603	277	297	574	246	262	508	315	317	632	307	317	624
TOTAL	1,702	1,708	3,410	1,769	1,774	3,543	1,819	1,830	3,649	2,011	1,999	4,010	2,081	2,093	4,174

Table 79 - Enrolment by grade and sex in secondary schools : Mauritius

GRADE	1969			1970			1971			1972			1973		
	Male	Female	Both sexes	Male	Female	Both sexes	Male	Female	Both sexes	Male	Female	Both sexes	Male	Female	Both sexes
Form I	5,522	4,104	9,626	5,407	4,102	9,509	6,455	5,219	11,664	6,912	5,531	12,443	7,053	5,874	12,927
Form II	4,622	3,289	7,911	5,042	3,536	8,578	4,897	3,317	8,214	6,037	4,585	10,622	6,209	4,991	11,200
Form III	4,180	2,827	7,007	4,159	3,032	7,191	4,608	3,342	7,950	4,721	3,488	8,209	5,611	4,210	9,821
Form IV	4,257	2,810	7,067	4,413	2,955	7,368	4,619	3,225	7,844	5,446	3,802	9,248	5,376	4,067	9,443
Form V	5,836	2,894	8,730	5,810	3,193	9,003	5,307	3,193	8,500	5,639	3,336	8,975	5,939	3,741	9,680
Form VI	1,313	570	1,883	1,453	605	2,058	1,579	646	2,225	1,796	737	2,533	1,741	807	2,548
TOTAL	25,730	16,494	42,224	26,284	17,423	43,707	27,455	19,442	46,897	30,551	21,479	52,030	31,929	23,690	55,619

Table 80 - Enrolment by grade and sex in secondary schools : Rodrigues

GRADE	1969			1970			1971			1972			1973 ⁺		
	Male	Female	Both sexes	Male	Female	Both sexes	Male	Female	Both sexes	Male	Female	Both sexes	Male	Female	Both sexes
Form I	27	28	55	41	28	69	50	38	88	40	32	72	35	25	60
Form II	25	23	48	27	28	55	36	30	66	44	36	80	27	31	58
Form III	27	14	41	22	20	42	20	25	45	23	28	51	54	31	65
Form IV	19	31	50	39	30	69	30	31	61	29	23	52	23	23	46
Form V	13	13	26	14	13	27	23	18	41	22	23	45	26	19	45
Form VI	-	-	-	-	-	-	-	-	-	-	-	-	-	-	-
TOTAL	111	109	220	143	119	262	159	142	301	158	142	300	145	129	274

+ Provisional

Table 81 - University of Mauritius: students enrolled

	School of Administration		School of Agriculture		School of Industrial Technology		Total	
	1972-73	1973-74 ^{1/}	1972-73	1973-74 ^{1/}	1972-73	1973-74 ^{1/}	1972-73	1973-74 ^{1/}
Degree courses	-	-	25	27	4	-	29	27
Diploma courses	149	128	62	69	118	144	329	341
Certificate and other courses	756 ^{2/}	397 ^{3/}	32	30	131	146	919	573

^{1/} subject to new admissions in January-February 1974

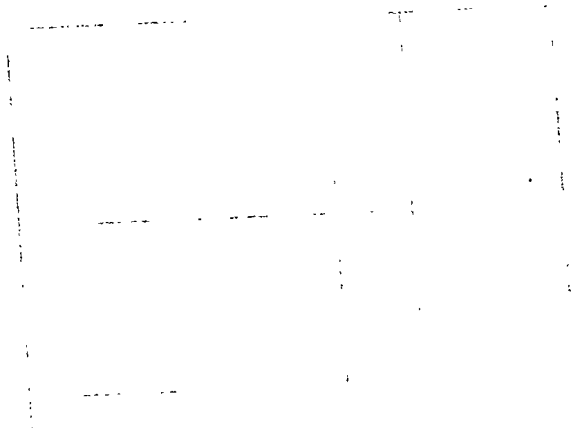
^{2/} including 493 students for non-award courses

^{3/} including 88 students for non-award courses

Table 82 - University of Mauritius: output

	School of Administration		School of Agriculture		School of Industrial Technology		Total	
	1972-73	1973-74 ^{1/}	1972-73	1973-74 ^{1/}	1972-73	1973-74 ^{1/}	1972-73	1973-74 ^{1/}
	Degree courses	-	-	-	9	-	3	-
Diploma courses	26	53	23	19	23	25	72	97
Certificate and other courses	70	50	16	22	38	41	124	113

^{1/} subject to new admissions in January-February 1974



X - TRANSPORT AND COMMUNICATION

Table 83 - Motor vehicles registered

Period	Grand total	Private vehicles				Commercial vehicles						Government owned vehicles
		Total	Cars	Motor cycles	Auto cycles	Total	Taxi-cars	Lorries	Vans	Buses	Other	
1969	24,736	16,161	11,193	2,744	2,224	7,473	1,351	2,461	1,654	693	1,339	1,097
1970	25,389	16,603	11,220	2,914	2,469	7,588	1,326	2,439	1,732	722	1,369	1,198
1971	26,766	17,463	11,657	3,115	2,691	7,951	1,357	2,475	1,915	770	1,436	1,352
1972	28,538	18,605	12,079	3,265	3,261	8,399	1,397	2,452	2,197	831	1,522	1,534
1973	32,345	21,875	13,446	3,880	4,549	9,375	1,392	2,706	2,678	951	1,648	1,695
1972 : 1st Qr.	27,215	17,780	11,808	3,184	2,788	8,071	1,369	2,471	1,985	783	1,463	1,364
2nd Qr.	27,206	17,737	11,673	3,107	2,957	8,020	1,361	2,385	2,011	799	1,464	1,449
3rd Qr.	27,773	18,053	11,792	3,187	3,079	8,231	1,399	2,435	2,088	807	1,502	1,484
4th Qr.	28,538	18,605	12,079	3,265	3,261	8,399	1,397	2,452	2,197	831	1,522	1,534
1973: 1st Qr.	29,483	19,277	12,345	3,382	3,550	8,557	1,393	2,492	2,284	848	1,540	1,649
2nd Qr.	30,651	20,161	12,737	3,549	3,875	8,824	1,394	2,552	2,412	884	1,582	1,666
3rd Qr.	31,716	20,896	13,070	3,683	4,143	9,135	1,389	2,649	2,545	917	1,635	1,685
4th Qr.	32,945	21,875	13,446	3,880	4,549	9,375	1,392	2,706	2,678	951	1,648	1,695

Note: The above table has been completely revised in the light of amendments to the Road Traffic Ordinance, 1962.

Figures in the new series are consequently not comparable with those published previously.

Table 84 - New Registration of Motor Vehicles ^{1/} 1972/73

Period	End of period														
	Grand total	Cars	Trorries	Buses	Motor cycles and auto cycles	D.P.V. ^{2/} and Vans	Other	Period	Grand total	Cars	Trorries	Buses	Motor cycles and auto cycles	D.P.V. ^{2/} and Vans	Other
1972 : January	150	61	1	1	56	25	6	1973 : January	198	64	8	-	108	15	3
February	180	71	-	5	55	35	14	February	367	128	4	7	190	36	2
March	162	63	1	6	53	25	14	March	320	110	9	5	144	39	13
April	202	66	4	2	96	20	14	April	348	154	3	8	137	41	5
May	166	54	2	7	74	22	7	May	349	101	7	14	174	41	12
June	344	111	8	11	178	27	9	June	347	93	22	16	163	32	16
July	181	59	14	1	60	25	22	July	302	74	13	8	141	41	25
August	199	82	2	4	72	33	6	August	333	117	13	14	139	43	7
September	130	40	8	3	59	18	2	September	288	101	11	14	119	33	10
October	195	78	1	5	72	39	-	October	355	96	13	9	202	30	5
November	227	85	6	8	90	32	6	November	340	118	7	10	154	47	4
December	303	108	7	11	108	39	30	December	416	111	3	14	240	44	4

^{1/} Including Government Vehicles

^{2/} Dual Purpose Vehicles

Table 85 - Bus operational statistics

	Unit	1969	1970	1971	1972	1973
Total number of buses (at 30th June)	Number	651	679	770	796	884
Total vehicle - journeys	Thousand	2,340	2,559	2,513	2,900	3,290
Average vehicle - journeys per day	"	6	7	7	8	9
Total vehicle-miles	"	24,426	26,665	26,395	34,200	33,584
Average vehicle-miles per day	"	67	73	72	93*	92
Total number of passengers carried during year	"	74,475	81,238	82,026	114,070	122,233
Average number of passengers carried per day	"	204	223	225	312*	335
Total gross receipts	000 Rs	19,820	21,542	22,454	26,540	36,613
Average gross receipts per day	"	54	59	62	72	100

* Amended

Table 86 - Road traffic accidents and casualties

	1969	1970	1971	1972	1973
<u>Road traffic accidents</u>					
Number	<u>2,035</u>	<u>2,142</u>	<u>2,075</u>	<u>2,547</u>	<u>2,866</u>
Number per 100,000 of population	255	264	252	306	340
<u>Motor vehicle accidents</u>					
Number	<u>1,899</u>	<u>2,009</u>	<u>1,960</u>	<u>2,457</u>	<u>2,689</u>
Number per 100,000 of population	238	248	238	295	319
Number per 1,000 registered motor vehicles	78	80	75	90	88
<u>Total casualties</u>	<u>1,934</u>	<u>2,174</u>	<u>2,100</u>	<u>2,259</u>	<u>2,327</u>
<u>Nature of casualty</u>					
Killed	78	117	90	115	139
Seriously injured	176	254	248	218	256
Slightly injured	1,680	1,803	1,762	1,926	1,932
<u>Casualties by class of road users</u>					
Pedestrians	805	882	921	912	898
Pedal cyclists	280	374	290	316	315
Passengers	555	569	547	596	663
Drivers or riders of motor vehicles	294	349	342	435	451

Table 87 - Sea-borne shipping

Period	Vessels entering		Vessels leaving		Goods	
	Number	Net registered tonnage Thousand m/tons	Number	Net registered tonnage Thousand m/tons	Unloaded Thousand m/tons	Loaded ^{1/} Thousand m/tons
1969	1,315	2,487	1,311	2,435	615	759
1970	1,110	2,478	1,121	2,472	535	726
1971	981	2,165	948	2,188	670	536
1972	918	2,015	931	2,206	718	798
1973	1,008	2,466	998	2,417	731	900
1972: 1st Qr.	237	423	248	645	226	195
2nd Qr.	205	457	202	475	130	67
3rd Qr.	234	542	232	512	179	291
4th Qr.	244	589	249	574	185	245
1973: 1st Qr.	228	562	219	545	157	89
2nd Qr.	234	537	244	560	174	58
3rd Qr.	257	608	253	520	165	322
4th Qr.	269	704	282	692	234	331

^{1/} excluding tankers

Table 88 - Civil aviation

Period	Number of movements		Freight	
	In-lands	Overseas	Unloaded m/tons	Loaded (m/tons)
1969	298	598	277.3	235.3
1970	888	323	402.0	336.4
1971	1,167	1,167	511.2	670.9
1972	1,324	1,724	582.0	1,519.0
1973	1,592	1,702	952.3	1,298.4
1972 : 1st Qr.	293	293	154.4	129.1
2nd Qr.	262	302	145.9	197.3
3rd Qr.	368	368	148.2	305.3
4th Qr.	361	361	137.6	887.3
1973 : 1st Qr.	387	335	192.5	270.7
2nd Qr.	381	332	185.3	316.5
3rd Qr.	412	415	187.2	352.5
4th Qr.	410	410	391.6	358.7

Note: In this table (1) are included only movements of commercial aircraft;
 (2) each touch down or take off is counted as a separate movement;
 (3) freight carried by planes other than commercial is included.

Table 89 - Telephone service

End of period

	Unit	1969	1970	1971	1972	1973
Main exchange (including rural automatic exchange)	Number	23	24	25	26	26
Capacity (in terms of line)	"	13,170	13,420	14,870	15,220	16,670
Exchange line connections	"	10,961	11,958	12,761	13,478	14,569
Individual installations	"	16,793	18,038	19,113	20,427	22,593
Call units registered (during period)	Thousand	17,858	19,583	21,673	24,636	26,520
Outstanding applications for telephone service	Number	992	566	898	1,799	2,736

Table 90 - Broadcasting services

End of period

	Unit	1969	1970	1971	1972	1973
<u>SOUND</u>						
Stations	Number	1	1	1	1	1
Transmitters	"	3	3	3	3	3
Aerial output: short wave	Kw.	10	10	10	10	10
medium wave	"	10	10	10	10	10
Weekly transmission time	Hour	116	116	116	116	116
New licences issued ^{1/} (during period)	Number	4,494 ^{3/}	2,102 ^{3/}	2,009 ^{3/}	1,903 ^{3/}	2,078
Radio sets licensed ^{2/}	"	81,224	83,716	83,778	84,633	84,218
<u>TELEVISION</u>						
Stations	Number	1	1	1	1	1
Transmitters	"	5	5	5	5	5
Aerial output (ERP)	Kw.	15	15	15	15	15
Weekly transmission time	Hour	45	57 ^{3/4}	57 ^{3/4}	59 ^{1/4}	58 ^{1/3}
New licences issued ^{1/} (during period)	Number	4,119	2,910	3,049	4,289	5,654
Television sets licensed	"	16,342	18,858	21,685	25,474	30,596
Omnibus licences issued (during period)	"	953	236	179	133	186

^{1/}including omnibus licences

^{2/}excluding scrapped sets

^{3/}revised

XI. LAND UTILIZATION

Table 91 - Total area ^{1/} classified by utilization

	<u>Acres</u>
	1972
<u>Agriculture</u>	261,900
Sugar cane	242,100
Tea	14,800
Tobacco, vegetable and other crops	5,000
<u>Forests, scrub areas, grasslands and grazing lands</u>	159,900
Forest plantations	16,740
Forest, natural	5,900
Savannah, grasslands, meadows, etc.	18,400
Scrub and other forest lands	118,860
<u>Reservoirs and ponds</u>	2,900
<u>Swamps and rocks</u>	3,500
<u>Roads (main thoroughfares)</u>	3,300
<u>Built-up areas</u>	29,300
Total island	460,800

^{1/} Based on the findings of the UNDP-FAO Land and Water Resources Survey team working on aerial photographs of the island taken at the end of 1965 and supplemented to some extent by land surveys.

Table 92 - Effective area under cultivation

	<u>Acres</u>				
	1969	1970	1971	1972	1973
Sugar cane	213,400	213,800	213,500	214,000	216,000
Tea	8,800	9,400	10,000	12,000	12,600
Tobacco	600	600	1,000	1,100	1,100

XII. LOCAL PRODUCTION

Table 93 - Agriculture: production of main crops, fish and meat

Commodity	Unit	1970	1971	1972	1973
<u>INDUSTRIAL CROPS</u>					
Sugar cane	Thousand m/ton	5,120	5,256	6,315	6,243
Tea (green leaf processed)	M/ton	16,029	19,837	23,543	20,365
Tobacco leaf <u>1/</u>	"	526	562	614	677
<u>VEGETABLES, PULSES & FRUITS</u>					
Beans and peas	"	455	513	497	440
Creepers <u>2/</u>	"	7,033	6,517	7,390	6,862
Eddoes	"	341	465	472	530
Egg plants (bringelles)	"	2,320	2,714	1,490	1,012
Ginger	"	760	984	1,000	1,161
Groundnuts	"	693	1,062	1,471	1,984
Maize	"	529	504	470	442
Manioc	"	249	252	248	433
Potatoes (Irish)	"	6,815	8,928	7,516	10,069
Rice	"	906	1,084	1,149	883
Sweet potatoes	"	211	254	213	179
Tomatoes	"	5,284	6,058	5,440	4,778
Mixed vegetables <u>3/</u>	"	6,804	7,845	6,491	6,799
Bananas	"	7,953	12,005	9,990	10,214
Pineapples	"	545	,815	415	673
<u>FISH, MEAT AND BY-PRODUCTS</u>					
Fish: Coastal fishing (controlled catch)	"	1,042	936	938	916
High seas	"	1,208	1,064	1,183	666
Meat <u>4/</u> : Beef	"	2,257	2,193	1,892	1,069
Goat	"	214	160	144	137
Mutton	"	92	56	65	35
Pork	"	561	629	760	762
Cattle hides and skins	Number	16,888	16,894	14,585	8,968

1/ Refers to crop year which normally extends from the beginning of April to the end of March.

2/ Include margoze, calabash, chouchou, cucumber, patolle, pipengaille, pumpkin, squash, voehm.

3/ Include beet, cabbage, carrot, cauliflower, chillies (long and small), garlic, leek, lettuce, onion, petsai, sweet pepper, ladies' finger (lalo)

4/ From local and imported livestock.

Table 94- Industry: production of specific commodities

Commodity	Unit	1969	1970	1971	1972	1973
Sugar	M/ton	668,553	576,214	621,087	686,366	718,464
Molasses	"	166,332	142,427	140,158	176,489	184,842
Tea (manufactured)	"	3,197	3,258	4,089	4,678	4,079
Aloe fibre	"	1,294	1,534	1,976	1,556	1,461
Alcohol @ 100 G.L.	H/litre	12,420	12,006	13,478	16,920	17,883
Colonial spirits(rum)	"	13,361	12,923	14,916	17,996	19,024
Denatured spirits:						
Power alcohol	"	3,138	2,863	2,923	3,431	2,933
Alcohol for heat- ing and lighting	"	1,934	2,329	2,445	2,471	2,767
Perfumed spirits	"	404	465	503	604	829
Vinegar	"	568	168	450	383	491
Beer and stout	"	36,799	44,036	53,793	66,831	72,483
Country liquor	"	33,362	33,903	43,215	50,449	52,873
Soft aerated beverages	"	92,000	98,800	110,900	137,300	214,000
Cigarettes	M/ton	586	590	634	674	755
Matches	Gross boxes	103,064	108,347	109,466	117,505	155,140
Lime	M/ton	6,000	6,000	6,000	6,000	6,500
Sacks ^{1/}	Thousand	2,338	2,403	2,599	1,761	1,251
Salt	M/ton	4,200	4,500	5,400
Electricity generated	Mn kwh	130	136	148	164	187

^{1/} manufactured by the Government Sack Factory.

Table 95 - Sugar industry: cane cultivation

Crop year	AREA UNDER CULTIVATION (Thousand arpents)		AREA HARVESTED (Thousand arpents)		CANE HARVESTED (Thousand m/tons)		AVERAGE YIELD (M/tons per arpent)		
	Millers	Planters	Millers	Planters	Millers	Planters	Millers	Planters	Total
1969	110	95	99	89	3,564	2,260	36,1	25,2	30,9
1970	113	92	101	89	3,181	1,939	31,5	21,7	26,9
1971	114	91	102	87	3,433	1,822	33,7	20,8	27,8
1972	115	90	103	87	3,903	2,412	38,0	27,6	33,2
1973	116	91	104	88	3,854	2,389	37,2	27,0	32,5

Table 96 - Sugar manufacture

Crop year	Number of factories operating	Commercial sugar recovered (% cane)	PRODUCTS OF MANUFACTURE (Thousand m/tons)			RESIDUES OF MANUFACTURE (Thousand m/tons)		Average price sugar ex-syndicate (Rs per m/ton)
			White sugar	Raw sugar	Total sugar	Molasses	Scums	
1969	22	11,48	23	646	669	166	194	445,27
1970	21	11,26	22	554	576	142	166	471,69
1971	21	11,82	34	587	621	140	169	522,64
1972	21	10,89	55	631	686	176	196	641,43
1973	21	11,48	56	662	718	185	200	738,00

1/ Provisional

*
Table 97 - Construction Statistics : New Buildings

Type of Building	1970		1971		1972		1973 ⁺	
	No. of permits issued	Floor area (Thousand sq. ft)	No. of permits issued	Floor area (Thousand sq. ft)	No. of permits issued	Floor area (Thousand sq. ft)	No. of permits issued	Floor area (Thousand sq. ft)
<u>Residential</u>	1,525	1,305	1,685	1,710	2,006	2,201	2,623	2,675
<u>Non-residential</u>	209	152	185	580	197	519	332	905
Agriculture, forestry, hunting & fishing	5	2	1	1	-	-	18	45
Manufacturing	40	143	36	259	29	225	64	591
Construction	5	11	-	-	1	3	3	22
Electricity, gas, water and sanitary services	-	-	2	16	1	1	6	6
Transportation, storage & communication	8	12	11	37	17	26	4	6
Wholesale and retail trade	93	126	79	100	56	113	147	204
Banking, insurance and real estate	1	5	1	2	3	5	3	15
Services	57	160	53	165	90	146	87	216
All buildings	1,734	1,767	1,868	2,290	2,203	2,720	2,955	3,578

* Include only buildings for which permits have been issued by the Ministry of Works & Municipalities
+ Provisional

Table 98 - Electricity^{1/} : production, consumption, sales, etc.

	Unit	1970	1971	1972	1973
Generating stations	Number	<u>8</u>	<u>9</u>	<u>9</u>	<u>9</u>
Hydro	"	6	7	7	7
Thermal	"	2	2	2	2
Plant - effective capacity	Kw	<u>43,090</u>	<u>52,090</u>	<u>50,590</u>	<u>56,390</u>
Hydro	"	15,090	25,090	25,090	24,890
Thermal	"	28,000	27,000	25,500	31,500
Energy generated	Million kwh	<u>113.7</u>	<u>123.6</u>	<u>140.9</u>	<u>163.1</u>
Hydro	"	50.9	50.3	68.1	74.0
Thermal	"	62.8	73.3	72.8	89.1
Energy purchased from sugar and other factories	"	22.3	24.7	23.4	23.7
Energy sold	"	109.1	120.5	135.2	153.2
Number of consumers on 31st December:	Number	<u>93,910</u>	<u>97,385</u>	<u>103,021</u>	<u>109,969</u>
Domestic	"	82,762	85,948	91,092	97,497
Commercial	"	9,520	9,736	10,044	10,356
Industrial	"	1,458	1,516	1,688	1,899
Special	"	170	185	197	217
Average selling price	Cents per kwh	21.6	21.1	21.0	20.7
Total revenue	Rs mn	24.8	26.8	29.7 ^{2/}	33.5
Total current expenditure	" "	22.7	25.2	26.9	33.8
Persons employed	Number	1,260	1,283	1,323	1,394

^{1/} Statistical data relating to the Central Electricity Board.

^{2/} Revised.

XIII. CLIMATE

Table 99 - Monthly temperatures, 1973

Period	VACOAS Centre - 1,394 ft. A.M.S.L. ^{1/}				PLAISANCE Coastal Region, South - 188 ft.A.M.S.L. ^{1/}			
	Maximum		Minimum		Maximum		Minimum	
	Mean	Departure from normal	Mean	Departure from normal	Mean	Departure from normal	Mean	Departure from normal
January	27.7	+ 0.6	20.3	+ 0.2	29.4	+ 0.4	23.3	+ 0.8
February	27.6	- 0.2	20.4	- 0.3	29.5	0.0	23.3	+ 0.6
March	28.1	+ 0.8	20.5	0.0	29.5	+ 0.5	23.2	+ 0.7
April	26.1	- 0.2	19.4	+ 0.1	27.9	0.0	21.6	+ 0.5
May	25.8	+ 1.7	17.9	+ 0.7	27.2	+ 1.1	20.3	+ 0.9
June	22.2	- 0.5	15.6	- 0.1	24.6	- 0.3	18.0	+ 0.1
July	22.1	+ 0.5	15.5	+ 0.3	24.1	+ 0.3	18.3	+ 0.8
August	21.1	0.0	15.1	+ 0.5	23.5	+ 0.1	17.9	+ 0.7
September	22.7	+ 0.4	15.2	0.0	24.5	+ 0.2	17.3	- 0.2
October	24.4	+ 0.8	16.4	+ 0.4	26.1	+ 0.5	18.6	+ 0.2
November	26.7	+ 1.2	17.7	+ 0.1	28.6	+ 1.3	19.7	- 0.2
December	27.2	+ 0.5	18.9	- 0.3	29.6	+ 1.0	21.0	- 0.5

^{1/} above mean sea level

Blank page with faint horizontal lines and scanning artifacts.

Table 100 - Monthly rainfall for the sugar cane districts, 1973

Period	WEST		NORTH		EAST		SOUTH		CENTRE		ALL DISTRICTS	
	Amount	Difference from normal	Amount	Difference from normal	Amount	Difference from normal	Amount	Difference from normal	Amount	Difference from normal	Amount	Difference from normal
January	162	- 27	214	+ 38	313	+ 1	350	+ 51	257	- 76	282	+ 7
February	136	- 60	190	- 25	405	+ 65	437	+ 136	246	- 94	318	+ 25
March	148	- 118	249	- 10	303	- 127	340	- 37	430	+ 64	324	- 28
April	36	- 80	69	- 106	138	- 172	157	- 143	105	- 135	117	-136
May	55	00	172	+ 50	187	- 17	129	- 57	105	- 43	144	- 17
June	46	+ 8	95	+ 6	215	+ 21	173	+ 19	185	+ 46	160	+ 21
July	15	- 12	81	+ 10	120	- 50	148	+ 2	110	- 25	114	- 12
August	12	- 5	75	+ 15	152	+ 23	151	+ 36	185	+ 75	135	+ 35
September	61	+ 41	50	- 2	65	- 47	59	- 35	71	- 26	59	- 27
October	6	- 22	30	- 9	35	- 52	32	- 44	25	- 47	30	- 37
November	0	- 61	13	- 62	17	- 104	13	- 106	14	- 94	14	- 90
December	89	- 47	81	- 40	104	- 115	86	- 112	104	- 81	92	- 85

Millimetres

