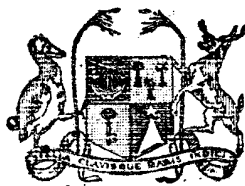


Vol. 4

No. 2



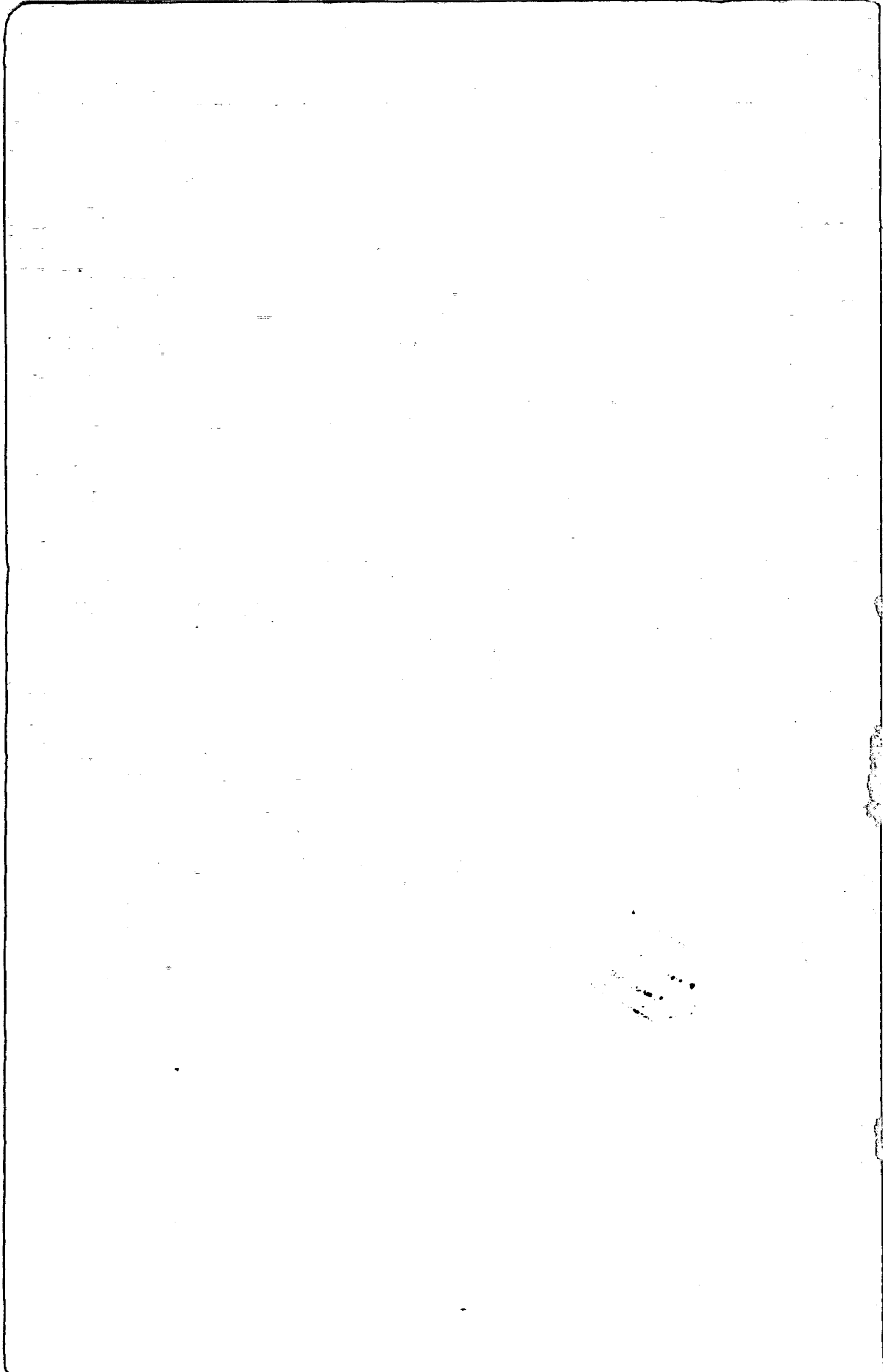
MAURITIUS

CENTRAL STATISTICAL OFFICE
Ministry of Economic Planning and Development

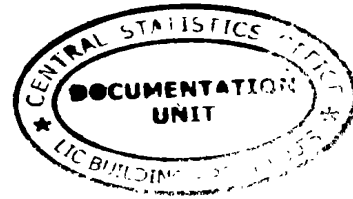
**BI-ANNUAL
DIGEST OF STATISTICS**

December 1969

[Price : Rs 5.00]



FOREWORD



This is the seventh issue of the Bi-annual Digest of Statistics compiled and published by the Central Statistical Office.

In this edition many improvements have been made in order to enhance the usefulness of the digest as a source of statistical information bearing on the demographic, economic and social characteristics of Mauritius. In particular a number of graphs and charts have been incorporated as an introduction to enable the readers to have a quick impression of the trend of events in the various sectors of the economy. Among the other new features in this issue are data on the population of Rodrigues, on incomes, income tax and tourism.

Our readers are reminded that, as the material already published may be subjected to scrutiny and revision in the light of new information obtained, the figures published in each volume of the digest supersede and replace those appearing in the preceding ones.

The Central Statistical Office, as usual, would be grateful for any suggestion to improve the scope, form and content of this publication, and has much pleasure to record its appreciation of the assistance rendered by all contributors, official and private.



A handwritten signature in cursive script, appearing to read "M. Etienne".

M. ETIENNE
Director of Statistics

July, 1970.

BI-ANNUAL DIGEST OF STATISTICS

NOTES

The following symbols are used throughout : -

- Nil or negligible

... Not available

2. Some of the figures in this digest are liable to revision in the later issues.

3. Where necessary, figures have been rounded off to the nearest final digit, and in some tables there may be discrepancies between the sum of the constituent items and the total as shown.

Central Statistical Office,
Mauritius.

CONTENTS

	Page
<u>Selected graphs and charts</u>	
Fig 1 - Population estimates 1939-69	i
2 - Age structure : Mauritius and the United Kingdom	ii
3 - Crude birth and death rates and rate of natural increase 1935-69	iii
4 - Infantile mortality rate, 1937-69	iv
5 - Central government recurrent budget, 1968-69	v
6 - Gross national product at factor cost 1959-68	vi
7 - Per capita gross national product at factor cost 1958-68	vi
8 - Consumer price index (yearly average), whole island 1962-69	vii
9 - Consumer price index (monthly) whole island 1968-69	vii
10 - Balance of visible trade, 1960-69	viii
11 - Enrolment in primary and secondary schools 1964-69	ix
12 - Land utilization, 1969	ix
13 - Sugar production, 1960-69	x
14 - Tea production 1960-69	x

Statistical tables

I - POPULATION AND VITAL STATISTICS

Table 1 - Estimated population of Mauritius as at 30th June 1969, based initially on the census enumeration of June 1962	1
2 - Population of Mauritius as enumerated at each census (1846-62)	1
3 - Post-censal population estimates, 1962-69	2
4 - Comparison with other countries	2
5 - Estimated population of Mauritius by population group, sex and geographical district as at 31st December 1969	3
6 - Estimated age distribution of the population of Mauritius by sex as at 30th June, 1969	4
7 - Estimated population of towns as at	5
8 - External migration	5
9 - Passenger traffic, by country of origin or destination and by mode of transport, 1969	6
10 - Tourist arrivals and tourist nights by country of residence, 1969	7
11 - Population and vital statistics	8
12 - Live births and still births	9

CONTENTS (Cont'd)

Page

Statistical tables

I - POPULATION AND VITAL STATISTICS (Cont'd)

Table 13 - Infant deaths (deaths under 1 year of age) by sex and age	9
14 - Deaths by age and sex	10
15 - Population and vital statistics - quarterly	11
16 - Still births and infant deaths	12
17 - Expectation of life in years at selected ages	12
18 - Population and vital statistics - Rodrigues	13

II - PUBLIC HEALTH

Table 19 - Health services	14
20 - Statistics of hospitals	15
21 - Notifiable, contagious or communicable diseases	16
22 - Cause of death, 1969	17

III - PUBLIC FINANCE AND BANKING

Table 23 - Central government revenue and expenditure	18
24 - Functional classification of central government recurrent revenue	18
25 - Functional classification of central government recurrent expenditure	19
26 - Functional classification of central government capital revenue	20
27 - Functional classification of central government capital expenditure	20
28 - Central government indebtedness	21
29 - Sinking funds held against the public debt	21
30 - Central government loan raisings	22
31 - Outstanding loans and advances made from public funds, balance at 30th June 1968 & 30th June 1969	22
32 - Income tax - individuals	23
33 - " " - companies	24
34 - Sterling assets	25
35 - Assets and liabilities of the Bank of Mauritius	26
36 - Banking statistics - assets of commercial banks	27
37 - " " - liabilities of commercial banks	28
38 - " " - assets and liabilities of the Development Bank of Mauritius	29
39 - Banking statistics - Post Office Savings Bank	29
40 - " " - assets and liabilities of the Mauritius Co-operative Central Bank Ltd.	30
41 - Money supply	30
42 - Assets and liabilities of the Mauritius Housing Corporation	31
43 - Bank and interest rates	31
44 - Foreign exchange rates	32

CONTENTS (Cont'd)

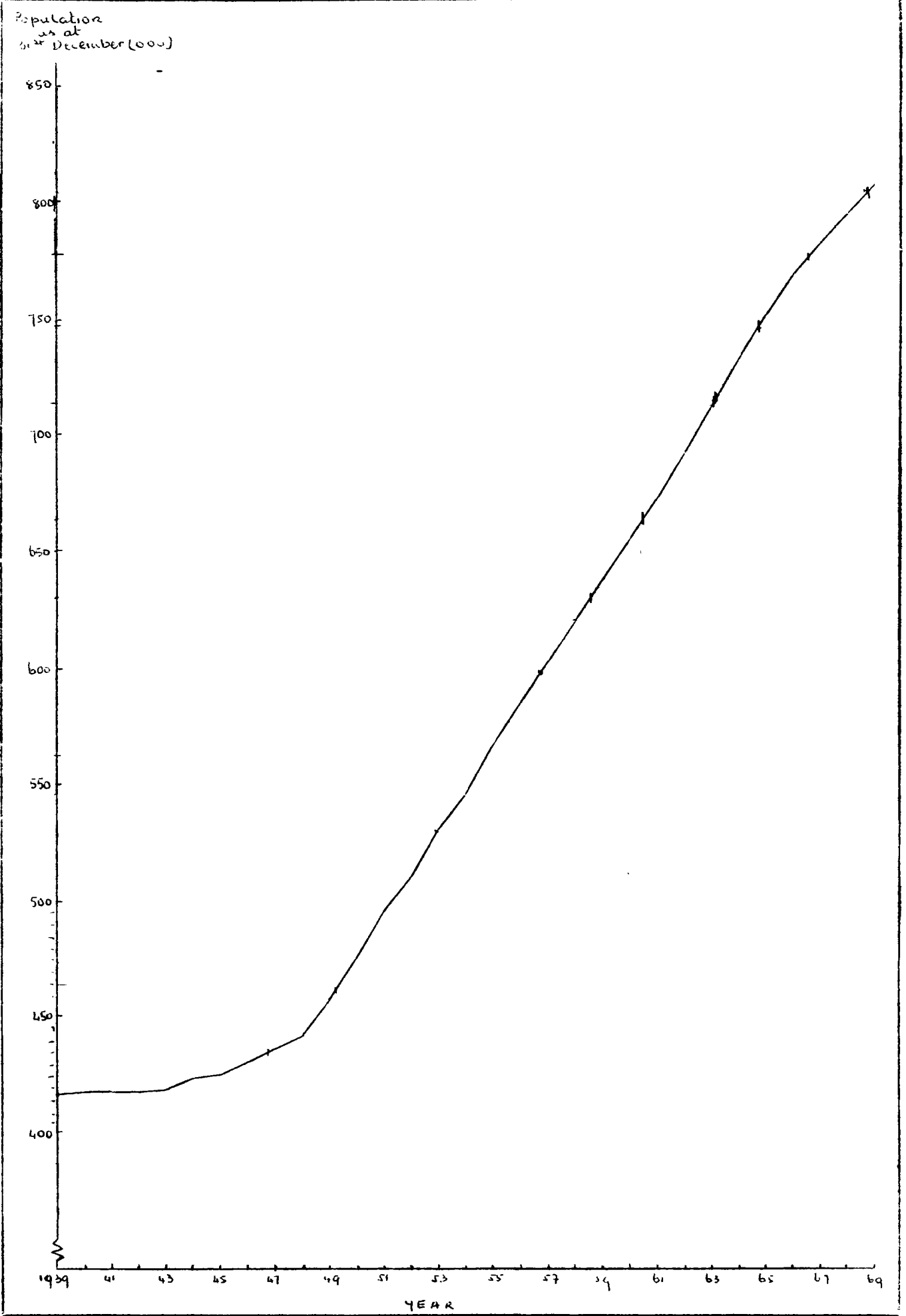
	<u>Page</u>
<u>IV. NATIONAL ACCOUNTS</u>	
Table 45 - Gross national product, by industrial origin	33
46 - " " " , per capita	33
46 - Distribution of the national income before providing for depreciation	34
47 - Expenditure on gross National Product	35
48 - Composition of gross domestic fixed capital formation	36
49 - Balance of payments	37
<u>V. CONSUMER PRICE INDICES</u>	
Table 50 - Consumer price indices	38
<u>VI. EXTERNAL TRADE</u>	
Table 51 - Balance of visible trade	39
52 - Quantum and price indices of exports and imports and the terms of trade	39
53 - Quantum and price indices of imports, by section	40
54 - Exports : quantities and values	41
55 - Exports : principal countries of destination - values	42
56 - Imports : values by S.I.T.C. sections	43
57 - " : selected commodities - values	44
58 - " : selected commodities - quantities	45
59 - " : main sources of supply - values	46
60 - Imports of fertilizers	47
<u>VII. EMPLOYMENT AND WAGES</u>	
Table 61 - Employment by major industrial groups	48
62 - Employment by sex and age group	49
63 - Employment in specified sectors : Sugar industry	50
64 - " " " " : Government services	50
65 - " " " " : Manufacturing industries	51
66 - Indicators of unemployment	52
67 - Daily wage rates in certain industries	53
68 - Daily wage rates of manual workers employed by the central government	53
69 - Employment and wages of certain categories of employees on sugar millers' estates	54
70 - Employment and earnings on sugar millers' estates	55
<u>VIII. SOCIAL ASSISTANCE</u>	
Table 71 - Social benefits	56

CONTENTS (Cont'd)

	<u>Page</u>
<u>IX. EDUCATION</u>	
Table 72 - Education statistics	57
73 - Enrolment in primary and secondary schools, by type of institution	58
74 - Enrolment in primary schools, by grade and sex	59
75 - Enrolment in secondary schools by grade and sex	60
<u>X. TRANSPORT AND COMMUNICATION</u>	
Table 76 - Motor vehicles registered	61
77 - Bus operational statistics	62
78 - Road traffic accidents and casualties	62
79 - Sea borne shipping	63
80 - Civil aviation	63
81 - Telephone service	64
82 - Broadcasting services	64
<u>XI. LAND UTILIZATION</u>	
Table 83 - Total area classified by utilization	65
84 - Effective area under cultivation	65
<u>XII. LOCAL PRODUCTION</u>	
Table 85 - Agriculture : production of main crops, fish and meat	66
86 - Industry : production of specific commodities	67
87 - Sugar industry : cane cultivation	68
88 - " " : sugar manufacture	68
89 - Electricity : production, consumption, sales, etc.	69
<u>XIII. CLIMATE</u>	
Table 90 - Monthly temperatures, 1969	70
91 - Monthly rainfall for the sugar cane districts, 1969	71

Fig. 1

POPULATION ESTIMATES 1939-1969



AGE STRUCTURE: MAURITIUS (1969) AND THE UNITED KINGDOM (1961).

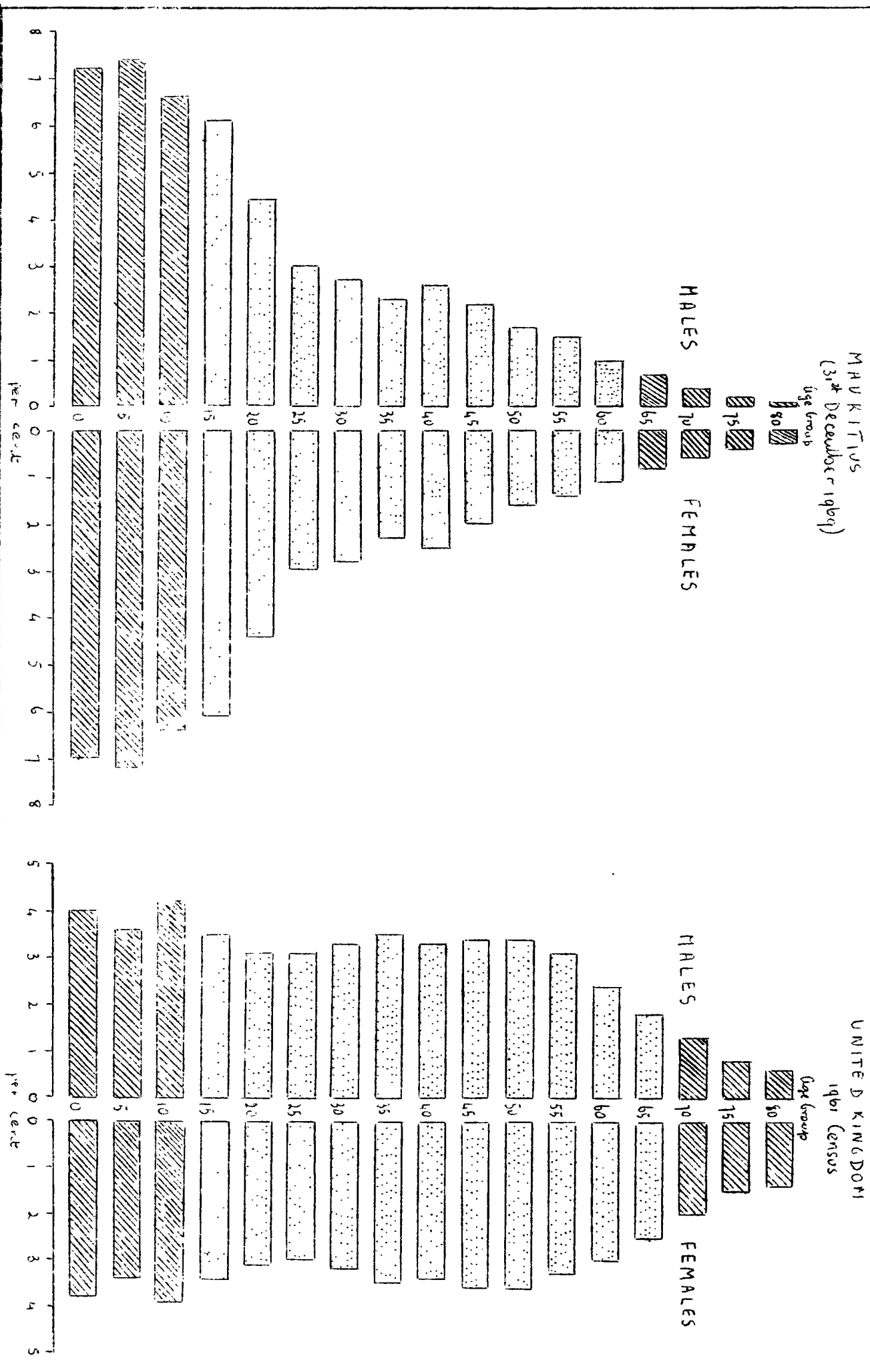


Fig. 2.

Fig 3

CRUDE BIRTH AND DEATH RATES AND RATE OF NATURAL INCREASE: 1935-1969

Rate per 1000
of
midyear population

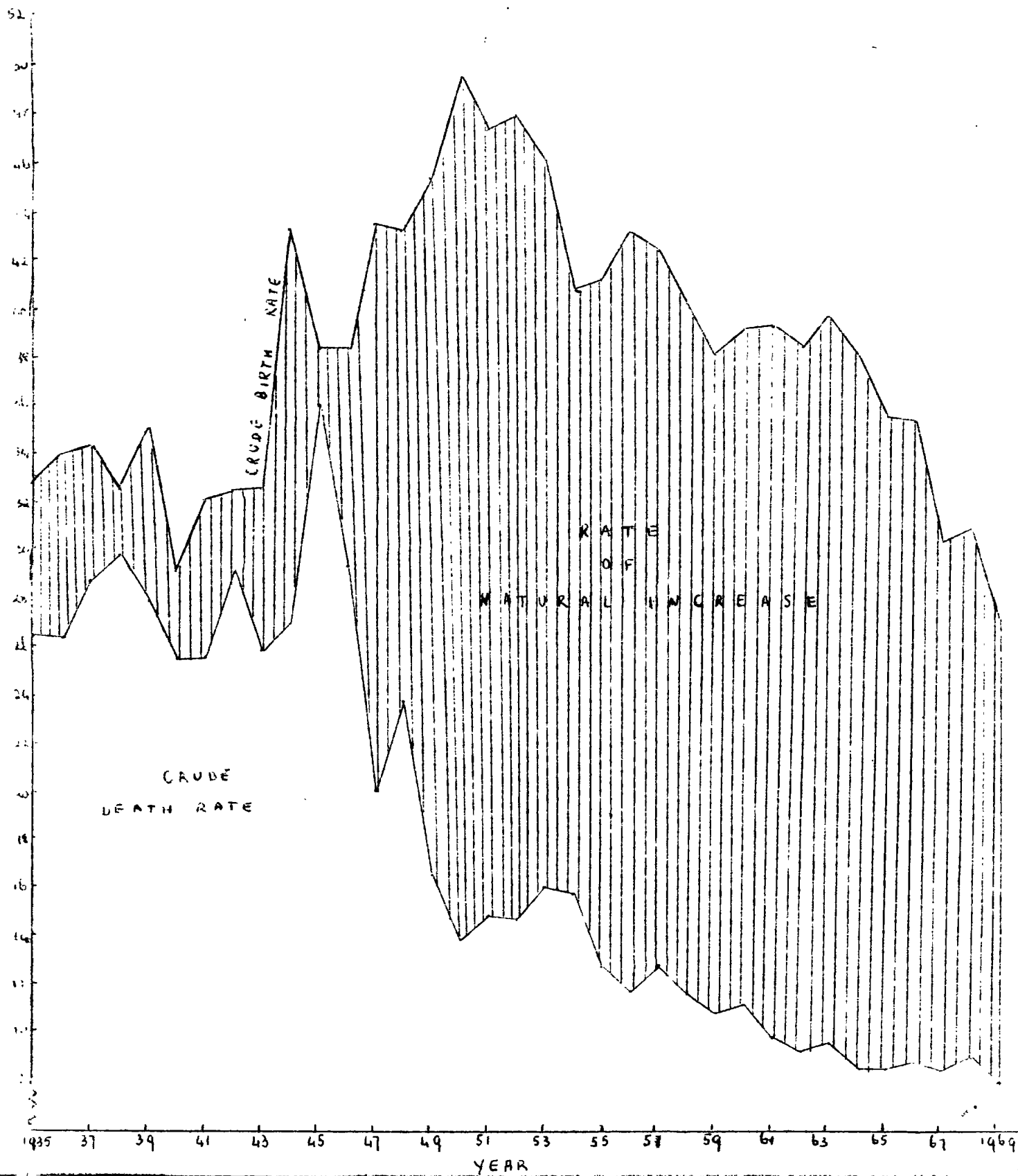


Fig. 4

INFANTILE MORTALITY RATE, 1937-1969

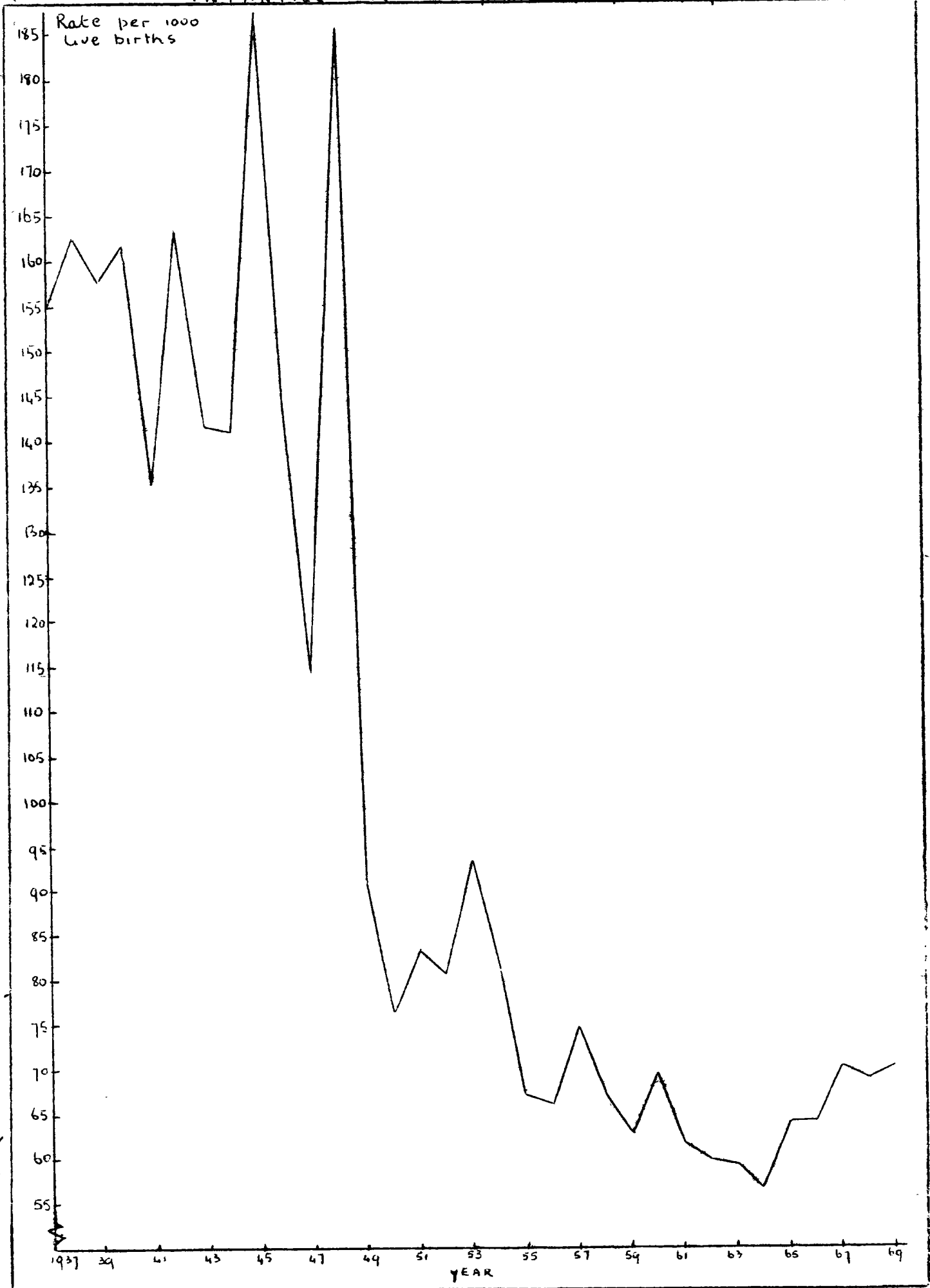
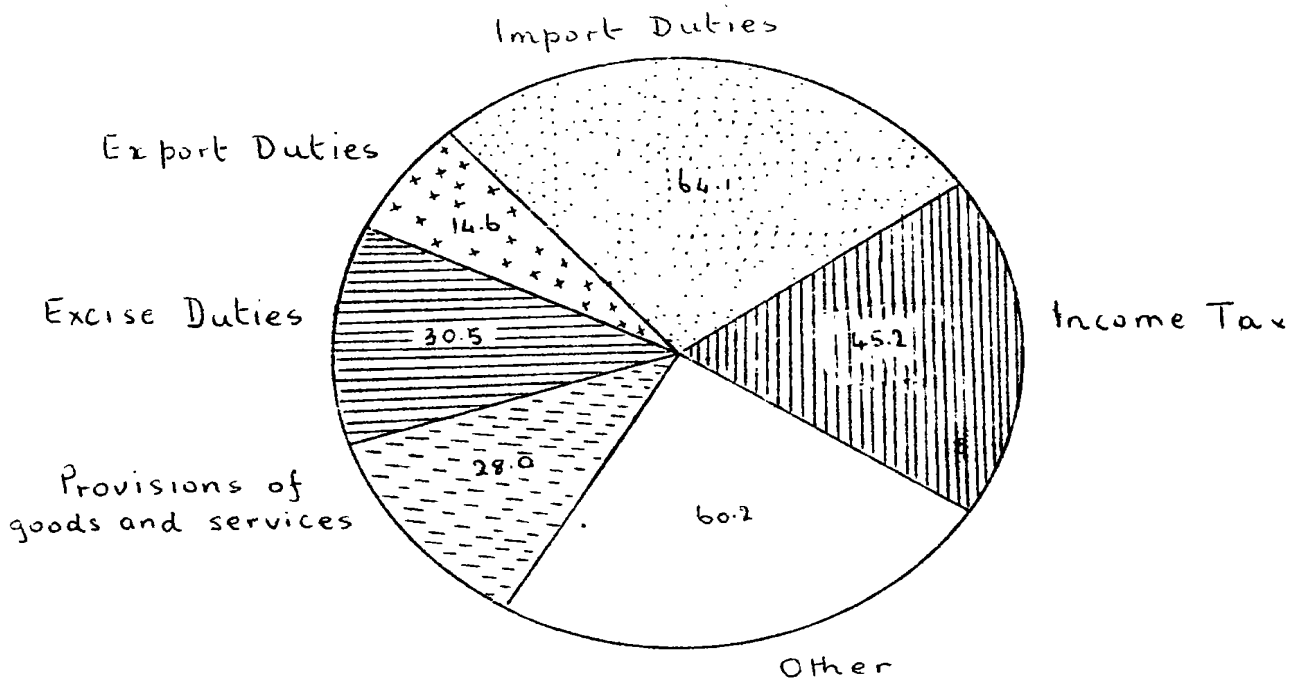


Fig 5

CENTRAL GOVERNMENT RECURRENT BUDGET, 1968-69

REVENUE
(Rs mn)



EXPENDITURE
(Rs mn)

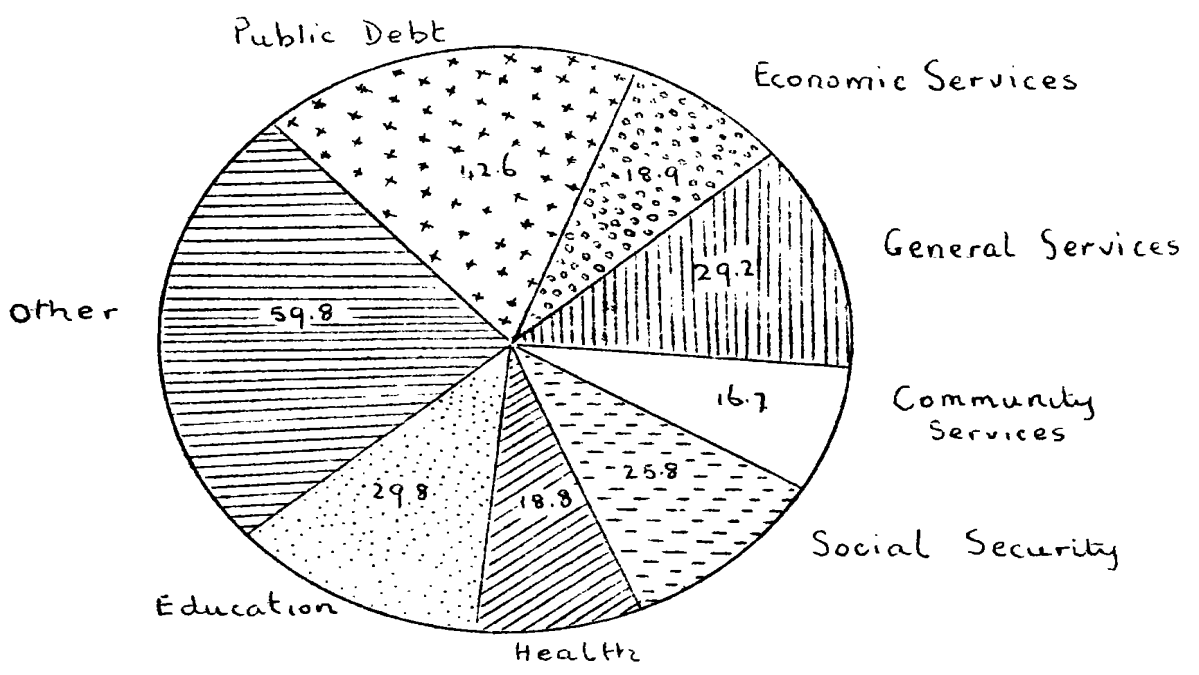


Fig. 6

GROSS NATIONAL PRODUCT AT FACTOR COST (1959-1968).

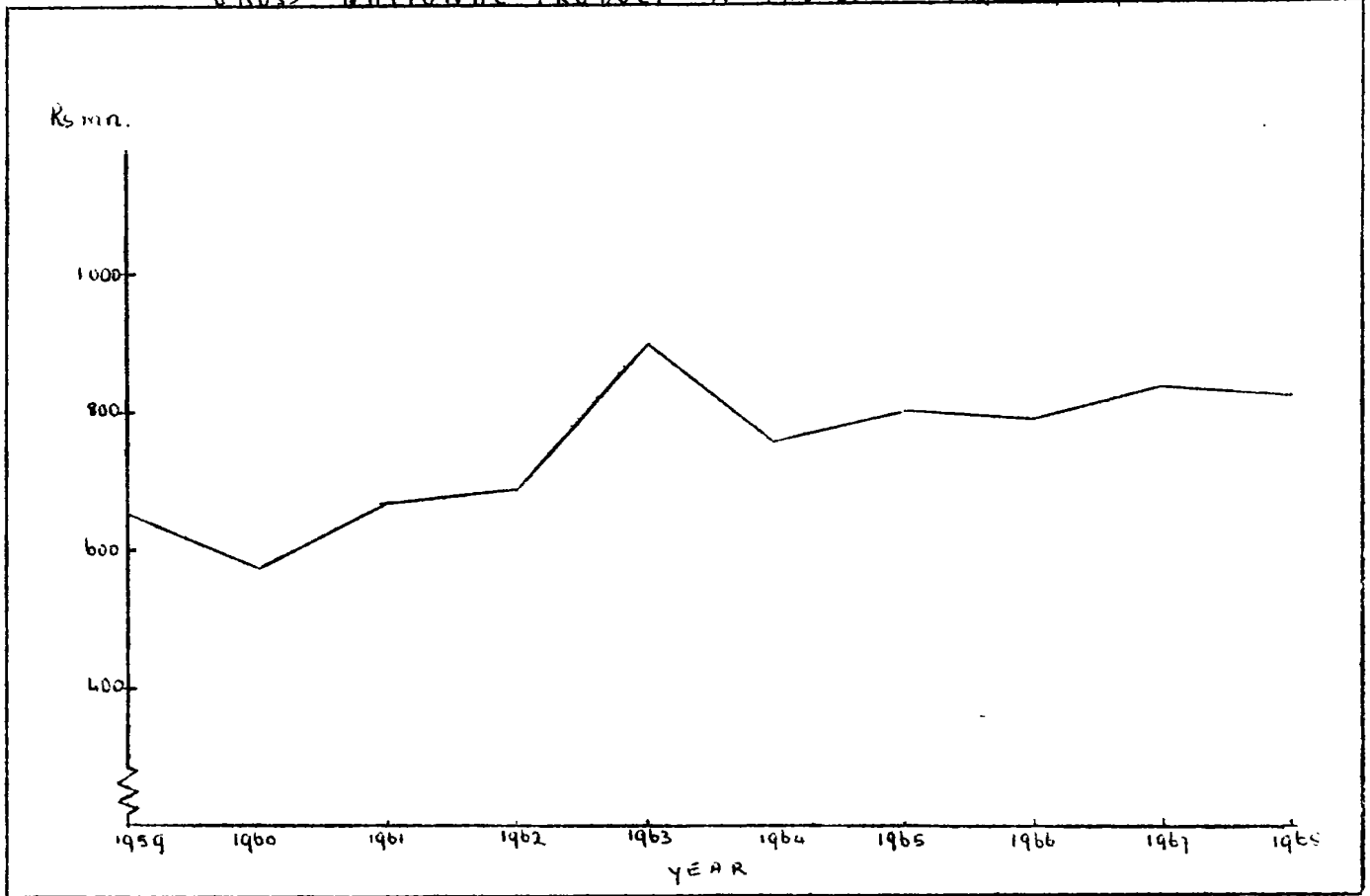
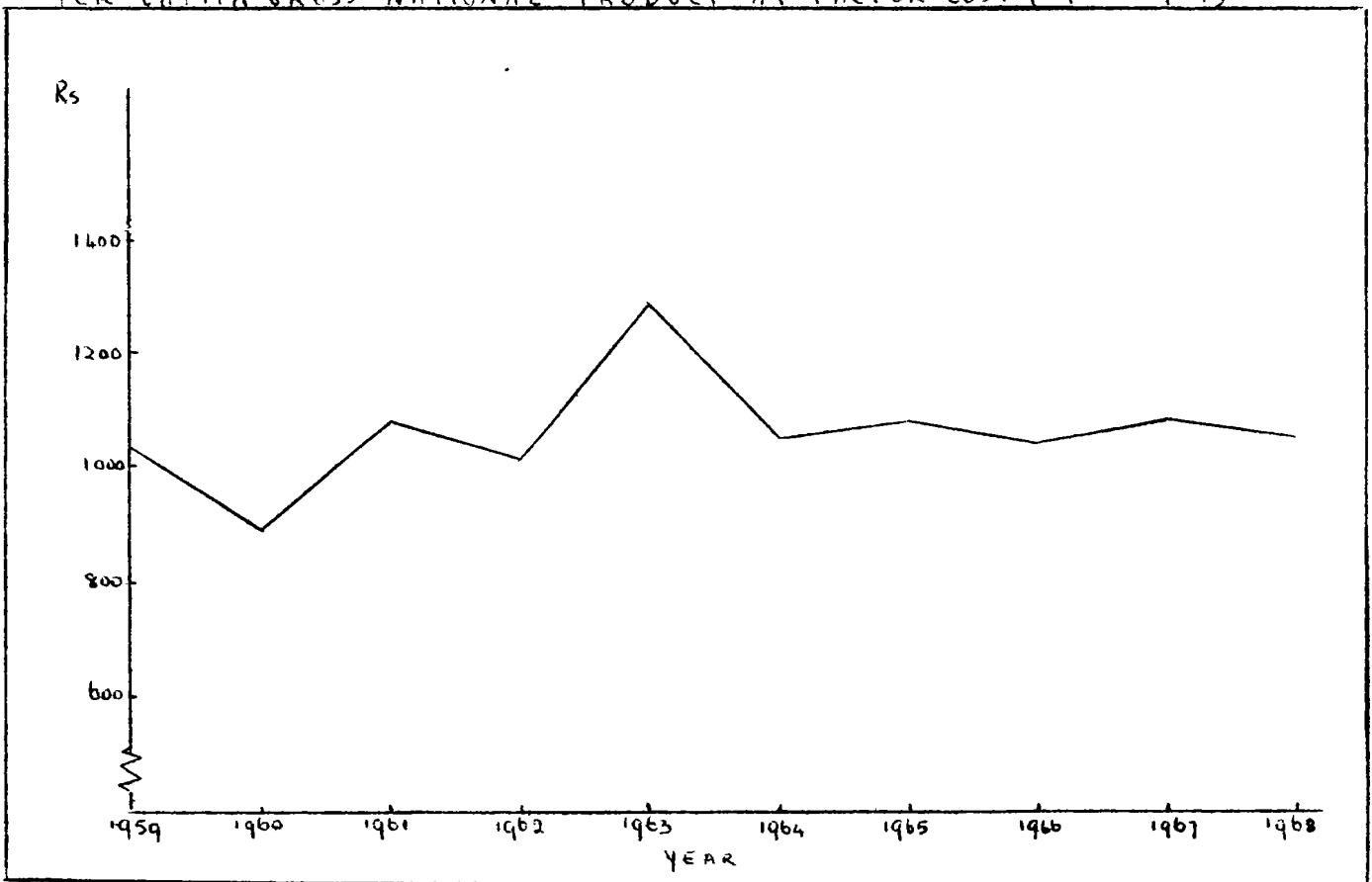
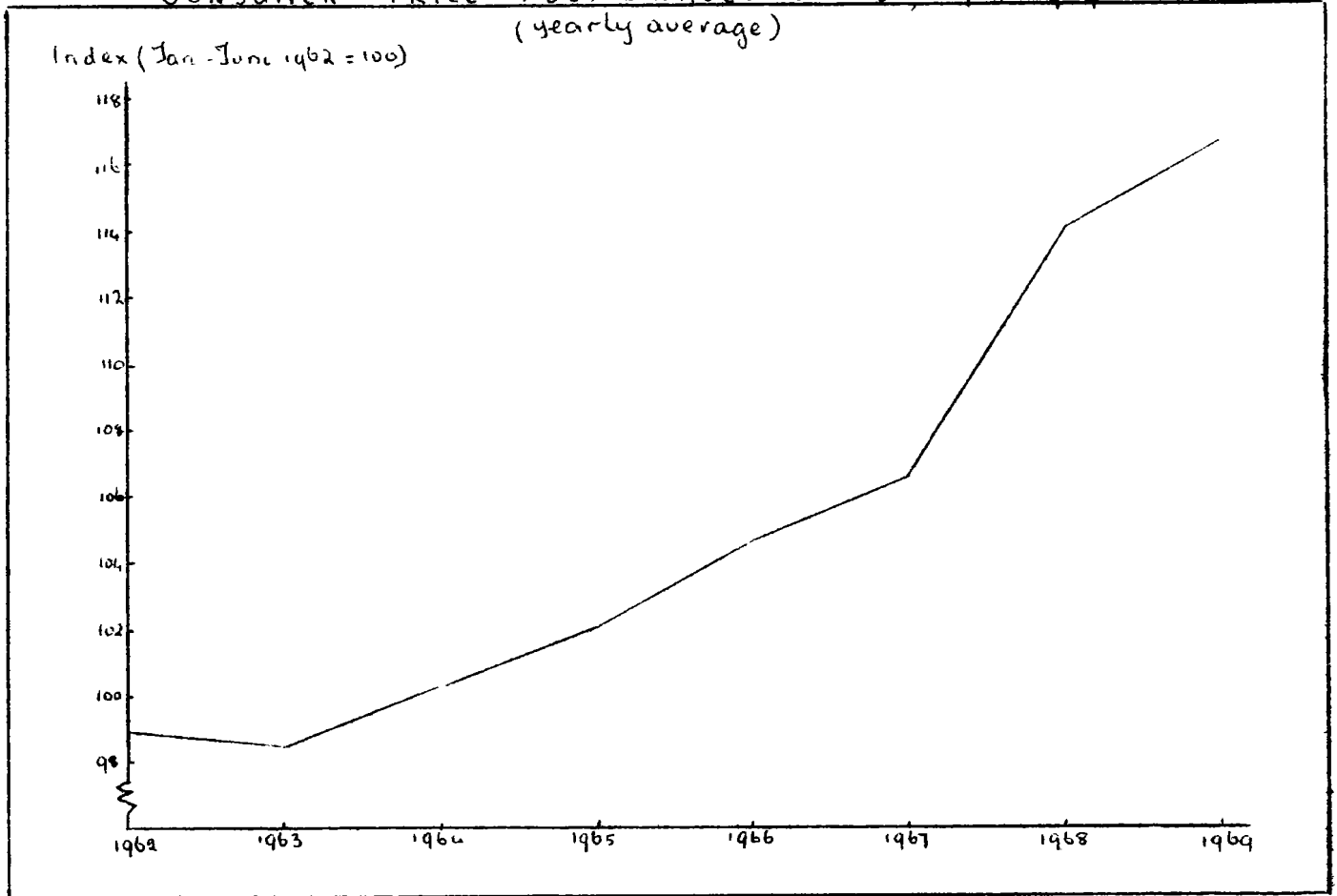


Fig. 7

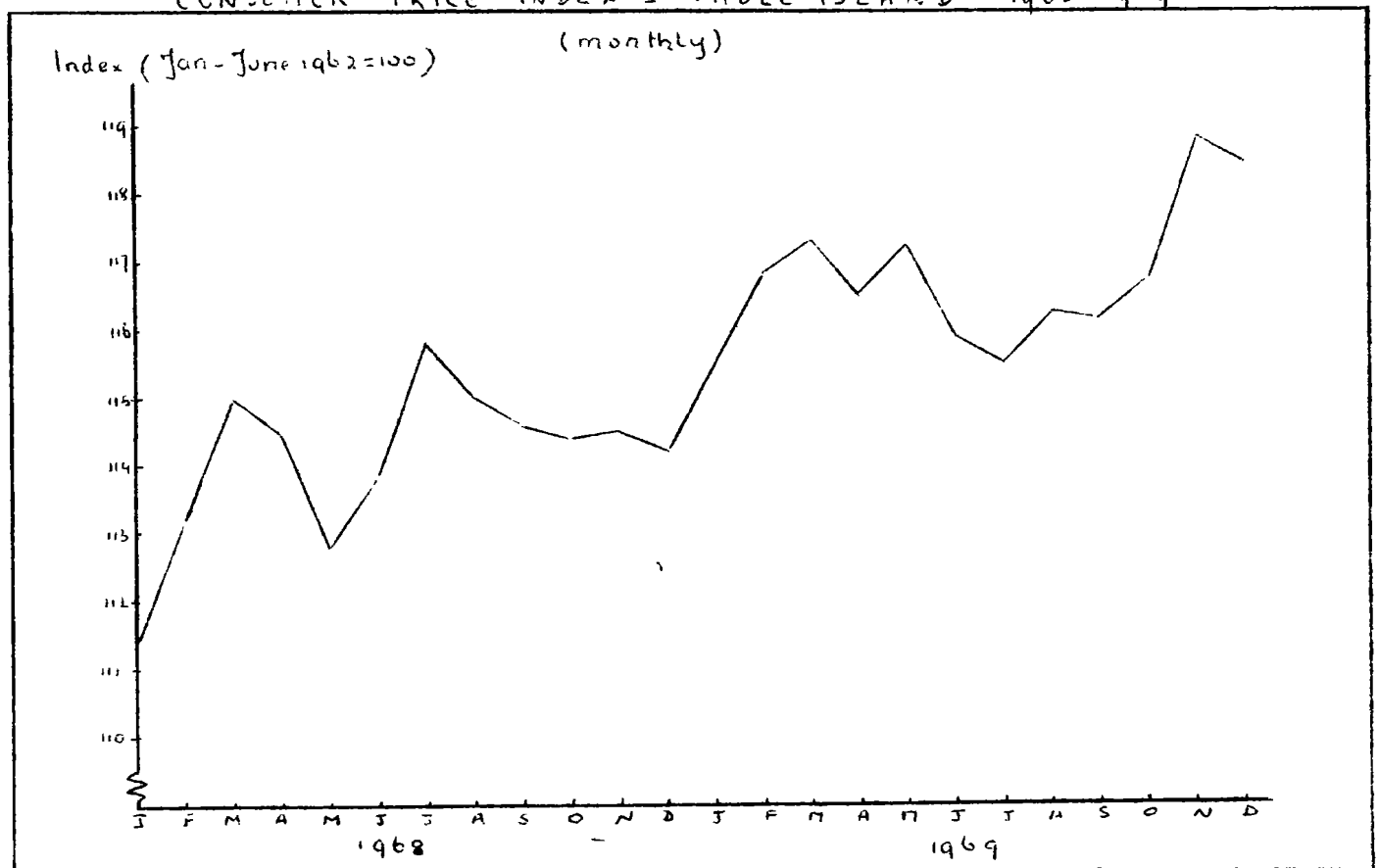
PER CAPITA GROSS NATIONAL PRODUCT AT FACTOR COST (1958-1968)



CONSUMER PRICE INDEX - WHOLE ISLAND, 1962-1969
(yearly average)



CONSUMER PRICE INDEX - WHOLE ISLAND 1968-1969



BALANCE OF VISIBLE TRADE, 1960-1969

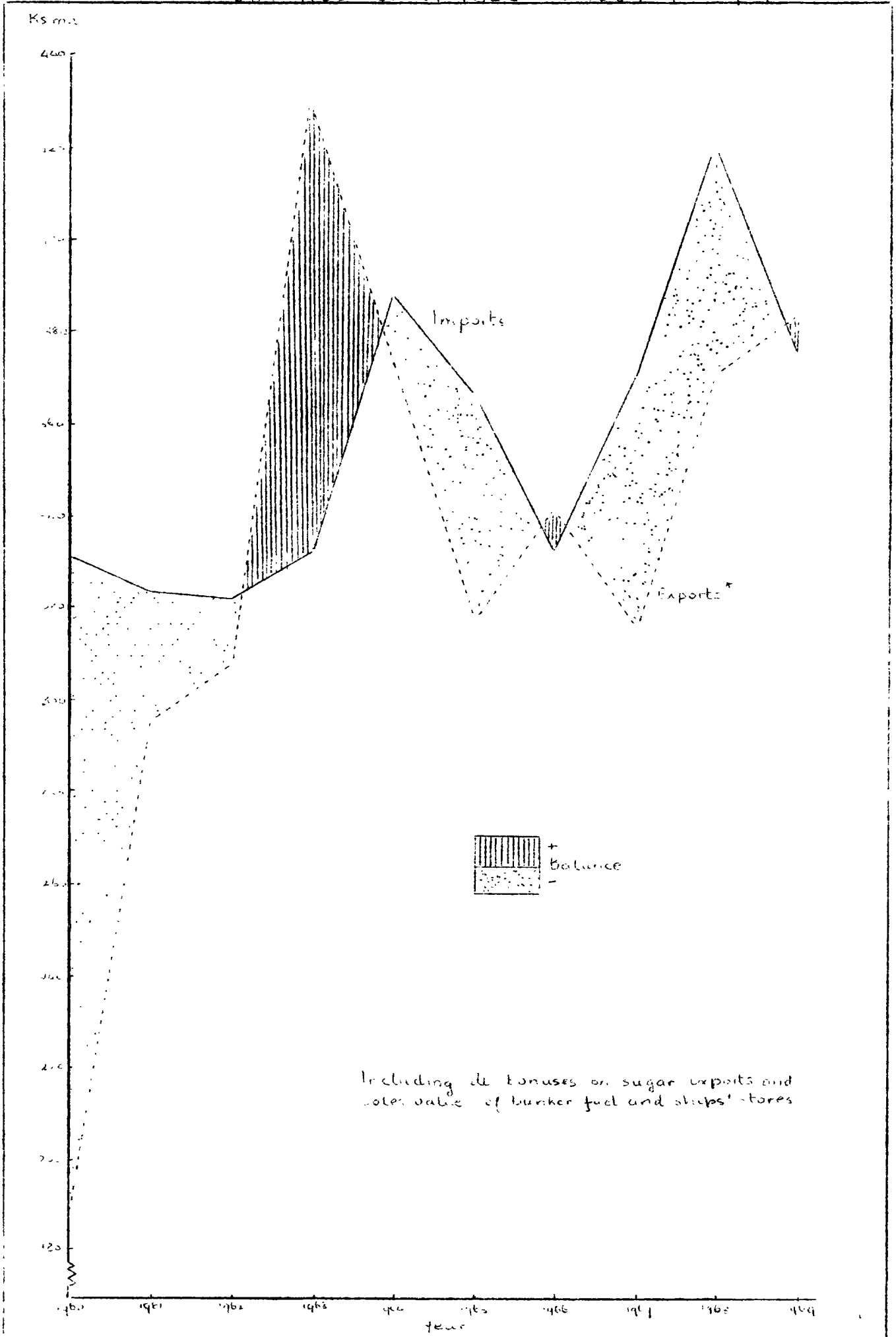


Fig. 11

ENROLMENT IN PRIMARY AND SECONDARY SCHOOLS, 1964-1969 (Mauritius and Rodrigues)

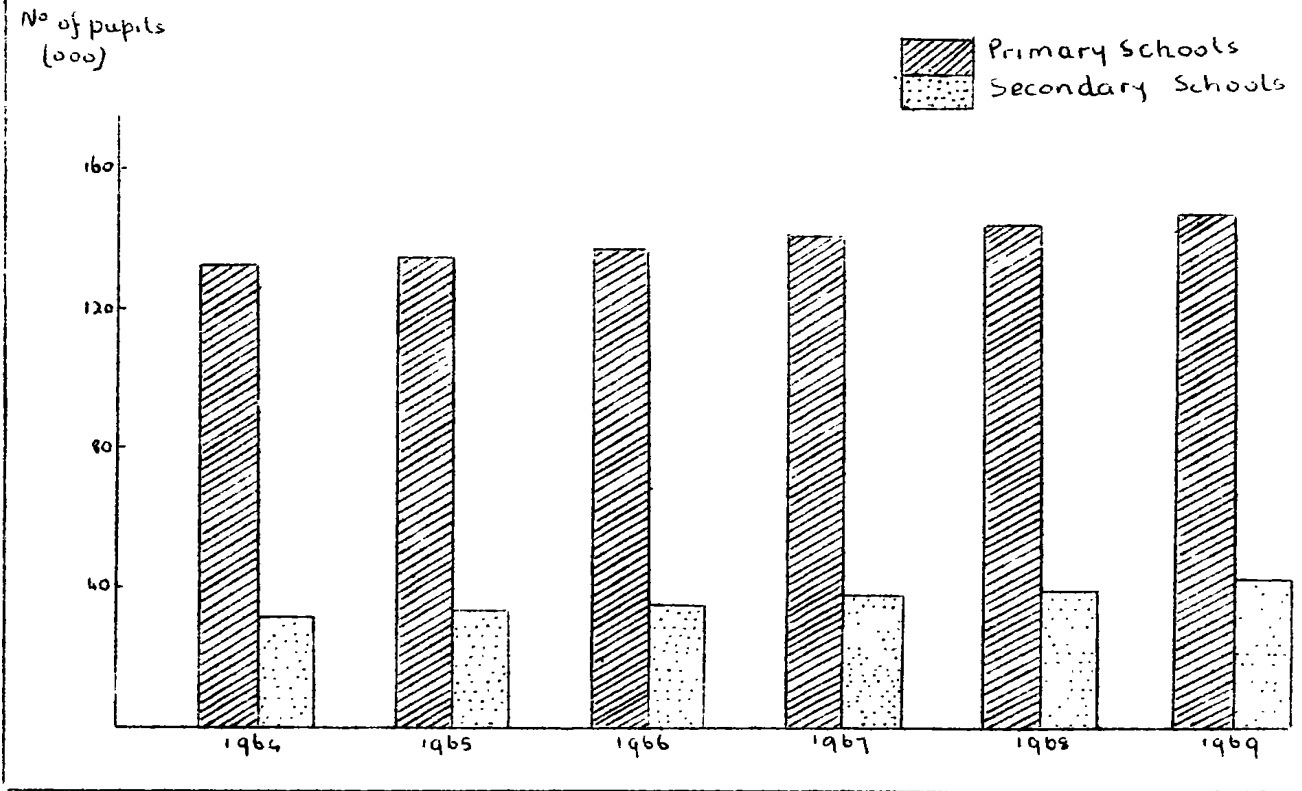
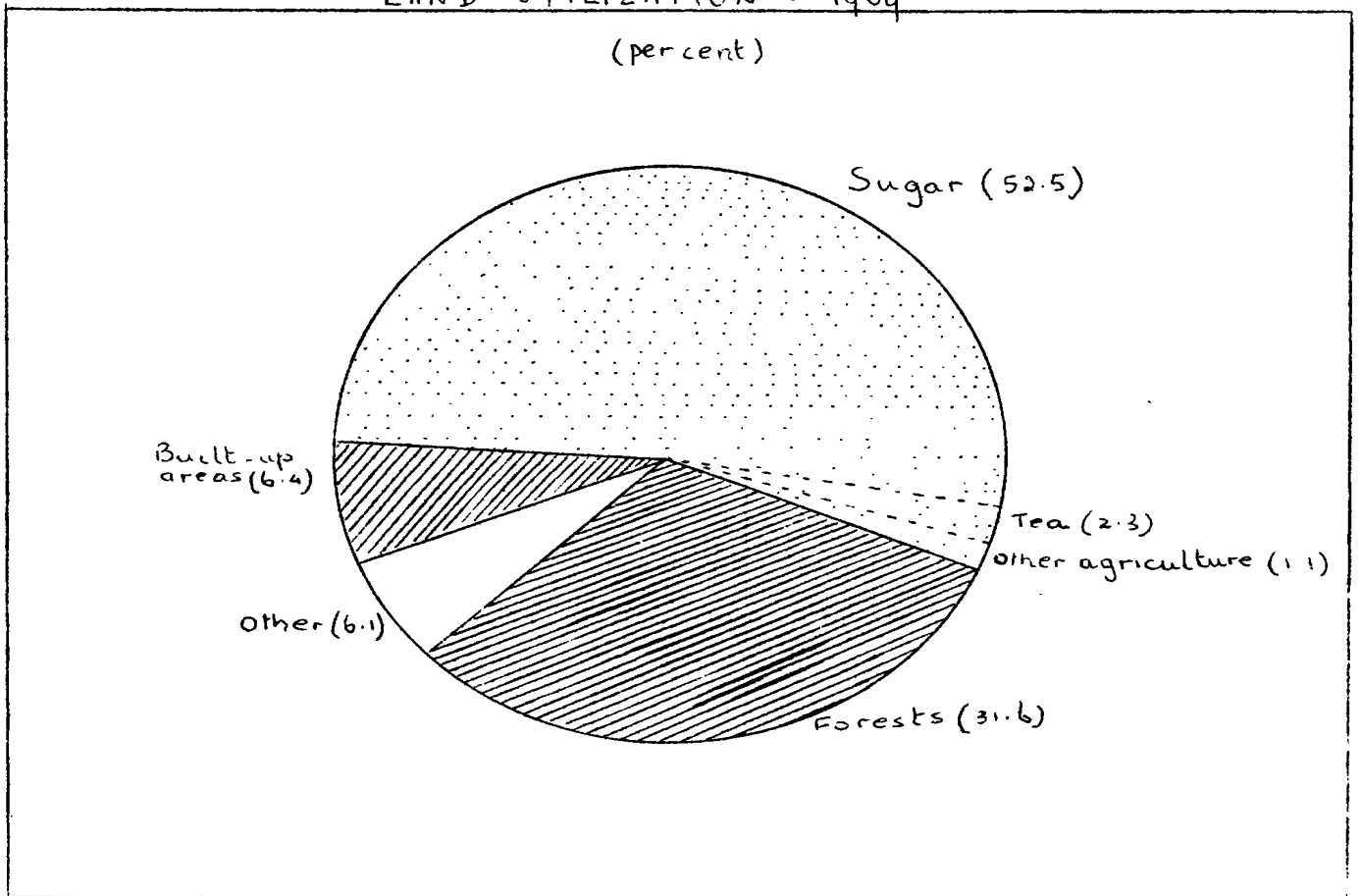


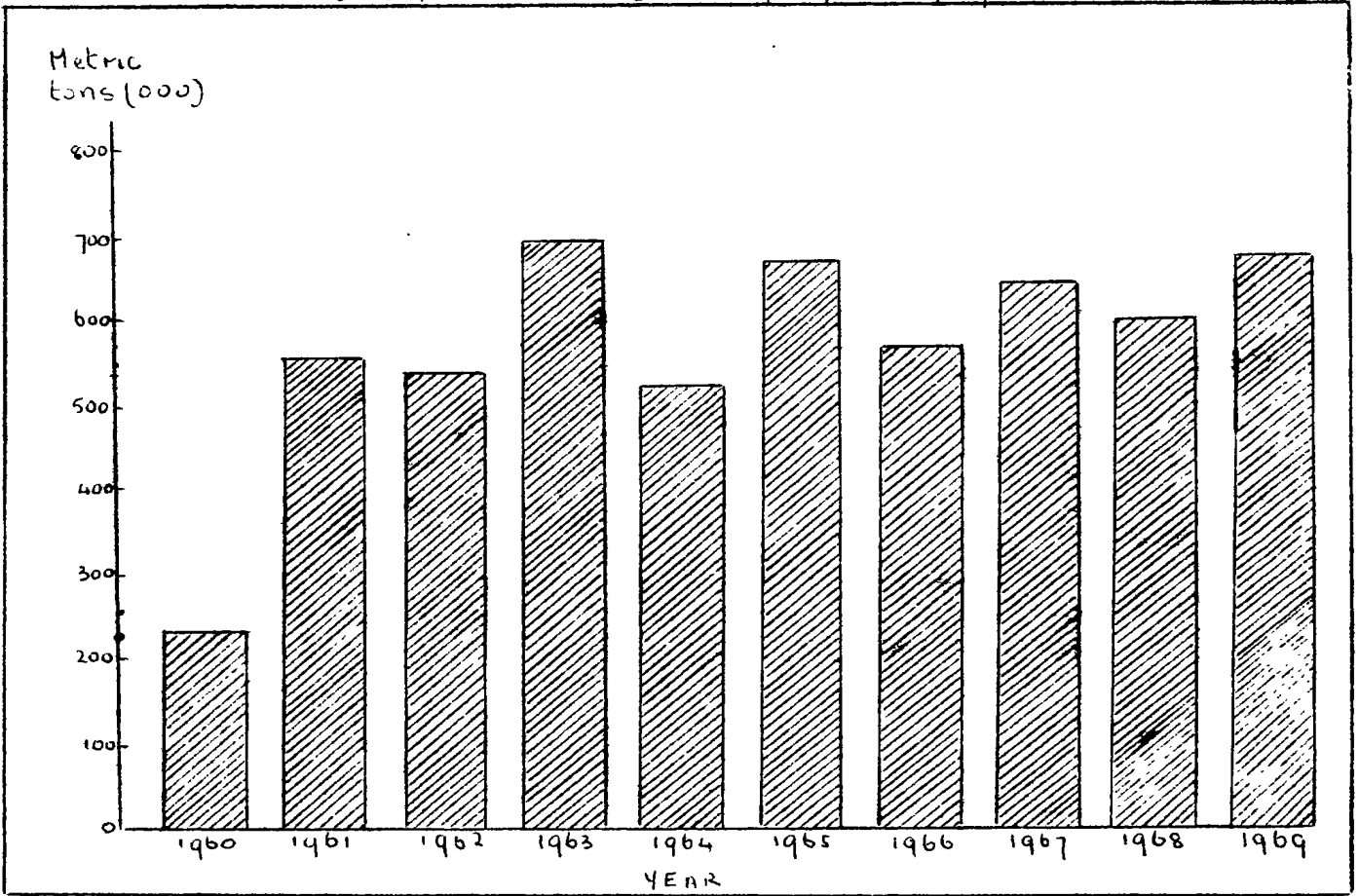
Fig. 12

LAND UTILIZATION - 1969 (percent)



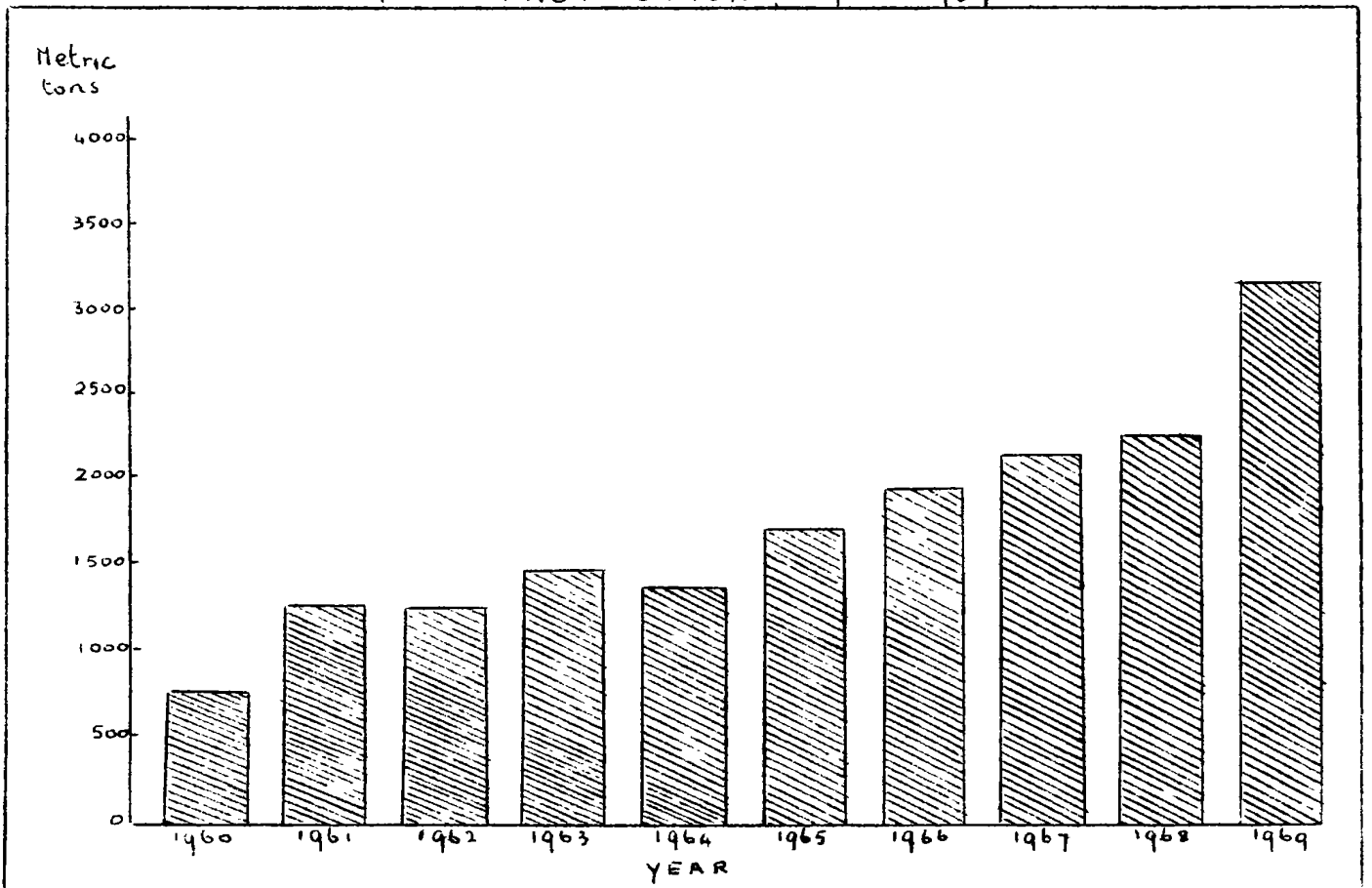
SUGAR PRODUCTION 1960-1969

Fig. 13



TEA PRODUCTION 1960-1969

Fig. 14



I. POPULATION AND VITAL STATISTICS

Table 1 - Estimated population of Mauritius as at 31st December 1969 based initially on the census enumeration of June 1962

Population	30th June 1962 (Census)			31st December 1969		
	Both sexes	Male	Female	Both sexes	Male	Female
Total	681,619	342,306	339,313	807,027	404,814	402,213
General	203,652	98,983	104,669	227,129	111,221	115,908
Hindu	344,587	174,698	169,889	421,390	212,945	208,445
Muslim	110,322	55,971	54,351	133,441	67,226	66,215
Chinese	23,058	12,654	10,404	25,067	13,422	11,645

Table 2 - Population of Mauritius as enumerated at each census (1846-1962)

Census year	Population enumerated at census			Intercensal increase	Average annual rate of increase %
	Both sexes	Male	Female		
1846	158,462	104,598	53,864		
1851	180,823	119,341	61,482	22,361	2.55
1861	310,050	202,961	107,089	129,227	5.87
1871	316,042	193,575	122,467	5,992	0.19
1881	359,874	208,655	151,219	43,832	1.31
1891	370,588	206,038	164,550	10,714	0.29
1901	371,023	199,552	171,471	435	0.01
1911	368,791	194,095	174,696	- 2,232	- 0.06
1921	376,485	194,108	182,377	7,694	0.21
1931	393,238	200,609	192,629	16,753	0.44
1944	419,185	210,326	208,859	25,947	0.49
1952	501,415	252,032	249,383	82,230	2.26
1962 ⁺	681,619	342,306	339,313	180,204	3.12

⁺ de facto population - including the European members of the Armed Forces but excluding the passengers and crews of ships lying in the harbour.

Table 3 - Post censal population estimates, 1962-69

Period	Total population (31st December)			Increase during period		Mid-year population (30th June)
	Both sexes	Male	Female	Numerical	Percent	
1962	692,354	347,743	344,611			681,619
1963	713,371	358,385	354,986	21,017	3.04	701,422
1964	733,605	368,534	365,071	20,234	2.84	722,089
1965	751,421	377,245	374,176	17,816	2.43	741,036
1966	768,692	385,677	383,015	17,271	2.30	759,067
1967	782,044	392,283	389,761	13,352	1.74	773,573
1968	794,746	398,572	396,174	12,702	1.62	787,406
1969	807,027	404,814	402,213	12,281	1.55	798,684

Table 4 - Comparison with other countries

Continent & country	Average annual rate of increase 1963-68 (%)	Continent & country	Average annual rate of increase 1963-68 (%)
AFRICA :		ASIA :	
Mauritius	2.3	Ceylon	2.4
AMERICA :		India	2.5
Canada	1.9	Japan	1.1
Guyana	3.0	Pakistan	2.1
Trinidad & Tobago	2.0	Taiwan	2.9
Chile	2.4	EUROPE :	
OCEANIA :		Albania	2.8
Australia	1.9	France	0.9
New Zealand	1.7	United Kingdom	0.6

Table 5 - Estimated population⁺ of Mauritius by population group, sex and geographical district as at 31st December, 1969

Geographical district	Total population			General population			Indo-Mauritian population						Chinese population		
	Both sexes	Male	Female	Both sexes	Male	Female	Hindu			Muslim			Both sexes	Male	Female
							Both sexes	Male	Female	Both sexes	Male	Female			
Port Louis	139,299	69,349	69,950	49,436	24,004	25,432	36,496	18,392	18,104	40,450	20,327	20,123	12,917	6,626	6,291
Pamplemousses	65,432	32,911	32,521	9,955	4,868	5,087	44,944	22,716	22,228	9,866	4,969	4,897	667	358	309
Riv. du Rempart	65,402	33,144	32,258	9,890	4,882	5,008	46,689	23,768	22,921	8,305	4,191	4,114	518	303	215
Flacq	89,223	45,149	44,074	15,558	7,845	7,713	60,657	30,624	30,033	12,082	6,139	5,943	926	541	385
Grand Port	82,835	41,906	40,929	19,569	9,809	9,760	50,476	25,592	24,884	11,471	5,753	5,718	1,319	752	567
Savanne	55,694	28,224	27,470	11,232	5,723	5,509	33,506	16,868	16,638	10,150	5,165	4,985	806	468	338
Plaines Wilhems	242,391	120,595	121,796	96,194	46,438	49,756	106,042	53,570	52,472	33,231	16,772	16,459	6,924	3,815	3,109
Moka	44,532	22,351	22,181	6,584	3,294	3,290	29,893	15,026	14,867	7,435	3,690	3,745	620	341	279
Black River	22,219	11,185	11,034	8,711	4,358	4,353	12,687	6,389	6,298	451	220	231	370	218	152
WHOLE ISLAND	807,027	404,814	402,213	227,129	111,221	115,908	421,390	212,945	208,445	133,441	67,226	66,215	25,067	13,422	11,645
%	100.0			28.2			52.2			16.5			3.1		

⁺Based initially on the 1962 Population Census. No account has been taken of internal migration.

Table 6 - Estimated age distribution⁺ of the population of Mauritius as at 30th June, 1969

Age group (years)	Male	Female	Both sexes	
			Number	% of total
0 - 4	57,350	56,250	113,600	14.2
5 - 9	59,200	57,900	117,100	14.7
10 - 14	52,350	51,450	103,800	13.0
15 - 19	48,900	48,600	97,500	12.2
20 - 24	35,150	35,050	70,200	8.8
25 - 29	23,700	23,600	47,300	5.9
30 - 34	21,700	22,100	43,800	5.5
35 - 39	18,750	18,350	37,100	4.7
40 - 44	20,700	19,900	40,600	5.1
45 - 49	17,200	15,800	33,000	4.1
50 - 54	13,900	12,700	26,600	3.3
55 - 59	11,800	10,900	22,700	2.8
60 - 64	8,100	8,400	16,500	2.1
65 - 69	5,900	6,800	12,700	1.6
70 - 74	3,400	5,100	8,500	1.0
75 - 79	1,550	3,200	4,750	0.6
80 - 84	700	1,650	2,350	0.3
85 & over	150	450	600	0.1
All Ages	400,500	398,200	798,700	100.0
<u>Totals</u>				
Under 15	168,900	165,600	334,500	41.9
Under 21	225,465	221,895	447,360	56.0
21 and over	175,035	176,305	351,340	44.0
60 and over	19,800	25,600	45,400	5.7

⁺Based initially on the smoothed age distribution at the census of June 1962 corrected for under-enumeration of young children and pro-rated to official population estimates.

Table 7 - Estimated population⁺ of towns as at 31st December, 1969

Town	Population
Port Louis	139,300
Beau Bassin-Rose Hill	71,260
Quatre Bornes	45,400
Vacoas-Phoenix	48,900
Curepipe	51,960

⁺Based initially on 1962 Population Census. No account has been taken of internal migration.

Table 8 - External migration*

Period	Arrivals			Departures			Net migration
	Total	By sea	By air	Total	By sea	By air	
1962	15,189	4,258	10,931	16,075	4,374	11,701	- 886
1963	18,047	4,660	13,387	18,299	4,432	13,867	- 252
1964	21,221	5,187	16,034	22,331	5,478	16,853	- 1,110
1965	22,024	4,886	17,138	24,150	5,463	18,687	- 2,126
1966	26,456	5,544	20,912	29,301	6,330	22,971	- 2,845
1967	29,321	4,901	24,420	32,925	6,515	26,410	- 3,604
1968	31,403	4,264	27,139	35,988	5,967	30,021	- 4,585
1969	35,919	3,483	32,436	38,929	4,632	34,297	- 3,010
1968 : 1st Qr.	7,640	1,154	6,486	9,779	1,793	7,986	- 2,139
2nd Qr.	6,278	804	5,474	7,517	1,562	5,955	- 1,239
3rd Qr.	8,874	954	7,920	9,946	1,138	8,808	- 1,072
4th Qr.	8,611	1,352	7,259	8,746	1,474	7,272	- 135
1969 : 1st Qr.	7,930	727	7,203	9,662	1,196	8,466	- 1,732
2nd Qr.	6,896	906	5,990	7,988	1,129	6,859	- 1,092
3rd Qr.	11,348	799	10,549	12,400	1,194	11,206	- 1,052
4th Qr.	9,745	1,051	8,694	8,879	1,113	7,766	+ 866

*Includes : (a) The very small figure of engaged or discharged seamen;
 (b) Emigrants to and immigrants from the dependencies; and
 (c) Movement of military personnel as from the 1962 Population Census.

Table 9 - Passenger traffic⁺ by country of origin or destination and by mode of transport, 1969

Country of origin or destination	Arrivals			Departures		
	Sea	Air	Total	Sea	Air	Total
Kenya	3	924	927	1	837	838
Malagasy Republic	275	2,520	2,795	341	2,416	2,757
Malawi	-	95	95	-	69	69
Reunion	346	13,974	14,320	344	14,125	14,469
Rhodesia	-	73	73	1	43	44
Seychelles	90	14	104	88	12	100
South Africa	234	3,550	3,784	165	3,424	3,589
Tanzania	2	408	410	-	347	347
Zambia	-	507	507	-	441	441
British Indian Ocean Territories	-	12	12	2	5	7
Rodrigues	1,493	-	1,493	1,569	-	1,569
Other dependencies of Mauritius	252	-	252	230	-	230
Other countries in Africa	8	360	368	6	476	482
China	2	-	2	-	1	1
Hong Kong	4	96	100	-	204	204
India	12	839	851	25	909	934
Japan	16	79	95	13	89	102
Singapore	-	37	37	-	44	44
Other countries in Asia	39	245	284	4	260	264
Australia	34	1,489	1,523	1,082	2,020	3,102
New Zealand	6	218	224	5	265	270
Other countries in Oceania	3	117	120	-	112	112
Belgium	-	37	37	-	63	63
France	74	1,356	1,430	67	1,603	1,670
Italy	-	180	180	-	242	242
Switzerland	2	88	90	-	96	96
United Kingdom	38	4,177	4,215	78	5,052	5,130
Other countries in Europe	47	431	478	13	466	479
Canada	2	70	72	-	114	114
U.S.A.	12	494	506	6	507	513
Other countries in America	3	46	49	1	55	56
Total	2,997	32,436	35,433	4,041	34,297	38,338

⁺Excluding transit passengers, 486 discharged seamen and 591 engaged seamen

Table 10 - Tourist arrivals and tourist nights by country of residence and by mode of transport, 1969

Country of residence	Arrivals			Tourist nights
	Sea	Air	Total	
Kenya	3	571	574	4,355
Malagasy Republic	58	1,992	2,050	24,236
Malawi	-	27	27	285
Reunion	212	8,693	8,905	105,018
Rhodesia	-	22	22	141
Seychelles	13	8	21	858
South Africa	70	2,610	2,680	23,792
Tanzania	2	192	194	1,054
Zambia	-	332	332	3,130
Other countries in Africa	3	250	253	2,390
Hong Kong	2	68	70	318
India	3	269	272	5,482
Japan	10	76	86	1,058
Singapore	-	37	37	374
Other countries in Asia	9	105	114	1,581
Australia	5	1,157	1,162	7,877
New Zealand	6	218	224	879
Other countries in Oceania	-	109	109	229
France	6	761	767	6,531
Italy	-	146	146	1,049
Switzerland	2	75	77	694
United Kingdom	19	1,505	1,524	19,609
Other countries in Europe	25	304	329	4,523
Canada	-	57	57	391
U.S.A.	6	500	506	4,085
Other countries in America	1	48	49	633
Total	455	20,132	20,587	220,572

Table 11 - Population and vital statistics

Year	Estimated mid-year population (30th June)	Numbers				Rates per 1000 of the mid-year population			
		Marriages [†]	Births	Deaths	Natural increase	Marriage [†] rate	Crude birth rate	Crude death rate	Rate of natural increase
1944-48 Average	424,219	3,228	17,788	11,672	6,116	15.2	41.9	27.5	14.4
1949-53 "	483,859	3,552	22,913	7,358	15,555	14.7	47.4	15.2	32.2
1954-58 "	574,938	3,008	23,936	7,401	16,535	10.5	41.6	12.9	28.7
1959-63 "	662,368	3,452	25,913	6,708	19,205	10.4	39.1	10.1	29.0
1964-68 "	759,067	4,004	25,707	6,578	19,129	10.5	33.9	8.7	25.2
1959	627,249	3,297	23,923	6,753	17,170	10.5	33.1	10.8	27.3
1960	644,743	3,113	25,307	7,248	18,059	9.7	39.3	11.2	28.1
1961	662,368	3,484	26,092	6,505	19,587	10.5	39.4	9.8	29.6
1962	681,619	3,893	26,267	6,325	19,942	11.4	38.5	9.3	29.2
1963	701,422	3,472	27,978	6,709	21,269	9.9	39.9	9.6	30.3
1964	722,089	3,965	27,528	6,184	21,344	11.0	38.1	8.6	29.5
1965	741,036	3,976	26,279	6,337	19,942	10.7	35.5	8.6	26.9
1966	759,067	4,157	26,817	6,701	20,116	11.0	35.3	8.8	26.5
1967	773,573	3,949	23,499	6,543	16,956	10.2	30.4	8.5	21.9
1968	787,406	3,974	24,413	7,126	17,287	10.1	31.0	9.0	22.0
1969	798,684	3,882	21,719	6,428	15,291	9.7	27.2	8.0	19.2

[†] Civil marriages only.

Note: Revision of population estimates from 1953 based on data obtained from the 1962 Population Census.

Table 12 - Live births and still births

Year	Numbers			Rates	
	Live births	Still births	Infant deaths	Still birth rate ⁺	Infantile mortality rate ⁺⁺
1944-48 Average	17,788	1,154	2,745	60.9	151.3
1949-53 "	22,913	1,464	1,945	60.1	84.9
1954-58 "	23,936	1,622	1,704	63.5	71.2
1959-63 "	25,913	1,773	1,622	64.0	62.6
1964-68 "	25,707	1,347	1,662	49.8	64.7
1959	23,923	1,759	1,495	68.5	62.5
1960	25,307	1,783	1,760	65.8	69.5
1961	26,092	1,963	1,618	70.0	62.0
1962	26,267	1,841	1,579	65.5	60.1
1963	27,978	1,519	1,660	51.5	59.3
1964	27,528	1,611	1,561	55.3	56.7
1965	26,279	1,557	1,685	55.9	64.1
1966	26,817	1,384	1,721	49.1	64.2
1967	23,499	1,074	1,656	43.7	70.5
1968	24,413	1,110	1,688	43.5	69.1
1969	21,719	951	1,528	41.9	70.4

⁺ still births per 1000 total births (live births and still births)

⁺⁺ deaths of children under 1 year of age per 1000 live births

Table 13 - Infant deaths (deaths under 1 year of age) by age and sex

Age	1967			1968			1969		
	Both Sexes	Male	Female	Both Sexes	Male	Female	Both Sexes	Male	Female
Total infant deaths	1,656	947	709	1,688	935	753	1,528	847	681
Under 1 day	173	98	75	120	72	48	202	122	80
1 - 6 days	405	253	152	421	254	167	298	181	117
7 - 27 days	216	116	100	276	145	131	178	96	82
28 days-under 2 months	108	58	50	167	92	75	98	59	39
2 - 3 months	198	109	89	196	107	89	183	91	92
4 - 5 months	169	95	74	153	82	71	165	84	81
6 - 7 months	163	92	71	139	72	67	164	96	68
8 - 9 months	130	75	55	123	55	68	131	67	64
10 - 11 months	94	51	43	93	56	37	109	51	58

Table 14 - Deaths by age and sex

Age group	1967			1968			1969		
	Both sexes	Male	Female	Both sexes	Male	Female	Both sexes	Male	Female
	Total deaths	6,543	3,497	3,046	7,126	3,744	3,382	6,428	3,361
0 - 4	2,389	1,298	1,091	2,419	1,278	1,141	2,262	1,212	1,050
5 - 9	146	69	77	177	88	89	160	79	81
10 - 14	83	45	38	115	60	55	88	38	50
15 - 19	125	65	60	144	60	84	106	56	50
20 - 24	106	41	65	132	48	84	119	49	70
25 - 29	107	35	72	139	54	85	98	41	57
30 - 34	125	55	70	133	53	80	117	54	63
35 - 39	157	75	82	153	71	82	133	70	63
40 - 44	185	104	81	195	107	88	177	99	78
45 - 49	202	139	63	229	152	77	232	134	98
50 - 54	280	176	104	351	233	118	288	175	113
55 - 59	428	289	139	432	290	142	371	226	145
60 - 64	439	287	152	496	308	188	441	268	173
65 - 69	463	271	192	537	315	222	477	281	196
70 - 74	476	241	235	510	269	241	489	263	226
75 - 79	369	165	204	455	189	266	378	167	211
80 - 84	263	102	161	283	107	176	267	91	176
85 and over	200	40	160	226	62	164	225	58	167

Table 15 - Population and vital statistics - quarterly

Period	Marriages*	Live births			Deaths			Natural increase	Net overseas migration	Total increase	Estimated population at the end of the period
		Both sexes	Male	Female	Both sexes	Male	Female				
1965	3,976	26,279	13,287	12,992	6,337	3,388	2,949	19,942	- 2,126	17,816	751,421
1966	4,157	26,817	13,554	13,263	6,701	3,550	3,151	20,116	- 2,845	17,271	768,692
1967	3,949	23,499	12,061	11,438	6,543	3,497	3,046	16,956	- 3,604	13,352	782,044
1968	3,974	24,413	12,394	12,019	7,126	3,744	3,382	17,287	- 4,585	12,702	794,746
1969	3,882	21,719	11,182	10,537	6,428	3,361	3,067	15,291	- 3,010	12,281	807,027
1968 : 1st Qr.	799	5,943	2,962	2,981	1,603	841	762	4,340	- 2,139	2,201	784,245
2nd Qr.	1,030	6,047	3,070	2,977	1,647	860	787	4,400	- 1,239	3,161	787,406
3rd Qr.	1,039	6,662	3,386	3,276	2,287	1,231	1,056	4,375	- 1,072	3,303	790,709
4th Qr.	1,106	5,761	2,976	2,785	1,589	812	777	4,172	- 135	4,037	794,746
1969 : 1st Qr.	847	4,992	2,571	2,421	1,540	786	754	3,452	- 1,732	1,720	796,466
2nd Qr.	984	4,766	2,400	2,366	1,456	784	672	3,310	- 1,092	2,218	798,684
3rd Qr.	1,021	5,782	3,051	2,731	1,746	918	828	4,036	- 1,052	2,984	801,668
4th Qr.	1,030	6,179	3,160	3,019	1,686	873	813	4,493	+ 866	5,359	807,027

*Civil marriages only.

Table 16 - Still births and infant deaths

Period	Still births	Infant deaths		
		Both sexes	Male	Female
1965	1,557	1,685	943	742
1966	1,384	1,721	943	778
1967	1,074	1,656	947	709
1968	1,110	1,688	935	753
1969	951	1,528	847	681
1968 : 1st Qr.	245	384	215	169
2nd Qr.	323	404	223	181
3rd Qr.	293	526	289	237
4th Qr.	249	374	208	166
1969 : 1st Qr.	214	419	237	182
2nd Qr.	198	334	189	145
3rd Qr.	257	347	204	143
4th Qr.	282	428	217	211

Table 17 - Expectation of life in years at selected ages

Exact age (years)	Males			Females		
	1942-46 ⁺	1951-53 ⁺	1961-63	1942-46 ⁺	1951-53 ⁺	1961-63
0	32.8	49.8	58.7	33.8	52.3	61.9
10	35.8	49.2	55.1	37.3	52.2	58.1
20	28.1	40.1	45.7	30.2	43.7	48.9
30	22.3	31.6	36.6	26.1	36.2	40.3
40	16.7	23.6	27.7	21.2	28.7	31.9
50	11.9	16.7	19.6	15.7	21.2	23.5
60	8.1	11.2	13.2	10.6	14.6	15.8
70	5.6	6.7	8.5	7.1	9.1	9.7
80	4.0	4.3	4.8	4.6	5.3	5.4

⁺Excluding Chinese.

Source : Mauritius Life Tables.

Table 18 - Population and vital statistics - Rodrigues

Period	Estimated mid-year population (30th June)	Numbers			Rates ⁺				Estimated population as at 31st December	
		Marriages	Births	Deaths	Natural increase	Marriage rate	Crude birth rate	Crude death rate		Rate of natural increase
1962	18,335	145	895	160	735	15.8	48.8	8.7	40.1	18,674
1963	18,754	171	881	203	678	18.2	47.0	10.8	36.2	18,812
1964	19,199	161	1,082	237	845	16.8	56.4	12.4	44.0	19,507
1965	19,663	127	916	300	616	12.9	46.6	15.3	31.3	19,934
1966	20,309	132	1,014	243	771	13.0	49.9	12.0	37.9	20,613
1967	20,987	156	972	207	765	14.9	46.3	9.9	36.4	21,595
1968	22,057	145	996	256	740	13.1	45.2	11.6	33.6	22,391
1969	22,659	173	902	305	597	15.3	39.8	13.5	26.3	23,064

⁺ per 1000 of the mid-year population

II. PUBLIC HEALTH

Table 19 - Health services

	1967	1968	1969
<u>Hospitals</u>			
General hospitals	8	8	8
Special hospitals (mental diseases, leprosy and tuberculosis)	3	3	3
Private hospitals on sugar estates	24	24	24
<u>Dispensaries</u>			
Public dispensaries and out-patients' departments of hospitals	56	56	56
Private dispensaries on sugar estates	24	24	24
Mobile dispensaries	5	5	5
<u>Clinics</u>			
Private	5	5	5
Public mobile ante-natal	1	1	1
Public mobile dental	4	4	4
<u>Maternity and Child Health Centres</u>	39	39	41
<u>Doctors</u>			
Government Service :			
Specialists*	34	34	36
General practice	114	97	98
Private Service :			
Registered medical practitioners	64	70	67
<u>Dentists</u>			
Government Service	9	8	7
Private	22	21	15
<u>Trained Nurses</u>	690	720	725
<u>Midwives</u>	141	160	157
<u>Pharmacists</u>			
Attached to hospitals	3	3	4
Private	48	48	46

* included in figure for general practice

Table 20 - Statistics of hospitals

Period	No. of beds	Patients in hospitals on first day of period	Total admissions	Deaths	Discharges	Patients remaining on last day of period
1962	2,453	1,751	38,130	1,628	36,480	1,773
1963	2,453	1,773	45,717	1,959	43,686	1,845
1964	2,481	1,845	49,080	1,887	47,233	1,805
1965	2,514	1,805	51,445	1,955	49,356	1,939
1966	2,514	1,939	51,258	1,983	49,575	1,639
1967	2,578	1,723	54,982	2,255	52,734	1,716
1968	2,543	1,716	60,055	2,361	57,447	1,963
1969	2,561	1,963	59,421	1,997	57,452	1,935
1968 : 1st Qr.	2,543	1,716	13,984	543	12,717	2,440
2nd Qr.	2,543	2,440	14,528	596	13,927	2,445
3rd Qr.	2,543	2,445	15,136	671	14,528	2,382
4th Qr.	2,543	2,382	16,407	551	16,275	1,963
1969 : 1st Qr.	2,561	1,963	14,232	547	13,275	2,373
2nd Qr.	2,561	2,373	15,031	484	14,604	2,316
3rd Qr.	2,561	2,316	14,729	452	14,242	2,351
4th Qr.	2,561	2,351	15,429	514	15,331	1,935

Note : Pointe aux Canonniers Tuberculosis Hospital included as from 1967.

Table 21 - Notifiable, contagious or communicable diseases

Disease Period	Enteric	Diphtheria	Acute poliomyelitis	Puerperal fever	Erysipelas	Cerebro- spinal meningitis	Tuberculosis	Leprosy	Murine typhus
	fever								
1962	81	151	1	-	-	-	300	1	3
1963	89	145	3	2	2	-	429	4	3
1964	64	206	-	6	-	-	472	-	1
1965	77	78	-	-	-	-	366	-	-
1966	54	75	5	1	-	-	585	2	-
1967	91	37	6	1	-	-	553	5	-
1968	32	44	-	2	2	-	499	1	-
1969	9	8	-	-	-	-	393	-	-
1968 : 1st Qr.	9	6	-	1	1	-	87	-	-
2nd Qr.	11	12	-	-	-	-	144	-	-
3rd Qr.	7	12	-	-	1	-	123	1	-
4th Qr.	5	14	-	1	-	-	145	-	-
1969 : 1st Qr.	2	3	-	-	-	-	116	-	-
2nd Qr.	4	2	-	-	-	-	91	-	-
3rd Qr.	2	2	-	-	-	-	81	-	-
4th Qr.	1	1	-	-	-	-	105	-	-

Table 22 - Cause of death, 1969

Section ⁺	CAUSE OF DEATH	D E A T H S						Death rate per 100,000 of population		
		Under 1 year		1 to under 5 years		All Ages				
		Both sexes	Male	Female	Both sexes	Male	Female			
I	Infective and parasitic diseases	622	698	638	405	698	638	1,336	20.8	167.3
II	Neoplasms	1	170	186	8	170	186	356	5.5	44.6
III	Endocrine, nutritional and metabolic diseases	33	79	95	39	79	95	174	2.7	21.8
IV	Diseases of the blood and blood forming organs	7	66	107	13	66	107	173	2.7	21.7
V	Mental disorders	-	5	-	-	5	-	5	0.1	0.6
VI	Diseases of the nervous system and sense organs	10	52	35	21	52	35	87	1.4	10.9
VII	Diseases of the circulatory system	12	725	622	6	725	622	1,347	21.0	168.6
VIII	Diseases of the respiratory system	178	403	391	128	403	391	794	12.3	99.4
IX	Diseases of the digestive system	11	107	85	8	107	85	192	3.0	24.0
X	Diseases of the genito-urinary system	1	31	35	3	31	35	66	1.0	8.3
XI	Complications of pregnancy, childbirth, and the puerperium	-	-	30	-	-	30	30	0.5	3.8
XII	Diseases of the skin and subcutaneous tissue	2	5	1	-	5	1	6	0.1	0.7
XIII	Diseases of the musculoskeletal system and connective tissue	-	5	9	-	5	9	14	0.2	1.7
XIV	Congenital anomalies	29	26	12	3	26	12	38	0.6	4.8
XV	Certain causes of perinatal morbidity and mortality	437	253	184	-	253	184	437	6.8	54.7
XVI	Symptoms and ill-defined conditions	182	526	550	59	526	550	1,076	16.7	134.7
XVII	Accidents, poisoning, and violence	3	210	87	41	210	87	297	4.6	37.2
	All causes	1,528	3,361	3,067	734	3,361	3,067	6,428	100.0	801.8

⁺ International Classification, 1965.

III. PUBLIC FINANCE AND BANKING

Table 23 - Central Government revenue and expenditure

Financial year	Rs million						
	Revenue [@]			Expenditure [@]			Surplus (+) Deficit (-)
	Recurrent	Capital	Total	Recurrent	Capital	Total	
1965-66	182.2	74.6	256.8	201.9	53.7	255.6	+ 1.2
1966-67	199.3	29.7	229.0	221.0	56.0	277.0	- 48.0
1967-68	232.4	60.4	292.8	232.3	65.1	297.4	- 4.6
1968-69	242.6	20.6	263.2	241.6	43.4	285.0	- 21.8
1969-70 ^{*†}	242.0	90.2	332.2	248.6	79.9	328.5	+ 3.7

[@] including tax reserve certificates

^{*} estimates

Table 24 - Functional classification of Central Government recurrent revenue

	Rs million			
	1966-67	1967-68	1968-69	1969-70 ^{*†}
<u>Taxes on Income and Capital</u>	<u>45.7</u>	<u>49.0</u>	<u>49.4</u>	<u>54.2</u>
Income Tax :				
Individuals	27.5	26.6	26.7	30.1
Companies	13.8	18.0	17.6	20.0
Development contribution	-	0.8	1.0	0.5
Contribution to Widows' Fund	2.1	2.1	2.2	1.6
Succession duties	2.3	1.5	1.9	2.0
<u>Taxes on Financial Transactions</u>	<u>6.1</u>	<u>6.7</u>	<u>8.9</u>	<u>7.4</u>
<u>Taxes on Gambling</u>	<u>2.4</u>	<u>2.4</u>	<u>3.2</u>	<u>3.4</u>
<u>Taxes on Consumption and Production</u>	<u>109.4</u>	<u>118.8</u>	<u>123.3</u>	<u>128.4</u>
Import duties	56.6	62.2	64.1	66.8
Export duties	13.4	15.3	14.6	15.3
Excise duties	27.8	29.4	30.4	31.8
Business and professional licences	4.4	4.7	6.7	6.6
Taxes on transportation	7.2	7.2	7.5	7.9
<u>Provision of Goods and Services</u>	<u>18.5</u>	<u>24.8</u>	<u>28.0</u>	<u>31.9</u>
Rental of government property	2.0	1.8	2.1	2.4
Telephone service	3.3	3.6	4.0	4.0
Marine services	4.3	6.4	6.7	7.5
Posts and telegraphs	2.9	4.2	4.7	4.9
Water and irrigation	2.6	2.7	3.0	3.1
Agriculture and forests	1.5	1.7	2.0	2.0
Other goods and services	1.9	4.4	5.5	8.0
<u>Interests, Profits and Dividends</u>	<u>12.0</u>	<u>8.5</u>	<u>8.6</u>	<u>12.1</u>
<u>Grants from British Government</u>	<u>1.0</u>	<u>18.4</u>	<u>1.4</u>	<u>0.9</u>
<u>Other Recurrent Revenue</u>	<u>4.2</u>	<u>3.8</u>	<u>19.8</u>	<u>3.7</u>
Total	199.3	232.4	242.6	242.0

^{*} estimates

Table 25 - Functional classification of Central Government recurrent expenditure

	Rs million			
	1966-67	1967-68	1968-69	1969-70 [*]
<u>General Services</u>	<u>27.0</u>	<u>27.3</u>	<u>29.2</u>	<u>33.3</u>
General administration	1.6	1.4	1.5	1.8
Legislature	0.6	0.7	0.8	0.8
Maintenance of law and order :				
Justice and Attorney General	1.8	1.8	1.8	2.0
Police and defence	11.1	11.6	12.0	14.0
Prisons	1.7	1.8	1.8	2.0
Revenue collection and financial control	5.4	5.2	5.2	6.5
Other general services	4.8	4.8	6.1	6.2
<u>Community Services</u>	<u>17.3</u>	<u>17.1</u>	<u>16.7</u>	<u>17.9</u>
Maintenance of roads & public buildings	7.9	7.9	7.7	8.2
Domestic water supplies	3.9	3.9	3.9	4.0
Sanitation and sewerage	3.3	3.1	3.0	3.4
Other community services	2.2	2.2	2.1	2.3
<u>Social Services</u>	<u>84.0</u>	<u>90.4</u>	<u>91.2</u>	<u>90.9</u>
Education	27.4	29.4	29.8	32.1
Health (excluding sanitation)	18.3	18.8	18.8	23.1
Social security :				
Family allowances	9.9	9.4	6.2	5.5
Outdoor relief	10.0	9.8	8.3	9.0
Old age pensions	10.6	11.0	11.3	11.4
Housing	1.6	1.6	1.5	1.7
Other social services	6.2	10.4	15.3	8.1
<u>Economic Services</u>	<u>17.9</u>	<u>20.7</u>	<u>18.9</u>	<u>22.2</u>
Agriculture and forests	7.3	8.2	6.5	8.2
Civil aviation and marine services	2.7	2.7	2.8	3.6
Posts, telegraphs & telecommunications	5.0	5.9	5.8	6.1
Other economic services	2.9	3.9	3.8	4.3
<u>Unallocable Expenditure</u>	<u>74.8</u>	<u>76.8</u>	<u>85.6</u>	<u>84.3</u>
Transfer to local authorities	6.8	6.9	5.8	6.5
Recurrent financial obligations :				
Public debt :				
Interest	12.0	15.2	17.7	18.4
Redemptions	1.7	2.1	18.3	6.2
Sinking Fund	4.6	4.9	6.6	10.5
Public pensions and gratuities	14.7	15.8	17.0	17.7
Passages	4.6	1.4	0.8	1.5
Rodrigues	3.7	3.8	4.0	4.6
Relief works	18.9	18.9	8.8	9.2
Other unallocable expenditure	7.8	7.8	6.6	9.7
Total	221.0	232.3	241.6	248.6

* revised estimates

Table 26 - Functional classification of Central Government capital revenue

	Rs million			
	1966-67	1967-68	1968-69	1969-70*
Grants :				
British government	4.1	15.7	10.7	11.5
Other foreign sources	-	-	1.6	0.1
Sale of property	0.2	-	-	-
Internal borrowing	11.4	20.2	3.4	38.0
External borrowing	8.7	19.6	2.4	38.5
Interest on investments	2.0	0.7	1.3	1.1
Tax reserve certificates	2.0	3.2	-	-
Other capital revenue	1.3	1.0	1.2	1.0
Total	29.7	60.4	20.6	90.2

* estimates

Table 27 - Functional classification of Central Government capital expenditure

	Rs million			
	1966-67	1967-68	1968-69	1969-70*
Agriculture and forests	9.6	11.3	8.7	11.5
Irrigation	0.9	0.7	0.8	1.1
Roads and bridges	2.1	0.9	1.0	3.3
Marine services and civil aviation	2.6	1.2	4.7	12.4
Domestic water supplies	3.0	3.9	2.7	8.3
Health	9.6	13.8	4.5	1.0
Housing	2.7	0.6	1.8	1.2
Sewerage	2.7	3.3	5.9	6.3
Education	2.7	2.1	1.4	5.8
Rodrigues	2.6	4.2	3.9	3.3
Loans :				
Development Bank of Mauritius	7.1	7.7	-	4.0
Central Electricity Board	-	2.0	-	-
Mauritius Housing Corporation	1.3	1.7	-	-
Central Housing Authority	2.0	0.8	2.4	1.5
Municipalities	0.2	-	-	-
Other loans	0.5	0.1	3.7	0.6
Redemption of loans	-	-	-	13.0
Tax reserve certificates	1.6	2.7	-	-
Other capital expenditure	4.8	8.1	1.9	6.6
Total	56.0	65.1	43.4	79.9

* estimates

Table 28 - Central Government indebtedness

Rs million

Period	Amount outstanding at beginning of period				Borrowing during period		Repayments during period	
	Total	Internal		External	Internal	External	Internal	External
		Tap loan	Other	U.K.				
1.7.63-30.6.64	184.4	55.6	36.1	92.7	-	7.6	48.0	1.0
1.7.64-30.6.65	239.0	63.2	36.1	124.3	15.4	7.2	11.5	1.1
1.7.65-30.6.66	256.4	70.2	36.1	123.8	26.3	12.9	20.3	1.5
1.7.66-30.6.67	286.4	76.5	41.0	136.3	32.6	14.2	7.6	3.2
1.7.67-30.6.68	301.2	88.2	39.7	141.8	31.5	22.1	26.0	3.6
1.7.68-30.6.69	341.1	92.3	53.1	160.2	35.5	5.3	16.3	38.2
1969 : 1st Qr.	322.6	95.5	53.1	139.2	34.8	1.4	0.3	1.3
2nd Qr.	320.7	94.6	53.1	138.2	34.8	-	2.1	1.2
3rd Qr.	320.5	94.6	51.9	140.1	33.9	-	1.2	-
4th Qr.	320.5	93.4	51.9	141.3	33.9	2.6	1.0	0.9

*International Bank for Reconstruction and Development

Table 29 - Sinking funds held against the public debt

Amount at 30th June	Rs million			
	1964	1965	1966	1967
	54.2	62.6	73.7	81.0
				88.9
				1968
				1969
				76.0

Note : Investments have been valued at mean market prices

Table 30 - Central Government loan raisings

	Year of issue	Rate of interest (% p.a.)	Amount outstanding @ 31.12.69 (Rs million)
<u>Local loans</u>			
Development Welfare Loan 1971-81	1950	3	3.1
Development (general purposes) Loan 1964-74	1953	4 $\frac{1}{4}$	14.5
Development (general purposes) Loan 1973-83	1962	5 $\frac{3}{4}$	15.0
Development (general purposes) Loan 1971-76	1966	6	5.0
Treasury debenture stock 1970	1968	6	14.0
Tap Loan	(a)	5	96.0
<u>U.K. loans</u>			
Development (general purposes) Loan 1972-77	1955-56	4 $\frac{3}{4}$	27.9
Development (general purposes) Loan 1973-75	1964	6 $\frac{1}{2}$	27.9

(a) Tap loans are issued every year since 1959. The date of redemption is at the option of the purchaser.

Table 31 - Outstanding loans and advances made from public funds

Debtor	Rs million	
	@ 30.6.68	@ 30.6.69
Central Electricity Board	91.9	89.2
Central Housing Authority	31.9	33.5
Development Bank of Mauritius	21.5	21.5
Mauritius Housing Corporation	14.6	14.4
Mauritius Broadcasting Corporation	-	1.2
Municipalities	22.3	21.8
Sewerage schemes	7.3	9.4
Sack Factory	5.0	5.0
Colonial steamships	2.1	1.9
Tea estates	3.7	3.6
Mauritius Hotels	1.4	1.3
Agricultural Marketing Board	1.0	3.5
Landlords of private school buildings	1.8	1.6
Planters' Hurricane Loan	0.9	0.8
Other	2.2	2.3
Total	207.6	211.0

Table 32 - Income tax - individuals

Range of chargeable income (Rs)	Year of assessment 1966-67*				Year of assessment 1967-68*			
	Taxpayers (No.)	Gross income (Mn. Rs.)	Chargeable income (Mn. Rs.)	Tax assessed (Mn. Rs.)	Taxpayers (No.)	Gross income (Mn. Rs.)	Chargeable income (Mn. Rs.)	Tax assessed (Mn. Rs.)
1 - 5,000	10,858	75.6	20.2	2.8	10,872	76.0	20.1	3.0
5,001 - 10,000	2,300	34.0	17.8	2.8	2,331	33.9	17.4	2.9
10,001 - 15,000	1,012	21.8	13.2	2.6	1,023	21.3	12.8	2.5
15,001 - 25,000	923	27.7	19.0	4.9	932	27.5	18.7	4.7
25,001 - 50,000	500	24.0	18.4	7.0	488	22.6	17.1	6.6
50,001 - 100,000	121	10.0	8.5	4.7	107	8.9	7.5	4.3
100,001 - 250,000	30	5.0	4.6	3.0	21	3.4	3.1	2.0
250,001 - 500,000	4	1.6	1.5	1.0	5	1.9	1.8	1.2
Total	15,748	199.7	103.2	28.8	15,779	195.5	98.5	27.2

* revised to date

Note : The figures are provisional and subject to amendment, as the income tax ordinance empowers the Commissioner of Income Tax to revise cases under objection, to issue additional claims for the six years preceding the present year of assessment, and to claim back duty at any time in cases of false or incorrect returns of income for any previous years.

Table 33 - Income tax - companies

Range of chargeable income (Rs)	Year of assessment 1966-67*					Year of assessment 1967-68*				
	Companies (No.)	Gross income (Mn. Rs.)	Chargeable income (Mn. Rs.)	Tax assessed (Mn. Rs.)	Companies (No.)	Gross income (Mn. Rs.)	Chargeable income (Mn. Rs.)	Tax assessed (Mn. Rs.)		
1 - 5,000	186	4.4	0.3	0.1	188	6.3	0.3	0.1		
5,001 - 10,000	49	2.1	0.4	0.1	65	2.8	0.5	0.2		
10,001 - 15,000	20	1.7	0.3	0.1	29	1.1	0.4	0.1		
15,001 - 25,000	29	1.6	0.6	0.2	28	1.4	0.6	0.2		
25,001 - 50,000	40	4.0	1.4	0.5	32	3.9	1.2	0.4		
50,001 - 100,000	29	6.8	2.0	0.8	27	4.2	1.9	0.7		
100,001 - 250,000	35	10.3	5.0	1.9	25	11.1	3.7	1.4		
250,001 - 500,000	13	14.0	5.1	1.8	15	11.1	5.5	2.1		
500,001 - 750,000	4	4.0	2.6	1.0	4	3.7	2.5	1.0		
750,001 - 1,000,000	5	10.6	4.4	1.6	4	6.3	3.5	1.3		
Over 1,000,000	9	26.5	16.7	6.6	10	36.2	20.2	7.6		
Total	419	86.0	38.8	14.7	427	88.1	40.3	15.1		

* revised to date

Note :The figures are provisional and subject to amendment, as the income tax ordinance empowers the Commissioner of Income Tax to revise cases under objection, to issue additional claims for the six years preceding the present year of assessment, and to claim back duty at any time in cases of false or incorrect returns of income for any previous years.

Table 34 - Sterling assets
(end of period)

Period	INVESTMENTS (Nominal value)				LIQUID ASSETS (Cash, money at call and short-term deposits)						
	Government	Currency backing	Semi-governmental institutions	Post Office Savings Bank	Total	Government	* Currency backing	Semi-governmental institutions	Post Office Savings Bank	Total government and semi-governmental institutions	Net balances of banks due from banks abroad
1965	24.1 ⁺	57.7	6.9	20.3	109.0	0.8	37.3	7.0	3.9	54.0	44.0
1966	56.2 ⁺	57.6	6.9	19.0	139.7	- 5.0	34.2	6.9	10.9	47.0	53.2
1967	32.8 ⁺	(a)	6.9	18.8	58.5	- 22.0	(a)	6.4	4.7	- 10.9	36.0
1968	31.0 ⁺	(a)	4.3	18.1	53.4	- 9.9	(a)	7.4	5.0	2.5	19.5
1969	17.9	(a)	4.3	(b)	22.2	- 2.2	(a)	23.3	(b)	21.1	39.3
1969 : 1st Qr.	31.1 ⁺	(a)	4.3	18.0	53.4	- 8.0	(a)	2.2	5.0	- 0.7	25.2
2nd Qr.	31.0 ⁺	(a)	4.3	18.0	53.3	- 11.5	(a)	2.4	5.0	- 4.1	- 37.3
3rd Qr.	17.1	(a)	4.3	(b)	21.4	- 3.8	(a)	2.4	(b)	- 1.4	- 5.2
4th Qr.	17.9	(a)	4.3	(b)	22.2	- 2.2	(a)	23.3	(b)	21.1	39.3

* Net of short-term borrowings

+ Revised

(a) These assets have become the property of the Central Bank since August 1967 and are now shown in table 35. Hence 'Total Investments' and 'Total Liquid Assets of Government and Semi-government Institutions' before and after that date are not comparable.

(b) During the third quarter of 1969, these assets were surrendered to the Bank of Mauritius in return for payments in Mauritian Rupees; and hence these are merged with the sterling assets of the Bank of Mauritius shown in table 35. Because of this modification, the figures of "Total Investments" and "Total Liquid Assets of Government and Semi-government Institutions" before and after the third quarter of 1969, are not strictly comparable.

Table 35 - Assets and liabilities of the Bank of Mauritius
(end of period)

ASSETS	Period	External					Local			
		Total	Balances with banks	Bills	Securities	Total	Government securities	Discounts & advances	Other assets	
1968 : 3rd Qr.	106.4	54.4	5.5	10.8	38.1	52.0	28.3	22.3	1.4	
	130.7	89.0	20.6	30.4	38.0	41.7	24.0	15.9	1.8	
1969 : 1st Qr.	139.4	85.9	6.8	15.2	63.9	53.5	28.8	22.9	1.8	
	154.8	112.4	5.8	20.1	86.5	42.4	24.0	15.2	3.2	
3rd Qr.	190.7	151.9	14.8	29.0	108.1	38.8	20.5	12.8	5.5	
4th Qr.	219.0	180.0	18.1	44.3	117.6	39.0	14.9	19.7	4.4	

LIABILITIES	Period	Demand deposits			Total deposits		Notes in circulation		Coins in circulation		Capital & reserve	Total
		Government	Bankers'	Other	Government	Other	Government	Other	Government	Other		
1968 : 3rd Qr.	106.4	0.6	5.7	0.1	6.4	85.3	5.8	6.0	6.0	6.0	106.4	
	130.7	1.5	1.6	0.1	24.2	91.1	6.0	6.0	6.0	6.0	130.7	
1969 : 1st Qr.	139.4	0.7	7.7	1.1	39.7	83.6	5.6	5.6	6.0	6.0	139.4	
	154.8	0.6	6.6	1.0	34.6	80.5	5.4	5.4	7.2	7.2	154.8	
3rd Qr.	190.7	1.6	16.6	1.6	64.7	86.8	5.8	5.8	7.2	7.2	190.7	
4th Qr.	219.0	3.0	3.5	3.1	76.6	100.5	6.2	6.2	7.2	7.2	219.0	

* mainly due to semi-government bodies

Note : The Central Bank commenced its activities in August 1967.

Table 36 - Banking statistics - assets of commercial banks

Period	Total	Cash	Balances due by			Loans and advances			Investments			Other assets	
			Other local banks	Banks abroad	Primary products	Other industries	Other advances	Local	Abroad	Bills discounted and bills receivable	Other		
1964	311.1	7.3	2.0	97.4	44.9	51.6	32.4	10.6	2.4	15.3	47.2		
1965	280.0	5.8	1.7	57.8	52.0	60.4	32.7	5.8	4.3	12.3	47.2		
1966	284.3	5.3	4.6	56.7	50.8	59.3	36.4	6.9	2.0	14.1	48.2		
1967	313.3	7.0	2.2	52.3	73.9	73.4	21.9	6.7	2.0	15.2	58.7		
1968	308.7	7.9	1.5	38.7	63.1	87.3	30.1	11.7	2.0	10.2	56.2		
1969	344.6	9.5	0.5	45.2	78.1	78.4	29.2	24.2	2.0	11.6	65.9		
1969 : 1st Qr.	304.6	6.5	0.1	32.6	64.4	78.0	30.6	9.7	2.0	10.8	69.9		
2nd Qr.	317.7	6.8	0.5	8.5	87.2	86.2	31.9	20.1	2.0	13.5	61.0		
3rd Qr.	324.9	8.4	0.1	29.2	69.8	80.9	28.3	21.0	2.0	11.0	74.2		
4th Qr.	344.6	9.5	0.5	45.2	78.1	78.4	29.2	24.2	2.0	11.6	65.9		

Rs million

Table 37- Banking statistics : Liabilities of commercial banks

(end of period)

Period	Total	Notes in circulation	Deposits			Balances due to			Other liabilities
			Demand	Time	Savings	Other local banks	Banks abroad	Other	
1965	280.0	-	128.4	38.2	28.1	1.8	13.9	69.6	
1966	284.3	-	148.8	25.7	30.5	3.6	3.5	72.2	
1967	313.3	-	139.7	30.5	41.6	5.4	16.3	79.8	
1968	308.7	-	104.4	54.0	44.6	1.9	19.2	84.6	

Period	Total	Notes in circulation	Deposits			Balances due to			Other liabilities
			Government	Non-government Demand	Non-government Time Savings	Other local banks	Banks abroad	Other	
1969 : 1st Qr.	304.6	-	7.2	104.3	50.6	46.6	0.1	7.4	88.4
2nd Qr.	317.7	-	7.6	87.7	47.8	45.9	0.1	45.8	82.8
3rd Qr.	324.9	-	7.1	95.6	52.5	47.0	1.3	34.5	86.9
4th Qr.	344.6	-	3.8	116.7	70.2	49.1	-	6.0	98.8

Note : No breakdown of deposits into Government and non-government was available before March 1969.

Table 38 - Assets and liabilities of the Development Bank of Mauritius

		Rs million			
		31.12.66	31.12.67	31.12.68	31.12.69
<u>Assets</u>					
Cash		0.1	-	0.1	-
Balances due by other banks in Mauritius		0.8	1.1	0.4	1.0
Loans and advances :					
Primary industries		23.5	23.7	22.7	21.6
Other industries		9.1	10.7	13.8	15.9
Other loans & advances		-	-	0.3	0.4
Investments :					
Local (at cost)		2.1	2.7	7.6	6.2
Overseas		1.3	1.6	2.4	2.0
Other assets		3.8	5.5	4.8	6.2
	Total	40.7	45.3	52.1	53.3
<u>Liabilities</u>					
Notes in circulation		-	-	-	-
Deposits :					
Demand		1.0	1.0	0.8	1.4
Time		2.5	2.1	1.8	1.8
Savings		2.0	1.9	1.9	1.8
Debentures		17.0	17.0	17.0	17.0
The Government of Mauritius		10.7	15.5	22.2	22.4
Bills		0.4	0.4	0.4	0.3
Other liabilities		7.1	7.4	8.0	8.6
	Total	40.7	45.3	52.1	53.3

Table 39 - Post Office Savings Bank

Period	Deposits during period	Withdrawals during period	Accumulated balance at end of period	Number of accounts at 30th June
	(Rs mn.)	(Rs mn.)	(Rs mn.)	
1964	16.9	15.6	34.8	84,642
1965	15.0	15.9	34.8	86,929
1966	14.3	16.2	33.9	88,171
1967	14.3	18.9	29.3	88,503
1968	11.2	13.5	27.0	89,653
1969	11.5	11.8	26.7	90,552
1968 : 3rd Qr.	2.5	4.0	27.5	...
4th Qr.	2.8	3.3	27.0	...
1969 : 1st Qr.	2.2	2.5	26.7	...
2nd Qr.	3.1	3.1	26.7	90,552
3rd Qr.	3.1	3.3	26.5	...
4th Qr.	3.1	2.9	26.7	...

Table 40 - Assets and liabilities of the Mauritius Co-operative Central Bank Ltd.

	Rs million		
	28.2.67	28.2.68	28.2.69
<u>Assets</u>			
Cash at bank and in hand	0.2	1.3	1.1
Loans and advances :			
Primary industries	4.3	4.0	4.1
Housing	1.4	1.2	1.2
Other loans and advances	1.6	1.2	0.9
Investments :			
Local	0.6	1.6	3.6
Abroad	-	-	-
Other assets	0.3	0.3	0.3
Total	8.4	9.6	11.2
<u>Liabilities</u>			
"Owned Funds"	2.8	3.1	3.4
Deposits :			
Demand	2.1	1.8	1.5
Time	0.9	1.7	4.0
Savings	2.2	2.6	2.0
Balances due to other banks in Mauritius	-	-	-
Other liabilities	0.4	0.4	0.3
Total	8.4	9.6	11.2

Table 41 - Money supply
(end of period)

	Rs million			
Period	Notes and coins in circulation ^{1/}	Demand deposits with commercial banks ^{2/}	Other deposits ^{3/}	Total money supply
1968 : 1st Qr.	82.7	88.6	2.0	173.3
2nd Qr.	77.3	84.6	2.1	164.0
3rd Qr.	82.8	96.7	2.8	182.3
4th Qr.	89.2	100.7	1.7	191.6
1969 : 1st Qr.	82.8	104.3	2.3	189.4
2nd Qr.	79.1	87.7	3.5	170.3
3rd Qr.	84.2	95.6	4.5	184.3
4th Qr.	97.2	116.7	4.6	218.5

^{1/} Net of cash held by banks

^{2/} Excludes government deposits

^{3/} Miscellaneous current accounts with Bank of Mauritius and Mauritius Co-operative Central Bank

Table 42 - Assets and liabilities of the Mauritius Housing Corporation Rs million

	31.12.67	31.12.68	31.12.69
<u>Assets</u>			
Cash in hand and on deposit	0.2	-	-
Housing loans	28.3	30.7	32.1
Investments (at cost)	-	-	-
Other assets	0.4	1.7	3.1
Total	28.9	32.4	35.2
<u>Liabilities</u>			
Loans :			
Local			
Government of Mauritius	14.6	14.4	14.2
Development Bank of Mauritius	0.3	0.3	0.4
Other local loans	0.1	2.9	5.6
External			
British Government	3.5	3.3	3.0
Commonwealth Development Corporation	6.7	6.5	6.4
Other liabilities	3.7	5.0	5.6
Total	28.9	32.4	35.2

Table 43 - Bank and interest rates

	per cent per annum		
	31.12.68	30.6.69	31.12.69
<u>Deposit rates</u>			
Post Office Savings Bank	3	4	4
Trading banks :			
Savings accounts			
Fixed deposits (3 months)	4½-4¾	5½	5½
" (6 months)	4¾-5	5¾	5¾
" (12 months)	5¼-5½	6¼	6
" (over 12 months)	7-8	7-8	6¾-7½
<u>Lending rates</u>			
Bank of Mauritius - discount rate	7½	8	7½
Trading banks - bills of exchange and advances	8½-9	8½-9½	8-9
Public notaries - mortgage loans	9-11	9-11	9-11
Mauritius Housing Corporation - housing loans	8	8	8

Note : Rates of interest on Treasury loans are shown in table 30.

Table 44 - Foreign exchange rates

Country	Currency	on 31.12.68		on 30.6.69		on 31.12.69	
		Selling rate	Buying rate	Selling rate	Buying rate	Selling rate	Buying rate
United Kingdom	Pound sterling	13.40	13.20	13.40	13.25	13.40	13.25
Australia	Dollar	6.27-6.30	6.13	6.27	6.15	6.27	6.15
Belgium	Franc	0.1125	0.1116	0.113	0.11	0.110	0.11
Canada	Dollar	5.24	5.18	5.23	5.13	5.23	5.13
France	Franc	1.14	1.11	1.11	1.00	1.01	0.99
Germany, Fed. Rep. of	Mark	1.41	1.38	1.41	1.38	1.52	1.49
Hong Kong	Dollar	0.92	0.91	0.92	0.90	0.92	0.90
India	Rupee	0.7465	0.7315	0.7465	0.7315	0.7465	0.7315
Kenya	Shilling	0.7830-0.7845	0.76	0.78	0.76	0.783	0.76
Malagasy, Rep. of	Franc	0.023	0.022	0.0204	0.0176	0.02	0.0172
New Zealand	Dollar	6.27-6.30	6.00-6.15	6.27	6.15	6.27	6.15
Pakistan	Rupee	1.175	1.155	1.175	1.155	1.175	1.155
Reunion	Franc	0.023	0.022	0.0204	0.0176	0.02	0.0172
South Africa, Rep. of	Rand	7.83-7.85	7.67-7.70	7.83	7.67	7.84	7.70
Switzerland	Franc	1.31	1.28	1.31	1.28	1.31	1.28
U.S.A.	Dollar	5.63	5.53	5.62	5.54	5.60	5.52

Rupees

IV. NATIONAL ACCOUNTS

Table 45 - Industrial origin of the gross national product
(at current factor cost)

	Rs million				
	1964	1965	1966	1967*	1968*
1. Agriculture, forestry, hunting and fishing	180	198	190	203	193
2. Mining and quarrying	1	1	1	1	1
3. Manufacturing	119	129	121	130	124
4. Construction	53	55	52	59	49
5. Electricity, gas, water and sanitary services	22	25	26	30	30
6. Transportation, storage and communication	95	102	99	100	102
7. Wholesale and retail trade	86	87	84	89	92
8. Banking, insurance and real estate	16	16	16	17	16
9. Ownership of dwellings	59	61	63	65	66
10. Public administration and defence	38	40	41	43	44
11. Services	91	94	99	104	110
GROSS DOMESTIC PRODUCT AT FACTOR COST	760	808	792	841	827
Net factor income from the rest of the world	- 2	- 6	- 1	- 5	- 3
GROSS NATIONAL PRODUCT AT FACTOR COST	758	802	791	836	824
Per capita gross national product at factor cost (Based on mid-year population)	(Rs) 1,050	(Rs) 1,082	(Rs) 1,042	(Rs) 1,081	(Rs) 1,046

* provisional

Table 46 - Distribution of the national income before providing for depreciation

	Rs million				
	1964	1965	1966	1967*	1968*
1. Compensation of employees	445	464	470	488	484
2. Income from unincorporated enterprises	102	106	110	111	119
3. Income from property	106	107	107	112	114
4. Saving of corporations	86	102	76	98	83
5. Direct tax on corporations	12	14	17	18	19
6. General government income from property and entrepreneurship	20	23	26	28	27
7. <u>Less</u> interest on public debt	- 9	- 10	- 11	- 15	- 18
8. <u>Less</u> interest on consumers' debt	- 4	- 4	- 4	- 4	- 4
NATIONAL INCOME AND DEPRECIATION =					
Gross national product at factor cost	758	802	791	836	824

* provisional

Table 47 - Expenditure on gross national product
(at current prices)

	1964	1965	1966	1967*	1968*
1. Private consumption expenditure on goods and services	677	634	654	688	711
2. General government consumption expenditure on goods and services	126	138	152	163	154
3. Gross domestic fixed capital formation of private enterprises	126	107	86	87	94
4. Gross domestic fixed capital formation of government and public enterprises	51	48	47	58	47
5. Increase in stocks
CONSUMPTION AND GROSS CAPITAL FORMATION	980	927	939	996	1,006
6. Net exports of goods and services	- 102	- 5	- 27	- 27	- 40
7. Net factor income from the rest of the world	- 2	- 6	- 1	- 5	- 3
8. Less indirect taxes (net of subsidies)	- 118	-114	-120	-128	-139
GROSS NATIONAL PRODUCT AT FACTOR COST	758	802	791	836	824

* provisional

Table 48 - Composition of gross domestic fixed capital formation
(at current prices)

	Rs million				
	1964	1965	1966	1967	1968
A. By type of capital good					
a. Land ^x	3	2	2	2	4
b. Dwellings	44	37	29	37	32
c. Non-residential buildings	22	25	21	29	21
d. Other construction and works	32	31	28	27	24
e. Transport equipment					
(i) Passenger cars	8	6	4	4	5
(ii) Other equipment	16	12	22	11	15
f. Machinery and other equipment	52	42	27	35	40
GROSS DOMESTIC FIXED CAPITAL FORMATION	177	155	133	145	141
B. By industrial use [*]					
a. Agriculture, forestry and fishing	17	17	16	19	17
b. Mining and quarrying	-	-	-	-	-
c. Manufacture	33	17	11	13	14
d. Construction	3	4	3	3	4
e. Electricity, gas and water	16	15	12	14	13
f. Transportation, storage and communications	39	33	37	21	30
g. Wholesale and retail trade	6	9	4	6	6
h. Banking, insurance and real estate	2	1	2	-	-
i. Ownership of dwellings	45	38	29	38	32
j. Public administration	1	3	4	1	-
k. Service industries	12	16	13	28	21
l. Legal fees, stamp duties, etc.	3	2	2	2	4
GROSS DOMESTIC FIXED CAPITAL FORMATION	177	155	133	145	141

^x Including legal fees, stamp duties, agents' commission, etc., connected with the transfer of ownership of land and buildings.

^{*} The figures for 1965 onwards are not strictly comparable with those of previous years as a better distribution of imports of machinery into user industries is now possible.

Table 49 - Balance of payments

Rs million

ITEM	1967		1968		1969	
	Credit	Debit	Credit	Debit	Credit	Debit
A. <u>GOODS AND SERVICES</u>						
1. Merchandise	306	325	359	359	365	326
2. Non-monetary gold	-	1	-	1	-	1
3. Freight and insurance on merchandise	1	48	8	51	8	42
4. Other transportation	27	21	39	25	45	32
5. Travel	13	21	13	21	17	18
6. Investment income	10	16	11	15	13	14
7. Government, not included elsewhere	15	6	14	5	11	6
8. Other services	15	13	19	17	23	16
Net goods and services	-	64	-	31	27	-
B. <u>TRANSFER PAYMENTS</u>						
9. Private	5	12	6	11	5	6
10. Central government	15	2	33	4	16	4
Net transfer payments	6	-	24	-	11	-
C. <u>CAPITAL & MONETARY GOLD</u>						
<u>Non-monetary sectors</u>						
11. Direct investment	1	1	2	2	9	-
12. Other private long-term	-	5	-	3	1	2
13. Other private short-term	1	-	-	1	5	-
14. Local government	-	-	-	-	-	-
15. Central government	15	-	18	-	23	-
<u>Monetary sectors</u>						
16. Commercial banks : liabilities	13	-	3	-	-	13
17. Commercial banks : assets	4	-	11	-	-	7
18. Central institutions: liabilities	18	-	-	19	21	-
19. Central institutions: assets	31	-	-	16	-	86
OTHER CAPITAL, ERRORS AND OMISSIONS	-	19	14	-	11	-

V. CONSUMER PRICE INDICES

Table 50 - Consumer price indices
(Base : January-June 1962 = 100)

The table below gives three consumer price indices, viz :

- (a) an index for households in urban areas;
- (b) an index for households in rural areas;
- (c) a total index for Mauritius as a whole.

Period	Urban	Rural	Whole Island
1963 (Average)	98.5	98.5	98.5
1964 (")	100.5	100.2	100.3
1965 (")	102.3	102.0	102.1
1966 (")	105.0	104.5	104.7
1967 (")	106.6	106.6	106.6
1968 (")	113.0	114.9	114.1
1969 (")	115.6	117.6	116.7
1968 : January	110.6	112.0	111.4
February	112.5	113.6	113.2
March	114.2	115.6	115.0
April	113.4	115.3	114.5
May	111.8	113.6	112.8
June	112.6	114.7	113.8
July	114.5	116.8	115.8
August	113.7	115.9	115.0
September	113.4	115.5	114.6
October	113.2	115.3	114.4
November	113.3	115.4	114.5
December	113.0	115.2	114.2
1969 : January	114.3	116.4	115.5
February	115.7	117.7	116.8
March	116.2	118.1	117.3
April	115.2	117.4	116.5
May	115.9	118.2	117.2
June	114.8	116.8	115.9
July	114.4	116.4	115.5
August	115.1	117.0	116.2
September	115.0	117.0	116.1
October	115.5	117.6	116.7
November	117.5	119.8	118.8
December	117.1	119.4	118.4

VI. EXTERNAL TRADE

Table 51 - Balance of visible trade

Period	Rs million				
	Imports (c.i.f. value)	Exports [*] (f.o.b. value)	Bunkers and ships' stores (f.o.b. value)	Balance of visible trade	
				Surplus	Deficit
1964	388.9	366.9	4.2	-	17.8
1965	367.3	313.4	4.2	-	49.7
1966	333.2	337.6	4.3	8.7	-
1967	371.1	306.8	9.4	-	54.9
1968	421.1	354.0	17.1	-	50.0
1969	376.0	365.2	17.9	7.1	-
1969 : 1st Qr.	93.5	58.1	4.3	-	31.1
2nd Qr.	88.9	20.2	4.1	-	64.6
3rd Qr.	91.4	150.2	5.0	63.8	-
4th Qr.	102.1	136.7	4.5	39.1	-

^{*}Including value of sugar quota certificates and the bonus received in lieu of the Commonwealth Preference on sugar exports, but excluding sales value of bunker fuel and ships' stores.

Table 52 - Quantum and price indices of exports and imports and terms of trade

Period	Quantum indices		Price indices		Terms of trade ^x
	Export	Import	Export	Import	
1964 = 100 ^{xx}					
1965	101	90	85	105	81
1966	104	81	89	106	84
1967	92	89	91	107	85
1965 = 100					
1966	103	90	105	100	105
1967	91	99	108	102	106
1968	106	98	106	117	91

^xRatio of export price to import price index.
A rise in the index indicates that the terms of trade have moved in favour of Mauritius.

^{xx}Revised.

Table 53 - Quantum and price indices of imports, by section

Period	All sections	Food	Beverages and tobacco	Crude materials, inedible, except fuels	Mineral fuels, lubricants, etc.	Animal and vegetable oils and fats	Chemicals	Manufactured goods classified chiefly by material	Machinery and transport equipment	Miscellaneous manufactured articles
<u>Quantum indices</u>										
1964 = 100*	90	99	91	103	105	116	91	85	76	82
1965	81	95	64	88	89	147	90	80	49	72
1966	89	102	63	111	147	159	85	86	60	79
1967										
1968										
1965 = 100	90	97	72	89	85	126	98	93	65	90
1966	99	103	70	106	141	139	93	100	76	100
1967	98	96	73	106	172	154	99	90	82	89
1968										
<u>Price indices</u>										
1964 = 100*	105	103	100	100	99	113	111	104	105	106
1965	106	109	101	94	101	107	109	99	108	107
1966	107	110	104	98	101	101	108	103	104	114
1967										
1968										
1965 = 100	100	104	100	91	103	95	98	96	100	99
1966	102	107	102	99	102	88	97	99	102	104
1967	117	130	116	109	118	81	105	109	122	126
1968										

* revised

Table 54 - Exports : quantities and values*

Period	Total Re-exports value	DOMESTIC EXPORTS										
		Total		Sugar		Molasses		Tea		Other		
		Quantity	Value	Quantity	Value	Quantity	Value	Quantity	Value	Quantity	Value	
1963	427.8	6.8	...	420.9	574.3	400.2	109.8	13.5	1.0	5.5	...	1.8
1964	366.9	7.0	...	359.9	575.7	344.2	99.1	8.8	0.8	4.4	...	2.5
1965	313.4	9.9	...	303.5	569.4	290.3	92.1	5.0	1.1	5.9	...	2.2
1966	337.6	9.0	...	328.6	579.9	306.4	127.5	11.5	1.3	6.5	...	4.1
1967	306.8	6.1	...	300.7	515.8	281.3	96.9	8.5	1.6	8.4	...	2.4
1968	354.0	7.7	...	346.3	596.0	320.7	169.2	11.9	1.7	9.6	...	4.0
1969	365.2	7.0	...	358.2	596.1	326.0	125.3	10.1	2.7	14.6	...	7.6
1968 : 1st Qr.	69.4	1.1	...	67.9	104.1	59.6	45.2	3.5	0.7	3.8	...	1.0
2nd Qr.	19.3	3.0	...	16.3	30.3	11.7	11.1	0.7	0.5	3.0	...	0.9
3rd Qr.	99.2	1.3	...	97.9	172.4	92.8	48.4	3.8	0.1	0.5	...	0.9
4th Qr.	166.1	2.0	...	164.2	289.3	156.7	64.5	3.9	0.4	2.4	...	1.2
1969 : 1st Qr.	58.2	1.6	...	56.6	91.0	48.8	0.1	0.4	1.0	5.6	...	1.8
2nd Qr.	20.2	1.8	...	18.4	13.2	8.4	36.0	2.8	1.0	5.5	...	1.7
3rd Qr.	150.2	1.7	...	148.5	272.2	144.4	21.5	1.5	0.2	1.0	...	1.7
4th Qr.	136.7	1.9	...	134.8	219.7	124.5	67.7	5.4	0.5	2.5	...	2.4

*Including value of sugar quota certificates and the bonus received in lieu of the Commonwealth Preference on sugar exports but, excluding sales value of bunker fuel and ships' stores.

Table 55 - Total exports*: principal countries of destination - values

Period	Rs million (f.o.b.)									
	United Kingdom	Canada	Republic of South Africa	New Zealand	Holland	Italy	Republic of Malagasy	Reunion	United States of America	
1963	296.9	66.7	1.2	0.4	0.1	8.4	1.5	1.8	47.8	
1964	279.5	57.1	2.3	0.3	1.6	11.8	0.9	1.0	5.4	
1965	245.5	28.0	11.8	0.5	0.6	0.3	0.9	1.6	14.1	
1966	275.7	30.9	1.3	0.2	0.3	-	1.1	2.9	16.4	
1967	269.2	9.5	3.4	0.1	2.8	0.4	1.7	1.3	15.8	
1968	272.2	44.1	6.9	0.3	0.3	0.9	1.9	2.5	21.6	
1969	260.5	63.2	9.6	0.3	0.5	-	2.4	3.3	18.5	
1968 : 1st Qr.	55.7	6.8	2.1	0.1	0.2	-	0.4	0.5	2.7	
2nd Qr.	5.9	7.6	2.1	0.1	0.1	0.8	0.7	0.7	-	
3rd Qr.	79.2	14.4	0.3	-	-	-	0.4	0.6	3.7	
4th Qr.	131.3	15.3	2.3	-	-	0.1	0.4	0.8	15.2	
1969 : 1st Qr.	44.6	4.1	4.2	-	-	-	0.5	0.6	0.4	
2nd Qr.	13.4	-	2.3	0.2	-	-	1.3	0.6	1.5	
3rd Qr.	100.1	34.3	0.8	-	0.5	-	0.5	1.1	12.4	
4th Qr.	102.4	24.8	2.3	0.1	-	-	0.2	1.0	4.2	

*Including value of sugar quota certificates and the bonus received in lieu of the Commonwealth Preference on sugar exports.

Table 56 - Imports : values by S.I.T.C. sections

Period	Total	Food	Beverages and tobacco	Crude materials, inedible, except fuels	Mineral fuels, lubricants, etc.	Animal and vegetable oils and fats	Chemicals	Manufactured goods classified chiefly by material	Machinery and transport equipment	Miscellaneous manufactured articles	Miscellaneous transactions and commodities, n.e.s.
1963	333.1	94.7	7.9	5.6	14.2	12.1	39.7	70.8	55.7	31.7	0.8
1964	388.9	105.9	7.4	6.5	17.0	11.3	46.4	88.5	70.3	35.5	0.1
1965	367.3	108.0	6.8	6.7	17.7	14.9	47.1	78.6	56.3	31.0	0.3
1966	333.2	109.6	4.9	5.4	15.4	17.7	45.6	70.2	36.9	27.4	0.2
1967	371.1	118.5	4.8	7.1	25.4	18.3	42.6	78.5	43.7	32.1	0.1
1968	421.1	135.5	5.7	7.8	35.9	18.5	49.0	77.6	56.5	34.6	0.1
1969	376.0	132.6	5.3	5.6	31.7	12.5	43.0	72.4	44.7	27.9	0.2
1968 : 1st Qr.	105.5	32.6	1.4	1.6	8.8	3.0	10.6	21.2	16.6	9.6	0.1
2nd Qr.	99.9	35.1	1.4	2.5	6.3	4.7	8.9	18.9	14.6	7.5	-
3rd Qr.	104.9	33.6	1.4	1.5	8.0	6.6	15.1	18.0	12.9	7.8	-
4th Qr.	110.9	34.2	1.5	2.2	12.8	4.1	14.4	19.5	12.4	9.8	-
1969 : 1st Qr.	93.4	34.6	1.1	1.1	9.6	3.1	8.5	16.8	12.1	6.3	0.2
2nd Qr.	89.0	30.9	1.2	1.3	4.5	4.3	9.0	19.0	11.3	7.5	-
3rd Qr.	91.4	28.7	1.3	1.7	10.0	2.4	13.1	17.2	10.8	6.1	-
4th Qr.	102.1	38.4	1.6	1.5	7.7	2.6	12.3	19.3	10.5	2.0	-

1. The first part of the document discusses the importance of maintaining accurate records of all transactions.

2. It is essential to ensure that all entries are supported by appropriate documentation and receipts.

3. Regular audits should be conducted to verify the accuracy of the records and identify any discrepancies.

4. The second part of the document outlines the procedures for handling disputes and resolving conflicts.

5. All parties involved in a dispute should be given an opportunity to present their case and provide evidence.

6. The goal is to reach a fair and equitable resolution through mediation or arbitration.

7. The third part of the document provides information on the legal rights and responsibilities of all parties.

8. It is important to understand the applicable laws and regulations that govern the transaction.

9. The fourth part of the document discusses the role of the mediator and the arbitrator.

10. The mediator acts as a neutral third party who facilitates communication and helps the parties reach a mutually agreeable solution.

11. The arbitrator is a neutral third party who makes a binding decision based on the evidence presented.

12. The fifth part of the document provides information on the costs and fees associated with the process.

13. It is important to understand the potential costs and to budget accordingly.

14. The sixth part of the document discusses the benefits of using mediation and arbitration.

15. These methods are often faster, less expensive, and more confidential than traditional litigation.

16. The seventh part of the document provides information on the selection of a mediator or arbitrator.

17. It is important to choose a neutral and experienced professional who is familiar with the subject matter.

18. The eighth part of the document discusses the enforcement of the final decision.

19. The final decision is binding and enforceable in court.

20. The ninth part of the document provides information on the confidentiality of the process.

21. The proceedings are typically confidential and the details are not disclosed to the public.

22. The tenth part of the document provides information on the availability of the process.

Table 57 - Imports of merchandise : selected commodities - values

Period	Rs million (c.i.f.)													
	Rice	Wheat flour	Alcoholic beverages	Petroleum products	Vegetable edible oils	Fertilizers, manufactured,	Cotton fabrics	Other textile fabrics	Cement	Iron and steel goods	Manufactures of metals, n.e.s.	Machinery other than electric	Electric machinery, apparatus and appliances	Road motor vehicles and parts
1963	38.3	12.1	5.9	13.8	11.5	16.4	12.1	6.5	7.4	9.0	12.0	17.8	22.0	13.8
1964	39.2	13.5	5.6	16.6	10.8	19.4	13.5	8.7	9.1	15.6	13.4	30.0	18.5	19.3
1965	39.3	14.4	5.1	17.4	14.4	18.4	10.8	7.3	8.9	11.6	11.3	23.2	17.2	14.7
1966	37.5	13.1	3.8	14.8	16.5	17.4	9.7	8.3	7.5	10.7	8.5	12.9	12.8	10.3
1967	44.2	15.3	4.0	25.0	16.2	19.0	11.4	8.4	8.1	12.7	10.8	16.6	16.3	9.9
1968	55.7	17.6	4.2	35.3	14.5	19.3	9.2	9.9	7.3	11.6	9.7	19.7	18.1	14.3
1969	54.9	23.0	4.0	31.1	9.7	17.1	8.4	10.7	8.4	9.3	8.2	18.6	15.0	10.4
1968 : 1st Qr.	14.8	4.7	1.1	8.7	2.6	2.9	2.1	2.3	2.1	3.9	2.7	4.9	4.1	3.8
2nd Qr.	11.7	4.3	1.0	6.1	3.6	1.6	2.3	2.3	2.0	2.4	2.4	5.2	5.1	4.2
3rd Qr.	14.0	4.8	1.1	7.9	5.1	6.8	2.1	2.1	1.6	2.5	2.4	5.3	4.1	3.3
4th Qr.	15.1	3.8	1.0	12.6	3.2	8.0	2.7	3.1	1.5	2.9	2.2	4.3	4.7	3.0
1969 : 1st Qr.	17.6	4.3	0.8	9.4	2.7	2.2	1.9	2.3	1.6	2.5	2.0	5.2	3.7	3.0
2nd Qr.	9.4	6.4	1.0	4.4	3.2	2.1	2.4	2.4	2.2	2.7	2.1	4.3	4.2	2.7
3rd Qr.	11.0	5.7	0.9	9.8	1.8	7.0	1.9	2.6	2.1	1.8	2.0	4.8	3.5	2.5
4th Qr.	16.9	6.6	1.3	7.5	2.0	5.9	2.3	3.3	2.4	2.3	2.0	4.1	3.7	2.3

Table 58 - Imports of merchandise : selected commodities - quantities

Period	Rice	Wheat flour	Vegetable edible oils	Fertilizers, manufactured	Cotton fabrics	Other textile fabrics	Cement	Iron and steel goods
	Thousand m/tons	Thousand m/tons	Thousand m/tons	Thousand m/tons	Million sq. metres	Million sq. metres	Thousand m/tons	Thousand m/tons
1963	69.7	28.2	8.2	66.7	9.6	2.0	80.4	12.9
1964	68.1	28.6	7.5	69.3	10.2	3.0	103.1	21.3
1965	67.2	35.5	8.6	58.1	8.5	2.6	95.4	15.8
1966	61.2	30.6	10.2	51.6	7.7	3.5	79.7	14.3
1967	66.8	35.0	10.6	59.0	9.0	3.1	87.9	16.2
1968	61.5	36.2	10.2	57.3	6.5	3.6	67.1	14.2
1969	64.8	44.9	7.9	57.2	6.0	3.7	76.1	10.4
1968 : 1st Qr.	15.9	10.7	1.9	10.3	1.6	0.9	20.6	4.8
2nd Qr.	14.9	9.0	2.5	4.5	1.7	0.8	17.6	2.9
3rd Qr.	14.8	9.3	3.6	18.8	1.4	0.8	14.9	3.1
4th Qr.	16.0	7.2	2.2	23.6	1.8	1.1	14.0	3.4
1969 : 1st Qr.	19.6	8.3	2.1	7.6	1.4	0.7	14.8	2.9
2nd Qr.	10.5	12.4	2.9	7.0	1.7	0.8	20.1	2.9
3rd Qr.	12.8	11.3	1.5	22.4	1.3	1.0	19.2	2.2
4th Qr.	21.9	12.9	1.5	20.2	1.7	1.2	22.0	2.3

Table 59 - Imports : main sources of supply - values

Period	Rs million (c.i.f.)											
	United Kingdom	Australia	Burma	Hong kong	India	Republic of South Africa	Western Germany	Iran	Japan	Thailand	France	United States of America
1963	94.2	19.3	34.7	11.7	13.0	30.8	13.0	10.3	9.7	4.3	17.2	9.0
1964	115.2	30.6	26.5	12.3	16.3	32.3	13.7	11.3	15.6	13.9	17.2	11.4
1965	98.4	24.2	23.3	9.6	11.2	34.6	15.2	11.1	13.9	17.1	20.9	12.7
1966	79.1	23.9	23.1	8.8	9.9	27.3	19.7	11.4	14.2	14.3	20.2	7.5
1967	77.8	28.0	27.0	10.4	9.4	30.6	25.9	17.8	16.8	16.1	20.3	7.3
1968	99.6	25.7	42.3	8.7	11.5	31.4	27.9	12.6	14.3	10.7	23.8	8.8
1969	74.4	27.1	7.7	8.8	10.2	31.3	17.1	19.9	14.6	43.8	24.8	6.0
1968 : 1st Qr.	31.2	5.2	3.2	1.9	2.7	6.6	5.1	3.3	3.3	10.1	7.1	2.0
2nd Qr.	25.0	7.1	11.0	2.2	3.9	8.4	6.0	2.6	2.6	0.1	5.4	1.6
3rd Qr.	23.3	6.2	14.0	2.1	2.3	8.6	9.8	2.2	3.5	0.1	5.4	3.1
4th Qr.	20.2	7.1	14.1	2.6	2.6	7.7	6.9	4.6	4.8	0.4	5.9	2.1
1969 : 1st Qr.	19.0	4.0	7.3	1.6	3.3	7.3	3.5	6.1	2.9	10.1	6.0	0.9
2nd Qr.	20.0	7.5	-	2.4	2.4	8.4	3.7	1.9	3.2	8.4	6.6	2.1
3rd Qr.	17.2	7.2	0.2	1.8	2.3	7.2	5.1	5.3	3.6	9.1	5.8	1.7
4th Qr.	18.2	8.4	0.1	3.0	2.1	8.4	4.9	6.6	4.9	16.1	6.4	1.4

Table 60 - Imports of fertilizers*

Kind of fertilizer	1967		1968		1969	
	Quantity m/tons	c.i.f. value Rs 000	Quantity m/tons	c.i.f. value Rs 000	Quantity m/tons	c.i.f. value Rs 000
TOTAL IMPORTS	68,736	19,759	67,970	20,559	67,407	18,247
<u>NITROGENOUS FERTILIZERS</u>	19,018	4,529	15,939	3,786	18,869	4,298
Sulphate of ammonia	18,039	4,227	14,841	3,434	17,689	3,982
Ammonium sulphate nitrate	928	283	1,023	322	850	237
Sodium nitrate	50	18	75	30	325	76
Other nitrogenous fertilizers	1	1	-	-	5	3
<u>POTASSIC FERTILIZERS</u>	6,037	1,614	4,571	1,280	6,050	1,683
Muriate of potash	5,803	1,536	4,521	1,261	5,876	1,614
Sulphate of potash	234	78	50	19	174	69
<u>PHOSPHATIC FERTILIZERS</u>	12,686	1,655	14,583	2,385	12,707	2,044
Single superphosphate	1,638	387	2,233	521	437	103
Triple superphosphate	1,350	547	1,676	655	1,660	716
Phosphatic guano	9,698	721	10,669	1,205	10,233	1,147
Other phosphatic fertilizers	-	-	5	4	377	78
<u>MIXED AND COMPOUND FERTILIZERS</u>	30,995	11,961	32,877	13,108	29,781	10,222

* excluding imports from dependencies

VII. EMPLOYMENT AND WAGES

The figures of employment in tables 61-65 apply to large establishments only - these being defined as :

- (i) Sugar cane plantations known to harvest 25 arpents or more;
- (ii) Tea plantations of 5 arpents or more;
- (iii) All "flue cured" tobacco establishments, irrespective of acreage;
- (iv) Non-agricultural establishments employing at least 10 persons on the day of the survey;
- (v) All central and local government departments.

Table 61 - Employment by major industrial groups

Industrial group	Total no. of persons employed on last Thursday of :		
	September 1968	March 1969	September 1969
Agriculture and fishing	61,668	53,714	58,704
Sugar	57,352	48,366	54,546
Tea	3,089	4,164	2,945
Other	1,227	1,184	1,213
Mining and quarrying	165	163	144
Manufacturing	7,684	7,772	7,813
Construction	1,600	1,730	2,046
Electricity	1,286	1,252	1,276
Commerce	3,717	3,738	3,779
Transport, storage and communication	5,142	4,410	5,613
Services :	31,885	32,655	33,400
Government	27,940	28,626	29,349
Other	3,945	4,029	4,051
Total (excluding relief workers)	113,147	105,434	112,775
Relief workers	13,428	13,459	12,442
GRAND TOTAL (including relief workers)	126,575	118,893	125,217

Table 62 - Employment by sex and age group

Age group	September 1968			March 1969			September 1969		
	Males	Females	Total	Males	Females	Total	Males	Females	Total
18 years of age and over (i.e. adults)	82,796	24,368	107,164	78,466	22,205	100,671	83,857	23,601	107,458
Under 18 years of age (i.e. young persons)	4,882	1,101	5,983	4,202	561	4,763	4,618	699	5,317
Total (excluding relief workers)	87,678	25,469	113,147	82,668	22,766	105,434	88,475	24,300	112,775
Relief workers	13,376	52	13,428	13,395	64	13,459	12,371	71	12,442

Table 63 - Employment in specified sectors : sugar industry

Source of employment	Acreage group (arpents)	Total no. of persons employed on the last Thursday of:		
		September 1968	March 1969	September 1969
Sugar cane planters (including metayers)	25 -	2,456	1,806	2,192
	50 -	1,132	842	967
	75 -	470	468	625
	100 -	6,862	5,295	6,240
Total planters		10,920	8,411	10,024
Millers' estates & annexes (including factories)		46,432	39,955	44,522
Total		57,352	48,366	54,546

Note : Employment figures for millers' estates include workers in field, factory, garage and workshop.

Table 64 - Employment in specified sectors : government services

Source of employment	Total no. of persons employed on the last Thursday of:		
	September 1968	March 1969	September 1969
Central government ⁺	25,114	25,780	26,316
Local government	2,826	2,846	3,033
Relief works	13,428	13,459	12,442
Total	41,368	42,085	41,791

⁺ includes employees of district councils

Table 65 - Employment in specified sectors : manufacturing industries

Industrial group	Total no. of persons employed on last Thursday of:		
	September 1968	March 1969	September 1969
Food ⁺	556	654	693
Beverages and tobacco	1,285	1,295	1,298
Textiles (including aloe fibre)	957	922	854
Wearing apparel	389	416	525
Wood and furniture	230	233	243
Printing and publishing	658	694	681
Rubber and leather products	134	150	122
Chemical products	372	341	340
Non-metallic mineral products	553	603	576
Metal products	337	282	331
Repairs of machinery (except electrical)	605	591	588
Repairs of electrical machinery	168	170	156
Transport equipment	1,208	1,134	1,136
Miscellaneous manufacturing industries	208	263	270
Total	7,660	7,748	7,813

⁺excluding employees in sugar and tea factories, who have been included with plantation workers in agriculture.

Table 66 - Indicators of unemployment

Month	Registered unemployed ⁺					Relief workers [*]				
	1965	1966	1967	1968	1969	1965	1966	1967	1968	1969
January	9,650	13,988	18,567	9,956	13,082	5,338	9,631	19,977	18,179	15,727
February	7,341	16,367	18,144	9,888	14,606	6,532	12,406	19,911	18,156	15,650
March	8,071	15,975	16,614	9,954	14,846	7,400	15,162	20,262	18,294	15,389
April	8,231	13,889	15,950	9,974	15,293	7,900	17,720	20,237	18,082	15,338
May	8,888	15,348	15,943	8,710	15,297	8,940	18,840	20,242	17,961	15,415
June	8,501	14,429	15,414	7,833	15,351	9,045	19,682	20,276	17,463	15,210
July	8,418	13,308	14,459	7,931	14,432	8,665	19,223	23,291	15,669	14,793
August	7,480	11,625	11,609	7,472	13,041	8,185	18,817	31,696	14,818	13,847
September	7,795	12,283	8,666	8,127	13,274	7,755	19,137	31,218	14,777	13,674
October	7,325	13,101	14,601	8,447	13,154	7,390	19,124	19,050	14,212	13,534
November	8,353	13,347	10,806	10,023	14,238	6,770	19,281	19,069	14,732	13,706
December	9,942	15,885	9,366	10,698	14,794	6,964	19,773	18,469	15,658	14,450

⁺These figures exclude persons already in employment but seeking a change in job.

^{*}Including gangmen, supervisors, pay clerks, etc.

Table 67 - Daily wage rates in certain industries (October inquiry*)

Industry	Occupation	Rupees					
		Lowest			Highest		
		1967	1968	1969	1967	1968	1969
a. Manufacture of bread	Brigadiers	6.75	6.75	6.75	6.75	6.75	6.75
b. Manufacture of furniture	Cabinet makers	7.00	7.00	7.65	8.00	8.00	7.65
c. Publishing & printing	Pressmen	5.50	6.50	6.50	10.50	10.55	10.55
d. - do -	Compositors by hand	5.50	5.50	5.50	10.35	10.35	11.90
e. Manufacture of machinery	Fitters	5.10	5.45	5.85	10.95	10.95	11.20
f. - do -	Pattern makers	6.00	6.65	5.85	7.85	7.75	8.40
g. Repair of motor vehicles	Mechanics	5.50	4.00	5.00	10.50	11.50	11.15
h. Construction	Carpenters	6.25	6.50	6.60	8.50	10.00	10.00
i. - do -	Masons	7.25	7.00	5.50	8.50	8.00	10.00
j. Electricity	Linesmen	8.65	8.65	8.85	12.20	12.20	12.80
k. - do -	Labourers	6.50	6.70	6.85	6.70	7.20	7.20
l. Transport (bus companies)	Drivers	9.60	9.60	9.60	9.60	9.60	9.60
m. - do -	Conductors	8.25	8.25	8.25	8.25	8.25	8.25
n. Municipal services	Labourers, unskilled	5.00	5.00	5.00	5.40	6.00	6.00

The normal hours of work are 9 per day for (j) and (k) and 8 for all others
The normal hours of work are 56 per week for (a), 48 for (l) and (m) and 45 for all others

*

Data are collected in October of each year from a certain number of large establishments.

Table 68 - Daily wage rates of manual workers employed by the Central Government

	Minimum		Maximum	
		Rs		Rs
Foremen		11.00		14.00
Artisans :				
Class	II	9.90		10.70
	III	8.50		9.30
	IV	7.20		8.00
	V	6.60		7.00
	VI	6.00		6.40
	VII	5.60		6.00

Note : These rates are in force since July 1963.

Table 69 - Employment and wages of certain categories of employees on sugar millers' estates (September inquiry)*

Category	Grade	1968			1969		
		Number employed	Monthly wages		Number employed	Monthly wages	
			Lowest	Highest		Lowest	Highest
			Rs	Rs		Rs	Rs
Boiler makers	I	21	253.50	325.00	24	266.20	309.50
" "	II	17	188.50	234.00	21	197.95	245.70
Pan boilers	Chief	23	338.00	460.00	23	354.90	472.90
" "	I	63	266.50	360.00	56	279.85	325.00
" "	II	63	195.00	253.50	55	204.65	266.24
Boiler attendants	Chief	33	175.20	294.75	31	184.00	309.50
" "	Asst.	35	149.50	195.00	36	157.00	200.00
Mill drivers	I	368	149.50	294.75	336	157.00	300.00
" "	II	210	130.00	145.34	214	136.50	156.00
Derrick drivers	I	92	183.80	253.50	79	193.00	277.20
" "	II	40	165.30	165.36	42	173.60	184.30
Fitters	I	110	294.75	500.00	101	309.50	500.00
" "	II	77	253.50	275.60	74	266.20	285.00
" "	III	89	195.00	240.24	83	204.75	240.24
Tractor drivers	I	109	188.50	318.50	107	197.95	318.55
" "	II	39	169.00	188.50	32	177.45	179.35
" "	III	22	143.00	169.00	25	150.15	165.88
Loco drivers		94	157.90	217.00	84	165.80	224.90
Car and lorry drivers	I	610	195.25	250.00	586	205.15	250.00
" "	II	104	170.80	185.00	87	179.35	199.40

*Data are collected in September of each year from all sugar millers.

Table 70 - Employment and earnings on sugar millers' estates

Month	Workers on monthly rates of pay						Workers on daily rates of pay					
	Man-days actually worked (000)			Earnings (Rs mn)			Man-days actually worked (000)			Earnings (Rs Mn)		
	1967	1968	1969	1967	1968	1969	1967	1968	1969	1967	1968	1969
January	107	143	137	1.3	1.3	1.4	515	736	612	3.0	4.0	3.4
February	156	151	148	1.3	1.4	1.6	753	719	677	3.6	3.5	3.8
March	164	139	155	1.3	1.5	1.4	778	666	690	4.1	3.7	3.9
April	137	147	185	1.3	1.3	1.4	651	742	882	3.5	4.1	4.4
May	179	172	157	1.3	1.3	1.3	859	872	710	4.4	4.5	3.7
June	147	147	160	1.3	1.3	1.3	694	721	717	3.6	3.8	3.7
July	164	197	189	1.5	1.7	1.6	842	1,102	963	4.8	6.5	5.6
August	181	169	164	1.7	1.7	1.7	983	935	857	6.4	6.0	5.9
September	154	172	167	1.6	1.7	1.7	792	929	878	5.4	5.9	5.9
October	159	190	190	1.6	1.7	1.8	824	1,218	1,077	5.3	6.5	7.1
November	174	163	154	1.6	1.5	1.6	910	823	855	5.7	4.6	5.4
December	159	170	181	4.3	4.2	4.7	859	813	889	6.1	5.4	5.9
Total	1,881	1,960	1,987	20.1	20.6	21.5	9,460	10,276	9,807	55.9	58.5	58.7

Note : (i) The table excludes the "Etat Major" staff.

(ii) Earnings and the number of "man-days actually worked" refer to 4 or 5 weekly periods ending on the pay-day of each month, the figures are not strictly comparable from month to month.

(iii) Earnings also include overtime, holiday and leave pay, housing allowance and end-of-year bonus.

VIII. SOCIAL ASSISTANCE

Table 71 - Social benefits

	1965	1966	1967	1968	1969
<u>Outdoor relief</u>					
Total number of cases relieved	42,718	44,079	44,409	43,380	41,549
Total relief payments (Rs mn.)	9.0	9.3	9.7	8.8	7.8
<u>Indoor relief</u>					
Number of persons in infirmaries at end of year	706	714	726	719	756
Number of persons in orphanages at end of year	179	189	190	186	185
Total capitation grants paid (Rs mn.)	0.4	0.4	0.4	0.4	0.4
<u>Old age pension</u>					
Number of beneficiaries at end of year	38,064	39,198	40,393	41,760	42,670
Total amount paid (Rs mn.)	9.9	10.4	10.8	11.1	11.4
<u>Family allowance</u>					
Number of beneficiaries at end of year	53,954	53,476	52,930	40,564	42,116
Total amount paid (Rs mn.)	9.3	9.9	9.8	7.8	5.7
<u>Assistance to voluntary organisations</u>					
Total cash grants paid (Rs mn.)	0.2	0.2	0.2	-	-

IX. EDUCATION

Table 72 - Education statistics, Mauritius and Rodrigues

Period	Primary				Secondary			
	Number of schools ⁺	Number of pupils	Number of teachers	Pupil/Teacher ratio	Number of schools ⁺	Number of pupils	Number of teachers	Pupil/Teacher ratio
October 1963	325	130,073	3,642	36	110	28,134	1,213	23
" 1964	297	132,074	3,750	35	119	31,797	1,348	24
" 1965	331	134,534	4,015	34	135	34,021	1,484	23
" 1966	340	136,944	4,129	33	144	35,127	1,542	23
" 1967	300	140,495	4,203	33	143	38,508	1,645	23
" 1968	332	142,959	4,253	34	137	39,703	1,706	23
" 1969	337	146,490	4,405	33	141	42,444	1,940	22

⁺ Government, aided and non-aided schools

Table 73 - Enrolment in primary and secondary schools in Mauritius and Rodrigues by type of institution

Period	Primary			Secondary				
	Total	Government	Aided	Non-aided [†]	Total	Government	Aided	Non-aided
October 1963	130,073	75,672	48,377	6,024	28,134	1,945	4,900	21,289
" 1964	132,074	86,240	40,169	5,665	31,797	2,067	5,029	24,701
" 1965	134,534	89,374	39,117	6,043	34,021	2,367	5,568	26,086
" 1966	136,944	92,684	38,781	5,479	35,127	2,431	5,875	26,821
" 1967	140,495	98,417	37,903	4,175	38,508	2,505	6,218	29,785
" 1968	142,959	100,954	37,341	4,664	39,703	2,538	6,372	30,793
" 1969	146,490	102,902	37,951	5,637	42,444	2,616	7,003	32,825

[†] including pupils of the primary sections of aided and non-aided secondary schools.

Table 74 - Enrolment in primary schools (Mauritius and Rodrigues) by grade and sex

Grade	1965			1966			1967			1968			1969		
	Male	Female	Both sexes	Male	Female	Both sexes	Male	Female	Both sexes	Male	Female	Both sexes	Male	Female	Both sexes
std. I	11,487	11,044	22,531	11,771	11,049	22,820	12,485	11,928	24,413	12,391	11,893	24,284	13,138	12,743	25,881
std. II	11,852	11,223	23,075	11,022	10,666	21,688	11,167	10,434	21,601	12,458	11,828	24,286	12,114	11,738	23,852
std. III	11,288	10,339	21,627	11,575	10,891	22,466	10,740	10,345	21,085	10,947	10,148	21,095	12,197	11,494	23,691
std. IV	11,327	10,187	21,514	11,012	9,991	21,003	11,323	10,593	21,916	10,432	10,029	20,461	10,703	9,897	20,600
std. V	9,883	8,702	18,585	11,013	9,819	20,832	10,704	9,638	20,342	10,899	10,089	20,988	10,066	9,593	19,659
std. VI	14,801	12,401	27,202	15,139	12,996	28,135	16,763	14,375	31,138	17,063	14,782	31,845	17,510	15,297	32,807
Total	70,638	63,896	134,534	71,532	65,412	136,944	73,182	67,313	140,495	74,190	68,769	142,959	75,728	70,762	146,490

Table 75 - Enrolment in secondary schools (Mauritius and Rodrigues) by grade and sex

Grade	1965			1966			1967			1968			1969		
	Male	Female	Both sexes	Male	Female	Both sexes	Male	Female	Both sexes	Male	Female	Both sexes	Male	Female	Both sexes
Form I	5,262	3,167	8,429	5,158	3,205	8,363	5,721	3,780	9,501	5,542	3,789	9,331	5,549	4,132	9,681
Form II	4,806	2,719	7,525	4,406	2,711	7,117	4,451	2,909	7,360	4,656	3,143	7,799	4,647	3,312	7,959
Form III	3,968	2,181	6,149	4,178	2,420	6,598	4,028	2,588	6,616	3,903	2,627	6,530	4,207	2,841	7,048
Form IV	3,134	1,759	4,943	3,749	2,063	5,812	4,710	2,598	7,308	4,566	2,601	7,167	4,276	2,841	7,117
Form V	4,236	1,684	5,920	4,064	1,939	6,003	4,376	1,978	6,354	4,881	2,334	7,215	5,849	2,907	8,756
Form VI	736	319	1,055	815	419	1,234	920	449	1,369	1,166	495	1,661	1,313	570	1,883
Total	22,192	11,829	34,021	22,370	12,757	35,127	24,206	14,302	38,508	24,714	14,989	39,703	25,841	16,603	42,444

X. TRANSPORT AND COMMUNICATION

Table 76 - Motor vehicles registered

Period	Grand total	Private vehicles					Commercial vehicles						Government owned vehicles
		Total	Cars	Motor cycles	Auto cycles	Total	Taxi-cars	Lorries	Vans	Buses	Other	Total	
1967	22,783	14,739	10,716	2,436	1,587	7,101	1,371	2,406	1,508	634	1,182	943	
1968	23,811	15,375	10,876	2,600	1,899	7,371	1,405	2,423	1,586	657	1,300	1,065	
1969	24,736	16,161	11,193	2,744	2,224	7,478	1,331	2,461	1,654	693	1,339	1,097	
1968 : 1st Qr.	22,918	14,830	10,721	2,465	1,644	7,127	1,370	2,403	1,528	638	1,188	961	
2nd Qr.	23,327	15,055	10,795	2,521	1,739	7,243	1,382	2,403	1,545	648	1,265	1,029	
3rd Qr.	23,554	15,171	10,808	2,535	1,828	7,329	1,395	2,425	1,564	648	1,297	1,054	
4th Qr.	23,811	15,375	10,876	2,600	1,899	7,371	1,405	2,423	1,586	657	1,300	1,065	
1969 : 1st Qr.	24,040	15,585	10,969	2,642	1,974	7,382	1,385	2,429	1,598	669	1,301	1,073	
2nd Qr.	24,266	15,808	11,082	2,672	2,054	7,387	1,326	2,443	1,621	681	1,316	1,071	
3rd Qr.	24,502	15,976	11,142	2,706	2,128	7,446	1,327	2,455	1,639	680	1,345	1,080	
4th Qr.	24,736	16,161	11,193	2,744	2,224	7,478	1,331	2,461	1,654	693	1,339	1,097	

Note : The above table has been completely revised in the light of amendments to the Road Traffic Ordinance 1962. Figures in the new series are consequently not comparable with those published previously.

Table 77 - Bus operational statistics

	Unit	1965	1966	1967	1968	1969
Total number of buses (at 30th June)	Number	604	591	621	622	651
Total vehicle-journeys	Thousand	2,095	2,166	2,160	2,243	2,340
Average vehicle-journeys per day	"	6	6	6	6	6
Total vehicle-miles	"	22,112	22,614	23,025	23,425	24,426
Average vehicle-miles per day	"	61	62	63	64	67
Total number of passengers carried during year	"	63,001	64,829	68,607	71,661	74,475
Average number of passengers carried per day	"	173	178	188	196	204
Total gross receipts	000 Rs	17,439	17,553	18,856	18,851	19,820
Average gross receipts per day	"	48	48	52	52	54

Table 78 - Road traffic accidents and casualties

	1965	1966	1967	1968	1969
<u>Road traffic accidents</u>					
Number	<u>2,694</u>	<u>2,475</u>	<u>2,575</u>	<u>2,128</u>	<u>2,035</u>
Number per 100,000 of population	364	326	333	270	255
<u>Motor vehicle accidents</u>					
Number	<u>2,525</u>	<u>2,240</u>	<u>2,425</u>	<u>2,025</u>	<u>1,899</u>
Number per 100,000 of population	341	295	313	257	238
Number per 1,000 registered motor vehicles	119	109	110	87	78
<u>Total casualties</u>	<u>2,159</u>	<u>2,125</u>	<u>2,357</u>	<u>1,928</u>	<u>1,934</u>
<u>Nature of casualty</u>					
Killed	74	72	87	80	78
Seriously injured) 2,085	217	222	218	176
Slightly injured		1,836	2,048	1,630	1,680
<u>Casualties by class of road users</u>					
Pedestrians	1,007	976	974	810	805
Pedal cyclists	447	345	396	310	280
Passengers	451	524	646	454	555
Drivers or riders of motor vehicles	254	280	341	354	294

Table 79 - Sea-borne shipping

Period	Vessels entering		Vessels leaving		Goods	
	Number	Net registered tonnage	Number	Net registered tonnage	Unloaded	Loaded ⁺
		Thousand m/tons		Thousand m/tons	Thousand m/tons	Thousand m/tons
1965	710	1,728	714	1,734	550	619
1966	718	1,747	719	1,872	460	746
1967	1,026	2,499	1,023	2,460	594	627
1968	1,269	2,770	1,269	2,744	583	779
1969	1,315	2,487	1,311	2,436	615	759
1968 : 1st Qr.	261	593	258	596	156	160
2nd Qr.	313	643	307	632	120	54
3rd Qr.	361	825	361	780	135	228
4th Qr.	334	709	343	736	172	337
1969 : 1st Qr.	267	566	271	559	146	134
2nd Qr.	334	560	320	559	129	22
3rd Qr.	354	704	356	649	156	325
4th Qr.	360	657	364	669	184	278

⁺ excluding bunkers

Table 80 - Civil aviation

Period	Number of movements		Passengers		Freight	
	Landings	Take offs	Set down	Picked up	Unloaded	Loaded
1965	511	510	16,967	18,541	153.1	70.2
1966	542	539	20,699	22,781	165.3	92.2
1967	601	604	24,084	26,037	229.7	118.5
1968	554	554	26,565	29,389	245.9	192.1
1969	598	598	33,160	35,095	277.8	235.8
1968 : 1st Qr.	148	147	6,141	7,938	66.8	43.0
2nd Qr.	135	136	5,215	5,697	53.5	49.0
3rd Qr.	141	141	7,868	8,728	60.2	45.3
4th Qr.	130	130	7,341	7,026	65.4	54.8
1969 : 1st Qr.	131	131	7,367	8,593	48.8	33.5
2nd Qr.	142	142	6,057	6,922	54.0	50.1
3rd Qr.	160	160	10,726	11,411	96.2	83.0
4th Qr.	165	165	9,010	8,169	78.8	69.2

Note : In this table : (1) are included only movements of commercial aircraft;
 (2) each touch down or each take off is counted as a separate movement;
 (3) passengers in transit are excluded;
 (4) freight carried by planes other than commercial is included.

Table 81 - Telephone service

		End of period				
	Unit	1965	1966	1967	1968	1969
Main exchanges (including rural automatic exchange)	Number	19	20	22	22	23
Capacity (in terms of lines)	"	10,720	11,820	11,970	11,957	13,370
No. of exchange line connections	"	9,179	9,620	10,178	10,417	10,961
Individual installations	"	13,634	14,399	15,328	15,996	16,793
Call units registered (during period)	Thousand	13,991	15,207	15,947	17,252	17,858
Outstanding applications for telephone service	Number	843	738	752	830	992

Table 82 - Broadcasting services

		End of period				
	Unit	1965	1966	1967	1968	1969
<u>SOUND</u>						
Stations	Number	1	1	1	1	1
Transmitters	"	3	3	3	3	3
Aerial output : short wave	Kw.	10	10	10	10	10
medium wave	"	10	10	10	10	10
Weekly transmission time	Hour	112	112	112	112	116
New licences issued (during period)	Number	4,996	3,741	4,243	8,939*	3,541 ⁺
Radio sets licensed	"	62,581	65,662	69,905	76,829	81,224
<u>TELEVISION</u>						
Stations	"	1	1	1	1	1
Transmitters	"	5	5	5	5	5
Aerial output (ERP)	Kw.	15	15	15	15	15
Weekly transmission time	Hour	24	24	24	31½	45
New licenses issued (during period)	Number	3,534	2,579	3,430	4,409*	4,119 ⁺
Television sets licensed	"	3,599	6,045	9,179	12,847	16,342

*including 714 omnibus licences

⁺including 953 omnibus licences

XI. LAND UTILIZATION

Table 83 - Total area⁺ classified by utilization

	<u>Acres</u>	
	1969	
<u>Agriculture</u>		257,900
Sugar cane	242,100	
Tea	10,800	
Tobacco, vegetables and other crops	5,000	
<u>Forests, scrub areas, grasslands & grazing lands</u>		163,900
Forest plantations	23,900	
Forest, natural	5,900	
Savannah, grasslands, meadows, etc.	18,400	
scrub and other forest lands	115,700	
<u>Reservoirs and ponds</u>		2,900
<u>Swamps and rocks</u>		3,500
<u>Roads (main thoroughfares)</u>		3,300
<u>Built-up areas</u>		29,300
Total island area		460,800

⁺Based on the findings of the UNDP-FAO Land and Water Resources Survey team working on aerial photographs of the island taken at the end of 1965 and supplemented to some extent by land surveys.

Table 84 - Effective area under cultivation

	<u>Acres</u>			
	1966	1967	1968	1969
Sugar cane	216,000	214,000	211,700	213,400
Tea	7,100	7,900	8,400	8,400
Tobacco	1,300	800	1,000	600

XII. LOCAL PRODUCTION

Table 85 - Agriculture : production of main crops, fish and meat

Commodity	Unit	1965	1966	1967	1968	1969
<u>INDUSTRIAL CROPS</u>						
Sugar cane	1000m/tons	5,984	4,843	5,814	5,152	5,824
Tea (green leaf processed)	M/ton	8,225	9,362	10,508	11,062	15,353
Tobacco leaf ^{a/}	- do -	490	579	528	742	442
<u>VEGETABLES, PULSES AND FRUITS</u>						
Beans and peas	- do -	950	754	725	652	613
Creepers ^{b/}	- do -	9,296	10,664	9,342	8,006	7,071
Eddoes	- do -	262	458	400	458	468
Egg plants (bringelles)	- do -	1,504	1,888	1,898	1,874	2,628
Ginger	- do -	403	762	970	882	1,152
Groundnuts	- do -	575	832	879	632	792
Maize	- do -	296	300	457	376	462
Manioc	- do -	269	348	454	241	239
Potatoes (Irish)	- do -	3,972	8,442	9,199	9,578	5,761
Rice	- do -	-	-	-	118	813
Sweet potatoes	- do -	478	349	233	268	219
Tomatoes	- do -	5,400	5,700	10,499 ^{c/}	8,780	8,566
Mixed vegetables ^{d/}	- do -	8,693	7,674	7,575	7,227	7,715
Bananas	- do -	10,318	9,023	9,865	10,763	11,468
Pineapples	- do -	306	428	490	666	670
<u>FISH, MEAT AND BY-PRODUCTS</u>						
Fish :Coastal fishing (controlled catch)	- do -	1,120	1,130	925 ^{e/}	940	1,350
High seas	- do -	482	499	1,062	1,259	1,282
Meat ^{f/} :Beef	- do -	1,939	2,100	2,498	2,348	2,148
Goat	- do -	170	162	226	202	205
Mutton	- do -	81	108	69	40	44
Pork	- do -	479	499	557	536	543
Cattle hides & skins	Number	14,719	14,803	16,593	16,498	15,861

a/ Refers to crop year which normally extends from the beginning of April to the end of March.

b/ Include margoze, calabash, chouchou, cucumber, patolle, pipengaille, pumpkin, squash, voehm.

c/ About one eighth of this production was probably not harvested due to prices ruling in the market being too low.

d/ Include beet, cabbage, carrot, cauliflower, chillies (long and small), garlic, leek, lettuce, onion, petsai, sweet pepper, ladies finger (lalo).

e/ Estimated

f/ From local and imported livestock.

Table 86 - Industry : production of specific commodities

Commodity	Unit	1966	1967	1968	1969
Sugar	M/ton	561,762	638,322	596,549	668,553
Molasses	"	133,114	154,404	132,707	166,332
Tea (manufactured)	"	1,974	2,190	2,288	3,197
Aloe fibre	"	1,552	1,603	1,319	1,294
Alcohol @ 100 G.L.	Hectolitre	13,365	16,437	12,863	12,420
Colonial spirits (rum)	"	13,870	13,022	14,254	13,358
Denatured spirits :					
Power alcohol	"	3,422	3,081	2,680	3,046
Alcohol for heating and lighting	"	2,959	2,586	2,534	1,905
Perfumed spirits	"	344	768	355	404
Vinegar	"	5,320	10,404	2,913	568
Beer and stout	"	36,996	40,118	39,259	36,799
Country liquor	"	41,176	34,569	32,949	33,362
Soft aerated beverages	"	94,830	101,700	82,800	...
Cigarettes	M/ton	580	583	562	584
Matches	Gross boxes	71,797	88,520	114,585	103,064
Lime	M/ton	5,500	6,000	6,000	6,000
Sacks*	Thousand	1,652	1,335	1,552	2,338
Salt	M/ton	4,200	4,200	4,200	4,200
Electricity generated	Mn kwh	112	121	126	130

*Manufactured by the Government Sack Factory

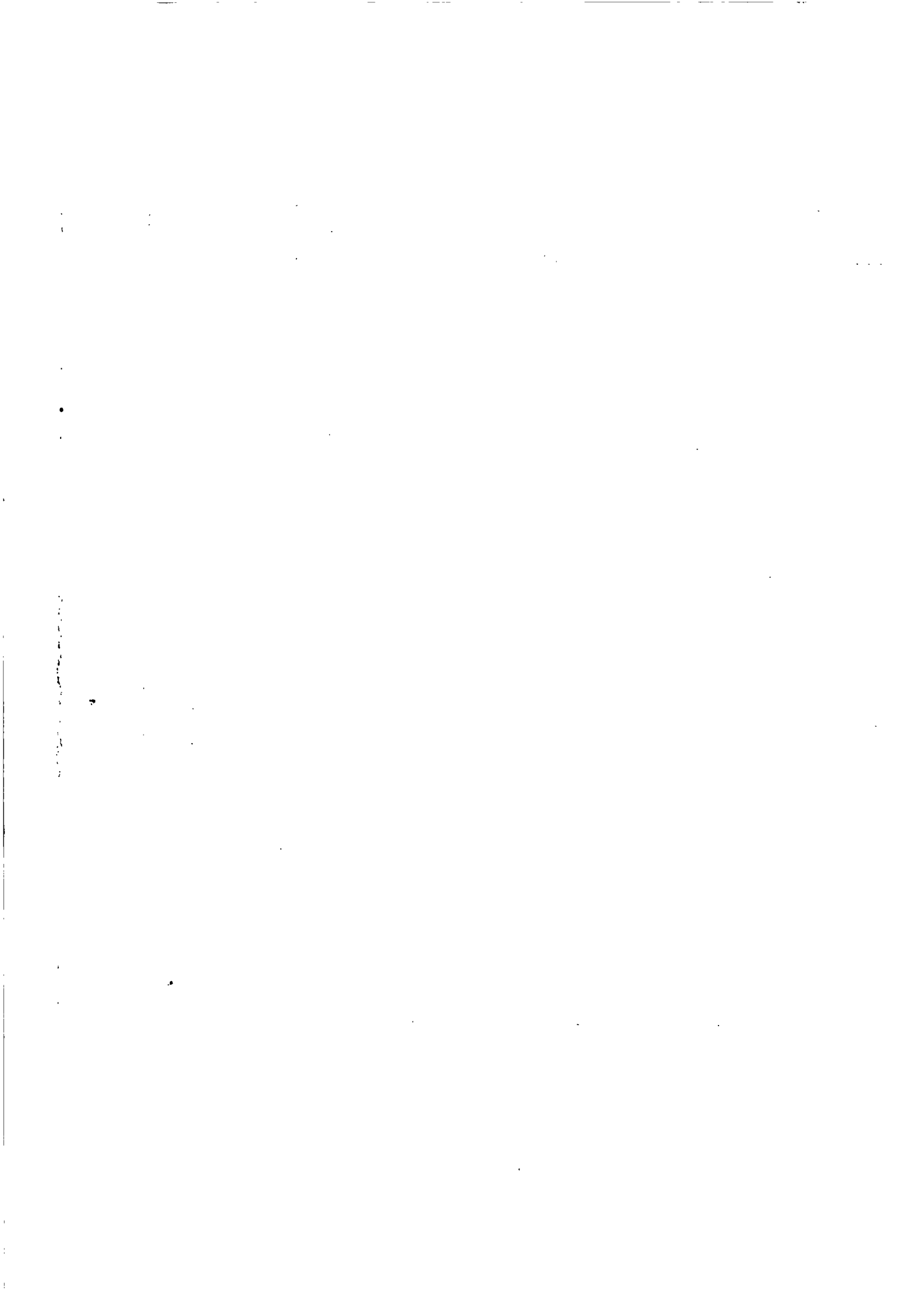


Table 87 - Sugar industry : cane cultivation

Crop Year	AREA UNDER CULTIVATION (Thousand arpents)			AREA HARVESTED (Thousand arpents)			CANES HARVESTED (Thousand m/tons)			AVERAGE YIELD (M/tons per arpent)		
	Millers	Planters	Total	Millers	Planters	Total	Millers	Planters	Total	Millers	Planters	Total
1963	109	95	204	100	94	194	3,515	2,232	5,747	35.1	23.7	29.6
1964	110	97	207	100	95	195	2,615	1,765	4,380	26.2	18.5	22.4
1965	111	95	206	101	94	195	3,619	2,365	5,984	35.7	25.3	30.7
1966	111	97	208	102	94	196	3,004	1,839	4,843	29.5	19.5	24.7
1967	111	94	205	101	91	192	3,569	2,245	5,814	35.3	21.7	30.3
1968	110	93	203	100	89	189	3,113	2,039	5,152	31.2	22.8	27.2
1969	110	95	205	99	89	188	3,564	2,260	5,824	36.1	25.2	30.9

Table 88- sugar manufacture

Crop Year	Number of factories operating		Commercial sugar recovered (% cane)	PRODUCTS OF MANUFACTURE (Thousand m/tons)			RESIDUES OF MANUFACTURE (Thousand m/tons)			Average sugar price ex-syndicate (Rs per m/ton)
	operating	operating		White sugar	Raw sugar	Total sugar	Molasses	Scums		
1963	23	23	11.93	20	666	686	150	177	590.89	
1964	23	23	11.85	20	499	619	115	148	433.13	
1965	23	23	11.10	25	639	664	149	179	409.32	
1966	23	23	11.60	23	539	562	133	160	421.50	
1967	23	23	10.98	24	614	638	154	180	424.40	
1968	23 ✓	23 ✓	11.58	23	574	597 ✓	133	171	428.39	
1969	22	22	11.48	23	646	669	166	194	410.00 ⁺	

⁺ provisional.

Note : 1 arpent = 1.043 acres.

Table 89 - Electricity^{*}: production, consumption, sales, etc.

	Unit	1967	1968	1969
Generating stations	Number	<u>8</u>	<u>8</u>	<u>8</u>
Hydro	"	6	6	6
Thermal	"	2	2	2
Plant - effective capacity	Kw	<u>43,090</u>	<u>43,090</u>	<u>43,090</u>
Hydro	"	15,090	15,090	15,090
Thermal	"	28,000	28,000	28,000
Energy generated ✓	Million kwh	<u>103.6</u>	<u>107.8</u>	<u>104.4</u>
Hydro ✓	" "	57.6	46.5	26.5
Thermal /	" "	46.0	61.3	77.9
Energy purchased from sugar and other factories	" "	17.0	18.6	24.9
Energy sold	" "	94.3	98.3	102.5
Number of consumers on 31st December :	Number	<u>93,169</u>	<u>91,234</u>	<u>92,485</u>
Domestic	"	82,550	80,456	81,476
Commercial	"	9,113	9,212	9,423
Industrial	"	1,378	1,424	1,430
Special	"	128	142	156
Average selling price	Cents per kwh	19.3	22.1	21.9
Total revenue ✓	Rs mn.	19.4	23.0	23.7
Total current expenditure	" "	18.5	21.6	23.4
Persons employed	Number	1,285	1,242	1,257

^{*} Statistical data relating to the Central Electricity Board.

XIII. CLIMATE

Table 90 - Monthly temperatures, 1969

Period	VACOAS Centre - 1,394 ft. A.M.S.L. +				PLAISANCE Coastal Region, South - 188 ft. A.M.S.L. +			
	Maximum		Minimum		Maximum		Minimum	
	Mean	Departure from normal	Mean	Departure from normal	Mean	Departure from normal	Mean	Departure from normal
January	27.3	- 0.2	19.9	- 0.9	30.1	+ 0.5	22.5	+ 0.1
February	28.1	+ 1.0	20.3	- 0.4	29.8	+ 0.6	22.3	- 0.1
March	28.7	+ 1.8	20.9	+ 0.1	30.5	+ 1.6	22.9	+ 0.6
April	26.8	+ 0.8	20.7	+ 1.1	28.6	+ 0.8	22.3	+ 1.3
May	25.3	+ 1.3	18.9	+ 1.1	27.0	+ 0.7	20.9	+ 1.2
June	22.9	+ 1.0	16.0	0.0	25.2	+ 0.7	18.2	0.0
July	21.7	+ 0.4	15.2	+ 0.6	24.1	+ 0.2	18.3	+ 0.9
August	21.2	- 0.1	14.6	- 0.4	23.4	- 0.6	17.4	+ 0.2
September	22.9	+ 0.8	15.5	+ 0.1	24.7	0.0	18.0	+ 0.5
October	24.7	+ 1.2	16.7	+ 0.7	26.7	+ 0.9	19.6	+ 1.4
November	27.2	+ 1.8	19.0	+ 1.5	29.0	+ 1.5	21.1	+ 1.6
December	27.7	+ 0.7	20.4	+ 1.1	29.5	+ 0.6	22.3	+ 1.2

Values in sea level.

Table 91 - Monthly rainfall for the sugar cane districts, 1969

Period	Millimetres											
	WEST		NORTH		EAST		SOUTH		CENTRE		ALL DISTRICTS	
	Amount	Difference from normal	Amount	Difference from normal	Amount	Difference from normal	Amount	Difference from normal	Amount	Difference from normal	Amount	Difference from normal
January	11	- 178	47	- 129	111	- 201	67	- 232	101	- 232	76	- 199
February	147	- 49	127	- 88	257	- 83	187	- 114	287	- 53	206	- 87
March	182	- 84	206	- 53	190	- 240	211	- 66	195	- 171	201	- 151
April	135	+ 19	208	+ 33	319	+ 7	309	+ 9	282	+ 42	275	+ 22
May	103	+ 48	129	+ 9	198	- 8	125	- 61	163	+ 16	148	- 13
June	30	- 8	48	- 41	78	- 116	94	- 60	85	- 54	76	- 63
July	18	- 9	143	+ 72	221	+ 51	212	+ 66	177	+ 43	183	+ 57
August	13	- 3	55	- 5	157	+ 28	99	- 16	150	+ 39	107	+ 7
September	12	- 8	37	- 15	63	- 49	55	- 39	56	- 41	51	- 35
October	4	- 24	4	- 35	10	- 77	13	- 62	12	- 60	10	- 56
November	8	- 54	13	- 62	41	- 80	26	- 94	46	- 62	30	- 74
December	221	+ 85	299	+ 178	312	+ 93	360	+ 163	438	+ 252	349	+ 171

