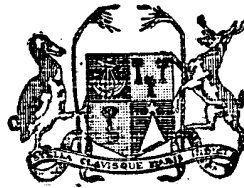


No. 2



MAURITIUS

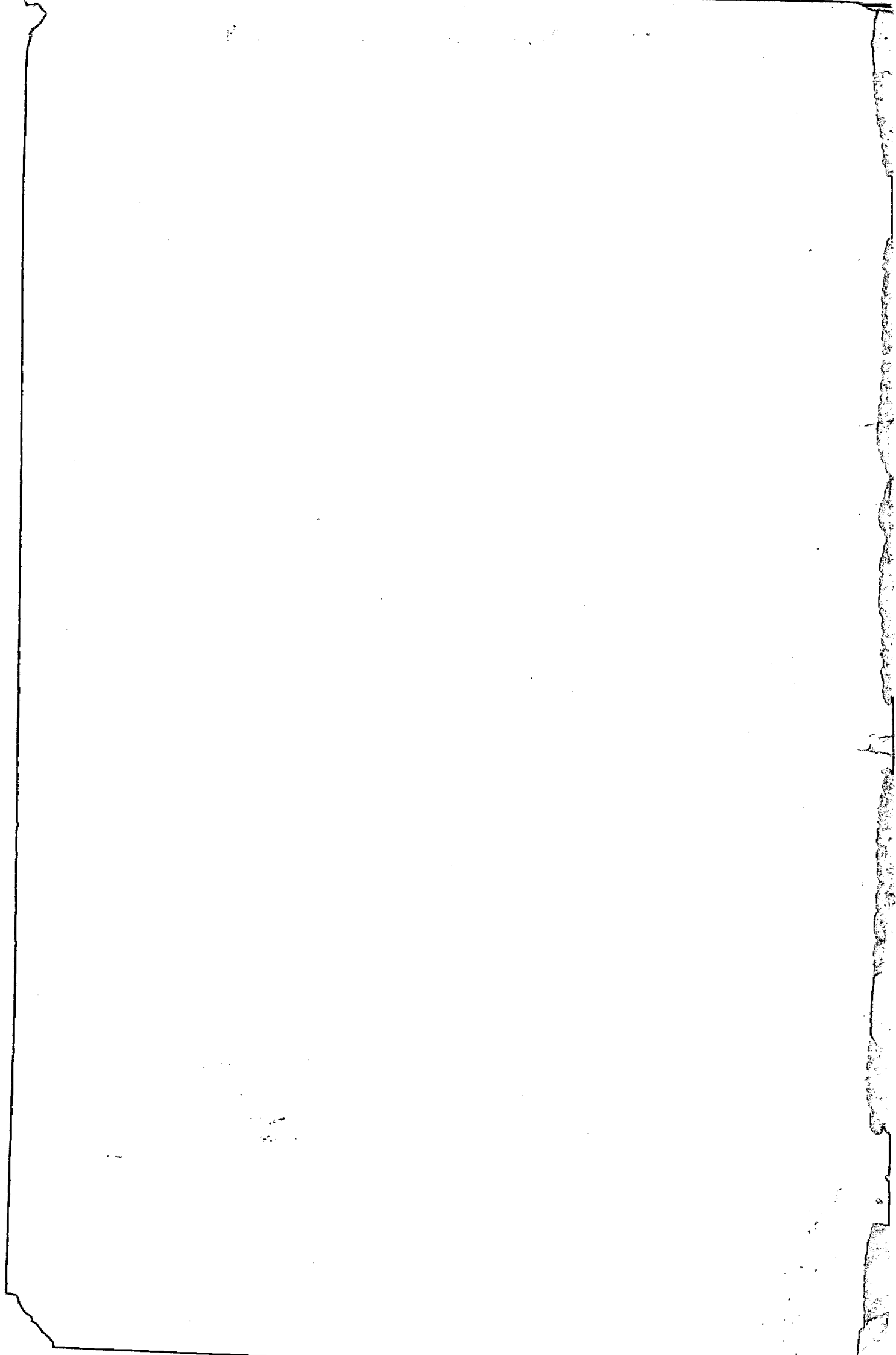
CENTRAL STATISTICAL OFFICE

**BI-ANNUAL
REGIST OF STATISTICS**

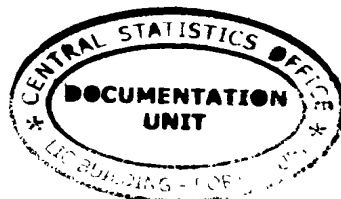
December 1967

[Price : Rs 5.00]

1
ES



FOREWORD



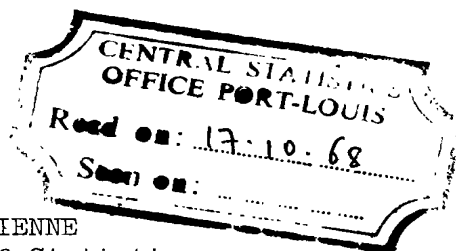
This is the third issue of the bi-annual digest of statistics prepared and published by the Central Statistical Office with the co-operation of both the government and the private sectors.

With the aim of making this publication more useful to our readers, the following new features have been incorporated in the present issue : -

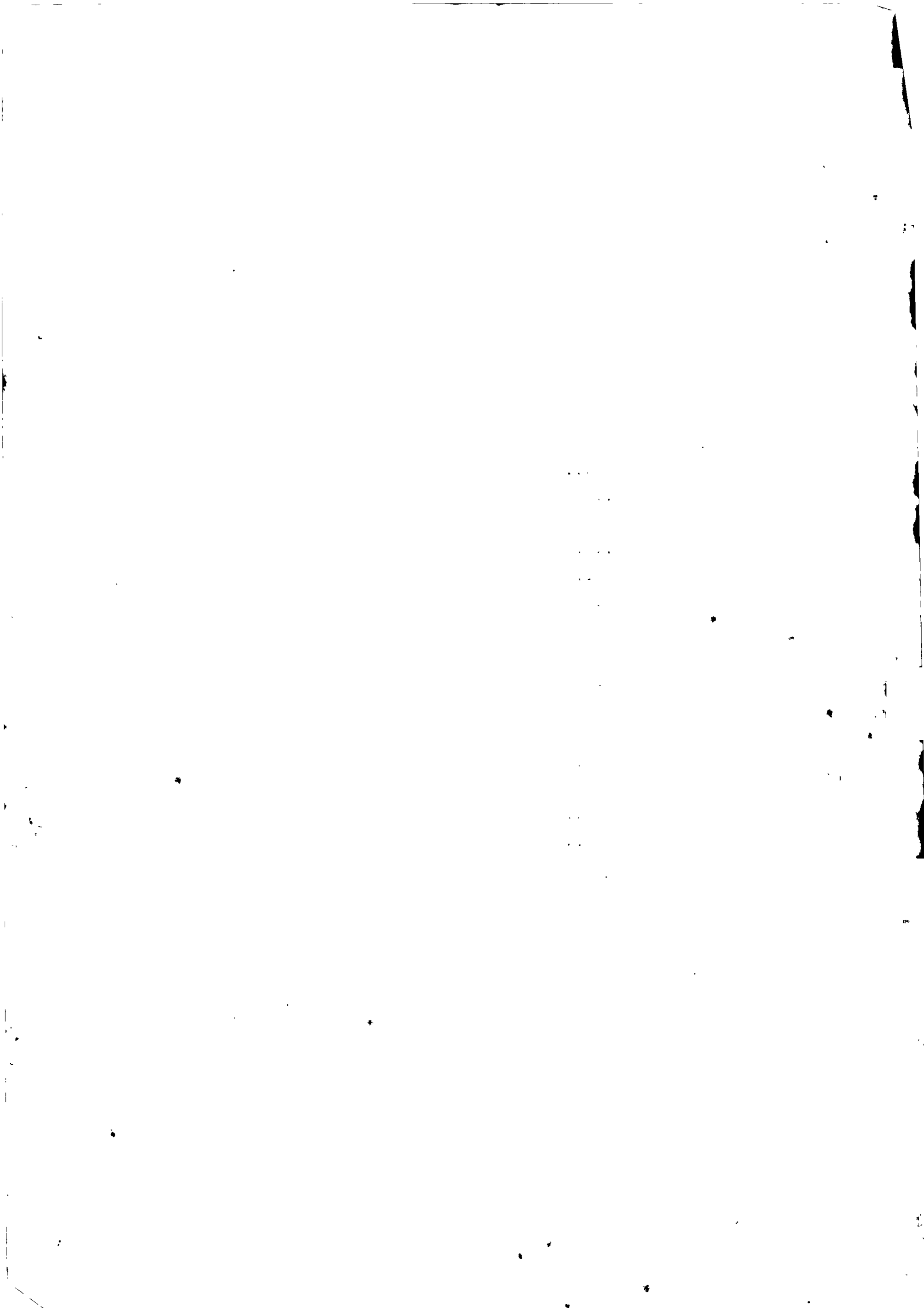
- Tables 21-24 .. Functional classification of central government recurrent and capital revenue and expenditure
- Table 26 Sinking fund held against the public debt
- Table 27 Outstanding loans and advances made from public funds
- Table 29 Assets and liabilities of the Bank of Mauritius
- Table 36 Banks' rates of exchange
- Table 38 Distribution of the National Income
- Tables 61-62 .. Enrolment in primary and secondary schools by grade and sex
- Table 63 Enrolment in primary and secondary schools by geographical district
- Table 67 Telephone service
- Table 68 Broadcasting services
- Tables 71A-71B Sugar Industry
- Tables 72-73 .. Climate - monthly temperatures and rainfall
- Chapter XIII .. Election statistics

The wider coverage and higher cost of materials have necessitated an increase in the price of the digest to Rs 5.- per copy.

I have much pleasure in placing on record my appreciation of the assistance rendered by all contributors, official and private.



M. ETIENNE
Director of Statistics



BI-ANNUAL DIGEST OF STATISTICS

NOTES

The following symbols are used throughout :-

- Nil or negligible

... Not available

2. Some of the figures in this Digest are liable to revision in the later issues.
3. Where necessary, figures have been rounded off to the nearest final digit, and in some tables there may be discrepancies between the sum of the constituent items and the total as shown.

Central Statistical Office,
Mauritius.

CONTENTS

	Page
I. <u>POPULATION AND VITAL STATISTICS</u>	
Table 1 - Estimated population of Mauritius as at 31st December 1967, based initially on the census enumeration of June 1962	1
2 - Population of Mauritius as enumerated at each census (1846-1962)	1
3 - Post-censal population estimates	2
4 - Comparison with other countries	2
5 - Estimated population of Mauritius by population group, sex and geographical district as at 31.12.67	3
6 - Estimated age distribution of the population of Mauritius, by sex as at 30th June, 1967	4
7 - Estimated population of towns as at 31st December, 1967	5
8 - External migration	5
9 - Passenger traffic, by country of origin or destination and by mode of transport, 1967	6
10 - Population and vital statistics	7
11 - Live births and still births	8
12 - Infant deaths (deaths under 1 year of age) by age and sex	8
13 - Deaths by age and sex	9
14 - Population and vital statistics - quarterly	10
15 - Still births and infant deaths	11
16 - Expectation of life in years at selected ages	11
 II. <u>PUBLIC HEALTH</u>	
Table 17 - Statistics of hospitals	12
18 - Notifiable, contagious or communicable diseases	13
19 - Cause of death, 1967	14
 III. <u>PUBLIC FINANCE AND BANKING</u>	
Table 20 - Central government revenue and expenditure	15
21 - Functional classification of central government recurrent revenue	15
22 - Functional classification of central government recurrent expenditure	16
23 - Functional classification of central government capital revenue	17
24 - Functional classification of central government capital expenditure	17

CONTENTS (Cont'd)

Page

III. PUBLIC FINANCE AND BANKING (Cont'd)

Table 25 - Central government indebtedness	18
26 - Sinking fund held against the public debt	19
27 - Outstanding loans and advances made from public funds, balance at 30th June 1967	19
28 - Sterling assets	20
29 - Assets and liabilities of the Bank of Mauritius	21
30 - Banking statistics - Assets of commercial banks	22
31 - " " - Liabilities of commercial banks	23
32 - " " - Assets of the Development Bank of Mauritius and the Mauritius Housing Corporation	24
33 - Banking Statistics - Liabilities of the Development Bank of Mauritius and the Mauritius Housing Corporation	25
34 - Post Office Savings Bank	26
35 - Currency in circulation	26
36 - Banks' rates of exchange	27

IV. NATIONAL ACCOUNTS

Table 37 - Gross National Product, by industrial origin	28
" " " - per capita	28
38 - Distribution of the National Income before providing for depreciation	29
39 - Expenditure on Gross National Product	30
40 - Composition of Gross Fixed Domestic Capital Formation	31
41 - Balance of Payments	32

V. CONSUMER PRICE INDICES

Table 42 - Consumer price indices	33
-----------------------------------	----

VI. EXTERNAL TRADE

Table 43 - Balance of visible trade	34
44 - Quantum and price indices of exports and imports and the terms of trade	34
45 - Quantum and price indices of imports, by section	35
46 - Exports : quantities and values	36
47 - Exports : principal countries of destination - values	37
48 - Imports : values by S.I.T.C. sections	38
49 - Imports : selected commodities - values	39
50 - Imports : selected commodities - quantities	40
51 - Imports : main sources of supply - values	41
52 - Imports of fertilizers	42

CONTENTS (Cont'd)

	Page
<u>VII. LABOUR</u>	
Table 53 - Employment by major industrial groups	43
54 - Employment by sex and age groups	44
55 - Employment in specified sectors : Sugar Industry	45
56 - " " " " : Government services	45
57 - " " " " : Manufacturing industries	46
58 - Indicators of unemployment	47
<u>VIII. EDUCATION</u>	
Table 59 - Education statistics	48
60 - Enrolment in primary and secondary schools, by type of institution	49
61 - Enrolment in primary schools, by grade and sex	50
62 - Enrolment in secondary schools by grade and sex	51
63 - Enrolment in primary and secondary schools by geographical district, October 1967	52
<u>IX. TRANSPORT AND COMMUNICATION</u>	
Table 64 - Road transport	53
65 - Sea borne shipping	54
66 - Civil aviation	54
67 - Telephone service	55
68 - Broadcasting services	55
<u>X. LAND UTILIZATION</u>	
Table 69 - Total area classified by utilization	56
69A - Effective area under cultivation	56
<u>XI. LOCAL PRODUCTION</u>	
Table 70 - Agriculture : Production of main crops, fish and meat	57
71 - Industry : Production of specific commodities	58
71A - Sugar Industry : Cane cultivation	58A
71B - Sugar Manufacture	58A
<u>XII. CLIMATE</u>	
Table 72 - Monthly temperatures, 1967	59
73 - Monthly rainfall for the sugar cane districts, 1967	60
<u>XIII. ELECTION STATISTICS</u>	61

I. POPULATION AND VITAL STATISTICS

Table 1 - Estimated population of Mauritius as at 31st December 1967 based initially on the census enumeration of June 1962

Population	30th June 1962 (Census)			31st December 1967		
	Both sexes	Male	Female	Both sexes	Male	Female
Total	681,619	342,306	339,313	782,044	392,283	389,761
General	203,652	98,983	104,669	224,692	109,867	114,825
Hindu	344,587	174,698	169,889	403,551	204,168	199,383
Muslim	110,322	55,971	54,351	128,779	64,817	63,962
Chinese	23,058	12,654	10,404	25,022	13,431	11,591

Table 2 - Population of Mauritius as enumerated at each census (1846 - 1962)

Census year	Population enumerated at census			Intercensal increase	Average annual rate of increase %
	Both sexes	Male	Female		
1846	158,462	104,598	53,864	-	-
1851	180,823	119,341	61,482	22,361	2.55
1861	310,050	202,961	107,089	129,227	5.87
1871	316,042	193,575	122,467	5,992	0.19
1881	359,874	208,655	151,219	43,832	1.31
1891	370,588	206,038	164,550	10,714	0.29
1901	371,023	199,552	171,471	435	0.01
1911	368,791	194,095	174,696	- 2,232	- 0.06
1921	376,485	194,108	182,377	7,694	0.21
1931	393,238	200,609	192,629	16,753	0.44
1944	419,185	210,326	208,859	25,947	0.49
1952	501,415	252,032	249,383	82,230	2.26
1962 ⁺	681,619	342,306	339,313	180,204	3.12

⁺ de facto population - including the European members of the Armed Forces but excluding the passengers and crews of ships lying in the harbour.

Table 3 - Post censal population⁺ estimates, 1962-67

Period	Total population (31st December)			Increase during period		Mid-year population (30th June)
	Both Sexes	Male	Female	Numerical	Percent	
1962	692,354	347,743	344,611	-	-	681,619
1963	713,371	358,385	354,986	21,027	3.04	701,422
1964	733,605	368,534	365,071	20,234	2.84	722,089
1965	751,421	377,245	374,176	17,816	2.43	741,036
1966	768,692	385,677	383,015	17,271	2.30	759,067
1967	782,044	392,283	389,761	13,352	1.74	773,573

⁺ de facto population

Table 4 - Comparison with other countries

Continent & Country	Average annual rate of increase 1958-64 (%)	Continent & country	Average annual rate of increase 1958-64 (%)
AFRICA :		ASIA :	
Mauritius	2.9	Ceylon	2.6
AMERICA :		India	2.3*
Canada	2.0	Japan	1.0
Guyana	2.8	Pakistan	3.2
Trinidad & Tobago	3.1	Taiwan	3.4
Chile	2.3	EUROPE :	
OCEANIA :		Albania	3.1
Australia	2.1	France	1.3
New Zealand	2.2	United Kingdom	0.7

*for 1963-64

Table 5 - Estimated population[†] of Mauritius by population group, sex and geographical district as at 31.12.67

Geographical District	Total Population			General Population			Indo-Mauritian Population						Chinese Population		
	Both Sexes	Male	Female	Both Sexes	Male	Female	Hindu			Muslim			Both Sexes	Male	Female
							Both Sexes	Male	Female	Both Sexes	Male	Female			
Port Louis	136,194	67,725	68,469	49,028	23,755	25,273	35,095	17,661	17,434	39,139	19,643	19,496	12,932	6,666	6,266
Pamplemousses	63,334	31,932	31,402	9,905	4,854	5,051	43,221	21,888	21,333	9,537	4,828	4,709	671	362	309
R. du Rempart	62,476	31,634	30,842	9,717	4,775	4,942	44,231	22,534	21,697	8,002	4,017	3,985	526	308	218
Flacq	85,422	43,235	42,187	15,295	7,727	7,568	57,564	29,077	28,487	11,628	5,884	5,744	935	547	388
Grand Port	79,821	40,417	39,404	19,270	9,661	9,609	48,176	24,476	23,700	11,051	5,526	5,525	1,324	754	570
Savanne	53,828	27,332	26,496	11,066	5,629	5,437	32,212	16,278	15,934	9,739	4,953	4,786	811	472	339
Plaines															
Wilhems	236,740	117,723	119,017	95,520	46,013	49,507	102,248	51,718	50,530	32,122	16,222	15,900	6,850	3,770	3,080
Moka	42,817	21,496	21,321	6,419	3,208	3,211	28,673	14,426	14,247	7,121	3,531	3,590	604	331	273
Black River	21,412	10,789	10,623	8,472	4,245	4,227	12,131	6,110	6,021	440	213	227	369	221	148
Whole Island	782,044	392,283	389,761	224,692	109,867	114,825	403,551	204,168	199,383	128,779	64,817	63,962	25,022	13,431	11,591
(%)	100.0			28.7			51.6			16.5			3.2		
	787,466			224,076			408,190			130,139			25,001		

[†]Based initially on the 1962 Population Census. No account has been taken of internal migration.

Table 6 - Estimated age distribution⁺ of the population of Mauritius as at 30th June 1967

Age Group (years)	Male	Female	Both Sexes	
			Number	% of total
0 - 4	61,500	60,250	121,750	15.7
5 - 9	56,750	55,650	112,400	14.5
10 - 14	51,650	51,000	102,650	13.3
15 - 19	45,150	44,800	89,950	11.6
20 - 24	30,050	29,950	60,000	7.8
25 - 29	22,650	22,800	45,450	5.9
30 - 34	21,250	21,500	42,750	5.5
35 - 39	19,200	18,600	37,800	4.9
40 - 44	20,850	19,450	40,300	5.2
45 - 49	15,750	14,400	30,150	3.9
50 - 54	13,900	12,750	26,650	3.4
55 - 59	10,700	9,900	20,600	2.7
60 - 64	7,900	8,350	16,250	2.1
65 - 69	5,600	6,600	12,200	1.6
70 - 74	2,900	4,750	7,650	1.0
75 - 79	1,500	2,900	4,400	0.5
80 - 84	650	1,500	2,150	0.3
85 & over	150	350	500	0.1
All Ages	388,100	385,500	773,600	100.0
<u>Totals</u>				
Under 15	169,900	166,900	336,800	43.5
Under 21	222,270	218,670	440,940	57.0
21 & over	165,830	166,830	332,660	43.0
60 & over	18,700	24,450	43,150	5.6

⁺Based initially on the smoothed age distribution at the census of June 1962 corrected for under-enumeration of young children and pro-rated to official population estimates.

Exp. no. 1147
La duell'

Table 7 - Estimated population⁺ of towns as at 31st December, 1967

Town	Population
Port Louis	136,200
Beau-Bassin-Rose Hill	69,800
Quatre Bornes	44,150 ⁺⁺
Vacoas-Phoenix	47,450
Curepipe	50,500

⁺Based initially on 1962 Population Census. No account has been taken of internal migration.

⁺⁺Including La Source locality as from March 1967.

Table 8 - External migration^{*}

Period	Arrivals			Departures			Net migration
	Total	By sea	By air	Total	By sea	By air	
1962	15,189	4,258	10,931	16,075	4,374	11,701	- 886
1963	18,047	4,660	13,387	18,299	4,432	13,867	- 252
1964	21,221	5,187	16,034	22,331	5,478	16,853	- 1,110
1965	22,024	4,886	17,138	24,150	5,463	18,687	- 2,126
1966	26,456	5,544	20,912	29,301	6,330	22,971	- 2,845
1967	29,321	4,901	24,420	32,925	6,515	26,410	- 3,604
1966 : 1st Qr.	5,427	974	4,453	6,644	1,361	5,283	- 1,217
2nd Qr.	5,404	1,075	4,329	6,511	1,594	4,917	- 1,107
3rd Qr.	8,506	1,561	6,945	9,393	1,652	7,741	- 887
4th Qr.	7,119	1,934	5,185	6,753	1,723	5,030	+ 366
1967 : 1st Qr.	6,181	1,126	5,055	8,111	1,859	6,252	- 1,930
2nd Qr.	5,762	1,045	4,717	6,838	1,659	5,179	- 1,076
3rd Qr.	9,220	1,342	7,878	9,834	1,234	8,600	- 614
4th Qr.	8,158	1,338	6,770	8,142	1,763	6,379	+ 16

^{*}Includes : (a) The very small figure of engaged or discharged seamen;
 (b) Emigrants to and immigrants from the dependencies; and
 (c) Movement of military personnel as from the 1962 Population Census.

Trusty

14.4 4

Air Part

15% increase annually

Table 9 - Passenger traffic⁺ by country of origin or destination and by mode of transport, 1967

Country of origin or destination	Arrivals			Departures		
	Sea	Air	Total	Sea	Air	Total
Kenya*	33	1,347	1,380	74	1,204	1,278
Malagasy Republic	513	1,921	2,434	580	1,515	2,095
Malawi	-	214	214	-	240	240
Reunion	628	11,646	12,274	840	11,963	12,803
Rhodesia	2	684	686	-	718	718
Seychelles	68	3	71	64	5	69
South Africa	450	1,901	2,351	415	2,189	2,604
Tanzania	21	248	269	4	208	212
Zambia	-	218	218	-	257	257
British Indian Ocean Territories	148	-	148	120	2	122
Rodrigues	1,268	-	1,268	1,485	-	1,485
Other Dependencies	208	-	208	252	-	252
Other African Countries	7	156	163	40	210	250
China	6	-	6	4	2	6
Hong Kong	148	21	169	74	27	101
India	185	344	529	35	448	483
Japan	20	17	37	41	21	62
Singapore	12	8	20	59	11	70
Other Asian Countries	30	158	188	3	172	175
Australia	63	1,177	1,240	1,023	1,396	2,419
New Zealand	2	45	47	-	53	53
Belgium	4	23	27	7	78	85
France	184	573	757	167	727	894
Italy	1	175	176	-	174	174
Switzerland	2	34	36	6	48	54
United Kingdom	374	3,156	3,530	643	4,338	4,981
Other European Countries	11	148	159	17	177	194
Canada	-	35	35	1	72	73
U.S.A.	5	136	141	2	106	108
Other and unspecified Countries	14	32	46	25	49	74
Total	4,407	24,420	28,827	5,981	26,410	32,391

⁺excluding passengers in transit, 494 discharged seamen and 534 engaged seamen.

* the country of origin or destination of the majority of these passengers was probably India or the United Kingdom.

Table 10 - Population and vital statistics

Year	Estimated mid-year population (30th June)	Numbers				Rates per 1000 of the mid-year population			
		Marriages	Births	Deaths	Natural increase	Marriage rate	Crude birth rate	Crude death rate	Rate of natural increase
1944-48 Average	424,219	3,228	17,788	11,672	6,116	15.2	41.9	27.5	14.4
1949-53 "	483,859	3,552	22,913	7,358	15,555	14.7	47.4	15.2	32.2
1954-58 "	574,938	3,008	23,936	7,401	16,535	10.5	41.6	12.9	28.7
1959-63 "	662,368	3,452	25,913	6,708	19,205	10.4	39.1	10.1	29.0
1959	627,249	3,297	23,923	6,753	17,170	10.5	38.1	10.8	27.3
1960	644,743	3,113	25,307	7,248	18,059	9.7	39.3	11.2	28.1
1961	662,368	3,484	26,092	6,505	19,587	10.5	39.4	9.8	29.6
1962	681,619	3,893	26,267	6,325	19,942	11.4	38.5	9.3	29.2
1963	701,422	3,472	27,978	6,709	21,269	9.9	39.9	9.6	30.3
1964	722,089	3,965	27,528	6,184	21,344	11.0	38.1	8.6	29.5
1965	741,036	3,976	26,279	6,337	19,942	10.7	35.5	8.6	26.9
1966	759,067	4,157	26,817	6,701	20,116	11.0	35.3	8.8	26.5
1967	773,573	3,949	23,499	6,543	16,956	10.2	30.4	8.5	21.9
							33		23.0

Note : Revision of population estimates from 1953 based on data obtained from the 1962 Population Census.

Table 11 - Live births and still births

Year	Numbers			Rates	
	Live births	Still births	Infant deaths	Still birth rate ⁺	Infantile mortality rate ⁺⁺
1944-48 Average	17,788	1,154	2,745	60.9	154.3
1949-53 "	22,913	1,464	1,945	60.1	84.9
1954-58 "	23,936	1,622	1,704	63.5	71.2
1959-63 "	25,913	1,773	1,622	64.0	62.6
1959	23,923	1,759	1,495	68.5	62.5
1960	25,307	1,783	1,760	65.8	69.5
1961	26,092	1,963	1,618	70.0	62.0
1962	26,267	1,841	1,579	65.5	60.1
1963	27,978	1,519	1,660	51.5	59.3
1964	27,528	1,611	1,561	55.3	56.7
1965	26,279	1,557	1,685	55.9	64.1
1966	26,817	1,384	1,721	49.1	64.2
1967	23,499	1,074	1,656	43.7	70.5

⁺Still births per 1000 total births (live births and still births)

⁺⁺Deaths of children under 1 year of age per 1000 live births

Table 12 - Infant deaths (deaths under 1 year of age) by age and sex

Age	1965			1966			1967		
	Both Sexes	Male	Female	Both Sexes	Male	Female	Both Sexes	Male	Female
Total infant deaths	1,685	943	742	1,721	943	778	1,656	947	709
Under 1 day	169	105	64	199	115	84	173	98	75
1 - 6 days	428	263	165	408	246	162	405	253	152
7 - 27 days	231	121	110	232	117	115	216	116	100
28 days-under 2 months	122	69	53	148	76	72	108	58	50
2 - 3 months	185	86	99	239	125	114	198	109	89
4 - 5 months	163	86	77	142	69	73	169	95	74
6 - 7 months	147	74	73	131	68	63	163		71
8 - 9 months	135	77	58	128	77	51	130	75	55
10 - 11 months	105	62	43	94	50	44	94	51	43

Table 13 - Deaths by age and sex

Age Group (years)	1965				1966				1967			
	Both Sexes		Male	Female	Both Sexes		Male	Female	Both Sexes		Male	Female
	Total deaths											
Total deaths	6,327	3,388	2,949	6,701	3,550	3,151	6,534	3,497	3,046			
0 - 4	2,387	1,296	1,091	2,450	1,305	1,145	2,389	1,298	1,091			
5 - 9	131	66	65	192	105	87	146	69	77			
10 - 14	78	42	36	93	57	36	83	45	38			
15 - 19	98	45	53	121	59	62	125	65	60			
20 - 24	106	39	67	115	36	79	106	41	65			
25 - 29	117	46	71	107	37	70	107	35	72			
30 - 34	91	30	61	113	43	70	125	55	70			
35 - 39	142	69	73	168	88	80	157	75	82			
40 - 44	194	125	69	181	109	72	185	104	81			
45 - 49	229	151	78	211	127	84	202	139	63			
50 - 54	323	215	108	306	212	94	280	176	104			
55 - 59	362	245	117	371	244	127	428	289	139			
60 - 64	452	273	179	455	295	160	439	287	152			
65 - 69	466	264	202	502	294	208	463	271	192			
70 - 74	414	214	200	460	239	221	476	241	235			
75 - 79	342	149	193	376	167	209	369	165	204			
80 - 84	245	79	166	256	81	175	263	102	161			
85 and over	160	40	120	224	52	172	200	40	160			

Table 14 - Population and vital statistics - quarterly

Period	Marriage	Live births			Deaths			Natural increase	Net oversea migration	Total increase	Estimated population at the end of the period
		Both sexes	Male	Female	Both Sexes	male	Female				
1965	3,976	26,279	13,287	12,992	6,337	3,888	2,949	19,942	- 2,126	17,816	751,421
1966	4,157	26,817	13,554	13,263	6,701	3,550	3,151	20,116	- 2,845	17,271	768,692
1967	3,949	23,499	12,061	11,438	6,543	3,497	3,046	16,956	- 3,604	13,352	782,044
1966 : 1st Qr.	827	6,618	3,330	3,288	1,764	932	832	4,854	- 1,217	3,637	755,058
2nd Qr.	1,108	6,691	3,413	3,278	1,575	822	753	5,116	- 1,107	4,009	759,067
3rd Qr.	1,093	7,187	3,605	3,582	1,813	975	838	5,374	- 887	4,487	763,554
4th Qr.	1,129	6,321	3,206	3,115	1,549	821	728	4,772	+ 366	5,138	768,692
1967 : 1st Qr.	873	5,610	2,921	2,689	1,789	930	859	3,821	- 1,930	1,891	770,583
2nd Qr.	1,066	5,611	2,887	2,724	1,545	813	732	4,066	- 1,076	2,990	773,573
3rd Qr.	900	5,975	3,030	2,945	1,611	874	737	4,364	- 614	3,750	777,323
4th Qr.	1,110	6,303	3,223	3,080	1,598	880	718	4,705	+ 16	4,721	782,044

1958 792
 1959 6,047
 1,603
 1,647
 4,

Table 15 - Still births and infant deaths

Period	Still births	Infant Deaths		
		Both Sexes	Male	Female
1965	1,557	1,685	943	742
1966	1,384	1,721	943	778
1967	1,074	1,656	947	709
1966 : 1st Qr.	334	428	236	192
2nd Qr.	392	392	205	187
3rd Qr.	354	473	250	223
4th Qr.	304	428	252	176
1967 : 1st Qr.	234	565	313	252
2nd Qr.	236	402	227	175
3rd Qr.	318	321	187	134
4th Qr.	286	368	220	148

Table 16 - Expectation of life in years at selected ages

Exact Age (years)	Males			Females		
	1942-46 ⁺	1951-53 ⁺	1961-63	1942-46 ⁺	1951-53 ⁺	1961-63
0	32.8	49.8	58.7	33.8	52.3	61.9
10	35.8	49.2	55.1	37.3	52.2	58.1
20	28.1	40.1	45.7	30.2	43.7	48.9
30	22.3	31.6	36.6	26.1	36.2	40.3
40	16.7	23.6	27.7	21.2	28.7	31.9
50	11.9	16.7	19.6	15.7	21.2	23.5
60	8.1	11.2	13.2	10.6	14.6	15.8
70	5.6	6.7	8.5	7.1	9.1	9.7
80	4.0	4.3	4.8	4.6	5.3	5.4

+excluding Chinese

Source : Mauritius Life Tables

II. PUBLIC HEALTH

Table 17 - Statistics of hospitals

Period	No. of beds	Patients in hospital on 1st day of period	Total admissions	Deaths	Discharges	Patients remaining on last day of period
1962	2,453	1,751	38,130	1,628	36,480	1,773
1963	2,453	1,773	45,717	1,959	43,686	1,845
1964	2,481	1,845	49,080	1,887	47,233	1,805
1965	2,514	1,805	51,445	1,995	49,356	1,939
1966	2,514	1,939	51,258	1,983	49,575	1,639
1967	2,578	1,723	54,982	2,255	52,734	1,716
1966 : 1st Qr.	2,514	1,939	13,435	515	12,510	2,349
2nd Qr.	2,514	2,349	11,611	431	11,358	2,171
3rd Qr.	2,514	2,171	13,126	552	12,576	2,169
4th Qr.	2,514	2,169	13,086	485	13,131	1,639
1967 : 1st Qr.	2,578	1,723	14,126	605	12,923	2,321
2nd Qr.	2,578	2,321	13,034	514	12,584	2,257
3rd Qr.	2,578	2,257	13,117	539	12,531	2,304
4th Qr.	2,578	2,304	14,705	597	14,696	1,716

Note : Pointe aux Canonnières Tuberculosis Hospital included as from 1967.

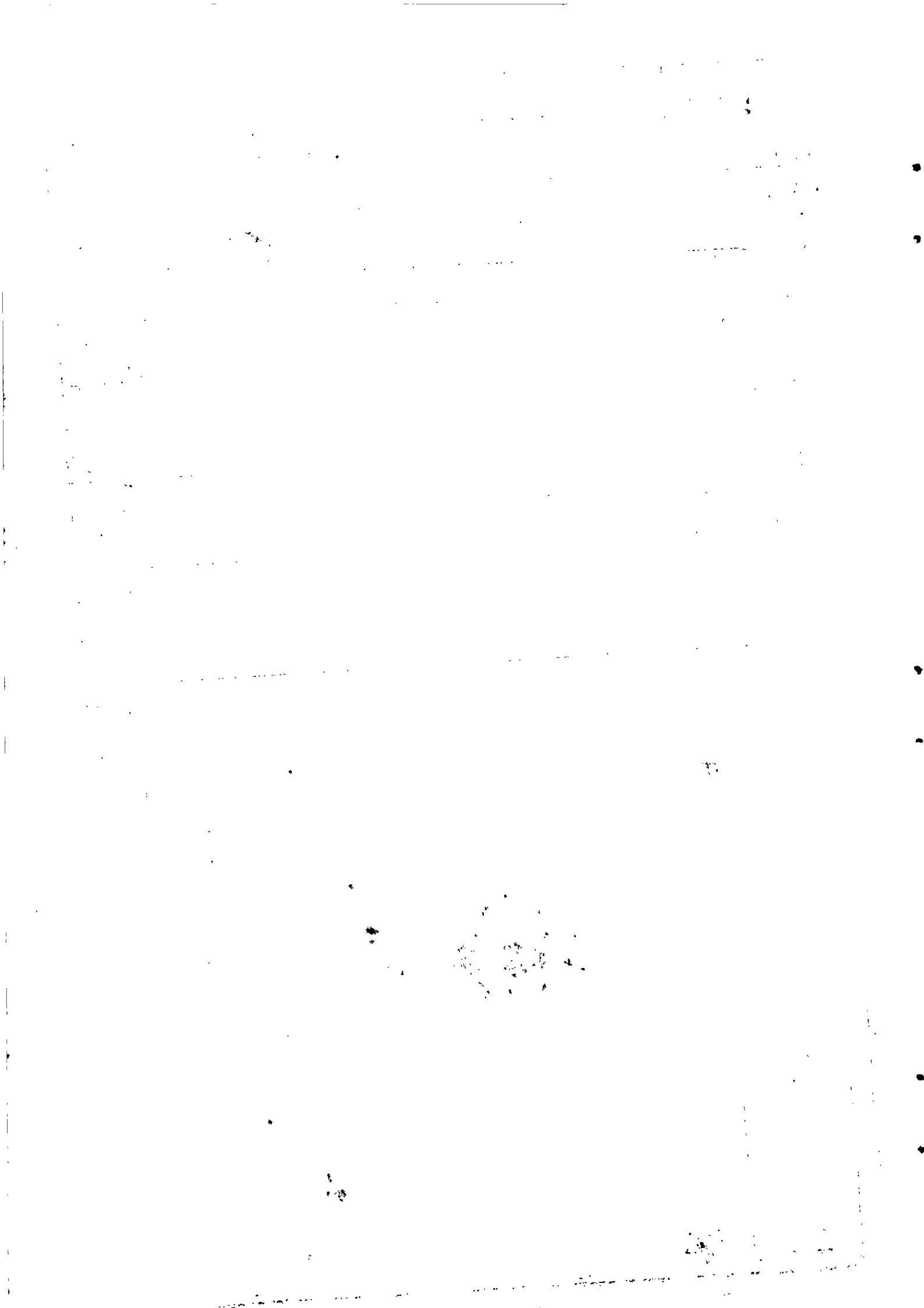
Table 18 Notifiable, contagious or communicable diseases

Period	Disease	Enteric fever	Diphtheria	Acute poliomyelitis	Puerperal fever	Erysipelas	Cerebro-spinal meningitis	Tuberculosis	Leprosy	Murine typhus
1962		81	151	1	-	-	-	300	1	3
1963		89	145	3	2	2	-	429	4	3
1964		64	206	-	6	-	-	472	-	1
1965		77	78	-	-	-	-	366	-	-
1966		54	75	5	1	-	-	585	2	-
1967		91	37	6	1	-	-	553	5	-
1966 :	1st Qr.	7	31	1	-	-	-	118	-	-
	2nd Qr.	12	23	-	1	-	-	129	-	-
	3rd Qr.	13	7	-	-	-	-	173	-	-
	4th Qr.	22	14	4	-	-	-	165	2	-
1967 :	1st Qr.	42	10	4	-	-	-	161	2	-
	2nd Qr.	35	11	1	-	-	-	141	2	-
	3rd Qr.	11	11	1	-	-	-	137	1	-
	4th Qr.	3	5	-	1	-	-	114	-	-

Table 19 - Cause of death, 1967

Section	CAUSE OF DEATH	DEATHS						Death rate per 100,000 of population	
		Under 1 year		1 to 4 years		All Ages			% of total deaths
		Both Sexes	Male	Female	Both Sexes	Male	Female		
I	Infective and parasitic diseases	23	110	76	186	24.0	2.8		
II	Neoplasm	1	143	145	288	37.2	4.4		
III	Allergic, endocrine system, metabolic and nutritional diseases	13	158	131	289	37.4	4.4		
IV	Diseases of the blood and blood forming organs	8	91	138	229	29.6	3.5		
V	Mental, psychoneurotic, and personality disorders	-	1	1	2	0.3	-		
VI	Diseases of the nervous system & sense organs	20	241	240	481	62.2	7.4		
VII	Diseases of the circulatory system	7	463	369	832	107.6	12.7		
VIII	Diseases of the respiratory system	179	328	285	613	79.2	9.4		
IX	Diseases of the digestive system	530	631	505	1,136	146.8	17.4		
X	Diseases of the genito-urinary system	2	30	19	49	6.3	0.7		
XI	Deliveries and complications of pregnancy, childbirth, and the puerperium	-	-	29	29	3.7	0.4		
XII	Diseases of the skin and cellular tissue	1	7	2	9	1.2	0.1		
XIII	Diseases of bones and organs of movement	-	5	5	10	1.3	0.2		
XIV	Congenital malformations	19	18	6	24	3.1	0.4		
XV	Certain diseases of early infancy	714	411	303	714	92.3	10.9		
XVI	Symptoms, senility, and ill-defined conditions	134	672	707	1,379	178.3	21.1		
XVII	Accidents, poisoning, and violence	5	188	85	273	35.3	4.2		
	All Causes	1,656	3,497	3,046	6,543	845.8	100.0		

+ International Classification 1955



III. PUBLIC FINANCE AND BANKING

Table 20 - Central government revenue and expenditure

Rs Million

Financial Year	REVENUE			EXPENDITURE			Surplus (+) Deficit (-)
	Recurrent	Capital	Total	Recurrent	Capital	Total	
1963-64	184.6	60.6	245.2	169.0	53.7	222.7	+ 22.5
1964-65	231.7	24.4	256.1	185.7	56.4	242.1	+ 14.0
1965-66	182.2	73.6	255.8	201.9	52.0	253.9	+ 1.9
1966-67	199.3	27.0	226.3	221.0	54.4	275.4	- 49.1
1967-68*	204.6 216.4	64.6	269.2	233.4	85.7	319.1	- 49.9
1968-69	249.1						

Table 21 - Functional classification of central government recurrent revenue

Rs Million

	1964-65	1965-66	1966-67	1967-68*
<u>Taxes on Income and Capital</u>	90.5	37.5	45.7	48.3
Income Tax :				
Individuals	31.9	22.1	27.5	30.7
Companies ✓	46.1	12.0	13.8	13.5
Development contribution	9.2	-	-	0.8
Contributions to Widows' fund	1.8	1.9	2.1	2.0
Succession duties	1.5	1.5	2.3	1.3
<u>Taxes on Financial Transactions</u>	5.3	5.2	6.1	6.7
<u>Taxes on Gambling</u>	1.9	2.5	2.4	2.9
<u>Taxes on Consumption and Production</u>	104.7	103.6	109.4	111.5
Import duties	57.5	54.9 52.3	54.4 56.6	57.3 58.1
Export duties	12.9	14.0 15.2	14.3 13.4	12.0
Excise duties ✓	25.1	25.6	27.8	28.9
Business & professional licences	3.9	3.9	4.4	4.5
Taxes on transportation	5.3	6.6	7.2	8.0
<u>Provision of Goods and Services</u>	15.9	18.0	18.5	20.9
Rental of government property	2.0	1.8	2.0	2.1
Telephone service	2.6	2.9	3.3	3.7
Marine services	3.5	4.5	4.3	4.6
Posts and telegraphs	3.0	2.9	2.9	4.1
Water and irrigation	1.4	2.4	2.6	2.8
Agriculture and forests	1.6	1.5	1.5	1.4
Other goods and services	1.8	2.0	1.9	2.2
<u>Interest, Profits and Dividends</u>	9.0	10.7	12.0	8.2
<u>Overseas Service Aid Scheme</u>	1.1	1.1	1.0	1.7
Other recurrent revenue	3.3	3.6	4.2	4.4
Total	231.7	182.2	199.3	204.6

Table 22 - Functional classification of central government recurrent expenditure

Rs Million

	1964-65	1965-66	1966-67	1967-68 ⁺
<u>GENERAL SERVICES</u>	24.5	25.7	27.0	29.1
General administration	1.2	1.3	1.6	1.6
Legislature	0.6	0.6	0.6	0.7
Maintenance of Law and Order :				
Justice and Attorney General	1.8	1.8	1.8	1.9
Police and Defence	10.3	10.6	11.1	11.6
Prisons	1.7	1.7	1.7	1.8
Revenue collection and financial control	4.6	5.0	5.4	5.7
Other general services	4.3	4.7	4.8	5.8
<u>COMMUNITY SERVICES</u>	16.6	16.5	17.3	17.6
Maintenance of roads and public buildings	8.5	7.5	7.9	7.9
Domestic water supplies	2.7	3.4	3.9	3.9
Sanitation and sewerage	3.3	3.4	3.3	3.5
Other community services	2.1	2.2	2.2	2.3
<u>SOCIAL SERVICES</u>	76.1	80.2	84.0	91.6
Education	25.1	26.1	27.4	30.3
Health (excluding sanitation)	16.4	17.7	18.3	20.2
Social security :				
Family allowances	9.5	9.8	9.9	9.3
Outdoor relief	9.1	9.4	10.0	9.6
Old age pensions	8.9	10.4	10.6	10.5
Housing	1.5	1.2	1.6	1.7
Other social services	5.6	5.6	6.2	10.0
<u>ECONOMIC SERVICES</u>	18.0	18.0	17.9	20.9
Agriculture and forests	7.9	7.7	7.3	9.5
Civil aviation and marine services	2.5	2.5	2.7	2.8
Posts & Telegraphs & Telecommunications	5.2	5.1	5.0	5.5
Other economic services	2.4	2.7	2.9	3.1
<u>UNALLOCABLE EXPENDITURE</u>	50.5	61.5	74.8	74.2
Transfers to local authorities	5.9	6.4	6.8	7.1
Recurrent financial obligations :				
Public debt :-				
Interest	9.5	10.5	12.0	12.6
Redemptions	0.5	1.1	1.7	1.8
Sinking fund	3.6	4.5	4.6	4.8
Public pensions and gratuities	13.8	14.5	14.7	15.8
Passages	4.2	4.1	4.6	1.5
Rodrigues	3.7	3.7	3.7	3.9
Relief works	3.8	10.5	18.9	18.3
Other unallocable expenditure	5.5	6.2	7.8	8.4
<u>Total</u>	185.7	201.9	221.0	233.4

*excluding transfers to the Capital Budget

+ estimates

Table 23 - Functional classification of central government capital revenue*

	Rs Million			
	1964-65	1965-66	1966-67	1967-68 ⁺
Grants :				
Colonial development and welfare	1.4	1.8	3.1	16.3
Other	3.6	1.9	1.1	1.6
Sale of property	0.1	40.0	0.2	0.0
Loans:				
Local	5.9	11.0	11.4	7.0
External	11.5	17.7	8.7	38.0
Interest on investments	0.5	0.5	2.0	1.0
Other capital revenue	1.4	0.7	0.5	0.7
Total	24.4	73.6	27.0	64.6

Table 24 - Functional classification of central government capital expenditure

	Rs Million			
	1964-65	1965-66	1966-67	1967-68 ⁺
Agriculture and forests	6.3	6.0	9.6	11.7
Irrigation	0.3	0.4	0.9	2.9
Roads and bridges	3.6	4.7	2.1	2.0
Marine services and civil aviation	5.7	3.2	2.6	6.5
Domestic water supplies	2.6	3.6	3.0	5.9
Health	0.8	1.0	9.6	13.4
Housing	4.1	2.8	2.7	2.3
Sewerage	3.1	2.2	2.7	5.9
Education	2.8	3.3	2.7	6.3
Rodrigues	1.3	1.4	2.6	2.9
Loans :				
Development Bank of Mauritius	3.1	3.0	7.1	6.0
Central Electricity Board	9.2	4.9	-	2.0
Mauritius Housing Corporation	1.3	2.3	1.3	1.5
Central Housing Authority	4.8	3.1	2.0	3.0
Municipalities	1.0	2.6	0.2	1.0
Other loans	1.1	1.4	0.5	0.7
Other capital expenditure	5.3	6.1	4.8	11.7
Total	56.4	52.0	54.4	85.7

* Excluding transfers from the recurrent budget which amounted to Rs 20 Mn. in 1964-65 and Rs 12 Mn. in 1965-66.

⁺ estimates

Table 25 - Central government indebtedness

Period	Amount outstanding at beginning of period						Borrowing during period		Repayments during period	
	Total	Internal		External		Internal	External	Internal	External	
		Tap loan	Other	U.K.	I.B.R.D.*					
1962-63	152.1	46.0	21.1	85.0	-	24.7	14.6	0.1	6.9	
1963-64	184.4	55.6	36.1	92.7	-	7.6	48.0	-	1.0	
1964-65	239.0	63.2	36.1	124.3	15.4	7.2	11.5	0.2	1.1	
1965-66	256.4	70.2	36.1	123.8	26.3	12.9	20.3	1.7	1.5	
1966-67	286.4	76.5	41.0	136.3	32.6	14.2	7.6	3.8	3.2	
1967 : July-Sept.	301.2	88.2	39.7	141.8	31.5	3.1	-	0.3	0.5	
Oct.-Dec. +	303.5	91.0	39.7	141.3	31.5	2.1	-	-	0.8	

Rs Million

* International Bank for Reconstruction and Development.

+ provisional.

Table 26 - Sinking fund held against the public debt
(end of period)

Period	Rs Million
1962-63	47.8
1963-64	54.2
1964-65	62.6
1965-66	73.7
1966-67	81.0

Note : Investments have been valued at mean market prices

Table 27 - Outstanding loans and advances made from public funds
(Balance at 30th June 1967)

Debtor	Rs Million
Agricultural Marketing Board	1.8
Central Electricity Board	117.6
Mauritius Housing Corporation	12.9
Development Bank of Mauritius	13.8
Sack Factory	5.0
General Manager of Railways	7.5*
Municipalities	
Port Louis	10.0
Beau Bassin-Rose Hill	3.4
Curepipe	2.9
Quatre-Bornes	5.1
Vacoas-Phoenix	1.3
Mauritius Hotels	1.4
Colonial Steamships	2.2
Bois Cheri and La Flora Tea Estates	1.1
Planters Hurricane Loan	1.6
Landlords of private school buildings	1.9
Other	3.3
Total	192.8

*to be written off

Table 28 - Sterling assets
(end of period)

Period	Rs Million										
	INVESTMENTS					LIQUID ASSETS					
	Government	Currency Backing	Semi-governmental institutions	Post Office Savings Bank	Total	Government	Currency Backing	Semi-governmental institutions	Post Office Savings Bank	Total	
1962	29.4	59.6	20.5	23.3	132.8	3.0	28.7	- 6.5	2.1	27.3	21.0
1963	32.6	45.7	8.8	23.1	110.2	12.0	46.5	- 1.2	4.3	61.6	108.0
1964	38.0	44.9	8.8	22.4	114.1	8.6	46.0	7.7	6.5	68.8	96.1
1965	40.8	57.7	6.9	20.3	125.7	0.8	37.3	7.0	8.9	54.0	44.0
1966	78.2	57.6	6.9	19.0	161.7	- 5.0	34.2	6.9	10.9	47.0	53.2
1967	57.8	(a)	6.9	18.8	83.5	-22.0	(a)	6.4	4.7	-10.9	52.3
1966 : 3rd Qr.	79.3	57.4	6.9	19.2	162.8	- 3.6	29.5	5.4	10.7	42.0	-18.9
4th Qr.	78.2	57.6	6.9	19.0	161.7	- 5.0	34.2	6.9	10.9	47.0	53.2
1967 : 1st Qr.	73.5	57.5	6.9	19.0	156.9	- 2.6	22.6	7.1	7.9	35.0	24.9
2nd Qr.	63.2	57.5	6.9	18.9	146.5	-13.1	16.8	6.2	2.7	12.6	-29.5
3rd Qr.	63.6	(a)	6.9	18.9	89.4	-25.5	(a)	6.3	2.7	-16.5	24.0
4th Qr. ⁺	57.8	(a)	6.9	18.8	83.5	-22.0	(a)	6.4	4.7	-10.9	52.3

⁺ provisional

(a) These assets have become the property of the Central Bank since August 1967 and are now shown in table 29. Hence 'Total Investments' and 'Total Liquid Assets of Government and Semi-Governmental Institutions' before and after that date are not comparable.

Table 29 - Assets and Liabilities of the Bank of Mauritius

Period	Assets										
	Total	External				Securities	Total	Local			Other Assets
		Total	Balances with banks	Bills	Securities			Government securities	Discounts & advances	Other Assets	
1967 : Sept.	111.1	64.7	5.4	12.3	47.0	46.4	34.0	9.2	3.2		
Oct.	108.8	72.1	5.3	23.4	43.4	36.7	34.0	-	2.7		
Nov.	108.0	71.3	4.9	23.5	42.9	36.7	34.0	-	2.7		
Dec.	116.7	73.8	4.9	25.8	43.1	42.9	34.0	6.9	2.0		

LIABILITIES

Period	Total	Paid up capital	Notes in circulation	Coins in circulation	Deposits			Other liabilities
					Total	Public	Bankers'	
1967 : Sept.	111.1	5.0	84.3	6.2	4.3	-	4.3	11.3
Oct.	108.8	5.0	85.7	6.2	1.2	-	1.2	10.7
Nov.	108.0	5.0	85.2	6.1	1.0	-	1.0	10.7
Dec.	116.7	5.0	94.1	6.2	0.5	-	0.5	10.9

Note : The Central Bank commenced its activities in August 1967.

Bank rate was raised from 5½% to 7½% on the 20th November, 1967.

1967 : Sept. 108.8

Table 30 - Banking statistics - Assets of commercial banks

Period	Rs Million										
	Balances due by			Loans and advances			Investments		Other assets		
	Cash	Other local Banks	Banks abroad	Primary products	Other industries	Other advances	Local	Abroad	Bills discounted and bills receivable	Other	Other
1962 : 31st Dec.	6.4	0.9	46.4	57.4	44.0	20.9	5.0	2.0	10.7	35.5	
1963 : "	8.9	3.3	113.2	28.5	41.8	19.9	6.4	2.0	10.5	47.4	
1964 : "	7.3	2.0	97.4	44.9	51.6	32.4	10.6	2.4	15.3	47.2	
1965 : "	5.8	1.7	57.8	52.0	60.4	32.7	5.8	4.3	12.3	47.2	
1966 : "	5.3	4.6	56.7	50.8	59.3	36.4	6.9	2.0	14.1	48.2	
1967 : "	7.0	2.2	52.3	73.9	73.4	21.9	6.7	2.0	15.2	58.7	
1968 : 31st March	10.2	1.4	35.9	67.4	65.9	28.0	5.8	2.4	12.6	49.3	
30th June	10.7	2.6	7.8	97.3	63.3	33.4	6.8	2.4	16.5	48.9	
30th Sept.	6.9	3.1	21.4	69.9	72.2	28.2	6.9	2.3	16.4	47.6	
31st Dec.	5.3	4.6	56.7	50.8	59.3	36.4	6.9	2.0	14.1	48.2	
1967 : 31st March	11.0	3.0	41.0	60.1	66.2	26.8	7.6	2.0	12.3	51.0	
30th June	9.2	2.9	10.7	76.9	74.1	31.2	7.0	2.0	15.2	55.1	
30th Sept.	9.6	5.2	24.0	66.9	75.8	24.7	6.9	2.0	15.9	54.8	
31st Dec.	7.0	2.2	52.3	73.9	73.4	21.9	6.7	2.0	15.2	58.7	

Table 31 - Banking statistics : Liabilities of commercial banks

Period	Total	Notes in circulation	Deposits			Balances due to			Other liabilities
			Demand	Time	Savings	Other	Local banks	Banks abroad	
1962 : 31st Dec.	229.2	-	124.5	7.3	15.2	1.3	25.5	55.4	
1963 : "	281.9	-	174.7	10.7	20.7	4.3	5.2	66.3	
1964 : "	311.1	-	161.2	52.3	26.2	2.7	1.4	67.3	
1965 : "	280.0	-	128.4	38.2	23.1	1.8	13.9	69.6	
1966 : "	284.3	-	148.8	25.7	30.5	3.6	3.5	72.2	
1967 : "	313.3	-	139.7	30.5	41.6	5.4	16.3	79.8	
1966 : 31st March	278.9	-	112.6	48.4	29.2	2.0	15.5	71.2	
30th June	289.7	-	97.6	42.1	29.1	2.9	45.9	72.1	
30th Sept.	274.9	-	96.6	34.5	30.1	2.6	40.4	70.7	
31st Dec.	284.3	-	148.8	25.7	30.5	3.6	3.5	72.2	
1967 : 31st March	281.0	-	114.8	42.1	33.0	2.5	16.1	72.5	
30th June	284.3	-	105.1	22.8	35.6	2.5	40.2	78.1	
30th Sept.	285.8	-	102.1	29.2	40.2	3.1	32.8	78.4	
31st Dec.	313.3	-	139.7	30.5	41.6	5.4	16.3	79.8	

Rs Million

Table 32 - Banking Statistics : Assets of the Development Bank of Mauritius and the Mauritius Housing Corporation

Period	Total	Cash	Balances due by			Loans and advances			Investments		Other Assets
			Other local banks	Banks abroad	Primary products	Other industries	Other advances	Local	Abroad		
										Other	
1962 : 31st Dec.	46.3	-	1.6	-	24.4	0.8	14.0	1.0	0.9	3.6	
1963 : "	45.8	-	1.3	-	23.4	1.0	14.7	1.1	0.9	3.4	
1964 : "	48.3	-	2.4	-	22.1	1.7	15.6	1.4	0.9	4.2	
1965 : "	55.3	-	2.1	-	24.2	3.6	18.8	1.8	1.1	3.7	
1966 : "	64.0	0.1	0.8	-	23.5	9.1	22.2	2.1	1.3	4.9	
1967 : "	74.2	0.1	1.3	-	20.3	14.0	28.3	2.7	1.6	5.9	
1966 : 31st March	57.4	-	1.5	-	22.7	4.0	21.8	2.5	1.3	3.6	
30th June	58.3	0.1	1.6	-	23.5	4.6	20.2	2.8	1.3	4.2	
30th Sept.	62.3	0.5	0.8	-	23.6	7.5	21.2	2.6	1.3	4.8	
31st Dec.	64.0	0.1	0.8	-	23.5	9.1	22.2	2.1	1.3	4.9	
1967 : 31st March	66.6	-	0.7	-	21.0	12.8	23.2	2.7	1.5	4.7	
30th June	70.6	0.1	1.5	-	20.6	13.7	25.0	2.7	1.5	5.5	
30th Sept.	72.6	0.0	0.7	-	20.7	14.2	26.6	2.7	1.5	6.2	
31st Dec.	74.2	0.1	1.3	-	20.3	14.0	28.3	2.7	1.6	5.9	

Table 33 - Banking Statistics : Liabilities of the Development Bank of Mauritius and the Mauritius Housing Corporation

Period	Total	Notes in circulation	Deposits			Balances due to		Other liabilities
			Demand	Time	Savings	Other local banks	Banks abroad	
1962 : 31st Dec.	46.3	-	0.7	9.6	2.0	-	-	34.0
1963 : "	45.8	-	0.5	9.0	2.2	-	-	34.1
1964 : "	48.3	-	0.3	8.6	2.1	-	-	37.3
1965 : "	55.3	-	1.2	3.6	2.1	-	-	48.4
1966 : "	64.0	-	1.6	2.5	2.0	-	-	57.9
1967 : "	74.2	-	1.7	2.1	1.9	-	-	68.5
1966 : 31st March	57.4	-	1.3	3.1	2.0	-	-	51.0
30th June	58.3	-	0.9	3.0	2.1	-	-	52.3
30th Sept.	62.3	-	1.0	3.0	2.0	-	-	56.3
31st Dec.	64.0	-	1.6	2.5	2.0	-	-	57.9
1967 : 31st March	66.6	-	2.1	2.4	1.9	-	-	60.2
30th June	70.6	-	2.2	2.3	1.9	-	-	64.2
30th Sept.	72.6	-	2.0	2.1	1.9	0.4	-	66.2
31st Dec.	74.2	-	1.7	2.1	1.9	-	-	68.5

Rs Million

Table 34 - Post Office Savings Bank

Period	Deposits during period	Withdrawals during period	Accumulated balance at end of period	Number of accounts at 30th June
	Rs Mn	Rs Mn	Rs Mn	
1962	13.9	15.3	29.8	83,857
1963	15.4	13.4	32.6	86,052
1964	16.9	15.6	34.8	84,642
1965	15.0	15.9	34.8	86,929
1966	14.3	16.2	33.9	88,171
1967	14.3	18.9	29.3	88,503
1966 : 1st Qr.	3.9	3.9	34.8	...
2nd Qr.	2.8	3.6	35.0	88,171
3rd Qr.	3.8	4.5	34.3	...
4th Qr.	3.8	4.2	33.9	...
1967 : 1st Qr.	3.6	6.5	31.0	...
2nd Qr.	2.9	5.2	28.7	88,503
3rd Qr.	5.1	3.5	30.3	...
4th Qr.	2.7	3.7	29.3	...

Table 35 - Currency in circulation
(end of period)

Period	Notes	Coins	Total	Cash held by banks	Net circulation
1962	77.3	4.9	82.2	6.4	75.8
1963	95.8	5.3	101.1	8.9	92.2
1964	92.2	5.6	97.8	7.3	90.5
1965	93.4	5.6	99.0	5.8	93.2
1966	92.6	5.7	98.3	5.3	93.0
1967	94.1	6.2	100.3	7.0	93.3
1966 : 1st Qr.	87.4	5.4	92.8	10.2	82.6
2nd Qr.	84.4	5.2	89.6	10.7	78.9
3rd Qr.	87.3	5.5	92.8	6.9	85.9
4th Qr.	92.6	5.7	98.3	5.3	93.0
1967 : 1st Qr.	90.7	5.5	96.2	11.0	85.2
2nd Qr.	87.0	5.4	92.4	9.2	83.2
3rd Qr.	84.3	6.2	90.5	9.6	80.9
4th Qr.	94.1	6.2	100.3	7.0	93.3

1965

Table 36 - Banks' rates of exchange

Country	Currency	Rupees			
		on 30.6.67		on 31.12.67	
		Selling rate	Buying rate	Selling rate	Buying rate
United Kingdom	Pound Sterling	13.40	13.20	13.40	13.20
Australia	Dollar	5.40-5.60	5.275-5.40	6.27	6.10-6.15
Belgium	Franc	.0965-.0972	.09	0.108-0.11	0.10-0.113
Canada	Dollar	4.475-4.50	4.37-4.375	5.18	5.08
France	Franc	0.99	0.92-0.94	1.15	1.10
Germany Western	Mark	1.21	1.17-1.18	1.40-1.41	1.36-1.37
Hong Kong	Dollar	0.85	0.83	0.92	0.85-0.90
India	Rupee	0.642	0.6275	0.7465	0.7315
Kenya	Shillings	0.67	0.65-0.66	0.78	0.76
Madagascar	Franc	.0190-.0198	.0175-.0188	.023	.022
New Zealand	Dollar	6.69	6.575	6.27	6.15
Pakistan	Rupee	1.01	0.99	1.175	1.155
Reunion	Franc	.0198	.0188	.023	.022
South Africa	Rand	6.71	6.60	7.83	7.67-7.70
Switzerland	Franc	1.11	1.08	1.29-1.30	1.25-1.26
U.S.A.	Dollar	4.82	4.70-4.725	5.60	5.50

1. The first step in the process of the cell cycle is the replication of DNA.

2. The second step is the condensation of the DNA into chromosomes.

3. The third step is the separation of the sister chromatids.

4. The fourth step is the movement of the chromosomes to opposite poles of the cell.

5. The fifth step is the division of the cell into two daughter cells.

Protein

IV. NATIONAL ACCOUNTS

Table 37 - Industrial Origin of Gross National Product
(At current factor cost)

		Rs Million				
	1962	1963	1964	1965 ⁺	1966 ⁺	
1. Agriculture, forestry, hunting and fishing	206	174	296	180	190	
2. Mining and quarrying	1	1	1	1	1	
3. Manufacturing	131	115	176	129	121	
4. Construction	60	52	49	55	52	
5. Electricity, gas, water and sanitary services	24	17	21	22	22	
6. Transportation, storage and communication	100	84	92	95	99	
7. Wholesale and retail trade	89	72	81	86	84	
8. Banking, insurance and real estate	17	12	14	16	16	
9. Ownership of dwellings	65	55	57	59	63	
10. Public administration and defence	48	32	34	38	45	
11. Services	104	80	85	94	100	
GROSS DOMESTIC PRODUCT AT FACTOR COST	845	694	906	760	793	
Net factor income from the rest of the world	- 5	- 4	- 6	- 2	- 2	
GROSS NATIONAL PRODUCT AT FACTOR COST	840	690	900	758	791	
Per Capita Gross National Product at factor cost (Based on mid-year population)	1,086	Rs 1,012	Rs 1,283	Rs 1,050	Rs 1,042	

⁺ provisional

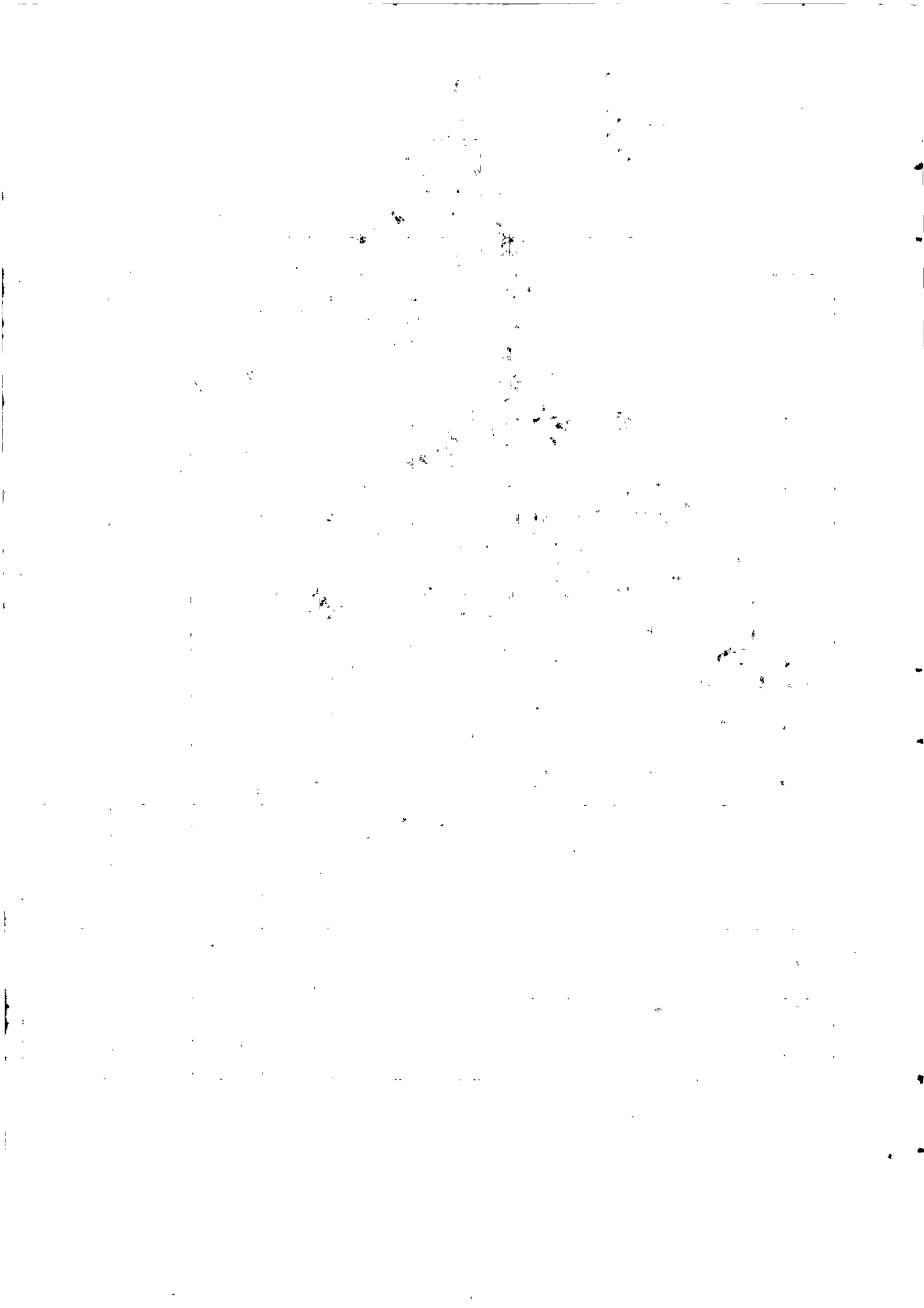


Table 38 - Distribution of the National Income before providing for depreciation

	Rs Million				
	1962	1963	1964	1965 ⁺	1966 ⁺
1. Compensation of employees	401	436	450	469	474
2. Income from unincorporated enterprises	94	125	97	101	105
3. Income from property	113	139	106	107	113
4. Saving of corporations	57	138	86	103	74
5. Direct tax on corporations	18	55	12	13	14
6. General Government income from property and entrepreneurship	16	18	20	23	26
7. <u>Less</u> Interest on public debt	- 6	- 7	- 9	- 10	- 11
8. <u>Less</u> Interest on consumers' debt	- 3	- 4	- 4	- 4	- 4
NATIONAL INCOME AND DEPRECIATION =					
Gross National Product at factor cost	690	900	758	802	791

⁺ provisional

Table 39 - Expenditure on Gross National Product, 1962-66
(At current prices)

	Rs Million				
	1962	1963	1964	1965 ⁺	1966 ⁺
1. Private consumption expenditure on goods and services	565	581	673	628	652
2. General government consumption expenditure on goods and services	108	115	126	138	154
3. Gross domestic fixed capital formation of private enterprises	89	87	126	107	86
4. Gross domestic fixed capital formation of government and public enterprises	57	73	51	48	47
5. Increase in stocks
CONSUMPTION AND GROSS CAPITAL FORMATION					
6. Net exports of goods and services	819 - 26	856 + 162	976 - 98	921 + 1	939 - 26
7. Net factor income from the rest of the world	- 4	- 6	- 2	- 6	- 2
8. Less Indirect taxes (net of subsidies)	- 99	- 112	- 118	- 114	- 120
GROSS NATIONAL PRODUCT AT FACTOR COST	690	900	758	802	791

⁺ provisional

Table 40 - Composition of Gross Fixed Domestic Capital Formation
(at current prices)

Rs Million

	1961	1962	1963	1964	1965	1966
A. By type of capital good						
a. Land ^x	2	2	2	3	2	2
b. Dwellings	37	42	45	44	37	29
c. Non-residential buildings	29	14	14	22	25	21
d. Other construction and work	5	37	38	32	31	28
e. Transport equipment						
(i) Passenger cars	4	5	5	8	6	4
(ii) Other equipment	11	11	11	16	12	22
f. Machinery and other equipment	35	30	43	52	42	27
GROSS FIXED DOMESTIC CAPITAL FORMATION ⁺	145	141	158	177	155	133
B. By industrial use [*]						
a. Agriculture, forestry and fishing	1	16	9	17	17	16
b. Mining and quarrying	-	-	-	-	-	-
c. Manufacture	13	19	21	33	17	11
d. Construction	3	2	3	3	4	3
e. Electricity, gas and water	14	12	30	16	15	12
f. Transportation, storage and communications	21	35	30	39	33	37
g. Wholesale and retail trade	6	3	3	6	9	4
h. Banking, insurance and real estate	-	1	1	2	1	2
i. Ownership of dwellings	38	44	50	45	38	29
j. Public Administration	1	-	1	1	3	4
k. Service industries	28	7	8	12	16	13
l. Legal fees, stamp duties, etc.	2	2	2	3	2	2
GROSS FIXED DOMESTIC CAPITAL FORMATION ⁺	145	141	158	177	155	133

^xIncluding legal fees, stamp duties, agents' commission, etc., connected with the transfer of ownership of land and buildings.

⁺

Excluding the expenditure incurred on reconstruction of and abnormal repairs to buildings damaged by cyclones and valued at Rs 5 M. in 1962 and Rs 2M. in 1963.

^{*}The figures for 1965 and 1966 are not strictly comparable with those of previous years as a better distribution of imports of machinery into user industries is now possible.

1070

2000 ...
500 ...
2000 ...

2.5 - 3.5 ...

5.0 - 20

Temp. +28

	1981	1982
1. ...		5
2. ...	-	1
3. ...	1	48
4. ...	27	20
5. ...		18
6. ...	10	16
7. ...	15	6
8. ...	15	14
9. ...		64

10. ...	5	12
11. ...	15	2
12. ...	6	
13. ...		
14. ...		3
15. ...	15	-
16. ...	12	-
17. ...	4	-
18-19. ...	41	-

... 12

Table 41 - Balance of Payments

Rs Million

ITEM	1965		1966		1967 (Jan.-June ⁺)	
	Credit	Debit	Credit	Debit	Credit	Debit
A. <u>GOODS AND SERVICES</u>						
1. Merchandise	318	319	338	297	45	158
2. Non-monetary gold	-	1	-	1	-	-
3. Freight and insurance on merchandise	-	47	1	41	-	22
4. Other transportation	14	14	18	18	10	10
5. Travel	10	25	10	24 27	4	13
6. Investment income	9	15	11	13	6	10
7. Government, not included elsewhere	10	5	13	5	8	4
8. Other services	41	24	12	13	6	8
Net goods and services	-	48	-	12 ⁹	-	146
B. <u>TRANSFER PAYMENTS</u>						
9. Private	5	16	5	14	2	6
10. Central government	7	2	45	2	7	1
Net transfer payments	-	6	34	-	2	-
C. <u>CAPITAL AND NON-MONETARY GOLD</u>						
<u>Non-monetary sectors</u>						
11)						
12) Private	-	4	-	-	-	1
13)						
14)						
15. Central government	-	7	9	-	15	-
<u>Monetary sectors</u>						
16. Commercial banks : liabilities	12	-	-	10	37	-
17) Commercial banks : assets	40	-	1	-	46	-
18) Central government	6	-	-	16	41	-
19)						
OTHER CAPITAL, ERRORS & OMISSIONS	7	-	-	6 ⁹	6	-

⁺ provisional

1968

Jan

111.4

113.2

115.0

114.5

May

112.8

July

115.8

Aug

114

115.9

115.0

Sept

113.4

115.5

114.6

Oct

113.2

115.3

114.4

V. CONSUMER PRICE INDICES

Table 42 - Consumer price indices

(Base : January-June 1962 = 100)

The table below gives three consumer price indices, viz :

- (a) an index for households in urban areas;
- (b) an index for households in rural areas;
- (c) a total index for Mauritius as a whole.

Period	Urban	Rural	Whole Island
1963	98.5	98.5	98.5
1964	100.5	100.2	100.3
1965	102.3	102.0	102.1
1966	105.0	104.5	104.7
1967	106.6	106.6	106.6
1966 : January	105.7	105.2	105.4
February	106.3	105.9	106.1
March	105.1	104.8	105.0
April	103.9	103.5	103.7
May	102.8	102.2	102.5
June	103.5	103.0	103.3
July	104.7	104.1	104.4
August	105.1	104.6	104.8
September	104.8	104.2	104.4
October	105.9	104.9	105.3
November	106.3	105.6	105.9
December	106.2	105.7	105.9
1967 : January	106.1	105.4	105.7
February	108.2	107.4	107.8
March	106.8	106.2	106.5
April	106.2	105.6	105.9
May	106.3	105.5	105.9
June	105.2	104.5	104.8
July	105.4	104.6	105.0
August	105.7	104.8	105.2
September	106.3	107.2	106.8
October	107.1	109.2	108.3
November	107.0	108.6	107.9
December	109.5	110.7	110.1

Jan
Feb

115.0

VI. EXTERNAL TRADE

Table 43 - Balance of visible trade

Rs Million

Period	Imports (C.I.F. Value)	Exports* (F.O.B. Value)	Balance of visible trade	
			Surplus	Deficit
1962	322.7	305.9	-	16.8
1963	333.1	427.8	94.7	-
1964	388.9	366.9	-	22.0
1965	367.3	313.4	-	53.9
1966	333.2	337.6	4.4	-
1967	<u>371.1</u>	304.9	-	66.2
1966 : 1st Qr.	80.4	56.7	-	23.7
2nd Qr.	82.9	6.3	-	76.6
3rd Qr.	83.7	140.1	56.4	-
4th Qr.	86.2	134.5	48.3	-
1967 : 1st Qr.	81.1	37.8	-	43.3
2nd Qr.	95.1	6.3	-	88.8
3rd Qr.	102.4	116.6	14.2	-
4th Qr.	92.5	144.2	51.7	-

*Including value of sugar quota certificates, but excluding sales value of bunker fuel and ships' stores.

Table 44 - Quantum and price indices of exports and imports & terms of trade
(1964 = 100)

Period	Quantum Indices		Price Indices		Terms of trade ^x
	Export	Import	Export	Import	
1962	92	87	91	96	95
1963	101	87	116	98	118
1964	100	100	100	100	100
1965	101	90	85	105	81
1966	104	82	89	104	86
1967	100	91	83	105	79

^xRatio of export price index to import price index.

A rise in the index indicates that the terms of trade have moved in favour of Mauritius.

Table 46 - Exports : Quantities and values

Period	Total value ^x	Re-exports value	DOMESTIC EXPORTS									
			Total		Sugar		Molasses		Tea		Other	
			Quantity	Value	Quantity	Value	Quantity	Value	Quantity	Value	Quantity	Value
1962	305.9	8.8	...	297.1	515.1	282.0	110.3	9.1	0.7	3.9	2.1	
1963	427.8	6.8	...	420.9	574.3	400.2	109.8	13.5	1.0	5.5	1.8	
1964	366.9	7.0	...	359.9	575.7	344.2	99.1	8.8	0.8	4.4	2.5	
1965	313.4	9.9	...	303.5	569.4	290.3	92.1	5.0	1.1	5.9	2.2	
1966	337.6	9.0	...	328.6	579.9	306.4	127.5	11.5	1.3	6.5	4.1	
1967	304.9	6.1	...	298.8	515.8	279.4	96.9	8.5	1.6	8.4	2.4	
1966 : 1st Qr.	56.7	3.4	...	53.3	89.8	47.3	35.8	2.0	0.4	2.2	1.8	
2nd Qr.	6.3	1.9	...	4.4	1.8	0.5	22.0	1.5	0.4	2.0	0.4	
3rd Qr.	140.1	2.2	...	137.9	259.8	134.6	19.2	1.4	0.1	0.7	1.2	
4th Qr.	134.5	1.5	...	133.0	228.5	124.0	50.4	6.7	0.3	1.7	0.7	
1967 : 1st Qr.	37.8	1.8	...	35.9	43.8	27.8	32.6	4.3	0.7	3.5	0.3	
2nd Qr.	6.3	2.3	...	4.0	-	-	8.5	1.1	0.5	2.4	0.5	
3rd Qr.	116.6	1.2	...	115.5	204.0	113.6	8.4	0.5	0.1	0.4	1.0	
4th Qr.	144.2	0.8	...	143.4	267.9	138.0	47.4	2.7	0.4	2.0	0.6	

^x Including value of sugar quota certificates, but excluding sales value of bunker fuel and ships' stores.

Quantity : Thousand metric tons

Value : Million rupees F.O.B.

Table 47 - Total exports*: Principal countries of destination - values

Period	Rs Million F.O.B.									
	United Kingdom	Canada	Republic of South Africa	Federation of Malaysia	New Zealand	Holland	Italy	Madagascar	Reunion	United States of America
1962	257.5	22.3	2.1	0.1	0.6	2.0	0.5	0.8	1.2	9.2
1963	296.9	66.7	1.2	0.1	0.4	0.1	8.4	1.5	1.8	47.8
1964	279.5	57.1	2.3	4.0	0.3	1.6	11.8	0.9	1.0	5.4
1965	245.5	28.0	11.8	4.6	0.5	0.6	0.3	0.9	1.6	14.1
1966	275.7	30.9	1.3	2.6	0.2	0.3	-	1.1	2.9	16.4
1967	267.3	9.5	3.4	-	0.1	2.8	0.4	1.7	1.3	15.8
1966 : 1st Qr.	43.9	3.4	0.2	2.6	0.1	-	-	0.3	1.7	1.1
2nd Qr.	3.1	-	0.4	-	-	0.2	-	0.3	0.4	1.3
3rd Qr.	122.8	15.0	0.2	-	0.1	0.1	-	0.3	0.4	0.1
4th Qr.	105.9	12.5	0.5	-	-	-	-	0.2	0.3	13.9
1967 : 1st Qr.	32.6	-	1.4	-	-	-	-	0.5	0.3	2.5
2nd Qr.	2.7	-	0.6	-	-	1.1	0.4	0.5	0.3	-
3rd Qr.	111.6	2.8	0.2	-	-	-	-	0.5	0.4	-
4th Qr.	120.3	6.7	1.2	-	-	1.7	-	0.2	0.3	13.3

*Including value of sugar quota certificates

Table 48 - Imports : values by S.I.T.C. Sections

Period	Rs Million C.I.F.										
	Total	Food	Beverages and tobacco	Crude materials, inedible, except fuels	Mineral fuels, lubricants, etc.	Animal and vegetable oils and fats	Chemicals	Manufactured goods classified chiefly by material	Machinery transport equipment	Miscellaneous manufactured articles	Miscellaneous transactions and commodities n.e.s.
1962	322.7	93.0	8.1	6.3	15.5	10.7	37.2	70.9	45.4	34.9	0.7
1963	333.1	94.7	7.9	5.6	14.2	12.1	39.7	70.8	55.7	31.7	0.8
1964	368.9	105.9	7.4	6.5	17.0	11.3	46.4	88.5	70.3	35.5	0.1
1965	367.3	108.0	6.8	6.7	17.7	14.9	47.1	78.6	56.3	31.0	0.3
1966	333.2	109.6	4.9	5.4	15.4	17.7	45.6	70.2	36.9	27.4	0.2
1967	371.1	118.5	4.8	7.1	25.4	18.3	42.6	78.5	43.7	32.1	0.1
1966 : 1st Qr.	80.4	27.5	0.8	1.6	3.0	4.3	8.7	18.9	9.7	5.8	0.1
2nd Qr.	82.9	29.3	1.1	1.4	5.5	5.8	9.3	16.3	8.2	6.0	0.1
3rd Qr.	83.7	26.3	1.4	1.3	3.0	4.6	14.6	15.1	10.1	7.1	0.1
4th Qr.	86.2	26.4	1.4	1.1	3.9	3.0	13.0	19.9	8.9	8.5	-
1967 : 1st Qr.	81.1	27.1	0.8	1.3	4.7	3.0	7.3	19.0	11.2	6.7	-
2nd Qr.	95.1	32.0	1.2	2.5	5.1	5.7	8.5	20.4	11.7	8.0	-
3rd Qr.	102.4	32.6	1.4	1.6	6.2	5.1	15.3	21.0	12.0	7.1	0.1
4th Qr.	92.5	26.8	1.5	1.7	9.3	4.5	11.5	18.0	8.9	10.4	0.1

Table 49 - Imports of merchandise : selected commodities - values

Period	Rice	Wheat flour	Alcoholic beverages	Petroleum products	Vegetable edible oils	Fertilizers manufactured	Cotton fabrics	Other textile fabrics	Cement	Iron and steel goods	Manufactures of metals n.e.s.	Machinery other than electric	Electric machinery, apparatus and appliances	Road motor vehicles and parts
1962	37.3	11.6	6.4	15.0	10.0	14.9	12.7	5.6	8.8	11.1	9.6	18.2	12.0	13.8
1963	38.3	12.1	5.9	13.8	11.5	16.4	12.1	6.5	7.4	9.0	12.0	17.8	22.0	13.8
1964	39.2	13.5	5.6	16.6	10.8	19.4	13.5	8.7	9.1	15.6	13.4	30.0	18.5	19.3
1965	39.3	14.4	5.1	17.4	14.4	18.4	10.8	7.3	8.9	11.6	11.3	23.2	17.2	14.7
1966	37.5	13.1	3.8	14.8	16.5	17.4	9.7	8.3	7.5	10.7	8.5	12.9	12.8	10.3
1967	44.2	15.3	4.0	25.0	16.2	19.0	11.4	8.4	8.1	12.7	10.8	16.6	16.3	9.9
1966 : 1st Qr.	12.1	1.9	0.7	2.7	4.0	2.1	2.5	2.0	2.1	3.4	2.6	3.1	3.5	2.8
2nd Qr.	9.8	4.6	0.8	5.4	5.5	2.4	2.3	1.9	2.1	2.2	1.9	3.4	2.5	2.2
3rd Qr.	8.5	3.6	1.1	3.0	4.3	6.7	1.8	2.0	1.4	2.1	2.0	3.5	3.0	3.4
4th Qr.	7.2	3.0	1.2	3.8	2.7	6.2	3.1	2.5	1.8	2.9	2.0	3.0	3.7	1.9
1967 : 1st Qr.	11.3	2.0	0.7	4.6	2.5	2.3	2.5	1.9	2.0	3.2	2.9	4.1	4.3	2.5
2nd Qr.	13.9	3.6	1.0	5.0	4.7	1.8	2.7	2.3	2.1	2.8	2.9	4.1	4.5	2.9
3rd Qr.	14.1	3.2	1.1	6.1	4.6	8.7	3.5	2.3	2.3	3.5	2.7	4.8	4.1	2.9
4th Qr.	5.0	6.5	1.2	9.2	4.3	6.1	2.7	1.9	1.7	3.2	2.3	3.6	3.5	1.7

Table 50 - Imports of merchandise : selected commodities - quantities

Period	Rice Thousand M/Tons	Wheat flour Thousand M/Tons	Vegetable edible oils Thousand M/Tons	Fertilizers manufactured Thousand M/Tons	Cotton fabrics Million Sq. Metres	Other textile fabrics Million Sq. Metres	Cement Thousand M/Tons	Iron and Steel goods Thousand M/Tons
1962	68.2	26.6	6.8	62.7	10.0	2.5	95.2	14.2
1963	69.7	28.2	8.2	66.7	9.6	2.0	80.4	12.9
1964	68.1	28.6	7.5	69.3	10.2	3.0	103.1	21.3
1965	67.2	35.5	8.6	58.1	8.5	2.6	95.4	15.8
1966	61.2	30.6	10.2	51.6	7.7	3.5	79.7	14.3
1967	66.8	41.0	10.6	59.0	9.0	3.1	87.9	16.2
1966 : 1st Qr.	19.9	4.4	2.5	7.6	2.0	0.9	21.4	4.3
2nd Qr.	15.1	10.6	3.4	6.5	1.9	0.8	23.2	3.1
3rd Qr.	13.9	8.5	2.7	18.9	1.4	0.8	15.0	2.9
4th Qr.	12.2	7.1	1.7	18.6	2.5	1.0	20.2	3.9
1967 : 1st Qr.	19.3	4.7	1.6	7.7	1.9	0.6	21.5	4.2
2nd Qr.	20.0	7.9	3.1	5.9	2.2	0.8	22.5	3.5
3rd Qr.	20.6	7.3	3.1	25.9	2.8	0.8	25.4	4.3
4th Qr.	6.9	21.1	2.9	19.5	2.1	0.8	18.5	4.2

Table 51 - Imports : Main sources of supply - values

Period	Rs Million C.I.F.											
	United Kingdom	Australia	Burma	Hong-Kong	India	Republic of South Africa	Western Germany	Iran	Japan	Siam	France	United States of America
1962	90.2	22.1	34.5	11.7	14.0	34.7	13.1	12.4	10.1	4.7	15.4	7.8
1963	94.2	19.3	34.7	11.7	13.0	30.8	13.0	10.3	9.7	4.3	17.2	9.0
1964	115.2	30.6	26.5	12.3	16.3	32.3	13.7	11.3	15.6	13.9	17.2	11.4
1965	98.4	24.2	23.3	9.6	11.2	34.6	15.2	11.1	13.9	17.1	20.9	12.7
1966	79.1	23.9	23.1	8.8	9.9	27.3	19.7	11.4	14.2	14.3	20.2	7.5
1967	77.8	28.0	27.0	10.4	9.4	30.6	25.9	17.8	16.8	16.1	20.3	7.3
1966 : 1st qr.	22.3	3.5	5.0	1.4	3.3	7.6	2.6	1.9	3.4	7.0	4.5	2.0
2nd qr.	15.8	6.7	3.6	2.0	2.3	5.8	4.8	3.7	3.7	6.2	6.0	2.0
3rd qr.	20.5	5.6	7.4	2.3	1.5	7.1	7.0	2.4	2.8	1.0	5.5	2.3
4th qr.	20.5	8.0	7.1	3.0	2.7	6.7	5.2	3.4	4.3	0.1	4.3	1.2
1967 : 1st qr.	20.6	4.7	11.3	2.0	2.8	7.5	3.6	3.5	4.2	0.1	3.7	1.3
2nd qr.	21.7	6.5	5.0	2.8	2.1	7.6	6.0	2.9	3.5	8.1	5.0	1.8
3rd qr.	20.6	8.2	6.2	2.3	2.2	7.4	9.0	4.2	4.2	7.8	4.7	2.1
4th qr.	14.9	3.7	4.5	3.2	2.4	8.0	7.3	7.2	4.9	0.1	6.9	2.1

Table 52 - Imports of fertilizers⁺ 1966-67

Kind of Fertilizer	1966		1967	
	Quantity M/Tons	C.I.F. Value Rs 000	Quantity M/Tons	C.I.F. Value Rs 000
<u>NITROGENEOUS FERTILIZERS</u>				
Sulphate of ammonia	12,818	3,314	18,039	4,227
Ammonium sulphate nitrate	1,696	539	928	283
Sodium nitrate	101	38	50	19
Other nitrogenous fertilizers	31	8	1	1
	14,646	3,899	19,018	4,529
<u>POTASSIC FERTILIZERS</u>				
Muriate of potash	4,559	1,240	5,803	1,536
Sulphate of potash	135	44	234	78
	4,694	1,284	6,037	1,614
<u>PHOSPHATIC FERTILIZERS</u>				
Single superphosphate	998	216	1,638	387
Triple superphosphate	200	81	1,350	547
Phosphate guano	5,873	339	9,698	721
Other phosphatic fertilizers	202	44	-	-
	7,273	680	12,686	1,655
<u>MIXED & COMPOUND FERTILIZERS</u>				
Nitropotash	3,932	1,528	3,582	1,350
Other mixed and compound fertilizers	27,040	10,382	27,413	10,611
	30,972	11,910	30,995	11,961
Total	57,585	17,773	68,736	19,759

⁺Excluding imports from Dependencies.

April

-300

110

1,251
3,240
4,491

+1000

-600

(100)

VII. LABOUR

The figures of employment in tables 53-57 apply to large establishments only - these being defined as :

- (i) Sugar cane plantations where 25 arpents or more were harvested during the 1966 crop;
- (ii) Tea plantations of 5 arpents or more;
- (iii) All "flue cured" tobacco establishments, irrespective of acreage;
- (iv) Non-agricultural establishments employing at least 10 persons on the day of the survey;
- (v) All Central and Local Government departments.

Employment figures of September 1967 are set against those of September 1966 and March 1967. This comparison has been made possible by excluding from the 1967 figures establishments which did not respond in September 1966.

Table 53 - Employment by major industrial groups

Industrial Group	Total no. of persons employed on the last Thursday of:		
	September 1966	March 1967	September 1967
Agriculture and fishing	57,091	53,293	56,899
Mining and quarrying	157	153	166
Manufacturing	7,015	7,214	7,456
Construction	2,442	2,445	2,447
Electricity	1,319	1,300	1,295
Commerce	3,150	3,111	3,291
Transport, storage and communication	4,955	4,078	4,620
Services	48,834	49,486	61,996*
Total	124,963	121,080	138,170

*The rise in employment is due mainly to an increase in the number of Relief workers employed, from 19,290 in March to 30,877 in September 1967.

Table 54 - Employment by sex and age groups

Age Group	September 1966			March 1967			September 1967		
	Males	Females	Total	Males	Females	Total	Males	Females	Total
18 years of age and over (i.e. adults)	95,560	22,867	118,427	93,212	21,873	115,085	108,075	23,785	131,860
under 18 years of age (i.e. young persons)	5,471	1,065	6,536	5,077	918	5,995	5,424	886	6,310
TOTAL	101,031	23,932	124,963	98,289	22,791	121,080	113,499	24,671	138,170

Table 55 - Employment in specified sectors : Sugar Industry

Source of employment	Acreage group (arpents)	Total no. of persons employed on the last Thursday of :		
		September 1966	March 1967	September 1967
Sugar cane planters (including metayers)	25 -	2,444	1,911	2,062
	50 -	1,120	1,184	1,360
	75 -	807	551	532
	100 -	5,842	5,657	6,324
Total planters		10,213	9,303	10,278
Millers' estates and annexes (including factories)		43,280	39,234	43,032
Total		55,493	48,537	53,310

Note : Employment figures for Millers' Estates include workers in field, factory, garage and workshop.

Table 56 - Employment in specified sectors : Government Services

Source of employment	Total no. of persons employed on last Thursday of :		
	September 1966	March 1967	September 1967
Central Government ⁺	24,564	24,909	25,528 +1,000
Local Government	2,592	2,449	2,625
Relief works	19,043	19,290	30,877
Total	46,199	46,648	59,030

⁺ includes employees of District Councils

Table 57 - Employment in specified sectors : Manufacturing Industries

Industrial Group	Total no. of persons employed on last Thursday of :		
	September 1966	March 1967	September 1967
Food ⁺	371	471	554
Beverage and tobacco	1,230	1,215	1,221
Textiles (including aloe fibre)	1,020	1,061	980
Wearing apparel	283	314	371
Wood and furniture	225	259	229
Printing and publishing	780	718	729
Rubber and leather products	101	112	104
Chemical products	293	304	302
Non-metallic mineral products	616	625	633
Metal products	272	269	305
Repairs of machinery (except electrical)	559	614	604
Repairs of electrical machinery	139	144	146
Transport equipment	1,034	975	1,113
Miscellaneous manufacturing industries	92	133	165
Total	7,015	7,214	7,456

⁺excluding employees in sugar and tea factories, who have been included with plantation workers in Agriculture.

Table 58 - Indicators of unemployment
(at end of period)

Period	Registered unemployed ⁺	Relief workers [*]
1966 :		
January	13,988	9,631
February	16,367	12,406
March	15,975	15,162
April	13,888	17,720
May	15,348	18,840
June	14,429	19,531
July	13,308	19,223
August	11,625	18,817
September	12,283	19,137
October	13,101	19,124
November	13,347	19,281
December	15,885	19,773
1967 :		
January	18,567	19,977
February	18,144	19,917
March	16,614	20,262
April	15,950	20,237
May	15,943	20,242
June	15,414	20,276
July	14,459	23,291
August	11,609	31,696
September	8,666	31,218
October	14,601	19,050
November	10,806	19,069
December	9,366	18,469

968
18,179
18,156
18,294
18,052
17,961
17,463
15,669
19,818
14,777
14,212

⁺These figures exclude persons already in employment but seeking a change in job.

^{*}Including gangmen, supervisors, pay clerks etc.

VIII - EDUCATION

Table 59 - Education Statistics, Mauritius and Rodrigues

Period	PRIMARY				SECONDARY			
	Number of schools ⁺	Number of pupils	Number of teachers	Pupil/Teacher ratio	Number of schools ⁺	Number of pupils	Number of teachers	Pupil/Teacher ratio
October 1962	357	125,667	3,714	34	105	26,861	1,187	23
" 1963	325	130,073	3,642	36	110	28,134	1,213	23
" 1964	297	132,074	3,750	35	119	31,797	1,348	24
" 1965	331	134,534	4,015	34	135	34,021	1,484	23
" 1966	340	136,944	4,129	33	144	35,127	1,542	23
" 1967	300	140,495	4,203	33	143	38,508	1,645	23

⁺ Government, Aided and Non-Aided Schools

Table 60 - Enrolment in primary and secondary schools in Mauritius and Rodrigues by type of institution

Period	PRIMARY				SECONDARY			
	Total	Government	Aided	Non-Aided ⁺	Total	Government	Aided	Non-Aided
October 1962	125,667	72,241	47,389	6,037	26,861	1,750	4,688	20,423
" 1963	130,073	75,672	48,377	6,024	28,134	1,945	4,900	21,289
" 1964	132,074	86,240	40,169	5,665	31,797	2,067	5,029	24,701
" 1965	134,534	89,374	39,117	6,043	34,021	2,367	5,568	26,086
" 1966	136,944	92,684	38,781	5,479	35,127	2,431	5,875	26,821
" 1967	140,495	98,417	37,903	4,175	38,508	2,505	6,218	29,785

⁺ including pupils of the primary sections of Aided and Non-Aided Secondary Schools

Table 61 - Enrolment in Primary Schools (Mauritius and Rodrigues) by grade and sex

Grade	1963			1964			1965			1966			1967		
	Male	Female	Both Sexes	Male	Female	Both Sexes	Male	Female	Both Sexes	Male	Female	Both Sexes	Male	Female	Both Sexes
Std. I	12,090	11,203	23,293	12,091	11,534	23,625	11,487	11,044	22,531	11,771	11,049	22,820	12,485	11,928	24,413
Std. II	11,918	10,940	22,858	11,453	10,659	22,112	11,852	11,223	23,075	11,022	10,666	21,688	11,167	10,434	21,601
Std. III	10,469	9,392	19,861	11,526	10,464	21,990	11,288	10,339	21,627	11,575	10,891	22,466	10,740	10,345	21,085
Std. IV	9,210	8,215	17,425	10,177	9,108	19,285	11,327	10,187	21,514	11,012	9,991	21,003	11,323	10,593	21,916
Std. V	9,607	8,289	17,896	8,870	7,807	16,677	9,883	8,702	18,585	11,013	9,819	20,832	10,704	9,638	20,342
Std. VI	16,228	12,512	28,740	15,549	12,836	28,385	14,801	12,401	27,202	15,139	12,996	28,135	16,763	14,375	31,138
Total	69,522	60,551	130,073	69,666	62,408	132,074	70,638	63,896	134,534	71,532	65,412	136,944	75,182	67,313	140,495

Table 62 - Enrollment in Secondary Schools (Mauritius and Rodrigues) by grade and sex

Grade	1963			1964			1965			1966			1967		
	Male	Female	Both Sexes	Male	Female	Both Sexes	Male	Female	Both Sexes	Male	Female	Both Sexes	Male	Female	Both Sexes
	Form I	4,660	2,664	7,324	5,444	3,122	8,566	5,262	3,167	8,429	5,158	3,205	8,363	5,721	3,780
Form II	3,490	1,913	5,403	4,257	2,393	6,650	4,806	2,719	7,525	4,406	2,711	7,117	4,451	2,909	7,360
Form III	3,067	1,801	4,868	3,160	1,899	5,059	3,968	2,181	6,149	4,178	2,420	6,598	4,028	2,588	6,616
Form IV	3,708	1,784	5,492	3,204	1,807	5,011	3,184	1,759	4,943	3,749	2,063	5,812	4,710	2,598	7,308
Form V	3,040	1,230	4,270	4,028	1,600	5,628	4,236	1,684	5,920	4,064	1,939	6,003	4,376	1,978	6,354
Form VI	561	216	777	645	238	883	736	319	1,055	815	419	1,234	920	449	1,369
Total	18,526	9,608	28,134	20,738	11,059	31,797	22,192	11,829	34,021	22,370	12,757	35,127	24,206	14,302	38,508

Table 63 - Enrolment in primary and secondary schools (Mauritius and Rodrigues) by geographical district, October 1967

District	PRIMARY			SECONDARY				
	No. of schools	Enrolment		No. of schools	Enrolment			
		Male	Female		Both Sexes	Male	Female	Both Sexes
Port Louis	44	13,211	12,595	25,806	30	6,555	4,267	10,822
Pamplemousses	23	5,623	5,102	10,725	8	1,283	473	1,756
Riviere du Rempart	22	6,002	5,385	11,387	9	1,075	329	1,404
Flacq	30	7,512	6,459	13,971	6	1,581	539	2,120
Grand Port	32	6,806	6,079	12,885	11	1,021	422	1,443
Savanne	24	4,520	4,074	8,594	10	786	291	1,077
Plaines Wilhems	83	22,457	21,073	43,530	62	11,439	7,523	18,962
Moka	24	3,764	3,555	7,319	4	277	334	611
Black River	11	1,487	1,256	2,743	1	74	24	98
Rodrigues	7	1,800	1,735	3,535	2	115	100	215
Total	300	73,182	67,313	140,495	143	24,206	14,302	38,508

IX. TRANSPORT AND COMMUNICATION

Table 64 - Road Transport

End of period	Grand Total		Private vehicles				Commercial vehicles				Government owned vehicles
	Total	Total	Cars	Motor cycles	Other	Total	Taxi-cars	Buses	Lorries	Other	
1962	16,673	10,847	8,860	1,400	587	5,224	1,194	498	2,470	1,062	602
1963	18,092	12,020	9,640	1,621	759	5,446	1,284	519	2,561	1,082	626
1964	20,093	13,536	10,709	1,914	913	5,899	1,389	590	2,672	1,248	658
1965 ⁺	22,762	16,420	12,303	1,977	2,140	5,547	1,387	615	2,669	876	795
1966 ⁺	21,213	15,006	10,491	2,068	2,447	5,333	1,270	604	2,371	1,088	874
1967 ⁺	22,783	16,282	10,716	2,414	3,152	5,558	1,371	634	2,406	1,147	943
1966 ⁺ : 1st Qr.	23,248	16,806	12,488	2,049	2,269	5,615	1,117	624	2,678	896	827
2nd Qr.	20,534	14,360	10,231	1,929	2,200	5,338	1,388	591	2,370	989	836
3rd Qr.	20,932	14,773	10,452	1,997	2,324	5,299	1,264	597	2,379	1,059	860
4th Qr.	21,213	15,006	10,491	2,068	2,447	5,333	1,270	604	2,371	1,088	874
1967 ⁺ : 1st Qr.	21,608	15,189	10,423	2,172	2,594	5,514	1,433	609	2,377	1,095	905
2nd Qr.	22,070	15,672	10,600	2,267	2,805	5,466	1,351	621	2,386	1,108	932
3rd Qr.	22,535	16,033	10,678	2,351	3,004	5,572	1,398	622	2,407	1,145	930
4th Qr.	22,783	16,282	10,716	2,414	3,152	5,558	1,371	634	2,406	1,147	943
1966	22,915	16,344	10,721	2,443	3,220	5,565	1,320	638	2,403	1,152	946

⁺ Note : As a result of the implementation of amendments to the Road Traffic Ordinance, 1962,

(a) a new classification of vehicles - especially of dual purpose ones - has been adopted as from July 1965, and

(b) any vehicle or trailer which is not licensed for a consecutive period of twelve months has been cancelled as from the second quarter of 1966. The period formerly allowed was five years.

Figures in the new series will consequently not be comparable.

Source: Road Transport Department, 1968 and 1966-1967

Table 65 - Sea borne shipping

Period	Vessels entering		Vessels leaving		Goods	
	Number	Net	Number	Net	Unloaded	Loaded ⁺
		registered tonnage		registered tonnage		Thousand M/Tons
1962	467	1,494	464	1,490	517	633
1963	493	1,651	486	1,598	466	694
1964	731	1,891	730	1,920	578	686
1965	710	1,728	714	1,734	550	619
1966	718	1,747	719	1,872	460	746
1967	1,026	2,499	1,023	2,460	594	627
1966 : 1st Qr.	156	396	156	406	103	125
2nd Qr.	149	408	152	515	120	39
3rd Qr.	205	472	200	470	119	313
4th Qr.	208	470	211	480	118	269
1967 : 1st Qr.	157	406	160	383	117	69
2nd Qr.	162	385	165	390	139	18
3rd Qr.	348	921	341	915	187	234
4th Qr.	359	787	357	772	152	307

⁺ excluding bunkers

Table 66 - Civil Aviation

Period	Number of movements		Passengers		Freight	
	Landings	Take offs	Set down	Picked up	Unloaded	Loaded
					M/Tons	M/Tons
1962	377	376	10,351	11,179	130.9	43.4
1963	390	390	12,912	13,405	120.4	51.5
1964	431	431	15,810	16,593	152.7	53.1
1965	511	510	16,967	18,541	153.1	70.2
1966	542	539	20,699	22,781	165.3	92.2
1967	601	604	24,084	26,037	229.7	118.5
1966 : 1st Qr.	125	124	4,394	5,236	35.1	26.9
2nd Qr.	120	120	4,284	4,871	59.9	19.7
3rd Qr.	169	169	6,894	7,686	37.9	26.3
4th Qr.	128	126	5,127	4,988	32.4	19.3
1967 : 1st Qr.	139	140	4,978	6,181	37.3	23.7
2nd Qr.	141	142	4,677	5,144	59.9	23.5
3rd Qr.	170	170	7,762	8,459	66.7	32.7
4th Qr.	151	152	6,667	6,253	65.7	38.6

Note : In this table : (1) are included only movements of commercial aircraft;
(2) each touch down and take off is counted as a separate movement;
(3) passengers in transit are excluded;
(4) freight carried by planes other than commercial are included.

X. LAND UTILIZATION

Table 69 - Total area⁺ classified by utilization

	Acres	
	1967	
<u>Agriculture</u>	257,400	
Sugar cane	242,100	
Tea	10,300	
Tobacco, vegetables and other crops	5,000	
<u>Forests, scrub areas, grass lands and grazing lands</u>	164,400	
Forest plantations	22,600	
Forest natural	5,900	
Savannah, grass lands, meadows, etc.	18,400	
Scrub and other forest lands	117,500	
<u>Reservoirs and ponds</u>	2,900	
<u>Swamps and rock</u>	3,500	
<u>Roads (main thoroughfares)</u>	3,300	
<u>Built-up areas</u>	29,300	
Total Island Area	460,800	

⁺ Based on the findings of the UNDP-FAO Land and Water Resources Survey team working on aerial photographs of the island taken at the end of 1965 and supplemented to some extent by land surveys.

Table 69A - Effective area under cultivation

	Acres		
	1965	1966	1967
Sugar cane	214,400	216,000	214,000
Tea	6,600	7,100	7,900
Tobacco	1,000	1,300	800

XI. LOCAL PRODUCTION

Table 70 - Agriculture : Production of main crops, fish and meat

Commodity	Unit	1963	1964	1965	1966	1967
<u>INDUSTRIAL CROPS</u>						
Sugar cane	000 M/Tons	5,747	4,380	5,984	4,843	5,814
Tea (green leaf processed)	M/Ton	7,132	6,911	8,225	9,362	10,500
Tobacco leaf [@]	M/Ton	482	328	490	579	528
<u>VEGETABLES, PULSES & FRUITS</u>						
Beans and peas	M/Ton	706	513	950	754	725
Creepers ⁺	"	9,681	6,304	9,296	10,664	9,342
Eddoes	"	693	401	262	458	400
Egg plant (brinjalles)	"	1,957	1,197	1,504	1,888	1,858
Ginger	"	738	469	403	762	970
Groundnuts	"	446	509	575	832	879
Maize	"	147	25	296	300	457
Manioc	"	606	200	269	348	454
Potatoes (Irish)	"	4,989	5,930	3,972	8,442	9,199
Sweet potatoes	"	702	466	478	349	233
Tomatoes	"	5,698	5,456	5,400	5,700	10,499
Mixed vegetables [*]	"	10,335	6,290	8,693	7,674	7,575
Bananas	"	5,411	2,998	10,318	9,023	9,865
<u>FISH, MEAT & BY-PRODUCTS</u>						
Fish :						
Coastal fishing (controlled catch)	"	1,475	1,145	1,120	1,130	...
High seas	"	167	341	482	499	1,062
Meat ^x :						
Beef	"	2,149	1,966	1,939	2,110	2,498
Goat	"	303	248	170	162	226
Mutton	"	88	100	81	108	69
Pork	"	446	462	479	499	557
Cattle hides and skins	Number	17,446	15,097	14,719	14,803	16,593

[@] refers to crop year which normally extends from the beginning of April to the end of March.

⁺ includes margoze, calabash, chouchou, cucumber, patolle, pipengaille, pumpkin, squash, voehm.

^{*} includes beets, cabbage, carrot, cauliflower, chillies (long and small), garlic, leek, lettuce, onion, petsai, sweet pepper, ladies finger (lalo).

^{*} In 1967, catch was controlled at only 4 out of the 25 fish landing stations and amounted to 394 metric tons.

^x from local and imported livestock.

Table 71 - Industry : Production of specific commodities

Commodity	Unit	1963	1964	1965	1966	1967
Sugar	M/Ton	685,597	518,994	664,403	561,762	638,322
Molasses	"	150,104	115,340	149,389	133,114	154,404
Tea (manufactured)	"	1,477	1,393	1,737	1,974	2,190
Alce fibre	"	1,349	1,207	1,391	1,552	1,603
Alcohol @ 100° G.L.	Hectolitre	17,360	15,380	15,740	13,365	16,437
Colonial spirits (Rum)	"	15,385	15,708	14,638	13,870	14,293
Denatured spirits :						
Power alcohol	"	3,779	4,091	3,214	3,422	3,081
Alcohol for heating and lighting	"	4,328	3,614	3,531	2,959	2,586
Perfumed spirits	"	264	326	318	344	768
Vinegar	"	993	1,345	2,080	5,320	10,404
Beer and stout	"	19,518	36,521	30,093	36,996	40,118
Country liquor	"	50,245	45,859	42,947	41,176	34,561
Soft aerated beverages	"	62,765	77,370	87,000	94,830	101,700
Cigarettes	M/Ton	577	604	589	580	583
Matches	Gross boxes	36,052	69,777	56,593	71,797	88,520
Lime	M/Ton	7,500	6,000	6,000	5,500	6,000
Sacks*	Thousand	1,534	1,458	1,600	1,652	1,335
Salt	M/Ton	4,200	4,400	4,200	4,200	4,200
Electricity generated	Mn kwh	87	93	103	112	121

*Manufactured by the Government Sack Factory

Table 71 A - Sugar Industry : Cane Cultivation

Crop Year	AREA UNDER CULTIVATION (Thousand Arpents)		AREA HARVESTED (Thousand Arpents)		CANES HARVESTED (Thousand M/Tons)		AVERAGE YIELD (M/Tons per arpent)	
	Millers	Planters	Millers	Planters	Millers	Planters	Millers	Planters
1963	109	95	100	94	3,515	2,232	35.1	23.7
1964	110	97	100	95	2,615	1,765	26.2	18.5
1965	111	95	101	94	3,619	2,365	35.7	25.3
1966	111	97	102	94	3,004	1,839	29.5	19.5
1967	111	94	101	91	3,569	2,245	35.3	24.7

Table 71 B - Sugar Manufacture

Crop Year	Number of factories operating	Commercial sugar recovered % cane	PRODUCTS OF MANUFACTURE (Thousand M/Tons)			RESIDUES OF MANUFACTURE (Thousand M/Tons)		Average price sugar price ex-syndicate (Rs per metric ton)
			White sugar	Raw sugar	Total sugar	Molasses	Scums	
1963	23	11.93	20	666	686	150	177	590.89
1964	23	11.85	20	499	519	115	148	433.13
1965	23	11.10	25	639	664	149	179	409.32
1966	23	11.60	23	539	562	133	160	421.50
1967	23	10.98	24	614	638	154	180	424.38

Note : 1 arpent = 1.045 acres

XII. CLIMATE

Table 72 - Monthly temperatures, 1967

Month	VACOAS Centre - 1,394 ft. A.M.S.L.				PLAISANCE Coastal Region, South - 188 ft. A.M.S.L.			
	Maximum		Minimum		Maximum		Minimum	
	Mean	Departure from normal	Mean	Departure from normal	Mean	Departure from normal	Mean	Departure from normal
January	27.4	- 0.1	20.7	- 0.1	29.3	- 0.3	23.1	+ 0.7
February	28.0	+ 0.9	20.9	+ 0.2	29.6	+ 0.4	22.8	+ 0.4
March	28.1	+ 1.2	20.7	- 0.1	29.8	+ 0.9	22.6	+ 0.3
April	27.3	+ 1.3	19.8	+ 0.5	28.9	+ 1.1	21.6	+ 0.6
May	23.6	- 0.4	17.4	- 0.4	25.7	- 0.6	20.1	+ 0.4
June	22.1	+ 0.2	15.7	- 0.3	24.5	0.0	18.7	+ 0.5
July	21.6	+ 0.3	15.8	+ 0.6	29.3	0.0	17.6	+ 0.2
August	21.1	- 0.2	14.9	- 0.1	23.1	- 0.9	17.7	+ 0.5
September	22.1	0.0	15.6	+ 0.2	24.0	- 0.7	17.6	+ 0.1
October	23.5	0.0	15.7	- 0.3	24.7	- 1.1	18.4	+ 0.2
November	26.0	+ 0.6	18.3	+ 1.3	26.7	- 0.8	20.1	+ 0.6
December	27.2	+ 0.2	19.1	- 0.2	28.5	- 0.4	21.3	+ 0.2
Year	24.8	+ 0.3	17.9	+ 0.1	26.6	- 0.2	20.1	+ 0.4

Table 73 - Monthly rainfall for the sugar cane districts, 1967

Month	WEST		NORTH		EAST		SOUTH		CENTRE		ALL DISTRICTS	
	Amount	Difference from normal	Amount	Difference from normal	Amount	Difference from normal	Amount	Difference from normal	Amount	Difference from normal	Amount	Difference from normal
January	236	+ 47	322	+ 146	458	+ 146	281	- 18	551	+ 218	383	+ 108
February	42	- 154	45	- 170	140	- 200	98	- 203	127	- 213	97	- 196
March	217	- 49	298	+ 39	407	- 23	247	- 130	342	- 24	310	- 42
April	113	- 3	180	+ 5	315	+ 3	234	- 66	236	- 4	233	- 20
May	9	- 46	48	- 72	212	+ 6	126	- 60	117	- 30	117	- 44
June	8	- 30	75	- 14	143	- 51	100	- 54	134	- 5	107	- 32
July	41	+ 14	147	+ 76	321	+ 151	284	+ 138	209	+ 75	232	+ 106
August	20	+ 4	78	+ 18	186	+ 57	162	+ 47	176	+ 65	145	+ 45
September	9	- 11	42	- 10	91	- 21	81	- 13	87	- 10	72	- 14
October	29	+ 1	121	+ 82	202	+ 115	196	+ 121	162	+ 90	166	+ 100
November	181	+ 119	161	+ 86	212	+ 91	287	+ 167	239	+ 131	227	+ 123
December	119	- 17	182	+ 61	263	+ 44	328	+ 131	258	+ 72	257	+ 79
Year	1,024	- 125	1,699	+ 247	2,950	+ 318	2,424	+ 60	2,638	+ 365	2,346	+ 213

0.03 0.25 0.19 3.27 2.27

XIII. ELECTION STATISTICS

Mauritius is now divided into 20 constituencies each returning 3 members, and Rodrigues is a separate constituency returning 2 members to the Legislative Assembly.

For the first general election held on the 7th August, 1967 under the new electoral system, the number of electors on the register and the number of voters were as follows :

Constituency	No. of electors on register	No. of persons who voted at general election	Voters as % of electorate
1. Grand River North West-Port Louis West	15,781	13,903	88.10
2. Port Louis South-Port Louis Central	12,409	10,693	86.17
3. Port Louis Maritime-Port Louis East	10,918	9,509	87.10
4. Port Louis North-Montagne Longue	16,962	14,641	86.32
5. Pamplemousses-Triolet	14,875	13,342	89.69
6. Grand' Baie-Poudre d'Or	14,944	13,675	91.51
7. Piton-Rivière du Rempart	12,840	11,388	88.69
8. Quartier Militaire-Moka	14,892	13,517	90.77
9. Flacq-Bon Accueil	17,668	15,357	86.92
10. Montagne Blanche-Grand River South East	16,110	13,887	86.20
11. Vieux Grand Port-Rose Belle	14,732	13,051	88.59
12. Mahebourg-Plaine Magnien	14,826	13,197	89.01
13. Riviere des Anguilles-Souillac	14,914	13,604	91.22
14. Savanne-Black River	17,827	16,024	89.89
15. La Caverne-Phoenix	17,544	15,686	89.41
16. Vacoas-Floréal	16,567	15,007	90.58
17. Curepipe-Midlands	14,090	12,607	89.47
18. Belle Rose-Quatre Bornes	15,755	13,791	87.53
19. Stanley-Rose Hill	16,017	14,276	89.13
20. Beau Bassin-Petite Riviere	16,457	14,184	86.19
Rodrigues	7,876	7,223	91.71
Total	314,004	278,562	88.71

