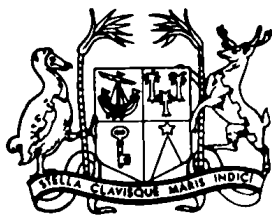


R. Hoff (copy)



MAURITIUS

Ministry of Economic Planning and Development

CENTRAL STATISTICAL OFFICE

**DIGEST
OF
AGRICULTURAL STATISTICS
1986**

(Price : Rs 75.00)

1986
JUNE 1986

DIGEST OF AGRICULTURAL STATISTICS - 1986

This is the third issue of a regular publication of the Central Statistical Office on Agricultural Statistics.

The digest is designed to bring together in a single report as many statistical series as possible on agricultural statistics. It thus contains information on the sugar, tea, tobacco, foodcrops, live-stock and fisheries sectors. It also includes a series of yearly "Food Balance Sheets" showing the pattern of food consumption of the population.

The data published here normally cover the last 5 years (1982-1986), and are the latest available as at end of May 1987. Some of the figures are therefore provisional and subject to revision in later issues. Figures in successive issues of the digest supersede those appearing in previous ones.

It is hoped that the statistics which have been assembled in this digest will be useful to the public in general and to agricultural policy makers, planners and scientists in particular.

The preparation of this digest has required the co-operation of numerous organisations, both public and private. This co-operation is gratefully acknowledged here.

(D. Zmanay)
Director of Statistics

Central Statistical Office
Rosé Hill

June 1987

C O N T E N T S

<u>SECTION 1 - ECONOMIC ACCOUNTS OF AGRICULTURE</u>	<u>Page</u>
Table 1.1 - Agricultural crops: area harvested and production	1
1.2 - Production of agro-industrial products	1
1.3 - Share of agriculture in the economy, 1982 - 1986	3
1.4 - Production account of agriculture, 1982 - 1986	4
1.5 - Value added at factor cost of agriculture (at current prices), by main product groups, 1982 - 1986	4
1.6 - Exports of agricultural and food products, 1982 - 1986	6
1.7 - Employment in the agricultural sector (large establishments), 1982 - 1986	7
1.8 - Employment in the agricultural sector (large and small establishments), June 1983	8
<u>SECTION 2 - SUGAR</u>	
Table 2.1 - Area harvested, cane production, cane yield for estates, metayer and owner-planters, 1977 - 1986	9
2.2 - Area harvested, cane production, cane yield of estates, metayer and owner-planters by region, 1985 - 1986	10
2.3 - Sugar crop 1985 (area harvested, canes produced, yield and sugar production by factory area)	11
2.4 - Sugar crop 1986 (area harvested, cane produced, yield and sugar production by factory area)	12
2.5 - Frequency distribution of owner and tenant planters, 1985 - 1986	13
2.6 - Mechanical loading and harvesting of canes, 1977 - 1986	14
2.7 - Production of sugar, molasses and scum, 1977 - 1986	15
2.8 - Supply and disposal of sugar, 1977 - 1986	16
2.9 - Monthly supply and disposal of sugar, 1986	17

CONTENTS (cont'd)

<u>SECTION 2 - SUGAR (cont'd)</u>	<u>Page</u>
Table 2.10 - Sugar sales and revenue, crop year , 1977/78 - 1986/87	19
2.11 - Sugar exports by main markets, crop year , 1982/83 - 1985/86	20
2.12 - Earnings of sugar producers-ex-syndicate, before charging sugar insurance premium, 1980 - 1985	21
2.13 - Monthly average price of sugar (London daily price), 1977 - 1986	22
2.14 - Employment by sugar estates with factories and large sugar cane planters, 1983 - 1986	23
 <u>SECTION 3 - TEA AND TOBACCO</u>	
Table 3.1 - Area under tea, 1982 - 1986	24
3.2 - Frequency distribution of individual plantations by size (arpents), 1986	24
3.3 - Production of green leaf by type of producer, 1982 - 1986	25
3.4 - Production of black tea by factories, 1982 - 1986	26
3.5 - Exports of black tea at current and constant 1976 prices, 1977 - 1986	27
3.6 - Exports of tea by country of destination, 1982 - 1986	28
3.7 - Tobacco : Number of growers, area harvested, production of leaf, price paid to planters and value of production, 1982 - 1986	29
 <u>SECTION 4 - FOODCROPS</u>	
Table 4.1 - Area harvested and production of foodcrops, 1982 - 1986	31
4.2 - Area harvested and production of foodcrops grown in interline plantations, 1984 - 1986	33
4.3 - Foodcrops : monthly area harvested, 1985	34

CONTENTS (cont'd)

<u>Section 4 - FOODCROPS (cont'd)</u>	<u>Page</u>
Table 4.4 - Foodcrops : monthly area harvested, 1986	35
4.5 - Monthly production of foodcrops, 1985	36
4.6 - Monthly production of foodcrops, 1986	37
4.7 - Area harvested and production of foodcrops by district, 1982 - 1986	39
4.8 - Area harvested and production, of beans and peas by district, 1982 - 1986	40
4.9 - Area harvested and production of potato by district, 1982 - 1986	41
4.10 - Area harvested and production of maize by district, 1982 - 1986	42
4.11 - Area harvested and production of groundnut by district, 1982 - 1986	43
4.12 - Area harvested and production of onion by district, 1982 - 1986	44
4.13 - Area harvested and production of tomato by district, 1982 - 1986	45
4.14 - Area harvested and production of cabbage and cauliflower by district, 1982 - 1986	46
4.15 - Area harvested and production of creepers by district, 1982 - 1986	47
4.16 - Area harvested and production of other vegetables by district, 1982 - 1986	48
4.17 - Area harvested and production of banana by district, 1982 - 1986	49
4.18 - Area harvested and production of pineapple by district, 1982 - 1986	50
4.19 - Retail prices of foodcrops, 1985	51
4.20 - Retail prices of foodcrops, 1986	53
4.21 - Number of fruit trees (bearing/non bearing) grown in backyard by species, 1985	55

CONTENTS (cont'd)

<u>SECTION 5 - LIVESTOCK AND FISHERIES</u>	<u>Page</u>
Table 5.1 - Cattle population for past Livestock Censuses, 1921 - 1983	56
5.2 - Number of cattle, goats, sheep and pigs by sex and type of breeder, 1983 Livestock Census	56
5.3 - Regional distribution of small cattle breeders by herdsize and number of cattle owned, 1983 Livestock Census	57
5.4 - Livestock slaughtered, 1982 - 1986	58
5.5 - Production of fish (in wet weight equivalent), 1982 - 1986	59
5.6 - Catch from artisanal fishing by type, 1982 - 1986	60
5.7 - Number of registered fishermen by region and type, 1986	60
<u>SECTION 6 - FOOD BALANCE SHEET</u>	
Table 6.1 - Per capita consumption of food commodities, 1983 - 1986	61
6.2 - Food balance sheet, 1985	66
6.3 - Food balance sheet, 1986	71
<u>SECTION 7 - MISCELLANEOUS</u>	
Table 7.1 - Total land area classified by utilization	76
7.2 - Imports of agricultural and food products, 1982 - 1986	77
7.3 - Imports of selected items (Quantities), 1982 - 1986	80
7.4 - Imports of major agricultural inputs and machinery, 1982 - 1986	81
7.5 - Consumption of fertilizers, 1977 - 1986	82

CONTENTS (cont'd)

<u>SECTION 7 - MISCELLANEOUS (cont'd)</u>	<u>Page</u>
Table 7.6 - Average price of fertilizers, 1982 - 1986	83
7.7 - Monthly rainfall for the sugar cane districts, 1986	84
7.8 - Monthly temperatures, 1986	85

I L L U S T R A T I O N S

	<u>Page</u>
Fig. 1 - Distribution of gross domestic product at factor cost (current prices) by sector, 1977 - 1986	2
2 - Total domestic exports (F.O.B. value in Rs million), 1977 - 1986	5
3 - Value of sugar production at current and constant prices, 1976/77 - 1986/87 (Rs million)	18
4 - Exports of black tea (at current and constant 1976 prices), 1976 - 1986	27
5 - Foodcrops production, 1982 - 1986	30
6 - Production of maize, potato and other foodcrops by district, 1985	38
7 - Total land classified by utilization	76
8 - Consumption of fertilizers (Nutrients content N, P ₂ O ₅ , K ₂ O), 1971 - 1986	82

*o*o*o*o*o*o*o*o*

N O T E S

Symbols

The following symbols are used throughout :

... Negligible

Nil

Abbreviations

Rs : Rupees (Mauritian)

'000 : Thousand

Mn : Million

No. : Number

N.A. : Not available

n.e.s. : not elsewhere specified

Conversion factors

1 arpent = 1.043 acres = 0.42203 hectare

1 inch = 25.4 millimetres

Degrees Celsius (Centigrade) to convert into
degrees Fahrenheit multiply by 9 and add 32°
5

1 metric ton = 1,000 kilos = 0.9842 long ton

Regions

Corresponding district

North	Port Louis, Pamplémousses and Rivière du Rempart
South	Grand Port and Savanne
East	Flacq
West	Black River
Centre	Plaines Wilhems and Ibka

Note : Figures for 1986 are provisional

**ECONOMIC ACCOUNTS
OF
AGRICULTURE**

Handwritten text at the top of the page, appearing to be a list or index of items, possibly names or titles, written in a cursive or semi-cursive script. The text is somewhat faded and difficult to read.

Small handwritten mark or signature on the left side of the page.

Small handwritten mark or signature in the center of the page.

Small handwritten mark or signature at the bottom center of the page.

AGRICULTURAL PRODUCTION, 1986

Sugar

Following favourable weather conditions prevailing during the crop year 1986, sugar cane production increased in spite of a 700 arpents decrease in area harvested, to reach 6,024,962 metric tons as compared with 5,533,367 metric tons the previous year. Area harvested dropped from 184,866 arpents in 1985 to 184,167 arpents in 1986.

Average sugar cane yield per arpent consequently rose from 30.2 metric tons in 1985 to 32.7 metric tons in 1986, a level usually reached during a normal crop season.

An extraction rate of 11.73% led to the production of 706,839 metric tons of sugar, as compared to 645,797 metric tons in 1985, when the extraction rate was 11.57%. This is the second time that sugar production has exceeded the 700,000 metric tons mark, the first one being the record crop of 1973, when 718,464 metric tons were produced. It should however be noted that there has been a reduction of over 7,500 arpents between the two periods so that actually the sugar yield per arpent is higher during the present crop relative to the 1973 one. In fact the sugar yield per arpent in 1986 of 3.84 metric tons is an all-time record, the corresponding figure for 1973 being 3.75.

Tea

The area under cultivation dropped from 9,259 arpents in 1985 to 8,946 arpents in 1986. The production of green leaves in 1986 amounts to 43,423 metric tons showed a decrease of about 4% when compared to the previous year.

The production of manufactured tea amounted to 7,876 metric tons in 1986, as against 8,115 metric tons a year ago, thus registering a fall of about 3%.

Tobacco/...

Tobacco

Production of tobacco leaves increased by nearly 14% over 1985, to reach 954 metric tons in 1986. This was mainly a result of a larger harvested area which stood at almost 11% over the 1985 level. The area harvested in 1986 was 1,426 arpents as against 1,280 in 1985.

Foodcrops

Foodcrop production showed a slight overall decrease of about 2% over the previous year and amounted to 65,700 metric tons in 1986, in spite of an 18% increase in area harvested, of about 15,000 arpents. A relatively reduced potato harvest was mainly responsible for this fall in foodcrop production.

The 1986 potato crop was about 30% below the level of 1985 due to a combination of both a smaller area under cultivation (1,895 arpents against 2,043) and a lower yield per arpent (7.6 metric tons against 11.4). This was mainly attributable to some over production in 1985, when 23,305 metric tons were produced. As a result plantation in 1986 was delayed as well as reduced, since less potato seeds were available. In addition, the lower yield is partly explained by the **prevalence** of a pest known as thrips.

On the other hand, an excellent maize harvest yielded about 3,000 metric tons, a level of production never reached before in recent times. The production last year was about 4,900 metric tons. The 60% increase in production was mainly accounted for by the larger area harvested in 1986 : about 4,300 arpents as against 2,450 arpents the previous year.

Tomato cultivation increased substantially from 1,643 arpents to 2,034 arpents in 1986, resulting in an enhanced production of about 10,600 metric tons in 1986, a rise of about 13% over the 1985 production of 9,000 metric tons.

Another important foodcrop whose production went up significantly during 1986 was onions. The increase is of the order of about 14% from 2,595 metric tons in 1985 to 2,955 metric tons in 1986. The area under cultivation was the main factor contributing to the increase, being larger in the latter year, i.e. 600 arpents against 500.

Production of pineapples and bananas also grew significantly over the two periods, to reach 980 metric tons and 7,830 metric tons in 1986, as compared to 790 and 7,150 respectively in 1985.

Livestock, poultry and fishing

There has been a general increase in the production of the commodities as indicated below :

	<u>Production</u>		<u>Increase</u>
	<u>1985</u>	<u>1986</u>	
Cattle meat (m. tons)	949	1,233	30 %
Milk (thousand litres)	10,700	11,000	2.8%
Fish (m. tons)	7,054	7,977	13 %

Most of the increase in cattle meat was attributable to the slaughter of local cattle. As regards fish the increase is mostly accounted for by higher production from high seas which amounted to almost 6,000 tons as compared with 5,000 tons the previous year.

As regards the production of meat, the following changes have also been noted: goat and sheep (+ 10%), poultry (+ 14%) and pigs (+ 10%)

Table 1.1 - Agricultural crops : area harvested and production

C r o p	1 9 8 5		1 9 8 6	
	Area harvested (arpents)	Production (metric tons)	Area harvested (arpents)	Production (metric tons)
1. Sugar cane	184,866	5,583,367	184,167	6,024,962
2. Tea (green leaves)	9,259 ^{1/}	45,291	8,946 ^{1/}	43,423
3. Tobacco	1,280	831	1,426	954
4. Foodcrops	12,663	67,195	14,917	65,700

^{1/} area under cultivation

Table 1.2 - Production of agro-industrial products

Agro-industrial products	Unit	1 9 8 5	1 9 8 6
1. Sugar	m/tons	645,797	706,839
2. Tea (manufactured)	"	8,115	7,876
3. Cattle ^{1/}	"	949	1,233
Local including Rodrigues	"	(587)	(894)
Imported	"	(362)	(339)
4. Goat and sheep ^{1/}	"	146	161
5. Pigs ^{1/}	"	541	595
6. Poultry	"	6,000	6,875
7. Milk	000 litres	10,000	11,000
8. Fish	m/tons	7,054	7,977
Coastal	"	(2,034)	(2,027)
Bank ^{2/}	"	(5,020)	(5,950)

^{1/} includes abattoir slaughters only

^{2/} fresh weight equivalent

**FIG. 1 - DISTRIBUTION OF GROSS DOMESTIC PRODUCT AT FACTOR COST
(CURRENT PRICES) BY SECTOR, 1977 - 1986**

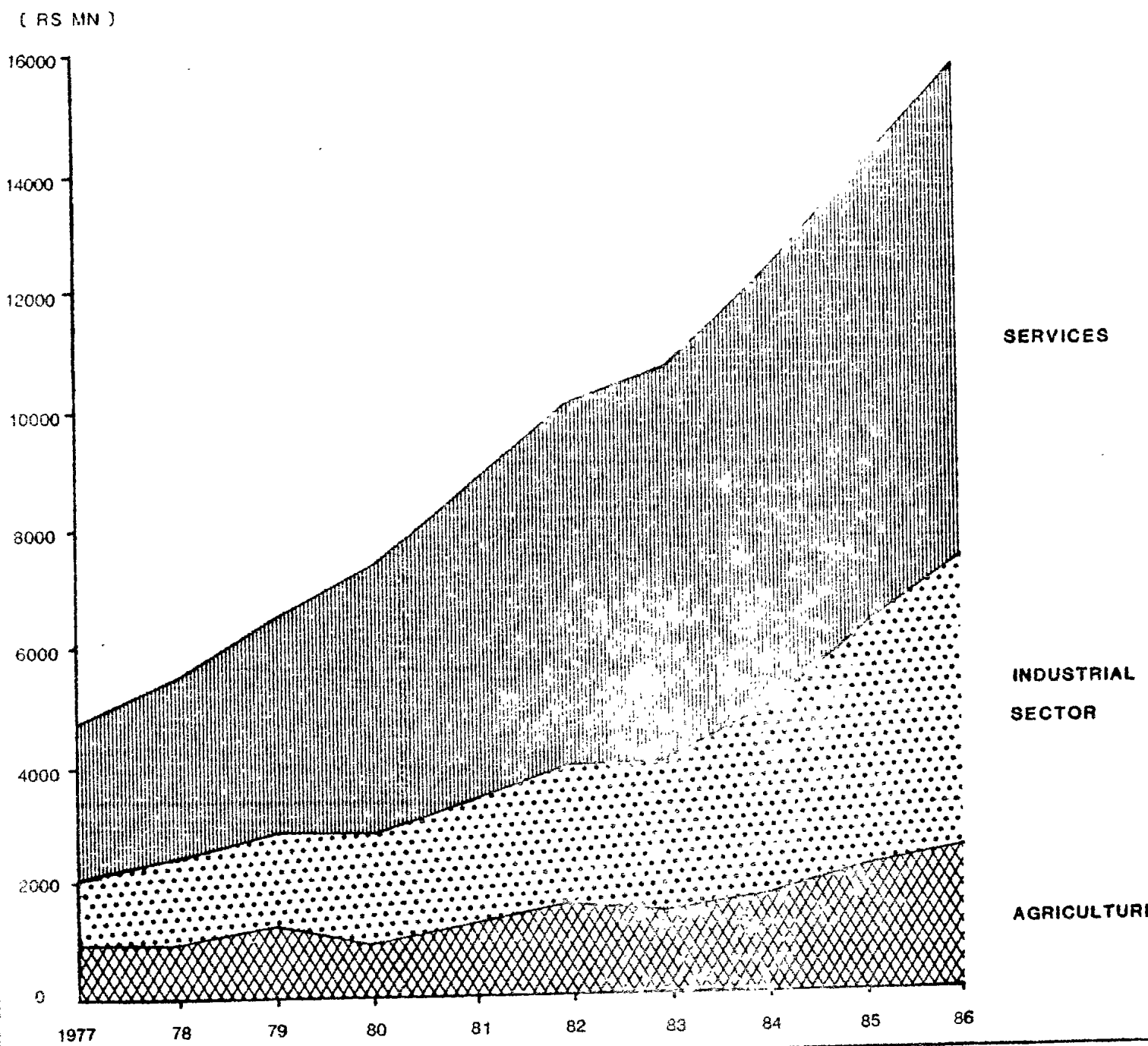


Table 1.3 - Share of agriculture in the economy, 1982 - 1986

	Unit	1982	1983	1984	1985	1986 I/
Gross domestic product (G.D.P.), at current factor cost	Rs Mn	10,020	10,613	12,050	13,879	15,600
Value added - agriculture, at current factor cost	Rs Mn	1,530	1,465	1,736	2,123	2,395
of which sugar	Rs Mn	(1,140)	(1,010)	(1,166)	(1,538)	(1,800)
Share of agriculture in G.D.P. at factor cost	%	15	14	14	15	15
Share of sugar in agriculture	%	75	69	67	72	75
Gross domestic fixed capital formation (GDFCF)	Rs Mn	2,100	2,300	2,595	3,100	3,800
G.D.F.C.F. in agriculture	Rs Mn	135	102	123	130	150
Share of investment in agriculture in total G.D.F.C.F.	%	6.4	4.4	4.7	4.2	3.9
Annual growth rate of G.D.P. at factor cost	%	+ 5.8	+ 0.4	+ 4.7	+ 6.8	+ 7.1
Annual growth rate of agriculture	%	+ 19.4	- 13.0	+ 0.8	+ 11.4	+ 8.0
Annual growth rate of sugar	%	+ 25.5	- 20.0	- 4.0	+ 15.0	+ 10.0

I/ preliminary estimates

Table 1.4 - Production account of agriculture, 1982 - 1986

Rs million

	1982	1983	1984	1985	1986
Gross output	2,344.6	2,315.8	2,607.0	3,098.0	3,443.0
Intermediate Consumption	814.6	861.0	885.7	990.0	1,066.0
Value added (market prices)	1,530.0	1,454.8	1,721.3	2,108.0	2,377.0
Indirect taxes net of subsidies	-	- 10.2	- 14.7	- 15.0	- 18.0
Value added (factor cost)	1,530.0	1,465.0	1,736.0	2,123.0	2,395.0
Wages and salaries	900.0	974.0	994.0	1,043.0	1,200.0
Gross operating surplus	630.0	491.0	742.0	1,080.0	1,195.0

Table 1.5 - Value added at factor cost of agriculture (at current prices) by main product groups, 1982 - 1986

Rs million

Product groups	1982	1983	1984	1985	1986
Industrial crops	1,192.2	1,091.8	1,321.2	1,660.2	1,892.4
Sugar cane	(1,140.0)	(1,010.0)	(1,166.0)	(1,538.0)	(1,800.0)
Tea (greenleaf)	(38.0)	(62.0)	(131.0)	(101.1)	(63.0)
Tobacco leaf	(14.2)	(19.8)	(24.2)	(21.1)	(29.4)
Foodcrops	108.0	122.2	150.0	153.7	155.0
Fruits, flowers and forestry	41.5	41.7	41.5	51.1	51.5
Livestock and poultry products	114.2	117.1	121.7	136.6	179.4
Fishing	34.3	45.8	64.7	87.1	86.2
Agriculture services and other agricultural activities n.e.s.	39.8	46.4	36.9	34.3	30.4
Total Agriculture	1,530.0	1,465.0	1,736.0	2,123.0	2,395.0

FIG.2- TOTAL DOMESTIC EXPORTS (F.O.B. VALUE IN RS. MN.), 1977-1986

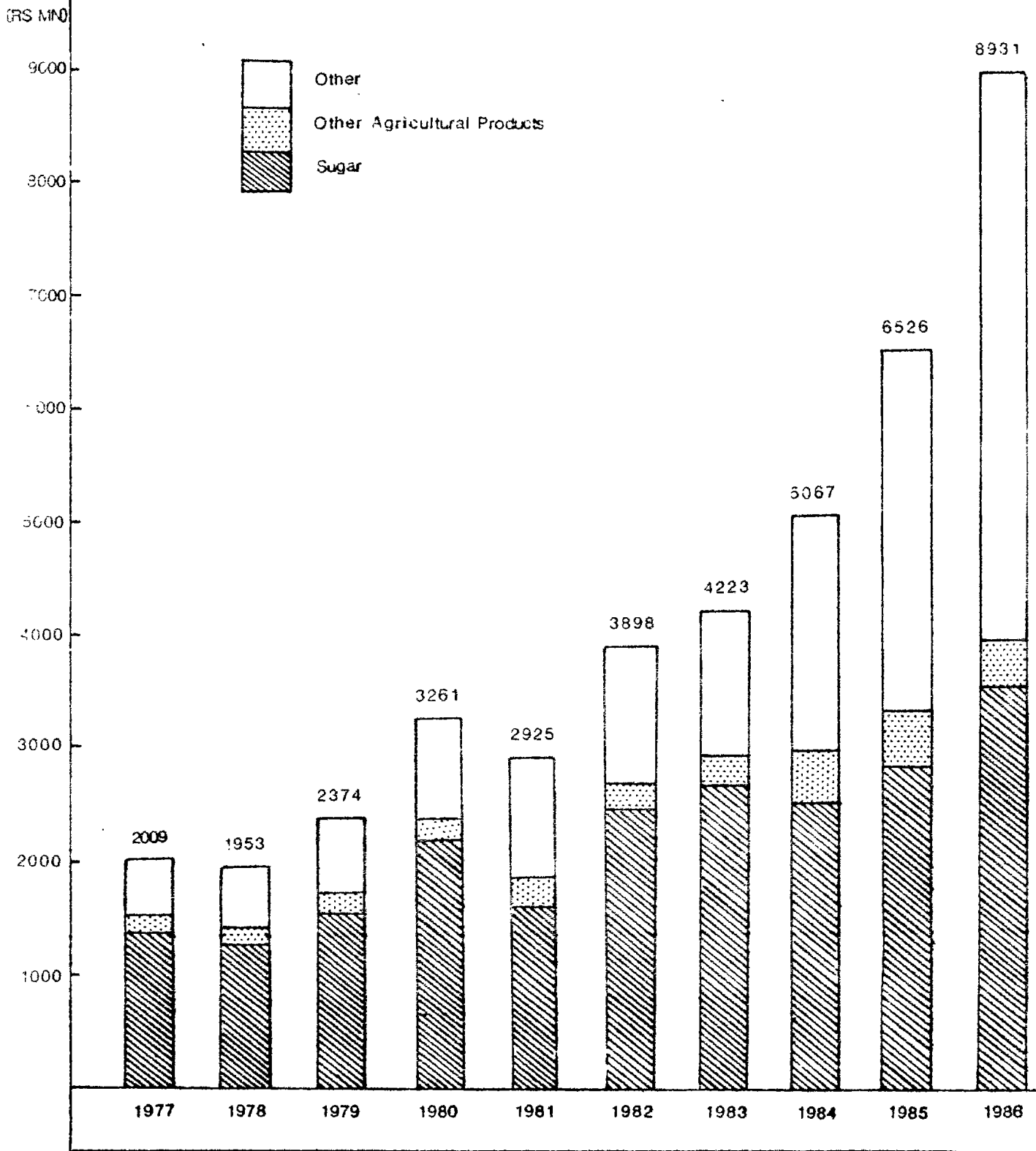


Table 1.6 - Exports of agricultural and food products, 1982 - 1986

(F.O.B. value in Rs million)

Item	1982	1983	1984	1985	1986
Sugar	2,462.5	2,678.9	2,522.6	2,866.6	3,544.5
Molasses	66.6	63.3	61.5	89.1	82.7
Tea	66.7	97.0	249.1	178.4	104.4
Fish and fish preparations	55.5	76.2	107.2	142.5	135.3
Vegetables and fruits	2.8	3.2	6.8	10.8	19.5
Cut flowers and foliage	5.9	7.3	9.5	15.4	19.1
Other agricultural and food products	17.6	8.2	17.8	17.6	40.4
Total agricultural and food products	2,678.2	2,934.1	2,974.5	3,320.4	3,945.9
Total domestic exports	3,898.5	4,223.3	5,067.1	6,532.8	8,931.4
% Exports agricultural & food products					
Total domestic exports	68.7	69.5	58.7	50.6	44.2

Table 1.7 - Employment in the agricultural sector (large establishments ^{1/}), 1982 - 1986

	M a r c h					S e p t e m b e r				
	1982	1983	1984	1985	1986	1982	1983	1984	1985	1986
Sugar	46,457	46,082	44,628	42,882	41,718	49,864	49,132	47,575	46,603	45,800
- Estates with factories ^{2/}	(40,319)	(40,239)	(39,070)	(37,804)	(36,855)	(43,027)	(42,830)	(41,771)	(41,219)	(40,556)
- Planters ^{3/}	(6,138)	(5,843)	(5,558)	(5,078)	(4,863)	(6,837)	(6,302)	(5,804)	(5,384)	(5,244)
Tea ^{4/}	4,747	4,613	3,643	3,508	3,173	4,728	4,281	3,391	3,361	3,354
Tobacco ^{5/}	275	239	263	384	424	934	1,069	1,042	1,076	1,105
Fishing	273	421	348	414	337	381	313	374	325	372
Other agricultural activities	705	790	895	1,104	1,258	804	1,031	1,038	1,286	1,401
Total agriculture	52,457	52,145	49,777	48,292	46,910	56,711	55,826	53,420	52,651	52,032

1/ establishment with 10 employees or more

2/ including sugar milling

3/ planters cultivating more than 25 arpents

4/ including tea manufacturing, TDA and planters cultivating more than 5 arpents

5/ planters cultivating flue-cured tobacco only

Table 1.8 - Employment in the agricultural sector (large and small establishments) - June 1983

Sector	Large establishments			Small establishments*			Total employment		
	Male	Female	Total	Male	Female	Total	Male	Female	Total
Sugar	35,381	12,226	47,607	4,500	2,000	6,500	39,881	14,226	54,107
Tea	3,869	578	4,447	4,000	2,000	6,000	7,869	2,578	10,447
Fishing	357	10	367	2,400	-	2,400	2,757	10	2,767
Other	916	649	1,565	4,000	3,000	7,000	4,916	3,649	8,565
Total	40,523	13,465	53,986	14,900	7,000	21,900	55,423	20,463	75,886

* Estimates

SUGAR INDUSTRY

Table 2.1 - Area harvested, cane production, cane yield for estates, metayer and owner planters, 1977 - 1986

Year	Area Harvested (arpent)			Cane Production ('000 tons)			Cane yield (tons/arpent)					
	Estates	Metayer	Owner planters	TOTAL	Estates	Metayer	Owner planters	TOTAL	Estates	Metayer	Owner planters	TOTAL
1977	105,091	4,663	81,254	191,008	3,747	104	2,171	6,022	35.7	22.4	26.7	31.5
1978	106,205	4,519	79,470	190,194	3,914	101	2,245	6,260	36.9	22.5	28.3	32.9
1979	106,694	4,268	77,922	188,884	3,977	96	2,240	6,313	37.3	22.5	28.8	33.4
1980	106,391	4,245	76,872	187,508	2,874	69	1,621	4,564	27.0	16.2	21.1	24.3
1981	105,502	4,196	75,790	185,488	3,455	87	1,761	5,303	32.8	20.6	23.2	28.6
1982	102,598	4,136	82,585	189,319	3,942	100	2,540	6,582	38.4	24.2	30.8	34.8
1983	99,462	4,293	82,075	185,830	3,203	87	1,965	5,255	32.2	20.2	23.9	28.3
1984	98,487	4,586	81,733	184,806	3,117	85	1,807	5,009	31.6	18.4	22.1	27.1
1985	97,193	4,675	82,998	184,866	3,281	100	2,202	5,583	33.8	21.3	26.5	30.2
1986	94,380	4,792	84,995	184,167	3,434	108	2,483	6,025	36.4	22.5	29.2	32.7

Table 2.2 - Area harvested, cane production, cane yield of estates, metayer and owner-planters by region, 1985 - 1986

	Area harvested (arpents)				Cane production ('000 tons)				Cane yield (tons/arpent)			
	Estates	Metayer	Owner Planters	Total	Estates	Metayer	Owner Planters	Total	Estates	Metayer	Owner Planters	Total
	1985											
North	12,765	-	33,853	46,618	441.8	-	886.0	1,327.8	34.6	-	26.2	28.5
South	39,409	1,980	16,024	57,413	1,346.8	50.0	458.1	1,854.9	34.2	25.3	28.6	32.3
East	25,135	2,435	18,975	46,545	833.9	45.2	474.0	1,353.1	33.2	18.5	25.0	29.1
West	10,018	-	4,495	14,513	341.8	-	124.4	466.2	34.1	-	27.7	32.1
Centre	9,866	260	9,651	19,777	316.8	4.4	260.1	581.3	32.1	17.3	27.0	29.4
Total Island	97,193	4,675	82,998	184,866	3,281.1	99.6	2,202.6	5,583.3	33.8	21.3	26.5	30.2
1986												
North	11,573	-	34,858	46,431	472.3	-	1,087.4	1,559.6	40.8	-	31.2	33.6
South	38,403	2,007	16,125	56,535	1,367.7	51.5	474.1	1,893.2	35.6	25.7	29.4	33.5
East	24,463	2,543	19,467	46,473	886.9	52.2	525.6	1,464.6	36.3	26.0	27.0	31.5
West	10,122	-	4,655	14,777	366.2	-	133.8	500.0	36.2	-	28.7	33.8
Centre	9,819	242	9,890	19,951	341.3	4.3	262.0	607.5	34.8	17.8	26.5	30.4
Total Island	94,380	4,792	84,995	184,167	3,434.3	107.9	2,482.7	6,025.0	36.4	22.5	29.2	32.7

Table 2.3 - Sugar crop 1985 (area harvested, canes produced, yield and sugar production by factory area)

Factory area	Area harvested (arpents)	Sugar cane production (tons)	Yield (tons/arpent)	Sugar production (tons)
<u>North</u>	46,618	1,327,809	28.5	145,066
Beau Plan	9,447	285,331	30.2	30,171
Belle Vue	13,602	379,333	27.9	42,853
Mon Loisir	8,822	263,323	29.9	29,045
Mount	5,738	213,189	37.2	23,019
St. Antoine	9,009	186,633	20.7	19,978
<u>South</u>	57,413	1,854,689	32.3	219,741
Bel Ombre	6,483	189,905	29.3	20,656
Britania	6,468	221,832	34.3	26,627
Mon Trésor/Mon Désert	7,423	258,770	34.9	31,635
Riche-en-Eau	8,281	266,363	32.2	31,290
Rose Belle	7,513	194,808	25.9	23,452
St. Felix	5,947	161,632	27.2	17,724
Savannah	8,090	290,023	35.9	35,933
Union St. Aubin	7,208	271,417	37.7	32,424
<u>East</u>	46,545	1,353,103	29.1	158,567
Fuel	21,670	634,084	29.3	72,604
Beau Champ	14,876	454,531	30.6	54,485
Constance	9,999	264,488	26.5	31,478
<u>West</u>	14,513	466,220	32.1	57,390
Medine	14,513	466,220	32.1	57,390
<u>Centre</u>	19,777	581,355	29.4	65,033
Highlands	9,111	277,793	30.5	27,530
Mon Désert (Alma)	10,666	303,562	28.5	37,503
Total Island	184,866	5,583,367	30.2	645,797

Table 2.4 - Sugar crop 1986 (area harvested, canes produced, yield and sugar production by factory area)

Factory area	Area harvested (arpents)	Sugar cane production (tons)	Yield (tons/arpent)	Sugar production (tons)
<u>North</u>	<u>46,431</u>	<u>1,559,625</u>	<u>33.6</u>	<u>177,663</u>
Beau Plan	9,264	298,517	32.2	33,714
Belle Vue	13,315	455,912	34.2	52,920
Mon Loisir	9,017	315,409	35.0	36,190
Mount	5,737	228,747	39.9	26,074
St. Antoine	9,098	261,040	28.7	28,765
Solitude				
<u>South</u>	<u>56,535</u>	<u>1,893,236</u>	<u>33.5</u>	<u>226,684</u>
Bel Ombre	6,119	180,102	29.4	20,753
Britania	6,413	215,575	33.6	26,135
Mon Trésor/Mon Désert	7,385	269,527	36.5	33,636
Riche en Eau	8,283	277,361	33.5	32,401
Rose Belle	7,423	193,683	26.1	23,301
St. Felix	5,804	163,293	28.1	18,138
Savannah	8,060	307,209	38.1	38,603
Union St. Aubin	7,048	286,487	40.7	33,717
<u>East</u>	<u>46,473</u>	<u>1,464,621</u>	<u>31.5</u>	<u>169,784</u>
Fuel	21,979	705,896	32.1	80,356
Beau Champ	14,496	441,241	30.5	52,211
Constance	9,998	317,484	31.8	37,217
<u>West</u>	<u>14,777</u>	<u>499,995</u>	<u>33.8</u>	<u>62,633</u>
Médine	14,777	499,995	33.8	62,633
<u>Centre</u>	<u>19,951</u>	<u>607,484</u>	<u>30.4</u>	<u>70,075</u>
Highlands	8,067	251,951	31.2	30,187
Mon Désert Alma	11,884	355,533	29.9	39,888
Reufac				
Total Island	184,167	6,024,962	32.7	706,839

Table 2.5 - Frequency distribution of owner and tenant planters, 1985 - 1986

Range (Arpents)	1 9 8 5						1 9 8 6					
	Owner planters		Tenant planters		Total		Owner planters		Tenant planters		Total	
	Number	Arpents harvested	Number	Arpents harvested	Number	Arpents harvested	Number	Arpents harvested	Number	Arpents harvested	Number	Arpents harvested
0.01 - 0.99	17,306	8,642	298	168	17,604	8,810	17,717	9,000	299	174	18,016	9,174
1.00 - 1.99	8,597	12,621	577	1,094	9,174	13,715	8,175	12,000	412	600	8,587	12,600
2.00 - 4.99	5,842	17,772	377	1,188	6,219	18,960	6,497	19,075	525	1,587	7,022	20,662
5.00 - 9.99	1,730	11,602	195	1,381	1,925	12,983	1,745	12,000	193	1,288	1,938	13,288
10.00 - 24.99	516	7,845	46	664	562	8,509	567	8,682	70	990	637	9,672
25.00 - 49.99	74	2,686	6	180	80	2,866	75	2,573	5	153	80	2,726
50.00 - 99.99	56	3,951	-	-	56	3,951	63	4,567	-	-	63	4,567
100.00 - 199.99	34	4,892	-	-	34	4,892	33	4,911	-	-	33	4,911
200.00 - 499.99	20	5,530	-	-	20	5,530	18	5,023	-	-	18	5,023
500.00 and over	10	7,457	-	-	10	7,457	10	7,164	-	-	10	7,164
T O T A L	34,185	82,998	1,499	4,675	35,684	87,673	34,900	84,995	1,504	4,792	36,404	89,787

Table 2.C - Mechanical loading and harvesting of canes, 1977 - 1986

Year	Mechanical loading				Area Utilized (arpents)	Area Utilized (arpents)	Mechanical harvesting			
	Quantity of canes mechanically loaded			Total (tons)			Estates (tons)	Planters (tons)	Quantity of canes mechanically harvested	
	Estates (tons)	Planters (tons)	% of total Production						(tons)	Total % of total Production
1977	N.A.	N.A.	972,614	16.1	N.A.	N.A.	N.A.	45,000	0.7	
1978	N.A.	N.A.	1,609,797	25.7	N.A.	N.A.	N.A.	58,490	0.9	
1979	N.A.	N.A.	2,179,257	34.5	N.A.	N.A.	N.A.	84,499	1.3	
1980	N.A.	N.A.	1,752,437	38.4	N.A.	N.A.	N.A.	57,526	1.3	
1981	57,862	1,912,849	2,006,454	37.8	1,933	61,844	-	61,844	1.2	
1982	52,702	1,960,671	2,281,991	34.5	630	23,665	108	23,773	0.4	
1983	52,542	1,739,768	1,927,122	36.7	-	-	-	-	-	
1984	55,205	1,620,328	1,820,063	36.3	-	-	-	-	-	
1985	50,931	1,710,185	2,014,229	36.1	-	-	-	-	-	
1986	39,458	1,943,601	2,444,194	40.6	-	-	-	-	-	

Table 2.7 - Production of sugar molasses and scums, 1977 - 1986

Year	SUGAR										Molasses (tons)	Scums (tons)
	Production (tonnes)			Commercial sugar recovered % cane	Average tons of cane (per ton sugar)	Average yield of sugar (tons per arpent)	Average polarisation (degrees)	Molasses (tons)	Scums (tons)			
	White	Raw	Total									
1977	48,079	617,356	665,435	11.05	9.05	3.48	98.8	194,561	204,636			
1978	41,745	623,474	665,219	10.63	9.41	3.50	98.8	201,783	210,317			
1979	42,311	646,072	688,383	10.90	9.17	3.64	98.8	207,975	214,014			
1980	31,550	443,944	475,494	10.42	9.60	2.54	98.8	136,415	177,230			
1981	36,781	537,745	574,526	10.84	9.23	3.10	98.7	153,607	207,655			
1982	40,902	647,038	687,940	10.45	9.57	3.42	98.7	190,103	245,416			
1983	37,738	566,992	604,730	11.51	8.69	3.05	98.7	162,143	204,311			
1984	39,842	535,775	575,617	11.49	8.70	3.11	98.7	141,652	202,999			
1985	48,698	597,099	645,797	11.57	8.65	3.48	98.7	154,149	216,417			
1986	38,129	668,710	706,839	11.73	8.52	3.84	98.7	173,402	295,130			

Table 2.6 - Supply and disposal of sugar, 1977 - 1986

('000 tonnes tel quel)

Calendar Year	Opening stock	Production	Available supplies	Exports	Domestic consumption	Loss or surplus in storage	Closing stock
1977	237.1	665.4	902.5	636.4	37.5	-	228.6
1978	228.6	665.2	893.8	578.6	37.9	+ 1.4	278.7
1979	278.7	688.4	967.1	604.3	38.5	- 0.3	324.0
1980	324.0	475.5	799.5	617.3	36.7	- 4.3	141.2
1981	141.2	574.5	715.7	432.2	37.6	- 1.1	244.8
1982	244.8	687.9	932.7	596.8	35.4	-	300.5
1983	300.5	604.7	905.2	608.0	36.5	- 0.6	260.1
1984	260.1	575.6	835.7	530.7	38.0	+ 0.3	267.3
1985	267.3	645.8	913.1	539.5	36.8	+ 0.1	336.9
1986	336.9	706.8	1,043.7	624.9	37.7	- 0.5	380.6

Table 2.9 - Monthly supply and disposal of sugar, 1986

(Tonnes tel quel)

Month	Opening stock	Production	Available supplies	Exports	Domestic consumption	Loss or surplus in storage	Closing stock
January	336,875	-	336,875	45,690	2,779	-	288,406
February	288,406	-	288,406	89,351	2,746	-	196,309
March	196,309	-	196,309	29,631	3,073	-	163,605
April	163,605	-	163,605	9,212	3,293	-	151,100
May	151,100	-	151,100	56,301	3,329	-	91,470
June	91,470	10,656	102,126	1,975	2,680	- 469	97,002
July	97,002	150,775	247,777	92,124	3,319	-	152,334
August	152,334	156,250	308,584	49,697	2,957	-	255,930
September	255,930	155,562	411,492	75,029	3,076	-	333,387
October	333,387	148,508	481,895	85,856	3,297	-	392,742
November	392,742	79,448	472,190	56,217	3,233	-	412,740
December	412,740	5,640	418,380	33,866	3,949	-	380,565
Total Year	336,875	706,839	1,043,714	624,949	37,731	- 469	380,565

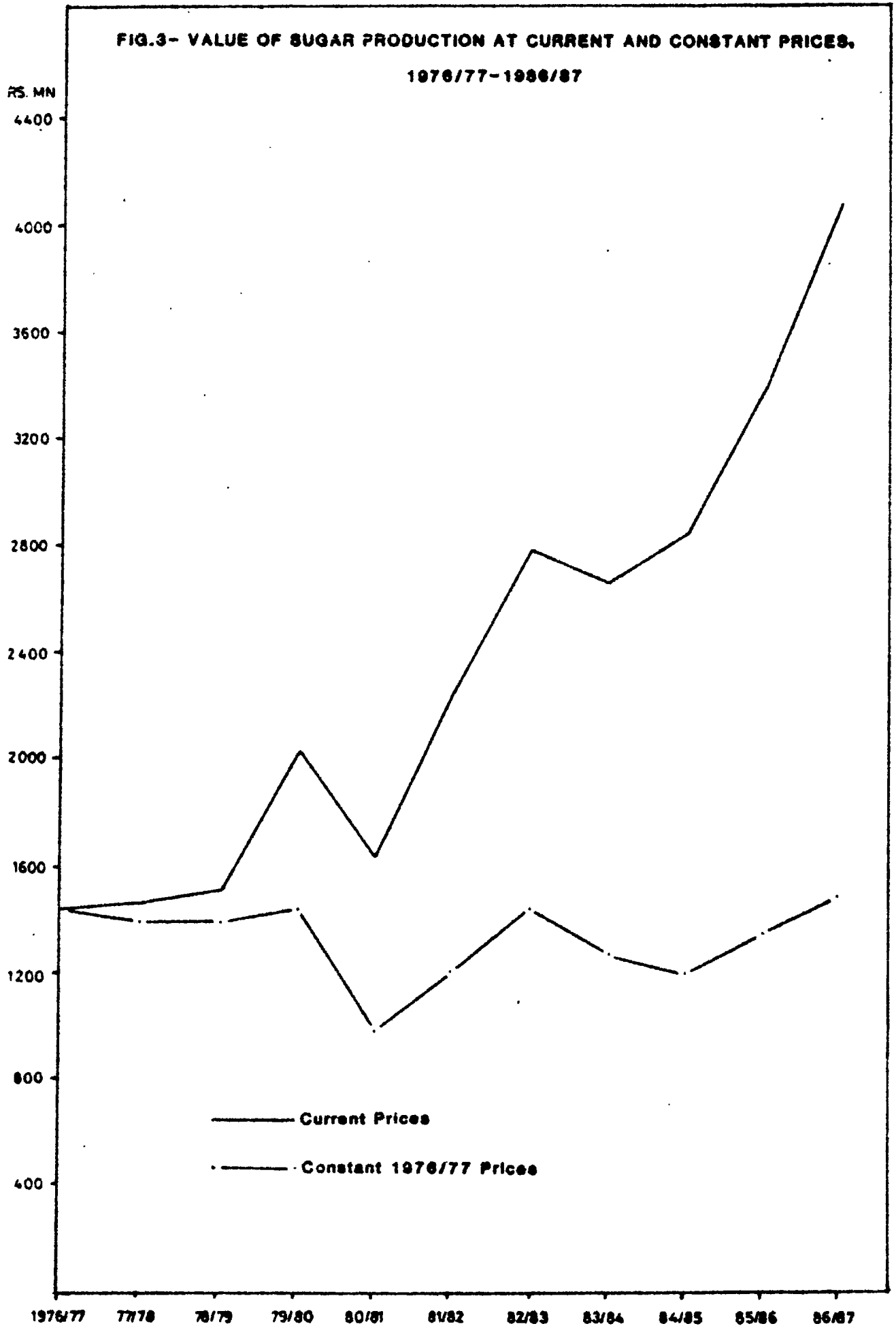


Table 2.10 - Sugar sales and revenue, crop year 1977/78 - 1986/87

Crop year	Production		Exports		Local Sales	
	Quantity (tons)	Value (Rs Million)	Quantity (tons)	Value (Rs Million)	Quantity (tons)	Value (Rs Million)
1977/78	665.4	1,465.5	626.0	1,451.1	37.5	14.4
1978/79	665.2	1,526.1	624.7	1,512.8	37.9	13.3
1979/80	688.4	2,044.1	644.0	2,005.2	38.5	28.9
1980/81	475.5	1,639.7	442.6	1,581.5	36.7	59.8
1981/82	574.5	2,266.2	540.1	2,188.3	37.6	77.8
1982/83	687.9	2,801.1	647.7	2,713.5	35.4	87.5
1983/84	604.7	2,665.5	569.5	2,579.8	36.5	85.6
1984/85	575.6	2,858.5	537.0	2,755.7	38.4	102.8
1985/86	647.2	3,458.	608.4	3,361.2	36.8	97.7
1986/87	706.8	4,095.1	661.7	3,980.9	44.8	114.3

Notes: (1) Harvesting generally extends from June to December, while export and local sales are spread over the period 1st July to 30th June the following year.

(2) Production may not tally with exports and local sales due to loss or surplus in storage.

(3) For crop year 1986/87, estimated figures are given.

Source : Mauritius Sugar Syndicate

Table 2.11 - Sugar exports by main markets, crop year 1982/83 - 1985/86

(Quantity in tons, Value in Rs mn, Average price in Rs/ton)

	1982/83			1983/84			1984/85			1985/86		
	Quantity	Value	Average price	Quantity	Value	Average price	Quantity	Value	Average price	Quantity	Value	Average price
E.C.	552.2	2,422.7	4,387	513.3	2,359.1	4,589	505.3	2,566.6	5,071	505.7	3,017.3	5,950
S.A.	30.7	144.0	4,689	27.6	163.7	5,917	25.5	182.0	7,113	26.6	157.1	5,893
World Market	39.3	73.8	1,878	28.6	85.9	2,999	6.2	7.1	1,127	72.2	186.8 ^{4/}	2,444 ^{4/}
Adjustment	25.5 ^{1/}	73.0 ^{2/}	-	-	- 28.9 ^{3/}	-	-	-	-	-	-	-
Total Exports	647.7	2,713.5	4,244	569.5	2,579.8	4,523	537.0	2,755.7	5,122	604.5	3,361.2	5,508

1/ Amount still to be exported

2/ Estimate from 1/

3/ Difference on estimate 2/

4/ Inclusive of a stock of 36,802 tons valued at prevailing world price June 1986

Table 2.12 - Earnings of sugar producers - ex-syndicate, before charging sugar insurance premium, 1980 - 1985

Rupees per tonne of sugar basis 98.5° Pol.

	1980	1981	1982	1983
Planters exporting				
(i) not more than 20 tonnes of sugar	3,117	3,634	3,704	4,005
(ii) over 20 up to 75 tonnes of sugar	2,813	3,275	3,404	4,005
(iii) over 75 up to 1,000 tonnes of sugar ^{1/}	2,762	3,215	3,215	3,537
(iv) over 75 up to 1,000 tonnes of sugar ^{2/}	2,748	3,201	3,301	3,523
(v) over 1,000 up to 3,000 tonnes of sugar ^{1/}	2,646	3,081	3,190	3,403
(vi) over 1,000 up to 3,000 tonnes of sugar ^{2/}	2,646	3,081	3,190	3,389
(vii) over 3,000 tonnes of sugar ^{1/}	2,418	2,812	2,953	3,103
(viii) over 3,000 tonnes of sugar ^{2/}	2,418	2,812	2,939	3,089
Miller-planters and millers	2,410	2,804	2,931	3,081
Average for all producers	2,564	2,980	3,094	3,279
Index (Base 1976 = 100)	147.5	171.5	178.0	188.7

1/ Producing less than 5,000 tonnes of cane

2/ Producing 5,000 tonnes of cane or more

Table 2.12 - Earnings of sugar producers - ex-syndicate, before charging Sugar Insurance Premium, 1980 - 1985 (cont'd)

Rupees per tonne of sugar basis 98.5° Pol.

	1984	1985
On the first 1,000 tonnes exported	4,586	4,933
On the next 2,000 tonnes exported	3,910	4,198
On the remainder	3,572	3,830
Average for all producers	3,955	4,239
Index (Base 1976 = 100)	227.6	243.9

Source : Mauritius Sugar Syndicate

Table 2.13 - Monthly average price of sugar at C.I.F. value (London daily price), 1977 - 1986

(£ Sterling/ton)

Year	January	February	March	April	May	June	July	August	September	October	November	December	Average price	Index 1976 = 100
1977	122	124	128	142	128	115	107	109	114	100	96	107	116	74
1978	111	107	100	101	101	99	86	92	101	109	101	100	101	65
1979	94	102	104	96	98	101	98	101	114	139	159	173	115	74
1980	189	237	217	233	324	313	275	319	341	388	369	317	294	188
1981	276	257	240	202	180	207	218	205	163	160	155	167	203	130
1982	166	170	152	136	113	100	113	131	86	91	102	103	122	78
1983	100	108	108	112	148	172	168	175	154	159	139	133	140	90
1984	126	119	114	112	109	107	93	86	91	102	95	88	104	67
1985	95	102	100	83	71	69	67	88	98	92	97	96	88	56
1986	90	102	119	-	-	-	-	-	-	-	-	-	N.A.	N.A.
1986 ^{1/}	-	-	-	137	114	93	83	86	72	83	94	93	N.A.	N.A.

1/ As from April 1986, London daily price of sugar is available at F.O.B. value

Source : Mauritius Sugar Syndicate

Table 2.14 - Employment by sugar estates with factories and large sugar cane planters ^{1/}, 1983 - 1986

	1983						1984					
	March ^{2/}			September ^{2/}			March ^{2/}			September ^{2/}		
	Estates	Planters	Total	Estates	Planters	Total	Estates	Planters	Total	Estates	Planters	Total
Males	30,566	3,675	34,241	32,396	4,125	36,521	29,674	3,516	33,190	31,158	3,730	34,888
Females	9,673	2,168	11,841	10,434	2,177	12,611	9,396	2,042	11,433	10,613	2,074	12,687
Total	40,239	5,843	46,082	42,830	6,302	49,132	39,070	5,558	44,628	41,771	5,804	47,575

	1985						1986					
	March ^{2/}			September ^{2/}			March ^{2/}			September ^{2/}		
	Estates	Planters	Total	Estates	Planters	Total	Estates	Planters	Total	Estates	Planters	Total
Males	28,487	3,221	31,708	30,842	3,531	34,373	27,867	3,086	30,953	30,226	3,408	33,634
Females	9,317	1,857	11,174	10,377	1,853	12,230	8,988	1,777	10,765	10,330	1,836	12,166
Total	37,804	5,078	42,882	41,219	5,384	46,603	36,855	4,863	41,718	40,556	5,244	45,800

^{1/} cultivating more than 25 arpents each

^{2/} Last Thursday of the month

008,24
8-1-51
33-03
10/11

2574
1834
2405
2705/28
2805/29

10

2574
1834
2405
2705/28
2805/29

2574
1834
2405
2705/28
2805/29

TEA & TOBACCO

Table 3.1 - Area under tea, 1982 - 1986

(Arpents)

	1982	1983	1984	1985	1986
Plantation cultivated by factories	720	510	465	427	450
Plantation cultivated by private planters	1,918	1,992	2,166	2,093	1,992
Plantation cultivated by the T.D.A.	6,292	6,669	6,669	6,669	6,121
Plantation cultivated for experimental purposes	70	70	70	70	70
Total area cultivated	9,000	9,241	9,370	9,259	8,946

Table 3.2 - Frequency distribution of individual plantations by size (arpents), 1986

	No. of individual plantations	Aggregate area cultivated (arpents)
less than 1	1,174	621
1 but less than 2	1,867	2,827
2 but less than 3	1,838	3,898
3 but less than 4	86	295
4 but less than 5	26	110
5 but less than 10	7	44
10 but less than 25	5	68
25 but less than 100	4	303
100 but less than 300	1	167
300 but less than 500	-	-
500 and above	1	613
Total	5,009	8,946

Source : Tea Board

Table 3.3 - Production of green leaf of tea by type of producer, 1982 - 1986

(Metric tons)

Year	Factory Estates	Metayers	Free Planters	Planters in Co-operative Societies	Other ^{1/}	Total
1982	3,299.2	3,069.7	1,628.8	16,793.8	1,786.8	26,577.5
1983	913.8	3,112.3	4,498.6 ^{2/}	20,714.4	2,035.4	31,274.5
1984	1,192.7	3,771.7	5,056.7 ^{2/}	31,032.5	536.5	41,573.1
1985	4,165.5	3,623.3	2,306.2	34,902.5	293.5	45,291.0
1986	3,686.4	3,270.3	2,286.9	33,863.9	315.6	43,423.1

1/ Including Tea Development Authority

2/ Including parcelled tea estates

Source : Tea Board

Table 3.4 - Production of black tea by factories, 1982 - 1986

(Metric Tons)

F a c t o r y	1982	1983	1984	1985	1986
Belle Rive	409.6	440.9	981.9	891.9	876.1
Dubreuil	1,557.6	1,616.4	2,182.7	2,505.7	2,468.4
Bois Chéri	951.5	981.6	1,239.8	1,256.0	1,042.5
Nouvelle France	722.2	923.3	844.4	664.7	657.1
La Chartreuse	944.4	1,432.8	1,656.5	1,879.0	1,751.8
La Flora	299.5	264.1	381.9	345.2	355.3
Corson	271.8	300.8	348.5	346.6	359.2
Pont Colville	130.7	182.2	385.2	225.6	365.3
Tea Investment (ltd)	-	-	-	-	-
T o t a l	5,287.2	6,142.2	8,020.9	8,114.7	7,875.7

Source : Tea Board

Table 3.5 - Exports of black tea (at current and constant 1976 prices), 1982-1986

	1982	1983	1984	1985	1986
Quantity	4,425.9	4,935.9	6,770.8	7,088.7	6,476.7
Exports (F.O.B. value Rs mn)					
At current prices	66.7	97.0	249.1	178.4	104.4
At constant 1976 prices	37.6	42.0	57.6	60.3	55.1

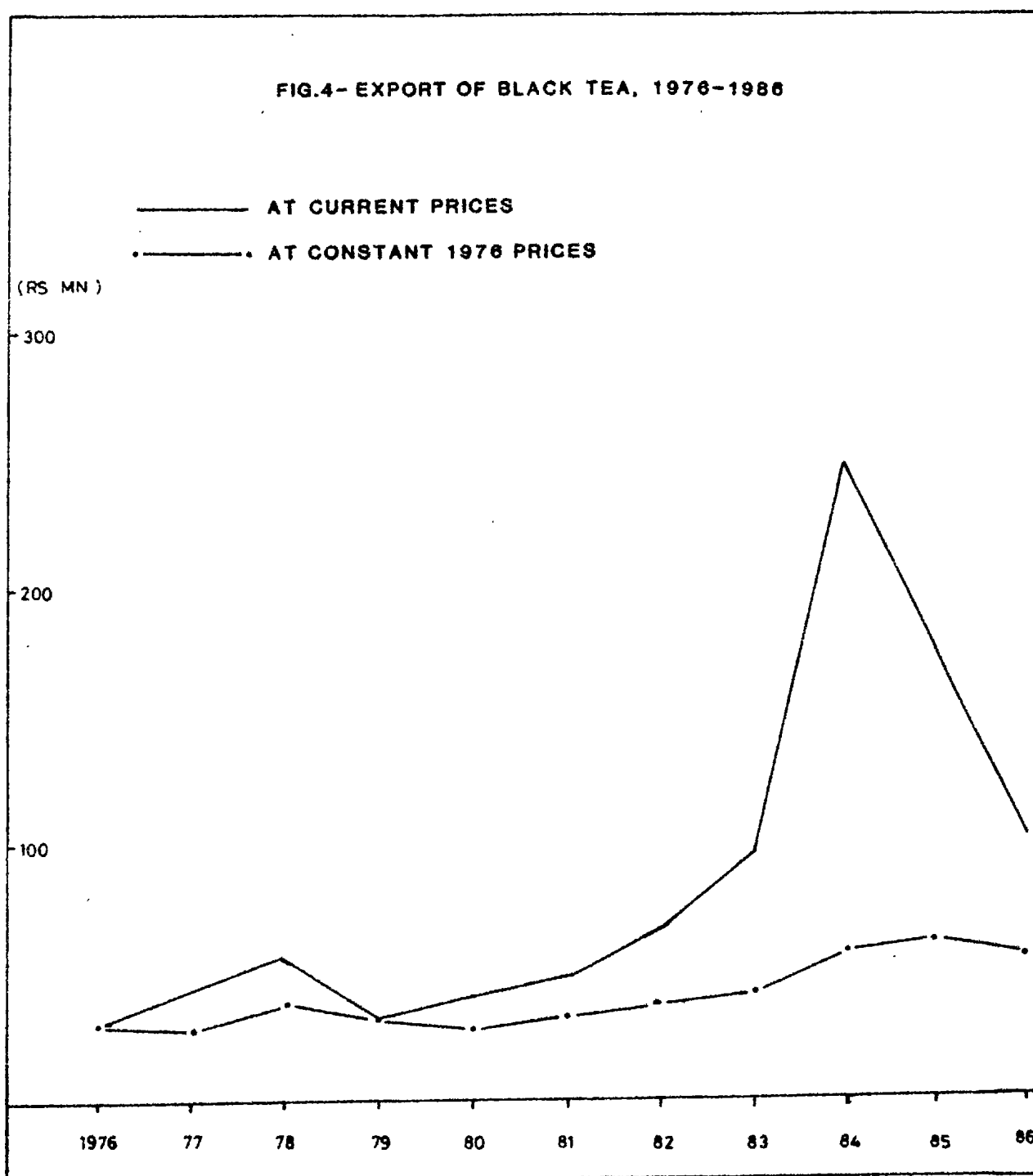


Table 3.6 - Exports of tea by country of destination, 1982 - 1986
 (Quantity in tons, F.O.B. value in Rs Mn)

Country of destination	1982		1983		1984		1985		1986	
	Quantity	Value	Quantity	Value	Quantity	Value	Quantity	Value	Quantity	Value
United Kingdom	2,732.7	43.4	2,719.8	58.3	4,531.9	171.1	4,385.4	116.7	4,244.5	72.1
South Africa	298.5	4.4	277.8	3.6	148.0	4.1	45.7	0.7	281.9	2.1
U.S.S.R.	485.3	7.8	474.4	7.7	153.3	5.1	328.0	12.2	-	-
Netherlands	465.0	3.9	511.3	9.0	463.7	16.1	462.2	10.5	592.2	9.2
Pakistan	234.3	3.7	478.7	8.9	1,107.9	41.3	1,047.4	25.9	643.0	9.9
United States	81.1	1.4	296.0	5.7	73.2	2.6	209.0	2.8	198.0	2.3
Kenya	67.6	0.5	5.8	0.1	77.5	2.0	397.0	5.6	129.0	1.0
Reunion	13.7	0.4	15.8	0.4	13.5	0.4	17.3	0.7	21.1	0.3
Canada	35.1	0.3	110.8	2.4	111.7	3.1	39.4	0.5	-	-
Other countries	15.6	0.4	45.5	0.9	90.3	3.3	157.3	2.8	567.4	6.5
Total Exports	4,425.9	66.7	7,935.9	97.0	6,770.8	249.1	7,088.7	178.4	6,476.7	104.4

Table 3.7 - Tobacco : Number of growers, area harvested, production of leaf, price paid to planters and value of production, 1982 - 1986*

	1982	1983	1984	1985	1986
<u>Number of growers</u>					
Virginia Flue-cured	153	206	212	214	214
Amarello Air-cured	296	327	328	327	322
Total	449	533	540	541	536
<u>Area Harvested (arpents)</u>					
Virginia Flue-cured	689	912	957	1,106	1,228
Amarello Air-cured	226	275	258	172	193
Total	915	1,187	1,215	1,280	1,421
<u>Leaf production(tons)</u>					
Virginia Flue-cured	432	615	663	673	797
Amarello Air-cured	192	181	266	158	157
Total	624	796	929	831	954
<u>Average price to planters(us/lb)</u>					
Virginia Flue-cured	40.05	39.11	39.12	42.74	43.68
Amarello Air-cured	14.83	17.87	17.47	20.86	21.71
Value of Production (Rs Mr)	20.1	27.3	30.8	32.1	38.2

* Crop year usually extends from May to April the following year

FOOD CROPS

FIG.5-FOODCROPS PRODUCTION 1982-1986

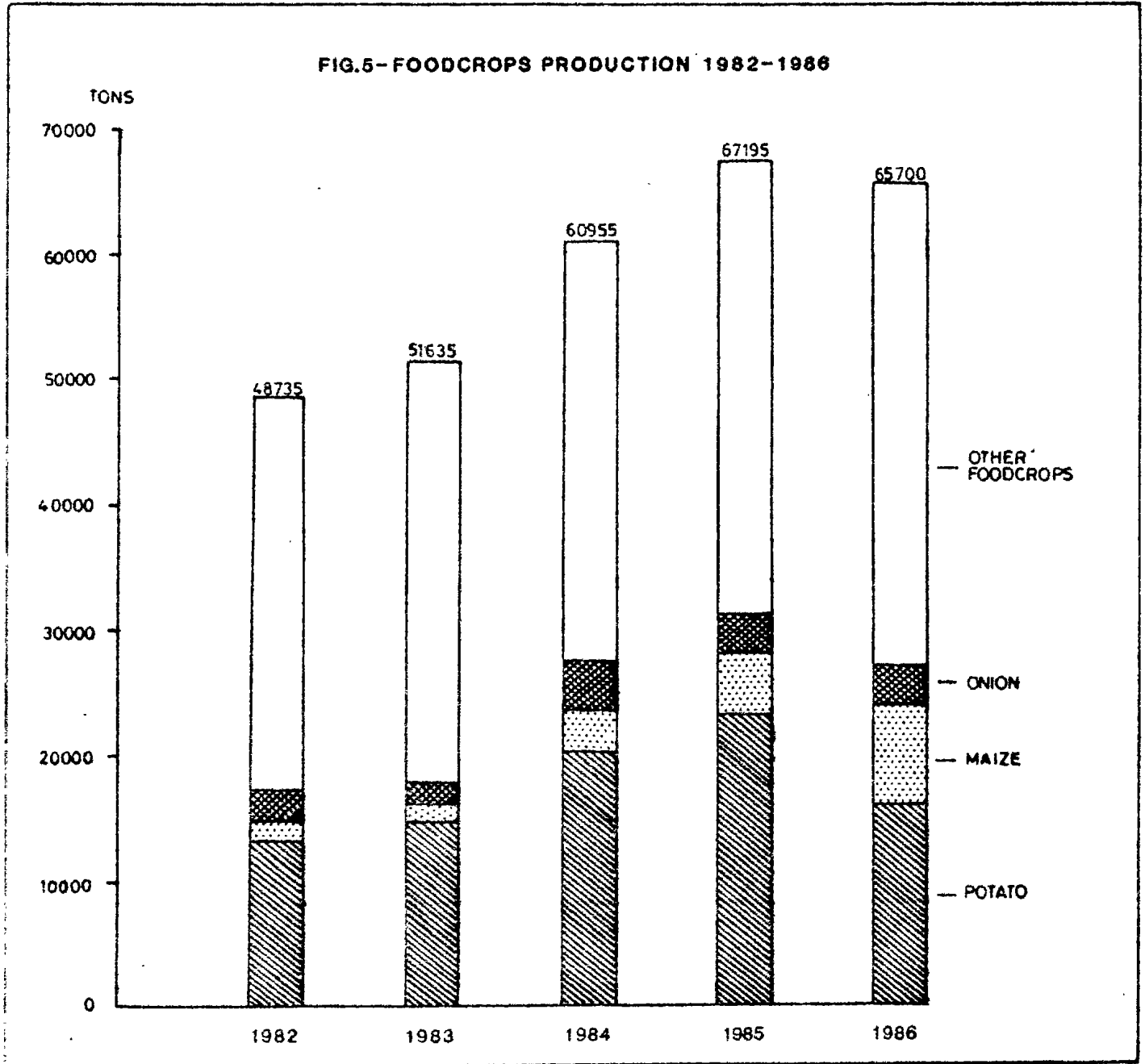


Table 4.1 - Area harvested and production of foodcrops, 1982 - 1986
(Area: arpents; Production: metric tons)

Foodcrops	1982		1983		1984		1985		1986	
	Area	Production	Area	Production	Area	Production	Area	Production	Area	Production
Beans	466	730	598	860	732	1,240	730	1,140	705	930
Beet	19	150	53	220	28	200	22	175	20	135
Bittergourd	115	180	94	155	116	200	109	180	128	190
Brinjal	165	645	181	995	159	750	161	870	164	685
Caouage	208	2,415	251	2,455	270	2,990	265	2,955	291	3,270
Calabash	155	815	100	595	124	745	113	680	146	865
Carrot	54	365	74	465	83	575	82	595	103	765
Cauliflower	67	480	79	535	99	725	76	530	81	610
Cnillies(long)	198	320	223	370	225	320	230	335	205	305
Chillies(small)	23	30	51	45	38	65	52	100	46	80
Chouchou	83	790	64	560	112	1,060	185	1,995	227	2,740
Cucumber	281	1,695	266	1,475	269	1,560	324	2,000	275	1,525
Eddoes(violet)	23	130	19	80	20	90	25	100	14	90
Eddoes(curry)	36	150	30	125	45	185	55	225	71	280
Garlic	69	215	41	120	62	175	85	240	103	325
Ginger	70	440	65	415	66	530	58	455	42	360
Green peas	54	35	66	45	65	70	70	100	43	40
Groundnut	1,310	1,940	1,468	1,910	1,941	2,420	1,657	2,165	1,704	2,250
Leek	6	35	7	40	5	35	7	40	9	30
Lettuce	33	195	45	265	45	255	43	280	43	250

Table 4.1 - Area harvested and production of foodcrops, 1982 - 1986 (Cont'd)

(Area : arpents; Production: metric tons)

Foodcrops	1982		1983		1984		1985		1986	
	Area	Production	Area	Production	Area	Production	Area	Production	Area	Production
Ladies finger	86	265	90	280	88	235	79	215	67	175
Maize	1,285	1,375	988	1,195	1,773	3,265	2,441	4,890	4,304	7,970
Manioc	15	80	30	200	40	275	53	320	45	350
Onion	501	2,190	260	1,685	667	5,635	501	2,595	598	2,955
Patole	45	150	37	115	33	110	48	155	43	135
Petsai	70	575	79	635	66	580	81	670	60	485
Pipengaille	64	530	50	260	56	295	35	185	53	270
Potato	1,500	13,500	1,716	14,910	1,944	20,680	2,045	23,305	1,895	16,265
Pumpkin	167	1,255	137	1,040	152	1,180	267	2,150	163	1,285
Rice	7	10	58	145	115	275	71	135	77	175
Squash	33	115	40	135	47	165	59	135	49	170
Sweet pepper	5	5	5	5	4	5	5	5	5	5
Sweet potato	82	355	35	150	33	180	35	200	40	220
Tomato	1,930	9,530	2,110	11,550	2,142	10,500	1,643	8,985	2,034	10,600
Voehm	74	115	62	100	57	100	73	150	61	105
Banana	770	6,415	775	7,075	775	4,750	800	7,150	869	7,830
Pine apple	80	535	57	425	80	535	100	790	134	960
Total foodcrops	10,127	42,735	10,294	51,635	12,576	60,955	12,663	67,195	14,917	65,700

Table 4.2 - Area harvested and production of foodcrops grown in interline plantations, 1984 - 1986

Type of crop	1984			1985			1986		
	Area (arpents)		Production (tons)	Area (arpents)		Production (tons)	Area (arpents)		Production (tons)
	Interline	Pure stand equivalent		Interline	Pure stand equivalent		Interline	Pure stand equivalent	
Beans	390	134	231	580	249	416	480	181	241
Peas	92	29	36	105	48	79	84	23	24
Groundnut	5,973	1,250	1,531	2,700	913	1,289	3,111	965	1,245
Maize	3,669	1,087	2,140	4,410	1,227	2,569	6,297	1,823	3,457
Potato	3,298	1,469	15,915	3,509	1,666	19,257	3,094	1,371	11,864
Tomato	368	216	1,353	409	202	1,311	431	257	1,752
Other	91	41	484	143	63	366	89	47	234
Total	11,881	4,206	21,690	11,856	4,368	25,087	15,586	4,667	18,815

Table 4.3 - Foodcrops : Monthly area harvested, 1985

(Arrebits)

Foodcrops	January	February	March	April	May	June	July	August	September	October	November	December	Total year
Beans & peas	56	48	33	52	65	82	106	72	55	90	99	62	800
Potato	2	-	-	-	2	13	168	401	149	207	701	400	2,043
Rice	11	12	-	23	11	9	-	-	-	-	-	5	71
Maize	791	365	167	72	19	42	195	164	118	22	156	310	2,441
Groundnut	181	201	140	146	115	72	225	137	101	104	57	173	1,657
Onion	3	-	-	7	27	35	75	140	99	72	36	7	501
Ginger	-	-	-	-	1	5	10	7	14	6	9	6	58
Garlic	-	-	-	-	-	-	1	5	40	32	7	-	85
Chillies	23	21	20	20	19	20	26	25	26	28	28	26	282
Tomato	252	196	34	100	94	132	139	107	90	91	106	199	1,643
Cabbage	13	12	9	11	15	32	29	38	28	23	29	26	265
Cauliflower	-	-	-	-	4	13	15	20	11	10	3	-	76
Brinjal	14	13	12	12	12	12	14	15	14	15	15	13	161
Creepers	144	136	97	86	88	80	76	76	75	79	117	139	1,193
Mixed vegetables	25	27	42	36	36	48	48	44	56	46	40	39	487
Banana	65	65	65	65	67	67	67	67	67	69	69	67	800
Pineapple	12	8	8	7	5	6	5	6	7	6	13	15	100
Total Foodcrops	1,572	1,104	727	637	580	668	1,199	1,344	950	905	1,435	1,492	12,663

Arrepts

Table 4.1 - Foodcrops : Monthly area harvested, 1986

Foodcrops	January	February	March	April	May	June	July	August	September	October	November	December	Total year
Beans & peas	67	27	39	44	57	51	76	61	70	95	93	68	748
Potato	136	6	-	-	-	9	20	165	245	392	598	324	1,895
Rice	7	-	-	5	48	10	-	-	-	-	-	7	77
Maize	1,709	451	88	9	34	114	195	375	164	84	151	930	4,304
Groundnut	180	128	238	150	112	107	102	191	295	87	8	106	1,704
Onion	3	1	-	7	31	51	64	81	177	71	47	65	598
Ginger	-	-	-	-	3	5	7	13	5	-	3	6	42
Garlic	-	-	-	-	-	-	-	13	55	25	10	-	103
Chillies	24	21	19	17	18	19	17	22	21	23	24	26	251
Tomato	320	280	157	118	96	112	126	126	112	121	244	222	2,034
Cabbage	9	14	14	14	28	25	35	35	35	36	27	19	291
Cauliflower	-	-	-	-	8	12	13	18	10	11	9	-	81
Brinjal	12	11	12	12	12	13	14	15	16	17	16	14	164
Creepers	144	132	92	81	74	75	73	76	78	81	113	126	1,145
Mixed vegetables	36	36	36	38	45	44	47	46	43	45	33	28	477
Banana	72	72	72	71	71	75	74	74	77	70	71	70	869
Pineapple	12	6	8	10	11	7	11	9	10	10	27	13	134
Total foodcrops	2,731	1,185	775	576	648	729	874	1,320	1,413	1,168	1,474	2,024	14,917

Table 4.5 - Monthly production of foodcrops, 1985

(Tons)

Foodcrops	January	February	March	April	May	June	July	August	September	October	November	December	Total year
Beans & Peas	52	43	51	87	99	129	176	120	85	136	162	100	1,240
Potato	21	-	-	-	5	113	1,975	4,425	1,314	1,950	8,500	5,002	23,305
Rice	30	3	-	47	21	21	-	-	-	-	-	13	135
Maize	1,499	759	354	94	26	73	423	384	250	29	277	722	4,890
Groundnut	217	208	166	211	190	103	317	196	160	130	68	199	2,165
Onion	18	-	1	25	115	112	339	705	515	448	264	53	2,595
Ginger	-	-	-	-	4	30	83	54	105	55	78	46	455
Garlic	-	-	-	1	2	-	2	12	116	87	18	2	240
Chillies	44	37	35	34	30	27	35	35	37	41	41	39	435
Tomato	1,376	816	523	450	516	794	892	686	506	562	629	1,235	8,985
Cabbage	126	77	76	100	163	369	352	463	322	269	344	294	2,955
Cauliflower	-	-	-	-	28	94	116	138	72	62	20	-	530
Brinjal	71	60	63	66	68	69	84	82	79	82	70	76	870
Creepers	749	657	505	488	616	556	612	601	576	568	796	906	7,630
Mixed vegetables	125	125	196	187	193	292	301	260	355	291	258	242	2,825
Banana	518	556	586	601	608	601	597	597	602	621	631	632	7,150
Pineapple	87	58	64	57	47	54	48	43	47	62	104	119	790
Total Foodcrops	4,933	3,399	2,620	2,448	2,731	3,437	6,352	8,801	5,141	5,393	12,260	9,680	67,195

Table 4.6 - Monthly production of foodcrops, 1986

(Tons)

Foodcrops	January	February	March	April	May	June	July	August	September	October	November	December	Total year
Beans and peas	73	39	48	60	87	76	84	73	72	159	117	82	970
Potato	1,557	42	-	-	1	70	182	1,692	2,406	3,040	4,487	2,788	16,265
Rice	17	-	-	13	112	23	-	-	-	-	-	10	175
Maize	3,331	882	127	8	33	252	332	695	334	117	264	1,595	7,970
Groundnut	265	164	376	227	170	167	133	230	283	95	10	130	2,250
Onion	14	2	-	23	110	204	265	441	866	314	258	458	2,955
Ginger	1	-	-	-	19	46	56	127	44	-	23	44	360
Garlic	-	-	-	-	-	-	-	44	169	78	34	-	325
Chillies	42	38	31	29	28	26	23	31	29	32	36	40	385
Tomato	1,912	1,313	713	559	511	639	645	674	653	743	1,278	960	10,600
Cabbage	98	149	138	133	302	300	399	400	427	422	301	201	3,270
Cauliflower	-	-	-	-	58	102	114	150	65	73	47	1	610
Brinjal	67	65	65	63	62	58	50	49	50	49	56	51	685
Creepers	847	701	492	538	529	605	598	594	604	523	594	660	7,285
Mixed vegetables	207	197	203	225	275	266	283	266	237	276	183	167	2,785
Banana	625	635	636	625	617	676	689	682	704	638	653	650	7,830
Pineapple	90	44	60	77	87	54	85	77	77	73	170	86	980
Total foodcrops	9,146	4,271	2,889	2,580	3,001	3,564	3,938	6,225	7,020	6,632	8,511	7,923	65,700

FIG.6- PRODUCTION OF MAIZE,POTATO AND OTHER FOODCROPS BY DISTRICT 1986

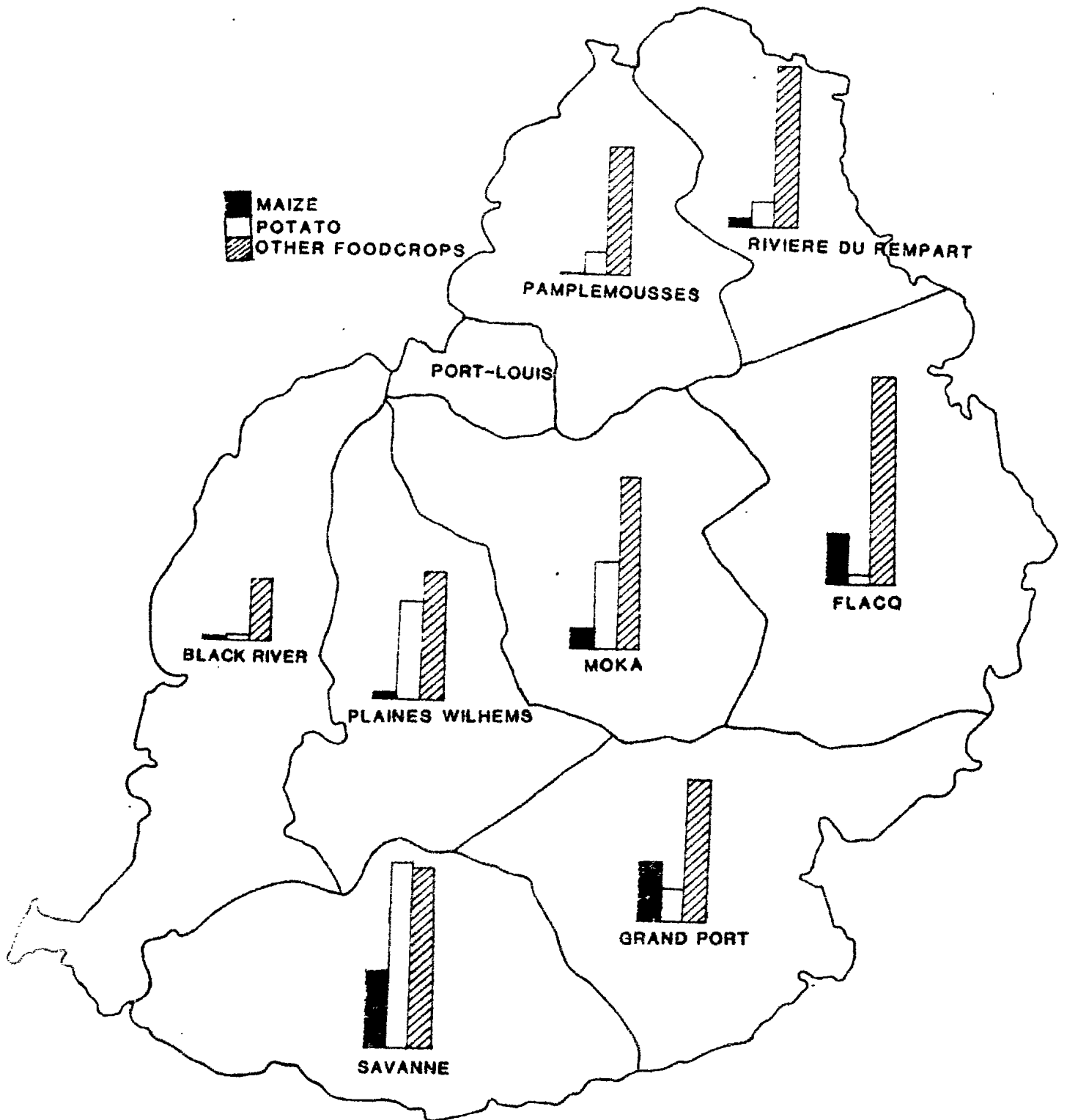


Table 4.7 - Area harvested and production of foodcrops by district, 1982 - 1986

(Area in arpents; Production in tons)

District	1982		1983		1984		1984		1986	
	Area	Production	Area	Production	Area	Production	Area	Production	Area	Production
Rivière di Rempart	1,831	7,336	1,895	6,281	2,323	8,001	1,825	6,693	2,163	6,804
Pamplemousses	1,187	5,217	1,558	6,644	1,266	6,054	1,233	5,556	1,266	5,134
Moka	602	4,287	830	5,428	944	8,106	1,412	13,188	1,550	9,958
Flacq	1,594	6,592	1,257	5,775	2,021	7,509	2,470	9,010	2,506	9,348
Black River	775	2,805	492	2,705	502	2,659	528	2,713	497	2,409
Plaines Wilhems	946	5,828	887	5,220	1,162	8,474	1,109	8,095	1,073	7,941
Grand Port	1,579	5,986	1,504	6,271	1,826	6,040	1,844	7,101	2,680	8,367
Savanne	1,613	10,686	1,873	13,311	2,532	14,112	2,242	14,839	3,182	15,689
Whole Island	10,127	48,735	10,294	51,635	12,576	60,955	12,663	67,195	14,917	65,700

Table 4.8 - Area harvested and production of beans and peas by district, 1982 - 1986

(Area in arpents; Production in tons)

District	1982		1983		1984		1985		1986	
	Area	Production	Area	Production	Area	Production	Area	Production	Area	Production
Rivière du Rempart	138	222	132	191	118	197	138	248	158	217
Pamplemousses	40	65	83	106	68	103	82	127	175	100
Moka	51	50	56	78	75	132	92	162	159	108
Flacq	79	95	91	111	218	377	183	256	135	191
Black River	28	47	30	43	37	65	68	114	84	74
Plaines Wilhems	60	81	76	97	63	99	55	86	42	65
Grand Port	114	162	148	200	129	203	128	169	135	155
Savanne	30	42	48	79	89	134	56	78	62	57
Whole island	520	765	664	905	797	1,310	800	1,240	748	970

Table 4.9 - Area harvested and production of potato by district, 1982 - 1986
 (Area in arpents; Production in tons)

District	1982		1983		1984		1985		1986	
	Area	Production	Area	Production	Area	Production	Area	Production	Area	Production
Rivière du Rempart	184	1,681	115	665	110	929	99	890	112	849
Pamplemousses	189	1,456	251	1,694	193	2,005	138	1,175	86	697
Moka	178	1,586	297	2,646	411	4,414	578	7,128	378	3,093
Flacq	22	130	37	212	34	330	61	426	32	291
Black River	165	1,080	119	821	32	301	106	784	21	152
Plaines Wilhems	143	1,169	136	937	315	4,012	350	4,299	323	3,356
Grand Port	191	1,495	179	1,308	161	1,507	175	1,787	212	1,205
Savanne	428	4,905	612	6,627	688	7,182	536	6,816	731	6,622
Whole Island	1,500	13,500	1,746	14,910	1,944	20,680	2,043	23,305	1,895	16,265

Table 4.10 -- Area harvested and production of maize by district, 1962 - 1986
 (Area in arpents; Production in tons)

District	1982		1983		1984		1985		1986	
	Area	Production	Area	Production	Area	Production	Area	Production	Area	Production
Rivière du Rempart	171	219	142	175	218	302	134	346	241	330
Pamplemousses	43	59	35	34	20	23	28	48	31	46
Moka	52	62	125	152	7	9	110	232	537	749
Flacq	150	186	122	165	288	586	744	1,537	790	1,741
Black River	298	275	23	20	25	21	49	46	71	120
Plaines Wilhelms	52	36	13	13	63	109	156	272	53	172
Grand Port	224	273	216	247	417	842	540	1,002	1,153	2,155
Savanne	315	287	312	389	735	1,373	680	1,407	1,428	2,657
Whole Island	1,285	1,375	988	1,195	1,773	3,265	2,441	4,890	4,304	7,970

Table 4.11 - Area harvested and production of groundnut by district, 1982 - 1986
 (Area in arpents; Production in tons)

District	1982		1983		1984		1985		1986	
	Area	Production	Area	Production	Area	Production	Area	Production	Area	Production
Rivière du Rempart	260	412	459	644	554	745	458	683	583	777
Pamplemousses	227	296	378	394	324	356	283	358	326	480
Moka	12	22	46	71	47	58	23	42	10	17
Flacq	304	421	117	152	273	330	375	451	323	355
Black River	130	220	124	154	159	241	99	132	92	137
Plaines Wilhems	52	87	39	60	89	105	27	30	14	22
Grand Port	219	332	168	219	277	307	249	288	160	184
Savanne	106	150	137	216	218	278	143	181	196	278
Whole Island	1,310	1,940	1,468	1,910	1,941	2,420	1,657	2,165	1,704	2,250

Table 4.12 - Area harvested and production of onion by district, 1982 - 1986

(Area in arpents; Production in tons)

District	1982		1983		1984		1985		1985	
	Area	Production	Area	Production	Area	Production	Area	Production	Area	Production
Rivière du Rempart	44	138	26	112	52	136	44	126	44	144
Pamplemousses	11	33	3	11	15	72	7	33	4	15
Moka	2	10	2	9	1	3	1	2
Flacq	260	1,046	30	262	301	1,410	210	854	279	1,004
Black River	56	454	77	754	114	1,136	93	873	96	1,000
Plaines Wilhems	15	115	18	133	53	402	34	274	60	397
Grand Port	94	303	70	385	111	373	88	331	104	352
Savanne	19	19	6	28	19	97	24	101	10	41
Whole Island	501	2,190	200	1,685	667	3,635	501	2,595	598	2,955

Table 4.13 - Area harvested and production of tomato by district, 1982 - 1986

(Area in arpents: Production in tons)

District	1982		1983		1984		1985		1986	
	Area	Production	Area	Production	Area	Production	Area	Production	Area	Production
Riviere du Rempart	734	3,499	775	3,516	945	4,326	622	3,062	700	3,323
Pamplemousses	332	1,700	417	2,581	291	1,674	269	1,635	315	1,792
Moka	44	185	80	598	44	330	50	390	97	1,050
Flacq	156	620	148	690	175	740	147	704	159	692
Black River	44	342	51	398	52	469	48	432	59	529
Plaines Wilhems	72	515	56	531	50	365	16	122	24	198
Grand Port	256	1,061	298	1,530	342	1,232	242	1,192	454	1,596
Savanne	292	1,608	285	1,706	243	1,364	249	1,448	227	1,420
Whole Island	1,930	9,530	2,110	11,550	2,142	10,500	1,643	8,985	2,034	10,600

Table 4.14 - Area harvested and production of cabbage and cauliflower by district, 1982 - 1986

(Area in arpents; Production in tons)

District	1982		1983		1984		1985		1986	
	Area	Production	Area	Production	Area	Production	Area	Production	Area	Production
Riviere du Rempart	8	83	4	39	6	66	5	56	3	28
Pamplemousses	1	10	1	7	4	40	2	19	1	7
Moka	23	259	35	392	64	811	85	1,014	66	867
Flaqcq	69	878	81	925	69	879	85	1,018	99	1,184
Black River	4	77	6	107	4	44	3	46	2	31
Plaines Wilhems	150	1,412	166	1,374	184	1,556	137	1,137	180	1,596
Grand Port	13	113	9	63	20	160	13	89	8	56
Savanne	7	63	8	83	18	159	11	106	13	111
Whole Island	275	2,895	310	2,990	369	3,715	341	3,485	372	3,880

Table 4.15 - Area harvested and production of creepers by district, 1982 - 1986

(Area in arpents, production in tons)

District	1982		1983		1984		1985		1986	
	Area	Production	Area	Production	Area	Production	Area	Production	Area	Production
Riviere du Rempart	149	632	108	446	152	672	167	712	181	763
Pamplemousses	125	615	144	612	141	717	131	667	156	740
Moka	175	1,493	105	832	176	1,587	333	3,203	274	3,169
Placq	91	376	88	394	101	499	144	779	112	577
Black River	8	50	9	82	16	86	8	41	12	75
Plaines Wilhems	226	1,241	155	782	135	653	142	711	170	884
Grand Port	155	648	147	662	134	620	150	814	166	749
Savanne	66	388	94	625	111	581	118	703	74	328
Whole Island	995	5,445	850	4,435	966	5,415	1,193	7,630	1,145	7,285

Table 4.16 - Area harvested and production of other vegetables by district, 1982 - 1986

District	1982		1983		1984		1985		1986	
	Area	Production	Area	Production	Area	Production	Area	Production	Area	Production
Riviere du Rempart	130	385	116	382	162	579	148	502	133	314
Pamplemousses	170	704	202	827	179	821	242	1,035	226	579
Moka	62	347	58	322	88	533	95	409	86	387
Flacq	254	1,033	301	1,153	328	911	282	1,045	278	1,069
Black River	35	190	46	263	58	268	252	235	59	287
Plaines Wilhems	151	895	205	1,098	203	1,135	187	1,130	199	1,206
Grand Port	132	540	97	389	75	318	97	299	97	387
Savanne	5	51	21	121	29	165	41	225	36	186
Whole Island	961	4,145	1,046	4,555	1,122	4,730	1,144	4,960	1,114	4,715

(Area in arpents ; Production in tons)

Table 4.17 - Area harvested and production of banana by district, 1982 - 1986

District	1982		1983		1984		1985		1986	
	Area	Production	Area	Production	Area	Production	Area	Production	Area	Production
Riviere du Rempart	13	65	16	111	6	49	10	60	6	46
Pamplemousses	17	144	17	169	3	26	10	75	4	40
Moka	23	273	28	337	30	223	45	525	42	516
Flacq	162	1,451	166	1,511	187	1,158	190	1,586	233	1,779
Black River	7	70	7	63	5	28	2	10	1	4
Plaines Wilhems	35	277	23	195	7	38	7	34	8	42
Grand Port	174	1,037	169	1,256	159	474	160	1,124	176	1,446
Savanne	339	3,098	349	3,433	378	2,754	376	3,728	399	3,957
Whole Island	770	6,415	775	7,075	775	4,750	800	7,150	869	7,830

(Area in arpent; Production in tons)

Table 4.13 - Area harvested and production of pineapple by district, 1982 - 1986
(Area in arpents; Production in tons)

District	1982		1983		1984		1985		1986	
	Area	Production	Area	Production	Area	Production	Area	Production	Area	Production
Rivière du Rempart	2	13
Pamplemousses	24	155	27	209	28	217	41	384	42	288
Moka
Flacq	47	351	26	200	47	289	49	354	67	465
Black River
Plaines Wilhems
Grand Port	7	25	5	12	1	4	2	6	17	82
Savanne	2	5	1	4	4	25	8	46	6	32
Whole Island	80	525	57	425	80	535	100	790	134	980

Table 4.19 Annual prices of foodcrops, 1985

(Rupees)

Foodcrops	Unit	January	February	March	April	May	June	July	August	September	October	November	December
Beans	Kg	5.80	8.40	10.20	5.60	4.90	4.70	5.60	5.90	6.30	5.30	4.00	3.80
Beet	Unit	1.50	1.45	1.50	1.80	1.60	1.50	1.40	1.45	1.35	1.20	1.30	1.30
Bittergourd	Kg	5.30	6.30	5.70	6.30	7.30	8.60	9.80	10.10	11.10	9.60	7.65	6.75
Brinjal	Kg	2.90	4.10	4.80	3.50	4.70	4.40	4.40	4.40	5.50	4.60	4.05	3.75
Cabbage	Unit	2.75	4.25	4.75	5.15	3.25	2.50	2.50	2.95	3.30	2.75	2.10	2.15
Calabash	Kg	2.90	4.40	3.60	3.70	4.10	4.00	3.40	4.60	3.40	3.40	3.20	2.55
Carrot	Kg	6.20	7.20	12.30	9.90	8.70	5.00	4.40	4.30	4.70	3.70	4.05	3.65
Cauliflower	Unit	-	-	-	-	12.95	5.45	4.65	4.75	6.10	5.80	9.00	-
Chillies (long)	Kg	7.20	10.50	11.10	8.80	13.90	12.90	14.20	8.40	8.90	8.50	8.05	9.70
Chillies (small)	Kg	17.90	18.00	17.10	14.30	16.40	30.60	34.00	21.60	23.50	25.80	24.10	23.45
Chouchou	Kg	4.00	8.00	10.00	3.80	2.20	1.10	1.40	1.60	2.00	2.30	2.20	2.70
Cucumber	Unit	2.15	2.75	2.40	2.40	1.90	2.05	2.45	2.95	2.45	1.65	1.65	1.60
Eddoes (violet)	Kg	6.40	6.60	6.20	3.15	5.60	4.80	5.30	5.50	6.30	6.10	5.80	5.05
Eddoes (curry)	Kg	4.50	5.50	5.20	4.60	3.80	3.30	3.90	3.60	-	4.00	3.75	2.25
Garlic	Kg	33.90	38.10	38.10	37.30	40.30	35.10	36.80	33.60	28.40	28.10	31.15	30.65
Ginger	Kg	11.20	11.40	10.80	11.60	13.70	12.70	11.40	11.40	11.50	11.90	10.45	10.05
Green peas	Kg	18.80	-	-	30.50	24.00	8.80	8.90	10.20	15.10	16.30	13.00	17.20
Groundnut (fresh)	Kg	6.60	6.20	5.20	6.70	7.20	6.30	6.30	6.30	6.90	7.70	8.80	6.50

Table 4.19- Retail prices of food crops, 1985 (continued)

(Rupees)

Foodcrops	Unit	January	February	March	April	May	June	July	August	September	October	November	December
Groundnut (dry)	Kg	14.60	14.90	13.50	14.10	14.80	15.20	14.60	13.90	14.40	14.50	15.70	13.00
Beek	Unit	0.70	1.00	1.10	1.20	0.85	1.00	1.05	1.00	1.15	1.00	1.15	1.05
Lettuce	Unit	1.45	1.90	1.70	1.35	1.30	1.20	1.20	1.30	1.25	1.25	1.40	1.25
Radishes finger	Kg	8.40	11.60	9.00	5.20	4.40	5.90	8.00	9.80	12.10	11.60	11.65	9.55
Maize (grain)	Kg	5.30	4.70	4.90	3.50	5.70	5.30	6.00	5.60	5.40	5.20	2.85	1.20
Manioc	Kg	3.60	-	4.10	3.50	3.50	3.00	3.20	3.70	3.80	4.00	3.50	3.1
Onion (local)	Kg	6.70	6.80	6.90	7.00	7.00	6.90	6.70	6.50	6.30	6.00	6.30	6.50
Carrot	Kg	3.50	5.80	5.00	4.40	4.30	4.30	4.50	4.50	5.40	4.60	4.20	3.65
Capsai	Unit	1.80	2.30	2.40	2.10	1.95	1.90	2.20	2.25	2.25	2.20	1.95	1.80
Pipengaille	Kg	4.90	7.00	6.30	3.30	4.70	5.20	6.10	7.00	7.30	5.90	5.90	5.80
Potato	Kg	2.50	2.50	2.50	2.50	2.50	2.50	2.50	2.50	2.50	2.50	2.50	1.85
Pumpkin	Kg	2.40	2.70	3.00	2.90	3.20	2.90	2.90	2.90	3.10	3.00	2.65	2.25
Squash	Unit	1.20	1.45	1.90	1.50	1.40	1.30	1.30	1.45	1.60	1.35	1.30	1.35
Sweet pepper	Unit	0.70	1.05	-	-	1.15	1.75	1.75	1.35	1.30	1.25	1.25	1.00
Sweet potato	Kg	4.50	4.50	4.50	4.40	3.80	3.80	4.30	4.60	4.50	4.20	4.15	3.75
Tomato	Kg	5.40	8.50	13.70	13.10	7.00	4.70	4.50	4.20	7.90	8.60	8.15	3.20
Yoehm	Kg	5.10	6.60	6.40	4.80	5.40	4.90	5.80	6.60	7.00	6.60	5.70	4.40

Table 4.20 - Retail prices of foodcrops, 1986

(Rupees)

Foodcrops	Unit	January	February	March	April	May	June	July	August	September	October	November	December
Beans	Kg	5.40	9.05	8.85	6.20	6.20	5.15	6.05	7.35	7.55	5.85	4.65	6.35
Beet	Unit	1.10	1.25	1.20	1.65	1.35	1.60	1.40	1.65	1.50	1.50	1.20	1.45
Bittergourd	Kg	5.90	6.65	6.20	6.50	7.55	8.80	9.35	10.80	12.90	12.30	10.00	9.60
Brinjal	Kg	2.70	3.70	3.80	4.50	5.95	6.15	7.70	9.15	9.30	9.10	6.60	6.90
Cabbage	Unit	2.65	3.65	4.45	5.10	4.30	3.75	3.45	3.90	3.10	2.90	2.90	3.35
Calabash	Kg	2.20	2.90	3.60	3.40	4.10	3.70	4.10	4.50	4.25	4.10	4.20	4.05
Carrot	Kg	3.90	6.00	7.45	9.90	9.50	7.15	5.40	3.95	6.00	5.45	5.30	5.75
Cauliflower	Unit	-	-	-	-	11.55	7.15	4.80	6.40	6.45	7.05	7.70	-
Chillies(long)	Kg	10.10	11.00	12.55	8.55	9.20	11.50	14.75	23.30	15.90	9.75	8.10	9.00
Chillies(small)	Kg	20.90	14.65	15.80	14.05	16.05	40.90	67.35	-	-	75.00	25.25	25.50
Chouchou	Kg	3.65	5.75	5.65	4.40	2.35	1.50	1.40	2.70	4.05	4.30	3.40	3.95
Cucumber	Unit	1.60	2.10	2.40	2.25	2.35	2.50	2.70	3.50	3.50	2.25	2.15	2.60
Eddoes(violet)	Kg	5.40	4.85	5.25	5.15	4.95	4.50	4.80	5.20	4.80	5.45	5.40	5.30
Eddoes(curry)	Kg	-	5.45	4.50	4.15	3.95	3.35	3.90	3.95	4.00	3.80	4.10	3.80
Garlic	Kg	31.40	33.65	38.00	38.90	39.40	35.25	43.40	43.25	36.25	29.25	29.10	30.75
Ginger	Kg	12.95	13.90	15.75	17.80	18.00	13.65	14.25	14.45	14.00	11.00	10.80	11.70
Green peas	Kg	-	-	-	-	18.40	13.55	12.80	15.40	17.95	20.60	17.90	18.50

Table 4.20 - Retail prices of food crops, 1986 (cont'd)

(Rupees)

Foodcrops	Unit	January	February	March	April	May	June	July	August	September	October	November	December
Groundnut (fresh)	Kg	6.40	6.50	6.90	6.20	6.80	6.70	7.50	6.70	7.00	7.50	8.50	7.90
Groundnut (dry)	Kg	14.10	12.70	14.10	13.50	14.20	13.20	13.00	14.10	14.20	14.90	14.80	14.10
Leek	Unit	0.95	1.20	1.20	1.25	1.35	1.15	1.10	1.05	1.15	1.20	1.20	1.25
Lettuce	Unit	1.20	1.70	1.45	1.45	1.35	1.50	1.25	1.45	1.40	1.25	1.20	1.55
Ladies Finger	Kg	8.65	9.70	7.80	6.30	6.20	8.00	8.90	11.90	13.45	13.40	10.55	10.40
Maize (grain)	Kg	5.30	5.20	5.20	5.20	6.00	6.00	5.40	5.25	5.50	5.30	-	-
Manioc	Kg	3.00	3.30	3.55	3.70	3.50	3.15	3.25	3.45	3.45	3.25	3.30	3.60
Onion (local)	Kg	6.60	6.60	6.90	-	7.00	7.00	6.95	6.70	6.45	6.45	6.35	6.45
Patole	Kg	3.50	4.70	3.55	3.70	4.05	4.70	5.10	6.25	6.45	6.90	5.20	5.10
Petsai	Unit	1.80	2.50	2.00	2.30	2.15	2.05	2.15	2.20	2.45	2.55	2.10	2.50
Pipengaille	Kg	5.45	6.40	4.25	3.45	4.20	5.30	6.60	7.10	7.95	8.85	7.30	7.30
Potato	Kg	2.35	2.50	2.50	2.50	2.50	2.50	2.50	2.50	2.45	2.45	2.45	2.50
Pumpkin	Kg	2.50	2.60	2.65	2.50	3.85	3.70	3.65	4.15	3.70	3.90	3.70	3.50
Squash	Unit	1.25	1.70	1.50	1.75	1.70	1.45	1.30	1.55	1.50	1.35	1.15	1.35
Sweet pepper	Unit	1.35	1.05	1.60	1.25	1.40	1.65	1.55	1.40	1.35	1.90	1.70	1.55
Sweet potato	Kg	3.45	3.40	3.40	3.90	3.40	3.80	3.80	4.00	4.30	3.95	3.80	3.85
Tomato	Kg	2.80	6.55	8.95	9.45	9.25	9.10	8.15	9.55	5.60	4.55	3.70	10.50
Voehm	Kg	3.60	5.90	5.80	5.75	7.35	6.25	6.80	7.25	9.15	8.00	6.05	6.55

Table 4.21- Number of fruit trees ^{1/}(bearing/non-bearing) grown in back-yard by species, 1985

	Number of fruit trees		
	Bearing	Non-bearing	Total
Banana	150,228	399,396	549,624
Mango	142,940	94,831	237,771
Pawpaw	138,689	78,802	217,491
Citrus	64,840	135,099	199,937
Lime	(14,623)	(35,302)	(49,925)
Lemon	(12,023)	(19,552)	(31,575)
Mandarine	(4,218)	(9,295)	(13,511)
Orange	(1,811)	(4,422)	(6,233)
Other Citrus	(32,165)	(66,528)	(98,693)
Guava	104,062	88,629	192,691
Coconut	42,175	84,337	126,512
Longane	53,250	50,272	103,522
Avocado	41,189	36,996	78,185
Pine apple	21,702	51,651	73,353
Jackfruit	30,876	14,565	45,441
Letchi	22,243	16,700	38,943
Fruit de Cythere	16,497	11,822	28,319
Atte	16,980	8,335	25,315
Coeur de boeuf	8,130	3,334	16,464
Corrosol	7,817	6,451	14,268
Grenadille	7,407	6,034	13,441
Breadfruit	9,586	2,491	12,077
Olive	5,667	5,284	10,951
Grapes	3,747	4,498	8,245
Tamarin	3,911	2,516	6,427
Other	110,084	87,715	197,799
T o t a l	1,002,020	1,194,756	2,196,776

^{1/} Based on fruit trees survey March - April 1985

**LIVESTOCK
&
FISHERIES**



Table 5.1 - Cattle population for past livestock censuses, 1921 - 1983

Census Year	1921	1930	1940	1943	1950	1956	1964	1973	1978	1983
Number of cattle	44,339	25,926	24,269	34,443	37,213	40,074	45,683	41,094	21,098	25,485

Table 5.2 - Number of cattle, goats, sheep and pigs by sex and type of breeder (1983 Livestock Census)

Type of breeder	CATTLE			GOATS			SHEEP			PIGS		
	Male	Female	TOTAL	Male	Female	TOTAL	Male	Female	TOTAL	Male	Female	TOTAL
	4,179	11,741	15,920	25,399	46,879	72,278	211	378	589	3,153	3,901	7,054
2,150	6,105	8,255	25	51	76	265	1,094	1,359	472	559	1,031	
Livestock Breeding Station and Prison farm	266	1,044	1,310	113	229	342	27	62	89	257	256	513
TOTAL	6,595	18,890	25,485	25,537	47,159	72,696	503	1,534	2,037	3,882	4,716	8,598

Source : Veterinary services, Ministry of Agriculture, Fisheries and Natural Resources

Table 5.3 - Regional distribution of small cattle breeders by herd size and number of cattle owned (1983 livestock Census)

Livestock Areas	No. of small breeders keeping			Total No. of small breeders	No. of cattle owned
	1 cattle	2 cattle	> 2 cattle		
1. Port Louis	466	323	143	932	1,663
2. Triolet	62	24	8	94	141
3. Pamplemousses	543	260	83	886	1,330
4. Goodlands	384	167	38	589	841
5. Rivière du Rempart	268	183	49	500	796
6. Mapou	132	102	21	255	401
7. Flacq	338	283	76	697	1,162
8. Brisée Verdière	363	253	78	694	1,134
9. Bel Air	273	237	68	578	966
10. Quartier Militaire	349	330	133	812	1,435
11. Moka	209	194	96	499	922
12. Black River	136	127	128	391	914
13. Black River (Albion)	83	92	53	228	462
14. Plaines Wilhems (lower)	192	167	48	407	693
15. Plaines Wilhems (upper)	321	290	114	725	1,276
16. Union Park	71	62	18	151	252
17. Rivière des Anguilles	82	68	28	178	323
18. New Grove	194	203	83	480	878
19. Plaisance	64	83	32	179	331
T O T A L	4,530	3,448	1,297	9,275	15,920

Source : Veterinary Services, Ministry of Agriculture, Fisheries and Natural Resources

Table 5.4 - Livestock slaughtered, 1982 - 1986

Type of livestock	1982		1983		1984		1985		1986	
	No. of heads	Carcass weight (M/tons)	No. of heads	Carcass weight (M/tons)	No. of heads	Carcass weight (M/tons)	No. of heads	Carcass weight (M/tons)	No. of heads	Carcass weight (M/tons)
Cattle	6,301	1,262.2	6,034	1,174.4	5,000	983.2	5,088	948.8	6,901	1,232.8
Local	2,108	357.7	2,562	406.9	1,862	341.7	2,621	457.8	4,402	784.9
Milchbreed										
Bulls & Calves	435	54.5	720	93.5	460	60.0	690	93.8	1,295	176.4
Cows*	160	24.7	73	10.0	83	11.0	138	16.4	220	30.9
Other breed	1,513	278.5	1,769	303.4	1,319	270.7	1,793	387.6	2,887	577.6
Rodrigues	428	56.9	712	101.3	736	90.6	731	89.3	807	108.9
Imported	3,765	847.6	2,760	666.2	2,402	551.0	1,736	361.7	1,692	339.0
Goats	13,341	85.3	15,188	95.2	16,886	108.7	19,873	121.6	21,908	131.5
Sheep	2,438	23.3	2,254	20.7	2,082	21.2	2,058	24.1	2,552	29.1
Pigs	11,322	608.3	11,147	600.7	12,140	616.5	11,731	540.5	10,461	595.2

*Including Heifers

Table 5.5 - Production of fish ^{1/} (in wet weight equivalent), 1982 - 1986

(Tons)

	1982	1983	1984	1985	1986
Bank fishing	<u>3,795</u>	<u>2,741</u>	<u>2,837</u>	<u>5,020</u>	<u>5,950</u>
Local vessels	1,493	1,830	2,657	5,020	5,950
Foreign vessels	2,302	911	180	-	-
Coastal fishing	<u>1,754</u>	<u>2,070</u>	<u>2,075</u>	<u>2,034</u>	<u>2,067</u>
Lagoon and off lagoon	1,054	1,370	1,375	1,334	1,327
Sport fishing	400	400	400	400	400
Amateur fishing	300	300	300	300	300
Ponds and barachois	<u>37</u>	<u>35</u>	<u>36</u>	<u>35</u>	<u>40</u>
Total production	5,586	4,846	4,948	7,089	8,017

^{1/} excludes fish caught for the canning industry

Source : Ministry of Agriculture, Fisheries and Natural Resources

Table 5.6 - Catch from artisanal fishing by type, 1982 - 1986

	Tons				
	1982	1983	1984	1985	1986
Fin fish	984	1,236	1,218	1,179	1,152
Bony	(975)	(1,222)	(1,204)	(1,172)	(1,146)
Cartilaginous	(9)	(14)	(14)	(7)	(6)
Shell fish	5	23	48	39	42
Molluscs	65	111	109	116	133
T o t a l	1,054	1,370	1,375	1,334	1,327

Table 5.7 - Number of professional fishermen by region and type, 1986

Region \ Type	Basket trap	Line	Basket trap and line	Large net	Gill net	Other	Total
North and northwest	139	205	248	205	13	12	822
West	78	137	153	85	12	6	471
South and Southwest	104	63	164	76	8	9	424
Southeast	108	156	173	107	19	6	569
East and northeast	53	118	102	98	17	3	391
T o t a l	482	679	840	571	69	36	2,677

Source : Ministry of Agriculture, Fisheries and Natural Resources

**FOOD
BALANCE SHEET**

Food Balance Sheet

General Notes

1. All data relate to the Island of Mauritius only (not its dependencies)
2. Quantity is in metric tons unless otherwise specified.
3. (a) Gross imports include imports from dependencies
(b) Gross exports include exports to dependencies
4. Estimated changes in stock :

A plus sign indicates that there has been a decrease in stock, that is an increase in supply. A negative sign would mean the converse.
5. Data on production of foodcrops may not tally with production data published in other sections since allowance has been made here for backyard production.
6. Local production of meat includes imported live animals slaughtered in Mauritius. Estimates for off-abattoir slaughters have been included.
7. Data on fish and crustaceans are given in terms of wet-weight equivalent.

Table 6.1 - Per capita consumption of food commodities, 1983 - 1986

Commodity	1983		1984		1985		1986	
	Kgms p/year	Grams p/day	Kgms p/year	Grams p/day	Kgms p/year	Grams p/day	Kgms p/year	Grams p/day
CEREALS								
Wheat/flour	57.49	157.49	61.94	169.25	60.39	165.45	60.04	164.50
Paddy/milled rice	72.07	197.41	72.03	196.81	71.55	196.02	71.54	196.01
Maize	1.06	2.91	1.13	3.08	1.22	3.34	1.11	3.03
Oats	0.04	0.10	0.03	0.09	0.10	0.26	0.10	0.28
Barley	-	-	-	-	-	-	-	-
Malt	0.06	0.17	0.03	0.09	0.06	0.18	0.07	0.21
Other cereals (Unmilled) 1/	0.01	0.03	0.07	0.20	0.02	0.04	0.02	0.07
Other cereals (flour)	0.08	0.21	0.12	0.34	0.04	0.11	0.07	0.21
Cereals preparations 2/	1.05	2.89	0.94	2.56	0.99	2.71	1.24	3.41
STARCHY-FOODS								
Potatoes	15.87	43.48	18.96	51.80	21.96	60.16	18.35	50.26
Sweet potatoes	0.14	0.40	0.17	0.46	0.19	0.51	0.20	0.55
Cassava (Manioc)	0.30	0.82	0.27	0.73	0.31	0.85	0.33	0.91
Tapioca & Sago	0.23	0.62	0.21	0.57	0.10	0.26	0.08	0.22
Taro (Eddoes)	0.21	0.57	0.28	0.75	0.32	0.89	0.36	0.99

1/ includes wheat unmilled

2/ refers to prepared breakfast foods, macaroni and spaghetti, bakery products and other

Table 6.1 - Per capita consumption of food commodities, 1983 - 1986 (cont'd)

Commodity	1983		1984		1985		1986	
	Kgms p/year	Grams p/day	Kgms p/year	Grams p/day	Kgms p/year	Grams p/day	Kgms p/year	Grams p/day
SUGARS								
Cane/sugar 1/	35.57	97.43	36.33	99.26	35.43	97.08	35.97	98.54
Other sugars	0.32	0.88	0.46	1.25	0.41	1.12	0.42	1.16
Sugar preparations	-	-	-	-	0.08	0.21	0.25	0.67
Honey	0.07	0.20	0.04	0.11	0.05	0.13	0.07	0.20
PULSES NUTS & SEEDS								
Pulses 2/	8.42	23.06	7.14	19.51	9.02	24.72	8.42	23.06
Groundnuts (in shells or not)	1.87	5.13	2.41	6.59	2.11	5.79	2.17	5.94
Coconuts 3/	2.27	6.22	2.30	6.29	2.73	7.48	2.96	8.10
Other edible nuts	0.03	0.09	0.04	0.12	0.03	0.08	0.02	0.06
VEGETABLES								
Tomatoes	11.36	31.11	10.26	28.04	8.70	23.83	10.19	27.91
Other (fresh) 4/	15.01	41.13	17.46	47.71	19.35	53.02	19.41	53.18
Onion	4.27	11.71	5.07	13.87	4.70	12.89	5.26	14.41
Vegetable prepared or preserved	0.68	1.87	0.46	1.25	0.53	1.44	0.51	1.41

1/ includes raw and white sugar

2/ Green peas and beans are accounted for as vegetables

3/ includes green and dried coconuts and copra for manufacturing

4/ excludes potatoes, tomatoes, onion, ginger, groundnuts, bananas, pineapples, garlic, manioc, sweet pepper, chillies, sweet potatoes, eddoes, rice and maize which are given separately

Table 6.1 - Per capita consumption of food commodities, 1983 - 1986 (cont'd)

Commodity	1983		1984		1985		1986	
	Kgms p/year	Grams p/day	Kgms p/year	Grams p/day	Kgms p/year	Grams p/day	Kgms p/year	Grams p/day
FRUITS								
Fresh bananas	7.02	19.22	4.63	12.65	6.90	18.91	7.49	20.51
Fresh citrus	1.71	4.69	1.29	3.53	0.95	2.61	1.18	3.24
Fresh apples	0.99	2.70	0.74	2.03	0.67	1.83	0.68	1.86
Fresh pineapples	0.42	1.15	0.53	1.44	0.76	2.09	0.96	2.62
Fresh other 1/	0.11	0.30	0.10	0.27	0.05	0.14	0.04	0.12
Fresh grapes	0.24	0.65	0.29	0.80	0.22	0.60	0.26	0.71
Dried grapes	0.13	0.98	0.16	0.43	0.10	0.28	0.08	0.23
Dried other	0.36	0.98	0.07	0.20	0.17	0.47	0.11	0.30
Preserved fruits	0.45	1.24	0.41	1.12	0.30	0.80	0.55	1.51
Fruit & Vegetable juices	0.76	2.08	0.40	1.10	0.39	1.07	0.58	1.59
MISCELLANEOUS								
Ginger	0.38	1.04	0.48	1.30	0.39	1.06	0.30	0.81
Pepper, chillies, etc.	0.47	1.30	0.42	1.16	0.43	1.19	0.37	1.01
Garlic	0.36	0.98	0.42	1.14	0.45	1.25	0.48	1.33
Other spices	0.94	2.57	0.54	1.48	0.70	1.90	0.89	2.44
Cocoa/chocolate 2/	0.24	0.66	0.10	0.45	0.25	0.69	0.23	0.64

1/ no estimate of local fruit production and consumption is available

2/ including food preparations containing cocoa

Table 6.1 - Per capita consumption of food commodities, 1983 - 1986 (cont'd)

Commodity	1983		1984		1985		1986	
	Kgms p/year	Grams p/day	Kgms p/year	Grams p/day	Kgms p/year	Grams p/day	Kgms p/year	Grams p/day
MEAT								
Cattle/meat	4.01	11.15	4.12	11.27	4.79	13.12	5.70	15.63
Goat & sheep/meat	2.22	6.07	2.44	6.67	2.54	6.95	2.83	7.75
Pigs/meat	0.69	1.89	0.63	1.72	0.55	1.49	0.59	1.63
Edible offals for the 4 above items	2.21	6.10	2.32	6.34	2.17	5.95	2.18	5.98
Poultry/meat	6.50	17.81	6.36	17.38	6.34	17.37	6.85	18.77
Rabbit	0.03	0.07	0.03	0.07	0.03	0.07	0.02	0.07
Game/meat	0.34	0.92	0.33	0.91	0.33	0.90	0.35	0.96
Beacon, ham and sausages	0.24	0.67	0.17	0.48	0.19	0.53	0.16	0.43
Meat preparations	0.46	1.27	0.33	0.90	0.32	0.88	0.37	1.02
Other/offals	0.07	0.20	0.06	0.16	0.08	0.22	0.10	0.28
EGGS								
Hen/eggs	3.78	10.37	3.69	10.08	3.01	8.24	2.97	8.13
MILK								
Fresh milk & cream	8.19	22.44	9.23	25.22	10.60	29.05	10.91	29.89
Dried milk exceeding 1.5% by wt. of fat	8.57	23.48	8.16	22.29	7.13	19.54	6.68	18.31
Dried milk not exceeding 1.5% by wt. of fat	0.90	2.47	1.48	4.05	1.83	5.01	1.96	5.38
Condensed milk	0.19	0.51	0.33	0.91	0.33	0.89	0.27	0.75
Milk/cheese	0.59	1.61	1.12	3.05	0.90	2.45	0.75	2.06

Table 6.1 - Per capita consumption of food commodities, 1983 - 1986 (cont'd)

Commodity	1983		1984		1985		1986	
	Kgms p/year	Grams p/day	Kgms p/year	Grams p/day	Kgms p/year	Grams p/day	Kgms p/year	Grams p/day
FISH								
Fresh or frozen	5.38	14.72	4.88	13.32	6.84	18.74	7.23	19.81
Other	5.98	16.38	8.14	22.23	4.73	12.96	5.45	14.93
CRUSTACEANS & MOLLUSCS								
Fresh or frozen	0.50	1.37	0.49	1.33	0.26	0.72	0.35	0.95
Other	0.27	0.75	0.59	1.62	0.51	1.41	0.50	1.37
OILS AND FATS	20.29	55.57	19.69	53.81	19.90	54.53	20.50	56.16
BEVERAGE CROPS								
Tea	1.01	2.75	0.98	2.67	1.03	2.83	1.11	3.05
Coffee	0.12	0.32	0.11	0.31	0.13	0.34	0.11	0.29
ALCOHOLIC BEVERAGES								
CROPS								
(Hectolitres)								
Molasses spirits (100° GL)	2.31 (litres)	6.31 (c.c.)	2.10 (litres)	5.75 (c.c.)	2.06 (litres)	5.64 (c.c.)	2.23 (litres)	6.11 (c.c.)
Beer, cider and wine	19.24 (litres)	52.71 (c.c.)	21.61 (litres)	59.07 (c.c.)	21.91 (litres)	60.02 (c.c.)	24.29 (litres)	66.55 (c.c.)

Population at 30.6.85: 935,210

(Figures in metric tons unless otherwise specified)

Commodity	Production		Estimated changes in stock	Gross Imports	Supply	Gross Exports	Domestic Utilization								
	Input	Output					Total	Feed	Seed	Manu- facture	Waste	Food			
CEREALS															
Wheat/flour	-	-	+ 1,174	60,380	61,554	1,459	60,095	-	-	-	-	600	59,495		
Paddy/milled Rice	135	88	- 8,114	63,318	75,292	4,094	71,198	-	-	-	-	710	70,488		
Maize	-	4,890	- 964	11,046	14,972	3	14,969	13,649	50	-	-	70	1,200		
Oats	-	-	-	294	294	-	294	200	-	-	-	-	94		
Barley	-	-	-	15	15	-	15	-	-	15	-	-	-		
Malt	-	-	+ 93	2,644	2,737	-	2,737	-	-	2,673	-	-	63		
Other Cereals (unmilled)1/	-	-	-	115	115	-	115	100	-	-	-	-	15		
Other Cereals flour	-	-	-	149	149	9	140	100	-	-	-	-	40		
Cereals preparations2/	-	-	-	1,020	1,020	34	986	-	-	-	-	10	976		
STARCHY FOODS															
Potatoes	-	23,855	- 363	1,561	24,553	164	24,389	150	1,948	-	-	657	21,634		
Sweet Potatoes	-	200	-	-	200	-	200	15	-	-	-	-	185		
Cassava (Manioc)	-	320	-	-	320	-	320	15	-	-	-	-	305		
Tapioca & Sago	-	-	-	95	95	1	94	-	-	-	-	-	94		
Taro (Eddoes)	-	325	-	-	325	-	325	5	-	-	-	-	320		

1/ includes wheat unmilled

2/ refers to prepared breakfast foods, macaroni and spaghetti, bakery products and other

Table C.2 - Balance Sheet, 1985 (cont'd)

Commodity	Production		Estimated changes in stock	Gross Imports	Supply	Gross Exports	Domestic Utilization										
	Input	Output					Total	Feed	Seed	Manu- facture	Waste	Food					
<u>SUGARS</u>																	
Cane/sugar 1/	5,583,345	645,797	- 69,433	1	576,365	541,105	35,260	-	-	-	-	350	34,910				
Other sugars	-	-	-	422	422	21	401	-	-	-	-	-	401				
Sugar preparations	-	-	-	160	168	94	74	-	-	-	-	-	74				
Honey	-	30	-	18	48	-	48	-	-	-	-	-	48				
<u>PULSES, NUTS & SEEDS</u>																	
Pulses 2/	-	70	-	9,035	9,114	130	3,976	-	-	-	-	85	8,891				
Groundnuts (in shells or not)	-	2,165	-	33	2,198	1	2,197	-	90	-	-	25	2,082				
Coconuts 3/	-	-	-	1,735	3,000	-	3,000	-	-	250	-	60	2,690				
Other edible nuts	-	-	-	27	27	-	27	-	-	-	-	-	27				
<u>VEGETABLES</u>																	
Tomatoes	-	8,995	-	-	8,985	2	8,983	-	-	75	-	350	8,568				
Other (fresh) 4/	-	20,950	-	3	20,953	536	20,415	-	-	350	-	1,000	19,065				
Onions	-	2,415	+ 400	1,934	4,749	30	4,719	-	-	-	-	85	4,634				
Vegetables prepared or preserved	-	300	-	250	558	39	519	-	-	-	-	-	519				

1/ includes raw and white sugar

2/ green peas and beans are accounted for as vegetables

3/ includes green and dried coconuts and copra for manufacturing

4/ excludes potatoes, tomatoes, onion, ginger, groundnuts, bananas, pineapples, garlic, manioc, sweet pepper, chillies, sweet potatoes, eddoes, rice, maize which are given separately

Table C.1 - Food Balance Sheet, 1935 (cont'd)

Commodity	Production		Estimated changes in stocks	Gross Imports	Supply	Gross Exports	Domestic Utilization										
	Input	Output					Total	Food	Seed	Manufacture	Waste	Food					
FRUITS																	
Fresh bananas	-	7,150	-	-	7,150	-	-	-	-	-	-	-	350	-	-	-	6,800
Fresh citrus	-	-	-	1,096	1,096	128	-	-	-	10	-	-	20	-	-	-	938
Fresh apples	-	-	-	672	672	6	-	-	-	-	-	-	15	-	-	-	657
Fresh pineapples	-	790	-	-	790	-	-	-	-	25	-	-	15	-	-	-	750
Fresh other 1/	-	-	-	133	133	80	-	-	-	1	-	-	1	-	-	-	51
Fresh grapes	-	-	-	213	213	-	-	-	-	-	-	-	4	-	-	-	214
Dried grapes	-	-	-	99	99	-	-	-	-	-	-	-	-	-	-	-	99
Dried, other	-	-	-	175	175	1	-	-	-	-	-	-	4	-	-	-	170
Preserved fruits	-	50(E)	-	269	319	20	-	-	-	-	-	-	-	-	-	-	299
Fruit & vegetable juices	-	250(E)	-	156	406	12	-	-	-	5	-	-	-	-	-	-	389
MISCELLANEOUS																	
Ginger	-	455	-	-	455	-	-	-	-	-	-	-	-	-	-	-	380
Pepper, chillies, etc.	-	440 ^{2/}	-	28	468	32	-	-	-	-	-	-	4	-	-	-	427
Garlic	-	240	-10	233	457	-	-	-	-	-	-	-	9	-	-	-	448
Other spices	-	-	-	837	837	145	-	-	-	-	-	-	7	-	-	-	685
Cocoa/chocolate 3/	-	-	-	256	256	9	-	-	-	-	-	-	-	-	-	-	247

1/ no estimate of local fruit production and consumption is available

2/ includes green chillies and sweet pepper

3/ including food preparations containing cocoa

Table 6.2 - Food Balance Sheet, 1955 (cont'd)

Commodity	Production		Estimated changes in stock	Gross Imports	Supply	Gross Exports	Domestic Utilization											
	Input	Output					Total	Feed	Seed	Manu- facture	Waste	Food						
<u>MEAT</u>																		
Cattle/meat	(H) 5,340	995	-	3,764	4,759	16	4,743	-	-	-	-	24	4,719					
Goat & sheep/meat	(H) 35,850*	240	-	2,387	2,627	115	2,512	-	-	-	-	14	2,498					
Pigs/meat	(H) 11,731	540	-	112	652	-	652	-	110	-	-	5	537					
Edible offals for the 4 above items	-	350(E)	-	1,840	2,190	2	2,188	-	25	-	25	25	2,138					
Poultry/meat	-	6,000(E)	+ 337	9	6,346	68	6,278	-	-	-	-	31	6,247					
Rabbit	-	25(E)	-	-	25	-	25	-	-	-	-	-	25					
Game/meat	-	325(E)	-	-	325	-	325	-	-	-	-	-	325					
Beacon, ham and sausages	110	125	-	67	192	-	192	-	-	-	-	1	191					
Meat preparations	-	-	-	324	324	12	312	-	-	-	-	-	312					
Other/offals	-	80(E)	-	-	80	-	80	-	-	-	-	-	80					
<u>EGGS</u>																		
Hen/eggs	-	3,450	-	17	3,467	40	3,427	-	425	-	-	40	2,962					
<u>MILK</u>																		
Fresh milk & cream	-	10,700	-	53	10,753	30	10,723	175	-	-	-	100	10,448					
Dried milk exceeding 1.5% by wt. of fat	-	-	-	7,177	7,177	114	7,063	-	-	-	-	35	7,028					
Dried milk not exceeding 1.5% by wt. of fat	-	-	-	1,941	1,941	130	1,811	-	-	-	-	9	1,802					
Condensed milk	-	-	-	333	333	12	321	-	-	-	-	-	321					
Milk/cheese	-	-	-	902	902	15	887	-	-	-	-	5	882					

* includes imported live animals slaughtered in Mauritius

(H) No. of heads

Table 6.2 - Food Balance Sheet, 1985 (cont'd)

Commodity	Production		Estimated changes in stock	Gross Imports	Supply	Gross Exports	Domestic Utilization								
	Input	Output					Total	Feed	Seed	Manu- facture	Waste	Food			
<u>FISH</u>															
Fresh or frozen	-	11,271	- 361	3,914	14,024	404	14,420	-	-	7,680	-	-	-	6,740	
Other	7,680	7,558	+ 56	3,730	11,344	6,682	4,662	-	-	-	-	-	-	4,662	
<u>CRUSTACEANS & MOLLUSCS</u>															
Fresh or frozen	-	138	-	130	268	8	260	-	-	-	-	-	-	260	
Other	-	-	-	510	510	3	507	-	-	-	-	-	-	507	
<u>OILS & FATS</u>															
	16,891	18,926	- 898	19,092	37,120	470	36,650	-	-	16,891	150	-	-	19,609	
<u>BEVERAGE CROPS</u>															
Tea	42,651	8,115	+ 6	4	8,125	7,089	1,036	-	-	-	20	-	-	1,016	
Coffee	-	-	-	124	124	-	124	-	-	-	-	-	-	124	
<u>ALCOHOLIC BEVERAGES</u> (Hectolitres)															
Molasses/spirits (100° GL)	13,655	20,500	-	800	21,300	1,020	20,280	-	-	-	-	-	-	20,280	
Beer, cider & wine	2,074	226,909	- 893	4,657	230,673	14,846	215,827	-	-	-	-	-	-	215,827	

Table 6.3 - Food Balance Sheet, 1956

(Figures in metric tons unless otherwise specified)

Population at 30.6.86 = 99,851

Commodity	Production		Estimated changes in stock	Gross Imports	Supply	Gross Exports	Domestic Utilization								
	Input	Output					Total	Feed	Seed	Manu- facture	Waste	Food			
<u>CEREALS</u>															
Wheat/flour	-	-	- 20	61,794	61,774	1,500	60,274	-	-	-	-	600	59,674		
addy/milled rice	175	115	+ 10,815	64,894	75,824	4,000	71,824	-	-	-	-	720	71,104		
Maize	-	7,970	+ 921	15,929	24,820	6,450	18,370	17,170	-	-	-	100	1,100		
Oats	-	-	-	350	350	-	350	250	-	-	-	-	100		
Barley	-	-	-	19	19	-	19	-	-	19	-	-	-		
Malt	-	-	+ 143	2,707	2,850	-	2,850	-	-	2,775	-	-	75		
Other Cereals (Unmilled) ^{1/}	-	-	-	200	200	-	200	175	-	-	-	-	25		
Other Cereals	-	-	-	235	235	2	233	158	-	-	-	-	75		
Cereals Preparations ^{2/}	-	-	-	1,357	1,357	8	1,249	-	-	-	-	12	1,237		
<u>STARCHY FOODS</u>															
Potatoes	-	16,950	+ 2,724	1,451	21,125	175	20,950	100	1,850	-	-	766	18,234		
Sweet Potatoes	-	220	-	-	220	-	220	20	-	-	-	-	200		
Cassava (Manioc)	-	350	-	-	350	-	350	20	-	-	-	-	330		
Tapioca & Sago ^{3/}	-	-	-	81	81	1	80	-	-	-	-	-	80		
Taro (Eddoes)	-	370	-	-	370	-	370	10	-	-	-	-	360		

^{1/} includes wheat unmilled

^{2/} refers to prepared breakfast foods, macaroni and spaghetti, bakery products and other

^{3/} new item, formerly included in preserved and prepared vegetables

Commodity	Production		Estimated changes in stock	Gross Imports	Supply	Gross Exports	Domestic Utilization								
	Input	Output					Total	Feed	Seed	Manu- facture	Waste	Food			
<u>UGARS</u>															
1/ cane/sugar	6,024,962	706,839	- 44,159	-	662,680	626,574	36,106	-	-	-	-	360	35,746		
2/ other sugars	-	-	-	424	424	2	422	-	-	-	-	-	422		
3/ sugar preparations	-	-	-	200	200	55	245	-	-	-	-	-	245		
4/ honey	-	30	-	43	73	-	73	-	-	-	-	-	73		
<u>PULSES, NUTS & SEEDS</u>															
1/ pulses	-	90	-	8,510	8,600	150	8,450	-	-	-	-	85	8,365		
2/ groundnuts (in shells or not)	-	2,250	-	38	2,288	3	2,285	-	100	-	-	30	2,155		
3/ coconuts	-	N.A.	-	1,675	3,000	-	3,000	-	-	-	-	60	2,940		
4/ other edible nuts	-	-	-	22	22	1	21	-	-	-	-	-	21		
<u>VEGETABLES</u>															
1/ tomatoes	-	10,600	-	-	10,600	75	10,525	-	-	-	-	300	10,125		
2/ other (fresh)	-	20,740	-	-	20,740	300	20,440	-	-	-	-	750	19,290		
3/ onions	-	2,955	- 267	2,664	5,352	25	5,327	-	-	-	-	100	5,227		
4/ Vegetables prepared or preserved	-	350	-	200	550	39	511	-	-	-	-	-	511		

1/ Brown sugar and white sugar combined

2/ Green peas and beans are accounted for as vegetables

3/ Includes green and dried coconuts and copra for manufacturing

4/ Excludes potatoes, tomatoes, onion, ginger, groundnuts, bananas, pineapples, garlic, manioc, sweet pepper, chillies, sweet potatoes, eddoes, rice, maize which are given separately

Table C.3 - Food Balance Sheet, 1985 (cont'd)

Commodity	Production		Estimated changes in stock	Gross Imports	Supply	Gross Exports	Domestic Utilization											
	Input	Output					Total	Feed	Seed	Manu- facture	Waste	Food						
<u>FRUITS</u>																		
Fresh Bananas	-	7,830	-	-	7,830	-	7,830	-	-	-	-	390	7,440					
Fresh citrus	-	-	-	1,226	1,226	26	1,200	-	-	-	-	25	1,175					
Fresh apples	-	-	-	691	691	1	690	-	-	-	-	14	676					
Fresh pineapples	-	980	-	-	980	10	970	-	-	-	-	20	950					
Fresh other 1/	-	-	+ 100	134	234	190	44	-	-	-	-	1	43					
Fresh grapes	-	-	-	264	264	-	264	-	-	-	-	5	259					
Dried grapes	-	-	-	90	90	5	85	-	-	-	-	-	85					
Dried other	-	-	-	112	112	1	111	-	-	-	-	3	108					
Preserved fruits	-	75(E)	-	484	559	10	549	-	-	-	-	-	549					
Fruit & vegetable juices	-	275(E)	-	305	580	3	577	-	-	-	-	-	577					
<u>MISCELLANEOUS</u>																		
Ginger	-	360	-	-	360	-	360	-	-	-	-	5	295					
Pepper, chillies etc.	-	335 2/	-	63	448	75	373	-	-	-	-	3	365					
Garlic	-	325	+ 22	145	492	-	492	-	-	-	-	10	482					
Other spices	-	-	-	1,100	1,100	205	895	-	-	-	-	10	885					
Cocoa/chocolate 3/	-	-	-	233	233	1	232	-	-	-	-	-	232					

1/ No estimate of local fruit production and consumption available 2/ Includes green chillies and sweet pepper

3/ Including food preparations containing cocoa

Table 1.3 - Food balance sheet (continued)

Commodity	Production		Estimated changes in stock	Gross Imports	Supply	Gross Exports	Domestic Utilization							
	Input	Output					Total	Feed	Seed	Manu- facture	Waste	Food		
<u>MEAT</u>														
Cattle/meat	(H) 7,525*	1,540	-	4,367	5,707	10	5,697	-	-	-	-	28	5,669	
Goat & sheep/meat	(H) 59,460*	260	-	2,667	2,927	100	2,827	-	-	-	-	15	2,812	
Pigs/meat	(H) 10,860	620	-	68	688	-	688	-	95	-	-	3	598	
Edible offals for the above 4 items	-	400	-	1,832	2,232	40	2,192	-	-	-	-	22	2,170	
Poultry/meat	-	6,875	- 22	9	6,862	53	6,809	-	-	-	-	-	6,809	
Rabbit	-	25	-	-	25	-	25	-	-	-	-	-	25	
Game/meat	-	25	-	-	350	-	350	-	-	-	-	-	350	
Bacon, ham and sausages	95	95	-	62	157	2	155	-	-	-	-	-	155	
Meat preparations	-	-	-	383	383	13	370	-	-	-	-	-	370	
Other/offals	-	100	-	-	100	-	100	-	-	-	-	-	100	
<u>EGGS</u>														
Hen/eggs	-	3,200	-	10	3,210	20	3,190	-	-	200	-	40	2,950	
<u>MILK</u>														
Fresh milk & cream	-	11,000	-	153	11,153	10	11,143	250	-	-	-	50	10,843	
Dried milk exceeding 1.5% oy wt. of fat	-	-	-	6,826	6,826	150	6,676	-	-	-	-	33	6,643	
Dried milk not exceeding 1.5% by wt. of fat	-	-	-	2,060	2,060	100	1,960	-	-	-	-	10	1,950	
Condensed milk	-	-	-	274	274	2	272	-	-	-	-	-	272	
Milk/cheese	-	-	-	771	771	20	751	-	-	-	-	5	746	

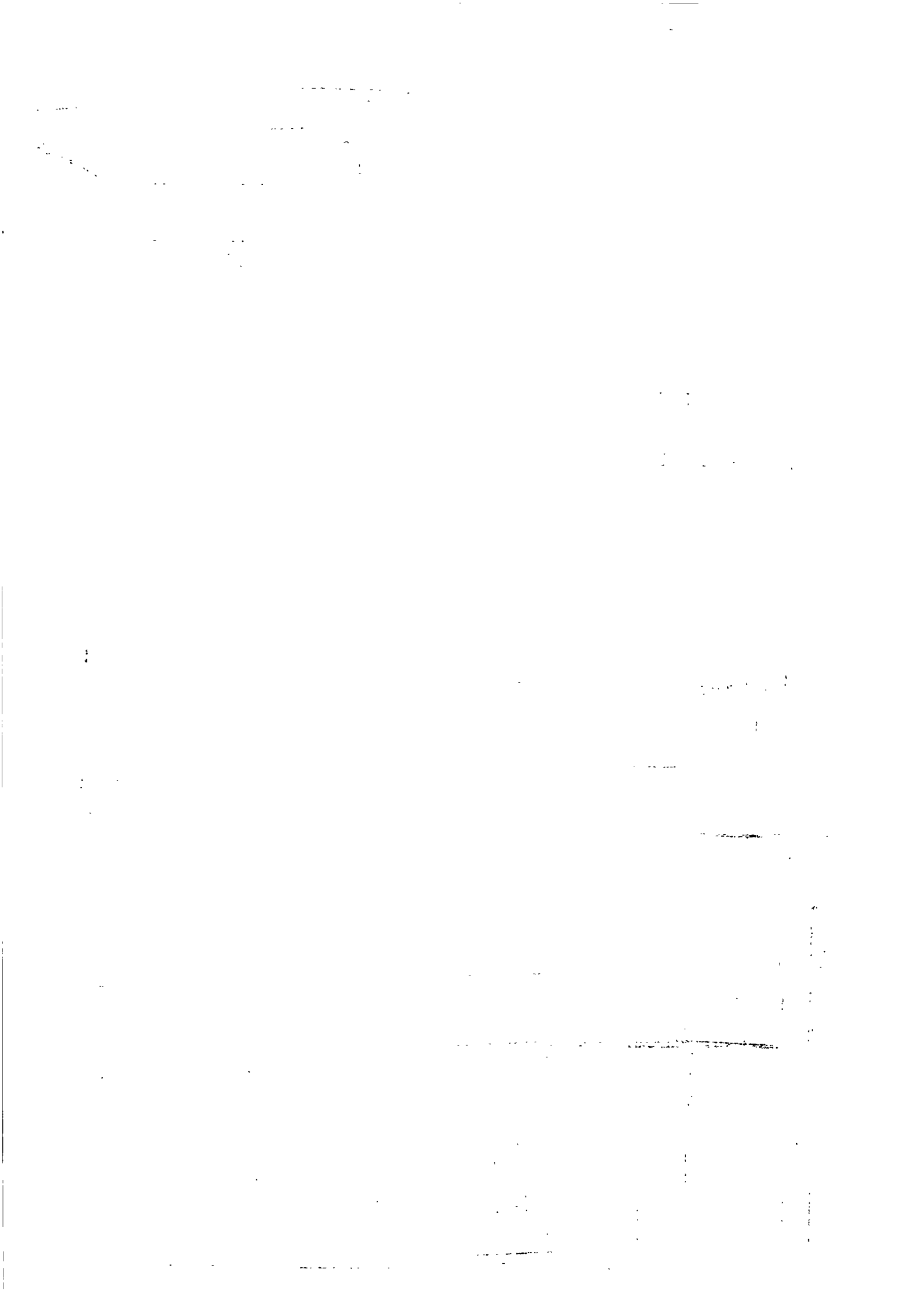
(H) No. of heads

* includes live animals slaughtered in Mauritius

† for hatching purposes

Table 6.3 - Food Balance Sheet, 1986 (cont'd)

Commodity	Production		Estimated changes in stock	Gross Imports	Supply	Gross Exports	Domestic Utilization								
	Input	Output					Total	Feed	Seed	Manu- facture	Waste	Food			
<u>FISH</u>															
Fresh or frozen	-	9,116	+ 590	5,515	15,221	327	14,094	-	-	7,709	-	-	-	7,185	
Other	7,709	7,545	- 306	4,577	11,316	6,400	5,416	-	-	-	-	-	-	5,416	
<u>CRUSTACEANS & MOLLUSCS</u>															
Fresh or frozen	-	150	-	208	353	14	344	-	-	-	-	-	-	344	
Other	-	-	-	506	506	9	497	-	-	-	-	-	-	497	
<u>OILS & FATS</u>	13,125	19,867	+ 196	19,206	39,267	575	38,692	-	-	18,151	-	170	-	20,371	
Tea	40,267	7,876	- 256	5	7,625	6,500	1,125	-	-	-	-	20	-	1,105	
Coffee	-	-	-	106	106	-	106	-	-	-	-	-	-	106	
<u>ALCOHOLIC BEVERAGES</u> (Hectolitres)															
Molasses/spirits 100°GL	14,000	21,000	-	1,807	22,307	650	22,157	-	-	-	-	-	-	22,157	
Beer, Cider & Wine	2,869	236,797	- 617	5,738	241,918	500	241,418	-	-	-	-	-	-	241,418	



MISCELLANEOUS

Table 7.1 - Total land area^{1/} classified by utilization

	Acres
Agriculture	<u>262,500</u>
Sugar cane	242,100
Tea	15,400
Tobacco, vegetable and other crops	5,000
Forests, scrub areas, grassland and grazing lands	<u>159,300</u>
Forest plantation	16,740
Forest natural	5,900
Savannahs, grasslands, meadows, etc.	18,400
Scrub and other forest lands	118,260
Reservoirs and ponds	<u>2,900</u>
Swamps and rocks	<u>3,500</u>
Roads (main thorough fares)	<u>3,300</u>
Built-up areas	<u>29,300</u>
Total Island	460,800

^{1/} based on the findings of the U N D P - F A O land and water Resources Survey team working on aerial photographs of the island taken at the end of 1965 and supplemented to some extent by land surveys.

FIG. 7 - TOTAL LAND AREA CLASSIFIED BY UTILIZATION

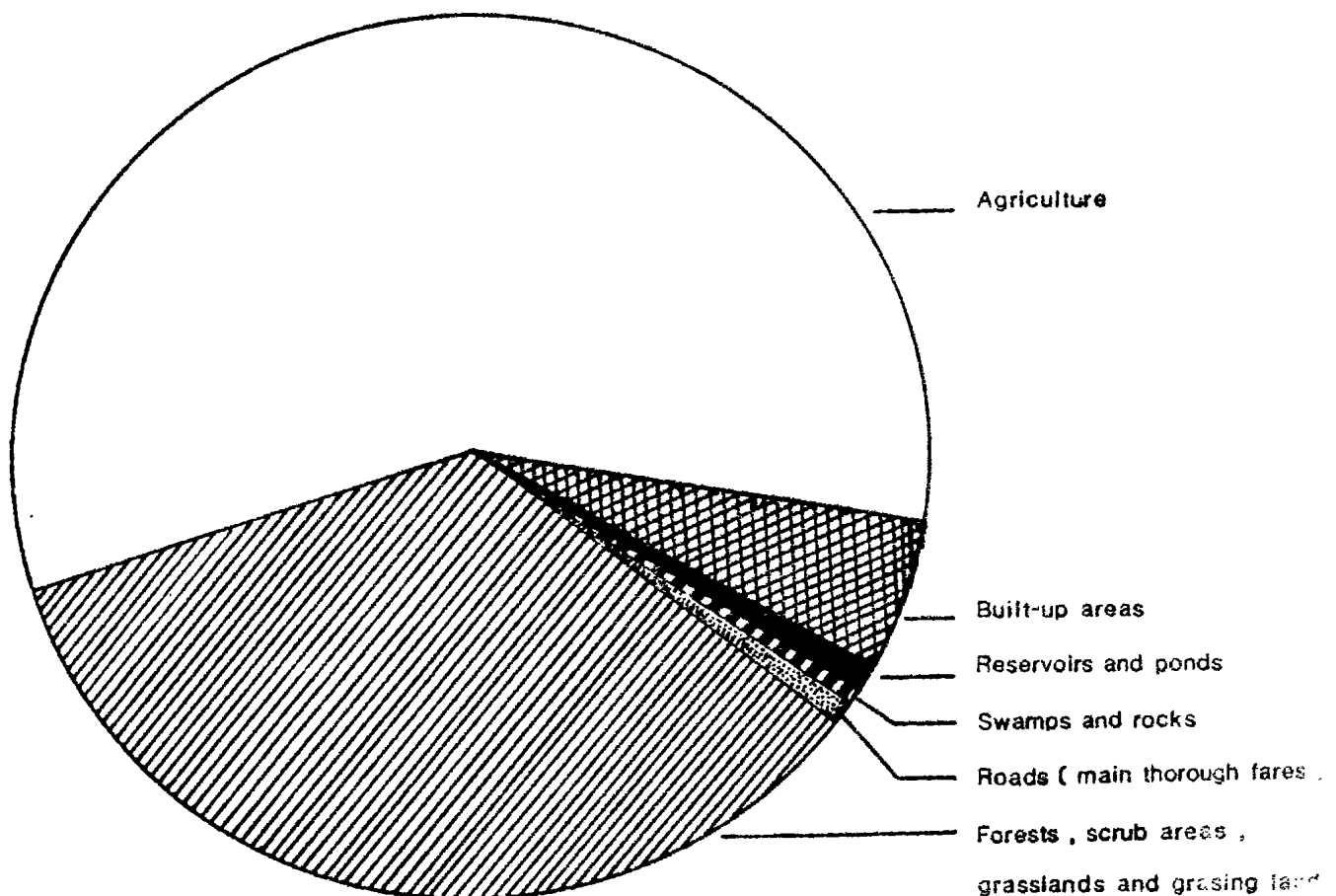


Table 7.2 - Imports of agricultural and food products, 1982 - 1986

(C.I.F. Value in Rs million)

Description of product	1982	1983	1984	1985	1986
1. Live animals	17.5	26.5	10.8	17.3	13.2
(cattle)	(10.0)	(23.5)	(5.8)	(11.1)	(8.8)
2. Meat and meat preparations	119.6	115.8	129.6	144.4	147.9
(Meat and edible meat offals fresh, chilled or frozen)	(92.7)	(98.9)	(117.2)	(130.7)	(135.6)
(Meat and edible meat offals or preserved)	(23.2)	(16.6)	(11.9)	(13.2)	(11.9)
3. Dairy products and eggs	228.2	200.5	233.4	236.3	211.0
(Milk and cream)	(174.4)	(157.5)	(159.6)	(181.3)	(160.5)
(Butter, ghee, cheese & curd)	(53.6)	(42.9)	(63.4)	(54.7)	(50.2)
4. Fish, crustaceans, molluscs and preparation thereof	84.7	76.0	94.0	97.8	105.9
(Fish - fresh, chilled and frozen)	(34.3)	(24.9)	(24.9)	(45.5)	(51.2)
(Fish - dried, salted, smoked)	(19.7)	(20.6)	(20.6)	(23.0)	(11.9)
(Fish, crustaceans and molluscs - prepared and otherwise preserved)	(26.4)	(25.1)	(37.9)	(19.1)	(31.1)

Table 7.2 - Imports of agricultural and food products, 1982 - 1986 (cont'd)
(C.I.F. Value in Rs million)

Description of product	1982	1983	1984	1985	1986
5. Cereals and cereal preparations	587.7	484.5	585.2	606.2	457.9
(Rice)	(297.4)	(210.0)	(269.6)	(279.8)	(162.7)
(Maize)	(30.2)	(50.4)	(44.9)	(34.7)	(32.8)
(Wheat flour)	(215.5)	(176.2)	(224.6)	(243.4)	(211.3)
(Cereal preparations)	(40.7)	(44.4)	(41.3)	(44.4)	(46.6)
6. Vegetables and fruits	101.6	124.9	116.2	127.7	113.0
(Potatoes)	(6.2)	(6.7)	(9.0)	(7.1)	(6.7)
(Pulses)	(28.3)	(43.9)	(44.7)	(64.4)	(54.1)
(Fruits and nuts, fresh or dried)	(34.8)	(36.8)	(36.7)	(30.8)	(28.3)
(Fruit preserved and fruit preparations)	(13.1)	(11.0)	(8.7)	(5.6)	(6.7)
7. Sugar (sugar preparations and honey)	6.0	7.4	8.9	(11.6)	(13.7)

Table 7.2 - Imports of agricultural and food products, 1982 - 1986 (cont'd)
(C.I.F. value in Rs million)

	1982	1983	1984	1985	1986
8. Coffee, tea, cocoa, spices and manufactured thereof	28.6	30.4	28.8	34.5	38.7
(Chocolate and food preparations containing cocoa)	(12.0)	(9.3)	(6.3)	(7.7)	(9.5)
(spices)	(10.0)	(13.4)	(15.2)	(17.6)	(20.9)
9. Feeding stuff for animals	38.0	37.6	37.7	38.5	43.4
10. Miscellaneous food preparations	28.2	26.4	32.1	33.4	44.5
11. Beverages and tobacco	20.8	22.8	25.6	25.9	33.7
(Non-alcoholic beverages n.e.s.)	(0.7)	(1.4)	(3.0)	(2.9)	(3.6)
(Alcoholic beverages)	(13.4)	(14.7)	(16.4)	(18.9)	(25.0)
(Tobacco, manufactured)	(0.7)	(0.3)	(0.8)	(1.4)	(1.7)
(Tobacco unmanufactured)	(5.9)	(6.4)	(5.4)	(2.7)	(3.4)
12. Vegetable oils and fats	102.9	105.7	176.0	193.3	112.0
Total agricultural & food products	1,363.9	1,258.6	1,478.3	1,567.0	1,322.0
Total imports	5,048.2	5,155.9	6,485.7	8,119.1	9,090.0
Total imports of agricultural and food products %	27.0	24.4	22.8	19.3	14.5
Total imports					

Table 7.3- Imports of selected items (Quantity), 1982 - 1986

Selected items	Tons				
	1982	1983	1984	1985	1986
1. Rice	78,585	72,077	87,046	83,432	65,100
2. Maize	12,045	17,150	12,694	11,046	15,923
3. Wheat flour	62,930	56,165	62,588	60,380	61,827
4. Pulses	5,093	8,448	7,254	9,035	8,508
5. Fruits (fresh and dried)	3,184	3,480	2,738	2,400	2,518
6. Coffee	96	118	111	123	103
7. Cocoa/chocolate	332	237	165	260	241
8. Vegetable oils and fats	16,664	16,632	17,204	18,617	16,788
9. Cattle *(live)	2,230	2,429	2,997	2,148	2,016
10. Meat and edible meat offals (fresh, chilled or frozen)	5,853	6,333	7,237	8,111	8,942
11. Meat and edible meat offals (prepared or preserved)	1,030	651	419	410	410
12. Milk and cream	8,933	10,064	10,097	9,505	9,330
13. Butter, ghee, cheese and curd	1,751	1,325	1,979	1,968	1,875
14. Fish and crustaceans (fresh, chilled and frozen)	3,093	2,494	2,196	3,464	4,595
15. Fish and crustaceans (dried, salted and smoked)	1,149	1,058	1,271	978	626
16. Fish and crustaceans (prepared or otherwise preserved)	1,813	1,835	2,519	1,117	1,702

* Number of heads

Table 7.4 - Imports of major agricultural inputs and machinery, 1982 - 1986

(Quantity in metric tons, C.I.F. value in Rs 000)

Commodities	1982		1983		1984		1985		1986	
	Quantity	Value	Quantity	Value	Quantity	Value	Quantity	Value	Quantity	Value
Fertilizers	38,720	55,711	44,705	60,600	41,959	74,571	54,055	96,594	47,799	74,478
Insecticides	557	13,599	258	12,304	199	9,404	357	17,474	365	16,327
Fungicides	90	2,892	149	5,204	89	5,944	104	4,570	116	6,193
Weedkillers	671	26,418	827	29,901	655	24,163	603	28,005	573	31,023
Agricultural machinery	N.A.	7,790	N.A.	5,071	N.A.	6,245	N.A.	23,115	N.A.	14,338

1/ provisional

Table 7.5 - Consumption of fertilizers, 1982 - 1986

(Metric tons)

Year	Product weight	Nutrients Content		
		N	P ₂ O ₅	K ₂ O
1982	61,469	9,870	3,336	12,663
1983	66,076	10,332	3,963	13,235
1984	67,143	10,805	3,708	12,882
1985	72,949	10,464	4,430	13,824
1986	68,228	11,075	3,696	13,737

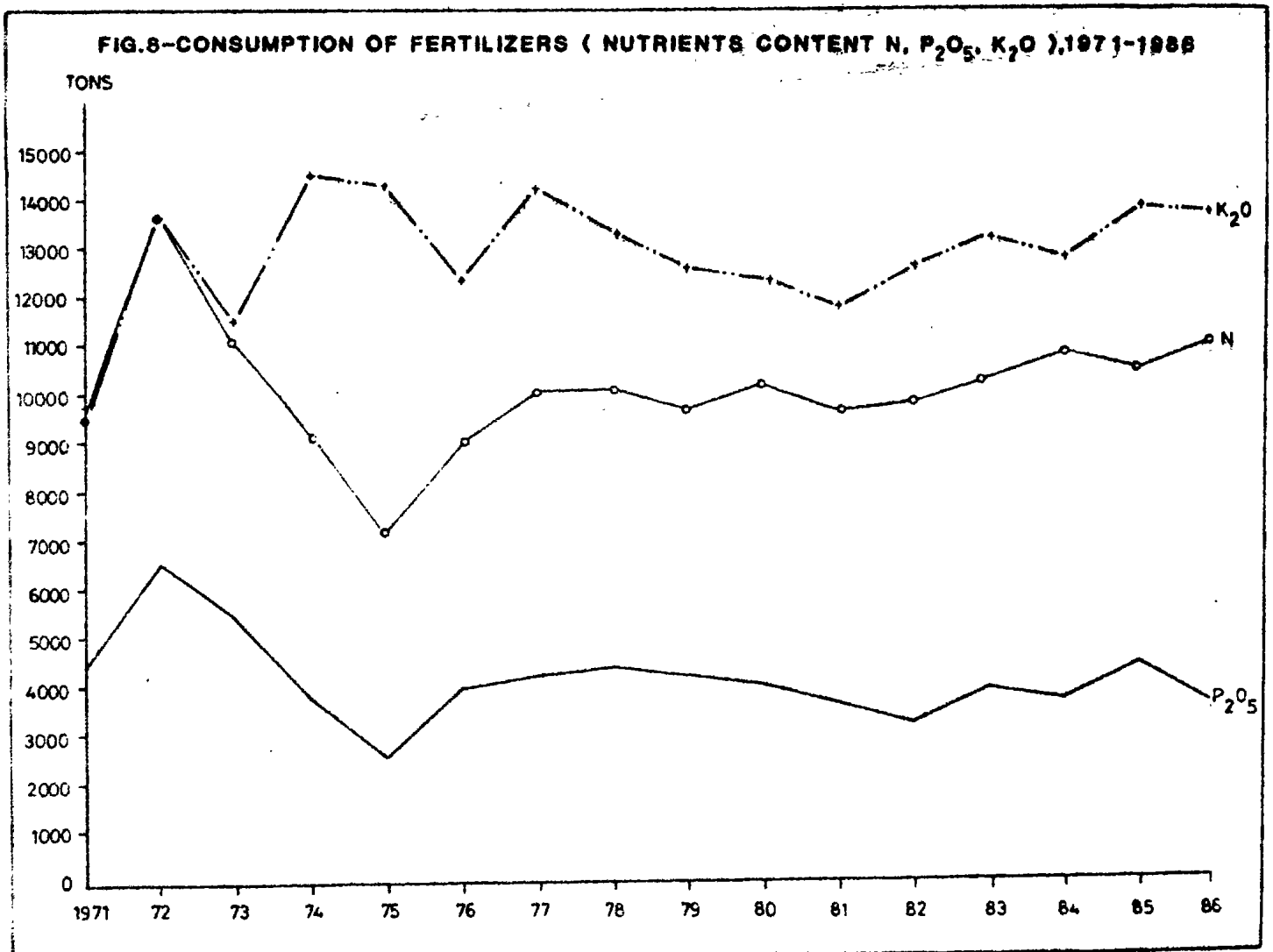


Table 7.6 - Average price ^{1/} of fertilisers, 1982 - 1986

(Rupees/ton)

Fertilizers	1982	1983	1984	1985	1986
STRAIGHT FERTILIZERS :					
Ammonium Nitrate Solution	N.A.	1,769	1,667	2,263	1,970
Di-Ammonium Phosphate	4,385	4,185	4,261	5,364	5,535
Triple Superphosphate	3,386	3,145	3,079	3,516	3,755
Muriate of Potash	2,269	2,028	1,937	2,223	2,379
Ammonium Sulphate	2,124	1,848	1,841	2,080	N.A.
Single Superphosphate	2,411	2,152	2,123	2,409	2,497
Sulphate of Potash	3,068	2,802	2,758	3,065	3,489
Potassium Nitrate	3,000	N.A.	4,000	4,000	6,000
Urea	N.A.	3,783	3,772	4,167	3,783
CALCIUM AMMONIUM NITRATE	2,383	2,193	2,108	2,623	N.A.
COMPLETE FERTILISERS :					
17 - 8 - 25	2,773	2,568	2,747	3,128	3,133
17 - 2 - 27	2,580	2,378	2,511	2,863	2,862
13 - 13 - 20 + 2 Mg O	3,075	2,816	2,781	3,147	3,195
22.5 - 7.5 - 7.5	2,794	2,624	2,796	3,181	3,000
Price Index (1981 = 100)	106.7	97.6	101.0	115.5	114.3

Table 7.7 - monthly rainfall for the sugar cane districts, 1986

Millimetres

Period	West		North		East		South		Centre		All districts	
	Amount	Difference from normal	Amount	Difference from normal	Amount	Difference from normal	Amount	Difference from normal	Amount	Difference from normal	Amount	Difference from normal
1986:												
January	80	- 104	127	- 73	168	- 153	139	- 157	138	- 134	139	- 128
February	146	- 59	221	+ 18	396	+ 74	279	- 5	311	- 31	288	+ 16
March	57	- 154	219	- 20	263	- 124	288	- 45	298	+ 41	249	- 65
April	24	- 83	60	- 112	132	- 162	136	- 145	100	- 128	103	- 134
May	40	- 11	91	- 26	238	+ 32	159	- 27	143	+ 2	151	- 7
June	8	- 31	47	- 44	99	- 85	112	- 35	59	- 76	79	- 54
July	2	- 24	30	- 49	71	- 96	50	- 99	61	- 75	48	- 77
August	41	+ 23	115	+ 47	188	+ 53	225	+ 104	169	+ 49	167	+ 64
September	2	- 17	19	- 31	88	- 12	53	- 34	32	- 58	47	- 29
October	33	+ 7	131	+ 91	235	+ 149	138	+ 61	114	+ 41	150	+ 84
November	6	- 47	37	- 36	87	- 35	67	- 48	77	- 28	61	- 39
December	145	+ 3	145	+ 14	174	- 58	269	+ 62	143	- 72	190	+ 1
Total year	584	- 477	1,242	- 221	2,139	- 417	1,915	- 368	1,645	- 469	1,672	- 368

Source : Meteorological Services.

Table 7.8 - Monthly temperatures, 1986

(Degrees Centigrade)

Period	Vacoas (centre) 1,394 ft A.M.S.L.*			Plaisance (Coastal region, South) 188 ft A.M.S.L.*							
	Maximum		Minimum	Maximum		Minimum					
	Mean	Departure from normal	Mean	Departure from normal	Mean	Departure from normal					
January	27.3	0.0	19.9	- 0.3	29.3	0.0					
February	27.5	0.0	20.5	- 0.1	29.5	+ 0.3					
March	26.7	- 0.6	20.2	- 0.2	29.1	+ 0.1					
April	26.5	+ 0.1	18.7	- 0.3	28.7	+ 0.5					
May	24.1	- 0.5	17.7	+ 0.1	26.7	+ 0.1					
June	22.1	- 0.7	13.9	- 1.9	24.5	- 0.6					
July	21.5	- 0.3	13.3	- 2.0	24.2	+ 0.1					
August	21.5	+ 0.1	15.1	+ 0.3	24.7	+ 1.0					
September	23.3	+ 0.7	15.6	+ 0.4	25.9	+ 1.3					
October	24.4	+ 0.5	16.9	+ 0.7	26.7	+ 0.7					
November	25.7	+ 0.1	18.3	+ 0.5	28.3	+ 0.7					
December	27.4	+ 0.3	20.7	+ 1.4	29.4	+ 0.4					
							Mean	22.8			
							Departure from normal	+ 0.3			
							Mean	23.1			
							Departure from normal	+ 0.4			
							Mean	23.0			
							Departure from normal	+ 0.5			
							Mean	21.3			
							Departure from normal	0.0			
							Mean	20.0			
							Departure from normal	+ 0.3			
							Mean	17.3			
							Departure from normal	- 0.9			
							Mean	16.8			
							Departure from normal	- 1.1			
							Mean	17.7			
							Departure from normal	+ 0.2			
							Mean	17.7			
							Departure from normal	0.0			
							Mean	19.1			
							Departure from normal	+ 0.4			
							Mean	21.0			
							Departure from normal	+ 0.9			
							Mean	22.7			
							Departure from normal	+ 1.1			

* Above mean sea level