

**REPUBLIC OF MAURITIUS**

MINISTRY OF FINANCE

**STATISTICS MAURITIUS**

---

**2022**  
**HOUSING AND POPULATION CENSUS**

**REPUBLIC OF MAURITIUS**

*ANALYSIS REPORT*

*VOLUME I: POPULATION DATA EVALUATION*

March 2025



## Contents

1. Introduction.....	1
2. Summary of findings.....	1
3. Method used for census evaluation.....	1
4. Coverage error .....	1
4.1 <i>Balancing equation by sex</i> .....	2
4.2 <i>Growth rate</i> .....	3
4.3 <i>Age and sex population structure</i> .....	3
4.3.1 <i>Median age</i> .....	3
4.3.2 <i>Sex ratio</i> .....	4
4.3.3 <i>Age and sex composition</i> .....	5
4.3.4 <i>Child-woman ratio</i> .....	6
4.3.5 <i>Dependency ratio</i> .....	7
5. Content error .....	8
5.1 <i>Population pyramid</i> .....	8
5.2 <i>Digit preference</i> .....	10
5.3 <i>Age ratio, Sex ratio and UN Joint Score</i> .....	14
5.4 <i>Survival ratio</i> .....	15
6. Consistency checks with data from other sources .....	17
6.1 <i>Comparison of Population Census with Housing Census count</i> .....	17
6.2 <i>Comparison of 2022 Census data with statistics from the Ministry of Social Integration, Social Security and National Solidarity</i> .....	17
6.3 <i>Comparison of 2022 Census data with school enrolment from the Ministry of Education, Tertiary Education, Science and Technology</i> .....	18
6.4 <i>Comparison of 2022 Census data with the Electoral Commissioner’s Office – Registered electors</i> .....	18
7. Adjustment for under enumeration of children.....	20
8. Notes .....	27
8.1 <i>Contact persons</i> .....	27
8.2 <i>List of Tables</i> .....	27
8.3 <i>List of Figures</i> .....	28
8.4 <i>Annex</i> .....	28



## 1. Introduction

A Housing and Population Census is a huge undertaking that requires proper planning and implementation to ensure that the data collected is of high quality and reliable. However, despite thorough preparations, some degree of error is inevitable. This report presents the results of the evaluation exercise to determine whether data from the 2022 Population Census are complete and accurate. The 2022 Population Census was conducted in line with the United Nations Principles and Recommendations for Population and Housing Censuses, Revision 3. The main objectives of the evaluation are:

- to identify the types and sources of errors or biases;
- to measure the accuracy of the data; and
- to adjust the data based on the errors identified.

## 2. Summary of findings

- (i) The age and sex data from the 2022 Population Census can be considered to be consistent and in line with past censuses as well as with fertility and mortality data from the vital registration system. It was also found to be of acceptable quality on the basis of the Myers' Index and the UN Joint Score.
- (ii) There are no major coverage errors; the data is consistent with natural growth, and population growths registered at previous censuses.
- (iii) The population figures for persons aged 18 years and above are consistent with data from registered electors and for those aged 60 years and above with data on old-age pensioners.
- (iv) The enumeration is complete in the island of Rodrigues whereas the evaluation indicates an under enumeration of children below the age of 15 years in the island of Mauritius for which an adjustment of 18,038 is needed.

## 3. Method used for census evaluation

The indirect method through demographic analysis has been used for this evaluation exercise. Data has been evaluated using:

- internal consistency checks within 2022 Population Census data; and
- external checks by comparing 2022 Population Census data with data from other sources such as previous censuses and administrative sources.

## 4. Coverage error

Coverage error is the error in the count of persons which may occur in various forms, namely:

- excluding a person who should have been enumerated;
- including a person more than once; and
- including a person who should not have been enumerated.

The extent of the coverage error is being assessed in sections 4.1 to 4.3.

#### 4.1 Balancing equation by sex

The population balancing equation is a fundamental demographic concept used to measure population change over a given period. According to the population balancing equation, the population at the time of a census should be equal to the population at the previous census, plus births, minus deaths, and plus net migration during the intercensal period. One of the ways of determining the reliability of the estimates from a Census is to determine the intercensal discrepancy.

The intercensal discrepancy refers to the difference between the latest 2022 Population Census and the estimated population figures based on the previous 2011 Population Census which have been carried forward using births, deaths and migration data. This is computed through the population balancing equation. (Table 1)

**Table 1 – Balancing equation by sex, 2022 Population Census, Republic of Mauritius**

	<b>Both sexes</b>	<b>Male</b>	<b>Female</b>
Resident population, 2011 Census <sup>1</sup>	1,252,404	619,591	632,813
<i>Add: Live births July 2011 - June 2022</i>	146,518	74,678	71,840
<i>Less: Deaths July 2011 - June 2022</i>	116,118	64,167	51,951
<i>Add: Net migration</i>	-20,555	-6,315	-14,240
Expected population at 2022 Census	1,262,249	623,787	638,462
Enumerated resident population - 2022 Census	1,233,097	607,761	625,336
Difference of enumerated over expected population	-29,152	-16,026	-13,126
Difference as a % of enumerated 2022 population	-2.36	-2.64	-2.10

<sup>1</sup> *After adjusting for under enumeration of young children*

However, the intercensal discrepancy of -29,152 obtained for 2022 Population Census can be due to multiple reasons such as:

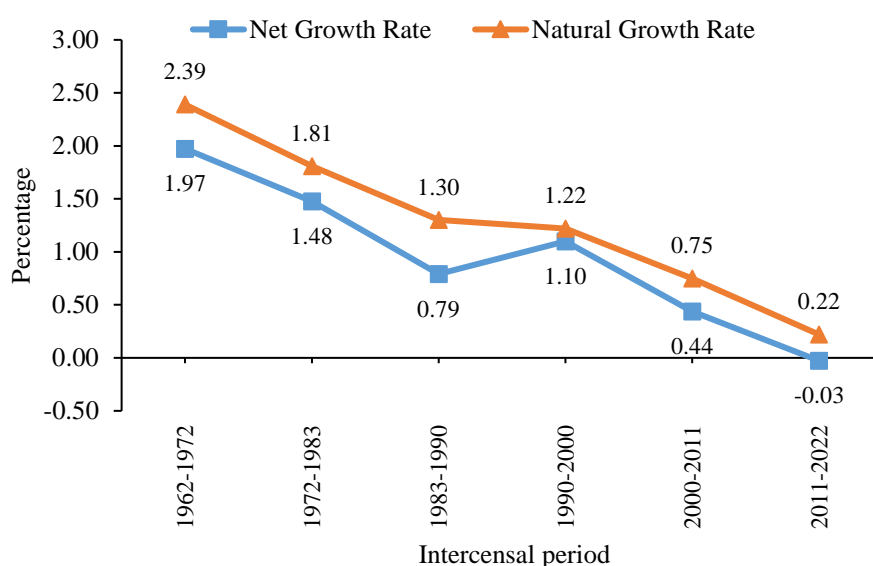
- inaccurate migration data; and
- census undercounts/overcounts.

In Mauritius, given that vital registration is considered complete thus births and deaths are correctly reported. However, since international migration data are not as reliable; the estimates thereon have been based on past intercensal data.

## 4.2 Growth rate

As shown in Figure 1, the net population growth rate during the period 2011 - 2022 is consistent with the natural growth rate for the same period, the latter being based entirely on vital statistics. It is also in line with net growth rates for past intercensal periods. There was a gradual decline in the population growth rate from 1962 to 1990 but an increase from 1990 to 2000 possibly due to reduced out-migration during that period.

**Figure 1 – Population annual growth rate (%), 1962-2022 Censuses, Republic of Mauritius**



It can therefore be determined that coverage errors in 2022 Population Census were minimal.

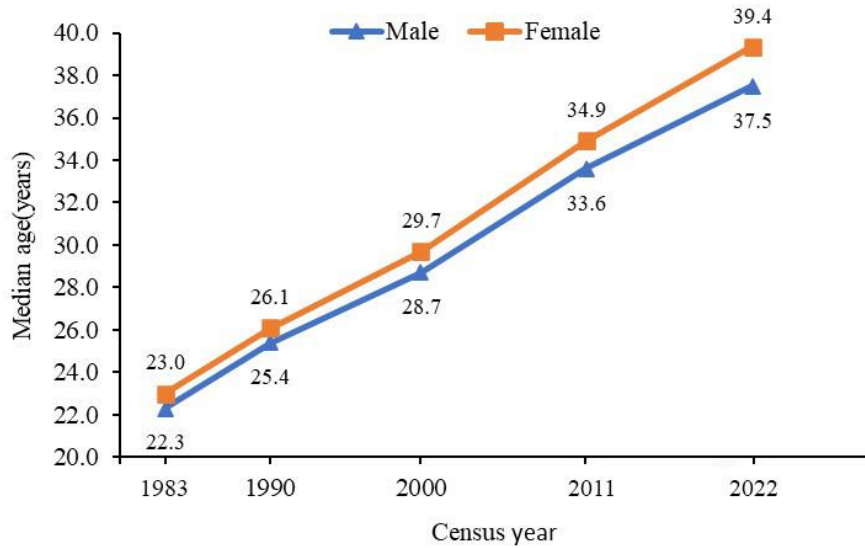
## 4.3 Age and sex population structure

### 4.3.1 Median age

The median age is defined as the age which divides the population into two equal size groups, one of which is younger and the other older than the median.

The median age observed at 2022 Population Census is in line with that observed at previous censuses and confirms the tendency towards population ageing (Figure 2). The median ages of both males and females are increasing and the gap is widening from 0.7 year in 1983 to 1.9 years in 2022, as a result of feminization of ageing.

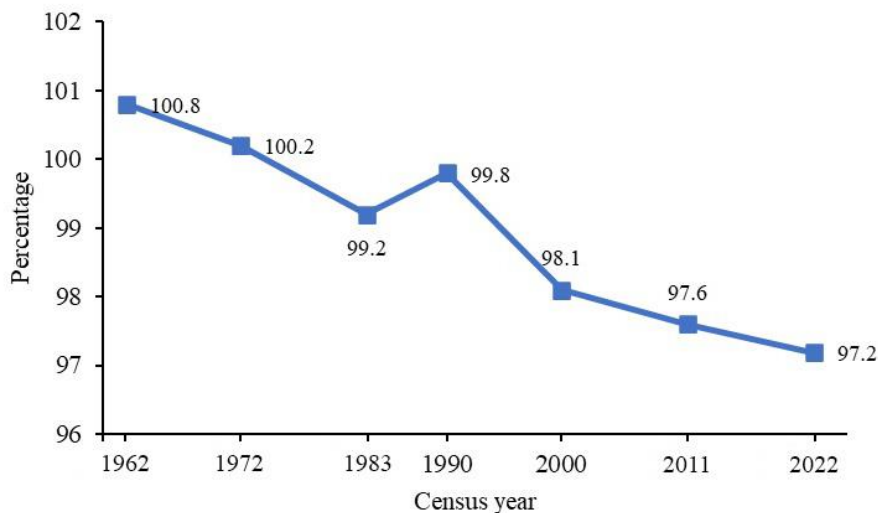
**Figure 2 – Median age of the population by sex, 1983-2022 Censuses, Republic of Mauritius**



#### 4.3.2 Sex ratio

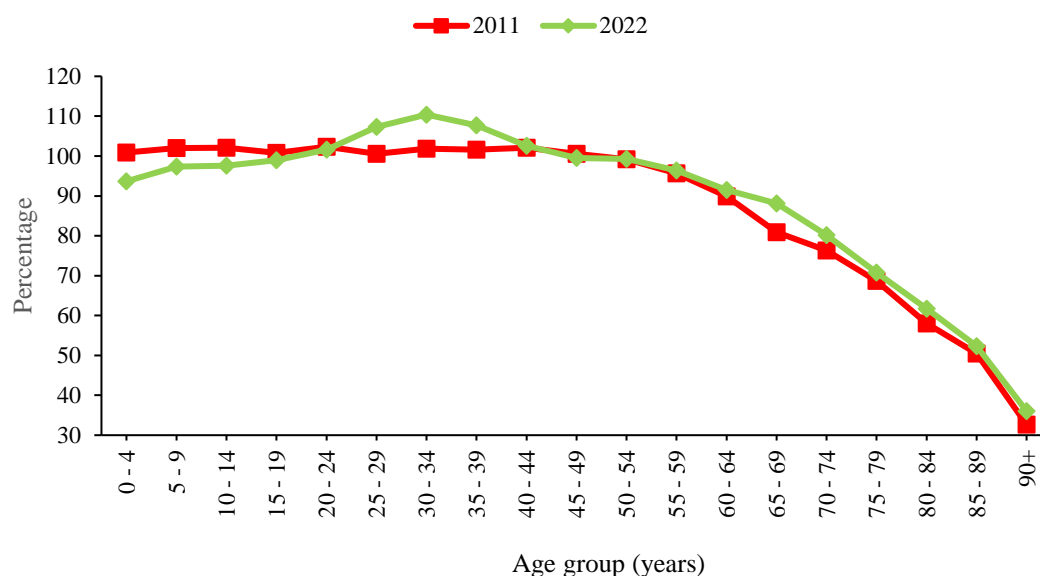
Sex ratio measures the excess or deficit of the male population relative to the female population. Sex ratio is influenced by the three factors of population change namely fertility, mortality and migration. It gives the number of males for every 100 females. If it is above 100, it shows the predominance of males over females, and conversely when it is lower than 100, there are more females than males in the population.

**Figure 3 – Evolution of sex ratio, 1962-2022 Censuses, Republic of Mauritius**



The sex ratio continued its declining trend in 2022 (Figure 3); the increase noted in 1990 may be due to higher out-migration of females than males during the period 1983 to 1990.



**Figure 4 – Age specific sex ratio, 2011 & 2022 Censuses, Republic of Mauritius**

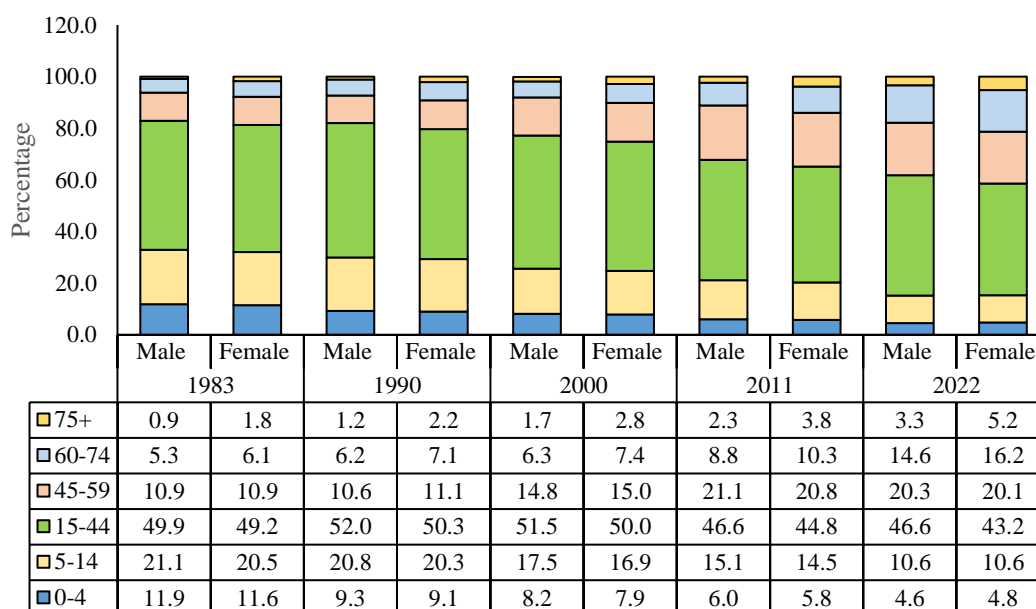
The age-specific sex ratio, which measures the number of males per 100 females in an age group, is an important indicator for assessing the quality of age/sex data reporting. Sex ratios generally decline with increasing age because more males are born than females and females tend to live longer. The sex ratio below 100 for younger age groups is an indication of sex mis-reporting. As shown in Figure 4 above, compared to 2011 Census, there are increases in the sex ratios from the 25-29 to the 40-44 age groups, possibly due to the presence of foreign male workers in the population. After this, the sex ratios continue to decline starting from the 35-39 age group. In 2022, the overall sex ratio was 97.

#### 4.3.3 Age and sex composition

Comparison of data on age and sex composition from 2022 Population Census with previous censuses (Figure 5) shows that, from 1983 to 2022, the proportion of the population

- aged 0-4 and 5-14 years decreased continuously among both males and females, mainly due to a general fall in fertility;
- aged 15-59 years continuously increased up to 2011, and slightly decreased in 2022. The decrease in 2022 is mainly due to births of relatively lower fertility years entering the age bracket.
- aged 60 years and above increased significantly due to higher life expectancy.
- aged 75 years and over for both males and females more than doubled.

**Figure 5 – Composition of the population by age and sex, 1983-2022 Censuses, Republic of Mauritius**



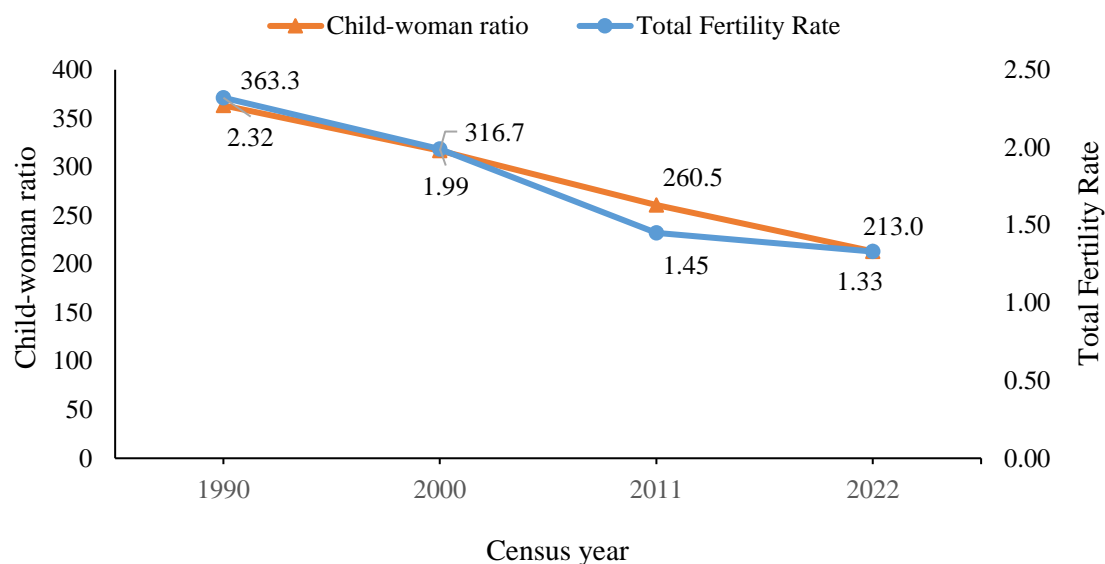
Among the elderly, females are more numerous since they live longer than men.

#### 4.3.4 Child-woman ratio

The child-woman ratio is defined as the number of children aged 0-4 years per 1,000 women in the age group 15-44 years. It is a crude measure of the level of fertility derived from census data. The Total Fertility Rate is the average number of children born to an average woman assuming that she survives to the end of her child-bearing age and is subjected to a fixed schedule of age-specific fertility rates.

During the period 1990-2022, the child-woman ratio has declined continuously from 363.3 in 1990 to 213.0 in 2022. These ratios are in line with the fertility decline observed during this period whereby the Total Fertility Rate went down from 2.32 in 1990 to 1.45 in 2011 and 1.33 in 2022 (Figure 6).

The observed similar trends in child-woman ratio (based on census) and Total Fertility Rate (based on vital statistics) indicate the consistency of 2022 Population Census with previous censuses.

**Figure 6 – Evolution of Child-woman ratio and Total Fertility Rate, 1990-2022 Censuses, Republic of Mauritius**

#### 4.3.5 Dependency ratio

The total dependency ratio is the ratio of the ‘dependent’ population (combined child population less than 15 years and the population aged 65 years and over) to the population of intermediate age 15-64 years. It is the sum of the child and old-age dependency ratios.

**Table 2 – Dependency ratio by sex, 2011 & 2022 Censuses, Republic of Mauritius**

Sex	2011			2022		
	Child Dependency Ratio	Old-age Dependency Ratio	Total Dependency Ratio	Child Dependency Ratio	Old-age Dependency Ratio	Total Dependency Ratio
Male	292.8	93.4	386.2	207.7	160.1	367.8
Female	287.7	131.8	419.5	219.3	212.1	431.4
Both Sexes	290.2	112.5	402.7	213.5	185.9	399.4

The total dependency ratio, as shown in Table 2 above, decreased slightly from 402.7 in 2011 to 399.4 in 2022. This is mainly attributable to a fall in child dependency ratio due to fertility decline.

Conversely, the old-age dependency ratio went up from 112.5 in 2011 to 185.9 in 2022, as a result of improved life expectancies.

In addition, for both censuses, the data indicate higher old-age dependency among females than males due to the fact that women live longer than men.

## **5. Content error**

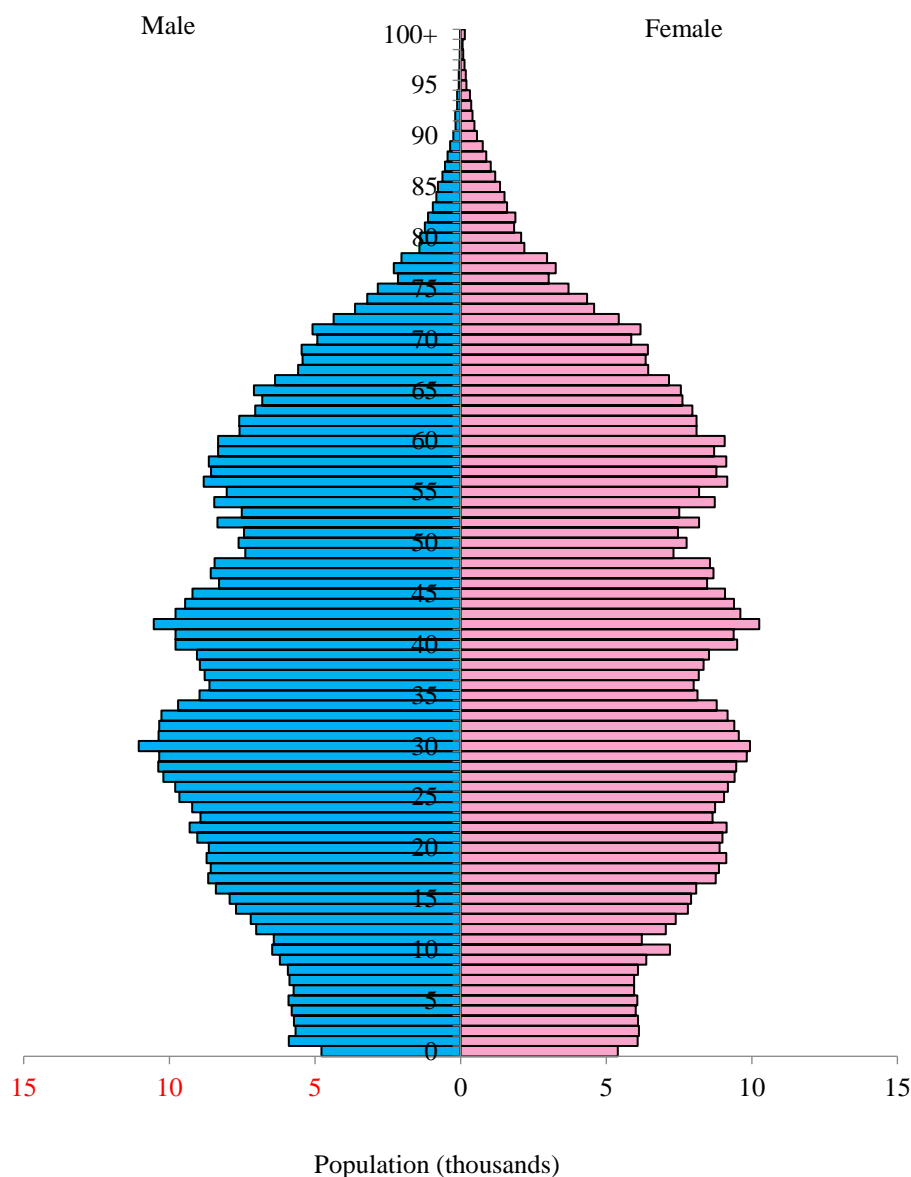
Content errors refer to instances where characteristics such as age, sex, marital status and economic activity of a person enumerated in a census are incorrectly reported.

The extent of the content errors in 2022 Population Census is examined in Sections 5.1 to 5.4.

### ***5.1 Population pyramid***

By inspecting a population pyramid by single year of age, irregularities in the reported age data of a census may be detected. In a population with no drastic changes in fertility, mortality and migration and where migration is either negligible or does not occur at selective ages, change in population in given ages is expected to decrease smoothly with age. The base of the pyramid is mainly determined by the level of fertility in the population, while how fast it converges to peak is determined by previous levels of mortality and fertility. Moreover, migration by age and sex also affect the shape of the pyramid.

**Figure 7 – Population pyramid by single year of age, 2022 Population Census, Republic of Mauritius**



The base of the population pyramid for the 2022 Population Census (Figure 7) is narrower than the age band above it, indicating fewer births and is in line with a fertility rate which is continuously decreasing over the past two decades. The bulge at age 42 corresponds to high births around year 1980. Above and below this age, the number of births has been declining.

The bulge at age 30 is the result of high births around the year 1992. The top of the pyramid shows the impact of mortality among both males and females above 60 years old.

The fact that years of peak births registered by vital statistics corresponds well with census age profile is an indication of little age misreporting in the census.

### ***5.2 Digit preference***

A common form of age misreporting is digit preference or age heaping, that is, a noticeable concentration of reported ages at specific digits. This is the result of deliberate mis-statement or ignorance of age on the part of the respondent. Age heaping is more frequently found at the ages ending in 0 or 5.

Figures 8 and 9 depict the age distribution by sex of the population of the Republic of Mauritius. The peaks and troughs in the chart correspond to actual trends in birth for the corresponding years. Visually detecting digit preference can be challenging. To more accurately study digit preference, statistical methods such as Myers' Index can provide clearer insights than visual analysis.

Figure 8 - Male Population by age - 2022 Population Census, Republic of Mauritius

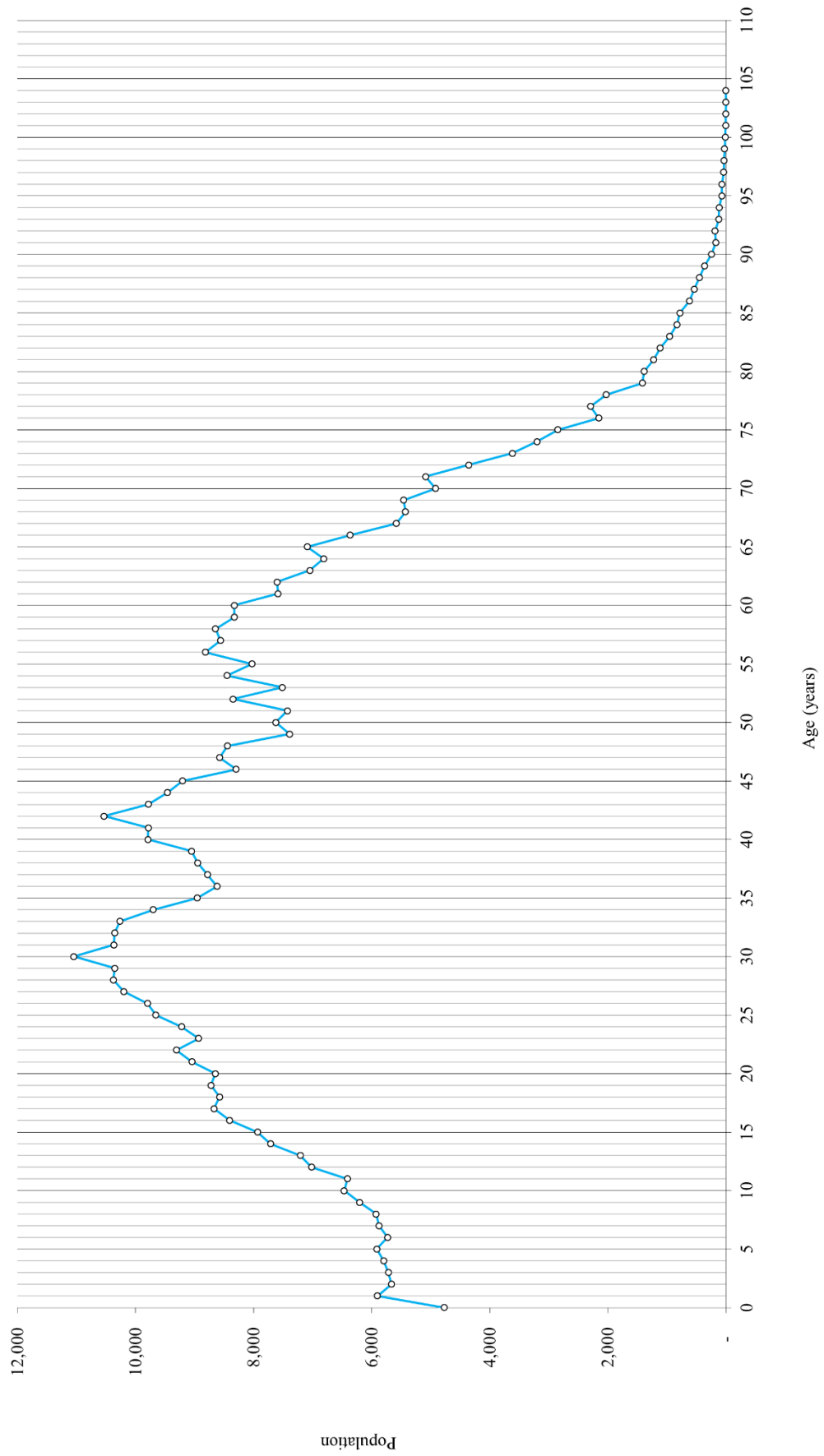
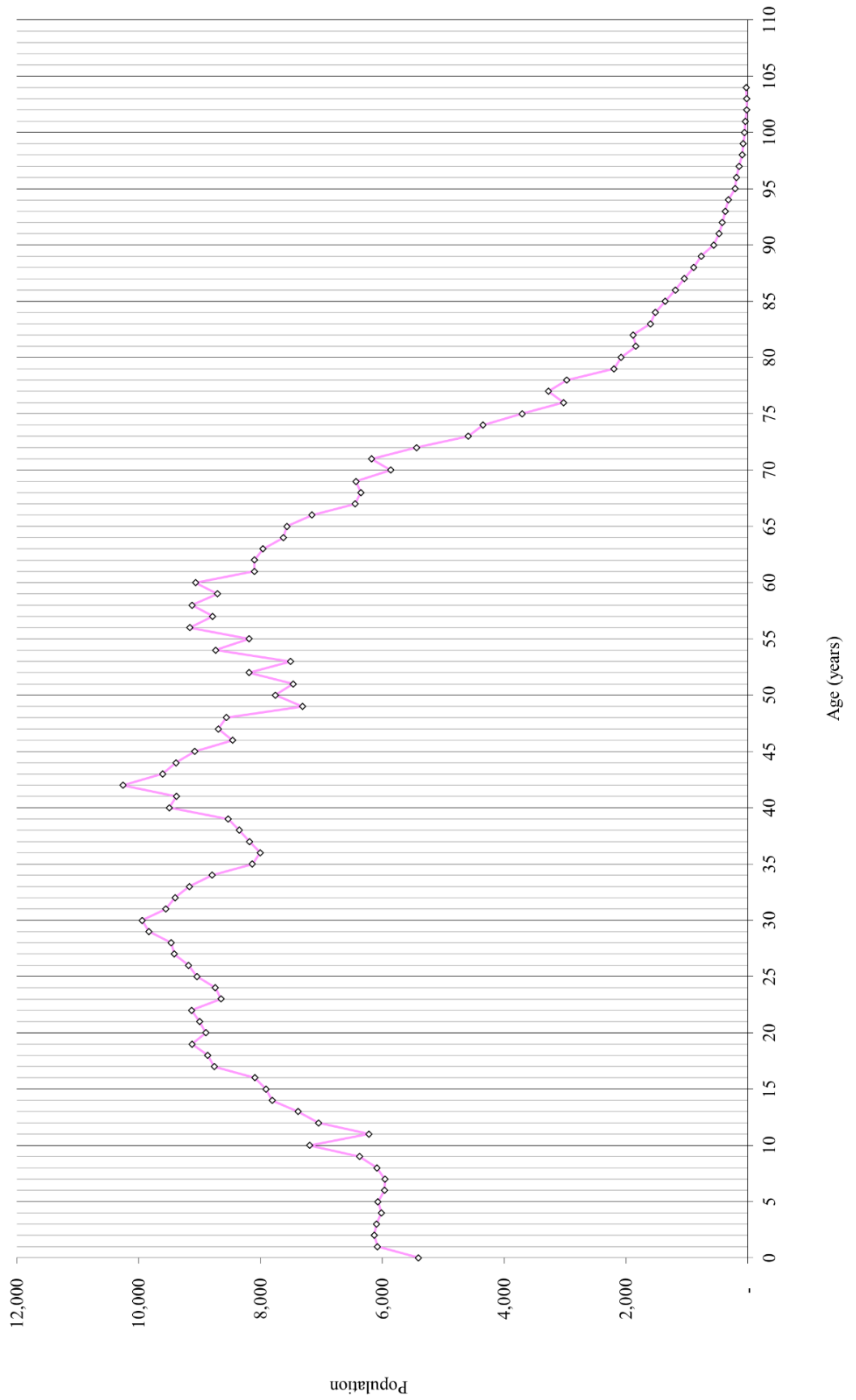


Figure 9 - Female Population by age - 2022 Population Census, Republic of Mauritius





Myers' Index offers an alternative method of evaluating single year age data. It has the advantage of quantifying the magnitude of digit avoidance or preference for the individual digits '0' to '9'. Thus, to quantify the magnitude of digit preference, the Myers' Index has been used. It involves the calculation of the percentage of the population,  $P(i)$  having age ending in  $i$  where  $i=0,1,2,\dots,9$ . In the ideal situation where there is no digit preference,  $P(i)$  equals 10 for each  $i$ .

The index is thus computed as the sum of absolute deviations of  $P(i)$  from 10,

i.e.

$$Index = \frac{1}{2} \sum_{i=0}^{i=9} |P(i) - 10|$$

It lies between 0 and 90 where 0 means no digit preference and 90 means absolute digit preference at a single digit.

Table 3 indicates slight digit preference of 0, 2 and 8 at the 2022 Population Census. However, considering that the Myers' index was only 0.7 to 0.8 on a scale of 0 to 90, it can be construed that age was accurately reported at the 2022 Population Census.

In addition, the Myers' index shows a slight improvement in age reporting at 2022 Population Census for male as compared to 2011 Population Census.

**Table 3 – Index for digit preference in age data, 2022 Population Census, Republic of Mauritius**

Terminal digit	Individual percentages	
	Male	Female
0	10.2	10.3
1	9.9	9.9
2	10.4	10.3
3	9.9	9.8
4	10.0	10.0
5	9.8	9.7
6	9.8	9.8
7	10.0	10.0
8	10.1	10.1
9	9.9	10.0
2022 Index	0.7	0.8
2011 Index	0.9	0.8

### 5.3 Age ratio, Sex ratio and UN Joint Score

The quality of age data can also be evaluated by examining age and sex ratios. To quantify the degree of age-sex reporting errors, various indices such as the age ratio score, the sex ratio score and the UN Joint Score have been calculated for the population aged less than 70 years. The age specific sex ratio, the number of males per 100 females in an age group is an important measure for assessing the quality of the reporting of sex data.

The age ratio is defined as the ratio of the population of a given age to half the sum of population in the preceding and following groups and expressed per 100. The age-ratio score is defined as the average of the sum of absolute deviations of age-ratios from the expected 100. When there are no major changes in fertility, mortality or migration, the age ratios do not deviate much from 100, hence, any substantial deviation is explained in terms of age misreporting.

The sex ratio score is defined as the average of the sum of absolute deviations of sex ratios of consecutive age-groups.

The UN age-sex accuracy index or UN Joint Score combines indices on accuracy of the age distribution and accuracy in sex ratio to come up with a single index measuring the accuracy of the age-sex distribution of a Census. The census data is considered to be "accurate", "inaccurate" or "highly inaccurate" if the index is under 20, 20 to 40 or over 40 respectively.

**Table 4 – Age Ratio, Sex Ratio and UN Joint Score, 2011 & 2022 Censuses, Republic of Mauritius**

Census Year	Sex Ratio Score	Age Ratio Score		UN Joint Score
		Male	Female	
2011	2.2	6.4	6.5	19.6
2022	3.0	6.9	6.8	22.7

When compared with 2011 Population Census, sex ratio score has increased from 2.2 to 3.0 in 2022. Age ratio score for male has increased from 6.4 to 6.9 while that for female from 6.5 to 6.8, and the UN Joint Score went up from 19.6 to 22.7.

The increase in the UN Joint Score is primarily attributed to disruptions in the age and sex distribution of the population, largely caused by migration, particularly the in-migration of foreign workers. When the UN Joint Score is calculated excluding foreign workers, the figure is approximately 20, which can be considered relatively accurate.

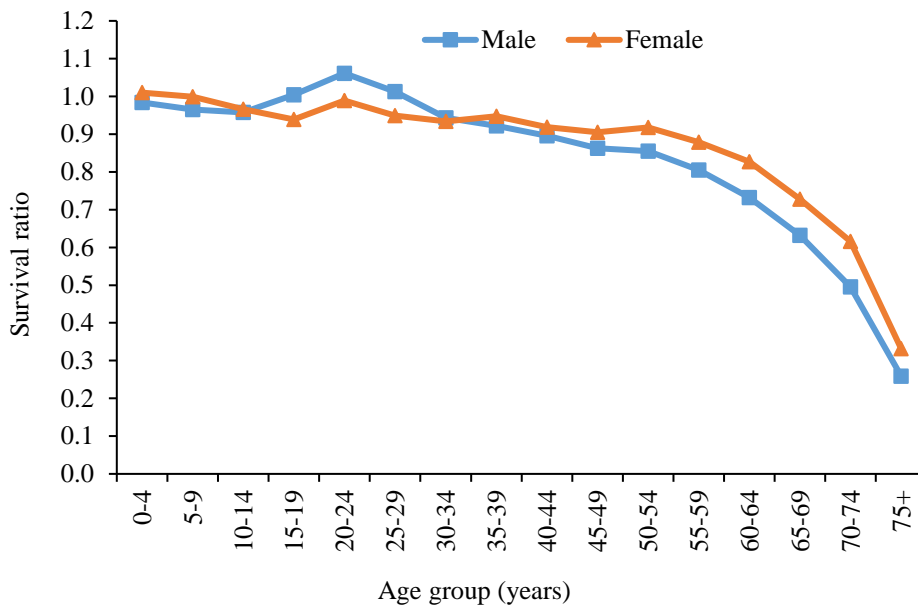
#### 5.4 Survival ratio

The quality of census data can also be assessed by the analysis of survival ratios. The cohort survival ratio is the proportion of persons in a given age group who have survived from one census to another assuming there is no international migration in the country. In the absence of migration, cohort size from one census to the next should only decrease in a regular pattern.

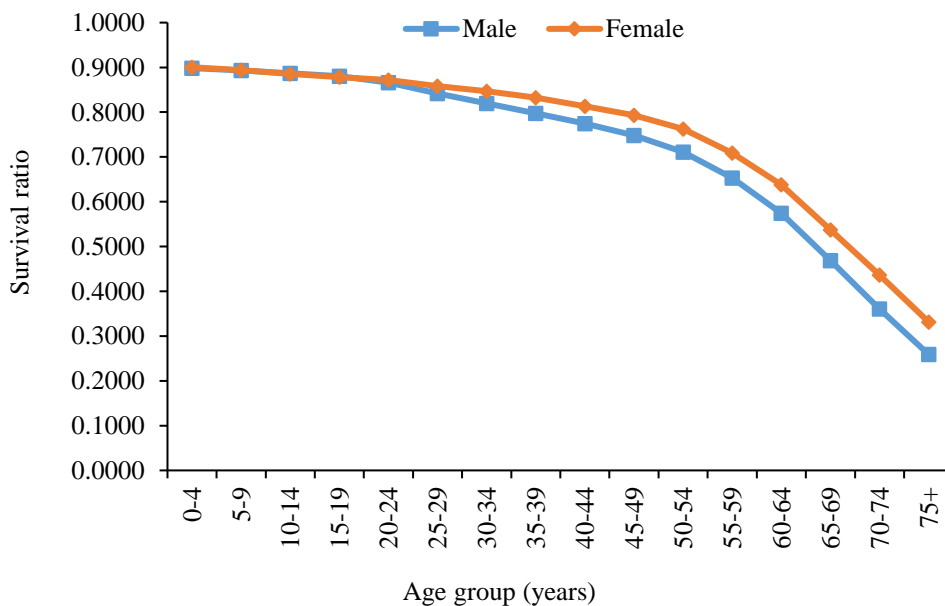
The survival ratio is usually below unity due to deaths and is expected to decrease smoothly with increasing age. Ratio values for any particular cohort which exceed 1.0 would indicate the impact of in-migration during the inter-censal period.

**Table 5 – Intercensal cohort and overall survival ratio, 2011 & 2022 Censuses, Republic of Mauritius**

Cohort survival ratio			Overall survival ratio		
Age group in 2011	Male	Female	Age	Male	Female
0-4	0.9841	1.0099	0+	0.8983	0.9003
5-9	0.9650	0.9990	5+	0.8931	0.8938
10-14	0.9576	0.9657	10+	0.8872	0.8856
15-19	1.0045	0.9388	15+	0.8803	0.8783
20-24	1.0612	0.9892	20+	0.8660	0.8716
25-29	1.0129	0.9494	25+	0.8415	0.8579
30-34	0.9431	0.9336	30+	0.8196	0.8469
35-39	0.9222	0.9472	35+	0.7974	0.8326
40-44	0.8955	0.9189	40+	0.7743	0.8135
45-49	0.8625	0.9052	45+	0.7479	0.7932
50-54	0.8549	0.9176	50+	0.7110	0.7621
55-59	0.8051	0.8789	55+	0.6533	0.7091
60-64	0.7320	0.8267	60+	0.5746	0.6379
65-69	0.6319	0.7276	65+	0.4683	0.5374
70-74	0.4955	0.6159	70+	0.3606	0.4364
75+	0.2589	0.3315	75+	0.2589	0.3315
All age groups	0.8983	0.9003			

**Figure 10 – Cohort survival ratio, 2011 & 2022 Censuses, Republic of Mauritius**

For ages 19-44 years, there is an irregular pattern; the survival ratios do not decrease with increasing age and this could be due to in-migration. As from age 45, the survival ratios follow the expected pattern and decrease smoothly with age, with a gap between males and females due to higher life expectancy among women.

**Figure 11 – Overall survival ratio, 2011 & 2022 Censuses, Republic of Mauritius**

However, the overall survival ratios show the expected pattern, where the ratio declines continuously with increasing age, without any fluctuations, indicating that the census data is of good quality.

A comparison of overall survival ratio by sex indicates that for ages below 24, the ratios are almost the same for males and females while for ages 25 and above, higher survival ratios can be observed among females. This is expected since mortality is lower among females.

## 6. Consistency checks with data from other sources

### 6.1 Comparison of Population Census with Housing Census count

The Housing Census was conducted between 30 April and 20 June 2022 while the Population Census was taken at the beginning of July 2022.

At the Housing Census, 367,870 private households and 1,202,192 persons were enumerated compared to 366,169 private households and 1,197,340 persons at the Population Census. The difference of -0.5% in the figures for the household may be explained by some households who own secondary residences have been counted at both their principal and secondary residences at the Housing Census. However, this was not the case with the Population Census, which was taken on a specific census date (night of 3-4 July 2022). The formation of new households and the splitting of households between the conduct of the two censuses have also contributed to the observed difference in the number of households.

As regards the population figures, the difference of -0.4% may be attributed to the fact that the definition of the resident population used at the Population Census could not be used at the Housing Census.

Given the negligible difference between the figures of the 2022 Housing Census and the 2022 Population Census, they can be considered to be consistent with each other.

### 6.2 Comparison of 2022 Census data with statistics from the Ministry of Social Integration, Social Security and National Solidarity

In Mauritius, an old-age pension known as the Basic Retirement Pension (BRP) is payable to every Mauritian citizen aged 60 years and above, provided that the person has resided in Mauritius for an aggregate period of 12 years since attaining the age of 18.

**Table 6 – Comparison of 2022 enumerated resident population with Beneficiaries of Basic Retirement Pension by age, Republic of Mauritius**

Age group (years)	2022 Population Census	Beneficiaries of BRP (2021/2022)	Difference	% Difference
60 - 64	78,220	80,526	-2,306	-2.9
65 - 69	63,876	65,964	-2,088	-3.3
70 - 74	47,585	49,302	-1,717	-3.6
75 - 79	25,898	26,878	-980	-3.8
80 - 84	14,411	15,063	-652	-4.5
85 - 89	7,976	8,357	-381	-4.8
90 - 94	2,969	3,173	-204	-6.9
95 - 99	907	971	-64	-7.1
100+	168	177	-9	-5.4
<b>60 and over</b>	<b>242,010</b>	<b>250,411</b>	<b>-8,401</b>	<b>-3.5</b>

It can be inferred that the figure from the 2022 Population Census closely aligns with the number of beneficiaries of Basic Retirement Pension considering the differences in the population definitions between the two sources.

### ***6.3 Comparison of 2022 Census data with school enrolment from the Ministry of Education, Tertiary Education, Science and Technology***

Education statistics is yet another external source of data with which census data can be compared. Figures on children aged 5 to 16 years now attending school at the 2022 Population Census have been compared with school enrolment statistics from the Ministry of Education, Tertiary Education, Science and Technology (Table 7). The comparison has been done for children aged 5 to 16 years since formal education is compulsory up to age 16 in Mauritius.

It indicates a deficit of 4,508 in the age group 5-9 years and 2,407 in the age group 10-14 years. However, for children aged 15 to 16 years, a surplus of 1,107 is observed. It is to be noted that these figures are not strictly comparable, since due to the onset of COVID-19 pandemic in 2020 and 2021, the country was under lockdown during specific periods resulting in the closure of educational institutions from primary to tertiary levels for durations extending beyond the lockdown period. Furthermore, to catch up on the learning loss, the school calendar was extended for two consecutive years, that is, the school year 2020 started in January 2020 and ended in March 2021 while the school year 2021 started in June 2021 and was extended to November 2022.

**Table 7 – Comparison of 2022 census data on school population with school enrolment from the Ministry of Education, Tertiary Education, Science and Technology, Island of Mauritius**

<b>Age group (years)</b>	<b>Census data</b>	<b>School Enrolment<sup>1</sup> (2021/2022)</b>	<b>Difference</b>	<b>% Difference</b>
5 - 9	56,268	60,776	-4,508	-7.4
10 - 14	66,339	68,746	-2,407	-3.5
15 - 16	29,469	28,362	1,107	3.9
<b>5 - 16</b>	<b>152,076</b>	<b>157,884</b>	<b>-5,808</b>	<b>-3.7</b>

<sup>1</sup> Number of children aged 5 to 16 years enrolled in schools at pre-primary, primary and secondary level.

### ***6.4 Comparison of 2022 Census data with the Electoral Commissioner's Office – Registered electors***

In Mauritius, a house-to-house enquiry is usually done in January by officers of the Electoral Commissioner's Office to register all eligible electors (aged 18 years and above) in the country. A comparison of the population aged 18 years and over enumerated at the 2022 Population Census with the number of registered electors in 2022 indicates a surplus of 19,370 persons, (around 2.0%) at the 2022 Population Census. In some constituencies the differences are almost negligible.

Overall, the census figures show close consistency with figures from the Electoral Commissioner's Office.

**Table 8 – Comparison of 2022 resident population aged 18 years and over with number of registered electors, Republic of Mauritius**

Constituency	Resident Population 18+ years (A)	No. of Electors (B)	Difference (A- B)	% Difference
1. Grand River North West and Port Louis West	50,036	42,950	7,086	14.16
2. Port Louis South and Port Louis Central	21,752	24,287	-2,535	-11.65
3. Port Louis Maritime and Port Louis East <sup>1</sup>	20,125	21,772	-1,647	-8.18
4. Port Louis North and Montagne Longue	52,662	50,977	1,685	3.20
5. Pamplemousses and Triolet	71,606	68,671	2,935	4.10
6. Grand Baie and Poudre D'Or	59,784	56,996	2,788	4.66
7. Piton and Rivière du Rempart	47,999	45,495	2,504	5.22
8. Quartier Militaire and Moka	49,807	47,819	1,988	3.99
9. Flacq and Bon Accueil	59,647	58,573	1,074	1.80
10. Montagne Blanche and Grand River South East	55,639	54,868	771	1.39
11. Vieux Grand Port and Rose Belle	44,881	45,134	-253	-0.56
12. Mahebourg and Plaine Magnien	40,069	40,474	-405	-1.01
13. Rivière des Anguilles and Souillac	36,023	36,307	-284	-0.79
14. Savanne and Black River	70,833	66,484	4,349	6.14
15. La Caverne and Phoenix	61,531	59,519	2,012	3.27
16. Vacoas and Floreal	47,006	46,368	638	1.36
17. Curepipe and Midlands	45,830	47,032	-1,202	-2.62
18. Belle Rose and Quatre Bornes	43,078	44,258	-1,180	-2.74
19. Stanley and Rose Hill	38,092	39,281	-1,189	-3.12
20. Beau Bassin and Petite Rivière	49,594	46,899	2,695	5.43
21. Rodrigues	29,408	31,868	-2,460	-8.37
<b>Total</b>	<b>995,402</b>	<b>976,032</b>	<b>19,370</b>	<b>1.95</b>

<sup>1</sup> Including resident population for Agalega

*Note: The annual compilation of the register of electors is laid down in the Constitution and the Representation of the People Act which stipulate that a person shall be qualified as an elector if he/she is 18 years and above and has resided in Mauritius for a period of not less than 2 years immediately before the 1 January of the year in which he is seeking registration or he is domiciled in Mauritius and is a resident therein on the 1st of January.*

## 7. Adjustment for under enumeration of children

Based on the above demographic analysis and consistency checks, coverage of the population aged 18 years and above can be considered as complete.

In order to assess the degree of under-enumeration at the 2022 Population Census, the enumerated resident population has been compared with the estimated population in 2022. The estimated population has been derived by surviving the 2011 census figures on the basis of data on live births, deaths and migration for the inter-censal period July 2011 to June 2022.

In the Island of Mauritius, at lower ages (0-14 years) the enumerated resident population is less than the estimated population indicating an under enumeration of children in the census count. At older ages (15+ years), migration becomes an important factor with the impact being either positive or negative depending on the direction of flow of the migrants. (Table 9)

**Table 9 – Comparison of 2022 enumerated resident population with estimated 2022 population based on 2011 Census data, Island of Mauritius**

Age/Age group (years)	Male Population			Female Population		
	Enumerated	Estimated <sup>1</sup>	Difference	Enumerated	Estimated <sup>1</sup>	Difference
0	4,360	5,663	-1,303	4,967	5,642	-675
1	5,468	6,327	-859	5,647	5,924	-277
2	5,231	6,020	-789	5,700	5,957	-257
3	5,334	6,212	-878	5,722	5,987	-265
4	5,398	6,246	-848	5,611	5,930	-319
<b>(0-4)</b>	<b>25,791</b>	<b>30,468</b>	<b>-4,677</b>	<b>27,647</b>	<b>29,440</b>	<b>-1,793</b>
5	5,516	6,200	-684	5,693	5,907	-214
6	5,372	6,143	-771	5,549	5,791	-242
7	5,519	6,286	-767	5,607	6,048	-441
8	5,550	6,471	-921	5,712	6,305	-593
9	5,858	6,733	-875	6,030	6,377	-347
<b>(5-9)</b>	<b>27,815</b>	<b>31,833</b>	<b>-4,018</b>	<b>28,591</b>	<b>30,428</b>	<b>-1,837</b>
10	6,089	6,942	-853	6,796	6,784	12
11	6,048	6,951	-903	5,888	6,810	-922
12	6,621	7,228	-607	6,681	7,110	-429
13	6,785	7,432	-647	7,007	7,441	-434
14	7,286	7,857	-571	7,405	7,764	-359
<b>(10-14)</b>	<b>32,829</b>	<b>36,410</b>	<b>-3,581</b>	<b>33,777</b>	<b>35,909</b>	<b>-2,132</b>
15	7,540	8,252	-712	7,471	7,784	-313
16	7,998	8,784	-786	7,698	8,284	-586
17	8,205	8,914	-709	8,342	8,758	-416
18	8,185	9,202	-1,017	8,454	8,774	-320
19	8,341	9,364	-1,023	8,729	9,244	-515
<b>(15-19)</b>	<b>40,269</b>	<b>44,516</b>	<b>-4,247</b>	<b>40,694</b>	<b>42,844</b>	<b>-2,150</b>

<sup>1</sup> 2022 Population estimates based on Census 2011



Age/Age group (years)	Male Population			Female Population		
	Enumerated	Estimated <sup>1</sup>	Difference	Enumerated	Estimated <sup>1</sup>	Difference
20	8,269	9,273	-1,004	8,544	9,021	-477
21	8,678	9,654	-976	8,655	9,264	-609
22	8,973	9,502	-529	8,798	9,062	-264
23	8,671	9,311	-640	8,340	8,823	-483
24	8,950	9,351	-401	8,457	8,971	-514
<b>(20-24)</b>	<b>43,541</b>	<b>47,091</b>	<b>-3,550</b>	<b>42,794</b>	<b>45,141</b>	<b>-2,347</b>
25	9,375	9,339	36	8,764	9,210	-446
26	9,543	9,002	541	8,857	8,867	-10
27	9,933	9,342	591	9,094	9,201	-107
28	10,089	9,432	657	9,163	9,310	-147
29	10,108	9,697	411	9,553	9,789	-236
<b>(25-29)</b>	<b>49,048</b>	<b>46,812</b>	<b>2,236</b>	<b>45,431</b>	<b>46,377</b>	<b>-946</b>
30	10,777	9,774	1,003	9,658	9,352	306
31	10,108	9,419	689	9,254	8,909	345
32	10,090	8,984	1,106	9,129	8,756	373
33	9,996	8,851	1,145	8,856	8,450	406
34	9,456	8,395	1,061	8,496	8,106	390
<b>(30-34)</b>	<b>50,427</b>	<b>45,423</b>	<b>5,004</b>	<b>45,393</b>	<b>43,573</b>	<b>1,820</b>
35	8,686	7,804	882	7,863	7,482	381
36	8,371	7,696	675	7,742	7,398	344
37	8,509	8,035	474	7,884	7,852	32
38	8,652	8,279	373	8,001	8,003	-2
39	8,735	8,502	233	8,208	8,234	-26
<b>(35-39)</b>	<b>42,953</b>	<b>40,316</b>	<b>2,637</b>	<b>39,698</b>	<b>38,969</b>	<b>729</b>
40	9,461	9,297	164	9,135	9,019	116
41	9,440	9,601	-161	9,001	9,117	-116
42	10,169	10,090	79	9,907	9,927	-20
43	9,459	9,785	-326	9,290	9,307	-17
44	9,176	9,362	-186	9,088	9,164	-76
<b>(40-44)</b>	<b>47,705</b>	<b>48,135</b>	<b>-430</b>	<b>46,421</b>	<b>46,534</b>	<b>-113</b>
45	8,904	8,867	37	8,778	8,479	299
46	8,018	8,287	-269	8,189	8,105	84
47	8,302	8,623	-321	8,426	8,313	113
48	8,175	8,297	-122	8,290	8,280	10
49	7,154	7,331	-177	7,049	7,122	-73
<b>(45-49)</b>	<b>40,553</b>	<b>41,405</b>	<b>-852</b>	<b>40,732</b>	<b>40,299</b>	<b>433</b>
50	7,424	7,521	-97	7,529	7,479	50
51	7,186	7,650	-464	7,214	7,514	-300

<sup>1</sup> 2022 Population estimates based on Census 2011

Age/Age group (years)	Male Population			Female Population		
	Enumerated	Estimated <sup>1</sup>	Difference	Enumerated	Estimated <sup>1</sup>	Difference
52	8,086	8,282	-196	7,924	8,151	-227
53	7,325	7,702	-377	7,291	7,682	-391
54	8,228	8,503	-275	8,507	8,747	-240
<b>(50-54)</b>	<b>38,249</b>	<b>39,658</b>	<b>-1,409</b>	<b>38,465</b>	<b>39,573</b>	<b>-1,108</b>
55	7,818	8,244	-426	7,971	8,288	-317
56	8,576	9,232	-656	8,915	9,406	-491
57	8,361	8,628	-267	8,577	9,053	-476
58	8,433	8,900	-467	8,913	9,282	-369
59	8,145	8,376	-231	8,499	8,791	-292
<b>(55-59)</b>	<b>41,333</b>	<b>43,380</b>	<b>-2,047</b>	<b>42,875</b>	<b>44,820</b>	<b>-1,945</b>
60	8,144	8,344	-200	8,858	8,982	-124
61	7,370	7,598	-228	7,887	8,009	-122
62	7,446	7,310	136	7,927	7,993	-66
63	6,871	7,007	-136	7,781	7,942	-161
64	6,647	6,679	-32	7,451	7,499	-48
<b>(60-64)</b>	<b>36,478</b>	<b>36,938</b>	<b>-460</b>	<b>39,904</b>	<b>40,425</b>	<b>-521</b>
65	6,891	6,814	77	7,398	7,420	-22
66	6,222	6,348	-126	6,994	7,174	-180
67	5,445	5,429	16	6,328	6,361	-33
68	5,299	5,317	-18	6,201	6,341	-140
69	5,374	5,413	-39	6,346	6,459	-113
<b>(65-69)</b>	<b>29,231</b>	<b>29,321</b>	<b>-90</b>	<b>33,267</b>	<b>33,755</b>	<b>-488</b>
70	4,830	4,857	-27	5,740	5,709	31
71	4,979	5,119	-140	6,081	6,307	-226
72	4,269	4,270	-1	5,347	5,381	-34
73	3,541	3,521	20	4,510	4,581	-71
74	3,129	3,097	32	4,259	4,285	-26
<b>(70-74)</b>	<b>20,748</b>	<b>20,864</b>	<b>-116</b>	<b>25,937</b>	<b>26,263</b>	<b>-326</b>
75	2,778	2,740	38	3,628	3,628	0
76	2,086	2,052	34	2,956	2,990	-34
77	2,226	2,314	-88	3,185	3,316	-131
78	1,997	2,038	-41	2,903	3,023	-120
79	1,356	1,260	96	2,129	2,132	-3
<b>(75-79)</b>	<b>10,443</b>	<b>10,404</b>	<b>39</b>	<b>14,801</b>	<b>15,089</b>	<b>-288</b>
80	1,347	1,387	-40	2,020	2,026	-6
81	1,179	1,139	40	1,783	1,827	-44

<sup>1</sup> 2022 Population estimates based on Census 2011

Age/Age group (years)	Male Population			Female Population		
	Enumerated	Estimated <sup>1</sup>	Difference	Enumerated	Estimated <sup>1</sup>	Difference
82	1,077	1,161	-84	1,832	1,901	-69
83	925	930	-5	1,548	1,565	-17
84	805	795	10	1,473	1,448	25
<b>(80-84)</b>	<b>5,333</b>	<b>5,412</b>	<b>-79</b>	<b>8,656</b>	<b>8,767</b>	<b>-111</b>
<b>85+</b>	<b>3,704</b>	<b>3,576</b>	<b>128</b>	<b>7,960</b>	<b>7,420</b>	<b>540</b>
<b>All ages</b>	<b>586,450</b>	<b>601,962</b>	<b>-15,512</b>	<b>603,043</b>	<b>615,626</b>	<b>-12,583</b>

<sup>1</sup> 2022 Population estimates based on Census 2011

In the Island of Rodrigues, the enumerated resident population is in general agreement with the estimated population irrespective of age groups (Table 10).

**Table 10 – Comparison of 2022 enumerated resident population with estimated 2022 population based on 2011 Census data - Island of Rodrigues**

Age/Age group (years)	Male Population			Female Population		
	Enumerated	Estimated <sup>1</sup>	Difference	Enumerated	Estimated <sup>1</sup>	Difference
0	411	451	-40	438	468	-30
1	434	424	10	431	424	7
2	433	426	7	430	435	-5
3	382	381	1	374	366	8
4	399	392	7	404	400	4
<b>(0-4)</b>	<b>2,059</b>	<b>2,074</b>	<b>-15</b>	<b>2,077</b>	<b>2,093</b>	<b>-16</b>
5	394	394	0	377	368	9
6	356	340	16	413	376	37
7	357	337	20	349	327	22
8	374	354	20	377	343	34
9	347	355	-8	345	334	11
<b>(5-9)</b>	<b>1,828</b>	<b>1,780</b>	<b>48</b>	<b>1,861</b>	<b>1,748</b>	<b>113</b>
10	376	364	12	395	366	29
11	360	323	37	334	300	34
12	398	371	27	364	379	-15
13	421	388	33	379	345	34
14	425	419	6	404	400	4
<b>(10-14)</b>	<b>1,980</b>	<b>1,865</b>	<b>115</b>	<b>1,876</b>	<b>1,790</b>	<b>86</b>
15	392	395	-3	441	446	-5
16	408	390	18	393	403	-10
17	463	463	0	418	414	4
18	391	423	-32	414	443	-29

<sup>1</sup> 2022 Population estimates based on Census 2011

Age/Age group (years)	Male Population			Female Population		
	Enumerated	Estimated <sup>1</sup>	Difference	Enumerated	Estimated <sup>1</sup>	Difference
19	383	419	-36	393	407	-14
<b>(15-19)</b>	<b>2,037</b>	<b>2,090</b>	<b>-53</b>	<b>2,059</b>	<b>2,113</b>	<b>-54</b>
20	380	414	-34	354	406	-52
21	363	400	-37	343	393	-50
22	333	414	-81	336	396	-60
23	260	341	-81	310	367	-57
24	269	318	-49	283	332	-49
<b>(20-24)</b>	<b>1,605</b>	<b>1,887</b>	<b>-282</b>	<b>1,626</b>	<b>1,894</b>	<b>-268</b>
25	280	323	-43	282	315	-33
26	256	282	-26	325	355	-30
27	268	318	-50	321	347	-26
28	288	315	-27	301	317	-16
29	244	248	-4	280	275	5
<b>(25-29)</b>	<b>1,336</b>	<b>1,486</b>	<b>-150</b>	<b>1,509</b>	<b>1,609</b>	<b>-100</b>
30	269	272	-3	286	276	10
31	261	238	23	303	262	41
32	262	240	22	271	234	37
33	271	247	24	314	267	47
34	243	209	34	297	255	42
<b>(30-34)</b>	<b>1,306</b>	<b>1,206</b>	<b>100</b>	<b>1,471</b>	<b>1,294</b>	<b>177</b>
35	272	228	44	270	246	24
36	246	222	24	265	227	38
37	274	261	13	294	267	27
38	299	303	-4	348	339	9
39	316	294	22	320	326	-6
<b>(35-39)</b>	<b>1,407</b>	<b>1,308</b>	<b>99</b>	<b>1,497</b>	<b>1,405</b>	<b>92</b>
40	327	307	20	362	377	-15
41	345	328	17	377	394	-17
42	363	353	10	352	349	3
43	325	301	24	315	340	-25
44	285	298	-13	301	313	-12
<b>(40-44)</b>	<b>1,645</b>	<b>1,587</b>	<b>58</b>	<b>1,707</b>	<b>1,773</b>	<b>-66</b>
45	302	290	12	303	315	-12
46	276	280	-4	272	286	-14
47	272	283	-11	264	284	-20
48	269	276	-7	270	299	-29
49	238	255	-17	261	277	-16
<b>(45-49)</b>	<b>1,357</b>	<b>1,384</b>	<b>-27</b>	<b>1,370</b>	<b>1,461</b>	<b>-91</b>
50	203	217	-14	230	245	-15
51	244	253	-9	252	276	-24

<sup>1</sup> 2022 Population estimates based on Census 2011

Age/Age group (years)	Male Population			Female Population		
	Enumerated	Estimated <sup>1</sup>	Difference	Enumerated	Estimated <sup>1</sup>	Difference
52	263	267	-4	263	286	-23
53	187	197	-10	215	226	-11
54	224	242	-18	227	237	-10
<b>(50-54)</b>	<b>1,121</b>	<b>1,176</b>	<b>-55</b>	<b>1,187</b>	<b>1,270</b>	<b>-83</b>
55	210	217	-7	216	221	-5
56	239	257	-18	247	257	-10
57	201	214	-13	207	216	-9
58	212	222	-10	212	216	-4
59	183	208	-25	208	212	-4
<b>(55-59)</b>	<b>1,045</b>	<b>1,118</b>	<b>-73</b>	<b>1,090</b>	<b>1,122</b>	<b>-32</b>
60	181	176	5	208	214	-6
61	215	228	-13	212	215	-3
62	159	167	-8	171	183	-12
63	177	195	-18	176	193	-17
64	165	179	-14	174	199	-25
<b>(60-64)</b>	<b>897</b>	<b>945</b>	<b>-48</b>	<b>941</b>	<b>1,004</b>	<b>-63</b>
65	201	212	-11	170	176	-6
66	147	162	-15	159	165	-6
67	137	149	-12	116	127	-11
68	127	139	-12	152	163	-11
69	85	102	-17	84	97	-13
<b>(65-69)</b>	<b>697</b>	<b>764</b>	<b>-67</b>	<b>681</b>	<b>728</b>	<b>-47</b>
70	87	99	-12	119	144	-25
71	107	104	3	98	117	-19
72	86	109	-23	88	93	-5
73	76	90	-14	80	87	-7
74	71	75	-4	88	92	-4
<b>(70-74)</b>	<b>427</b>	<b>477</b>	<b>-50</b>	<b>473</b>	<b>533</b>	<b>-60</b>
75	66	73	-7	76	89	-13
76	65	75	-10	66	83	-17
77	68	70	-2	85	97	-12
78	34	40	-6	72	81	-9
79	58	57	1	64	77	-13
<b>(75-79)</b>	<b>291</b>	<b>315</b>	<b>-24</b>	<b>363</b>	<b>427</b>	<b>-64</b>
80	38	50	-12	62	60	2
81	45	63	-18	52	69	-17
82	34	43	-9	51	58	-7
83	25	26	-1	49	49	0
84	24	27	-3	42	52	-10

<sup>1</sup> 2022 Population estimates based on Census 2011

Age/Age group (years)	Male Population			Female Population		
	Enumerated	Estimated <sup>1</sup>	Difference	Enumerated	Estimated <sup>1</sup>	Difference
(80-84)	166	209	-43	256	288	-32
85+	107	154	-47	249	284	-35
<b>All ages</b>	<b>21,311</b>	<b>21,825</b>	<b>-514</b>	<b>22,293</b>	<b>22,836</b>	<b>-543</b>

<sup>1</sup> 2022 Population estimates based on Census 2011

An evaluation has been done on the differences between the estimated and enumerated resident population of the two islands by age and sex. For the Island of Mauritius, gaps observed for ages (0-14 years) can be attributed to an under enumeration of young children. For the Island of Rodrigues, the gaps between the enumerated resident and estimated population were negligible. Adjustment for under enumeration is therefore needed for the Island of Mauritius only.

It is to be noted that in the population estimates based on Census 2011, live births and deaths statistics used are complete. As a result, population estimates up to age 14 years are robust. The actual adjustments for under enumeration as shown in Table 11 are the difference between the estimated and the enumerated resident population for ages 0-14 years.

**Table 11 – Adjustment for under enumeration of children, 2022 Population Census, Island of Mauritius**

Age/Age group	Male	Female	Total
0	-1,303	-675	-1978
1	-859	-277	-1136
2	-789	-257	-1046
3	-878	-265	-1143
4	-848	-319	-1167
<b>0 - 4</b>	<b>-4,677</b>	<b>-1,793</b>	<b>-6,470</b>
5	-684	-214	-898
6	-771	-242	-1013
7	-767	-441	-1208
8	-921	-593	-1514
9	-875	-347	-1222
<b>5 - 9</b>	<b>-4,018</b>	<b>-1,837</b>	<b>-5,855</b>
10	-853	12	-841
11	-903	-922	-1825
12	-607	-429	-1036
13	-647	-434	-1081
14	-571	-359	-930
<b>10 - 14</b>	<b>-3,581</b>	<b>-2,132</b>	<b>-5,713</b>
<b>0 - 14</b>	<b>-12,276</b>	<b>-5,762</b>	<b>-18,038</b>

## 8. Notes

### 8.1 Contact persons

Mr. C. K. Arianaick, Principal Statistician  
(Email: [carianaick@govmu.org](mailto:carianaick@govmu.org))

Ms. C. Martial, Statistician/Senior Statistician  
(Email: [cmartial@govmu.org](mailto:cmartial@govmu.org))

Statistics Mauritius  
Tel: (230)208 1800  
Fax: (230)211 4150

Website: <http://statsmauritius.govmu.org>

### 8.2 List of Tables

- Table 1 - Balancing equation by sex, 2022 Population Census, Republic of Mauritius
- Table 2 - Dependency ratio by sex, 2011 & 2022 Censuses, Republic of Mauritius
- Table 3 - Index for digit preference in age data, 2022 Population Census, Republic of Mauritius
- Table 4 - Age ratio, Sex Ratio and UN Joint Scores, 2011 & 2022 Censuses, Republic of Mauritius
- Table 5 - Intercensal cohort and overall survival ratio, 2011 & 2022 Censuses, Republic of Mauritius
- Table 6 - Comparison of 2022 enumerated resident population with Beneficiaries of Basic Retirement Pension by age, Republic of Mauritius
- Table 7 - Comparison of 2022 census data on school population with school enrolment from the Ministry of Education, Tertiary Education, Science and Technology, Island of Mauritius
- Table 8 - Comparison of 2022 resident population aged 18 years and over with number of registered electors, Republic of Mauritius
- Table 9 - Comparison of 2022 enumerated resident population with estimated 2022 population based on 2011 Census data, Island of Mauritius
- Table 10 - Comparison of 2022 enumerated resident population with estimated 2022 population based on 2011 Census data, Island of Rodrigues
- Table 11 - Adjustment for under enumeration of children, 2022 Population Census, Island of Mauritius

### 8.3 List of Figures

- Figure 1 - Population annual growth rate (%), 1962-2022 Censuses, Republic of Mauritius
- Figure 2 - Median age of the population by sex, 1983-2022 Censuses, Republic of Mauritius
- Figure 3 - Evolution of sex ratio, 1962-2022 Censuses, Republic of Mauritius
- Figure 4 - Age-specific sex ratio, 2011 & 2022 Censuses, Republic of Mauritius
- Figure 5 - Composition of the population by age and sex, 1983-2022 Censuses, Republic of Mauritius
- Figure 6 - Evolution of Child-woman ratio and Total Fertility Rate, 1990-2022 Censuses, Republic of Mauritius
- Figure 7 - Population pyramid by single year of age, 2022 Population Census, Republic of Mauritius
- Figure 8 - Male population by age, 2022 Population Census, Republic of Mauritius
- Figure 9 - Female population by age, 2022 Population Census, Republic of Mauritius
- Figure 10 - Cohort survival ratio, 2011 & 2022 Censuses, Republic of Mauritius
- Figure 11 - Overall survival ratio, 2011 & 2022 Censuses, Republic of Mauritius

### 8.4 Annex

Annex I – 2022 Population Census questionnaire





IN STRICT CONFIDENCE



**REPUBLIC OF MAURITIUS**  
**MINISTRY OF FINANCE, ECONOMIC PLANNING AND DEVELOPMENT**  
**STATISTICS MAURITIUS**  
**2022 CENSUS OF POPULATION (CENSUS NIGHT 3 - 4 July 2022)**

**Confidentiality**

The census is being carried out under the provisions of Statistics Act and in accordance with the Data Protection Act, which guarantees the confidentiality of personal information.

**Who should be counted?**

- Every person who spends Census night 3-4 July 2022 on the household's premises, whether he or she is a member of the household, a visitor, a guest, a boarder or a servant.

- Every person who usually lives in the household, but was away on Census night; e.g.:

- a) on night work, staying overnight or temporarily with relatives, friends, staying in secondary residence, resort hotel, in hospital, even if person is being enumerated elsewhere;
- b) on vacation outside Mauritius;
- c) on business trip;
- d) studying abroad;
- e) working abroad, provided his/her usual place of residence is still at this address

- Every person who arrives on the premises and joins the household on Monday 4 July 2022 without having been enumerated elsewhere.

**Type of household/institution:**

1. Single
2. Combined
3. Part of household
4. Hospital, infirmary, asylum, prison
5. Orphanage, old people's home, convent and others\*
6. Hotel population
7. Collective quarters
8. Homeless
9. Vacant
10. Under construction
11. Ships, barges or other vessels
12. Naval forces, Air forces, Special Mobile Force or Police training force

\* **Others include student dormitories/campus**

	Total	Male	Female	Undetermined
No. of Persons at Housing Census (HC)	-----	-----	-----	-----
No. of Persons at Population Census (PC)	-----	-----	-----	-----

Reason for discrepancy	Number		Number
Moved in (E.g. marriage, etc.)	.....	Death	.....
Merged Household	.....	Split household	.....
Birth	.....	Left household (e.g. moved way, marriage, etc.)	.....
Missed member at HC	.....		.....
Newly formed household	.....		.....
Household moved in from another address	.....	Other	.....

Questionnaire number

Enumeration Area

Block Number

Building Number

Housing Unit Number

Household Number

First name and surname of head of household: .....

**Address**

Apartment/Flat (Including Number): .....

Street/Road/Lane Number and Name: .....

Locality: .....

Town/Village: .....

**Response status:**

1. Available
2. Interview re-scheduled
3. Temporarily away
4. Non-contact
5. Moved elsewhere in RoM\*\* *End Here*
6. Moved abroad *End Here*
7. Vacant housing unit *End Here*
8. Refusal
9. Under Construction *End Here*
10. Part of household *End Here*
11. Other

Signature of respondent: .....

Date: \_\_\_/\_\_\_/\_\_\_

Name of Enumerator: .....

Signature of enumerator: .....

Number of questionnaires completed for this household: .....

Name of Supervisor: .....

**Instruction to Enumerator:**

Write 'End' in the answer box wherever questionnaire ends for a person

Note: \*\* . RoM refers to Republic of Mauritius throughout the questionnaire


1. LIST OF INDIVIDUALS

FOR EVERY PERSON PRESENT ON CENSUS NIGHT (3 - 4 July 2022), AND ALSO FOR EVERY PERSON WHO USUALLY LIVES IN THE HOUSEHOLD BUT WAS ABSENT ON CENSUS NIGHT.

P00	P01	P02	P03	P04	P05	P06	P07
Person Number	Name of household member	Relationship to head	Sex	Age	Whereabouts on census night	Usual Address (Select 'Here' for a person who usually lives at this address, even if he/she was temporarily away on Census night (e.g., on night work, staying temporarily with relatives, on vacation elsewhere in Mauritius, in secondary residence, in hospital, on business trip, studying abroad, on vacation outside Mauritius))	
	Give the Name and Surname of household member(s) <i>Enter First name and then Surname</i> <i>Enter each person in the following order:</i> <i>Head of household</i> <i>Spouse of head</i> <i>Unmarried children of head</i> <i>Married children of head and their families</i> <i>Other relatives</i> <i>Other persons</i> <b>BABIES MUST BE INCLUDED</b>	What is the relationship of the person to head of household? 1 Head 2 Spouse/Partner 3 Son/Daughter 4 Son-in-law/ Daughter-in-law 5 Grand child 6 Father/Mother of head 7 Father/Mother of spouse 8 Other relative of head 9 Non-relative of head	State if: 1 Male 2 Female 3 Undetermined	Enter Age in completed years  <i>Estimate an age if not provided by respondent</i>	Was the person present here on Census Night?  1 Yes, Here 2 No, Elsewhere in the RoM 3 No, Outside the RoM	Does the person usually live here?  1 Yes, Here 2 No, Elsewhere in the RoM 3 No, Outside the RoM  <b>If 'Here', GO TO P08</b>	For persons whose usual address is NOT HERE  If Elsewhere in the RoM, write the person's usual address and GO TO P10  If Outside the RoM, write the country of residence
01	.....	1 2 3 4 5 6 7 8 9	1 2 3		1 2 3	1 2 3	.....
02	.....	1 2 3 4 5 6 7 8 9	1 2 3		1 2 3	1 2 3	.....
03	.....	1 2 3 4 5 6 7 8 9	1 2 3		1 2 3	1 2 3	.....
04	.....	1 2 3 4 5 6 7 8 9	1 2 3		1 2 3	1 2 3	.....
05	.....	1 2 3 4 5 6 7 8 9	1 2 3		1 2 3	1 2 3	.....
06	.....	1 2 3 4 5 6 7 8 9	1 2 3		1 2 3	1 2 3	.....
07	.....	1 2 3 4 5 6 7 8 9	1 2 3		1 2 3	1 2 3	.....
08	.....	1 2 3 4 5 6 7 8 9	1 2 3		1 2 3	1 2 3	.....

1. LIST OF INDIVIDUALS (Cont.)

P00	P08	P09	P10	P10_S	P11	P12
Person Number	Place of residence		Citizenship		Year of last arrival	Reason for staying in Mauritius
	Did the person live in the RoM continuously for the past 12 months? 1 Yes 2 No  <i>If 'Yes', GO TO P10</i>	Does the person intend to live in the RoM continuously for at least 12 months? 1 Yes 2 No	What is the person's citizenship? 1 Mauritian, born in Island of Mauritius 2 Mauritian, born in Rodrigues 3 Mauritian, born in Diego Garcia/Chagos 4 Mauritian, born in Agalega/St. Brandon 5 Mauritian by descent 6 Mauritian by registration 7 Mauritian by naturalisation 8 Non-Mauritian  <i>If P06=2, END HERE</i>  <i>If P08 or P09 is 'Yes' AND P10 =1,2,3,4 or 5, GO TO Individual Questionnaire</i>  <i>If P08 or P09 is 'Yes' AND P10= 6 or 7, GO TO P11</i>  <i>If P09 is 'No' AND P10 =1,2,3,4, 5, 6 or 7, GO TO E5</i>  <i>If 'P10 = 8, GO TO P10_S</i>	What is the person's country of citizenship?  <i>If P08 or P09 is 'Yes', GO TO P11</i>  <i>If P09 is 'No', GO TO P12</i>	In what year did the person come to live in the RoM?  <i>(Ignore arrival in Mauritius for short/temporary stay)</i>  <i>Write the year</i>  <i>GO TO Individual Questionnaire</i>	Since the person's place of usual residence is abroad, for what reason is he/she presently staying in the RoM? 1 Work/Business 2 Study/Training/Seminar/Workshop 3 Medical treatment 4 Vacation/family visit 5 Other, to specify ....  <i>END HERE</i>
01	Y N	Y N	1 2 3 4 5 6 7 8			1 2 3 4 5 Specify: .....
02	Y N	Y N	1 2 3 4 5 6 7 8			1 2 3 4 5 Specify: .....
03	Y N	Y N	1 2 3 4 5 6 7 8			1 2 3 4 5 Specify: .....
04	Y N	Y N	1 2 3 4 5 6 7 8			1 2 3 4 5 Specify: .....
05	Y N	Y N	1 2 3 4 5 6 7 8			1 2 3 4 5 Specify: .....
06	Y N	Y N	1 2 3 4 5 6 7 8			1 2 3 4 5 Specify: .....
07	Y N	Y N	1 2 3 4 5 6 7 8			1 2 3 4 5 Specify: .....
08	Y N	Y N	1 2 3 4 5 6 7 8			1 2 3 4 5 Specify: .....

2. INDIVIDUAL QUESTIONNAIRE

Individual questionnaire to be filled with respect to all persons identified as usual resident of RoM, i.e. those who answer 'Yes' at P08 or 'Yes' at P09.

P00	R01_A	R01_A2	R01_B	R02	R02_A	R03	R04
Person Number	National Identity Card (NIC) number	Reason for no NIC number	Date of birth	Place of Birth	Country of Birth	Usual address five years ago	
	Please give the person's NIC number <i>(Applicable to Mauritian citizens)</i>  <i>(If NIC number is provided, GO TO R02)</i>	If NIC number is not provided, please give reason  1 Unwilling to give 2 Not available 3 Not yet declared 4 Other, to specify ....	Please tell the person's date of birth  <b>(dd/mm/yyyy)</b>  <i>(Applicable if NIC number not provided, i.e. R01_A is unanswered)</i>	Where was the person born?  1 Island of Mauritius 2 Rodrigues 3 Diego Garcia/Chagos 4 Agalega/St. Brandon 5 Abroad  <b>If R02 = 1,2,3 or 4, GO TO R03</b>	In which country was the person born?	Where was the person residing five years ago, on 03.07.2017?  State if: 1 Here (GO TO R06) 2 Elsewhere in the RoM 3 Outside the RoM 4 Not born (GO TO R06)	If usual address 5 years ago is elsewhere in the RoM, write the person's address.  If usual address 5 years ago is outside the RoM, write the country.
01		1 2 3 4 Specify:.....		1 2 3 4 5		1 2 3 4	
02		1 2 3 4 Specify:.....		1 2 3 4 5		1 2 3 4	
03		1 2 3 4 Specify:.....		1 2 3 4 5		1 2 3 4	
04		1 2 3 4 Specify:.....		1 2 3 4 5		1 2 3 4	
05		1 2 3 4 Specify:.....		1 2 3 4 5		1 2 3 4	
06		1 2 3 4 Specify:.....		1 2 3 4 5		1 2 3 4	
07		1 2 3 4 Specify:.....		1 2 3 4 5		1 2 3 4	
08		1 2 3 4 Specify:.....		1 2 3 4 5		1 2 3 4	

Health

Health													
P00	R05				R06								
Person Number	Physical Activity/Sport		Medical Check-up		Functioning/Disability The next question asks about difficulties someone may have while doing the activities listed below because of a HEALTH PROBLEM (Read the above text aloud to respondents)								
	Does the person have difficulty:												
	A. Does the person practice any physical activity/Sport at least once a week?	B. Does the person undergo regular medical check-up?			A. Seeing even if wearing glasses	B. Hearing even if using a hearing aid	C. Walking or climbing steps	D. Remembering or concentrating	E. With self-care such as washing all over or dressing	F. Communicating using his/her usual language, for example, understanding or being understood by others	G. With manual activities such as gripping and holding	H. Such as disturbances of behaviour, including antisocial behaviour, maladjustment and liability to self-injury	I. Other difficulties.  <i>If 2,3,4, please elaborate and give details of type of difficulty</i>
	State the severity of all difficulties as follows:												
				None....1	Some difficulty...2	A lot of difficulty...3	Cannot do at all...4						
01	Y	N	Y	N	1 2 3 4	1 2 3 4	1 2 3 4	1 2 3 4	1 2 3 4	1 2 3 4	1 2 3 4	1 2 3 4	1 2 3 4 Specify.....
02	Y	N	Y	N	1 2 3 4	1 2 3 4	1 2 3 4	1 2 3 4	1 2 3 4	1 2 3 4	1 2 3 4	1 2 3 4	1 2 3 4 Specify.....
03	Y	N	Y	N	1 2 3 4	1 2 3 4	1 2 3 4	1 2 3 4	1 2 3 4	1 2 3 4	1 2 3 4	1 2 3 4	1 2 3 4 Specify.....
04	Y	N	Y	N	1 2 3 4	1 2 3 4	1 2 3 4	1 2 3 4	1 2 3 4	1 2 3 4	1 2 3 4	1 2 3 4	1 2 3 4 Specify: .....
05	Y	N	Y	N	1 2 3 4	1 2 3 4	1 2 3 4	1 2 3 4	1 2 3 4	1 2 3 4	1 2 3 4	1 2 3 4	1 2 3 4 Specify: .....
06	Y	N	Y	N	1 2 3 4	1 2 3 4	1 2 3 4	1 2 3 4	1 2 3 4	1 2 3 4	1 2 3 4	1 2 3 4	1 2 3 4 Specify: .....
07	Y	N	Y	N	1 2 3 4	1 2 3 4	1 2 3 4	1 2 3 4	1 2 3 4	1 2 3 4	1 2 3 4	1 2 3 4	1 2 3 4 Specify: .....
08	Y	N	Y	N	1 2 3 4	1 2 3 4	1 2 3 4	1 2 3 4	1 2 3 4	1 2 3 4	1 2 3 4	1 2 3 4	1 2 3 4 Specify:.....

P00	R07	R08	R09	R10	R11	R12	R13	R14
		FOR PERSONS NOT 'SINGLE' AT R07	FOR WOMEN NOT 'SINGLE' AT R07				APPLICABLE to persons aged 10 years and over	
Person Number	<b>Marital Status</b>	<b>Age at first marriage/union</b>	<b>No. of children</b>	<b>Religion</b>	<b>Language(s) spoken by ancestors</b>	<b>Language usually spoken</b>	<b>Literacy</b>	
	<b>What is the person's marital status?</b> 1 Widowed (not remarried) 2 Divorced (not remarried) 3 Separated 4 Married religiously and civilly 5 Married religiously only 6 Married civilly only 7 In a union but not married religiously or civilly 8 Single (never married) 9 Unmarried parent 10 Other - to specify ....  If 'single', GO TO R10	<b>How old was the person when married/ in a union for the first time?</b>  (Age in completed years)	<b>How many live-born children has the person ever had?</b>  (Excluding still birth)	<b>To what religion does the person belong?</b>  Write religion as reported by the person.  If the person has no religion, write 'NO RELIGION'	<b>What is the language spoken by the person's ancestors?</b>  If the language of the paternal ancestors is different from that of the maternal ancestors, write both.  For census purposes, consider Creole, Bhojpuri, etc. as languages.	<b>What is the language that the person usually speaks at home?</b>  For children not yet able to speak, write the language spoken by the mother  <b>END HERE for children under 2 years</b>	<b>Can the person both read and write, with understanding, a simple statement on his/her everyday life?</b>  1 Yes 2 No  If 'NO', GO TO R15	<b>In which languages?</b> 1 Creole 2 Bhojpuri 3 Indian languages 4 Chinese languages 5 Other Oriental languages 6 English 7 French 8 Other European languages 9 Other languages – to specify ...  More than one answer can be circled
01	1 2 3 4 5 6 7 8 9 10 Specify: .....						Y N	1 2 3 4 5 6 7 8 9 Specify: .....
02	1 2 3 4 5 6 7 8 9 10 Specify: .....						Y N	1 2 3 4 5 6 7 8 9 Specify: .....
03	1 2 3 4 5 6 7 8 9 10 Specify: .....						Y N	1 2 3 4 5 6 7 8 9 Specify: .....
04	1 2 3 4 5 6 7 8 9 10 Specify: .....						Y N	1 2 3 4 5 6 7 8 9 Specify: .....
05	1 2 3 4 5 6 7 8 9 10 Specify: .....						Y N	1 2 3 4 5 6 7 8 9 Specify: .....
06	1 2 3 4 5 6 7 8 9 10 Specify: .....						Y N	1 2 3 4 5 6 7 8 9 Specify: .....
07	1 2 3 4 5 6 7 8 9 10 Specify: .....						Y N	1 2 3 4 5 6 7 8 9 Specify: .....
08	1 2 3 4 5 6 7 8 9 10 Specify: .....						Y N	1 2 3 4 5 6 7 8 9 Specify: .....

2. INDIVIDUAL QUESTIONNAIRE (Cont.)

P00		R15	R16	R17	R18			
<b>APPLICABLE TO PERSONS AGED 2 YEARS AND OVER</b>								
Person Number	School attendance	Educational Level				Primary Level	Secondary Level	
	<p><b>Has the person ever attended an educational institution?</b></p> <p>1 Yes, Now full time 2 Yes, Now part time 3 Yes, in the past 4 No, never 5 No, Child not yet at school (CNYS)</p> <p><i>If R15 = 5, END HERE</i></p>	<p><b>What is the highest level of education that the person has attended / is attending?</b></p> <p>0 None <i>If None, GO TO R24 if aged 12yrs or more, ELSE END HERE</i></p> <p>1 Pre-Primary <i>If pre-primary and R15 = 1,2, END HERE If pre-primary and R15 = 3,4, GO TO R24 if aged 12yrs or more, ELSE END HERE</i></p> <p>2 Primary <i>If primary, GO TO R17</i></p> <p>3 Secondary <i>If secondary, GO TO R18</i></p> <p>4 Other than Primary &amp; Secondary <i>If other than primary &amp; secondary, GO TO R17/R18 and R19</i></p> <p>5 Special Education Needs Schools <i>If specialized schools, GO TO R24 if aged 12yrs or more, ELSE END HERE</i></p> <p>6 Unknown <i>If Unknown, GO TO R24 if aged 12yrs or more, ELSE END HERE</i></p>				<p><b>What is the highest grade that the person attended / is attending at primary level?</b></p> <p>11 Standard I/Grade 1 12 Standard II/Grade 2 13 Standard III/Grade 3 14 Standard IV/Grade 4 15 Standard V/Grade 5 16 Standard VI/Grade 6 or equivalent- not achieved 17 Standard VI/Grade 6 or equivalent-achieved 19 Primary Unknown</p> <p><i>If R16=2, GO TO R24 if aged 12yrs or more, ELSE END HERE</i></p>		<p><b>State the highest grade the person attended / is attending at secondary level</b></p> <p>21 Form I/Grade 7 211 Extended Grade 7 22 Form II/Grade 8 221 Extended Grade 8 23 Form III/Grade 9 or equivalent-not achieved 231 Form III/Grade 9 or equivalent-achieved 232 Extended Grade 9 233 Extended Grade 9+ 24 Form IV/Grade 10 25 Form V/Grade 11 or prevoc equivalent-not achieved</p> <p>26 Form V/Grade 11 or equivalent-achieved 27 Lower VI/Grade 12 28 Form VI/Grade 13 or equivalent-not achieved 29 Form VI/Grade 13 or equivalent-achieved 30 Secondary, unknown 31 Form I prevoc 32 Form II prevoc 33 Form III prevoc 34 Form IV</p> <p><i>If R16=3, GO TO R24 if aged 12yrs or more, ELSE END HERE</i> (e.g. for Form I/Grade 7 should be recorded as "021")</p>
01	1 2 3 4 5	0 1 2 3 4 5 6						
02	1 2 3 4 5	0 1 2 3 4 5 6						
03	1 2 3 4 5	0 1 2 3 4 5 6						
04	1 2 3 4 5	0 1 2 3 4 5 6						
05	1 2 3 4 5	0 1 2 3 4 5 6						
06	1 2 3 4 5	0 1 2 3 4 5 6						
07	1 2 3 4 5	0 1 2 3 4 5 6						
08	1 2 3 4 5	0 1 2 3 4 5 6						

P00	R19	R20_A	R20_B	R20_C	R21	R22	R23_A	R23_B	R23_C
APPLICABLE TO PERSONS AGED 12 YEARS AND OVER									
Person Number	Highest Qualification other than Primary & Secondary				Additional Qualification other than Primary & Secondary				
	What is the level of the course that the person followed / is following at a university, vocational/technical school, professional body, etc.?  1 Certificate 2 Diploma 3 Bachelor's degree or equivalent 4 Master's degree or equivalent 5 Doctoral or equivalent 6 Other - to Specify ....	In which field did the person follow this course?	Duration of course in months?  <i>Applicable if course was completed</i>	Name of training institution  <i>Applicable if R19 = 1,2 &amp; 6 (certificate or diploma course and option "Other")</i>	Does the person possess another qualification from a university, vocational/technical school, professional body, etc.?  1 Yes 2 No  <i>If 'NO', GO TO R24</i>	What is the level of this course?  1 Certificate 2 Diploma 3 Bachelor's degree or equivalent 4 Master's degree or equivalent 5 Doctorate or equivalent 6 Other- to Specify ....	In which field did the person follow this course?	Duration of course in months?  <i>Applicable if course was completed</i>	Name of training institution  <i>Applicable if R22 = 1,2 &amp; 6 (certificate or diploma course and option "Other")</i>
01	1 2 3 4 5 6				Y N	1 2 3 4 5 6 Specify: .....			
02	1 2 3 4 5 6				Y N	1 2 3 4 5 6 Specify: .....			
03	1 2 3 4 5 6				Y N	1 2 3 4 5 6 Specify: .....			
04	1 2 3 4 5 6				Y N	1 2 3 4 5 6 Specify:.....			
05	1 2 3 4 5 6				Y N	1 2 3 4 5 6 Specify:.....			
06	1 2 3 4 5 6				Y N	1 2 3 4 5 6 Specify:.....			
07	1 2 3 4 5 6				Y N	1 2 3 4 5 6 Specify:.....			
08	1 2 3 4 5 6				Y N	1 2 3 4 5 6 Specify: .....			



2. INDIVIDUAL QUESTIONNAIRE (Cont.)

P00	R24	R25	R26	R27	R28	R29	R30
APPLICABLE TO PERSONS AGED 12 YEARS AND OVER							
Person Number	Hours worked during reference week	Whether temporarily away from work	Job search	Availability for work during reference week		Worked in the past	When last worked
	During the reference week, 27 Jun - 03 Jul 2022, did the person do any work for pay, profit or family business, even if it was only for one hour? If <b>YES</b> , write the number of <b>HOURS</b> worked during the week excluding lunch breaks and <b>GO TO R31</b> If <b>NO</b> , write "0".	During the reference week, was the person temporarily absent from a job or business because of illness, injury, holiday, industrial dispute, off-season inactivity, temporary disorganisation or any other reason?  1 Yes 2 No  If Yes, <b>GO TO R31</b>	Has the person been looking for work or trying to set up his own business during <u>the past 4 weeks</u> ?  1 Yes 2 No	Could the person have started to work during the reference week if work was available?  1 Yes 2 No  If R26 = 'Yes' and R27 = 'Yes', <b>GO TO R29</b>  <b>ELSE GO TO R28</b>	Why did the person not start working during reference week even though work was available? 1 Household/family responsibilities 2 Studies 3 Disability 4 Illness/ injury 5 Wholly retired/too old 6 Too young to work 7 Parents or spouse not agreeable 8 Got tired/frustrated of seeking work 9 Not interested to work 10 Other, to specify  <b>END HERE for those who answer this question</b>	Has the person ever worked in the past, even for a few days?  1 Yes 2 No  If 'No', <b>END HERE</b>	When did the person work for the last time?  State month and year in this format mm/yyyy
01	<input type="text"/>	Y N	Y N	Y N	1 2 3 4 5 6 7 8 9 10 Specify : .....	Y N	
02	<input type="text"/>	Y N	Y N	Y N	1 2 3 4 5 6 7 8 9 10 Specify : .....	Y N	
03	<input type="text"/>	Y N	Y N	Y N	1 2 3 4 5 6 7 8 9 10 Specify : .....	Y N	
04	<input type="text"/>	Y N	Y N	Y N	1 2 3 4 5 6 7 8 9 10 Specify : .....	Y N	
05	<input type="text"/>	Y N	Y N	Y N	1 2 3 4 5 6 7 8 9 10 Specify : .....	Y N	
06	<input type="text"/>	Y N	Y N	Y N	1 2 3 4 5 6 7 8 9 10 Specify : .....	Y N	
07	<input type="text"/>	Y N	Y N	Y N	1 2 3 4 5 6 7 8 9 10 Specify : .....	Y N	
08	<input type="text"/>	Y N	Y N	Y N	1 2 3 4 5 6 7 8 9 10 Specify : .....	Y N	

2. INDIVIDUAL QUESTIONNAIRE (Cont.)

P00	R31	R33	R34	R35	R36	R37	R38	
Person Number	<p>The following questions refer to the person's work during the reference week <b>Monday 27 June to Sunday 3 July 2022</b>. If the person had no job during that week, ask about his/her last job. If the person has more than one job, ask about the job at which he /she worked the most hours.</p>							
	Name of Establishment	Kind of Business, Industry or Service	Type of workplace	Address of workplace	Occupation	Employment Status	Length of Service	
	<p>What is the name of the establishment, firm, government institution, etc. for which the person worked <u>during the reference week</u>?</p> <p>or</p> <p>What is the name of the establishment, firm, government institution, etc. for which the person worked <u>in the past</u>?</p> <p><i>If establishment has no name, give <b>NAME OF EMPLOYER</b>.</i></p> <p><i>If self-employed, write the name of business shop, agency, etc., or write <b>THE PERSON'S OWN NAME</b>.</i></p> <p><i>If working for a private household (e.g. cook, gardener, etc.), write <b>"PRIVATE HOUSEHOLD"</b></i></p>	<p>What is the main business activity carried out at the person's place of work?</p> <p><i>Write FULLY the kind of business, industry or service activities carried out at the establishment.</i></p> <p><i>Use precise terms such as SUGAR MANUFACTURING, PRIMARY EDUCATION, etc.</i></p>	<p>Does the person work in:</p> <ol style="list-style-type: none"> <li>1 Fixed place of work outside home</li> <li>2 No fixed place of work/Mobile</li> <li>3 Worked at home</li> <li>4 Worked from home with resident employer</li> <li>5 Worked from home with non-resident employer</li> <li>6 Worked partly from home and partly at place of work</li> <li>7 Worked outside RoM</li> </ol>	<p>Give the address of the workplace</p> <p><i>If R34 =1, write full address including municipal ward/village council area/locality.</i></p> <p><i>If R34 =2, write full address where the person reported for work or the place he/she worked the most.</i></p> <p><i>If R34 =3, 4 or 5, write "HOME".</i></p> <p><i>If R34 =6, write full address of workplace where he/she worked the most.</i></p> <p><i>If R34 =7, write the country.</i></p>	<p>Write the kind of work/business the person did most of the time</p> <p><i>Use precise terms such as ACCOUNTS CLERK, LORRY DRIVER, PRIMARY TEACHER, ETC.</i></p>	<p>State if the person's employment status is:</p> <ol style="list-style-type: none"> <li>1 Self-employed with employees</li> <li>2 Self-employed without employees</li> <li>3 Contributing family worker</li> <li>4 Apprentice/trainees with pay</li> <li>5 Employee paid by the month</li> <li>6 Employee paid by day, week, fortnight, job</li> <li>7 Worker-member of co-operatives</li> <li>8 Other- to Specify ....</li> </ol>	<p>Write the number of <u>years</u> the person has worked/ worked for his/her present or most recent employer.</p> <p><i>For self-employed persons, write the number of years he/she has been in the present business.</i></p> <p><i>If worked for <u>less than 1 year</u>, write '0'.</i></p>	
	01			1 2 3 4 5 6 7			1 2 3 4 5 6 7 8 Specify: .....	
	02			1 2 3 4 5 6 7			1 2 3 4 5 6 7 8 Specify: .....	
	03			1 2 3 4 5 6 7			1 2 3 4 5 6 7 8 Specify: .....	
	04			1 2 3 4 5 6 7			1 2 3 4 5 6 7 8 Specify: .....	
	05			1 2 3 4 5 6 7			1 2 3 4 5 6 7 8 Specify: .....	
	06			1 2 3 4 5 6 7			1 2 3 4 5 6 7 8 Specify: .....	
	07			1 2 3 4 5 6 7			1 2 3 4 5 6 7 8 Specify: .....	
08			1 2 3 4 5 6 7			1 2 3 4 5 6 7 8 Specify: .....		

R32 has intentionally been skipped in question numbering

