



**Ministry of Finance**

# **2024 CENSUS OF AGRICULTURE (CA 2024)**

## **Methodological Report**

**January 2026**

## **TABLE OF CONTENTS**

	<b>Page</b>
<b>1. INTRODUCTION</b>	
1.1 Introduction	4
1.2 Background Information	4
<b>2. CENSUS ORGANISATION AND OPERATIONS</b>	
2.1 Census organisation	5
2.2 Office organisation	5
2.3 Responsibilities of office staff	5
2.4 Training of office staff	5
2.5 Field organisation	6
2.6 Recruitment of field staff	7-10
2.7 Training of field staff	10
2.8 Calendar of activities	11
2.9 Census Cost	12
2.10 Census Publicity	13
<b>3. CONCEPTS AND DEFINITIONS</b>	
3.1 Farm (Agricultural Holding)	13
3.2 Farmer (Agricultural Holder)	13
3.3 Land Parcel	13
3.4 Household	13
3.5 Head of Household	14
<b>4. CENSUS METHODOLOGY</b>	
4.1 Sampling frame for household farms	14
4.2 Frame for non-household farms	14
4.3 Phase 1 - Census of non-household farms	14
4.4 Phase 2 - Sampling design for household farms	14
4.5 Phase 3 - Sampling design for survey of private households	14

<b>5. CENSUS DOCUMENTS</b>	<b>Page</b>
5.1 Business Questionnaire	15
5.2 Farm Questionnaire	16
5.3 Household Questionnaire	17
5.4 Instruction manuals	18
5.5 Other training materials	18
 <b>6. DATA COLLECTION</b>	
6.1 Phase 1 –Business Questionnaire	18
6.2 Phase 2 –Farm Questionnaire	19
6.3 Phase 3 – Household Questionnaire	19
6.4 Supervision and control	19
 <b>7. DATA PROCESSING AND REPORTING</b>	
7.1 Editing, coding and data cleaning	20
 <b>8. ADJUSTMENTS OF WEIGHTS</b>	20
 <b>9. ADJUSTMENTS BASED ON HOUSEHOLD QUESTIONNAIRE RESULTS</b>	20
 <b>10. ESTIMATION PROCEDURES FOR BACKYARD PRODUCTION</b>	21
 <b>11. EVALUATION OF RESULTS</b>	21
 <b>12. CONSOLIDATION OF SUGAR CANE AND TEA</b>	22
 <b>13. REPORTING OF RESULTS</b>	
13.1 CA 2024 Main results	22
13.2 Table reports	22
 <b>14. RELIABILITY OF CENSUS DATA</b>	
14.1 Sources of non-sampling errors and control	22-23
 Glossary of Terms	24-25

## **LIST OF BOXES**

Box 1: Field organisation of Phase 2 – “Farm” questionnaire

Box 2: Field organisation of Phase 3 – “Household” questionnaire

## **LIST OF TABLES**

Table 1: Calendar of activities for CA 2024 – Gantt Chart

Table 2: Project value and actual expenditure of CA 2024

## **LIST OF APPENDICES**

Appendix A – Glossary of Terms

Appendix B – Census Questionnaires

## **LIST OF ACRONYMS**

CA 2024	2024 Census of Agriculture
CSPro	Census and Survey Processing System
CAPI	Computer Assisted Personal Interviewing
FAO	Food and Agricultural Organization
FAREI	Food and Agricultural Research and Extension Institute
HH	Household
NAPRO	National Agricultural Product Regulatory Office
NHH	Non-Household
PSU	Primary Sampling Unit
RRA	Rodrigues Regional Assembly
SFWF	Small Farmers Welfare Fund
HPC 2022	2022 Housing and Population Census
SIFB	Sugar Insurance Fund Board
SM	Statistics Mauritius
WCA 2020	FAO World Programme for the Census of Agriculture 2020

## **CONVERSION FACTORS FOR AREA**

1 hectare	= 2.36922 arpent
1 arpent	= 100 perches
1 perche	= 11 toises
1 toise	= 0.09 perche approx.
1 perche	= 40 m <sup>2</sup> approx.

# **2024 CENSUS OF AGRICULTURE**

## **1. INTRODUCTION**

### **1.1 Introduction**

Statistics Mauritius conducted a Census of Agriculture in the islands of Mauritius and Rodrigues from July to December 2024.

The 2024 Census of Agriculture (CA 2024) was the fourth Census for the Republic of Mauritius and the previous censuses were carried out in 1930, 1940 and 2014.

### **1.2 Background Information**

#### **1.2.1 Census Objectives**

The main objectives of the 2024 Census of Agriculture were:

- (a) To provide important information on the organisational structure of farms at geographic level for better and informed decision making (e.g. farm size, land use, land tenure, crop area harvested, presence of irrigation, livestock numbers, farm labour as well as the number of holdings with each crop and livestock type);
- (b) To improve estimates on the contribution of agriculture for the economy;
- (c) To provide information on the household sector including subsistence farming which is important for food security; and
- (d) To improve the completeness of existing sampling frame that will be used as the base for sample selection for future agricultural surveys.

#### **1.2.2 Census Coverage**

The CA2024 covered agriculture, in the Islands of Mauritius and Rodrigues, excluding

- (i) sugar cane since most of the data required is available at the Sugar Insurance Fund Board (SIFB);
- (ii) tea since most of the data required is available at NAPRO (formerly Tea Board);

#### **1.2.3 Legal basis**

The CA2024 was conducted according to the provisions of the Statistics Act 2000 amended in 2011 and 2017.

The **Statistics Act** provides for an obligation on:

- (i) the selected farmers to furnish the required information according to the approved questionnaires; and
- (ii) Statistics Mauritius and its employees (including temporary ones) to treat in strict confidence all individual particulars obtained during the census.

All the questionnaires used for the three Phases of the Census were approved by the Statistics Board. The notice of the taking of the Census was published under Section 13 of the Statistics Act in the Government Gazette as General Notice No. 67 of 2024 on 29 June 2024

## **2. CENSUS ORGANISATION AND OPERATIONS**

### **2.1 Census organisation**

The CA2024 was conducted by SM with the collaboration of various organisations:

- (a) Ministry of Agro-Industry, Food Security, Blue Economy and Fisheries
- (b) Food and Agricultural Research and Extension Institute (FAREI)
- (c) Government Printing Office for printing the survey documents
- (d) Ministry of Finance for the budget

### **2.2 Office organisation**

The planning, organisation and execution of the census rested with the Director of Statistics responsible, amongst others, for agriculture statistics. The preparatory work for the Census, which started in January 2023, was under the responsibility of a Deputy Director of Statistics with long experience in agricultural statistics, namely agricultural censuses and surveys.

The CA2024 unit was set up in December 2023 and was supervised by a Statistician/ Senior Statistician and supported by four Statistical Officers/Senior Statistical Officers and 3 Management Support Officers. As from October 2024, five additional Management Support Officers joined the unit to cater for editing, coding and validation.

### **2.3 Responsibilities of office staff**

The Deputy Director had the overall responsibilities of the census, at the same time coaching the Statistician in various tasks including census operations, editing and coding, data processing and analysis.

The supporting staff were mainly involved in the following duties:

- (i) Preparing appointment letters, survey materials and payment lists for field staff
- (ii) Preparing tablets by inserting latest CSPro version
- (iii) Verifying edited and coded questionnaires
- (iv) Liaising with private firms for the flow of the questionnaires for data capture
- (v) Working on the correction of invalid records at the validation stage of the census in parallel with the editing and coding exercise

Experienced Statistical Officers/ Senior Statistical Officers controlled the flow of census documents from the field to the office and vice versa.

### **2.4 Training of office staff**

At the initial stage of the training, coders familiarised themselves with all the questionnaires used for the Census. They were briefed according to the guidelines given in the editing and coding manuals including classifications of crops (vegetables, fruits and flowers) and districts. Emphasis was laid on how to verify the questionnaires for errors, inconsistencies and omissions.

## 2.5 Field organisation

The CA 2024 was conducted in three phases as follows:

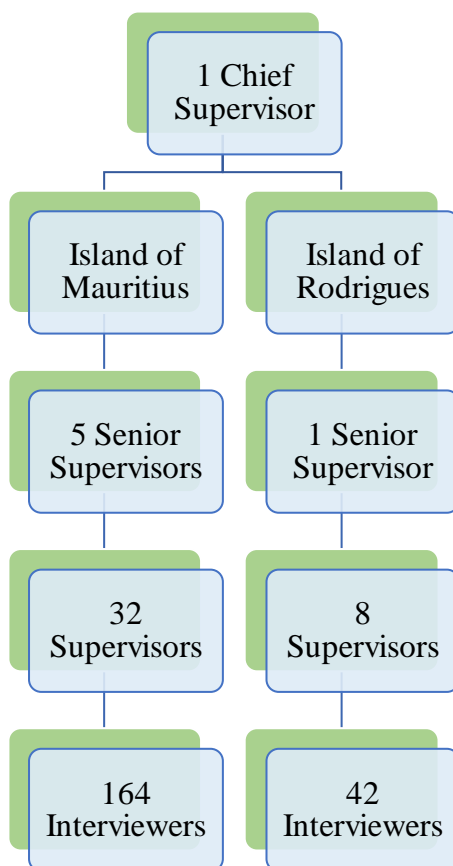
Phase 1 covered a complete census of 170 agricultural businesses (i.e. those operating in the non-household sector, namely corporations, NGOs, Government institutions etc). Data collection was carried out from July to December 2024.

Phase 2 covered a sample of 10,200 household farms. Data collection was carried out from July to September 2024, and

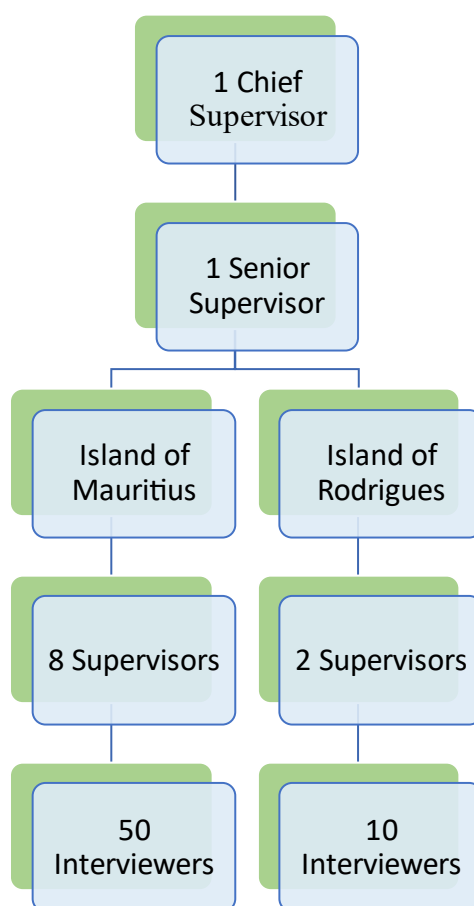
Phase 3 covered a sample of 8,700 private households. Data collection was carried out from October to November 2024.

Phases 2 and 3 were carried out after office hours and especially during weekends and five grades of field staff were employed as shown in Boxes 1 and 2 respectively.

### Box1: Field organisation of Phase 2 – “Farm” questionnaire



## Box 2: Field organisation of Phase 3 – “Household” questionnaire



### 2.6 Recruitment of field staff

The field staff was recruited from government employees and also from Food and Agricultural Research and Extension Institute (FAREI). The Public Service Commission appointed the Chief Supervisor and the Senior Supervisors on the recommendation of the Director of Statistics. As regards to the other grades, the Commission delegated its authority to the Director of Statistics for their recruitment. This was done on the advice of a departmental selection board according to pre-defined criteria as approved by the Commission. The selection criteria were:

- (a) Availability to work outside office hours and the number of daylight hours to be devoted to the survey
- (b) Experience in previous censuses and surveys
- (c) Place of residence
- (d) Other things being equal, preference will be given to staff of Statistics Mauritius, the Ministry of Agro-Industry, Food Security, Blue Economy and Fisheries and FAREI



### **2.6.1 Chief Supervisor**

The main duties of the Chief Supervisor are:

- (i) Overall responsibility for the fieldwork and ensuring the quality in data collected
- (ii) Conducting training sessions including training of trainers for Supervisors and Senior Supervisors
- (iii) Organising weekly meetings with Senior Supervisors
- (iv) Conducting sample field checks
- (v) Control of quality of work of Senior Supervisors and Supervisors
- (vi) Sample editing of completed questionnaires
- (vii) Settling of difficult cases, queries and dealing with any unforeseen problems including those not specifically covered in instruction manuals
- (viii) Ensure filling in of control documents

The fee paid for phase 2 was Rs 90,400 payable in 4 monthly instalments. A monthly travelling allowance of Rs 6,675 was paid over a period of 4 months.

The fee paid for phase 3 was Rs 42,400 payable in 2 monthly instalments. A monthly travelling allowance of Rs 6,675 was paid over a period of 2 months.

### **2.6.2 Senior Supervisor**

The Senior Supervisor is responsible for a group of 6 to 7 Supervisors. His main duties are:

- (i) Ensuring the quality of information collected
- (ii) Attending training of trainer's session
- (iii) Conducting training sessions for Interviewers, Supervisors and practical sessions
- (iv) Organising meetings with Supervisors and Interviewers
- (v) Sample field checks and re-interviews
- (vi) Control the quality of work of Supervisors and Interviewers
- (vii) Sample editing of completed questionnaires
- (viii) Settling of difficult cases and problems
- (ix) Filling in of control documents
- (x) Keeping records in diaries provided for field activities including problems encountered, actions taken and progress of work

The fee paid for phase 2 was Rs 71,400 payable in 4 monthly instalments. A monthly travelling allowance of Rs 4,240 was paid over a period of 4 months.

The fee paid for phase 3 was Rs 34,000 payable in 2 monthly instalments. A monthly travelling allowance of Rs 4,240 was paid over a period of 2 months.

### **2.6.3 Supervisor**

The Supervisor has the responsibility for the work of a group of 6 to 7 interviewers, including:

- (i) Attending briefing/training sessions with his/her team of Interviewers and ensuring that they understand all relevant concepts and instructions
- (ii) Conducting practical sessions of questionnaire completion with the team of interviewers
- (iii) Consolidating interviewers' training and understanding by accompanying/ assisting

them as and when needed, but especially during the first interviews while monitoring closely the work of poor performers

- (iv) Providing prompt assistance to interviewers in identifying / locating the selected farms/ persuading reticent farmers into cooperation, etc
- (v) Controlling the quality of work of interviewers on field. This is done by carrying out field checks and re-interviews; re-interview of at least two farms should be done for each interviewer falling under their responsibility
- (vi) Ensuring that work is not disrupted, and that there is a constant flow of collected data from field to the Senior Supervisors
- (vii) Submit partial database to CA2024 list as per timetable
- (viii) Collecting and editing all the questionnaires before returning them to the CA2024 unit
- (ix) Keeping records in diaries provided for field activities including problems encountered, actions taken and progress of work
- (x) Returning of all tablets, accessories and signed control documents to CA2024 unit

The Supervisor for phase 2 had to furnish around 130 hours of work outside office hours. The fee paid for the job was Rs 41,400 payable in 3 monthly instalments. A monthly travelling allowance of Rs 4,805 was paid over a period of 3 months.

The Supervisor for phase 3 had to furnish around 79 hours of work outside office hours from October to November 2024. The fee paid for the job was Rs 27,600 payable in 2 monthly instalments. A monthly travelling allowance of Rs 4,805 (for large area) Rs 3,000 (for small area) and Rs 4,805 (for Rodrigues) was paid over a period of 2 months.

#### **2.6.4 Interviewer**

The role of the Interviewer is of utmost importance in the census. He/She is the person who collects the required information directly from the farmer at the interview and records them on tablet. Interviewers are therefore in a better position to evaluate and ensure the plausibility of the answers obtained before these are recorded.

The duties of the interviewer consist broadly of the following:

- (i) Interviewing is conversation with a purpose and our purpose here is to take back a case (i.e. questionnaire), duly filled in with responses reflecting faithfully the characteristics of the farm to which it pertains
- (ii) Whether we have inspired enough confidence in the interviewee for his/her responses to our questions to be reliable; the first impression you create is decisive in determining the degree of cooperation of the farmer
- (iii) Whether the interviewee is not too uncomfortable for the interview, in a way which can distort his/her answers
- (iv) Whether the proper meaning of our question has been understood by the farmer
- (v) Whether we have completely/clearly understood his/her answer before recording it

The Interviewer for phase 2 had to furnish around 85 hours of work outside office hours from July to September 2024. The fee paid for the job was based on number of completed farms (Rs 413 for each completed questionnaire) inclusive of travelling expenses, together with a briefing fee of Rs 4,845. A travelling allowance of Rs 910 was given to interviewers who reside far from their selected farmers' residence.

The Interviewer for phase 3 had to furnish around 62 hours of work outside office hours from October to November 2024. The fee paid for the job was based on number of household questionnaires completed (Rs 97 for each completed household questionnaire) inclusive of travelling expenses, together with a briefing fee of Rs 2,040. A travelling allowance of Rs 910 was given to interviewers who reside far from the selected PSU.

## **2.7 Training of field staff**

The Chief Supervisor, the Deputy Director responsible for the Census and the Senior Supervisors conducted the training sessions to the field staff in the Islands of Mauritius and Rodrigues.

### **2.7.1 Island of Mauritius**

The quality of the data obtained through a survey being largely dependent on the performance of the fieldworkers, an elaborate reference manual, "Instructions for field work" was provided to all Interviewers and Supervisors. Furthermore, intensive training sessions were carried out by the Chief and Senior Supervisors to ensure that all concepts and procedures were clearly understood. Two trainings sessions were organised for phase 2.

The first training of trainers session was conducted around 2 weeks before the start of the Census at Statistics Mauritius by the Chief Supervisor. During that training, Senior Supervisors were provided with a concise knowledge of an agricultural census and its objectives. Emphasis was laid on the following aspects:

- (a) Objectives and methodology of the survey
- (b) Terms of appointment of field staff
- (c) Legal authority/importance of Identity Card
- (d) Confidentiality
- (e) Office and field organisation
- (f) Duties of field staff
- (g) Concepts and definitions
- (h) Interviewing techniques
- (i) Identification of Household farms and filling in of questionnaires

The second training session was conducted by Senior Supervisors before the data collection started. The session was meant to discuss and clear problems encountered and to explain to Interviewers how to verify the data collected. During that session, emphasis was laid on the following:

- (a) How to use tablet to collect data
- (b) Assessment of quality of the data collected
- (c) Clarification of concepts
- (d) Probing exercise with respondent to clear doubtful figures and obtain missing information
- (e) Consistency checks of data from the different sections of the questionnaire

For phase 3, a training session for supervisors and interviewers was conducted by the Chief Supervisor and the Senior Supervisor at GMD Atchia State College.

## 2.7.2 Island of Rodrigues

Similarly, in Rodrigues training sessions were conducted for each phase. Training of senior supervisor, supervisors and interviewers for phase 2 was conducted by the Chief Supervisor while that for phase 3 by the Senior Supervisor responsible for Rodrigues.

## 2.8 Calendar of activities

The calendar of activities shown below starts from questionnaire design in August 2023 to the publications of the CA 2024 Main Results in August 2025, Table Reports and Methodological Report in January 2026.

**Table 1: Calendar of activities for CA 2024 – Gantt Chart**

	Activity	2023					2024												2025												2026
		A	S	O	N	D	J	F	M	A	M	J	J	A	S	O	N	D	J	F	M	A	M	J	J	A	S	O	N	D	J
1	Questionnaires design																														
2	Construction of Frame																														
3	Sampling designs																														
4	Preparation of instruction and CAPI manuals for fieldstaff																														
5	Legal instruments (gazetting)																														
6	Printing of census documents																														
7	Allocation of workload and recruitment of fieldstaff																														
8	Publicity																														
9	Training of Trainers CA2024																														
10	Training of fieldstaff (Phases 2 & 3)																														
11	Data collection (Phases 1, 2 & 3)																														
12	Training of Editors and Coders																														
13	Missions to Rodrigues (Training & field check phase 3)																														
14	Editing and coding of questionnaires																														
15	Data processing (Data capture, validation, tabulation)																														
16	Tabulation (Cleaning of data and final tabulation)																														
17	Evaluation and analysis of data and dissemination of Main results of CA 2024																														
18	Table and methodological reports																														

## 2.9 Census Cost

The project value of the 2024 Census of Agriculture was estimated at Rs 12.6 million. A breakdown of the project value and the expenses incurred by the Government of Mauritius is given below.

**Table 2: Project value and actual expenditure, CA2024**

	<b>Expenditure Item</b>	<b>Project Value (Rupees)</b>	<b>Actual Expenditure (Rupees)</b>
<b>1</b>	<b>Personnel expenses</b>	<b>9,717,500</b>	<b>9,667,586</b>
	Office Staff (comprises overtime for Staff and Office Attendant)	600,000	450,514
	<b>Field staff:</b>	9,117,500	9,217,072
	Fees for field work	8,260,000	8,417,877
	Travelling allowances	857,500	799,195
<b>2</b>	<b>Non-personnel expenses</b>	<b>2,645,000</b>	<b>2,983,806</b>
	<i>of which :</i>		
	Stationery	600,000	171,200
	Printing of census documents	200,000	71,312
	Postage	-	59,670
	Tablets	-	2,484,000
	Mission to Rodrigues	245,000	141,707
	Freight <sup>1</sup>	-	29,927
	Publicity	1,600,000	25,990
<b>3</b>	<b>Contingencies</b>	<b>250,000</b>	<b>-</b>
	<b>TOTAL</b>	<b>12,612,500</b>	<b>12,651,392</b>

<sup>1</sup> Fee for sending tablets to Rodrigues

## **2.10 Census Publicity**

Publicity helps to create a better awareness on the conduct of the Census, and thus increases response rate. In this context, press releases on the taking of the Census were published in newspapers both in Mauritius and Rodrigues. For phases 1 and 2 of the Census, a press communiqué dated 1 July 2024 was published in four main newspapers in Mauritius. Similarly for phase 3, a press release dated 30 September 2024 was published in two main newspapers in Mauritius.

A communiqué on CA2024 was published in the Government Gazette on 29 June 2024.

## **3. CONCEPTS AND DEFINITIONS**

The main concepts and definitions used in CA 2024 were based on the WCA 2020 guidelines of the FAO. More concepts and definitions are found at Appendix A – Glossary of Terms.

### **3.1 Farm (Agricultural Holding)**

An agricultural holding is an economic unit of agricultural production under single management comprising all livestock kept and all land used for agricultural production purposes without regard to title, legal form or size.

A farm is an agricultural holding consisting of agricultural production activities of an enterprise, where an enterprise is a corporation, a government institution, or (most commonly) a household. It may be operated by a single individual, jointly by several individuals with or without contractual agreement belonging to the same or to different households.

Farms in the household sector are holdings that are operated by household members. Usually there is only one farm in a household (single-holding household), but there can be two or more farms in a household (multiple-holding household). A farm may also consist of a partnership of two or more households. In many developing countries, including Mauritius, most farms are in the household sector.

### **3.2 Farmer (Agricultural Holder)**

A farmer (or agricultural holder) is the person or persons making the major decisions about the agricultural operation. The agricultural holder has technical and economic responsibility for the agricultural production and may undertake all responsibilities directly or through a hired manager.

### **3.3 Land Parcel**

A land parcel is a piece of land entirely surrounded by other land, water, road, forest or other features not forming part of the holding.

### **3.4 Household**

A household, for the purpose of the agricultural census, is defined as:

- either *A person living on his/her own.*
- or *A group of two or more persons, who may or may not be related, but who live together and make common provision for food and other essentials for living.*

Two or more families, living in one house constitute one household if they have common

housekeeping arrangements, but should be considered as distinct and separate households if they have separate housekeeping arrangements, and should be enumerated as separate households. In case of varying degrees of housekeeping arrangements, a group of persons who make common provision for at least one meal per day is regarded as one household.

### **3.5 Head of Household**

The head of household is any adult member, male or female, who is acknowledged as such by the other members of any household.

## **4. CENSUS METHODOLOGY**

### **4.1 Sampling frame for household farms**

The sampling frame for household farms consisted of a list of agricultural production units obtained from the databases of Ministry of Agro-Industry, Food Security, Blue Economy and Fisheries and FAREI for livestock and poultry breeders, supplemented with information from other administrative sources such as small farmers registered at SFWF, persons engaged in growing of crops - vegetables, fruits and flowers (including vegetable crops in kitchen gardens and fruit trees in backyard) mainly for sale or own consumption with at least 5 perches of land (identified from the 2022 HPC), etc.

### **4.2 Frame for non-household farms**

The frame for non-household farms consisted of a list of agricultural establishments obtained from the databases of Ministry of Agro-Industry, Food Security, Blue Economy and Fisheries and FAREI for crops, livestock and poultry breeders, supplemented with information from other administrative sources.

### **4.3 Phase 1 - Census of non-household farms**

Some 170 farms of the non-household sector (145 in the Island of Mauritius and 25 in the Island of Rodrigues), mostly private sector establishments and Government institutions involved in agricultural production (excluding sugar cane and tea), were surveyed.

### **4.4 Phase 2 - Sampling design for household farms**

The sample comprised 10,200 farms (8,200 for the Island of Mauritius and 2,000 for the Island of Rodrigues) of the household sector which were allocated to the different strata according to disproportionate stratified random sampling. The stratifying factors were agricultural intensity, types of crops/livestock and geographical region. This type of allocation was considered to be more appropriate than the usual proportional allocation. Within the strata, selection of units was effected by systematic random sampling to ensure representativeness. It covers a census of all large farms and samples of medium and small farms. The sample represented 42% of the estimated number of household farms.

### **4.5 Phase 3 - Sampling design for survey of private households**

A random sample of around 8,700 private households was interviewed. The sampling design was a stratified cluster sampling. The clusters or Primary Sampling Units (PSUs), around 1,550 for Island of Mauritius and 46 for the Island of Rodrigues, were stratified according to their agricultural intensity. A representative sample of PSUs (50 for Mauritius and 10 for Rodrigues) was drawn. Each private household in the selected PSU was interviewed. The

sample represented around 3% of households in the Island of Mauritius and around 22% in the Island of Rodrigues.

## **5. CENSUS DOCUMENTS**

The Census necessitated a separate questionnaire for each phase as follows:

- (a) ) Phase 1 – Business Questionnaire (CA1)
- (b) ) Phase 2 – Farm Questionnaire (CA2)
- (c) ) Phase 3 – Household Questionnaire (CA3)

### **5.1 Business Questionnaire (CA1)**

The Business questionnaire was used to collect information on all farms of the non-household sector (agricultural businesses). The content of the questionnaires are as follows:

*(i) Identification of Business*

Name, address, Business licence holder's name, registration with authorities, date of start of operation, telephone and fax number and e-mail address

*(ii) Characteristics of Business*

Activities of Business, Type of ownership

*(iii) Agricultural activities of Business*

Crops, Livestock and Other

*(iv) Employment in agriculture*

Number of persons engaged

*(v) Land use and tenure for agricultural production*

Type of land use and land tenure of areas operated by the business

*(vi) Land owned by business but rented to others*

*(vii) Temporary and permanent crop production*

- Vegetables – crop name, method of planting, number of plantings, total area harvested in open field and under protective cover and production
- Fruits and beverage crops – crop name, method of planting, total area harvested, number of permanent plant/ trees, of which bearing, sale and production
- Flowers – crop name, total area harvested in open field and under protective cover and production

*(viii) Type of farming*

- Organic and Inorganic farming

*(ix) Agricultural Practices*

- Irrigation system, Fertilizers, pesticides, herbicides and improved seeds

*(x) Type of mechanisation*

- Land preparation, planting, irrigation, fertilizers, herbicides & pesticides application, harvesting, livestock farming, milk production and poultry farming



*(xi) Livestock*

- Cattle – cattle type, total number for meat and dairy purposes, number sold live and slaughtered, milk production
- Goat –goat type, total number for meat and breeding purposes, number sold live and slaughtered
- Sheep – sheep type, total number for meat and breeding purposes, number sold live and slaughtered
- Pigs – pig type, total number for meat and breeding purposes, number sold live and slaughtered
- Poultry for meat production – animal type and quantity sold, number of layers, number of eggs sold, other livestock - animal type, number as at 30 June 2024 and quantity sold
- Apiculture – number of productive and non-productive beehives, production of honey

*(xii) Marketing practices*

- Disposal of agricultural produce

*(xiii) Outstanding Agricultural loan*

*(xiv) Constraints as a farmer*

## **5.2 Farm Questionnaire (CA2)**

The Farm questionnaire was used to collect information on a sample of farms of the household sector. The content of the questionnaires are as follows:

*(i) Number of farmers operating this farm*

*(ii) Identification of farmers*

- Surname, other names, ID number

*(iii) Characteristics of household*

- Surname and other names of household head, address of household, number of separate farms
- For members working on the farm –age, sex, highest education attainment, whether followed short courses and taken examination, employment status and type of employment
- Total household members aged below 12 years, proportion of total household income from agriculture

*(iv) Agricultural activities of Farm*

- Crops, Livestock and Other

*(v) Main purpose of production*

*(vi) Number of paid employees who usually worked on the farm*

*(vii) Land Use and Tenure for agricultural production*

- Type of land use and land tenure of areas operated by farmer
- Number of land parcels operated by farm for agricultural production

*(viii) Land area rented to others by the farmer*

*(ix) Temporary and permanent crop production*

- Vegetables – crop name, method of planting, number of plantings, total area harvested in open field and under protective cover and production
- Fruits and beverage crops – crop name, method of planting, total area harvested, number of permanent plant/ trees, of which bearing, sale and production

- Flowers – crop name, total area harvested in open field and under protective cover, production

*(x) Type of farming*

- Organic and Inorganic farming

*(xi) Agricultural Practices*

- Irrigation system, Fertilizers, pesticides, herbicides and improved seeds

*(xii) Type of mechanisation*

- Land preparation, planting, irrigation, fertilizers, herbicides & pesticides application, harvesting, livestock farming, milk production and poultry farming

*(xiii) Livestock*

- Cattle – cattle type, total number for meat and dairy purposes, number sold live and slaughtered. Number of cows milked and average quantity of milk produced
- Goat -goat type, total number for meat and breeding purposes, number sold live and slaughtered
- Sheep – sheep type, total number for meat and breeding purposes, number sold live and slaughtered
- Pigs – pig type, total number for meat and breeding purposes, number sold live and slaughtered
- Poultry for meat production – animal type, number and quantity sold
- Poultry for egg production – number of layers, number of eggs sold
- Other livestock – animal type, number and quantity sold
- Area of exercise yard for livestock
- Apiculture – number of productive and non-productive beehives, production of honey

*(xiv) Marketing practices*

- Disposal of agricultural produce

*(xv) Outstanding agricultural loan*

*(xvi) Main constraints as a farmer*

*(xvii) Registration with authorities*

### **5.3 Household Questionnaire (CA3)**

The Household questionnaire was used to collect information on a sample of households. The content of the questionnaires are as follows:

*(i) Characteristics of the household*

- Surname and other names of household head, address of household, telephone number of household and number of persons in household

*(ii) Whether the household was interviewed for the 2024 Census of Agriculture at Phase 2.*

*(iii) Agricultural operations*

- Area of land (if any) cultivated on own account and mainly for commercial purpose, Area of kitchen garden (if any), name, sex, and age of person responsible for decision making on the agricultural activities of household

*(iv) Agricultural activities of household*

- Crops, livestock and other activities such as aquaculture, nursery for sale etc

(v) *Fruit and nut trees*

- Number of trees and of which bearing

(vi) *Vegetables grown*

- Crop grown and area harvested

(vii) *Main purpose of agricultural production*

## **5.4 Instruction manuals**

### **5.4.1 Instructions for fieldwork**

Instruction manuals were made available to the field staff for reference for phases 2 and 3. The manuals were meant to help the field staff in the successful performance of their duties. Their aims were to set field work procedures, standardise the method of data collection and summarise the instructions received during briefing and training sessions. It covered various aspects of the census namely:

- (a) Objectives and uses
- (b) Duties of field staff
- (c) Interviewing techniques
- (d) Concepts and definitions
- (e) Filling in of questionnaires

### **5.4.2 Computer Assisted Personal Interview (CAPI) manual**

The questionnaires for phase 2 and phase 3 were filled on tablet using Census and Survey Processing System (CSPro), Separate CAPI manuals were used as the tablet user guide for phase 1 and 2. The aim of the CAPI manual was to help field workers to get acquainted to all features and functions of the tablet. Tablets were used to determine the questions order and skips, and also to enable validating responses as they are entered. The tablet user guide assisted field staff to practice filling of questionnaires in training mode prior to the start of the census. The flow of questionnaires among interviewers, supervisors, senior supervisors and chief supervisor was done upon synchronization using tablet.

## **5.5 Other training materials**

Given that the data collection of agricultural data is complex, some case studies were designed to help field staff better understand complex definitions and concepts such as crop cycle, reference period, dwelling parcel, staggered/compact/scattered plantation, mixed cropping, multiple harvests, etc.

## **6 DATA COLLECTION**

Data collection for the CA2024 was carried out in three phases.

### **6.1 Phase 1 – Business Questionnaire (CA1)**

Letters were sent to around 1500 agricultural businesses in August 2024 with the request that

the completed questionnaire be returned to this office by 12 September 2024. All business farms which were in operation were contacted by phone and requested that the questionnaire be returned by September 2024. All undelivered questionnaires returned to the Census unit and this tallied to around 1,350 business farms.

SM officers visited the non-respondents during office hours in order to improve the response rate. At the end there were only 170 completed questionnaires for the non-household sector.

## **6.2 Phase 2 – Farm Questionnaire (CA2)**

Phase 2 comprised of a sample of 10,200 farms of the household sector from July to September 2024. The training of interviewers was held on 13 and 14 July 2024 in the island of Mauritius and on 20 and 21 July in the island of Rodrigues. Each interviewer was allocated around 50 farms and had to contact them for filling of the questionnaires. Data collection started on 22 July 2024 in the islands of Mauritius and Rodrigues. It was completed in end-September 2024. The completion rate was around 90%.

## **6.3 Phase 3 – Household Questionnaire (CA3)**

Phase 3 comprised of a sample survey of 8,700 private households from October to November 2024. The training of field staff was held on Saturday 5 October 2024. Data collection started on Monday 7 October 2024 and was completed in end-November 2024.

## **6.4 Supervision and control**

Since the Census of Agriculture involved the collection of a huge amount of data, field supervision and control were vital to ensure good quality data. Supervisory staff was required to exercise close and continuous control throughout the data collection process. They had to ensure that the interviewers adhered to instructions and procedures prescribed all along the survey.

Supervisors accompanied their interviewers during the first few interviews to consolidate the interviewers' understanding of the instructions. Less competent ones were spotted early and given special attention. Completed questionnaires were synchronized and examined, as soon as possible so that any mistake/misunderstanding could be cleared promptly and effectively.

Difficulties met by an interviewer were reported immediately to the concerned Supervisor who was responsible to deal with such cases as quickly as possible.

Senior Supervisors closely monitored the work of Supervisors through weekly diaries of field work filled in by the latter. They also helped the Supervisors to resolve difficult cases and settle queries.

## **7 DATA PROCESSING**

Data were processed and validated using STATA to obtain clean data. Tables were compiled using Microsoft Excel.

## **7.1 Editing, coding and data cleaning**

The editing and coding of completed business questionnaires (CA1) and farm questionnaires (CA2) were carried out by staff of the CA 2024 unit. This exercise started as scheduled in September 2024 and was completed by end-November 2024.

An editing and coding instruction manual was developed and it outlines the process of editing and coding to ensure data accuracy, consistency and completeness. This process involves identifying and resolving errors and inconsistencies.

### ***Editing exercise***

The following variables were thoroughly edited to identify errors and inconsistencies:

- Number of farmers operating a farm versus reported household members working on it
- Broad agricultural activities of a farm versus detailed reported crops and/ or livestock items
- Number of persons engaged on a farm versus its size
- Number of dwelling parcels versus reported fruit trees in “other than orchards”
- Area under temporary/permanent crops versus land use
- Area of exercise yard for livestock versus land under permanent meadows and pastures
- Area harvested of a crop versus number of plantings
- Area harvested of a crop versus presence of pests/diseases and occurrence of natural disasters (flood, cyclone and drought)
- Conversion of areas reported as “other than perche” to perche.
- Plant densities of fruit trees (for scattered and area not reported)
- Inorganic/organic inputs versus type of farming (inorganic/organic produce).

### ***Coding exercise***

- Residential addresses of farmers were coded at district level
- Addresses of land parcels were coded at district level

## **8 ADJUSTMENT OF WEIGHTS**

The findings from the data obtained from farm questionnaires showed that some farms (around 2%) were not properly classified as either small, medium or large based on their actual area of holding or herd size. These farms were reclassified to their appropriate strata and weights were recalculated to obtain better estimates.

## **9 ADJUSTMENTS BASED ON HOUSEHOLD QUESTIONNAIRE RESULTS**

The findings from the data collected from the Household questionnaire showed that the frames used for Islands of Mauritius and Rodrigues for the farm questionnaire were not exhaustive and

thus adjustments for overall Census results were done.

Land area of less than 5 perches was not covered in Farm questionnaire for open fields. Adjustments were done in the overall Census results for holdings below this threshold of 5 perches, whether it was wholly for sale, partly for sale or wholly for own consumption based on the results of the Household questionnaire.

Secondly, household farms having a kitchen garden of less than five perches were not covered in Farm questionnaire. Thus, area harvested was adjusted based on results obtained from Household questionnaire.

## **10 ESTIMATION PROCEDURES FOR BACKYARD PRODUCTION**

Based on results obtained from the Household questionnaire, estimates for harvested area of crops grown in kitchen gardens and on roof tops, for areas less than 5 perches were done.

### ***Fruits & vegetables***

Fruits and vegetables are produced in backyard gardens of households. Thus, in order to have a complete picture of agriculture in the Republic of Mauritius, adjustments had to be done for vegetables and fruits. It is to be noted that dwelling parcels are not considered here as they form part of the agricultural holdings of household farms.

## **11 EVALUATION OF RESULTS**

The results of the 2024 Census of Agriculture were compared with those of the 2014 Census of Agriculture to study and evaluate the main changes over the 10-year period. Additionally, the results were compared with the published data for the period July 2023 to June 2024 to evaluate the data gaps from administrative sources. Thus, the CA2024 results were thoroughly evaluated before dissemination.

Some important variables were evaluated from other sources as follows:

### ***Land***

Decreases in agricultural land in certain districts were noted in CA 2024, since some of these lands were converted into non-residential lands on which shopping malls, business parks, residential buildings, etc were built.

### ***Area harvested for vegetables***

Area harvested of each vegetable obtained from the Census was compared with the published figures for open field and under protected culture. Significant discrepancies between Census and published figures, mainly from administrative sources, were evaluated.

### ***Livestock***

The census results on livestock were evaluated against published data obtained from administrative sources for the following variables:

- Number of heads by livestock type
- Slaughter statistics

## **12 CONSOLIDATION OF SUGAR CANE AND TEA**

Given that the Census did not cover sugar cane and tea, the total area of agricultural land was obtained by consolidating the 2024 Census results with land data obtained from SIFB for area under sugar cane and from NAPRO for area under tea cultivation.

## **13 REPORTING OF RESULTS**

### **13.1 CA 2024 Main results**

The preliminary results of the CA 2024 were published in August 2025 in the Economic and Social Indicators, Issue No. 1876, “2024 Census of Agriculture – Main results” and can be accessed through the following link:

[2024 Census of Agriculture-Main results](#)

### **13.2 Table Reports**

Detailed results of the CA 2024 were published in January 2026 in Table reports for the Islands of Mauritius and Rodrigues separately. These reports can be accessed through the following links:

1. Island of Mauritius:

[CA2024 IOM 280126.pdf](#)

[CA2024 IOM 280126.xls](#)

2. Island of Rodrigues:

[CA2024 IOR 280126.pdf](#)

[CA2024 IOR 280126.xls](#)

## **14 RELIABILITY OF CENSUS DATA**

Every sample survey is subjected to two types of errors, namely sampling errors and non-sampling errors.

## **14.1 Sources of non-sampling errors and controls**

Non-sampling errors arise from various sources. In contrast to sampling errors, these errors are difficult to measure but are usually reduced by putting in place quality controls at various stages of the census. Below are the possible sources of non-sampling errors in CA2024 together with the respective controls.

### **14.1.1 Questionnaire design**

While conducting any survey, sources of errors in the design of a questionnaire are mainly layout of the questionnaire, wordings including ambiguous and vague words and phrases, non-exhaustiveness of pre-coded answers.

### **14.1.2 Data Collection**

During the data collection stage possible sources of errors are non-response, interviewer's bias, respondent's bias, lack of understanding of concepts and definitions by both respondent and field staff, lack of supervision on field, errors of recording in the schedule, etc.

The above possible errors were reduced by:

- (a) Intensive training of field staff who were provided with a detailed instruction manual;
- (b) Incorporating validation checks in the tablet to ensure consistency of information provided;
- (c) Providing supervisory staff with a diary in which they had to fill in their itineraries, problems encountered and solution thereof;
- (d) Interviewers being accompanied by their supervisors during the first few interviews and also in difficult cases;
- (e) Re-interviews being carried out to clear out queries, if any, and ensure corrections of data collected; and
- (f) Intensive editing and consistency checks carried out at office where outliers were flagged and reported to supervisory staff for call backs if necessary.

### **14.1.3 Data Processing**

Editors and coders and supervisory staffs (Statistician/Senior Statistician and Statistical Officers/Senior Statistical Officers) were intensively trained by the Deputy Director of Statistics in charge of the CA2024 Unit. Computer editing, consisting of checks on totals, range of values and other consistency checks, was carried out.

## **14.2 Sampling errors**

The CA2024 estimates are based on a sample of observations. Hence, they are subject to sampling errors; that is estimates could differ from the figures that would have been produced if information had been collected from all farmers in the country.



## **Appendix A – Glossary of Terms**

**Agricultural census** - Collection of structural data from agricultural holdings

**Agricultural household** - A household whose largest source of income consists from income derived from agricultural production.

**Agricultural land** - Total of arable land, permanent crops, and permanent pastures and meadows

**Built up areas** - Land occupied by buildings, parks, roads, lanes, open spaces needed for storing equipment and products, etc

**Compact plantation (permanent crop)** - Plants and trees planted in a regular or systematic manner.

**Forest or other wooded land** - Land which includes wood lots or tracts of timber, natural or planted, which have or will have value as wood, timber or other forest products. Nurseries of forest trees should be classified under this category.

**Land under temporary crops** - Land used for crops with a less than one year growing cycle. This includes all vegetables and food crops with a growing cycle of less than one year such as, melons, some types of flowers and also fodder crops.

**Land under temporary meadows and pastures** - Land temporarily cultivated with herbaceous forage crops for mowing or pasture. A period of less than five years is used to differentiate between temporary and permanent meadows.

**Land fallow** - Arable land at rest for a period of time before it is cultivated again (maximum 5 years). This may be part of the holding's crop rotation system or because the normal crop cannot be planted because of flood damage, lack of water, unavailability of inputs, or other reasons.

**Land under permanent crops** - Land which is cultivated with crops which occupy it for a year or longer and which do not have to be planted after harvest. For example, land under trees and shrubs producing crops, fruits and flowers, such as roses and jasmine.

**Land under permanent meadows and pastures** - Land used permanently (for five years or more) to grow herbaceous forage crops, through cultivation or naturally (wild prairie or grazing land) including land used solely for livestock.

**Land suitable for agriculture** - Land suitable for agriculture but not used in the last 5 years for agricultural production.

**Other lands** - Wasteland, land under water, etc

**Landless holding** - An agricultural holding with no land

**Land tenure** - Arrangements under which a holder operates land on a holding

**Land use** - Classification of land according to the activity undertaken on the land

**Mixed cropping** - Several temporary crops grown simultaneously as a mixture on the same piece of land.

**Organic fertilisers** - Fertilizers prepared from processed plant and animal material

**Pesticide** - Substances intended to repel, mitigate, control or destroy diseases and pests in plants or animals and to prevent any harm to agricultural commodity during production, storage, transport, processing and marketing etc.

## Appendix B – Census Questionnaires

CA1

CONFIDENTIAL

S.N.



Republic of Mauritius  
**STATISTICS MAURITIUS**  
Ministry of Finance, Economic Planning and Development  
LIC Centre, John Kennedy Street, Port Louis

**Tel No:** 2081800      **Fax No:** 211 4150      **E-mail:** sm\_agricensus@govmu.org

### 2024 CENSUS OF AGRICULTURE (CA2024)

#### BUSINESS QUESTIONNAIRE

*Statistics Mauritius is conducting a Census of Agriculture in 2024 (CA2024). Data supplied on crops should relate to the period 1 July 2023 - 30 June 2024 whereas number of heads for livestock should relate to 30 June 2024.*

*The Census is being conducted under the provision of the Statistics Act which guarantees the confidentiality of information collected as provided for in the Act.*

*Before completing the questionnaire, please read carefully the explanatory notes enclosed. If you need further clarification or assistance, feel free to contact the 2024 Census of Agriculture Unit (CA2024 Unit) of this office on 2081800 (ext 126, 271 or 431)*

#### 1. IDENTIFICATION OF BUSINESS

1.1 Name of Business :.....

1.2 Business address :.....

(Head Office) :.....

:.....

:.....

**For office use**

--	--	--	--	--

1.3 Business licence holder's name :.....

1.4 Business Registration Number (BRN) : 

--	--	--	--	--	--	--	--	--	--

1.5 Date of start of operation:      Month ..... 

--	--

      Year ..... 

--	--	--	--

1.6 Tel No. :..... Fax No. :..... E-mail :.....

#### FOR OFFICE USE

Edited and coded by :..... Input by :.....

Checked by :..... Verified by :.....

## 2. CHARACTERISTICS OF BUSINESS

Please circle the correct codes or write on the dotted lines or write in the boxes where applicable

### 2.1 Activities of business

2.1.1 Main activity : .....

For office use

--	--	--	--	--

2.1.2 Secondary activity (if any) : .....

For office use

--	--	--	--	--

### 2.2 Type of ownership of business

(a) Company..... 1

(c) Cooperatives..... 3

(b) Private partnership..... 2

(d) Other, specify ..... 4

## 3. AGRICULTURAL ACTIVITIES OF BUSINESS OVER THE PERIOD

1 JULY 2023 - 30 JUNE 2024

(Circle the appropriate code; Multiple answers are allowed)

### 3.1 Crops

	Yes No		Farming Technique <sup>1/</sup>				
	1	2					
(a) Sugar cane							
(b) Tea							
(c) Vegetable							
(d) Fruits							

	Yes No		Farming Technique <sup>1/</sup>				
	1	2	1	2	3	4	5
(e) Flowers for sale							
(f) Fodder							
(g) Other, specify.....							

<sup>1/</sup> 1 = Open fields; 2 = Hydroponics; 3 = Aeroponics; 4 = Non-hydroponics; 5 = Aquaponics

### 3.2 Livestock

	Yes No	
	1	2
(a) Cattle		
(b) Goat		
(c) Sheep		
(d) Pig		
(e) Poultry-Layer		

	Yes No	
	1	2
(f) Poultry-Broiler		
(g) Bee keeping		
(h) Deer		
(i) Other, specify.....		

### 3.3 Other

	Yes No	
	1	2
(a) Nursery for sale		
(b) Forestry (timber for sale - biomass)		
(c) Forestry (timber for sale - other)		
(d) Aquaculture for sale - Berry Rouge (Red Hybrid Tilapia)		
(e) Aquaculture for sale - Camaron (Freshwater Prawn)		
(f) Agro-processing of agricultural products for sale		

## 4. EMPLOYMENT IN AGRICULTURE

### 4.1 Number of persons engaged as at end March 2024 <sup>2/</sup>

Employment status	Mauritian				Non-Mauritian				Total			
	Male		Female		Male		Female		Male		Female	
	FT	PT <sup>3/</sup>	FT	PT <sup>3/</sup>	FT	PT <sup>3/</sup>	FT	PT <sup>3/</sup>	FT	PT <sup>3/</sup>	FT	PT <sup>3/</sup>
1. Employer/ Working												
2. Contributing family worker												
3. Employee												
<b>Total</b>												
<i>of whom persons with disabilities</i>												

<sup>2/</sup> Including recruitment under Youth Employment Programme

FT: Full Time

PT: Part Time

<sup>3/</sup> working less than half of usual working hours on the farm

## 5. LAND USE AND TENURE FOR AGRICULTURAL PRODUCTION

### 5.1 Land use of areas operated by the business over the period 1 July 2023 - 30 June 2024

Type of land use	Area (perches)					
<b>Land used:</b>						
1. Land under temporary crops						
<i>of which: equipped with irrigation</i>						
2. <i>infrastructure</i>						
3. <i>of which: actually irrigated</i>						
4. Land under temporary meadows and pastures						
5. Land fallow						
6. Land under permanent crops						
<i>of which: equipped with irrigation</i>						
7. <i>infrastructure</i>						
8. <i>of which: actually irrigated</i>						
9. Land under permanent meadows and pastures						
10. Forest or other wooded land						
<b>Land not used:</b>						
11. Suitable for agriculture						
12. Built up areas (e.g land occupied by buildings, parks, roads, lanes, open spaces needed for storing equipment and products etc)						
13. Other (e.g wasteland, land under water, etc)						
<b>Total</b>						

**Land Use**

**Land under temporary crops:** Land used for crops with a less than one year growing cycle; that is, they must be newly sown or planted for further production after the harvest.

**Land under temporary meadows and pastures:** Land temporarily cultivated with herbaceous forage crops for mowing or pasture. A period of less than five years is used to differentiate between temporary and permanent meadows.

**Land fallow:** Arable land at rest for a period of time before it is cultivated again. This may be part of the holding's crop rotation system or because the normal crop cannot be planted because of flood damage, lack of water, unavailability of inputs, or other reasons.

**Land under permanent crops:** Land which is cultivated with crops which occupy it for a year or longer and which do not have to be planted after harvest. For example land under trees and shrubs producing flowers, such as roses and jasmine.

**Land under permanent meadows and pastures:** Land used permanently (for five years or more) to grow herbaceous forage crops, through cultivation or naturally (wild prairie or grazing land).

**Forest or other wooded land:** Land which includes wood lots or tracts of timber, natural or planted, which have or will have value as wood, timber or other forest products. Nurseries of forest trees should be classified under this category. Forest or other wooded land used only for recreational purposes should be classified as "Land not used".

### 5.2 Land tenure of areas operated by the business over the period 1 July 2023 - 30 June 2024

Type of land tenure	Area (perches)					
1. Land owned						
2. Land leased from Government						
3. Land rented/leased from others						
4. Other types of land tenure (please specify.....)						
<b>Total</b>						

**Land Tenure**

**Rented/Leased:** Land that is rented or leased by the holding from other persons, usually for a limited time period. Rental arrangements can take different forms. Land may be rented for an agreed sum of money and/or produce, for a share of the produce, or in exchange for services.

Total at 5.2 should equal Total at 5.1
--

## 6. LAND OWNED BY BUSINESS BUT RENTED TO OTHERS OVER THE PERIOD 1 JULY 2023 - 30 JUNE 2024

Area (perches)

## 7. TEMPORARY AND PERMANENT CROP PRODUCTION OVER THE PERIOD 1 JULY 2023 - 30 JUNE 2024

**7.1 Vegetables (including melons, cereals, oilseed crops, root/tuber crops and leguminous crops):**  
If not applicable, go to Section 7.2

Crop Name		Harvest over the period 1 July 2023 - 30 June 2024												Production over the period 1 July 2023 - 30 June 2024											
		1=Mono; 2=Mixed; 3=Scattered	No. of plantings	Open field						Under protective cover						Specify kg or unit	Quantity produced								
				Specify unit for area	Total area harvested					Hydroponics=1 Aeroponics=2 Non- hydroponics=3 Aquaponics=4	Total area harvested (m²)														
1.	<div></div>				<div></div>													<div></div>							
2.	<div></div>				<div></div>														<div></div>						
3.	<div></div>				<div></div>														<div></div>						
4.	<div></div>				<div></div>														<div></div>						
5.	<div></div>				<div></div>														<div></div>						
6.	<div></div>				<div></div>														<div></div>						
7.	<div></div>				<div></div>														<div></div>						
8.	<div></div>				<div></div>														<div></div>						
9.	<div></div>				<div></div>														<div></div>						
10.	<div></div>				<div></div>														<div></div>						
11.	<div></div>				<div></div>														<div></div>						
12.	<div></div>				<div></div>														<div></div>						
13.	<div></div>				<div></div>														<div></div>						
14.	<div></div>				<div></div>														<div></div>						
15.	<div></div>				<div></div>														<div></div>						
16.	<div></div>				<div></div>														<div></div>						
17.	<div></div>				<div></div>														<div></div>						
18.	<div></div>				<div></div>														<div></div>						
19.	<div></div>				<div></div>														<div></div>						
20.	<div></div>				<div></div>														<div></div>						

**7.2 Fruits and beverage crops: If not applicable, go to Section 7.3**

Crop Name		Size of production unit														Sold			Production over the period 1 July 2023 - 30 June 2024							
		1=Mono; 2=Mixed 3=Scattered	Specify unit for area	Total area harvested			Permanent plants/ trees						Yes (wholly)	Yes (partly)	No	Specify kg or unit	Quantity produced									
							Number			Of which bearing																
1.	<div><div></div><div></div><div></div><div></div><div></div><div></div></div>														1	2	3									
2.	<div><div></div><div></div><div></div><div></div><div></div><div></div></div>															1	2	3								
3.	<div><div></div><div></div><div></div><div></div><div></div><div></div></div>															1	2	3								
4.	<div><div></div><div></div><div></div><div></div><div></div><div></div></div>															1	2	3								
5.	<div><div></div><div></div><div></div><div></div><div></div><div></div></div>															1	2	3								
6.	<div><div></div><div></div><div></div><div></div><div></div><div></div></div>															1	2	3								
7.	<div><div></div><div></div><div></div><div></div><div></div><div></div></div>															1	2	3								
8.	<div><div></div><div></div><div></div><div></div><div></div><div></div></div>															1	2	3								
9.	<div><div></div><div></div><div></div><div></div><div></div><div></div></div>															1	2	3								
10.	<div><div></div><div></div><div></div><div></div><div></div><div></div></div>															1	2	3								
11.	<div><div></div><div></div><div></div><div></div><div></div><div></div></div>															1	2	3								
12.	<div><div></div><div></div><div></div><div></div><div></div><div></div></div>															1	2	3								

**7.3 Flowers:** If not applicable, go to Section 8

[illegible]

**8. Which type of farming did you use over the period 1 July 2023 - 30 June 2024? If not applicable, go to Section 10**

	Yes	No
(a) Organic farming	1	2
(b) Inorganic farming	1	2

## 9. AGRICULTURAL PRACTICES

	Yes	No
(a) Irrigation system	1	2
(b) Fertilisers (chemical)	1	2
(c) Fertilisers (organic)	1	2
(d) Pesticides	1	2
(e) Herbicides	1	2
(f) Improved/selected seeds	1	2

An **irrigation** system consists of an intake structure, a conveyance system, a distribution system, a field application system, and a drainage system.

**Organic fertilisers** are fertilisers derived from animal or vegetable matter. (e.g. compost, manure).

**Improved/selected (GM/hybrid) seeds** are normally imported seeds that farmers purchase as opposed to normal (traditional) seeds produced by themselves or other farmers.

## 10. TYPES OF MECHANISATION

	Yes, 100%	Yes, partly	No	NA
(a) Land preparation	1	2	3	4
(b) Planting	1	2	3	4
(c) Irrigation	1	2	3	4
(d) Fertilisers application	1	2	3	4
(e) Herbicides application	1	2	3	4
(f) Pesticides application	1	2	3	4
(g) Harvesting	1	2	3	4
(h) Livestock farming	1	2	3	4
(i) Milk production	1	2	3	4
(j) Poultry farming	1	2	3	4

**Mechanisation** in agriculture is the process of using agricultural machinery to increase farm worker productivity.

**Mechanised irrigation** is a system of applying water to crops and fields where mechanical aids are primarily used, such as pumps, sprinklers, spray nozzles, pressure regulators, or other mechanical means.

## 11. LIVESTOCK

### 11.1 Cattle: If not applicable, go to Section 11.3

Cattle type	Number as at 30 June 2024						Sales over the period 1 July 2023 - 30 June 2024					
	Meat purposes			Dairy purposes			Total			Number sold live		
1. Bulls (breeding)												
2. Bulls (non-breeding)												
3. Cows (milking)												
4. Cows (non-milking)												
5. Heifers (young)												
6. Heifers (adult)												
7. Male Calves												
8. Female Calves												
<b>Total</b>												

### 11.2 Milk production

Quantity of milk produced over the period 1 July 2023 - 30 June 2024

litres



### 11.3 Goat: If not applicable, go to Section 11.4

Goat type	Number as at 30 June 2024									Sales over the period 1 July 2023 - 30 June 2024							
	Meat purposes			Breeding purposes			Total			Number sold live				Number Slaughtered			
1. Buck																	
2. Doe																	
3. Male Kid (up to 1 yr)																	
4. She Kid (up to 1 yr)																	
<b>Total</b>																	

### 11.4 Sheep: If not applicable, go to Section 11.5

Sheep type	Number as at 30 June 2024									Sales over the period 1 July 2023 - 30 June 2024							
	Meat purposes			Breeding purposes			Total			Number sold live				Number Slaughtered			
1. Ram																	
2. She Sheep (Ewe)																	
3. Male Lamb (up to 1 yr)																	
4. She Lamb (up to 1 yr)																	
<b>Total</b>																	

### 11.5 Pigs: If not applicable, go to Section 11.6

Pig type	Number as at 30 June 2024									Sales over the period 1 July 2023 - 30 June 2024							
	Meat purposes			Breeding purposes			Total			Number sold live				Number Slaughtered			
1. Boar																	
2. Sow																	
3. Gilt																	
4. Male Piglet																	
5. She Piglet																	
<b>Total</b>																	

### 11.6 Poultry-Meat production: If not applicable, go to Section 11.7

Animal type	Number as at 30 June 2024							Sales over the period 1 July 2023 - 30 June 2024						
								Number Slaughtered						
1. Broiler														
2. Duck														
3. Turkeys														
4. Other (specify .....)														

### 11.7 Egg production: If not applicable, go to Section 11.8

11.7.1 Number of layers as at 30 June 2024

--	--	--	--	--	--	--	--

11.7.2 Number of eggs sold over the period 1 July 2023 - 30 June 2024

--	--	--	--	--	--	--	--

### 11.8 Other livestock: If not applicable, go to Section 11.9

Animal type	Number as at 30 June 2024							Sales over the period 1 July 2023 - 30 June 2024						
								Number Slaughtered						
1. Deer ("chassée")														
2. Deer (feedlot)														
3. Other (specify .....)														

**Deer ("chassée"):** Deer which is kept extensively in forests (used as hunting grounds)

**Deer (feedlot):** Deer reared in confined system, feeding is effected mostly on cut and carry fodder and supplemented with concentrate feed

### 11.9 Apiculture: If not applicable, go to Section 12

11.9.1 Number of productive beehives as at 30 June 2024

--	--	--

11.9.2 Number of non-productive beehives as at 30 June 2024

--	--	--

11.9.3 Production of honey over the period 1 July 2023 - 30 June 2024

--	--	--	--	--

 litres

### 12.1 How do you dispose your agricultural produce?

- (a) Sold directly to consumers
- (b) Retailers
- (c) Wholesalers
- (d) National Wholesale Market
- (e) Exported
- (f) Use as feed
- (g) Use in agro-processing

	1. VEGETABLES	2. FRUITS	3. FLOWERS	4. CATTLE	5. GOATS
	%	%	%	%	%
	<div style="width: 0%; height: 20px; background-color: #f0f0f0;"></div>	<div style="width: 0%; height: 20px; background-color: #f0f0f0;"></div>	<div style="width: 0%; height: 20px; background-color: #f0f0f0;"></div>	<div style="width: 0%; height: 20px; background-color: #f0f0f0;"></div>	<div style="width: 0%; height: 20px; background-color: #f0f0f0;"></div>
	<div style="width: 0%; height: 20px; background-color: #f0f0f0;"></div>	<div style="width: 0%; height: 20px; background-color: #f0f0f0;"></div>	<div style="width: 0%; height: 20px; background-color: #f0f0f0;"></div>	<div style="width: 0%; height: 20px; background-color: #f0f0f0;"></div>	<div style="width: 0%; height: 20px; background-color: #f0f0f0;"></div>
	<div style="width: 0%; height: 20px; background-color: #f0f0f0;"></div>	<div style="width: 0%; height: 20px; background-color: #f0f0f0;"></div>	<div style="width: 0%; height: 20px; background-color: #f0f0f0;"></div>	<div style="width: 0%; height: 20px; background-color: #f0f0f0;"></div>	<div style="width: 0%; height: 20px; background-color: #f0f0f0;"></div>
	<div style="width: 0%; height: 20px; background-color: #f0f0f0;"></div>	<div style="width: 0%; height: 20px; background-color: #f0f0f0;"></div>	<div style="width: 0%; height: 20px; background-color: #f0f0f0;"></div>	<div style="width: 0%; height: 20px; background-color: #f0f0f0;"></div>	<div style="width: 0%; height: 20px; background-color: #f0f0f0;"></div>
	<div style="width: 0%; height: 20px; background-color: #f0f0f0;"></div>	<div style="width: 0%; height: 20px; background-color: #f0f0f0;"></div>	<div style="width: 0%; height: 20px; background-color: #f0f0f0;"></div>	<div style="width: 0%; height: 20px; background-color: #f0f0f0;"></div>	<div style="width: 0%; height: 20px; background-color: #f0f0f0;"></div>
	<div style="width: 0%; height: 20px; background-color: #f0f0f0;"></div>	<div style="width: 0%; height: 20px; background-color: #f0f0f0;"></div>	<div style="width: 0%; height: 20px; background-color: #f0f0f0;"></div>	<div style="width: 0%; height: 20px; background-color: #f0f0f0;"></div>	<div style="width: 0%; height: 20px; background-color: #f0f0f0;"></div>
	<div style="width: 0%; height: 20px; background-color: #f0f0f0;"></div>	<div style="width: 0%; height: 20px; background-color: #f0f0f0;"></div>	<div style="width: 0%; height: 20px; background-color: #f0f0f0;"></div>	<div style="width: 0%; height: 20px; background-color: #f0f0f0;"></div>	<div style="width: 0%; height: 20px; background-color: #f0f0f0;"></div>
Total	1    0    0	1    0    0	1    0    0	1    0    0	1    0    0

- (a) Sold directly to consumers
- (b) Retailers
- (c) Wholesalers
- (d) National Wholesale Market
- (e) Exported
- (f) Use as feed
- (g) Use in agro-processing

	6. SHEEP			7. PIGS			8. POULTRY MEAT			9. EGGS			10. HONEY		
	%			%			%			%			%		
Total	1	0	0	1	0	0	1	0	0	1	0	0	1	0	0

Yes ☐ 1      No ☐ 2

**WHAT ARE YOUR MAIN CONSTRAINTS IN**  
**(DO NOT READ OUT; Multiple answers are allowed)**

	Yes	No
(a) Availability of water	1	2
(b) Availability of labour	1	2
(c) High price of labour	1	2
(d) Availability of land	1	2
(e) Availability of seeds	1	2
(f) High price of seeds	1	2
(g) High price of agro-chemicals	1	2
(h) Availability of fodder	1	2
(i) High price of feeds	1	2
(j) Natural disaster/Climate change	1	2
(k) Pests/diseases (instructions: Feral dogs, monkeys, wild boars, etc)	1	2
(l) Marketing	1	2
(m) Theft	1	2
(n) Old age of farmer	1	2
(o) Other constraint (specify .....	1	2

**Person to be contacted for further information or queries about this questionnaire**

**Name** : .....

**Status in business** : .....

**Telephone number** : (Office)..... (Mobile).....

**E-mail address** : .....

**Website Address** : .....

**Date** : .....

CONFIDENTIAL



CA2

S.N 

--	--	--	--	--

Republic of Mauritius  
**STATISTICS MAURITIUS**

Ministry of Finance, Economic Planning and Development

**2024 CENSUS OF AGRICULTURE (CA2024)**

**FARM QUESTIONNAIRE**

*Please write on the dotted lines or write in the boxes where applicable*

**1. NUMBER OF FARMERS OPERATING THIS FARM**

--

**2. IDENTIFICATION OF FARMERS**

**2.1 Farmer (1)**

(a) Surname of farmer : .....

(b) Other names of farmer : .....

(c) ID Number of farmer :

--	--	--	--	--	--	--	--	--	--	--	--	--	--	--

**2.2 Farmer (2)**

(a) Surname of farmer : .....

(b) Other names of farmer : .....

(c) ID Number of farmer :

--	--	--	--	--	--	--	--	--	--	--	--	--	--	--

**2.3 Farmer (3)**

(a) Surname of farmer : .....

(b) Other names of farmer : .....

(c) ID Number of farmer :

--	--	--	--	--	--	--	--	--	--	--	--	--	--	--

Name of Interviewer: .....

Date of interview:

--	--	--	--	--	--

Name of Supervisor: .....

Date submitted:

--	--	--	--	--	--

Fieldcheck by Supervisor: .....

--	--	--	--	--	--

Name of Senior Supervisor: .....

Date submitted:

--	--	--	--	--	--

**FOR OFFICE USE**

Edited and coded by : .....

Input by : .....

Checked by : .....

Verified by : .....

### 3. CHARACTERISTICS OF HOUSEHOLD

Please circle the correct codes or write on the dotted lines or write in the boxes where applicable

3.1 Surname of household head:.....

3.2 Other names of household head:.....

3.3 Address of household: .....  
 : .....  
 : .....  
 : ..... MVCA code

For office use

--	--	--	--

3.4 How many separate farms do members of this household operate?

*If only 1 farm, skip to Q 3.7*

#### 3.5 Farm (2)

(a) Name of farmer :.....

(b) ID Number of farmer :

--	--	--	--	--	--	--	--	--	--	--	--	--	--	--

(c) Main activity: Crop 1 Livestock 2 Both Crop & Livestock 3 Other, specify..... 4

#### 3.6 Farm (3)

(a) Name of farmer :.....

(b) ID Number of farmer :

--	--	--	--	--	--	--	--	--	--	--	--	--	--	--

(c) Main activity: Crop 1 Livestock 2 Both Crop & Livestock 3 Other, specify..... 4

Male	Female	Total

3.7 Number of household members

3.8 Complete the table below for all household members working on the farm

Serial Number (S.N)	Name of household member (First name only)	Age (Last birthday- years)		Sex		Highest educational attainment	Short courses <sup>1/</sup> related to current activity		Employment Status	Type of employment	
				Male	Female		Yes	No		Full Time	Part Time <sup>2/</sup>
01				1	2		1	2		1	2
02				1	2		1	2		1	2
03				1	2		1	2		1	2
04				1	2		1	2		1	2
05				1	2		1	2		1	2

<sup>1/</sup> without examinations i.e. not a qualification

<sup>2/</sup> working less than half of usual working hours on the farm

3.9 Proportion of total household income from agriculture

(a) Up to 50%

1
---

(b) Above 50%

2
---

#### 4. AGRICULTURAL ACTIVITIES OF FARM OVER THE PERIOD 1 JULY 2023 - 30 JUNE 2024

##### 4.1 Crops

	Yes No		Farming Technique <sup>1/</sup>				
(a) Sugar cane	1	2					
(b) Tea	1	2					
(c) Vegetable	1	2	1	2	3	4	5
(d) Fruits	1	2	1	2	3	4	5

	Yes No		Farming Technique <sup>1/</sup>				
(e) Flowers for sale	1	2	1	2	3	4	5
(f) Fodder	1	2					
(g) Other, specify .....	1	2					

<sup>1/</sup> 1 = Open fields; 2 = Hydroponics; 3 = Aeroponics; 4 = Non-hydroponics; 5 = Aquaponics

##### 4.2 Livestock

	Yes No	
(a) Cattle	1	2
(b) Goat	1	2
(c) Sheep	1	2
(d) Pig	1	2
(e) Poultry-Layer	1	2

	Yes No	
(f) Poultry-Broiler	1	2
(g) Poultry-Local	1	2
(h) Bee keeping	1	2
(i) Deer	1	2
(j) Other, specify .....	1	2

##### 4.3 Other

	Yes No	
(a) Presence of nursery	1	2
(b) Nursery for sale	1	2
(c) Forestry (timber for sale- biomass)	1	2
(d) Forestry (timber for sale- other)	1	2
(e) Aquaculture for sale-(Berry Rouge Tilapia)	1	2
(f) Aquaculture for sale-Camaron (Freshwater Prawn)	1	2
(g) Subsistence fishing	1	2
(h) Agro-processing of agricultural products for sale	1	2

#### 5. MAIN PURPOSE OF PRODUCTION

(a) Mainly for sale      1      (b) Mainly for own consumption      2

#### 6. NUMBER OF PAID EMPLOYEES WHO USUALLY WORKED ON THE FARM OVER THE PERIOD 1 JULY 2023 - 30 JUNE 2024: If no employee, go to Section 7

Type of employment	Mauritian		Non-Mauritian		Total	
	Male	Female	Male	Female	Male	Female
Full time						
Part Time <sup>2/</sup>						

<sup>2/</sup> working less than half of usual working hours on the farm

## 7. LAND USE AND TENURE FOR AGRICULTURAL PRODUCTION

### 7.1 Land area operated by farmer by land use over the period 1 July 2023 - 30 June 2024

Type of land use	Area (perches)					
<b>Land used:</b>						
1. Land under temporary crops						
2. of which: equipped with irrigation infrastructure						
3. of which: actually irrigated						
4. Land under temporary meadows and pastures						
5. Land fallow						
6. Land under permanent crops						
7. of which: equipped with irrigation infrastructure						
8. of which: actually irrigated						
9. Land under permanent meadows and pastures						
10. Forest or other wooded land						
<b>Land not used:</b>						
11. Suitable for agriculture						
12. Built up areas (e.g land occupied by buildings, parks, roads, lanes, open spaces needed for storing equipment and products etc)						
13. Other (e.g wasteland, land under water, etc)						
<b>Total</b>						

### 7.2 Number of land parcels operated by farm for agricultural production over the period 1 July 2023 - 30 June 2024

#### Parcel 1

(a) Area (perches)

For office use

(b) Main crop

(specify) .....

(c) Address: .....

: ..... For office use

(d) MVCA code

#### Parcel 2

(a) Area (perches)

For office use

(b) Main crop

(specify) .....

(c) Address: .....

: ..... For office use

(d) MVCA code

#### Parcel 3

(a) Area (perches)

For office use

(b) Main crop

(specify) .....

(c) Address: .....

: ..... For office use

(d) MVCA code

#### Parcel 4

(a) Area (perches)

For office use

(b) Main crop

(specify) .....

(c) Address: .....

: ..... For office use

(d) MVCA code

### 7.3 Details of land area owned, leased or rented by the farmer over the period 1 July 2023 - 30 June 2024

	Area (perches)					
1. Land owned						
2. Land leased from Government						
3. Land rented/leased from others						
4. Other types of land tenure (please specify.....)						
<b>Total</b>						

### 8. LAND AREA RENTED TO OTHERS BY THE FARMER OVER THE PERIOD 1 JULY 2023 - 30 JUNE 2024

Area (perches)					

## 9. TEMPORARY AND PERMANENT CROP PRODUCTION OVER THE PERIOD 1 JULY 2023 - 30 JUNE 2024

**9.1 Vegetables (including melons, cereals, oilseed crops, root/tuber crops and leguminous crops):**  
If not applicable, go to Section 9.2

Crop Name	Harvest over the period 1 July 2023 - 30 June 2024														Production over the period 1 July 2023 - 30 June 2024					
	1=Mono; 2=Mixed; 3=Scattered	No. of plantings	Open field					Under protective cover				Specify kg or unit	Quantity produced							
			Specify unit for area	Total area harvested	IF AREA NOT KNOWN: Total no. of plants/heaps	Hydroponics=1 Aeroponics=2 Non- hydroponics=3 Aquaponics=4	Total area harvested (m²)													
1. <div><div></div><div></div><div></div><div></div><div></div></div>			<div><div></div></div>	<div><div></div><div></div><div></div><div></div><div></div><div></div><div></div><div></div><div></div><div></div><div></div><div></div><div></div><div></div><div></div></div>									<div><div></div></div>	<div><div></div><div></div><div></div><div></div><div></div><div></div><div></div><div></div><div></div><div></div><div></div><div></div><div></div><div></div><div></div></div>						
2. <div><div></div><div></div><div></div><div></div><div></div></div>			<div><div></div></div>	<div><div></div><div></div><div></div><div></div><div></div><div></div><div></div><div></div><div></div><div></div><div></div><div></div><div></div><div></div><div></div></div>									<div><div></div></div>	<div><div></div><div></div><div></div><div></div><div></div><div></div><div></div><div></div><div></div><div></div><div></div><div></div><div></div><div></div><div></div></div>						
3. <div><div></div><div></div><div></div><div></div><div></div></div>			<div><div></div></div>	<div><div></div><div></div><div></div><div></div><div></div><div></div><div></div><div></div><div></div><div></div><div></div><div></div><div></div><div></div><div></div></div>									<div><div></div></div>	<div><div></div><div></div><div></div><div></div><div></div><div></div><div></div><div></div><div></div><div></div><div></div><div></div><div></div><div></div><div></div></div>						
4. <div><div></div><div></div><div></div><div></div><div></div></div>			<div><div></div></div>	<div><div></div><div></div><div></div><div></div><div></div><div></div><div></div><div></div><div></div><div></div><div></div><div></div><div></div><div></div><div></div></div>									<div><div></div></div>	<div><div></div><div></div><div></div><div></div><div></div><div></div><div></div><div></div><div></div><div></div><div></div><div></div><div></div><div></div><div></div></div>						
5. <div><div></div><div></div><div></div><div></div><div></div></div>			<div><div></div></div>	<div><div></div><div></div><div></div><div></div><div></div><div></div><div></div><div></div><div></div><div></div><div></div><div></div><div></div><div></div><div></div></div>									<div><div></div></div>	<div><div></div><div></div><div></div><div></div><div></div><div></div><div></div><div></div><div></div><div></div><div></div><div></div><div></div><div></div><div></div></div>						
6. <div><div></div><div></div><div></div><div></div><div></div></div>			<div><div></div></div>	<div><div></div><div></div><div></div><div></div><div></div><div></div><div></div><div></div><div></div><div></div><div></div><div></div><div></div><div></div><div></div></div>									<div><div></div></div>	<div><div></div><div></div><div></div><div></div><div></div><div></div><div></div><div></div><div></div><div></div><div></div><div></div><div></div><div></div><div></div></div>						
7. <div><div></div><div></div><div></div><div></div><div></div></div>			<div><div></div></div>	<div><div></div><div></div><div></div><div></div><div></div><div></div><div></div><div></div><div></div><div></div><div></div><div></div><div></div><div></div><div></div></div>									<div><div></div></div>	<div><div></div><div></div><div></div><div></div><div></div><div></div><div></div><div></div><div></div><div></div><div></div><div></div><div></div><div></div><div></div></div>						
8. <div><div></div><div></div><div></div><div></div><div></div></div>			<div><div></div></div>	<div><div></div><div></div><div></div><div></div><div></div><div></div><div></div><div></div><div></div><div></div><div></div><div></div><div></div><div></div><div></div></div>									<div><div></div></div>	<div><div></div><div></div><div></div><div></div><div></div><div></div><div></div><div></div><div></div><div></div><div></div><div></div><div></div><div></div><div></div></div>						
9. <div><div></div><div></div><div></div><div></div><div></div></div>			<div><div></div></div>	<div><div></div><div></div><div></div><div></div><div></div><div></div><div></div><div></div><div></div><div></div><div></div><div></div><div></div><div></div><div></div></div>									<div><div></div></div>	<div><div></div><div></div><div></div><div></div><div></div><div></div><div></div><div></div><div></div><div></div><div></div><div></div><div></div><div></div><div></div></div>						
9. <div><div></div><div></div><div></div><div></div><div></div></div>			<div><div></div></div>	<div><div></div><div></div><div></div><div></div><div></div><div></div><div></div><div></div><div></div><div></div><div></div><div></div><div></div><div></div><div></div></div>									<div><div></div></div>	<div><div></div><div></div><div></div><div></div><div></div><div></div><div></div><div></div><div></div><div></div><div></div><div></div><div></div><div></div><div></div></div>						
11. <div><div></div><div></div><div></div><div></div><div></div></div>			<div><div></div></div>	<div><div></div><div></div><div></div><div></div><div></div><div></div><div></div><div></div><div></div><div></div><div></div><div></div><div></div><div></div><div></div></div>									<div><div></div></div>	<div><div></div><div></div><div></div><div></div><div></div><div></div><div></div><div></div><div></div><div></div><div></div><div></div><div></div><div></div><div></div></div>						
12. <div><div></div><div></div><div></div><div></div><div></div></div>			<div><div></div></div>	<div><div></div><div></div><div></div><div></div><div></div><div></div><div></div><div></div><div></div><div></div><div></div><div></div><div></div><div></div><div></div></div>									<div><div></div></div>	<div><div></div><div></div><div></div><div></div><div></div><div></div><div></div><div></div><div></div><div></div><div></div><div></div><div></div><div></div><div></div></div>						
13. <div><div></div><div></div><div></div><div></div><div></div></div>			<div><div></div></div>	<div><div></div><div></div><div></div><div></div><div></div><div></div><div></div><div></div><div></div><div></div><div></div><div></div><div></div><div></div><div></div></div>									<div><div></div></div>	<div><div></div><div></div><div></div><div></div><div></div><div></div><div></div><div></div><div></div><div></div><div></div><div></div><div></div><div></div><div></div></div>						
14. <div><div></div><div></div><div></div><div></div><div></div></div>			<div><div></div></div>	<div><div></div><div></div><div></div><div></div><div></div><div></div><div></div><div></div><div></div><div></div><div></div><div></div><div></div><div></div><div></div></div>									<div><div></div></div>	<div><div></div><div></div><div></div><div></div><div></div><div></div><div></div><div></div><div></div><div></div><div></div><div></div><div></div><div></div><div></div></div>						
15. <div><div></div><div></div><div></div><div></div><div></div></div>			<div><div></div></div>	<div><div></div><div></div><div></div><div></div><div></div><div></div><div></div><div></div><div></div><div></div><div></div><div></div><div></div><div></div><div></div></div>									<div><div></div></div>	<div><div></div><div></div><div></div><div></div><div></div><div></div><div></div><div></div><div></div><div></div><div></div><div></div><div></div><div></div><div></div></div>						
16. <div><div></div><div></div><div></div><div></div><div></div></div>			<div><div></div></div>	<div><div></div><div></div><div></div><div></div><div></div><div></div><div></div><div></div><div></div><div></div><div></div><div></div><div></div><div></div><div></div></div>									<div><div></div></div>	<div><div></div><div></div><div></div><div></div><div></div><div></div><div></div><div></div><div></div><div></div><div></div><div></div><div></div><div></div><div></div></div>						
17. <div><div></div><div></div><div></div><div></div><div></div></div>			<div><div></div></div>	<div><div></div><div></div><div></div><div></div><div></div><div></div><div></div><div></div><div></div><div></div><div></div><div></div><div></div><div></div><div></div></div>									<div><div></div></div>	<div><div></div><div></div><div></div><div></div><div></div><div></div><div></div><div></div><div></div><div></div><div></div><div></div><div></div><div></div><div></div></div>						
18. <div><div></div><div></div><div></div><div></div><div></div></div>			<div><div></div></div>	<div><div></div><div></div><div></div><div></div><div></div><div></div><div></div><div></div><div></div><div></div><div></div><div></div><div></div><div></div><div></div></div>									<div><div></div></div>	<div><div></div><div></div><div></div><div></div><div></div><div></div><div></div><div></div><div></div><div></div><div></div><div></div><div></div><div></div><div></div></div>						
19. <div><div></div><div></div><div></div><div></div><div></div></div>			<div><div></div></div>	<div><div></div><div></div><div></div><div></div><div></div><div></div><div></div><div></div><div></div><div></div><div></div><div></div><div></div><div></div><div></div></div>									<div><div></div></div>	<div><div></div><div></div><div></div><div></div><div></div><div></div><div></div><div></div><div></div><div></div><div></div><div></div><div></div><div></div><div></div></div>						
20. <div><div></div><div></div><div></div><div></div><div></div></div>			<div><div></div></div>	<div><div></div><div></div><div></div><div></div><div></div><div></div><div></div><div></div><div></div><div></div><div></div><div></div><div></div><div></div><div></div></div>									<div><div></div></div>	<div><div></div><div></div><div></div><div></div><div></div><div></div><div></div><div></div><div></div><div></div><div></div><div></div><div></div><div></div><div></div></div>						



9.2 Fruits and beverage crops: *If not applicable, go to Section 9.3*

Crop Name	Size of production unit														Sold			Production over the period 1 July 2023 - 30 June 2024									
	1=Mono; 2=Mixed; 3=Scattered	Specify unit for area	Total area harvested	Permanent plants/ trees										Yes (wholly)	Yes (partly)	No	Specify kg or unit	Quantity produced									
				Number					Of which bearing																		
1.														1	2	3											
2.														1	2	3											
3.														1	2	3											
4.														1	2	3											
5.														1	2	3											
6.														1	2	3											
7.														1	2	3											
8.														1	2	3											
9.														1	2	3											
9.														1	2	3											
11.														1	2	3											
12.														1	2	3											

9.3 Flowers: *If not applicable, go to Section 10*

Crop Name	Harvest over the period 1 July 2023 - 30 June 2024														Production over the period 1 July 2023 - 30 June 2024									
	Area harvested							Area harvested under protective cover (m <sup>2</sup> )							Quantity produced (unit)									
	Specify unit for area	Open field																						
1.																								
2.																								
3.																								
4.																								
5.																								

## 10. TYPE OF FARMING

**10.1. Which type of farming did you use over the period 1 July 2023 - 30 June 2024? If not applicable, go to Section 13**

	Yes	No
(a) Organic farming	1	2
(b) Inorganic farming	1	2

## 11. AGRICULTURAL PRACTICES

	Yes	No
(a) Irrigation system	1	2
(b) Fertilisers (chemical)	1	2
(c) Fertilisers (organic)	1	2
(d) Pesticides	1	2
(e) Herbicides	1	2
(f) Improved/selected seeds	1	2

An **irrigation** system consists of an intake structure, a conveyance system, a distribution system, a field application system, and a drainage system.

**Organic fertilisers** are fertilisers derived from animal or vegetable matter. (e.g. compost, manure).

**Improved/selected seeds** are normally seeds that farmers purchase as opposed to traditional seeds produced by themselves or other farmers.

## 12. TYPES OF MECHANISATION

	Yes, 100%	Yes, partly	No	NA
(a) Land preparation	1	2	3	4
(b) Planting	1	2	3	4
(c) Irrigation	1	2	3	4
(d) Fertilisers application	1	2	3	4
(e) Herbicides application	1	2	3	4
(f) Pesticides application	1	2	3	4
(g) Harvesting	1	2	3	4
(h) Livestock farming	1	2	3	4
(i) Milk production	1	2	3	4
(j) Poultry farming	1	2	3	4

**Mechanisation** in agriculture is the process of using agricultural machinery to increase farm worker productivity. **Mechanised irrigation** is a system of applying water to crops and fields where mechanical aids are primarily used, such as pumps, sprinklers, spray nozzles, pressure regulators, or other mechanical means.

## 13. LIVESTOCK

**13.1 Cattle: If not applicable, go to Section 13.3**

Cattle type	Number as at 30 June 2024						Sales over the period 1 July 2023 - 30 June 2024							
	Meat purposes			Dairy purposes			Total				Number sold live			
1. Bulls (breeding)														
2. Bulls (non-breeding)														
3. Cows (milking)														
4. Cows (non-milking)														
5. Heifers (young)														
6. Heifers (adult)														
7. Male Calves														
8. Female Calves														
<b>Total</b>														

### 13.2 Milk production

13.2.1 Number of cows milked during the past week

--	--	--

13.2.2 Average quantity of milk produced during the past week

--	--	--	--	--

 litres

### 13.3 Goat: *If not applicable, go to Section 13.4*

Goat type	Number as at 30 June 2024									Sales over the period 1 July 2023 - 30 June 2024							
	Meat purposes			Breeding purposes			Total			Number sold live				Number Slaughtered			
1. Buck																	
2. Doe																	
3. Male Kid (up to 1 yr)																	
4. She Kid (up to 1 yr)																	
<b>Total</b>																	

### 13.4 Sheep: *If not applicable, go to Section 13.5*

Sheep type	Number as at 30 June 2024									Sales over the period 1 July 2023 - 30 June 2024							
	Meat purposes			Breeding purposes			Total			Number sold live				Number Slaughtered			
1. Ram																	
2. She Sheep (Ewe)																	
3. Male Lamb (up to 1 yr)																	
4. She Lamb (up to 1 yr)																	
<b>Total</b>																	

### 13.5 Pigs: *If not applicable, go to Section 13.6*

Pig type	Number as at 30 June 2024									Sales over the period 1 July 2023 - 30 June 2024							
	Meat purposes			Breeding purposes			Total			Number sold live				Number Slaughtered			
1. Boar																	
2. Sow																	
3. Gilt																	
4. Male Piglet																	
5. She Piglet																	
<b>Total</b>																	

### 13.6 Poultry-Meat production: *If not applicable, go to Section 13.7*

Animal type	Number as at 30 June 2024									Sales over the period 1 July 2023 - 30 June 2024							
										Quantity (Number)							
1. Poultry-Broiler																	
2. Poultry-Local																	
3. Duck																	
4. Turkeys																	
5. Other (specify) .....																	

### 13.7 Egg production: *If not applicable, go to Section 13.8*

13.7.1 Number of layers as at 30 June 2024

--	--	--	--	--	--	--	--

13.7.2 Number of eggs sold over the period 1 July 2023 - 30 June 2024

--	--	--	--	--	--	--	--

### 13.8 Other livestock: If not applicable, go to Section 13.9

Animal type	Number as at 30 June 2024							Sales over the period 1 July 2023 - 30 June 2024				
								Quantity (Number)				
1. Deer ("chassée")												
2. Other (specify) .....												

**Deer ("chassée"):** A deer which is kept extensively in forests (used as hunting grounds)

### 13.9 Area of exercise yard for livestock: If not applicable, go to Section 13.10

--	--	--	--	--

 m<sup>2</sup>

### 13.10 Apiculture: If not applicable, go to Section 14

13.10.1 Number of productive beehives as at 30 June 2024

13.10.2 Number of non-productive beehives as at 30 June 2024

13.10.3 Production of honey over the period 1 July 2023 - 30 June 2024


 litres

## 14. MARKETING PRACTICES

### 14.1 How do you dispose your agricultural produce?

	1. VEGETABLES %	2. FRUITS %	3. FLOWERS %	4. CATTLE %	5. GOATS %
(a) Sold directly to consumers					
(b) Retailers					
(c) Wholesalers					
(d) National Wholesale Market					
(e) Exported					
(f) Use as feed					
(g) Use in agro-processing					
<b>Total</b>	<b>1 0 0</b>	<b>1 0 0</b>	<b>1 0 0</b>	<b>1 0 0</b>	<b>1 0 0</b>

	6. SHEEP %	7. PIGS %	8. POULTRY MEAT %	9. EGGS %	10. HONEY %
(a) Sold directly to consumers					
(b) Retailers					
(c) Wholesalers					
(d) National Wholesale Market					
(e) Exported					
(f) Use as feed					
(g) Use in agro-processing					
<b>Total</b>	<b>1 0 0</b>	<b>1 0 0</b>	<b>1 0 0</b>	<b>1 0 0</b>	<b>1 0 0</b>

**15. DO YOU HAVE ANY OUTSTANDING AGRICULTURAL LOAN as at 30 June 2024?**

Yes ☐ 1 No ☐ 2

**16. WHAT ARE YOUR MAIN CONSTRAINTS AS A FARMER?**

*(DO NOT READ OUT; Multiple answers are allowed)*

	Yes	No
(a) Availability of water	<input type="checkbox"/> 1	<input type="checkbox"/> 2
(b) Availability of labour	<input type="checkbox"/> 1	<input type="checkbox"/> 2
(c) High price of labour	<input type="checkbox"/> 1	<input type="checkbox"/> 2
(d) Availability of land	<input type="checkbox"/> 1	<input type="checkbox"/> 2
(e) Availability of seeds	<input type="checkbox"/> 1	<input type="checkbox"/> 2
(f) High price of seeds	<input type="checkbox"/> 1	<input type="checkbox"/> 2
(g) High price of fertilisers and pesticides	<input type="checkbox"/> 1	<input type="checkbox"/> 2
(h) Availability of fodder	<input type="checkbox"/> 1	<input type="checkbox"/> 2
(i) High price of feeds	<input type="checkbox"/> 1	<input type="checkbox"/> 2
(j) Natural disaster/Climate change	<input type="checkbox"/> 1	<input type="checkbox"/> 2
(k) Pests/diseases(instruction:feral dogs, monkeys,wild boars etc)	<input type="checkbox"/> 1	<input type="checkbox"/> 2
(l) Marketing	<input type="checkbox"/> 1	<input type="checkbox"/> 2
(m) Theft	<input type="checkbox"/> 1	<input type="checkbox"/> 2
(n) Old age of farmer	<input type="checkbox"/> 1	<input type="checkbox"/> 2
(o) Other constraint (specify .....)	<input type="checkbox"/> 1	<input type="checkbox"/> 2

**17. ARE YOU REGISTERED WITH:**

*(Multiple answers are allowed)*

	Yes	No
(a) Small Farmers Welfare Fund	<input type="checkbox"/> 1	<input type="checkbox"/> 2
(b) Agricultural Cooperative Society	<input type="checkbox"/> 1	<input type="checkbox"/> 2
(c) NAPRO (ex-)Tea Board	<input type="checkbox"/> 1	<input type="checkbox"/> 2
(d) Other membership (specify .....)	<input type="checkbox"/> 1	<input type="checkbox"/> 2

Telephone number of farmer:           Fixed line

5           Mobile

*Collected under the provisions of Statistics Act and in accordance with sections 22, 24, 25, and 50 of the Data Protection Act*

CONFIDENTIAL



CA 3

S.N.

Republic of Mauritius

STATISTICS MAURITIUS

Ministry of Finance, Economic Planning and Development

2024 CENSUS OF AGRICULTURE (CA2024)

**HOUSEHOLD QUESTIONNAIRE**

*Please circle the correct codes or write on the dotted lines or write in the boxes where applicable*

PSU Number  Enumeration Area  HH No

**1. CHARACTERISTICS OF THE HOUSEHOLD**

1.1 Surname of household head : .....

1.2 Other names of household head : .....

1.3 Address of household : .....

1.4 Telephone number of household:  Fixed line

Mobile

1.5 Number of persons in household

**2. WAS HOUSEHOLD PREVIOUSLY INTERVIEWED FOR THE 2024 CENSUS OF AGRICULTURE?**

YES  NO

**3.AGRICULTURAL OPERATIONS**

3.1 Does any member of the household cultivate any land on own account or mainly for commercial purpose ?

YES  NO  If YES, Area (perches)  Year first cultivated

3.2 Does the household have a kitchen garden ?

YES  NO  If YES, Area (perches)  Year first cultivated

3.3 Who are responsible for decision making on the agricultural activities of the household ?

	Name	Sex		Age (Last birthday-years)
		M	F	
Person 1		<input type="text"/>	<input type="text"/>	
Person 2		<input type="text"/>	<input type="text"/>	
Person 3		<input type="text"/>	<input type="text"/>	

**4. AGRICULTURAL ACTIVITIES OF HOUSEHOLD OVER THE PERIOD**

**1 JULY 2023 - 30 JUNE 2024**

**4.1 Crops**

Yes No

(a) Sugar cane	<input type="text"/>	<input type="text"/>
(b) Tea	<input type="text"/>	<input type="text"/>
(c) Vegetable	<input type="text"/>	<input type="text"/>
(d) Fruits	<input type="text"/>	<input type="text"/>

Yes No

(e) Flowers for sale	<input type="text"/>	<input type="text"/>
(f) Fodder	<input type="text"/>	<input type="text"/>
(g) Other, specify.....	<input type="text"/>	<input type="text"/>

Name of Interviewer:.....	Date of Interview:	<input type="text"/>
Name of Supervisor:.....	Date submitted:	<input type="text"/>
Fieldcheck by Supervisor:.....		<input type="text"/>

**FOR OFFICE USE**

Edited and coded by :.....

Input by :.....

Checked by :.....

Verified by :.....

#### 4.2 Livestock

	Yes	No
(a) Cattle	1	2
(b) Goat	1	2
(c) Sheep	1	2
(d) Pig	1	2
(e) Poultry-Layer	1	2

#### Number


#### Yes No

(f) Poultry-Broiler	1	2
(g) Poultry-Local	1	2
(h) Bee keeping	1	2
(i) Deer	1	2
(j) Other, specify	1	2
.....		

#### Number


#### 4.3 Other

#### Yes No

(a) Presence of nursery	1	2
(b) Nursery for sale	1	2
(c) Forestry (timber for sale-biomass)	1	2
(d) Forestry (timber for sale-other)	1	2
(e) Aquaculture for sale-(Berry Rouge Tilapia)	1	2
(f) Aquaculture for sale-Camaron (Freshwater Prawn)	1	2
(g) Subsistence fishing	1	2
(h) Agro-processing of agricultural products for sale	1	2

#### 5. FRUIT AND NUT TREES

If YES to 4.1(d) enter the number of fruit trees owned by household; If NO go to 6

	Number	of which bearing:		Number	of which bearing:
(a) Avocado			(f) Lychee		
(b) Banana			(g) Guava		
(c) Breadfruit			(h) Mango		
(d) Citrus			(i) Papaya		
(e) Coconut			(j) Other, specify.....		

#### 6. VEGETABLES GROWN OVER THE PERIOD 1 JULY 2023- 30 JUNE 2024

If YES to 4.1(c) enter area harvested in the reference period and unit of area. If NO go to 7

Crop	Specify unit for area	Area harvested
1. Beans		
2. Brinjal		
3. Cabbage		
4. Calabash		
5. Carrot		
6. Cassava		
7. Cauliflower		
8. Chillies		
9. Creepers		
10. Cucumber		
11. Eddoes		
12. Ginger		
13. Groundnut		

Crop	Specify unit for area	Area harvested
14. Herbs		
15. Maize		
16. Onion		
17. Potatoes		
18. Pumpkin		
19. Sweet potato		
20. Tomato		
Other, specify:		
21. ....		
22. ....		
23. ....		
24. ....		
25. ....		
26. ....		

#### 7. WHAT IS THE MAIN PURPOSE OF YOUR AGRICULTURAL ACTIVITY?

Mainly for sale ☐ 1

Mainly for own consumption ☐ 2