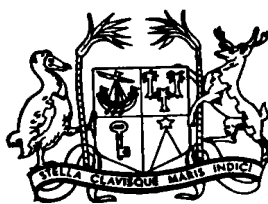


M. Ganoo



MAURITIUS

Ministry of Economic Planning and Development

CENTRAL STATISTICAL OFFICE

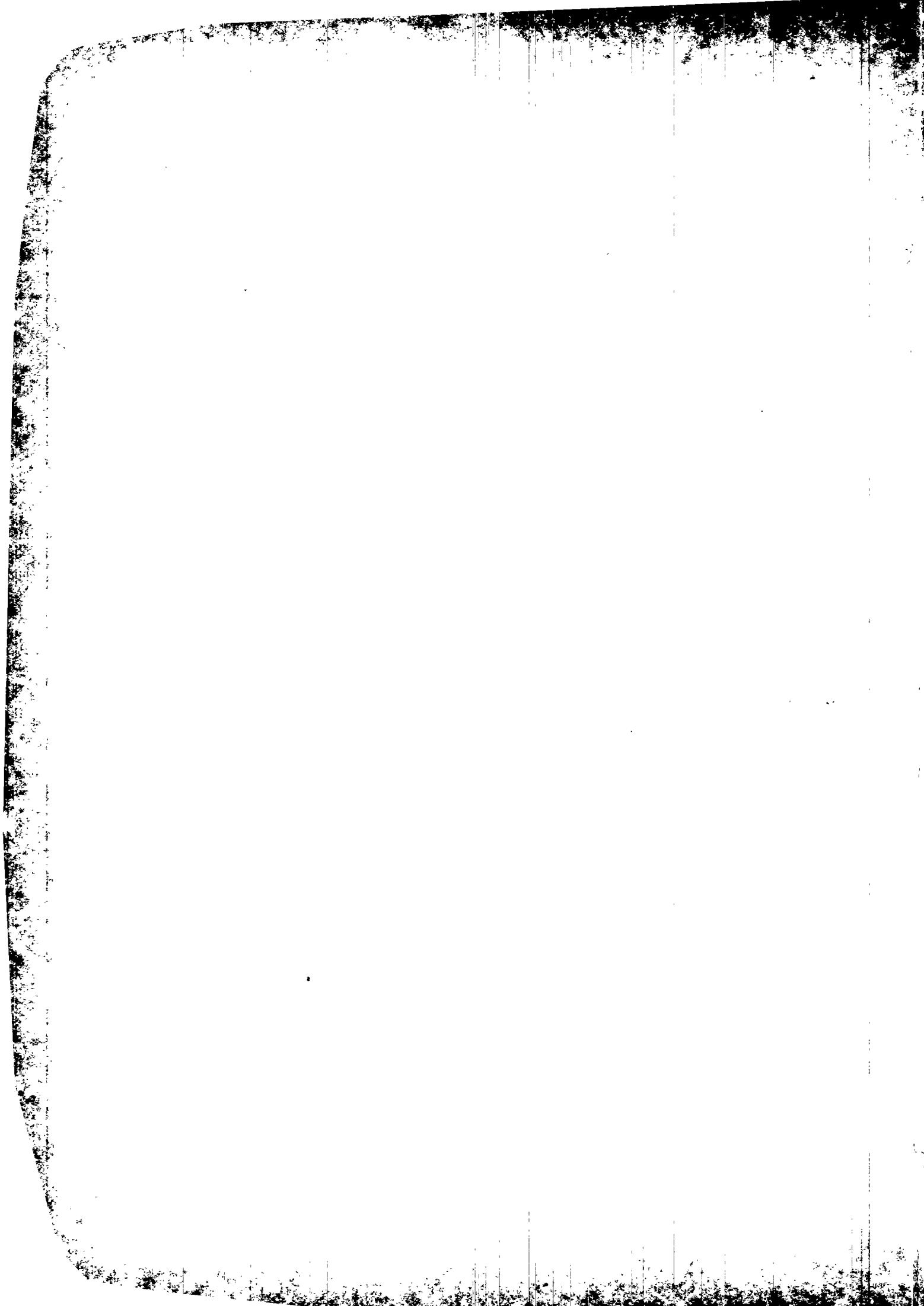
1983
Housing and Population Census
of
MAURITIUS

VOLUME III

Geographical and Migration Characteristics
(ISLAND OF MAURITIUS)

February 1985

Price : Rs. 75.00



Foreword

This report is the third in the series to be published on the results of the 1983 Housing and Population Census of Mauritius. The first report describes the census methodology whilst the second presents data on the demographic characteristics of the population in the Island of Mauritius. The present volume shows the geographical and migration characteristics of the population, again in the Island of Mauritius. Information on housing and living conditions, characteristics of households, fertility and mortality, and finally economic characteristics will be published in the course of this year. A single report containing all data on the Island of Rodrigues will be issued separately in March or April.

The figures presented here have been obtained directly from compilations of the raw data collected on the census forms. Like all census data they may be subject to some inaccuracies and inconsistencies. A detailed evaluation and analysis will be carried out and published later on. However, it is expected that the level of accuracy is likely to be high for most topics.

The special feature of this report is that it contains data on internal migration which have been collected for the first time in the census. Although it has not been possible to present migration data cross-tabulated at the regional level, it is hoped that the district data will be sufficient for many purposes; in any case, the detailed tabulations are available for consultation at the office.

The last table in the report is possibly the longest single census table that will be published. It shows population data for the smallest localities, or parts of localities within electoral constituencies. The table will be most useful to the Electoral Boundaries Commission in the delimitation of electoral districts or constituencies for both general and local elections.

It is with pleasure that I again put on record my thanks to members of the public, my own staff, the census fieldstaff, and the staff of all departments, who have contributed to the success of the census. Particular thanks are due to the United Nations Fund for Population Activities and to the United Nations Economic Commission for Africa for financial and technical assistance.

D. Zmanay
Director of Statistics

Central Statistical Office
Rose Hill
Mauritius

February 1985

C O N T E N T S

Page

Introduction i - iii

Table	1 - Population increase in intercensal periods - Island of Mauritius (1846-1983) and Island of Rodrigues (1944-1983)	1
	2 - Urban and rural population by geographical district and sex	2
	3 - Evolution of urban and rural population between the 1972 and 1983 censuses	3
	4 - Population in municipal and vilalge council areas by size-class of municipal and village council area and sex	4
	5 - Distribution of localities, households and population within municipal and village council areas by geographical district	5
	6 - Population by district of usual residence and district where enumerated	6
	7 - Population by place of enumeration and place of usual residence	7
	8 - Mauritian and non-Mauritian population by single year of age and sex	13
	9 - Population aged 5 years and over by district of usual residence and district of residence 5 years ago	16
	10 - Population 1 year and over by district of usual residence and district of residence 1 year ago	17
	11 - Five year and one year migration streams to and from each geographical district	18
	12 - Concentration of resident population by region	28
	13 - Population change between the censuses of 1972 and 1983 by constituency	31
	14 - Households, Mauritian and non-Mauritian population and population aged 18 years and over by electoral constituency (E.C.), geographical district, municipal or village council area, and locality	32

Maps and Illustrations

Net migration streams between districts, 1978 - 1983	facing page 26
Concentration of resident population by region-Lorenz curve	facing page 30
Location of geographical areas	after page 91

Questionnaire

Population Census questionnaire	inside back cover
---------------------------------	-------------------

Introduction1. Background

In 1983 Mauritius successfully conducted its fifteenth census of population according to provisions laid down in the Statistics Act 1951. The count was made on a "de facto" basis. All persons alive in the State of Mauritius at midnight on the night of 2 - 3 July 1983 were enumerated irrespective of whether they were residents or not. Generally speaking, persons were enumerated in the household, whether private or institutional, in which they were present on census night. A list of such households had been compiled at the Housing Census taken about three months earlier than the Population Census.

2. Total population enumerated

The total population enumerated at the census was 1,000,432 broken down as follows:

	<u>Male</u>	<u>Female</u>	<u>Both Sexes</u>
Island of Mauritius	481,368	485,495	966,863
Island of Rodrigues	16,552	16,530	33,082
Agalega	200	150	350
St. Brandon	137	-	137
Mauritius	<u>498,257</u>	<u>502,175</u>	<u>1,000,432</u>

3. Census fieldwork

At the previous census in 1972, the Island of Mauritius had been divided into 376, and the Island of Rodrigues into 12, enumeration areas of about 500 households each. These areas were further sub-divided in 1983 to meet certain specific needs in town and country planning and to provide clusters of roughly the same size for future sample surveys. Thus, for the 1983 census, there were about 2700 new enumeration areas in the Island of Mauritius and about 100 in Rodrigues. Each contained roughly 80 households in the rural and 100 households in the urban regions.

The fieldstaff consisted of 4,271 officers of whom 2 Chief Supervisors, 9 Senior Supervisors, 85 Supervisors, 607 Chief Enumerators and 3,568 Enumerators.

At the Housing Census, each Chief Enumerator was assigned a number of enumeration areas in which he had to enumerate all buildings, housing units, households and commercial and industrial establishments. After completion of the Housing Census, an addressed population census form was prepared for each household identified, each vacant housing unit and also for housing units under construction.

At the Population census each Enumerator was given a list of about 70 such households and housing units together with the corresponding census questionnaires. The Enumerator was also supplied with a number of unaddressed blank questionnaires for new households that might have been formed, or that might have moved into the housing units since the Housing Census.

(ii)

Census night was the night of 2 - 3 July 1983. The questionnaires were distributed to households by Enumerators from 25 to 30 June. Heads of households were requested to complete all items, except those on economic characteristics, in respect of every person who spent census night on the premises, or who joined the household or institution on 3 July without having been counted elsewhere. The questionnaires were collected from 3 to 8 July. Enumerators had to check the entries made by households, complete the columns on economic characteristics, and also complete all questionnaires and columns which the household had not been able to fill in.

4. Data processing

The editing and coding of the census data was done by a team of about 68 officers recruited at clerical officer level. Processing of census data is the responsibility of the Data Processing Division of the Ministry of Finance. Data were transferred to discs through key-edit stations and stored on magnetic tapes. Validation, creation of data files and tabulation are being done on an ICL ME 29 - 37 computer.

5. Census budget

Government expenditure on the census project is estimated at about 12 million Rupees, inclusive of costs attributable to existing infrastructure and services not paid for from the census budget. Thus the cost per person enumerated is 12 Rupees. Furthermore, the United Nations Fund for Population Activities has contributed about 700,000 Rupees for strengthening the capability of the Central Statistical Office and the Data Processing Division. The census project has also benefitted from the advisory services of the Economic Commission for Africa.

6. Publication programme

The programme for the publication of census results has been delayed by about two months because of problems concerning the reproduction of tables for the reports. The revised publication plan now stands as follows:

Volume	I	-	Methodological Report	October	1984
Volume	II	-	Demographic characteristics - Island of Mauritius	November	1984
Volume	III	-	Geographical and Migration characteristics - Island of Mauritius	February	1985
Volume	IV	-	Housing and Living conditions - Island of Mauritius	April	1985
Volume	V	-	Housing and Population Census Results - Island of Rodrigues	April	1985
Volume	VI	-	Households - Island of Mauritius	June	1985
Volume	VII	-	Fertility and Mortality - Island of Mauritius	October	1985
Volume	VIII	-	Economic characteristics - Island of Mauritius	November	1985

7. Analysis and evaluation

In the past, evaluation of census data has been done by United Nations experts. This time the exercise will be done by local staff who will, however, work under the guidance of a United Nations expert with international experience in Demographic Analysis. A series of analysis reports covering demographic characteristics, fertility, mortality, housing, manpower and migration will be published as and when they are completed in the course of 1986.

8. Concepts and definitions

The concepts and definitions used at the census are in accordance with the recommendations of the United Nations, as contained in the Statistical Paper entitled "Principles and Recommendations for Population and Housing Censuses". Sometimes slight modifications have been made to suit local conditions.

Although the census enumeration was essentially on an individual basis, the count of individuals was made within the framework of the household. A household was either a person living on his own and making his **own provision** for food and other essentials for living, or a group of two or more persons, whether related or not, who lived together and made common provision for food and other essentials for living. Varying degrees of common housekeeping were resolved by considering as one household if there was a regular arrangement to share at least one meal a day. The head of household was the person acknowledged as such by the other members.

In hotels, or institutions such as convents, hospitals and prisons, the guests or inmates were considered as members of what may be termed an institutional household. The person in charge of the hotel or institution at the time of the census was considered as the head.

The tables presented in this report are self-explanatory. However, a brief note is necessary in connection with the data for localities. Although legal boundaries exist for geographical districts, municipal and village council areas, and electoral constituencies, the exact boundaries of localities are often ill-defined. Sometimes, the expansion of neighbouring villages makes it difficult to delimit one village from another. Furthermore, it is possible that the boundaries of localities may have changed from one census to another. Hence it may be necessary for some purposes to look at a locality not in isolation, but to consider also the population of adjacent localities.

The last table shows the enumerated "de facto" Mauritian and non-Mauritian population in the smallest localities within electoral constituencies. It would have been interesting to have the usual residents of these small localities as well as the enumerated "de facto" population. However, the collection of detailed data on usual residence of persons not in their own home on census night would have given considerable difficulties on the field. Data on usual residence was therefore collected only at the municipal ward and village council area level. These are given in table seven.

§§§§§§§§§§§§§§§§

Table 1 - Population increase in intercensal periods - Island of Mauritius (1846 - 1983) and Island of Rodrigues (1944 - 1983)

Census date	Population enumerated at census			Density per sq. km.	Intercensal increase	Average annual rate of increase %
	Both sexes	Male	Female			
<u>Island of Mauritius</u>						
1st Aug. 1846	158,462	104,598	53,864	85	-	-
20th Nov. 1851	180,823	119,341	61,482	97	22,361	2.55
8th Apr. 1861	310,050	202,961	107,089	166	129,227	5.87
11th Apr. 1871	316,042	193,575	122,467	169	5,992	0.19
4th Apr. 1881	359,874	208,655	151,219	193	43,832	1.31
6th Mar. 1891	370,588	206,038	164,550	199	10,714	0.29
1st Apr. 1901	371,023	199,552	171,471	199	435	0.01
31st Mar. 1911	368,791	194,095	174,696	198	- 2,232	- 0.06
21st May 1921	376,485	194,108	182,377	202	7,694	0.21
26th Apr. 1931	393,238	200,609	192,629	211	16,753	0.44
11th Jun. 1944	419,185	210,326	208,859	225	25,947	0.49
30th Jun. 1952	501,415	252,032	249,383	269	82,230	2.26
30th Jun. 1962	681,619	342,306	339,313	365	180,204	3.12
30th Jun. 1972	826,199	413,580	412,619	443	144,580	1.94
2nd Jul. 1983	966,863	481,368	485,495	518	140,664	1.44
<u>Island of Rodrigues</u>						
11th Jun. 1944	11,885	5,740	6,145	114	-	-
30th Jun. 1952	13,333	5,947	7,386	128	1,448	1.45
30th Jun. 1962	18,335	9,062	9,273	176	5,002	3.24
30th Jun. 1972	24,769	12,270	12,499	238	6,434	3.05
2nd Jul. 1983	33,082	16,552	16,530	318	8,313	2.67

Table 2 - Urban and rural population^{1/} by geographical district and sex

Geographical district	Area in sq. km	Population density per sq. km	Total population			Urban			Rural		
			Both sexes	Male	Female	Both sexes	Male	Female	Both sexes	Male	Female
Port Louis	42.7	3,131	133,702	66,132	67,570	133,702	66,132	67,570	-	-	-
Pamplemousses	178.7	506	90,466	45,268	45,198	-	-	-	90,466	45,268	45,198
Riviere du Rempart	147.6	549	80,993	40,500	40,493	-	-	-	80,993	40,500	40,493
Flacq	297.9	361	107,670	53,855	53,815	-	-	-	107,670	53,855	53,815
Grand Port	260.3	358	93,180	46,584	46,596	-	-	-	93,180	46,584	46,596
Savanne	244.8	240	58,789	29,445	29,344	-	-	-	58,789	29,445	29,344
Plaines Wilhems	203.3	1,495	303,993	150,698	153,295	266,754	132,085	134,669	37,239	18,613	18,626
Moka	230.5	266	61,209	30,433	30,776	-	-	-	61,209	30,433	30,776
Black River	259.0	142	36,861	18,453	18,408	2,795 ^{2/}	1,356 ^{2/}	1,439 ^{2/}	34,066	17,097	16,969
All districts	1,864.8	518	966,863	481,368	485,495	403,251	199,573	203,678	563,612	281,795	281,817

^{1/} Urban population is the population in municipal council areas, the boundaries of which are established by proclamation.

^{2/} In municipal council area of Quatre Bornes whose main part is in Plaines Wilhems district.

Table 3 - Evolution of urban and rural population between the 1972 and 1983 censuses

Municipal Council Area ^{1/}	Population enumerated at 1972 census			Population enumerated at 1983 census			Intercensal increase	
	Both sexes	Male	Female	Both sexes	Male	Female	Number	Annual average %
Port Louis	133,996	66,431	67,565	133,702	66,132	67,570	- 294	- 0.02
Beau Bassin - Rose Hill	80,318	39,701	40,617	90,577	45,071	45,506	10,259	1.10
Quatre Bornes	50,770	24,920	25,850	63,682	31,204	32,478	12,912	2.08
Vacoas - Phoenix	47,638	23,740	23,898	53,090	26,386	26,704	5,452	0.99
Curepipe	51,956	25,673	26,283	62,200	30,780	31,420	10,244	1.65
Urban population	364,678	180,465	184,213	403,251	199,573	203,678	38,573	0.92
Rural population	461,521	233,115	228,406	563,612	281,795	281,817	102,091	1.83
Total population	826,199	413,580	412,619	966,863	481,368	485,495	140,664	1.44

^{1/} according to proclaimed boundaries, altered in 1963 (Proclamation Nos. 12 and 13) and subsequently enlarged in 1965 (Proclamation No. 23) and in 1967 (Proclamation No. 2). Urban population is the population in municipal council areas

Table 4 - Population in municipal and village council areas by size-class of municipal and village council area and sex

Administrative division and size-class	Number of municipal or village council areas	Both Sexes	Male	Female
<u>Whole island</u>		<u>966,863</u>	<u>481,368</u>	<u>485,495</u>
<u>Municipal Council areas</u>	<u>5</u>	<u>403,251</u>	<u>199,573</u>	<u>203,678</u>
100,000 or more inhabitants	1	133,702	66,132	67,570
75,000 - 99,999 "	1	90,577	45,071	45,506
50,000 - 74,999 "	3	178,972	88,370	90,602
Less than 50,000 "	-	-	-	-
<u>Village Council Areas</u>	<u>98</u>	<u>475,776</u>	<u>237,942</u>	<u>237,834</u>
20,000 or more inhabitants	-	-	-	-
10,000 - 19,999 "	9	138,450	69,034	69,416
5,000 - 9,999 "	24	170,002	84,893	85,109
3,000 - 4,999 "	23	89,514	44,997	44,517
2,000 - 2,999 "	16	39,991	20,075	19,916
1,000 - 1,999 "	23	36,325	18,163	18,162
500 - 999 "	2	1,038	548	490
Less than 500 "	1	456	232	224
<u>Population not in municipal or village council areas</u>		<u>87,836</u>	<u>43,853</u>	<u>43,983</u>

Table 5 - Distribution of localities, households and population within municipal and village council areas by geographical district.

Geographical district	Urban (Municipal Council areas)						Rural					
	Municipal Council areas			Village Council areas (VCA's)			Village Council areas (VCA's)			Outside VCA's		
	No. of MCA's	No. of Localities	Households	Population	No. of VCA's	No. of Localities	Households	Population	No. of Localities	Households	Population	
Port-Louis	1	19	29,187	133,702	-	-	-	-	-	-	-	
Pamplemousses	-	-	-	-	14	89	16,763	86,106	16	840	4,360	
Rivière du Rempart	-	-	-	-	13	61	15,647	77,835	13	632	3,158	
Flacq	-	-	-	-	20	111	19,239	101,052	19	1,343	6,618	
Grand Port	-	-	-	-	20	72	16,235	81,334	24	2,387	11,846	
Savanne	-	-	-	-	9	28	9,783	48,488	40	2,085	10,301	
Plaines Wilhems	4	59	58,698	266,754	2	11	822	4,220	29	6,448	33,019	
Moka	-	-	-	-	12	38	10,739	53,603	21	1,557	7,606	
Black River	-	-	568 ^{1/}	2,795 ^{1/}	8	33	4,793	23,138	36	2,171	10,928	
Whole island	5	78	88,453	403,251	98	443	94,021	475,776	198	17,463	87,836	

^{1/} Within municipality of Quatre Bornes which is mainly in the district of Plaines Wilhems.

Table 6 - Population by district of usual residence and district where enumerated

District of usual residence	Geographical district where enumerated									
	All districts	Port-Louis	Pamplemousses	Rivière du Rempart	Flacq	Grand Port	Savanne	Plaines Wilhems	Moka	Black River
Total	266,863	133,702	90,466	80,993	107,670	93,180	58,789	303,993	61,209	36,861
Port Louis	133,464	132,439	90	34	44	28	21	701	51	56
Pamplemousses	90,397	93	99,846	64	45	17	6	283	34	9
Rivière du Rempart	30,981	46	129	80,502	54	23	6	187	23	6
Flacq	107,551	44	104	42	106,958	25	24	295	52	7
Grand Port	93,289	30	16	19	53	92,707	57	375	21	11
Savanne	58,394	22	13	5	30	54	58,504	234	21	11
Plaines Wilhems	302,206	250	117	181	151	166	119	300,957	128	137
Moka	61,249	110	23	24	42	38	12	180	60,817	3
Black River	36,381	42	12	-	6	9	9	128	7	36,168
Outside Island of Mauritius	2,146	412	112	120	281	104	23	599	49	446
Not stated	305	214	4	2	6	9	8	54	1	7

Table 7 - Population by place of enumeration and by place of usual residence

Place of enumeration or usual residence	Enumerated Population	Usual residents
Whole island	966,863	966,863
<u>District of Port-Louis</u>	<u>133,702</u>	<u>133,464</u>
Port Louis Ward 1	24,052	24,084
Port Louis Ward 2	12,424	12,084
Port Louis Ward 3	25,388	25,394
Port Louis Ward 4	15,710	15,344
Port Louis Ward 5	20,704	20,626
Port Louis Ward 6	35,424	35,473
Port Louis Ward Not Stated	-	459
<u>District of Pamplemousses</u>	<u>90,466</u>	<u>90,397</u>
Arsenal V.C.A.	1,674	1,661
Calebasses V.C.A.	2,809	2,811
Congomah V.C.A.	1,654	1,658
Crève Coeur V.C.A.	2,512	2,527
D'Epinay V.C.A.	4,378	4,362
Fond du Sac V.C.A.	4,249	4,268
Grand' Baie V.C.A. ^{1/}	1,068	1,071
Long Mountain V.C.A.	8,830	8,861
Morcellement St. André V.C.A.	4,625	4,631
Pamplemousses V.C.A.	6,061	6,132
Piton V.C.A. ^{1/}	1,070	1,091
Plaine des Papayes V.C.A.	4,979	4,977
Pointe aux Piments V.C.A.	3,719	3,740
Terre Rouge V.C.A.	19,305	19,325
Triplet V.C.A.	17,175	17,221
Villebague V.C.A.	1,998	2,000
V.C.A. not stated	-	11
Rest of District	4,360	4,050

^{1/} Part in District of Rivière du Rempart.

Table 7 - (cont'd)

Place of enumeration or usual residence	Enumerated Population	Usual Residents
<u>District of Rivière du Rempart</u>	<u>80,993</u>	<u>80,981</u>
Belle Vue Maurel V.C.A.	7,602	7,573
Cottage V.C.A.	2,441	2,444
Esperance Trébuchet V.C.A.	1,878	1,882
Goodlands V.C.A.	15,251	15,267
Grand Baie V.C.A. ^{2/}	5,954	5,823
Grand Gaube V.C.A.	7,640	7,667
Petit Raffray V.C.A.	9,282	9,262
Piton V.C.A. ^{2/}	3,193	3,203
Poudre d'Or V.C.A.	3,272	3,292
Poudre d'Or Hamlet V.C.A.	1,746	1,754
Rivière du Rempart V.C.A.	9,172	9,238
Roches Noires V.C.A. ^{3/}	7,491	7,487
The Vale V.C.A.	2,913	2,908
V.C.A. not stated	-	6
Rest of District	3,158	3,175
<u>District of Flacq</u>	<u>107,670</u>	<u>107,551</u>
Bel Air-Rivière Sèche V.C.A.	13,367	13,412
Bon Accueil V.C.A.	19,366	19,398
Camp de Masque V.C.A.	2,503	2,508
Camp de Masque Pavé V.C.A.	3,644	3,647
Camp Ithier V.C.A.	3,278	3,286
Central Flacq V.C.A.	13,068	13,109
Clemencia V.C.A.	1,607	1,616
Ecroignard V.C.A.	4,128	4,132
Grand River South East V.C.A.	2,156	2,161
Laventure V.C.A.	3,644	3,653

^{2/} Part in District of Pamplemousses

^{3/} Part in District of Flacq

Table 7 - (cont'd)

Place of enumeration or usual residence	Enumerated Population	Usual Residents
<u>District of Flacq (cont'd)</u>		
Mare La Chaux V.C.A.	1,653	1,655
Médine (Camp de Masque) V.C.A. 4/	4,379	4,380
Montagne Blanche V.C.A. 4/	777	777
Olivia V.C.A.	3,343	3,351
Poste de Flacq V.C.A.;	5,232	5,094
Quatre Cocos V.C.A.	3,638	3,649
Quatre Soeurs V.C.A.	2,727	2,734
Roches Noires V.C.A. 5/	-	4
Saint Julien V.C.A.	1,642	1,647
Saint Julien d'Hotman V.C.A. 4/	2,501	2,480
Sebastopol V.C.A.	4,532	4,539
Trou d'Eau Douce V.C.A.	3,867	3,846
V.C.A. not stated	-	3
Rest of District	6,618	6,470
<u>District of Grand Port</u>	<u>93,180</u>	<u>93,289</u>
Bambous Virieux V.C.A.	1,014	1,024
Bananes V.C.A.	531	530
Bel Air (South) V.C.A.	2,869	2,858
Bois des Amourettes V.C.A.	1,634	1,638
Cluny V.C.A.	1,468	1,478
Grand Sable V.C.A.	1,774	1,780
L'Escalier V.C.A.	6,501	6,547
Mahebourg V.C.A.	15,118	15,145
Mare Chicose V.C.A.	456	452
Mare d'Albert V.C.A.	3,596	3,591
Mare Tabac V.C.A.	2,081	2,090
New Grove V.C.A.	7,075	7,088
Nouvelle France V.C.A.	5,209	5,231
Old Grand Port V.C.A.	2,329	2,329
Plaine Magnien V.C.A.	6,935	6,983
Rivière des Creoles V.C.A.	1,462	1,470

4/ Part in District of Moka

5/ Part in District of Rivière du Rempart

Table 7 - (cont'd)

Place of enumeration or usual residence	Enumerated Population	Usual Residents
<u>District of Grand Port (cont'd)</u>		
Rivière du Poste V.C.A. <u>6/</u>	1,073	1,077
Rose Belle V.C.A.	9,733	9,812
Saint Hubert V.C.A.	2,453	2,457
Trois Boutiques V.C.A.	4,937	4,945
Union Park V.C.A.	3,031	3,033
V.C.A. not stated	-	4
Rest of District	11,346	11,727
<u>District of Savanne</u>		
Baie du Cap V.C.A.	4,044	4,061
Bois Cheri V.C.A.	3,031	3,074
Camp Diable V.C.A.	2,882	2,883
Chemin Grenier-Chamouny V.C.A.	13,735	13,761
Grand Bois V.C.A.	5,961	5,959
Rivière des Anguilles V.C.A.	7,743	7,800
Rivière du Poste V.C.A. <u>7/</u>	806	805
Souillac V.C.A.	3,319	3,299
Surinam V.C.A.	6,917	6,950
V.C.A. not stated	-	1
Rest of District	10,301	10,301
<u>District of Plaines Wilhems</u>		
<u>Municipality of Beau-Bassin/Rose Hill</u>		
Ward 1	21,744	21,783
Ward 2	18,855	18,882
Ward 3	19,093	18,960
Ward 4	30,885	29,192
Ward not stated	-	220
<u>Municipality of Quatre Bornes</u>		
Ward 1	12,536	12,553
Ward 2	24,044	23,446
Ward <u>8/</u>	24,307	24,264
Ward not stated	-	183

6/ Part in District of Savanne
7/ Part in District of Grand Port
8/ Part in District of Black River

Table 7 - (cont'd)

Place of enumeration or usual residence	Enumerated Population	Usual Residents
<u>District of Plaines Wilhems (cont'd)</u>		
<u>Municipality of Vacoas-Phoenix</u>	53,090	53,152
Ward 1	17,519	17,497
Ward 2	18,722	18,651
Ward 3	16,849	16,830
Ward not stated	-	174
<u>Municipality of Curepipe</u>	62,200	62,524
Ward 1	28,512	28,570
Ward 2	17,233	17,269
Ward 3	16,455	16,417
Ward not stated	-	268
Cinq Arpents V.C.A.	1,045	1,047
Henrietta V.C.A.	3,175	3,185
V.C.A. or Ward not stated	-	9
Rest of District	33,019	32,806
<u>District of Moka</u>		
Camp Thorel V.C.A.	1,926	1,918
Dagotièrè V.C.A.	4,772	4,798
Espérance V.C.A.	1,518	1,523
L'Avenir V.C.A.	2,076	2,071
La Laura-Malenga V.C.A.	1,030	1,028
Medine (Camp de Masque) V.C.A. ^{9/}	963	959
Melrose V.C.A.	1,603	1,602
Moka V.C.A.	6,839	6,806
Montagne Blanche V.C.A. ^{9/}	5,595	5,595
Pailles V.C.A.	6,021	6,029
Quartier Militaire V.C.A.	6,748	6,778
Ripailles V.C.A.	2,447	2,448
St. Julien d'Hotman V.C.A. ^{9/}	-	3
St. Pierre V.C.A.	12,065	12,127
V.C.A. not stated	-	6
Rest of District	7,606	7,558

^{9/} Part in District of Flacq

Table 7 - (cont'd)

Place of enumeration or usual residence	Enumerated Population	Usual Residents
<u>District of Black River</u>	<u>36,861</u>	<u>36,381</u>
Bambous V.C.A.	6,859	6,870
Cascavelle V.C.A.	1,538	1,539
Case-Noyale - La Goulette V.C.A.	2,292	2,319
Chamarel V.C.A.	507	514
Flic en Flac V.C.A.	1,114	964
Grande Rivière Noire V.C.A.	1,736	1,686
Petite Rivière V.C.A.	7,360	7,388
Tamarin V.C.A.	1,732	1,705
Quatre Bornes Ward 3 <u>10/</u>	2,795	2,773
V.C.A. not stated	-	2
Rest of District	10,928	10,621
<u>Agalega</u>	-	<u>6</u>
<u>Rodrigues</u>	-	<u>126</u>
<u>Outside Mauritius</u>	-	<u>2,014</u>
<u>Not Stated</u>	-	<u>305</u>

10/ Major part in District of Plaines Wilhems

Table 8 - Mauritian and non-Mauritian population by single year of age and sex

Both sexes

Age (years)	Total	Mauritian	Non-Mauritian	Age (years)	Total	Mauritian	Non-Mauritian
All ages	966,363	961,824	5,039				
Under 1	19,795	19,744	51	45	7,900	7,854	46
1	21,506	21,411	95	46	7,814	7,771	43
2	22,573	22,493	80	47	7,633	7,579	54
3	24,183	24,098	85	48	7,727	7,674	53
4	23,299	23,201	98	49	7,761	7,712	49
0 - 4	111,356	110,947	409	45 - 49	38,835	38,590	245
5	22,066	21,963	103	50	6,941	6,904	37
6	21,393	21,304	89	51	5,893	5,852	41
7	19,932	19,828	104	52	6,058	6,020	38
8	20,681	20,577	104	53	6,695	6,656	39
9	20,084	19,988	96	54	6,611	6,575	36
5 - 9	104,156	103,660	496	50 - 54	32,198	32,007	191
10	17,633	17,547	86	55	6,902	6,873	29
11	18,387	18,289	98	56	6,928	6,892	36
12	18,866	18,799	67	57	7,447	7,423	24
13	20,439	20,366	73	58	6,886	6,861	25
14	19,482	19,419	63	59	6,635	6,600	35
10 - 14	94,807	94,420	387	55 - 59	34,798	34,649	149
15	21,727	21,666	61	60	5,569	5,531	38
16	21,400	21,347	53	61	5,346	5,315	31
17	23,721	23,671	50	62	5,182	5,152	30
18	23,218	23,169	49	63	4,385	4,352	33
19	23,659	23,618	41	64	4,101	4,072	29
15 - 19	113,725	113,471	254	60 - 64	24,583	24,422	161
20	22,632	22,580	52	65	3,836	3,809	27
21	22,243	22,192	51	66	4,080	4,059	21
22	20,393	20,323	70	67	3,391	3,375	16
23	20,473	20,423	50	68	3,586	3,556	30
24	19,559	19,498	61	69	3,766	3,740	26
20 - 24	105,300	105,016	284	65 - 69	18,659	18,539	120
25	18,816	18,731	85	70	2,962	2,946	16
26	19,240	19,163	77	71	2,625	2,599	26
27	18,433	18,344	89	72	2,584	2,561	23
28	16,513	16,426	87	73	2,136	2,112	24
29	16,383	16,300	83	74	1,970	1,951	19
25 - 29	89,385	88,964	421	70 - 74	12,277	12,169	108
30	17,346	17,243	103	75	1,923	1,909	14
31	15,550	15,472	78	76	1,615	1,599	16
32	16,895	16,821	74	77	1,334	1,319	15
33	15,041	14,940	101	78	1,269	1,251	18
34	13,076	12,986	90	79	1,156	1,135	21
30 - 34	77,908	77,462	446	75 - 79	7,297	7,213	84
35	12,632	12,535	97	80	1,042	1,029	13
36	11,112	11,028	84	81	745	729	16
37	9,553	9,486	67	82	762	746	16
38	11,085	11,015	70	83	655	643	12
39	10,400	10,328	72	84	465	452	13
35 - 39	54,782	54,392	390	80 - 84	3,863	3,599	264
40	8,167	8,093	74	85	427	417	10
41	8,235	8,160	75	86	331	330	1
42	7,633	7,607	26	87	283	275	8
43	8,697	8,646	51	88	223	219	4
44	7,682	7,622	60	89	159	155	4
40 - 44	40,464	40,128	336	85 - 89	1,423	1,396	27
				90 & over	580	571	9
				Not stated	561	509	52

Table 8 - Mauritian and non-Mauritian population by single year of age and sex (cont'd)
Male

Age (years)	Total	Mauritian	Non-Mauritian	Age (years)	Total	Mauritian	Non-Mauritian
All ages	431,368	478,814	2,554				
Under 1	9,975	9,946	29	45	3,901	3,870	31
1	10,822	10,778	44	46	3,865	3,833	27
2	11,441	11,396	45	47	3,748	3,727	21
3	12,137	12,150	37	48	3,833	3,805	28
4	11,746	11,696	50	49	3,938	3,916	22
0 - 4	56,171	55,966	205	45 - 49	19,285	19,156	129
5	11,185	11,127	58	50	3,484	3,461	23
6	10,825	10,783	42	51	2,987	2,966	21
7	9,915	9,868	47	52	2,965	2,941	24
8	10,497	10,446	51	53	3,289	3,263	26
9	10,066	10,022	44	54	3,434	3,417	17
5 - 9	52,488	52,246	242	50 - 54	16,159	16,048	111
10	8,991	8,946	45	55	3,441	3,424	17
11	9,166	9,116	50	56	3,391	3,372	19
12	9,628	9,596	32	57	3,710	3,697	13
13	10,449	10,415	34	58	3,381	3,369	12
14	9,897	9,867	30	59	3,358	3,342	16
10 - 14	48,131	47,940	191	55 - 59	17,281	17,204	77
15	10,938	10,902	36	60	2,754	2,733	21
16	10,883	10,857	26	61	2,613	2,594	19
17	11,914	11,888	26	62	2,479	2,464	15
18	11,720	11,690	30	63	2,029	2,012	17
19	11,976	11,951	25	64	2,003	1,985	18
15 - 19	57,431	57,288	143	60 - 64	11,878	11,788	90
20	11,533	11,507	26	65	1,794	1,773	21
21	11,160	11,141	19	66	1,988	1,977	11
22	10,354	10,320	34	67	1,592	1,582	10
23	10,279	10,263	16	68	1,586	1,574	12
24	9,751	9,726	25	69	1,698	1,686	12
20 - 24	53,077	52,957	120	65 - 69	8,658	8,592	66
25	9,266	9,233	33	70	1,301	1,296	5
26	9,745	9,710	35	71	1,181	1,167	14
27	9,304	9,256	48	72	1,107	1,091	16
28	8,236	8,203	33	73	853	843	10
29	8,157	8,120	37	74	791	782	9
25 - 29	44,708	44,522	186	70 - 74	5,233	5,179	54
30	8,653	8,609	44	75	743	735	8
31	7,887	7,851	36	76	620	612	8
32	8,615	8,571	44	77	503	495	8
33	7,539	7,537	52	78	466	458	8
34	6,486	6,443	43	79	386	377	9
30 - 34	39,230	39,011	219	75 - 79	2,718	2,677	41
35	6,215	6,173	42	80	366	359	7
36	5,592	5,543	49	81	230	224	6
37	4,621	4,590	31	82	239	229	10
38	5,372	5,345	27	83	194	189	5
39	5,155	5,122	33	84	129	123	6
35 - 39	26,955	26,773	182	80 - 84	1,158	1,124	34
40	3,970	3,936	34	85	102	99	3
41	4,079	4,040	39	86	83	83	-
42	3,808	3,774	34	87	64	63	1
43	4,267	4,240	27	88	50	50	-
44	3,828	3,791	37	89	33	31	2
40 - 44	19,952	19,781	171	85 - 89	332	326	6
				90 & over	115	110	5
				Not stated	408	126	282

Table 8 - Mauritian and non-Mauritian population by single year of age and sex (cont.)

Female

Age (years)	Total	Mauritian	Non-Mauritian	Age (years)	Total	Mauritian	Non-Mauritian
All ages	485,495	483,010	2,485				
Under 1	9,820	9,793	22	45	3,999	3,984	15
1	10,684	10,633	51	46	3,949	3,933	16
2	11,132	11,097	35	47	3,835	3,852	33
3	11,996	11,948	48	48	3,894	3,869	25
4	11,553	11,505	48	49	3,823	3,796	27
0 - 4	55,185	54,931	204	45 - 49	19,550	19,434	116
5	10,881	10,836	45	50	3,457	3,443	14
6	10,563	10,521	47	51	2,906	2,886	20
7	10,017	9,960	57	52	3,093	3,079	14
8	10,184	10,131	53	53	3,406	3,393	13
9	10,018	9,966	52	54	3,177	3,153	19
5 - 9	51,668	51,414	254	50 - 54	16,039	15,959	80
10	8,642	8,601	41	55	3,461	3,449	12
11	9,221	9,173	48	56	3,537	3,520	17
12	9,238	9,203	35	57	3,737	3,726	11
13	9,990	9,951	39	58	3,505	3,492	13
14	9,585	9,552	33	59	3,277	3,258	19
10 - 14	46,676	46,480	196	55 - 59	17,517	17,445	72
15	10,789	10,764	25	60	2,815	2,793	17
16	10,517	10,490	27	61	2,733	2,721	12
17	11,807	11,783	24	62	2,703	2,683	15
18	11,498	11,479	19	63	2,356	2,340	16
19	11,683	11,667	16	64	2,098	2,087	11
15 - 19	56,294	56,183	111	60 - 64	12,705	12,634	71
20	11,099	11,073	26	65	2,042	2,036	6
21	11,033	11,051	32	66	2,092	2,082	10
22	10,039	10,003	36	67	1,799	1,793	6
23	10,194	10,160	34	68	2,000	1,982	13
24	9,808	9,772	36	69	2,068	2,054	14
20 - 24	52,223	52,059	164	65 - 69	10,001	9,947	54
25	9,550	9,498	52	70	1,661	1,650	11
26	9,495	9,453	42	71	1,444	1,432	12
27	9,129	9,088	41	72	1,477	1,470	7
28	8,277	8,223	54	73	1,283	1,269	14
29	8,226	8,180	46	74	1,179	1,169	10
25 - 29	44,677	44,442	235	70 - 74	7,044	6,990	54
30	8,693	8,634	59	75	1,180	1,174	6
31	7,663	7,621	42	76	995	987	8
32	8,280	8,250	30	77	831	824	7
33	7,452	7,403	49	78	803	793	10
34	6,590	6,543	47	79	770	758	12
30 - 34	38,678	38,451	227	75 - 79	4,572	4,536	43
35	6,417	6,362	55	80	676	670	6
36	5,520	5,485	35	81	515	505	10
37	4,932	4,896	36	82	523	517	6
38	5,713	5,670	43	83	461	454	7
39	5,245	5,206	39	84	336	329	7
35 - 39	27,827	27,619	208	30 - 34	2,511	2,475	36
40	4,197	4,157	40	35	325	318	7
41	4,156	4,120	36	36	248	247	1
42	3,875	3,833	42	37	219	212	7
43	4,430	4,406	24	38	173	169	4
44	3,854	3,831	23	39	126	124	2
40 - 44	20,512	20,347	165	85 - 89	1,091	1,070	21
				90 & over	465	461	4
				Not stated	253	83	170

Table 9 - Population aged 5 years and over by district of usual residence and district of residence 5 years ago

Usual residence	Residence 5 years ago											Total
	Port Louis	Pamplemousses	Rivière du Rempart	Flacq	Grand Port	Savanne	Plaines Wilhems	Moka	Black River	Rodrigues	Foreign and not stated	
Port Louis	112,652	1,383	415	637	363	209	1,995	508	336	130	720	119,329
Pamplemousses	3,559	71,023	1,281	711	243	122	1,324	300	154	63	256	79,036
Rivière du Rempart	471	1,036	67,827	739	123	53	575	167	90	22	192	71,289
Flacq	436	575	562	90,391	389	143	789	467	115	20	192	94,079
Grand Port	226	120	124	364	79,150	749	1,139	172	60	8	201	82,313
Savanne	111	64	51	101	562	50,135	719	97	89	35	102	52,066
Plaines Wilhems	6,304	1,241	822	1,488	2,190	1,757	251,386	1,792	852	188	1,828	269,840
Moka	2,198	319	189	778	268	176	1,352	48,292	162	27	134	53,869
Black River	1,317	204	83	107	102	175	1,949	94	27,248	18	130	31,427
Rodrigues	4	-	-	-	-	1	2	-	1	105	3	116
Foreign and not stated	12	2	4	5	10	8	43	4	-	-	2,027	2,115
Total	127,270	75,961	71,359	95,321	83,400	53,522	261,273	51,893	29,107	616	5,785	855,507

Table 10 - Population 1 year and over by district of usual residence and district of residence 1 year ago.

Usual Residence	Residence 1 year ago											Total
	Port-Louis	Pamplemousses	Riv. du Rempart	Flacq	Grand Port	Savanne	Plaines Wilhems	Moka	Black River	Rodrigues	Foreign & not stated	
Port-Louis	128,607	411	125	207	96	55	777	247	123	46	211	130,905
Pamplemousses	1,224	85,818	335	188	67	25	422	82	46	19	112	88,338
Riv. du Rempart	115	264	78,326	192	24	29	161	37	39	3	82	79,272
Flacq	113	170	204	104,053	103	40	213	162	40	16	126	105,240
Grand Port	76	34	40	100	90,375	208	357	47	21	2	87	91,347
Savanne	35	25	7	28	173	57,123	214	40	22	11	59	57,737
Plaines Wilhems	1,669	406	249	472	676	431	290,892	556	350	62	685	296,448
Moka	309	74	62	197	92	41	385	58,651	47	18	71	59,947
Black River	353	61	52	35	30	51	574	48	34,163	10	69	35,446
Rodrigues	-	-	-	-	-	1	-	-	-	119	1	121
Foreign & not stated	2	-	3	3	1	2	19	3	-	-	2,234	2,267
Total	132,503	87,263	79,403	105,475	91,637	58,006	294,014	59,873	34,851	306	3,737	947,068

Table 11 - Five year and one year migration streams to and from each geographical district

PORT-LOUIS	Migration streams								
	1978 - 1983				1982 - 1983				
	To Port-Louis	From Port-Louis	Net balance	To Port-Louis	From Port-Louis	Net balance	To Port-Louis	From Port-Louis	
District of origin or destination									
Pamplemousses	1,383	3,559	- 2,176	411	1,224	- 813			
Rivière du Rempart	416	471	- 55	125	115	+ 10			
Flacq	637	436	+ 201	207	113	+ 94			
Grand Port	363	226	+ 137	96	76	+ 20			
Savanne	209	111	+ 98	55	35	+ 20			
Plaines Wilhems	1,995	6,304	- 4,309	777	1,669	- 892			
Moka	508	2,198	- 1,690	247	309	- 62			
Black River	336	1,317	- 981	123	353	- 230			
Rodrigues	130	4	+ 126	46	-	+ 46			
TOTAL	5,977	14,626	- 8,649	2,007	3,894	- 1,807			

Table 11 - Five year and one year migration streams to and from each geographical district (cont'd)

PAMPLEMOUSSES District of origin or destination	Migration streams					
	1978 - 1983			1982 - 1983		
	To Pamplemousses	From Pamplemousses	Net balance	To Pamplemousses	From Pamplemousses	Net balance
Port Louis	3,559	1,383	+ 2,176	1,224	411	+ 813
Rivière du Rempart	1,281	1,030	+ 251	335	264	+ 71
Flacq	711	575	+ 136	188	170	+ 18
Grand Port	243	120	+ 123	67	34	+ 33
Savanne	122	64	+ 58	25	25	0
Plaines Wilhems	1,324	1,241	+ 83	422	406	+ 16
Moka	300	319	- 19	82	74	+ 8
Black River	154	204	- 50	46	61	- 15
Rodrigues	63	-	+ 63	19	-	+ 19
TOTAL	7,757	4,936	+ 2,821	2,408	1,445	+ 963

Table 11 - Five year and one year migration streams to and from each geographical district (cont'd)

RIVIERE DU REMPART	Migration streams					
	1978 - 1983			1982 - 1983		
	To Riv. du Rempart	From Riv. du Rempart	Net balance	To Riv. du Rempart	From Riv. du Rempart	Net balance
Port Louis	471	416	+ 55	115	125	- 10
Pamplemousses	1,030	1,281	- 251	264	335	- 71
Flacq	739	562	+ 177	192	204	- 12
Grand Port	123	124	- 1	24	40	- 16
Savanne	53	51	+ 2	29	7	+ 22
Plaines Wilhems	575	822	- 247	161	249	- 88
Moka	167	189	- 22	37	62	- 25
Black River	90	83	+ 7	39	52	- 13
Rodrigues	22	--	+ 22	3	--	+ 3
TOTAL	3,270	3,528	- 258	864	1,074	- 210

Table 11 - Five year, and one year migration streams to and from each geographical district (cont'd)

FLACQ	Migration streams					
	1978 - 1983			1982 - 1983		
	To FLACQ	From FLACQ	Net balance	To FLACQ	From FLACQ	Net balance
District of origin						
or destination						
Port Louis	436	637	- 201	113	207	- 94
Pamplemousses	575	711	- 136	170	188	- 18
Rivière du Rempart	562	739	- 177	204	194	+ 12
Grand Port	389	364	+ 25	103	100	+ 3
Savanne	143	101	+ 42	40	28	+ 12
Plaines Wilhems	789	1,488	- 699	213	472	- 259
Moka	467	778	- 311	162	197	- 35
Black River	115	107	+ 8	40	35	+ 5
Rodrigues	20	-	+ 20	16	-	+ 16
TOTAL	3,496	4,925	- 1,429	1,061	1,419	- 358

Table 11 - Five year and one year migration streams to and from each geographical district (cont'd)

GRAND PORT	Migration streams					
	1978 - 1983			1982 - 1983		
	To Grand Port	From Grand Port	Net balance	To Grand Port	From Grand Port	Net balance
District of origin or destination						
Port Louis	226	363	- 137	76	96	- 20
Pamplemousses	120	243	- 123	34	67	- 33
Rivière du Rempart	124	123	+ 1	40	24	+ 16
Flacq	364	389	- 25	100	103	- 3
Savanne	749	562	+ 187	208	173	+ 35
Plaines Wilhems	1,139	2,190	- 1,051	357	676	- 319
Moka	172	268	- 96	47	92	- 45
Black River	60	102	- 42	21	30	- 9
Rodrigues	8	-	+ 8	2	-	+ 2
TOTAL	2,962	4,240	- 1,278	885	1,261	- 376

Table 11 - Five year and one year migration streams to and from each geographical district (cont'd)

SAVANNE	Migration streams					
	1978 - 1983			1982 - 1983		
	To Savanne	From Savanne	Net balance	To Savanne	From Savanne	Net balance
Port Louis	111	209	- 98	35	55	- 20
Pamplemousses	64	122	- 58	25	25	0
Rivière du Rempart	51	53	- 2	7	29	- 22
Flacq	101	143	- 42	28	40	- 12
Grand Port	562	749	- 187	173	208	- 35
Plaines Wilhems	719	1,757	- 1,038	214	431	- 217
Moka	97	170	- 73	40	41	- 1
Black River	89	175	- 86	22	51	- 29
Rodrigues	35	1	+ 34	11	1	+ 10
TOTAL	1,829	3,379	- 1,550	555	881	- 326

Table 14 - 1978 year and one year migration streams to and from each geographical district (cont'd)

PLAINES WILHEMS	Migration streams						
	1978 - 1983			1982 - 1983			
	To Plaines Wilhems	From Plaines Wilhems	Net balance	To Plaines Wilhems	From Plaines Wilhems	Net balance	
Port Louis	6,304	1,995	+ 4,309	1,669	777	+ 892	
Pamplemousses	1,241	1,324	- 83	406	422	- 16	
Rivière du Rempart	822	575	+ 247	249	161	+ 88	
Flacq	1,488	789	+ 699	472	213	+ 259	
Grand Port	2,190	1,139	+ 1,051	676	357	+ 319	
Savanne	1,757	719	+ 1,038	431	214	+ 217	
Moka	1,792	1,352	+ 440	556	385	+ 171	
Black River	852	1,949	- 1,097	350	574	- 224	
Rodrigues	188	2	+ 186	62	-	+ 62	
TOTAL	16,634	9,844	+ 6,790	4,871	3,103	+ 1,768	

Table 11 - Five year net migration streams to and from each geographical district (continued)

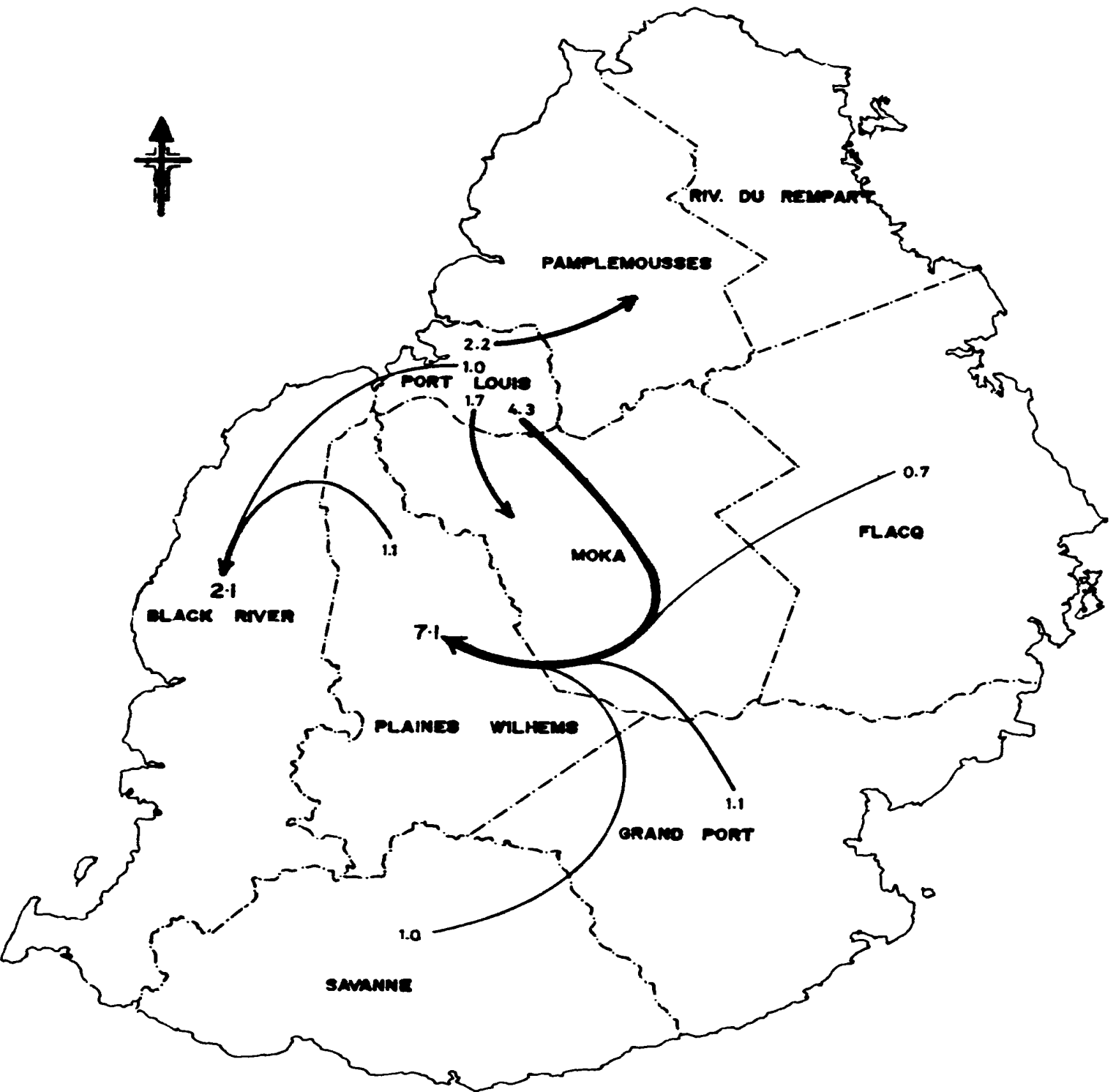
MOKA	Migration Streams					
	1978 - 1983			1982 - 1983		
	To Moka	From Moka	Net balance	To Moka	From Moka	Net balance
District of origin or destination						
Port Louis	2,198	508	+ 1,690	309	247	+ 62
Pamplémousses	319	300	+ 19	74	82	- 8
Rivière du Rempart	189	167	+ 22	62	37	+ 25
Flacq	778	467	+ 311	197	162	+ 35
Grand Port	268	172	+ 96	92	47	+ 45
Savanne	170	97	+ 73	41	40	+ 1
Plaines Wilhems	1,352	1,792	- 440	385	556	- 171
Black River	162	94	+ 68	47	48	- 1
Rodrigues	27	-	+ 27	18	-	+ 18
TOTAL	5,463	3,597	+ 1,866	1,225	1,219	+ 6

Table 11 - Five year annual migration streams to and from each geographical district (cont'd)

BLACK RIVER	Migration Streams						
	1978 - 1983			1982 - 1983			
	To Black River	From Black River	Net balance	To Black River	From Black River	Net balance	
Port Louis	1,317	336	+ 981	353	123	+ 230	
Pamplemousses	204	154	+ 50	61	46	+ 15	
Rivière du Rempart	83	90	- 7	52	39	+ 13	
Flacq	107	115	- 8	35	40	- 5	
Grand Port	102	60	+ 42	30	21	+ 9	
Savanne	175	89	+ 86	51	22	+ 29	
Plaines Wilhems	1,949	852	+ 1,097	574	350	+ 224	
Moka	94	162	- 68	48	47	+ 1	
Rodrigues	18	1	+ 17	10	-	+ 10	
TOTAL	4,049	1,859	+ 2,190	1,214	688	+ 526	

Net migration streams between districts, 1978-83

(in thousands excluding less than 500)



Source: TABLE II

Table 11 - Five year and one year migration streams to and from each geographical district (cont'd)

RODRIGUES	Migration streams							
	1978 - 1983				1982 - 1983			
	To Rodrigues	From Rodrigues	Net balance	To Rodrigues	From Rodrigues	Net balance	To Rodrigues	From Rodrigues
District of origin or destination								
Port Louis	4	130	- 126	-	46	- 46	-	46
Pamplemousses	-	63	- 63	-	19	- 19	-	19
Rivière du Rempart	-	22	- 22	-	3	- 3	-	3
Flacq	-	20	- 20	-	16	- 16	-	16
Grand Port	-	8	- 8	-	2	- 2	-	2
Savanne	1	35	- 34	1	11	- 10	-	11
Plaines Wilhems	2	188	- 186	-	62	- 62	-	62
Moka	-	27	- 27	-	18	- 18	-	18
Black River	1	18	- 17	-	10	- 10	-	10
TOTAL	8	511	- 503	1	187	- 186	-	187

Table 12 - Concentration of resident population by region

Region (Municipal and village council area)	Population density per Km ²	% of population	Cumulative % of population	% of area	Cumulative % of area
Mahebourg V.C.A.	9,628.1	1.57	1.6	0.08	0.1
Beau Bassin-Rose Hill M.C.A.	6,842.2	9.23	10.8	0.70	0.8
Piton V.C.A.	4,913.0	0.45	11.3	0.05	0.8
Quatre Bornes M.C.A.	4,426.5	6.56	17.8	0.77	1.6
Curepipe M.C.A.	4,310.2	6.48	24.3	0.78	2.4
Vacoas-Phoenix M.C.A.	3,949.8	5.51	29.8	0.72	3.1
Souillac V.C.A.	3,454.5	0.34	30.1	0.05	3.2
Port Louis M.C.A.	3,384.5	13.84	44.0	2.12	5.3
Chemin Grenier-Chamouny V.C.A.	3,186.9	1.43	45.4	0.23	5.5
Riviere des Anguilles V.C.A.	2,929.0	0.81	46.2	0.14	5.6
Rose Belle V.C.A.	2,771.8	1.02	47.2	0.19	5.8
Goodlands V.C.A.	2,531.8	1.58	48.8	0.32	6.2
St. Pierre V.C.A.	2,388.6	1.26	50.1	0.27	6.4
Camp Diable V.C.A.	2,313.8	0.30	50.4	0.07	6.5
Plaine des Papayes V.C.A.	2,311.7	0.52	50.9	0.12	6.6
Cottage V.C.A.	2,219.8	0.25	51.2	0.06	6.7
Henrietta V.C.A.	2,150.6	0.33	51.5	0.08	6.8
Surinam V.C.A.	2,107.3	0.72	52.2	0.18	6.9
L'Escalier V.C.A.	1,972.6	0.68	52.9	0.18	7.1
Central Flacq V.C.A.	1,925.0	1.36	54.2	0.37	7.5
Esperance Trébuchet V.C.A.	1,904.9	0.20	54.4	0.05	7.5
Triolet V.C.A.	1,824.1	1.79	56.2	0.51	8.0
The Vale V.C.A.	1,690.7	0.30	56.5	0.09	8.1
Bambous V.C.A.	1,665.9	0.71	57.2	0.22	8.4
Morcellement St. André V.C.A.	1,625.5	0.48	57.7	0.15	8.5
Plaine Magnien V.C.A.	1,570.3	0.72	58.4	0.24	8.7
Poudre d'Or Hamlet V.C.A.	1,517.3	0.18	58.6	0.06	8.8
Mananes V.C.A.	1,488.8	0.05	58.7	0.02	8.8
Mon Accueil V.C.A.	1,483.0	2.01	60.7	0.70	9.5
Long Mountain V.C.A.	1,458.8	0.92	61.6	0.33	9.9
Montagne Blanche V.C.A.	1,416.9	0.66	62.3	0.24	10.1
New Grove V.C.A.	1,357.9	0.73	63.0	0.28	10.4
St. Joka V.C.A.	1,330.6	0.71	63.7	0.27	10.6
Bel Air - Rivière Sèche V.C.A.	1,288.0	1.39	65.1	0.56	11.2
Union Park V.C.A.	1,286.3	0.31	65.4	0.13	11.3
Broignard V.C.A.	1,276.1	0.43	65.8	0.17	11.5
Belrose V.C.A.	1,252.5	0.17	66.0	0.07	11.6

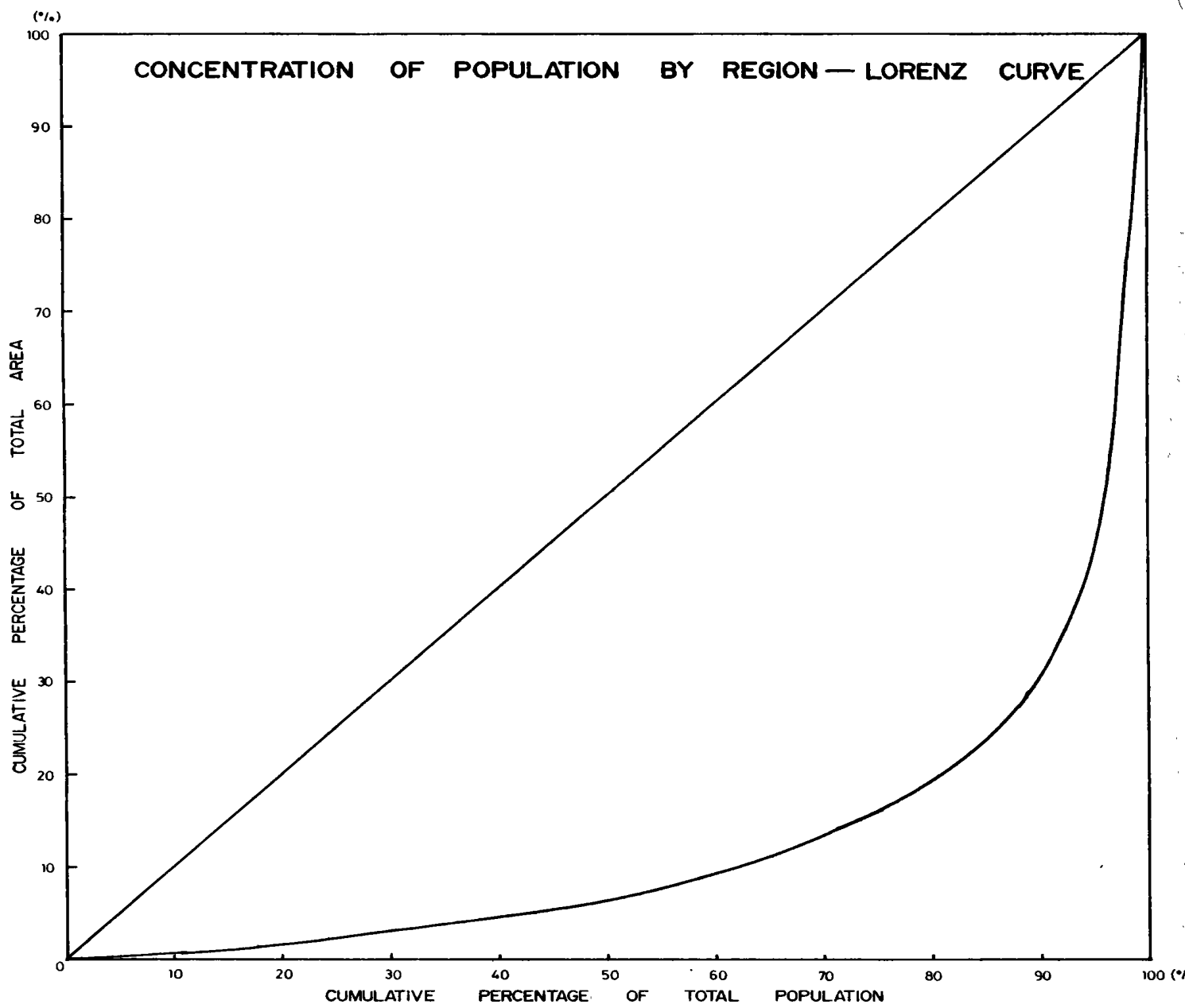
Table 12 - Concentration of resident population by region (cont'd)

Region (Municipal and village council area)	Population density per Km ²	% of population	Cumulative % of population	% of area	Cumulative % of area
Pailles V.C.A.	1,207.2	0.63	66.6	0.27	11.8
Calebasses V.C.A.	1,097.2	0.29	66.9	0.14	12.0
Grand River South East V.C.A.	1,086.5	0.22	67.1	0.11	12.1
Bois Chéri V.C.A.	1,066.2	0.32	67.5	0.16	12.3
Terre Rouge V.C.A.	1,060.0	2.00	69.5	0.98	13.2
Camp de Masque Pavé V.C.A.	1,041.7	0.38	69.8	0.19	13.4
Grand Bois V.C.A.	1,024.8	0.62	70.5	0.31	13.7
Rivière du Rempart V.C.A.	1,010.1	0.96	71.4	0.49	14.2
Pamplemousses V.C.A.	978.1	0.64	72.1	0.34	14.6
Petite Rivière V.C.A.	976.2	0.77	72.8	0.41	15.0
Grand Gaube V.C.A.	950.2	0.80	73.6	0.43	15.4
Petit Raffray V.C.A.	944.1	0.96	74.6	0.53	15.9
Belle Vue Maurel V.C.A.	852.1	0.79	75.4	0.48	16.4
Mare la Chaux V.C.A.	851.8	0.17	75.6	0.10	16.5
Camp de Masque V.C.A.	850.2	0.26	75.8	0.16	16.7
Fond du Sac V.C.A.	837.0	0.44	76.3	0.27	16.9
Dagotièrre V.C.A.	813.2	0.50	76.8	0.32	17.3
Poste de Flacq V.C.A.	810.0	0.53	77.3	0.34	17.6
Roches Noires V.C.A.	792.4	0.78	78.1	0.51	18.1
Grand Baie V.C.A.	765.7	0.72	78.8	0.48	18.6
Nouvelle France V.C.A.	761.5	0.54	79.3	0.37	19.0
Médine Camp de Masque V.C.A.	735.8	0.55	79.9	0.39	19.4
Camp Thorel V.C.A.	726.8	0.20	80.1	0.14	19.5
Old Grand Port V.C.A.	719.3	0.24	80.3	0.17	19.7
Espérance V.C.A.	684.2	0.16	80.5	0.12	19.8
Camp Ithier V.C.A.	653.8	0.34	80.8	0.27	20.1
Baie du Cap V.C.A.	642.5	0.42	81.2	0.34	20.4
Mare d'ALbert V.C.A.	641.4	0.37	81.6	0.30	20.7
D'Epina y V.C.A.	633.3	0.45	82.1	0.37	21.1
St. Julien d'Hotman V.C.A.	621.7	0.26	82.3	0.21	21.3
Trou d'Eau Douce V.C.A.	620.3	0.40	82.7	0.33	21.6
Poudre d'Or V.C.A.	610.2	0.34	83.1	0.29	21.9
Quatre Cocos V.C.A.	562.5	0.38	83.4	0.35	22.2
Bel Air (South) V.C.A.	546.6	0.30	83.7	0.28	22.5
Cascavelle V.C.A.	546.3	0.16	83.9	0.15	22.7
Quatre Soeurs V.C.A.	536.1	0.28	84.2	0.27	22.9
L'Avenir V.C.A.	517.6	0.21	84.4	0.21	23.2

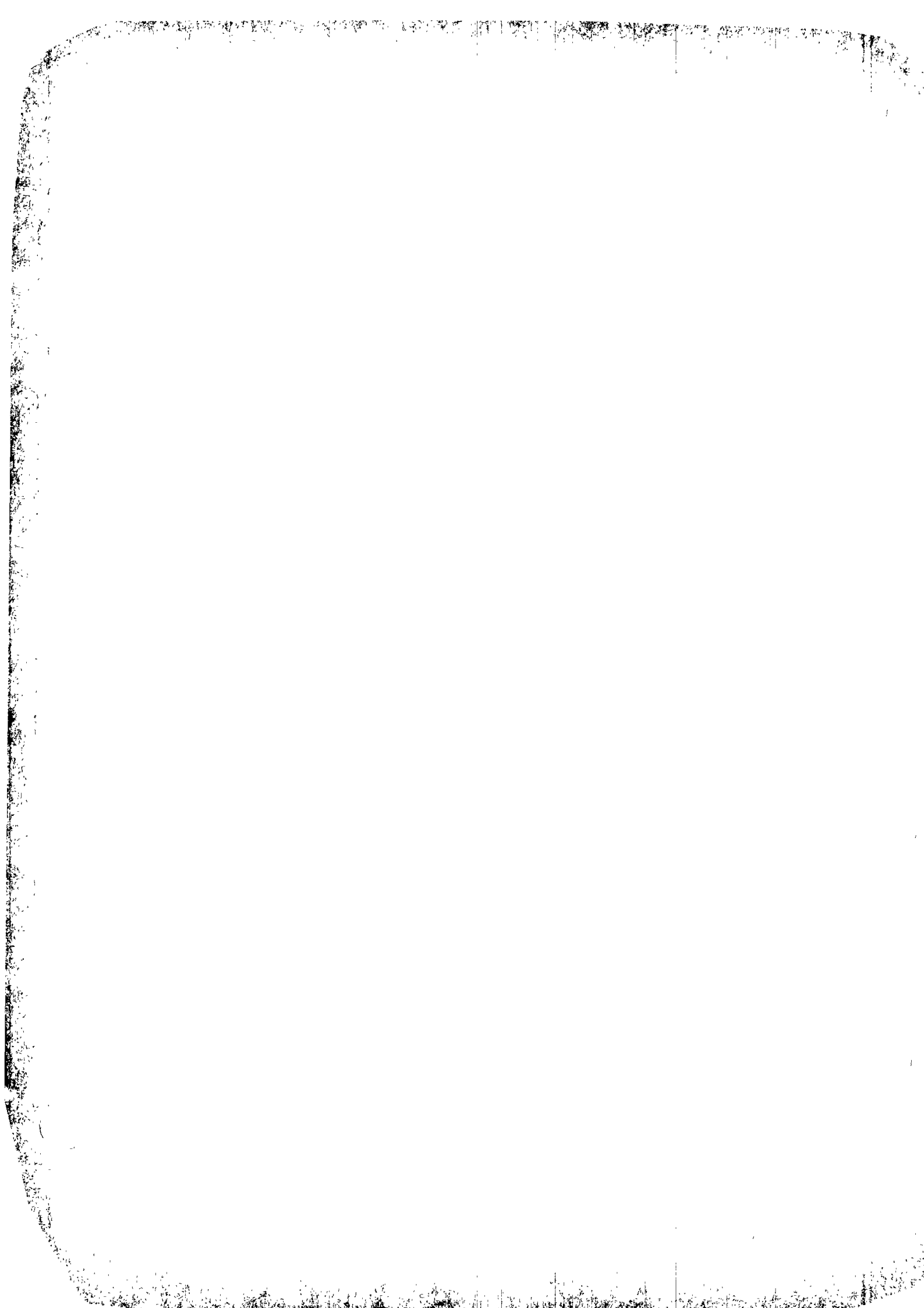
Table 12 - Concentration of resident population by region (cont'd)

Region (Municipal and village council area)	Population density per km ²	% of population	Cumulative % of population	% of area	Cumulative % of area
Laventure V.C.A.	502.3	0.38	84.8	0.39	23.5
St. Julien V.C.A.	499.4	0.17	84.9	0.18	23.7
Mare Tabac V.C.A.	498.4	0.22	85.2	0.23	24.0
Quartier Militaire V.C.A.	456.9	0.70	85.9	0.80	24.8
Pointe aux Piments V.C.A.	452.6	0.39	86.2	0.44	25.2
Trois Boutiques V.C.A.	447.0	0.51	86.8	0.59	25.8
Sébastopol V.C.A.	426.3	0.47	87.2	0.57	26.4
Rivière des Créoles V.C.A.	421.7	0.15	87.4	0.19	26.5
Crève Coeur V.C.A.	411.0	0.26	87.6	0.33	26.9
Olivia V.C.A.	408.3	0.35	88.0	0.44	27.3
Ripailles V.C.A.	394.7	0.25	88.2	0.33	27.6
Tamarin V.C.A.	378.9	0.18	88.4	0.24	27.9
Rivière du Poste V.C.A.	352.8	0.20	88.6	0.29	28.2
Grand Sable V.C.A.	309.3	0.18	88.8	0.31	28.5
St. Hubert V.C.A.	308.8	0.25	89.0	0.43	28.9
Villebague V.C.A.	277.6	0.21	89.3	0.39	29.3
Congomah V.C.A.	260.4	0.17	89.4	0.34	29.6
Plaines Wilhems ^{1/}	243.4	3.40	92.8	7.24	36.9
La Laura - Malenga V.C.A.	228.0	0.11	92.9	0.24	37.1
Clémencia V.C.A.	207.2	0.17	93.1	0.42	37.5
Bambous Virieux V.C.A.	204.6	0.11	93.2	0.27	37.8
Cinq Arpents V.C.A.	196.2	0.11	93.3	0.29	38.1
Grande Rivière Noire V.C.A.	187.7	0.17	93.5	0.48	38.6
Bois des Amourettes V.C.A.	177.9	0.17	93.7	0.49	39.1
Arsenal V.C.A.	177.3	0.17	93.8	0.50	39.6
Cluny V.C.A.	163.2	0.15	94.0	0.49	40.1
Case Noyale - La Gaulette V.C.A.	150.0	0.24	94.2	0.83	40.9
Mare Chicose V.C.A.	82.9	0.05	94.3	0.29	41.2
Grand Port ^{1/}	76.8	1.22	95.5	8.21	49.4
Black River ^{1/}	60.0	1.10	96.6	9.51	58.9
Pamplemousses ^{1/}	49.0	0.42	97.0	4.44	63.3
Savanne ^{1/}	47.0	1.07	98.1	11.77	75.1
Moka ^{1/}	43.5	0.78	98.9	9.34	84.5
Rivière du Rempart ^{1/}	42.3	0.33	99.2	4.03	88.5
Flic en Flac V.C.A.	41.8	0.10	99.3	1.24	89.7
Chamarel V.C.A.	39.7	0.05	99.3	0.70	90.4
Flacq ^{1/}	36.3	0.67	100.0	9.58	100.0

^{1/} Rest of district



SOURCE: Table 12



13 - Population change between the censuses of 1972 and 1983 by constituency

Constituency	1972 Census	1983 Census	Change from 1972 to 1983
1. Grand River North West - Port Louis West	39,979	40,016	37
2. Port Louis South - Port Louis Central	33,112	33,348	236
3. Port Louis Maritime - Port Louis East	26,687	22,147	-4,540
4. Port Louis North - Montagne Longue	48,203	57,165	8,962
5. Pamplémousses - Triolet	44,408	61,325	16,917
6. Grand'Baie - Poudre d'Or	44,459	55,687	11,228
7. Piton - Rivière du Rempart	35,809	41,451	5,642
8. Quartier Militaire - Moka	41,182	48,813	7,631
9. Flacq - Bon Accueil	50,156	61,597	11,441
10. Montagne Blanche - Grand River South East	41,375	49,725	8,350
11. Vieux Grand Port - Rose Belle	38,837	44,654	5,817
12. Mahebourg - Plaine Magnien	37,614	43,560	5,946
13. Rivière des Anguilles - Souillac	37,378	40,563	3,185
14. Savanne - Black River	47,404	59,581	12,177
15. La Caverne - Phoenix	47,340	58,435	11,095
16. Vacoas - Floréal	43,464	51,028	7,564
17. Curepipe - Midlands	36,621	43,889	7,268
18. Belle Rose - Quatre Bornes	39,361	43,218	3,857
19. Stanley - Rose Hill	42,840	48,509	5,669
20. Beau Bassin - Petite Rivière	49,970	62,152	12,182
All Constituencies - Island of Mauritius	826,199	966,863	140,664
21. Rodrigues	24,769	33,082	8,313
All Constituencies - Mauritius	850,968	999,945	148,977

geographical constituency (E.C.)

Electoral constituency, geographical district, municipal or village council area and locality	Households	Population all ages			Population aged 18 and over		
		Mauritian	Non-Mauritian	Total	Mauritian	Non-Mauritian	Total
All Electoral Constituencies	199,987	961,805	5,058	966,863	586,097	3,599	589,696
Electoral Constituency 1	8,967	40,088	186	40,274	25,826	137	25,963
Port Louis	7,654	33,873	165	34,038	22,275	121	22,396
Ward 1	5,379	23,990	62	24,052	15,245	46	15,291
Bell Village	258	1,087	1	1,088	687	-	687
Borstal	123	615	1	616	415	1	416
Camp Benoit (part in E.C. 20 and Sub Region 1)	41	219	-	219	129	-	129
Camp Chapelon	159	879	-	879	488	-	488
Cassis (including Fort William, Bain des Dames & Verger Coco)	1,857	7,971	9	7,980	4,904	8	4,912
Cité Valljee	746	3,469	10	3,479	2,280	5	2,285
Grand River North West	493	2,475	13	2,488	1,606	10	1,616
Les Salines	438	1,879	10	1,889	1,187	7	1,194
Plaine Lauzun	242	1,151	1	1,152	699	1	700
Pointe aux Sables (part in E.C.20)	48	242	4	246	152	4	156
Port Louis Ward 1	842	3,391	13	3,404	2,334	10	2,344
Pailles	132	612	-	612	364	-	364
Ward 2	2,275	9,883	103	9,986	7,030	75	7,105
Port Louis Ward 2	2,275	9,883	103	9,986	7,030	75	7,105

There were 19 Mauritians for whom the region was not properly reported or coded. The figures for the non-Mauritian column were obtained by subtraction. Figures for population aged 18 and over include 661 cases in which age was not reported. Localities not in municipal or village council areas (M.C.A., V.C.A.) are grouped into "sub-regions".

Table 14 (cont'd)

Electoral constituency, geographical district, municipal or village council area and locality	Households			Population all ages			Population aged 18 and over		
	Mauritian	Non-Mauritian	Total	Mauritian	Non-Mauritian	Total	Mauritian	Non-Mauritian	Total
<u>Electoral Constituency 1 cont'd</u>									
<u>Moka</u>	1,271	21	6,021	3,433	16	3,449	3,433	16	3,449
<u>Pailles V.C.A.</u>	1,271	21	6,021	3,433	16	3,449	3,433	16	3,449
<u>Pailles</u>	1,178	17	5,565	3,190	13	3,203	3,190	13	3,203
<u>Les Guibies</u>	93	4	456	243	3	246	243	3	246
<u>Black River</u>	42	==	215	118	==	118	118	==	118
<u>Sub Region 1</u>	42	-	215	118	-	118	118	-	118
<u>Camp Benoit (part in E.C. 20 Ward 1)</u>	42	-	215	118	-	118	118	-	118
<u>Electoral Constituency 2</u>									
<u>Port Louis</u>	7,164	271	33,348	33,077	271	33,348	21,530	174	21,704
<u>Ward 2</u>	396	18	1,650	1,632	18	1,650	1,131	12	1,143
<u>Port Louis Ward 2</u>	396	18	1,650	1,632	18	1,650	1,131	12	1,143
<u>Ward 3</u>	4,229	132	19,975	19,843	132	19,975	12,714	86	12,800
<u>Cité Guy Rozemont</u>	1	-	9	9	-	9	7	-	7
<u>Port Louis Ward 3</u>	1,443	102	6,667	5,565	102	6,667	4,538	72	4,610
<u>Tranquebar</u>	1,604	26	7,320	7,294	26	7,320	4,711	13	4,724
<u>Vallée des Prêtres (Part in E.C.4)</u>	3	-	13	13	-	13	7	-	7
<u>Vallée Pitot</u>	1,178	4	5,966	5,962	4	5,966	3,451	1	3,452
<u>Ward 4</u>	2,539	121	11,723	11,602	121	11,723	7,685	76	7,761
<u>Camp Yolloff (Part in E.C. 3 & E.C.4)</u>	4	-	13	13	-	13	11	-	11
<u>Plaine Verte (Part in E.C.3 & E.C.4)</u>	750	12	3,558	3,546	12	3,558	2,253	2	2,255
<u>Port Louis Ward 4</u>	1,785	109	8,152	8,043	109	8,152	5,421	74	5,495

Table 14 (cont'd)

Electoral constituency, geographical district, municipal or village council area and locality	Households		Population all ages			Population aged 18 and over		
	Total	Mauritian	Non-Mauritian	Total	Mauritian	Non-Mauritian	Total	
								Mauritian
Electoral Constituency 3	4,892	21,655	492	22,147	14,169	439	14,608	
<u>Port Louis</u>	<u>4,892</u>	<u>21,655</u>	<u>492</u>	<u>22,147</u>	<u>14,169</u>	<u>439</u>	<u>14,608</u>	
<u>Ward 2</u>	<u>176</u>	<u>763</u>	<u>25</u>	<u>788</u>	<u>558</u>	<u>23</u>	<u>581</u>	
Port Louis Ward 2	176	763	25	788	558	23	581	
<u>Ward 4</u>	<u>1,018</u>	<u>3,562</u>	<u>425</u>	<u>3,987</u>	<u>2,549</u>	<u>393</u>	<u>2,942</u>	
Camp Yoloff (part in E.C. 2, E.C. 4 and Port Louis Ward 5)	39	137	3	140	103	3	106	
Plaine Verte (part in E.C.2, E.C. 4 and Port Louis Ward 5)	14	72	2	74	52	-	52	
Port Louis Ward 4	965	3,353	420	3,773	2,394	390	2,784	
<u>Ward 5</u>	<u>3,698</u>	<u>17,330</u>	<u>42</u>	<u>17,372</u>	<u>11,062</u>	<u>23</u>	<u>11,085</u>	
Camp Yoloff (part in E.C. 2, E.C. 4 and Port Louis Ward 4)	204	881	3	884	594	2	596	
Cité G. Martial	582	2,894	5	2,899	1,815	3	1,818	
Plaine Verte (part in E.C. 2, E.C. 4 and Port Louis Ward 4)	2,912	13,555	34	13,589	8,653	18	8,671	

Table 14 (cont'd)

Electoral constituency, geographical district, municipal or village council area and locality	Households	Population all ages			Population aged 18 and over		
		Mauritian	Non-Mauritian	Total	Mauritian	Non-Mauritian	Total
Electoral Constituency 4	11,996	56,971	194	57,165	34,075	133	34,208
<u>Port Louis</u>	<u>2,477</u>	<u>43,983</u>	<u>186</u>	<u>44,169</u>	<u>26,413</u>	<u>129</u>	<u>26,542</u>
<u>Port Louis Ward 3</u>	<u>1,033</u>	<u>5,410</u>	<u>3</u>	<u>5,413</u>	<u>2,993</u>	<u>3</u>	<u>2,996</u>
Cité La Cure (part in Port Louis Ward 6)	193	992	2	994	524	2	526
Vallée des Prêtres (part in E.C. 2 and Port Louis Ward 6)	840	4,418	1	4,419	2,469	1	2,470
<u>Port Louis Ward 5</u>	<u>753</u>	<u>3,297</u>	<u>35</u>	<u>3,332</u>	<u>2,156</u>	<u>25</u>	<u>2,181</u>
Camp Yoloff (part in E.C. 2, E.C. 3 and Port Louis Ward 6)	679	2,985	35	3,020	1,961	25	1,986
Plaine Verte (part in E.C. 2, E.C. 3 and Port Louis Ward 6)	45	165	-	165	103	-	103
Trou Fanfaron	29	147	-	147	92	-	92
<u>Port Louis Ward 6</u>	<u>7,691</u>	<u>35,276</u>	<u>148</u>	<u>35,424</u>	<u>21,264</u>	<u>101</u>	<u>21,365</u>
Abercrombie	466	1,903	1	1,904	1,255	-	1,255
Camp Yoloff (part in E.C. 2, E.C. 3 and Port Louis Ward 5)	99	486	12	498	271	3	274
Camp Lalo	124	639	-	639	368	-	368
Cité La Briquetterie	502	2,375	17	2,392	1,434	9	1,443
Cité La Cure (part in Port Louis Ward 3)	714	3,170	4	3,174	1,852	4	1,856
Plaine Verte (part in E.C. 2, E.C. 3 and Port Louis Ward 5)	529	2,539	2	2,541	1,582	1	1,583
Roche Bois	2,753	12,484	66	12,550	7,352	58	7,410
Saint François	808	3,922	7	3,929	2,411	4	2,415
Sainte Croix	1,563	7,106	38	7,144	4,349	22	4,371
Vallée des Prêtres (part in E.C. 2 and Port Louis Ward 3)	133	652	1	653	390	-	390

Table 14 (cont'd)

Electoral constituency, geographical district, municipal or village council area and locality	Households	Population all ages		Population aged 18 and over			
		Mauritian	Non-Mauritian	Total	Mauritian	Non-Mauritian	Total
<u>Electoral Constituency 4 (cont'd)</u>							
<u>Pamplemousses</u>	<u>2,519</u>	<u>12,988</u>	<u>8</u>	<u>12,996</u>	<u>7,662</u>	<u>4</u>	<u>7,666</u>
<u>Congonah V.C.A.</u>	<u>325</u>	<u>1,654</u>	-	<u>1,654</u>	<u>880</u>	-	<u>880</u>
Belvédère	46	232	-	232	127	-	127
Congomah	279	1,422	-	1,422	753	-	753
<u>Crève Coeur V.C.A.</u>	<u>473</u>	<u>2,510</u>	<u>2</u>	<u>2,512</u>	<u>1,441</u>	-	<u>1,441</u>
Crève Coeur	284	1,455	-	1,455	839	-	839
Rivalland	93	559	-	559	309	-	309
Robinson	12	81	-	81	59	-	59
Thomassin	53	257	-	257	147	-	147
Tosca	31	158	2	160	87	-	87
<u>Long Mountain V.C.A.</u>	<u>1,721</u>	<u>8,824</u>	<u>6</u>	<u>8,830</u>	<u>5,341</u>	<u>4</u>	<u>5,345</u>
Baillache	130	710	-	710	440	-	440
Boulingrin	67	350	-	350	205	-	205
Camp La Boue	42	218	-	218	130	-	130
Colombo	33	166	-	166	93	-	93
Des Coins	44	215	1	216	149	1	150
Ilot (part in D'Epina V.C.A.)	11	56	-	56	34	-	34
Industrie	14	63	-	63	35	-	35
Les Mariannes	114	620	-	620	338	-	338
Long Mountain	494	2,539	2	2,541	1,583	1	1,584
Notre Dame	509	2,566	3	2,569	1,514	2	1,516
Ruisseau Rose	177	888	-	888	550	-	550
Walton	65	337	-	337	202	-	202
Victoria	21	96	-	96	68	-	68

Electoral constituency, geographical district, municipal or village council area and locality	Households	Population all ages		Population aged 18 and over			
		Mauritian	Non-Mauritian	Total	Mauritian	Non-Mauritian	Total
Electoral Constituency 5	12,409	61,183	142	61,325	35,626	99	35,725
<u>Pamplemousses</u>	<u>12,409</u>	<u>61,183</u>	<u>142</u>	<u>61,325</u>	<u>35,626</u>	<u>99</u>	<u>35,725</u>
<u>Arsenal V.C.A.</u>	<u>368</u>	<u>1,674</u>	-	<u>1,674</u>	<u>925</u>	-	<u>925</u>
Arsenal	295	1,364	-	1,364	752	-	752
Le Goulet	7	24	-	24	16	-	16
Petit Gamin	24	107	-	107	53	-	53
St. Joseph (part in Terre Rouge VCA)	18	72	-	72	44	-	44
Tombeau Bridge	20	87	-	87	51	-	51
Ville Valio	4	20	-	20	9	-	9
<u>Calebasses V.C.A.</u>	<u>580</u>	<u>2,807</u>	<u>2</u>	<u>2,809</u>	<u>1,623</u>	<u>1</u>	<u>1,624</u>
Calebasses	293	1,462	-	1,462	829	-	829
Camp Badamiers	40	203	-	203	95	-	95
Khoyratty	125	597	-	597	363	-	363
L'Espoir	23	103	-	103	72	-	72
Vith Mile	96	416	2	418	250	1	251
Souvenir	3	26	-	26	14	-	14

Table 14 (cont'd)

Electoral constituency, geographical district, municipal or village council area and locality	Households		Population all ages		Population aged 18 and over	
	Mauritian	Non-Mauritian	Total	Mauritian	Non-Mauritian	Total
<u>Electoral Constituency 5 (cont'd)</u>						
<u>Pamplemousses (cont'd)</u>						
<u>D'Epinau V.C.A.</u>	851	6	4,378	2,533	1	2,534
Camp Creoles	8	-	29	20	-	20
D'Epinau	302	1	1,485	870	-	870
Grande Rosalie	16	5	91	48	1	49
Ilot (part in Long Mountain VCA)	135	-	713	403	-	403
Mont Gout	279	-	1,501	848	-	848
The Mount	111	-	559	344	-	344
<u>Morcellement St. André V.C.A.</u>	863	3	4,625	2,804	2	2,806
Bon Air	76	-	457	284	-	284
Morcellement St. André	787	3	4,168	2,520	2	2,522
<u>Pamplemousses V.C.A.</u>	1,230	12	6,061	3,528	12	3,540
Bois Rouge	195	-	977	550	-	550
Camp des Embrevades	133	-	788	425	-	425
Canton Belle Eau	258	-	1,201	702	-	702
Canton Nancy	94	-	451	264	-	264
La Louisa	16	-	92	50	-	50
Madame Cayeux	74	4	329	199	4	203
Pamplemousses	450	8	2,149	1,307	8	1,315
Mont Gout	10	-	74	31	-	31

Table 14 (cont'd)

Electoral constituency, geographical district, municipal or village council area and locality	Population all ages			Population aged 18 and over			
	Households	Mauritian	Non-Mauritian	Total	Mauritian	Non-Mauritian	Total
<u>Electoral constituency 5 (cont'd)</u>							
<u>Pamplemousses (cont'd)</u>							
<u>Pointe aux Piments V.C.A.</u>							
Camp Sadah	691	3,718	1	3,719	2,033	-	2,033
Camp Scipion	68	349	-	349	196	-	196
Pointe aux Piments (Grande)	38	180	-	180	95	-	95
Pointe aux Piments (Petite)	281	1,455	-	1,455	751	-	751
Camp Bestel	235	1,322	1	1,323	747	-	747
	69	412	-	412	244	-	244
<u>Terre Rouge V.C.A.</u>	4,258	19,223	82	19,305	11,066	62	11,128
Bois Marchand	195	900	-	900	470	-	470
Bois Pignolet	141	725	-	725	368	-	368
Cité Bois Marchand	8	41	-	41	25	-	25
Le Hochet	713	3,152	17	3,169	1,844	12	1,856
Mademoiselle Laure	1	3	-	3	2	-	2
Riche Terre	380	1,853	1	1,854	1,014	1	1,015
St. Joseph (part in Arsenal VCA)	8	33	-	33	21	-	21
Sinatambou	15	67	-	67	34	-	34
Terre Rouge	1,364	6,332	4	6,336	3,608	3	3,611
Tombeau Bay	1,433	6,117	60	6,177	3,680	46	3,726

Table 14 (cont'd)

Electoral constituency, geographical district, municipal or village council area and locality	Households		Population all ages		Population aged 18 and over	
	Mauritian	Non-Mauritian	Total	Mauritian	Non-Mauritian	Total
<u>Electoral Constituency 5 (cont'd)</u>						
<u>Pamplemousses (cont'd)</u>						
<u>Triplet V.C.A.</u>	<u>3,295</u>	<u>33</u>	<u>17,175</u>	<u>10,103</u>	<u>19</u>	<u>10,122</u>
Camp Cocos	3	-	14	11	-	11
Camp Lilas	4	-	21	10	-	10
VIIth Mile	531	-	2,471	1,412	-	1,412
Triplet	2,462	13	13,242	7,813	4	7,817
Trou aux Biches (part in E.C. 6)	122	19	541	313	14	327
Derningham	173	1	886	544	1	545
<u>Sub Region 1</u>	<u>93</u>	<u>1</u>	<u>454</u>	<u>261</u>	<u>-</u>	<u>261</u>
Beau Plan	93	1	454	261	-	261
<u>Sub Region 2</u>	<u>132</u>	<u>1</u>	<u>608</u>	<u>375</u>	<u>1</u>	<u>376</u>
Solitude	132	1	608	375	1	376
<u>Sub Region 3</u>	<u>39</u>	<u>1</u>	<u>472</u>	<u>348</u>	<u>1</u>	<u>349</u>
Moulin à Poudre	39	1	472	348	1	349
<u>Sub Region 4</u>	<u>9</u>	<u>-</u>	<u>45</u>	<u>27</u>	<u>-</u>	<u>27</u>
Petite Rosalie	6	-	33	18	-	18
The Mount	3	-	12	9	-	9

Tabl. 14 (cont'd)

Electoral constituency, geographical district, municipal or village council area and locality	Households	Population all ages		Population aged 18 and over			
		Mauritian	Non-Mauritian	Total	Mauritian	Non-Mauritian	Total
Electoral Constituency 6	11,049	55,428	259	55,687	31,967	167	32,134
<u>Pamplemousses</u>	<u>2,061</u>	<u>10,773</u>	<u>56</u>	<u>10,829</u>	<u>6,338</u>	<u>39</u>	<u>6,377</u>
<u>Fond du Sac V.C.A.</u>	<u>773</u>	<u>4,248</u>	<u>1</u>	<u>4,249</u>	<u>2,465</u>	<u>1</u>	<u>2,466</u>
Aussailles	49	298	-	298	165	-	165
Belle Vue Pilot	15	71	-	71	41	-	41
Fond du Sac	709	3,879	1	3,880	2,259	1	2,260
<u>Grand' Baie V.C.A.</u>	<u>248</u>	<u>1,033</u>	<u>35</u>	<u>1,068</u>	<u>631</u>	<u>21</u>	<u>652</u>
Pointe aux Canonniers	177	705	31	736	446	19	465
Grand' Baie (part in Rivière du Rempart of same E.C.)	71	328	4	332	185	2	187
<u>Plaines des Papayes V.C.A.</u>	<u>217</u>	<u>4,971</u>	<u>8</u>	<u>4,979</u>	<u>2,957</u>	<u>5</u>	<u>2,962</u>
Bois Mangues	154	870	6	876	538	5	543
Gowsal	220	1,211	-	1,211	683	-	683
Plaine des Papayes	543	2,890	2	2,892	1,736	-	1,736
<u>Sub Region 1</u>	<u>122</u>	<u>517</u>	<u>12</u>	<u>529</u>	<u>282</u>	<u>12</u>	<u>294</u>
Mon Choisy	66	336	1	337	165	1	166
Trou aux Biches (part in Triolet V.C.A.)	56	181	11	192	117	11	128
<u>Sub Region 2</u>	<u>1</u>	<u>4</u>	<u>-</u>	<u>4</u>	<u>3</u>	<u>-</u>	<u>3</u>
Belle Vue Harel (part in E.C. 7)	1	4	-	4	3	-	3

Table 14 (cont'd)

Electoral constituency, geographical district, municipal or village council area and locality	Households	Population all ages			Population aged 13 and over		
		Mauritian	Non-Mauritian	Total	Mauritian	Non-Mauritian	Total
<u>Electoral Constituency 6 (cont'd)</u>							
<u>Rivière du Rempart</u>	<u>8,283</u>	<u>44,655</u>	<u>203</u>	<u>44,858</u>	<u>25,629</u>	<u>128</u>	<u>25,757</u>
<u>Goodlands V.C.A.</u>	<u>2,983</u>	<u>15,241</u>	<u>10</u>	<u>15,251</u>	<u>8,913</u>	<u>5</u>	<u>8,918</u>
Goodlands	2,060	10,505	9	10,514	6,266	5	6,271
Madame Azor	96	475	-	475	291	-	291
Mademoiselle Jeanne	364	1,902	1	1,903	1,060	-	1,060
Mapou Leclézio	210	1,109	-	1,109	604	-	604
Bois Rouge	131	675	-	675	381	-	381
Cité Ste Claire	64	314	-	314	161	-	161
Petit Village	58	261	-	261	150	-	150
<u>Grand' Baie V.C.A.</u>	<u>1,332</u>	<u>5,850</u>	<u>104</u>	<u>5,954</u>	<u>3,305</u>	<u>65</u>	<u>3,370</u>
Grand' Baie (part in Pamplemousses of same E.C.)	1,106	4,909	56	4,965	2,749	35	2,784
Pereybère	140	515	48	563	320	30	350
Sottise	86	426	-	426	236	-	236
<u>Grand Gaube V.C.A.</u>	<u>1,493</u>	<u>7,615</u>	<u>25</u>	<u>7,640</u>	<u>4,441</u>	<u>13</u>	<u>4,454</u>
Boutique Batie	63	289	2	291	166	1	167
Camp la Serpe	3	13	-	18	13	-	13
Germain	43	244	-	244	138	-	138
Grand Gaube	653	3,172	23	3,195	1,898	12	1,910
Melville	133	674	-	674	366	-	366
Petit Camp	59	265	-	265	172	-	172
Roche Terre	451	2,530	-	2,530	1,461	-	1,461
Sir Fat	49	230	-	230	121	-	121
Camp Madras	13	66	-	66	40	-	40
Look	26	127	-	127	66	-	66

Electoral constituency, geographical district, municipal or village council area and locality	Households	Population all ages		Population aged 18 and over		
		Mauritian	Non-Mauritian	Mauritian	Non-Mauritian	Total
<u>Electoral Constituency 6 (cont'd)</u>						
<u>Rivière du Rempart (cont'd)</u>						
<u>Petit Raffray V.C.A.</u>	<u>1,770</u>	<u>9,232</u>	<u>50</u>	<u>9,282</u>	<u>35</u>	<u>5,232</u>
Anse la Raie	3	18	-	18	-	10
Butte à l'Herbe	25	93	5	98	3	69
Cap Malheureux	247	1,070	31	1,101	23	676
Moulin à Vent	247	1,396	4	1,400	3	768
Pavillon	212	948	-	948	-	495
Petit Raffray	786	4,356	1	4,357	1	2,434
Réunion Maurel	143	816	-	816	-	479
St. François	107	535	9	544	5	304
<u>Poudre d'Or V.C.A.</u>	<u>698</u>	<u>3,264</u>	<u>8</u>	<u>3,272</u>	<u>7</u>	<u>1,803</u>
Poudre d'Or	698	3,264	8	3,272	7	1,803
<u>The Vale V.C.A.</u>	<u>594</u>	<u>2,910</u>	<u>3</u>	<u>2,913</u>	<u>2</u>	<u>1,652</u>
Vale	594	2,910	3	2,913	2	1,659
<u>Sub Region 1</u>	<u>7</u>	<u>33</u>	<u>-</u>	<u>33</u>	<u>-</u>	<u>21</u>
Mon Loisir Rouillard	4	15	-	15	-	12
Union Daruty	3	18	-	18	-	9
<u>Sub Region 2</u>	<u>111</u>	<u>510</u>	<u>3</u>	<u>513</u>	<u>1</u>	<u>297</u>
Belmont	6	27	-	27	-	18
St. Antoine	105	483	3	486	1	279

Table 14 (cont.)

Electoral constituency geographical district, municipal or village council area and locality	Households	Population all ages				Population ages 13 and over				
		Mauritian		Non-Mauritian		Mauritian		Non-Mauritian		Total
Electoral Constituency 7	7,905	41,423	28	41,451	24,113	16	24,129			
<u>Pamplemousses</u>	<u>1,005</u>	<u>5,311</u>	<u>5</u>	<u>5,316</u>	<u>3,031</u>	<u>4</u>	<u>3,035</u>			
<u>Piton V.C.A.</u>	<u>193</u>	<u>1,070</u>	-	<u>1,070</u>	<u>658</u>	-	<u>658</u>			
La Paix	130	735	-	735	474	-	474			
Piton (part in Rivière du Rempart)	63	335	-	335	184	-	184			
<u>Villebague V.C.A.</u>	<u>368</u>	<u>1,994</u>	<u>4</u>	<u>1,998</u>	<u>1,118</u>	<u>3</u>	<u>1,121</u>			
Nicolière	10	40	-	40	29	-	29			
Petite Julie	210	1,164	-	1,164	637	-	637			
Pont Praslin	84	446	4	450	240	3	243			
Villebague	64	344	-	344	212	-	212			
<u>Sub Region 1</u>	<u>142</u>	<u>656</u>	<u>1</u>	<u>657</u>	<u>406</u>	<u>1</u>	<u>407</u>			
Belle Vue Harel (part in E.C. 6)	142	656	1	657	406	1	407			
<u>Sub Region 2</u>	<u>91</u>	<u>498</u>	-	<u>498</u>	<u>242</u>	-	<u>242</u>			
Camp Ferret	8	29	-	29	17	-	17			
Mapou (part in Sub Region 3 of Rivière du Rempart)	77	427	-	427	202	-	202			
Mon Rocher	6	42	-	42	23	-	23			
<u>Sub Region 3</u>	<u>1</u>	<u>3</u>	-	<u>3</u>	<u>3</u>	-	<u>3</u>			
Belle Vue Mauricia	1	3	-	3	3	-	3			
<u>Sub Region 4</u>	<u>2</u>	<u>11</u>	-	<u>11</u>	<u>4</u>	-	<u>4</u>			
Mon Choix	2	11	-	11	4	-	4			
<u>Sub Region 5</u>	<u>208</u>	<u>1,079</u>	-	<u>1,079</u>	<u>600</u>	-	<u>600</u>			
Piton	208	1,079	-	1,079	600	-	600			

Table 14 (cont'd)

Electoral constituency, geographical district, municipal or village council area and locality	Households		Population all ages		Population aged 18 and over			
			Mauritian	Non-Mauritian	Total	Mauritian	Non-Mauritian	Total
<u>Electoral Constituency 7 (cont'd)</u>								
<u>Rivière du Rempart</u>	<u>6,900</u>		<u>36,112</u>	<u>23</u>	<u>36,135</u>	<u>21,082</u>	<u>12</u>	<u>21,094</u>
<u>Belle Vue Maurel V.C.A.</u>	<u>1,426</u>		<u>7,600</u>	<u>2</u>	<u>7,602</u>	<u>4,428</u>	<u>2</u>	<u>4,430</u>
Amaury	471		2,446	-	2,446	1,385	-	1,385
Amitié	170		989	-	989	623	-	623
Barlow (part in Sub Region 6 of Rivière du Rempart)	155		817	1	818	440	1	441
Belle Vue Maurel	421		2,189	-	2,189	1,309	-	1,309
Gokoola	142		802	-	802	456	-	456
Mon Loisir	67		357	1	358	215	1	216
<u>Cottage V.C.A.</u>	<u>460</u>		<u>2,441</u>	<u>-</u>	<u>2,441</u>	<u>1,428</u>	<u>-</u>	<u>1,428</u>
Cottage	460		2,441	-	2,441	1,428	-	1,428
<u>Espérance Irébuchet V.C.A.</u>	<u>331</u>		<u>1,875</u>	<u>3</u>	<u>1,878</u>	<u>1,051</u>	<u>1</u>	<u>1,052</u>
Espérance Irébuchet	331		1,875	3	1,878	1,051	1	1,052
<u>Piton V.C.A.</u>	<u>584</u>		<u>3,193</u>	<u>-</u>	<u>3,193</u>	<u>1,916</u>	<u>-</u>	<u>1,916</u>
Beau Séjour (part in Sub Region 4 of Rivière du Rempart)	21		102	-	102	63	-	63
Espérance Piton	563		3,091	-	3,091	1,853	-	1,853

Table 14 (cont'd)

Electoral constituency, geographical district, municipal or village council area and locality	Households	Population all ages		Population aged 18 and over		
		Mauritian	Non-Mauritian	Total	Mauritian	Non-Mauritian
<u>Electoral Constituency 7 (cont'd)</u>						
<u>Rivière du Rempart (cont'd)</u>						
<u>Poudre d'Or Hamlet V.C.A.</u>	<u>315</u>	<u>1,743</u>	<u>3</u>	<u>1,746</u>	<u>1</u>	<u>1,065</u>
Poudre d'Or Hamlet (part in Sub Region 4 of Riv. du Rempart)	315	1,743	3	1,746	1	1,065
<u>Rivière du Rempart V.C.A.</u>	<u>1,825</u>	<u>9,168</u>	<u>4</u>	<u>9,172</u>	<u>-</u>	<u>5,502</u>
Beaulieu	52	251	-	251	-	154
Coquinbourg	79	371	-	371	-	231
Hermitage	35	166	-	166	-	79
<u>La Clémence</u>	<u>159</u>	<u>835</u>	<u>-</u>	<u>835</u>	<u>-</u>	<u>511</u>
Le Ravin	574	2,941	4	2,945	-	1,760
Pointe des Lascars	99	451	-	451	-	255
Rivière du Rempart	827	4,153	-	4,153	-	2,512
<u>Roches Noires V.C.A.</u>	<u>1,445</u>	<u>7,484</u>	<u>7</u>	<u>7,491</u>	<u>5</u>	<u>4,250</u>
Plaine des roches	637	3,304	-	3,304	-	1,935
Roches Noires	808	4,180	7	4,187	5	2,315

Table 14 (cont'd)

Electoral constituency, geographical district, municipal or village council area and locality	Households			Population all ages			Population aged 18 and over			
		Mauritian	Non-Mauritian	Total	Mauritian	Non-Mauritian	Total	Mauritian	Non-Mauritian	Total
<u>Electoral Constituency 7 (cont'd)</u>										
<u>Rivière du Rempart (cont'd)</u>										
<u>Sub Region 1</u>	<u>3</u>	<u>16</u>	-	<u>16</u>	<u>8</u>	-	<u>8</u>	<u>8</u>	-	<u>8</u>
Haute Rive	3	16	-	16	8	-	8	8	-	8
<u>Sub Region 2</u>	<u>44</u>	<u>243</u>	-	<u>243</u>	<u>133</u>	-	<u>133</u>	<u>133</u>	-	<u>133</u>
Cottage	44	243	-	243	133	-	133	133	-	133
<u>Sub Region 3</u>	<u>224</u>	<u>1,149</u>	<u>1</u>	<u>1,150</u>	<u>633</u>	<u>1</u>	<u>634</u>	<u>634</u>	<u>1</u>	<u>634</u>
Bon Espoir	7	37	-	37	18	-	18	18	-	18
Camp Béton	62	311	-	311	170	-	170	170	-	170
Espérance Nicole	3	23	-	23	12	-	12	12	-	12
Labourdonnais	141	725	1	726	405	1	406	406	1	406
Mapou (part in Sub Region 7 of Pamplémousses)	11	53	-	53	28	-	28	28	-	28
<u>Sub Region 4</u>	<u>93</u>	<u>484</u>	-	<u>484</u>	<u>263</u>	-	<u>263</u>	<u>263</u>	-	<u>263</u>
Beau Séjour (part in Piton VCA)	83	434	-	434	235	-	235	235	-	235
Poudre d'Or Hamlet (part in VCA)	2	9	-	9	7	-	7	7	-	7
Schoenfeld	8	41	-	41	21	-	21	21	-	21
<u>Sub Region 5</u>	<u>109</u>	<u>486</u>	<u>3</u>	<u>489</u>	<u>281</u>	<u>2</u>	<u>283</u>	<u>283</u>	<u>2</u>	<u>283</u>
Mon Loisir	109	486	3	489	281	2	283	283	2	283
<u>Sub Region 6</u>	<u>41</u>	<u>230</u>	-	<u>230</u>	<u>130</u>	-	<u>130</u>	<u>130</u>	-	<u>130</u>
Antoinette	6	23	-	23	14	-	14	14	-	14
Mon Sange	7	33	-	33	22	-	22	22	-	22
Barlow (part in Belle Vue Maurel VCA)	28	174	-	174	94	-	94	94	-	94

Table 14 (cont'd)

Electoral constituency, geographical district, municipal or village council area and locality	Households	Population all ages		Population aged 18 and over			
		Mauritian	Non-Mauritian	Total	Mauritian	Non-Mauritian	Total
Electoral Constituency 8	9,773	48,713	100	48,813	29,096	56	29,152
<u>Placq</u>	<u>475</u>	<u>2,497</u>	<u>4</u>	<u>2,501</u>	<u>1,549</u>	<u>3</u>	<u>1,552</u>
<u>St. Julien d'Hotman V.C.A.</u>	<u>475</u>	<u>2,497</u>	<u>4</u>	<u>2,501</u>	<u>1,549</u>	<u>3</u>	<u>1,552</u>
<u>St. Julien d'Hotman</u>	<u>475</u>	<u>2,497</u>	<u>4</u>	<u>2,501</u>	<u>1,549</u>	<u>3</u>	<u>1,552</u>
<u>Plaines Milhens</u>	<u>1</u>	<u>4</u>	<u>=</u>	<u>4</u>	<u>4</u>	<u>=</u>	<u>4</u>
<u>Sub Region 1</u>	<u>1</u>	<u>4</u>	<u>=</u>	<u>4</u>	<u>4</u>	<u>=</u>	<u>4</u>
<u>Ebène</u>	<u>1</u>	<u>4</u>	<u>=</u>	<u>4</u>	<u>4</u>	<u>=</u>	<u>4</u>
<u>Moka</u>	<u>2,297</u>	<u>46,212</u>	<u>96</u>	<u>46,308</u>	<u>27,543</u>	<u>53</u>	<u>27,596</u>
<u>Camp Thorel V.C.A.</u>	<u>368</u>	<u>1,926</u>	<u>=</u>	<u>1,926</u>	<u>1,132</u>	<u>=</u>	<u>1,132</u>
<u>Camp Thorel</u>	<u>368</u>	<u>1,926</u>	<u>=</u>	<u>1,926</u>	<u>1,132</u>	<u>=</u>	<u>1,132</u>
<u>Dagotière V.C.A.</u>	<u>895</u>	<u>4,766</u>	<u>6</u>	<u>4,772</u>	<u>2,743</u>	<u>3</u>	<u>2,746</u>
<u>Assurance</u>	<u>86</u>	<u>492</u>	<u>=</u>	<u>492</u>	<u>286</u>	<u>=</u>	<u>286</u>
<u>Dagotière</u>	<u>595</u>	<u>3,119</u>	<u>3</u>	<u>3,122</u>	<u>1,833</u>	<u>3</u>	<u>1,836</u>
<u>Valetta</u>	<u>172</u>	<u>942</u>	<u>3</u>	<u>945</u>	<u>516</u>	<u>=</u>	<u>516</u>
<u>Valetta Camp</u>	<u>42</u>	<u>213</u>	<u>=</u>	<u>213</u>	<u>108</u>	<u>=</u>	<u>108</u>
<u>Espérance V.C.A.</u>	<u>301</u>	<u>1,517</u>	<u>1</u>	<u>1,518</u>	<u>819</u>	<u>1</u>	<u>820</u>
<u>Espérance</u>	<u>301</u>	<u>1,517</u>	<u>1</u>	<u>1,518</u>	<u>819</u>	<u>1</u>	<u>820</u>
<u>L'Avenir V.C.A.</u>	<u>399</u>	<u>2,067</u>	<u>2</u>	<u>2,076</u>	<u>1,244</u>	<u>2</u>	<u>1,246</u>
<u>Beau Bois</u>	<u>87</u>	<u>442</u>	<u>2</u>	<u>444</u>	<u>279</u>	<u>=</u>	<u>279</u>
<u>L'Avenir</u>	<u>312</u>	<u>1,625</u>	<u>7</u>	<u>1,632</u>	<u>965</u>	<u>2</u>	<u>967</u>

Table 14 (cont'd)

Electoral constituency, geographical district, municipal or village council area and locality	Households	Population all ages		Population aged 18 and over		
		Mauritian	Non-Mauritian	Total	Mauritian	Non-Mauritian
<u>Electoral Constituency 8 (cont'd)</u>						
<u>Moka (cont'd)</u>						
<u>La Laura - Malenga V.C.A.</u>	193	1,030	-	1,030	554	554
La Laura	126	688	-	688	370	370
Malenga	67	342	-	342	184	184
<u>Moka V.C.A.</u>	1,461	6,799	40	6,839	4,282	4,309
Bocage	3	11	-	11	5	5
Bois Chéri (part in St. Pierre V.C.A.)	85	411	2	413	241	242
Camp Samy	146	673	2	675	399	399
Chantenay	9	36	-	36	22	22
Euréka	5	21	-	21	19	19
Gentilly	135	697	3	700	418	421
Martindale	198	850	2	852	587	589
Moka	509	2,370	25	2,395	1,516	1,531
Mount Ory	223	1,063	5	1,068	655	660
Telfair	148	667	1	668	420	421
<u>Quartier Militaire V.C.A.</u>	1,278	6,737	11	6,748	3,802	3,807
Bonne Veine	99	511	-	511	312	312
Cité Vuillemin	78	400	-	400	198	198
Provence	408	2,301	6	2,307	1,268	1,270
Quartier Militaire	455	2,371	4	2,375	1,436	1,438
Vuillemin	238	1,154	1	1,155	588	589

Table 14. (cont'd)

Electoral constituency, geographical district, municipal or village council area and locality	Households	Population all ages		Population aged 18 and over			
		Mauritian	Non-Mauritian	Total	Mauritian	Non-Mauritian	Total
<u>Electoral Constituency 8 (cont'd)</u>							
<u>Moka (cont'd)</u>							
<u>Ripailles V.C.A.</u>	<u>441</u>	<u>2,447</u>	-	<u>2,447</u>	<u>1,401</u>	-	<u>1,401</u>
Nouvelle Découverte	297	1,621	-	1,621	927	-	927
Ripailles	144	826	-	826	474	-	474
<u>St. Pierre V.C.A.</u>	<u>2,569</u>	<u>12,046</u>	<u>19</u>	<u>12,065</u>	<u>7,586</u>	<u>10</u>	<u>7,596</u>
Bois Chéri (part in Moka V.C.A.)	42	209	-	209	139	-	139
Circonstance	443	2,129	3	2,132	1,403	2	1,405
Helvetia	130	587	-	587	392	-	392
L'Agrement	513	2,477	2	2,479	1,521	1	1,522
Mont Fleuri	101	437	4	441	288	3	291
Petit Verger	<u>458</u>	<u>2,108</u>	<u>4</u>	<u>2,112</u>	<u>1,287</u>	<u>3</u>	<u>1,290</u>
Rivière Baptiste	26	122	-	122	72	-	72
Roselyn Cottage	109	469	2	471	293	-	293
St. Pierre	747	3,508	4	3,512	2,191	1	2,192

Table 14. (cont'd)

Electoral constituency, geographical district, municipal or village council area and locality	Households	Population all ages		Population aged 18 and over		
		Mauritian	Non-Mauritian	Total	Mauritian	Non-Mauritian
<u>Electoral Constituency 8 (cont'd)</u>						
<u>Moka (cont'd)</u>						
<u>Sub Region 1</u>	2	8	-	8	5	2
Melrose	2	8	-	8	5	5
<u>Sub Region 2</u>	2	15	-	15	2	2
Sorèze	4	14	-	14	8	8
Rivière Baptiste	1	1	-	1	1	1
<u>Sub Region 3</u>	64	326	1	327	217	218
Begatelle	2	12	-	12	5	5
Réduit	62	314	1	315	212	213
<u>Sub Region 4</u>	8	34	-	34	17	17
Beau Climat	1	4	-	4	2	2
Minissy	7	30	-	30	15	15
<u>Sub Region 5</u>	385	1,797	3	1,800	1,084	1,085
Camp Auguste	34	176	-	176	100	100
Côte D'Or	150	653	-	653	373	373
Helvetia Camp	35	192	-	192	112	112
Verdun (part in Sub Region 6)	166	776	3	779	499	500

Table 14 (cont'd)

Electoral constituency, geographical district, municipal or village council area and locality	Households	Population all ages			Population aged 18 and over		
		Mauritian	Non-Mauritian	Total	Mauritian	Non-Mauritian	Total
<u>Electoral Constituency 8 (cont'd)</u>							
<u>Moka (cont'd)</u>							
<u>Sub Region 6</u>	377	1,813	2	1,815	1,041	1	1,042
Alma	205	1,038	2	1,040	580	1	581
Bar Le Duc	1	4	-	4	2	-	2
Verdun (part in Sub Region 5)	58	243	-	243	162	-	162
Donne Veine	113	528	-	528	297	-	297
<u>Sub Region 7</u>	3	10	-	10	6	-	6
Salazie	2	8	-	8	4	-	4
Nouvelle Découverte	1	2	-	2	2	-	2
<u>Sub Region 8</u>	166	914	4	918	546	2	548
Belle Rive	14	52	4	56	32	2	34
Hermitage	152	862	-	862	514	-	514
<u>Sub Region 9</u>	369	1,899	-	1,899	1,024	-	1,024
Chartreuse	12	60	-	60	37	-	37
Dubreuil	353	1,817	-	1,817	977	-	977
Piton du Milieu	4	22	-	22	10	-	10
<u>Sub Region 10</u>	13	61	-	61	31	-	31
La Pipe	10	43	-	43	21	-	21
Sans Souci	3	18	-	18	10	-	10

Table 14 (cont'd)

Electoral constituency, geographical district, municipal or village council area and locality	Households	Population all ages			Population aged 18 and over		
		Mauritian	Non-Mauritian	Total	Mauritian	Non-Mauritian	Total
Electoral Constituency 9	11,657	61,341	256	61,597	34,679	196	34,875
<u>Flacs</u>	<u>11,657</u>	<u>61,341</u>	<u>256</u>	<u>61,597</u>	<u>34,679</u>	<u>196</u>	<u>34,875</u>
<u>Bon Accueil V.C.A.</u>	<u>3,508</u>	<u>19,357</u>	<u>9</u>	<u>19,366</u>	<u>10,917</u>	<u>4</u>	<u>10,921</u>
Belvédère	357	2,017	-	2,017	1,114	-	1,114
Bon Accueil	703	3,946	3	3,949	2,275	2	2,277
Brisée Verdère	831	4,460	3	4,463	2,549	1	2,550
Grand dans Fond	82	495	-	495	243	-	243
Grande Retraite	195	991	-	991	553	-	553
Lalmétie	1,064	5,976	3	5,979	3,372	1	3,373
Latapie	39	219	-	219	121	-	121
Mare d'Australia	237	1,253	-	1,253	690	-	690
<u>Camp Ithier V.C.A.</u>	<u>592</u>	<u>3,277</u>	<u>1</u>	<u>3,278</u>	<u>1,848</u>	<u>1</u>	<u>1,849</u>
Camp Ithier	375	2,062	1	2,063	1,167	1	1,168
Camp Marcelin	78	401	-	401	221	-	221
Isidore Rose	119	680	-	680	398	-	398
Isidore Rose Pavé	20	114	-	114	62	-	62

Table 14 (cont'd)

Electoral constituency, geographical district, municipal or village council area and locality	Households	Population all ages			Population aged 18 and over		
		Mauritian	Non-Mauritian	Total	Mauritian	Non-Mauritian	Total
Electoral Constituency 9 (cont'd)							
Flacq (cont'd)							
Central Flacq V.C.A.	2,554	12,905	26	12,931	7,665	14	7,679
Argy	244	1,224	5	1,229	719	2	721
Boulet Blanc	127	671	1	672	400	-	400
Boulet Rouge	224	1,093	-	1,093	683	-	683
Camp Eouillon	47	262	-	262	125	-	125
Camp Garreau (part in E.C. 10)	72	366	-	366	227	-	227
Central Flacq	367	1,783	6	1,789	1,085	3	1,088
La Source	146	732	-	732	437	-	437
Plaine de Gersigny	314	1,607	3	1,610	944	-	944
Pont Blanc	68	294	-	294	161	-	161
Riche Mare	639	3,248	5	3,253	1,998	5	1,913
Saint Rémy	274	1,407	6	1,413	834	4	838
Saint Anne	42	218	-	218	142	-	142
Ecrougnard V.C.A.	760	4,117	11	4,128	2,241	2	2,243
Bramsthan	447	2,493	4	2,497	1,317	-	1,317
Ecrougnard	313	1,624	7	1,631	924	2	926
Laventure V.C.A.	685	3,644	-	3,644	2,033	-	2,033
Bois d'Oiseaux	109	542	-	542	305	-	305
Laventure	492	2,654	-	2,654	1,479	-	1,479
Petite Retraite	84	448	-	448	249	-	249
Mare La Chaux V.C.A.	300	1,652	1	1,653	911	1	912
Mare la Chaux	300	1,652	1	1,653	911	1	912

Table 14 (cont'd)

Electoral constituency, geographical district, municipal or village council area and locality	Households	Population all ages			Population ages 18 and over		
		Mauritian	Non-Mauritian	Total	Mauritian	Non-Mauritian	Total
<u>Flacq (cont'd)</u>							
<u>Poste de Flacq V.C.A.</u>	<u>966</u>	<u>5,084</u>	<u>148</u>	<u>5,232</u>	<u>2,607</u>	<u>126</u>	<u>2,733</u>
Camp Accacia	73	398	147	545	200	125	325
Camp Poorun	54	298	-	298	145	-	145
Camp Rafia	34	176	-	176	89	-	89
Hermitage	126	616	-	616	324	-	324
Poste de Flacq	560	2,882	-	2,882	1,517	-	1,517
Providence	119	714	1	715	332	1	333
<u>Quatre Cocos V.C.A.</u>	<u>709</u>	<u>3,638</u>	-	<u>3,638</u>	<u>1,988</u>	-	<u>1,988</u>
Belle Mare	154	739	-	739	385	-	385
Camp Ranco	23	102	-	102	61	-	61
Mare du Puits	21	106	-	106	56	-	56
Palmar	180	943	-	943	524	-	524
Quatre Cocos	331	1,748	-	1,748	962	-	962
<u>Saint Julien V.C.A.</u>	<u>332</u>	<u>1,642</u>	-	<u>1,642</u>	<u>1,011</u>	-	<u>1,011</u>
Camp Souillon	25	143	-	143	85	-	85
Camp Caboche	74	425	-	425	234	-	234
Camp Lebrasse	35	196	-	196	109	-	109
Rich Fund	30	157	-	157	83	-	83
Saint Julien	168	741	-	741	500	-	500

Electoral constituency geographical district, municipal or village council area and locality	Households		Population all ages		Population ages 10 and over	
	Mauritian	Non-Mauritian	Total	Mauritian	Non-Mauritian	Total
<u>Electoral Constituency 9 (cont'd)</u>						
<u>Flag (cont'd)</u>						
<u>Sub Region 1</u>	86	1	347	193	1	194
Bras d'Eau	4	-	21	13	-	13
Choisy	1	-	4	2	-	2
Poste Lafayette	81	1	322	178	1	179
<u>Sub Region 2</u>	32	53	152	59	42	101
Pointe de Flacq	24	53	114	39	42	81
Belle Mare	8	-	38	20	-	20
<u>Sub Region 3</u>	218	3	1,134	597	3	600
Constance	216	3	1,134	597	3	600
<u>Sub Region 4</u>	2	-	12	8	-	8
Camp de Masque	2	-	12	8	-	8
<u>Sub Region 5</u>	903	3	4,440	2,601	2	2,603
Bonne Mère	174	-	872	491	-	491
Camp Bonne Mère	92	-	468	262	-	262
La Gaité	3	-	22	10	-	10
La Roche	22	-	91	56	-	56
Mare Carrée	1	-	2	2	-	2
Queen Victoria	349	2	1,650	962	2	964
Union Flacq	262	1	1,335	818	-	818

Table 14 (cont'd)

Electoral constituency, geographical district, municipal or village council area and locality	Households	Population all ages			Population aged 18 and over		
		Mauritian	Non-Mauritian	Total	Mauritian	Non-Mauritian	Total
Electoral Constituency 10	9,632	49,628	97	49,725	27,971	80	28,051
<u>Flacq</u>	<u>7,904</u>	<u>40,775</u>	<u>70</u>	<u>40,845</u>	<u>22,940</u>	<u>54</u>	<u>22,994</u>
<u>Bel Air - Rivière Sèche V.C.A.</u>	<u>2,579</u>	<u>13,366</u>	<u>1</u>	<u>13,367</u>	<u>7,431</u>	<u>1</u>	<u>7,432</u>
Bel Air	1,455	7,390	1	7,391	4,194	1	4,195
Ernest Florent	190	1,070	-	1,070	587	-	587
La Caroline	609	3,249	-	3,249	1,720	-	1,720
La Lucie Roy	127	656	-	656	379	-	379
Petit Bois	65	343	-	343	186	-	186
Pont Lardier	133	658	-	658	365	-	365
<u>Camp de Masque V.C.A.</u>	<u>482</u>	<u>2,496</u>	<u>7</u>	<u>2,503</u>	<u>1,490</u>	<u>5</u>	<u>1,495</u>
Camp de Masque	434	2,254	7	2,261	1,351	5	1,356
Unité	48	242	-	242	139	-	139
<u>Camp de Masque Pavé V.C.A.</u>	<u>698</u>	<u>3,644</u>	<u>-</u>	<u>3,644</u>	<u>2,022</u>	<u>-</u>	<u>2,022</u>
Camp de Masque Pavé	485	2,487	-	2,487	1,377	-	1,377
Mare Goyaves	21	104	-	104	61	-	61
Petite Cabane	192	1,053	-	1,053	584	-	584
<u>Central Flacq V.C.A.</u>	<u>24</u>	<u>137</u>	<u>-</u>	<u>137</u>	<u>71</u>	<u>-</u>	<u>71</u>
Camp Garreau (part in E.C. 5)	24	137	-	137	71	-	71
<u>Clemencia V.C.A.</u>	<u>327</u>	<u>1,607</u>	<u>-</u>	<u>1,607</u>	<u>888</u>	<u>-</u>	<u>888</u>
Belle Rose	71	325	-	325	185	-	185
Clemencia	205	1,064	-	1,064	578	-	578
La Lucie	51	218	-	218	125	-	125

Table 14 (cont'd)

Electoral constituency, geographical district, municipal or village council area and locality	Households	Population all ages			Population aged 18 and over		
		Mauritian	Non-Mauritian	Total	Mauritian	Non-Mauritian	Total
<u>Electoral Constituency 10 (cont'd)</u>							
<u>Grand River South East V.C.A.</u>	402	2,156	-	2,156	1,183	-	1,183
Beau Champ	145	848	-	848	474	-	474
Camp Pêcheur	115	594	-	594	296	-	296
Grand River South East	140	704	-	704	407	-	407
Quinze Arpents	2	10	-	10	6	-	6
<u>Medine (Camp de Masque) V.C.A.</u>	857	4,376	3	4,379	2,644	3	2,647
Bel Etang	70	338	1	339	190	1	191
Medine (Camp de Masque)	628	3,162	2	3,164	1,915	2	1,917
Mont Ida	159	876	-	876	539	-	539
<u>Montagne Blanche V.C.A.</u>	157	777	-	777	432	-	432
Montagne Blanche (part in Moka)	157	777	-	777	432	-	432
<u>Olivia V.C.A.</u>	673	3,343	-	3,343	1,888	-	1,888
Bois d'Oiseau	16	82	-	82	49	-	49
Camp Jacky	28	131	-	131	75	-	75
Deep River	80	408	-	408	213	-	213
La Commune	108	592	-	592	311	-	311
La Nourrice	76	306	-	306	187	-	187
Louis Renaud	35	176	-	176	107	-	107
Olivia	274	1,332	-	1,332	776	-	776
Plaine Bananes	32	189	-	189	104	-	104
Trois Ilots	24	127	-	127	66	-	66

Table 14 (cont'd)

Electoral constituency, geographical district, municipal or village council area and locality	Households		Population all ages		Population aged 18 and over	
	Mauritian	Non-Mauritian	Total	Mauritian	Non-Mauritian	Total
<u>Electoral Constituency 10 (cont'd)</u>						
<u>Flacq (cont'd)</u>						
Sebastopol V.C.A.	<u>4,532</u>	-	<u>4,532</u>	<u>2,427</u>	-	<u>2,427</u>
Cent Gaulettes	252	-	252	124	-	124
Clavel	255	-	255	138	-	138
Lesur	635	-	635	350	-	350
Pellegrin	1,122	-	1,122	592	-	592
Sebastopol	2,268	-	2,268	1,223	-	1,223
Trou d'Eau Douce V.C.A.	<u>3,857</u>	<u>10</u>	<u>3,867</u>	<u>2,194</u>	<u>5</u>	<u>2,199</u>
Palmar (part in Sub Region 1 of Flacq)	64	3	67	44	1	45
Trou d'Eau Douce (part in Sub Region 2 of Flacq)	2,779	4	2,783	1,574	1	1,575
Victoria	1,014	3	1,017	576	3	579
<u>Sub Region 1</u>	<u>76</u>	<u>2</u>	<u>78</u>	<u>53</u>	<u>2</u>	<u>55</u>
Palmar (part in Trou d'Eau Douce V.C.A.)	76	2	78	53	2	55
<u>Sub Region 2</u>	<u>223</u>	<u>47</u>	<u>270</u>	<u>131</u>	<u>38</u>	<u>169</u>
Beau Champ	203	-	203	118	-	118
Beau Rivage	5	-	5	2	-	2
Trou d'Eau Douce (part in Trou d'Eau Douce V.C.A.)	15	47	62	11	38	49
<u>Sub Region 3</u>	<u>185</u>	-	<u>185</u>	<u>86</u>	-	<u>86</u>
Belle Rive	58	-	58	28	-	28
L'Etoile	127	-	127	58	-	58

Table 14 (cont'd)

Electoral constituency, geographical district, municipal or village council area and locality	Households	Population all ages		Population aged 18 and over			
		Mauritian	Non-Mauritian	Total	Mauritian	Non-Mauritian	Total
<u>Moka</u>	<u>1,728</u>	<u>8,853</u>	<u>27</u>	<u>8,880</u>	<u>5,031</u>	<u>26</u>	<u>5,057</u>
<u>Lédine (Camp de Masque) V.C.A.</u>	<u>187</u>	<u>963</u>	<u>-</u>	<u>963</u>	<u>564</u>	<u>-</u>	<u>564</u>
Mont Ida	187	963	-	963	564	-	564
<u>Melrose V.C.A.</u>	<u>311</u>	<u>1,603</u>	<u>-</u>	<u>1,603</u>	<u>903</u>	<u>-</u>	<u>903</u>
Melrose (part in Sub Region 1 of Moka)	311	1,603	-	1,603	903	-	903
<u>Montagne Blanche V.C.A.</u>	<u>1,065</u>	<u>5,593</u>	<u>2</u>	<u>5,595</u>	<u>3,175</u>	<u>1</u>	<u>3,176</u>
Montagne Elanche (part in Flacq)	790	4,052	2	4,054	2,350	1	2,351
Petit Paquet	275	1,541	-	1,541	825	-	825
<u>Sub Region 1</u>	<u>2</u>	<u>3</u>	<u>-</u>	<u>3</u>	<u>3</u>	<u>-</u>	<u>3</u>
Melrose (part in Melrose VCA)	2	3	-	3	3	-	3
<u>Sub Region 2</u>	<u>163</u>	<u>691</u>	<u>25</u>	<u>716</u>	<u>386</u>	<u>25</u>	<u>411</u>
Sans Souci	163	691	25	716	386	25	411

Table 14 (cont'd)

Electoral constituency, geographical district, municipal or village council area and locality	Households	Population all ages		Population aged 18 and over			
		Mauritian	Non-Mauritian	Total	Mauritian	Non-Mauritian	Total
Electoral Constituency 11	8,793	44,602	52	44,654	25,826	36	25,862
<u>Flacq</u>	<u>546</u>	<u>2,726</u>	<u>1</u>	<u>2,727</u>	<u>1,466</u>	<u>1</u>	<u>1,467</u>
<u>Quatre Soeurs V.C.A.</u>	<u>546</u>	<u>2,726</u>	<u>1</u>	<u>2,727</u>	<u>1,466</u>	<u>1</u>	<u>1,467</u>
Deux Frères	181	831	-	831	443	-	443
Marie Jeanne	80	477	-	477	246	-	246
Pointe aux Feuilles	98	452	-	452	234	-	234
Quatre Soeurs	187	966	1	967	543	1	544
<u>Grand Port</u>	<u>8,247</u>	<u>41,876</u>	<u>51</u>	<u>41,927</u>	<u>24,360</u>	<u>35</u>	<u>24,395</u>
<u>Bambou Virieux V.C.A.</u>	<u>190</u>	<u>1,010</u>	<u>4</u>	<u>1,014</u>	<u>522</u>	<u>3</u>	<u>525</u>
Bambou Virieux	190	1,010	4	1,014	522	3	525
<u>Bananes V.C.A.</u>	<u>100</u>	<u>531</u>	<u>-</u>	<u>531</u>	<u>280</u>	<u>-</u>	<u>280</u>
Bananes (part in Sub Region 3)	100	531	-	531	280	-	280
<u>Bois des Amourettes V.C.A.</u>	<u>329</u>	<u>1,631</u>	<u>3</u>	<u>1,634</u>	<u>871</u>	<u>2</u>	<u>873</u>
Anse Jonchée	124	640	-	640	313	-	313
Bois des Amourettes	124	597	3	600	342	2	344
Providence	81	394	-	394	216	-	216
<u>Cluny V.C.A.</u>	<u>286</u>	<u>1,466</u>	<u>1</u>	<u>1,467</u>	<u>816</u>	<u>1</u>	<u>817</u>
Benanique	69	324	-	324	159	-	159
Camp Ramdin	5	23	-	23	11	-	11
Cluny	204	1,079	-	1,079	627	-	627
Eau Bleu (Tostée)	8	40	1	41	19	1	20

Table 14 (cont'd)

Electoral constituency, geographical district, municipal or village council area and locality	Households	Population all ages		Population aged 18 and over			
		Mauritian	Non-Mauritian	Total	Mauritian	Non-Mauritian	Total
<u>Electoral Constituency 11 (cont'd)</u>							
<u>Grand Port (cont'd)</u>							
<u>Grand Sable V.C.A.</u>	352	1,772	1	1,774	950	1	951
Grand Sable	241	1,204	1	1,205	656	1	657
Petit Sable	89	434	-	434	226	-	226
Pointe des Roches	25	135	-	135	68	-	68
<u>Mare Chicose V.C.A.</u>	88	456	-	456	240	-	240
Astroea (Rochecouste)	47	249	-	249	130	-	130
Mare Chicose	41	207	-	207	110	-	110
<u>New Grove V.C.A.</u>	1,382	7,063	12	7,075	4,232	2	4,240
Bois d'Oiseaux	3	11	-	11	8	-	8
Gros Billot	358	1,935	7	1,942	1,091	2	1,093
La Rosa	241	1,295	1	1,296	773	-	773
Mont Fertile	137	659	1	660	389	1	390
New Grove	643	3,163	3	3,166	1,974	2	1,976
<u>Nouvelle France V.C.A.</u>	960	5,207	2	5,209	3,019	2	3,021
Nouvelle France	654	3,550	1	3,551	2,008	1	2,009
Pont Colville	306	1,657	1	1,658	1,011	1	1,012
<u>Old Grand Port V.C.A.</u>	456	2,329	-	2,329	1,316	-	1,316
Belle Vue	22	115	-	115	78	-	78
Kenya	93	508	-	508	272	-	272
Old Grand Port	341	1,706	-	1,706	966	-	966

Table 14 (cont'd)

Electoral constituency, geographical district, municipal or village council area and locality	Households	Population all ages		Population aged 18 and over			
		Mauritian	Non-Mauritian	Total	Mauritian	Non-Mauritian	Total
<u>Electoral Constituency 11 (cont'd)</u>							
<u>Grand Port (cont'd)</u>							
<u>Rivière des Créoles V.C.A.</u>	294	1,462	-	1,462	834	-	834
Rivière des Créoles	294	1,462	-	1,462	834	-	834
<u>Rose Belle V.C.A.</u>	1,985	2,771	17	2,788	5,898	13	5,911
Baramia	485	2,391	2	2,393	1,480	2	1,482
Gebert	231	1,199	1	1,200	719	1	720
Madame Lolo	308	1,371	1	1,372	773	1	774
Marie Jeanie	242	1,244	5	1,249	770	4	774
Mongelard	188	897	-	897	521	-	521
Rose Belle	531	2,669	8	2,677	1,635	5	1,640
<u>Saint Hubert V.C.A.</u>	530	2,453	-	2,453	1,374	-	1,374
Cent Gaulettes	4	10	-	10	7	-	7
Saint Hubert	328	1,548	-	1,548	897	-	897
Sainte Hilaire	198	895	-	895	470	-	470
<u>Union Park V.C.A.</u>	565	3,020	3	3,031	1,831	3	1,834
Balisson	207	1,139	1	1,140	698	1	699
Pastourelle	29	149	-	149	88	-	88
Union Park (part in Sub Region 4)	329	1,740	2	1,742	1,045	2	1,047

Table 14 (cont'd)

Electoral constituency, geographical district, municipal or village council area and locality	Households	Population all ages		Population aged 18 and over			
		Mauritian	Non-Mauritian	Total	Mauritian	Non-Mauritian	Total
<u>Electoral Constituency 11 (cont'd)</u>							
<u>Grand Port (cont'd)</u>							
Sub Region 1	270	1,411	5	1,416	795	2	797
Ferney	156	816	5	821	483	2	485
Le Vallon	37	187	-	187	94	-	94
Rivière des Créoles	77	408	-	408	218	-	218
Sub Region 2	317	1,524	3	1,527	928	3	931
Camp Jardin	51	241	-	241	158	-	158
Riche en Eau	266	1,283	3	1,286	770	3	773
Sub Region 3	2	13	-	13	4	-	4
Bananes (part in Bananes V.C.A.)	2	13	-	13	4	-	4
Sub Region 4	135	733	-	733	437	-	437
Rose Belle S.L.	119	647	-	647	391	-	391
Union Park (part in Union Park V.C.A.)	16	86	-	86	46	-	46
Sub Region 5	1	5	-	5	3	-	3
Beau Climat	1	5	-	5	3	-	3
Sub Region 6	2	10	-	10	7	-	7
Astrorea Lerché	2	10	-	10	7	-	7

Electoral constituency, geographical district, municipal or village council area and locality	Households	Population all ages			Population aged 16 and over		
		Mauritian	Non-Mauritian	Total	Mauritian	Non-Mauritian	Total
Electoral Constituency 12	8,864	43,444	124	43,568	25,676	92	25,768
<u>Grand Port</u>	<u>8,864</u>	<u>43,444</u>	<u>124</u>	<u>43,568</u>	<u>25,676</u>	<u>92</u>	<u>25,768</u>
<u>Bel Air (South) V.C.A.</u>	<u>565</u>	<u>2,723</u>	<u>2</u>	<u>2,725</u>	<u>1,579</u>	<u>2</u>	<u>1,581</u>
Cité Villie Noire (part in E.C. 13)	166	799	-	799	443	-	443
Grand Bel Air	214	1,052	2	1,054	627	2	629
Petit Bel Air	185	872	-	872	509	-	509
<u>Cluny V.C.A.</u>	<u>1</u>	<u>1</u>	<u>-</u>	<u>1</u>	<u>1</u>	<u>-</u>	<u>1</u>
Camp Ramdin	1	1	-	1	1	-	1
<u>L'Escalier V.C.A.</u>	<u>8</u>	<u>33</u>	<u>-</u>	<u>33</u>	<u>16</u>	<u>-</u>	<u>16</u>
L'Escalier	8	33	-	33	16	-	16
<u>Mahebourg V.C.A.</u>	<u>3,227</u>	<u>15,105</u>	<u>13</u>	<u>15,118</u>	<u>9,571</u>	<u>8</u>	<u>9,579</u>
Mahebourg (part in Sub Region 3)	2,858	13,363	13	13,376	8,529	8	8,537
Ville Noire	369	1,742	-	1,742	1,042	-	1,042
<u>Mare d'Albert V.C.A.</u>	<u>682</u>	<u>3,594</u>	<u>2</u>	<u>3,596</u>	<u>2,029</u>	<u>-</u>	<u>2,029</u>
Mare d'Albert	615	3,253	2	3,255	1,837	-	1,837
La Rampe	67	341	-	341	192	-	192
<u>Mare Tabac V.C.A.</u>	<u>376</u>	<u>2,081</u>	<u>-</u>	<u>2,081</u>	<u>1,167</u>	<u>-</u>	<u>1,167</u>
Joli Bois	23	130	-	130	76	-	76
Mare Tabac	353	1,951	-	1,951	1,091	-	1,091

Electoral constituency, geographical district, municipal or village council area and locality	Households			Population all ages		Population aged 16 and over	
	Mauritian	Non-Mauritian	Total	Mauritian	Non-Mauritian	Total	
<u>Electoral Constituency 12 (cont'd)</u>							
<u>Grand Port (cont'd)</u>							
<u>Plaine Magnien V.C.A.</u>	<u>1,371</u>	<u>10</u>	<u>6,935</u>	<u>4,046</u>	<u>5</u>	<u>4,051</u>	
Camp Poule	1	-	6	5	-	5	
Mon Trésor	5	-	31	20	-	20	
Plaine Magnien	1,365	10	6,898	4,021	5	4,026	
<u>Trois Boutiques V.C.A.</u>	<u>974</u>	<u>1</u>	<u>4,937</u>	<u>2,677</u>	<u>-</u>	<u>2,677</u>	
Beau Fond	48	-	287	171	-	171	
Camp Accacia	60	-	304	168	-	168	
Camp Esnouf (part in Sub Region 4)	42	-	189	94	-	94	
Carol Village	134	-	586	287	-	287	
Le Bouchon	59	-	261	141	-	141	
Malakoff	41	1	189	111	-	111	
Plein Bois	91	-	430	264	-	264	
Sauveterre	15	-	72	34	-	34	
Trois Boutiques	484	-	2,619	1,407	-	1,407	

Table 14 (cont'd)

Electoral constituency, geographical district, municipal or village council area and locality	Households	Population all ages		Population aged 10 and over			
		Mauritian	Non-Mauritian	Total	Mauritian	Non-Mauritian	Total
<u>Electoral Constituency 12 (cont'd)</u>							
<u>Grand Port (cont'd)</u>							
<u>Sub Region 1</u>	9	44	-	44	32	-	32
Bois d'Uiseau	9	44	-	44	32	-	32
<u>Sub Region 2</u>	21	89	-	89	46	-	46
Ruisseau Copeaux	21	89	-	89	46	-	46
<u>Sub Region 3</u>	967	4,666	42	4,708	2,701	27	2,728
Beau Vallon	547	2,765	4	2,749	1,641	4	1,645
La Chau	308	1,480	1	1,481	799	1	800
Manchebourg (part in Manchebourg VCF)	9	41	-	41	22	-	22
Pointe d'Esry	102	395	37	432	236	22	258
Pointe Jérôme	1	5	-	5	3	-	3
<u>Sub Region 4</u>	399	2,012	54	2,066	1,102	50	1,152
Camp Esnouf (part in Trois Boutiques VCA)	1	7	-	7	6	-	6
Ile des Deux Cocos	2	12	-	12	4	-	4
Mon Désert	250	1,199	1	1,200	682	1	683
Plaisance (Le cheland)	102	559	53	612	295	49	344
Union Vale	44	235	-	235	115	-	115
<u>Sub Region 5</u>	86	375	-	375	227	-	227
Grois Bois	85	367	-	367	222	-	222
Mare Jacac	1	8	-	8	5	-	5
<u>Sub Region 6</u>	178	860	-	860	482	-	482
La Barraque	126	595	-	595	351	-	351
Savinia	52	265	-	265	131	-	131

Table 14 (cont'd)

Electoral constituency, geographical district, municipal or village council area and locality	Housholds		Population all ages		Population aged 18 and over		
		Mauritian	Non-Mauritian	Total	Mauritian	Non-Mauritian	Total
Electoral Constituency 13	8,044	40,526	37	40,563	24,506	24	24,530
Grand Port	1,511	7,678	7	7,685	4,692	2	4,694
Bel Air (South) V.C.A.	28	144	-	144	85	-	85
Cité Ville Noire (part in E.C. 12)	28	144	-	144	85	-	85
L'Escalier V.C.A.	1,281	6,468	7	6,468	3,991	2	3,993
Camp La Hache	26	143	-	143	94	-	94
Camp Tagore	23	87	-	87	48	-	48
La Sourdine	151	310	-	310	474	-	474
L'Escalier	1,081	5,428	7	5,428	3,375	2	3,377
Rivière du Poste V.C.A.	202	1,073	-	1,073	616	-	616
Rivière du Poste (part in Savanne)	202	1,073	-	1,073	616	-	616

Table M (cont'd)

Electoral constituency, geographical district, municipal or village council area and locality	Households	Population all ages		Population aged 18 and over		
		Mauritian	Non-Mauritian	Mauritian	Non-Mauritian	Total
<u>Savanne</u>	<u>6,533</u>	<u>32,848</u>	<u>30</u>	<u>19,814</u>	<u>22</u>	<u>19,836</u>
Baie du Cap V.C.A.	<u>26</u>	<u>148</u>	-	<u>87</u>	-	<u>87</u>
Baie du Cap	<u>26</u>	<u>148</u>	-	<u>87</u>	-	<u>87</u>
<u>Bois Chéri V.C.A.</u>	<u>588</u>	<u>3,081</u>	-	<u>1,749</u>	-	<u>1,749</u>
Bois Chéri (part in Sub Region 1)	<u>588</u>	<u>3,081</u>	-	<u>1,749</u>	-	<u>1,749</u>
<u>Camp Diable V.C.A.</u>	<u>530</u>	<u>2,881</u>	<u>1</u>	<u>1,693</u>	<u>1</u>	<u>1,694</u>
Camp Diable (part in Sub Region 9)	<u>504</u>	<u>2,707</u>	<u>1</u>	<u>1,603</u>	<u>1</u>	<u>1,604</u>
Ilot	<u>26</u>	<u>174</u>	-	<u>90</u>	-	<u>90</u>
<u>Grand Bois V.C.A.</u>	<u>1,091</u>	<u>5,960</u>	<u>1</u>	<u>3,389</u>	<u>1</u>	<u>3,390</u>
Grand Bois	<u>678</u>	<u>3,729</u>	<u>1</u>	<u>2,123</u>	<u>1</u>	<u>2,124</u>
La Flora	<u>413</u>	<u>2,231</u>	-	<u>1,266</u>	-	<u>1,266</u>
<u>Rivière des Anguilles V.C.A.</u>	<u>1,612</u>	<u>7,732</u>	<u>11</u>	<u>5,004</u>	<u>7</u>	<u>5,011</u>
Rivière des Anguilles (part in Sub Region 8)	<u>933</u>	<u>4,478</u>	<u>6</u>	<u>2,910</u>	<u>4</u>	<u>2,914</u>
Tyack	<u>679</u>	<u>3,254</u>	<u>5</u>	<u>2,094</u>	<u>3</u>	<u>2,097</u>
<u>Rivière du Poste V.C.A.</u>	<u>151</u>	<u>806</u>	-	<u>452</u>	-	<u>452</u>
Rivière du Poste (part in Grand Port)	<u>151</u>	<u>806</u>	-	<u>452</u>	-	<u>452</u>
<u>Souillac V.C.A.</u>	<u>738</u>	<u>3,316</u>	<u>3</u>	<u>2,190</u>	<u>2</u>	<u>2,192</u>
Souillac	<u>738</u>	<u>3,316</u>	<u>3</u>	<u>2,190</u>	<u>2</u>	<u>2,192</u>

Electoral constituency 13 (cont'd)	Households	Population all ages		Population aged 18 and over	
		Mauritian	Non-Mauritian	Mauritian	Non-Mauritian
		Total	Total	Total	Total
Sub Region 1	22	94	56	56	56
Bois Chéri (part in Bois Chéri V.C.A.)	19	77	45	45	45
Grand Bassin	3	17	10	10	10
Sub Region 2	92	2,014	1,170	1,173	1,173
Bon Accueil	1	4	2	2	2
Brickfield	267	1,413	827	829	829
Camp Bertheaud	55	169	98	98	98
Petit Bien	10	51	26	27	27
Riche Bois	40	195	122	122	122
Rivière Dragon	3	18	9	9	9
St. Avold	26	164	86	86	86
Sub Region 3	50	197	111	111	111
Beau Bois	50	197	111	111	111
Sub Region 4	1	6	4	4	4
Mont Blanc	1	6	4	4	4
Sub Region 5	2	10	4	4	4
Exil	1	2	2	2	2
Jurassic	1	8	2	2	2

Table 14 (cont'd)

Electoral constituency, geographical district, municipal or village council area and locality	Households	Population all ages		Population aged 18 and over			
		Mauritian	Non-Mauritian	Total	Mauritian	Non-Mauritian	Total
<u>Electoral Constituency 13 (cont'd)</u>							
<u>Savanne (cont'd)</u>							
<u>Sub Region 6</u>							
Cité St. Aubin	434	2,081	3	2,084	1,249	3	1,252
Combo	98	565	-	565	316	-	316
Fontenelle	33	121	-	121	74	-	74
Gris Gris	10	44	-	44	20	-	20
St. Aubin	1	14	-	14	14	-	14
Terracine	63	315	-	315	215	-	215
Union Ducrey	130	537	2	539	315	2	317
<u>Sub Region 7</u>							
Bel Air	99	485	1	486	295	1	296
St. Felix (Bel Air)	218	1,092	1	1,096	661	1	662
Senneville	104	549	-	549	343	-	343
<u>Sub Region 8</u>							
Batimaraïs	61	297	-	297	156	-	156
Bénarés	53	249	1	250	162	1	163
Chateau Bénarés	433	2,173	7	2,180	1,238	4	1,242
Colmar	242	1,120	3	1,123	623	2	625
Rivière des Anguilles (part in Rivière des Anguilles V.C.A.)	111	642	4	646	367	2	369
<u>Sub Region 9</u>							
Camp Diabie (part in Camp Diabie V.C.A.)	72	371	-	371	223	-	223
Cité Camp Diabie	7	33	-	33	21	-	21
Savannah	1	7	-	7	-	-	-
<u>Sub Region 2</u>							
Cité Camp Diabie	255	1,254	-	1,254	754	-	754
Savannah	151	772	-	772	462	-	462
Cité Camp Diabie	4	22	-	22	16	-	16
Savannah	100	460	-	460	276	-	276

Table 14 (cont'd)

Electoral constituency, geographical district, municipal or village council area and locality	Households	Population all ages		Population aged 18 and over			
		Mauritian	Non-Mauritian	Total	Mauritian	Non-Mauritian	Total
Electoral Constituency 14	12,217	59,067	494	59,581	34,624	459	35,063
Plaines Wilhems	2,603	12,719	12	12,730	7,593	2	7,599
Quatre Bornes Ward 3	2,603	12,718	12	12,730	7,593	6	7,599
Bassin Road	1,090	5,564	1	5,565	3,182	1	3,183
Candos (part in E.C. 15 & E.C. 18)	70	344	5	349	219	3	222
Cité John Kennedy (part in E.C. 18)	819	3,789	5	3,794	2,432	2	2,434
Palma (part in E.C. 18, E.C. 19 Quatre Bornes 3 and Sub Region 2 of Black River)	602	2,909	1	2,910	1,703	-	1,703
Quatre Bornes Ward 3	22	112	-	112	57	-	57
Black River	4,272	20,480	462	20,940	11,459	439	12,889
Quatre Bornes Ward 3	568	2,791	4	2,795	1,616	2	1,618
Palma (part in E.C. 18, E.C. 19 Q/Cornes Ward 3 of P/Wilhems and Sub Region 2 of B/River)	568	2,791	4	2,795	1,616	2	1,618
Bambous V.C.A.	1,380	6,057	2	6,059	3,668	1	3,669
Bambous (part in E.C. 20 and Sub Region 1 of Black River)	1,221	6,102	2	6,104	3,500	1	3,501
Cité La Ferme	159	755	-	755	368	-	368

Table 14 (cont'd)

Electoral constituency, geographical district, municipal or village council area and locality	Households	Population all ages		Population aged 18 and over			
		Mauritian	Non-Mauritian	Total	Mauritian	Non-Mauritian	Total
<u>Electoral Constituency 14 (cont'd)</u>							
<u>Black River (cont'd)</u>							
Cascavelle V.C.A.	310	1,538	-	1,538	831	-	831
Beaux Sarnes	186	962	-	962	497	-	497
Camp Créoles	30	129	-	129	75	-	75
Cascavelle	73	340	-	340	201	-	201
Xavier	21	107	-	107	58	-	58
Case Noyale - La Saullette V.C.A.	461	2,292	-	2,292	1,324	-	1,324
Case Noyale	139	664	-	664	360	-	360
Coteau Reffin	46	182	-	182	96	-	96
Ile aux Benitiers	1	2	-	2	1	-	1
Le Gaulette	232	1,113	-	1,113	708	-	708
Petite Rivière Noire	63	331	-	331	159	-	159
Chamarel V.C.A.	117	505	2	507	291	2	293
Chamarel (part in Suc Region 5 of Black River)	117	505	2	507	291	2	293
Flic en Flac V.C.A.	199	948	166	1,114	532	152	691
Clarens	21	127	-	127	53	-	63
Flic en Flac	137	657	25	683	377	22	334
Palmyre	5	25	-	25	14	-	14
Volmar	36	139	149	279	83	137	220
Grande Rivière Noire V.C.A.	409	1,719	17	1,736	985	11	996
Grande Rivière Noire	314	1,336	9	1,345	758	7	765
La Preneuse	95	383	8	391	227	4	231
Tamarin V.C.A.	363	1,702	30	1,732	1,018	25	1,043
Tamarin	363	1,702	30	1,732	1,018	25	1,043

Table 14 (cont'd)

Electoral constituency, geographical district, municipal or village council area and locality	Households		Population all ages		Population aged 18 and over	
	Mauritian	Non-Mauritian	Total	Mauritian	Non-Mauritian	Total
<u>Electoral Constituency 14 (cont'd)</u>						
<u>Black River (cont'd)</u>						
<u>Sub Region 1</u>	<u>156</u>	-	<u>800</u>	<u>477</u>	-	<u>477</u>
Bambous (part in E.C. 20 and Bambous V.C.A.)	23	-	93	52	-	52
Médine	133	-	707	425	-	425
<u>Sub Region 2</u>	<u>59</u>	-	<u>299</u>	<u>164</u>	-	<u>164</u>
La Ferme (Power Station)	34	-	172	96	-	96
Pierrefonds	10	-	43	29	-	29
Palme (part in E.C. 19, E.C. 19, Q/Bornes Ward 3 of P/Wilhelms and Black River)	15	-	84	39	-	39
<u>Sub Region 3</u>	<u>1</u>	-	<u>4</u>	<u>2</u>	-	<u>2</u>
Magenta	1	-	4	2	-	2
<u>Sub Region 4</u>	<u>41</u>	-	<u>203</u>	<u>100</u>	-	<u>100</u>
Yénon	10	-	41	21	-	21
Tamarin Estate	31	-	162	79	-	79
<u>Sub Region 5</u>	<u>175</u>	<u>239</u>	<u>1,061</u>	<u>442</u>	<u>239</u>	<u>661</u>
Chamarel (part in Chamarel VCA)	1	-	7	5	-	5
La Prairie	5	-	21	10	-	10
Laviliéon	3	-	8	5	-	5
L'Embrasure	1	-	10	6	-	6
Le Morne Brabant	18	239	313	46	239	287
Le Morne Village	140	-	671	353	-	353
Moka	1	-	7	3	-	3
Staub	6	-	24	12	-	12

Table 14 (cont'd)

Electoral constituency, geographical district, municipal or village council area and locality	Population all ages			Population aged 16 and over			
	Households	Mauritius	Non-Mauritius	Total	Mauritius	Non-Mauritius	Total
<u>Electoral constituency 14 (cont'd)</u>							
Savanne	5,335	25,605	22	25,210	12,581	14	15,522
Baie de Cap V.C.A.	832	3,694	2	3,626	2,163	2	2,165
Baie du Cap	397	1,737	1	1,738	999	1	991
Choisy	74	332	-	352	195	-	195
Cité Bel Ombre	57	293	-	293	174	-	171
Saint Martin	314	1,532	1	1,533	807	1	808
<u>Chemin Grenier - Chemeruy V.C.A.</u>	<u>2,750</u>	<u>13,725</u>	<u>10</u>	<u>13,735</u>	<u>6,382</u>	<u>5</u>	<u>5,387</u>
Camp Charlot	312	1,437	1	1,438	865	1	866
Cheramy	599	3,033	3	3,036	1,616	1	1,617
Chemin Grenier	1,275	6,501	4	6,505	4,112	2	4,014
Valentine	12	53	-	53	39	-	35
Belvédère	223	1,106	1	1,107	667	1	663
Camp Jeannette	140	699	-	699	410	-	418
Camp Fanny	117	526	-	520	331	-	331
Camp Lilas	92	376	1	377	243	-	243
<u>Surinam V.C.A.</u>	<u>1,457</u>	<u>6,914</u>	<u>3</u>	<u>6,917</u>	<u>4,250</u>	<u>2</u>	<u>4,253</u>
La Martinère (part in Sub Region 5 of Savanne)	32	140	-	140	89	-	86
Riambel (part in Sub Region 5 of Savanne)	288	1,413	1	1,414	818	1	819
Surinam	1,137	5,353	2	5,355	3,356	2	3,358

Table 14 (cont'd)

Electoral constituency, geographical district, municipal or village council, area and locality	Households	Population all ages		Population aged 18 and over			
		Mauritian	Non-Mauritian	Total	Mauritian	Non-Mauritian	Total
<u>Electoral Constituency 14 (cont'd)</u>							
<u>Savanne (cont'd)</u>							
<u>Sub Region 1</u>							
Luchon	13	94	-	94	44	-	44
Mare Anguillée	2	11	-	11	4	-	4
Mont Blanc	2	15	-	15	4	-	4
<u>Sub Region 2</u>	14	68	-	68	36	-	36
<u>Le Soulier</u>	6	20	-	20	10	-	10
<u>Sub Region 3</u>	6	20	-	20	10	-	10
<u>Sub Region 4</u>	128	580	1	581	342	1	344
Beau Champ	12	51	-	51	31	-	31
Eol Umbre	106	502	1	503	291	1	292
Frédérica	8	33	-	33	19	-	19
Valruche	2	2	-	2	2	-	2
<u>Sub Region 5</u>	98	455	5	461	259	3	262
Pointe aux Roches	7	21	5	27	12	3	15
Rivière des Galets	73	345	-	345	192	-	192
Saint Félix	18	89	-	89	55	-	55
<u>Sub Region 6</u>	38	199	-	199	124	-	124
Del Air (Montsecchio)	2	9	-	9	6	-	6
La Martiniers (part in Surinam VCA)	2	12	-	12	6	-	6
Pomponette	1	6	-	6	4	-	4
Riambel (part in Surinam VCA)	33	172	-	172	104	-	104

Table 14 (cont'd).

Electoral constituency, geographical district, municipal or village council area and locality	Households	Population all ages		Population aged 18 and over			
		Mauritian	Non-Mauritian	Total	Mauritian	Non-Mauritian	Total
Electoral Constituency 15	11,956	58,053	382	58,435	36,525	243	36,768
Plaines Wilhems	11,956	58,053	382	58,435	36,525	243	36,768
Quatre Bornes Ward 2	544	2,470	78	2,548	1,649	47	1,696
Candos (part in E.C. 14 and E.C. 18)	102	779	5	784	550	4	554
Moroellement Saint Jean (part in E.C. 18)	122	495	19	514	333	13	346
Sodnac (part in E.C. 18)	320	1,196	54	1,250	766	30	796
Vacoas-Phoenix Ward 1	3,606	17,416	103	17,519	11,077	70	11,147
Bonne Terre (including Modern)	607	2,870	25	2,895	1,889	18	1,907
Carreau Laliane	130	641	-	641	375	-	375
Clairfonds	454	2,050	16	2,066	1,363	10	1,373
Mon Désert Paillette (including Mon Désir and Vingta)	253	1,248	-	1,248	760	-	760
Solférino (part in Sub Region 3)	666	3,766	7	3,773	2,229	6	2,235
Vacoas Ward 1	1,263	5,764	44	5,808	3,809	30	3,839
Phoenix (Pont Fer)	233	1,077	11	1,088	652	6	658

Table 14 (cont'd)

Electoral constituency, geographical district, municipal or village council area and locality	Households	Population all ages		Population aged 18 and over			
		Mauritian	Non-Mauritian	Total	Mauritian	Non-Mauritian	Total
Electoral Constituency 15 (cont'd)							
Plaines Wilhems (cont'd)							
Vacoas-Phoenix Ward 2	3,399	15,669	174	15,843	10,111	108	10,219
Allée brillant (part in E.C. 16 & E.C. 17)	62	302	3	305	178	-	178
Castel (part in E.C. 16 & E.C. 17)	429	2,064	-	2,068	1,337	2	1,339
Engrais Martial (part in E.C. 16 & E.C. 17)	81	364	-	364	243	-	243
Mesnil	498	2,430	6	2,436	1,622	5	1,627
Phoenix Ward 2	1,668	7,673	63	7,736	4,933	36	4,969
St. Paul	473	2,179	9	2,188	1,403	5	1,408
Vacoas Ward 2	188	657	89	746	395	60	455
Vacoas-Phoenix Ward 3	1,079	4,976	16	5,090	3,201	10	3,211
La Caverne (part in E.C. 16 and Sub Region 3)	495	2,128	10	2,138	1,426	8	1,434
Guinze Cartons (part in E.C. 16 and Sub Region 3)	394	1,910	4	1,914	1,197	2	1,199
Vacoas Ward 3	54	238	-	238	161	-	161
La Croisée Diolle (part in E.C. 16)	136	700	-	700	417	-	417
Curepipe Ward 2	1	1	-	1	1	-	1
Curepipe Road (part in E.C. 16 & E.C. 17)	1	1	-	1	1	-	1

Table 14 (cont'd)

Electoral constituency, geographical district, municipal or village council area and locality	Households	Population all ages		Population aged 18 and over			
		Mauritian	Non-Mauritian	Total	Mauritian	Non-Mauritian	Total
<u>Electoral Constituency 15 (cont'd)</u>							
<u>Plaines Wilhems (cont'd)</u>							
<u>Sub Region 1</u>	492	2,577	2	2,579	1,539	-	1,539
Petit Camp	121	699	2	701	392	-	392
Riverside	268	1,315	-	1,315	782	-	782
Valentina	106	563	-	563	365	-	365
<u>Sub Region 2</u>	1,581	8,725	7	8,732	5,317	5	5,322
Camp Fouquereaux	525	2,883	1	2,884	1,728	1	1,729
Galéa	179	939	1	940	605	-	605
Highlands	692	3,880	5	3,885	2,366	4	2,370
Saint Antoine	185	1,023	-	1,023	618	-	618
<u>Sub Region 3</u>	1,251	6,219	4	6,223	3,630	3	3,633
La Caverne (part in E.C. 16 and Vacoas-Phoenix Ward 3)	701	3,404	3	3,407	1,969	2	1,971
Quinze Cantons (part in E.C. 16 and Vacoas-Phoenix Ward 3)	117	606	-	606	362	-	362
Solférino (part in Vacoas-Phoenix Ward 1)	35	173	1	179	103	1	104
Holyrood	381	1,952	-	1,952	1,149	-	1,149
Trois Mamelles	17	79	-	79	47	-	47

Electoral constituency, geographical district, municipal or village council area and locality	Households	Population all ages		Population aged 18 and over			
		Mauritian	Non-Mauritian	Total	Mauritian	Non-Mauritian	Total
Electoral Constituency 16	11,011	50,563	457	51,020	32,435	286	32,721
<u>Plaines Wilhems</u>	<u>11,011</u>	<u>50,563</u>	<u>457</u>	<u>51,020</u>	<u>32,435</u>	<u>286</u>	<u>32,721</u>
<u>Vacoas-Phoenix Ward 2</u>	<u>620</u>	<u>2,802</u>	<u>77</u>	<u>2,879</u>	<u>1,892</u>	<u>47</u>	<u>1,942</u>
Allée Brillant (part in E.C. 15, E.C. 17 & Curepipe Ward 1)	334	1,517	54	1,571	1,003	35	1,043
Vacoas Ward 2	286	1,285	23	1,308	887	12	899
<u>Vacoas-Phoenix Ward 3</u>	<u>2,562</u>	<u>11,806</u>	<u>53</u>	<u>11,859</u>	<u>7,818</u>	<u>30</u>	<u>7,848</u>
Camp Bombaye	187	886	1	887	566	1	567
Camp Très Bon	269	1,267	-	1,267	836	-	836
La Caverne (part in E.C. 15)	1	10	-	10	8	-	8
Quinze Cantons (part in E.C. 15)	40	181	-	181	119	-	119
Réunion	321	1,507	6	1,513	1,018	3	1,021
Vacoas Ward 3	1,399	6,242	44	6,286	4,174	26	4,200
Sadally	250	1,269	2	1,271	819	-	819
La Croisée Diolle (part in E.C. 15 and Sub Region 1)	94	438	-	438	276	-	276
Grand	1	6	-	6	2	-	2

Table 14 (cont'd)

Electoral constituency, geographical district, municipal or village council area and locality	Households	Population all ages		Population aged 18 and over		
		Mauritian	Non-Mauritian	Total	Mauritian	Non-Mauritian
<u>Curepipe Ward 1</u>	<u>3,309</u>	<u>17,484</u>	<u>200</u>	<u>17,684</u>	<u>10,929</u>	<u>11,058</u>
Allée Brillant (part in E.C. 15, E.C. 17 & Vacoas-Phoenix Ward 2)	344	1,640	15	1,655	994	1,001
Camp Cavet (part in E.C. 17)	6	25	-	25	14	14
Camp Rouillard	37	172	-	172	108	108
Castel (part in E.C. 15 & E.C. 17)	120	550	-	550	344	344
Cité Mangalkhan	431	2,213	1	2,214	1,500	1,501
Cité Souchon (part in E.C. 17)	21	115	-	115	74	74
Curepipe Road (part in E.C. 17)	250	1,208	6	1,214	776	779
Eau Coulée (part in E.C. 17 & Curepipe Ward 3)	469	2,126	1	2,127	1,329	1,330
Ingrais Martial (part in E.C. 15 & E.C. 17)	396	1,894	1	1,895	1,156	1,157
Floréal	1,187	5,024	168	5,192	3,152	3,263
Mangalkhan	157	713	2	715	466	467
Cité Loiseau (part in E.C. 17)	391	1,804	6	1,810	1,016	1,020
<u>Curepipe Ward 3</u>	<u>1,842</u>	<u>7,683</u>	<u>92</u>	<u>7,775</u>	<u>5,293</u>	<u>5,350</u>
Cité Malherbes (part in E.C. 17)	1	3	-	3	2	2
Curepipe Ward 3	256	926	28	954	639	660
Curepipe Road (part in E.C. 15, E.C. 17 & Curepipe Ward 1)	1,216	5,108	55	5,163	3,552	3,582
Eau Coulée (part in E.C. 17 & Curepipe Ward 1)	343	1,523	8	1,531	1,020	1,025
Cité Céré (part in E.C. 17)	26	123	1	124	80	81

Table 14 (cont'd)

Electoral constituency, geographical district, municipal or village council area and locality	Households		Population all ages		Population aged 18 and over		
	Mauritian	Non-Mauritian	Mauritian	Non-Mauritian	Mauritian	Non-Mauritian	Total
<u>Electoral Constituency 16 (cont'd)</u>							
<u>Plaines Wilhems (cont'd)</u>							
<u>Henrietta V.C.</u>	<u>627</u>	-	<u>3,175</u>	-	<u>1,887</u>	-	<u>1,887</u>
Bord Cascade	37	-	162	-	102	-	102
Camp Bellin	103	-	510	-	281	-	281
Camp Bombay	8	-	40	-	26	-	26
Camp Créoles	32	-	144	-	85	-	85
Camp Mapou	106	-	516	-	301	-	301
Camp Roches	130	-	667	-	412	-	412
Henrietta	211	-	1,136	-	680	-	680
<u>Sub Region 1</u>	<u>1,344</u>	<u>20</u>	<u>6,545</u>	<u>20</u>	<u>3,994</u>	<u>20</u>	<u>4,014</u>
Abattoir	1	-	6	-	5	-	5
Camp La Vanille	80	14	334	14	199	11	210
Glen Park	995	12	4,872	12	2,970	7	2,977
La Croisée	181	2	908	2	560	2	562
La Croisée Diolle (part in E.C. 15 & Vacacs-Phoenix Ward 3)	87	-	425	-	260	-	260
<u>Sub Region 2</u>	<u>196</u>	<u>6</u>	<u>1,040</u>	<u>6</u>	<u>600</u>	<u>2</u>	<u>602</u>
Beard	33	6	179	6	87	2	89
La Marie	163	-	861	-	513	-	513
<u>Sub Region 3</u>	<u>11</u>	<u>1</u>	<u>28</u>	<u>1</u>	<u>19</u>	<u>1</u>	<u>20</u>
Clozel	3	-	11	-	5	-	5
Le Pétrin	5	1	9	1	6	1	7
Tamarinid Falls	3	-	8	-	8	-	8

Electoral constituency, geographical district, municipal or village council area and locality	Households	Population all ages		Population ages 16 and over			
		Mauritian	Non-Mauritian	Mauritian	Non-Mauritian	Total	
Electoral Constituency 17	9,835	43,525	364	43,889	28,204	250	28,454
<u>Plaines Wilhems</u>	<u>2,835</u>	<u>43,525</u>	<u>364</u>	<u>43,889</u>	<u>28,204</u>	<u>250</u>	<u>28,454</u>
<u>Curepipe Ward 1</u>	<u>2,403</u>	<u>10,737</u>	<u>91</u>	<u>10,828</u>	<u>6,916</u>	<u>73</u>	<u>6,991</u>
Allée Brillant (part in E.C. 15 & E.C. 16)	2	8	1	9	5	1	6
Camp Caval (part in E.C. 16)	422	2,005	-	2,005	1,268	-	1,268
Camp Malgache	53	214	10	224	129	7	136
Castel (part in E.C. 15 & E.C. 16)	1	3	-	3	2	-	2
Cité Souchon (part in E.C. 16)	1	5	-	5	2	-	2
Curepipe Ward 1	749	3,168	37	3,205	2,111	27	2,138
Curepipe Road (part in E.C. 15, E.C. 16 & Curepipe Wards 2 & 3)	330	1,394	41	1,435	915	36	951
Eau Coulée (part in E.C. 16)	449	2,046	1	2,047	1,325	1	1,326
Engrais Martial (part in E.C. 15 & E.C. 16)	26	137	-	137	73	-	73
Cité Loiseau (part in E.C. 16)	3	17	-	17	10	-	10
Camp Lovieux (part in Curepipe Ward 3)	159	739	-	739	462	-	462
Camp Lovieux (part in Curepipe Ward 3)	208	1,004	1	1,005	515	1	517

Table 14 (cont'd)

Electoral constituency, geographical district, municipal or village council area and locality	Households	Population all ages			Population aged 18 and over		
		Mauritian	Non-Mauritian	Total	Mauritian	Non-Mauritian	Total
<u>Electoral Constituency 17 (cont'd)</u>							
<u>Plaine Wilhems (cont'd)</u>							
<u>Curepipe Ward 2</u>	4,047	17,042	150	17,232	11,296	125	11,421
Camp Lagessc	21	91	-	91	61	-	61
Curepipe Ward 2	1,244	4,622	96	4,718	3,232	65	3,295
Curepipe Road (part in E.C. 15, E.C. 16 & Curepipe Wards 1 & 3)	163	602	11	613	400	8	408
Forest Side (Sub Region 3 & Sub Region 5)	1,978	8,837	55	8,892	5,836	40	5,876
La Brasserie	276	1,214	8	1,222	675	3	682
Les Casernes	365	1,676	20	1,696	1,088	11	1,099
<u>Curepipe Ward 3</u>	1,921	8,604	76	8,680	5,514	46	5,562
Cité Baissac	94	352	19	371	257	10	267
Cité Malherbes (part in E.C. 16 & Sub Region 1)	366	1,839	1	1,840	1,150	-	1,150
Cité Rivet	76	305	1	306	192	1	193
Couvent de Lorette	312	1,538	-	1,538	904	-	904
Curepipe Ward 3	455	1,809	49	1,858	1,218	33	1,251
Curepipe Road (part in E.C. 15, E.C. 16 & Curepipe Wards 1 & 2)	312	1,412	3	1,415	862	2	864
Malherbes	233	1,004	3	1,007	696	2	698
Cité Céré (part in E.C. 16)	15	62	-	62	41	-	41
Camp Levieux (part in Curepipe Ward 1)	58	283	-	283	174	-	174

Table 14 (cont'd)

Electoral constituency, geographical district, municipal or village council area and locality	Households	Population all ages		Population aged 18 and over			
		Mauritian	Non-Mauritian	Total	Mauritian	Non-Mauritian	Total
<u>Electoral Constituency 17 (cont'd)</u>							
<u>Plaines Wilhems (cont'd)</u>							
<u>Sub Region 1</u>	<u>290</u>	<u>1,419</u>	<u>1</u>	<u>1,420</u>	<u>923</u>	<u>1</u>	<u>924</u>
Cité Malherbes (part in E.C. 16 & Curepipe Ward 3)	282	1,389	-	1,389	905	-	905
Corson	4	12	1	13	6	1	7
Wooton	4	18	-	18	12	-	12
<u>Sub Region 2</u>	<u>48</u>	<u>225</u>	<u>-</u>	<u>225</u>	<u>146</u>	<u>-</u>	<u>146</u>
Rotinson (part in Curepipe Ward 1)	48	225	-	225	146	-	146
<u>Sub Region 3</u>	<u>95</u>	<u>477</u>	<u>5</u>	<u>482</u>	<u>329</u>	<u>2</u>	<u>331</u>
Forest Side (part in Curepipe Ward 2 and Sub Region 5)	95	477	5	482	329	2	331
<u>Sub Region 4</u>	<u>550</u>	<u>2,811</u>	<u>-</u>	<u>2,811</u>	<u>1,631</u>	<u>-</u>	<u>1,631</u>
Midlands	355	1,857	-	1,857	1,065	-	1,065
16th Mile	195	954	-	954	566	-	566
<u>Sub Region 5</u>	<u>481</u>	<u>2,210</u>	<u>1</u>	<u>2,211</u>	<u>1,447</u>	<u>1</u>	<u>1,448</u>
Cité Atlee	318	1,522	-	1,522	1,008	-	1,008
Forest Side (part in Curepipe Ward 2 and Sub Region 3)	163	688	1	689	439	1	440

Table 14 (cont'd)

Electoral constituency, geographical district, municipal or village council area and locality	Households	Population all ages		Population aged 18 and over			
		Mauritian	Non-Mauritian	Total	Mauritian	Non-Mauritian	Total
Electoral Constituency 18	9,331	42,724	494	43,218	28,559	313	28,872
Plaines Wilhems	9,881	42,724	494	43,218	28,559	313	28,872
Bean Bassin - Rose Hill Ward 1	568	2,452	12	2,464	1,704	4	1,708
Rose Hill Ward 1	568	2,452	12	2,464	1,704	4	1,708
Quatre Bornes Ward 1	2,811	12,483	53	12,536	8,350	30	8,380
Belle Rose	1,842	8,242	37	8,279	5,479	21	5,500
Quatre Bornes Ward 1	969	4,241	16	4,257	2,871	9	2,880
Quatre Bornes Ward 2	5,064	21,096	400	21,496	14,400	257	14,657
Candos (part in E.C. 14 & E.C. 15)	1	5	-	5	5	-	5
Cité Candos	8	24	-	24	15	-	15
Cité Saint Jean	204	892	3	895	598	-	598
Morcellement Saint Jean (part in E.C. 15)	635	2,528	134	2,662	1,728	80	1,808
Pellegrin	37	297	3	300	215	3	218
Quatre Bornes Ward 2	4,107	17,045	260	17,305	11,636	174	11,810
Sodnac (part in E.C. 15)	72	305	-	305	203	-	203

Table 14 (cont'd)

Electoral constituency, geographical district, municipal or village council area and locality	Households	Population all ages		Population aged 18 and over			
		Mauritian	Non-Mauritian	Total	Mauritian	Non-Mauritian	Total
<u>Electoral Constituency 18 (cont'd)</u>							
<u>Plaines Wilhems (cont'd)</u>							
Quatre Bornes Ward 3	1,147	5,170	26	5,196	3,236	19	3,255
Cité John Kennedy (part in L.C. 14)	1	2	-	2	2	-	2
Cité Père Laval	226	1,015	1	1,016	668	-	668
Palma (part in L.C. 14 & E.C. 19)	1	3	-	3	2	-	2
Quatre Bornes Ward 3	919	4,150	25	4,175	2,564	19	2,583
<u>Cinq Arpents V.C. 1.</u>	195	1,045	-	1,045	575	-	575
Bagatelle	20	95	-	95	56	-	56
Belle Terre	86	454	-	454	251	-	251
Cinq Arpents	89	496	-	496	268	-	268
<u>Sub Region 1</u>	96	478	3	481	294	3	297
Èbène	78	400	-	400	253	-	253
Trianon	13	78	3	81	41	3	44

Table 14 (cont'd)

Electoral constituency, geographical district, municipal or village council area and locality	Households	Population all ages			Population aged 18 and over		
		Mauritian	Non-Mauritian	Total	Mauritian	Non-Mauritian	Total
Electoral Constituency 19	10,730	48,265	244	48,509	30,657	157	31,034
<u>Plaines Wilhems</u>	<u>10,730</u>	<u>48,265</u>	<u>244</u>	<u>48,509</u>	<u>30,657</u>	<u>157</u>	<u>31,034</u>
<u>Beau Bassin-Rose Hill Ward 1</u>	<u>4,090</u>	<u>19,244</u>	<u>36</u>	<u>19,280</u>	<u>11,770</u>	<u>15</u>	<u>11,785</u>
Rose Hill Ward 1	8	26	-	25	22	-	22
Stanley	2,200	10,311	14	10,325	5,364	8	6,372
Trèfles	1,657	8,056	22	8,080	4,885	7	4,892
Camp Leveque	185	349	-	349	495	-	499
<u>Beau Bassin-Rose Hill Ward 2</u>	<u>4,270</u>	<u>18,790</u>	<u>152</u>	<u>18,952</u>	<u>12,479</u>	<u>114</u>	<u>12,593</u>
Plaisance	2,236	10,944	22	10,066	6,367	14	6,381
Roches Brunes (part in E.C. 20)	77	366	-	366	229	-	229
Rose Hill Ward 2	2,057	5,290	130	8,420	5,883	100	5,983
<u>Beau Bassin-Rose Hill Ward 3</u>	<u>955</u>	<u>3,940</u>	<u>50</u>	<u>3,995</u>	<u>2,792</u>	<u>35</u>	<u>2,827</u>
Rose Hill Ward 3	954	3,945	50	3,995	2,791	35	2,826
Cité Barkly (part in E.C. 20)	1	1	-	1	1	-	1
<u>Quatre Bornes Ward 3</u>	<u>1,315</u>	<u>6,375</u>	<u>6</u>	<u>6,381</u>	<u>3,826</u>	<u>3</u>	<u>3,829</u>
La Source	597	2,907	5	2,912	1,756	3	1,759
Palma (part in E.C. 14 & E.C. 16)	377	1,854	1	1,855	1,057	-	1,057
Quatre Bornes Ward 3	341	1,610	-	1,614	1,013	-	1,013

Table 14 (cont'd)

Electoral constituency, geographical district, municipal or village council area and locality	Households	Population all ages		Population aged 18 and over		Total
		Mauritian	Non-Mauritian	Mauritian	Non-Mauritian	
Electoral Constituency 20	13,162	61,509	385	61,894	39,823	40,055
<u>Plaines Wilhems</u>	<u>9,951</u>	<u>45,870</u>	<u>318</u>	<u>46,188</u>	<u>30,924</u>	<u>31,104</u>
Beau Bassin-Rose Hill Ward 2	1	3	-	3	2	2
Plaisance	1	3	-	3	2	2
<u>Beau Bassin-Rose Hill Ward 3</u>	<u>3,596</u>	<u>14,910</u>	<u>187</u>	<u>15,097</u>	<u>10,444</u>	<u>10,538</u>
Beau Bassin Ward 3	3,265	13,365	182	13,545	9,389	9,482
Rose Hill Ward 3	17	47	1	48	32	32
Cité de Rosnay	58	217	4	221	168	169
Cité Barkly (part in E.C. 19 and S/Bassin-R/Hill Ward 4)	256	1,283	-	1,283	855	855
<u>Beau Bassin-Rose Hill Ward 4</u>	<u>6,345</u>	<u>30,755</u>	<u>130</u>	<u>30,885</u>	<u>20,250</u>	<u>20,575</u>
Beau Bassin Ward 4	2,721	14,191	40	14,231	9,557	9,561
Belle Etoile	352	1,530	22	1,552	1,062	1,079
Chebel	568	2,705	1	2,706	1,794	1,794
5th Mile	183	826	1	829	502	503
Cité Barkly (part in E.C. 19 and S/Bassin-R/Hill Ward 3)	538	2,727	1	2,728	1,620	1,621
Cité Koenig	77	321	4	325	229	231
Cité Vuillemin	1	5	-	5	3	3
Coromandel	362	1,572	18	1,590	1,061	1,075
Mont Roches (part in E.C. 19)	739	3,323	7	3,330	2,114	2,117
Roches Brunès	491	2,183	13	2,196	1,418	1,426
Mare Gravier	313	1,370	23	1,393	950	965
<u>Sub Region 1</u>	<u>9</u>	<u>202</u>	<u>1</u>	<u>203</u>	<u>188</u>	<u>189</u>
Richelieu (part in Petite Rivière VCA & Sub Region 1 of S/River)	9	202	1	203	188	189

Table 14 (cont'd)

Electoral constituency, geographical district, municipal or village council area and locality	Households	Population all ages			Population aged 18 and over		
		Mauritian	Non-Mauritian	Total	Mauritian	Non-Mauritian	Total
<u>Electoral Constituency 20 (cont'd)</u>							
<u>Black River</u>	<u>3,211</u>	<u>15,639</u>	<u>67</u>	<u>15,706</u>	<u>6,899</u>	<u>52</u>	<u>8,951</u>
<u>Petite Rivière V.C.A.</u>	<u>1,514</u>	<u>7,348</u>	<u>12</u>	<u>7,360</u>	<u>4,233</u>	<u>9</u>	<u>4,242</u>
Allée Tamarin	1	4	-	4	2	-	2
Cité Richelieu	538	2,604	6	2,610	1,491	4	1,495
Petite Rivière	950	4,613	6	4,619	2,675	5	2,680
Plateforme	1	4	-	4	2	-	2
Richelieu (part in Su. Region 1 of P/Wilhems and Black River)	24	123	-	123	63	-	63
<u>Sub Region 1</u>	<u>1,118</u>	<u>5,207</u>	<u>48</u>	<u>5,255</u>	<u>3,082</u>	<u>36</u>	<u>3,118</u>
Camp Benoit (part in E.C. 1)	54	282	-	282	142	-	142
Camp Créoles	1	10	-	10	6	-	6
Petit Verger	189	909	6	915	557	5	562
Pointe aux Sables (part in Port Louis Ward 1)	561	2,596	12	2,608	1,540	7	1,547
Morcellement Rey	199	856	30	886	522	24	546
Richelieu (part in sub Region 1 of P/Wilhems & Petite Rivière VCA)	97	495	-	495	282	-	282
Kahine	9	59	-	59	33	-	33

Table 14 (cont'd)

Electoral constituency, geographical district, municipal or village council area and locality	Households	Population all ages			Population aged 18 and over		
		Mauritius	Non-Mauritius	Total	Mauritius	Non-Mauritius	Total
<u>Electoral Constituency 20 (cont'd)</u>							
<u>Black River (cont'd)</u>							
<u>Sub Region 2</u>	<u>533</u>	<u>2,794</u>	<u>7</u>	<u>2,801</u>	<u>1,406</u>	<u>7</u>	<u>1,413</u>
Albion	63	284	-	284	148	-	148
Belle Vue	2	7	7	14	2	7	9
Camp Créoles	92	499	-	499	258	-	258
Canet	147	749	-	749	389	-	389
Chebel Road	66	325	-	325	153	-	153
Cros Cailloux	163	930	-	930	446	-	446
<u>Sub Region 3</u>	<u>22</u>	<u>122</u>	<u>-</u>	<u>122</u>	<u>71</u>	<u>-</u>	<u>71</u>
Bambous (part in E.C. 14)	2	16	-	16	7	-	7
La Macque	20	106	-	106	64	-	64
<u>Sub Region 4</u>	<u>32</u>	<u>168</u>	<u>-</u>	<u>168</u>	<u>107</u>	<u>-</u>	<u>107</u>
La Chaumière	5	25	-	25	17	-	17
Saint Martin	27	143	-	143	90	-	90