

**Vol. 41**



**Republic of Mauritius**

**Digest of International Travel  
and Tourism Statistics  
2014**

**Ministry of Finance and Economic Development  
Statistics Mauritius**

**August 2015**

**(Price: Rs 75.00)**

**DIGEST OF**  
**INTERNATIONAL TRAVEL**  
**AND**  
**TOURISM STATISTICS**  
**2014**

# **INTERNATIONAL TRAVEL AND TOURISM STATISTICS**

**Vol. 41**

**2014**

"International Travel and Tourism Statistics" is a regular publication of Statistics Mauritius, designed to present in a single report, detailed statistics concerning international travel and tourism relating to Mauritius.

The statistical tables presented in this report have been compiled from data collected from the passport of travellers, disembarkation cards filled in by non-residents, questions put to non-residents entering the country, hotels and administrative records.

Statistical data on International Travel and Tourism are constantly updated as more reliable information become available, necessitating minor changes over previous issues of this publication. The figures published in this issue therefore supersede those of all previous issues.

It is hoped that the data herewith assembled will prove useful to the public in general and to policy makers, planners and research workers in particular.

The publication of this report has been made possible with the collaboration of the Passport and Immigration Office and the Ministry of Tourism and External Communications. Their co-operation is herewith gratefully acknowledged.

L.F Cheung Kai Suet

Director of Statistics

Statistics Mauritius  
Ministry of Finance and Economic Development  
PORT LOUIS  
MAURITIUS  
August 2015

# CONTENTS

Table	Page
<b>I - POPULATION AND VITAL STATISTICS</b>	
1 - Estimated resident population of Republic of Mauritius as at 31st December, 2013 & 2014	5
2 - Population growth in intercensal periods - Island of Mauritius, 1851 - 2011	5
3 - Population growth in intercensal periods - Island of Rodrigues, 1851 - 2011	6
4 - Estimated resident population by geographical district and sex - Republic of Mauritius, 2013 & 2014 (End of year estimates)	7
5 - Population and vital statistics - Republic of Mauritius, 1979 - 2014	8
6 - Growth of the resident population and vital statistics - Island of Mauritius, 2004 - 2014	9
7 - Growth of the resident population and vital statistics - Island of Rodrigues, 2004 - 2014	10
<b>II - PASSENGER TRAFFIC</b>	
8 - Passenger traffic by sex, 1994 - 2014	11
9 - Passenger traffic between Islands of Mauritius and Rodrigues, 1994 - 2014	12
10 - Passenger traffic by mode of transport, 1994 - 2014	16
11 - Passenger traffic by month, 2011 - 2014	17
12 - Arrivals by country of original embarkation, 2009 - 2014	18
13 - Departures by country of final destination, 2009 - 2014	19
14 - Monthly passenger traffic by type of passenger, 2014	20
15 - Passenger traffic by type of passenger, 2005 - 2014	21
16 - Total arrivals by age and sex, 2013 & 2014	22
17 - Total departures by age and sex, 2013 & 2014	23
18 - Excess of arrivals over departures by age and sex, 2013 & 2014	24
19 - Arrivals of Mauritian residents by age and sex, 2013 & 2014	25
20 - Departures of Mauritian residents by age and sex, 2013 & 2014	26
21 - Excess of arrivals over departures of Mauritian residents by age and sex, 2013 & 2014	27
22 - Arrivals and departures of Mauritian residents by country of embarkation and disembarkation, 2012 - 2014	28

## **CONTENTS**

<b>Table</b>		<b>Page</b>
	<b>III - TOURISM</b>	
	<b>Definition and notes</b>	29
23 -	Tourist arrivals by mode of transport and tourist nights spent during period, 1998 - 2014	31
24 -	Tourist arrivals by month of arrival, 2005 - 2014	32
25 -	Percentage distribution of tourist arrivals by month of arrival, 2005 - 2014	34
26 -	Tourist arrivals by country of residence and sex, 2013 and 2014	35
27 -	Tourist arrivals by country of residence, 2005 - 2014	36
28 -	Percentage distribution of tourist arrivals by country of residence, 2005 - 2014	37
29 -	Tourist nights by country of residence, 2005 - 2014	39
30 -	Visitor arrivals by country of residence and type of passenger, 2012 - 2014	42
31(i) -	Visitor arrivals by age and sex, 2013 & 2014	43
31(ii) -	Tourist arrivals by broad age group and mode of arrival, 2013 & 2014	43
32 -	Visitor departures by duration of stay, 2013 & 2014	44
33 -	Visitor departures by country of residence and duration of stay, 2014	45
34 -	Tourist arrivals, tourist departures and average length of stay of tourists by country of residence, 2013 and 2014	46
35 -	Gross earnings from tourism, 2005 - 2014	47
36 -	Expenditure of tourists by country of residence, 2010 - 2013	47
37 -	Expenditure of tourists by type of expenditure, 2010 - 2013	47
38 -	Hotels, rooms and bedplaces, 2005 - 2014	48
39 -	Monthly occupancy rates in large hotels, 2010 - 2014	49
40 -	Monthly occupancy rates in all hotels, 2010 - 2014	50

## **CONTENTS**

**Page**

### **ILLUSTRATIONS**

Fig. 1	- Passenger Traffic: Total arrivals by sex, 1998 - 2014	13
2	- Passenger Traffic: Total departures by sex, 1998 - 2014	14
3	- Passenger Traffic: Total arrivals and total departures, 2005 - 2014	15
4	- Tourist arrivals by month, 2010 - 2014	33
5	- Percentage distribution of tourist arrivals by country of residence, 2014	38
6	- Total arrivals and tourist arrivals, 2005 - 2014	40
7	- Tourist nights, 2005 - 2014	41

**The following symbol is used throughout :-**

**" - " for Nil**

**Appendix : Disembarkation Card**

\*\*\*\*\*

#### **Contact persons:**

Mr. E.Romjon, Ag. Statistician,  
Mrs T.Joomun, Senior Statistical Officer  
Ministry of Tourism and Communications  
3<sup>rd</sup> Floor, Victoria House  
Port Louis  
Tel: (230) 211-9042  
Fax: (230) 210-3901  
Email: sm-tourism@govmu.org

## I - POPULATION AND VITAL STATISTICS

**Table 1 - Estimated resident population of Republic of Mauritius  
as at 31st December, 2013<sup>1</sup> & 2014**

Year	Island	Both sexes	Male	Female	Area ( sq km)	Density (persons/km <sup>2</sup> )
<b>2013</b>	Mauritius	1,218,060	602,831	615,229	1,864.8	653
	Rodrigues	41,504	20,467	21,037	104.0	399
	Other	274	174	100	71.2	4
	<b>Republic of Mauritius</b>	<b>1,259,838</b>	<b>623,472</b>	<b>636,366</b>	<b>2,040.0</b>	<b>618</b>
<b>2014</b>	Mauritius	1,219,659	603,576	616,083	1,864.8	654
	Rodrigues	41,788	20,584	21,204	104.0	402
	Other	274	174	100	71.2	4
	<b>Republic of Mauritius</b>	<b>1,261,721</b>	<b>624,334</b>	<b>637,387</b>	<b>2,040.0</b>	<b>618</b>

<sup>1</sup> based on the 2011 population census data adjusted for underenumeration of young children.

**Table 2 - Population growth in intercensal periods - Island of Mauritius, 1851 - 2011**

Census Date	Population enumerated at census			Intercensal increase	Average annual rate of increase(%)
	Both sexes	Male	Female		
20 Nov. 1851	180,823	119,341	61,482	22,361	2.55
8 Apr. 1861	310,050	202,961	107,089	129,227	5.91
11 Apr. 1871	316,042	193,575	122,467	5,992	0.19
4 Apr. 1881	359,874	208,655	151,219	43,832	1.31
6 Mar. 1891	370,588	206,038	164,550	10,714	0.29
1 Apr. 1901	371,023	199,552	171,471	435	0.01
31 Mar. 1911	368,791	194,095	174,696	-2,232	-0.06
21 May. 1921	376,485	194,108	182,377	7,694	0.21
26 Apr. 1931	393,238	200,609	192,629	16,753	0.44
11 Jun. 1944	419,185	210,326	208,859	25,947	0.49
30 Jun. 1952	501,415	252,032	249,383	82,230	2.26
30 Jun. 1962 <sup>1</sup>	681,619	342,306	339,313	180,204	3.12
30 Jun. 1972 <sup>1</sup>	826,199	413,580	412,619	144,580	1.94
2 Jul. 1983 <sup>1</sup>	966,863	481,368	485,495	140,664	1.44
1 Jul. 1990 <sup>2</sup>	1,022,456	510,676	511,780	55,593	0.80
2 Jul. 2000 <sup>2</sup>	1,143,069	566,056	577,013	120,613	1.12
3 Jul. 2011 <sup>2</sup>	1,196,383	590,944	605,439	53,314	0.42

<sup>1</sup> " De facto " population

<sup>2</sup> " De jure " population

**Table 3 - Population growth in intercensal periods - Island of Rodrigues,  
1851 - 2011**

Census Date	Population enumerated at census			Inter-censal increase	Average annual rate of increase (%)
	Both sexes	Male	Female		
20 Nov. 1851 <sup>3</sup>	495	312	183	-	-
8 Apr. 1861 <sup>3</sup>	693	464	229	198	3.65
11 Apr. 1871	1,108	693	415	415	4.80
4 Apr. 1881	1,431	812	619	323	2.59
6 Mar. 1891	2,068	1,154	914	637	3.75
1 Apr. 1901	3,162	1,685	1,477	1,094	4.34
31 Mar. 1911	4,829	2,523	2,306	1,667	4.33
21 May. 1921	6,584	3,300	3,284	1,755	3.15
26 Apr. 1931	8,202	4,033	4,169	1,618	2.22
11 Jun. 1944	11,885	5,740	6,145	3,683	2.89
30 Jun. 1952	13,333	5,947	7,386	1,448	1.45
30 Jun. 1962 <sup>1</sup>	18,335	9,062	9,273	5,002	3.24
30 Jun. 1972 <sup>1</sup>	24,769	12,270	12,499	6,434	3.05
2 Jul. 1983 <sup>1</sup>	33,082	16,552	16,530	8,313	2.67
1 Jul. 1990 <sup>2</sup>	34,204	17,084	17,120	1,122	0.48
2 Jul. 2000 <sup>2</sup>	35,779	17,700	18,079	1,575	0.45
3 Jul. 2011 <sup>2</sup>	40,434	19,904	20,530	4,655	1.12

<sup>1</sup> " De facto " population

<sup>2</sup> " De jure " population

<sup>3</sup> Revised



**Table 4 - Estimated resident population by geographical district and sex - Republic of Mauritius, 2013 & 2014**  
**(End of year estimates) <sup>1</sup>**

Geographical district	Area (km <sup>2</sup> )	31st December 2013			31st December 2014		
		Both sexes	Male	Female	Both sexes	Male	Female
Port Louis	42.7	120,507	59,874	60,633	120,098	59,662	60,436
Pamplemousses	178.7	138,849	68,929	69,920	139,415	69,153	70,262
Riviere du Rempart	147.6	107,777	53,434	54,343	107,975	53,556	54,419
Flacq	297.9	138,121	68,699	69,422	138,366	68,809	69,557
Grand Port	260.3	112,789	56,151	56,638	112,906	56,182	56,724
Savanne	244.8	68,725	34,051	34,674	68,676	34,047	34,629
Plaines Wilhems	203.3	369,076	180,660	188,416	368,985	180,613	188,372
Moka	230.5	82,980	41,257	41,723	83,125	41,360	41,765
Black River	259.0	79,236	39,776	39,460	80,113	40,194	39,919
Island of Mauritius	1,864.8	1,218,060	602,831	615,229	1,219,659	603,576	616,083
Island of Rodrigues	104.0	41,504	20,467	21,037	41,788	20,584	21,204
Other <sup>2</sup>	71.2	274	174	100	274	174	100
<b>Republic of Mauritius</b>	<b>2,040.0</b>	<b>1,259,838</b>	<b>623,472</b>	<b>636,366</b>	<b>1,261,721</b>	<b>624,334</b>	<b>637,387</b>

<sup>1</sup> based on the 2011 population census data adjusted for underenumeration of young children.

Internal migration within districts is assumed to be the same as the net annual internal migration during 2006 - 2011 (obtained from the 2011 census).

<sup>2</sup> includes Agalega and St Brandon.

**Table 5 - Population and vital statistics - Republic of Mauritius <sup>1</sup>, 1979 - 2014**

Year	Population at mid-year <sup>2</sup>	Live births	Deaths	Infant deaths	Still births	Civil marriages	Divorces <sup>3</sup>
1979	949,888	26,163	6,871	891	668	9,327	265
1980	966,039	26,294	6,919	864	662	8,894	351
1981	980,462	24,967	6,653	884	590	8,406	305
1982	992,521	22,459	6,584	682	458	10,768	312
1983	1,001,691	21,073	6,532	570	403	10,255	361
1984	1,012,221	20,332	6,646	505	404	10,865	471
1985	1,020,528	19,376	6,906	487	383	11,245	460
1986	1,028,360	19,170	6,805	524	365	10,556	616
1987	1,036,082	20,033	6,753	504	363	11,392	842
1988	1,043,239	20,941	6,879	471	374	11,453	740
1989	1,051,260	21,822	7,149	498	415	11,197	711
1990	1,058,775	22,602	7,031	462	365	11,425	549
1991	1,070,266	22,197	7,027	413	400	11,295	707
1992	1,084,441	22,902	7,023	426	291	11,408	781
1993	1,097,374	22,329	7,433	438	337	11,576	762
1994	1,112,846	21,795	7,402	394	274	11,414	733
1995	1,122,457	20,549	7,465	404	299	10,624	801
1996	1,133,996	20,763	7,670	459	266	10,700	792
1997	1,148,284	20,012	7,986	406	257	10,887	891
1998	1,160,421	19,434	7,839	376	227	10,898	1,012
1999	1,175,267	20,311	7,944	396	226	11,295	1,150
2000	1,186,873	20,205	7,982	322	266	10,963	1,191
2001	1,196,287	19,696	7,983	282	244	10,635	1,512
2002	1,204,621	19,983	8,310	297	203	10,484	1,291
2003	1,213,370	19,343	8,520	250	220	10,812	1,190
2004	1,221,003	19,230	8,475	277	191	11,385	1,162
2005	1,228,254	18,820	8,646	248	185	11,294	1,133
2006	1,233,996	17,604	9,162	249	147	11,471	1,379
2007	1,239,630	17,034	8,498	261	172	11,547	1,302
2008	1,244,121	16,372	9,004	236	165	11,197	1,569
2009	1,247,429	15,344	9,224	205	138	10,619	2,154
2010	1,250,400	15,005	9,131	187	103	10,555	1,837
2011	1,252,404	14,701	9,170	189	139	10,499	1,788
2012	1,255,882	14,494	9,343	199	140	10,382	2,003
2013	1,258,653	13,688	9,440	165	117	9,575	1,584 <sup>4</sup>
2014	1,260,934	13,415	9,682	194	138	9,959	2,262

<sup>1</sup> Excluding Agalega & Saint Brandon

<sup>2</sup> Figures for 2001 - 2010 have been revised in the light of the 2011 census data

<sup>3</sup> Source : Judicial Department

<sup>4</sup> Revised

Note : The increase in the number of civil marriages as from 1982 is due largely to improved registration of religious marriages with the coming into force of a new Civil Status Act as from January 1982.

**Table 6 - Growth of the resident population and vital statistics - Island of Mauritius, 2004 - 2014**

Year	Population at beginning of year	Natural movement			Net migration	Total increase	% change during the year due to:			Population at end of year
		Live births	Deaths	Natural increase			Natural increase	Migration	Total	
2004	1,191,336	18,285	8,259	10,026	-362	9,664	0.84	-0.03	0.81	1,201,000
2005	1,201,000	17,924	8,422	9,502	+800	10,302	0.79	+0.07	0.86	1,211,302
2006	1,211,302	16,723	8,917	7,806	+100	7,906	0.64	+0.01	0.65	1,219,208
2007	1,219,208	16,190	8,323	7,867	0	7,867	0.65	0.00	0.65	1,227,075
2008	1,227,075	15,590	8,798	6,792	+175	6,967	0.55	+0.01	0.56	1,234,042
2009	1,234,042	14,623	8,987	5,636	+110	5,746	0.46	+0.01	0.47	1,239,788
2010	1,239,788	14,291	8,891	5,400	+100	5,500	0.44	+0.01	0.45	1,245,288
2011	1,211,181	14,002	8,951	5,051	-3,030	2,021	0.42	-0.25	0.17	1,213,202
2012	1,213,202	13,766	9,103	4,663	-1,732	2,931	0.38	-0.14	0.24	1,216,133
2013	1,216,133	12,986	9,231	3,755	-1,828	1,927	0.31	-0.15	0.16	1,218,060
2014	1,218,060	12,727	9,438	3,289	-1,690	1,599	0.30	-0.20	0.10	1,219,659

**Table 7 - Growth of the resident population and vital statistics - Island of Rodrigues, 2004 - 2014**

Year	Population at beginning of year	Natural movement			Net migration	Total increase	% change during the year due to:			Population at end of year
		Live births	Deaths	Natural increase			Natural increase	Migration	Total	
2004	36,503	945	216	729	-460	269	2.00	-1.26	0.74	36,772
2005	36,772	896	224	672	-450	222	1.83	-1.22	0.61	36,994
2006	36,994	881	245	636	-400	236	1.72	-1.08	0.64	37,230
2007	37,230	844	175	669	-400	269	1.80	-1.07	0.73	37,499
2008	37,499	782	206	576	-375	201	1.54	-1.00	0.54	37,700
2009	37,700	721	237	484	-410	74	1.28	-1.09	0.19	37,774
2010	37,774	714	240	474	-410	64	1.25	-1.08	0.17	37,838
2011	40,221	699	219	480	-38	442	1.19	-0.09	1.10	40,663
2012	40,663	728	240	488	-68	420	1.20	-0.17	1.03	41,083
2013	41,083	702	209	493	-72	421	1.20	-0.18	1.02	41,504
2014	41,504	688	244	444	-160	284	1.10	-0.40	0.70	41,788

## II - PASSENGER TRAFFIC

**Table 8 - Passenger traffic <sup>1</sup> by sex, 1994 - 2014**

Period	Arrivals			Departures			Arrivals minus Departures
	Both Sexes	Male	Female	Both Sexes	Male	Female	
1994	558,136	295,259	262,877	557,575	295,500	262,075	+ 561
1995	579,993	304,705	275,288	578,481	304,245	274,236	+ 1,512
1996	672,070	350,561	321,509	663,501	345,892	317,609	+ 8,569
1997	743,291	378,593	364,698	737,523	379,841	357,682	+ 5,768
1998	778,574	367,914	410,660	775,998	382,567	393,431	+ 2,576
1999	823,085	434,667	388,418	809,233	428,234	380,999	+ 13,852
2000	915,203	480,879	434,324	895,569	469,902	425,667	+ 19,634
2001	910,489	477,984	432,505	903,073	473,096	429,977	+ 7,416
2002	951,090	498,177	452,913	942,876	494,212	448,664	+ 8,214
2003	968,906	510,212	458,694	947,774	497,011	450,763	+ 21,132
2004	1,000,545	523,961	476,584	979,322	511,734	467,588	+ 21,223
2005	1,043,900	544,520	499,380	1,029,666	538,113	491,553	+ 14,234
2006	1,072,879	562,766	510,113	1,060,074	555,279	504,795	+ 12,805
2007	1,238,826	648,554	590,272	1,237,747	645,657	592,090	+ 1,079
2008	1,280,640	669,919	610,721	1,261,182	658,947	602,235	+ 19,458
2009	1,210,005	623,925	586,080	1,206,550	623,551	582,999	+ 3,455
2010	1,312,700	677,067	635,633	1,317,581	679,362	638,219	- 4,881
2011	1,358,951	703,094	655,857	1,358,562	702,039	656,523	+ 389
2012	1,354,589	702,943	651,646	1,353,618	702,000	651,618	+ 971
2013	1,391,295	721,445	669,850	1,390,467	719,252	671,215	+ 828
2014 <sup>2</sup>	1,458,896	750,208	708,688	1,454,657	745,658	708,999	+ 4,239

<sup>1</sup> Includes traffic between Island of Mauritius and Rodrigues. Figures also include cruise travellers, i.e., passengers and crews of cruise ships.

<sup>2</sup> Provisional

**Table 9 - Passenger traffic <sup>1</sup> between Islands of Mauritius and Rodrigues, 1994 - 2014**

Period	Arrivals in Rodrigues			Departures from Rodrigues			Arrivals minus Departures
	Both Sexes	Male	Female	Both Sexes	Male	Female	
1994	23,292	14,174	9,118	23,636	14,177	9,459	- 344
1995	24,150	14,532	9,618	24,820	14,603	10,217	- 670
1996	29,129	16,947	12,182	29,370	16,861	12,509	- 241
1997	37,765	22,120	15,645	38,014	22,096	15,918	- 249
1998	40,648	24,181	16,467	40,553	23,072	17,481	+ 95
1999	45,117	28,384	16,733	45,154	26,961	18,193	- 37
2000	49,530	28,280	21,250	49,981	29,436	20,545	- 451
2001	52,777	30,320	22,457	52,307	30,760	21,547	+ 470
2002	60,355	34,647	25,708	59,984	34,004	25,980	+ 371
2003	63,649	37,203	26,446	63,937	37,673	26,264	- 288
2004	60,862	34,467	26,395	60,830	34,314	26,516	+ 32
2005	53,534	29,805	23,729	53,987	29,447	24,540	- 453
2006	55,368	31,395	23,973	56,015	31,822	24,193	- 647
2007	61,617	33,991	27,626	61,595	33,735	27,860	+ 22
2008	54,433	29,713	24,720	54,212	29,260	24,952	+ 221
2009	52,981	28,337	24,644	53,426	28,341	25,085	- 445
2010	60,573	31,624	28,949	60,662	32,101	28,561	- 89
2011	65,423	34,417	31,006	64,564	33,938	30,626	+ 859
2012	67,527	35,666	31,861	67,745	36,372	31,373	- 218
2013	69,762	36,235	33,527	69,848	37,348	32,500	- 86
2014 <sup>2</sup>	69,514	35,530	33,984	69,660	36,435	33,225	- 146

<sup>1</sup> Includes residents and non-residents

<sup>2</sup> Provisional

Fig 1 - Passenger traffic: Total arrivals by sex, 1998 - 2014

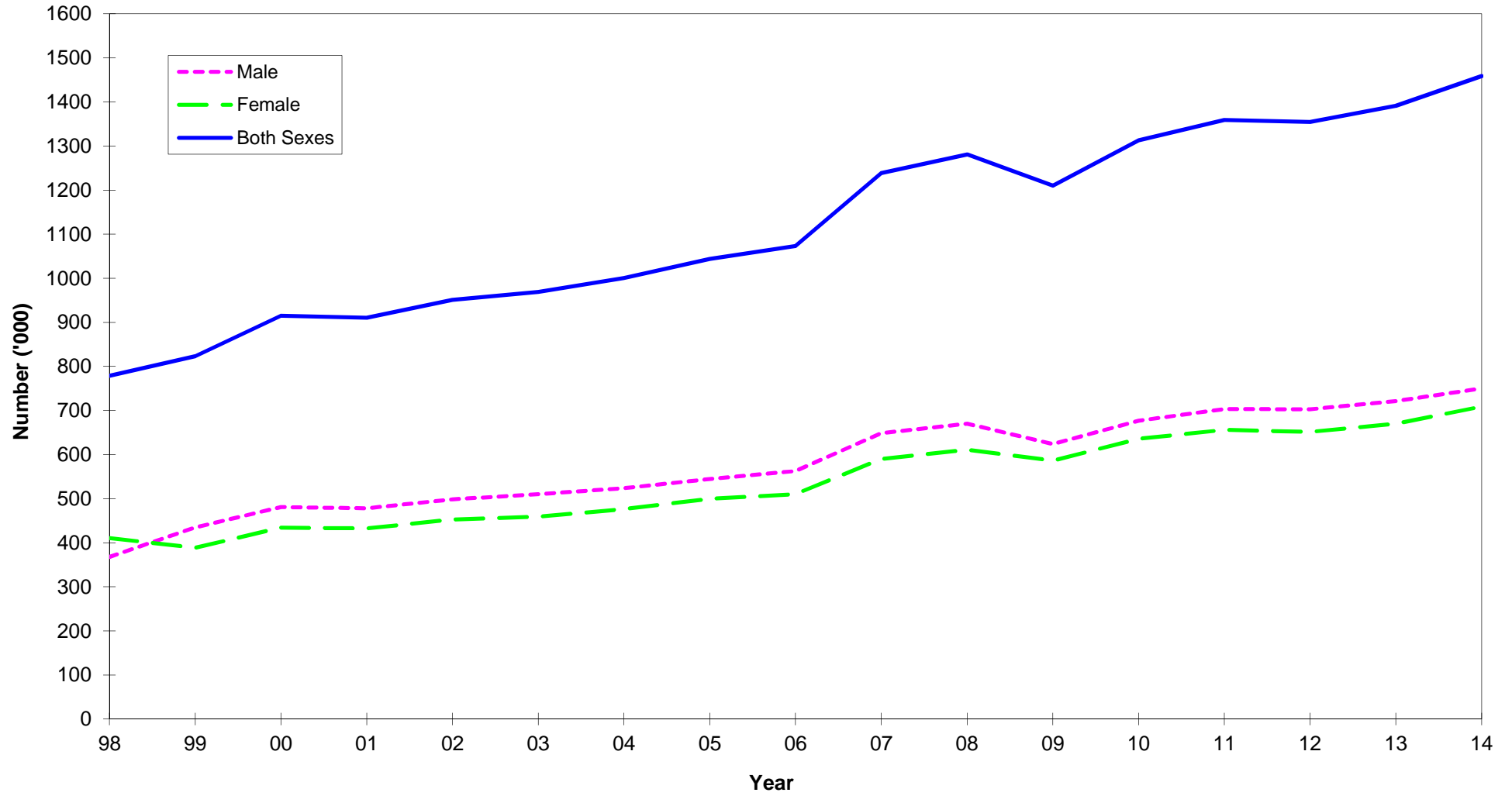
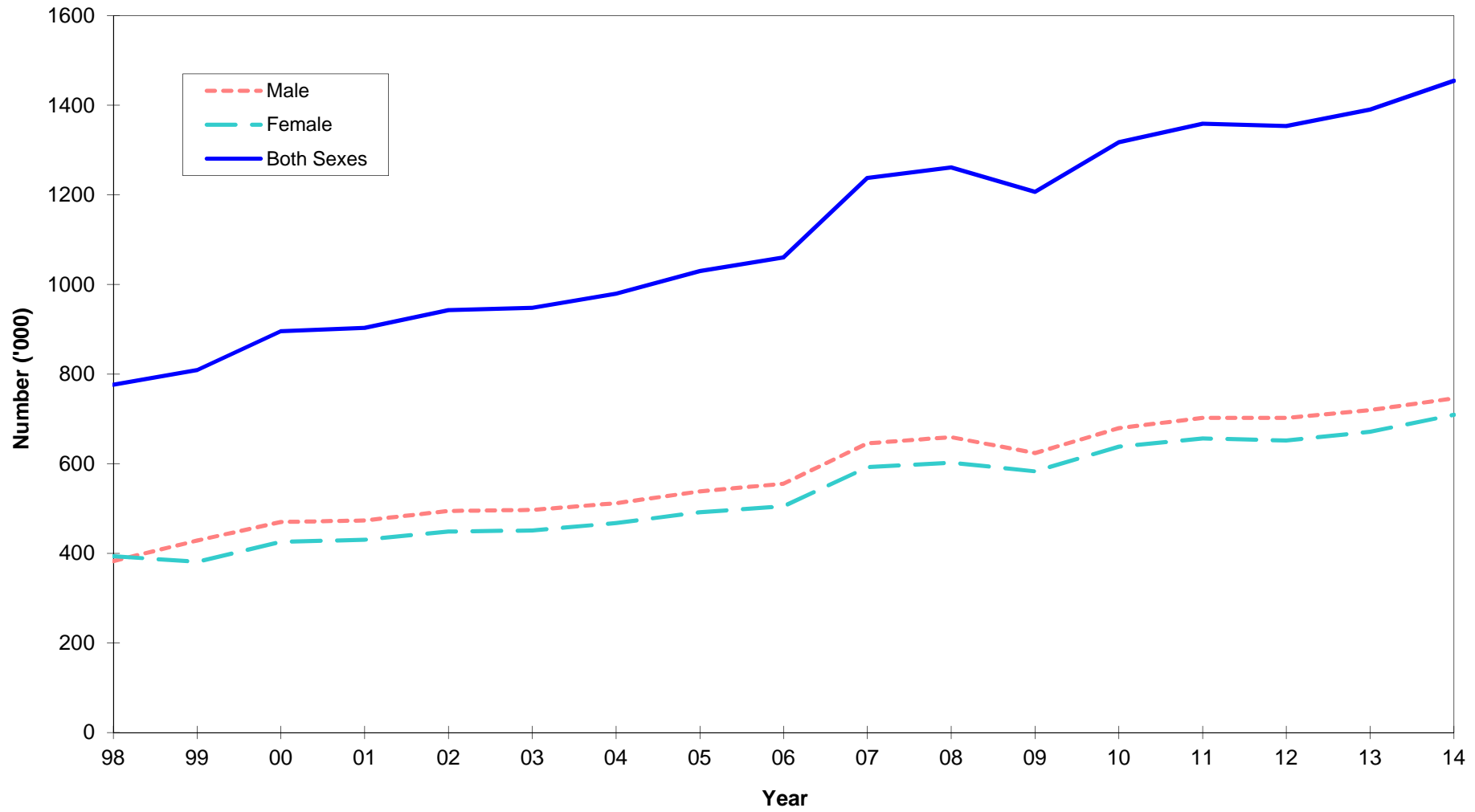
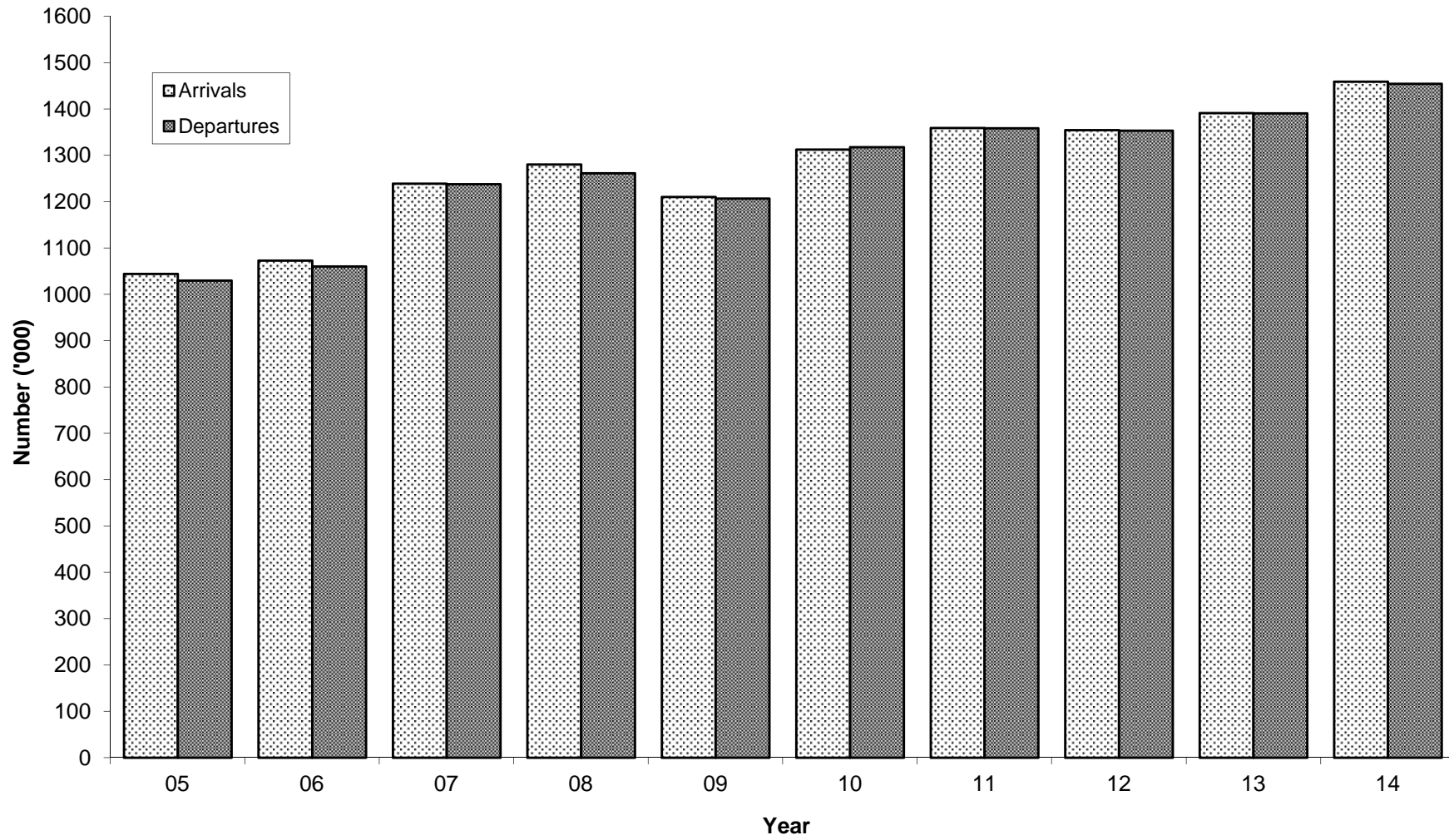


Fig 2 - Passenger traffic: Total departures by sex, 1998 - 2014





**Fig. 3 - Passenger traffic : Total arrivals and total departures, 2005 - 2014**



**Table 10 - Passenger traffic <sup>1</sup> by mode of transport, 1994 - 2014**

Period	Arrivals			Departures			Arrivals minus Departures
	Total	By sea	By air	Total	By sea	By air	
1994	558,136	19,461	538,675	557,575	17,663	539,912	+ 561
1995	579,993	18,854	561,139	578,481	17,895	560,586	+ 1,512
1996	672,070	27,308	644,762	663,501	24,794	638,707	+ 8,569
1997	743,291	29,756	713,535	737,523	27,390	710,133	+ 5,768
1998	778,574	43,706	734,868	775,998	40,809	735,189	+ 2,576
1999	823,085	40,499	782,586	809,233	39,230	770,003	+ 13,852
2000	915,203	34,262	880,941	895,569	33,368	862,201	+ 19,634
2001	910,489	27,847	882,642	903,073	26,313	876,760	+ 7,416
2002	951,090	43,890	907,200	942,876	42,630	900,246	+ 8,214
2003	968,906	31,296	937,610	947,774	28,936	918,838	+ 21,132
2004	1,000,545	32,238	968,307	979,322	28,609	950,713	+ 21,223
2005	1,043,900	35,422	1,008,478	1,029,666	35,478	994,188	+ 14,234
2006	1,072,879	31,713	1,041,166	1,060,074	28,725	1,031,349	+ 12,805
2007	1,238,826	33,373	1,205,453	1,237,747	31,001	1,206,746	+ 1,079
2008	1,280,640	48,311	1,232,329	1,261,182	47,494	1,213,688	+ 19,458
2009	1,210,005	54,396	1,155,609	1,206,550	49,005	1,157,545	+ 3,455
2010	1,312,700	57,576	1,255,124	1,317,581	63,549	1,254,032	- 4,881
2011	1,358,951	54,841	1,304,110	1,358,562	52,356	1,306,206	+ 389
2012	1,354,589	45,947	1,308,642	1,353,618	48,258	1,305,360	+ 971
2013	1,391,295	39,558	1,351,737	1,390,467	40,643	1,349,824	+ 828
2014 <sup>2</sup>	1,458,896	30,612	1,428,284	1,454,657	30,537	1,424,120	+ 4,239
2014:1st Qr.	372,251	19,415	352,836	400,014	19,616	380,398	- 27,763
2nd Qr.	321,582	3,726	317,856	325,911	3,610	322,301	- 4,329
3rd Qr.	338,782	1,463	337,319	334,448	1,430	333,018	+ 4,334
4th Qr.	426,281	6,008	420,273	394,284	5,881	388,403	+ 31,997

<sup>1</sup> Includes traffic between Island of Mauritius and Rodrigues. Figures also include cruise travellers, i.e., passengers and crews of cruise ships.

<sup>2</sup> Provisional

**Table 11 - Passenger traffic <sup>1</sup> by month, 2011 - 2014 <sup>2</sup>**

Month	Arrivals				Departures				Excess of arrivals over departures			
	2011	2012	2013	2014	2011	2012	2013	2014	2011	2012	2013	2014
January	140,898	141,537	133,204	137,550	163,294	161,618	155,872	157,037	- 22,396	- 20,081	- 22,668	- 19,487
February	107,189	109,705	107,135	109,082	105,877	110,455	107,928	111,059	1,312	- 750	- 793	- 1,977
March	113,364	111,257	121,963	125,619	120,954	115,750	121,410	131,918	- 7,590	- 4,493	553	- 6,299
April	112,027	115,656	111,692	123,335	109,440	116,514	115,749	118,653	2,587	- 858	- 4,057	4,682
May	95,129	97,676	102,030	107,890	102,756	105,415	111,679	117,374	- 7,627	- 7,739	- 9,649	- 9,484
June	84,688	81,335	83,356	90,357	83,662	78,968	80,757	89,884	1,026	2,367	2,599	473
July	116,429	111,572	113,264	117,420	105,168	100,158	101,216	104,105	11,261	11,414	12,048	13,315
August	102,159	100,129	110,440	117,101	108,437	108,930	118,002	126,958	- 6,278	- 8,801	- 7,562	- 9,857
September	92,166	93,423	100,628	104,261	92,002	94,603	101,186	103,385	164	- 1,180	- 558	876
October	120,083	118,782	123,663	132,842	117,131	112,103	117,898	124,702	2,952	6,679	5,765	8,140
November	120,253	117,217	122,351	128,252	117,011	116,961	120,743	129,282	3,242	256	1,608	- 1,030
December	154,566	156,300	161,569	165,187	132,830	132,143	138,027	140,300	21,736	24,157	23,542	24,887
<b>Whole Year</b>	<b>1,358,951</b>	<b>1,354,589</b>	<b>1,391,295</b>	<b>1,458,896</b>	<b>1,358,562</b>	<b>1,353,618</b>	<b>1,390,467</b>	<b>1,454,657</b>	<b>+ 389</b>	<b>+ 971</b>	<b>+ 828</b>	<b>+ 4,239</b>

<sup>1</sup> Includes traffic between Island of Mauritius and Rodrigues. Figures also include cruise travellers, i.e., passengers and crews of cruise ships.

<sup>2</sup> Provisional

**Table 12 - Arrivals <sup>1</sup> by country of original embarkation, 2009 - 2014**

Country of original embarkation	2009	2010	2011	2012	2013	2014 <sup>3</sup>
Australia	16,859	21,438	20,265	22,404	28,827	23,860
France	261,716	273,903	279,027	274,976	257,080	251,278
Germany	43,157	42,668	45,194	41,822	40,815	38,498
Hong Kong SAR <sup>2</sup>	22,310	28,161	30,262	25,307	22,028	19,623
India	53,487	70,138	75,268	80,325	83,193	79,597
Italy	46,403	50,884	46,198	24,333	15,742	13,054
Kenya	4,926	6,396	8,582	9,856	9,609	9,520
Malagasy Rep.	21,480	26,363	28,870	31,913	31,467	30,535
Malaysia	NA	NA	NA	NA	15,564	16,767
People's Rep. of China	NA	NA	NA	NA	29,946	51,129
Reunion Island	240,369	268,943	272,452	257,612	256,149	258,896
Rodrigues	53,426	60,662	64,564	67,745	69,848	69,660
Russian Federation	NA	NA	NA	NA	604	835
Seychelles	22,702	24,557	17,794	13,448	18,594	18,753
Singapore	16,501	21,749	23,630	22,403	15,381	12,574
S. Africa, Rep. of	130,776	138,838	147,295	144,510	154,724	161,744
Switzerland	10,404	14,806	17,765	15,791	7,747	4,244
United Arab Emirates	NA	NA	NA	NA	230,039	281,497
United Kingdom	108,441	103,588	107,206	96,711	87,197	94,136
Other & not stated	157,048	159,606	174,579	225,433	16,741	22,696
<b>All Countries</b>	<b>1,210,005</b>	<b>1,312,700</b>	<b>1,358,951</b>	<b>1,354,589</b>	<b>1,391,295</b>	<b>1,458,896</b>

<sup>1</sup> Figures on passenger arrivals include cruise travellers, i.e., passengers and crews of cruise ships which numbered 34117, 38061, 35172, 27763, 23180 and 24105 for 2009, 2010, 2011, 2012, 2013 and 2014 respectively, in accordance with the recommendations of the World Tourism Organisation.

<sup>2</sup> Special Administrative Region of China

<sup>3</sup> Provisional

NA - Not available

**Table 13 - Departures <sup>1</sup> by country of final destination, 2009 - 2014**

<b>Country of final destination</b>	<b>2009</b>	<b>2010</b>	<b>2011</b>	<b>2012</b>	<b>2013</b>	<b>2014 <sup>3</sup></b>
Australia	18,164	18,300	25,541	22,785	23,118	24,255
France	274,659	284,197	291,778	285,448	265,791	260,609
Germany	43,023	44,132	43,704	44,984	40,450	38,223
Hong Kong SAR <sup>2</sup>	21,795	27,367	26,287	20,821	21,072	19,008
India	53,120	68,052	74,296	78,464	77,629	73,653
Italy	47,626	51,220	47,729	25,316	16,217	12,872
Kenya	3,430	4,431	6,960	8,350	9,773	9,021
Malagasy Rep.	22,805	26,338	30,286	32,940	33,590	31,307
Malaysia	NA	NA	NA	NA	15,932	21,427
People's Rep. of China	NA	NA	NA	NA	27,864	51,947
Reunion Island	224,128	258,359	262,721	248,892	257,235	260,272
Rodrigues	52,981	60,573	65,423	67,527	69,762	69,514
Russian Federation	NA	NA	NA	NA	NA	642
Seychelles	30,978	31,958	27,423	18,587	16,190	17,714
Singapore	15,542	17,868	17,428	18,229	14,898	5,991
S. Africa, Rep. of	117,004	132,040	136,619	141,989	154,143	155,521
Switzerland	9,234	13,013	17,131	11,885	7,690	4,501
United Arab Emirates	NA	NA	NA	NA	234,153	287,972
United Kingdom	111,143	105,368	105,433	96,831	89,544	94,091
Other & not stated	160,918	174,365	179,803	230,570	15,416	16,117
<b>All Countries</b>	<b>1,206,550</b>	<b>1,317,581</b>	<b>1,358,562</b>	<b>1,353,618</b>	<b>1,390,467</b>	<b>1,454,657</b>

<sup>1</sup> Figures on passenger departures include cruise travellers, i.e., passengers and crews of cruise ships which numbered 31154, 40834, 34735, 27953, 23386 and 24208 for 2009, 2010, 2011, 2012, 2013 and 2014 respectively, in accordance with the recommendations of the World Tourism Organisation.

<sup>2</sup> Special Administrative Region of China

<sup>3</sup> Provisional

NA Not available

**Table 14 - Monthly passenger traffic <sup>1</sup> by type of passenger, 2014 <sup>2</sup>**

Type of passenger	Jan	Feb	Mar	Apr	May	Jun	Jul	Aug	Sep	Oct	Nov	Dec	Whole Year
<b>Arrivals</b>													
Visitors <sup>3</sup>	98,889	83,756	93,458	90,502	79,681	61,498	83,456	79,787	75,813	102,603	93,528	123,429	1,066,400
- On holiday	90,516	74,443	81,580	83,671	72,676	54,200	76,557	72,841	68,486	94,587	84,466	115,501	969,524
- On business & Conference	2,879	2,964	3,837	3,083	4,146	4,297	3,259	3,605	3,869	4,485	5,065	3,298	44,787
- In transit	5,317	6,142	7,712	3,479	2,535	2,336	3,502	2,982	3,259	3,189	3,571	4,420	48,444
- Other and not stated	177	207	329	269	324	665	138	359	199	342	426	210	3,645
Mauritian residents	33,372	19,521	25,141	28,121	24,596	25,312	30,187	33,389	24,490	26,101	29,244	35,893	335,367
Others <sup>4</sup>	5,289	5,805	7,020	4,712	3,613	3,547	3,777	3,925	3,958	4,138	5,480	5,865	57,129
<b>Total arrivals</b>	<b>137,550</b>	<b>109,082</b>	<b>125,619</b>	<b>123,335</b>	<b>107,890</b>	<b>90,357</b>	<b>117,420</b>	<b>117,101</b>	<b>104,261</b>	<b>132,842</b>	<b>128,252</b>	<b>165,187</b>	<b>1,458,896</b>
<b>Departures</b>													
Visitors <sup>3</sup>	121,480	83,539	99,214	84,912	89,133	61,432	70,723	90,490	71,269	95,348	94,375	95,932	1,057,847
Mauritian residents	29,115	20,818	24,570	27,791	23,889	23,909	28,442	31,122	27,149	24,263	28,919	36,595	326,582
Others <sup>4</sup>	6,442	6,702	8,134	5,950	4,352	4,543	4,940	5,346	4,967	5,091	5,988	7,773	70,228
<b>Total departures</b>	<b>157,037</b>	<b>111,059</b>	<b>131,918</b>	<b>118,653</b>	<b>117,374</b>	<b>89,884</b>	<b>104,105</b>	<b>126,958</b>	<b>103,385</b>	<b>124,702</b>	<b>129,282</b>	<b>140,300</b>	<b>1,454,657</b>

<sup>1</sup> Including traffic between Island of Mauritius and Rodrigues

<sup>2</sup> Provisional

<sup>3</sup> Including non-residents who left the airport but stayed in the country for less than a day

<sup>4</sup> Including contract workers

**Table 15 - Passenger traffic <sup>1</sup> by type of passenger, 2005 - 2014 <sup>2</sup>**

Type of passenger	2005	2006	2007	2008	2009	2010	2011	2012	2013	2014
<b>Arrivals</b>										
Visitors <sup>3</sup>	781,572	806,652	932,782	970,482	889,999	956,327	982,566	984,104	1,015,285	1,066,400
- On holiday	692,084	712,620	818,714	821,325	819,739	865,562	897,786	896,977	923,247	969,524
- On business & Conference	30,164	32,511	34,633	37,521	29,025	36,081	40,730	42,567	43,482	44,787
- In transit	48,299	47,966	61,186	82,683	24,871	42,243	40,948	41,744	44,863	48,444
- Other & not stated	11,025	13,555	18,249	28,953	16,364	12,441	3,102	2,816	3,693	3,645
Mauritian residents	239,389	242,330	277,369	283,792	253,374	278,987	292,018	315,795	328,628	335,367
Others <sup>4</sup>	22,939	23,897	28,675	26,366	66,632	77,386	84,367	54,690	47,382	57,129
<b>Total arrivals</b>	<b>1,043,900</b>	<b>1,072,879</b>	<b>1,238,826</b>	<b>1,280,640</b>	<b>1,210,005</b>	<b>1,312,700</b>	<b>1,358,951</b>	<b>1,354,589</b>	<b>1,391,295</b>	<b>1,458,896</b>
<b>Departures</b>										
Visitors <sup>3</sup>	773,951	801,702	942,374	960,279	908,253	972,791	997,507	971,157	1,009,562	1,057,847
Mauritian residents	236,457	241,138	274,786	280,300	248,945	272,145	284,478	304,122	319,900	326,582
Others <sup>4</sup>	19,258	17,234	20,587	20,603	49,352	72,645	76,577	78,339	61,005	70,228
<b>Total departures</b>	<b>1,029,666</b>	<b>1,060,074</b>	<b>1,237,747</b>	<b>1,261,182</b>	<b>1,206,550</b>	<b>1,317,581</b>	<b>1,358,562</b>	<b>1,353,618</b>	<b>1,390,467</b>	<b>1,454,657</b>

<sup>1</sup> Including traffic between Island of Mauritius and Rodrigues

<sup>2</sup> Provisional

<sup>3</sup> Including non-residents who left the airport but stayed in the country for less than a day

<sup>4</sup> Including contract workers

**Table 16 - Total arrivals <sup>1</sup> by age and sex, 2013 & 2014 <sup>2</sup>**

Age (years)	2013			2014			January - June 2014			July - December 2014		
	Both Sexes	Male	Female	Both Sexes	Male	Female	Both Sexes	Male	Female	Both Sexes	Male	Female
Under 1	6,675	3,454	3,221	6,917	3,483	3,434	3,318	1,686	1,632	3,599	1,797	1,802
1 - 4	37,076	18,624	18,452	38,289	19,410	18,879	18,617	9,400	9,217	19,672	10,010	9,662
5 - 9	48,826	24,526	24,300	51,349	26,128	25,221	23,283	11,824	11,459	28,066	14,304	13,762
10 - 14	48,620	24,478	24,142	50,804	25,697	25,107	21,946	10,966	10,980	28,858	14,731	14,127
15 - 19	41,616	19,810	21,806	43,621	20,828	22,793	18,430	8,688	9,742	25,191	12,140	13,051
20 - 24	70,550	29,982	40,568	72,614	29,884	42,730	33,692	13,629	20,063	38,922	16,255	22,667
25 - 29	146,405	68,278	78,127	157,664	72,523	85,141	72,720	33,592	39,128	84,944	38,931	46,013
30 - 34	144,558	75,470	69,088	151,540	78,460	73,080	71,103	36,777	34,326	80,437	41,683	38,754
35 - 39	129,783	69,544	60,239	132,888	70,465	62,423	64,180	33,880	30,300	68,708	36,585	32,123
40 - 44	128,243	70,993	57,250	130,658	71,686	58,972	63,573	35,150	28,423	67,085	36,536	30,549
45 - 49	127,589	69,962	57,627	130,992	70,864	60,128	63,074	34,380	28,694	67,918	36,484	31,434
50 - 54	114,382	61,233	53,149	123,052	65,382	57,670	58,517	31,122	27,395	64,535	34,260	30,275
55 - 59	93,934	49,752	44,182	99,399	52,247	47,152	47,628	25,095	22,533	51,771	27,152	24,619
60 - 64	77,003	40,894	36,109	82,292	43,856	38,436	39,816	21,376	18,440	42,476	22,480	19,996
65 - 69	51,513	27,648	23,865	55,679	29,894	25,785	27,713	14,876	12,837	27,966	15,018	12,948
70 & over	47,585	25,551	22,034	53,030	28,321	24,709	26,727	14,469	12,258	26,303	13,852	12,451
Not stated	76,937	41,246	35,691	78,108	41,080	37,028	39,496	21,047	18,449	38,612	20,033	18,579
<b>All ages</b>	<b>1,391,295</b>	<b>721,445</b>	<b>669,850</b>	<b>1,458,896</b>	<b>750,208</b>	<b>708,688</b>	<b>693,833</b>	<b>357,957</b>	<b>335,876</b>	<b>765,063</b>	<b>392,251</b>	<b>372,812</b>

<sup>1</sup> Include arrivals from Rodrigues and cruise travellers, i.e., passengers and crews of cruise ships which numbered 23180 and 24105 for 2013 and 2014 respectively, in accordance with the recommendations of the World Tourism Organisation.

<sup>2</sup> Provisional



**Table 17 - Total departures <sup>1</sup> by age and sex, 2013 & 2014 <sup>2</sup>**

Age (years)	2013			2014			January - June 2014			July - December 2014		
	Both Sexes	Male	Female	Both Sexes	Male	Female	Both Sexes	Male	Female	Both Sexes	Male	Female
Under 1	6,384	3,287	3,097	6,589	3,328	3,261	3,497	1,774	1,723	3,092	1,554	1,538
1 - 4	37,200	18,738	18,462	38,147	19,295	18,852	20,577	10,377	10,200	17,570	8,918	8,652
5 - 9	49,136	24,687	24,449	51,318	26,068	25,250	25,799	13,092	12,707	25,519	12,976	12,543
10 - 14	48,953	24,709	24,244	50,821	25,638	25,183	24,176	12,040	12,136	26,645	13,598	13,047
15 - 19	42,299	20,126	22,173	44,130	21,042	23,088	19,595	9,240	10,355	24,535	11,802	12,733
20 - 24	69,000	28,704	40,296	70,917	28,512	42,405	34,241	13,662	20,579	36,676	14,850	21,826
25 - 29	144,766	67,249	77,517	155,708	71,105	84,603	74,115	33,997	40,118	81,593	37,108	44,485
30 - 34	145,166	75,548	69,618	151,919	78,294	73,625	74,227	38,121	36,106	77,692	40,173	37,519
35 - 39	129,797	69,555	60,242	132,392	70,281	62,111	66,984	35,343	31,641	65,408	34,938	30,470
40 - 44	129,435	71,657	57,778	131,323	71,911	59,412	67,316	36,912	30,404	64,007	34,999	29,008
45 - 49	126,761	69,753	57,008	129,763	70,410	59,353	65,936	35,898	30,038	63,827	34,512	29,315
50 - 54	115,192	61,610	53,582	124,074	65,692	58,382	62,472	33,048	29,424	61,602	32,644	28,958
55 - 59	93,112	49,349	43,763	98,430	51,866	46,564	49,906	26,210	23,696	48,524	25,656	22,868
60 - 64	77,415	41,078	36,337	82,586	43,883	38,703	42,310	22,549	19,761	40,276	21,334	18,942
65 - 69	51,404	27,548	23,856	55,419	29,719	25,700	29,324	15,666	13,658	26,095	14,053	12,042
70 & over	47,630	25,539	22,091	53,141	28,427	24,714	28,785	15,473	13,312	24,356	12,954	11,402
Not stated	76,817	40,115	36,702	77,980	40,187	37,793	36,665	19,471	17,194	41,315	20,716	20,599
<b>All ages</b>	<b>1,390,467</b>	<b>719,252</b>	<b>671,215</b>	<b>1,454,657</b>	<b>745,658</b>	<b>708,999</b>	<b>725,925</b>	<b>372,873</b>	<b>353,052</b>	<b>728,732</b>	<b>372,785</b>	<b>355,947</b>

<sup>1</sup> Include departures to Rodrigues and cruise travellers, i.e., passengers and crews of cruise ships which numbered 23386 and 24208 for 2013 and 2014 respectively, in accordance with the recommendations of the World Tourism Organisation.

<sup>2</sup> Provisional

**Table 18 - Excess of arrivals over departures <sup>1</sup> by age and sex, 2013 & 2014 <sup>2</sup>**

Age (years)	2013			2014			January - June 2014			July - December 2014		
	Both Sexes	Male	Female	Both Sexes	Male	Female	Both Sexes	Male	Female	Both Sexes	Male	Female
Under 1	291	167	124	328	155	173	-179	-88	-91	507	243	264
1 - 4	-124	-114	-10	142	115	27	-1,960	-977	-983	2,102	1,092	1,010
5 - 9	-310	-161	-149	31	60	-29	-2,516	-1,268	-1,248	2,547	1,328	1,219
10 - 14	-333	-231	-102	-17	59	-76	-2,230	-1,074	-1,156	2,213	1,133	1,080
15 - 19	-683	-316	-367	-509	-214	-295	-1,165	-552	-613	656	338	318
20 - 24	1,550	1,278	272	1,697	1,372	325	-549	-33	-516	2,246	1,405	841
25 - 29	1,639	1,029	610	1,956	1,418	538	-1,395	-405	-990	3,351	1,823	1,528
30 - 34	-608	-78	-530	-379	166	-545	-3,124	-1,344	-1,780	2,745	1,510	1,235
35 - 39	-14	-11	-3	496	184	312	-2,804	-1,463	-1,341	3,300	1,647	1,653
40 - 44	-1,192	-664	-528	-665	-225	-440	-3,743	-1,762	-1,981	3,078	1,537	1,541
45 - 49	828	209	619	1,229	454	775	-2,862	-1,518	-1,344	4,091	1,972	2,119
50 - 54	-810	-377	-433	-1,022	-310	-712	-3,955	-1,926	-2,029	2,933	1,616	1,317
55 - 59	822	403	419	969	381	588	-2,278	-1,115	-1,163	3,247	1,496	1,751
60 - 64	-412	-184	-228	-294	-27	-267	-2,494	-1,173	-1,321	2,200	1,146	1,054
65 - 69	109	100	9	260	175	85	-1,611	-790	-821	1,871	965	906
70 & over	-45	12	-57	-111	-106	-5	-2,058	-1,004	-1,054	1,947	898	1,049
Not stated	120	1,131	-1,011	128	893	-765	2,831	1,576	1,255	-2,703	-683	-2,020
<b>All ages</b>	<b>828</b>	<b>2,193</b>	<b>-1,365</b>	<b>4,239</b>	<b>4,550</b>	<b>-311</b>	<b>-32,092</b>	<b>-14,916</b>	<b>-17,176</b>	<b>36,331</b>	<b>19,466</b>	<b>16,865</b>

<sup>1</sup> Including traffic between Island of Mauritius and Rodrigues

<sup>2</sup> Provisional

**Table 19 - Arrivals <sup>1</sup> of Mauritian residents by age and sex, 2013 & 2014 <sup>2</sup>**

Age (years)	2013			2014			January - June 2014			July - December 2014		
	Both Sexes	Male	Female	Both Sexes	Male	Female	Both Sexes	Male	Female	Both Sexes	Male	Female
Under 1	737	420	317	765	393	372	361	199	162	404	194	210
1 - 4	4,340	2,207	2,133	4,208	2,148	2,060	1,879	973	906	2,329	1,175	1,154
5 - 9	5,939	2,973	2,966	6,026	3,032	2,994	2,493	1,265	1,228	3,533	1,767	1,766
10 - 14	6,570	3,314	3,256	6,879	3,491	3,388	2,874	1,459	1,415	4,005	2,032	1,973
15 - 19	7,950	3,820	4,130	8,125	3,991	4,134	3,733	1,808	1,925	4,392	2,183	2,209
20 - 24	16,838	8,417	8,421	16,716	8,189	8,527	7,416	3,693	3,723	9,300	4,496	4,804
25 - 29	21,645	10,963	10,682	22,016	11,192	10,824	10,083	5,099	4,984	11,933	6,093	5,840
30 - 34	27,608	14,714	12,894	27,059	14,625	12,434	12,752	6,937	5,815	14,307	7,688	6,619
35 - 39	29,930	16,084	13,846	31,039	16,539	14,500	14,710	7,920	6,790	16,329	8,619	7,710
40 - 44	28,069	17,042	11,027	27,885	16,655	11,230	13,330	8,197	5,133	14,555	8,458	6,097
45 - 49	28,431	17,035	11,396	29,309	17,400	11,909	13,755	8,339	5,416	15,554	9,061	6,493
50 - 54	24,089	13,606	10,483	25,480	14,553	10,927	11,947	6,997	4,950	13,533	7,556	5,977
55 - 59	20,712	11,219	9,493	21,118	11,306	9,812	9,833	5,382	4,451	11,285	5,924	5,361
60 - 64	17,186	9,438	7,748	18,742	10,443	8,299	8,792	5,016	3,776	9,950	5,427	4,523
65 - 69	9,882	5,460	4,422	10,690	5,893	4,797	5,032	2,819	2,213	5,658	3,074	2,584
70 & over	8,854	4,706	4,148	9,650	5,084	4,566	4,466	2,427	2,039	5,184	2,657	2,527
Not stated	69,848	37,348	32,500	69,660	36,435	33,225	32,607	17,259	15,348	37,053	19,176	17,877
<b>All ages</b>	<b>328,628</b>	<b>178,766</b>	<b>149,862</b>	<b>335,367</b>	<b>181,369</b>	<b>153,998</b>	<b>156,063</b>	<b>85,789</b>	<b>70,274</b>	<b>179,304</b>	<b>95,580</b>	<b>83,724</b>

<sup>1</sup> Including arrivals from Rodrigues

<sup>2</sup> Provisional

**Table 20 - Departures <sup>1</sup> of Mauritian residents by age and sex, 2013 & 2014 <sup>2</sup>**

Age (years)	2013			2014			January - June 2014			July - December 2014		
	Both Sexes	Male	Female	Both Sexes	Male	Female	Both Sexes	Male	Female	Both Sexes	Male	Female
Under 1	658	372	286	701	365	336	337	182	155	364	183	181
1 - 4	4,054	2,091	1,963	3,983	2,021	1,962	1,738	903	835	2,245	1,118	1,127
5 - 9	5,773	2,915	2,858	5,825	2,944	2,881	2,024	1,038	986	3,801	1,906	1,895
10 - 14	6,474	3,280	3,194	6,764	3,405	3,359	2,207	1,092	1,115	4,557	2,313	2,244
15 - 19	8,449	4,049	4,400	8,615	4,284	4,331	3,110	1,546	1,564	5,505	2,738	2,767
20 - 24	16,429	8,148	8,281	16,565	8,074	8,491	7,459	3,787	3,672	9,106	4,287	4,819
25 - 29	20,740	10,451	10,289	21,309	10,719	10,590	10,316	5,208	5,108	10,993	5,511	5,482
30 - 34	26,675	14,115	12,560	26,246	14,189	12,057	13,060	7,181	5,879	13,186	7,008	6,178
35 - 39	29,061	15,473	13,588	30,281	16,082	14,199	14,628	7,930	6,698	15,653	8,152	7,501
40 - 44	27,515	16,776	10,739	27,157	16,253	10,904	13,128	8,143	4,985	14,029	8,110	5,919
45 - 49	27,614	16,584	11,030	28,683	17,093	11,590	13,590	8,275	5,315	15,093	8,818	6,275
50 - 54	23,307	13,264	10,043	24,557	14,015	10,542	11,696	6,819	4,877	12,861	7,196	5,665
55 - 59	19,853	10,839	9,014	20,230	10,951	9,279	9,594	5,242	4,352	10,636	5,709	4,927
60 - 64	16,250	8,992	7,258	17,447	9,836	7,611	8,416	4,780	3,636	9,031	5,056	3,975
65 - 69	9,160	5,037	4,123	9,918	5,434	4,484	4,759	2,631	2,128	5,159	2,803	2,356
70 & over	8,126	4,308	3,818	8,787	4,648	4,139	4,263	2,228	2,035	4,524	2,420	2,104
Not stated	69,762	36,235	33,527	69,514	35,530	33,984	29,769	15,678	14,091	39,745	19,852	19,893
<b>All ages</b>	<b>319,900</b>	<b>172,929</b>	<b>146,971</b>	<b>326,582</b>	<b>175,843</b>	<b>150,739</b>	<b>150,094</b>	<b>82,663</b>	<b>67,431</b>	<b>176,488</b>	<b>93,180</b>	<b>83,308</b>

<sup>1</sup> Including departures to Rodrigues

<sup>2</sup> Provisional

**Table 21 - Excess of arrivals over departures <sup>1</sup> of Mauritian residents by age & sex, 2013 & 2014 <sup>2</sup>**

Age (years)	2013			2014			January - June 2014			July - December 2014		
	Both Sexes	Male	Female	Both Sexes	Male	Female	Both Sexes	Male	Female	Both Sexes	Male	Female
Under 1	79	48	31	64	28	36	24	17	7	40	11	29
1 - 4	286	116	170	225	127	98	141	70	71	84	57	27
5 - 9	166	58	108	201	88	113	469	227	242	-268	-139	-129
10 - 14	96	34	62	115	86	29	667	367	300	-552	-281	-271
15 - 19	-499	-229	-270	-490	-293	-197	623	262	361	-1,113	-555	-558
20 - 24	409	269	140	151	115	36	-43	-94	51	194	209	-15
25 - 29	905	512	393	707	473	234	-233	-109	-124	940	582	358
30 - 34	933	599	334	813	436	377	-308	-244	-64	1,121	680	441
35 - 39	869	611	258	758	457	301	82	-10	92	676	467	209
40 - 44	554	266	288	728	402	326	202	54	148	526	348	178
45 - 49	817	451	366	626	307	319	165	64	101	461	243	218
50 - 54	782	342	440	923	538	385	251	178	73	672	360	312
55 - 59	859	380	479	888	355	533	239	140	99	649	215	434
60 - 64	936	446	490	1,295	607	688	376	236	140	919	371	548
65 - 69	722	423	299	772	459	313	273	188	85	499	271	228
70 & over	728	398	330	863	436	427	203	199	4	660	237	423
Not stated	86	1,113	-1,027	146	905	-759	2,838	1,581	1,257	-2,692	-676	-2,016
<b>All ages</b>	<b>8,728</b>	<b>5,837</b>	<b>2,891</b>	<b>8,785</b>	<b>5,526</b>	<b>3,259</b>	<b>5,969</b>	<b>3,126</b>	<b>2,843</b>	<b>2,816</b>	<b>2,400</b>	<b>416</b>

<sup>1</sup> Including traffic between Island of Mauritius and Rodrigues.

<sup>2</sup> Provisional

**Table 22 - Arrivals and departures of Mauritian residents<sup>1</sup> by country of embarkation and disembarkation, 2012 - 2014<sup>2</sup>**

Country of embarkation/ disembarkation	Arrivals			Departures			Excess of arrivals over departures		
	2012	2013	2014	2012	2013	2014	2012	2013	2014
Australia	9,282	9,467	8,856	9,251	9,045	8,651	31	422	205
France	38,872	37,273	36,560	35,939	35,518	34,743	2,933	1,755	1,817
Germany	2,775	2,264	2,041	3,428	1,904	1,622	-653	360	419
Hong Kong SAR <sup>3</sup>	9,548	8,716	6,770	8,359	8,353	6,684	1,189	363	86
India	25,792	26,306	23,713	24,393	25,028	23,019	1,399	1,278	694
Italy	2,959	2,502	2,574	2,876	2,507	2,357	83	-5	217
Kenya	3,016	3,389	3,193	3,074	3,457	3,281	-58	-68	-88
Rodrigues	67,745	69,848	69,660	67,527	69,762	69,514	218	86	146
Reunion	38,638	39,730	39,625	36,615	39,359	38,375	2,023	371	1,250
Singapore	11,672	7,872	5,946	10,227	7,916	3,159	1,445	-44	2,787
S. Africa, Rep of	23,571	26,134	27,982	22,604	25,693	27,838	967	441	144
Switzerland	2,179	228	148	1,003	124	94	1,176	104	54
United Kingdom	25,998	22,990	22,051	23,725	21,580	19,669	2,273	1,410	2,382
Other countries	53,748	71,909	86,248	55,101	69,654	87,576	-1,353	2,255	-1,328
<b>All Countries</b>	<b>315,795</b>	<b>328,628</b>	<b>335,367</b>	<b>304,122</b>	<b>319,900</b>	<b>326,582</b>	<b>11,673</b>	<b>8,728</b>	<b>8,785</b>

<sup>1</sup> Including traffic between Island of Mauritius and Rodrigues

<sup>2</sup> Provisional

<sup>3</sup> Special Administrative Region of China

### III - TOURISM

#### Definition and notes

1. Definition of tourist

- (a) Prior to 1964, a tourist has been defined as a non-resident staying in Mauritius for more than 24 hours but less than 6 months.
- (b) From 1964 to 2008, a tourist is defined as a non-resident staying in Mauritius for more than 24 hours but less than a year and is not involved in any gainful occupation.
- (c) As from 2009, a tourist is defined as a non-resident staying overnight but less than a year, and who has no employer-employee relationship with a resident.

The figures for the three periods are nevertheless comparable because of the small number of tourists staying for more than 6 months.

2. Visitors include the following:

- (a) Tourists as defined above and
- (b) Excursionists or same day visitors, i.e non-residents, other than those who do not leave the airport/ships, who depart on the same day they arrived.

3. Method of compilation

*Sources of data*

The main source of data for the compilation of passenger traffic statistics is the Passport and Immigration Office, which maintains a database of all passengers entering and leaving the country. The data are collected from the passport of travellers, disembarkation cards filled in by non-residents and questions put to non-residents entering the country. At the end of every month, passenger traffic for that particular month is downloaded and supplied to the Statistics Unit of the Ministry of Tourism and Leisure within fifteen days. Additional data on cruises are supplied by the Mauritius Ports Authority.

Prior to 1994, figures have been compiled from a 10% sample of embarkation and disembarkation cards filled in by passengers. However, as from January 1994, they are based on movements of all passengers. Thus disaggregated data for 1994 onwards may not be strictly comparable to previous series.

### *Tourism earnings*

The Bank of Mauritius is responsible for the estimation of tourism earnings based on monthly statements of Inward and Outward Remittances of Commercial Banks.

### *Monthly Occupancy Rates*

All hotels are contacted by mail and/or phone at the end of every month on room / bed nights available and rented during the month for the calculation of room and bed occupancy.

#### 4. Tourist nights

Prior to 2010, tables on tourist nights show the number of nights spent by tourists who were present in the country during the period under review. Thus the number of tourist nights for 2009 include:

- (a) nights spent during 2009 by tourists who arrived prior to 1st January 2009; and
- (b) nights during 2009 by tourists who arrived during the same year.

However, nights spent after 31st December 2009 by tourists who arrived in 2009 are excluded.

As from 2010, tourist night for year Y refer to tourist nights spent by tourists departing in year Y.

#### 5. Large hotels

Large hotels are well established beach hotels of over 80 rooms.



**Table 23 -Tourist arrivals by mode of transport and tourist nights spent during period, 1998 - 2014**

Period	Tourist arrivals			Tourist nights spent during period	% change over previous year	
	Sea	Air	Total		Tourist arrivals	Tourist nights
1998	17,109	541,086	558,195	5,567,889	+ 4.1	+ 2.1
1999	13,852	564,233	578,085	5,729,464	+ 3.6	+ 2.9
2000	10,677	645,776	656,453	6,412,876	+ 13.6	+ 11.9
2001	10,532	649,786	660,318	6,527,800	+ 0.6	+ 1.8
2002	14,180	667,468	681,648	6,768,870	+ 3.2	+ 3.7
2003	12,155	689,863	702,018	6,952,313	+ 3.0	+ 2.7
2004	11,390	707,471	718,861	7,118,603	+ 2.4	+ 2.4
2005	13,321	747,742	761,063	7,498,251	+ 5.9	+ 5.3
2006	13,249	775,027	788,276	7,760,679	+ 3.6	+ 3.5
2007	12,163	894,808	906,971	8,986,934	+ 15.1	+ 15.8
2008	15,961	914,495	930,456	9,218,625	+ 2.6	+ 2.6
2009	23,265	848,091	871,356	8,639,304	- 6.4	- 6.3
2010 <sup>1</sup>	23,648	911,179	934,827	9,336,446	+ 7.3	...
2011	25,047	939,595	964,642	9,494,297	+ 3.2	+ 1.7
2012	16,930	948,511	965,441	10,043,683	+ 0.1	+ 5.8
2013	13,284	979,822	993,106	10,667,071	+ 2.9	+ 6.2
2014 <sup>2</sup>	3,888	1,035,080	1,038,968	11,266,346	+ 4.6	+ 5.6

<sup>1</sup> Revised as from 2010; a new methodology for computation of tourist nights is being used. "Tourist nights" for year Y refer to nights spent by tourists departing in year Y.

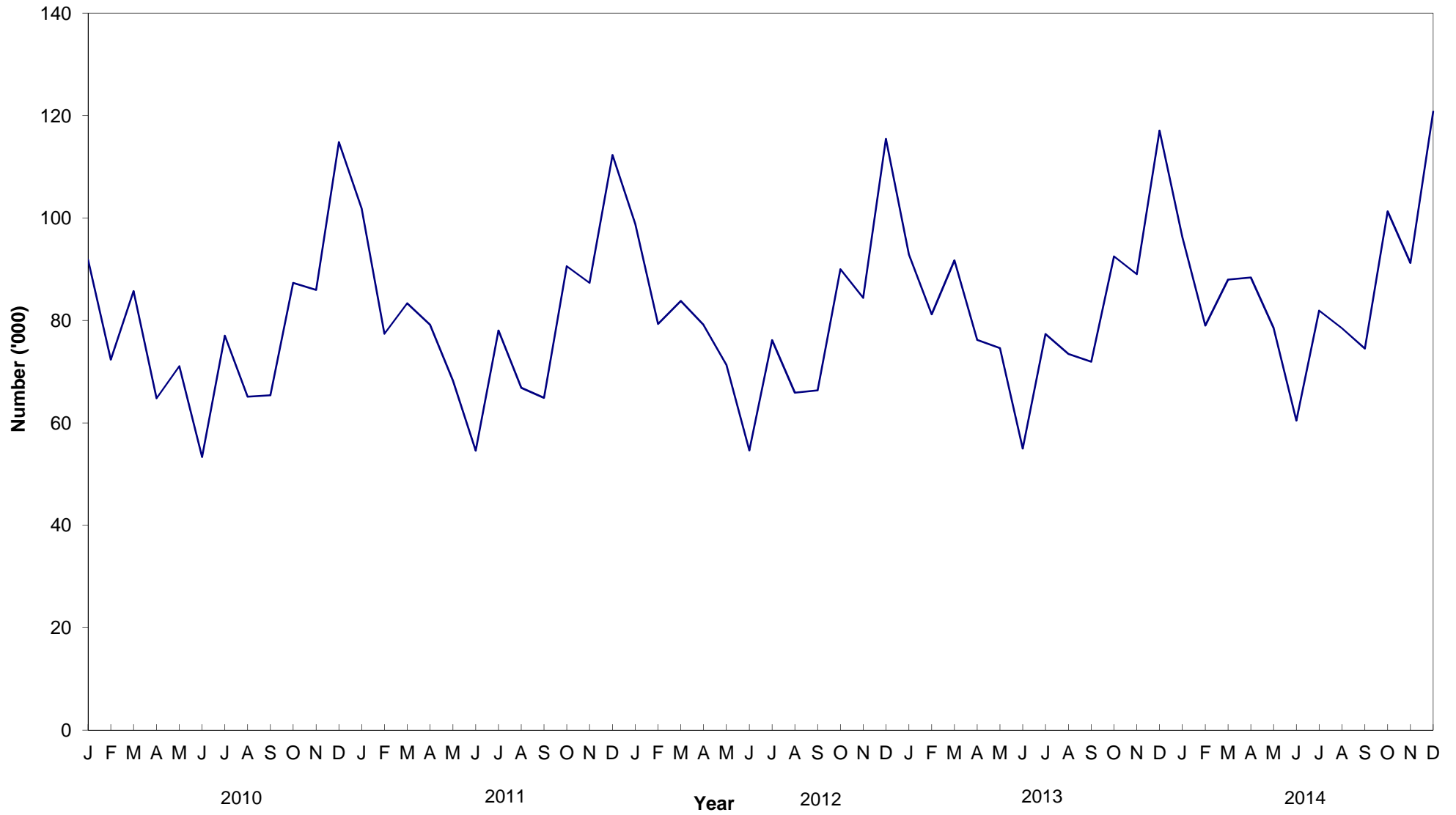
<sup>2</sup> Provisional

**Table 24 - Tourist arrivals by month of arrival, 2005 - 2014**

<b>Month of arrival</b>	<b>2005</b>	<b>2006</b>	<b>2007</b>	<b>2008</b>	<b>2009</b>	<b>2010</b>	<b>2011</b>	<b>2012</b>	<b>2013</b>	<b>2014 <sup>1</sup></b>
January	73,053	86,218	91,628	94,579	88,591	91,857	101,887	98,837	92,894	96,332
February	56,367	64,894	72,338	77,763	67,892	72,366	77,390	79,331	81,185	78,984
March	67,931	58,136	79,965	89,152	76,425	85,748	83,349	83,827	91,759	87,977
April	52,971	57,361	70,297	72,837	68,969	64,797	79,173	79,137	76,223	88,404
May	55,995	50,773	65,301	67,705	64,761	71,055	68,214	71,396	74,596	78,555
June	42,994	42,755	52,584	53,722	46,866	53,327	54,591	54,625	55,007	60,445
July	65,462	65,540	77,225	81,169	71,872	77,009	78,034	76,166	77,374	81,935
August	60,746	64,307	69,941	71,605	63,365	65,093	66,865	65,896	73,454	78,475
September	53,233	56,138	65,542	65,632	60,144	65,404	64,880	66,369	71,951	74,516
October	70,999	75,451	81,244	83,524	80,197	87,340	90,616	89,994	92,520	101,327
November	70,793	70,394	77,236	75,380	78,544	85,982	87,348	84,398	89,057	91,234
December	90,519	96,309	103,670	97,388	103,730	114,849	112,295	115,465	117,086	120,784
<b>Year</b>	<b>761,063</b>	<b>788,276</b>	<b>906,971</b>	<b>930,456</b>	<b>871,356</b>	<b>934,827</b>	<b>964,642</b>	<b>965,441</b>	<b>993,106</b>	<b>1,038,968</b>

<sup>1</sup> Provisional

**Fig 4 - Tourist arrivals by month, 2010-2014**



**Table 25 - Percentage distribution of tourist arrivals by month of arrival, 2005 - 2014**

Month of arrival	2005	2006	2007	2008	2009	2010	2011	2012	2013	2014 <sup>1</sup>
January	9.6	10.9	10.1	10.2	10.2	9.8	10.6	10.2	9.4	9.3
February	7.4	8.2	8.0	8.4	7.8	7.7	8.0	8.2	8.2	7.6
March	8.9	7.4	8.8	9.6	8.8	9.2	8.6	8.7	9.2	8.5
April	7.0	7.3	7.8	7.8	7.9	6.9	8.2	8.2	7.7	8.5
May	7.4	6.4	7.2	7.3	7.4	7.6	7.1	7.4	7.5	7.5
June	5.6	5.4	5.8	5.8	5.4	5.7	5.7	5.7	5.5	5.8
July	8.6	8.3	8.5	8.7	8.2	8.2	8.1	7.9	7.8	7.9
August	8.0	8.2	7.7	7.7	7.3	7.0	6.9	6.8	7.4	7.6
September	7.0	7.1	7.2	7.1	6.9	7.0	6.7	6.9	7.2	7.2
October	9.3	9.6	9.0	9.0	9.2	9.3	9.4	9.3	9.3	9.7
November	9.3	8.9	8.5	8.1	9.0	9.2	9.1	8.7	9.0	8.8
December	11.9	12.2	11.4	10.5	11.9	12.3	11.6	12.0	11.8	11.6
<b>Whole Year</b>	<b>100.0</b>	<b>100.0</b>	<b>100.0</b>	<b>100.0</b>	<b>100.0</b>	<b>100.0</b>	<b>100.0</b>	<b>100.0</b>	<b>100.0</b>	<b>100.0</b>

<sup>1</sup> Provisional

**Table 26 - Tourist arrivals by country of residence and sex, 2013 and 2014**

Country of residence	2013			2014 <sup>2</sup>		
	Male	Female	Both Sexes	Male	Female	Both Sexes
Australia	9,163	9,230	18,393	8,685	8,844	17,529
Belgium	5,782	5,784	11,566	5,778	5,687	11,465
France	120,830	123,922	244,752	120,373	123,292	243,665
Germany	29,773	30,757	60,530	30,537	31,694	62,231
Hong Kong SAR <sup>1</sup>	767	682	1,449	733	722	1,455
India	32,479	24,776	57,255	34,836	26,331	61,167
Italy	15,531	15,674	31,205	14,729	14,828	29,557
Japan	998	770	1,768	928	731	1,659
Kenya	1,712	1,153	2,865	1,904	1,362	3,266
Malagasy Rep.	7,186	6,757	13,943	6,495	6,544	13,039
P. Rep. of China	20,558	21,355	41,913	29,496	33,869	63,365
Reunion Island	70,097	73,017	143,114	68,941	72,724	141,665
Russian Federation	7,093	7,812	14,905	6,179	7,110	13,289
Seychelles	3,286	3,901	7,187	3,199	3,727	6,926
Singapore	1,343	769	2,112	1,119	730	1,849
S. Africa, Rep. of	47,219	46,989	94,208	46,576	46,544	93,120
Switzerland	13,403	14,353	27,756	14,212	15,073	29,285
United Arab Emirates	4,099	4,062	8,161	4,173	3,828	8,001
United Kingdom	48,949	49,068	98,017	57,267	58,059	115,326
U.S.A.	3,308	2,469	5,777	4,294	3,014	7,308
Zimbabwe	840	686	1,526	940	795	1,735
Other countries	56,859	47,845	104,704	60,081	51,985	112,066
<b>All Countries</b>	<b>501,275</b>	<b>491,831</b>	<b>993,106</b>	<b>521,475</b>	<b>517,493</b>	<b>1,038,968</b>

<sup>1</sup> Special Administrative Region of China

<sup>2</sup> Provisional

**Table 27 - Tourist arrivals by country of residence, 2005 - 2014**

Country of residence	2005	2006	2007	2008	2009	2010	2011	2012	2013	2014 <sup>2</sup>
Australia	13,486	16,660	19,635	18,852	10,363	11,493	15,726	17,009	18,393	17,529
Belgium	8,973	9,216	10,945	11,796	10,254	10,214	12,029	10,967	11,566	11,465
France	220,421	182,295	240,028	260,054	275,599	302,185	282,469	256,929	244,752	243,665
Germany	55,983	57,251	65,165	61,484	51,279	52,886	56,331	55,186	60,530	62,231
Hong Kong SAR <sup>1</sup>	508	519	649	641	382	415	593	1,269	1,449	1,455
India	29,755	37,498	42,974	43,911	39,252	49,779	53,955	55,197	57,255	61,167
Italy	43,458	69,407	69,510	66,432	56,736	56,540	52,747	40,009	31,205	29,557
Japan	1,638	1,695	1,730	1,751	1,351	1,485	1,545	1,641	1,768	1,659
Kenya	1,358	1,694	1,790	1,997	1,386	1,548	1,914	2,705	2,865	3,266
Malagasy Rep.	7,397	7,239	8,842	10,905	8,333	9,833	11,449	13,563	13,943	13,039
People's Rep. of China	5,526	4,875	7,739	8,425	6,925	7,609	15,133	20,885	41,913	63,365
Reunion Island	99,036	89,127	95,823	96,174	104,946	114,914	132,535	144,340	143,114	141,665
Russian Federation	4,000	5,081	5,968	6,763	5,628	6,615	12,224	19,429	14,905	13,289
Seychelles	10,084	12,023	14,275	10,604	7,532	10,160	8,485	6,779	7,187	6,926
Singapore	1,789	1,862	2,020	1,758	1,657	1,909	2,461	2,078	2,112	1,849
S. Africa, Rep. of	58,446	70,796	81,733	84,448	74,176	81,458	86,232	89,058	94,208	93,120
Switzerland	15,773	16,161	17,546	16,037	15,349	18,577	24,362	26,002	27,756	29,285
United Arab Emirates	1,344	1,896	1,971	4,109	3,141	3,470	3,780	5,403	8,161	8,001
United Kingdom	95,407	102,333	107,297	107,919	101,996	97,548	88,182	87,648	98,017	115,326
USA	4,890	5,220	5,451	7,089	6,951	7,316	6,870	6,374	5,777	7,308
Zimbabwe	2,419	1,587	1,669	1,809	1,326	1,204	1,495	1,568	1,526	1,735
Other Countries	79,372	93,841	104,211	107,498	86,794	87,669	94,125	101,402	104,704	112,066
<b>All Countries</b>	<b>761,063</b>	<b>788,276</b>	<b>906,971</b>	<b>930,456</b>	<b>871,356</b>	<b>934,827</b>	<b>964,642</b>	<b>965,441</b>	<b>993,106</b>	<b>1,038,968</b>

<sup>1</sup> Special Administrative Region of China

<sup>2</sup> Provisional

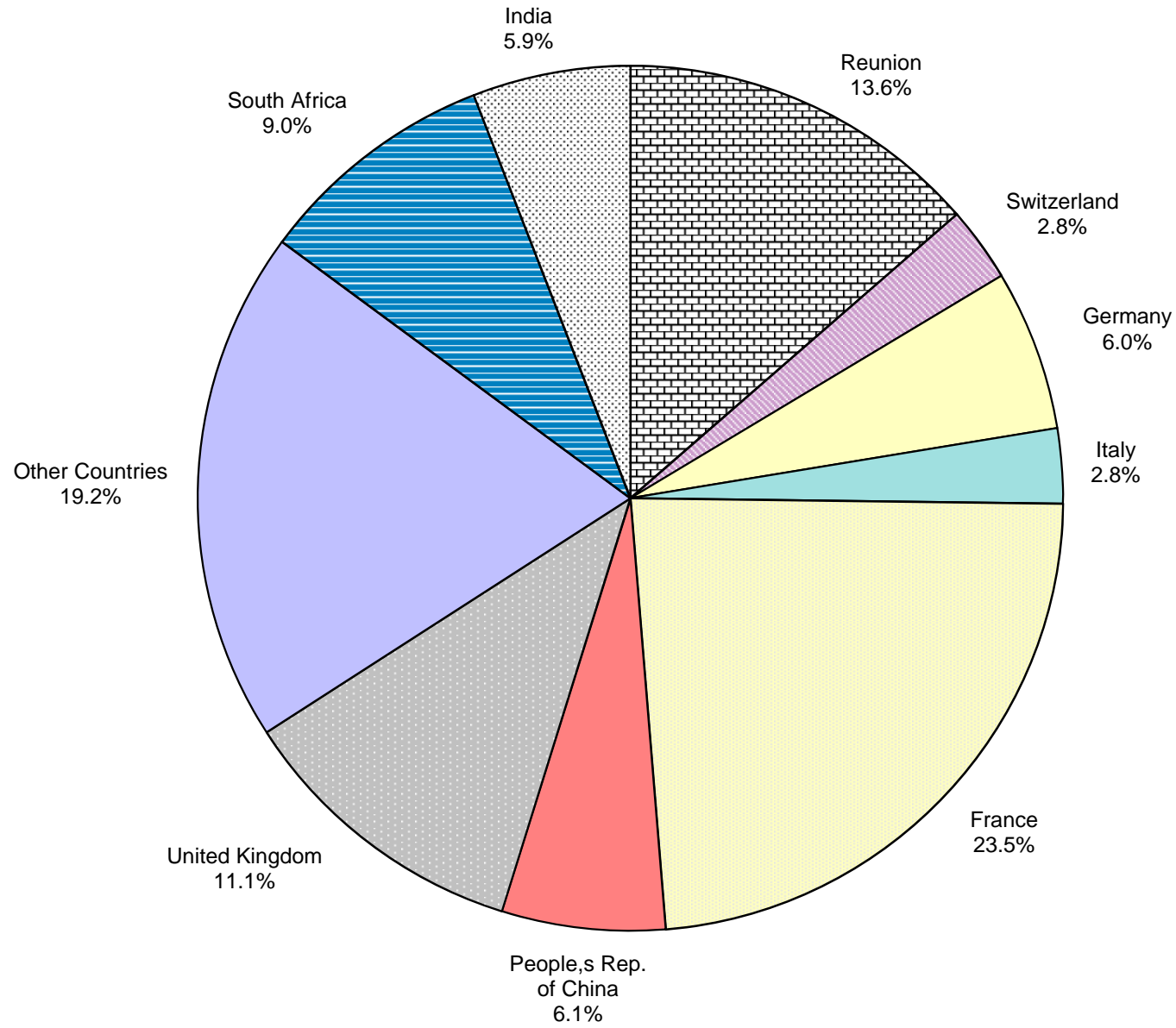
**Table 28 - Percentage distribution of tourist arrivals by country of residence, 2005 - 2014**

Country of residence	2005	2006	2007	2008	2009	2010	2011	2012	2013	2014 <sup>2</sup>
Australia	1.8	2.1	2.2	2.0	1.2	1.2	1.6	1.8	1.9	1.7
Belgium	1.2	1.2	1.2	1.3	1.2	1.1	1.2	1.1	1.2	1.1
France	29.0	23.1	26.5	27.9	31.6	32.3	29.3	26.6	24.6	23.5
Germany	7.4	7.3	7.2	6.6	5.9	5.7	5.8	5.7	6.1	6.0
Hong Kong SAR <sup>1</sup>	0.1	0.1	0.1	0.1	0.0	0.0	0.1	0.1	0.1	0.1
India	3.9	4.8	4.7	4.7	4.5	5.3	5.6	5.7	5.8	5.9
Italy	5.7	8.8	7.7	7.1	6.5	6.0	5.5	4.1	3.1	2.8
Japan	0.2	0.2	0.2	0.2	0.2	0.2	0.2	0.2	0.2	0.2
Kenya	0.2	0.2	0.2	0.2	0.2	0.2	0.2	0.3	0.3	0.3
Malagasy Rep.	1.0	0.9	1.0	1.2	1.0	1.1	1.2	1.4	1.4	1.3
People's Rep. of China	0.7	0.6	0.9	0.9	0.8	0.8	1.6	2.2	4.2	6.1
Reunion Island	13.0	11.3	10.6	10.3	12.0	12.3	13.7	15.0	14.4	13.6
Russian Federation	0.5	0.6	0.7	0.7	0.6	0.7	1.3	2.0	1.5	1.3
Seychelles	1.3	1.5	1.6	1.1	0.9	1.1	0.9	0.7	0.7	0.7
Singapore	0.2	0.2	0.2	0.2	0.2	0.2	0.3	0.2	0.2	0.2
S. Africa, Rep. of	7.7	9.0	9.0	9.1	8.5	8.7	8.9	9.2	9.5	9.0
Switzerland	2.1	2.1	1.9	1.7	1.8	2.0	2.5	2.7	2.8	2.8
United Arab Emirates	0.2	0.2	0.2	0.4	0.4	0.4	0.4	0.6	0.8	0.8
United Kingdom	12.5	13.0	11.8	11.6	11.7	10.4	9.1	9.1	9.9	11.1
USA	0.6	0.7	0.6	0.8	0.8	0.8	0.7	0.7	0.6	0.7
Zimbabwe	0.3	0.2	0.2	0.2	0.2	0.1	0.2	0.2	0.2	0.2
Other Countries	10.4	11.9	11.3	11.7	9.8	9.4	9.7	10.4	10.5	10.8
<b>All Countries</b>	<b>100.0</b>	<b>100.0</b>	<b>100.0</b>	<b>100.0</b>	<b>100.0</b>	<b>100.0</b>	<b>100.0</b>	<b>100.0</b>	<b>100.0</b>	<b>100.0</b>

<sup>1</sup> Special Administrative Region of China

<sup>2</sup> Provisional

**Fig. 5 - Percentage distribution of tourist arrivals by country of residence, 2014**





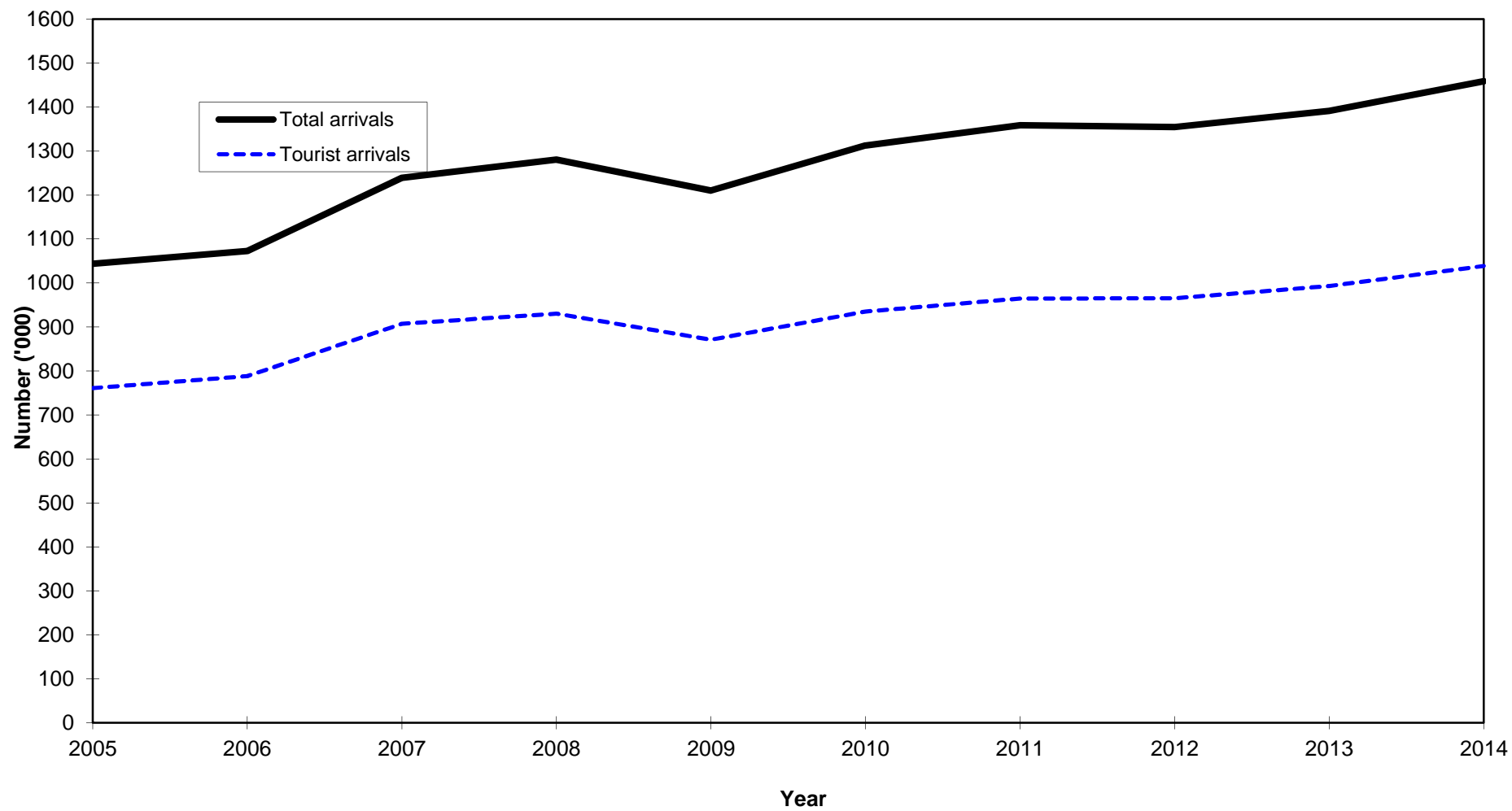
**Table 29 - Tourist nights by country of residence, 2005 - 2014 <sup>1</sup>**

Country of residence	2005	2006	2007	2008	2009	2010 <sup>2</sup>	2011	2012	2013	2014
Australia	115,851	126,859	143,482	161,488	138,665	173,841	184,783	219,385	222,980	233,747
Belgium	117,210	120,987	132,145	148,978	138,764	136,864	141,919	148,383	159,720	163,753
France	2,208,575	1,931,005	2,542,172	2,711,413	2,498,920	2,861,792	2,966,510	2,978,517	3,018,544	3,114,910
Germany	655,283	655,738	735,938	760,468	579,531	643,932	662,562	663,498	718,022	776,106
Hong Kong SAR <sup>3</sup>	4,694	3,739	4,788	4,492	4,211	4,932	5,434	10,003	9,931	12,642
India	295,698	336,048	408,128	399,570	376,783	412,802	441,355	515,778	578,628	611,581
Italy	397,160	619,089	600,236	605,457	512,033	509,369	471,977	387,725	330,839	308,502
Japan	10,538	9,889	10,701	10,643	11,481	11,018	9,269	11,141	10,077	8,668
Kenya	12,258	13,875	12,642	14,338	11,767	11,412	17,802	18,296	22,109	25,035
Malagasy Rep.	73,964	84,400	98,034	107,295	96,282	115,578	107,111	138,998	151,352	181,578
People's Rep. of China	64,707	67,643	88,967	105,990	69,196	95,055	120,641	226,741	376,207	469,136
Reunion Island	828,889	730,678	917,369	790,612	969,927	993,837	1,030,720	1,042,124	1,014,575	996,665
Russian Federation	NA	NA	NA	NA	NA	72,279	116,692	218,512	184,308	172,487
Seychelles	93,951	108,603	133,595	95,254	67,976	89,750	81,251	66,202	66,441	62,395
Singapore	12,106	14,166	12,200	11,953	11,330	11,902	14,553	15,243	20,004	16,888
S. Africa, Rep. of	467,603	565,627	676,795	699,329	602,983	670,365	704,608	734,287	786,147	784,307
Switzerland	185,482	200,141	207,130	192,797	197,742	241,899	284,738	317,601	347,838	373,043
United Arab Emirates	NA	NA	NA	NA	NA	36,279	36,271	36,205	45,792	50,905
United Kingdom	1,070,185	1,152,123	1,141,982	1,189,830	1,281,968	1,205,658	1,057,883	1,140,129	1,370,007	1,528,504
U.S.A.	41,298	44,827	49,666	65,761	54,075	51,428	59,440	54,691	57,055	66,455
Zimbabwe	31,233	20,493	23,207	24,678	12,859	12,223	14,262	17,296	16,471	18,317
Other countries	811,566	954,749	1,047,757	1,118,279	1,002,811	974,231	964,517	1,082,928	1,160,024	1,290,722
<b>All Countries</b>	<b>7,498,251</b>	<b>7,760,679</b>	<b>8,986,934</b>	<b>9,218,625</b>	<b>8,639,304</b>	<b>9,336,446</b>	<b>9,494,297</b>	<b>10,043,683</b>	<b>10,667,071</b>	<b>11,266,346</b>

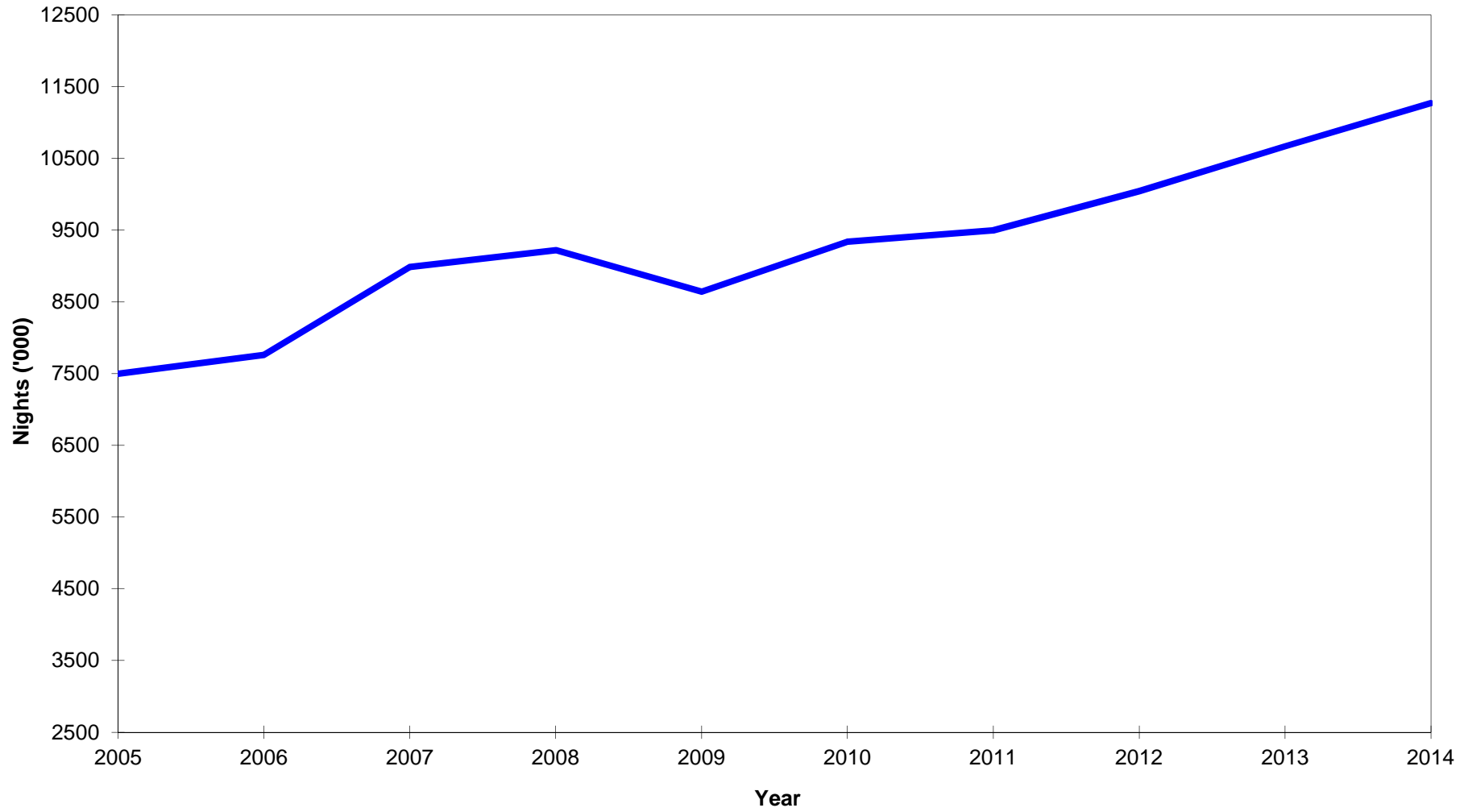
<sup>1</sup> Provisional<sup>2</sup> Revised as from 2010, a new methodology for computation of tourist nights is being used. "Tourist nights" for year Y refer to nights spent by tourists departing in year Y.<sup>3</sup> Special Administrative Region of China

NA - Not available

Fig 6 - Total arrivals and tourist arrivals, 2005- 2014



**Fig 7 - Tourist nights, 2005 - 2014**



**Table 30 - Visitor <sup>1</sup> arrivals by country of residence and type of passenger, 2012 - 2014 <sup>3</sup>**

Country of residence	Visitors on holidays			Visitors on business			Visitors in transit			Other visitors			Total visitors		
	2012	2013	2014	2012	2013	2014	2012	2013	2014	2012	2013	2014	2012	2013	2014
Australia	15,410	16,081	15,431	510	517	602	2,447	4,063	3,495	9	15	19	18,376	20,676	19,547
Belgium	10,563	11,143	11,065	350	380	369	114	110	119	17	15	12	11,044	11,648	11,565
France	249,107	238,115	236,358	4,960	5,104	5,710	5,286	3,899	3,861	300	199	263	259,653	247,317	246,192
Germany	54,381	59,052	61,282	594	663	795	1,069	1,872	1,385	15	19	41	56,059	61,606	63,503
Hong Kong SAR <sup>2</sup>	1,022	1,235	1,218	113	158	188	166	82	92	3	7	4	1,304	1,482	1,502
India	49,071	51,189	53,905	4,874	4,960	6,100	1,289	1,201	1,271	330	287	363	55,564	57,637	61,639
Italy	39,361	30,544	28,887	471	507	513	457	623	530	18	8	22	40,307	31,682	29,952
Japan	1,380	1,399	1,377	196	243	219	621	2,036	1,523	6	1	1	2,203	3,679	3,120
Kenya	1,349	1,362	1,814	1,059	1,097	1,239	274	348	180	36	72	43	2,718	2,879	3,276
Malagasy Rep.	8,663	8,389	8,019	1,585	1,468	1,407	3,552	4,256	3,791	321	429	456	14,121	14,542	13,673
Reunion Island	137,759	137,293	136,276	2,625	2,191	2,253	7,078	6,920	6,576	496	691	645	147,958	147,095	145,750
Seychelles	5,279	5,329	5,348	537	595	563	698	930	728	353	509	367	6,867	7,363	7,006
Singapore	1,576	1,385	1,327	412	656	433	121	88	144	0	3	5	2,109	2,132	1,909
S. Africa Rep. of	81,115	85,614	84,535	7,198	7,619	7,542	1,880	2,602	3,864	184	290	230	90,377	96,125	96,171
Switzerland	25,538	27,187	28,799	349	463	399	586	482	727	6	9	20	26,479	28,141	29,945
United Kingdom	84,009	94,602	111,777	2,657	2,641	2,675	3,309	2,631	4,640	56	86	92	90,031	99,960	119,184
U.S.A.	4,744	4,447	5,426	999	1,020	1,015	1,608	1,546	3,261	18	9	25	7,369	7,022	9,727
Zimbabwe	1,119	1,081	1,350	422	386	358	12	17	26	22	49	18	1,575	1,533	1,752
Other & N. Stated	125,531	147,800	175,330	12,656	12,814	12,407	11,177	11,157	12,231	626	995	1,019	149,990	172,766	200,987
<b>All Countries</b>	<b>896,977</b>	<b>923,247</b>	<b>969,524</b>	<b>42,567</b>	<b>43,482</b>	<b>44,787</b>	<b>41,744</b>	<b>44,863</b>	<b>48,444</b>	<b>2,816</b>	<b>3,693</b>	<b>3,645</b>	<b>984,104</b>	<b>1,015,285</b>	<b>1,066,400</b>

<sup>1</sup> Visitors include tourists, cruise ship passengers and non-residents who stay in the country for less than a day, other than those who do not leave the airport

<sup>2</sup> Special Administrative Region of China

<sup>3</sup> Provisional

**Table 31(i) - Visitor arrivals by age and sex, 2013 & 2014 <sup>1</sup>**

Age (years)	Same day visitors						Tourists					
	2013			2014			2013			2014		
	Both Sexes	Male	Female	Both Sexes	Male	Female	Both Sexes	Male	Female	Both Sexes	Male	Female
Under 1	30	17	13	47	21	26	5,869	2,994	2,875	6,066	3,048	3,018
1 - 4	239	108	131	248	132	116	32,304	16,212	16,092	33,595	16,993	16,602
5 - 9	410	206	204	402	203	199	42,301	21,272	21,029	44,709	22,811	21,898
10 - 14	518	249	269	504	248	256	41,378	20,839	20,539	43,219	21,854	21,365
15 - 19	612	305	307	611	320	291	32,363	15,320	17,043	34,085	16,132	17,953
20 - 24	1,394	679	715	1,297	617	680	46,940	17,953	28,987	48,218	18,164	30,054
25 - 29	1,596	943	653	1,641	978	663	113,582	51,400	62,182	121,004	54,686	66,318
30 - 34	1,892	1,187	705	2,091	1,338	753	107,943	55,279	52,664	113,515	57,576	55,939
35 - 39	1,884	1,284	600	2,019	1,359	660	92,847	48,899	43,948	94,150	48,996	45,154
40 - 44	1,935	1,344	591	1,947	1,315	632	93,994	49,712	44,282	96,145	50,579	45,566
45 - 49	1,812	1,224	588	1,842	1,246	596	94,054	49,370	44,684	96,206	49,641	46,565
50 - 54	1,630	1,031	599	1,904	1,140	764	86,586	45,036	41,550	93,251	47,932	45,319
55 - 59	1,458	855	603	1,906	1,055	851	70,594	36,774	33,820	75,019	38,815	36,204
60 - 64	1,759	902	857	2,342	1,146	1,196	57,422	30,077	27,345	60,438	31,684	28,754
65 - 69	2,053	1,026	1,027	3,178	1,480	1,698	39,339	21,003	18,336	41,559	22,330	19,229
70 & over	2,957	1,582	1,375	5,453	2,902	2,551	35,590	19,135	16,455	37,789	20,234	17,555
<b>All ages</b>	<b>22,179</b>	<b>12,942</b>	<b>9,237</b>	<b>27,432</b>	<b>15,500</b>	<b>11,932</b>	<b>993,106</b>	<b>501,275</b>	<b>491,831</b>	<b>1,038,968</b>	<b>521,475</b>	<b>517,493</b>

<sup>1</sup> Provisional

**Table 31(ii):- Tourist arrivals by broad age group and mode of arrival, 2013 and 2014 <sup>1</sup>**

Age group (years)	2013			2014		
	Air	Sea	Total	Air	Sea	Total
Under 15	120,013	1,839	121,852	127,216	373	127,589
15 - 59	731,781	7,122	738,903	769,853	1,740	771,593
60 & over	128,028	4,323	132,351	138,011	1,775	139,786
<b>Total</b>	<b>979,822</b>	<b>13,284</b>	<b>993,106</b>	<b>1,035,080</b>	<b>3,888</b>	<b>1,038,968</b>

<sup>1</sup> Provisional

**Table 32 - Visitor departures by duration of stay, 2013 & 2014**

Duration of stay	2013 <sup>1</sup>		2014 <sup>2</sup>	
	Number	Percentage	Number	Percentage
Less than 1 night	22,179	2.2	27,432	2.6
1 night	31,795	3.1	23,924	2.3
2 nights	31,292	3.1	24,009	2.3
3 nights	41,153	4.1	41,256	3.9
4 nights	57,888	5.7	61,481	5.8
5 nights	80,989	8.0	102,323	9.7
6 nights	86,580	8.6	87,859	8.3
7 nights	219,632	21.8	221,169	20.9
8 nights	43,428	4.3	49,463	4.7
9 nights	55,942	5.5	58,497	5.5
10 nights	65,353	6.5	70,190	6.6
11 nights	27,119	2.7	29,969	2.8
12 nights	37,538	3.7	38,036	3.6
13 nights	33,385	3.3	35,793	3.4
14 nights	64,310	6.4	71,211	6.7
15 nights	10,240	1.0	11,229	1.1
16 nights	9,865	1.0	9,832	0.9
17 nights	6,062	0.6	6,449	0.6
18 nights	5,219	0.5	5,712	0.5
19 nights	6,182	0.6	6,263	0.6
20 - 24 nights	24,506	2.4	25,327	2.4
25 - 29 nights	13,171	1.3	13,493	1.3
1 month - under 2 months	22,541	2.2	22,761	2.2
2 months - under 3 months	6,045	0.6	6,454	0.6
3 months and over	7,148	0.7	7,715	0.7
<b>All Countries</b>	<b>1,009,562</b>	<b>100.0</b>	<b>1,057,847</b>	<b>100.0</b>

<sup>1</sup> Revised

<sup>2</sup> Provisional

**Table 33 - Visitor departures by country of residence and duration of stay, 2014 <sup>1</sup>**

Country of residence	Duration of stay (Nights)												
	<1	1 - 2	3 - 4	5 - 6	7 - 8	9 - 10	11 - 12	13 - 14	15 - 19	20 - 24	25 - 29	30+	Total
Australia	2,018	2,751	1,784	2,617	1,647	2,081	688	1,251	1,135	1,078	742	1,560	19,352
Belgium	100	190	623	862	2,829	2,078	979	1,490	718	476	267	787	11,399
France	2,527	6,885	17,318	23,257	77,006	38,599	20,030	23,043	11,719	8,006	4,909	13,035	246,334
Germany	1,272	820	1,268	3,094	7,553	10,445	9,792	19,628	5,075	2,783	579	992	63,301
Hong Kong SAR <sup>2</sup>	47	202	200	509	236	71	77	16	52	12	17	61	1,500
India	472	2,589	14,157	33,269	2,969	1,413	473	798	776	612	465	2,958	60,951
Italy	395	409	740	2,880	15,237	3,072	1,435	3,012	661	554	274	856	29,525
Japan	1,461	240	701	451	142	34	19	15	12	7	12	17	3,111
Kenya	10	553	931	340	972	142	75	84	49	30	15	100	3,301
Malagasy Rep.	634	4,021	1,629	1,440	1,792	964	557	762	380	169	228	942	13,518
People's Rep. of China	366	1,523	2,691	48,126	7,324	1,406	454	140	343	196	190	1,099	63,858
Reunion Island	4,085	11,811	30,252	29,464	47,428	9,134	3,141	2,993	3,050	1,478	776	1,762	145,374
Seychelles	80	1,227	812	709	1,541	894	373	460	260	196	70	216	6,838
Singapore	60	276	430	502	145	120	54	98	88	42	23	64	1,902
S. Africa Rep. of	3,051	3,066	9,287	12,026	45,624	10,767	3,140	3,593	2,005	1,041	487	1,237	95,324
Switzerland	660	376	653	2,043	5,987	5,290	3,796	6,503	1,880	1,283	490	859	29,820
United Kingdom	3,858	1,937	2,995	6,582	23,472	23,117	11,429	29,577	4,848	3,941	2,011	4,551	118,318
U.S.A.	2,419	885	1,635	1,544	1,032	401	304	250	274	152	110	274	9,280
Zimbabwe	17	75	267	327	529	207	67	115	52	25	14	71	1,766
Other & not stated	3,900	8,097	14,364	20,140	27,167	18,452	11,122	13,176	6,108	3,246	1,814	5,489	133,075
<b>All Countries</b>	<b>27,432</b>	<b>47,933</b>	<b>102,737</b>	<b>190,182</b>	<b>270,632</b>	<b>128,687</b>	<b>68,005</b>	<b>107,004</b>	<b>39,485</b>	<b>25,327</b>	<b>13,493</b>	<b>36,930</b>	<b>1,057,847</b>

<sup>1</sup> Provisional

<sup>2</sup> Special Administrative Region of China

**Table 34 - Tourist arrivals, tourist departures and average length of stay of tourists by country of residence, 2013 and 2014**

Country of Residence	2013			2014 <sup>3</sup>		
	Tourist arrivals	Departures		Tourist arrivals	Departures	
		Number of tourists	Average length of stay <sup>2</sup> (nights)		Number of tourists	Average length of stay <sup>2</sup> (nights)
Australia	18,393	18,234	12.2	17,529	17,334	13.5
Belgium	11,566	11,651	13.7	11,465	11,299	14.5
France	244,752	244,145	12.4	243,665	243,807	12.8
Germany	60,530	59,453	12.1	62,231	62,029	12.5
Hong Kong SAR <sup>1</sup>	1,449	1,407	7.1	1,455	1,453	8.7
India	57,255	56,592	10.2	61,167	60,479	10.1
Italy	31,205	31,793	10.4	29,557	29,130	10.6
Japan	1,768	1,698	5.9	1,659	1,650	5.3
Kenya	2,865	2,860	7.7	3,266	3,291	7.6
Malagasy Rep.	13,943	13,280	11.4	13,039	12,884	14.1
People's Rep. of China	41,913	41,112	9.2	63,365	63,492	7.4
Reunion	143,114	143,244	7.1	141,665	141,289	7.1
Russian Federation	14,905	15,125	12.2	13,289	13,298	13.0
Seychelles	7,187	7,150	9.3	6,926	6,758	9.2
Singapore	2,112	2,115	9.5	1,849	1,842	9.2
S. Africa, Rep. of	94,208	93,934	8.4	93,120	92,273	8.5
Switzerland	27,756	27,696	12.6	29,285	29,160	12.8
United Arab Emirates	8,161	8,116	5.6	8,001	8,002	6.4
United Kingdom	98,017	99,035	13.8	115,326	114,460	13.4
U.S.A.	5,777	5,608	10.2	7,308	6,861	9.7
Zimbabwe	1,526	1,491	11.0	1,735	1,749	10.5
Other & not stated	104,704	101,644	11.4	112,066	107,875	12.0
<b>All Countries</b>	<b>993,106</b>	<b>987,383</b>	<b>10.8</b>	<b>1,038,968</b>	<b>1,030,415</b>	<b>10.9</b>

<sup>1</sup> Special Administrative Region of China

<sup>2</sup> Revised; henceforth average length of stay will refer to average number of nights spent by tourists departing in the reference period.

<sup>3</sup> Provisional



**Table 35 - Gross earnings from tourism, 2005 - 2014**

Earnings (Rs Mn)	2005	2006	2007	2008	2009	2010	2011	2012	2013	2014
		25,704	31,942	40,687	41,213	35,693	39,456	42,717	44,378	40,577

Source : Bank of Mauritius

**Table 36 - Expenditure of tourists by country of residence, 2010 - 2013**

Country of residence	Expenditure (Rs Mn)			
	2010	2011	2012	2013
France	13,981.5	11,362.9	10,316.0	10,991.1
Germany	2,876.4	2,816.3	2,922.9	3,211.3
Italy	2,503.3	2,330.9	1,597.8	1,382.9
Russia	N.A	732.4	1,090.9	966.7
Switzerland	1,108.5	1,270.7	1,436.8	1,709.4
United Kingdom	5,212.0	4,390.6	4,432.1	4,822.9
Reunion	3,206.3	3,053.6	3,194.2	3,472.4
South Africa, Rep. of	3,368.3	3,340.4	3,326.7	3,493.1
China	276.4	603.7	1,053.1	2,034.4
India	1,659.5	1,691.2	1,727.2	1,784.1
Other countries	6,802.8	6,954.5	7,553.8	8,009.1
<b>All Countries</b>	<b>40,995.2</b>	<b>38,547.1</b>	<b>38,651.4</b>	<b>41,877.3</b>

N.A - Not Available

Source: Survey of Inbound Tourism conducted by Statistics Mauritius

**Table 37 - Expenditure of tourists by type of expenditure, 2010 - 2013**

Type of expenditure	Expenditure (Rs Mn)			
	2010	2011	2012	2013
Accommodation	21,409	23,197	22,603	24,673
Meals & Beverages	5,585	4,830	5,475	4,194
Transport	5,309	3,019	2,882	3,313
Entertainment	3,212	3,031	3,178	4,558
Shopping	4,977	4,029	4,134	4,413
Other	503	441	379	726
<b>Total</b>	<b>40,995</b>	<b>38,547</b>	<b>38,651</b>	<b>41,877</b>

Source: Survey of Inbound Tourism conducted by Statistics Mauritius

**Table 38 - Hotels, rooms and bedplaces, 2005 - 2014**

<b>Year</b>	<b>No. of hotels</b>	<b>No. of rooms</b>	<b>No. of bedplaces</b>
2005	99	10,497	21,072
2006	98	10,666	21,403
2007	97	10,857	21,788
2008	102	11,488	23,095
2009	102	11,456	23,235
2010	112	12,075	24,698
2011	109	11,925	24,242
2012	117	12,527	25,496
2013	107	12,376	25,105
2014 <sup>1</sup>	112 <sup>2</sup>	12,799	26,174

<sup>1</sup> *Provisional*

<sup>2</sup> *Excluding three hotels not operational because of renovation works*

**Table 39 - Monthly occupancy rates in large <sup>1</sup> hotels, 2010 - 2014**

Month	2010		2011		2012		2013		2014 <sup>2</sup>	
	Room	Bed	Room	Bed	Room	Bed	Room	Bed	Room	Bed
January	74	66	76	67	76	67	69	61	74	66
February	67	60	70	61	69	60	67	59	69	61
March	65	58	66	58	66	58	66	58	65	57
April	64	56	68	60	66	58	63	56	69	60
May	63	55	57	50	61	54	61	53	62	54
June	48	43	45	39	46	41	42	37	47	41
July	55	48	54	48	53	47	54	48	57	52
August	62	54	60	53	60	52	62	55	67	62
September	67	58	66	58	62	54	67	60	68	61
October	71	62	70	61	70	62	72	64	75	68
November	76	67	76	67	71	63	75	67	78	70
December	78	68	74	65	74	65	74	66	76	71
<b>Whole Year</b>	<b>66</b>	<b>58</b>	<b>65</b>	<b>57</b>	<b>65</b>	<b>57</b>	<b>65</b>	<b>57</b>	<b>67</b>	<b>60</b>

<sup>1</sup> Large Hotels are well established beach hotels of over 80 rooms

<sup>2</sup> Provisional

Room Occupancy Rate =  $\frac{\text{Total number of room nights rented} \times 100}{\text{Total number of room nights available}}$

Bed Occupancy Rate =  $\frac{\text{Total number of bed nights rented} \times 100}{\text{Total number of bed nights available}}$

**Table 40 - Monthly occupancy rates in all hotels, 2010 - 2014**

Month	2010		2011		2012		2013		2014 <sup>1</sup>	
	Room	Bed	Room	Bed	Room	Bed	Room	Bed	Room	Bed
January	72	64	75	66	74	65	67	59	72	64
February	67	58	68	60	67	59	66	57	67	59
March	64	56	64	57	65	57	63	56	64	56
April	61	54	64	57	62	55	60	53	65	57
May	61	53	55	49	59	52	58	51	59	52
June	47	41	44	38	45	39	42	36	46	41
July	54	47	53	47	52	45	53	47	54	49
August	60	52	57	51	56	50	60	53	62	57
September	65	57	64	57	60	53	65	57	64	58
October	69	61	68	60	67	59	71	63	71	65
November	74	65	74	66	69	61	74	65	76	67
December	75	66	73	64	71	63	73	65	74	68
<b>Whole Year</b>	<b>65</b>	<b>57</b>	<b>65</b>	<b>57</b>	<b>62</b>	<b>55</b>	<b>63</b>	<b>55</b>	<b>65</b>	<b>58</b>

<sup>1</sup> Provisional

Room Occupancy Rate =  $\frac{\text{Total number of room nights rented} \times 100}{\text{Total number of room nights available}}$

Bed Occupancy Rate =  $\frac{\text{Total number of bed nights rented} \times 100}{\text{Total number of bed nights available}}$

**APPENDIX**

**Welcome to Mauritius / Bienvenue à Maurice  
DISEMBARKATION CARD / FICHE DE DEBARQUEMENT  
(Regulation 23 of the Passports Regulations 1969)**

Flight No. <i>No. de vol</i>		<input type="text"/>		
Surname <i>Nom</i>		<input type="text"/>		
First Name/s <i>Prenom/s</i>		<input type="text"/>		
Male <i>Masculin</i>	<input type="checkbox"/>	Female <i>Féminin</i>	<input type="checkbox"/>	Date of birth <i>Date de naissance</i>
				<input type="text"/>
Country of Birth <i>Pays de naissance</i>				<input type="text"/>
Nationality <i>Nationalité</i>				<input type="text"/>
Profession				<input type="text"/>
Passport Number <i>Numéro du passeport</i>				<input type="text"/>
Date of expiry <i>Date d'Expiration</i>				<input type="text"/>
Country of Issue <i>Pays de Délivrance</i>				<input type="text"/>
Country of residence <i>Pays de résidence</i>				<input type="text"/>
Street <i>Rue</i>				<input type="text"/>
Town/City <i>Ville/Cité</i>				<input type="text"/>
Port of Embarkation <i>Port d'Embarquement</i>				<input type="text"/>
Purpose: Holidays: <i>Motif: Vacances:</i>	<input type="checkbox"/>	Other: <i>Autre:</i>		<input type="text"/>
Duration of Stay <i>Durée du Séjour</i>	Days <i>Jours</i>	Months <i>Mois</i>	Years <i>Années</i>	<input type="text"/>
Address during Stay <i>Adresse durant le Séjour</i>				<input type="text"/>

**DECLARATION**

I declare that all the information I have given is true and complete. I understand that I shall commit an offence if I refuse to fill-in the card or knowingly give false information.

*Je déclare qu'à ma connaissance toutes les informations fournies sont exactes et complètes. Je suis conscient que le fait de ne pas remplir cette fiche ou toute fausse déclaration de ma part pourrait entrainer des poursuites pénales.*

Date

Signature