

**Vol. 30**

**REPUBLIC OF MAURITIUS**

**Ministry of Finance and Economic Development**

**STATISTICS MAURITIUS**

**DIGEST  
OF  
ROAD TRANSPORT  
AND  
ROAD ACCIDENT STATISTICS  
2014**

**November 2015**

**(Price Rs 75)**

**DIGEST**

**OF**

**ROAD TRANSPORT**

**AND**

**ROAD ACCIDENT STATISTICS**

**2014**

# **Digest of Road Transport and Road Accident Statistics - 2014**

## **FOREWORD**

This is the thirtieth issue of the Digest of Road Transport and Road Accident Statistics published by Statistics Mauritius.

It presents statistics on road transport and road traffic accidents relating to the Island of Mauritius. Data on vehicles have been compiled from the register of the National Transport Authority and those on road traffic accidents from returns provided by police stations and insurance companies.

The figures published are the latest available. Some of them are provisional and are therefore subject to revision in later issues. Figures in this issue of the digest supersede those appearing in previous ones.

It is hoped that the data presented in this report will be of valuable help to planners, policy-makers and the public in general.

This digest has been prepared with the collaboration of the National Transport Authority, the Traffic Management and Road Safety Unit of the Ministry of Public Infrastructure and Land Transport, the Police Department and insurance companies. Their assistance is gratefully acknowledged.

**D. Bahadoor**  
**Ag. Director of Statistics**

Statistics Mauritius  
Ministry of Finance and Economic Development  
PORT LOUIS .

**November 2015**

Contact person:

Mr. A. Bundhoo, Statistician or  
Mr. A. Poreema, Senior Statistical Officer

National Transport Authority  
MSI Building, Les Cassis  
Tel: (230) 202-2831 Fax: (230) 212-9399

Traffic Branch Police Road Safety Unit  
Line Barracks, P. Louis  
Tel: (230) 203-1205 Fax: (230) 208-6077  
E-mail: [statsmauritius@govmu.org](mailto:statsmauritius@govmu.org)  
Website: <http://statsmauritius.govmu.org>

## CONTENTS

Page

Definition and Explanatory Notes	5 - 7
Abbreviations and Symbols	8
Road Transport and Road Traffic Accident Statistics, 2014 - An overview	9
Main Road Transport and Road Accident Indicators, 2013 - 2014	11

### **PART 1 - VEHICLE STATISTICS**

Table 1.1 - Road network as at end of year, 2010 - 2014	15
1.2 - Vehicles registered, 2005 - 2014	17
1.3 - New vehicles registered, 2010 - 2014	18
1.4 - Imported second-hand and re-registered vehicles, 2010 - 2014	19
1.5 - Vehicles off the road, 2010 - 2014	20
1.6 - Age composition of cars, dual purpose vehicles and double cab pickup, 2013 - 2014	21
1.7 - Age composition of operational bus fleet, 2013 - 2014	22
1.8 - Bus operational statistics, 2010 - 2014	23
1.9 - Evolution of bus fares (adults), 2002 - 2014	24
1.10 - Receipts from the activities of the National Transport Authority, 2010 - 2014	25
1.11 - Driving licences issued during the year by type of licence, 2005 - 2014	26
1.12 - Imports of vehicles and spare parts by country of origin, 2013 - 2014	27 - 35

### **PART 2 - ROAD TRAFFIC ACCIDENT STATISTICS**

Table 2.1 - Road traffic accidents and casualties, 2005 - 2014	39
2.2 - Road traffic accidents, motor-vehicles involved and casualties, 2010 - 2014	41
2.3 - Number of casualties by degree of casualty and casualty rate, 2010- 2014	41
2.4 - Casualty accidents, pedestrian and rider (auto/moto cycle) casualties by police district, 2013- 2014	42
2.5 - Pedestrian and total casualties by police district and semester, 2014	43
2.6 - Distribution of casualty accidents by day of the week and time, 2014	44
2.7 - Number of accidents by severity of accident, 2010 - 2014	46
2.8 - Number of casualty accidents involved in "hit and run cases", by semester, 2013 - 2014	46
2.9 - Number of casualty accidents by severity of accident and police district, 2013- 2014	47

**CONTENTS ( cont'd )**

**Page**

Table 2.10 - Number of casualty accidents by severity of accident and weather conditions, 2013 - 2014	48
2.11 - Number of casualty accidents by severity of accident and light conditions, 2013 - 2014	49
2.12 - Number of casualty accidents by severity of accident, type of road and collision type, 2014	50
2.13 - Number of casualty accidents by severity of accident and type of road, 2013 - 2014	51
2.14 - Number of casualty accidents by degree of casualties and junction type, 2014	52
2.15 - Number of vehicles involved in casualty accidents by type, 2013 - 2014	53
2.16 - Number of motor-vehicles involved in casualty accidents by type of vehicle and nature of damage, 2014	54
2.17 - Number of drivers and riders involved in casualty accidents by age group and sex, 2014	55
2.18 - Number of drivers/riders involved in casualty accidents by driving experience and sex, 2014	56
2.19 - Number of casualties by class of road users, 2013 - 2014	57
2.20 - Number of casualties by degree of casualty and class of road users, 2013 - 2014	58
2.21 - Number of casualties by class of road users, age-group and sex, 2014	59
2.22 - Number of pedestrian casualties by age-group, 2013 - 2014	60
2.23 - Number of fatalities by class of road users, age-group and sex, 2014	61
2.24 - Fatalities by category of road users, 2013 -2014	62
2.25 - Number of fatalities by police district and by class of road users, 2013 - 2014	63

**PART 3 - PETROLEUM PRODUCTS**

Table 3.1 - Evolution of price and sales of gasolene and gas oil, 2011 - 2014	67
3.2 - Imports of motor-spirit and gas oil by country of origin, 2013 - 2014	68
3.3 - Imports of lubricating oils and greases by country of origin, 2013 - 2014	69

<b>ILLUSTRATIONS</b>	<b>Page</b>
Figure 1.1 - Stock of registered vehicles, 2005 - 2014	16
1.2 - Age composition of cars, dual purpose vehicles and double cab pickup as at 31st December, 2013 - 2014	21
1.3 - Age composition of operational bus fleet, as at 31st December, 2013 - 2014	22
2.1 - Number of vehicles registered and road accidents, 2005 - 2014	40
2.2 - Number of casualty accidents by day of week, 2014	45
2.3 - Number of casualty accidents by time of day, 2014	45
2.4 - Vehicles involved in casualty accidents by type of vehicle, 2014	53
2.5 - Casualties by class of road users, 2014	57
2.6 - Fatalities by category of road users, 2013 - 2014	62
 Appendix Police Form (PF 178)	

## Vehicle Statistics<sup>1</sup>

### Definitions

Definitions as stipulated in Section 4 of Road Traffic Act of 1962 for types of vehicles and subsequent amended Act No. 27 of 2012.

#### 1. Motor cars

Motor cars are mechanically propelled vehicles, other than vehicles classified as motor cycles, which are constructed themselves to carry a load or passengers and whose unladen weight –

- (i) in case of vehicles which are –
  - (A) constructed solely for the carriage of passengers and their effects;
  - (B) adapted to carry not more than 7 passengers exclusive of the driver; and
  - (C) fitted with tyres of the prescribed type, does not exceed 3 tons;
- (ii) in any other case does not exceed 3 tons.

#### 2. Heavy motor cars

Heavy motor cars are mechanically propelled vehicles, other than vehicles classified as motor cars, which are constructed themselves to carry a load or passengers and whose unladen weight exceeds 2½ tons.

#### 3. Dual purpose vehicles

Dual purpose vehicles are vehicles constructed or adapted for the carriage both of passengers and of goods or burden of any description whose unladen weight does not exceed two tons and which either:-

- (a) are so constructed or adapted that the driving power of the engine is, or by the appropriate use of the controls of the vehicle can be, transmitted to all the wheels of the vehicle; or
- (b) satisfied the following conditions as to construction -
  - (i) the vehicle is permanently fitted with a rigid roof, with or without a sliding panel,
  - (ii) the area of the vehicle to the rear of the driver's seat is -
    - (A) permanently fitted with at least one row of transverse seats (fixed or folding) for 2 or more passengers and those seats are properly sprung or cushioned and provided with upholstered back-rests, attached either to the seats or to a side or the floor of the vehicle; and

---

<sup>1</sup> excludes pedal cycles



- (B) lit on each side and at the rear by a window or windows of glass or other transparent material having an area or aggregate area of not less than 2 square feet on each side and not less than 120 square inches on the rear.
- (iii) the distance between the rearmost part of the steering wheel and the backrests of the row of transverse seats satisfying the requirements specified in subparagraph (ii) (A) (or, where there is more than one row of seats, the distance between the rearmost part of the steering wheel and the backrests of the rearmost row) is, when the seats are ready for use, not less than one-third of distance between the rearmost part of the steering wheel and the rearmost part of the floor of the vehicle.

#### **4. Double cab pickup**

Double cab pickup means a motor vehicle which has –

- (i) a front passenger cabin which contain 2 rows of seats and is capable of seating a maximum of 4 persons excluding the driver,
- (ii) at least 2 doors capable of being opened separately; and
- (iii) an open pickup area behind the passenger cabin.

#### **5. Motor cycles**

Motor cycles are mechanically propelled vehicles, other than auto-cycles, with not more than 4 wheels and whose unladen weight does not exceed 400 kilograms.

#### **6. Auto cycles**

Auto cycles are bicycles which have pedals and a motor attached which can be propelled by means of those pedals and by mechanical or electrical power from that motor and the swept volume of the cylinders of that motor does not exceed 50 cubic centimeters.

#### **7. Motor tractors**

Motor tractors are mechanically propelled vehicles which are not constructed themselves to carry any load and whose unladen weight does not exceed 7¼ tons.

#### **8. Trailer**

- (a) means a vehicle which has no independent motive power of its own and which is drawn, or designed to be drawn, by a motor vehicle,
- (b) does not include a sidecar attached to a motor cycle, nor a farm implement that is not constructed or adapted for the conveyance of goods or burden of any description.

#### **9. Weight Unladen**

Means the weight of a vehicle which:-

- (a) includes the body and all parts (the heavier being taken where alternative bodies or parts are used) which are necessary to, or ordinarily used with, the vehicle when working on a road;
- (b) excludes the weight of water, fuel or accumulators used for the purpose of the supply of power for the propulsion of vehicle or of loose tools and loose equipment.

## **B. Road Traffic Accidents**

In this report, data on accidents refer to all road accidents reported to police stations and to insurance companies.

### **1. Road Traffic Accident**

A road traffic accident is an accident between two or more vehicles, a vehicle and a cyclist, a vehicle and a pedestrian, a vehicle and a fixed object such as a bridge, building, tree, post, etc, or a single vehicle that overturned on or near a public road.

### **2. Severity of accident**

Road traffic accidents are classified into the following categories according to the severity of the accident:

*Fatal accident* - an accident resulting in the death of one or more persons. Prior to 2002, a fatal accident was defined as an accident where deaths occurred within 7 days. As from 2002, a fatal accident is defined as an accident where deaths occurred within 30 days.

*Serious injury accident* - An accident in which one or more persons are seriously injured.

*Slight injury accident* - An accident in which one or more persons are slightly injured.

*Non injury accident* - An accident in which no one is killed or injured but which results in damage to the vehicle/s and/or other property only.

### **3. Casualty**

Any person killed or injured in a road accident is referred to as a casualty.

*Fatality* - Any person killed during an accident, or within 30 days as a result of an accident is referred to as a fatality.

#### ***Injury definition***

(i) As from January 2013:

(a) Serious Injury - An injury for which a person is admitted to hospital as an "in-patient" for more than 24 hours.

(b) Slight Injury - An injury for which a person has received medical care but has not been admitted to hospital for more than 24 hours.

(ii) Prior to January 2013:

(a) Serious Injury - An injury for which a person is detained in hospital as an "in-patient" or any of the following injuries (whether or not he is detained in hospital): fractures, concussions, internal injuries, severe cuts and lacerations, crushings and severe general shock requiring medical treatment.

(b) Slight Injury - An injury of minor character such as a sprain, bruise and cut not judged to be severe.

## Abbreviations and Symbols

### Abbreviations

No.	:	Number
000	:	Thousand
%	:	Percentage
km	:	Kilometre
sq	:	Square
M/ton	:	Metric ton : 1,000 kilos
Mn	:	Million
Rs	:	Rupees
c.i.f	:	Cost, insurance and freight
n.e.s	:	Not elsewhere specified
000 Litres:		Thousand Litres

### Symbols

-		Nil or negligible
...		Not available

## **Road Transport and Road Traffic Accident Statistics – An overview (Island of Mauritius)**

**Year 2014**

### **1. Vehicles registered in 2014**

At the end of December 2014, there were 465,052 vehicles registered at the National Transport Authority (NTA). This represents a net increase of 21,557 vehicles (4.9%) as compared to end of year 2013 when the number of registered vehicles was 443,495.

During the year 2014, the fleet was strengthened with the registration of 26,400 vehicles, of which 18,170 (68.8%) were new, 7,386 (28.0%) were imported second-hand and 844 (3.2%) were re-registered vehicles; i.e., those which had been previously put off the road. During the same period some 4,843 vehicles were put off the road. The net addition to the existing fleet worked out to 21,557 vehicles.

### **2. Composition of fleet**

A breakdown of the fleet by type of vehicle is given in Table 1.2. At the end of December 2014, the fleet consisted of 48.5% (225,522) cars, double cab pickup and dual purpose vehicles and 40.4% (187,851) auto/motor cycles. The remaining 11.1% comprised vans (26,890), lorries and trucks (14,243), buses (3,006) and other vehicles (7,540). It is to be noted that, prior to year 2013, double cab pickup was included in dual purpose vehicles.

### **3. Vehicles used for transport of passengers**

#### **3.1 *Cars, double cab pickup and dual purpose vehicles***

At the end of December 2014, the number of cars, double cab pickup and dual purpose vehicles was 225,522, a rise of 6.6% over the figure of 211,586 as at end of December 2013. This increase resulted from the registration of 15,654 such vehicles (8,342 new, 6,914 imported second-hand and 398 re-registered), partly offset by 1,718 vehicles that were put off the road.

Table 1.6 shows the age distribution of cars, double cap pickup and dual purpose vehicles. At the end of December 2014, some 44.0% were less than 5 years, 25.1% between 5 and 9 years and the remaining 30.9%, 10 years and above.

#### **3.2 *Buses***

At the end of December 2014, there were 3,006 registered buses, out of which 1,963 or 65.3% were 'public' buses operating with a road service licence. During 2014, some 163 new buses were registered while 120 buses were put off the road resulting in a net increase of 43 buses.

Table 1.7 which gives the age distribution of the fleet of public buses, shows that 32.6% of the buses were under 5 years, 35.6% between 5 and 9 years and 31.8%, between 10 and 20 years.

#### **4. Motor cycles and auto cycles**

At the end of 2014, there were 187,851 motor cycles and auto cycles. This represents a net increase of 7,066 (+3.9%) against 180,785 at the end of 2013.

#### **5. Road traffic accidents**

The number of road accidents registered during the year 2014 was 26,400 against 25,563 in the preceding year, showing an increase of 12.0%. Among these accidents, the majority, 23,807 (90.2%) were non-injury, 125 fatal, 425 caused serious injuries and 2,043 slight injuries (Table 2.7).

Compared to 2013, accidents causing casualties went up by 0.6% and non-injury accidents by 13.4%. Fatal accidents rose by 5.0%, serious injury accidents by 9.3% while slight injury accidents decreased by 1.3%.

The accident rate, expressed as the number of accidents per 100,000 mid-year population, increased from 1,936 in 2013 to 2,165 in 2014 and the number of accidents per 1,000 mid-year registered motor vehicles increased from 55 in 2013 to 57 in 2014 (Table 2.1).

#### **6. Vehicles involved in road accidents**

During the year 2014, the total number of vehicles (both motor and non-motor) involved in road accidents was 51,396 against 42,089 in the previous year. The number of motor vehicles involved in accidents resulting in casualties was 3,651 in 2014 against 3,866 in 2013. Table 2.15 shows that 30.3% of the vehicles were private cars, another 43.1% were motor/auto cycles, 6.7% were buses and 4.9% were vans.

#### **7. Casualties**

The number of casualties (fatalities and persons injured as a result of road accidents) decreased by 0.5% from 3,610 in 2013 to 3,592 in 2014. Among the casualties, 137 were fatal, 505 seriously injured and the remaining 2,950 slightly injured.

Table 2.19 reveals that, among the casualties in 2014, some 23.9% were passengers, 41.7% riders of auto/motor cycles, 16.9% pedestrians, 13.9% drivers and 3.6% pedal cyclists.

Compared to 2013, the number of persons who died as a result of road accidents in 2014 went up by 0.7%. The fatality rate, expressed as the number of persons who died as a result of road accidents per 100,000 mid-year population, was 11.2, same as in 2014. Out of the 137 persons killed in road accidents during year 2014, the most vulnerable category of road users were riders/pillion riders of motorised two-wheelers (56), followed by pedestrians (36) (Table 2.24).

#### **8. Hit and run cases of accidents causing casualties**

In 2014, there were 163 "hit and run" cases causing casualties compared to 192 in 2013. Out of these 163 cases, 56.4% (92) involved vehicles only while the other 43.6% (71) involved both vehicles and pedestrians (Table 2.8).

**Main Road Transport and Road Accident Indicators,  
2013 - 2014 (Island of Mauritius)**

	<b>2013</b>	<b>2014</b>	
Population (mid - year)	1,217,341	1,219,265	
Area of Mauritius (sq km)	1,865	1,865	
Length of roads (km)	2,275	2,356	
Per Capita G.D.P at market prices (Rs) <sup>1</sup> - Republic of Mauritius	290,771	306,659	
	<b>2013</b>	<b>2014</b>	<b>% change</b>
<b>Vehicles on register</b>	<b>443,495</b>	<b>465,052</b>	<b>+ 4.9</b>
Motor cycle and auto cycle	180,785	187,851	+ 3.9
Car and dual purpose vehicle	211,586	225,522	+ 6.6
Other	51,124	51,679	+ 1.1
<b>Road Accidents</b>	<b>23,563</b>	<b>26,400</b>	<b>+12.0</b>
Number of non-injury accidents	20,985	23,807	+ 13.4
Number of casualty accidents	2,578	2,593	+ 0.6
<i>Fatal accident</i>	119	125	+ 5.0
<i>Serious injury accident</i>	389	425	+ 9.3
<i>Slight injury accident</i>	2,070	2,043	- 1.3
<b>Total casualties</b>	<b>3,610</b>	<b>3,592</b>	<b>- 0.5</b>
<i>Fatal</i>	136	137	+ 0.7
<i>Seriously injured</i>	465	505	+ 8.6
<i>Slightly injured</i>	3,009	2,950	- 2.0
<b>Motor vehicles involved in road accidents</b>	<b>41,888</b>	<b>51,264</b>	<b>+ 22.4</b>
<b>Fatality rate</b>			
Rate per 1,000 registered motor vehicles <sup>1</sup>	0.31	0.30	- 0.01
Rate per 100,000 population	11.17	11.24	+ 0.07
Rate per 100 casualty accident	5.28	5.28	0.00
Rate per 100 casualties	3.77	3.81	+ 0.04

<sup>1</sup> revised

# PART I

VEHICLES

STATISTICS

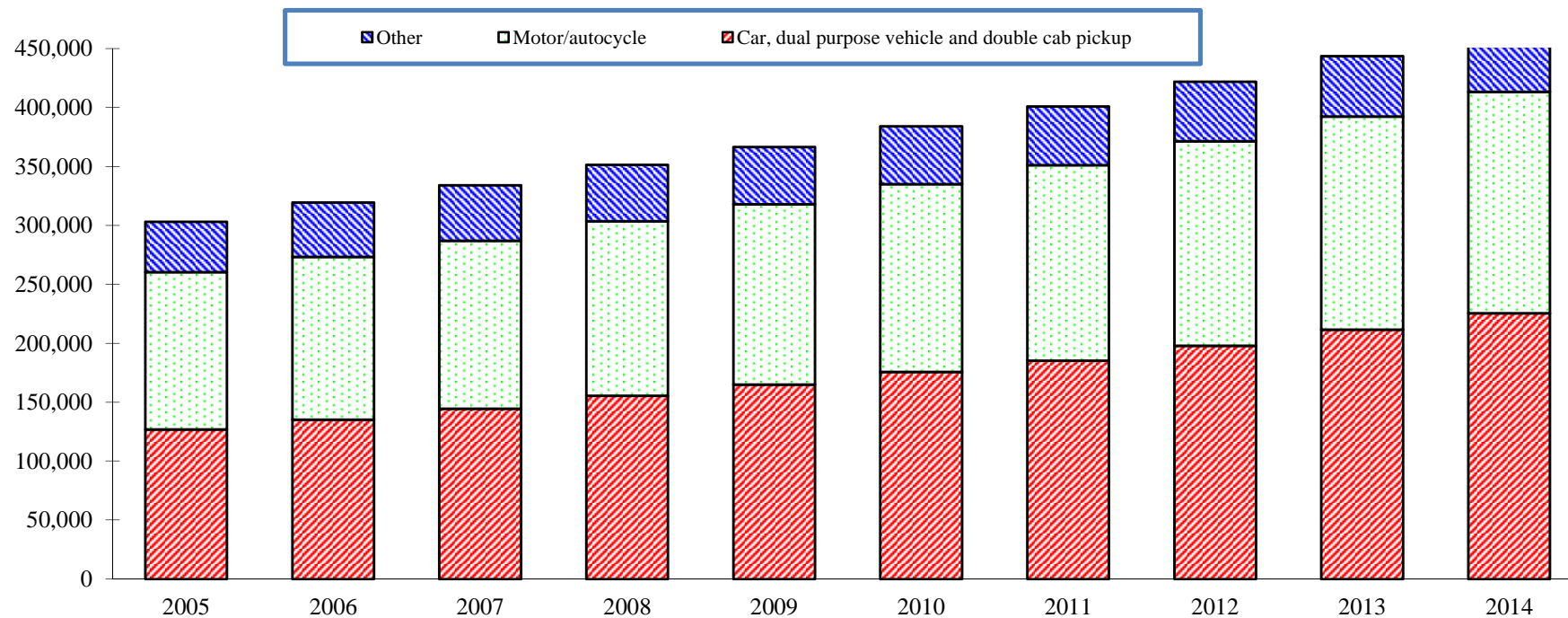
**Table 1.1 - Road network as at end of year, 2010 - 2014**

Year	Length of roads (km)					% of roads paved	Density <sup>1</sup> of total network in km per sq km	Number of vehicles per km of road
	Motorways	Main roads	Secondary roads	Other roads	Total			
<b>2010</b>	75	1,014	593	398	<b>2,080</b>	98	1.12	185
<b>2011</b>	82	1,035	595	400	<b>2,112</b>	98	1.13	190
<b>2012</b>	86	1,068	608	408	<b>2,170</b>	98	1.16	194
<b>2013</b>	99	1,131	625	420	<b>2,275</b>	98	1.22	195
<b>2014</b>	99	1,131	673	453	<b>2,356</b>	98	1.26	197

<sup>1</sup> density of total network in km per sq. km is the ratio of the total number of km of roads to the area of Mauritius (1,865 sq. km)



**Fig. 1.1 - Stock of registered vehicles, 2005 - 2014**



Type of vehicle	2005	2006	2007	2008	2009	2010	2011	2012	2013	2014
Car, dual purpose vehicle and double cab pickup <sup>1</sup>	126,844	135,132	144,405	155,528	165,036	175,634	185,357	197,849	211,586	225,522
Motor cycle and autocycle	133,430	138,174	142,606	147,988	152,935	159,329	165,706	173,508	180,785	187,851
Other	45,222	46,134	47,134	47,890	48,549	49,152	49,856	50,569	51,124	51,679
<b>Total</b>	<b>305,496</b>	<b>319,440</b>	<b>334,145</b>	<b>351,406</b>	<b>366,520</b>	<b>384,115</b>	<b>400,919</b>	<b>421,926</b>	<b>443,495</b>	<b>465,052</b>

<sup>1</sup> New category of vehicle defined in Road Traffic Act as amended by Act No. 27 of 2012.  
Prior to the year 2013 'double cab pickup' was included in 'dual purpose vehicle'

**Table 1.2 - Vehicles<sup>1</sup> registered , 2005 - 2014**

Type of vehicle	Number									
	2005	2006	2007	2008	2009	2010	2011	2012	2013	2014
Car	84,818	91,911	99,770	109,507	117,890	127,363	136,225	147,733	160,701	173,954
<i>(of which taxi car)</i>	<i>(6,798)</i>	<i>(6,860)</i>	<i>(6,885)</i>	<i>(6,941)</i>	<i>(6,921)</i>	<i>(6,924)</i>	<i>(6,907)</i>	<i>(6,905)</i>	<i>(6,915)</i>	<i>(6,911)</i>
Dual purpose vehicle	42,026	43,221	44,635	46,021	47,146	48,271	49,132	50,116	49,730	49,503
Double cab pickup <sup>2</sup>	-	-	-	-	-	-	-	-	1,155	2,065
Heavy motor car	1,045	1,118	1,223	1,290	1,275	1,249	1,230	1,244	1,250	1,271
Motor cycle	30,927	33,936	36,969	40,804	44,222	48,655	53,410	59,637	65,827	72,067
Auto cycle	102,503	104,238	105,637	107,184	108,713	110,674	112,296	113,871	114,958	115,784
Lorry and truck	12,047	12,272	12,536	12,726	12,950	13,186	13,539	13,902	14,061	14,243
Van	23,989	24,522	24,934	25,334	25,622	25,914	26,090	26,293	26,624	26,890
Bus	2,560	2,612	2,753	2,762	2,803	2,845	2,912	2,957	2,963	3,006
Tractor and dumper	2,982	3,001	3,025	3,045	3,102	3,119	3,173	3,202	3,226	3,254
Prime mover	412	436	452	505	558	596	650	689	715	734
Trailer	1,765	1,756	1,795	1,809	1,823	1,821	1,834	1,845	1,846	1,842
Road roller	96	96	96	96	97	98	99	101	102	103
Other	326	321	320	323	319	324	329	336	337	336
<b>TOTAL</b>	<b>305,496</b>	<b>319,440</b>	<b>334,145</b>	<b>351,406</b>	<b>366,520</b>	<b>384,115</b>	<b>400,919</b>	<b>421,926</b>	<b>443,495</b>	<b>465,052</b>

<sup>1</sup> Excluding pedal cycles, but including government vehicles.

<sup>2</sup> New category of vehicle defined in Road Traffic Act as amended by Act No. 27 of 2012.  
Prior to the year 2013 'double cab pickup' was included in 'dual purpose vehicle'

**Table 1.3 - New vehicles<sup>1</sup> registered, 2010 - 2014**

Type of vehicle	Number				
	2010	2011	2012	2013	2014
<b>Car</b>	4,828	5,970	7,207	6,651	7,181
<b>Dual purpose vehicle</b>	1,325	1,214	1,341	74	-
<b>Double cab pickup<sup>2</sup></b>	-	-	-	1,079	1,161
<b>Heavy motor car</b>	18	27	28	25	45
<b>Motor cycle</b>	4,331	5,020	6,517	6,481	6,608
<b>Auto cycle</b>	3,019	2,944	2,942	2,444	2,194
<b>Lorry and truck</b>	261	245	334	209	264
<b>Van</b>	291	354	362	452	454
<b>Bus</b>	157	147	151	91	163
<b>Tractor and dumper</b>	66	73	57	59	57
<b>Prime mover</b>	6	17	15	11	15
<b>Trailer</b>	55	37	55	24	21
<b>Road roller</b>	1	1	1	-	1
<b>Other<sup>3</sup></b>	9	8	11	7	6
<b>Total</b>	<b>14,367</b>	<b>16,057</b>	<b>19,021</b>	<b>17,607</b>	<b>18,170</b>

<sup>1</sup> Includes government vehicles

<sup>2</sup> New category of vehicle defined in Road Traffic Act as amended by Act No. 27 of 2012. Prior to the year 2013 'double cab pickup' was included in 'dual purpose vehicle'

<sup>3</sup> Includes, inter alia, tanker lorries, excavators and industrial tractors

**Table 1.4 - Imported Second-hand and re-registered vehicles, 2010 - 2014**

Number

Type of vehicle	2010			2011			2012			2013			2014		
	Imported second - hand vehicles	Re-registered vehicles <sup>1</sup>	Total	Imported second - hand vehicles	Re-registered vehicles <sup>1</sup>	Total	Imported second - hand vehicles	Re-registered vehicles <sup>1</sup>	Total	Imported second - hand vehicles	Re-registered vehicles <sup>1</sup>	Total	Imported second - hand vehicles	Re-registered vehicles <sup>1</sup>	Total
<b>Car</b>	4,786	721	<b>5,507</b>	3,615	364	<b>3,979</b>	5,012	409	<b>5,421</b>	7,109	350	<b>7,459</b>	6,886	324	<b>7,210</b>
<b>Dual purpose vehicle</b>	118	165	<b>283</b>	86	157	<b>243</b>	90	156	<b>246</b>	76	47	<b>123</b>	14	16	<b>30</b>
<b>Double cab pickup<sup>2</sup></b>	-	-	-	-	-	-	-	-	-	22	63	<b>85</b>	14	58	<b>72</b>
<b>Heavy motor car</b>	3	4	<b>7</b>	4	4	<b>8</b>	-	13	<b>13</b>	7	5	<b>12</b>	3	5	<b>8</b>
<b>Motor cycle</b>	52	552	<b>604</b>	72	338	<b>410</b>	46	367	<b>413</b>	66	346	<b>412</b>	59	305	<b>364</b>
<b>Auto cycle</b>	5	1	<b>6</b>	6	1	<b>7</b>	7	1	<b>8</b>	4	3	<b>7</b>	1	5	<b>6</b>
<b>Lorry and truck</b>	242	98	<b>340</b>	291	64	<b>355</b>	193	64	<b>257</b>	109	65	<b>174</b>	64	44	<b>108</b>
<b>Van</b>	324	106	<b>430</b>	209	73	<b>282</b>	207	106	<b>313</b>	297	71	<b>368</b>	287	60	<b>347</b>
<b>Bus</b>	-	1	<b>1</b>	-	1	<b>1</b>	-	-	-	-	-	-	-	-	-
<b>Tractor and dumper</b>	6	7	<b>13</b>	15	14	<b>29</b>	13	11	<b>24</b>	6	8	<b>14</b>	7	7	<b>14</b>
<b>Prime mover</b>	42	6	<b>48</b>	50	4	<b>54</b>	42	-	<b>42</b>	30	2	<b>32</b>	23	5	<b>28</b>
<b>Trailer</b>	19	17	<b>36</b>	56	14	<b>70</b>	21	18	<b>39</b>	36	19	<b>55</b>	28	14	<b>42</b>
<b>Road roller</b>	-	-	-	-	-	-	-	1	<b>1</b>	-	1	<b>1</b>	-	-	-
<b>Other<sup>3</sup></b>	1	-	<b>1</b>	2	1	<b>3</b>	2	1	<b>3</b>	2	-	<b>2</b>	-	1	<b>1</b>
<b>Total</b>	<b>5,598</b>	<b>1,678</b>	<b>7,276</b>	<b>4,406</b>	<b>1,035</b>	<b>5,441</b>	<b>5,633</b>	<b>1,147</b>	<b>6,780</b>	<b>7,764</b>	<b>980</b>	<b>8,744</b>	<b>7,386</b>	<b>844</b>	<b>8,230</b>

<sup>1</sup> Refers to re-registration of vehicles previously put off the road excludes government vehicles which are not liable to re-registration

<sup>2</sup> New category of vehicle defined in Road Traffic Act as amended by Act No. 27 of 2012.  
Prior to the year 2013 'double cab pickup' was included in 'dual purpose vehicle'

<sup>3</sup> Includes, inter alia, tanker lorries, excavators and industrial tractors

**Table 1.5 - Vehicles off the road<sup>1</sup>, 2010 - 2014**

Type of vehicle	Number				
	2010	2011	2012	2013	2014
<b>Car</b>	862	1,087	1,120	1,142	1,138
<b>Dual purpose vehicle</b>	483	596	603	583	257
<b>Double cab pickup<sup>2</sup></b>	-	-	-	9	323
<b>Heavy motor car</b>	51	54	27	31	32
<b>Motor cycle</b>	502	675	703	703	732
<b>Auto cycle</b>	1,064	1,329	1,375	1,364	1,374
<b>Lorry and truck</b>	365	247	228	224	190
<b>Van</b>	429	460	472	489	535
<b>Bus</b>	116	81	106	85	120
<b>Tractor and dumper</b>	62	48	52	49	43
<b>Prime mover</b>	16	17	18	17	24
<b>Trailer</b>	93	94	83	78	67
<b>Road roller</b>	-	-	-	-	-
<b>Other<sup>3</sup></b>	4	6	7	8	8
<b>Total</b>	<b>4,047</b>	<b>4,694</b>	<b>4,794</b>	<b>4,782</b>	<b>4,843</b>

<sup>1</sup> A vehicle may be withdrawn from the register of vehicles (off the road) either temporarily or permanently. Any such vehicle (except a government vehicle) must register with the N.T.A before it is put on the road again. Includes government vehicles which have been sold by auction.

<sup>2</sup> New category of vehicle defined in Road Traffic Act as amended by Act No. 27 of 2012. Prior to the year 2013 'double cab pickup' was included in 'dual purpose vehicle'

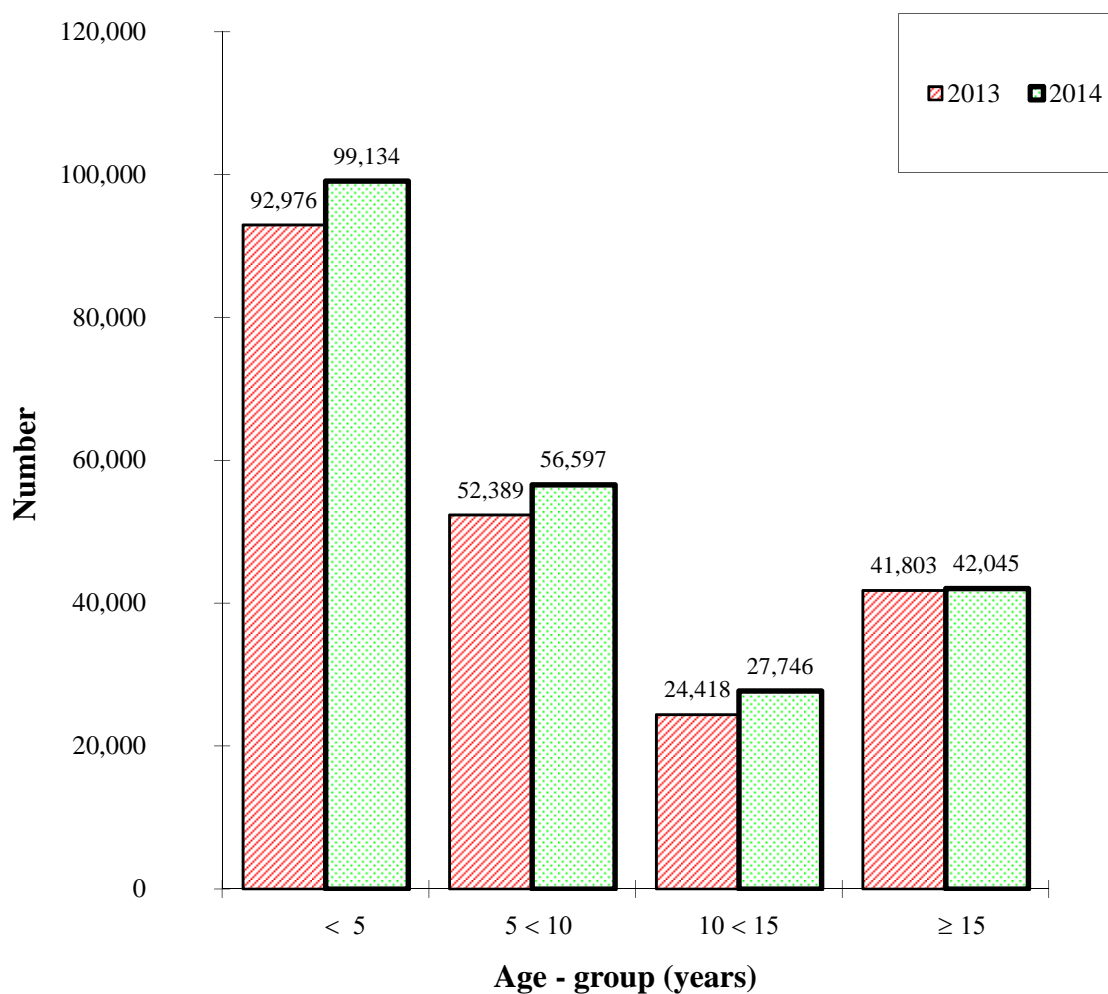
<sup>3</sup> Includes, inter alia, tanker lorries, excavators and industrial tractors

**Table 1.6 - Age composition of cars, dual purpose vehicles and double cab pickup<sup>1</sup>, 2013 - 2014**

( as at 31st December )

Age group (Years)	2013		2014	
	Number	%	Number	%
< 5	92,976	43.9	99,134	44.0
5 < 10	52,389	24.8	56,597	25.1
10 < 15	24,418	11.5	27,746	12.3
≥ 15	41,803	19.8	42,045	18.6
<b>TOTAL</b>	<b>211,586</b>	<b>100.0</b>	<b>225,522</b>	<b>100.0</b>

**Fig. 1.2 - Age composition of cars, dual purpose vehicles and double cab pickup<sup>1</sup>(as at 31st December)**



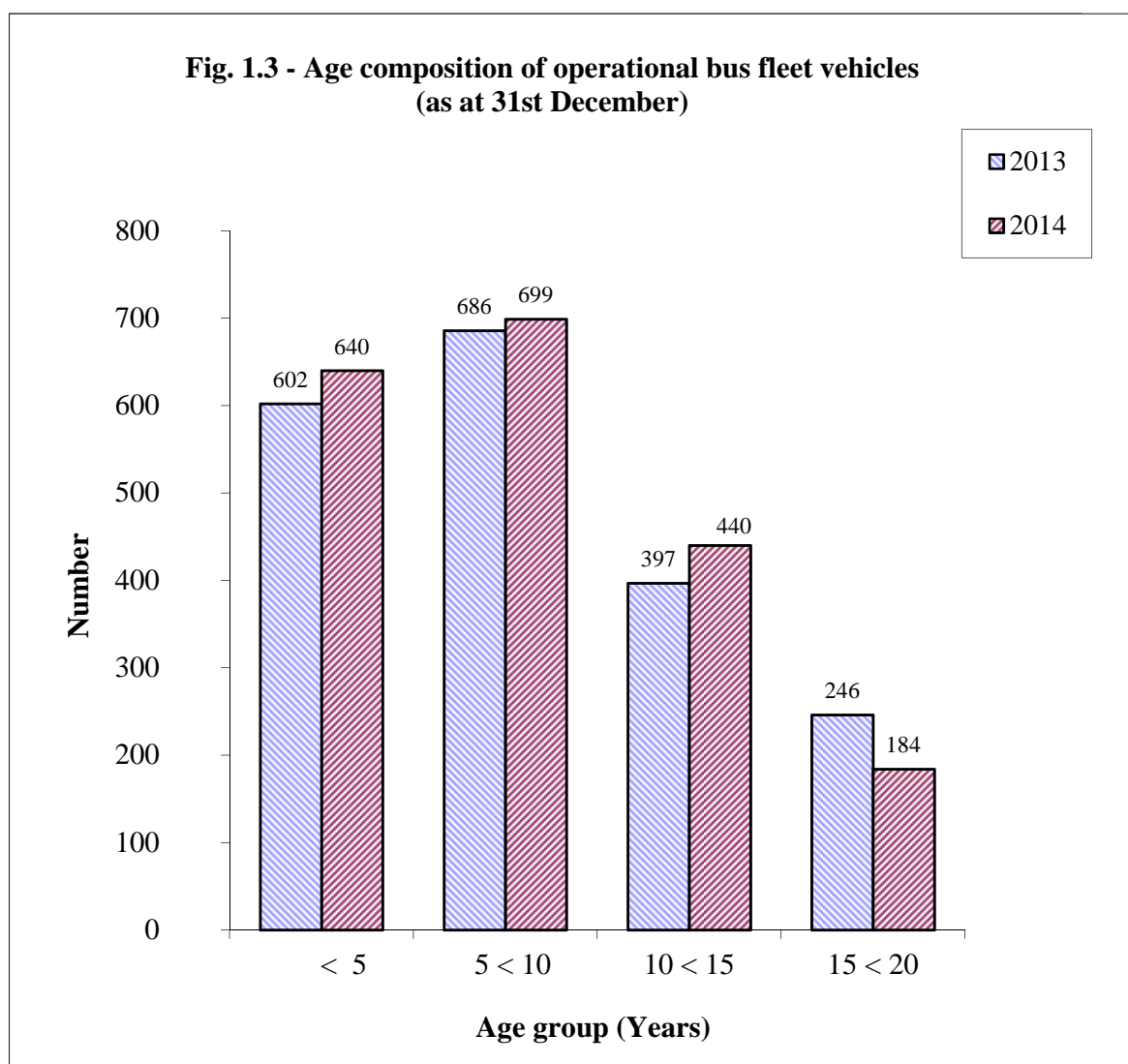
<sup>1</sup> New category of vehicle defined in Road Traffic Act as amended by Act No. 27 of 2012. Prior to the year 2013 'double cab pickup' was included in 'dual purpose vehicle'

**Table 1.7 - Age composition of operational bus fleet <sup>1</sup>, 2013 - 2014**

(as at 31st December)

Age group (Years)	2013		2014	
	Number	%	Number	%
< 5	602	31.2	640	32.6
5 < 10	686	35.5	699	35.6
10 < 15	397	20.6	440	22.4
15 < 20	246	12.7	184	9.4
<b>TOTAL</b>	<b>1,931</b>	<b>100.0</b>	<b>1,963</b>	<b>100.0</b>

<sup>1</sup> Refers only to buses with a Road Service License, i.e, buses which operate on proclaimed routes and charge individual fares



**Table 1.8 - Bus operational statistics<sup>1</sup>, 2010 - 2014**

	<b>Unit</b>	<b>2010</b>	<b>2011</b>	<b>2012</b>	<b>2013 <sup>2</sup></b>	<b>2014 <sup>3</sup></b>
<b>Operational bus fleet (as at 30th June)</b>	Number	1,848	1,853	1,884	1,918	1,986
<b>Total vehicle - journeys</b>	Thousand	4,899	4,905	4,900	4,808	4,805
<b>Average vehicle - journeys per day</b>	"	8.8	8.8	8.7	8.4	8.1
<b>Total vehicle - kilometres</b>	"	97,548	97,582	96,314	96,392	97,825
<b>Average vehicle - kilometres per day</b>	"	176	176	170	168	164
<b>Total gross receipts</b>	Rs Mn	2,219	2,239	2,247	2,405	2,444
<b>Average gross receipts per day</b>	Rs '000	6,827	6,889	6,914	7,400	7,520

<sup>1</sup> refer only to buses with a Road Service Licence, i.e., buses which operate on proclaimed routes and charge individual fares . Including data on special trips .

<sup>2</sup> revised

<sup>3</sup> provisional



**Table 1.9 - Evolution of bus fares (adults), 2002 - 2014**

		Rupees				
Period Stage	Aug. 02	Oct. 04	May. 08	Dec. 10	Aug. 13	
1	5.00	6.00	8.00	10.00	12.00	
2	9.00	10.00	14.00	16.00	18.00	
3	12.00	14.00	18.00	22.00	24.00	
4	12.00	14.00	18.00	22.00	24.00	
5	14.00	16.00	20.00	25.00	27.00	
6	14.00	16.00	20.00	25.00	27.00	
7	16.00	18.00	23.00	28.00	30.00	
8	16.00	18.00	23.00	28.00	30.00	
9	17.00	19.00	24.00	29.00	31.00	
10	17.00	19.00	24.00	29.00	31.00	
11	17.00	19.00	24.00	29.00	31.00	
12	17.00	19.00	24.00	29.00	31.00	
13	19.00	21.00	26.00	32.00	34.00	
14	19.00	21.00	26.00	32.00	34.00	
15	19.00	21.00	26.00	32.00	34.00	
16	19.00	21.00	26.00	32.00	34.00	
17	19.00	21.00	26.00	32.00	34.00	
18	19.00	21.00	26.00	32.00	34.00	
19	19.00	21.00	26.00	32.00	34.00	
20	19.00	21.00	26.00	32.00	34.00	
21	20.00	22.00	27.00	32.00	34.00	
22	20.00	22.00	27.00	32.00	34.00	
23	20.00	22.00	27.00	32.00	34.00	
24	20.00	22.00	27.00	32.00	34.00	
25	20.00	22.00	27.00	32.00	34.00	
26	20.00	22.00	27.00	32.00	34.00	
27	20.00	22.00	27.00	32.00	34.00	
28	20.00	22.00	27.00	32.00	34.00	
29	20.00	22.00	27.00	32.00	34.00	
30	20.00	22.00	27.00	32.00	34.00	
30 +	21.00	23.00	28.00	35.00	37.00	

**Table 1.10 - Receipts from the activities of the National Transport Authority, 2010 - 2014**

Rs. '000

Activity	As at end of December				
	2010	2011	2012	2013	2014 <sup>1</sup>
<b>Issue of motor vehicle licences (Road tax)</b>	1,106,398	1,154,699	1,210,757	1,290,830	1,344,534
<b>Examination of vehicles</b>	31,608	63,345	67,830	72,465	74,890
<b>Issue of public service vehicle and carrier's licences</b>	35,563	45,492	39,740	34,964	31,877
<b>Registration of vehicles</b>	65,370	83,503	94,246	96,598	102,244
<b>Issue of special route permits</b>	397	663	524	522	419
<b>Issue of motor vehicles dealers and petrol service station licences</b>	2,503	1,663	3,065	3,674	3,071
<b>Total</b>	<b>1,241,839</b>	<b>1,349,365</b>	<b>1,416,162</b>	<b>1,499,053</b>	<b>1,557,035</b>

<sup>1</sup> provisional

**Table 1.11 - Driving licences issued during the year by type of licence, 2005 - 2014**

Number

Type of Licence Year	Learner's licence			Competent licence			International Licence		
	First issue			First issue					
	Male	Female	Both Sexes	Male	Female	Both Sexes	Male	Female	Both Sexes
<b>2005</b>	8,742	6,372	<b>15,114</b>	10,878	2,557	<b>13,435</b>	4,200	825	<b>5,025</b>
<b>2006</b>	9,809	7,317	<b>17,126</b>	11,212	2,465	<b>13,677</b>	4,200	1,014	<b>5,214</b>
<b>2007</b>	10,440	8,429	<b>18,869</b>	6,984	2,958	<b>9,942</b>	4,943	652	<b>5,595</b>
<b>2008</b>	10,434	8,817	<b>19,251</b>	7,575	3,297	<b>10,872</b>	4,526	1,542	<b>6,068</b>
<b>2009</b>	10,386	10,410	<b>20,796</b>	7,121	3,505	<b>10,626</b>	4,290	965	<b>5,255</b>
<b>2010</b>	9,587	6,036	<b>15,623</b>	7,762	3,816	<b>11,578</b>	4,073	1,078	<b>5,151</b>
<b>2011</b>	12,209	10,568	<b>22,777</b>	8,490	4,328	<b>12,818</b>	4,073	733	<b>4,806</b>
<b>2012</b>	11,980	9,509	<b>21,489</b>	7,477	4,697	<b>12,174</b>	2,905	1,453	<b>4,358</b>
<b>2013</b>	9,919	7,173	<b>17,092</b>	8,152	4,647	<b>12,799</b>	3,235	1,330	<b>4,565</b>
<b>2014<sup>1</sup></b>	9,035	7,890	<b>16,925</b>	7,782	4,706	<b>12,488</b>	3,688	1,214	<b>4,902</b>

<sup>1</sup> provisional

**Table 1.12 - Imports of vehicles and spare parts by country of origin, 2013 - 2014**

C.I.F. Value Rs '000

Item	Country of origin	Unit	2013 <sup>1</sup>		2014 <sup>2</sup>	
			Quantity	Value	Quantity	Value
<b>1 - Passenger motor cars</b> - of engine capacity not exceeding 1,250 c.c.	France	No.	51	19,357	23	9,412
	Germany	"	3	785	84	42,152
	India	"	854	207,112	1,200	264,521
	Japan	"	2,306	429,635	2,225	358,099
	Korea Rep.	"	525	139,767	445	121,779
	Malaysia	"	237	47,994	61	12,582
	South Africa Rep.	"	31	9,441	39	13,045
	Spain	"	41	9,746	129	56,755
	Thailand	"	239	69,548	455	134,096
	Turkey	"	100	30,703	104	42,451
	United Kingdom	"	17	3,851	46	18,895
	Other Countries	"	25	6,777	105	36,085
				<b>4,429</b>	<b>974,716</b>	<b>4,916</b>
- of engine capacity exceeding 1,250 c.c. but not exceeding 1,500 c.c.	China	No.	28	8,465	23	7,735
	Germany	"	71	25,620	38	15,058
	India	"	83	27,088	150	50,097
	Indonesia	"	67	24,626	12	4,397
	Japan	"	4,886	1,118,781	4,412	888,241
	Korea Rep.	"	372	123,935	348	115,973
	Malaysia	"	3	794	18	5,333
	Poland	"	9	4,102	60	28,397
	South Africa Rep.	"	32	11,953	11	3,377
	Thailand	"	111	41,191	458	164,523
	United Kingdom	"	46	14,257	35	12,660
	Other Countries	"	44	18,006	43	17,909
				<b>5,752</b>	<b>1,418,818</b>	<b>5,608</b>

<sup>1</sup> revised

<sup>2</sup> provisional

**Table 1.12 (cont'd) - Imports of vehicles and spare parts by country of origin, 2013 - 2014**

C.I.F. Value Rs '000

Item	Country of origin	Unit	2013 <sup>1</sup>		2014 <sup>2</sup>	
			Quantity	Value	Quantity	Value
- of engine capacity exceeding 1,500 c.c. but not exceeding 2,250 c.c.	Austria	No.	14	12,125	9	7,751
	France	"	253	137,229	189	112,209
	Germany	"	1,242	1,040,304	1,093	1,091,955
	India	"	93	35,915	134	51,541
	Japan	"	565	228,360	806	337,295
	Korea Rep.	"	770	339,232	568	265,430
	Malaysia	"	9	4,297	11	5,007
	South Africa Rep.	"	2	1,908	362	247,686
	Spain	"	49	34,686	42	36,187
	Thailand	"	233	119,681	324	168,479
	Turkey	"	16	7,485	19	9,432
	United Kingdom	"	342	214,565	329	216,423
	Other Countries	"	17	10,423	36	19,187
			<b>3,605</b>	<b>2,186,210</b>	<b>3,922</b>	<b>2,568,582</b>
- of engine capacity exceeding 2,250 c.c.	Germany	No.	85	199,346	164	258,999
	Japan	"	22	14,666	35	27,715
	Korea Rep.	"	47	35,511	50	37,659
	South Africa Rep.	"	2	688	5	1,756
	United Kingdom	"	34	51,309	46	84,610
	United States	"	7	5,179	15	19,032
	Other Countries	"	4	5,065	20	12,455
			<b>201</b>	<b>311,764</b>	<b>335</b>	<b>442,226</b>

<sup>1</sup> revised

<sup>2</sup> provisional

**Table 1.12 (cont'd) - Imports of vehicles and spare parts by country of origin, 2013 - 2014**

C.I.F. Value Rs '000

Item	Country of origin	Unit	2013 <sup>1</sup>		2014 <sup>2</sup>	
			Quantity	Value	Quantity	Value
- other, unspecified	Germany	No.	8	7,142	2	591
	Japan	"	522	149,388	413	107,079
	United Kingdom	"	16	9,017	1	591
			<b>546</b>	<b>165,547</b>	<b>416</b>	<b>108,261</b>
<b>2 - Trucks and lorries, trucks of pick-up type, vans designed solely for the types which are not derived solely from ordinary passenger motor-car</b>	Argentina	No.	53	41,041	15	9,116
	Belgium	"	29	10,929	-	-
	China	"	101	35,538	101	35,398
	France	"	119	45,219	121	45,008
	India	"	16	6,479	18	9,232
	Japan	"	418	181,032	435	167,241
	Korea Rep.	"	115	43,326	166	64,472
	South Africa Rep.	"	886	520,323	975	598,637
	Spain	"	21	10,542	32	18,494
	Thailand	"	63	33,545	249	140,444
	United Kingdom	"	35	20,180	13	6,987
	Other Countries	"	9	4,935	18	6,914
			<b>1,865</b>	<b>953,089</b>	<b>2,143</b>	<b>1,101,943</b>

<sup>1</sup> revised

<sup>2</sup> provisional

**Table 1.12 (cont'd) - Imports of vehicles and spare parts by country of origin, 2013 - 2014**

C.I.F. Value Rs '000

Item	Country of origin	Unit	2013 <sup>1</sup>		2014 <sup>2</sup>	
			Quantity	Value	Quantity	Value
<b>3 - Public service type passenger motor vehicle</b>	China	No.	32	19,764	93	103,234
	Germany	"	-	-	30	16,125
	India	"	38	32,132	-	-
	Japan	"	365	218,194	477	272,126
	Korea Rep.	"	11	8,112	23	13,812
	Pakistan	"	3	3,882	-	-
	Spain	"	2	1,191	2	1,258
			<b>451</b>	<b>283,275</b>	<b>625</b>	<b>406,555</b>
<b>4 - Road tractors for semi-trailers</b>	China	No.	-	-	2	5,264
	France	"	8	25,434	3	9,397
	Japan	"	2	3,947	-	-
	United Kingdom	"	20	40,700	24	57,070
			<b>30</b>	<b>70,081</b>	<b>29</b>	<b>71,731</b>
<b>5 - Dumpers</b>	Germany	"	3	3,974	-	-
	Spain	"	1	426	-	-
	United Kingdom	"	2	1,316	-	-
			<b>6</b>	<b>5,716</b>	<b>-</b>	<b>-</b>

<sup>1</sup> revised

<sup>2</sup> provisional

**Table 1.12 (cont'd) - Imports of vehicles and spare parts by country of origin, 2013 - 2014**

C.I.F. Value Rs ' 000

Item	Country of origin	Unit	2013 <sup>1</sup>		2014 <sup>2</sup>	
			Quantity	Value	Quantity	Value
<b>6 - Other motor vehicles for the transport of goods or materials</b>  - of an engine capacity not exceeding 1,600 c.c.  - of an engine capacity exceeding 1,600 c.c. but not exceeding 2,250 c.c.  - of an engine capacity exceeding 2,250 c.c.	China	No.	8	1,644	7	1,577
	Japan	"	21	4,424	1	181
			<b>29</b>	<b>6,068</b>	<b>8</b>	<b>1,758</b>
	Japan	No.	3	709	73	15,414
			<b>3</b>	<b>709</b>	<b>73</b>	<b>15,414</b>
	China	No.	3	2,001	-	-
	Japan	"	80	21,909	55	12,817
	United Kingdom	"	3	855	2	711
			<b>86</b>	<b>24,765</b>	<b>57</b>	<b>13,528</b>

<sup>1</sup> revised

<sup>2</sup> provisional



**Table 1.12 (cont'd) - Imports of vehicles and spare parts by country of origin, 2013 - 2014**

C.I.F. Value Rs '000

Item	Country of origin	Unit	2013 <sup>1</sup>		2014 <sup>2</sup>	
			Quantity	Value	Quantity	Value
<b>7 - Special purpose motor vehicles and vans</b>	China	No.	248	19,883	24	31,276
	France	"	13	27,351	14	25,285
	Germany	"	1	12,095	13	51,811
	India	"	2	943	11	11,108
	Italy	"	11	23,814	7	5,762
	Japan	"	51	48,046	87	78,835
	South Africa Rep.	"	2	4,145	-	-
	United Kingdom	"	41	67,621	21	40,092
	United States	"	30	7,274	16	4,316
	Other countries	"	9	37,323	9	32,108
			<b>408</b>	<b>248,495</b>	<b>202</b>	<b>280,593</b>

<sup>1</sup> revised

<sup>2</sup> provisional

**Table 1.12 (cont'd) - Imports of vehicles and spare parts by country of origin, 2013 - 2014**

C.I.F. Value Rs '000

Item	Country of origin	Unit	2013 <sup>1</sup>		2014 <sup>2</sup>	
			Quantity	Value	Quantity	Value
<b>8 - Motor cycles, scooters and auto cycles</b>	Austria	No.	7	1,022	11	1,104
	Belgium	"	2	204	4	274
	China	"	9,152	200,985	8,662	184,563
	France	"	41	990	11	2,968
	India	"	957	38,919	1,583	58,414
	Italy	"	39	2,953	87	4,351
	Japan	"	71	5,138	107	10,193
	Korea Rep.	"	-	-	20	801
	Spain	"	27	1,579	7	400
	Taiwan	"	155	6,508	155	6,217
	Thailand	"	6	278	51	5,582
	Turkey	"	50	1,139	-	-
	United States	"	14	4,747	130	6,778
	Other countries	"	11	880	10	907
				<b>10,532</b>	<b>265,342</b>	<b>10,838</b>
<b>9 - Cycles not motorised</b>	China	No.	32,168	40,935	43,707	62,759
	France	"	254	1,538	194	1,907
	Netherlands	"	589	2,381	531	5,914
	South Africa Rep.	"	133	1,187	146	1,457
	Taiwan	"	1,203	7,330	1,855	10,177
	Other countries	"	404	2,509	544	2,393
			<b>34,751</b>	<b>55,880</b>	<b>46,977</b>	<b>84,607</b>

<sup>1</sup> revised

<sup>2</sup> provisional

**Table 1.12 (cont'd) - Imports of vehicles and spare parts by country of origin, 2013- 2014**

C.I.F. Value Rs '000

Item	Country of origin	Unit	2013 <sup>1</sup>		2014 <sup>2</sup>	
			Quantity	Value	Quantity	Value
<b>10 - Chassis fitted with engines for tractors, and for motor vehicles</b>	China	No.	7	7,772	4	1,752
	France	"	-	-	8	29,751
	India	"	16	10,650	2	1,117
	Japan	"	31	38,741	47	83,155
	Pakistan	"	6	9,293	-	-
	Other countries	"	3	5,445	-	-
				<b>63</b>	<b>71,901</b>	<b>61</b>
<b>11 - Parts and accessories for tractors and for motor vehicles</b>	China	M/ton	864	111,718	648	93,660
	France	"	58	33,257	61	35,502
	Germany	"	88	74,020	70	75,150
	India	"	102	23,866	76	23,658
	Italy	"	34	19,852	54	22,065
	Japan	"	734	186,860	1,016	264,758
	Korea Rep.	"	89	32,168	56	26,836
	Malaysia	"	119	20,700	71	15,906
	Singapore	"	30	6,762	23	5,335
	South Africa Rep.	"	42	24,430	37	19,890
	Taiwan	"	73	20,641	68	19,098
	Thailand	"	124	37,619	166	41,287
	Turkey	"	28	11,239	17	7,692
	United Kingdom	"	230	43,190	170	40,325
	Other countries	"	117	64,241	125	55,573
			<b>2,732</b>	<b>710,563</b>	<b>2,658</b>	<b>746,735</b>

<sup>1</sup> revised

<sup>2</sup> provisional

**Table 1.12 (cont'd) - Imports of vehicles and spare parts by country of origin, 2013 - 2014**

C.I.F. Value Rs '000

Item	Country of origin	Unit	2013 <sup>1</sup>		2014 <sup>2</sup>	
			Quantity	Value	Quantity	Value
<b>12 - Parts n.e.s and accessories for motor cycles, scooters and autocycles</b>	China	M/ton	238	28,849	247	31,688
	France	"	1	1,616	1	1,592
	India	"	27	3,541	19	2,716
	Italy	"	1	2,643	1	2,918
	Japan	"	5	3,894	3	4,046
	Taiwan	"	17	4,481	14	3,949
	Thailand	"	7	854	3	583
	Turkey	"	3	496	8	2,038
	Other countries	"	4	6,859	4	6,705
			<b>303</b>	<b>53,233</b>	<b>300</b>	<b>56,235</b>

<sup>1</sup> revised

<sup>2</sup> provisional

# PART II

## ROAD ACCIDENTS

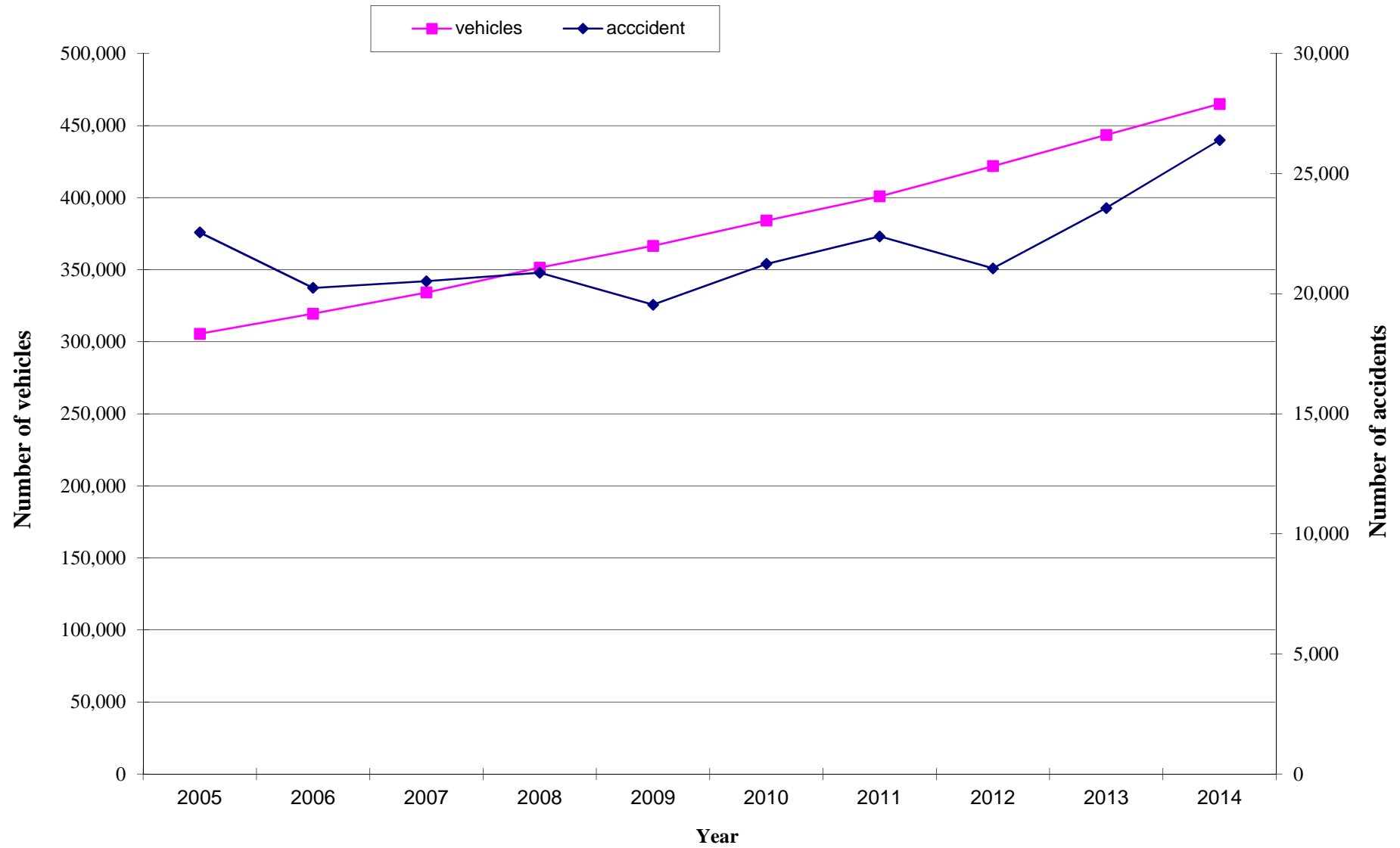
**Table 2.1 - Road traffic accidents<sup>1</sup> and casualties, 2005 - 2014**

	2005	2006	2007	2008	2009	2010	2011	2012	2013	2014
<b>1. Road traffic accidents :</b>										
Number	22,554	20,242	20,519	20,873	19,542	21,243	22,387	21,056	23,563	26,400
Rate per 100,000 population	1,895	1,693	1,709	1,732	1,618	1,755	1,847	1,733	1,936	2,165
Rate per 1,000 registered motor vehicles	76	65	63	61	54	57	57	51	55	57
<b>2. Motor vehicle involved :</b>										
Number	43,741	40,023	41,178	42,910	38,058	41,084	41,294	40,759	41,888	51,264
Rate per 1,000 registered motor vehicles	147	128	126	125	106	110	105	99	97	110
<b>3. Casualties :</b>										
Total number of casualties of which	2,760	2,522	3,055	3,435	3,661	3,640	3,422	3,653	3,610	3,592
<i>Fatal</i>	136	134	140	168	140	158	152	156	136	137
<i>Seriously injured</i>	358	348	500	512	516	569	487	549	465	505
<i>Slightly injured</i>	2,266	2,040	2,415	2,755	3,005	2,913	2,783	2,948	3,009	2,950
<b>4. Fatality :</b>										
Rate per 100,000 population	11.4	11.2	11.7	13.9	11.6	13.1	12.5	12.8	11.2	11.2
Rate per 1,000 registered motor vehicles	0.4	0.4	0.4	0.5	0.4	0.4	0.4	0.4	0.3	0.3
Fatality index <sup>2</sup>	4.9	5.3	4.6	4.9	3.8	4.3	4.4	4.3	3.8	3.8

<sup>1</sup> Exclude accidents involving bicycles only or bicycle and pedestrian.

<sup>2</sup> Fatality index is the number of fatalities per 100 casualties.

**Figure 2.1 - Number of vehicles registered and road accidents, 2005 -2014**



**Table 2.2 - Road traffic accidents, motor-vehicles involved and casualties, 2010 - 2014**

Year	Accidents	Casualty accidents	Non-injury accidents	Casualties	Motor Vehicles involved	Population (mid-year)	Motor vehicles registered (mid-year)
<b>2010</b>	21,243	2,549	18,694	3,640	41,084	1,210,391	374,547
<b>2011</b>	22,387	2,404	19,983	3,422	41,294	1,211,970	392,276
<b>2012</b>	21,056	2,590	18,466	3,653	40,759	1,214,987	411,527
<b>2013</b>	23,563	2,578	20,985	3,610	41,888	1,217,341	432,331
<b>2014</b>	26,400	2,593	23,807	3,592	51,264	1,219,265	454,426

**Table 2.3 - Number of casualties by degree of casualty and casualty rate, 2010- 2014**

Year	Degree of casualty				Casualty rate		
	Fatal	Seriously injured	Slightly injured	Total casualties	Per casualty accident	Per 100,000 population	Per 1,000 Motor-vehicles
<b>2010</b>	158	569	2,913	<b>3,640</b>	1.4	301	10
<b>2011</b>	152	487	2,783	<b>3,422</b>	1.4	282	9
<b>2012</b>	156	549	2,948	<b>3,653</b>	1.4	301	9
<b>2013</b>	136	465	3,009	<b>3,610</b>	1.4	297	8
<b>2014</b>	137	505	2,950	<b>3,592</b>	1.4	295	8



**Table 2.4 - Casualty accidents, pedestrian and rider (auto/motor) casualties by police district, 2013 - 2014**

Police District	Casualty accidents		Casualties							
			Pedestrian		Rider (auto/moto cycle)		Other		Total	
	2013	2014	2013	2014	2013	2014	2013	2014	2013	2014
<b>Port Louis (South)</b>	232	199	46	47	146	130	118	89	310	266
<b>Port Louis (North)</b>	248	351	85	89	276	246	141	118	502	453
<b>Pamplemousses/Rivière du Rempart</b>	652	617	94	107	351	399	321	398	766	904
<b>Moka/Flacq</b>	434	328	96	78	224	178	272	189	592	445
<b>Grand Port/Savanne</b>	319	361	89	87	143	156	233	265	465	508
<b>Upper Plaines Wilhems</b>	203	204	59	57	82	87	132	133	273	277
<b>Plaines Wilhems/Black River</b>	490	533	148	142	255	302	299	295	702	739
<b>Whole Island</b>	<b>2,578</b>	<b>2,593</b>	<b>617</b>	<b>607</b>	<b>1,477</b>	<b>1,498</b>	<b>1,516</b>	<b>1,487</b>	<b>3,610</b>	<b>3,592</b>

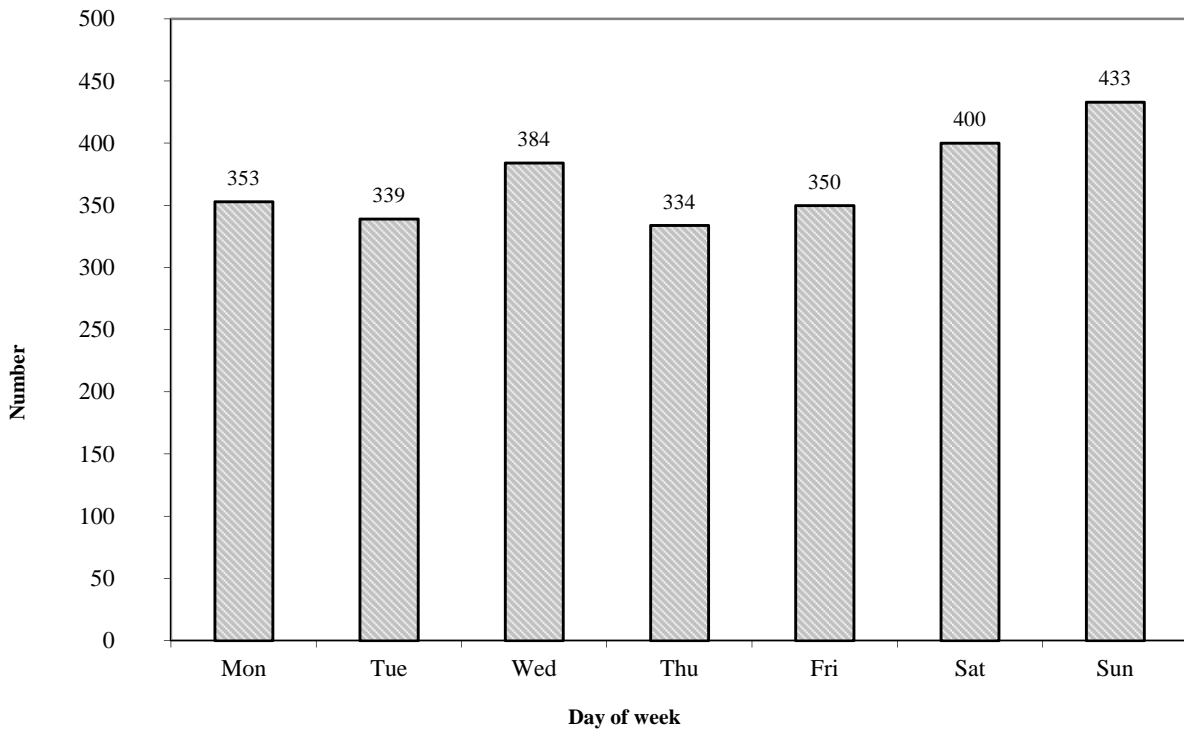
**Table 2.5 - Pedestrian and total casualties by police district and semester, 2014**

Police district	Pedestrian casualties			Total casualties		
	Jan - Jun	Jul - Dec	Total	Jan - Jun	Jul - Dec	Total
<b>Port Louis (South)</b>	21	26	47	148	118	266
<b>Port Louis (North)</b>	49	40	89	238	215	453
<b>Pamplemousses/Rivière du Rempart</b>	50	57	107	445	459	904
<b>Moka/Flacq</b>	45	33	78	270	175	445
<b>Grand Port/Savanne</b>	38	49	87	235	273	508
<b>Upper Plaines Wilhems</b>	26	31	57	149	128	277
<b>Plaines Wilhems/Black River</b>	75	67	142	363	376	739
<b>Whole Island</b>	<b>304</b>	<b>303</b>	<b>607</b>	<b>1,848</b>	<b>1,744</b>	<b>3,592</b>

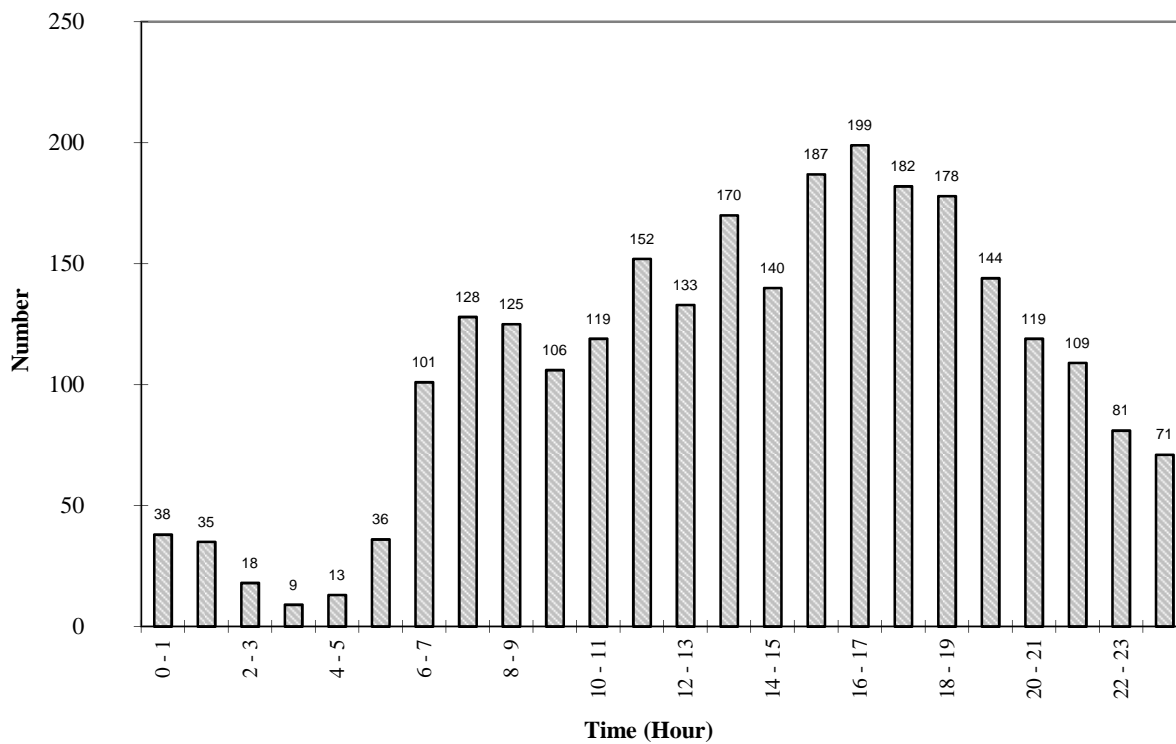
**Table 2.6 - Distribution of casualty accidents by day of week and time, 2014**

<b>Day Time (Hour)</b>	<b>Monday</b>	<b>Tuesday</b>	<b>Wednesday</b>	<b>Thursday</b>	<b>Friday</b>	<b>Saturday</b>	<b>Sunday</b>	<b>Total</b>
<b>0 - 1</b>	5	3	7	5	2	5	11	<b>38</b>
<b>1 - 2</b>	6	3	5	5	2	4	10	<b>35</b>
<b>2 - 3</b>	3	-	4	-	2	3	6	<b>18</b>
<b>3 - 4</b>	-	-	-	2	1	-	6	<b>9</b>
<b>4 - 5</b>	2	1	1	-	-	-	9	<b>13</b>
<b>5 - 6</b>	4	5	8	7	3	3	6	<b>36</b>
<b>6 - 7</b>	14	15	10	24	15	5	18	<b>101</b>
<b>7 - 8</b>	23	18	25	14	19	17	12	<b>128</b>
<b>8 - 9</b>	17	24	24	22	12	12	14	<b>125</b>
<b>9 - 10</b>	10	16	13	15	19	9	24	<b>106</b>
<b>10 - 11</b>	15	14	14	20	20	17	19	<b>119</b>
<b>11 - 12</b>	24	23	21	21	15	24	24	<b>152</b>
<b>12 - 13</b>	17	21	12	15	25	26	17	<b>133</b>
<b>13 - 14</b>	22	26	30	18	22	23	29	<b>170</b>
<b>14 - 15</b>	17	15	25	18	32	16	17	<b>140</b>
<b>15 - 16</b>	21	28	26	26	23	34	29	<b>187</b>
<b>16 - 17</b>	32	31	38	20	21	28	29	<b>199</b>
<b>17 - 18</b>	34	24	21	25	20	32	26	<b>182</b>
<b>18 - 19</b>	27	14	33	17	26	28	33	<b>178</b>
<b>19 - 20</b>	17	14	15	14	23	35	26	<b>144</b>
<b>20 - 21</b>	11	13	20	16	15	22	22	<b>119</b>
<b>21 - 22</b>	13	16	18	14	8	19	21	<b>109</b>
<b>22 - 23</b>	9	11	6	10	15	16	14	<b>81</b>
<b>23 - 24</b>	10	4	8	6	10	22	11	<b>71</b>
<b>Total</b>	<b>353</b>	<b>339</b>	<b>384</b>	<b>334</b>	<b>350</b>	<b>400</b>	<b>433</b>	<b>2,593</b>

**Fig. 2.2 - Number of casualty accidents by day of week, 2014**



**Fig. 2.3 - Number of casualty accidents by time of day, 2014**



**Table 2.7 - Number of accidents by severity of accident, 2010 - 2014**

Year	Severity of accident				
	Fatal <sup>1</sup>	Serious	Slight	No injury	Total
2010	151	487	1,911	18,694	21,243
2011	132	407	1,865	19,983	22,387
2012	144	455	1,991	18,466	21,056
2013	119	389	2,070	20,985	23,563
2014	125	425	2,043	23,807	26,400

**Table 2.8 - Number of casualty accidents involved in "hit and run" cases by semester, 2013- 2014**

Year Accident	2013				2014			
	Jan. - Jun.	Jul. - Dec.	Total	%	Jan. - Jun.	Jul. - Dec.	Total	%
Vehicles v/s pedestrian	38	45	83	43.2	35	36	71	43.6
Vehicles v/s vehicles	52	57	109	56.8	53	39	92	56.4
<b>Total</b>	<b>90</b>	<b>102</b>	<b>192</b>	<b>100.0</b>	<b>88</b>	<b>75</b>	<b>163</b>	<b>100.0</b>

**Table 2.9 - Number of casualty accidents by severity of accident and police district, 2013 - 2014**

Number

Police district	2013				2014			
	Severity of accident				Severity of accident			
	Fatal	Serious	Slight	Total	Fatal	Serious	Slight	Total
Port Louis (South)	12	26	194	<b>232</b>	6	31	162	<b>199</b>
Port Louis (North)	4	36	208	<b>248</b>	18	63	270	<b>351</b>
Pamplemousses /Riviere-Du-Rempart	28	85	539	<b>652</b>	29	80	508	<b>617</b>
Moka/Flacq	16	54	364	<b>434</b>	13	42	273	<b>328</b>
Grand-Port/Savanne	29	58	232	<b>319</b>	20	60	281	<b>361</b>
Upper Plaine -Wilhems	8	21	174	<b>203</b>	13	50	141	<b>204</b>
Plaine - Wilhems/Black- River	22	109	359	<b>490</b>	26	99	408	<b>533</b>
<b>Total</b>	<b>119</b>	<b>389</b>	<b>2,070</b>	<b>2,578</b>	<b>125</b>	<b>425</b>	<b>2,043</b>	<b>2,593</b>

**Table 2.10 - Number of casualty accidents by severity of accident and weather conditions, 2013 - 2014**

Number

Weather conditions	2013				2014			
	Severity of accident				Severity of accident			
	Fatal	Serious	Slight	Total	Fatal	Serious	Slight	Total
<b>Fine</b>	104	339	1,867	<b>2,310</b>	113	395	1,859	<b>2,367</b>
<b>Rainy</b>	14	45	200	<b>259</b>	10	26	177	<b>213</b>
<b>Foggy/misty</b>	-	5	3	<b>8</b>	1	4	5	<b>10</b>
<b>Other</b>	1	-	-	<b>1</b>	1	-	2	<b>3</b>
<b>Total</b>	<b>119</b>	<b>389</b>	<b>2,070</b>	<b>2,578</b>	<b>125</b>	<b>425</b>	<b>2,043</b>	<b>2,593</b>

**Table 2.11 - Number of casualty accidents by severity of accident and light conditions, 2013 - 2014**

Number

Light conditions	2013				2014			
	Severity of accident				Severity of accident			
	Fatal	Serious	Slight	Total	Fatal	Serious	Slight	Total
<b>Day light</b>	60	277	1,474	<b>1,811</b>	71	281	1,502	<b>1,854</b>
<b>Dark - no street lighting</b>	16	23	120	<b>159</b>	13	33	121	<b>167</b>
<b>Dark - street lighting on</b>	36	79	443	<b>558</b>	37	104	397	<b>538</b>
<b>Dark -street lighting off</b>	7	10	32	<b>49</b>	4	7	23	<b>34</b>
<b>Not specified</b>	-	-	1	<b>1</b>	-	-	-	<b>-</b>
<b>Total</b>	<b>119</b>	<b>389</b>	<b>2,070</b>	<b>2,578</b>	<b>125</b>	<b>425</b>	<b>2,043</b>	<b>2,593</b>



**Table 2.12 - Number of casualty accidents by type of road, severity of accident and collision type, 2014**

Number

Collision type	Type of road									Total
	One Way Street	Two Way Street	Dual Carriage way	One Way Street	Two Way Street	Dual Carriage way	One Way Street	Two Way Street	Dual Carriage way	
	Fatal			Serious			Slight			
<b>Head On</b>	4	35	2	8	112	10	54	483	33	<b>741</b>
<b>Rear End</b>	1	6	1	8	15	3	14	125	17	<b>190</b>
<b>Right Angle</b>	-	2	1	4	28	-	14	107	8	<b>164</b>
<b>Side Swipe</b>	1	4	-	2	29	5	11	120	14	<b>186</b>
<b>Ran Off Road</b>	1	5	-	-	23	3	7	155	7	<b>201</b>
<b>Hit Object in Road</b>	-	1	-	1	4	-	2	39	1	<b>48</b>
<b>Hit Object off Road</b>	-	14	-	1	18	2	5	69	10	<b>119</b>
<b>Hit Parked Vehicle</b>	-	-	1	2	6	-	4	27	1	<b>41</b>
<b>Hit Pedestrian</b>	2	27	4	12	78	4	50	387	5	<b>569</b>
<b>Hit Animal</b>	-	-	-	-	8	-	2	73	-	<b>83</b>
<b>Other</b>	-	11	2	1	36	2	10	177	12	<b>251</b>
<b>Total</b>	<b>9</b>	<b>105</b>	<b>11</b>	<b>39</b>	<b>357</b>	<b>29</b>	<b>173</b>	<b>1,762</b>	<b>108</b>	<b>2,593</b>

**Table 2.13 - Number of casualty accidents by severity of accident and type of road, 2013 - 2014**

Number

Type of road	2013					2014				
	Length of roads (kms)	Severity of accident				Length of roads (kms)	Severity of accident			
		Fatal	Serious	Slight	Total		Fatal	Serious	Slight	Total
<b>Motor-way</b>	99	10	21	112	<b>143</b>	99	11	29	108	<b>148</b>
<b>Main road</b>	1,131	97	334	1,709	<b>2,140</b>	1,131	99	347	1,716	<b>2,162</b>
<b>Secondary road</b>	625	9	26	212	<b>247</b>	673	9	39	173	<b>221</b>
<b>Other road</b>	420	3	8	37	<b>48</b>	453	6	10	46	<b>62</b>
<b>Total</b>	<b>2,275</b>	<b>119</b>	<b>389</b>	<b>2,070</b>	<b>2,578</b>	<b>2,356</b>	<b>125</b>	<b>425</b>	<b>2,043</b>	<b>2,593</b>

**Table 2.14 - Number of casualty accidents by degree of casualties and junction type, 2014**

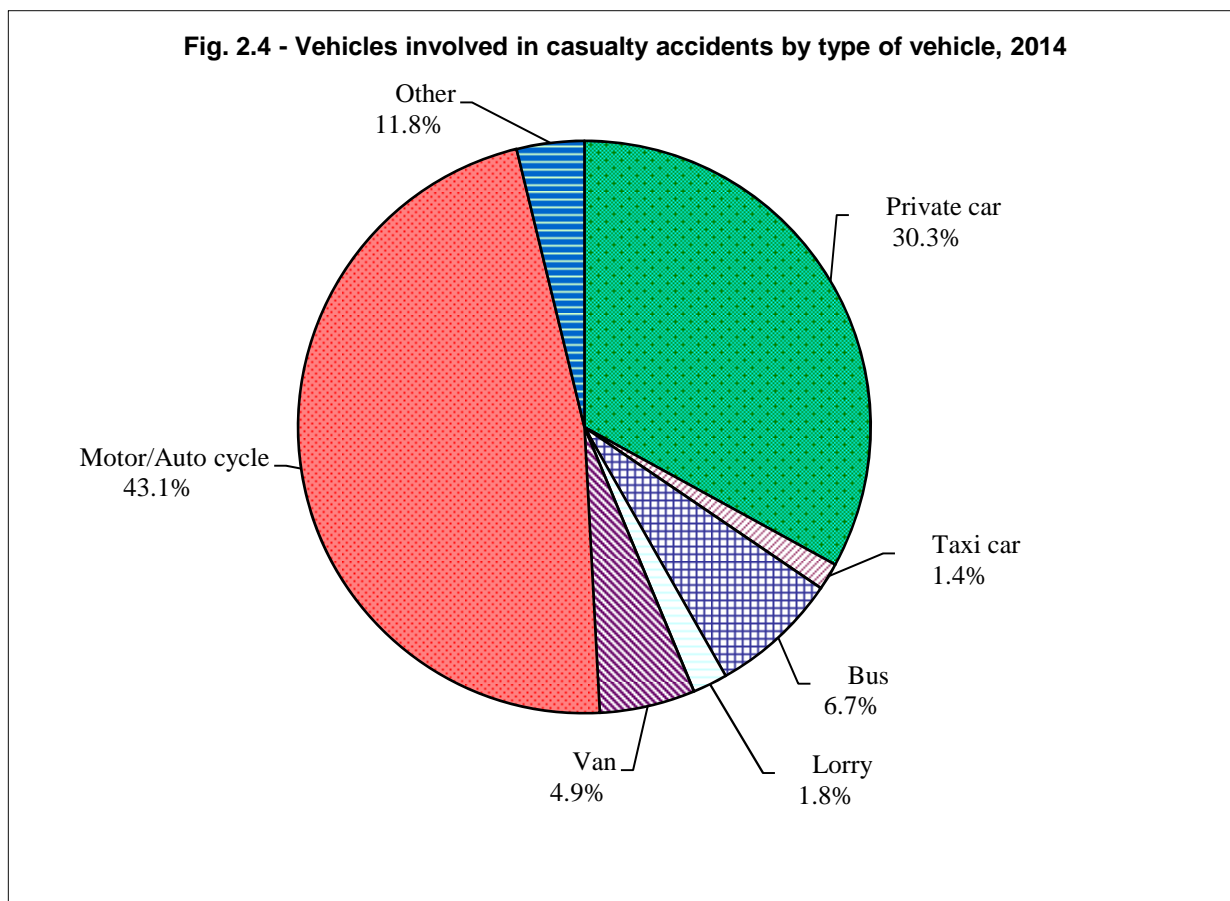
Junction type	2014			
	Degree of casualties			
	Fatal	Serious	Slight	Total
Not a Junction	107	288	1,421	1,816
Crossroads	2	52	238	292
T - Junction	10	59	233	302
Staggered - Junction	-	2	9	11
Y - Junction	2	2	12	16
Roundabout	4	10	87	101
Slip Road	-	4	21	25
Private Entrance	-	8	22	30
<b>Total</b>	<b>125</b>	<b>425</b>	<b>2,043</b>	<b>2,593</b>

Number

**Table 2.15 - Number of vehicles<sup>1</sup> involved in casualty accidents by type, 2013 - 2014**

Type of vehicle	2013		2014	
	Number of vehicles	%	Number of vehicles	%
Private car	1,216	29.9	1,144	30.3
Taxi car	63	1.6	53	1.4
Bus	231	5.7	252	6.7
Lorry	78	1.9	68	1.8
Van	210	5.2	187	4.9
Motor/Auto cycle	1,669	41.0	1,632	43.1
Pedal cycle	201	4.9	132	3.5
Other motor vehicle	399	9.8	315	8.3
Other non-motor vehicle	0	0.0	0	0.0
<b>All vehicles</b>	<b>4,067</b>	<b>100.0</b>	<b>3,783</b>	<b>100.0</b>

<sup>1</sup> only three main vehicles have been considered in accidents involving more than three vehicles.



**Table 2.16 - Number of motor-vehicles <sup>1</sup> involved in casualty accidents by type of vehicle and nature of damage, 2014**

Type of vehicle	2014			
	Seriously damaged	Slightly damaged	No damage	Total
<b>Private car</b>	186	788	269	<b>1,243</b>
<b>Taxi car</b>	8	35	13	<b>56</b>
<b>Bus</b>	32	141	83	<b>256</b>
<b>Lorry</b>	10	34	27	<b>71</b>
<b>Van</b>	29	123	41	<b>193</b>
<b>Motor/Auto cycle</b>	443	1,037	217	<b>1,697</b>
<b>Other motor-vehicle</b>	14	99	22	<b>135</b>
<b>All vehicles</b>	<b>722</b>	<b>2,257</b>	<b>672</b>	<b>3,651</b>

<sup>1</sup> only three main vehicles have been considered in accidents involving more than three vehicles.

Note: as from August 2004, most non-injury road traffic accidents are not reported to the police, but only to insurance companies. Consequently, disaggregated data on non-injury accidents by type of vehicle and nature of damage are not available .

**Table 2.17 - Number of drivers and riders<sup>1</sup> involved in casualty accidents by age-group and sex, 2014**

Age - group (years)	Drivers			Riders			Total		
	Male	Female	Total	Male	Female	Total	Male	Female	Total
15 - 18	7	-	7	102	2	104	109	2	111
19 - 24	182	19	201	405	10	415	587	29	616
25 - 34	422	51	473	537	9	546	959	60	1,019
35 - 44	511	39	550	277	3	280	788	42	830
45 - 54	355	24	379	176	6	182	531	30	561
55 - 60	170	5	175	95	-	95	265	5	270
Over 60	160	8	168	75	1	76	235	9	244
<b>All ages</b>	<b>1,807</b>	<b>146</b>	<b>1,953</b>	<b>1,667</b>	<b>31</b>	<b>1,698</b>	<b>3,474</b>	<b>177</b>	<b>3,651</b>

<sup>1</sup> excluding drivers and riders involved in hit and run cases.

Note: as from August 2004, most non-injury road traffic accidents are not reported to the police, but only to insurance companies. Consequently, disaggregated data on non-injury accidents by age group and sex are not available.

**Table 2.18 - Number of drivers/riders<sup>1</sup> involved in casualty accidents by driving experience and sex, 2014**

Driving experience	2014		
	Number of drivers/riders		
	Male	Female	Total
No licence	86	4	90
Learner driver's licence	857	22	879
Full licence	2,531	151	2,682
All categories	3,474	177	3,651

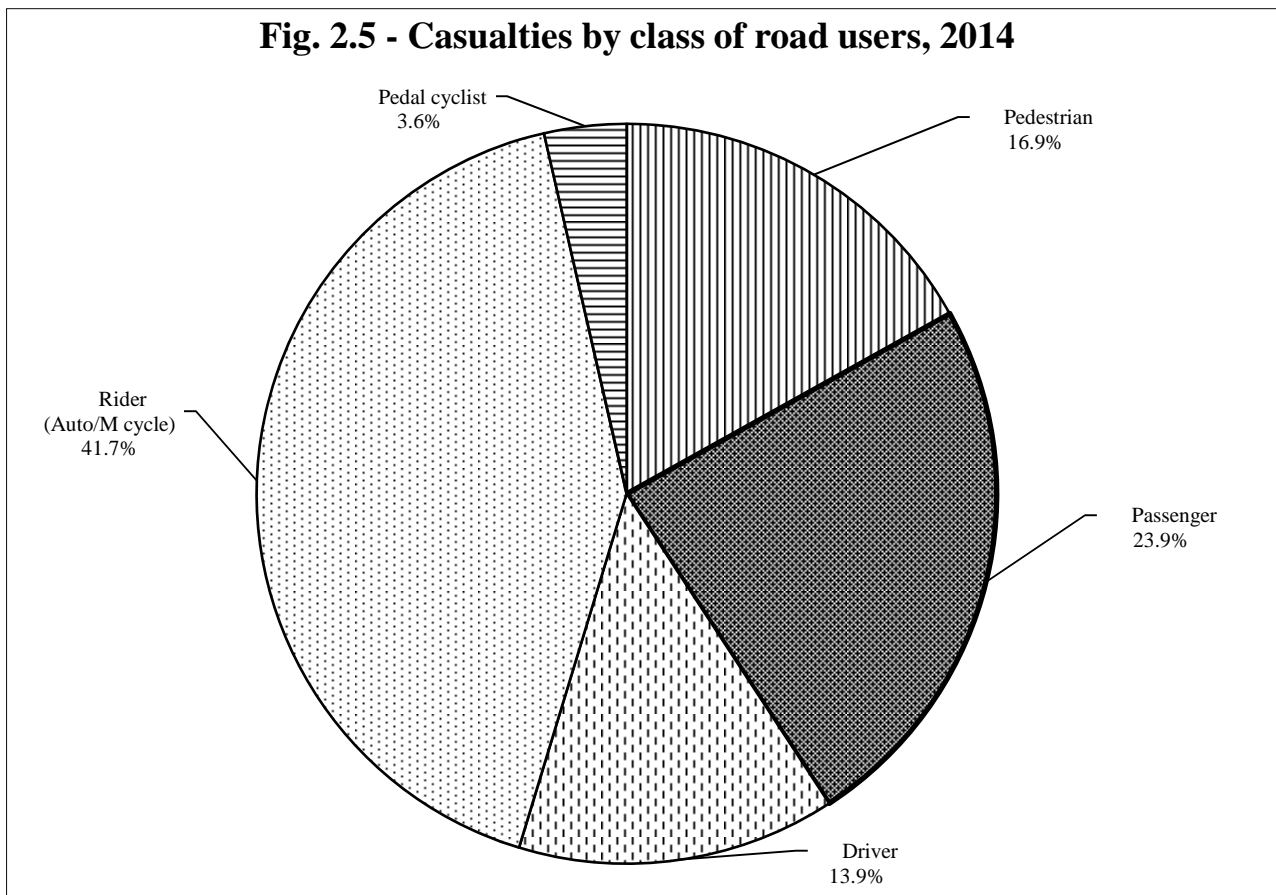
<sup>1</sup> excluding drivers and riders involved in hit and run cases

**Table 2.19 - Number of casualties by class of road users, 2013- 2014**

Class of Road users	2013 <sup>1</sup>		2014	
	Number	%	Number	%
<b>Pedestrian</b>	617	17.1	607	16.9
<b>Passenger</b>	827	22.9	858	23.9
<b>Driver</b>	499	13.8	500	13.9
<b>Rider (auto/motor cycle)</b>	1,477	40.9	1,498	41.7
<b>Pedal cyclist</b>	190	5.3	129	3.6
<b>All road users</b>	<b>3,610</b>	<b>100.0</b>	<b>3,592</b>	<b>100.0</b>

<sup>1</sup> Revised

**Fig. 2.5 - Casualties by class of road users, 2014**





**Table 2.20 - Number of casualties by degree of casualty and class of road users, 2013- 2014**

Class of Road users	2013					2014				
	Degree of casualty					Degree of casualty				
	Fatal	Seriously injured	Slightly injured	Total	%	Fatal	Seriously injured	Slightly injured	Total	%
<b>Pedestrian</b>	47	68	502	617	17.1	36	92	479	607	16.9
<b>Passenger</b>	32	82	713	827	22.9	25	97	736	858	23.9
<b>Driver</b>	6	63	430	499	13.8	17	57	426	500	13.9
<b>Rider ( auto / m - cycle )</b>	38	229	1,210	1,477	40.9	50	243	1,205	1,498	41.7
<b>Pedal cyclist</b>	13	23	154	190	5.3	9	16	104	129	3.6
<b>All road users</b>	<b>136</b>	<b>465</b>	<b>3,009</b>	<b>3,610</b>	<b>100.0</b>	<b>137</b>	<b>505</b>	<b>2,950</b>	<b>3,592</b>	<b>100.0</b>

**Table 2.21 - Number of casualties by class of road users, age-group and sex, 2014**

Number

Age-group (years)	Road Users											
	Pedestrian			Passenger			Driver/Rider/Cyclist			Total Casualties		
	Male	Female	Total	Male	Female	Total	Male	Female	Total	Male	Female	Total
<b>Under 5</b>	7	4	<b>11</b>	10	9	<b>19</b>	2	-	<b>2</b>	19	13	<b>32</b>
<b>5 - 14</b>	48	33	<b>81</b>	39	24	<b>63</b>	13	2	<b>15</b>	100	59	<b>159</b>
<b>15 - 29</b>	73	52	<b>125</b>	215	166	<b>381</b>	867	30	<b>897</b>	1,155	248	<b>1,403</b>
<b>30 - 44</b>	62	49	<b>111</b>	120	118	<b>238</b>	677	24	<b>701</b>	859	191	<b>1,050</b>
<b>45 - 59</b>	64	65	<b>129</b>	56	58	<b>114</b>	372	9	<b>381</b>	492	132	<b>624</b>
<b>60 - 69</b>	44	43	<b>87</b>	13	16	<b>29</b>	98	3	<b>101</b>	155	62	<b>217</b>
<b>Over 69</b>	29	34	<b>63</b>	8	6	<b>14</b>	30	-	<b>30</b>	67	40	<b>107</b>
<b>All ages</b>	<b>327</b>	<b>280</b>	<b>607</b>	<b>461</b>	<b>397</b>	<b>858</b>	<b>2,059</b>	<b>68</b>	<b>2,127</b>	<b>2,847</b>	<b>745</b>	<b>3,592</b>

**Table 2.22 - Number of pedestrian casualties by age-group, 2013 - 2014**

Number

Age-group (years)	2013			2014		
	Population (mid year)	Pedestrian casualties		Population (mid year)	Pedestrian casualties	
		Number	Per 100,000 population		Number	Per 100,000 population
<b>Under 5</b>	69,951	13	19	67,841	11	16
<b>5 - 14</b>	178,510	80	45	174,794	81	46
<b>15 - 29</b>	273,935	138	50	274,457	125	46
<b>30 - 44</b>	269,802	113	42	269,014	111	41
<b>45 - 59</b>	257,677	139	54	258,516	129	50
<b>60 - 69</b>	103,389	88	85	107,852	87	81
<b>Over 69</b>	64,077	46	72	66,791	63	94
<b>All ages</b>	<b>1,217,341</b>	<b>617</b>	<b>51</b>	<b>1,219,265</b>	<b>607</b>	<b>50</b>

**Table 2.23 - Number of fatalities by class of road users, age-group and sex, 2014**

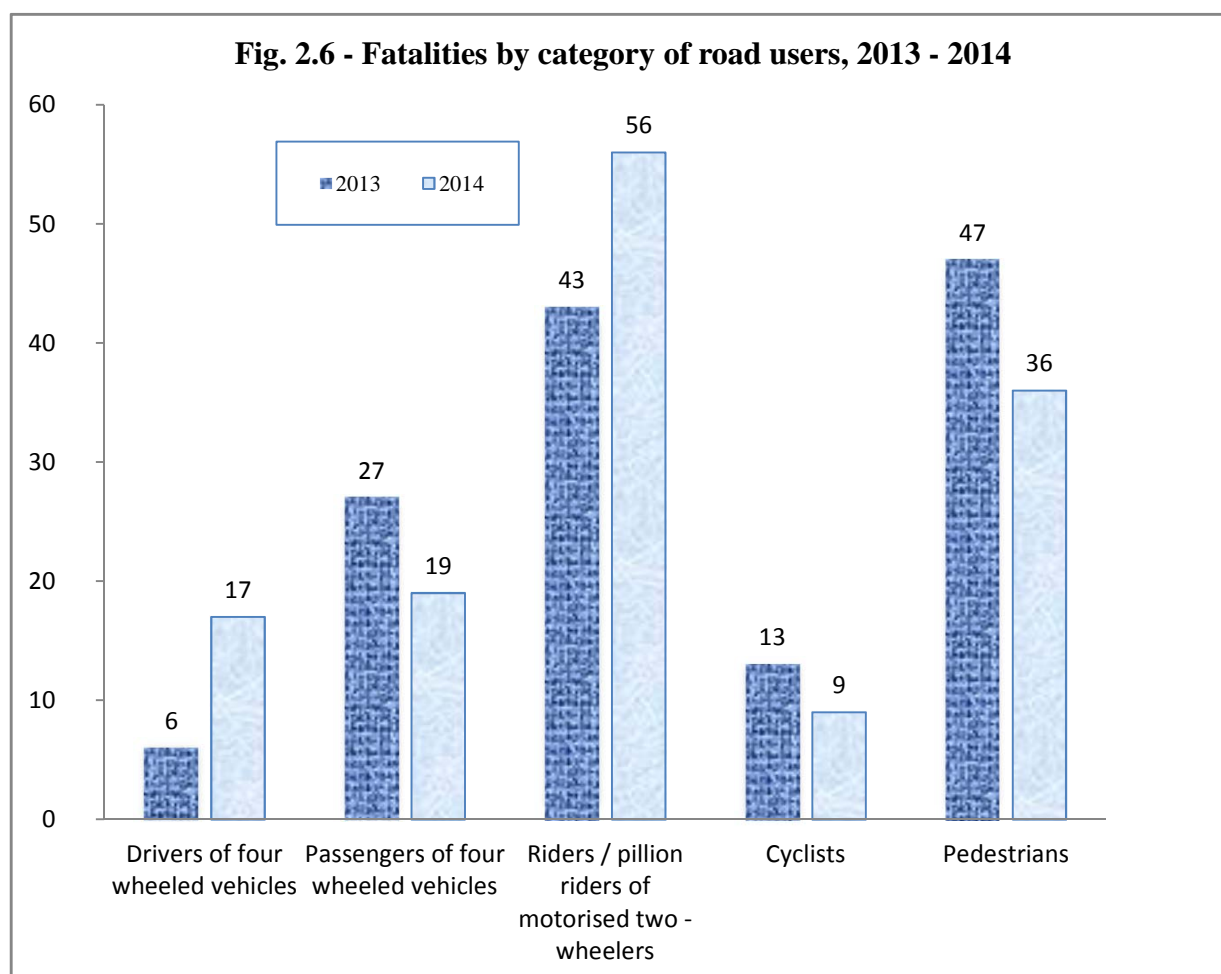
Number

Age-group (years)	Road Users											
	Pedestrian			Passenger			Driver/Rider/Cyclist			Total Fatalities		
	Male	Female	Total	Male	Female	Total	Male	Female	Total	Male	Female	Total
<b>Under 5</b>	-	-	-	-	-	-	-	-	-	-	-	-
<b>5 - 14</b>	-	-	-	2	-	2	1	-	1	3	-	3
<b>15 - 29</b>	3	-	3	5	3	8	25	-	25	33	3	36
<b>30 - 44</b>	3	-	3	4	2	6	20	2	22	27	4	31
<b>45 - 59</b>	5	4	9	1	3	4	14	1	15	20	8	28
<b>60 - 69</b>	5	4	9	2	1	3	13	-	13	20	5	25
<b>Over 69</b>	6	6	12	1	1	2	-	-	-	7	7	14
<b>All ages</b>	<b>22</b>	<b>14</b>	<b>36</b>	<b>15</b>	<b>10</b>	<b>25</b>	<b>73</b>	<b>3</b>	<b>76</b>	<b>110</b>	<b>27</b>	<b>137</b>

**Table 2.24 - Fatalities by category of road users, 2013 - 2014**

Category of road users	Fatalities			
	2013		2014	
	Number	%	Number	%
Drivers of four wheeled vehicles	6	4.4	17	12.4
Passengers of four wheeled vehicles	27	19.9	19	13.9
Riders / pillion riders of motorised two - wheelers	43	31.6	56	40.9
Cyclists	13	9.6	9	6.6
Pedestrians	47	34.6	36	26.3
<b>All road users</b>	<b>136</b>	<b>100.0</b>	<b>137</b>	<b>100.0</b>

**Fig. 2.6 - Fatalities by category of road users, 2013 - 2014**



**Tab 2.25 - Number of fatalities by Police district and class of road users, 2013 - 2014**

Number

Police district	2013						2014					
	Class of road users						Class of road users					
	Pedestrian	Passengers	Drivers	Riders	Pedal Cyclist	All Road Users	Pedestrian	Passengers	Drivers	Riders	Pedal Cyclist	All Road Users
Port Louis (South)	6	10	1	3	2	22	2	-	-	4	-	6
Port Louis (North)	3	1	-	4	1	9	9	2	1	6	1	19
Pamplemousses/Riviere Du Rempart	8	3	1	10	1	23	6	7	4	16	1	34
Moka/Flacq	4	7	1	6	3	21	4	1	2	7	-	14
Grand-Port/Savanne	14	4	-	7	4	29	3	6	5	6	2	22
Upper Plaine -Wilhems	3	2	1	2	-	8	3	4	3	4	1	15
Plaine -Wilhems/Black-River	9	5	2	6	2	24	9	5	2	7	4	27
<b>Total</b>	<b>47</b>	<b>32</b>	<b>6</b>	<b>38</b>	<b>13</b>	<b>136</b>	<b>36</b>	<b>25</b>	<b>17</b>	<b>50</b>	<b>9</b>	<b>137</b>

# PART III

# PETROLEUM PRODUCTS

**Table 3.1 - Evolution of price and sales of gasoline and gas oil, 2011 - 2014**

Year		Gasolene		Gas oil	
		Price (Rs/Litre)	Sales (000 Litre)	Price (Rs/Litre)	Sales (000 Litre)
<b>2011</b>	22-Jan-2011	48.50	166,889	39.90	222,981
	14-Mar-2011	51.30		43.50	
	29-Mar-2011	49.30		41.20	
	27-Dec-2011	49.30		41.20	
<b>2012</b>	3-Feb-2012	49.30	172,154	41.20	226,494
	2-Mar-2012	49.30		41.20	
	6-Apr-2012	49.30		41.20	
	8-Jun-2012	49.30		41.20	
	7-Jul-2012	49.30		41.20	
<b>2013</b>	1-Mar-2013	52.25	179,834	43.95	219,731
	12-Apr-2013	52.25		43.95	
	5-Jul-2013	52.25		43.95	
	8-Aug-2013	52.25		43.95	
	4-Oct-2013	52.25		43.95	
	31-Oct-2013	52.25		43.95	
	6-Dec-2013	52.25		43.95	
<b>2014</b>	13-Jan-2014	52.25	191,245	43.95	220,783
	14-Feb-2014	52.25		43.95	
	2-May-2014	52.25		43.95	
	6-Jun-2014	52.25		43.95	
	4-Jul-2014	52.25		43.95	
	22-Aug-2014	50.15		41.90	
	10-Oct-2014	50.15		41.90	
	7-Nov-2014	50.15		41.90	
	21-Nov-2014	47.90		39.45	
	6-Dec-2014	45.95		37.80	



**Table 3.2 - Imports of motor spirit and gas oil by country of origin , 2013 - 2014**

Item	Country of origin	2013		2014 <sup>1</sup>	
		Quantity ( '000 Litres)	Value (C.I.F, Rs '000)	Quantity ( '000 Litres)	Value (C.I.F, Rs '000)
<b>Motor spirit (Gasolene)</b>	France	-	-	12	267
	India	180,842	4,424,210	181,087	4,093,822
	United Kingdom	-	-	2	57
		<b>180,842</b>	<b>4,424,210</b>	<b>181,089</b>	<b>4,093,879</b>
<b>Gas oil</b>	Bahrain	-	-	9,428	220,750
	India	407,783	10,213,648	324,853	7,410,616
	Singapore	-	-	3,256	73,321
	South Africa Rep.	-	-	32,189	748,216
		<b>407,783</b>	<b>10,213,648</b>	<b>369,726</b>	<b>8,452,903</b>

<sup>1</sup> Provisional

**Table 3.3 - Imports of lubricating oils and greases by country of origin, 2013 - 2014**

( C.I.F. Value Rs '000 )

Item	Country of origin	Unit	2013 <sup>1</sup>		2014 <sup>2</sup>	
			Quantity	Value	Quantity	Value
Lubricating oil containing not less than 70% by weight of petroleum products	Belgium	M/ton	80	7,650	94	11,051
	France	"	212	22,764	282	29,665
	Germany	"	59	9,438	36	5,267
	India	"	483	26,803	214	16,129
	Indonesia	"	14	1,238	29	1,859
	Japan	"	35	7,322	53	10,043
	Korea Rep.	"	38	4,072	11	823
	Malaysia	"	61	3,074	130	6,174
	Singapore	"	1,923	123,562	2,065	143,395
	South Africa Rep.	"	1,701	118,839	3,329	246,435
	Turkey	"	103	5,557	164	8,797
	United Arab Emirates	"	2,468	163,812	1,188	69,134
	United Kingdom	"	38	6,319	37	5,726
	Other countries	"	110	15,533	43	7,838
				<b>7,325</b>	<b>515,983</b>	<b>7,675</b>
Lubricating greases containing not less than 70% by weight of petroleum products	France	M/ton	17	2,278	3	692
	India	"	4	243	4	182
	Malaysia	"	1	53	2	190
	South Africa Rep.	"	76	7,606	124	11,729
	Turkey	"	2	102	2	128
	United Arab Emirates	"	26	2,416	5	302
	United Kingdom	"	1	478	1	541
	United States	"	5	784	7	980
	Other countries	"	4	1,714	5	926
			<b>136</b>	<b>15,674</b>	<b>153</b>	<b>15,670</b>

<sup>1</sup> revised

<sup>2</sup> provisional

<b>MAURITIUS POLICE FORCE</b>  <b>ROAD ACCIDENT DATA FORM</b>  <b>PF 178</b>		1.OB.No. <input style="width: 50px;" type="text"/>		Accident Key: Date entered : <input style="width: 20px;" type="text"/> <input style="width: 20px;" type="text"/> <input style="width: 20px;" type="text"/> <input style="width: 20px;" type="text"/>		Vehicle No. 1 <input style="width: 50px;" type="text"/>		Reg. No <input style="width: 20px;" type="text"/> <input style="width: 20px;" type="text"/> <input style="width: 20px;" type="text"/> <input style="width: 20px;" type="text"/>		Driver 1 <input style="width: 50px;" type="text"/>																				
		2. Police Station <input style="width: 50px;" type="text"/>		3. District: <input style="width: 50px;" type="text"/>		Make <input style="width: 50px;" type="text"/> Insured at: <input style="width: 50px;" type="text"/> Pol No. <input style="width: 50px;" type="text"/>		Name of Policy holder: <input style="width: 50px;" type="text"/> Tel: <input style="width: 50px;" type="text"/>		Name <input style="width: 50px;" type="text"/>		Address and Telephone number <input style="width: 50px;" type="text"/>																		
		4. Accident Severity: 1. Fatal 2. Serious 3. Slight 4. Heavy Damage only		5. Date <input style="width: 20px;" type="text"/> <input style="width: 20px;" type="text"/> <input style="width: 20px;" type="text"/> <input style="width: 20px;" type="text"/> <input style="width: 20px;" type="text"/> <input style="width: 20px;" type="text"/>		6. Day 1.Sun 2. Mon 3.Tues 4. Wed 5.Thurs 6. Fri 7.Sat		7. Time(24 hour clock) <input style="width: 20px;" type="text"/> <input style="width: 20px;" type="text"/> <input style="width: 20px;" type="text"/> <input style="width: 20px;" type="text"/>		3. Vehicle Type 1. Bicycle 7. Minibus 2. Autocycle 8. Bus 3. Motorcycle 9. Other 4. Car 5. Light Goods Vehicles 6. Heavy Goods Vehicles		4. Vehicle Monoeuvre 1. Right turn 6. Diverging 11. Sudden stop 2. Left turn 7. Overtaking 12. Parked Off road 3. U turn 8. Going ahead 13. Parked ON road 4. Cross traffic 9. Reversing 14. Other..... 5. Merging 10. Sudden start		9. Licence Number <input style="width: 20px;" type="text"/> <input style="width: 20px;" type="text"/> <input style="width: 20px;" type="text"/> <input style="width: 20px;" type="text"/> <input style="width: 20px;" type="text"/> <input style="width: 20px;" type="text"/>																
No of vehicles involved: <input style="width: 20px;" type="text"/> <input style="width: 20px;" type="text"/>		Number of casualties (Killed and injured) <input style="width: 20px;" type="text"/> <input style="width: 20px;" type="text"/>		8. Junction Type 1. Not at Junction 5. 2.  6. 3.  7. Slip road 4.  8. Private entrance		9. Junction Control 1. Police Officer 2. Traffic Signals 3. STOP Sign 4. GIVE WAY sign or Marking 5. Uncontrolled		10. Collision Type 1. Head on 9. Hit Pedestian 2. Rear End 10. Hit Animal 3. Right Angle 11. Other..... 4. Side Swipe 5. Ran off Road 6. Hit Object in Road 7. Hit Object off Road 8. Hit Parked Vehicles		11. Road Type 1. One way Street 2. Two Way Street 3. Dual Carriageway		12. Weather 1. Fair 2. Rain 3. Fog 4. Smoke/ Dust 5 Other.....																		
13. Light Condition 1. Day light 2. Dawn/ Dusk 3. Darkness: Street light present and lit 4. Darkness: Street light present but unlit 5. Darkness: no street lighting		14. Road Character 1. Straight + Flat 2. Curve only 3. Incline only 4. Curve + Incline 5. Bridge		15. Road Condition 1. Good 2. Damaged		16. Surface Type 1. Asphalt 2. Gravel 3. Earth		17. Surface Condition 1. Dry 2. Wet 3. Muddy 4. Flooded 5. Oil or Diesel		18. Roadworks 1. Yes 2. No  19. Hit & Run 1. Yes 2. No		13. Driver Injury 1. Fatal 2. Serious 3. Slight 4. Uninjured		14. Alcohol 1. Not suspected 3. Test Positive 2. Suspected 4. Test negative  15. Seat Belt / Helmet worn 1. Yes 2. No																
Name of town/village <input style="width: 50px;" type="text"/>		X = <input style="width: 20px;" type="text"/> <input style="width: 20px;" type="text"/> <input style="width: 20px;" type="text"/> <input style="width: 20px;" type="text"/> <input style="width: 20px;" type="text"/> <input style="width: 20px;" type="text"/>		Y = <input style="width: 20px;" type="text"/> <input style="width: 20px;" type="text"/> <input style="width: 20px;" type="text"/> <input style="width: 20px;" type="text"/> <input style="width: 20px;" type="text"/> <input style="width: 20px;" type="text"/>		Route No. <input style="width: 20px;" type="text"/> <input style="width: 20px;" type="text"/> <input style="width: 20px;" type="text"/> Km <input style="width: 20px;" type="text"/>		Vehicle No. 2 <input style="width: 50px;" type="text"/>		Reg. No <input style="width: 20px;" type="text"/> <input style="width: 20px;" type="text"/> <input style="width: 20px;" type="text"/> <input style="width: 20px;" type="text"/>		Driver 2 <input style="width: 50px;" type="text"/>																		
<b>Accident Location Sketch</b>  Show site in relation to well -known places such as scholls, temples, mosques, churches, bridges, and road junctions. Mark distances to these places. Always give street names.		<b>Collision Diagram Sketch</b>  Mark the position and direction of each vehicles and details of the road layout at the site of the accident.		5. Loading 1. Property loaded 2. Overloaded 3. Insecure load 4. Protruding load 5. Other omproper load		6. Apparent Vehicles Defest 1. None 2. Brakes 3. Steering 4. Tyres 5. Lights 6. Multiple 7. Other		7. Vehicles Damage 1. None 7. Windscreen 2. Front 8. Multiple 3. Rear 4. Right 5. Left 6. Roof		8. Owner 1. Government 2. Dilpomatic 3. Private 4. Company 5. Hire Car 6. Taxi 7. Other.....		13. Driver Injury 1. Fatal 2. Serious 3. Slight 4. Uninjured		14. Alcohol 1. Not suspected 3. Test Positive 2. Suspected 4. Test negative  15. Seat Belt / Helmet worn 1. Yes 2. No																
				PASSENGER Casualties (Class 2) <span style="float: right;">Completed tables using codes from the bottom panel</span>		Name		1. Cas Class		2. Veh. No		3 Sex		4. Age		5. Injury		6. Position		7. Action		8. Belt/Helmet								
<b>Witnesses</b> <table border="1" style="width:100%; border-collapse: collapse;"> <tr> <th>Name</th> <th>Address</th> <th>Telephone (Res and Off.)</th> </tr> <tr> <td>1</td> <td></td> <td></td> </tr> <tr> <td>2</td> <td></td> <td></td> </tr> </table>		Name	Address	Telephone (Res and Off.)	1			2			<b>25. Police description of accident</b>  Reporting Officer- Rank and Name <input style="width: 50px;" type="text"/>		1.		2.		3													
		Name	Address	Telephone (Res and Off.)																										
1																														
2																														
5. Injury 1. Fatal 2. Serious Slight		6. Passenger Position 1. Front seat 2. Rear seat 3. M/cycle passenger 4. Bus passenger 5. Back of truck or pickup		7. Passenger Action 1. Sitting 2. Standing 3. Boarding 4. Alighting 5. Falling		8. Seat Belt/Helmet used 1. Yes 2. No		6. Pedestrian Location 1. On pedestrian Crossing 2. Within 50m of Ped Xing 3. On Central Refuge 4. In centre of raod (not1-3) 5. On Footpath/verge		7. Pedestrian Action 1. Standing 2. Crossing road 3. Walking along middle 4. Walking along edge 5. Playing on road																				