

Vol. 31

REPUBLIC OF MAURITIUS

Ministry of Finance and Economic Development

STATISTICS MAURITIUS

**DIGEST
OF
ROAD TRANSPORT
AND
ROAD ACCIDENT STATISTICS
2015**

November 2016

(Price Rs 75)

DIGEST

OF

ROAD TRANSPORT

AND

ROAD ACCIDENT STATISTICS

2015

Digest of Road Transport and Road Accident Statistics - 2015

FOREWORD

This is the thirty-first issue of the Digest of Road Transport and Road Accident Statistics published by Statistics Mauritius.

It presents statistics on road transport and road traffic accidents relating to the Island of Mauritius. Data on vehicles have been compiled from the register of the National Transport Authority and those on road traffic accidents from returns provided by police stations and insurance companies.

The figures published are the latest available. Some of them are provisional and are therefore subject to revision in later issues. Figures in this issue of the digest supersede those appearing in previous ones.

It is hoped that the data presented in this report will be of valuable help to planners, policy-makers and the public in general.

This digest has been prepared with the collaboration of the National Transport Authority, the Traffic Management and Road Safety Unit of the Ministry of Public Infrastructure and Land Transport, the Police Department and insurance companies. Their assistance is gratefully acknowledged.

Y. Cassimally
Ag. Director of Statistics

Statistics Mauritius
Ministry of Finance and Economic Development
PORT LOUIS .

November 2016

Contact person:

Mr. A. Bundhoo, Statistician or
Mr. A. Poreema, Senior Statistical Officer

National Transport Authority
MSI Building, Les Cassis
Tel: (230) 202-2831 Fax: (230) 212-9399

Traffic Branch Police Road Safety Unit
Line Barracks, P. Louis
Tel: (230) 203-1205 Fax: (230) 208-6077
E-mail: statsmauritius@govmu.org
Website: <http://statsmauritius.govmu.org>

CONTENTS

Page

Definition and Explanatory Notes	5 - 7
Abbreviations and Symbols	8
Road Transport and Road Traffic Accident Statistics, 2015 - An overview	9
Main Road Transport and Road Accident Indicators, 2014 - 2015	11

PART 1 - VEHICLE STATISTICS

Table 1.1 - Road network as at end of year, 2011 - 2015	15
1.2 - Vehicles registered, 2006 - 2015	17
1.3 - New vehicles registered, 2011 - 2015	18
1.4 - Imported second-hand and re-registered vehicles, 2011 - 2015	19
1.5 - Vehicles off the road, 2011 - 2015	20
1.6 - Age composition of cars, dual purpose vehicles and double cab pickup, 2014 - 2015	21
1.7 - Age composition of operational bus fleet, 2014 - 2015	22
1.8 - Bus operational statistics, 2011 - 2015	23
1.9 - Evolution of bus fares (adults), 2002 - 2015	24
1.10 - Receipts from the activities of the National Transport Authority, 2011 - 2015	25
1.11 - Driving licences issued during the year by type of licence, 2006 - 2015	26
1.12 - Imports of vehicles and spare parts by country of origin, 2014 - 2015	27 - 35

PART 2 - ROAD TRAFFIC ACCIDENT STATISTICS

Table 2.1 - Road traffic accidents and casualties, 2006 - 2015	39
2.2 - Road traffic accidents, motor-vehicles involved and casualties, 2011 - 2015	41
2.3 - Number of casualties by degree of casualty and casualty rate, 2011- 2015	41
2.4 - Casualty accidents, pedestrian and rider (auto/moto cycle) casualties by police district, 2014- 2015	42
2.5 - Pedestrian and total casualties by police district and semester, 2015	43
2.6 - Distribution of casualty accidents by day of the week and time, 2015	44
2.7 - Number of accidents by severity of accident, 2011 - 2015	46
2.8 - Number of casualty accidents involved in "hit and run cases", by semester, 2014 - 2015	46
2.9 - Number of casualty accidents by severity of accident and police district, 2014- 2015	47

CONTENTS (cont'd)	Page
Table 2.10 - Number of casualty accidents by severity of accident and weather conditions, 2014 - 2015	48
2.11 - Number of casualty accidents by severity of accident and light conditions, 2014 - 2015	49
2.12 - Number of casualty accidents by severity of accident, type of road and collision type, 2015	50
2.13 - Number of casualty accidents by severity of accident and type of road, 2014 - 2015	51
2.14 - Number of casualty accidents by degree of casualties and junction type, 2015	52
2.15 - Number of vehicles involved in casualty accidents by type, 2014 - 2015	53
2.16 - Number of motor-vehicles involved in casualty accidents by type of vehicle and nature of damage, 2015	54
2.17 - Number of drivers and riders involved in casualty accidents by age group and sex, 2015	55
2.18 - Number of drivers/riders involved in casualty accidents by driving experience and sex, 2015	56
2.19 - Number of casualties by class of road users, 2014 - 2015	57
2.20 - Number of casualties by degree of casualty and class of road users, 2014 - 2015	58
2.21 - Number of casualties by class of road users, age-group and sex, 2015	59
2.22 - Number of pedestrian casualties by age-group, 2014 - 2015	60
2.23 - Number of fatalities by class of road users, age-group and sex, 2015	61
2.24 - Fatalities by category of road users, 2014 -2015	62
2.25 - Number of fatalities by police district and by class of road users, 2014 - 2015	63

PART 3 - PETROLEUM PRODUCTS

Table 3.1 - Evolution of price and sales of gasoline and gas oil, 2012 - 2015	67
3.2 - Imports of motor-spirit and gas oil by country of origin, 2014 - 2015	68
3.3 - Imports of lubricating oils and greases by country of origin, 2014 - 2015	69

ILLUSTRATIONS	Page
Figure 1.1 - Stock of registered vehicles, 2006 - 2015	16
1.2 - Age composition of cars, dual purpose vehicles and double cab pickup as at 31st December, 2014 - 2015	21
1.3 - Age composition of operational bus fleet, as at 31st December, 2014 - 2015	22
2.1 - Number of vehicles registered and road accidents, 2006 - 2015	40
2.2 - Number of casualty accidents by day of week, 2015	45
2.3 - Number of casualty accidents by time of day, 2015	45
2.4 - Vehicles involved in casualty accidents by type of vehicle, 2015	53
2.5 - Casualties by class of road users, 2015	57
2.6 - Fatalities by category of road users, 2014 - 2015	62

Appendix Police Form (PF 178)

Vehicle Statistics¹

Definitions

Definitions as stipulated in Section 4 of Road Traffic Act of 1962 for types of vehicles and subsequent amended Act No. 27 of 2012.

1. Motor cars

Motor cars are mechanically propelled vehicles, other than vehicles classified as motor cycles, which are constructed themselves to carry a load or passengers and whose unladen weight –

- (i) in case of vehicles which are –
 - (A) constructed solely for the carriage of passengers and their effects;
 - (B) adapted to carry not more than 7 passengers exclusive of the driver; and
 - (C) fitted with tyres of the prescribed type, does not exceed 3 tons;
- (ii) in any other case does not exceed 3 tons.

2. Heavy motor cars

Heavy motor cars are mechanically propelled vehicles, other than vehicles classified as motor cars, which are constructed themselves to carry a load or passengers and whose unladen weight exceeds 2½ tons.

3. Dual purpose vehicles

Dual purpose vehicles are vehicles constructed or adapted for the carriage both of passengers and of goods or burden of any description whose unladen weight does not exceed two tons and which either:-

- (a) are so constructed or adapted that the driving power of the engine is, or by the appropriate use of the controls of the vehicle can be, transmitted to all the wheels of the vehicle; or
- (b) satisfied the following conditions as to construction -
 - (i) the vehicle is permanently fitted with a rigid roof, with or without a sliding panel,
 - (ii) the area of the vehicle to the rear of the driver's seat is -
 - (A) permanently fitted with at least one row of transverse seats (fixed or folding) for 2 or more passengers and those seats are properly sprung or cushioned and provided with upholstered back-rests, attached either to the seats or to a side or the floor of the vehicle; and

¹ excludes pedal cycles

- (B) lit on each side and at the rear by a window or windows of glass or other transparent material having an area or aggregate area of not less than 2 square feet on each side and not less than 120 square inches on the rear.
- (iii) the distance between the rearmost part of the steering wheel and the backrests of the row of transverse seats satisfying the requirements specified in subparagraph (ii) (A) (or, where there is more than one row of seats, the distance between the rearmost part of the steering wheel and the backrests of the rearmost row) is, when the seats are ready for use, not less than one-third of distance between the rearmost part of the steering wheel and the rearmost part of the floor of the vehicle.

4. Double cab pickup

Double cab pickup means a motor vehicle which has –

- (i) a front passenger cabin which contain 2 rows of seats and is capable of seating a maximum of 4 persons excluding the driver,
- (ii) at least 2 doors capable of being opened separately; and
- (iii) an open pickup area behind the passenger cabin.

5. Motor cycles

Motor cycles are mechanically propelled vehicles, other than auto-cycles, with not more than 4 wheels and whose unladen weight does not exceed 400 kilograms.

6. Auto cycles

Auto cycles are bicycles which have pedals and a motor attached which can be propelled by means of those pedals and by mechanical or electrical power from that motor and the swept volume of the cylinders of that motor does not exceed 50 cubic centimeters.

7. Motor tractors

Motor tractors are mechanically propelled vehicles which are not constructed themselves to carry any load and whose unladen weight does not exceed 7¼ tons.

8. Trailer

- (a) means a vehicle which has no independent motive power of its own and which is drawn, or designed to be drawn, by a motor vehicle,
- (b) does not include a sidecar attached to a motor cycle, nor a farm implement that is not constructed or adapted for the conveyance of goods or burden of any description.

9. Weight Unladen

Means the weight of a vehicle which:-

- (a) includes the body and all parts (the heavier being taken where alternative bodies or parts are used) which are necessary to, or ordinarily used with, the vehicle when working on a road;
- (b) excludes the weight of water, fuel or accumulators used for the purpose of the supply of power for the propulsion of vehicle or of loose tools and loose equipment.

B. Road Traffic Accidents

In this report, data on accidents refer to all road accidents reported to police stations and to insurance companies.

1. Road Traffic Accident

A road traffic accident is an accident between two or more vehicles, a vehicle and a cyclist, a vehicle and a pedestrian, a vehicle and a fixed object such as a bridge, building, tree, post, etc, or a single vehicle that overturned on or near a public road.

2. Severity of accident

Road traffic accidents are classified into the following categories according to the severity of the accident:

Fatal accident - an accident resulting in the death of one or more persons. Prior to 2002, a fatal accident was defined as an accident where deaths occurred within 7 days. As from 2002, a fatal accident is defined as an accident where deaths occurred within 30 days.

Serious injury accident - An accident in which one or more persons are seriously injured.

Slight injury accident - An accident in which one or more persons are slightly injured.

Non injury accident - An accident in which no one is killed or injured but which results in damage to the vehicle/s and/or other property only.

3. Casualty

Any person killed or injured in a road accident is referred to as a casualty.

Fatality - Any person killed during an accident, or within 30 days as a result of an accident is referred to as a fatality.

Injury definition

(i) As from January 2013:

(a) Serious Injury - An injury for which a person is admitted to hospital as an "in-patient" for more than 24 hours.

(b) Slight Injury - An injury for which a person has received medical care but has not been admitted to hospital for more than 24 hours.

(ii) Prior to January 2013:

(a) Serious Injury - An injury for which a person is detained in hospital as an "in-patient" or any of the following injuries (whether or not he is detained in hospital): fractures, concussions, internal injuries, severe cuts and lacerations, crushings and severe general shock requiring medical treatment.

(b) Slight Injury - An injury of minor character such as a sprain, bruise and cut not judged to be severe.

Abbreviations and Symbols

Abbreviations

No.	:	Number
000	:	Thousand
%	:	Percentage
km	:	Kilometre
sq	:	Square
M/ton	:	Metric ton : 1,000 kilos
Mn	:	Million
Rs	:	Rupees
c.i.f	:	Cost, insurance and freight
n.e.s	:	Not elsewhere specified
000 Litres:		Thousand Litres

Symbols

-		Nil or negligible
...		Not available

Road Transport and Road Traffic Accident Statistics – An overview (Island of Mauritius)

Year 2015

1. Vehicles registered in 2015

At the end of December 2015, there were 486,144 vehicles registered at the National Transport Authority (NTA). This represents a net increase of 21,092 vehicles (4.5%) as compared to end of year 2014 when the number of registered vehicles was 465,052.

During the year 2015, the fleet was strengthened with the registration of 26,013 vehicles, of which 16,108 (61.9%) were new, 9,041 (34.8%) were imported second-hand and 864 (3.3%) were re-registered vehicles; i.e., those which had been previously put off the road. During the same period some 4,921 vehicles were put off the road. The net addition to the existing fleet worked out to 21,092 vehicles.

2. Composition of fleet

A breakdown of the fleet by type of vehicle is given in Table 1.2. At the end of December 2015, the fleet consisted of 49.4% (240,289) cars, double cab pickup and dual purpose vehicles and 39.9% (193,688) auto/motor cycles. The remaining 10.7% comprised vans (27,229), lorries and trucks (14,372), buses (2,980) and other vehicles (7,586). It is to be noted that, prior to year 2013, double cab pickup was included in dual purpose vehicles.

3. Vehicles used for transport of passengers

3.1 *Cars, double cab pickup and dual purpose vehicles*

At the end of December 2015, the number of cars, double cab pickup and dual purpose vehicles was 240,289, a rise of 6.5% over the figure of 225,522 as at end of December 2014. This increase resulted from the registration of 16,570 such vehicles (7,649 new, 8,511 imported second-hand and 410 re-registered), partly offset by 1,803 vehicles that were put off the road.

Table 1.6 shows the age distribution of cars, double cap pickup and dual purpose vehicles. At the end of December 2015, some 43.4% were less than 5 years, 26.1% between 5 and 9 years and the remaining 30.5%, 10 years and above.

3.2 *Buses*

At the end of December 2015, there were 2,980 registered buses, out of which 1,937 or 65.0% were 'public' buses operating with a road service licence. During 2015, some 56 new buses were registered, 1 bus was re-registered while 83 buses were put off the road resulting in a decrease of 26 buses.

Table 1.7 which gives the age distribution of the fleet of public buses, shows that 28.9% of the buses were under 5 years, 34.5% between 5 and 9 years and 36.6%, between 10 and 20 years.

4. Motor cycles and auto cycles

At the end of 2015, there were 193,688 motor cycles and auto cycles. This represents a net increase of 5,837 (+3.1%) against 187,851 at the end of 2014.

5. Road traffic accidents

The number of road accidents registered during the year 2015 was 28,476 against 26,400 in the preceding year, showing an increase of 7.9%. Among these accidents, the majority, 25,733 (90.4%) were non-injury, 127 fatal, 468 caused serious injuries and 2,148 slight injuries (Table 2.7).

Compared to 2014, accidents causing casualties went up by 5.8% and non-injury accidents by 8.1%. Fatal accidents rose by 1.6%, serious injury accidents by 10.1% and slight injury accidents by 5.1%.

The accident rate, expressed as the number of accidents per 100,000 mid-year population, increased from 2,165 in 2014 to 2,333 in 2015 and the number of accidents per 1,000 mid-year registered motor vehicles increased from 58 in 2014 to 60 in 2015 (Table 2.1).

6. Vehicles involved in road accidents

During the year 2015, the total number of vehicles (both motor and non-motor) involved in road accidents was 55,787 (+8.5%) against 51,396 in the previous year. The number of motor vehicles involved in accidents resulting in casualties was 4,152 in 2015 against 3,651 in 2014. Table 2.15 shows that 32.6% of the vehicles were private cars, another 38.8% were motor/auto cycles, 6.6% were buses and 5.8% were vans.

7. Casualties

The number of casualties (fatalities and persons injured as a result of road accidents) increased by 3.6% from 3,592 in 2014 to 3,722 in 2015. Among the casualties, 139 were fatal, 530 seriously injured and the remaining 3,053 slightly injured.

Table 2.19 reveals that, among the casualties in 2015, some 22.5% were passengers, 41.5% riders of auto/motor cycles, 15.3% pedestrians, 16.3% drivers and 4.4% pedal cyclists.

Compared to 2014, the number of persons who died as a result of road accidents in 2015 went up by 1.5%. The fatality rate, expressed as the number of persons who died as a result of road accidents per 100,000 mid-year population, was 11.4, compared to 11.2 in 2014. Out of the 139 persons killed in road accidents during year 2015, the most vulnerable category of road users were riders/pillion riders of motorised two-wheelers (54), followed by pedestrians (44) (Table 2.24).

8. Hit and run cases of accidents causing casualties

In 2015, there were 199 "hit and run" cases causing casualties compared to 163 in 2014. Out of these 199 cases, 56.8% (113) involved vehicles only while the other 43.2% (86) involved both vehicles and pedestrians (Table 2.8).

**Main Road Transport and Road Accident Indicators,
2014 - 2015 (Island of Mauritius)**

	2014	2015	
Population (mid - year)	1,219,265	1,220,663	
Area of Mauritius (sq km)	1,868 ¹	1,868	
Length of roads (km)	2,356	2,428	
Per Capita G.D.P at market prices (Rs) ¹ - Republic of Mauritius	310,862	324,278	
	2014	2015	% change
Vehicles on register	465,052	486,144	+ 4.5
Motor cycle and auto cycle	187,851	193,688	+ 3.1
Car and dual purpose vehicle	225,522	240,289	+ 6.5
Other	51,679	52,167	+ 0.9
Road Accidents	26,400	28,476	+7.9
Number of non-injury accidents	23,807	25,733	+ 8.1
Number of casualty accidents	2,593	2,743	+ 5.8
<i>Fatal accident</i>	125	127	+ 1.6
<i>Serious injury accident</i>	425	468	+ 10.1
<i>Slight injury accident</i>	2,043	2,148	+ 5.1
Total casualties	3,592	3,722	3.6
<i>Fatal</i>	137	139	+ 1.5
<i>Seriously injured</i>	505	530	+ 5.0
<i>Slightly injured</i>	2,950	3,053	3.5
Motor vehicles involved in road accidents	51,264	55,617	+ 8.5
Fatality rate			
Rate per 1,000 registered motor vehicles ¹	0.30	0.29	- 0.01
Rate per 100,000 population	11.24	11.39	+ 0.15
Rate per 100 casualty accident	5.28	5.07	-0.21
Rate per 100 casualties	3.81	3.74	- 0.07

¹ revised

Note: As from 2011, the area of the Island of Mauritius is according to new boundaries as amended and gazetted in the Local Government Act 2011 (Act No. 36 of 2011)

PART I

VEHICLES

STATISTICS

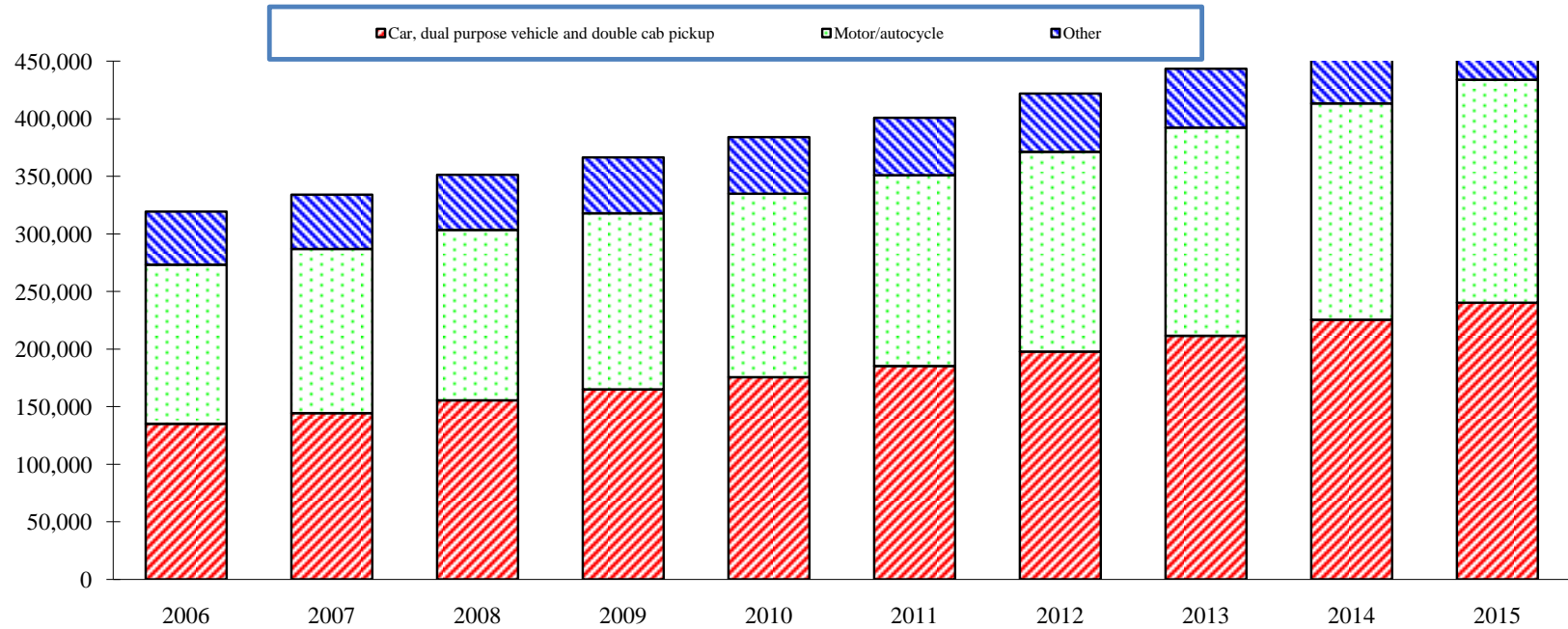
Table 1.1 - Road network as at end of year, 2011 - 2015

Year	Length of roads (km)					% of roads paved	Density ¹ of total network in km per sq km	Number of vehicles per km of road
	Motorways	Main roads	Secondary roads	Other roads	Total			
2011	82	1,035	595	400	2,112	98	1.13	190
2012	86	1,068	608	408	2,170	98	1.16	194
2013	99	1,131	625	420	2,275	98	1.22	195
2014	99	1,131	673	453	2,356	98	1.26	197
2015	99	1,131	716	482	2,428	98	1.30	200

¹ density of total network in km per sq. km is the ratio of the total number of km of roads to the area of Mauritius (1,868 sq. km)

Note: As from 2011, the area of Island of Mauritius is according to new boundaries as amended and gazetted in the Local Government Act 2011 (Act No. 36 of 2011)

Fig. 1.1 - Stock of registered vehicles, 2006 - 2015



Type of vehicle	2006	2007	2008	2009	2010	2011	2012	2013	2014	2015
Car, dual purpose vehicle and double cab pickup ¹	135,132	144,405	155,528	165,036	175,634	185,357	197,849	211,586	225,522	240,289
Motor cycle and autocycle	138,174	142,606	147,988	152,935	159,329	165,706	173,508	180,785	187,851	193,688
Other	46,134	47,134	47,890	48,549	49,152	49,856	50,569	51,124	51,679	52,167
Total	319,440	334,145	351,406	366,520	384,115	400,919	421,926	443,495	465,052	486,144

¹ New category of vehicle defined in Road Traffic Act as amended by Act No. 27 of 2012.

Prior to the year 2013 'double cab pickup' was included in 'dual purpose vehicle'

Table 1.2 - Vehicles¹ registered , 2006 - 2015

Type of vehicle	Number									
	2006	2007	2008	2009	2010	2011	2012	2013	2014	2015
Car	91,911	99,770	109,507	117,890	127,363	136,225	147,733	160,701	173,954	188,299
<i>(of which taxi car)</i>	<i>(6,860)</i>	<i>(6,885)</i>	<i>(6,941)</i>	<i>(6,921)</i>	<i>(6,924)</i>	<i>(6,907)</i>	<i>(6,905)</i>	<i>(6,915)</i>	<i>(6,911)</i>	<i>(6,907)</i>
Dual purpose vehicle	43,221	44,635	46,021	47,146	48,271	49,132	50,116	49,730	49,503	49,301
Double cab pickup ²	-	-	-	-	-	-	-	1,155	2,065	2,689
Heavy motor car	1,118	1,223	1,290	1,275	1,249	1,230	1,244	1,250	1,271	1,284
Motor cycle	33,936	36,969	40,804	44,222	48,655	53,410	59,637	65,827	72,067	77,603
Auto cycle	104,238	105,637	107,184	108,713	110,674	112,296	113,871	114,958	115,784	116,085
Lorry and truck	12,272	12,536	12,726	12,950	13,186	13,539	13,902	14,061	14,243	14,372
Van	24,522	24,934	25,334	25,622	25,914	26,090	26,293	26,624	26,890	27,229
Bus	2,612	2,753	2,762	2,803	2,845	2,912	2,957	2,963	3,006	2,980
Tractor and dumper	3,001	3,025	3,045	3,102	3,119	3,173	3,202	3,226	3,254	3,244
Prime mover	436	452	505	558	596	650	689	715	734	774
Trailer	1,756	1,795	1,809	1,823	1,821	1,834	1,845	1,846	1,842	1,850
Road roller	96	96	96	97	98	99	101	102	103	103
Other	321	320	323	319	324	329	336	337	336	331
TOTAL	319,440	334,145	351,406	366,520	384,115	400,919	421,926	443,495	465,052	486,144

¹ Excluding pedal cycles, but including government vehicles.

² New category of vehicle defined in Road Traffic Act as amended by Act No. 27 of 2012.
Prior to the year 2013 'double cab pickup' was included in 'dual purpose vehicle'

Table 1.3 - New vehicles¹ registered, 2011 - 2015

Type of vehicle	Number				
	2011	2012	2013	2014	2015
Car	5,970	7,207	6,651	7,181	6,678
Dual purpose vehicle	1,214	1,341	74	-	1
Double cab pickup²	-	-	1,079	1,161	970
Heavy motor car	27	28	25	45	29
Motor cycle	5,020	6,517	6,481	6,608	5,923
Auto cycle	2,944	2,942	2,444	2,194	1,658
Lorry and truck	245	334	209	264	236
Van	354	362	452	454	470
Bus	147	151	91	163	56
Tractor and dumper	73	57	59	57	21
Prime mover	17	15	11	15	33
Trailer	37	55	24	21	31
Road roller	1	1	-	1	-
Other³	8	11	7	6	2
Total	16,057	19,021	17,607	18,170	16,108

¹ Includes government vehicles

² New category of vehicle defined in Road Traffic Act as amended by Act No. 27 of 2012.
Prior to the year 2013 'double cab pickup' was included in 'dual purpose vehicle'

³ Includes, inter alia, tanker lorries, excavators and industrial tractors

Table 1.4 - Imported Second-hand and re-registered vehicles, 2011 - 2015

Type of vehicle	2011			2012			2013			2014			2015		
	Imported second hand vehicles	Re-registered vehicles ¹	Total	Imported second hand vehicles	Re-registered vehicles ¹	Total	Imported second hand vehicles	Re-registered vehicles ¹	Total	Imported second hand vehicles	Re-registered vehicles ¹	Total	Imported second hand vehicles	Re-registered vehicles ¹	Total
Car	3,615	364	3,979	5,012	409	5,421	7,109	350	7,459	6,886	324	7,210	8,479	350	8,829
Dual purpose vehicle	86	157	243	90	156	246	76	47	123	14	16	30	22	7	29
Double cab pickup ²	-	-	-	-	-	-	22	63	85	14	58	72	10	53	63
Heavy motor car	4	4	8	-	13	13	7	5	12	3	5	8	5	6	11
Motor cycle	72	338	410	46	367	413	66	346	412	59	305	364	53	317	370
Auto cycle	6	1	7	7	1	8	4	3	7	1	5	6	4	2	6
Lorry and truck	291	64	355	193	64	257	109	65	174	64	44	108	54	52	106
Van	209	73	282	207	106	313	297	71	368	287	60	347	361	52	413
Bus	-	1	1	-	-	-	-	-	-	-	-	-	-	1	1
Tractor and dumper	15	14	29	13	11	24	6	8	14	7	7	14	1	6	7
Prime mover	50	4	54	42	-	42	30	2	32	23	5	28	21	5	26
Trailer	56	14	70	21	18	39	36	19	55	28	14	42	30	13	43
Road roller	-	-	-	-	1	1	-	1	1	-	-	-	-	-	-
Other ³	2	1	3	2	1	3	2	-	2	-	1	1	1	-	1
Total	4,406	1,035	5,441	5,633	1,147	6,780	7,764	980	8,744	7,386	844	8,230	9,041	864	9,905

¹ Refers to re-registration of vehicles previously put off the road excludes government vehicles which are not liable to re-registration

² New category of vehicle defined in Road Traffic Act as amended by Act No. 27 of 2012.

Prior to the year 2013 'double cab pickup' was included in 'dual purpose vehicle'

³ Includes, inter alia, tanker lorries, excavators and industrial tractors

Table 1.5 - Vehicles off the road¹, 2011 - 2015

Type of vehicle	Number				
	2011	2012	2013	2014	2015
Car	1,087	1,120	1,142	1,138	1,162
Dual purpose vehicle	596	603	583	257	232
Double cab pickup ²	-	-	9	323	409
Heavy motor car	54	27	31	32	27
Motor cycle	675	703	703	732	757
Auto cycle	1,329	1,375	1,364	1,374	1,363
Lorry and truck	247	228	224	190	213
Van	460	472	489	535	544
Bus	81	106	85	120	83
Tractor and dumper	48	52	49	43	38
Prime mover	17	18	17	24	19
Trailer	94	83	78	67	66
Road roller	-	-	-	-	-
Other ³	6	7	8	8	8
Total	4,694	4,794	4,782	4,843	4,921

¹ A vehicle may be withdrawn from the register of vehicles (off the road) either temporarily or permanently. Any such vehicle (except a government vehicle) must register with the N.T.A before it is put on the road again. Includes government vehicles which have been sold by auction.

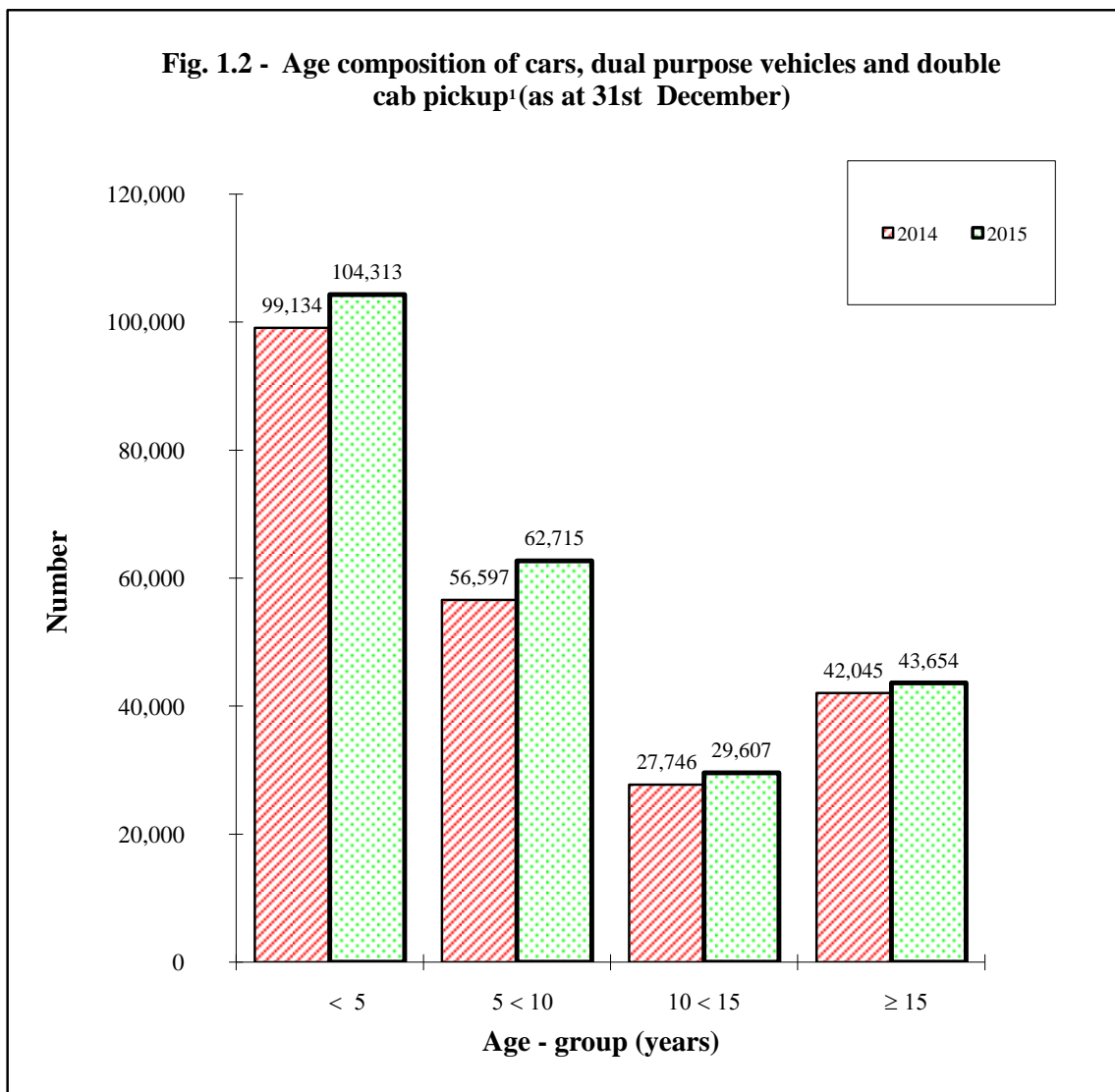
² New category of vehicle defined in Road Traffic Act as amended by Act No. 27 of 2012. Prior to the year 2013 'double cab pickup' was included in 'dual purpose vehicle'

³ Includes, inter alia, tanker lorries, excavators and industrial tractors

**Table 1.6 - Age composition of cars, dual purpose vehicles and double cab pickup ¹,
2014 - 2015**

(as at 31st December)

Age group (Years)	2014		2015	
	Number	%	Number	%
< 5	99,134	44.0	104,313	43.4
5 < 10	56,597	25.1	62,715	26.1
10 < 15	27,746	12.3	29,607	12.3
≥ 15	42,045	18.6	43,654	18.2
TOTAL	225,522	100.0	240,289	100.0



¹ New category of vehicle defined in Road Traffic Act as amended by Act No. 27 of 2012.
Prior to the year 2013 'double cab pickup' was included in 'dual purpose vehicle'

Table 1.7 - Age composition of operational bus fleet ¹, 2014 - 2015

(as at 31st December)

Age group (Years)	2014		2015	
	Number	%	Number	%
< 5	640	32.6	560	28.9
5 < 10	699	35.6	668	34.5
10 < 15	440	22.4	520	26.8
15 < 20	184	9.4	189	9.8
TOTAL	1,963	100.0	1,937	100.0

¹ Refers only to buses with a Road Service License, i.e, buses which operate on proclaimed routes and charge individual fares

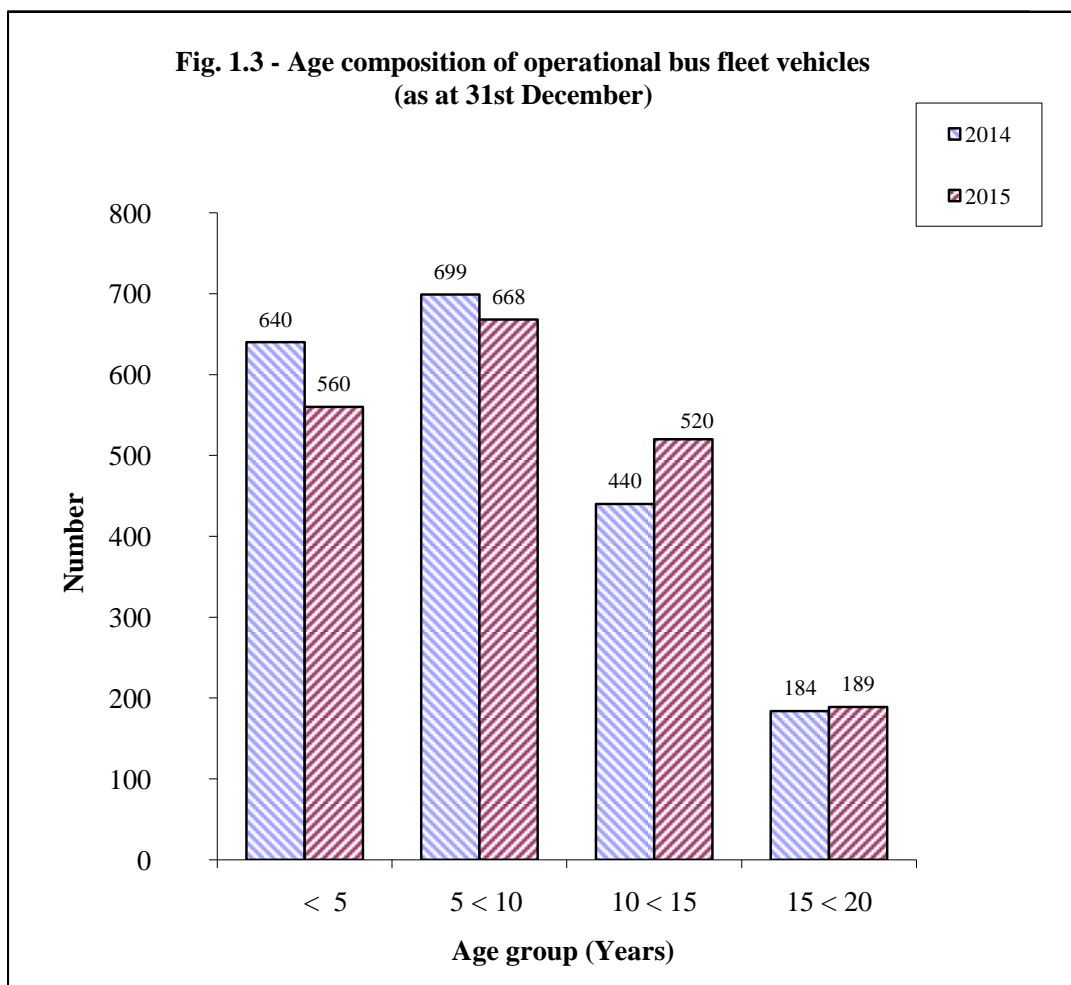


Table 1.8 - Bus operational statistics¹, 2011 - 2015

	Unit	2011	2012	2013	2014	2015²
Operational bus fleet (as at 30th June)	Number	1,853	1,884	1,918	1,986	1,943
Total vehicle - journeys	Thousand	4,905	4,900	4,808	4,805	4,820
Average vehicle - journeys per day	"	8.8	8.7	8.4	8.1	8.3
Total vehicle - kilometres	"	97,582	96,314	96,392	97,825	98,020
Average vehicle - kilometres per day	"	176	170	168	164	168
Total gross receipts	Rs Mn	2,239	2,247	2,405	2,444	2,452
Average gross receipts per day	Rs '000	6,889	6,914	7,400	7,520	7,545

¹ refer only to buses with a Road Service Licence, i.e., buses which operate on proclaimed routes and charge individual fares. Including data on special trips.

² provisional

Table 1.9 - Evolution of bus fares (adults), 2002 - 2015

Period Stage		Rupees				
		Aug. 02	Oct. 04	May. 08	Dec. 10	Aug. 13
1	5.00	6.00	8.00	10.00	12.00	
2	9.00	10.00	14.00	16.00	18.00	
3	12.00	14.00	18.00	22.00	24.00	
4	12.00	14.00	18.00	22.00	24.00	
5	14.00	16.00	20.00	25.00	27.00	
6	14.00	16.00	20.00	25.00	27.00	
7	16.00	18.00	23.00	28.00	30.00	
8	16.00	18.00	23.00	28.00	30.00	
9	17.00	19.00	24.00	29.00	31.00	
10	17.00	19.00	24.00	29.00	31.00	
11	17.00	19.00	24.00	29.00	31.00	
12	17.00	19.00	24.00	29.00	31.00	
13	19.00	21.00	26.00	32.00	34.00	
14	19.00	21.00	26.00	32.00	34.00	
15	19.00	21.00	26.00	32.00	34.00	
16	19.00	21.00	26.00	32.00	34.00	
17	19.00	21.00	26.00	32.00	34.00	
18	19.00	21.00	26.00	32.00	34.00	
19	19.00	21.00	26.00	32.00	34.00	
20	19.00	21.00	26.00	32.00	34.00	
21	20.00	22.00	27.00	32.00	34.00	
22	20.00	22.00	27.00	32.00	34.00	
23	20.00	22.00	27.00	32.00	34.00	
24	20.00	22.00	27.00	32.00	34.00	
25	20.00	22.00	27.00	32.00	34.00	
26	20.00	22.00	27.00	32.00	34.00	
27	20.00	22.00	27.00	32.00	34.00	
28	20.00	22.00	27.00	32.00	34.00	
29	20.00	22.00	27.00	32.00	34.00	
30	20.00	22.00	27.00	32.00	34.00	
30 +	21.00	23.00	28.00	35.00	37.00	

Table 1.10 - Receipts from the activities of the National Transport Authority, 2011 - 2015

Rs. '000

Activity	As at end of December				
	2011	2012	2013	2014	2015 ¹
Issue of motor vehicle licences (Road tax)	1,154,699	1,210,757	1,290,830	1,344,534	1,403,395
Examination of vehicles	63,345	67,830	72,465	74,890	78,902
Issue of public service vehicle and carrier's licences	45,492	39,740	34,964	31,877	40,412
Registration of vehicles	83,503	94,246	96,598	102,244	109,951
Issue of special route permits	663	524	522	419	435
Issue of motor vehicles dealers and petrol service station licences	1,663	3,065	3,674	3,071	3,153
Total	1,349,365	1,416,162	1,499,053	1,557,035	1,636,248

¹ provisional

Table 1.11 - Driving licences issued during the year by type of licence, 2006 - 2015

Number

Type of Licence Year	Learner's licence			Competent licence			International Licence		
	First issue			First issue					
	Male	Female	Both Sexes	Male	Female	Both Sexes	Male	Female	Both Sexes
2006	9,809	7,317	17,126	11,212	2,465	13,677	4,200	1,014	5,214
2007	10,440	8,429	18,869	6,984	2,958	9,942	4,943	652	5,595
2008	10,434	8,817	19,251	7,575	3,297	10,872	4,526	1,542	6,068
2009	10,386	10,410	20,796	7,121	3,505	10,626	4,290	965	5,255
2010	9,587	6,036	15,623	7,762	3,816	11,578	4,073	1,078	5,151
2011	12,209	10,568	22,777	8,490	4,328	12,818	4,073	733	4,806
2012	11,980	9,509	21,489	7,477	4,697	12,174	2,905	1,453	4,358
2013	9,919	7,173	17,092	8,152	4,647	12,799	3,235	1,330	4,565
2014	9,035	7,890	16,925	7,782	4,706	12,488	3,688	1,214	4,902
2015 ¹	9,701	9,229	18,930	7,846	4,790	12,636	4,695	671	5,366

¹ provisional

Table 1.12 - Imports of vehicles and spare parts by country of origin, 2014 - 2015

C.I.F. Value Rs '000

Item	Country of origin	Unit	2014 ¹		2015 ²	
			Quantity	Value	Quantity	Value
1 - Passenger motor cars - of engine capacity not exceeding 1,250 c.c.	Belgium	No.	50	16,678	128	45,619
	France	"	23	9,412	92	35,832
	Germany	"	84	42,152	62	36,984
	Hungary	"	35	13,196	53	35,450
	India	"	1,200	264,521	1,043	280,482
	Japan	"	2,225	358,099	2,492	435,271
	Korea Rep.	"	445	121,779	440	145,235
	Malaysia	"	61	12,582	56	14,769
	South Africa Rep.	"	39	13,045	17	6,496
	Spain	"	129	56,755	140	71,167
	Thailand	"	455	134,096	188	55,808
	Turkey	"	104	42,451	134	60,952
	United Kingdom	"	46	18,895	284	160,317
	Other Countries	"	20	6,212	7	3,071
				4,916	1,109,873	5,136
- of engine capacity exceeding 1,250 c.c. but not exceeding 1,500 c.c.	Germany	No.	38	15,058	253	127,482
	India	"	150	50,097	344	127,766
	Indonesia	"	12	4,397	33	13,961
	Japan	"	4,412	888,241	5,007	1,005,678
	Korea Rep.	"	348	115,973	232	90,026
	Poland	"	60	28,397	16	9,159
	Spain	"	12	5,705	59	38,053
	Thailand	"	458	164,523	607	255,329
	United Kingdom	"	35	12,660	34	14,771
	Other Countries	"	83	28,648	35	15,719
			5,608	1,313,699	6,620	1,697,944

¹ revised

² provisional

Table 1.12 (cont'd) - Imports of vehicles and spare parts by country of origin, 2014 - 2015

C.I.F. Value Rs '000

Item	Country of origin	Unit	2014 ¹		2015 ²	
			Quantity	Value	Quantity	Value
- of engine capacity exceeding 1,500 c.c. but not exceeding 2,250 c.c.	Austria	No.	9	7,751	15	12,879
	France	"	189	112,209	91	49,708
	Germany	"	1,093	1,091,955	1,055	952,073
	Hungary	"	12	5,654	25	14,258
	India	"	134	51,541	106	51,753
	Japan	"	806	337,295	1,083	475,943
	Korea Rep.	"	568	265,430	446	240,935
	Malaysia	"	11	5,007	6	2,281
	South Africa Rep.	"	362	247,686	310	219,684
	Spain	"	42	36,187	47	30,936
	Thailand	"	324	168,479	185	115,065
	Turkey	"	19	9,432	2	983
	United Kingdom	"	329	216,423	451	388,009
	Other Countries	"	24	13,532	12	7,685
			3,922	2,568,581	3,834	2,562,192
- of engine capacity exceeding 2,250 c.c.	Germany	No.	164	258,999	107	229,246
	Japan	"	35	27,715	13	8,430
	Korea Rep.	"	50	37,659	54	48,557
	United Kingdom	"	46	84,610	43	102,311
	United States	"	15	19,032	28	23,311
	Other Countries	"	25	14,210	5	4,915
			335	442,225	250	416,770

¹ revised

² provisional

Table 1.12 (cont'd) - Imports of vehicles and spare parts by country of origin, 2014 - 2015

C.I.F. Value Rs '000

Item	Country of origin	Unit	2014 ¹		2015 ²	
			Quantity	Value	Quantity	Value
- other, unspecified	Germany	No.	2	591	73	47,109
	Japan	"	413	107,079	589	155,316
	United Kingdom	"	1	591	2	1,879
	South Africa Rep.	"	-	-	1	486
				416	108,261	665
2 - Trucks and lorries, trucks of pick-up type, vans designed solely for the types which are not derived solely from ordinary passenger motor-car	Argentina	No.	15	9,116	2	2,214
	China	"	101	35,398	67	28,210
	France	"	121	45,008	61	22,979
	India	"	18	9,232	14	5,775
	Italy	"	14	5,227	28	10,861
	Japan	"	429	166,190	448	180,316
	Korea Rep.	"	166	64,472	127	49,965
	South Africa Rep.	"	975	598,637	839	542,679
	Spain	"	32	18,494	6	4,692
	Thailand	"	249	140,444	198	133,344
	United Kingdom	"	13	6,987	22	19,941
	United States	"	4	1,687	6	2,930
	Other Countries	"	-	-	26	10,279
				2,137	1,100,892	1,844

¹ revised

² provisional

Table 1.12 (cont'd) - Imports of vehicles and spare parts by country of origin, 2014 - 2015

C.I.F. Value Rs '000

Item	Country of origin	Unit	2014 ¹		2015 ²	
			Quantity	Value	Quantity	Value
3 - Public service type passenger motor vehicle	China	No.	93	103,234	20	33,135
	Germany	"	30	16,125	2	1,332
	India	"	-	-	1	2,535
	Japan	"	477	272,126	289	175,864
	Korea Rep.	"	23	13,812	81	61,995
	Spain	"	2	1,258	-	-
				625	406,555	393
4 - Road tractors for semi-trailers	China	No.	2	5,264	7	13,907
	France	"	3	9,397	1	2,817
	Japan	"	-	-	17	35,104
	Netherlands	"	-	-	1	2,442
	United Kingdom	"	24	57,070	10	23,875
				29	71,731	36
5 - Dumpers	United Kingdom	"	-	-	1	737
			-	-	1	737

¹ revised

² provisional

Table 1.12 (cont'd) - Imports of vehicles and spare parts by country of origin, 2014 - 2015

C.I.F. Value Rs '000

Item	Country of origin	Unit	2014 ¹		2015 ²			
			Quantity	Value	Quantity	Value		
6 - Other motor vehicles for the transport of goods or materials	China	No.	7	1,577	2	593		
			Japan	"	59	11,587	88	17,544
					66	13,164	90	18,137
	Japan	No.	8	1,637	7	1,667		
			8	1,637	7	1,667		
			Japan	No.	13	3,422	28	11,299
	13	3,422			28	11,299		
	- of an engine capacity not exceeding 1,600 c.c.							
	- of an engine capacity exceeding 1,600 c.c. but not exceeding 2,250 c.c.							
- of an engine capacity exceeding 2,250 c.c.								

¹ revised

² provisional

Table 1.12 (cont'd) - Imports of vehicles and spare parts by country of origin, 2014 - 2015

C.I.F. Value Rs '000

Item	Country of origin	Unit	2014 ¹		2015 ²	
			Quantity	Value	Quantity	Value
7 - Special purpose motor vehicles and vans	China	No.	9	22,075	9	12,856
	France	"	9	10,024	4	9,047
	Germany	"	10	44,987	12	24,840
	India	"	10	10,455	1	1,112
	Japan	"	138	66,049	123	42,768
	South Africa Rep.	"	-	-	11	4,975
	Taiwan	"	6	1,006	18	3,562
	United Kingdom	"	18	28,981	8	15,600
	United States	"	16	4,316	41	12,309
	Other countries	"	2	30,894	18	69,382
			218	218,787	245	196,451

¹ revised

² provisional

Table 1.12 (cont'd) - Imports of vehicles and spare parts by country of origin, 2014 - 2015

C.I.F. Value Rs '000

Item	Country of origin	Unit	2014 ¹		2015 ²	
			Quantity	Value	Quantity	Value
8 - Motor cycles, scooters and auto cycles	Austria	No.	11	1,104	-	-
	China	"	8,662	184,563	6,110	161,202
	France	"	11	2,968	6	441
	India	"	1,583	58,414	1,384	54,643
	Indonesia	"	-	-	28	2,982
	Italy	"	87	4,351	58	3,568
	Japan	"	107	10,193	40	3,372
	Korea Rep.	"	20	801	12	690
	Spain	"	7	400	-	-
	Taiwan	"	155	6,217	53	3,116
	Thailand	"	51	5,582	40	4,422
	United States	"	130	6,778	-	-
	Other countries	"	14	1,181	10	1,385
				10,838	282,552	7,741
9 - Cycles not motorised	Austria	No.	216	645	27	160
	China	"	43,707	62,759	28,386	41,668
	France	"	194	1,907	388	2,257
	Hong Kong	"	-	-	627	3,294
	Netherlands	"	531	5,914	493	3,032
	South Africa Rep.	"	146	1,457	215	1,294
	Taiwan	"	1,855	10,177	1,333	8,135
	Other countries	"	328	1,748	461	2,319
			46,977	84,607	31,930	62,159

¹ revised

² provisional

Table 1.12 (cont'd) - Imports of vehicles and spare parts by country of origin, 2014- 2015

C.I.F. Value Rs '000

Item	Country of origin	Unit	2014 ¹		2015 ²	
			Quantity	Value	Quantity	Value
10 - Chassis fitted with engines for tractors, and for motor vehicles	China	No.	4	1,752	4	4,426
	France	"	8	29,751	-	-
	India	"	2	1,117	23	19,304
	Japan	"	47	83,155	37	63,539
	South Africa Rep.	"	-	-	1	1,120
			61	115,775	65	88,389
11 - Parts and accessories for tractors and for motor vehicles	China	M/ton	648	93,660	522	95,126
	France	"	61	35,502	57	32,623
	Germany	"	70	75,150	59	54,097
	India	"	76	23,658	85	30,524
	Italy	"	54	22,065	44	20,669
	Japan	"	1,016	264,758	487	178,276
	Korea Rep.	"	56	26,836	108	54,240
	Malaysia	"	71	15,906	101	20,052
	Singapore	"	23	5,335	15	6,390
	South Africa Rep.	"	37	19,890	46	23,311
	Taiwan	"	68	19,098	70	26,660
	Thailand	"	166	41,287	132	46,427
	Turkey	"	17	7,692	37	12,293
	United Kingdom	"	170	40,325	121	51,331
	United States	"	24	14,582	27	31,460
	Other countries	"	101	40,991	81	49,747
				2,658	746,735	1,992

¹ revised

² provisional

Table 1.12 (cont'd) - Imports of vehicles and spare parts by country of origin, 2014 - 2015

C.I.F. Value Rs '000

Item	Country of origin	Unit	2014		2015 ¹	
			Quantity	Value	Quantity	Value
12 - Parts n.e.s and accessories for motor cycles, scooters and autocycles	China	M/ton	247	31,688	247	34,543
	France	"	1	1,592	2	1,358
	India	"	19	2,716	40	4,378
	Italy	"	1	2,918	2	4,670
	Japan	"	3	4,046	4	3,776
	Taiwan	"	14	3,949	15	4,191
	Thailand	"	3	583	3	579
	Turkey	"	8	2,038	2	746
	Other countries	"	4	6,705	5	4,729
			300	56,235	320	58,970

¹ provisional

PART II

ROAD ACCIDENTS

Table 2.1 - Road traffic accidents¹ and casualties, 2006 - 2015

	2006	2007	2008	2009	2010	2011	2012	2013	2014 ³	2015
1. Road traffic accidents :										
Number	20,242	20,519	20,873	19,542	21,243	22,387	21,056	23,563	26,400	28,476
Rate per 100,000 population	1,693	1,709	1,732	1,618	1,755	1,847	1,733	1,936	2,165	2,333
Rate per 1,000 registered motor vehicles	65	63	61	54	57	57	51	55	58	60
2. Motor vehicle involved :										
Number	40,023	41,178	42,910	38,058	41,084	41,294	40,759	41,888	51,264	55,617
Rate per 1,000 registered motor vehicles	128	126	125	106	110	105	99	97	113	117
3. Casualties :										
Total number of casualties of which	2,522	3,055	3,435	3,661	3,640	3,422	3,653	3,610	3,592	3,722
<i>Fatal</i>	134	140	168	140	158	152	156	136	137	139
<i>Seriously injured</i>	348	500	512	516	569	487	549	465	505	530
<i>Slightly injured</i>	2,040	2,415	2,755	3,005	2,913	2,783	2,948	3,009	2,950	3,053
4. Fatality :										
Rate per 100,000 population	11.2	11.7	13.9	11.6	13.1	12.5	12.8	11.2	11.2	11.4
Rate per 1,000 registered motor vehicles	0.4	0.4	0.5	0.4	0.4	0.4	0.4	0.3	0.3	0.3
Fatality index ²	5.3	4.6	4.9	3.8	4.3	4.4	4.3	3.8	3.8	3.7

¹ Exclude accidents involving bicycles only or bicycle and pedestrian.

² Fatality index is the number of fatalities per 100 casualties.

³ Revised.

Figure 2.1 - Number of vehicles registered and road accidents, 2006 -2015

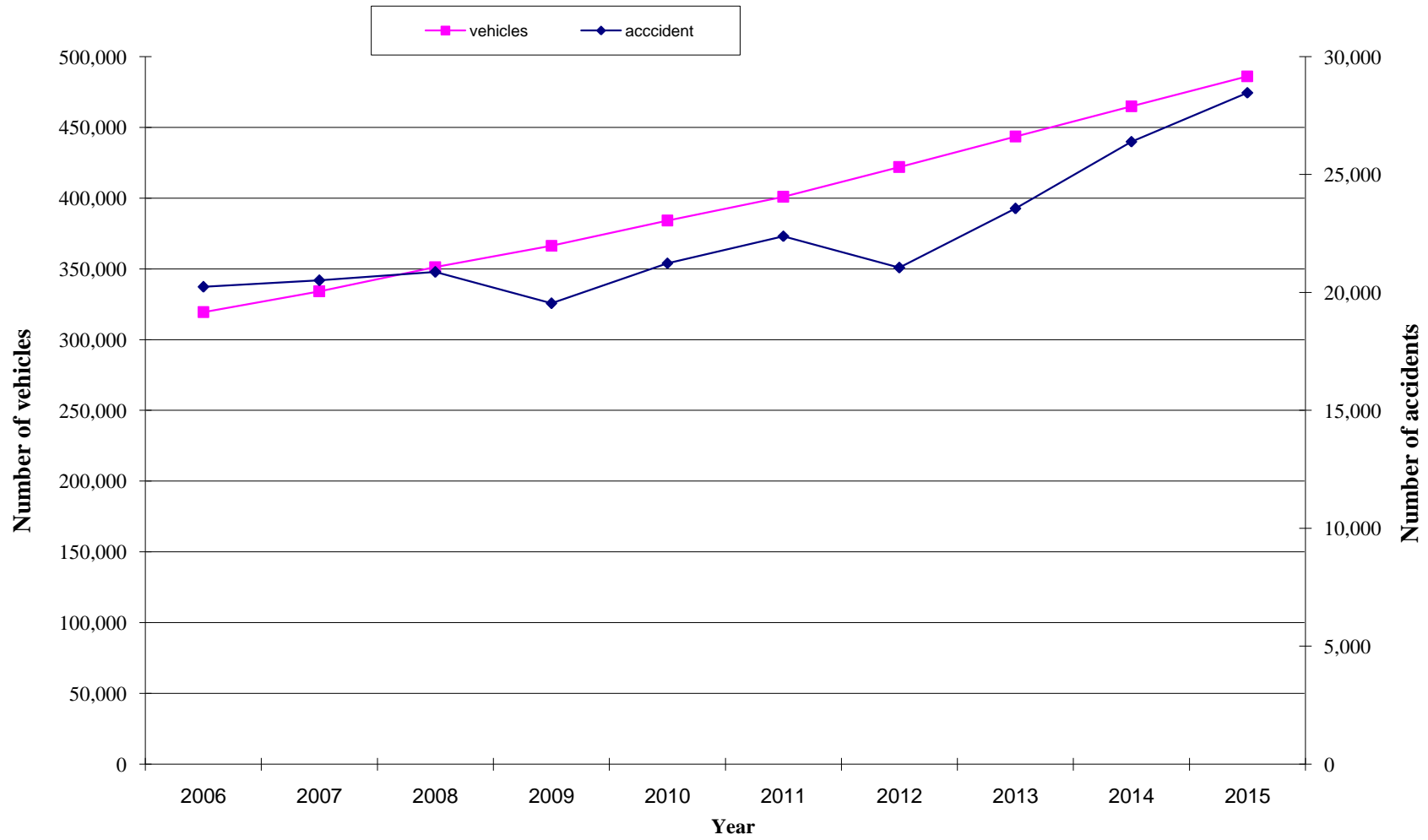


Table 2.2 - Road traffic accidents, motor-vehicles involved and casualties, 2011 - 2015

Year	Accidents	Casualty accidents	Non-injury accidents	Casualties	Motor Vehicles involved	Population (mid-year)	Motor vehicles registered (mid-year)
2011	22,387	2,404	19,983	3,422	41,294	1,211,970	392,276
2012	21,056	2,590	18,466	3,653	40,759	1,214,987	411,527
2013	23,563	2,578	20,985	3,610	41,888	1,217,341	432,331
2014	26,400	2,593	23,807	3,592	51,264	1,219,265	454,426
2015	28,476	2,743	25,733	3,722	55,617	1,220,663	474,364

Table 2.3 - Number of casualties by degree of casualty and casualty rate, 2011- 2015

Year	Degree of casualty				Casualty rate		
	Fatal	Seriously injured	Slightly injured	Total casualties	Per casualty accident	Per 100,000 population	Per 1,000 Motor-vehicles
2011	152	487	2,783	3,422	1.4	282	9
2012	156	549	2,948	3,653	1.4	301	9
2013	136	465	3,009	3,610	1.4	297	8
2014	137	505	2,950	3,592	1.4	295	8
2015	139	530	3,053	3,722	1.4	305	8

Table 2.4 - Casualty accidents, pedestrian and rider (auto/motor) casualties by police district, 2014 - 2015

Police District	Casualty accidents		Casualties							
			Pedestrian		Rider (auto/moto cycle)		Other		Total	
	2014	2015	2014	2015	2014	2015	2014	2015	2014	2015
Port Louis (South)	199	267	47	48	130	136	89	147	266	331
Port Louis (North)	351	391	89	98	246	289	118	121	453	508
Pamplemousses/Rivière du Rempart	617	524	107	85	399	346	398	322	904	753
Moka/Flacq	328	446	78	76	178	243	189	259	445	578
Grand Port/Savanne	361	396	87	93	156	158	265	331	508	582
Upper Plaines Wilhems	204	180	57	52	87	83	133	104	277	239
Plaines Wilhems/Black River	533	539	142	117	302	289	295	325	739	731
Whole Island	2,593	2,743	607	569	1,498	1,544	1,487	1,609	3,592	3,722

Table 2.5 - Pedestrian and total casualties by police district and semester, 2015

Police district	Pedestrian casualties			Total casualties		
	Jan - Jun	Jul - Dec	Total	Jan - Jun	Jul - Dec	Total
Port Louis (South)	19	29	48	144	187	331
Port Louis (North)	56	42	98	258	250	508
Pamplemousses/Rivière du Rempart	55	30	85	387	366	753
Moka/Flacq	36	40	76	246	332	578
Grand Port/Savanne	54	39	93	310	272	582
Upper Plaines Wilhems	27	25	52	127	112	239
Plaines Wilhems/Black River	64	53	117	384	347	731
Whole Island	311	258	569	1,856	1,866	3,722

Table 2.6 - Distribution of casualty accidents by day of week and time, 2015

Day Time (Hour)	Monday	Tuesday	Wednesday	Thursday	Friday	Saturday	Sunday	Total
0 - 1	11	2	2	3	6	11	7	42
1 - 2	7	1	2	2	6	4	8	30
2 - 3	3	2	2	2	-	4	7	20
3 - 4	1	1	2	4	2	4	5	19
4 - 5	1	2	1	3	3	3	5	18
5 - 6	2	6	5	7	8	11	11	50
6 - 7	18	18	10	10	9	14	13	92
7 - 8	19	25	23	32	22	16	14	151
8 - 9	23	27	23	24	19	24	17	157
9 - 10	29	11	19	12	14	16	18	119
10 - 11	15	19	20	18	15	17	20	124
11 - 12	20	13	18	22	20	23	17	133
12 - 13	20	16	20	21	23	15	18	133
13 - 14	21	23	21	20	14	26	20	145
14 - 15	20	21	22	24	22	26	24	159
15 - 16	18	22	24	30	28	23	20	165
16 - 17	35	29	31	33	25	20	43	216
17 - 18	46	41	28	34	26	17	21	213
18 - 19	27	19	27	36	30	26	35	200
19 - 20	19	17	21	22	23	18	31	151
20 - 21	13	13	14	10	21	31	34	136
21 - 22	15	14	10	7	22	25	19	112
22 - 23	14	7	8	6	10	19	25	89
23 - 24	11	10	2	5	11	13	17	69
Total	408	359	355	387	379	406	449	2,743

Fig. 2.2 - Number of casualty accidents by day of week, 2015

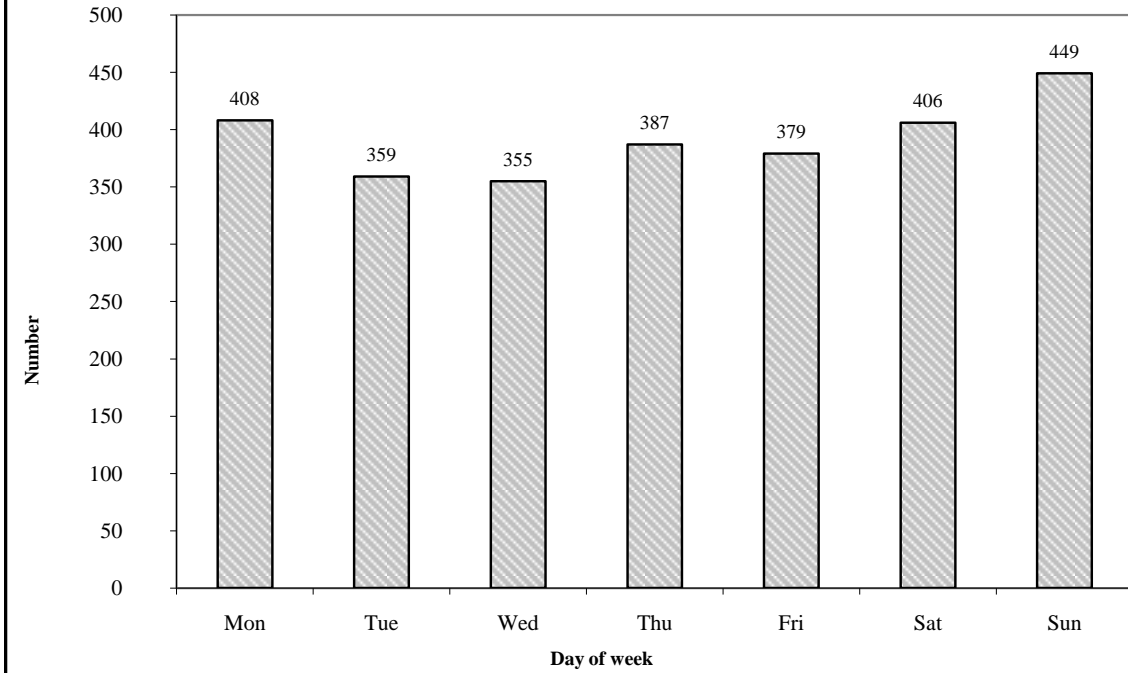


Fig. 2.3 - Number of casualty accidents by time of day, 2015

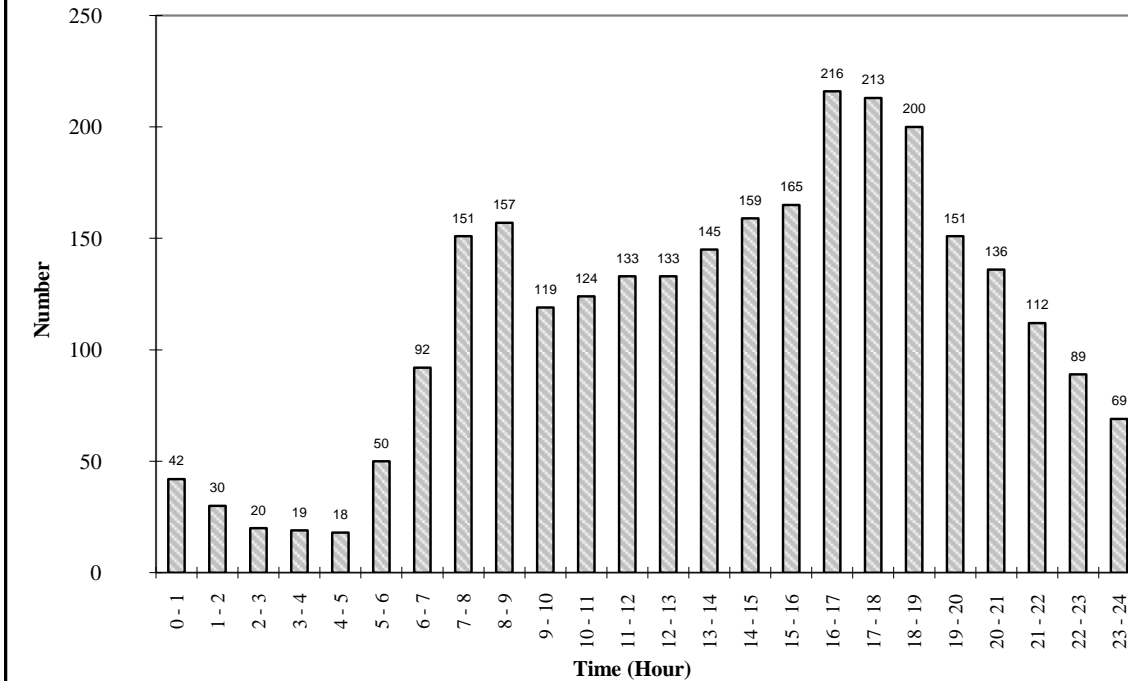


Table 2.7 - Number of accidents by severity of accident, 2011 - 2015

Year	Severity of accident				
	Fatal ¹	Serious	Slight	No injury	Total
2011	132	407	1,865	19,983	22,387
2012	144	455	1,991	18,466	21,056
2013	119	389	2,070	20,985	23,563
2014	125	425	2,043	23,807	26,400
2015	127	468	2,148	25,733	28,476

Table 2.8 - Number of casualty accidents involved in "hit and run" cases by semester, 2014- 2015

Year Accident	2014				2015			
	Jan. - Jun.	Jul. - Dec.	Total	%	Jan. - Jun.	Jul. - Dec.	Total	%
Vehicles v/s pedestrian	35	36	71	43.6	56	30	86	43.2
Vehicles v/s vehicles	53	39	92	56.4	63	50	113	56.8
Total	88	75	163	100.0	119	80	199	100.0

Table 2.9 - Number of casualty accidents by severity of accident and police district, 2014 - 2015

Police district	2014				2015			
	Severity of accident				Severity of accident			
	Fatal	Serious	Slight	Total	Fatal	Serious	Slight	Total
Port Louis (South)	6	31	162	199	12	42	213	267
Port Louis (North)	18	63	270	351	15	56	320	391
Pamplemousses /Riviere-Du-Rempart	29	80	508	617	30	107	387	524
Moka/Flacq	13	42	273	328	16	53	377	446
Grand-Port/Savanne	20	60	281	361	18	73	305	396
Upper Plaine -Wilhems	13	50	141	204	13	38	129	180
Plaine - Wilhems/Black- River	26	99	408	533	23	99	417	539
Total	125	425	2,043	2,593	127	468	2,148	2,743

Number

Table 2.10 - Number of casualty accidents by severity of accident and weather conditions, 2014 - 2015

Number

Weather conditions	2014				2015			
	Severity of accident				Severity of accident			
	Fatal	Serious	Slight	Total	Fatal	Serious	Slight	Total
Fine	113	395	1,859	2,367	102	419	1,963	2,484
Rainy	10	26	177	213	24	49	177	250
Foggy/misty	1	4	5	10	-	-	7	7
Other	1	-	2	3	1	-	1	2
Total	125	425	2,043	2,593	127	468	2,148	2,743

Table 2.11 - Number of casualty accidents by severity of accident and light conditions, 2014 - 2015

Number

Light conditions	2014				2015			
	Severity of accident				Severity of accident			
	Fatal	Serious	Slight	Total	Fatal	Serious	Slight	Total
Day light	56	252	1,319	1,627	59	253	1,352	1,664
Dawn / dusk	15	29	183	227	10	54	237	301
Darkness : street lights present and lit	37	104	397	538	35	125	404	564
Darkness : street lights present but unlit	4	7	23	34	6	13	40	59
Darkness : no street lighting	13	33	121	167	17	23	115	155
Not specified	-	-	-	-	-	-	-	-
Total	125	425	2,043	2,593	127	468	2,148	2,743

Table 2.12 - Number of casualty accidents by type of road, severity of accident and collision type, 2015

Number

Collision type	Type of road									Total
	One Way Street	Two Way Street	Dual Carriage way	One Way Street	Two Way Street	Dual Carriage way	One Way Street	Two Way Street	Dual Carriage way	
	Fatal			Serious			Slight			
Head On	-	45	1	9	146	6	41	597	34	879
Rear End	-	3	2	4	26	-	27	151	15	228
Right Angle	-	2	-	2	23	3	11	131	8	180
Side Swipe	-	1	-	2	28	6	27	137	20	221
Ran Off Road	-	12	1	-	32	3	8	95	7	158
Hit Object in Road	-	-	-	2	1	-	4	28	7	42
Hit Object off Road	-	7	-	1	23	-	7	77	5	120
Hit Parked Vehicle	-	1	-	-	10	1	1	20	-	33
Hit Pedestrian	2	35	4	7	89	1	43	350	7	538
Hit Animal	-	-	-	-	3	-	3	59	1	66
Other	-	9	2	1	35	4	13	199	15	278
Total	2	115	10	28	416	24	185	1,844	119	2,743

Table 2.13 - Number of casualty accidents by severity of accident and type of road, 2014 - 2015

Number

Type of road	2014					2015				
	Length of roads (kms)	Severity of accident				Length of roads (kms)	Severity of accident			
		Fatal	Serious	Slight	Total		Fatal	Serious	Slight	Total
Motor-way	99	11	29	108	148	99	10	24	119	153
Main road	1,131	99	347	1,716	2,162	1,131	102	410	1,757	2,269
Secondary road	673	9	39	173	221	716	12	27	239	278
Other road	453	6	10	46	62	482	3	7	33	43
Total	2,356	125	425	2,043	2,593	2,428	127	468	2,148	2,743

Table 2.14 - Number of casualty accidents by degree of casualties and junction type, 2015

Number

Junction type	2015			
	Degree of casualties			
	Fatal	Serious	Slight	Total
Not a Junction	114	328	1,491	1,933
Crossroads	4	61	249	314
T - Junction	7	47	251	305
Staggered - Junction	1	3	20	24
Y - Junction	-	5	16	21
Roundabout	-	17	89	106
Slip Road	1	3	17	21
Private Entrance	-	4	15	19
Total	127	468	2,148	2,743

Table 2.15 - Number of vehicles¹ involved in casualty accidents by type, 2014 - 2015

Type of vehicle	2014		2015	
	Number of vehicles	%	Number of vehicles	%
Private car	1,144	30.3	1,409	32.6
Taxi car	53	1.4	58	1.3
Bus	252	6.7	283	6.6
Lorry	68	1.8	83	1.9
Van	187	4.9	248	5.8
Motor/Auto cycle	1,632	43.1	1,677	38.8
Pedal cycle	132	3.5	170	3.9
Other motor vehicle	315	8.3	394	9.1
Other non-motor vehicle	0	0.0	0	0.0
All vehicles	3,783	100.0	4,322	100.0

¹ only three main vehicles have been considered in accidents involving more than three vehicles.

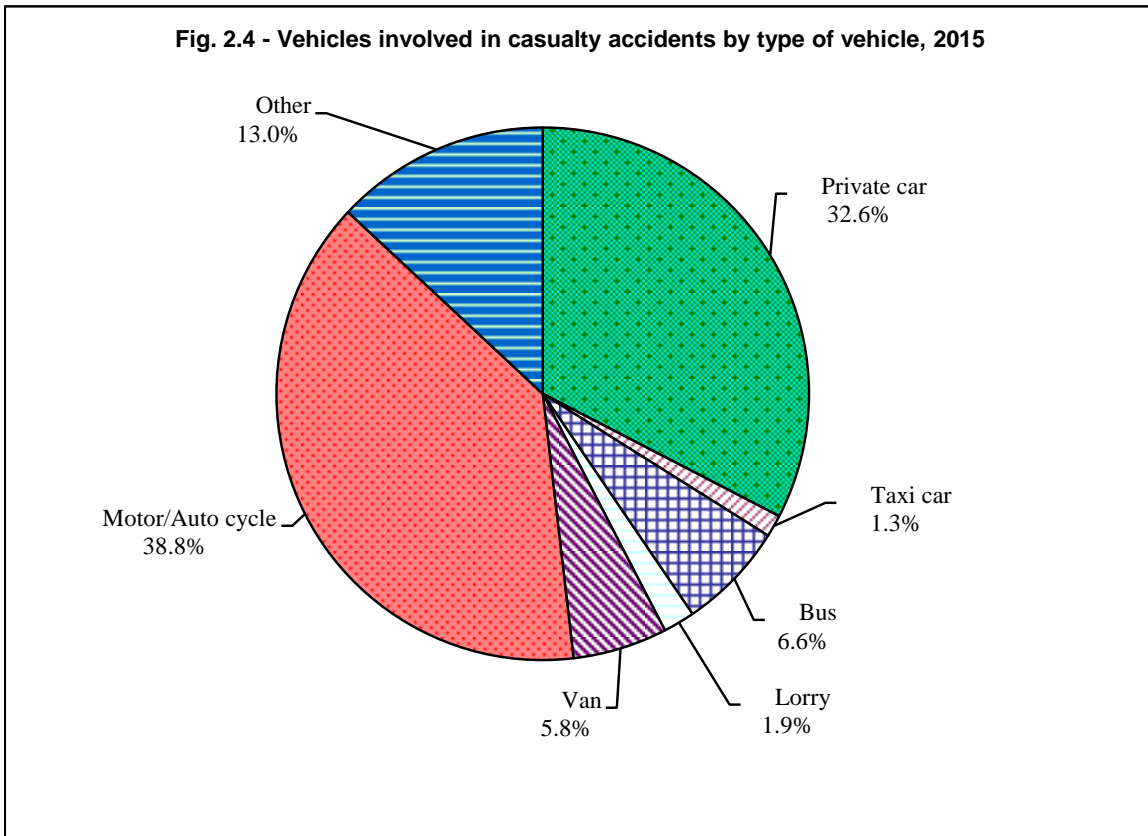


Table 2.16 - Number of motor-vehicles ¹ involved in casualty accidents by type of vehicle and nature of damage, 2015

Type of vehicle	Nature of damage, 2015			
	Seriously damaged	Slightly damaged	No damage	Total
Private car	252	897	260	1,409
Taxi car	8	36	14	58
Bus	25	170	87	282
Lorry	7	38	36	81
Van	49	142	57	248
Motor/Auto cycle	442	1,080	150	1,672
Other motor-vehicle	36	157	58	251
All vehicles	819	2,520	662	4,001

¹ only three main vehicles have been considered in accidents involving more than three vehicles.

Note: as from August 2004, most non-injury road traffic accidents are not reported to the police, but only to insurance companies. Consequently, disaggregated data on non-injury accidents by type of vehicle and nature of damage are not available .

Table 2.17 - Number of drivers and riders¹ involved in casualty accidents by age-group and sex, 2015

Age - group (years)	Drivers			Riders			Total		
	Male	Female	Total	Male	Female	Total	Male	Female	Total
15 - 18	7	1	8	93	5	98	100	6	106
19 - 24	223	20	243	414	7	421	637	27	664
25 - 34	568	67	635	496	17	513	1,064	84	1,148
35 - 44	612	52	664	253	3	256	865	55	920
45 - 54	400	37	437	198	4	202	598	41	639
55 - 60	169	10	179	92	2	94	261	12	273
Over 60	155	8	163	88	-	88	243	8	251
All ages	2,134	195	2,329	1,634	38	1,672	3,768	233	4,001

¹ excluding drivers and riders involved in hit and run cases.

Note: as from August 2004, most non-injury road traffic accidents are not reported to the police, but only to insurance companies. Consequently, disaggregated data on non-injury accidents by age group and sex are not available.

Table 2.18 - Number of drivers/riders¹ involved in casualty accidents by driving experience and sex, 2015

Driving experience	Number of drivers/riders involved in casualty accidents, 2015		
	Male	Female	Total
No licence	81	-	81
Learner driver's licence	873	18	891
Full licence	2,814	215	3,029
All categories	3,768	233	4,001

¹ excluding drivers and riders involved in hit and run cases

Table 2.19 - Number of casualties by class of road users, 2014- 2015

Class of Road users	2014		2015	
	Number	%	Number	%
Pedestrian	607	16.9	569	15.3
Passenger	858	23.9	837	22.5
Driver	500	13.9	608	16.3
Rider (auto/motor cycle)	1,498	41.7	1,544	41.5
Pedal cyclist	129	3.6	164	4.4
All road users	3,592	100.0	3,722	100.0

¹ Revised

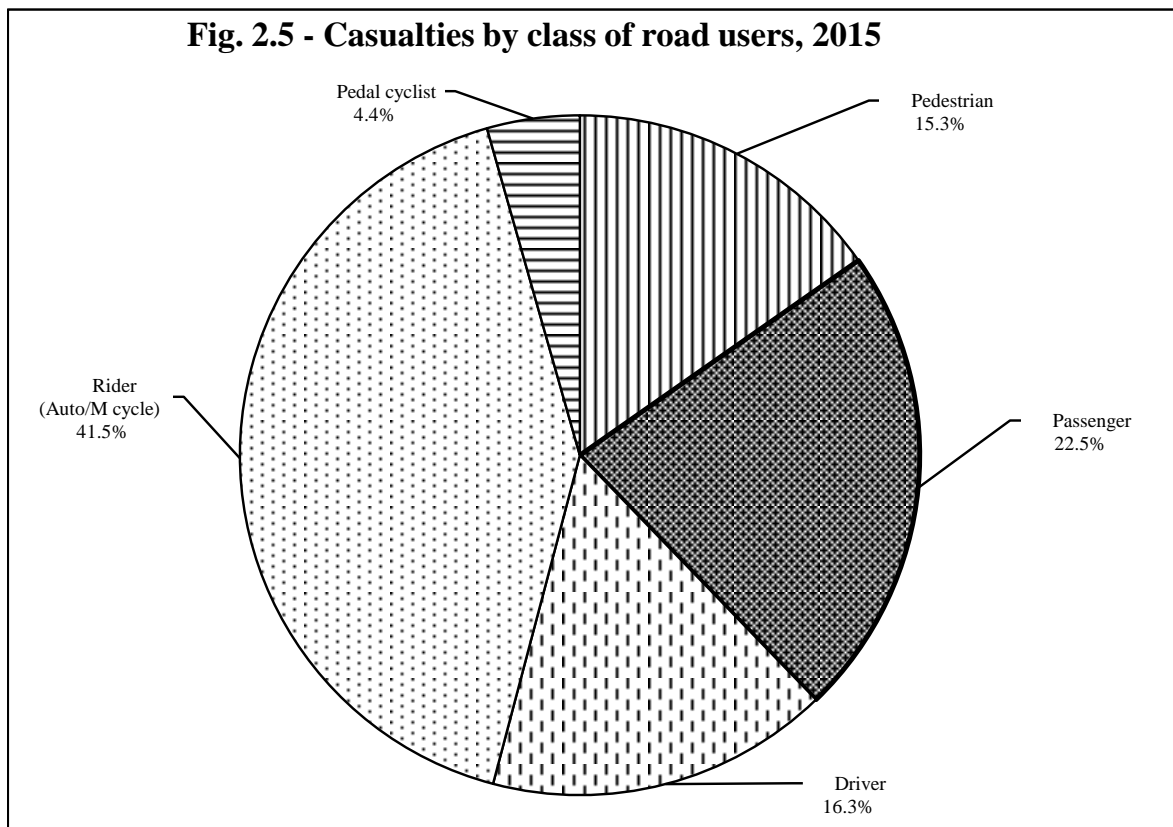


Table 2.20 - Number of casualties by degree of casualty and class of road users, 2014 - 2015

Class of Road users	2014					2015				
	Degree of casualty					Degree of casualty				
	Fatal	Seriously injured	Slightly injured	Total	%	Fatal	Seriously injured	Slightly injured	Total	%
Pedestrian	36	92	479	607	16.9	44	95	430	569	15.3
Passenger	25	97	736	858	23.9	22	98	717	837	22.5
Driver	17	57	426	500	13.9	15	70	523	608	16.3
Rider (auto / m - cycle)	50	243	1,205	1,498	41.7	50	251	1,243	1,544	41.5
Pedal cyclist	9	16	104	129	3.6	8	16	140	164	4.4
All road users	137	505	2,950	3,592	100.0	139	530	3,053	3,722	100.0

Table 2.21 - Number of casualties by class of road users, age-group and sex, 2015

Number

Age-group (years)	Road Users											
	Pedestrian			Passenger			Driver/Rider/Cyclist			Total Casualties		
	Male	Female	Total	Male	Female	Total	Male	Female	Total	Male	Female	Total
Under 5	7	3	10	8	7	15	-	-	-	15	10	25
5 - 14	39	25	64	35	31	66	16	-	16	90	56	146
15 - 29	50	47	97	202	157	359	997	43	1,040	1,249	247	1,496
30 - 44	74	35	109	115	112	227	643	39	682	832	186	1,018
45 - 59	92	59	151	58	70	128	402	13	415	552	142	694
60 - 69	49	41	90	7	20	27	122	5	127	178	66	244
Over 69	19	29	48	8	7	15	35	1	36	62	37	99
All ages	330	239	569	433	404	837	2,215	101	2,316	2,978	744	3,722

Table 2.22 - Number of pedestrian casualties by age-group, 2014 - 2015

Number

Age-group (years)	2014			2015		
	Population (mid year)	Pedestrian casualties		Population (mid year)	Pedestrian casualties	
		Number	Per 100,000 population		Number	Per 100,000 population
Under 5	67,841	11	16	65,815	10	15
5 - 14	174,794	81	46	170,223	64	38
15 - 29	274,457	125	46	275,754	97	35
30 - 44	269,014	111	41	266,909	109	41
45 - 59	258,516	129	50	260,263	151	58
60 - 69	107,852	87	81	111,803	90	80
Over 69	66,791	63	94	69,896	48	69
All ages	1,219,265	607	50	1,220,663	569	47

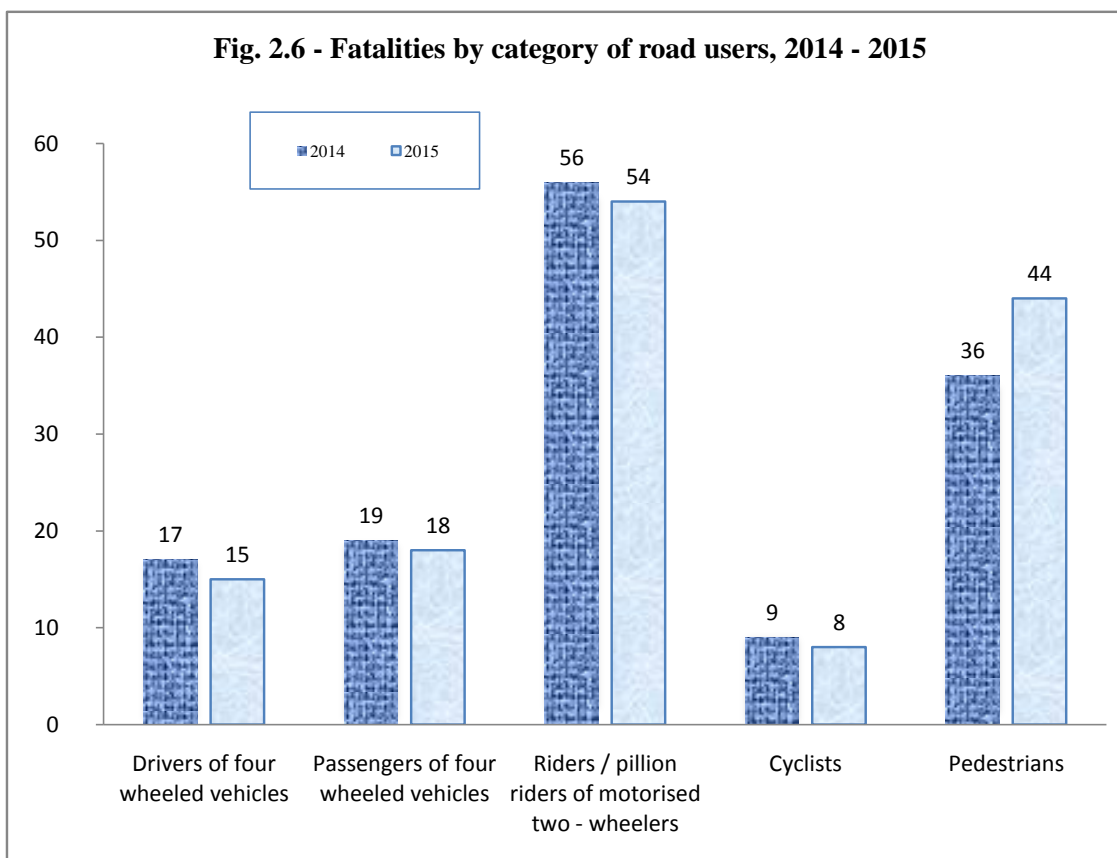
Table 2.23 - Number of fatalities by class of road users, age-group and sex, 2015

Number

Age-group (years)	Road Users											
	Pedestrian			Passenger			Driver/Rider/Cyclist			Total Fatalities		
	Male	Female	Total	Male	Female	Total	Male	Female	Total	Male	Female	Total
Under 5	-	-	-	-	-	-	-	-	-	-	-	-
5 - 14	-	-	-	-	-	-	-	-	-	-	-	-
15 - 29	3	-	3	7	5	12	31	3	34	41	8	49
30 - 44	6	-	6	4	2	6	20	-	20	30	2	32
45 - 59	11	6	17	2	-	2	13	-	13	26	6	32
60 - 69	8	3	11	-	-	-	6	-	6	14	3	17
Over 69	4	3	7	1	1	2	-	-	-	5	4	9
All ages	32	12	44	14	8	22	70	3	73	116	23	139

Table 2.24 - Fatalities by category of road users, 2014 - 2015

Category of road users	Fatalities			
	2014		2015	
	Number	%	Number	%
Drivers of four wheeled vehicles	17	12.4	15	10.8
Passengers of four wheeled vehicles	19	13.9	18	12.9
Riders / pillion riders of motorised two - wheelers	56	40.9	54	38.8
Cyclists	9	6.6	8	5.8
Pedestrians	36	26.3	44	31.7
All road users	137	100.0	139	100.0



Tab 2.25 - Number of fatalities by Police district and class of road users, 2014 - 2015

Number

Police district	2014						2015					
	Class of road users						Class of road users					
	Pedestrian	Passengers	Drivers	Riders	Pedal Cyclist	All Road Users	Pedestrian	Passengers	Drivers	Riders	Pedal Cyclist	All Road Users
Port Louis (South)	2	-	-	4	-	6	8	1	1	4	-	14
Port Louis (North)	9	2	1	6	1	19	7	-	-	7	1	15
Pamplemousses/Riviere Du Rempart	6	7	4	16	1	34	5	6	3	17	3	34
Moka/Flacq	4	1	2	7	-	14	4	1	1	9	1	16
Grand-Port/Savanne	3	6	5	6	2	22	4	4	5	3	2	18
Upper Plaine -Wilhems	3	4	3	4	1	15	6	1	1	6	-	14
Plaine -Wilhems/Black-River	9	5	2	7	4	27	10	9	4	4	1	28
Total	36	25	17	50	9	137	44	22	15	50	8	139

PART III

PETROLEUM

PRODUCTS

Table 3.1 - Evolution of price and sales of gasoline and gas oil, 2012 - 2015

Year		Gasolene		Gas oil	
		Price (Rs/Litre)	Sales (000 Litre)	Price (Rs/Litre)	Sales (000 Litre)
2012	3-Feb-2012	49.30	172,154	41.20	226,494
	2-Mar-2012	49.30		41.20	
	6-Apr-2012	49.30		41.20	
	8-Jun-2012	49.30		41.20	
	7-Jul-2012	49.30		41.20	
2013	1-Mar-2013	52.25	179,834	43.95	219,731
	12-Apr-2013	52.25		43.95	
	5-Jul-2013	52.25		43.95	
	8-Aug-2013	52.25		43.95	
	4-Oct-2013	52.25		43.95	
	31-Oct-2013	52.25		43.95	
	6-Dec-2013	52.25		43.95	
2014	13-Jan-2014	52.25	191,245	43.95	220,783
	14-Feb-2014	52.25		43.95	
	2-May-2014	52.25		43.95	
	6-Jun-2014	52.25		43.95	
	4-Jul-2014	52.25		43.95	
	22-Aug-2014	50.15		41.90	
	10-Oct-2014	50.15		41.90	
	7-Nov-2014	50.15		41.90	
	21-Nov-2014	47.90		39.45	
	6-Dec-2014	45.95		37.80	
2015	17-Jan-2015	45.95	205,758	37.80	222,430
	25-Apr-2015	45.95		37.80	
	6-Jun-2015	45.95		37.80	
	13-Aug-2015	45.95		37.80	
	5-Sep-2015	45.95		35.50	
	14-Nov-2015	41.35		32.75	

Table 3.2 - Imports of motor spirit and gas oil by country of origin , 2014 - 2015

Item	Country of origin	2014		2015 ¹	
		Quantity ('000 Litres)	Value (C.I.F, Rs '000)	Quantity ('000 Litres)	Value (C.I.F, Rs '000)
Motor spirit (Gasolene)	France	12	267	-	-
	India	181,087	4,093,822	211,331	3,388,246
	United Kingdom	2	57	-	-
		181,089	4,093,879	211,331	3,388,246
Gas oil	Bahrain	9,428	220,750	7,034	151,350
	India	324,853	7,410,616	367,313	5,707,529
	Singapore	3,256	73,321	6,431	144,810
	South Africa Rep.	32,189	748,216	3,031	67,435
		369,726	8,452,903	383,809	6,071,124

¹ Provisional

Table 3.3 - Imports of lubricating oils and greases by country of origin, 2014 - 2015

(C.I.F. Value Rs '000)

Item	Country of origin	Unit	2014 ¹		2015 ²	
			Quantity	Value	Quantity	Value
Lubricating oil containing not less than 70% by weight of petroleum products	Belgium	M/ton	94	11,051	121	16,627
	France	"	282	29,665	258	28,805
	Germany	"	36	5,267	27	3,319
	India	"	214	16,129	304	25,361
	Indonesia	"	29	1,859	29	3,104
	Japan	"	53	10,043	48	10,154
	Korea Rep.	"	11	823	55	4,656
	Malaysia	"	130	6,174	100	4,504
	Singapore	"	2,065	143,395	1,873	114,483
	South Africa Rep.	"	3,329	246,435	2,687	209,950
	Turkey	"	164	8,797	158	8,383
	United Arab Emirates	"	1,188	69,134	1,064	62,550
	United Kingdom	"	37	5,726	35	6,180
	Other countries	"	43	7,838	82	8,583
			7,675	562,336	6,841	506,659
Lubricating greases containing not less than 70% by weight of petroleum products	France	M/ton	3	692	2	539
	India	"	4	182	7	474
	Singapore	"	3	389	2	255
	South Africa Rep.	"	124	11,729	132	10,942
	Turkey	"	2	128	30	1,465
	United Arab Emirates	"	5	302	10	627
	United Kingdom	"	1	541	1	302
	United States	"	7	980	9	1,087
	Other countries	"	3	727	7	1,090
			152	15,670	200	16,781

¹ revised

² provisional

