



REPUBLIC OF MAURITIUS

Ministry of Finance and Economic  
Development

CENTRAL STATISTICS OFFICE

**MAURITIUS IN FIGURES 2007**

June 2008

**MAURITIUS IN FIGURES** is published yearly since 1996

Central Statistics Office  
LIC Centre  
1, John Kennedy Street  
Port Louis

**Mauritius**

Tel: (230) 212 2316/7

Fax: (230) 211 4150

Email: [cso@mail.gov.mu](mailto:cso@mail.gov.mu)

Website: <http://statsmauritius.gov.mu>

**Symbols & abbreviations**

- Nil  
... Data not available  
n.a not applicable  
000 Thousand  
000,000 Million  
Gg Gigagram (000 Tonne)  
GWh Million kilowatt hour  
c.i.f. Cost, insurance and freight  
f.o.b. Free on board

Printed by  
The Government Printer  
Republic of Mauritius  
June 2008

**CONTENTS**

	<b>Page</b>
Introduction ... ..	2
Concepts and definitions ... ..	3
1 Climate ... ..	7
2 Population & Vital statistics ... ..	8
3 Health ... ..	10
4 Education ... ..	12
5 Environmen ... ..	15
6 Labour ... ..	17
7 Price Indices ... ..	19
8 Housing & Households ... ..	21
9 Household Income & Expenditure ... ..	23
10 Transport & Communications ... ..	25
11 Land Utilization ... ..	27
12 Agricultural Production ... ..	28
13 Industrial Production ... ..	29
14 Energy ... ..	30
15 Government Finance ... ..	31
16 Money & Banking ... ..	32
17 National Accounts ... ..	33
18 Construction ... ..	36
19 External Trade ... ..	37
20 Balance of Payments ... ..	41
21 International Travel & Tourism ... ..	42
22 Social Security ... ..	44

## INTRODUCTION

The Republic of Mauritius is a group of islands in the South West of the Indian Ocean, consisting of the main island of Mauritius, Rodrigues and several outer islands located at distances greater than 350 km from the main island. Mauritius has been successively a Dutch, French and British colony. It became independent of Britain on 12th March 1968 and acceded to the status of Republic within the Commonwealth on 12th March 1992. The country has a Westminster type of Parliamentary government. The official language is English, but French is widely spoken.

The population, estimated at 1.3 million, comprises Indo-Mauritians, General population, i.e, people of mixed European and African origin and Sino-Mauritians.

The islands of Mauritius and Rodrigues, with a total area of 1,969 sq km, have an overall population density of 638 persons per sq km. About 43% of the area is allocated to agriculture, 25% is occupied by built-up areas and 2% by public roads; the remaining consists of abandoned canefields, forests, scrub land, grasslands and grazing lands, reservoirs and ponds, swamps and rocks.

The climate is sub-tropical. The average mid-day temperature on the central plateau varies from 22°C in August to 28°C in January. Near the coastal regions, temperatures are about 4-5°C higher.

During the past thirty years, the Mauritian economy has diversified from a sugar-cane monocrop economy in the 1970's to one based on sugar, manufacturing (mainly textiles and garments) and tourism in the 1980's. Global business (offshore) and freeport activities have also been growing continuously since the mid 1990s.

The economy in 2007 grew by 5.4% and the Gross National Income per capita at market prices reached 192,774 rupees. Unemployment rate is estimated at about 8.5% while inflation stood at 8.8% in 2007.

**2. Population and Vital Statistics**

- 2.1 *Median age*                      The age which divides the population into two equal-size groups, one of which is younger and the other older than the median.
- 2.2 *Dependency ratio*              The ratio of the combined child population under 15 years and population aged 65 years and over per 1,000 population of intermediate age (15-64 years).
- 2.3 *Crude birth rate*                Number of live births registered in a year per 1,000 mid-year population.
- 2.4 *Total fertility rate*              Average number of children born to an average woman under certain conditions.
- 2.5 *Crude death rate*                Number of deaths occurring in a year per 1,000 mid-year population.
- 2.6 *Marriage rate*                    Number of persons civilly married in a year per 1,000 mid-year population.
- 2.7 *Divorce rate*                     Number of persons granted divorce in a year per 1,000 mid-year population.

**3. Health**

- 3.1 *Life expectancy at birth*              The average number of years that a newly born child is expected to live under certain conditions.
- 3.2 *Early neonatal mortality rate*        Number of deaths in a year of infants under 7 days of age per 1,000 live births during the year.
- 3.3 *Late neonatal mortality rate*        Number of deaths in a year of infants aged from 7 to 27 days per 1,000 live births during the year.
- 3.4 *Perinatal mortality rate*            Combined number of deaths of infants aged under 7 days and number of still births in a year per 1,000 total births (live+still) during the year.
- 3.5 *Infant mortality rate*              Number of deaths in a year of infants aged under one year per 1,000 live births during the year.

## Concepts & definitions (contd.)

### 4. Education

- 4.1 *Gross Enrolment ratio* Number of students enrolled per 100 population aged
- 4-5 years for pre-primary level
  - 6-11 years for primary level
  - 12-19 years for secondary level
- 4.2 *Literacy rate* Percentage of persons aged 12+ years who can, with understanding, both read and write a simple statement.

### 5. Labour

- 5.1 *Labour force* Number of persons who are either working (employed) or not working, looking for work and available for work (unemployed).
- 5.2 *Activity rate* Number of persons aged 16 years and above in the labour force as a % of the total number of persons aged 16 years and above.
- 5.3 *Unemployment rate* Number of unemployed as a % of the labour force.

### 8. Household income and expenditure

- 8.1 *Gini Coefficient* Measures the degree of inequality in the income distribution of households. It varies between 0 for complete equality and 1 for complete inequality.
- 8.2 *Median monthly income of households* That value which divides the distribution of monthly household income into two parts such that 50% of households have an income above that value and 50% below.

### 9. Transport and communications

- 9.1 *Casualties* The total number of fatalities and persons injured as a result of road accidents.
- 9.2 *Fatality* Prior to 2002, fatality was defined as death occurring within seven days as a result of road accidents. From 1 January 2002, the definition changed to death occurring within 30 days as a result of road accident.

## Concepts & definitions (contd.)

### 9.3 *Fatality index*

The number of fatalities per 100 casualties.

## 16. National accounts

### 16.1 *Gross Domestic Product (GDP)*

The aggregate money value of all goods and services produced within a country out of economic activity during a specified period usually a year, before provision for the consumption of fixed capital.

### 16.2 *GDP at basic prices*

GDP at basic prices is obtained as the difference between output and intermediate consumption whereby output is valued at basic prices and intermediate consumption at purchasers' prices.

The basic price is the amount receivable by the producer exclusive of taxes on products and inclusive of subsidies on products. The equivalent for imported products is the c.i.f. value, i.e. the value at the border of the importing country.

The purchasers' price is the amount payable by the purchaser exclusive of deductible taxes on products (e.g. deductible value added tax).

### 16.3 *GDP at market prices*

GDP at basic prices plus taxes (net of subsidies) on products.

### 16.4 *Financial Intermediation Services Indirectly Measured (FISIM)*

FISIM is obtained as the difference between interest received and interest paid by banks excluding those received on own funds.

## Concepts & definitions (contd.)

- 16.5 *Final Consumption Expenditure* Consumption expenditure is made up of final consumption expenditure of households and of government. Government final consumption expenditure consists of collective and individual consumption expenditure. Collective expenditure consists of the services which government provides to the community as a whole, e.g. security and defence, whereas individual expenditure is made up of expenses incurred in providing services which are mostly beneficial to individuals, e.g. health and education.
- 16.6 *Gross Domestic Fixed Capital Formation (GDFCF)* The net additions to the physical assets of the country in a year. These consist mainly of investment in buildings, plants, machinery & transport equipment, all valued at market prices.
- 16.7 *Gross National Income (GNI)* GDP at market prices plus net primary income from the rest of the world gives GNI.
- 16.8 *Gross National Disposable Income (GNDI)* The sum of GNI and net transfers from the rest of the world.
- 16.9 *Gross National Savings* Disposable income (GNDI) less final consumption expenditure gives Gross National Savings.

## 18. External trade

- 18.1 *Domestic Exports* Exports of goods of national origin.
- 18.2 *Re-exports* Goods exported in the same condition as imported or after undergoing minor operations which leave them essentially unchanged.



**1. CLIMATE****Mean temp. (°C) - 2007**

	<b>Island of Mauritius island of Rodrigues</b>			
	<b>Min.</b>	<b>Max.</b>	<b>Min.</b>	<b>Max.</b>
January	24.0	30.3	24.1	30.7
February	23.9	29.9	23.9	29.4
March	22.8	29.2	23.3	29.8
April	22.5	28.6	22.8	29.0
May	20.6	27.4	21.6	28.1
June	18.3	25.1	19.7	26.5
July	18.0	25.0	19.6	25.9
August	17.7	24.8	19.1	25.9
September	18.4	25.3	19.4	26.4
October	19.2	25.9	19.8	26.9
November	20.3	28.4	21.8	28.8
December	22.5	29.7	22.9	29.5

**Rainfall (millimetres) - 2007**

	<b>Island of Mauritius island of Rodrigues</b>	
January	342	73
February	566	315
March	169	54
April	123	47
May	145	35
June	140	30
July	132	75
August	63	43
September	72	46
October	99	38
November	49	7
December	61	182
<b>Total for the year</b>	<b>1,961</b>	<b>945</b>

## 2. POPULATION & VITAL STATISTICS

	2000	2006 <sup>1/</sup>	2007 <sup>2/</sup>
<b>Total mid-year resident population ('000)</b>	<b>1,186.9</b>	<b>1,252.7</b>	<b>1,260.4</b>
Male	588.2	619.2	622.9
Female	598.7	633.5	637.5
<b>Age composition (%)</b>			
under 15 years	25.7	23.9	23.3
(15-59) years	65.2	66.4	66.7
(60-64) years	2.8	3.1	3.3
65 years and over	6.3	6.6	6.7
<b>Median age (years)</b>	<b>29.0</b>	<b>30.8</b>	<b>31.2</b>
<b>Dependency ratio</b>	<b>470.4</b>	<b>440.3</b>	<b>430.2</b>
<b>Population density (per km<sup>2</sup>)</b>	<b>585</b>	<b>616</b>	<b>620</b>
<b>Mid-year geographical distribution ('000)</b>			
Port Louis	128.8	130.3	130.0
Pamplemousses	123.1	132.6	134.0
Riv. du Rempart	99.6	106.0	106.8
Flacq	127.8	136.1	137.2
Grand Port	107.5	113.2	113.8
Savanne	66.8	69.6	69.9
Plaine Wilhems	360.5	377.6	379.4
Moka	76.0	79.8	80.2
Black River	61.0	70.4	71.8
Rodrigues	35.8	37.1	37.3
<b>Vital statistics</b>			
Live births	20,205	17,604	17,034
Deaths	7,982	9,162	8,498
Marriages	10,963	11,471	11,547
Divorces	1,191	1,379	1,302
Revised		<sup>2</sup> Provisional	

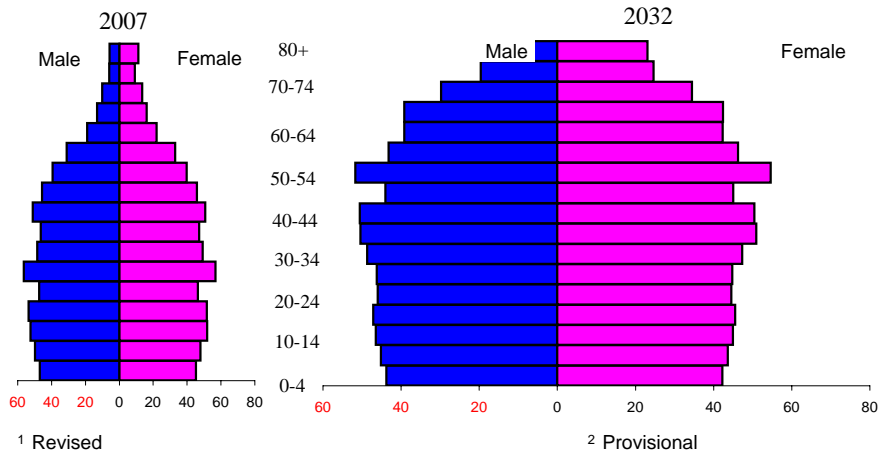
	2000	2006 <sup>1/</sup>	2007 <sup>2/</sup>
<b>Vital statistics (contd.)</b>			
Crude birth rate	17.0	14.1	13.5
Total fertility rate	2.0	1.7	1.7
Crude death rate	6.7	7.3	6.7
Marriage rate	18.5	18.3	18.3
Divorce rate	2.0	2.2	2.1
	<b>2012</b>	<b>2022</b>	<b>2032</b>

<b>Projected population ('000)</b>	<b>1,303.6</b>	<b>1,383.4</b>	<b>1,432.1</b>
Male	643.2	681.7	705.2
Female	660.4	701.7	726.9

**Age composition (%)**

under 15 years	21.5	19.9	18.6
15-59 years	66.4	62.9	59.8
60-64 years	4.6	5.8	5.7
65 years and over	7.5	11.4	15.9

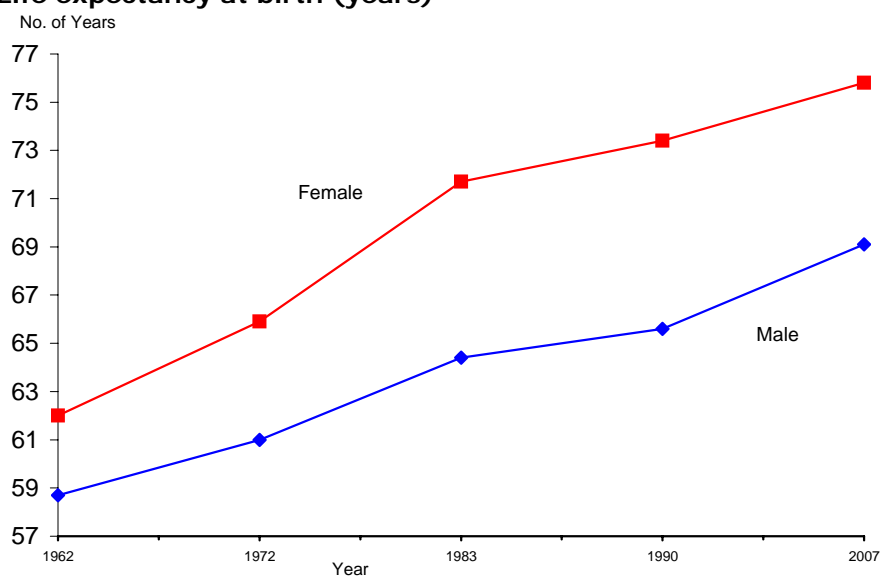
**Population pyramid ('000)**



### 3. HEALTH

	2000	2006 <sup>1</sup>	2007 <sup>2</sup>
Life expectancy at birth (years)			
<i>Male</i>	68.2	69.0	69.1
<i>Female</i>	75.3	75.7	75.8
Early neonatal mortality rate	9.0	7.1	8.3
Late neonatal mortality rate	3.6	3.5	2.6
Perinatal mortality rate	21.9	15.3	17.6
Infant mortality rate	15.9	14.1	15.3
Deaths per 100,000 of 45-64 yrs old			
<i>Male</i>	1,314	1,250	1,234
<i>Female</i>	744	682	630

#### Life expectancy at birth (years)



	2000	2006 <sup>1</sup>	2007 <sup>2</sup>
<b>Health facilities</b>			
Hospitals <sup>3</sup>	15	15	15
Hospital beds	3,990	3,737	3,756
Area health centres <sup>4</sup>	27	26	26
Mediclinics	2	2	2
Community health centres	121	126	127
Private clinics	13	13	13

<sup>1</sup> Revised. <sup>2</sup> Provisional. <sup>3</sup> Including two health centres with beds in Rodrigues. <sup>4</sup> Including Y. Cantin and Long Mountain Community Hospitals.

	2000	2006 <sup>1</sup>	2007 <sup>2</sup>
<b>Health facilities (contd.)</b>			
Medical practitioners	1,080	1,400	1,444
Dentists	146	193	228
Nurses & midwives	2,957	3,087	3,300
Pharmacists	247	302	327
<b>Doctor per 1000 population</b>	<b>0.91</b>	<b>1.11</b>	<b>1.14</b>
<b>Dentist per 1000 population</b>	<b>0.12</b>	<b>0.15</b>	<b>0.18</b>
<b>Deaths (per 100,000 population)</b>			
Circulatory system <sup>3</sup>	258	263	245
Respiratory system	62	54	47
Neoplasms	63	75	77
Injury & poisoning	42	42	43
Diabetes mellitus <sup>3</sup>	100	165	151
Renal failure	21	15	9
<b>% Deaths</b>			
Circulatory system <sup>3</sup>	37	36	36
Respiratory system	9	7	7
Neoplasms	9	10	11
Injury & poisoning	6	6	6
Diabetes mellitus <sup>3</sup>	15	23	22
Renal failure	3	2	1
<b>Public expenditure on health as % of</b>			
Total public expenditure	8.4	8.9	8.9
GDP at market prices	2.0	2.2	2.1

<sup>1</sup> Revised      <sup>2</sup> Provisional

<sup>3</sup> revised in the light of 2005 data following application of the new revision (10th) of the International Classification of Diseases (ICD 10) for the coding of underlying causes of death

<b>4. EDUCATION</b>
---------------------

	2000	2006	2007
<b>Pre-primary</b>			
Schools	1,087	1,087	1,076
Enrolment	39,232	37,129	36,467
<i>Male</i>	19,677	18,730	18,362
<i>Female</i>	19,555	18,399	18,105
Gross enrolment ratio	96	95	94
<i>Male</i>	95	94	93
<i>Female</i>	96	95	94
Teaching staff	2,448	2,527	2,513
Pupil/teacher ratio	16	15	15
<b>Primary</b>			
Schools	291	290	289
Enrolment	135,237	121,387	119,310
<i>Male</i>	68,711	61,687	60,641
<i>Female</i>	66,526	59,700	58,669
Gross enrolment ratio	104	102	101
<i>Male</i>	105	102	101
<i>Female</i>	104	101	101
Teaching staff 1	5,178	5,598	5,548
<i>Male</i>	2,326	1,994	1,958
<i>Female</i>	2,852	3,604	3,590
Pupil/teacher ratio 2	36	29	28
Cert. of Primary Education (% pass)	66.4	67.9	66.2
<i>Male</i>	61.2	62.0	60.1
<i>Female</i>	71.8	74.3	72.7

	2000	2006	2007
<b>Secondary - Academic</b>			
Schools	134	189	186
Enrolment	95,448	114,657	116,706
<i>Male</i>	46,399	55,136	56,097
<i>Female</i>	49,049	59,521	60,609
Gross enrolment ratio	60	69	69
<i>Male</i>	58	65	65
<i>Female</i>	63	72	72
Teaching staff	5,140	7,079	7,423
<i>Male</i>	2,658	3,148	3,278
<i>Female</i>	2,482	3,931	4,145
Pupil/teacher ratio	19	16	16
School Certificate (% pass) <sup>3</sup>	76.6	78.9	76.7
<i>Male</i>	74.7	74.5	71.8
<i>Female</i>	78.3	82.8	81.2
Higher School Certificate (% pass) <sup>3</sup>	72.3	79.3	77.8
<i>Male</i>	67.4	74.9	72.9
<i>Female</i>	76.9	83.1	81.8
<b>Secondary - Pre-vocational<sup>4</sup></b>			
Schools	25	152	153
Enrolment	4,695	10,424	9,573
<i>Male</i>	3,344	6,399	5,957
<i>Female</i>	1,351	4,025	3,616
Teaching staff	296	682	701
<i>Male</i>	157	250	260
<i>Female</i>	139	432	441
Pupil/teacher ratio	16	15	14

	2000	2005	2006
<b>Vocational &amp; Technical Training<sup>5</sup></b>			
Schools	12	13	13
Enrolment	5,450	7,436	8,023
<i>Male</i>	4,684	5,929	5,883
<i>Female</i>	766	1,507	2,140
<b>Post-secondary<sup>6</sup></b>			
Schools	3	5	5
Enrolment	10,041	15,207	16,707
<i>Male</i>	4,422	6,939	6,781
<i>Female</i>	5,619	8,268	9,926
<b>Polytechnics<sup>7</sup></b>			
Enrolment	997	1,102	1,068
<i>Male</i>	761	730	689
<i>Female</i>	236	372	379
<b>Mauritius College of the Air</b>			
<b>Distance Education Courses</b>			
Enrolment	1,444	464	449
<i>Male</i>	191	233	210
<i>Female</i>	1,253	231	239
<b>Literacy rate</b>			
	<b>2000</b>	<b>2006</b>	<b>2007</b>
Total	85.0	...	...
<i>Male</i>	88.7	...	...
<i>Female</i>	81.5	...	...
<b>Public expenditure on education</b>			
<b>as a % of (Year ending 30th June)</b>			
	<b>00/01</b>	<b>06/07</b>	<b>07/08</b>
Total public expenditure	15.0	12.6	12.7
GDP at market prices	3.5	3.2	3.2

<sup>1</sup> General purpose teachers and Asian language teachers. <sup>2</sup> Pupils per general purpose teacher. <sup>3</sup> Figures are provisional for 2007. <sup>4</sup> State Secondary Sch., State Secondary Vocational Sch., M. Gandhi Secondary Schools, R. Tagore Institute, Gandhian Basic School and Private Secondary Schools. <sup>5</sup> Industrial & Vocational Training Board Centres.

<sup>6</sup> The University of Mauritius, The Mauritius Institute of Education, The Mahatma Gandhi Institute & The University of Technology, Mauritius. As from 2003/2004, figures include Mauritius Institute of Health. <sup>7</sup> Swami Dayanand Institute of Management, Lycee Sir Guy Forget, Institut Superieur de Technologie. <sup>8</sup> Figures revised for years 2006/07



**5. ENVIRONMENT**

	2000	2006	2007 <sup>1</sup>
<b>Greenhouse gas (Gg)</b>			
<b>Emissions</b>			
Carbon dioxide	2,456.8	3348.9	...
Oxides of nitrogen	13.8	16.6	...
Carbon monoxide	66.3	64.8	...
Sulphur dioxide	28.9	33.0	...
<b>Removals</b>			
Carbon dioxide	229.2	193.2	...
<b>Net emissions</b>			
Carbon dioxide	2,227.6	3155.6	...
<b>Carbon dioxide emissions from fossil fuels (Gg)</b>	<b>2,454</b>	<b>3,346.8</b>	...
Energy industries	1,185.4	1912.5	...
Manufacturing industries	357.4	404.9	...
Transport	735.8	843.7	...
Residential	141.7	136.7	...
Other (Agriculture and Commerce)	33.7	49.0	...
<b>Solid Waste landfilled (tonne)</b>	<b>265,815</b>	<b>407,038</b>	<b>394,423</b>
<b>Number of E.I.A<sup>2</sup> licenses issued</b>	<b>92</b>	<b>55</b>	<b>46</b>
Land parcelling (morcellement)	31	19	5
Poultry rearing	26	-	-
Industrial development	7	4	9
Coastal hotels and related works	11	21	23
Housing	4	3	3
Other	13	8	6

	2000	2006	2007 <sup>1</sup>
<b>Number of PER<sup>3</sup>. licenses issued</b>	....	<b>91</b>	<b>96</b>
Land parcelling (morcellement)	...	10	5
Poultry rearing	...	15	19
Industrial development	...	15	28
Coastal hotels and related works	...	...	23
Housing	...	14	4
Other	...	37	17
<b>Number of complaints received at the Dept. of Environment</b>	<b>1,906</b>	<b>813</b>	<b>568</b>
Noise	555	178	135
Solid waste	586	137	88
Air pollution	71	61	62
Waste water	150	92	76
Odour	251	121	88
Other	293	224	119
<b>Water</b>			
Fresh water abstraction, (Mm <sup>3</sup> ) (Excl of hydropower)	681	682	...
Water utilisation, (Mm <sup>3</sup> )	982	918	...
Domestic, industrial and tourism	209	216	...
Agricultural (irrigation)	468	453	...
Hydropower	305	236	...
Daily domestic per capita consumption, (litres)	154.9	167.0	...
Waste water: total volume treated in public treatment plants, (Mm <sup>3</sup> )	20.5	35.9	...

<sup>1</sup> Provisional

<sup>2</sup> Environment Impact Assessment (EIA)

<sup>3</sup> Preliminary Environmental Report (PER)

Note: Licences were issued as from September 2002

## 6. LABOUR

	2006 <sup>4</sup>	2007
<b>Labour Force- Mauritians ('000)<sup>1</sup></b>	<b>548.4</b>	<b>548.9</b>
Male	351.4	353.6
Female	197.0	195.3
<b>Activity rate (%)<sup>1</sup></b>	<b>59.7</b>	<b>58.9</b>
Male	77.7	77.2
Female	42.2	41.2
<b>Employment- Mauritians ('000)<sup>1</sup></b>	<b>498.6</b>	<b>502.1</b>
Male	332.2	335.0
Female	166.4	167.1
<b>Unemployment ('000)<sup>1</sup></b>	<b>49.8</b>	<b>46.8</b>
Male	19.2	18.6
Female	30.6	28.2
<b>Unemployment rate<sup>1</sup></b>	<b>9.1</b>	<b>8.5</b>
Male	5.5	5.3
Female	15.5	14.4
<b>Employment- Foreigners ('000)<sup>2</sup></b>	<b>16.7</b>	<b>21.6</b>
Male	8.3	12.1
Female	8.4	9.5
<b>Total Employment by sector ('000)<sup>3</sup></b>	<b>515.3</b>	<b>523.7</b>
<b>Primary sector</b>	<b>48.2</b>	<b>47.5</b>
<b>Secondary sector</b>	<b>172.2</b>	<b>175.3</b>
Manufacturing	120.8	122.6
Electricity and water supply	3.0	3.0
Construction	48.4	49.7
<b>Tertiary sector</b>	<b>295.3</b>	<b>301.0</b>
Trade, hotels & restaurants	110.3	110.5
Transport, storage & communications	36.9	37.4
Financial intermediation, real estate, renting and business activities	30.5	35.3
Other services	117.6	117.8

**Average earnings & Wage rate index**

	2000	2006 <sup>4</sup>	2007
<b>Average monthly earnings (rupees)</b>	<b>8,178</b>	<b>12,632</b>	<b>13,378</b>
<b>Primary sector</b>	<b>6,585</b>	<b>9,984</b>	<b>10,383</b>
Sugar cane	6,159	9,202	9,453
<b>Secondary sector</b>	<b>6,131</b>	<b>9,311</b>	<b>9,906</b>
Manufacturing	5,544	8,214	8,626
<i>Sugar</i>	<i>8,417</i>	<i>12,468</i>	<i>12,897</i>
<i>Food(excluding sugar)</i>	<i>6,630</i>	<i>8,538</i>	<i>8,929</i>
<i>Textiles</i>	<i>6,159</i>	<i>7,924</i>	<i>8,649</i>
<i>Other</i>	<i>5,271</i>	<i>8,054</i>	<i>8,438</i>
Electricity & water supply	13,515	22,016	24,125
Construction	8,746	13,047	14,143
<b>Tertiary sector</b>	<b>10,328</b>	<b>14,481</b>	<b>15,205</b>
Trade, hotels & restaurants	8,562	11,940	12,743
Transport, storage & communications	11,502	16,664	17,554
Financial intermediation, real estate, renting and business activities	11,974	16,995	17,361
Other services	10,466	15,268	16,136
<b>Wage Rate Index (base:2000=100)</b>	<b>100.0</b>	<b>142.1</b>	
	<b>(base:2006=100)</b>	<b>100.0</b>	<b>104.4</b>

<sup>1</sup> The Continuous Multi-Purpose Household Survey is used, as from 2004, as the instrument to measure labour force, employment and unemployment. Estimates refer to the Mauritian population aged 16 years and above, and exclude foreign workers

<sup>2</sup> Data on foreigners are obtained from surveys of employment and earnings

<sup>3</sup> Including foreigners

<sup>4</sup> Revised

## 7. PRICE INDICES

	Weight	Jul07 - Dec 07	
<b>Consumer Price Index</b>	<b>1,000</b>	<b>106.0</b>	
(base: July 2006-June 2007=100)			
Food & non-alcoholic beverages	<b>286</b>	109.9	
Alcoholic beverages & tobacco	<b>92</b>	106.7	
Clothing & footwear	<b>51</b>	104.5	
Housing, water, electricity, gas & other fuels	<b>131</b>	104.1	
Furnishings, hhold.equip.& hhold. maintenance	<b>64</b>	105.4	
Health	<b>30</b>	105.5	
Transport	<b>147</b>	104.1	
Communication	<b>36</b>	100.0	
Recreation and culture	<b>48</b>	100.8	
Education	<b>32</b>	102.7	
Restaurants and hotels	<b>43</b>	106.2	
Miscellaneous goods and services	<b>40</b>	106.3	
<b>Inflation rate(%) - calendar year 2007</b>		<b>8.8</b>	
	<b>Weight</b>	<b>2006</b>	<b>2007</b>
<b>Export Price Index</b>	<b>10,000</b>	<b>120.7</b>	<b>127.1</b>
(base: 2003=100)			
Food & live animals	<b>2,942</b>	123.8	129.7
<i>-Sugar</i>	<b>2,296</b>	123.4	126.1
Manufactured goods classified chiefly by materials	<b>293</b>	106.7	116.9
Misc. manufactured goods	<b>6,713</b>	120.0	126.5
<i>-Apparel &amp; clothing accessories</i>	<b>6,589</b>	119.1	125.3

	<b>Weight</b>	<b>2006</b>	<b>2007</b>
<b>Import Price Index (base 2003 = 100)</b>	<b>10,000</b>	<b>145.1<sup>1</sup></b>	<b>153.8<sup>2</sup></b>
Food & live animals	<b>1,621</b>	146.7	168.9
Mineral fuel, lubricants and related materials	<b>1,789</b>	214.2	220.3
<i>Petroleum, Petroleum products and related materials</i>	<b>1,554</b>	219.4	224.0
Manufactured goods classified chiefly by material	<b>3,776</b>	128.4	131.9
<i>-Textile yarn, fabrics, made-up articles, n.e.s</i>	<b>2,590</b>	119.3	120.9
Machinery and transport equipment	<b>1,134</b>	117.1	125.4

#### **Producer Price Index**

(Manufacturing: Base year 2003 = 100)

<b>Manufacturing</b>	<b>1,000</b>	<b>126.9</b>	<b>146.4</b>
Food	<b>324</b>	123.8	151.4
Beverages & tobacco	<b>160</b>	127.8	137.1
Other	<b>516</b>	136.4	146.3

#### **Construction Price Index**

(residential: base: 4th Qr.2001=100)

Labour	<b>345</b>	113.9	117.1
Hire of plant	<b>30</b>	114.1	127.1
Materials	<b>572</b>	144.9	168.4
Transport	<b>53</b>	115.8	126.4

<sup>1</sup> Revised.

<sup>2</sup> Provisional

## 8. HOUSING & HOUSEHOLDS

	1990*	2000*
<b>Buildings ('000)</b>	<b>209.9</b>	<b>268.3</b>
<i>of which - % wholly residential</i>	<i>90.1</i>	<i>89.4</i>
<i>- % partly residential</i>	<i>3.5</i>	<i>4.4</i>
<b>Residential &amp; partly residential buildings</b>		
<b>Year of construction (%)</b>		
Before 1985	70.6	38.9
1985 - 1989	20.1	14.8
1990 - 1994	1.1 <sup>1</sup>	17.5
1995 - April 2000	...	24.3
Not completed but inhabited	4.9	2.0
Not known	3.3	2.5
<b>Construction materials (%)</b>		
Concrete walls & roof	70.6	86.3
Concrete walls & iron or tin roof	7.3	3.9
Iron or tin walls and roof	18.2	8.1
Wood walls & iron or tin or shingle roof	2.3	0.9
Other	1.6	0.7
Average no. of housing units per building	1.21	1.24
<b>Housing units ('000)</b>	<b>223.8</b>	<b>297.7</b>
<b>Ownership (%)</b>		
Private	98.6	99.1
Public	1.3	0.4
Not stated	0.1	0.5
<b>Occupancy (%)</b>		
Occupied	97.5	94.8
Vacant	2.5	5.2

<sup>1</sup> Buildings constructed from January to April 1990

\* Census figures

	1990*	2000*
Average no. of rooms per housing unit	3.9	4.6
Average no. of persons per room	1.2	0.9
Average no. of households per housing unit	1.10	1.07
<b>Households ('000)</b>	<b>236.1</b>	<b>296.3</b>
<b>Tenure (%)</b>		
Owner	75.9	86.5
Tenant	14.8	9.3
Subtenant	0.4	-
Free	8.8	4.1
Other	0.1	-
<b>Amenities (%)</b>		
Piped water	95.2	98.7
Electricity	96.9	99.0
Toilet	99.3	99.8
<i>of which: flush toilet</i>	<i>62.8</i>	<i>88.8</i>
Bathroom	94.5	99.0
Kitchen	97.5	99.2
Acceptable refuse disposal	68.4	97.0
<b>Fuel used for cooking (%)</b>		
Wood & charcoal	26.3	4.5
Kerosene	21.7	3.4
Electricity	1.5	0.5
Gas	50.3	91.5
Other	0.2	0.1
% female-headed	17.6	17.5
% one-parent	8.1	7.7
% 60+ years living alone	2.8	3.0
Average household size	4.5	3.9

\* Census figures



**Consumption pattern**Monthly household consumption<sup>1</sup> expenditure<sup>2</sup> (%)

Food & non-alcoholic beverages	31.6	29.7	
Alcoholic beverages & tobacco	9.1	9.5	
Clothing & footwear	6.4	5.3	
Housing, water, electricity, gas & other fuels	9.3	9.8	
Furnishing, household equipment & routine household maintenance	6.0	6.7	
Health	2.5	3.1	
Transport	12.6	15.2	
Communication	3.3	3.7	
Recreation and culture	4.6	5.0	
Education	3.7	3.4	
Restaurants and hotels	6.1	4.5	
Miscellaneous goods and services	4.8	4.2	
<b>Per capita consumption (kg/year)<sup>3</sup></b>	<b>2000</b>	<b>2006</b>	<b>2007</b>

**Selected food items**

Wheat flour	76.5	77.2	....
Milled rice	55.9	47.8	....
Potatoes	18.2	18.2	....
Sugar	34.0	30.4	....
Fresh vegetables	82.2	82.8	....
Oils & fats	28.4	22.4	....
Fresh milk (litres)	6.2	5.3	....
Powdered milk	13.6	10.2	....
Pulses	10.1	9.7	....
Eggs	9.4	8.3	....
Meat & meat preparations	39.0	43.8	....
Banana	7.2	8.6	....
Other fresh fruits	16.4	16.3	....
Fish & fish preparations	23.1	17.6	....

<sup>1</sup> Classification of Individual Consumption According to Purpose<sup>2</sup> Adjusted for under reporting      <sup>3</sup> Source: Food balance sheet<sup>4</sup> Provisional

## 9. HOUSEHOLD INCOME & EXPENDITURE

### Household Budget Survey

01/02<sup>1</sup>    06/07<sup>2</sup>

#### Household income

Average household size	3.9	3.7
Income earners per household	1.9	1.8
Average monthly income (rupees)	14,232	19,083
Median monthly income (rupees)	11,150	14,640
1/2 median monthly income (rupees)	5,575	7,320
% hholds with < 1/2 med. mthly income	13.1	14.3

#### Gini coefficient

**0.371    0.388**

#### Income share

% of total income going to:

Lowest 20% of households	6.4	6.1
Highest 20% of households	44.0	45.6

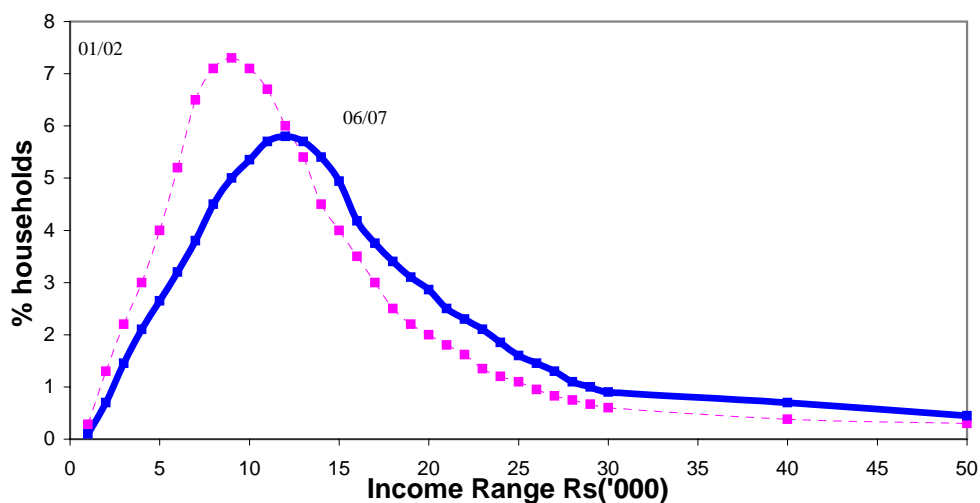
Ratio of highest 20% to lowest 20%

6.9    7.4

#### Household consumption expenditure<sup>1</sup>

Average monthly expenditure (rupees)	11,390	15,188
Median monthly expenditure (rupees)	8,154	10,850
1/2 median monthly expend. (rupees)	4,077	5,425
% hholds with < 1/2 med. mthly expend.	12.3	12.0

#### Trends in monthly household income distribution



<sup>1</sup> Unadjusted for under reporting.

<sup>2</sup> Revised.

## 10. TRANSPORT & COMMUNICATIONS

	2000	2006	2007
<b>Road transport</b>			
<b>Motor-vehicles registered ('000)</b>	<b>244.0</b>	<b>319.4</b>	<b>334.1</b>
Private cars	49.9	85.1	92.9
Taxi cars	5.0	6.9	6.9
Vans	18.8	24.5	24.9
Dual purpose vehicles	34.9	43.2	44.6
Lorries & trucks	10.5	12.3	12.5
Buses	2.4	2.6	2.8
Motor cycle	24.5	33.9	37.0
Autocycle	92.0	104.2	105.6
Other vehicles	6.0	6.7	6.9
<b>Road traffic accidents</b>			
<b>Number of accidents</b>	<b>18,278</b>	<b>20,242</b>	<b>20,519</b>
Rate (per 100,000 population)	1,588	1,665	1,678
Rate (per 1,000 registered motor-vehicles)	77	65	63
<b>Motor-vehicles involved</b>			
<b>Number</b>	<b>33,537</b>	<b>40,023</b>	<b>41,178</b>
Rate (per 1,000 reg. motor-vehicles)	142	129	127
<b>Casualties</b>			
<b>Number</b>	<b>3,291</b>	<b>2,522</b>	<b>3,055</b>
Fatal <sup>1</sup>	163	134	140
Seriously injured	266	348	500
Slightly injured	2,862	2,040	2,415
<b>Fatality</b>			
Rate (per 100,000 population)	14.16	11.02	11.45
Rate (per 1,000 registered motor-vehicles)	0.69	0.43	0.43
Index	4.95	5.31	4.58
<b>Private cars per 1,000 households</b>	<b>169</b>	<b>264</b>	<b>284</b>
<b>Length of roads (kilometres)</b>	<b>1,926</b>	<b>2,021</b>	<b>2,028</b>
<b>Vehicles per kilometre of road</b>	<b>127</b>	<b>158</b>	<b>165</b>

<sup>1</sup> For year 2000, figures were based on definition of fatal accidents whereby deaths were caused within 7 days of road accidents but for years 2002 onwards figures are based on new definition of fatal accidents whereby deaths are caused within 30 days of road accidents.

	2000	2006 <sup>1</sup>	2007 <sup>2</sup>
<b>Air transport</b>			
<b>Landings</b>	<b>8,349</b>	<b>9,211</b>	<b>8,543</b>
Freight loaded ('000 tonnes)	21.2	24.4	24.9
Freight unloaded ('000 tonnes)	20.1	21.2	22.7
<b>Sea transport</b>			
<b>Arrivals</b>	<b>1,658</b>	<b>2,428</b>	<b>2,317</b>
Goods loaded ('000 tonnes)	1,514	1,253	1,179
Goods unloaded ('000 tonnes)	3,677	4,433	5,080
<b>Communication</b>			
<b>Radio operators</b>	<b>1</b>	<b>4</b>	<b>4</b>
<b>Television operators</b>	<b>4</b>	<b>4</b>	<b>3</b>
<b>Television sets licensed ('000)</b>	<b>223.9</b>	<b>277.4</b>	<b>289.9</b>
<b>Fixed telephone subscribers('000)</b>	<b>262.0</b>	<b>357.3</b>	<b>361.3</b>
National calls registered <sup>3</sup> ('000,000)	506.6	537.1	513.4
International outgoing telephone traffic ('000,000 minutes)	34.6	59.7	71.4
Cellular mobile tel subscribers '000	174.5	772.4	915.3
<b>Total Internet subscribers '000</b>	<b>35</b>	<b>137.5</b>	150.4
Fixed Internet subscribers '000	35	76.4	72.0
Mobile Internet subscribers '000	n.a	61.1	78.4
<b>Local press</b>	<b>41</b>	<b>46</b>	<b>47</b>
Dailies	6	8	8
- <i>English &amp; French</i>	4	5	5
- <i>Other</i>	2	3	3
Weeklies	29	34	26
- <i>English &amp; French</i>	23	28	23
- <i>Other</i>	6	6	3
Others	6	4	13
- <i>English &amp; French</i>	6	2	10
- <i>Other</i>	-	2	3

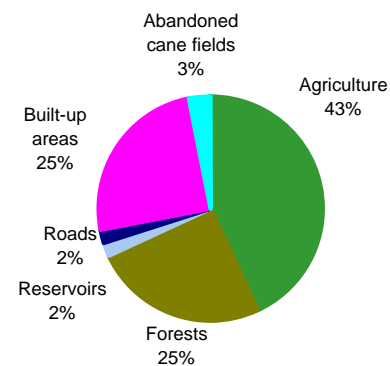
<sup>1</sup> Revised

<sup>2</sup> Provisional

<sup>3</sup> Calls irrespective of duration from fixed telephone

## 11. LAND UTILIZATION

	<b>2005* Area (Hectares)</b>
<b>Whole island</b>	<b>186,500</b>
<b>Agriculture</b>	<b>80,674</b>
<i>Sugarcane</i>	72,000
<i>Other agricultural activities</i>	8,674
Forests scrubs & grazing lands	47,200
Reservoirs, ponds, swamps & rocks	2,900
Roads & footpaths	4,500
Built-up areas	46,500
Abandoned cane fields	4,726



Source: Final Draft Report-Stocktaking & Stakeholders Consultation Exercise on Climate Change Activities, March 2006. Ministry of Environment and National Development Unit

	<b>2000</b>	<b>2006<sup>1</sup></b>	<b>2007<sup>2</sup></b>
<b>Effective area cultivated</b>			
Sugar cane	76,962	70,801	68,523
Tea	670	688	709
Tobacco	397	252	279
<b>Land under irrigation</b>	<b>19,506</b>	<b>21,422</b>	<b>21,321</b>
Overhead	15,951	17,576	17,602
Surface	2,020	1,737	1,618
Drip	1,535	2,109	2,101

\* estimate

<sup>1</sup> revised

<sup>2</sup> Provisional

## 12. AGRICULTURAL PRODUCTION

	2000	2006 <sup>1</sup>	2007 <sup>2</sup>
<b>PRODUCTION ('000 tonnes)</b>			
<b>Crop products</b>			
Sugarcane	5,109.5	4,749.0	4235.8
Foodcrops	114.5	106.9	99.1
Tea leaf	6.4	7.6	8.0
Fruits	21.5	24.0	23.0
Tobacco leaf <sup>3</sup>	0.5	0.3	0.3
<b>Products from slaughtered</b>			
<b>and live animals</b>	<b>45.1</b>	55.6	58.2
Poultry meat	25.6	36.0	40.0
Milk	4.0	4.0	3.5
Eggs	12.0	12.0	11.5
<b>Fishing</b>	<b>7.8</b>	<b>8.9</b>	<b>5.9</b>
<b>(Million rupees)</b>			
<b>VALUE ADDED</b>	<b>7,277.0</b>	<b>10,129.2</b>	<b>9784.7</b>
<b>Crop products</b>			
Sugarcane	3,741.0	5,136.6	4571.1
Foodcrops	1,130.5	1,563.4	1546.6
Tea leaf	52.3	65.8	75.1
Fruits	163.8	138.9	174.7
Tobacco leaf <sup>3</sup>	30.2	22.9	26.1
<b>Animals &amp; animal products</b>	<b>815.6</b>	<b>1,363.4</b>	<b>1710</b>
<b>Fishing</b>	<b>292.9</b>	<b>419.6</b>	<b>265.1</b>

<sup>1</sup> Revised

<sup>3</sup> crop year: April-March

<sup>2</sup> Provisional

## 13. INDUSTRIAL PRODUCTION

		2000	2006 <sup>1</sup>	2007 <sup>2</sup>
<b>Quantity produced (selected commodities)</b>				
Sugar	('000 tonnes)	569.3	504.9	436.0
Molasses	"	144.0	139.6	130.9
Tea (Black)	"	1.3	1.6	1.6
Iron bars & steel tubes	"	46.0	66.6	68.2
Fertilizers		83.7	87.3	86.0
Denatured spirit	('000 H. Litres)	6.4	5.3	...
Beer and stout	"	374.9	370.0	337.7
Wine (country liquor)	"	41.2	51.2	50.5
Electricity generated	(GWh)	1,777.5	2,350.2	2,464.7
<b>Manufacturing</b>				
<b>Growth rate</b>				
Manufacturing		+7.0	+4.0	2.2
Sugar		+64.5	-2.9	-13.6
Food (excluding Sugar)		+6.4	+9.6	+4.0
Textiles		+6.4	+2.9	+8.5
Other		+6.6	+1.8	-3.1
<b>Labour Productivity Index<sup>4</sup> (2000=100)</b>				
Manufacturing		100.0	118.4	119.3
EOE <sup>3</sup>		100.0	109.0	115.2
<b>Capital Productivity Index (2000=100)</b>				
Manufacturing		100.0	84.8	82.8
EOE <sup>3</sup>		100.0	66.1	61.2
<b>Unit Labour Cost Index<sup>4</sup> (2000=100)</b>				
Manufacturing		100.0	129.7	144.3
EOE <sup>3</sup>		100.0	140.6	148.2

<sup>1</sup> Revised

<sup>2</sup> Provisional

<sup>3</sup> Export Oriented Enterprises(EOE) as from October 2006, consist of all those enterprises previously operating with an EPZ Certificate and those Enterprises manufacturing goods for exports and holding a registration certificate issued by the Board of Investment.

<sup>4</sup> The indices are for the whole manufacturing sector.

## 14. ENERGY

	2000	2006 <sup>1</sup>	2007 <sup>2</sup>
<b>Imports of energy sources</b> ('000 tonnes)			
Gasolene	89.8	88.9	96.4
Diesel oil	339.7	327.5	307.5
Dual purpose kerosene	217.4	242.0	266.4
<i>-Aviation fuel</i>	<i>190.0</i>	<i>236.0</i>	<i>262.6</i>
Fuel oil	218.8	304.4	333.9
LPG	47.3	58.8	62.7
Coal	222.4	490.3	647.8
<b>Re-export and Bunkering</b> <sup>3</sup> ('000 tonnes)			
Aviation fuel	87.5	100.0	116.8
Diesel oil	160.0	122.3	118.4
Fuel oil	57.6	49.1	75.7
<b>Electricity generated</b> <sup>4</sup> (GWh)			
Hydro	95.6	76.6	83.9
Wind	...	0.4	0.4
Thermal	1681.9	2273.2	2,380.4
<b>Peak demand(MW), Mauritius</b>			
	<b>283.9</b>	<b>367.3</b>	<b>367.6</b>
<b>Rodrigues</b>			
	<b>3.8</b>	<b>5.7</b>	<b>5.9</b>
<b>Electricity sales</b> (GWh)			
Domestic	491.9	617.9	643.0
Commercial	374.8	581.8	618.0
Industrial (general)	458.6	612.8	644.8
Industrial (irrigation)	27.2	28.7	28.2
<b>No. of electricity consumers</b> ('000)			
Domestic	288.5	335.8	343.1
Commercial	27.8	33.1	34.4
Industrial (general)	6.6	6.9	6.9
Industrial (irrigation)	0.4	0.5	0.5

<sup>1</sup> Revised.   <sup>2</sup> Provisional   <sup>3</sup> Pertaining to sales of fuel to foreign vessels

<sup>4</sup> Includes electricity generated for own use by Independent Power Producers



<b>15. GOVERNMENT FINANCE</b>
-------------------------------

	00/01	05/06	06/07
<b>Budgetary central government</b>			
		(Million rupees)	
<b>Total revenue &amp; grants</b>	<b>22,796</b>	<b>39,219</b>	<b>42,169</b>
<b>Total revenue</b>	<b>22,597</b>	<b>38,730</b>	<b>41,847</b>
<b>Current revenue</b>	<b>22,597</b>	<b>38,509</b>	<b>41,818</b>
Tax revenue	20,190	35,381	38,186
<i>-Tax on income, profits &amp; capital gains</i>	3,039	7,469	7,608
<i>-Domestic taxes on goods &amp; services</i>	9,466	18,762	21,404
<i>-Import duties</i>	6,349	7,195	6,299
Non tax revenue	2,407	3,127	3,632
<i>-Property income</i>	1,749	1,805	2,180
<b>Capital revenue</b>	...	<b>222</b>	<b>29</b>
<b>Grants</b>	<b>199</b>	<b>489</b>	<b>322</b>
<b>Total expenditure &amp; lending minus repayments</b>	<b>25,382</b>	<b>49,564</b>	<b>51,608</b>
<b>Total expenditure</b>	<b>31,582</b>	<b>48,875</b>	<b>51,233</b>
General government services	5,402	8,273	8,339
Community & social services	15,494	25,368	26,540
<i>-Education</i>	4,357	6,852	7,087
<i>-Health</i>	2,547	4,213	4,402
<i>-Social Security</i>	6,160	10,305	11,269
Economic services	4,648	5,270	4,727
<i>-Agriculture, forestry, fishing &amp; hunting</i>	1,290	1,439	1,351
<i>-Transportation &amp; communication</i>	1,855	1,379	1,623
Other functions	6,038	9,964	11,627
<i>-Public debt interest</i>	5,177	7,355	8,882
<b>Lending minus repayments</b>	<b>-6,200</b>	<b>689</b>	<b>375</b>
<b>Overall deficit</b>	<b>-2,586</b>	<b>-10,345</b>	<b>-9,439</b>
<b>Overall deficit excluding PF and NIDF<sup>1</sup></b>	<b>-5,469</b>	<b>-10,345</b>	<b>-9,439</b>
<b>Budgetary central government</b>			
<b>debt</b> (end of period)	<b>60,561</b>	<b>113,364</b>	<b>122,120</b>
Domestic debt	53,745	104,828	108,668
Foreign debt	6,816	8,535	13,452

<sup>1</sup> Privatisation Fund and National Infrastructure Development Fund (lending minus repayments).

## 16. MONEY & BANKING

(as at end of period)

**Jun-07    Sep-07    Dec-07**

(Million rupees)

### Components of Monetary Base

1 Currency with Public	11,597	12,081	14,260
2 Currency with Other Depository Corporations	1,915	1,960	3,438
3 Deposits with BOM	10,329	11,485	10,313
<i>Other Depository Corporations</i>	<i>9,480</i>	<i>10,750</i>	<i>9,858</i>
<i>Other</i>	<i>849</i>	<i>735</i>	<i>455</i>
<b>Monetary Base(1+2+3)</b>	<b>23,841</b>	<b>25,526</b>	<b>28,011</b>

### Sources of Monetary base

1 Net Foreign assets	52,223	51,740	50,880
2 Net Claims on Budgetary Central Govt	-1,417	-179	-270
3 Claims on other Depository Corporations	1,714	1,336	1,083
4 Claims on Private Sector	238	166	251
5 Net Non-Monetary Liabilities	28,917	27,537	23,932
<b>Monetary Base (1+2+3+4+5)</b>	<b>23,841</b>	<b>25,526</b>	<b>28,011</b>

### Net International reserves

Bank of Mauritius Net Foreign assets	52,223	51,740	50,880
Other Depository Corporations Net Foreign assets	30,939	33,633	34,640
Others	338	331	314

### Foreign exchange rates (selling - Rs)

	<b>Jun-05</b>	<b>Jun-06</b>	<b>Jun-07</b>
Euro	35.82	39.73	43.06
India (IN R 100)	69.00	68.00	79.00
Japan (JP Y 100)	26.92	27.19	26.07
South Africa, Rep. of (SA R 1)	4.52	4.48	4.61
United States (US D 1)	29.61	31.01	32.02
United Kingdom (GB P 1)	53.54	57.02	64.14

Source: Bank of Mauritius

## 17. NATIONAL ACCOUNTS

	2000	2006 <sup>1</sup>	2007 <sup>1</sup>
<b>Gross Domestic Product (GDP)</b>			
<b>at current prices</b>			
<b>(i) Value added by sector (million rupees)</b>			
<b>Primary</b>	<b>7,491</b>	<b>10,231</b>	<b>9,881</b>
<i>Agriculture, hunting, forestry &amp; fishing</i>	7,328	10,130	9,785
<i>Mining &amp; quarrying</i>	163	101	96
<b>Secondary</b>	<b>32,420</b>	<b>50,082</b>	<b>57,879</b>
<i>Manufacturing</i>	24,701	36,356	41,060
<i>Electricity, gas &amp; water supply</i>	1,820	3,521	3,674
<i>Construction</i>	5,899	10,205	13,145
<b>Tertiary</b>	<b>71,250</b>	<b>131,772</b>	<b>150,702</b>
<i>Wholesale &amp; retail trade; repair of motor vehicles motorcycles, personal &amp; household goods</i>	12,810	22,534	25,598
<i>Hotels and restaurants</i>	6,872	15,500	19,517
<i>Transport, storage &amp; communication</i>	13,663	22,173	24,826
<i>Financial intermediation</i>	10,156	18,850	21,607
<i>Real estate, renting &amp; business activities</i>	9,341	19,026	22,539
<i>Public administration &amp; defence; compulsory social security</i>	7,043	12,199	12,674
<i>Education</i>	4,761	8,440	9,136
<i>Health and social work</i>	3,106	6,266	6,824
<i>Other services</i>	3,498	6,784	7,981
FISIM	-5,955	-10,117	-11,528
<b>GDP at basic prices</b>	<b>105,206</b>	<b>181,968</b>	<b>206,934</b>
Taxes on products (net of subsidies)	15,085	24,319	28,549
<b>GDP at market prices</b>	<b>120,290</b>	<b>206,287</b>	<b>235,483</b>

	2000	2006 <sup>1</sup>	2007 <sup>1</sup>
<b>Per capita GDP at market prices (rupees)</b>	<b>101,326</b>	<b>164,636</b>	<b>186,831</b>
<b>Sectoral contribution to GDP at basic prices (%)</b>			
Primary	7.1	5.6	4.8
Secondary	30.8	27.5	28.0
Tertiary	67.8	72.4	72.8
FISIM	-5.7	-5.5	-5.6
<b>(ii) By expenditure component (million rupees)</b>			
Final consumption expenditure on goods and services	89,522	174,846	196,533
<i>Households</i>	<i>72,536</i>	<i>145,491</i>	<i>165,790</i>
<i>General government :</i>	<i>16,986</i>	<i>29,355</i>	<i>30,743</i>
<i>Individual</i>	<i>7,106</i>	<i>12,125</i>	<i>12,866</i>
<i>Collective</i>	<i>9,880</i>	<i>17,230</i>	<i>17,877</i>
Gross Domestic Fixed Capital Formation (GDFCF)			
Formation (GDFCF)	27,595	50,048	59,170
<i>Private sector</i>	<i>19,866</i>	<i>34,177</i>	<i>46,261</i>
<i>Public sector</i>	<i>7,729</i>	<i>15,871</i>	<i>12,909</i>
Increase in inventories <sup>2</sup>	3,846	4,694	3,461
Exports of goods & services	73,841	127,128	138,236
Less imports of goods & services	74,513	150,429	161,917
<b>GDP at market prices</b>	<b>120,290</b>	<b>206,287</b>	<b>235,483</b>

	2000	2006 <sup>1</sup>	2007 <sup>1</sup>
<b>Gross National Income (GNI),</b>			
<b>disposable income and savings</b>			
Net primary income from the rest of the world (R.o.w)	-783	1,633	7,491
<b>GNI at market prices</b>	<b>119,507</b>	<b>207,920</b>	<b>242,974</b>
Net transfer from r.o.w	1,662	2,269	3,693
<b>Gross National Disposable Income</b>	<b>121,169</b>	<b>210,189</b>	<b>246,667</b>
Less final consumption expenditure	89,522	174,846	196,533
<b>Gross national savings</b>	<b>31,647</b>	<b>35,343</b>	<b>50,134</b>
<b>Per capita GNI at market prices (rupees</b>	<b>100,666</b>	<b>165,939</b>	<b>192,774</b>
<b>Annual real growth rate (%)</b>			
GDP at basic prices	9.7	5.0	5.4
Final consumption expenditure	4.2	5.5	3.9
<i>Households</i>	<i>3.7</i>	<i>5.9</i>	<i>4.5</i>
<i>General government</i>	<i>6.6</i>	<i>3.8</i>	<i>0.8</i>
GDFCF(including aircraft & vessels)	-8.3	19.0	8.6
GDFCF(excluding aircraft & vessels)	1.0	5.5	17.0

<sup>1</sup> Revised

<sup>2</sup> Includes all statistical discrepancies

## 18. CONSTRUCTION

	2000	2006	2007
<b>Building permits</b>			
<b>Number issued</b>	<b>8,867</b>	<b>8,690</b>	<b>9,100</b>
<i>of which: -Residential</i>	8,331	8,122	8,133
<b>Floor area covered ('000 m<sup>2</sup>)</b>	<b>1,510</b>	<b>1,569</b>	<b>1,960</b>
<i>of which: -Residential</i>	1,170	1,250	1,293
<b>Employment<sup>1</sup> in construction sector ('000)</b>	<b>45.1</b>	<b>48.4</b>	<b>49.7</b>
<b>Investment in construction</b>			
Value (million rupees)	15,341	25,994	34,903
as a % of GDP at market prices	12.8	12.6	14.8
<b>Investment in the construction of residential buildings</b>			
Value (million rupees)	6,368	8,872	10,579
as a % of GDP at market prices	5.3	4.3	4.5
<b>Share of construction in GDFCF (%)</b>	<b>55.6</b>	<b>52.6</b>	<b>59.0</b>
<b>All construction works</b>			
Residential buildings	23.1	18.0	18.0
Non residential buildings	20.4	21.4	30.0
Other construction works	12.1	13.2	11.0

<sup>1</sup> Revised

## 19. EXTERNAL TRADE

	2000	2006 <sup>1</sup>	2007 <sup>2</sup>
<b>Total value of trade</b> (Million rupees)	<b>95,810</b>	<b>189,539</b>	<b>190,563</b>
<b>Total Exports</b> (f.o.b. value)	<b>40,882</b>	<b>74,037</b>	<b>69,482</b>
Domestic exports	37,609	47,638	50,289
Re-exports	1,463	21,328	13,753
Ship's stores & bunkers	1,810	5,071	5,440
<b>Total Imports</b> (c.i.f. value)	<b>54,928</b>	<b>115,502</b>	<b>121,081</b>
<b>Balance of visible trade</b>	<b>-14,046</b>	<b>-41,465</b>	<b>-51,599</b>
<b>EOE<sup>3</sup> export</b>	<b>-</b>	<b>33,610</b>	<b>37,798</b>
<b>EOE<sup>3</sup> imports</b>	<b>-</b>	<b>19,026</b>	<b>20,789</b>
<b>Trade Indices ( base: 2003=100)</b>			
<b>Export index</b> (domestic)	<b>100</b>	<b>121</b>	<b>127</b>
<b>Import index</b>	<b>100</b>	<b>145</b>	<b>154</b>
<b>Terms of trade</b>	<b>100</b>	<b>83</b>	<b>82</b>
(ratio of export to import index)			

	(Million rupees)		
<b>Domestic Exports</b> (f.o.b.)	<b>37,609</b>	<b>47,638</b>	<b>50,289</b>
<b>By commodity</b>			
Food and live animals	7,154	17,876	17,029
<i>of which: - Sugar</i>	5,544	11,198	9,268
Beverages & tobacco	34	52	130
Crude materials, inedible except fuels	263	475	481
<i>of which: -Cut flowers and foliage</i>	133	101	111
Animal & vegetable oils & fats	-	3	4
Chemicals	311	341	436
Manufactured goods classified by materials	3,046	3,739	4,100
<i>of which: -Textile yarns, fabrics, made up articles</i>	1,823	1,502	1,794
Machinery & transport equipment	79	140	155
Miscellaneous manufactured goods	26,718	24,970	27,907
<i>of which: -Articles of apparel &amp; clothing</i>	24,755	21,999	24,794
Other	4	42	47

Note: As from 2002, data include transactions of the freeport

1 Revised

2 Provisional

<sup>3</sup> Export Oriented Enterprises (EOE) as from October 2006, consist of all those enterprises previously operating with an EPZ Certificate and those Enterprises manufacturing goods for exports and holding a registration certificate issued by the Board of Investment.

	2000	2006 <sup>1</sup>	2007 <sup>2</sup>
<b>Domestic Exports (f.o.b.) (contd.)</b>			
<b>By country of destination</b>	(Million rupees)		
-United Kingdom	11,276	21,875	21,421
-France	7,743	6,909	7,021
-U.S.A.	7,873	4,831	4,501
-Germany	1,414	1,076	1,638
-Italy	1,515	1,956	2,670
-Netherlands	652	851	934
-Malagasy Republic	1,580	1,397	1,779
-Belgium	897	1,582	1,911
-Reunion	509	784	889
-Spain	869	1,810	1,586
-Portugal	381	142	651
<b>Re-Exports (f.o.b.)</b>	<b>1,463</b>	<b>21,328</b>	<b>13,753</b>
<b>By commodity</b>			
Food and live animals	47	2,309	2,351
Beverages & tobacco	5	237	338
Crude materials, inedible except fuels	21	378	377
Chemicals	50	526	874
Manufactured goods classified by materials	509	1,793	1,585
Machinery & transport equipment	424	11,937	3,905
Miscellaneous manufactured goods	386	4,003	4,130
Other	21	46	52
<b>By country of destination</b>			
U.A.E	37	7,849	2,428
-Malagasy Republic	422	1,891	2,087
-France	193	1,795	1,843
-Reunion	80	868	951
-Italy	21	798	901
-India	27	252	194
-Spain	12	637	464
-Republic of South Africa	75	344	350
-United Kingdom	86	487	252
-China	14	108	101

Note: As from 2002, data include transactions of the freeport

1 Revised

2 Provisional



	2000	2006 <sup>1</sup>	2007 <sup>2</sup>
	(Million rupees)		
<b>Total Imports (c.i.f.)</b>	<b>54,928</b>	<b>115,502</b>	<b>121,081</b>
<b>By commodity</b>			
Food and live animals	6,948	17,276	20,037
-Dairy products & birds' eggs	1,072	1,870	2,444
-Fish & fish preparations	1,058	6,687	7,068
Beverages & tobacco	369	952	1,558
Crude materials, inedible except fuels	1,654	2,769	3,368
Mineral fuels, lubricants, etc.	6,450	19,321	22,184
-Refined petroleum products	5,634	17,025	18,972
Animal & vegetable oils & fats	455	711	1,147
Chemicals	4,260	8,157	9,416
-Medical & pharmaceutical products	795	1,890	2,176
Manufactured goods classified by materials	17,570	21,811	24,793
-Paper, paperboard & articles thereof	1,056	1,576	1,672
-Textile yarns, fabrics, made up articles	10,843	8,441	8,996
-Iron & steel	1,041	2,423	3,155
-Manufactures of metals, n.e.s.	1,193	2,610	3,352
Machinery & transport equipment	12,427	35,931	28,487
-Specialised & gen. industrial machinery	4,023	6,399	8,047
-Road vehicles	2,916	4,505	5,221
-Aircraft, marine vessels & parts	135	7,175	3,185
Miscellaneous manufactured goods	4,710	8,208	9,582
-Articles of apparel & clothing	507	1,163	1,339
-Watches, clocks & opticals goods	451	569	609
Other	85	366	509

Note: As from 2002, data include transactions of the freeport

1 Revised

2 Provisional

	2000	2006 <sup>1</sup>	2007 <sup>2</sup>
<b>Total Imports (c.i.f.) (contd.)</b>			
<b>By country of origin</b>	(Million rupees)		
-France	5,248	16,440	12,817
-Republic of South Africa	8,198	8,433	8,902
-India	4,821	15,687	25,637
-United Kingdom	2,378	2,894	3,622
-Japan	2,255	3,254	4,333
-Hong Kong	1,881	597	582
-Germany	2,113	4,613	3,267
-Malaysia	1,681	2,978	3,143
-Australia	1,897	3,105	2,753
-Italy	1,815	2,950	3,322
-China	4,152	9,988	13,773
-Singapore	1,080	1,103	1,333
-U.S.A.	1,601	2,328	2,777
-Switzerland	875	1,296	2,012
-Kuwait	-	18	20
-Belgium	965	1,758	1,607
<b>Regional trade</b>			
<b>COMESA</b>			
Exports to member states <sup>3</sup>	2,521	4,270	5,137
Imports from member states	1,535	3,546	3,875
<b>SADC</b>			
Exports to member states <sup>3</sup>	701	5,065	6,159
Imports from member states	8,690	9,900	10,528

Note: As from 2002, data include transactions of the freeport

1 Revised

<sup>2</sup> Provisional

<sup>3</sup> Excluding ship's stores and bunkers

## 20. BALANCE OF PAYMENTS

	2005	2006	2007 <sup>1</sup>
	(Million rupees)		
<b>CURRENT ACCOUNT</b>	<b>-9,569</b>	<b>-19,608</b>	<b>-12,497</b>
<b>Goods and services</b>	<b>-11,127</b>	<b>-23,511</b>	<b>-23,681</b>
<b>Goods</b>	<b>-23,515</b>	<b>-34,494</b>	<b>-44,182</b>
Merchandise	-23,151	-34,133	-43,677
Non-monetary gold	-364	-361	-505
<b>Services</b>	<b>12,388</b>	<b>10,983</b>	<b>20,501</b>
Transportation	-4,092	-5,469	-4,594
Travel	17,594	21,525	29,428
Other services	-1,114	-5,073	-4,333
<i>Private</i>	-1,248	-5,183	-4,466
<i>Government</i>	134	110	133
<b>Income</b>	<b>-239</b>	<b>1,636</b>	<b>7,491</b>
Direct investment income	-856	-2,721	-2,221
Other investment income	1,277	5,267	11,703
Portfolio investment income	-405	-616	-1,703
Compensation of employees	-255	-294	-288
<b>Current transfers</b>	<b>1,797</b>	<b>2,267</b>	<b>3,693</b>
Private	1,491	1,910	3,149
Government	306	357	544
<b>CAPITAL AND FINANCIAL ACCOUN</b>	<b>9,043</b>	<b>6,570</b>	<b>2,132</b>
<b>Capital account</b>	<b>-52</b>	<b>-83</b>	<b>-51</b>
Capital transfers	-52	-83	-51
<b>Financial account</b>	<b>9,095</b>	<b>6,653</b>	<b>2,183</b>
Financial account (excluding			
reserve assets)	4,207	2,080	16,063
Direct investment	-176	3,018	8,800
Portfolio investment	-481	-989	647
Other investment	4,864	51	6,616
Reserve assets	4,888	4,573	-13,880
<b>NET ERRORS AND OMISSIONS</b>	<b>526</b>	<b>13,038</b>	<b>10,365</b>

Source: Bank of Mauritius

<sup>1</sup> Provisional estimates

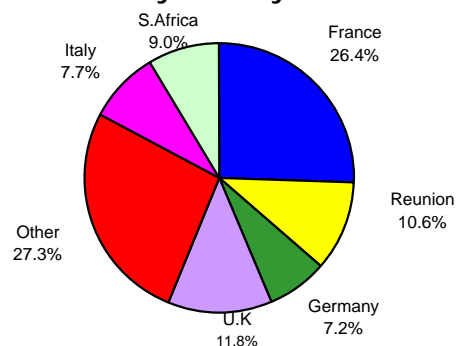
<b>21. INTERNATIONAL TRAVEL &amp; TOURISM</b>
---

	2000	2006	2007 <sup>1</sup>
<b>Passenger traffic ('000)</b>			
<b>Arrivals</b>	<b>915.2</b>	<b>1,072.9</b>	<b>1,238.8</b>
(i) By gender			
Male	480.9	562.8	648.5
Female	434.3	510.1	590.3
(ii) By type of passenger			
Visitors	678.5	806.7	932.8
<i>of which: -on holiday</i>	<i>602.6</i>	<i>712.6</i>	<i>818.7</i>
<i>-on business</i>	<i>27.0</i>	<i>32.5</i>	<i>34.6</i>
Residents	216.7	242.3	277.3
Other	20.0	23.9	28.7
<b>Departures</b>	<b>895.6</b>	<b>1,060.1</b>	<b>1,237.7</b>
(i) By gender			
Male	469.9	555.3	645.6
Female	425.7	504.8	592.1
(ii) By type of passenger			
Visitors	667.2	801.7	942.3
Residents	212.9	241.2	274.8
Other	15.5	17.2	20.6
<b>Inter-island passenger traffic</b>			
From Mauritius to Rodrigues	49,530	55,368	61,617
<i>Male</i>	<i>28,280</i>	<i>31,395</i>	<i>33,991</i>
<i>Female</i>	<i>21,250</i>	<i>23,973</i>	<i>27,626</i>
From Rodrigues to Mauritius	49,981	56,015	61,595
<i>Male</i>	<i>29,436</i>	<i>31,822</i>	<i>33,735</i>
<i>Female</i>	<i>20,545</i>	<i>24,193</i>	<i>27,860</i>

<sup>1</sup> Provisional

	2000	2006	2007 <sup>1</sup>
<b>Tourist arrivals ('000)</b>	<b>656.5</b>	<b>788.3</b>	<b>907.0</b>
France	198.4	182.3	240.0
Germany	52.9	57.3	65.2
Italy	39.0	69.4	69.5
Reunion	86.9	89.1	95.8
Republic of South Africa	48.7	70.8	81.7
United Kingdom	74.5	102.3	107.3
Other countries	156.1	217.1	247.5

**Tourist arrivals by country of residence (2007)**



	2000	2006	2007 <sup>1</sup>
<b>Number of licensed hotels</b>	<b>95</b>	<b>98</b>	<b>97</b>
Number of rooms	8,657	10,666	10,857
Number of bed places	17,776	21,403	21,788
Room occupancy rate (%)	70	66	76
Bed occupancy rate (%)	62	59	68
Tourist nights ('000)	6,413	7,761	9,160
Tourist receipts (Million rupees)	14,234	31,942	40,687
Average length of stay (nights)	10.4	10.1	10.2
Average expend. per tourist (rupees)	21,683	40,521	44,860

<sup>1</sup> Provisional

## 22. SOCIAL SECURITY

	99/00	05/06 <sup>1</sup>	06/07 <sup>2</sup>
<b>Non-contributory benefits</b>			
No. of beneficiaries ('000) <sup>3</sup>	166.5	194.4	198.8
Total amount paid (million rupees)	3,331.4	6,175.7	6,652.5
<b>Contributory benefits<sup>4</sup></b>			
(National Pensions Fund)			
No. of employees paying contribution ('000)	277.5	286.7	296.2
Contributions collected <sup>5</sup> (million rupees)	979.0	1,446.5	1,571.9
Surcharge collected (million rupees)	6.9	0.9	1.1
No. of beneficiaries ('000) <sup>3</sup>	45.7	62.1	65.4
Total amount paid (million rupees)	288.9	576.6	656.6
<b>Public expenditure on social security and welfare as a % of</b>			
Total public expenditure	21.7	23.3	24.3
GDP at market prices	5.3	5.9	5.6

	Beneficiaries (000) as at June 2007	Amount Paid 06/07(R Mn)
<b>Benefits by type<sup>6</sup>, 2005/06</b>		
<b>Non-contributory benefits</b>	<b>198.8</b>	<b>6,652.5</b>
-Retirement pension	131.1	4,459.1
-Widows pension	22.8	722.0
-Invalids pension	27.6	1061.9
-Orphans pension	0.4	14.9
-Social Aid	16.9	394.6
<b>Contributory benefits</b>	<b>65.4</b>	<b>656.6</b>
-Retirement pension	41.8	473.4
-Widows pension (All ages)	15.9	124.2
-Invalids pension	6.7	29.2
-Orphans pension	0.1	0.2
-Industrial injury benefits	0.9	29.6

1 Revised. 2 Provisional. 3 As at June. 4 Excludes public and parastatal sectors. 5 Ratio of contribution is 2/3 from employers & 1/3 from employees. Excludes surcharge paid by employers. 6 A person receiving several benefits is counted several times.

**REGULAR PUBLICATIONS OF CENTRAL STATISTICS OFFICE**

Title	First Issue
1. Annual Digest of Statistics	1966
2. Business Activity Statistics	1997
3. Digest of Agricultural Statistics	1984
4. Digest of Demographic Statistics	1985
5. Digest of Educational Statistics	1984
6. Digest of Energy Statistics	1998
7. Digest of Environment Statistics	2002
8. Digest of External Trade Statistics	1977
9. Digest of Industrial Statistics	1984
10. Digest of International Travel and Tourism Statistics	1974
11. Digest of Labour Statistics	1994
12. Digest of Productivity and Competitiveness Statistics	1998
13. Digest of Public Finance Statistics	1988
14. Digest of Road Transport and Road Accident Statistics	1984
15. Digest of Social Security Statistics	2002
16. Digest of Statistics on Rodrigues	1994
17. National Accounts of Mauritius	1983

Above publications may be purchased at the Central Statistics Office and at the Sales Department of The Government Printing Office, La Tour Koenig.