

REPUBLIC OF MAURITIUS

MAURITIUS IN FIGURES

2008

Central Statistics Office
Ministry of Finance & Economic
Empowerment

MAURITIUS IN FIGURES is published yearly since 1996 by the
Central Statistics Office
LIC Centre
1, John Kennedy Street
Port Louis

Mauritius

Tel: (230) 212 2316/7

Fax: (230) 211 4150

Email: cso@mail.gov.mu

Website: <http://statsmauritius.gov.mu>

Symbols & abbreviations

- Nil
... Data not available
n.a not applicable
000 Thousand
000,000 Million
Gg Gigagram (000 Tonne)
GWh Million kilowatt hour
c.i.f. Cost, insurance and freight
f.o.b. Free on board

Printed by
The Government Printer
Republic of Mauritius
June 2009

CONTENTS

	Page
Introduction	2
Concepts and definitions	3
1 Climate	7
2 Population & Vital statistics	8
3 Health	10
4 Education	12
5 Environment	15
6 Labour	17
7 Price Indices	19
8 Housing & Households	21
9 Household Income & Expenditure	23
10 Transport & Communications	25
11 Land Utilization	27
12 Agricultural Production	28
13 Industrial Production	29
14 Energy	30
15 Government Finance	31
16 Money & Banking	32
17 National Accounts	33
18 Construction	36
19 External Trade	37
20 Balance of Payments	41
21 International Travel & Tourism	42
22 Social Security	44

INTRODUCTION

The Republic of Mauritius is a group of islands in the South West of the Indian Ocean, consisting of the main island of Mauritius, Rodrigues and several outer islands located at distances greater than 350 km from the main island. Mauritius has been successively a Dutch, French and British colony. It became independent of Britain on 12th March 1968 and acceded to the status of Republic within the Commonwealth on 12th March 1992. The country has a Westminster type of Parliamentary government. The official language is English, but French is widely spoken.

The population, estimated at 1.3 million, comprises Indo-Mauritians, General population, i.e. people of mixed European and African origin and Sino-Mauritians.

The islands of Mauritius and Rodrigues, with a total area of 1,969 sq km, have an overall population density of 638 persons per sq km. About 43% of the area is allocated to agriculture, 25% is occupied by built-up areas and 2% by public roads; the remaining consists of abandoned canefields, forests, scrub land, grasslands and grazing lands, reservoirs and ponds, swamps and rocks.

The climate is sub-tropical. The average mid-day temperature on the central plateau varies from 22°C in August to 28°C in January. Near the coastal regions, temperatures are about 4-5°C higher.

During the past thirty years, the Mauritian economy has diversified from a sugar-cane monocrop economy in the 1970's to one based on sugar, manufacturing (mainly textiles and garments) and tourism in the 1980's. Global business (offshore) and freeport activities have also been growing continuously since the mid 1990s.

The economy in 2008 grew by 5.3% and the Gross National Income per capita at market prices reached 212,427 rupees. Unemployment rate is estimated at about 7.2% while inflation stood at 9.7% in 2008.

CONCEPTS & DEFINITIONS

2. Population and Vital Statistics

- 2.1 *Median age* The age which divides the population into two equal-size groups, one of which is younger and the other older than the median.
- 2.2 *Dependency ratio* The ratio of the combined child population under 15 years and population aged 65 years and over per 1,000 population of intermediate age (15-64 years).
- 2.3 *Crude birth rate* Number of live births registered in a year per 1,000 mid-year population.
- 2.4 *Total fertility rate* Average number of children born to an average woman under certain conditions.
- 2.5 *Crude death rate* Number of deaths occurring in a year per 1,000 mid-year population.
- 2.6 *Marriage rate* Number of persons civilly married in a year per 1,000 mid-year population.
- 2.7 *Divorce rate* Number of persons granted divorce in a year per 1,000 mid-year population.

3. Health

- 3.1 *Life expectancy at birth* The average number of years that a newly born child is expected to live under certain conditions.
- 3.2 *Early neonatal mortality rate* Number of deaths in a year of infants under 7 days of age per 1,000 live births during the year.
- 3.3 *Late neonatal mortality rate* Number of deaths in a year of infants aged from 7 to 27 days per 1,000 live births during the year.
- 3.4 *Perinatal mortality rate* Combined number of deaths of infants aged under 7 days and number of still births in a year per 1,000 total births (live+still) during the year.
- 3.5 *Infant mortality rate* Number of deaths in a year of infants aged under one year per 1,000 live births during the year.

Concepts & definitions (contd.)

4. Education

- 4.1 *Gross Enrolment ratio* Number of students enrolled per 100 population aged
- 4-5 years for pre-primary level
- 6-11 years for primary level
- 12-19 years for secondary level
- 4.2 *Literacy rate* Percentage of persons aged 12+ years who can, with understanding, both read and write a simple statement.

6. Labour

- 6.1 *Labour force* Number of persons who are either working (employed) or not working, looking for work and available for work (unemployed).
- 6.2 *Activity rate* Number of persons aged 16 years and above in the labour force as a % of the total number of persons aged 16 years and above.
- 6.3 *Unemployment rate* Number of unemployed as a % of the labour force.

9. Household income and expenditure

- 9.1 *Gini Coefficient* Measures the degree of inequality in the income distribution of households. It varies between 0 for complete equality and 1 for complete inequality.
- 9.2 *Median monthly income of households* That value which divides the distribution of monthly household income into two parts such that 50% of households have an income above that value and 50% below.

10. Transport and communications

- 10.1 *Casualties* The total number of fatalities and persons injured as a result of road accidents.
- 10.2 *Fatality* Prior to 2002, fatality was defined as death occurring within seven days as a result of road accidents. From 1 January 2002, the definition changed to death occurring within 30 days as a result of road accident.

Concepts & definitions (contd.)

- 10.3 *Fatality index* The number of fatalities per 100 casualties.
- 17. National accounts**
- 17.1 *Gross Domestic Product (GDP)* The aggregate money value of all goods and services produced within a country out of economic activity during a specified period usually a year, before provision for the consumption of fixed capital.
- 17.2 *GDP at basic prices* GDP at basic prices is obtained as the difference between output and intermediate consumption whereby output is valued at basic prices and intermediate consumption at purchasers' prices.
The basic price is the amount receivable by the producer exclusive of taxes on products and inclusive of subsidies on products. The equivalent for imported products is the c.i.f. value, i.e. the value at the border of the importing country.
The purchasers' price is the amount payable by the purchaser exclusive of deductible taxes on products (e.g. deductible value added tax).
- 17.3 *GDP at market prices* GDP at basic prices plus taxes (net of subsidies) on products.
- 17.4 *Financial Intermediation Services Indirectly Measured (FISIM)* FISIM is obtained as the difference between interest received and interest paid by banks excluding those received on own funds.

Concepts & definitions (contd.)

- 17.5 *Final Consumption Expenditure* Consumption expenditure is made up of final consumption expenditure of households and of government. Government final consumption expenditure consists of collective and individual consumption expenditure. Collective expenditure consists of the services which government provides to the community as a whole, e.g. security and defence, whereas individual expenditure is made up of expenses incurred in providing services which are mostly beneficial to individuals,
- 17.6 *Gross Domestic Fixed Capital Formation (GDFCF)* The net additions to the physical assets of the country in a year. These consist mainly of investment in buildings, plants, machinery & transport equipment, all valued at market prices.
- 17.7 *Gross National Income (GNI)* GDP at market prices plus net primary income from the rest of the world gives GNI.
- 17.8 *Gross National Disposable Income (GNDI)* The sum of GNI and net transfers from the rest of the world.
- 17.9 *Gross National Savings* Disposable income (GNDI) less final consumption expenditure gives Gross National Savings.
- 19. External trade**
- 19.1 *Domestic Exports* Exports of goods of national origin.
- 19.2 *Re-exports* Goods exported in the same condition as imported or after undergoing minor operations which leave them essentially unchanged.

1. CLIMATE

Mean temp. (°C) - 2007

Island of Mauritius				Island of Rodrigues			
Min.	Max.	Min.	Max.	Min.	Max.	Min.	Max.
23.0	29.7	23.3	29.6	23.0	29.6	23.3	29.6
23.4	29.6	23.5	29.8	23.4	29.6	23.5	29.8
22.4	28.9	23.5	29.7	22.4	28.9	23.5	29.7
21.4	29.1	23.0	29.9	21.4	29.1	23.0	29.9
19.7	27.0	21.4	27.8	19.7	27.0	21.4	27.8
18.4	24.7	19.7	25.8	18.4	24.7	19.7	25.8
17.3	24.1	18.8	25.2	17.3	24.1	18.8	25.2
18.2	24.4	19.7	25.6	18.2	24.4	19.7	25.6
19.2	25.2	19.8	26.3	19.2	25.2	19.8	26.3
20.1	26.5	20.9	27.1	20.1	26.5	20.9	27.1
21.0	28.5	22.4	28.4	21.0	28.5	22.4	28.4
22.3	29.8	23.4	30.1	22.3	29.8	23.4	30.1

Rainfall (millimetres)

Island of Mauritius				Island of Rodrigues			
2007*	2008	2007*	2008	2007*	2008	2007*	2008
347	241	145	134	347	241	145	134
572	251	383	147	572	251	383	147
165	508	85	77	165	508	85	77
119	53	88	21	119	53	88	21
139	299	48	157	139	299	48	157
142	165	32	88	142	165	32	88
123	135	89	41	123	135	89	41
63	72	46	88	63	72	46	88
71	348	65	50	71	348	65	50
105	61	50	65	105	61	50	65
45	152	8	134	45	152	8	134
63	97	187	53	63	97	187	53
1,954	2,382	1,226	1,055	1,954	2,382	1,226	1,055

*revised

2. POPULATION & VITAL STATISTICS

	2000	2007 ^{1/}	2008 ^{2/}
Total mid-year resident population ('000)	1,186.9	1,260.4	1,268.6
Male	588.2	622.9	626.6
Female	598.7	637.5	642.0
Age composition (%)			
under 15 years	25.7	23.3	22.8
(15-59) years	65.2	66.7	66.9
(60-64) years	2.8	3.3	3.5
65 years and over	6.3	6.7	6.8
Median age (years)	29.0	31.2	31.7
Dependency ratio	470.4	430.2	419.4
Population density (per km²)(Indica	585	620	624
Mid-year geographical distribution ('000)			
Port Louis	128.8	130.0	129.9
Pamplemousses	123.1	134.0	135.4
Riv. du Rempart	99.6	106.8	107.7
Flacq	127.8	137.2	138.2
Grand Port	107.5	113.8	114.4
Savanne	66.8	69.9	70.1
Plaine Wilhems	360.5	379.4	381.4
Moka	76.0	80.2	80.6
Black River	61.0	71.8	73.3
Rodrigues	35.8	37.3	37.6
Vital statistics			
Live births	20,205	17,034	16,372
Deaths	7,982	8,498	9,004
Marriages	10,963	11,547	11,197
Divorces	1,191	1,302	1,569

¹ Revised

² Provisional

	2000	2007 ^{1/}	2008 ^{2/}
Vital statistics (contd.)			
Crude birth rate	17.0	13.5	12.9
Total fertility rate	2.0	1.7	1.6
Crude death rate	6.7	6.7	7.1
Marriage rate	18.5	18.3	17.7
Divorce rate	2.0	2.1	2.5
Projected population ('000)			
	2013	2023	2033
Male	1,311.0	1,387.1	1,428.5
Female	646.4	682.1	700.8
Age composition (%)			
under 15 years	21.2	19.8	18.4
15-59 years	66.3	62.5	60.0
60-64 years	4.8	5.9	5.5
65 years and over	7.7	11.8	16.1

Population pyramid ('000)



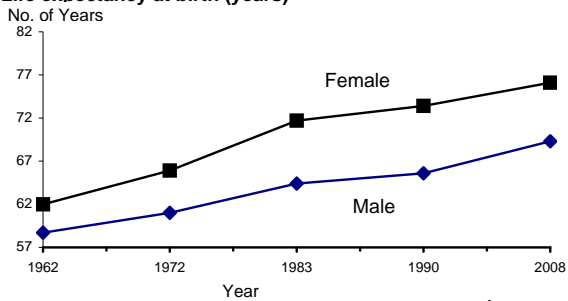
¹ Revised

² Provisional

3. HEALTH

	2000	2007 ¹	2008 ²
Life expectancy at birth (years)			
<i>Male</i>	68.2	69.2	69.3
<i>Female</i>	75.3	76.0	76.1
Early neonatal mortality rate	9.0	8.2	6.9
Late neonatal mortality rate	3.6	2.8	2.4
Perinatal mortality rate	21.9	18.1	17.0
Infant mortality rate	15.9	15.3	14.4
Deaths per 100,000 of 45-64 yrs old			
<i>Male</i>	1,314	1,234	1,336
<i>Female</i>	744	630	651

Life expectancy at birth (years)



	2000	2007 ¹	2008 ²
Health facilities			
Hospitals ³	15	15	15
Hospital beds	3,990	3,706	3,653
Area health centres ⁴	27	26	26
Medicines	2	2	2
Community health centres	121	127	127
Private clinics	13	13	17

¹ Revised. ² Provisional. ³ Including two health centres with beds in Rodrigues. ⁴ Including Y. Cantin and Long Mountain Community Hospitals.

	2000	2007 ¹	2008 ²
Health facilities (contd.)			
Medical practitioners	1,080	1,425	1,450
Dentists	146	228	235
Nurses & midwives	2,957	3,300	3,500
Pharmacists	247	327	348
Doctor per 1000 population	0.91	1.13	1.14
Dentist per 1000 population	0.12	0.18	0.18
Deaths (per 100,000 population)			
Circulatory system ³	258	245	248
Respiratory system	62	47	45
Neoplasms	63	77	86
Injury & poisoning	42	43	43
Diabetes mellitus ³	100	151	161
Renal failure	21	9	10
% Deaths			
Circulatory system ³	37	36	35
Respiratory system	9	7	6
Neoplasms	9	11	12
Injury & poisoning	6	6	6
Diabetes mellitus ³	15	22	23
Renal failure	3	1	1
Public expenditure on health as % of			
Total public expenditure	8.4	8.9	8.7
GDP at market prices	2.0	2.1	1.9

¹ Revised ² Provisional

³ revised in the light of 2005 data following application of the new revision (10th) of the International Classification of Diseases (ICD 10) for the coding of underlying causes of death

4. EDUCATION

	2000	2007	2008
Pre-primary			
Schools	1,087	1,076	1,070
Enrolment	39,232	36,467	36,242
<i>Male</i>	19,677	18,362	18,263
<i>Female</i>	19,555	18,105	17,979
Gross enrolment ratio	96	94	94
<i>Male</i>	95	93	93
<i>Female</i>	96	94	95
Teaching staff	2,448	2,513	2,541
Pupil/teacher ratio	16	15	14
Primary			
Schools	291	289	299
Enrolment	135,237	119,310	119,022
<i>Male</i>	68,711	60,641	60,693
<i>Female</i>	66,526	58,669	58,329
Gross enrolment ratio	104	101	101
<i>Male</i>	105	101	101
<i>Female</i>	104	101	101
Teaching staff ¹	5,178	5,548	5,495
<i>Male</i>	2,326	1,958	1,844
<i>Female</i>	2,852	3,590	3,651
Pupil/teacher ratio ²	36	28	29
Cert. of Primary Education (% pass)	66.4	66.2	67.4
<i>Male</i>	61.2	60.1	62.1
<i>Female</i>	71.8	72.7	73.2

	2000	2007	2008
Secondary - Academic			
Schools	134	186	180
Enrolment	95,448	116,706	116,503
<i>Male</i>	46,399	56,097	55,873
<i>Female</i>	49,049	60,609	60,630
Gross enrolment ratio	60	69	69
<i>Male</i>	58	65	65
<i>Female</i>	63	72	72
Teaching staff	5,140	7,423	7,408
<i>Male</i>	2,658	3,278	3,209
<i>Female</i>	2,482	4,145	4,199
Pupil/teacher ratio	19	16	16
School Certificate (% pass)	76.6	76.7	76.5
<i>Male</i>	74.7	71.8	71.5
<i>Female</i>	78.3	81.2	80.9
Higher School Certificate (% pass)	72.3	77.8	78.7
<i>Male</i>	67.4	72.9	74.4
<i>Female</i>	76.9	81.8	82.2
Secondary - Pre-vocational³			
Schools	25	153	138
Enrolment	4,695	9,573	8,495
<i>Male</i>	3,344	5,957	5,336
<i>Female</i>	1,351	3,616	3,159
Teaching staff	296	701	645
<i>Male</i>	157	260	234
<i>Female</i>	139	441	411
Pupil/teacher ratio	16	14	13

Vocational & Technical Training⁴	2000	2007	2008
Schools	12	13	14
Enrolment	5,450	8,023	8,521
<i>Male</i>	4,684	5,883	6,623
<i>Female</i>	766	2,140	1,898
Post-secondary⁵	00/01	07/08	08/09
Schools	3	5	5
Enrolment	10,041	16,707	16,911
<i>Male</i>	4,422	6,781	6,891
<i>Female</i>	5,619	9,926	10,020
Polytechnics⁶			
Enrolment	997	1,068	1,025
<i>Male</i>	761	689	704
<i>Female</i>	236	379	321
Mauritius College of the Air Distance Education Courses			
Enrolment	1,444	449	530
<i>Male</i>	191	210	203
<i>Female</i>	1,253	239	327
Literacy rate	2000	2007	2008
Total	85.0
<i>Male</i>	88.7
<i>Female</i>	81.5
Public expenditure on education as a % of (Year ending 30th June)⁷	00/01	07/08	08/09
Total public expenditure	15.0	12.7	11.4
GDP at market prices	3.5	3.1	3.1

¹ General purpose teachers and Asian language teachers. ² Pupils per general purpose teacher. ³ State Secondary Sch., State Secondary Vocational Sch., M. Gandhi Secondary Schools, R. Tagore Institute, Gandhian Basic School and Private Secondary Schools. ⁴ Industrial & Vocational Training Board Centres.

⁵ The University of Mauritius, The Mauritius Institute of Education, The Mahatma Gandhi Institute & The University of Technology, Mauritius. As from 2003/2004, figures include Mauritius Institute of Health. ⁶ Swami Dayanand Institute of Management, Lycee Sir Guy Forget, Institut Supérieur de Technologie. ⁷ Figures for years 2007/08 and 2008/09 are estimates

5. ENVIRONMENT

	2000	2007	2008 ¹
Greenhouse gas (Gg)			
Emissions			
Carbon dioxide	2,456.8	3,449.6	...
Oxides of nitrogen	13.8	16.6	...
Carbon monoxide	66.3	65.4	...
Sulphur dioxide	28.9	33.0	...
Removals			
Carbon dioxide	229.2	224.0	...
Net emissions			
Carbon dioxide	2,227.6	3,225.6	...
Carbon dioxide emissions from fossil fuels (Gg)	2,454	3,448.2	...
Energy industries	1,185.4	2,067.9	...
Manufacturing industries	357.4	400.3	...
Transport	735.8	800.1	...
Residential	141.7	130.6	...
Other (Agriculture and Commerce)	33.7	49.3	...
Solid Waste landfilled (tonne)	265,815	394,423	...
Number of E.I.A² licenses issued	92	46	44
Land parcelling (morcellement)	31	5	12
Poultry rearing	26	-	-
Industrial development	7	9	-
Coastal hotels and related works	11	23	8
Housing	4	3	-
Other	13	6	24

	2000	2007	2008 ¹
Number of PER³ licenses issued	96	40
Land parcelling (morcellement)	...	5	-
Poultry rearing	...	19	10
Industrial development	...	28	16
Coastal hotels and related works	...	23	-
Housing	...	4	-
Other	...	17	14
Number of complaints received			
at the Dept. of Environment	1,906	568	596
Noise	555	135	157
Solid waste	586	88	49
Air pollution	71	62	57
Waste water	150	76	84
Odour	251	88	102
Other	293	119	147
Water			
Fresh water abstraction,(Mm ³)(Excl of hydropower)	681	630	...
Water utilisation,(Mm ³)	982	884	...
Domestic,industrial and tourism	209	201	...
Agricultural (irrigation)	468	423	...
Hydropower	305	254	...
Daily domestic per capita consumption,(litres)	154.9	162.0	...
Waste water:total volume treated in public treatment plants,(Mm3)	20.5	24.33	...

¹ Provisional

² Environment Impact Assessment (EIA)

³ Preliminary Environmental Report (PER)

Note: Licences were issued as from September 2002

6. LABOUR

	2007 ⁴	2008
Labour Force- Mauritians ('000)¹	548.9	559.4
Male	353.6	355.6
Female	195.3	203.8
Activity rate (%)¹	58.9	59.2
Male	77.2	76.6
Female	41.2	42.4
Employment- Mauritians ('000)¹	502.1	519.0
Male	335.0	341.0
Female	167.1	178.0
Unemployment ('000)¹	46.8	40.4
Male	18.6	14.6
Female	28.2	25.8
Unemployment rate¹	8.5	7.2
Male	5.3	4.1
Female	14.4	12.7
Employment- Foreigners ('000)²	21.6	24.0
Male	12.1	14.7
Female	9.5	9.3
Total Employment by sector ('000)³	523.7	543.0
Primary sector	47.5	47.1
Secondary sector	175.2	178.6
Manufacturing	122.5	123.5
Electricity and water supply	3.0	3.1
Construction	49.7	52.0
Tertiary sector	301.0	317.3
Trade, hotels & restaurants	110.5	116.5
Transport, storage & communications	37.4	39.0
Financial intermediation, real estate, renting and business activities	35.3	40.5
Other services	117.8	121.3

Average earnings & Wage rate index

	2000 ⁴	2007 ⁴	2008
Average monthly earnings (rupees)	8,178	13,397	14,438
Primary sector	6,585	10,382	10,927
Sugar cane	6,159	9,453	9,926
Secondary sector	6,131	9,903	10,329
Manufacturing	5,544	8,622	8,979
<i>Sugar</i>	8,417	12,897	12,976
<i>Food(excluding sugar)</i>	6,630	8,930	9,018
<i>Textiles</i>	4,716	7,203	7,520
<i>Other</i>	5,192	10,722	11,191
Electricity & water supply	13,515	24,125	24,449
Construction	8,746	14,143	15,457
Tertiary sector	10,328	15,691	16,907
Trade, hotels & restaurants	8,562	12,472	13,452
Transport, storage & communications	11,502	17,472	19,824
Financial intermediation, real estate, renting and business activities	11,974	17,642	19,522
Other services	10,466	16,133	17,121
Wage Rate Index (base:2000=100)	100.0		
(base:2006=100)		104.3	118.8

¹ The Continuous Multi-Purpose Household Survey is used, as from 2004, as the instrument to measure labour force, employment and unemployment. Estimates refer to the Mauritian population aged 16 years and above, and exclude foreign workers

² Data on foreigners are obtained from surveys of employment and earnings

³ Including foreigners

⁴ Revised

7. PRICE INDICES

	Weight	Jul07 -Dec07	Dec 08
Consumer Price Index	1,000	106.0	113.9
(base: July 2006-June 2007=100)			
Food & non-alcoholic beverages	286	109.9	124.0
Alcoholic beverages & tobacco	92	106.7	111.4
Clothing & footwear	51	104.5	108.8
Housing, water, electricity, gas & other fuels	131	104.1	109.2
Furnishings, hhold.equip.& hhold.maintenance	64	105.4	110.1
Health	30	105.5	110.3
Transport	147	104.1	113.2
Communication	36	100.0	97.8
Recreation and culture	48	100.7	101.4
Education	32	102.7	107.2
Restaurants and hotels	43	106.2	119.1
Miscellaneous goods and services	40	106.3	110.5
Inflation rate(%) - calendar year		8.8 (Yr 07)	9.7
	Weight	2007	2008
Export Price Index	10,000	127.1	121.6
(base: 2003=100)			
Food & live animals	2,942	129.4	129.9
- <i>Sugar</i>	2,296	125.8	118.5
Manufactured goods classified chiefly by materials	293	116.9	124.4
Misc. manufactured goods	6,713	126.5	117.7
- <i>Apparel & clothing accessories</i>	6,589	125.3	116.2

	Weight	2007	2008
Import Price Index (base 2003 =100)	10,000	153.6²	166.2
Food & live animals	1,621	169.0	194.6
Mineral fuel,lubricants and related materials	1,789	219.2	285.6
<i>Petroleum,Petroleum products and related materials</i>	1,554	223.3	287.2
Manufactured goods classified chiefly by material	3,776	131.9	125.1
<i>-Textile yarn,fabrics,made-up articles,n.e.s</i>	2,590	120.9	108.8
Machinery and transport equipment	1,134	125.4	124.8
Producer Price Index (Manufacturing: Base year 2003 = 100)			
Manufacturing	1,000	146.4	169.7
Food	324	151.4	190.4
Beverages & tobacco	160	137.1	154.7
Other	516	146.3	161.3
Construction Price Index (residential: base: 4th Qr.2001=100)	1,000	147.2	163.4
Labour	345	117.1	121.6
Hire of plant	30	127.1	135.5
Materials	572	168.4	192.2
Transport	53	126.4	146.8

¹ Revised.

² Provisional

8. HOUSING & HOUSEHOLDS

	1990*	2000*
Buildings ('000)	209.9	268.3
<i>of which: - % wholly residential</i>	90.1	89.4
<i>- % partly residential</i>	3.5	4.4
Residential & partly residential buildings		
Year of construction (%)		
Before 1985	70.6	38.9
1985 - 1989	20.1	14.8
1990 - 1994	1.1 ¹	17.5
1995 - April 2000	...	24.3
Not completed but inhabited	4.9	2.0
Not known	3.3	2.5
Construction materials (%)		
Concrete walls & roof	70.6	86.3
Concrete walls & iron or tin roof	7.3	3.9
Iron or tin walls and roof	18.2	8.1
Wood walls & iron or tin or shingle roof	2.3	0.9
Other	1.6	0.7
Average no. of housing units per building	1.21	1.24
Housing units ('000)	223.8	297.7
Ownership (%)		
Private	98.6	99.1
Public	1.3	0.4
Not stated	0.1	0.5
Occupancy (%)		
Occupied	97.5	94.8
Vacant	2.5	5.2

¹ Buildings constructed from January to April 1990

* Census figures

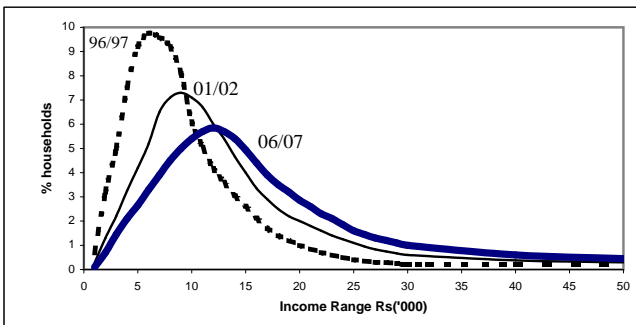
	1990*	2000*
Average no. of rooms per housing unit	3.9	4.6
Average no. of persons per room	1.2	0.9
Average no. of households per housing unit	1.10	1.07
Households ('000)	236.1	296.3
Tenure (%)		
Owner	75.9	86.5
Tenant	14.8	9.3
Subtenant	0.4	-
Free	8.8	4.1
Other	0.1	-
Amenities (%)		
Piped water	95.2	98.7
Electricity	96.9	99.0
Toilet	99.3	99.8
<i>of which: flush toilet</i>	62.8	88.8
Bathroom	94.5	99.0
Kitchen	97.5	99.2
Acceptable refuse disposal	68.4	97.0
Fuel used for cooking (%)		
Wood & charcoal	26.3	4.5
Kerosene	21.7	3.4
Electricity	1.5	0.5
Gas	50.3	91.5
Other	0.2	0.1
% female-headed	17.6	17.5
% one-parent	8.1	7.7
% 60+ years living alone	2.8	3.0
Average household size	4.5	3.9

* Census figures

9. HOUSEHOLD INCOME & EXPENDITURE

Household Budget Survey

	96/97	01/02 ¹	06/07
Average household size	4.1	3.9	3.7
Income earners per household	1.9	1.9	1.8
Average monthly income (rupees)	10,179	14,232	19,083
Median monthly income (rupees)	7,870	11,150	14,640
1/2 median monthly income (rupees)	3,935	5,575	7,320
% hholds with < 1/2 med. mthly income	14.2	13.1	14.3
Gini coefficient	0.387	0.371	0.388
Income share			
% of total income going to:			
Lowest 20% of households	5.9	6.4	6.1
Highest 20% of households	46.2	44.0	45.6
Ratio of highest 20% to lowest 20%	7.8	6.9	7.4
Average monthly expenditure (rupees)	7,846	11,390	15,188
Median monthly expenditure (rupees)	6,136	8,154	10,850
1/2 median monthly expend. (rupees)	3,068	4,077	5,425
% hholds with <1/2 med. mthly expend.	13.3	12.3	12.0



¹ Unadjusted for under reporting.

Household Budget Survey**96/97****01/02****06/07****Consumption pattern**Monthly household consumption¹ expenditure² (%)

Food & non-alcoholic beverages	33.7	31.6	29.7
Alcoholic beverages & tobacco	8.9	9.1	9.5
Clothing & footwear	7.7	6.4	5.3
Housing, water, electricity, gas & o	9.6	9.3	9.8
Furnishing, household equipment & routine household maintenance	7.8	6.0	6.7
Health	3.4	2.5	3.1
Transport	11.5	12.6	15.2
Communication	2.1	3.3	3.7
Recreation and culture	4.0	4.6	5.0
Education	2.6	3.7	3.4
Restaurants and hotels	4.7	6.1	4.5
Miscellaneous goods and services	3.8	4.8	4.2

Per capita consumption (kg/year)³**2000****2007⁵****2008****Selected food items**

Wheat flour	76.5	78.8
Milled rice	55.9	48.5
Potatoes	18.2	18.0
Sugar	34.0	30.8
Fresh vegetables	82.2	72.1
Oils & fats	26.3 ⁴	28.2
Fresh milk (litres)	6.2	5.4
Powdered milk	13.6	10.0
Pulses	10.1	10.9
Eggs	9.4	7.8
Meat & meat preparations	39.0	45.6
Banana	7.2	6.8
Other fresh fruits	16.4	17.8
Fish & fish preparations	23.1	18.1

¹ Classification of Individual Consumption According to Purpose² Adjusted for under reporting³ Source: Food balance sheet⁴ Revised⁵ Provisional

10. TRANSPORT & COMMUNICATIONS

	2000	2007	2008
Road transport			
Motor-vehicles registered ('000)	244.0	334.1	351.4
Private cars	49.9	92.9	102.6
Taxi cars	5.0	6.9	6.9
Vans	18.8	24.9	25.3
Dual purpose vehicles	34.9	44.6	46.0
Lorries & trucks	10.5	12.5	12.7
Buses	2.4	2.8	2.8
Motor cycle	24.5	37.0	40.8
Autocycle	92.0	105.6	107.2
Other vehicles	6.0	6.9	7.1
Road traffic accidents			
Number of accidents	18,278	20,519	20,877
Rate (per 100,000 population)	1,588	1,678	1,696
Rate (per 1,000 registered motor-vehicles)	77	63	61
Motor-vehicles involved			
Number	33,537	41,178	42,910
Rate (per 1,000 reg. motor-vehicles)	142	127	125
Casualties			
Number	3,291	3,055	3,431
Fatal ¹	163	140	168
Seriously injured	266	500	517
Slightly injured	2,862	2,415	2,746
Fatality			
Rate (per 100,000 population)	14.16	11.45	13.65
Rate (per 1,000 registered motor-vehicles)	0.69	0.43	0.49
Index	4.95	4.58	4.90
Private cars per 1,000 households	169	284	309
Length of roads (kilometres)	1,926	2,028	2,028
Vehicles per kilometre of road	127	165	173 ²

¹ For year 2000, figures were based on definition of fatal accidents whereby deaths were caused within 7 days of road accidents but for years 2002 onwards figures are based on new definition of fatal accidents whereby deaths are caused within 30 days of road accidents.

² Provisional

	2000	2007 ¹	2008 ²
Air transport			
Landings	8,349	9,593	7,732
Freight loaded ('000 tonnes)	21.2	28.4	19.5
Freight unloaded ('000 tonnes)	20.1	24.0	17.6
Sea transport			
Arrivals	1,658	2,317	2,008
Goods loaded ('000 tonnes)	1,514	1,165	1,155
Goods unloaded ('000 tonnes)	3,677	5,062	5,140
Communication			
Radio operators	1	4	4
Television operators	4	3	3
Television sets licensed ('000)	223.9	289.9	318.0
Fixed telephone subscribers('000)	262.0	361.3	363.4
National calls registered ³ ('000,000)	506.6	513.4	449.1
International outgoing telephone traffic ('000,000 minutes)	34.6	71.4	106.9
Cellular mobile tel subscribers '000	174.5	915.3	1,033.3
Total Internet subscribers '000	35	150.4	197.1
Fixed Internet subscribers '000	35	72.0	78.0
Mobile Internet subscribers '000	n.a	78.4	119.1
Local press	41	47	57
Dailies	6	8	8
-English & French	4	5	5
-Other	2	3	3
Weeklies	29	26	25
-English & French	23	23	24
-Other	6	3	1
Others	6	13	24
-English & French	6	10	19
-Other	-	3	5

¹ Revised

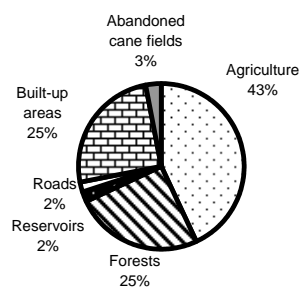
² Provisional

³ Calls irrespective of duration from fixed telephone

11. LAND UTILIZATION

2005 ¹
Area
(Hectares)

Whole island	186,500
Agriculture	80,674
<i>Sugarcane</i>	72,000
<i>Other agricultural activities</i>	8,674
Forests scrubs & grazing lands	47,200
Reservoirs, ponds, swamps & rocks	2,900
Roads & footpaths	4,500
Built-up areas	46,500
Abandoned cane fields	4,726



Source: Final Draft Report-Stocktaking & Stakeholders Consultation Exercise on Climate Change Activities, March 2006. Ministry of Environment and National Development Unit

¹ Estimate

	2000	2007 ¹	2008 ²
Effective area cultivated			
Sugar cane	76,962	67,524	65,500
Tea	670	709	702
Tobacco	397	252	259
Land under irrigation	19,506	21,321	21,457
Overhead	15,951	17,602	18,264
Surface	2,020	1,618	1,053
Drip	1,535	2,101	2,140

¹ revised

² Provisional

12. AGRICULTURAL PRODUCTION

	2000	2007 ¹	2008 ²
PRODUCTION ('000 tonnes)			
Crop products			
Sugarcane	5,109.5	4235.8	4533.0
Foodcrops	102.6 ¹	83.7	73.1
Tea leaf	6.4	8.0	8.7
Fruits	21.5	23.0	24.0
Tobacco leaf ³	0.5	0.3	0.3
Products from slaughtered and live animals	45.1	58.2	58.4
Poultry meat ('000 tonnes)	25.6	40.0	42.0
Milk (mn litres)	4.0	3.5	3.3
Eggs ('000 tonnes)	12.0	11.5	10.2
Fishing ('000 tonnes)	7.8	6.0	6.0
	(Million rupees)		
VALUE ADDED	7,277.0	9,833.6	10054.9
Crop products	5,226.3	6,546.3	6412.0
<i>of which</i>			
Sugarcane	3,741.0	4,620.0	4373.6
Foodcrops	1,130.5	1,546.6	1667.2
Tea leaf	52.3	75.1	68.5
Fruits	163.8	174.7	169.3
Tobacco leaf ³	30.2	26.1	32.2
Animals & animal products	815.6	1,710.0	1910.4
Fishing	292.9	265.1	292.7

¹ Revised

³ crop year: April-March

² Provisional

13. INDUSTRIAL PRODUCTION

	2000	2007 ²	2008 ²
Quantity produced (selected commodities)			
Sugar ('000 tonnes)	569.3	436.0	452.1
Molasses "	144.0	130.9	144.3
Tea (Black) "	1.3	1.6	1.7
Iron bars & steel tubes "	46.0	68.2	...
Fertilizers	83.7	86.0	...
Denatured spirit ('000 H. Litres)	6.4	4.6	7.2
Beer and stout "	374.9	337.7	360.8
Wine (country liquor) "	41.2	50.5	60.8
Electricity generated (GWh)	1,777.5	2,464.7	...
Manufacturing			
Growth rate			
EOE ³	+6.0	+8.0	+4.1
Manufacturing	+7.9	+2.2	+1.8
Sugar	+64.5	-13.6	+5.5
Food (excluding Sugar)	+6.4	+4.0	+2.6
Textiles	+6.4	+8.5	+0.2
Other	+6.6	-3.1	+2.4
Labour Productivity Index⁴ (2000=100)			
Manufacturing	100.0	119.3	122.2
EOE ³	100.0	115.7	118.6
Capital Productivity Index (2000=100)			
Manufacturing	100.0	80.8	80.2
EOE ³	100.0	61.2	64.2
Unit Labour Cost Index⁴ (2000=100)			
Manufacturing	100.0	144.3	158.8
EOE ³	100.0	148.2	153.2

¹ Revised

² Provisional

³ Export Oriented Enterprises (EOE) as from October 2006, consist of all those enterprises previously operating with an EPZ Certificate and those Enterprises manufacturing goods for exports and holding a registration certificate issued by the Board of Investment.

⁴ The indices are for the whole manufacturing sector.

14. ENERGY

	2000	2007 ¹	2008 ²
Imports of energy sources ('000 tonnes)			
Gasolene	89.8	96.4	108.5
Diesel oil	339.7	307.5	328.5
Dual purpose kerosene	217.4	266.4	268.1
- <i>Aviation fuel</i>	190.0	262.6	262.2
Fuel oil	218.8	333.9	291.0
LPG	47.3	62.7	63.1
Coal	222.4	647.8	606.5
Re-export and Bunkering ³ ('000 tonnes)			
Aviation fuel	87.5	116.8	125.5
Diesel oil	160.0	118.4	117.3
Fuel oil	57.6	75.7	96.2
Electricity generated ⁴ (GWh)	1,777.5	2,464.7	2,511.7
Hydro	95.6	83.9	108.3
Wind	...	0.4	0.4
Thermal	1681.9	2,380.4	2,403.0
Peak demand(MW), Mauritius	283.9	367.6	378.1
Rodrigues	3.8	5.9	6.0
Electricity sales (GWh)	1,374.0	1,975.3	2,051.3
Domestic	491.9	643.0	652.2
Commercial	374.8	618.0	672.7
Industrial (general)	458.6	644.8	662.9
Industrial (irrigation)	27.2	28.2	26.1
No. of electricity consumers ('000)	323.7	385.3	394.0
Domestic	288.5	343.1	350.6
Commercial	27.8	34.4	35.7
Industrial (general)	6.6	6.9	6.8
Industrial (irrigation)	0.4	0.5	0.5

¹ Revised. ² Provisional ³ Pertaining to sales of fuel to foreign vessels

⁴ Includes electricity generated for own use by Independent Power Producers

15. GOVERNMENT FINANCE

	00/01	06/07	07/08
Budgetary central government			
	(Million rupees)		
Total revenue & grants	22,796	42,169	53,222
Total revenue	22,597	41,847	52,768
Current revenue	22,597	41,818	52,744
Tax revenue	20,190	38,186	47,831
-Tax on income, profits & capital gains	3,039	7,608	10,440
-Domestic taxes on goods & services	9,466	21,404	26,477
-Import duties	6,349	6,299	6,646
Non tax revenue	2,407	3,632	4,913
-Property income	1,749	2,180	3,406
Capital revenue	...	29	23
Grants	199	322	454
Total expenditure & lending minus repayments	25,382	51,608	61,543
Total expenditure	31,582	51,233	60,106
General government services	5,402	8,340	9,114
Community & social services	15,494	26,540	28,823
-Education	4,357	7,089	8,703
-Health	2,547	4,402	4,680
-Social Security	6,160	11,269	11,745
Economic services	4,648	4,727	8,533
-Agriculture, forestry, fishing & hunting	1,290	1,351	4,228
-Transportation & communication	1,855	1,623	1,565
Other functions	6,038	11,627	13,635
-Public debt interest	5,177	8,882	10,675
Lending minus repayments	-6,200	375	1,437
Overall deficit	-2,586	-9,439	-8,321
Overall deficit excluding PF and NIDF¹	-5,469	-9,439	-8,321
Budgetary central government debt (end of period)	60,561	122,120	122,287
Domestic debt	53,745	108,668	109,836
Foreign debt	6,816	13,452	12,451

¹ Privatisation Fund and National Infrastructure Development Fund (lending minus repayments).

16. MONEY & BANKING

(as at end of period)

Jun-08 Sep-08 Dec-08
(Million rupees)

Components of Monetary Base

1 Currency with Public	12,914	13,618	16,323
2 Currency with Other Depository Corporations	2,094	2,166	3,787
3 Deposits with BOM	12,319	16,364	10,551
<i>Other Depository Corporations</i>	11,933	16,166	10,393
<i>Other</i>	386	197	158
Monetary Base(1+2+3)	27,327	32,147	30,662

Sources of Monetary base

1 Net Foreign assets	57,026	55,389	56,025
2 Net Claims on Budgetary Central Govt	-4,362	-7,083	-3,797
3 Claims on other Depository Corporation:	986	4,225	1,014
4 Claims on Private Sector	135	137	135
5 Net Non-Monetary Liabilities	26,458	20,522	22,714
Monetary Base (1+2+3+4-5)	27,327	32,147	30,662

Net International reserves

Bank of Mauritius Net Foreign assets	57,026	55,389	56,025
Other Depository Corporations Net			
Foreign assets	26,601	24,661	33,496
Others	319	312	643

Foreign exchange rates (selling - Rs)

Euro	43.84	41.54	45.89
India (IN R 100)	65.48	62.61	68.04
Japan (JP Y 100)	26.24	27.83	36.17
South Africa, Rep. of (SA R 1)	3.56	3.52	3.53
United States (US D 1)	27.71	28.90	32.45
United Kingdom (GB P 1)	55.33	52.11	47.04

Electronic Banking Transactions

No of ATMs in Operations	382	384	364
No of Transactions	3,554,029	3,780,226	5,009,154
Value of Transactions : (Rs mn)	6204	7,043	11,024

No of Cards in Circulation

<i>Credit Cards</i>	180,185	186,234	184,451
<i>Debit Cards and others</i>	916,183	946,670	977,936
Total	1,096,368	1,132,904	1,162,387

Outstanding Advances on Credit Cards (Rs mn)	1413.1	1461.1	1547.3
--	--------	--------	--------

Source: Bank of Mauritius

17. NATIONAL ACCOUNTS

	2000	2007 ¹	2008 ¹
Gross Domestic Product (GDP)			
at current prices			
(i) Value added by sector (million rupees)			
Primary	7,491	9,930	10,155
<i>Agriculture, hunting, forestry & fishing</i>	7,328	9,834	10,054
<i>Mining & quarrying</i>	163	96	101
Secondary	32,420	57,888	67,863
<i>Manufacturing</i>	24,701	41,075	46,888
<i>Electricity, gas & water supply</i>	1,820	3,668	4,759
<i>Construction</i>	5,899	13,145	16,216
Tertiary	71,250	150,653	169,635
<i>Wholesale & retail trade; repair of motor vehicles motorcycles, personal & household goods</i>	12,810	25,598	28,840
<i>Hotels and restaurants</i>	6,872	19,517	20,048
<i>Transport, storage & communication</i>	13,663	24,727	26,056
<i>Financial intermediation</i>	10,156	21,607	25,410
<i>Real estate, renting & business activities</i>	9,341	22,615	26,886
<i>Public administration & defence; compulsory social security</i>	7,043	12,674	14,618
<i>Education</i>	4,761	9,110	10,443
<i>Health and social work</i>	3,106	6,824	7,909
<i>Other services</i>	3,498	7,981	9,425
FISIM	-5,955	-11,528	-14,000
GDP at basic prices	105,206	206,943	233,653
Taxes on products (net of subsidies)	15,085	28,549	31,201
GDP at market prices	120,291	235,492	264,854

	2000	2007 ¹	2008 ¹
Per capita GDP at market prices (rupees)	101,327	186,796	208,570
Sectoral contribution to GDP at basic prices (%)			
Primary	7.1	4.8	4.4
Secondary	30.8	28.0	29.0
Tertiary	67.8	72.8	72.6
FISIM	-5.7	-5.6	-6.0
(ii) By expenditure component (million rupees)			
Final consumption expenditure on goods and services	89,522	196,533	231,849
<i>Households</i>	72,536	165,790	196,929
<i>General government :</i>	16,986	30,743	34,920
<i>Individual</i>	7,106	12,866	14,727
<i>Collective</i>	9,880	17,877	20,193
Gross Domestic Fixed Capital Formation (GDFCF)	27,595	59,170	64,893
<i>Private sector</i>	19,866	46,261	53,713
<i>Public sector</i>	7,729	12,909	11,180
Increase in inventories ²	3,846	4,126	6,988
Exports of goods & services	73,841	138,530	140,614
Less imports of goods & services	74,513	162,867	179,490
GDP at market prices	120,291	235,492	264,854

	2000	2007 ¹	2008 ¹
Gross National Income (GNI), disposable income and savings			
Net primary income from the rest of the world (R.o.w)	-783	7,023	4,898
GNI at market prices	119,508	242,515	269,752
Net transfer from r.o.w	1,662	3,882	6,250
Gross National Disposable Income	121,170	246,397	276,002
Less final consumption expenditure	89,522	196,533	231,849
Gross national savings	31,648	49,864	44,153
Per capita GNI at market prices (rupees)	100,667	192,366	212,427
Annual real growth rate (%)			
GDP at basic prices	9.7	5.4	5.3
Final consumption expenditure	4.2	3.9	6.0
<i>Households</i>	3.7	4.5	7.0
<i>General government</i>	6.6	0.8	0.7
GDFCF(including aircraft & vessels)	-8.3	8.6	3.2
GDFCF(excluding aircraft & vessels)	1.0	17.0	6.7
¹ Revised			
² Includes all statistical discrepancies			

18. CONSTRUCTION

	2000	2007	2008
Building permits			
Number issued	8,867	9,100	7,643
<i>of which: -Residential</i>	8,331	8,133	7,010
Floor area covered ('000 m²)	1,510	1,960	1,567
<i>of which: -Residential</i>	1,170	1,293	1,124
Employment¹ in construction sector ('000)	45.1	49.7	52.0
Investment in construction			
Value (million rupees)	15,341	34,903	43,941
as a % of GDP at market prices	12.8	14.4	16.3
Investment in the construction of residential buildings			
Value (million rupees)	6,368	10,579	13,944
as a % of GDP at market prices	5.3	4.4	5.2
Share of construction in GDFCF (%)	55.6	59.0	67.7
All construction works			
Residential buildings	23.1	17.9	21.5
Non residential buildings	20.4	30.1	34.2
Other construction works	12.1	11.0	12.1

¹ Revised

19. EXTERNAL TRADE

	2000	2007 ¹	2008 ²
Total value of trade (Million rupees)	95,810	190,745	200,973
Total Exports (f.o.b. value)	40,882	69,708	68,409
Domestic exports	37,609	50,487	46,719
Re-exports	1,463	13,778	12,736
Ship's stores & bunkers	1,810	5,443	8,954
Total Imports (c.i.f. value)	54,928	121,037	132,564
Balance of visible trade	-14,046	-51,329	-64,155
EOE³ exports	-	37,840	34,932
EOE³ imports	-	21,036	19,896
Trade Indices (base: 2003=100)			
Export index (domestic)	100	127	122
Import index	100	154	166
Terms of trade	100	82	73
(ratio of export to import index)			
	(Million rupees)		
Domestic Exports (f.o.b.)	37,609	50,487	46,719
By commodity			
Food and live animals	7,154	17,314	16,317
<i>of which: - Sugar</i>	<i>5,544</i>	<i>9,578</i>	<i>8,266</i>
Beverages & tobacco	34	130	168
Crude materials, inedible except fuels	263	482	542
<i>of which: -Cut flowers and foliage</i>	<i>133</i>	<i>111</i>	<i>103</i>
Animal & vegetable oils & fats	-	4	5
Chemicals	311	437	443
Manufactured goods classified by materials	3,046	4,089	3,807
<i>of which: -Textile yarns, fabrics, made up articles</i>	<i>1,823</i>	<i>1,794</i>	<i>1,564</i>
Machinery & transport equipment	79	146	158
Miscellaneous manufactured goods	26,718	27,838	25,264
<i>of which:-Articles of apparel & clothing</i>	<i>24,755</i>	<i>24,726</i>	<i>22,140</i>
Other	4	47	15

Note: As from 2002, data include transactions of the freeport

¹ Revised

² Provisional

³ Export Oriented Enterprises(EOE) as from October 2006, consist of all those enterprises previously operating with an EPZ Certificate and those Enterprises manufacturing goods for exports and holding a registration certificate issued by the Board of Investment.

2000 2007¹ 2008²

Domestic Exports (f.o.b.) (contd.)

By country of destination	(Million rupees)		
-United Kingdom	11,276	21,671	20,053
-France	7,743	7,022	6,724
-U.S.A.	7,873	4,483	3,677
-Germany	1,414	1,637	1,404
-Italy	1,515	2,666	2,121
-Netherlands	652	934	781
-Malagasy Republic	1,580	1,778	1,658
-Belgium	897	1,900	1,942
-Reunion	509	889	856
-Spain	869	1,585	1,326
-Portugal	381	666	605
Re-Exports (f.o.b.)	1,463	13,778	12,736
By commodity			
Food and live animals	47	2,352	2,231
Beverages & tobacco	5	337	432
Crude materials, inedible except fuels	21	375	435
Chemicals	50	873	1,391
Manufactured goods classified by materials	509	1,586	1,476
Machinery & transport equipment	424	3,932	3,581
Miscellaneous manufactured goods	386	4,134	3,073
Other	21	50	54
By country of destination			
U.A.E	37	2,429	1,787
-Malagasy Republic	422	2,087	1,857
-France	193	1,867	1,235
-Reunion	80	950	1,181
-Italy	21	902	594
-India	27	195	308
-Spain	12	463	677
-Republic of South Africa	75	351	336
-United Kingdom	86	253	153
-China	14	105	209

Note: As from 2002, data include transactions of the freeport

¹ Revised

² Provisional

2000 2007¹ 2008²

(Million rupees)

Total Imports (c.i.f.)	54,928	121,037	132,564
By commodity			
Food and live animals	6,948	20,032	23,872
-Dairy products & birds' eggs	1,072	2,443	3,008
-Fish & fish preparations	1,058	7,066	8,547
Beverages & tobacco	369	1,545	2,126
Crude materials, inedible except fuels	1,654	3,369	3,821
Mineral fuels, lubricants, etc.	6,450	22,180	28,352
-Refined petroleum products	5,634	18,969	20,042
Animal & vegetable oils & fats	455	1,147	1,579
Chemicals	4,260	9,414	10,415
-Medical & pharmaceutical products	795	2,176	2,397
Manufactured goods classified by materials	17,570	24,733	25,035
-Paper, paperboard & articles thereof	1,056	1,672	1,854
-Textile yarns, fabrics, made up articles	10,843	8,990	7,492
-Iron & steel	1,041	3,155	3,675
-Manufactures of metals, n.e.s.	1,193	3,352	3,182
Machinery & transport equipment	12,427	28,529	26,272
-Specialised & gen. industrial machinery	4,023	8,052	6,453
-Road vehicles	2,916	5,228	6,215
-Aircraft, marine vessels & parts	135	3,183	866
Miscellaneous manufactured goods	4,710	9,583	10,807
-Articles of apparel & clothing	507	1,339	1,612
-Watches, clocks & opticals goods	451	609	720
Other	85	505	285

Note: As from 2002, data include transactions of the freeport

¹ Revised

² Provisional

	2000	2007 ¹	2008 ²
Total Imports (c.i.f.) (contd.)			
By country of origin	(Million rupees)		
-France	5,248	12,813	10,203
-Republic of South Africa	8,198	8,910	10,707
-India	4,821	25,633	31,698
-United Kingdom	2,378	3,622	2,997
-Japan	2,255	4,334	5,382
-Hong Kong	1,881	582	536
-Germany	2,113	3,268	2,966
-Malaysia	1,681	3,116	3,422
-Australia	1,897	2,752	3,201
-Italy	1,815	3,321	3,274
-China	4,152	13,768	15,291
-Singapore	1,080	1,333	1,098
-U.S.A.	1,601	2,777	3,168
-Switzerland	875	2,011	1,452
-Kuwait	-	20	-
-Belgium	965	1,607	1,648
Regional trade			
COMESA			
Exports to member states ³	2,521	5,055	5,006
Imports from member states	1,535	3,833	4,037
SADC			
Exports to member states ³	701	6,130	5,910
Imports from member states	8,690	10,536	12,508

Note: As from 2002, data include transactions of the freeport

¹ Revised

² Provisional

³ Excluding ship's stores and bunkers

20. BALANCE OF PAYMENTS

	2006	2007	2008 ¹
	(Million rupees)		
CURRENT ACCOUNT	-19,608	-12,497	-27,728
Goods and services	-23,511	-23,681	-38,876
Goods	-34,494	-44,182	-56,516
Merchandise	-34,133	-43,677	-56,235
Non-monetary gold	-361	-505	-281
Services	10,983	20,501	17,640
Transportation	-5,469	-4,594	-5,717
Travel	21,525	29,428	28,378
Other services	-5,073	-4,333	-5,021
Private	-5,183	-4,466	-5,125
Government	110	133	104
Income	1,636	7,491	4,898
Direct investment income	-2,721	-2,221	-4,474
Other investment income	5,267	11,703	11,233
Portfolio investment income	-616	-1,703	-1,518
Compensation of employees	-294	-288	-343
Current transfers	2,267	3,693	6,250
Private	1,910	3,149	3,900
Government	357	544	2,350
CAPITAL AND FINANCIAL ACCOUNT	6,570	2,132	20,857
Capital account	-83	-51	-40
Capital transfers	-83	-51	-40
Financial account	6,653	2,183	20,897
Financial account (excluding reserve assets)	2,080	16,063	25,521
Direct investment	3,018	8,800	9,411
Portfolio investment	-989	647	-4,868
Other investment	51	6,616	20,978
Reserve assets	4,573	-13,880	-4,624
NET ERRORS AND OMISSIONS	13,038	10,365	6,871

Source: Bank of Mauritius

¹ Provisional estimates

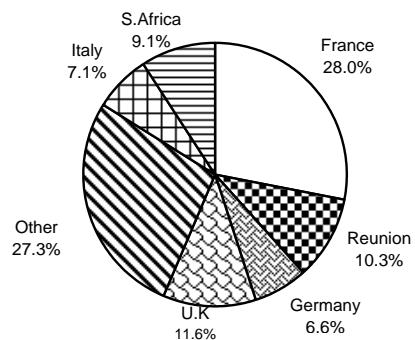
21. INTERNATIONAL TRAVEL & TOURISM

	2000	2007	2008 ¹
Passenger traffic ('000)			
Arrivals	915.2	1,238.8	1,280.6
(i) By gender			
Male	480.9	648.5	669.9
Female	434.3	590.3	610.7
(ii) By type of passenger			
Visitors	678.5	932.8	970.4
<i>of which: -on holiday</i>	602.6	818.7	821.3
<i>-on business</i>	27.0	34.6	37.5
Residents	216.7	277.3	283.8
Other	20.0	28.7	26.4
Departures	895.6	1,237.7	1,261.2
(i) By gender			
Male	469.9	645.6	659.0
Female	425.7	592.1	602.2
(ii) By type of passenger			
Visitors	667.2	942.3	960.3
Residents	212.9	274.8	280.3
Other	15.5	20.6	20.6
Inter-island passenger traffic			
From Mauritius to Rodrigues	49,530	61,617	54,433
<i>Male</i>	28,280	33,991	29,713
<i>Female</i>	21,250	27,626	24,720
From Rodrigues to Mauritius	49,981	61,595	54,212
<i>Male</i>	29,436	33,735	29,260
<i>Female</i>	20,545	27,860	24,952

¹ Provisional

	2000	2007	2008 ²
Tourist arrivals ('000)	656.5	907.0	930.5
France	198.4	240.0	260.1
Germany	52.9	65.2	61.5
Italy	39.0	69.5	66.4
Reunion	86.9	95.8	96.2
Republic of South Africa	48.7	81.7	84.4
United Kingdom	74.5	107.3	107.9
Other countries	156.1	247.5	254.0

Tourist arrivals by country of residence (2008)



	2000	2007	2008 ²
Number of licensed hotels	95	97	102
Number of rooms	8,657	10,857	11,488
Number of bed places	17,776	21,788	23,095
Room occupancy rate (%)	70	76	68
Bed occupancy rate (%)	62	68	61
Tourist nights ('000)	6,413	8,987 ¹	9,100
Tourist receipts (Million rupees)	14,234	40,687	41,213
Average length of stay (nights)	10.4	10.3 ¹	10.3
Average expend. per tourist (rupees)	21,683	44,860	44,293

¹ Revised

² Provisional

22. SOCIAL SECURITY

	99/00	06/07 ¹	07/08 ²
Non-contributory benefits			
No. of beneficiaries ('000) ³	166.5	198.8	203.4
Total amount paid (million rupees)	3,331.4	6,652.5	7,117.4
Contributory benefits⁴			
(National Pensions Fund)			
No. of employees paying contribution ('000)	277.5	296.2	305.3
Contributions collected ⁵ (million rupees)	979.0	1,571.9	1,712.1
Surcharge collected (million rupees)	6.9	1.1	1.3
No. of beneficiaries ('000) ³	45.7	65.4	68.8
Total amount paid (million rupees)	288.9	656.6	764.1
Public expenditure on social security and welfare as a % of			
Total public expenditure	21.7	24.2	23.0
GDP at market prices	5.3	5.6	5.1
	Beneficiaries (000)	Amount Paid	
Benefits by type⁶, 2007/08	as at June 2008	07/08	(R Mn)
Non-contributory benefits	203.4	7,117.4	
-Retirement pension	136.4	4,761.8	
-Widows pension	22.6	778.8	
-Invalids pension	27.4	1,125.9	
-Orphans pension	0.4	20.7	
-Social Aid	16.6	430.2	
Contributory benefits	68.8	764.1	
-Retirement pension	44.6	555.6	
-Widows pension (All ages)	16.7	147.8	
-Invalids pension	6.5	30.9	
-Orphans pension	0.1	0.2	
-Industrial injury benefits	0.9	29.6	

¹ Revised. ² Provisional. ³ As at June. ⁴ Excludes public and parastatal sectors.

⁵ Ratio of contribution is 2/3 from employers & 1/3 from employees. Excludes surcharge paid by employers. ⁶ A person receiving several benefits is counted several times.

REGULAR PUBLICATIONS OF CENTRAL STATISTICS OFFICE

Title	First Issue
1. Annual Digest of Statistics	1966
2. Business Activity Statistics	1997
3. Digest of Agricultural Statistics	1984
4. Digest of Demographic Statistics	1985
5. Digest of Education Statistics	1984
6. Digest of Energy & Water Statistics	1998
7. Digest of Environment Statistics	2002
8. Digest of External Trade Statistics	1977
9. Digest of Industrial Statistics	1984
10. Digest of International Travel and Tourism Statistics	1974
11. Digest of Labour Statistics	1994
12. Digest of Productivity and Competitiveness Statistics	1998
13. Digest of Public Finance Statistics	1988
14. Digest of Road Transport and Road Accident Statistics	1984
15. Digest of Social Security Statistics	2002
16. Digest of Statistics on Rodrigues	1994
17. National Accounts of Mauritius	1983

Above publications may be purchased at the Central Statistics Office and at the Sales Department of the Government Printing Office, La Tour Koenig.