

## Labour force, Employment and Unemployment – Third quarter 2018

### Introduction

1. This issue of Economic and Social Indicators (ESI) presents a set of estimates of labour force, employment and unemployment for the third quarter of 2018, based on the results of the Continuous Multi-Purpose Household Survey (CMPHS) from July to September 2018. The estimates refer to the Mauritian population aged 16 years and above.
2. Annual estimates of labour force including foreign workers derived after integrating data from CMPHS with other sources are given at Annex 3.

### Key figures

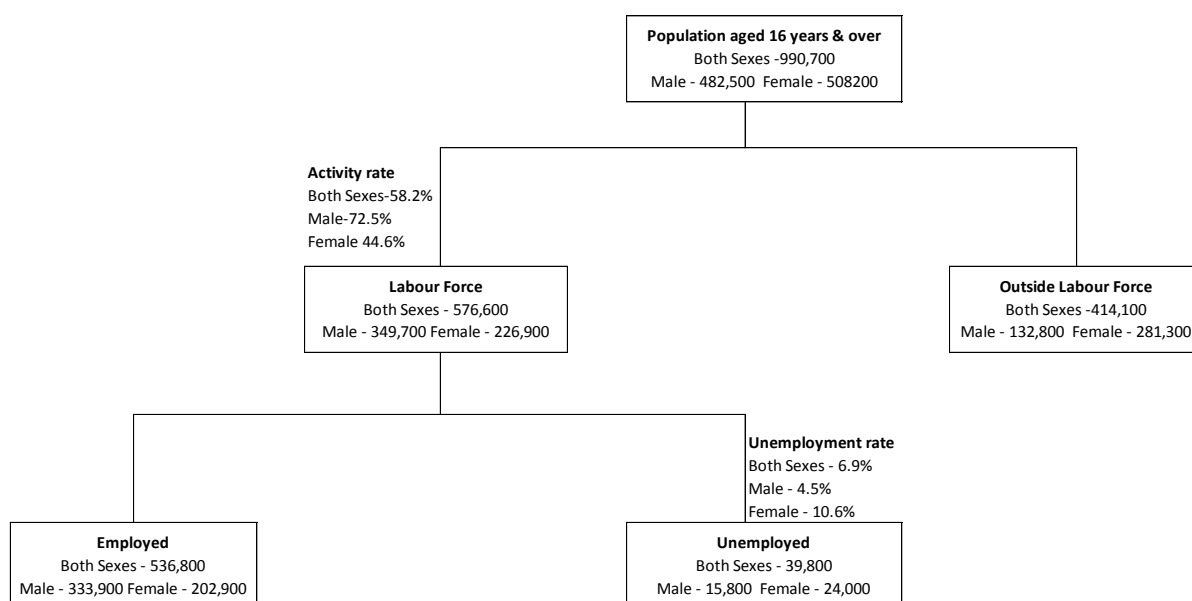
	Q3 2017	Q2 2018	Q3 2018	Change	
				Q3 2017 to Q3 2018	Q2 2018 to Q3 2018
Population (aged 16+)	985,200	991,600	990,700	+5,500	-900
Labour Force (Economically active)	583,000	582,000	576,600	-6,400	-5,400
<i>Of which Employment</i>	<i>542,400</i>	<i>541,500</i>	<i>536,800</i>	<i>-5,600</i>	<i>-4,700</i>
<i>Unemployment</i>	<i>40,600</i>	<i>40,500</i>	<i>39,800</i>	<i>-800</i>	<i>-700</i>
Outside Labour Force (Economically inactive)	402,200	409,600	414,100	+11,900	+4,500
Activity rate (%)	59.2	58.7	58.2	-1.0	-0.5
Unemployment rate (%)	7.0	7.0	6.9	-0.1	-0.1
Seasonally adjusted unemployment rate	7.2	6.7	7.1	-0.1	+0.4
Youth unemployment	19,500	21,500	19,300	-200	-2,200
Youth unemployment rate (%)	24.9	27.5	25.2	+0.3	-2.3

**NOTE: The increase or decrease in employment, represents the net change in employment level i.e the combined effect of employment creations and losses during the period under reference.**

## Labour market overview, third quarter 2018

3. Compared with the corresponding quarter of 2017, there has been a decrease in the labour force (-6,400) with decreases in both employment (-5,600) and unemployment (-800). The number of those outside labour force increased by 4,500 during the same period.
4. Compared with the previous quarter, labour force decreased by 5,400 with decreases in both employment (-4,700) and unemployment (-700). Those outside labour force increased by 11,900 during the same period.

Chart 1: The Labour Market, 3rd quarter 2018



## Labour force participation

	Q3 2017	Q2 2018	Q3 2018	Change	
				Q3 2017 to Q3 2018	Q2 2018 to Q3 2018
Activity rate (%)					
Both sexes	59.2	58.7	58.2	-1.0	-0.5
Male	73.9	72.4	72.5	-1.4	0.1
Female	45.2	45.7	44.6	-0.6	-1.1

5. The activity rate for the third quarter 2018 was 58.2%, down by 1.0 percentage point from 59.2% in the corresponding quarter one year earlier. The male activity rate decreased by 1.4 percentage points to 72.5% and the female rate decreased by 0.6 percentage point to 44.6%.

6. Compared with the previous quarter, the activity rate decreased by 0.5 percentage point to 58.2%. The male activity rate increased by 0.1 percentage point from 72.4% to 72.5% while the female activity rate decreased by 1.1 percentage points from 45.7% to 44.6%.

### Employment

	Q3 2017	Q2 2018	Q3 2018	Change	
				Q3 2017 - Q3 2018	Q2 2018 - Q3 2018
Employment					
Both sexes	542,400	541,500	536,800	-5,600	-4,700
Male	338,300	331,500	333,900	-4,400	+2,400
Female	204,100	210,000	202,900	-1,200	-7,100

7. From third quarter 2017 to third quarter 2018, employment decreased by 5,600 to 536,800; male employment decreased by 4,400 to 333,900 and female employment decreased by 1,200 to 202,900.

8. Compared with the previous quarter, employment decreased by 4,700; male employment increased by 2,400 while female employment decreased by 7,100.

### Unemployment

	Q3 2017	Q2 2018	Q3 2018	Change	
				Q3 2017 to Q3 2018	Q2 2018 to Q3 2018
Unemployment					
Both sexes	40,600	40,500	39,800	-800	-700
Male	16,400	18,500	15,800	-600	-2,700
Female	24,200	22,000	24,000	-200	+2000
Unemployment rate (%)					
Both sexes	7.0	7.0	6.9	-0.1	-0.1
Male	4.6	5.3	4.5	-0.1	-0.8
Female	10.6	9.5	10.6	0.0	+1.1

### ***3<sup>rd</sup> Quarter 2017 to 3<sup>rd</sup> Quarter 2018***

9. From third quarter 2017 to third quarter 2018, the number of unemployed persons decreased by 800 with decreases in both male (-600) and female (-200).
10. The unemployment rate decreased by 0.1 percentage point from third quarter 2017 to 6.9% in third quarter 2018. Male unemployment rate decreased by 0.1% to 4.5% while female unemployment rate remained unchanged at 10.6%.

### ***2<sup>nd</sup> Quarter 2018 to 3<sup>rd</sup> Quarter 2018***

11. When compared with the second quarter of 2018, the total number of unemployed persons decreased by 700 with a decrease in males (-2,700) and an increase in females (+2,000).
12. From second quarter 2018 to third quarter 2018, the unemployment rate decreased by 0.1 percentage point from 7.0% to 6.9%. Male unemployment rate decreased by 0.8 percentage point from 5.3% to 4.5% while female unemployment rate increased by 1.1 percentage points from 9.5% to 10.6%.

### **Unemployment of the youth aged 16-24 years**

	Q3 2017	Q2 2018	Q3 2018	Change	
				Q3 2017 - Q3 2018	Q2 2018 - Q3 2018
Youth unemployment					
Both sexes	19,500	21,500	19,300	-200	-2,200
Male	8,100	10,900	8,500	+400	-2,400
Female	11,400	10,600	10,800	-600	+200
Youth unemployment rate (%)					
Both sexes	24.9	27.5	25.2	+0.3	-2.3
Male	18.7	25.7	20.4	+1.7	-5.3
Female	32.8	29.6	31.0	-1.8	+1.4

13. At the third quarter 2018, youth unemployed aged 16 to 24 years numbered 19,300 (8,500 males and 10,800 females) compared to 21,500 (10,900 males and 10,600 females) at the previous quarter and 19,500 (8,100 males and 11,400 females) at the corresponding quarter of 2017.
14. The youth unemployment rate increased from 24.9% to 25.2% in the third quarter of 2018 as compared to the corresponding quarter one year earlier. During the same period, the youth unemployment rate for male increased by 1.7 percentage points to

20.4% while female youth unemployment rate decreased by 1.8 percentage points to 31.0%.

15. Compared to the previous quarter, the youth unemployment rate decreased from 27.5% to 25.2% with a decrease of 5.3 percentage points in the male youth unemployment rate and an increase of 1.4 percentage points in the female youth unemployment rate.

### ***Characteristics of the unemployed as at third quarter 2018***

16. The main characteristics of the unemployed as at third quarter 2018 were as follows:

- (i) The 39,800 unemployed comprised 15,800 males (40%) and 24,000 females (60%).
- (ii) Around 24,400 (61%) of the unemployed were single. Among males, the majority (80%) was single compared to 49% among the females.
- (iii) Some 3,600 or 9% had not reached the Certificate of Primary Education (CPE) level or equivalent and a further 13,900 (35%) did not have the Cambridge School Certificate (SC) or equivalent.
- (iv) Around 32,700 (82%) had been looking for work for up to one year and the remaining 7,100 (18%) for more than one year.
- (v) About 26,200 (66%) had working experience and 13,600 (34%) were looking for a job for the first time.
- (vi) Around 20,200 (51%) were registered at the Employment Service Information Centre.
- (vii) There were 9,100 (23%) young persons aged 16 to 24 years, not yet married and looking for a first job. Some 2,000 (22%) of them possessed a qualification below SC.
- (viii) 3,100 or 8% of the unemployed were heads of households.
- (ix) 5,200 (13%) lived in households with no employed persons.

### ***Seasonally adjusted unemployment rate***

17. Seasonally adjusted unemployment rate for the third quarter of 2018 was 7.1%, lower than the rate of 7.2% at the corresponding quarter of 2017 but higher than the rate of 6.7% at the previous quarter.

### **Population outside Labour Force**

18. The number of persons aged 16 years and over, not forming part of the labour force (inactive population) was estimated at 414,100 at the third quarter 2018 compared to 409,600 in the previous quarter and 402,200 in the corresponding quarter of 2017.

19. The population outside labour force was made up of 132,800 males and 281,300 females. Among inactive males, around 49% were ‘retired or old persons’ and 30% were students. Among females, 60% were homemakers; 18% were ‘retired or old persons’ followed by 15% ‘students’.

### Forecasts of Employment and Unemployment estimates - Year 2018<sup>1</sup>

20. Based on the results of the survey for the first three quarters of the current year and other information available, forecasts of employment and unemployment for 2018 are as follows:

	Year 2017	Year 2018 <sup>1</sup>	Change
Employment	545,100	546,500	+1,400 <sup>2</sup>
Unemployment	41,800	40,400	-1,400
Unemployment rate (%)	7.1	6.9	-0.2

<sup>1</sup>Forecasts

<sup>2</sup>please see explanations in the box on page 1

#### CAUTION:

The estimate of unemployment rate for the year is NOT end of year estimate (i.e as at 31<sup>st</sup> December). It represents weighted averages of estimates based on sample data collected throughout the year under review.

21. Employment is expected to increase by 1,400 in 2018 to reach 546,500 compared to 545,100 in 2017. It is to be noted that this increase represents the net change in employment level, i.e the combined effect of employment creations and losses during the period under reference.

22. Unemployment rate for 2018 is forecasted at 6.9%, lower than the rate of 7.1% for 2017.

### Sampling errors

23. The estimates in this publication are based on the results of a sample survey and are thus subject to sample variability. Standard errors and confidence intervals give an indication of this variability.

24. The standard error of the estimates and the 95% confidence interval which represent a 95% chance that the true value lies within that interval, are given in the tables that follow.

Estimated labour force, employment and unemployment by sex, 3<sup>rd</sup> quarter 2017 – 3<sup>rd</sup> quarter 2018

Both Sexes

		Estimates	Standard Error	95% confidence interval	
				Lower limit	Upper limit
Labour force					
	2017 Q3	583,000	11,200	560,900	605,100
	Q4	587,600	11,400	565,200	610,000
	2018 Q1	581,000	12,700	556,000	606,100
	Q2	582,000	6,700	568,900	595,100
	Q3 <sup>1</sup>	576,600	11,800	553,300	599,800
Employment					
	2017 Q3	542,400	10,600	521,600	563,200
	Q4	548,000	10,800	526,600	569,300
	2018 Q1	540,000	12,000	516,300	563,700
	Q2	541,500	6,700	528,400	554,600
	Q3 <sup>1</sup>	536,800	11,500	514,300	559,400
Unemployment					
	2017 Q3	40,600	2,600	35,600	45,700
	Q4	39,600	2,400	34,800	44,400
	2018 Q1	41,000	2,500	36,200	46,000
	Q2	40,500	2,500	35,600	45,500
	Q3 <sup>1</sup>	39,800	2,600	34,700	44,800
Unemployment rate, %					
	2017 Q3	7.0	0.4	6.2	7.8
	Q4	6.7	0.4	6.0	7.5
	2018 Q1	7.1	0.4	6.3	7.9
	Q2	7.0	0.4	6.1	7.8
	Q3 <sup>1</sup>	6.9	0.4	6.0	7.7
Activity rate, %					
	2017 Q3	59.2	0.6	57.9	60.4
	Q4	59.5	0.7	58.2	60.9
	2018 Q1	58.8	0.6	57.5	60.0
	Q2	58.7	0.6	57.5	59.9
	Q3 <sup>1</sup>	58.2	0.7	56.9	59.5

<sup>1</sup> Provisional

Estimated labour force, employment and unemployment by sex, 3<sup>rd</sup> quarter 2017 – 3<sup>rd</sup> quarter 2018

Male

		Estimates	Standard Error	95% confidence interval	
				Lower limit	Upper limit
Labour force					
	2017 Q3	354,700	7,500	339,900	369,500
	Q4	357,000	7,700	341,800	372,200
	2018 Q1	351,100	8,000	335,400	366,900
	Q2	350,000	6,200	337,800	362,200
	Q3 <sup>1</sup>	349,700	7,400	335,100	364,300
Employment					
	2017 Q3	338,300	7,400	323,700	353,000
	Q4	340,700	7,700	325,500	355,800
	2018 Q1	333,100	7,800	317,800	348,400
	Q2	331,500	6,100	319,500	343,500
	Q3 <sup>1</sup>	333,900	7,400	319,400	348,400
Unemployment					
	2017 Q3	16,400	1,800	12,800	19,900
	Q4	16,300	1,700	13,000	19,700
	2018 Q1	18,000	1,800	14,600	21,600
	Q2	18,500	1,800	15,100	21,900
	Q3 <sup>1</sup>	15,800	1,700	12,500	19,000
Unemployment rate, %					
	2017 Q3	4.6	0.5	3.6	5.6
	Q4	4.6	0.5	3.6	5.5
	2018 Q1	5.1	0.5	4.2	6.1
	Q2	5.3	0.5	4.3	6.3
	Q3 <sup>1</sup>	4.5	0.5	3.6	5.4
Activity rate, %					
	2017 Q3	73.9	0.7	72.5	75.3
	Q4	74.2	0.8	72.7	75.8
	2018 Q1	72.9	0.7	71.4	74.3
	Q2	72.4	0.8	70.8	74.0
	Q3 <sup>1</sup>	72.5	0.7	71.1	73.8

<sup>1</sup> Provisional



Estimated labour force, employment and unemployment by sex, 3<sup>rd</sup> quarter 2017 – 3<sup>rd</sup> quarter 2018

Female

		Estimates	Standard Error	95% confidence interval	
				Lower limit	Upper limit
Labour force					
	2017 Q3	228,300	5,900	216,800	239,900
	Q4	230,600	6,400	218,000	243,200
	2018 Q1	229,900	6,700	216,600	243,200
	Q2	232,000	5,500	221,300	242,700
	Q3 <sup>1</sup>	226,900	6,700	213,800	240,000
Employment					
	2017 Q3	204,100	5,500	193,300	214,900
	Q4	207,300	6,400	194,700	219,900
	2018 Q1	206,900	6,100	194,800	219,000
	Q2	210,000	5,300	199,600	220,300
	Q3 <sup>1</sup>	202,900	6,200	190,700	215,200
Unemployment					
	2017 Q3	24,200	2,100	20,100	28,400
	Q4	23,300	1,800	19,700	26,800
	2018 Q1	23,000	1,900	19,300	26,700
	Q2	22,000	1,900	18,400	25,700
	Q3 <sup>1</sup>	24,000	2,100	19,900	28,000
Unemployment rate, %					
	2017 Q3	10.6	0.9	8.9	12.3
	Q4	10.1	0.8	8.5	11.6
	2018 Q1	10.0	0.7	8.6	11.5
	Q2	9.5	0.8	8.0	11.0
	Q3 <sup>1</sup>	10.6	0.8	8.9	12.2
Activity rate, %					
	2017 Q3	45.2	0.9	43.4	46.9
	Q1	45.5	0.9	43.7	47.3
	2018 Q1	45.4	0.9	43.6	47.1
	Q2	45.7	0.9	43.9	47.4
	Q3 <sup>1</sup>	44.6	1.0	42.6	46.7

<sup>1</sup> Provisional

## Longer time series

- The following graphs show the series for employment, unemployment and activity rate from 3<sup>rd</sup> quarter 2014 to 3<sup>rd</sup> quarter 2018.

Chart 2: Employment by quarter, 3<sup>rd</sup> quarter 2014 – 3<sup>rd</sup> quarter 2018

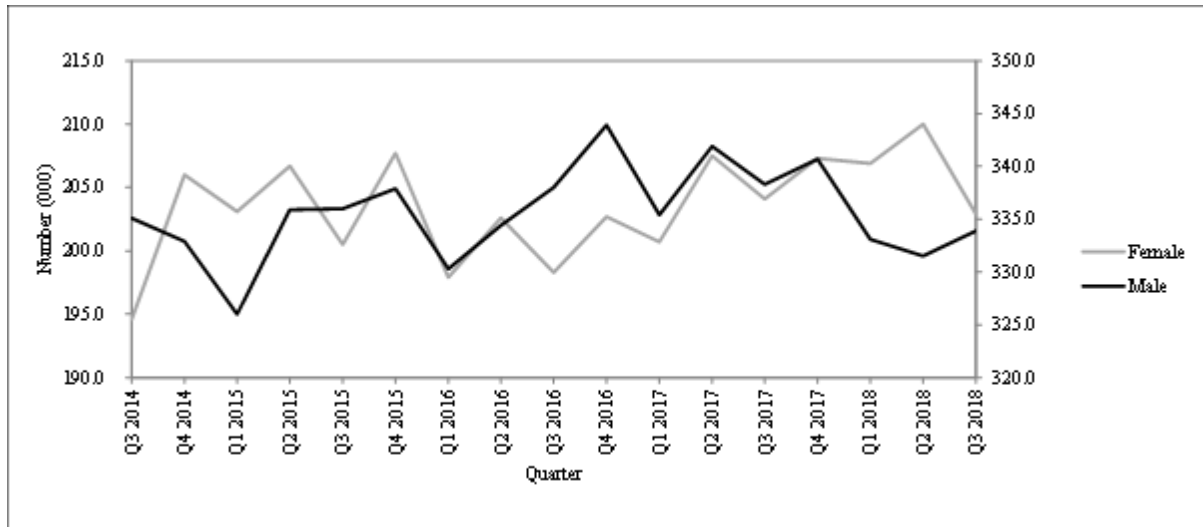


Chart 3: Unemployment rate by quarter, 3<sup>rd</sup> quarter 2014 – 3<sup>rd</sup> quarter 2018

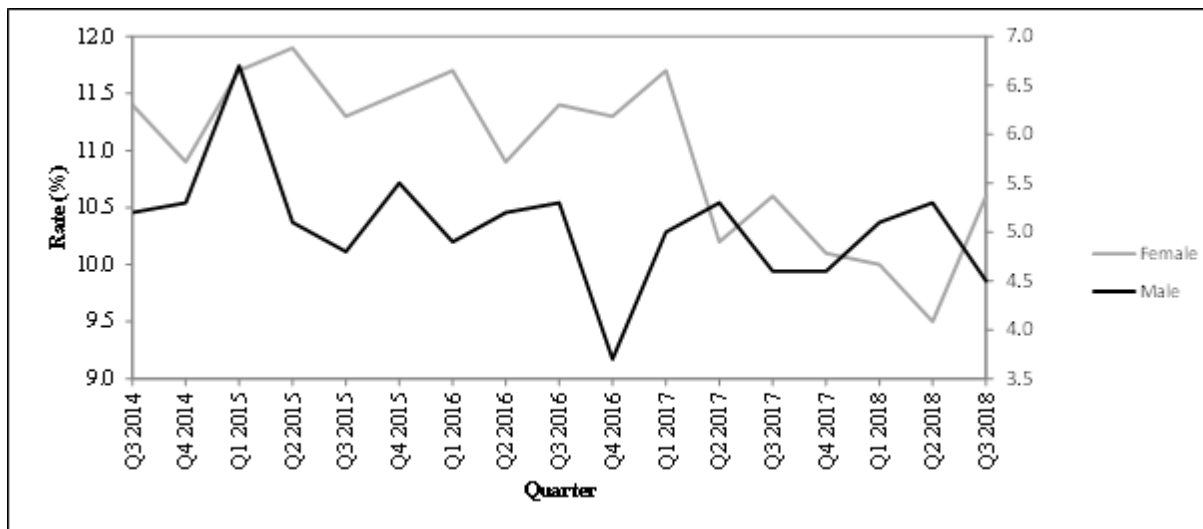
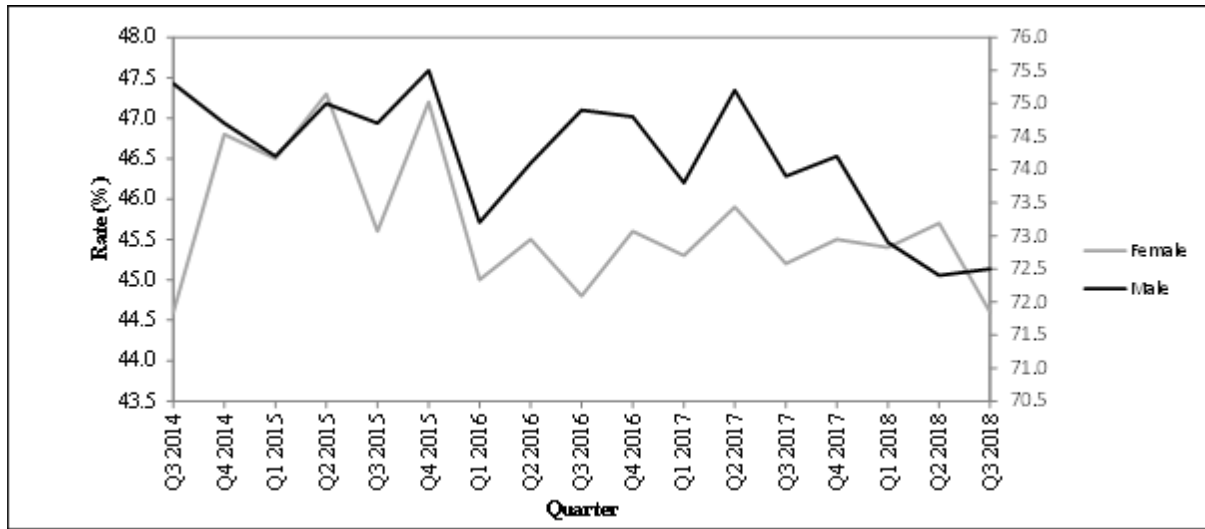


Chart 4: Activity rate by quarter, 3<sup>rd</sup> quarter 2014 – 3<sup>rd</sup> quarter 2018



The following tables together with the web version of this publication can be downloaded from Statistics Mauritius website at <http://statsmauritius.govmu.org> From the homepage, click on ‘Statistics by subject’ followed by ‘Labour’ then select the appropriate publication under the heading ‘Publications – Economic and Social Indicators’.

### **List of tables**

*Table 1: Labour market activity by status, 3rd Quarter 2017 to 3rd Quarter 2018*

*Table 2: Labour force characteristics by age and sex, 3rd Quarter 2018*

*Table 3: Employment by industrial activity, 3rd Quarter 2017 to 3rd Quarter 2018*

*Table 4: Employment by occupational group, 3rd Quarter 2017 to 3rd Quarter 2018*

*Table 5: Employment by hours worked, 3rd Quarter 2017 to 3rd Quarter 2018*

*Table 6: Unemployment by educational attainment, 3rd Quarter 2017 to 3rd Quarter 2018*

*Table 7: Unemployment by age, 3rd Quarter 2017 to 3rd Quarter 2018*

*Table 8: Unemployment by work experience, 3rd Quarter 2017 to 3rd Quarter 2018*

*Table 9: Economically inactive population by reason, 3rd Quarter 2017 to 3rd Quarter 2018*

*Annex 3: Annual labour force estimates based on data from different data sources, 2011-2018*

Statistics Mauritius  
Ministry of Finance and Economic Development  
Port Louis

December 2018

Contact persons: (1) Ms. N. Ramjan (Statistician)  
Email: [nramjan@govmu.org](mailto:nramjan@govmu.org)

(2) Ms. P. Koonjul (Senior Statistical Officer)  
Email: [pkoonjul@govmu.org](mailto:pkoonjul@govmu.org)

Statistics Mauritius  
LIC Centre, Port Louis  
Tel: 2081800 Fax: 2114150

## **NOTES**

### **Release of Labour Force data**

Labour Force statistics are compiled and published in the “Economic and Social Indicators” in March, June, September and December according to an advance calendar posted on the website of Statistics Mauritius (<http://statsmauritius.govmu.org>). This issue provides data for the third quarter 2018 compared to the previous quarter and to the same quarter a year ago.

However, where appropriate, historical series are also provided for the main indicators.

### **The CMPHS Survey methodology**

#### **Data collection**

Face to face interviews of household members are carried out by qualified interviewers recruited by the office.

#### **Frequency of data collection**

Data collection is carried out monthly except in 2004 when it was carried out every quarter. Up to 2005, the reference period for data on labour force was the last week of the survey month. As from 2006, the reference week has been changed to the second week of the survey month so that estimates can be published within one quarter of the reference period, as required by the IMF Special Data Dissemination System (SDDS) to which the country has graduated on 28 February 2012.

#### **Scope and coverage of collection**

All private Mauritian households in the islands of Mauritius and Rodrigues are covered.

#### **Sampling method**

A Stratified two-stage sampling design is used. At the first stage, Primary Sampling Units (PSUs) are selected with probability proportional to size and at the second stage, a fixed number of households is selected from each selected PSU.

Prior to 2005, the first stage stratification factors were urban, semi urban and rural geographical locations. As from 2005, the Relative Development Index (RDI) is used as the spatial stratification factor. This index is based on 12 variables encompassing housing and living conditions, literacy and education, and employment derived from the 2011 Housing and Population Census to rank PSUs. A set of RDIs for administrative regions has been published in the series "Economic and Social Indicators" - Issue No. 977.

The second stage stratification criteria are community, household size and average monthly expenditure of the household.

## **Sample size**

From 1999 to 2003, around 6,500 households were covered each year. In 2004, the sample was increased to 8,640 so that reliable quarterly estimates of labour force, employment and unemployment could be worked out. As from 2005, the sample for the year has been further increased to 11,280. Furthermore, in order to measure quarterly changes, 50% of the households sampled in a quarter are re-interviewed in the following quarter; for example, 50% of the households sampled in the first quarter of 2005 have been re-interviewed in the second quarter of 2005.

## **Questionnaire**

The CMPHS questionnaire comprises three modules: (a) a basic module common to all rounds of the survey covering the general characteristics of the population (b) a second module covering labour force with in-depth investigation and a core set of questions which are kept constant at all rounds of the survey and (c) a third module grouping other topics of interest but investigated in less details.

## **Estimation and reliability of results**

Estimates worked out from household survey data are inevitably subject to sampling variability since they are based on information collected from only a sample of households rather than from all households. The Standard Error (S.E) which is a measure of this variability, used to set confidence intervals for any estimate (whether a total or a rate) derived from the sample. For example, a 95% confidence interval indicates that there is 95% chance that the upper and lower limits of the interval enclose the true value (which would be obtained if all households had been surveyed). Standard errors and confidence intervals are calculated for the main labour force estimates.

## **Definitions**

### **Household**

A household is defined as either a person living on his/her own or a group of two or more persons, who may or may not be related, but who live together and make common provision for food and other essentials for living.

### **Employment**

Employed population consists of Mauritians aged 16 years and above (16+) who have worked for pay, profit or family gain for at least one hour during the reference week of a month. It includes those who are temporarily absent from work for reasons such as leave with pay, leave without pay and temporary disorganisation of work (bad weather, break down of equipment, lack of order, etc.).

It is to be noted that as from year 2007, labour force estimates are based on population aged 16 years and above, following the amendment to the Labour Act in December 2006 whereby the minimum legal working age is 16 years, and the subsequent recommendation by the ILO to be in line with the amended Labour Act.

### **Unemployment**

Unemployed population comprises all Mauritians aged 16+ who are not working but who are looking for work and are available for work during the reference period.

### **Labour force**

Labour force or active population is made up of employed and unemployed population.

### **Unemployment rate**

Unemployment rate is the ratio (%) of unemployment to labour force.

### **Outside the Labour Force (previously known as inactive population)**

Outside the labour force includes all Mauritians aged 16+ years, not forming part of the labour force for reasons such as attendance at educational institutions, engagement in household duties, retirement, old age and infirmity/disablement.

### **Activity rate**

Activity rate is the ratio (%) of labour force to population aged 16+ (active and inactive population).

### **Employer**

An employer is a person who operates his/her own business or trade and hires one or more employees

### **Own account worker**

An Own account worker is a person who operates his/her own business or trade but does not hire employees. He/She may be working alone or with the help of contributing family workers.

### **Employee**

An Employee is a person who works for pay for someone else, even in a temporary capacity.

### **Apprentice**

An Apprentice is a person being trained for a job or trade. He/She may be paid or may receive some pocket money (stipend); an apprentice is considered as an employee if he/she works for pay in cash or in kind.

### **Contributing family worker**

A Contributing family worker is a person who works without pay in an enterprise operated by a family member.

### **Educational attainment**

*Primary:* comprises persons who have studied up to a “Standard” between Standard 1 and the Certificate of Primary Education (CPE) or equivalent.

*Secondary:* comprises persons who have studied up to a “Form” between Form 1 and the Higher School Certificate (HSC) or equivalent.

*Tertiary:* comprises persons who in addition to their secondary educational certificates (SC and HSC or equivalent) also possess either a certificate/diploma (which is above the HSC but below a first degree) or a degree.



## Annual labour force estimates based on data from different data sources, 2011 - 2018

	Labour force			Employment				Unemployment <sup>1</sup>	
	Mauritians aged 16+	Foreign workers	Total	in large establishments	outside large establishments	Total	of whom Mauritian	Number	Rate
	(000s)	(000s)	(000s)	(000s)	(000s)	(000s)	(000s)	(000s)	(%)
<b>Both sexes</b>									
2011	548.6	23.0	<b>571.6</b>	310.7	218.2	<b>528.9</b>	505.9	42.7	7.8
2012	556.3	24.0	<b>580.3</b>	311.5	224.2	<b>535.7</b>	511.7	44.6	8.0
2013	571.2	26.3	<b>597.5</b>	312.5	239.5	<b>552.0</b>	525.7	45.5	8.0
2014	575.7	28.3	<b>604.0</b>	313.5	245.7	<b>559.2</b>	530.9	44.8	7.8
2015	584.6	28.3	<b>612.9</b>	314.1	252.5	<b>566.6</b>	538.3	46.3	7.9
2016	581.0	28.6	<b>609.6</b>	314.2	253.0	<b>567.2</b>	538.6	42.4	7.3
2017	586.9	28.4	<b>615.3</b>	316.9	256.6	<b>573.5</b>	545.1	41.8	7.1
2018 <sup>2</sup>	586.9	29.7	<b>616.6</b>	321.3	254.9	<b>576.2</b>	546.5	40.4	6.9
<b>Change current year over previous:</b>	0.0	1.3	1.3	4.4	-1.7	2.7	1.4	-1.4	-0.2
<b>Male</b>									
2011	343.3	13.4	<b>356.7</b>	197.8	141.6	<b>339.4</b>	326.0	17.3	5.0
2012	346.9	14.2	<b>361.1</b>	198.3	144.7	<b>343.0</b>	328.8	18.1	5.2
2013	350.4	16.5	<b>366.9</b>	199.1	149.2	<b>348.3</b>	331.8	18.6	5.3
2014	352.8	18.3	<b>371.1</b>	199.3	152.4	<b>351.7</b>	333.4	19.4	5.5
2015	353.3	18.6	<b>371.9</b>	198.5	153.9	<b>352.4</b>	333.8	19.5	5.5
2016	353.6	19.3	<b>372.9</b>	198.6	157.4	<b>356.0</b>	336.7	16.9	4.8
2017	356.6	20.0	<b>376.6</b>	194.8	164.6	<b>359.4</b>	339.4	17.2	4.8
2018 <sup>2</sup>	354.6	18.2	<b>372.8</b>	196.4	159.2	<b>355.6</b>	337.4	17.2	4.9
<b>Change current year over previous:</b>	-2.0	-1.8	-3.8	1.6	-5.4	-3.8	-2.0	0.0	0.1
<b>Female</b>									
2011	205.3	9.6	<b>214.9</b>	112.9	76.6	<b>189.5</b>	179.9	25.4	12.4
2012	209.4	9.8	<b>219.2</b>	113.2	79.5	<b>192.7</b>	182.9	26.5	12.7
2013	220.8	9.8	<b>230.6</b>	113.4	90.3	<b>203.7</b>	193.9	26.9	12.2
2014	222.9	10.0	<b>232.9</b>	114.2	93.3	<b>207.5</b>	197.5	25.4	11.4
2015	231.3	9.7	<b>241.0</b>	115.6	98.6	<b>214.2</b>	204.5	26.8	11.6
2016	227.4	9.3	<b>236.7</b>	115.6	95.6	<b>211.2</b>	201.9	25.5	11.2
2017	230.3	8.4	<b>238.7</b>	122.1	92.0	<b>214.1</b>	205.7	24.6	10.7
2018 <sup>2</sup>	232.3	11.5	<b>243.8</b>	124.9	95.7	<b>220.6</b>	209.1	23.2	10.0
<b>Change current year over previous:</b>	2.0	3.1	5.1	2.8	3.7	6.5	3.4	-1.4	-0.7

<sup>1</sup> Unemployment figures and rate refer to Mauritians<sup>2</sup> Provisional**Note:**

1. The above figures have been worked out in order to give a set of comparable labour force estimates obtained from different sources. Users are cautioned in the use of these figures given that there are differences related to the reference period, coverage and methodology. The different sources from which these estimates have been obtained are as follows:

- i CMPHS for Mauritian labour force estimates which are subject to sampling variability as mentioned at Annex 1.
- ii The Annual Survey of Employment and Earnings (SEE) carried out in March of each year. Employment figures refer to jobs in large establishments employing 10 or more persons and include both Mauritians and foreign workers.
- iii Employment in 'other than large' establishments has been estimated after reconciling data from CMPHS, SEE and administrative sources.

**Table 1: Labour market activity by status, 3rd Quarter 2017 to 3rd Quarter 2018**

	Total Mauritian population aged 16 & over	In employment						In thousands	
		Employees	Employers	Own account workers	Contrib. family workers	Total	Unemployed	Total econ. active	Total econ. inactive
<b>Both sexes</b>									
2017 Q3	<b>985.2</b>	428.1	24.5	76.6	13.2	<b>542.4</b>	<b>40.6</b>	<b>583.0</b>	<b>402.2</b>
Q4	<b>987.4</b>	442.8	21.3	72.7	11.2	<b>548.0</b>	<b>39.6</b>	<b>587.6</b>	<b>399.8</b>
2018 Q1	<b>988.6</b>	433.3	19.9	76.4	10.4	<b>540.0</b>	<b>41.0</b>	<b>581.0</b>	<b>407.6</b>
Q2	<b>991.6</b>	430.5	18.3	83.4	9.3	<b>541.5</b>	<b>40.5</b>	<b>582.0</b>	<b>409.6</b>
Q3 <sup>1</sup>	<b>990.7</b>	435.1	17.9	74.4	9.4	<b>536.8</b>	<b>39.8</b>	<b>576.6</b>	<b>414.1</b>
<b>% change, latest quarter over:</b>									
previous quarter	<b>-0.1</b>	<b>1.1</b>	<b>-2.2</b>	<b>-10.8</b>	<b>1.1</b>	<b>-0.9</b>	<b>-1.7</b>	<b>-0.9</b>	<b>1.1</b>
same quarter a year ago	<b>0.6</b>	<b>1.6</b>	<b>-26.9</b>	<b>-2.9</b>	<b>-28.8</b>	<b>-1.0</b>	<b>-2.0</b>	<b>-1.1</b>	<b>3.0</b>
<b>Male</b>									
2017 Q3	<b>479.9</b>	254.6	21.6	57.4	4.7	<b>338.3</b>	<b>16.4</b>	<b>354.7</b>	<b>125.2</b>
Q4	<b>480.9</b>	264.7	17.8	54.4	3.8	<b>340.7</b>	<b>16.3</b>	<b>357.0</b>	<b>123.9</b>
2018 Q1	<b>481.8</b>	255.3	16.4	59.4	2.0	<b>333.1</b>	<b>18.0</b>	<b>351.1</b>	<b>130.7</b>
Q2	<b>483.6</b>	251.3	14.8	63.1	2.3	<b>331.5</b>	<b>18.5</b>	<b>350.0</b>	<b>133.6</b>
Q3 <sup>1</sup>	<b>482.5</b>	259.8	14.7	56.9	2.5	<b>333.9</b>	<b>15.8</b>	<b>349.7</b>	<b>132.8</b>
<b>% change, latest quarter over:</b>									
previous quarter	<b>-0.2</b>	<b>3.4</b>	<b>-0.7</b>	<b>-9.8</b>	<b>8.7</b>	<b>0.7</b>	<b>-14.6</b>	<b>-0.1</b>	<b>-0.6</b>
same quarter a year ago	<b>0.5</b>	<b>2.0</b>	<b>-31.9</b>	<b>-0.9</b>	<b>-46.8</b>	<b>-1.3</b>	<b>-3.7</b>	<b>-1.4</b>	<b>6.1</b>
<b>Female</b>									
2017 Q3	<b>505.3</b>	173.5	2.9	19.2	8.5	<b>204.1</b>	<b>24.2</b>	<b>228.3</b>	<b>277.0</b>
Q4	<b>506.5</b>	178.1	3.5	18.3	7.4	<b>207.3</b>	<b>23.3</b>	<b>230.6</b>	<b>275.9</b>
2018 Q1	<b>506.8</b>	178.0	3.5	17.0	8.4	<b>206.9</b>	<b>23.0</b>	<b>229.9</b>	<b>276.9</b>
Q2	<b>508.0</b>	179.2	3.5	20.3	7.0	<b>210.0</b>	<b>22.0</b>	<b>232.0</b>	<b>276.0</b>
Q3 <sup>1</sup>	<b>508.2</b>	175.3	3.2	17.5	6.9	<b>202.9</b>	<b>24.0</b>	<b>226.9</b>	<b>281.3</b>
<b>% change, latest quarter over:</b>									
previous quarter	<b>0.3</b>	<b>-1.5</b>	<b>-8.6</b>	<b>2.9</b>	<b>-17.9</b>	<b>-1.9</b>	<b>4.3</b>	<b>-1.3</b>	<b>1.6</b>
same quarter a year ago	<b>0.6</b>	<b>1.0</b>	<b>10.3</b>	<b>-8.9</b>	<b>-18.8</b>	<b>-0.6</b>	<b>-0.8</b>	<b>-0.6</b>	<b>1.6</b>

<sup>1</sup> Provisional

**Table 2: Labour force characteristics by age and sex, 3rd Quarter 2018<sup>1</sup>**

	In thousands					
	Mauritian aged 16 and over	Age group (years)				
	16-24	25 - 29	30 - 39	40 - 49	50+	
<b>Both sexes</b>						
In employment	<b>536.8</b>	57.2	64.6	130.3	129.1	155.6
Unemployed	<b>39.8</b>	19.3	7.0	7.9	4.2	1.4
Labour force	<b>576.6</b>	76.5	71.6	138.2	133.3	157.0
Economically inactive	<b>414.1</b>	93.9	15.3	33.1	36.3	235.5
Total Population	<b>990.7</b>	170.4	86.9	171.3	169.6	392.5
Employment rate (%)	<b>93.1</b>	74.8	90.2	94.3	96.8	99.1
Unemployment rate (%)	<b>6.9</b>	25.2	9.8	5.7	3.2	0.9
Activity rate (%)	<b>58.2</b>	44.9	82.4	80.7	78.6	40.0
<b>Male</b>						
In employment	<b>333.9</b>	33.2	37.4	78.6	80.3	104.4
Unemployed	<b>15.8</b>	8.5	2.7	3.4	0.8	0.4
Labour force	<b>349.7</b>	41.7	40.1	82.0	81.1	104.8
Economically inactive	<b>132.8</b>	44.1	3.2	3.1	4.1	78.3
Total Population	<b>482.5</b>	85.8	43.3	85.1	85.2	183.1
Employment rate (%)	<b>95.5</b>	79.6	93.3	95.9	99.0	99.6
Unemployment rate (%)	<b>4.5</b>	20.4	6.7	4.1	1.0	0.4
Activity rate (%)	<b>72.5</b>	48.6	92.6	96.4	95.2	57.2
<b>Female</b>						
In employment	<b>202.9</b>	24.0	27.2	51.7	48.8	51.2
Unemployed	<b>24.0</b>	10.8	4.3	4.5	3.4	1.0
Labour force	<b>226.9</b>	34.8	31.5	56.2	52.2	52.2
Economically inactive	<b>281.3</b>	49.8	12.1	30.0	32.2	157.2
Total Population	<b>508.2</b>	84.6	43.6	86.2	84.4	209.4
Employment rate (%)	<b>89.4</b>	69.0	86.3	92.0	93.5	98.1
Unemployment rate (%)	<b>10.6</b>	31.0	13.7	8.0	6.5	1.9
Activity rate (%)	<b>44.6</b>	41.1	72.2	65.2	61.8	24.9

<sup>1</sup> Provisional

**Table 3: Employment by industrial activity, 3rd Quarter 2017 to 3rd Quarter 2018**

	Total employed aged 16+	Primary sector	Secondary sector	Tertiary sector	Selected NSIC <sup>1</sup> Sections			
					Manufacturing	Construction	Wholesale and retail trade	Other services
					C	F	G	H - U
	(000s)	(%)	(%)	(%)	(%)	(%)	(%)	(%)
<b>Both sexes</b>								
2017 Q3	<b>542.4</b>	6.6	25.4	68.0	12.9	11.2	15.0	53.1
Q4	<b>548.0</b>	7.1	26.1	66.8	13.7	11.2	14.7	52.1
2018 Q1	<b>540.0</b>	6.4	23.2	70.4	12.8	9.4	16.2	54.1
Q2	<b>541.5</b>	6.4	22.3	71.3	11.7	9.7	16.5	54.9
Q3 <sup>2</sup>	<b>536.8</b>	6.3	23.7	70.0	12.4	10.2	14.3	55.8
<b>Male</b>								
2017 Q3	<b>338.3</b>	7.4	31.5	61.1	12.7	17.1	13.3	47.8
Q4	<b>340.7</b>	8.8	31.7	59.5	12.8	17.3	13.7	45.8
2018 Q1	<b>333.1</b>	8.1	28.9	63.0	13.0	14.7	15.5	47.5
Q2	<b>331.5</b>	7.7	27.7	64.6	11.2	15.3	15.1	49.4
Q3 <sup>2</sup>	<b>333.9</b>	7.5	28.4	64.1	11.2	15.8	13.4	50.6
<b>Female</b>								
2017 Q3	<b>204.1</b>	5.1	15.4	79.5	13.3	1.5	17.7	61.8
Q4	<b>207.3</b>	4.4	16.9	78.7	15.3	1.2	16.3	62.4
2018 Q1	<b>206.9</b>	3.6	14.2	82.2	12.6	1.0	17.4	64.9
Q2	<b>210.0</b>	4.3	13.7	82.0	12.5	0.9	18.6	63.4
Q3 <sup>2</sup>	<b>202.9</b>	4.3	15.9	79.8	14.4	0.9	15.6	64.2

<sup>1</sup> National version of the International Standard Industrial Classification of All Economic Activities (ISIC Revision 4)

<sup>2</sup> Provisional

**Table 4: Employment by occupational group, 3rd Quarter 2017 to 3rd Quarter 2018**

		ISCO-08 <sup>1</sup>					
		Total employed aged 16+	Managers, Professionals, Technicians & associate professionals	Clerical support workers	Service and sales workers	Agricultural, Craft & related trades workers, Plant & machine operators & assemblers	Elementary occupations
		(000s)	1,2,3 (%)	4 (%)	5 (%)	6,7,8 (%)	9 (%)
<b>Both sexes</b>							
	2017 Q3	<b>542.4</b>	24.4	8.7	21.1	30.0	15.8
	Q4	<b>548.0</b>	22.3	10.0	21.5	29.5	16.7
	2018 Q1	<b>540.0</b>	24.6	10.2	20.8	28.9	15.5
	Q2	<b>541.5</b>	25.2	8.7	22.4	28.1	15.6
	Q3 <sup>2</sup>	<b>536.8</b>	25.4	9.2	19.5	29.6	16.3
<b>Male</b>							
	2017 Q3	<b>338.3</b>	22.3	5.2	19.3	41.2	12.0
	Q4	<b>340.7</b>	20.2	6.2	19.9	40.7	13.0
	2018 Q1	<b>333.1</b>	22.8	6.1	18.9	40.3	11.9
	Q2	<b>331.5</b>	23.9	4.5	20.0	39.6	12.0
	Q3 <sup>2</sup>	<b>333.9</b>	24.3	5.7	17.3	40.6	12.1
<b>Female</b>							
	2017 Q3	<b>204.1</b>	27.8	14.5	24.0	11.5	22.2
	Q4	<b>207.3</b>	25.9	16.1	24.2	11.1	22.7
	2018 Q1	<b>206.9</b>	27.6	16.7	23.8	10.6	21.3
	Q2	<b>210.0</b>	27.2	15.4	26.2	9.9	21.3
	Q3 <sup>2</sup>	<b>202.9</b>	27.2	15.1	23.2	11.3	23.2

<sup>1</sup> National version of the International Standard Classification of Occupations (ISCO-08)

<sup>2</sup> Provisional

**Table 5: Employment by hours worked, 3rd Quarter 2017 to 3rd Quarter 2018**

	Total employed aged 16+ (000's)	Total hours worked (000's)	% having worked for:					Average number of hours worked
			0 hour	1 to 23 hours	24 to 40 hours	41 to 50 hours	51 and above	
<b>Both sexes</b>								
2017 Q3	<b>542.4</b>	20,400	4.9	10.1	43.0	28.6	13.4	39.5
Q4	<b>548.0</b>	20,800	6.0	10.9	37.5	29.1	16.5	40.4
2018 Q1	<b>540.0</b>	17,300	7.9	17.4	47.1	17.4	10.2	34.7
Q2	<b>541.5</b>	20,100	5.6	10.9	41.8	28.5	13.2	39.3
Q3 <sup>1</sup>	<b>536.8</b>	19,100	4.3	11.1	52.5	20.1	12.0	37.1
<b>Male</b>								
2017 Q3	<b>338.3</b>	13,300	5.4	7.7	39.4	30.7	16.8	41.5
Q4	<b>340.7</b>	13,600	5.6	7.9	35.8	31.1	19.6	42.3
2018 Q1	<b>333.1</b>	11,100	9.2	13.4	46.1	19.1	12.2	36.6
Q2	<b>331.5</b>	12,800	6.4	8.3	39.3	29.5	16.5	41.2
Q3 <sup>1</sup>	<b>333.9</b>	12,500	4.8	8.5	49.9	21.6	15.2	39.2
<b>Female</b>								
2017 Q3	<b>204.1</b>	7,100	4.1	14.0	49.0	25.1	7.8	36.3
Q4	<b>207.3</b>	7,200	6.8	15.9	40.3	25.6	11.4	37.2
2018 Q1	<b>206.9</b>	6,200	5.7	24.0	48.8	14.6	6.9	31.6
Q2	<b>210.0</b>	7,300	4.4	14.9	45.9	26.9	7.9	36.3
Q3 <sup>1</sup>	<b>202.9</b>	6,600	3.5	15.4	56.7	17.6	6.8	33.7

0 hour not included in total hours worked & in average number of hours worked

<sup>1</sup> Provisional

**Table 6: Unemployment by educational attainment, 3rd Quarter 2017 to 3rd Quarter 2018**

	Unemployed Mauritians aged 16+ (000s)	Primary			Secondary			Tertiary	
		Total (%)	Below CPE (%)	Passed CPE (%)	Total (%)	Below SC (%)	Passed SC (%)	Passed HSC (%)	
<b>Both sexes</b>									
2017 Q3	<b>40.6</b>	<b>13.1</b>	8.9	4.2	<b>62.8</b>	31.8	18.0	13.0	<b>24.1</b>
Q4	<b>39.6</b>	<b>10.5</b>	9.3	1.2	<b>66.5</b>	32.6	21.0	12.9	<b>23.0</b>
2018 Q1	<b>41.0</b>	<b>12.2</b>	11.2	1.0	<b>63.2</b>	35.1	13.9	14.2	<b>24.6</b>
Q2	<b>40.5</b>	<b>8.1</b>	5.9	2.2	<b>60.5</b>	29.1	15.1	16.3	<b>31.4</b>
Q3 <sup>1</sup>	<b>39.8</b>	<b>11.0</b>	9.0	2.0	<b>62.6</b>	34.9	13.1	14.6	<b>26.4</b>
<b>Male</b>									
2017 Q3	<b>16.4</b>	<b>15.2</b>	9.7	5.5	<b>59.8</b>	35.4	14.6	9.8	<b>25.0</b>
Q4	<b>16.3</b>	<b>8.6</b>	6.1	2.5	<b>73.0</b>	42.9	21.5	8.6	<b>18.4</b>
2018 Q1	<b>18.0</b>	<b>14.4</b>	13.3	1.1	<b>65.6</b>	41.1	12.8	11.7	<b>20.0</b>
Q2	<b>18.5</b>	<b>9.7</b>	5.4	4.3	<b>65.4</b>	40.5	8.7	16.2	<b>24.9</b>
Q3 <sup>1</sup>	<b>15.8</b>	<b>10.7</b>	8.2	2.5	<b>68.4</b>	43.0	12.7	12.7	<b>20.9</b>
<b>Female</b>									
2017 Q3	<b>24.2</b>	<b>11.6</b>	8.3	3.3	<b>64.8</b>	29.3	20.2	15.3	<b>23.6</b>
Q4	<b>23.3</b>	<b>12.0</b>	11.6	0.4	<b>61.8</b>	25.3	20.6	15.9	<b>26.2</b>
2018 Q1	<b>23.0</b>	<b>10.4</b>	9.5	0.9	<b>61.3</b>	30.4	14.8	16.1	<b>28.3</b>
Q2	<b>22.0</b>	<b>6.8</b>	6.4	0.4	<b>56.4</b>	19.5	20.5	16.4	<b>36.8</b>
Q3 <sup>1</sup>	<b>24.0</b>	<b>11.3</b>	9.6	1.7	<b>58.7</b>	29.6	13.3	15.8	<b>30.0</b>

<sup>1</sup> Provisional

**Table 7: Unemployment by age, 3rd Quarter 2017 to 3rd Quarter 2018**

In Thousands

		All aged 16 and over	Age group (years)		
			16-24	25-49	50+
<b>Both sexes</b>					
	2017 Q3	<b>40.6</b>	19.5	19.9	1.2
	Q4	<b>39.6</b>	16.7	21.6	1.3
	2018 Q1	<b>41.0</b>	19.3	19.0	2.7
	Q2	<b>40.5</b>	21.5	17.7	1.3
	Q3 <sup>1</sup>	<b>39.8</b>	19.3	19.1	1.4
<b>Change, latest quarter over:</b>					
	previous quarter	<b>-0.7</b>	<b>-2.2</b>	<b>1.4</b>	<b>0.1</b>
	same quarter a year ago	<b>-0.8</b>	<b>-0.2</b>	<b>-0.8</b>	<b>0.2</b>
<b>Male</b>					
	2017 Q3	<b>16.4</b>	8.1	7.7	0.6
	Q4	<b>16.3</b>	7.5	7.9	0.9
	2018 Q1	<b>18.0</b>	9.2	7.4	1.4
	Q2	<b>18.5</b>	10.9	7.0	0.6
	Q3 <sup>1</sup>	<b>15.8</b>	8.5	6.9	0.4
<b>Change, latest quarter over:</b>					
	previous quarter	<b>-2.7</b>	<b>-2.4</b>	<b>-0.1</b>	<b>-0.2</b>
	same quarter a year ago	<b>-0.6</b>	<b>0.4</b>	<b>-0.8</b>	<b>-0.2</b>
<b>Female</b>					
	2017 Q3	<b>24.2</b>	11.4	12.2	0.6
	Q4	<b>23.3</b>	9.2	13.7	0.4
	2018 Q1	<b>23.0</b>	10.1	11.6	1.3
	Q2	<b>22.0</b>	10.6	10.7	0.7
	Q3 <sup>1</sup>	<b>24.0</b>	10.8	12.2	1.0
<b>Change, latest quarter over:</b>					
	previous quarter	<b>2.0</b>	<b>0.2</b>	<b>1.5</b>	<b>0.3</b>
	same quarter a year ago	<b>-0.2</b>	<b>-0.6</b>	<b>0.0</b>	<b>0.4</b>

<sup>1</sup> Provisional



**Table 8: Unemployment by work experience, 3rd Quarter 2017 to 3rd Quarter 2018**

	Unemployed Mauritians aged 16+	No. of first job seekers	Unemployed with work experience by industry *					
			Total	Manuf.	Construction	Wholesale & Retail Trade	Accommodation & Food Service Activities	Other
			(000s)	(%)	(%)	(%)	(%)	(%)
<b>Both sexes</b>								
2017 Q3	<b>40.6</b>	12.9	27.7	13.7	8.3	26.4	14.8	36.8
Q4	<b>39.6</b>	14.1	25.5	15.7	9.0	31.0	6.3	38.0
2018 Q1	<b>41.0</b>	14.7	26.3	15.6	13.3	20.9	12.5	37.7
Q2	<b>40.5</b>	13.8	26.7	8.2	8.6	24.3	14.2	44.7
Q3 <sup>1</sup>	<b>39.8</b>	13.6	26.2	17.2	3.4	23.7	14.9	40.8
<b>Change, latest quarter over:</b>								
previous quarter	<b>-0.7</b>	<b>-0.2</b>	<b>-0.5</b>					
same quarter a year ago	<b>-0.8</b>	<b>0.7</b>	<b>-1.5</b>					
<b>Male</b>								
2017 Q3	<b>16.4</b>	5.7	10.7	15.0	18.7	18.7	15.9	31.7
Q4	<b>16.3</b>	5.7	10.6	16.0	20.8	21.7	6.6	34.9
2018 Q1	<b>18.0</b>	6.0	12.0	15.0	24.2	13.3	10.8	36.7
Q2	<b>18.5</b>	6.0	12.5	8.8	16.8	20.0	12.0	42.4
Q3 <sup>1</sup>	<b>15.8</b>	4.4	11.4	18.4	7.0	25.4	9.6	39.6
<b>Change, latest quarter over:</b>								
previous quarter	<b>-2.7</b>	<b>-1.6</b>	<b>-1.1</b>					
same quarter a year ago	<b>-0.6</b>	<b>-1.3</b>	<b>0.7</b>					
<b>Female</b>								
2017 Q3	<b>24.2</b>	7.2	17.0	12.9	1.8	31.2	14.1	40.0
Q4	<b>23.3</b>	8.4	14.9	15.4	0.7	37.6	6.0	40.3
2018 Q1	<b>23.0</b>	8.7	14.3	16.1	4.2	27.3	14.0	38.4
Q2	<b>22.0</b>	7.8	14.2	7.7	1.4	28.2	16.2	46.5
Q3 <sup>1</sup>	<b>24.0</b>	9.2	14.8	16.2	0.7	22.3	18.9	41.9
<b>Change, latest quarter over:</b>								
previous quarter	<b>2.0</b>	<b>1.4</b>	<b>0.6</b>					
same quarter a year ago	<b>-0.2</b>	<b>2.0</b>	<b>-2.2</b>					

\* National version of the International Standard Industrial Classification of All Economic Activities (ISIC Revision 4)

<sup>1</sup> Provisional

**Table 9: Economically inactive population by reason, 3rd Quarter 2017 to 3rd Quarter 2018**

	Total Mauritians aged 16+	Economically inactive by reason					
		Total	Homemakers	Retired or elderly	Students	Sick or disabled	Other
		(000s)	(%)	(%)	(%)	(%)	(%)
<b>Both sexes</b>							
2017 Q3	<b>985.2</b>	402.2	42.6	24.8	20.0	9.0	3.6
Q4	<b>987.4</b>	399.8	43.0	25.0	19.7	9.1	3.2
2018 Q1	<b>988.6</b>	407.6	40.7	27.8	17.7	9.2	4.6
Q2	<b>991.6</b>	409.6	41.5	26.8	18.2	8.8	4.7
Q3 <sup>1</sup>	<b>990.7</b>	414.1	41.0	27.7	19.8	8.0	3.5
<b>Male</b>							
2017 Q3	<b>479.9</b>	125.2	0.1	48.4	31.2	15.8	4.5
Q4	<b>480.9</b>	123.9	0.2	48.7	30.8	15.8	4.5
2018 Q1	<b>481.8</b>	130.7	0.4	48.2	26.8	16.7	7.9
Q2	<b>483.6</b>	133.6	0.6	48.6	27.3	15.5	8.0
Q3 <sup>1</sup>	<b>482.5</b>	132.8	0.4	49.3	29.7	14.0	6.6
<b>Female</b>							
2017 Q3	<b>505.3</b>	277.0	61.8	14.2	14.9	5.9	3.2
Q4	<b>506.5</b>	275.9	62.2	14.4	14.7	6.1	2.6
2018 Q1	<b>506.8</b>	276.9	59.8	18.1	13.4	5.7	3.0
Q2	<b>508.0</b>	276.0	61.3	16.3	13.7	5.6	3.1
Q3 <sup>1</sup>	<b>508.2</b>	281.3	60.2	17.5	15.1	5.2	2.0

<sup>1</sup> Provisional